

A peer-reviewed version of this preprint was published in PeerJ on 6 November 2014.

[View the peer-reviewed version](https://doi.org/10.7717/peerj.643) (peerj.com/articles/643), which is the preferred citable publication unless you specifically need to cite this preprint.

Cook GR, Krithika S, Edwards M, Kavanagh P, Parra EJ. 2014. Quantitative measurement of odor detection thresholds using an air dilution olfactometer, and association with genetic variants in a sample of diverse ancestry. PeerJ 2:e643 <https://doi.org/10.7717/peerj.643>

Quantitative measurement of odor detection thresholds using an air dilution olfactometer, and association with genetic variants in a sample of diverse ancestry

Genetic association studies require a quantitative and reliable method for odor threshold assessment in order to examine the contribution of genetic variants to complex olfactory phenotypes. Our main goal was to assess the feasibility of a portable Scentroid air dilution olfactometer for use in such studies. Using the Scentroid SM110C and the SK5 n-butanol Sensitivity Kit (IDES Canada Inc.), n-butanol odor thresholds were determined for 182 individuals of diverse ancestry (mean age: 20.4 ± 2.5 years; $n = 128$ female; $n = 54$ male). Threshold scores from repeat participants were used to calculate a test-retest reliability coefficient, which was statistically significant ($r = 0.754$, $p < 0.001$, $n = 29$), indicating that the Scentroid provides reliable estimates of odor thresholds. In addition, we performed a preliminary genetic analysis evaluating the potential association of n-butanol odor thresholds to six single-nucleotide polymorphisms (SNPs) putatively involved in general olfactory sensitivity (GOS). The results of multiple linear regression analysis revealed no significant association between the SNPs tested and threshold scores. However, our sample size was relatively small, and our study was only powered to identify genetic markers with strong effects on olfactory sensitivity. Overall, we find that the Scentroid provides reliable quantitative measures of odor detection threshold and is well suited for genetic studies of olfactory sensitivity.

- 1 **Quantitative measurement of odor detection thresholds using an air dilution olfactometer,**
2 **and association with genetic variants in a sample of diverse ancestry.**

3 Gillian R. Cook, S. Krithika, Melissa Edwards, Paula Kavanagh, Esteban J. Parra

4 *Department of Anthropology, University of Toronto at Mississauga, ON, Canada.*

5 *Correspondence to be sent to: Esteban Parra, Department of Anthropology, University of*
6 *Toronto at Mississauga, Mississauga, Canada, 905-828-3889, esteban.parra@utoronto.ca.*

7 **Introduction**

Human scent perception abilities are highly variable. It is well documented that variation exists between individuals and between sexes (Hoover 2010; Keller et al. 2007). Similarly, several studies have identified inter-population differences in olfactory abilities (Eibenstein et al. 2005; Sorokowska et al. 2013; McRae et al. 2013). Matching the high degree of diversity in scent perception phenotypes, there is a correspondingly large amount of genetic variation in olfactory genes. Ongoing research is attempting to link variation at the genetic level to observed phenotypic variation, gaining a deeper understanding of olfactory genetics, and of the genetic contribution to highly personalized scent perception phenotypes (see Mainland et al. 2014; Schütz et al. 2014; McRae et al. 2013). The majority of studies have focused on the impact of genetic variants in olfactory receptor (OR) genes, although there have also been efforts to examine the potential role of variants in auxiliary olfactory genes (Keydar et al. 2013). In addition, gene expression analysis has shown that inter-individual differences in olfactory abilities may be due to differential expression of functional OR genes in the olfactory mucosa (Verbeurgt et al. 2014).

A major bottleneck in the study of olfactory sensitivity has been a lack of instrumentation for accurately measuring smell. Unlike for vision and hearing, there is no standardized test for olfactory sensitivity in either the clinical or research setting (Eibenstein et al. 2005). Numerous psychophysical methods exist, all of which present olfactory stimuli and allow the test subject to report on their experience (Doty 2006). These tests of olfactory sensitivity evaluate detection or perception thresholds, as well as odor discrimination, identification, memory, intensity and pleasantness (Doty et al. 1995; Eibenstein et al. 2005). The majority of these tests are qualitative, such as the University of Pennsylvania Smell Identification Test (UPSIT), or are not precise enough for the purposes of genetic association studies (Doty et al. 1995; Kremer et al. 1998). The most quantitative measurements are gained through odor threshold testing, where the lowest

32 concentration of an odor that the subject can detect is determined without requiring recognition of
33 the smell (Eibenstein et al. 2005).

34 While similar in principle, individual threshold tests vary in their design. Common
35 differences include the method of odor delivery, and the order in which dilutions are presented
36 during testing. The most simple odor presentation strategy is the ascending method of limits
37 (AML), whereby the series of diluted odorants is always presented from lowest to highest
38 concentration. With an AML strategy, the threshold is estimated from the transition point at
39 which the subject reports odor detection (Doty 2006). Threshold tests can be either forced choice
40 or non-forced choice in design. Forced choice tests offer one or more blank stimuli. A non-
41 forced choice design requires presentation of a single odor stimulus, such that the test subject is
42 required to respond whether or not they smell the odor from a single sample without blanks
43 presented for comparison (Doty et al. 1995).

44 Common threshold tests employed today include the Connecticut Chemosensory Clinical
45 Research Center Test (CCCRC), Sensonic Inc.'s Smell Threshold Test (STT), and a component of
46 the Sniffin' Sticks test battery (Cain et al. 1983; Doty 2006; Hummel et al. 1997). These three
47 tests are characterized by the use of liquid odorant dilutions, which are delivered in plastic
48 squeeze bottles or modified felt tip pens. Despite the convenience of liquid dilution, air dilution
49 methods are preferable for evaluating olfactory response. Air dilution olfactometry is more
50 precise than liquid dilution, and circumvents issues of odor intensity loss in volatile aqueous
51 solutions (Eibenstein et al. 2005; Kremer et al. 1998). However, preparation and administration
52 is generally more expensive and time consuming for air dilutions than for liquid dilutions.
53 Therefore, a portable, affordable and reliable air dilution olfactory threshold test that can be
54 administered in a short amount of time is needed.

The main goals of our study were to 1) assess the suitability of a portable dynamic olfactometer, the Scentroid SM110C (IDES Canada Inc.), for olfactory threshold studies, and 2) carry out a pilot study to examine the potential association of a selected number of GOS genetic variants and n-butanol thresholds in a sample of diverse ancestry. We evaluated the test-retest reliability of the Scentroid SM110C using n-butanol as an odorant (SK5 n-butanol Sensitivity Kit, IDES Canada Inc). The odorant n-butanol is widely used in olfaction studies, in part due to its variable odor detection threshold (Doty et al. 1995; Hummel et al. 1997). We surveyed the olfactory thresholds for n-butanol in a multi-ethnic population, and genotyped the participants at six missense single-nucleotide polymorphisms (SNPs) located in putative auxiliary olfactory genes. The markers were chosen for their potential involvement in general olfactory sensitivity (GOS), a phenotype characterized by correlation of sensitivities to multiple odorants (Keydar et al. 2013). Genetic variants involved in GOS affect the olfactory thresholds of numerous odorants, making them easier to detect than OR variants when the odor threshold is measured for a single odorant.

We genotyped five SNPs in three genes that had been identified in a database of candidate auxiliary olfactory genes (<http://genome.weizmann.ac.il/GOSdb>): rs17132289 and rs17712299 in the ATP-binding cassette, sub-family A, member 13 gene (*ABCA13*); rs2889732 and rs13036385 in the BPI fold containing family B, member 4 gene (*BPIFB4*); and rs6746030 in the sodium channel, voltage-gated, type IX, alpha subunit gene (*SCN9A*) (Keydar et al. 2013). The *SCN9A* variant rs6746030 has previously been implicated as having an effect on olfactory function (Heimann et al. 2013; Weiss et al. 2011). In addition to genes identified in the GOS database (GOSdb), we genotyped the SNP rs6265 located in the brain-derived neurotrophic factor gene (*BDNF*), which has been linked to olfactory ability in previous studies (Hedner et al. 2010; Tonacci et al. 2013).

79 **Materials and methods**

80 *Subjects*

81 182 participants were recruited on the University of Toronto at Mississauga campus and
82 ranged in age from 18 to 32 years old (mean age: 20.4 ± 2.5 years; n = 128 female; n = 54 male).
83 60 individuals were of East Asian ancestry (Chinese, Japanese, Korean, and Taiwanese), 55 were
84 of European ancestry, 58 were of South Asian ancestry (Bangladeshi, Indian, Pakistani, and Sri
85 Lankan), and nine were of mixed or other ancestry. Table 1 describes the main characteristics of
86 the sample. Prior to testing, participants were asked not to eat or drink for twenty minutes. All
87 the individuals gave written informed consent prior to participating in the study. The research
88 protocol was approved by the University of Toronto Research Ethics Board. This study complies
89 with the Declaration of Helsinki for Medical Research involving Human Subjects.

90 *Olfactory threshold testing*

91 Olfactory thresholds for n-butanol were assessed using the Scentroid SM110C
92 olfactometer and the SK5 n-butanol Sensitivity Kit (IDES Canada Inc.), shown in Fig. 1. This
93 instrument complies with the European Standard EN13725:2003 for dynamic olfactometers.
94 Additionally, results obtained with the Scentroid SM110 have previously been shown to correlate
95 well with those from established odor assessment techniques. Bokova (2012) reported very good
96 correlation between the results obtained with the Scentroid SM110 and traditional odor
97 evaluations using a dynamic olfactometer. Szyłak-Szydłowski (2014) reported very strong
98 correlations between the odor concentrations estimated by the Scentroid SM-100 and the Nasal
99 Ranger for Tetrahydrothiophene and Hydrogen sulphide (r values 0.98 and 0.93, respectively), for
100 field tests on a water treatment plant ($r=0.89$).

The odor was presented birhinally using a non-forced choice strategy that consisted of fifteen steps with dilution ratios ranging from 200 to 3600. A fresh dilution of n-butanol was prepared daily in a stainless steel evaporation chamber by combining 0.5 μ l of aqueous n-butanol with compressed air, equivalent to a concentration of 20 ppm, and was subsequently stored in a 1 L Tedlar bag (Fig. 2). Using the Scentroid's standardized restriction plate two in the flow regulator allowed for the 20 ppm sample of n-butanol to be further diluted within a 5.5 to 100 ppb range. Subjects were presented with the lowest concentration of n-butanol first and, following an AML strategy, were exposed to successively increased concentrations. A metal cone expelling air at a constant flow of 20 L/min and velocity of 2.5 m/s was presented to each subject for approximately 2 seconds per dilution step, followed by a brief stimulus break (Fig. 3). Subjects were asked to verbally respond whether or not they could detect the odor at each step. The olfactory threshold was determined from the transition point at which the subjects reported odor detection, and calculated as the mean of the scores from three consecutive tests. Each individual threshold test took approximately 1 to 3 minutes to complete.

A replication sample consisting of 29 participants was tested 14 to 18 weeks after their original testing date. The olfactory threshold test protocol remained unchanged.

Genotyping

Saliva was collected with the Oragene DNA OG-500 (DNA Genotek Inc.) for genomic DNA extraction following recommended protocols. Samples were sent to LGC Genomics for genotyping by means of the KASP genotyping assay. Genotyping was performed for six SNPs with potential involvement in GOS phenotypes: rs6265, rs2889732, rs6746030, rs13036385, rs17132289, and rs17712299.

Statistical analyses

124 The olfactory threshold scores were found to be positively skewed and a log
 125 transformation was applied. Using the log-transformed data, an ANOVA was run to examine
 126 differences in n-butanol olfactory thresholds between ancestry groups. Test-retest reliability was
 127 evaluated using correlation tests and Bland-Altman plots, based on the olfactory threshold scores
 128 obtained from a subset of participants who were measured twice within an interval of 14 to 18
 129 weeks. Associations between SNPs and olfactory sensitivity were analyzed through multiple
 130 linear regression, with age and sex included as covariates. The association tests were done
 131 individually for each ancestry group and also for the full sample, with ancestry as an additional
 132 covariate. For the association tests, we used a genotypic model, where the effects of one of the
 133 homozygous categories and the heterozygous category are reported in relation to the remaining
 134 homozygous category, which is used as a reference. The statistical analyses were carried out with
 135 IBM SPSS Statistics v.20. For all analyses the level of significance was set to $\alpha = 0.05$.
 136 Genotype data was checked for deviations from Hardy-Weinberg equilibrium, using exact tests
 137 available at <http://ihg.gsf.de/cgi-bin/hw/hwa1.pl>. Post-hoc power analysis was performed with
 138 the program Quanto (<http://biostats.usc.edu/Quanto.html>), using several inheritance models
 139 (additive, dominant and recessive) and allele frequencies ranging from 0.05 to 0.50. Parameters
 140 were set based on observed n-butanol threshold scores in ppb (mean = 22, SD = 14), with a
 141 sample size of 60 and allelic effect sizes ranging from 1 to 10 beta.

142 **Results**

143 *Analysis of olfactory thresholds in individuals of diverse ancestry*

The n-butanol olfactory threshold was evaluated in 182 participants of diverse ancestry using the Scentroid SM110C olfactometer. Figure 4 shows the distribution of olfactory threshold in the total sample. The distributions observed in each ancestry group are provided as supplementary information (Supplemental Fig. S1). The average (\pm SD) odor threshold concentration in the full sample was 22.5 ± 13.7 ppb. The average concentrations in the European, East Asian and South Asian groups were 20.9 ± 13.0 , 24.4 ± 16.2 and 22.1 ± 11.8 ppb, respectively. Odor thresholds were non-normally distributed, and were log-transformed prior to statistical analysis. Using one-way ANOVA, we examined the impact of age, sex and ancestry on log-transformed n-butanol threshold scores. All three factors were not significant ($p = 0.615$ age; $p = 0.053$ sex; $p = 0.586$ ancestry).

In order to assess the reliability of the Scentroid olfactometer and our protocol for determining olfactory threshold, the thresholds from returning participants were used to calculate a test-retest reliability coefficient (Pearson correlation coefficient) (Fig. 5). The resulting value of 0.754 was statistically significant ($p < 0.001$; $n = 29$). We also evaluated reliability using Bland-Altman plots, which are shown in Fig. 6. This plot revealed three distinct outliers, whose removal resulted in an improved test-retest reliability coefficient of 0.880. Furthermore, the mean olfactory thresholds (ppb) did not differ significantly between time points, as evidenced by the results of a repeated measures ANOVA ($p = 0.731$, $n = 29$).

Association of putative GOS SNPs with olfactory thresholds

Six SNPs that have been putatively linked with GOS were genotyped using the KASP assay. The concordance rate observed for blind duplicates was 100%. The genotype distributions of all six SNPs met the assumptions of Hardy-Weinberg equilibrium ($p > 0.05$).

Using multiple regression analysis, each SNP was tested for association with olfactory threshold. The results are depicted in Table 2. The analysis for rs6265, rs2889732, rs6746030, rs13036385, rs17132289 and rs17712299 yielded no significant results, either in the individual ancestry groups or the total sample.

Discussion

Threshold test

We measured the n-butanol olfactory threshold in 182 subjects, in order to assess the feasibility of using the Scentroid SM110C air dilution olfactometer to test olfactory sensitivity. Reliability for this instrument was established using return participant test scores, from which a Pearson correlation coefficient was calculated. The derived test-retest reliability coefficient, representing the linear relationship between the first and second test values, was found to be high ($r = 0.754$, $p < 0.001$). Therefore, the Scentroid air dilution olfactometer, when used in conjunction with a non-forced choice AML strategy, produces reliable n-butanol olfactory thresholds, and compares favorably with many other n-butanol threshold tests (Table 3), for which the correlation coefficients range from 0.26 to 0.86 (Hummel et al. 1997; Linschoten et al. 2001; Lam et al. 2006; Doty et al. 1995).

Currently, the two most common methods for measuring olfactory thresholds are Sniffin' Sticks, and versions of the CCCRC. The Sniffin' Sticks olfactory threshold test is applied birhinally, using n-butanol as the odorant in a triple forced-choice strategy using a staircase presentation method. Staircase strategies differ from the AML in the presentation order of the dilution series, and therefore in how thresholds are estimated (see Doty 2006). Unique to Sniffin' Stick is the application of felt tipped pens for odor presentation. The felt pens are easy to

administer, making this particular test highly popular as a result (Hummel et al. 1997; Kobal et al. 2000). In the CCCRC threshold test, subjects are presented with two plastic squeeze bottles, one containing a blank and the other a set dilution of aqueous n-butanol. The basic procedure is two-alternate forced-choice with an AML presentation of the dilution series. Between nine and 13 dilutions are used, with varying n-butanol concentrations (Cain et al. 1983). Various olfactory tests based on the CCCRC also exist, including the Combined Olfactory Test (COT) in China. It includes both identification and threshold tests, the former of which is culturally adapted. The threshold test component is indistinguishable from that of the CCCRC, yet threshold scores reported in the literature vary (Lam et al. 2006).

Variability in the olfactory threshold scores of individual tests can be attributed to differences in experimental design and the study sample. The age of the subjects tested is a significant factor in evaluation of olfactory sensitivity due to the degradation of the sense of smell with age (Hoover 2010). The mean age of the individuals who participated in the studies listed in Table 3 ranged from 31.6 to 49.5 years (Linschoten et al. 2001; Hummel et al. 1997). The mean age of our sample is 20.4 years, which is between 10 and 30 years less than those previously cited. In determining a test's reliability, the time between retests is an important aspect of the research protocol that can impact the results. Our test-retest interval of 14 to 18 weeks is long relative to the studies listed in Table 3, whose intervals range from one day to three weeks, with an average of two weeks. Past research was unable to find support for a relationship between test-retest scores and the time interval between tests (Doty et al. 1995). However, this was based on the examination of relatively short intervals of less than two weeks. Linschoten et al. (2001) included retests performed up to three weeks after initial testing and identified a general trend, whereby the correlation of threshold scores decreased as the test interval increased. This reflects

211 the influence of environmental factors, which act alongside genetics, and impact olfactory
212 sensitivity (Doty 2006; Hasin-Brumshtein et al. 2009).

213 As highlighted previously, the staircase odor presentation strategy of the Sniffin' Sticks
214 test differs from the AML presentation used in the CCCRC and our protocol. Likewise, the mode
215 of stimulus delivery varies from felt-tipped pens, to plastic bottles, to the Scentroid air dilution
216 olfactometer. Yet, the Scentroid as a method for odor delivery is distinctive. A single sample of
217 the odorant needs to be prepared, and using compressed air, the instrument then further dilutes
218 that stock sample for presentation to the test subject. The test administrator can easily switch
219 between set dilutions, thus altering the compressed air to sample ratio.

220 Here, we measured n-butanol olfactory thresholds using the Scentroid SM110C air
221 dilution olfactometer. The resulting test-retest reliability coefficient indicates that the Scentroid
222 produces reliable n-butanol olfactory thresholds. While we employed the AML strategy in a non-
223 forced choice manner, adjustments to this protocol could improve the accuracy of odor thresholds
224 obtained with a Scentroid. Multiple-forced choice designs are less subject to response biases,
225 increasing the reliability of resultant threshold scores (Doty et al. 1995). Moreover, the AML
226 odor presentation strategy is less reliable than simple staircase methods, which in turn are
227 associated with higher error rates than the maximum-likelihood adaptive staircase (ML-PEST)
228 (Linschoten et al. 2001). However, such changes in experimental design will increase the test's
229 administration time and complexity.

230 *Olfactory SNPs*

231 In addition to testing the reliability of the Scentroid SM110C olfactometer, we carried out
232 a pilot study in which we genotyped six SNPs in genes potentially involved in GOS phenotypes,

233 aiming to investigate genetic associations with n-butanol olfactory thresholds. Our goal was to
234 examine variants that may contribute to overall olfactory sensitivity.

235 Studies have shown that individuals with heightened or decreased sensitivity to one odor
236 tend to display similar sensitivities to multiple odorants (Cain & Gent 1991). This has been
237 explained by variation in auxiliary olfactory genes, which are involved in aspects of olfaction
238 other than direct odorant binding, influencing neuronal development or relaying the signal
239 generated by odorant-receptor interaction (Keydar et al. 2013; Hasin-Brumshtein et al. 2009).

240 From the GOS database of candidate auxiliary olfactory genes developed by Keydar et al.
241 (2013), we chose SNPs from three genes. Our regression analysis revealed no association
242 between olfactory threshold and genotype for the variants examined in *ABCA13* and *BPIFB4*.
243 There has been no direct evidence of these genes having an olfactory effect in humans. *ABCA13*
244 and *BPIFB4* were included in the GOSdb based on RNA sequences in humans and mice, as well
245 as rat proteome data. Conversely, *SCN9A* has been associated with human olfactory function in
246 two separate studies, in addition to being included in the GOSdb. The voltage-gated sodium
247 channel encoded by *SCN9A* is expressed in both nociceptive and olfactory sensory neurons, and
248 is linked to altered pain and olfactory perception phenotypes. Individuals with loss-of-function
249 mutations in *SCN9A* cannot feel pain, and exhibit general anosmia (Weiss et al. 2011). An
250 investigation of gain-of-function mutations in this ion channel found that haplotypes carrying the
251 minor alleles of the rs6746030 and rs41268673 polymorphisms were associated with increased
252 pain sensitivity and general olfactory acuity (Heimann et al. 2013) with respect to the wild-type
253 haplotypes. In our study, we did not observe a significant effect of this polymorphism in
254 olfactory detection thresholds, either in the full sample or individual ancestry groups.

255 The Val66Met polymorphism in *BDNF*, rs6265, has been linked to age-related decline in
256 olfactory sensitivity (Hedner et al. 2010). Initially, the effect was only seen among subjects

257 between 70 and 90 years of age. However, a study investigating the effects of Val66Met in
258 younger individuals found an association with olfactory function for a sample with a mean age of
259 38.7 years (Tonacci et al. 2013). Our study failed to replicate these results, though this may be
260 due to the relatively low mean age of our sample (mean age: 20.4 years).

261 We performed a small-scale genetic association test for potential GOS variants, utilizing
262 n-butanol olfactory thresholds. No significant results were found in this pilot study. For some
263 variants, this may be due to lack of involvement in GOS. However, several of the SNPs
264 examined have been linked to human olfactory sensitivity previously. Our investigation was
265 hindered by a small sample size, which was further reduced through independent analysis of each
266 ancestry. Our post-hoc power analyses indicate that our study is only adequately powered to
267 identify alleles with strong effects on olfactory sensitivity. For example, assuming an additive
268 model of inheritance (Supplementary Table S1), we estimated that we have 80% power to
269 identify common alleles (allele frequencies (0.35 – 0.50) with effect sizes of 7 ppb or higher.
270 However, our power decreases substantially for alleles with lower allele frequencies and/or
271 smaller effect sizes. Therefore, it is possible that the SNPs examined here have minor effects on
272 inter-individual differences in olfactory sensitivity, and thus should continue to be candidates in
273 future studies.

274 **Conclusion**

275 In summary, in this study we show that the Scentroid SM110C provides reliable
276 quantitative estimates of odor thresholds, and would be an adequate olfactometer to explore the
277 genetic basis of olfactory sensitivity. Air dynamic olfactometers, which allow a continuous
278 control of the concentration of odorant, have advantages over methods based on liquid dilutions

in bottles, which may lose their smell intensity with time (Eibenstein et al. 2005; Kremer et al. 1998). A distinct advantage of the Scentroid SM110C with respect to other olfactometers is that it is portable, conferring flexibility in terms of the sampling location. Adequate phenotype characterization is a critical step in the success of genome-wide association (GWA) studies. For traits with an underlying quantitative distribution, using quantitative measures, instead of threshold-based dichotomous outcomes, enhances statistical power because of the larger information content (Plomin et al. 2009; Smith and Newton-Cheh, 2009). However, it is also important to consider the precision of the estimates, as it has been shown that measurement error reduces statistical power and can have a strong effect on the profile of SNPs identified in GWA studies (Barendse, 2011; Liao et al. 2014). Measurement errors can be reduced by taking multiple measurements (Barendse, 2011; Liao et al. 2014). In our study, we took three measurements per individual, and used the mean value as the dependent variable in our association tests. Using the AML strategy employed in this study, it was possible to get reliable, quantitative measures of odor threshold in less than 5 minutes per participant. This is particularly important for genome-wide association studies focusing on olfactory sensitivity, which ideally should include thousands of participants in order to identify markers with relatively small effects on olfactory sensitivity. Here, we have primarily focused on odor threshold as a measure of olfactory sensitivity. Other types of test have been developed to evaluate olfactory sensitivity, such as tests for odor discrimination, odor identification, odor memory, and suprathreshold scaling of odor intensity and pleasantness (Doty, 1995). All these tests capture different aspects of olfactory performance.

Acknowledgements

300 The authors are grateful to the individuals who volunteered to participate in this study.
301 This work was supported by an NSERC (Natural Sciences and Engineering Research Council of
302 Canada) Discovery Grant to E.J.P., and a Canada Graduate Scholarship-Master's to G.R.C.

303 **References**

- 304 Barendse W. 2011. The effect of measurement error of phenotypes on genome wide association
305 studies. *BMC Genomics*. 12:232.
- 306 Bokowa AH. 2012. Ambient Odour Assessment Similarities and Differences Between Different
307 Techniques. *Chem Eng Trans*. 30:313–318.
- 308 Cain WS, Gent J, Catalanotto FA, Goodspeed RB. 1983. Clinical evaluation of olfaction. *Am J*
309 *Otolaryngol*. 4(4):252–6.
- 310 Cain WS, Gent JF. 1991. Olfactory sensitivity: reliability, generality, and association with aging. *J*
311 *Exp Psychol Hum Percept Perform*. 17(2):382–391.
- 312 Doty RL. 2006. Olfactory dysfunction and its measurement in the clinic and workplace. *Int Arch*
313 *Occup Environ Health*. 79(4):268–82.
- 314 Doty RL, McKeown DA, Lee WW, Shaman P. 1995. A study of the test-retest reliability of ten
315 olfactory tests. *Chem Senses*. 20(6):645–656.
- 316 Eibenstein A, Fioretti AB, Lena C, Rosati N, Amabile G, Fusetti M. 2005. Modern
317 psychophysical tests to assess olfactory function. *Neurol Sci*. 26(3):147–55.
- 318 Hasin-Brumshtein Y, Lancet D, Olender T. 2009. Human olfaction: from genomic variation to
319 phenotypic diversity. *Trends Genet*. 25(4):178–184.
- 320 Hedner M, Nilsson L-G, Olofsson JK, Bergman O, Eriksson E, Nyberg L, Larsson M. 2010. Age-
321 Related Olfactory Decline is Associated with the BDNF Val66met Polymorphism: Evidence from
322 a Population-Based Study. *Front Aging Neurosci*. 2:24.

323 Heimann D, Lötsch J, Hummel T, Doehring A, Oertel BG. 2013. Linkage between increased
 324 nociception and olfaction via a SCN9A haplotype. *PLoS One*. 8(7):e68654.
 325 Hoover KC. 2010. Smell with inspiration: the evolutionary significance of olfaction. *Am J Phys*
 326 *Anthropol*. 143(S51):63–74.
 327 Hummel T, Sekinger B, Wolf SR, Pauli E, Kobal G. 1997. “Sniffin” sticks’: olfactory
 328 performance assessed by the combined testing of odor identification, odor discrimination and
 329 olfactory threshold. *Chem Senses*. 22(1):39–52.
 330 Keller A, Zhuang H, Chi Q, Vosshall L, Matsunami H. 2007. Genetic variation in a human
 331 odorant receptor alters odour perception. *Nature*. 449(7161):468–473.
 332 Keydar I, Ben-Asher E, Feldmesser E, Nativ N, Oshimoto A, Restrepo D, Matsunami H, Chien
 333 M-S, Pinto JM, Gilad Y, Olender T, Lancet, D. 2013. General olfactory sensitivity database
 334 (GOSdb): candidate genes and their genomic variations. *Hum Mutat*. 34(1):32–41.
 335 Kobal G, Klimek L, Wolfensberger M, Gudziol H, Temmel A, Owen CM, Seeber H, Pauli E,
 336 Hummel T. 2000. Multicenter investigation of 1,036 subjects using a standardized method for the
 337 assessment of olfactory function combining tests of odor identification, odor discrimination, and
 338 olfactory thresholds. *Eur Arch Otorhinolaryngol*. 257(4):205–11.
 339 Kremer B, Klimek L, Mösges R. 1998. Clinical validation of a new olfactory test. *Eur Arch*
 340 *Otorhinolaryngol*. 255(7):355–8.
 341 Lam HCK, Sung JKK, Abdullah VJ, van Hasselt CA. 2006. The combined olfactory test in a
 342 Chinese population. *J Laryngol Otol*. 120(2):113–6.

343 Linschoten MR, Harvey LO, Eller PM, Jafek BW. 2001. Fast and accurate measurement of taste
 344 and smell thresholds using a maximum-likelihood adaptive staircase procedure. *Percept*
 345 *Psychophys.* 63(8):1330–47.

346 Liao J, Li X, Wong TY, Wang JJ, Khor CC, Tai ES, Aung T, Teo YY, Cheng CY. 2014. Impact of
 347 measurement error on testing genetic association with quantitative traits. *PLoS One* 9(1):e87044.

348 Mainland JD, Keller A, Li YR, Zhou T, Trimmer C, Snyder LL, Moberly AH, Adipietro KA, Liu
 349 WLL, Zhuang H, Zhan S, Lee SS, Lin A, Matsunami H. 2014. The missense of smell: functional
 350 variability in the human odorant receptor repertoire. *Nat Neurosci.* 17(1):114–20.

351 McRae JF, Jaeger SR, Bava CM, Beresford MK, Hunter D, Jia Y, Chheang SL, Jin D, Peng M,
 352 Gamble JC, Atkinson KR, Axten LG, Paisley AG, Williams L, Tooman L, Pineau, B, Rouse SA,
 353 Newcomb RD. 2013. Identification of regions associated with variation in sensitivity to food-
 354 related odors in the human genome. *Curr Biol.* 23(16):1596–1600.

355 Smith JG, Newton-Cheh C. 2009. Genome-wide association study in humans. In: DiPetrillo K,
 356 ed. *Cardiovascular Genomics, Methods and Protocols (Methods in Molecular Biology, Vol.*
 357 *573)*. Humana Press, 231-257.

358 Plomin R, Haworth CM, Davis OS. 2009. Common disorders are quantitative traits. *Nat Rev*
 359 *Genet.* 10(12):872-878.

360 Schütz M, Oertel BG, Heimann D, Doebring A, Walter C, Dimova V, Geisslinger G, Lötsch J.
 361 2014. Consequences of a Human TRPA1 Genetic Variant on the Perception of Nociceptive and
 362 Olfactory Stimuli. *PLoS One.* 9(4):e95592.

363 Sorokowska A, Sorokowski P, Hummel T, Huanca T. 2013. Olfaction and environment: Tsimane'
 364 of bolivian rainforest have lower threshold of odor detection than industrialized german people.
 365 PLoS One. 8(7):e69203.

366 Szyłak-Szydłowski M. 2014. Comparison of Two Types of Field Olfactometers for Assessing
 367 Odours in Laboratory and Field Tests. Chem Eng Trans. 40:67–72.

368 Tonacci A, Borghini A, Mercuri A, Pioggia G, Andreassi MG. 2013. Brain-derived neurotrophic
 369 factor (Val66Met) polymorphism and olfactory ability in young adults. J Biomed Sci. 20(1):57.

370 Verbeurgt C, Wilkin F, Tarabichi M, Gregoire F, Dumont JE, Chatelain P. 2014. Profiling of
 371 olfactory receptor gene expression in whole human olfactory mucosa. PLoS One. 9(5):e96333.

372 Weiss J, Pyrski M, Jacobi E, Bufe B, Willnecker V, Schick B, Zizzari P, Gossage SJ, Greer CA,
 373 Leinders-Zufall T, Woods CG, Wood JN, Zufall F. 2011. Loss-of-function mutations in sodium
 374 channel Nav1.7 cause anosmia. Nature. 472(7342):186–90.

Figure 1

Scentroid SM110C olfactometer used in measuring n-butanol olfactory thresholds.



Figure 2

Stainless steel evaporation chamber used for transferring diluted n-butanol to a Tedlar bag.



Figure 3

Olfactory threshold testing using the Scentroid SM110C olfactometer and SK5 n-butanol Sensitivity Kit.



Figure 4

Distribution of n-butanol olfactory threshold scores for 182 participants of diverse ancestry.

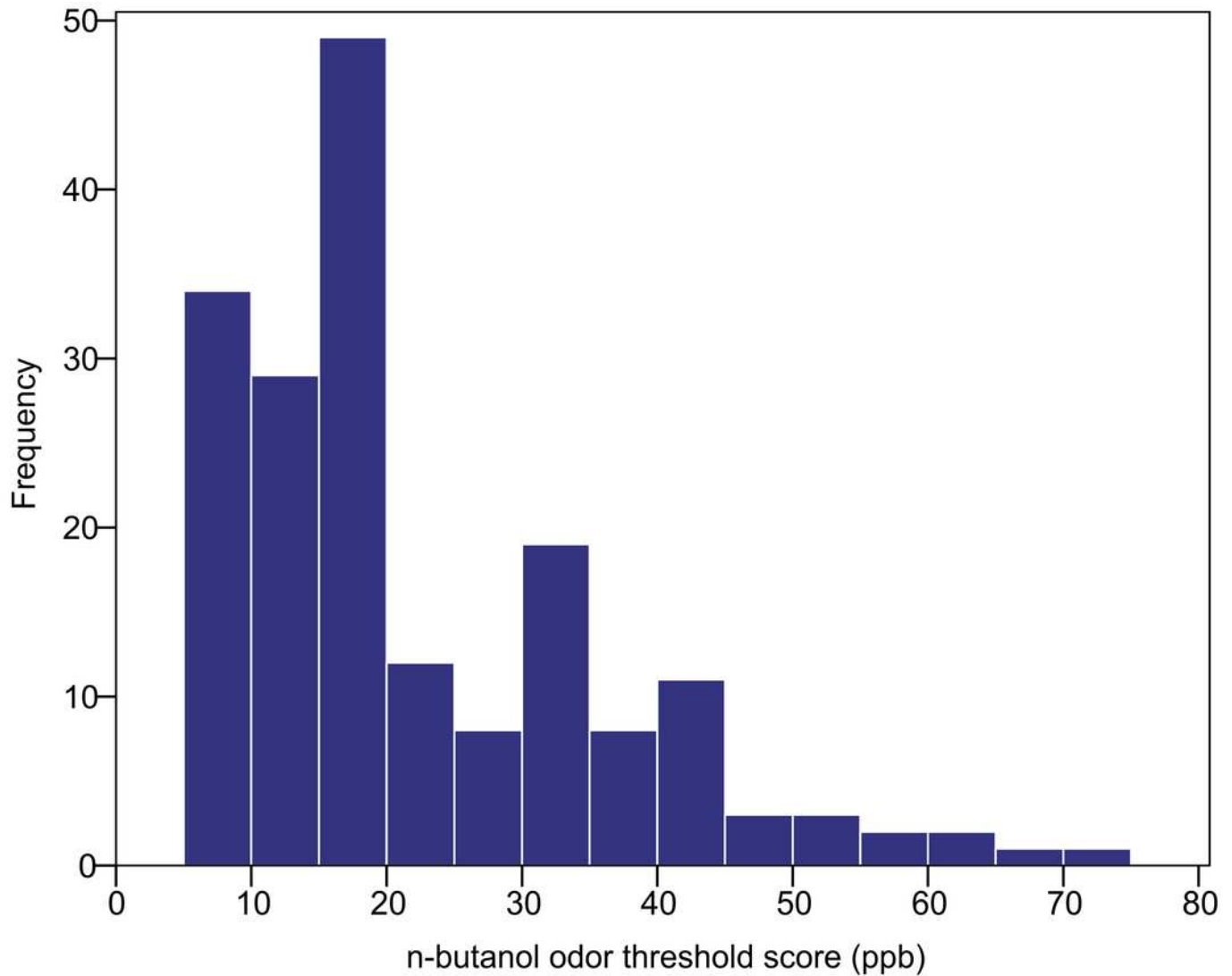


Figure 5

Correlation of n-butanol olfactory threshold scores obtained from participants tested twice, 14 to 18 weeks apart.

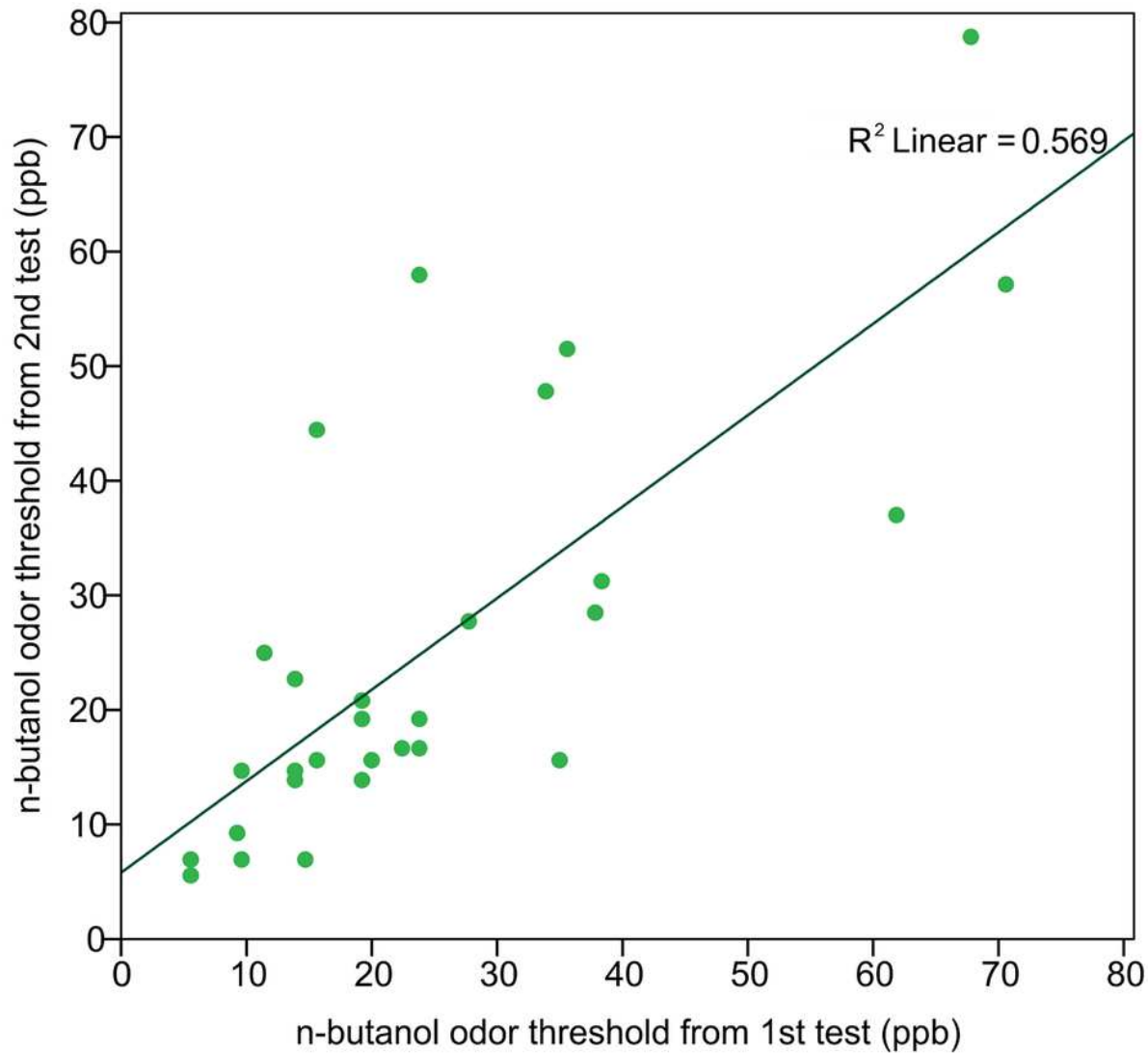


Figure 6

Bland-Altman plot comparing the n-butanol olfactory threshold scores obtained from participants tested twice, 14 to 18 weeks apart

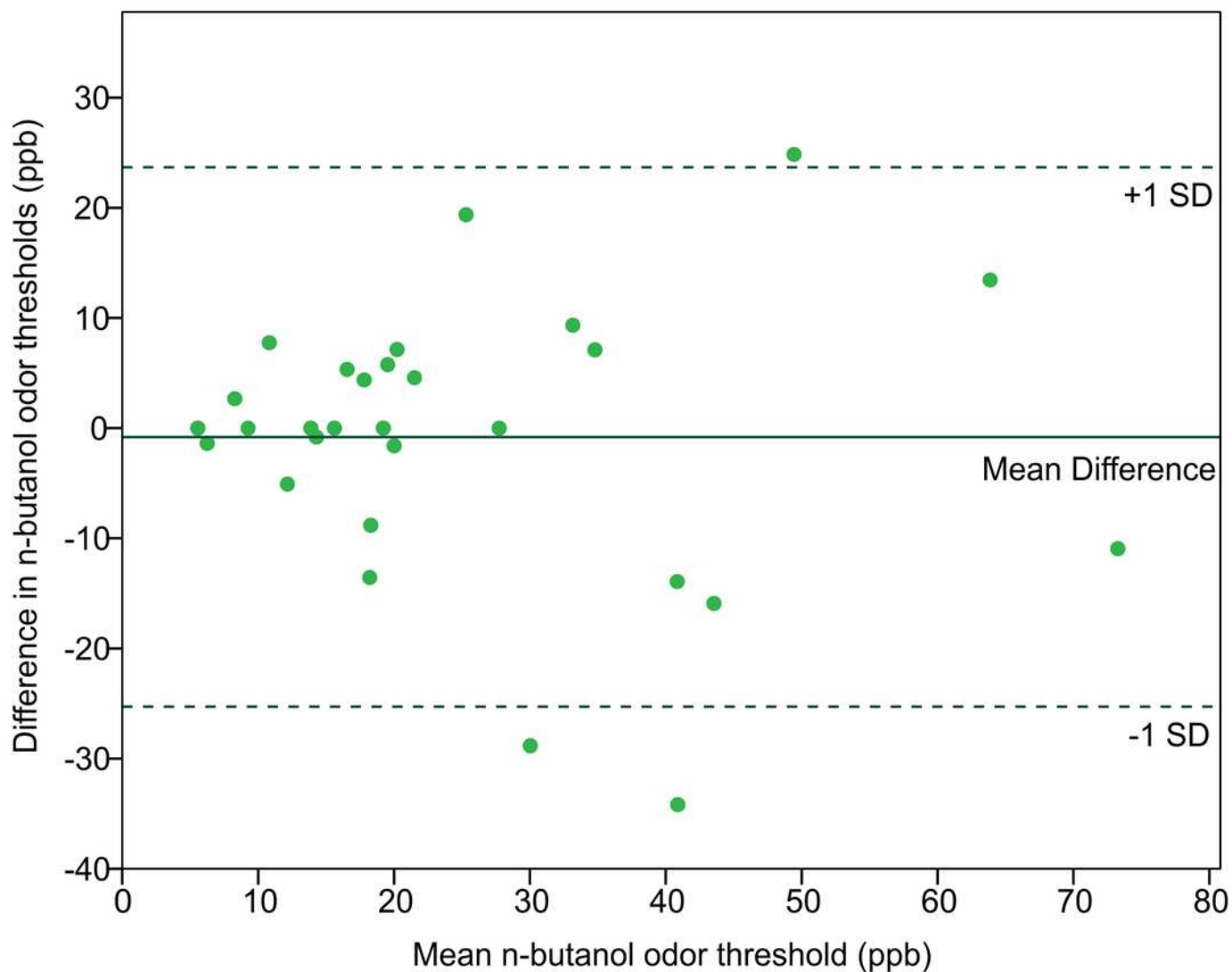


Table 1(on next page)

Sample characteristics

Table 1. Sample characteristics by ancestry.

	Total Sample	East Asian	European	South Asian	Other
N (M, F)	182 (54, 128)	60 (15, 45)	55 (18, 37)	58 (17, 41)	9 (4, 5)
Mean age \pm SD	20.4 \pm 2.5	20.8 \pm 2.5	21.0 \pm 2.7	19.6 \pm 2.1	19.7 \pm 1.3

Table 2(on next page)

Results of linear regression tests evaluating association of genetic markers with n-butanol thresholds

Table 2. Results of multiple linear regression analysis using a genotypic model, organized by ancestry. None of the markers are significant at a p - value threshold of 0.05.

SNP	Reference Genotype	Genotype	East Asian		European		South Asian		Total Sample	
			Beta	p - value	Beta	p - value	Beta	p - value	Beta	p - value
1s6265	TT	CC	0.121	0.453	-0.501	0.256	-0.098	0.698	-0.670	0.596
		TC	0.085	0.594	-0.420	0.342	-0.103	0.684	-0.005	0.965
rs2889732	AA	CC	-0.138	0.702	-0.173	0.208	-0.183	0.270	-0.069	0.525
		AC	-0.283	0.431	-0.024	0.876	-0.076	0.640	-0.132	0.202
rs6746030	GG	AA								
		GA	0.078	0.566	0.201	0.141	0.139	0.313	0.120	0.131
rs13036385	GG	CC	-0.026	0.841	0.025	0.860	-0.064	0.697	0.016	0.846
		GC	-0.126	0.340	0.017	0.904	0.097	0.494	-0.016	0.841
rs17132289	AA	TT	-0.004	0.978					-0.005	0.946
		AT	-0.049	0.718	-0.173	0.208			-0.107	0.182
rs17712299	TT	CC	-0.001	0.994					0.001	0.990
		TC	-0.008	0.953	-0.104	0.459	0.222	0.111	0.035	0.654

Table 3(on next page)

Test-retest reliability coefficients of various n-butanol olfactory threshold tests

Table 3. Test-retest reliability coefficients of various n-butanol olfactory threshold tests.

Olfactory Test	Test-retest Reliability Coefficient	Sample Size	p - value	Reference
Connecticut Chemosensory Clinical Research Center (CCCRC)	0.36	104	<0.001	(Hummel et al. 1997)
	0.49	57	<0.001	(Doty et al. 1995)
CCCRC modification using ML-PEST	0.26 to 0.86 ^a	27	0.190 to <0.001	(Linschoten et al. 2001)
CCCRC done as part of the Combined Olfactory Test (COT)	0.85	35	<0.001	(Lam et al. 2006)
Sniffin' Sticks	0.61	104	<0.001	(Hummel et al. 1997)
Scentroid SM110C	0.76	29	<0.001	

^a Variation in test-retest reliability coefficients due to time between retests