

A peer-reviewed version of this preprint was published in PeerJ on 17 September 2015.

[View the peer-reviewed version](https://doi.org/10.7717/peerj.1245) (peerj.com/articles/1245), which is the preferred citable publication unless you specifically need to cite this preprint.

Hendrickx C, Araújo R, Mateus O. 2015. The non-avian theropod quadrate I: standardized terminology with an overview of the anatomy and function. PeerJ 3:e1245 <https://doi.org/10.7717/peerj.1245>

The nonavian theropod quadrate I: standardized terminology and overview of the anatomy, function and ontogeny

Keywords: quadrate; terminology; anatomy; ontogeny; theropod; dinosaur

Christophe Hendrickx^{1,2}

¹ Universidade Nova de Lisboa, Departamento de Ciências da Terra, Faculdade de Ciências e Tecnologia, Quinta da Torre, 2829-516, Caparica, Portugal.

² Museu da Lourinhã, 9 Rua João Luis de Moura, 2530-158, Lourinhã, Portugal.

chritophe.hendrickx@hotmail.com

Ricardo Araújo^{2,3}

² Museu da Lourinhã, 9 Rua João Luis de Moura, 2530-158, Lourinhã, Portugal.

³ Huffington Department of Earth Sciences, Southern Methodist University, PO Box 750395, 75275-0395, Dallas, Texas, USA.

rmaraujo@smu.edu

Octávio Mateus^{1,2}

¹ Universidade Nova de Lisboa, Departamento de Ciências da Terra, Faculdade de Ciências e Tecnologia, Quinta da Torre, 2829-516, Caparica, Portugal.

² Museu da Lourinhã, 9 Rua João Luis de Moura, 2530-158, Lourinhã, Portugal.

omateus@fct.unl.pt

ABSTRACT

By allowing the articulation of the mandible with the cranium, the quadrate of diapsids and most other tetrapods plays an important role morphofunctionally. In Theropoda, its morphology is particularly complex and varies importantly among different clades of nonavian theropods so that the quadrate possesses a strong taxonomic potential.

Inconsistencies in the notation and terminology used in discussions of the theropod quadrate anatomy have been noticed, a number of no less than eight different terms being sometimes given to a same structure. A standardization list of terms and notation for each quadrate anatomical entity is here proposed, with the goal of facilitating future descriptions of this important cranial bone.

An overview of the quadrate function, pneumaticity and ontogeny in nonavian theropods is also given. The quadrate of the large majority of nonavian theropod is akinetic and the diagonally oriented sulcus of the mandibular articulation allowed both rami of the mandible to move laterally when opening the mouth in many of them. Pneumaticity of the quadrate is also present in most of tetanuran clades and the pneumatic chamber, invaded by the quadrate diverticulum of the mandibular arch pneumatic system, was connected to one or several pneumatopores on the medial, lateral, posterior, anterior or ventral sides of the quadrate. Absence of a quadrate foramen in allosauroid embryos and a poor delimitation of mandibular condyles in both embryonic and juveniles tetanurans seems to be ontogenetic features of some theropods. Finally, the numerous morphological differences existing in the quadrates of the two specimens of *Shuvuuia deserti*, interpreted by some as juvenile and adult individuals, are considered as ontogenetic, taphonomic, and perhaps also taxonomic variations.

INTRODUCTION

The quadrate (in Latin *quadratum*, meaning ‘square’) is a cranial bone of endochondral origin that articulates with the mandible in all gnathostomes except mammals, in which it evolved into the incus (Carroll 1988; Benton 2005; Brusatte 2012). In theropods, this bone plays many important functions such as a structural support for the basicranium, articulatory element with the lower jaws, attachment for several muscles, audition and hosting important nerves and vascular passages (e.g., Witmer 1990, 1997; Bakker 1998; Sedlmayr 2002; Kundrát and Janáček 2007; Holliday and Witmer 2008; Tahara and Larsson 2011); Appendix 1).

Its rather simple architecture, an elongated body bearing an anteriorly projected blade, therefore tends to vary significantly in the structure of its head, mandibular articulation, quadratojugal contact and the presence of pneumatic openings, quadrate foramen and lateral processes, among theropods with a large variability of feeding strategies (e.g., Holtz 2003; Therrien et al. 2005; Hone and Rauhut 2010; Zanno and Makovicky 2011). Such morphological variation has been recognized in avian theropods in particular, revealing the great taxonomical utility of the quadrate in this clade (e.g., Lowe 1926; Samejima and Otsuka 1987; Barbosa 1990; Elzanowski et al. 2001; Elzanowski and Stidham 2010). Likewise but to a lesser degree, the systematic potential of the quadrate bone has also been noted for nonavian theropods (Maryńska and Osmólska 1997; Currie 2006), witnessing the particular importance that should be accorded to the description of this bone in the literature on nonavian theropod anatomy. Nevertheless, the terminology and abbreviations of the quadrate anatomy has been inconsistent in nonavian theropods, several different anatomical terms for the same quadrate sub-entity being often used (Appendix 2). Although a thorough list of anatomical terms has been given by Elzanowski et al. (2001) and Elzanowski and Stidham (2010) for the avian quadrate, the terminology proposed by these authors has never been

followed in the description of the nonavian theropod quadrate hitherto. Indeed, the quadrate of birds has greatly changed in its morphology throughout the evolution of this clade and therefore displays many features absent in more primitive theropods, so that many anatomical terms coined by Elzanowski et al. (2001) and Elzanowski and Stidham (2010) cannot be applied for the nonavian theropod quadrate. Likewise, some quadrate entities such as the quadrate foramen and the lateral process observable in nonavian theropods are absent in their avian descents and do not appear in the list of these authors.

The present paper has two major aims. The first is to propose a standardization of the anatomical terms for the quadrate sub-units, each associated with a two to four letters abbreviation and followed by a definition, in order to facilitate future description of this bone in the literature. The second is to give a general overview of the function, pneumaticity and ontogeny of this important bone in nonavian theropods.

Institutional Abbreviations

AMNH, American Museum of Natural History, New York, U.S.A.; **BMNH**, The Natural History Museum, London, U.K.; **BYUVP**, Brigham Young University Vertebrate Paleontology, Provo, Utah, U.S.A.; **CMNH**, Carnegie Museum, Pittsburgh, Pennsylvania, U.S.A.; **FMNH**, Field Museum of Natural History, Chicago, Illinois, U.S.A.; **IGM**, Mongolian Institute of Geology, Ulaan Bataar, Mongolia; **IVPP**, Institute for Vertebrate Paleontology and Paleoanthropology, Beijing, China; **MACN**, Museo Argentino de Ciencias Naturales, Buenos Aires, Argentina; **MCF PVP**, Museo Municipal Carmen Funes, Paleontología de Vertebrados, Plaza Huincul, Argentina; **MCNA**, Museo de Ciencias Naturales y Antropológicas de Mendoza, Mendoza, Argentina; **MIWG**, Dinosaur Isle, Isle of Wight Museum Services, Sandown, U.K.; **ML**, Museu da Lourinhã, Lourinhã, Portugal; **MNHN**, Muséum national d'Histoire Naturelle, Paris, France; **MNN**, Musée National du

Niger, Niamey, Niger; **MSNM**, Museo di Storia Naturale di Milano, Milan, Italy; **MUCPv**, Museo de Ciencias Naturales de la Universidad Nacional de Comahue, Neuquén, Argentina; **NH**, Horniman Museum & Gardens, London, U.K.; **OUMNH**, Oxford University Museum, Oxford, U.K.; **PVSJ**, Instituto y Museo de Ciencias Naturales, San Juan, Argentina; **SMA**, Sauriermuseum Aathal, Aathal, Switzerland; **SMNS**, Staatliches Museum für Naturkunde, Stuttgart, Germany; **RTMP**, Royal Tyrrell Museum of Palaeontology, Drumheller, Alberta, Canada; **UCMP**, University of California Museum of Paleontology, Berkeley, California, U.S.A.; **UC**, University of Chicago Paleontological Collection, Chicago, U.S.A.; **UMNH**, Utah Museum of Natural History, Salt Lake City, Utah, U.S.A.; **USNM**, United State National Museum Vertebrate Paleontology, Washington, D. C., U.S.A.; **WDIS**, Wyoming Dinamation International Society, Casper, Wyoming, U.S.A.

PROPOSED TERMINOLOGY OF THE QUADRATE ANATOMY

Figure 1

Table 1

Quadrate body (qb). Part of the quadrate that includes the mandibular articulation, the quadrate shaft, the quadrate ridge, the quadrate head, the lateral contact (quadratojugal and/or squamosal contact), and the lateral process, and excludes the pterygoid flange. In posterior view, the quadrate body is delimited by the lateral margin of the lateral contact and sometimes the medial margin of the quadrate foramen, the ventral margin of the mandibular articulation, the dorsal margin of the quadrate head, and a medial margin mostly formed by the quadrate shaft and the medial fossa of the pterygoid flange. The quadrate body corresponds to the corpus ossis quadrati of Baumel and Witmer (1993), and the corpus quadrati of Elzanowski et al. (2001) and Elzanowski and Stidham (2010) for avian theropods.

123 **Quadrate shaft (qs).** Part of the quadrate body that excludes the lateral process and all
124 articulating surfaces (i.e., quadrate head, quadratojugal/squamosal/pterygoid contacts, and
125 mandibular articulation). The quadrate shaft, as called by Welles (1984), Sereno and Novas
126 (1994), Norell et al. (2006), Sampson and Witmer (2007), Sereno et al. (2008), Carrano et al.
127 (2011), and Brusatte et al. (2012), is also referred as the quadrate pillar by Madsen and Welles
128 (2000), and the ascending process by Colbert (1989).

129 **Quadrate ridge (qr).** Dorsoventrally elongated column, ridge or crest located on the quadrate
130 body and visible in posterior view. Although the quadrate ridge is present in the large
131 majority of nonavian theropods, a description of the structure is often omitted in the literature.
132 The quadrate ridge is referred as 'a column' for Welles (1984), a 'ridge-like mediodorsal
133 edge' for Carr (1996), 'a prominent rounded ridge' for Smith et al. (2007), a 'columnar ridge'
134 for (Rauhut et al. 2010) and a 'robust ridge' for Brusatte et al. (2012).

135 **Quadrate ridge groove (qrg).** Groove dividing the quadrate ridge in two different units at
136 two-thirds, or more dorsally, of the quadrate body height. A quadrate ridge groove exists in
137 some allosauroid theropods.

138 **Quadrate head (qh).** Dorsal articulation of the quadrate abutting to the cotyle of the
139 squamosal and touching other bones of the braincase in some theropod taxa. The quadrate
140 head, as it is called by Britt (1991), Charig and Milner (1997), Madsen and Welles (2000),
141 Sampson and Witmer (2007), Sereno et al. (2008), Norell et al. (2009) and Brusatte et al.
142 (2012) among others, has also been termed quadrate cotylus (Currie 2003; Coria and Currie
143 2006) quadrate cotyle (Currie 2003; Coria and Currie 2006), squamosal condyle (Coria and
144 Salgado 1998), squamosal articulation (Turner et al. 2011), otic process (Maryńska and
145 Osmólska 1997; Burnham 2004; Holliday and Witmer 2008), squamosal capitulum (Zanno
146 2010) and, processus oticus (Baumel and Witmer 1993; Fig. 2), and caput quadrati

147 (Elzanowski et al. 2001; Elzanowski and Stidham 2010). When the quadrate head is double, it
148 divides into otic and squamosal capitula.

149 **Otic capitulum (otc).** Medial capitulum of the quadrate head articulating with the braincase.
150 The otic capitulum corresponds to the capitulum (condylus) oticum of Baumel and Witmer
151 (1993; Fig. 2), Elzanowski et al. (2001) and Elzanowski and Stidham (2010) for avian
152 theropods.

153 **Squamosal capitulum (sqc).** Lateral capitulum of the quadrate head articulating with the
154 squamosal. The squamosal capitulum corresponds to the capitulum (condylus) squamosum of
155 Baumel and Witmer (1993; Fig. 2), Elzanowski et al. (2001) and Elzanowski and Stidham
156 (2010) for avian theropods.

157 **Intercapitular sulcus (icas).** Groove separating the otic capitulum from the squamosal
158 capitulum on the dorsal surface of the quadrate head. The intercapitular sulcus (sensu Witmer
159 1990) corresponds to the incisura intercapitularis of Baumel and Witmer (1993; Fig. 2), and
160 the vallecule intercapitularis of Elzanowski et al. (2001) and Elzanowski and Stidham (2010)
161 for avian theropods.

162 **Quadrate foramen (qf).** Aperture in the quadrate body or concavity on the lateral margin of
163 the quadrate body and delimited ventrally by the ventral quadratojugal contact and dorsally by
164 the dorsal quadratojugal contact and its ventral projection in some theropod taxa. Most
165 authors usually refer to this perforation as the quadrate foramen (e.g., Welles 1984; Sereno
166 and Novas 1994; Charig and Milner 1997; Maryńska and Osmólska 1997; Currie and
167 Carpenter 2000; Coria and Currie 2006; Currie 2006; Norell et al. 2006; Zanno 2010;
168 Choiniere et al. 2010; Foth and Rauhut 2012; Brusatte et al. 2012) but it can be also called the
169 paraquadratic foramen (e.g., Barsbold and Osmólska 1999; Kobayashi and Lü 2003;
170 Kobayashi and Barsbold 2005), the paraquadrate foramen (Sampson and Witmer 2007; Dal
171 Sasso and Maganuco 2011), the paraquadrate fenestra (Smith et al. 2007) or the quadrate

172 fenestra (e.g., Carr 1996; Sereno et al. 1998; Currie 2003; Eddy and Clarke 2011). A quadrate
173 foramen exists in all nonavian theropods but Ceratosauria and Megalosauridae.

174 **Mandibular articulation (mar).** Ventral surface of the quadrate, articulating with the
175 mandible and fitting in the glenoid fossa of the lower jaw. It includes the ectocondyle,
176 entocondyles, sometimes a mediocondyle, and an intercondylar sulcus. Corresponds to the
177 pars or processus mandibularis of Baumel and Witmer (1993; Fig. 2), Elzanowski et al.
178 (2001) and Elzanowski and Stidham (2010) for avian theropods. Although most authors (e.g.,
179 Currie 2006; Sampson and Witmer 2007; Rauhut et al. 2010; Brusatte et al. 2012) referred the
180 ectocondyle and entocondyles as the lateral and medial condyles (or hemicondyles)
181 respectively, the terms 'ectocondyle' and 'entocondyle' have been used by Welles (1984), and
182 Madsen and Welles (2000). The condyle present in between the ecto- and entocondyles in
183 some theropods is here coined mediocondyle.

184 **Ectocondyle (ecc).** Lateral condyle of the mandibular articulation. The ectocondyle
185 corresponds to the condylus (mandibularis) lateralis of Baumel and Witmer (1993; Fig. 2),
186 Elzanowski et al. (2001) and Elzanowski and Stidham (2010) for avian theropods.

187 **Entocondyle (enc).** Medial condyle of the mandibular articulation. The entocondyle
188 corresponds to the condylus (mandibularis) medialis of Baumel and Witmer (1993; Fig. 2),
189 Elzanowski et al. (2001) and Elzanowski and Stidham (2010) for avian theropods.

190 **Mediocondyle (mdc).** Median condyle of the mandibular articulation. The mediocondyle is
191 referred as the third condyle by Clark et al. (1994) and Xu and Wu (2001), the accessory
192 condyle by Kobayashi and Lü (2003), and the condyles caudalis of Baumel and Witmer
193 (1993) and Elzanowski et al. (2001) for avian theropods.

194 **Intercondylar sulcus (ics).** Groove separating the ectocondyle from the entocondyle and
195 sliding along the interglenoid ridge of the articular. The intercondylar sulcus, a term also used
196 by Carrano et al. (2011), can be referred as a groove (e.g., Madsen 1976; Britt 1991; Madsen

197 and Welles 2000; Currie 2006), swelling (Charig and Milner 1997), sulcus (e.g., Kobayashi
198 and Lü 2003; Norell et al. 2006; Sadleir et al. 2008), trochlea (Brochu 2003; Brusatte et al.
199 2010), trochlear surface (Brusatte et al. 2010, 2012), and intercondylar bridge (Zanno 2010).
200 The intercondylar sulcus corresponds to the sulcus intercondylaris (Baumel and Witmer 1993)
201 and the vallecule intercondylaris (Elzanowski et al. 2001; Elzanowski and Stidham 2010) of
202 the quadrate of avian theropods.

203 **Intercondylar notch (icn).** Notch located in between the ectocondyle and entocondyle, either
204 on the anterior or posterior margin of the mandibular articulation, and corresponding to the
205 depressio praecondylaris of Elzanowski et al. (2001) for avian theropods.

206 **Lateral process (lpq).** Lateral or anterolateral projection of the lateral margin of the quadrate
207 body. Also known as the dorsal wing (Welles 1984; Currie 2006), the anterolateral wing
208 (Madsen and Welles 2000), the lateral lamina (Coria and Salgado 1998) and the lateral ramus
209 (Sampson and Witmer 2007), this process can contact the quadratojugal and/or the squamosal
210 and therefore either be referred to the quadratojugal ramus by Sampson and Witmer (2007) or
211 the squamosal ramus Norell et al. (2006).

212 **Quadratojugal contact (qjc).** Contact of the quadrate with the quadratojugal on the lateral,
213 anterolateral or, posterolateral margin of the quadrate body. The quadratojugal contact, which
214 corresponds to the cotyla quadratojugalis of Baumel and Witmer (1993), Elzanowski et al.
215 (2001) and Elzanowski and Stidham (2010) for avian theropods, can be divided into a ventral
216 and a dorsal quadratojugal contact when the quadrate foramen is present and delimited by
217 both quadrate and quadratojugal.

218 **Ventral quadratojugal contact (vqjc).** ventral contact of the quadrate with the
219 quadratojugal. The ventral quadratojugal contact of the quadrate always receives the
220 quadratojugal bone.

221 **Dorsal quadratojugal contact (dqjc).** dorsal contact of the quadrate with the quadratojugal.
 222 The ventral quadratojugal contact of the quadrate can either receive the quadratojugal or both
 223 quadratojugal and squamosal in some theropod taxa.

224 **Ventral projection of the dorsal quadratojugal contact (vpdq).** Small projection of the
 225 dorsal quadratojugal contact delimiting the dorsolateral margin of the quadrate foramen.

226 **Quadratojugal process (qjp).** Anterior projection of the ventral quadratojugal contact of the
 227 quadrate.

228 **Squamosal contact (sqc).** Contact on the lateral margin of the quadrate with the squamosal.

229 **Posterior fossa (pfq).** Depression or concavity situated on the posterior side of the quadrate
 230 body and dorsal to the mandibular articulation, ventral to the quadrate head and lateral to the
 231 quadrate ridge. The posterior fossa can include or exclude the quadrate foramen.

232 **Quadrate diverticulum (qdi).** Air sac invading the pneumatic chamber inside the quadrate
 233 body and communicating with other diverticula by the quadrate pneumatopores.

234 **Dorsal pneumatopore (dpne).** Pneumatic foramen or recess located on the dorsal part of the
 235 quadrate, beneath the quadrate head. The dorsal pneumatopore corresponds to the foramen
 236 pneumaticum caudomediale of Elzanowski et al. (2001) and Elzanowski and Stidham (2010)
 237 for avian theropods.

238 **Medial pneumatopore (mpne).** Pneumatic foramen or recess situated on the medial side of
 239 the quadrate, typically in the ventromedial part of the pterygoid flange. The medial
 240 pneumatopore corresponds to the foramen pneumaticum basiorbitale of Elzanowski et al.
 241 (2001) and Elzanowski and Stidham (2010) for avian theropods.

242 **Posterior pneumatopore (ppne).** Pneumatic foramen or recess on the posterior side of the
 243 quadrate body, typically at one-height of the quadrate. The posterior pneumatopore
 244 corresponds to the ‘foramen pneumaticum rostromediale’ of Elzanowski et al. (2001) and
 245 Elzanowski and Stidham (2010) for avian theropods.

246 **Ventral pneumatopore (vpne).** Pneumatic foramen or recess on the ventral side of the
247 quadrate. The ventral pneumatopore corresponds to the foramen pneumaticum adventitium of
248 Elzanowski et al. (2001) and Elzanowski and Stidham (2010) for avian theropods.

249 **Pterygoid flange (pfl).** Sheet-like projection attached to the quadrate body and extending
250 anteriorly or anteromedially to contact the pterygoid bone. The pterygoid flange, a term also
251 used by Charig and Milner (1997), Brochu (2003), Currie (2006), Coria and Currie (2006)
252 and (Rauhut et al. 2010), is also known as the quadrate/anterior flange (e.g., Colbert 1989;
253 Norell et al. 2006; Brusatte et al. 2010, 2012), the pterygoid ramus (e.g., Sereno and Novas
254 1994; Sampson and Witmer 2007; Choiniere et al. 2010), the pterygoid wing (e.g., Welles
255 1984; Madsen and Welles 2000; Eddy and Clarke 2011), the pterygoid ala (e.g., Currie 2003,
256 2006; Sadleir et al. 2008; Dal Sasso and Maganuco 2011), the pterygoid process (Molnar
257 1991; Carr 1996; Sereno et al. 2008), the optic wing (Balanoff and Norell 2012), the orbital
258 process (Clark et al. 1994; Chiappe et al. 2002), and the processus orbitalis (Baumel and
259 Witmer 1993; Elzanowski et al. 2001; Elzanowski and Stidham 2010; Fig. 2) for avian
260 theropods.

261 **Pterygoid contact (ptc).** Contact on the medial margin of the pterygoid flange, or the
262 quadrate body, with the pterygoid. The pterygoid contact corresponds, for avian theropods, to
263 the facies pterygoidea in Elzanowski et al. (2001) and the facies articularis pterygoidea in
264 Elzanowski and Stidham (2010), as well as the condylus pterygoideus, located on the
265 quadrate body, in Baumel and Witmer (1993; Fig. 2), Elzanowski et al. (2001) and
266 Elzanowski and Stidham (2010).

267 **Medial fossa (mfq).** Depression or concavity situated ventroposteriorly on the pterygoid
268 flange. It is delimited by the quadrate shaft and the ventral shelf in some theropod taxa. The
269 medial fossa corresponds to the fossa corporis quadrati of Fuchs (1954) and the fossa

basiorbitalis of Elzanowski et al. (2001) and Elzanowski and Stidham (2010) for avian theropods.

Ventral shelf (vsh). a medial or medioposterior fold of the ventral margin of the pterygoid flange. The term ‘shelf’ was employed by Sereno and Novas (1994) and ‘ventral shelf’ was used by Sampson and Witmer (2007), Eddy and Clarke (2011) and Carrano et al. (2011).

Figure 2

Inter-taxic Topological Homologies

To establish comparisons between taxa with widely disparate quadrate morphology, a homology concept of the feature in question is required. Here, we will give a general account of the variability within different anatomical sub-units of the quadrate and by following the criteria summarized in Rieppel (2006).

The quadrate ridge (Figure 1, qr) is easily distinguishable in many theropod taxa such as *Aerosteon riocoloradensis* (MCNA-PV 3137) and *Proceratosaurus bradleyi* (NHM R.4860) but the limits of this structure on the quadrate body can be subtle like in *Noasaurus leali* (PVL 4061), *Majungasaurus crenatissimus* (FMNH PR 2100), and *Eustreptospondylus oxoniensis* (OUMNH J.13558). The quadrate ridge corresponds to a columnar ridge in many theropod clades like in *Dilophosaurus wetherilli* (Welles 1984), *Allosaurus* (SMA 005/02) and *Eotyrannus lengi* (MIWG, 1997.550) but can also corresponds to a thin crest as in Tyrannosauridae (AMNH 5027; Carr 1996; Brusatte et al. 2012). Although the ventral portion of the quadrate ridge is usually demarcated just above the medial condyle of the mandibular articulation, its dorsal termination is more variable. The dorsal termination can reach the quadrate head like in *Acrocanthosaurus atokensis* (NCSM 14345) or flatten at the mid-height of the quadrate such as in *Albertosaurus sarcophagus* (Currie 2003:fig. 10B). Despite being the same structure, the quadrate ridge can be separated by a deep groove like in *Allosaurus*

295 *fragilis* (AMNH 600) and *Allosaurus europaeus* (ML 415) or flare and reappear more
 296 dorsally at the second third of the quadrate such as in some derived Spinosauridae (pers.
 297 observ.). Likewise, the ventral portion can also be divided in two parts separated by a
 298 concavity such as in the tyrannosaurids *Albertosaurus sarcophagus*, *Daspletosaurus* sp.
 299 (Currie 2003:fig. 10 and 28) and *Tyrannosaurus rex* (AMNH 5027).

300 The pterygoid flange (Figure 1, pfl) contacts the quadrate process of the pterygoid
 301 anteriorly or anteromedially, and sometimes other bones such as the epipterygoid in
 302 *Herrerasaurus ischigualastensis* (PVSJ 407), the basipshenoid and prootic in *Erlikosaurus*
 303 *andrewsi* (Clark et al. 1994), and the squamosal in *Khaan mckennai* (Balanoff and Norell
 304 2012). Although the pterygoid flange can be easily homologized between taxa, it may acquire
 305 subtrapezoidal, subtriangular, subrectangular and M-shaped outlines or form a large semi-oval
 306 structure. The ventral limit of the flange can reach the mandibular condyles (e.g., *Baryonyx*
 307 *walkeri*, *Tyrannosaurus rex*) or get attached to the quadrate body well-above the mandibular
 308 articulation (e.g., *Majungasaurus crenatissimus*). This single structure can in some instances
 309 be divided into two ridges delimited by a deep pneumatic fossa facing ventrally (e.g.,
 310 *Alioramus altai*, Brusatte et al. (2012), figure 23c; *Tyrannosaurus rex* FMNH PR2081). In
 311 anterior view, the pterygoid flange can be straight and only directed anteriorly like in the
 312 carcharodontosaurid *Shaochilong maortuensis* (Brusatte et al. 2010:fig. 7a), or completely
 313 recurved anteromedially and its anteroventral margin can be either straight, or fold medially
 314 and dorsally, forming the ventral shelf, such as in *Majungasaurus crenatissimus* (FMNH PR
 315 2100), *Carnotaurus sastrei* (MACN-CH 894) and *Allosaurus fragilis* (Madsen 1976:plate 3d).

316 The medial fossa of the quadrate (Figure 1, mfq) can be easily recognizable between
 317 taxa as it is always situated on the pterygoid flange, usually on the ventral part of it. This
 318 fossa is posteriorly delimited by the quadrate body in nonavian theropods and sometimes by
 319 the ventral shelf of the pterygoid flange. The medial fossa can be of variable depth (deep in

Cryolophosaurus and shallow in *Eustreptospondylus*), pneumatized (e.g., *Falcarius*), and situated in the ventralmost part of the pterygoid flange (e.g., *Tsaagan*) or at mid-height of it and just above a large pneumatic recess like in *Mapusaurus roseae* (MCF PVPH-108.102).

The posterior fossa of the quadrate (Figure 1, pfq) can be located either in between the quadrate and the quadratojugal, being centred on the lateral margin of the quadrate (e.g., *Ceratosaurus*); or in the middle of the quadrate shaft and between the quadrate ridge and the lateral margin of the quadrate (e.g., '*Syntarsus*'; *Majungasaurus*; *Tsaagan*). Difficulties to recognize this structure between taxa may arise because it is not always well-delimited (e.g., *Shaochilong*). The posterior fossa can either be strongly ventrodorsally elongated like in the megalosaurid *Torvosaurus tanneri*, or form an oval concavity lateromedially wide (e.g., *Majungasaurus*). Similarly to the medial fossa, the posterior fossa can have a large pneumatic recess positioned dorsally (e.g., *Sinornithomimus*) or ventrally (e.g., *Garudimimus*) inside the fossa.

Due to the highly variable morphology of the quadrate foramen (Figure 1, qf), this structure deserves special attention. It can be completely absent (e.g., *Carnotaurus*, *Torvosaurus*), or form a very small aperture (e.g., '*Syntarsus*') to a large opening (e.g., *Tsaagan*). In most nonavian theropods, the quadrate foramen is mostly delimited by the quadrate and only its lateral margin is bounded by the quadratojugal (e.g., *Sinraptor*). In some nonavian theropods, however, the medial margin of the quadrate foramen and part of the ventral and dorsal margins are formed by the quadrate, the other lateral half being delimited by the quadratojugal (e.g., *Dromaeosaurus*). Finally, in a few theropods, the foramen can be completely enclosed in the quadrate (e.g., *Aerosteon*).

The quadratojugal contact of the quadrate (Figure 1, qjc) can either be a single extensive contact or made of two contacts separated by the quadrate foramen. In the latter case, the ventral quadratojugal contact and the dorsal quadratojugal contact of the quadrate

are not always clearly separated and their dorsal and ventral margins, respectively, can overlap like in the sinraptorid *Sinraptor dongi* (IVPP 10600). If the quadrate foramen is absent or located inside the quadrate, the lateral quadratojugal contact is an elongated line of variable width along the lateral margin of the quadrate. If separated by the quadrate foramen, the ventral and dorsal contacts can display a wide variety of shapes that, nevertheless, are easily recognizable inter-taxically. Both quadratojugal contacts may face laterally, anteriorly or posteriorly and their articulating surface can be smooth, irregular or deeply grooved by several radiating ridges as in *Allosaurus fragilis* (Madsen 1976). The ventral quadratojugal contact is usually D-shaped or ovoid and its anterior margin can extend far anteriorly, forming the quadratojugal process occasionally forming a large subtriangular projection (Norell et al. 2006). The dorsal quadratojugal contact can vary from a very thin line to a broad surface and its dorsal extension can reach the dorsal condyle or terminate well beneath it. A ventral projection of this contact may be present, and such projection delimiting part of the lateral border of the quadrate can either be short, like in *Daspletosaurus* sp. (Currie 2003:fig. 28A), or formed an elongated ramus, like in the therizinosaurid *Falcarius utahensis* (Zanno 2010:fig. 1H) and the coelurosaur *Zuolong salleei* (Choiniere et al. 2010:fig. 3B).

In some basal theropods, ceratosaurs and dromaeosaurids, the lateral process of the quadrate (Figure 1, lpq) forms a wing-like projection similar to the pterygoid flange. This process is an extension of the quadrate body laterally so that it can be difficult to delimitate and one can see the presence of such process in *Allosaurus 'jimmadseni'* (SMA 005/02), *Sinraptor dongi* (Currie 2006:fig. 1D), and *Erlikosaurus andrewsi* (Clark et al. 1994:fig. 7). The lateral process can also vary in shape and size, as it can be short and parabolic (e.g., *Carnotaurus*) or elongated and subtriangular (e.g., *Tsaagan*). Its ventral border can also extend to the quadrate foramen (e.g., *Bambiraptor*) or more ventrally, sometimes reaching the medial condyle of the mandibular articulation (e.g., *Ilokelesia*).

370 The quadrate head (Figure 1, qh) always articulates with the deep cotylus of the
 371 squamosal and contacts more rarely other bones of the braincase such as the opisthotic in
 372 oviraptorids (Maryńska and Osmólska 1997), the prootic in *Mononykus olecranus* (Perle et
 373 al. 1994; Chiappe et al. 2002) and the postorbital in *Shuvuuia deserti* (Chiappe et al. 1998,
 374 2002). The contact of the braincase between the dorsal part of the quadrate and the opisthotic-
 375 exoccipital or the paroccipital process is also present in *Herrerasaurus ischigualastensis*
 376 (Serenó and Novas 1994), *Dilophosaurus wetherilli* (Welles 1984), *Ceratosaurus*
 377 *magnicornis* (Madsen and Welles 2000; Sanders and Smith 2005), tyrannosaurids (Currie
 378 2003), *Heyuannia huangi* (Lü 2005), and perhaps *Erlikosaurus andrewsi* (Clark et al. 1994),
 379 but this contact occurs on a small medial surface just below the quadrate head and not with
 380 the quadrate head itself. The large majority of nonavian theropods have a single headed
 381 quadrate head (Rauhut 2003; pers. observ.); however, oviraptorids (Maryńska and Osmólska
 382 1997:fig. 3B) and the alvarezsaurid *Shuvuuia deserti* (Chiappe et al. 1998) have a unique
 383 double head. A bistylic quadrate head has also been observed in the dromaeosaurid *Mahakala*
 384 *omnogovae* (Turner et al. 2007) but Turner et al. (2011:fig. 4) later reconsidered the head of
 385 the quadrate as not being double headed. The morphology of the quadrate head is variable; it
 386 may be subtriangular in most basal theropods (Serenó and Novas 1994; UCMP 37302), oval
 387 or subcircular in megalosaurids (UC OBA1; BYUVP 9246) and allosauroids (MCNA-PV-
 388 3137; IVPP 10600; IVPP V2885.3), subquadrangular in Spinosaurinae (SMNS 58022;
 389 MSNM V6896) or conical in Oviraptoridae (Maryńska and Osmólska 1997:fig. 1B). Whilst
 390 most nonavian theropods have either a convex or a flattened quadrate head, the quadrate of
 391 some allosaurids (Bakker 1998:fig. 5C) and derived tyrannosaurids (FMNH PR208) can also
 392 possess a well-marked concavity on the dorsal margin of the quadrate head. Despite this
 393 variability, the quadrate head can be easily homologized inter-taxically due to the obvious
 394 location of this structure.

With the exception of the therizinosaur *Erlikosaurus andrewsi* and the ornithomimosaur *Sinornithomimus dongi* which both seem to have a unique tricondylar condition on the mandibular articulation (Clark et al. 1994; Kobayashi and Lü 2003), all other nonavian theropods have two mandibular condyles. The presence of three mandibular condyles was also noted in the alvarezsaurid *Avimimus portentosus* (Chatterjee 1995) and the dromaeosaurid *Sinornithosaurus millenii* (Xu and Wu 2001). However, Vickers-Rich et al. (2002) only found two condyles in the former and our observations confirm that the third condyle of the latter seems to be part of the much broader lateral condyle (Xu and Wu 2001:fig. 4D).

The intercondylar sulcus (Figure 1, ics) varies in orientation, size and depth. It can be large, shallow and sub-perpendicular to the long axis passing through the mandibular articulation as in *Tyrannosaurus rex* (FMNH PR2081); or narrow, deep and strongly lateromedially-oriented as in some derived spinosaurids (pers. observ.).

The shape of the mandibular articulation (Figure 1, mar) in posterior view can vary from the biconvex condition known in most theropods, to the W-shaped articulation typical of *Citipati osmolskae* (Clark et al. 2002:fig. 6) or a unique convex articulation seen in some dromaeosaurids such as *Tsaagan manga* (IGM 100/1015). The intercondylar notch (Figure 1, icn) is present in *Allosaurus 'jimmadseni'* (Bakker 1998:fig. 5B, C; SMA 005/02) and *Suchomimus tenerensis* (MNN GAD 502) on the posterior side of the mandibular articulation, and in *Majungasaurus crenatissimus* (FMNH PR 2100) and *Carnotaurus sastrei* (MACN-CH 894) on its anterior margin. The ectocondyle (Figure 1, ecc) and entocondyle (Figure 1, ent) are highly variable among each clade of nonavian theropods in terms of shape, size and orientation.

Pneumaticity of the quadrate can either be internal or, obviously expressed externally by pneumatopores. The establishment of inter-taxic homologies is difficult to assess, because

these structures have very diverse interspecific variability. Nevertheless, as in other saurischian taxa (Schwarz et al. 2007), these pneumatic structures have phylogenetic signal. These openings can appear on different views and portions of the quadrate. The medial and posterior pneumatopores (Figure 1, ppne) usually occur in the medial and posterior fossa respectively, and their position inside the fossae is again quite variable. Pneumatopores can also be located in a pneumatic recess outside the medial fossa and just beneath it such as in the carcharodontosaurids *Mapusaurus roseae* (Coria and Currie 2006) and *Acrocanthosaurus atokensis* (Eddy and Clarke 2011). In the latter, the pneumatic aperture is divided by a septum.

OVERVIEW OF THE FUNCTION, PNEUMATICITY AND ONTOGENY

Figure 3

Function of the Quadrate

Although in all archosaurs, and all amniotes except mammals, the main function of the quadrate is the articulation of the cranium with the mandible, this bone can also play an important role in the mobility of the skull in many extant theropods. Quadrate movement inside the skull, known as streptostyly, is a fundamental property of all avian theropods, and cranial kinesis in birds, known already in the beginning of the 19th century (Nitzsch 1816), has been extensively studied in the past sixty years (e.g., Fisher 1955; Bock 1964, 1999, 2000; Bühler 1981; Zusi 1984, 1993; Bühler et al. 1985, 1988; Chatterjee 1991, 1997; Hoeser and Westneat 1996; Zweers et al. 1997; Zweers and Vanden Berge 1998; Bout and Zweers 2001; Gussekloo and Bout 2005; Meekangvan et al. 2006). Streptostyly consists of the rotation of the quadrate at its dorsal articulation against the squamosal and/or supratemporal and usually corresponds to a transversal movement, although a lateral movement of the quadrate around an anteroposteriorly directed axis occurs in some lepidosaurs taxa (Metzger 2002). Cranial

kinesis in avian theropods with a streptostylic quadrate includes upward (protraction) and downward (retraction) rotation of the upper jaw relative to the braincase and three main types of kinesis are recognized relative to the position of the dorsal flexion zone of the cranium and the nature of the nasal opening in modern theropods (Bock 1964; Bühler 1981; Zusi 1984; Meekangvan et al. 2006). There are the prokinesis where the flexion occurs at the nasofrontal joint and the upper jaw thereby moves as one unit, the amphikinesis where the flexion occurs in two zones of flexibility and the upper jaw and its tip are bent upward, and finally the rhynchokinesis where the flexion happens forward from the nasofrontal joint, allowing its rostral part to be moved.

Inference of the cranial kinesis and quadrate mobility in nonavian theropods has been recently investigated by Holliday and Witmer (2008) which regard the cranium of this group of dinosaurs as partially kinetically competent, since synovial joints and protractor muscles are present, but not fully kinetic like in birds. The strong suture of the quadrate to the quadratojugal and the immobile contact of the quadrate and the pterygoid on the medial side of the pterygoid flange in most nonavian theropods seem to indicate a very limited movement, and perhaps even the total absence of movement of this bone within the cranium. Although the synovial quadrate head joint existing in theropods, and all other archosaurs, is necessary to infer cranial kinesis, its presence in akinetic taxa such as crocodiles and thyreophorans demonstrates that the synovial joint cannot be considered alone as an argument for cranial kinesis. Synovial joints have actually been interpreted as growth zones rather than articular surfaces of mobile joints based on the presence of very thin articular cartilage covering the end of this joint (Holliday and Witmer 2008). According to Holliday and Witmer (2008) “articular cartilage persists in loading environments that exert hydrostatic pressures (which result in a change in volume but not shape) but exert low shear stresses”. Indeed, one of the key centres of deformation during normal biting is the quadrate-squamosal contact, which

would have experienced large shear stresses associated with torque and asymmetrical loading during biting (Rayfield 2005), and the presence of a minimal amount of cartilage between the quadrate and squamosal would therefore suggest that the synovial zone was rather a growth zone than a mobile one. A streptostylic quadrate in *Tyrannosaurus rex* (Molnar 1991, 1998), *Oviraptor philoceratops* (Smith 1992), *Heyuannia huangi* (Lü 2005) and *Dromiceiomimus brevitertius* (Russell 1972) based on the saddle joint between the quadrate and squamosal only is thereby unlikely.

Nevertheless, and more convincingly, a streptostylic quadrate has also been proposed in the alvarezsaurid *Shuvuuia deserti* (Chiappe et al. 1998) in which the quadratojugal/jugal (Dufeu (2003) suggested that the quadratojugal may be absent in *Shuvuuia deserti*), rather than being firmly sutured to the quadrate, like in other nonavian theropods, would have contacted the quadrate through a movable joint (Chiappe et al. 1998, 2002; Fig.3). According to Chiappe et al. (1998), the absence of a latero-dorsal contact of the quadrate with the quadratojugal/jugal, as well as a ventro-lateral process of the squamosal, would have permitted to the quadrate of this mononychine to pivot antero-posteriorly, and the upper jaw to rotate ventro-dorsally thanks to this transversal movement. Although these authors have implied the existence of a bending zone between the frontals and the nasal-preorbital bones in *S. deserti*, allowing the flexion of the snout as a single unit when the quadrate displaced forward, like in prokinetic birds, the complex contacts between the nasal, frontal and prefrontal illustrated by Sereno (2001:fig. 12B) makes assessment of Chiappe et al. (1998) hypothesis quite dubious (Holliday and Witmer 2008). In addition, Holliday and Witmer (2008) noted that a maxillojugal and palatal flexion zones authorizing a true prokinesis to be present in alvarezsaurids is still not clear. Likewise, the contact between the pterygoid flange of the quadrate and the pterygoid needs also to be better documented in order to imply any specific movement of the quadrate inside the cranium of *S. deserti*.

495 A movable articulation between the quadrate and quadratojugal may also have been
496 present in the oviraptorids *Heyuannia huangi* (Lü 2003) and *Nemegtia huangi* (Lü et al. 2004) in
497 which the quadrate and quadratojugal articulation of the former corresponds to a trochlea-like
498 structure (Lü 2003, 2005), while the quadratojugal contact of the latter is convex and fit into a
499 quadratojugal cotyle (Lü et al. 2004).

500 Quadrate articulation with the mandible and orientation of the intercondylar sulcus are
501 highly variable among nonavian theropods, therefore suggesting some variation in the
502 movement of the rami when the jaw opened. The helical intercondylar sulcus present in many
503 nonavian theropods, but not all of them (pers. observ.), was noticed by Bakker (1998) in
504 primitive theropod dinosaurs, Hendrickx and Buffetaut (2008) in spinosaurids, and Molnar
505 (1991) and (Larson 2008) in *Tyrannosaurus rex*. These authors suggested that such spiral
506 groove of the mandibular articulation constrained the diagonal ridge of the articular glenoid
507 fossa, which fitted into the intercondylar sulcus, to slide laterally, therefore forcing the rami
508 of the mandible to displace laterally when the lower jaw was depressed, enlarging the width
509 of the larynx in order to swallow food of large size (Hendrickx and Buffetaut 2008).

510 In allosaurid quadrates, the marked constriction of the intercondylar sulcus, associated
511 with the enlargement of the mandibular condyles, the backward bent of the ventral part of the
512 quadrate, and the intercondylar notch, were interpreted by Bakker (1998) as joint-stabilization
513 zones. According to this author, the enlargement of the articulating surface would improve the
514 stability of the joint when the mouth was widely opened, while the posterior depression would
515 correspond to the area for attachment of one or several ligaments within the quadrate-
516 mandibular articulation ((Bakker 1998). An intercondylar notch has also been noticed in the
517 abelisaurids *Carnotaurus sastrei* (MACN-CH 894) and *Majungasaurus crenatissimus*
518 (FMNH PR 2100), and the spinosaurid *Suchomimus tenerensis* (MNN GAD 502), implying a
519 similar mechanic of the mandibular articulation than *Allosaurus*.

Figure 4

Pneumaticity in the Quadrate

Pneumatization of the quadrate bone has long been recognized for its phylogenetic value (e.g., Gauthier 1986; Holtz 1998; Chiappe 2001; Rauhut 2003; Holtz et al. 2004; Smith et al. 2007; Benson 2010; Carrano et al. 2012; Turner et al. 2012; Novas et al. 2013; Choiniere et al. 2014). Pneumatopores within the quadrate are widespread among avetheropod clades (Gold et al. 2013; Fig. 4). The presence of one or several pneumatopores has indeed been recorded in carcharodontosaurids (e.g., Coria and Currie 2006; Eddy and Clarke 2011), neovenatorids (Sereno et al. 2008), tyrannosauroids (e.g., Molnar 1991; Brochu 2003; Currie 2003; Xu et al. 2004; Brusatte et al. 2012; Gold et al. 2013), compsognathids (Currie and Chen 2001), therizinosauroids (Clark et al. 1994; Zanno 2010), oviraptorids (e.g., Maryańska and Osmólska 1997; Lü 2003; Kundrát and Janáček 2007; Balanoff and Norell 2012), ornithomimoids (Witmer 1997; Tahara and Larsson 2011), dromaeosaurids (Makovicky et al. 2005) and troodontids (Barsbold et al. 1987; Currie and Zhao 1993; Varricchio 1997; Xu et al. 2002; Xu and Norell 2004). An incipient development of a pneumatic recess also exists in the basal allosauroid *Sinraptor dongi* (Currie 2006), and quadrate pneumaticity therefore seems to be an avetheropod synapomorphy (Fig. 4). Among nonavian avetheropods, there is however no evidence of a pneumatic quadrate in Alvarezsauroidea hitherto.

The pneumatic foramen is particularly large in some allosauroids such as *Aerosteon riocoloradensis* (Sereno et al. 2008) and *Acrocanthosaurus atokensis* (Eddy and Clarke 2011), and the therizinosaur *Falcarius utahensis* (Zanno 2010; Fig. 5). It however corresponds to a small rounded or oval aperture lodged in the posterior fossa of the quadrate body in most avetheropods (Fig. 5). Indeed, a posterior pneumatopore exists in the

tyrannosauroid *Dilong paradoxus* (Xu et al. 2004), the compsognathid *Sinosauropteryx prima*
 (Currie and Chen 2001:fig. 3f), the ornithomimids *Garudimimus brevipes* (the ‘paraquadrate
 foramen’ or ‘paraquadratic foramen’ of Kobayashi and Barsbold 2005), *Sinornithomimus*
dongi (the ‘paraquadratic foramen’ of Kobayashi and Lü 2003) and *Ornithomimus*
edmontonicus (Tahara and Larsson 2011), the dromaeosaurid *Buitreraptor gonzalezorum*
 (Makovicky et al. 2005), and the troodontids *Mei long* (Xu and Norell 2004), and *Sinovenator*
changii (Xu et al. 2002). A pneumatopore can also be located in the ventral corner of the
 pterygoid flange, as observed in the carcharodontosaurids *Acrocanthosaurus atokensis* (Eddy
 and Clarke 2011), *Mapusaurus roseae* (Coria and Currie 2006), *Giganotosaurus carolinii*
 (MUCPv-CH-1), and the tyrannosaurid *Albertosaurus sarcophagus* (Currie 2003:fig. 10B). A
 pneumatic opening is also present anteroventrally, within a recess on the posteroventral part
 of the pterygoid flange (‘funnellike external opening on the rostral surface of the quadrate,
 above the condyles’ of Gold et al., 2013, p. 37) like in the therizinosauroid *Falcarius*
utahensis (Zanno 2010) and the tyrannosaurids *Alioramus altai* ((Brusatte et al. 2012; Gold et
 al. 2013), *Daspletosaurus* sp. (Currie 2003:fig. 28C) and *Tyrannosaurus rex* (Brochu 2003).
 This ventral pneumatopore has also been reported in the basal tyrannosauroid *Dilong*
paradoxus (Gold et al. 2013) but was not observed in the closely related taxa *Guanlong*
wucaii, *Proceratosaurus lengi*, and *Xiongguanlong baimoensis* (Gold et al. 2013), and its
 presence cannot be established in *Eotyrannus lengi* (contra Gold et al. 2013; pers. obs.). More
 rarely, a pneumatic opening can be situated on the lateral surface of the quadrate body, as in
Aerosteon riocoloradensis (MCNA-PV 3137), and in the anterior part of the quadrate, as in
Mapusaurus roseae (Coria and Currie 2006), *Troodon formosus* (Currie and Zhao 1993),
Heyuannia huangi (Lü 2005), and perhaps *Tyrannosaurus rex* (Molnar 1991).
Figure 5

Carcharodontosauridae (Coria and Currie 2006; Eddy and Clarke 2011) and Tyrannosauridae (Molnar 1991; Brochu 2003) possess several pneumatic openings which perforate different sides of the quadrate and sometimes intercommunicate (Brochu 2003). The pneumatic foramina usually enter a large pneumatic chamber within the quadrate bone such as in *Tyrannosaurus rex* (Molnar 1991; Brochu 2003), *Alioramus altai* (Gold et al. 2013), *Conchoraptor gracilis* (Kundrát and Janáček 2007) or *Ornithomimus edmontonicus* (Tahara and Larsson 2011). The neovenatorid *Aerosteon riocoloradensis* also possess a large posterior pneumatopore leading to a pneumatic chamber, as well as a shallow pneumatic recess on the lateral surface of the quadrate shaft (pers. obs.).

These pneumatopores and the pneumatic chamber associated with them are invaded by the quadrate diverticulum of the mandibular arch pneumatic system which, together with the periotic pneumatic system, forms the tympanic sinus of archosaurs (Tahara and Larsson 2011). The mandibular arch pneumatic system includes the quadrate and/or the articular diverticulum which both have their embryological origins as parts of the first pharyngeal (= mandibular) arch, like the middle ear sac itself (Witmer 1997). As nonavian theropods, the quadrate diverticulum of modern birds exhibits a large variety of morphologies, and can either pneumatize the quadrate by entering through a single medial or anteromedial foramen or not (Witmer 1990; Tahara and Larsson 2011). In the basal theropods that do not have a pneumatic quadrate, both medial and posterior fossae of the quadrate correspond to the osteological trace of the quadrate diverticulum. In nonavian theropods with a pneumatic quadrate, the position of the quadrate diverticulum is variable such as in ornithomimids (Tahara and Larsson 2011), carcharodontosaurids and oviraptorids (pers. observ.). The quadrate diverticulum of nonavian theropods may also have communicated with other diverticula such as the squamosal diverticulum as in *Conchoraptor gracilis* (Kundrát and Janáček 2007), and the siphoneal diverticulum of the articular as in *Dilong paradoxus*, *Aerosteon riocoloradensis* and perhaps

other nonavian maniraptorans (Serenio et al. 2008; Tahara and Larsson 2011). In *Tyrannosaurus rex*, however, the siphoneal diverticulum does not pass through the quadrate and the quadrate diverticulum only enters the ventral opening of the pterygoid flange, and then passes with or without the siphoneal diverticulum along the medial fossa of the pterygoid flange. Likewise, the quadrate diverticulum only pneumatizes two distinct regions of the quadrate in *Acrocanthosaurus atokensis* and *Mapusaurus roseae* (Tahara and Larsson 2011).

Figure 6

Quadrate Ontogeny

Skull ontogeny has been generally poorly studied in nonavian theropod, especially in their early stage of development (Rauhut and Fechner 2005), but the ontogeny of the quadrate bone has particularly received very little attention when compared to other cranial bones (see Carr 1999; Loewen 2010). Although the quadrate of embryonic and juvenile specimens has been reported in many nonavian theropod clades such as basal Megalosauroidea (Rauhut et al. 2012), Spinosauridae (Hendrickx and Mateus 2012), basal Avetheropoda (Hendrickx and Mateus 2012), Tyrannosauridae (e.g. Bakker et al. 1988; Carr and Williamson 2010; Tsuihiji et al. 2011), Compsognathidae (Dal Sasso and Maganuco 2011), alvarezsaurid (Dufeau 2003), Oviraptoridae (Norell et al. 1994, 2001; Weishampel et al. 2008) and Troodontidae (Varricchio et al. 2002), the ontogenic variations of the nonavian theropod quadrate has only been investigated by Hendrickx and Mateus (2012) hitherto. These authors reported two incomplete quadrates belonging to embryos of *Lourinhanosaurus autunesi* (Fig. 6) from the Upper Jurassic of Portugal (Mateus et al. 1998; de Ricqlès et al. 2001; Mateus 2005). Comparison of these two bones with the quadrates of the closest relative of *Lourinhanosaurus*, *Sinraptor dongi* (Benson 2010; Benson et al. 2010) allowed Hendrickx and Mateus (2012) to suggest that the absence of a quadrate foramen and the poor

delimitation of the two mandibular condyles and the intercondylar sulcus were most likely ontogenetical features present in the allosauroid quadrate. Hendrickx and Mateus (2012) also examined the ontogenic changes of the quadrate in spinosaurids from the Cenomanian of Eastern Morocco. Based on five quadrates belonging to juvenile, subadult and adult specimens of *Spinosaurus* sp., they were able to propose a list of ontogenetical steps that they divided into juvenile, subadult and adult stages. The ontogenetical transformation occurring in the *Spinosaurus* quadrate are the clear delimitation of the ento- and ectocondyle, the intercondylar sulcus and the quadrate head, as well as the development of a ventral projection of the dorsal quadratojugal contact and the excavation of both ventral and dorsal quadratojugal contacts, allowing a firm contact between the quadrate and quadratojugal to be present in sub-adults and adults specimens.

Well-preserved quadrates are present in a small and large specimens of the alvarezsaurid *Shuvuuia deserti* (Chiappe et al. 1998; Dufeu 2003). Dufeu (2003), who interprets the small skull (IGM 100-1001) and the larger one (IGM 100-977) as belonging to a juvenile and adult specimens of *Shuvuuia deserti*, respectively, comprehensively described the quadrate bone but did not investigate the ontogenetic variation occurring in the skull of *Shuvuuia deserti*. Personal examination of the two specimens allowed to observe major differences in the quadrate morphology (Fig. 3.3-3.6) that could be interpreted as ontogenetic variations. The quadrate body of IGM 100-1001 is extremely ventro-dorsally elongated, with a prominent and narrow quadrate ridge along the dorsal half of the quadrate bone. On the other hand, the quadrate body of the larger specimen IGM 100-977 is shorter, with a relatively shallow quadrate ridge. The mandibular articulation of IGM 100-1001 is lateromedially expanded and the lateral part of the articulation is subtriangular in outline and strongly projects laterally. The mandibular articulation of IGM 100-977 is particularly short, subrectangular in outline in posterior view, and lacks a lateral projection (Fig. 3.3, 3.5). This

projection may however be broken and present as an isolated piece of bone displaced on the ventrolateral surface of the pterygoid flange (pers. obs.). In IGM 100-1001, the lateral process is ventro-dorsally long, subtriangular in lateral view, almost subrectangular in posterior view, and reaches the quadrate head dorsally. The most lateral corner projects anteriorly to contact the postorbital, and the postorbital contact of the quadrate extends along the anterodorsal surface of the lateral process. The ventral most part of the lateral process forms a small corner dorsal to the parabolic outline of the ventral part of the quadrate body. On the contrary, the lateral process of IGM 100-977 only projects laterally and does not extend to the quadrate head dorsally. The lateral margin of the lateral process is parabolic in outline, and neither includes a small corner ventrally, nor an important projection anteriorly. The quadrate foramen of IGM 100-1001, forms a large fenestra delimited by the quadrate, jugal and, postorbital. If an articulation between the postorbital and the lateral corner of the lateral process was present in IGM 100-977 as well, the quadrate foramen of this specimen would have been much smaller, and delimited by the ventral half of the quadrate only. The quadrate head of the small specimen (IGM 100-1001) is incipiently bistylic and oriented posteromedially to contact the squamosal dorsally, and the braincase posteromedially (Fig. 3.3). The quadrate head of IGM 100-977 is strongly inclined laterally and seems to include a single condyle only, although Dufeu (2003) noted that the quadrate head was also divided by a very weak intercondylar sulcus in the adult specimen.

Dufeu (2003) interpreted these differences in the two specimens of *Shuvuuia deserti* as ontogenetic and taphonomic variations (Dufeu pers. comm.). According to Dufeu (2003), the contact between the quadrate head and the junction of the squamosal and postorbital, which is unique in IGM 100-1001 among nonavian theropods, is, for instance, interpreted as a taphonomic condition where the quadrate head would be taphonomically displaced laterally. Nevertheless, both left and right quadrate of IGM 100-1001 occupy the same position and

share similar contact with the postorbital and squamosal, and the skull suffered neither compressional nor shear distortions (Dufeu 2003; pers. obs.). A taphonomic displacement of the quadrate of IGM 100-1001 seems therefore unlikely, and the postorbital contact of the quadrate is an autapomorphy of *Shuvuuia deserti*. Despite the fact that the right quadrate of the larger specimen IGM 100-977 may have been subject to important postmortem compression (as the rest of the skull which is ventro-dorsally flattened), the numerous differences existing between IGM 100-1001 and IGM 100-977 suggests that these variations may be taphonomic, ontogenetic, but also perhaps taxonomic. The ontogenetic variations occurring in the spinosaurid quadrates are subtle and only concern the delimitation of the condyles and quadrate head, and the reinforcement of the quadrate and quadratojugal suture, so that the general morphology of the quadrate bone does not change at all. If the features differentiating IGM 100-1001 and IGM 100-977 are mostly ontogenetic, the quadrate of *Shuvuuia deserti* would therefore undergo a major metamorphosis during its development, including a dorsoventral shortening of the quadrate bone, rotation of the quadrate head from a medial to a lateral orientation, posterior displacement of the lateral process, and morphological transformation of the lateral process from a subtriangular to a parabolic process. Although plausible, these ontogenetic transformations seem a bit extreme, and it is reasonable to suggest that IGM 100-977 and IGM 100-977 may belong to two taxa, perhaps two species of *Shuvuuia*.

Quadrate pneumaticity appears early in ontogeny as it has been reported in the embryo of *Troodon formosus* (Varricchio et al. 2002) and the juvenile *Tarbosaurus baatar* (Tsuihiji et al. 2011). Although absent in the embryonic specimen of *Lourinhanosaurus autunesi*, a quadrate foramen exists in many juvenile specimens of theropods such as the hatchling *Scipionyx samniticus* (Dal Sasso and Maganuco 2011) and the early posthatchling *Sciurumimus albersdoerferi* (Rauhut et al. 2012). Although the quadrate and quadratojugal

are weakly articulated to each other in immature tetanurans (Hendrickx and Mateus 2012), a fusion between the quadrate and pterygoid was already present in oviraptorid embryos (Norell et al. 2001).

CONCLUSIONS

A revised nomenclature of the quadrate bone, along with a corresponding set of abbreviations, is here proposed and provides a standard set of terms for describing this cranial bone in nonavian theropod dinosaurs. The quadrate can be divided into two regional categories, the quadrate body and the pterygoid flange, and twelve anatomical sub-units, the quadrate shaft, quadrate head, quadrate ridge, quadrate foramen, lateral process, quadratojugal contact, squamosal contact, pterygoid contact, mandibular articulation, medial fossa, and posterior fossa. Although being highly variable in shape, all of these quadrate entities, with perhaps the exception of the posterior fossa, are easily recognisable inter-taxa and a description of their morphology should be provided in the literature.

A summary of the current knowledge on the quadrate function, pneumaticity and ontogeny in nonavian theropods allows some evidence about this bone to be highlighted. The quadrate of large majority of nonavian theropods is akinetic and a streptostylic quadrate may have been present in some derived coelurosaurs such as the alvarezsaurid *Shuvuuia deserti* and the oviraptorid *Nemegtia huangi*. A lateral movement of the rami while the mandible was depressed was permitted in many theropods such as spinosaurids thanks to a helicoidal and diagonally oriented intercondylar sulcus of the mandibular articulation. Likewise, the presence of an intercondylar notch constricting the intercondylar sulcus in allosaurids was interpreted to be a joint-stabilization zone that would improve the stability of the mandibular articulation when the mouth was widely opened.

A pneumatic quadrate was present in members of most nonavian avetheropod clades such as allosauroids, tyrannosaurids, compsognathids, therizinosauroids, ornithomimoids, oviraptorids, troodontids and dromaeosaurids, in which pneumatopores typically open in the ventral part of the pterygoid flange and in the medial and lateral fossae. Although the pneumatic recess invaded by the quadrate diverticulum of the mandibular arch pneumatic system was linked to only one pneumatopore in most avetheropods, the presence of several pneumatic openings perforating different sides of the quadrate have been recorded in Neovenatoridae, Carcharodontosauridae and Tyrannosauridae.

A poorly delimited mandibular condyles, intercondylar sulcus and quadrate head, and a quadratojugal contact with a smooth surface have been interpreted as ontogenetical features in the quadrate of embryonic and juvenile basal tetanurans. The development of a quadrate foramen and a ventral projection of the dorsal quadratojugal contact seem also to happen during ontogeny in allosauroids and spinosaurids, respectively. On the other hand, pneumaticity and a strong suture between the quadrate and quadratojugal appear early in ontogeny, in the embryonic stage of coelurosaurs. Finally, based on the quadrate morphology, the two specimens assigned to *Shuvuuia deserti*, considered by some as juvenile and adult specimens, may belong to two distinct taxa.

ACKNOWLEDGMENTS

The authors would like to thank E. Buffetaut (CNRS), S. Brusatte (AMNH), M. Mortimer, and J. Headden for useful information and discussion regarding the morphology and evolution of the quadrate as well as coding characters. The quadrate of many nonavian theropods were examined at first hand in several institutions and access to the material was possible thanks to P. Sereno (Uni. Chicago), P. Makovicky (FMNH), W. Simpson (FMNH), M. Lamanna (CMNH), A. Henrici (CMNH), M. Carrano (NMNH), M. Brett-Surman

(NMNH), S. Chapman (NHM), P. Barrett (NHM), P. Jeffery (OUMNH), S. Hutt (MIW), R. Allain (MNHN), R. Schoch (SMNS), H.-J. Siber (SMA), C. Dal Sasso (MSNM), A. Kramarz (MACN), F. Novas (MACN), R. Barbieri (MPCA), L. Salgado (MUCPv), J. Ignacio Canale (MUCPv-CH), R. Coria (MCF-PVPH), C. Succar (MCF-PVPH), J. Calvo (CePaLB), R. Martínez (PVSJ), C. Mehling (AMNH), M. Norell (AMNH), D. Krauze (SBU), J. Groenke (SBU), P. Brinkman (NCSM), and L. Zanno (NCSM). Photographs of theropod quadrates were kindly shared by E. Buffetaut (CNRS), M. Lamanna (CMNH), M. Carrano (USNM), L. Witmer (Uni. Ohio), S. Brusatte (AMNH), R. Benson (Uni. Cambridge), P. Barrett (BMNH), M. Ellison (AMNH), D. Eddy (Uni. Texas), S. Nesbitt (Uni. Texas), Y. Kobayashi (HUM), R. Tahara (McGill Uni.), R. Pei (AMNH), P. Sereno (Uni. Chicago), C. Abraczinskas (Uni. Chicago), N. Smith (Uni. Chicago), L. Zanno (FMNH), R. Tykoski (MNSD), D. Burnham (Uni. Kansas), M. Ezcurra (MACNBR), P. Asaroff (MACNBR), R. Irmis (UMNH), V. Shneider (NCMNS), C. Brochu (Uni. Iowa), S. Lautenschlager (Uni. Bristol), M. Mortimer and K. Peyer (MNHN), and the authors would like to address their sincere thanks to all of these people.

REFERENCES

- Bakker, R.T. 1998. Brontosaurus killers: late Jurassic allosaurids as sabre-tooth cat analogues. *Gaia* 15:145–158.
- Bakker, R.T., Williams, M. and Currie, P.J. 1988. *Nanotyrannus*, a new genus of pygmy tyrannosaur, from the latest Cretaceous of Montana. *Hunteria* 1:1–30.
- Balanoff, A.M. and Norell, M.A. 2012. Osteology of *Khaan mckennai* (Oviraptorosauria: Theropoda). *Bulletin of the American Museum of Natural History* 1–77.
- doi:10.1206/803.1.

- 767 Barbosa, A. 1990. Identification key of Iberian waders (Charadriiformes) based on the os
768 quadratum. *Miscellània Zoològica* 14:181–185.
- 769 Barsbold, R. and Osmólska, H. 1999. The skull of *Velociraptor* (Theropoda) from the Late
770 Cretaceous of Mongolia. *Acta Palaeontologica Polonica* 44:189–219.
- 771 Barsbold, R., Osmólska, H. and Kurzanov, S.M. 1987. On a new troodontid (Dinosauria,
772 Theropoda) from the Early Cretaceous of Mongolia. *Acta Palaeontologica Polonica*
773 32:121–132.
- 774 Baumel, J.J. and Witmer, L.M. 1993. Osteologia, p. 45–132. In Baumel, J.J. (ed.), *Handbook*
775 *of Avian Anatomy: Nomina Anatomica Avium*. Nuttall Ornithological Club,
776 Cambridge.
- 777 Benson, R., Carrano, M. and Brusatte, S. 2010. A new clade of archaic large-bodied predatory
778 dinosaurs (Theropoda: Allosauroidae) that survived to the latest Mesozoic.
779 *Naturwissenschaften* 97:71–78. doi:10.1007/s00114-009-0614-x.
- 780 Benson, R.B.J. 2010. A description of *Megalosaurus bucklandii* (Dinosauria: Theropoda)
781 from the Bathonian of the UK and the relationships of Middle Jurassic theropods.
782 *Zoological Journal of the Linnean Society* 158:882–935.
- 783 Benton, M.J. 2005. *Vertebrate Palaeontology (Third edition)*. Wiley-Blackwell.
- 784 Bock, W.J. 1964. Kinetics of the avian skull. *Journal of Morphology* 114:1–41.
785 doi:10.1002/jmor.1051140102.
- 786 Bock, W.J. 1999. Avian cranial kinesis revisited. *Acta Ornithologica* 34:115–122.
- 787 Bock, W.J. 2000. The evolution of avian cranial kinesis, p. 1, 191–201. In Zhou, Z. and
788 Zhang, F. (eds.), *Proceedings of the 5th Symposium of the Society of Avian*
789 *Paleontology and Evolution, Beijing, 1–4 June 2000*. Science Press, Beijing.

- 790 Bonaparte, J.F., Novas, F.E. and Coria, R.A. 1990. *Carnotaurus sastrei* Bonaparte, the
791 horned, lightly built carnosaur from the Middle Cretaceous of Patagonia. *Natural*
792 *History Museum of Los Angeles County Contributions in Science* 416:1–42.
- 793 Bout, R.G. and Zweers, G.A. 2001. The role of cranial kinesis in birds. *Comparative*
794 *Biochemistry and Physiology Part A: Molecular & Integrative Physiology* 131:197–
795 205. doi:10.1016/S1095-6433(01)00470-6.
- 796 Britt, B.B. 1991. Theropods of Dry Mesa Quarry (Morrison Formation, Late Jurassic),
797 Colorado, with emphasis on the osteology of *Torvosaurus tanneri*. *Brigham Young*
798 *University Geology Studies* 37:1–72.
- 799 Brochu, C.A. 2003. Osteology of *Tyrannosaurus rex*: Insights from a nearly complete
800 skeleton and high-resolution computed tomographic analysis of the skull. *Journal of*
801 *Vertebrate Paleontology* 22:1–138. doi:10.1080/02724634.2003.10010947.
- 802 Brusatte, S.L. 2012. *Dinosaur Paleobiology*. Wiley-Blackwell.
- 803 Brusatte, S.L., Carr, T.D. and Norell, M.A. 2012. The osteology of *Alioramus*, a gracile and
804 long-snouted tyrannosaurid (Dinosauria: Theropoda) from the Late Cretaceous of
805 Mongolia. *Bulletin of the American Museum of Natural History* 366:1–197.
806 doi:10.1206/770.1.
- 807 Brusatte, S.L., Chure, D.J., Benson, R.B.J. and Xu, X. 2010. The osteology of *Shaochilong*
808 *maortuensis*, a carcharodontosaurid (Dinosauria: Theropoda) from the Late
809 Cretaceous of Asia. *Zootaxa* 2334:1–46.
- 810 Bühler, P. 1981. Functional anatomy of the avian jaw apparatus. *Form and function in birds*
811 2:439–468.
- 812 Bühler, P., Hecht, M.K., Ostrom, J.H., Viohl, G. and Wellnhofer, P. 1985. On the morphology
813 of the skull of Archaeopteryx. *The Beginnings of Birds* 135–140.

- 814 Bühler, P., Martin, L.D. and Witmer, L.M. 1988. Cranial kinesis in the Late Cretaceous birds
- 815 Hesperornis and Paraesperornis. *The Auk* 105:111–122.
- 816 Burnham, D.A. 2004. New Information on *Bambiraptor feinbergi* (Theropoda:
- 817 Dromaeosauridae) from the Late Cretaceous of Montana, p. 67–111. In Currie, P.J.,
- 818 Koppelhus, E.B., Shugar, M.A., and Wright, J.L. (eds.), *Feathered Dragons: Studies*
- 819 *on the Transition from Dinosaurs to Birds*. Indiana University Press, Bloomington,
- 820 Indiana.
- 821 Carr, T.D. 1996. Cranial osteology and craniofacial ontogeny of Tyrannosauridae:
- 822 Dinosauria: Theropoda from the Dinosaur Park Formation (Judith River Group, Upper
- 823 Cretaceous, Campanian) of Alberta. MSc. Dissertation, University of Toronto,
- 824 Toronto, Ontario, Canada.
- 825 Carr, T.D. 1999. Craniofacial ontogeny in Tyrannosauridae (Dinosauria, Coelurosauria).
- 826 *Journal of Vertebrate Paleontology* 19:497–520.
- 827 doi:10.1080/02724634.1999.10011161.
- 828 Carr, T.D. and Williamson, T.E. 2010. *Bistahieversor sealeyi*, gen. et sp. nov., a new
- 829 tyrannosauroid from New Mexico and the origin of deep snouts in Tyrannosauroidea.
- 830 *Journal of vertebrate Paleontology* 30:1–16.
- 831 Carrano, M.T., Benson, R.B.J. and Sampson, S.D. 2012. The phylogeny of Tetanurae
- 832 (Dinosauria: Theropoda). *Journal of Systematic Palaeontology* 10:211–300.
- 833 doi:10.1080/14772019.2011.630927.
- 834 Carrano, M.T., Loewen, M.A. and Sertich, J.J.W. 2011. New materials of *Masiakasaurus*
- 835 *knopfleri* Sampson, Carrano, and Forster, 2001, and implications for the morphology
- 836 of the Noasauridae (Theropoda: Ceratosauria). *Smithsonian Contributions to*
- 837 *Paleobiology* 95:1–53.
- 838 Carroll, R.L. 1988. *Vertebrate Paleontology and Evolution*. W. H. Freeman and Company.

- 839 Charig, A.J. and Milner, A.C. 1997. *Baryonyx walkeri*, a fish-eating dinosaur from the
- 840 Wealden of Surrey. *Bulletin of the Natural History Museum* 53:11–70.
- 841 Chatterjee, S. 1991. Cranial anatomy and relationships of a new Triassic bird from Texas.
- 842 *Philosophical Transactions: Biological Sciences* 332:277–342.
- 843 Chatterjee, S. 1995. The Triassic bird Protoavis. *Archaeopteryx* 13:15–31.
- 844 Chatterjee, S. 1997. *The rise of birds: 225 million years of evolution*. Johns Hopkins
- 845 University Press Baltimore, Maryland.
- 846 Chiappe, L.M. 2001. Phylogenetic relationships among basal birds, p. 125–139. In Gauthier,
- 847 J. and Gall, L.F. (eds.), *New perspectives on the origin and early evolution of birds:*
- 848 *proceedings of the international symposium in honor of John H. Ostrom*. Yale Univ
- 849 Peabody Museum.
- 850 Chiappe, L.M., Norell, M.A. and Clark, J.M. 1998. The skull of a relative of the stem-group
- 851 bird Mononykus. *Nature* 392:275–278. doi:10.1038/32642.
- 852 Chiappe, L.M., Norell, M.A. and Clark, J.M. 2002. The Cretaceous, short-armed
- 853 Alvarezsauridae: *Mononykus* and its kin, p. 87–120. In Chiappe, L.M. and Witmer,
- 854 L.M. (eds.), *Mesozoic birds: above the heads of dinosaurs*. University of California
- 855 Press.
- 856 Choiniere, J.N., Clark, J.M., Forster, C.A., Norell, M.A., Eberth, D.A., Erickson, G.M., Chu,
- 857 H. and Xu, X. 2014. A juvenile specimen of a new coelurosaur (Dinosauria:
- 858 Theropoda) from the Middle–Late Jurassic Shishugou Formation of Xinjiang,
- 859 People’s Republic of China. *Journal of Systematic Palaeontology* 12:177–215.
- 860 doi:10.1080/14772019.2013.781067.
- 861 Choiniere, J.N., Clark, J.M., Forster, C.A. and Xu, X. 2010. A basal coelurosaur (Dinosauria:
- 862 Theropoda) from the Late Jurassic (Oxfordian) of the Shishugou Formation in

- 863 Wucaiwan, People's Republic of China. *Journal of Vertebrate Paleontology* 30:1773–
864 1796. doi:10.1080/02724634.2010.520779.
- 865 Clark, J.M., Norell, M.A. and Rowe, T. 2002. Cranial anatomy of *Citipati osmolskae*
866 (Theropoda, Oviraptorosauria), and a reinterpretation of the holotype of *Oviraptor*
867 *philoceratops*. *American Museum Novitates* 3364:1–24.
- 868 Clark, J.M., Perle, A. and Norell, M. 1994. The skull of *Erlicosaurus andrewsi*, a late
869 Cretaceous “Segnosaur” (Theropoda, Therizinosauridae) from Mongolia. *American*
870 *Museum Novitates* 3115:1–39.
- 871 Colbert, E.H. 1989. The Triassic dinosaur *Coelophysis*. *Museum of Northern Arizona Bulletin*
872 57:1–174.
- 873 Colbert, E.H. and Russell, D.A. 1969. The small Cretaceous dinosaur *Dromaeosaurus*.
874 *American Museum Novitates* 2380:1–49.
- 875 Coria, R.A. and Currie, P.J. 2006. A new carcharodontosaurid (Dinosauria, Theropoda) from
876 the Upper Cretaceous of Argentina. *Geodiversitas* 28:71–118.
- 877 Coria, R.A. and Salgado, L. 1998. A basal Abelisauria Novas, 1992 (Theropoda-Ceratosauria)
878 from the Cretaceous of Patagonia, Argentina. *Gaia* 15:89–102.
- 879 Currie, P.J. 1995. New information on the anatomy and relationships of *Dromaeosaurus*
880 *albertensis* (Dinosauria: Theropoda). *Journal of Vertebrate Paleontology* 15:576–591.
881 doi:10.1080/02724634.1995.10011250.
- 882 Currie, P.J. 2003. Cranial anatomy of tyrannosaurid dinosaurs from the Late Cretaceous of
883 Alberta, Canada. *Acta Palaeontologica Polonica* 48:191–226.
- 884 Currie, P.J. 2006. On the quadrate of *Sinraptor dongi* (Theropoda: Allosauroidae) from the
885 Late Jurassic of China. *Mesozoic and Cenozoic Vertebrates and Paleoenvironments.*
886 *Tributes to the career of Prof. Dan Grigorescu* 111–115.

- 887 Currie, P.J. and Carpenter, K. 2000. A new specimen of *Acrocanthosaurus atokensis*
888 (Theropoda, Dinosauria) from the Lower Cretaceous Antlers Formation (Lower
889 Cretaceous, Aptian) of Oklahoma, USA. *Geodiversitas* 22:207–246.
- 890 Currie, P.J. and Chen, P. 2001. Anatomy of *Sinosauropteryx prima* from Liaoning,
891 northeastern China. *Canadian Journal of Earth Sciences* 38:1705–1727.
892 doi:10.1139/e01-050.
- 893 Currie, P.J. and Zhao, X.-J. 1993. A new troodontid (Dinosauria, Theropoda) braincase from
894 the Dinosaur Park Formation (Campanian) of Alberta. *Canadian Journal of Earth*
895 *Sciences* 30:2231–2247. doi:10.1139/e93-194.
- 896 Dufeu, D.L. 2003. The cranial anatomy of the theropod dinosaur *Shuvuuia deserti*
897 (Coelurosauria: Alvarezsauridae), and its bearing upon coelurosaurian phylogeny.
898 MSc. Dissertation, University of Texas, Austin, Texas.
- 899 Eddy, D.R. and Clarke, J.A. 2011. New information on the cranial anatomy of
900 *Acrocanthosaurus atokensis* and its implications for the phylogeny of Allosauroidea
901 (Dinosauria: Theropoda). *PLoS ONE* 6:e17932. doi:10.1371/journal.pone.0017932.
- 902 Elzanowski, A., Paul, G.S. and Stidham, T.A. 2001. An avian quadrate from the Late
903 Cretaceous Lance formation of Wyoming. *Journal of Vertebrate Paleontology*
904 20:712–719.
- 905 Elzanowski, A. and Stidham, T.A. 2010. Morphology of the quadrate in the Eocene
906 anseriform *Presbyornis* and extant galloanserine birds. *Journal of Morphology*
907 271:305–323. doi:10.1002/jmor.10799.
- 908 Fisher, H.I. 1955. Some aspects of the kinetics in the jaws of birds. *The Wilson Bulletin* 175–
909 188.

- 910 Foth, C. and Rauhut, O. 2012. Macroevolutionary and morphofunctional patterns in theropod
911 skulls: a morphometric approach. *Acta Palaeontologica Polonica*.
912 doi:10.4202/app.2011.0145.
- 913 Fuchs, A. 1954. On the correlation between the skull structure and the muscles in the male
914 *Phasianus colchicus* L. IV. The attachment of the musculus protractor quadrati et
915 pterygoidei and of the musculus depressor mandibulae. *Koninklijke Nederlandse*
916 *Akademie van Wetenschappen, Proceedings, C* 57:666–672.
- 917 Gauthier, J. 1986. Saurischian monophyly and the origin of birds, p. 8, 1–55. In Padian, K.
918 (ed.), *The origin of Birds and the Evolution of Flight*. Memoirs of the California
919 Academy of Sciences, San Francisco, California.
- 920 Gilmore, C.W. 1920. Osteology of the carnivorous Dinosauria in the United State National
921 museum: with special reference to the genera *Antrodemus* (*Allosaurus*) and
922 *Ceratosaurus*. *Bulletin of the United States National Museum* 110:1–159.
- 923 Gold, M.E.L., Brusatte, S. and Norell, M. 2013. The cranial pneumatic sinuses of the
924 tyrannosaurid *Alioramus* (Dinosauria, Theropoda) and the evolution of cranial
925 pneumaticity in theropod dinosaurs. *American Museum Novitates* 3790:1–46.
- 926 Gussekloo, S.W.S. and Bout, R.G. 2005. Cranial kinesis in palaeognathous birds. *Journal of*
927 *Experimental Biology* 208:3409–3419. doi:10.1242/jeb.01768.
- 928 Hendrickx, C. and Buffetaut, E. 2008. Functional interpretation of spinosaurid quadrates
929 (Dinosauria: Theropoda) from the Mid-Cretaceous of Morocco. *56th Annual*
930 *Symposium of Vertebrate Palaeontology and Comparative Anatomy. Dublin*
931 *(September 2nd-6th 2008)* 25–26.
- 932 Hendrickx, C. and Mateus, O. 2012. Ontogenetical changes in the quadrate of basal
933 tetanurans, p. 20, 101–104. In Royo-Torres, R., Gascó, F., and Alcalá, L. (eds.), *10th*

- 934 *Annual Meeting of the European Association of Vertebrate Palaeontologists.*
- 935 *;Fundamental!*
- 936 Hoeese, W.J. and Westneat, M.W. 1996. Biomechanics of cranial kinesis in birds: testing
- 937 linkage models in the white-throated sparrow (*Zonotrichia albicollis*). *Journal of*
- 938 *Morphology* 227:305–320.
- 939 Holliday, C.M. 2009. New insights into dinosaur jaw muscle anatomy. *The Anatomical*
- 940 *Record: Advances in Integrative Anatomy and Evolutionary Biology* 292:1246–1265.
- 941 doi:10.1002/ar.20982.
- 942 Holliday, C.M. and Witmer, L.M. 2008. Cranial kinesis in dinosaurs: intracranial joints,
- 943 protractor muscles, and their significance for cranial evolution and function in
- 944 diapsids. *Journal of Vertebrate Paleontology* 28:1073–1088. doi:10.1671/0272-4634-
- 945 28.4.1073.
- 946 Holtz, T.R.J. 1998. A new phylogeny of the carnivorous dinosaurs. *Gaia* 15:5–61.
- 947 Holtz, T.R.J. 2003. Dinosaur Predation: Evidence and Ecomorphology, p. 325–340. In Kelley,
- 948 P.H., Kowalewski, M., and Hansen, T.A. (eds.), *Predator—Prey Interactions in the*
- 949 *Fossil Record*. Topics in Geobiology. Springer US.
- 950 Holtz, T.R.J., Molnar, R.E. and Currie, P.J. 2004. Basal Tetanurae, p. 71–110. In
- 951 Weishampel, D.B., Dodson, P., and Osmólska, H. (eds.), *The Dinosauria. Second*
- 952 *Edition*. University of California Press, Berkeley, California.
- 953 Hone, D.W.E. and Rauhut, O.W.M. 2010. Feeding behaviour and bone utilization by
- 954 theropod dinosaurs. *Lethaia* 43:232–244. doi:10.1111/j.1502-3931.2009.00187.x.
- 955 Kobayashi, Y. and Barsbold, R. 2005. Reexamination of a primitive ornithomimosaur,
- 956 *Garudimimus brevipes* Barsbold, 1981 (Dinosauria: Theropoda), from the Late
- 957 Cretaceous of Mongolia. *Canadian Journal of Earth Sciences* 42:1501–1521.
- 958 doi:10.1139/e05-044.

- 959 Kobayashi, Y. and Lü, J.-C. 2003. A new ornithomimid dinosaur with gregarious habits from
960 the Late Cretaceous of China. *Acta Palaeontologica Polonica* 48:235–259.
- 961 Kundrát, M. and Janáček, J. 2007. Cranial pneumatization and auditory perceptions of the
962 oviraptorid dinosaur *Conchoraptor gracilis* (Theropoda, Maniraptora) from the Late
963 Cretaceous of Mongolia. *Naturwissenschaften* 94:769–778. doi:10.1007/s00114-007-
964 0258-7.
- 965 Larson, P.L. 2008. Atlas of the skull bones of *Tyrannosaurus rex*, p. 233–243. In Larson, P.L.
966 and Carpenter, K. (eds.), *Tyrannosaurus rex, the Tyrant King*. Indiana University
967 Press, Bloomington, Indiana.
- 968 Li, D., Norell, M.A., Gao, K.Q., Smith, N.D. and Makovicky, P.J. 2010. A longirostrine
969 tyrannosauroid from the Early Cretaceous of China. *Proceedings of the Royal Society*
970 *B: Biological Sciences* 277:183–190.
- 971 Loewen, M.A. 2010. Variation in the Late Jurassic theropod dinosaur *Allosaurus*:
972 Ontogenetic, functional, and taxonomic implications. Ph.D. Dissertation, The
973 University of Utah, Texas, Utah, USA.
- 974 Lowe, P.R. 1926. More notes on the quadrate as a factor in avian classification. *Ibis* 68:152–
975 188. doi:10.1111/j.1474-919X.1926.tb07563.x.
- 976 Lü, J. 2003. A new oviraptorosaurid (Theropoda: Oviraptorosauria) from the Late Cretaceous
977 of southern China. *Journal of Vertebrate Paleontology* 22:871–875.
978 doi:10.1671/0272-4634(2002)022[0871:ANOTOF]2.0.CO;2.
- 979 Lü, J. 2005. Oviraptorid dinosaurs from southern China. Ph.D. Dissertation, Southern
980 Methodist University, Dallas, Texas, USA.
- 981 Lü, J., Tomida, Y., Azunia, Y., Dong, Z. and Lee, Y.N. 2004. New Oviraptorid Dinosaur
982 (Dinosauria: Oviraptorosauria) from the Nemegt Formation of Southwestern

983 Mongolia. *Bulletin of the National Science Museum: Geology & paleontology* 30:95–
 984 130.

985 Madsen, J.H. 1976. *Allosaurus fragilis*: A Revised Osteology. *Utah Geological Survey*
 986 *Bulletin* 109:1–177.

987 Madsen, J.H. and Welles, S.P. 2000. *Ceratosaurus* (Dinosauria, Theropoda): a revised
 988 osteology. *Utah Geological Survey, Miscellaneous Publication* 00-2:1–89.

989 Makovicky, P.J., Apesteguía, S. and Agnolín, F.L. 2005. The earliest dromaeosaurid theropod
 990 from South America. *Nature* 437:1007–1011. doi:10.1038/nature03996.

991 Maryańska, T. and Osmólska, H. 1997. The quadrate of oviraptorid dinosaurs. *Acta*
 992 *Palaeontologica Polonica* 42:361–371.

993 Mateus, I., Mateus, H., Antunes, M.T., Mateus, O., Taquet, P., Ribeiro, V. and Manuppella,
 994 G. 1998. Upper Jurassic theropod dinosaur embryos from Lourinhã (Portugal).
 995 *Memórias da Academia das Ciências de Lisboa* 37:101–110.

996 Mateus, O. 2005. Dinossauros do Jurássico Superior de Portugal, com destaque para os
 997 saurísquios. Ph.D. Dissertation, Universidade Nova de Lisboa, Lisbon, Portugal.

998 Meekangvan, P., Barhorst, A., Burton, T.D., Chatterjee, S. and Schovanec, L. 2006.
 999 Nonlinear dynamical model and response of avian cranial kinesis. *Journal of*
 1000 *Theoretical Biology* 240:32–47. doi:10.1016/j.jtbi.2005.08.027.

1001 Metzger, K. 2002. Cranial kinesis in lepidosaurs: skulls in motion. *Topics in functional and*
 1002 *ecological vertebrate morphology. Maastricht: Shaker Publishing.* p 15–46.

1003 Molnar, R.E. 1991. The cranial morphology of *Tyrannosaurus rex*. *Palaeontographica*
 1004 *Abteilung A* 217:137–176.

1005 Molnar, R.E. 1998. Mechanical factors in the design of the skull of *Tyrannosaurus rex*
 1006 (Osborn, 1905). *Gaia* 15:193–218.

- 1007 Nitzsch, C.L. 1816. Über die bewegung des oberkiefers der vögel. *Deutsches Archiv für die*
1008 *Physiologie* 2:361–380.
- 1009 Norell, M.A., Clark, J.M. and Chiappe, L.M. 2001. An embryonic oviraptorid (Dinosauria:
1010 Theropoda) from the Upper Cretaceous of Mongolia. *American Museum Novitates*
1011 3315:1–20.
- 1012 Norell, M.A., Clark, J.M., Demberelyin, D., Rhinchen, B., Chiappe, L.M., Davidson, A.R.,
1013 McKenna, M.C., Altangerel, P. and Novacek, M.J. 1994. A Theropod Dinosaur
1014 Embryo and the Affinities of the Flaming Cliffs Dinosaur Eggs. *Science* 266:779–782.
1015 doi:10.1126/science.266.5186.779.
- 1016 Norell, M.A., Clark, J.M., Turner, A.H., Makovicky, P.J., Barsbold, R. and Rowe, T. 2006. A
1017 new dromaeosaurid theropod from Ukhaa Tolgod (Ömnögov, Mongolia). *American*
1018 *Museum Novitates* 3545:1–51. doi:10.1206/0003-
1019 0082(2006)3545[1:ANDTFU]2.0.CO;2.
- 1020 Norell, M.A. and Hwang, S.H. 2004. A troodontid dinosaur from Ukhaa Tolgod (Late
1021 Cretaceous Mongolia). *American Museum Novitates* 3446:1–9.
- 1022 Norell, M.A., Makovicky, P.J., Bever, G.S., Balanoff, A.M., Clark, J.M., Barsbold, R. and
1023 Rowe, T. 2009. A review of the Mongolian Cretaceous dinosaur *Saurornithoides*
1024 (Troodontidae: Theropoda). *American Museum Novitates* 3654:1–63.
1025 doi:10.1206/648.1.
- 1026 Novas, F.E., Agnolín, F.L., Ezcurra, M.D., Porfiri, J. and Canale, J.I. 2013. Evolution of the
1027 carnivorous dinosaurs during the Cretaceous: The evidence from Patagonia.
1028 *Cretaceous Research* 45:174–215. doi:10.1016/j.cretres.2013.04.001.
- 1029 Perle, A., Chiappe, L.M. and Barsbold, R. 1994. Skeletal morphology of *Mononykus*
1030 *olecranus* (Theropoda: Avialae) from the Late Cretaceous of Mongolia. *American*
1031 *Museum Novitates* 3105:1–29.

- 1032 Rauhut, O.W.M. 2003. The interrelationships and evolution of basal theropod dinosaurs.
1033 *Special Papers in Palaeontology* 69:1–213.
- 1034 Rauhut, O.W.M. and Fechner, R. 2005. Early development of the facial region in a non-avian
1035 theropod dinosaur. *Proceedings of the Royal Society B: Biological Sciences*
1036 272:1179–1183. doi:10.1098/rspb.2005.3071.
- 1037 Rauhut, O.W.M., Foth, C., Tischlinger, H. and Norell, M.A. 2012. Exceptionally preserved
1038 juvenile megalosauroid theropod dinosaur with filamentous integument from the Late
1039 Jurassic of Germany. *Proceedings of the National Academy of Sciences* 109:11746–
1040 11751. doi:10.1073/pnas.1203238109.
- 1041 Rauhut, O.W.M., Milner, A.C. and Moore-Fay, S. 2010. Cranial osteology and phylogenetic
1042 position of the theropod dinosaur *Proceratosaurus bradleyi* (Woodward, 1910) from
1043 the Middle Jurassic of England. *Zoological Journal of the Linnean Society* 158:155–
1044 195. doi:10.1111/j.1096-3642.2009.00591.x.
- 1045 Rayfield, E.J. 2005. Using finite-element analysis to investigate suture morphology: A case
1046 study using large carnivorous dinosaurs. *The Anatomical Record Part A: Discoveries*
1047 in *Molecular, Cellular, and Evolutionary Biology* 283A:349–365.
1048 doi:10.1002/ar.a.20168.
- 1049 De Ricqlès, A., Mateus, O., Antunes, M.T. and Taquet, P. 2001. Histomorphogenesis of
1050 embryos of Upper Jurassic theropods from Lourinhã (Portugal). *Comptes Rendus de*
1051 *l'Académie des Sciences-Series IIA-Earth and Planetary Science* 332:647–656.
- 1052 Rieppel, O. 2006. The merits of similarity reconsidered. *Systematics and Biodiversity* 4:137–
1053 147. doi:10.1017/S1477200005001830.
- 1054 Russell, D.A. 1972. Ostrich dinosaurs from the Late Cretaceous of Western Canada.
1055 *Canadian Journal of Earth Sciences* 9:375–402. doi:10.1139/e72-031.

- 1056 Sadleir, R., Barrett, P.M. and Powell, H.P. 2008. The anatomy and systematics of
 1057 *Eustreptospondylus oxoniensis*, a theropod dinosaur from the Middle Jurassic of
 1058 Oxfordshire, England. *Monograph of the Palaeontographical Society, London* 160:1–
 1059 82.
- 1060 Sakamoto, M. 2008. Bite force and the evolution of feeding function in birds, dinosaurs and
 1061 cats. Ph.D. Dissertation, University of Bristol, Bristol, U.K.
- 1062 Samejima, M. and Otsuka, J. 1987. Observations on the Quadrate of Birds. *Japanese Journal*
 1063 *of Ornithology* 35:129–144.
- 1064 Sampson, S.D. and Witmer, L.M. 2007. Craniofacial anatomy of *Majungasaurus*
 1065 *crenatissimus* (Theropoda: Abelisauridae) from the Late Cretaceous of Madagascar.
 1066 *Journal of Vertebrate Paleontology* 27:32–104. doi:10.1671/0272-
 1067 4634(2007)27[32:CAOMCT]2.0.CO;2.
- 1068 Sanders, R.K. and Smith, D.K. 2005. The endocranium of the theropod dinosaur *Ceratosaurus*
 1069 studied with computed tomography. *Acta Palaeontologica Polonica* 50:601.
- 1070 Dal Sasso, C. and Maganuco, S. 2011. *Scipionyx samniticus* (Theropoda: Compsognathidae)
 1071 from the Lower Cretaceous of Italy: osteology, ontogenetic assessment, phylogeny,
 1072 soft tissue anatomy, taphonomy and palaeobiology. *Memorie della Società Italiana di*
 1073 *Scienze Naturali e del Museo Civico di Storia Naturale di Milano* 37:1–281.
- 1074 Schwarz, D., Frey, E. and Meyer, C.A. 2007. Pneumaticity and soft-tissue reconstructions in
 1075 the neck of diplodocid and dicraeosaurid sauropods. *Acta Palaeontologica Polonica*
 1076 52:167.
- 1077 Sedlmayr, J.C. 2002. Anatomy, evolution, and functional significance of cephalic vasculature
 1078 in Archosauria. Ph.D. dissertation, Ohio University, Athens, Ohio, USA.
- 1079 Sereno, P.C. 2001. Alvarezsaurids: birds or ornithomimosaur, p. 69–98. In Gauthier, J. and
 1080 Gall, L.F. (eds.), *New Perspectives on the Origin and Early Evolution of Birds:*

- Proceedings of the International Symposium in Honor of John H. Ostrom*. Yale Univ Peabody Museum.
- Sereno, P.C., Beck, A.L., Dutheil, D.B., Gado, B., Larsson, H.C.E., Lyon, G.H., Marcot, J.D., Rauhut, O.W.M., Sadleir, R.W., Sidor, C.A., Varricchio, D.D., Wilson, G.P. and Wilson, J.A. 1998. A long-snouted predatory dinosaur from Africa and the evolution of spinosaurids. *Science* 282:1298–1302. doi:10.1126/science.282.5392.1298.
- Sereno, P.C., Martinez, R.N., Wilson, J.A., Varricchio, D.J., Alcober, O.A. and Larsson, H.C.E. 2008. Evidence for avian intrathoracic air sacs in a new predatory dinosaur from Argentina. *PLoS ONE* 3:e3303. doi:10.1371/journal.pone.0003303.
- Sereno, P.C. and Novas, F.E. 1994. The skull and neck of the basal theropod *Herrerasaurus ischigualastensis*. *Journal of Vertebrate Paleontology* 13:451–476. doi:10.1080/02724634.1994.10011525.
- Smith, D. 1992. The type specimen of *Oviraptor philoceratops*, a theropod dinosaur from the Upper Cretaceous of Mongolia. *Neues Jahrbuch für Geologie und Paläontologie, Abhandlungen* 186:365–388.
- Smith, N.D., Makovicky, P.J., Hammer, W.R. and Currie, P.J. 2007. Osteology of *Cryolophosaurus ellioti* (Dinosauria: Theropoda) from the Early Jurassic of Antarctica and implications for early theropod evolution. *Zoological Journal of the Linnean Society* 151:377–421. doi:10.1111/j.1096-3642.2007.00325.x.
- Tahara, R. and Larsson, H.C.E. 2011. Cranial pneumatic anatomy of *Ornithomimus edmontonicus* (Ornithomimidae: Theropoda). *Journal of Vertebrate Paleontology* 31:127–143. doi:10.1080/02724634.2011.539646.
- Therrien, F., Henderson, D.M. and Ruff, C.B. 2005. Bite me: biomechanical models of theropod mandibles and implications for feeding behavior, p. 179–237. In Carpenter, K. (ed.), *The Carnivorous Dinosaurs*. Indiana University Press, Bloomington, Indiana.

- 1106 Tsuihiji, T., Watabe, M., Tsogtbaatar, K., Tsubamoto, T., Barsbold, R., Suzuki, S., Lee, A.H.,
1107 Ridgely, R.C., Kawahara, Y. and Witmer, L.M. 2011. Cranial osteology of a juvenile
1108 specimen of *Tarbosaurus bataar* (Theropoda, Tyrannosauridae) from the Nemegt
1109 Formation (Upper Cretaceous) of Bugin Tsav, Mongolia. *Journal of Vertebrate*
1110 *Paleontology* 31:497–517. doi:10.1080/02724634.2011.557116.
- 1111 Turner, A.H., Hwang, S.H. and Norell, M.A. 2007. A small derived theropod from Öösh,
1112 Early Cretaceous, Baykhangor Mongolia. *American Museum Novitates* 3557:1–27.
- 1113 Turner, A.H., Makovicky, P.J. and Norell, M. 2012. A review of dromaeosaurid systematics
1114 and paravian phylogeny. *Bulletin of the American Museum of Natural History* 371:1–
1115 206.
- 1116 Turner, A.H., Pol, D. and Norell, M.A. 2011. Anatomy of *Mahakala omnogovae* (Theropoda:
1117 Dromaeosauridae), Tögrögiin Shiree, Mongolia. *American Museum Novitates* 3722:1–
1118 66. doi:10.1206/3722.2.
- 1119 Varricchio, D.J. 1997. Troodontidae, p. 749–754. In Currie, P.J. and Padian, K. (eds.),
1120 *Encyclopedia of Dinosaurs*. Academic Press, San Diego, California.
- 1121 Varricchio, D.J., Horner, J.R. and Jackson, F.D. 2002. Embryos and eggs for the Cretaceous
1122 theropod dinosaur *Troodon formosus*. *Journal of Vertebrate Paleontology* 22:564–
1123 576. doi:10.1671/0272-4634(2002)022[0564:EAEFTC]2.0.CO;2.
- 1124 Vickers-Rich, P., Chiappe, L.M. and Kurzanov, S. 2002. The enigmatic birdlike dinosaur
1125 *Avimimus portentosus*, p. 65–86. In Chiappe, L.M. and Witmer, L.M. (eds.), *Mesozoic*
1126 *birds: above the heads of dinosaurs*. University of California Press, Berkeley/Los
1127 Angeles/London.
- 1128 Weishampel, D.B., Fastovsky, D.E., Watabe, M., Varricchio, D., Jackson, F., Tsogtbaatar, K.
1129 and Barsbold, R. 2008. New oviraptorid embryos from Bugin-Tsav, Nemegt

- 1130 Formation (Upper Cretaceous), Mongolia, with insights into their habitat and growth.
- 1131 *Journal of Vertebrate Paleontology* 28:1110–1119. doi:10.1671/0272-4634-28.4.1110.
- 1132 Welles, S.P. 1984. *Dilophosaurus wetherilli* (Dinosauria, Theropoda). Osteology and
- 1133 comparisons. *Palaeontographica Abteilung A* 185:85–180.
- 1134 Witmer, L.M. 1990. The craniofacial air sac system of Mesozoic birds (Aves). *Zoological*
- 1135 *Journal of the Linnean Society* 100:327–378. doi:10.1111/j.1096-
- 1136 3642.1990.tb01865.x.
- 1137 Witmer, L.M. 1997. The evolution of the antorbital cavity of archosaurs: a study in soft-tissue
- 1138 reconstruction in the fossil record with an analysis of the function of pneumaticity.
- 1139 *Journal of Vertebrate Paleontology* 17:1–76. doi:10.1080/02724634.1997.10011027.
- 1140 Xu, X. and Norell, M.A. 2004. A new troodontid dinosaur from China with avian-like
- 1141 sleeping posture. *Nature* 431:838–841. doi:10.1038/nature02898.
- 1142 Xu, X., Norell, M.A., Kuang, X., Wang, X., Zhao, Q. and Jia, C. 2004. Basal tyrannosauroids
- 1143 from China and evidence for protofeathers in tyrannosauroids. *Nature* 431:680–684.
- 1144 doi:10.1038/nature02855.
- 1145 Xu, X., Norell, M.A., Wang, X., Makovicky, P.J. and Wu, X. 2002. A basal troodontid from
- 1146 the Early Cretaceous of China. *Nature* 415:780–784. doi:10.1038/415780a.
- 1147 Xu, X. and Wu, X.-C. 2001. Cranial morphology of *Sinornithosaurus millenii* Xu et al. 1999
- 1148 (Dinosauria: Theropoda: Dromaeosauridae) from the Yixian Formation of Liaoning,
- 1149 China. *Canadian Journal of Earth Sciences* 38:1739–1752. doi:10.1139/e01-082.
- 1150 Zanno, L.E. 2010. Osteology of *Falcarius utahensis* (Dinosauria: Theropoda): characterizing
- 1151 the anatomy of basal therizinosaurs. *Zoological Journal of the Linnean Society*
- 1152 158:196–230. doi:10.1111/j.1096-3642.2009.00464.x.

- 1153 Zanno, L.E. and Makovicky, P.J. 2011. Herbivorous ecomorphology and specialization
1154 patterns in theropod dinosaur evolution. *Proceedings of the National Academy of*
1155 *Sciences* 108:232–237. doi:10.1073/pnas.1011924108.
- 1156 Zusi, R.L. 1984. A functional and evolutionary analysis of rhynchokinesis in birds.
1157 *Smithsonian Contributions to Zoology* 395:1–40.
- 1158 Zusi, R.L. 1993. Patterns of diversity in the avian skull. *The skull* 2:391–437.
- 1159 Zweers, G.A. and Vanden Berge, J.C. 1998. Birds at geological boundaries. *Zoology*
1160 100:183–202.
- 1161 Zweers, G.A., Vanden Berge, J.C. and Berkhoudt, H. 1997. Evolutionary patterns of avian
1162 trophic diversification. *Zoology* 100:25–57.
- 1163

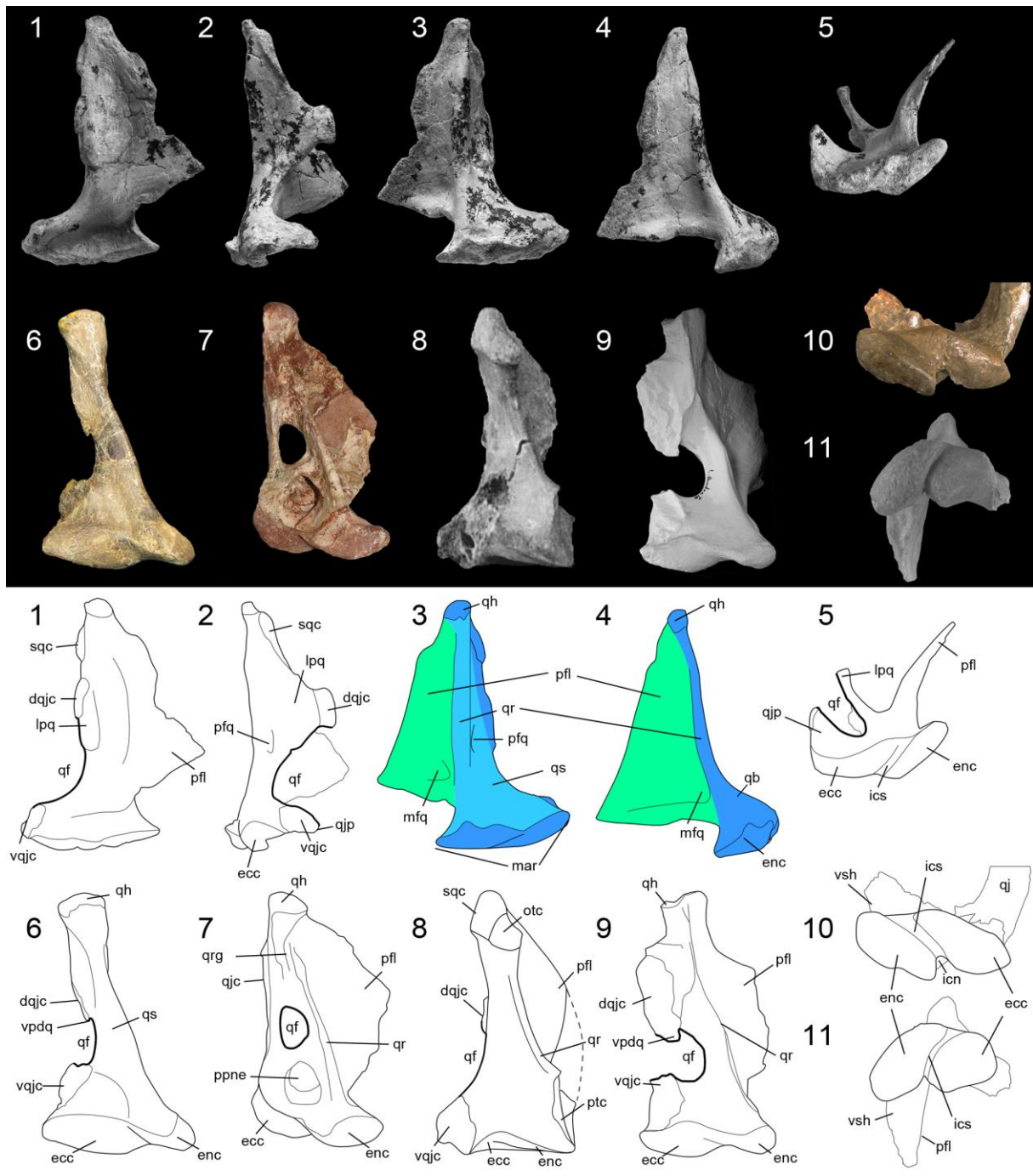


FIGURE 1. Anatomy of nonavian theropod quadrates. Right (1–5) quadrate of *Tsaagan mangas* (IGM 100-1015; courtesy shared by Mick Ellison © AMNH) in (1) anterior, (2) lateral, (3) posterior, (4) medial and (5) ventral views; left (6–10) and right (11) quadrates of (6) *Baryonyx walkeri* (BMNH R9951), (7) *Aerosteon riocoloradensis* (MCNA-PV-3137; courtesy shared by Martín Ezcurra), (8) an indeterminate Oviraptoridae (GIN A; Maryańska

and Osmólska 1997:fig. 1), (9) *Tyrannosaurus rex* (BHI 3333, cast; Larson and Carpenter, 2008), (10) *Allosaurus 'jimmadseni'* (SMA 005/02), and (11) *Majungasaurus crenatissimus* (FMNH PR 2100, cast; courtesy shared by Lawrence Witmer) in (6–9) posterior and (10–11) ventral views. Abbreviations: **dqjc**, dorsal quadratojugal contact; **ecc**, ectocondyle; **enc**, entocondyle; **icn**, intercondylar notch; **ics**, intercondylar sulcus; **lpq**, lateral process of the quadrate; **mar**, mandibular articulation; **mfq**, medial fossa of the quadrate; **pfl**, pterygoid flange (in green); **pfq**, posterior fossa of the quadrate; **ppne**, posterior pneumatopore; **qb**, quadrate body (in blue); **qf**, quadrate foramen (delimited by a broader line); **qh**, quadrate head; **qj**, quadratojugal; **qjp**, quadratojugal process; **qr**, quadrate ridge; **qrg**, quadrate ridge groove; **qs**, quadrate shaft (in light blue); **sqc**, squamosal contact; **vqjc**, ventral quadratojugal contact; **vpdq**, ventral projection of the dorsal quadratojugal contact; **vsh**, ventral shelf.

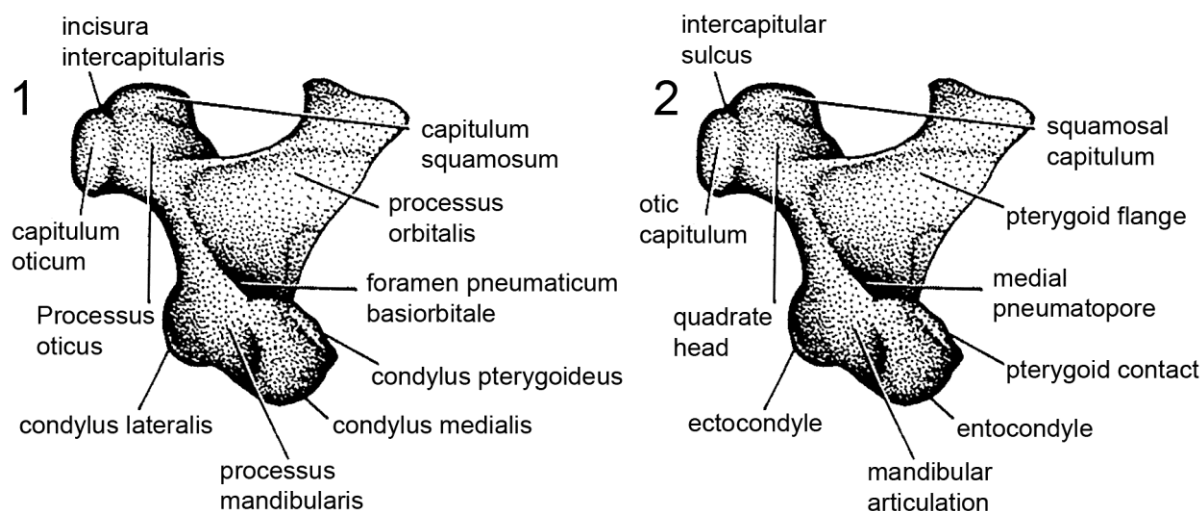
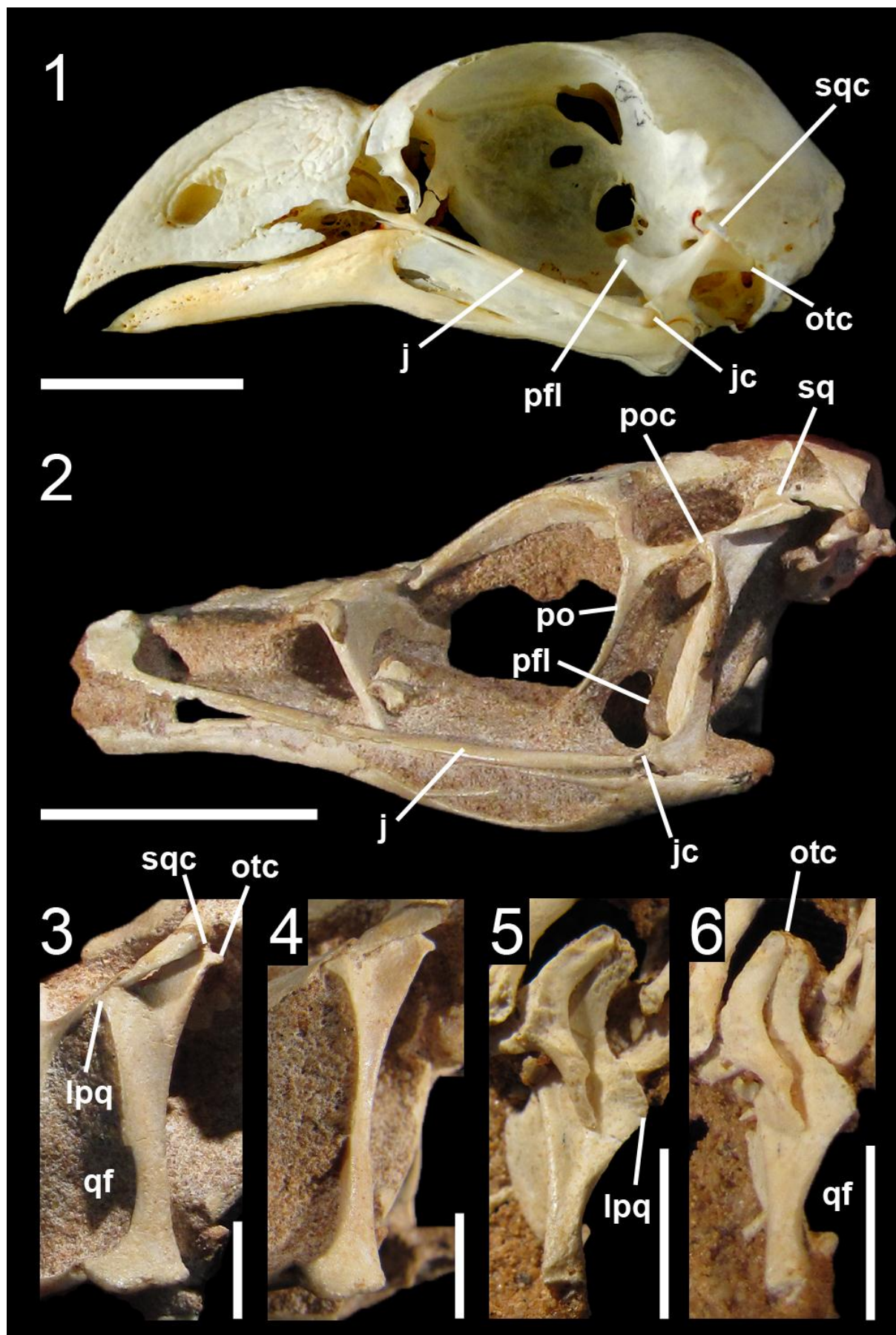


FIGURE 2. Avian and non-avian theropod terminology of the quadrate bone. Left quadrate of *Fregata minor* (Great Frigatebird) in medial view annotated with (1) Baumel and Witmer (1993) terminology, and (2) the here proposed terminology for the nonavian theropod quadrate (image from Witmer 1990 and Baumel and Witmer (1993); modified).



1189

FIGURE 3. Skull comparison between (1) the bird *Corythaeola cristata* (Great Blue Turaco; NH.34.26; courtesy of the Horniman Museum & Gardens), and (2) the alvarezsaurid *Shuvuuia deserti* (IGM 100-1001; reversed) in lateral view. Comparison between the left quadrate of the juvenile? specimen of *Shuvuuia deserti* (IGM 100-1001) in (3) posterior, and (4) lateral view, and the right quadrate of the adult specimen of *Shuvuuia deserti* (IGM) in (5) posterior, and (6) posterolateral views. Abbreviations: **j**, jugal; **jc**, jugal contact; **lpq**, lateral process; **otc**, otic capitulum; **pfl**, pterygoid flange; **po**, postorbital; **poc**, postorbital contact; **qf**, quadrate foramen; **sq**, squamosal; **sqc**, squamosal capitulum. Scale bars = 2 cm (1-2), 1 cm (5-6), and 5 mm (3-4).

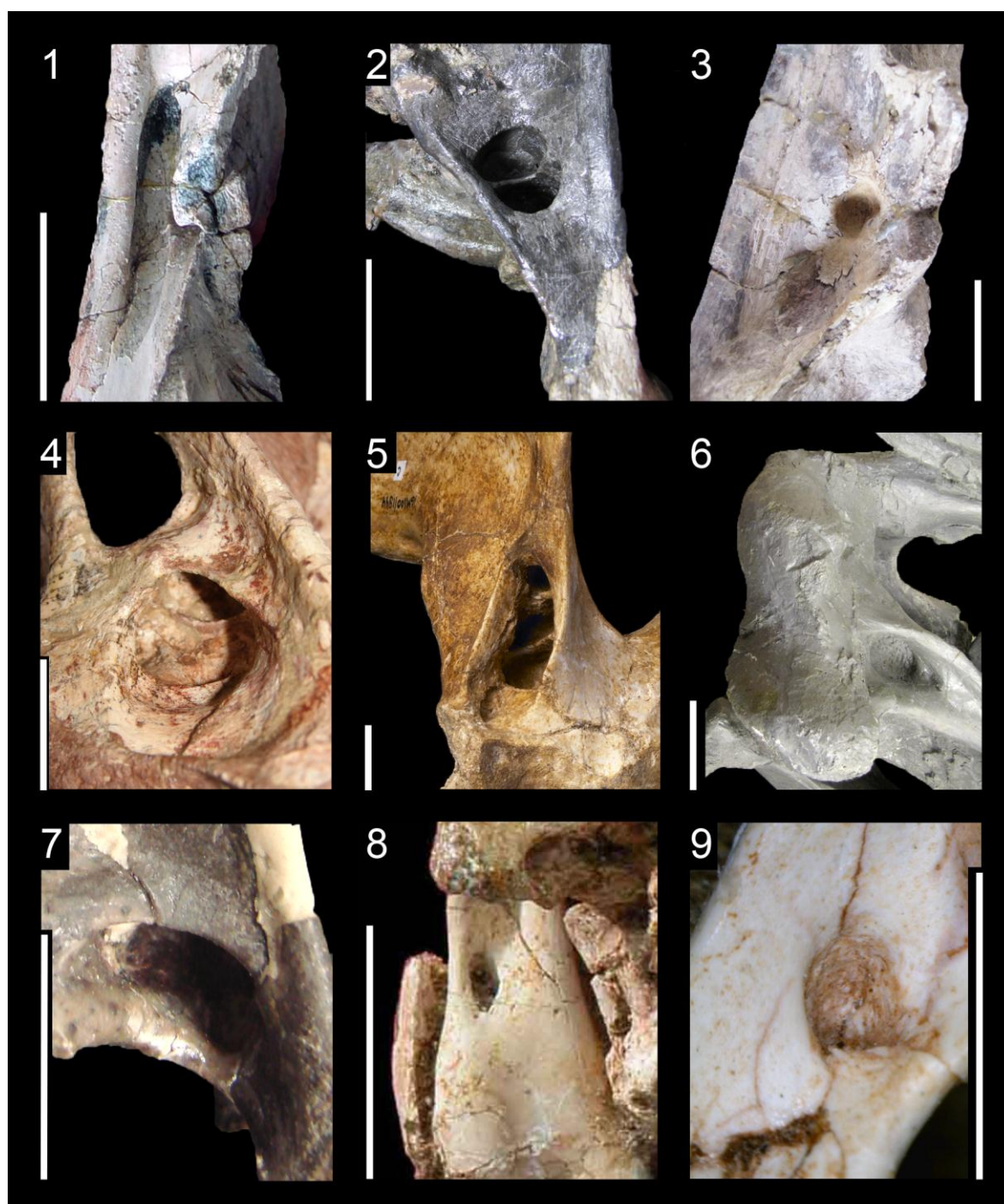


FIGURE 4. Morphology and position of pneumatic openings in the quadrate of nonavian Theropoda. Pneumatic fossa (1) of the right quadrate of the metriacanthosaurid *Sinraptor dongi* (IVPP 10600) in posterior view (courtesy of Philip Currie). Medial pneumatopore (2) of the right quadrate of the carcharodontosaurid *Acrocanthosaurus atokensis* (NCSM 14345) in medial view. Medial pneumatopore (3) of the left quadrate of the carcharodontosaurid

1206 *Giganotosaurus carolinii* (MUCPv CH 1) in medial view. Posterior pneumatopore (4) of the
1207 left quadrate of the neovenatorid *Aerosteon riocoloradensis* (MCNA PV 3137) in posterior
1208 view (courtesy of Martín Ezcurra). Ventral pneumatopore (5) of the right quadrate of the
1209 tyrannosaurid *Alioramus altai* (IGM 100–844) in ventral view (courtesy of Mick Ellison).
1210 Ventral pneumatopore (6) of the left quadrate of the tyrannosaurid *Tyrannosaurus rex*
1211 (FMNH PR2081; cast) in ventral view. Medial pneumatopore (7) on the right quadrate of the
1212 therizinosauroid *Falcarius utahensis* (UMNH VP 14559) in medial view (courtesy of Lindsay
1213 Zanno). Posterior pneumatopore (8) of the left quadrate of the ornithomimid *Garudimimus*
1214 *brevipes* (IGM 100–13) in posterior view (courtesy of Yoshitsugu Kobayashi). Posterior
1215 pneumatopore (9) of the right quadrate of the dromaeosaurid *Buitreraptor gonzalezorum*
1216 (MPCA 245) in posterior view. Scale bars = 5 cm (1–3,6), 2 cm (4,8), 1 cm (5,7), 5 mm (9).

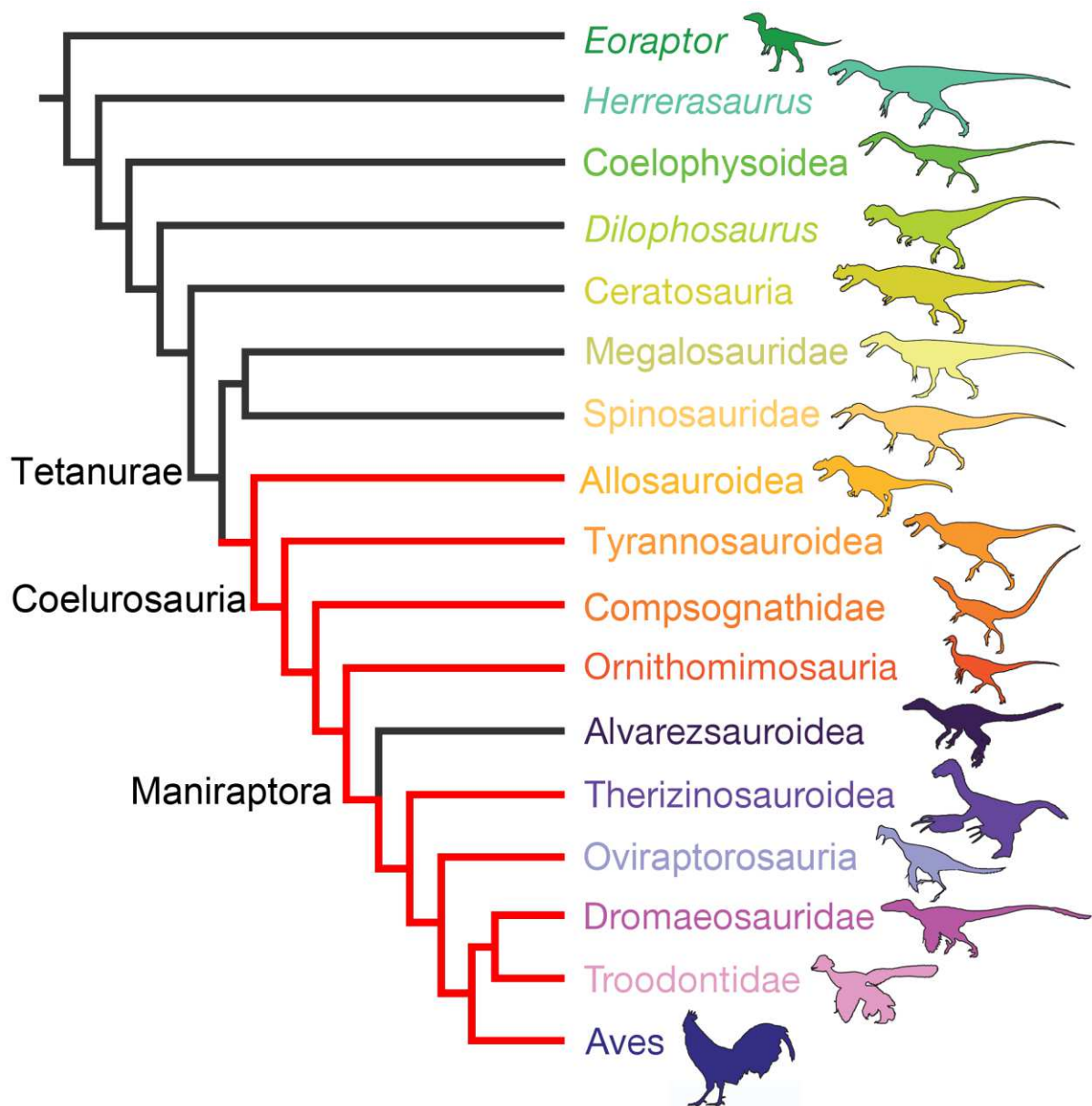


FIGURE 5. Distribution of quadrate pneumaticity in Theropoda. Simplified cladogram of theropod dinosaurs showing the phylogenetic distribution of a pneumatic quadrate denoted in red (from Bhullar et al., 2012; Modified). Pneumaticity is present in the quadrate of Allosauroidae (*Acrocanthosaurus*, *Mapusaurus*, *Giganotosaurus*), Tyrannosauroidae (*Alioramus*, *Albertosaurus*, *Tyrannosaurus*), Compsognathidae (*Sinosauropteryx*), Ornithomimosauria (*Ornithomimus*), Therizinosauria (*Falcarius*), Oviraptorosauria (*Conchoraptor*), Troodontidae (*Sinovenator*), Dromaeosauridae (*Buitreraptor*) and many birds. There is no evidence of a pneumatic quadrate in Alvarezsauridae hitherto. When

optimized onto this simplified tree, a pneumatic quadrate is a synapomorphy of
 Avetheropoda.

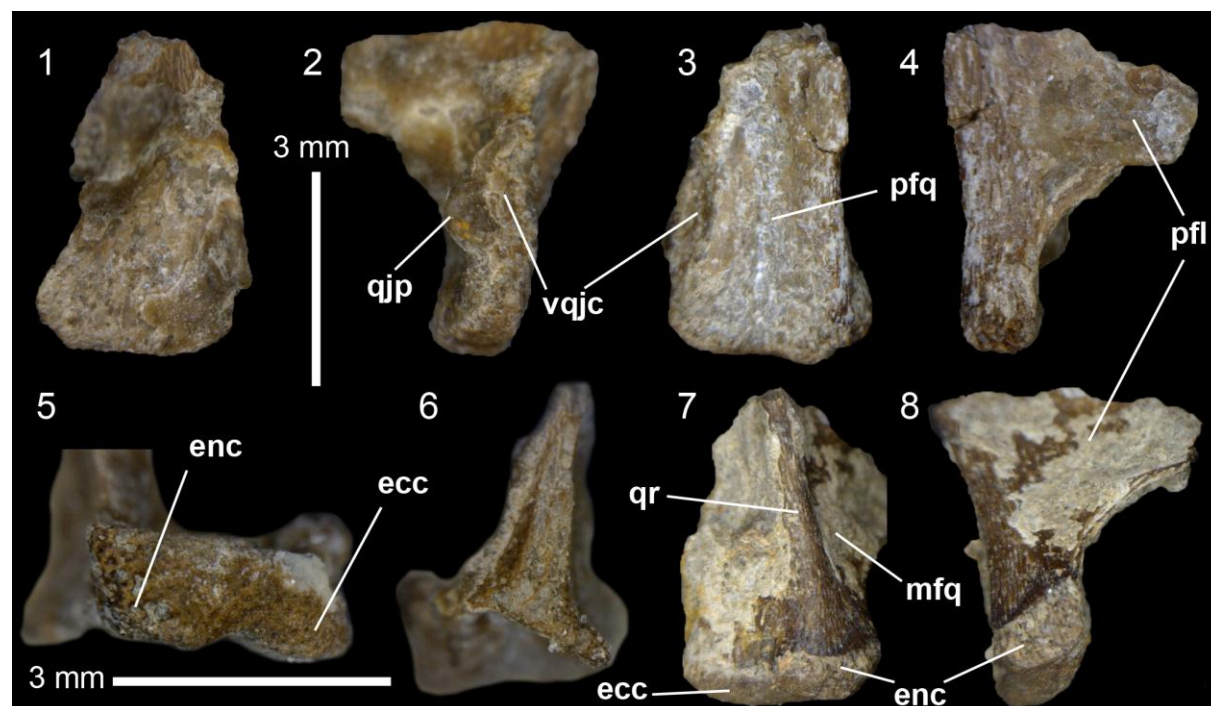


FIGURE 6. Quadrate of *Lourinhanosaurus antunesi* embryo. Incomplete left (1–8) quadrate (ML565-150) in (1) anterior, (2) lateral, (3) posterior, (4) medial, (5) ventral, (6) dorsal, (7) posteromedial, and (8) ventromedial views (the quadrate in (7) and (8) was photographed before preparation). Abbreviations: **dqjc**, dorsal quadratojugal contact; **ecc**, ectocondyle; **enc**, entocondyle; **mfq**, medial fossa; **pfl**, pterygoid flange; **pfq**, posterior fossa; **qjp**, quadratojugal process; **qr**, quadrate ridge; **vqjc**, ventral quadratojugal contact.

1238 **TABLE 1.** Standardized terminology and abbreviation of the nonavian theropod quadrate and
 1239 comparison with the terminology of the avian quadrate based on Baumel and Witmer (1993),
 1240 Elzanowski et al. (2001) and Elzanowski and Stidham (2010).

Nonavian theropod quadrate (q)		Avian theropod quadrate
Quadrate body	qb	Corpus quadrati
Quadrate shaft	qs	/
Quadrate ridge	qr	/
Quadrate ridge groove	qrg	/
Quadrate head	qh	Processus oticus/Pars otica/Caput quadrati
Otic capitulum	otc	Capitulum oticum
Squamosal capitulum	sqc	Capitulum squamosum
Intercapitular sulcus	icas	Incisura/Vallecula intercapitularis
Quadrate foramen	qf	/
Mandibular articulation	mar	Pars/Processus mandibularis
Ectocondyle	ecc	Condylus (mandibularis) lateralis
Entocondyle	enc	Condylus (mandibularis) medialis
Mediocondyle	mec	Condylus caudalis
Intercondylar sulcus	ics	Vallecula intercondylaris
Intercondylar notch	icn	Depressio praecondylaris
Lateral process	lpq	/
Quadratojugal contact	qjc	Cotyla quadratojugal
Ventral quadratojugal contact	vqjc	/
Dorsal quadratojugal contact	dqjc	/

Quadratojugal process	qjp	/
Ventral projection of the dorsal	vpdq	/
quadratojugal contact		
Squamosal contact	sqc	/
Posterior fossa	pfq	/
Quadrate diverticulum	qdi	/
Dorsal pneumatopore	dpne	Foramen pneumaticum caudomediale
Medial pneumatopore	mpne	Foramen pneumaticum basiorbitale
Posterior pneumatopore	ppne	Foramen pneumaticum rostromediale
Ventral pneumatopore	vpne	Foramen pneumaticum adventitium
Pterygoid flange	pfl	Processus orbitalis
Pterygoid contact	ptc	Condylus pterygoideus/Facies articularis pterygoidea
Medial fossa	mfq	Fossa basiorbitalis
Ventral shelf	vsh	/

1241

1242

APPENDIX

1243

1244 Appendix 1: Function of quadrate sub-entities.

1245 Appendix 2: Quadrate sub-units terminology.

1246

1247 **APPENDIX 1A.** Function of quadrate sub-entities.

<i>Anatomical component</i>	<i>Nature</i>	<i>Anatomical sub-entity</i>	<i>Function</i>
Quadrate diverticulum	Tympanic sinus, mandibular arch pneumatic system	Lateral, medial and posterior pneumatopores	Auditory function?
Siphoneal diverticulum	Tympanic sinus, mandibular arch pneumatic system	Ventromedial pneumatopore?	Auditory function?
Dorsal tympanic diverticulum	Tympanic sinus	Cotylus, separated into otic and squamosal capitula	Auditory function
Musculus Protractor Pterygoideus (MPPt)	Orbitotemporal muscle	Medial surface of the pterygoid ramus	Insertion for the MPPt
Musculus Adductor Mandibulae Externus Medialis (MAMEM)	Temporal muscle	Quadrate body between otic and orbital processes	Origin for the MAMEM
Musculus Adductor Mandibulae Externus Superficialis	Temporal muscle	Ootic process	Origin for the MAMES

(MAMES)

Musculus Adductor Mandibulae	Palatal muscle	Lateral surface of the pterygoid ramus	Origin for the MAMP
Posterior (MAMP)			
Musculus Pterygoideus	Palatal muscle	Lateral surface of the pterygoid ramus	Insertion for the MPTv
Ventralis (MPTv)			
Musculus Pseudotemporalis	Palatal muscle	Anterior surface of the otic process	Origin for the MPsTP
Profundus (MPsTP)			
Otic joint	Synovial joint	Otic process of cotylus	Articulation with squamosal
Articular process of quadrate	Synovial joint	Mandibular condyles	Articulation with mandible
Intercondylar sulcus	Synovial joint	Groove between ectocondyle and entocondyle	Ventral or ventrolateral displacement of mandible rami
Branches of maxillomandibular vessels	Neurovascular bundle	Quadrate foramen	Neurovasculature transmission between the occiput and adductor chamber

Anatomical component	Theropod clades involved	Publication
Quadrate diverticulum	All Theropoda	(Witmer 1990; Kundrát and Janáček 2007; Tahara and Larsson 2011)
Siphoneal diverticulum	Allosauroidae? Tyrannosauridae?	(Tahara and Larsson 2011)
Dorsal tympanic diverticulum	Neognathae	(Witmer 1990)
Musculus Protractor Pterygoideus (MPPt)	All Theropoda	(Holliday 2009)
Musculus Adductor	Avian and non-avian?	(Sedlmayr 2002)
Mandibulae Externus Medialis (MAMEM)	Theropoda	
Musculus Adductor	Avian and non-avian?	(Sakamoto 2008)
Mandibulae Externus Superficialis (MAMES)	Theropoda	
Musculus Adductor Mandibulae Posterior (MAMP)	All Theropoda	(Molnar 1998; Sakamoto 2008; Holliday 2009)
Musculus Pterygoideus Ventralis (MPTv)	Tyrannosauridae?	(Sakamoto 2008; Holliday 2009)
Musculus Pseudotemporalis Profundus (MPsTP)	Neornithes	(Holliday and Witmer 2008; Sakamoto 2008; Holliday 2009)

		2009)
Otic joint	All Theropoda	(Holliday and Witmer 2008)
Articular process of quadrate	All Theropoda	(Holliday and Witmer 2008)
Intercondylar sulcus	All Theropoda	(Molnar 1991; Bakker 1998; Hendrickx and Buffetaut 2008)
Branches of maxillomandibular vessels	Some Theropoda	(Sampson and Witmer 2007)

1251 **APPENDIX 2A.** Terminology of nonavian theropod quadrate sub-unit by authors.

Source	Referred taxa	Quadrate shaft	Quadrate ridge	Pterygoid flange
(Sereno and Novas 1994)	<i>Herrerasaurus</i>	Shaft	/	Pterygoid ramus
(Colbert 1989)	<i>Coelophysis</i>	Ascending process	/	Quadrate flange
(Welles 1984)	<i>Dilophosaurus</i>	Shaft	Column	Pterygoid wing
(Smith et al. 2007)	<i>Cryolophosaurus</i>	Body	Rounded ridge	/
(Gilmore 1920)	<i>Ceratosaurus/ Allosaurus</i>	/	/	Sheet/projection
(Madsen and Welles 2000)	<i>Ceratosaurus</i>	Pillar	/	Pterygoid wing
(Carrano et al. 2011)	<i>Masiakasaurus</i>	Shaft/body	/	Pterygoid articular flange
(Coria and Salgado 1998)	<i>Ilokelesia</i>	/	/	Medial process
(Bonaparte et al. 1990)	<i>Carnotaurus</i>	/	/	Anteromedial projection
(Sampson and Witmer 2007)	<i>Majungasaurus</i>	Shaft	/	Pterygoid ramus
(Sadleir et al. 2008)	<i>Eustreptospondylus</i>	Shaft	/	Pterygoid ala

(Britt 1991)	<i>Torvosaurus</i>	Shaft	/	Pterygoid blade
(Charig and Milner 1997)	<i>Baryonyx</i>	Shaft	/	Pterygoid flange
(Madsen 1976)	<i>Allosaurus</i>	Shaft/body	/	Contact with the pterygoid
(Serenio et al. 2008)	<i>Aerosteon</i>	Shaft	/	Pterygoid process
(Currie 2006)	<i>Sinraptor</i>	Column	/	Pterygoid flange/ala
(Currie and Carpenter 2000)	<i>Acrocanthosaurus</i>	/	/	/
(Eddy and Clarke 2011)	<i>Acrocanthosaurus</i>	/	/	Pterygoid wing/contact
(Brusatte et al. 2010)	<i>Shaorchilong</i>	Shaft	/	Quadrate flange
(Coria and Currie 2006)	<i>Mapusaurus</i>	/	/	Pterygoid flange
(Rauhut et al. 2010)	<i>Proceratosaurus</i>	/	Columnar ridge	Pterygoid flange
(Li et al. 2010)	<i>Xiongguanlong</i>	Shaft	/	Quadrate wing
(Brusatte et al. 2012)	<i>Alioramus</i>	Shaft	Robust ridge	Quadrate flange
(Carr 1996)	<i>Albertosaurus</i>	Quadrate body	Ridge	Pterygoid flange/process

(Currie 2003)	<i>Albertosaurus/</i> <i>Daspletosaurus</i>	/	/	Pterygoid ala
(Molnar 1991)	<i>Tyrannosaurus</i>	Vertical bar	/	Pterygoid process
(Brochu 2003)	<i>Tyrannosaurus</i>	/	/	Pterygoid flange
(Dal Sasso and Maganuco 2011)	<i>Scipionyx</i> <i>samniticus</i>	/	/	Pterygoid ala
(Kobayashi and Lü 2003)	<i>Sinornithomimu</i> <i>s</i>	/	/	Pterygoid wing
(Kobayashi and Barsbold 2005)	<i>Garudimimus</i>	/	/	Pterygoid wing
(Zanno 2010)	<i>Falcarius</i>	/	/	Pterygoid process/flange/ wing
(Clark et al. 1994)	<i>Erlikosaurus</i>	Body	/	Orbital process
(Maryńska and Osmólska 1997)	<i>Oviraptoridae</i>	Shaft	/	Pterygoid ramus
(Choiniere et al. 2010)	<i>Zuolong</i>	Shaft	Ridge	Pterygoid ramus
(Burnham 2004)	<i>Bambiraptor</i>	/	/	/
(Norell et al.	<i>Tsaagan</i>	Shaft	/	Anterior/pteryg

2006)			oid flange
(Colbert and Russell 1969)	<i>Dromaeosaurus</i>	Shaft	Pterygoid flange/wing
(Currie 1995)	<i>Dromaeosaurus</i>	/	Anterodorsal lamina
(Norell and Hwang 2004)	<i>Sauornithoides</i>	Shaft	Pterygoid flange
(Norell et al. 2009)	<i>Zanabazar</i>	Shaft	/

1252

Referred taxa	Lateral process	Quadrate foramen	Quadrate head	Ento-/Ectocondyles
<i>Herrerasaurus</i>	/	Quadrate foramen	Head	Distal condyles
<i>Coelophysis</i>	Smaller surface/wing	/	Upper extremity	Quadrate condyle
<i>Dilophosaurus</i>	Dorsal wing	Quadrate foramen	Head	Ento/Ectocondyles
<i>Cryolophosaurus</i>	/	Paraquadrate fenestra	Dorsal head	Medial/Lateral condyles
<i>Ceratosaurus/Allosaurus</i>	/	Quadrate foramen	/	articular surfaces
<i>Ceratosaurus</i>	Anterolateral wing	Quadrate foramen	Head	Ento/Ectocondyles
<i>Masiakasaurus</i>	/	Foramen	/	Medial/Lateral condyles
<i>Ilokelesia</i>	Lateral lamina/process	/	Squamosal condyle	Medial/Lateral condyles
<i>Carnotaurus</i>	/	/	/	Lower condyles
<i>Majungasaurus</i>	Lateral/quadrato jugal ramus	Paraquadrate foramen	Head	Medial/Lateral condyles
<i>Eustreptospondylus</i>	/	/	Head	Medial/Lateral condyles

<i>Torvosaurus</i>	/	Quadrates foramen	Head	Medial/Lateral condyles
<i>Baryonyx</i>	/	Quadrates foramen	Head	Quadrates condyle
<i>Allosaurus</i>	/	Quadrates foramen	Head	Condyles
<i>Aerosteon</i>	/	Quadrates foramen	Head	Distal condyles
<i>Sinraptor</i>	Wing-like process	Quadratic foramen	Quadrates cotyle	Medial/Lateral condyles
<i>Acrocanthosaurus</i>	/	Quadrates foramen	Head	Condyles
<i>Acrocanthosaurus</i>	/	Quadrates foramen/fenestra	Quadrates cotylus	Medial/Lateral condyles
<i>Shaochilong</i>	/	Quadrates foramen	Quadrates cotylus/head	Medial/Lateral condyles
<i>Mapusaurus</i>	/	Quadratic foramen	Quadrates cotyle	Mandibular articulation
<i>Proceratosaurus</i>	/	Quadrates foramen	Head	Medial/Lateral condyles
<i>Xiongguanlong</i>	/	Quadrates foramen	/	Medial/Lateral condyles
<i>Alioramus</i>	/	Quadrates	Head	Medial/Lateral

		foramen		condyles
<i>Albertosaurus</i>	/	Quadrates	Quadrates	Medial/Lateral
		fenestra		condyles
<i>Albertosaurus</i>	/	Quadrates	Quadrates	Mandibular
<i>Daspletosaurus</i>		fenestra	cotylus	condyles
<i>Tyrannosaurus</i>	/	Quadrates	Hemispherical	Quadrates
		foramen	surface	condyle
<i>Tyrannosaurus</i>	/	Quadrates	Head	Medial/Lateral
		foramen		hemicondyles
<i>Scipionyx</i>	/	Paraquadrates	Quadrates head	Medial/Lateral
<i>samniticus</i>		foramen		condyles
<i>Sinornithomimus</i>	/	Paraquadrates		Medial/Lateral
<i>s</i>		foramen	/	condyles
<i>Garudimimus</i>	/	Paraquadrates	/	Mandibular
		foramen		condyles
<i>Falcarius</i>	/	Quadrates	Head/Squamosa	Medial/Lateral
		foramen	1 capitulum	condyles
<i>Erlkosaurus</i>	/	Quadrates	Dorsal process	Mandibular
		foramen		process
<i>Oviraptoridae</i>	/	Quadrates	Otic process	Medial/Lateral
		foramen		condyles
<i>Zuolong</i>	/	Quadrates	Dorsal condyle	Medial/Lateral
		foramen		condyles
<i>Bambiraptor</i>	/	/	Otic process	Medial/Lateral

				condyles
<i>Tsaagan</i>	Squamosal ramus	Quadrates foramen	Dorsal articulation	Articular ramus
<i>Dromaeosaurus</i>	/	Quadrates foramen	Head	Medial/Lateral condyles
<i>Dromaeosaurus</i>	/	Quadrates fenestra	Head	/
<i>Saurornithoides</i>	/	/	/	Medial/Lateral condyles
<i>Zanabazar</i>	/	/	Head	/