

A peer-reviewed version of this preprint was published in PeerJ on 12 September 2017.

[View the peer-reviewed version](https://doi.org/10.7717/peerj.3772) (peerj.com/articles/3772), which is the preferred citable publication unless you specifically need to cite this preprint.

Bleicher SS. 2017. The landscape of fear conceptual framework: definition and review of current applications and misuses. PeerJ 5:e3772 <https://doi.org/10.7717/peerj.3772>

The landscape of fear conceptual framework: definition and review of current applications and misuses

Landscapes of Fear (LOF), the spatially explicit distribution of perceived predation risk as seen by a population, is increasingly cited in ecological literature and has become a frequently used “buzz-word”. With the increase in popularity, it became necessary to clarify the definition for the term, suggest boundaries and propose a common framework for its use. The LOF, as a progeny of the “ecology of fear” conceptual framework, defines fear as the strategic manifest of the cost-benefit analysis of food and safety tradeoffs. In addition to direct predation risk, the LOF is affected by individuals’ energetic-state, inter- and intra-specific competition and is constrained by the evolutionary history of each species. Herein, based on current applications of the LOF conceptual framework, I suggest the future research in this framework will be directed towards: (1) finding applied management uses as a trait defining a population’s habitat-use and habitat-suitability; (2) studying multi-dimensional distribution of risk-assessment through time and space; (3) studying variability between individuals within a population; and (4) measuring eco-neurological implications of risk as a feature of environmental heterogeneity.

The landscape of fear conceptual framework: definition and review of current applications and misuses

Sonny S. Bleicher^{1,2}

1. Ecology and Evolutionary Biology, University of Arizona, Tucson, AZ, USA

2. Tumamoc People and Habitat, University of Arizona, Tucson, AZ, USA

Corresponding author's email: bleicher.s.s@gmail.com

Abstract

Landscapes of Fear (LOF), the spatially explicit distribution of perceived predation risk as seen by a population, is increasingly cited in ecological literature and has become a frequently used “buzz-word”. With the increase in popularity, it became necessary to clarify the definition for the term, suggest boundaries and propose a common framework for its use. The LOF, as a progeny of the “ecology of fear” conceptual framework, defines fear as the strategic manifest of the cost-benefit analysis of food and safety tradeoffs. In addition to direct predation risk, the LOF is affected by individuals’ energetic-state, inter- and intra-specific competition and is constrained by the evolutionary history of each species. Herein, based on current applications of the LOF conceptual framework, I suggest the future research in this framework will be directed towards: (1) finding applied management uses as a trait defining a population’s habitat-use and habitat-suitability; (2) studying multi-dimensional distribution of risk-assessment through time and space; (3) studying variability between individuals within a population; and (4) measuring eco-neurological implications of risk as a feature of environmental heterogeneity.

Introduction

The study of community ecology has developed from a study of how species affect each other in terms of resource competition to the study of how that competition affected community structure over evolutionary time (Morris & Lundberg, 2011). In other words, how species' resource-use efficiency impacts inter-species interactions on an evolutionary scale—resulting in present day community structures shaped by extinction and speciation events (Vincent & Brown, 2005). This historical shift can be traced back to the model that first tested top-down trophic cascades (*e.g.* Paine, 1963), and large collaborative and conceptual efforts to explain the dynamics driven by predator-prey interactions (*e.g.* Hassell, 1978; Murdoch & Oaten, 1975; Rosenzweig & MacArthur, 1963). These efforts continue today, and predominantly focus on the study of non-consumptive effects of predators on entire communities (Appendix I)(*e.g.* Kotler, 1984; Sih et al. 1998). Joel Brown colloquially referred to these non-consumptive effects as the “ecology of fear” (Brown, Laundré & Gurung, 1999).

While the ecology of fear continued to focus on the means by which community structure impacts specific behaviors, some choose to broaden the study to the ecosystem level (*e.g.* Madin, Madin & Booth, 2011). Such theses assess ecosystem health using the trophic cascades as the basis for a new theory of behavioral cascades reverberating down the food chain and affecting habitat selection of species along the chain.

John Laundré (2001) called the effect, behavioral-pattern, resulting from these trophic cascades the “Landscape of Fear” (LOF). The use of the LOF, as a concept, is gaining favor as more studies investigate spatial dynamics in the distribution of populations using a community centric lens. This review has two main objectives: (1) clearly define the LOF, while dispelling common misuses of the term. And (2) discuss how the current literature uses LOFs, suggesting

future trajectories possible for this growing research program.

Review Method

For the purpose of this review, I conducted a literature search for manuscripts that use the term “landscape(s) of fear” as part of their title, or within their key-words and abstracts. The search was conducted on Google Scholar®, Wiley Interscience Online Library®, JSTOR® and Thompson Reuters’ Web of Science®. Every manuscript found in the search was examined and if it studied spatial distribution of predation risk it was included in the database. Every manuscript was mined for the following information: definition of the LOF(s), article type (review, opinion, or empirical), publication aim (based on journal guidelines), method used and study system (in studies providing data), and the theoretical contributions each brings to the field (if any). Three manuscripts were added to the database (despite not mentioning LOF per-se in their abstracts, or being peer reviewed): my own Ph.D. thesis (Bleicher 2014) and two manuscripts that were cited regularly in other manuscripts (Zanette & Jenkins, 2000; Ripple & Beschta, 2003).

Defining the LOF

Among growing interpretation of the LOF concept it is critically important to provide a concise and clear definition. The LOF is a behavioral trait of an individual animal, and more commonly used on the population level. The LOF provides a spatially dependent, yet geographically independent, measure of the way an animal “sees” its world— its *umwelt* (cf. Uexküll, 1909). In other words, it is a short term measure of the way the animal perceives its environment based on the cost-benefit analysis of the tradeoff of food and safety associated with foraging in specific areas of the habitat available to it (cf. Brown, Laundré & Gurung, 1999). As

such, LOFs are affected by a large variety of biological, evolutionary and yes— sometimes geographic variables.

(1) Predation risk.

The most studied factor impacting an animal's LOF is direct and perceived predation risk (*cf.* Laundré, Hernández & Altendorf, 2001; Laundré, Hernandez & Ripple, 2010). Within predation risk, three major factors impact the LOF: (1) diversity of the predator community, (2) predation intensity [activity of predators] and (3) information [how well can the animal predict the likelihood of being attacked] (Brown, 1999).

A forager has to strategically decide where to forage based on the type of risk presented by the predators it is likely to face. For example, the decisions a forager must take to manage risk from ambush predators will differ greatly from those it will take to manage risk from a flying predator. In a case of Negev Desert gerbils facing barn owls and vipers, gerbils showed an ability to alter their LOF to adjust to the owl, a larger perceived threat than vipers, during the nights an owl is present in the experimental vivarium (Bleicher, 2014). Similarly, the features of the LOF will change based on the predator activity levels. A number of studies use landscape rugosity, how “wrinkled” the landscape appears, as a means to express heterogeneity in patterns of perceived-risk distribution (Laundré et al., 2010, Bleicher, 2014). The best variable proposed to measure this feature of the LOF is the mean rate of change in foraging tenacity over space (mean harvested resources/meter). The greater the risk, the steeper the difference between safe and risky zones in the LOF. Thus, mean rugosity should increase as predator activity levels increase (Brown & Kotler, 2004).

(2) Energetic-state

Gallagher et al. (2017) offer the opinion that the field of LOFs and the field of energy

landscapes (using energetic-expenditure to explain movement through space) should be combined as they are two facets of the same coin. In many ways, they are correct, however the field of LOF has already focused a large portion of its scientific effort to quantifying the LOF using energetic tradeoffs, and foraging in particular.

This was first justified using an example with cape ground squirrels (*Xerus inauris*) where the costs associated with the distance they must venture from shelter altered their perception of risk (Van Der Merwe & Brown, 2008). Distance from refuge was an exercise in adding non-direct predation costs into the calculation of the LOF. This is important since over short periods, and small spatial scales, metabolic costs and missed opportunity costs are constant across the landscape. Examining these costs thus allows the extrapolation of the LOF from the temporally and spatially much more sensitive predation cost of foraging.

The possible variables that could alter an animal's LOF include both physiological and external variables. Individuals (and populations) should take greater risk based on the increase in stress imposed by drought, blight, disease and parasites. Assuming optimal foraging, perceived resource availability should affect forager decisions. Stressed foragers will likely visit patches of greater risk-variability (high likelihood of a patch not yielding resources) (Real & Caraco, 1986). Alternately, resource shortage, will drive the stressed foragers to take risks by moving greater distances in search of isolated high quality patches, as in the case of Simpson Desert dunnarts (Haythornthwaite & Dickman, 2006; Bleicher & Dickman, 2016). Another factor impacting the energetic balance of the LOF is parasite load, both physiologically and behaviorally (Raveh et al., 2011).

Seasonal variability brings with it resource shortages that can shift the risk-taking behavior, namely water shortage (e.g. Shrader et al., 2008; Tadesse & Kotler, 2011; Arias-Del

Razo et al., 2012). In times of drought, thirsty herds of African savannah ungulates are known to descend to water holes teeming with crocodiles and other predators. In this case the probability of escaping the predators, though meager, is still lower than the probability of dying from dehydration. It is the balance of risk and energetics that governs the LOF choices in the majority of cases.

(3) Demographics

The success of an individual, its fitness, is measured not by the amount of energy (food) it successfully harvests from the environment, but in the successful conversion of that energy into viable offspring. Thus, competition for mates and care for offspring have an important role in determining both resource needs and risk-taking probability in opposite direction. Because of the time sensitivity of both offspring care and mating seasons, these shifts in behaviors will temporarily change the LOF for each individual, and collectively for the population.

In a study of collared peccaries, mothers protecting offspring remained in the safety of a wadi while males, not concerned with offspring safety, were observed foraging on resources near a hiking trail frequented by 1500 visitors daily (Bleicher & Rosenzweig, in preparation). This phenomenon, of parental intimidation, and its deleterious reproductive consequence were observed in a study on song sparrows (Zanette et al., 2011). On the flip side, during courtship, risk-taking in males, as in examples of lek behaviors, can lead to increased reproductive success (Boyko et al., 2004).

(4) Density Dependence- Intraspecific Competition

Living in a group provides safety in numbers (Rosenzweig, Abramsky & Subach, 1997), however the intraspecific competition can result in deleterious impacts on the foraging efficiency of individuals affecting the entire population's fitness (Berger-Tal et al., 2015). Spatially,

ecologists assume ideal free distribution, suggesting that the populations will disperse when the environmental conditions do not meet ideal fitness returns for individuals (Morris, 2003). By changing the spatial resolution on which we make our observations, we undoubtedly will be exposed to different stories. On fine-grained resolution we can observe the decision-making process impacting individual, however on a larger, course-grained resolution we are generally privy to the dynamics of the entire population (Druce et al., 2009). No empirical manuscript has yet to test the effects of density dependence on the landscape of fear as they materialize for populations of different sizes. It is likely that this specific factor will become the focus of more studies in the future.

(5) Community structure – Interspecific Competition

The study of habitat selection has been largely dominated by community studies testing strong-weak competitor pairs of species (*e.g.* Rosenzweig, 1973; Dickman, 1986; Abramsky, Rosenzweig & Subach, 2001; McGill et al., 2006). Most of these studies suggest that a strong, more aggressive competitors, forces the weak to forage in less profitable habitat (greater risk/lower resources). This can also manifest itself in temporal partitioning (Kotler et al., 2002). This evidence strongly suggests that the LOF of a population in isolation will not compare with the same population's LOF when competing for resources.

A couple of studies thus far have identified (or referred to) the impacts of competition on the LOF of competing species. (1) Competition for resources had greater impact on habitat selection in lemmings. This was attributed to the fact that the foraging season is very short and risk aversion may lead to starvation over the arctic winter (Dupuch, Morris & Halliday, 2013). In another example, the competition for resources can manipulate the distribution of predators. (2)

In studies at various sites in Australia, dingo presence suppressed mesopredator populations (Ritchie & Johnson, 2009). Similarly, the competition between the invasive mesopredators suppresses the population of the competitor. When foxes are hunted, the feral cat populations explode and vice versa (Glen & Dickman, 2005; Allen, Allen & Leung, 2015), this in turn has a trickle-down effect on prey species' LOFs.

(6) Evolutionary History – Ghosts of Predator and Competitor Past.

Behavioral and applied ecologists rarely study the evolutionary history of their species. The conditions (environment, community structure, resources) in which the species evolved will determine the tools which the species has to assess risk. In turn, these tools are applied by individuals to make the strategic decisions that manifest themselves in their LOFs. Comparing populations that use different habitat, or convergent species from similar environment may provide insight to the role of a larger meta-scale, both temporal (evolutionary and seasonal) and geographic (continents), in determining each population's LOF.

The only example I found for such a study, was a macroevolutionary study where populations of convergent desert rodents were brought to a common arena and exposed to predator present in both systems, vipers and barn owls (Bleicher, 2014). Rodents of the Mojave Desert, that evolved with vipers that have heat sensing capabilities focused on the snakes as the focal driver of their LOF. The owl presence only elevated the risk in the entire landscape.

Rodents of the Negev Desert, who evolved with snakes blind in the dark, fear owls above snakes (Kotler et al., 2016). As a result, they redraw their LOF based on the greatest risk in the environment. On nights with vipers alone, they identify the ambush sites of snakes and avoid those. On nights with both vipers and owls they avoid the flight paths of the owls in the arena (vivarium).

Misinterpretation – avoiding misuse

There are three major misuses commonly published in the LOF literature. It is important to state them and discuss how these could be easily avoided for the benefit of this research program.

(1) Using the LOF concept interchangeably with habitat use. Animals will avoid habitat they perceive as risky, therefore the LOF plays a critical role in habitat use and habitat selection. However, it is important to re-emphasize that it is the habitat quality that is responsible in shaping the LOF. Thus, using the LOF to explain habitat use needs to be approached with caution. While activity data can reveal habitat use, they do not necessarily reveal the LOF. As an example, a rich food source can attract foragers and enhance activity to a given area without reduced risk necessarily being involved. This confusion is perpetuated by the fact the 81% (63) of manuscripts apply the LOF as a descriptor for habitat-selection. This problem is exacerbated by the fact the majority of manuscripts that misinterpret the term are able to draw sound conclusions about habitat selection (*e.g.* Creel et al., 2005; Madin, Madin & Booth, 2011). I suggest here, that when using the LOF as a descriptor for habitat-selection, one should also cross reference other critical factors, such as availability of food, shelter (nest sites, borrows, cavities), water etc.

(2) Suggesting predators impose a LOF. It is very metaphorically colorful to suggest that the presence of a predator imposes a LOF (*e.g.* Lone et al., 2014; Massey, Cubaynes & Coulson, 2013), however, every population interprets risk cues even in the absence of predators. This misinterpretation is most commonly published in applied journals, with 47% (9) of the applied-ecology manuscripts making this type of statement. The appropriate expression of these ideas, must refer to changes in the perceived risk associated with features in the landscape. This distinction was best shown in a study of vervet monkeys responding to playback of alarm calls

corresponding to different predator types. This experiment generated three dimensional LOFs based on elevation in trees and spatial-distribution of safe zones within the troop's home-range (Willems and Hill, 2009). Each call-type changed the monkeys' preferred habitat.

(3) Using the LOF as jargon without defining the term. Though not common, 4% (3) of the manuscripts used the term, LOF, without defining it.

General Review Results

Since the year 2000, 77 manuscripts (Appendix II) were published either using the term LOF (in title, key-words or abstract). The publication rate has been increasing steadily since 2001, with a mean of 5.1 ± 0.7 SE manuscripts per year (Figure 1).

Of these 77 manuscripts 75% are empirical tests that employ the concept, while the rest of the manuscripts discuss implications in form of review and opinion papers. The majority of papers (76%) were published in journals dedicated to general ecology and zoology (e.g. Ecology ©, Oikos© and the Canadian Journal of Zoology ©) (Table 1).

With the rise in popularity of the term, the rate of misuse has also increased significantly. Between 2001-2009 a mean of 11% of the publications (per annum) used a definition different than the one intended by Laundré and Brown based in the "ecology of fear" (Brown, Laundré & Gurung, 1999). Between 2009-2016 the rate of misuse of the term increased to a mean of 35%. (Figure 1). For the purpose of the discussion ensuing, I categorized manuscripts that use a definition other than "a variation on a behavioral descriptor of the perception of risk a population sense in the environment" as "buzzword" papers. A number of manuscripts used the LOF to describe features of the environment as belonging to an animal's LOF or define LOFs as traits of an individual (Table 1). If the manuscripts referred to the LOF as an intrinsic perception of the

way an organism balances risk and energetic gains they were classified as relevant (Table 1).

38% (31) of the manuscripts discuss theoretical implications of LOFs. Of these, about half make suggestions that are of particular mention (Table 2). These contributions included ways to describe LOFs' features, novel applications for which the LOF framework, novel methods to measure the LOF, or discussions on the merit of LOF as a research group (see applications section).

Measuring the LOF.

From this point in the manuscript I will only refer to a subset of the manuscripts that used my definition of a LOF (57 in total). The majority of these manuscripts focused on ungulates in North American alpine scrubland systems (Table 3A,B). It was the wolf-elk-willow system that brought the LOF into common ecological jargon through the study of successful reintroduction of wolves to Yellowstone National Park. Despite the base of the LOF in ungulate research, many studies preferred the variability provided by small-mammal model species (gerbils, heteromyids, lemmings and voles). Researchers have manipulation capabilities in small mammals resulting in 40% (6) of these studies being performed in controlled captive environments (vivaria). These vivaria allow for the manipulation of predation risk and environmental conditions: e.g. homogenous landscapes, illumination, resource availability, energetic state of the population etc. The rise in small-mammal experiments also secured the giving-up density (GUD; *cf.* Brown, 1988) as the preferred measure of LOFs (Table 3B).

Given species-specific constraints, each class of organisms has a specialized-tool kit used to measure its LOF (Table 3B). GUDs remain the most versatile measure for the studies using habitat assessment (59% of the manuscripts) and historically were successfully used to measure environmental stress in birds, ungulates, small mammals and experimentally—fish (Bedoya-

Perez et al., 2013). Larger mammals and finicky foragers pose challenge to the GUD method. As a result, the LOFs for larger species were commonly measured applying occupancy models using variables such as scat abundance, hoof mark density and trail camera arrays (19% of manuscripts). Measuring predator (and marine) LOF provides even further challenge due to low density of populations. Thus, the major tool used was radio and GPS tracking. Despite being a very small proportion of the current literature base, some efforts have been made to quantify environmental risk using stress hormones. So far, this method has been limited to birds (Chalfoun & Martin, 2009; Roper, Sullivan & Ricklefs, 2010; Clinchy et al., 2011).

Thus far, 38% (17) manuscripts provided a map for the study organism's LOF. These maps help readers relate with associated distribution of risk the studied population experiences. The majority of these have used the GUD as the measure of risk and graphed the LOF map as a three dimensional scatter plot, using a distance-weighted-least-squares (DWLS) smoothing function to generate the contour lines (or raster) for the maps (Figure 2).

The current literature linguistically borrows attributes from other ecological, evolutionary and geographic theories to describe the zones of different risk characteristics. For example, in a study of striped mice, the features of risky habitat was described as "islands" of fear, a reference to the island-biogeography theory and the SLOSS debate (*cf.* Diamond, 1975). This study emphasized the impacts of both borders and edges in altering the distribution of safety zones the mice perceive in the environment (Abu Baker & Brown, 2010).

In a previous review, Laundré et al. (2010) prefer to describe the landscape features as valleys and peaks (re: safe to risky) in an aim to show that risk assessment is a quantitative attribute and not a binomial characteristic (two distinct outcomes risk or safety). Lastly, my own work evaluated the role played by gradients of change (in perceived risk) describe the attributes

of the decision making process made within the LOFs.

This measure can be described as the rugosity of the landscape (Bleicher, Kotler & Brown, 2012; Bleicher, 2014). A highly rugose landscape (highly variable with steep changes between points) implies that the population perceives the risk as localized. In comparison, flat landscapes can be interpreted as the result of one of two distinct behavioral strategies. (1) A flat LOF may be the result of a very “fearful” population whereas the majority of the environment “plateaus” on a high risk contour. In such a LOF, the major focus of the behavior remains in contact with the locations of refuge in the landscape and the risk lessens gradually as one moves near the refuge. Alternately, (2) a population that is “secure” in its management ability of predation risk from the predators in the environment will have a very flat (low) landscape. In this scenario, the zones of risk are less focused and tangible and thus the change between “riskier” and “safer” zones is gradual and not very distinct.

Current Applications

Of the manuscripts defining a LOF as a trait of population behavior, 42 were empirical. Within those it is possible to divide the aims of the manuscripts into four focal aims: (1) to characterize the role of perceived predation risk on habitat use by wild and captive populations, (2) to project top-down trophic effects, (3) to understand how habitat complexity affects demographic and behavioral dynamics within populations and (4) deconstruct community interactions within an evolutionary framework.

(1) Population level

The majority, 76% (33), of empirical manuscripts using the LOF, and almost all, 92%, of the manuscripts that provided visual charts of the LOF, aimed to study how populations perceive

their environment. Thus, the majority of publications apply the LOF as an equivalent to habitat selection. As mentioned above, this has given rise to a large misinterpretation of the LOF. The large number of publications here makes the review of these largely unnecessary. However, there are a couple of noteworthy examples that did impact the understanding of the LOF.

Druce et al. (2009) showed in his study of klipspringers that the study-scale can reveal different patterns of elements impacting a LOF. In this study, the small scale (grids of stations 3-4 meters apart) showed that microhabitat (cover, distance from rocky outcrops) impacted foraging decisions specifically on a temporal scale. But on larger scales (grids of 6-24 stations 30 meters apart), the major geographic features of the landscape (substrate, drainage lines) explained the majority of variation in foraging decisions. This study drew the attention to the importance of natural history to calibrate experiments to study the focal population on terms relevant to their specific ecology.

Kauffman et al. (2007) showed that the conspecific competition had a stronger impact on the distribution of wolf kill-sites than habitat suitability for hunting. This study made two noteworthy contributions to the understanding of fear-based habitat use. (1) Predators are constrained in their activity by elements beyond prey availability and ease of hunting. (2) Information about predator limiting factors, gained through experience cohabitating with the predators, will alter prey decision-making. In this case, given enough information, prey will likely prefer habitat of territorial dispute between wolf-packs.

(2) Trophic dynamics

Despite the fact that the origin of the LOF framework is in trophic cascades, only half (22 total and 13 empirical) of the manuscripts actually include multi-trophic studies (Table 4). Noteworthy examples of multi-level studies include the trickle down of shark predators on algal

blooms in tropical reefs (Madin, Madin & Booth, 2011). Additionally, Manning, Gordon & Ripple (2009) offer a predictive study of the impact reintroducing wolves to Scotland would have on vegetation patterns. This study drew direct parallels to vegetation regeneration post the reintroduction of wolves into Yellowstone National Park (Beschta & Ripple, 2009; Ripple & Beschta, 2012).

The majority of the studies that did use a trophic framework, only looked at a pair of species (predator-prey) (Table 4). Interesting examples of these include the study of predator facilitation and interference (*e.g.* Ritchie & Johnson, 2009; Embar et al., 2014). Similarly, there is a fair number of studies that question the role of predation risk in the distribution of the prey populations. Two good studies can be shown for this category. (1) Coyote distribution (scat) does not correlate with the distribution of jackrabbits and other desert rodents in Chihuahuan high desert (Laundré, Calderas & Hernández, 2009). And (2) sharks and sea turtles do not show the same pattern of spatial and temporal rates of surfacing behavior (Hammerschlag et al., 2015).

(3) Individual-based LOFs.

This category of applications represents a very small proportion (5%) of the manuscripts, however that subset is of utmost importance in developing the study of LOFs. Those manuscripts define the LOF as a population trait, however they acknowledge individual variation within the population. Each of the three studies took a very different approach.

Zanette and Jenkins (2000) measured fledging success and correlated it with predator activity within fragmented forest segments. They suggest that the more fragmented the habitat, the more stressed the parenting birds are, and thus the offspring are less likely to fledge. On the flipside, this suggests that parental stress becomes a predictor of predation risk, or predator distribution.

Rypstra et al. (2007) found that wolf-spiders exposed to a larger predatory spider were driven into a mixed habitat where their prey capture rate was significantly diminished. Individuals who were not exposed to the larger spiders were found in exposed, *i.e.* risky, habitat and were found to have a greater hunting success. This study suggests that gaining information about predator preferences (through cues) causes a shift in an individual's LOF. This approach provides insight into the learning process, or loss of naiveté, that is hard to observe in natural settings.

The third study was performed on state-dependent risk taking in green sea-turtles (Heithaus et al., 2007). This study found that turtles with low fat reserves were likely to forage in shark infested waters, while healthier individuals remained in shallow waters and low shark habitat. This study shows that individual well-being affects the way that individual perceives the tradeoff of food and safety. As a result if the LOF was measured for groups of turtles based on their energetic state, a different shape would be revealed.

(4) Evolutionary mechanisms of coexistence.

The LOF, as a derivative of the ecology of fear (Appendix I), relies on Darwinistic evolutionary forces to explain the ecological dynamics associated with communities, populations and individuals. This suggests that the forces historically influencing the study of populations' ancestors, ghosts of predator and competitor past, would mold the way they present day descendants respond to the tradeoffs of food and safety.

Only two empirical studies applied an evolutionary lens to their discussion. The first, found that lemmings that evolved in arctic conditions, with limited time to store resources for the long winters, give precedence to competition over the risk of predation (Dupuch, Morris & Halliday, 2013). This study, provided the incentive to use the LOF to ask questions comparing species within the same trophic level. It provided the framework to measure competitor strategies using

spatial distribution of risk perception. This study inspired the four way comparison (captive study) of convergent rodents from two continents under the predation risk of predators shared by both systems (Bleicher, 2014).

In this study, two heteromyid rodents, from the Mojave Desert, and two gerbil species, from the Negev Desert, were exposed to treatments of vipers and owls in a homogeneous semi-natural arena. The heteromyids that evolved alongside vipers that use heat-sensing pits to “see” in the dark, exhibited fixed LOFs that did not change their shape when owls were added to the vipers constantly present in the environment. Meanwhile the middle-eastern gerbils, who evolved with snakes “blind” in the dark, exhibited plastic LOFs. They altered their LOF, adjusting the topography in ways that address risk that is derived from unique adaptations to manage risk from different types of predators. In other words, focusing the peaks and valleys on the activity pattern exhibited by the predator they perceived as the greatest risk. For these gerbils, this meant the owl (Kotler et al., 2016). In its absence the LOF peaks were centered around viper ambush sites.

Prospectus – Developing the LOF for future applications.

I would like to “throw the gauntlet” to my colleagues and offer the following five directions in which the LOF concept can be applied.

(1) Conservation and applied management

Despite the theoretical background of the LOF in conservation efforts and the reintroduction of wolves to Yellowstone National Park, the active management of populations has not measured LOFs as a monitoring tool. Charting the LOF can provide a temporal snapshot of the way populations see their environment. With relatively low effort (installing a food patch matrix), and

in a short time-frame (4-15 repetitions), one can, for example, ascertain the efficiency of a habitat augmentation program (*cf.* Bleicher & Dickman, in preparation). Similarly, the LOF can provide an accurate measure of the impact of human activity has on species of conservation concern without waiting for demographic changes in the population. Additionally, one could use the LOF to physically study how we can increase the perception of risk a pest population senses in an area (*cf.* Bleicher and Rosenzweig, in preparation). By cues of predation risk (sound, odor) as management treatments (*e.g.* Suraci et al., 2016), one could follow the changes in spatial distribution of the pests. Such methods could be applied, for example, in air-fields to lower wildlife-impacts and control agricultural pests.

(2) The LOF studied on meta-scales

The macro-evolutionary perspective—comparing the populations, species and communities that evolved under different conditions—requires comparisons on very large geographic scales as well as cross-species comparison. To achieve such comparisons studies have two possible designs: (a) run common-garden experiments bringing populations with varying evolutionary background to a shared location (*e.g.* Bleicher, 2014; Kotler et al., 2016; Bleicher, Kotler & Brown, in preparation) or (b) run comparative studies within areas of similar habitat at geographically isolated locations. Such studies have the ability to shed light on how predator-prey dynamics of the past drive current-day mechanisms of species coexistence.

Above, I suggested that the environmental conditions at the time data is collected to generate the LOF, impacts the shape of the LOF. As LOFs provide a short-term “picture” of how populations perceive their environment, field-studies will require repeated measures to understand how risk perception is affected by drought, population booms or busts, predator density or activity. Similarly repeated measures along an extended period of time would be

required to monitor habitat restoration or augmentation. For example, a study that used the LOF to look at the effectiveness of shelter augmentation (Bleicher and Dickman, in preparation) suggested that the study must be repeated once the populations recovered from the bust induced by bush-fires and a prolonged drought. As in this example, the shape of the LOF should alter based on the increased inter- and intra-specific competition and by the additional resources and shelter that successional vegetation will provide. Despite this well-known (and discussed) temporal constraint, no studies have yet to follow-up with repeated measures. The exception to this is the follow-up on the Yellowstone wolf reintroduction that looked predominantly at plant diversity and abundance of aspens and willows but did not measure the elk or bison's LOF (Ripple and Beschta, 2012).

(3) The 4D LOF.

Mapping the LOF provides a level of intricacy that categorical analysis can fall short of explaining. The growing number of studies offering contour maps (3D scatterplots) of the LOF is a sign for the increasing prominence of spatial statistics in current ecology. Studies in primates and brushtailed possums suggest that elevation has as much significance as landscape heterogeneity in the management of risk from a variety of predators (Willems and Hill, 2009; Emerson, Brown & Linden, 2011; Mella, Banks & McArthur, 2014). Similar to those mammals, most species do not live on a two dimensional plane. Therefore, one must conclude that the future of the field will aim towards 4D and 5D models that incorporate altitude (aerial, aquatic or above/ below ground) and time (hourly, seasonal, annual or generational).

(4) The personality-based individual LOF

Populations are comprised of individuals with differing phenotypic expressions on an axis limited by the niche breadth (range of possible expression forms) of each trait (Vincent &

Brown, 2005). When we measure variability on the population level we average out the “noise” produced by the variation in individual response. The focus on the individual is gaining prominence in behavioral ecology. Specifically the study of bold-shy expression and how they affect risk assessment (*e.g.* Ioannou, Payne & Krause, 2008) and the spread of invasive species (*e.g.* Fogarty, Cote & Sih, 2011) as a couple of examples.

Variability of traits within a population is a pillar of Darwinistic evolution, and I suggest that the LOF may provide a platform to study consequences of changing behavioral traits. Manipulative experiments could subject stressors on a selective group within a population, following how these treatments change the individual’s risk assessment from the overall population. Some of these manipulative studies already exist, however they did not focus on the spatial components of the behavioral response. An example of such a study is the effect of parasites and the distraction they produce on the risk-taking behavior in gerbils (*e.g.* Raveh et al., 2011).

Some manipulative studies of this sort could involve: group size and density dependence (does group size influence the boldness of individuals?); Energetic-state (does the hungry individual take greater risks than satiated individuals in a group?), demographics (does a male take more risk when competing for mates with many other males?, or do females with offspring reduce the risk-taking in comparison with the males in the group?) and more.

(5) The neurology of LOFs.

The last frontier to the LOF studies I wish to highlight is the neuro-ecology of fear. *i.e.* converting environmental risk into a measureable impact on stress syndromes. When an animal is under stress (risk of predation specifically), the neurological registering of the risk cues causes an increase in stress hormones being released in the body of the animal (Gross & Canteras,

2012). The physiological responses to these stress hormones are energetically costly (Apfelbach et al., 2005) and result in lowered productivity (e.g. Mukherjee et al. 2014).

For example, sparrows are shown to respond with an increase of a variety of stress hormones (plasma total corticosterone, corticosteroid binding globulin (CBG) and free corticosterone) in response to an increase in the risk of predation in the environment (Zanette et al., 2011). Creel et al. (2013) suggest that competition may play a similar role in producing stress hormones, and should result in changes in population dynamics. I agree with Clinchy et al. (2013) in suggesting that this connection of environmental stress and neurological responses is a fertile ground for research. It is important to move away from the chronic stress studied in laboratory animals into spatially explicit studies within realistic ecological scenarios.

Acknowledgments

I would like to thank B.P. Kotler, J.S. Brown, C.R. Dickman, J.W. Laundré and M.L. Rosenzweig for conversation and guidance that inspired this research. I would like to extend a special thanks to A. Halloway, J. Bernhart, A. Adivrekar and D. & L. Bleicher for editorial comments both in contents and in copyediting.

References:

- Abramsky Z., Rosenzweig ML., Subach A. 2001. The cost of interspecific competition in two gerbil species. *Journal of Animal Ecology* 70:561–567.
- Abu Baker MA., Brown JS. 2010. Islands of fear: effects of wooded patches on habitat suitability of the striped mouse in a South African grassland. *Functional Ecology* 24:1313–1322. DOI: 10.1111/j.1365-2435.2010.01757.x.
- Allen BL., Allen LR., Leung LK. 2015. Interactions between two naturalised invasive predators

in Australia : are feral cats suppressed by dingoes ? *Biological Invasions* 17:761–776. DOI: 10.1007/s10530-014-0767-1.

Arias-Del Razo I., Hernández L., Laundré JWJ., Velasco-Vázquez L., Hernández L., Laundré JWJ. 2012. The landscape of fear: habitat use by a predator (*Canis latrans*) and its main prey (*Lepus californicus* and *Sylvilagus audubonii*). *Canadian Journal of Zoology* 90:683–693. DOI: 10.1139/Z2012-036.

Bedoya-Perez MA., Carthey AJR., Mella VSA., McArthur C., Banks PB. 2013. A practical guide to avoid giving up on giving-up densities. *Behavioral Ecology and Sociobiology* 67:1541–1553. DOI: 10.1007/s00265-013-1609-3.

Berger-Tal O., Embar K., Kotler BP., Saltz D. 2015. Everybody loses : intraspecific competition induces tragedy of the commons in Allenby’s gerbils. *Ecology* 96:54–61.

Beschta RL., Ripple WJ. 2009. Large predators and trophic cascades in terrestrial ecosystems of the western United States. *Biological Conservation* 142:2401–2414. DOI: 10.1016/j.biocon.2009.06.015.

Bleicher SS. 2014. Divergent behaviour amid convergent evolution: common garden experiments with desert rodents and vipers. Ph.D. Dissertation. University of Illinois at Chicago.

Bleicher SS., Brown JS., Embar K., Kotler BP. 2016. Novel predator recognition by Allenby’s gerbil (*Gerbillus andersoni allenbyi*): Do gerbils learn to respond to a snake that can “see” in the dark? *Israel Journal of Ecology and Evolution*:1–8. DOI: 10.1080/15659801.2016.1176614.

- Bleicher SS., Dickman CR. 2016. Bust economics: foragers choose high quality habitats in lean times. *PeerJ* 1:1–15. DOI: 10.7717/peerj.1609.
- Bleicher SS., Kotler BP., Brown JS. 2012. Comparing landscapes of fear in four desert rodents exposed to vipers and owls. International Mammalogical Congress XI, Belfast, UK (Poster).
- Boyko AR., Gibson RM., Lucas JR., Boyko AR., Gibson RM., Lucas JR. 2004. How Predation Risk Affects the Temporal Dynamics of Avian Leks : Greater Sage Grouse versus Golden Eagles. *The American Naturalist* 163:154–165.
- Brown JS. 1988. Patch use as an indicator of habitat preference, predation risk, and competition. *Behavioral Ecology and Sociobiology* 22:37–47. DOI: 10.1007/BF00395696.
- Brown JS. 1999. Vigilance, patch use and habitat selection : Foraging under predation risk. *Evolutionary Ecology Research* 1:49–71.
- Brown JS., Kotler BP. 2004. Hazardous duty pay and the foraging cost of predation. *Ecology Letters* 7:999–1014. DOI: 10.1111/j.1461-0248.2004.00661.x.
- Brown JS., Laundré JW., Gurung M. 1999. The ecology of fear: optimal foraging, game theory, and trophic interactions. *Journal of Mammalogy* 80:385–399.
- Chalfoun AD., Martin TE. 2009. Habitat structure mediates predation risk for sedentary prey: Experimental tests of alternative hypotheses. *Journal of Animal Ecology* 78:497–503. DOI: 10.1111/j.1365-2656.2008.01506.x.
- Clinchy M., Zanette L., Charlier TD., Newman AEM., Schmidt KL., Boonstra R., Soma KK. 2011. Multiple measures elucidate glucocorticoid responses to environmental variation in predation threat. *Oecologia* 166:607–614. DOI: 10.1007/s00442-011-1915-2.

- Creel S., Dantzer B., Goymann W., Rubenstein DR. 2013. The ecology of stress: Effects of the social environment. *Functional Ecology* 27:66–80. DOI: 10.1111/j.1365-2435.2012.02029.x.
- Dickman C. 1986. An experimental study of competition between two species of dasyurid marsupials. *Ecological Monographs* 56:221–241.
- Diamond JM. 1975. The island dilemma: Lessons of modern biogeographic studies for the design of natural reserves. *Biological Conservation* 7:129–146. DOI: 10.1016/0006-3207(75)90052-X.
- Druce DJ., Brown JS., Kerley GIH., Kotler BP., Mackey RL., Slotow R. 2009. Spatial and temporal scaling in habitat utilization by klipspringers (*Oreotragus oreotragus*) determined using giving-up densities. *Austral Ecology* 34:577–587. DOI: 10.1111/j.1442-9993.2009.01963.x.
- Dupuch A., Morris DW., Halliday WD. 2013. Patch use and vigilance by sympatric lemmings in predator and competitor-driven landscapes of fear. *Behavioral Ecology and Sociobiology* 68:299–308. DOI: 10.1007/s00265-013-1645-z.
- Embar K., Raveh A., Hoffmann I., Kotler BP. 2014. Predator facilitation or interference: a game of vipers and owls. *Oecologia* 174:1301–9. DOI: 10.1007/s00442-013-2760-2.
- Emerson SE., Brown JS., Linden JD. 2011. Identifying Sykes' monkeys', *Cercopithecus albogularis erythrarchus*, axes of fear through patch use. *Animal Behaviour* 81:455–462. DOI: 10.1016/j.anbehav.2010.11.018.
- Fogarty S., Cote J., Sih A. 2011. Social Personality Polymorphism and the Spread of Invasive

- Species: A Model. *The American Naturalist* 177:273–287. DOI: 10.1086/658174.
- Gallagher AJ., Creel S., Wilson RP., Cooke SJ. 2017. Energy Landscapes and the Landscape of Fear. *Trends in Ecology & Evolution* 32:88–96. DOI: 10.1016/j.tree.2016.10.010.
- Glen AS., Dickman CR. 2005. Complex interactions among mammalian carnivores in Australia, and their implications for wildlife management. *Biological reviews of the Cambridge Philosophical Society* 80:387–401. DOI: 10.1017/s1464793105006718.
- Hammerschlag N., Broderick AC., Coker JW., Coyne MS., Dodd M., Frick MG., Godfrey MH., Godley BJ., Griffin DB., Hartog K., Murphy SR., Murphy TM., Rose Nelson E., Williams KL., Witt MJ., Hawkes LA. 2015. Evaluating the landscape of fear between apex predatory sharks and mobile sea turtles across a large dynamic seascape. *Ecology* 96:2117–2126. DOI: 10.1890/14-2113.1.
- Hassell MP. 1978. *The dynamics of arthropod predator-prey systems*. Princeton, NJ: Princeton University Press.
- Haythornthwaite AS., Dickman CR. 2006. Long-distance movements by a small carnivorous marsupial: How *Sminthopsis youngsoni* (Marsupialia: Dasyuridae) uses habitat in an Australian sandridge desert. *Journal of Zoology* 270:543–549. DOI: 10.1111/j.1469-7998.2006.00186.x.
- Heithaus MR., Frid A., Wirsing AJ., Dill LM., Fourqurean JW., Burkholder D., Thomson J., Bejder L. 2007. State-dependent risk-taking by green sea turtles mediates top-down effects of tiger shark intimidation in a marine ecosystem. *Journal of Animal Ecology* 76:837–844. DOI: 10.1111/j.1365-2656.2007.01260.x.

- Ioannou CC., Payne M., Krause J. 2008. Predator effects on prey population dynamics in open systems. *Oecologia* 157:177–182. DOI: 10.1007/s00442-008-.
- Iribarren C., Kotler BP. 2012. Foraging patterns of habitat use reveal landscape of fear of Nubian ibex *Capra nubiana*. *Wildlife Biology* 18:194–201. DOI: 10.2981/11-041.
- Jacob J., Brown JS. 2000. Microhabitat Use, Giving-Up Densities and Temporal Activity as Short- and Long-Term Anti-Predator Behaviors in Common Voles. *Oikos* 91:131–138.
- Kauffman MJ., Varley N., Smith DW., Stahler DR., MacNulty DR., Boyce MS. 2007. Landscape heterogeneity shapes predation in a newly restored predator-prey system. *Ecology Letters* 10:690–700. DOI: 10.1111/j.1461-0248.2007.01059.x.
- Kotler BP. 1984. Risk of predation and the structure of desert rodent communities. *Ecology* 65:689–701.
- Kotler BP., Brown JS., Bleicher SS., Embar K. 2016. Intercontinental-wide consequences of compromise-breaking adaptations: the case of desert rodents. *Israel Journal of Ecology & Evolution* 0:1–10.
- Kotler BP., Brown JS., Dall SRX., Gresser S., Ganey D., Bouskila A. 2002. Foraging games between gerbils and their predators : temporal dynamics of resource depletion and apprehension in gerbils. *Evolutionary Ecology Research* 4:495–518.
- Laundré JW., Calderas JMM., Hernández L. 2009. Foraging in the landscape of fear, the predator's dilemma: Where should I hunt ? *The Open Ecology Journal* 2:1–6.
- Laundré JW., Hernández L., Altendorf KB. 2001. Wolves, elk, and bison: reestablishing the “landscape of fear” in Yellowstone National Park, U.S.A. *Canadian Journal of Zoology*

79:1401–1409. DOI: 10.1139/cjz-79-8-1401.

Laundré JW., Hernandez L., Lopez Medina P., Campanella A., Lopez-Portillo J., Gonzolez-Romero A., Grajales-Tam KM., Burke AM., Gronemeyer P., Browning DM. 2017. The landscape of fear : the missing link to understand top-down and bottom-up controls of prey abundance ? *Ecology* 95:1141–1152. DOI: 10.1890/13-1083.1.

Laundré JW., Hernandez L., Ripple WJ. 2010. The landscape of fear: Ecological implications of being afraid. *The Open Ecology Journal* 3:1–7. DOI: 10.2174/1874213001003030001.

Madin EMP., Madin JS., Booth DJ. 2011. Landscape of fear visible from space. *Scientific Reports* 1:1–4. DOI: 10.1038/srep00014.

Manning AD., Gordon IJ., Ripple WJ. 2009. Restoring landscapes of fear with wolves in the Scottish Highlands. *Biological Conservation* 142:2314–2321. DOI: 10.1016/j.biocon.2009.05.007.

Massey J., Cubaynes S., Coulson T. 2013. Will central Wyoming elk stop migrating to Yellowstone , and should we care ? *Ecology* 94:1271–1274.

Matassa CM., Trussell GC. 2011. Landscape of fear influences the relative importance of consumptive and nonconsumptive predator effects. *Ecology* 92:2258–2266. DOI: 10.1890/11-0424.1.

McGill BJ., Enquist BJ., Weiher E., Westoby M. 2006. Rebuilding community ecology from functional traits. *Trends in Ecology and Evolution* 21:178–185. DOI: 10.1016/j.tree.2006.02.002.

Mella VSA., Banks PB., Mearns C. 2014. Negotiating multiple cues of predation risk in a

- landscape of fear: What scares free-ranging brushtail possums? *Journal of Zoology* 294:22–30. DOI: 10.1111/jzo.12146.
- Morris DW. 2003. How can we apply theories of habitat selection to wildlife conservation and management? *Wildlife Research* 30:303–319. DOI: 10.1071/WR02028.
- Morris DW., Lundberg P. 2011. *Pillars of evolution: fundamental principles of the evolutionary process*. Oxford: Oxford University Press.
- Murdoch WW., Oaten A. 1975. Predation and Population Stability. *Advances in Ecological Research* 9:1–131.
- Paine RT. 1963. Food web complexity and species diversity. *The American Naturalist* 100:65–75. DOI: 10.2307/2678832.
- Raveh A., Kotler BP., Abramsky Z., Krasnov BR. 2011. Driven to distraction: detecting the hidden costs of flea parasitism through foraging behaviour in gerbils. *Ecology letters* 14:47–51. DOI: 10.1111/j.1461-0248.2010.01549.x.
- Real LA., Caraco T. 1986. Risk and foraging in stochastic environments: theory and evidence Real. *Annual Review of Ecology, Evolution, and Systematics* 17:371–390.
- Ripple WJ., Beschta RL. 2003. Wolf reintroduction, predation risk, and cottonwood recovery in Yellowstone National Park. *Forest Ecology and Management* 184:299–313. DOI: 10.1016/S0378-1127(03)00154-3.
- Ripple WJ., Beschta RL. 2004. Wolves and the Ecology of Fear: Can Predation Risk Structure Ecosystems? *BioScience* 54:755–766. DOI: 10.1641/0006-3568(2004)054[0755:WATEOF]2.0.CO;2.

- Ripple WJ., Beschta RL. 2012. Trophic cascades in Yellowstone: The first 15 years after wolf reintroduction. *Biological Conservation* 145:205–213. DOI: 10.1016/j.biocon.2011.11.005.
- Ritchie EG., Johnson CN. 2009. Predator interactions, mesopredator release and biodiversity conservation. *Ecology Letters* 12:982–998. DOI: 10.1111/j.1461-0248.2009.01347.x.
- Roper JJ., Sullivan KA., Ricklefs RE. 2010. Avoid nest predation when predation rates are low, and other lessons : testing the tropical – temperate nest predation paradigm. *Oikos*: 719–729. DOI: 10.1111/j.1600-0706.2009.18047.x.
- Rosenzweig ML. 1973. Habitat selection experiments with a pair of coexisting Heteromyid rodent species. *Ecology* 54:111–117.
- Rosenzweig ML., Abramsky Z., Subach A. 1997. Safety in numbers: sophisticated vigilance by Allenby’s gerbil. *Proceedings of the National Academy of Sciences of the United States of America* 94:5713–5715. DOI: 10.1073/pnas.94.11.5713.
- Rosenzweig, ML., MacArthur R. 1963. Graphical Representation and Stability Conditions of Predator-Prey Interactions. *American Naturalist* 97:209–223. DOI: 10.1086/282272.
- Rypstra AL., Schmidt JM., Reif BD., Devito J., Matthew H., Rypstra AL., Schmidt JM., Reif BD., Devito J., Persons MH. 2007. Tradeoffs Involved in Site Selection and Foraging in a Wolf Spider : Effects of Substrate Structure and Predation Risk. *Oikos* 116:853–863.
- Shrader AM., Brown JS., Kerley GIH., Kotler BP. 2008. Do free-ranging domestic goats show “landscapes of fear”? Patch use in response to habitat features and predator cues. *Journal of Arid Environments* 72:1811–1819. DOI: 10.1016/j.jaridenv.2008.05.004.
- Sih A., Englund G., Wooster D. 1998. Emergent impacts of multiple predators on prey. *TREE*

13:350–355.

Suraci JP., Clinchy M., Dill LM., Roberts D., Zanette LY. 2016. Fear of large carnivores causes a trophic cascade. *Nature Communications* 7:10698. DOI: 10.1038/ncomms10698.

Tadesse S., Kotler BP. 2011. Seasonal Habitat Use by Nuian Ibex (*Capra nubiana*) evaluated with behavioral indicators. *Israel Journal of Ecology and Evolution* 57:223–246.

Uexküll JJ. 1909. Umwelt und Innenwelt der Tiere [Environment and inner world of animals]. *Foundations of Comparative Ethology*: 222–245.

Van Der Merwe M., Brown JS. 2008. Mapping the landscape of fear of the cape ground squirrel (*Xerus inauris*). *Journal of Mammalogy* 89:1162–1169. DOI: 10.1644/08-MAMM-A-035.1.

Vincent TL., Brown JS. 2005. *Evolutionary game theory, natural selection, and Darwinian dynamics*. Cambridge University Press.

Willems EP., Hill RA. 2009. Predator-Specific Landscapes of Fear and Resource Distribution : Effects on Spatial Range Use. *Ecology* 90:546–555.

Zanette L., Jenkins B. 2000. Nesting success and nest predators in forest fragments : A study using real and artificial nests. *The Auk* 117:445–454.

Zanette LY., White AF., Allen MC., Clinchy M. 2011. Perceived predation risk reduces the number of offspring songbirds produce per year. *Science* 334:1398–1402.

Figure Legends

Figure 1. Cumulative number of manuscripts using the “landscape of fear” (LOF) as a significant descriptor of the study in the title, abstract or key-words. The Buzz-Word category is a classification of manuscripts that defined the LOF in a way that differed from a spatial distribution of a populations’ (or individuals’) behavioral response to the perceived balance of resources and risk of predation.*Only manuscripts published between January-April 2017.

Figure 2. Example of Landscape of Fear Map using a dataset adapted from Bleicher et al. (2016). The map shows the distribution of risk using giving up densities (GUDs) for a population of Allenby’s gerbils (*G. andersoni allenbyi*) in a controlled enclosure in Sde Boker, Israel. The contour lines are derived using the distance weighted least squares (DWLS) smoothing function at a tension of 0.5. GUD values above 2.0g (orange and red) reflect areas that are perceived as dangerous by the gerbils while areas below 1.0g (green and blue) reflect zones of safety. The + signs are the locations in which the data was collected and both x and y-axes are measuring the enclosure in meters.

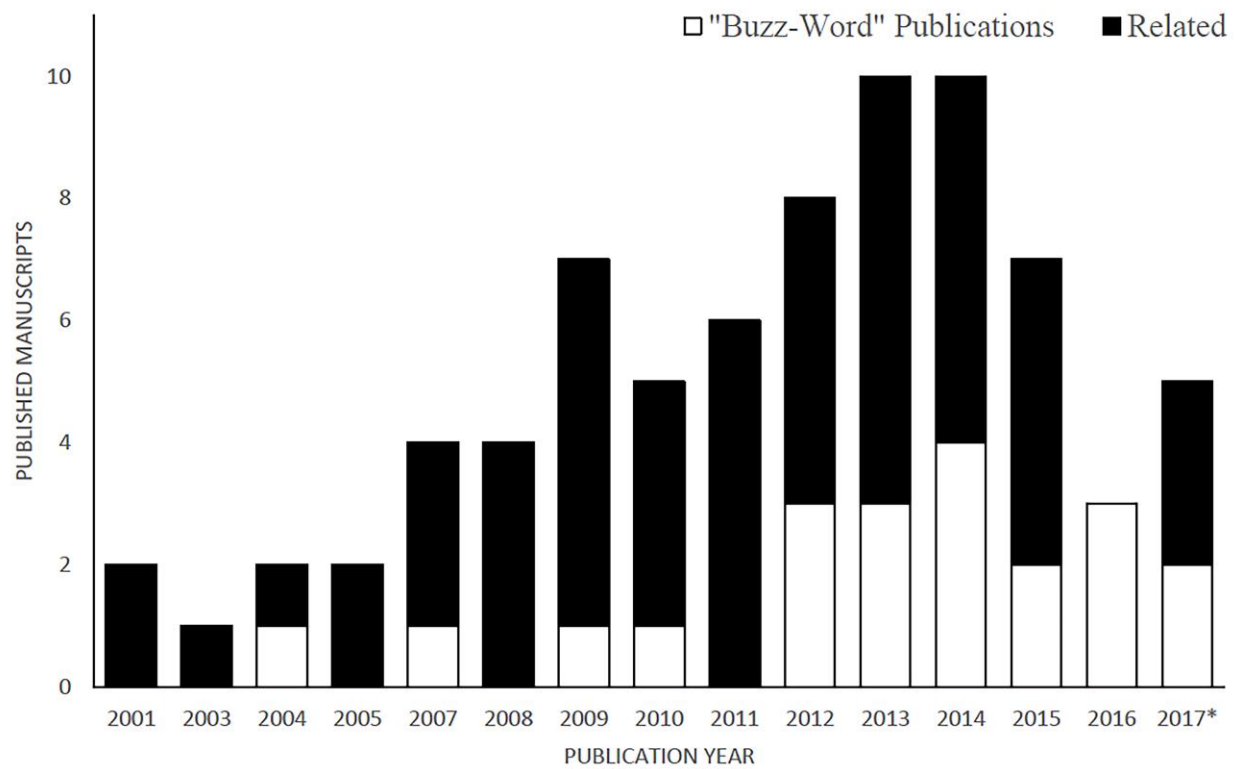
Figure 1.

Figure 2

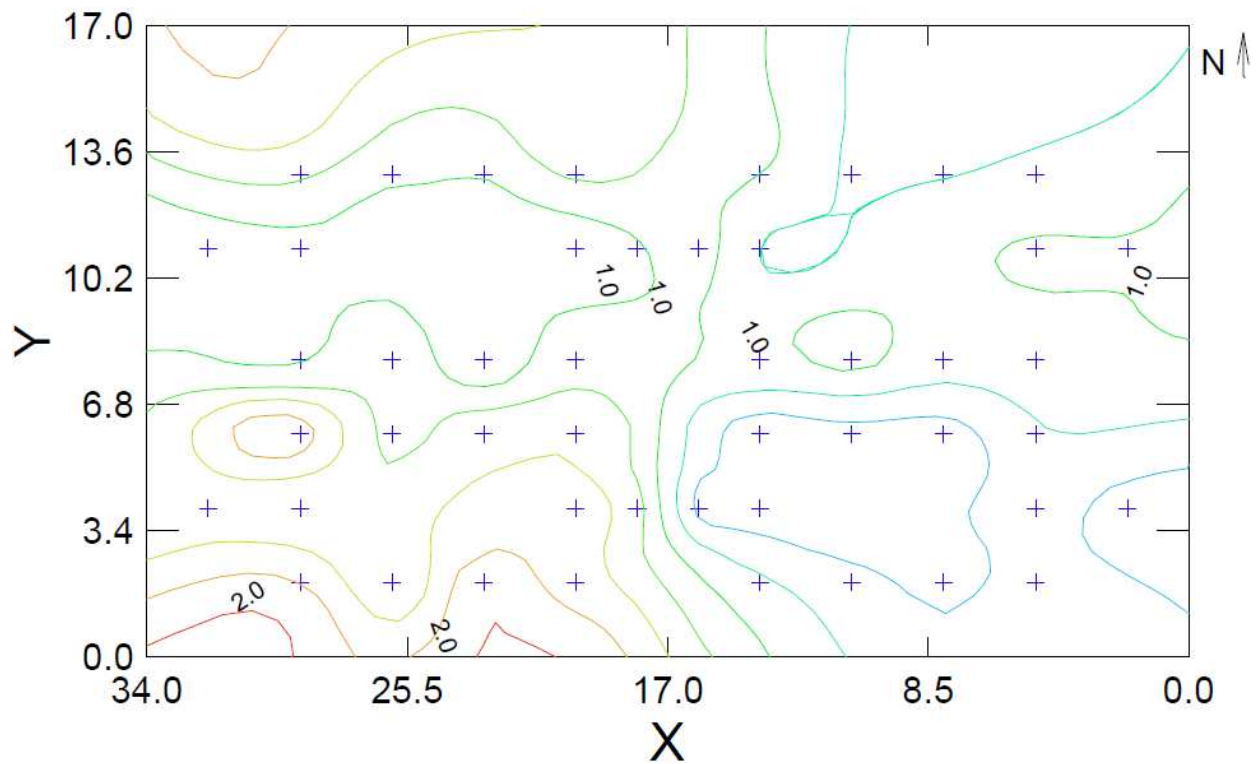


Table 1. Summary table for all published manuscripts using the term “landscape of fear” (in title, abstract or key words), and distinction of manuscripts misinterpreting the term as “Buzz-Word” manuscripts.

	Total Manuscripts	% Buzz-Word (# of publications)
A. Manuscripts using the LOF concept:	78	26.9% (21)
B. Published in a journal covering:		
General Ecology	44*	14% (6)
Zoology	15*	7% (1)
Animal Behavior	9*	22% (2)
Applied Ecology /Wildlife Management	9	45% (4)
General Biology	8	75% (6)
Evolution	3	67% (2)
C. Manuscript Type :		
Opinion	8	25% (2)
Review	12	25% (3)
Empirical	58	28 % (16)
D. Manuscript Defines The LOF as a:		
Landscape Trait	23**	31% (7)
Individuals' trait	15**	33% (5)
Populations' trait	49**	12% (6)
* Some manuscripts are counted more than one time if journals cover a variety of fields (<i>e.g.</i> Journal of Animal Ecology is categorized both as general ecology and zoology). ** Some manuscripts have conflicting definitions or apply the LOF to describe a characteristic of multiple levels and are thus counted more than one time.		

Table 2— Theoretical development of the LOF as a research program. *these references to the LOF were published prior to the seminal paper Laundré et al 2001, however are regularly cited as influential papers in the field, or had referenced the seminal paper as unpublished work.

Year	Manuscript	Major Theoretical Contribution
2000*	(Jacob & Brown, 2000) (Zanette & Jenkins, 2000)	<ul style="list-style-type: none"> • The LOF combines both spatial and temporal assessments of risk • The LOF is a measure of distribution of stress within a physical landscape based on habitat quality
2001	(Laundré, Hernández & Altendorf, 2001)	<ul style="list-style-type: none"> • Defining the LOF framework as the impact of relative danger in shaping prey behavior and habitat selection.
2004	(Brown & Kotler, 2004) (Ripple & Beschta, 2004)	<ul style="list-style-type: none"> • LOF changed based on levels of risk: predator community or predator activity levels. • Linking food webs to the ecology of fear through examples where fear of wolves trickled down to increase in vegetation diversity (and where it did not.
2007	(Kauffman et al., 2007) (Rypstra et al., 2007) (Heithaus et al., 2007)	<ul style="list-style-type: none"> • Predators tap into prey LOF in hunting site selection. • The individual effect: intra-species competition and cannibalism affect the populations LOF. • Behavioral state: health of individual affects its LOF.
2008	(Van Der Merwe & Brown, 2008)	<ul style="list-style-type: none"> • The LOF as a cost benefit analysis of energy; measuring a LOF in kJ.
2009	(Druce et al., 2009) (Ritchie & Johnson, 2009) (Willems & Hill, 2009)	<ul style="list-style-type: none"> • Defining spatial and temporal scales as drivers of change in LOFs • Studying inter-guild competition using the LOF framework (apex-mesopredators) • Information based LOF's- signals for specific predators.
2011	(Matassa & Trussell, 2011)	<ul style="list-style-type: none"> • Using survivorship as a measure of non-consumptive predator effects on both spatial and temporal scales.
2013	(Dupuch, Morris & Halliday, 2013)	<ul style="list-style-type: none"> • Using the LOF as a tools to compare competition pressures and predation risk.
2014	(Bleicher, 2014)	<ul style="list-style-type: none"> • Defining LOF shape and plasticity; The LOF as a tool for macroevolutionary comparison.
2015	(Hammerschlag et al., 2015)	<ul style="list-style-type: none"> • Linking activity patterns of predators the LOF of prey on a temporal scale.
2017	(Laundré et al., 2017)	<ul style="list-style-type: none"> • Comparing bottom-up and top-down models of population dynamics using the LOF framework.
	(Gallagher et al., 2017)	<ul style="list-style-type: none"> • Combining LOF and energy landscapes as one unit.

(A)	Continent								
Study	(A)	N. America	Africa/Sahara	Australia	Europe	Asia/Polynesia			Total
	Alpine Scrubland	9	4						13
	Arid/ Tundra	4	8						12
	Temperate Forest	1		2	3				6
	Grassland/Savannah	1	3		1				5
	Marine	2		1		1			4
	Anthropocentric				1	1			2
	Total	17	15	3	5	2			42
(B)	Focal Organism								
Measure	(B)	Ungulate	Small Mammal	Predators*	Primates	Marine Herbivores**	Vegetation***	Birds	Total
	GUD	6	13	1	4	1	1		26
	Occupancy	2	1	2		1			6
	Scat Density	2	1						3
	Telemetry	1		1		1			3
	Vigilance	3							3
	Others	1					1	1	3
	Total	15	15	4	4	3	2	1	44

*both mesopredators and apex predators.**multiple studies used grazing reef fish as a group as opposed with a specific species.***Damage to algae or woody vegetation.

Table 4. Distribution of manuscripts by trophic levels studied

No. of Publications	
A. Number of Trophic Levels in Study	
1 trophic level	20
2 trophic levels	23
3 trophic levels	6
B. Trophic Level Studied	
Humans	1
Apex-predators	2
Carnivore	49
Herbivore (granivore)	31
Vegetation	10
**Non Biotic	1

Appendix I. The Historical Base Leading to the LOFs

A. Trophic cascades

The world is green because predators control the populations of grazing species concluded Hairston (Hairston, Smith & Slobodkin, 1960) in what later became known as the “Green World Hypothesis”. Since this ground-breaking paper, a large focus in community ecology was directed at the study of trophic cascades, i.e. the idea that through direct predation the size of a population impacts multiple trophic levels below it and the size of the population of prey dictates the availability of resources that sustain the predators above them.

The textbook example used to teach these interactions is population fluxes in Lotka-Volterra of lynx-hare (and mastings) predator-prey cycles in Canadian boreal forests (Hewitt, 1921; Fox & Bryant, 1984; Krebs et al., 1995; Lima, 1998). This example highlights the trophic cascades from a bottom-up perspective, i.e. how the availability of resources influences the populations of predators. Resource availability dictates the availability of niches for species to occupy in the community (Vincent & Brown, 2005). However, the top-down interactions greatly dictate the traits the species must have to survive within those niches. Robert Paine pioneered the study of the predation implications on prey when he described how a diverse predator community results in diverse prey community (Paine, 1963). In this example, the predation pressure from multiple intertidal zone predators (sea stars) removed the competitive ability of the dominant barnacles and allowed for higher mollusk diversity. More recently, Schmitz and Price (2011) showed a strong positive correlation between the biomass of arachnid predators on the vegetation biomass in an agricultural system. In this system, spiders feed on grasshoppers that damage vegetation. The biomass of spiders thus positively correlates with the health of the vegetation crop. These examples show that the predators negatively affect the prey populations

and thus indirectly have positive effects on the vegetation. However, consumptive-effects did not entirely explain how predators control prey (and vice-versa). Thus a study of non-consumptive predator effects was created, named the “ecology of fear” by Joel Brown (Brown, Laundré & Gurung, 1999), with the aim to answer two major questions: (1) Do predators control the populations of prey solely by consuming them? And (2) would the evolution of prey species to manage the risk of predation not overcome the negative impacts these predators have on their prey populations?

B. Non- Consumptive Effects of Predators: an “Ecology of Fear”

One does not have to study wildlife behavior to understand the effects predation risk has on animal behavior. All one has to do, is think of our own body’s response to a risky situation. Our bodies instinctively respond to the risk in the environment by producing stress hormones. This production results in increased blood pressure, pulse and sensory sensitivity. In essence, our bodies tell us to get out of harm’s way as fast as we can. In this example of our own day-to-day life we find the evidence for the millions of years evolutionary race between predators and prey to maintain the energetic needs of both groups. Prey evolve mechanisms to avoid the risk, and predators find ways to out-gun these defense mechanisms.

In non-human examples we expect that predators would have to find a balance between over-hunting a naïve food resource into extinction and starvation from aiming to hunt highly vigilant prey (Brown & Vincent, 1992; Lima, 1998, 2002; Brown, Laundré & Gurung, 1999; Wolf & Mangel, 2007). The evolutionary arms-race between the predators and their prey results in predators managing the fear of the prey into an optimal state of vigilance by limiting their encounter rates (Embar, Mukherjee & Kotler, 2014). Overstimulating the perception of risk in the prey, would lower the hunting success of the predator to unsustainable levels. Meanwhile, the

prey species evolved to counteract the predator management through a variety of behavioural strategies, or choices. I will examine a few case studies of such strategies.

Many species choose their habitat based on the risk which this habitat poses to them. For example, heteromyid rodents choose habitat based on the density of vegetation. Species (kangaroo rats) that can hop out of harm's way prefer the un-encumbered open, and species that are limited in predator evasion strategies (pocket mice) find shelter under thick vegetation (Rosenzweig, 1973). In kangaroo rats specifically the presence of vipers was shown to be a driver of the choice of the open habitat (Bouskila, 1995). In another example, Gerbilline rodents responded to owls with clear preference for sheltered microhabitats (Kotler, Blaustein & Brown, 1992; Abramsky et al., 1996; Abramsky, Rosenzweig & Subach, 1997; Kotler et al., 2002; St. Juliana et al., 2011; Embar et al., 2014). Habitat fragmentation, or edge effect, has been shown to affect the habitat use (predominantly in the form of avoidance) by songbirds (Storch, Woitke & Krieger, 2005; Fischer & Lindenmayer, 2007). Larger animals (ungulates and primates) have been shown to select habitat where the sightlines allow good visibility of approaching predators (Tadesse, 2012; Abu Baker & Brown, 2013; Coleman & Hill, 2014). Lastly, a number of studies studying wolf-elk interactions show that based on habitat variability the strategies applied by the elk to avoid predation (vigilance, habitat selection) can vary greatly (Hebblewhite, Merrill & McDonald, 2005; Eisenberg et al., 2014)

Other strategic choices of prey driven by the predator-prey dynamics can include dietary selection and movement patterns. For example (again in the Heteromyid rodents), foragers better equipped for risk management (kangaroo rats) have a more diverse diet than the foragers less well equipped for predator management (pocket mice) who forage what they can (Davidson, Brown & Inouye, 1980). In another example, in the Simpson Desert, dasyurid marsupials avoid

risk by covering large distances to search for refuge. These small mammals (20 grams on average) inhabit burrows in the swale of sand dunes located away from the resource dense habitats at the dune crests (Haythornthwaite, 2005; Haythornthwaite & Dickman, 2006). All of these adaptations clearly suggest that a trade-off between resources and predation risk occurs within a spatial dynamic, and as such these predator-prey games can and should be studied using a spatial analysis, a “landscape of fear” (LOF).

This conceptual framework was expanded to study the effects of landscape heterogeneity (Brown & Kotler, 2004) culminating in measured maps combining vegetation, refuge, resource availability and risk. In an example with cape ground squirrels (*Xerus inauris*), the LOF was interpreted as a cost benefit analysis of energetic values over change in the landscape (Joules/meter) (Van Der Merwe & Brown, 2008). This conversion allowed researchers to weigh the study of energetic gain from food patches and compare those gains to the cost of risk avoidance (cf. Brown, 1988)

Sources Used

Abramsky Z., Rosenzweig ML., Subach A. 1997. Gerbils under threat of owl predation : isoclines and isodars. *Oikos* 78:81–90.

Abramsky Z., Strauss E., Subach A., Riechman A., Kotler BP. 1996. The effect of barn owls (*Tyto alba*) on the activity and microhabitat selection of *Gerbillus allenbyi* and *G. pyramidum*. *Oecologia* 105:313–319. DOI: 10.1007/BF00328733.

Abu Baker M., Brown JS. 2013. Foraging and habitat use of common duikers , *Sylvicapra grimmia* , in a heterogeneous environment within the Soutpansberg, South Africa. *African Journal of Ecology* 52:1–10.

- Bouskila A. 1995. Interactions between predation risk and competition : a field study of kangaroo rats and snakes. *Ecology* 76:165–178.
- Brown JS. 1988. Patch use as an indicator of habitat preference, predation risk, and competition. *Behavioral Ecology and Sociobiology* 22:37–47. DOI: 10.1007/BF00395696.
- Brown JS., Kotler BP. 2004. Hazardous duty pay and the foraging cost of predation. *Ecology Letters* 7:999–1014. DOI: 10.1111/j.1461-0248.2004.00661.x.
- Brown JS., Laundré JW., Gurung M. 1999. The ecology of fear: optimal foraging, game theory, and trophic interactions. *Journal of Mammalogy* 80:385–399.
- Brown JS., Vincent TL. 1992. Organization of predator-prey communities as an evolutionary game. *Evolution* 46:1269–1283.
- Coleman BT., Hill RA. 2014. Living in a landscape of fear: the impact of predation, resource availability and habitat structure on primate range use. *Animal Behaviour* 88:165–173. DOI: 10.1016/j.anbehav.2013.11.027.
- Davidson DW., Brown JH., Inouye RS. 1980. Competition and the structure of granivore communities. *BioScience* 30:233–238.
- Eisenberg C., Hibbs DE., Ripple WJ., Salwasser H. 2014. Context dependence of elk (*Cervus elaphus*) vigilance and wolf (*Canis lupus*) predation risk. *Canadian Journal of Zoology* 92:727–736. DOI: 10.1139/cjz-2014-0049.
- Embar K., Mukherjee S., Kotler BP. 2014. What do predators really want ? The role of gerbil energetic state in determining prey choice by Barn Owls. *Ecology* 95:280–285.
- Embar K., Raveh A., Hoffmann I., Kotler BP. 2014. Predator facilitation or interference: a game

- of vipers and owls. *Oecologia* 174:1301–9. DOI: 10.1007/s00442-013-2760-2.
- Fischer J., Lindenmayer DB. 2007. Landscape modification and habitat fragmentation : a synthesis. *Global Ecology and Biogeography* 16:265–280. DOI: 10.1111/j.1466-8238.2006.00287.x.
- Fox JF., Bryant JP. 1984. Instability of the snowshoe hare and woody plant interaction. *Oecologia* 63:128–135. DOI: 10.1007/BF00379794.
- Hairston NG., Smith FE., Slobodkin LB. 1960. Community structure, population control, and competition. *American Naturalist* 94:421–425. DOI: 10.1086/521238.
- Haythornthwaite AS. 2005. Microhabitat use and foraging behaviour of *Sminthopsis youngsoni* (Marsupialia : Dasyuridae) in arid central Australia. *Wildlife Research* 32:609–615. DOI: 10.1071/WR04126.
- Haythornthwaite AS., Dickman CR. 2006. Long-distance movements by a small carnivorous marsupial: How *Sminthopsis youngsoni* (Marsupialia: Dasyuridae) uses habitat in an Australian sandridge desert. *Journal of Zoology* 270:543–549. DOI: 10.1111/j.1469-7998.2006.00186.x.
- Hebblewhite M., Merrill EH., McDonald TL. 2005. Spatial Decomposition of Predation Risk Using Resource Selection Functions : An Example in a Wolf-Elk Predator-Prey System. *Oikos* 111:101–111.
- Hewitt CG. 1921. In *The Conservation of the Wild Life of Canada*. New York, New York: Charles Scribner's Sons.
- St. Juliana J., Kotler BP., Brown JS., Mukherjee S., Bouskila A. 2011. The foraging response of

- gerbils to a gradient of owl numbers. *Evolutionary Ecology Research* 13:869–878.
- Kotler BP., Blaustein L., Brown JS. 1992. Predator Facilitation: the combined effect of snakes and owls on the foraging behavior of gerbils. *Annals of Zoology Fennici* 29:199–206.
- Kotler BP., Brown JS., Dall SRX., Gresser S., Ganey D., Bouskila A. 2002. Foraging games between gerbils and their predators : temporal dynamics of resource depletion and apprehension in gerbils. *Evolutionary Ecology Research* 4:495–518.
- Krebs CJ., Boutin S., Boonstra R., Sinclair a R., Smith JN., Dale MR., Martin K., Turkington R. 1995. Impact of food and predation on the snowshoe hare cycle. *Science* 269:1112–1115. DOI: 10.1126/science.269.5227.1112.
- Lima SL. 1998. Nonlethal effects in the ecology of predator-prey interactions. *BioScience* 48:25–34. DOI: 10.2307/1313225.
- Lima SL. 2002. Putting predators back into behavioral predator–prey interactions. *Trends in Ecology & Evolution* 17:70–75. DOI: 10.1016/S0169-5347(01)02393-X.
- Van Der Merwe M., Brown JS. 2008. Mapping the landscape of fear of the cape ground squirrel (*Xerus inauris*). *Journal of Mammalogy* 89:1162–1169. DOI: 10.1644/08-MAMM-A-035.1.
- Paine RT. 1963. Food web complexity and species diversity. *The American Naturalist* 100:65–75. DOI: 10.2307/2678832.
- Rosenzweig ML. 1973. Habitat selection experiments with a pair of coexisting Heteromyid rodent species. *Ecology* 54:111–117.
- Schmitz OJ., Price JR. 2011. Convergence of trophic interaction strengths in grassland food webs through metabolic scaling of herbivore biomass. *Journal of Animal Ecology* 80:1330–

1336. DOI: 10.1111/j.1365-2656.2011.01882.x.

Storch I., Voitke E., Krieger S. 2005. Landscape-scale edge effect in predation risk in forest-farmland mosaics of central Europe⁷. *Landscape Ecology* 20:927–940. DOI: 10.1007/s10980-005-7005-2.

Tadesse S. 2012. Habitat quality and foraging ecology of Mountain Nyala (*Tragelaphus buxtoni*) in the Munessa Forest and the Bale Mountains National Park, South-Eastern Ethiopia. Ph.D. Dissertation. Ben Gurion University of the Negev.

Vincent TL., Brown JS. 2005. Evolutionary game theory, natural selection, and Darwinian dynamics. Cambridge, Cambridge University Press.

Wolf N., Mangel M. 2007. Strategy, compromise, and cheating in predator – prey games. *Evolutionary Ecology Research* 9:1293–1304.

Appendix II. Bibliography of manuscripts reviewed for this analysis

- Abu Baker MA., Brown JS. 2010. Islands of fear: effects of wooded patches on habitat suitability of the striped mouse in a South African grassland. *Functional Ecology* 24:1313–1322. DOI: 10.1111/j.1365-2435.2010.01757.x.
- Abu Baker M a., Brown JS. 2011. Variation of within-day foraging costs in the striped mouse (*Rhabdomys pumilio*). *Mammalian Biology* 76:654–656. DOI: 10.1016/j.mambio.2011.02.005.
- Abu Baker M., Brown JS. 2013. Foraging and habitat use of common duikers, *Sylvicapra grimmia*, in a heterogeneous environment within the Soutpansberg, South Africa. *African Journal of Ecology* 52:1–10.
- Altendorf KB., Laundré JW., Lopez Gonzalez CA., Brown JS., González CAL., Brown JS. 2001. Assessing effects of predation risk on foraging behavior of mule deer. *Journal of Mammalogy* 82:430–439.
- Arias-Del Razo I., Hernández L., Laundré JWJ., Velasco-Vázquez L., Hernández L., Laundré JWJ. 2012. The landscape of fear: habitat use by a predator (*Canis latrans*) and its main prey (*Lepus californicus* and *Sylvilagus audubonii*). *Canadian Journal of Zoology* 90:683–693. DOI: 10.1139/Z2012-036.
- Atkins A., Redpath SM., Little RM., Amar A. 2017. Experimentally Manipulating the Landscape of Fear to Manage Problem Animals. *The Journal of Wildlife Management* 81:610–616. DOI: 10.1002/jwmg.21227.
- Bedoya-Perez MA., Carthey AJR., Mella VSA., McArthur C., Banks PB. 2013. A practical

- guide to avoid giving up on giving-up densities. *Behavioral Ecology and Sociobiology* 67:1541–1553. DOI: 10.1007/s00265-013-1609-3.
- Benhaiem S., Delon M., Lourtet B., Cargnelutti B., Aulagnier S., Hewison AM., Morellet N., Verheyden H. 2008. Hunting increases vigilance levels in roe deer and modifies feeding site selection. *Animal Behaviour* 76:611–618. DOI: 10.1016/j.anbehav.2008.03.012.
- Beschta RL., Ripple WJ. 2013. Are wolves saving Yellowstone’s aspen? A landscape-level test of a behaviorally mediated trophic cascade : comment. *Ecology* 94:1420–1425.
- Blanchard P., Lauzeral C., Chamille-Jammes S., Yoccoz NG., Pontier D. 2016. Analyzing the proximity to cover in a landscape of fear: a new approach applied to fine-scale habitat use by rabbits facing feral cat predation on Kerguelen archipelago. *PeerJ* 1:1–16.
- Bleicher SS. 2014. Divergent behaviour amid convergent evolution: common garden experiments with desert rodents and vipers. Ph.D. Dissertation. University of Illinois at Chicago.
- Breviglieri CPB., Piccoli GCO., Uieda W., Romero GQ. 2013. Predation-risk effects of predator identity on the foraging behaviors of frugivorous bats. *Oecologia* 173:905–912. DOI: 10.1007/s00442-013-2677-9.
- Brook LA., Johnson CN., Ritchie EG. 2012. Effects of predator control on behaviour of an apex predator and indirect consequences for mesopredator suppression. *Journal of Applied Ecology* 49:1278–1286. DOI: 10.1111/j.1365-2664.2012.02207.x.
- Brown JS. 2010. Ecology of fear. In: Breed MD, Moore J eds. *Encyclopedia of Animal Behaviour*. Oxford: Elsevier Ltd, 581–587.

- Brown JS., Kotler BP. 2004. Hazardous duty pay and the foraging cost of predation. *Ecology Letters* 7:999–1014. DOI: 10.1111/j.1461-0248.2004.00661.x.
- Ciuti S., Muhly TB., Paton DG., McDevitt AD., Musiani M., Boyce MS. 2012a. Human selection of elk behavioural traits in a landscape of fear. *Proceedings. Biological sciences / The Royal Society* 279:4407–4416. DOI: 10.1098/rspb.2012.1483.
- Ciuti S., Northrup JM., Muhly TB., Simi S., Musiani M., Pitt JA., Boyce MS. 2012b. Effects of Humans on Behaviour of Wildlife Exceed Those of Natural Predators in a Landscape of Fear. *PLoS ONE* 7. DOI: 10.1371/journal.pone.0050611.
- Coleman BT., Hill RA. 2014. Living in a landscape of fear: the impact of predation, resource availability and habitat structure on primate range use. *Animal Behaviour* 88:165–173. DOI: 10.1016/j.anbehav.2013.11.027.
- Cromsigt JPGM., Kuijper DPJ., Adam M., Beschta RL., Churski M., Eycott A., Kerley GIH., Mysterud A., Schmidt K., West K. 2013. Hunting for fear: innovating management of human-wildlife conflicts. *Journal of Applied Ecology* 50:544–549. DOI: 10.1111/1365-2664.12076.
- Druce DJ., Brown JS., Kerley GIH., Kotler BP., Mackey RL., Slotow R. 2009. Spatial and temporal scaling in habitat utilization by klipspringers (*Oreotragus oreotragus*) determined using giving-up densities. *Austral Ecology* 34:577–587. DOI: 10.1111/j.1442-9993.2009.01963.x.
- Dupuch A., Morris DW., Ale SB., Wilson DJ., Moore DE. 2014. Landscapes of fear or competition? Predation did not alter habitat choice by Arctic rodents. *Oecologia* 174:403–412. DOI: 10.1007/s00442-013-2792-7.

Dupuch A., Morris DW., Halliday WD. 2013. Patch use and vigilance by sympatric lemmings in predator and competitor-driven landscapes of fear. *Behavioral Ecology and Sociobiology* 68:299–308. DOI: 10.1007/s00265-013-1645-z.

Eccard J a., Liesenjohann T. 2014. The importance of predation risk and missed opportunity costs for context-dependent foraging patterns. *PLoS ONE* 9:1–5. DOI: 10.1371/journal.pone.0094107.

Embar K., Kotler BP., Mukherjee S. 2011. Risk management in optimal foragers: the effect of sightlines and predator type on patch use, time allocation, and vigilance in gerbils. *Oikos* 120:1657–1666. DOI: 10.1111/j.1600-0706.2011.19278.x.

Emerson SE., Brown JS., Linden JD. 2011. Identifying Sykes' monkeys', *Cercopithecus albogularis erythrarchus*, axes of fear through patch use. *Animal Behaviour* 81:455–462. DOI: 10.1016/j.anbehav.2010.11.018.

Gaillard J-M., Hebblewhite M., Loison A., Fuller M., Powell R., Basille M., Van Moorter B. 2010. Habitat-performance relationships: finding the right metric at a given spatial scale. *Philosophical Transactions of the Royal Society of London. Series B, Biological sciences* 365:2255–2265. DOI: 10.1098/rstb.2010.0085.

Gallagher AJ., Creel S., Wilson RP., Cooke SJ. 2017. Energy Landscapes and the Landscape of Fear. *Trends in Ecology & Evolution* 32:88–96. DOI: 10.1016/j.tree.2016.10.010.

Gervasi V., Sand H., Zimmermann B., Mattisson J., Linnell JDC., Gervasi V., Sand H., Zimmermann B., Mattisson J., Wabakken P., Linnell JDC. 2013. Decomposing risk : Landscape structure and wolf behavior generate different predation patterns in two sympatric ungulates. *Ecological Applications* 23:1722–1734.

- Gil MA., Zill J., Ponciano JM. 2017. Context dependent landscape of fear : algal density elicits risky herbivory in a coral reef. *Ecology* 98:534–544. DOI: 10.1002/ecy.1668.
- Halofsky JS., Ripple WJ. 2008. Fine-scale predation risk on elk after wolf reintroduction in Yellowstone National Park, USA. *Oecologia* 155:869–877. DOI: 10.1007/s00442-007-0956-z.
- Hammerschlag N., Broderick AC., Coker JW., Coyne MS., Dodd M., Frick MG., Godfrey MH., Godley BJ., Griffin DB., Hartog K., Murphy SR., Murphy TM., Rose Nelson E., Williams KL., Witt MJ., Hawkes LA. 2015. Evaluating the landscape of fear between apex predatory sharks and mobile sea turtles across a large dynamic seascape. *Ecology* 96:2117–2126. DOI: 10.1890/14-2113.1.
- Heithaus MR., Frid A., Wirsing AJ., Dill LM., Fourqurean JW., Burkholder D., Thomson J., Bejder L. 2007. State-dependent risk-taking by green sea turtles mediates top-down effects of tiger shark intimidation in a marine ecosystem. *Journal of Animal Ecology* 76:837–844. DOI: 10.1111/j.1365-2656.2007.01260.x.
- Hernández L., Laundré JW. 2005. Foraging in the “landscape of fear” and its implications for habitat use and diet quality of elk *Cervus elaphus* and bison *Bison bison*. *Wildlife Biology* 11:215–220. DOI: 10.2981/0909-6396(2005)11[215:FITLOF]2.0.CO;2.
- Iribarren C., Kotler BP. 2012. Foraging patterns of habitat use reveal landscape of fear of Nubian ibex *Capra nubiana*. *Wildlife Biology* 18:194–201. DOI: 10.2981/11-041.
- Jaatinen K., Seltmann MW., Öst M. 2014. Context-dependent stress responses and their connections to fitness in a landscape of fear. *Journal of Zoology* 294:147–153. DOI: 10.1111/jzo.12169.

- Jacob J., Brown JS. 2000. Microhabitat Use, Giving-Up Densities and Temporal Activity as Short- and Long-Term Anti-Predator Behaviors in Common. *Oikos* 91:131–138.
- Kauffman MJ., Brodie JF., Jules ES., Url S. 2013. Are wolves saving Yellowstone's aspens? A landscape-level test of a behaviorally mediated trophic cascade. *Ecology* 91:2742–2755. DOI: 10.1890/09-1949.1.
- Kauffman MJ., Varley N., Smith DW., Stahler DR., MacNulty DR., Boyce MS. 2007. Landscape heterogeneity shapes predation in a newly restored predator-prey system. *Ecology Letters* 10:690–700. DOI: 10.1111/j.1461-0248.2007.01059.x.
- Kuijper DPJ., de Kleine C., Churski M., van Hooft P., Bubnicki J., Jedrzejewska B. 2013. Landscape of fear in Europe: Wolves affect spatial patterns of ungulate browsing in Białowieża Primeval Forest, Poland. *Ecography* 36:1263–1275. DOI: 10.1111/j.1600-0587.2013.00266.x.
- Laundré JW. 2010. Behavioral response races, predator — prey shell games, ecology of fear, and patch use of pumas and their ungulate prey. *Ecology* 91:2995–3007.
- Laundré JW., Calderas JMM., Hernández L. 2009. Foraging in the landscape of fear , the predator's dilemma: Where should I hunt ? *The Open Ecology Journal* 2:1–6.
- Laundré JW., Hernández L., Altendorf KB. 2001. Wolves, elk, and bison: reestablishing the “landscape of fear” in Yellowstone National Park, U.S.A. *Canadian Journal of Zoology* 79:1401–1409. DOI: 10.1139/cjz-79-8-1401.
- Laundré JW., Hernandez L., Lopez Medina P., Campanella A., Lopez-Portillo J., Gonzolez-Romero A., Grajales-Tam KM., Burke AM., Gronemeyer P., Browning DM. 2017. The

landscape of fear : the missing link to understand top-down and bottom-up controls of prey abundance ? *Ecology* 95:1141–1152. DOI: 10.1890/13-1083.1.

Laundré JW., Hernandez L., Ripple WJ. 2010. The landscape of fear: Ecological implications of being afraid. *The Open Ecology Journal* 3:1–7. DOI: 10.2174/1874213001003030001.

Lone K., Loe LE., Gobakken T., Linnell JDC., Odden J., Remmen JJ., Mysterud A. 2014. Living and dying in a multi-predator landscape of fear: Roe deer are squeezed by contrasting pattern of predation risk imposed by lynx and humans. *Oikos* 123:641–651. DOI: 10.1111/j.1600-0706.2013.00938.x.

Lyly MS., Villers A., Koivisto E., Helle P., Ollila T., Korpimäki E. 2015. Avian top predator and the landscape of fear: Responses of mammalian mesopredators to risk imposed by the golden eagle. *Ecology and Evolution* 5. DOI: 10.1002/ece3.1370.

Madin EMP., Madin JS., Booth DJ. 2011. Landscape of fear visible from space. *Scientific Reports* 1:1–4. DOI: 10.1038/srep00014.

Makin DF., Payne HFP., Kerley GIH., Shrader AM. 2012. Foraging in a 3-D world: how does predation risk affect space use of vervet monkeys? *Journal of Mammalogy* 93:422–428. DOI: 10.1644/11-MAMM-A-115.1.

Manning AD., Gordon IJ., Ripple WJ. 2009. Restoring landscapes of fear with wolves in the Scottish Highlands. *Biological Conservation* 142:2314–2321. DOI: 10.1016/j.biocon.2009.05.007.

Massey J., Cubaynes S., Coulson T. 2013. Will central Wyoming elk stop migrating to Yellowstone , and should we care ? *Ecology* 94:1271–1274.

- Matassa CM., Trussell GC. 2011. Landscape of fear influences the relative importance of consumptive and nonconsumptive predator effects. *Ecology* 92:2258–2266. DOI: 10.1890/11-0424.1.
- Mella VSA., Banks PB., Mearns C. 2014. Negotiating multiple cues of predation risk in a landscape of fear: What scares free-ranging brushtail possums? *Journal of Zoology* 294:22–30. DOI: 10.1111/jzo.12146.
- Nowak K., Le Roux A., Richards SA., Scheijen CPJ., Hill RA. 2014. Human observers impact habituated samango monkeys' perceived landscape of fear. *Behavioral Ecology* 25:1–6. DOI: 10.1093/beheco/aru110.
- Oriol-Cotterill A., Valeix M., Frank LG., Riginos C., Macdonald DW. 2015. Landscapes of Coexistence for terrestrial carnivores: The ecological consequences of being downgraded from ultimate to penultimate predator by humans. *Oikos* 124:1263–1273. DOI: 10.1111/oik.02224.
- Riginos C. 2015. Climate and the landscape of fear in an African savanna. *Journal of Animal Ecology* 84:124–133. DOI: 10.1111/1365-2656.12262.
- Riginos C., Grace JB. 2008. Savanna tree density, herbivores, and the herbaceous community: bottom-up vs. top-down effects. *Ecology* 89:2228–38.
- Ripple WJ., Beschta RL. 2003. Wolf reintroduction, predation risk, and cottonwood recovery in Yellowstone National Park. *Forest Ecology and Management* 184:299–313. DOI: 10.1016/S0378-1127(03)00154-3.
- Ripple WJ., Beschta RL. 2004. Wolves and the Ecology of Fear: Can Predation Risk Structure

- Ecosystems? *BioScience* 54:755–766. DOI: 10.1641/0006-3568(2004)054[0755:WATEOF]2.0.CO;2.
- Ripple WJ., Beschta RL. 2012. Trophic cascades in Yellowstone: The first 15 years after wolf reintroduction. *Biological Conservation* 145:205–213. DOI: 10.1016/j.biocon.2011.11.005.
- Ritchie EG., Johnson CN. 2009. Predator interactions, mesopredator release and biodiversity conservation. *Ecology Letters* 12:982–998. DOI: 10.1111/j.1461-0248.2009.01347.x.
- Rösner S., Mussard-Forster E., Lorenc T., Müller J. 2014. Recreation shapes a “landscape of fear” for a threatened forest bird species in Central Europe. *Landscape Ecology* 29:55–66. DOI: 10.1007/s10980-013-9964-z.
- Rypstra AL., Schmidt JM., Reif BD., Devito J., Matthew H., Rypstra AL., Schmidt JM., Reif BD., Devito J., Persons MH. 2007. Tradeoffs Involved in Site Selection and Foraging in a Wolf Spider : Effects of Substrate Structure and Predation Risk. *Oikos* 116:853–863.
- Schmidt K., Kuijper DPJ. 2015. A “death trap” in the landscape of fear. *Mammal Research* 60:275–284. DOI: 10.1007/s13364-015-0229-x.
- Searle KR., Stokes CJ., Gordon IJ. 2008. When foraging and fear meet: Using foraging hierarchies to inform assessments of landscapes of fear. *Behavioral Ecology* 19:475–482. DOI: 10.1093/beheco/arn004.
- Shrader AM., Brown JS., Kerley GIH., Kotler BP. 2008. Do free-ranging domestic goats show “landscapes of fear”? Patch use in response to habitat features and predator cues. *Journal of Arid Environments* 72:1811–1819. DOI: 10.1016/j.jaridenv.2008.05.004.
- Steele MA., Rompré G., Stratford JA., Zhang H., Suchocki M., Marino S. 2015. Scatterhoarding

- rodents favor higher predation risks for cache sites: The potential for predators to influence the seed dispersal process. *Integrative Zoology* 10:257–266. DOI: 10.1111/1749-4877.12134.
- Sundararaj V., McLaren BE., Morris DW., Goyal SP. 2012. Can rare positive interactions become common carnivores consume livestock? *Ecology* 93:272–280.
- Suraci JP., Clinchy M., Dill LM., Roberts D., Zanette LY. 2016. Fear of large carnivores causes a trophic cascade. *Nature Communications* 7:10698. DOI: 10.1038/ncomms10698.
- Swanson A., Arnold T., Kosmala M., Packer C. 2016. In the absence of a “landscape of fear”: How lions, hyenas, and cheetahs coexist. *Ecology and Evolution* 6:8534–8545. DOI: 10.1002/ece3.2569.
- Tadesse S. 2012. Habitat quality and foraging ecology of Mountain Nyala (*Tragelaphus buxtoni*) in the Munessa Forest and the Bale Mountains National Park, South-Eastern Ethiopia. Ph.D. Dissertation. Ben Gurion University of the Negev.
- Tadesse S., Kotler BP. 2011. Seasonal Habitat Use by Nubian Ibex (*Capra nubiana*) evaluated with behavioral indicators. *Israel Journal of Ecology and Evolution* 57:223–246.
- Themba'alilhlwa AMM., Monadjem A., McCleery R., Belmain SR. 2017. Domestic cats and dogs create a landscape of fear for pest rodents around rural homesteads. *PloS ONE* 1:1–9. DOI: 10.1371/journal.pone.0171593.
- Tolon V., Dray S., Loison A., Zeileis a., Fischer C., Baubet E. 2009. Responding to spatial and temporal variations in predation risk: space use of a game species in a changing landscape of fear. *Canadian Journal of Zoology* 87:1129–1137. DOI: 10.1139/Z09-101.

- Valeix AM., Loveridge AJ., Davidson Z., Murindagomo F., Macdonald DW., Ecology S., Jan N., Chamaill S., Lyon U De., Mendel BG. 2009. Behavioral Adjustments of African Herbivores to Predation Risk by Lions : Spatiotemporal Variations Influence Habitat Use. *Ecology* 90:23–30.
- Van Der Merwe M., Brown JS. 2008. Mapping the landscape of fear of the cape ground squirrel (*Xerus inauris*). *Journal of Mammalogy* 89:1162–1169. DOI: 10.1644/08-MAMM-A-035.1.
- Willems EP., Hill RA. 2009. Predator-Specific Landscapes of Fear and Resource Distribution : Effects on Spatial Range Use. *Ecology* 90:546–555.
- Zanette LY., Sih A. 2015. Gordon Research Conference on Predator–Prey Interactions: from Genes, to Ecosystems to Human Mental Health. *Bulletin of the Ecological Society of America* 96:165–173. DOI: 10.1634/stemcells.2005-0336.
- Zanette LY., White AF., Allen MC., Clinchy M. 2011. Perceived predation risk reduces the number of offspring songbirds produce per year. *Science* 334:1398–1402.