

A peer-reviewed version of this preprint was published in PeerJ on 3 February 2020.

[View the peer-reviewed version](https://peerj.com/articles/8518) (peerj.com/articles/8518), which is the preferred citable publication unless you specifically need to cite this preprint.

Singh LS, Singh RM, Singh HL. 2020. Epidemiological scenario of dengue in the state of Manipur during the last 3 years. PeerJ 8:e8518
<https://doi.org/10.7717/peerj.8518>

Epidemiological scenario of Dengue in the state of Manipur during the last 3 years

Leimapokpam Shivadutta Singh ^{Corresp. 1}, Rajkumar Manojkumar Singh ², Huidrom Lokhendro Singh ²

¹ Viral Research and Diagnostic Laboratory, Department of Microbiology, JNIMS, Imphal, Manipur, India

² Department of Microbiology, JNIMS, Imphal, Manipur, India

Corresponding Author: Leimapokpam Shivadutta Singh
Email address: shivadutta.n@gmail.com

Background. In recent years, Dengue has been emerging as a global health problem with approximately 2.5 billion people being affected by it. In the last 50 years, the incidence of dengue infection has increased 30-fold, and the World Health Organization (WHO) has estimated that 96 million cases of dengue occur annually. The epidemiology of dengue fever (DF) is complex in the Indian subcontinent as all the four serotypes are circulating. And there is no systematic epidemiological study done on dengue cases in Manipur, a north-eastern state of India. This study is therefore done to report observations on dengue cases from a virus diagnostic and research laboratory of Manipur to present an epidemiological scenario of the state for the last three years. **Method.** We used the dengue data extracted from the laboratory register of Viral Research and Diagnostic Laboratory (VRDL) from 2016 to 2018. All suspected outpatient and inpatients dengue cases from public and private health services are included in the VRDL database whose informed consent were obtained. We evaluated the overall features of the data for generating seasonal pattern, geographical pattern, gender wise distribution, age wise distribution and seroprevalence pattern of dengue cases for the study period from 2016 to 2018. **Results.** A total of 1689 cases of suspected patients of dengue virus infection were tested for dengue ELISA test and 272(16.10%) samples were found to be seropositive. The month wise distribution of dengue cases is quite an interesting as the three years of study shows variant pattern in observation. In all the three years dengue seropositive cases were seen higher in male population. But there is no significant value to the positivity of dengue seropositive towards male than female (The chi-square statistic is 2.1314. The p -value is .344481. The result is *not* significant at $p < .05$.). **Conclusion.** Our study presents a comparative epidemiological study on seroprevalence of dengue in the state of Manipur from the year 2016 to 2018. The findings in the present study extend the knowledge of the geographical distribution and seroprevalence of dengue in the state of Manipur for the last three years. This is an attempt to present epidemiological dengue seroprevalence in the

state of Manipur which in future would be a reference from public health concerns for taking up necessary action plan to curtail the spread of dengue.

1 **Epidemiological Scenario of Dengue in the State of Manipur During the last 3 years**

2 Leimapokpam Shivadutta Singh¹, Rajkumar Manojkumar Singh², Huidrom Lokhendro Singh³

3 ¹Viral Research and Diagnostic Laboratory, Department of Microbiology, Imphal Manipur,
4 India.

5 ² Department of Microbiology, Porompat, Imphal, Manipur, India.

6 ³ Department of Microbiology, Porompat, Imphal, Manipur, India.

7 Corresponding Author:

8 Leimapokpam Shivadutta Singh¹

9 Liwa Road Maibam Leikai, Singjamei, Imphal, Manipur, 795008, India

10 Email address: shivadutta.n@gmail.com

11 **Abstract**

12 **Background.** In recent years, Dengue has been emerging as a global health problem with
13 approximately 2.5 billion people being affected by it .In the last 50 years, the incidence of
14 dengue infection has increased 30-fold, and the World Health Organization (WHO) has
15 estimated that 96 million cases of dengue occur annually. The epidemiology of dengue fever
16 (DF) is complex in the Indian subcontinent as all the four serotypes are circulating. And there is
17 no systematic epidemiological study done on dengue cases in Manipur, a north-eastern state of
18 India. This study is therefore done to report observations on dengue cases from a virus diagnostic
19 and research laboratory of Manipur to present an epidemiological scenario of the state for the last
20 three years.

21 **Method.** We used the dengue data extracted from the laboratory register of Viral Research and
22 Diagnostic Laboratory (VRDL) from 2016 to 2018. All suspected outpatient and inpatients
23 dengue cases from public and private health services are included in the VRDL database whose
24 informed consent were obtained. We evaluated the overall features of the data for generating
25 seasonal pattern, geographical pattern, gender wise distribution, age wise distribution and
26 seroprevalence pattern of dengue cases for the study period from 2016 to 2018.

27 **Results.** A total of 1689 cases of suspected patients of dengue virus infection were tested for
28 dengue ELISA test and 272(16.10%) samples were found to be seropositive. The month wise
29 distribution of dengue cases is quite an interesting as the three years of study shows variant
30 pattern in observation. In all the three years dengue seropositive cases were seen higher in male
31 population. But there is no significant value to the positivity of dengue seropositive towards male

32 than female (The chi-square statistic is 2.1314. The p -value is .344481. The result is *not*
33 significant at $p < .05$).

34 **Conclusion.** Our study presents a comparative epidemiological study on seroprevalence of
35 dengue in the state of Manipur from the year 2016 to 2018. The findings in the present study
36 extend the knowledge of the geographical distribution and seroprevalence of dengue in the state
37 of Manipur for the last three years. This is an attempt to present epidemiological dengue
38 seroprevalence in the state of Manipur which in future would be a reference from public health
39 concerns for taking up necessary action plan to curtail the spread of dengue.

40 Keywords: Dengue, epidemiological, ELISA, Manipur

41 **Introduction**

42 Dengue is an arboviral disease which WHO reported as one of the 8 neglected tropical diseases
43 [1]. It is of global public health concern causing higher morbidity in most of the endemic
44 regions of the world with approximately 2.5 billion people being affected [2,3]. Mostly the urban
45 dwellers in tropical and subtropical regions have higher risk of contracting dengue infection as
46 compared to other regions [4]. According to WHO report dengue cases have increased 30 fold in the
47 last 50 years and estimated that 96 million cases of dengue occur annually [5,6]. About 75% of
48 the world's total disease burden arising due to dengue comes mainly from South-East Asian
49 Region and Western Pacific regions [7]. Falling in the South East Asian region, India has high
50 reporting of dengue fever outbreaks leading to its complexity in health care management [8].

51 Early detection of dengue virus infection (DVI) routinely done by serological test is very
52 essential. IgM antibodies against dengue infection appear by 3rd day and remain circulating in
53 blood for about 3 months which IgM-capture enzyme-linked immunosorbent assay (ELISA) can
54 detect easily. This procedure is used as a standard method for detecting IgM [9].

55 The epidemiology of dengue fever is complex and remains poorly understood due to
56 involvement of status of host, viral and vector which are dependent on demographic, economic,
57 behavioural and varied societal factors. Numerous observations have raised concerns against
58 widely accepted epidemiological characteristics of dengue [10, 11]. Understanding the evolving
59 pattern and trend of dengue fever epidemiology is very crucial in determining the success of
60 prevention and control programmes. The present study was done focussing on various
61 epidemiological factors and also for the sero-prevalence pattern of dengue infection over the past
62 3 (years) in state of Manipur.

63 **Material and Methods**

64 The present retrospective study was carried out at Viral Research and Diagnostic Laboratory
65 (VRDL), Department of Microbiology, JNIMS, Porompat, Imphal East, Manipur during a period
66 of three (3) years from January 2016 to December 2018. Dengue suspected cases were

67 retrospectively identified from the register at the VRDL. We used the dengue data extracted from
68 the laboratory register of VRDL from 2016 to 2018. All suspected outpatient and inpatients
69 dengue cases from public and private health services are included in the VRDL database whose
70 informed consent were obtained.

71 The data extracted includes demographic, days since onset of symptoms, clinical findings,
72 serologic tests (IgM antibodies, NS1 detection). We explored the temporal patterns of dengue
73 cases by plotting monthly incidence for the study period. We evaluated the overall features of the
74 data for generating seasonal pattern, geographical pattern, gender wise distribution, age wise
75 distribution and seroprevalence pattern of dengue cases for the study period from 2016 to 2018.

76 **Results**

77 A total of 1689 cases of suspected patients of dengue virus infection were referred to the VRDL
78 for confirmation of diagnosis of dengue over a period of three years, from January 2016 to
79 December 2018, out of which 272(16.10%) cases were found to seropositive. Maximum cases
80 were enrolled in the year 2017, 1286 cases while the least was seen in the year 2018 with 152
81 cases while in the year 2016 a total of 251 cases were enrolled (**Table 1** and Figure 1).

82 The decrease of percentage of seropositivity is seen from 2016 to 2018 which is a positive sign
83 in connection with public health issues caused by spread of dengue in the state of Manipur. But
84 the suspected cases of dengue enrolled for diagnosis was highest in the year 2017 and least was
85 seen in the year 2018.

86 Though the percentage of positivity was highest in the year 2016 the maximum numbers of
87 positive cases were observed in the year 2017 (**Table 1 & Figure 1**).

88 The month wise distribution of dengue cases is quite an interesting as the three years of study
89 shows different observation. In the year 2016 the dengue cases began from the month of
90 September and peaked during October and sharply decreased with fall of temperature. In the year
91 2017 the dengue case started reporting from the month of May and abruptly rises till the month
92 of August. July and August had maximum dengue positive cases of the same year. Unlike
93 previous year the decline in dengue cases were seen starting from the month of September. The
94 year 2018 has all together a different scenario, the dengue cases were seen sparsely distributed
95 throughout the year except in the month of February, May and June with no dengue positive
96 cases (**Table 2 & Figure 2**).

97 Maximum dengue seropositive cases were observed from the month of September to December
98 for the year 2016, and from the month of May to December for the year 2017 while three small
99 peaks were seen in the case of 2018 (Table 2, Figure 2).

100 In all the three years dengue seropositive cases were seen higher in male population. But there is
101 no significant value to the positivity of dengue seropositive towards male than female (The chi-
102 square statistic is 2.1314. The p -value is .344481. The result is *not* significant at $p < .05$).

103 Even though in our study for the period of three years the male population had higher
104 seropositive as compared to that of female the significant value of this comparison shows no
105 significant at p value 0.05 indicating the dengue cases are not gender specific and there is equal
106 chances of both the gender being infected by dengue virus (**Table 3 & Figure 3**).

107 The age wise distribution of seropositive dengue cases in three years is quite different from each
108 other. In 2016 almost all the age group were found to be equally infected by dengue except age
109 group of upto 10 years showing least positive cases. For the year 2017 highest positive cases
110 were observed in the age groups of 21-30 followed by upto 10 age groups and least was seen in
111 the case of 41-50 age groups. In the year 2018 the highest positive cases were observed in the
112 age group of 11-20 years followed by 21-30 age groups while least was seen in the age group of
113 31-40 and 41-50. There was no positive case detected in the age group of upto 10 years (**Table 4**
114 **& Figure 4**).

115 The dengue positive cases were seen distributed in 6 districts in the year 2016. Imphal West
116 district showing the highest positivity followed by Imphal East. In the year 2017 distribution of
117 dengue positive cases were seen in all the districts of Manipur with Churachandpur district
118 having highest positivity followed by Imphal East, Imphal West. While the least positive cases
119 were observed in Tamenglong district. In the case of 2018 the highest positive cases were from
120 Imphal East district and Thoubal district. While three district namely Bishnupur, Chandel and
121 Tamenglong did not have any positive cases. (**Table-5, Figure 5**).

122 Overall the most positive cases were seen in Churachandpur district followed by Imphal West,
123 Imphal East, Senapati, Thoubal, Chandel. While Bishnupur, Ukhrul and Tamenglong districts
124 had least positive cases till the year 2018.

125 Discussion

126 Due to progressive improper urbanization, lack of proper sanitation, poor drainage system in
127 many places of India, the *Aedes* mosquitos' breeding ground has expanded favouring higher rate
128 of breeding and multiplication leading to several periodic raise of dengue infection in the past
129 decade.

130 Spread of awareness of dengue infection among health care workers and public has paved the
131 way of increased serological tests leading to higher rate of detection of dengue cases over the
132 past few years (3).

133 In our study a total of 1689 dengue cases were analysed out of which 272 cases were positive for
134 dengue virus infection. This positivity is higher than the study done by Atul et al., 2011 with

135 time span of 5 years. The proportion of males was found to be higher than females in our study
136 (1.37:1). This finding of high preponderance of males in dengue fever than females was similarly
137 reported in the studies done by Jimmy et al., 2014; Atul et al., 2011 and Mohan et al., 2013.

138 Comparatively in the three years of studies highest dengue infection was seen in the age group of
139 21yrs to 30yrs which is in accordance with the findings of the study done by Sodani S et al.,
140 2015 and Rubina et al., 2018.

141 To identify the seasonal variation of the disease, analysis of the data on monthly basis
142 were done. A gradual increase in cases was noticed from September with a peak in October, in
143 the year 2016 which is quite close to finding by Atul et al., 2011 but in the year 2017 the dengue
144 cases started to increase from the month of May with a peak in July, August. However, the
145 seasonal variation in the year 2018 seems quite different with low level of dengue cases and
146 uneven distribution pattern throughout the year. Such uneven pattern of seasonal variation yearly
147 is quite different from the studies done by Mohan et al., 2013 and Atul et al., 2011.

148 The probable reason of uneven pattern of seasonal distribution might be due to changing pattern
149 of rainy season in the state of Manipur and also may be due to change in climatic changes due to
150 deep deforestation and rapid construction for development in the state.

151 **Conclusion**

152 Although dengue infection has been shown to correlate with rainy season the pattern of variation
153 seems quite different geographically. Our study presents a comparative epidemiological study on
154 seroprevalence of dengue in the state of Manipur from the year 2016 to 2018 on the basis ELISA
155 diagnosis done at VRDL, Microbiology Department, JNIMS, Imphal, Manipur. The findings in
156 the present study extend the knowledge of the geographical distribution and seroprevalence of
157 dengue in the state of Manipur for the last three years.

158 Laboratory-based active surveillance systems are needed to complement the current passive
159 surveillance and control programs. Regular sentinel surveillance and sample surveys during
160 interepidemic periods are also necessary to detect and monitor sudden increases in the numbers
161 of dengue cases or changes in the predominant serotypes which usually precede major outbreaks.

162 The tropical climate makes Manipur susceptible to co-circulation of different arboviruses, such as
163 DENV, CHIKV, and JEV, already reported in the state. These viral infections are oligosymp-
164 tomatic and clinically similar, hampering the differential diagnosis. Furthermore, there is still a
165 need of improvement of laboratory diagnosis for dengue, since serologic tests available often
166 take several days to be completed and present high cross-reactivity among DENV serotypes.
167 Beyond the differentiation between the arboviruses co-circulating, efficient diagnosis allows
168 appropriate patient care, generation of accurate epidemiological data, and implementation of
169 effective public health interventions. This is an attempt to present epidemiological dengue

170 seroprevalence in the state of Manipur which in future would be a reference from public health
171 concerns for taking up necessary action plan to curtail the spread of dengue.

172 **Acknowledgements**

173 We acknowledge our laboratory technician Mr Kh Bipin Singh and Mrs Sulla Yumnam for their
174 technical support.

175 **References**

- 176 1. World Health Organization. Neglected tropical diseases. WHO press; 2016; Available
177 from www.who.int/neglected-diseases/disease/en/2016.
- 178 2. World Health Organization and the Special Programme for Research and Training in
179 Tropical Diseases (TDR). Dengue: Guidelines for Diagnosis, Treatment, Prevention and
180 Control. Geneva, Switzerland: WHO Press; 2009. p. 3-147. Available from:
181 http://www.who.int/publications-2009-9789241547871_eng.pdf.
- 182 3. Sodani S, Ahirwar S, Mutha A, Hawaldar R. Retrospective study and evaluation of rapid
183 and ELISA tests for diagnosis of dengue in a tertiary care hospital. Panacea Journal of
184 Medical Sciences, May – August 2015;5(2); 81-84.
- 185 4. Halstead SB. Dengue. Lancet. 2007 Nov 10;370 (9599):1644–52.
- 186 5. WHO, Dengue Guidelines for Diagnosis, Treatment, Prevention and Control: New
187 Edition, (2009), pp. 1–147 <http://www.who.int/rpc/guidelines/9789241547871>
- 188 6. S. Bhatt, P.W. Gething, O.J. Brady, J.P. Messina, A.W. Farlow, C.L. Moyes, J.M. Drake,
189 J.S. Brownstein, A.G. Hoen, O. Sankoh, M.F. Myers, D.B. George, T. Jaenisch, G.R.
190 Wint, C.P. Simmons, T.W. Scott, J.J. Farrar, S.I. Hay. The global distribution and burden
191 of dengue, Nature 496 (7446) (2013) 504–507.
- 192 7. Garg A, Garg J, Rao YK, Upadhyay GC, Sakhuja S. Prevalence of dengue among
193 clinically suspected febrile episodes at a teaching hospital in North India. J Infect Dis
194 Immun. 2011; 3:85-89.
- 195 8. Dr. Mohan D Kashinkunti, Dr. Shiddappa, Dr. Dhananjaya M. A Study of Clinical
196 Profile of Dengue Fever in a Tertiary Care Teaching Hospital. Sch. J. App. Med. Sci.,
197 2013; 1(4):280-282.
- 198 9. Kuno G, Cropp CB, Wong-Lee J, Gubler DJ. Evaluation of an IgM immunoblot kit
199 for dengue diagnosis. Am J Trop Med Hyg 1998 59:757-762.
- 200 10. Guha-Sapir D, Schimmer B. Dengue fever: New paradigms for a changing epidemiology.
201 Emerg Themes Epidemiol 2005; 2:1.
- 202 11. Guzman MG, Halstead SB, Artsob H, Buchy P, Farrar J, Gubler DJ, et al. Dengue: A
203 continuing global threat. Nat Rev Microbiol 2010; 8 (12 Suppl):S7-16.
- 204 12. Rubina Paul, Loveena Oberoi, Kanwardeep Singh, Pushpa Devi. Molecular
205 Characterization and Serological Analysis of Dengue Viruses in Amritsar District.
206 International Journal of Contemporary Medical Research 2018;5(3):C10-C14.

- 207 13. Xiaoxi O, 2, Xin J, Dayong G, Yaou Z, S.K. Kong, Chaoxin, Weidong X. Dysregulated
208 Serum MiRNA Profile and Promising Biomarkers in Dengue-infected Patients. *Int. J.*
209 *Med. Sci.* 2016; 13(3): 195-205.
- 210 14. Atul Garg, Jaya Garg, YK Rao, GC Upadhyay and Suman Sakhuja. Prevalence of dengue among
211 clinically suspected febrile episodes at a teaching hospital in North India. *J. Infect. Dis. Immun*
212 *.* 2011; 3(5): 85-89.
- 213 15. Jimmy Antony, T.M. Celine. A descriptive study on dengue fever reported in a Medical
214 College Hospital. *Sahel Medical Journal.* 2014; 17(3): 83-86.

Figure 1 (on next page)

Year-wise distribution of dengue sero-positive cases

Blue clour bar represents total dengue cases and red represents dengue positive cases in a particular year.

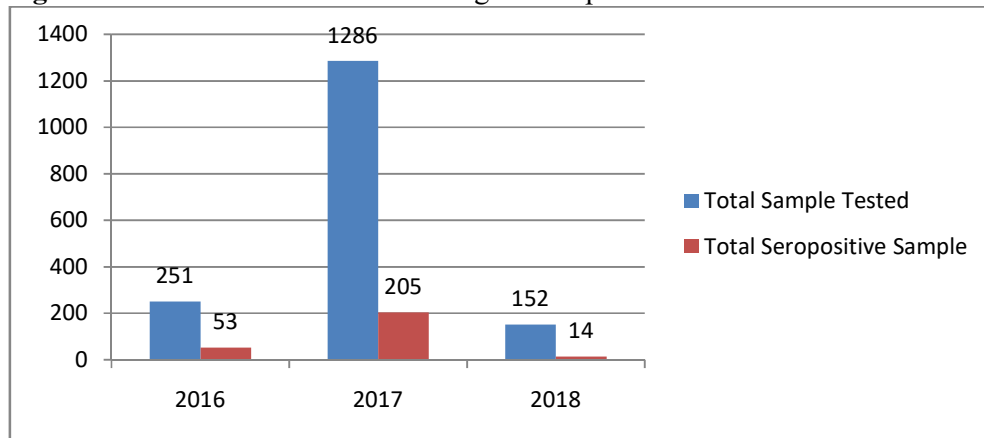
Figure 1. Year-wise distribution of dengue sero-positive cases

Figure 2 (on next page)

Dengue positive cases distribution month wise over three year's period

The blue line indicated the number of dengue positive in the year 2016, the red line indicates the same for the year 2017 and the green for the year 2018

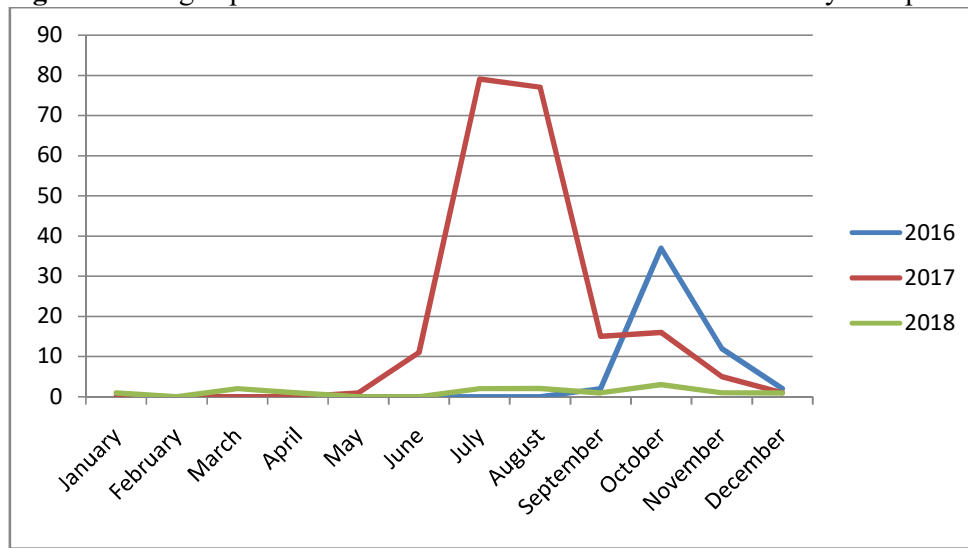
Figure 2. Dengue positive cases distribution month wise over three year's period

Figure 3(on next page)

Dengue positive cases among male and female

The first set of blue, red and green bar represents the total number of seropositive dengue cases in the year 2016,2017 and 2018. The second set and third set indicates the total number of dengue positive male and females respectively.

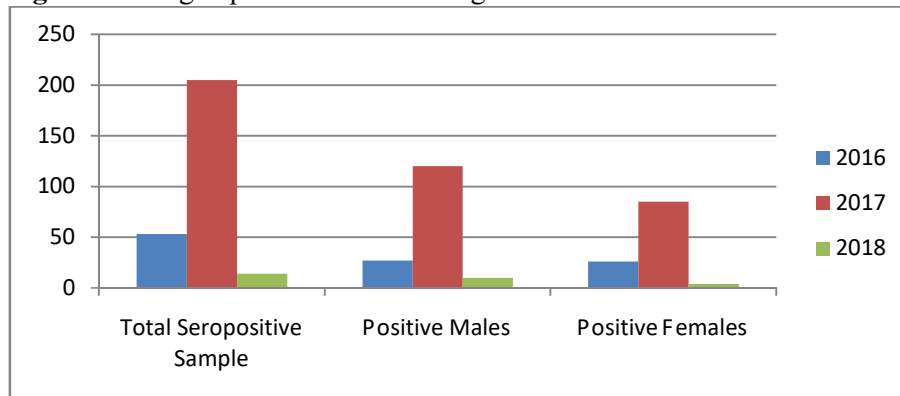
Figure 3. Dengue positive cases among male and female

Figure 4(on next page)

Age Wise Distribution of Dengue Positive Cases from the year 2016-2019

Blue, red and green bars indicates the number of dengue positive cases accordingly with age wise grouping.

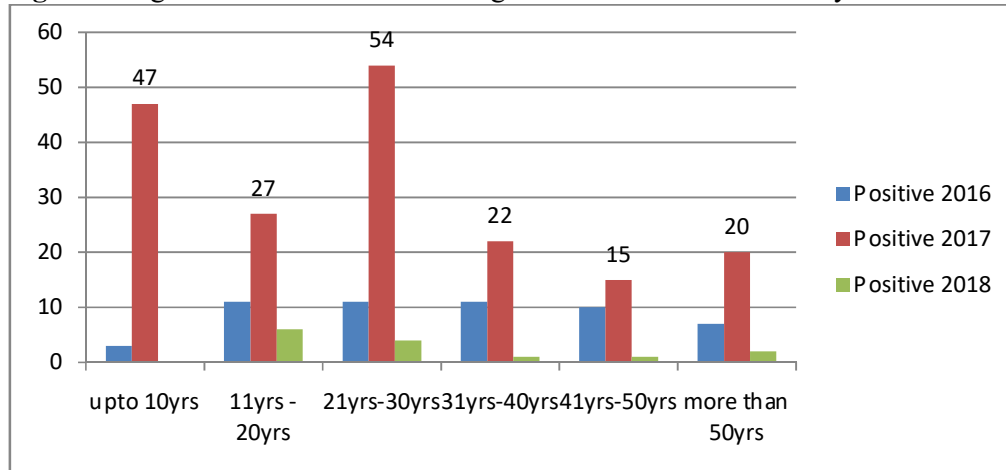
Figure 4. Age Wise Distribution of Dengue Positive Cases from the year 2016-2019

Figure 5 (on next page)

District wise distribution of dengue positive cases

Blue, red and green horizontal bar indicates the total number of dengue positive cases distributed district wise.

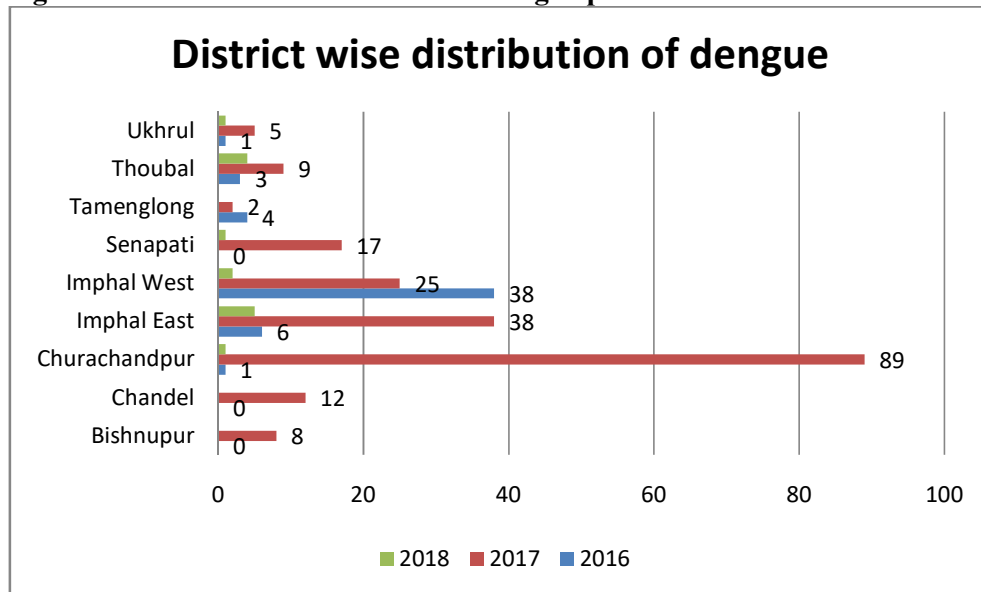
Figure 5. District wise distribution of dengue positive cases

Table 1 (on next page)

Year wise distribution of positive dengue cases

The data gives the number of dengue cases, dengue positive cases year wise.

Year	Total Sample Tested	NSI Positive	IgM Positive	Total
2016	251	35 (13.94%)	18 (7.17%)	53(21.11%)
2017	1286	24(1.87%)	181(14.07%)	205 (15.94%)
2018	152	4(2.63%)	10(6.58%)	14(9.21%)
Total	1689	63(3.73%)	209(12.37%)	272(16.10%)

The chi-square statistic is 94.9796. The p -value is < 0.00001 . The result is significant at $p < .05$.

1 *Table 1. Year wise distribution of positive dengue cases*

2

Table 2 (on next page)

Month wise/season wise distribution of sero-positive dengue cases

Each data represents the total number of dengue positive cases in a particular month for the particular year.

Name of the Month	Seropositive (2016)	Seropositive (2017)	Seropositive (2018)
January	0	0	1
February	0	0	0
March	0	0	2
April	0	0	1
May	0	1	0
June	0	11	0
July	0	79	2
August	0	77	2
September	2	15	1
October	37	16	3
November	12	5	1
December	2	1	1
Total	53	205	14

1 **Table 2. Monthwise/season wise distribution of sero-positive dengue cases**

2

Table 3 (on next page)

Gender wise dengue sero-positive distribution

The data shows male and female dengue positive cases from the year 2016 to 2018

Year	Total Sero-positive Sample	Positive Males	Positive Females
2016	53	27	26
2017	205	120	85
2018	14	10	4

1 **Table 3. Gender wise dengue sero-positive distribution**

2

Table 4(on next page)

Age wise sero-positive cases

The data shows the distribution of dengue positive cases accordingly with age groups.

Age	Positive 2016	Positive 2017	Positive 2018	Total
upto 10	3	47	0	50(18.38%)
11-20	11	27	6	64(23.53%)
21-30	11	54	4	69(25.37%)
31-40	11	22	1	34(12.5%)
41-50	10	15	1	26(9.56%)
more than 50	7	20	2	29(10.66%)
				272

1 **Table 4.**Age wise sero-positive cases

2

3

Table 5 (on next page)

District wise distribution of dengue positive cases

The data indicated the districts with number of dengue positive cases from the year 2016-2018

Name of District	2016	2017	2018	Total
Bishnupur	0	8	0	8
Chandel	0	12	0	12
Churachandpur	1	89	1	91
Imphal East	6	38	5	49
Imphal West	38	25	2	65
Senapati	0	17	1	18
Tamenglong	4	2	0	6
Thoubal	3	9	4	16
Ukhrul	1	5	1	7

1 **Table 5.**District wise distribution of dengue positive cases

2