

**A peer-reviewed version of this preprint was published in PeerJ on 3 October 2019.**

[View the peer-reviewed version](https://doi.org/10.7717/peerj.7597) (peerj.com/articles/7597), which is the preferred citable publication unless you specifically need to cite this preprint.

Igawa T, Takahara T, Lau Q, Komaki S. 2019. An application of PCR-RFLP species identification assay for environmental DNA detection. PeerJ 7:e7597 <https://doi.org/10.7717/peerj.7597>

# An application of PCR-RFLP species identification assay for environmental DNA detection

Takeshi Igawa<sup>Corresp., 1</sup>, Teruhiko Takahara<sup>Corresp., 2, 3</sup>, Quintin Lau<sup>4</sup>, Shohei Komaki<sup>5</sup>

<sup>1</sup> Amphibian Research Center, Hiroshima University, Higashi-Hiroshima, Hiroshima, Japan

<sup>2</sup> Faculty of Life and Environmental Science, Shimane University, Matsue, Shimane, Japan

<sup>3</sup> Estuary Research Center, Shimane University, Matsue, Shimane, Japan

<sup>4</sup> Department of Evolutionary Studies of Biosystems, Graduate University for Advanced Studies, Hayama, Kanagawa, Japan

<sup>5</sup> Division of Biomedical Information Analysis, Iwate Tohoku Medical Megabank Organization, Disaster Reconstruction Center, Iwate Medical University, Shiwa, Iwate, Japan

Corresponding Authors: Takeshi Igawa, Teruhiko Takahara

Email address: [tigawa@hiroshima-u.ac.jp](mailto:tigawa@hiroshima-u.ac.jp), [ttakahara@life.shimane-u.ac.jp](mailto:ttakahara@life.shimane-u.ac.jp)

Recent advancement of eDNA methods for surveying species in aquatic ecosystems has been used for various organisms and contributed to monitoring and conservation of species and environments. Amphibians are one of the promising taxa which could be monitored efficiently by using eDNA. However, the cost of the eDNA detection can be quite high and requires instruments that are not usually installed in ecology laboratories. For aiding researchers foraging into eDNA studies of amphibians, especially those not specialized in molecular biology, we developed a cost efficient protocol using PCR-RFLP method. We attempted to detect eDNA of three Japanese *Rana* species (*R. japonica*, *R. ornativentris*, and *R. tagoi tagoi*) in various spatial scales including an area close to the Fukushima Nuclear Power Plant (FNPP) where the environment is recovering after the disaster in 2011. Our PCR-RFLP protocol was successful in detecting *Rana* species in static water in both laboratory and field; however, it could not detect *Rana* species in non-static water samples from the field. Even a more sensitive detection method (standard qPCR) was unable to detect frogs in all non-static water samples. We speculate that our new protocol is effective for frogs living in lentic habitats, but not for lotic habitats which may still require the gold standard of field observation for detection approach.

# An application of PCR-RFLP species identification assay for environmental DNA detection.

Takeshi Igawa<sup>1</sup>, Teruhiko Takahara<sup>2,3</sup>, Quintin Lau<sup>4</sup>, Shohei Komaki<sup>5</sup>

<sup>1</sup>Amphibian Research Center, Hiroshima University, Higashi-Hiroshima, Hiroshima, Japan

<sup>2</sup>Faculty of Life and Environmental Science, Shimane University, Matsue, Shimane, Japan

<sup>3</sup>Estuary Research Center, Shimane University, Matsue, Shimane, Japan

<sup>4</sup>Department of Evolutionary Studies of Biosystems, Sokendai, The Graduate University for Advanced Studies, Hayama, Kanagawa, Japan

<sup>5</sup>Division of Biomedical Information Analysis, Iwate Tohoku Medical Megabank Organization, Disaster Reconstruction Center, Iwate Medical University, Shiwa, Iwate, Japan

Corresponding Author:

Takeshi Igawa<sup>1</sup>, Teruhiko Takahara<sup>2</sup>

<sup>1</sup>1-3-1 Kagamiyama, Higashi-Hiroshima, Hiroshima, 739-8526, Japan

<sup>2</sup>1060 Nishikawatsu-cho, Matsue, Shimane, 690-8504, Japan

Email address: [tigawa@hiroshima-u.ac.jp](mailto:tigawa@hiroshima-u.ac.jp) (TI), [ttakahara@life.shimane-u.ac.jp](mailto:ttakahara@life.shimane-u.ac.jp) (TT)

## Abstract

Recent advancement of eDNA methods for surveying species in aquatic ecosystems has been used for various organisms and contributed to monitoring and conservation of species and environments. Amphibians are one of the promising taxa which could be monitored efficiently by using eDNA. However, the cost of the eDNA detection can be quite high and requires instruments that are not usually installed in ecology laboratories. For aiding researchers foraging into eDNA studies of amphibians, especially those not specialized in molecular biology, we developed a cost efficient protocol using PCR-RFLP method. We attempted to detect eDNA of three Japanese *Rana* species (*R. japonica*, *R. ornativentris*, and *R. tagoi tagoi*) in various spatial scales including an area close to the Fukushima Nuclear Power Plant (FNPP) where the environment is recovering after the disaster in 2011. Our PCR-RFLP protocol was successful in detecting *Rana* species in static water in both laboratory and field; however, it could not detect *Rana* species in non-static water samples from the field. Even a more sensitive detection method (standard qPCR) was unable to detect frogs in all non-static water samples. We speculate that our new protocol is effective for frogs living in lentic habitats, but not for lotic habitats which may still require the gold standard of field observation for detection approach.

## Introduction

Spatial distribution of organisms is one of the key components for understanding ecology of a species and the ecosystem of the area. In addition, monitoring of species and population distribution are essential for conservation of a species. However, traditional visual surveys and monitoring techniques can be problematic, related to seasonal, ecological, and ethological differences within a target species, and difficulties in distinguishing between sympatric related species and varied life stages. In recent studies, environmental DNA (eDNA) methods, which involve the detection of species-specific DNA fragments in the environment, have been used for surveying species in aquatic ecosystems (Takahara, Minamoto & Doi, 2013; Rees et al., 2014; Goldberg, Strickler & Pilliod, 2015). This is an efficient and non-invasive method and thus has been used for various organisms including both plants and animals in terrestrial and aquatic environments (Thomsen & Willerslev, 2015).

However, such eDNA detection experiments usually require expensive instruments and reagents for quantitative PCR (qPCR) (for single species) or next generation sequencing (NGS) (for multiple species). In addition, the number of institutions and researchers that can implement eDNA experiments has been quite limited. For ensuring sustainability of monitoring activities and conservation of species diversity, an efficient method should be developed for easy application in many laboratories close to a field site. Especially for amphibians, several studies support that detection is more efficient with eDNA than with traditional monitoring approaches (Olson, Briggler & Williams, 2013; Pilliod et al., 2013; Biggs et al., 2015; Buxton et al., 2017). Amphibians are also intrinsic target species for eDNA studies in terms of their ecology because they have both aquatic and terrestrial life cycles and inhabit different kinds of water bodies, such as river (lotic) and pond (lentic) water systems, depending on species and life stages.

Although the sensitivity and cost of detection methods could be correlated, applying the low cost PCR-RFLP for eDNA detection has already been successful in differentiating several salmonid fish species using nested PCR (Clusa et al., 2017). However, to-date this method has not been applied to terrestrial organisms including amphibians. Therefore, it would be important to develop a cost efficient protocol using PCR-RFLP method for detection of eDNA fragments, instead of qPCR, in amphibian species.

In this study, we attempted to develop a protocol for detecting the presence of three true frog species from the *Rana* genus (*R. japonica*, *R. ornativentris* and *R. tagoi tagoi*). These species are distributed across mainland Japan, including Honshu, Shikoku, and Kyushu islands. While habitat selection of the three species differs to some extent, each species inhabits a wide range of microhabitats. *Rana japonica* and *R. ornativentris* are mainly found in grasslands that range from lowlands to hillsides; they migrate to marshes, ponds, or paddy fields before the breeding season in winter (Maeda & Matsui, 1999), but *R. ornativentris* tends to dwell at higher elevations than *R. japonica* (Kuramoto & Ishikawa, 2000; Osawa & Katsuno, 2001). Another brown frog species, *R. tagoi tagoi*, resembles *R. ornativentris* in morphology and is distributed in hilly areas, sometimes in sympatry with the other two species. However, *R. t. tagoi* lay their eggs under the ground on the edges of small mountain streams during spring. *R. japonica* and *R.*

*ornativentris* are often located near areas of human development and thus could be threatened with population decline due to human-related habitat loss. As a result, these two species have been listed as locally threatened in some regions (e.g., Natural Environment Division, Bureau of Environment, Tokyo Metropolitan Government, 2010; Natural Environment Division, Department of Environmental Affairs, Fukuoka Prefectural Government, 2014). In addition, these species are key indicator species for assessing the degree of disturbance to the natural environment, especially in Japanese traditional rural areas which are often called “Satoyama” (Kitagawa, 2002). For example, agencies like the Biodiversity Center of Japan, the Nature Conservation Bureau, and the Ministry of the Environment (e.g., Monitoring-Site 1000 project) have conducted ecological monitoring surveys and listed the occurrence of *Rana* species in numerous reports.

For development of our new protocol in this study, we adapted the PCR-RFLP method for recognizing these three *Rana* species (Igawa et al., 2015) for eDNA detection. In this method, mitochondrial 16S rRNA fragments were amplified and digested with two restriction enzymes (SpeI and HphI) to identify species within the samples by electrophoretic banding pattern of the digested fragments. To evaluate the performance of our protocol, we attempted to detect eDNA diluted in water samples and compared the results with visual observation and qPCR methods. The water samples were taken from various spatial scales from regional levels to microhabitat in addition to water tank experiments. In particular, we obtained regional samples covering 60 km from Fukushima Nuclear Power Plant (FNPP) in spring and summer seasons and assessed presence information of *R. t. tagoi* in regenerating habitats after the disaster in 2011. Finally, we reported the effectivity of the protocol for distribution surveys in the field.

## Materials & Methods

### *Water tank experiment*

To characterize basic performance of our PCR-RFLP assay for environmental DNA detection, we firstly conducted model experiments by preparing eight different water tank culture setups with the following animals: (1) forty *R. japonica* tadpoles for two days, (2) forty *R. japonica* tadpoles for five days, (3) nine *R. japonica* and one *R. ornativentris* adults for one day, (4) one *R. japonica* and nine *R. ornativentris* adults for one day, (5) five *R. japonica* and five *R. ornativentris* adults for one day, (6) one *R. t. tagoi* and nine *R. japonica* adults for one day, (7) one *R. t. tagoi* and nine *R. ornativentris* adults for one day, (8) negative control- no animals for one day (but water was used previously for other frog species). The tadpoles of *R. japonica* were collected from a pond in Hiroshima University campus in Higashi-hiroshima city (Hiroshima Prefecture) in April 2016 just before the experiment and were classified as growth stage 33 according to Tahara (1974). The adult frogs of *R. japonica*, *R. ornativentris*, and *R. t. tagoi* were collected from Higashi-hiroshima city in 2014, Kita-hiroshima-cho (Hiroshima Prefecture) in 2015, and Kisa, Miyoshi city (Hiroshima Prefecture) in 2011, respectively, and reared in the Amphibian Research Center, Hiroshima University, until the start of experiments. We transferred

and kept animals in plastic tanks (450 × 650 × 150 mm) filled with 8 L tap water (water level about 30 mm which immerses half body of adults). The animals were not fed during the experiment and were held at room temperature around 18°C under 12 h: 12 h light-dark cycle. We collected a 500 mL water sample from each tank after the specified periods using DNA-free 500 mL bottles, and samples were immediately transferred to a -30°C freezer. These experiments were conducted in April 2016 for tadpoles (tanks 1 and 2) and September 2016 for adults (tanks 3 to 8); all animals were returned to the original habitat or enclosures under healthy conditions soon after the experiments.

All procedures were approved by the Hiroshima University Animal Research Committee (Approval number: G17-4) and were carried out in accordance with the recommendations in the Guide for the Care and Use of Laboratory Animals of the Hiroshima University Animal Research Committee.

### ***Field survey and experiments***

To check the performance and sensitivity of PCR-RFLP assay for eDNA from the field environment, we collected water samples from ponds and rivers at 28 sites (Fig. 1). For exemplification of applicability in various scales of distribution monitoring studies, we collected samples in three hierarchical levels: (A) regional samples covering 60 km from Fukushima Nuclear Power Plant (FNPP) (sample no. 1 – 19), (B) local area samples from a single body of water in Hiroshima University campus, Higashi-Hiroshima (sample no. 20 – 25), and (C) microhabitat level samples from a single breeding site of *R. japonica* in Etajima Island, Hiroshima Prefecture (N 34.27067, E 132.47679) (sample no. 26 and 27). We collected 500 mL water samples from the water surface at each site using DNA-free 500 mL bottles. Samples from Fukushima (A) were collected between 10:00 – 16:00 during two periods, 12 to 14 May 2015 and 11 to 13 August 2015. Samples from Hiroshima University (B) and Etajima (C) were collected between 15:00 – 16:00 on 11 April and 13:00 on 17 April in 2016, respectively. To prevent contamination by field sampler at each site, we carefully collected samples firstly in downstream sites and moved upstream for subsequent sampling. Sampled water bottles were immediately transported on ice in a cooling box to the laboratory and stored at -30°C until the laboratory experiments mentioned below. In addition, we recorded the presence and non-detection of frogs and/or tadpoles by visual observation, exploring the vicinity of the field sampling sites. For sampling in Fukushima, permission to enter the survey area was obtained from the local governments [Iitate Village (approval number: 2705-01 and 2707-0) and Namine Town (approval number: 755 and 1959)]. Notification of the field survey was accepted by the Iwaki District Forest Office, and permits were obtained from private landowners as required for each site.

### ***DNA extraction and PCRs***

The water samples stored at -30 °C were thawed and vacuum-filtered through glass microfiber filters (GF/F, GE Healthcare Bio-Sciences, Pittsburgh, PA, USA) with 0.7 µm



particle retention. Sodium hypochlorite treatment (10% for 5 min, rinsed with distilled water) was performed in between samples to avoid contamination. Filtering controls (i.e., 500 mL of distilled water) were filtered on each day of sample filtration. The filter papers were wrapped in aluminum foil, placed in plastic bags, and stored at  $-30^{\circ}\text{C}$ . The eDNA was extracted from the filters according to the methods of Uchii, Doi & Minamoto (2016), using a Salivette tube (Sarstedt, Nümbrecht, Germany) and a DNeasy Blood and Tissue Kit for DNA purification (Qiagen, Hilden, Germany). The filters were incubated by submersion in a mixed buffer (400  $\mu\text{L}$  buffer AL and 40  $\mu\text{L}$  Proteinase K; Qiagen) using a Salivette tube in a dry oven at  $56^{\circ}\text{C}$  for 30 min. The tubes with filters were centrifuged at 5,000 g for 5 min at room temperature. Then, 220  $\mu\text{L}$  of TE (Tris-EDTA) buffer (pH: 8.0; 10 mM Tris-HCl and 1 mM EDTA) was added to the filters, and tubes were centrifuged again at 5,000 g for 5 min. Buffer AL (200  $\mu\text{L}$ ) and 100% ethanol (600  $\mu\text{L}$ ) were then added to each filtrate and mixed by pipetting. The mixture was applied to a DNeasy Mini spin column and centrifuged at 6,000 g for 1 min. This step was repeated until the mixture was completely processed. We followed the manufacturer's instructions for further steps, and eDNA was eluted from each sample solution with a final volume of 100  $\mu\text{L}$  Buffer AE.

The eDNA samples were then used for PCR-RFLP assay to detect DNA from the three target Japanese brown frog species based on Igawa et al (2015). This method utilizes species-specific restriction enzyme (SpeI and HphI) digestion sites in a partial nucleotide fragment of mitochondrial 16S rRNA amplified by PCR. However, the oligonucleotide primers used by Igawa et al. (2015) could amplify 16S rRNA fragments originated from other vertebrate species including humans and showed similar banding patterns. Therefore, we altered the primers to amplify a shorter region in which only the three target frog species have restriction sites. Specifically, we modified the method of Igawa et al (2015) by changing the primers: F96 5'-GTCCAGCCTGCCAGTGAYAAA -3' and R19 5'- GTTGAACAAACGAACCATTTGGT -3'. These new primers were designed from an internal region of the previous study and amplify shorter fragments (approximately 500 bp).

For higher efficiency of PCR amplification, we also modified the PCR protocol described by Igawa et al. (2015). In this study, PCR was conducted using KOD FX Neo (TOYOBO, Osaka, Japan). The 20  $\mu\text{L}$  total volume of reaction solution included 10  $\mu\text{L}$  of  $2\times$  PCR Buffer for KOD FX Neo, 2  $\mu\text{L}$  of 2mM dNTPs, 10 pmole of each primer, 3  $\mu\text{L}$  of eDNA solution and 0.4 U of KOD FX Neo. Thermal cycling was performed using two-step PCR cycling:  $95^{\circ}\text{C}$  for 3 min followed by 35 cycles of  $98^{\circ}\text{C}$  for 10 s and  $65^{\circ}\text{C}$  for 30 s. Following PCR amplification, independent digestion using two restrictions enzymes (SpeI and HphI) and electrophoresis were conducted in the same manner as Igawa et al. (2015). Then, 5  $\mu\text{L}$  of the original PCR product or 15  $\mu\text{L}$  of each PCR product digested with the two restriction enzymes were electrophoresed on a 2% agarose gel for 30 min at 100 V and visualized.

For *R. japonica*, the amplified fragments are expected to have different digestion patterns between the western (including Hiroshima) and northern part (including Fukushima) of the Japanese mainland. In all *R. japonica* populations, amplicons digested with SpeI result in 255

and 259 bp subfragments. However, after HphI digestion, *R. japonica* frogs from the western part have no subfragments while those from the northern part have 301 and 220 bp subfragments. For *R. ornativentris* and *R. t. tagoi*, amplified fragments are commonly digested only with HphI, resulting in 231, 199 and 86 bp subfragments and 313 and 200 bp subfragments, respectively. To confirm the specificity of eDNA detection by our PCR-RFLP method, some of the amplified fragments were directly sequenced using the same primers and BigDye Terminator ver 3.1 (Life Technologies) after PEG precipitation. The obtained nucleotide sequences were annotated by NCBI blastn (<https://blast.ncbi.nlm.nih.gov>).

In addition, we conducted real-time quantitative PCR (qPCR) assay for samples from Fukushima to compare the sensitivity of eDNA detection for *R. t. tagoi*. At first, we defined regions to design the primers and TaqMan MGB probes for the qPCR assays for this species using PrimerExpress 3.0.1 (Thermo Fisher Scientific, Carlsbad, CA, USA), for amplification of 106 bp fragments: Rtag16SrRNA-F, 5'-AGAAGGAACTCGGCAAACCTT-3'; Rtag16SrRNA-R, 5'-CCGCGGCCGTTGAAT-3'; Rtag16SrRNA-Pr, 5'-[FAM]-CCAGCCTGCCCAGTG-[NFQ]-[MGB]-3'. To prove that the primers did not amplify other sympatric frog species, we confirmed no amplification when the primers were applied to DNA extracted from *R. japonica* and *R. ornativentris* tissues. However, in addition to *R. t. tagoi*, three closely related species (i.e., *R. sakuraii*, *R. t. okiensis* and *R. t. yakushimensis*) were also detected in an *in silico* specificity screen, which was performed using Primer-BLAST, with the setting “nr” for database and “vertebrates” for organisms parameters (<http://www.ncbi.nlm.nih.gov/tools/primer-blast/>). *Rana sakuraii* may inhabit sympatrically with *R. t. tagoi* in our field survey. In contrast, *Rana t. okiensis* and *R. t. yakushimensis* never share distribution with our target species because they are only found on Oki island in Shimane Prefecture and the Yakushima islands in Kagoshima Prefecture, respectively. Thus, in this study, the qPCR primers we developed are specific for *R. t. tagoi/R. sakuraii*.

Environmental DNA was quantified using a StepOnePlus™ Real-Time PCR system (Life Technologies, Carlsbad, CA, USA). Each TaqMan reaction contained 10 µL of TaqMan® Environmental Master Mix 2.0 (Thermo Fisher Scientific), 1 µL of the primer (900 nM)/probe (125 nM) mix, 7 µL of distilled water, and 2 µL of eDNA extract. The PCR cycles were as follows: 2 min at 50 °C, 10 min at 95 °C, then 55 cycles of 15 s at 95 °C, and 60 s at 60 °C. In order to produce standard DNA for the qPCR, a target amplicon was inserted into a pMD20-T vector (Takara Bio, Shiga, Japan), and the vector was digested with BamHI. A dilution series of the plasmid containing  $1 \times 10^1$  to  $1 \times 10^4$  copies was amplified as standards in duplicates in all qPCR assays. The qPCR for each sample was performed in 8 wells, and the mean was used as the concentration of eDNA (copies/L). If any of the 8 replicates of each sample yielded a positive result, the sample was designated as containing *R. t. tagoi/R. sakuraii* eDNA. As a negative control, each qPCR assay included 8 wells that contained no template (2 µL of DNA-free water) (i.e., NTC). In addition, using the primer-probe set of this species, qPCR amplicons were sequenced directly from a positive PCR of the field samples (N = 6) after treatment with ExoSAP-IT (USB Corporation, Cleveland, OH, USA) or DNA fragment isolation with



FastGene™ Gel/PCR Extraction Kit (NIPPON Genetics, Tokyo, Japan) following agarose gel electrophoresis. Products were sequenced by a commercial sequencing service (Takara Bio, Shiga, Japan) or by our experiment using ABI3130xl automated sequencer (Thermo Fisher Scientific).

The range of qPCR efficiency across the entire study, calculated from the slope of standard curves, was 91.937% to 94.716%, and the  $R^2$  value for standard curve was 0.997. Since we could detect two copies of DNA in at least one of the three replicates, we defined the limit of detection (LOD) for DNA from *R. t. tagoi* using qPCR assay as two copies.

To avoid contamination, we followed a unidirectional lab flow. That is, we performed all PCR protocols, including preparation/addition of the standards and qPCR cycling, in two separate rooms (rooms 1 and 2, respectively). To prevent carry-over contamination, no equipment or samples were returned from room 2 to room 1.

## Results

### *Water tank experiments*

For the eDNA solutions from water tank experiments, we could amplify 16S rRNA fragments from all samples, each showing a single band following gel electrophoresis (Fig. 2A). The band patterns of digested fragments in each sample were completely matched with the species that were held in each tank, except for the negative control tank without animals (Fig. 2A). Notably, for the samples from water tanks in which two species were cultured, we could simultaneously amplify eDNA from both species whereby both band patterns specific to two species were displayed.

### *Field survey and experiments*

In the survey in Fukushima (A), field observation of *R. t. tagoi* adults were recorded in 15 of 19 sites (Fig 1, Supp Table 1), while tadpoles were observed in a single separate site (no. 2). Among the sites where *R. t. tagoi* adults were observed, adults of *R. ornativentris* were also observed sympatrically in 5 sites (Supp Table 1). However, we could not identify presence of either *R. t. tagoi* or *R. ornativentris* by PCR-RFLP analyses of eDNA from any of the samples from Fukushima (Supp Fig 1). Subsequently, we applied the more sensitive *R. t. tagoi/R. sakuraii*-specific qPCR which could still only confirm presence of *R. t. tagoi* in five of the fifteen sites with field observations of adults of the species (Fig 1, Supp Table 1). Our direct sequences of the qPCR amplicons (106 bp product size) were almost identical to haplotypes of *R. t. tagoi* deposited in DDBJ. In addition, no amplification was observed in any control samples (i.e. filtering controls and NTC).

In Fukushima site no. 1, we also reported field observation of *Bufo japonicus* tadpoles, a species outside of our target species. From this sample, PCR amplification resulted in an approximately 600 bp fragment; sequencing and BLAST search confirmed a match of nucleotide

sequence with partial sequence of 16S rRNA of *Bufo japonicus* (= *B. j. formosus*) [AB159565, a haplotype from Atsumi, Yamagata Pref. (Igawa et al., 2006)].

From field experiment (B) and (C), field observation of *R. japonica* tadpoles was recorded for three sites (no. 20, 21, and 26; Fig 1, Supp Table 1). This was consistent with our PCR-RFLP which showed *R. japonica*-specific banding patterns following *SpeI* restriction digestion in the same samples (Figure 2B). We also confirmed the sequence from site no. 20 had BLAST similarity with partial sequence of 16s rRNA from *R. japonica* [LC014155, a haplotype from Hiroshima University (Igawa et al., 2015)]. In addition, PCR-RFLP analyses of site no. 27 supports the presence of *R. japonica*, despite no field observation of tadpoles at this small drainage site.

## Discussion

As shown in our water tank experiment, eDNA of *Rana* species was successfully amplified and we could even simultaneously identify each pair of the three species using PCR-RFLP method. Following success of this newly developed protocol, we applied it to a variety of field collected water samples. In field experiment (A) at Fukushima, despite frogs (adults or tadpoles) being identified in 16 of 19 sites by field observation, we could not detect eDNA of *R. t. tagoi* or *R. ornativentris* using our PCR-RFLP method. Even when we applied the more sensitive qPCR approach for detecting *R. t. tagoi*, this method only confirmed presence of the species in five of the sites. There are differences in detection sensitivity across PCR-RFLP and qPCR methods: qPCR is more sensitive than conventional PCR as shown in a study in guinea pigs (Zemtsova, Montgomery & Levin, 2015). In addition, the more expensive approaches like digital PCR and NGS of eDNA could prove to be more sensitive, despite the hurdles associated with cost.

The lack of detection by PCR-RFLP and limited sensitivity by qPCR could be attributed to the water system of the environment. Such factors like water volume, water discharge and flow rate could markedly impact the concentration of eDNA. It seems likely that flowing waters of lotic habitats could have lower eDNA concentrations due to dilution from fresh water upstream. In addition, *R. t. tagoi* adults and their spawned tadpoles utilize small torrents or subsoil water systems only in the breeding season. According to Matsu and Maeda (1999), *R. t. tagoi* breed during late June in colder regions of Japan like Fukushima; our sample sessions occurred at both before and after this breeding period and thus could result in low level of eDNA in the water. Overall, the detection of *Rana* species from river water samples could potentially be challenging compared to static water samples, and we need to select the appropriate time of sampling considering ecology and behavior of the target species.

We then applied PCR-RFLP to static water samples collected in the field. From the eight sites in field experiments (B) and (C), PCR-RFLP could successfully detect eDNA in all three sites where *R. japonica* tadpoles were visually observed. An additional site, site no. 27, had no tadpoles observed in field study, but showed some evidence of presence from PCR-RFLP

analyses. This site is a small drainage site with a small volume and water flowing upstream from a paddy field. Thus, it seems possible that PCR-RFLP can detect presence of frogs that may inhabit upstream or in close proximity, even in the absence of visual confirmation. When we compare this site of flowing water to that of sites in Fukushima, the water volumes and flow rate are much smaller and slower, respectively.

## Conclusion

We have successfully developed a cost-effective method for detecting three common *Rana* frog species from Japan. This approach works well in field-collected samples that originate from static or slow-flowing water systems. However, our approach cannot be applicable to lotic water systems. Further exploration of alternative cost-effective methods are required, and could include collection of larger volumes of water and experimental assessment of the impact of various factors like water volume and flow rate on eDNA concentration. Nevertheless, this method has potential to be used to monitor frog populations that are facing decline due to urbanization, especially *R. japonica* which inhabits static water bodies like rice paddy fields.

## Acknowledgements

The present study was financially supported by a Scientific Research Grant from the Kurita Water, and Environment Foundation Grant and by the Environment Research and Technology Development Fund of the Ministry of the Environment (4RF-1302), and Environmental Restoration and Conservation Agency (4-1602 and 4-1503), Japan. We also thank the Department of Molecular and Functional Genomics, Interdisciplinary Center for Science Research, Organization for Research and Academic Information, Shimane University, for providing the DNA laboratory facilities. The authors thank the faculty of Life and Environmental Science in Shimane University, Japan for providing financial support towards publishing this study. All methods adhered to the laws of Japan.

## References

- Biggs J., Ewald N., Valentini A., Gaboriaud C., Dejean T., Griffiths RA., Foster J., Wilkinson JW., Arnell A., Brotherton P., Williams P., Dunn F. 2015. Using eDNA to develop a national citizen science-based monitoring programme for the great crested newt (*Triturus cristatus*). *Biological Conservation* 183:19–28. DOI: 10.1016/j.biocon.2014.11.029.
- Buxton AS., Groombridge JJ., Zakaria NB., Griffiths RA. 2017. Seasonal variation in environmental DNA in relation to population size and environmental factors. *Scientific Reports* 7:1–9. DOI: 10.1038/srep46294.
- Clusa L., Ardura A., Fernández S., Roca AA., García-Vázquez E. 2017. An extremely sensitive nested PCR-RFLP mitochondrial marker for detection and identification of salmonids in eDNA from water samples. *PeerJ* 5:e3045. DOI: 10.7717/peerj.3045.

- Goldberg CS., Strickler KM., Pilliod DS. 2015. Moving environmental DNA methods from concept to practice for monitoring aquatic macroorganisms. *Biological Conservation* 183:1–3. DOI: 10.1016/j.biocon.2014.11.040.
- Igawa T., Komaki S., Takahara T., Sumida M. 2015. Development and validation of PCR-RFLP assay to identify three Japanese brown frogs of the true frog genus *Rana*. *Current Herpetology* 34:89–94. DOI: 10.5358/hsj.34.89.
- Igawa T., Kurabayashi A., Nishioka M., Sumida M. 2006. Molecular phylogenetic relationship of toads distributed in the Far East and Europe inferred from the nucleotide sequences of mitochondrial DNA genes. *Molecular phylogenetics and evolution* 38:250–60. DOI: 10.1016/j.ympev.2005.09.003.
- Kitagawa Y. 2002. Regeneration of satoyama landscapes. In: Takeuchi K, Brown RD, Washitani I, Tsunekawa A, Yokohari M eds. *Satoyama: The Traditional Rural Landscape of Japan*. Tokyo: Springer-Verlag, 129–142.
- Kuramoto M., Ishikawa H. 2000. Breeding ecology of brown frogs in Yamada park, Kitakyushu, Japan. *Bull Herpetol Soc Jpn* 2000:7–18.
- Maeda N., Matsui M. 1999. *Frogs and Toads of Japan*. Tokyo: Bunichi Sogo Shuppan.
- Natural Environment Division, Bureau of Environment, Tokyo Metropolitan Government. 2010. *2010 Red List of Threatened Species in Tokyo: 23-ward and Tama area version*. Tokyo: Natural Environment Division, Bureau of Environment, Tokyo Metropolitan Government.
- Natural Environment Division, Department of Environmental Affairs, Fukuoka Prefectural Government. 2014. *Endangered Species in Fukuoka: Red Data Book Fukuoka 2014*. Fukuoka: Natural Environment Division, Department of Environmental Affairs, Fukuoka Prefectural Government,.
- Olson ZH., Briggler JT., Williams RN. 2013. An eDNA approach to detect eastern hellbenders (*Cryptobranchus a. alleganiensis*) using samples of water. *Wildlife Research* 39:629. DOI: 10.1071/WR12114.
- Osawa S., Katsuno T. 2001. Dispersal of brown frogs *Rana japonica*. *Current Herpetology* 20:1–10.
- Pilliod DS., Goldberg CS., Arkle RS., Waits LP. 2013. Estimating occupancy and abundance of stream amphibians using environmental DNA from filtered water samples. *Canadian Journal of Fisheries and Aquatic Sciences* 70:1123–1130. DOI: 10.1139/cjfas-2013-0047.
- Rees HC., Maddison BC., Middleditch DJ., Patmore JRM., Gough KC. 2014. REVIEW: The detection of aquatic animal species using environmental DNA - a review of eDNA as a survey tool in ecology. *Journal of Applied Ecology* 51:1450–1459. DOI: 10.1111/1365-2664.12306.
- Tahara Y. 1974. Table of the normal developmental stages of the frog, *Rana japonica*. *Memoirs of Osaka Kyoiku University. III, Natural science and applied science* 23:33–53.
- Takahara T., Minamoto T., Doi H. 2013. Using environmental DNA to estimate the distribution of an invasive fish species in ponds. *PLoS ONE* 8. DOI: 10.1371/journal.pone.0056584.
- Thomsen PF., Willerslev E. 2015. Environmental DNA - An emerging tool in conservation for monitoring past and present biodiversity. *Biological Conservation* 183:4–18. DOI: 10.1016/j.biocon.2014.11.019.
- Uchii K., Doi H., Minamoto T. 2016. A novel environmental DNA approach to quantify the cryptic invasion of non-native genotypes. *Molecular Ecology Resources* 16:415–422. DOI: 10.1111/1755-0998.12460.

405 Zemtsova GE., Montgomery M., Levin ML. 2015. Relative sensitivity of conventional and real-  
406 time PCR assays for detection of SFG rickettsia in blood and tissue samples from laboratory  
407 animals. *PLOS ONE* 10:e0116658. DOI: 10.1371/journal.pone.0116658.  
408

# Figure 1(on next page)

Sampling localities of field experiments.

Results of field observation, qRCR and PCR-RFLP detection were indicated respectively (X/X/X). NA: qPCR not conducted.



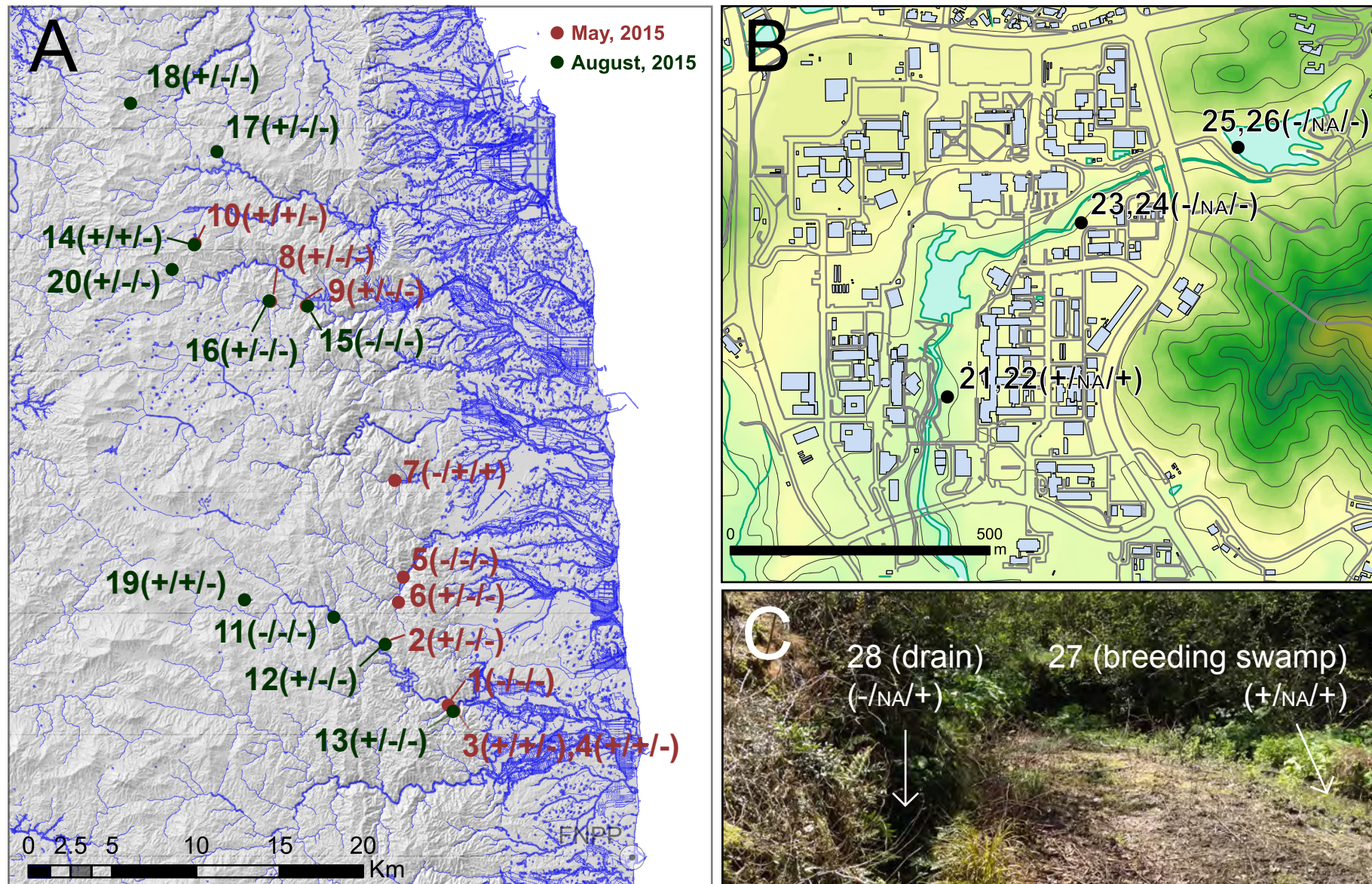


Figure 1: Sampling localities of field experiments. Results of field observation, qRCR and PCR-RFLP detection were indicated respectively (X/X/X). NA: qPCR not conducted.

## Figure 2 (on next page)

PCR-RFLP and gel electrophoresis of water tank experiment and field experiment (B).



A Peer Preprints  
Water tank experiment

# B

