

**A peer-reviewed version of this preprint was published in PeerJ on 23 May 2017.**

[View the peer-reviewed version](https://doi.org/10.7717/peerj.3342) (peerj.com/articles/3342), which is the preferred citable publication unless you specifically need to cite this preprint.

Farke AA, Phillips GE. 2017. The first reported ceratopsid dinosaur from eastern North America (Owl Creek Formation, Upper Cretaceous, Mississippi, USA) PeerJ 5:e3342 <https://doi.org/10.7717/peerj.3342>

# The first reported ceratopsid dinosaur from eastern North America (Owl Creek Formation, Late Cretaceous, Mississippi, USA)

Andrew A. Farke <sup>Corresp., 1</sup>, George E. Phillips <sup>2</sup>

<sup>1</sup> Raymond M. Alf Museum of Paleontology, Claremont, California, United States of America

<sup>2</sup> Mississippi Museum of Natural Science, Mississippi Department of Wildlife, Fisheries and Parks, Jackson, Mississippi, United States of America

Corresponding Author: Andrew A. Farke

Email address: afarke@webb.org

Ceratopsids (“horned dinosaurs”) are known from numerous specimens in western North America and Asia, a distribution reflecting the inferred subaerial link between the two landmasses during the Late Cretaceous. However, this clade was previously unknown from eastern North America, presumably due to limited outcrop of the appropriate age and depositional environment as well as the separation of eastern and western North America by the Western Interior Seaway during much of the Late Cretaceous. A dentary tooth from the Owl Creek Formation (late Maastrichtian) of Union County, Mississippi, represents the first reported occurrence of Ceratopsidae from eastern North America. This tooth shows a combination of features typical of Ceratopsidae, including a double root and a prominent, blade-like carina. Based on the age of the fossil, we hypothesize that it is consistent with a dispersal of ceratopsids into eastern North America during the very latest Cretaceous, after the two halves of North America were reunited following the retreat of the Western Interior Seaway.

**The first reported ceratopsid dinosaur from eastern North America (Owl Creek Formation, Late Cretaceous, Mississippi, USA)**

Andrew A. Farke<sup>1</sup> and George E. Phillips<sup>2</sup>

<sup>1</sup>Raymond M. Alf Museum of Paleontology, Claremont, California, USA

<sup>2</sup>Mississippi Museum of Natural Science, Mississippi Department of Wildlife, Fisheries and Parks, Jackson, Mississippi, USA

Corresponding Author:

Andrew A. Farke<sup>1</sup>

Email address: [afarke@webb.org](mailto:afarke@webb.org)

## Abstract

Ceratopsids (“horned dinosaurs”) are known from numerous specimens in western North America and Asia, a distribution reflecting the inferred subaerial link between the two landmasses during the Late Cretaceous. However, this clade was previously unknown from eastern North America, presumably due to limited outcrop of the appropriate age and depositional environment as well as the separation of eastern and western North America by the Western Interior Seaway during much of the Late Cretaceous. A dentary tooth from the Owl Creek Formation (late Maastrichtian) of Union County, Mississippi, represents the first reported occurrence of Ceratopsidae from eastern North America. This tooth shows a combination of features typical of Ceratopsidae, including a double root and a prominent, blade-like carina. Based on the age of the fossil, we hypothesize that it is consistent with a dispersal of ceratopsids into eastern North America during the very latest Cretaceous, after the two halves of North America were reunited following the retreat of the Western Interior Seaway.

## Introduction

The Western Interior Seaway split North America during much of the Late Cretaceous, which in turn may have driven terrestrial faunal differences between eastern and western North America (Appalachia and Laramidia, respectively). Non-avian dinosaur fossils from the Late Cretaceous of Appalachia are, with a few notable exceptions, largely fragmentary and indicative of a fauna including theropods (ornithomimosaurs and tyrannosauroids), nodosaurids, hadrosauroids, and potentially leptoceratopsids (Schwimmer, 1997; Weishampel et al., 2004; Longrich, 2016; Prieto-Márquez, Erickson & Ebersole, 2016a). The hadrosauroids and tyrannosauroids in particular have been suggested as representing clades distinct from their relatives in western North America (Longrich, 2016). This is further supported by the notable absence of ceratopsid dinosaurs, which are abundant in Laramidia, from the published fossil record of Appalachia. Faunal differences between Laramidia and Appalachia presumably were reduced when the two land masses were reunited following the retreat of the interior seaway during the late Maastrichtian. Yet, late Maastrichtian fossils are virtually unknown from eastern North America, so there is little evidence to test this hypothesis.

Here, we report the first definitive ceratopsid specimen from eastern North America, a tooth recovered from the Maastrichtian Owl Creek Formation of Union County, Mississippi. The fossil, collected by the second author (G. E. Phillips) in July 2016, suggests a dispersal of ceratopsids into eastern North America following the regression of the Western Interior Seaway.

## Geologic setting

### Occurrence

The tooth described here (MMNS VP-7969) was collected in loose association with the Upper Cretaceous marine Owl Creek Formation (and other units) in northeast Mississippi (Figure 1). More precisely, it was found out of context in the active fluvial lag of a modern stream, albeit in close proximity to its presumed stratigraphic origins. The pebbly, fossiliferous stream lag contains Pleistocene terrestrial-alluvial, Paleocene marine, and Cretaceous marine fossil float originating from the channel floor and walls. The Paleocene is represented in the area by the Clayton Formation (Figure 2), the nearest outcrop (preserving the base of the formation) of which is ~4.3 km upstream (and up-section) from the tooth collection point. Fossil float originating from the Clayton Formation has been limited to fragments of the Paleocene index gastropod *Kapalmerella mortoni* (Conrad, 1830). The Upper Cretaceous Owl Creek Formation,

although rarely exposed in the stream, crops out intermittently along the channel length between the base of the Clayton and the tooth recovery point. The tooth was retrieved from the stream float within a few meters of the contact between the Owl Creek Formation and the subjacent Chiwapa Sandstone Member of the Ripley Formation at MMNS locality MS.73.001b (Figure 1). Based on the extent of channel length explored thus far, Quaternary alluvium, slumping, vegetation, and water level conceal the Owl Creek Formation rather thoroughly, making direct access to the Owl Creek beds very difficult. Local thickness of the Owl Creek Formation is about 12 m, and it is rich in Maastrichtian neritic marine fossils (Stephenson, 1955; Sohl, 1960; Sohl & Koch, 1983, 1986).

Both the Cretaceous and Paleocene units cropping out in the channel contain marine vertebrate fossils, although vertebrate fossils are considerably more common in the former than in the latter. Cretaceous deposits in the area have previously produced dinosaur fossils, and the Paleocene occasionally contains reworked Upper Cretaceous fossils. Based on a couple of short-lived, partial exposures in the greater vicinity (e.g., MMNS locality MS.73.030), a persistent phosphatic fossil assemblage occurs in the uppermost part of the Owl Creek Formation. This assemblage consists largely of a shell bed of locally common, dark, well-lithified phosphatic mollusk and decapod steinkerns along with less frequently occurring fragments of marine vertebrates—all characteristically Maastrichtian (Figure 3, Table 1). Of all the sourceable constituents of the modern stream lag, the ceratopsian tooth is most consistent with the average size, specific gravity, and color of the phosphatic fossils and pebbles that populate the upper part of the Owl Creek Formation.

## Age

The Owl Creek Formation crops out in portions of several states within the Mississippi Embayment, namely Missouri, Illinois, Tennessee, and Mississippi (Figure 1). The Owl Creek Formation lies entirely within the upper Maastrichtian (Figure 2), according to published ammonite stratigraphy (Larina et al., 2016) and non-cephalopod mollusk assemblage zonation (Sohl & Koch, 1986), and at least *partly* (or mostly) within the upper Maastrichtian according to planktonic foraminiferan zonation (e.g., Puckett, 2005). As indicated above, the exact placement of the tooth within the Owl Creek is uncertain, but it is suspected to be from considerably closer to the K-Pg boundary (top) than it is to the base of the unit, thus making it very likely latest Maastrichtian in age. According to Matt Garb of Brooklyn College (pers. comm., 2016), scaphitid ammonite steinkerns in the fossil float accompanying the ceratopsian tooth are almost entirely dominated by *Discoscaphites iris* (Conrad, 1858; Figure 3C,E), which equates to the uppermost portion of calcareous nannofossil zone CC 26 of Perch-Nielsen (1985), or latest Maastrichtian (Figure 2).

Reworking is always a consideration with condensed, phosphatic pebble beds. To date, suspected anachronistic fossils have not been detected at any interval within the Owl Creek Formation. Considering the exceptional condition of the tooth, and that it was collected from modern stream lag below a small waterfall produced by a resistant calcareous sandstone ledge (Ripley Formation, Chiwapa Member), prior to which it had traveled at least several meters across the irregular surface of the exposed sandstone, reworking from a notably older Cretaceous interval prior to entombment in the Owl Creek sediments is highly unlikely.

## Methods

In order to illustrate the details of MMNS VP-7969 at high resolution, stacked images

were produced with a Visionary Digital Passport system (Dun, Inc., Virginia, USA). The stacking device was interfaced with a Canon EOS 6D camera (Canon, Inc., Tokyo, Japan) with attached 50 mm macro lens and a 1.4× Tamron extension, at a magnification setting of 1:2. Images were processed within Helicon Focus 5.3 (Helicon Soft Ltd., Kharkiv, Ukraine).

To produce a three-dimensional digital model for archival and illustration purposes, MMNS VP-7969 was digitized using a NextEngine 3D Scanner Ultra 3D with MultiDrive (NextEngine, Inc., Santa Monica, California, USA). The initial scans were acquired and processed in ScanStudio PRO 2.0.2 (ShapeTools LLC and NextEngine, Inc., Santa Monica, California, USA). Data were collected in several passes, with all set for the maximum resolution on the scanner (6,300 points per square millimeter), using macro mode, and assuming a dark target object. The first pass included six scans taken around the long (apico-basal) axis of the tooth. The second pass included three scans bracketing the apical view of the tooth, and the third pass included three scans bracketing the basal view of the tooth. A final scan captured a portion of the tooth in distal view. The scans were aligned using both manual and automatic alignment, and then fused into a single watertight mesh using the “mesh reconstruction” fuse method (high resolution mesh fitting, and relax fitting selected as an option). This mesh was downsampled to reduce file size, creating a final mesh of 83,312 vertices and 166,620 faces. The file was exported in stereolithography (STL) format. The file is archived at MorphoSource (<http://www.morphosource.org>), under project P275.

Measurements were taken from the original specimen using digital calipers, to the nearest 0.1 mm. Comparison with measurements taken from the digital model showed the latter to be consistent with the physical specimen to between 0.5–2.5%.

All fossils figured and described here are accessioned at the Mississippi Museum of Natural Science (MMNS). The tooth was molded in silicone rubber, and a limited number of plastic resin casts are available to research institutions by placing requests with the MMNS.

## Institutional abbreviations

AZMNH, Arizona Museum of Natural History, Mesa, Arizona, USA; MMNS, Mississippi Museum of Natural Science, Mississippi Department of Wildlife, Fisheries and Parks, Jackson, Mississippi, USA.

## Systematic Paleontology

Dinosauria Owen, 1842

Ornithischia Seeley, 1887

Ceratopsia Marsh, 1890

Ceratopsoidea Hay, 1902

Ceratopsidae Marsh, 1888

Ceratopsidae indet.

**Referred material.** MMNS VP-7969, an isolated right dentary tooth, Figure 4.

**Locality and horizon.** MMNS locality MS.73.001b, Union County, Mississippi, United States of America (Figure 1); Owl Creek Formation (late Maastrichtian). Precise locality data are on file at MMNS and are available to qualified investigators upon request.

**Description.** For simplicity, the following description presumes that the tooth is from the right dentary. This is based on the sharply protruding primary ridge, characteristic of dentary teeth in ceratopsids and contrasting with the relatively subdued primary ridge in maxillary teeth. Once



oriented as a dentary tooth, the offset of the primary ridge is in the mesial direction, and the tooth is thus from the right side (Mallon & Anderson, 2014). Terminology follows that illustrated by Tanoue et al. (2009:fig. 2).

MMNS VP-7969 preserves both the crown and the root of the tooth (Figure 4). Portions of the crown were slightly chipped and the extreme ends of the roots were broken off prior to discovery. Due to dark and consistent coloration across the surface of the tooth, it is not possible to describe enamel distribution with any confidence.

The crown as preserved is taller (18.9 mm) than wide (15.8 mm) in lingual view (Figure 4C,D). A slight peak at the mesial and distal edges, where the root intersects with the carinae, produces a rhomboid profile. A prominent primary ridge divides the tooth crown into a smaller mesial lobe and a larger distal lobe (Figure 4G). Towards the base of the crown, the ridge has a slight mesial curvature (Figure 4C,D). In mesial and distal views, the primary ridge is strongly arched, and a slight inflection marks the point where the ridge and the cingulum/root connect (Figure 4A,B,E,F). The primary ridge is fin-like and strongly compressed mesio-distally. The lingual edge of the ridge bears very fine and imbricating crenulations. A single, very poorly defined secondary ridge occurs at the mesial edge of the mesial lobe (Figure 4C); otherwise, secondary ridges are completely absent. No unambiguous denticles appear on the tooth, either. A distinct cingulum separates the crown from the root on the tooth's lingual surface (Figure 4E,G). As preserved, the maximum apico-basal length of the entire tooth in lingual view is 26.8 mm.

In labial view, the crown and root are not distinctly separated (Figure 4I,J). The labial surface is gently arched from mesio-distally, with at least seven faint plications along the surface of the tooth oriented apico-basally. A flat, approximately quadrangular wear surface marks the apical end of the tooth in this view. A handful of minor scratches mark this area, although the lack of consistent orientation suggests that they are taphonomic in origin rather than representing microwear. Assuming a standard tooth orientation, the wear facet was at least subvertical. As preserved, the maximum apico-basal length of the entire tooth in labial view is 28.4 and the maximum width is 16.8 mm.

The root is bipartite, with the two halves having a maximum span of 22.2 mm. The labial root is more robust and longer than the lingual root (Figure 4E). A v-shaped resorption groove marks the basal surface of the root (Figure 4K,L).

## Discussion

**Referral to Ceratopsidae.** The prominent primary ridge and split root of MMNS VP-7969 definitively distinguish it from teeth belonging to other ornithischian dinosaurs present in North America during the Late Cretaceous, such as hadrosaurs, ankylosaurs, pachycephalosaurs, and basal ornithopods, all of which lack these features. This gross morphology, thus, is most consistent with referral to Ceratopsidae. However, to avoid the hazards of "overidentification," we here examine the phylogenetic distribution of notable apomorphies in MMNS VP-7969 to arrive at the most conservative identification possible. This is particularly important in light of teeth described for *Turanoceratops*, a non-ceratopsid ceratopsoid from Uzbekistan that also displays some apomorphies historically recognized only in ceratopsids (Sues & Averianov, 2009; Farke et al., 2009). The subject is further complicated by variation across the tooth row in ceratopsids; teeth at the very mesial or distal end differ from those in the middle in the development of some features (Hatcher, Marsh & Lull, 1907).

*Split tooth root.* This feature is noted in *Turanoceratops tardabilis* (Nessov, Kaznyshkina & Cherepanov, 1989; Sues & Averianov, 2009) and all ceratopsids for which the relevant tooth

anatomy is preserved, but does not occur in other ceratopsians, nor in other ornithischians as a whole.

*Absence of secondary ridges on tooth crown.* Secondary ridges paralleling the median carina (primary ridge) are common in teeth of non-ceratopsid neoceratopsians (Tanoue, You & Dodson, 2009), and also occur variably in *Turanoceratops* (Sues & Averianov, 2009) as well as in *Zuniceratops christopheri* (personal observation, AAF, AZMNH P2224, AZMNH P3600). Due to their variable occurrence in *T. tardabilis*, the near absence of these ridges in MMNS VP-7969 can only restrict a tooth to Ceratopsoidea.

*Projecting, blade-like primary ridge on dentary teeth.* The primary ridge projects strongly from the body of the tooth in MMNS VP-7969 and all ceratopsids, but is far more subdued in dentary teeth of *T. tardabilis* (Sues & Averianov, 2009:fig. 2e,f) and *Z. christopheri* (personal observation; AZMNH P3600). Most notably, in the known *Turanoceratops* specimens (as well as non-ceratopsid neoceratopsians such as *Protoceratops*), the carina is smoothly continuous with the root in mesial and distal views. By contrast, the carina is arched away from the main body of the tooth in MMNS VP-7969 and many ceratopsid dentary teeth (but not all, particularly from those at the extreme ends of the rows). Our observations suggest that the morphology is only found in Ceratopsidae.

In total, the anatomy of MMNS VP-7969 identifies it as a tooth from a ceratopsid dinosaur. At present, a more constrained identification is not possible due to the general similarities in teeth across ceratopsid clades (e.g., Mallon & Anderson, 2014).

**Biogeographic implications.** The tooth (MMNS VP-7969) represents the first reported occurrence of Ceratopsidae from eastern North America (Appalachia). Previous reports of ceratopsians from Appalachia have been from non-ceratopsid neoceratopsians, including isolated teeth from the Aptian-aged Arundel Formation of Maryland and a potential leptoceratopsid from the Campanian-aged Tar Heel Formation of North Carolina (Chinnery et al., 1998; Chinnery-Allgeier & Kirkland, 2010; Longrich, 2016). The dispersal route of these earlier ceratopsians into Appalachia is uncertain, and the overall evidence supports a lengthy geographic separation of Appalachia from Laramidia during the Late Cretaceous (late Cenomanian to latest Maastrichtian, ~95–66 Ma, Slattery et al., 2015).

Based on the overall paleogeography, we hypothesize that the occurrence of a ceratopsid in Mississippi represents a dispersal event from western North America into eastern North America. Significantly, this is the first time that a representative of a previously Laramidian dinosaur clade has been identified from eastern North America. This provides strong biogeographic evidence for a physical connection between eastern and western North America during the latest Maastrichtian (Figure 5).

**Eastern dinosaurs.** Non-avian dinosaurs from Cretaceous deposits in the eastern U. S. have been well publicized (e.g., Weishampel & Young, 1996; Schwimmer, 1997). Although few discoveries are complete enough for comprehensive description and precise taxonomic assignment, recent notable exceptions include a tyrannosauroid and hadrosaur from Alabama (Carr, Williamson & Schwimmer, 2005; Prieto-Márquez, Erickson & Ebersole, 2016a,b). Cretaceous dinosaur finds from eastern North America are not rare, but they are infrequent. Since Cretaceous dinosaur remains were first reported on the east coast in the 1850s, numerous specimens representing several groups, both ornithischian and theropod, have been reported from Mississippi to New Jersey. Most of this material consists of isolated and often fragmentary elements, like the ceratopsian tooth reported herein. Collectively, however, the scattered discoveries across the Gulf and Atlantic Coastal Plain reveal an eastern North American



Cretaceous dinosaur bestiary that included six major dinosaur clades. To date, these include hadrosauroids (e.g., Langston, Jr., 1960; Prieto-Márquez, Weishampel & Horner, 2006; Prieto-Márquez, Erickson & Ebersole, 2016a), ankylosaurians (Langston, Jr., 1960; Weishampel & Young, 1996; Stanford, Weishampel & DeLeon, 2011), tyrannosauroids (Baird & Horner, 1979; Schwimmer et al., 1993; Carpenter et al., 1997; Carr, Williamson & Schwimmer, 2005), dromaeosaurids (Kiernan & Schwimmer, 2004), ornithomimids (Baird & Horner, 1979; Carpenter, 1982; Schwimmer et al., 1993), and ceratopsians (Chinnery et al., 1998; Longrich, 2016; this paper).

Mississippi's published fragmentary dinosaur remains currently encompass only hadrosaurs (e.g., Horner, 1979) and undetermined theropods (Carpenter, 1982), although one association of over two dozen elements of a single juvenile hadrosaur has been described (Kaye & Russell, 1973). One of the unassigned theropod pedal phalanges (Carpenter, 1982) later turned out to belong to Mississippi's first ornithomimid discovery (Baird, 1986). In addition to previously described Mississippi material (Carpenter, 1982), MMNS possesses unpublished, largely isolated elements of hadrosaurs (the most commonly encountered), nodosaurs (teeth and fragmentary bones), dromaeosaurids (teeth), and ornithomimids (the second most common dinosaur). Except for the ceratopsian tooth, all MMNS Mississippi dinosaur holdings are derived from late Santonian through late Campanian deposits. Dinosaurs are otherwise unreported from the Maastrichtian of the Gulf Coastal Plain, although they have been encountered with some regularity from deposits of this age in the Atlantic Coastal Plain over the last hundred years, namely from the Navesink Formation in New Jersey (Weishampel & Young, 1996).

## Conclusions

The ceratopsid tooth from the Owl Creek Formation of Mississippi represents the first unequivocal occurrence of this clade in Appalachia (eastern North America). The fossil is consistent with the hypothesis that clades from Laramidia (western North America) dispersed eastward during the retreat of the Western Interior Seaway sometime during the Maastrichtian. We predict that future work will uncover additional evidence of "western" clades in Appalachia; in particular, careful placement within a geological context will help to establish the exact timing and tempo of the seaway retreat.

## Acknowledgements

We extend our gratitude to T. L. Harrell, Jr., who first recognized the tooth as belonging to a ceratopsian and introduced the writers to one another, which led to the current project. Harrell also identified the mosasaur teeth found at the ceratopsian locality (Figure 3H). Thanks also to P. Kuchirka, MMNS volunteer, who molded/cast the tooth; D. Kitchens, who graciously allowed us access to his property where the tooth was found; M. Garb of Brooklyn College (CUNY), who identified ammonites from the tooth locality, which was useful for biostratigraphic determinations; and Colorado Plateau Geosystems for licensed use of the paleogeographic maps. Discussions with F. Varriale were helpful in establishing the orientation of the specimen.

# References

- Agassiz L. 1843. *Recherches Sur Les Poissons Fossiles. Tome III (livr. 15-16)*. Neuchatel: Imprimerie de Petitpierre.
- Arambourg C. 1935. Note préliminaire sur les vertébrés fossiles des Phosphates du Maroc. *Bulletin de la Société Géologique de France* 5:413–439.
- Baird D. 1986. Upper Cretaceous reptiles from the Severn Formation of Maryland. *The Mosasaur* 3:63–85.
- Baird D., Horner JR. 1979. Cretaceous dinosaurs of North Carolina. *Brimleyana* 2:1–28.
- Bicker AR, Jr. 1969. Geologic map of Mississippi, scale 1:500,000.
- Bishop GA. 1986. Two new crabs, *Parapaguristes tuberculatus* and *Palaeoxantho libertiensis*, from the Prairie Bluff Formation (Middle Maastrichtian), Union County, Mississippi, U.S.A. *Proceedings of the Biological Society of Washington* 99:604–611.
- Carpenter K. 1982. The oldest Late Cretaceous dinosaurs in North America? *Mississippi Geology* 3:11–17.
- Carpenter K., Russell D., Baird D., Denton R. 1997. Redescription of the holotype of *Dryptosaurus aquilunguis* (Dinosauria: Theropoda) from the Upper Cretaceous of New Jersey. *Journal of Vertebrate Paleontology* 17:561–573. DOI: 10.1080/02724634.1997.10011003.
- Carr TD., Williamson TE., Schwimmer DR. 2005. A new genus and species of tyrannosauroid from the Late Cretaceous (Middle Campanian) Demopolis Formation of Alabama. *Journal of Vertebrate Paleontology* 25:119–143.
- Chinnery BJ., Lipka TR., Kirkland JL., Parrish JM., Brett-Surman M. 1998. Neoceratopsian teeth from the Lower to middle Cretaceous of North America. *New Mexico Museum of Natural History and Science Bulletin* 14:297–302.
- Chinnery-Allgeier BJ., Kirkland JL. 2010. An update on the paleobiogeography of ceratopsian dinosaurs. In: Ryan MJ, Chinnery-Allgeier BJ, Eberth DA eds. *New Perspectives on Horned Dinosaurs: The Royal Tyrrell Museum Ceratopsian Symposium*. Bloomington, Indiana: Indiana University Press, 387–404.
- Cobban WA. 1974. Some ammonoids from the Ripley Formation of Mississippi, Alabama, and Georgia. *United States Geological Survey Journal of Research* 2:81–88.
- Cobban WA., Kennedy WJ. 1991a. Some Upper Cretaceous ammonites from the Nacatoch Sand of Hempstead County, Arkansas. *United States Geological Survey Bulletin* 1985C:1–5.
- Cobban WA., Kennedy WJ. 1991b. Upper Cretaceous (Maastrichtian) ammonites from the *Nostoceras alternatum* zone in southwestern Arkansas. *United States Geological Survey Bulletin* 1985E:1–6.
- Cobban WA., Kennedy WJ. 1995. Maastrichtian ammonites chiefly from the Prairie Bluff Chalk in Alabama and Mississippi. *Paleontological Society Memoir* 44:1–40.
- Conrad TA. 1853. Descriptions of new fossil shells of the United States. *Journal of the Academy of Natural Sciences of Philadelphia, Second Series* 2:273–276.
- Conrad TA. 1858. Observations on a group of Cretaceous fossil shells, found in Tippah County, Miss., with descriptions of fifty-six new species. *Journal of the Academy of Natural Sciences of Philadelphia, Second Series* 3:323–336.
- Conrad TA. 1860. Descriptions of new Cretaceous and Eocene fossils of Mississippi and Alabama. *Journal of the Academy of Natural Sciences of Philadelphia, Second Series* 4:275–298.
- Farke AA., Sampson SD., Forster CA., Loewen MA. 2009. *Turanoceratops tardabilis*—sister

- taxon, but not a ceratopsid. *Naturwissenschaften* 96:869–870. DOI: 10.1007/s00114-009-0543-8.
- Feldmann RM., Portell RW. 2007. First report of *Costacopluma* (Decapoda: Brachyura: Retroplumidae) from the Eocene of Alabama, U.S.A. *Journal of Crustacean Biology* 27:90–96. DOI: 10.1651/S-2712.1.
- Gabb WM. 1860. Descriptions of new species of American Tertiary and Cretaceous fossils. *Journal of the Academy of Natural Sciences of Philadelphia* 4:375–406.
- Hatcher JB., Marsh OC., Lull RS. 1907. The Ceratopsia. *United States Geological Survey Monograph* 49:1–300.
- Hay OP. 1902. Bibliography and catalogue of the fossil Vertebrata of North America. *Bulletin of the United States Geological Survey* 179:1–868.
- Horner JR. 1979. Upper Cretaceous dinosaurs from the Bearpaw Shale (marine) of South-central Montana with a checklist of Upper Cretaceous dinosaur remains from marine sediments in North America. *Journal of Paleontology* 53:566–577.
- Kaye JM., Russell DA. 1973. The oldest record of hadrosaurian dinosaurs in North America. *Journal of Paleontology* 47:91–93.
- Kennedy WJ., Cobban WA. 1993. Ammonites from the Saratoga Chalk (Upper Cretaceous), Arkansas. *Journal of Paleontology* 67:404–434.
- Kiernan CR., Schwimmer DR. 2004. First record of a velociraptorine theropod (Tetanurae, Dromaeosauridae) from the eastern Gulf coastal United States. *The Mosasaur* 7:89–93.
- Lamarck JBPA. 1806. Suite des Mémoires sur les fossiles des environs de Paris. Genre LXXIV. *Annales du Muséum national d'histoire naturelle* 8:156–166.
- Landman NH., Johnson RO., Edwards LE. 2004. Cephalopods from the Cretaceous/Tertiary boundary interval on the Atlantic Coastal Plain, with a description of the highest ammonite zones in North America. Part 1, Maryland and North Carolina. *American Museum Novitates* 3454:1–64.
- Langston, Jr. W. 1960. The vertebrate fauna of the Selma Formation of Alabama. Part VI. The dinosaurs. *Fieldiana, Geology* 3:315–361.
- Larina E., Garb M., Landman N., Dastas N., Thibault N., Edwards L., Phillips G., Rovelli R., Myers C., Naujokaityte J. 2016. Upper Maastrichtian ammonite biostratigraphy of the Gulf Coastal Plain (Mississippi Embayment, southern USA). *Cretaceous Research* 60:128–151. DOI: 10.1016/j.cretres.2015.11.010.
- Lehman TM. 1996. A horned dinosaur from the El Picacho Formation of West Texas, and review of ceratopsian dinosaurs from the American Southwest. *Journal of Paleontology* 70:494–508.
- Lehman TM., Wick SL., Barnes KR. 2016. New specimens of horned dinosaurs from the Aguja Formation of West Texas, and a revision of *Agujaceratops*. *Journal of Systematic Palaeontology* 0:1–34. DOI: 10.1080/14772019.2016.1210683.
- Leidy J. 1856. Notice of remains of extinct turtles of New Jersey, collected by Prof. Cook, of the State Geological Survey, under the direction of Dr. W. Kitchell. *Proceedings of the Academy of Natural Sciences of Philadelphia* 8:301–327.
- Loewen MA., Sampson SD., Lund EK., Farke AA., Aguillón Martínez MC., de Leon CA., Rodríguez de la Rosa RA., Getty MA., Eberth DA. 2010. Horned dinosaurs (Ornithischia: Ceratopsidae) from the Upper Cretaceous (Campanian) Cerro del Pueblo Formation, Coahuila, Mexico. In: Ryan MJ, Chinnery-Allgeier BJ, Eberth DA eds. *New Perspectives on Horned Dinosaurs: The Royal Tyrrell Museum Ceratopsian Symposium*.

- 378           Bloomington: Indiana University Press, 99–116.
- 379 Longrich NR. 2016. A ceratopsian dinosaur from the Late Cretaceous of eastern North America,
- 380           and implications for dinosaur biogeography. *Cretaceous Research* 57:199–207. DOI:
- 381           10.1016/j.cretres.2015.08.004.
- 382 Mallon JC., Anderson JS. 2014. The functional and palaeoecological implications of tooth
- 383           morphology and wear for the megaherbivorous dinosaurs from the Dinosaur Park
- 384           Formation (Upper Campanian) of Alberta, Canada. *PLoS ONE* 9:e98605. DOI:
- 385           10.1371/journal.pone.0098605.
- 386 Mancini EA., Puckett TM., Tew BH., Smith CC. 1995. Upper Cretaceous sequence stratigraphy
- 387           of the Mississippi-Alabama area. *Gulf Coast Association of Geological Societies*
- 388           *Transactions* 45:377–384.
- 389 Mantell GA. 1829. A tabular arrangement of the organic remains of the county of Sussex.
- 390           *Transactions of the Geological Society of London* 2:201–216.
- 391 Marsh OC. 1888. A new family of horned dinosaurs from the Cretaceous. *American Journal of*
- 392           *Science* 36:477–478.
- 393 Marsh OC. 1890. Additional characters of the Ceratopsidae, with notice of new Cretaceous
- 394           dinosaurs. *American Journal of Science* s3-39:418–426. DOI: 10.2475/ajs.s3-39.233.418.
- 395 Martínez-Díaz JL., Phillips GE., Nyborg T., Espinosa B., Távora V de A., Centeno-García E.,
- 396           Vega FJ. 2016. Lilliput effect in a retroplumid crab (Crustacea: Decapoda) across the
- 397           K/Pg boundary. *Journal of South American Earth Sciences* 69:11–24. DOI:
- 398           10.1016/j.jsames.2016.03.007.
- 399 Morton SG. 1834. *Synopsis of the organic remains of the Cretaceous group of the United States.*
- 400           *Illustrated by nineteen plates, to which is added an appendix containing a tabular view*
- 401           *of the Tertiary fossils discovered in America.* Philadelphia: Key and Biddle.
- 402 Nessov LA., Kaznyshkina LF., Cherepanov GO. 1989. Ceratopsian dinosaurs and crocodiles of
- 403           the Mesozoic of middle Asia. In: Bogdanova TN, Khozatsky LI eds. *Theoretical and*
- 404           *Applied Aspects of Modern Paleontology.* Leningrad: Nauka, 144–154.
- 405 Owen R. 1842. Report on British fossil reptiles. Part II. *Report of the Eleventh Meeting of the*
- 406           *British Association for the Advancement of Science* 1841:66–204.
- 407 Perch-Nielsen K. 1985. Mesozoic calcareous nannofossils. In: Bolli HM, Saunders JB, Perch-
- 408           Nielsen K eds. *Plankton stratigraphy, Volume 1: Planktic foraminifera, calcareous*
- 409           *nannofossils and calpionellids.* New York: Cambridge University Press, 329–426.
- 410 Phillips GE. 2010. A distinctive lithofacies between the Prairie Bluff and Owl Creek formations
- 411           (Upper Cretaceous) of north Mississippi and its characteristic faunal content. *Journal of*
- 412           *the Mississippi Academy of Sciences* 55:78.
- 413 Phillips GE., Nyborg T., Vega FJ. 2014. Icriocarcinidae: A family of portunoid crabs from the
- 414           Upper Cretaceous of North America. *Paläontologische Zeitschrift* 88:139–158. DOI:
- 415           10.1007/s12542-013-0190-4.
- 416 Porras-Múzquiz HG., Lehman TM. 2011. A ceratopsian horncore from the Olmos Formation
- 417           (early Maastrichtian) near Múzquiz, Mexico. *Revista Mexicana de Ciencias Geológicas*
- 418           28:262–266.
- 419 Prieto-Márquez A., Erickson GM., Ebersole JA. 2016a. A primitive hadrosaurid from
- 420           southeastern North America and the origin and early evolution of “duck-billed”
- 421           dinosaurs. *Journal of Vertebrate Paleontology* 36:e1054495. DOI:
- 422           10.1080/02724634.2015.1054495.
- 423 Prieto-Márquez A., Erickson GM., Ebersole JA. 2016b. Anatomy and osteohistology of the basal

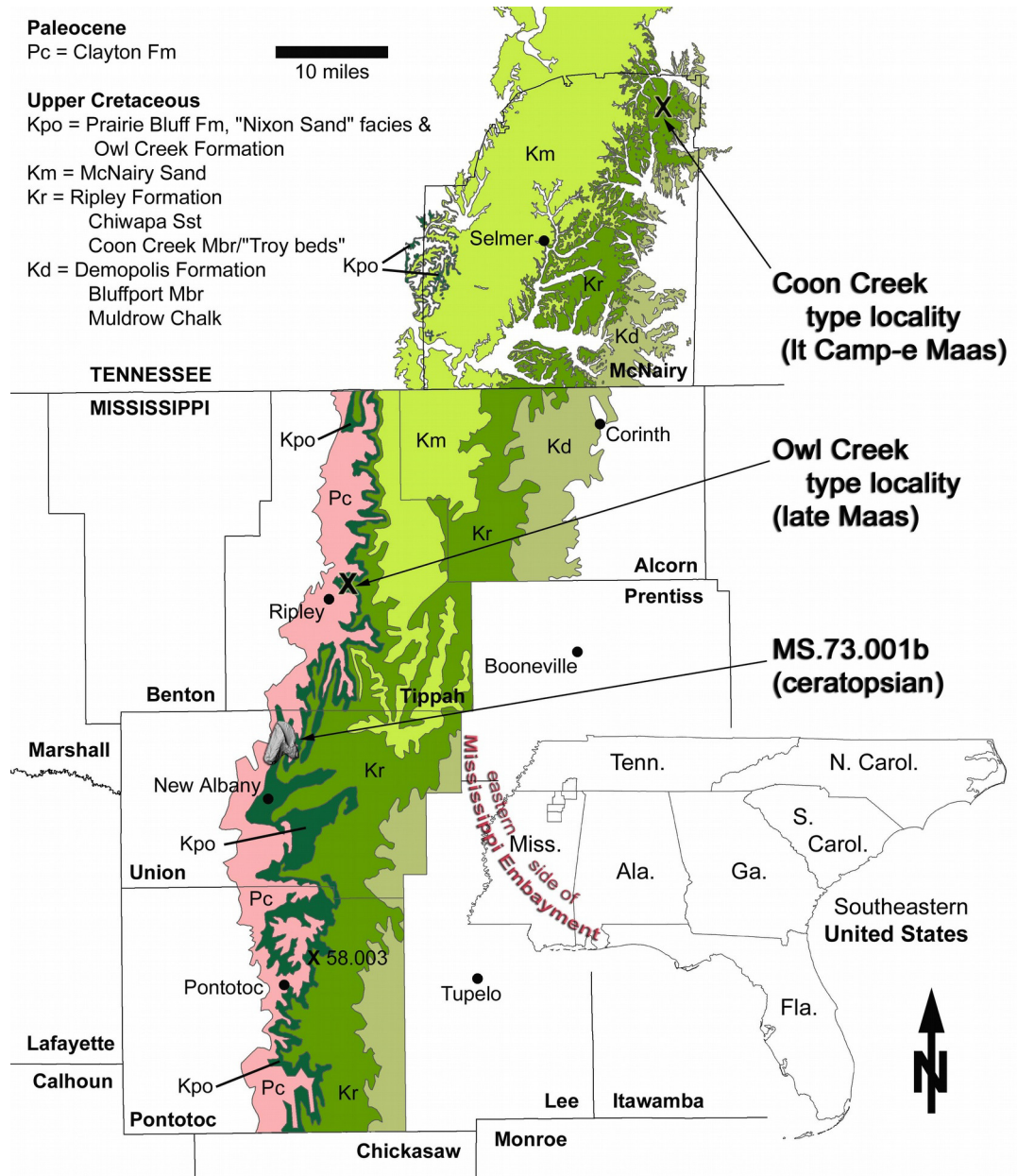


- hadrosaurid dinosaur *Eotrachodon* from the uppermost Santonian (Cretaceous) of southern Appalachia. *PeerJ* 4:e1872. DOI: 10.7717/peerj.1872.
- Prieto-Márquez A., Weishampel DB., Horner JR. 2006. The dinosaur *Hadrosaurus foulkii*, from the Campanian of the East Coast of North America, with a reevaluation of the genus. *Acta Palaeontologica Polonica* 51:77–98.
- Puckett TM. 2005. Santonian-Maastrichtian planktonic foraminiferal and ostracode biostratigraphy of the northern Gulf Coastal Plain, USA. *Stratigraphy* 2:117–146.
- Rathbun MJ. 1926. Crustacea. In: Wade B ed. *The fauna of the Ripley Formation of Coon Creek, Tennessee, United States Geological Survey Professional Paper 137*. 184–191.
- Rivera-Sylva HE., Hedrick BP., Dodson P. 2016. A centrosaurine (Dinosauria: Ceratopsia) from the Aguja Formation (Late Campanian) of Northern Coahuila, Mexico. *PLOS ONE* 11:e0150529. DOI: 10.1371/journal.pone.0150529.
- Sampson SD., Loewen MA., Farke AA., Roberts EM., Forster CA., Smith JA., Titus AL. 2010. New horned dinosaurs from Utah provide evidence for intracontinental dinosaur endemism. *PLOS ONE* 5:e12292.
- Sampson SD., Lund EK., Loewen MA., Farke AA., Clayton KE. 2013. A remarkable short-snouted horned dinosaur from the Late Cretaceous (late Campanian) of southern Laramidia. *Proceedings of the Royal Society B: Biological Sciences* 280:20131186. DOI: 10.1098/rspb.2013.1186.
- Say T. 1820. Observations on some species of zoophytes, shells, etc., principally fossil. *American Journal of Science, Series 1* 2:34–45.
- Schwimmer DR. 1997. Late Cretaceous dinosaurs in eastern USA: A taphonomic and biogeographic model of occurrences. In: Wolberg DL, Rosenberg GD eds. *Dinofest International Proceedings Volume*. Philadelphia: Academy of Natural Sciences of Philadelphia, 203–211.
- Schwimmer DR., Williams GD., Dobie JL., Siesser WG. 1993. Late Cretaceous dinosaurs from the Blufftown Formation in western Georgia and eastern Alabama. *Journal of Paleontology* 67:288–296. DOI: 10.1017/S0022336000032212.
- Seeley HG. 1887. On the classification of the fossil animals commonly named Dinosauria. *Proceedings of the Royal Society of London* 43:165–171.
- Slattery JS., Cobban WA., McKinney KC., Harries PJ., Sandness AL. 2015. Early Cretaceous to Paleocene paleogeography of the Western Interior Seaway: The interaction of eustasy and tectonism. *Wyoming Geological Association Guidebook* 2015:22–60.
- Sohl NF. 1960. Archeogastropoda, Mesogastropoda, and stratigraphy of the Ripley, Owl Creek, and Prairie Bluff Formations. *United States Geological Survey Professional Paper* 331A:1–151.
- Sohl NF. 1964. Neogastropoda, Opisthobranchia, and Basommatophora from the Ripley, Owl Creek, and Prairie Bluff Formations. *United States Geological Survey Professional Paper* 331B:153–344.
- Sohl NF., Koch C. 1983. Upper Cretaceous (Maestrichtian) Mollusca from the *Haustator bilira* Assemblage Zone in the East Gulf Coastal Plain. *United States Geological Survey Open File Report* 83–451:1–239.
- Sohl NF., Koch C. 1986. Molluscan biostratigraphy and biofacies of the *Haustator bilira* assemblage zone (Maestrichtian) of the East Gulf Coastal Plain. In: Reinhardt J ed. *Stratigraphy and sedimentology of continental, nearshore, and marine Cretaceous sediments of the eastern Gulf Coastal Plain*. Carrollton, Georgia: Georgia Geological

- Society, 45-56-99.
- Stanford R., Weishampel DB., Deleon VB. 2011. The first hatchling dinosaur reported from the eastern United States: *Propanoplosaurus marylandicus* (Dinosauria: Ankylosauria) from the Early Cretaceous of Maryland, U.S.A. *Journal of Paleontology* 85:916–924. DOI: 10.1666/10-113.1.
- Stephenson LW. 1941. The larger invertebrate fossils of the Navarro Group of Texas. *University of Texas Publication* 4101:1–641.
- Stephenson LW. 1955. Owl Creek (Upper Cretaceous) fossils from Crowleys Ridge, southeastern Missouri. *United States Geological Survey Professional Paper* 274E:97–140.
- Sues H-D., Averianov A. 2009. *Turanoceratops tardabilis*-the first ceratopsid dinosaur from Asia. *Die Naturwissenschaften* 96:645–652. DOI: 10.1007/s00114-009-0518-9.
- Sullivan RM., Boere AC., Lucas SG. 2005. Redescription of the ceratopsid dinosaur *Torosaurus utahensis* (Gilmore, 1946) and a revision of the genus. *Journal of Paleontology* 79:564–582.
- Sullivan RM., Lucas SG. 2010. A new chasmosaurinae (Ceratopsidae, Dinosauria) from the Upper Cretaceous Ojo Alamo Formation (Naashoibito Member), San Juan Basin, New Mexico. In: Ryan MJ, Chinnery-Allgeier BJ, Eberth DA eds. *New Perspectives on Horned Dinosaurs: The Royal Tyrrell Museum Ceratopsian Symposium*. Bloomington, Indiana: Indiana University Press, 169–180.
- Swann CT., Dew JJ. 2008. Geological map of the Troy, Mississippi 7.5' quadrangle.
- Swann CT., Dew JJ. 2009. Geology of the Troy, Miss., 7.5 minute topographic quadrangle, Chickasaw and Pontotoc Counties, Mississippi. *Mississippi Mineral Resources Institute Open-File Report* 09–2S:1–28.
- Tanoue K., You H., Dodson P. 2009. Comparative anatomy of selected basal ceratopsian dentitions. *Canadian Journal of Earth Sciences* 46:425–439. DOI: 10.1139/E09-030.
- Weishampel DB., Barrett PM., Coria RA., Le Loeuff J., Xu X., Zhao X., Sahni A., Goman EMP., Noto CR. 2004. Dinosaur distribution. In: Dodson P, Weishampel DB, Osmólska H eds. *The Dinosauria*. Berkeley: University of California Press, 517–606.
- Weishampel DB., Young L. 1996. *Dinosaurs of the East Coast*. Baltimore: Johns Hopkins University Press.
- Wick SL., Lehman TM. 2013. A new ceratopsian dinosaur from the Javelina Formation (Maastrichtian) of West Texas and implications for chasmosaurine phylogeny. *Naturwissenschaften* 100:667–682. DOI: 10.1007/s00114-013-1063-0.



**Figure 1.** Geologic map of Maastrichtian deposits in northeast Mississippi. The area of interest includes the noteworthy type localities of the Coon Creek Formation (latest Campanian–early Maastrichtian) and Owl Creek Formation (late Maastrichtian). Base map composed by the Mississippi Office of Geology in 2010, from data in Bicker (1969).

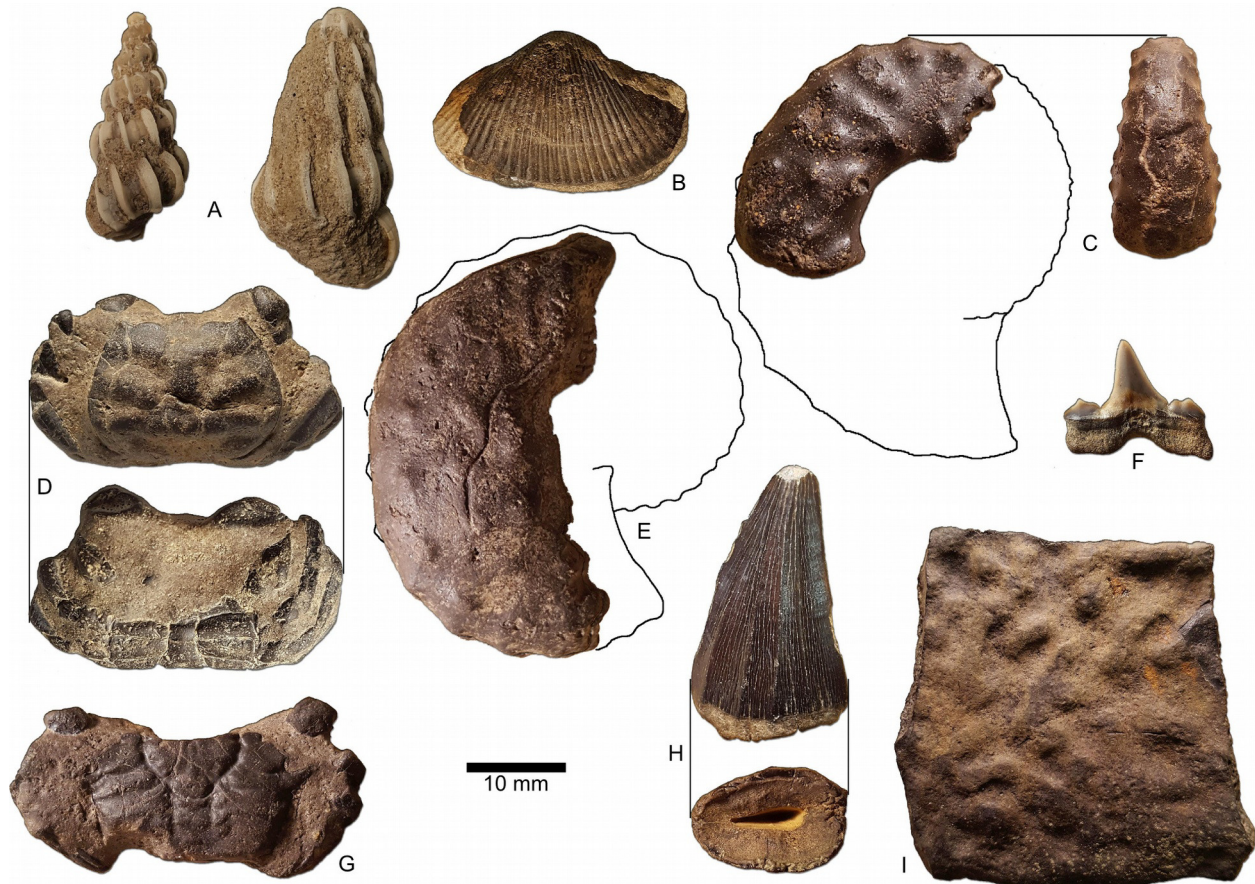


**Figure 2.** Stratigraphic chart of Maastrichtian deposits in northeast Mississippi. Basic chart chronostratigraphy and most of the biostratigraphic columns were produced using TS (TimeScale) Creator (© 2005-2010, A. Lugowski and J. Ogg). All ages are standardized to the Geologic Time Scale 2016 and the Concise Geologic Time Scale compilation of the International Commission on Stratigraphy and its Subcommittee on Stratigraphic Information. The stratigraphic data used in TS Creator is based on numerous events borrowed from many global and regional reference sections and integrated time scales. The Gulf Coastal Plain (GCP) ammonite zones and their correlative ages are based primarily on Cobban (1974), Cobban and Kennedy (1991a,b, 1995; 1993), Landman et al. (2004), and Larina et al. (2016). The relationship of GCP to WIS ammonite zones as presented here should be considered provisional. The position of the stage and substage boundaries is based, in part, on the work of Sohl and Koch (1986). The informal units "Nixon beds," "Troy beds," and "transitional clay" were introduced by Phillips (2010), Swann and Dew (2008, 2009), and Sohl (1960), respectively. The Coon Creek and correlative beds are time transgressive, the Campanian-Maastrichtian boundary being located higher in the section in the northern part of the outcrop belt (Tennessee). A major unconformity is recognized at the base of the Chiwapa Sandstone, separating it from the remainder of the subjacent Ripley Formation. Contrary to the age of the sub-Chiwapa Ripley given here (early Maastrichtian), foraminiferal zonation established for the Gulf Coast by Mancini et al. (1995) and Puckett (2005) defines the Campanian-Maastrichtian boundary as coincident with the transgressive surface marking the base of the Chiwapa Sandstone, thus making the lower Ripley beds Campanian. The dashed vertical arrow represents the uncertainty of the exact stratigraphic position for the ceratopsid tooth within the Owl Creek Formation.

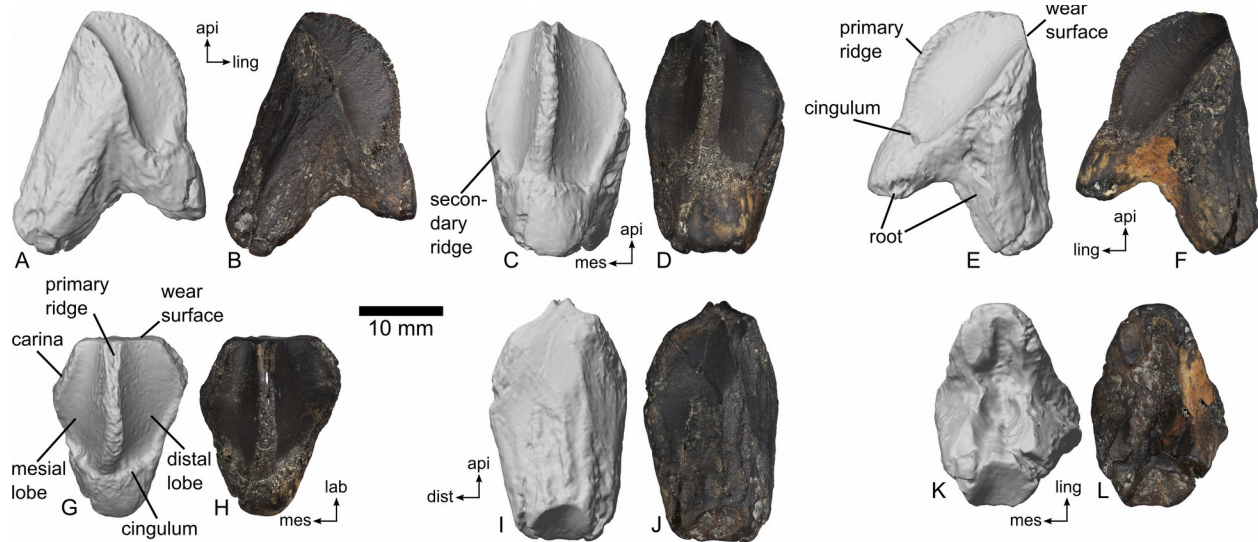
	Euro. Stratotypes		MISSISSIPPI-TENNESSEE		Planktonic	Calcareous	Gulf Coast	North American West.	
Age	Stage	Substage	<small>SOUTH</small> Portland Co.	<small>NORTH</small> McNairy Co.	Forams	Nannos	Ammonite Zones	Interior Ammo. Zones	
66	Danian		Clayton Fm		P1	NP2			
					Pa	NP1			
					P0	CC26b			
	70	Maas-trichtian	Late	<div><div>Owl Creek Fm</div><div>"Nixon beds"</div><div>Prairie Bluff Fm</div><div>Chiwapa Sst</div><div>Ripley Fm</div><div>"Troy beds"</div><div>"transitional clay"</div></div> <div><div>↑</div><div>↓</div></div> <div>transitional base</div>		Abathom-phalus mayaroensis	CC25	Discoscaphites iris Discoscaphites minardi	[Few usable ammonites]
Racemi-guembelina fruticosa									
CC24						Nostoceras alternatum			
Gansserina gansseri									
72	Camp-anian	Early	McNairy Sand Creek Member		Globo-truncana aegyptica	CC23	Nostoceras rugosum	Jeletzkytes nebrascensis	
							Nostoceras hyatti	Hoploscaphites nicolleti	
								Hopl. birkelundi	
								Baculites clinolobatus	
	Late		Demopolis Fm				Bac. grandis		
							Bac. baculus		
							Bac. eliasi		
							Bac. jenseni		
							Bac. reesidei		
							Bac. cuneatus		
						Bac. compressus			



**Figure 3.** Maastrichtian marine macrofossils collected in loose association with ceratopsian tooth (from Table 1). A) *Striaticostatum* cf. *S. sparsum* Sohl, MMNS IP-8648; B) *Liopistha protexta* (Conrad), MMNS IP-6116; C) *Discoscaphites iris* (Conrad), microconch, MMNS IP-8646; D) *Costacopluma grayi* Feldmann & Portell, larger Maastrichtian variety (Martínez-Díaz et al., 2016), MMNS IP-8647 (distinct from the smaller Danian variety); E) *Discoscaphites iris* (Conrad), macroconch, MMNS IP-494; F) *Cretalamna* cf. *C. maroccana* (Arambourg), lower posterior tooth, MMNS VP-8041; G) *Branchiocarcinus flectus* (Rathbun), MMNS IP-6115.3; H) *Mosasaurus hoffmani* Mantell, MMNS VP-6803; I) *Peritresius* cf. *P. ornatus* (Leidy), costal carapace fragment, MMNS VP-4407.

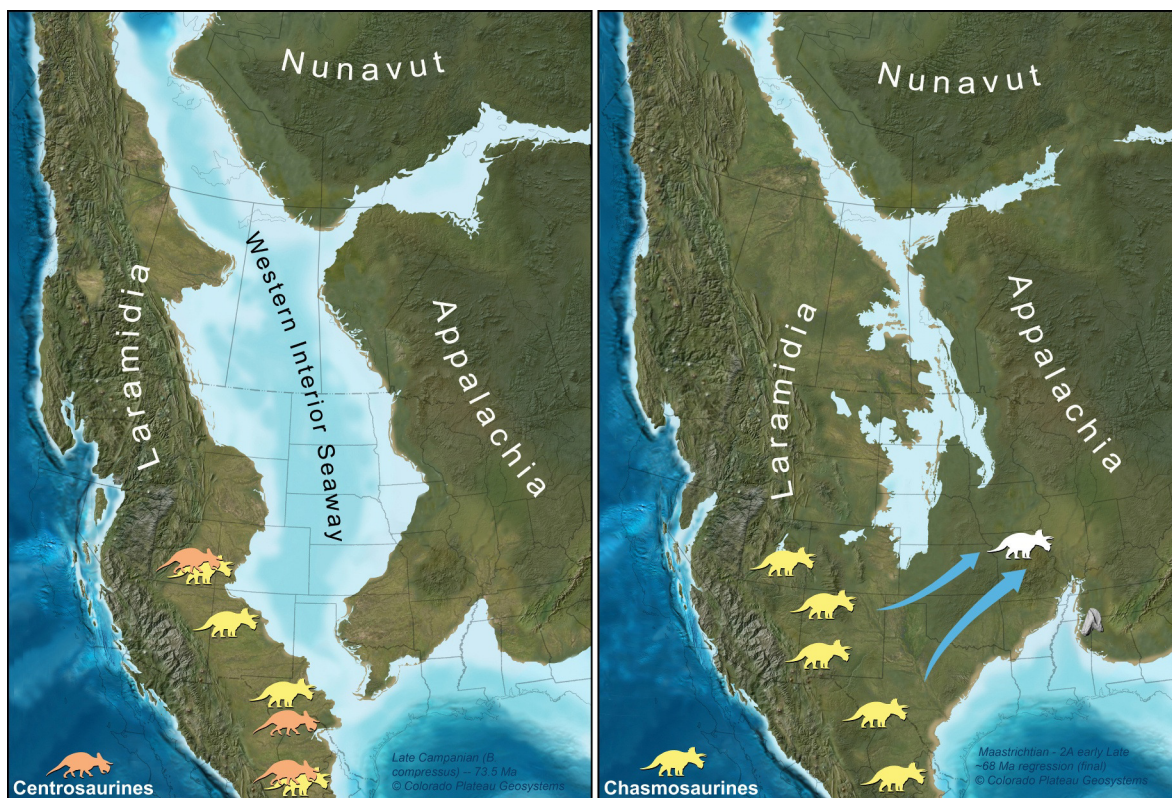


**Figure 4.** Right dentary tooth of ceratopsid dinosaur, MMNS VP-7969. Digital renderings and photographs in A, B) mesial (posterior); C, D) lingual (medial); E, F) distal (anterior); G, H) apical (dorsal); I, J) labial (lateral); K, L) root (ventral) views. Scale bar equals 10 mm. Directional abbreviations: api, apical; dist, distal; mes, mesial; lab, labial; ling, lingual.





**Figure 5.** Paleogeographic maps of two key geochronologic intervals in the uppermost Cretaceous of North America. Late Campanian (left) and late Maastrichtian (right) time slices are depicted with southern Laramidia ceratopsid localities on the appropriate time interval map. Ceratopsid occurrences and their associated ages are taken from numerous references (Lehman, 1996; Sullivan, Boere & Lucas, 2005; Loewen et al., 2010; Sampson et al., 2010, 2013; Sullivan & Lucas, 2010; Porras-Múzquiz & Lehman, 2011; Wick & Lehman, 2013; Rivera-Sylva, Hedrick & Dodson, 2016; Lehman, Wick & Barnes, 2016). Arrows designate late Maastrichtian dispersal of ceratopsians, in this interpretation, along an emerging southern route formed by a northerly retreating seaway. Maps are part of the Key Time Slices of North America series, © 2013 Colorado Plateau Geosystems, Inc., and used with their kind permission by licensed agreement. Silhouettes are by Raven Amos (chasmosaurine) and Lukas Panzarin (centrosaurine, from Sampson et al., 2013), via www.phylopic.org.



**Table 1.** Partial faunal list produced from Upper Cretaceous marine fossils collected in loose association with MMNS VP-7969. The mollusks were previously established as characteristic of the late Maastrichtian Owl Creek Formation at the type locality, Tippah County, as well as historic outcrops in the vicinity of the ceratopsian locality, Union County (Sohl & Koch, 1983). The other listed species have also been previously reported as distinguishing Maastrichtian marine deposits of the eastern United States (e.g., Baird, 1986; Phillips, Nyborg & Vega, 2014; Martínez-Díaz et al., 2016). Selected specimens are illustrated in Figure 3. \*Mollusks represented by original calcitic shell. Remaining macroinvertebrates are largely internal molds.

## Mollusca

### Bivalvia

- Cucullaea capax* Conrad 1858
- Tenuipteria argentea* (Conrad 1858)
- Pinna* cf. *P. laquata* Conrad 1858
- Exogyra costata* Say 1820\*
- Pycnodonte vesicularis* Lamarck 1806\*
- Pterotrigonia* cf. *P. eufalensis* (Gabb 1860)
- Pterotrigonia* sp.
- Crassatella* sp.
- Linearia* cf. *L. metastriata* Conrad 1860
- Eufistulana ripleyana* (Stephenson 1941)
- Liopistha protexta* (Conrad 1853)

### Gastropoda

- Turritella* sp(p).
- Striaticostatum* cf. *S. sparsum* Sohl 1964\*

### Cephalopoda

- Discoscaphites iris* (Conrad 1858)
- Trachyscaphites* sp.
- Eubaculites carinatus* (Morton 1834)

## Crustacea

### Decapoda

- Branchiocarcinus flectus* (Rathbun 1926)
- Costacopluma grayi* Feldmann & Portell 2007
- Palaeoxanthopsis libertiensis* (Bishop 1986)

## Vertebrata

### Chimaeriformes

- Ischyodus* sp.

### Selachii

- Cretalamna* cf. *C. maroccana* (Arambourg 1935)
- Squalicorax pristodontus* (Agassiz 1843)

### Testudines

- Peritresius* cf. *P. ornatus* (Leidy 1856)

### Squamata

- Mosasaurus hoffmani* Mantell 1829