

**A peer-reviewed version of this preprint was published in PeerJ on 30 June 2017.**

[View the peer-reviewed version](https://doi.org/10.7717/peerj.3526) (peerj.com/articles/3526), which is the preferred citable publication unless you specifically need to cite this preprint.

Stilkerich J, Smrecak TA, De Baets K. 2017. 3D-Analysis of a non-planispiral ammonoid from the Hunsrück Slate: natural or pathological variation? PeerJ 5:e3526 <https://doi.org/10.7717/peerj.3526>

# 3D-Analysis of a non-planispiral ammonoid from the Hunsrück-Slate: natural or pathological variation?

Julia Stalkerich<sup>1</sup>, Trisha Smrecak<sup>2</sup>, Kenneth De Baets<sup>1,\*</sup>

<sup>1</sup>Geozentrum Nordbayern, Friedrich-Alexander Universität Erlangen-Nürnberg, Erlangen, Germany

<sup>2</sup>Department of Geology, Grand Valley State University, Allendale, United States

\*Corresponding author: kenneth.debaets@fau.de

## Abstract:

We herein examine the only known non-planispirally coiled early Devonian ammonoid, the holotype specimen of *Ivoites opitzi*, to investigate if the host was encrusted *in vivo* and if these sclerobionts were responsible for the trochospiral coiling observed in this unique specimen. To test if the presence of runner-like sclerobionts infested the historically collected specimen of *Ivoites opitzi* during its life, we used microCT to produce a three-dimensional model of the surface of the specimen. Our results indicate that sclerobionts grew across the outer rim (venter) on both sides of the ammonoid conch at exactly the location where the deviation from the planispiral was recognized, and where subsequent ammonoid growth would likely preclude encrustation. This indicates *in vivo* encrustation of the *I. opitzi* specimen, and represents the earliest documentation of the phenomenon. Further, this suggests that non-planispiral coiling in *I. opitzi* was pathologically induced and does not represent natural morphological variation in the species. Despite the observed anomalies in coiling, the specimen reached adulthood and retains important identifying morphological features, suggesting the ammonoid was minimally impacted by encrustation in life. As such, appointing a new type specimen – as suggested by some authors – for the species is not necessary. In addition, we identify the sclerobionts responsible for modifying the coiling of this specimen as hederelloids, a peculiar group of sclerobionts likely related to phoronids. Hederelloids in the Devonian are commonly found encrusting on fossils collected in moderately deep environments within the photic zone and are rarely documented in dysphotic and aphotic samples. This indicates that when the ammonoid was encrusted it lived within the euphotic zone and supports the latest interpretations of the Hunsrück Slate depositional environment.

## Introduction

Ammonoids are an extinct group of externally-shelled cephalopods that are often used to study biostratigraphy, diversity and evolutionary patterns (Ritterbush et al. 2014). The ammonoid shell is typically coiled with touching or overlapping whorls, but some forms – so called heteromorphs – deviate from this shape as their shell is not entirely coiled and/or is trochospirally coiled (Landman, Tanabe & Davis 1996). Mesozoic heteromorphs have convergently evolved in the Upper Triassic, Middle to Upper Jurassic, and multiple times in the Cretaceous (Wiedmann 1969; Dietl 1978; Cecca 1997)). Early ammonoids were loosely coiled and can therefore also be considered heteromorphs from a morphological perspective. However, early ammonoids differ in important ways from Mesozoic

heteromorphs as their embryonic shell is also uncoiled (House 1996; De Baets et al. 2012; De Baets et al. 2013; De Baets, Landman & Tanabe 2015), and not all types of coiling known from the Mesozoic have been reported from the Paleozoic (e.g., trochospiral coiling is thought to be absent). The sole known possible exception was a specimen of *Ivoites opitzi* from the Hunsrück Slate of Germany, which showed evidence for non-planispiral coiling (De Baets et al. 2013). Originally, the holotype specimen was interpreted to exhibit a transitional morphology in the natural variation from gyroconic to trochospiral coiling as observed in the Jurassic heteromorph *Spiroceras* (Dietl 1978).

However, this specimen is also encrusted by epicoles – “any organism that spent its life attached to or otherwise inhabiting the exterior of any more or less hard object” (Davis, Klofak & Landman 1999). In biology, the term chosen for the encrusting organism implies the relationship it has with its host (e.g. *in vivo*, post mortem), and a wide variety of terminology has been employed for encrusters in the paleontological literature (see discussion in Taylor & Wilson 2002). A general term for encrusting or boring organism being used with growing popularity is ‘sclerobiont’ and means “organisms living in or on any kind of hard substrate” (Taylor and Wilson, 2002). If these epicoles, or sclerobionts, settled on the ammonoid host shell during its life, they could be called epizoa (Davis, Klofak & Landman 1999; Klug & Korn 2001) and may cause deviations from planispiral coiling (oscillations of the shell around the median plane to trochospiral coiling) to abnormalities in the whorl cross section when overgrowing the epizoa (Merk 1966; Keupp 1992; Checa, Okamoto & Keupp 2002) and various other pathologies (Larson 2007; Keupp 2012; De Baets, Keupp & Klug 2015; Keupp & Hoffmann 2015). Cephalopod workers have commonly used the term epicoles to refer to organisms which encrust ammonoids post-mortem (Davis, Klofak & Landman 1999; Klug & Korn 2001; Rakociński 2011; De Baets, Keupp & Klug 2015; Keupp & Hoffmann 2015). Deviations from planispiral coiling in ammonoids have been attributed to sclerobionts in the past (discussed below), yet distinguishing between *in vivo* and post-mortem encrustations is rarely straightforward. In some cases it is impossible to tell if encrustation was *in-vivo* or post mortem, but using various lines of evidence (Seilacher 1960; Seilacher 1982; Baird, Brett & Frey 1989; Davis, Klofak & Landman 1999; Keupp 2012; De Baets, Keupp & Klug 2015; Keupp & Hoffmann 2015) can sometimes elucidate a live-live interaction between host and encruster. The main criteria used by researchers to identify likely cases of *in vivo* colonization of cephalopod shell are (compare Rakús & Zítt 1993; Davis, Klofak & Landman 1999; Klug & Korn 2001; Luci & Cichowolski 2014):

1. both flanks are encrusted but the apertural region remains free of encrusters
2. encrusters growth stops precisely at a whorl or are otherwise outpaced by the conch growth of the cephalopod
3. encrusters show a dominant growth direction consistent with shape and putative life position of the cephalopod shell and may express changes in growth direction as the host life position changes
4. the cephalopod reacts to its encrusters during growth by developing some kind of behaviour that is reflected in the shell (usually nonplanispiral coiling and other deformations).

85

86 Cases in which deformation of the shell and/or deviation from the normal planispiral coiling  
87 were caused by encrusters provide incontrovertible evidence that the encrusters colonized  
88 the shell while the host lived (Checa, Okamoto & Keupp 2002; Luci & Cichowolski 2014).  
89 Asymmetrical encrustations during life result in deviations from the planispiral; this has been  
90 experimentally demonstrated in gastropods and has been observed in various taxa of  
91 ammonoids (Merkt 1966; Klug & Korn 2001; Keupp 2012). Patterns related with Criteria 1  
92 and 3 are the only criteria which can be used to infer in-vivo encrustation when host growth  
93 has already stopped (Seilacher 1960; Keupp 2012), but could potentially also develop in  
94 postmortem sclerobiont attachment during necroplanktonic drift. However, post-mortem  
95 drift seems unlikely when ammonoid shells are small (< 200 mm: Wani et al. 2005;  
96 Rakociński 2011). Large, well-preserved or heavily colonized ammonoids were likely also  
97 encrusted *in-vivo*, because the length of time required for significant encrustation to occur is  
98 greater than the length of necroplanktonic drift, even when the additional weight of the  
99 sclerobiont is not considered (Keupp 2012). Furthermore, a vertical position resembling the  
100 living position of the ammonoid is not always preserved in necroplanktonic drift, and a  
101 subhorizontal position can be achieved after *asymmetrical* postmortem encrustation as a  
102 result of added weight (e.g., loosely coiled *Spirula*; Donovan 1989).

103 Although post-mortem encrustations of ammonoids on the seafloor can be common  
104 (Rakociński 2011), there are many examples for different organisms settling on the shells of  
105 living and fossil cephalopods including foraminifers, bivalves, sponges and corals (Baird,  
106 Brett & Frey 1989; Davis & Mapes 1999; Keupp 2012; Wyse Jackson & Key Jr 2014). These  
107 live-live interactions are not necessarily beneficial for the host or the sclerobiont. Often the  
108 cephalopods are disadvantaged, because encrustation increases drag and provides an  
109 additional weight burden that the cephalopod must carry, potentially limiting speed and  
110 mobility (Keupp 2012). In some cases the encrusters have a disadvantage. As the host  
111 cephalopod grows, the encruster may rotate away from their preferred position, losing  
112 access to valuable currents for filter feeding, and might eventually be overgrown by the shell  
113 in coiled ammonoids (Meischner 1968). However, encrusters largely profit from establishing  
114 on a pelagic host. Sessile organisms obtain a pseudoplanktic method of locomotion,  
115 providing the potential for greater and more varied nutrition and increased reproductive  
116 breadth.

117 Mobile organisms can potentially use the shell as temporary pasture (Keupp 2012), while  
118 sclerobionts can use it as benthic island surrounded by soft and unconsolidated sediment  
119 (Seilacher 1982). For pathological reactions in shell form and growth to occur, the  
120 sclerobionts must settle on still growing, younger hosts. Sclerobionts that settle on the shell  
121 of adult animals that have already reached their final shell size do not induce a pathological  
122 change in the host. In those situations, it is only possible to infer that these sclerobionts  
123 encrusted *in-vivo* because of their preferential orientation with respect to water currents or  
124 the life position of its host (Seilacher 1960; Seilacher 1982; Keupp, Röper & Seilacher 1999;  
125 Hauschke, Schöllmann & Keupp 2011).

126 If encrustation happens after the host's death, the organisms can colonize both the exterior  
127 and interior of empty shells (Bartels, Briggs & Brassel 1998). Shells which are lying on the

seabottom are typically substantially overgrown on one side (the portion above the sediment-water interface) and is usually taken as good evidence for post-mortem encrustation (Seilacher 1982; Schmid-Röhl & Röhl 2003; Lukeneder 2008; Keupp 2012). Encrustation on both sides can potentially also develop in reworked shells and internal moulds; however these typically show a more complex history of encrustation involving multiple generations and a variety of taxa (Macchioni 2000; Luci & Cichowolski 2014; Luci, Cichowolski & Aguirre-Urreta 2016). More importantly, resedimentation typically results in shell breakage and reworked ammonoids (sensu Fernández-López 1991) differ considerably from normally preserved ammonoids (e.g., abrasional features, differences in infilling and preservation: Fernández-López & Meléndez 1994). Post-mortem encrustation can also be recognized when structures normally believed to be covered with soft-parts (inside of the shell) or additional objects are encrusted by the epicoles (Bartels, Briggs & Brassel 1998; Klug & Korn 2001). Different generations of sclerobionts with clearly diverging orientations or different taxa on both sides of the ammonoid are also indicative of a post-mortem encrustation (Macchioni 2000; Klug & Korn 2001; Luci & Cichowolski 2014).

Our main goal is to test if the sclerobionts settled on the ammonoid during lifetime, which can be tested by investigating the criteria listed above – particularly if they are growing on both sides of the shell (criterion 1) and if the beginning of non-planispiral coiling (criterion 4) correlates with the settling of these sclerobionts. If these encrustations happened during lifetime and can be linked with severe pathological reactions (e.g., non-planispiral coiling), this might have important implications for taxonomy and indirectly for biostratigraphy (Spath 1945). Pathological specimens with strongly different morphologies have occasionally been described as different species (Spath 1945; Keupp 2012).

An additional goal is to identify the identity of the sclerobionts, which were preliminary determined to be auloporidae tabulate corals (De Baets et al. 2013). Some taxa of auloporidae corals have traditionally been confused with other sclerobionts with runner-like morphologies (Lescinsky 2001) like hederelloids and cyclostomate bryozoans (Fenton & Fenton 1937; Elias 1944; Bancroft 1986).

In testing these questions, it was important to avoid using destructive analyses because the specimen is an important historical specimen (Opitz 1932) and the holotype of *Ivoites opitzi* (De Baets et al. 2013) from the famous Hunsrück Lagerstätte. The Hunsrück Slate is a facies typical for the Lower Devonian (Emsian) of the Rhenish Massif which consists predominantly of dark fine-grained argillites metamorphosed into slates (Bartels, Briggs & Brassel 1998). In the Bundenbach-Gemünden area, these strata can contain fossils with remarkable preservation including articulated echinoderms and vertebrates as well as preserved soft tissues of arthropods and other groups without hard tissues (Bartels et al., 1998). Although some fossils reveal remarkable preservation, they are all typically flattened and it is difficult to impossible to prepare such thin, compressed fossils from both sides without destroying parts of it. This is for example illustrated by the only known specimen and holotype of *Palaeoscorpius devonicus*, where some parts of the shale that are thinner than 1 mm are very fragile or missing altogether after preparation (Kühl et al. 2012b). This might be one of the reasons why fossils with hard parts commonly studied for biostratigraphic or paleoenvironmental purposes at other sites where they are more three-dimensionally

preserved have been comparable little studied in the Hunsrück Slate (Bartels, Briggs & Brassel 1998; Südkamp 2007). This is also the case for ammonoids, which are important index fossils to date this deposit and are often extremely flattened hampering also their taxonomic assignment (Bartels, Briggs & Brassel 1998; De Baets et al. 2013).

Considering the size and the preservation of our specimen, as well as the expected x-ray contrast between pyritic fossils and the slate matrix, we elected micro-CT to create a three-dimensional model to answer these questions. This method is well suited for these purposes (Sutton, Rahman & Garwood 2014). Many CT-studies have focused on analyzing ontogeny or morphological traits for phylogenetic purposes (Monnet et al. 2009; Garwood & Dunlop 2014; Naglik et al. 2015a), but they can be used to test ecological or paleobiological aspects (Kruta et al. 2011; Köhl et al. 2012b; Hoffmann et al. 2014) such as the interpretation of pathologies (Anné et al. 2015) and bioerosion (Beuck et al. 2008; Rahman et al. 2015). Tomographic studies in ammonoids have focused on functional morphology, empirical buoyancy calculations and ontogeny of the chambered shell (Lukeneder 2012; Hoffmann et al. 2014; Tajika et al. 2014; Lemanis et al. 2015; Naglik et al. 2015a; Naglik et al. 2015b; Tajika et al. 2015; Lemanis et al. 2016; Lemanis, Zachow & Hoffmann 2016; Naglik, Rikhtegar & Klug 2016).

## Material and geological setting

The studied fossil specimen is the holotype of *Ivoites opitzi*, which was collected from the Hunsrück Slate in the Central Hunsrück, now known as the Middle Kaub Formation (Schindler et al. 2002), at the Schieleberg-quarry near Herrstein, Germany (De Baets et al. 2013; see Fig.1 for a map and stratigraphic provenance of this specimen). It is deposited in the Karl-Geib-Museum in Bad Kreuznach: KGM 1983/147. The Middle Kaub Formation contains some of most completely preserved early ammonoids (De Baets et al. 2013) and belong the oldest known ammonoid faunas (Becker & House 1994) together with similar aged faunas from China (Ruan 1981; 1996) and Morocco (De Baets, Klug & Plusquellec 2010). The exact stratigraphic position of our specimen is not known. However, *Ivoites* is restricted to Early Emsian. This particular species (*I. opitzi*) has been found associated with dacryoconarid *Nowakia praecursor* in samples deriving from Eschenbach-Bocksberg Quarry, but they have also been found in overlying layers of the Obereschenbach quarry (Wingertshell member sensu Schindler et al. 2002), which might range into the Barrandei Zone (De Baets et al. 2013). Other ammonoids, including those from the same genus (*I. schindewolfi*, *Erbenoceras solitarium*), which have been reported from the early Emsian strata of the Schieleberg quarry in Herrstein, speak for a Praecursor to the Barrandei zone age of the strata (De Baets et al. 2013).



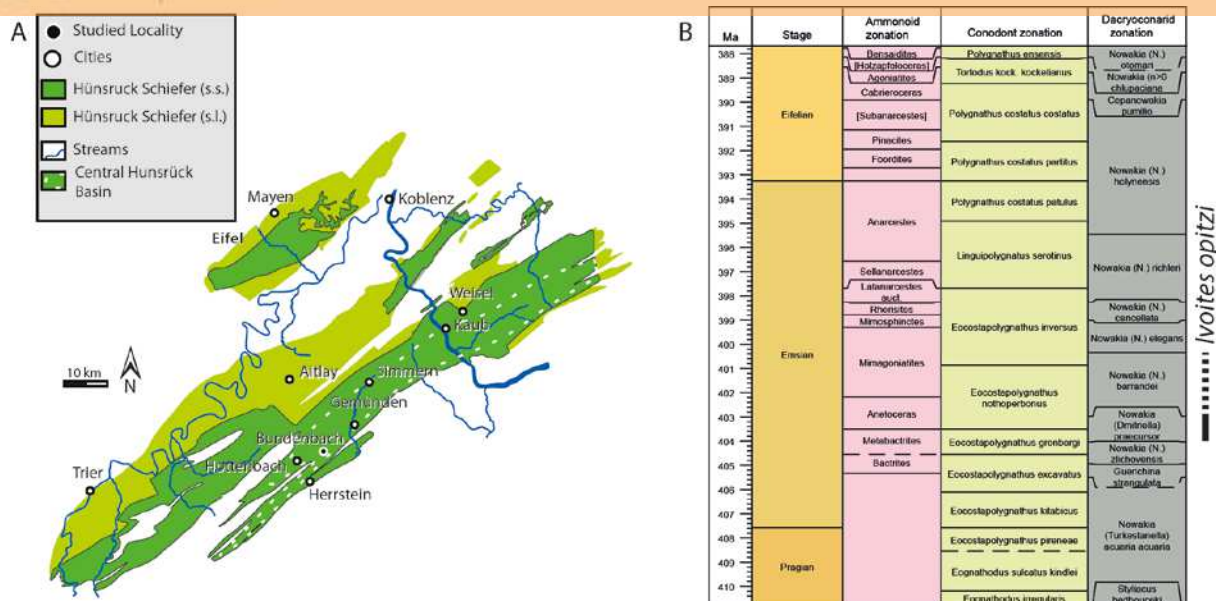


Fig.1: Geographic and Stratigraphic Context. (A) map of the locality (modified from De Baets 2012) and (B) stratigraphic provenance of *Ivoites opitzi* (time-scale based on Becker, Gradstein & Hammer 2012: created with time-scale creator 6.4: <http://engineering.purdue.edu/Stratigraphy/tscreator/>)

We investigated the taxonomy, provenance and taphonomy of 342 ammonoids from the Central Hunsrück Basin in a recent monograph (De Baets et al. 2013) including 82 specimens of *Ivoites* and 7 additional specimens of closely related *Metabactrites*.

The investigated specimen was chosen as the holotype above 19 other specimens of *Ivoites opitzi* as it was the most complete, three-dimensional and well-preserved specimen of the species. It has three complete whorls and a diameter of 105 mm (Fig. 2; De Baets et al., 2013). The specimen is mostly preserved as an internal, pyritic mould as evidenced by traces of suture lines and other structures (e.g., opitzian pits) internal to the shell (taphonomic category IIB of De Baets et al., 2013). The last half-whorl probably corresponds to the body chamber as indicated by faint traces of a suture in hand piece and x-ray images (Kneidl 1984), lack of pyrite infilling of the last whorl, terminal uncoiling as well as the large lateral extension of the end of the whorl interpreted to be the apertural edge (De Baets et al. 2013).

The infilling of the shell with pyrite in this taphonomic category is interpreted to have happened early in the diagenesis, below the sediment-water interface and before the dissolution, compaction, and breakage of the shell. These observations were used successfully to interpret preservation of ammonoids in the Jurassic bioturbated shales (Hudson 1982), and were additionally supported by fracture patterns (De Baets et al. 2013).

The whorls of this specimen touch and overlap each other, but this is interpreted to be a consequence of compression and tectonic deformation as the inner whorl lies completely above the following whorl (De Baets et al. 2013). Oblique embedding can result in one bit of whorl lying on top of one whorl, but the opposite side should then lie below this whorl (see for example De Baets et al. 2013, Plate 5, Fig. 3 for an example), which is not the case in our specimen. Compaction on an umbilical concretion can also results in asymmetric deformation, but affect similar quadrants is the same way and the concretion should still be

present, which is not the case in our specimen (see De Baets et al. 2013, Plate 10, Fig. 11 for an example). Compaction of a horizontally embedded specimen would result in subsequent whorl (with a thicker whorl section) to lie above previous whorls. The only way the preservation observed in KGM 1983/147 could occur is if the specimen was already torticonic before burial.

During the initial investigation of the holotype of *I. opitzi*, the possibility of a live-live relationship between the host and the sclerobionts was excluded because of an inferred lack of conclusive evidence (De Baets et al. 2013). The sclerobionts nearer the aperture did not provide any evidence that could support *in situ* or post-mortem encrustation. The sclerobiont colony on the phragmacone near the point of non-planispiral coiling was seemingly not growing across both sides of the whorl, and again, the authors were unable to infer the relationship between host and sclerobiont. But only the left side was prepared in this historically collected material (Opitz, 1932, p. 121, Fig. 117). A microCT of the specimen allowing to study the specimens from both sides, now gives us the unique opportunity to reevaluate this interpretation.





253

254 Fig. 2: Holotype of *Ivoites opitzi*. Several sclerobionts can be seen encrusting specimen KGM 1983/147.  
255 Scalebar: 1 cm.

## Methods

The specimen of *I. opitzi* under investigation is a holotype, and thus could not be investigated destructively. Thus, the specimen was well-suited to be studied with X-ray microtomography. X-ray microtomography uses x-rays to acquire radiographs (or projections) of an object at multiple angles. From these projections, a sequence of parallel and evenly spaced tomograms (individual slice images mapping the X-ray attenuation within a sample) are computed indirectly. This tomographic dataset in turn can be used to recreate a virtual model (3D model) without destroying the original object. The prefix micro- refers to the fact that pixel sizes of the cross-sections are in the micrometre range (Sutton, Rahman & Garwood 2014). Markus Poschmann (Mainz) kindly borrowed the specimen from the Karl-Geib-Museum and brought it to the Steinmann Institute, where it was investigated with X-ray micro-tomography. KGM 1983/147 was scanned on a Phoenix v|tome|x s at 150 kV and 160  $\mu$ A with 0.400 s of exposure time by Alexandra Bergmann (Steinmann Institute). This resulted in two thousand two hundred unfiltered projections providing a voxel size of 118  $\mu$ m ( $\sim$  pixel size of 118 $\mu$ m). Three-dimensional reconstructions and an animation were produced using the 107 images (tomograms) in the x-z-plane by Julia Stalkerich using the free software SPIERS (Sutton et al. 2012; <http://spiers-software.org>). A video as well as files essential for verification can be found in the supplementary material, the latter include the used image stack and a scansheet with description of scan settings and specimen information (Davies et al. 2017). The fixed threshold value was manually chosen to maximally separate pyritic fossils from the shale matrix, because the objects of focus (ammonoid and epicoles) are pyritic (see material and methods); Regions of interest were defined using the masking system in SPIERS, allowing them to be rendered separately to have the most conservative interpretation of the position of the pyritic ammonoid vs. epicoles (Sutton, Rahman & Garwood 2014). Coloured masks were used in the final representation to distinguish the various features captured: ammonoid (yellow), runner-like epicoles (green), orthoconic nautiloid (red), brachiopod (blue) and dacryoconarids (yellow). This model was imported into Blender v 7.28 and enlarged 200% on the z-axis to measure the deviation from the plani-spiral.

## Results

Position of the epicoles and its relationship with non-planispiral coiling

In the model, the first whorl lies on top of the second whorl. The median plane of the first whorl seems to lie between 1 and 2 mm above that of the second whorl in the model, which must have been even greater before compaction (see discussion). The 3D-model (see Figs. 3, 4) therefore substantiates the previously hypothesized suspicion (De Baets et al. 2013) that the specimen is not entirely coiled planispirally. Five clusters (A-E) of colonial sclerobionts can be recognized in the 3D-model (see arrows in Figs. 3, 4).



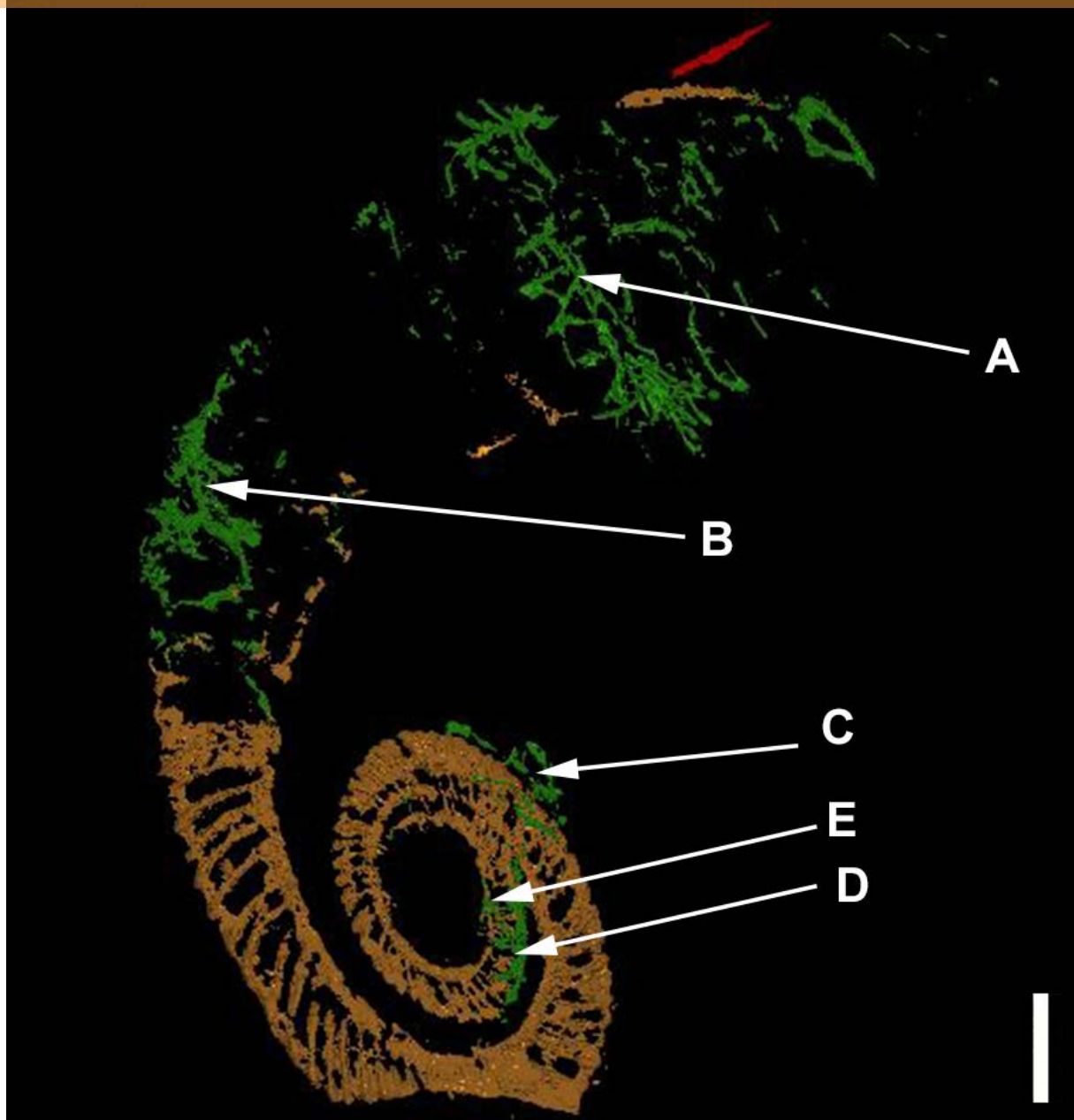


Fig. 3: The ammonoid (brown), the epicoles (green) and the orthoconic nautiloid (red) in the 3D-model. Five sclerobiont clusters (A-E) were distinguished. Scalebar: 1 cm.

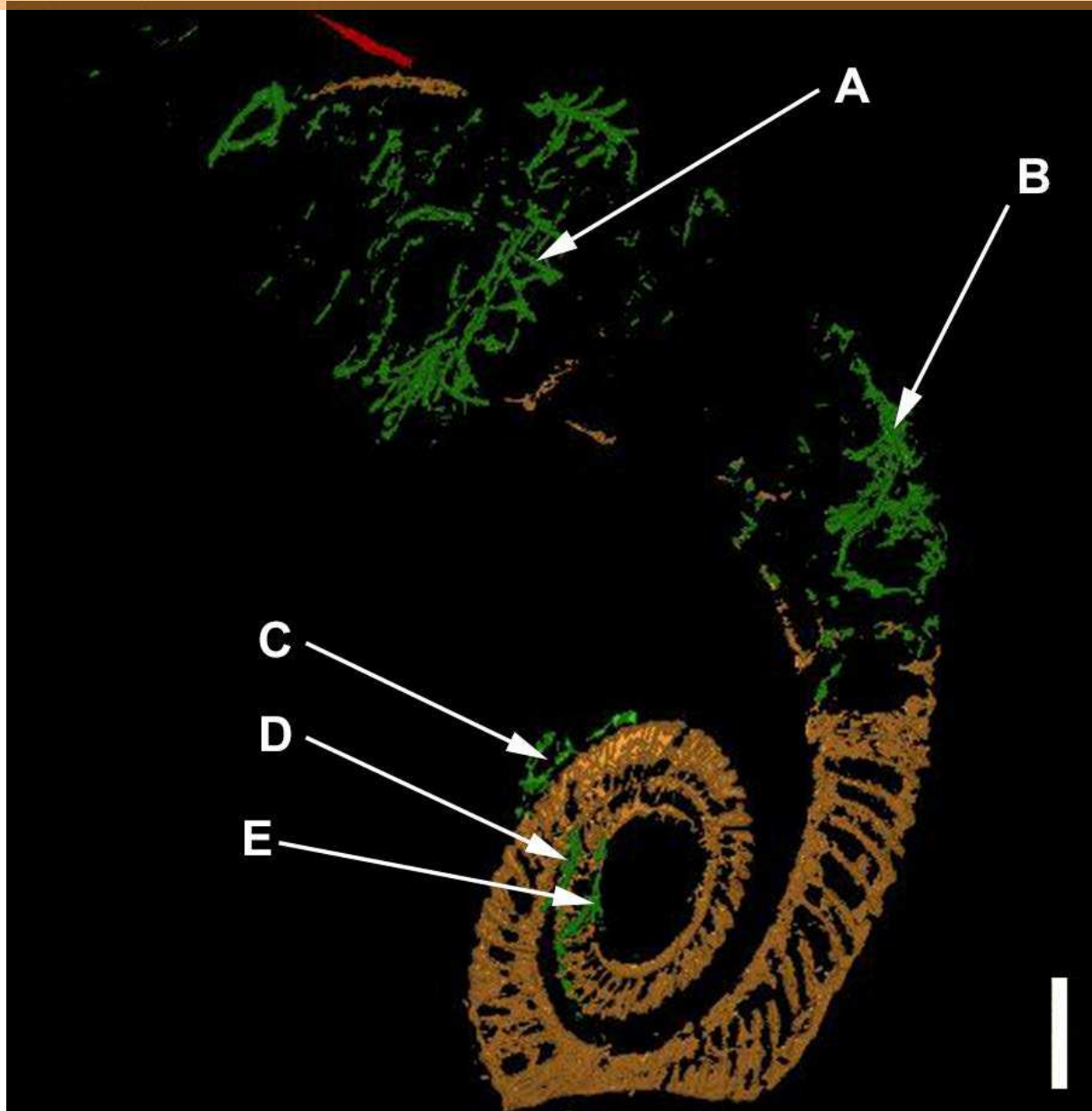


Fig. 4: The ammonoid (brown), the runner-like epicoles (green) and the orthoconic nautiloid (red) rotated 180°. Scalebar: 1 cm.

At least three clusters (C-E) can be recognized on the phragmocone. Additional clusters (A, B) can be found on the final demi-whorl. In the inner whorls, the sclerobionts are located ventrally on both sides of the whorl cross section (see Figs. 3C-E, 4C-E). Their direction of growth and budding follows the spiral axis of the ammonoid shell. The earliest recognizable sclerobionts with respect to the growth direction of the ammonoid (clusters D-E) coincide with the position where non-planispirality can be first recognized (Fig. 5).

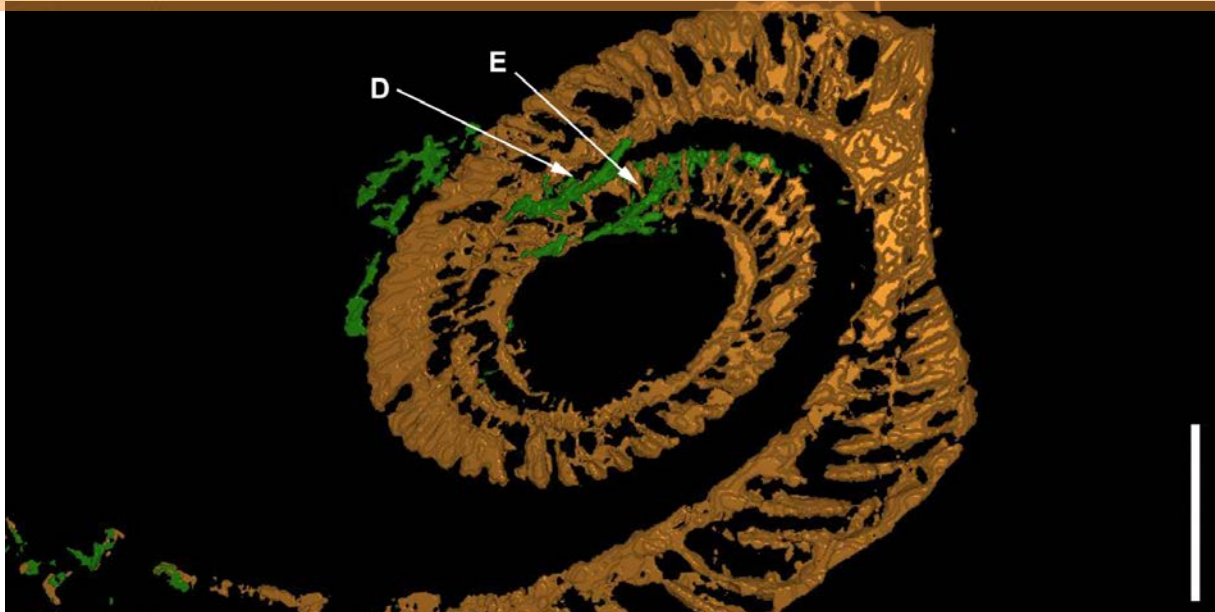


Fig. 5: The white arrows mark the position of the sclerobiont clusters (D and E) close to the position where non-planispiral coiling can be first recognized. Scalebar: 1 cm.

More importantly, there is evidence that clusters (C, D and E) are growing on both sides of the ammonoid (Fig. 6). The last demi-whorl of the host ammonoid was not infilled with pyrite, therefore the growth patterns of the sclerobionts in clusters A and B cannot be established with certainty.

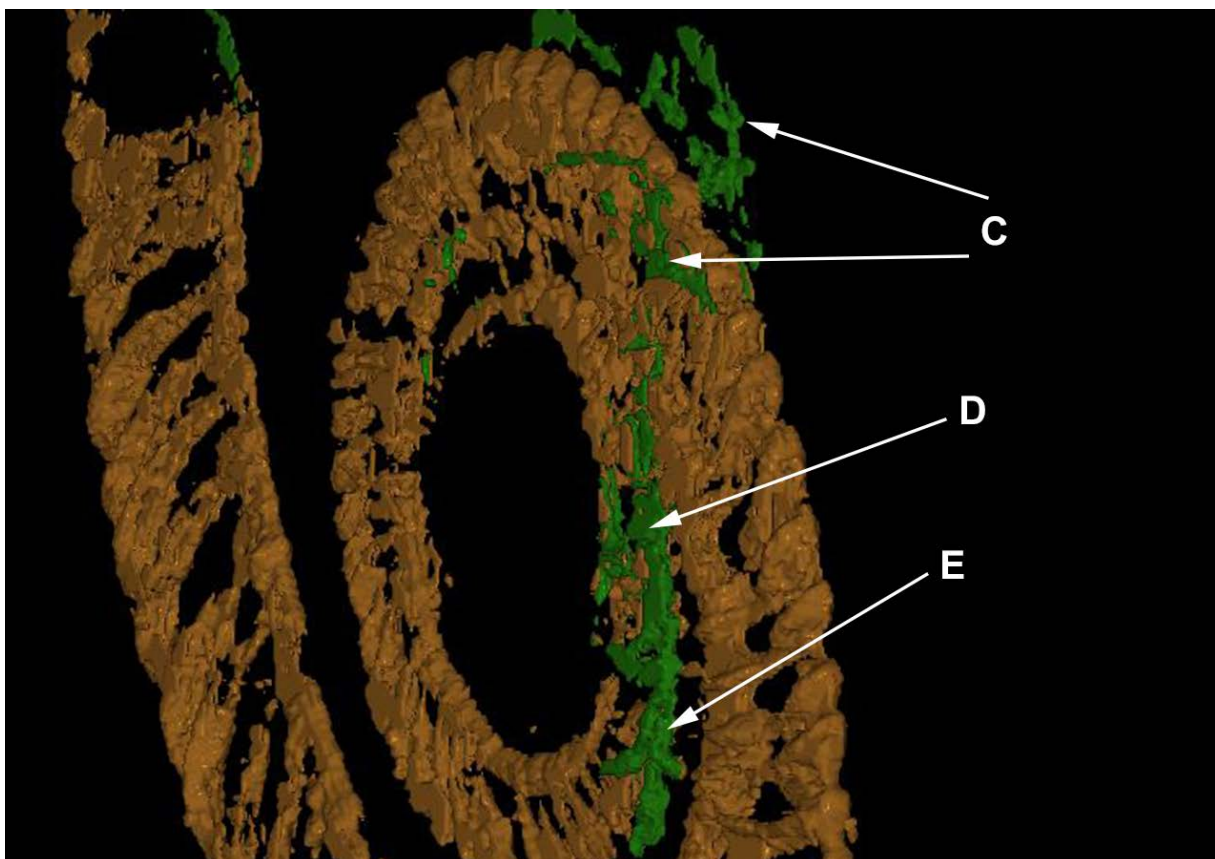


Fig. 6: Close-up of the 3D-model showing that sclerobionts are settling on both sides of the shell. Note correlation between asymmetrical sclerobiont encrustation of cluster E and the deviation from planispiral coiling of the host.

Elongated components like the dacryoconarids present in the substrate (marked in yellow in Figure 7) along with the *I. opitzi* specimen are often orientated along the direction of the paleo-current (Hladil, Čejchan & Beroušek 1991; Hladil et al. 2014; Gügel et al. 2017). Neither the dacryoconarids nor the epicoles show a preferential orientation with respect to the substrate. Sclerobiont clusters C, D, and E do show a preferential orientation with respect to the spiral axis of the ammonoid shell. Unnamed, small, and bulky components visible in the matrix are probably prytic nodules of different sizes.

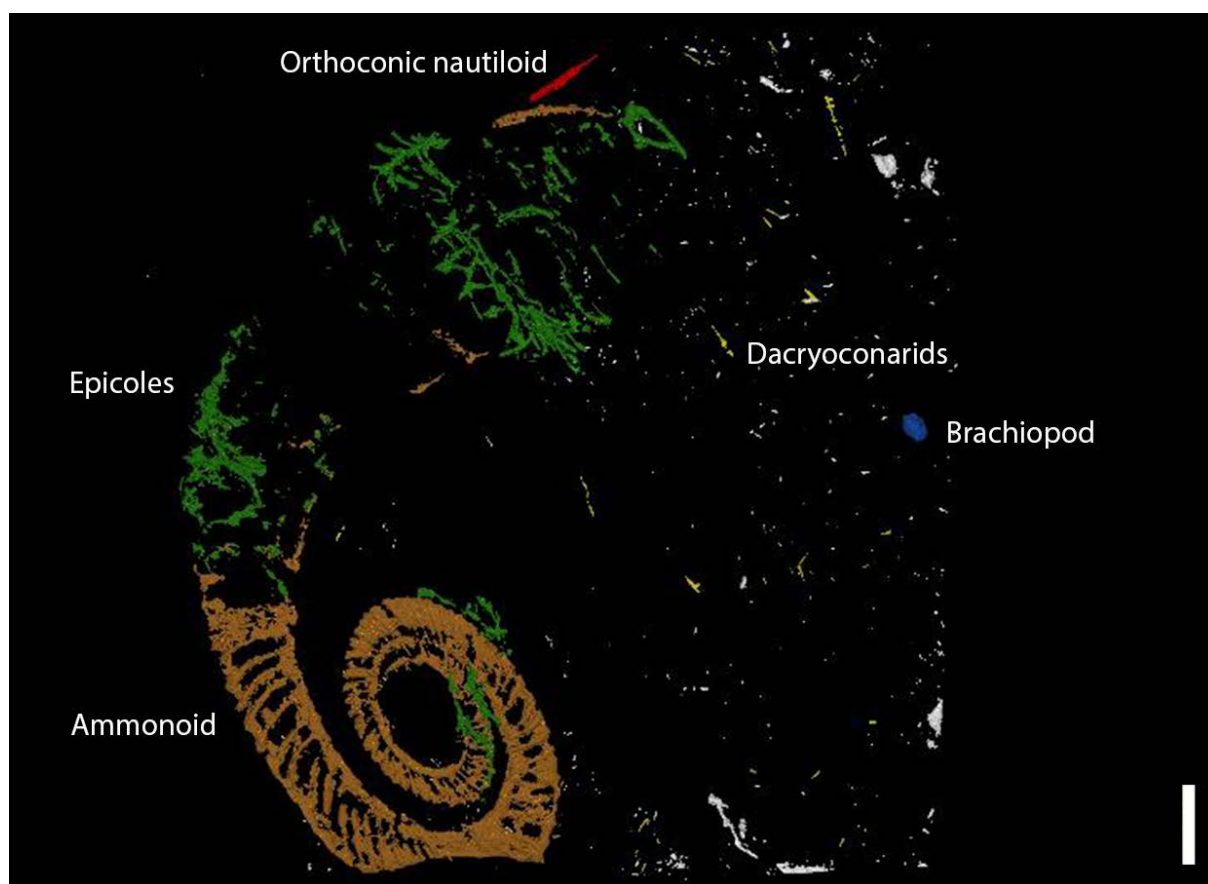


Fig. 7: The 3D-model showing all components. A brachiopod is coloured blue and dacryoconarids are shown in yellow. Runner-like epicoles are marked in green and orthoconic nautiloid in red. Scalebar: 1 cm.

### Morphology of the runner-like sclerobionts

The mode of preservation of the *I. opitzi* specimen, pyritization and internal mould preservation, makes examination of fine details or microstructure of the sclerobionts impossible. Yet the microCT permits three dimensional examination of the branching



patterns of the sclerobiont colonies. The original settlement location of the colonial organism cannot be distinguished, but the branching pattern of colonies grow in a direction largely parallel to the direction of the aperture of the host.

The colonies in all clusters have the same taxonomic affinity. Zooids in the colonies are long and tubular, and curve slightly near the zooecial opening. Zooids are larger than those commonly observed in bryozoans and bud in alternating directions. Diameter of the more 3D-preserved tubes are typically around 1.5 mm, but this might have been artificially augmented by compaction (De Baets et al. 2013). The tubes widen in the direction of growth expand distally and slightly contracted at the apex giving them a club-like appearance, characters typical of hederelloids (Elias 1944).

Branching morphology in the established colonies on the host are diverse despite many shared characteristics. Morphologies of zooids exhibited in clusters A through D are generally more elongate and acutely curved away from the uniserial plane to those in cluster E which contain zooids that curve more dramatically along multiple, pluriserial branches of the colony. Some of this variation could have been amplified by differential compaction in shales (Ross 1978; Briggs & Williams 1981).

## Discussion

The three-dimensional model of *I. opitzi* permitted extensive observation of the relationship between the ammonoid host and the sclerobiont clusters present. The results permit positive identification of the sclerobionts and interpretation of the relationship between them and their host.

### Synvivo vs. Post-Mortem encrustation

Three possible scenarios can explain encrustation on both sides of the ammonoid by a sclerobiont colony, clearly visible in clusters C, D and E:

1) In-vivo encrustation: encrustation on both sides of the ammonoid by sclerobiont colonies C, D, and E and the direction of the growth of those sclerobionts matching the growth of the ammonoid, speak for an in-vivo encrustation – at least for sclerobiont clusters C-E. A lack of a similar directional growth for all sclerobiont colonies on the ammonoid and with dacryoconarids in the surrounding substrate, as well as a lack in widespread encrustation across the ammonoid shell, further support the likelihood that the ammonoid was encrusted before the ammonoid settled on the seafloor (see Figure 8).

2) Post-mortem drift: encrustation of such large colonies solely during post-mortem drift seems unlikely due to the small size of our specimen (105 mm diameter). This is below the 200 mm limit listed for long floating cephalopod shells by Wani et al. (2005) and Rakociński (2011). Interestingly, our specimen would have even a much smaller phragmocone volume than coiled ammonoids at equal diameters used in these experiments. More importantly, the extra weight of the sclerobionts should have made it sink even sooner than a non-encrusted shells so that it would not have resulted in encrustation on both sides. Post-mortem drift is deemed rare for ammonoids in general; most are implied to sink rather

rapidly (Maeda & Seilacher 1996). Furthermore its vertical position in the water column should have been affected by asymmetric encrustation resulting in a non-vertical position of the shell after loss of soft-part parts which should have led to a more asymmetrical distribution of the sclerobionts as the preferentially attach to the lower part of drifting shells (Donovan 1989).

3) Resedimentation or reelaboration/reworking on the seafloor: usually encrustation of the sediment-free side of the ammonoids - which mostly end of horizontally on the seafloor - is taken to be characteristic unless reelaboration/reworking of shells or internal moulds happened (Macchioni 2000). In our cases, we have encrustation on both sides by the same colonies and transport by currents and reworking seems unlikely due the completeness of our specimen and similarities in preservation with other specimens of its taphonomic group (De Baets et al. 2013). All their characteristics speak for a relatively rapid burial and infilling with pyrite only during early diagenesis (before shell dissolution). Furthermore, the same sclerobionts (C-E) started growing on the venter to both sides of the lateral sides which speak rather for a simple encrustation history rather than multiple generations of epibionts encrusting each sediment-free side sequentially (at least one before and after resedimentation/reworking and possibly more). No evidence for re-sedimentation or reworking (abrasional features) are present in any of the 82 studied specimens of *Ivoites*.

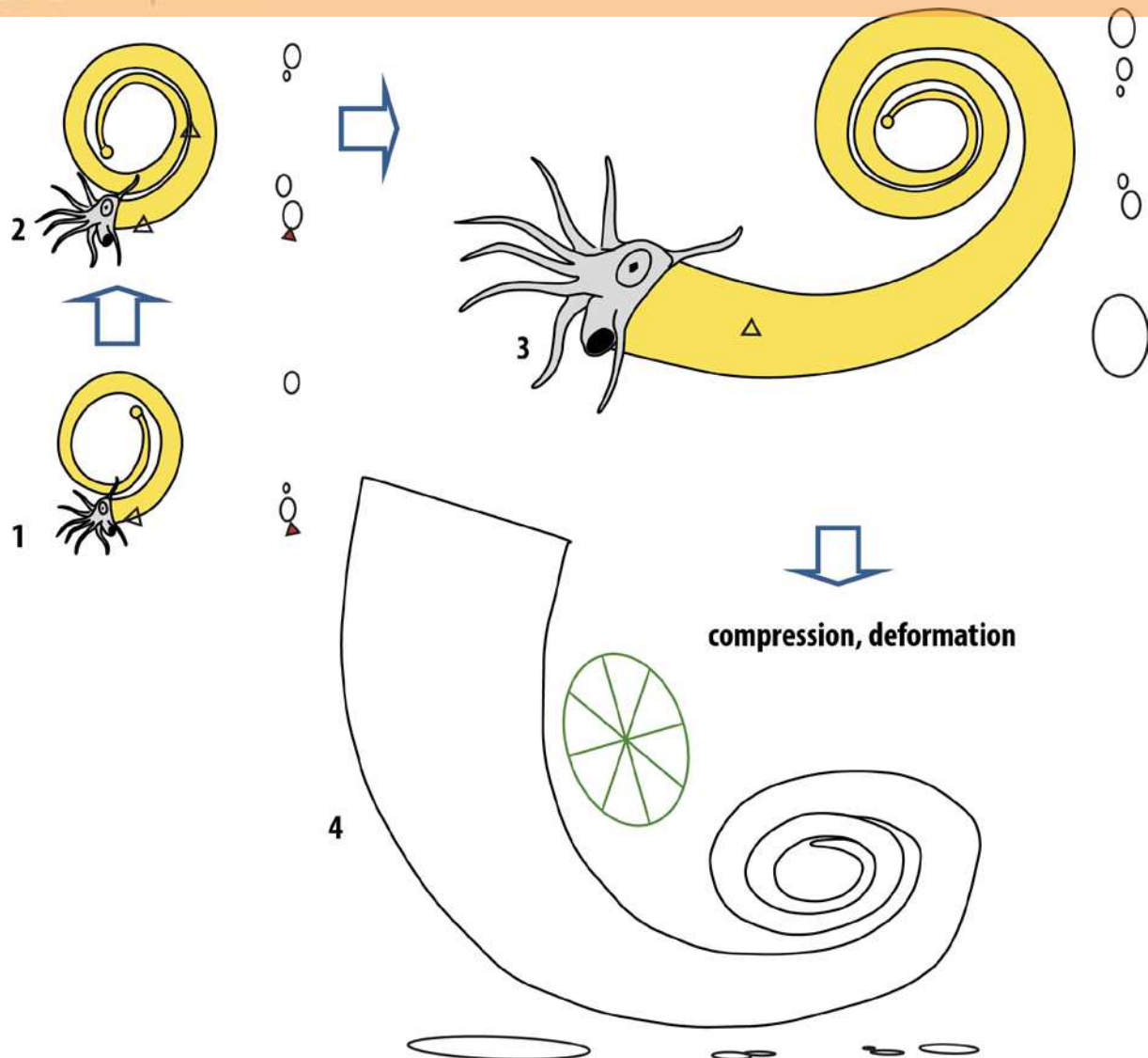


Fig. 8: Model of in-vivo encrustation and subsequent compression and deformation on *Ivoites opitzi*. 1) orientation and morphology of the specimen shortly after asymmetrical encrustation of first generation of epizoa (clusters D and E). 2) orientation and morphology of the specimen shortly after the asymmetrical encrustation of the second generation (cluster C) of epizoa (previous cluster of epizoa are currently lodged between the first and second whorl), 3) orientation and morphology of specimen when becoming encrusted with final epizoa (clusters A and B) or shortly before, 4) specimen after deformation; effect of deformation if specimen would have been initially planispirally coiled, effect in whorl section of specimen which was initially non-planispiral.

#### Pathological variation in the morphology of *I. opitzi*

The non-planispiral coiling of this specimen, a unique occurrence in the species, occurs at the position of the sclerobiont clusters D and E. This pathological variation in host growth is also consistent with encrustation of the cephalopod during its life-time. Even if the deviation in coiling plane is only 1 to 2 mm now, it would have been substantially greater before burial

and compaction. Whorl thickness alone has estimated to reduce up to 248 % in some specimens (De Baets et al. 2013), so originally these deviations could have been up at least 2.5 to 5 mm. If we artificially the thickness with 200 %, we obtain a maximum deviation of the median plane of one whorl to the next of about 2 mm (2,5 mm if we augment the thickness to 250 %). The same deviations can be observed within a single whorl (Fig. 10). Considering that the specimen has been extremely flattened (one whorl has been pressed on the other). At least another whorl thickness, the differences in whorl thickness between this whorl and the next which would make it a total of about 2 times this amount, ca. 4 mm (5 mm is we artificially augment the whorl thickness to 250%). This is a rather conservative estimate, as we cannot know exactly how the specimen was compressed between the whorls.

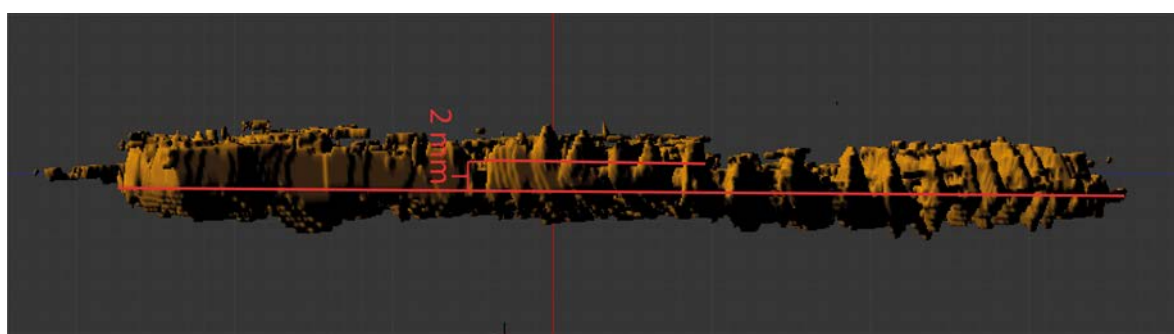


Figure 9. Retrodeformed whorl cross section to 200% results in a 2 mm distance between the mid-point of a particular part of the whorl (lateral view).

Sclerobionts in clusters D and E are in a position that would have been hard to encrust if the subsequent whorl had already grown at the time of encrustation (e.g., when it was lying on the seafloor, the space between whorls around the venter would only have been between around 5 mm, complicating sclerobiont settling. Our specimen suggests that the second whorl lies on top of the first whorl (e.g., in the direction of the more heavily encrusted side, see Figure 3) while the last whorl probably lies again below the second whorl (e.g., the coiling had almost normalized until the next encrustation by sclerobiont cluster C). The encrustation and its slightly different weight distribution across the venter would predict a deviation of the whorl initially in the direction of the encrusters weight and subsequently in the opposite direction (this seems to be still visible in our specimen despite it been heavily flattened). Such a pattern would thus be expected if the specimen was encrusted in-vivo for the first time slightly before it completed about one whorl (Checa, Okamoto & Keupp 2002). The non-planispiral coiling observed in this specimen could not be produced by flattening or deformation – not even if the specimen was embedded obliquely (see discussion in Material and Methods). Furthermore, clusters D-E are positioned closely before the position where deviation of planispiral coiling can first be recognized and indicates that the coiling was induced by the sclerobiont encrustation. If these clusters grew on the ammonoid during life, as is also suggested by growth on both sides of the shell, the deviations from planispiral coiling would have been unavoidable (Checa, Okamoto & Keupp 2002).

The fact that sclerobiont clusters C, D, and E of runner-like epicoles are growing on both sides of the ammonoid and that clusters (D-E) occur slightly before the position where the deviations from planispiral coiling – where a whorl lies directly on top of the subsequent whorl – can be first recognized are also consistent with an encrustation of the ammonoid during its lifetime.

This specimen, therefore, documents the oldest direct evidence for *in-vivo* encrustation of ammonoids. The previous record holders were *Paranarcestes*, *Latanarcestes* and *Sellanarcestes* from the Upper Emsian interpreted to be encrusted with auloporida corals during their lifetime, also evidenced by deviations from normal planispiral coiling in the host and by the subsequent growth of the ammonoid over the coral (Klug & Korn 2001; De Baets, Keupp & Klug 2015).

#### Identity of the encrusters

Hederelloids are a problematic group of runner-like sclerobionts, which occur in the fossil record from the Silurian through Permian and are most diverse in the Devonian (Solle 1952; Solle 1968; Taylor & Wilson 2007). Hederelloids have traditionally been treated as cyclostome bryozoans (Bassler 1939; Elias 1944; Solle 1952; Solle 1968; Dzik 1981), but were redefined based upon differences in branching patterns, skeletal microstructure, lack of an astogenetic gradient, and wide range in tube diameters (Bancroft 1986; Wilson & Taylor 2001; Taylor & Wilson 2007). They are currently mostly interpreted to be closely related to phoronids (Taylor & Wilson 2007; Taylor, Vinn & Wilson 2010; Frey et al. 2014). Both auloporida corals and hederelloids are uncommon in the middle Kaub Formation as their life habit requires a solid substrate upon which to settle; these were rare within the clay environments of the Hunsrück Slate (Bartels, Briggs & Brassel 1998).

The nature of the pyritic preservation of the host specimen, *I. opitzi*, does not make it possible to look at the microstructure or fine details of the sclerobionts, but the general morphology supports that all clusters of sclerobionts share a taxonomic affinity. Runner-like sclerobionts common in the Devonian include auloporida coral, paleotubuliporida bryozoans, and hederelloids. The sclerobionts encrusting *I. opitzi* are colonial, with elongated zooids, lateral branching/budding patterns, and relatively large tube diameters which speak for their identification as hederelloids rather than auloporida or bryozoans (Elias 1944; Bancroft 1986; Wilson & Taylor 2006; Taylor & Wilson 2007).

The runner-like encrusters were initially thought to be auloporida corals (De Baets et al. 2013), which are known to encrust brachiopods (Zapalski 2005; Mistiaen et al. 2012) and ammonoids (Klug & Korn 2001) during their lifetime. Some auloporida taxa have been confused with hederelloids in the past (Fenton & Fenton 1937; Elias 1944) and can be hard to differentiate when taphonomic conditions have degraded the quality of the specimen due to gross morphological similarities.

Hederelloids have been reported to encrust externally shelled cephalopods before (Thayer 1974; Brassel 1977; Bartels, Briggs & Brassel 1998; Frey et al. 2014), but these are, to our knowledge, the first reported to encrust an ammonoid *in vivo*. Sclerobionts can provide also

important information on paleoecology, sedimentary environments and taphonomy, both when they encrust shells *in vivo* or after death of their host (Baird, Brett & Frey 1989; Kacha & Šaric 2009; Rakociński 2011; Brett et al. 2012; Wilson & Taylor 2013; Luci & Cichowolski 2014; Wyse Jackson, Key & Coakley 2014; Luci, Cichowolski & Aguirre-Urreta 2016).

The presence of five distinct clusters of hederelloids suggest that colonization of the host by sclerobionts happened numerous times (see Figures 4 and 6). Not all colonizations show clear evidence of *in vivo* encrustation; clusters A and B were likely the last to settle on the specimen – based upon their location on the shell and the ontogeny of the host – but also do not show evidence of *post-mortem* encrustation. Clusters A and B, however, are the largest, which suggest that they had sufficient nutrients to settle, establish, and grow for an extended period of time. This is unlikely to have occurred in the benthos after the death of the *I. opitzi* specimen, but is not impossible. However, because the size of the hederelloid colonies in clusters A and B exceed that of the other colonies, clusters C, D and E were likely not living concurrently with clusters A and B.

#### Implications for paleoenvironment of *Ivoites*

Some authors have attributed the rarity of encrusters in coiled ammonoids compared with Paleozoic (orthoconic) nautiloids to their ability to (keep) clean or chemical defenses against encrusters (Donovan 1989; Davis, Klofak & Landman 1999; Keupp 2012). Potentially, early ammonoid were more similar to their orthoconic nautiloid and bactritoid relatives. Furthermore, mechanical removal of epizoans might have proven more difficult in loosely coiled ammonoids like *Ivoites* as the previous whorl might have been out of reach of the cephalopod-arm complex (see Figure 8). However, these suggestions are all quite speculative – it is impossible to find direct evidence for chemical or mechanical cleaning or defensive behavior in this fossil group. More importantly, these mechanisms are also unnecessary to be invoked for such differences which could equally be explained by the fact that many nautiloids would have lived in more shallow environments – which show higher encrustation rates in general (Brett et al. 2012; Smrecak & Brett 2014; Smrecak 2016). Modern *Nautilus* shows differences in encrustations between different environments too (Landman et al. 1987).

The sedimentary environment of the Hunsrück Slate have been widely interpreted, ranging from shallow sedimentation on tidal flats, at depths from around storm-wave base to significantly deeper (Solle 1950; Seilacher & Hemleben 1966; Erben 1994; Bartels, Briggs & Brassel 1998). The sedimentary environment in the central Hunsrück Basin is now thought to be rather complex; depressions between sedimentary fans provided environments below storm wave base and sills which could locally extend into the intertidal zone (Etter 2002). The beds with the exceptionally preserved fossils and hemipelagic fauna (ammonoids, dactyloconarids) in the Bundenbach-Gemünden area have been interpreted to be mostly deposited below storm-wave base and/or at depths around 100m (Sutcliffe, Tibbs & Briggs 2002; Stets & Schäfer 2009). Even in these regions, more sandy layers with neritic brachiopods are intercalated, suggesting occasional shallower depths above storm wave base. It is now generally accepted that the maximum depth was within the photic zone due to the presence in some layers of receptaculitid algae, which are interpreted to be closely related to green algae, and good visual capabilities of arthropods (Bartels, Briggs & Brassel



1998; Etter 2002; Selden & Nudds 2012). Based on the latter, maximum depths of 200 m have suggested (Rust et al. 2016).

Hederelloids are typical encrusters found in Devonian photic zone environments (Brett et al. 2012). They are most diverse and abundant in shallower facies, but persist into the deep euphotic zone (Smrecak 2016). The presence of hederelloids on the specimen, in combination with other evidence described earlier, support an interpretation of *in vivo* encrustation. The pelagic life habit of *I. opitzi* would allow colonies of hederelloids to settle and grow on the shell with some success. In contrast, at depths of 100+ meters, hederelloid encrustation, and sclerobiont encrustation in general, is significantly less common (e.g., Brett et al. 2011; Brett et al. 2012; Smrecak & Brett 2014)). Thus, presence of multiple colonies of hederelloids on the specimen support *in vivo* encrustation at depths within the photic zone, and lends further support for depositional conditions in line with current interpretations that the Hunsrück Slate interpreted was deposited near storm-wave base (Bartels, Briggs & Brassel 1998; Sutcliffe, Tibbs & Briggs 2002).

De Baets et al. (2013) found encrusted ammonoid shells to be rare (only 6 of 342 studied ammonoids: about 2%). Only two specimens of 82 specimens of *Ivoites* (2%) were found to be encrusted with hederelloids – our specimen and an additional specimen of *Ivoites* sp. which was interpreted to be encrusted post-mortem (Bartels, Briggs & Brassel 1998). Taphonomic or collection biases (Wyse Jackson & Key Jr 2014) are unlikely to explain the low percentages of encrustation as the ammonites and epibionts are principally preserved in the way (e.g., pyritic compound moulds in our case). So far, bivalves, brachiopods, bryozoans, crinoids, hederelloids and tabulate corals have been reported to encrust conchs of ammonoids or other externally shelled cephalopods from the Hunsrück Slate s.s. or middle Kaub Formation (Brassel 1977; Bartels, Briggs & Brassel 1998; Jahnke & Bartels 2000; Kühl et al. 2012a; De Baets et al. 2013), but these have mostly thought to have happened post-mortem due to their heavy encrustation on one side of the fossils or the encrustation of the structures which would normally be covered with soft-parts (Bartels, Briggs & Brassel 1998; Jahnke & Bartels 2000; De Baets et al. 2013). Heavy encrustations seems to be more common in nautiloids (Bartels, Briggs & Brassel 1998; Jahnke & Bartels 2000; Kühl et al. 2012a), but these have so far only been qualitatively studied. In environments between 100 and 200m encrustation is generally low, which also consistent with a rare *in-vivo* encrustation of our specimen which have swam in shallower depths when the first encrusters settled rather than the commonly reported post-mortem encrustation. Additional studies on epicoles on ammonoid shells and other shells from the Hunsrück Slate would be necessary to further corroborate these hypotheses.

## Implication for mode of life

Loosely coiled early ammonoids are mostly treated as poor swimmers based on their poor streamlining with high drag (Westermann 1996; Klug & Korn 2004; Klug et al. 2015a); additional limitations imposed by epizoa on streamlining and shell orientation might be (even) less important in these forms than in normally coiled ammonoids. The fact that our specimen survived at least three separate encrustations – as evidenced by different settlement locations of the clusters of hederelloids – and growth deformations associated with earlier encrustation further corroborates this idea, although further investigations on

additional specimens would be necessary to confirm this hypothesis. Most hederelloid colonies generally grow along the spiral direction and do not cross from one whorl to the next, which provide additional evidence that they encrusted the ammonoid during its lifetime.

We cannot entirely rule out a post-mortem encrustation of clusters A-B. Hederelloid growth in those clusters are preferentially orientated away from the aperture of the ammonoid conch, as opposed to those of the inner whorls (cluster C-E) which are preferentially orientated towards it. Associated dacryoconarids do not show a preferential orientation with respect to the substrate (as would be expected in the case of current alignment: Hladil, Čejchan & Beroušek 1991) or the hederelloids. This does not necessarily speak against encrustation during the lifetime of the ammonoid by clusters A and B as the terminal uncoiling of the ammonoid is interpreted to have influenced the life orientation from an upturned aperture in the inner whorls to a downturned aperture (see Figure 8) during the terminal uncoiling at the end of the ontogeny (Klug & Korn 2004; De Baets et al. 2013; Klug et al. 2015a). We know the ammonoid specimen reached adulthood because it terminally uncoils, which is typical for many taxa of Anetoceratinae and interpreted as a sign of adulthood (De Baets, Klug & Korn 2009; De Baets et al. 2013; De Baets, Klug & Monnet 2013; Klug et al. 2015b).

*Hederella* is known to encrust another ammonoid from the Hunsrück Slate, but this is interpreted to have happened post-mortem (Brassel 1977; Bartels, Briggs & Brassel 1998). There is no evidence that this happened in-vivo in the second specimen as these are located on an incompletely preserved body chamber, and have been interpreted as encrusting the inside of the shell (Bartels, Briggs & Brassel 1998) – but this should be further tested with  $\mu$ CT. Additional studies would be necessary to confirm if our specimen is an isolated case of in vivo encrustation or part of a more common phenomenon.

## Implications for taxonomy

Defining pathological specimens as species can have important taxonomic implications (Spath 1945). According to Spath (1945), such ammonoid species should remain valid, but no new type can be chosen while the holotype is still in existence. Others, like Haas (1946), claim assigning a pathological specimen might undermine the status of the species, considering the morphology of the species is described based on a pathological specimen, and that a new neotype should be selected. It is important to note that several authors have erected different ammonoid species based on small differences in coiling. As the only known non-planispirally coiled specimen of *I. opitzi* is pathological, an author like Haas (1946) might have suggested to designate another specimen as type for this species to avoid ambiguity. However, our study highlights that non-planispirality does not belong to normal intraspecific variation of this species, nor to the taxonomic definition of this taxon. Paratype SMF-HF 940, which was collected from the same locality as the holotype (De Baets et al. 2013), would be the best candidate among the paratypes. Reassigning a neotype has recently been intensively discussed for the holotype of *Homo floriensis* (Kaifu et al. 2009; Eckhardt & Henneberg 2010), but the severity of deviation has to be considered in this specimen. However, both aspects (electing a neotype for pathological specimens and its dependence of the severity of the pathology) are not specifically discussed in the International Code of

Zoological Nomenclature (ICZN). According to Article 75.1 of ICZN, “the neotype is ... designated under conditions ... when no name-bearing type specimen is believed to be extant ...”. In this case, if the holotype, even when pathologically deformed, is extant, the proposal of neotype is not granted. A proposal could be submitted to the ICZN to resolve the use of pathologically-induced morphological variation of holotypes, but this falls outside the aim of our study. Furthermore, we are confident that original type specimen belongs to same species as the paratypes as it completes the same amount of whorl before uncoiling, has a similar rib spacing and only differs from other specimens in its minor coiling deviations (De Baets et al. 2013). As non-planispiral coiling was not part of the original diagnosis, we feel it is unnecessary to submit a proposal to appoint a new type specimen, which might not be allowed anyway.

## Conclusions

With the aid of  $\mu$ CT, we can demonstrate that at least some of the encrustations must have happened during the lifetime of the ammonoid as the sclerobionts are located on both sides of the ammonoid at the place where deviation from planispiral coiling starts. This indicates that the non-planispiral, slight trochospiral coiling in this specimen is probably pathological and does not form a part of the natural variation (De Baets et al. 2013). To avoid taxonomic confusion resulting from non-spiral coiling in this taxon, which is not part of the natural variation as initially thought, one could select a neotype. While this practice has been suggested for other taxa (e.g. Haas (1946)), this is, in our opinion, not necessary as non-planispiral coiling did not form part of the original diagnosis. As the specimen survived at least 3 different encrustations and associated deformations through adulthood, the effects on its daily life were probably negligible. We re-identify these runner-like epizoa as hederelloids (as opposed to auloporidae tabulate corals), which make them the first known hederelloids to encrust an ammonoid *in vivo* and suggests that the ammonoid probably lived within the photic zone for most of its life. However, more studies on sclerobionts from the Hunsrück Slate, preferably with  $\mu$ CT, are necessary to further corroborate these hypotheses.

## Acknowledgements

JS performed the analysis in the framework of her Bachelor thesis (under supervision of KDB). Markus Poschmann and Alexandra Bergmann (Steinmann Institute, Bonn) kindly borrowed and scanned the specimen for KDB in 2011. Peter Göddertz (Steinmann Institute, Bonn) kindly provided the original data and additional information on the original scan. We would also like to thank Andrej Ernst, Paul Taylor and Mark Wilson who kindly pointed us to the appropriate literature on hederelloids. The constructive reviews of the reviewers Ryoji Wani (Yokohama) and Russel Garwood (Manchester) are greatly appreciated. Trisha Smrecak also reviewed an early version of this manuscript. After the 1st round of revision, we invited Trisha Smrecak to join us as a co-author due to her extensive input and original additions to the research.

# References

- Anné J, Garwood RJ, Lowe T, Withers PJ, and Manning PL. 2015. Interpreting pathologies in extant and extinct archosaurs using micro-CT. *PeerJ* 3:e1130.
- Baird GC, Brett CE, and Frey RC. 1989. "Hitchhiking" epizoa on orthoconic cephalopods: preliminary review of evidence and its implications. *Senckenbergiana Lethaea* 69:439-465.
- Bancroft AJ. 1986. *Hederella carbonaria* Condra and Elias, a rare ?bryozoan from the Carboniferous of Great Britain. *Proceedings of the Geologists' Association* 97:243-248.
- Bartels C, Briggs DEG, and Brassel G. 1998. *The fossils of the hunsrück slate - Marine Life in the devonian.*
- Bassler RS. 1939. The Hederelloidea: A Suborder of Paleozoic Cyclostomatous Bryozoa. *Proceedings of the United States National Museum* 87:25-91.
- Becker RT, Gradstein FM, and Hammer O. 2012. Chapter 22 - The Devonian Period. In: Gradstein FM, Ogg JG, Schmitz MD, and Ogg GM, eds. *The Geologic Time Scale*. Boston: Elsevier, 559-601.
- Becker RT, and House MR. 1994. International Devonian goniatite zonation, Emsian to Givetian, with new records from Morocco. *Courier Forschungsinstitut Senckenberg* 169:79-135.
- Beuck L, Wisshak M, Munnecke A, and Freiwald A. 2008. A Giant Boring in a Silurian Stromatoporoid Analysed by Computer Tomography. *Acta Palaeontologica Polonica* 53:149-160.
- Brassel G. 1977. Der erste Fund von Hederelloideen (Bryozoa) im Hunsrücksschiefer von Bundenbach (Unterdevon, Rheinisches Schiefergebirge). *Notizblatt des Hessischen Landesamtes für Bodenforschung* 105:41-45.
- Brett CE, Parsons-Hubbard KM, Walker SE, Ferguson C, Powell EN, Staff G, Ashton-Alcox KA, and Raymond A. 2011. Gradients and patterns of sclerobionts on experimentally deployed bivalve shells: Synopsis of bathymetric and temporal trends on a decadal time scale. *Palaeogeography, Palaeoclimatology, Palaeoecology* 312:278-304.
- Brett CE, Smrecak T, Parsons Hubbard K, and Walker S. 2012. Marine Sclerobiofacies: Encrusting and Endolithic Communities on Shells Through Time and Space. In: Talent JA, ed. *Earth and Life*. Dordrecht: Springer, 129-157.
- Briggs DE, and Williams SH. 1981. The restoration of flattened fossils. *Lethaia* 14:157-164.
- Cecca F. 1997. Late jurassic and early cretaceous uncoiled ammonites: Trophism-related evolutionary processes. *Comptes Rendus de l'Académie des Sciences - Series IIA - Earth and Planetary Science* 325:629-634.
- Checa AG, Okamoto T, and Keupp H. 2002. Abnormalities as natural experiments: a morphogenetic model for coiling regulation in planispiral ammonites. *Paleobiology* 28:127-138.
- Davies TG, Rahman IA, Lautenschlager S, Cunningham JA, Asher RJ, Barrett PM, Bates KT, Bengtson S, Benson RBJ, Boyer DM, Braga J, Bright JA, Claessens LPAM, Cox PG, Dong X-P, Evans AR, Falkingham PL, Friedman M, Garwood RJ, Goswami A, Hutchinson JR, Jeffery NS, Johanson Z, Lebrun R, Martínez-Pérez C, Marugán-Lobón J, O'Higgins PM, Metscher B, Orliac M, Rowe TB, Rücklin M, Sánchez-Villagra MR, Shubin NH, Smith SY, Starck JM, Stringer C, Summers AP, Sutton MD, Walsh SA, Weisbecker V, Witmer LM, Wroe S, Yin Z, Rayfield EJ, and Donoghue PCJ. 2017. Open data and digital morphology. *Proceedings of the Royal Society B: Biological Sciences* 284.
- Davis RA, Klofak SM, and Landman NH. 1999. Epizoa on Externally Shelled Cephalopods. In: Rozanov AY, and Shevyrev AA, eds. *Fossil Cephalopods: Recent Advances In Their Study*. Moscow: Russian Academy of Sciences Paleontological Institute, 32-51.
- Davis RA, and Mapes RH. 1999. Pits in internal molds of cephalopods. *Berichte der Geologischen Bundesanstalt* 46:31.
- De Baets K. 2012. Early Emsian Ammonoidea: stratigraphy, intraspecific variability and macroevolution PhD Thesis. Universität Zürich.

- De Baets K, Keupp H, and Klug C. 2015. Parasites of ammonoids. In: Klug C, Korn D, De Baets K, Kruta I, and Mapes RH, eds. *Ammonoid Paleobiology: From anatomy to paleoecology Topics in Geobiology 43*. Dordrecht: Springer, 837-875.
- De Baets K, Klug C, and Korn D. 2009. Anetoceratinae (Ammonoidea, Early Devonian) from the Eifel and Harz Mountains (Germany), with a revision of their genera. *Neues Jahrbuch für Geologie und Paläontologie - Abhandlungen* 252:361-376.
- De Baets K, Klug C, Korn D, Bartels C, and Poschmann M. 2013. Emsian Ammonoidea and the age of the Hunsrück Slate (Rhenish Mountains, Western Germany). *Palaeontographica A* 299:1-113.
- De Baets K, Klug C, Korn D, and Landman NH. 2012. Early Evolutionary Trends in Ammonoid Embryonic Development. *Evolution* 66:1788-1806.
- De Baets K, Klug C, and Monnet C. 2013. Intraspecific variability through ontogeny in early ammonoids. *Paleobiology* 39:75-94.
- De Baets K, Klug C, and Plusquellec Y. 2010. Zlichovian faunas with early ammonoids from Morocco and their use for the correlation of the eastern Anti-Atlas and the western Dra Valley. *Bulletin of Geosciences* 85:317-352.
- De Baets K, Landman NH, and Tanabe K. 2015. Ammonoid Embryonic Development. In: Klug C, Korn D, De Baets K, Kruta I, and Mapes RH, eds. *Ammonoid Paleobiology: From anatomy to ecology Topics in Geobiology 43*. Dordrecht: Springer, 113-205.
- Dietl G. 1978. Die heteromorphen Ammoniten des Dogger. *Stuttgarter Beiträge Zur Naturkunde B* 33:1-97.
- Donovan SK. 1989. Taphonomic significance of the encrustation of the dead shell of recent *Spirula spirula* (Linné) (Cephalopoda: Coleoidea) by *Lepas anatifera* Linné (Cirripedia: Thoracia). *Journal of Paleontology* 63:698-702.
- Dzik J. 1981. Evolutionary relationships of the early Palaeozoic 'cyclostomatous' Bryozoa. *Palaeontology* 24:827-861.
- Eckhardt RB, and Henneberg M. 2010. LB1 from Liang Bua, Flores: Craniofacial asymmetry confirmed, plagiocephaly diagnosis dubious. *American Journal of Physical Anthropology* 143:331-334.
- Elias MK. 1944. Auloporidae and Hederelloidea (And a System to Avoid Ambiguous Use of Generic Names). *Journal of Paleontology* 18:529-534.
- Erben H. 1994. Das Meer des Hunsrückschiefers. *Erdgeschichte im Rheinland Fossilien und Gesteine aus* 400:49-56.
- Etter W. 2002. Hunsrück slate: widespread pyritization of a Devonian fauna. *Exceptional fossil preservation, eds Bottjer, DJ, W Etter, JW Hagadorn, and CM Tang*:143-165.
- Fenton MA, and Fenton CL. 1937. Aulopora: A Form-Genus of Tabulate Corals and Bryozoans. *American Midland Naturalist* 18:109-115.
- Fernández-López S, and Meléndez G. 1994. Abrasion surfaces on internal moulds of ammonites as palaeobathymetric indicators. *Palaeogeography, Palaeoclimatology, Palaeoecology* 110:29-42.
- Fernández-López SR. 1991. Taphonomic concepts for a theoretical biochronology. *Revista Espanola de Paleontologia* 6:37-49.
- Frey L, Naglik C, Hofmann R, Schemm-Gregory M, FRÝDA J, Kroeger B, Taylor PD, Wilson MA, and Klug C. 2014. Diversity and palaeoecology of Early Devonian invertebrate associations in the Tafilalt (Anti-Atlas, Morocco). *Bulletin of Geosciences* 89:75-112.
- Garwood RJ, and Dunlop J. 2014. Three-dimensional reconstruction and the phylogeny of extinct chelicerate orders. *PeerJ* 2:e641.
- Gügel B, De Baets K, Jerjen I, Schuetz P, and Klug C. 2017. A new subdisarticulated machaeridian from the Middle Devonian of China: Insights into taphonomy and taxonomy using X-ray microtomography and 3D-analysis. *Acta Palaeontologica Polonica* 62:237-247.
- Haas O. 1946. Neotypes for Species Based on Pathological Specimens. *Nature* 157:700.
- Hauschke N, Schöllmann L, and Keupp H. 2011. Oriented attachment of a stalked cirripede on an orthoconic heteromorph ammonite - implications for the swimming position of the latter. *Neues Jahrbuch für Geologie und Paläontologie - Abhandlungen* 262:199-212.



- 765 Hladil J, Čejchan P, and Beroušek P. 1991. Orientation of the conical tests of tentaculites: internal  
766 waves in aqueous environment. *Casopis pro Mineralogii a Geologii* 36:115-130.
- 767 Hladil J, Simcik M, Ruzicka MC, Kulaviak L, and Lisy P. 2014. Hydrodynamic experiments on  
768 dacryoconarid shell telescoping. *Lethaia* 47:376-396.
- 769 Hoffmann R, Schultz JA, Schellhorn R, Rybacki E, Keupp H, Gerden SR, Lemanis R, and Zachow S. 2014.  
770 Non-invasive imaging methods applied to neo- and paleo-ontological cephalopod research.  
771 *Biogeosciences* 11:2721-2739.
- 772 House MR. 1996. Juvenile goniatite survival strategies following Devonian extinction events.  
773 *Geological Society, London, Special Publications* 102:163-185.
- 774 Jahnke H, and Bartels C. 2000. Der Hunsrückschiefer und seine Fossilien, Unter-Devon. In: Pinna G,  
775 and Meischner D, eds. *Europäische Fossilagerstätten*. Dordrecht: Springer, 36-44.
- 776 Kacha P, and Šaric R. 2009. Host preferences in Late Ordovician (Sandbian) epibenthic bryozoans:  
777 example from the Zahorany Formation of Prague Basin. *Bulletin of Geosciences* 84:169-178.
- 778 Kaifu Y, Baba H, Kurniawan I, Sutikna T, Saptomo EW, Jatmiko, Awe RD, Kaneko T, Aziz F, and  
779 Djubiantono T. 2009. Brief communication: "Pathological" deformation in the skull of LB1,  
780 the type specimen of *Homo floresiensis*. *American Journal of Physical Anthropology* 140:177-  
781 185.
- 782 Keupp H. 1992. Wachstumsstörungen bei *Pleuroceras* und anderen Ammonoidea durch Epökie.  
783 *Berliner Geowissenschaftliche Abhandlungen E* 3:113-119.
- 784 Keupp H. 2012. Atlas zur Paläopathologie der Cephalopoden. *Berliner Paläobiologische*  
785 *Abhandlungen* 12:1-392.
- 786 Keupp H, and Hoffmann R. 2015. Ammonoid paleopathology. In: Klug C, Korn D, De Baets K, Kruta I,  
787 and Mapes RH, eds. *Ammonoid Paleobiology: from anatomy to ecology*. Dordrecht: Springer,  
788 877-926.
- 789 Keupp H, Röper M, and Seilacher A. 1999. Paläobiologische Aspekte von syn vivo-besiedelten  
790 Ammonoideen im Plattenkalk des Ober-Kimmeridgiums von Brunn in Ostbayern. *Berliner*  
791 *Geowissenschaftliche Abhandlungen Reihe E Palaeobiologie* 30:121-145.
- 792 Klug C, and Korn D. 2001. Epizoa and post-mortem epicoles on cephalopod shells—examples from the  
793 Devonian and Carboniferous of Morocco. *Berliner geowissenschaftliche Abhandlungen (E)*  
794 36:145-155.
- 795 Klug C, and Korn D. 2004. The origin of ammonoid locomotion. *Acta Palaeontologica Polonica* 49:235-  
796 242.
- 797 Klug C, Kröger B, Vinther J, Fuchs D, and De Baets K. 2015a. Ancestry, Origin and Early Evolution of  
798 Ammonoids. In: Klug C, Korn D, De Baets K, Kruta I, and Mapes RH, eds. *Ammonoid*  
799 *Paleobiology: From macroevolution to paleogeography Topics in Geobiology* 44, 3-24.
- 800 Klug C, Zatoń M, Parent H, Hostettler B, and Tajika A. 2015b. Mature modifications and sexual  
801 dimorphism. In: Klug C, Korn D, De Baets K, Kruta I, and Mapes RH, eds. *Ammonoid*  
802 *Paleobiology: from anatomy to ecology*. Dordrecht: Springer, 253-320.
- 803 Kneidl V. 1984. *Hunsrück und Nahe: Geologie, Mineralogie und Paläontologie. Ein Wegweiser für den*  
804 *Liebhaber*. Stuttgart: Kosmos Verlag.
- 805 Kruta I, Landman N, Rouget I, Cecca F, and Tafforeau P. 2011. The Role of Ammonites in the Mesozoic  
806 Marine Food Web Revealed by Jaw Preservation. *Science* 331:70-72.
- 807 Kühl G, Bartels C, Briggs DEG, and Rust J. 2012a. *Visions of a Vanished World: The Extraordinary*  
808 *Fossils of the Hunsrück Slate*: Yale University Press.
- 809 Kühl G, Bergmann A, Dunlop J, Garwood RJ, and Rust JES. 2012b. Redescription and palaeobiology of  
810 *Palaeoscorpius devonicus* Lehmann, 1944 from the Lower Devonian Hunsrück Slate of  
811 Germany. *Palaeontology* 55:775-787.
- 812 Landman NH, Saunders WB, Winston JE, and Harries PJ. 1987. Incidence and kinds of epizoans on the  
813 shells of live *Nautilus*. In: Saunders WB, and Landman NH, eds. *Nautilus: The Biology and*  
814 *Paleobiology of a Living Fossil*. New York: Plenum Press, 163-177.
- 815 Landman NH, Tanabe K, and Davis RA. 1996. *Ammonoid paleobiology*. New York: Plenum Press.



- Larson N. 2007. Deformities in the Late Callovian (Late Middle Jurassic) Ammonite Fauna from Saratov, Russia. In: Landman NH, Davis RA, and Mapes RH, eds. *Cephalopods Present and Past: New Insights and Fresh Perspectives*. Netherlands: Springer 344-374.
- Lemanis R, Korn D, Zachow S, Rybacki E, and Hoffmann R. 2016. The Evolution and Development of Cephalopod Chambers and Their Shape. *PLoS ONE* 11:e0151404.
- Lemanis R, Zachow S, Füsseis F, and Hoffmann R. 2015. A new approach using high-resolution computed tomography to test the buoyant properties of chambered cephalopod shells. *Paleobiology FirstView*:1-17.
- Lemanis R, Zachow S, and Hoffmann R. 2016. Comparative cephalopod shell strength and the role of septum morphology on stress distribution. *PeerJ* 4:e2434.
- Lescinsky HI. 2001. Epibionts. In: Briggs DEG, and Crowther PR, eds. *Palaeobiology II*. Oxford: Blackwell Publishing, 460-464.
- Luci L, and Cichowolski M. 2014. Encrustation in nautilids: a case study in the Cretaceous species *Cymatoceras peristriatum*, Neuquén Basin, Argentina. *Palaios* 29:101-120.
- Luci L, Cichowolski M, and Aguirre-Urreta MB. 2016. Sclerobionts, shell morphology and biostratigraphy on ammonites: two Early Cretaceous cases from the Neuquén Basin, Argentina. *Palaios* 31:41-54.
- Lukeneder A. 2008. The ecological significance of solitary coral and bivalve epibionts on Lower Cretaceous (Valanginian-Aptian) ammonoids from the Italian Dolomites. *Acta Geologica Polonica* 58:425-436.
- Lukeneder A. 2012. Computed 3D visualisation of an extinct cephalopod using computer tomographs. *Computers & Geosciences* 45:68-74.
- Macchioni F. 2000. Bioeroded and/or encrusted ammonite moulds and their taphonomic implications. *Rivista Italiana di Paleontologia e Stratigrafia* 106:337-352.
- Maeda H, and Seilacher A. 1996. Ammonoid Taphonomy. In: Landman NH, Tanabe K, and Davis RA, eds. *Ammonoid Paleobiology*. New York Plenum Press, 543-578.
- Meischner D. 1968. Perniciöse Epökie von *Placunopsis* auf *Ceratites*. *Lethaia* 1:156-174.
- Merk J. 1966. Über Austern und Serpeln als Epöken auf Ammonitengehäusen. *Neues Jahrbuch für Geologie und Paläontologie - Abhandlungen* 125:467-479.
- Mistiaen B, Brice D, Zapalski M, and Loones C. 2012. Brachiopods and Their Auloporid Epibionts in the Devonian of Boulonnais (France): Comparison with Other Associations Globally. In: Talent J, ed. *Earth and Life*: Springer Netherlands, 159-188.
- Monnet C, Zollikofer C, Bucher H, and Goudemand N. 2009. Three-dimensional morphometric ontogeny of mollusc shells by micro-computed tomography and geometric analysis. *Paleontologia Electronica* 12:1-13.
- Naglik C, Monnet C, Goetz S, Kolb C, De Baets K, Tajika A, and Klug C. 2015a. Growth trajectories of some major ammonoid sub-clades revealed by serial grinding tomography data. *Lethaia* 48:29-46.
- Naglik C, Rikhtegar F, and Klug C. 2016. Buoyancy of some Palaeozoic ammonoids and their hydrostatic properties based on empirical 3D-models. *Lethaia* 49:3-12.
- Naglik C, Tajika A, Chamberlain JA, and Klug C. 2015b. Ammonoid Locomotion. In: Klug C, Korn D, De Baets K, Kruta I, and Mapes RH, eds. *Ammonoid Paleobiology: From anatomy to ecology*. Dordrecht: Springer, 649-688.
- Opitz R. 1932. *Bilder aus der Erdgeschichte des Nahe-Hunsrück-Landes Birkenfeld*. Birkenfeld: Enke.
- Rahman IA, Belaústegui Z, Zamora S, Nebelsick JH, Domènech R, and Martinell J. 2015. Miocene Clypeaster from Valencia (E Spain): Insights into the taphonomy and ichnology of bioeroded echinoids using X-ray micro-tomography. *Palaeogeography, Palaeoclimatology, Palaeoecology* 438:168-179.
- Rakociński M. 2011. Sclerobionts on upper Famennian cephalopods from the Holy Cross Mountains, Poland. *Palaeobiodiversity and Palaeoenvironments* 91:63-73.
- Rakús M, and Zítt J. 1993. Crinoid encrusters of Ammonite shells (Carixian, Tunisia). *Geobios* 26:317-329.

- Ritterbush KA, Hoffmann R, Lukeneder A, and De Baets K. 2014. Pelagic palaeoecology: the importance of recent constraints on ammonoid palaeobiology and life history. *Journal of Zoology* 292:229-241.
- Ross CA. 1978. Distortion of fossils in shales. *Journal of Paleontology*:943-945.
- Ruan YP. 1981. Devonian and earliest Carboniferous Ammonoids from Guangxi and Guizhou. *Memoirs of the Nanjing Institute of Geology & Paleontology* 15:152.
- Ruan YP. 1996. Zonation and distribution of the early Devonian primitive ammonoids in South China. In: Wang H-Z, and Wang X-L, eds. *Centennial Memorial Volume of Prof Sun Yunzhen: Paleontology and Stratigraphy*. Wuhan: China University of Geosciences Press, 104-112.
- Rust J, Bergmann A, Bartels C, Schoenemann B, Sedlmeyer S, and Kühl G. 2016. The Hunsrück Biota: A Unique Window into the Ecology of Lower Devonian Arthropods. *Arthropod Structure & Development*.
- Schindler T, Sutcliffe O, Bartels C, Poschmann M, and Wuttke M. 2002. Lithostratigraphical subdivision and chronostratigraphical position of the middle Kaub Formation (Lower Emsian, Lower Devonian) of the Bundenbach area (Hunsrück, SW Germany). *Metalla (Bochum)* 9:73-104.
- Schmid-Röhl A, and Röhl HJ. 2003. Overgrowth on ammonite conchs: environmental implications for the Lower Toarcian Posidonia Shale. *Palaeontology* 46:339-352.
- Seilacher A. 1960. Epizoans as a Key to Ammonoid Ecology. *Journal of Paleontology* 34:189-193.
- Seilacher A. 1982. Ammonite Shells as Habitats — Floats or Benthic Islands? (Abstract). In: Einsele G, and Seilacher A, eds. *Cyclic and Event Stratification*: Springer Berlin Heidelberg, 504-504.
- Seilacher A, and Hemleben C. 1966. Beiträge zur sedimentation und Fossilführung des Hunsrückschiefers 14. *Spurenfauna und Bildungsteife der Hunsrückschiefer (Unterdevon)* *Notizblatt des Hessischen Landesamtes für Bodenforschung zu Wiesbaden* 94:40-53.
- Selden P, and Nudds J. 2012. *Evolution of fossil ecosystems*: Elsevier.
- Smrecak TA. 2016. Understanding patterns of sclerobiont encrustation: Methodological review and application of sclerobiont facies model in Middle Devonian Appalachian and Michigan Basin paleodepth gradients PhD. Michigan State University.
- Smrecak TA, and Brett CE. 2014. Establishing patterns in sclerobiont distribution in a late Ordovician (Cincinnatian) depth gradient: toward a sclerobiofacies model. *Palaios* 29:74-85.
- Solle G. 1950. Obere Siegener Schichten, Hunsrückschiefer, tiefstes Unterkoblenz und ihre Eingliederung ins Rheinische Unterdevon. *Geol Jb* 65:299-380.
- Solle G. 1952. Neue Untersuchungen und Arten der Bryozoen-Gattung Hederella und eine Hernodia im rheinischen Unterdevon. *Notzbl hess LA Bodenforsch* 6:35-55.
- Solle G. 1968. Hederelloidea (Cyclostomata) und einige ctenostome Bryozoen aus dem Rheinischen Devon. *Abhandlungen des Hessischen Landesamtes für Bodenforschung* 54:1-40.
- Spath LF. 1945. Problems of Ammonite-Nomenclature X. The Naming of Pathological Specimens. *Geological Magazine* 82:251-255.
- Stets J, and Schäfer A. 2009. The Siegenian delta: land-sea transitions at the northern margin of the Rhenohercynian Basin. *Geological Society, London, Special Publications* 314:37-72.
- Südkamp WH. 2007. An atypical fauna in the Lower Devonian Hunsrück Slate of Germany. *Paläontologische Zeitschrift* 81:181-204.
- Sutcliffe O, Tibbs S, and Briggs D. 2002. Sedimentology and environmental interpretation of the fine-grained turbidites in the Kaub Formation of the Hunsrück Slate: analysis of a section excavated for Project Nahecaris. *Metalla (Bochum)* 9:89-104.
- Sutton MA, Rahman IA, and Garwood RJ. 2014. *Techniques for Virtual Palaeontology*. UK: Wiley-Blackwell.
- Tajika A, Morimoto N, Wani R, Naglik C, and Klug C. 2015. Intraspecific variation of phragmocone chamber volumes throughout ontogeny in the modern nautilid Nautilus and the Jurassic ammonite Normannites. *PeerJ* 3:e1306.
- Tajika A, Naglik C, Morimoto N, Pascual-Cebrian E, Hennhöfer D, and Klug C. 2014. Empirical 3D model of the conch of the Middle Jurassic ammonite microconch Normannites: its buoyancy,

- 920 the physical effects of its mature modifications and speculations on their function. *Historical*
- 921 *Biology*:1-11.
- 922 Taylor PD, Vinn O, and Wilson MA. 2010. Evolution of biomineralisation in 'lophophorates'. *Special*
- 923 *Papers in Palaeontology* 84:317-333.
- 924 Taylor PD, and Wilson M. 2007. Morphology and affinities of hederelloid "bryozoans". *Bryozoan*
- 925 *Studies 2007: proceedings of the 14th international bryozoology conference, Boone, North*
- 926 *Carolina, July 1–8: Virginia Museum of Natural History Special Publication.* p 301-309.
- 927 Taylor PD, and Wilson MA. 2002. A New Terminology for Marine Organisms Inhabiting Hard
- 928 *Substrates. Palaios* 17:522-525.
- 929 Thayer CW. 1974. Substrate Specificity of Devonian Epizoa. *Journal of Paleontology* 48:881-894.
- 930 Wani R, Kase T, Shigeta Y, and De Ocampo R. 2005. New look at ammonoid taphonomy, based on
- 931 *field experiments with modern chambered nautilus. Geology* 33:849-852.
- 932 Westermann GEG. 1996. Ammonoid Life and Habitat. In: Landman NH, Tanabe K, and Davis RA, eds.
- 933 *Ammonoid Paleobiology.* New York: Plenum Press, 607-707.
- 934 Wiedmann J. 1969. The heteromorphs and ammonoid extinction. *Biological Reviews* 44:563-602.
- 935 Wilson M, and Taylor P. 2001. Pseudobryozoans" and the problem of encruster diversity in the
- 936 *Paleozoic. Paleobios* 21:134-135.
- 937 Wilson MA, and Taylor PD. 2006. Predatory drill holes and partial mortality in Devonian colonial
- 938 *metazoans. Geology* 34:565-568.
- 939 Wilson MA, and Taylor PD. 2013. Palaeoecology, Preservation and Taxonomy of Encrusting
- 940 *Ctenostome Bryozoans Inhabiting Ammonite Body Chambers in the Late Cretaceous Pierre*
- 941 *Shale of Wyoming and South Dakota, USA. In: Ernst A, Schäfer P, and Scholz J, eds. Bryozoan*
- 942 *Studies 2010. Berlin, Heidelberg: Springer Berlin Heidelberg, 419-433.*
- 943 Wyse Jackson PN, and Key Jr MM. 2014. Epizoic bryozoans on cephalopods through the Phanerozoic:
- 944 *A review. Studi Trentini di Scienze Naturali* 94:283-291.
- 945 Wyse Jackson PN, Key MMJ, and Coakley SP. 2014. Epizoozoan Trepustome Bryozoans on Nautiloids
- 946 *from the Upper Ordovician (Katian) of the Cincinnati Arch Region, U.S.A.: An Assessment of*
- 947 *Growth, form, and Water Flow Dynamics. Journal of Paleontology* 88:475-487.
- 948 Zapalski MK. 2005. Paleoecology of Auloporida: an example from the Devonian of the Holy Cross
- 949 *Mts., Poland. Geobios* 38:677-683.