

# 1 **r.avaflow & r.randomwalk: two complementary and com-** 2 **prehensive open source GIS simulation tools for the propa-** 3 **gation of rapid geophysical mass flows**

4 *Martin Mergili*<sup>1,2</sup>, *Matthias Benedikt*<sup>1,3</sup>, *Julia Krenn*<sup>1,4</sup>, *Jan-Thomas Fischer*<sup>5</sup>, and *Shiva P.*  
5 *Pudasaini*<sup>6</sup>

6 <sup>1</sup> University of Natural Resources and Life Sciences (BOKU), Institute of Applied Geology, Vienna, Austria

7 <sup>2</sup> University of Vienna, Department of Geography and Regional Research, Vienna, Austria

8 <sup>3</sup> Benedikt IT Services (BITS), Vienna, Austria

9 <sup>4</sup> Provincial Government of Lower Austria, Group Roads, St. Pölten, Austria

10 <sup>5</sup> Austrian Research Centre for Forests (BFW), Department of Natural Hazards, Innsbruck, Austria

11 <sup>6</sup> University of Bonn, Department of Geophysics, Bonn, Germany

12 [martin.mergili@boku.ac.at](mailto:martin.mergili@boku.ac.at)

## 13 **Abstract**

14 We present two GIS model applications for simulating the propagation of rapid geophysical mass  
15 flows: r.avaflow employs an advanced physically-based two phase flow model intended for in-  
16 detail case studies, r.randomwalk a conceptual model suitable for studies at various scales. Both  
17 tools are implemented in open source software environments serving for the needs of both rese-  
18 arch and practice. They offer a range of visualization, validation, parameter sensitivity analysis and  
19 parameter optimization functions. Some of the key functionalities of both tools are demonstrated  
20 for the Acheron rock avalanche in New Zealand.

## 21 **Introduction**

22 Rapid geophysical mass flows such as snow avalanches, rock avalanches or debris flows are poten-  
23 tially dangerous phenomena in mountain areas worldwide. Anticipation of such events at different  
24 stages of the risk management cycle, and at various spatial scales, assists in reducing the associated  
25 risks. All up-to-date efforts in this direction rely on physical-mathematical and computer models.  
26 The present work focuses on open source GIS model applications simulating the propagation of  
27 rapid mass flows. Thereby we present two tools, r.avaflow and r.randomwalk, and selected results  
28 obtained with these tools.

## 29 **The computational tools r.avaflow & r.randomwalk**

30 r.avaflow employs an advanced two-phase flow model ([Pudasaini, 2012](#)) and targets at the detailed  
31 analysis of observed or expected mass flow events. This tool is suitable for the simulation of more  
32 or less complex process chains (e.g., the impact of a flow-like landslide into a lake and the resul-  
33 ting flood wave) and includes functionalities to compute entrainment and deposition. Starting  
34 from one or more aggregations of release pixels, or one or more release hydrographs, the motion of  
35 the flow is described by mass and momentum conservation laws and numerically solved on a  
36 high-resolution NOC central differencing scheme. Propagation ends as soon as all material has met  
37 a certain stopping criterion or moved out of the investigation area. The spatio-temporal distributi-

38 ons of flow height, change of basal topography, flow velocities, pressure and kinetic energy for the  
39 solid and fluid phases are the key output. Output hydrographs can be provided for user-defined  
40 profiles.

41 `r.randomwalk` (Mergili et al., 2015) uses simple conceptual models, targeting at susceptibility map-  
42 ping at broader scales, but also at quick first-order analyses of the impact areas of foreseen events.  
43 Starting from one or more user-defined release points or zones, a series of constrained random  
44 walks – governed by a set of parameters determining lateral spreading – is routed through the ter-  
45 rain until a defined break criterion is reached. Break criteria may (i) consist in empirical-statistical  
46 rules for the angle of reach or related parameters; (ii) build on the two-parameter friction model of  
47 Perla et al. (1980). The output consists in a binary impact/no impact map, but various rules can be  
48 combined in order to derive an impact indicator score. Alternatively, an impact probability may  
49 be assigned to each pixel, based on the probability density function of the angles of reach back-  
50 calculated from the analysis of observed events.

51 The core functionalities of `r.avafLOW` and `r.randomwalk` are implemented as C codes. Both tools are  
52 available in two versions, differing in the way how the C code is embedded. The structure how  
53 each of the versions is designed is identical for both tools:

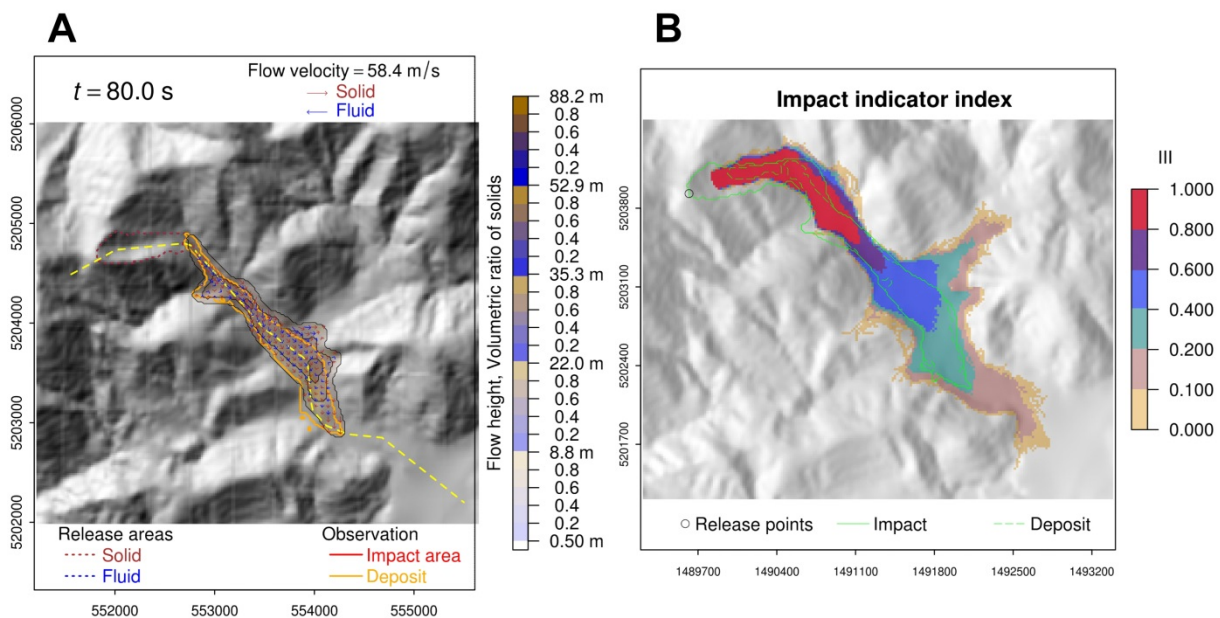
54 (i) Version intended for research, targeting at scientists performing parameter studies or other  
55 types of complex computational experiments. This version is available for UNIX systems. `r.avafLOW`  
56 and `r.randomwalk` are implemented as raster modules of the GRASS GIS software. Python scripts  
57 for pre- and post-processing are wrapped around the C codes. R scripts are employed for built-in,  
58 automatized validation and visualization functions. Further, the model runs may be repeated with  
59 varying combinations of uncertain input parameter. This results in an impact indicator index (III)  
60 map in the range 0–1, corresponding to the fraction of parameter combinations resulting in an  
61 impact on a given pixel. III therefore builds on parameter ranges or spaces instead of definite valu-  
62 es, reflecting uncertainty. The same feature allows to perform parameter optimization and sensiti-  
63 vity analyses in a convenient way (Krenn et al., 2016). The tools are most efficiently operated in a  
64 non-interactive way on the shell script level. For this purpose, the codes are parallelized at the  
65 python level in order to speed up computation, a useful feature when exploiting high-performance  
66 computational environments.

67 (ii) Stand-alone version intended for use by practitioners. The C code is implemented in a multi-  
68 platform GUI system building on C++ and python. Parameters are entered in an interactive way,  
69 and also the resulting maps may be displayed and queried interactively. The validation and para-  
70 meter testing functionalities are not available as built-in functions, but the results may be vali-  
71 dated by an additional R script.

## 72 **Simulation experiments**

73 We focus on the case of the 6.4 million cubic m Acheron rock avalanche in Canterbury, New Ze-  
74 aland, for demonstrating the functionalities of the two simulation tools. Due to its mobility (travel  
75 distance of 3.5 km and angle of reach of 11.6 degree) and a sharp bend in the flow path, this exa-

76 mple is particularly challenging in terms of modelling. Applying an ad-hoc parameter optimiza-  
 77 on to r.avaflow already leads to a reasonable correspondence between the observed deposition  
 78 areas of the rock avalanche and the flow depth distribution at a final stage (after 80 seconds;  
 79 Fig. 1A). We use the GRASS version of r.randomwalk to demonstrate a more systematic optimiza-  
 80 tion strategy, employing the two-parameter friction model for this purpose. Instead of definite  
 81 parameter values (Fischer et al., 2015), we prefer to optimize value ranges (parameter spaces).  
 82 Thereby, the III values yielded with various parameter sub-spaces are validated against the obser-  
 83 ved impact area in terms of the area under the ROC curve (AUROC) and the ratio between the  
 84 average III and the fraction of observed impact pixels, compared to all pixels in the study area  
 85 (conservativeness measure CIII). Values of AUROC and CIII close to 1 indicate a good simulation  
 86 performance. We arrive at optimized ranges of 0.1–0.4 for the bed friction coefficient and of 2150–  
 87 4650 for the mass-to-drag ratio, yielding values of AUROC = 0.93 and CIII = 1.01 (Fig. 1B). An  
 88 analogous procedure is supported by the GRASS version of r.avaflow.



89

90 Fig. 1. Results yielded for the Acheron rock avalanche, New Zealand. A: Flow depth after  
 91 80 seconds derived with r.avaflow. B: Impact indicator index (III) yielded with r.randomwalk,  
 92 applying the optimized parameter sub-space.

### 93 Conclusions and outlook

94 We note that the back-calculation of a larger number of documented events of different process  
 95 types and magnitudes may result in guiding values – or ranges of guiding values – of parameters  
 96 that can be used for the forward calculation of possible future events. In this way we intend to  
 97 implement open source guiding parameter databases for both r.avaflow and r.randomwalk directly  
 98 in the stand-alone tools in order to facilitate forward modelling for risk management practitioners.

99 From October 2016 onwards, the latest source codes and installation scripts (GRASS version) and  
 100 the binaries for various platforms (stand-alone version) along with the corresponding manuals and

101 selected test data sets are available through the software web sites <http://www.avaflow.org> and  
102 <http://www.randomwalk.org>.

### 103 **References**

104 Fischer, J.-T., Kofler, A., Fellin, W., Granig, M., and Kleemayr, K. (2015). Multivariate parameter  
105 optimization for computational snow avalanche simulation. *Journal of Glaciology* 61: 875–888.

106 Krenn, J., Mergili, M., Fischer, J.-T., Frattini, P., and Pudasaini, S.P. (2016). Optimizing the para-  
107 meterization of mass flow models. *Landslides and Engineered Slopes. Experience, Theory and*  
108 *Practice, Proceedings of the 12th International Symposium on Landslides (ISL), Napoli, Italy, 12–*  
109 *19 June 2016: 1195–1203.*

110 Mergili, M., Krenn, J., and Chu, H.-J. (2015). *r.randomwalk*, a multi-functional conceptual tool for  
111 mass movement routing. *Geoscientific Model Development Discussions* 8: 8193–8237.

112 Perla, R., Cheng, T. T., and McClung, D. M. (1980). A Two-Parameter Model of Snow Avalanche  
113 Motion. *Journal of Glaciology* 26: 197–207.

114 Pudasaini, S. P. (2012). A general two-phase debris flow model. *Journal of Geophysical Research*  
115 117: F03010