

A peer-reviewed version of this preprint was published in PeerJ on 17 May 2016.

[View the peer-reviewed version](https://doi.org/10.7717/peerj.2036) (peerj.com/articles/2036), which is the preferred citable publication unless you specifically need to cite this preprint.

Piñeiro G, Núñez Demarco P, Meneghel MD. 2016. The ontogenetic transformation of the mesosaurid tarsus: a contribution to the origin of the primitive amniotic astragalus. PeerJ 4:e2036
<https://doi.org/10.7717/peerj.2036>

The ontogenetic transformation of the mesosaurid tarsus: a contribution to the origin of the primitive amniotic astragalus

Graciela Piñeiro, Pablo Núñez Demarco, Melitta D Meneghel

The hypotheses about the origin of the primitive amniotic tarsus are very speculative. Early studies argued that the origin of the astragalus, one of the largest proximal bones in the tarsus of basal amniotes, was produced by either the fusion of two, three, or even four of the original tarsal bones, the intermedium, the tibiale and the proximal centralia (c4 and c3), or that the intermedium alone transforms into the primitive astragalus. More recent studies have shown that the structure of the tarsus in *Captorhinus* supports the former hypothesis about a fusion of the intermedium, the tibiale, the proximal centrale (c4) and eventually c3, producing a purportedly multipartite structure of the amniotic astragalus, but the issue remained contentious. Very well preserved tarsi of the Early Permian aquatic amniote *Mesosaurus tenuidens* Gervais, 1864-1865, which represent the most complete ontogenetic succession known for a basal amniote (the other exceptional one is provided by the Late Permian diapsid *Hovasaurus boulei* Piveteau, 1926), suggest that there is more than one ossification center for the astragalus and that these fuse during late embryonic stages or maybe early after birth. A non-hatched *Mesosaurus* in an advanced stage of development shows that the tarsus is represented by a single bone, most probably the astragalus, which seems to be formed by the suturing of three bones, which we interpret as being the intermedium, the tibiale, which could have already integrated the c4 in an earlier stage of the development, and the c3. An amniote-like tarsal structure is observed in very basal Carboniferous and Permian tetrapods such as *Proterogyrinus*, *Gephyrostegus*, the diadectids *Diadectes* and *Orobates*, some microsaurids like *Tuditanus* and *Pantylus*, and possibly *Westlothiana*, taxa that were all considered as true amniotes in their original descriptions. Therefore, the structure of the amniotic tarsus, including the configuration of the proximal series formed by the astragalus and the calcaneum, typically a pair of enlarged bones, could have been established well before the first recognized amniote walked on Earth. Accordingly, the tarsus of these taxa does not constitute specialized convergences that appeared in unrelated groups, they might be instead, part of a transformation series that involves taxa closely related to the early amniotes as some hypotheses have suggested.

The ontogenetic transformation of the mesosaurid tarsus: a contribution to the origin of the amniotic astragalus

Graciela Piñeiro, Pablo Núñez Demarco and Melitta Meneghel

The hypotheses about the origin of the primitive amniotic tarsus are very speculative. Early studies argued that the origin of the astragalus, one of the largest proximal bones in the tarsus of basal amniotes, was produced by either the fusion of two, three, or even four of the original tarsal bones, the intermedium, the tibiale and the proximal centralia (c4 and c3), or that the intermedium alone transforms into the primitive astragalus. More recent studies have shown that the structure of the tarsus in *Captorhinus* supports the former hypothesis about a fusion of the intermedium, the tibiale, the proximal centrale (c4) and eventually c3, producing a purportedly multipartite structure of the amniotic astragalus, but the issue remained contentious. Very well preserved tarsi of the Early Permian aquatic amniote *Mesosaurus tenuidens* Gervais, 1864-1865, which represent the most complete ontogenetic succession known for a basal amniote (the other exceptional one is provided by the Late Permian diapsid *Hovasaurus boulei* Piveteau, 1926), suggest that there is more than one ossification center for the astragalus and that these fuse during late embryonic stages or maybe early after birth. A non-hatched *Mesosaurus* in an advanced stage of development shows that the tarsus is represented by a single bone, most probably the astragalus, which seems to be formed by the suturing of three bones, which we interpret as being the intermedium, the tibiale, which could have already integrated the c4 in an earlier stage of the development, and the c3. An amniote-like tarsal structure is observed in very

basal Carboniferous and Permian tetrapods such as *Proterogyrinus*, *Gephyrostegus*, the diadectids *Diadectes* and *Orobates*, some microsaurs like *Tuditanus* and *Pantylus*, and possibly *Westlothiana*, taxa that were all considered as true amniotes in their original descriptions.

Therefore, the structure of the amniotic tarsus, including the configuration of the proximal series formed by the astragalus and the calcaneum, typically a pair of enlarged bones, could have been established well before the first recognized amniote walked on Earth. Accordingly, the tarsus of these taxa does not constitute specialized convergences that appeared in unrelated groups, they might be instead, part of a transformation series that involves taxa closely related to the early amniotes as some hypotheses have suggested.

The ontogenetic transformation of the mesosaurid tarsus: a contribution to the origin of the amniotic astragalus

Graciela Piñeiro¹, Pablo Núñez Demarco¹ and Melitta Meneghel²

¹Instituto de Ciencias Geológicas, Facultad de Ciencias. Iguá 4225. CP. 11400. Montevideo, Uruguay.

²Laboratorio de Sistemática e Historia Natural de Vertebrados, IECA, Facultad de Ciencias, Universidad de la República, Montevideo, Uruguay

Corresponding Author: Graciela Piñeiro, Instituto de Ciencias Geológicas, Facultad de Ciencias. Iguá 4225. CP. 11400. Montevideo, Uruguay. Email: fossil@fcien.edu.uy

INTRODUCTION

The origin of the astragalus and the calcaneum in the ankle of basal amniotes has been considered as an adaptation to terrestrial locomotion and a key innovation in the origin of Amniota (Romer, 1956). Taking into account the elements present in the tarsus of basal tetrapods, it is clear that there was a strong reduction in the number of bones that form the primitive amniotic tarsus. This reduction can be explained by the fusion or loss of some tarsal bones in the ancestral amniotes despite the homology of these elements not always being well established. According to previous contributions, it is widely acknowledged that the calcaneum is derived from the fibulare, ie. from only one of the precursor bones present in the tarsus of non-amniote tetrapods. However, the origin of the astragalus, as well as the identification of the ancestral bones that give origin to it, are contentious (Peabody, 1951; Rieppel, 1993; Kissel, Dilkes & Reisz, 2002; Berman & Henrici, 2003; O'Keefe et al., 2006; Meyer & Anderson, 2013). Some authors supported the classic hypothesis of a unitary origin for the astragalus, from the intermedium (e.g. Romer or perhaps from the fusion of this bone to the tibiale (e.g. Holmgren, 1933; Gegenbaur, 1864 in Schaeffer, 1941). However, Peabody, 1951, following Holmgren (1933), suggested that the origin of the astragalus is produced by the fusion of three

bones; mainly the intermedium, one of the proximal centralia (c4) and perhaps, the tibiale (Peabody, 1951, figure 2). A modification of this proposal, although supporting the composite origin for the astragalus, was suggested by O’Keefe et al. (2006) by including also the third centrale as a component of the fused element (four-center hypothesis). Indeed, there is evidence of a fusion between the tibiale and the proximal centrale (c4) in *Gephyrostegus* (Schaeffer, 1941; Holmes, 1984) which possesses an amniote-like tarsus (Carroll, 1970), thus, this fusion may have occurred early in the evolution of the amniotic tarsus. Peabody’s (1951) hypothesis was subsequently refuted by Rieppel (1993) who stated, based on embryological evidence from extant reptiles, that the reptilian astragalus is a neomorph. But Rieppel’s (1993) suggestion was not widely accepted and the hypothesis on the multipartite structure of the reptilian astragalus remains plausible. Recent reports of well-preserved tarsi from apparently young individuals of several captorhinid species (Kissel, Dilkes & Reisz, 2002; Berman & Henrici, 2003; O’Keefe et al., 2005, 2006), which will be discussed later, demonstrate that the matter is still open.

Embryological studies show only two cartilaginous condensations close to the distal end of the fibula in most extant reptiles, one for the astragalus and the other for the calcaneum (Schaeffer, 1941; Rieppel, 1993), but the presence of additional anlagen for the tibiale, remains contentious. Mainly due to this evidence, the widespread view about the origin of the astragalus before Peabody’s (1951) contribution was in favor of a slightly transformed intermedium as the astragalus precursor.

Another characteristic of the primitive amniotic tarsus is the articulation of the proximal tarsal elements (astragalus and calcaneum) with centralia 1 and 2, which are placed distally and often fuse to each other (Peabody, 1951). The fused element (c1+c2), commonly named the centrale or lateral centrale, has been suggested to form the navicular bone, characteristically

present in therapsid-grade synapsids and mammals (Broom, 1915; 1924, Jenkins, 1971).

Moreover, five distal tarsals are present, the first and the fourth commonly being the largest.

Here we investigate the origin and evolution of the amniotic astragalus by a thorough study of several almost complete and some incomplete mesosaur skeletons and natural external molds and casts, including well-preserved feet. Moreover, well preserved, isolated astragali and calcanea of individuals in different ontogenetic stages, including the tarsus of one non-hatched *Mesosaurus tenuidens* and hatchling individuals, were also analyzed for completing an ontogenetic sequence previously unknown for any other Early Permian amniote. This amazing record provides useful data for characterizing the tarsal structure in early and late juvenile stages, and helps us to understand the transition towards the acquisition of the adult tarsal morphology. We present a synoptic view of the evidence we found for homologizing the primitive amniotic astragalus to the intermedium plus possibly the tibiale and proximal centralia, and propose that the suturing of these elements occurred during the embryonic stage, producing a very specialized single bone in the hatchlings. We also report the invariable presence of a navicular-like bone (fusion of c1+c2?) in *Mesosaurus tenuidens* (*contra* Modesto, 1996a-b; 1999) and discuss the possibility if this character is polymorphic for mesosaurs as observed in basal synapsids (Romer & Price, 1940).

Institutional Abbreviations: FC-DP: Fossil Vertebrates of Facultad de Ciencias, Montevideo, Uruguay; GP/2E: Instituto de Geociências (section Palaeontology), São Paulo University, São Paulo, Brazil; SMF-R: Senckenberg-Institut, Frankfurt, Germany, MN: Museu Nacional de Rio de Janeiro, Brazil; AMNH: American Museum of Natural History, New York, USA.

MATERIALS AND METHODS

The specimens used in this study are part of several palaeontological collections and consist of almost complete and well preserved *Mesosaurus tenuidens* individuals and partially preserved skeletons that include the hind limbs, which are the subject of our study. They allow us to address the structure of the mesosaur tarsus and its component bones at different stages of development. All these materials plus isolated complete astragali and calcanea from juvenile and mature individuals were analyzed by using a binocular microscope and different techniques of photography, as well as by digital drawings. Specimens from FC-DPV, GP/2E, MN and SMF-R were personally analysed by the senior author (GP), while the specimens from the AMNH were studied from photographs kindly provided by personnel of that institution.

Methods

In order to evaluate the structure and ontogenetic variation of the mesosaurid tarsus, particularly that of the astragalus, we carried out an anatomical study of 50 mesosaurid specimens assigned to the species *Mesosaurus tenuidens*. We selected 18 individuals with well-preserved tarsi, including a non-hatched individual in a late stage of development, to represent an idealized ontogenetic transition (Figs. 1-6).

Distinction of juvenile from adult mesosaurs

The recognition of young, immature individuals from adult, mature ones was not easy to determine in mesosaurs. Modesto (1996a, 1999, 2006, 2010) made a detailed study of the characters that can be used to recognize the three monospecific genera that compose the Family

112 Mesosauridae. He concluded that the main characters (e.g. tooth morphology, head-to-neck
 113 ratios, presacral vertebral counts, presence/absence of pachyostotic ribs and hemal arches) used
 114 for taxonomic purposes are valid to separate three monospecific mesosaurid taxa. Nevertheless,
 115 Piñeiro (2002, 2004, 2008) revised some of the characters that have been previously used as
 116 taxonomically diagnostic and found that they could instead be ontogenetic conditions
 117 distinguishing alternatively immature and mature specimens or could even represent sexual
 118 dimorphism. Reliable characters that can be useful to differentiate juvenile (immature) from
 119 adult (mature) mesosaurid individuals can be derived from changes in the morphology and
 120 structure of the coracoid and the scapula in the shoulder girdle and the pubis in the pelvic girdle
 121 (Piñeiro, 2004). These bones are simple rounded plate-like structures in very young individuals,
 122 only acquiring the suchlike shape in adults; the coracoid develops into a roughly rectangular
 123 bone with anterior and medial convex margins (Modesto, 1996; Piñeiro, 2004). The coracoid
 124 notch pierces the bone medially but is very poorly developed in young individuals. It becomes a
 125 true coracoid foramen in adults, when both bones suture and eventually fuse to form the scapulo-
 126 coracoid. These bones can fuse leaving no trace of any suture between them, even in apparently
 127 young adults, or the suture may remain visible even in large, adult individuals (Piñeiro, 2002),
 128 evidencing perhaps intraspecific or sexual variability (Piñeiro, 2004). Similar morphological
 129 changes are seen in the pubis, from being a small, plate-like rounded bone to a more kidney-
 130 shaped element that develops a pubic notch or a true obturator foramen totally enclosed by bone.
 131 Other aspects of the skeleton morphology will be part of a forthcoming paper, and will not,
 132 therefore, be discussed here. Even though the characters reviewed above are useful as
 133 complementary data to help identify the development stage in mesosaurs, the presence of well
 134 ossified carpal and tarsal bones was the most useful feature for considering maturity in

mesosaurs. We consider here that an individual is mature when in the tarsus, the astragalus and the calcaneum approach each other and the foramen for the perforating artery appears between them.

Centralia and Navicular Nomenclature

The c1 is often named as the lateral centrale and the c2 as the medial centrale. But, when only one distal tarsal is seen (it could result from the fusion of c1+ c2 or it could be just the c2), it is often identified as the centrale (e.g. Schaeffer, 1941, Currie, 1981, Lewis, 1964, Reisz & Fröbisch, 2014), or as the distal centrale (e.g. Carroll, 1970) or as the lateral centrale (e.g. Peabody, 1952, Modesto, 1999, Reiz & Dilkes, 2003), even though these bones are always placed medially in the tarsus, or even as the navicular (Schaeffer, 1941). Similarly, the c4 is called the proximal centrale (e.g. Kissel, Dilkes & Reisz, 2002; Berman & Henrici, 2003) or posterior centrale (Olson 1964). On the other hand, there is no stable designation for the c3 and it can be mistaken for the c4 when it is called the proximal centrale (Carroll, 1970; Holmgren, 1933) or even considered a distal centrale (Fröbisch, 2008; Hall, 2007). This lack of consensus in the literature on how to refer to specific centralia increases the confusion about the establishment of evolutionary patterns for the early amniotic tarsus. Therefore, we decided to establish a naming criterion: we refer to the bone (or fused bones) placed distally to the astragalus in the mesosaur tarsus as the ‘navicular’, and we use the name "proximal centrale" only when it cannot be determined if it is the c4 or c3.

SYSTEMATIC PALAEONTOLOGY

Amniota Haeckel, 1866

Proganosauria Baur, 1889

Mesosauridae Baur, 1889

Mesosaurus tenuidens Gervais, 1864—1865

Figures 1—9

The mesosaurid tarsus (Figs. 1-9) displays a primitive construction regarding the structures observed in other basal amniotes as *Hylonomus lyelli*, *Paleothyris acadiana* and *Petrolacosaurus kansensis* (Carroll, 1964, 1969; Peabody, 1952; Reisz, 1981). It is essentially equivalent to the tarsus of basal synapsids (Romer & Price, 1940; Romer, 1956) and it even mirrors the structure described for some microsaurs, particularly *Tuditanus*, and *Pantylus*, the embolomere *Proterogyrinus*, *Westlothiana* and *Gephyrostegus* (Carroll, 1968; 1970; Carroll & Baird, 1968; Holmes, 1984; Smithson, 1989, although see also Smithson et al., 1994) (Fig. 10).

Description. All specimens from Uruguay were collected either in bituminous or non-bituminous shale of the Early Permian (Artinskian) Mangrullo Formation (Piñeiro, 2004; Piñeiro et al., 2012a, b); all the material coming from Brazil was collected in the correlative Iratí Formation (Santos et al., 2006). Each of the constituent tarsal elements will be described for the specimens representing the transition regarding their ontogenetic stage and the morphological changes detected:

1) FC-DPV 2504 (Figs. 1-2A, 9). An almost complete and well preserved non-hatched *Mesosaurus tenuidens* from Uruguay, which is curled as if within an egg (Piñeiro et al., 2012b). It consists of an external mould of a small, still poorly ossified skeleton that suffered strong dorsoventral compression during diagenesis. This is evidenced by the displacement of the ribs and feet which are overlapping each other, as well as by the reduced three-dimensionality (suggesting strong compression) of the delicate skeleton, which represents the smallest mesosaur

yet found (see Figs. 1-2 to better appreciate the small size of the specimen). While some of the constituent bones of the feet may not be completely ossified (considering the small size and the poor preservation of the manus), the extraordinary preservation of the specimen allowed us to reconstruct the structure of the tarsus and to describe the bones that seem to be present (Fig. 9). Both astragali are preserved, but only one of them shows the precursor bones articulated (see Fig. 9); the other was probably affected by the lateral compression that the specimen suffered during the early stages of fossilization, producing the separation of the bones. Neither one is preserved in its original anatomical position, but they were not too much displaced. Most probably, considering the curled disposition of the skeleton, the astragali dropped from their original position close to the zeugopodium to near the metatarsals when the soft tissues were decomposed. A similar displacement is observed in very young specimens of *Hovasaurus boulei* as figured by Caldwell (1994). The composite astragalus is shown as if it has turned itself over before reaching its final position. This was obviously favored by the presence of the enclosing egg membrane that prevented long transportation and loss of such tiny bones. Considering this taphonomic explanation, and following the anatomical disposition of the bones we interpreted the sutured bones, to be the intermedium, the tibiale (which possibly has fused to c4) and possibly the c3, confirming Peabody's (1951) and O'Keefe et al. (2006) theory about the presence of a composite astragalus in the tarsus of early amniotes. The c4 (and maybe also c3) ossifies early in aquatic and terrestrial reptiles (Shubin & Alberch 1986; Rieppel, 1992a,b, 1993; Caldwell, 1994, among others), and the former fuses to the tibiale in *Proterogyrinus scheelei* (Holmes, 1984). On the other hand, c1 and c2 (=‘navicular’) may ossify very late in mesosaurs, (Figs. 4-6, 8). Thus, taking into account the tarsal structure shown by early amniotes, and

203 considering that mesosaurids are a very basal group, our suggested tarsal arrangement for the
204 non-hatched mesosaurid tarsus is plausible.

205 The distal tarsals are no visible in the specimen. They could be still unossified judging
206 from the fact that distal tarsals ossify later than metatarsals in amniotes and at least metatarsals
207 II, III, IV and V were partially, or possibly completely ossified in FC-DPV 2504, but no
208 metatarsal I, which is apparently absent (see Sheil & Portik, 2008 and references therein).
209 Otherwise (but very improbably) due to their very small size, they would not be visible if they
210 were displaced between the overlapping metatarsals.

211 2) GP-2E 272 (Figs. 1-3B). This specimen is a well preserved very young individual from Brazil.
212 The ribs are not as pachyostotic as can be observed in other immature specimens, but apart from
213 that condition, the specimen does not show relevant anatomical differences to *M. tenuidens*. The
214 silhouette of part of the body can be reconstructed due to the preservation of the skin. The
215 interdigital membrane that unites the toes to the claws can be delimited as well as the robustness
216 of the leg musculature, even in such a young individual. What could have been the plantar
217 aponeurosis covers most of the tarsal bones (Fig. 3B). However, two elements (maybe
218 mineralized cartilages) placed very close to the fibula are interpreted here as a possible astragalus
219 (the largest bone) and an incipient, smaller calcaneum, which was distally displaced. It is
220 difficult to believe that, covered by the, highly resistant plantar membrane, this tarsal bone can
221 appear as displaced from its original anatomical position. But considering that in very early
222 stages of development the astragalus and the calcaneum are the only bones ossified, we
223 hypothesize that the small size of the bone and gravity combined to move it distally after the
224 decay of flesh tissues started, particularly damaging the skin and muscle insertions. Otherwise,
225 the calcaneum is covered by the aponeurosis and it is not visible or it is a very small fragmentary

bone that is observed medially to the fibula (see Fig. 3B). It is also possible to see shadow-like structures that can be interpreted as some of the distal tarsals (e.g. dt4), which begin to ossify at very early ontogenetic stages in extant reptiles (Caldwell, 1994; Sheil & Portik, 2008). What appear to be scratch marks (according to Sedor & Costa Da-Silva, 2004) are observed close to the left foot, possibly produced by the individual before its sudden death. But these structures more likely are part of the muscle and skin that form the base of the tail, exquisitely preserved. These taphonomic features support the hypothesis that the tarsal elements, even if still cartilaginous, could have been perfectly preserved, but covered by the plantar aponeurosis, which is not frequently observed in fossil tetrapods.

3) SMF-R 4496 (Figs. 1-3C). This specimen constitutes an external mould of a partially preserved posterior trunk and tail, with associated pelvic girdle and limbs from the Iratí Formation. This is the specimen that best shows the structure of the tarsus in immature, juvenile mesosaurids; the preserved bones might be partially ossified. The specimen is comparatively larger than the two described above; its tarsus is formed by two small roughly rounded bones, which can be homologized with the astragalus (the larger one) and the calcaneum (the smaller one), which do not meet, but lie one in front of the other and are positioned as in adult individuals. Despite its apparent general subcircular outline, the astragalus indeed shows a structure similar to that preserved in adults or sub-adult individuals, bearing thickened articulating areas and some suture lines. Although it is difficult to establish with confidence which of the original bones are involved, it is possible to suggest a putative arrangement based on the astragalus of the non-hatched mesosaurid (see Fig. 3C).

4) AMNH 23795 (Figs. 1-3D) is an articulated, very complete skeleton of a young mesosaur, which bears a tarsus showing the same structure seen in SMF-R 4496 (probably because they are

249 individuals of equivalent age). Both the astragalus and the calcaneum can be seen close to each
 250 other. Again, the astragalus shows the same structure as in the small, previously analysed
 251 specimens, and what appear to be sutures between component bones can be seen on the dorsal
 252 surface (see Fig. 3D).
 253 5) MN 4741 and SMF-R 4934 (Figs. 1-3E-F respectively) and SMF-R 4513 (Figs. 1-3G) from
 254 Brazil are a little larger than the specimens previously described. Even though their similar still
 255 small size, SMF-R 4513 is probably ontogenetically older judging for the tarsal features. We can
 256 see for the first time the morphological differences between both the proximal tarsal bones in the
 257 ontogenetic series, the astragalus being transformed into a more stylized and more easily
 258 recognizable element (see for instance Fig. 3G). Astragalus and calcaneum are preserved close
 259 to each other, and the foramen for the perforating artery is incipient but visible at approximately
 260 the midpoint length between these bones (see SMF-R 4513, Figs. 1-3G). SMF-R 4513 (Figs. 1-
 261 3G) is probably an adult or a subadult individual. There are three bones present; two proximal
 262 tarsal elements are visible, the larger one being the astragalus which features a morphology
 263 which is similar to those observed in more mature individuals (Fig.3). It is a stout bone tending
 264 to reach the L-shaped outline characteristic of the basalmost amniotes and some other tetrapods
 265 (see the distribution and schematic morphology of the tarsal bones in Fig. 10). The foramen for
 266 the perforating artery is placed at the midlength of the lateral margin, and an intimate area of
 267 contact is being generated between astragalus and calcaneum at this point (Fig 3G). A small
 268 bone can be seen distal to the astragalus-calcaneum contact in SMF-R 4513, which is located
 269 proximal to the distal tarsal elements, including probably the dt4. It could be the 'navicular'
 270 starting to ossify, which will be well developed later, in mature *Mesosaurus* specimens.

6) At later stages, these bones develop a short contact through the lateral margin of the astragalus and the medial margin of the calcaneum (Figs. 4-6H to P), so, the remaining analysed specimens (FC-DPV 2497, GP-2E 114, GP-2E 5610, SMF-R 4710, SMF-R 44 70, GP-2E 5816, GP-2E 6576, GP-2E 5740 and FC-DPV 2058 (see figures 4-6H-P) represent adult individuals. Most of them possess the complete series of tarsal elements: astragalus, calcaneum and ‘navicular’, as well as five distal tarsals, where the first and the fourth are often the largest, although this can be very variable (Fig. 6).

In summary, the mesosaur tarsus consists of two proximal bones identified as the astragalus and the calcaneum plus a single navicular-like element and five elements in the distal tarsal series (Fig. 7), resulting in 8 or 9 tarsal bones. The bones that form the ‘navicular’ may be the centralia 1 and 2 considering that c4 and c3 ossify very early in the ontogeny of other fossil and extant sauropsids, while the former are the last to become visible (Caldwell, 1994).

RESULTS

Following the evidence provided by the studied specimens, which notably includes the partially preserved tarsus of a non-hatched mesosaurid in an advanced stage of development, we can see the significant morphological transformation that the mesosaur astragalus experienced during ontogeny. The non-hatched *Mesosaurus tenuidens* found in the Early Permian of Uruguay (see Piñeiro et al., 2012a, b) is so exquisitely preserved that it allows us to describe the morphology of what we interpret to be a composite astragalus that is one millimeter in length! It possibly shows the precursors of the typical amniotic astragalus united by weak sutures (Fig. 9). The following postnatal, early stages of mesosaur ontogeny are characterized by the presence of

294 sub-circular to roughly square small bones, mainly representing the astragalus as a single bone
295 (and the more frequently preserved), although some young specimens still show the tripartite
296 structure (Figs. 1-3 C-E) which is not easy to observe directly from photographs because of the
297 very small size of the specimens. The sutures between the precursor bones in the astragalus of
298 larger, adult individuals can often be deduced from not always well preserved features (e.g.
299 sutures, rugose surfaces and thickened margins) (Figs. 6 and 8C).

300 In the early stages of development, astragalus and calcaneum seem to have been
301 separated, as there is no evidence of contact between them. The foramen for the perforating
302 artery is not visible; we consider both these features as useful in identifying juvenile, immature
303 mesosaurids. At the following stage, the astragalus becomes more quadrangular in shape,
304 approaches the calcaneum, and an incipient foramen for the perforating artery develops. At this
305 stage, mesosaurids appear to be young adults and possibly, mature individuals, judging by the
306 further ossification of the overall skeleton. The remaining transformations are crucial for the
307 growth of the individuals for improving their capabilities for capturing prey and for their
308 reproductive traits (see Ramos, 2015; Villamil et al., 2015; Piñeiro et al., 2012a). The proximal
309 border of the astragalus in adult individuals is deep and bears an extended rectangular facet for
310 the fibula, making an almost immobile articulation between these bones, as in basal synapsids
311 (Romer & Price, 1940). The foramen for the perforating artery is well developed in large
312 (mature) individuals where the notches in both bones approach each other to form a conspicuous
313 true foramen (see Figs. 4-6 H to P). The groove for the passage of the perforating artery crosses
314 the bone medially and proximally, where a rugose area is visible (Figs. 4 and 6). Probably it
315 marks the line of suture of both of the larger bones seen in the astragalus of the non-hatched
316 mesosaurid, implicating the intermedium and the c4+tibiale complex. Considering this

hypothesis as the most probable, another line of suture located at the medial corner of the astragalus of adult individuals may correspond to the delimitation of the tibiale and includes the articular facet for the tibia at the medial margin (Figs. 6, and 8). This suture line is also seen to be continue at the medial margin, where it runs just above the articular facet for the tibia. This facet is wide and teardrop-shaped, which allows for a broad (comparatively motile) articulation with the tibia (Fig. 8 A and C), considering the oblique angle and the short surface at which the contact is produced. It is interesting to note that the same type of articulations (and very similarly shaped facets) for the fibula and the tibia were described for the ‘pelycosaur’ tarsus, as well as the presence of a medio-ventral extension interpreted as a cartilaginous remnant of the tibiale (Romer & Price, 1940).

Limb ossification patterns

In *Mesosaurus* a significant delay in mesopodial ossification is noted, following the pattern observed in most aquatic tetrapods (Rieppel, 1992 a-b; Caldwell, 1994) such as *Hovasaurus boulei* Currie, 1981, from which we also know an almost complete ontogenetic succession in the development of the tarsus (Caldwell, 1994). Thus, long bones (propodials, epipodials and metapodials) become ossified while the mesopodials are still formed of cartilage. However, unlike in *Hovasaurus*, where the astragalus and the calcaneum of very young specimens are of nearly the same size, in *Mesosaurus* the first is clearly larger than the latter, thus supporting the hypothesis that the astragalus is the first bone to ossify in the mesosaur tarsus, arising from the suturing and later fusion of at least three bones that are present in the non-hatched mesosaurid. Taking into account this information, along with the evidence from Carboniferous tetrapods and

the evidence provided by the non-hatched specimen, the mesosaurid tarsal ossification proceeds in the following sequence: intermedium, tibiale+centrale 4 (and c3?, see Fig. 9 and O’Keefe et al. 2006), calcaneum, distal tarsal four, the ‘navicular’ and the remaining bones (distal tarsals 3—1 and 5). The sequence of ossification of the distal tarsal bones is not clear, however.

Contrary to what seen in extant reptiles, where the calcaneum is the first tarsal element that ossifies (Fröbisch, 2008), the fibulare (the calcaneum precursor) ossifies much later in mesosaurs and aquatic fossil diapsids; in *Hovasaurus boulei* it is suggested that it appears after the c4 does (after Caldwell, 1994). Thus, it may be possible that it is already present in the tarsus of the non-hatched mesosaurid (Fig. 9), but if so, it should have been very small. Considering the presence of only two bones in juvenile individuals, identified as the astragalus and the calcaneum (Figs. 1-3), it is possible that the intermedium and the tibiale (which possibly is a composite bone if it already fused to c4) fuse early in ontogeny, as some previous workers have suggested (e.g. Gegenbaur & Williston, in Schaeffer, 1941). Indeed, the tibiale fuses to c4 in *Proterogyrinus*, suggesting that these bones also ossify early, and this event was proposed as the first step towards the formation of the amniotic astragalus, as both these bones also fuse to the intermedium later (Holmes, 1984).

This pattern of ossification is mostly in agreement with recent discoveries in those fields of paleontology and developmental genetics looking for patterns and processes of vertebrate limb evolution (Caldwell, 2002 and references therein). Moreover, it highlights, at least in basal tetrapods, the potential conservatism of the underlying genetic controls of limb development patterns, exceptions are related to different ecological and functional adaptations (see below).

DISCUSSION

The astragalus during ontogeny

The astragalus is the largest bone in the mesosaurid tarsus, featuring an L-shaped outline in dorsal view in mature specimens (see Figs. 4, 7).

The shape of the astragalus changes dramatically during ontogeny; mature individuals show a stout, roughly squared bone with broad articulating facets for the crus (Fig. 8 A and C). This bone also possesses a wide, shelf-like latero-distal facet for receiving the centrale or ‘navicular’ (Figs. 6-7), which can be totally separated from the astragalus, or partially fused so that the free, unfused part of the bone can only be seen on the ventral surface (Fig. 8).

However, the astragalus of immature mesosaurids is a delicate, roughly rounded or maybe subquadrangular bone bearing an evident thick dorso-medial border which developed into very well defined articulating areas during growth, producing a slightly excavated central area in the dorsal margin for the fibula and a broad, medially placed almost sub-triangular surface for the tibia. These thickened margins can be seen even in very small newborn individuals (see Fig. 1-3 C-G).

In his 1993 study, Rieppel stated that the mesosaurid astragalus does not show any evidence of being a fusion of the plesiomorphically separated tarsal elements; to him all the suture-like structures (e.g. delicate grooves or thickenings) seen on the ventral surface correspond to attachments of muscles and tendons, and the medial groove delimitates the passage of the perforating artery. Even though the mesosaur astragalus of post-hatching stages does not show the tripartite structure described in *Captorhinus* (Peabody, 1951; Fox & Bowman, 1966; Kissel, Dilkes & Reisz, 2002 and references therein), it seems to have been derived from the

junction of at least three bones, as we can deduce from the tarsus of the non-hatched mesosaurid (Fig. 9) where we interpret although with doubts, that the incipient astragalus is the only bone in the tarsus, showing suturing for the intermedium, the tibiale and maybe both the proximal centralia (c4+c3). Actually, some of the original joints remained in some specimens, but they show a slightly different pattern from that described by Peabody (1951) because the mediiodistal Y-shaped suture for intermedium, c4 and c3 is not as evident in the studied specimens (see figures 3, 6, 8).

The mesosaur ‘navicular’

The ‘navicular’ is a bone present in both synapsid and sauropsid amniotes. In the latter, it is observed at least in their basalmost representatives: a ‘navicular’ is found in captorhinids, basal diapsids, some Parareptilia and Mesosauridae and in all pelycosaurs (Figs. 8, and 10). Later, it becomes a bone that is only characteristic of derived synapsids and living mammals and it is lost in crown diapsids. In mesosaurs it ossifies at a late stage (at the same time that the foramen for the perforating artery forms) and is separated from the astragalus in most individuals or abuts against the distal margin of this bone, even fusing partially with it in mature individuals (Figs. 6 and 8). That means that the presence of the ‘navicular’ in mesosaurs is indicative of maturity.

The presence of the ‘navicular’ in *Mesosaurus* is a novel characteristic, as all but one (Modesto, 1996a, b; 1999) of the previous workers did not mention its presence in descriptions of the mesosaurid tarsus. Indeed, Modesto (1996a,b) described the presence of a lateral centrale only in *Stereosternum* and stated that this bone is never present in *Mesosaurus*. We have enough

evidence to confirm that a transversely elongated bone is invariably present distal to the astragalus in all the analysed mature specimens—most frequently representing two sutured bones—identified as the centralia c1 and c2 present in “pelycosaurs” and other basal amniotes. As these bones suture to the astragalus in very mature individuals, as also seems to occur in *Captorhinus aguti* (Peabody, 1951), it becomes difficult to identify its presence in the tarsus, as probably occurred with the specimens studied by Modesto (1996,1999) assigned to *Mesosaurus tenuidens*. We first become aware of the presence of a ‘navicular’ in *Mesosaurus* from an isolated, relatively large astragalus where the fusion of c1 and c2 has not yet been completed (see Fig. 8 for more detail of this condition). It firstly appears as two sutured (but not fused) bones (Figs. 4 and 6 H-I), and there seems to be a reduction in the size of c1, which becomes a pointed medial tip that is not preserved in most individuals because of the fragility of its suture to c2 (see Figs. 3G; 8B-C). As a result, in *Mesosaurus*, the ‘navicular’ strongly abuts the platform-like facet on the distal margin of the astragalus (Figs. 6P, 8).

This variable condition concerning the fusion of centralia 1 and 2 recalls that observed in ‘pelycosaurs’, in which some species show the centralia 1 and 2 as separate bones (e.g. *Ophiacodon*), while others show them fused (e.g. *Haptodus*) (Romer & Price, 1940) (Fig. 10). It is likely that this is an ontogenetic, perhaps heterochronic condition in mesosaurs (L. Gaetano and D. Marjanović, personal communication), but this needs to be tested by analysis of more than one individual of the same species at different stages of development. For instance, the morphology of the c1 in mesosaurids is very similar to that of the putative medial centrale of *Sphenacodon ferox* (according to Henrici et al., 2005), and if it is repositioned medially to the lateral central we can obtain a navicular-like bone in *Sphenacodon*. Thus, the small size of the tarsal bones of early amniotes and the possibility that they can be displaced from their original

positions, plus to the fact that the recognition of homologous bones seems to be a difficult endeavor, make it likely that the real nature of the tarsus structure in several taxa could remain obscure. Mesosaurs may provide a good opportunity to revisit and gain a better understanding of the processes that are involved in the origin and early evolution of the amniotic tarsus.

Morphological changes supporting an evolutionary transition in the origin of the amniote tarsus

Although most previous workers (e.g. Carroll, 1964; Berman & Henrici, 2003; O'Keefe et al., 2006; Meyer & Anderson, 2013, and references therein) accepted the composite origin of the astragalus following the contribution of Peabody in 1951, the reappraisal of that condition and its significance performed by Rieppel in 1993 introduced controversy. This last author rejected the multipartite origin of the astragalus, arguing that there was a lack of unequivocal ontogenetic evidence that would show that the bones which would form the composite astragalus are present in at least some stage of development. He rejected the proposed composite origin of the astragalus by Peabody (1951) mainly based on the fact that this bone derives from a single ossification center in extant reptiles and that, according to Sewertzoff (1908), lizards have just a single block of cartilage close to the distal end of the fibula and tibia where the astragalus and the calcaneum later ossifies. In *Sphenodon punctatus*, the astragalus originates by the condensation of more than one chondrogenic element, but they fuse during the embryonic stage (Rieppel, 1993). Moreover, the presence of more than one cartilage condensation, apparently homologous with the ancestral tetrapod tarsals, has been recently described to be present during early embryonic stages in the development of six different orders of modern birds (Ossa Fuentes,

Mpodozis & Vargas, 2015) and also in chameleons (Diaz & Trainor, 2015). Even though we consider that a comparison with animals that possess an extreme adaptation to flying and perching and that are temporally and phylogenetically so distant from the taxa included in this study, is not appropriate, we will discuss on this subject later.

Indeed, there are several known examples of tetrapods, possibly stem amniotes, that allow us to deduce the steps of fusion of the tarsal bones leading to the attainment of the amniote condition. Thus, it is possible that, as the embryology of extant lizards suggests, the fusion of these elements in the development of the amniote ankle is produced in the embryonic stage and so, it is not possible to address their original ossification centers any more (Gauthier et al., 1988). Rieppel (1993) observed that associations of tarsal bones are common in amphibians and that, while centralia 1 and 2 can be fused or separated, c3 and c4 may be fused, or rather, one of them can be lost. Thus, according to Rieppel (1993) the association between the tibiale and c4 may be casual and may not represent a condition of phylogenetic relevance. However, we can see a real transition from closely related, supposedly non amniote taxa (e.g. *Gephyrostegus*, *Westlothiana*, *Tuditanus*, *Pantylus* (see Ruta, Coates & Quicke, 2003 and Marjanović & Laurin, 2015, for the phylogenetic position of these taxa), to the acquisition of the primitive amniotic tarsal configuration (see figure 10). Thus, if we consider the association of the tibiale and c4 observed in some *Proterogyrinus* specimens (Holmes, 1984) and possibly present in the tarsus of the non-hatched mesosaurid (see Fig. 9) as the first step towards the development of the amniotic tarsus (Holmes, 1984), we can reconstruct the succession including *Gephyrostegus* (see Carroll, 1970 as a reference of the tarsal structure in this last taxon) where the tibiale+c4 (and c3?, see O’Keefe et al., 2006) complex is associated with the intermedium to form the composite amniotic astragalus, a configuration that is also present in some microsaurs (e.g. *Tuditanus punctulatus*,

Carroll & Baird, 1972; Carroll & Gaskill, 1978 and *Pantylus cordatus*, Carroll, 1968) and possibly in *Westlothiana* (Smithson, 1989 but see Smithson et al. 1994). Within that transformation, the fibulare becomes the calcaneum and c1 and c2 remain as the only centralia present, either as separated bones or fused to form a single element, the ‘navicular’.

Phylogenetic context supporting the evolutionary transition

On a phylogenetic point of view, even considering that there is not complete consensus about the relationships of the taxa involved in the transition, their relationships seem to be supported by the most recent cladistics analyses of basal tetrapods: Ruta, Coates & Quicke, 2003; Vallin & Laurin, 2004; Klembara, 2005; Ruta & Coates, 2007; Marjanović & Laurin, 2009, 2015 (see Fig. 11). These phylogenies show *Proterogyrinus* as an embolomere anthracosaur, although the relationships of this taxon are contentious and were not completely resolved (see Ruta, Coates & Quicke, 2003). *Gephyrostegus* is very close to Seymouriamorpha and to microsaurs, a hypothesis supported by the Laurin & Reisz (1997) tree, which also argues that lepospondyls are a monophyletic group closely related to amniotes (see also Marjanović & Laurin, 2015). Otherwise, if microsaurs are paraphyletic to other lepospondyls and to the amniote stem, as other workers suggest (Olori, 2015), they could have been the last phylogenetic intermediaries in our evolutionary transformation series.

It is noteworthy that some taxa which are not classified as amniotes have an amniote-like tarsus or at least developed the large proximal tarsal bones that characterize the amniotic tarsus, the astragalus and the calcaneum (Fig. 10). Notable examples of this feature are the diadectids earlier analysed (Romer & Byrne, 1931; Romer, 1944), although adults show a somewhat

autapomorphic condition of a fusion between both the proximal bones to produce an astragalocalcaneum bone. Within lepospondyls, the microsaurs *Pantylus* (Carroll, 1968) and *Tuditanus punctulatus* have intriguingly, an amniote-like tarsus (Carroll & Baird, 1972). Moreover, the proterogyrinid *Proterogyrinus scheelei*, *Gephyrostegus bohemicus* and probably *Westlothiana lizziae* also have an amniote-like tarsus (see Carroll, 1970; Holmes, 1984; Smithson, 1989). Because mesosaurids are very basal amniotes (Laurin & Reisz, 1995; Piñeiro et al., 2012b) or basal parareptiles (Modesto, 1996 a-b; Modesto, 1999; Piñeiro, 2004) we explored these taxa in order to find homologies between putative plesiomorphic, non-amniotic tarsi and their corresponding structure in mesosaurids according to the different ontogenetic stages described for the group.

The status of Westlothiana and microsaurs and its role in the transition

Regarding the condition in *Westlothiana*, Smithson (1989), reconstructed the tarsus as very amniote-like, including within it nine bones (see Smithson, 1989, figure 2d). There were certainly nine bones in the preserved material although they were not preserved in their original anatomical position. But, later, (Smithson et al., 1994) pointed out that, the tarsus of *Westlothiana* is indeed very plesiomorphic (or amphibian-like) because it included ten, rather than nine bones (see figure 20A in Smithson et al., 1994). We do not find enough evidence to refute the former reconstruction or for validate the latter, thus, a proposal about the tarsus structure in *Westlothiana* would be very speculative at this stage. Moreover, the renaming of the two large, proximally placed bones originally described as the astragalus and the calcaneum as an intermedium and a fibulare, thereby introducing the presence of a putative fibulare bone, is

also speculative because this last bone is difficult to identify from the preserved specimen, where the foot bones are mostly disarticulated and obscured by the caudal vertebrae (Smithson et al., 1994). Besides, according to these authors, the putative intermedium is L-shaped, a characteristic very frequently found in the astragalus of early amniotes. Despite *Westlothiana* possessing other advanced conditions that may suggest its relation to the amniote clade, it also retains some plesiomorphic features in the skeleton such as a prefrontal-postfrontal contact, excluding the frontal from the orbital margin (Smithson, 1989). Thus, the reconstruction of the real structure of the tarsus in *Westlothiana* may be crucial to an understanding of the evolutionary transition to the origin of the amniotic astragalus as we have figured it out in this contribution. We hope that our paper will encourage new studies on this taxon.

Concerning microsaurids, these ecologically diverse, small-bodied tetrapods are credible candidates for being part of the stem leading to the emergence of the earliest amniotes. They develop a tarsus with a very amniote-like morphology, and as was recently demonstrated they even show a similar ossification pattern, with the intermedium (?astragalus) and the fibulare (?calcaneum) being the first tarsal bones to ossify (see Olori, 2015). They are also the only proximal elements in the tarsus as in all amniotes, and naming them as intermedium and fibulare is just arbitrary at this stage, if we have no embryological information to prove their identity. We have to take into account that in mesosaurids the astragalus and the calcaneum are the only proximal tarsal bones in born individuals, despite the former deriving from the fusion of three or four bones.

Diadectids

Diadectids were recently considered to be amniotes (Berman, 2000), and as such, they would have had an amniote tarsus. Recent discoveries of possible juvenile diadectid tarsi including a putative composite astragalus formed by the intermedium, the tibiale and the proximal centrale (c4, as it was identified) introduced interesting new data to the origin of the amniotic astragalus (Berman & Henrici, 2003). Later, this material was assigned to the species *Orobates pabsti*, a diadectid (Berman et al., 2004). Nevertheless, the holotype specimen of *Orobates* described by Berman & Henrici (2003) and Berman et al. (2004: 29) as having a tripartite astragalus (MNG 10181) was recently subjected to an in-deep study using micro-focus computed tomography scans (Nyakatura et al., 2015), which allowed for a thoughtful anatomical understanding of the specimen. The scanned image and digital reconstruction show that there are seven separated bones in the tarsus of *Orobates*, which morphology suggests could be homologized with immature astragalus and calcaneum plus two centralia (c1+c2) and three small distal tarsals. Indeed, despite the very good preservation of the individual, it was apparently subjected to severe diagenetic distortion; the bones were embedded in a crystalline calcite matrix and there was a significant chemical substitution around their margins (cf. Nyakatura et al., 2015). That taphonomic feature could have produced a configuration that, under direct examination, led to the interpretation of Berman & Henrici (2003) about the presence of a composite astragalus in *Orobates*.

Berman & Henrici (2003) also described two associated (maybe sutured) tarsal bones which they recognized as the intermedium and the fibulare of a juvenile *Diadectes*. However, the shape of the bones, mostly subcircular, and their relative size and proportions, remind us of the astragalus and calcaneum of a very young individual, taking into account the ontogenetic stages described here for the very basal amniote *Mesosaurus tenuidens*.

This new configuration matches the pattern of the tarsus already known for diadectids: distinct astragalus and calcaneum in young individuals, which fuse later to produce an astragalocalcaneum in very mature adults. Thus, diadectids have a very amniote-like tarsus. The non-diadectid diadectomorphs (*Tseajaia campi*) do not have a well-defined tarsus, but this can be masked by the not sufficiently good preservation of the specimen feet. Even though, in *Tseajaia campi*, three distinct bones seem to form the proximal line (Moss, 1972), some fusions tending to achieve the amniote-like pattern can be hypothesized to be present: the tibiale fuses to c4 as the evolutionary transition reviewed above suggests, and the intermedium, shown by Moss (1972) as fusing to c4, indeed fuses to c3 (see Figs. 10, 12), supporting the putative incorporation of both centralia into the amniotic astragalus as O’Keefe et al. 2006 have suggested and as it is shown by the tarsus in the non-hatched mesosaurid (Fig.9).

Some groups like diadectids and seymouriamorphs for instance, show a high plasticity in producing different patterns often correlated to a different expression of otherwise highly conserved regulatory genes (Shubin, 2002). Therefore, the expression of these genes and the consecutive structure of the tarsus may be regulated by the different ecological pressures to what some have to adapt along the different stages of their development. Juvenile or young adult *Diadectes* show a conservative tarsus, and distinct astragalus and calcaneum were described as being present (Romer & Byrne, 1931; Romer, 1944; Berman & Henrici, 2003). However, astragalocalcaneum fusion is shown to occur in very large and mature individuals, where it would seem that the movement between these bones becomes very limited or null (Romer, 1944).

Hylonomus lyelli

594

595 Revising the evidence from other basal amniotes such as *Hylonomus lyelli* (Carroll, 1964;
596 Meyer & Anderson, 2013) we found some inconsistencies related to the identification of the
597 bones figured, perhaps as an attempt to follow the Peabody's (1951) suggestion of a tripartite
598 origin of the astragalus. Thus, Meyer & Anderson (2013), following Carroll (1964, fig. 1),
599 identified the astragalus and calcaneum from a partially disarticulated specimen where the feet
600 are completely disassociated and considered the calcaneum of *Hylonomus* as two times larger
601 than the astragalus. According to the information found in Carroll (1964, p. 72, fig. 8) and based
602 on the ontogenetic succession that we described here for mesosaurs, the calcaneum can
603 sometimes be equal in size to the astragalus or even a little larger, but never that much larger.
604 Thus, we could deduce both that it is an incomplete astragalus missing the intermedium, as
605 Meyer & Anderson proposed in the text and in figure 3 (but this would suggest that the type
606 specimen of *Hylonomus lyelli* belonged to a very young individual and it does not appear to be
607 the case, see figure 1 of Carroll, 1964), or that the bone identified as the calcaneum is the
608 astragalus or that the bone is neither the astragalus nor the calcaneum. We are inclined to accept
609 the last hypothesis because the overall small size of the individual suggests that these bones are
610 much too large to be tarsal bones; they seem to be elements of the pelvic girdle, possibly the
611 pubis (see figure 1 of Carroll, 1964). The well identified astragalus of *Hylonomus lyelli* (see
612 figure 8 of Carroll, 1964) does not show any trace of sutures.

613

614 *Captorhinids*

615

Taking into account the previous evolutionary transition in favor of a composite origin of the amniotic astragalus, which of course may also include other taxa, the interpretation of Peabody (1951) and later workers of the presence of more than one ossification center in the astragalus of *Captorhinus* and other basal amniotes seems sensible. However, other extensive descriptions of *Captorhinus* (e.g. Fox & Bowman, 1966) do not provide more conclusive evidence about the structure of the tarsus and, as Rieppel (1993) claimed, it is necessary to have ontogenetic evidence (e.g. articulated skeletons of very young individuals of *Captorhinus* and/or of related taxa) to demonstrate the homology of the bones composing the tripartite astragalus and their presence in the earliest stages of development. Isolated astragali from the Lower Permian of Oklahoma were described by Kissel, Dilkes & Reisz (2002) as belonging to *Captorhinus magnus*, showing the putative tripartite structure visible only from the dorsal surface of the bones. However, this feature was discussed by Rieppel (1993) who argued that the putative unclosed sutures should be interpreted as areas of muscular attachment, or grooves for blood vessel irrigation, or fractures.

Concerning *Captorhinus*, most of the isolated astragali figured by Peabody (1951) clearly belong to mature animals, according to their size and structure (see Fox and Bowman, 1966, for comparison); the smallest one already shows the same morphology seen in the larger ones. If the astragali shown by Peabody (1951) partially represent an ontogenetic transformation series, they cannot confidently demonstrate that the apparent tripartite structure is derived from the fusion of three or four of the plesiomorphic tarsal bones. A feature that could not support the hypothesis of the tripartite structure is that the sutural lines and groove patterns present in *Captorhinus* as described by Peabody (1951) are only visible on the ventral surface of the bone; alternatively, it suggests that the fusion started on the dorsal surface and was not completed in adult individuals.

The same condition can be observed in the large captorhinid *Captorhinus magnus* (Kissel, Dilkes & Reisz, 2002).

Fragmentary pedes referred to juvenile and adult individuals of the giant, largest known captorhinid *Moradisaurus grandis* from the Upper Permian of Niger, were figured and described by O’Keefe et al. (2005, 2006). Even though the bones were found in association and it was possible to recognize the identity of some of them, they represent isolated and disarticulated pedes whose referral to *Moradisaurus* can be possible but not accurate, at least no more, than to any other basal tetrapod of the same size. Nevertheless, based on the pes assigned to a juvenile captorhinid, O’Keefe et al. (2006) suggested that the c3 is also a component of the multipartite amniote astragalus, occupying its latero-distal corner. However, the individualization of the constituent bones of the juvenile tarsus and all the possible arrangements show that there is a bone, dorsal to the intermedium that does not belong to the tarsus, unless it is part of the intermedium yet not totally ossified because the juvenile condition of the specimen. But, that bone is the only that is totally isolated from the rest of the tarsus, which excepting the four distal tarsals, appears as a co-ossified structure.

Even though our reconstruction of the non-hatched *Mesosaurus* tarsus is consistent with the O’Keefe et al. (2006) reconstruction of the *Moradisaurus* tarsus in the fact that the c3 may be part of the astragalus, the arrangement of the bones seems to have been very different in both taxa. Moreover, the putative calcaneum has a very developed notch for the perforating artery, which does not match with the condition in the astragalus, including the evident individualization of the constituent bones. It is also difficult to include the O’Keefe et al. (2006) specimen because their reconstruction does not show an evident fusion between the tibiale and the c4, and because it is a unique, isolated, putatively juvenile pes of *Moradisaurus*, where the identity of the bones

is highly subjective. The other fragmentary pes, interpreted to pertain to an adult specimen displays the typical amniotic tarsal structure and the astragalus shows no sign of the composite origin.

The presumable “implicit” relationship between mesosaurids and basal synapsids regarding the structure of their skull and tarsus

In 1941, Friedrich von Huene proposed for the first time a phylogenetic relationship between *Mesosaurus* and some basal ‘pelycosaurs’. That suggestion was not generally acknowledged by later authors who developed the currently accepted hypothesis that mesosaurids are the basalmost sauropsids (Laurin & Reisz, 1995) or the basalmost parareptiles (Modesto, 1999). More recently, Piñeiro (2004) found some evidence that she understood gave support to von Huene’s hypothesis (1941) but acknowledged that it should be tested in a phylogenetic context. Moreover, the nature of the mesosaurid skull, long discussed during more than a hundred years, has been recently reassessed to show the presence of a synapsid-like lower temporal fenestra in *Mesosaurus tenuidens* (Piñeiro et al., 2012c). This contribution gave credit to the observations made by von Huene (1941) about the morphology of the mesosaur skull. Similarly, the tarsus of mesosaurs has been studied by several authors, and here we have demonstrated that its structure is almost identical to that described for basal synapsids, but also it is equivalent to that of basal sauropsids, including one of the basalmost diapsid *Petrolacosaurus kansensis* (Reisz, 1981).

Basal synapsids show a greater development of the calcaneum (Romer & Price, 1940), which in some taxa roughly acquires the size of the astragalus. In contrast to this, the calcaneum

of *Mesosaurus* is smaller than the astragalus (although the size differences are less significant in adult individuals), and develops a lateral expansion in the area of the heel, possibly for insertion of extensor tendons including the Achilles tendon (Fig. 7).

Indeed, the tarsus in early amniotes is both structural and morphologically equivalent in the two groups, except that in ‘pelycosaurs’ there is no evidence for the multipartite formation of the astragalus, thus generating doubts about the homology of these bones in synapsid and sauropsid amniotes (Rieppel, 1993). However, the multipartite original structure can be seen just in very young mesosaurs and it disappears before the achievement of the adult stage; but it seems to be evident in captorhinids, being possibly an heterochronic pattern.

Evolutionary paths for the development of amniote tarsus: the mesosaur contribution

The morphological ontogenetic transformation presented here for *Mesosaurus tenuidens* is the most complete known for a basal amniote (cf. Laurin & Reisz, 1995) and as such, it constitutes a relevant database for studies of a different nature. The information provided for this data base on the origin of the amniotic tarsus suggests that, as Peabody (1951) and previous authors (e.g. Holmgren, 1933) have stated, the earliest astragalus originated from at least four ossification centers (taking into account that the tibiale and c4 fuse together early in the ontogeny), near the tibial and fibular distal margins. More than one ossification center appears to be present at the early embryonic stages of some extant groups (cf. Ossa-Fuentes, Mpodozis & Vargas, 2015; Diaz & Trainor, 2015) but their homology to the earliest amniote condition is difficult to establish, as the pattern is observed in very specialized groups such as birds and chameleons. Indeed, in the above mentioned papers, (Ossa-Fuentes, Mpodozis & Vargas, 2015;

Diaz & Trainor, 2015) it is suggested that the intermedium and the tibiale (although the latter is not pretty much apparent from the figures provided by Diaz & Trainor, 2015) appear as independent ossifications at very early stages of the development. On the other hand, Ossa-Fuentes, Mpodozis & Vargas (2015) observed that in the six groups that they studied, in contrast to the most common condition in birds (i+fe), the intermedium forms a separate ossification center that later fuses to the 'astragalus' (sic) forming the ascending process characteristic of dinosauromorphs. Thus, the 'astragalus' should be the tibiale? Moreover, the pattern of ossification that Ossa-Fuentes, Mpodozis & Vargas (2015) suggest, where the fibulare is the first to ossify, followed by the putative intermedium and later by the tibiale, is very different to that currently accepted to occur in basal amniotes.

The centralia, which are considered basic components of the astragalus structure, are recognized in stem-lepidosaurs. However, these bones are not detected in dinosauromorphs and in many extant diapsids (e.g., chameleons and birds). Therefore, they must have fused to a different bone than the astragalus or disappeared during the evolution of modern sauropsids as they are not recognizable during the ontogeny of the most advanced taxa".

Selective pressures to reduce the number of tarsal bones in the sense that they are an extension of the epipodials, favour stability by strengthening the feet to drive the body forward. Thus, the acquisition of unitary, stout structures instead of several separate, delicate bones was an improvement for sustained locomotion capabilities. Therefore, we have to be cautious regarding these findings, considering the high variability shown by the chameleons' tarsal structure, and the lack of embryological evidence in the fossil taxa for use in comparison. Therefore, as we previously mentioned, the possibility that neomorphic elements are present in such derived groups cannot be ruled out with the available data.

According to our observations of the non-hatched *Mesosaurus tenuidens* which possesses an astragalus formed by at least four bones, we can say that the mesosaurid astragalus is not a neomorphic as Rieppel (1993) has suggested, unless we consider that once united in the earliest stages of the development, these bones form a new element. Even the evidence taken from taxa such as the embolomere *Proterogyrinus scheelei* Romer, 1970 can provide support for the multipartite hypothesis and the identification of the bones provided in the present work (Holmes, 1984).

We made several interesting observations that support the already established homologies and possible evolutionary paths towards the origin of the primitive amniotic astragalus. Particularly in *Proterogyrinus* the intermedium has a very similar structure to that of the astragalus of young mature mesosaurs, and the tibiale is clearly sutured against the medial corner formed by c4 and the intermedium. The fibulare is also very similar to the calcaneum of the same stage (see Figs. 1-6), so it is logical to presume that these bones are homologous, as already stated. The main question is what happens to the remaining bones to obtain the mesosaurid (= basal amniote) tarsus consisting of two large proximal elements plus one or two centralia and five distal tarsals. We find evidence for the presence of c3 early in the ontogeny (Fig. 9); it is possible that it fuses to c4 in the described mesosaur ontogenetic transformation after the c4 fuses to the tibiale. Indeed, based on the structure shown by *Proterogyrinus* (Holmes, 1984), where apparently the tibiale fuses to c4, and taking into account that shown by the tarsus in the captorhinomorph *Labidosaurus* (Williston, 1917) where the intermedium and the tibiale also fuse to c4, we hypothesized three possibilities or combinations: A, the astragalus is just formed by the intermedium+tibiale only, and c4 and c3 undergo a reduction in size until they finally disappear (not plausible, given the probable presence of c4 and c3 in the tarsus of the non-hatched

mesosaurid); B, the astragalus is formed by intermedium+tibiale+c4, and c3 is reduced to be lost (not probable given its putative presence in the tarsus of the non-hatched mesosaurid and taking into account the proposal by O’Keefe et al., 2006); C, the astragalus results from the fusion of all bones, i+te+c4+c3 (Figs. 9 and 12A). The last possibility (C) seems to be supported by the materials that we described here, and is consistent with that suggested by O’Keefe et al., 2006, who provided evidence for the inclusion of c3). It does not imply the loss of bones but a re-patterning to produce the amniotic tarsus. Moreover, there are also two possibilities for the formation of the ‘navicular’: 1, it results from fusion of c1 and c2; 2, it is formed by the c2 after the reduction and loss of c1 (see Fig. 12B). We found probable evidence of some of these fusions (the tibiale+?c4+ intermedium, c1+c2) in early stages of *Mesosaurus tenuidens*’s development, but not in all individuals.

If the hypotheses of the astragalus and the ‘navicular’ formation are combined, we can have the following six possibilities: A-1; A-2; B-1; B-2; C-1; C-2, but the evidence from mesosaurs might support just C-1.

CONCLUSIONS

The changes produced in the mesosaur tarsus structure during ontogeny were established based on the study of several specimens preserved in different stages of development. This transformation series is the most complete known for a basal amniote as it includes even embryological information. Our results allow for a better recognition of intraspecific (ontogenetic) from interspecific variation in mesosaurs and provides more informative characters that can be used in comparative studies of amniote relationships.

The mesosaur tarsus includes 8 or 9 bones: astragalus and calcaneum plus centralia 1 and 2 (fused to form the mesosaur ‘navicular’) and five distal tarsals. The ‘navicular’ is proved to be present in all subadult and adult mesosaurs, even in *Mesosaurus* where it fuses to the astragalus in mature individuals. The early amniote astragalus is a composite bone as can be evidenced by the presence of at most three sutured bones in the tarsus of a non-hatched mesosaurid in an advanced stage of development. These bones seem to be the intermedium and the tibiale, and the later fused to c4; and the c3. Thus, our study rejects the hypothesis that the amniotic astragalus is neomorphic.

Regarding the analyzed ontogenetic series, we could determine that the attainment of maturity in mesosaurs can be related to a determinate tarsus structure, which can be a good age indicator to extrapolate to other groups of basal amniotes. Moreover, the morphological changes observed in the mesosaur ontogeny could have strong implications in the recognition of until now undocumented, ancestral developmental features of early amniotes.

Current morphological and comparative studies on the mesosaurid skeleton suggest other interesting similarities between mesosaurids and basal synapsids that will be properly described in a forthcoming paper. However, these features are also shared with other basal sauropsids and taxa that are not even amniotes. For instance, mesosaurs share characters with taxa previously known to be closer to Amniota (Panchen & Smithson, 1988; but see also Smithson et al., 1994) but these hypotheses were not phylogenetically evaluated. These taxa are now considered as stem or crown-tetrapods (Olori, 2015; Marjanović & Laurin, 2015) or their affinities are not yet well defined (e.g. *Westlothiana*), but they still remain close to the earliest amniotes. This commonly shared morphology among apparently unrelated but very basal taxa reflects the primitive nature of mesosaurids, as already noted by Huene (1941) and other paleontologists.

The example of the similar tarsal structure observed in mesosaurids, some microsaurs, basal synapsids and non-amniote tetrapods suggests that the evolution of the astragalus and calcaneum as the most typical bones in the amniotic tarsus could be an acquisition obtained much earlier than when the first recognized amniote appeared and walked on the planet.

Acknowledgements

We are indebted to Carl Mehling (Fossil Amphibian, Reptile, and Bird Collections, Division of Paleontology of the American Museum of Natural History) who kindly provided the pictures of specimens revised by Olivier Rieppel in his 1993 paper.

Prof. Ivone Cardoso Gonzalez and Lics. Alejandro Ramos, Marcelha Páez Landim and Igor Fernando Olivera assisted us in the revision of the mesosaurid material housed in the Collection of Departamento de Paleontologia do Instituto de Geociências, Universidade de São Paulo, Brazil. Silvia Villar gave us a big help by allowing us to present the best SEM photographs that could be taken of the non-hatched mesosaur tarsus, which, being a unique specimen preserved as an external mould, could not be separated from the compacted shale that contains it, and neither it could be treated with a golden cover before to be photographed. GP wishes to thank Jorge Ferigolo for having allowed her to meet mesosaurs and for the valuable talks together and the outstanding knowledge that he spread to learning and curious people; he made her understand how much we can know from fossils to reconstruct the life during the past. We thank very much Robin Hewison for kindly accepting to revise the English language. We also want to acknowledge Leandro Gaetano and David Marjanović for their insightful comments, helpful criticisms and editorial remarks that highly improved this manuscript.

References

- Baur G. 1889. *Palaeohatteria* Credner and the Proganosauria. *American Journal of Science* **27**:310–313.
- Berman, D. S. 2000. Origin and early evolution of the amniote occiput. *Journal of Paleontology* **74**:938–956.
- Berman DS & Henrici AC. 2003. Homology of the astragalus and structure and function of the tarsus of Diadectidae. *Journal of Paleontology* **77**:172–188.
- Berman DS, Henrici AC, Sumida SS & Martens T. 2000. Redescription of *Seymouria sanjuanensis* (Seymouriamorpha) from the Lower Permian of Germany based on complete mature specimens with a discussion of paleoecology of the Bromacker locality assemblage. *Journal of Vertebrate Paleontology* **20**(2):253–268.
- Berman DS, Henrici AC, Kissel RA, Sumida SS, Martens T. 2004. A new diadectid (Diadectomorpha), *Orobates pabsti*, from the Early Permian of central Germany. *Bulletin of Carnegie Museum of Natural History* **35**:1–36. doi: 10.2992/0145-9058(2004)35[1:anddop]2.0.co;2
- Broom R. 1915. On the origin of mammals. *Phylosophical Transactions of the Royal Society of London, Series B* **206**:1–48.
- Broom R. 1924. Further evidence on the structure of the Eosuchian. *Bulletin of the American Museum of Natural History* **51**:67–76.
- Caldwell MW. 1994. Developmental constraints and limb evolution in Permian and modern lepidosauromorph diapsids. *Journal of Vertebrate Paleontology* **14**:459–471

- 845 Caldwell MW. 2002. From fins to limbs to fins: Limb evolution in fossil marine reptiles.
846 *American Journal of Medical Genetics* **112**: 236–249. doi: 10.1002/ajmg.10773
- 847 Carroll RL. 1964. The earliest reptiles. *Zoological Journal of the Linnean Society* **45**:61–83.
- 848 Carroll RL. 1968. The postcranial skeleton of the Permian microsauro *Pantylus*. *Canadian*
849 *Journal of Zoology* **46**:1175–1192. doi: 10.1139/z68-168
- 850 Carroll RL. 1969. A Middle Pennsylvanian captorhinomorph, and the interrelationships of
851 primitive reptiles. *Journal of Paleontology* **43**:151–170.
- 852 Carroll RL. 1970. The ancestry of reptiles. *Philosophical Transactions of the Royal Society of*
853 *London B* **257**:267–308.
- 854 Carroll RL & Baird D. 1968. The Carboniferous Amphibian *Tuditanus* [*Eosauravus*] and the
855 Distinction Between Microsaurs and Reptiles. *American Museum Novitates* **2337**: 1–50.
- 856 Carroll RL & Baird D. 1972. Carboniferous stem-reptiles of the Family Romeriidae. *Bulletin of*
857 *the Museum of Comparative Zoology* **143**:321–364.
- 858 Carroll RL & Gaskill P. 1978. The Order Microsauria. *Memoirs of the American Philosophical*
859 *Society* **126**, 211 pp.
- 860 Carroll RL. 1995. Problems of the phylogenetic analysis of Paleozoic choanates. In Studies on
861 Early Vertebrates: VIIth International Symposium, Parc de Miguasha, Quebec (M.
862 Arsenault, H. Lelièvre and P. Janvier (eds.), pp. 389–445. *Bulletin du Muséum National*
863 *d'Histoire Naturelle*, Paris (série 4) 17 (C).
- 864 Currie 1981. *Hovasaurus boulei*, an aquatic eosuchian from the upper Permian of Madagascar.
865 *Palaeontographica Africana* **24**:99–168.

- 866 Diaz R E & Trainor P A. 2015. Hand/Foot splitting and the re-evolution of mesopodial skeleton
867 elements during the evolution and radiation of chameleons. *Evolutionary Biology* **15**: 1–
868 25.
- 869 Dilkes D. 2015. Carpus and tarsus of Temnospondyli. *Vertebrate Anatomy Morphology*
870 *Palaeontology* **1**:51–87.
- 871 Fox RC & Bowman MC. 1966. Osteology and relationships of *Captorhinus aguti* (Cope)
872 (Reptilia: Captorhinomorpha). *University of Kansas Paleontological Contributions,*
873 *Vertebrata* **11**:1–79.
- 874 Fröbisch N. 2008. Ossification patterns in the tetrapod limb—conservation and divergence from
875 morphogenetic events. *Biological Reviews* **83**:571–600.
- 876 Gauthier JA, Kluge AG & Rowe T. 1988. The early evolution of the Amniota; n Benton M J ed.
877 *The Phylogeny and Classification of the Tetrapods*, Vol. 1. Clarendon Press, Oxford.
878 103–155.
- 879 Gervais P. 1864-1865. Description du *Mesosaurus tenuidens* reptile fossile de l’Afrique
880 australe. In *Académie des Sciences et Lettres de Montpellier, Mémoires de la Section des*
881 *Sciences*, Tome Sixième. Boehm et Fils, Montpellier, 169–175.
- 882 Gervais P. 1865. Du *Mesosaurus tenuidens*, reptile fossile de l’Afrique australe. *Comptes*
883 *Rendus de l’Académie des Sciences* **60**:950–955.
- 884 Godfrey S J. 1989. The postcranial skeletal anatomy of the Carboniferous tetrapod *Greererpeton*
885 *burkemorani* Romer, 1969. *Philosophical Transactions of the Royal Society of London B:*
886 *Biological Sciences* **323**(1213):75-133.
- 887 Hall BK. 2007. Fins into limbs: Evolution, Development and Transformation. Chicago:
888 University of Chicago Press. 433 p.

- 889 Haeckel, E., 1866. *Generelle Morphologie Der Organismen*. Reimer, Berlin.
- 890 Henrici A, Berman D, Lucas SG, Heckert AB, Rinehart LF & Zeigler KE. 2005. The carpus and
- 891 tarsus of the Early Permian synapsid *Sphenacodon ferox* (Eupelycosauria:
- 892 *Sphenacodontidae*). In Lucas, S.G. and Zeigler, K.E., eds. *The Nonmarine Permian*, New
- 893 Mexico. Museum of Natural History and Science Bulletin No. **30**:106–110.
- 894 Holmes R. 1984. The Carboniferous amphibian *Proterogyrinus scheelei* Romer, and the early
- 895 evolution of tetrapods. *Philosophical Transactions of the Royal Society of London*, B
- 896 **306**:431–524.
- 897 Holmgren N. 1933. On the origin of the tetrapod limb. *Acta Zoologica* **14**:185–295.
- 898 Huene F v. 1941. Osteologie und systematische Stellung von *Mesosaurus*. *Palaeontographica*,
- 899 *Abteilung A* **92**:45–58.
- 900 Jenkins Jr. FA. 1971. The postcranial skeleton of African Cynodonts. Peabody Museum of
- 901 Natural History. Bulletin **36**:1–216.
- 902 Kissel RA, Dilkes DW & Reisz RR. 2002. *Captorhinus magnus*, a new captorhinid (Amniota:
- 903 Eureptilia) from the Lower Permian of Oklahoma, with new evidence on the homology of
- 904 the astragalus. *Canadian Journal of Earth Sciences* **39**:1363–1372.
- 905 Klembara, J. 2005. A new discosauriscid seymouriamorph tetrapod from the Lower Permian of
- 906 Moravia, Czech Republic. *Acta Palaeontologica Polonica* **50**(1):25–48.
- 907 Laurin M. 1998. The importance of global parsimony and historical bias in understanding
- 908 tetrapod evolution. Part I. Systematics, middle ear evolution, and jaw suspension. *Annals*
- 909 *des Sciences Naturelles, Zoologie* **19**:1–42.
- 910 Laurin M & Reisz R R. 1995. A reevaluation of early amniote phylogeny. *Zoological Journal*
- 911 *of the Linnean Society* **113**:165–223.

- 912 Laurin M & Reisz RR. 1997. A new perspective on tetrapod phylogeny. In: Sumida S, Martin K
913 eds. *Amniote Origins– Completing the Transition to Land*. San Diego: Academic Press,
914 9–59.
- 915 Laurin M, Reisz RR. 1999. A new study of *Solenodonsaurus janenschi*, and a 728
916 reconsideration of amniote origins and stegocephalian evolution. *Canadian Journal of*
917 *Earth Sciences | Revue canadienne des Sciences de la Terre* **36**:1239–1255.
- 918 Lewis O J. 1964. The homologies of the mammalian tarsal bones. *Journal of Anatomy* **98**: (Pt
919 2):195.
- 920 Marjanović D & Laurin M. 2009. The origin(s) of modern amphibians: a commentary.
921 *Evolutionary Biology* 36:336–338. DOI 10.1007/s11692-009-9065-8
- 922 Marjanović D & Laurin M. 2015. Reevaluation of the largest morphologic data matrix for
923 phylogenetic analysis of Paleozoic limbed vertebrates. *PeerJ PrePrints* |
924 <https://doi.org/10.7287/peerj.preprints.1596v1> | CC-BY 4.0 Open Access | rec: 18 Dec
925 2015, publ: 18 Dec 2015.
- 926 Meyer TE & Anderson JS 2013. Tarsal fusion and the formation of the astragalus in *Hylonomus*
927 *lyelli*, the earliest amniote, and other early tetrapods, *Journal of Vertebrate Paleontology*
928 **33**:488–492.
- 929 Modesto SP. 1996a. The anatomy, relationships, and palaeoecology of *Mesosaurus tenuidens*
930 and *Stereosternum tumidum* (Amniota: Mesosauridae) from the Lower Permian of
931 Gondwana. [Ph.D. Thesis]. Toronto: University of Toronto, p. 279.
- 932 Modesto SP. 1996b. *Noteosaurus africanus* Broom is a nomen dubium. *Journal of Vertebrate*
933 *Paleontology* **16**:172–174.

- 934 Modesto SP. 1999. Observations on the structure of the Early Permian reptile *Stereosternum*
935 *tumidum* Cope. *Palaeontologia Africana* **35**:7–19.
- 936 Modesto, S.P., 2006. The cranial skeleton of the Early Permian aquatic reptile *Mesosaurus*
937 *tenuidens*: implications for relationships and palaeobiology. *Zoological Journal of the*
938 *Linnean Society* **146**:345–368.
- 939 Modesto SP. 2010. The postcranial skeleton of the aquatic parareptile *Mesosaurus tenuidens*
940 from the Gondwanan Permian. *Journal of Vertebrate Paleontology* **30**(5):1378–1395.
- 941 Moss JL. 1972. The morphology and phylogenetic relationships of the Lower Permian tetrapod
942 *Tseajaia campi* Vaughn (Amphibia: Seymouriamorpha). *University of California*
943 *Publications in Geological Sciences*, **98**:1–72.
- 944 Nyakatura JA, Allen VR, Lauströer J, Andikfar A, Danczak M, Ullrich H-J, Werner Hufenbach
945 W, Martens T, and Fischer MS. 2015. A three-dimensional skeletal reconstruction of the
946 stem amniote *Orobates pabsti* (Diadectidae): analyzes of body mass, centre of mass
947 position, and joint mobility. *PLoS ONE* 10(9):
948 0137284.doi:10.1371/journal.pone.0137284
- 949 O’Keefe FR, Sidor CA, Larsson HCE, Maga A & Ide O. 2005. The vertebrate fauna of the Upper
950 Permian of Niger. III. Morphology and ontogeny of the hindlimb of *Moradisaurus*
951 *grandis* (Reptilia: Captorhinidae). *Journal of Vertebrate Paleontology* **25**:309–319.
- 952 O’Keefe FR, Sidor CA, Larsson HCE, Maga A & Ide O. 2006. Evolution and homology of the
953 astragalus in early amniotes: new fossils, new perspectives. *Journal of Morphology*
954 **267**:415–425.

- 955 Olori J. 2015. Skeletal morphogenesis of *Microbrachis* and *Hyloplezion* (Tetrapoda:
956 Lepospondyli) and implications for the developmental patterns of extinct, early tetrapods.
957 *PLoS ONE* **10**(6): e0128333. doi:10.1371/journal.pone.0128333
- 958 Olson, EC. 1968. The family Caseidae. *Fieldiana, Geology* **17**:225–349.
- 959 Ossa-Fuentes L, Mpodozis J & Vargas AO. 2015. Bird embryos uncover homology and
960 evolution of the dinosaur ankle. *Nature Communications* 6:8902 | DOI:
961 10.1038/ncomms9902 |www.nature.com/naturecommunications.
- 962 Panchen AL & Smithson TR. 1988. The relationship of the earliest tetrapods. In: Benton MJ ed.
963 *The phylogeny and classification of the tetrapods. Vol. 1. Amphibians, Reptiles, Birds*, 1–
964 32. Oxford: Oxford University Press.
- 965 Peabody FE. 1951. The origin of the astragalus of reptiles. *Evolution* **5**: 339–344.
- 966 Peabody FE. 1952. *Petrolacosaurus kansensis* Lane, a Pennsylvanian reptile from Kansas.
967 *University of Kansas Paleontological Contributions, Vertebrata*, art. **1**:1–41.
- 968 Piñeiro G. 2002. Paleofaunas del Pérmico-Eotriásico de Uruguay. MSc Thesis. PEDECIBA,
969 Universidad de la República, Montevideo, Uruguay, 208 p. +28 Figs.
- 970 Piñeiro G, 2004. Paleofaunas del Pérmico y Permo-Triásico de Uruguay. Bioestratigrafía,
971 Paleobiogeografía y sistemática. Universidad de la República Montevideo, Uruguay, 206
972 p.
- 973 Piñeiro, G. 2008. Los mesosaurios y otros fósiles de fines del Paleozoico. In: Perea D, ed.,
974 *Fósiles de Uruguay*. DIRAC. Facultad de Ciencias, 179–205.
- 975 Piñeiro G, Ramos A, Goso C, Scarabino F, & Laurin M. 2012a. Unusual environmental
976 conditions preserve a Permian mesosaur-bearing Konservat-Lagerstätte from Uruguay.
977 *Acta Palaeontologica Polonica* **57** (2): 299–318. doi.org/10.4202/app.2010.0113

- 978 Piñeiro G, Ferigolo J, Meneghel M & Laurin M. 2012b. The oldest known amniotic embryos
979 suggest viviparity in mesosaurs. *Historical Biology* **24** (6):630–640.
- 980 Piñeiro G, Ferigolo J, Ramos A & Laurin M. 2012c. Cranial morphology of the Early Permian
981 mesosaurid *Mesosaurus tenuidens* and the evolution of the lower temporal fenestration
982 reassessed. *Comptes Rendus Palevol* **11**(5):379–391.
- 983 Piveteau J. 1926. Paleontologie de Madagascar, XIII. Amphibiens et reptiles permien. *Annales*
984 *de Paleontologic* **15**:53–180.
- 985 Ramos, A. La dieta de los reptiles Mesosauridae (Reptilia: Proganosauria) del Pérmico
986 Temprano de Uruguay. 2015. MSc. Thesis. Universidad de la República, Montevideo,
987 Uruguay. 33 pp.
- 988 Reisz RR. 1981. A diapsid reptile from the Pennsylvanian of Kansas. *Special Publication of the*
989 *Museum of Natural History*, University of Kansas **7**:1–74.
- 990 Reisz RR & Dilkes DW. 2003. *Archaeovenator hamiltonensis*, a new varanopid (Synapsida:
991 Eupelycosauria) from the Upper Carboniferous of Kansas. *Canadian Journal of Earth*
992 *Sciences* **40**(4), 667–678.
- 993 Reisz R R & Fröbisch J. 2014. The oldest caseid synapsid from the Late Pennsylvanian of
994 Kansas, and the evolution of herbivory in terrestrial vertebrates. *PloS ONE* **9**(4): e94518.
- 995 Rieppel O. 1992a. Studies on skeleton formation in reptiles: I, the postembryonic development of
996 the skeleton in *Cyrtodactylus pubisulcus* (Reptilia, Gekkonidae). *Journal of Zoology of*
997 *London* **227**:87–100.
- 998 Rieppel O. 1992b. Studies on skeleton formation in reptiles.III. Patterns of ossification in the
999 skeleton of *Lacerta vivipara* Jacquin (Reptilia, Squamata). *Fieldiana Zoology N. Ser.*
1000 **68**:1–25.

- 1001 Rieppel O. 1993. Studies on skeleton formation in reptiles. IV. The homology of the reptilian
1002 (amniote) astragalus revisited. *Journal of Vertebrate Paleontology* **13**:31–47.
- 1003 Romer AS. 1944. The Permian cotylosaur *Diadectes tenuitectus*. *American Journal of Science*
1004 **242**:139–144.
- 1005 Romer AS. 1956. The Osteology of the Reptiles. The University of Chicago Press, Chicago, 772
1006 pp
- 1007 Romer AS & Byrne F. 1931. The pes of *Diadectes*: notes on the primitive tetrapod limb.
1008 *Palaeobiologica* **4**:25–48.
- 1009 Romer AS & Price IL. 1940. Review of the Pelycosauria. *Geological Society of America Special*
1010 *Paper* **28**:1–538. doi: 10.1130/spe28-p1
- 1011 Ruta M, Coates MI & Quicke DLJ. 2003. Early tetrapod relationships revisited. *Biological*
1012 *Reviews* **78**:251–345.
- 1013 Ruta M & Coates MI. 2007. Dates, nodes and character conflict: addressing the lissamphibian
1014 6049 origin problem. *Journal of Systematic Palaeontology* **5**:69–122. DOI 6050
1015 10.1017/S1477201906002008
- 1016 Santos RV, Souza PA, Alvarenga CJS, Dantas EL, Pimentel EL, Oliveira CG & Araújo LM.
1017 2006. Shrimp U–Pb Zircon Dating and Palynology of Bentonitic Layers from the
1018 Permian Irati Formation, Parana Basin, Brazil. *Gondwana Research* **9**:456–463.
- 1019 Schaeffer B. 1941. The morphological and functional evolution of the tarsus in amphibians and
1020 reptiles. *Bulletin of the American Museum of Natural History* **78**:395–472.
- 1021 Sedor FA & Costa Da-Silva R. 2004. Primeiro registro de pegadas de Mesosauridae (Amniota,
1022 Sauropsida) na Formação Irati (Permiano Superior da Bacia do Paraná) do Estado de
1023 Goiás, Brasil. *Revista Brasileira de Paleontologia* **7**(2):269–274.

- 1024 Sewertzoff AN. 1908. Studien über die Entwicklung der Muskeln, Nerven und des Skeletts der
1025 Extremitäten der niederen Tetrapoda. *Bulletin de la Société Impériale des Naturalistes de*
1026 *Moscou*, N.S. **21**:1–430.
- 1027 Sheil A & Portik D. 2008. Formation and ossification of limb elements in *Trachemys scripta* and
1028 a discussion of autopodial elements in turtles. *Zoological Sciences* 25:622–641.
- 1029 Shubin NH. 2002. Origin of evolutionary novelty: examples from limbs. *Journal of Morphology*
1030 **252**:15–28.
- 1031 Shubin NH & Alberch P. 1986. A morphogenetic approach to the origin and basic organization
1032 of the tetrapod limb. *Evolutionary Biology* **20**:319–387.
- 1033 Smithson TR. 1989. The earliest known reptile. *Nature* **342**:676–677.
- 1034 Smithson RT, Carroll RL, Panchen AL & Andrews SM. 1994. *Westlothiana lizziae* from the
1035 Viséan of East Kirkton, West Lothian, Scotland, and the amniote stem. *Transactions of*
1036 *the Royal Society of the Edinburgh, Earth Sciences* **84**:383–412.
1037 doi:10.1017/S0263593300006192
- 1038 Vallin G, Laurin M. 2004. Cranial morphology and affinities of *Microbrachis*, and a reappraisal
1039 of the phylogeny and lifestyle of the first amphibians. *Journal of Vertebrate Paleontology*
1040 **24**:56–72.
- 1041 Villamil J, Meneghel M, Blanco RE, Jones W, Núñez Demarco P, Rinderknecht A, Laurin M &
1042 Piñeiro, G. 2015. Optimal swimming speed estimates in the Early Permian mesosaurid
1043 *Mesosaurus tenuidens* (Gervais, 1865) from Uruguay. *Historical Biology*. Published
1044 online: 14 August, 2015. <http://dx.doi.org/10.1080/08912963.2015.1075018>
- 1045 Williston S W. 1917. *Labidosaurus* Cope, a Lower Permian cotylosaur reptile from Texas.
1046 *Journal of Geology* **25**:309–321.

Figure captions

Figure 1. *Mesosaurus tenuidens*, ontogenetic transformation in the tarsus formation. Photographs of the selected specimens preserving epipodial, mesopodial and metapodial elements. The images focussed particularly on the tarsal elements preserved in each of the specimens. This figure includes the earliest stages of the ontogenetic series. A. FC-DPV 2504, close-up view of the limbs preserved in a non-hatched mesosaurid. The very small composite tarsus can be seen slightly distally displaced from its natural position close to the zeugopodium. See the interpretive drawings in Figs. 2A and 7 and text for further description. B. GP-2E 272, tarsus of a very young mesosaur; the constituent elements should have already started ossification, but they are covered by the plantar aponeurosis and just shadows of astragalus and distal tarsals can be seen. See interpretive drawings in figure 2B for details, C. SMF-R 4496, well preserved tarsus of a young individual, both astragalus and calcaneum can be observed close to the crus. See the interpretive drawing in Fig. 2C for a more detailed anatomical description of the specimen. D. AMNH 23795, tarsus of a very young mesosaur showing the astragalus and a tiny calcaneum a little laterally displaced. The calcaneum still preserves part of the suturing of the precursor bones over its visible (probably ventral) surface. Toe number one is not completely ossified yet, suggesting a very juvenile stage of this specimen. See interpretive drawings in Fig. 2D for more detailed anatomical description of the specimen. E-G. MN 4741, SMF-R 4934, and SMF-R 4513, show the progressive growing of the individuals in the ontogenetic series and the concomitant dramatic changes in the morphology of the

astragalus. According to the tarsus morphology and the further ossification of the limbs and overall skeleton, the specimen in G is considered to be a young adult or a sub-adult. See text for further descriptions and interpretive drawing in Fig. 2 E-G.

Figure 2. *Mesosaurus tenuidens*, ontogenetic transformation in the tarsus formation. Interpretive drawings of the specimens in Fig. 1. See text for further descriptions of each included specimen. Scale bar: 5 mm.

Figure 3. *Mesosaurus tenuidens*, ontogenetic transformation in the tarsus formation. Detailed interpretive drawings to show the morphology of the tarsus in hatchling and juvenile mesosaurid shown in figure 1 (B-G; A, is detailed in Fig.9). Putative ancestral bones that formed the mesosaur astragalus are shown as we interpreted them based on the morphology and relationships of the tarsal bones preserved in FC-DPV 2504, the non-hatched mesosaurid (see Fig. 9 and text for further descriptions of each the included specimens). Anatomical Abbreviations: ?ac3, putative ancestral centrale three; ?ai, putative ancestral intermedium; as, astragalus; ?ate+ac4, putative ancestral tibiale plus ancestral centrale four; ?c2, putative centrale two; ca, calcaneum; ?dt, putative distal tarsals; ?dt4, putative distal tarsal four; ?na, putative navicular; pa, plantar aponeurosis.

Figure 4. *Mesosaurus tenuidens*, ontogenetic transformation in the tarsus formation.

Photographs of the selected specimens preserving epipodial, mesopodial and metapodial elements. From H to P. GP-2E 5610, FC-DPV 2497, GP-2E 114, SMF-R 4710, SMF-R 4470, GP-2E 5816, GP-2E 6576, GP-2E 5740, FC-DPV 2058. All the specimens are considered as adults; they have well ossified tarsi. The preserved bones and their morphology fit into the typical pattern for basal amniotes: 2 large proximal bones (astragalus and calcaneum), a ‘navicular’ (often preserving the suture between c1 and c2)

and 5 distal tarsals. See Figs. 5 and 6 for interpretive drawings of the preserved bones and their main characteristic features.

Figure 5. *Mesosaurus tenuidens*, ontogenetic transformation in the tarsus formation. Interpretive drawings of the specimens in Fig.2 (H-P) showing the adult stages in the ontogenetic sequence. See text for further descriptions of each the included specimens.

Figure 6. *Mesosaurus tenuidens*, ontogenetic transformation in the tarsus formation. Detailed interpretive drawings of the specimens in Fig. 2 showing the morphology of the tarsus in adult individuals. The formation of the ‘navicular’ by the fusion of c1 and c2 is shown through the series, as well as the formation and development of the foramen for the perforating artery. Notable is the variation in size and shape of the distal tarsals observed in the analysed specimens. Anatomical abbreviations: as, astragalus; c1: centrale 1; c2, centrale 2; ca, calcaneum; na: ‘navicular’; paf, foramen for the perforating artery; I,II,III,IV,V, distal tarsals.

Figure 7. Photograph (A) and anatomical reconstruction (B) of the crus in an adult *Mesosaurus tenuidens*. Colours indicate the identity of the different elements that form the tarsus and the crus. Scale bar: 10 mm.

Figure 8. Ontogenetic transition of the ‘navicular’ in *Mesosaurus tenuidens*. A, FC-DPV 1502, from left to right, photographs and interpretive drawings of isolated astragalus from a young individual, in dorsal, ventral and medial views respectively. The bone shows the typical square outline of immature individuals and the remains of sutures between the original anlagen more visible on its ventral surface, which appears to display a different morphology with respect to the dorsal one. Note that there are no traces of the ‘navicular’

preserved along the distal surface of the astragalus, which bears a concave margin. B, GP-2E 5203, photograph and interpretive drawing of astragalus, calcaneum and incipient 'navicular' of a young individual in dorsal view. Recall on that the 'navicular' is already united to the astragalus by c2, being formed by c1 and c2 and the suture between them is still well visible. C, FC-DPV 1479, photographs and interpretive drawings of an isolated astragalus from an adult individual in dorsal, ventral and medial view. Observe that the 'navicular' is now a single bone almost completely fused to the astragalus to produce the finally resultant adult outline. C1 has transformed into a tip-like bone and remains separated from the astragalus, but it can just be seen from the ventral view, which still features different from the dorsal one. The wide and triangular facet for articulation with the tibia can be seen from the medial view. Anatomical abbreviations: a, astragalus; ca, calcaneum; c1, centrale one; c2, centrale two; ac3, ancestral centrale three; ft, facet for the articulation of the tibia; ai, ancestral intermedium; ate+ac4, ancestral tibiale plus ancestral central four. Scale bar: 5 mm.

Figure 9. Preserved tarsus in a *Mesosaurus tenuidens* non-hatched individual. A, FC.DPV 2504, a non-hatched mesosaurid in the egg, showing the two feet overlapping each other by compression. B, SEM image of the foot of FC-DPV 2504 focusing on the tarsal area. The astragali can be seen in the center of the figure, mixed between the metatarsals. The astragalus seems to be not preserved. C, Interpretive drawing of the tarsus including a possible identification of the preserved bones by regarding previous hypotheses about the origin of the amniotic astragalus. The composing elements of the astragalus were colored to favour identification of the isolated bones of the left foot. Anatomical abbreviations:

1137 ?i, possible intermedium; ?c4, possible central four; fi, fibula; mc, metacarpals; ?te,
1138 possible tibiale; t, tibia. Scale bar: 1mm.

1139 Figure 10. Tarsus structure in basal tetrapods, including amniote and non-amniote taxa.

1140 Schematic diagram for comparing the tarsus structure in the basal tetrapods *Acheloma*
1141 and *Greererpeton* (amphibian-like tarsus) with regard to that of embolomeres and
1142 microsaur (amniote-like tarsus) and early amniotes. Note the similar structure and
1143 construction of the microsaurs tarsus with respect to the early amniote *Hylonomus*. See
1144 text for more details of the evolutive significance of the selected taxa. Abbreviations: as,
1145 astragalus; i, intermedium; te, tibiale; 1,2,3,4, centralia; i,ii,iii,iv,v, distal tarsals. Taxa
1146 were redrawn from the following sources: *Acheloma* (Dilkes, 2015); *Greererpeton*
1147 (Godfrey, 1989); *Proterogyrinus* (Holmes, 1984); *Gephyrostegus* (Carroll, 1970);
1148 *Seymouria* (Berman et al., 2000); *Westlothiana* (Smithson 1989, Smithson et al.,1994);
1149 *Pantylus* (Carroll, 1968); *Tuditanus* (Carroll, 1968); Diadectomorphs (Moss, 1972;
1150 Berman & Henrici 2003;); *Ophiacodon* and *Haptodus* (Romer & Price, 1940);
1151 *Hylonomus* (Carroll, 1964); *Captorhinus* (Fox & Bowman, 1966); *Petrolacosaurus*
1152 (Peabody, 1952; Reisz, 1981).

1153 Figure 11. Schematic representation of recent phylogenetic hypotheses of early tetrapod
1154 relationships showing the position of the taxa involved in the evolutionary transition to
1155 the formation of the early amniotic astragalus (see text for the figure context). A. Ruta &
1156 Coates, 2007; B. Carroll, 1995; C. Laurin & Reisz, 1999; D. Marjanović & Laurin, 2015.

1157 Figure 12. Hypotheses about the astragalus and the navicular formation. The schematic diagram
1158 shows the steps that lead to the formation of the amniotic tarsus, regarding the series of

possible transformations that could have produced the primitive astragalus (A) as well as those that prevailed into the evolution of the 'navicular' bone (B).

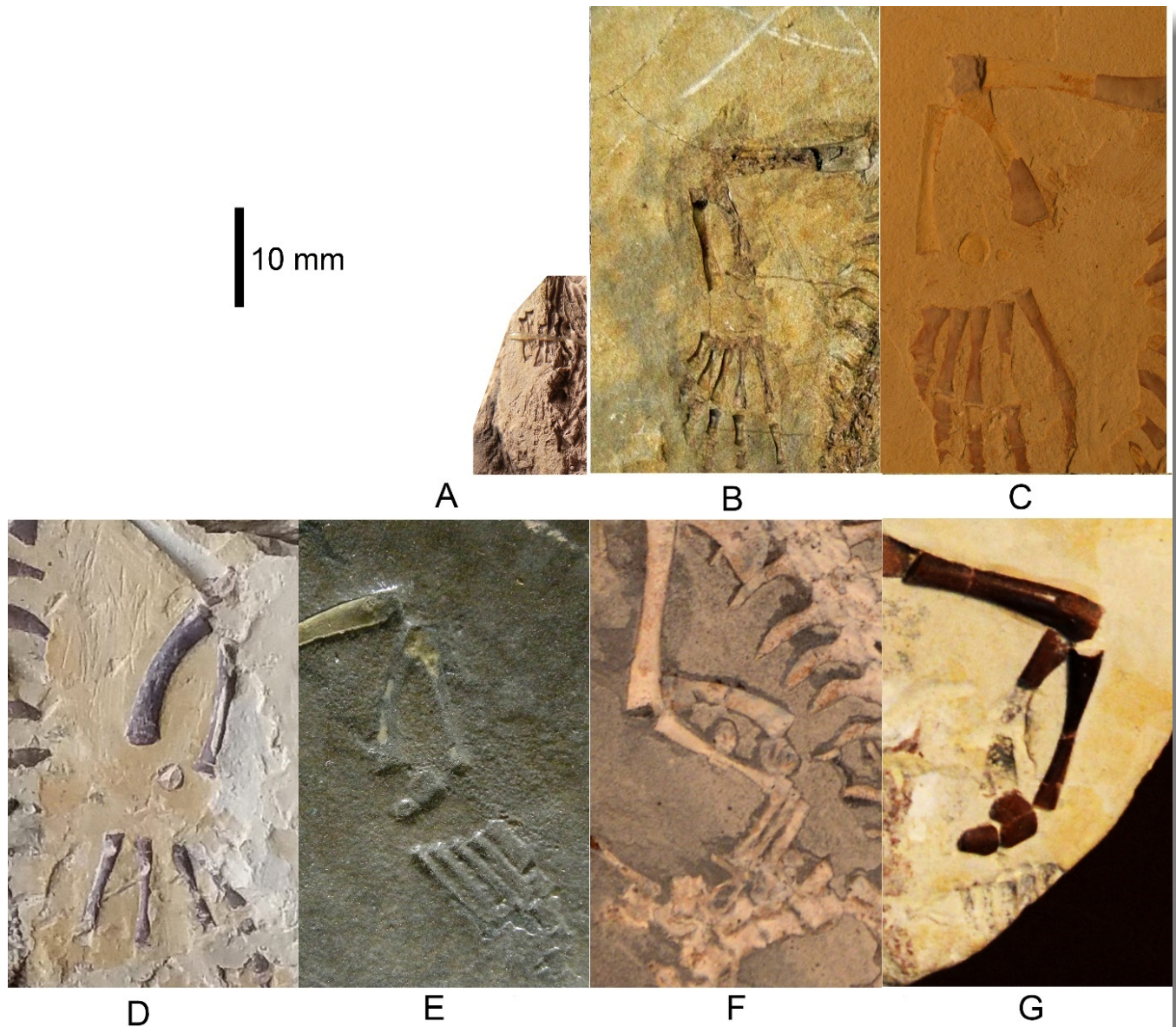
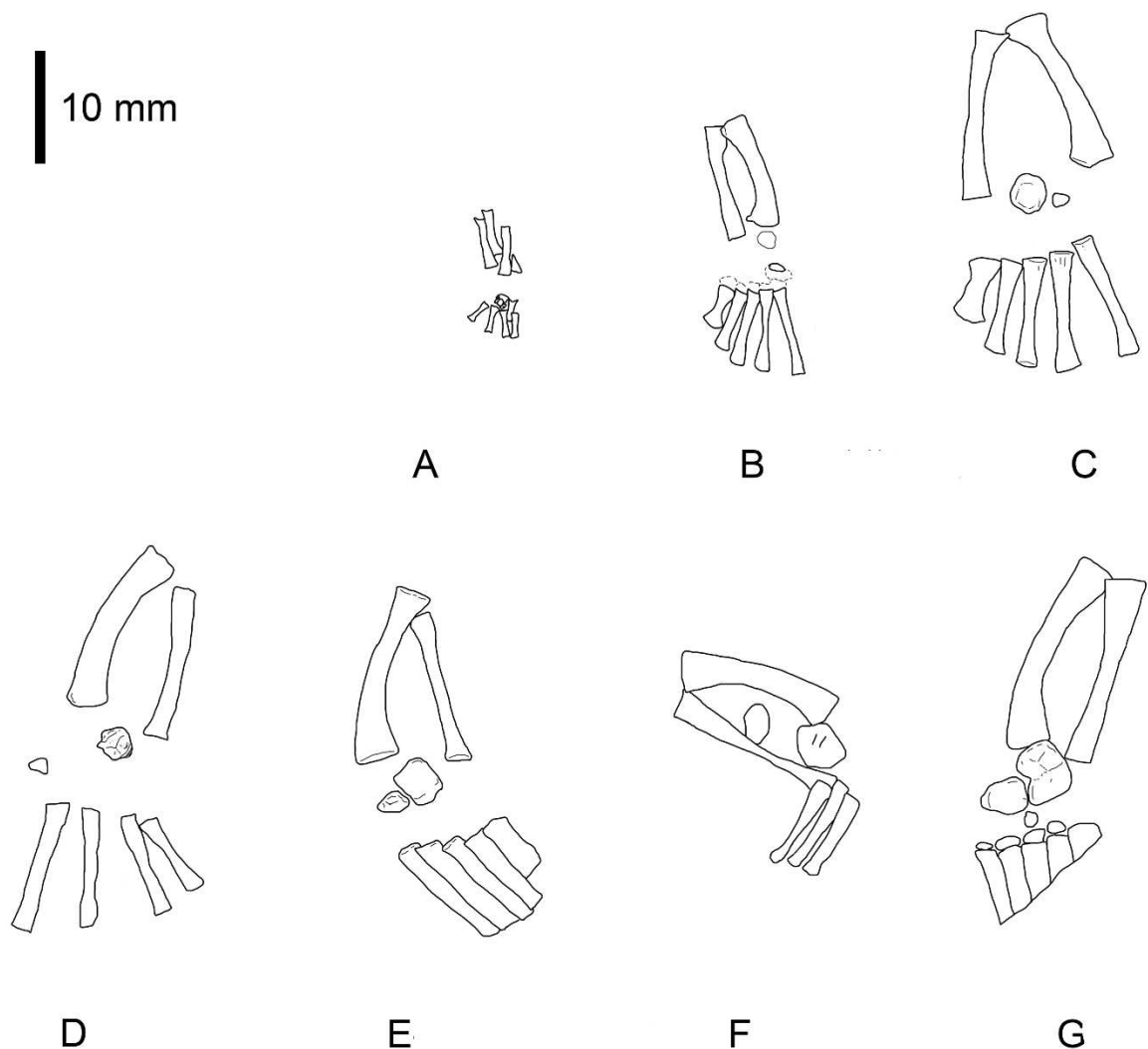


Figure 1. *Mesosaurus tenuidens*, ontogenetic transformation in the tarsus formation. Photographs of the selected specimens preserving epipodial, mesopodial and metapodial elements. The images focussed particularly on the tarsal elements preserved in each of the specimens.

This figure includes the earliest stages of the ontogenetic series. A. FC-DPV 2504, close-up view of the limbs preserved in a non-hatched mesosaurid. The very small composite tarsus can be seen slightly distally displaced from its natural position close to the zeugopodium. See the interpretive drawings in Figs. 2A, and 7 and text for further description. B. GP-2E 272, tarsus of a very young mesosaur; the constituent elements should have already started ossification, but they are covered by the plantar aponeurosis and just shadows of astragalus and distal tarsals can be seen. See interpretive drawings in figure 2B for details, C. SMF-R 4496, well preserved tarsus of a young individual, both astragalus and calcaneum can be observed close to the crus. See interpretive drawing in Fig. 2C for a more detailed anatomical description of the specimen. D. AMNH 23795, tarsus of a very young mesosaur showing the astragalus and a tiny calcaneum a little laterally displaced. The calcaneum still preserves part of the suturing of the precursor bones over its visible (probably ventral) surface. Toe number one is not completely ossified yet, suggesting a very juvenile stage of this specimen. See interpretive drawings in Fig. 2D for more detailed anatomical description of the specimen. E-G. MN 4741, SMF-R 4934 and SMF-R 4513 show the progressive growing of the individuals in the ontogenetic series and the concomitant dramatic changes in the morphology of the astragalus. According to the tarsus morphology and the further ossification of the limbs and overall skeleton, the specimen in G is considered to be a young adult or a sub-adult. See text for further descriptions and interpretive drawing in Fig. 2 E-G.

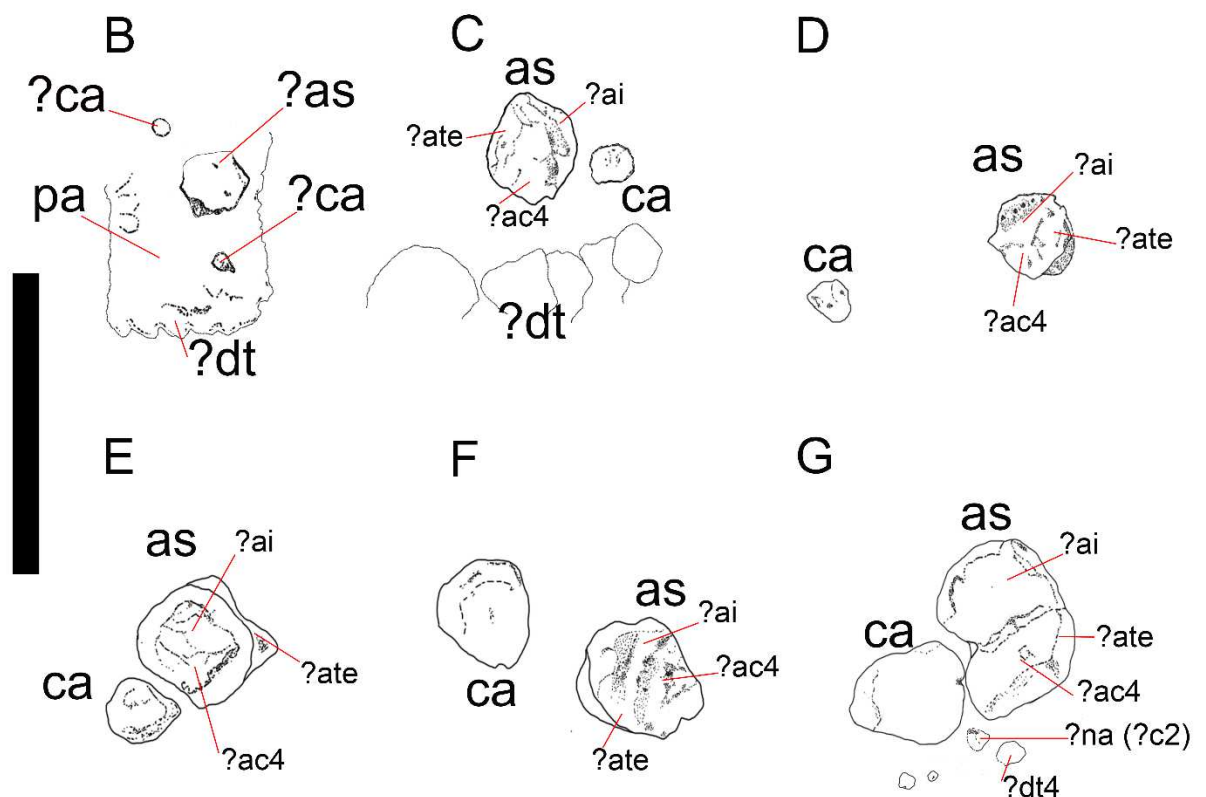


1185

1186 Figure 2. *Mesosaurus tenuidens*, ontogenetic transformation in the tarsus formation. Interpretive

1187 drawings of the specimens in Fig. 1. See text for further descriptions of each included

1188 specimen. Scale bar: 5 mm.



1189

1190 Figure 3. *Mesosaurus tenuidens*, ontogenetic transformation in the tarsus formation. Detailed

1191 interpretive drawings to show the morphology of the tarsus in hatchling and juvenile

1192 mesosaurid shown in figure 1 (B-G; A, is detailed in Fig.9). Putative ancestral bones that

1193 formed the mesosaur astragalus are shown as we interpreted them based on the

1194 morphology and relationships of the tarsal bones preserved in FC-DPV 2504, the non-

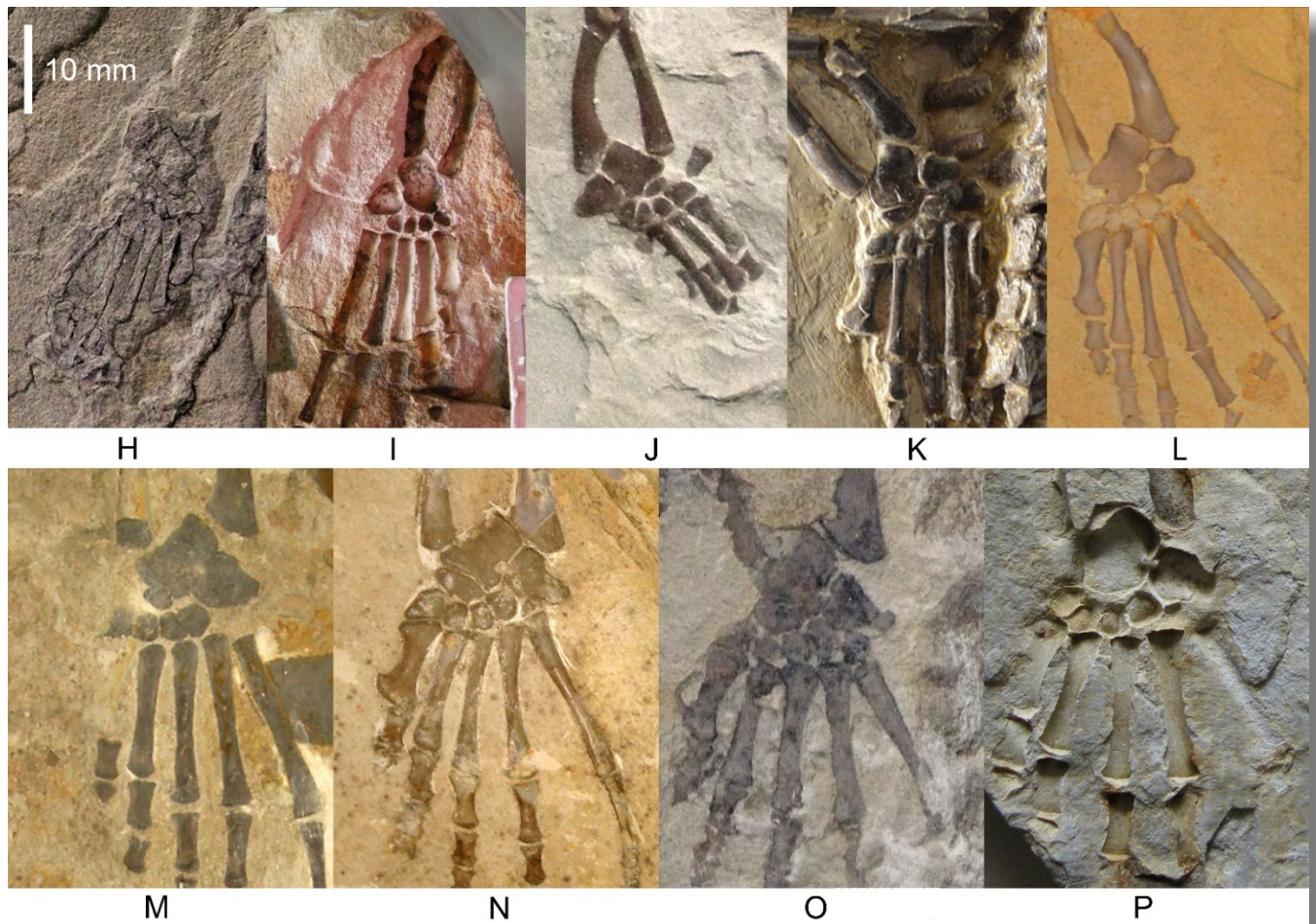
1195 hatched mesosaurid (see Fig. 9 and text for further descriptions of each the included

1196 specimens). Anatomical Abbreviations: ?ac3, putative ancestral centrale three; ?ai,

1197 putative ancestral intermedium; as, astragalus; ?ate+ac4, putative ancestral tibiale plus

1198 ancestral centrale four; ?c2, putative centrale two; ca, calcaneum; ?dt, putative distal

1199 tarsals; ?dt4, putative distal tarsal four; ?na, putative navicular; pa, plantar aponeurosis.



1200

1201 Figure 4. *Mesosaurus tenuidens*, ontogenetic transformation in the tarsus formation.

1202 Photographs of the selected specimens preserving epipodial, mesopodial and metapodial

1203 elements. From H to P. GP-2E 5610, FC-DPV 2497, GP-2E 114, SMF-R 4710, SMF-R

1204 4470, GP-2E 5816, GP-2E 6576, GP-2E 5740, FC-DPV 2058. All the specimens are

1205 considered as adults; they have well ossified tarsi. The preserved bones and their

1206 morphology fit into the typical pattern for basal amniotes: 2 large proximal bones

1207 (astragalus and calcaneum), 'a navicular' (often preserving the suture between c1 and c2)

and 5 distal tarsals. See Figs. 5 and 6 for interpretive drawings of the preserved bones and their main characteristic features.

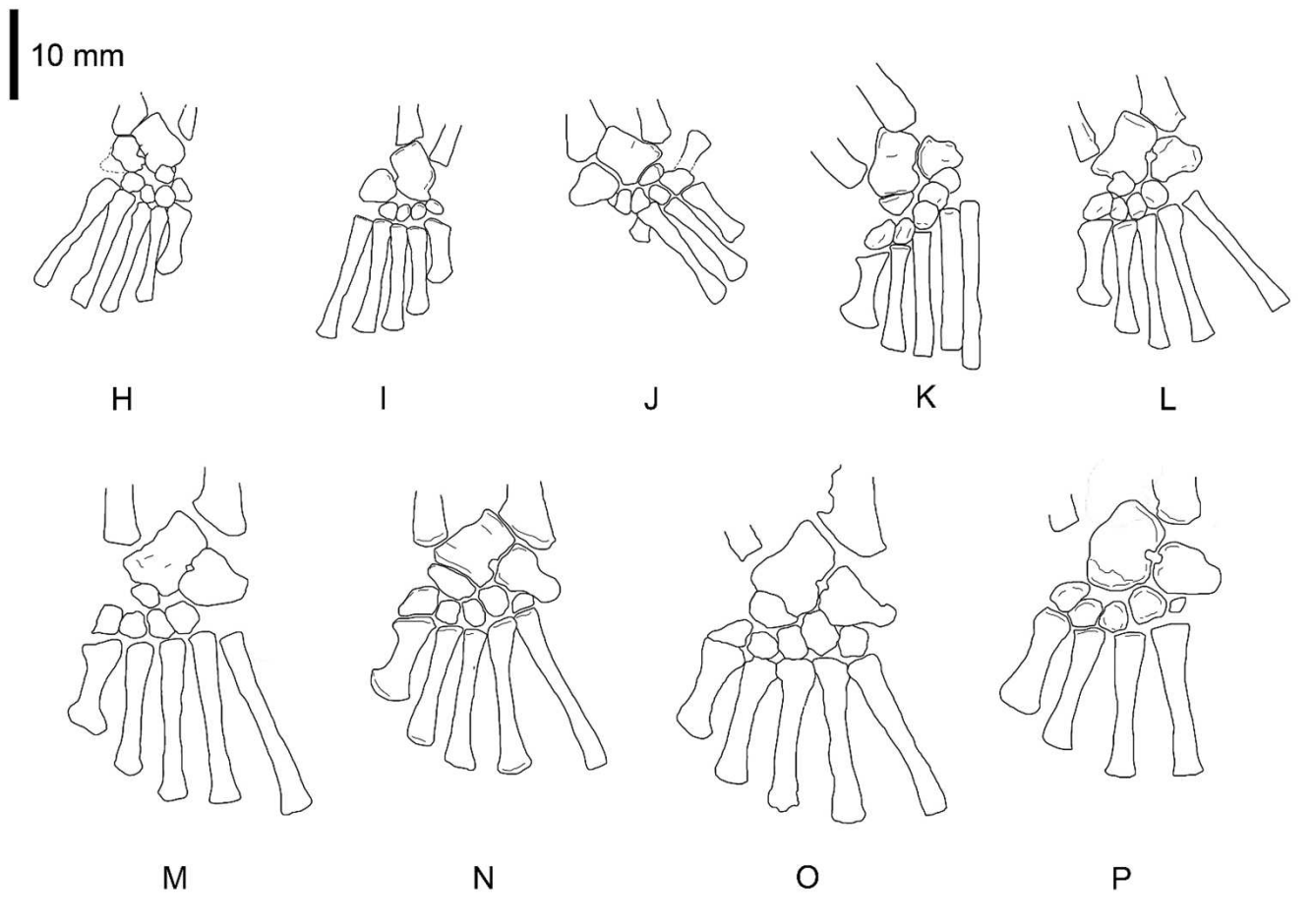
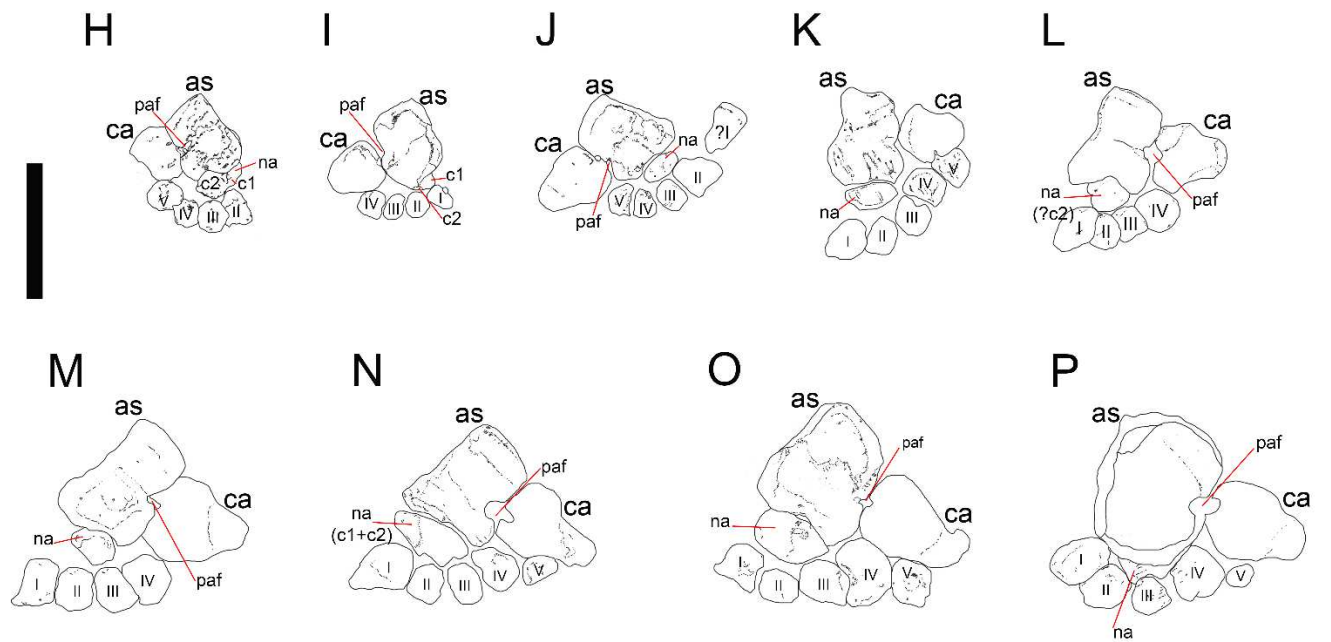


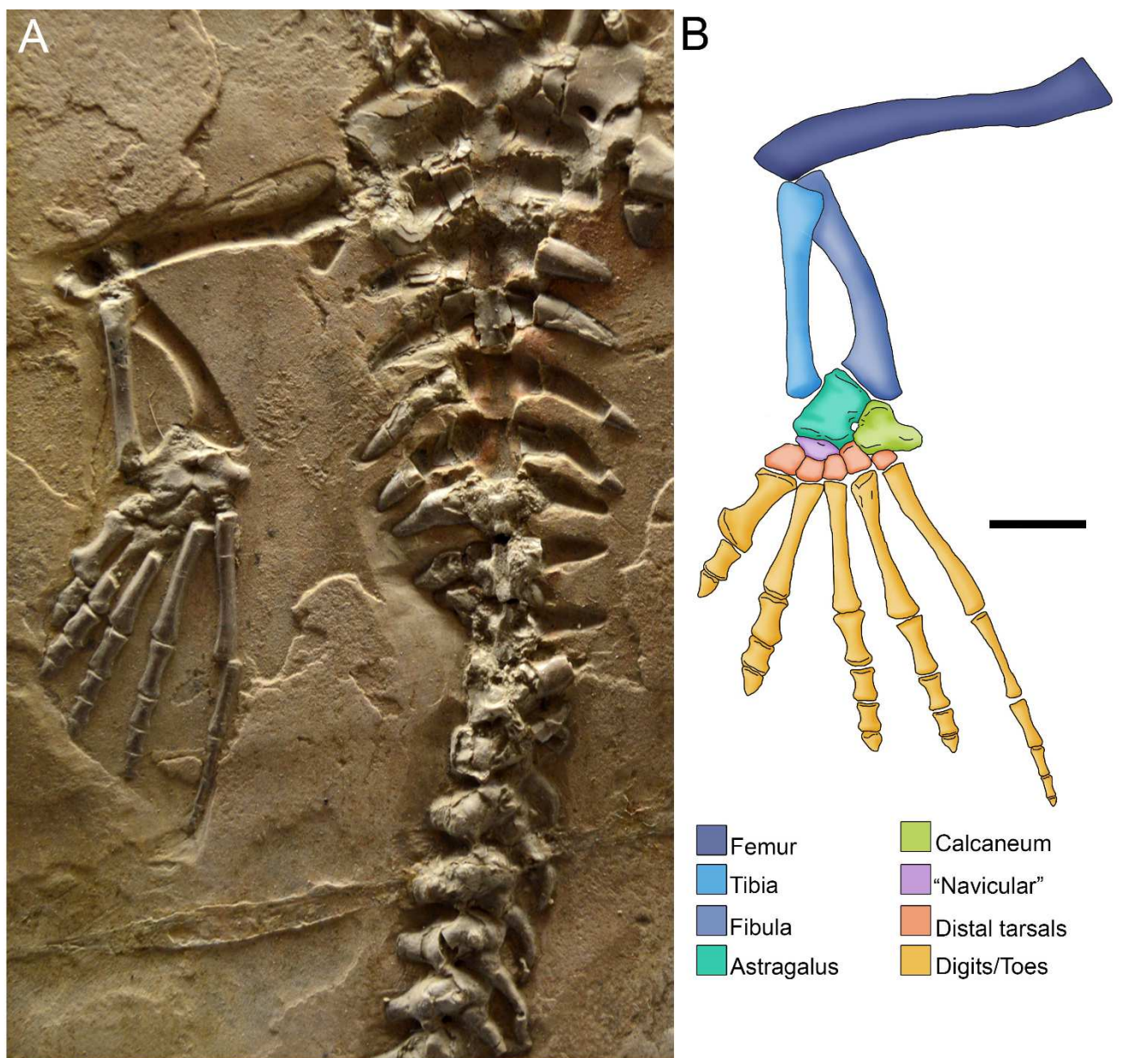
Figure 5. *Mesosaurus tenuidens*, ontogenetic transformation in the tarsus formation.

Interpretive drawings of the specimens in Fig.2 (H-P) showing the adult stages in the ontogenetic sequence. See text for further descriptions of each the included specimens.



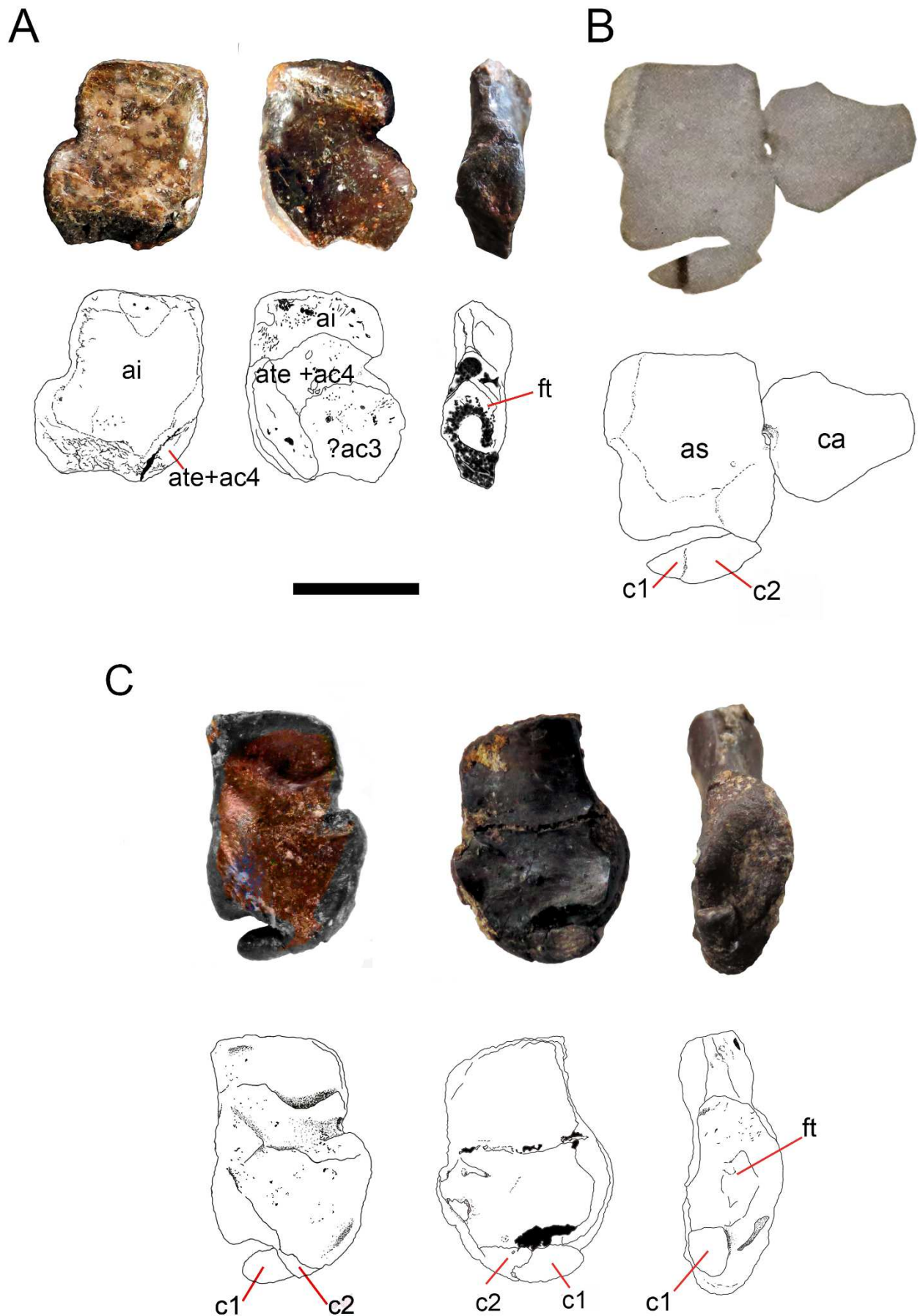
1215

1216 Figure 6. *Mesosaurus tenuidens*, ontogenetic transformation in the tarsus formation. Detailed
 1217 interpretive drawings of the specimens in Fig. 2 showing the morphology of the tarsus in
 1218 adult individuals. The formation of the 'navicular' by the fusion of c1 and c2 is shown
 1219 through the series, as well as the formation and development of the foramen for the
 1220 perforating artery. Notable is the variation in size and shape of the distal tarsals observed
 1221 in the analysed specimens. Anatomical abbreviations: as, astragalus; c1: centrale 1; c2,
 1222 centrale 2; ca, calcaneum; na: 'navicular'; paf, foramen for the perforating artery;
 1223 I,II,III,IV,V, distal tarsals.



1224

1225 Figure 7. Photograph (A) and anatomical reconstruction (B) of the crus in an adult *Mesosaurus*
 1226 *tenuidens*. Colours indicate the identity of the different elements that form the tarsus and
 1227 the crus. Scale bar: 10 mm.



1229

1230 Figure 8. Ontogenetic transition of the ‘navicular’ in *Mesosaurus tenuidens*. A, FC-DPV 1502,
1231 from left to right, photographs and interpretive drawings of isolated astragalus from a
1232 young individual, in dorsal, ventral and medial views respectively. The bone shows the
1233 typical square outline of immature individuals and the remains of sutures between the
1234 original anlagen more visible on its ventral surface, which appears to display a different
1235 morphology with respect to the dorsal one. Note that there are no traces of the ‘navicular’
1236 preserved along the distal surface of the astragalus, which bears a concave margin. B,
1237 GP-2E 5203, photograph and interpretive drawing of astragalus, calcaneum and incipient
1238 ‘navicular’ of a young individual in dorsal view. Recall on that the ‘navicular’ is already
1239 united to the astragalus by c2, being formed by c1 and c2 and the suture between them is
1240 still well visible. C, FC-DPV 1479, photographs and interpretive drawings of an isolated
1241 astragalus from an adult individual in dorsal, ventral and medial view. Observe that the
1242 ‘navicular’ is now a single bone almost completely fused to the astragalus to produce the
1243 finally resultant adult outline. C1 has transformed into a tip-like bone and remains
1244 separated from the astragalus, but it can just be seen from the ventral view, which still
1245 features different from the dorsal one. The wide and triangular facet for articulation with
1246 the tibia can be seen from the medial view. Anatomical abbreviations: a, astragalus; ca,
1247 calcaneum; c1, centrale one; c2, centrale two; ac3, ancestral centrale three; ft, facet for
1248 the articulation of the tibia; ai, ancestral intermedium; ate+ac4, ancestral tibiale plus
1249 ancestral central four. Scale bar: 5 mm.

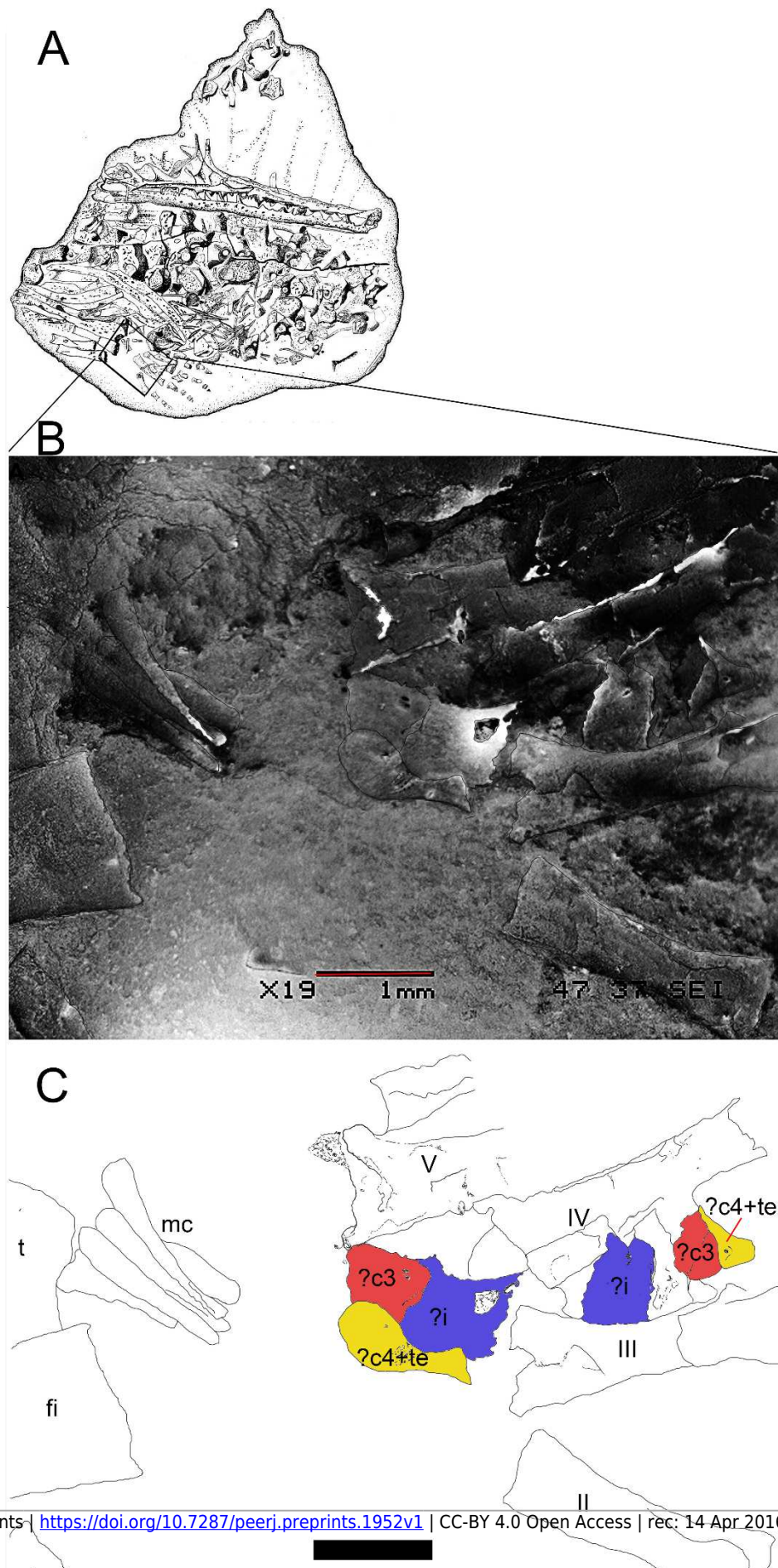
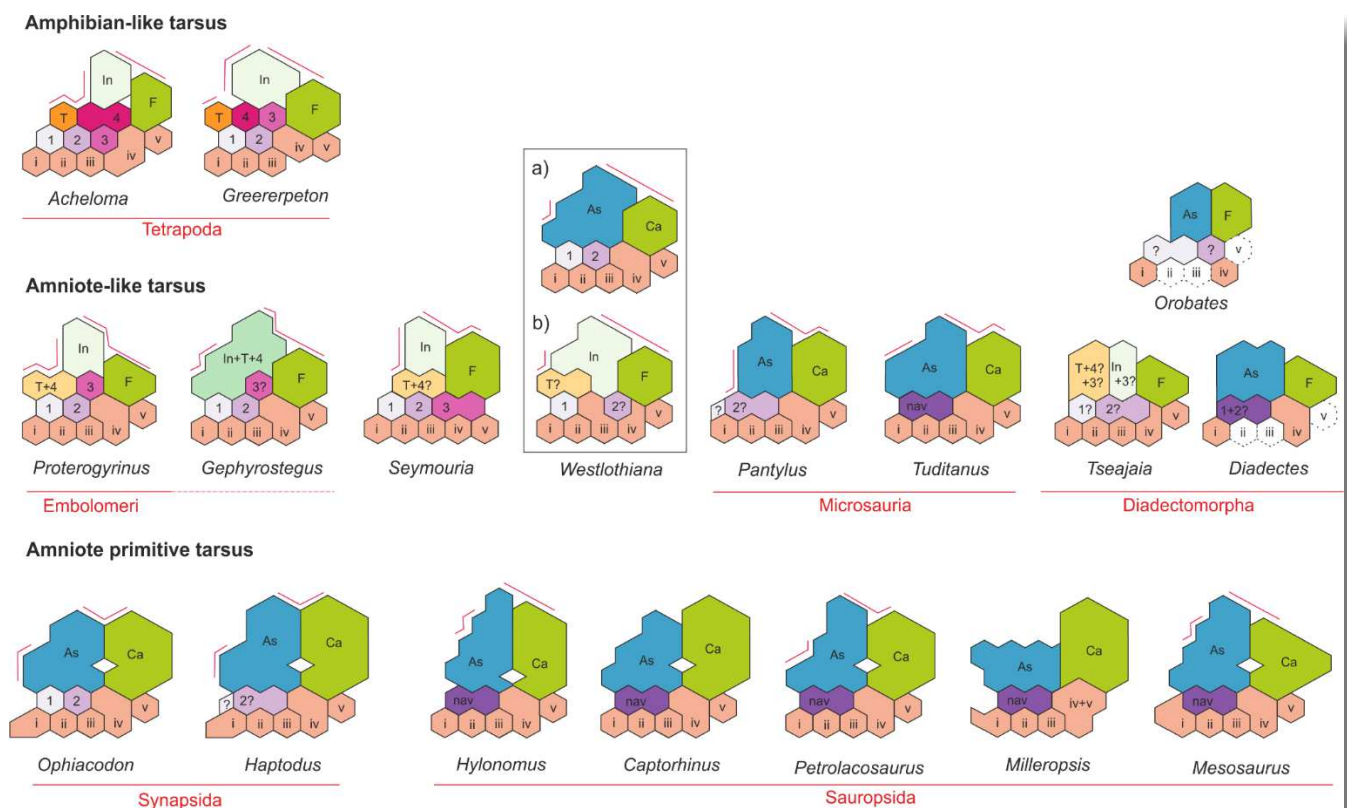


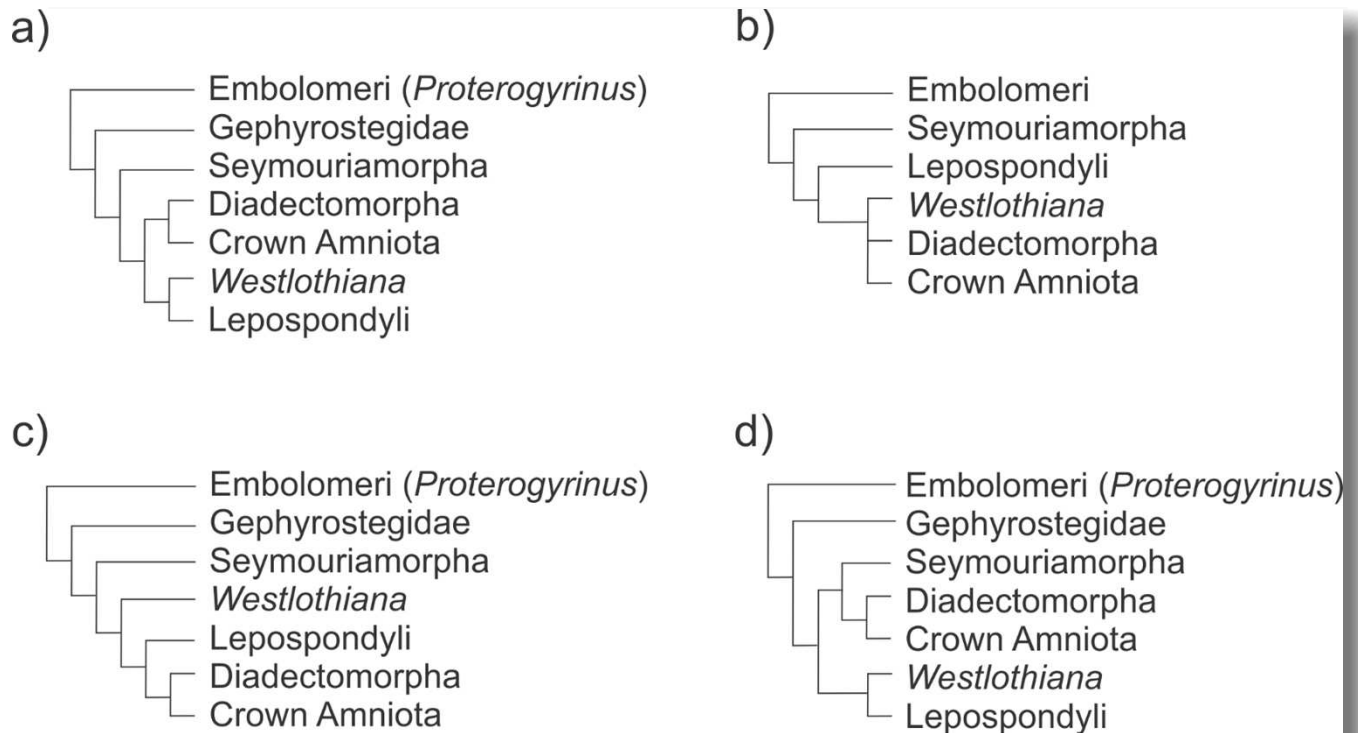
Figure 9. Preserved tarsus in a *Mesosaurus tenuidens* non-hatched individual. A, FC.DPV 2504, a non-hatched mesosaurid in the egg, showing the two feet overlapping each other by compression. B, SEM image of the foot of FC-DPV 2504 focusing on the tarsal area. The astragali can be seen in the center of the figure, mixed between the metatarsals. The astragalus seems to be not preserved. C, Interpretive drawing of the tarsus including a possible identification of the preserved bones by regarding previous hypotheses about the origin of the amniotic astragalus. The composing elements of the astragalus were colored to favour identification of the isolated bones of the left foot. Anatomical abbreviations: ?i, possible intermedium; ?c3, possible central three; fi, fibula; mc, metacarpals; ?te+c4, possible tibiale plus possible central four; t, tibia. Scale bar: 1mm.



1261

Figure 10. Tarsus structure in basal tetrapods, including amniote and non-amniote taxa.

Schematic diagram for comparing the tarsus structure in the basal tetrapods *Acheloma* and *Greererpeton* (amphibian-like tarsus) with regard to that of embolomeres and microsaur (amniote-like tarsus) and early amniotes. Note the similar structure and construction of the microsaurs (amniote-like tarsus) and early amniotes. See text for more details of the evolutive significance of the selected taxa. Abbreviations: as, astragalus; i, intermedium; te, tibiale; 1,2,3,4, centralia; i,ii,iii,iv,v, distal tarsals. Taxa were redrawn from the following sources: *Acheloma* (Dilkes, 2015); *Greererpeton* (Godfrey, 1989); *Proterogyrinus* (Holmes, 1984); *Gephyrostegus* (Carroll, 1970); *Seymouria* (Berman et al., 2000); *Westlothiana* (Smithson 1989, Smithson et al.,1994); *Pantylus* (Carroll, 1968); *Tuditanus* (Carroll, 1968); Diadectomorphs (Moss, 1972; Berman & Henrici 2003;); *Ophiacodon* and *Haptodus* (Romer & Price, 1940); *Hylonomus* (Carroll, 1964); *Captorhinus* (Fox & Bowman, 1966); *Petrolacosaurus* (Peabody, 1952; Reisz, 1981).



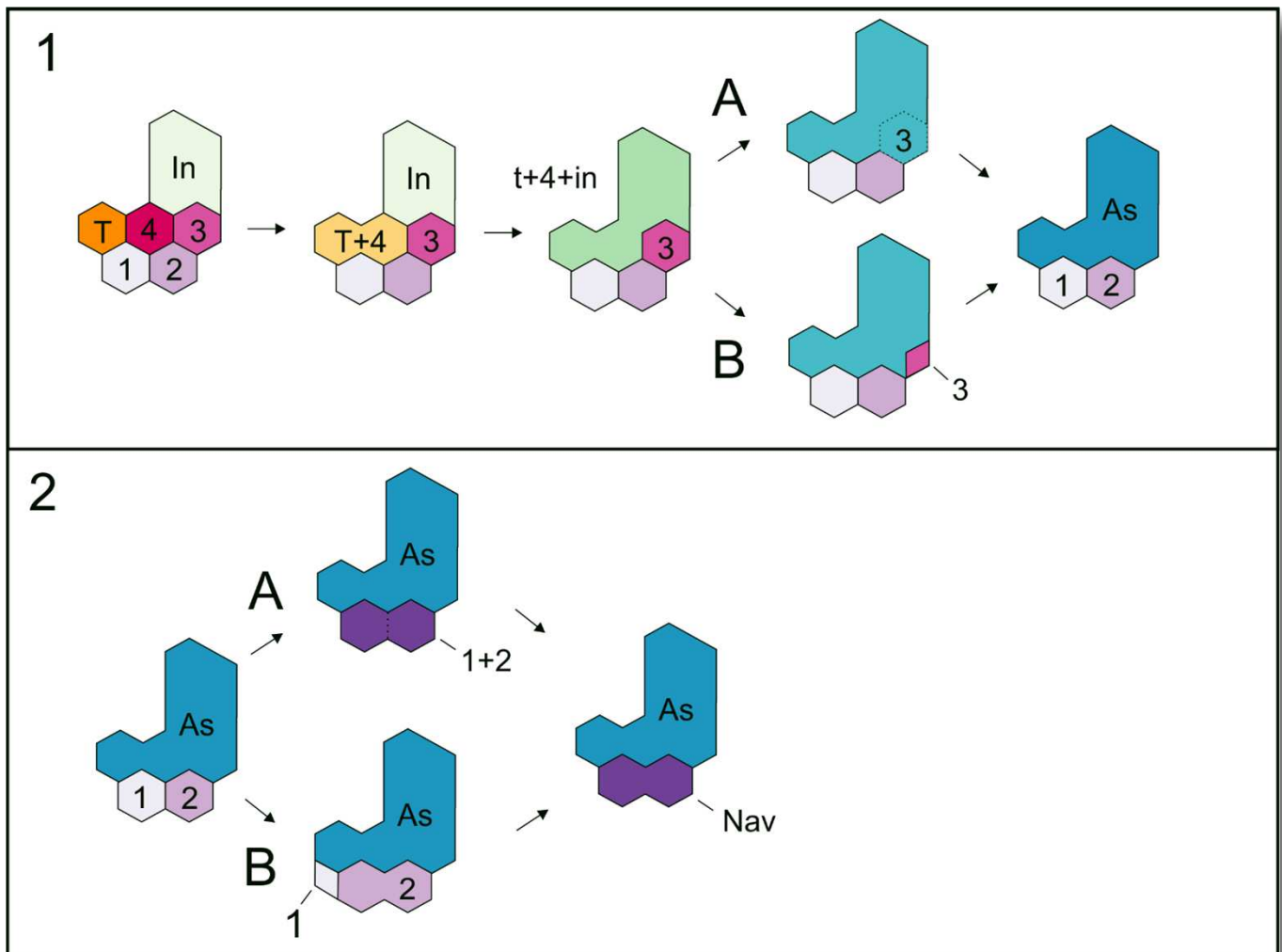
1277

1278 Figure 11. Schematic representation of recent phylogenetic hypotheses of early tetrapod

1279 relationships showing the position of the taxa involved in the evolutionary transition to

1280 the formation of the early amniotic astragalus (see text for the figure context). A. Ruta &

1281 Coates, 2007; B. Carroll, 1995; C. Laurin & Reisz, 1999; D. Marjanović & Laurin, 2015.



1282

1283 Figure 12. Hypotheses about the astragalus and the navicular formation. The schematic diagram

1284 shows the steps that lead to the formation of the amniotic tarsus, regarding the series of

1285 possible transformations that could have produced the primitive astragalus (A) as well as

1286 those that prevailed into the evolution of the 'navicular' bone (B).

1287