

A peer-reviewed version of this preprint was published in PeerJ on 15 February 2016.

[View the peer-reviewed version](https://doi.org/10.7717/peerj.1695) (peerj.com/articles/1695), which is the preferred citable publication unless you specifically need to cite this preprint.

Wang Z, W.L. Au W, Rendell L, Wang K, Wu H, Wu Y, Liu J, Duan G, Cao H, Wang D. 2016. Apparent source levels and active communication space of whistles of free-ranging Indo-Pacific humpback dolphins (*Sousa chinensis*) in the Pearl River Estuary and Beibu Gulf, China. PeerJ 4:e1695 <https://doi.org/10.7717/peerj.1695>

Apparent source levels and active communication space of whistles of free-ranging Indo-Pacific humpback dolphins (*Sousa chinensis*) in the Pearl River Estuary and Beibu Gulf, China

Zhi-Tao Wang, Whitlow Au, Luke Rendell, Ke-Xiong Wang, Hai-Ping Wu, Yu-Ping Wu, Jian-Chang Liu, Guo-Qin Duan, Han-Jiang Cao, Ding Wang

Background. Knowledge of species-specific vocalization characteristics and their associated active communication space, the effective range over which a communication signal can be detected by a conspecific, is critical for understanding the impacts of underwater acoustic pollution, as well as other threats. **Methods.** We used a two-dimensional cross-shaped hydrophone array system to record the whistles of free-ranging Indo-Pacific humpback dolphins (*Sousa chinensis*) in shallow-water environments of the Pearl River Estuary (PRE) and Beibu Gulf (BG), China. Using hyperbolic position fixing, which exploits time differences of arrival of a signal between pairs of hydrophone receivers, we obtained source location estimates for whistles with good signal-to-noise ratio ($\text{SNR} \geq 10$ dB) and not polluted by other sounds and back-calculated their apparent source levels. Combining with the masking levels (including simultaneous noise levels, masking tonal threshold, and the *Sousa* auditory threshold) and the custom made site-specific sound propagation models, we further estimated their active communication space (ACS). **Results.** Humpback dolphins produced whistles with average root-mean-square apparent source levels (ASL) of 138.5 ± 6.8 (mean \pm standard deviation) and 137.2 ± 7.0 dB re $1 \mu\text{Pa}$ in PRE ($N=33$) and BG ($N=209$), respectively. We found statistically significant differences in ASLs among different whistle contour types. The mean and maximum ACS of whistles were estimated to be 14.7 ± 2.6 (median \pm quartile deviation) and 17.1 ± 3.5 m in PRE, and 34.2 ± 9.5 and 43.5 ± 12.2 m in BG. Using just the auditory threshold as the masking level produced the mean and maximum ACS_{at} of 24.3 ± 4.8 and 35.7 ± 4.6 m for PRE, and 60.7 ± 18.1 and 74.3 ± 25.3 m for BG. The small ACSs were due to the high ambient noise level. Significant differences in ACSs were also observed among different whistle contour types. **Discussion.** Besides shedding some light for evaluating appropriate noise exposure levels and information for the regulation of underwater acoustic pollution, these baseline data can also be used for aiding the passive acoustic monitoring of dolphin populations, defining the boundaries of separate groups in a more

biologically meaningful way during field surveys, and guiding the appropriate approach distance for local dolphin-watching boats and research boat during focal group following.

Apparent source levels and active communication space of whistles of free-ranging Indo-Pacific humpback dolphins (*Sousa chinensis*) in the Pearl River Estuary and Beibu Gulf, China

Zhi-Tao Wang^{1,2,3,*}, Whitlow W. L. Au³, Luke Rendell⁴, Ke-Xiong Wang¹, Hai-Ping Wu⁵, Yu-Ping Wu⁶, Jian-Chang Liu⁷, Guo-Qin Duan⁸, Han-Jiang Cao⁸, Ding Wang¹

¹ The Key Laboratory of Aquatic Biodiversity and Conservation of the Chinese Academy of Sciences, Institute of Hydrobiology, Chinese Academy of Sciences, Wuhan, P. R. China

² University of Chinese Academy of Sciences, Beijing, P. R. China

³ Marine Mammal Research Program, Hawaii Institute of Marine Biology, University of Hawaii, Hawaii, United States of America

⁴ Sea Mammal Research Unit, School of Biology, University of St. Andrews, Fife, United Kingdom

⁵ School of Marine Sciences, Qinzhou University, Guangxi, P. R. China

⁶ School of Marine Sciences, Sun Yat-Sen University, Guangzhou, P. R. China

⁷ Transport Planning and Research Institute, Ministry of Transport, Beijing, P. R. China

⁸ Hongkong-Zhuhai-Macao Bridge Authority, Guangzhou, P. R. China

* Current address: Division of Marine Science and Conservation, Nicholas School of the Environment, Duke University, Beaufort, NC, United States of America

Corresponding Authors:

Ke-Xiong Wang and Ding Wang

- 20 7# Donghu South Road, Wuhan, Hubei, 430074, China
- 21 Email address: wangk@ihb.ac.cn (KXW); wangd@ihb.ac.cn (DW)

Abstract:

Background. Knowledge of species-specific vocalization characteristics and their associated active communication space, the effective range over which a communication signal can be detected by a conspecific, is critical for understanding the impacts of underwater acoustic pollution, as well as other threats.

Methods. We used a two-dimensional cross-shaped hydrophone array system to record the whistles of free-ranging Indo-Pacific humpback dolphins (*Sousa chinensis*) in shallow-water environments of the Pearl River Estuary (PRE) and Beibu Gulf (BG), China. Using hyperbolic position fixing, which exploits time differences of arrival of a signal between pairs of hydrophone receivers, we obtained source location estimates for whistles with good signal-to-noise ratio ($\text{SNR} \geq 10$ dB) and not polluted by other sounds and back-calculated their apparent source levels. Combining with the masking levels (including simultaneous noise levels, masking tonal threshold, and the *Sousa* auditory threshold) and the custom made site-specific sound propagation models, we further estimated their active communication space (ACS).

Results. Humpback dolphins produced whistles with average root-mean-square apparent source levels (ASL) of 138.5 ± 6.8 (mean \pm standard deviation) and 137.2 ± 7.0 dB re $1 \mu\text{Pa}$ in PRE (N=33) and BG (N=209), respectively. We found statistically significant differences in ASLs among different whistle contour types. The mean and maximum ACS of whistles were estimated to be 14.7 ± 2.6 (median \pm quartile deviation) and 17.1 ± 3.5 m in PRE, and 34.2 ± 9.5 and 43.5 ± 12.2 m in BG. Using just the auditory threshold as the masking level produced the mean and maximum ACS_{at} of 24.3 ± 4.8 and 35.7 ± 4.6 m for PRE, and 60.7 ± 18.1 and 74.3 ± 25.3 m for BG. The small ACSs were due to the high ambient

42 noise level. Significant differences in ACSs were also observed among different whistle contour types.

43 **Discussion.** Besides shedding some light for evaluating appropriate noise exposure levels and information
44 for the regulation of underwater acoustic pollution, these baseline data can also be used for aiding the
45 passive acoustic monitoring of dolphin populations, defining the boundaries of separate groups in a more
46 biologically meaningful way during field surveys, and guiding the appropriate approach distance for local
47 dolphin-watching boats and research boat during focal group following.

48

49 Keywords: Active communication space, Apparent source level, Beibu Gulf, Hydrophone arrays, Pearl
50 River Estuary, Indo-Pacific Humpback dolphins, *Sousa chinensis*, Sound propagation model, Whistles

51 Running title: Source level and communication range of *Sousa* whistle

52

Introduction

Human activities have profoundly changed the world's aquatic environment. The International Union for the Conservation of Nature (IUCN) suggests that nearly half of the extant marine mammal species are threatened by two or more human impacts, and that a quarter of marine mammals have been classified as threatened with extinction (Davidson et al. 2012). The Indo-Pacific humpback dolphins (*Sousa chinensis*, locally called the Chinese white dolphin) is widely distributed throughout shallow, coastal waters from eastern India in the west to the Southern China Sea in the east and throughout Southeast Asia (Jefferson & Rosenbaum 2014; Reeves et al. 2008). However, marine mammal species occurring in coastal areas are most susceptible to risk, and the coastal distribution of the humpback dolphins make it highly vulnerable to the impact of human activity (Davidson et al. 2012). Its conservation status was categorized as Near Threatened by the IUCN Red List of Threatened Species (Reeves et al. 2008) and as a Grade One National Key Protected Animal in China. Five resident populations of Indo-Pacific humpback dolphins have been identified in Chinese coastal waters: the Pearl River Estuary (PRE) (Chen et al. 2010), Leizhou Bay (Xu et al. 2015) of Guangdong, the Beibu Gulf (BG) of Guangxi (Chen et al. 2009; Pan et al. 2006), Xiamen harbor of Fujian (Chen et al. 2009), and the West coast of Taiwan (Wang et al. 2012).

The PRE region (Fig. 1) is among the most economically developed regions in China (Yeung & Shen 2008) and also home the world's largest known population of humpback dolphins (Chen et al. 2010; Preen 2004), with the population size estimated to be over 2500 (CVs: 19 – 89%) (Chen et al. 2010). The BG region (Fig. 1) is, in comparison, relatively undeveloped, with a smaller human population, and the humpback dolphin population there was estimated to be 251 (95% CI of 136-794) (Chen et al. 2009; Pan

et al. 2006). The concern about the effects of anthropogenic noise on aquatic life is growing world widely (Popper & Hawkins 2012), and economic growth in China has been accelerating human damage to coastal ecosystems (He et al. 2014). The recent construction of the Hongkong-Zhuhai-Macao bridge (Wang et al. 2014b), the Zhuhai wind-farm project in Pearl River Estuary, and the flourishing year round dolphin-watching industry in Beibu Gulf (Wang et al. 2013) all have potentially adverse effects on aquatic life. Pile-driving is likely to cause acoustic disturbance (Wang et al. 2014b), and the intense dolphin-watching industry make the dolphin susceptible to close approaches by high-speed dolphin-watching vessels. High-speed vessels can seriously affect the dolphins' natural behavior (Ng & Leung 2003), introduce masking noise (Sims et al. 2012a), and cause injury or even death (Jefferson 2000) to resident cetaceans. Hence, concerns regarding the conservation of these Chinese white dolphin populations are increasing.

Marine mammals, especially cetaceans, have evolved sophisticated sound production and reception mechanisms to aid in meeting their requirements for a series of vital processes, including communication, navigation, and foraging (Au 1993; Au & Hastings 2008; Surlykke et al. 2014). Dolphins use frequency modulated narrowband sounds, also called whistles, for communication with conspecifics (Janik 2000b; Janik & Slater 1998). Both whistle source level (SL), defined as the amplitude at 1 m from the animal on the acoustic axis (Janik 2000a) and its associated active communication space, the effective range over which a communication signal can be detected by a conspecific (Marten & Marler 1977; Tervo et al. 2012) are fundamental parameters in animal communication systems. The source level is important because it can provide information on the biological ambient noise caused by conspecifics to which an animal is

exposed (Janik 2000a), which can shed some light on evaluating the appropriate exposure level of dolphins to anthropogenic noise. Knowledge of the statistical distribution of whistle source levels can help in planning passive acoustic monitoring studies of habitat use, as well as abundance estimates (Frankel et al. 2014; Širović et al. 2007). However, the distance commonly used to identify dolphins as members of a group was either the ‘10-m chain rule’ (any individuals considered part of the same group were within 10 m of at least one other member of the group, regardless of behavior) (Acevedo-Gutiérrez 2002; Acevedo-Gutiérrez & Stienessen 2004; Connor et al. 2006; Quick & Janik 2008; Quick & Janik 2012; Smolker et al. 1992) or a radius of 100 m (a collection of individuals within which no dolphins were separated by greater than 100 m) (Barco et al. 1999; Lewis et al. 2011), which may not be biologically meaningful. In conjunction with passive acoustic localization, many recorded whistles from a dolphin focal group (defined by 10-m chain rule) were confirmed to be produced by non-focal groups nearby, rather than the defined focal group (Quick & Janik 2008). As well, the estimated whistle active space in previous studies of odontocetes were mismatched with, and always greater than, the separation distances commonly used to define the boundary of separate groups (Janik 2000a; Miller 2006; Quintana-Rizzo et al. 2006). Additionally, with the increasing threaten of the acoustic masking in marine ecosystems by anthropogenic noise(Clark et al. 2009), the active communication space can help to define the boundary of separate dolphin groups in a more biologically meaningful way.

Humpback dolphin can emit pulsed sound with a peak frequency of 114 ± 12 kHz and an apparent source level of 199 ± 3 dB re $1\mu\text{Pa}$ @ 1m (peak-to-peak)(Freitas et al. 2015). As well, they can produce whistles with fundamental frequencies averaged 6.4 kHz, and minimum and maximum fundamental

frequencies averaged 5.1 kHz and 7.7 kHz, respectively (Wang et al. 2013). Although *S. chinensis* is a common species in many waters, information about its vocal behavior remains sparse (Hoffman et al. 2015; Kimura et al. 2014; Li et al. 2012; Wang et al. 2013; Wang et al. 2015). The regulation of underwater acoustic pollution is currently constrained by sparse data, especially the scarcity of quantitative data on animal vocalization characteristics and effects of anthropogenic noise on the biological functions, such as acoustically mediated social interactions (NRC 2005). In order to avoid or to mitigate the possible detrimental impact and to better protect these *Sousa* populations, basic acoustic information is needed.

While, the apparent source level of whistles, defined as the back-calculated sound pressure level at 1 m distance from the sound source at an unknown angle from the acoustic axis (Jensen et al. 2009b), and its active communication space were estimated in many cetaceans, such as in bottlenose dolphin (*Tursiops truncatus*) (Jensen et al. 2012) and in white-beaked dolphins (*Lagenorhynchus albirostris*) (Rasmussen et al. 2006), relevant information is barely known in humpback dolphin. In this study, by using passive acoustic localization, the apparent source level of whistles produced by free-ranging *S. chinensis* in Pearl River Estuary and Beibu Gulf were measured. The active communication space of whistles were further estimated by integrating whistle source parameters, real-time measurements of environmental background noise spectrum levels and by modeling of the sound propagation loss for the habitat in question with animal physiological hearing capabilities and critical ratios.

Methods

Data collection

Acoustic recordings were made during June-July, 2014, in PRE (22°06'-22°11'S; 113°40'-113°45'E) and August 2014 in BG (21°30'-21°37'S; 108°40'-108°58'E), China (Fig.1). Surveys were conducted from a 7.5 m recreational powerboat with a 140 hp outboard engine in PRE or a 6.8 m dolphin-watching vessel powered by 40 hp outboard engine in BG under Beaufort sea states ≤ 3 (on a scale of 12) with a randomly selected route rather than structured transects.

When a group of dolphins was sighted and the majority of whose members were engaged in slow or moderate movements (resting, milling, socializing or feeding) (Hawkins & Gartside 2009), the vessel moved position to the side of the dolphin group. Groups were defined by the '10 m chain rule' (Quick & Janik 2012). If the dolphin group was traveling fast (Hawkins & Gartside 2009), the boat would move swiftly ahead of their moving direction to await them passing by. During sound recording, the vessel's engine was turned off. For each animal group, the GPS time, location (latitude and longitude), dolphin species, and behavior (traveling, socializing, milling, resting, and feeding) (Hawkins & Gartside 2009) were recorded. The water depth and water quality, including temperature, salinity, and pH, were measured with a Horiba Multi-parameter Water Quality Monitoring System (model W-22XD; Horiba, Ltd., Kyoto, Japan) for sound propagation modeling. Recording was stopped when none of the dolphins of a group were within 50 m to the hydrophone arrays.

The two-dimensional cross-shaped array consisted of five Reson piezoelectric hydrophones, one in the middle and four on each end of the arms (model TC-4013, frequency range 1 Hz to 170 kHz, sensitivity: -211 dB \pm 3 dB re 1 V/ μ Pa; Reson Inc., Slangerup, Denmark) (Fig.2). Each hydrophone was equipped

with a 1 MHz bandwidth Reson EC6081 voltage pre-amplifier with a band-pass filter (model VP2000, pass-band 0.1 to either 100 kHz or 250 kHz depending on sampling rate). The EC6081 employ the first order filters (one pole), which was a filter slope of 6 dB/octave in frequency. The hydrophones were connected via a 16-channel synchronized analogue-to-digital (A/D) converter to a laptop computer running LabVIEW 2011 SP1 software (National Instruments (NI), Austin, TX, USA). The A/D converter consisted of four high-speed, 16 bit resolution, data acquisition (DAQ) modules (NI 9223), incorporated in a compact DAQ four-slot USB chassis (NI cDAQ-9174). Each NI 9223 was a four-channel simultaneous A/D converter with a sample rate up to 1 MHz for each channel. Both VP2000 amplifier and NI cDAQ-9174 were powered by external battery packs.

A steel bracket was used to fix the distance between hydrophones. The bracket was made from a stainless cylinder-shaped bar with a cross structure as its backbone (bar diameter: 2.5 cm) and a reinforced stainless bar (bar diameter: 2 cm) at each quadrant (Fig.2). A 5 cm extending bar (bar diameter: 0.3 cm) was affixed perpendicularly to the bracket plane at the center and end of each arms to mount the hydrophones, to minimize the interference of the bar to the sound (including reflection and/or shadowing) (Fig.2). Inter-hydrophone distance along the backbone structure of the bracket was 1.47 m in PRE and 1.54 m in BG.

During the sound recording, the hydrophone arrays were deployed from the side of the boat so that the plate was in the horizontal plane at a depth of 1 m. Floats and attached weights limited array movement to reduce noise due to water flow (Fig.2). The acoustic data were stored directly on the hard drive of a computer in technical data management streaming (TDMS) format and sampled at a rate of either 200

173 kHz or 512.828 kHz, giving a Nyquist frequency of 100 kHz and 256.414 kHz, respectively. The
174 presence of signals was monitored in real-time by using both the PC screen for waveforms monitoring and
175 a headphone connected to the center hydrophone. To minimize the chance of missing good signal, a three
176 second pre-recording buffer was employed. Upon detecting a signal, a manual trigger was used to
177 initiated a recording with the buffer included.

178 The Reson hydrophones were calibrated prior to shipment from the factory (S1 Fig.). The remaining
179 components of the recording system, including the amplifier, filter, A/D converter and laptops, were
180 calibrated in the lab prior to the field survey by inputting a calibration signal generated by an OKI
181 underwater sound level meter (model SW1020; OKI Electric Industry Co., LTD., Tokyo, Japan). Signal
182 flow was also simultaneously monitored with an oscilloscope (model TDS1002C; Tektronix Inc.,
183 Beaverton, OR, USA). The noise floor of the recording system was about 65 and 55 dB re $1\mu\text{Pa}^2/\text{Hz}$ at
184 100 Hz and 1 kHz, respectively, and flat at about 50 dB re $1\mu\text{Pa}^2/\text{Hz}$ between 10 kHz and 100 kHz, which
185 were lower than the ambient noise level at sea state 0 in our study (S1 Fig.), and suitable for noise
186 monitoring.

187 **Sound propagation modeling**

188 Multi-path propagation is inevitable in shallow waters, as bottom and surface reflections interfere with
189 the signal propagation in a direct path. Following standard sound propagation theory (Au & Hastings
190 2008; Aubauer et al. 2000; Urlick 1983), a custom-compiled sound propagation model (S1 File) targeted
191 on the impact of multi-path propagation on the original signals and took into account the hydrophone-
192 animal geometry (such as animal depth, hydrophone depth, distance between hydrophone and animal) and

site specific environment and bathymetry characteristics (such as water depth and bottom sediment contents) was adopted for this study (Fig.3).

Since the energy flux density (EFD , dB re $1\mu\text{Pa}^2\text{s}$) is more meaningful in situations where considerable signal distortion occurs during propagation (Urick 1983), the estimated transmission loss (TL) for each location was subsequently derived from the difference from the energy flux density of the received signal (EFD_r) and the energy flux density at the signal source (EFD_s) by the equation:

$$TL = EFD_r - EFD_s \quad (1)$$

$$EFD = 10 \times \log_{10} \left\{ \int_0^T (p^2(t) / p_{refl}^2) dt \right\} \quad (2)$$

Where $p(t)$ is the sound pressure in μPa , then p_{refl} was $1\mu\text{Pa}^2\text{s}$. For each hydrophone and animal depth combination at a given water depth, the above obtained transmission losses, at varied separation distances between the hydrophone and animal were fitted to a geometric spreading loss model to estimate the environment-dependent transmission loss coefficient by the equation:

$$TL = k \times \log_{10}(r / r_0) \quad (3)$$

Where k was the transmission loss coefficient, r was the distance between the animal and hydrophone, r_0 was the reference range set as 1 m (Fig.4). Frequency-dependent absorption was ignored here, since the sound absorption losses for a standard *Sousa* whistle, with a mean fundamental frequency of 6.35 kHz (Wang et al. 2013) as a function of site specific temperature and pressure at the PRE and BG were 0.31 and 0.30 dB/km, respectively, according to the Fisher and Simmons equation (Fisher & Simmons 1977), and would be negligible over the ranges at which we actually recorded signals.

Acoustic data analysis

The peripheral four hydrophone channels were used for the acoustic localization of phonating animals, and the center hydrophone channel was used for detailed whistle characteristic measurement. Raven Pro Bioacoustics Software (version 1.4; Cornell Laboratory of Ornithology, NY, USA) was used to analyze the acoustic data in spectrogram (window type: Hann windows; FFT size: 8192 and 16384 samples for sampling frequencies of 200 and 512 kHz, respectively; frame overlapping: 80%). Only whistles with good signal-to-noise ratios ($\text{SNR} \geq 10 \text{ dB}$) on all five hydrophones and satisfying the criteria of no overlapping echolocation signal or whistles from different individuals were analyzed. In order to make the data more independent and to reduce the possibility of using multiple whistles from the same animal, for each dolphin encounter, we extracted only one signal for each whistle tonal type (Wang et al. 2013) for further analyzing.

Acoustic localization

Passive acoustic localization of vocalizing animals based on differences in the time of arrival of the same sound between all pairs of hydrophone receivers is a well-established technique (Au & Benoit-Bird 2003; Janik 2000b; Jensen et al. 2009a; Spiesberger 1997; Spiesberger & Fristrup 1990; Wahlberg et al. 2001; Watkins & Schevill 1972). In this study, a custom-written package based on Matlab software (version R2010b; The Mathworks, Inc., Natick, MA, USA), named TOADY (King et al. 2014; Quick & Janik 2008; Quick & Janik 2012; Quick et al. 2008; Schulz et al. 2006; Schulz et al. 2008) was adopted for localizing phonating animals. The time delays were preserved on the simultaneous multi-track recording of signal input from all hydrophones. Signal waveforms from the different recording channels were cross-correlated to determine the difference in arrival time of a sound at each hydrophone pair.

Before cross-correlation processing, a digital high-pass filter set to start rolling off just below the minimum frequency of the fundamental frequency contour of each whistle was used to eliminate any low-frequency background noise interference. The position of the largest peak in the resulting cross-correlation vector represents the amount by which the two signals are offset in time (Hayes et al. 2000). Signals with more than one equivalent peak and/or low cross-correlation maxima were discarded (Lammers & Au 2003). The time delays were used to generate hyperboloid surfaces of possible source locations.

The standard hyperboloid can be estimated by rotating a standard hyperbola along its transverse axis. In detail, the standard hyperbola can be constructed by equations:

$$x^2/a_{ij}^2 - y^2/b_{ij}^2 = 1 \quad (4)$$

$$a_{ij} = c \times t_{i-j} / 2 \quad (5)$$

$$d_{ij} = \sqrt{(x_i - x_j)^2 + (y_i - y_j)^2 + (z_i - z_j)^2} \quad (6)$$

$$b_{ij} = \sqrt{(d_{ij} / 2)^2 - a_{ij}^2} \quad (7)$$

Where (x, y) represent the locus coordinates in two dimensions at the hyperbola located along the hydrophone array plane, a_{ij} and b_{ij} represent the distance from the center to either vertex and the length of a segment perpendicular to the transverse axis drawn from each vertex to the asymptotes of the hyperbola between the hydrophone i and j , respectively. The symbols (x_i, y_i, z_i) and (x_j, y_j, z_j) represent the three-dimension coordinates of the hydrophone i and j , respectively, c represents the speed of sound in water in m/s, and t_{i-j} represents the time delay between the hydrophones i and j in seconds. The maximum allowable time delay between a pair of hydrophones in the array is limited to the direct-path propagation

time between them (Helble et al. 2015) as:

$$\max(t_{i-j}) = d_{ij} / c \quad (8)$$

Where d_{ij} represent the separation of the hydrophone i and j in m. The standard hyperboloid was then rotated and further recast to the center of the spatial geometry of the corresponding array-pair positions.

Once all the hyperboloids were established, contours of the hyperboloids (hyperbolae) at varied assumed animal depths, ranging from the water surface to the bottom set at 0.5 m increments, were displayed in the graphical interface of the TOADY software for visual inspection the hyperbolic fixing (Fig.5C). Four hydrophones resulted in six hyperbolae and yield four points of intersection (for each independent combination of a hydrophone triad, only two of the three time differences were linearly independent, and all three hyperbolae intersected at a single point) (Laurinolli et al. 2003). The localization accuracy was increased by inclusion of the depth function (Quick et al. 2008), and animal depth was estimated as that where the surface area of the polygon formed by the hyperbola intersections was minimum (Quick et al. 2008). The average of the hyperboloid intersections was taken as the best estimate of the sound source's location (Clark & Ellison 2000; Laurinolli et al. 2003; Schulz et al. 2006; Schulz et al. 2008).

Ideally, all the four intersections occurred at one point (Fig.5C). The location error was assessed by a linear error propagation model (Taylor 1997), and the root-mean-square (rms) location error was estimated using the equation:

$$\varepsilon_{rms} = \sqrt{\varepsilon_x^2 + \varepsilon_y^2 + \varepsilon_z^2} \quad (9)$$

Where ε_x , ε_y , and ε_z are the standard deviation (SD) of the hyperbolae intersections in the zonal,

meridional, and vertical directions, respectively (Laurinolli et al. 2003; Schulz et al. 2008; Wahlberg et al. 2001).

Signal extraction

Whistles with successful source location estimates were extracted for sound parameter analysis using the center hydrophone channel. The extracted whistle was assigned to one of the following six tonal types based on its fundamental time-frequency contour as: flat, down, rise, U-shape, concave and sine. All tonal types were mutually exclusive (Fig. 6, for detailed definition, see Wang *et al.* 2013). A three-step procedure was applied to extract the candidate whistles (Fig. 7). A 2-s signal was extracted for each candidate whistle (the whole signal in Fig. 7A and B). The actual whistle was subsequently measured from the start and end points of the fundamental contour (Fig. 7C) and further extracted it as the portion containing 98% of the total cumulative energy, which started at the time when 1% of the cumulative signal energy was reached ($t_{1\%ce}$, in Fig. 7E) and ended when 99% of the cumulative signal energy was reached ($t_{99\%ce}$, in Fig. 7E). Whistle duration was derived from the time difference between the 1st and 99th cumulative energy percentiles (in Fig. 7E). A 500 ms ambient noise selection was extracted either before or after (in Fig. 7B) each whistle from the 2-s signal, with a gap of over 0.2 ms from either sides of the whistle fundamental contour (in Fig. 7B). All spectrograms were computed with 25 ms Hann windows (5000 and 12820 samples, zero-padded to 8192 and 16384 samples for sampling frequencies of 200 and 512 kHz, respectively) for FFT computation with 80% overlap for a temporal resolution of 5 ms and an interpolated spectral frequency resolution of 24.4 and 31.1 Hz, respectively.

Apparent source levels and source energy flux density

For each whistle, the root-mean-square sound pressure levels (SPL_{rms} , dB re 1 μ Pa) and energy flux density (EFD) were calculated using the following equations (Au & Hastings 2008):

$$SPL_{rms} = 10 \times \log_{10} \left\{ 1 / T \times \int_0^T (p^2(t) / p_{ref}^2) dt \right\} \quad (10)$$

where $p(t)$ was the sound pressure in μ Pa, and p_{ref} was 1 μ Pa. SPL_{rms} critically relies upon the signal window size (T) in equation 10 (Madsen 2005). Bottlenose dolphins integrate pure-tone acoustic energy in the same way as humans (Johnson 1968b), with the integrating time constant for the pure-tone range from 1 kHz to 8 kHz approximately 200 ms (Johnson 1968b; Plomp & Bouman 1959). The representative range of the fundamental frequencies of the *Sousa* whistle averaged at 6.4 kHz with the minimum and maximum fundamental frequency average at 5.1 kHz and 7.7 kHz, respectively (Wang et al. 2013). Here, we assumed that the integration time constant from bottlenose dolphins also applied to *Sousa*. Both whistles and matched noise samples were consecutively cut into segments of 200 ms with two adjacent slices overlapping by 95%. A measure termed SPL_{rms200} was taken as maximum SPL_{rms} value from the 200 ms slices of each whistle, and SPL_{noi} was derived from the average SPL_{rms} value of the 200 ms slices of each matched noise sample. Absolute pressure levels were derived by incorporating the sensitivity of the hydrophone and the amplifier gain (Au & Hastings 2008). Apparent source levels ($ASLs$) and source energy flux density ($SEFD$) were estimated from the received apparent sound pressure levels and energy flux density by compensating for the transmission loss using the site-specific transmission loss model.

Power spectral density and One-third octave band levels

Power spectral density (dB re 1 μ Pa² Hz⁻¹), the averaged sound power in each 1 Hz band (Sims et al. 2012b) were calculated using Welch approach for each whistle over its 98% energy windows and their

corresponding noise to assess the detailed acoustic energy distribution. Their one-third octave band levels (dB re 1 μPa^2) were further calculated to assess how cetaceans auditory systems perceive sound and were impacted by ambient noise (Madsen et al. 2006). All power spectral density and one-third octave band levels were computed with 0.2 s slice window, with 95% overlap between two slices for FFT computation, resulting in an interpolated spectral frequency resolution of 3.05 and 3.91 Hz for sampling frequencies of 200 and 512 kHz, respectively.

Active communication space

Detection of a tonal signal against a continuous broad-band noise background will be effectively masked by only a relatively narrow band of frequencies centered on the tonal stimulus, namely the critical bandwidth (Fletcher 1940). The critical ratio is another measure of auditory filter width and an indirect method for estimating critical bandwidth (Au & Moore 1990). At the detection threshold, the signal power equals the noise power, so that the auditory filter width is the ratio of the threshold intensity of a tone over the ambient noise power spectral density at the frequency in question (Fletcher 1940).

The active communication space is a combined function of the signal source level, the dolphin auditory threshold, the habitat-specific transmission loss, and the masking level at the one third octave band center frequency in question (Janik 2000a; Jensen et al. 2012; Quintana-Rizzo et al. 2006). The masking level is determined by the noise one-third octave band level or the masked tone threshold, whichever dominated. The masked tone threshold is the sum of the noise power spectral density and the critical ratio at the frequency in question (Janik 2000a; Jensen et al. 2012; Quintana-Rizzo et al. 2006). The active communication space of each whistle is estimated as the maximum range at which the signal can still be

detected in at least one of the one-third octave bands analyzed after accounting for the transmission loss (Miller 2006). For whistle signals, the one-third octave band that determines the maximum range is always at the peak frequency of the signal one-third octave band levels (Fig.8).

The active communication space for each whistle can be modeled by the equations:

$$k \times \log_{10}[\text{mean}(\text{ACS})] = \text{TL} = [\text{mean}(\text{Sig_TOBL})](f_p) - \max\{\text{ML}(f_p), \text{AT}(f_p)\} \quad (11)$$

$$k \times \log_{10}[\text{max}(\text{ACS})] = \text{TL} = [\text{max}(\text{Sig_TOBL})](f_p) - \max\{\text{ML}(f_p), \text{AT}(f_p)\} \quad (12)$$

$$\text{ML}(f_p) = \max\{[\text{mean}(\text{Noi_TOBL})](f_p), \text{MTT}(f_p)\} \quad (13)$$

$$\text{MTT}(f_p) = [\text{mean}(\text{Noi_PSD})](f_p) + \text{CR}(f_p) \quad (14)$$

Where ACS was the active communication space of the whistle in the near simultaneous ambient noise conditions obtained from the matched noise sample, $\text{mean}(\text{Sig_TOBL})$ and $\text{max}(\text{Sig_TOBL})$ were the averaged and maximum one-third octave band level for all the 200 ms slices for each whistle, f_p was determined by the peak frequency of the averaged one-third octave band levels for all the 200 ms slices for each whistle, $\text{mean}(\text{Noi_PSD})$ and $\text{mean}(\text{Noi_TOBL})$ were the averaged power spectral density and one-third octave band levels of all the 200 ms slices from the matched noise sample for each whistle, ML was the masking level, MTT was the masked tone threshold, and AT was *Sousa* auditory threshold. The *Sousa* audiogram with a frequency span of 500 Hz to 38 kHz (which cover the fundamental contour range of *Sousa* whistles of 520 Hz to 33 kHz (Wang et al. 2013)) was estimated by fitting a third-order polynomial curve to the auditory thresholds between 5 kHz and 38 kHz (Li et al. 2012). CR was the dolphin critical ratio (Johnson et al. 1989), and was obtained by following the equation:

$$\text{CR} = 19.8 + 0.075 \times f^{1/2} \quad (15)$$

Where CR was in dB and f was the frequency in Hz. The equation was obtained by applying a least-square fit to the bottlenose dolphin critical ratio data (Johnson 1968a; Moore & Au 1982)

In cases where the masking level was always higher than the relevant *Sousa* auditory threshold, i.e., the active communication space was noise-limited, the theoretical active communication space determined by the *Sousa* auditory threshold alone was also calculated. The active communication space determined by auditory threshold alone (ACS_{at}) can be modeled as:

$$k \times \log_{10}[\text{mean}(ACS_{at})] = TL = [\text{mean}(\text{Sig_TOBL})](fp) - AT(fp) \quad (16)$$

$$k \times \log_{10}[\text{max}(ACS_{at})] = TL = [\text{max}(\text{Sig_TOBL})](fp) - AT(fp) \quad (17)$$

Statistical analysis

Descriptive statistics of all measured acoustic parameters were obtained and presented in the form of mean, SD, and ranges if they were normal distributed. For those parameters with a grossly skewed distribution, descriptive parameters of median, quartile deviation (QD), 5 percentile (P5), and 95 percentile (P95) were adopted. The Levene's test for equality of error variances and Kolmogorov–Smirnov goodness-of-fit test were used to analyze homogeneity of variance and the distributions of the data, respectively. Nonparametric statistical analyses (Zar 1999) were adopted if data were not normally distributed. The Kruskal–Wallis test (Zar 1999) was used to examine the difference in the mean of the transmission loss coefficient of different test signals running in the sound propagation model. The Mann–Whitney U -test (Zar 1999) was used to analyze differences between transmission loss coefficients, as well as acoustic parameters between sites. Differences in apparent source levels and energy flux density across different whistle tonal types was analyzed by the Kruskal–Wallis test (Zar 1999), and Duncan's multiple

comparison test (Zar 1999) was used for post hoc comparisons of acoustic parameter among tonal types. Statistical analyses were performed using SPSS 16.0 for Windows (SPSS Inc., Chicago, U.S.A.). Differences were considered significant at $p < 0.05$.

Ethical statement

Permission to conduct the study was granted by the Ministry of Science and Technology of the People's Republic of China. The research permit was issued to the Institute of Hydrobiology of the Chinese Academy of Sciences (Permit number: 2011BAG07B05).

380

Results

Six hundred and thirty four whistles were recorded during 14 observation days, from which 33 whistles were successfully selected from two days in the Pearl River Estuary and 209 whistles from eight days in the Beibu Gulf (Table 1) for further analysis.

Sound propagation modeling

Sixteen whistles with estimated source distance from one of the 5 hydrophone channels close to 1 m were selected as a proxy for whistle sources and imported to the sound propagation model. The sound propagation speed in water (c_w) was calculated as 1538 m/s and 1535 m/s, for the Pearl River Estuary and Beibu Gulf, respectively, according to the Medwin equation (Medwin 1975) based on the average measured site-specific temperature, salinity, and water depth (Table 2). The sound speed in air (c_s) was 343 m/s, and in bottom sediment (c_b) was 1535 and 1742 m/s for Pearl River Estuary and Beibu Gulf, respectively. The impedances z_s and z_w were 400 and 1.54×10^6 Pam^{-1}s , z_b was 2.19×10^6 and 3.45×10^6

Pam's for Pearl River Estuary and Beibu Gulf, respectively (Urlick 1983), since the sediment types were different, with clay silt in Pearl River Estuary and fine sand in Beibu Gulf (TQ Zeng and HW Su, personal communications). The hydrophone depth was set at 1 m to mirror the real hydrophone setup during sound recording. The water depth in Pearl River Estuary and Beibu Gulf was set as a range from 5 m to 9 m and from 2 m to 8 m, respectively, to mirror the measured site-specific depth (Table 2). The maximum distance between animal and hydrophone was set at 50 m (Fig. 4), corresponding to the maximum localized whistle distance of 49.6 m (see next paragraph). The reflective coefficients at the air–water interface were averaged at -0.09 for both of the Pearl River Estuary and Beibu Gulf, whereas the reflective coefficients at the water-bottom interface were averaged at 0.24 and 0.46 for Pearl River Estuary and Beibu Gulf, respectively. No significant difference in the mean transmission loss coefficient k was observed among different testing signals within each site (Pearl River Estuary: Kruskal-Wallis $\chi^2 = 16.82$, $df = 15$, $p = 0.33$; Beibu Gulf: Kruskal-Wallis $\chi^2 = 5.02$, $df = 15$, $p = 0.91$). Thus, we pooled all test signals within the sites to calculate average transmission loss. From the pooled data we estimated an average k in Pearl River Estuary of -17.3 ± 1.0 [95% CI (-17.4:-17.2)], which was significantly different from that in Beibu Gulf of -14.6 ± 0.8 [95% CI (-14.7:-14.5)] (Mann-Whitney U-test: $z = 1532$, $df = 1119$, $p < 0.01$) (Fig.9).

Acoustic localization

Of all the analyzed whistles, the average estimated distance between the center hydrophone and phonating animals was 6.8 ± 4.2 (SD) m (range: 2.1-23.8 m) in Pearl River Estuary and 8.4 ± 7.0 (SD) m (range: 2.2-49.6 m) in Beibu Gulf (note that the distribution of the distance between hydrophone and

phonating animal may vary if a different hydrophone was chosen). The average localization error (ϵ_{rms}) was 0.3 ± 0.2 m and 0.5 ± 0.4 m in Pearl River Estuary and Beibu Gulf, respectively.

Apparent source levels and source energy flux density

Significant differences in whistle duration was observed between Pearl River Estuary (mean \pm SD: 0.50 ± 0.19 s) and Beibu Gulf (mean \pm SD: 0.44 ± 0.20 s) (Mann-Whitney U test, $z = -2.0$, $df = 241$, $p = 0.04$) (Table 3). On the other hand, no significant differences were found in all the measured apparent source levels and source energy flux density between Pearl River Estuary and Beibu Gulf (Mann-Whitney U test, $p < 0.05$) (Table 3), thus they were pooled according to tonal classes for further analysis.

The 242 successfully located whistles consisted of 66 flat, 28 down, 28 rise, 64 U-shape, 15 convex, and 41 sine whistles (Table 1). Significant differences were observed in the whistle duration, apparent source levels, and source energy flux density among the six tonal types (whistle duration: Kruskal-Wallis $\chi^2 = 29.27$, $df = 5$, $p < 0.01$; ASL_{rms} : Kruskal-Wallis $\chi^2 = 17.02$, $df = 5$, $p < 0.01$; ASL_{rms200} : Kruskal-Wallis $\chi^2 = 12.08$, $df = 5$, $p = 0.03$ and source energy flux density: Kruskal-Wallis $\chi^2 = 11.16$, $df = 5$, $p = 0.04$). In detail, the duration of sine whistles (mean \pm SD: 0.60 ± 0.3 s) was significantly longer than flat (mean \pm SD: 0.43 ± 0.2 s), rise (mean \pm SD: 0.43 ± 0.2 s) (Duncan's multiple-comparison test; $p < 0.05$) and U-shape (mean \pm SD: 0.39 ± 0.2 s) whistle types (Duncan's multiple-comparison test; $p < 0.01$). Sine whistles had significantly lower ASL_{rms200} and source energy flux density (Duncan's multiple-comparison test; $p < 0.05$) and ASL_{rms} (Duncan's multiple-comparison test; $p < 0.01$) than down whistles (Fig.10).

One-third octave band levels

The average peak frequency across the one-third octave band levels for all the 200 ms whistles slices

across all whistles was 4.9 ± 1.0 kHz and 6.1 ± 2.6 kHz for Pearl River Estuary and Beibu Gulf, respectively, which were significantly different (Mann-Whitney U test, $z=-3.0$, $df=241$, $p < 0.01$) (Table 3). No significant difference was observed in the ambient noise sound pressure levels between Pearl River Estuary (SPL_{noi} ; mean \pm SD: 122.3 ± 5.0 dB) and Beibu Gulf (mean \pm SD: 122.2 ± 6.3 dB) (Mann-Whitney U test, $z = -1.0$, $df = 241$, $p = 0.32$) (Table 3). However, their one third octave band noise level property was significantly varied: in Pearl River Estuary, the one third octave band level at frequency band of 4.47-5.63 kHz (centered at 6.3 kHz and corresponding to the peak frequency of whistles in Beibu Gulf) was significantly higher than the band of 5.63-7.08 kHz (centered at 5 kHz and corresponding to the peak frequency of whistles in Pearl River Estuary) (mean \pm SD: 95.8 ± 3.2 dB and 97.1 ± 4.2 dB, respectively; Wilcoxon signed ranks test, $Z = -4.99$, $p < 0.001$, $N = 33$), whereas, an opposite trend was observed in Beibu Gulf (mean \pm SD: 99.3 ± 4.3 dB and 96.9 ± 4.2 dB, respectively, for the two frequency bands; Wilcoxon signed ranks test, $Z = -8.59$, $p < 0.001$, $N = 209$). In addition, the one third octave level at frequency band of 4.47-5.63 kHz in Pearl River Estuary was significantly higher than that in Beibu Gulf (Mann-Whitney U-test: $z = -4.02$, $df = 241$, $p < 0.001$), although no significant difference in the frequency band of 5.63-7.08 kHz was observed between them (Mann-Whitney U-test: $z = -1.68$, $df = 241$, $p = 0.09$).

Active Communication space

We calculated the mean and maximum active communication spaces across the 200 ms segments for each analyzed whistle. The median of these results were 14.7 ± 2.6 m and 17.1 ± 3.5 m, respectively, in Pearl River Estuary, and 34.2 ± 4.8 m and 43.5 ± 4.6 m, respectively, in Beibu Gulf. Both measures were

453 significantly smaller in Pearl River Estuary than in Beibu Gulf (Mann-Whitney U test: $z = -5.5$, $df = 241$,
 454 $p < 0.01$ and $z = -5.8$, $df = 241$, $p < 0.01$, respectively). The largest mean active communication spaces for
 455 any whistle in Pearl River Estuary and Beibu Gulf were estimated to be at 40.7 m and 209.7 m,
 456 respectively, while the largest maximum active communication spaces were estimated to be 51.1 m and
 457 266.8 m, respectively. Significant differences were observed in the mean and maximum active
 458 communication space among six tonal types, which follow from the observed differences in apparent
 459 source level (mean active communication space: Kruskal-Wallis $\chi^2 = 25.56$, $df = 5$, $p < 0.01$; maximum
 460 active communication space: Kruskal-Wallis $\chi^2 = 23.80$, $df = 5$, $p < 0.01$). In detail, both of the mean and
 461 maximum active communication space of flat was significantly shorter than that in down and U-shape
 462 (Duncan's multiple-comparison test; $p < 0.01$). The mean active communication space of flat was
 463 significantly short than that in rise (Duncan's multiple-comparison test; $p < 0.01$). Of all the localized
 464 whistles, the averaged one-third octave band levels of all matched 200 ms noise samples for each whistle
 465 at the frequency determined by the peak frequency of the averaged one-third octave band levels of all the
 466 whistle 200 ms slices ($[\text{mean}(\text{Noi_TOBL})](\text{fp})$) were significantly higher than *Sousa* auditory threshold at
 467 the same frequency ($\text{AT}(\text{fp})$) (Mann-Whitney U test, $z = -9.25$, $df = 241$, $p < 0.01$), indicating that active
 468 communication space was mainly noise-limited. However, 62 out of 242 whistles (26.6 %) with the
 469 $[\text{mean}(\text{Noi_TOBL})](\text{fp})$ lower than its corresponding $\text{AT}(\text{fp})$, indicating that their active communication
 470 space were auditory-threshold limited, as opposed to noise-limited, we also estimated the theoretical
 471 auditory-threshold-limited active communication space for all whistles. The theoretical mean auditory-
 472 threshold limited active communication space in Pearl River Estuary (median \pm QD: 24.3 ± 4.8 m) was

significantly shorter than that in Beibu Gulf (median \pm QD: 60.7 \pm 12.2 m) (Mann-Whitney U test, $z = -$
 4.2, $df = 241$, $p < 0.01$), and the maximum was also significantly shorter in Pearl River Estuary (median \pm
 QD: 35.7 \pm 4.6 m) than in Beibu Gulf (median \pm QD: 74.3 \pm 25.3 m) (Mann-Whitney U test, $z = -4.4$, $df =$
 241, $p < 0.01$) (Table 3). The biggest mean auditory-threshold limited active communication space in
 Pearl River Estuary and Beibu Gulf were estimated to be 106.5 m and 457.2 m, respectively, whereas the
 biggest maximum ACS_{at} were estimated to be 109.3 m and 463.8 m, respectively. Significant difference
 was observed in the mean and maximum auditory-threshold limited active communication space among
 six tonal types (Kruskal-Wallis $\chi^2=17.04$, $df = 5$, $p < 0.01$ and Kruskal-Wallis $\chi^2 = 15.28$, $df = 5$, $p < 0.01$,
 respectively). In detail, both of the mean and maximum auditory-threshold limited active communication
 space of flat were significantly shorter than that in U-shape (Duncan's multiple-comparison test; $p < 0.05$).

Discussion

Although the majority of the analyzed data were from one day of survey for both areas, with 44% (92
 out of 209) analyzed whistles in Beibu Gulf from 22 August, 2014 and 88% (29 out of 33) analyzed
 whistles in Pearl River Estuary from 5 June, 2014, the data within these days was obtained from many
 different dolphin groups and participated in variety of activities. Thus, the analyzed data was
 representative for the region where they were obtained.

Sound propagation modeling

Depending on local conditions, the spreading loss constant k normally ranges from spherical spreading
 loss ($k=20$) to cylindrical spreading loss ($k=10$) (Urick 1983). The transmission loss coefficient in Pearl

River Estuary (mean \pm SD: -17.3 ± 1.0 ; range: from -20.5 to -15.5) followed an almost spherical spreading model and was comparable to that calculated for shallow waters of Koombana Bay in Western Australis of -18 , which was derived from playback experiments with variable receiver and sender locations at an approximate homogenous water depth of 5-7 m, using pure tone sounds with a frequency span of 1-7 kHz (Jensen et al. 2012) and the empirical and theoretical derived transmission loss coefficient at the Antarctic Peninsula of -17.8 (Širović et al. 2007). The transmission loss coefficient in Beibu Gulf (mean \pm SD: -14.6 ± 0.8 ; range: from -16.5 to -12.1) was equidistant between spherical and cylindrical spreading. The range of the transmission loss coefficient estimated in Pearl River Estuary and Beibu Gulf (Fig.9) was also comparable to that estimated with a water depth less than 3 m and in mud or sand sediment (k range from -26.6 to -14.5) and in channels with water depth between 3 m and 5.3 m (k range from -24.5 to -12.8) in Sarasota Bay, Florida (Quintana-Rizzo et al. 2006). Therefore, our transmission loss estimates were well within the range of currently published findings in similar habitats.

Acoustic localization

The potential factors that influence the source location include ambient noise in the transmission paths, variability in sound speed in the media (Clark & Ellison 2000; Tiemann et al. 2004), multipath arrivals of a signal at the hydrophone (Clark & Ellison 2000; Hayes et al. 2000), and array configurations (Janik 2000a). However, we estimated low localization error in both of the Pearl River Estuary and Beibu Gulf, with error percentages (ϵ_{rms} divided by mean localized distance between hydrophone and animal (r)) of $0.3/6.8 = 4.4\%$ and $0.5/8.4 = 5.9\%$, respectively. Therefore, error due to source localization was not expected to be large in our results.

513 The low localization error in this study may be ascribed to the following counter error analysis
 514 strategies, firstly, the use of waveform, rather than spectrogram cross-correlation technique. In order to
 515 determine the time delay between two hydrophones, a cross-correlation function can be applied to either
 516 signal waveforms or spectrograms (Janik 2000a). Compared with waveform cross-correlation,
 517 spectrogram cross-correlation technique may introduce a slightly larger error (Clark & Ellison 2000). The
 518 error was due to the time grid spacing resolution during spectrogram calculation by averaging over small
 519 time slices of the original signals (Janik 2000a). Secondly, the inclusion of the scanning depth function
 520 (an extra dimension to the array plane) in the TOADY localization program in conjunction with the two
 521 dimensional array recording systems makes possible the three dimensional localization of the animal and
 522 helps to increase the accuracy of the localization (Quick et al. 2008), since using a two dimensional array
 523 in a three dimensional environment may generate some errors (Janik 2000a). On the other hand, the
 524 optimal source location in passive acoustic localization can be achieved when phonation animals inside
 525 the array and the source-to-hydrophone distance of the same order of magnitude as inter-hydrophone
 526 spacing (Madsen & Wahlberg 2007). Additionally, source-to-array distance to a range of three to four
 527 times the hydrophone array dimension can still be localized with high confidence (Watkins & Schevill
 528 1972). Of all the localized whistles in this study, those with a source-to-hydrophone distance smaller than
 529 3 m, 12 m, and 15 m, which mimics the distance of one time, three times, and four times of the maximum
 530 inter-hydrophone spacing, account for 27.3 %, 83.9% and 93.9%, respectively. In addition, the 95%
 531 confidence interval of the mean distance between the animal and hydrophone (Pearl River Estuary: 5.4-
 532 8.3 m, Beibu Gulf: 7.4-9.3 m) was well within three times of the maximum inter-hydrophone spacing.

533 This also account for the high acoustic localization in this study.

534 **Apparent source level and noise levels**

535 The apparent source levels of *Sousa* whistle obtained in this study, with the ASL_{rms} over its 98% energy
536 window of 137.4 ± 6.9 dB (range: 114.1-160.4 dB) and ASL_{rms} over 200 ms running windows of $139.5 \pm$
537 6.9 dB (range: 115.6 -161.4 dB), were similar to the estimated mean and range of the ASL_{rms} of Atlantic
538 spotted dolphin (*Stenella frontalis*) and bottlenose dolphin at Gulf of Mexico (Frankel et al. 2014), but
539 lower than those found for other dolphin species, including Hawaiian spinner dolphins (*Stenella*
540 *longirostris*) (Watkins & Schevill 1974), common dolphin (*Deiphinus delphiis*) (Fish & Turl 1976), white-
541 beaked dolphins (Rasmussen et al. 2006), baiji (*Lipotes vexillifer*) (Wang et al. 2006), short-
542 finned pilot whale (*Globicephala macrorhynchus*) (Fish & Turl 1976) and killer whale (*Orcinus orca*)
543 (Miller 2006), and bottlenose dolphin(Fish & Turl 1976; Janik 2000a; Jensen et al. 2012; Tyack 1985) in
544 other regions (Table 4). The observed no significant difference in broad band noise level between the two
545 regions in our study may be due to the fact that, in order to model the active communication range of
546 whistles in real time noise conditions, the analyzed noise were derived from sound file with whistle
547 recorded in good SNR and successfully localized. However, majority of good whistles were obtained
548 either far away from the construction or navigation region in Pearl River Estuary or without dolphin
549 tourism boat nearby in Beibu Gulf and represent an environment with less anthropogenic noise pollution.
550 Besides, the fact that the successfully localized whistles in this study were from a less anthropogenic
551 impacted environment may, in part, account for the low source level of the humpback dolphin whistles,
552 since dolphins may use higher amplitude sound in a noisy environment. Additionally, the frequency of

dolphin whistles tend to modify according to environmental ambient noise, and the bottlenose dolphin was observed to produced whistles with lower (Morisaka et al. 2005) or higher (May-Collado & Wartzok 2008) frequencies at higher ambient noise conditions. In present study, both the averaged peak frequency of whistles and one third octave band level of noise were significantly different between Pearl River Estuary and Beibu Gulf. However, the reasons why humpback dolphins emitted whistles with peak frequency coincidence with the noise one third octave frequency band with higher noise level in both of these two regions deserve further investigation.

Active communication space

Active communication space has been estimated for bottlenose dolphins (Janik 2000a; Jensen et al. 2012; Quintana-Rizzo et al. 2006), killer whale (Miller 2006), white-beaked dolphins (Rasmussen et al. 2006) and baiji (Wang et al. 2006). In these studies, the whistle source levels used to model the active communication space were either the highest and lowest source levels (Rasmussen et al. 2006), the mean source level (Wang et al. 2006), the highest and mean source levels (Janik 2000a), the three ‘representative’ source levels (Quintana-Rizzo et al. 2006), the source level of each whistle over its 95% energy window (Jensen et al. 2012) or on the one-third octave band level scale (Miller 2006). The noise condition was either extrapolated from literature at other habitats at sea-state 0 and sea-state 4 or 6 (Janik 2000a; Miller 2006), or using the noise level at the habitat in question under an optimal conditions of sea-state 0-1 and without an adjacent boat (Jensen et al. 2012; Rasmussen et al. 2006), or under normal recording conditions (Quintana-Rizzo et al. 2006; Wang et al. 2006). The propagation model was either adopted from the spherical transmission attenuation model (Rasmussen et al. 2006; Wang et al. 2006), the

Marsh and Schulkin shallow-water transmission model (Marsh & Schulkin 1962) which assumes the
 transducer and receiver were in the middle of the water column (Janik 2000a; Miller 2006) or derived by
 the sound transmission experiment using playback signal of computer-generated whistle mimic tone at
 varied distance with the transducer and receiver at a fixed depth of 1 m (Quintana-Rizzo et al. 2006), or
 with varied transducer and receiver combination (Jensen et al. 2012). However, when using the signal
 ASL_{rms} for modeling active communication space, the critical band theory of the mammalian auditory
 system was not considered, and may therefore have integrated the energy from harmonics, which was the
 integer times of the fundamental frequency and tends to be directional (Lammers & Au 2003; Miller 2002;
 Rasmussen et al. 2006), and more heavily affected by absorption. Additionally, the optimal or averaged
 noise condition, rather than the real-time ambient noise level used for modeling active communication
 space, may not shed much light for the biologically relevant active communication space of the signal.
 This was further corroborated by the findings that the modeled active communication space of baiji
 whistles with a ASL_{rms} of 143.2 dB will reduced from 6.6 km at normal noise level to a range of 22-220 m
 in a noisy boat traffic conditions. Furthermore, the Marsh and Schulkin model or playback experiment
 with the transducer and receiver at a fixed depth may not represent the transmission loss pattern of the site,
 because the sound transmission loss may vary within the water column (Quintana-Rizzo et al. 2006).
 Transmission loss near the surface or the bottom of the water column was observed to be much higher
 than that at the center of the water column (Janik 2000a). One-third of an octave approximates the
 effective filter bandwidth of mammalian hearing systems (Fletcher 1940; Richardson et al. 1995). The
 signal one-third octave band level information provided us with a starting point and an appropriate way

for investigating how a mammal's auditory system perceives sound and the extent of the masking effect of the ambient noise (Blackwell et al. 2004; Madsen et al. 2006). In this study, models integrating the signal one-third octave band levels for each individual whistle, its corresponding real-time noise conditions, and site-specific transmission attenuation were adopted to estimate the active communication space in a more meaningful way. Notice should be addressed that, sound detection and discrimination thresholds may differ, for example, in all the birds of budgerigars (*Melopsittacus undulates*), zebra finches (*Taeniopygia guttata*) and canaries (*Serinus canaria*), the thresholds for discrimination between calls of the same species was observed higher than the thresholds for detection of those calls (Lohr et al. 2003). The weakest portions of an emitted signal will always be lost during transmission before it is detected by a receiver, but whether or not the transmitting animal can be discriminated by a receiving animal will depend on how much of the information in the signal is needed to solve this task. Individual discrimination information of bottlenose dolphins was encoded in the frequency modulation contour of their signature whistles (Janik et al. 2006). Thus, the active communication space of signature whistles was determined by the weakest portion of the signal modulation contour. However, whether signature whistles also exist in humpback dolphins is still unknown and deserve further research. Since whistles were narrowband signals, we believe that the active communication space calculated by using the mean(Sig_TOBL), as obtained by a running average of all the one-third octave band levels for each whistle over its 98% energy windows, will be similar to that based on the bandwidth of the entire whistle.

The small active communication space calculated in this study is a result of ambient noise limiting detection ranges. The averaged one-third octave band noise levels were 98.7 ± 4.5 and 96.8 ± 4.2 dB re 1

μPa at the band which accommodates the peak frequency of whistles at 4.9 kHz and 6.1 kHz for Pearl River Estuary and Beibu Gulf, respectively. These results were almost 20 dB higher than the one-third octave band noise levels at the same frequency band (estimated to be less than 75 dB) for the estimation of the whistle communication range of the white-beaked dolphins in Faxaflói Bay, Iceland (Rasmussen et al. 2006), almost 30 dB higher than the ambient noise level (estimated to be 66.8 dB) for the estimation of the whistle communication range of baiji in the Shishou reserve (Wang et al. 2006), about 50 and 30 dB higher than the ambient noise level at sea state 0 and 4 respectively used for the estimation of the whistle communication range of bottlenose dolphins at Moray Firth (Janik 2000a), and almost equal to the background noise spectrum level plus critical ratios for the estimation of the whistle communication range of bottlenose dolphins in Sarasota Bay (Quintana-Rizzo et al. 2006). The high ambient noise level observed in both of the Pearl River Estuary and Beibu Gulf at less anthropogenic impacted areas may due to the waves and biological noise, such as snap shrimps, and deserves further research.

The flourishing year round dolphin-watching industry makes the Beibu Gulf dominated by dolphin-watching boats of about 7 m length and equipped with 40 horse power engine during the day time, whereas the fast developing local economy makes Pearl-River Estuary dominated by different kinds of hydrofoil ferries between Hongkong, Zhuhai, and Macao throughout the day, with the ferry length of 27.4-47.5 m and speed of 28-45 knots (Z-T Wang, unpublished data). Since different vessels tend to had very different acoustic signatures (Hermannsen et al. 2014). The varied vessel traffic condition between these two regions might also be a clue to the sources contributing to the ambient noise. Longtime noise recordings will be needed for a better view of the soundscape difference between these two regions.

The apparent source levels between different tonal classes was only significant varied between sine and down. The significant difference in active communication space between flat and down, and between U-shape and rise may be due to their frequency band variations (Wang et al. 2013), since the active communication space was determined by the one-third octave band level at the whistle peak frequency and the corresponding noise one-third octave levels at the same frequency band. In addition, the significant differences in apparent source levels and its active communication space among different whistle tonal types may be associated with their different functions in different behavioral context. This was further corroborated by the findings that different whistle tonal classes were in relation with different behavior states in Indo-Pacific bottlenose dolphins (Hawkins & Gartside 2010) and some whistle types were used to convey specific information on their specific behavioral context (Hawkins & Gartside 2010).

Acoustic cues play an important role in mediating social structure and were critical for aquatic animals, especially cetaceans that rely heavily on acoustic for communication. The active communication space calculated in this study can be used for defining dolphin groups in a more biologically meaningful way during field surveys. As determined by the mean active communication range, humpback dolphins within the distance of 14.7 m in Pearl River Estuary and 34.2 m in Beibu Gulf might be able to keep acoustic contact and can be defined as the same dolphin group. In a more quieter environment, where dolphin auditory threshold determine the active communication range, animals which apart from each other at a distance of less than 24.3 m in Pearl River Estuary and 60.7 m in Beibu Gulf can be grouped into the same dolphin group.

Auditory masking of communication signals may interfere the acoustically mediated social interactions.

During our field survey in Beibu Gulf, when fast moving dolphin-watching boat was presented even at a distance of more than 1000 m away, the whistles recorded will be severely masked with the generated vessel noise dominating the ambient noise. The negative impacts of vessel noise on cetacean have been widely documented. The vessel noise recorded at the heavily ship-trafficked marine habitats in Denmark from a range of different ship types was observed substantially elevated ambient noise levels across a wide frequency band of 0.025-160 kHz and can cause hearing range reduction of over 20 dB on harbor porpoises (*Phocoena phocoena*) even at a distances of over 1 km away (Hermannsen et al. 2014). Small vessels noise can significantly mask acoustically mediated communication in cetaceans and those travelling at 5 knots in shallow waters of the Koombana Bay, Western Australia can reduce the communication range of 26% on bottlenose dolphins within a distance of 50 m (Jensen et al. 2009a). What's the impact of vessel traffic on local humpback dolphins, especially the hydrofoil ferries at heavy shipping lanes of the PRE deserves further research.

Limitations

Cetacean audiograms can vary greatly among individuals of different age groups (Houser et al. 2008; Popov et al. 2007), and the threshold may shift with the presence of masking noise (Johnson 1968a). Therefore, the audiogram adopted in this study may not be considered representative of the auditory sensitivity of *Sousa* as a whole, and more auditory studies covering different dolphin age groups are needed for deriving an accurate audiogram of *Sousa*. The source level of dolphin whistles can vary depending on the number, age, and sex of the individuals in a group, as well as their behavioral context

(Fish & Turl 1976; Frankel et al. 2014). The maximum apparent sound pressure level of 160.4 dB (rms) observed here does not necessarily represent the capability of the species. Due to the trade-off between high SNR and increased active space for high amplitude sound and decreased detection probability by predator with low amplitude sound (Morisaka & Connor 2007), dolphins might not produce whistles at their maximum levels, even if rewarded in a conditioning procedure (Janik 2000a).

The directional pattern of outgoing signals and any directional hearing capability will impact the active communication range of animal vocalization (Au 1993). Received sound pressure levels will be maximum when the phonating dolphin is pointed directly at the receiver, and vice versa. In this study, both the directivity index (*DI*) and the beam pattern (*BP*) of the outgoing signal transmission and sound receiving at the frequency of the *Sousa* whistle were assumed to be 0 dB. The assumption of the 0 dB directivity index of the sound receiving system was further corroborated by the findings that bottlenose dolphins' sound receiving directivity index increased with frequency and followed the equation (Au 1993):

$$DI_{receiving} = 16.94 \times \log_{10}(f) - 14.69 \quad (18)$$

Where *DI* was directivity index, and *f* was frequency in kHz. If this was also applicable and can be extrapolated for *Sousa*, then the directivity index for signals with frequencies lower than 7.37 kHz will be close to 0.

Previously, 4 cm and 6 cm radius circular piston projectors were applied to model the outgoing signal transmission beam pattern for spinner dolphin (Lammers & Au 2003) and white-beaked dolphin whistles (Rasmussen et al. 2006), respectively.

The same method (Au 1993; Wang et al. 2015) was adopted in this study, and the modeled beam pattern has a directivity index of 3 dB for a 4 cm circular piston model and 6 dB for a 6 cm circular piston model (S2 Fig), suggesting directionality would also have a minor effect on the results reported here. These are only theoretical results, however, and need to be further corroborated by empirical measurements.

Conclusions and Implication of the findings

Regulation of anthropogenic noise is often limited by insufficient data on marine mammal vocalization characteristics and on the impacts of noise on their biological functions. The present study back-calculated the apparent source levels of free-ranging Indo-Pacific humpback dolphin whistles in the shallow-water environments of Pearl River Estuary and Beibu Gulf, China, by using a 2 dimension cross-shaped hydrophone array system to localize phonating animals and site-specific sound propagation modeling. The dolphins produced whistles with a mean apparent source levels of 138.5 ± 6.8 dB and 137.2 ± 7.0 dB re $1\mu\text{Pa}$ (rms) for Pearl River Estuary and Beibu Gulf, respectively. The corresponding mean and maximum active communication space of *Sousa* whistle were estimated with a median of 14.7 m and 17.1 m for Pearl River Estuary, and 34.2 m and 43.5 m for Beibu Gulf. Whereas the auditory threshold determined mean and maximum active communication range were estimated with a median of 24.3 m and 35.7 m for Pearl River Estuary, and 60.7 m and 74.3 m for Beibu Gulf by integrating the real-time ambient noise levels, masking tonal threshold, *Sousa* auditory threshold and site-specific transmission loss model. The present study contributes relevant quantitative baseline data on *Sousa* vocalization characteristics. Since the broadband anthropogenic noise tend to overlap in frequency range

with the acoustic signals of a wider range of marine fauna, the source level information of the dolphin whistles can also be referenced as the safe biological ambient noise that an animal is exposed to and can shed some light for evaluating the appropriate noise exposure level for humpback dolphin and regulation or mitigation of underwater acoustic pollution. Furthermore, although biosonar clicks are easy to detect automatically at close distance, and standard methods have been developed for passive acoustic monitoring of biosonar clicks (Zimmer 2011), whistles may be detected at a greater range compared with the biosonar clicks, which are higher in directionality and suffering higher transmission loss. The whistle apparent source levels and site-specific transmission loss model derived in this study can aid in expanding the application of passive acoustic monitoring strategies. These include the scope of local population abundance estimation by incorporating the active detection range of the passive acoustic recorders (Wang et al. 2014a), propagation characteristics of the environment, and animal vocalization rates (Frankel et al. 2014). Finally, the active communication space calculated in this study can be used to determine how far apart members of dolphin group might be able to keep acoustic contact and be used for defining dolphin groups in a more biologically meaningful way during field surveys. In addition, it can guide the appropriate approach distance for local dolphin-watching boats and research boat during focal group following.

Acknowledgments

The hydrophone array system was provided courtesy of the Public Technology Service Center, IHB, CAS. We gratefully acknowledge the captains of Hongwei Su, Shaode Huang, Hongyu Su, Hongfang

Su, Yingqiang Li for their patience and cooperation, and Xiangxia Wu and Rui Zheng for logistic support. Individual thanks are due to Wenjun Xu of the Ningbo No.2 High School of Zhejiang province for her field and statistical assistance, Paul E. Nachtigall and Marc O. Lammers of the Hawaii Institute of Marine Biology of the University of Hawaii for their helpful discussion about this study. Special thanks are also extended to Susan Schmidt and the academic editor and many reviewers for their helpful critique of an earlier version of this manuscript.

References

- Acevedo-Gutiérrez A. 2002. Interactions between marine predators: dolphin food intake is related to number of sharks. *Marine Ecology Progress Series* 240:267-271.
- Acevedo-Gutiérrez A, and Stienessen SC. 2004. Bottlenose dolphins (*Tursiops truncatus*) increase number of whistles when feeding. *Aquatic Mammals* 30:357-362.
- Au WWL. 1993. *The sonar of dolphins*. New York: Springer-Verlag.
- Au WWL, and Benoit-Bird KJ. 2003. Automatic gain control in the echolocation system of dolphins. *Nature* 423:861-863.
- Au WWL, and Hastings MC. 2008. *Principles of marine bioacoustics* New York: Springer Science.
- Au WWL, and Moore PWB. 1990. Critical ratio and critical bandwidth for the Atlantic bottlenose dolphin. *The Journal of the Acoustical Society of America* 88:1635-1638. 10.1121/1.400323
- Aubauer R, Lammers MO, and Au WW. 2000. One-hydrophone method of estimating distance and depth of phonating dolphins in shallow water. *The Journal of the Acoustical Society of America* 107:2744-2749.
- Barco SG, Swingle WM, McLellan WA, Harris RN, and Pabst D. 1999. Local abundance and distribution of bottlenose dolphins (*Tursiops truncatus*) in the nearshore waters of Virginia Beach, Virginia. *Marine Mammal Science* 15:394-408.
- Blackwell SB, Lawson JW, and Williams MT. 2004. Tolerance by ringed seals (*Phoca hispida*) to impact pipe-driving and construction sounds at an oil production island. *The Journal of the Acoustical Society of America* 115:2346-2357.
- Chen BY, Zheng DM, Yang G, Xu XR, and Zhou KY. 2009. Distribution and conservation of the Indo-Pacific humpback dolphin in China. *Integrative Zoology* 4:240-247. 10.1111/j.1749-4877.2009.00160.x
- Chen T, Hung SK, Qiu YS, Jia XP, and Jefferson TA. 2010. Distribution, abundance, and individual movements of Indo-Pacific humpback dolphins (*Sousa chinensis*) in the Pearl River Estuary, China. *Mammalia* 74:117-125. 10.1515/Mamm.2010.024

- 764 Clark CW, and Ellison WT. 2000. Calibration and comparison of the acoustic location methods used during the
765 spring migration of the bowhead whale, *Balaena mysticetus*, off Pt. Barrow, Alaska, 1984–1993. *The*
766 *Journal of the Acoustical Society of America* 107:3509-3517. 10.1121/1.429421
- 767 Clark CW, Ellison WT, Southall BL, Hatch L, Van Parijs SM, Frankel A, and Ponirakis D. 2009. Acoustic masking in
768 marine ecosystems: intuitions, analysis, and implication. *Marine Ecology Progress Series* 395:201-222.
- 769 Connor RC, Smolker R, and Bejder L. 2006. Synchrony, social behaviour and alliance affiliation in Indian Ocean
770 bottlenose dolphins, *Tursiops aduncus*. *Animal Behaviour* 72:1371-1378.
- 771 Davidson AD, Boyer AG, Kim H, Pompa-Mansilla S, Hamilton MJ, Costa DP, Ceballos G, and Brown JH. 2012. Drivers
772 and hotspots of extinction risk in marine mammals. *Proceedings of the National Academy of Sciences*
773 109:3395-3400. 10.1073/pnas.1121469109
- 774 Fish JF, and Turl CW. 1976. Acoustic source levels of four species of small whales. San Diego, California: Naval
775 undersea center. p 21.
- 776 Fisher FH, and Simmons VP. 1977. Sound absorption in sea water. *The Journal of the Acoustical Society of America*
777 62:558-564. 10.1121/1.381574
- 778 Fletcher H. 1940. Auditory patterns. *Reviews of modern physics* 12:47-66.
- 779 Frankel AS, Zeddies D, Simard P, and Mann D. 2014. Whistle source levels of free-ranging bottlenose dolphins and
780 Atlantic spotted dolphins in the Gulf of Mexico. *The Journal of the Acoustical Society of America* 135:1624-
781 1631. 10.1121/1.4863304
- 782 Freitas M, Jensen FH, Tyne J, Bejder L, and Madsen PT. 2015. Echolocation parameters of Australian humpback
783 dolphins (*Sousa sahalensis*) and Indo-Pacific bottlenose dolphins (*Tursiops aduncus*) in the wild. *The*
784 *Journal of the Acoustical Society of America* 137:3033-3041. doi:<http://dx.doi.org/10.1121/1.4921277>
- 785 Hawkins E, and Gartside DF. 2009. Interactive behaviours of bottlenose dolphins (*Tursiops aduncus*) during
786 encounters with vessels. *Aquatic Mammals* 35:259-268.
- 787 Hawkins ER, and Gartside DF. 2010. Whistle emissions of Indo-Pacific bottlenose dolphins (*Tursiops aduncus*) differ
788 with group composition and surface behaviors. *The Journal of the Acoustical Society of America* 127:2652-
789 2663
- 790 Hayes SA, Mellinger DK, Croll DA, Costa DP, and Borsani JF. 2000. An inexpensive passive acoustic system for
791 recording and localizing wild animal sounds. *The Journal of the Acoustical Society of America* 107:3552-
792 3555. 10.1121/1.429424
- 793 He Q, Bertness MD, Bruno JF, Li B, Chen G, Coverdale TC, Altieri AH, Bai J, Sun T, Pennings SC, Liu J, Ehrlich PR, and
794 Cui B. 2014. Economic development and coastal ecosystem change in China. *Scientific reports* 4.
795 10.1038/srep05995
- 796 Helble TA, Ierley GR, D'Spain GL, and Martin SW. 2015. Automated acoustic localization and call association for
797 vocalizing humpback whales on the Navy's Pacific Missile Range Facility. *The Journal of the Acoustical*
798 *Society of America* 137:11-21. 10.1121/1.4904505
- 799 Hermannsen L, Beedholm K, Tougaard J, and Madsen PT. 2014. High frequency components of ship noise in
800 shallow water with a discussion of implications for harbor porpoises (*Phocoena phocoena*). *The Journal of*
801 *the Acoustical Society of America* 136:1640-1653. doi:<http://dx.doi.org/10.1121/1.4893908>
- 802 Hoffman JM, Ponnampalam LS, Araújo CC, Wang JY, Kuit SH, and Hung SK. 2015. Comparison of Indo-Pacific

- humpback dolphin (*Sousa chinensis*) whistles from two areas of western Peninsular Malaysia. *The Journal of the Acoustical Society of America* 138:2829-2835. doi:<http://dx.doi.org/10.1121/1.4934254>
- Houser DS, Gomez - Rubio A, and Finneran JJ. 2008. Evoked potential audiometry of 13 Pacific bottlenose dolphins (*Tursiops truncatus gilli*). *Marine Mammal Science* 24:28-41.
- Janik VM. 2000a. Source levels and the estimated active space of bottlenose dolphin (*Tursiops truncatus*) whistles in the Moray Firth, Scotland. *Journal of Comparative Physiology A-Sensory Neural and Behavioral Physiology* 186:673-680.
- Janik VM. 2000b. Whistle matching in wild bottlenose dolphins (*Tursiops truncatus*). *Science* 289:1355-1357.
- Janik VM, Sayigh LS, and Wells RS. 2006. Signature whistle shape conveys identity information to bottlenose dolphins. *Proceedings of the National Academy of Sciences of the United States of America* 103:8293-8297. 10.1073/pnas.0509918103
- Janik VM, and Slater PJ. 1998. Context-specific use suggests that bottlenose dolphin signature whistles are cohesion calls. *Animal Behaviour* 56:829-838.
- Jefferson TA. 2000. Population biology of the Indo-Pacific hump-backed dolphin in Hong Kong waters. *Wildlife monographs* 144:1-65.
- Jefferson TA, and Rosenbaum HC. 2014. Taxonomic revision of the humpback dolphins (*Sousa* spp.), and description of a new species from Australia. *Marine Mammal Science* 30:1494-1541. 10.1111/mms.12152
- Jensen FH, Beedholm K, Wahlberg M, Bejder L, and Madsen PT. 2012. Estimated communication range and energetic cost of bottlenose dolphin whistles in a tropical habitat. *The Journal of the Acoustical Society of America* 131:582-592. 10.1121/1.3662067
- Jensen FH, Bejder L, Wahlberg M, Aguilar De Soto N, Johnson MP, and Madsen PT. 2009a. Vessel noise effects on delphinid communication. *Marine Ecology Progress Series* 395:161-175.
- Jensen FH, Bejder L, Wahlberg M, and Madsen PT. 2009b. Biosonar adjustments to target range of echolocating bottlenose dolphins (*Tursiops* sp.) in the wild. *Journal of experimental biology* 212:1078-1086. 10.1242/jeb.025619
- Johnson CS. 1968a. Masked Tonal Thresholds in the Bottlenosed Porpoise. *The Journal of the Acoustical Society of America* 44:965-967. 10.1121/1.1911236
- Johnson CS. 1968b. Relation between absolute threshold and duration of tone pulses in the bottlenosed porpoise. *The Journal of the Acoustical Society of America* 43:757-763. 10.1121/1.1910893
- Johnson CS, McManus MW, and Skaar D. 1989. Masked tonal hearing thresholds in the beluga whale. *The Journal of the Acoustical Society of America* 85:2651-2654. 10.1121/1.397759
- Kimura S, Akamatsu T, Fang L, Wang Z, Wang K, Wang D, and Yoda K. 2014. Apparent source level of free-ranging humpback dolphin, *Sousa chinensis*, in the South China Sea. *Journal of the Marine Biological Association of the United Kingdom*. 10.1017/S0025315414000071
- King SL, Harley HE, and Janik VM. 2014. The role of signature whistle matching in bottlenose dolphins, *Tursiops truncatus*. *Animal Behaviour* 96:79-86. 10.1016/j.anbehav.2014.07.019
- Lammers MO, and Au WWL. 2003. Directionality in the whistles of Hawallan Spinner Dolphins (*Stenella longirostris*): a signal feature to cue direction of movement? *Marine Mammal Science* 19:249-264.
- Laurinolli MH, Hay AE, Desharnais F, and Taggart CT. 2003. Localization of North Atlantic right whale sounds in the

- 842 Bay of Fundy using a sonobuoy array. *Marine Mammal Science* 19:708-723. 10.1111/j.1748-
843 7692.2003.tb01126.x
- 844 Lewis J, Wartzok D, and Heithaus M. 2011. Highly dynamic fission–fusion species can exhibit leadership when
845 traveling. *Behavioral Ecology and Sociobiology* 65:1061-1069. 10.1007/s00265-010-1113-y
- 846 Li S, Wang D, Wang K, Taylor EA, Cros E, Shi W, Wang Z, Fang L, Chen Y, and Kong F. 2012. Evoked-potential
847 audiogram of an Indo-Pacific humpback dolphin (*Sousa chinensis*). *The Journal of Experimental Biology*
848 215: 3055-3063.
- 849 Lohr B, Wright TF, and Dooling RJ. 2003. Detection and discrimination of natural calls in masking noise by birds:
850 estimating the active space of a signal. *Animal Behaviour* 65:763-777. 10.1006/anbe.2003.2093
- 851 Madsen P. 2005. Marine mammals and noise: Problems with root mean square sound pressure levels for
852 transients. *The Journal of the Acoustical Society of America* 117:3952–3957.
- 853 Madsen PT, and Wahlberg M. 2007. Recording and quantification of ultrasonic echolocation clicks from free-
854 ranging toothed whales. *Deep Sea Research Part I: Oceanographic Research Papers* 54:1421-1444.
855 10.1016/j.dsr.2007.04.020
- 856 Madsen PT, Wahlberg M, Tougaard J, Lucke K, and Tyack PL. 2006. Wind turbine underwater noise and marine
857 mammals: implications of current knowledge and data needs. *Marine Ecology Progress Series* 309:279–
858 295.
- 859 Marsh HW, and Schulkin M. 1962. Shallow - Water Transmission. *The Journal of the Acoustical Society of America*
860 34:863-864. 10.1121/1.1918212
- 861 Marten K, and Marler P. 1977. Sound transmission and its significance for animal vocalization. *Behavioral Ecology*
862 *and Sociobiology* 2:271-290.
- 863 May-Collado LJ, and Wartzok D. 2008. A Comparison of Bottlenose Dolphin Whistles in the Atlantic Ocean: Factors
864 Promoting Whistle Variation. *Journal of Mammalogy* 89:1229-1240.
- 865 Medwin H. 1975. Speed of sound in water: A simple equation for realistic parameters. *The Journal of the Acoustical*
866 *Society of America* 58:1318-1319. 10.1121/1.380790
- 867 Miller P. 2002. Mixed-directionality of killer whale stereotyped calls: a direction of movement cue? *Behavioral*
868 *Ecology and Sociobiology* 52:262-270. 10.1007/s00265-002-0508-9
- 869 Miller PJO. 2006. Diversity in sound pressure levels and estimated active space of resident killer whale
870 vocalizations. *Journal of Comparative Physiology a-Neuroethology Sensory Neural and Behavioral*
871 *Physiology* 192:449-459. 10.1067/s00359-005-0085-2
- 872 Moore PWB, and Au WWL. 1982. Masked pure - tone thresholds of the bottlenosed dolphin (*Tursiops truncatus*)
873 at extended frequencies. *The Journal of the Acoustical Society of America* 72:S42. 10.1121/1.2019889
- 874 Morisaka T, and Connor RC. 2007. Predation by killer whales (*Orcinus orca*) and the evolution of whistle loss and
875 narrow-band high frequency clicks in odontocetes. *Journal of Evolutionary Biology* 20:1439-1458.
876 10.1111/j.1420-9101.2007.01336.x
- 877 Morisaka T, Shinohara M, Nakahara F, and Akamatsu T. 2005. Effects of ambient noise on the whistles of Indo-
878 Pacific bottlenose dolphin populations. *Journal of Mammalogy* 86:541-546.
- 879 Ng SL, and Leung S. 2003. Behavioral response of Indo-Pacific humpback dolphin (*Sousa chinensis*) to vessel traffic.
880 *Marine Environmental Research* 56:555-567. 10.1016/S0141-1136(03)00041-2

- 881 NRC. 2005. Marine mammal populations and ocean noise: determining when noise causes biologically significant
882 effects. Washington, DC: National Research Council of the National Academies p135.
- 883 Pan W, Lindsay P, Wang Y, Qin D, Long Y, Jin T, Liang Z, Wang D, Su Y, and Pei Z. 2006. The importance of the Indo-
884 Pacific humpback dolphin (*Sousa chinensis*) population of Sanniang Bay, Guangxi province, PR China:
885 Recommendations for habitat protection. the 58th Annual Meeting of the International Whaling
886 Commission. St. Kitts p1-6.
- 887 Plomp R, and Bouman MA. 1959. Relation between Hearing Threshold and Duration for Tone Pulses. *The Journal of*
888 *the Acoustical Society of America* 31:749-758. 10.1121/1.1907781
- 889 Popov VV, Supin AY, Pletenko MG, Tarakanov MB, Klishin VO, Bulgakova TN, and Rosanova EI. 2007. Audiogram
890 variability in normal bottlenose dolphins (*Tursiops truncatus*). *Aquatic Mammals* 33:24-33.
- 891 Popper AN, and Hawkins A. 2012. *The effects of noise on aquatic life*. New York: Springer Science & Business Media.
- 892 Preen A. 2004. Distribution, abundance and conservation status of dugongs and dolphins in the southern and
893 western Arabian Gulf. *Biological Conservation* 118:205-218.
- 894 Quick NJ, and Janik VM. 2008. Whistle rates of wild bottlenose dolphins (*Tursiops truncatus*): Influences of group
895 size and behavior. *Journal of Comparative Psychology* 122:305-311.
- 896 Quick NJ, and Janik VM. 2012. Bottlenose dolphins exchange signature whistles when meeting at sea. *Proceedings*
897 *of the Royal Society B: Biological Sciences* 279:2539–2545.
- 898 Quick NJ, Rendell LE, and Janik VM. 2008. A mobile acoustic localization system for the study of free - ranging
899 dolphins during focal follows. *Marine Mammal Science* 24:979-989.
- 900 Quintana-Rizzo E, Mann DA, and Wells RS. 2006. Estimated communication range of social sounds used by
901 bottlenose dolphins (*Tursiops truncatus*). *The Journal of the Acoustical Society of America* 120:1671-1683.
902 10.1121/1.2226559
- 903 Rasmussen MH, Lammers M, Beedholm K, and Miller L. 2006. Source levels and harmonic content of whistles in
904 white-beaked dolphins (*Lagenorhynchus albirostris*). *The Journal of the Acoustical Society of America*
905 120:510-517.
- 906 Reeves RR, Dalebout ML, Jefferson TA, Karczmarski L, Laidre K, O'Corry-Crowe G, Rojas-Bracho L, Secchi ER, Slooten
907 E, Smith BD, Wang JY, and Zhou KY. 2008. *Sousa chinensis*. IUCN Red List of Threatened Species (Version
908 2015-6) (accessed 28 June 2015).
- 909 Richardson WJ, Greene CRJ, Malme CI, and Thompson DH. 1995. *Marine Mammals and Noise*. San Diego:
910 Academic Press
- 911 Schulz T, Whitehead H, and Rendell L. 2006. A remotely-piloted acoustic array for studying sperm whale vocal
912 behaviour. *Canadian Acoustics* 34:54-55.
- 913 Schulz TM, Whitehead H, Gero S, and Rendell L. 2008. Overlapping and matching of codas in vocal interactions
914 between sperm whales: insights into communication function. *Animal Behaviour* 76:1977-1988.
- 915 Sims PQ, Hung SK, and Wursig B. 2012a. High-Speed vessel noises in west Hong kong waters and their
916 contributions relative to Indo-Pacific humpback dolphins (*Sousa chinensis*). *Journal of Marine Biology*
917 2012. 10.1155/2012/169103
- 918 Sims PQ, Vaughn R, Hung SK, and Wursig B. 2012b. Sounds of Indo-Pacific humpback dolphins (*Sousa chinensis*) in
919 West Hong Kong: A preliminary description. *The Journal of the Acoustical Society of America* 131:EL48-

- 920 EL53.
- 921 Širović A, Hildebrand JA, and Wiggins SM. 2007. Blue and fin whale call source levels and propagation range in the
922 Southern Ocean. *The Journal of the Acoustical Society of America* 122:1208-1215. 10.1121/1.2749452
- 923 Smolker RA, Richards AF, Connor RC, and Pepper JW. 1992. Sex differences in patterns of association among Indian
924 Ocean bottlenose dolphins. *Behaviour* 123:38-69.
- 925 Spiesberger JL. 1997. Passive acoustic localization enhanced with tomography and acoustic thermometry in the
926 ocean. *Marine and Freshwater Behaviour and Physiology* 30:147-172. 10.1080/10236249709379022
- 927 Spiesberger JL, and Fristrup KM. 1990. Passive localization of calling animals and sensing of their acoustic
928 environment using acoustic tomography. *The american naturalist* 135:107-153.
- 929 Surlykke A, Nachtigall PE, Fay RR, and Popper AN. 2014. *Biosonar*. New York: Springer.
- 930 Taylor JR. 1997. *An introduction to error analysis: The study of uncertainties in physical measurements*. Sausalito,
931 CA: University Science Books.
- 932 Tervo OM, Christoffersen MF, Simon M, Miller LA, Jensen FH, Parks SE, and Madsen PT. 2012. High source levels
933 and small active space of high-pitched song in bowhead whales (*Balaena mysticetus*). *PLOS ONE* 7:e52072.
- 934 Tiemann CO, Porter MB, and Frazer LN. 2004. Localization of marine mammals near Hawaii using an acoustic
935 propagation model. *The Journal of the Acoustical Society of America* 115:2834-2843. 10.1121/1.1643368
- 936 Tyack P. 1985. An optical telemetry device to identify which dolphin produces a sound. *The Journal of the*
937 *Acoustical Society of America* 78:1892-1895.
- 938 Urlick RJ. 1983. *Principles of underwater sound*. New York: McGraw-Hill.
- 939 Wahlberg M, Møhl B, and Madsen PT. 2001. Estimating source position accuracy of a large-aperture hydrophone
940 array for bioacoustics. *The Journal of the Acoustical Society of America* 109:397-406.
- 941 Wang JY, Yang SC, Fruet PF, Daura-Jorge FG, and Secchi ER. 2012. Mark-recapture analysis of the critically
942 endangered eastern Taiwan Strait population of Indo-Pacific humpback dolphins (*Sousa chinensis*):
943 Implications for conservation. *Bulletin of Marine Science* 88:885-902.
- 944 Wang K, Wang D, Akamatsu T, Fujita K, and Shiraki R. 2006. Estimated detection distance of a baiji's (Chinese river
945 dolphin, *Lipotes vexillifer*) whistles using a passive acoustic survey method. *Journal of the Acoustical*
946 *Society of America* 120:1361-1365. 10.1121/1.2221416
- 947 Wang Z-T, Akamatsu T, Wang K-X, and Wang D. 2014a. The Diel Rhythms of Biosonar Behavior in the Yangtze
948 Finless Porpoise (*Neophocaena asiaeorientalis asiaeorientalis*) in the Port of the Yangtze River: The
949 Correlation between Prey Availability and Boat Traffic. *PLOS ONE* 9:e97907. doi:
950 10.1371/journal.pone.0097907
- 951 Wang Z-T, Fang L, Shi W-J, Wang K-X, and Wang D. 2013. Whistle characteristics of free-ranging Indo-Pacific
952 humpback dolphins (*Sousa chinensis*) in Sanniang Bay, China. *The Journal of the Acoustical Society of*
953 *America* 133:2479-2489. doi: 10.1121/1.4794390
- 954 Wang Z-T, Nachtigall PE, Akamatsu T, Wang K-X, Wu Y-P, Liu J-C, Duan G-Q, Cao H-J, and Wang D. 2015. Passive
955 acoustic monitoring the diel, lunar, seasonal and tidal patterns in the biosonar activity of the Indo-Pacific
956 humpback dolphins (*Sousa chinensis*) in the Pearl River Estuary, China. *PLOS ONE* 10:e0141807. doi:
957 10.1371/journal.pone.0141807
- 958 Wang Z-T, Wu Y-P, Duan G-Q, Cao H-J, Liu J-C, Wang K-X, and Wang D. 2014b. Assessing the underwater acoustics

of the world's largest vibration hammer (OCTA-KONG) and its potential effects on the Indo-Pacific humpbacked dolphin (*Sousa chinensis*). *PLOS ONE* 9:e110590. doi: 10.1371/journal.pone.0110590

Watkins WA, and Schevill WE. 1972. Sound source location by arrival-times on a non-rigid three-dimensional hydrophone array. *Deep Sea Research and Oceanographic Abstracts*: Elsevier. p 691-706.

Watkins WA, and Schevill WE. 1974. Listening to Hawaiian spinner porpoises, *Stenella cf. longirostris*, with a three-dimensional hydrophone array. *Journal of Mammalogy*:319-328.

Xu X, Song J, Zhang Z, Li P, Yang G, and Zhou K. 2015. The world's second largest population of humpback dolphins in the waters of Zhanjiang deserves the highest conservation priority. *Scientific reports* 5. 10.1038/srep08147

Yeung YM, and Shen JF. 2008. *The Pan-Pearl River Delta: An Emerging Regional Economy in a Globalizing China*. Hongkong: the Chinese University Press.

Zar JH. 1999. *Biostatistical analysis* Upper Saddle River, NJ: Prentice-Hall.

Zimmer WMX. 2011. *Passive acoustic monitoring of cetaceans*. New York: Cambridge University Press

Figure 1(on next page)

Map of the study area.

Acoustic recordings of underwater sounds produced by humpback dolphins were made in Pearl River Estuary and Beibu Gulf. Dashed line area shows the sound recording region.

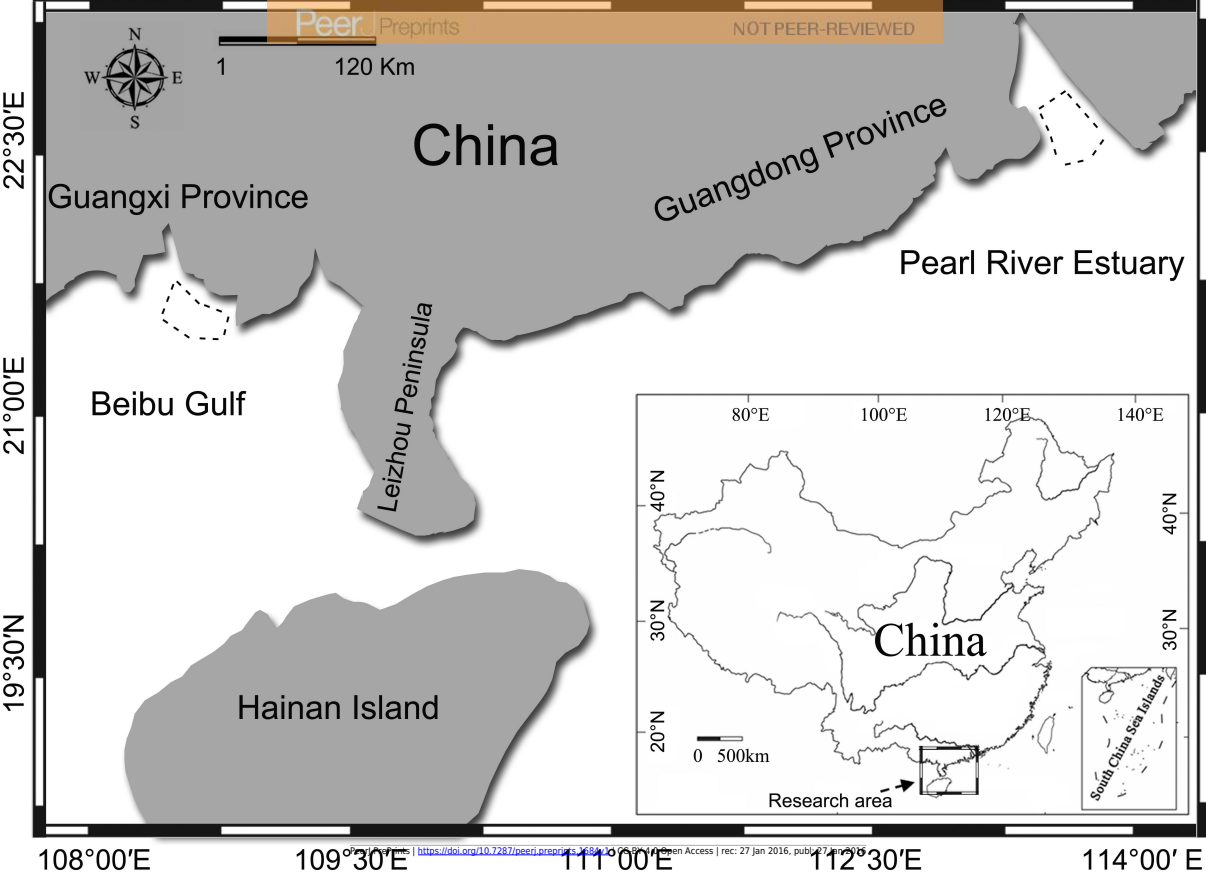


Figure 2 (on next page)

Schematic of experimental apparatus and the array design.

Acoustic signals were picked up by the hydrophones and conditioned by the amplifier and filtered before storage into the PC via the DAQ systems. Distance between H1, H2, H3, H4, and H5 was 1.47m and 1.54 m for Pearl River Estuary and Beibu Gulf, respectively. Distance between H1, H2, H3, and H4 was 2.08 m and 2.18 m for Pearl River Estuary and Beibu Gulf, respectively. The inset shows a detailed view of the hydrophone array.

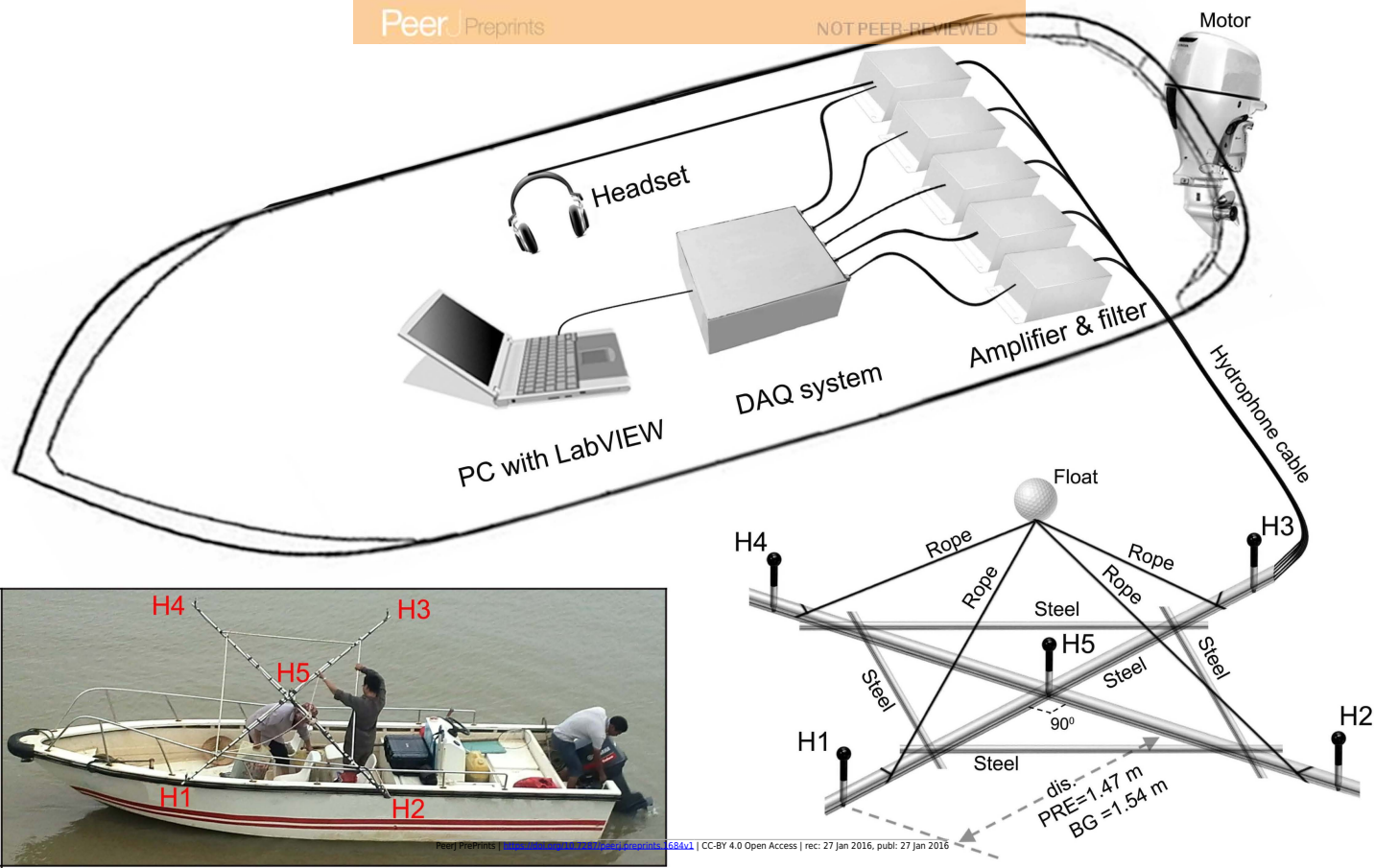


Figure 3(on next page)

Schematic of multipath propagation

The d_w , d_a and d_h were the depth of the water, the animal, and the receiving hydrophone, respectively. "A" denotes the animal location, and "H" denotes the hydrophone, A_a was the horizontal separation distance between the animal and the hydrophone, r_o was the horizontal separation distance between the animal and the hydrophone, $r_s(m)$ and $r_b(m)$ were the signal propagation lengths for multipath propagation signal with a total number of m reflection points and the initial reflection point at the air-water and water-bottom interface, respectively, $\theta_s(m)$ and $\phi_s(m)$ were the incident (same as reflected) and transmitted angle, respectively, for multipath propagation signal with a total number of m reflection points and the initial reflection point at the air-water interface, $\theta_b(m)$ and $\phi_b(m)$ were the incident (same as reflected) and transmitted angle, respectively, for multipath propagation signal with a total number of m reflection points and the initial reflection point at the water-bottom interface, $h_s(m)$ and $h_b(m)$ were the vertical propagation length of the multipath propagation signal with a total number of m reflection points and the initial reflection point at the air-water and water-bottom interface, respectively, by referencing the animal location. The insets show the sound transmission at the air-water interface and at the water-bottom interface, respectively.

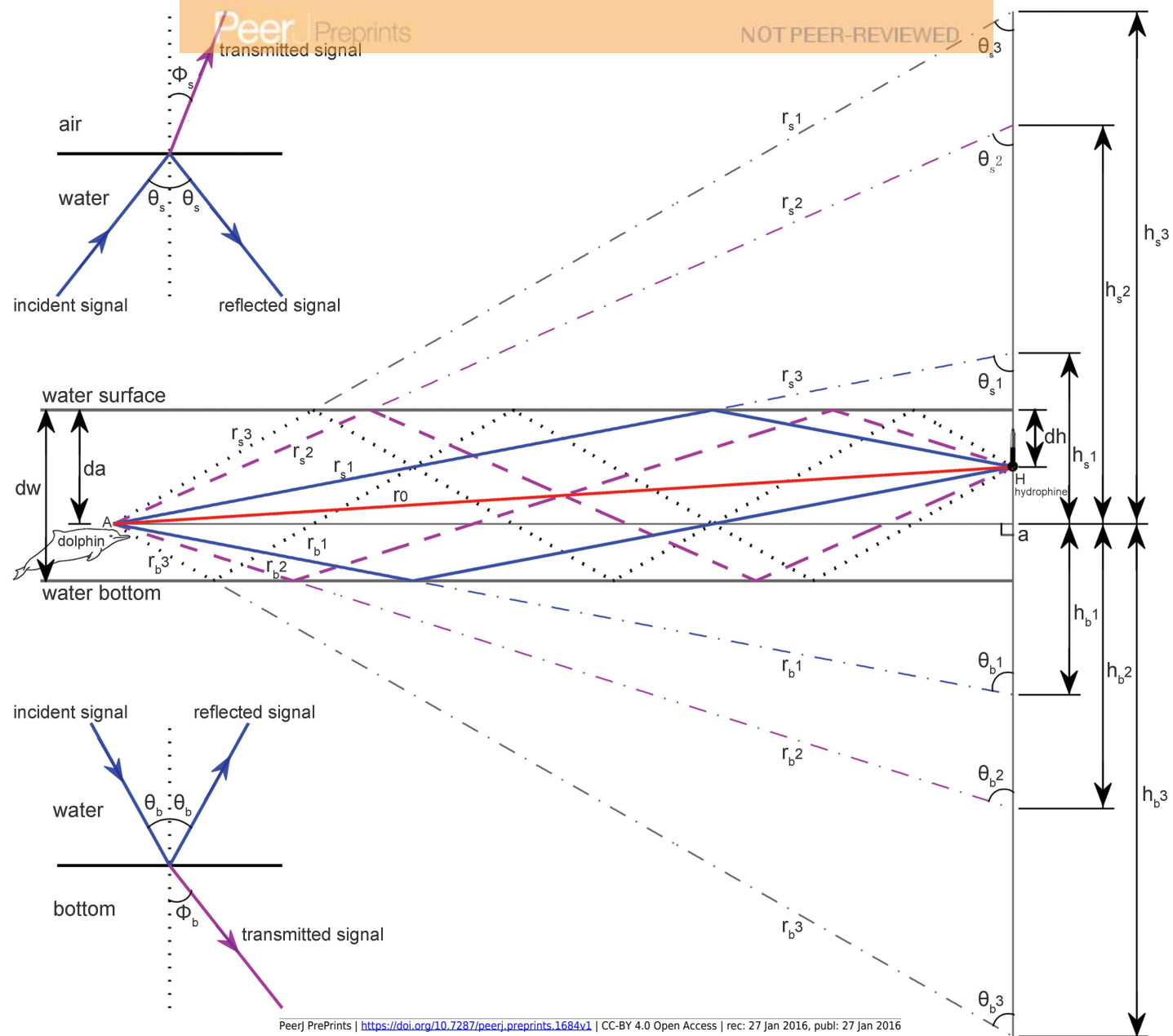
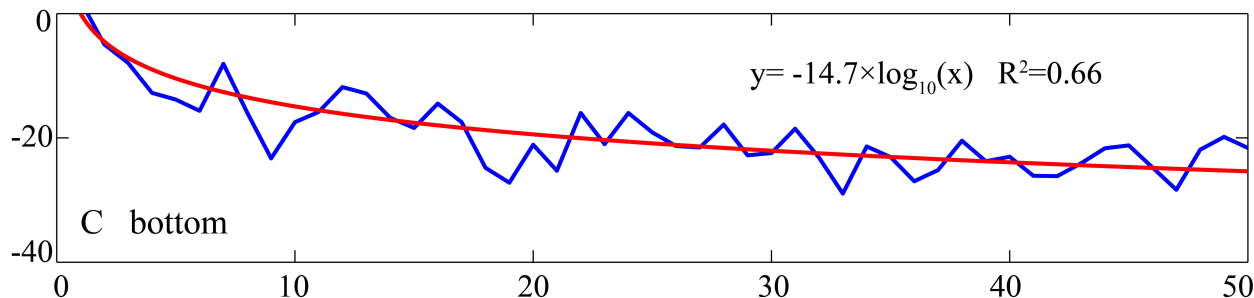
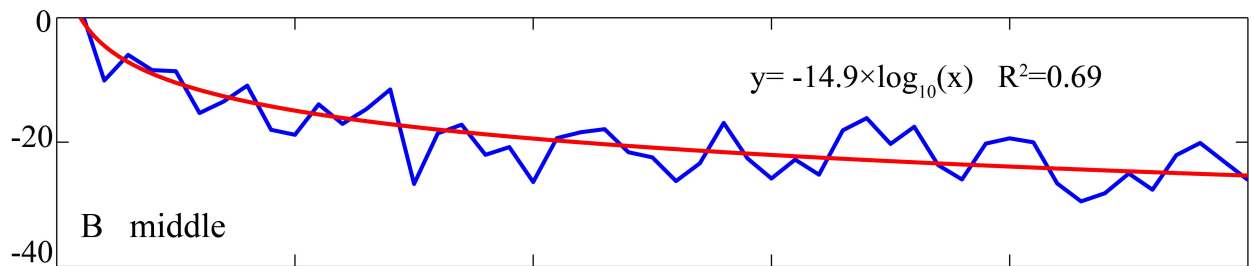
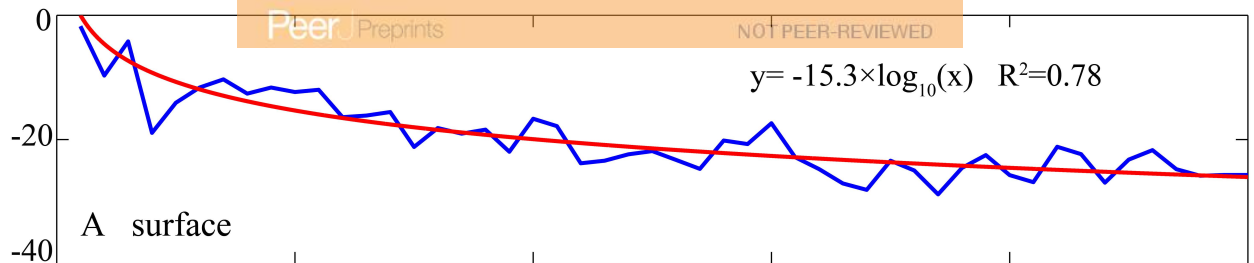


Figure 4(on next page)

Sound transmission loss coefficient as a function of animal depth and distance between hydrophone and animals at given hydrophone and water depth.

The blue curve was the modeled transmission loss of the whistle with a peak frequency of 6.6 kHz (see spectrogram in Fig. 5) at water depth of 4.5 m with hydrophone at 1m depth and animal located at (A) surface, (B) middle section and (C) bottom of the water in Beibu Gulf. The red curve in each graph represents logarithmic curve fit of the blue curve.

Transmission loss (dB re 1 m)



Distance (m)

Figure 5 (on next page)

Schematic of acoustic localization of humpback dolphins whistle.

(A) oscillograms of same signal received at four different hydrophones (H1, H2, H3, and H4). Cross-correlation was shown in B, and legends on the top left corner of each panel indicate which two hydrophones have been cross-correlated. The peak of each correlation function corresponds to time differences in time of arrival of whistles in the front hydrophone minus that of the later one for the compared hydrophones. Hyperbola fixing (in C) and legends next to each hyperbola in indicate which hydrophone pair it corresponds to. Points of intersection of hyperbolae indicate position of sound source. Closed blue circle (in C) indicates position of hydrophone arrays. Point (0, 0) was located at the center of the acoustic array. The slide on the top right corner of (C) indicating the depth of the animal.

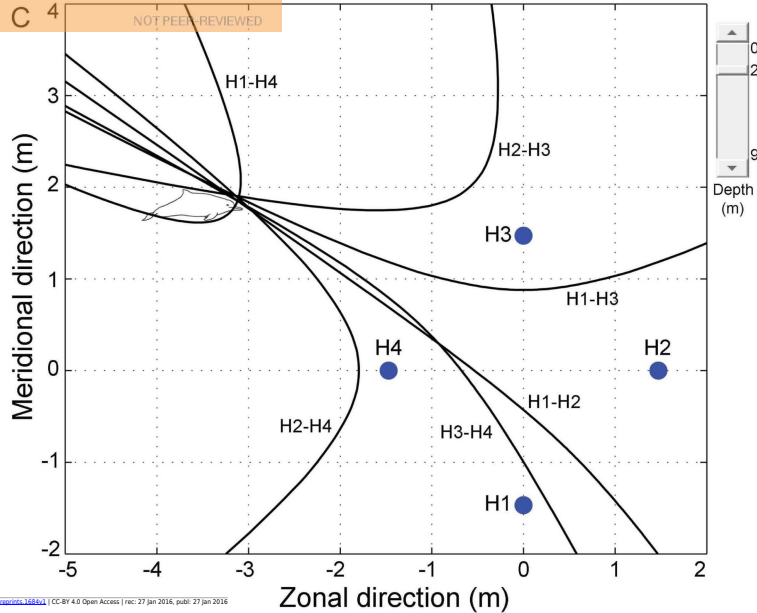
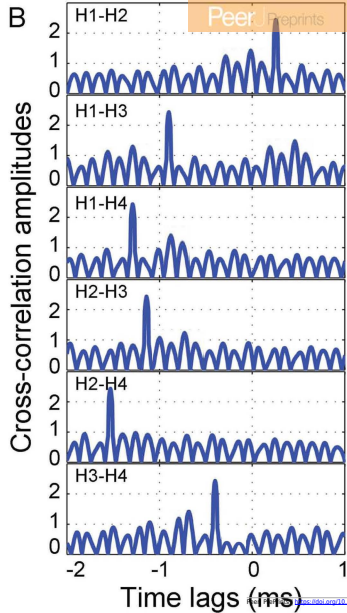
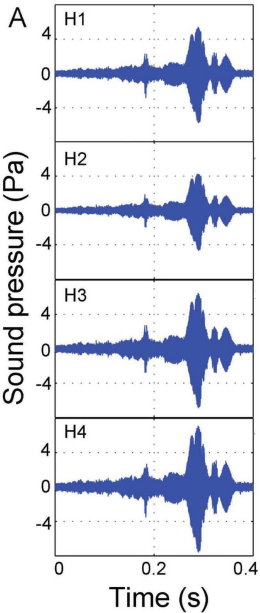


Figure 6(on next page)

Spectrogram of the six whistle tonal types.

Spectrogram configuration (window type: Hanning; temporal grid resolution 5 ms; overlap samples per frame 80%; frequency grid spacing 24.4 Hz; window size 5 000; FFT size 8 192; Nyquist frequency 100 kHz). Note that spectrogram maximum frequency was scaled to 25 kHz for a detailed view of the whistle fundamental frequency.

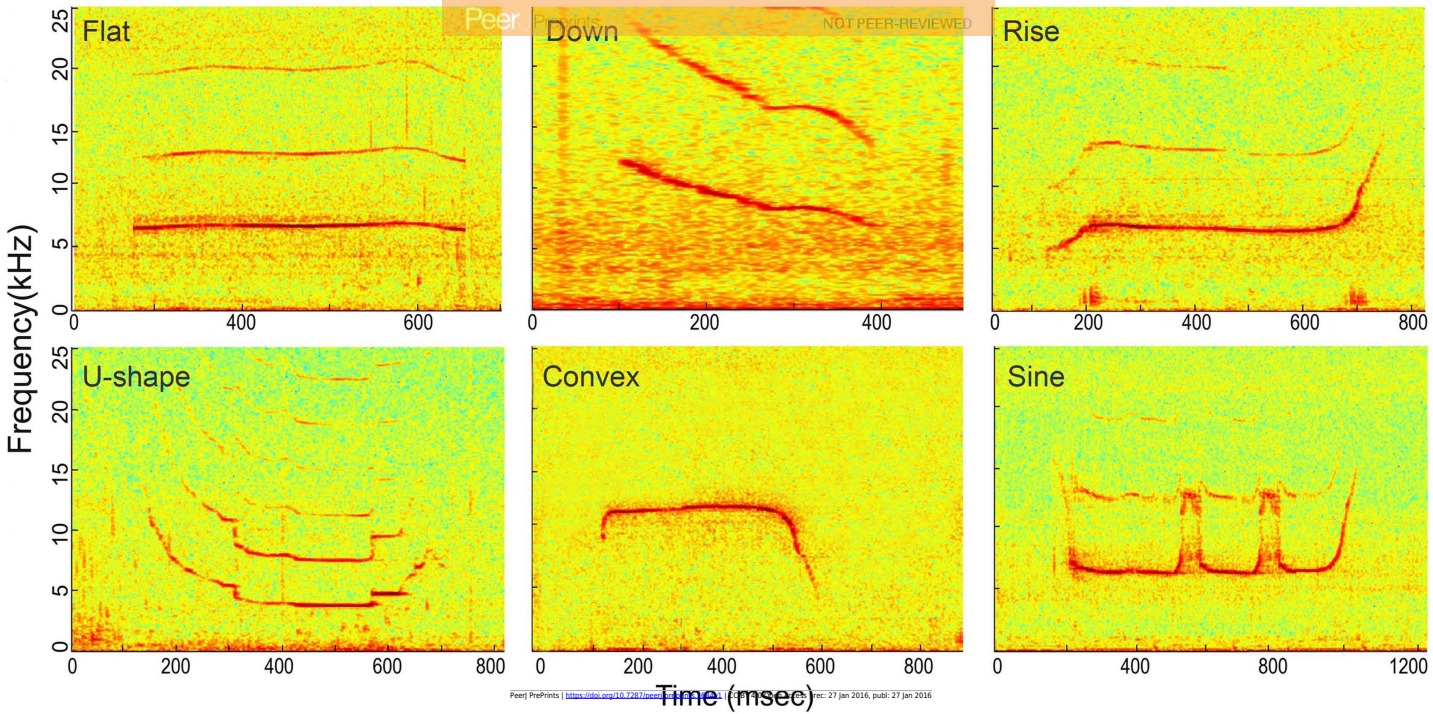


Figure 7 (on next page)

Three-step whistle extraction.

(A) waveform and (B) spectrogram of the 2 s signal extracted for each whistle. Candidate whistle was extracted from the starting and ending point of the trace of the whistle fundamental frequency contour (in C) and further extracted as the portion containing 98% of the total cumulative energy (between $ce_{1\%}$ and $ce_{99\%}$ in E), whistle duration was defined as the time between the 1st and 99th cumulative energy percentiles (between $t_{99\%ce}$ and $t_{1\%ce}$ in E). A 500 ms ambient noise selection (in A and B) was extracted following each whistle as the matched noise. Spectrogram configuration (window type: Hanning; temporal grid resolution 5 ms; overlap samples per frame 80%; frequency grid spacing 31.3 Hz; window size 12 821; FFT size 16 384; Nyquist frequency 256.414 kHz). Note that spectrogram maximum frequency was scaled to 20 kHz for a detailed view of the fundamental frequency.

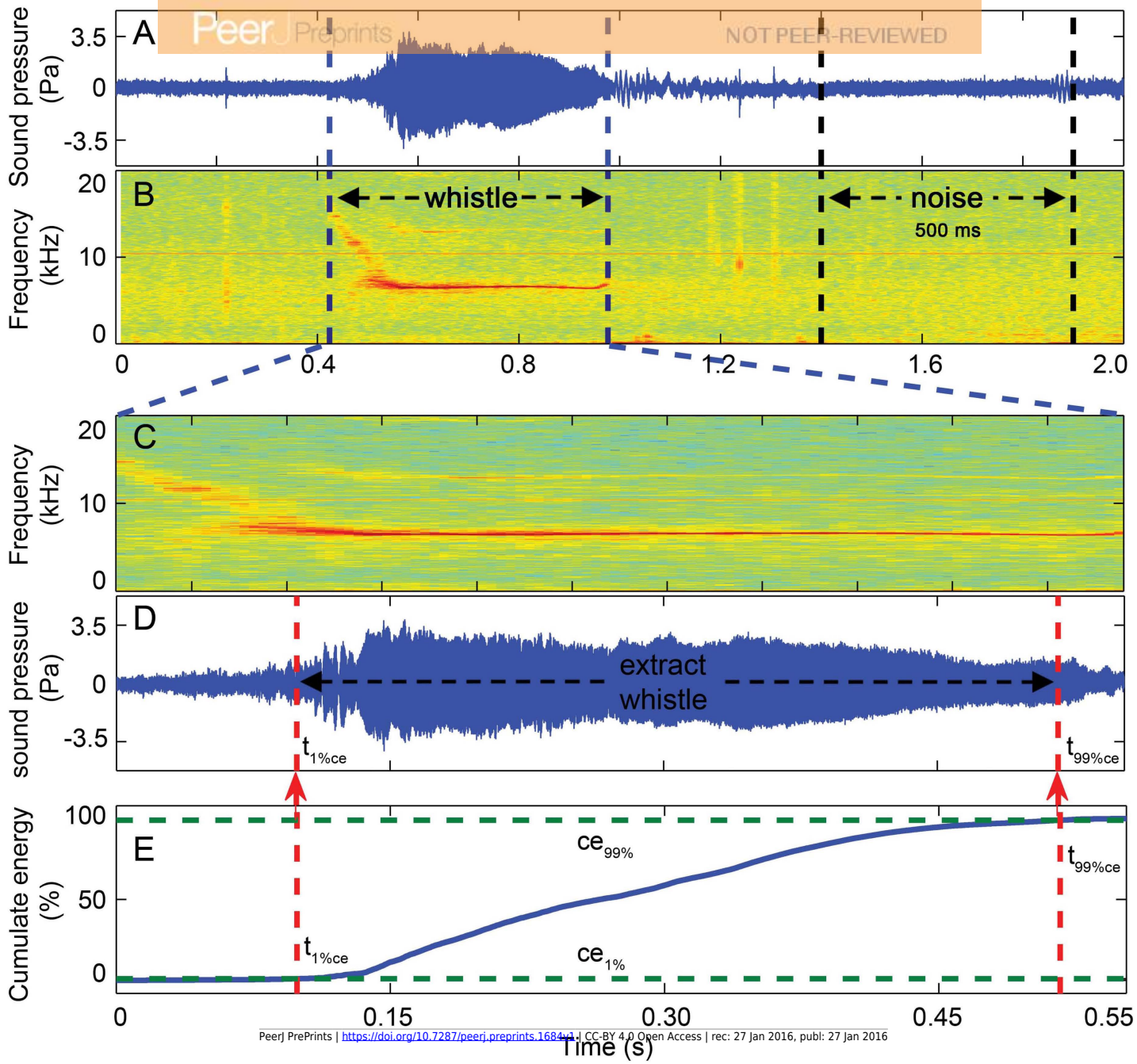


Figure 8(on next page)

Schematic for active communication space calculation.

The mean(Sig_TOBL) and mean(Noi_TOBL), surrounded by gray shading of a 95% CI was calculated from a running average of the one-third octave band levels for each whistle and the matched noise, respectively, with step window size of 200 ms and 95% steps overlap, f_p was the peak frequency determined by the mean(Sig_TOBL), the max(Sig_TOBL) and mean(Noi_PSD) was calculated from a running maximum one-third octave band levels of whistle and a running average power spectral density of the matched noise, respectively, both with step window size of 200 ms and 95% steps overlap. *Sousa* audiogram with a frequency span of 500 Hz to 38 kHz was obtained by fitting a third-order polynomial curve to the *Sousa* auditory thresholds between 5 kHz and 38 kHz. Dolphin critical ratio was adopted from Johnson *et al*, 1989. The inset shows a detailed portion of the max(Sig_TOBL) and mean(Sig_TOBL) at the peak frequency determined by the averaged one-third octave band levels for all the 200 ms slices for each whistle.

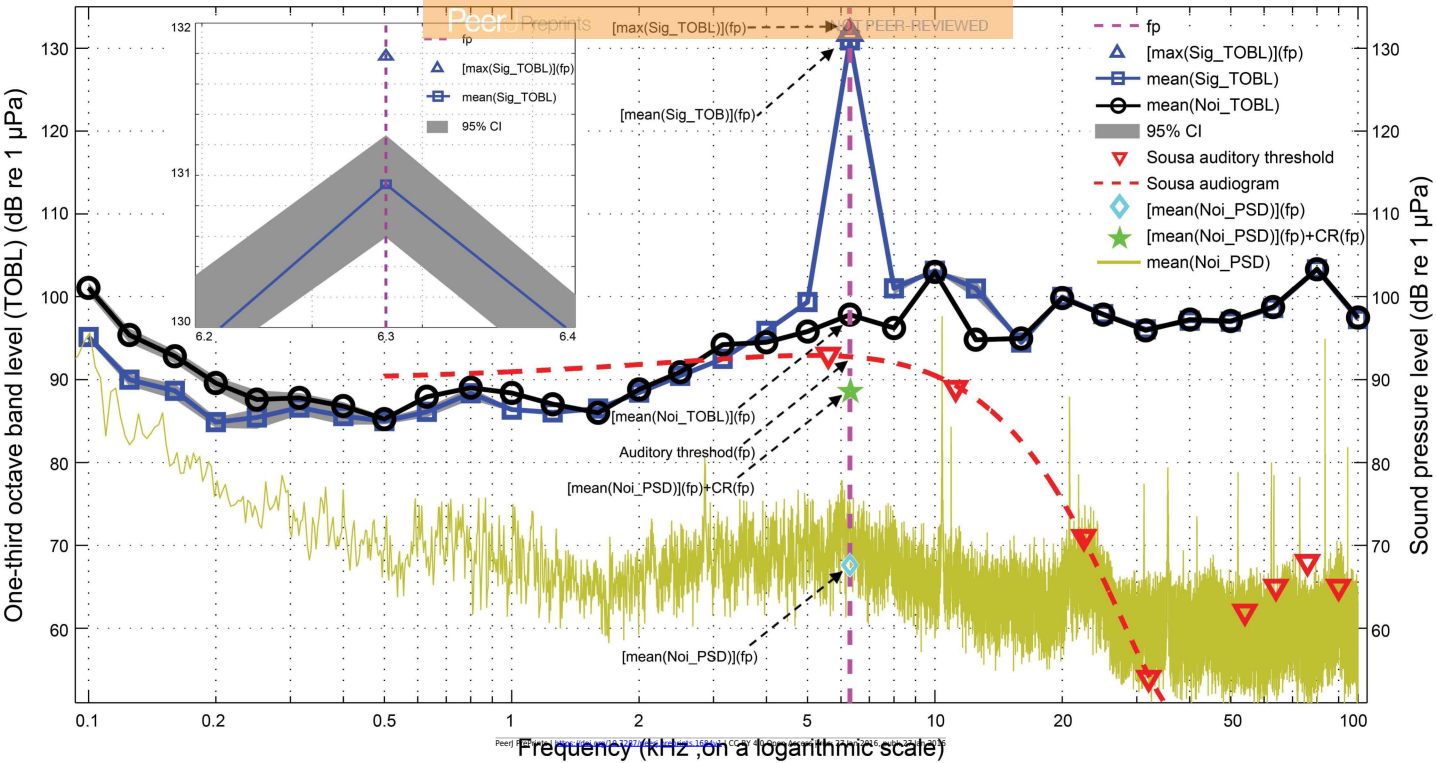


Figure 9 (on next page)

Histogram (A) and box plot (B) of the modeling sound transmission loss coefficient in Pearl River Estuary and Beibu Gulf.

In the box plot, the central line mark on each box is the median, the edges of the box are the first quartile (Q1) and the third quartile (Q3), and the notch indicates the 95% CI of the median. Outliers (Open circles) were the data that is outside the fences of $Q1 - 1.5 \times \text{inter-quartile-range (IQR)}$ and $Q3 + 1.5 \times \text{IQR}$, where $\text{IQR} = Q3 - Q1$; Whiskers show the most extreme data points that are not outliers.

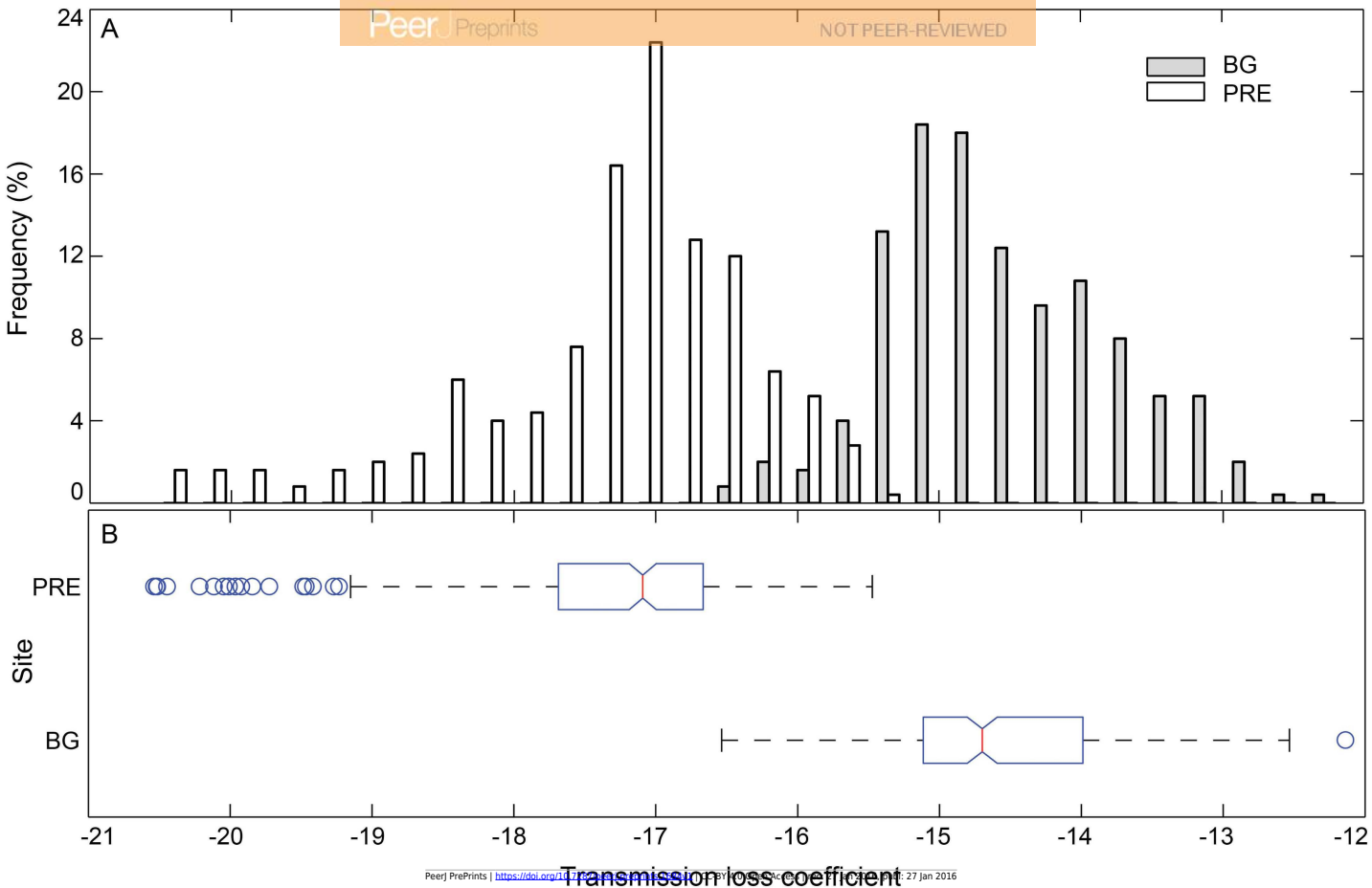


Figure 10(on next page)

Box plot of the apparent source levels (ASLs) and source energy flux density (SEFD) of the six tonal types.

The center of each box is the median value, the upper and lower box borders are the first quartile (Q1) and the third quartile (Q3). The whiskers extend to the most extreme data within the fences of $Q1 - 1.5 \times \text{inter-quartile-range (IQR)}$ and $Q3 + 1.5 \times \text{IQR}$, where $\text{IQR} = Q3 - Q1$. Outliers (open circles) were the data outside the fences. The boxes with different lower case and upper case were significantly different at $p < 0.05$ and $p < 0.01$, respectively, within each apparent source level and source energy flux density categories.

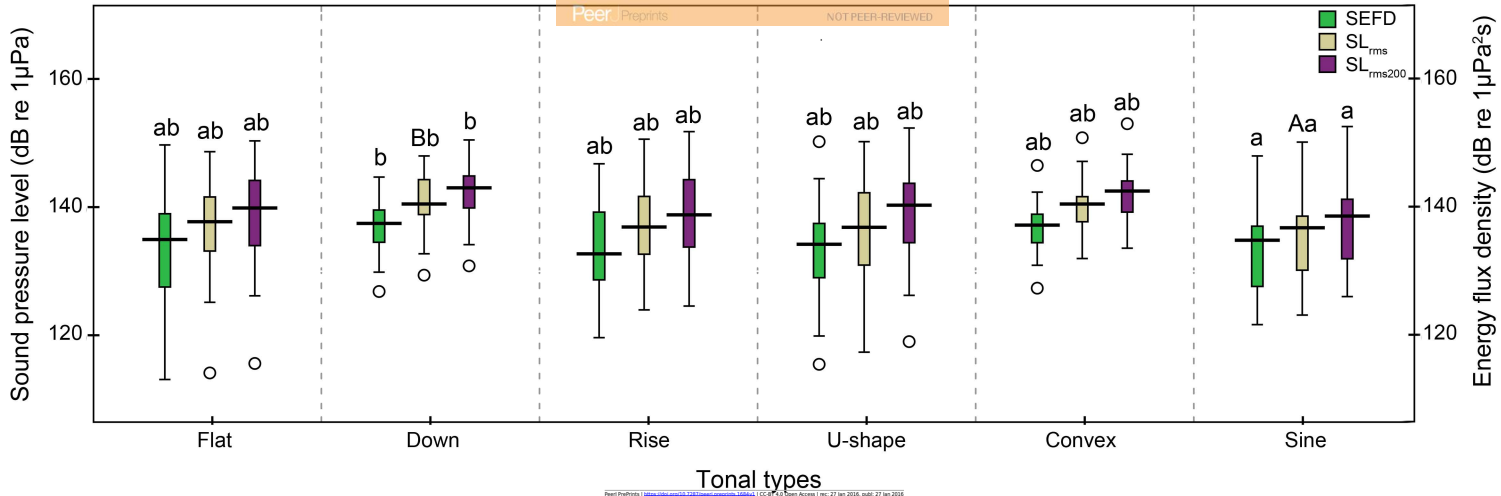


Table 1 (on next page)

Summary of 14 survey days in Pearl River Estuary and Beibu Gulf.

Each successfully localized whistle was grouped according to tonal types.

Site	Date	Sample rate	Recorded whistles			Localized whistles				
				Flat	Down	Rise	U-shape	Convex	Sine	sum
PRE	20140605	200 000	78	21	0	2	0	1	5	29
	20140708	512 821	5	0	0	0	0	0	0	0
	20140710	512 821	19	1	0	0	0	0	3	4
	20140711	512 821	6	0	0	0	0	0	0	0
BG	20140804	512 821	35	4	3	2	3	3	4	19
	20140805	512 821	49	2	2	1	15	1	2	23
	20140806	512 821	28	5	5	1	1	0	0	12
	20140813	200 000	107	6	2	2	1	3	1	15
	20140814	200 000	55	8	1	4	9	1	0	23
	20140815	200 000	8	1	0	0	0	0	1	2
	20140816	200 000	4	0	0	0	0	0	0	0
	20140820	200 000	66	5	3	2	2	2	9	23
	20140821	200 000	18	0	0	0	0	0	0	0
	20140822	200 000	156	13	12	14	33	4	16	92
	Sum		634	66	28	28	64	15	41	242

Table 2 (on next page)

Environmental parameters and the estimated sound propagation speed at the recording site of the Pearl River Estuary and Beibu Gulf.

		Temperature(°C)	Salinity(‰)	pH	Depth(m)	Velocity(m/s)	Sediment
PRE(N=61)	mean±SD	28.6±0.7	30.6±3.7	7.5±0.4	7.0±0.9	1538	Clayey silt
	Range	27.3-30.2	30.1-31.1	6.6-7.9	4.6-9.3		
BG(N=45)	mean±SD	30.6±0.4	23.5±6.0	8.1±0.1	4.6±2.0	1535	Fine sand
	Range	30.1-31.1	20.0-30.0	7.7-8.3	1.9-7.9		

1

Table 3 (on next page)

Descriptive and comparative statistic of the whistle parameters and active communication spaces from Pearl River Estuary and Beibu Gulf.

t, whistle duration; ASLs, apparent source levels; *fp*, peak frequency derived from a running average of the whistle mean one-third octave band levels with step window size of 200 ms and 95% overlap; ACS, the active communication space; ACS_{at}, the auditory-threshold limited active communication space. * denote data with a grossly skewed distribution and descriptive parameters of median±quartile deviation and P5-P95 were presented. Bolded numbers indicating significantly different at $p < 0.05$.

	PRE(n=33)		BG(n=209)			
	mean±SD	Range	mean±SD	Range	z	p
t	0.50±0.19	0.23-1.01	0.44±0.20	0.21-1.61	-2.0	0.04
ASL _{rms}	138.5±6.8	125-158	137.2±7.0	114-160	-0.8	0.42
ASL _{rms200}	140.3±7.3	126-160	139.3±6.9	116-161	-0.4	0.66
SEFD	135.2±7.4	121-155	134.0±6.8	110-158	-0.7	0.46
SPL _{noi}	122.3±5.0	111-134	122.2±6.3	105-132	-1.0	0.32
f _p	4.9±1.0	3.2-8.0	6.1±2.6	1.6-16.0	-3.0	<0.001
mean(ACS)*	14.7±2.6	3.6-34.6	34.2±9.5	6.1-76.5	-5.5	<0.001
max(ACS)*	17.1±3.5	3.9-39.8	43.5±12.2	7.2-119.2	-5.8	<0.001
mean(ACS _{at})*	24.3±4.8	6.9-65.3	60.7±18.1	6.8-142.6	-4.2	<0.001
max(ACS _{at})*	37.5±4.6	7.4-76.5	74.3±25.3	8.1-198.1	-4.4	<0.001

Table 4(on next page)

Apparent source level of dolphin and whale whistles.

All source levels were in rms, except those from the study of Fish and Turl (1976), of which power spectrum range were given. ^a animal moving with or towards the array; ^b animal moving ahead of or away from the array; ^c limited by the recording system; ^d measured from power spectrum generated by peak hold method; ^e measured from 95% energy window; ^f 90% CI; ^g measured from 200 ms running windows; ^h measured from power spectrum generated by sum-average method; ⁱ measured from 100 ms running window; ^j measured by cross-correlation functions; ^k measured from the 98% energy window; ^l measured from 200 ms running window.

Species	Latin name	Source	Location	Mean±SD(dB)	Range (dB)	Sample size
Hawaiian Spinner dolphins	<i>Stenella longirostris</i>	Watkins and Schevill (1974)	Kealakekua Bay, Hawaii		109 to 125	N=14
		Lammers and Au (2003)	Coastal of Oahu, Hawaii	153.9±4.5 ^a		N=22
				150.2±2.8 ^b		N=22
Bottlenose dolphin	<i>Tursiops truncatus</i>	Tyack (1985)	Captive in aquariums, US		125 - >140 ^c	
		Fish and Turl (1976)	Offshore Southern California waters		150-173 ^d	
		Janik (2000)	Moray firth, Scotland	158±6.4	134-169	N=103
		Jensen <i>et al</i> (2012)	Koombana Bay, Western Australia	146.7±6.2 ^e	136.8-158.0 ^f	N=180
				147.6±6.4 ^g	137.9-159.0 ^f	N=180
		Frankel <i>et al</i> (2014)	Gulf of Mexico	138.2±8.0	114-163	N=645
Common dolphin	<i>Deiphinus delphiis</i>	Fish and Turl (1976)	Offshore Southern California waters		125-145 ^h	N=385
Atlantic spotted dolphin	<i>Stenella frontalis</i>	Frankel <i>et al</i> (2014)	Gulf of Mexico	138.4±8.0	115.4-163.1	
white-beaked dolphins	<i>Lagenorhynchus albirostris</i>	Rasmussen <i>et al</i> (2006)	Faxaflói Bay, Iceland	148±12 ⁱ	124-166	N=12
				144±8 ^j	118-167	N=43
Baiji	<i>Lipotes vexillifer</i>	Wang <i>et al</i> (2006)	Shishou reserve, China	143.2±5.8	135.9-150.8	N=43
Humpback dolphin	<i>Sousa chinensis</i>	Present study	PRE and BG, China	137.4±6.9 ^k	114-160	N=242
				139.5±6.9 ^l	116-161	N=242
Short-finned pilot whale	<i>Globicephala macrorhynchus</i>	Fish and Turl (1976)	Offshore Southern California waters		157-183 ^d	
Killer whale	<i>Orcinus orca</i>	Miller <i>et al</i> (2006)	Johnstone strait, Canada	140.2±4.1	133-147	N=24

1

2