

**A peer-reviewed version of this preprint was published in PeerJ on 20 August 2015.**

[View the peer-reviewed version](https://doi.org/10.7717/peerj.1187) (peerj.com/articles/1187), which is the preferred citable publication unless you specifically need to cite this preprint.

Rohwer S, Grason E, Navarro-Sigüenza AG. 2015. Irrigation and avifaunal change in coastal Northwest Mexico: has irrigated habitat attracted threatened migratory species? PeerJ 3:e1187  
<https://doi.org/10.7717/peerj.1187>

# **Irrigation and avifaunal change in Coastal Northwest Mexico: Has irrigated habit attracted threatened migratory species?**

Sievert Rohwer, Emily W. Grason, Adolfo G Navarro-Sigüenza

Irrigation in desert ecosystems can either reduce or increase species diversity. Groundwater pumping often lowers water tables and reduces natural wetlands, while canal irrigation often creates mesic habitat, resulting in great increases in avian diversity from irrigation. Here we use remotely-sensed data sets to show that 60% of the land in the coastal plain of southern Sonora and northern Sinaloa lying below 200m elevation has been converted by irrigation to more mesic habitats. We then use the record of bird specimens in the world's museums from this same region of Mexico to examine the avian community before and after the development of extensive irrigation. In general these museum records show an increase in the abundance and diversity of breeding birds associated with mesic habitats. Although thorn forest birds have likely decreased in total numbers, most are common enough in the remaining thorn forest that collection records did not indicate their probable decline. Four migrants having most of their breeding ranges in the U.S. or Canada, Yellow-billed Cuckoo, Cliff Swallow, Bell's Vireo, and Orchard Oriole, apparently have increased dramatically as breeders in irrigated habitats of NW Mexico. Because these species have decreased or even largely disappeared as breeding birds in parts of the U.S. or Canada, further research should assess whether their increases in new mesic habitats of NW Mexico are linked to their declines as breeding birds in Canada and the U.S. For Bell's Vireo recent specimens from Sinaloa suggest its new breeding population in NW Mexico may be composed partly of the endangered Least Bell's Vireo.

Irrigation and avifaunal change in Coastal Northwest Mexico: Has irrigated habit attracted threatened migratory species?

Sievert Rohwer

Burke Museum and Department of Biology, University of Washington, Seattle, WA 98195-1800, USA

Emily Grason

Department of Biology, University of Washington, Seattle, WA 98195-1800, USA

Adolfo G. Navarro-Sigüenza

Museo de Zoología, Facultad de Ciencias, Universidad Nacional Autónoma de México, Apartado Postal 70-399, México D. F. 04510, Mexico

## INTRODUCTION

Biologists generally agree that we are in the midst of an anthropogenic global extinction caused by habitat modification, the introduction of alien species, and global climate change (Jetz et al. 2007; Steadman 2006; Wilson 1992; Dirzo et al. 2014). Throughout the Pacific vast numbers of avian extinctions followed the arrival of humans as a consequence of habitat modification, and the introduction of pigs, rats and cats, as well as diseases that island endemics could not resist (Steadman 2006, 1995). Now, on continental landmasses, habitat modification has also become the primary cause of species being listed as threatened or endangered (Wilcove et al. 1998). Even though climate change will be more dramatic in temperate regions, habitat modification and climate change are projected to increase disproportionately as drivers of extinction in tropical species because so many have small ranges, which make them disproportionately susceptible to habitat and climate changes (Jetz et al. 2007).

Here we use historic and recent museum collections to document dramatic changes in the breeding bird community caused by land-use change. During the last half-century

massive agricultural irrigation projects have transformed extensive areas of original thorn forest in northern Sinaloa and southern Sonora, Mexico into mesic habitats. This change has the potential to differentially affect species based on habitat preferences. In particular, we were interested to learn whether increased availability of mesic habitat in this region could be providing new breeding habitat for migrant species that are thought to have declined in their historic breeding ranges further north (Wilcove and Wikelski 2008).

Massive irrigation systems often dramatically transform habitat and bird communities, but these transformations can vary in almost opposite ways. For example, wet meadows and woodlands may disappear when pumping ground water from wells lowers water tables, resulting in substantial declines in the abundance and even the presence of wetland species (Dilts et al. 2012, Yom-Tov et al. 2012). At the other extreme, irrigation water supplied from large reservoirs via canals usually increases mesic habitats. The forest and shrub habitat, which develop along irrigation lakes, canals and runoff ponds, usually increases diversity by recruiting woodland birds and, sometimes, results in losses of species associated with arid lands (Yom-Tov et al. 2012, Singh 2009, Sivaperuman and Baqri 2009, Khoury and Al-Shamlih 2006, Rahmani and Soni 1997, Knopf 1986). Missing from these past analyses, however, are considerations of possible linkages between population increases in irrigated regions and population declines in other parts of a species' range.

Although there are a handful of long-running ecological surveys, few are as old as the earliest collections in natural history museums (Magurran et al. 2010). Thus, the aggregated record of specimens collected during the past two centuries and held by natural history museums constitutes the longest record of population changes against which faunal changes throughout the world can be assessed (Lister and Group 2011). Modern quantitative surveys that include randomized designs and systematic measures of census effort and detectability are limited in timescale; even the venerable Breeding Bird Survey (BBS) of North America was begun only in 1966 (Sauer et al. 2013). In contrast, bird specimen records for Mexico were being accumulated in substantial numbers in the 1880's and, although spotty in geographic and temporal distribution (Navarro S. et al. 2003), specimens from Mexico have continued to be added to the world's museums into the

2010's. We use this record of collecting to assess how the avian community of coastal NW Mexico has changed with the development of irrigated agriculture.

This paper first quantifies the extent to which the lowland coastal regions of NW Mexico have been converted to habitats affected by irrigation. This includes not only irrigated fields and their edges, but also pastures that now receive more water as a result of irrigation. Second, we assess how the avifauna changed from an early, pre-irrigation period of collecting (1870s-1970s) to the post-irrigation period of collecting (2000's to 2010's). Finally, we discuss the potential that increasing breeding abundances of some migrants in NW Mexico may be linked to declines in those same species to the north in Canada and the U.S. In general this study echoes recent admonishments that, without knowing more about the biology of migrant birds in areas south of their normal breeding ranges in the U.S. and Canada, conservation responses to regional population declines may be inappropriate (Faaborg et al. 2010b, 2010a; Wilcove and Wikelski 2008).

## **Irrigation in NW Mexico**

Federal investments that initiated the construction of small diversion dams and irrigation channels started at several sites of Sonora and Sinaloa in 1934, and lasted until 1970 (Ortega Noriega 1999). Massive irrigation in coastal NW Mexico escalated after enactment of the Land and Water Reform laws of 1971 redistributed private land in the states of Sinaloa and Sonora to peasants by reducing land-holdings per owner from 100 to 20 hectares in new irrigation districts and distributing the excess land to landless families (World Bank 1974). With these reforms, a suite of major loans from the World Bank, permitted the construction 1) of large reservoirs on most of the major rivers of coastal Sinaloa and Southern Sonora, 2) of hundreds of kilometers of cement-lined irrigation canals supplying water throughout the coastal plain, and 3) of an extensive network of drains in coastal areas that facilitated agriculture in land near sea level that had previously been too saline to farm.

Before irrigation this region received most of its water as rain that fell during a July through September monsoon (Comrie and Glenn 1998). Now, when reservoirs are full, this region has access to irrigation water throughout the year and produces crops twice each year in some areas. The demand for water is high and some of the reservoirs in this region

are so large (e.g. Huites on the Rio Fuerte) that they do not fill in the annual monsoon. Instead they are filled during typhoons and the water is stored for power and irrigation for several years. When water reserves are low, farmers are advised before the planting season that they must shift to crops demanding less water, with the result that canals are full and irrigation continues even in dry years.

## METHODS

### Indexing faunal change

Perhaps the greatest shortcoming of specimen records is that individual records contain no information on the effort invested in obtaining them (Pyke and Ehrlich 2010). Thus, how much time a collector actually worked in a region is not available for the vast majority of the world's natural history specimens and we have no measures of the likelihood that a species might be encountered and collected. Although this is a major impediment to the use of specimen records in assessing changes in population densities, it can be partially overcome by using aggregated databases that can be generated through electronic catalogs such as ORNIS (<http://www.ornisnet.org/home>). We employ an Abundance Index (AI; AIs for multiple values) to convert simple counts of specimens to an index that is corrected by a crude measure of effort (Miki et al. 2000; Barry et al. 2009; Rohwer et al. 2007; Rohwer et al. 2012). The measure of effort is the sum of all specimens taken from the same region and time period that would be collected by the methods used to collect the focal species (Barry et al. 2009; Rohwer et al. 2012). The only previous attempt to evaluate how AIs perform under various sampling scenarios was a demonstration that AIs computed as the percentage of adults within a single species in late summer closely paralleled the AIs for those adults computed as percentage of total passerines (Barry et al. 2009).

Formally, AI for a given species is defined as

$$AI_{kr} = 100 \frac{x_{kr}}{\sum_{j=1}^n x_{jr}}$$

where  $x_{kr}$  is number of specimens of the  $k^{\text{th}}$  species collected in  $r$ , the region and time period of interest, and  $n$  is the number of specimens of all species that would be “expected” to be collected using the same methods in that region and time period of interest. We say “expected” because species included in the numerator and denominator should be about equally as likely to be encountered and collected on a per individual basis. Thus, for example, species that must be collected using song playback should not be compared to species that are readily collected without playback, and nocturnal and diurnal species should not be comparable if they are not encountered and sampled at similar rates. We multiply by 100 to express AI as a percentage.

With the advent of quantitative assessments of morphological variation among populations in the mid 20<sup>th</sup> century, museums and collectors began attempting to accumulate population samples of most species they were collecting. A consequence of attempting to collect samples suitable for measuring phenotypic variability is that uncommon species that could be sampled in reasonable numbers were likely over-represented relative to their abundance in local communities, whereas common species were likely under-represented. Thus, small changes in AIs should be interpreted cautiously; nonetheless, AIs are surely better measures of faunal change than simple counts of species without correction for effort because the denominator informs us of effort (Barry et al. 2009; Rohwer et al. 2007). AIs have previously been shown to track seasonal abundance of migrants, demonstrating that they reliably track regional population changes (Rohwer et al. 2012).

Collecting methods have changed between the two time periods we are comparing. In the early collecting period most specimens were collected with shotgun, while most recent specimens were collected with mist nets. Certainly some birds are easier to collect with nets than with shotguns and vice versa but, as collectors experienced with both collecting methods, our sense is that these biases have minimal effects on total collections. Many individuals of edge and understory species that are over sampled with nets are released so that there is time to prepare good samples of species that are more difficult to collect with nets than with shotgun. Thus, the ultimate goal of acquiring a broad sample of the avian community tends to result in netted and shot birds being sampled in comparable frequencies. Although singing males are easy to collect with shotgun, our experience

suggests that biases in species composition are minimal compared to biases in sex ratios generated by these alternate collecting methods. Thus in dense habitats, nets generate far more females than do shotguns yet, the number of individuals sampled per species varies less because collectors are always time-constrained. To minimize biases caused by different collecting methods we have used only cuckoos, hummingbirds, woodpeckers, and passerines to measure effort because most species in these groups are regularly collected with guns or with nets. Although we used a rifle or shotgun for some of our recent collecting, most of these new specimens were netted on joint expeditions by the University of Washington Burke Museum (UWBM) and the Museo de Zoología of the Faculty of Sciences, at the Universidad Nacional Autónoma de México (MZFC). Collecting for this project was conducted under scientific collection permits issued by the Secretaría de Medio Ambiente y Recursos Naturales (SEMARNAT) to the Facultad de Ciencias (B. Hernández-Baños FAUT 0169) of UNAM. All work was conducted in accordance with policies of the University of Washington Institutional Animal Care and Use Committee (protocol 4309-01).

## **The Mexican Bird Atlas**

Since the late 1990's, A. Navarro and T. Peterson have been compiling a database of all the bird specimens in the world's Natural History museums that have been collected in Mexico (Navarro S et al. 2003; Peterson et al. 1998). There are now more than 370,000 specimens in this database from 71 museums, including the recent collections made by the UWBM and MZFC in coastal Northwest Mexico. All of these records have been georeferenced, making it possible to use them in a GIS framework. From this master database we have extracted a set of specimens appropriate to the questions that lead to this paper.

## **Study Area**

In collaboration with MZFC, the UWBM began collecting in coastal NW Mexico to study migrants that move to this region in mid to late summer to undergo their annual molt (Rohwer et al. 2005; Pyle et al. 2009). Extensive surveys revealed that most molt migrants were using agricultural fields and thorn forest habitats found below 200m for molting (Rohwer unpublished data). Molt migrants apparently concentrate in this coastal region of



NW Mexico for two reasons. First, the diversity and density of permanent resident species is low because these deciduous forests are mostly leafless during the November through June dry season, resulting in little competition with residents for food during the molt (Rohwer et al. 2005). Second, the July through September monsoon turns the deciduous thorn forest green, which generates an abundance of food that is exploited by molt migrants and by other migrants that breed here during the rains but winter elsewhere in Mexico.

We restrict these analyses to areas of southern Sonora and northern Sinaloa, the area of Mexico we collected and surveyed intensively for studies of molt migrants. Fortunately, Chester C. Lamb, a prolific professional collector who worked in Mexico from 1925-1955, lived in Los Mochis, Sinaloa and collected extensively in the same lowland region of coastal NW Mexico that we worked in our recent surveys. These excellent early and recent collections can be used to assess the influence of the recent development of large-scale irrigation on the avifauna of this region.

To make sampling areas comparable for early and recent collections, we eliminated from the full Mexican Atlas 1) specimens from states other than Sonora and Sinaloa, 2) specimens from months other than May – August, 3) specimens taken north of Guaymas in Sonora (27.93° N, 110.89° W) and south of the junction of Route 2 and coastal route 15 in Sinaloa (23.72° N, 106.66° W), 4) specimens collected above 200 m elevation, and 5) a set of specimens that were target-collected for particular research projects and that would have inappropriately inflated either the numerator or the denominator of the AIs. This left us with 2100 specimens of potential use to the AI analyses. Setting the northern boundary at Guaymas, Sonora means that we include areas around Ciudad Obregón and the Rio Yaki reservoir, which supplies irrigation water to parts of southern Sonora. Most early collectors did not record elevations so the georeferenced data from the Atlas were assigned elevations using a Geographic Information System (ArcGIS 10.2; ESRI). Elevations at each collection locale (m above mean sea level) were extracted from a digital elevation model with 15m resolution of Sonora and Sinaloa (INEGI 2014).

Our recent collections included good numbers of birds collected in September, but we omitted September specimens from our analyses for several reasons. First, except for

Yellow-billed Cuckoo (*Coccyzus americanus*), Rufous-winged Sparrow (*Aimophila carpalis*), and Varied Bunting (*Passerina versicolor*), most species collected in September were inappropriate to this analysis of change in the breeding avifauna of this region because most stop breeding in July or August. Second, September marks the beginning of a new influx of species that molted before they migrated south; including these birds would inflate the denominator of the AIs. Third, other local breeders, such as Tropical Kingbirds and Streak-backed Orioles, are much less common in these lowland habitats by September, apparently because most individuals of these species move to other areas in Mexico for their post-breeding molt (Pyle et al. 2009). Finally, early collectors took few September specimens in this region.

### Assessing habitat changes

We used a Geographic Information System (ArcGIS 10.2) to quantify the conversion of vegetation types that occurred during the second half of the 20<sup>th</sup> century as a result of the massive expansion of irrigation. For this purpose, the study area was clipped to include only land below 200m in elevation in Northern Sinaloa and Southern Sonora (bounded by 23.72° - 27.93° N, and 106.66° - 110.89° W, Figure 1). Three datasets of land use and vegetation cover, representing different time points, were obtained from the Instituto Nacional de Estadística y Geografía (INEGI).

1. To estimate habitat availability in the study area prior to the installation of major irrigation projects, we analyzed a high-resolution (1:50,000) dataset of potential vegetation types (INEGI, unpublished data). This dataset was developed from historical imagery and expert analysis, and classifies the land area based on the FAO Land Cover Classification System of vegetation types that would have been present prior to irrigation. We then quantified the amount of this area transformed to mesic habitat by calculating the total area of irrigated land from the following two remotely-sensed datasets, combining land classified as irrigated pasture or irrigated cropland into a single “mesic” category.

- 241 2. Series I (1:250,000 scale). The first land use dataset compiled by INEGI during the  
242 1980's, interpreted from areal photography dating, on average, from 1976, and  
243 extensively ground-truthed (INEGI, 1980).  
244 3. Series V (1:250,000 scale). The most recent land-use and vegetation dataset  
245 compiled by INEGI from Landsat data recorded in 2012.

#### 247 **Avifaunal change predictions.**

248 To assess changes in species composition that might be attributed to irrigation-  
249 related habitat changes in this region we identified two sets of species for comparisons  
250 (Table 1). First was a list of 30 species that might have been expected to expand in  
251 numbers because they are associated either directly with mesic habitats or because they  
252 prefer habitats with larger trees for breeding. Formerly, large trees were found only along  
253 rivers in coastal west Mexico, but they are now found around numerous seeps or lakes  
254 formed where irrigation canals cross what, previously, had been dry arroyos. Irrigation  
255 canals are built along elevation contours that are cut by arroyos. Where modern concrete-  
256 lined irrigation canals cross small arroyos a concrete siphon is typically built under the  
257 arroyo, resulting in no loss of water, but where these canals cross wide arroyos the lower  
258 side of the arroyo is simply dammed with earth, creating a lake that may be quite large.  
259 Large trees and dense brush often grow around these lakes and, particularly, in the seeps  
260 below their earth dams. Our list of 30 mesic species includes several (noted in Table 2)  
261 that are likely under represented in our recent collecting because they are easier to collect  
262 with shotguns than nets (e.g. some tyrannids, swallows, grassquit). We retained these  
263 species because some warrant further consideration and because the variability in AI ratios  
264 around  $\pm 1$  (see below) helps inform us about the importance of species showing larger  
265 changes in relative abundance over time.

266 Our second list was nine species that mostly breed in the deciduous thorn forest  
267 that previously dominated of this region of Mexico (Table 1). Because of the massive  
268 decline in the extent of thorn forest, these species might be expected to have declined in  
269 total numbers throughout the region, but collecting bias tends to nullify this expectation.  
270 Collectors generally try to obtain at least small samples of all species found breeding in a  
271 region and we certainly paid attention to thorn forest specialists because they were under

represented in the UWBM collections. Although thorn forest specialists have likely declined in total numbers in coastal NW Mexico, enough thorn forest habitat persists in areas without irrigation that samples of most thorn forest breeders are easily obtained. For this reason, declines in relative numbers of thorn forest species could only be expected in exceptional cases.

Our collected specimens and field observations showed that all species in both categories were breeding in June and July; some species had not yet begun breeding in May, and others were no longer initiating nests in August, although adults and fledged young were present in August (Table 1). Just three of the focal species were recorded breeding in September, Greater Roadrunner (*Geococcyx californianus*), Yellow-billed Cuckoo, and Rufous-winged Sparrow. When our observations were insufficient to determine breeding status during certain months those cells in Table 1 were left blank.

### Plotting AI ratios

When one component of a community is expected to increase between two time periods (our mesic species) and another is expected to remain the same or to decrease (our thorn forest species) potential changes in their AIs need to be presented in a way that scales increases and decreases in AI values equally. We have done this by computing ratios of the AI values for the pre- and post-irrigation collecting periods. When AI values for a species increased between early and late collecting periods, they are expressed as positive ratios,  $AI_l/AI_e$ , where the subscripts *l* and *e* refer to late and early collecting periods, respectively. When AI values for a species decreased between the early and late period are plotted as negative ratios,  $AI_e/AI_l$ . Interchanging the numerator and denominator in these ratios avoids a ratio that is bounded by 0, thus scaling relative increases and decreases equivalently.

When histograms of AI ratios are used to index faunal change, species clustering near  $\pm 1$  assess volatility in AI ratios that, at least in part, are driven by sampling error. This focuses attention on large changes in AI ratios, which represent species whose numbers are most likely to have changed through time. Assuming collectors attempt to assemble samples of as many species as possible, species present in sufficient numbers to be reasonably represented in two collecting periods should show little change in their AI

ratios. In contrast, outliers should be species that either were so uncommon that reasonable samples could not be obtained, or that were so common that they were over-sampled when less common species are not being caught. Thus AI ratios falling beyond the peak in the distribution centered on  $\pm 1$ , should most reliably indicate population changes.

## RESULTS

### Land use change

The extensive development of irrigation in coastal NW Mexico has dramatically increased mesic habitat. Irrigation was taking place in this region on a local scale prior to the 1970's, but the scale of that irrigation was trivial compared to the transformation of this region following the agrarian reform laws of 1971. Irrigated agriculture on an industrial scale now accounts for the vast majority of land use on the coastal plain of northwest Mexico.

The projected natural vegetation for the region (outlined in Figure 1) was primarily spiny thorn forest (38%) and dry scrublands (35%) as well as deciduous forest (21%). Mesic habitat was found only in areas with riparian vegetation, and comprised less than 5% of the land cover prior to irrigation. By the time of the first land-use assessment for Mexico in 1976 approximately 34% (1,293,231 hectares<sup>2</sup>) of the low elevation areas of NW Mexico were categorized as mesic habitats (Fig. 1, middle panel). This was mostly due to small diversion dams and local irrigation projects and that were constructed before loans from the World Bank helped build much larger reservoirs and cement lined canals. Now, 60% of the land area (2,293,766 hectares<sup>2</sup>) in our study region of coastal NW Mexico is currently covered by mesic habitat (Fig. 1, right panel). Areas that remain unaffected by irrigation are largely hills and small mountains with slopes unsuitable for agriculture and desert habitats on the coastal plain that cannot, at present, be supplied with water.

### Faunal change

Most collecting that occurred in coastal northwest Mexico prior to the development of modern irrigation occurred before the 1970's (Table 3). Then, there was a substantial to complete hiatus in collecting from the 1970's through the 1990's, during which time many major irrigation dams and canals were built. Collecting resumed with the joint

UWBM/MZFC expeditions to this region conducted from 2003-2011. Of the 2100 specimens in the analysis, 1,213 were collected during the early period (Pre 1970's), predating the majority of land-use change, and 887 have been added since (Table 3).

We found no change in the rate at which the group of nine thorn forest species were collected before and after irrigation (Table 4; Fisher's exact  $p = 0.28$ ). AI values normalized by the number of species were 1.09 and 1.25, for the early and recent periods respectively (Table 4). In contrast, there was a significant increase in the normalized AI values for the group of 30 mesic species from 0.98 in the early period to 1.48 in the post-irrigation period (Table 4; Fisher's exact  $p < 0.0001$ ).

Examining changes in the AI ratios between the early and late periods of collecting (Table 2) provides further insight into the volatility of these ratios. There is a great deal more variance in the AI ratios for mesic than for thorn forest species (Fig. 2). More importantly, there is a strong right skew in the ratios for mesic species because some mesic species were seldom collected in the early period, but frequently collected in the post-irrigation period. This skew suggests that moderate increases for a number of mesic species are reflected in museum collections, even though the habit of collectors to evenly sampling all species in a community collectors tends to obscure small changes in abundance.

For the nine thorn forest taxa AI ratios are, as expected, little skewed (Figure 2). Yellow Grosbeak (*Pheucticus chrysopheplus*) is the most negative point in this distribution, and likely has declined in total numbers at low elevations in coastal NW Mexico (Table 2; Fig. 2). Yellow Grosbeaks are never abundant in collections, and they were uncommon enough that we had little sense of their habitat requirements. We certainly over-sampled Yellow Grosbeaks, compared to their actual abundance. It was the only thorn forest species for which we collected every individual captured but densities were too low for us to capture reasonable samples.

### Individual species

A few species, including two that we did not treat in the AI analyses merit further descriptive comment and interpretation. All may have increased as a consequence of irrigation.

365

366 ***Athene cunicularia***. No Burrowing Owls were collected in our work in coastal NW Mexico.  
367 However, we observed several nesting pairs about 12km S and 2 km W of El Carrizo,  
368 Sinaloa. Prior to extensive clearing of thorn forest and the development of irrigated  
369 agriculture this species wintered in coastal NW Mexico but was not reported to breed there  
370 (Enriquez-Rocha 1997). The Mexican Atlas includes no May-September specimens from  
371 the pre-irrigation period, but numerous wintering specimens; now they breed abundantly  
372 in burrows they excavate in the banks of coastal drains. Macias-Duarte (2011) quantified  
373 breeding densities of Burrowing Owls in coastal Sinaloa and Sonora and found densities  
374 among the highest ever recorded. Now it is presumably a common breeder because of the  
375 ease with which burrows can be excavated in the banks of coastal drains.

376

377 ***Ortalis wagleri***. We excluded the Rufous-bellied Chachlaca from our AI analyses because  
378 it cannot be collected with nets, but we did obtain reasonable samples of this bird with a  
379 .22 we borrowed for collecting. Prior to 1970 the atlas database contains seven May -  
380 August specimen records from Coastal NW Mexico, but there are 22 records for the same  
381 months since 2007. Pairs are now found everywhere along canals and in arroyos where  
382 flowing water or seeps below dams have stimulated the development of larger trees and  
383 dense brush. We did not find it in thorn forest away from large trees or dense brush.  
384 There can be little doubt that this resident chachalaca has increased enormously in  
385 response to the increase in dense vegetation associated with irrigation.

386

387 ***Coccyzus americanus***. Just three Yellow-billed Cuckoo specimens were taken in the early  
388 period of collecting, and all were taken in early to mid June before this species begins to  
389 breed in the lowland habitats we worked (Rohwer and Wood 2013). All of the early to mid  
390 June specimens we collected were migrants and territorial birds were not found until late  
391 June (Rohwer and Wood 2013). Although Yellow-billed Cuckoos bred at higher elevations  
392 in NW Mexico before irrigation (Short 1974), they surely have increased dramatically as  
393 breeding birds in the coastal lowlands in response to irrigation.

394



***Passerina versicolor*.** The Varied Bunting is the only thorn forest species to show a moderate increase in the rate at which it was collected in recent years. We categorized this species as a thorn forest bird because it can be found breeding in thorn forest far from irrigated fields. However, it also breeds in brushy ecotones, and it commonly forages in sorghum fields and in the weedy edges of other irrigated fields where it was frequently netted. We released many individuals, suggesting that this bunting was under sampled relative to its actual abundance, even though students are eager to prepare stunning adult males and age-related plumage variation makes this species particularly interesting. This species has likely increased in total numbers because sorghum fields and weedy edges offer so much food.

***Petrochelidon pyrrhonota*.** Cliff Swallows were little collected in the pre irrigation era and were probably mostly restricted to towns where they would have nested on buildings. Throughout irrigated areas of the coastal region we found nesting colonies under the bridges crossing most of the coastal drains, under many river bridges, and on structures near water that create foraging and mud gathering habitat.

***Icterus spurius*.** Early (Friedmann et al. 1950; Miller et al. 1959) and more recent faunal works (Howell and Webb 1995) were unclear about the status of Orchard Orioles as a breeding bird in coastal NW Mexico. The Atlas contains only 5 pre-1970's specimens, 4 from June and 1 from August, but the age and breeding status of these specimens has not been addressed. The June specimens could be breeding birds, but the peak of nesting now occurs in July (Rohwer et al. 2012) when no specimens were taken in the pre-irrigation period. Even if the early specimens were all breeders this species has surely increased dramatically following the widespread development of irrigation. Breeding individuals and small colonies are now common, particularly where appropriate nest trees are found adjacent to irrigated alfalfa fields (Rohwer and Wood 2013).

***Melospiza melodia*.** Although two June Song Sparrows were taken in the early collecting period, this bird is emphatically reported not to breed in this region of Mexico by Howell and Webb (1995). However, it is now a common breeder along the brushy edges of coastal



426 canals and drains, and pairs can even be found at edges of mangrove stands that have  
427 developed enough soil and tidal litter to support patches of low forbes for foraging and  
428 nesting cover.

429

430 ***Sayornis nigricans***. We seldom collected Black Phoebes because they usually perched and  
431 foraged over canals where it was difficult to set nets. Although never abundant, they have  
432 surely increased dramatically; they nested under bridges over drains and canals  
433 throughout the region.

434

435 ***Stelgidopteryx serripennis***. We are uncertain that Northern Rough-winged Swallows have  
436 increased as a breeder in this region because the species is also a molt migrant from the  
437 north, with the earliest molting birds arriving in July (Rohwer et al. 2011). Estimating the  
438 frequency of molt migrants from the north among the hundreds of July and August birds  
439 often seen around the canals and lakes would require more isotope work on birds that are  
440 actively molting.

441

442 ***Oreothlypis luciae***. Lucy's Warbler had not previously been recorded as a breeder in  
443 Mexico except near the US border (Howell and Webb 1995; Johnson et al. 2012). However,  
444 an abundance of singing and territorial males that were mated in May and June show that  
445 Lucy's Warblers are now common breeders in stands of larger mesquite trees that have  
446 grown up near water sources. Because we did little collecting in May and June and because  
447 we seldom netted in habitats where Lucy's Warblers breed, the early years of our recent  
448 collecting seriously under represent breeding abundance of Lucy's Warblers in Sinaloa.  
449 Most of our specimens were taken in July and August in a grassy mesquite flat that was part  
450 of an irrigated pasture and attractive to molt migrants. We assumed these Lucy's Warblers  
451 were also molt migrants (Rohwer et al. 2007), but the newly documented status of this bird  
452 as a common breeder in northern Sinaloa, suggests these molting individuals could have  
453 been local breeders and locally produced young. Nonetheless, individuals from the north  
454 still seem to move here to molt because we observed apparent migrants moving south  
455 through the desert in Sonora on 9 July 2006, before they begin the molt (Rohwer et al.  
456 2007).

457

458 ***Vireo bellii***. For the principal breeding months of June and July, there are no Bell's vireo  
 459 specimens from coastal NW Mexico, but there are two records from May that could have  
 460 been breeders or migrants. Now this species breeds abundantly in brushy edges around  
 461 most irrigated fields, and there is little doubt that it has increased enormously as a  
 462 breeding bird in this region. Our records for this species may somewhat overestimate its  
 463 change in abundance because we collected a number of puzzling birds that were singing in  
 464 late summer, most of which turned out to be males hatched that season; some had partially  
 465 developed, testes.

466 For the Bell's Vireos now breeding in coastal Sinaloa source populations could have  
 467 been either the endangered *V. b. pusillus*, which now breeds only in southern California and  
 468 northern-most Baja, or *V. b. arizonae*, which breeds in Arizona and Nevada. These races are  
 469 difficult to distinguish in fresh fall plumage. Thus, SAR compared 25 new specimens from  
 470 Sinaloa with reference material of *pusillus* collected in California and the Baja peninsula (n  
 471 = 25) and *arizonae* collected Arizona (n = 17). Breeding season *pusillus* from California  
 472 largely lack the yellowish wash on their flanks that characterize most *arizonae*, but *pusillus*  
 473 in fresh plumage from coastal California (MVZ 104087, 4057, 3353, 37144) and from Baja  
 474 Sur (MVZ 44325 and 55750; UWB 81277) were as yellowish on their flanks as many  
 475 *arizonae*. For recently collected Sinaloa specimens, those that matched or were more  
 476 greenish yellow on their flanks than these seven reference specimens were considered  
 477 *arizonae* and paler specimens were considered *pusillus*. By this criteria, 18 of the new  
 478 Sinaloa specimens were considered *arizonae* and 7 were considered *pusillus*. We should  
 479 emphasize that these difference are subtle and, as is often the case with continental races,  
 480 many individuals could not be assigned to race with confidence.

481

## 482 DISCUSSION

483 The changes in the breeding avifauna that we have documented emphasize two  
 484 important points. First, following the onset of irrigation, mesic habitats have increased  
 485 from less than 5% of the land area to more than 60%, and this change has substantially  
 486 changed the composition of the avian community of coastal NW Mexico. These changes are  
 487 similar, though perhaps less dramatic to those seen in many other desert regions of the

world where raised water tables and consistent flow of water through irrigation canals often transforms arid lands to mosaics of wetlands and mesophilic vegetation, resulting in increases in birds associated with mesic habitats (Yom-Tov et al. 2012, Singh 2009, Sivaperuman and Baqri 2009, Khoury and Al-Shamlih 2006, Rahmani and Soni 1997, Knopf 1986). Second, generating AIs by tallying all specimens from a region and time period that could reasonably be expected to have been collected by the same methods used to collect the focal species corrects, at least partially, for differences in effort; thus AIs more reliably track changes in densities than do counts of specimens. Incorporating data on age, fat, and the breeding status of specimens into electronic data repositories would greatly increase the utility of specimens to studies of population biology.

Early avian collecting from 1880-1970 in coastal NW Mexico predated the development of intensive irrigation, while recent collecting, mostly from 2002-2012, occurred after massive irrigation was well developed. Thus the AIs we computed for early and recent collecting in NW Mexico assess avifaunal change across with this dramatic increase in mesic habitats. Although collectors likely over-collect rare species and under-collect common species, time constraints on collectors together with the demand to generate good numbers of specimens mean that the relative abundance of species available for sampling will influence the relative numbers of individuals collected, resulting in AIs at least crudely indexing changes in abundance.

Some species that we found to have increased were sampled prior to the initiation of massive irrigation programs in the 1970s, but they were taken in small relative numbers; moreover, collection dates suggest that some pre-irrigation specimens were migrants. Only a single Red-winged Blackbird (*Agelaius phoeniceus*) and a single Northern Mockingbird (*Mimus polyglottos*) were collected in this region of Mexico during prior to 1970, and both were August specimens that were likely post-breeding immigrants (Table 2). Now Red-winged blackbirds commonly nest in cattails that grow around lakes formed by canals and along coastal drains that reclaim saline lands for agriculture. Similarly, mockingbirds are now common breeders around the brushy edges of irrigated fields and were frequently caught in our nets (Table 2). The increases suggested for these species by our AI ratios surely underestimate their increase as breeding birds; we shot no redwings and they were seldom netted, and we released many netted mockingbirds. In contrast,

there are three early specimens of Yellow-billed Cuckoos from this region, but all were collected in early June when migrant cuckoos are present but before they have are settled on territories in this region of Mexico. For consistency these three early specimens were included in the early AI but, if there were migrants, as recent collections suggest, then the AI ratio suggests less increase in cuckoos than likely has occurred.

By comparing current land use with potential natural vegetation we estimated that 60% of the low thorn forest of NW Mexico was converted to mesic habitat. This landscape change has resulted in the apparent addition of several new breeding birds to this region of Mexico (Burrowing Owl, Yellow-billed Cuckoo, Lucy's Warbler, Orchard Oriole), and to dramatic increases in other species that were either of uncertain status or uncommon as breeders prior to irrigation (Cliff Swallow, Bell's Vireo, Northern Mockingbird, Red-winged Blackbird). Thus irrigation has increased the diversity of the breeding avifauna of this region. At the same time, about 40% of the land area in this region is on slopes that cannot be irrigated, and this remaining dry habitat continues to support most of the arid-land species that predominated in this region prior to massive irrigation. Indeed, Yellow Grosbeak was the only thorn-forest specialist for which there were few enough recent specimens to suggest a decline in its numbers. Although other thorn-forest species have surely declined in total numbers from loss of habitat, the remaining thorn forest is extensive enough that they are easily collected.

### **Conservation implications of expanded breeding numbers in Mexico**

Could population changes in migrants breeding in Mexico and the U.S. linked? When a species is winter limited (Fretwell 1972, Terborg 1989), the development of either higher quality habitat in NW Mexico, or of habitat similar in quality to historical breeding areas to the north that reduces migration distance, may result in a decline in numbers to the north. In contrast, if populations are regulated by density dependent breeding success, colonization of new breeding habitat in one region should not reduce breeding numbers elsewhere, as long as the winter range can accommodate summer production. Asymmetries in the land areas of breeding and wintering ranges for Neotropical migrants suggest winter limitation could be the rule; their winter range is often only a third to a fifth the size of their

549 summer range and they arrive there with numbers swollen by summer production  
550 (Terborg 1989).

551 We seldom know whether populations are primarily winter or breeding season  
552 limited; yet, most studies of threatened and endangered birds focus on losses of breeding  
553 habitat and cowbird parasitism (e.g. Kus 1998, Gaines and Laymon 1984, Goldwasser et al.  
554 1980), which implicitly assumes breeding-season regulation. However, migratory  
555 shortstopping and winter population regulation can easily lead to population declines in  
556 northern breeding areas that are driven, not by losses of northern breeding habitat but, by  
557 the development of better habitat to the south. Such population shifts need not be driven  
558 solely on migratory shortstopping. Certainly, pioneering breeders in the south must be  
559 shortstoppers but, as soon as recruitment is higher in the south than in the north, increases  
560 in numbers in the south will be matched by declines in the north, if populations are winter  
561 limited.

562 Flexibility in the settlement patterns of Neotropical migrant passerines has been  
563 documented to occur over vast geographic scales, apparently through domino effects of  
564 territorial behavior. In Black-throated Blue Warblers (*Setophaga caerulescens*) adults are  
565 concentrated in the southern Appalachian Mountains where their density and productivity  
566 is high, while yearlings predominate to the north over large areas where densities are low  
567 (Graves 1997). Yearling American Redstarts (*Setophaga ruticilla*) that depart early from  
568 their Jamaican wintering grounds settle south of their birth place in North America, while  
569 yearlings that depart late settle north of their birth place, presumably because southern  
570 habitats have filled with earlier migrants. Moreover, these distances are related to their  
571 relative departure dates (Studds et al. 2008). Similarly, as measured by age ratios, the  
572 habitat distribution of Hermit and Townsend's Warblers (*Setophaga occidentalis* and *S.*  
573 *townsendi*, respectively) in the Cascade Mountains of Washington and Oregon are strongly  
574 affected by elevation gradients. At low elevations adult Townsend's Warblers show strong  
575 breeding site fidelity (Pearson 2000), and adults at low elevations that fail to return in  
576 spring are replaced, not by yearlings, but by unmarked adults. Yearling males settle at high  
577 elevations for their first breeding season (Rohwer 2004) but apparently moved to more  
578 suitable low-elevation sites after breeding their first season at high elevations (Pearson  
579 2000; Rohwer 2004).

Most studies of the decline of migrants breeding in the American Southwest have focused almost exclusively on habitat loss in that region, probably because most of the money available for these studies must be spent in the U.S. This is distressing: these migrants spend majority of the annual cycle south of the U.S. and their population biology is little studied outside of the breeding season. If there is winter population regulation and if breeding populations in the U.S. and coastal NW Mexico are linked by migratory shortstopping, then restored habitat in the U.S. would need to exceed the quality of the new breeding habitat in NW Mexico sufficiently to repay the cost of a longer, trans-desert migration. The huge increase in mesic habitat, from less than 5% to 60% of the land area in coastal NW Mexico has resulted in large new breeding populations of some migrants that could be linked to declines in the US.

Eight long-distance migrants included in our assessments of changes in breeding abundance in the irrigated regions of coastal NW Mexico are reasonable candidates for such linkages (Table 5). Two these eight species, Northern Rough-winged Swallow and Lucy's Warbler, are molt migrants to this region (Rohwer et al. 2011; Rohwer et al. 2007). For this reason the increases we estimated for these species may be high, so we do not further consider these species. Two others, Yellow-breasted Chat (*Icteria virens*) and Common Yellowthroat (*Geothlypis trichas*), appear to have changed little in abundance in coastal NW Mexico and neither shows BBS (Sauer et al. 2013) declines in the west (Table 5). Chats have likely expanded with the increase in brushy edges, but they are well represented in collections prior to the 1970's, and our recent collections seldom included breeding yellowthroats, which were common only along the coast (Table 2). In contrast, Yellow-billed Cuckoo, Cliff Swallow, Bell's Vireo and Orchard Oriole, have likely increased dramatically as breeders in the irrigated regions of NW Mexico. All are migrants with breeding ranges mostly in the U.S. and Canada and all have declined to the north, suggesting their population changes could be linked.

Yellow-billed Cuckoos have disappeared from most of their historic breeding range in the western U.S. and Canada (Gaines and Laymon 1984; Goldwasser et al. 1980; Laymon and Halterman 1987). Although much riparian habitat has been lost in the Southwest US, the loss of cuckoos from northern parts of their western breeding range is inconsistent with their decline being driven by losses of breeding habitat because landscape changes in



the north have increased ecotonal habitats they prefer for breeding,. Although historically widely distributed in the west, the western population of cuckoos was probably never very large because they were restricted to riparian corridors and human created ecotones. The density of cuckoos now breeding in the irrigated habitats of coastal NW Mexico easily seems high enough to account for the numbers that previously bred in the western U.S. and Canada. Further, the decline in the much larger population of cuckoos in eastern North America (Sauer et al. 2013), suggests that loss of winter habitat may explain their continent-wide decline in breeding numbers, even though they surely have increased as breeding birds in coastal NW Mexico.

For the endangered Least's Bell's Vireo (*Vireo bellii pusillus*) of California the situation is less compelling, but shortstopping seems worth considering given the remarkable abundance of Bell's Vireos that now breed in irrigated regions of NW Mexico. The California population has responded positively to habitat improvements and to cowbird control, which weakens a case for a causal link between the expanding population in NW Mexico and declines in California (Kus 1998; Kus and Whitfield 2005). *Pusillus* supposedly winters only in Baja California, but a small change in the fall migratory orientation of *pusillus* that breed in California would take them to the excellent new breeding habitat created by irrigation in coastal Sonora and Sinaloa.

With an average of almost \$2.5m spent on recovery efforts each year for Least Bell's Vireos (Restani and Marzluff 2001), it seems important to assess whether their decline in the U.S. might be linked to their increase in NW Mexico. To assess the source of the Bell's Vireos now breeding in Sinaloa, we attempted to assign 25 new Sineloa specimens to race: 18 better matched *V. b. arizonae*, but 7 better matched *V. b. pusillus*. Distinguishing these races is difficult, so this conclusion should be further evaluated using genetics or geolocators (Klicka, 2014). If further genetic work using SNPs (Klicka 2014) discloses *pusillus* genotypes in the now large breeding populations in NW Mexico, then habitat restoration in California could be competing with the recently developed irrigated habitat in coastal Sonora and Sinaloa. Alternatively, if the *V. bellii* now breeding in coastal NW Mexico all carry *arizonae* SNPs, then there would be no reason to think shortstopping in Sinaloa and Sonora has contributed to the decline of *pusillus* in California.

Unlike cuckoos and vireos, breeding Cliff Swallows remain abundant in Canada and the western USA, but declines have been impressive since the Breeding Bird Survey was begun. Our Als greatly underestimate the increase in Cliff Swallows, and the numbers we see breeding in NW Mexico easily seem sufficient to account for their decline in Canada and the western U.S.

Finally, Orchard Orioles were not previously thought to breed in NW Mexico (Miller et al. 1959). Not only are they common breeders in irrigated farmlands of this region (Rohwer and Wood 2013), but their breeding densities around irrigated alfalfa fields similar to those found in the best breeding habitats in Kansas and Louisiana. The BBS shows significant survey-wide declines for Orchard orioles, but their sharpest declines have been in southern states (Table 5). Because they are patchily distributed as breeding birds in Mexico and in the USA, we have little sense of whether the numbers now breeding in the irrigated habitats of NW Mexico are sufficient to account for the declines in breeding numbers to the north.

## Conclusions

Widespread irrigation has enormously increased the percentage of mesic land cover in coastal NW Mexico, leaving less than 40% of the land area in dry habitat. This change has increased the diversity and abundance of small birds breeding in this region, without resulting in the loss of species dependent on the original thorn forest habitat. The greatest value of discovering new breeding populations or large increases in breeding numbers of some migrants in this region is the implication that it these population increases of Mexico could be linked, through winter population regulation, to declines in breeding numbers in the U.S. and Canada. Given the sums being invested in these populations in the U.S. (Restani and Marzluff 2001), further exploring this possible linkage seems urgent. In general, both the connections between events affecting winter and summer ecology of migrants (Wilcove and Wikelski 2008) and the degree to which habitat distributions may be affected through domino effects of social behavior over landscape and, possibly, range-wide scales (Graves 1997, Rohwer 2004, Studds et al. 2008). If breeding numbers to the north are causally related to the development of new breeding populations in Mexico, then



recovery investments for those species in the U.S. and Canada should be redirected to other management priorities.

#### ACKNOWLEDGEMENTS

Alejandro Gordillo coordinated geolocation of specimen records. Lukas Klicka provided analyses of genetic variation in Bell's Vireo. Town Peterson, Jorge Soberón, and Miles Logsdon helped with the analyses of land use change. Chris Wood, Vanya Rohwer, Rob Faucett, Marco Ortiz, Samuel López, Erick García, Jaime Castro, Tanya Kobelkowsky, Diego Roldán, Jesus Calderón, Jessie Barry, Gabriel David, and Sara Zakutansky helped with fieldwork. Marc Antonio Yocupicio of Tesila, Sinaloa was helpful in so many ways, including giving us a safe place to camp and lending us a .22 for collecting. Gabriel David first recognized the song of Lucy's Warblers that we found breeding during June fieldwork Sinaloa, and Jack Cerchiara suggested a helpful reorganization of the manuscript. Jennifer Ruesink, Vanya Rohwer, the Boersma lab group and, especially Laura Rayner offered helpful comments on the manuscript. Specimens for the identification of *Vireo belli* were made available from the Museum of Vertebrate Biology at UC Berkeley, and from the UW Burke Museum. Thanks to all of these individuals and institutions!

Thanks also to the following collections for specimen records in the portion of the Mexican Bird Atlas used for this study: American Museum of Natural History; Academy of Natural Sciences of Philadelphia; Bell Museum of Natural History, University of Minnesota; Natural History Museum (Tring, UK); Zoologische Forschungsinstitut und Museum Alexander Koenig; Übersee-Museum Bremen; Carnegie Museum of Natural History; California Academy of Sciences; Canadian Museum of Nature; Colección Ornitológica Centro de Investigaciones Biológicas UAEM; Cornell University Museum of Vertebrates; Denver Museum of Natural History; Delaware Museum of Natural History; Fort Hays State College; Field Museum of Natural History, Senckenberg Museum Frankfurt, Colección Nacional de Aves Instituto de Biología UNAM; Instituto de Historia Natural y Ecología; University of Kansas Natural History Museum; Los Angeles County Museum of Natural History; Natuurhistorische Museum Leiden; Louisiana State University Museum of Zoology; Museo de las Aves de México; Museum of Comparative Zoology; Moore Laboratory of Zoology;

702 Museum Nationale D'histoire Naturelle Paris; Zoological Museum Moscow State University;  
 703 Museum Mensch und Natur Munich; Museum of Vertebrate Zoology; Museo de Zoología  
 704 Facultad de Ciencias UNAM; Royal Ontario Museum; San Diego Natural History Museum;  
 705 Staatliche Museen fur Naturkunde, Stuttgart; Southwestern College, Kansas; Universidad  
 706 Autónoma de Baja California; University of Arizona; University of British Columbia Museum  
 707 of Zoology; University of California Los Angeles; Florida Museum of Natural History;  
 708 University of Michigan Museum of Zoology; United States National Museum of Natural  
 709 History; University of Washington Burke Museum; Western Foundation of Vertebrate  
 710 Zoology; and, Yale University Peabody Museum.

## 712 REFERENCES

- 713 Barry, J. H., L. K. Butler, S. Rohwer, and V. G. Rohwer (2009). Documenting molt-migration  
 714 in Western Kingbird (*Tyrannus verticalis*) using two measures of collecting effort.  
 715 Auk 126:260-267.
- 716 Comrie, A. C., and E. C. Glenn (1998). Principal components-based regionalization of  
 717 precipitation regimes across the southwest United States and northern Mexico, with  
 718 an application to monsoon precipitation variability. Climate Research 10:201-215.
- 719 Dirzo, R., H. S. Young, M. Galetti, G. Ceballos, N. J. B. Isaac, and B. Collen (2014). Defaunation  
 720 in the Anthropocene. Science 345:401-406.
- 721 Enriquez-Rocha, P. L. (1997). Seasonal records of the Burrowing Owl in Mexico.
- 722 Faaborg, J., R. T. Holmes, A. D. Anders, K. L. Bildstein, K. M. Dugger, J. Gauthreaux, Sidney A. ,  
 723 P. Heglund, K. A. Hobson, A. E. Jahn, D. H. Johnson, S. C. Latta, et al. (2010a).  
 724 Conserving migratory land birds in the New World: Do we know enough? Ecological  
 725 Applications 20:398-418.
- 726 Faaborg, J., R. T. Holmes, A. D. Anders, K. L. Bildstein, K. M. Dugger, J. Gauthreaux, Sidney A. ,  
 727 P. Heglund, K. A. Hobson, A. E. Jahn, D. H. Johnson, S. C. Latta, et al. (2010b). Recent  
 728 advances in understanding migration systems of New World land birds. Ecological  
 729 Monographs 80:3-48.
- 730 Friedmann, H., L. Griscom, and R. T. Moore (1950). Distributional Check-List of the Birds of  
 731 Mexico. Part I. Cooper Ornithological Club, Berkeley.
- 732 Gaines, D., and S. A. Laymon (1984). Decline, status and preservation of the Yellow-billed  
 733 Cuckoo in California. Western Birds 15:49-80.
- 734 Goldwasser, s., D. Gaines, and S. R. Wilbur (1980). The Least Bell's Vireo in California: A *de*  
 735 *facto* endangered race. American Birds 34:742-745.
- 736 Howell, S. N. G., and S. Webb (1995). A guide to the birds of Mexico and northern Central  
 737 America. Oxford University Press, USA.
- 738 Jetz, W., D. S. Wilcove, and A. P. Dodson (2007). Projected impacts of climate and land-use  
 739 change on the global diversity of birds. PLoS Biology 5:1211-1219: e1157.  
 740 doi:10.1371/journal.

- 741 Johnson, R. R., H. Yard, K. , and B. T. Brown, (Johnson, R. R., H. Yard, K. , and B. T.  
742 Brown(Johnson, R. R., H. Yard, K. , and B. T. Browns) (2012). Lucy's Warbler  
743 (*Oreothlypis luciae*). Cornell Lab of Ornithology, Ithaca.
- 744 Kus, B. E. (1998). Use of restored riparian habitat by the endangered Least Bell's Vireo  
745 (*Vireo bellii pusillus*). Restoration Ecology 6:75-82.
- 746 Kus, B. E., and M. J. Whitfield (2005). Parasitism, productivity, and population growth:  
747 Response of least Bell's Vireos (*Vireo bellii pusillus*) and southwestern Willow  
748 Flycatchers (*Empidonax traillii extimus*) to cowbird (*Molothrus* spp.) control.  
749 Ornithological Monographs 7:16-27.
- 750 Lamm, D. W. (1991). Lucy's Warbler banding in southeastern Arizona. North American  
751 Bander 16:9-10.
- 752 Laymon, S., and M. D. Halterman (1987). Can the western subspecies of the Yellow-billed  
753 Cuckoo be saved from extinction? Western Birds 18:19-25.
- 754 Lister, A. M., and C. C. R. Group (2011). Natural history collections as sources of long-term  
755 datasets. Trends in Ecology and Evolution 26:153-154.
- 756 Macias-Duarte, A. 2011. Change in migratory behavior as a possible explanation for  
757 Burrowing Owl population declines in northern latitudes. PhD, University of  
758 Arizona.
- 759 Magurran, A. E., S. R. Baillie, S. T. Buckland, J. M. Dick, D. A. Elston, E. M. Scott, R. I. Smith, P. J.  
760 Somerfield, and A. D. Watt (2010). Long-term datasets in biodiversity research and  
761 monitoring: Assessing change in ecological communities through time. Trends in  
762 Ecology and Evolution 25:574-582.
- 763 Miki, E., K. Kondo, M. Okada, H. Kanai, S. Sekita, and M. Satake (2000). Dynamics of  
764 medicinal plants in Japan estimated by the herbarium specimens. Journal of  
765 Japanese Botany 75:347-359.
- 766 Miller, A. H., H. Friedmann, L. Griscom, and R. T. Moore (1959). Distributional Check-List of  
767 the Birds of Mexico. Part II. Cooper Ornithological Society, Berkeley.
- 768 Navarro S, A. G., A. T. Peterson, and A. Gordillo-Martínez (2003). Museums working  
769 together: the atlas of the birds of Mexico. Bulletin of the British Ornithological Club  
770 123A:207-225.
- 771 Pearson, S. F. (2000). Behavioral asymmetries in a moving hybrid zone. Behavioral Ecology  
772 11:84-92.
- 773 Peterson, A. T., A. G. Navarro-Sigüenza, and H. Benitez-Dias (1998). The need for continued  
774 scientific collecting; a geographic analysis of Mexican bird specimens. Ibis 140:288-  
775 294.
- 776 Pyke, G. H., and P. R. Ehrlich (2010). Biological collections and ecological/ environmental  
777 research: a review, some observations and a look to the future. Biological Reviews  
778 85:247-266.
- 779 Pyle, P., W. A. Leitner, L. Lozano-Angulo, F. Avilez-Teran, H. Swanson, E. G. Limón, and M. K.  
780 Chambers (2009). Temporal, spatial, and annual variation in the occurrence of molt-  
781 migrant passerines in the Mexican monsoon region. The Condor 111:583-590.
- 782 Restani, M., and J. M. Marzluff (2001). Avian conservation under the endangered species  
783 act: Expenditures versus recovery priorities. Conservation Biology 15:1292-1299.
- 784 Rohwer, S. (2004). Using age ratios to infer survival and despotic breeding dispersal in  
785 hybridizing warblers. Ecology 85:423-431.

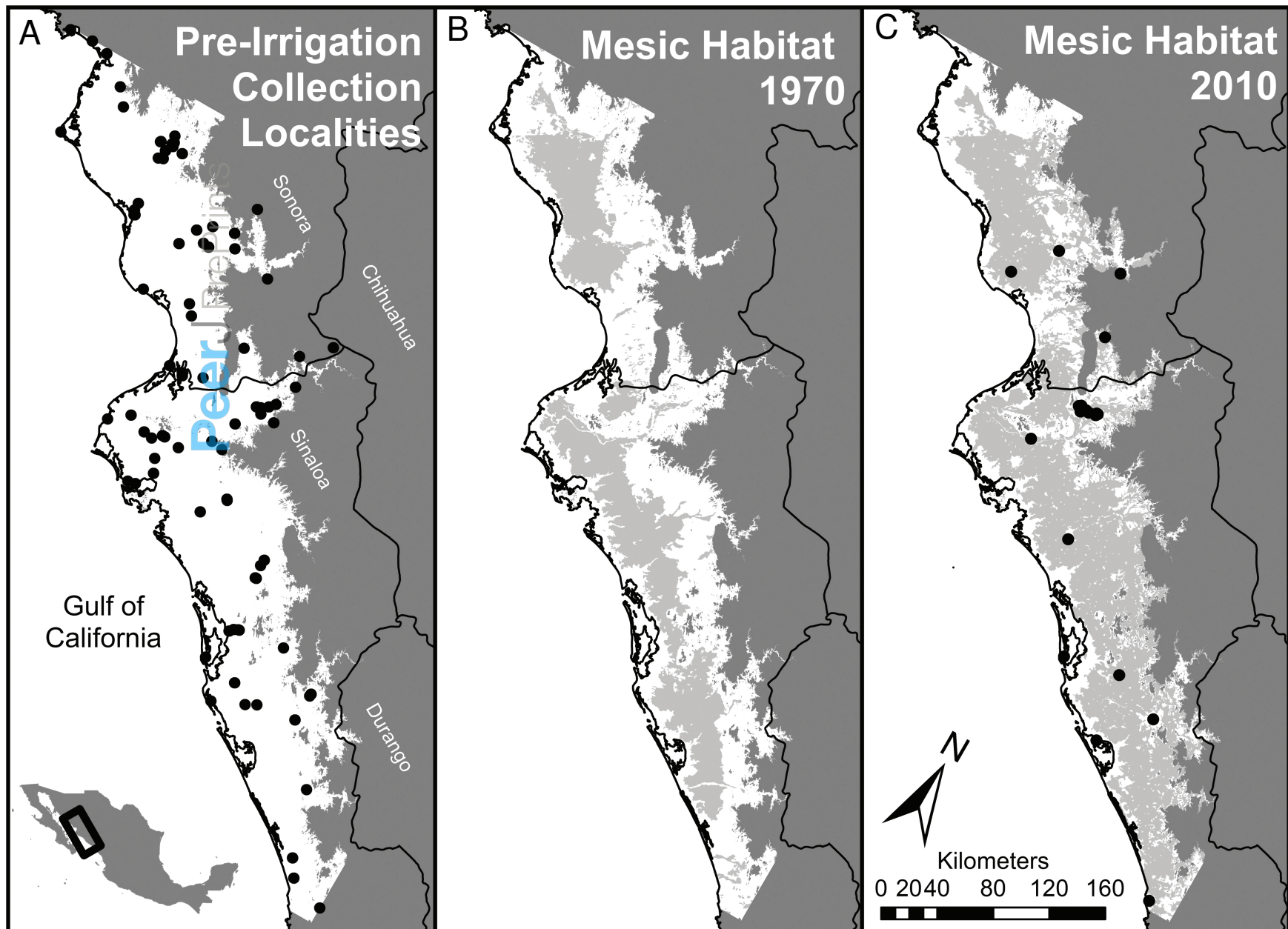
- Rohwer, S., L. K. Butler, and D. R. Froehlich (2005). Ecology and demography of east-west differences in molt scheduling in Neotropical migrant passerines. In *Birds of Two Worlds* (Greenberg, R., and P. P. Marra, Greenberg, R., and P. P. Marra, Greenberg, R., and P. P. Marra). Johns Hopkins University Press, Baltimore 87-105.
- Rohwer, S., K. A. Hobson, and S. Yang (2011). Stable isotopes ( $\delta d$ ) reveal east-west differences in scheduling of molt and migration in northern Rough-winged Swallows (*Stelgidopteryx serripennis*). *The Auk* 128:522-530.
- Rohwer, S., A. G. Navarro, and G. Voelker (2007). Rates versus counts: Fall molts of Lucy's Warblers (*Vermivora luciae*). *Auk* 124:806-814.
- Rohwer, S., V. G. Rohwer, A. T. Peterson, A. G. Navarro-Siguenza, and P. English (2012). Assessing migratory double breeding through complementary specimen densities and breeding records. *The Condor* 114:1-14.
- Rohwer, S., and C. S. Wood (2013). Abundant early-summer breeding in sinaloa does not suggest post-migration breeding in three potential double breeders. *Wilson Journal of Ornithology* 125:243-250.
- Sauer, J. R., W. A. Link, J. E. Fallon, K. L. Pardieck, and D. J. Ziolkowski Jr. (2013). The north american breeding bird survey 1966–2011: Summary analysis and species accounts. *North American Fauna* 79:1-32.
- Short, L. L. (1974). Nesting of southern Sonoran birds during the summer rainy season. *Condor* 76:21-32.
- Steadman, D. W. (1995). Prehistoric extinctions of pacific island birds: Biodiversity meets zooarchaeology. *Science* 267:1123-1131.
- Steadman, D. W. (2006). *Extinction and Biogeography of Tropical Pacific Birds*. University of Chicago Press.
- Studds, C. E., T. K. Kyser, and P. P. Marra (2008). Natal dispersal driven by environmental conditions interacting across the annual cycle of a migratory songbird. *Proceedings of the National Academy of Sciences of the United States of America* 105:2929-2933.
- Wilcove, D. S., D. Rothstein, J. Dubow, A. Phillips, and E. Losos (1998). Quantifying threats to imperiled species in the United States. *BioScience* 48:607-615.
- Wilcove, D. S., and M. Wikelski (2008). Going, going, gone: Is animal migration disappearing? *PLoS Biology* 6:1361-1364 e1188. doi:10.1371/journal.pbio.0060188.
- Wilson, E. (1992). *The diversity of life*. W.W. Norton & Company, New York.

## Figure 1(on next page)

Figure 1. Summary of habitat changes for regions of southern Sonora and northern Sinaloa below 200m elevation.

Early (pre-1970) collecting localities are indicated on the left panel (A) and late (1970 to present) collecting localities on the right panel (C). Left panel represents the study area, a subset of lowland habitat (<200m above sea level) in southern Sinaloa and northern Sonora. Grey areas of the middle (B) and right panels show the extent of mesic habitat developed by irrigation in this region by 1976 and by 2012, respectively. Coastal wetlands and river corridors were excluded from the mesic habitat designations in the middle and right panels; these areas accounted for 4.4% of the land area below 200m, most of which was coastal wetlands. This convention means that all of the grey areas in the middle and right panels result from irrigation.

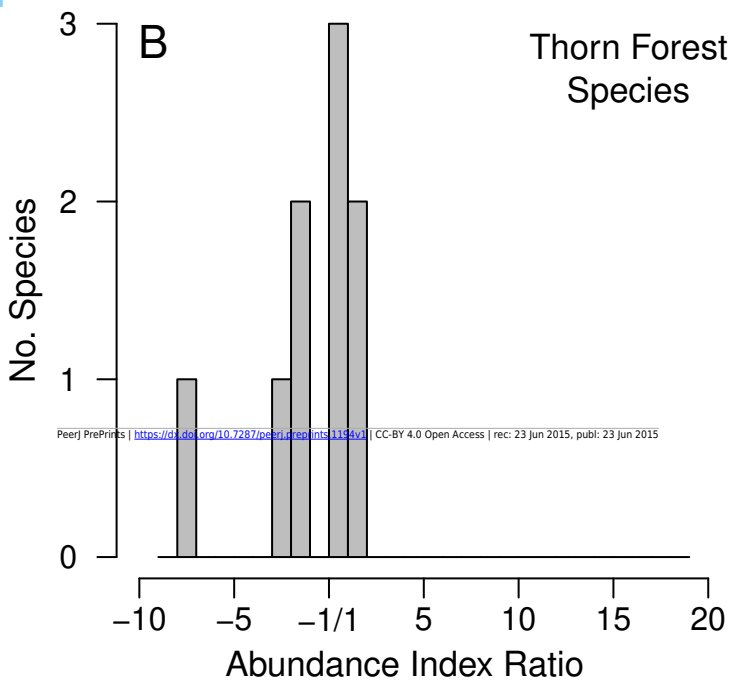
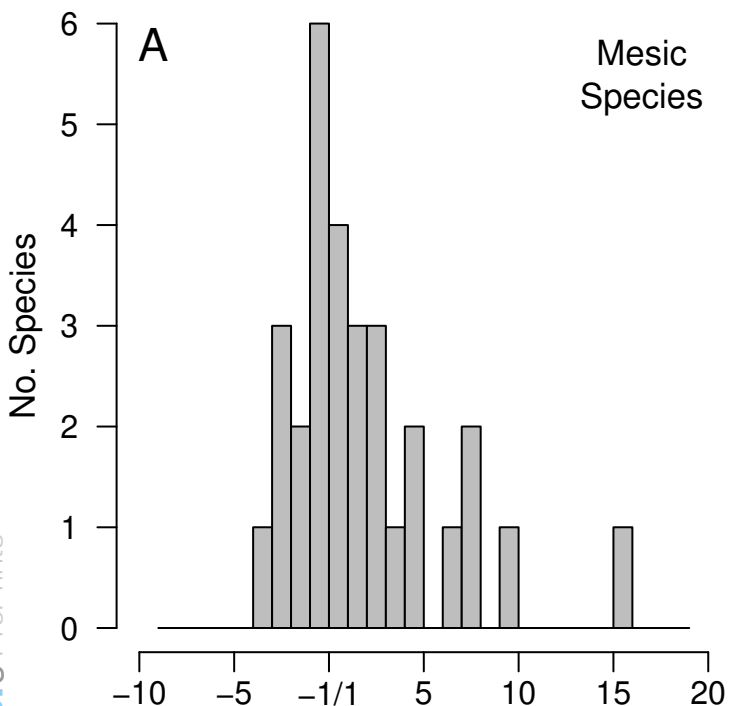




## Figure 2 (on next page)

Figure 2. Histograms of the distribution of the AI ratios for the thorn forest taxa (9 species) and for the species associated with mesic habitats or large trees (30 species).

Positive values represent species that have increased in relative abundance from the pre- to post-irrigation period and negative values represent species that have decreased. Note that these ratios cannot fall between  $\pm 1$ . Large changes are most likely to reliably indicate actual changes in relative population sizes, but AI values closer to  $\pm 1$  may largely reflect random volatility in the index.





## **Table 1**(on next page)

Table 1. Thorn forest and mesic species used in the AI analyses, with breeding status indicated by month.

Breeding was assessed from field observations of behavior and nests, and from the condition of collected specimens. “No” signifies species that were not breeding and blanks signify species for which we had too few observations to assess active nesting.

<b>Thorn forest species</b>	<b>May</b>	<b>Jun</b>	<b>Jul</b>	<b>Aug</b>
<i>Aimophila carpalis</i>	No	x	x	x
<i>Auriparus flaviceps</i>	x	x	x	
<i>Campylorhynchus brunneicapillus</i>	x	x	x	x
<i>Colaptes auratus/chrysoides*</i>	x	x	x	
<i>Geococcyx californianus*</i>	x	x	x	x
<i>Passerina versicolor</i>	No	x	x	x
<i>Pheucticus chrysopheplus</i>	x	x	x	x
<i>Pipilo fuscus</i>	No	x	x	
<i>Polioptila melanura</i>	x	x	x	x
<b>Mesic species</b>				
<i>Agelaius phoeniceus</i>	x	x	x	No
<i>Cacicus melanicterus*</i>	x	x	x	No
<i>Calocitta colliei*</i>	No	x	x	x
<i>Coccyzus americanus</i>	No	x	x	x
<i>Corvus sinaloae*</i>	x	x	x	x
<i>Crotophaga sulcirostris</i>	No	x	x	x
<i>Geothlypis trichas</i>	x	x	x	x
<i>Hirundo pyrrhonota*</i>	x	x	x	No
<i>Icteria virens</i>	x	x	x	x
<i>Icterus pustulatus</i>	x	x	x	No
<i>Icterus spurius</i>	x	x	x	x
<i>Melospiza melodia</i>	x	x	x	No
<i>Mimus polyglottos</i>	x	x	x	No
<i>Molothrus aeneus</i>	x	x	x	
<i>Molothrus ater</i>	x	x	x	x
<i>Myiarchus tyrannulus</i>	x	x	x	No
<i>Myiodynastes luteiventris*</i>	x	x	x	No
<i>Myiozetetes similis*</i>	x	x	x	
<i>Pachyramphus aglaiae*</i>	No	x	x	Mostly No
<i>Pitangus sulphuratus*</i>	x	x	x	
<i>Quiscalus mexicanus*</i>	x	x	x	
<i>Saltator coerulescens</i>	x	x	x	
<i>Sayornis nigricans</i>	x	x	x	
<i>Stelgidopteryx serripennis</i>	x	x	x	No
<i>Thryothorus felix</i>	x	x	x	x
<i>Thryothorus sinaloa</i>	x	x	x	x
<i>Tyrannus melancholicus</i>	x	x	x	Mostly No
<i>Vermivora luciae</i>	x	x	x	No

Vireo bellii	x	x	x	No
Volatinia jacarina	?	x	x	x

2

## **Table 2**(on next page)

Table 2. Numbers of individuals collected in pre and post irrigation periods for focal species and their AI values.

The final numeric column presents AI ratios, with increases indicated by positive numbers and decreases indicated by negative numbers (see text for details).

Decades	May	Jun	Jul	Aug	Totals
1870's	0	0	1	0	1
1880's	16	6	0	1	23
1890's	1	1	2	0	4
1900's	2	77	1	0	80
1910's	1	0	0	0	1
1920's	7	40	1	0	48
1930's	233	273	173	89	768
1940's	32	0	0	0	32
1950's	0	66	6	0	72
1960's	5	106	26	18	155
1970's	26	0	2	1	29
<b>Early Totals</b>	<b>323</b>	<b>569</b>	<b>212</b>	<b>109</b>	<b>1213</b>
1980's	0	1	0	0	1
1990's	0	0	0	0	0
2000's	0	0	433	276	709
2010's	25	152	0	0	177
<b>Recent Totals</b>	<b>25</b>	<b>153</b>	<b>433</b>	<b>276</b>	<b>887</b>
<b>Grand Totals</b>	<b>348</b>	<b>722</b>	<b>645</b>	<b>385</b>	<b>2100</b>

### **Table 3**(on next page)

Table 3. Number of specimens taken per decade from coastal regions of southern Sonora and northern Sinaloa below 200m from May through August.

Most of the specimens from the 1930's were collected by Chester C. Lamb, who lived in Los Mochis and collected extensively in areas worked by the UWBM from 2003-2011. Pre-irrigation collecting occurred earlier in the season than the recent UWBM collecting.

1

Thorn Forest Species (9 species)	Number of individuals	All specimens	Normalized AI values (Per species AI)	Chi-square (Yates correction)
Early collecting	119	1213	1.09	X2 = 0.82
Recent collecting	100	887	1.25	p = 0.54
Mesic Species (30 species)				
Early collecting	356	1213	0.98	X2 = 22.95
Recent collecting	380	887	1.48	p < 0.0001

2  
3  
4  
5  
6  
7  
8

## Table 4 (on next page)

Table 4. Changes in pooled AI values split by thorn forest and mesic species.

The final numeric column presents AI ratios, with increases indicated by positive numbers and decreases indicated by negative numbers (see text for details).



Decrease Predicted	Early collecting						Recent Collecting							
Species	May	Jun	Jul	Aug	Total	AI	May	Jun	Jul	Aug	Total	AI	AI change	Notes on potential collecting bias
<i>Aimophila carpalis</i>	9	9	1		19	1.57		3	10	7	20	2.25	1.44	
<i>Auriparus flaviceps</i>	8	6	1		15	1.24		2	10	2	14	1.58	1.28	
<i>Campylorhynchus brunneicapillus</i>	2	4	1		7	0.58	1	1	2	7	10	1.13	1.95	
<i>Colaptes chrysoides</i>	5	8	2	1	16	1.32		1	2		3	0.34	-3.90	
<i>Geococcyx californianus</i>	2	5		1	8	0.66		1	1		2	0.23	-2.87	
<i>Passerina versicolor</i>	7	10	1		18	1.48	3	13	16	2	31	3.49	2.36	Breeds in thorn scrub but abundant forager in weedy edges.
<i>Pheucticus chrysopheplus</i>		12			12	0.99			1		1	0.11	-8.77	
<i>Pipilo fuscus</i>	3	4			7	0.58			2		2	0.23	-2.56	
<i>Poliophtila melanura/nigriceps</i>	6	7	0	4	17	1.40			8	5	13	1.47	1.05	
Totals/Mean AI values					119	1.09					96	1.20	1.02	
Increase Predicted														
<i>Agelaius phoeniceus</i>				1	1	0.08	2	2			2	0.23	2.74	Abundant breeder in cattails where we seldom collected
<i>Cacicus melanicterus</i>		27			27	2.23		4	1		5	0.56	-3.95	Under sampled with nets. The 27 early specimens were taken in June 2004 at a single locality.
<i>Calocitta colliei</i>	1	6			7	0.58			2	2	4	0.45	-1.28	Under sampled with nets.
<i>Coccyzus americanus</i>		3			3	0.25			12	1	13	1.47	5.93	Settles in late June, breeds Jul-Aug. The three early specimens, taken 9, 14, 22 Jun, are likely migrants.
<i>Corvus sinaloae</i>	8	10	1	4	23	1.90		1	5	7	13	1.47	-1.29	Under sampled with nets.
<i>Crotophaga sulcirostris</i>	1	7	2	8	18	1.48			8	3	11	1.24	-1.20	
<i>Geothlypis trichas</i>	6	7			13	1.07		1	1	1	3	0.34	-3.17	Common near coast where we seldom collected.
<i>Hirundo pyrrhonota</i>		3		1	4	0.33		6	3	2	11	1.24	3.76	Large colonies under most bridges.
<i>Icteria virens</i>	5	10		4	19	1.57			14	12	26	2.93	1.87	Common in brushy edges .

<i>Icterus pustulatus</i>	18	1		19	1.57		6	6	8	20	2.25	1.44	
<i>Icterus spurius</i>	4		1	5	0.41		1	26	4	31	3.49	8.48	Now an abundant breeder.
<i>Melospiza melodia</i>	2			2	0.16	1	2	4		6	0.68	4.10	Common along coastal canals.
<i>Mimus polyglottos</i>			1	1	0.08	3	4		5	9	1.01	12.31	Now an abundant breeder in ecotones.
<i>Molothrus aeneus</i>	9	8	1	2	20	1.65		5	4		9	1.01	-1.62
<i>Molothrus ater</i>	3	4		1	8	0.66		1	3	9	13	1.47	2.22
													August increase could be birds moving in to exploit late breeding hosts.
<i>Myiarchus tyrannulus</i>	13	9		22	1.81		4	3	5	12	1.35	-1.34	Under sampled with nets.
<i>Myiodynastes luteiventris</i>		5		5	0.41		1			1	0.11	-3.66	Under sampled with nets.
<i>Myiozetetes similis</i>	7	8		4	19	1.57		2	4		6	0.68	-2.32
<i>Pachyrhamphus aglaiae</i>	8	12		6	26	2.14			4		4	0.45	-4.75
<i>Pitangus sulphuratus</i>	4	6	1	3	14	1.15		1	5		6	0.68	-1.71
<i>Quiscalus mexicanus</i>	4	7	3		14	1.15	7	8	16	7	31	3.49	3.03
													Many nesting colonies near canals close to coast.
<i>Saltator coerulescens</i>	4	4		5	13	1.07		4	6		10	1.13	1.05
<i>Sayornis nigricans</i>		2			2	0.16		3	2		5	0.56	3.42
													Under sampled with nets. Common along canals.
<i>Stelgidopteryx serripennis</i>		3			3	0.25			10	8	18	2.03	8.21
													Common along canals.
<i>Thryothorus felix</i>	2	7	1	1	11	0.91		3	11	8	22	2.48	2.74
<i>Thryothorus sinaloa</i>	1	7			8	0.66			2		2	0.23	-2.92
<i>Tyrannus melancholicus</i>	11	19	2	5	37	3.05		4	15	10	29	3.27	1.07
													Under sampled with nets.
<i>Vermivora luciae</i>		4		1	5	0.41		3	21	3	27	3.04	7.38
													Now an abundant breeder in mesquite forest.
<i>Vireo bellii</i>	2			1	3	0.25		1	9	13	23	2.59	10.48
													Now an abundant breeder in ecotones.
<i>Volatinia jacarina</i>		3	1		4	0.33			3	5	8	0.90	2.74
													Now common in weedy fields. Flies through nets, so under sampled in recent collecting.
TOTALS/MEAN AI VALUES				356	0.98					380	1.43	2.97	

3  
4  
5

## **Table 5**(on next page)

Table 5. Migrant species breeding in NW Mexico that have most of their breeding range in the U.S. and Canada.

Positive AI ratios signify an increase in the relative frequency of specimens in collections from coastal Sinaloa and Sonora after extensive development of irrigation; Breeding Bird Survey trends are from the 1966 to 2011. For the first four species we suggest that population increases in Mexico may be linked to population declines in the U.S. and Canada.

Species	AI ratio	Population trends to the north	Notes for irrigated regions of NW Mexico
<i>Coccyzus americanus</i>	+5.93	Mostly lost in the west; BBS shows significant declines in most of its eastern range.	Common breeder; seldom netted, but some collected with gun.
<i>Petrochelidon pyrrhonota</i>	+3.76	BBS: significant declines in the west; sharply declining in Canada.	Seriously under-sampled in our recent collecting in NW Mexico.
<i>Vireo bellii</i>	+10.48	<i>Vireo belli pusillus</i> is mostly extirpated in California; BBS shows <i>V. b. arizonae</i> stable in Arizona.	Somewhat oversampled in NW Mexico because of late summer singing.
<i>Icterus spurius</i>	+8.48	BBS: significant survey-wide declines; sharpest declines in southern states.	Common new breeder for Sinaloa and southern Sonora; migrates further south to molt
<i>Stelgidopteryx serripennis</i>	+8.21	BBS: significant declines in the west, but not in Canada.	Our AI ratio overestimates increases in breeders because breeders and molt migrants were not distinguished.
<i>Oreothlypis lucae</i>	+7.38	BBS: slight, non-significant increase in the U.S.; but large declines are reported in the mid 1980's for a long-term study in AZ (Lamm 1991).	Common new breeder for Sinaloa, but our AI ratio does not distinguish breeders and molt migrants.

<i>Icteria virens</i>	+1.87	BBS: Mostly stable in the west.	Common breeder with more available habitat.
<i>Geothlypis trichas</i>	-3.17	BBS: Stable in the west	Occasional breeder in interior wetlands; common along the coast where we seldom collected.

2  
3