

# Radiolarian assemblages in the shelf area of the East China Sea and Yellow Sea and their ecological indication of the Kuroshio Current derivative branches (#44305)

1

First revision

## Guidance from your Editor

Please submit by **21 Aug 2020** for the benefit of the authors .



### Structure and Criteria

Please read the 'Structure and Criteria' page for general guidance.



### Raw data check

Review the raw data.



### Image check

Check that figures and images have not been inappropriately manipulated.

Privacy reminder: If uploading an annotated PDF, remove identifiable information to remain anonymous.

## Files

Download and review all files from the [materials page](#).

- 1 Tracked changes manuscript(s)
- 1 Rebuttal letter(s)
- 8 Figure file(s)
- 6 Table file(s)
- 1 Other file(s)



# Structure and Criteria

## Structure your review

The review form is divided into 5 sections. Please consider these when composing your review:

1. BASIC REPORTING
2. EXPERIMENTAL DESIGN
3. VALIDITY OF THE FINDINGS
4. General comments
5. Confidential notes to the editor

 You can also annotate this PDF and upload it as part of your review

When ready [submit online](#).

## Editorial Criteria

Use these criteria points to structure your review. The full detailed editorial criteria is on your [guidance page](#).

### BASIC REPORTING

-  Clear, unambiguous, professional English language used throughout.
-  Intro & background to show context. Literature well referenced & relevant.
-  Structure conforms to [Peerj standards](#), discipline norm, or improved for clarity.
-  Figures are relevant, high quality, well labelled & described.
-  Raw data supplied (see [Peerj policy](#)).

### EXPERIMENTAL DESIGN

-  Original primary research within [Scope of the journal](#).
-  Research question well defined, relevant & meaningful. It is stated how the research fills an identified knowledge gap.
-  Rigorous investigation performed to a high technical & ethical standard.
-  Methods described with sufficient detail & information to replicate.

### VALIDITY OF THE FINDINGS

-  Impact and novelty not assessed. Negative/inconclusive results accepted. *Meaningful* replication encouraged where rationale & benefit to literature is clearly stated.
-  All underlying data have been provided; they are robust, statistically sound, & controlled.
-  Speculation is welcome, but should be identified as such.
-  Conclusions are well stated, linked to original research question & limited to supporting results.

# Standout reviewing tips

3



The best reviewers use these techniques

## Tip

**Support criticisms with evidence from the text or from other sources**

## Example

*Smith et al (J of Methodology, 2005, V3, pp 123) have shown that the analysis you use in Lines 241-250 is not the most appropriate for this situation. Please explain why you used this method.*

**Give specific suggestions on how to improve the manuscript**

*Your introduction needs more detail. I suggest that you improve the description at lines 57- 86 to provide more justification for your study (specifically, you should expand upon the knowledge gap being filled).*

**Comment on language and grammar issues**

*The English language should be improved to ensure that an international audience can clearly understand your text. Some examples where the language could be improved include lines 23, 77, 121, 128 – the current phrasing makes comprehension difficult.*

**Organize by importance of the issues, and number your points**

1. Your most important issue
2. The next most important item
3. ...
4. The least important points

**Please provide constructive criticism, and avoid personal opinions**

*I thank you for providing the raw data, however your supplemental files need more descriptive metadata identifiers to be useful to future readers. Although your results are compelling, the data analysis should be improved in the following ways: AA, BB, CC*

**Comment on strengths (as well as weaknesses) of the manuscript**

*I commend the authors for their extensive data set, compiled over many years of detailed fieldwork. In addition, the manuscript is clearly written in professional, unambiguous language. If there is a weakness, it is in the statistical analysis (as I have noted above) which should be improved upon before Acceptance.*

# Radiolarian assemblages in the shelf area of the East China Sea and Yellow Sea and their ecological indication of the Kuroshio Current derivative branches

**Hanxue Qu** <sup>Equal first author, 1, 2, 3, 4</sup>, **Yong Xu** <sup>Equal first author, 1, 2, 3, 4</sup>, **Jinbao Wang** <sup>1, 3, 4</sup>, **Xinzheng Li** <sup>Corresp. 1, 2, 3, 4</sup>

<sup>1</sup> Institute of Oceanology, Chinese Academy of Sciences, Qingdao, China

<sup>2</sup> University of Chinese Academy of Sciences, Beijing, China

<sup>3</sup> Center for Ocean Mega-Science, Chinese Academy of Sciences, Qingdao, China

<sup>4</sup> Laboratory for Marine Biology and Biotechnology, Qingdao, China

Corresponding Author: Xinzheng Li  
Email address: [lixzh@qdio.ac.cn](mailto:lixzh@qdio.ac.cn)

We analyzed the radiolarian assemblages of 59 surface sediment samples collected from the Yellow Sea and East China Sea of the northwestern Pacific. In the study region, the Kuroshio Current and its derivative branches exerted a crucial impact on radiolarian composition and distribution. Radiolarians in the Yellow Sea shelf showed a quite low abundance, as no tests were found in 15 of 25 Yellow Sea samples. Radiolarians in the East China Sea shelf could be divided into three regional groups, including the East China Sea north region group, the East China Sea middle region group, and the East China Sea south region group. The results of the redundancy analysis suggested that the Sea Surface Temperature and Sea Surface Salinity were primary environmental variables explaining species-environment relationship. The gradients of temperature, salinity, and species diversity reflect the powerful influence of the Kuroshio Current in the study area.

# **Radiolarian assemblages in the shelf area of the East China Sea and Yellow Sea and their ecological indication of the Kuroshio Current derivative branches**

Hanxue Qu<sup>1, 2, 3, 4</sup>, Yong Xu<sup>1, 2, 3, 4</sup>, Jinbao Wang<sup>1, 3, 4</sup>, Xinzheng Li<sup>1, 2, 3, 4</sup>

<sup>1</sup> Institute of Oceanology, Chinese Academy of Sciences, 7 Nanhai Road, Qingdao 266071, China

<sup>2</sup> University of Chinese Academy of Sciences, Beijing 100049, China

<sup>3</sup> Center for Ocean Mega-Science, Chinese Academy of Sciences, 7 Nanhai Road, Qingdao, 266071, China

<sup>4</sup> Laboratory for Marine Biology and Biotechnology, Pilot National Laboratory for Marine Science and Technology (Qingdao), 1 Wenhai Road, Qingdao 266237, China

Corresponding Author:

Xinzheng Li

7 Nanhai Road, Qingdao, 266071, China

Email address: [lixzh@qdio.ac.cn](mailto:lixzh@qdio.ac.cn)

## Abstract

We analyzed the radiolarian assemblages of 59 surface sediment samples collected from the Yellow Sea and East China Sea of the northwestern Pacific. In the study region, the Kuroshio Current and its derivative branches exerted a crucial impact on radiolarian composition and distribution. Radiolarians in the Yellow Sea shelf showed a quite low abundance, as no tests were found in 15 of 25 Yellow Sea samples. Radiolarians in the East China Sea shelf could be divided into three regional groups, including the East China Sea north region group, the East China Sea middle region group, and the East China Sea south region group. The results of the redundancy analysis suggested that the Sea Surface Temperature and Sea Surface Salinity were primary environmental variables explaining species-environment relationship. The gradients of temperature, salinity, and species diversity reflect the powerful influence of the Kuroshio Current in the study area.

## Introduction

Polycystine Radiolaria (hereafter Radiolaria), with a high diversity of 1192 Cenozoic fossil to Recent species, are a crucial group of marine planktonic protists (Lazarus et al., 2015; Suzuki, 2016). Living Radiolaria are widely distributed throughout the shallow-to-open oceans (Lombardi & Boden, 1985; Wang, 2012), and a proportion of their siliceous skeletons settle on the seafloor after death (Takahashi, 1981; Yasudomi et al., 2014). The distribution of Radiolaria in a given region is associated with the pattern of water mass, such as temperature, salinity and nutrients (Abelmann & Nimmergut, 2005; Anderson, 1983; Hernández - Almeida et al., 2017). The East China Sea (ECS) and Yellow Sea (YS) are marginal seas of the northwestern Pacific (Xu et al., 2011). The two regions are divided by the line connecting the northern tip of the mouth of the Changjiang and the southern tip of the Jeju Island (Jun, 2014). Hydrographic conditions of the shelf area of both the ECS and YS, where the depth is generally less than 100 meters, vary remarkably with the season (Qi, 2014). Generally, the annual sea surface temperature (SST) and sea surface salinity (SSS) show a decreasing trend from the southeast to northwest in study area (Fig. 1). The Kuroshio Current originates from the Philippine Sea, flows through the ECS, and afterwards forms the Kuroshio Extension (Hsueh, 2000; Qiu, 2001). The Kuroshio Current and its derivative branch-the Taiwan Warm Current (TWC), form the main circulation systems in the ECS shelf area, while the Yellow Sea Warm Current, one derivative branch of the Kuroshio Current, dominates in the YS shelf area (Hsueh, 2000; Tomczak & Godfrey, 2001). In the ECS shelf region's summer (Fig. 2A), the Kuroshio subsurface water gradually upwells northwestward from east of Taiwan, and finally reaches 30.5°N off the Changjiang estuary along ~60 m isobaths, forming the Nearshore Kuroshio Branch Current (Yang et al., 2012; Yang et al., 2011). Meanwhile, the TWC is formed by the mixing of the Taiwan Strait Warm Current and Kuroshio Surface Water (Qi, 2014). In winter (Fig. 2B), the Kuroshio Surface Water shows relatively intense intrusion as part of the Kuroshio Surface Water northwestward reaches continental shelf area across 100 m isobaths (Zhao & Liu, 2015). At this point, the TWC is mainly fed from the Kuroshio Current northeast of Taiwan (Qi, 2014).

In the YS shelf region's summer (Fig. 2A), the Yellow Sea Cold Water Mass, characterized by low temperature, occupies the central low-lying area mostly below the 50 m isobaths while the Yellow Sea Warm Current shows little influence (Guan, 1963). In winter (Fig. 2B), the impact of the Yellow Sea Warm Current on shelf region is enhanced, while the Yellow Sea Cold Water Mass disappears (Weng et al., 1988). The continuous water circulation in the YS is mainly comprised of the Yellow Sea Warm Current and the China Coastal Current (UNEP, 2005). The radiolarian assemblages in surface sediments have been investigated in the ECS whereas there are few reports in the YS. These reports cover the ECS including the Okinawa Trough (Chang et al., 2003; Cheng & Ju, 1998; Wang & Chen, 1996) and continental shelf region extensively (Chen & Wang, 1982; Tan & Chen, 1999; Tan & Su, 1982). They summarize the distribution patterns of the dominant species and the environmental conditions that affect the composition of radiolarian fauna in the ECS in their excellent taxonomic works. On the basis of these valuable works, we rigorously investigate the relationships between radiolarians and environmental variables. In addition, to which the ECS and YS are influenced by the Kuroshio Current and its derivative branch are specially focused in this study. The radiolarian data collected from 59 surface sediment samples are associated with environmental variables of the upper water to explore the principal variables explaining radiolarian species composition. The influences of the Kuroshio Current and its derivative branch on radiolarian assemblages in the study area are also considerably discussed.

## Materials & Methods

### Sample collection and treatment

The surface sediments were collected at 59 sites (Fig. 3A) in the Yellow Sea and East China Sea using a box corer. The sediment samples in the study area were divided into four groups geographically and were labeled the Yellow Sea region (YSR) samples, the ECS north region (ECSNR) samples, the ECS middle region (ECSMR) samples, and the ECS south region (ECSSR) samples. The samples were prepared using the method described by Chen et al. (2008). 30% hydrogen peroxide and 10% hydrochloric acid were added to each dry sample to remove organic component and the calcium tests, respectively. Then the treated sample was sieved with a 50  $\mu$ m sieve and dried in an oven. After flotation in carbon tetrachloride, the cleaned residue was sealed with Canada balsam for radiolarian identification and quantification under a light microscope with a magnification of 200X or 400X. To reduce counting uncertainty, *Dictyocoryne profunda* Ehrenberg, *Dictyocoryne truncatum* (Ehrenberg), *Dictyocoryne bandaicum* (Harting) were combined as *Dictyocoryne* group. Photographs of some radiolarians encountered in this study are exhibited in Figure 4.

### Environmental data

Grain size analysis of the surface sediments was conducted with a Laser Diffraction Particle Size Analyzer (Cilas 1190, CILAS, Orleans, Loiret, France). The data were used to categorise grain size classes as clay (1-4  $\mu$ m), silt (4-63  $\mu$ m) and sand (63-500  $\mu$ m), and to determine different sediment types according to the Folk classification (Folk, Andrews & Lewis, 1970). In addition, the mean grain size was calculated for each site.

The values of annual temperature (SST), salinity (SSS), oxygen, phosphate, nitrate, and silicate of sea surface with a 0.5° resolution for the period of 1930 to 2009 were derived from the CARS2009 dataset (Ridgway, Dunn & Wilkin, 2002). The sea surface chlorophyll-*a* and particulate organic carbon with a 9 km resolution for the period of 1997 to 2010 were obtained from <https://oceancolor.gsfc.nasa.gov/l3/>. The values of the environmental variables mentioned above for each surface sediment site were estimated by linear interpolation. These values, together with depth, are shown in Supplementary material Table 1.

### Statistical processing

The minimum number of specimens counted in each sample is customarily 300. However, low radiolarian concentrations are frequent in the shelf type sediments comprised mainly of terrigenous sources (Chen et al., 2008). Given small sediment samples, it was difficult to find 300 tests in some sites. According to Fatela & Taborda (2002), counting 100 tests allows less than 5% probability of losing those species with a proportion of 3%. Balanced between the insufficient samples and the accuracy of the statistical analysis, the threshold number of radiolarians was adjusted to 100 (Fatela & Taborda, 2002; Rogers, 2016). Based on this threshold, 24 samples (Fig. 3B) were retained for detailed statistical analysis. Seven of 24 samples had less than 300 tests, containing six ECSNR samples and one ECSSR sample. The proportion of each dominant species in the ECSNR group was higher than 3%, guaranteeing a reliable interpretation of species proportions.

We calculated the absolute abundance (tests.(100g)<sup>-1</sup>) and the diversity indices, including the species number (*S*), Shannon-Wiener's index (*H'* (log<sub>e</sub>)). To ensure a creditable estimate of diversity indices, which may be biased by different counting numbers, the specimens of radiolarians in each sample was randomly subsampled and normalized to the equal size of 100 tests by using `rrarefy()` function in `vegan` package in R program. For each site, *S* and *H'* of sample containing all tests and subsample containing 100 tests were calculated.

Relative abundance (%) of each radiolarian taxon was also calculated. Then the hierarchical cluster analysis with group-average linking was applied to analyze the variations of radiolarian assemblage among different regions. The percentage data of the relative abundance was transformed by square root for normalize the dataset. Afterwards, triangular resemblance matrix was constructed based on the Bray-Curtis similarity (Clarke & Warwick, 2001). Analysis of similarity (ANOSIM) was employed to determine the differences among different assemblages. Similarity percentage procedure (SIMPER) analysis was used to identify the species that contributed most to the similarities among radiolarian assemblages.

Detrended correspondence analysis (DCA) was applied to determine the character of the species data. The gradient length of the first DCA axis was 1.773 < 3, suggesting that redundancy analysis (RDA, linear ordination method) was more suitable than Canonical correspondence analysis (CCA, unimodal ordination method) (Lepš & Šmilauer, 2003). RDA was used to evaluate the relationship between environmental variables and radiolarian assemblages identified by SIMPER analysis. The species abundance data was square root transformed before analysis to reduce the effect of extremely high values (Ter Braak & Šmilauer, 2002). Variance inflation



factors (VIF) was calculated to screen the environmental variables with  $VIF > 5$  (Lomax & Hahs-Vaughn, 2013). Sand percentage, mean grain size, chlorophyll-*a*, silicate, particulate organic carbon, oxygen, depth, nitrate, and silt percentage were removed from the RDA model step by step, in order to avoid collinearity (Naimi et al., 2014). Finally, four variables, SST, SSS, clay percentage, and phosphate, were employed in the RDA. The significant environmental variables were determined by automatic forward selection with Monte Carlo tests (999 permutations). Station DH 8-5 was excluded from the RDA model for lack of environmental data.

Correlation analysis was employed to investigate the relationship between the dominant radiolarian taxa and significant environmental variables.

The diversity indices calculation, cluster analysis, ANOSIM, and SIMPER were performed by PRIMER 6.0. Correlation analysis was performed by SPSS 20. DCA and RDA were conducted by CANOCO 4.5.

## Results

A total of 137 radiolarian taxa were identified from the surface sediments of study area, including 75 genera, 14 families, and 3 orders. The raw radiolarian counting data is shown in Supplementary material Table 2. Approximately 91.0% of the species belonged to Spumellaria, accounting for the vast majority of the radiolarian fauna. Nassellaria and Collodaria accounted for 8.4% and 0.6%, respectively. **Pyloniidae** definitely dominated in the species composition as it occupied approximately 61% followed by Spongodiscidae 18%, and Coccodiscidae 8% (Fig. 5A).

Radiolarian abundance in surface sediments varied greatly in study area (Fig. 5B), showing a tendency of ECSMR (2776 tests.(100g)<sup>-1</sup>) > ECSSR (1776 tests.(100g)<sup>-1</sup>) > ECSNR (500 tests.(100g)<sup>-1</sup>) > YSR (8 tests.(100g)<sup>-1</sup>). The distribution pattern of species number (Fig. 5C) was similar to that of the abundance, exhibiting a trend of ECSMR (38 species) > ECSSR (35 species) > ECSNR (16 species) > YSR (1 species). The top 9 species taxa, accounting for 79.6% of the total assemblages in the study area, were as follows: *Tetrapyle octacantha* group Mueller (55.6%), *Didymocyrtis tetrathalamus* (Haeckel) (7.5%), *Dictyocoryne* group (3.7%), *Spongaster tetras* Ehrenberg (2.5%), *Stylodictya multispina* Haeckel (2.2%), *Spongodiscus resurgens* Ehrenberg (2.2%), *Zygocircus piscicaudatus* Popofsky (2.1%), *Phorticium pylonium* Haeckel (2.0%), and *Euchitonia furcata* Ehrenberg (1.8%).

### The radiolarian assemblages in the YS shelf area

In general, radiolarians showed a quite low abundance value in the YS, as no tests were found in 15 samples (Fig. 5). For the remaining 10 samples, only 49 tests were originally counted, belonging to 21 species taxa. The radiolarian abundance for 25 samples of the YS ranged from 0 tests.(100g)<sup>-1</sup> to 91 tests.(100g)<sup>-1</sup>, and species number ranged from 0 to 12. ~~Based on the abundance data,~~ *T. octacantha* (17.4%), *Spongodiscus* sp. (10.9%), *Didymocyrtis tetrathalamus* (9.1%), *Acrosphaera spinosa* (6.1%), and *P. pylonium* (6.1%) were the top 5 abundant species taxa in the YS, ~~occupying a proportion of~~ 49.7% of the total assemblages.

### Selected stations in the ECS shelf area with radiolarian tests $\geq 100$

According to Table 1, among three regions, there exists a significant difference in radiolarian abundance (ANOVA,  $p = 0.001$ ). Diversity indices, including  $S$  and  $H'$ , displayed an overall ranking of ECSSR > ECSMR > ECSNR both in samples ( $S$ , Kruskal-Wallis Test,  $p = 0.000$ ;  $H'$ , ANOVA,  $p = 0.000$ ) and subsamples ( $S_{\text{sub}}$ , ANOVA,  $p = 0.000$ ;  $H'_{\text{sub}}$ , ANOVA,  $p = 0.000$ ). Cluster analysis based on the relative abundance classified all but one site into three regional groups at the 60% Bray-Curtis similarity level, including the ECSNR group, ECSMR group and ECSSR group (Fig. 6). The significant differences among the three groups were examined by ANOSIM (Global  $R = 0.769$ ,  $p = 0.001$ ).

The dominant species in each regional group were identified by SIMPER analysis with a cut-off of 50% (Table 2). *Tetrapyle octacantha*, *Didymocyrtis tetrathalamus*, and *Spongodiscus resurgens* dominated in the ECSNR group, with contribution of 41.70%, 9.79%, and 8.89%, respectively. The radiolarian taxa, including *T. octacantha*, *Didymocyrtis tetrathalamus*, *Dictyocoryne* group, *Stylodictya multispina*, and *Spongodiscus resurgens*, contributed most to the ECSMR group. The dominant species in the ECSSR group were composed of *T. octacantha*, *Didymocyrtis tetrathalamus*, *Dictyocoryne* group, *Spongaster tetras*, *Z. piscicaudatus*, *P. pylonium*, *Stylodictya multispina*, and *E. furcata*.

It was indicated by the RDA that the first two axes explained 39.9% (RDA1 30.0%, RDA2 9.9%) of the species variance, and 86.5% of the species-environment relation variance (Table 3A). Forward selection with Monte Carlo test (999 Permutation) revealed that SST and SSS were the most significant environmental variables associated with radiolarian composition (Table 3B). The RDA plot showed a clear distribution pattern of regional samples (Fig. 7A). The ECSNR samples generally occupied the left part of the ordination, showing a feature of comparatively lower SST and an extensive fitness to SSS. The ECSMR samples were mostly located in the middle part, suggesting an adaption to higher values of SST and SSS than the ECSNR samples. The ECSSR samples distributed mainly at right part, characterized by the higher value of SST and SSS.

The dominant species identified by the SIMPER analysis (Table 2) were displayed in the RDA plot (Fig. 7B). Species taxa, including *Spongaster tetras*, *Dictyocoryne* group and *P. pylonium*, were related to higher SST, while showed little relationship with SSS. *Zygocircus piscicaudatus*, *E. furcata*, and *Stylodictya multispina* displayed a preference of higher SST and lower SSS. *Didymocyrtis tetrathalamus* was positively related to SST and SSS. *Tetrapyle octacantha* showed a better fitness to higher SSS and lower SST. Additionally, *Spongodiscus resurgens* was negatively associated with SST and SSS.

## Discussion

Generally, the number of the radiolarian tests in continental shelf sediments of the ECS and YS is several orders of magnitude lower than that of the adjacent Okinawa trough (Chang et al., 2003; Cheng & Ju, 1998). First, due to the continental runoff input, coastal area water is featured of lower temperature and salinity, resulting in lower number of living radiolarians (Chen & Wang, 1982; Matsuzaki, Itaki & Kimoto, 2016; Tan & Su, 1982). Also, deposition rate in study

area is considerably high as 0.1–0.8 cm/yr in the YS, and 0.1–3 cm/yr in the ECS (Dong, 2011), which greatly masks the concentration of radiolarian skeleton in sediments (Chang et al., 2003).

### **The radiolarian assemblages in the YS shelf area**

Based on our results, though radiolarian assemblages varied greatly between the YS and ECS, there are some common species as all of the 21 radiolarian species in the YS can be found in the ECS, that is, no endemic species were observed in the YS. The top 5 species taxa, except *Spongodiscus* sp., were reported as typical warm species (Chang et al., 2003; Chen et al., 2008; Matsuzaki & Itaki, 2017), suggesting a warm-water origin of radiolarians in the YS.

As a semi-enclosed marginal sea mostly shallower than 80 m, YS is influenced by a continuous circulation, primarily comprised by the Yellow Sea Warm Current and China Coastal Current (UNEP, 2005). The mean values of SST and SSS in the YS are 15°C and 32psu, respectively (Fig. 1), making it quite difficult for radiolarians to survive and proliferate. For the surface sediments in the YS in our study, only a small number of radiolarians were detected at the margin of the YS shelf area, whereas no radiolarians were detected in the 15 sites within the range of the central YS (Fig. 5B). For the planktonic samples in the southern YS, low radiolarian stocks were also reported previously (Tan & Chen, 1999). Sporadic radiolarians were merely documented in winter, with radiolarian stocks less than 200 tests.m<sup>-3</sup> (Tan & Chen, 1999). We thus infer the radiolarians in the YS (Fig. 5) were probably introduced by the Yellow Sea Warm Current, and transported by the China Coastal Current. The question whether the absence of radiolarians in the central YS is controlled by the Yellow Sea Cold Water Mass remains unclear and needs future investigations.

### **Selected stations in the ECS shelf area with radiolarian tests $\geq 100$**

In the ECS, the gradients of SST and SSS are controlled by the interaction of the Kuroshio branch current, TWC and Changjiang Diluted Water (Yang et al., 2012). SST and SSS both show an increase from north to south, corresponding well with the overall distribution of radiolarians (Fig. 1, Fig. 5).

Revealed by the RDA, SST was the most significant environmental variable related to the radiolarian composition, followed by SSS (Table 3B). SST is generally regarded as having an extremely important role in controlling the composition and distribution of radiolarians (Boltovskoy & Correa, 2017; Hernández - Almeida et al., 2017; Ikenoue et al., 2015). According to Matsuzaki, Itaki & Tada (2019), the species diversity in the northern ECS was higher during interglacial period than during glacial period. For a long time, the relationship between radiolarian assemblages and SST is used to construct past changes in hydrographic conditions (Matsuzaki & Itaki, 2017). In this study, SST showed a significant correlation with abundance, species number, and  $H'$  (Table 4), suggesting that higher SST may often correspond to higher diversity.

SSS was also crucial for explaining species-environment correlations in the ECS shelf area. At the offshore Western Australia, salinity is strongly significant in determining radiolarian species distributions (Rogers, 2016). Hernández - Almeida et al. (2017) and Liu et al. (2017a) stated that the composition and distribution pattern of the radiolarian fauna in the western Pacific responds

mainly to SST and SSS. Gupta (2002) found that the relative abundance of Pyloniidae exhibits a positive correlation with salinity. In this study SSS was positively correlated to abundance and species number (Table 4), possibly suggesting a positive influence of SSS on radiolarian diversity.

The radiolarian assemblages of the ECSSR group were influenced by the Kuroshio Current and TWC, while the TWC predominated. The surface water of the TWC is mainly characterised by high temperature (23-29°C) and salinity (33.3-34.2psu) (Weng & Wang, 1988). Some of the TWC waters are supplemented from the South China Sea (Liu et al., 2017b), where radiolarians show high diversity (Chen et al., 2008; Liu et al., 2017a; Zhang et al., 2009). The dominant species in the ECSSR group included *T. octacantha*, *Didymocyrtis tetrathalamus*, *Dictyocoryne* group, *Spongaster tetras*, *Z. piscicaudatus*, *P. pylonium*, *Stylodictya multispina*, and *E. furcata* (Table 2, Fig. 8). These species taxa are reported as typical indicators of the Kuroshio Current (Chang et al., 2003; Gallagher et al., 2015; Liu et al., 2017a; Matsuzaki et al., 2016). The relatively high abundance of these taxa in the study area reflected the influence of the warm Kuroshio and TWC waters. Moreover, moderate percentage (0.91%) of *Pterocorys campanula* Haeckel was detected in the ECSSR group, in contrast with the ECSMR group (0.14%) and ECSNR group (0.06%). Members of *Pterocorys* are shallow-water dwellers, as reported by Matsuzaki, Itaki & Sugisaki (2019). *Pterocorys campanula* frequently occurs and dominates in the South China Sea, whereas there are no reports of the dominance of *P. campanula* in the sediment samples of the ECS (Chen & Tan, 1996; Chen et al., 2008; Hu et al., 2015; Liu et al., 2017a). The high abundance of this taxon in the ECSSR group further demonstrates our conclusion that radiolarian assemblages of the ECSSR group were brought by the Kuroshio Current and TWC with the TWC playing the main role.

The ECSMR group was influenced by the Kuroshio Current, TWC, and Changjiang Diluted Water. The dominant species in the ECSMR included *T. octacantha*, *Didymocyrtis tetrathalamus*, *Dictyocoryne* group, *Stylodictya multispina* and *Spongodiscus resurgens* (Table 2). The dominant species of the ECSMR group showed great overlap with the ECSSR group, which, in some degrees, suggests a similarity between the two groups, as both are influenced by the Kuroshio Current and TWC. On the other hand, the lower percentages of *Didymocyrtis tetrathalamus*, *Dictyocoryne* group, and *Stylodictya multispina* indicated part of the impact by the Changjiang Diluted Water, which is characterized by lower SST (Fig. 8).

*Tetrapyle octacantha*, *Didymocyrtis tetrathalamus*, and *Spongodiscus resurgens* were dominant species of the ECSNR group, which was primarily impacted by the Changjiang Diluted Water and Kuroshio Current. Compared to the ECSMR and ECSSR group, the ECSNR group occupied higher latitude which means a lower SST, while the large input of Changjiang Diluted Water decreased SSS (Fig. 1). This combination of lower SST and SSS probably hindered the radiolarian diversity of the ECSNR (Table 1).

The radiolarian assemblages in the shallower sea, i.e., the shelf sea area of the ECS, displayed distinctly different patterns from those in the open ocean. *Tetrapyle octacantha* occurred in the extraordinarily high proportion of 59% in the study area (Fig. 8), much higher than ever reported



in adjacent areas with deeper waters (Chang et al., 2003; Cheng & Ju, 1998; Liu et al., 2017a; Wang & Chen, 1996). *Tetrapyle octacantha*, as the most abundant taxon in the subtropical area (Boltovskoy, 1989), shows a high tolerance to temperature (Ishitani et al., 2008). This taxon has been reported to be associated with water from the ECS shelf area (Chang et al., 2003; Itaki, Kimoto & Hasegawa, 2010). Zhang et al. (2009) found that *T. octacantha* frequency was negatively correlated with SST, and Welling & Pisias (1998) concluded that *T. octacantha* dominated during the cold tongue period. In our study, *T. octacantha* was negatively related to SST according to the results of the RDA (Fig. 7B), tending to confirm the previous studies. We thus infer that *T. octacantha* is possibly more resistant to local severe temperature and, so, reaches comparatively high abundance in the shelf area. Therefore, *T. octacantha* can serve as an indicator that depicts the degree of mixture between the colder shelf water and warm Kuroshio water. The response of *T. octacantha* to SSS was unclear, though it showed positive relationship with SSS in the RDA plot (Fig. 7B). Here a special station with the highest Shannon-Wiener's index (3.2 in both original sample and subsample) was noticed, namely the station 3000-1 (Fig. 3), which is located at the Changjiang estuary. In our study, it had the lowest value of salinity (26.6psu) and the lowest percentage of *T. octacantha* (14.8%). After removed 3000-1, no significant correlation existed between SSS and the relative abundance of *T. octacantha* ( $n = 22$ ,  $r = -0.027$ ,  $p = 0.906$ ). *Spongodiscus resurgens*, with an upper sub-surface maximum, was generally considered to be cold water species (Suzuki & Not, 2015) and related to productive nutrient-rich water (Itaki, Minoshima & Kawahata, 2009; Matsuzaki & Itaki, 2017). The ECSNR group was primarily controlled by the colder Changjiang Diluted Water, and thus had the highest percentage of *T. octacantha* and *Spongodiscus resurgens* among three regions.

## Conclusions

We analyzed radiolarian assemblages collected from the YS and ECS shelf area, where the Kuroshio Current and its derivative branches, including the TWC and Yellow Sea Warm Current, exerts great effect.

(1) The radiolarian abundance in the YS was quite low, and no radiolarians were detected in 15 of 25 YS sites.

(2) The radiolarian abundance and diversity in the ECS, which is controlled by the Kuroshio warm water, was much higher. Based on the cluster analysis, the radiolarian assemblages in the ECS could be divided into three regional groups, namely the ECSNR group, ECSMR group and ECSSR group.

a. The ECSNR group was chiefly impacted by the Changjiang Diluted Water and Kuroshio Current, with dominant species of *T. octacantha*, *Didymocorytis tetrathalamus*, and *Spongodiscus resurgens*.

b. The ECSMR group was controlled by the Kuroshio Current, TWC and Changjiang Diluted Water. Species contributed most to this group included *T. octacantha*, *Didymocorytis tetrathalamus*, *Dictyocoryne* group, *Stylodictya multispina*, and *Spongodiscus resurgens*.

c. The ECSSR group was affected by the Kuroshio Current and TWC, in which the TWC occupies major status. The dominant species in this group were composed of *T. octacantha*,

*Didymocyrtis tetrathalamus*, *Dictyocoryne* group, *Spongaster tetras*, *Z. piscicaudatus*, *P. pylonium*, *Stylodictya multispina*, and *Euchitonia furcata*.  
(3) The RDA results showed that SST and SSS were main environmental variables that influenced the radiolarian composition in the ECS shelf.

## Acknowledgements

We are grateful to laboratory members for collecting sediment samples. We thank Dr. Lanlan Zhang for advising on this research. We also appreciate Dr. Kenji M. Matsuzaki, Dr. John Rogers, and the editor for their valuable comments on the manuscript.

## References

- Abelmann A, Nimmergut A. 2005. Radiolarians in the Sea of Okhotsk and their ecological implication for paleoenvironmental reconstructions. *Deep-Sea Research II* **52**:2302-2331. <https://doi.org/10.1016/j.dsr2.2005.07.009>
- Anderson OR. 1983. *Radiolaria*. New York: Springer Science & Business Media.
- Boltovskoy D. 1989. Radiolarian record of the last 40,000 years in the western equatorial Pacific. *Oceanologica Acta* **12**:79-86.
- Boltovskoy D, Correa N. 2017. Planktonic equatorial diversity troughs: fact or artifact? Latitudinal diversity gradients in Radiolaria. *Ecology* **98**:112-124. <https://doi.org/10.1002/ecy.1623>
- Chang FM, Zhuang LH, Li TG, Yan J, Cao QY, Cang SX. 2003. Radiolarian fauna in surface sediments of the northeastern East China Sea. *Marine Micropaleontology* **48**:169-204. [https://doi.org/10.1016/s0377-8398\(03\)00016-1](https://doi.org/10.1016/s0377-8398(03)00016-1)
- Chen MH, Tan ZY. 1996. *Radiolaria from Surface Sediments of the Central and Northern South China Sea*. Beijing: Science Press.
- Chen MH, Zhang LL, Zhang L, Xiang R, Lu J. 2008. Preservation of radiolarian diversity and abundance in surface sediments of the South China Sea and its environmental implication. *Journal of China University of Geosciences* **19**:217-229. [https://doi.org/10.1016/s1002-0705\(08\)60041-2](https://doi.org/10.1016/s1002-0705(08)60041-2)
- Chen W, Wang B. 1982. A preliminary study on the Radiolaria from surface sediments of the East China Sea (in Chinese with English abstract). *Marine Geological Research* **2**:59-69.
- Cheng Z, Ju X. 1998. Radiolaria from the Surface Sediments in the Middle Okinawa Trough (in Chinese with English abstract). *Oceanologia et Limnologia Sinica* **29**:662-665.
- Clarke K, Warwick R. 2001. *Changes in Marine Communities: An Approach to Statistical Analysis and Interpretation*. 2nd ed. Plymouth: PRIMER-E Ltd.
- Dong A. 2011. Source, Sink and its Environmental Record of Sediments in Yellow Sea and East China Sea. Ocean University of China.
- Fatela F, Taborda R. 2002. Confidence limits of species proportions in microfossil assemblages. *Marine Micropaleontology* **45**:169-174. [https://doi.org/10.1016/s0377-8398\(02\)00021-x](https://doi.org/10.1016/s0377-8398(02)00021-x)
- Folk RL, Andrews P, Lewis DW. 1970. Detrital sedimentary rock classification and nomenclature for use in New Zealand. *New Zealand Journal of Geology & Geophysics* **13**:937-968. <http://dx.doi.org/10.1080/00288306.1970.10418211>

- Gallagher SJ, Kitamura A, Iryu Y, Itaki T, Koizumi I, Hoiles PW. 2015. The Pliocene to recent history of the Kuroshio and Tsushima Currents: a multi-proxy approach. *Progress in Earth and Planetary Science* **2**. <https://doi.org/10.1186/s40645-015-0045-6>
- Guan B. 1963. A preliminary study of the temperature variations and the characteristics of the circulation of the cold water mass of the Yellow Sea (in Chinese with English abstract). *Oceanologia et Limnologia Sinica* **5**:255-284.
- Gupta SM. 2002. Pyloniid stratigraphy—a new tool to date tropical radiolarian ooze from the central tropical Indian Ocean. *Marine Geology* **184**:85-93. [https://doi.org/10.1016/S0025-3227\(01\)00276-6](https://doi.org/10.1016/S0025-3227(01)00276-6)
- Hernández-Almeida I, Cortese G, Yu PS, Chen MT, Kucera M. 2017. Environmental determinants of radiolarian assemblages in the western Pacific since the last deglaciation. *Paleoceanography* **32**:830-847. <https://doi.org/10.1002/2017PA003159>
- Hsueh Y. 2000. The Kuroshio in the East China Sea. *Journal of Marine Systems* **24**:131-139. [https://doi.org/10.1016/S0924-7963\(99\)00083-4](https://doi.org/10.1016/S0924-7963(99)00083-4)
- Hu W, Zhang L, Chen M, Zeng L, Zhou W, Xiang R, Zhang Q, Liu S. 2015. Distribution of living radiolarians in spring in the South China Sea and its responses to environmental factors. *Science China Earth Sciences* **58**:270-285. <https://doi.org/10.1007/s11430-014-4950-0>
- Ikenoue T, Bjørklund K, Kruglikova S, Onodera J, Kimoto K, Harada N. 2015. Flux variations and vertical distributions of siliceous Rhizaria (Radiolaria and Phaeodaria) in the western Arctic Ocean: indices of environmental changes. *Biogeosciences* **12**. <https://doi.org/10.5194/bg-12-2019-2015>
- Ishitani Y, Takahashi K, Okazaki Y, Tanaka S. 2008. Vertical and geographic distribution of selected radiolarian species in the North Pacific. *Micropaleontology* **54**:27-39.
- Itaki T, Kimoto K, Hasegawa S. 2010. Polycystine radiolarians in the Tsushima Strait in autumn of 2006. *Paleontological Research* **14**:19-32. <https://doi.org/10.2517/1342-8144-14.1.019>
- Itaki T, Minoshima K, Kawahata H. 2009. Radiolarian flux at an IMAGES site at the western margin of the subarctic Pacific and its seasonal relationship to the Oyashio Cold and Tsugaru Warm currents. *Marine Geology* **255**:131-148. <https://doi.org/10.1016/j.margeo.2008.07.006>
- Jun P. 2014. The Delimitation of the Continental Shelf beyond 200 Nautical Miles in the East China Sea. *China Oceans Law Review*:124.
- Lazarus D, Suzuki N, Caulet JP, Nigrini C, Goll I, Goll R, Dolven JK, Diver P, Sanfilippo A. 2015. An evaluated list of Cenozoic-Recent radiolarian species names (Polycystinea), based on those used in the DSDP, ODP and IODP deep-sea drilling programs. *Zootaxa* **3999**:301-333. [10.11646/zootaxa.3999.3.1](https://doi.org/10.11646/zootaxa.3999.3.1)
- Lepš J, Šmilauer P. 2003. *Multivariate Analysis of Ecological Data Using CANOCO*. Cambridge: Cambridge university press.

- 417 Liu L, Zhang Q, Chen M, Zhang L, Xiang R. 2017a. Radiolarian biogeography in surface  
418 sediments of the Northwest Pacific marginal seas. *Science China Earth Sciences* **60**:517-  
419 530. <https://doi.org/10.1007/s11430-016-5179-4>
- 420 Liu W, Song J, Yuan H, Li N, Li X, Duan L. 2017b. Dissolved barium as a tracer of Kuroshio  
421 incursion in the Kuroshio region east of Taiwan Island and the adjacent East China Sea  
422 (in Chinese with English abstract). *Science China Earth Sciences*:160-171.
- 423 Lomax RG, Hahs-Vaughn DL. 2013. *An introduction to statistical concepts*: Routledge.
- 424 Lombardi G, Boden G. 1985. Modern radiolarians global distributions. *Cushman Foundation for*  
425 *Foraminiferal Research, Special Publication* **16**:1-125.
- 426 Matsuzaki KM, Itaki T. 2017. New northwest Pacific radiolarian data as a tool to estimate past  
427 sea surface and intermediate water temperatures. *Paleoceanography* **32**:218-245.  
428 <http://dx.doi.org/10.1002/2017PA003087>
- 429 Matsuzaki KM, Itaki T, Kimoto K. 2016. Vertical distribution of polycystine radiolarians in the  
430 northern East China Sea. *Marine Micropaleontology* **125**:66-84.  
431 <https://doi.org/10.1016/j.marmicro.2016.03.004>
- 432 Matsuzaki KM, Itaki T, Sugisaki S. 2019. Polycystine radiolarians vertical distribution in the  
433 subtropical Northwest Pacific during Spring 2015 (KS15-4) (in press). *Paleontological*  
434 *Research*. <http://dx.doi.org/10.2517/2019PR019>
- 435 Matsuzaki KM, Itaki T, Tada R. 2019. Paleocceanographic changes in the Northern East China  
436 Sea during the last 400 kyr as inferred from radiolarian assemblages (IODP Site U1429).  
437 *Progress in Earth and Planetary Science* **6**:1-21. [http://dx.doi.org/10.1186/s40645-019-](http://dx.doi.org/10.1186/s40645-019-0256-3)  
438 0256-3
- 439 Naimi B, Hamm NA, Groen TA, Skidmore AK, Toxopeus AG. 2014. Where is positional  
440 uncertainty a problem for species distribution modelling? *Ecography* **37**:191-203.
- 441 Pi Z. 2016. The evolution of the Yellow Sea Warm Current under the background of East Asian  
442 Monsoon since mid Holocene (in Chinese with English abstract). Institute of  
443 Oceanology, Chinese Academy of Sciences.
- 444 Qi J. 2014. The study on the Water Masses, Kuroshio and Water Exchange in the East China Sea  
445 (in Chinese with English abstract). Institute of Oceanology, Chinese Academy of  
446 Sciences.
- 447 Qiu B. 2001. Kuroshio and Oyashio currents. *Ocean Currents: A Derivative of the Encyclopedia*  
448 *of Ocean Sciences*:61-72. <https://doi.org/10.1006/rwos.2001.0350>
- 449 Ridgway K, Dunn J, Wilkin J. 2002. Ocean interpolation by four-dimensional weighted least  
450 squares—Application to the waters around Australasia. *Journal of atmospheric and*  
451 *oceanic technology* **19**:1357-1375. [https://doi.org/10.1175/1520-](https://doi.org/10.1175/1520-0426(2002)019<1357:oibfdw>2.0.co;2)  
452 0426(2002)019<1357:oibfdw>2.0.co;2
- 453 Rogers J. 2016. Monsoonal and other climatic influences on radiolarian species abundance over  
454 the last 35 ka, as recorded in core FR10/95-GC17, off North West Cape (Western  
455 Australia). *Revue de Micropaleontologie* **59**:275-293.  
456 <https://doi.org/10.1016/j.revmic.2016.05.003>



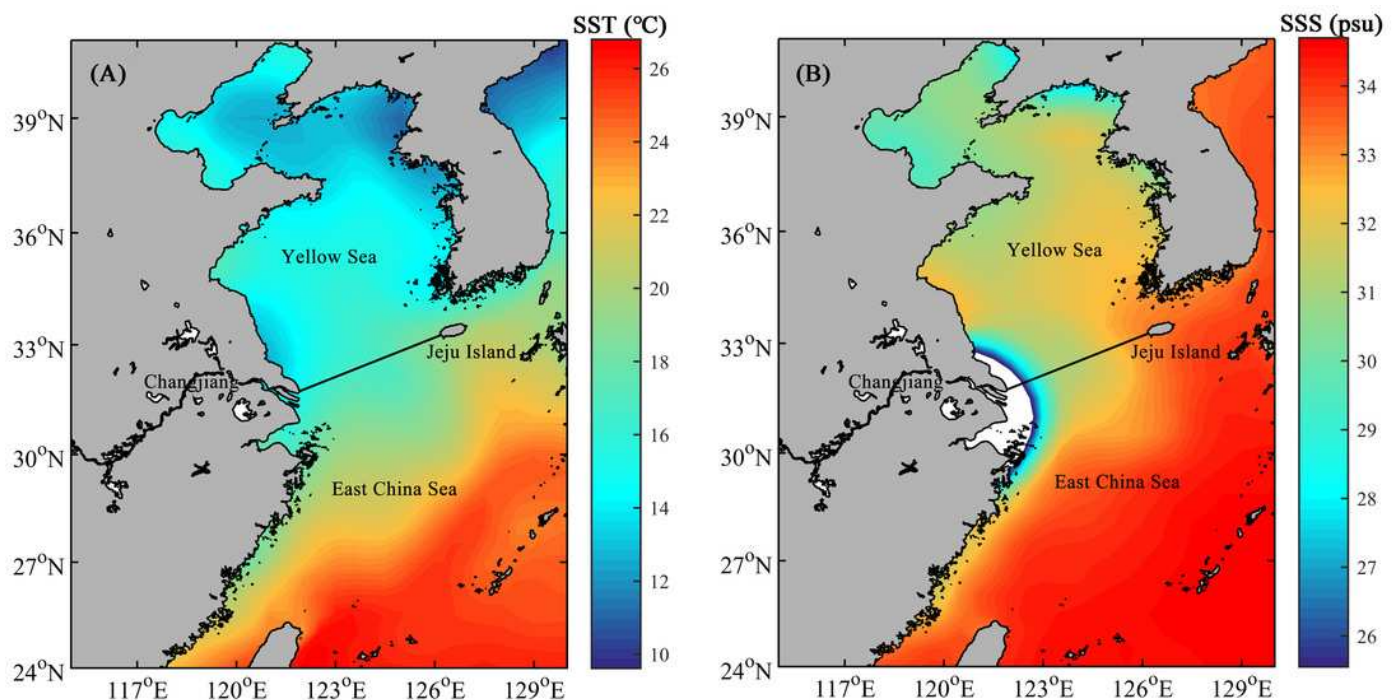
- Suzuki N. 2016. The statistic information on radiolarian studies based on PaleoTax for Windows, a synonym database (in Japanese with English abstract). *Fossils* **99**:15-31.
- Suzuki N, Not F. 2015. *Biology and Ecology of Radiolaria*. Japan: Springer Japan.
- Takahashi K. 1981. Vertical Flux, Ecology and Dissolution of Radiolaria in Tropical Oceans: Implications for the Silica Cycle. Massachusetts Institute of Technology and Woods Hole Oceanographic Institution.
- Tan Z, Chen M. 1999. *Offshore Radiolaria from China (in Chinese with English abstract)*. Beijing: Science Press.
- Tan Z, Su X. 1982. Studies on the Radiolaria in sediments of the East China Sea (continental shelf) (in Chinese with English abstract). *Studia Marina Sinica* **19**:129-216.
- Ter Braak CJ, Smilauer P. 2002. CANOCO reference manual and CanoDraw for Windows user's guide: software for canonical community ordination (version 4.5). Microcomputer Power.
- Tomczak M, Godfrey JS. 2001. *Regional Oceanography: An Introduction (Version 1.0)*. Oxford: Pergamon Press.
- UNEP. 2005. In: Teng, S.K., Yu, H., Tang, Y., Tang, L., Choi, C.Y., Kang, D., Liu, H., Chun, Y., Juliano, R.O., Rautalahti-Miettinen, E., Daler, D. (Eds.), Yellow Sea. GIWA Regional Assessment 34. University of Kalmar, Kalmar, Sweden.
- Wang JB. 2012. Study on the Ecology and Taxonomy of polycystine Radiolaria from three aeras of the South China Sea (in Chinese with English abstract). Institute of Oceanology, Chinese Academy of Sciences.
- Wang R, Chen R. 1996. Preliminary study on the Radiolaria from the surface sediments in southern Okinawa Trough (in Chinese with English abstract). *Journal of Tongji University*:670-676.
- Welling LA, Pisias NG. 1998. Radiolarian fluxes, stocks, and population residence times in surface waters of the central equatorial Pacific. *Deep-Sea Research Part I: Oceanographic Research Papers* **45**:639-671.
- Weng X, Wang C. 1988. On the Taiwan Warm Current Water. *Chinese Journal of Oceanology & Limnology* **6**:320-329.
- Weng X, Zhang Y, Wang C, Zhang Q. 1988. The variational characteristics of the Huanghai Sea (Yellow Sea) cold water mass (in Chinese with English abstract). *Oceanologia et Limnologia Sinica* **19**:368-379.
- Xu D, Li X, Zhu J, Qi Y. 2011. Evaluation of an ocean data assimilation system for Chinese marginal seas with a focus on the South China Sea. *Chinese Journal of Oceanology and Limnology* **29**:414-426. <https://doi.org/10.1007/s00343-011-0044-4>
- Yang D, Yin B, Liu Z, Bai T, Qi J, Chen H. 2012. Numerical study on the pattern and origins of Kuroshio branches in the bottom water of southern East China Sea in summer. *Journal of Geophysical Research: Oceans* **117**:1-16. <https://doi.org/10.1029/2011jc007528>
- Yang D, Yin B, Liu Z, Feng X. 2011. Numerical study of the ocean circulation on the East China Sea shelf and a Kuroshio bottom branch northeast of Taiwan in summer. *Journal of Geophysical Research: Oceans* **116**. <https://doi.org/10.1029/2010jc006777>

497 Yasudomi Y, Motoyama I, Oba T, Anma R. 2014. Environmental fluctuations in the  
 498 northwestern Pacific Ocean during the last interglacial period: evidence from radiolarian  
 499 assemblages. *Marine Micropaleontology* **108**:1-12.  
 500 <https://doi.org/10.1016/j.marmicro.2014.02.001>  
 501 Zhang L, Chen M, Xiang R, Zhang J, Liu C, Huang L, Lu J. 2009. Distribution of polycystine  
 502 radiolarians in the northern South China Sea in September 2005. *Marine*  
 503 *Micropaleontology* **70**:20-38. <https://doi.org/10.1016/j.marmicro.2008.10.002>  
 504 Zhao RX, Liu ZL. 2015. The seasonal variability of the Kuroshio surface water intrusion onto  
 505 the East China Sea continental shelf derived from Argos drifter data (in Chinese with  
 506 English abstract). *Marine Sciences* 39:118-123.

# Figure 1

The mean annual sea surface temperature (SST, A) and sea surface salinity (SSS, B) in the shelf area of the ECS and YS.

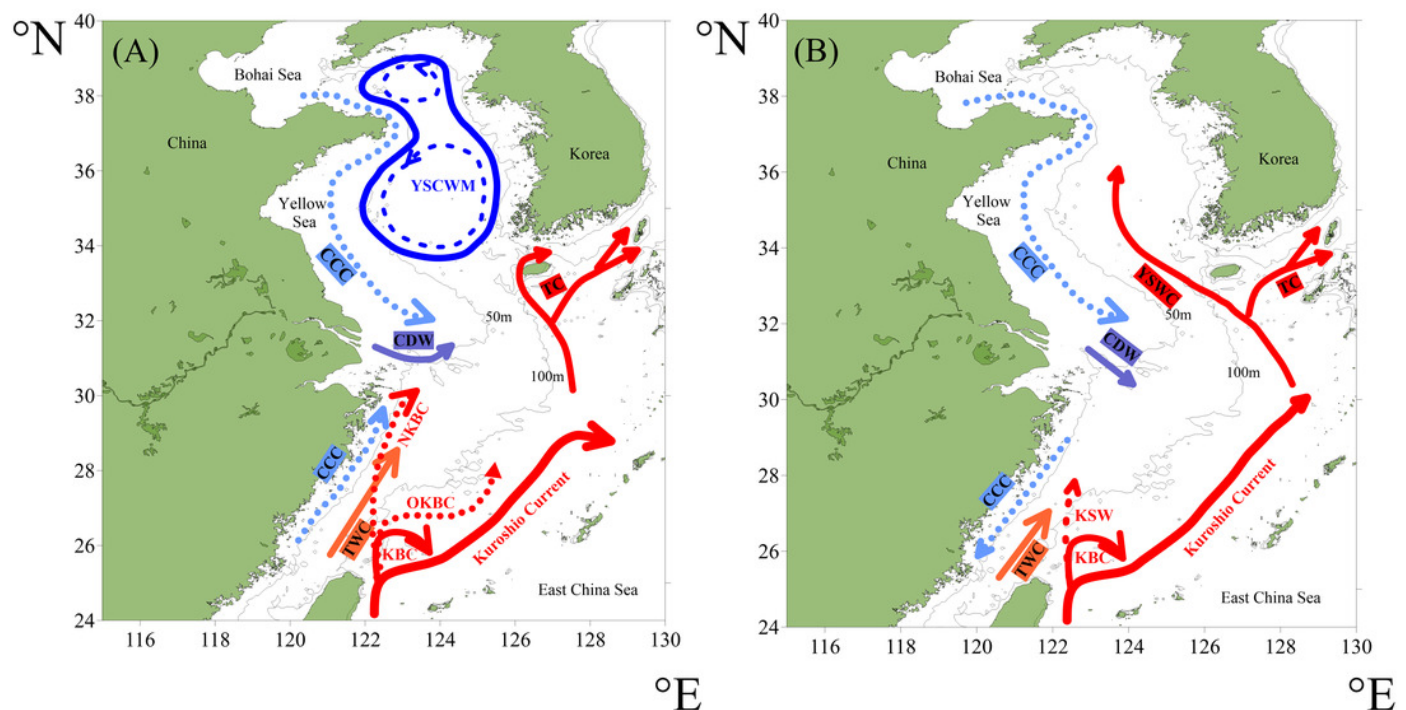
Solid line indicates the boundary between the ECS and YS.



# Figure 2

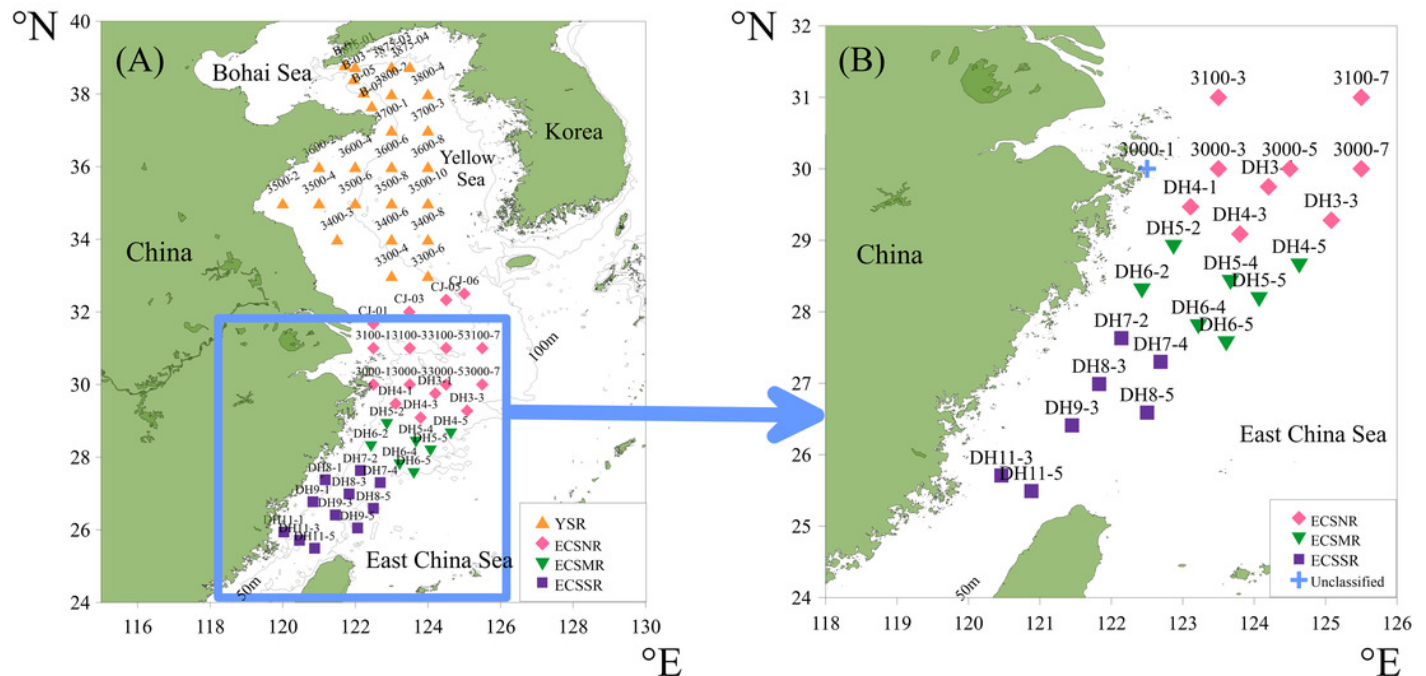
The circulation system of the study area in summer (A) and winter (B) (redrawn after Yang et al. (2012) and Pi (2016)).

Abbreviations: KBC – Kuroshio Branch Current, OKBC – Offshore Kuroshio Branch Current, NKBC – Nearshore Kuroshio Branch Current, KSW – Kuroshio Surface Water, TWC – Taiwan Warm Current, CCC – China Coastal Current, CDW – Changjiang Diluted Water, YSCWM – Yellow Sea Cold Water Mass, YSWC – Yellow Sea Warm Current, TC – Tsushima Current.



# Figure 3

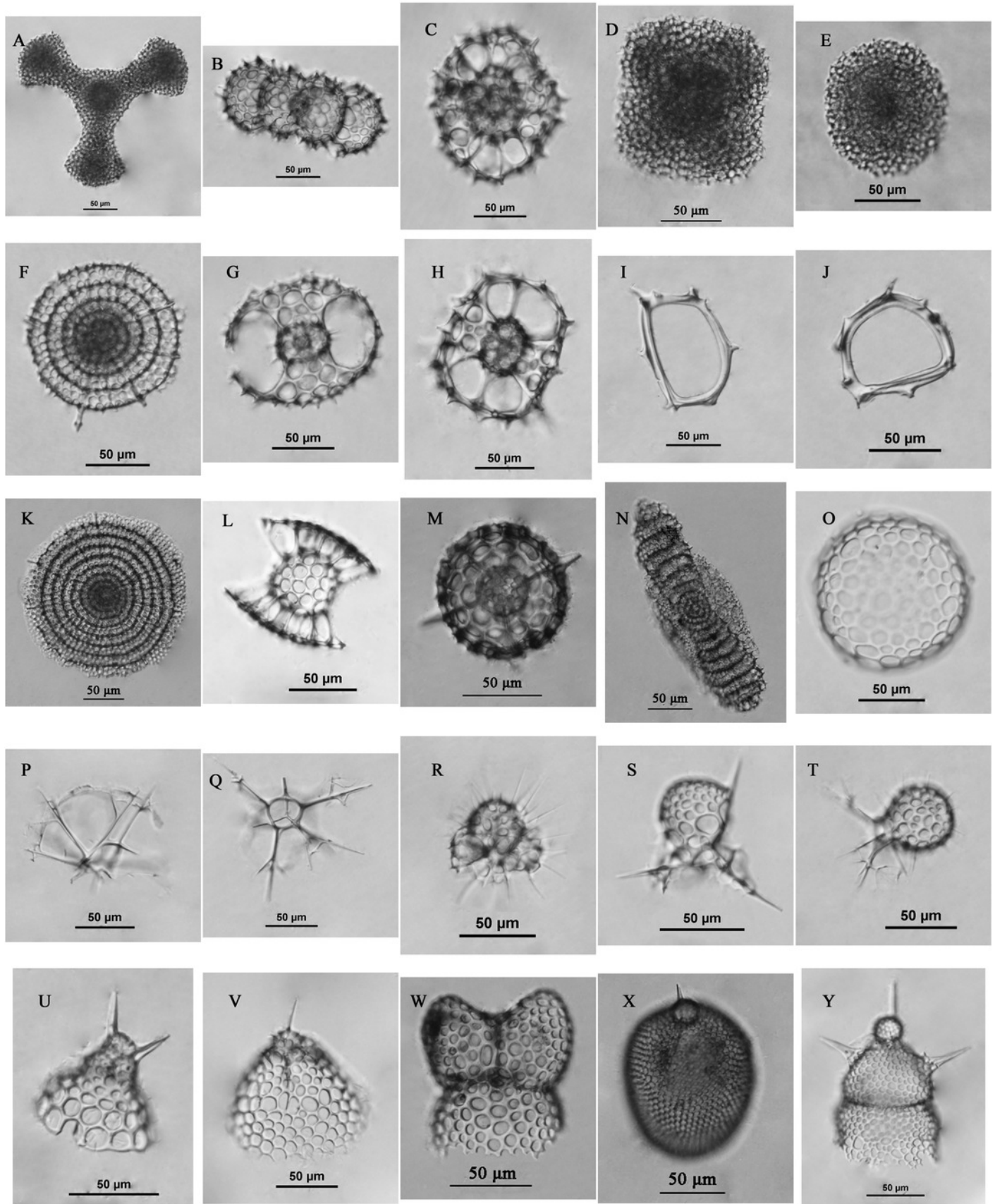
The location of the total surface sediment samples in the ECS and YS shelf area (A), and simplified 24 samples with a threshold of 100 tests (B).



# Figure 4

Some radiolarians encountered in this study.

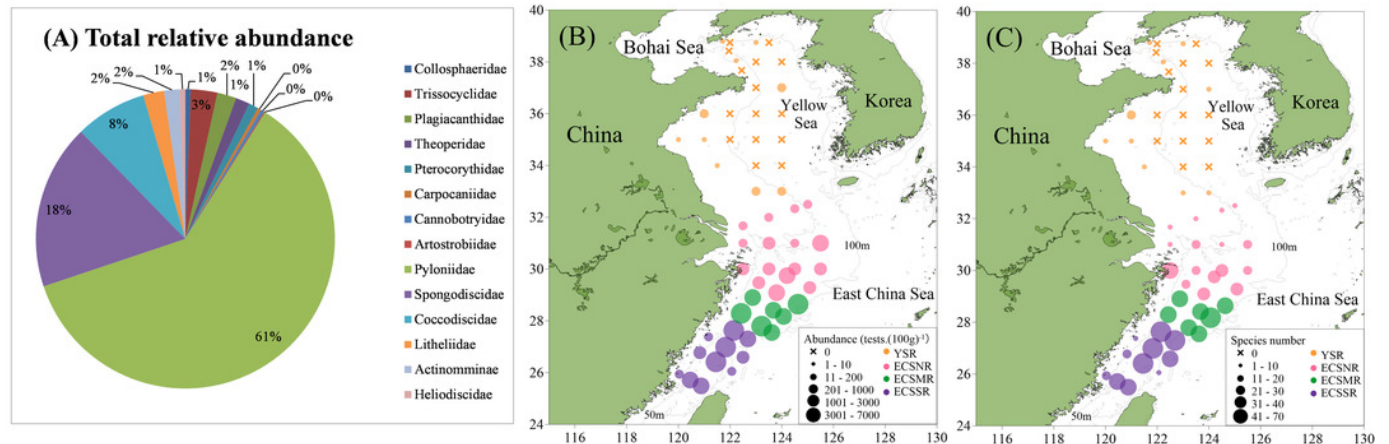
A. *Dictyocoryne* group; B. *Didymocyrtis tetrathalamus* (Haeckel); C. *Phorticium pylonium* Haeckel; D. *Spongaster tetras* Ehrenberg; E. *Spongodiscus resurgens* Ehrenberg; F. *Stylodictya multispina* Haeckel; G-H, *Tetrapyle octacantha* group Mueller; I-J, *Zygocircus piscicaudatus* Popofsky; K. *Flustrella polygonia* (Popofsky); L. *Sethodiscus macrococcus* Haeckel; M. *Hexacontium pachydermum* Jorgensen; N, *Amphibrachium sponguroides* Haeckel; O, *Collosphaera* sp.; P-Q, *Pseudocubus obeliscus* Haeckel; R, *Acanthocorys castanoides* Tan & Tchang; S, *Peromelissa spinosissima* Tan & Tchang; T, *Peridium* sp.; U. *Cycladophora bicornis* (Popofsky); V. *Helotholus histricosa* Jorgensen; W. *Phormospyris stabilis stabilis* (Goll); X. *Lithopera bacca* Ehrenberg; Y. *Lipmanella dictyoceras* (Haeckel).  
Scale bar = 50  $\mu$ m.





# Figure 5

Total relative abundance (A), absolute abundance (B), and species number (C) of the radiolarians in the surface sediments.

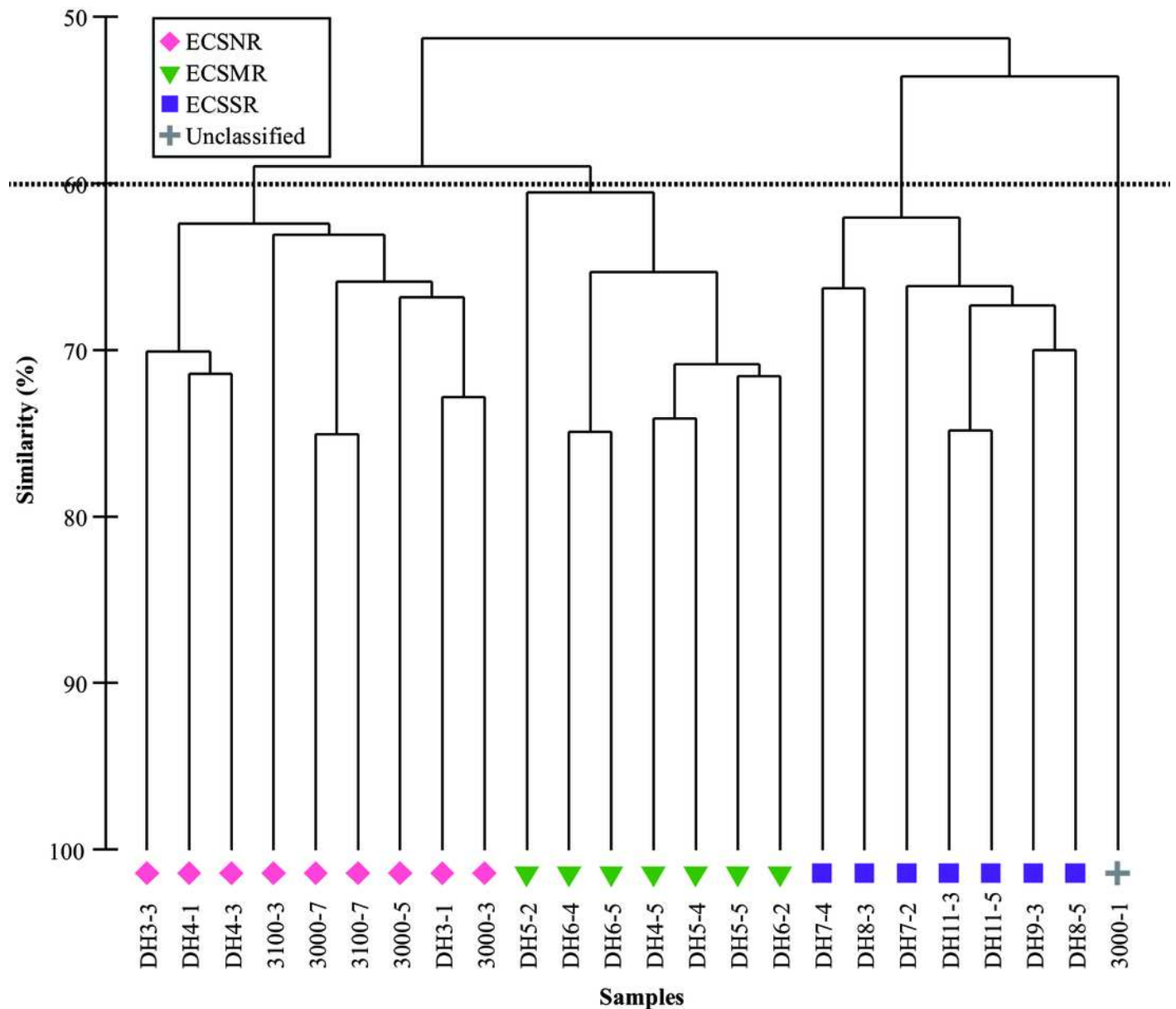




# Figure 6

Cluster analysis of radiolarian assemblages in the ECSNR, ECSMR and ECSSR.

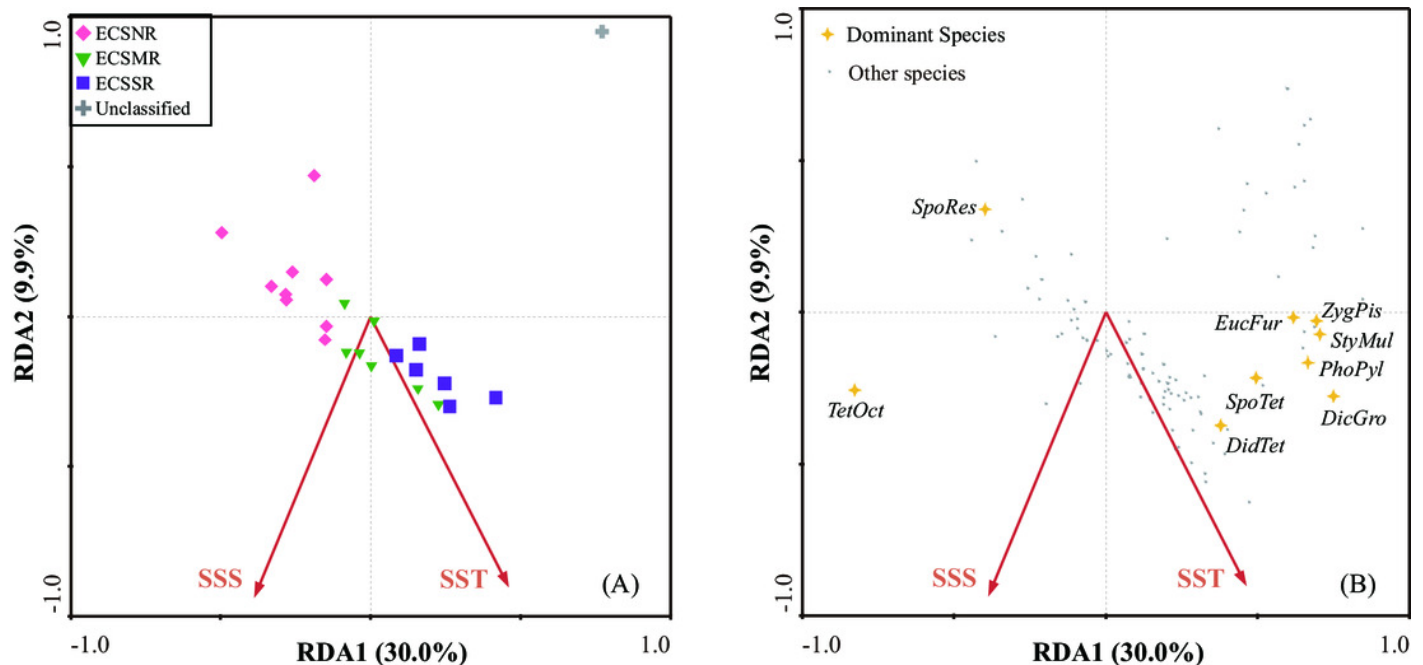
The dotted line represents 60% similarity level.



# Figure 7

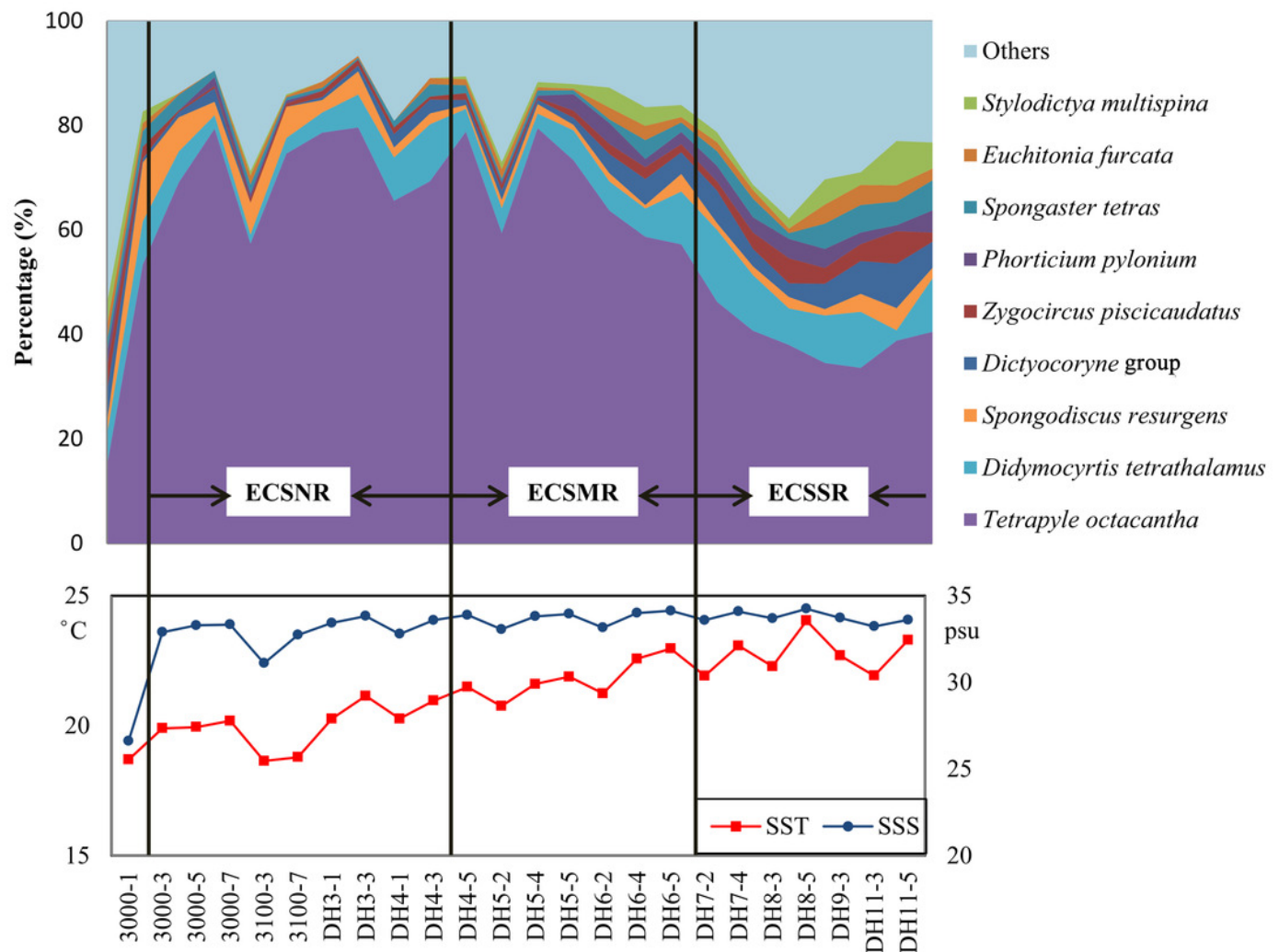
The redundancy analysis (RDA) ordination: (A) samples, (B) species.

Species codes: *DicGro* – *Dictyocoryne* group, *DidTet* – *Didymocyrtis tetrathalamus*, *EucFur* – *Euchitonina furcata*, *PhoPyl* – *Phortidium pylonium*, *SpoTet* – *Spongaster tetras*, *SpoRes* – *Spongodiscus resurgens*, *StyMul* – *Stylodictya multispina*, *TetOct* – *Tetrapyle octacantha*, *ZygPis* – *Zygocircus piscicaudatus* (in alphabetical order).



# Figure 8

Distribution of the dominant radiolarian species, SST, and SSS in the ECSNR, ECSMR, and ECSSR.



# **Table 1**(on next page)

The average values and standard errors (mean  $\pm$  SE) of abundance and diversity indices in different regions (ECSNR, ECSMR, ECSSR).

Different lowercase a, b and c indicate significant differences among regional groups.

Abbreviations:  $N$ , Abundance (tests.(100g)<sup>-1</sup>);  $S$ , species number;  $H'$  (log<sub>e</sub>) , Shannon-Wiener's index;  $S_{sub}$ , species number of subsamples;  $H'_{sub}$  (log<sub>e</sub>) , Shannon-Wiener's index of subsamples.

Diversity index	ECSNR (n = 9 )	ECSMR (n = 7)	ECSSR (n = 7)
$N$	$811 \pm 121^a$	$2776 \pm 463^b$	$2729 \pm 770^c$
$S$	$21 \pm 1^a$	$38 \pm 1^b$	$48 \pm 5^b$
$H'$	$1.35 \pm 0.10^a$	$1.61 \pm 0.13^b$	$2.65 \pm 0.08^c$
$S_{\text{sub}}$	$11 \pm 1^a$	$16 \pm 1^b$	$26 \pm 2^c$
$H'_{\text{sub}}$	$1.22 \pm 0.11^a$	$1.35 \pm 0.13^b$	$2.43 \pm 0.10^c$

1

## **Table 2**(on next page)

Average relative abundance, contribution (%) and cumulative contribution (%) of the radiolarian fauna contributing to the similarity within each group. A cut-off at 50% similarity was employed.

Species	Av.Abund.	Contrib %	Cum %
ECSNR group	Average similarity: 64.65%		
<i>Tetrapyle octacantha</i> group Mueller	69.67	41.70	41.70
<i>Didymocyrtis tetrathalamus</i> (Haeckel)	5.65	9.79	51.49
<i>Spongodiscus resurgens</i> Ehrenberg	4.81	8.89	60.38
ECSMR group	Average similarity: 66.17%		
<i>Tetrapyle octacantha</i> group Mueller	67.24	31.00	31.00
<i>Didymocyrtis tetrathalamus</i> (Haeckel)	5.54	8.11	39.11
<i>Dictyocoryne</i> group	2.53	4.62	43.73
<i>Stylodictya multispina</i> Haeckel	1.95	4.05	47.78
<i>Spongodiscus resurgens</i> Ehrenberg	1.55	3.96	51.74
ECSSR group	Average similarity: 65.02%		
<i>Tetrapyle octacantha</i> group Mueller	38.91	17.85	17.85
<i>Didymocyrtis tetrathalamus</i> (Haeckel)	9.06	7.41	25.25
<i>Dictyocoryne</i> group	5.26	5.95	31.20
<i>Spongaster tetras</i> Ehrenberg	3.98	5.01	36.21
<i>Zygocircus piscicaudatus</i> Popofsky	3.42	4.56	40.77
<i>Phorticium pylonium</i> Haeckel	2.98	4.43	45.20
<i>Stylodictya multispina</i> Haeckel	3.67	4.28	49.48
<i>Euchitonia furcata</i> Ehrenberg	2.44	3.87	53.35

# Table 3(on next page)

□A□ Results of the RDA for the radiolarian assemblages and environmental variables. □B□ Conditional effects of the total environmental variables in the RDA with the significant variables in bold.



	Axes				Total Inertia
	1	2	3	4	
Eigenvalues	0.300	0.099	0.039	0.024	1
Species-environment correlations	0.955	0.971	0.816	0.772	
Cumulative percentage variance of species data	30.0	39.9	43.8	46.2	
Cumulative percentage variance of species-environment relation	65.1	86.5	94.8	100	
Sum of all eigenvalues					1
Sum of all canonical eigenvalues					0.462

1

2

Variable	Conditional Effects		% contribution to canonical eigenvalues	<i>p</i>	F
	VIF	LambdaA			
<b>SST</b>	1.86	0.14	30%	<b>0.004</b>	3.34
<b>SSS</b>	2.76	0.24	52%	<b>0.001</b>	8.01
Clay%	1.02	0.05	11%	0.086	1.43
Phospate	2.69	0.03	6%	0.301	1.16

3

# **Table 4**(on next page)

The Spearman correlation between diversity indices and the environmental variables. Values of significant correlations are in bold.

Different lowercase a, b and c indicate significant differences among regional groups.

Abbreviations:  $N$ , Abundance (tests.(100g)<sup>-1</sup>);  $S$ , species number;  $H'$  (log<sub>e</sub>) , Shannon-Wiener's index;  $S_{sub}$ , species number of subsamples;  $H'_{sub}$  (log<sub>e</sub>) , Shannon-Wiener's index of subsamples.

Diversity index	n	SST		SSS	
		<i>r</i>	<i>p</i>	<i>r</i>	<i>p</i>
<i>N</i>	24	<b>0.60</b>	<b>0.00</b>	<b>0.47</b>	<b>0.02</b>
<i>S</i>	24	<b>0.69</b>	<b>0.00</b>	<b>0.55</b>	<b>0.01</b>
<i>H'</i>	24	<b>0.50</b>	<b>0.01</b>	0.11	0.62
<i>S</i> <sub>sub</sub>	24	<b>0.60</b>	<b>0.00</b>	0.28	0.19
<i>H'</i> <sub>sub</sub>	24	<b>0.41</b>	<b>0.04</b>	0.02	0.92

1