



Peritumoral immune infiltrates in primary tumours are not associated with the presence of axillary lymph node metastasis in breast cancer: a retrospective cohort study

Carlos López^{1,2,*}, Ramón Bosch-Príncipe^{1,*}, Guifré Orero¹, Laia Fontoura Balagueró¹, Anna Korzynska³, Marcial García-Rojo⁴, Gloria Bueno⁵, Maria del Milagro Fernández-Carrobles⁵, Lukasz Roszkowiak³, Cristina Callau Casanova¹, M. Teresa Salvadó-Usach^{1,2}, Joaquín Jaén Martínez¹, Albert Gibert-Ramos¹, Albert Roso-Llorach⁶, Andrea Gras Navarro¹, Marta Berenguer-Poblet^{2,7}, Montse Llobera⁸, Júlia Gil Garcia⁹, Bárbara Tomás¹, Vanessa Gestí¹, Eeva Laine⁷, Benoît Plancoulaine¹⁰, Jordi Baucells¹¹ and Maryléne Lejeune^{1,2}

¹ Department of Pathology, Hospital de Tortosa Verge de la Cinta, Tortosa, Spain

² Campus Terres de l'Ebre, Universitat Rovira Virgili Tarragona, Tortosa, Spain

³ Laboratory of Processing and Analysis of Microscopic Images, Nałęcz Institute of Biocybernetics and Biomedical Engineering, Warsaw, Poland

⁴ Department of Pathology, Hospital Universitario Puerta del Mar, Cádiz, Spain

⁵ VISILAB, Universidad de Castilla-La Mancha, Ciudad Real, Spain

⁶ Institut Universitari d'Investigació en Atenció Primària Jordi Gol, Barcelona, Spain

⁷ Department of Knowledge Management, Hospital de Tortosa Verge de la Cinta, Tortosa, Spain

⁸ Department of Oncology, Hospital de Tortosa Verge de la Cinta, Tortosa, Spain

⁹ Department of Surgery, Hospital Universitari de Girona Dr Josep Trueta, Girona, Spain

¹⁰ UNICAEN, INSERM, ANTICEPE, Université de Caen Basse Normandie, Caen, France

¹¹ Department of Informatics, Hospital de Tortosa Verge de la Cinta, Tortosa, Spain

* These authors contributed equally to this work.

Submitted 12 March 2020
Accepted 30 July 2020
Published 2 September 2020

Corresponding authors
Carlos López,
cLopezp.ebre.ics@gencat.cat
Maryléne Lejeune,
mlejeune.ebre.ics@gencat.cat

Academic editor
Kevin Henry

Additional Information and
Declarations can be found on
page 14

DOI 10.7717/peerj.9779

© Copyright
2020 López et al.

Distributed under
Creative Commons CC-BY 4.0

OPEN ACCESS

ABSTRACT

Background. The axillary lymph nodes (ALNs) in breast cancer patients are the body regions to where tumoral cells most often first disseminate. The tumour immune response is important for breast cancer patient outcome, and some studies have evaluated its involvement in ALN metastasis development. Most studies have focused on the intratumoral immune response, but very few have evaluated the peritumoral immune response. The aim of the present article is to evaluate the immune infiltrates of the peritumoral area and their association with the presence of ALN metastases.

Methods. The concentration of 11 immune markers in the peritumoral areas was studied in 149 patients diagnosed with invasive breast carcinoma of no special type (half of whom had ALN metastasis at diagnosis) using tissue microarrays, immunohistochemistry and digital image analysis procedures. The differences in the concentration of the immune response of peritumoral areas between patients diagnosed with and without metastasis in their ALNs were evaluated. A multivariate logistic regression model was developed to identify the clinical-pathological variables and the peritumoral

immune markers independently associated with having or not having ALN metastases at diagnosis.

Results. No statistically significant differences were found in the concentrations of the 11 immune markers between patients diagnosed with or without ALN metastases. Patients with metastases in their ALNs had a higher histological grade, more lymphovascular and perineural invasion and larger-diameter tumours. The multivariate analysis, after validation by bootstrap simulation, revealed that only tumour diameter (OR = 1.04; 95% CI [1.00–1.07]; $p = 0.026$), lymphovascular invasion (OR = 25.42; 95% CI [9.57–67.55]; $p < 0.001$) and histological grades 2 (OR = 3.84; 95% CI [1.11–13.28]; $p = 0.033$) and 3 (OR = 5.18; 95% CI [1.40–19.17]; $p = 0.014$) were associated with the presence of ALN metastases at diagnosis. This study is one of the first to study the association of the peritumoral immune response with ALN metastasis. We did not find any association of peritumoral immune infiltrates with the presence of ALN metastasis. Nevertheless, this does not rule out the possibility that other peritumoral immune populations are associated with ALN metastasis. This matter needs to be examined in greater depth, broadening the types of peritumoral immune cells studied, and including new peritumoral areas, such as the germinal centres of the peritumoral tertiary lymphoid structures found in extensively infiltrated neoplastic lesions.

Subjects Immunology, Oncology, Women's Health, Histology

Keywords Peritumoral, Immune response, Breast cancer, Axillary lymph nodes, Metastasis

INTRODUCTION

Breast cancer (BC) patients with axillary lymph node (ALN) metastasis have a higher risk of distant metastases and death within 10 years of diagnosis. The primary cause of death in cancer patients is distant metastasis, most of which are incurable (*Siegel, Miller & Jemal, 2017*).

Immune cells are an important class of cells that are involved in tumoral progression (*Gardner & Ruffell, 2016; Hanahan & Coussens, 2012; Weber & Kuo, 2012*). The immune system protects against tumours, but cancer cells induce changes in the immune response, enabling them to evade immune destruction (*Corthay, 2014*). In most cases, the immune reaction against the tumour alone is ineffective at eliminating cancer cells due to the immunoediting and/or immunosubversion produced by the tumour. This is considered one of the emerging hallmarks of cancer (*Hanahan & Weinberg, 2011*). It is becoming clearer that distinct infiltrating cell types differ in their prognostic and predictive significance (*Fridman et al., 2011*). In BC, the intratumoral immune response has an important role in tumour progression, patient relapse and survival, among other processes (*De la Cruz-Merino et al., 2013*). In particular, tumour-infiltrating lymphocytes (TILs) in BC are of predictive and prognostic value, especially in triple-negative (TN) and human epidermal growth factor receptor (HER) 2-positive BC subtypes (*Loi et al., 2019; Salgado et al., 2015*). In fact, presence of TILs in the primary tumour significantly impacts the outcome of BC patients, especially when they have ALN metastasis at diagnosis (*Loi et al., 2019*). Nevertheless, only a few studies have evaluated the impact of either general TILs, by

haematoxylin and eosin (H&E) using Salgado's criteria ([Salgado et al., 2015](#)), or specific TIL subtypes in the peritumoral area (or invasive margin), by IHC. Two of them found no significant correlation between peritumoral immune infiltrates and clinical factors ([Acs et al., 2017](#); [Al-Saleh et al., 2017](#)).

ALN status at the time of diagnosis is the most important prognostic indicator for women with BC ([Bernet Vegue, Cano Munoz & Pinero Madrona, 2012](#)). Moreover, ALN is the place to where the BC most often first disseminates ([Valente et al., 2014](#)). There is evidence of immune cell activation in invaded ALNs ([Gibert-Ramos et al., 2019](#)), and our group studied non-invaded ALNs of BC patients and identified several immune populations associated with the presence or absence of ALN metastasis at diagnosis ([López et al., 2020](#)), also highlighting the importance of the immune response of ALNs to patients' clinical outcome. Some studies have evaluated the possible association of the intratumoral immune response with ALN metastasis, but to our knowledge only one study has shown the peritumoral lymphocytic infiltrate to be an important predictive factor of the metastatic invasion of the ALN ([Bordea et al., 2012](#)). It is therefore of utmost importance to know whether the immune response in the peritumoral area of the primary tumour is associated with ALN metastasis in any way. The lack of research on this subject and the issues outlined above prompted us to study the association between the peritumoral immune response and the presence of ALN metastases at diagnosis.

MATERIAL AND METHODS

Tissue preparation and immunohistochemistry

This is a retrospective cohort study of 149 patients diagnosed with invasive BC of no special type in the Hospital de Tortosa Verge de la Cinta (HTVC), Spain, 75 of whom had ALN metastasis at diagnosis. The Ethics Committee of the Hospital Joan XXIII de Tarragona, Spain, approved the study (reference 22p/2011) and we followed the Strengthening the Reporting of Observational Studies in Epidemiology (STROBE) guidelines. Written informed consent was signed by all patients involved in the study, in accordance with Spanish law.

Two representative 2-mm tissue cylinders from the border of the tumour area of the biopsy were selected by a pathologist from the Pathology Department of the HTVC for the purpose of constructing tissue microarrays (TMAs). Ductal carcinoma in situ elements and tertiary lymphoid structures around the border of the tumour were excluded when selecting the areas from which cylinders were taken. Each TMA block contained 50 cylinders, giving 6 TMAs ((149 patients X 2 cylinders)/50 cylinders). Eleven slides were sectioned from each TMA in order to stain the 11 immune markers chosen for study ([Fig. 1](#)). TMA technology is of great value for analysing large numbers of cases, but it is clear that the degree of correlation between TMAs and whole-tissue sections is not ideal at the diagnostic level. Nevertheless, the use of TMAs with a large number of samples is widely considered to be adequate for research level ([Pinder et al., 2013](#)). In fact, as we mentioned in our previous report, in which we also used TMAs ([López et al., 2020](#)), a search using the terms "tissue microarray breast cancer immune" in PubMed identified more than 100 articles,

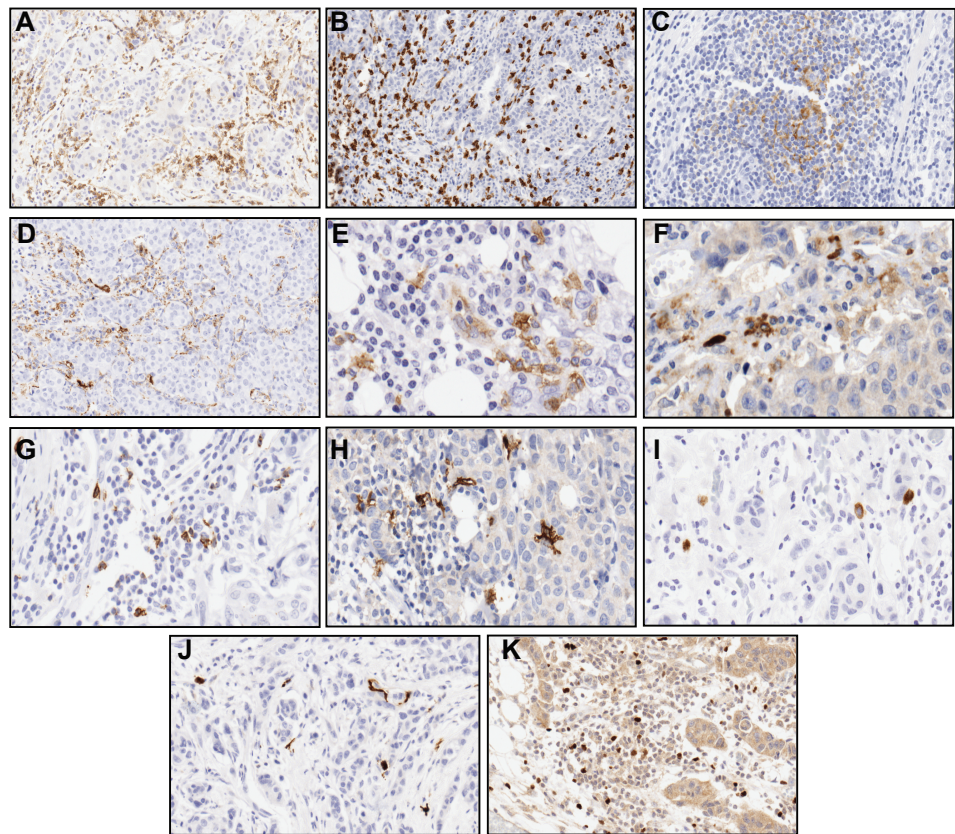


Figure 1 Immunohistochemical staining patterns of immune markers in formalin-fixed, paraffin-embedded sections. Representative examples of membrane (A) CD4, (B) CD8, (C) CD21, cytoplasmic (D) CD68, (E) CD123, (F) LAMP3, membrane and/or cytoplasmic (G) CD57, (H) CD1a, (I) CD83, nuclear and/or cytoplasmic (J) S100 and nuclear (K) FOXP3 reactivity of the biomarkers (magnification 20X).

Full-size  DOI: [10.7717/peerj.9779/fig-1](https://doi.org/10.7717/peerj.9779/fig-1)

highlighting the widespread use of TMAs in studies into the evaluation of the immune system (Pelekanou *et al.*, 2018; Solinas *et al.*, 2017). Moreover, Salgado explained in his guide for evaluating TILs that results in TMAs have proven concordance with those of other studies (Ali *et al.*, 2014; Chavan, Ravindra & Prasad, 2017; Liu *et al.*, 2014; Schalper *et al.*, 2014), which makes them a good option for rapid evaluations (Salgado *et al.*, 2015).

The selection of immune markers for the present work was based on the findings of other studies that have demonstrated the various immune cell populations evaluated (lymphocytes, macrophages and the DC) to be associated with BC patient outcome (De Melo Gagliato *et al.*, 2017; Stovgaard *et al.*, 2018; Zhao *et al.*, 2017). Immune cells were immunohistochemically detected on each slide using the following primary antibodies: T helper lymphocytes (anti-CD4, clone 4B12, Dako, Santa Clara, CA, USA), cytotoxic T lymphocytes (anti-CD8, clone C8/144B, Dako, Santa Clara, CA, USA), natural killers (anti-CD57, clone NK1, Zymed, Thermo Fisher Scientific, Waltham, MA, USA), regulatory T cells (anti-FOXP3, clone 236A/E7, CNIO, Madrid, Spain), macrophages (anti-CD68,

clone KP1, Dako, Santa Clara, CA, USA), follicular DC (anti-CD21, clone 1F8, Dako, Santa Clara, CA, USA), Langerhans DC (anti-CD1a, clone 010, Dako, Santa Clara, CA, USA), plasmacytoid DC (anti-CD123, clone 6H6, eBioscience, San Diego, CA, USA), interdigitant DC (anti-S100, polyclonal, Leica Microsystems GmbH, Wetzlar, Germany), LAMP3 DC+ (anti-CD208, polyclonal, Proteintech, Rosemont, IL, USA), mature DC (anti-CD83, clone1H4b, Leica Microsystems GmbH, Wetzlar, Germany). The ENVISION™ FLEX method (Dako, Santa Clara, CA, USA) was applied to stain the slides, using the chromogen diaminobenzidine (DAB) as a substrate. The samples were counterstained with haematoxylin.

Slide digitization and image evaluation

We used whole-slide imaging (WSI), a method that is replacing the microscope for classical diagnosis in some centres ([Pantanowitz et al., 2013](#)), to analyse digital images. We obtained the images in TIFF format by scanning the 66 stained slides with an Aperio ScanScope XT scanner at 40X magnification at a resolution of 0.25 $\mu\text{m}/\text{pixel}$. We extracted each cylinder of the original WSI from each TMA as a single image using an automatic tool developed by members of our team ([Roszkowiak & López, 2016](#)). The tissue cylinder areas and the stained areas of immune markers in each image were evaluated using our own digital image analysis procedures ([López et al., 2020](#)), which enable the number and density (in μm^2) of pixels of the positive-stained areas for each immune marker, and the area of each cylinder included in the TMAs, to be calculated ([Callau et al., 2015](#)). The concentration of each immune marker was calculated as the percentage of positive-stained areas of each immune marker relative to the whole area of the cylinder, as previously described ([López et al., 2020](#)).

Clinical and pathological variables

To determine which clinical and pathological variables, in addition to the peritumoral immune response, could also be associated with the presence of metastasis in the ALN at diagnosis, the following data were collected from the patients' clinical records: age, tumour diameter, lymphovascular invasion (LVI), perineural invasion (PNI), histological grade, oestrogen receptor status (ER), progesterone receptor status (PR), HER-2 status, proliferation index (Ki67), menopausal status and molecular profile.

Statistical analysis

Differences in immune response marker concentrations between patients diagnosed with and without metastasis in their ALN were evaluated using the Mann–Whitney U test. The quantitative clinical and pathological variables in the two groups of patients were compared using the Mann–Whitney U test or Student's unmatched samples *t*-test (age and tumour diameter). In order to identify disproportionate frequencies of combinations of categories of the clinical and pathological variables we performed chi-squared test or Fisher's exact tests.

A univariate logistic regression analysis was carried out for each variable to evaluate its association with the presence or absence of ALNs with metastasis. Two multivariate logistic regression models were then developed to identify which of the clinical and pathological

variables, and which of the immune cell populations present in the peritumoral area, were associated with the presence of ALN metastases at diagnosis. The Hosmer–Lemeshow test was used to estimate the goodness of fit of all the variables considered in the multivariate analyses. The area under the curve (AUC) and the receiver-operating characteristic (ROC) curve were also derived to estimate the sensitivity and specificity of each model. We can consider that the present study, which featured 75 events and yielded final multivariate models comprising three independent variables, had an adequate sample size for a reliable multivariate analysis as previously suggested (Peduzzi *et al.*, 1996). In the first model, all variables with a significance of $p \leq 0.1$ in the univariate logistic regression analyses were considered when deriving the multivariate model 1. In the second model, all the variables with a significance of $p \leq 0.3$ were included. Each model was validated using two statistical techniques: (1) bootstrap simulation, carried out with IBM SPSS Statistics 21.0 (IBM, Armonk, NY, USA), based on 10,000 random samples; and (2) the multiple imputation method available in the IBM SPSS statistical application. This method replaces missing values of a specific variable by using linear regression to calculate values from others in the dataset. Failing to deal with missing data is a problem because it leads to a reduction in the statistical power of the model and can produce biased estimates.

RESULTS

Table 1 shows the differences in the clinical and pathological variables between patients with and without metastasis in their ALNs at diagnosis. Patients with metastases in their ALNs have a higher histological grade, more LVI and PNI, and larger-diameter tumours.

Table 2 shows the differences in the percentages of the immune populations in the peritumoral regions between patients diagnosed with and without metastatic ALN. There were no differences in the median concentration in the immune populations between the two groups of patients evaluated by the WSI and the digital image procedures.

We next identified the variables associated with the presence of metastasis in the ALN at diagnosis from the univariate logistic regressions and using several multivariate logistic regression models. In the first model, we only included those variables that were significant or had a value of $p \leq 0.1$ in the univariate analysis. In this case, only the histological grade and the presence of LVI were independently associated with the presence of ALN metastases at diagnosis (Table 3). None of the immune variables was included in multivariate model 1, as none of the peritumoral immune populations showed any association with ALN metastases at diagnosis or a value of $p \leq 0.1$ in the univariate model. The Hosmer–Lemeshow test of this first model indicated an excellent goodness of fit to the final model ($p = 0.798$). Nagelkerke's R-squared was 0.577, indicating that around 60% of the variance of the dependent variable (presence of metastasis in the ALN) was explained by the model. The logistic regression model had a sensitivity of 78.4%, a specificity of 86.5% and an AUC of 0.898 (Fig. 2A, black line). The bootstrap validation of multivariate logistic regression model 1 identified tumour diameter (OR=1.04; 95% CI [1.00–1.07]; $p = 0.026$), LVI (OR = 25.42; 95% CI [9.57–67.55]; $p < 0.001$) and histological grades 2 (OR=3.84; 95% CI [1.11–13.28]; $p = 0.033$) and 3 (OR = 5.18; 95% CI [1.40–19.17]; $p = 0.014$) as

Table 1 Differences in the clinical and pathological variables between patients with and without ALN⁺ at diagnosis.

	Patients without ALN ⁺ at diagnosis (n = 74)	Patients with ALN ⁺ at diagnosis (n = 75)	p
Age (years)	61.3 (10.7)	59.7 (12.0)	0.394 ^a
Tumour diameter (mm)	15.0 (12.3)	22.0 (13.0)	<0.001 ^b
LVI			
Yes	9 (12.2%)	57 (77.0%)	<0.001 ^c
No	65 (87.8%)	17 (23.0%)	
PNI			
Yes	10 (13.5%)	30 (40.5%)	<0.001 ^c
No	64 (86.5%)	44 (59.5%)	
Histological grade			
1	27 (36.5%)	8 (10.7%)	<0.001 ^c
2	30 (40.5%)	34 (45.3%)	
3	17 (23.0%)	33 (44.0%)	
ER expression			
Positive	55 (74.3%)	53 (70.7%)	0.617 ^c
Negative	19 (25.7%)	22 (29.3%)	
PR expression			
Positive	50 (67.6%)	41 (54.7%)	0.106 ^c
Negative	24 (32.4%)	34 (45.3%)	
HER-2 amplification			
Amplified	18 (24.7%)	20 (26.7%)	0.780 ^c
Non-amplified	55 (75.3%)	55 (73.3%)	
Ki 67 degree			
Low	26 (35.1%)	16 (21.9%)	0.120 ^c
Medium	26 (35.1%)	25 (34.3%)	
High	22 (29.8%)	32 (43.8%)	
Menopausal status			
Pre-menopausal	8 (11.6%)	15 (22.1%)	0.101 ^c
Post-menopausal	61 (88.4%)	53 (77.9%)	
Molecular profile			
Luminal A	47 (64.3%)	46 (61.4%)	0.967 ^c
Luminal B	10 (13.7%)	10 (13.3%)	
HER-2	8 (11.0%)	10 (13.3%)	
Triple-negative	8 (11.0%)	9 (12.0%)	

Notes.

ALN⁺, metastatic axillary lymph node; LVI, lymphovascular invasion; PNI, perineural invasion; ER, oestrogen receptor; PR, progesterone receptor; HER, human epidermal growth factor receptor.

^aThe data and statistical tests summarised in the table are the mean (standard deviation) for the *t*-Student test.

^bThe median (interquartile range) for the Mann-Whitney U test

^cThe number of patients (percentage) in each category for the chi-squared or Fisher's exact test

being significant factors. The AUC of validated model 1 was 0.898, with a sensitivity of 81.1% and a specificity of 86.5% (Fig. 2B, black line). All variables included in model 1, illustrated in Table 3, were retained in the validated model, the latter also showing tumour diameter to be associated with metastasis in the ALN at diagnosis (Table 4).

Table 2 Differences in the percentages of the immune populations in the peritumoral regions between patients diagnosed with and without ALN⁺.

	Patients without ALN ⁺ at diagnosis (<i>n</i> = 74)	Patients with ALN ⁺ at diagnosis (<i>n</i> = 75)	<i>p</i>
Peritumoral			
CD4	1.6 (3.4)	1.7 (3.6)	0.782
CD8	1.4 (2.8)	2.0 (3.3)	0.386
CD57	0.2 (0.5)	0.3 (0.8)	0.099
FOXP3	0.1 (0.2)	0.1 (0.2)	0.598
CD21	0.000 (0.005)	0.000 (0.001)	0.405
CD68	2.4 (2.3)	2.7 (3.0)	0.221
CD1a	0.1 (0.3)	0.1 (0.2)	0.133
CD123	0.00 (0.09)	0.00 (0.08)	0.377
S100	0.3 (0.5)	0.3 (0.4)	0.516
LAMP3	0.005 (0.021)	0.000 (0.034)	0.127
CD83	0.1 (0.1)	0.1 (0.2)	0.139

Notes.

ALN⁺, metastatic axillary lymph node.

The values in the table are the median (interquartile range) of the percentage of positive area expressed for each marker. The differences between groups were evaluated using the Mann-Whitney U test.

We derived a second multivariate model that included those variables with a level of significance of $p \leq 0.3$ (Table 3). The immune populations considered when generating this second model were CD8⁺ T lymphocytes, CD68⁺ macrophages, CD1a⁺ Langerhans DC, S100⁺ interdigitant DC and CD123⁺ LAMP3 DC. In the end, the multivariate model comprised only the LVI (with a wider CI than in model 1) and the CD68⁺ macrophages. Nagelkerke's R-squared was 0.789, and the Hosmer–Lemeshow test of this second model indicated excellent goodness of fit to the final model ($p = 0.794$) once again. Compared with model 1, this second model was more sensitive (88.4%), less specific (63.3%) and had a lower AUC (0.842) (Fig. 2A, red line). Nevertheless, the bootstrap validation of model 2 only retained LVI (OR=24.93; 95% CI [9.54–65.19]) as a significant factor; while the CD68⁺ macrophage factor was dropped. The AUC of this validated model was 0.852 (Fig. 2B, red line), with a sensitivity of 78.3% and specificity of 86.7%.

As an alternative validation system to the first and second models we used multiple imputation for the immune populations. The validation of the first model gave the same results with respect to the OR (Table 4), AUC, sensitivity and specificity as in the unvalidated first model (Fig. 2C, black line). After imputing the missing data, none of the immune populations was statistically significant or yielded a value of $p \leq 0.1$, so the same variables as in model 1 were included for the purpose of validation. In the validation of the second model using a threshold of $p \leq 0.3$, LVI, histological grade and the tumour diameter were included in the model, but none of immune populations was retained. The validated model had a sensitivity of 79.7%, a specificity of 87.8% and an AUC of 0.898 (Fig. 2C, red line).

To summarize, in three of the four validations of the two models, the histological grade and LVI were factors independently associated with ALN metastasis, and in two of the validations tumour diameter was also included. None of the four validated models featured

Table 3 Univariate and multivariate analyses of variables associated with ALN⁺ at diagnosis.

	Univariate OR (95% CI)	p	Multivariate model 1 OR (95% CI)	p	Multivariate model 2 OR (95% CI)	p
Age (years)	0.99 (0.96–1.02)	0.392				
Tumour diameter (mm)	1.06 (1.03–1.09)	0.001				
LVI						
Present	24.2 (10.0–58.5)	<0.001	25.3 (9.54–66.90)	<0.001	372.28 (13.22–10485.09)	0.001
Absent	–	–	–	–	–	–
PNI						
Present	4.36(1.94–9.83)	<0.001				
Absent	–	–				
Histological grade						
3	6.55 (2.45–17.5)	<0.001	5.13 (1.40–18.94)	0.014		
2	3.82 (1.51–9.69)	0.005	3.83 (1.11–13.16)	0.033		
1	–	–				
ER						
Positive	0.83 (0.41–1.71)	0.617				
Negative	–	–				
PR						
Positive	0.58 (0.30–1.13)	0.108				
Negative	–	–				
HER-2						
Amplified	1.11 (0.53–2.33)	0.780				
Non-amplified	–	–				
PI (Ki 67)						
High	2.36 (1.04–5.40)	0.041				
Med	1.56 (0.68–3.58)	0.292				
Low	–	–				
Menopausal status						
Pre-menopausal	0.46 (0.18–1.18)	0.106				
Post-menopausal	–	–				
Molecular profile						
HER-2	1.28 (0.46–3.52)	0.637				
TN	1.15 (0.41–3.24)	0.792				
Luminal B	1.02 (0.39–2.69)	0.965				
Luminal A	–	–				
Peritumoral immune markers						
CD4	1.03 (0.92–1.15)	0.644				
CD8	1.07 (0.95–1.21)	0.238				
CD57	1.04 (0.96–1.13)	0.320				
FOXP3	0.76 (0.15–3.75)	0.736				
CD21	0.67 (0.10–4.51)	0.682				
CD68	1.09 (0.94–1.27)	0.249			2.14 (1.20–3.83)	0.010
CD1a	0.67 (0.32–1.38)	0.272				

(continued on next page)

Table 3 (continued)

	Univariate OR (95% CI)	p	Multivariate model 1 OR (95% CI)	p	Multivariate model 2 OR (95% CI)	p
CD123	1.98 (0.10–38.65)	0.654				
S100	0.64 (0.28–1.44)	0.282				
LAMP3	5.73 (0.25–129.3)	0.272				
CD83	3.54 (0.54–23.28)	0.188				

Notes.

ALN⁺, metastatic axillary lymph node; OR, odds ratio; CI, confidence interval; LVI, lymphovascular invasion; PNI, perineural invasion; ER, oestrogen receptor; PR, progesterone receptor; HER, human epidermal growth factor receptor; PI, proliferation index.

Multivariate models 1 and 2 include variables from the univariate analyses with a level of significance of $p \leq 0.1$ and $p \leq 0.3$, respectively.

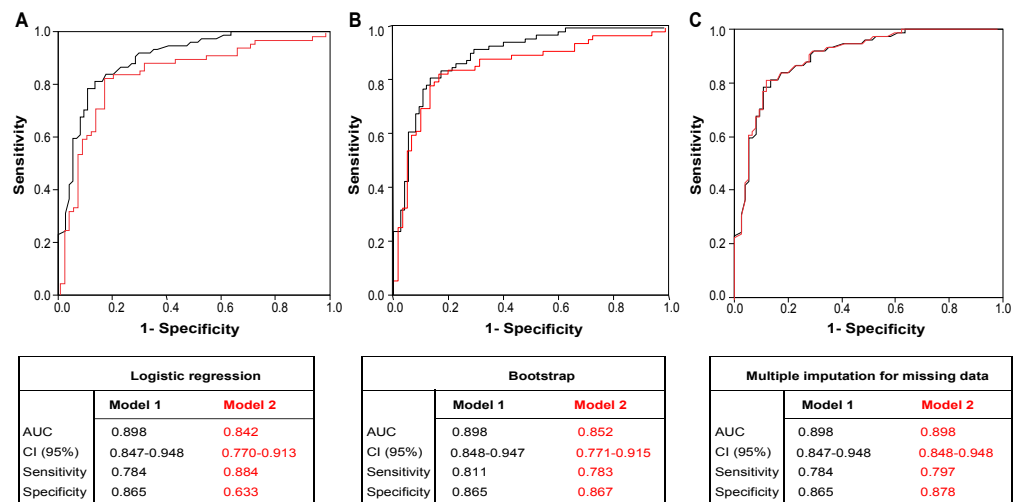


Figure 2 Receiver-operating characteristic (ROC) curves. ROC curves of (A) the two multivariate logistic regression models; (B) the two validated multivariate logistic regression models derived by the bootstrap method; and (C) the two validated multivariate logistic regression models derived by multiple imputation. Values of the area under the curve (AUC) and the 95% confidence interval (CI) for each original model and validated model are presented.

Full-size DOI: 10.7717/peerj.9779/fig-2

any of the peritumoral immune populations associated with the presence of ALN metastasis at diagnosis. Only in the second model were CD68+ macrophages associated with ALN metastasis, although even this term was dropped from both validated models (using bootstrapping and multiple imputation methods). With the analysis of our data we mostly observe that the association of CD68 and ALN metastasis (outcome) is not statistically significant and there is more evidence in favour (4 validation + model including variables with $p \leq 0.1$) than against (model including variables with $p \leq 0.3$). Therefore, we assume that the evidence for the association of CD68 and metastasis is not robust enough to conclude that it is a significant variable in our models.

DISCUSSION

In the present study, 11 immune markers in the peritumoral area were examined using WSI, TMA and digital image analysis procedures, to evaluate their association with the

Table 4 Univariate and multivariate analyses (multiple imputation).

	Univariate OR (95% CI)	p	Multivariate model 1 OR (95% CI)	p	Multivariate model 2 OR (95% CI)	p
Age (years)	0.99 (0.96–1.02)	0.392				
Tumour diameter (mm)	1.06 (1.03–1.09)	0.001	1.04(1.00–1.07)	0.057	1.04 (1.00–1.08)	0.038
LVI						
Present	24.2 (10.0-58.5)	<0.001	25.27(9.54–66.90)	<0.001	27.58 (9.55-79.67)	<0.001
Absent	–	–	–	–	–	–
PNI						
Present	4.36 (1.94-9.83)	<0.001				
Absent	–	–				
Histological grade						
3	6.55 (2.45-17.5)	<0.001	5.13(1.39-18.94)	0.014	6.43 (1.49-27.75)	0.013
2	3.82 (1.51-9.69)	0.005	3.83(1.11-13.16)	0.033	4.48 (1.14-17.64)	0.032
1	–	–	–	–	–	–
ER						
Positive	0.83 (0.41-1.71)	0.617				
Negative	–	–				
PR						
Positive	0.58 (0.30-1.13)	0.108				
Negative	–	–				
HER-2						
Amplified	1.11 (0.53-2.33)	0.780				
Non-amplified	–	–				
PI (Ki 67)						
High	2.36 (1.04-5.40)	0.041				
Medium	1.56 (0.68-3.58)	0.292				
Low	–	–				
Menopausal status						
Pre-menopausal	0.46 (0.18-1.18)	0.106				
Post-menopausal	–	–				
Molecular profile						
HER-2	1.28 (0.46-3.52)	0.637				
TN	1.15 (0.41-3.24)	0.792				
Luminal B	1.02 (0.39-2.69)	0.965				
Luminal A	–	–				
Peritumoral immune markers						
CD4	1.04 (0.93–1.16)	0.497				
CD8	1.09 (0.97–1.22)	0.148				
CD57	1.04 (0.97–1.12)	0.250				
FOXP3	1.00 (0.998–1.001)	0.555				
CD21	0.80 (0.13–5.00)	0.815				
CD68	1.12 (0.97–1.29)	0.132				

(continued on next page)

Table 4 (continued)

	Univariate OR (95% CI)	p	Multivariate model 1 OR (95% CI)	p	Multivariate model 2 OR (95% CI)	p
CD1a	0.76 (0.50–1.14)	0.757				
CD123	1.71 (0.24–12.25)	0.594				
S100	0.82 (0.57–1.17)	0.272				
LAMP3	7.08 (0.36–138.89)	0.197				
CD83	4.46 (0.69–28.86)	0.116				

Notes.

ALN⁺, metastatic axillary lymph node; OR, odds ratio; CI, confidence interval; LVI, lymphovascular invasion; PNI, perineural invasion; ER, oestrogen receptor; PR, progesterone receptor; HER, human epidermal growth factor receptor; PI, proliferation index.

Multivariate models 1 and 2 include variables from the univariate analyses with a level of significance of $p \leq 0.1$ and $p \leq 0.3$, respectively.

presence of metastasis in the ALN at diagnosis of BC patients. Even though BC is not a highly immunogenic tumour (Gingras et al., 2015), several studies have demonstrated the importance of the immune response in tumour progression and patient outcome (De la Cruz-Merino et al., 2013; Denkert et al., 2010; Gu-Trantien & Willard-Gallo, 2013; Loi, 2013; Loi et al., 2013). Indeed, in TN and HER2-positive BC, TILs are predictive of neoadjuvant therapy and prognostic in patients treated with chemotherapy (Dieci et al., 2018; Loi et al., 2019).

Immune response and ALN metastasis

In BC, metastasis in ALNs plays a key role in spreading tumoral cells to other parts of the body (Ran et al., 2010); in fact, several types of intratumoral cells are known to be linked to the presence of metastasis in the ALN at diagnosis: cytotoxic and helper T lymphocytes (La Rocca et al., 2008; Matkowski et al., 2009), T regulatory lymphocytes (Gokmen-Polar et al., 2013; Miyama et al., 2016; Nakamura et al., 2009), macrophages (Jubb et al., 2010; Mansfield et al., 2012; Shiota et al., 2016) and dendritic cells (Mansfield et al., 2011; Treilleux et al., 2004). In addition, our group previously found the CD21⁺ follicular DC immune population in the intratumoral region to be associated with the presence of ALN metastasis. In the same study, we compared the immune populations of the non-metastatic ALN in patients diagnosed with or without ALN metastasis. We found that higher concentrations of CD68⁺ macrophages and of S100⁺ interdigitant DC in the non-metastatic ALNs were associated with the presence of ALN metastasis at diagnosis. On the other hand, higher concentrations of CD123⁺ plasmacytoid DC were found to be a factor protecting against ALN metastasis (López et al., 2020). Since the immune populations could be associated with ALN metastasis in locations other than the intratumoral region, we decided to evaluate the peritumoral area as well.

Peritumoral immune infiltrates in BC

Little is known about the peritumoral immune infiltrates, and, especially, their links with ALN status. Bordea et al. showed BC to be more aggressive and associated with an increased rate of sentinel lymph node metastasis in patients with peritumoral TILs (Bordea et al., 2012). However, they did not use H&E or Salgado's criteria; the latter were published in 2015, and have since become established as the gold standard for TILs assessment (Salgado et al., 2015). Specific types of immune cells have barely been studied in the

peritumoral areas of BC patient samples. CD4+ follicular helper T cells are associated with peritumoral tertiary lymphoid structures (TLS) (Gu-Trantien et al., 2013). High levels of expression of intratumoral CD8+ TILs are significantly associated with the overall survival (OS) of luminal B patients treated with anthracycline-based neoadjuvant chemotherapy, but the peritumoral fraction is not (Al-Saleh et al., 2017). Conversely, Vgenopoulou et al. investigated peritumoral CD8 and CD57 markers, and found increased numbers of CD8+ cells in ALN+ patients, but no difference in the abundance of the CD57 marker (Vgenopoulou et al., 2003). Liu et al. reported high levels of peritumoral FOXP3+ to be a predictor for chemotherapy of HER2-positive patients. In addition, the latter article is the only one, to our knowledge, to report an association between the immune response in the peritumoral area of the primary tumour and ALN metastasis, showing positive correlation between peritumoral FOXP3+ and positive nodal status (Liu et al., 2014). A study analysing CD68+ macrophage cells showed that these cells were more likely to be present in the intratumoral area than in the peritumoral area, although its correlation with ALN status was not studied. The study was also limited by its low number of specimens (Carpenco, 2019). Controversially, Heiskala et al. found CD68+ infiltrations to be more abundant in the peritumoral than the intratumoral area, but CD68 frequency was not correlated with ALN status (Heiskala et al., 2019). Next, considering DCs, Bell et al. reported immature CD1a+ to be retained intratumorally, and mature CD83+ DCs to be confined to peritumoral areas in patients with BC; nonetheless, the study was performed with only 32 samples and no statistical analyses were carried out (Bell et al., 1999). However, our study revealed no association between the immune infiltrates of the peritumoral area and the presence of ALN metastases at diagnosis, which is in line with the findings of the few studies that have investigated the relation of the immune populations in the peritumoral areas with ALN status.

Clinical and pathological factors associated to ALN metastasis

Most of the studies on the clinical, molecular and pathological/histological factors associated with ALN metastasis were carried out a long time ago (Ahlgren et al., 1994; Chadha et al., 1994; Noguchi et al., 1993). We found primary tumour size, histological grade and LVI to be histological factors significantly associated with the presence of ALN metastases at diagnosis in two of four validations. These findings are consistent with the well-established pathological characteristics associated with ALN metastasis reviewed by Patani, Dwek & Douek (2007) and described in subsequent publications (Reynders et al., 2014; Yoshihara et al., 2013). In the present study, model 1 had the best AUC when validated and so had the best predictive capability. The validated first model included the LVI, primary tumour size and histological grade as independent factors associated with having ALN metastasis, and showed very good sensitivity and specificity. Patani et al. highlighted several works showing the values of the sensitivity and specificity of the multivariate models using tumour size, histological grade and LVI (Patani, Dwek & Douek, 2007). In some of these studies, sensitivity was related to tumour size, or the histological grade was higher than in our case, but conversely they showed very low specificity (Barth, Craig & Silverstein, 1997; Reynders et al., 2014; Silverstein, Skinner & Lomis, 2001). On the other hand, several studies

employing models using LVI were very specific but not at all sensitive (*Chadha et al., 1994; Tan et al., 2005*). Our model gave a very good balance between sensitivity and specificity; in fact, the AUC of the validated first model was almost 0.9, which implies that our model can correctly classify around 90% of patients, and shows that these variables are closely associated with the presence of ALN metastasis at diagnosis.

Furthermore, *Tseng et al. (2014)* and *Grigoriadis et al. (2018)* have demonstrated that other histological features may be associated with the presence of ALN with metastasis at diagnosis (lymphocytic lobulitis, size and number or location of germinal centres, etc.). These variables could also be used to evaluate BC patient outcome. In fact, another study showed that the presence of CD4+ T cells, localized in the germinal centres of peritumoral TLS found in extensively infiltrated neoplastic lesions, predicted better disease outcome among BC patients (*Gu-Trantien & Willard-Gallo, 2013*). Indeed, TLS have recently proven to be relevant in patients' survival and immunotherapy response in other cancer types like sarcoma and melanoma (*Cabrita et al., 2020; Helmink et al., 2020; Petitprez et al., 2020*). Nevertheless, we did not study the TLS on this occasion, although in the future it would be worthwhile evaluating them in the context of the immune response.

CONCLUSIONS

The present study aimed to determine whether the immune response in the peritumoral area of the primary BC tumour was associated with ALN metastasis at diagnosis. We studied 11 populations of immune infiltrates in the peritumoral areas by immunohistochemistry and did not find any association with the presence of metastases in the ALNs at diagnosis in BC patients. This does not rule out the possibility that other peritumoral immune populations are associated with ALN metastasis. This matter needs to be studied further, broadening the types of peritumoral immune cells studied and including new peritumoral areas, such as the germinal centres of the peritumoral TLS.

ACKNOWLEDGEMENTS

The authors would like to thank María del Mar Barberá, Anna Curto, Noelia Burgués, Ainhoa Montserrat, Eduard Nolla, Maria Fortuny, Sandra Bages, Mireia Sueca and Marc Iniesta for their skillful technical assistance, and Anna Carot for her excellent secretarial work.

ADDITIONAL INFORMATION AND DECLARATIONS

Funding

This work was funded by projects PI11/0488 and PI13/02501 of the Institute of Health Carlos III, which is the main public research body that funds, manages and carries out biomedical research in Spain, and co-financed with European Union ERDF funds (European Regional Development Fund). It was also supported by the Project AIDPATH FP7-PEOPLE Project ID: 612471. The funders had no role in study design, data collection and analysis, decision to publish, or preparation of the manuscript.

Grant Disclosures

The following grant information was disclosed by the authors:

Institute of Health Carlos III.

European Union ERDF funds (European Regional Development Fund).

Project AIDPATH FP7-PEOPLE Project: 612471.

Competing Interests

The authors declare there are no competing interests.

Author Contributions

- Carlos López conceived and designed the experiments, performed the experiments, analyzed the data, prepared figures and/or tables, authored or reviewed drafts of the paper, and approved the final draft.
- Ramón Bosch-Príncipe, Marcial García-Rojo and Joaquín Jaén Martínez conceived and designed the experiments, performed the experiments, authored or reviewed drafts of the paper, and approved the final draft.
- Guifré Orero performed the experiments, analyzed the data, authored or reviewed drafts of the paper, and approved the final draft.
- Laia Fontoura Balagueró and M. Teresa Salvadó-Usach analyzed the data, prepared figures and/or tables, and approved the final draft.
- Anna Korzynska, Gloria Bueno, Maria del Milagro Fernández-Carrobles, Lukasz Roszkowiak, Albert Gibert-Ramos and Montse Llobera performed the experiments, authored or reviewed drafts of the paper, and approved the final draft.
- Cristina Callau Casanova performed the experiments, prepared figures and/or tables, and approved the final draft.
- Albert Roso-Llorach analyzed the data, authored or reviewed drafts of the paper, and approved the final draft.
- Andrea Gras Navarro and Marta Berenguer-Poblet analyzed the data, prepared figures and/or tables, authored or reviewed drafts of the paper, and approved the final draft.
- Júlia Gil Garcia performed the experiments, prepared figures and/or tables, authored or reviewed drafts of the paper, and approved the final draft.
- Bárbara Tomás, Vanessa Gestí, Benoît Plancoulaine and Jordi Baucells performed the experiments, authored or reviewed drafts of the paper, and approved the final draft.
- Eeva Laine performed the experiments, prepared figures and/or tables, and approved the final draft.
- Maryléne Lejeune conceived and designed the experiments, performed the experiments, analyzed the data, authored or reviewed drafts of the paper, and approved the final draft.

Human Ethics

The following information was supplied relating to ethical approvals (i.e., approving body and any reference numbers):

The study was approved by the Ethics Committee of the Hospital Joan XXIII de Tarragona, Spain (Reference 22p/2011).

Data Availability

The following information was supplied regarding data availability:

Raw data is available as a [Supplemental File](#).

Supplemental Information

Supplemental information for this article can be found online at <http://dx.doi.org/10.7717/peerj.9779#supplemental-information>.

REFERENCES

- Acs B, Madaras L, Tokes AM, Kovacs AK, Kovacs E, Ozsvári-Vidakovich M, Karaszi A, Birtalan E, Dank M, Szasz AM, Kulka J. 2017. PD-1, PD-L1 and CTLA-4 in pregnancy-related—and in early-onset breast cancer: a comparative study. *Breast* 35:69–77 DOI 10.1016/j.breast.2017.06.013.
- Ahlgren J, Stal O, Westman G, Arnesson LG. 1994. Prediction of axillary lymph node metastases in a screened breast cancer population. South-East Sweden Breast Cancer Group. *Acta Oncologica* 33:603–608 DOI 10.3109/02841869409121769.
- Al-Saleh K, Abd El-Aziz N, Ali A, Abozeed W, Abd El-Warith A, Ibraheem A, Ansari J, Al-Rikabi A, Husain S, Nabholtz JM. 2017. Predictive and prognostic significance of CD8(+) tumor-infiltrating lymphocytes in patients with luminal B/HER 2 negative breast cancer treated with neoadjuvant chemotherapy. *Oncology Letters* 14:337–344 DOI 10.3892/ol.2017.6144.
- Ali HR, Provenzano E, Dawson SJ, Blows FM, Liu B, Shah M, Earl HM, Poole CJ, Hiller L, Dunn JA, Bowden SJ, Twelves C, Bartlett JM, Mahmoud SM, Rakha E, Ellis IO, Liu S, Gao D, Nielsen TO, Pharoah PD, Caldas C. 2014. Association between CD8+ T-cell infiltration and breast cancer survival in 12,439 patients. *Annals of Oncology* 25:1536–1543 DOI 10.1093/annonc/mdu191.
- Barth A, Craig PH, Silverstein MJ. 1997. Predictors of axillary lymph node metastases in patients with T1 breast carcinoma. *Cancer* 79:1918–1922 DOI 10.1002/(SICI)1097-0142(19970515)79:10<1918::AID-CNCR12>3.0.CO;2-Y.
- Bell D, Chomarat P, Broyles D, Netto G, Harb GM, Lebecque S, Valladeau J, Davoust J, Palucka KA, Banchereau J. 1999. In breast carcinoma tissue, immature dendritic cells reside within the tumor, whereas mature dendritic cells are located in peritumoral areas. *Journal of Experimental Medicine* 190:1417–1426 DOI 10.1084/jem.190.10.1417.
- Bernet Vegue L, Cano Munoz R, Pinero Madrona A. 2012. Breast cancer sentinel lymph node and axillary lymphadenectomy: new tools for new challenges. *Expert Review of Molecular Diagnostics* 12:147–158 DOI 10.1586/erm.11.96.
- Bordea C, Bordea M, Totan A, Condrea I, Voinea S, Sandru A, Plesca M, Blidaru A. 2012. Immunological aspects predicting metastatic sentinel lymph node in early breast cancer patients. *Journal of Medicine and Life* 5:455–461.
- Cabrita R, Lauss M, Sanna A, Donia M, Skaarup Larsen M, Mitra S, Johansson I, Phung B, Harbst K, Vallon-Christersson J, Van Schoiack A, Lovgren K, Warren S,

- Jirstrom K, Olsson H, Pietras K, Ingvar C, Isaksson K, Schadendorf D, Schmidt H, Bastholt L, Carneiro A, Wargo JA, Svane IM, Jonsson G. 2020. Tertiary lymphoid structures improve immunotherapy and survival in melanoma. *Nature* 577:561–565 DOI 10.1038/s41586-019-1914-8.
- Callau C, Lejeune M, Korzynska A, Garcia M, Bueno G, Bosch R, Jaen J, Orero G, Salvado T, López C. 2015. Evaluation of cytokeratin-19 in breast cancer tissue samples: a comparison of automatic and manual evaluations of scanned tissue microarray cylinders. *BioMedical Engineering OnLine* 14(Suppl 2):S2 DOI 10.1186/1475-925X-14-S2-S2.
- Carpenco E. 2019. Tumor associated macrophages in breast cancer. *Moldovan Medical Journal* 62:24–27 DOI 10.5281/zenodo.2590003.
- Chadha M, Chabon AB, Friedmann P, Vikram B. 1994. Predictors of axillary lymph node metastases in patients with T1 breast cancer. A multivariate analysis. *Cancer* 73:350–353 DOI 10.1002/1097-0142(19940115)73:2<350::aid-cnrcr2820730219>3.0.co;2-5.
- Chavan SS, Ravindra S, Prasad M. 2017. Breast biomarkers-comparison on whole section and tissue microarray section. *Journal of Clinical and Diagnostic Research* 11:EC40–EC44 DOI 10.7860/JCDR/2017/25088.9573.
- Corthay A. 2014. Does the immune system naturally protect against cancer? *Frontiers in Immunology* 5:197 DOI 10.3389/fimmu.2014.00197.
- De la Cruz-Merino L, Barco-Sanchez A, Henao Carrasco F, Nogales Fernández E, Vallejo Benitez A, Brugal Molina J, Martínez Peinado A, Grueso López A, Ruiz Borrego M, Codes Manuel De Villena M, Sanchez-Margalet V, Nieto-Garcia A, Alba Conejo E, Casares Lagar N, Ibanez Martinez J. 2013. New insights into the role of the immune microenvironment in breast carcinoma. *Clinical and Developmental Immunology* 2013:785317 DOI 10.1155/2013/785317.
- De Melo Gagliato D, Cortes J, Curigliano G, Loi S, Denkert C, Perez-Garcia J, Holgado E. 2017. Tumor-infiltrating lymphocytes in breast cancer and implications for clinical practice. *Biochimica et Biophysica Acta—Reviews on Cancer* 1868:527–537 DOI 10.1016/j.bbcan.2017.10.003.
- Denkert C, Loibl S, Noske A, Roller M, Muller BM, Komor M, Budczies J, Darb-Esfahani S, Kronenwett R, Hanusch C, Von Torne C, Weichert W, Engels K, Solbach C, Schrader I, Dietel M, Von Minckwitz G. 2010. Tumor-associated lymphocytes as an independent predictor of response to neoadjuvant chemotherapy in breast cancer. *Journal of Clinical Oncology* 28:105–113 DOI 10.1200/JCO.2009.23.7370.
- Dieci MV, Radosevic-Robin N, Fineberg S, Van den Eynden G, Ternes N, Penault-Llorca F, Pruneri G, D'Alfonso TM, Demaria S, Castaneda C, Sanchez J, Badve S, Michiels S, Bossuyt V, Rojo F, Singh B, Nielsen T, Viale G, Kim SR, Hewitt S, Wienert S, Loibl S, Rimm D, Symmans F, Denkert C, Adams S, Loi S, Salgado R. 2018. Update on tumor-infiltrating lymphocytes (TILs) in breast cancer, including recommendations to assess TILs in residual disease after neoadjuvant therapy and in carcinoma in situ: a report of the International Immuno-Oncology

- Biomarker Working Group on Breast Cancer. *Seminars in Cancer Biology* 52:16–25 DOI 10.1016/j.semcancer.2017.10.003.
- Fridman WH, Galon J, Pages F, Tartour E, Sautes-Fridman C, Kroemer G. 2011. Prognostic and predictive impact of intra- and peritumoral immune infiltrates. *Cancer Research* 71:5601–5605 DOI 10.1158/0008-5472.CAN-11-1316.
- Gardner A, Ruffell B. 2016. Dendritic cells and cancer immunity. *Trends in Immunology* 37:855–865 DOI 10.1016/j.it.2016.09.006.
- Gibert-Ramos A, López C, Bosch R, Fontoura L, Bueno G, Garcia-Rojo M, Berenguer M, Lejeune M. 2019. Immune response profile of primary tumour, sentinel and non-sentinel axillary lymph nodes related to metastasis in breast cancer: an immunohistochemical point of view. *Histochemistry and Cell Biology* 152:177–193 DOI 10.1007/s00418-019-01802-7.
- Gingras I, Azim Jr HA, Ignatiadis M, Sotiriou C. 2015. Immunology and breast cancer: toward a new way of understanding breast cancer and developing novel therapeutic strategies. *Clinical Advances in Hematology & Oncology* 13:372–382.
- Gokmen-Polar Y, Thorat MA, Sojitra P, Saxena R, Badve S. 2013. FOXP3 expression and nodal metastasis of breast cancer. *Cellular Oncology* 36:405–409 DOI 10.1007/s13402-013-0147-3.
- Grigoriadis A, Gazinska P, Pai T, Irhsad S, Wu Y, Millis R, Naidoo K, Owen J, Gillett CE, Tutt A, Coolen AC, Pinder SE. 2018. Histological scoring of immune and stromal features in breast and axillary lymph nodes is prognostic for distant metastasis in lymph node-positive breast cancers. *International Journal of Pathology and Clinical Research* 4:39–54 DOI 10.1002/cjp2.87.
- Gu-Trantien C, Loi S, Garaud S, Equeter C, Libin M, De Wind A, Ravoet M, Le Buanec H, Sibille C, Manfouo-Foutsop G, Veys I, Haibe-Kains B, Singhal SK, Michiels S, Rothe F, Salgado R, Duvillier H, Ignatiadis M, Desmedt C, Bron D, Larsimont D, Piccart M, Sotiriou C, Willard-Gallo K. 2013. CD4(+) follicular helper T cell infiltration predicts breast cancer survival. *Journal of Clinical Investigation* 123:2873–2892 DOI 10.1172/JCI67428.
- Gu-Trantien C, Willard-Gallo K. 2013. Tumor-infiltrating follicular helper T cells: the new kids on the block. *Oncoimmunology* 2:e26066 DOI 10.4161/onci.26066.
- Hanahan D, Coussens LM. 2012. Accessories to the crime: functions of cells recruited to the tumor microenvironment. *Cancer Cell* 21:309–322 DOI 10.1016/j.ccr.2012.02.022.
- Hanahan D, Weinberg RA. 2011. Hallmarks of cancer: the next generation. *Cell* 144:646–674 DOI 10.1016/j.cell.2011.02.013.
- Heiskala M, Leidenius M, Joensuu K, Heikkilä P. 2019. High expression of CCL2 in tumor cells and abundant infiltration with CD14 positive macrophages predict early relapse in breast cancer. *Virchows Archiv* 474:3–12 DOI 10.1007/s00428-018-2461-7.
- Helmink BA, Reddy SM, Gao J, Zhang S, Basar R, Thakur R, Yizhak K, Sade-Feldman M, Blando J, Han G, Gopalakrishnan V, Xi Y, Zhao H, Amaria RN, Tawbi HA, Cogdill AP, Liu W, LeBleu VS, Kugeratski FG, Patel S, Davies MA, Hwu P, Lee JE, Gershenwald JE, Lucci A, Arora R, Woodman S, Keung EZ, Gaudreau PO, Reuben A, Spencer CN, Burton EM, Haydu LE, Lazar AJ, Zappasodi R, Hudgens

- CW, Ledesma DA, Ong S, Bailey M, Warren S, Rao D, Krijgsman O, Rozeman EA, Peeper D, Blank CU, Schumacher TN, Butterfield LH, Zelazowska MA, McBride KM, Kalluri R, Allison J, Petitprez F, Fridman WH, Sautes-Fridman C, Hacohen N, Rezvani K, Sharma P, Tetzlaff MT, Wang L, Wargo JA. 2020. B cells and tertiary lymphoid structures promote immunotherapy response. *Nature* 577:549–555 DOI 10.1038/s41586-019-1922-8.
- Jubb AM, Soilleux EJ, Turley H, Steers G, Parker A, Low I, Blades J, Li JL, Allen P, Leek R, Noguera-Troise I, Gatter KC, Thurston G, Harris AL. 2010. Expression of vascular notch ligand delta-like 4 and inflammatory markers in breast cancer. *American Journal of Pathology* 176:2019–2028 DOI 10.2353/ajpath.2010.090908.
- La Rocca G, Anzalone R, Corrao S, Magno F, Rappa F, Marasa S, Czarnecka AM, Marasa L, Sergi C, Zummo G, Cappello F. 2008. CD1a down-regulation in primary invasive ductal breast carcinoma may predict regional lymph node invasion and patient outcome. *Histopathology* 52:203–212 DOI 10.1111/j.1365-2559.2007.02919.x.
- Liu S, Foulkes WD, Leung S, Gao D, Lau S, Kos Z, Nielsen TO. 2014. Prognostic significance of FOXP3+ tumor-infiltrating lymphocytes in breast cancer depends on estrogen receptor and human epidermal growth factor receptor-2 expression status and concurrent cytotoxic T-cell infiltration. *Breast Cancer Research* 16:432 DOI 10.1186/s13058-014-0432-8.
- Loi S. 2013. Tumor-infiltrating lymphocytes, breast cancer subtypes and therapeutic efficacy. *OncoImmunology* 2:e24720 DOI 10.4161/onci.24720.
- Loi S, Drubay D, Adams S, Pruneri G, Francis PA, Lacroix-Triki M, Joensuu H, Dieci MV, Badve S, Demaria S, Gray R, Munzone E, Lemonnier J, Sotiriou C, Piccart MJ, Kellokumpu-Lehtinen PL, Vingiani A, Gray K, Andre F, Denkert C, Salgado R, Michiels S. 2019. Tumor-infiltrating lymphocytes and prognosis: A pooled individual patient analysis of early-stage triple-negative breast cancers. *Journal of Clinical Oncology* 37:559–569 DOI 10.1200/JCO.18.01010.
- Loi S, Sirtaine N, Piette F, Salgado R, Viale G, Van Eenoo F, Rouas G, Francis P, Crown JP, Hitre E, De Azambuja E, Quinaux E, Di Leo A, Michiels S, Piccart MJ, Sotiriou C. 2013. Prognostic and predictive value of tumor-infiltrating lymphocytes in a phase III randomized adjuvant breast cancer trial in node-positive breast cancer comparing the addition of docetaxel to doxorubicin with doxorubicin-based chemotherapy: BIG 02-98. *Journal of Clinical Oncology* 31:860–867 DOI 10.1200/JCO.2011.41.0902.
- López C, Bosch R, Orero G, Korzynska A, Garcia-Rojo M, Bueno G, Fernández-Carrobles MDM, Gibert-Ramos A, Roszkowiak L, Callau C, Fontoura L, Salvado MT, Alvaro T, Jaen J, Roso-Llorach A, Llobera M, Gil J, Onyos M, Plan-coulaine B, Baucells J, Lejeune M. 2020. The immune response in nonmetastatic axillary lymph nodes is associated with the presence of axillary metastasis and breast cancer patient outcome. *American Journal of Pathology* 190:660–673 DOI 10.1016/j.ajpath.2019.11.002.
- Mansfield AS, Heikkila P, Von Smitten K, Vakkila J, Leidenius M. 2011. Metastasis to sentinel lymph nodes in breast cancer is associated with maturation arrest of

- dendritic cells and poor co-localization of dendritic cells and CD8+ T cells. *Virchows Archiv* **459**:391–398 DOI [10.1007/s00428-011-1145-3](https://doi.org/10.1007/s00428-011-1145-3).
- Mansfield AS, Heikkila P, Von Smitten K, Vakkila J, Leidenius M. 2012.** The presence of sinusoidal CD163(+) macrophages in lymph nodes is associated with favorable nodal status in patients with breast cancer. *Virchows Archiv* **461**:639–646 DOI [10.1007/s00428-012-1338-4](https://doi.org/10.1007/s00428-012-1338-4).
- Matkowski R, Gisterek I, Halon A, Lacko A, Szewczyk K, Staszek U, Pudelko M, Szynglarewicz B, Szelachowska J, Zolnierek A, Kornafel J. 2009.** The prognostic role of tumor-infiltrating CD4 and CD8 T lymphocytes in breast cancer. *Anticancer Research* **29**:2445–2451.
- Miyan M, Schmidt-Mende J, Kiessling R, Poschke I, De Boniface J. 2016.** Differential tumor infiltration by T-cells characterizes intrinsic molecular subtypes in breast cancer. *Journal of Translational Medicine* **14**:227 DOI [10.1186/s12967-016-0983-9](https://doi.org/10.1186/s12967-016-0983-9).
- Nakamura R, Sakakibara M, Nagashima T, Sangai T, Arai M, Fujimori T, Takano S, Shida T, Nakatani Y, Miyazaki M. 2009.** Accumulation of regulatory T cells in sentinel lymph nodes is a prognostic predictor in patients with node-negative breast cancer. *European Journal of Cancer* **45**:2123–2131 DOI [10.1016/j.ejca.2009.03.024](https://doi.org/10.1016/j.ejca.2009.03.024).
- Noguchi M, Thomas M, Kitagawa H, Kinishita K, Kinami S, Takamura H, Miyazaki I, Mizukami Y. 1993.** DNA ploidy and helix pomatia lectin binding as predictors of regional lymph node metastases and prognostic factors in breast cancer. *Breast Cancer Research and Treatment* **26**:67–75 DOI [10.1007/bf00682701](https://doi.org/10.1007/bf00682701).
- Pantanowitz L, Sinard JH, Henricks WH, Fatheree LA, Carter AB, Contis L, Beckwith BA, Evans AJ, Lal A, Parwani AV. 2013.** Validating whole slide imaging for diagnostic purposes in pathology: guideline from the College of American Pathologists Pathology and Laboratory Quality Center. *Archives of Pathology and Laboratory Medicine* **137**:1710–1722 DOI [10.5858/arpa.2013-0093-CP](https://doi.org/10.5858/arpa.2013-0093-CP).
- Patani NR, Dwek MV, Douek M. 2007.** Predictors of axillary lymph node metastasis in breast cancer: a systematic review. *European Journal of Surgical Oncology* **33**:409–419 DOI [10.1016/j.ejso.2006.09.003](https://doi.org/10.1016/j.ejso.2006.09.003).
- Peduzzi P, Concato J, Kemper E, Holford TR, Feinstein AR. 1996.** A simulation study of the number of events per variable in logistic regression analysis. *Journal of Clinical Epidemiology* **49**:1373–1379 DOI [10.1016/S0895-4356\(96\)00236-3](https://doi.org/10.1016/S0895-4356(96)00236-3).
- Pelekanou V, Villarroel-Espindola F, Schalper KA, Pusztai L, Rimm DL. 2018.** CD68, CD163, and matrix metalloproteinase 9 (MMP-9) co-localization in breast tumor microenvironment predicts survival differently in ER-positive and -negative cancers. *Breast Cancer Research* **20**:154 DOI [10.1186/s13058-018-1076-x](https://doi.org/10.1186/s13058-018-1076-x).
- Petitprez F, De Reynies A, Keung EZ, Chen TW, Sun CM, Calderaro J, Jeng YM, Hsiao LP, Lacroix L, Bougouin A, Moreira M, Lacroix G, Natario I, Adam J, Lucchesi C, Laizet YH, Toulmonde M, Burgess MA, Bolejack V, Reinke D, Wani KM, Wang WL, Lazar AJ, Roland CL, Wargo JA, Italiano A, Sautes-Fridman C, Tawbi HA, Fridman WH. 2020.** B cells are associated with survival and immunotherapy response in sarcoma. *Nature* **577**:556–560 DOI [10.1038/s41586-019-1906-8](https://doi.org/10.1038/s41586-019-1906-8).

- Pinder SE, Brown JP, Gillett C, Purdie CA, Speirs V, Thompson AM, Shaaban AM. 2013.** The manufacture and assessment of tissue microarrays: suggestions and criteria for analysis, with breast cancer as an example. *Journal of Clinical Pathology* **66**:169–177 DOI [10.1136/jclinpath-2012-201091](https://doi.org/10.1136/jclinpath-2012-201091).
- Ran S, Volk L, Hall K, Flister MJ. 2010.** Lymphangiogenesis and lymphatic metastasis in breast cancer. *Pathophysiology* **17**:229–251 DOI [10.1016/j.pathophys.2009.11.003](https://doi.org/10.1016/j.pathophys.2009.11.003).
- Reynders A, Brouckaert O, Smeets A, Laenen A, Yoshihara E, Persyn F, Floris G, Leunen K, Amant F, Soens J, Van Ongeval C, Moerman P, Vergote I, Christiaens MR, Staelens G, Van Eygen K, Vanneste A, Van Dam P, Colpaert C, Neven P. 2014.** Prediction of non-sentinel lymph node involvement in breast cancer patients with a positive sentinel lymph node. *Breast* **23**:453–459 DOI [10.1016/j.breast.2014.03.009](https://doi.org/10.1016/j.breast.2014.03.009).
- Roszkowiak L, López C. 2016.** PATMA: Parser of archival tissue microarray. *PeerJ* **4**:e2741 DOI [10.7717/peerj.2741](https://doi.org/10.7717/peerj.2741).
- Salgado R, Denkert C, Demaria S, Sirtaine N, Klauschen F, Pruneri G, Wienert S, Van den Eynden G, Baehner FL, Penault-Llorca F, Perez EA, Thompson EA, Symmans WF, Richardson AL, Brock J, Criscitiello C, Bailey H, Ignatiadis M, Floris G, Sparano J, Kos Z, Nielsen T, Rimm DL, Allison KH, Reis-Filho JS, Loibl S, Sotiriou C, Viale G, Badve S, Adams S, Willard-Gallo K, Loi S. 2015.** The evaluation of tumor-infiltrating lymphocytes (TILs) in breast cancer: Recommendations by an International TILs Working Group 2014. *Annals of Oncology* **26**:259–271 DOI [10.1093/annonc/mdu450](https://doi.org/10.1093/annonc/mdu450).
- Schalper KA, Velcheti V, Carvajal D, Wimberly H, Brown J, Pusztai L, Rimm DL. 2014.** In situ tumor PD-L1 mRNA expression is associated with increased TILs and better outcome in breast carcinomas. *Clinical Cancer Research* **20**:2773–2782 DOI [10.1158/1078-0432.CCR-13-2702](https://doi.org/10.1158/1078-0432.CCR-13-2702).
- Shiota T, Miyasato Y, Ohnishi K, Yamamoto-Ibusuki M, Yamamoto Y, Iwase H, Takeya M, Komohara Y. 2016.** The clinical significance of CD169-positive lymph node macrophage in patients with breast cancer. *PLOS ONE* **11**:e0166680 DOI [10.1371/journal.pone.0166680](https://doi.org/10.1371/journal.pone.0166680).
- Siegel RL, Miller KD, Jemal A. 2017.** Cancer statistics, 2017. *CA: A Cancer Journal for Clinicians* **67**:7–30 DOI [10.3322/caac.21387](https://doi.org/10.3322/caac.21387).
- Silverstein MJ, Skinner KA, Lomis TJ. 2001.** Predicting axillary nodal positivity in 2282 patients with breast carcinoma. *World Journal of Surgery* **25**:767–772 DOI [10.1007/s00268-001-0003-x](https://doi.org/10.1007/s00268-001-0003-x).
- Solinas C, Garaud S, De Silva P, Boisson A, Van den Eynden G, De Wind A, Risso P, Rodrigues Vitoria J, Richard F, Migliori E, Noel G, Duveillier H, Craciun L, Veys I, Awada A, Detours V, Larsimont D, Piccart-Gebhart M, Willard-Gallo K. 2017.** Immune checkpoint molecules on tumor-infiltrating lymphocytes and their association with tertiary lymphoid structures in human breast cancer. *Frontiers in Immunology* **8**:1412 DOI [10.3389/fimmu.2017.01412](https://doi.org/10.3389/fimmu.2017.01412).
- Stovgaard ES, Nielsen D, Hogdall E, Balslev E. 2018.** Triple negative breast cancer—prognostic role of immune-related factors: a systematic review. *Acta Oncologica* **57**:74–82 DOI [10.1080/0284186X.2017.1400180](https://doi.org/10.1080/0284186X.2017.1400180).

- Tan LG, Tan YY, Heng D, Chan MY. 2005.** Predictors of axillary lymph node metastases in women with early breast cancer in Singapore. *Singapore Medical Journal* **46**:693–697.
- Treilleux I, Blay JY, Bendriss-Vermare N, Ray-Coquard I, Bachelot T, Guastalla JP, Bremond A, Goddard S, Pin JJ, Barthelemy-Dubois C, Lebecque S. 2004.** Dendritic cell infiltration and prognosis of early stage breast cancer. *Clinical Cancer Research* **10**:7466–7474 DOI [10.1158/1078-0432.CCR-04-0684](https://doi.org/10.1158/1078-0432.CCR-04-0684).
- Tseng HS, Chen LS, Kuo SJ, Chen ST, Wang YF, Chen DR. 2014.** Tumor characteristics of breast cancer in predicting axillary lymph node metastasis. *Medical Science Monitor* **20**:1155–1161 DOI [10.12659/MSM.890491](https://doi.org/10.12659/MSM.890491).
- Valente AL, Kane JL, Ellsworth DL, Shriver CD, Ellsworth RE. 2014.** Molecular response of the axillary lymph node microenvironment to metastatic colonization. *Clinical and Experimental Metastasis* **31**:565–572 DOI [10.1007/s10585-014-9650-9](https://doi.org/10.1007/s10585-014-9650-9).
- Vgenopoulou S, Lazaris AC, Markopoulos C, Boltetsou E, Kyriakou V, Kavantzias N, Patsouris E, Davaris PS. 2003.** Immunohistochemical evaluation of immune response in invasive ductal breast cancer of not-otherwise-specified type. *Breast* **12**:172–178 DOI [10.1016/s0960-9776\(03\)00004-3](https://doi.org/10.1016/s0960-9776(03)00004-3).
- Weber CE, Kuo PC. 2012.** The tumor microenvironment. *Surgical Oncology* **21**:172–177 DOI [10.1016/j.suronc.2011.09.001](https://doi.org/10.1016/j.suronc.2011.09.001).
- Yoshihara E, Smeets A, Laenen A, Reynders A, Soens J, Van Ongeval C, Moerman P, Paridaens R, Wildiers H, Neven P, Christiaens MR. 2013.** Predictors of axillary lymph node metastases in early breast cancer and their applicability in clinical practice. *Breast* **22**:357–361 DOI [10.1016/j.breast.2012.09.003](https://doi.org/10.1016/j.breast.2012.09.003).
- Zhao X, Qu J, Sun Y, Wang J, Liu X, Wang F, Zhang H, Wang W, Ma X, Gao X, Zhang S. 2017.** Prognostic significance of tumor-associated macrophages in breast cancer: a meta-analysis of the literature. *Oncotarget* **8**:30576–30586 DOI [10.18632/oncotarget.15736](https://doi.org/10.18632/oncotarget.15736).