

Species richness and phylogenetic diversity have opposing effects on invertebrate herbivory

Long-standing ecological theory proposes that diverse communities of plants should experience a decrease in herbivory. Yet previous empirical examinations of this hypothesis have revealed that plant species richness increases herbivory in just as many systems as it decreases it. In this study, I ask whether more insight into the role of plant diversity in promoting or suppressing herbivory can be gained by incorporating information about the evolutionary history of species in a community. In an old field system in southern Ontario, I surveyed communities of plants and measured levels of leaf damage on 27 species in 38 plots. I calculated a measure of phylogenetic diversity (PSE) that encapsulates information about the amount of evolutionary history represented in each of the plots and looked for a relationship between levels of herbivory and both species richness and phylogenetic diversity using a generalized linear mixed model (GLMM) that could account for variation in herbivory levels between species. I found that species richness was positively associated with herbivore damage at the plot-level, in keeping with the results from several other recent studies on this question. On the other hand, phylogenetic diversity was associated with decreased herbivory. Importantly, there was also an interaction between species richness and phylogenetic diversity, such that plots with the highest levels of herbivory were plots which had many species but only if those species tended to be closely related to one another. I propose that these results are the consequence of interactions with herbivores whose diets are phylogenetically specialized (for which I introduce the term cladophagy), and how phylogenetic diversity may alter their realized host ranges. These results suggest that incorporating a phylogenetic perspective can add valuable additional insight into the role of plant diversity in explaining or predicting levels of herbivory at a whole-community scale.

Title Page

Authors:

Russell Dinnage

Affiliations:

1. CSIRO
Ecosystem Sciences
Floreath, WA
Australia
2. University of Western Australia
School of Animal Biology
Perth, WA
Australia
3. University of Toronto
Department of Ecology and Evolutionary Biology
Toronto, Ontario
Canada

Corresponding Author:

Russell Dinnage

Address: Private Bag 5, Wembley, WA 6193, Australia

Phone: +61893336126

Email: russell.dinnage@csiro.au

Introduction

The insect herbivore flies, crawls, hovers, and feeds in a matrix of stems, roots, flowers and leaves. Thousands do this in a typical community of plants in what – to us – is an impenetrably complex tangle of traits, each the product of millions of years of evolution. How then are we to understand the aggregate patterns that emerge from such a community? Indeed, community ecologists have long struggled to understand how the identity and traits of individual plant species add together and interact to determine herbivore communities and the damage they cause.

Though much work on insect herbivory has focused on interactions between single pairs of insect and plant species, it is also important to understand the phenomenon at the level of whole plant communities. After all, many of the consequences of major ecosystem changes will be manifest at the level of the community, and one-to-one interactions may not always be additive (Agrawal, Lau, & Hamback 2006; Agrawal *et al.* 2007).

One way of understanding herbivory at the community level is to look at the effects of plant species richness. Plant species richness is one of the simplest way to summarize information about many species at the community level, and studies of its role in herbivory link up nicely with the body of literature on the relationship between diversity and ecosystem functioning (Siemann *et al.* 1998; Haddad *et al.* 2001; Loreau *et al.* 2001; Hooper *et al.* 2005; Cardinale *et al.* 2006; Balvanera *et al.* 2006; Cardinale *et al.* 2007; Scherber *et al.* 2010a). Insect herbivore damage is a useful reflection of the activities of insect herbivores in plant communities, as well as a phenomenon of interest in and of itself, with implications for the health of a plant community.

There are some clear theoretical predictions about the effects of plant species richness on herbivory, which derive from a simple understanding of direct trophic interactions between plants and insects. Root (1973) suggested that increased plant species richness should lead to a decrease in specialist herbivores, and thus to a decrease in herbivory. The Resource Concentration Hypothesis states that if the number of plant species in a patch is higher, the density of each plant species must be lower, and so specialist herbivores of those species will be less likely to find such a patch, stay in such a patch, and do damage in such a patch. On the other hand, the presence of a wide variety of plant species provides a wide variety of nutritional resources for generalist herbivores, which may prefer to eat in diverse patches, and may thrive more in them too (Unsicker *et al.* 2008; Schuldt & Baruffol 2010). I will refer to this idea as the Dietary Mixing Hypothesis (after Bernays *et al.* 1994).

Unfortunately, previous empirical literature has not provided a clear picture of which

of these two hypotheses applies more widely to plant-herbivore systems, because whether plant species richness has a positive, negative, or no relationship with herbivory depends on the system under study. A review of the literature shows that there are roughly equal numbers of studies showing that plant diversity has a positive effect on herbivory as there are showing a negative effect, at least for studies that looked at the effect of species richness on the magnitude of herbivory (Table 1). This suggests that the role of plant species richness may sensitively depend on aspects of either the plant or the herbivore community. Based on the Resource Concentration Hypothesis and the Dietary Mixing Hypothesis described above, the relative abundance of generalist vs. specialist herbivores likely plays a role. For example, Lau et al. (2008) were able to separate damage done by specialists and damage done by generalists on *Lespedeza capita* planted in low and high diversity plots. They found that damage by generalists increased with high plant diversity and that damage from specialists decreased with high plant diversity, in accordance with the predictions of the Dietary Mixing hypothesis and the Resource Concentration Hypothesis, respectively.

Species richness is only a coarse measure of the diversity and structure of a community, and so including other sources of information about communities may help to clarify such simple predictions. Attempts to include more of the natural complexity of plant communities to understand community herbivory include using functional diversity in addition to plant species richness (Siemann *et al.* 1998; Koricheva *et al.* 2000; Prieur-Richard, Lavorel, & Linhart 2002; Scherber *et al.* 2006, 2010b) reducing species composition to low dimensional quantitative measures using ordination (Koricheva *et al.* 2000; Pfisterer, Diemer, & Schmid 2003; Schaffers *et al.* 2008), and incorporating information about plant species' evolutionary history, using community phylogenetics. Here, I explore the use of community phylogenetics to understand insect herbivory at the plant community level.

The increasing availability of phylogenetic information on plants and the recent development of sophisticated ways of incorporating this information into diversity measures (Helmus *et al.* 2007; Cavender-Bares *et al.* 2009; Vamosi *et al.* 2009; Cadotte *et al.* 2010; Pausas & Verdú 2010), is opening a new avenue of exploration for understanding the effects of plants on ecosystem function at the whole community scale. For example, recent analyses have shown that various measures of phylogenetic diversity are associated with the productivity of plant communities (Cadotte, Cardinale, & Oakley 2008; Cadotte *et al.* 2009; Connolly *et al.* 2011; Flynn *et al.* 2011) and the insect assemblages associated with them (Dinnage et al. 2012). Here, I show that incorporating phylogenetic diversity into hypotheses

about herbivory can provide a useful framework for predicting when species richness may increase or decrease herbivory in plant communities.

Phylogenetic diversity may be particularly important to herbivores and herbivory because of the widespread occurrence of herbivores with phylogenetically restricted diets – they feed on a group of closely related species (Ehrlich & Raven 1964; Janzen 1980; Ødegaard, Diserud, & Østbye 2005; Weiblen *et al.* 2006; Gossner *et al.* 2009; Futuyma & Agrawal 2009). I will refer to these species as cladophages, from the greek *klados* for 'branch', and the greek *phagein* for 'to eat' – thus 'branch-eater', or an organism that feeds preferentially on just one of the branches of the tree of life that is available to them. The act of feeding in this manner can be called cladophagy.

In this study I asked whether the phylogenetic diversity of old-field plant communities can predict the amount of herbivore damage on plants at a community-scale.

Materials and methods

Data collection

The study was conducted at the Koffler Scientific Reserve (KSR) at Joker's Hill (King City, Ontario, Canada; <http://www.ksr.utoronto.ca/jh.html>), a 350 hectare property containing a mix of primary forest, secondary forest and open habitats, including a large area of old field sites. I was granted permission by the site director – Ann Zimmerman – to conduct the research there.

Species survey

I haphazardly selected 38 10 x 10 meter plots spread across the available old field habitat at KSR. In early August, I surveyed each plot within 4 randomly placed 1x1 meter quadrats, one in each of the four quadrants of the larger plot. I noted the presence or absence of each forb species within the quadrats and combined the data from all four quadrats into a low resolution measure of abundance (ranging from 0-4) for each species within each 10x10 meter plot. I decided to focus on forbs to the exclusion of grasses for several reasons. Herbivory from chewing insect is difficult to measure on grasses but is obvious on forbs. There were only two common species of grass which occurred in nearly every one of the plots surveyed, and so inclusion of grasses in the phylogenetic diversity measures would have only diluted the signal from the forbs. I hypothesized that phylogenetic diversity amongst forbs would be the most important to understanding herbivory on forbs. This is because grasses and forbs share few herbivores, except for the most generalist. As an example,

Dinnage et al. (2012) showed that the largest difference in arthropod communities collected from different prairie plant species was between grasses and forbs.

Using this data, I calculated the species richness and abundance-weighted phylogenetic diversity for all 38 plots. This data, along with the species composition of all 38 plots, can be found in Table S1 in Supporting Information.

Herbivory survey

In order to quantify the amount of herbivore damage in the plots, I selected 27 of the most common species at KSR to measure damage (Fig. 1). These species acted as phytometers to capture the overall herbivore pressure in the plot. In late August – over a period of approximately two weeks – I measured herbivore damage rates in the 38 plots. For each of the phytometer species that occurred in a given plot, I sampled 10 individual plants by counting the number of damaged leaves and the number of total leaves on each one. The dataset then consisted of 1862 datapoints, each from an individual plant.

Phylogeny and diversity indices

I created a phylogenetic tree containing all the most common old field species found at my site using methods previously described (Dinnage 2009). I then pruned the tree so that the remaining species matched those found in the plots used for this study (Fig. 1).

Using this phylogeny I calculated an index of abundance-weighted phylogenetic diversity for each plot. There are several such indices available – I chose Phylogenetic Species Evenness (PSE; Helmus et al. 2007). PSE measures the amount of evolutionary history represented in a community by calculating the expected variance in a hypothetical continuous trait modeled as evolving through Brownian motion across the community phylogeny, and is standardized by the expected variance of the same modeled trait on a star phylogeny – where phylogenetic distances among all species are equal. This captures one of the fundamental features of interest in phylogenetic diversity, that it may encapsulate information about the ecological similarity of species in a community. I chose PSE for this reason, and because it is theoretically (and empirically in this study) independent of species richness. Thus, by using it, I could evaluate the *independent* contributions of species richness and phylogenetic diversity without the problems of co-linearity and heteroscedasticity common to many other phylogenetic diversity indices (e.g. Schweiger et al. 2008; Pio et al. 2011). PSE ranges between 0 and 1, where high values are associated with high phylogenetic diversity. Low values are associated with low phylogenetic diversity, or phylogenetic

clustering – small average phylogenetic distances among species in the community.

I used species richness rather than an abundance-weighted measure because I was interested in the effects of adding or subtracting species. This combined with the phylogenetic diversity measure can give a statistical measure of adding species of different phylogenetic distances from the species already present. In addition, abundance weighting is easily interpretable for a measure like phylogenetic diversity, because in essence it is a weighted average, and phylogeny is made from continuous measures of branch length. On the other hand, abundance weighted measures like the Shannon-Weaver index are abstracted quantities with no simple interpretation biologically. I did calculate evenness for the plots and it was not correlated with phylogenetic diversity, and so the phylogenetic diversity measure, though abundance-weighted, was not confounded with species evenness. In addition, evenness was not a significant predictor of herbivory when included as a factor in the model described below, and so I did not use it.

Statistical analysis

In order to account for variation in species composition across plots, I used a generalized linear mixed model (GLMM) with crossed random effects, to disentangle species and plot-level effects on herbivory. The number of damaged leaves on a plant can be modelled as a binomial distribution, with a damaged leaf considered a Bernoulli success (for the herbivores) and an undamaged leaf a failure. Factors that may influence the probability of a leaf being damaged were incorporated into the model with a logit link.

I used a logit-normal-binomial statistical model to analyze the data, as follows:

$$Damaged_i \sim Binomial(p_i, N_i)$$

$$Logit(p_i) = \alpha + \mu^1_{species[i]} + \mu^2_{plot[i]} + \mu^3_{obs[i]} + \beta_{pd}PD_{plot[i]} + \beta_{sr}SR_{plot[i]} + \beta_{pd*sr}(PD*SR)_{plot[i]} + \beta_{date}DATE_{plot[i]}$$

$$\mu^1_{species[i]} \sim Normal(0, \sigma^2_{species}), \mu^2_{plot[i]} \sim Normal(0, \sigma^2_{plot}), \mu^3_{obs[i]} \sim Normal(0, \sigma^2_{obs})$$

Where $Damaged_i$ is the number of damaged leaves on individual plant i , p_i is the probability of any given leaf on plant i being damaged, and N_i is the total number of leaves on plant i . $PD_{plot[i]}$ and $SR_{plot[i]}$ are the phylogenetic diversity and the species richness, respectively, for the plot in which plant i was found. $DATE_{plot[i]}$ is the date on which I sampled the plot, to control for any increases in herbivory that may have occurred while the sampling was ongoing. $\mu^1_{species[i]}$ and $\mu^2_{plot[i]}$ are the random effects for species and plot, respectively. $\mu^3_{obs[i]}$ is a

random effect for the individual observation which was included to account for any over- or under-dispersion in the data since the binomial distribution contains no variance parameter. The α (intercept) and β parameters are the fixed effects.

I used the lme4 package (Bates, Maechler, & Bolker 2011) for R statistical environment (R Development Core Team 2010) to fit the model.

Plot level herbivory (after accounting for species-level variation, sampling date, and observation) can then be estimated as the best linear unbiased predictors (BLUPs) – sometimes referred to as the conditional modes – of p_i (hereafter estimated proportional leaf damage). For plot j , this is equal to $p_j = \text{Logit}^{-1}(\alpha + \mu_j^2 + \beta_{pd}PD_j + \beta_{sr}SR_j + \beta_{pd*sr}(PD*SR)_j)$. Likewise, herbivory of species k (after accounting for plot-level variation, sampling date and observation) is $p_k = \text{Logit}^{-1}(\alpha + \mu_k^3)$. These values were used for plotting (Figs 2 and 3).

All continuous predictor variables were centred by subtracting their means prior to analysis, so that the main effect of the variable refers to its slope at the mean of all other variables.

Significance of the relationships between estimated proportional leaf damage and the fixed factors was determined using a parametric bootstrap approach. For each fixed factor, data was simulated under a simplified model without the fixed factor of interest. The full model was then fit to the simulated data and the z statistic was calculated. The observed z statistic from the full model was then compared to the distribution of z values obtained from 1000 such simulations, and a p value determined as the percent of simulated z values whose absolute value was greater than or equal to the absolute value of the observed z-value (Pinheiro & Bates 2000).

Results

The average percentage of leaves damaged in this study was 53.6%. The species of the plant had a large effect on the estimated proportional leaf damage, with estimated variance for the species random effect of 2.4 compared with 0.26 for the plot random effect and 0.82 for the observation random effect (equivalent in this model to residual variance). Leaf damage rates ranged from 5% for the non-native highly defended *Euphorbia cyparissias* to close to 98% for the (also non-native) forage legume *Medicago sativa* (Fig. 2). Most of the common, native species such as *Solidago canadensis*, *Asclepias syriaca* and *Symphytotrichum* spp. had intermediate to high levels of herbivory (Fig. 2).

Sampling date was positively related to estimated proportional leaf damage but not significantly so ($z = 1.05$, $p = 0.334$; Table 2).

After accounting for species composition, I found a significant positive main effect of species richness ($z = 2.26$, $p = 0.042$), and a marginally significant negative main effect of phylogenetic diversity ($z = -0.19$, $p = 0.055$) on herbivory at the plot-level (Table 2, Fig. 3). There was also a significant negative interaction between phylogenetic diversity and species richness of plants ($z = -2.27$, $p = 0.043$; Table 2, Fig. 3), so that the positive effect of species richness on herbivory decreased with increasing phylogenetic diversity. This means that the plots with the highest estimated proportional leaf damage were plots with many species which tended to be closely related. Plots with few species and plots with more distantly related species tended to have lower herbivory (Fig. 3). Plots with the lowest phylogenetic diversity and the highest species richness had about twice as much proportional leaf damage (~80%) as plots with high phylogenetic diversity and low species richness (~40%, Fig 3).

Discussion

The results of this study show that phylogenetic diversity is a useful measure for predicting the level of herbivory in plant communities. I have shown that community-level herbivory tends to increase with plant species richness, consistent with some past studies, and in contrast to other past studies (Table 1). On the other hand, I also showed, for the first time, that high phylogenetic diversity of plant communities is associated with overall lowered levels of herbivory. Even more importantly, there was an interaction between plant species richness and phylogenetic diversity, such that with increasing phylogenetic diversity, the positive effects of species richness on herbivory decrease.

The effects of plant species richness on herbivory

The positive effect of plant species richness on herbivory found here is the opposite of early ecological predictions (Elton 1958; Root 1973), but is not surprising given the frequency with which this pattern has been found in other systems (e.g. Mulder & Huss-Danell 2001; Prieur-Richard et al. 2002; Scherber et al. 2006; Vehviläinen, Koricheva, & Ruohomäki 2007; Lau et al. 2008; Schuldt et al. 2010; Plath et al. 2011; see Table 1). Theory predicting decreased levels of herbivory in speciose communities was based on the idea that specialist herbivores would be less likely to find and more likely to abandon diverse patches because abundance of their preferred hosts would necessarily be low in such communities (the Resource Concentration Hypothesis : Root 1973). However, this theory is dependent on the herbivore species' being monophagous. Thus, in systems where monophages are rare or do not constitute the most damaging class of herbivores, the

Resource Concentration Hypothesis is unlikely to apply. Another theory for why herbivore abundance and thus herbivory may be low in speciose plant communities is the Enemies Hypothesis (Elton 1958; Root 1973), which suggests that predators will be more abundant in diverse plant communities, and they will suppress herbivore populations. However, several recent empirical tests of this hypothesis have shown little direct relationship between plant species richness and predator abundance (Scherber *et al.* 2010a; Schuldt *et al.* 2011).

Theory for potential causes of a positive relationship between species richness and herbivory, on the other hand, is less developed and less frequently cited. Some authors have suggested that this may be the result of nutritional advantages to generalist herbivores who have access to a variety of food resources in diverse patches (Bernays *et al.* 1994; Unsicker *et al.* 2008; Schuldt & Baruffol 2010), which I refer to here as the Dietary Mixing Hypothesis. Other authors have suggested that spillover from preferred to less preferred host species could explain the effect, sometimes referred to as 'associational susceptibility' (White & Whitham 2000).

The effects of plant phylogenetic diversity on herbivory

The likelihood of the Resource Concentration Hypothesis, the Dietary Mixing Hypothesis, or associational susceptibility being a factor may be related to the phylogenetic structure of the plant community, because many herbivore species, and especially insect herbivores, have phylogenetic structure in their diet – they feed on few or many species which tend to be closely related (Ehrlich & Raven 1964; Janzen 1980; Ødegaard *et al.* 2005; Weiblen *et al.* 2006; Gossner *et al.* 2009; Futuyma & Agrawal 2009). And so theory which is based on the dichotomy of specialist vs generalist herbivores is likely to be too simplistic to adequately describe real systems. Instead it is more useful to use three categories of herbivore which may inhabit a plant community: 1) True specialists or monophages – which feed on only a single plant species, 2) Phylogenetic specialists or cladophages – which feed on a group of related plant species, and 3) true generalists or polyphages – which feed on a group of plant species which has no pattern with respect to phylogeny at some relevant phylogenetic scale. Phylogenetic scale is important because almost any species can be considered a cladophage at some phylogenetic scale. For example, all insect herbivores are cladophages at the scale of the tree of life, because they only eat plants – a monophyletic clade. And so to properly define these categories, the phylogenetic scale of interest must also be defined. Practically speaking, for the study of herbivory, this will usually be based on the phylogenetic tree containing all the plant species present in the study, which will usually be the most

appropriate for understanding local ecological dynamics (Cavender-Bares *et al.* 2009).

Using this framework we can begin to make hypotheses about the effects that phylogenetic diversity might have on herbivory in plant communities. It is clear that neither monophages nor polyphages should be affected by phylogenetic diversity of plants, at least directly – though nutritional effects are possible in generalists. On the other hand, cladophages are likely to respond to phylogenetic diversity of plants due to direct interactions with their host-plants (Dinnage *et al.* 2012). In a plant community with low phylogenetic diversity, if one host capable of supporting a particular cladophage is present, there is likely to be other suitable hosts as well (assuming the presence of at least moderate species richness). On the other hand, in plant communities with high phylogenetic diversity, if any hosts are suitable for a particular cladophage, it is likely to be the only one. This means that cladophages present in low phylogenetic diversity plant communities will be 'effective polyphages'; cladophages present in high phylogenetic diversity plant communities will be 'effective monophages'. Therefore, in plant communities with low phylogenetic diversity, cladophages are more likely to be able to take advantage of dietary mixing effects (as per the Dietary Mixing Hypothesis), and so species richness should have a positive effect. This is consistent with the negative effect of phylogenetic diversity on herbivory observed in this study, and also may explain why the positive effect of species richness increased at low phylogenetic diversity.

In plant communities with high phylogenetic diversity, cladophages will usually only be able to feed on one or a very few species, and so they may respond according to the Resource Concentration Hypothesis, that is, increasing the number of species in the plant community will make it more difficult for them to find their preferred host. Though in this study, the effect of species richness never became negative even at the highest level of phylogenetic diversity, it did become very nearly flat (Fig. 3). It is possible that the relationship would have become negative if there had been plots in this study with even higher phylogenetic diversity than observed.

There are several reasons why the relationship between plant species richness and herbivory may not become completely negative at the highest phylogenetic diversity of plants. For one, the effects of cladophages will be overlaid on the effects from monophages and polyphages. If the polyphage effect is more important in the system, then positive effects of plant species richness will likely predominate. Another possibility is that low species richness can sometimes have a negative effect on monophages, instead of the expected positive effect according to the Resource Concentration Hypothesis. These effects have been

termed 'resource dilution effects' (Otway, Hector, & Lawton 2005), and the commonness of their occurrence has yet to be established.

Though no study to date has studied the role of phylogenetic diversity *per se* on rates of herbivory in plant communities, my results are consistent with the results of Jactel & Brockerhoff (2007), who found in a meta-analysis that reductions in herbivory for focal trees grown in mixed stands instead of monoculture stands were stronger when the associated tree species in the mixed stand was taxonomically unrelated to the focal species.

The role of cladophages in ecological systems

The relative abundance of cladophages in this system is unknown, but it is likely that they occur regularly in most systems. It has been noted that the tendency for herbivores to feed on several closely related species is widespread (Ehrlich & Raven 1964; Janzen 1980; Futuyma & Agrawal 2009). If so, it is predicted that insect herbivore assemblages should be more similar in closely related plant hosts than in more distantly related ones. This pattern has been found in several recent studies in different systems (Ødegaard *et al.* 2005; Weiblen *et al.* 2006; Gossner *et al.* 2009). For example, in a tropical system, Weiblen *et al.* (2006) found that approximately half of the herbivore species they studied could be categorized as phylogenetic specialists.

The widespread existence of cladophages is also an assumption underlying the hypothesis that invasive species which are more distantly related to native species should experience higher levels of enemy release and thus lower levels of herbivory (Mitchell *et al.* 2006). This pattern, too, has been found in several recent studies (Dawson, Burslem, & Hulme 2009; Hill & Kotanen 2009; Ness, Rollinson, & Whitney 2011). Native species have also been shown to experience lower herbivory when growing with neighbours which are distantly related (Yguel *et al.* 2011; Ness *et al.* 2011), further suggesting not only that cladophages are common, but that they exert important influence in ecological systems.

Alternative explanations

There are several alternative explanations for why phylogenetic diversity might indirectly affect herbivory. It has been suggested that phylogenetic diversity is a good proxy for unmeasured trait or functional diversity of a community (e.g. Cadotte *et al.* 2008; Cavender-Bares *et al.* 2009). It is possible that functional diversity may be responsible for reduced herbivory. It is not clear why functional diversity would decrease herbivory directly, but it is possible that increased functional diversity could promote predator recruitment and

abundance, which in turn could suppress herbivores. Functional diversity could increase the architectural complexity of a plot, allowing more hunting niches, nesting sites, and places to hide and stalk for predators (Andow & Prokrym 1990; Coll & Botrell 1996; Beals 2006; Woodcock *et al.* 2007). For example, Dinnage *et al.* (2012) found that in an experimental prairie system, predator abundance increased strongly with phylogenetic diversity. However, in the old field system at my study site, there was little variation in structural forms. Most species grew with tall stalks, and leaves parallel to the ground along their entire height. There were a few understory species (rosettes), a few vines, and a few tree or shrub saplings. Most plots had all of these, regardless of phylogenetic diversity (Table S1, personal observation). These growth forms occurred across the phylogenetic tree without any obvious patterns. However, I cannot rule out this explanation without further information on the abundance of predators. The effect may also have been the result of a combination of factors, that is, both increased predator abundance and reduced diet breadth are jointly responsible for the decrease in herbivory.

It is possible that a correlation between phylogenetic and functional diversity contributes to the patterns I observed in addition to the effects of cladophagy, but it does not offer a good explanation for the interaction between phylogenetic diversity and species richness, or the effect of species richness itself. This is because functional diversity is also expected to – and usually observed to – increase with species richness, and in fact this is often the explanation offered for why species richness affects various ecosystem functions (Tilman 1997; Loreau *et al.* 2001; Hooper *et al.* 2005; Cardinale *et al.* 2006; Balvanera *et al.* 2006; Duffy *et al.* 2007; Cadotte *et al.* 2009; Fornara & Tilman 2009; Cardinale 2011; Connolly *et al.* 2011). Given this, we should expect to see a synergy between phylogenetic diversity and species richness, rather than a negative interaction.

Though the observational nature of this study gives it the advantage of realism, it also means I cannot completely rule out all confounding factors that may explain my results. If, for example, there were abiotic conditions which influenced both species richness and phylogenetic diversity, and also affected herbivory, and which varied sufficiently across my sites, this could spuriously generate the observed correlations. Though all the plots in this study came from a small geographic area and from a single habitat type, and thus likely do not vary much in environmental conditions, it is possible that some soil characteristics may have varied between the plots. Though environmental correlates of species richness have attracted much interest in the past, especially at large spatial scales, little is known about what environmental factors might influence phylogenetic diversity. Since it is often supposed that

407 phylogenetically closely related species will compete more strongly, it is possible that plots
408 with conditions that suppress competition amongst plants are the only ones where many
409 species which are closely related can coexist. If such conditions also promoted high
410 herbivory, then this could lead to high herbivory in plant communities with high species
411 richness and low phylogenetic diversity, as observed. To fully understand the role of
412 phylogenetic diversity in ecosystem function will require conducting large-scale experiments
413 where phylogenetic diversity is explicitly manipulated, but observational studies in natural
414 settings such as this will remain invaluable.

416 *Limitations of this study: Measuring the impact of herbivory*

417 This study shows that many plants may receive lower herbivore damage in
418 phylogenetically diverse communities. This result is similar to those of Yguel *et al.* (2011)
419 who found that oak trees that grew amongst distantly related trees experienced lower
420 herbivory. Yguel *et al.* (2011) suggested that this may produce a selective benefit that could
421 promote the evolution of a strategy to grow amongst distant relatives. This is an intriguing
422 possibility, but studies which only measure the magnitude of damage on plants cannot draw
423 this conclusion, unless they also measure the impact of damage on the plants. In order to
424 understand how selection might affect a plants' preference for its phylogenetic
425 neighbourhood, we need to know how the fitness of the plants are affected.

426 Damage is generally thought of as a negative impact on plant fitness, but many plants
427 are able to tolerate large amounts of damage without sustaining large reductions in fitness
428 (Rosenthal & Kotanen 1994; Strauss & Agrawal 1999). To understand fitness impacts of
429 herbivory generally requires measuring plant performance in the presence and absence of
430 herbivory. In Table 1, I show that although many studies that looked at the magnitude of
431 herbivory found that plant species richness increased herbivory, all but two studies that
432 looked at the impact of herbivory found a negative association with plant species richness,
433 such that speciose communities had a smaller difference in biomass between herbivore
434 exclusion and control treatments. This suggests that plant diversity may provide benefits in
435 terms of a plant's ability to tolerate herbivory, which more than makes up for any increases in
436 the actual amount of herbivore damage.

437 I therefore cannot conclude that any reduction in herbivory due to high phylogenetic
438 diversity *necessarily* results in an advantage to plants growing with their distant relatives.
439 However, the only way this would not be the case is if plants growing in low phylogenetic
440 diversity communities were more tolerant of damage than plants growing in high

441 phylogenetic diversity communities, and this increase in tolerance fully compensated for the
442 increase in herbivore damage. This seems unlikely, but cannot be ruled out without herbivore
443 exclusion studies. It is possible, for example, that plants growing with distant relatives will
444 tend to be in more marginal habitat, since abiotic niche requirements also may be similar for
445 close relatives (Cavender-Bares *et al.* 2009). Plants in marginal habitat may be impacted by
446 herbivory more.

448 *Implications for other studies*

449 As I show in Table 1, the results of previous studies are inconsistent about the
450 relationship observed between herbivory and species richness. The interaction I observed
451 between phylogenetic diversity and species richness in this study may offer an explanation.
452 That is, the degree and even direction of the relationship between species richness and
453 herbivory may depend on the difference in phylogenetic diversities of the communities that
454 are compared. Though I observed such a relationship at a local scale, between individual
455 plots, it may also apply on a larger scale. For example, it is possible that I may have observed
456 an overall positive main effect of species richness in my study because there was generally a
457 low amount of phylogenetic diversity in this system compared with other systems. Old fields
458 tend to be dominated by species in the family Asteraceae, and the one I studied is no
459 exception. Other systems where the question has been studied may draw from a larger pool of
460 evolutionary history, where negative effects may perhaps be more likely.

461 Of course, the relative abundance and importance of monophages, polyphages, and
462 cladophages present and active in the plant communities may also alter the observed effect of
463 plant diversity. For example, simplified ecosystems such as agricultural systems – where we
464 often see negative diversity-herbivory relationships (Andow 1991) – may be dominated by
465 monophages, because monocultures on very large scales may discourage polyphages (or even
466 many cladophages). Whereas polyphages need not be less common compared with
467 monophages in monocultures that are imbedded in a more diverse landscape (as is the case
468 for most biodiversity experiments), as long as the scale of the plots does not exceed the
469 dispersal capability of the polyphages.

471 *Conclusion*

472 Here I have shown that incorporating measures of phylogenetic diversity can improve
473 our understanding of the role of plant diversity in promoting or suppressing herbivore
474 damage. Phylogenetic diversity was negatively correlated with herbivory in an old field

system, and determined the degree to which species richness influenced herbivory as well. If we consider a reduction in herbivore damage as a positive outcome at the community scale, as is often the case in agricultural ecosystems, then we may wish to prioritize the conservation and restoration of phylogenetic diversity, perhaps even at the expense of some species richness.

Acknowledgements

I am grateful to Anna K. Simonsen for logistical support. Ann P. Zimmerman provided assistance and granted permission for the use of KSR. Peter Abrams provided valuable feedback on an earlier draft of the manuscript.

References

- Agrawal, A.A., Ackerly, D.D., Adler, F., Arnold, A.E., Cáceres, C., Doak, D.F., Post, E., Hudson, P.J., Maron, J., Mooney, K.A., Power, M., Schemske, D., Stachowicz, J., Strauss, S., Turner, M.G. & Werner, E. (2007) Filling key gaps in population and community ecology. *Frontiers in Ecology and the Environment*, **5**, 145-152.
- Agrawal, A., Lau, J.A. & Hamback, P.A. (2006) Community heterogeneity and the evolution of interactions between plants and insect herbivores. *Quarterly Review of Biology*, **81**, 349–376.
- Andow, D. (1991) Vegetational diversity and arthropod population response. *Annual Review of Entomology*, **36**, 561–586.
- Andow, D.A. & Prokrym, D.R. (1990) Plant structural complexity and host-finding by a parasitoid. *Oecologia*, **82**, 162-165.
- Balvanera, P., Pfisterer, A.A.B., Buchmann, N., He, J.-S.J., Nakashizuka, T., Raffaelli, D. & Schmid, B. (2006) Quantifying the evidence for biodiversity effects on ecosystem functioning and services. *Ecology Letters*, **9**, 1146-56.
- Bates, D., Maechler, M. & Bolker, B. (2011) lme4: Linear mixed-effects models using S4 classes.
- Beals, M.L. (2006) Understanding community structure: a data-driven multivariate approach. *Oecologia*, **150**, 484-95.
- Bernays, E., Bright, K., Gonzalez, N. & Angel, J. (1994) Dietary mixing in a generalist herbivore: tests of two hypotheses. *Ecology*, 1997–2006.
- Cadotte, M.W., Cardinale, B.J. & Oakley, T.H. (2008) Evolutionary history and the effect of biodiversity on plant productivity. *Proceedings of the National Academy of Sciences of the United States of America*, **105**, 17012-7.
- Cadotte, M.W., Cavender-Bares, J., Tilman, D. & Oakley, T.H. (2009) Using phylogenetic, functional and trait diversity to understand patterns of plant community productivity. *PloS one*, **4**, e5695.
- Cadotte, M.W., Jonathan Davies, T., Regetz, J., Kembel, S.W., Cleland, E. & Oakley, T.H.

- 515 (2010) Phylogenetic diversity metrics for ecological communities: integrating species
516 richness, abundance and evolutionary history. *Ecology Letters*, **13**, 96-105.
- 517 Cardinale, B.J. (2011) Biodiversity improves water quality through niche partitioning.
518 *Nature*, **472**, 86-89.
- 519 Cardinale, B.J., Srivastava, D., Duffy, J., Wright, J.P., Downing, A.L., Sankaran, M. &
520 Jouseau, C. (2006) Effects of biodiversity on the functioning of trophic groups and
521 ecosystems. *Nature*, **443**, 989–992.
- 522 Cardinale, B.J., Wright, J.P., Cadotte, M.W., Carroll, I.T., Hector, A., Srivastava, D.S.,
523 Loreau, M. & Weis, J.J. (2007) Impacts of plant diversity on biomass production
524 increase through time because of species complementarity. *Proceedings of the National
525 Academy of Sciences of the United States of America*, **104**, 18123-8.
- 526 Cavender-Bares, J., Kozak, K.H., Fine, P.V.A. & Kembel, S.W. (2009) The merging of
527 community ecology and phylogenetic biology. *Ecology Letters*, **12**, 693–715.
- 528 Coll, M. & Botrell, D. (1996) Movement of an insect parasitoid in simple and diverse plant
529 assemblages. *Ecological Entomology*, **21**, 141-149.
- 530 Connolly, J., Cadotte, M.W., Brophy, C., Dooley, A., Finn, J., Kirwan, L., Roscher, C. &
531 Weigelt, A. (2011) Phylogenetically diverse grasslands are associated with pairwise
532 interspecific processes that increase biomass. *Ecology*, **92**, 1385-92.
- 533 Dawson, W., Burslem, D.F.R.P. & Hulme, P.E. (2009) Herbivory is related to taxonomic
534 isolation, but not to invasiveness of tropical alien plants. *Diversity and Distributions*, **15**,
535 141-147.
- 536 Dinnage, R. (2009) Disturbance alters the phylogenetic composition and structure of plant
537 communities in an old field system. *PloS one*, **4**, e7071.
- 538 Dinnage, R., M.W. Cadotte, N.M. Haddad, G.M. Crutsinger, and D. Tilman. (2012) Diversity
539 of plant evolutionary lineages promotes arthropod diversity. *Ecology Letters*, **15**,
540 1308-1317.
- 541 Duffy, J.E., Cardinale, B.J., France, K.E., McIntyre, P.B., Thébault, E. & Loreau, M. (2007)
542 The functional role of biodiversity in ecosystems: incorporating trophic complexity.
543 *Ecology Letters*, **10**, 522-38.
- 544 Ehrlich, P.R. & Raven, P.H. (1964) Butterflies and plants: a study in coevolution. *Evolution*,
545 **18**, 586–608.
- 546 Elton, C.S. (1958) *The Ecology of Invasions by Animals and Plants*. Methuen, London.
- 547 Flynn, D.F.B., Mirotchnick, N., Jain, M., Palmer, M.I. & Naeem, S. (2011) Functional and
548 phylogenetic diversity as predictors of biodiversity--ecosystem-function relationships.
549 *Ecology*, **92**, 1573-81.
- 550 Fornara, D.A. & Tilman, D. (2009) Ecological mechanisms associated with the positive
551 diversity–productivity relationship in an N-limited grassland. *Ecology*, **90**, 408-418.
- 552 Futuyma, D.J. & Agrawal, A.A. (2009) Macroevolution and the biological diversity of plants
553 and herbivores. *Proceedings of the National Academy of Sciences of the United States of
554 America*, **106**, 18054-61.
- 555 Gossner, M.M., Chao, A., Bailey, R.I. & Prinzing, A. (2009) Native fauna on exotic trees:
556 phylogenetic conservatism and geographic contingency in two lineages of phytophages
557 on two lineages of trees. *American Naturalist*, **173**, 599-614.

- 558 Haddad, N.M., Tilman, D., Haarstad, J., Ritchie, M. & Knops, J. (2001) Contrasting effects of
559 plant richness and composition on insect communities: a field experiment. *American*
560 *Naturalist*, **158**, 17-35.
- 561 Hanley, M.E. (2004) Seedling herbivory and the influence of plant species richness in
562 seedling neighbourhoods. *Plant Ecology*, **170**, 35-41.
- 563 Helmus, M.R., Bland, T.J., Williams, C.K. & Ives, A.R. (2007) Phylogenetic measures of
564 biodiversity. *American Naturalist*, **169**.
- 565 Hill, S.B. & Kotanen, P.M. (2009) Evidence that phylogenetically novel non-indigenous
566 plants experience less herbivory. *Oecologia*, **161**, 581-90.
- 567 Hillebrand, H. & Cardinale, B.J. (2004) Consumer effects decline with prey diversity.
568 *Ecology Letters*, **7**, 192-201.
- 569 Hooper, D., Chapin Iii, F., Ewel, J., Hector, A., Inchausti, P., Lavorel, S., Lawton, J., Lodge,
570 D., Loreau, M., Naeem, S. & others. (2005) Effects of biodiversity on ecosystem
571 functioning: a consensus of current knowledge. *Ecological Monographs*, **75**, 3-35.
- 572 Jactel, H. & Brockerhoff, E.G. (2007) Tree diversity reduces herbivory by forest insects.
573 *Ecology Letters*, **10**, 835-48.
- 574 Janzen, D. (1980) Specificity of seed-attacking beetles in a Costa Rican deciduous forest.
575 *Journal of Ecology*, **68**, 929-952.
- 576 Koricheva, J., Mulder, C.P.H., Schmid, B., Joshi, J. & Huss-Danell, K. (2000) Numerical
577 responses of different trophic groups of invertebrates to manipulations of plant diversity
578 in grasslands. *Oecologia*, **125**, 271-282.
- 579 Lanta, V. (2007) Effect of slug grazing on biomass production of a plant community during a
580 short-term biodiversity experiment. *Acta Oecologica*, **32**, 145-151.
- 581 Lau, J. a, Strengbom, J., Stone, L.R., Reich, P.B. & Tiffin, P. (2008) Direct and indirect
582 effects of CO₂, nitrogen, and community diversity on plant-enemy interactions.
583 *Ecology*, **89**, 226-36.
- 584 Loreau, M., Naeem, S., Inchausti, P., Bengtsson, J., Grime, J., Hector, A., Hooper, D.,
585 Huston, M., Raffaelli, D., Schmid, B. & others. (2001) Biodiversity and ecosystem
586 functioning: current knowledge and future challenges. *Science*, **294**, 804.
- 587 McNaughton, S.J. (1985) Ecology of a Grazing Ecosystem: The Serengeti. *Ecological*
588 *Monographs*, **55**, 259.
- 589 Mitchell, C.E., Agrawal, A.A., Bever, J.D., Gilbert, G.S., Hufbauer, R.A., Klironomos, J.N.,
590 Maron, J.L., Morris, W.F., Parker, I.M., Power, A.G., Seabloom, E.W., Torchin, M.E. &
591 Vázquez, D.P. (2006) Biotic interactions and plant invasions. *Ecology Letters*, **9**, 726-40.
- 592 Mulder, K. & Huss-Danell, H. (2001) Insects affect relationships between plant species
593 richness and ecosystem processes. *Ecology Letters*, **2**, 237-246.
- 594 Narwani, A. & Mazumder, A. (2010) Community composition and consumer identity
595 determine the effect of resource species diversity on rates of consumption. *Ecology*, **91**,
596 3441-7.
- 597 Ness, J.H., Rollinson, E.J. & Whitney, K.D. (2011) Phylogenetic distance can predict
598 susceptibility to attack by natural enemies. *Oikos*, **120**, 1327-1334.
- 599 Nitschke, N., Ebeling, A., Rottstock, T., Scherber, C., Middelhoff, C., Creutzburg, S.,
600 Weigelt, A., Tschamtk, T., Fischer, M. & Weisser, W.W. (2010) Time course of plant

- 601 diversity effects on *Centaurea jacea* establishment and the role of competition and
602 herbivory. *Journal of Plant Ecology*, **3**, 109-121.
- 603 Ødegaard, F., Diserud, O.H. & Østbye, K. (2005) The importance of plant relatedness for
604 host utilization among phytophagous insects. *Ecology Letters*, **8**, 612-617.
- 605 Otway, S., Hector, A. & Lawton, J.H. (2005) Resource dilution effects on specialist insect
606 herbivores in a grassland biodiversity experiment. *Journal of Animal Ecology*, **74**,
607 234–240.
- 608 Pausas, J.G. & Verdú, M. (2010) The Jungle of Methods for Evaluating Phenotypic and
609 Phylogenetic Structure of Communities. *BioScience*, **60**, 614-625.
- 610 Petermann, J.S., Müller, C.B., Weigelt, A., Weisser, W.W. & Schmid, B. (2010) Effect of
611 plant species loss on aphid-parasitoid communities. *Journal of Animal Ecology*, **79**,
612 709-20.
- 613 Pfisterer, A.B., Diemer, M. & Schmid, B. (2003) Dietary shift and lowered biomass gain of a
614 generalist herbivore in species-poor experimental plant communities. *Oecologia*, **135**,
615 234-241.
- 616 Pinheiro, J. & Bates, D. (2000) *Mixed-effects Models in S and S-PLUS*. Springer.
- 617 Pio, D.V., Broennimann, O., Barraclough, T.G., Reeves, G., Rebelo, A.G., Thuiller, W.,
618 Guisan, A. & Salamin, N. (2011) Spatial predictions of phylogenetic diversity in
619 conservation decision making. *Conservation Biology*, **25**, 1229-39.
- 620 Plath, M., Dorn, S., Riedel, J., Barrios, H. & Mody, K. (2011) Associational resistance and
621 associational susceptibility: specialist herbivores show contrasting responses to tree
622 stand diversification. *Oecologia*, 1-11.
- 623 Prieur-Richard, A., Lavorel, S. & Linhart, Y. (2002) Plant diversity, herbivory and resistance
624 of a plant community to invasion in Mediterranean annual communities. *Oecologia*, **130**,
625 96 - 104.
- 626 R Development Core Team. (2010) R: A Language and Environment for Statistical
627 Computing. *R Foundation for Statistical Computing*.
- 628 Root, R.B. (1973) Organization of a plant-arthropod association in simple and diverse
629 habitats: the fauna of collards (*Brassica oleracea*). *Ecological Monographs*, **43**, 95–124.
- 630 Rosenthal, J.P. & Kotanen, P.M. (1994) Terrestrial plant tolerance to herbivory. *Trends in*
631 *Ecology & Evolution*, **9**, 145-8.
- 632 Schaffers, A.P., Raemakers, I.P., Sykora, K.V. & ter Braak, C.J.F. (2008) Arthropod
633 assemblages are best predicted by plant species composition. *Ecology*, **89**, 782-794.
- 634 Scherber, C., Eisenhauer, N., Weisser, W.W., Schmid, B., Voigt, W., Fischer, M., Schulze,
635 E.-D., Roscher, C., Weigelt, A., Allan, E., Bessler, H., Bonkowski, M., Buchmann, N.,
636 Buscot, F., Clement, L.W., Ebeling, A., Engels, C., Halle, S., Kertscher, I., Klein, A.-M.,
637 Koller, R., König, S., Kowalski, E., Kummer, V., Kuu, A., Lange, M., Lauterbach, D.,
638 Middelhoff, C., Migunova, V.D., Milcu, A., Müller, R., Partsch, S., Petermann, J.S.,
639 Renker, C., Rottstock, T., Sabais, A., Scheu, S., Schumacher, J., Temperton, V.M. &
640 Tschamtkke, T. (2010a) Bottom-up effects of plant diversity on multitrophic interactions
641 in a biodiversity experiment. *Nature*, **468**, 553-6.
- 642 Scherber, C., Heimann, J., Köhler, G., Mitschunas, N. & Weisser, W.W. (2010b) Functional
643 identity versus species richness: herbivory resistance in plant communities. *Oecologia*,
644 **163**, 707-717-717.

- 645 Scherber, C., Mwangi, P.N., Temperton, V.M., Roscher, C., Schumacher, J., Schmid, B. &
646 Weisser, W.W. (2006) Effects of plant diversity on invertebrate herbivory in
647 experimental grassland. *Oecologia*, **147**, 489-500.
- 648 Schuldt, A. & Baruffol, M. (2010) Tree diversity promotes insect herbivory in subtropical
649 forests of south-east China. *Journal of Ecology*, **98**, 917–926.
- 650 Schuldt, A., Both, S., Bruelheide, H., Härdtle, W., Schmid, B., Zhou, H. & Assmann, T.
651 (2011) Predator Diversity and Abundance Provide Little Support for the Enemies
652 Hypothesis in Forests of High Tree Diversity (ed MS Boyce). *PLoS ONE*, **6**, e22905.
- 653 Schweiger, O., Klotz, S., Durka, W. & Kühn, I. (2008) A comparative test of phylogenetic
654 diversity indices. *Oecologia*, **157**, 485-95.
- 655 Siemann, E., Tilman, D., Haarstad, J. & Ritchie, M. (1998) Experimental tests of the
656 dependence of arthropod diversity on plant diversity. *American Naturalist*, **152**,
657 738–750.
- 658 Sobek, S., Scherber, C., Steffan-Dewenter, I. & Tschamntke, T. (2009) Sapling herbivory,
659 invertebrate herbivores and predators across a natural tree diversity gradient in
660 Germany's largest connected deciduous forest. *Oecologia*, **160**, 279-88.
- 661 Stein, C., Unsicker, S.B., Kahmen, A., Wagner, M., Audorff, V., Auge, H., Prati, D. &
662 Weisser, W.W. (2010) Impact of invertebrate herbivory in grasslands depends on plant
663 species diversity. *Ecology*, **91**, 1639-1650.
- 664 Strauss, S.Y. & Agrawal, A.A. (1999) The ecology and evolution of plant tolerance to
665 herbivory. *Trends in Ecology & Evolution*, **14**, 179–185.
- 666 Tilman, D. (1997) The Influence of Functional Diversity and Composition on Ecosystem
667 Processes. *Science*, **277**, 1300-1302.
- 668 Unsicker, S.B., Baer, N., Kahmen, A., Wagner, M., Buchmann, N. & Weisser, W.W. (2006)
669 Invertebrate herbivory along a gradient of plant species diversity in extensively managed
670 grasslands. *Oecologia*, **150**, 233-46.
- 671 Unsicker, S.B., Oswald, A., Köhler, G. & Weisser, W.W. (2008) Complementarity effects
672 through dietary mixing enhance the performance of a generalist insect herbivore.
673 *Oecologia*, **156**, 313-24.
- 674 Vamosi, S.M., Heard, S.B., Vamosi, J.C. & Webb, C.O. (2009) Emerging patterns in the
675 comparative analysis of phylogenetic community structure. *Molecular Ecology*, **18**,
676 572-92.
- 677 Vehviläinen, H., Koricheva, J. & Ruohomäki, K. (2007) Tree species diversity influences
678 herbivore abundance and damage: meta-analysis of long-term forest experiments.
679 *Oecologia*, **152**, 287-98.
- 680 Wang, L., Wang, D., He, Z., Liu, G. & Hodgkinson, K.C. (2010) Mechanisms linking plant
681 species richness to foraging of a large herbivore. *Journal of Applied Ecology*, **47**, no-no.
- 682 Weiblen, G., Webb, C., Novotny, V., Basset, Y. & Miller, S. (2006) Phylogenetic dispersion of
683 host use in a tropical insect herbivore community. *Ecology*, **87**, 62–75.
- 684 White, J.A. & Whitham, T.G. (2000) Associational susceptibility of cottonwood to a box
685 elder herbivore. *Ecology*, **81**, 1795–1803.
- 686 Wilsey, B.J. & Polley, H.W. (2002) Reductions in grassland species evenness increase dicot
687 seedling invasion and spittle bug infestation. *Ecology Letters*, **5**, 676-684.

688 Woodcock, B.A., Potts, S.G., Westbury, D.B., Ramsay, A.J., Lambert, M., Harris, S.J. &
689 Brown, V.K. (2007) The importance of sward architectural complexity in structuring
690 predatory and phytophagous invertebrate assemblages. *Ecological Entomology*, **32**,
691 302-311.

692 Yguel, B., Bailey, R., Tosh, N.D., Vialatte, A., Vasseur, C., Vitrac, X., Jean, F. & Prinzing, A.
693 (2011) Phytophagy on phylogenetically isolated trees: why hosts should escape their
694 relatives. *Ecology Letters*, **14**, 1117-1124.

695

Table 1 (on next page)

Literature review of previous studies on the role of plant diversity in promoting or suppressing herbivory

Type refers to whether the species richness was manipulated (Experimental), natural species richness variation was taken advantage of (Observational), or the conclusion was based on estimates from previous literature (Meta-analysis). No study from the meta-analyses were repeated in this table.

Consumer effect refers to whether the study estimated a measure of the amount of interaction between plants and consumers (Magnitude) – usually a damage measurement, or estimated the effect that interaction had on the plants' fitness (Impact) – usually by measuring biomass in the presence or absence of herbivory. A positive relationship means that the study found that the magnitude or impact of herbivory increased with increasing plant diversity, a negative relationship means the study found that herbivory decreased with plant diversity. None means the study found no relationship between herbivory and plant diversity

Study	Type	Species Richness Range	Measured	Measured On effect	Consumer	Relationship
Lau et al. 2008	Experimental	1 vs. 16	Leaf damage from generalists	1 Legume sp	Magnitude	Positive
Mulder & Huss-Danell 2001	Experimental	1, 2, 4, 8, 12	Leaf damage	Community	Magnitude	Positive
Plath et al. 2011	Experimental	1 vs. 3	Leaf damage	1 Rosea tree	Magnitude	Positive
Prieur-Richard et al. 2002	Experimental	3, 6, 18	Leaf damage	2 Conyza spp.	Magnitude	Positive
Scherber et al. 2006	Experimental	1, 2, 4, 8, 16, & 60	Leaf damage	All species + 3 phytometer spp	Magnitude	Positive
Schuldt et al. 2010	Observational	25 – 68	Leaf damage	10 tree spp	Magnitude	Positive
Vehviläinen, Koricheva & Ruohomäki 2007	Meta-analysis	1 vs. Several	Leaf damage	2 tree spp (Oak & Alder)	Magnitude	Positive
Wang et al. 2010	Observational	1,2,4,6,8,11	# plants grazed by sheep	Community	Magnitude	Positive
Hanley 2004 relationship	Experimental	3, 6, 12	Leaf damage by Mollusks	All spp	Magnitude	No
Sobek et al. relationship 2009	Observational	Natural range across German deciduous forest	Leaf damage by insects	2 Maple spp	Magnitude	No
Yguel et al. relationship 2011	Observational	Natural range across managed French forest	Leaf damage	1 Oak sp.	Magnitude	No
Jactel & Brockhoff 2007	Meta-analysis	1 vs. Several	Leaf damage	Many individual spp.	Magnitude	Negative
Lau et al. 2008	Experimental	1 vs. 16	Leaf damage from specialists	1 Legume sp	Magnitude	Negative
Massey et al. 2006	Experimental	1 vs. 5	Leaf damage	1 Shorea sp	Magnitude	Negative
McNaughton 1985	Observational	Natural range across Serengeti	% Biomass consumed	Community	Magnitude	Negative
Petermann et al. 2010	Experimental	1, 2, 3, 4, 6, 9	Infestation by aphids	Community	Magnitude	Negative
Sobek et al. 2009	Observational	Natural range across German deciduous forest	Leaf damage by insects	1 Beech sp	Magnitude	Negative

Unsicker et al. 2006	Observational	18 – 45	Leaf damage	Many individual spp.	Magnitude	Negative
Vehviläinen, Koricheva & Ruohomäki 2007	Meta-analysis	1 vs. Several	Leaf damage by insects	1 Birch sp	Magnitude	Negative
Wilsey & Polley 2002	Experimental	1 – 4 (manipulated Evenness)	Infestation by spittlebugs	Solidago canadensis	Magnitude	Negative
Mulder & Huss-Danell 2001	Experimental	1, 2, 4, 8, 12	Reduction of biomass in insecticide plots	Community	Impact	Positive
Scherber et al. 2010	Experimental	1, 2, 4, 8, 16, 60	% reduction of biomass in insect exclusions	Community	Impact	No
Hillebrand & Cardinale 2004	Meta-analysis	1 - 60	Absolute and % reduction of biomass in grazer exclusion	Community of phytoplankton	Impact	Negative
Lanta 2007	Experimental	1, 2, 4, 6	Reduction of biomass in Mollusk exclusions	Community	Impact	Negative
Narwani & Mazumder 2010	Experimental	1 vs. 4	Biomass consumed	Community of phytoplankton	Impact	Negative
Pfisterer, Diemer & Schmid 2003	Experimental	1, 2, 4, 8, 32	% reduction of biomass in insect exclusion	Community	Impact	Negative
Stein et al. 2010	Observational	15 – 37	% reduction of biomass in insect exclusions	Community	Impact	Negative

Figure 1

Phylogenetic tree with branch lengths representing all species in this study

Species highlighted in grey are species for which herbivore damage measurements were taken. Branch lengths represent divergence times. Methods for generating the tree can be found in Dinnage (2009).

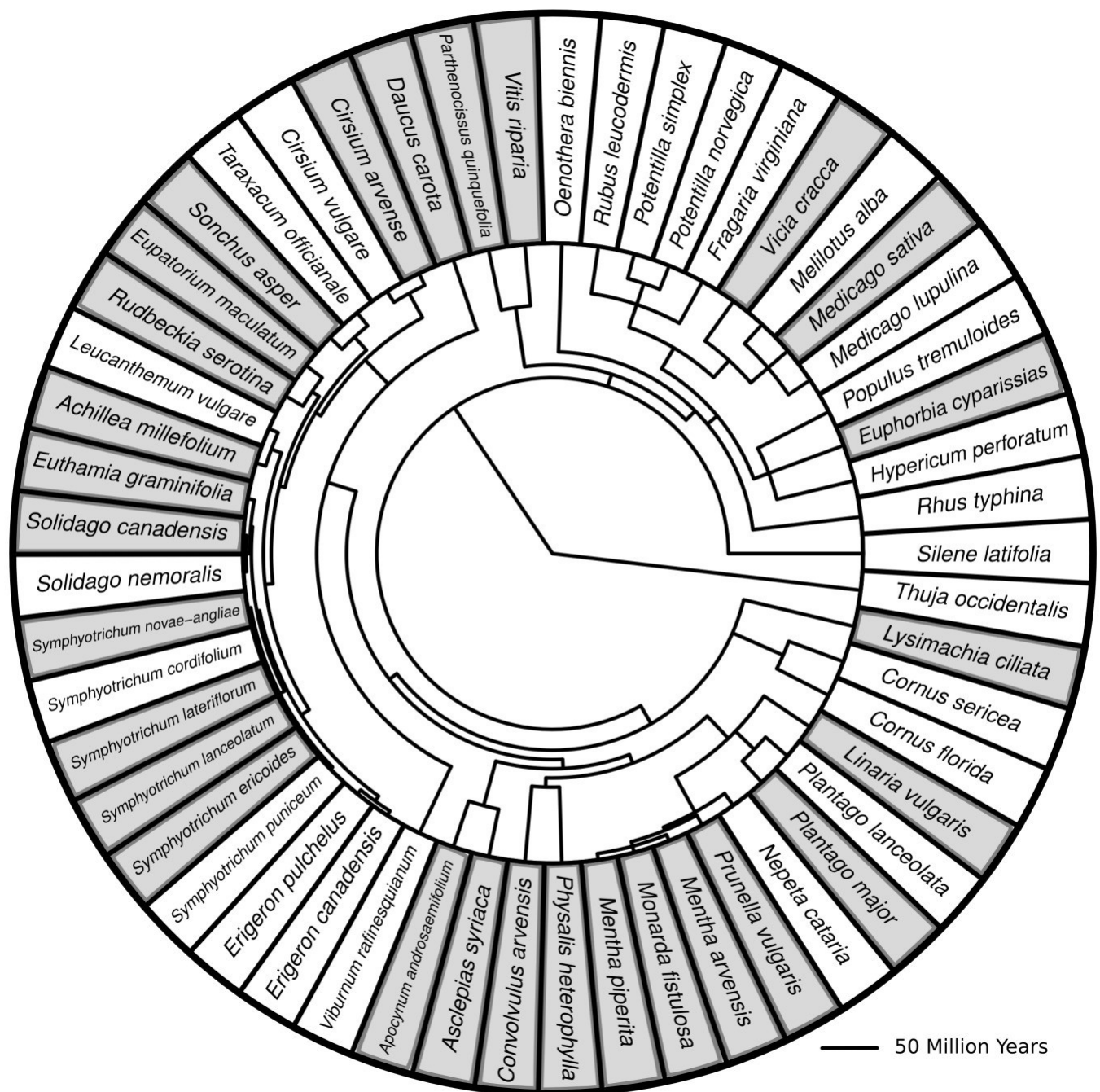


Figure 2

Species-level herbivory of the 27 species for which herbivore damage measurements were taken

On the left is the phylogenetic relationships of the species with branch length representing time since divergence. On the right is a barchart whose bars represent the best linear unbiased predictors (BLUPs) or conditional modes of the estimated proportional leaf damage for each species. Error bars are based on the conditional variance-covariance matrix generated by the model fitting procedure (lmer function in the lme4 package for R) and are conditional mode ± 1 conditional standard deviation.

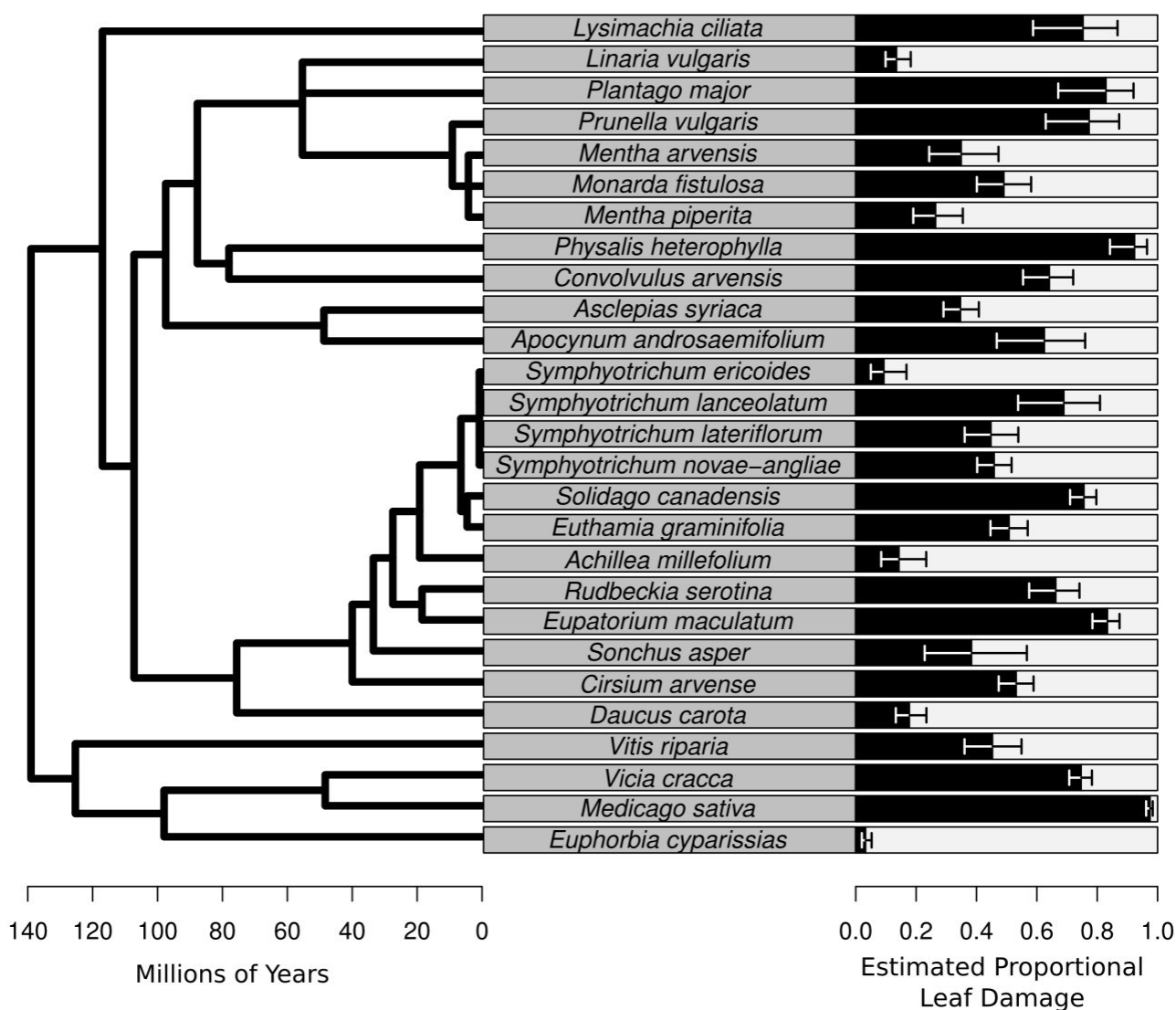


Table 2_(on next page)

Statistics for the fixed effects

Statistics for the fixed effects in a generalized linear mixed model (GLMM) with binomial family and logit link. $\Pr(|z|_{\text{obs}} < |z|_{\text{sim}})$ is the p-value generated from a parametric bootstrap on the z values. * z value is significant at the $\alpha = 0.05$ level.

Parameter	Name of Factor	Estimate	z value	Pr(z _{obs} < z _{sim})
α	Intercept	0.15		
β_{date}	Sampling Date	0.10	1.05	0.334
β_{sr}	Plant Species Richness	0.23	2.26	0.042*
β_{pd}	Plant Phylogenetic Diversity (PSE)	-0.19	-2.10	0.055
β_{sr*pd}	Plant Diversity Interaction	-0.28	-2.27	0.043*

Figure 3

Two figures showing the relationship between estimated proportional leaf damage and plot-level plant species richness and phylogenetic diversity.

a) Points represent best linear unbiased predictors (BLUPs) or conditional modes of plots. The size of the points is proportional to the species richness of the plot so that large points are speciose communities. Error bars are based on the conditional variance-covariance matrix generated by the model fitting procedure (lmer function in the lme4 package for R) and are conditional mode ± 1 conditional standard deviation. Fitted lines are back-transformed predicted values from the full generalized linear mixed model, for four different pre-set values of species richness (3,6,12,&17) representing the full range of species richnesses in this study. b) A heatmap which shows the back-transformed fitted surface of the full generalized linear mixed model. Points are the plot BLUPs, their colour represents their value as per the legend. Points that are darker than the surrounding colour fall below the predicted surface; points which are lighter fall above it.

