

# Chemical Profile and Pancreatic Lipase Inhibitory Activity of *Sinobambusa tootsik* (Sieb.) Makino leaves

Xiao-Lin Qiu<sup>1</sup>, Qing-Feng Zhang<sup>Corresp. 1, 2</sup>

<sup>1</sup> College of New Energy and Environmental Engineering, Nanchang Institute of Technology, Nanchang, China

<sup>2</sup> Jiangxi Key Laboratory of Natural Product and Functional Food, College of Food Science and Engineering, Jiangxi Agricultural University, Nanchang, China

Corresponding Author: Qing-Feng Zhang  
Email address: zhqf619@126.com

**Background.** *Sinobambusa tootsik* (Sieb.) Makino (*S. tootsik*) is one species of bamboo distributed in China, Japan and Vietnam. The chemical profile of its leaves and its potential application was unknown yet.

**Methods.** The chemical profile of *S. tootsik* was studied by HPLC and UPLC-DAD-QTOF-MS. The *S. tootsik* extract was prepared by extraction with 50% aqueous ethanol, followed by H103 macroporous resins adsorption and desorption processes. Pancreatic lipase inhibitory activity was determined using *p*-nitrophenyl palmitate as the substance, which was hydrolyzed by lipase to form coloured *p*-nitrophenol.

**Results.** Eighteen compounds were identified in *S. tootsik*. Most of them were the C-glycosylated derivatives of luteolin and apigenin, such as isoorientin, isoorientin-2''-O-rhamnoside and isovitexin. Isoorientin-2''-O-rhamnoside was the most dominant flavonoid in the sample. *S. tootsik* extract was prepared through resin adsorption/desorption with yield of  $1.12 \pm 0.15\%$  and total flavonoids content of  $82 \pm 2$  mg/g (in term of isoorientin). The extract exhibited pancreatic lipase inhibitory activity with IC<sub>50</sub> value of 0.93 mg/mL.

**Conclusion.** The chemical profile of *S. tootsik* leaves was uncovered for the first time. C-glycosyl flavonoids were the main constituents in the plant. The extract exhibited pancreatic lipase inhibitory activity and may have potential to be used as a food supplement for obesity controlling.

**Chemical Profile and Pancreatic Lipase Inhibitory Activity of  
*Sinobambusa tootsik* (Sieb.) Makino leaves**

Xiao-Lin Qiu<sup>1</sup> and Qing-Feng Zhang<sup>1,2\*</sup>

<sup>1</sup>Nanchang Institute of Technology, College of New Energy and Environmental Engineering, Nanchang, China

<sup>2</sup>Jiangxi Key Laboratory of Natural Product and Functional Food, College of Food Science and Engineering, Jiangxi Agricultural University, Nanchang, China

\*Corresponding author: zhqf619@126.com, Phone/fax: 86-791-83813863.

# ABSTRACT

**Background.** *Sinobambusa tootsik* (Sieb.) Makino (*S. tootsik*) is one species of bamboo distributed in China, Japan and Vietnam. The chemical profile of its leaves and its potential application was unknown yet.

**Methods.** The chemical profile of *S. tootsik* was studied by HPLC and UPLC-DAD-QTOF-MS. The *S. tootsik* extract was prepared by extraction with 50% aqueous ethanol, followed by H103 macroporous resins adsorption and desorption processes. Pancreatic lipase inhibitory activity was determined using *p*-nitrophenyl palmitate as the substance, which was hydrolyzed by lipase to form coloured *p*-nitrophenol.

**Results.** Eighteen compounds were identified in *S. tootsik*. Most of them were the C-glycosylated derivatives of luteolin and apigenin, such as isoorientin, isoorientin-2"-O-rhamnoside and isovitexin. Isoorientin-2"-O-rhamnoside was the most dominant flavonoid in the sample. *S. tootsik* extract was prepared through resin adsorption/desorption with yield of 1.12±0.15% and total flavonoids content of 82±2 mg/g (in term of isoorientin). The extract exhibited pancreatic lipase inhibitory activity with IC<sub>50</sub> value of 0.93 mg/mL.

**Conclusion.** The chemical profile of *S. tootsik* leaves was uncovered for the first time. C-glycosyl flavonoids were the main constituents in the plant. The extract exhibited pancreatic lipase inhibitory activity and may have potential to be used as a food supplement for obesity controlling.

32 **Keywords:** *Sinobambusa tootsik* (Sieb.) Makino; chemical profile; C-glycosyl flavonoids;

33 pancreatic lipase; inhibition

34

## INTRODUCTION

Bamboo is a valuable plant distributed all over the world with more than 1500 species. The bamboo shoots of some species, e.g. *Phyllostachys heterocycla* cv. *pubescens* (*P. heterocycla*), were eaten as vegetable, while the leaves were used as herbal material in China. The flavonoids extract of some bamboo species (*Phyllostachys* genus) were approved as the food antioxidant and food resources in China (Wang et al., 2012). The pharmacological activities of bamboo leaves were arise from the presence of phytochemicals. For instance, five C-Glycosyl flavones were isolated from *Fargesia robusta* (Van Hoyweghen et al., 2010). Three chlorogenic acid derivatives were isolated from *Phyllostachys edulis* and the antioxidant activity was evaluated (Kweon et al., 2001). Wang et al. isolated three isoorientin derivatives from *Bambusa. textilis* McClure (Wang et al., 2012). Previous, we identified twelve compounds in the leaves of *Bambusa multiplex* cv. *Fernleaf* (*B. multiplex*), and found that C-glycosyl flavonoids including vitexin, isovitexin, isoorientin and its derivatives, are the main chemical constitutes of the plant (Qiu & Zhang, 2019). *Sinobambusa tootsik* (Sieb.) Makino (*S. tootsik*) is one species of bamboo distributed in China, Japan and Vietnam. To the best of our knowledge, the chemical profile of its leaves has not been studied yet. To further uncover its potential application, the chemical composition of *S. tootsik* was studied by HPLC and UPLC-QTOF-MS in the present study. Furthermore, the pancreatic lipase inhibition activity of its extract was studied.

## MATERIALS AND METHODS

### Chemicals and Plant materials

Leaves of *S. tootsik* were collected in Jiangxi Agricultural University (with east longitude of 115°50' and northern latitude of 28°46') on Mar. 2019. The plant material was authenticated based on morphological characters by Prof. Qing-Pei Yang (Jiangxi Agricultural University), and the voucher specimen was deposited in Jiangxi Key Laboratory of Natural Product and Functional Food. The leaves was dried at 60 °C and smashed to filter through 40 mesh sieve. Isoorientin standard (>98%) was purchased from Beijing Solarbio Science & Technology Co., Ltd (Beijing, China). HPLC grade acetonitrile was purchased Anhui Tedia High Purity Solvents Co., Ltd (Anqin, China). Porcine pancreatic lipase (extract powder, 15-35 units/mg, catalog number L111237) was purchased from Aladdin Chemistry Co. Ltd. (Shanghai, China; <http://www.aladdin-e.com>). Milli-Q water was used throughout the study. All other reagents used were analytical grade.

## Sample extraction

A 0.1 g aliquot of *S. tootsik* powder was mixed with 5.0 mL of 50% aqueous ethanol. After sonicating for 30 min in a bath sonicator (100 W, 45 kHz, Kunshan, China), the mixture was centrifuged at 1100g for 5 min. The supernatant was filtered by 0.22 mm pore size filter and then used for HPLC and UPLC-DAD-QTOF-MS analysis.

For *S. Tootsik* extract preparation, 50 g of *S. tootsik* sample was extracted for twice with 500 mL of 50% aqueous ethanol each time. After centrifugation at 1100g for 5 min, the supernatant was combined together. The extract was condensed to about 500 mL by vacuum rotavapor at 50 °C. The concentrates was two times diluted by water. Then, the extract was pumped through a fixed

bed of H103 macroporous resin with diameter of 1.5 cm and height of 40 cm in a glass column. The flow rate was 10 mL/min. After adsorption, the fixed bed was desorbed with 4 BV of 90% ethanol with flow rate of 5 mL/min. The eluent was concentrated by vacuum rotavapor at 50 °C and then lyophilized to obtain the extract.

### **UPLC-DAD-QTOF-MS analysis**

The chemical identification was performed on a QTOF 5600-plus mass spectrometer equipped with Turbo V sources and a Turbolonspray interface (AB Sciex Corporation, Foster City, CA, USA) coupled to a Shimadzu LC-30A UPLC-DAD system (Shimadzu Corporation, Kyoto, Japan). Acquity UPLC BEH C18 column (2.1 mm × 100 mm, 1.7 μm, Waters) was used. The flow rate was 0.3 mL/min with injection volume of 1 μL and column temperature of 40 °C. The mobile phase was acetonitrile (A) and 0.1% formic acid aqueous solution (B) using a linear gradient program of 0-30min, 5-40% (A). The mass spectrometer was operated in the negative ion mode. Ultrapure nitrogen was used as the ion source gas 1 (50 psi), ion source gas 2 (50 psi), and curtain gas (40 psi). The Turbo Ion Spray voltage and temperature were set at -4500 V and 500 °C, respectively. Declustering potential, collision energy, and collision energy spread were set at 100 V, -40 V, and 10 V, respectively. Data acquisition was performed with Analyst 1.6 software (AB Sciex).

### **HPLC quantification Analysis**

The HPLC Analysis was performed on an Agilent 1260 HPLC system equipped with an

autosampler and DAD detector. A Symmetry C18 column (250 mm × 4.6 mm i.d., 5 µm; Waters, USA) was used as the stationary phase. The mobile phase consisted of acetonitrile (A) and 0.1% acetic acid aqueous solution (B). The flow rate was 1 mL/min with linear gradient program of 0-30 min, 1-40% A; 30-35 min, 40% A. Detected wavelength was 349 nm with injection volume of 10 µL and column temperature of 40 °C.

### **Pancreatic lipase inhibitory activity assay**

Pancreatic lipase inhibitory activity was determined using *p*-nitrophenyl palmitate (*p*-NPP) as the substance, which was hydrolyzed by lipase to form *p*-nitrophenol with maximum absorption around 405 nm. Lipase (10 mg) was dissolved in 5 mL Tris-buffer (50 mM, pH 8, containing 0.1% gum arabic powder and 0.2% sodium deoxycholate). The mixture was stirred for 15 min and centrifuged at 1800g for 10 min. The clear supernatant was used for the assay. Briefly, in a 96-well microplate, 30 µL Tris-buffer, 150 µL enzyme and 10 µL *S. tootsik* extract (dissolved in 50% ethanol) were mixed together. The mixture was incubated at 37 °C in the microplate reader for 20 minutes. Then, 10 µL of 10 mM *p*-NPP pre-incubated at 37 °C was added to start the reaction. The absorbance was determined under 405 nm for 20 min with interval of 1 min. The absorbance growth slope (V) which represented the enzyme activity was calculated by linear regression.

$$\text{Lipase inhibition activity (\%)} = \frac{V_b - V_s}{V_b} \times 100$$

Where  $V_b$  and  $V_s$  were the enzyme activity in the absence and presence of *S. tootsik* extract,



respectively. Orlistat was used as the positive control. The same reaction mixture but without lipase was used as the negative control, in which no absorbance change was found.

### Fluorescence quench measurements

A 1.0 mL aliquot of the lipase solution was mixed with 4 mL of Tris-buffer. Subsequently, 0, 5, 10, 15, 20, 25 and 30  $\mu$ L of *S. tootsik* extract (10 mg/mL in 50% aqueous ethanol) was added, respectively. The fluorescence spectra of the mixture was recorded between 300 to 450 nm under the excitation wavelength of 280 nm. A 970 CRT spectrofluorophotometer (Shanghai Scientific Instruments Limited Company, Shanghai, China) was used, and the excitation and emission bandwidths were set at 10 nm.

### Statistical Analysis

Data were expressed as the mean  $\pm$  standard deviation (SD) of triplicates. Statistical analysis, plotting, and curve fitting were performed by Origin 7.0 (Origin Lab Co., Northampton, MA, USA).

### Result and discussion

Figure 1 corresponds to the chromatograms of *S. tootsik* detected by QTOF-MS and DAD after UPLC separation. By the QTOF-MS detector, the molecular mass of each peak and its further MS<sup>2</sup> spectrum was obtained. The chemical identification was accomplished by comparing these information with published literature. The details were listed in Table 1. A total of 18 components were identified. Most of them were the C-glycosylated derivatives of luteolin and

apigenin, such as isoorientin, isoorientin-2"-O-rhamnoside and isovitexin. Besides, some other C-glycosyl and O-glycosyl flavonoids were found, such as isoscoparin-O-deoxyhexoside and kaempferol-O-glucoside. Two non-flavonoid compounds, feruloylquinic acid and roseoside, were also found. *S. tootsik* belongs to the family of *Poaceae*. Many studies showed that the main secondary metabolite found in the leaves of *Poaceae* plants were C-glycosyl flavonoids, for instance, barley, maize, wheat, rice, etc (Brazier-Hicks et al., 2009, Ferreres et al., 2008). Previously, we have studied the chemical constituents in the leaves of *Bambusa multiplex* cv. *Fernleaf* (*B. multiplex*), another bamboo species (Qiu & Zhang, 2019). It was found that C-glycosylated derivatives of luteolin and apigenin were the main components of both species. However, the specific flavonoids between the two plants were different. Only apigenin 6-C-pentoside-8-C-glucoside, isoorientin and isovitexin were found in the both species.

Figure 2A was the HPLC chromatogram of *S. tootsik* detected at 349 nm. With the results of UPLC-DAD-Q-TOF-MS analysis (Figure 1), the five main peaks in the HPLC chromatogram were identified. The peak of isoorientin (peak 2) was further validated by comparing the retention time and UV spectra with standard marker. From the peak area, it was found that isoorientin-2"-O-rhamnoside (peak 1) was the most dominant flavonoid in *S. tootsik*, followed by isoscoparin-O-deoxyhexoside (peak 4) and apigenin 6-C-[2"-O-deoxyhexoside]-pentoside (peak 5). This was also different from *B. multiplex*, in which isoorientin was the most dominant flavonoid, followed by isovitexin (Qiu & Zhang, 2019). The UV spectra of the five peaks were presented in Figure 2B. It was found that the UV spectra of peaks 1, 2 and 4 were very similar

with maximum absorption around 348 nm, while the maximum absorption of peaks 3 and 5 was around 338 nm.

### 3.2 *S. tootsik* extract preparation

Through 50% aqueous ethanol extraction, followed by H103 macroporous resins adsorption and desorption processes, the yield of *S. tootsik* extract was  $1.12 \pm 0.15\%$ . HPLC analysis showed that the chemical profile was unchanged (Figure 2). However, the chemical content reflected by peak area were about 29.8 times increased. Besides isoorientin, most of the other flavonoids identified in *S. tootsik* were market unavailable. The calibration curves of isoorientin were  $Y = 24.82X$ , with correlation coefficient of 0.999, where Y was the peak area and X was concentration of astilbin (5-200  $\mu\text{g/ml}$ ). By submitted the area sum of peak 1 to 5 to the calibration curves, the total flavonoids content in *S. tootsik* extract was calculated as  $82 \pm 2$  mg/g in term of isoorientin.

### 3.3 Pancreatic lipase inhibitory activity of *S. tootsik* extract

Obesity is becoming one of the biggest threats to human health around the world. Before being absorbed by the small intestine, food fats need first be hydrolyzed by lipase into monoglycerol and free fatty acids. Thus, the inhibition of lipase, especially pancreatic lipase, could effectively reduce the absorption of fat in the diet, thereby controlling and treating obesity (Bialecka-Florjanczyk et al., 2018; Birari & Bhutani, 2007; Buchholz & Melzig, 2015; Yun, 2010). Thus, the finding of lipase inhibitor from natural source is getting more and more attention. Many flavonoids from plant source show pancreatic lipase inhibitory activity, such as

luteolin, genistein, hyperin, kaempferol, etc (Buchholz & Melzig, 2015). Lee et al. found that the C-glycosylated derivatives of luteolin on A-ring exhibited much stronger pancreatic lipase inhibitory activity than luteolin (Lee et al., 2010). The main identified flavonoids in *S. tootsik* were the C-glycosylated derivatives of luteolin and apigenin. Thus, the pancreatic lipase inhibitory activity of *S. tootsik* extract was studied in the present study. The result showed that the pancreatic lipase inhibitory activity of *S. tootsik* extract steadily increased with the concentration, and the IC50 value was about 0.93 mg/mL (Figure 3). In comparison, the IC50 value of Orlistat, the clinically approved pancreatic lipase inhibitor, was 74 ng/mL. Many plant extracts with components of saponins, phenolic acids, and/or flavonoids, possess pancreatic lipase inhibitory effects (Buchholz & Melzig, 2015; de la Garza et al., 2011). For instance, *Crocus cancellatus* subsp. *damascenus* extract with main constituents of catechin, ferulic and caffeic acids, induced 50.39% of inhibition of lipase activity at 5 mg/mL (Loizzo et al., 2016). The acetic extracts of *Aronia melanocarpa* L. and its cyanidin-3-glucoside fraction exhibited pancreatic lipase inhibitory activities with IC50 values of 83.45 and 1.74 mg/mL, respectively (Worsztynowicz et al., 2014). The IC50 value of *Moricandia arvensis* (L.) DC methanolic extract with main constituents of flavonoid glycosides was 2.06 mg/mL, while the IC50 value of Orlistat was 0.018 mg/mL (Marrelli et al., 2018).

Fluorometric analysis showed that the addition of *S. tootsik* extract could gradually quench the endogenous fluorescence of pancreatic lipase (Figure 4). Furthermore, it also caused the red shift of maximum emission wavelength. These phenomenons implied that the flavonoids in *S. tootsik*

extract could bind on the enzyme. If the ligand is a monomeric compound, the fluorescence titration results can be further used to calculate the binding constant and binding site of the complexes using Stern-Volmer equations. However, in the present study, the *S. tootsik* extract is a mixture without definite molecular weight, and Stern-Volmer equations can't be applied.

Although the lipase inhibitory activity of *S. tootsik* extract was far weaker than Orlistat, as an abundant and safe natural product, it may also have potential to be used as a food supplement for obesity controlling. The *in vivo* study of its anti-obesity is in progress in our Lab.

## CONCLUSION

The chemical profile of *S. tootsik* was studied by HPLC and UPLC-DAD-QTOF-MS. Eighteen compounds were identified, most of them were the C-glycosylated derivatives of luteolin and apigenin, such as isoorientin, isoorientin-2"-O-rhamnoside and isovitexin. Isoorientin-2"-O-rhamnoside was the most dominant flavonoid in the sample. *S. tootsik* extract was prepared through resin adsorption/desorption with yield of  $1.12 \pm 0.15\%$  and total flavonoids content of  $82 \pm 2$  mg/g (in term of isoorientin). The extract exhibited pancreatic lipase inhibitory activity with IC<sub>50</sub> value of about 0.93 mg/mL.

## Funding

This work was supported by the National Natural Science Foundation of China (Grant Number 31760461).

## Competing Interests

210 The authors declare there are no competing interests

## 211 REFERENCES

212 **Bezerra AG, Negri G, Duarte-Almeida JM, Smaili SS, Carlini EA. 2016.** Phytochemical  
213 analysis of hydroethanolic extract of *Turnera diffusa* Willd and evaluation of its effects on  
214 astrocyte cell death. *Einstein (São Paulo)* **14(1)**:56-63.

215 **Bialecka-Florjanczyk E, Fabiszewska AU, Krzyczkowska J, Kurylowicz A. 2018.** Synthetic  
216 and natural lipase inhibitors. *Mini Reviews in Medicinal Chemistry* **18(8)**:672-683.

217 **Birari RB, Bhutani KK. 2007.** Pancreatic lipase inhibitors from natural sources: unexplored  
218 potential. *Drug Discovery Today* **12(19-20)**:879-889.

219 **Brazier-Hicks M, Evans KM, Gershater MC, Puschmann H, Steel PG, Edwards R. 2009.**  
220 The C-glycosylation of flavonoids in cereals. *Journal of Biological Chemistry* **284**:17926-  
221 17934.

222 **Buchholz T, Melzig MF. 2015.** Polyphenolic compounds as pancreatic lipase inhibitors. *Planta*  
223 *Medica* **81(10)**:771-783.

224 **de la Garza AL, Milagro FI, Boque N, Campión J, Martínez JA. 2011.** Natural inhibitors of  
225 pancreatic lipase as new players in obesity treatment. *Planta Medica* **77(08)**:773-785

226 **Ferreres F, Andrade PB, Valentão P, Gil-Izquierdo A. 2008.** Further knowledge on barley  
227 (*Hordeum vulgare* L.) leaves O-glycosyl-C-glycosyl flavones by liquid chromatography-  
228 UV diode-array detection-electrospray ionisation mass spectrometry. *Journal of*  
229 *Chromatography A* **1182(1)**:56-64.

- 230 **Figueirinha A, Paranhos A, Pérez-Alonso JJ, Santos-Buelga C, Batista MT. 2008.**  
231 *Cymbopogon citratus* leaves: Characterization of flavonoids by HPLC-PDA-ESI/MS/MS  
232 and an approach to their potential as a source of bioactive polyphenols. *Food Chemistry*  
233 **110(3):718-728**
- 234 **Han J, Ye M, Xu M, Sun J, Wang B, Guo D. 2007.** Characterization of flavonoids in the  
235 traditional Chinese herbal medicine-Huangqin by liquid chromatography coupled with  
236 electrospray ionization mass spectrometry. *Journal of Chromatography B* **848(2):355-362**.
- 237 **Ibrahim RM, El-Halawany AM, Saleh DO, El Naggar EMB, El-Shabrawy AERO, El-**  
238 **Hawary SS. 2015.** HPLC-DAD-MS/MS profiling of phenolics from *Securigera securidaca*  
239 flowers and its anti-hyperglycemic and anti-hyperlipidemic activities. *Revista Brasileira de*  
240 *Farmacognosia* **25(2):134-141**.
- 241 **Iswaldi I, Arráez-Román D, Rodríguez-Medina I, Beltrán-Debón R, Joven J, Segura-**  
242 **Carretero A, Fernández-Gutiérrez A. 2011.** Identification of phenolic compounds in  
243 aqueous and ethanolic rooibos extracts (*Aspalathus linearis*) by HPLC-ESI-MS (TOF/IT).  
244 *Analytical and Bioanalytical Chemistry* **400(10):3643-3654**.
- 245 **Kweon MH, Hwang HJ, Sung HC. 2001.** Identification and antioxidant activity of novel  
246 chlorogenic acid derivatives from bamboo (*Phyllostachys edulis*). *Journal of Agricultural*  
247 *and Food Chemistry* **49(10):4646-4655**.
- 248 **Lee EM, Lee SS, Chung BY, Cho JY, Lee IC, Ahn SR, Jang SJ, Kim TH. 2010.** Pancreatic  
249 lipase inhibition by C-glycosidic flavones isolated from *Eremochloa ophiuroides*.  
250 *Molecules* **15(11):8251-8259**.

- 251 **Loizzo MR, Marrelli M, Pugliese A, Conforti F, Nadjafi F, Menichini F, Tundis R. 2016.**  
252 *Crocus cancellatus* subsp. *damascenus* stigmas: chemical profile, and inhibition of  $\alpha$ -  
253 amylase,  $\alpha$ -glucosidase and lipase, key enzymes related to type 2 diabetes and obesity.  
254 *Journal of Enzyme Inhibition and Medicinal Chemistry* **31(2)**:212-218.
- 255 **Marrelli M, Morrone F, Argentieri M, Gambacorta L, Conforti F, Avato P. 2018.**  
256 Phytochemical and Biological Profile of *Moricandia arvensis* (L.) DC.: An Inhibitor of  
257 Pancreatic Lipase. *Molecules* **23(11)**:2829.
- 258 **Worsztynowicz P, Napierala M, Bialas W, Grajek W, Olkowicz M. 2014.** Pancreatic  $\alpha$ -  
259 amylase and lipase inhibitory activity of polyphenolic compounds present in the extract of  
260 black chokeberry (*Aronia melanocarpa* L.). *Process Biochemistry* **49(9)**, 1457-1463.
- 261 **Ozarowski M, Piasecka A, Paszel-Jaworska A, Chaves DSDA, Romaniuk A, Rybczynska M,**  
262 **Gryszczynskab A, Sawikowskag A, Kachlickic P, Mikolajczak PL, Seremak-**  
263 **Mrozikiewicz A, Klejewski A, Seremak-Mrozikiewicz A. 2018.** Comparison of  
264 bioactive compounds content in leaf extracts of *Passiflora incarnata*, *P. caerulea* and *P.*  
265 *alata* and in vitro cytotoxic potential on leukemia cell lines. *Revista Brasileira de*  
266 *Farmacognosia* **28(2)**:179-191.
- 267 **Qiu XL, Guo YX, Zhang QF. 2018.** Chemical profile and antioxidant activity of *Gynura*  
268 *bicolor* DC. ethanolic extract. *International Journal of Food Properties* **21(1)**:407-415.
- 269 **Qiu XL, Zhang QF. 2019.** Identification and quantification of main flavonoids in the leaves of  
270 *Bambusa multiplex* cv. *Fernleaf*. *Natural Product Research*  
271 DOI:10.1080/14786419.2019.1569013.



- 272 **Singh AP, Wilson T, Luthria D, Freeman MR, Scott RM, Bilenker D, Shah S,**  
273 **Somasundaram S, Vorsa N. 2011.** LC-MS-MS characterisation of curry leaf flavonols  
274 and antioxidant activity. *Food Chemistry* **127(1):**80-85.
  
- 275 **Spínola V, Pinto J, Castilho PC. 2015.** Identification and quantification of phenolic compounds  
276 of selected fruits from Madeira Island by HPLC-DAD-ESI-MS<sup>n</sup> and screening for their  
277 antioxidant activity. *Food Chemistry* **173:**14-30.
  
- 278 **Van Hoyweghen L, Karalic I, Van Calenbergh S, Deforce D, Heyerick A. 2010.** Antioxidant  
279 flavone glycosides from the leaves of *Fargesia robusta*. *Journal of Natural Products*  
280 **73(9):**1573-1577
  
- 281 **Wang J, Yue YD, Tang F, Sun J. 2012.** TLC screening for antioxidant activity of extracts from  
282 fifteen bamboo species and identification of antioxidant flavone glycosides from leaves of  
283 *Bambusa. textilis* McClure. *Molecules* **17(10):**12297-12311.
  
- 284 **Yun JW. 2010.** Possible anti-obesity therapeutics from nature-A review. *Phytochemistry* **71(14-**  
285 **15):**1625-1641.

**Table 1**(on next page)

Mass characterizations of main peak in the chromatogram of *Sinobambusa tootsik* (Sieb.) Makino by UPLC-QTOF-MS

1

Peak No.	RT (min)	[M-H] <sup>-</sup> (m/z)	Fragment ions (m/z) (% base peak)	Proposed structure	Reference
1	6.10	367.1033	193(45), 134(100), 117(10)	Feruloylquinic acid	Qiu et al., 2018
2	6.97	609.1449	519(25), 489(60), 399(70), 369(100)	Quercetin-3-O-robinobioside	Iswaldi et al., 2011
3	7.60	431.1915	385(15), 205(35), 153(100)	Roseoside	Spínola et al., 2015
4	7.78	519.1707	325(10), 265(33), 223(60), 205(100), 190(55),	Unidentified	
5	8.09	489.159	223(40), 205(100), 190(80), 164(27)	Unidentified	
6	8.69	371.098	121(100), 249(45), 231(10)	Unidentified	
7	9.14	563.1393	353(100), 383(65), 443(45), 473(32)	Apigenin 6-C-pentoside-8-C-glucoside	Ozarowski et al., 2018
	9.14	447.0924	327(100), 357(70), 297(55), 285(35)	Isorientin (luteolin 6-C-glucoside)	Figueirinha et al., 2008
8	9.26	593.1504	298(100), 473(85), 327(55), 309(40), 357(35), 429(25)	Isorientin-2"-O-rhamnoside	Ibrahim et al., 2015
9	9.78	613.213	181(100), 387(85), 166(30), 205(25), 399(20)	Unidentified	
10	10.68	533.128	353(100), 383(90), 443(50), 473(40), 365(25), 297(23)	Apigenin 6, 8-di-C-pentoside	Ozarowski et al., 2018
	10.68	577.1546	293(100), 413(35), 323(15), 311(15), 457(10),	Isovitexin-2"-O-rhamnoside	Ibrahim et al., 2015
	10.71	431.0986	311(100), 341(35), 283(75)	Isovitexin (apigenin 6-C-glucoside)	Ibrahim et al., 2015
11	11.27	607.1649	323(100), 443(40), 308(20), 341(15)	Isoscoparin-O-deoxyhexoside	Ozarowski et al., 2018
	11.29	447.091	285(100))	Kaempferol-O-glucoside	Singh et al., 2011
12	12.89	561.1595	561(100), 457(30), 399(14), 337(18), 295(40)	Chrysin 6-C-deoxyhexoside-7-O-glucoside	Ozarowski et al., 2018
	13.01	637.1759	329(100), 314(15), 299(10)	3,4-Dihydroxy-5,6-dimethoxy	Han et al., 2007

				-7-O-rutinoside flavone	
13	13.41	547.1446	293(100), 383(85), 341(35), 311(28)	Apigenin 6-C-[2"-O -deoxyhexoside] - pentoside	Ozarowski et al., 2018
14	13.69	577.1546	311(100), 415(50), 397(15)	Apigenin-6-C-deoxyhexoside- 7-O-glucoside	Ozarowski et al., 2018
15	14.08	575.1392	325(100), 297(100), 411(100), 337(70), 285(70), 367(55)	"X"-O-Rhamnosyl C-(6-deoxy -pento-hexos-ulosyl) luteolin	Figueirinha et al., 2008
16	14.45	577.1549	311(100), 298(70), 415(70), 473(50), 327(35)	Apigenin-8-C-deoxyhexoside-7 -O-glucoside	Ozarowski et al., 2018
17	15.52	559.1441	457(10), 395(95), 321(100), 309(25), 293(50), 281(30), 269(60)	Apigenin-8-C-[6-deoxy-2-O- rhamnosyl]-xylo-Hexos-3-uloside	Bezerra et al., 2016
18	16.00	589.1554	425(100), 351(65), 325(35), 299(35)	Unidentified	

2

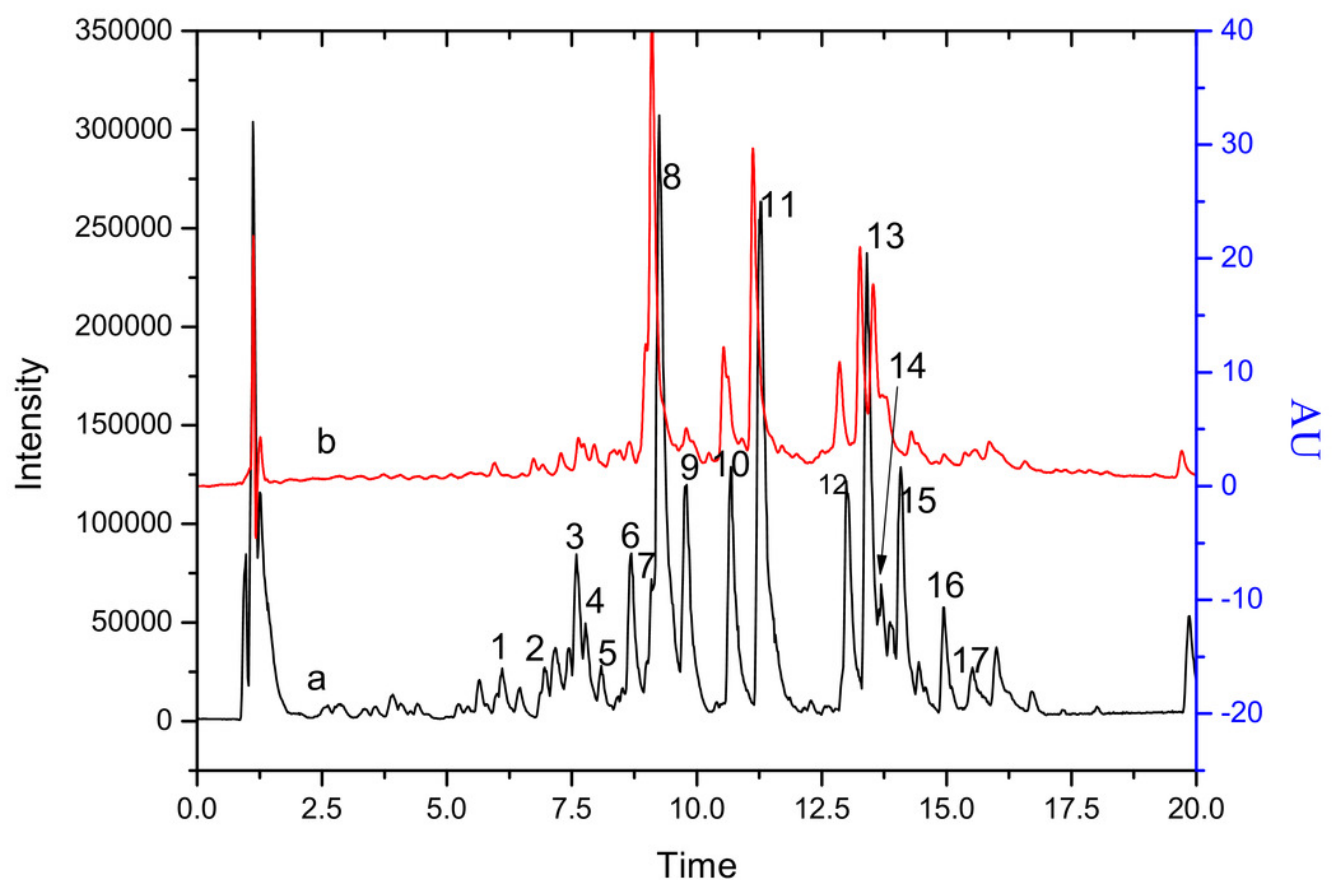
3

4

# Figure 1

The chromatograms of *S. tootsik* detected by QTOF-MS (a) and DAD (b) after UPLC separation.

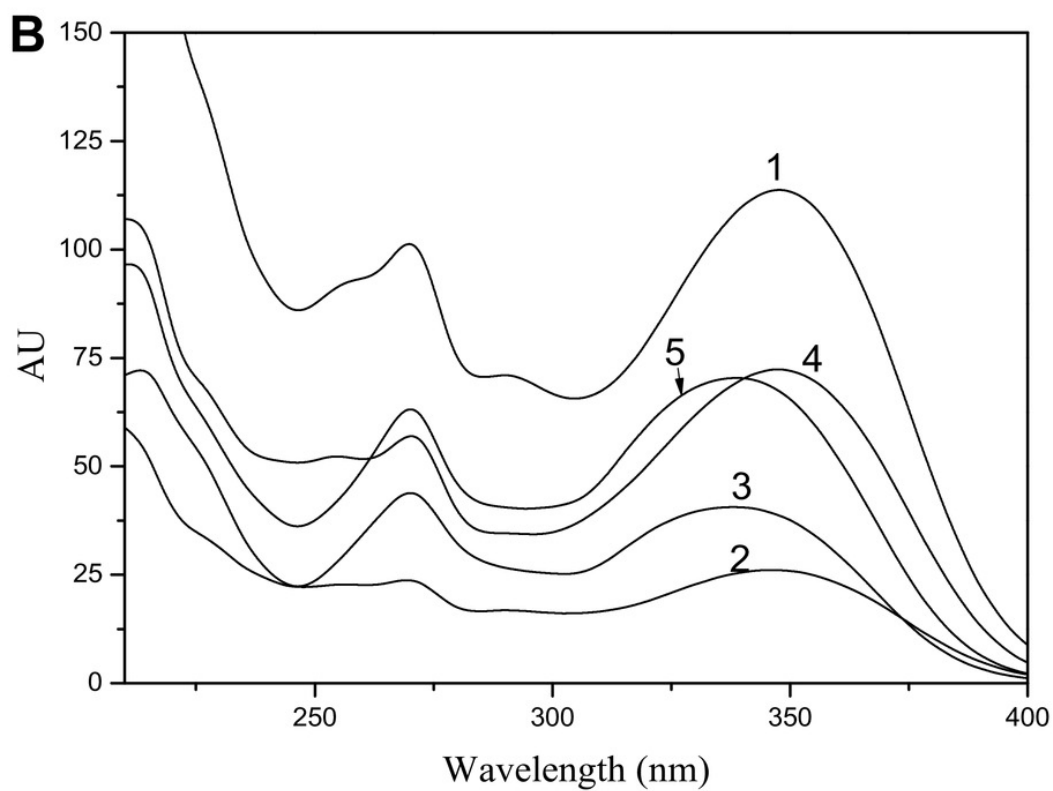
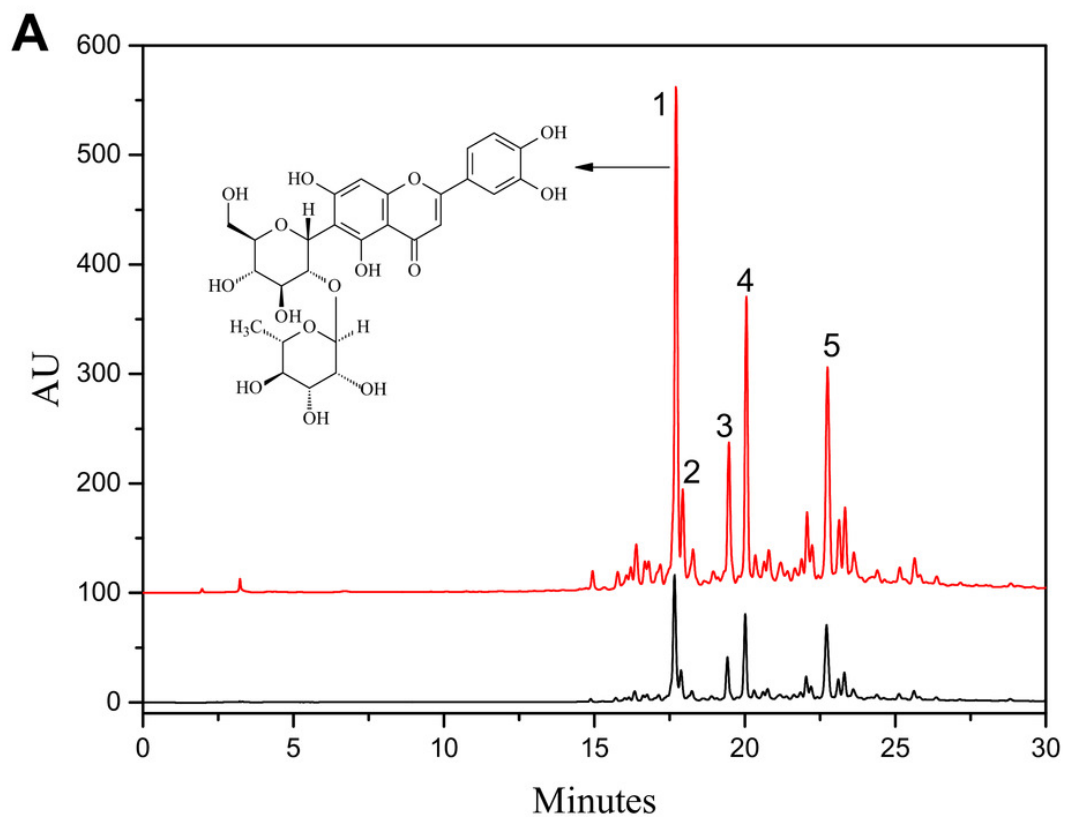
Line a: base peak chromatogram of QTOF-MS; Line b: detected at 349 nm.



## Figure 2

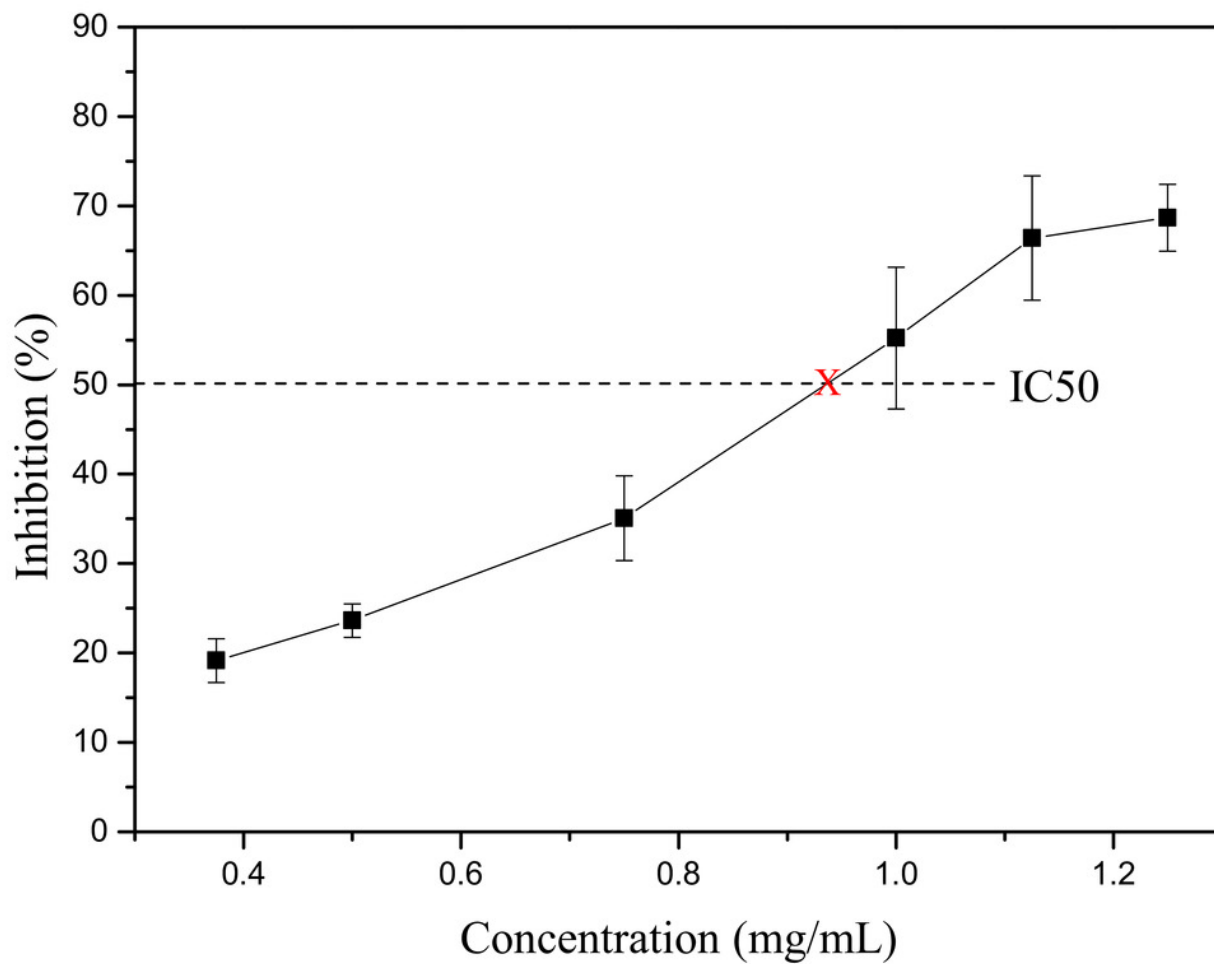
A: HPLC chromatogram of *S. tootsik* extract before (a) and after (b) resin purification; B: The UV spectra of peak 1-5.

Peaks: 1, Isoorientin-2''-O-rhamnoside; 2, Isoorientin; 3, Isovitexin-2''-O-rhamnoside; 4, Isoscoparin-O-deoxyhexoside; 5, Apigenin 6-C-[2''-O-deoxyhexoside]-pentoside.



# Figure 3

The lipase inhibitory activity of *S. tootsik* extract.





# Figure 4

The effect of *S. tootsik* extract on fluorescence emission spectra of pancreatic lipase.

The concentrations of *S. tootsik* extract from 1-7 were 0, 10, 20, 30, 40, 50, 60  $\mu\text{g/mL}$ , respectively.

