

Assessment of the bacterial community structure in shallow and deep sediments of the Perdido Fold Belt region in the Gulf of Mexico

Ma. Fernanda Sánchez-Soto Jiménez¹, Daniel Cerqueda-García², Jorge L. Montero-Muñoz¹, Ma. Leopoldina Aguirre-Macedo^{Corresp., 1}, José Q. García-Maldonado^{Corresp. 3}

¹ Centro de Investigación y de Estudios Avanzados del Instituto Politécnico Nacional, Unidad Mérida. Departamento de Recursos del Mar, Mérida, Yucatán, México

² Consorcio de Investigación del Golfo de México (CIGOM). Centro de Investigación y de Estudios Avanzados del Instituto Politécnico Nacional, Unidad Mérida. Departamento de Recursos del Mar, Mérida, Yucatán, México

³ CONACYT - Centro de Investigación y de Estudios Avanzados del Instituto Politécnico Nacional, Unidad Mérida. Departamento de Recursos del Mar, Mérida, Yucatán, México

Corresponding Authors: Ma. Leopoldina Aguirre-Macedo, José Q. García-Maldonado
Email address: leopoldina.aguirre@cinvestav.mx, jose.garcia@cinvestav.mx

The Mexican region of the Perdido Fold Belt (PFB), in northwestern Gulf of Mexico (GoM), is a geological province with important oil reservoirs that will be subjected to forthcoming oil exploration and extraction activities. To date, little is known about the native microbial communities of this region, and how these change relative to water depth. In this study we assessed the bacterial community structure of surficial sediments by high-throughput sequencing of the 16S rRNA gene at 11 sites in the PFB, along a water column depth gradient from 20 to 3700 m, including 5 shallow (20-600 m) and 6 deep (2800-3700 m) samples. The results indicated that OTUs richness and diversity were higher for shallow sites ($OTUs = 2888.2 \pm 567.88$; $H' = 9.6 \pm 0.85$) than for deep sites ($OTUs = 1884.7 \pm 464.2$; $H' = 7.74 \pm 1.02$). Nonmetric multidimensional scaling (NMDS) ordination revealed that shallow microbial communities grouped separately from deep samples. Additionally, the shallow sites plotted further from each other on the NMDS whereas samples from the deeper sites (abyssal plains) plotted much more closely to each other. These differences were related to depth, redox potential, sulfur concentration, and grain size (lime and clay), based on the environmental variables fitted with the axis of the NMDS ordination. In addition, differential abundance analysis identified 147 OTUs with significant fold changes among the zones (107 from shallow and 40 from deep sites), which constituted 10 to 40 % of the total relative abundances of the microbial communities. The most abundant OTUs with significant fold changes in shallow samples corresponded to *Kordiimonadales*, *Rhodospirillales*, *Desulfobacterales* (*Desulfococcus*), *Syntrophobacterales* and *Nitrospirales* (*GOUTA 19*, *BD2-6*, *LCP-6*), whilst *Chromatiales*, *Oceanospirillales* (*Amphritea*, *Alcanivorax*), *Methylococcales*, *Flavobacteriales*, *Alteromonadales* (*Shewanella*, *ZD0117*)

and *Rhodobacterales* were the better represented taxa in deep samples. Several of the OTUs detected in both deep and shallow sites have been previously related to hydrocarbons consumption. Thus, this metabolism seems to be well represented in the studied sites, and it could abate future hydrocarbon contamination in this ecosystem. The results presented herein, along with biological and physicochemical data, constitute an available reference for further monitoring of the bacterial communities in this economically important region in the GoM.

Assessment of the bacterial community structure in shallow and deep sediments of the Perdido Fold Belt region in the Gulf of Mexico

Ma. Fernanda Sánchez-Soto Jiménez¹, Daniel Cerqueda-García², Jorge L. Montero-Muñoz¹, Ma. Leopoldina Aguirre-Macedo^{1*} and José Q. García-Maldonado^{3*}

Ma. Fernanda Sánchez-Soto Jiménez¹, maria.sanchez-soto@cinvestav.mx
 Daniel Cerqueda-García², dacegabiol@ciencias.unam.mx
 Jorge L. Montero-Muñoz¹, jorge.montero@cinvestav.mx
 Ma. Leopoldina Aguirre-Macedo^{1*}, leopoldina.aguirre@cinvestav.mx (corresponding author)
 José Q. García-Maldonado^{3*}, jose.garcia@cinvestav.mx (corresponding author)

¹Centro de Investigación y de Estudios Avanzados del Instituto Politécnico Nacional, Unidad Mérida. Departamento de Recursos del Mar. Mérida, Yucatán, México.

²Consorcio de Investigación del Golfo de México (CIGOM). Centro de Investigación y de Estudios Avanzados del Instituto Politécnico Nacional, Unidad Mérida. Departamento de Recursos del Mar. Mérida, Yucatán, México.

³CONACYT – Centro de Investigación y de Estudios Avanzados del Instituto Politécnico Nacional, Unidad Mérida. Departamento de Recursos del Mar. Mérida, Yucatán, México.

Abstract

The Mexican region of the Perdido Fold Belt (PFB), in northwestern Gulf of Mexico (GoM), is a geological province with important oil reservoirs that will be subjected to forthcoming oil exploration and extraction activities. To date, little is known about the native microbial communities of this region, and how these change relative to water depth. In this study we assessed the bacterial community structure of surficial sediments by high-throughput sequencing of the 16S rRNA gene at 11 sites in the PFB, along a water column depth gradient from 20 to 3700 m, including 5 shallow (20-600 m) and 6 deep (2800-3700 m) samples. The results indicated that OTUs richness and diversity were higher for shallow sites ($OTUs = 2888.2 \pm 567.88$; $H' = 9.6 \pm 0.85$) than for deep sites ($OTUs = 1884.7 \pm 464.2$; $H' = 7.74 \pm 1.02$). Nonmetric multidimensional scaling (NMDS) ordination revealed that shallow microbial communities grouped separately from deep samples. Additionally, the shallow sites plotted

further from each other on the NMDS whereas samples from the deeper sites (abyssal plains) plotted much more closely to each other. These differences were related to depth, redox potential, sulfur concentration, and grain size (lime and clay), based on the environmental variables fitted with the axis of the NMDS ordination. In addition, differential abundance analysis identified 147 OTUs with significant fold changes among the zones (107 from shallow and 40 from deep sites), which constituted 10 to 40 % of the total relative abundances of the microbial communities. The most abundant OTUs with significant fold changes in shallow samples corresponded to *Kordiimonadales*, *Rhodospirillales*, *Desulfobacterales* (*Desulfococcus*), *Syntrophobacterales* and *Nitrospirales* (*GOUTA 19*, *BD2-6*, *LCP-6*), whilst *Chromatiales*, *Oceanospirillales* (*Amphritea*, *Alcanivorax*), *Methylococcales*, *Flavobacteriales*, *Alteromonadales* (*Shewanella*, *ZD0117*) and *Rhodobacterales* were the better represented taxa in deep samples. Several of the OTUs detected in both deep and shallow sites have been previously related to hydrocarbons consumption. Thus, this metabolism seems to be well represented in the studied sites, and it could abate future hydrocarbon contamination in this ecosystem. The results presented herein, along with biological and physicochemical data, constitute an available reference for further monitoring of the bacterial communities in this economically important region in the GoM.

Introduction

Microorganisms are well recognized as key drivers of biogeochemical cycles in marine environments (Webster et al. 2003; Santos et al. 2011). Measuring the changes in microbial communities is of particular interest to understanding how environmental factors modulate their structure and how that, in turn, is related to the function and stability of the ecosystem (Huber et

al. 2007; Jones et al. 2012; Fuhrman et al. 2015). In marine sediments, the type of substrate, energy and carbon sources, and the variables that are correlated with water depth (*e.g.*, temperature, oxygen concentration, light penetration and hydrostatic pressure), generally describe the most important aspects of the variability amongst habitats (Miller et al. 2012).

In the Gulf of Mexico (GoM), changes in bacterial community structure have been mainly related with depth in the water column, and likely result from differences in temperature, dissolved oxygen and suspended particles (King et al. 2013) which occur across these depth differences. In marine sediments from the GoM, bacterial community composition has been determined at different depths below the seafloor (from sediment cores). It has been proposed that the bacterial community composition of these sediments likely results from the interaction between the water column and a benthic microbial population limited to the upper layer of the sediments (Reese et al. 2013). In contrast, the microbial diversity present in different sediment depths from seep systems in the GoM have been directly related to the composition and magnitude of hydrocarbon seepage (*e.g.*, natural oils, methane, and non-methane hydrocarbons) (Orcutt et al. 2010), as well as to the presence of overlying microbial mats (Mills et al. 2004).

Knowledge about microbial communities in the GoM increased notably with the Deepwater Horizon (DWH) massive oil spill in 2010, which occurred in the north zone of the GoM across an enormous area with different environmental conditions (Kostka et al 2011; Mason et al. 2012; Liu and Liu 2013; Joye et al. 2014). During the spill, it was observed that different bacterial phyla in the deep-water plume (*e.g.*, *Oceanospirillales*, *Cycloclasticus* and *Colwellia*) rapidly responded and were enriched within hours - weeks following the DWH well blow out (Redmond and Valentine 2011; Mason et al. 2012). In natural hydrocarbon seep sites sampled at the same

time, several rare taxa increased rapidly in abundance after the spill, emphasizing the importance of specialized sub-populations and potential ecotypes during massive deep-sea oil discharges (Kleindienst et al. 2015). The oil transported to the shoreline after the discharge also had a profound impact on the abundance and community composition of indigenous bacteria in beach sands, where members of the *Gammaproteobacteria* and *Alphaproteobacteria* participated as key players in oil degradation (Kostka et al. 2011).

The precise volume of oil spilled and the trajectory of the oil slicks from the DHW are still controversial (Salcedo et al. 2017). Based on the surface circulation models of the waters of the GoM, it was inferred that the Mexican region of the Perdido Fold Belt (PFB), was also susceptible to this environmental disturbance (Soto and Vázquez-Botello 2013). Knowledge of environmental and biotic data of this region is, however, scarce despite being a geologic province with oil reservoirs. The present study assessed changes in the bacterial community structure of surficial sediments with respect to a depth gradient and specific environmental variables in the PFB region, where oil exploration and extraction activities are predicted to impact environmental conditions, and consequently the structure of bacterial communities. Additionally, bacterial phylotypes putatively involved in hydrocarbon degradation were highlighted in this work.

Material and Methods

Sample collection and physicochemical variables from marine sediments

The samples used in this study were collected in the Northwestern Gulf of Mexico in April 2014. Sediment samples from a depth gradient (20-3700 m), were collected perpendicular to the

coastline at 11 sites on the parallels 25 and 25.15°N (Fig. 1, Table 1). Samples were collected with a Hessler-Sandia MK-II boxcore (40 x 40 cm) from which three different surficial (0 - 5 cm) subsamples were taken: 1) sterile 100 mL plastic containers immediately frozen at -20°C on board for further molecular analysis; 2) a 2 inch core extracted to determine total sulfur concentration (TS) and redox potential on board, with a sulfide ion selective electrode and potentiometer (Bricker 1982; Brassard 1997); and 3) approximately 400 g of sediment stored in high density polyethylene bags at 4°C until the determination of total organic matter (TOM), total organic carbon (TOC), and grain size in the laboratory. TOM was determined by the wet oxidation technique with an excess of dichromate and back titration with iron (II) (Buchanan, 1984), TOC content was quantified using the oxidation with potassium dichromate in acid medium, and titration of excess oxidant with ferrous sulfate and diphenylamine as an indicator (Buchanan 1984). The amounts of sand, lime and clay were estimated using a hydrometer (Buchanan 1984). These physicochemical variables were compared among shallow and deep sites using a one-way analysis of variance (ANOVA $p < 0.05$ and F -values) and were correlated with the depth variable.

DNA extraction

Sediment samples were stored during five months at -20°C. Then, in October 2014 sediments were thawed at 4°C, homogenized mechanically under sterile conditions, and centrifuged 1 min/10,000 x g in order to separate the sediment from remaining water, which was discarded. Total DNA was extracted from 0.25 g of sediment using the PowerSoil®DNA Isolation Kit (Mo Bio Laboratories, Carlsbad, CA, USA) following the manufacturer's protocol. The quality of the DNA extractions was verified by agarose gel electrophoresis and the concentration was determined through UV absorption analysis with a NanoDrop 2000 Spectrometer (ThermoFisher

Scientific Inc., Wilmington, DE, USA). Extracted DNA was stored at -20°C for further 16S rRNA Illumina sequencing and DGGE analysis (see a detailed description in supplementary methods).

16S rRNA gene sequencing

Amplicons from environmental DNA were prepared for sequencing the 16S rRNA V3 and V4 variable regions by using a two PCR steps approach following the “16S Metagenomic Sequencing Library Preparation” protocol (Illumina). Briefly, the first PCR step amplified the template out of the DNA samples using the forward primer 5’-CCTACGGGNGGCWGCAG-3’ and the reverse primer 5’-GACTACHVGGGTATCTAATCC-3’ with Illumina overhang adapters attached, to obtain ~550 bp fragments (Klindworth et al. 2013). The PCR program was performed in a thermal cycler (Applied Biosystems Veriti ABI Inc., Foster City, CA, USA) with an initial denaturation at 95°C - 3 min, 25 cycles of 95°C - 30 s, 55°C - 30 s, 72°C - 30 s and a final extension at 72°C - 5 min. Each PCR reaction (20 µl) included 2 µl of environmental DNA (5 ng/µl), 0.5 µl of each primer (10 µM) and 10 µl of 2x Phusion High-Fidelity MasterMix (Thermo Scientific, Waltham, MA, USA). The correct size of the amplicons was verified on an QIAxcel Advanced system (QIAGEN, Hilden, Germany), DNA and the PCR clean-up were carried out using AMPure XP beads to discard free primers and primer dimer species. In the second PCR, eight cycles attached dual indices and the Illumina sequencing adapters using the Nextera XT Index Kit. PCR barcoded amplicons were verified and purified as previously described and quantified using a Qubit 3.0 fluorometer (Life Technology, Shah Alam, Selangor, Malaysia). The individual barcoded amplicons were diluted on 10 mM Tris (pH 8.5) and pooled in equimolar concentrations (9 pM). Paired-end sequencing (2x300 bp) was carried out using the

147 MiSeq platform (Illumina, San Diego, CA, USA) with a MiSeq Reagent Kit V3 (600 cycles).
148 Sequencing was performed in the Aquatic Pathology laboratory at CINVESTAV-Mérida.

149 Data analysis

150 Demultiplexing of the pooled amplicons and trimming the barcode and adapter sequences was
151 performed using the MiSeq Reporter Metagenomics Workflow (Illumina, 2014). Reads were
152 overlapped with the fast length adjustment of short reads to improve genome assemblies
153 (FLASH) software (Magoč and Salzberg, 2011), and processed using the QIIME (version 1.9)
154 (Caporaso et al., 2010) pipeline with the parameters q (phred_quality_threshold)=20, r
155 (max_bad_run_length)=3, p (min_per_read_length_fraction)=0.75, for quality filtering. The
156 demultiplexed sequences were clustered in operational taxonomic units (OTUs) with the
157 'pick_open_reference_otus.py' script at 97% of similarity using the usearch61 method (Edgar
158 2010) with a minimum OTU cluster size of 5. Chimeric sequences were removed with the
159 uchime2 algorithm in the reference mode (v 9.1.13) (Edgar 2016) and, the taxonomic assignment
160 was performed by the SortMeRna (Kopylova et al. 2012) with an e -value of 3×10^{-6} and default
161 parameters from QIIME, using the GreenGenes database (v13.8). An OTUs alignment was
162 performed with the Mafft algorithm (Katoh and Standley 2013) to build a phylogenetic tree using
163 the Fasttree software (Price et al. 2009) for its subsequent use in the UniFrac (Lozupone,
164 Hamady and Knight, 2006) distance analysis.

165 Community structure and composition analyses were performed by processing the OTU table in
166 the R environment (R Core Team, 2014) with the Phyloseq (McMurdie and Holmes 2013),
167 vegan (Oksanen et al. 2013) and ggplot2 (Wickham, 2010) packages. The data set was rarefied at
168 the depth from the smallest library (20,400). We reported the observed OTUs, the Shannon and

Simpson diversity indexes (H' and D , respectively) and the nonparametric richness from *Chao1*.

The Good's coverage was calculated to corroborate the adequate sampling depth.

In order to compare the microbial community composition among shallow and deep sampling

sites, a non-metric multidimensional scaling (NMDS) was plotted (Lozupone et al. 2006;

Giloteaux et al. 2010) with the weighted UniFrac distance metric (Lozupone, Hamady and

Knight, 2006) and a test of beta significance among groups of sample was performed using a

two-sided Student's two-sample t-test with the 'make_distance_boxplots.py' script of QIIME, p -

values were calculated using 1000 Monte Carlo permutations. The physicochemical variables

were fitted with the *envfit* function to the NMDS ordination to correlate them with the

community composition (p -value < 0.05 and 10 000 permutations). Physicochemical variables

were also tested with a PERMANOVA analysis at a p -value < 0.05 (Table S1). A differential

abundance analysis was performed with the DESeq2 (Love et al, 2014) R library to identify the

OTUs that have significant fold changes among the shallow and deep zones. The p -value was

corrected with the false discovery rate (FDR) method (Benjamini and Hochberg, 1995) and a

Log2 fold change plot was made with the significant OTUs at a p -value < 0.01 .

All the sequences are available at SRA site from NCBI database in the BioProject

PRJNA429278 and biosample accession ID's SRR6457706 to SRR6457716 and the raw

processed data in the supplementary material.

Results

Physicochemical properties from marine sediments

The physicochemical variables and textures of the sediment samples are shown in Table 1. Redox potential ranged from -204 to 236 mV. The electronegative values were found in samples from 20 to 600 m depth, while the electropositive values corresponded to the deep sediments (2800 - 3700 m). TS was constant at depths from 20 to 600 m at a concentration of 0.05 μM , while the maximum values were detected for deep sites (0.10 - 0.12 μM). The percentage of TOM and the concentration of TOC varied for all sites with averages of $0.872 \pm 0.22\%$ and $0.484 \pm 0.123 \mu\text{M}$, respectively. The percentages of sand, lime and clay in the sediment samples ranged from 20.50 - 34.5, 51.2 - 70.30 and 5.9 - 28.4%, respectively. Values of TS, redox potential, and the percentages of lime and clay showed significant correlations with depth (p -value < 0.01) (Table 1).

Bacterial community structure in a depth gradient

The NMDS ordination method showed that microbial communities from shallow sites grouped separately from those from the deep sites (Fig. 2), and it was according with the test of significance where the mean of the distances of Shallow and Deep samples were different with a p -value < 0.05 . Samples taken from shallow sites displayed greater dissimilarity distance from each other, while those derived from the deep sites displayed a closer proximity to each other (Fig. 2). The environmental variables fitted on the NMDS ordination were: depth ($r^2 = 0.79$), redox potential ($r^2 = 0.77$), the concentration of total sulfur ($r^2 = 0.73$) and percentages of clay ($r^2 = 0.71$) and lime ($r^2 = 0.7$), at a p -value < 0.05 .

The observed OTUs, Shannon (H') and Simpson (D) diversity indexes, and the nonparametric richness estimation from *Chao1*, were different among shallow and deep-sea sites (p -value

<0.05). These ecological estimators showed higher values in the sediment samples from shallow sites (observed OTUs = 2888.2 ± 567.88 , $H' = 9.6 \pm 0.85$, $D = 0.99 \pm 0.005$ and $Chao1 = 3791.2 \pm 737.81$) than those obtained from the deep ocean floor (observed OTUs = 1884.7 ± 464.2 , $H' = 7.74 \pm 1.02$, $D = 0.97 \pm 0.02$, and $Chao1 = 2806.18 \pm 589.39$) (Table 2).

Bacterial community composition

Microbial community analysis resulted in the detection of 25 bacterial phyla, however only 14 were $\geq 1\%$ in relative abundance (Table S2). *Proteobacteria*, represented by *Gamma*-, *Alpha*- and *Deltaproteobacteria* classes, were dominant in all the analyzed samples (Fig. 3). Nevertheless, *Bacteroidetes*, *Acidobacteria*, *Chloroflexi*, *Nitrospirae*, *Planctomycetes*, *Gemmatimonadetes* and the *NC10* phyla were also well represented in the samples. Two archaeal phyla, corresponding to the *Euryarchaeota* (*Thermoplasmata* class) and *Crenarchaeota* including *Miscellaneous Crenarchaeota Group* (MCG) and *Thaumarchaeota* classes (based on the GreenGene database), were also detected in low abundances (0.3 to 1.2 %) (Fig. 3). At lower taxonomic levels, 51 families were detected, from which *Piscirickettsiaceae*, *Rhodobacteraceae*, *Flavobacteriaceae*, *Syntrophobacteraceae*, *Thermovibrionaceae*, *Desulfobacteraceae*, *Colwelliaceae*, *Marinicellaceae*, *Alcanivoracaceae*, *Colwelliaceae*, and *Cenarchaeaceae* were among the families with higher relative abundances in the samples (Fig. S1A). Moreover, 23 genera were identified at $> 1\%$ of relative abundances (Fig S4). *Desulfococcus*, *Alcanivorax*, *Fulvivirga*, *Amphritea*, *BD2-6*, *Shewanella*, *ZD0117* and *Nitrospina* were the better represented in the samples (Fig S4).

Differential abundance analysis identified 147 OTUs with significant fold changes between the deep and shallow zones, 107 from shallow and 40 from deep sites (Fig 4A). From the shallow samples, most of these OTUs belonged to *Delta*-, *Alpha*- and *Gammaproteobacteria* (38, 24 and 18, respectively), while the rest of the OTUs were distributed in 13 classes of 10 phyla (Fig. 4A). In deep samples, all of the 40 OTUs belonged to *Gamma*-, *Alphaproteobacteria*, *Bacteroidetes* and *Nitrospirae* (27, 6, 6 and 1, respectively) (Fig 4A). The relative abundances of the 147 OTUs with significant fold changes constituted approximately 10 to 40 % of the total microbial communities (Fig 4B). *Kordiimonadales*, *Rhodospirillales*, *Desulfobacterales*, *Syntrophobacterales* and *Nitrospirales*, were the orders with highest relative abundances for shallow samples whilst the orders *Chromatiales*, *Oceanospirillales*, *Methylococcales*, *Flavobacteriales* and *Rhodobacterales* were the best represented orders for deep samples (Fig. 4B). At genus taxonomic level, differential abundance analysis allowed to identify *Marinicella*, *Alcanivorax*, *Shewanella* and ZD0117 with significant fold changes for deep samples; and *Nitrosopumilus*, *GOUTA19*, *LCP-6*, *BD2-6*, *Amphritea*, *Desulfococcus* and *Mariprofundus* for shallow sites (Fig. S5).

Discussion

Physicochemical properties of sediment samples

Physicochemical properties (*e.g.*, temperature, pH, redox) in marine sediments commonly change according to water depth (Miller et al. 2012). In this study, lime percentage, redox potential and total sulfur were positively correlated to depth, while the clay particles percentages were negatively correlated with depth (Table 1). The electronegative redox values measured in

the first 5 cm of the sediments in all shallow sites (Table 1), suggested that oxygen was depleted by microbial respiration as common reported for this layer in shallow marine sediments (Aranda et al. 2015). Electronegative redox values in the shallow samples were likely enhanced at higher fine-grained clay content, since this diminishes the sediment permeability as reported elsewhere for sediments in the continental platform (Probandt et al. 2017). In contrast, the electropositive redox values detected in the first 5 cm of the sediments in all the deep sites (Table 1) suggested oxidizing conditions. This condition has also been observed at different latitudes in the GoM (Deming and Carpenter 2008) due to both the circulation of deep water masses carrying oxygen (Jochens and DiMarco 2008), and low rates of oxygen consumption (Rowe et al. 2008).

Total organic matter percentage (TOM%) was determined to be below 2% for all the sediments analyzed (Table 1). These low organic contents are similar to those reported in studies of two onshore-offshore transects in the Northwestern GoM (Goñi et al. 1998). Shallow sites likely receive inputs from terrestrial organic matter (Balsam and Beeson 2003), and yet these sediments presented similar values of TOM than those detected for deep sites (Table 1). Previous studies have reported high production and consumption rates of oxygen measured for shallow sediments in Northeastern GoM (Mills et al. 2008). TOM values determined in this study for shallow sites are in concordance with previous reports for the GoM (Balsam and Beeson 2003). We hypothesize that these values are related to the consequence of high rates of microbial metabolism in those same zones.”

Microbial Ecology assessment

The effect of storage temperature on microbial community structure has been previously studied, and it is well recognized that microbial metabolism could keep on going at -20 °C, however the survival at these subzero temperatures requires several genetic and physiological strategies that exclusively cold-adapted microorganisms (permafrost and seasonally frozen soil microbial communities) have developed (Jansson and Tas 2014; Boetius et al 2015). In the present study, microbial communities from marine sediments living at temperatures ranging from 4 to 27 °C were analyzed. Thus, we considered that changes in the microbial community composition due to the storage temperature (-20 °C) were unlikely, because the sediments were immediately frozen at -20°C on board and they were never thawed during the transport neither in the laboratory before DNA extraction, as has been recommended in previous studies (Tedjo et al. 2015). The storage of the samples at -20 °C is a standard procedure commonly used for microbial community analyses from marine sediment (*e.g.*, Bienhold et al. 2016; Probandt et al. 2017).

Diversity indices are commonly used in microbial ecology studies to understand the links between the environmental conditions and the community (Kimes et al. 2013; Bargiela et al. 2015). It has been suggested that microbial richness and diversity could be an expression of environmental variation correlated to energy sources and temperature (Santelli et al. 2008; Rosano-Hernández et al. 2012; Bargiela et al. 2015). Our results revealed higher richness and diversity in shallow sites compared to deep sites (Table 2). This can be a result of more dynamic shallow environments, characterized by strong physical mixing and seasonal variation. In shallow environments the interaction among atmosphere, land and ocean increase environmental variation, and therefore higher microbial diversity, as reported for coastal environments elsewhere (Gobet et al. 2012). In contrast, lower richness and diversity in the deep sites could be

the result of relatively constant environmental conditions. Microbes from the abyssal plains environment are able to overcome the extreme conditions of temperature, pressure, oligotrophy and darkness (Jochens and DiMarco 2008) but are subjected to far less environmental variability.

It is well recognized that marine sediments are dynamic environments shaped by interactions among biotic and abiotic processes, including the redox reactions (Wasmund et al. 2017). In the present study, the electronegative redox values detected in the first 5 cm of the sediments for shallow sites (Table 1), suggested high microbial respiration or anoxic/reducing conditions (Valdes and Real 2004; Aranda et al. 2015). However, genera known to be both aerobic (*e.g.*, *Marinicella* and *Nitrosopumilus*) and anaerobic (*e.g.*, *Amphritea*, *Desulfococcus*, *GOUTA-19*, *LCP-6*, and *Pseudidiomarina*) were found in shallow samples (Fig S4). This suggested the co-occurrence of different metabolisms in these sites, in accordance with previous reports for other shallow marine sediments (Jørgensen 1977; Mills et al. 2008; Acosta-González et al. 2013; Tolar et al. 2013; Cerqueira et al. 2015).

Electropositive redox values detected in the deep sites (Table 1), suggested oxidizing conditions at those water depths, likely because the upper sediment layers remain oxygenated due to relatively high oxygen concentrations in deep waters of the GoM (Jochens and DiMarco 2008) as well as low rates of sediment community oxygen consumption previously reported in the deep GoM (Rowe et al. 2008). In these oxidizing deep sediments, genera known to be aerobic and facultative anaerobic bacteria, such as *Shewanella*, *Alcanivorax*, *Marinicella*, *Nitrospina* and *ZD0117* (*Alteromonadaceae*) were well represented (Fig. S4). Thus, these results suggest that

aerobic (and facultatively anaerobic) lifestyles seem to be favored in abyssal sediments of the studied region.

In this study, water depth was highly correlated with microbial community structure (Fig. 2). It is known that water depth and its dependent variables, such as temperature and pressure, are among the most important factors explaining variation in the bacterial community composition of seafloor sediments (Orcutt et al. 2010; Bienhold et al. 2016). As an example of this, our results showed a relatively high abundance of psychropiezophilic organisms of the genera *Colwellia* and *Shewanella* for the deep sites (Fig. S2 and Fig. S4), where conditions are favorable for the development of these microbial metabolisms (Nogi et al. 2004).

Detection of phylotypes putatively related to hydrocarbons degradation

Due to the presence of natural hydrocarbon effluents and the oil spills which have occurred in the GoM (*e.g.*, DWH spill), the potential effects of hydrocarbons on microbial community structure has been extensively studied there (Rosano-Hernández et al. 2012; Orcutt et al. 2010; Kleindienst et al. 2015). Recent investigations have provided insights about microbial populations responding to the presence of hydrocarbons, highlighting microorganisms capable of using these organic compounds as carbon source (Kostka et al. 2011; Redmond and Valentine 2011; Mason et al. 2012). In this work, we report the occurrence of several genera, such as *Shewanella*, *Alcanivorax*, *Pseudoalteromonas* and *Phaeobacter* (Fig. S4), which have been previously associated with hydrocarbon consumption (Beazley et al. 2012; Mason et al. 2014; Barbato et al. 2016; Liu et al. 2017).

In addition, this work reports for the first time *NC10* and *Kordiimonadales* phylotypes for sediments of the GoM (Fig. 3 and Fig S1), that based on the available information, are capable of anaerobic methane oxidation with nitrite denitrification, and aerobic degradation of alkanes and polycyclic aromatic hydrocarbons, respectively (Kwon et al. 2005; Xu et al. 2016; Math et al. 2012; Zhou and Xing 2015; Padilla et al. 2016). The *Kordiimonadales* phylotype was even detected by DGGE band sequencing approach (Fig. S2B), supporting their relatively high abundances in the analyzed samples.

The potential capability to degrade aromatic compounds, such as nitrotoluene, ethylbenzene, chlorocyclohexane and fluorobenzoate were predicted based on trait modeling software (PICRUSt) (Fig S3). This also suggests that microbial metabolisms related to the hydrocarbon degradation might be well distributed in the Mexican region of the PFB and could contribute with the bioremediation in case of hydrocarbon contamination due to forthcoming oil exploration and extraction activities in this area.

Conclusions

To our knowledge, this is the first study to report differences in abundances and composition of the microbial communities inhabiting surficial sediments in a water depth gradient in an important province for oil extraction in the Mexican region of the Gulf of Mexico. In this study, the combination of nucleic acid-based molecular methods and physicochemical measurements allowed the detection of changes in the structures of microbial communities which were mainly related to the redox potential, total sulfur concentration, grain size, as well as depth and the variables that change with it, such as temperature and pressure. Our findings indicate that shallow microbial communities are taxonomically richer than communities in the deep

sediments. Bacterial phylotypes putatively related to hydrocarbon degradation appear to be well represented for all the analyzed samples and could ameliorate future anthropogenic oil spills in this region of the GoM. These results contribute to the current knowledge of the environmental and biological dataset of the Perdido Fold Belt, which will be useful for further monitoring of this area in the Gulf of Mexico.

Acknowledgements

We are thankful to David Valdes and Silvia Guadalupe Granados for providing the physicochemical data; and to Abril Gamboa-Muñoz for the preparation of Fig. 1. Gregory Arjona and Francisco Puc were responsible of the sampling during the oceanographic campaign. We are very appreciative of many helpful discussions with Santiago Cadena and Alejandra Escobar-Zepeda. The computational resources used for bioinformatics analyses at CINVESTAV-Mérida were provided by Emanuel Hernández-Núñez.

References

- Acosta-González A, Rosselló-Móra R, Marqués S (2013) Characterization of the anaerobic microbial community in oil-polluted subtidal sediments: aromatic biodegradation potential after the *Prestige* oil spill. *Environ Microbiol* 15:77–92. doi: 10.1111/j.1462-2920.2012.02782.x
- Aranda CP, Valenzuela C, Matamala Y, Godoy FA, Aranda N (2015) Sulphur-cycling bacteria and ciliated protozoans in a *Beggiatoaceae* mat covering organically enriched sediments beneath a salmon farm in a southern Chilean fjord. *Mar Pollut Bull* 100:270–278.

doi: 10.1016/j.marpolbul.2015.08.040

Balsam WL and Beeson JP (2003) Sea-floor sediment distribution in the Gulf of Mexico, Deep Sea Research Part I: Oceanographic Research Papers 50(12):1421-1444.

Barbato M, Scoma A, Mapelli F, De Smet R, Banat IM, Daffonchio D, Boon N, Borin S (2016) Hydrocarbonoclastic Alcanivorax Isolates Exhibit Different Physiological and Expression Responses to n-dodecane. Front Microbiol 7:1–14. doi: 10.3389/fmicb.2016.02056

Bargiela R, Mapelli F, Rojo D, Chouaia B, Tornés J, Borin S, Richter M, Del Pozo MV, Cappello S, Gertler C, Genovese M, Denaro R, Martínez-Martínez M, Fodelianakis S, Amer RA, Bigazzi D, Han X, Chen J, Chernikova TN, Golyshina OV, Mahjoubi M, Jaouanil A, Benzha F, Magagnini M, Hussein E, Al-Horani F, Cherif A, Blaghen M, Abdel-Fattah YR, Kalogerakis N, Barbas C, Malkawi HI, Golyshin PN, Yakimov MM, Daffonchio D, Ferrer M (2015) Bacterial population and biodegradation potential in chronically crude oil-contaminated marine sediments are strongly linked to temperature. Nat Sci Reports 5:11651. doi: 10.1038/srep11651

Beazley MJ, Martinez RJ, Rajan S, Powell J, Piceno YM, Lauren MT, Andersen GL, Hazen TC, Van Nostrand JD, Zhou J, Mortazavi B, Sobecky PA (2012) Microbial Community analysis of a coastal salt marsh affected by the Deepwater Horizon oil spill. PLoS One 7:e41305. doi: 10.1371/journal.pone.0041305

Benjamini Y, Hochberg Y (1995) Controlling the false discovery rate: A practical and powerful approach to multiple testing. *J RStatSoc.* 57:289-300.

Bienhold C, Zinger L, Boetius A, Ramette A (2016) Diversity and biogeography of bathyal and abyssal seafloor bacteria. *PLoS One* 1–20. doi: 10.1371/journal.pone.0148016

Boetius A, Anesio AM, Deming JW, Mikucki JA, Rapp JZ (2015) Microbial ecology of the cryosphere: Sea ice and glacial habitats. *Nat Rev Microbiol* 13:677-690. doi: 10.1038/nrmicro3522

Brassard P (1997) Measurement of Eh and pH in aquatic sediments, in *Manual of physicochemical analysis of aquatic sediments*, edited by A Mudroch, J M Azcue & P Mudroch (CRC Press, Inc. Lewis Publishers), pp. 47-69.

Bricker OP (1982) Redox potential: Its measurement and importance in water systems, in: *Water analysis, Vol 1, Inorganic species*, edited by R AMinear & L H Keith, (Academic Press Inc, Florida, USA), pp. 55-79.

Buchanan JB (1984) Sediment analysis. In: Holme, N. A. & McIntyre, A.D. (Eds.) *Methods for the study of marine benthos. Second Edition. Second Edition.* & 3:41-65. Blackwell Scientific Publications. Oxford.

Caporaso JG, Kuczynski J, Stombaugh J, Bittinger K, Bushman FD, Costello EK, Noah F, Gonzalez Peña A, Goodrich JK, Gordon JI, Huttley GA, Kelley AT, Knights D, Koenig JE, Ley RE, Lozupone CA, McDonald D, Muegge BD, Pirrung M, Reeder J, Sevinsky JR, Turnbaugh PJ, Walters WA, Widmann J, Yatsunenko T, Zaneveld J, Knight R (2010) QIIME allows analysis of high-throughput community sequencing data. *Nature methods* 7(5):335.

Cerqueira T, Pinho D, Egas C, Froufe, H, Altermark B, Candeias C, Santos RS, Bettencourt R (2015) Microbial diversity in deep-sea sediments from the Menez Gwen hydrothermal vent system of the Mid-Atlantic Ridge. *Mar Genomics* 24:343–355. doi: 10.1016/j.margen.2015.09.001

Deming JW, Carpenter SD (2008) Factors influencing benthic bacterial abundance, biomass, and activity on the northern continental margin and deep basin of the Gulf of Mexico. *Deep Sea Res Part II* 55:2597–2606. doi: 10.1016/j.dsr2.2008.07.009

Edgar RC (2010) Search and clustering orders of magnitude faster than BLAST. *Bioinformatics* 26:2460–2461. doi: 10.1093/bioinformatics/btq461

Edgar RC (2016). UCHIME2: improved chimera prediction for amplicon sequencing. *bioRxiv*. doi: <http://dx.doi.org/10.1101/074252>

Fuhrman JA, Cram JA, Needham DM (2015) Marine microbial community dynamics and their ecological interpretation. *Nat Microbiol Rev* 13:133–146. doi: 10.1038/nrmicro3417

Giloteaux L, Goñi-Urriza M, Duran R (2010) Nested PCR and new primers for analysis of sulfate-reducing bacteria in low-cell-biomass environments. *Appl Environ Microbiol* 76:2856–2865. doi: 10.1128/AEM.02023-09

Gobet A, Böer SI, Huse SM, van Beusekom JEE, Quince C, Sogin ML, Boetius A, Ramette A (2012) Diversity and dynamics of rare and of resident bacterial populations in coastal sands. 542–553. doi: 10.1038/ismej.2011.132

Goñi MA, Ruttenger KC, Eglinton TI (1998) A reassessment of the sources and importance of land-derived organic matter in surface sediments from the Gulf of Mexico.

GeochimCosmochim Acta 62:3055–3075. doi: Doi 10.1016/S0016-7037(98)00217-8

Huber JA, Welch DBM, Morrison HG, Huse SM, Neal PR, Butterfield DA, Sogin ML (2007) Microbial population structures in the Deep Marine Biosphere. *Science* (80-) 318:97–101.

Illumina (2014) MiSeq Reporter Metagenomics Workflow Reference Guide. 5 pp.

Jiang H, Dong H, Ji S, Ye Y, Wu N (2007) Microbial diversity in the deep marine sediments from the Qiongdongnan Basin in South China Sea. *Geomicrobiol J* 0451:505. doi: 10.1080/01490450701572473

Jansson JK and Tas N (2014) The microbial ecology of permafrost. *Nature Reviews*

Microbiology volume 12, pages 414–425

Jochens AE, DiMarco SF (2008) Physical oceanographic conditions in the deep-water Gulf of Mexico in summer 2000-2002. *Deep Res Part II Top Stud Oceanogr* 55:2541–2554. doi: 10.1016/j.dsr2.2008.07.003

Jones SE, Cadkin TA, Newton RJ, McMahon KD (2012) Spatial and temporal scales of aquatic bacterial beta diversity. *Front Microbiol* 3:1–10. doi: 10.3389/fmicb.2012.00318

Jørgensen BB (1977) Bacterial sulfate reduction within reduced microniches of oxidized marine Sediments. 17:7–17.

Joye SB, Teske AP, Kostka JE (2014) Microbial dynamics following the Macondo oil well blowout across Gulf of Mexico environments. *Bioscience* 64:766–777. doi: 10.1093/biosci/biu121

Katoh K, Standley DM (2013) MAFFT multiple sequence alignment software version 7: Improvements in performance and usability. *MolBiolEvol* 30:772–780. doi: 10.1093/molbev/mst010

Kimes NE, Callaghan AV, Aktas DF, L, Smith WL, Sunner J, Golding BT, Drozdowska M, Hazen TC, Suflita JM, Morris PJ (2013) Metagenomic analysis and metabolite profiling of deep-sea sediments from the Gulf of Mexico following the Deepwater Horizon oil spill.

Front Microbiol 4:1-17. doi: 10.3389/fmicb.2013.00050

King GM, Smith CB, Tolar B, Hollibaugh JT (2013) Analysis of composition and structure of coastal to mesopelagic bacterioplankton communities in the northern Gulf of Mexico. Front Microbiol 3:1-14. doi: 10.3389/fmicb.2012.00438

Kleindienst S, Grim S, Sogin M, Bracco A, Crespo-Medina M, Joye SB (2015) Diverse, rare microbial taxa responded to the Deepwater Horizon deep-sea hydrocarbon plume. ISME J 10:1-16. doi: 10.1038/ismej.2015.121

Klindworth A, Pruesse E, Schweer T, Peplies J, Quast C, Horn M, Glöcker FO (2013) Evaluation of general 16S ribosomal RNA gene PCR primers for classical and next-generation sequencing-based diversity studies. Nucleic Acids Research 41:1-11. doi: 10.1093/nar/gks808

Kopylova E, Noé L, Touzet H (2012) SortMeRNA: fast and accurate filtering of ribosomal RNAs in metatranscriptomic data. Bioinformatics 28:3211-3217. doi: 10.1093/bioinformatics/bts611

Kostka JE, Prakash O, Overholt WA, Green SJ, Freyer G, Canion A, Delgadito J, Norton N, Hazen TC, Huettel M (2011) Hydrocarbon-degrading bacteria and the bacterial community response in Gulf of Mexico beach sands impacted by the Deepwater Horizon oil spill. Appl Environ Microbiol 77:7962-7974. doi: 10.1128/AEM.05402-11

Kwon KK, Lee H-S, Yang SH, Kim S-J (2005) *Kordiimonas gwangyangensis* gen. nov., sp. nov., a marine bacterium isolated from marine sediments that forms a distinct phyletic lineage (*Kordiimonadales* ord. nov.) in the “*Alphaproteobacteria*”. *Int J SystEvolMicrobiol* 55:2033–2037. doi: 10.1099/ijls.0.63684-0

Liu Z, Liu J (2013) Evaluating bacterial community structures in oil collected from the sea surface and sediment in the northern Gulf of Mexico after the Deepwater Horizon oil spill. *MicrobiologyOpen* 2:492–504. doi: 10.1002/mbo3.89

Liu J, Bacosa HP, Liu Z (2017) Potential environmental factors affecting oil-degrading bacterial populations in deep and surface waters of the Northern Gulf of Mexico. *Front Microbiol* 7:1–14. doi: 10.3389/fmicb.2016.02131

Love MI, Huber W, Anders S (2014). Moderated estimation of fold change and dispersion for RNA-seq data with DESeq2. *Genome Biol* 15:1-21. doi: 10.1186/s13059-014-0550-8

Lozupone C, Hamady M, Knight R (2006) UniFrac-an online tool for comparing microbial community diversity in a phylogenetic context. *BMC Bioinformatics* 7:371. doi: 10.1186/1471-2105-7-371

Magoč T, SL Salzberg (2011) FLASH: fast length adjustment of long reads to improve genome assemblies. *Bioinformatics* 27:2957-2963. doi: 10.1093/bioinformatics/btr507

Mason OU, Hazen TC, Borglin S, Chain PSG, Dubinsky EA, Fortney JL, Han J, Holman H-YN, Hultman J, Tringe SG, Woyke T, Zhou J, Rubin, Jansson JK EM (2012) Metagenome, metatranscriptome and single-cell sequencing reveal microbial response to Deepwater Horizon oil spill. *ISME J* 6:1715–27. doi: 10.1038/ismej.2012.59

Mason OU, Han J, Woyke T, Jansson JK (2014) Single-cell genomics reveals features of a *Colwellia* species that was dominant during the Deepwater Horizon oil spill ASSEMBLY. 5:1–8. doi: 10.3389/fmicb.2014.00332

Math RK, Jeong SH, Jin HM, Park MS, Kim JM, Jeon CO (2012) *Kordiimonasaestuarii* sp. nov., a marine bacterium isolated from a tidal flat. *Int J SystEvolMicrobiol* 62:3049–3054. doi: 10.1099/ijs.0.038943-0

McMurdie PJ, Holmes S (2013) phyloseq: An R package for reproducible interactive analysis and graphics of microbiome census data. *PLoS One*. doi: 10.1371/journal.pone.0061217

Miller CB, Wheeler PA (2012) The fauna in deep-sea sediments In Miller CB, Wheeler PA (Eds.) *Biological oceanography* (pp 292-320). Wiley-Blackwell 474p

Mills HJ, Hunter E, Humphrys M, Kerkhof L, McGuinness L, Huettel M, Kostka JE (2008) Characterization of nitrifying, denitrifying, and overall bacterial communities in permeable

marine sediments of the Northeastern Gulf of Mexico. Appl Environ Microbiol 74:4440–4453. doi: 10.1128/AEM.02692-07

Mills HJ, Martinez RJ, Story S, Sobecky PA (2004) Identification of members of the metabolically active microbial populations associated with *Beggiatoa* species mat communities from Gulf of Mexico cold-seep sediments. Society 70:5447–5458. doi: 10.1128/AEM.70.9.5447

Nogi Y, Hosoya S, Kato C, Horikoshi K (2004) *Colwellia piezophila* sp. nov., a novel piezophilic species from deep-sea sediments of the Japan Trench. Int J SystEvolMicrobiol 54:1627–1631. doi: 10.1099/ijs.0.03049-0

Oksanen, J 2013. Multivariate analysis of ecological communities in R: vegan tutorial. 3:121

Orcutt BN, Joye SB, Kleindienst S, Knittel K, Ramette A, Reitz A, Samarkin V, Treude T, Boetius A (2010) Impact of natural oil and higher hydrocarbons on microbial diversity, distribution, and activity in Gulf of Mexico cold-seep sediments. Deep-Sea Research II 57:2008–2021. doi: 10.1016/j.dsr2.2010.05.014

Padilla CC, Bristow LA, Sarode N, Garcia-Robledo E, Gómez E, Benson CR, Bourbonnais A, Altabet MA, Girguis PR, Thamdrup B, Stewart FJ (2016) *NC10* bacteria in marine oxygen minimum zones. ISME J 10:2067–2071. doi: 10.1038/ismej.2015.262

Price MN, Dehal PS, Arkin AP (2009) Fasttree: Computing large minimum evolution trees with profiles instead of a distance matrix. *MolBiolEvol* 26:1641–1650. doi: 10.1093/molbev/msp077

Probandt D, Knittel K, Tegetmeyer HE, Ahmerkamp S, Holtappels, Amann R (2017) Permeability shapes bacterial communities in sublittoral surface sediments. *Environ Microbiol* 19:1584–1599. doi: 10.1111/1462-2920.13676

R Core Team (2014). R: A language and environment for statistical computing. R Foundation for Statistical Computing, Vienna, Austria. URL <http://www.R-project.org/>.

Redmond MC, Valentine DL (2011) Natural gas and temperature structured a microbial community response to the Deepwater Horizon oil spill. doi: 10.1073/pnas.1108756108/-/DCSupplemental.www.pnas.org/cgi/doi/10.1073/pnas.1108756108

Reese BK, Mills HJ, Dowd SE, Morsee JW (2013) Linking molecular microbial ecology to geochemistry in a coastal hypoxic zone. *Geomicrobiol J* 0451:160-172. doi: 10.1080/01490451.2012.659331

Rosano-Hernández MC, Ramírez-Saad H, Fernández-Linares L (2012) Petroleum influenced beach sediments of the Campeche Bank, Mexico: diversity and bacterial community structure assessment. *J Environ Manage* 95:S325–S331. doi: 10.1016/j.jenvman.2011.06.046

Rowe GT, Morse J, Nunnally C, Boland GS (2008) Sediment community oxygen consumption in the deep Gulf of Mexico. *Deep Res Part II* 55:2686–2691. doi: 10.1016/j.dsr2.2008.07.018

Salcedo DL, Soto LA, Estradas-Romero A, Botello A V (2017) Interannual variability of soft-bottom macrobenthic communities of the NW Gulf of Mexico in relationship to the Deepwater Horizon oil spill. *Mar Pollut Bull* 114:987–994. doi: 10.1016/j.marpolbul.2016.11.031

Santelli CM, Orcutt BN, Banning E, Bach W, Moyer CL, Sogin ML, Staudigel H, Edwards KJ (2008) Abundance and diversity of microbial life in ocean crust. *Nat Lett* 453:653–656. doi: 10.1038/nature06899

Santos HF, Carmo FL, Paes JES, Rosado AS, Peixoto RS (2011) Bioremediation of mangroves impacted by Petroleum. *Water Air Soil Pollut* 216:329–350. doi: 10.1007/s11270-010-0536-4

Soto LA, Vázquez-Botello A (2013) Legal issues and scientific constraints in the environmental assessment of the Deepwater Horizon oil spill in Mexico Exclusive Economic Zone (EEZ) in the Gulf of Mexico. *Int J Geosci* 4:39–45.

Tedjo DI, Jonkers DMAE, Savelkoul PH, Masclee AA, van Best N, Pierik MJ, Penders J (2015) The Effect of Sampling and Storage on the Fecal Microbiota Composition in Healthy

and Diseased Subjects. PLoS ONE 10(5): e0126685.

<https://doi.org/10.1371/journal.pone.0126685>

Tolar BB, King GM, Hollibaugh JT (2013) An analysis of *Thaumarchaeota* populations from the northern Gulf of Mexico. Front Microbiol 4:1–36. doi: 10.3389/fmicb.2013.00072

Valdes DS, Real E (2004) Nitrogen and phosphorus in water and sediments at Ria Lagartos coastal lagoon, Yucatan, Gulf of Mexico. Indian J Mar Sci 33:338–345.

Wasmund K, Mußmann M, Loy A (2017) The life sulfuric: microbial ecology of sulfur cycling in marine sediments. Environ Microbiol Rep 9:323–344. doi: 10.1111/1758-2229.12538

Webster G, Newberry CJ, Fry JC, Weightman AJ (2003) Assessment of bacterial community structure in the deep sub-seafloor biosphere by 16S rDNA-based techniques: a cautionary tale. J Microbiol Methods 55:155–164. doi: 10.1016/S0167-7012(03)00140-4

Wickham, H. (2010). ggplot2: Elegant graphics for data analysis. J Stat Softw July 35:1-3.

Xu X-W, Huo Y-Y, Bai X-D, Wang C-S, Oren A, Li A-Y, Wu M (2011) *Kordiimonaslacus* sp. nov., isolated from a ballast water tank, and emended description of the genus *Kordiimonas*. Int J SystEvolMicrobiol 61:422–6. doi: 10.1099/ijs.0.018200-0

670 Zhou J, Xing J (2015) Effect of electron donors on the performance of haloalkaliphilic
 671 sulfate-reducing bioreactors for flue gas treatment and microbial degradation patterns related
 672 to sulfate reduction of different electron donors. *BiochemEng J* 96:14–22. doi:
 673 10.1016/j.bej.2014.12.015

Figure 1

Location of sampling sites in the Mexican Region of the Northwestern Gulf of Mexico.

Circles: shallow sites in the continental platform and slope from 20 to 600 m depth.

Triangles: deep sites in the abyssal plain from 2800 to 3700 m depth. The names of the stations are indicated. Source credit: Abril Gamboa-Muñoz.

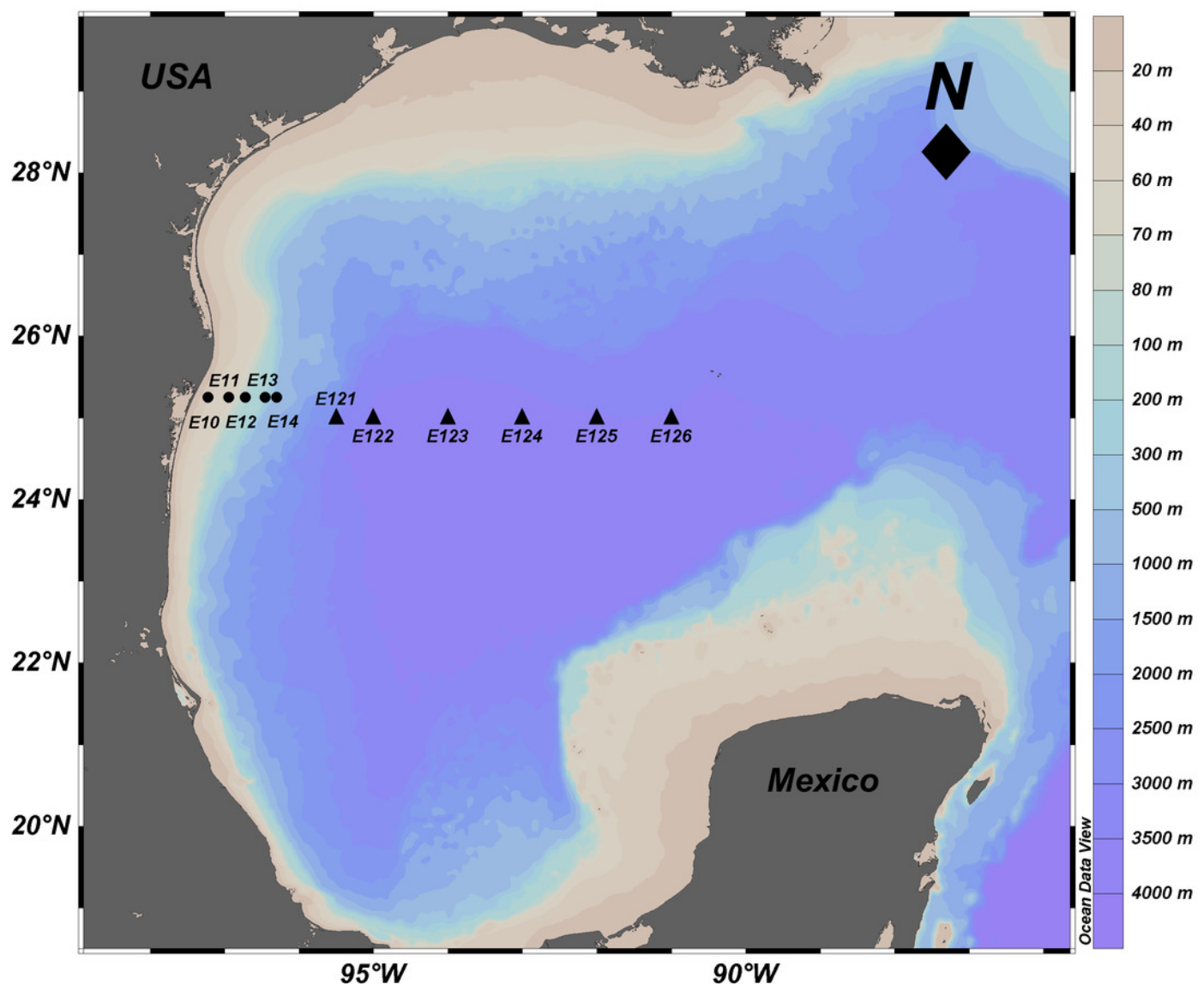


Figure 2

Non-metric multidimensional scaling (NMDS) of the bacterial community structure and the environmental variables.

Ordination of samples based on the weighted UniFrac distance from the community structure and their relationship with the physicochemical variables. Shallow sites included samples collected from 20 to 600 m, and deep sites from 2800 to 3700 m depth. Physicochemical variables related to the bacterial community structure are shown in green arrows. *TS* total sulfur concentration. NMDS stress value= 0.0684.

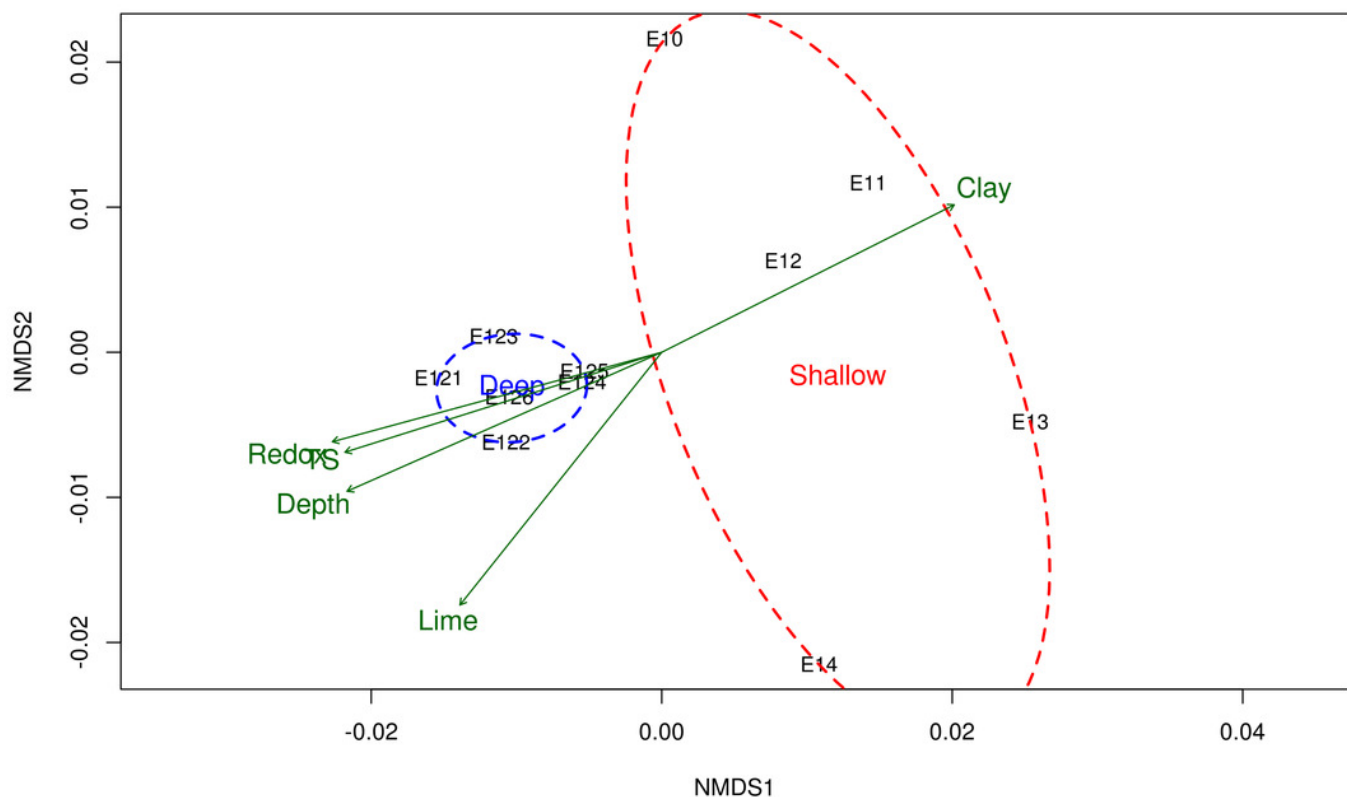


Figure 3

Relative abundances from bacteria inhabiting sediments in the Mexican Region in the northwestern GM.

Taxonomic diversity at phylum and class levels from shallow and deep samples. **Shallow** sediment samples retrieved from 20 to 600 m depth, and **deep** sediment samples retrieved from 2800 to 3700 m depth. Only the 20 most abundant classes are shown. The remaining classes were agglomerated in the “Others” category.

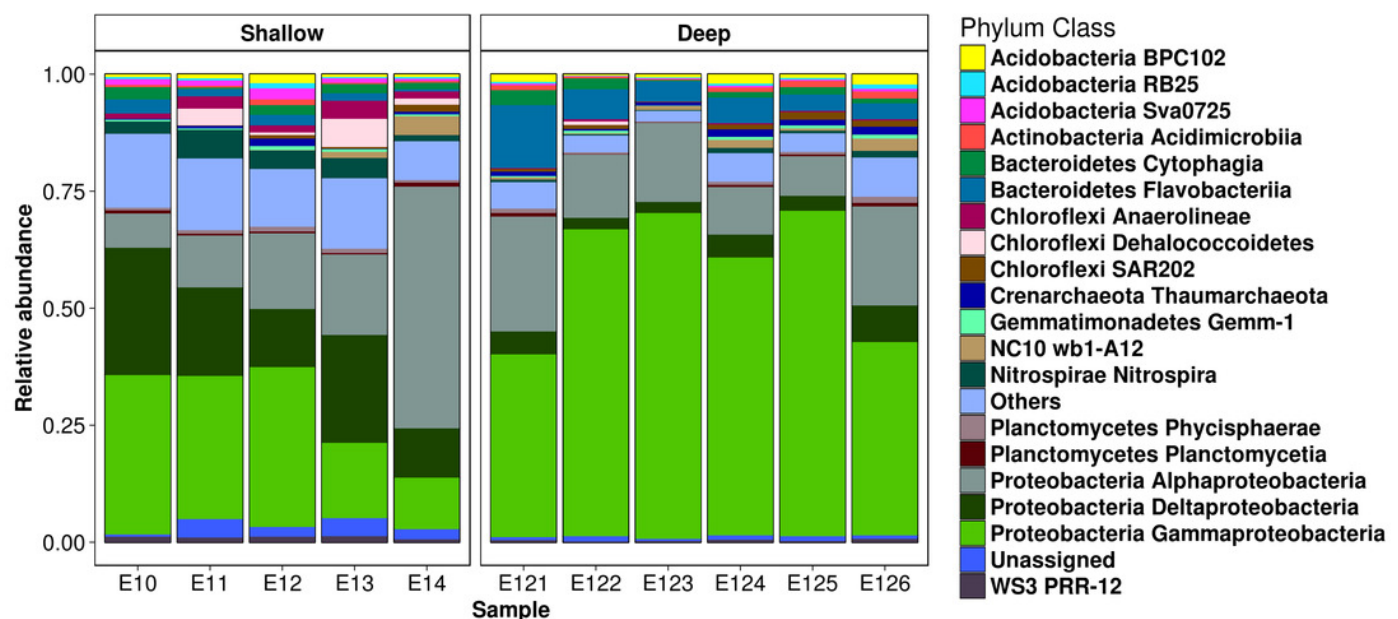


Figure 4

Differential OTUs abundance among shallow and deep communities from sediment samples in the Mexican northwestern Gulf of Mexico.

A) OTUs with significant fold changes among the community composition from shallow and deep zones. Circles in colors defines the phyla of the OTUs. **B)** Relative abundances of the OTUs with significant fold changes at a class-order taxonomic level.

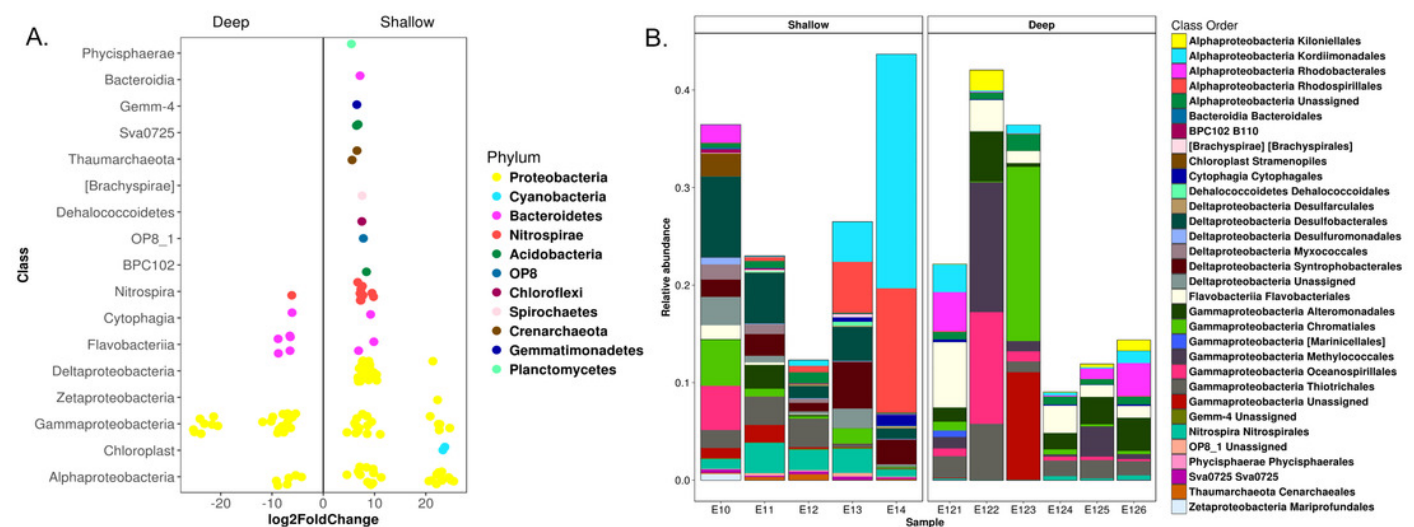


Table 1(on next page)

Physicochemical variables from shallow and deep sediment samples.

TS total sulfur, *TOM* total organic matter and *TOC* total organic carbon. Physicochemical variables measured with no replicates. Pearson coefficient showed significant correlation at a *p*-value <0.01 among *TS* ($r^2 = 0.98$), redox potential ($r^2 = 0.98$), and the percentages of lime ($r^2 = 0.78$) and clay ($r^2 = -0.78$) particles with depth. ↑ Variables with positive correlation with depth. ↓ Variables with negative correlation with depth.

1 Table 1. Physicochemical variables from shallow and deep sediment samples.

Geographical location					Physicochemical variables						
Site	Sam ple	Longitude	Latitude	Depth (m)	Redox ↑ (mV)	TS ↑ (μM)	TOM (%)	TOC (μM)	Sand (%)	Lime ↑ (%)	Clay ↓ (%)
Shallow	E10	97°13'48"W	25°15'N	20	-131.0	0.05	0.80	0.45	34.5	51.2	14.4
	E11	96°56'24"W	25°15'N	75	-174.4	0.05	1.10	0.61	26.5	57.3	16.3
	E12	96°43'12"W	25°15'N	100	-204.0	0.05	1.02	0.56	20.5	51.2	28.4
	E13	96°27'36"W	25°15'N	200	-131.7	0.05	0.83	0.46	22.5	51.2	26.4
	E14	96°18'36"W	25°15'N	600	-192.9	0.05	1.02	0.56	23.7	68.2	8.1
Deep	E121	95°30'W	25°00'N	2800	230	0.10	1.22	0.68	33.75	60.3	6.0
	E122	95°00'W	25°00'N	3600	233	0.10	0.59	0.33	27.75	66.3	6.0
	E123	94°00'W	25°00'N	3700	225	0.11	0.44	0.25	25.7	66.3	8.0
	E124	93°00'W	25°00'N	3700	215	0.11	0.85	0.47	29.8	64.3	5.9
	E125	92°00'W	25°00'N	3500	236	0.12	0.81	0.45	23.9	70.3	5.9
	E126	91°00'W	25°00'N	3700	215	0.12	0.92	0.51	25.8	68.2	6.0

2 *TS* total sulfur, *TOM* total organic matter and *TOC* total organic carbon. Physicochemical variables
3 measured with no replicates. Pearson coefficient showed significant correlation at a *p*-value <0.01 among
4 *TS* ($r^2 = 0.98$), redox potential ($r^2 = 0.98$), and the percentages of lime ($r^2 = 0.78$) and clay ($r^2 = -0.78$)
5 particles with depth.

6 ↑ Variables with positive correlation with depth.

7 ↓ Variables with negative correlation with depth.

8

9

10

11

12

13

14

15

Table 2 (on next page)

Alpha diversity estimations

Alfa diversity data from observed OTUs, H' Shannon diversity index, D Simpson diversity index, and Chao1 for nonparametric richness estimation. Statistical differences were observed among sampling sites Shallow and Deep-sea (p -value < 0.05). Percentages of Good's coverage shows the fraction of the OTUs subsampled more than once.

Table 2. Alpha diversity estimations.

Site	Sample	Depth (m)	Total counts	Observed OTUs	Ecological estimators			Good's coverage (%)
					H'	D	Chao1	
Shallow	E10	20	48886	2401	9.3	0.99	3002.2	96.51
	E11	75	30290	3262	10.1	1.00	4141.4	94.83
	E12	100	21243	3509	10.4	1.00	4770.5	93.94
	E13	200	35253	3081	9.8	1.00	3925.3	95.09
	E14	600	42131	2188	8.2	0.99	3116.4	95.8
Deep	E121	2800	53408	2238	8.7	0.99	3087.3	95.75
	E125	3600	56735	1434	7.0	0.97	2059.0	97.36
	E122	3700	20402	1243	6.7	0.97	2081.6	97.23
	E123	3700	61025	2139	8.0	0.97	3181.1	95.54
	E124	3500	42768	1848	6.9	0.94	3009.7	95.80
	E126	3700	45107	2406	9.11	0.99	3418.39	95.40

Alfa diversity data from observed OTUs, H' Shannon diversity index, D Simpson diversity index, and Chao1 for nonparametric richness estimation. Statistical differences were observed among sampling sites Shallow and Deep-sea (p -value <0.05). Percentages of Good's coverage shows the fraction of the OTUs subsampled more than once.