

Mate availability does not influence mating strategies in males of the sexually cannibalistic spider *Argiope bruennichi*

Anna-Lena Cory* and Jutta M. Schneider*

Institute of Zoology, Universität Hamburg, Hamburg, Germany

*These authors contributed equally to this work.

ABSTRACT

Background. Sexual selection theory predicts that male investment in a current female should be a function of female density and male competition. While many studies have focused on male competition, the impact of female density on male mating investment has been widely neglected. Here, we aimed to close this gap and tested effects of mate density on male mating decisions in the orb-web spider *Argiope bruennichi*. Males of this species mutilate their genitalia during copulation, which reduces sperm competition and limits their mating rate to a maximum of two females (bigyny). The mating rate is frequently further reduced by female aggression and cannibalization. Males can reduce the risk of cannibalism if they jump off the female in time, but will then transfer fewer sperm. An alternative solution of this trade-off is to copulate longer, commit self-sacrifice and secure higher minimal paternity. The self-sacrificial strategy may be adaptive if prospective mating chances are uncertain. In *A. bruennichi*, this uncertainty may arise from quick changes in population dynamics. Therefore, we expected that males would immediately respond to information about low or high mate availability and opt for self-sacrifice after a single copulation under low mate availability. If male survival depends on information about prospective mating chances, we further predicted that under high mate availability, we would find a higher rate of males that leave the first mating partner to follow a bigynous mating strategy.

Method. We used naïve males and compared their mating decisions among two treatments that differed in the number of signalling females. In the high mate availability treatment, males perceived pheromone signals from four adult, virgin females, while in the low mate availability treatment only one of four females was adult and virgin and the other three were penultimate and unreceptive.

Results. Males took more time to start mate searching if mate availability was low. However, a self-sacrificial strategy was not more likely under low mate availability. We found no effects of treatment on the duration of copulation, the probability to survive the first copulation or the probability of bigyny. Interestingly, survival chances depended on male size and were higher in small males.

Discussion. Our results do not support the hypothesis that mate density variation affects male mating investment, although they clearly perceived mate density, which they presumably assessed by pheromone quantity. One reason for the absence of male adjustments to mating tactics could be that adaptations to survive female attacks veil adaptations that facilitate mating decisions.

Submitted 28 February 2018

Accepted 12 July 2018

Published 7 August 2018

Corresponding author

Anna-Lena Cory, Anna-Lena.Cory@uni-hamburg.de, anna_lena.cory@yahoo.de

Academic editor

Lee Rollins

Additional Information and Declarations can be found on page 15

DOI 10.7717/peerj.5360

© Copyright

2018 Cory and Schneider

Distributed under

Creative Commons CC-BY 4.0

OPEN ACCESS

Subjects Animal Behavior, Evolutionary Studies

Keywords Female density, Male mating effort, Male sacrifice, Sex pheromones, Sexual cannibalism

INTRODUCTION

The mating decisions of males often reflect the general trade-off between increasing either mating rates or the investment in the current mate (*Magrath & Komdeur, 2003; Scharf, Peter & Martin, 2013; Trivers, 1972*). The trade-off results from the risk of losing paternity to rival males, since females are often choosy and polyandrous (*Arnqvist & Nilsson, 2000; Jennions & Petrie, 1997; Jennions & Petrie, 2000; Parker, 1970*). Strategies that secure or optimize paternity gains by increasing their reproductive effort are mate guarding, nuptial feeding, mate plugging, courtship behaviour, male fighting, and ejaculate expenditure (*Alatalo, Höglund & Lundberg, 1991; Andersson, 1994; Eberhard, 1994; Uhl, Nessler & Schneider, 2010; Vahed, 1998; Wedell, Gage & Parker, 2002*). However, increased reproductive effort has costs such as the depletion of resources (e.g., the amount of sperm), or the consumption of time and energy (*Cordts & Partridge, 1996; Hughes et al., 2000; Saeki, Kruse & Switzer, 2005; Sparkes, Keogh & Pary, 1996*). Accordingly, males that allocate more time, energy or resources to one mating partner, risk depleting reserves for future mates and missing further mating opportunities. Hence, the decision whether males should invest in the current or future mating partners should strongly depend on mating opportunities (*Kokko & Rankin, 2006; Kvarnemo & Ahnesjo, 1996*).

Mating opportunities for males are a function of female density and male competition (*Kvarnemo & Ahnesjo, 1996*), although many studies focus on the latter. There is ample evidence that males invest more in mate guarding, nuptial gifts, and/or ejaculates in response to a strong risk of male competition (*Bailey, Gray & Zuk, 2010; Carroll & Corneli, 1995; DelBarco-Trillo, 2011; Weir, Grant & Hutchings, 2011*). In contrast, the effects of female density on male mating investment are rarely investigated, and if considered they are often veiled in studies regarding population densities or sex ratios (*Barrett, Evans & Gasparini, 2014; Gage, 1995; Kokko & Rankin, 2006; Lauer, Sih & Krupa, 1996; Linklater et al., 2007; Oku, 2009*). Studies about sex ratios indeed depict the actual mating opportunities but disregard that under natural conditions, gathering information about mating opportunities may be constrained by the male's inability to perceive social cues. For instance, in mating systems where males are adapted to locate females by female sex pheromones or sex-specific chemical cues (*Wyatt, 2014*), males may not necessarily perceive sex-specific chemical cues of conspecific males. In this scenario, males are not able to determine the current sex ratio but can assess female density with some accuracy.

Female localization through chemical cues (or sex pheromones) is particularly common in moths, mantises, and spiders (*Gaskett, 2007; Greenfield, 1981; Holwell, Barry & Herberstein, 2007; Maxwell, Barry & Johns, 2010; Schulz, 2013*). Some members of these taxa are known to assess female traits such as body condition or mating status by using chemical cues (e.g., *Barry, 2010; Foster & Johnson, 2011; Stoltz, McNeil & Andrade, 2007*). Furthermore, in several spider species males developed faster if they received volatile or

silk-based pheromonal cues produced by females (Cory & Schneider, 2018; Kasumovic & Andrade, 2006; Neumann & Schneider, 2016). These findings imply that chemical cues are also involved in the assessment of female availability. Other studies suggest that males adjust their mating investment in response to experience with chemical cues produced by females. For example, it was found that males of the cellar spider *Pholcus phalangioides* courted longer if they had experienced silk cues of non-virgin, but receptive females (Hoefler, 2007). However, it is unknown whether males also adjust their mating investment in the current mate immediately on the receipt of chemical information about female availability. Immediate responses to social information may be particularly relevant in species where the availability of mating partners can be very dynamic throughout the mating season, as is the case in some well-studied orb-web spiders (Foellmer & Fairbairn, 2005; Zimmer, Welke & Schneider, 2012).

In many spiders, males show an extremely high limitation in mating rates because, with each mating encounter, males risk being cannibalized by the female (Elgar & Crespi, 1992). For instance, in the orb-web spider *Argiope bruennichi*, 50–80% of males die after a single copulation (Fromhage, Uhl & Schneider, 2003; Welke, Zimmer & Schneider, 2012). The causes of sexual cannibalism are still debated and are diverse (Elgar & Schneider, 2004; Schneider, 2014; Wilder, Rypstra & Elgar, 2009). Some studies have found that sexual cannibalism depends on the hunger state of females and may be an adaptation to food limitation in nature (Berning et al., 2012; Moskalik & Uetz, 2011). Apart from ecological reasons, sexual cannibalism may also be considered a manifestation of sexual conflict (Schneider, 2014). While some studies suggest that sexual cannibalism give females control over mating (Anderson & Hebets, 2017; Schneider et al., 2006), other studies indicate that males actively sacrifice their life (Andrade, 1996; Schneider et al., 2006; Schwartz, Wagner & Hebets, 2013). A male benefits from self-sacrifice if his body contributes to the female's fecundity or offspring survival and if paternity security is high (Elgar & Nash, 1988; Welke & Schneider, 2012). However, as with any reproductive effort, self-sacrifice has to be traded off against future mating opportunities and should, therefore, depend on female availability (Fromhage & Jennions, 2016).

Extreme male mating investment including self-sacrifice has evolved independently in some spider taxa limiting males to maximally two mating chances (Schneider & Fromhage, 2010). The limitation arises because their paired genitalia (pedipalps) also function as mating-plugs in the equally paired female genital openings (Uhl, Nessler & Schneider, 2010). Mate plugging by genital mutilation may indeed prevent insemination by rivals but limits males to a single use of each pedipalp (Uhl, Nessler & Schneider, 2010). Accordingly, males can only invest in one (monogyny) or two females (bigyny). A mating system, in which bigyny and male sacrifice behaviour coexist, provides a good opportunity to test effects of female availability because poor mating decisions have severe fitness consequences.

To test predictions about the density-dependent reproductive investment of males, we used the highly cannibalistic *A. bruennichi*, in which males show monogynous and bigynous mating tactics (Fromhage, Uhl & Schneider, 2003; Welke, Zimmer & Schneider, 2012). Females stereotypically attack males during copulation, but males can reduce the risk of cannibalization if they copulate briefly and try to jump off in time (Fromhage, Uhl &

Schneider, 2003; Schneider, Fromhage & Uhl, 2005; Welke & Schneider, 2010). By decreasing copulation duration, males also reduce the amount of sperm they transfer (*Schneider et al., 2006*). The trade-off between sperm transfer and mortality risk is further complicated because a considerable risk of mortality remains even after a short copulation (*Fromhage, Uhl & Schneider, 2003; Welke & Schneider, 2010*). Accordingly, self-sacrifice after a long copulation (more than 10 s) can be considered a comparably low-risk strategy because the outcome is predictable and 50% of the life-time sperm load can be transferred (*Fromhage, Uhl & Schneider, 2003; Welke & Schneider, 2010*). On the other hand, surviving males have the chance to either minimize the risk of sperm competition in the first female by plugging the second genital opening of the same female or to continue mate searching (bigyny) (*Nessler, Uhl & Schneider, 2007; Welke, Zimmer & Schneider, 2012*). A successful bigynous strategy can enhance the overall fitness of a male, but a single copulation leaves one female genital opening unsecured (*Nessler, Uhl & Schneider, 2007; Welke, Zimmer & Schneider, 2012*). Moreover, bigynous males also need to find another mating partner, which should strongly depend on female availability (*Fromhage & Schneider, 2012*). Thus, under a low density of females, it may be better to increase the investment in the current mating partner particularly if male competition is high. Strong male competition is generally expected in such mating systems because they are associated with extreme female-biased sexual size dimorphism (females more than twice as large as males; *Hormiga, Scharff & Coddington, 2000; Scharff & Coddington, 1997*) and reduced mortality of males during development, leading to a male-biased sex ratio (*Danielson-Francois et al., 2012; Foellmer & Fairbairn, 2005; Fromhage, Elgar & Schneider, 2005; Fromhage & Schneider, 2005*).

For our experiments, we used males that had no experience with female cues until we tested their mating decisions in response to different levels of female density. To manipulate information about female density, we made use of the fact that in *A. bruennichi* only adult, virgin females produce a sex pheromone that attracts males (*Chinta et al., 2010*). We conducted mating tests in which males were exposed to either four adult, virgin females (high mate availability) or one adult, virgin and three penultimate females (low mate availability) that do not produce the sex pheromone. We chose the term “mate availability” instead of “female density” because we used the same total female density for both treatments. We predicted that under low mate availability, copulation duration and the likelihood of sexual cannibalism would be higher than under high mate availability. Since our predictions are based on the assumption that males adjust their mating investment to the chance of finding prospective mates, we also predicted that if mate availability and thus prospective mating chances are low, males would rather stay with the current mate than continue mate searching.

MATERIAL AND METHODS

Spider husbandry

We used laboratory-bred *A. bruennichi* that derived from 37 egg sacs and whose parents originated from Southern France (*Cory & Schneider, 2018*). All spiders were kept in cups that were turned upside down and had a hole filled with cotton wool. Also, the cups were

roughened from the inside to facilitate web-building inside the cups. Cup volume (from 50 ml to 1 l) and food provision was adjusted to the spiders' body size. Small spiders received pollen and approximately three dead *Drosophila melanogaster* three times a week. Two days a week, larger individuals received ca. 20 *Drosophila* spp. and large subadult and adult females were fed with three *Calliphora* sp. Spiders were provisioned with water six times a week. Generally, we sprayed water inside the cups; but on days after food provision, we only watered the cotton wool to prevent the prey from escaping. During water provision, we also checked for moults of penultimate males and females and registered the day of maturation. Penultimate and adult spiders can be recognized and distinguished by their genitalia. Males develop a genital bulb on the distal part of each of their pedipalps (Uhl, Nessler & Schneider, 2007). The genital bulb is undifferentiated in penultimate males whereas it shows discrete sclerotized structures in adult males. Females can be identified by the scape, which is a sclerotized structure covering the epigyne (Uhl, Nessler & Schneider, 2007). The scape already starts to develop during the penultimate stage but is shorter and less differentiated than in adult females. Furthermore, the scape of penultimate females is covered by a thin membrane and is only exposed after females moult to sexual maturity. Females of both maturation states were put in frames (trapezoidal shape: upper width 14.5 cm, lower width 9 cm, length 13 cm) that could be fixed in our test arenas (see experimental design), which offered males access to the females during the mating tests.

Spiders either died a natural death in the laboratory and/or were frozen by -80° C. Some males were sexually cannibalized during the mating tests, which conforms to the natural situation. We used the tibia-patella length as an index for body size. To measure leg length, we photographed the legs under a binocular and used the measuring tools in the software Leica Application Suite V4.6 (Leica Microsystems, Heerbrugg, Switzerland). In addition to body size, which is fixed after maturation, we also determined the weight shortly after maturation and on the test day with a calibrated scale (Mettler Toledo AB54-S; accuracy 0.1 mg).

Treatment groups

We tested mating decisions of naïve males with no prior experience with female cues in two experimental set-ups with either a low or high availability of mating partners. In both treatments, males were exposed to four females, but we manipulated the number of pheromone-emitting females.

The low mate availability treatment was composed of one adult, virgin and three penultimate females. We know from previous studies in *A. bruennichi* that adult, virgin females are highly receptive whereas penultimate females are not (Schneider et al., 2006, A Cory, pers. obs., 2014). Furthermore, subadult females do not produce the sex pheromone that was found on the body and silk of adult, virgin females and that attracted males (Chinta et al., 2010).

In the high mate availability treatment all females were adult and virgin. The four females in each high mate availability treatment were matched for adult age (we only allowed an age difference of two days) because previous studies found that mate attraction depends on female age (Cory & Schneider, 2016). We ensured that the mean ages of the four females

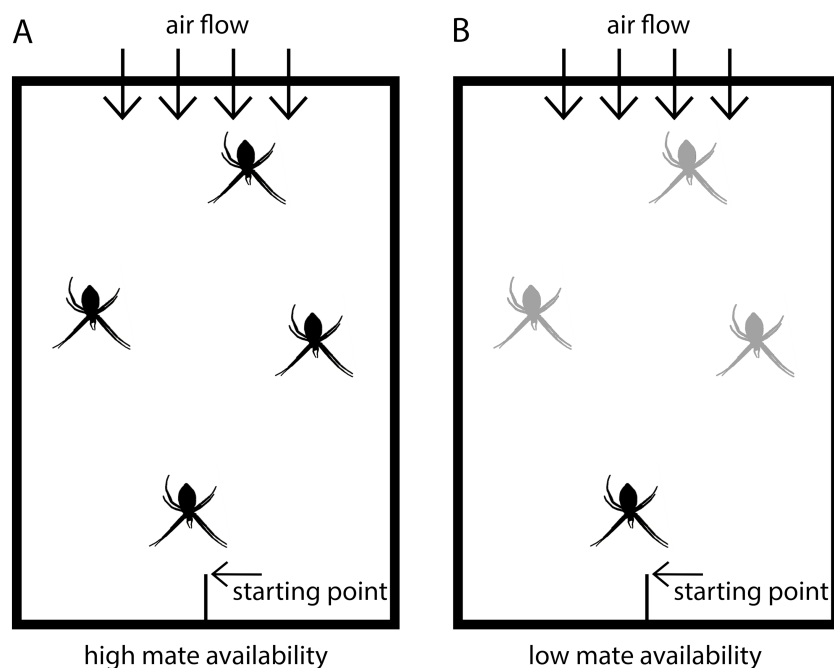


Figure 1 Scheme of experimental set-up. Males were placed in test arenas ($100 \times 70 \times 50$ cm) and exposed either to (A) four virgin adult females (high mate availability) or to (B) one adult, virgin female and three penultimate females (low mate availability). Adult virgin females are black and penultimate females grey-colored.

Full-size DOI: [10.7717/peerj.5360/fig-1](https://doi.org/10.7717/peerj.5360/fig-1)

in the high mate availability treatment did not differ from the ages of the adult, virgin females in the low mate availability treatment (Mann Whitney U test: $N = 50$, $W = 288$, $p = 0.8167$).

While we controlled for the adult age, we were unable to match for body size, which is a common measure of female quality. To minimize potential effects of female quality, we used individuals from Southern France for which previous studies found that female body size had no effect on male mating decisions (Cory & Schneider, 2018). Males generally mated with the first female they encountered. Body sizes of the females that copulated in both treatments revealed no difference (t test: $N = 50$, $df = 48$, $t = -0.7504$, $p = 0.4567$).

Completion of the treatments required a considerable number of penultimate and virgin adults of similar age so that we had to use some females multiple times. We ensured that we only re-used females that had no contact with males in previous tests. Males and females were always unrelated, but in some tests, two of the four females were siblings.

Test arenas

The tests were conducted in test arenas (Fig. 1) simulating semi-natural conditions in which females were randomly distributed and males could move freely. The floor of the arenas was covered with fresh packing paper, on which males could easily walk. The backend of the arena had an air permeable window through which a ventilator produced a slight airflow to ensure pheromone flow within the arena. The starting point for males was at

the front end in a central position and consisted of a roughened plastic stick positioned with an inclination of approximately 45°. Each test arena was fitted with the same four applications to fix the frames with the females in identical positions (front, back and two in the middle). In the high mate availability treatment, the four females were randomly positioned on the four spots. In the low mate availability tests, the single adult, virgin female was always located in the front position closest to the male starting point, and the three penultimate females were randomly distributed to the remaining positions.

Test procedure

Between July 14 and August 16 2016, the experiments took place outside on the roof of the Institute of Zoology of the Universität Hamburg. We monitored the mating tests in up to eight test arenas that were placed underneath a waterproof pavilion roof. In clean and prepared arenas, males were gently placed on the top of the roughened plastic stick (starting point). The time males left the plastic stick was defined as the start of mate searching. Males that did not start their mate search within 45 min were replaced. Males that were caught at the edges of the arena were reintroduced to the starting point and the clock was restarted. Males that ended up in the web of a penultimate female in the low mate availability treatment were given the chance to leave this female for 45 min until they were reintroduced to the starting point. However, males that visited penultimate females might also choose an opportunistic mating strategy, in which they mate with females while they moult to sexual maturity and are defenceless (*Uhl et al., 2015*). To take this into account, we analysed our data with and without males that had contact to penultimate females. Since the results did not deviate from each other, we only present the analysis with the total sample size and provide the other results as [Supplemental Information 2](#).

During the mating tests, we monitored which female was visited, the duration of copulation and whether the male was cannibalized or not. We also scored whether surviving males copulated a second time with the first mating partner (monopolization) or whether they left the female. We defined that males left the female when there was no contact with the web or frame of the female and a clear absence of male dragline silk attachments for at least one hour. In such cases, we presumed an intention to continue mate searching and follow a bigynous tactic.

Statistical analysis

We used R (*R Developmental Core Team, 2014*) for data analyses. We performed parametric tests for normally distributed data and otherwise non-parametric tests.

Mate searching and localization

Our predictions rely on the assumption that males estimate the density of adult virgin females via sex pheromone quantity. Thus, mate searching and localization should also be influenced by the number of signalling females. We tested whether latencies until mate search started and the probability of reintroduction after 45 min differed between treatments. Several previous studies from our lab found no evidence for sequential male mate choice in *A. bruennichi* (*Schulte, Uhl & Schneider, 2010*). We nevertheless explored

with binomial tests whether male mate search was directed towards the largest, most attractive female, or to the closest female.

Copulation duration and sexual cannibalism

We generated multivariate models to test influences of main effects and covariates on different dependent variables. We simplified the model by removing one variable at a time. Afterwards, we compared each simplified model with the original model using likelihood ratio tests. One by one, we omitted all variables that led to non-significant changes of deviance and removed the least-significant variable first. In the end, we kept the model that successfully explained more variation in the data than the other models.

To test whether copulation duration depended on mate availability, we applied a Cox regression model using the package “survival” (Therneau, 2014). As further explanatory variables, we included female size (tibia-patella length), female condition (residuals of the linear regression between female test weight and female size; see Jakob, Marshall & Uetz, 1996) and the relative weight change of males between adulthood and test day. We used the relative weight change rather than the residual-based male condition that we used for females because earlier studies found a significant effect on male mating decisions (Cory & Schneider, 2018). In a separate Cox regression model with a reduced sample size (we could not measure the legs of four males), we also tested whether male size affected copulation duration.

To test whether mate availability affected the probability of sexual cannibalism, we applied a binary logistic regression. We used the same female and male traits as above.

Mating decisions in surviving males

The sample size of surviving males was fairly small, which was why we only conducted a Fisher exact test to explore whether males of the low mate availability treatment would rather stay with the first mating partner than to continue mate searching.

RESULTS

Mate searching and localization

In the low mate availability treatment, males started mate searching significantly later than in the high mate availability treatment (high mate availability: median = 32 s, interquartile range = 184 s; low mate availability: median: 266 s, interquartile range = 580 s; Mann–Whitney U test: $N = 50$, $W = 202$, $p = 0.0328$). Moreover, we found a tendency that males were more disoriented in the low mate-availability treatments, so that males had to be reintroduced to the starting point after 45 min more frequently than males in the high mate availability treatment (high mate availability: 16%; low mate availability: 56%; Pearson χ^2 test: $N = 50$, $\chi^2 = 3.4286$, $p = 0.0641$).

In the low mate availability treatment, 7 of 25 males visited a penultimate female first. A prior visit of a penultimate female had no effect on the rate of cannibalism (Fisher exact test: $N = 25$, $p = 0.6592$) or on the duration of copulation (Mann–Whitney U test: $N = 25$, $W = 76$, $p = 0.4584$) with the receptive female. In the high mate availability treatment, 48% of males mated with the closest female in the arena, which deviates significantly from

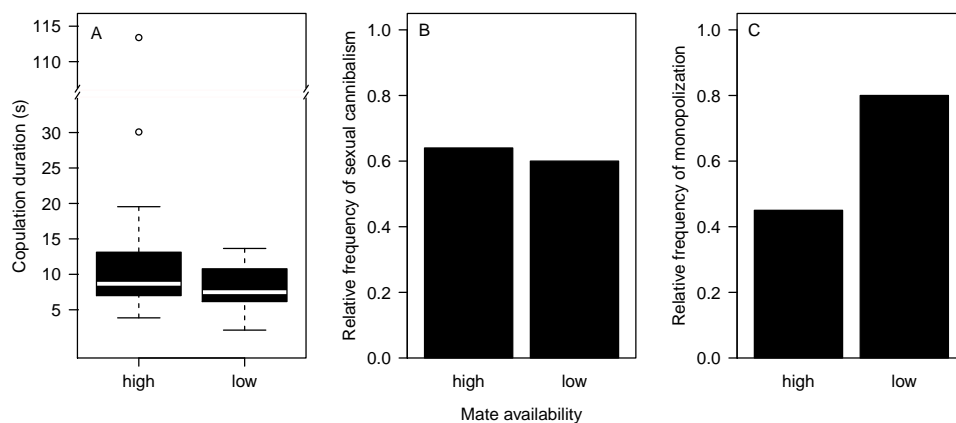


Figure 2 Effects of mate availability on mating behaviour. Effects of mate availability (high, low) on (A) the copulation duration (Cox regression: $N = 50$, $\text{Chi}^2 = 3.6061$, $p = 0.0576$); (B) the relative frequency of sexual cannibalism (logistic regression: $N = 50$, $\text{df-deviance} = 0.3082$, $p = 0.5788$); and (C) the relative frequency of males that survived the first copulation and copulated a 2nd time with the same female (monopolization) (Fisher exact test: $N = 19$, $p = 0.1698$).

Full-size DOI: [10.7717/peerj.5360/fig-2](https://doi.org/10.7717/peerj.5360/fig-2)

a 25% chance (Binomial test: $N = 25$, $p = 0.0178$). We found no evidence that males were more likely to visit the heaviest female (Binomial test: $N = 25$, $p = 0.4872$).

Copulation duration and cannibalism rate

Most males (90%) copulated less than 15 s (Fig. 2A) and one outlier male from the high mate availability treatment copulated for 113 s. The duration of copulation was not affected by mate availability or any other effect that we tested (Table 1) regardless of whether the outlier was included or not. Therefore, we kept this male in the final analysis. Unlike in previous studies using different populations from the same species (Fromhage, Uhl & Schneider, 2003; Welke & Schneider, 2010), copulation duration was not significantly associated with the probability of sexual cannibalism (Mann–Whitney U test: $N = 49$, $W = 327$, $p = 0.3944$). The overall rate of cannibalism was ca. 60% and did not significantly vary with mate availability (Fig. 2B; Table 2). The only significant predictor of sexual cannibalism was a large body size of males (Table 2, Fig. 3).

Mating decisions in surviving males

A total of 63.2% of the surviving males remated and monopolized the first mating partner. While nearly all males (eight of 10) stayed with the first mating partner in the low mate availability treatment, only four of the nine surviving males monopolized the female under high mate availability. However, the likelihood of monopolization did not significantly differ between treatments (Fig. 2C; Fisher exact test: $N = 19$, $p = 0.1698$), which might be due to the very small sample size.

DISCUSSION

Theory predicts that mating opportunities should strongly influence mating investment (Kokko & Rankin, 2006; Trivers, 1972). In *A. bruennichi*, males can increase their mating

Table 1 Results of the Cox regression model testing effects of mate availability (low, high) on the copulation duration ($N = 50$). The effect of male size was tested in a different model because the sample size was reduced ($N = 46$). The coefficients (coef) and their standard errors (se), and the hazard ratios ($\exp(\text{coef})$) are taken from the full model.

Effect	coef \pm se	exp(coef)	Chi ²	df	p
Availability of virgin ♀ (low)	0.5743 \pm 0.3166	1.7759	3.6061	1	0.0576
♀ size	0.0703 \pm 0.1177	1.0728	0.3567	1	0.5503
♀ condition	0.0052 \pm 0.0026	1.0052	3.0991	1	0.0783
♂ relative weight change	-2.0859 \pm 1.6427	0.1242	1.4882	1	0.2225

Effect	coef \pm se	exp(coef)	Chi ²	df	p
♂ size	0.1032 \pm 0.2499	1.1087	0.1683	1	0.6816

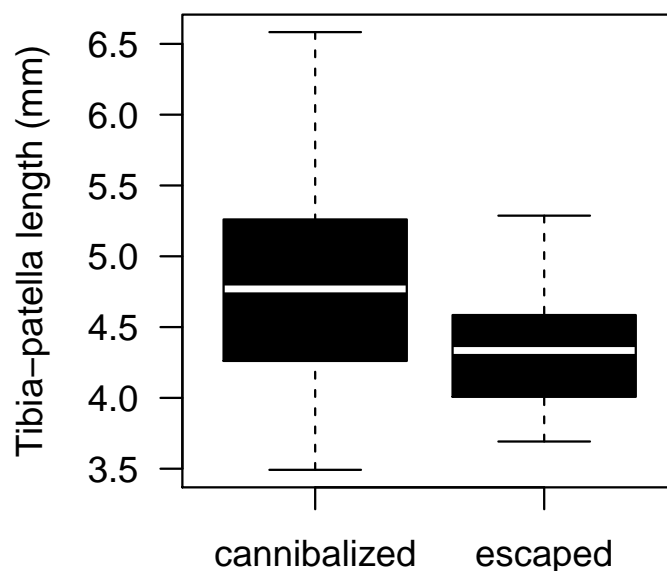
Table 2 Results of the binary logistic regression testing effects of mate availability (low, high) on the cannibalism rate ($N = 50$). The effect of male size was tested in a different model because the sample size was reduced ($N = 46$). The estimates and standard errors (SE) of the estimates are logit-transformed. Brackets show estimates and standard error of the full model and results of the minimal adequate model are without brackets.

Effect		Estimates \pm SE	df-deviance	df	p
Intercept	(Reference level: high availability)	(-3.0123 \pm 2.2115)			
	(low availability)	0.4895 \pm 0.2914			
Availability of virgin ♀	(low availability)	(-0.3185 \pm 0.6160)	0.3082	1	0.5788
♀ size		(0.4500 \pm 0.2861)	2.2874	1	0.1304
♀ condition		(-0.0023 \pm 0.0056)	0.1676	1	0.6822
♂ relative weight change		(-2.6694 \pm 3.8577.)	0.3953	1	0.5295

Effect	Estimates \pm SE	df-deviance	df	p
Intercept	-5.0451 \pm 2.7963			
♂ size	1.2490 \pm 0.6213	4.9700	1	0.0258

investment by prolonging copulation duration, which also increases the risk of sexual cannibalism. Due to their short mating season (Zimmer, Welke & Schneider, 2012), we expected that males would quickly respond to current information about mate availability. We predicted that under a low availability of adult, virgin females, males would copulate longer and be more often cannibalized than under a high availability of adult, virgin females. Under the latter condition, survival and a bigynous mating tactic would yield the largest fitness return. However, we found no evidence for a strategic adjustment of mating tactic to different levels of mate availability during mate searching.

Contrary to our predictions, neither the probability of sexual cannibalism nor the duration of copulation differed between high or low mate availability. Also, there was no significant evidence that males would leave the first mating partner after the first copulation and presumably engage a bigynous mating tactic when additional adult virgins were nearby. This was unexpected because low mate availability renders a bigynous mating tactic risky and a self-sacrificial strategy with a single, long copulation should be the safer option



Outcome of 1. copulation for males

Figure 3 Male size effect on sexual cannibalism. Males that were cannibalized by the female during their first copulation were larger in body size than males that escaped the female attack (logistic regression: $N = 50$, df -deviance = 4.97, $p = 0.0258$).

Full-size DOI: [10.7717/peerj.5360/fig-3](https://doi.org/10.7717/peerj.5360/fig-3)

to enhance male fitness. Even though frequency differences complied with the expected direction, sample size and power were likely too small to statistically verify the effect.

Despite our failure to detect any effect of mate availability on male mating investment, we suggest that variation in female availability is biologically relevant for *A. bruennichi* males. *A. bruennichi* is widespread in Europe and can occupy meadows in high densities (Bruggisser et al., 2012; Krehenwinkel & Tautz, 2013; Kumschick et al., 2011). While the spatial distribution of females may not be a problem, males have to deal with temporal changes in the availability of adult, virgin females (Zimmer, Welke & Schneider, 2012). As in many spider species, the availability of adult, virgin females is very low, especially in the beginning of the mating season, and the protandrous males strongly compete for access to the early maturing females (Elias, Andrade & Kasumovic, 2011). Moreover, the combination of male scramble competition and low mate rejection in females (Schneider et al., 2006) leads to a swift disappearance of virgin females from the mating pool. Thus, the density of adult, virgin females is very dynamic throughout the season, and it should be adaptive for males to integrate social information in their mating decisions. This might be most important for populations in Northern Europe where the mating season is very short. However, in this study, we used spiders derived from Mediterranean populations where seasonal constraints and competition may be less severe. We chose individuals from Southern Europe because unlike in Northern males, their mating decisions are not influenced by female body size (Cory & Schneider, 2018), for which we could not control

in our high mate availability treatment. In addition to this difference, Southern males also respond to female cues and shorten their developmental time to the presence of those (Cory & Schneider, 2018).

In contrast to our experiment, most studies tested effects of social experience on mating decisions. Here, individuals received social information (e.g., absence and presence of social cues) for a much longer period of time than in our study. It is well established that social information during development can affect life history traits and mating decisions (Kasumovic & Brooks, 2011; Rodriguez, Rebar & Fowler-Finn, 2013) such as mating preferences (Hebets, 2003; Rutledge, Miller & Uetz, 2010; Stoffer & Uetz, 2016). For instance, it was found that females of the wolf spider *Schizocosa ocreata* were more choosy as adults if they had a high encounter rate of males during development (Stoffer & Uetz, 2015). Hence, mate availability might have a strong impact on mating decisions, but individuals may need enough time to process social information.

We argue that male mating investment will strongly rely on information about adult, virgin female availability, particularly in mating systems where males are adapted to locate receptive females by sex pheromones. To account for this, we manipulated the number of adult, virgin females while leaving the density of webs with females constant. We used penultimate females in the low mate availability treatment because they do not produce the pheromone known for adult, virgin females (Chinta et al., 2010). However, absence and presence of a pheromone and the ability to distinguish do not necessarily mean that males cannot perceive the presence of penultimate females. In the field, males are often found in the vicinity of penultimate females and are known to copulate with them during their final moult (Zimmer & Schneider, 2016). This is beneficial for males because there is no risk of sexual cannibalism from a freshly moulted mate (Uhl et al., 2015). Accordingly, penultimate females do indeed promise future mating opportunities.

Although many studies found that spider males encounter penultimate females (Bel-Venner & Venner, 2006; Biaggio et al., 2016; Erez, Schneider & Lubin, 2005; Johnson, 2005), there is ample evidence that males more easily detect adult virgins than immature or mated females (Gaskett, 2007). In many species, including *A. bruennichi*, males recognize adult, virgin females by sex pheromones that are absent in subadult and mated females (Chinta et al., 2010; Gaskett, 2007; Thomas, 2011). In line with this, behavioural choice tests with *A. bruennichi* confirmed a preference for virgin females (Schneider et al., 2016; Schulte, Uhl & Schneider, 2010). Similar results were found in other spider species (Stoltz, McNeil & Andrade, 2007; Tuni & Berger-Tal, 2012; Watson, 1986). For instance, males of *Stegodyphus lineatus* showed less searching behaviour when presented to immature females than to adult, virgin females (Tuni & Berger-Tal, 2012). Our results agree with this finding. Under the low mate availability treatment, males waited longer until they moved and needed more attempts to find a female compared to males under high mate availability. This suggests that male sensory organs respond to increased quantity of pheromones.

Our low mate availability treatment simulated the beginning of the mating season, in which males could expect future mating chances with adult, virgin females. As the mating season proceeds, future mating chances become increasingly scarce because most females have moulted to adulthood and mated (Zimmer, Welke & Schneider, 2012). Thus,

we suggest that future studies should introduce a control treatment with double-mated females instead of penultimate females to simulate conditions late in the season. While females that had copulated once still offer mating opportunities, double-mated females have both copulatory openings plugged and in *A. bruennichi*, copulations into plugged genital openings are unlikely to return paternity gains (Nessler, Uhl & Schneider, 2007). We further suggest a second control-group, which only consists of a single adult, virgin female to test whether males are generally able to assess the presence of females independent of their developmental and mating state.

Another reason for our negative results could be that information about mate availability is not a reliable predictor of fitness, particularly in the absence of information about the degree of male competition. While it seems likely that *A. bruennichi* males can estimate mate availability by female sex pheromones, it is unknown whether males receive cues from other males to make informed decisions. Simultaneous mate choice experiments showed that *A. bruennichi* males do not modify their mate choice decisions in the presence of silk cues from rival males (Schneider et al., 2016). On the other hand, it was found that males decrease the duration of courtship if a rival male is present in the female web (Schneider & Lesmono, 2009). Similarly, males copulated longer and more likely plugged the female in the presence of a rival in the closely related species *Argiope lobata* (Hirt, Ruch & Schneider, 2017). We, therefore, propose that future studies with *A. bruennichi* should integrate information on male density either by testing it as a single factor or in relation to the sex ratio.

Contrary to several previous studies on *A. bruennichi*, we could not confirm the well-established positive relationship between copulation duration and cannibalism risk (Fromhage, Uhl & Schneider, 2003; Nessler, Uhl & Schneider, 2009; Schneider et al., 2006; Schneider & Lesmono, 2009; Welke & Schneider, 2010). We suggest that this interesting difference may be explained by differences in body size between populations. All previous studies used Northern populations, while we used individuals from the Mediterranean area that are larger and more heterogeneous in body size (Cory & Schneider, 2018; Krehenwinkel & Tautz, 2013). Since size differences between sexes matter in sexually cannibalistic spiders (Wilder & Rypstra, 2008), such differences might have affected our results. In contrast to previous studies, we detected size dependent male survival and a benefit of small male size. Observations suggest that larger males were less likely to escape because females were more successful in grasping larger males. A small size advantage of males in avoiding sexual cannibalism was already shown in other studies with spiders (Elgar, Schneider & Herberstein, 2000; Schneider & Elgar, 2001), although the opposite was also found (Elgar & Jones, 2008; Elgar, Schneider & Herberstein, 2000; Persons & Uetz, 2005). Possibly, size related survival differences between males have obscured the relationship between copulation duration and sexual cannibalism.

To our knowledge, this study is the first that tested immediate effects of different levels of mate availability on male investment in a mating system that strongly relies on chemical communication. Although chemical communication is involved in mating interactions of many species, the use of chemical cues is poorly understood (Wyatt, 2014). In comparison, we find many studies on mating systems where males can assess female availability by

vision (Barrett, Evans & Gasparini, 2014; Berglund, 1995; Lauer, Sih & Krupa, 1996). For instance, it was found that pipefish males (*Syngnathus typhle*) were only choosy if they were exposed to a high density of females during decision-making (Berglund, 1995). In line with this, a study on social experience in guppies (*Poecilia reticulata*) exposed males visually to a low or high female availability and found that, thereafter, large males showed a higher sexual interest in the current female if other mating opportunities were absent (Barrett, Evans & Gasparini, 2014). In contrast, water strider males (*Aquarius remiges*), that were housed under different density treatments with either females or males, only adjusted their pre-copulatory mating effort if they had experienced a high density of males before (Lauer, Sih & Krupa, 1996). Independent of whether social information was manipulated during or before male mating decisions were tested, this diversity of findings shows that future research should be based on an integrated framework of information about mate perception, mating constraints and ecological conditions.

CONCLUSION

Life history theory predicts a trade-off between the current and the future mating effort (Stearns, 2000). Which balance of investment maximizes fitness of males should strongly depend on prospective mating opportunities (Kokko & Rankin, 2006). However, adaptations to adjust investment to mate availability may only evolve if males can gain sufficient information about their social environment. Little is known about information use in a sensory world based on volatile chemicals particularly in the context of mating strategies. Because of their low maximal mating rate, males of sexually cannibalistic spiders are under strong selection to optimize their investment. More studies on such systems may prove useful to further our understanding of chemical information and how it is integrated into decision making. While several studies found that males gain social information through chemical cues by females (Gaskett, 2007; Greenfield, 1981; Holwell, Barry & Herberstein, 2007; Maxwell, Barry & Johns, 2010; Schulz, 2013) it is much less clear whether males can detect chemical cues of rival males. More studies are desired that address whether and how males can perceive rivals and integrate competition in their mating decision. For instance, male spiders may assess other males either by chemical cues or by silk threads that males leave behind during mate search. Besides proximate reasons, ecological and behavioural constraints resulting from the mating system (e.g., mating systems with sexual cannibalism) may also influence adaptations and prevent that males will flexibly respond to mate availability. Here, empirical studies could test whether an interaction between mate availability and risk of sexual cannibalism influences male mating decisions.

ACKNOWLEDGEMENTS

We thank Julia Becker, Tomma Dirks, Sebastian Franke, Onno Preik, Angelika Taebel-Hellwig and Leonie Schaum for their help with animal husbandry. We are particularly grateful to Tomma Dirks and Leonie Schaum for their support during the experimental

phase. We thank Stefanie Zimmer, Brent Stoffer and two anonymous referees for valuable comments on our manuscript.

ADDITIONAL INFORMATION AND DECLARATIONS

Funding

This work was funded by the Deutsche Forschungsgesellschaft (grant number Schn561/10). The funders had no role in study design, data collection and analysis, decision to publish, or preparation of the manuscript.

Grant Disclosures

The following grant information was disclosed by the authors:
Deutsche Forschungsgesellschaft: Schn561/10.

Competing Interests

The authors declare there are no competing interests.

Author Contributions

- Anna-Lena Cory conceived and designed the experiments, performed the experiments, analyzed the data, contributed reagents/materials/analysis tools, prepared figures and/or tables, authored or reviewed drafts of the paper, approved the final draft.
- Jutta M. Schneider conceived and designed the experiments, contributed reagents/materials/analysis tools, authored or reviewed drafts of the paper, approved the final draft.

Data Availability

The following information was supplied regarding data availability:
The raw data are provided in a [Supplemental File](#).

Supplemental Information

Supplemental information for this article can be found online at <http://dx.doi.org/10.7717/peerj.5360#supplemental-information>.

REFERENCES

- Alatalo RV, Höglund J, Lundberg A. 1991.** Lekking in the black grouse—a test of male viability. *Nature* **352**:155–156 DOI [10.1038/352155a0](https://doi.org/10.1038/352155a0).
- Anderson AG, Hebets EA. 2017.** Increased insertion number leads to increased sperm transfer and fertilization success in a nursery web spider. *Animal Behaviour* **132**:121–127 DOI [10.1016/j.anbehav.2017.08.007](https://doi.org/10.1016/j.anbehav.2017.08.007).
- Andersson M. 1994.** *Sexual selection*. Princeton: Princeton University Press.
- Andrade MCB. 1996.** Sexual selection for male sacrifice in the Australian redback spider. *Science* **271**:70–72 DOI [10.1126/science.271.5245.70](https://doi.org/10.1126/science.271.5245.70).
- Arnqvist G, Nilsson T. 2000.** The evolution of polyandry: multiple mating and female fitness in insects. *Animal Behaviour* **60**:145–164 DOI [10.1006/anbe.2000.1446](https://doi.org/10.1006/anbe.2000.1446).

- Bailey NW, Gray B, Zuk M. 2010.** Acoustic experience shapes alternative mating tactics and reproductive investment in male field crickets. *Current Biology* **20**:845–849 DOI [10.1016/j.cub.2010.02.063](https://doi.org/10.1016/j.cub.2010.02.063).
- Barrett LT, Evans JP, Gasparini C. 2014.** The effects of perceived mating opportunities on patterns of reproductive investment by male guppies. *PLOS ONE* **9**(4):e93780 DOI [10.1371/journal.pone.0093780](https://doi.org/10.1371/journal.pone.0093780).
- Barry KL. 2010.** Influence of female nutritional status on mating dynamics in a sexually cannibalistic praying mantid. *Animal Behaviour* **80**:405–411 DOI [10.1016/j.anbehav.2010.05.024](https://doi.org/10.1016/j.anbehav.2010.05.024).
- Bel-Venner MC, Venner S. 2006.** Mate-guarding strategies and male competitive ability in an orb-weaving spider: results from a field study. *Animal Behaviour* **71**:1315–1322 DOI [10.1016/j.anbehav.2005.08.010](https://doi.org/10.1016/j.anbehav.2005.08.010).
- Berglund A. 1995.** Many mates make male pipefish choosy. *Behaviour* **132**:213–218 DOI [10.1163/156853995x00702](https://doi.org/10.1163/156853995x00702).
- Berning AW, Gadd RDH, Sweeney K, MacDonald L, Eng RYY, Hess ZL, Pruitt JN. 2012.** Sexual cannibalism is associated with female behavioural type, hunger state and increased hatching success. *Animal Behaviour* **84**:715–721 DOI [10.1016/j.anbehav.2012.06.030](https://doi.org/10.1016/j.anbehav.2012.06.030).
- Biaggio MD, Sandomirsky I, Lubin Y, Harari AR, Andrade MCB. 2016.** Copulation with immature females increases male fitness in cannibalistic widow spiders. *Biology Letters* **12**(9):20160516 DOI [10.1098/rsbl.2016.0516](https://doi.org/10.1098/rsbl.2016.0516).
- Bruggisser OT, Sandau N, Blandenier G, Fabian Y, Kehrli P, Aebi A, Naisbit RE, Bersier LF. 2012.** Direct and indirect bottom-up and top-down forces shape the abundance of the orb-web spider *Argiope bruennichi*. *Basic and Applied Ecology* **13**:706–714 DOI [10.1016/j.baae.2012.10.001](https://doi.org/10.1016/j.baae.2012.10.001).
- Carroll SP, Corneli PS. 1995.** Divergence in male mating tactics between 2 populations of the soapberry bug. 2. Genetic change and the evolution of a plastic reaction norm in a variable social-environment. *Behavioral Ecology* **6**:46–56 DOI [10.1093/beheco/6.1.46](https://doi.org/10.1093/beheco/6.1.46).
- Chinta SP, Goller S, Lux J, Funke S, Uhl G, Schulz S. 2010.** The sex pheromone of the wasp spider *Argiope bruennichi*. *Angewandte Chemie—International Edition* **49**:2033–2036 DOI [10.1002/anie.200906311](https://doi.org/10.1002/anie.200906311).
- Cordts R, Partridge L. 1996.** Courtship reduces longevity of male *Drosophila melanogaster*. *Animal Behaviour* **52**:269–278 DOI [10.1006/anbe.1996.0172](https://doi.org/10.1006/anbe.1996.0172).
- Cory AL, Schneider JM. 2018.** Effects of social information on life history and mating tactics of males in the orb-web spider *Argiope bruennichi*. *Ecology and Evolution* **8**:344–355 DOI [10.1002/ece3.3672](https://doi.org/10.1002/ece3.3672).
- Cory A-L, Schneider JM. 2016.** Old maids have more appeal: effects of age and pheromone source on mate attraction in an orb-web spider. *PeerJ* **4**:e1877 DOI [10.7717/peerj.1877](https://doi.org/10.7717/peerj.1877).
- Danielson-Francois A, Hou C, Cole N, Tso IM. 2012.** Scramble competition for moulting females as a driving force for extreme male dwarfism in spiders. *Animal Behaviour* **84**:937–945 DOI [10.1016/j.anbehav.2012.07.018](https://doi.org/10.1016/j.anbehav.2012.07.018).

- DelBarco-Trillo J. 2011.** Adjustment of sperm allocation under high risk of sperm competition across taxa: a meta-analysis. *Journal of Evolutionary Biology* **24**:1706–1714 DOI [10.1111/j.1420-9101.2011.02293.x](https://doi.org/10.1111/j.1420-9101.2011.02293.x).
- Eberhard WG. 1994.** Evidence for widespread courtship during copulation in 131 species of insects and spiders, and implications for cryptic female choice. *Evolution* **48**:711–733 DOI [10.2307/2410481](https://doi.org/10.2307/2410481).
- Elgar MA, Crespi BJ. 1992.** Sexual cannibalism in spiders and other invertebrates. In: *Cannibalism: ecology and evolution among diverse taxa*. Oxford: Oxford University Press, 128–155.
- Elgar MA, Jones TM. 2008.** Size-dependent mating strategies and the risk of cannibalism. *Biological Journal of the Linnean Society* **94**:355–363 DOI [10.1111/j.1095-8312.2008.00986.x](https://doi.org/10.1111/j.1095-8312.2008.00986.x).
- Elgar MA, Nash DR. 1988.** Sexual cannibalism in the garden spider *Araneus diadematus*. *Animal Behaviour* **36**:1511–1517 DOI [10.1016/S0003-3472\(88\)80221-5](https://doi.org/10.1016/S0003-3472(88)80221-5).
- Elgar MA, Schneider JM. 2004.** Evolutionary significance of sexual cannibalism. *Advances in the Study of Behavior* **34**:135–163 DOI [10.1016/S0065-3454\(04\)34004-0](https://doi.org/10.1016/S0065-3454(04)34004-0).
- Elgar MA, Schneider JM, Herberstein ME. 2000.** Female control of paternity in the sexually cannibalistic spider *Argiope keyserlingi*. *Proceedings of the Royal Society B: Biological Sciences* **267**:2439–2443 DOI [10.1098/rspb.2000.1303](https://doi.org/10.1098/rspb.2000.1303).
- Elias DO, Andrade MCB, Kasumovic MM. 2011.** Dynamic population structure and the evolution of spider mating systems. In: Casas J, ed. *Advances in Insect Physiology* **41**:65–114 DOI [10.1016/B978-0-12-415919-8.00002-1](https://doi.org/10.1016/B978-0-12-415919-8.00002-1).
- Erez T, Schneider JM, Lubin Y. 2005.** Is male cohabitation costly for females of the spider *Stegodyphus lineatus* (Eresidae)? *Ethology* **111**:693–704 DOI [10.1111/j.1439-0310.2005.01090.x](https://doi.org/10.1111/j.1439-0310.2005.01090.x).
- Foellmer MW, Fairbairn DJ. 2005.** Competing dwarf males: sexual selection in an orb-weaving spider. *Journal of Evolutionary Biology* **18**:629–641 DOI [10.1111/j.1420-9101.2005.00868.x](https://doi.org/10.1111/j.1420-9101.2005.00868.x).
- Foster SP, Johnson CP. 2011.** Signal honesty through differential quantity in the female-produced sex pheromone of the moth *Heliothis virescens*. *Journal of Chemical Ecology* **37**:717–723 DOI [10.1007/s10886-011-9982-8](https://doi.org/10.1007/s10886-011-9982-8).
- Fromhage L, Elgar MA, Schneider JM. 2005.** Faithful without care: the evolution of monogyny. *Evolution* **59**:1400–1405.
- Fromhage L, Jennions MD. 2016.** Coevolution of parental investment and sexually selected traits drives sex-role divergence. *Nature Communications* **7**:12517 DOI [10.1038/ncomms12517](https://doi.org/10.1038/ncomms12517).
- Fromhage L, Schneider JM. 2005.** Virgin doves and mated hawks: contest behaviour in a spider. *Animal Behaviour* **70**:1099–1104 DOI [10.1016/j.anbehav.2005.02.020](https://doi.org/10.1016/j.anbehav.2005.02.020).
- Fromhage L, Schneider JM. 2012.** A mate to die for? A model of conditional monogyny in cannibalistic spiders. *Ecology and Evolution* **2**:2572–2582 DOI [10.1002/ece3.372](https://doi.org/10.1002/ece3.372).
- Fromhage L, Uhl G, Schneider JM. 2003.** Fitness consequences of sexual cannibalism in female *Argiope bruennichi*. *Behavioral Ecology and Sociobiology* **55**:60–64 DOI [10.1007/s00265-003-0656-6](https://doi.org/10.1007/s00265-003-0656-6).

- Gage MJG. 1995.** Continuous variation in the reproductive strategy as an adaptive response to population density in the moth *Plodia interpunctella*. *Proceedings of the Royal Society B: Biological Sciences* **261**:25–30 DOI [10.1098/rspb.1995.0112](https://doi.org/10.1098/rspb.1995.0112).
- Gaskett AC. 2007.** Spider sex pheromones: emission, reception, structures, and functions. *Biological Reviews* **82**:26–48 DOI [10.1111/j.1469-185X.2006.00002.x](https://doi.org/10.1111/j.1469-185X.2006.00002.x).
- Greenfield MD. 1981.** Moth sex pheromones: an evolutionary perspective. *Florida Entomologist* **64**:4–17 DOI [10.2307/3494597](https://doi.org/10.2307/3494597).
- Hebets EA. 2003.** Subadult experience influences adult mate choice in an arthropod: exposed female wolf spiders prefer males of a familiar phenotype. *Proceedings of the National Academy of Sciences of the United States of America* **100**:13390–13395 DOI [10.1073/pnas.2333262100](https://doi.org/10.1073/pnas.2333262100).
- Hirt K, Ruch J, Schneider JM. 2017.** Strategic male mating behaviour in *Argiope lobata*. *Animal Behaviour* **124**:27–34 DOI [10.1016/j.anbehav.2016.11.030](https://doi.org/10.1016/j.anbehav.2016.11.030).
- Hoefler CD. 2007.** Male mate choice and size-assortative pairing in a jumping spider, *Phidippus clarus*. *Animal Behaviour* **73**:943–954 DOI [10.1016/j.anbehav.2006.10.017](https://doi.org/10.1016/j.anbehav.2006.10.017).
- Holwell GI, Barry KL, Herberstein ME. 2007.** Mate location, antennal morphology, and ecology in two praying mantids (Insecta : Mantodea). *Biological Journal of the Linnean Society* **91**:307–313 DOI [10.1111/j.1095-8312.2007.00788.x](https://doi.org/10.1111/j.1095-8312.2007.00788.x).
- Hormiga G, Scharff N, Coddington JA. 2000.** The phylogenetic basis of sexual size dimorphism in orb-weaving spiders (Araneae, Orbiculariae). *Systematic Biology* **49**:435–462 DOI [10.1080/10635159950127330](https://doi.org/10.1080/10635159950127330).
- Hughes L, Chang BSW, Wagner D, Pierce NE. 2000.** Effects of mating history on ejaculate size, fecundity, longevity, and copulation duration in the ant-tended lycaenid butterfly, *Jalmenus evagoras*. *Behavioral Ecology and Sociobiology* **47**:119–128 DOI [10.1007/s002650050002](https://doi.org/10.1007/s002650050002).
- Jakob EM, Marshall SD, Uetz GW. 1996.** Estimating fitness: a comparison of body condition indices. *Oikos* **77**:61–67 DOI [10.2307/3545585](https://doi.org/10.2307/3545585).
- Jennions MD, Petrie M. 1997.** Variation in mate choice and mating preferences: a review of causes and consequences. *Biological Reviews of the Cambridge Philosophical Society* **72**:283–327 DOI [10.1017/s0006323196005014](https://doi.org/10.1017/s0006323196005014).
- Jennions MD, Petrie M. 2000.** Why do females mate multiply? A review of the genetic benefits. *Biological Reviews* **75**:21–64 DOI [10.1017/s0006323199005423](https://doi.org/10.1017/s0006323199005423).
- Johnson JC. 2005.** Cohabitation of juvenile females with mature males promotes sexual cannibalism in fishing spiders. *Behavioral Ecology* **16**:269–273 DOI [10.1093/beheco/arh152](https://doi.org/10.1093/beheco/arh152).
- Kasumovic MM, Andrade MCB. 2006.** Male development tracks rapidly shifting sexual versus natural selection pressures. *Current Biology* **16**:R242–R243 DOI [10.1016/j.cub.2006.03.017](https://doi.org/10.1016/j.cub.2006.03.017).
- Kasumovic MM, Brooks RC. 2011.** It's all who you know: the evolution of socially cued anticipatory plasticity as a mating strategy. *Quarterly Review of Biology* **86**:181–197 DOI [10.1086/661119](https://doi.org/10.1086/661119).

- Kokko H, Rankin DJ. 2006.** Lonely hearts or sex in the city? Density-dependent effects in mating systems. *Philosophical Transactions of the Royal Society B: Biological Sciences* **361**:319–334 DOI [10.1098/rstb.2005.1784](https://doi.org/10.1098/rstb.2005.1784).
- Krehenwinkel H, Tautz D. 2013.** Northern range expansion of European populations of the wasp spider *Argiope bruennichi* is associated with global warming-correlated genetic admixture and population-specific temperature adaptations. *Molecular Ecology* **22**:2232–2248 DOI [10.1111/mec.12223](https://doi.org/10.1111/mec.12223).
- Kumschick S, Fronzek S, Entling MH, Nentwig W. 2011.** Rapid spread of the wasp spider *Argiope bruennichi* across Europe: a consequence of climate change? *Climatic Change* **109**:319–329 DOI [10.1007/s10584-011-0139-0](https://doi.org/10.1007/s10584-011-0139-0).
- Kvarnemo C, Ahnesjo I. 1996.** The dynamics of operational sex ratios and competition for mates. *Trends in Ecology & Evolution* **11**:404–408 DOI [10.1016/0169-5347\(96\)10056-2](https://doi.org/10.1016/0169-5347(96)10056-2).
- Lauer MJ, Sih A, Krupa JJ. 1996.** Male density, female density and inter-sexual conflict in a stream-dwelling insect. *Animal Behaviour* **52**:929–939 DOI [10.1006/anbe.1996.0241](https://doi.org/10.1006/anbe.1996.0241).
- Linklater JR, Wertheim B, Wigby S, Chapman T. 2007.** Ejaculate depletion patterns evolve in response to experimental manipulation of sex ratio in *Drosophila melanogaster*. *Evolution* **61**:2027–2034 DOI [10.1111/j.1558-5646.2007.00157.x](https://doi.org/10.1111/j.1558-5646.2007.00157.x).
- Magrath MJL, Komdeur J. 2003.** Is male care compromised by additional mating opportunity? *Trends in Ecology & Evolution* **18**:424–430 DOI [10.1016/s0169-5347\(03\)00124-1](https://doi.org/10.1016/s0169-5347(03)00124-1).
- Maxwell MR, Barry KL, Johns PN. 2010.** Examinations of female pheromone use in two praying mantids, *Stagmomantis limbata* and *Tenodera aridifolia sinensis* (Mantodea: Mantidae). *Annals of the Entomological Society of America* **103**:120–127 DOI [10.1603/008.103.0115](https://doi.org/10.1603/008.103.0115).
- Moskalik B, Uetz GW. 2011.** Female hunger state affects mate choice of a sexually selected trait in a wolf spider. *Animal Behaviour* **81**:715–722 DOI [10.1016/j.anbehav.2010.12.016](https://doi.org/10.1016/j.anbehav.2010.12.016).
- Nessler SH, Uhl G, Schneider JM. 2007.** Genital damage in the orb-web spider *Argiope bruennichi* (Araneae : Araneidae) increases paternity success. *Behavioral Ecology* **18**:174–181 DOI [10.1093/beheco/arl074](https://doi.org/10.1093/beheco/arl074).
- Nessler SH, Uhl G, Schneider JM. 2009.** Scent of a woman—the effect of female presence on sexual cannibalism in an orb-weaving spider (Araneae: Araneidae). *Ethology* **115**:633–640 DOI [10.1111/j.1439-0310.2009.01646.x](https://doi.org/10.1111/j.1439-0310.2009.01646.x).
- Neumann R, Schneider JM. 2016.** Socially cued developmental plasticity in web-building spiders. *BMC Evolutionary Biology* **16**:170 DOI [10.1186/s12862-016-0736-7](https://doi.org/10.1186/s12862-016-0736-7).
- Oku K. 2009.** Effects of density experience on mate guarding behavior by adult male Kan-zawa spider mites. *Journal of Ethology* **27**:279–283 DOI [10.1007/s10164-008-0117-9](https://doi.org/10.1007/s10164-008-0117-9).
- Parker GA. 1970.** Sperm competition and its evolutionary consequences in insects. *Biological Reviews of the Cambridge Philosophical Society* **45**:525–567 DOI [10.1111/j.1469-185X.1970.tb01176.x](https://doi.org/10.1111/j.1469-185X.1970.tb01176.x).

- Persons MH, Uetz GW. 2005.** Sexual cannibalism and mate choice decisions in wolf spiders: influence of male size and secondary sexual characters. *Animal Behaviour* **69**:83–94 DOI [10.1016/j.anbehav.2003.12.030](https://doi.org/10.1016/j.anbehav.2003.12.030).
- R Developmental Core Team. 2014.** A language and environment for statistical computing. Vienna: R Foundation for Statistical Computing. Available at <https://www.R-project.org>.
- Rodriguez RL, Rebar D, Fowler-Finn KD. 2013.** The evolution and evolutionary consequences of social plasticity in mate preferences. *Animal Behaviour* **85**:1041–1047 DOI [10.1016/j.anbehav.2013.01.006](https://doi.org/10.1016/j.anbehav.2013.01.006).
- Rutledge JM, Miller A, Uetz GW. 2010.** Exposure to multiple sensory cues as a juvenile affects adult female mate preferences in wolf spiders. *Animal Behaviour* **80**:419–426 DOI [10.1016/j.anbehav.2010.05.027](https://doi.org/10.1016/j.anbehav.2010.05.027).
- Saeki Y, Kruse KC, Switzer PV. 2005.** Physiological costs of mate guarding in the Japanese beetle (*Popillia japonica* Newman). *Ethology* **111**:863–877 DOI [10.1111/j.1439-0310.2005.01106.x](https://doi.org/10.1111/j.1439-0310.2005.01106.x).
- Scharf I, Peter F, Martin OY. 2013.** Reproductive trade-offs and direct costs for males in arthropods. *Evolutionary Biology* **40**:169–184 DOI [10.1007/s11692-012-9213-4](https://doi.org/10.1007/s11692-012-9213-4).
- Scharff N, Coddington JA. 1997.** A phylogenetic analysis of the orb-weaving spider family Araneidae (Arachnida, Araneae). *Zoological Journal of the Linnean Society* **120**:355–434 DOI [10.1111/j.1096-3642.1997.tb01281.x](https://doi.org/10.1111/j.1096-3642.1997.tb01281.x).
- Schneider JM. 2014.** Sexual cannibalism as a manifestation of sexual conflict. *Cold Spring Harbor Perspectives in Biology* **6**(11):a017731 DOI [10.1101/cshperspect.a017731](https://doi.org/10.1101/cshperspect.a017731).
- Schneider JM, Elgar MA. 2001.** Sexual cannibalism and sperm competition in the golden orb-web spider *Nephila plumipes* (Araneoidea): female and male perspectives. *Behavioral Ecology* **12**:547–552 DOI [10.1093/beheco/12.5.547](https://doi.org/10.1093/beheco/12.5.547).
- Schneider JM, Fromhage L. 2010.** Monogynous mating strategies in spiders. In: Kappeler P, ed. *Animal behaviour: evolution and mechanisms*. Berlin: Springer, 441–464 DOI [10.1007/978-3-642-02624-9_15](https://doi.org/10.1007/978-3-642-02624-9_15).
- Schneider JM, Fromhage L, Uhl G. 2005.** Extremely short copulations do not affect hatching success in *Argiope bruennichi* (Araneae, Araneidae). *Journal of Arachnology* **33**:663–669 DOI [10.1636/s03-32.1](https://doi.org/10.1636/s03-32.1).
- Schneider JM, Gilberg S, Fromhage L, Uhl G. 2006.** Sexual conflict over copulation duration in a cannibalistic spider. *Animal Behaviour* **71**:781–788 DOI [10.1016/j.anbehav.2005.05.012](https://doi.org/10.1016/j.anbehav.2005.05.012).
- Schneider JM, Lesmono K. 2009.** Courtship raises male fertilization success through post-mating sexual selection in a spider. *Proceedings of the Royal Society B—Biological Sciences* **276**:3105–3111 DOI [10.1098/rspb.2009.0694](https://doi.org/10.1098/rspb.2009.0694).
- Schneider JM, Zimmer SM, Gatz AL, Sauerland K. 2016.** Context- and state-dependent male mate choice in a sexually cannibalistic spider. *Ethology* **122**:257–266 DOI [10.1111/eth.12466](https://doi.org/10.1111/eth.12466).
- Schulte KF, Uhl G, Schneider JM. 2010.** Mate choice in males with one-shot genitalia: limited importance of female fecundity. *Animal Behaviour* **80**:699–706 DOI [10.1016/j.anbehav.2010.07.005](https://doi.org/10.1016/j.anbehav.2010.07.005).

- Schulz S. 2013. Spider pheromones—a structural perspective. *Journal of Chemical Ecology* 39:1–14 DOI 10.1007/s10886-012-0231-6.
- Schwartz SK, Wagner WE, Hebets EA. 2013. Spontaneous male death and monogyny in the dark fishing spider. *Biology Letters* 9:20130113 DOI 10.1098/rsbl.2013.0113.
- Sparkes TC, Keogh DP, Pary RA. 1996. Energetic costs of mate guarding behavior in male stream-dwelling isopods. *Oecologia* 106:166–171 DOI 10.1007/bf00328595.
- Stearns SC. 2000. Life history evolution: successes, limitations, and prospects. *Naturwissenschaften* 87:476–486 DOI 10.1007/s001140050763.
- Stoffer B, Uetz GW. 2015. The effects of social experience with varying male availability on female mate preferences in a wolf spider. *Behavioral Ecology and Sociobiology* 69:927–937 DOI 10.1007/s00265-015-1904-2.
- Stoffer B, Uetz GW. 2016. Social experience affects female mate preferences for a visual trait in a wolf spider. *Behavioral Ecology* 27:252–261 DOI 10.1093/beheco/arv143.
- Stoltz JA, McNeil JN, Andrade MCB. 2007. Males assess chemical signals to discriminate just-mated females from virgins in redback spiders. *Animal Behaviour* 74:1669–1674 DOI 10.1016/j.anbehav.2007.03.011.
- Therneau T. 2014. A package for survival analysis in S. R package version 2.37-7. Available at <https://cran.r-project.org/web/packages/survival/index.html>.
- Thomas ML. 2011. Detection of female mating status using chemical signals and cues. *Biological Reviews* 86:1–14 DOI 10.1111/j.1469-185X.2010.00130.x.
- Trivers RL. 1972. Parental investment and sexual selection. In: *Sexual selection and the descent of man*. Chicago: Aldine Publishing Co., 136–179.
- Tuni C, Berger-Tal R. 2012. Male preference and female cues: males assess female sexual maturity and mating status in a web-building spider. *Behavioral Ecology* 23:582–587 DOI 10.1093/beheco/ars001.
- Uhl G, Nessler SH, Schneider J. 2007. Copulatory mechanism in a sexually cannibalistic spider with genital mutilation (Araneae : Araneidae : *Argiope bruennichi*). *Zoology* 110:398–408 DOI 10.1016/j.zool.2007.07.003.
- Uhl G, Nessler SH, Schneider JM. 2010. Securing paternity in spiders? A review on occurrence and effects of mating plugs and male genital mutilation. *Genetica* 138:75–104 DOI 10.1007/s10709-009-9388-5.
- Uhl G, Zimmer SM, Renner D, Schneider JM. 2015. Exploiting a moment of weakness: male spiders escape sexual cannibalism by copulating with moulting females. *Scientific Reports* 5:16928 DOI 10.1038/srep16928.
- Vahed K. 1998. The function of nuptial feeding in insects: review of empirical studies. *Biological Reviews of the Cambridge Philosophical Society* 73:43–78 DOI 10.1017/s0006323197005112.
- Watson PJ. 1986. Transmission of a female sex pheromone thwarted by males in the spider *Linyphia litigiosa* (Linyphiidae). *Science* 233:219–221 DOI 10.1126/science.3726530.
- Wedell N, Gage MJG, Parker GA. 2002. Sperm competition, male prudence and sperm-limited females. *Trends in Ecology & Evolution* 17:313–320 DOI 10.1016/s0169-5347(02)02533-8.

- Weir LK, Grant JWA, Hutchings JA. 2011.** The influence of operational sex ratio on the intensity of competition for mates. *American Naturalist* **177**:167–176 DOI [10.1086/657918](https://doi.org/10.1086/657918).
- Welke KW, Schneider JM. 2010.** Males of the orb-web spider *Argiope bruennichi* sacrifice themselves to unrelated females. *Biology Letters* **6**:585–588 DOI [10.1098/rsbl.2010.0214](https://doi.org/10.1098/rsbl.2010.0214).
- Welke KW, Schneider JM. 2012.** Sexual cannibalism benefits offspring survival. *Animal Behaviour* **83**:201–207 DOI [10.1016/j.anbehav.2011.10.027](https://doi.org/10.1016/j.anbehav.2011.10.027).
- Welke KW, Zimmer SM, Schneider JM. 2012.** Conditional monogyny: female quality predicts male faithfulness. *Frontiers in Zoology* **9**:7 DOI [10.1186/1742-9994-9-7](https://doi.org/10.1186/1742-9994-9-7).
- Wilder SM, Rypstra AL. 2008.** Sexual size dimorphism predicts the frequency of sexual cannibalism within and among species of spiders. *American Naturalist* **172**:431–440 DOI [10.1086/589518](https://doi.org/10.1086/589518).
- Wilder SM, Rypstra AL, Elgar MA. 2009.** The importance of ecological and phylogenetic conditions for the occurrence and frequency of sexual cannibalism. *Annual Review of Ecology Evolution and Systematics* 21–39.
- Wyatt TD. 2014.** *Pheromones and animal behavior: chemical signals and signatures*. 2nd Edition. New York: Cambridge University Press.
- Zimmer SM, Schneider JM. 2016.** Fine-scale spatial genetic structure suggests modest risk of inbreeding in natural populations of *Argiope bruennichi*. *Evolutionary Ecology Research* **17**:35–51.
- Zimmer SM, Welke KW, Schneider JM. 2012.** Determinants of natural mating success in the cannibalistic orb-web spider *Argiope bruennichi*. *PLOS ONE* **7**(2):e31389 DOI [10.1371/journal.pone.0031389](https://doi.org/10.1371/journal.pone.0031389).