

A new therocephalian (*Gorynychus masyutinae* gen. et sp. nov.) from the Permian Kotelnich locality, Kirov Region, Russia

Christian F Kammerer^{Corresp., 1}, Vladimir Masyutin²

¹ North Carolina Museum of Natural Sciences, Raleigh, North Carolina, United States of America

² Vyatka Paleontological Museum, Kirov, Russia

Corresponding Author: Christian F Kammerer
Email address: jonkeria@gmail.com

A new therocephalian taxon (*Gorynychus masyutinae* gen. et sp. nov.) is described based on a nearly complete skull and partial postcranium from the Permian Kotelnich locality of Russia. *Gorynychus* displays an unusual mixture of primitive (“pristerosaurian”) and derived (eutherocephalian) characters. Primitive features of *Gorynychus* include extensive dentition on the palatal boss and transverse process of the pterygoid, paired vomers, and a prominent dentary angle; derived features include the absence of the postfrontal. *Gorynychus* can be distinguished from all other therocephalians by its autapomorphic dental morphology, with roughly denticulated incisors and postcanines. Phylogenetic analysis recovers *Gorynychus* as a non-lycosuchid, non-scylacosaurid therocephalian situated as sister-taxon to Eutherocephalia. The identification of *Gorynychus* as the largest predator from Kotelnich indicates that therocephalians acted as apex predators in middle-late Permian transition ecosystems in Russia, corroborating a pattern observed in South African faunas. However, other aspects of the Kotelnich fauna, and Permian Russian tetrapod faunas in general, differ markedly from those of South Africa and suggest that Karoo faunas are not necessarily representative of global patterns.

A new therocephalian (*Gorynychus masyutinae* gen. et sp. nov.) from the Permian Kotelnich locality, Kirov Region, Russia

Christian F. Kammerer¹ and Vladimir V. Masyutin²

¹North Carolina Museum of Natural Sciences, 11 W. Jones Street, Raleigh, North Carolina, USA

²Vyatka Paleontological Museum, Spasskaya ulitsa 22, Kirov, Russia 610000

Correspondence to: C. F. Kammerer (christian.kammerer@naturalsciences.org)

Abstract. A new therocephalian taxon (*Gorynychus masyutinae* gen. et sp. nov.) is described based on a nearly complete skull and partial postcranium from the Permian Kotelnich locality of Russia. *Gorynychus* displays an unusual mixture of primitive (“pristerosaurian”) and derived (eutherocephalian) characters. Primitive features of *Gorynychus* include extensive dentition on the palatal boss and transverse process of the pterygoid, paired vomers, and a prominent dentary angle; derived features include the absence of the postfrontal. *Gorynychus* can be distinguished from all other therocephalians by its autapomorphic dental morphology, with roughly denticulated incisors and postcanines. Phylogenetic analysis recovers *Gorynychus* as a non-lycosuchid, non-scylacosaurid therocephalian situated as sister-taxon to Eutherocephalia. The identification of *Gorynychus* as the largest predator from Kotelnich indicates that therocephalians acted as apex predators in middle-late Permian transition ecosystems in Russia, corroborating a pattern observed in South African faunas. However, other aspects of the Kotelnich fauna, and Permian Russian tetrapod faunas in general, differ markedly from those of South Africa and suggest that Karoo faunas are not necessarily representative of global patterns.

27 **Keywords:** Synapsida, Therapsida, Therocephalia, Permian, Russia, phylogeny

28

INTRODUCTION

Terocephalians had perhaps the most unusual evolutionary trajectory of the major clades of non-mammalian therapsids. Whereas other therapsid groups remained relatively static in terms of niche occupation through time, terocephalians ‘reinvented’ themselves several times in their history, each time following mass extinctions. The earliest known terocephalians (Lycosuchidae and Scylacosauridae, historically united in the paraphyletic group “Pristerosauria”), which are best represented in middle Permian sediments of the Karoo Basin of South Africa, were large-bodied (skull length up to 40 cm) predators (Boonstra, 1969; van den Heever, 1980, 1994). Following the extinction of dinocephalians (including the gigantic, carnivorous anteosaurs) at the end of the Capitanian, terocephalians briefly served as the apex predators of the Karoo during the middle–late Permian transition represented by the *Pristerognathus* Assemblage Zone (AZ) (Kammerer, 2011; Abdala et al., 2014; Day et al., 2015). However, by the end of the *Pristerognathus* AZ lycosuchids and scylacosaurids were extinct, and the saber-toothed gorgonopsians had taken over as the dominant large-bodied therapsid predators (Smith et al., 2012; Kammerer et al., 2015). The surviving late Permian terocephalians all belong to the subclade Eutherocephalia, which were predominantly small-bodied animals (skull length ≤ 10 cm), many of which were likely insectivores (Mendrez, 1975; Kemp, 1986; Huttenlocker, 2009). A few eutherocephalians re-evolved large size and inferred macropredatory habits by the end of the Permian (e.g., the whaitsiid *Theriognathus* and the akidnognathid *Moschorhinus*), but these taxa died out as a result of the end-Permian mass extinction (*Moschorhinus* survived the main extinction pulse, but disappears from the record shortly thereafter, making it an example of a ‘dead clade walking’; Jablonski, 2002; Huttenlocker & Botha-Brink, 2013; Huttenlocker, 2014). Remarkably, despite major losses in the end-Permian mass extinction, terocephalians managed to reinvent themselves yet again, with a moderately successful third act as small-bodied herbivores (the Bauriamorpha) in the Early–Middle Triassic (Sigogneau-Russell & Sun, 1981; Abdala et al., 2014) before the clade was finally lost for good.

Basal therocephalians (lycosuchids and scylacosaurids) are the most common tetrapod predators in middle and earliest late Permian deposits in South Africa, with hundreds of known specimens (Smith et al., 2012) and 55 named species (although this number is clearly oversplit; van den Heever, 1987). By contrast, very few basal therocephalian fossils have been found in comparably-aged Laurasian rocks, despite extensive records of anomodonts, dinocephalians, and parareptiles from the middle Permian of China and Russia (Li 2001; Ivakhnenko 2003). No therocephalians have ever been found in middle Permian Chinese rocks. Historically, only a single species of therocephalian (*Porosteognathus efremovi*, a possible scylacosaurid from the Isheevo locality, Apastovskii District, Tatarstan) was known from the middle Permian of Russia (Vjuschkov 1955; Ivakhnenko 2011). Furthermore, *Porosteognathus* seems to be a minor component of the Isheevo assemblage, which is dominated by dinocephalians and venyukovioid anomodonts (many known from complete skulls and skeletons, whereas *Porosteognathus* is known only from isolated skull bones).

The earliest Russian assemblage preserving a substantial number of therocephalians is the Kotelnich locality in Kirov Region. Although known since the 1930s as a source of spectacularly-complete pareiasaur skeletons (Hartmann-Weinberg, 1937), therocephalians were not described from Kotelnich until the 1990s (Tatarinov, 1995a, 1995b, 1997, 1999). Now, however, they are the most species-rich tetrapod clade known from the site, with eight named species (*Chlynovia serridentatus*, *Karenites ornamentatus*, *Kotelcephalon viatkensis*, *Muchia microdonta*, *Perplexisaurus foveatus*, *Scalopodon tenuisfrons*, *Scalopodontes kotelnichi*, and *Viatkosuchus sumini*), although these may be somewhat oversplit (Ivakhnenko, 2011). The age of the Kotelnich assemblage is somewhat uncertain, with both middle and late Permian ages having been proposed (Tatarinov 2000; Benton et al. 2012). Currently, an early late Permian age is considered most likely, equivalent with the South African *Tropidostoma* AZ based on anomodont comparisons (Kurkin 2011). Benton et al. (2012) suggested equivalency between the Kotelnich assemblage and the *Pristerognathus* AZ. However, the described therocephalian

fauna of Kotelnich is composed entirely of euterocephalians (all of which other than *Viatkosuchus* are very small, i.e. <10 cm skull length), not the large scylacosaurids or lycosuchids characteristic of the *Pristerognathus* AZ in South Africa.

Here we describe a new taxon representing the first large, basal (i.e., non-euterocephalian) therocephalian from the Kotelnich locality. This species is represented by two specimens and is the largest known predatory therapsid from Kotelnich, indicating therocephalian occupation of apex predator niches in the Northern as well as Southern Hemisphere during the transition between middle and late Permian tetrapod faunas.

Nomenclatural acts

The electronic version of this article in portable document format (PDF) will represent a published work according to the International Commission on Zoological Nomenclature (ICZN), and hence the new names contained in the electronic version are effectively published under that Code from the electronic edition alone. This published work and the nomenclatural acts it contains have been registered in ZooBank, the online registration system for the ICZN. The ZooBank LSIDs (Life Science Identifiers) can be resolved and the associated information viewed through any standard web browser by appending the LSID to the prefix <http://zoobank.org/>. The LSID for this publication is: urn:lsid:zoobank.org:pub:CA4D73A1-8FA7-40DD-A464-621AC01421B6. The online version of this work is archived and available from the following digital repositories: PeerJ, PubMed Central, and CLOCKSS.

Institutional abbreviation

KPM, Vyatka Paleontological Museum, Kirov, Russia.

GEOLOGICAL CONTEXT

The Kotelnich locality is a rich, primarily tetrapod-bearing fossil assemblage in the Kirov region of European Russia. The first fossils from this locality were collected by A. P. Hartmann-Weinberg in the 1930s and consisted mainly of pareiasaurs, but more recent (1990s–present) excavations have revealed a substantially more diverse fauna. Several fossiliferous layers are present at the locality: the lowest red beds represent a more aquatic system which famously preserves numerous complete, fully articulated skeletons of the mid-sized pareiasaur *Deltavjatia rossica*. This level (the Vanyushonki Member of Coffa [1997]) has also produced the majority of synapsid finds, including spectacular examples such as the complete, articulated specimen of the small gorgonopsian *Viatkogorgon ivakhnenkoi* (Tatarinov, 1999) and the block of 15 skeletons of the arboreal anomodont *Suminia getmanovi* (Fröbisch and Reisz, 2011). Above this level the most common fossils are skulls and disarticulated skeletal material of the ouddenodontid dicynodont *Australobarbarus*. In addition to these “red beds”, lenses of later deposition, producing mainly plant and fish remains but also highly fragmentary tetrapods (primarily isolated teeth) are present at the top of the section (Benton et al., 2012).

The specimens of the new therocephalian described herein were all found in the lower red beds (Vanyushonki Member) of the Kotelnich locality. The holotype was discovered in 2008 by I. Shumov, 10.15 meters below the marker bed and 413 meters upstream from the village of Nizhnaya Vodskaya. These specimens were mechanically prepared by O. Masyutina and are housed in the collections of the Vyatka Paleontological Museum in Kirov.

SYSTEMATIC PALEONTOLOGY

Synapsida Osborn, 1903

Therapsida Broom, 1905

Therocephalia Broom, 1903

Gorynychus gen. nov.

LSID: urn:lsid:zoobank.org:act:CD10EB7C-57C0-45BA-8467-75309411E0DD

Type species: *Gorynychus masyutinae* sp. nov.

Etymology: Named for the legendary Russian dragon Zmey Gorynych (Змей Горыныч), in reference to the fearsome appearance of this taxon and its status as the largest known predator in the Kotelnich assemblage. Also a play on the English word 'gory' (meaning bloody) and the Ancient Greek ὄνυχος (Latinized 'onychus', meaning claw), in reference to this taxon's inferred behavior being 'red in tooth and claw.'

Diagnosis: As for type and only species.

***Gorynychus masyutinae* sp. nov.**

(Figs. 1–10)

LSID: urn:lsid:zoobank.org:act:105CB020-2584-4AD1-BF98-2B555EE69644

Holotype: KPM 346–349 (Figs. 1–8), a single individual (skull and cervical vertebrae in articulation, pectoral and rib elements disarticulated but directly associated with skull) broken into four pieces: KPM 346, a nearly complete skull (with damaged intertemporal region, occiput, and left temporal arcade) and lower jaws with the anterior 4 1/2 cervicals in articulation; KPM 347, postcranial elements including remaining half of fifth cervical (precise break, originally articulated with anterior portion) and worn sixth and seventh cervicals, ribs, partial clavicle, and left scapulocoracoid impression; KPM 348, isolated but associated incisor with intact crown; and KPM 349, isolated but associated incisor with damaged crown.

Paratype: KPM 291 (Figs. 9, 10), a block of fragmentary, disarticulated elements including the anterior portion of a partial right dentary, an isolated incisor, a jugal, at least four vertebrae, several ribs, a fibula, and various indeterminate bone fragments.

Etymology: Named in honor of Olga Masyutina for her skillful preparation of the holotype of this taxon, as well as numerous other important specimens from the Kotelnich locality.

Diagnosis: Therocephalian distinguished from all other members of the group by its autapomorphic dental morphology: all marginal teeth serrated, with serrations forming distinct denticles that are especially prominent on the incisors and postcanines. Postcanines 'spade'-shaped and reduced in number (three in the maxilla) relative to most therocephalians. Further distinguished from the other known Russian basal therocephalian *Porosteognathus efremovi* by a shorter tooth row on the pterygoid transverse process situated on a more discrete, raised boss and an anterolaterally-curved and expanded pterygoid palatal boss with fewer (8–9) teeth (transversely broad with ~14 teeth in *Porosteognathus*).

DESCRIPTION

The holotype is generally well preserved (Fig. 1), with good bone quality showing surface ornamentation and sutural boundaries on most of the snout and palate (Figs. 2–6). However, the skull is somewhat crushed, the left temporal arch is broken off, and the intertemporal region is badly eroded. The anterior five cervicals are reasonably well preserved (although the atlas is not exposed as prepared), but the subsequent members of the series are badly worn (Fig. 7). Other postcranial elements are broken and worn, and the scapulocoracoid is preserved mainly as an impression (Fig. 8). The paratype is a single block of disarticulated, fragmentary elements (Fig. 9), although most of these elements show good bone preservation (Fig. 10). One of these elements, an isolated incisor with intact crown, can confidently be referred to *Gorynychus masyutinae* based on the presence of very large, curved denticles on its mediodistal edges. The dentary fragment also has a tall, robust symphysis identical to that of the holotype; although it is possible this could represent a gorgonopsian, the only gorgonopsians known from this locality are much smaller and actually have weakly-developed dentary symphyses. Given the absence

of any other material that is not consistent with identification as *Gorynychus* and the lack of overlapping elements, this set of fossils is interpreted to be the remains of a single *Gorynychus* individual.

Cranium

The cranium of KPM 346 is 173 mm in standard basal length (from anteroventral edge of premaxilla to posteroventral edge of occipital condyle) and 208 mm in total dorsal length (from tip of snout to edge of temporal fenestra).

The palatal portion of the premaxilla is not exposed in the holotype because of occlusion of the lower jaw. The only information available concerning the ventral surface of the premaxilla comes from the edges of the incisor alveoli. Based on this, *Gorynychus* appears to have had an upper incisor count of five. Although no incisors are preserved in place, two isolated teeth (KPM 348 and 349) preserved in association with the skull have root proportions identical to the empty alveoli and are here interpreted as the upper incisors. Only one of these teeth (KPM 348) preserves an intact crown (Fig. 2C). The crown of KPM 348 is elongate, triangular, and weakly recurved with prominent mesiodistal serrations forming distinct denticles. The morphology of these denticles is unique among therocephalians: they are extremely prominent, extend from the tip of the crown right to the root, and each individual denticle is curved in the apical direction. This only comparable morphology among therocephalians occurs in the postcanines of this same specimen. The facial surface of the premaxilla is overlain by the maxilla posteriorly, near the point between the alveoli for I4 and I5 (Figs. 2, 4, 5). The bone surface of the premaxilla is rugose, with a series of well-developed foramina located 3–4 mm above the alveolar margin. Anteriorly, three foramina are situated in a distinct channel that originates vertically beneath the internarial bar then curves posterolaterally (Fig. 2B). The first and third foramina in this channel are small (<1 mm diameter), but the second is large (1 mm diameter) and situated deep inside the groove. Posterior to this channel, several additional foramina are present on the lateral face

of the premaxilla. The internarial bar is angled somewhat anteriorly, such that the snout comes to a distinct ‘point’ in lateral view (Fig. 4). The ascending ramus of the premaxilla frames the anterodorsal border of the external naris and terminates near the posterodorsal narial border.

The septomaxilla consists of a broad ventral plate making up the base of the external naris, a constricted intranarial portion, and a facial process extending between the maxilla and nasal (Figs. 2, 4, 5). The ventral plate is situated immediately dorsal to the premaxillary-maxillary suture. Immediately ventral to this plate is a large, ovoid foramen (1.5 mm diameter) that spans the premaxillary-maxillary suture. A weak groove extends anterior to this foramen for the length of the ventral plate of the septomaxilla. The constricted intranarial portion of the septomaxilla separates the main portion of the external naris from the maxillo-septomaxillary foramen. It has a pointed, anteromedially-directed anterior process as is typical of therocephalians, but not an expanded transverse lamina as in gorgonopsians. Posterodorsally, the septomaxilla makes a broad, irregular contribution to the facial portion of the snout. This facial process notably does not make up the entire posterior margin of the external naris—the nasal occupies the posterodorsal narial corner (Fig. 2B).

The maxilla is a tall, gently curved bone making up the main lateral surface of the snout (Figs. 4, 5). The facial surface of the maxilla is intensely sculptured with shallow, crater-like structures and small foramina, similar to that of some other basal therocephalians (see, e.g., Abdala et al., 2008). A labial emargination is absent, unlike in *Lycosuchus*. The posterior terminus of the maxilla is a process under the jugal that reaches the midpoint of the orbit. The tip of this process is notably expanded and rugose, but the majority of this process is notable for lacking the dermal sculpturing so prominent on the rest of the maxilla and bearing a weak lateral groove. The maxilla houses four teeth: the enlarged, blade-like canine and three small postcanines. The canine is recurved and has well-developed serrations fore and aft, as is usual in basal therocephalians (van den Heever, 1994; Abdala et al., 2014). Only a single canine is erupted on each side; unlike the usual condition in lycosuchids and a frequent condition in

scylacosaurids, there are not simultaneously-occupied anterior and posterior canine alveoli. The tip of a replacement canine is erupting anterior to the right canine, however. The postcanine morphology of *Gorynychus* is unique among therocephalians—these teeth are labiolingually compressed and ‘leaf’ or ‘spade-shaped’, with proportionally large denticles (serrations) along both mesial and distal edges. Although these denticles are not as large or exaggeratedly curved as those on the incisors, they still show distinct curvature (unlike the finer, straight serrations on the canine). As for the premaxilla, the palatal surface of the maxilla is for the most part not visible in this specimen.

The nasal is a long, flat bone (Figs. 2–5). It also bears dermal sculpturing, albeit developed to a lesser degree than in the facial portion of the maxilla. Dermal sculpturing to some degree is present on all the bones of the snout, including (albeit very weakly) on the facial portion of the jugal. The naso-frontal suture is gently bowed posteriorly and terminates near the anterior margin of the orbit.

The prefrontal is a roughly trapezoidal bone making up part of the snout and the anterodorsal margin of the orbit (Figs. 3–5). Its contribution to the orbital rim is unusually pronounced and rugose. This is also true for the lacrimal, jugal, and frontal, such that that the circumorbital rim is very prominent everywhere but on the postorbital bar. Anteriorly, the prefrontal terminates in a short, blunt process extending between the maxilla and nasal. The prefrontal makes up a large portion (roughly half) of the anterior face of the orbital wall, and appears to exclude the frontal from contacting the lacrimal.

The lacrimal is a large facial bone, nearly equivalent in height to the prefrontal albeit not as anteroposteriorly long (Figs. 4, 5). A similarly-sized lacrimal is also present in *Lycosuchus*, and although this bone is less dorsoventrally expanded in scylacosaurids it is of similar anteroposterior dimensions in that group as well (van den Heever, 1994). A large (1.5 mm diameter) lacrimal foramen is present on its contribution to the anterior orbital wall; this foramen

does not exit onto the lateral surface. A second, smaller lacrimal foramen may be present ventral to the first, but this is uncertain because of damage.

The jugal makes up the majority of the zygomatic arch (Fig. 4). Its facial portion is an attenuate process terminating below the lacrimal, posterior to the anterior lacrimal margin. Its facial portion is remarkably small for an early theriodont. In gorgonopsians, the jugal typically terminates in a broad, plate-like contribution to the snout equalling (or exceeding) the lacrimal in anterior extent (see, e.g., Kammerer, 2015; Kammerer et al., 2015). In *Lycosuchus* and other early therocephalians, the facial portion of the jugal terminates well posterior to the anterior edge of the lacrimal, but still forms a tall plate on the snout and occupies almost the entire ventral margin of the orbit (van den Heever, 1994). The jugal is constricted beneath the posterior margin of the orbit, before expanding to form a major part of the postorbital bar. In the postorbital bar, an ascending process of the jugal extends dorsally between the postfrontal anteriorly and a narrow lamina of the postorbital posteriorly. Posterior to the postorbital bar the jugal makes a tall contribution to the subtemporal bar, narrowing posteriorly and curving downwards. In the posterior half of the subtemporal bar, the jugal is bifurcated by an anterior process of the squamosal. The ventral portion of the jugal extends nearly to the back of the skull, and has a weakly bulbous terminus. In addition to being preserved in the holotype, an isolated jugal is present on the paratype block (Fig. 9), identifiable by the characteristic subtemporal curvature and well-developed process contributing to the postorbital bar.

The squamosal is preserved mainly in its zygomatic ramus (Fig. 4), as the occiput and intertemporal region are poorly preserved in this specimen (Fig. 1). It has a deep and fairly restricted squamosal sulcus, giving it a ‘forked’ appearance in lateral view. Medially, it forms the posterior portion of the lateral margin of the temporal fenestra (anteriorly, this margin is formed by the jugal).

The frontal is a mostly-flat bone making up the interorbital skull roof (Fig. 3). The medial portion of the frontal is damaged in this specimen, but its contribution to the orbit is well

preserved and shows that it was only weakly ornamented dorsally, until the very edge of the orbit (in which it is expanded and rugose, like most of the circumorbital rim). The suture between the frontal and postfrontal is poorly preserved and difficult to interpret, but it appears that the frontal makes only a narrow contribution to the dorsal orbital wall (Fig. 4), as in *Lycosuchus* (van den Heever, 1994).

A distinct postfrontal is absent in *Gorynychus*; this element may be fused with the postorbital. The postorbital makes up a broad portion of the skull roof at the posterodorsal margin of the orbit and continues as a posterior ramus making up the medial face of the temporal fenestra (Figs. 3, 4). The latter ramus is badly damaged in this specimen, like most of the posterior skull roof, and its posterior terminus and surface texture is indeterminable. The intertemporal bar is narrow, as its typical of therocephalians. However, this region is too damaged to determine its exact proportions or presence/absence of the pineal foramen or sagittal crest. The occiput is even more badly damaged, being worn off entirely dorsal to the occipital condyle (Fig. 5).

The vomer is not exposed anteriorly, but its posterior interchoanal portion is a tall, narrow blade, like that of scylacosaurids and unlike the broad, vaulted morphology of *Lycosuchus* (Fig. 6). The vomer is paired—a distinct mid-vomerine suture is visible in the interchoanal portion. Posteriorly, the vomer forms a broad, triangular contribution to the palate, extending between the palatines to contact the anterior margin of the pterygoids posteriorly. An elongate palatal depression or fossa is present medially, originating near the anterior edge of the plate-like palatal portion of the vomer and extending posteriorly until it reaches the transverse processes of the pterygoids. Although the depth of this structure is likely exaggerated by lateral compression in this specimen, its presence is natural.

The palatine is the largest bone of the palate (Fig. 6). It is a topologically complex element composed of a laminar anterior process the forms much of the lateral margin of the choana and a broad main portion with a prominent central ridge bounded by medial and lateral

depressions. This central ridge extends anterolaterally to posteromedially and is confluent posteriorly with a ridge on the pterygoid, terminating with the palatal boss. A suborbital fenestra, characteristic of therocephalians, is present at its posterolateral margin, bounded posteriorly by the pterygoid. Presumably it is also bounded laterally by the ectopterygoid, but this element is indistinct if present, probably due to poor preservation of the lateral margins of the palate.

As is typical of early therapsids, the pterygoid consists of three distinct processes: palatal, transverse, and quadrate (Fig. 6). The palatal portion of the pterygoid has an anteromedial-to-posteromedially-angled, strongly interdigitated suture with the palatine. Anteriorly it forms a short portion of the prominent palatal ridges (central ridge of palatine) before expanding into the dentigerous palatal bosses posteriorly. Dentigerous palatal bosses are ancestral for therapsids; although they are present in scylacosaurids and even various eutheriocephalians (van den Heever, 1994; Huttenlocker & Smith, 2017), they are absent in lycosuchids (*Lycosuchus* and *Simorhinella*) (Abdala et al., 2014). The palatal boss is 'teardrop'-shaped, with a narrow posterior tip and broad, rounded anterior. It is curved anterolaterally. The boss bears two tooth rows. On the left palatal boss (the more completely preserved of the two), the posterior tooth row follows the curve of the boss and is made up of five teeth. The anterior tooth row is transversely oriented and is made up of four teeth, for a total of nine (six are present on the right boss, but as mentioned this boss is damaged and this is probably not the complete complement of teeth). The transverse process of the pterygoid extends ventrolaterally: it has a broad base medially, constricts in ventral view towards its midpoint, and then expands into a rounded lateral tip where it braces the mandible. The anterior face of the transverse process bears a broad, shallow depression. Unlike most therocephalians, but similar to lycosuchids, the transverse process is dentigerous in *Goronychus*. Unlike *Lycosuchus* and *Simorhinella*, however, where the tooth row is relatively long (five teeth) and the teeth erupt directly from the main ramus of the transverse process, in *Goronychus* there are only 2–3 teeth situated on discrete, ovoid bosses raised above the medial bases of the transverse processes.

On the right transverse process there are only two teeth, a large lateral and small medial one; on the left there are three teeth of equal size, similar to the small one of the right. No interpterygoid vacuity is present; although there is a weak depression between the transverse processes medially, it is entirely bounded by bone dorsally. The quadrate process of the pterygoid is situated dorsal to the transverse process. It extends posterolaterally from a position near the medial base of the transverse process towards the quadrate, weakly curving along its length. The anterolateral margin of the quadrate process forms a tall, narrow ridge; posteromedially it forms a broad, concave plate bounding the lateral edge of the parasphenoid rostrum.

The parasphenoid-basisphenoid complex forms a narrow median rostrum originating behind the transverse processes of the pterygoids and extending posteriorly to the basal tubera (Fig. 6). Although tall and blade-like posteriorly, the anterior two-thirds of this rostrum are divided by a narrow median groove. The posterior terminus of the rostrum is abrupt, with a sharp drop to the base of the basal tubera (typical of early therocephalians) instead of a gradual decrease in height. Dorsally, the parasphenoid forms a narrow median lamina above the pterygoid, forming part of the mid-orbital plate (Fig. 5). Dorsal to this anteriorly is a tall, laminar bone interpreted as the orbitosphenoid, which extends dorsally to contact the frontal-postfrontal wall of the orbit. Dorsal to it posteriorly is the epipterygoid, which has an anteroposteriorly broad footplate ventrally that sits atop the parabasisphenoid. The ascending process of the epipterygoid narrows dorsally before expanding again at its contact with the ventral face of the parietal. The basal tubera are broadly separated by a median depression (Fig. 6). They are relatively slender and angled medially at their posterior end instead of forming distinct 'rings' (as in dicynodonts). The left stapes is preserved in place, extending from the basal tuber to near the quadrate. The stapes is dorsoventrally narrow but anteroposteriorly broad, although narrowing along its length laterally (similar to *Lycosuchus*). No foramen or dorsal process is visible, but

these could be obscured by matrix. The basioccipital forms a plate posterior to the basal tubera and terminates in the occipital condyle, which is similar to that of other early therocephalians.

The dentary is a massive, robust bone with a tall, well-developed symphysis more similar to that of gorgonopsians than other early therocephalians (Figs. 2, 4, 5, 10A). The anterior face of the symphysis is densely foraminated. The roots of at least three incisors are exposed due to damage to the right dentary (Fig. 4), but it is probable that more were present, given that these three do not occupy the entirety of the symphyseal length. The crowns of the lower incisors are not exposed. The lower canine is not exposed in the holotype but is well-preserved in the disarticulated dentary fragment in the paratype (Figs. 9, 10A). The lower canine is a tall, recurved tooth with well-developed fore and aft serrations. It is proportionally large, taking up much of the alveolar margin of the symphysis. Based on this position, it would have been situated anterior to the upper canine when in occlusion with the cranium. The lower postcanines are mostly obscured in both known specimens of *Gorynychus*, only a single small lower postcanine can be seen on the right mandibular ramus anterior to the upper PC1 in the holotype. This postcanine is smaller than any of the upper postcanines (2 mm apicobasal length, versus 4 mm in the uppers) but is otherwise identical in morphology, being 'spade'-shaped with well-developed denticulation. The dentary is constricted behind the symphysis, then expands posteriorly, with a well-developed angular process (Fig. 4). The dorsal and ventral margins have raised edges, and a distinct lateral fossa is present between them, extending anteriorly almost to the level of the symphysis. Although superficially similar to the masseteric fossa of cynodonts, this fossa is likely non-homologous; there is no evidence that the superficial masseter was present in therocephalians. The raised ventral margin of the dentary terminates posteriorly in a broad, flattened rugose region serving as the attachment site for adductor musculature. The coronoid process extends freely above the postdentary bones and has a broad posterodorsal terminus, as in the other basal therocephalians (van den Heever, 1994).

Unlike *Lycosuchus*, however, in which the posterior edge of the coronoid process is broadly rounded, in *Gorynychus* this edge is concave.

The postdentary bones are damaged on both sides of the skull: the surangular and articular are more complete on the right side but the reflected lamina of the angular is broken off ventrally; the surangular and posterior portion of the angular are broken off on the left side but the reflected lamina is more complete (Figs. 4, 5). In general, the postdentary elements are very similar to those of lycosuchids and scylacosaurids. The reflected lamina is large and occupies the entire lateral surface of the angular (typical of early therapsids, but distinct from gorgonopsians in which it is widely separated from the articular). The surface structure of the reflected lamina is typical of early therocephalians: an anterodorsal depression becoming a single broad ridge posteroventrally that then ramifies into ventral and posterior ridges. The surangular is exposed laterally as a narrow, curved element atop the angular, contacting the articular posteroventrally. A short angle is present at the posterior base of the coronoid process of the dentary where it overlies the surangular, and the dentary is weakly raised laterally anterior to this point, accommodating the internal anterior process of the surangular. The splenial is a tall, 'ribbon'-like bone occupying the medial face of the anterior portion of the jaw ramus (Fig. 6). It lacks any lateral exposure, being restricted to the internal surface of the jaw. It covers almost all of the medial surface of the dentary anteriorly, but decreased in height posteriorly before terminating at the level of the transverse process of the pterygoid. Dorsal to the splenial is a narrow, laminar bone: the prearticular. This element broadens posteriorly and becomes more raised and rod-like posterior to the dentary, terminating in an indistinct contact with the articular. Dorsal to the prearticular at roughly the mid-length of the jaw ramus is a short, narrow, laminar element interpreted as being the coronoid. The articular is poorly preserved on both sides in this specimen, but a bulbous, cup-like terminus articulating with the (equally poorly preserved) quadrate can be discerned in medial view on the left side (Figs. 4, 6). Although mostly worn off, the base of a large retroarticular process is present.

Postcranium

Little of the postcranium is preserved in the holotype of *Gorynychus masyutinae*. The majority of the cervical series is preserved in articulation with the skull and some ribs and pectoral elements are preserved posterior to this (Fig. 1). The atlas-axis complex is somewhat damaged and obscured by the skull and surrounding matrix and C5-7 are broken and badly worn, but C3 and 4 are well-preserved and exposed on both sides (Fig. 7). The cervical vertebrae are amphicoelous (except, presumably, the atlas) and are separated ventrally by small, wedge-shaped intercentra. The transverse processes are short and blunt. At least one cervical rib is preserved on the right side of the specimen in association with but disarticulated from vertebra C3. This rib has a broadly falcate head and mediolaterally narrow main body. Well-developed, stout prezygapophyses (12 mm anteroposterior length) extending anterior to the centra are present in C3 and 4, contacting the associated postzygapophyses of the anterior vertebrae ventrally (and slightly laterally, as the prezygapophysis bulges out somewhat at its anterodorsal edge). No anapophyses are present. The neural spines of C3 (17 mm tall) and 4 are constricted immediately above their point of origin but expand dorsally into broad, rounded tips (15 mm wide in C3). The axial neural spine is definitely anteroposteriorly broader than that of the subsequent vertebrae (Fig. 7), but its exact dimensions (including height relative to subsequent neural spines) are uncertain due to crushing. An isolated vertebra interpreted as the axis in the paratype KPM 291 preserves a tall, broad neural spine (Fig. 9), suggesting that the axial spine was substantially taller and broader than subsequent neural spines, as is typical for theriodonts (Jenkins, 1971). The other vertebrae preserved in KPM 291 have relatively lower, longer centra and shorter neural spines (Fig. 10B) than those of C3 and 4 in the holotype. They likely represent dorsals or even anterior caudals, although most are too poorly preserved to identify with any confidence.

The non-vertebral postcranial elements in the holotype are mostly damaged (Fig. 8) The remains of at least eight ribs are present, but little of their morphology is exposed other than simple, curved shafts. A robust, curved elongate bone exposed in worn cross-section probably represents the clavicle, but nothing more about its morphology can be said. The left scapulocoracoid is preserved almost entirely as impression (there is a small chunk of actual bone from the anterior margin of the procoracoid). This impression shows that the coracoid-procoracoid base of the structure was very anteroposteriorly broad. The scapula is broad ventrally but narrows markedly dorsally, where it curves anteriorly at tip. A prominent ridge on the scapula originates at the posterior margin of this element before curving anteriorly along the length of the scapular spine. An elongate bone preserved in the paratype (Fig. 9) is here identified as a fibula. This element lacks the curvature seen in the cervical-thoracic ribs on this block and in KPM 347, and is too long to be a lumbar rib. Additionally, it is expanded at both ends, unlike a rib. The morphology of this element is identical to the fibula in other therocephalians, in which it is usually a narrow, simple bone (Fourie & Rubidge, 2009).

PHYLOGENETIC ANALYSIS

Gorynychus masyutinae was coded into the most recent analysis of therocephalian interrelationships, that of Huttenlocker & Smith (2017). This analysis includes 57 taxa (including the newly-added *Gorynychus*) and 136 discrete-state characters (available as Supplemental Data). Analysis was undertaken using heuristic searching in PAUP* (Swofford, 2002) v.4.0a (build 159), treating *Biarmosuchus tener* as the outgroup. All characters were treated as unordered following Huttenlocker & Smith (2017). Bootstrap analysis was done using “fast” stepwise addition for 1000 replicates.

1260 most parsimonious trees of length 389 were recovered (consistency index=0.429, retention index=0.785). The strict consensus tree recovers *Gorynychus masyutinae* as the sister-taxon of Eutherocephalia (i.e., Akidnognathidae+Whaitsioidea+Baurioidea) (Fig. 11). The

addition of *Gorynychus* adds substantial instability to the analysis of Huttenlocker & Smith (2017), notably with the complete collapse of Whaitsioidea (although a core Hofmeyriidae composed of *Hofmeyria*, *Ictidostoma*, and *Mirotenthes* is retained). Unusually, *Perplexisaurus* falls outside of Eutherocephalia in the current analysis, occupying the node between Scylacosauridae and (*Gorynychus*+Eutherocephalia). This is probably attributable to the extremely fragmentary nature of *Perplexisaurus*, which otherwise is very similar to *Karenites* and probably closely related.

The breakdown of one of the major eutherocephalian clades (Whaitsioidea) as the sole result of adding *Gorynychus* to the dataset indicates remarkably poor support for a group that, on a strictly gestalt basis, seems to be very well-characterized. This problem can likely be blamed on extensive homoplasy in Eutherocephalia, as well as the need for additional sources of phylogenetic data. Only 19/136 characters in Huttenlocker & Smith's (2017) analysis are postcranial, for instance. Although cranial-focused analyses are standard for Therapsida (an artifact in part of preferential collecting of skulls by Karoo paleontologists during most of the 20th century), recent analyses of synapsid relationships (e.g., Benson, 2012) have highlighted the importance of bringing more robust sets of postcranial data to bear on phylogenetic problems in this clade. More basic descriptive work on therocephalian postcrania is needed; although skeletons are now known for a wide array of taxa, anatomical descriptions are currently available for only a select few (e.g., Kemp, 1986; Fourie & Rubidge, 2009; Botha-Brink & Modesto, 2011; Fourie, 2013).

DISCUSSION

At roughly 20 cm in skull length, *Gorynychus* is the largest predatory component of the Kotelnich tetrapod assemblage. Co-occurring gorgonopsians are substantially smaller, with skull lengths less than 10 cm (Kammerer & Masyutin, in review). The only (inferred) predators approaching *Gorynychus* in size are the burnetiamorph *Proburnetia* (known only from the

holotypic mould, of uncertain stratigraphic origin within the Kotelnich series) and the eutherocephalian *Viatkosuchus* (Ivakhnenko, 2011). This situations parallels that of middle–earliest late Permian faunas in South Africa (the *Tapinocephalus* and *Pristerognathus* AZs), wherein the only gorgonopsians are small animals and therocephalians are the larger-bodied predators (Kammerer, 2014). The Kotelnich predatory fauna is particularly comparable to that of the *Pristerognathus* AZ; in the middle Permian *Tapinocephalus* AZ, although large-bodied therocephalians were abundant, the apex predators were gigantic anteosaurian dinocephalians. The extinction of anteosaurs at the end of the Capitanian left a depauperate fauna with therocephalians momentarily atop the food chain (Day et al., 2015). It was only following the later extinction of these basal therocephalians that gorgonopsians began to diversify and cemented their position as the dominant large-bodied therapsid predators (Kammerer et al., 2015).

Although the presence of a therocephalian apex predator and relatively small gorgonopsians in Kotelnich indicates that the earliest South African records may accurately reflect ancestral body size in these clades (rather than regional peculiarities), in other regards the Kotelnich fauna differs markedly from that of the Karoo. The dominant herbivorous taxon in the Kotelnich fauna, and most abundant tetrapod of any kind, is the pareiasaur *Deltavjatia* (Tsuji, 2013). This pattern is in stark contrast to that of South Africa, where dicynodont therapsids are numerically dominant in all middle–late Permian faunas (Smith et al., 2012). Furthermore, this does not seem to be an isolated oddity, as the best-sampled later Permian Russian tetrapod fauna (North Dvina, a.k.a. Sokolki) also has pareiasaurs (*Scutosaurus*) as the dominant component (although there the top predator is the giant gorgonopsian *Inostrancevia*; this inferred predator-prey pair represents the ‘oligobiomorph community’ of Ivakhnenko [2008]).

The therocephalian fauna in Kotelnich is also unusual even by comparison to the *Pristerognathus* AZ. Although eutherocephalian fossils have been found in the *Pristerognathus* AZ, they are rarer than scylacosaurids/lycosuchids and are relatively poorly-known

(Huttenlocker & Smith, 2017). By contrast, eutherocephalians are the most abundant and species-rich theriodonts at Kotelnich. As such, the Kotelnich fauna seems to capture a phase in therocephalian evolution not well-represented in the South African record: the initial diversification of Eutherocephalia. The recovery of *Gorynychus* as a taxon just outside of Eutherocephalia, rather than a lycosuchid or scylacosaurid, adds another wrinkle to this interpretation. The few eutherocephalians known from the *Pristerognathus* AZ belong to well-known groups (the whaitsioid family Hofmeyriidae and baurioid family Ictidosuchidae) deeply nested within Eutherocephalia and appear in the record seemingly without precedent. In Kotelnich, however, there is a combination of taxa at the base of Eutherocephalia (*Gorynychus*, possible *Perplexisaurus*) and potential early representatives of known eutherocephalian families (e.g., *Viatkosuchus*). This indicates substantial therocephalian diversification occurring in Laurasia at the time, and suggest that eutherocephalians originated outside of the Karoo and only later migrated to the basin.

CONCLUSIONS

Based on the remains of two individuals, a new therocephalian taxon, *Gorynychus masyutinae*, is described from the (probably) earliest late Permian Kotelnich locality of Russia. *Gorynychus* is the largest known predatory tetrapod in the Kotelnich assemblage, and demonstrates that therocephalians acted as top predators in Russian as well as South African assemblages during the transition between typical middle and late Permian terrestrial communities. Although falling outside of Eutherocephalia, *Gorynychus* is more closely related to eutherocephalians than to the large-bodied therocephalian predators of southern Africa (and possibly earlier Permian assemblages in Russia, if *Porosteognathus* from the middle Permian Isheevo fauna truly is a scylacosaurid). The Kotelnich therocephalian fauna shows greater diversity of eutherocephalians than probable coeval faunas in South Africa, and suggests that initial diversification in this clade probably was not occurring in the Karoo Basin.

ACKNOWLEDGEMENTS

We thank director A. Toporov, curator T. Berestova, and the staff members at the Vyatka Paleontological Museum for all of their help. CFK's research was supported by a grant from the Deutsche Forschungsgemeinschaft (KA 4133/1-1).

REFERENCES

Abdala F, Rubidge BS, van den Heever JA. 2008. The oldest therocephalians (Therapsida, Eutheriodontia) and the early diversification of Therapsida. *Palaeontology* **51**:1011–1024.

Abdala F, Kammerer CF, Day MO, Jirah S, Rubidge BS. 2014. Adult morphology of the therocephalian *Simorhinella baini* from the middle Permian of South Africa and the taxonomy, paleobiogeography, and temporal distribution of the Lycosuchidae. *Journal of Paleontology* **88**:1139–1153.

Benson RBJ. 2012. Interrelationships of basal synapsids: cranial and postcranial morphological parititons suggest different topologies. *Journal of Systematic Palaeontology* **10**:601–624.

Benton MJ, Newell AJ, Khlyupin AY, Shumov IS, Price GD, Kurkin AA. 2012. Preservation of exceptional vertebrate assemblages in Middle Permian fluviolacustrine mudstones of Kotel'nich, Russia: stratigraphy, sedimentology, and taphonomy. *Palaeogeography, Palaeoclimatology, Palaeoecology* **319–320**:58–83.

Boonstra LD. 1969. The fauna of the *Tapinocephalus* Zone (Beaufort beds of the Karoo). *Annals of the South African Museum* **56**:1–73.

- Botha-Brink J, Modesto SP. 2011. A new skeleton of the therocephalian synapsid *Olivierosuchus parringtoni* from the Lower Triassic South African Karoo Basin. *Palaeontology* 54:591–606.
- Broom R. 1903. On the classification of the theriodonts and their allies. *Report of the South African Association for the Advancement of Science* 1:286–294.
- Broom R. 1905. On the use of the term Anomodontia. *Records of the Albany Museum* 1:266–269.
- Coffa AA. 1997. Geology and stratigraphy of the Upper Permian Kotel'nich locality, Vyatka River, Russia. Unpublished PhD thesis, Monash University.
- Day MO, Ramezani J, Bowring SA, Sadler PM, Erwin DH, Abdala F, Rubidge BS. 2015. When and how did the terrestrial mid-Permian mass extinction occur? Evidence from the tetrapod record of the Karoo Basin, South Africa. *Proceedings of the Royal Society B* 282:20150834 DOI 10.1098/rspb.2015.0834.
- Fourie H. 2013. The postcranial description of *Ictidosuchoides* (Therapsida: Therocephalia: Baurioidea). *Annals of the Ditsong National Museum of Natural History* 3:1–10.
- Fourie H, Rubidge BS. 2009. The postcranial skeleton of the basal therocephalian *Glanosuchus macrops* (Scylacosauridae) and comparisons of morphological and phylogenetic trends amongst the Theriodontia. *Palaeontologia africana* 44:27–39.

Hartmann-Weinberg AP. 1937. Pareiasauriden als Leitfossilien. *Problemy Paleontologii* **2/3**:649–712.

Huttenlocker AK. 2009. An investigation into the cladistic relationships and monophyly of therocephalian therapsids. *Zoological Journal of the Linnean Society* **157**:865–891.

Huttenlocker AK. 2014. Body size reductions in nonmammalian eutheriodont therapsids (Synapsida) during the end-Permian mass extinction. *PLoS ONE* **9(2)**:e87553 DOI 10.1371/journal.pone.0087553.

Huttenlocker AK, Botha-Brink J. 2013. Body size and growth patterns in the therocephalian *Moschorhinus kitchingi* (Therapsida: Eutheriodontia) before and after the end-Permian extinction in South Africa. *Paleobiology* **39**:253–277.

Huttenlocker AK, Smith RMS. 2017. New whaitsioids (Therapsida: Therocephalia) from the Teekloof Formation of South Africa and therocephalian diversity during the end-Guadalupian extinction. *PeerJ* **5**:e3868 DOI 10.7717/peerj.3868.

Ivakhnenko MF. 2003. Eotherapsids from the East European placket. *Paleontological Journal* **37**:S339–2465.

Ivakhnenko MF. 2008. Cranial morphology and evolution of Permian Dinomorpha (Eotherapsida) of Eastern Europe. *Paleontological Journal* **42**:859–995.

Ivakhnenko MF. 2011. Permian and Triassic therocephals (Eutherapsida) of Eastern Europe. *Paleontological Journal* **45**:981–1144.

620

621 **Jablonski D. 2002.** Survival without recovery after mass extinctions. *Proceedings of the*

622 *National Academy of Sciences of the United States of America* **99**:8139–8144 DOI

623 10.1073/pnas.102163299

624

625 **Jenkins FA, Jr. 1971.** The postcranial skeleton of African cynodonts. *Peabody Museum Bulletin*

626 **36**:1–216.

627

628 **Kammerer CF. 2011.** Systematics of the Anteosauria (Therapsida: Dinocephalia). *Journal of*

629 *Systematic Palaeontology* **9**:261–304.

630

631 **Kammerer CF. 2014.** A redescription of *Eriphostoma microdon* Broom, 1911 (Therapsida,

632 Gorgonopsia) from the *Tapinocephalus* Assemblage Zone of South Africa and a review of

633 Middle Permian gorgonopsians. In: Kammerer CF, Angielczyk KD, Fröbisch J, eds. *Early*

634 *Evolutionary History of the Synapsida*. Dordrecht: Springer, 171–184, 337 pp. DOI 10.1007/978-

635 94-007-6841-3_11.

636

637 **Kammerer CF. 2015.** Cranial osteology of *Arctognathus curvimola*, a short-snouted

638 gorgonopsian from the Late Permian of South Africa. *Papers in Paleontology* **1**:41–58.

639

640 **Kammerer CF, Smith RMH, Day MO, Rubidge BS. 2015.** New information on the morphology

641 and stratigraphic range of the mid-Permian gorgonopsian *Eriphostoma microdon* Broom, 1911.

642 *Papers in Palaeontology* **1**:201–221.

643

644 **Kemp TS. 1986.** The skeleton of a baurioid therocephalian from the Lower Triassic

645 (*Lystrosaurus* Zone) of South Africa. *Journal of Vertebrate Paleontology* **6**:215–232.

- Kurkin, AA. 2011.** Permian anomodonts: paleobiogeography and distribution of the group. *Paleontological Journal* **45**:432–444.
- Li J. 2001.** The most primitive lower tetrapod fauna in China. *Science in China (Series D)* **44**:47–51.
- Mendrez CH. 1975.** Principales variations du palais chez les thérocéphales sud-africains (Pristerosauria et Scaloposauria) au cours du Permien supérieur et du Trias inférieur. *Problèmes Actuels de Paléontologie—Évolution des Vertébrés. Colloques internationaux du Centre national de la recherche scientifique* **218**:379–408.
- Osborn HF. 1903.** On the primary division of the Reptilia into two sub-classes, Synapsida and Diapsida. *Science* **17**:275–276.
- Sigogneau-Russell D, Sun A-L. 1981.** A brief review of Chinese synapsids. *Geobios* **14**:275–279.
- Smith RMH, Rubidge BS, van der Walt M. 2012.** Therapsid biodiversity patterns and environments of the Karoo Basin, South Africa. In: Chinsamy A, ed. *Forerunners of mammals: radiation, histology, biology*. Bloomington and Indianapolis: Indiana University Press, 223–246, 330 pp.
- Swofford DL. 2002.** PAUP*. Phylogenetic analysis using parsimony (*and other methods). Version 4. Sinauer Associates, Sunderland, Massachusetts.

Tatarinov LP. 1995a. *Viatkosuchus sumini*, a new Late Permian therocephalian from the Kirov Region. *Paleontological Journal* **29**:111–128.

Tatarinov LP. 1995b. A new ictidosuchid *Karenites ornamentatus* (Theriodontia) from the Upper Permian of the Kotel'nich Locality in the Kirov Region. *Russian Journal of Herpetology* **2**:18–33.

Tatarinov LP. 1997. A new scaloposaur (Reptilia, Theriodontia) with an unusual sensory system, from the Upper Permian of the Kirov Region. *Paleontological Journal* **31**:655–661.

Tatarinov LP. 1999. New theriodonts (Reptilia) from the Late Permian fauna of the Kotelnich Locality, Kirov Region. *Paleontological Journal* **33**:550–556.

Tatarinov LP. 2000. New material of scaloposaurians (Reptilia, Theriodontia) from the Upper Permian of the Kotelnich Locality, Kirov Region. *Paleontological Journal* **34**:S187–S202.

Tsuji LA. 2013. Anatomy, cranial ontogeny and phylogenetic relationships of the pareiasaur *Deltavjatia rossicus* from the Late Permian of central Russia. *Earth and Environmental Science Transactions of the Royal Society of Edinburgh* **104**:81–122.

Van den Heever JA. 1980. On the validity of the therocephalian family Lycosuchidae (Reptilia: Therapsida). *South African Journal of Science* **81**:111–125.

Van den Heever JA. 1987. *The comparative and functional cranial morphology of the early Therocephalia (Amniota: Therapsida)*. Unpublished PhD Thesis, University of Stellenbosch, 659 pp.

698

699 **Van den Heever JA. 1994.** The cranial anatomy of the early Therocephalia (Amniota:

700 Therapsida). *Universiteit van Stellenbosch Annale* **1994**:1–59.

701

702 **Vjuschkov BP. 1955.** [Theriodonts of the Soviet Union]. *Trudy Paleontologicheskogo Instituta,*

703 *Akademiya Nauk SSSR* **49**:128–175. [in Russian]

FIGURE CAPTIONS

Figure 1. Holotype of *Gorynychus masyutinae*. The two blocks (KPM 346 and 347) making up the majority of the holotype shown in articulation. Holotype also includes two incisor teeth (KPM 348 and 349) disarticulated from the skull but found in association (see Figs. 2C and 10D).

[planned for page width]

Figure 2. Anterior snout and dentition of *Gorynychus masyutinae*. (A) Photograph and (B) interpretive drawing of the skull (KPM 346) in anterior view. (C) Disarticulated incisor (KPM 348) associated with skull in presumed anterior or anterolateral view. Abbreviations: apc, anterior premaxillary channel; mx, maxilla; na, nasal; nr, naris; pmx, premaxilla; smx, septomaxilla. Gray coloration indicates matrix. Scale bar equals 5 cm. [planned for page width]

Figure 3. Holotype of *Gorynychus masyutinae* in dorsal view. (A) Photograph and (B) interpretive drawing of skull (KPM 346). Abbreviations: d, dentary; fr, frontal; j, jugal; la, lacrimal; mx, maxilla; na, nasal; pmx, premaxilla; po, postorbital; prf, prefrontal; qpt, quadrate ramus of pterygoid; smx, septomaxilla; sq, squamosal. Gray coloration indicates matrix, patterning indicates eroded or broken bone surface. Scale bar equals 1 cm. [planned for page width]

Figure 4. Holotype of *Gorynychus masyutinae* in right lateral view. (A) Photograph and (B) interpretive drawing of skull (KPM 346). Abbreviations: ar, articular; C, upper canine; co, coronoid process of dentary; d, dentary; fr, frontal; i, lower incisor; j, jugal; la, lacrimal; mx, maxilla; na, nasal; pmx, premaxilla; prf, prefrontal; PC, upper postcanine; po, postorbital; q-qj, quadrate-quadratojugal complex; rla, reflected lamina of angular; sa, surangular; smx, septomaxilla; sq, squamosal; ss, squamosal sulcus. Gray coloration indicates matrix, patterning indicates eroded or broken bone surface. Scale bar equals 1 cm. [planned for page width]

730

731 **Figure 5.** Holotype of *Gorynychus masyutinae* in left lateral view. (A) Photograph and (B)
732 interpretive drawing of skull (KPM 346). Abbreviations: C, upper canine; co, coronoid process of
733 dentary; d, dentary; ept, epipterygoid; fr, frontal; j, jugal; la, lacrimal; mx, maxilla; na, nasal; os,
734 orbitosphenoid; pa, parietal; pmx, premaxilla; prf, prefrontal; PC, upper postcanine; po,
735 postorbital; qpt, quadrate ramus of pterygoid; rla, reflected lamina of angular; sa, surangular;
736 smx, septomaxilla. Gray coloration indicates matrix, patterning indicates eroded or broken bone
737 surface. Scale bar equals 1 cm. [planned for page width]

738

739 **Figure 6.** Holotype of *Gorynychus masyutinae* in ventral view. (A) Photograph and (B)
740 interpretive drawing of skull (KPM 346). Abbreviations: an, angular; ar, articular; bt, basal tuber;
741 C, upper canine; d, dentary; j, jugal; mx, maxilla; oc, occipital condyle; pl, palatine; pra,
742 prearticular; ps, parabasisphenoid; pt, palatal portion of pterygoid; q, quadrate; qpt, quadrate
743 ramus of pterygoid; ri, rib; rla, reflected lamina of angular; sf, suborbital fenestra; sp, splenial;
744 sq, squamosal; st, stapes; tpt, transverse process of pterygoid; v, vomer. Gray coloration
745 indicates matrix. Scale bar equals 1 cm. [planned for page width]

746

747 **Figure 7.** Cervical vertebrae of *Gorynychus masyutinae* (KPM 346–347). (A) Photograph and
748 (B) interpretive drawing. Abbreviations: as, axial neural spine; c, cervical vertebra; cr, cervical
749 rib; ic, intercentrum; ns, neural spine; poz, postzygapophysis; prz, prezygapophysis; sf?,
750 possible skull fragment; tp, transverse process. Gray coloration indicates matrix. Scale bar
751 equals 5 cm. [planned for page width]

752

753 **Figure 8.** Postcranial elements of *Gorynychus masyutinae* (KPM 347). (A) Photograph and (B)
754 interpretive drawing. Abbreviations: ?, unknown bone; c, cervical vertebra; cl?, possible clavicle;

ri, rib; sc, scapulocoracoid; ve, vertebra. Gray coloration indicates matrix. Scale bar equals 5 cm. [planned for page width]

Figure 9. KPM 291, a block containing disarticulated elements referred to *Gorynychus masyutinae* gen. et sp. nov. (A) Photograph and (B) interpretive drawing. Abbreviations: ax, axis vertebra; d, dentary; i, incisor; po?, postorbital?; r, rib; ve, vertebra. Elements marked with asterisks are shown in greater detail in Figure 10. Scale bar equals 5 cm. [planned for page width]

Figure 10. Disarticulated elements from the specimen KPM 291. (A) Anterior portion of right dentary preserving lower canine; (B) ?dorsal vertebra; (C) incisor tooth compared with (D) incisor from the holotype (KPM 349). Scale bars equal 1 cm. [planned for page width]

Figure 11. Cladogram showing phylogenetic position of *Gorynychus masyutinae*. Strict consensus of 1260 most parsimonious trees. Numbers at nodes represent bootstrap values, major clades labeled at nodes. [planned for page width]

Figure 1

Holotype of *Gorynychus masyutinae*.

The two blocks (KPM 346 and 347) making up the majority of the holotype shown in articulation. Holotype also includes two incisor teeth (KPM 348 and 349) disarticulated from the skull but found in association (see Figs. 2C and 10D).



Figure 2

Anterior snout and dentition of *Gorynychus masyutinae*.

(A) Photograph and **(B)** interpretive drawing of the skull (KPM 346) in anterior view. **(C)** Disarticulated incisor (KPM 348) associated with skull in presumed anterior or anterolateral view. **Abbreviations:** apc, anterior premaxillary channel; mx, maxilla; na, nasal; nr, naris; pmx, premaxilla; smx, septomaxilla. Gray coloration indicates matrix. Scale bar equals 5 cm.

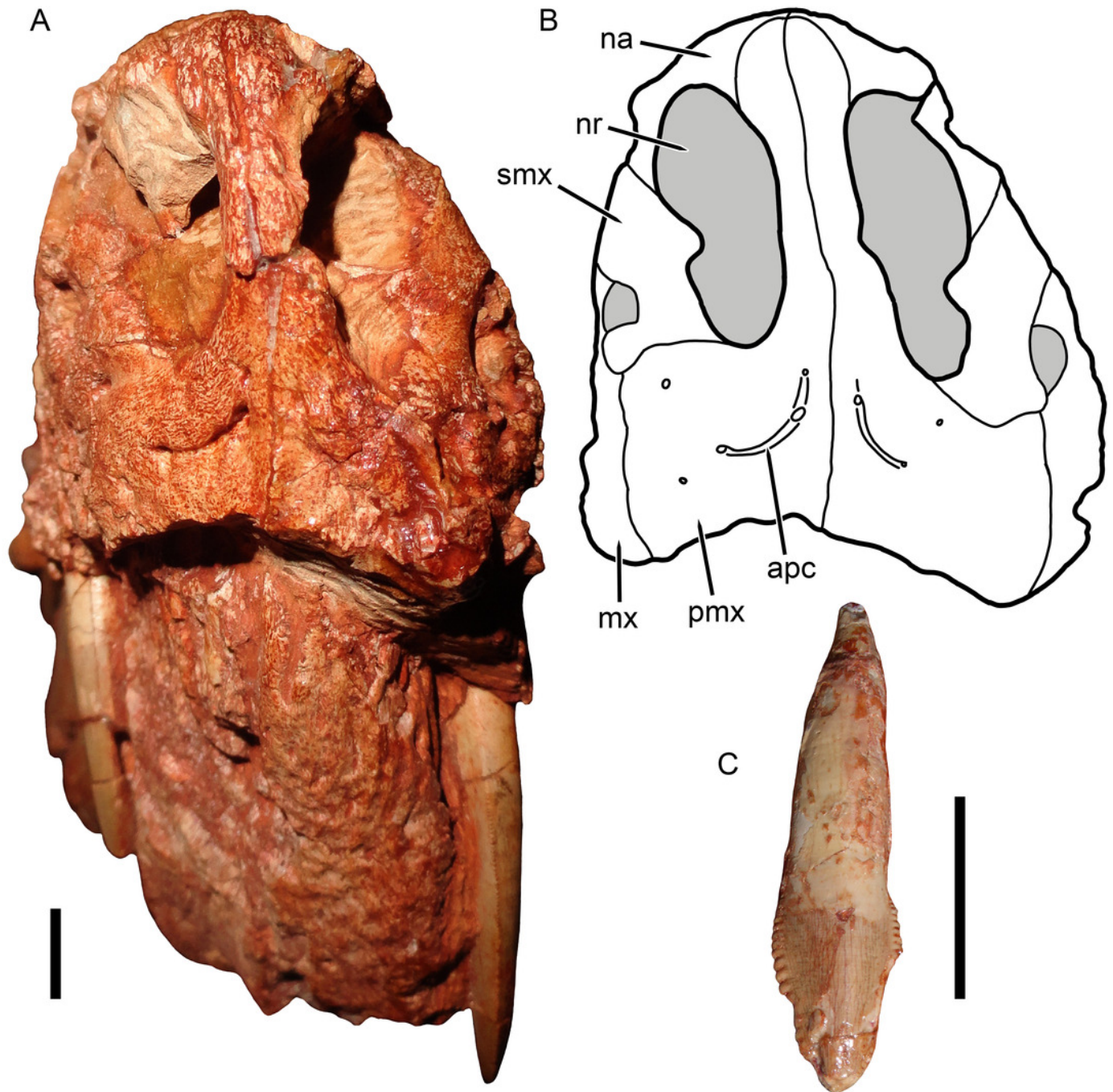


Figure 3

Holotype of *Gorynychus masyutinae* in dorsal view.

(A) Photograph and **(B)** interpretive drawing of skull (KPM 346). **Abbreviations:** d, dentary; fr, frontal; j, jugal; la, lacrimal; mx, maxilla; na, nasal; pmx, premaxilla; po, postorbital; prf, prefrontal; qpt, quadrate ramus of pterygoid; smx, septomaxilla; sq, squamosal. Gray coloration indicates matrix, patterning indicates eroded or broken bone surface. Scale bar equals 1 cm.

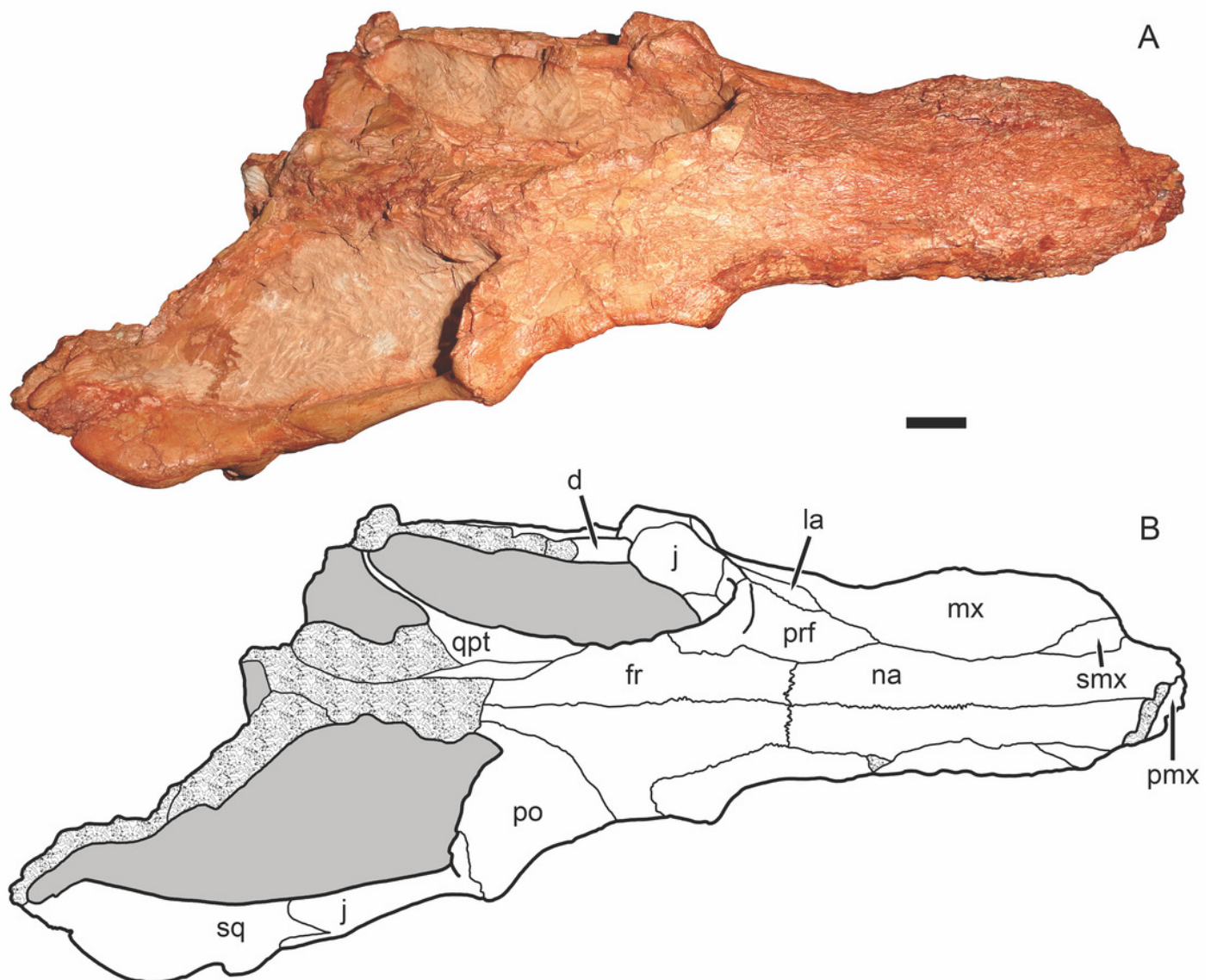


Figure 4

Holotype of *Gorynychus masyutinae* in right lateral view.

(A) Photograph and **(B)** interpretive drawing of skull (KPM 346). **Abbreviations:** ar, articular; C, upper canine; co, coronoid process of dentary; d, dentary; fr, frontal; i, lower incisor; j, jugal; la, lacrimal; mx, maxilla; na, nasal; pmx, premaxilla; prf, prefrontal; PC, upper postcanine; po, postorbital; q-qj, quadrate-quadratojugal complex; rla, reflected lamina of angular; sa, surangular; smx, septomaxilla; sq, squamosal; ss, squamosal sulcus. Gray coloration indicates matrix, patterning indicates eroded or broken bone surface. Scale bar equals 1 cm.

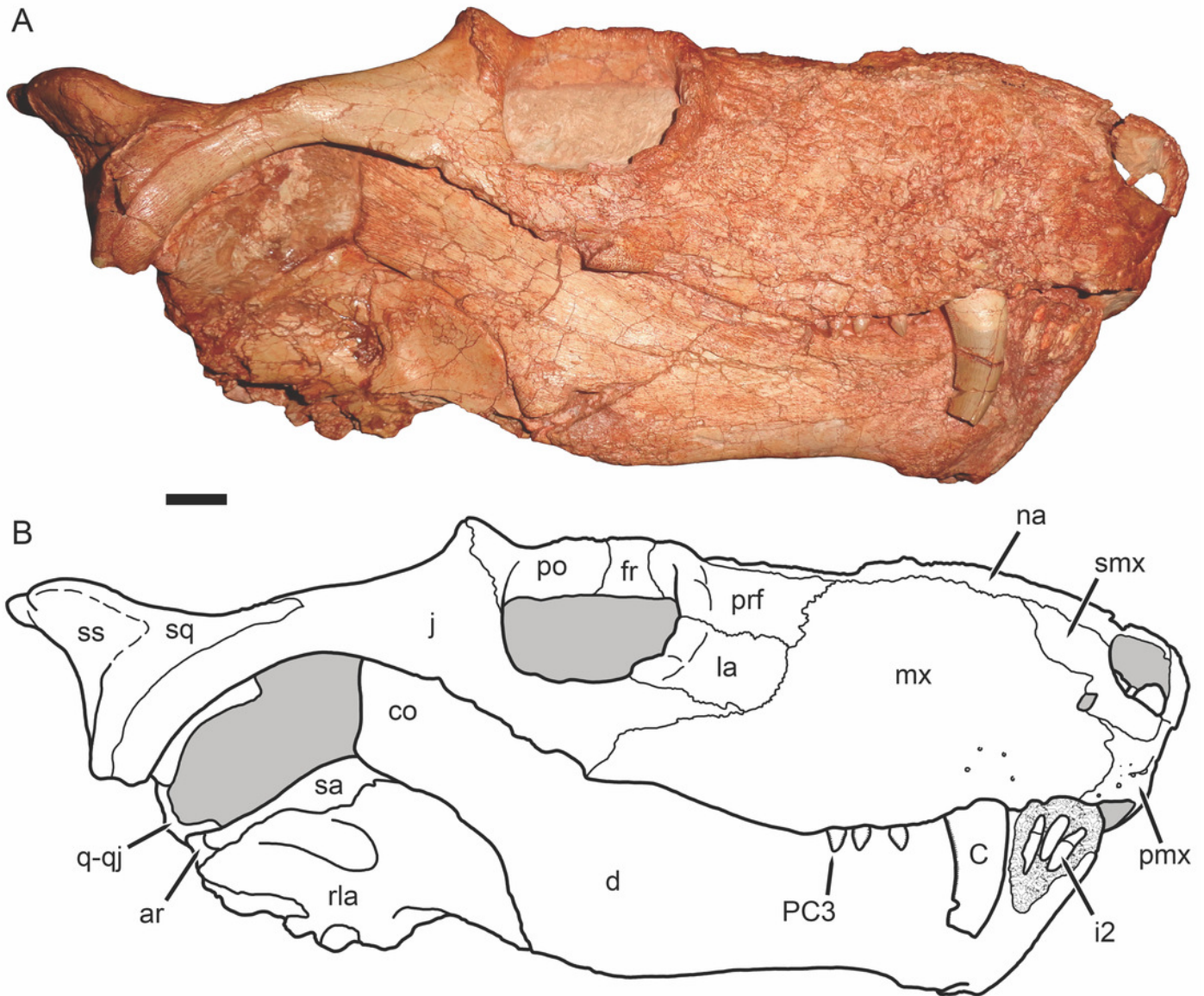


Figure 5

Holotype of *Gorynychus masyutinae* in left lateral view.

(A) Photograph and **(B)** interpretive drawing of skull (KPM 346). **Abbreviations:** C, upper canine; co, coronoid process of dentary; d, dentary; ept, epipterygoid; fr, frontal; j, jugal; la, lacrimal; mx, maxilla; na, nasal; os, orbitosphenoid; pa, parietal; pmx, premaxilla; prf, prefrontal; PC, upper postcanine; po, postorbital; qpt, quadrate ramus of pterygoid; rla, reflected lamina of angular; sa, surangular; smx, septomaxilla. Gray coloration indicates matrix, patterning indicates eroded or broken bone surface. Scale bar equals 1 cm.

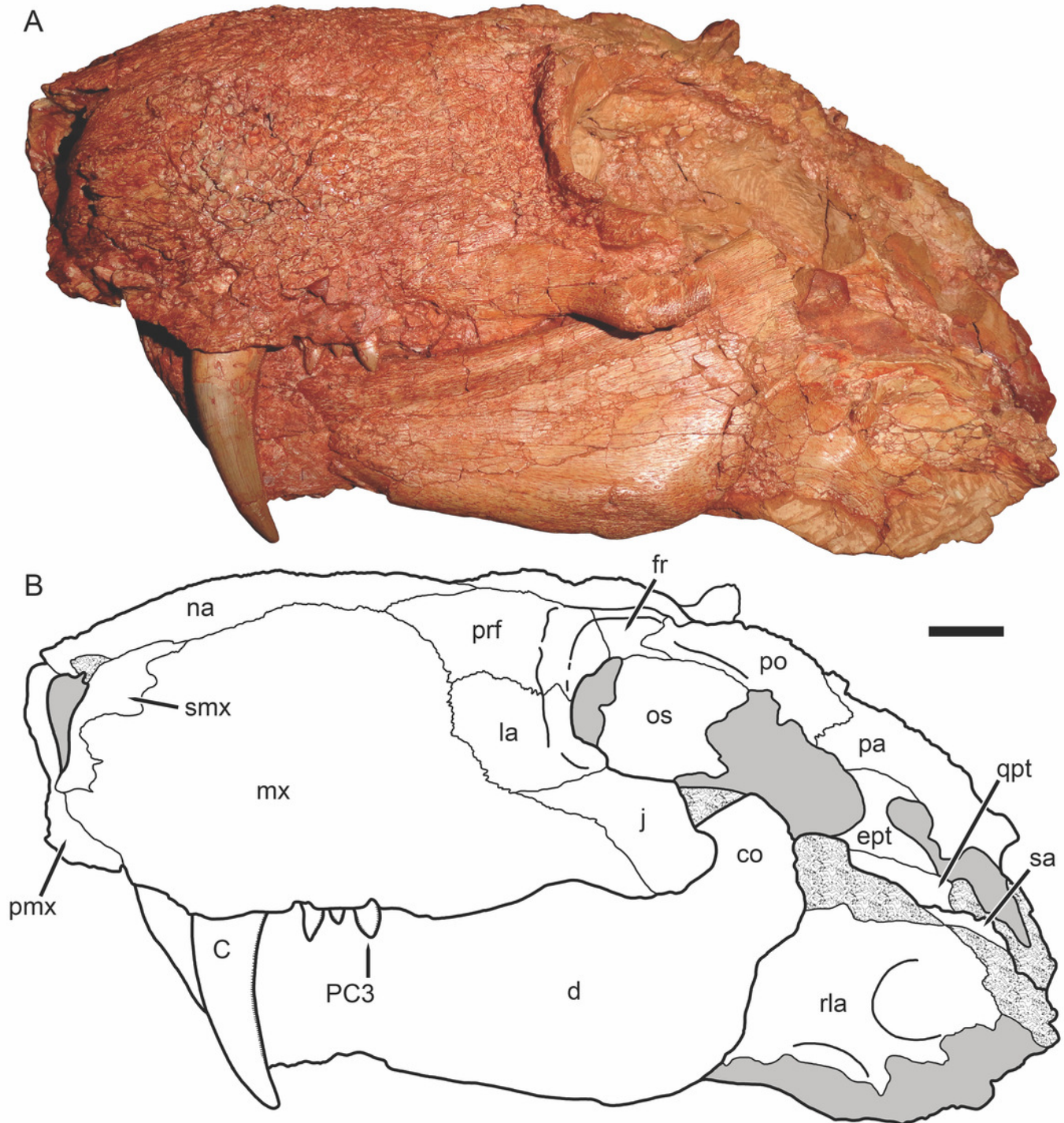


Figure 6

Holotype of *Gorynychus masyutinae* in ventral view.

(A) Photograph and **(B)** interpretive drawing of skull (KPM 346). **Abbreviations:** an, angular; ar, articular; bt, basal tuber; C, upper canine; d, dentary; j, jugal; mx, maxilla; oc, occipital condyle; pl, palatine; pra, prearticular; ps, parabasisphenoid; pt, palatal portion of pterygoid; q, quadrate; qpt, quadrate ramus of pterygoid; ri, rib; rla, reflected lamina of angular; sf, suborbital fenestra; sp, splenial; sq, squamosal; st, stapes; tpt, transverse process of pterygoid; v, vomer. Gray coloration indicates matrix. Scale bar equals 1 cm.

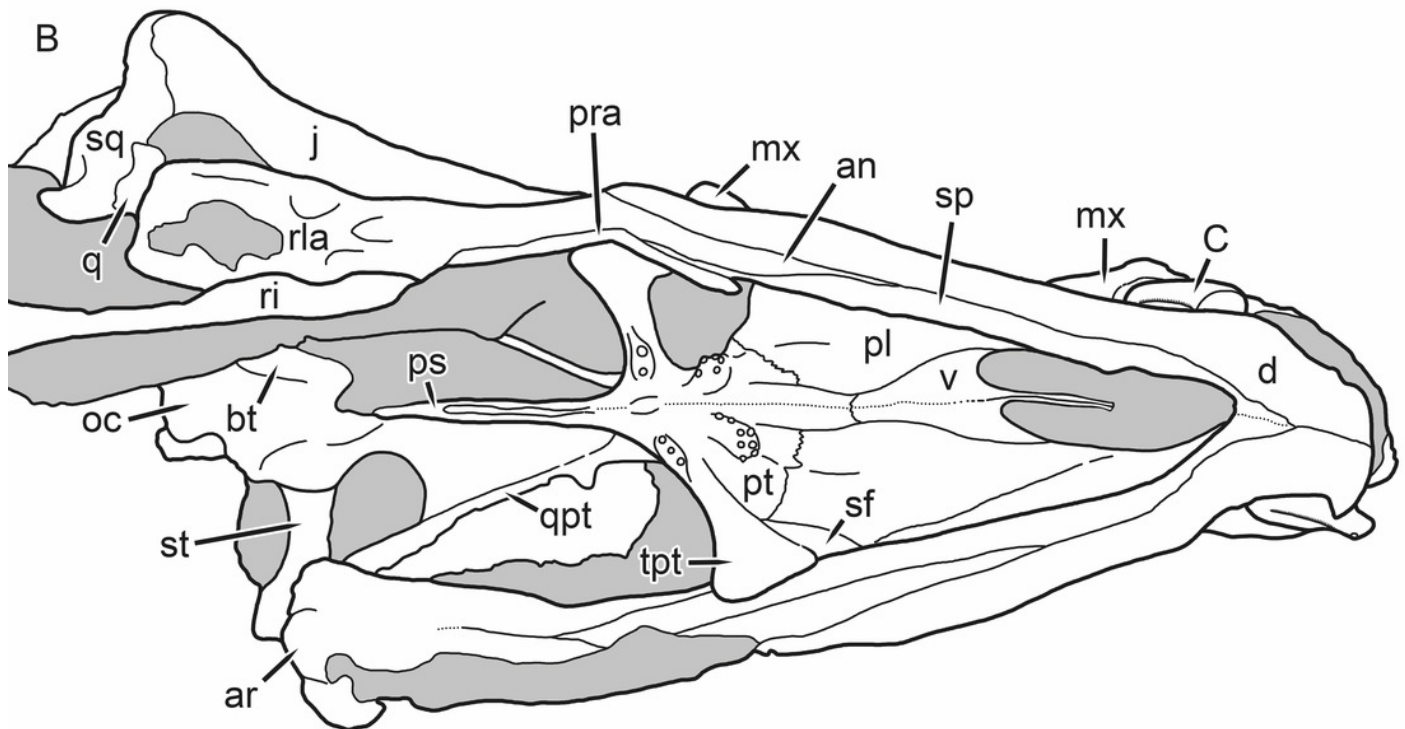
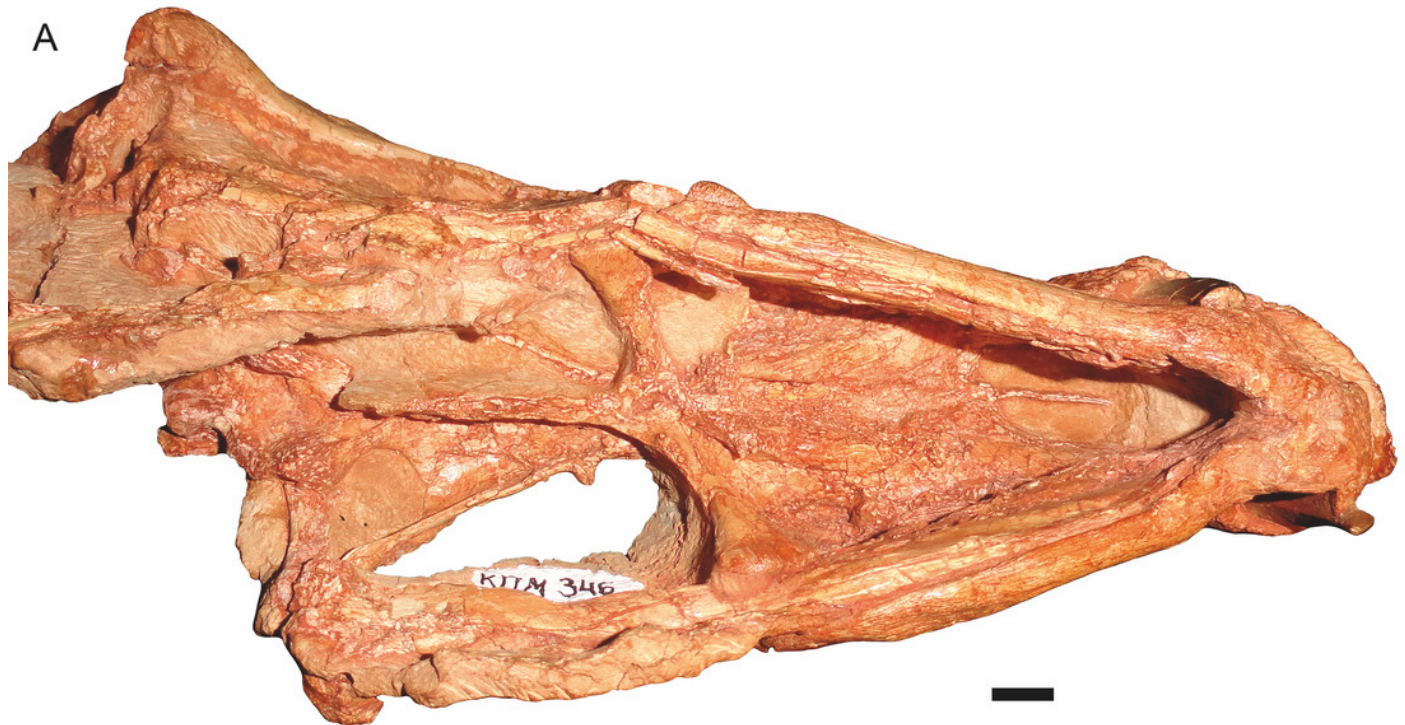


Figure 7

Cervical vertebrae of *Gorynychus masyutinae* (KPM 346–347).

(A) Photograph and **(B)** interpretive drawing. **Abbreviations:** as, axial neural spine; c, cervical vertebra; cr, cervical rib; ic, intercentrum; ns, neural spine; poz, postzygapophysis; prz, prezygapophysis; sf?, possible skull fragment; tp, transverse process. Gray coloration indicates matrix. Scale bar equals 5 cm.

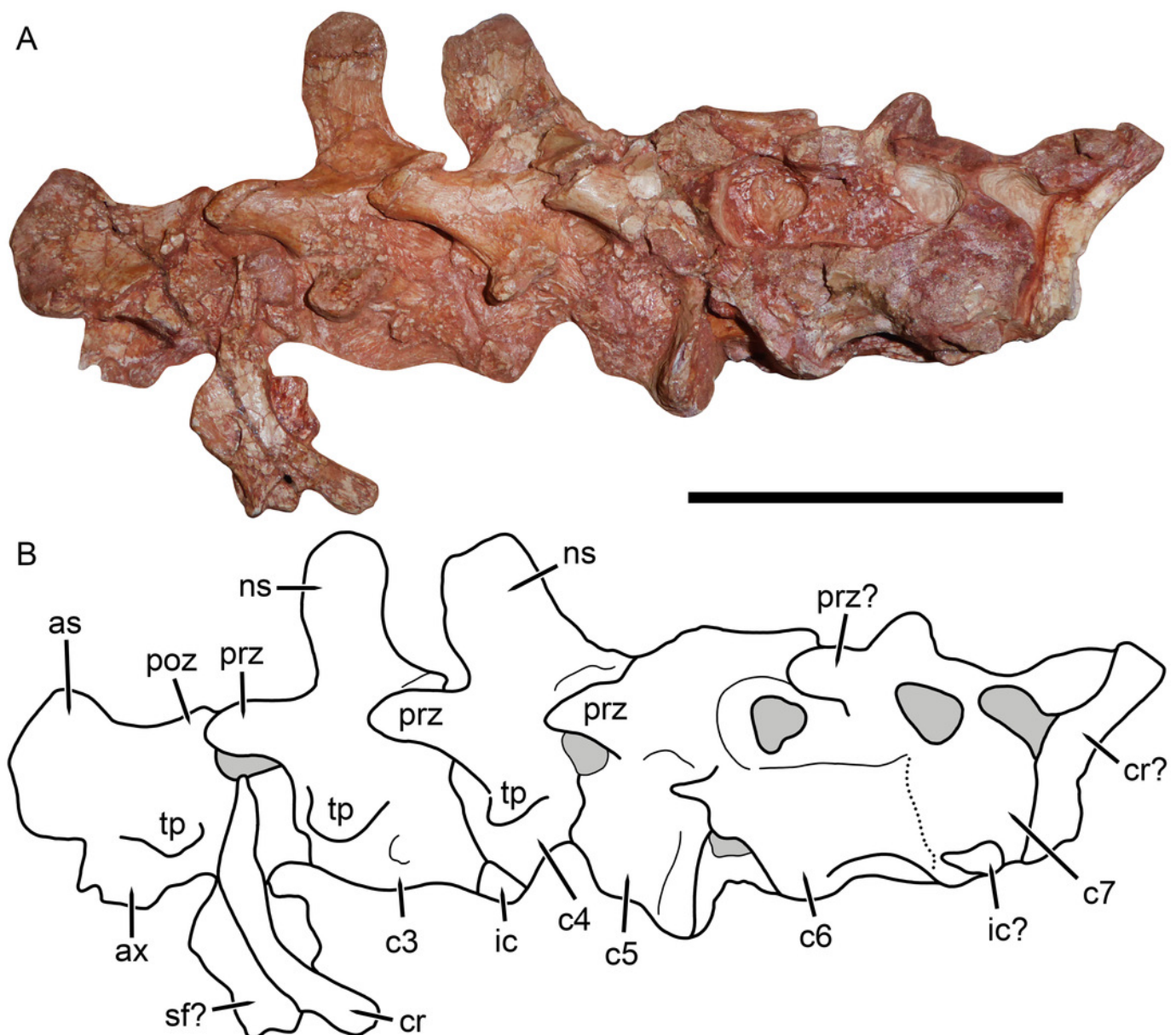


Figure 8

Postcranial elements of *Gorynychus masyutinae* (KPM 347).

(A) Photograph and **(B)** interpretive drawing. **Abbreviations:** ?, unknown bone; c, cervical vertebra; cl?, possible clavicle; ri, rib; sc, scapulocoracoid; ve, vertebra. Gray coloration indicates matrix. Scale bar equals 5 cm.

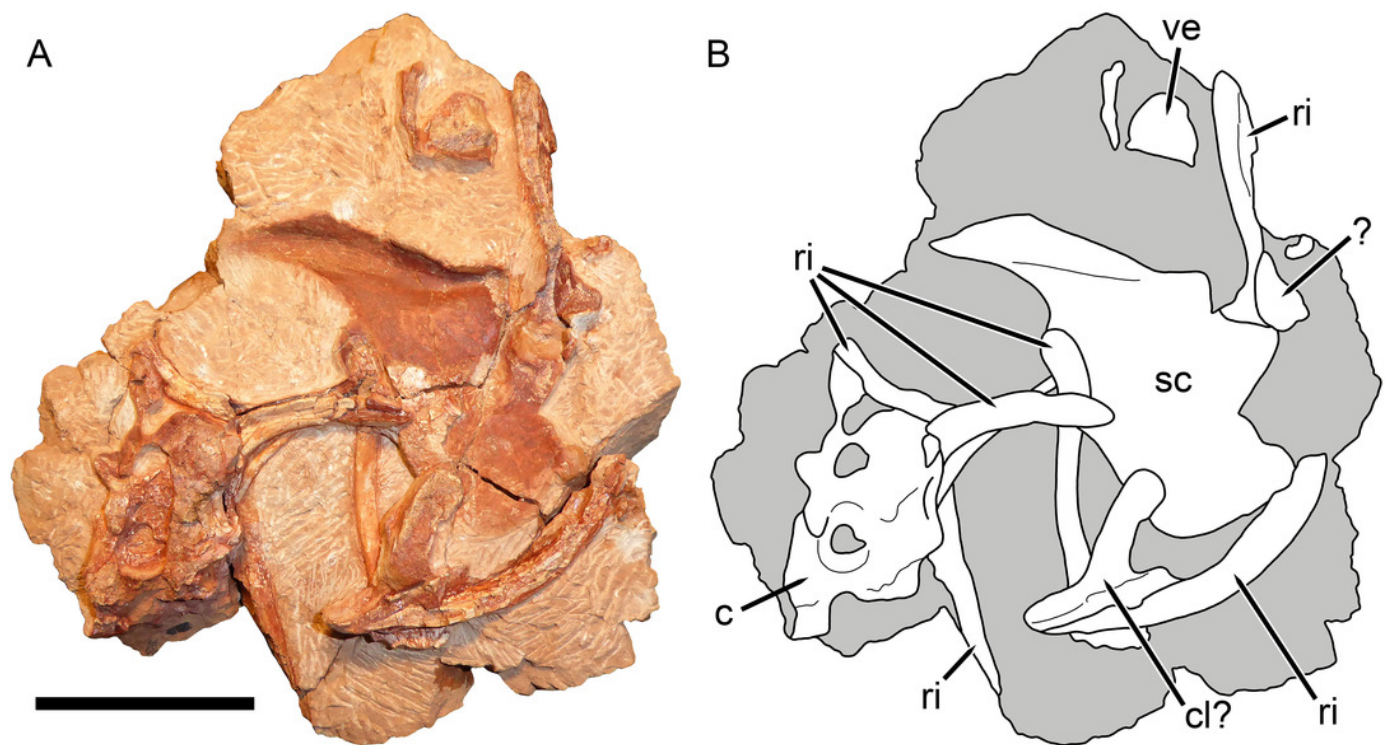


Figure 9

KPM 291, a block containing disarticulated elements referred to *Gorynychus masyutinae* gen. et sp. nov.

(A) Photograph and **(B)** interpretive drawing. **Abbreviations:** ax, axis vertebra; d, dentary; i, incisor; po?, postorbital?; r, rib; ve, vertebra. Elements marked with asterisks are shown in greater detail in Figure 10. Scale bar equals 5 cm.

A



B

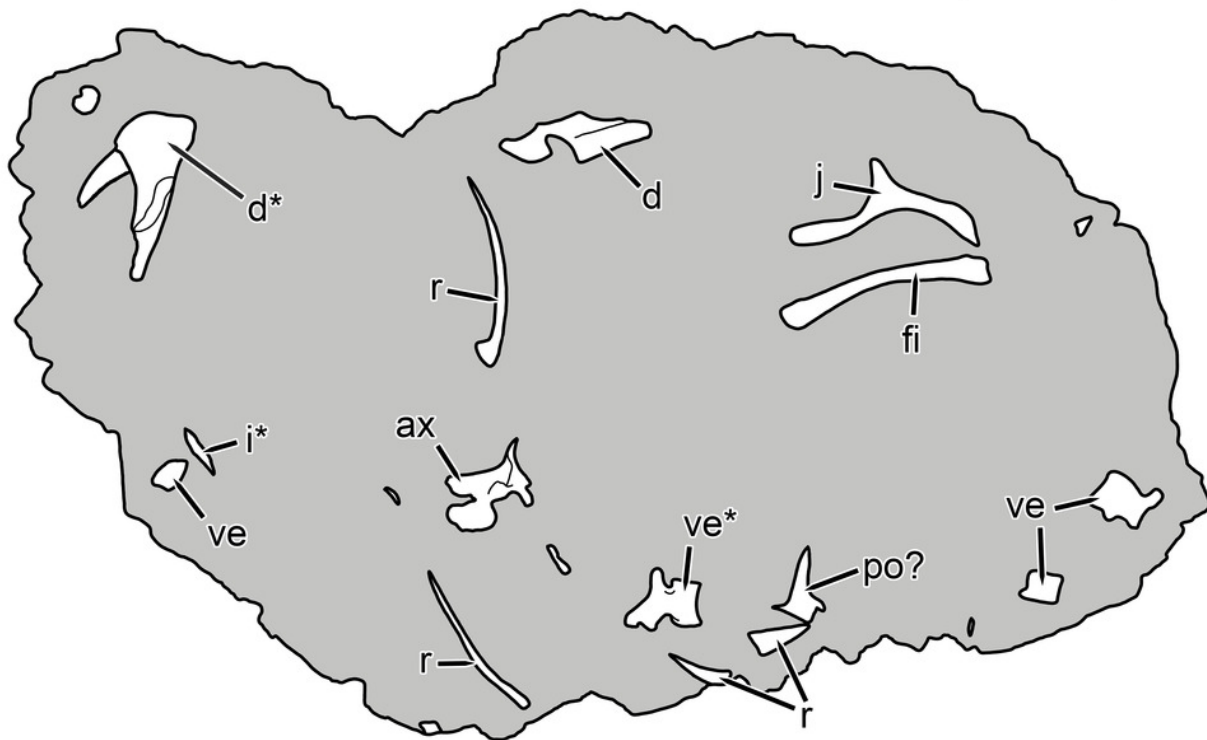


Figure 10

Disarticulated elements from the specimen KPM 291.

(A) Anterior portion of right dentary preserving lower canine; **(B)** ?dorsal vertebra; **(C)** incisor tooth compared with **(D)** incisor from the holotype (KPM 349). Scale bars equal 1 cm.

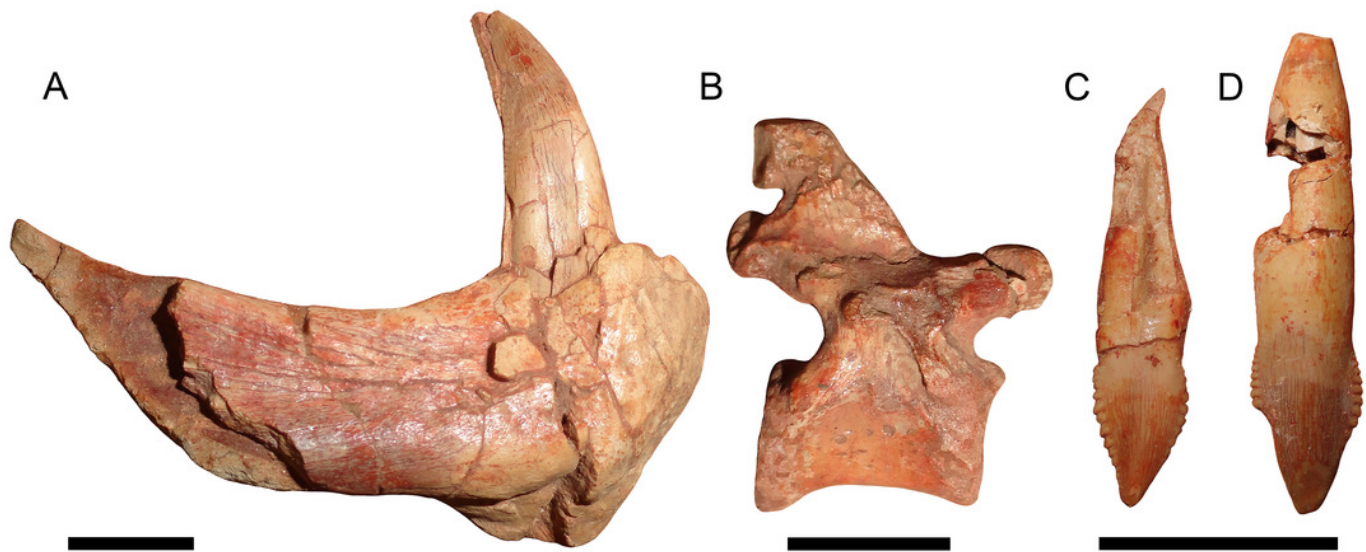


Figure 11

Cladogram showing phylogenetic position of *Gorynychus masyutinae*.

Strict consensus of 1260 most parsimonious trees. Numbers at nodes represent bootstrap values, major clades labeled at nodes.

