

# How has our knowledge of dinosaur diversity through geologic time changed through research history?

Jonathan P. Tennant<sup>Corresp., 1</sup>, Alfio A. Chiarenza<sup>Corresp., 1</sup>, Matthew Baron<sup>2, 3</sup>

<sup>1</sup> Department of Earth Science and Engineering, Imperial College London, London, United Kingdom

<sup>2</sup> Department of Earth Science, University of Cambridge, Cambridge, United Kingdom

<sup>3</sup> Earth Sciences Department, Natural History Museum, London, United Kingdom

Corresponding Authors: Jonathan P. Tennant, Alfio A. Chiarenza

Email address: jon.tennant.2@gmail.com, a.chiarenza15@imperial.ac.uk

Assessments of dinosaur macroevolution at any given time can be biased by the historical publication record. Recent studies have analysed patterns in dinosaur diversity that are based on secular variations in the numbers of published taxa. Many of these have employed a range of approaches that account for changes in the shape of the taxonomic abundance curve, which are largely dependent on databases compiled from the primary published literature. However, how these ‘corrected’ diversity patterns are influenced by the history of publication remains largely unknown. Here, we investigate the influence of publication history between 1991 and 2015 on our understanding of dinosaur evolution using raw diversity estimates and Shareholder Quorum Subsampling for the three major subgroups: Ornithischia, Sauropodomorpha and Theropoda. We find that, while sampling is generally improving through time, there remain periods and regions in dinosaur evolutionary history where diversity estimates are highly volatile (e.g., the latest Jurassic of Europe, the mid-Cretaceous of North America, and the Late Cretaceous of South America). Our results show that historical changes in database compilation can often substantially influence our interpretations of dinosaur diversity. ‘Global’ estimates of diversity based on the fossil record are often also based on incomplete, and distinct regional signals, each subject to their own sampling histories. Changes in the taxon abundance distribution, either through discovery of new taxa or addition of existing taxa to improve sampling evenness, are important in improving the reliability of our interpretations of dinosaur diversity. Furthermore, as the number of occurrences and newly identified dinosaurs is still rapidly increasing through time, suggesting that it is entirely possible for much of what we know about dinosaurs at the present to change within the next 20 years.

# How has our knowledge of dinosaur diversity through geologic time changed through research history?

Jonathan P. Tennant<sup>1\*</sup>, Alfio Alessandro Chiarenza<sup>1</sup>, Matthew Baron<sup>2,3</sup>

<sup>1</sup>Department of Earth Science and Engineering, Imperial College London, London, SW6 2AZ, United Kingdom.

<sup>2</sup>Department of Earth Science, University of Cambridge, Cambridge, CB2 3EQ, United Kingdom

<sup>3</sup>Earth Sciences Department, Natural History Museum, London, SW7 5BD, United Kingdom

\*Corresponding author: [jon.tennant.2@gmail.com](mailto:jon.tennant.2@gmail.com)

## Abstract

Assessments of dinosaur macroevolution at any given time can be biased by the historical publication record. Recent studies have analysed patterns in dinosaur diversity that are based on secular variations in the numbers of published taxa. Many of these have employed a range of approaches that account for changes in the shape of the taxonomic abundance curve, which are largely dependent on databases compiled from the primary published literature. However, how these ‘corrected’ diversity patterns are influenced by the history of publication remains largely unknown. Here, we investigate the influence of publication history between 1991 and 2015 on our understanding of dinosaur evolution using raw diversity estimates and Shareholder Quorum Subsampling for the three major subgroups: Ornithischia, Sauropodomorpha and Theropoda. We find that, while sampling is generally improving through time, there remain periods and regions in dinosaur evolutionary history where diversity estimates are highly volatile (e.g., the latest Jurassic of Europe, the mid-Cretaceous of North America, and the Late Cretaceous of South America). Our results show that historical changes in database compilation can often substantially influence our interpretations of dinosaur diversity. ‘Global’ estimates of diversity based on the fossil record are often also based on incomplete, and distinct regional signals, each subject to their own sampling histories. Changes in the taxon abundance distribution, either through discovery of new taxa or addition of existing taxa to improve sampling evenness, are important in improving the reliability of our interpretations of dinosaur diversity. Furthermore, as the number of occurrences and newly identified dinosaurs is still rapidly increasing through time, suggesting that it is entirely possible for much of what we know about dinosaurs at the present to change within the next 20 years.

29

## 30 Introduction

31 In the latter half of the 20<sup>th</sup> Century, palaeobiology underwent a renaissance by adopting a more  
 32 quantitative analytical approach to understanding changes in the fossil record through time (Valentine &  
 33 Moores 1970; Raup 1972; Gould & Eldredge 1977; Sepkoski et al. 1981; Van Valen 1984; Sepkoski Jr  
 34 1996). This seminal work was largely focussed around estimating patterns of animal diversity, extinction  
 35 and speciation through time, and what the external processes governing these were. To this day,  
 36 reconstructing the diversity of life through geological time remains one of the most crucial aspects of  
 37 palaeobiology, as it allows us to ask broader questions about the evolution of life and what the  
 38 mechanisms of extinction and recovery are. These pioneering analyses were largely based on an archive  
 39 of range-through taxa of marine animals, known as the ‘Sepkoski Compendium’. More recently,  
 40 analytical palaeobiology has had a second wave of innovation, in part due to development of large fossil  
 41 occurrence databases such as the Paleobiology Database ([www.paleobiodb.org](http://www.paleobiodb.org)), and also due to  
 42 development of increasingly sophisticated analytical subsampling (Alroy 2000a; Alroy 2003; Alroy 2010a;  
 43 Starrfelt & Liow 2016) and modelling (Smith & McGowan 2007; Lloyd 2012) techniques. These are  
 44 helping us to provide new insight into the evolutionary patterns and processes that we can infer from  
 45 the fossil record.

46 All of these studies, both older and more recent, are under-pinned by a single principle, in that they rely  
 47 on the recorded number of identifiable fossiliferous occurrences present through geological time.  
 48 Despite meticulous work to ensure that these databases and compendia represent the best possible  
 49 records of historical trends, there have been continuing questions as to the accuracy of the data and the  
 50 existence of what is broadly termed as ‘bias’, which can confound our estimates of palaeodiversity. This  
 51 includes factors such as heterogeneous sampling intensity, fossiliferous rock availability, and variable  
 52 depth of taxonomic research (Raup 1972; Raup 1976; Uhen & Pyenson 2007; Benton 2008a; Benton  
 53 2008b; Marx & Uhen 2010; Tarver et al. 2011; Smith et al. 2012; Smith & Benson 2013).

54 In 1993, Sepkoski added an additional dimension to these studies by assessing how database  
 55 compilation history through changes in taxonomy, stratigraphic resolution, and sampling influences the  
 56 shape of macroevolutionary patterns (Sepkoski Jr 1993). This was based on comparing two compendia  
 57 built in 1982 and 1992, and found that in spite of numerous taxonomic changes over ten years, the  
 58 overall patterns of diversity for marine animals remained relatively constant, with the main notable

change being that overall diversity was consistently higher in the 1992 compilation. Following this, Alroy (2000b) similarly showed that database age does appear to have an influence on North American mammal diversity estimates, and Alroy (2010c) further demonstrated that diversity estimates based on data from the Paleobiology Database were proportionally similar to either the genus- or family-level results based on Sepkoski's original compendium. At the present, there are three main arguments regarding the historical reliability of diversity curves (e.g., (Sepkoski et al. 1981); Sepkoski Jr (1993); Alroy (2000b): firstly, that because independent datasets produce similar diversity curves, this suggests that convergence on a common signal reflecting either a real evolutionary, fossil record structure, or taxonomic phenomenon; secondly, that the addition of new data to existing compilations should yield only minor changes to resulting diversity estimates; and thirdly, that the addition of new data can potentially dramatically alter shape of diversity (counter to the first and second arguments). At the present, the first argument appears to be the best supported by analytical evidence.

However, besides Sepkoski and Alroy's work, relatively little consideration has been given to how publication or database history can influence macroevolutionary patterns, despite an enormous reliance on their research utility (although see Benton (2008a); Benton (2008b); Tarver et al. (2011) for examples using vertebrates). In particular, to our knowledge, no one has yet tested this potential influence using an occurrence-based tetrapod dataset, such as those available from the Paleobiology Database. This is important, given that a wealth of recent studies, and in particular on tetrapod groups, have focussed on estimating diversity patterns through geological time and interpreting what the potential drivers of these large-scale evolutionary patterns might be (Butler et al. 2009; Benson & Butler 2011; Butler et al. 2011; Mannion et al. 2015; Nicholson et al. 2015; Benson et al. 2016; Grossnickle & Newham 2016; Nicholson et al. 2016; Tennant et al. 2016a; Brocklehurst et al. 2017). Many of these studies have employed subsampling methods that are sensitive to changes in the shape of the taxonomic abundance distribution, which we would expect to change in a non-random fashion based on new fossil discoveries through time as they are published (Benton et al. 2011; Benton et al. 2013a; Benton 2015) (e.g., due to the opening up of new discovery regions for geopolitical reasons, or the historical and macrostratigraphic availability of fossil-bearing rock formations). Furthermore as sampling increases through time we might also expect the relative proportion of singleton occurrences to decrease, improving the evenness of the underlying sampling pool (Alroy 2010a; Chao & Jost 2012), and therefore influencing calculated diversity estimates (see Methods below). Assessing this influence in a historical context is therefore important for understanding how stable our interpretations of evolutionary patterns are.

While the data used in these analyses are typically based on a ‘mature’ dataset that has undergone rigorous taxonomic scrutiny and data addition or refinement, they often tend to neglect explicit consideration of the potential influence of temporal variations in the publication record (which these databases are explicitly based on). This has important implications for several reasons. Firstly, we might expect the shape of both raw and subsampled diversity curves to change through time in concert with new discoveries and as sampling increases (Sepkoski Jr 1993; Alroy 2000b). Secondly, this could therefore impact our interpretations of the relative magnitude, tempo and mode of apparent radiations and extinctions, or we might find that subsampled diversity estimates stabilise at some point. Thirdly, if the shape of estimated diversity curves change (either based on raw or ‘corrected’ data), we could see that the strength of results from comparisons of diversity with extrinsic factors such as sea-level or palaeotemperature (Benson et al. 2010; Benson & Butler 2011; Butler et al. 2011; Peters & Heim 2011b; Mayhew et al. 2012; Martin et al. 2014; Mannion et al. 2015; Nicholson et al. 2015; Tennant et al. 2016a; Tennant et al. 2016b) will change.

As our data become more refined, capturing this influence of sampling variation becomes more important through longer periods of time. We might expect sampling error to be highest earlier on in sampling history, and to reduce through time, therefore improving the reliability of our correlation estimates. However, if our subsampled diversity estimates remain stable through historical time, then we can be more confident in these interpretations, as well as the effectiveness of subsampling methods in reliably estimating diversity. Recently, this was potential issue highlighted by Jouve et al. (2017) in a small study of Jurassic and Cretaceous thalattosuchian crocodylomorphs. These authors tested the conclusions of Martin et al. (2014) and their assertion that sea-surface temperature was the primary factor driving marine crocodylomorph evolution, contra Mannion et al. (2015) and Tennant et al. (2016a). They found that the strength of the relationships reported by the first study, also different to those reported by (Mannion et al. 2015) and (Tennant et al. 2016a), were fairly unstable even based on very recent changes in taxonomy. This taxonomically constrained example provides an interesting case of how small changes in publication history can lead to potentially mixed interpretations of macroevolutionary patterns.

In this study, we investigate the influence of publication history on our reading and understanding of diversity patterns through time. For this, we use the clade Dinosauria (excluding Aves) as a study group, as they have an intensely sampled fossil record and a rich history of taxonomic and macroevolutionary research. We note that this is just one of a whole suite of potential biases in paleodiversity studies (e.g.,

appropriate time-binning methods, optimal analytical protocols, or the impact of variation in the rock record through space and time), and these factors are appropriately discussed in more detail elsewhere (Peters & Heim 2010; Benson & Butler 2011; Heim & Peters 2011; Peters & Heim 2011b; Benson & Upchurch 2013; Benton et al. 2013b; Dunhill et al. 2014; Benton 2015; Benson et al. 2016; Tennant et al. 2016b).

## Material and Methods

### *Dinosaur occurrences dataset*

We used a primary dataset of dinosaur body fossil occurrences drawn from the Paleobiology Database (November, 2017; note a new download was performed subsequent to peer review) that spans the entirety of the Late Triassic to end-Cretaceous (66-235 Ma) (SI 1). This comprised only body fossil remains, and excluded ootaxa and ichnotaxa. This dataset was divided into the three major clades, Sauropodomorpha, Ornithischia, and Theropoda. We excluded Aves as they have a fossil record dominated by different and often exceptional modes of preservation. Having limited occurrences of exceptionally preserved fossils will bias our results, particularly in time periods characterised by the presence of avian-bearing Konservat-Lagerstätten (Brocklehurst et al. 2012; Dean et al. 2016). We elected to use genera, as these are more readily identified and diagnosed, which means that we can integrate occurrences that are resolved only to the genus level (e.g., *Allosaurus* sp.), and therefore include a substantial volume of data that would be lost at any finer resolution (Robeck et al. 2000). A potential issue with this genus-level approach is that analysing palaeodiversity at different taxonomic levels can potentially lead to different interpretations about what the external factors mediating it are (Wiese et al. 2016). Despite the fact that some dinosaur genera are multispecific, it has been shown previously that both genus- and species-level dinosaur diversity curves are very similar (Barrett et al. 2009), and that there is more error in species level dinosaur taxonomy than for genera (Benton 2008b). It has also been repeatedly demonstrated that the shape of species and genus curves are strongly correlated in spite of differential taxonomic treatment (Alroy 2000b; Butler et al. 2011; Mannion et al. 2015), and therefore a genus level compilation should be sufficient for the scope of the present study. These databases are based on a comprehensive data compilation effort from multiple workers, and represent updated information on dinosaur taxonomy and palaeontology at this time. We elected to use a stage-level binning method based upon the Standard European Stages and absolute dates provided by Gradstein et al. (2012). Others have used an equal-length time binning approach (Mannion et al. 2015;

Benson et al. 2016), but this has limitations in that it reduces the number of data points for statistical analyses, and can artificially group fossil occurrences from different stages that never temporally co-existed, which would confound our analyses. Only body fossil occurrences that could be unambiguously assigned to a single stage bin were included, and those in which assignment to a single stage bin was either ambiguous or not possible were excluded. This procedure was in order to avoid the over-counting of taxa or occurrences that have poorly constrained temporal durations or contained within multiple time bins. Each dinosaurian sub-group was further sub-divided into approximately contiguous palaeocontinental regions: Africa, Asia, Europe, South America, and North America (Mannion et al. 2015). Unfortunately, sampling is too poor to analyse patterns in Antarctica, Australasia, or Indo-Madagascar, although these regions remain included in the global analyses. We also provide data on the number of newly identified occurrences (SI 2) and newly named genera (SI 3) based on publication date.

#### *Calculating diversity through time*

To test how diversity changes through time, we reduced this primary dataset by successively deleting data from publications of each individual occurrence recursively at two year intervals. Note that this is not the same as the date that the entries were made into the database, but the explicit date of publication of that occurrence record in the published version of record. We stopped at 1991, giving 12 sequential temporal datasets for each dinosaurian clade. What this represents is the maturity of the dataset with respect to its present state based on publication history. Two methods were used to assess diversity patterns. Firstly, empirical diversity based on raw in-bin counts of taxa. This method has been strongly suggested to be a ‘biased’ or poor estimator of true diversity as it is influenced by heterogeneous sampling (Benson et al. 2010; Benson & Butler 2011; Benson & Upchurch 2013; Butler et al. 2013; Smith & Benson 2013; Newham et al. 2014; Mannion et al. 2015; Tennant et al. 2016b). Secondly, we employed the shareholder quorum subsampling (SQS) method, which was designed to account for differences in the shape of the taxon-abundance curve (Alroy 2010c; Alroy 2010a), and implemented in Perl (SI 4, 5).

SQS standardizes taxonomic occurrence lists based on an estimate of coverage to determine the relative magnitude of taxonomic biodiversity trends (Alroy 2010c; Alroy 2010a). In this method, each taxon within a sample pool (time bin) is treated as a ‘shareholder’, whose ‘share’ is its relative occurrence frequency. Taxa are randomly drawn from compiled in-bin occurrence lists, and when a summed proportion of these ‘shares’ reaches a certain ‘quorum’, subsampling stops and the number of sampled

taxa is summed. Coverage, as a measure of sampling quality, is defined as the proportion of the frequency distribution of taxa within a sample. It is estimated by using randomized subsampling to calculate the mean value of Good's  $u$ , which is defined as 1 minus the number of singleton occurrences, divided by the total number of occurrences (Good 1953). A coverage value of zero indicates that all taxa are singleton occurrences (i.e., that all occurrences of a taxon are restricted to a single collection within a time bin). Higher coverage values indicate more even sampling of taxa, and therefore provides a measure of sample completeness that is independent of the overall sample pool size. For each time bin,  $u$  is then divided into the quorum level (Alroy 2010a), thereby providing an estimate of the coverage of the total occurrence pool. In all subsampling replicates, singletons were excluded to calculate diversity (but included to calculate Good's  $u$ ), as they can distort estimates of diversity. Dominant taxa (those with the highest frequency of occurrences per bin) were included, and where these taxa are drawn, 1 is added to the subsampled diversity estimate for that bin (Alroy 2010c). Finally, single large collections that can create the artificial appearance of poor coverage were accounted for by counting occurrences of taxa that only occur in single publications, as opposed to those which occur in single collections, and excluding taxa that are only ever found in the most diverse collection. 1000 subsampling trials were run for each dataset (Theropoda, Ornithischia, and Sauropodomorpha, for each region and 2 year time interval), and the mean diversity reported for each publication time interval. For each sequential subsampling iteration, whenever a collection from a new publication was drawn from the occurrence list, subsequent collections were sampled until exactly three collections from that publication had been selected (Alroy 2010a). We set a baseline quorum of 0.4, as this has been demonstrated to be sufficient in accurately assessing changes in diversity, and widely used (Alroy 2010c; Alroy 2010a; Mannion et al. 2015; Nicholson et al. 2015; Tennant et al. 2016a). Diversity is not reported for any analyses in which this quorum could not be attained, and given an NA value. This dual method is important, as not all publications name new taxa – some add to our knowledge of existing taxa by publishing on new occurrences in different collections (or sites), and therefore by applying a method that accounts for changes in taxonomic abundance across collections we can see how publication history influences diversity through subsampling methods.

# *Correlation between diversity extrinsic parameters*

For our model-fitting protocol, we follow the procedure outlined in numerous recent analytical studies, by employing simple pairwise correlation tests to the residuals of detrended time series at the stage



level (Benson & Butler 2011; Butler et al. 2011; Butler et al. 2013; Mannion et al. 2015; Tennant et al. 2016a). Residuals for each of the two environmental parameters were calculated using the `arima()` function, which uses maximum likelihood to fit a first-order autoregressive model to each time series (Gardner et al. 1980). This method detects the potential influence of any long-term background trend (i.e., a directed change in the mean value of the complete time series through time) within the time series, which has the potential to artificially inflate correlation coefficients in pairwise tests (Box & Jenkins 1976), and also accounts for any potential serial autocorrelation (i.e., the correlation of a variable with itself through successive data points). This protocol has become standard practice now for palaeontological time series analysis following its recommendation by Alroy (2000b). For sea level, we used the curve of Miller et al. (2005), which has been widely applied in recent analyses of tetrapod diversification (Benson et al. 2010; Butler et al. 2011; Martin et al. 2014; Mannion et al. 2015; Tennant et al. 2016a), and for palaeotemperature we used the data from Prokoph et al. (2008), available as Stage level data from Hannisdal & Peters (2011) (SI 6).

We performed an assessment of normality for each time series prior to any correlation analyses, using the Shapiro-Wilk test (`shapiro.test()` function in R). From the output, if the p-values are greater than the pre-defined alpha level (traditionally, 0.05, and used here) this implies that the distribution of the data are not significantly different from a normal distribution, and therefore we can assume normality and use Pearson's test (Pearson's product moment correlation coefficient [ $r$ ]). If  $p > 0.05$ , we performed a non-parametric Spearman's rank correlation ( $\rho$ ). For each test, both the raw and adjusted p-values are reported, the latter calculated using the `p.adjust()` function, and using the 'BH' model (Benjamini & Hochberg 1995). This method accounts for the false-discovery test when performing multiple hypothesis tests with the same data set, which can inflate type-1 error (i.e., in order to avoid falsely rejecting a true null hypothesis; a false positive). We avoided the more commonly used 'Bonferroni correction', due the undesirable property it has of potentially increasing type 2 error to unacceptable levels (Nakagawa 2004). This adjustment was performed on 'families' of analyses (i.e., non-independent tests), rather than on all correlation tests together, otherwise we potentially run the risk of setting the pass rate for statistical significance too low.

We performed pairwise correlations for the detrended subsampled diversity estimates at each two year iteration for each group to assess how the strength and direction of correlation changes through publication history. We do not use a maximum likelihood model fitting approach because rather than trying to distinguish between a set of candidate models, we are simply assessing how the strength of

correlations changes through publication history. All analyses were carried out in R version 3.0.2 (R Development Core Team 2013) using the functions available in the default *stats* package..

## Results

### *Occurrences and genera through time*

From the first dinosaur discoveries until around 1950, the number of dinosaur occurrences published remained mostly consistent and steadily increasing through time (Fig. 1). From the mid-to the end of 20<sup>th</sup> century, the number of published occurrences has increased substantially. This is mostly due to the publication of theropod and ornithischian occurrences, which reached a peak around the turn of the millennium, with occurrences of all three groups remaining high but declining in rate of publication after this. A very similar pattern is observed for genera, with the publication of newly named genera increasing exponentially since around 1990, and at an equal rate for all three groups (Fig. 2). The cumulative frequency of newly named genera shows that, although the rate of growth remains approximately comparable and increasing for all three groups, there are times when the relative overall number of genera between groups changes through publication history. For example, while sauropodomorphs had more named genera than theropods until around 1935, this changed at around 1960 when new theropod genera became more frequently published than sauropodomorphs. The recent rate of growth of newly named theropod genera in the last 15 years means that they are now named as frequently as newly named ornithischian genera.

[Figure 1 – Occurrences through time]

[Figure 2 – Genera through time]

### *‘Global’ patterns of total dinosaur diversity*

Apparent ‘global’ empirical dinosaur diversity steadily rises until the end of the Jurassic (Fig. 3A). Diversity is low across the J/K interval until the Hauterivian, before recovering in the late Early Cretaceous. There is a second decline through the late Early to early Late Cretaceous interval, before diversity increases to its zenith in the latest Cretaceous. This general pattern remains constant throughout publication history, although diversity in the ‘middle’ Cretaceous and latest Cretaceous intervals shows the greatest increases. Subsampled global dinosaur diversity retains this overall pattern (Fig. 3B). The J/K interval decline is still visible, but the late Early Cretaceous apparent diversity increase

supersedes Late Jurassic levels. The early Late Cretaceous decline is also still present, but the magnitude of the latest Cretaceous diversity increase is much lower than that recovered for the empirical data. The reason for this distinction between subsampled and raw diversity is that SQS estimates diversity by standardising coverage of the taxon-abundance distribution, and thereby reduces the impact of intensely sampled time intervals such as the latest Cretaceous.

[Figure 3 – Dinosaur global diversity]

# *Patterns of raw and subsampled diversity by group*

## ***Ornithischians***

Raw ‘global’ ornithischian diversity (Fig. 4A) is constant and stable throughout publication history. The apparent magnitude of longer-term trends is obscured by the relative over-sampling of the Campanian and Maastrichtian, which are almost an order of magnitude higher than any other Jurassic or Cretaceous stage interval. Indeed, the Campanian shows no sign of slowing down in increasing diversity, and is the highest and most rapidly increasing of any time interval. In spite of this, the overall trends in raw diversity remain, with steadily increasing Middle to Late Jurassic diversity, a small earliest Cretaceous decline followed by a ‘middle’ Cretaceous peak in the Aptian, a shallow decline into the early Late Cretaceous, and an increase in the Campanian.

Raw diversity in Europe shows increasing diversity across the J/K transition before an earliest Cretaceous decline (Valanginian to Hauterivian), constant ‘middle’ Cretaceous diversity, and an increase from the Campanian to Maastrichtian (Fig. 4B). Raw African ornithischian diversity is too inconsistent to analyse any changes through geological time or publication time (Fig. 4C). Raw Asian diversity is fairly constant through the Cretaceous, until an apparent major Campanian peak and Maastrichtian decline (Fig. 4D). In North America, empirical diversity is flat and low throughout the Late Jurassic and most of the Cretaceous (Fig. 4E). There is a Campanian peak, and order of magnitude higher than any prior interval, which is rapidly increasing through publication time. Diversity decreases from this into the Maastrichtian, in which diversity has remained relatively stable through publication time. Sampling in South America is also relatively poor, with apparent diversity remaining low and flat where a signal is obtained (Fig. 4F).

[Figure 4 – Ornithischians, raw]

Subsampled 'global' ornithischian diversity shows a distinctly different pattern from the raw curve, both in terms of overall trends, and in terms of the magnitude of the effect of publication history (Fig. 5A). The Jurassic is generally too poorly sampled to reveal a constant signal, but there is evidence of a decline through the Jurassic/Cretaceous transition, which remains constant through publication time. This is followed by a middle-Cretaceous increase, in which ornithischian diversity is at its second highest level throughout their history. The magnitude of this Albian radiation has rapidly increased over publication time, the result being that originally what appeared to be increasing subsampled diversity over the Early/Late Cretaceous transition now shows a major decline from the Albian to Coniacian. Santonian subsampled diversity remains unknown, but when we see a signal emerge in the Campanian, diversity is higher than the Albian, reaching its highest level before declining by more than half into the Maastrichtian. This overall structure, besides the Albian, remains consistent throughout publication time with no major perturbations to the apparent 'global' curve.

[Figure 5 – Ornithischians, SQS]

Subsampled European diversity reveals increasing diversity across the Tithonian/Berriasian transition, followed by overall gradually decreasing diversity throughout the remainder of the Early Cretaceous (Fig. 5B). In Africa, the signal is too poor to reveal anything besides a Kimmeridgian/Tithonian subsampled diversity drop (Fig. 5C), and in Asia, there is evidence of a decline in subsampled diversity across the Albian/Cenomanian transition (Fig. 5D). In North America, subsampled diversity reveals a decline across the Early-Late Cretaceous transition, and a major decline from the Campanian to Maastrichtian, a pattern that remains stable through publication history (Fig. 5E). In South America, the subsampled signal is too poor to say anything about ornithischian diversity (Fig. 5F).

If we look at how coverage has changed through publication history (based on Good's  $u$ ), we should expect that subsampled diversity patterns are reflective of this. At a global level, coverage in the Cretaceous is much better than the Jurassic (Fig. 6A). Much of this, however, is based on patchy regional record. In Europe, we find that coverage increases across the J/K interval (Fig. 6B), and is the only place where a consistently reliable record here can be obtained. In Africa, coverage is generally poor, besides in the latest Jurassic (Fig. 6C). In Asia, coverage is poor up until the late Early Cretaceous (Fig. 6D). In North America, coverage is good in the latest Jurassic and 'middle' to Late Cretaceous, but non-existent in Early to Middle Jurassic and earliest Cretaceous (Fig. 6E). Coverage is generally poor for the entire South American ornithischian record (Fig. 6F), explaining why obtaining a subsampled diversity signal here is difficult.

[Figure 6 – Ornithischia, u]

# ***Theropods***

The overall shape of the raw ‘global’ theropod diversity curve remains consistent through publication history for the Jurassic (Fig. 7A), similar to ornithischians, where we see steadily increasing Middle to Late Jurassic diversity. ‘Middle’ Cretaceous raw diversity fluctuated, followed by a major Campanian to Maastrichtian rise. The lowest apparent diversity is in the Coniacian, reaching earliest Cretaceous levels. Notable variations due to publication history are in the Barremian to Cenomanian, where diversity increases in magnitude through time, gradually exceeding that for Late Jurassic diversity. Raw European diversity is fairly constant through publication history (Fig. 7B), with a Middle Jurassic diversity peak in the Bathonian, followed by a Callovian-Oxfordian trough, a second larger Kimmeridgian peak, and then constant decline from the Tithonian to the Valanginian. Barremian diversity is increasing through publication time, and is as high as Kimmeridgian levels. Aptian and Albian diversity is relatively low through publication history. Campanian and Maastrichtian diversity levels are slowly increasing through publication history. As with ornithischians, African theropods are generally too poorly sampled at the stage level to recognise any consistent empirical patterns (Fig. 7C). There is a Cenomanian raw diversity spike, but how this compares with much of the rest of the Cretaceous is obscured by patchy sampling. In Asia, raw Late Jurassic diversity is generally lower than for the Cretaceous (Fig. 7D). The Cretaceous sees three peaks in apparent diversity during the Aptian, Turonian and Campanian-Maastrichtian, with the latter being considerably higher than any previous one, and growing rapidly through publication history. In North America, raw diversity levels are dwarfed by the intensive sampling of latest Cretaceous theropods, with major gaps in the Middle to Late Jurassic and earliest Cretaceous records (Fig. 7E). Campanian and Maastrichtian raw diversity is constantly increasing at a faster rate than any other time interval, and consistently reveals a slight apparent diversity decline into the end-Cretaceous. Raw South American diversity estimates are changing rapidly through publication history, with almost every interval in which dinosaurs are available to be sampled doubling or tripling since 1991 (Fig. 7F). Of note is a recently emerging Late Jurassic theropod fossil record in South America, which at the present reveals an apparent low diversity.

[Figure 7 – Theropoda, raw]

When subsampling is applied, in the Late Jurassic we see a switch from steadily increasing subsampled diversity to a major Oxfordian peak and subsequent decline in diversity through the J/K transition decline, a pattern that is consistently recovered through publication time (Fig. 8A). Subsampled diversity is at its highest level during the Aptian than at any other stage during theropod history, and has doubled in the last 20 years of publication history. Campanian and Maastrichtian diversity are as high as the Cenomanian, a pattern that remains consistent through publication time. We see the 'global' J/K transition decline reflected in Europe (Fig. 8B), and a strong Barremian peak, which is not captured on a 'global' scale. Latest Triassic subsampled diversity is higher than at any other point in the Jurassic in Europe. Maastrichtian subsampled diversity remains high, reaching the same level as that for the Kimmeridgian. In Africa, as with ornithischians the signal is very patchy after subsampling is applied (Fig. 8C), but captures an Albian-Cenomanian diversity increase, which remains constant throughout publication history, and flat diversity in the latest Cretaceous. The subsampled theropod diversity signal is also patchy in Asia, but does reveal a very high latest Cretaceous diversity level, which is not otherwise seen throughout theropod evolutionary history (Fig. 8D). In North America, the subsampled record is as patchy as that for ornithischians, but remains stable through publication history (Fig. 8E). Here, we see slightly increasing subsampled diversity in the latest Jurassic, a large decline from the Aptian to Albian, and a major diversification from the Santonian to Campanian. In South America a subsampled diversity signal is almost entirely absent, although we do see a reduction in almost half from the Norian to Rhaetian, which remains stable through publication history.

[Figure 8 – Theropoda, SQS]

Theropod coverage levels are quite patchy at the 'global' level, remaining constant in the Late Triassic, fluctuating in the Middle Jurassic to earliest Cretaceous, but remaining fairly stable in the 'middle' and latest Cretaceous through publication history (Fig. 9A). On a regional level, this apparent 'global' signal across the Jurassic/Cretaceous transition is again emphasised in Europe, but in the Valanginian and Albian, coverage is getting notably worse through publication history (Fig. 9B). Coverage in Africa (Fig. 9C) and Asia (Fig. 9D) is very patchy, and does not appear to have changed in the last 20 years overall, besides the origin of moderate coverage levels in the Oxfordian and Aptian of Asia. In North America, coverage levels are moderately high in the latest Jurassic, Aptian and Albian, and latest Cretaceous, only improving in the latest Jurassic through publication history (Fig. 9E). In South America, coverage is generally poor throughout the Jurassic and Cretaceous, but appears to be declining in the Norian and Rhaetian theropod records (Fig. 9F).

[Figure 9 – Theropoda, u]

# ***Sauropodomorphs***

Sauropodomorph empirical diversity emphasises some more changes in raw patterns through publication time, particularly in the ‘middle’ and Late Cretaceous (Fig. 10A). Late Jurassic patterns are fairly consistent, with a rising Kimmeridgian and Tithonian raw diversity emphasising an apparent major decline across the J/K interval. In Europe, sauropods show a consistent and major decline in raw diversity from the Kimmeridgian to the Berriasian (Fig. 10B). Much of the rest of the Cretaceous is too poorly sampled, but raw sauropod diversity never attains Kimmeridgian levels in Europe for the rest of their evolutionary history. Sauropodomorph dinosaurs are generally better sampled than theropods and ornithischians in Africa, showing an apparent decline through the Triassic/Jurassic transition, a latest Jurassic raw diversity peak, and low levels through the ‘middle’ to Late Cretaceous transition (Fig. 10C). In Asia, raw taxonomic diversity is generally low compared to the Maastrichtian, in which diversity is relatively high and still rapidly increasing through publication history (Fig. 8C). The North American sauropod record is very patchy, with the latest Jurassic showing a shift from rapidly increasing raw diversity from the Oxfordian to a slight drop from the Kimmeridgian to Tithonian (Fig. 10E). The South American Jurassic sauropod record is patchy, but raw diversity is increasing throughout the ‘middle’ to Late Cretaceous through publication history.

[Figure 10 – Sauropodomorpha, raw]

At a ‘global’ level, Jurassic sauropodomorph subsampled diversity remains consistent through publication history (Fig. 11A). Here, we see steadily increase diversity levels through the Middle and Late Cretaceous, before a decline through the Jurassic/Cretaceous transition, which might have been initiated before the J/K boundary itself. The greatest change in subsampled diversity is in the Albian, which has almost doubled in the last 20 years, with implication for the ‘mid-Cretaceous sauropod hiatus’ (Mannion & Upchurch 2011). Subsampling reduces the European diversity signal due to poor sampling of sauropods, although there is evidence for the sauropod decline beginning prior to the J/K transition (Fig. 11B). In Africa, when subsampling is applied, the few intervals in which a signal emerges reveal a fairly constant level of diversity through the Jurassic and Cretaceous, and through publication time, with the notable exception being an increase in subsampled diversity in the latest Jurassic (Fig. 11C). In Asia, the signal is also fairly poor after subsampling is applied (Fig. 11D). Here, we see an increase in subsampled diversity across the Triassic/Jurassic transition, and the highest diversity level is in the

Maastrichtian, where subsampled estimates have increased by more than double in the last 20 years. In North America, the subsampled signal is highly degraded, although of note is a near doubling of Albian diversity levels in the last 20 years (Fig. 11E). In South America, the signal is very inconsistent, but improving through publication history, with a patchy Late Cretaceous signal beginning to emerge (Fig. 11F). Full subsampling results are provided in Supplementary Information 7 and 8.

# *Correlation results*

Our results find varying strength of correlation between subsampled ‘global’ dinosaur diversity for each clade and both palaeotemperature and sea level, although the correlations are consistently weak (SI 9). This lack of statistical strength occurs for subsampled diversity estimates at the two year intervals for each of ornithischians (Table 1), sauropodomorphs (Table 2), theropods (Table 3), and dinosaurs overall (Table 4), meaning that we cannot interpret anything from these results with any high level of confidence. The only time the results come close to alpha (0.05) is for the correlation between Ornithischia and sea level during 2007-2013 ( $p = 0.062-0.084$ ,  $\rho = 0.481-0.516$ ), but our correction methods reduce the strength of all our statistical results. This hints that it is possible for changes in subsampled diversity estimates based on publication history to be potentially somewhat influential.

[Tables 1- 4]

# **Discussion**

## *The influence of sampling and publication history on dinosaur diversity estimates*

The impact of publication history on estimates of both raw and subsampled dinosaur diversity has direct consequences for our interpretation of their evolutionary history and diversification (Benton 2008a; Tarver et al. 2011). What we have found using a small window of historical discovery, is that dinosaur diversity remains highly volatile in specific geographical regions and geological time, typically where sampling levels remain very uneven or the overall sampling pool is very small (Sepkoski 1993; Alroy 2000c). In poorly sampled areas, it is clear that even small changes to the data can yield substantial changes, as we are often dealing with very small total sample sizes. This is reflected much less on an apparent ‘global’ scale, and much more so when we look at regional signals after subsampling is applied.



As the rate of dinosaur discovery is increasing (both taxonomically and for occurrences) (Figs. 1, 2), we expect this volatility to remain in the future.

As research on dinosaurs continues and new taxa are described and published from existing fossiliferous formations, one implication of this is that raw diversity is expected to become more correlated with rock availability as result of increasing sampling effort (Raup 1977; Wang & Dodson 2006; Benton 2015), and represents a form of publication bias (Sepkoski 1993; Alroy 2000c; Jouve et al. 2017). Further research has shown that new dinosaur discoveries, and changes in their taxonomy and phylogenetic relationships, can strongly influence our understanding and interpretation of their fossil record and diversification patterns (Weishampel 1996; Tarver et al. 2011). In this study, we examined the historical trajectory of different dinosaur diversity estimates to observe whether sampling curves are beginning to stabilise or not. What we seem to be observing is that for raw diversity estimates, we find evidence for relatively stable patterns in spite of any ‘bonanza effect’ (i.e., fossil discoveries driving formation counts, especially prevalent in Lagerstätten) (Raup 1977; Benton 2015). The fact that the curves remain relatively consistent, despite the variable addition of new taxa, suggests we are seeing some form of the ‘redundancy’ hypothesis at play, in that fossils and sampling are non-independent from each other, when only raw data are considered (Benton et al. 2011; Benton et al. 2013a; Dunhill et al. 2014; Benton 2015). Conversely, a more appropriate interpretation might be that we are generally sampling fairly, or consistently, from an underlying occurrence pool through historical time, or that our application of subsampling based on a standardised estimate of coverage is sufficient to eliminate any such sampling biases.

However, what is the explanation for the diversity patterns we obtained so far, and what does the variation in these patterns tell us? Generally, a dinosaur bearing formation availability effect makes the Kimmeridgian, Barremian, Albian, Aptian, Campanian, and Maastrichtian the most productive stages (Barrett et al. 2009; Butler et al. 2011; Upchurch et al. 2011; Tennant et al. 2016b). By counting genus density (number of genera per million year), three stages from these stand out: Kimmeridgian, Campanian and Maastrichtian (Taylor 2006), with Asia being the most productive continent followed closely by North America, then Europe, South America, Africa, Australasia and finally Antarctica. However, what is clear from our analyses is that this is not historically consistent, and prone to changing as new regions are opened up for exploration and discovery.

There is a well-recognised relationship between the amount of rock available for palaeontologists to search for dinosaur fossils, and how this influences our interpretations of their diversity patterns

(Barrett et al. 2009; Butler et al. 2011; Mannion et al. 2011; Upchurch et al. 2011). This raises questions about the extent to which many aspects of diversity curves could be artefacts caused by changes in global sea levels, tectonics, and other geological processes related to preservational or geological megabiases (Peters & Foote 2001; Smith et al. 2001; Smith & McGowan 2007; Peters & Heim 2010; Heim & Peters 2011; Peters & Heim 2011a; Smith et al. 2012; Smith & Benson 2013). As a way of exploring this, Barrett et al. (2009) applied the “residuals” method (formerly designed by Smith & McGowan (2007) for marine fossil taxa) to account for these sorts of geological biases, and demonstrated that many features of dinosaur diversity curves are sampling artefacts that reflect changes in the amount of fossiliferous rocks and thus reflect geological rather than biological signals. The influence of these geological biases appears to have been largely mitigated in recent studies by considering a historically accurate account of sampling and modelling variation through time (Alroy 2010c; Alroy 2010a; Alroy 2010b; Newham et al. 2014; Mannion et al. 2015; Nicholson et al. 2015; Grossnickle & Newham 2016; Tennant et al. 2016b). Here, sampling heterogeneity in terms of both collection effort and rock availability can be accounted for through subsampling methods, which appear to capture and alleviate at least part of the geological signal. These relative changes in the amount of rock available for sampling, the number and abundance of different taxa, and the historical sampling intensity of different rock formations have implications for the patterns of palaeobiological change that we infer from them. An interesting extension of the present study, which explores historical publication bias, would be to test how the historical context of sampling (e.g., outcrop area variation or availability through time, sampling intensity through time) corresponds to our historical estimates of diversity.

We find that there are four main time periods when great caution should be applied to interpreting further processes or patterns based on dinosaur diversity, based on volatility in subsampled diversity estimates and coverage levels. These are: (1) the Late Jurassic interval for theropods in Europe, North America, and Asia (Figs. 8, 9); (2) the Middle-Late Cretaceous interval for theropods in South America and Asia (Figs. 8, 9); and (3) the mid-Late Cretaceous interval for ornithischians in North and South America and Asia (Figs. 5, 6); (4) the mid-Late Cretaceous for sauropodomorphs in Africa, Asia, and South America (i.e., Gondwana) (Figs. 11, 12). As well as this, the Late Triassic dinosaurian record is in a state of flux at the present (Baron et al. 2017), and should be interpreted carefully (Figs. 5, 8, 11). These represent the times when diversity estimates are changing most rapidly due to a combination of taxonomic revision and discovery-driven publication. While we cannot predict the future of dinosaur discovery, or the selective nature of publication, it seems prudent to suggest that we are cautious in our

interpretation of events in dinosaur macroevolution in these intervals, similar to the conclusions reached by Tarver et al. (2011).

*Discovery influences regional patterns of dinosaur diversity through time*

# ***Ornithischians***

The Jurassic/Cretaceous (J/K) interval decline in subsampled diversity remains constant and recognisable throughout publication history, with this stability suggesting that either this is a real biological signal and not a publication artefact (Tennant et al. 2016b). However, more focussed sampling needs to occur on J/K interval deposits to reveal the true global signal, as much of this pattern is based on fossils exclusively from historically well-sampled European localities (Tennant et al. 2016c) (Figs. 5, 9, 11). Ornithischian subsampled diversity decreases steadily through the Early Cretaceous in Europe, with a possible radiation in the Campanian to Maastrichtian, perhaps explained by an increase of recent occurrences of latest Cretaceous dinosaurian findings mainly in Spain, Portugal, France and Romania (Riera et al. 2009; Csiki et al. 2010). However, many of these latest Cretaceous European dinosaur faunas are not particularly well-resolved stratigraphically compared to the well-studied North-American sections, which makes the timing of any regional extinction here and comparison with North America and Asia difficult at the present. Advanced ornithischian faunas, including ceratopsians and hadrosaurids, appear to have diversified extremely rapidly in the latest Cretaceous, but this is classically explained by the oversampling of North American Late Campanian localities, like Dinosaur Park Formation and its approximate temporal equivalents. Although a small rise in subsampled diversity is recovered from the Campanian to the Maastrichtian in Europe, this is considerably less marked than the decline in North America, where subsampling reveals that ornithischian diversity was actually declining from the Campanian to Maastrichtian (Brusatte et al. 2015).

Ornithischian subsampled diversity in Asia has been increasing steadily through publication time in the ‘middle’ Cretaceous, filling in the gap from equivalent latitude European deposits at this time. This is plausibly due to the radiation of Parksosauridae and Ankylopollexia clades, two of the most dominant Late Cretaceous dinosaurian taxa around this time. Together with the North American record, this manifests as a great global decline across the Early-Late Cretaceous interval, a pattern that was not recognised until more recent years due to the discovery of more Konzentrat-Lagerstätten in Mongolia and China around this time, such as the Jehol Biota (Lambert et al. 2001; Godefroit et al. 2008; Upchurch

et al. 2011). A perceived Late Cretaceous subsampled diversity increase for Asian taxa, particularly hadrosauroids, could be due to a renaissance in the discovery of Cretaceous Asian dinosaurs over the past two decades (Lloyd et al. 2008; Barrett et al. 2009; Zhou & Wang 2010; Upchurch et al. 2011; Mo et al. 2016). Despite the increasing availability of Early Cretaceous dinosaur-bearing formations (DBFs) in Africa in the last 20 years (e.g., Tunisia, Niger; (Taquet & Russell 1999; Anderson et al. 2007)), sampling here is still too limited to reveal any consistent patterns in ornithischian subsampled diversity (Mannion et al. 2011; Upchurch et al. 2011; Tennant et al. 2016b) (Figs. 5, 6).

This regional distinction could be due to the tie between ecomorphological function and biological diversity, as Asian hadrosauroids increased in morphological disparity during the latest Cretaceous, whereas in North America large-bodied bulk-feeding ornithischians decreased in their disparity (Campione & Evans 2011; Brusatte et al. 2012). (Vavrek & Larsson 2010; Mitchell et al. 2012). In North America, several abiotic factors, including extreme fluctuations of the Western Interior Sea, and the Laramide orogeny and proposed biogeographic provincialism, may have affected the evolution of North America dinosaurs in distinct ways from species on other continents (Gates et al. 2012; Arbour et al. 2016), meaning that the North American record is unlikely to be representative of global diversity pattern (Sampson et al. 2010; Brusatte et al. 2012).

### ***Theropods***

As already shown elsewhere (Barrett et al., 2009, Brusatte et al., 2012), 'global' theropod diversity trends are overall very similar to that of Ornithischia, with subsampled diversity increases during the Late Jurassic (Oxfordian and Tithonian peaks punctuated by a Kimmeridgian decline), late Early Cretaceous (Aptian), early Late Cretaceous (Cenomanian) and latest Cretaceous. Moderately high Middle and Late Jurassic diversity subsampled levels represent the radiation of major avetheropodan clades, and a wealth of new discoveries in recent years, particularly from Asia (Upchurch et al. 2011; Xu et al. 2011; Carrano et al. 2012; Benson et al. 2014; Tennant et al. 2016b).

European subsampled theropod diversity is more constant than in other regions, with a Bajocian peak followed by a Bathonian-Oxfordian trough, and a Kimmeridgian peak followed by a Tithonian to Valanginian drop. This can, at least in part, be explained by an abundance of well-sampled Late Jurassic formations from the across Western Europe (Upchurch et al. 2011; Benson et al. 2013; Tennant et al. 2016c). Barremian diversity is increasing rapidly through publication history, and is now as high as calculated for the Kimmeridgian. As with the Late Jurassic, at least part of this signal represents the

influence of a Lagerstätten effect (e.g., Las Hoyas, Spain) (Buscalioni et al. 2008; Upchurch et al. 2011; Sánchez-Hernández & Benton 2012), highlighting that single, well-sampled formations can have a profound historical effect on our understanding of regional diversity patterns, even when subsampling methods are applied. The European Aptian-Albian record is increasing slower through time compared to the Campanian-Maastrichtian. However, this might possibly change in the future, as the ichnological record in southern Europe is quite abundant for the Aptian-Albian interval, and suggests a currently unrecognised dinosaurian diversity present there (Dalla Vecchia 2002; Meyer & Thuring 2003).

The North American theropod record is dwarfed by an oversampling of latest Cretaceous dinosaur-bearing formations (e.g. Dinosaur Provincial Park, Hell Creek Formation). An increasingly even representation of latitudinally diverse localities from the Cenomanian-Campanian of Utah, Colorado, New Mexico and Mexico (e.g. Wahweap Formation), may increase the magnitude of the small subsampled diversity drop through the Maastrichtian. Subsampling highlights a latest Jurassic peak in diversity (due to the abundance of remains from the well-sampled Morrison Formation; (Foster 2003)), although Jurassic subsampled diversity never attains that of the Cretaceous highs during the Aptian and Campanian. Conversely to Brusatte et al. (2015), who found no evidence for a progressive Campanian-Maastrichtian decline in North American theropod faunas using similar SQS analyses (implemented in R; see (Tennant et al. 2016a; Tennant et al. 2016b) and (Alroy 2010c; Alroy 2010a) for comparative discussions), we find a very slight decline that remains constant through publication history, that likely relates to our usage of a slightly different subsampling approach. Aptian subsampled diversity is relatively high due to the more heavily sampled localities from Montana to Texas (Kirkland et al. 1997; Cifelli et al. 1999; Kirkland & Madsen 2007).

In Africa, there is a Cenomanian radiation (Fig. 8C) mainly due to the multitaxic theropod dominated Kem Kem beds and other Albian-Cenomanian (“middle” Cretaceous) equivalents in Northern Africa, but this signal might have been altered by time averaging effects constraining a more temporally diluted diversity in a single unit (Mannion & Barrett 2013; Evers et al. 2015; Chiarenza & Cau 2016). Asian subsampled diversity peaks in the Aptian, Campanian and Maastrichtian might be explained by a Lagerstätten ‘bonanza’ effect, especially considering the high quality preservation deposits discovered and heavily sampled in the last 20 years (e.g. Liaoning) (Lloyd et al. 2008; Zhou & Wang 2010; Godefroit et al. 2013; O’Connor & Zhou 2015; Tennant et al. 2016c), although coverage remains only moderate (around 0.5) in each of these intervals (Fig. 9). Similarly to the pattern in Africa and Asia, South American theropod subsampled diversity stands out compared to other North America and Europe, remaining

relatively signal deficient. Despite an increasing rate of discovery of new taxa, which often alter our knowledge of dinosaur phylogeny and biogeography from the ‘middle’ Cretaceous of Patagonia and Brazil (Novas et al. 2005; Novas & Pol 2005; Canale et al. 2009; Novas et al. 2013), coverage remains poor at the stage level, emphasising the need for greater stratigraphic resolution of the theropod-bearing formations here.

### ***Sauropodomorphs***

Subsampled diversity patterns of sauropodomorphs share some characteristics of those of theropods and ornithischians, despite having a different fossil record due to taphonomic differences (i.e., larger, more robust skeletons being preferentially preserved in different environmental settings) (Mannion & Upchurch 2010; Mannion & Upchurch 2011; Dean et al. 2016). This is compounded by a difficulty in assigning a large number of taxa to specific stage bins, which unfortunately excludes many of them from our analyses (SI 1). Differences in diversity patterns between sauropodomorphs and ornithischians have classically been interpreted as being due to exclusive competition between the two main herbivorous dinosaurian subtaxa (Butler et al. 2009), with an explosive radiation in ornithischians during the Early Cretaceous resulting from the apparent decline in diversity of sauropodomorphs. In fact, the J/K transition represents a major extinction ‘event’ for sauropodomorphs, reflecting the decline of non-neosauropods, diplodocoids and basal macronarians (Mannion et al. 2013; Tennant et al. 2016b). Sauropodomorph faunas have a low subsampled diversity in the earliest Cretaceous, coupled with a generally poor fossil record (Mannion & Upchurch 2010), but at a time when we otherwise see rapid increases in theropod and ornithischian diversity and a prolonged phase of faunal turnover (Upchurch & Mannion 2012; Tennant et al. 2016b). Sauropodomorph subsampled diversity levels fluctuate from the ‘middle’ Cretaceous until the final latest Cretaceous radiation, with a possible small decline in the Maastrichtian. This find is somewhat contrary to that of Sakamoto et al. (2016) who found that their decline was initiated in the Early Cretaceous, and that the diversification of titanosaurs was at an insufficient rate to compensate for the overall loss of sauropodomorph lineages throughout the rest of the Cretaceous. However, we find that sauropodomorphs are at their most diverse during the Albion (Fig. 11). Sauropodomorphs appear to be overrepresented with respect to what we might expect for almost the entire duration of the Jurassic, whereas the opposite is true for the Cretaceous (Mannion et al. 2011; Upchurch et al. 2011; Tennant et al. 2016b). The general patterns of ‘global’ subsampled diversity shows a steady increase from Middle to the end of Jurassic with a decline through J/K transition (Upchurch & Mannion 2012; Tennant et al. 2016b). The relatively high Late Cretaceous subsampled diversity levels

can at least be partially explained by the constant discovery of new titanosaurian taxa, especially from Gondwanan continents (Vieira et al. 2014; de Jesus Faria et al. 2015; Bandeira et al. 2016; Poropat et al. 2016), and only recently a more appreciated diversity of diplodocoids (e.g., dicraeosaurids, rebbachisaurids) from relatively poorly sampled regions such as Africa (Mannion & Barrett 2013; Wilson & Allain 2015; Ibrahim et al. 2016).

Large-bodied sauropodomorph diversity in the Tithonian is certainly influenced by the intense sampling history of the North American Morrison Formation, where there is an unusually high diversity and cranial disparity of megaherbivores within a relatively resource-poor environment (Button et al. 2014). Here, high diversity remains in spite of our accounting for large collection biases associated with Konzentrat-Lagerstätten (Alroy 2010c; Alroy 2010a), implying that sauropodomorphs reached their zenith in diversity during the Late Jurassic. Sauropodomorphs appear to be better sampled than theropods and ornithischians in Africa (Fig. 12C), although their records remain largely too inconsistent and patchy record to reveal any major patterns. Asian subsampled diversity is constantly low until the Maastrichtian, where it increases moderately due to a series of recent discoveries from Pakistan and China (Malkani 2010; Junchang et al. 2013). However, the Asian Cretaceous sauropodomorph record is otherwise very poorly sampled, especially compared to ornithischians and theropods. This phenomenon could be explained by a taphonomic size bias discriminating against the preservation of larger-bodied animals in pre-Late Cretaceous Konservat-Lagerstätten, while they are more present although more rare in the dense bone assemblages from the latest Cretaceous of Mongolia, China and India (Kidwell, 2001).

There is a notable subsampled diversity decline in European sauropodomorphs through the J/K transition, as with other dinosaurian groups (Upchurch & Mannion 2012; Tennant et al. 2016b). This is distinct from results obtained with other methods (e.g., TRIPS) which do not find any evidence for such a decline (Starrfelt & Liow 2016). Subsampling also reveals that sauropodomorph diversity in the latest Cretaceous of Europe was relatively flat. The sauropodomorph record in South America is poor and mostly confined to the Late Cretaceous, with diversity levels rising and resolution improving through publication time as coverage increases and as new taxa get identified from emerging Patagonian and Brazilian deposits (Novas, 2007, 2009).

Here, it is worth noting the distinction between global and regional sauropodomorph records. On a global level, we appear to have strong evidence for a substantial sauropod subsampled diversity decline from the Campanian to Maastrichtian. However, this decline is not represented in any of the regional sauropodomorph diversity signals. Instead, the 'global' signal in the Maastrichtian is comprised of a

medley of regional records, which are only continuous with the Campanian record in Europe and North America. Therefore, the ‘global extinction’ of sauropods in the latest Cretaceous is actually due to regionally heterogeneous sampling signals that are summed into a misleading ‘global’ curve. A similar case can be made for the apparently ‘global’ radiation in the Albian, which is primarily a reflection of a well-sampled North American Albian sauropodomorph record (Fig. 11). Thus, when looking at diversity signals, interpretation of global patterns without considering structural changes on a regional level is not recommended.

### *Limitations of the present study*

As we have shown, the interpretation of subsampled diversity estimates in dinosaurs is often highly sensitive to changes in the taxon-abundance curve, and we can further distort this by relying on a historically biased source of data for our analyses. Our overwhelmingly weak correlation results mean that in no cases could we confidently reject any null hypotheses. As such, it is difficult to say exactly how the correlations have potentially changed through time. Some of the reasons for this might be that the tests are inadequate for picking apart temporal trends over such a long time period, a small *n* (often with a lot of missing data). Alternatively, it suggests that sea level is a poor predictor of dinosaur diversity at the stage level, and that dinosaur diversity and sea level are perhaps only related on broader temporal scales (Haubold 1990; Butler et al. 2011; Tennant et al. 2016b). We also only elected to use a single autocorrelation model, and it would be interesting in the future to explore the modelling a wider range of serial correlation structures on palaeontological data in the future, and the impact this might have on correlation analyses. Alternatively, our choice of using genus-level data might have been influential (see Benton (2008a); Benson et al. (2016)), despite previous assertions that the species and genus level diversity curves for dinosaurs are quite similar (Barrett et al. 2009). Future research could investigate the influence that taxonomic resolution has on our interpretation of dinosaur evolution. In addition, as mentioned above, it might simply be inappropriate to analyse ‘global’ correlations between diversity and extrinsic parameters, due to the regionally heterogeneous nature of diversity data. However, what we do see is that the strength of the relationship between sea level and subsampled diversity, despite being consistently weakly statistically supported, is contingent on the publication history of the group. This lends some support the recent analysis of Jouve et al. (2017), who also found that small changes in the taxonomic composition of a dataset can lead to divergent interpretations of the environmental regulators of diversity, although this phenomenon requires further investigation.



The accuracy of the results from the Gondwanan continents should be treated with caution, as it is clear that the fossil record is substantially patchier than the Laurasian record, reflected in the publication histories of specimens from these regions. High-magnitude changes in even moderately well-sampled intervals through publication history suggests we should acknowledge the limitations of any biological interpretations of the dinosaur record in Africa and South America until more reliable data is obtained (Barrett et al. 2009; Mannion et al. 2011; Upchurch et al. 2011; Tennant et al. 2016b).

We did not test for how changes in the stratigraphy of dinosaur-bearing formations through time (e.g., as chronological dates are found or refined) influences the structure of sampling pools in each time bin, a factor which is quite under-studied in paleodiversity reconstructions (Gibert & Escarguel 2017). Furthermore, by explicitly excluding occurrences that did not fit within a single stage-level time bin, we influence what data are not included in our analyses by rejecting specific formation pools from bins. This will have a particularly stronger effect in formations that span multiple time bins, as well as in formations that have less well-studied chronostratigraphy or less accurate dates. Furthermore, we used stage-level bins that are inherently of uneven duration, as opposed to other commonly used methods such as 2/9/10/million year approximately equal duration bins (Wang & Dodson 2006; Barrett et al. 2009; Butler et al. 2011; Upchurch et al. 2011; Brusatte et al. 2012; Lloyd 2012; Mannion et al. 2012); there is currently little consensus on which time binning methods are most appropriate for the fossil record, but we do know that different bins can influence resulting diversity estimates (Tennant et al. 2016a).

The impact that all of these factors can have on diversity estimates is an ongoing discussion in research about palaeodiversity, and exploring them all is beyond the scope of the present study. What is more important for us in terms of study design was a single, appropriate methodology that could be compared through publication history, which is what we performed. That is not to say that each of these factors do not also variably influence diversity estimates through time, and investigating how these potential stratigraphic biases influences diversity estimates would be a useful future research avenue.

## Conclusions

In this study, we investigated diversity trends through time for three major clades of Dinosauria (Ornithischia, Sauropodomorpha and Theropoda), by reducing a primary dataset of body fossil occurrences by progressively removing publications at each 2 year intervals, up until 1991. By analysing

both empirical and subsampled curves, we have been able to see how publication history influences different estimates of dinosaur diversity.

Subsampling reveals that there are major discrepancies between the 1991 and 2015 curves for theropods in the Oxfordian, Aptian, and Cenomanian, for ornithischians in the late Early Cretaceous, and for sauropods in the Albian and latest Cretaceous. However, almost without exception, these seemingly continuous ‘global’ diversity patterns are the product of summing together different, and invariably patchier, continental signals with vastly different trends, reflective of distinct geographic sampling histories. In ornithischians, a J/K transition decline is based almost exclusively on European fossils, and a perceived global reduction in their diversity in the latest Cretaceous is the result of an overpowering North American signal. Similarly, ‘global’ subsampled theropod diversity is prevalently based on the European record, with Asia and North America contributing substantially more after the earliest Cretaceous hiatus. Theropod diversity in the latest Cretaceous is changing the most rapidly compared to any other time interval. In these places where we see the most volatility in both subsampled diversity and coverage, we should be careful not to over-interpret patterns, especially in the context of apparent radiations and extinctions. Gondwanan dinosaurian faunas are still relatively poorly sampled despite intensive exploration in the last 20 years, and we expect the influence of discovery in Africa and South America to become more important in the future. Based on this, we urge caution in any evolutionary interpretations relying on Gondwanan dinosaur diversity until sampling improves.

The consequence that this appears to have on our interpretation of the potential extrinsic controls of ‘global’ dinosaur diversity are fairly minimal. However, the results of this study should be of interest to those who use occurrence-based compilations like the Paleobiology Database that rely heavily on the published literature, especially when ongoing research can potentially dramatically alter our understanding of the evolutionary history of dinosaurs (Baron et al. 2017). Both the addition of new taxa, and new occurrences of existing taxa, are clearly important in establishing stable and re-usable diversity curves for further research, and the maturity and growth of taxonomic datasets must be assessed prior to further macroevolutionary study (Tarver et al. 2011). By neglecting the publication history, and potential biases involved in this, we open ourselves up to potentially misinterpreting the patterns and processes involved in dinosaur evolution. In light of this, it is possible that many previous dinosaur diversity studies are likely now incorrect due to the large number of new discoveries being made every year (Figs. 1, 2). Furthermore, it is also likely that the analyses presented in this paper will be

demonstrated to be wrong in several years' time, and it remains to be seen whether we will be ever able to faithfully reconstruct an accurate diversity curve for Dinosauria.

Future research could investigate the changes in taxonomy, systematics, and validity of dinosaur taxa through publication history (Benton 2008a; Benton 2008b), and the influence that changes in the historical quality and stratigraphic resolution of the fossil record has on this. Furthermore, given the importance of sampling biases on our interpretations of the dinosaur fossil record (Barrett et al. 2009; Butler et al. 2011; Mannion & Upchurch 2011; Upchurch et al. 2011; Benton 2015; Tennant et al. 2016b), research could look at how the relationships between sampling proxies and dinosaur diversity change through time.

## Acknowledgements

We are grateful for the combined efforts of all those who have collected Triassic–Cretaceous dinosaur data, and to those who have entered these data into the Paleobiology Database, especially J. Alroy, M. T. Carrano, P. D. Mannion, R. B. J. Benson, and R. J. Butler. We also thank J. Alroy for providing the Perl script used to perform SQS analyses. This is Paleobiology Database official publication number XXX. We would like to extend our thanks to the four anonymous referees for their detailed and constructive reviews that greatly helped to improve this manuscript. We would both like to thank Serjoscha Evers for helping to come up with this idea during Progressive Palaeontology 2016 and during subsequent discussions.

## References

- Alroy J. 2000a. New methods for quantifying macroevolutionary patterns and processes. *Paleobiology* 26:707-733.
- Alroy J. 2000b. New methods for quantifying macroevolutionary patterns and processes. *Paleobiology* 26:707-733.
- Alroy J. 2000c. Successive approximations of diversity curves: ten more years in the library. *Geology* 28:1023-1026.
- Alroy J. 2003. Global databases will yield reliable measures of global biodiversity. *Paleobiology* 29:26-29.
- Alroy J. 2010a. Fair sampling of taxonomic richness and unbiased estimation of origination and extinction rates. In: J. Alroy GH, ed. *Quantitative Methods in Paleobiology: The Paleontological Society*, 55-80.
- Alroy J. 2010b. Geographical, environmental and intrinsic biotic controls on Phanerozoic marine diversification. *Palaeontology* 53:1211-1235.

- Alroy J. 2010c. The shifting balance of diversity among major marine animal groups. *Science* 329:1191-1194.
- Anderson PE, Benton MJ, Trueman CN, Paterson BA, and Cuny G. 2007. Palaeoenvironments of vertebrates on the southern shore of Tethys: The nonmarine Early Cretaceous of Tunisia. *Palaeogeography, Palaeoclimatology, Palaeoecology* 243:118-131.
- Arbour VM, Zanno LE, and Gates T. 2016. Ankylosaurian dinosaur palaeoenvironmental associations were influenced by extirpation, sea-level fluctuation, and geodispersal. *Palaeogeography, Palaeoclimatology, Palaeoecology* 449:289-299. DOI 10.1016/j.palaeo.2016.02.033
- Bandeira KL, Simbras FM, Machado EB, de Almeida Campos D, Oliveira GR, and Kellner AW. 2016. A New Giant Titanosauria (Dinosauria: Sauropoda) from the Late Cretaceous Bauru Group, Brazil. *PloS one* 11:e0163373.
- Baron MG, Norman DB, and Barrett PM. 2017. A new hypothesis of dinosaur relationships and early dinosaur evolution. *Nature* 543:501-506.
- Barrett PM, McGowan AJ, and Page V. 2009. Dinosaur diversity and the rock record. *Proceedings of the Royal Society Series B: Biological Sciences* 276:2667-2674. DOI 10.1098/rspb.2009.0352
- Benjamini Y, and Hochberg Y. 1995. Controlling the false discovery rate: a practical and powerful approach to multiple testing. *Journal of the Royal Statistical Society Series B (Methodological)* 57:289-300.
- Benson RB, Campione NE, Carrano MT, Mannion PD, Sullivan C, Upchurch P, and Evans DC. 2014. Rates of dinosaur body mass evolution indicate 170 million years of sustained ecological innovation on the avian stem lineage. *PLOS Biology* 12:e1001853.
- Benson RB, and Upchurch P. 2013. Diversity trends in the establishment of terrestrial vertebrate ecosystems: interactions between spatial and temporal sampling biases. *Geology* 41:43-46.
- Benson RBJ, and Butler RJ. 2011. Uncovering the diversification history of marine tetrapods: ecology influences the effect of geological sampling biases. In: McGowan AJ, and Smith AB, eds. *Comparing the Geological and Fossil Records: Implications for Biodiversity Studies*: Geological Society of London, Special Publications, 191-208.
- Benson RBJ, Butler RJ, Alroy J, Mannion PD, Carrano MT, and Lloyd GT. 2016. Near-stasis in the long-term diversification of Mesozoic tetrapods. *PLOS Biology* 14:e1002359. DOI 10.1371/journal.pbio.1002359
- Benson RBJ, Butler RJ, Lindgren J, and Smith AS. 2010. Mesozoic marine tetrapod diversity: mass extinctions and temporal heterogeneity in geological megabiases affecting vertebrates. *Proceedings of the Royal Society Series B: Biological Sciences* 277:829-834. DOI 10.1098/rspb.2009.1845
- Benson RBJ, Mannion PD, Butler RJ, Upchurch P, Goswami A, and Evans SE. 2013. Cretaceous tetrapod fossil record sampling and faunal turnover: Implications for biogeography and the rise of modern clades. *Palaeogeography, Palaeoclimatology, Palaeoecology* 372:88-107. DOI 10.1016/j.palaeo.2012.10.028
- Benton MJ. 2008a. Fossil quality and naming dinosaurs. *Biology Letters* 4:729-732.
- Benton MJ. 2008b. How to find a dinosaur, and the role of synonymy in biodiversity studies. *Paleobiology* 34:516-533.
- Benton MJ. 2015. Palaeodiversity and formation counts: redundancy or bias? *Palaeontology* 58:1003-1029.
- Benton MJ, Dunhill AM, Lloyd GT, and Marx FG. 2011. Assessing the quality of the fossil record: insights from vertebrates. *Geological Society, London, Special Publications* 358:63-94.
- Benton MJ, Ruta M, Dunhill AM, and Sakamoto M. 2013a. The first half of tetrapod evolution, sampling proxies, and fossil record quality. *Palaeogeography Palaeoclimatology Palaeoecology* 372:18-41. DOI 10.1016/j.palaeo.2012.09.005

- Benton MJ, Ruta M, Dunhill AM, and Sakamoto M. 2013b. The first half of tetrapod evolution, sampling proxies, and fossil record quality. *Palaeogeography, Palaeoclimatology, Palaeoecology* 372:18-41. DOI 10.1016/j.palaeo.2012.09.005
- Box GE, and Jenkins GM. 1976. *Time Series Analysis: Forecasting and Control*. San Francisco: Holden-Day.
- Brocklehurst N, Day MO, Rubidge BS, and Fröbisch J. 2017. Olson's Extinction and the latitudinal biodiversity gradient of tetrapods in the Permian. *Proc R Soc B: The Royal Society*. p 20170231.
- Brocklehurst N, Upchurch P, Mannion PD, and O'Connor J. 2012. The completeness of the fossil record of Mesozoic birds: implications for early avian evolution. *PLOS ONE* 7.
- Brusatte SL, Butler RJ, Barrett PM, Carrano MT, Evans DC, Lloyd GT, Mannion PD, Norell MA, Peppe DJ, and Upchurch P. 2015. The extinction of the dinosaurs. *Biological Reviews* 90:628-642.
- Brusatte SL, Butler RJ, Prieto-Márquez A, and Norell MA. 2012. Dinosaur morphological diversity and the end-Cretaceous extinction. *Nature Communications* 3:804. 10.1038/ncomms1815
- <https://www.nature.com/articles/ncomms1815#supplementary-information>
- Buscalioni A, Fregenal M, Bravo A, Poyato-Ariza F, Sanchíz B, Báez A, Moo OC, Closas CM, Evans S, and Lobón JM. 2008. The vertebrate assemblage of Buenache de la Sierra (Upper Barremian of Serranía de Cuenca, Spain) with insights into its taphonomy and palaeoecology. *Cretaceous Research* 29:687-710.
- Butler RJ, Barrett PM, Kenrick P, and Penn MG. 2009. Testing co - evolutionary hypotheses over geological timescales: interactions between Mesozoic non - avian dinosaurs and cycads. *Biological Reviews* 84:73-89.
- Butler RJ, Benson RBJ, and Barrett PM. 2013. Pterosaur diversity: Untangling the influence of sampling biases, Lagerstätten, and genuine biodiversity signals. *Palaeogeography, Palaeoclimatology, Palaeoecology* 372:78-87. DOI 10.1016/j.palaeo.2012.08.012
- Butler RJ, Benson RBJ, Carrano MT, Mannion PD, and Upchurch P. 2011. Sea level, dinosaur diversity and sampling biases: investigating the 'common cause' hypothesis in the terrestrial realm. *Proceedings of the Royal Society of London Series B: Biological Sciences* 278:1165-1170. DOI 10.1098/rspb.2010.1754
- Button DJ, Rayfield EJ, and Barrett PM. 2014. Cranial biomechanics underpins high sauropod diversity in resource-poor environments. *Proc R Soc B: The Royal Society*. p 20142114.
- Campione NE, and Evans DC. 2011. Cranial growth and variation in edmontosaurs (Dinosauria: Hadrosauridae): implications for latest Cretaceous megaherbivore diversity in North America. *PLoS One* 6:e25186.
- Canale JJ, Scanferla CA, Agnolin FL, and Novas FE. 2009. New carnivorous dinosaur from the Late Cretaceous of NW Patagonia and the evolution of abelisaurid theropods. *Naturwissenschaften* 96:409-414.
- Carrano MT, Benson RB, and Sampson SD. 2012. The phylogeny of Tetanurae (Dinosauria: Theropoda). *Journal of Systematic Palaeontology* 10:211-300.
- Chao A, and Jost L. 2012. Coverage-based rarefaction and extrapolation: standardizing samples by completeness rather than size. *Ecology* 93:2533-2547.
- Chiarenza AA, and Cau A. 2016. A large abelisaurid (Dinosauria, Theropoda) from Morocco and comments on the Cenomanian theropods from North Africa. *PeerJ* 4:e1754.
- Cifelli RL, Nydam RL, Gardner JD, Weil A, Eaton JG, Kirkland JJ, and Madsen SK. 1999. Medial Cretaceous vertebrates from the Cedar Mountain Formation, Emery County, Utah: the Mussentuchit local fauna. *Vertebrate paleontology in Utah* 99:219-242.
- Csiki Z, Grigorescu D, Codrea V, and Therrien F. 2010. Taphonomic modes in the Maastrichtian continental deposits of the Hațeg Basin, Romania—Palaeoecological and palaeobiological inferences. *Palaeogeography, Palaeoclimatology, Palaeoecology* 293:375-390.

- Dalla Vecchia F. 2002. Cretaceous dinosaurs in the Adriatic–Dinaric carbonate platform (Italy and Croatia): paleoenvironmental implications and paleogeographical hypotheses. *Memorie della Società Geologica Italiana* 57:89-100.
- de Jesus Faria CC, Riga BG, dos Anjos Candeiro CR, da Silva Marinho T, David LO, Simbras FM, Castanho RB, Muniz FP, and da Costa PVLG. 2015. Cretaceous sauropod diversity and taxonomic succession in South America. *Journal of South American Earth Sciences* 61:154-163.
- Dean CD, Mannion PD, and Butler RJ. 2016. Preservational bias controls the fossil record of pterosaurs. *Palaeontology* 59:225-247. 10.1111/pala.12225
- Dunhill AM, Hannisdal B, and Benton MJ. 2014. Disentangling rock record bias and common-cause from redundancy in the British fossil record. *Nature Communications* 5:4818.
- Evers SW, Rauhut OW, Milner AC, McFeeters B, and Allain R. 2015. A reappraisal of the morphology and systematic position of the theropod dinosaur *Sigilmassasaurus* from the “middle” Cretaceous of Morocco. *PeerJ* 3:e1323.
- Foster JR. 2003. *Paleoecological Analysis of the Vertebrate Fauna of the Morrison Formation (Upper Jurassic), Rocky Mountain Region, USA: Bulletin 23*: New Mexico Museum of Natural History and Science.
- Gardner G, Harvey A, and Phillips G. 1980. Algorithm AS 154: An algorithm for exact maximum likelihood estimation of autoregressive-moving average models by means of Kalman filtering. *Journal of the Royal Statistical Society Series C (Applied Statistics)* 29:311-322.
- Gates TA, Prieto-Márquez A, and Zanno LE. 2012. Mountain building triggered Late Cretaceous North American megaherbivore dinosaur radiation. *PLoS One* 7:e42135.
- Gibert C, and Escarguel G. 2017. Evaluating the accuracy of biodiversity changes through geologic times: from simulation to solution. *Paleobiology* 43:667-692.
- Godefroit P, Demuynck H, Dyke G, Hu D, Escuillié F, and Claeys P. 2013. Reduced plumage and flight ability of a new Jurassic paravian theropod from China. *Nature Communications* 4:1394.
- Godefroit P, Shulin H, Tingxiang Y, and Lauters P. 2008. New hadrosaurid dinosaurs from the uppermost Cretaceous of northeastern China. *Acta Palaeontologica Polonica* 53:47-74.
- Good IJ. 1953. The population frequencies of species and the estimation of population parameters. *Biometrika* 40:237-264.
- Gould SJ, and Eldredge N. 1977. Punctuated equilibria: the tempo and mode of evolution reconsidered. *Paleobiology* 3:115-151.
- Gradstein FM, Ogg JG, Schmitz M, and Ogg G. 2012. *The Geologic Time Scale 2012*: Elsevier.
- Grossnickle DM, and Newham E. 2016. Therian mammals experience an ecomorphological radiation during the Late Cretaceous and selective extinction at the K–Pg boundary. *Proc R Soc B: The Royal Society*. p 20160256.
- Hannisdal B, and Peters SE. 2011. Phanerozoic Earth system evolution and marine biodiversity. *Science* 334:1121-1124. DOI 10.1126/science.1210695
- Haubold H. 1990. Dinosaurs and fluctuating sea levels during the Mesozoic. *Historical Biology* 4:75-106.
- Heim NA, and Peters SE. 2011. Covariation in macrostratigraphic and macroevolutionary patterns in the marine record of North America. *Geological Society of America Bulletin* 123:620-630.
- Ibrahim N, Dal Sasso C, Maganuco S, Fabbri M, Martill DM, Gorscak E, and Lamanna M. 2016. Evidence of a derived titanosaurian (Dinosauria, Sauropoda) in the “Kem Kem beds” of Morocco, with comments on sauropod paleoecology in the Cretaceous of Africa. *Cretaceous Period: Biotic Diversity and Biogeography New Mexico Museum of Natural History and Science Bulletin*, 149-159.
- Jouve S, Mennecart B, Douteau J, and Jalil N-E. 2017. Biases in the study of relationships between biodiversity dynamics and fluctuation of environmental conditions. *Palaeontologia Electronica* 20:1-21.

- 934 Junchang L, Laiping Y, Hui Z, and Xuefang W. 2013. A new somphospondylan sauropod (Dinosauria,  
935 Titanosauriformes) from the Late Cretaceous of Ganzhou, Jiangxi Province of southern China.  
936 *Acta Geologica Sinica (English Edition)* 87:678-685.
- 937 Kirkland JI, Britt B, Burge DL, Carpenter K, Cifelli R, DeCourten F, Eaton J, Hasiotis S, and Lawton T. 1997.  
938 Lower to middle Cretaceous dinosaur faunas of the central Colorado Plateau: a key to  
939 understanding 35 million years of tectonics, sedimentology, evolution, and biogeography.  
940 *Brigham Young University Geology Studies* 42:69-104.
- 941 Kirkland JI, and Madsen SK. 2007. The Lower Cretaceous Cedar Mountain Formation, eastern Utah.
- 942 Lambert O, Godefroit P, Li H, Shang C-Y, and Dong Z-M. 2001. A new species of Protoceratops  
943 (Dinosauria, Neoceratopsia) from the Late Cretaceous of Inner Mongolia (PR China). *Bulletin-*  
944 *Institut royal des sciences naturelles de Belgique Sciences de la Terre* 71:5-28.
- 945 Lloyd GT. 2012. A refined modelling approach to assess the influence of sampling on palaeobiodiversity  
946 curves: new support for declining Cretaceous dinosaur richness. *Biology Letters* 8:123-126. DOI  
947 10.1098/rsbl.2011.0210
- 948 Lloyd GT, Davis KE, Pisani D, Tarver JE, Ruta M, Sakamoto M, Hone DWE, Jennings R, and Benton MJ.  
949 2008. Dinosaurs and the Cretaceous Terrestrial Revolution. *Proceedings of the Royal Society of*  
950 *London Series B: Biological Sciences* 275:2483-2490. DOI 10.1098/rspb.2008.0715
- 951 Malkani MS. 2010. New Pakisaurus (Pakisauridae, Titanosauria, Sauropoda) remains, and Cretaceous  
952 Tertiary (KT) boundary from Pakistan. *Sindh University Research Journal-SURJ (Science Series)* 42.
- 953 Mannion PD, and Barrett PM. 2013. Additions to the sauropod dinosaur fauna of the Cenomanian (early  
954 Late Cretaceous) Kem Kem beds of Morocco: Palaeobiogeographical implications of the mid-  
955 Cretaceous African sauropod fossil record. *Cretaceous Research* 45:49-59.
- 956 Mannion PD, Benson RB, Upchurch P, Butler RJ, Carrano MT, and Barrett PM. 2012. A temperate  
957 palaeodiversity peak in Mesozoic dinosaurs and evidence for Late Cretaceous geographical  
958 partitioning. *Global Ecology and Biogeography* 21:898-908.
- 959 Mannion PD, Benson RBJ, Carrano MT, Tennant JP, Judd J, and Butler RJ. 2015. Climate constrains the  
960 evolutionary history and biodiversity of crocodylians. *Nature Communications* 6:8438.  
961 10.1038/ncomms9438
- 962 Mannion PD, and Upchurch P. 2010. Completeness metrics and the quality of the sauropodomorph fossil  
963 record through geological and historical time. *Paleobiology* 36:283-302.
- 964 Mannion PD, and Upchurch P. 2011. A re-evaluation of the 'mid-Cretaceous sauropod hiatus' and the  
965 impact of uneven sampling of the fossil record on patterns of regional dinosaur extinction.  
966 *Palaeogeography, Palaeoclimatology, Palaeoecology* 299:529-540.
- 967 Mannion PD, Upchurch P, Barnes RN, and Mateus O. 2013. Osteology of the Late Jurassic Portuguese  
968 sauropod dinosaur *Lusotitan atalaiensis* (Macronaria) and the evolutionary history of basal  
969 titanosauriforms. *Zoological Journal of the Linnean Society* 168:98-206.
- 970 Mannion PD, Upchurch P, Carrano MT, and Barrett PM. 2011. Testing the effect of the rock record on  
971 diversity: a multidisciplinary approach to elucidating the generic richness of sauropodomorph  
972 dinosaurs through time. *Biological Reviews* 86:157-181. DOI 10.1111/j.1469-185X.2010.00139.x
- 973 Martin JE, Amiot R, Lecuyer C, and Benton MJ. 2014. Sea surface temperature contributes to marine  
974 crocodylomorph evolution. *Nature Communications* 5:4658. 10.1038/Ncomms5658
- 975 Marx FG, and Uhen MD. 2010. Climate, critters, and cetaceans: Cenozoic drivers of the evolution of  
976 modern whales. *Science* 327:993-996.
- 977 Mayhew PJ, Bell MA, Benton TG, and McGowan AJ. 2012. Biodiversity tracks temperature over time.  
978 *Proceedings of the National Academy of Sciences of the United States of America* 109:15141-  
979 15145.
- 980 Meyer C, and Thuring B. 2003. The First Iguanodontid Dinosaur Tracks from the Swiss Alps  
981 (Schrattenkalk Formation, Aptian). *Ichnos* 10:221-228. 10.1080/10420940390256186

- 982 Miller KG, Kominz MA, Browning JV, Wright JD, Mountain GS, Katz ME, Sugarman PJ, Cramer BS,  
983 Christie-Blick N, and Pekar SF. 2005. The Phanerozoic record of global sea-level change. *Science*  
984 310:1293-1298. DOI 10.1126/science.1116412
- 985 Mitchell JS, Roopnarine PD, and Angielczyk KD. 2012. Late Cretaceous restructuring of terrestrial  
986 communities facilitated the end-Cretaceous mass extinction in North America. *Proceedings of*  
987 *the National Academy of Sciences* 109:18857-18861.
- 988 Mo J, Buffetaut E, Tong H, Amiot R, Cavin L, Cuny G, Suteethorn V, Suteethorn S, and Jiang S. 2016. Early  
989 Cretaceous vertebrates from the Xinlong Formation of Guangxi (southern China): a review.  
990 *Geological Magazine* 153:143-159.
- 991 Nakagawa S. 2004. A farewell to Bonferroni: the problems of low statistical power and publication bias.  
992 *Behavioral Ecology* 15:1044-1045.
- 993 Newham E, Benson R, Upchurch P, and Goswami A. 2014. Mesozoic mammaliaform diversity: The effect  
994 of sampling corrections on reconstructions of evolutionary dynamics. *Palaeogeography,*  
995 *Palaeoclimatology, Palaeoecology* 412:32-44.
- 996 Nicholson DB, Holroyd PA, Benson RB, and Barrett PM. 2015. Climate-mediated diversification of turtles  
997 in the Cretaceous. *Nature Communications* 6:1-8. 10.1038/ncomms8848
- 998 Nicholson DB, Holroyd PA, Valdes P, and Barrett PM. 2016. Latitudinal diversity gradients in Mesozoic  
999 non-marine turtles. *Royal Society Open Science* 3:160581.
- 1000 Novas FE, Agnolín FL, Ezcurra MD, Porfiri J, and Canale JI. 2013. Evolution of the carnivorous dinosaurs  
1001 during the Cretaceous: the evidence from Patagonia. *Cretaceous Research* 45:174-215.
- 1002 Novas FE, de Valais S, Vickers-Rich P, and Rich T. 2005. A large Cretaceous theropod from Patagonia,  
1003 Argentina, and the evolution of carcharodontosaurids. *Naturwissenschaften* 92:226-230.
- 1004 Novas FE, and Pol D. 2005. New evidence on deinonychosaurian dinosaurs from the Late Cretaceous of  
1005 Patagonia. *Nature* 433:858-861.
- 1006 O'Connor J, and Zhou Z. 2015. Early evolution of the biological bird: perspectives from new fossil  
1007 discoveries in China. *Journal of Ornithology* 156:333-342.
- 1008 Peters SE, and Foote M. 2001. Biodiversity in the Phanerozoic: a reinterpretation. *Paleobiology* 27:583-  
1009 601.
- 1010 Peters SE, and Heim NA. 2010. The geological completeness of paleontological sampling in North  
1011 America. *Paleobiology* 36:61-79.
- 1012 Peters SE, and Heim NA. 2011a. Macrostratigraphy and macroevolution in marine environments: testing  
1013 the common-cause hypothesis. *Geological Society, London, Special Publications* 358:95-104.
- 1014 Peters SE, and Heim NA. 2011b. Macrostratigraphy and macroevolution in marine environments: testing  
1015 the common-cause hypothesis. In: McGowan AJ, and Smith AB, eds. *Comparing the Geological*  
1016 *and Fossil Records: Implications for Biodiversity Studies*. London: Geological Society of London,  
1017 95-104.
- 1018 Poropat SF, Mannion PD, Upchurch P, Hocknull SA, Kear BP, Kundrát M, Tischler TR, Sloan T, Sinapius GH,  
1019 and Elliott JA. 2016. New Australian sauropods shed light on Cretaceous dinosaur  
1020 palaeobiogeography. *Scientific reports* 6.
- 1021 Prokoph A, Shields GA, and Veizer J. 2008. Compilation and time-series analysis of a marine carbonate  
1022  $\delta_{18}\text{O}$ ,  $\delta_{13}\text{C}$ ,  $^{87}\text{Sr}/^{86}\text{Sr}$  and  $\delta^{34}\text{S}$  database through Earth history. *Earth-Science Reviews* 87:113-133.  
1023 <http://dx.doi.org/10.1016/j.earscirev.2007.12.003>
- 1024 R Development Core Team. 2013. R: A language and environment for statistical computing. R  
1025 Foundation for Statistical Computing. Vienna, Austria.
- 1026 Raup DM. 1972. Taxonomic diversity during the Phanerozoic. *Science* 177:1065-1071.
- 1027 Raup DM. 1976. Species diversity in the Phanerozoic: an interpretation. *Paleobiology* 2:289-297.
- 1028 Raup DM. 1977. Systematists follow the fossils. *Paleobiology* 3:328-329.



- 1029 Riera V, Oms O, Gaete R, and Galobart À. 2009. The end-Cretaceous dinosaur succession in Europe: the  
1030 Tremp Basin record (Spain). *Palaeogeography, Palaeoclimatology, Palaeoecology* 283:160-171.
- 1031 Robeck HE, Maley CC, and Donoghue MJ. 2000. Taxonomy and temporal diversity patterns. *Paleobiology*  
1032 26:171-187. Doi 10.1666/0094-8373(2000)026<0171:Tatdp>2.0.Co;2
- 1033 Sakamoto M, Benton MJ, and Venditti C. 2016. Dinosaurs in decline tens of millions of years before their  
1034 final extinction. *Proceedings of the National Academy of Sciences of the United States of America*  
1035 113:5036-5040. 10.1073/pnas.1521478113
- 1036 Sampson SD, Loewen MA, Farke AA, Roberts EM, Forster CA, Smith JA, and Titus AL. 2010. New horned  
1037 dinosaurs from Utah provide evidence for intracontinental dinosaur endemism. *PLoS One*  
1038 5:e12292.
- 1039 Sánchez-Hernández B, and Benton MJ. 2012. Filling the ceratosaur gap: A new ceratosaurian theropod  
1040 from the Early Cretaceous of Spain. *Acta Palaeontologica Polonica* 59:581-600.
- 1041 Sepkoski JJ. 1993. Ten years in the library: new data confirm paleontological patterns. *Paleobiology*  
1042 19:43-51.
- 1043 Sepkoski JJ, Bambach RK, Raup DM, and Valentine JW. 1981. Phanerozoic marine diversity and the fossil  
1044 record. *Nature* 293:435-437.
- 1045 Sepkoski Jr JJ. 1993. Ten years in the library: new data confirm paleontological patterns. *Paleobiology*  
1046 19:43-51.
- 1047 Sepkoski Jr JJ. 1996. Patterns of Phanerozoic extinction: a perspective from global data bases. In:  
1048 Walliser OH, ed. *Global Events and Event Stratigraphy in the Phanerozoic*: Springer Berlin  
1049 Heidelberg, 35-51.
- 1050 Smith AB, and Benson RBJ. 2013. Marine diversity in the geological record and its relationship to  
1051 surviving bedrock area, lithofacies diversity, and original marine shelf area. *Geology* 41:171-174.  
1052 Doi 10.1130/G33773.1
- 1053 Smith AB, Gale AS, and Monks NE. 2001. Sea-level change and rock-record bias in the Cretaceous: a  
1054 problem for extinction and biodiversity studies. *Paleobiology* 27:241-253.
- 1055 Smith AB, Lloyd GT, and McGowan AJ. 2012. Phanerozoic marine diversity: rock record modelling  
1056 provides an independent test of large-scale trends. *Proceedings of the Royal Society of London*  
1057 *Series B: Biological Sciences* 279:4489-4495. DOI 10.1098/rspb.2012.1793
- 1058 Smith AB, and McGowan AJ. 2007. The shape of the Phanerozoic marine palaeodiversity curve: How  
1059 much can be predicted from the sedimentary rock record of western Europe? *Palaeontology*  
1060 50:765-774. DOI 10.1111/j.1475-4983.2007.00693.x
- 1061 Starrfelt J, and Liow LH. 2016. How many dinosaur species were there? Fossil bias and true richness  
1062 estimated using a Poisson sampling model. *Philosophical Transactions of the Royal Society B:*  
1063 *Biological Sciences* 371:20150219.
- 1064 Taquet P, and Russell DA. 1999. A massively-constructed iguanodont from Gadoufaoua, Lower  
1065 Cretaceous of Niger. *Annales de Paléontologie*: Elsevier. p 85-96.
- 1066 Tarver J, Donoghue P, and Benton M. 2011. Is evolutionary history repeatedly rewritten in light of new  
1067 fossil discoveries? *Proceedings of the Royal Society of London B: Biological Sciences* 278:599-604.
- 1068 Taylor MP. 2006. Dinosaur diversity analysed by clade, age, place and year of description. Ninth  
1069 international symposium on Mesozoic terrestrial ecosystems and biota, Manchester, UK  
1070 Cambridge Publications Natural History Museum, London, UK. p 134-138.
- 1071 Tennant JP, Mannion PD, and Upchurch P. 2016a. Environmental drivers of crocodyliform extinction  
1072 across the Jurassic/Cretaceous transition. *Proc R Soc B* 283:20152840.
- 1073 Tennant JP, Mannion PD, and Upchurch P. 2016b. Sea level regulated tetrapod diversity dynamics  
1074 through the Jurassic/Cretaceous interval. *Nature Communications* 7.

- Tennant JP, Mannion PD, Upchurch P, Sutton MD, and Price GD. 2016c. Biotic and environmental dynamics through the Late Jurassic–Early Cretaceous transition: evidence for protracted faunal and ecological turnover. *Biological Reviews*.
- Uhen MD, and Pyenson ND. 2007. Diversity estimates, biases, and historiographic effects: resolving cetacean diversity in the Tertiary. *Palaeontologia Electronica* 10:1-22.
- Upchurch P, Mannion P, Benson R, Butler R, and Carrano M. 2011. Geological and anthropogenic controls on the sampling of the terrestrial fossil record: a case study from the Dinosauria. In: McGowan AJ, and Smith AB, eds. *Comparing the Geological and Fossil Records: Implications for Biodiversity Studies*. London: Geological Society of London, 209-240.
- Upchurch P, and Mannion PD. 2012. Dinosaur evolution and extinction across the Jurassic/Cretaceous boundary. *Actas de V Jornadas Internacionales sobre Paleontología de Dinosaurios y su Entorno, Salas de los Infantes, Burgos*:135-155.
- Valentine J, and Moores E. 1970. Plate-tectonic regulation of faunal diversity and sea level: a model. *Nature* 228:657-669. 10.1038/228657a0
- Van Valen LM. 1984. A resetting of Phanerozoic community evolution. *Nature* 307:50-52.
- Vavrek MJ, and Larsson HC. 2010. Low beta diversity of Maastrichtian dinosaurs of North America. *Proceedings of the National Academy of Sciences* 107:8265-8268.
- Vieira WLS, Vieira KS, Nobrega RP, Montenegro PFGP, Pereira Filho GA, Santana GG, Alves RRN, Almeida WO, and Vasconcellos A. 2014. Species richness and evidence of random patterns in assemblages of South American Titanosauria during the Late Cretaceous (Campanian–Maastrichtian). *PloS one* 9:e108307.
- Wang SC, and Dodson P. 2006. Estimating the diversity of dinosaurs. *Proceedings of the National Academy of Sciences* 103:13601-13605.
- Weishampel DB. 1996. Fossils, phylogeny, and discovery: a cladistic study of the history of tree topologies and ghost lineage durations. *Journal of Vertebrate Paleontology* 16:191-197.
- Wiese R, Renaudie J, and Lazarus DB. 2016. Testing the accuracy of genus-level data to predict species diversity in Cenozoic marine diatoms. *Geology* 44:1051-1054.
- Wilson JA, and Allain R. 2015. Osteology of Rebbachisaurus garasbae Lavocat, 1954, a diplodocoid (Dinosauria, Sauropoda) from the early Late Cretaceous–aged Kem Kem beds of southeastern Morocco. *Journal of Vertebrate Paleontology* 35:e1000701.
- Xu X, You H, Du K, and Han F. 2011. An *Archaeopteryx*-like theropod from China and the origin of Avialae. *Nature* 475:465-470.
- Zhou Z, and Wang Y. 2010. Vertebrate diversity of the Jehol Biota as compared with other lagerstätten. *Science China Earth Sciences* 53:1894-1907.

# Figure and table captions

Figure 1: Frequency (A) and cumulative frequency (B) of newly published dinosaur occurrences through publication time. Please note that all raw figure files (PDF) and the R code for generating these are available in SI 10.

1116 Figure 2: Frequency (A) and cumulative frequency (B) of newly published dinosaur genera through  
1117 publication time.

1118 Figure 3: Total dinosaur ‘global’ diversity patterns for a) raw and b) subsampled data. The vertical red  
1119 lines represent major interval boundaries. Time stage abbreviations (in chronological order) N= Norian;  
1120 R= Rhaetian, He= Hettangian; S= Sinemurian; P= Pliensbachian; T= Toarcian; A= Aalenian; Bj= Bajocian;  
1121 B= Bathonian; C= Callovian; O= Oxfordian; K= Kimmeridgian; Ti= Tithonian; Be= Berriasian; V=  
1122 Valanginian; Ha= Hauterivian; Ba= Barremian; Ap= Aptian; Al= Albian; Ce= Cenomanian; Tu= Turonian;  
1123 Co= Coniacian; Sa= Santonian; Cam= Campanian; M= Maastrichtian. Vertical dashed red lines indicate  
1124 boundaries between different periods (Triassic/Jurassic, Jurassic/Cretaceous and Cretaceous/Paleogene).

1125 Figure 4: Raw ornithischian diversity at a) global and b-f) regional levels (Europe, Africa, Asia, North  
1126 America, and South America, respectively) based on our published knowledge in 1991 and 2015.  
1127 Abbreviations as Figure 3.

1128 Figure 5: Subsampled ornithischian diversity at a) global and b-f) regional levels (Europe, Africa, Asia,  
1129 North America, and South America, respectively) based on our published knowledge in 1991 and 2015.  
1130 Abbreviations as Figure 3.

1131 Figure 6: Good’s  $u$  estimates for ornithischians at A) global and B-F) regional levels (Europe, Africa, Asia,  
1132 North America, and South America, respectively) based on our published knowledge in 1991 and 2015.  
1133 Abbreviations as Figure 3.

1134 Figure 7: Raw theropod diversity at A) global and B-F) regional levels (Europe, Africa, Asia, North  
1135 America, and South America, respectively) based on our published knowledge in 1991 and 2015.  
1136 Abbreviations as Figure 3.

1137 Figure 8: Subsampled theropod diversity at A) global and B-F) regional levels (Europe, Africa, Asia, North  
1138 America, and South America, respectively) based on our published knowledge in 1991 and 2015.  
1139 Abbreviations as Figure 3.

1140 Figure 9: Good’s  $u$  estimates for theropods at A) global and B-F) regional levels (Europe, Africa, Asia,  
1141 North America, and South America, respectively) based on our published knowledge in 1991 and 2015.  
1142 Abbreviations as Figure 3.

1143 Figure 10: Raw sauropodomorph diversity at A) global and B-F) regional levels (Europe, Africa, Asia,  
1144 North America, and South America, respectively) based on our published knowledge in 1991 and 2015.  
1145 Abbreviations as Figure 3.

1146 Figure 11: Subsampled sauropodomorph diversity at A) global and B-F) regional levels (Europe, Africa,  
1147 Asia, North America, and South America, respectively) based on our published knowledge in 1991 and  
1148 2015. Abbreviations as Figure 3.

1149 Figure 12: Good's  $u$  estimates for sauropodomorphs at a A) global and B-F) regional levels (Europe,  
1150 Africa, Asia, North America, and South America, respectively) based on our published knowledge in 1991  
1151 and 2015. Abbreviations as Figure 3.

1152

1153 Table 1. Ornithischian correlation test results.

1154 Table 2. Sauropodomorph correlation test results.

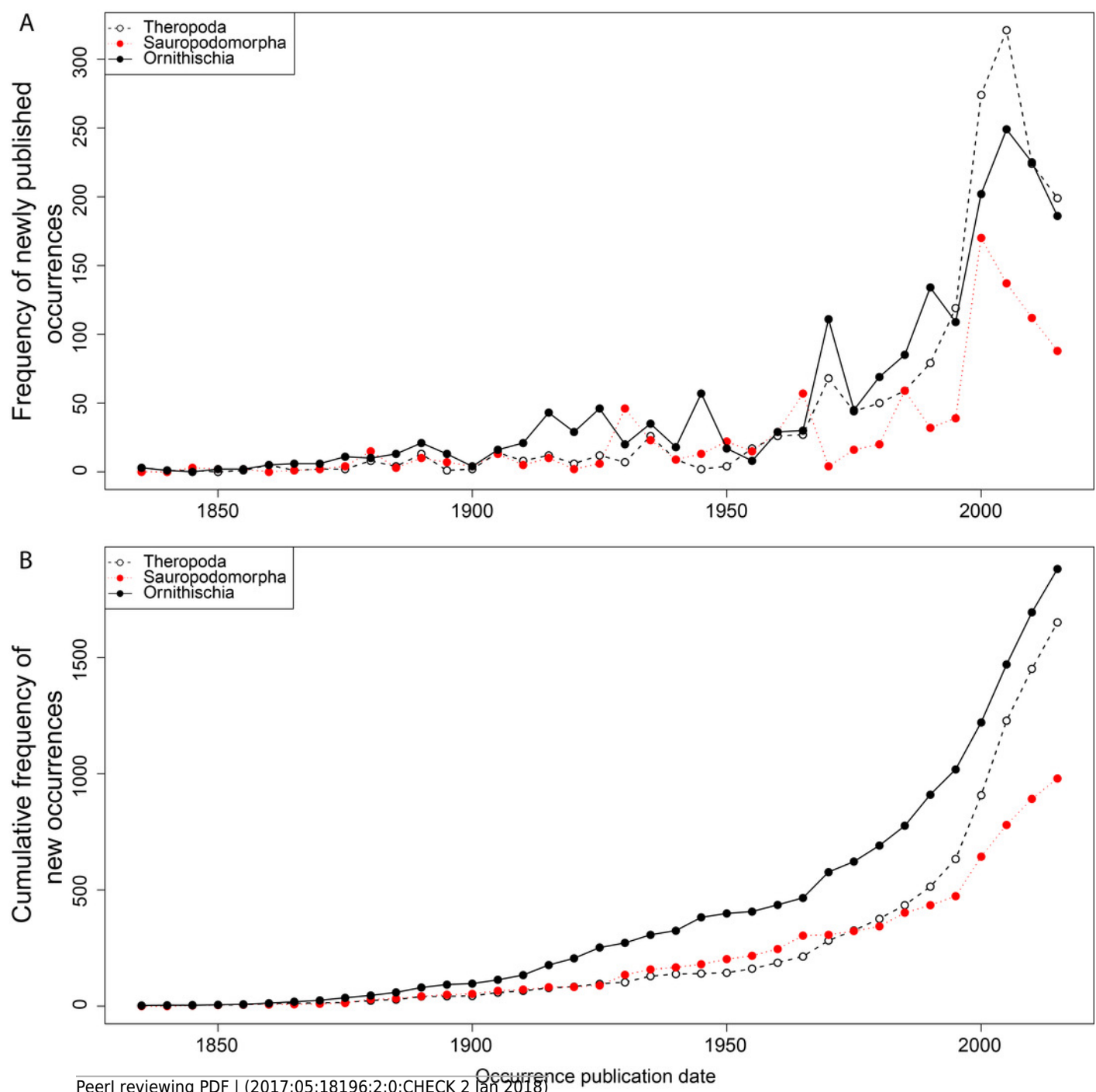
1155 Table 3. Theropod correlation tests results.

1156 Table 4. Total dinosaur correlation tests results.

# Figure 1

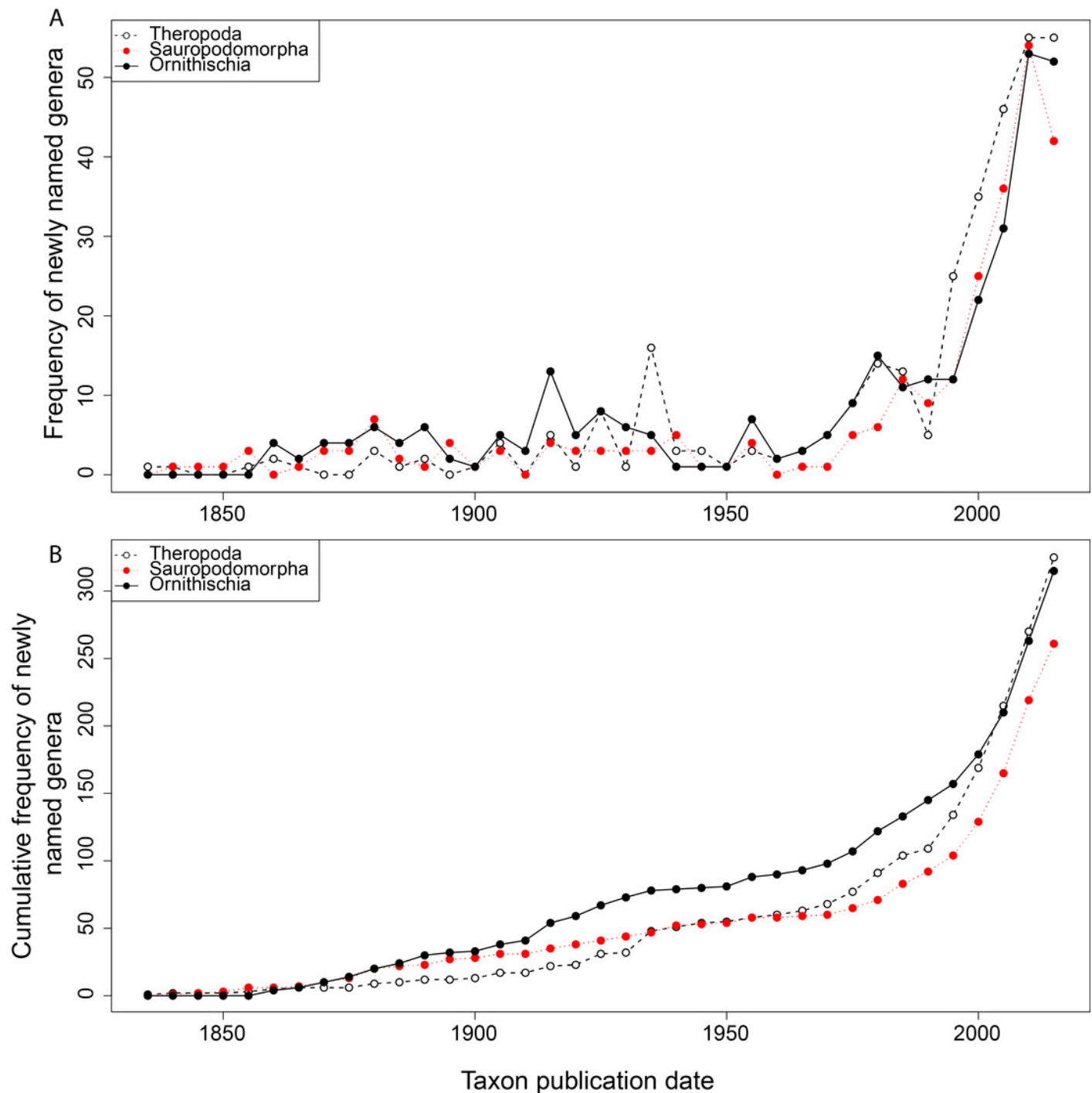
Frequency (A) and cumulative frequency (B) of newly published dinosaur occurrences through publication time.

Please note that all raw figure files (PDF) and the R code for generating these are available in SI 10.



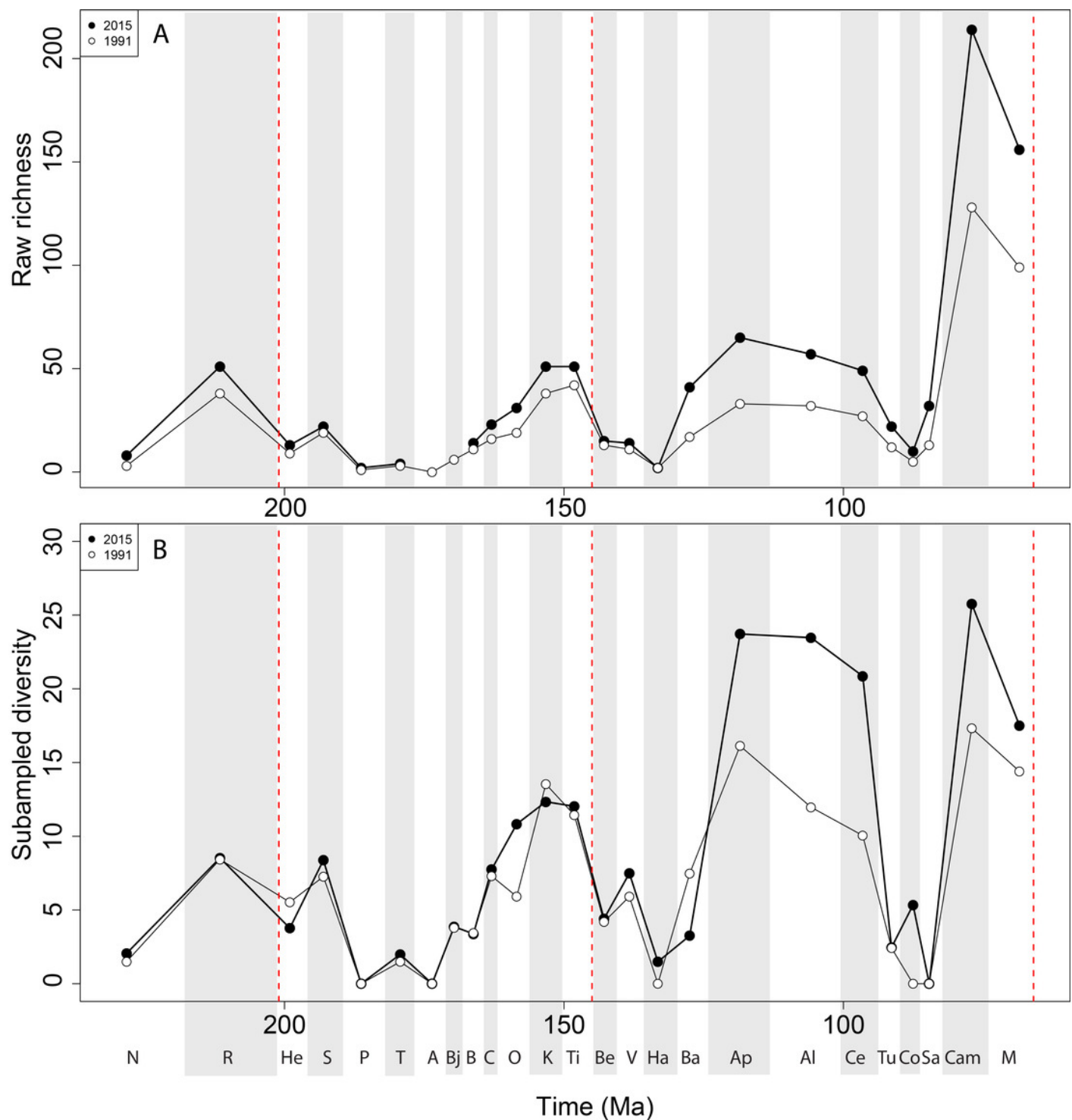
# Figure 2

Frequency (A) and cumulative frequency (B) of newly published dinosaur genera through publication time.



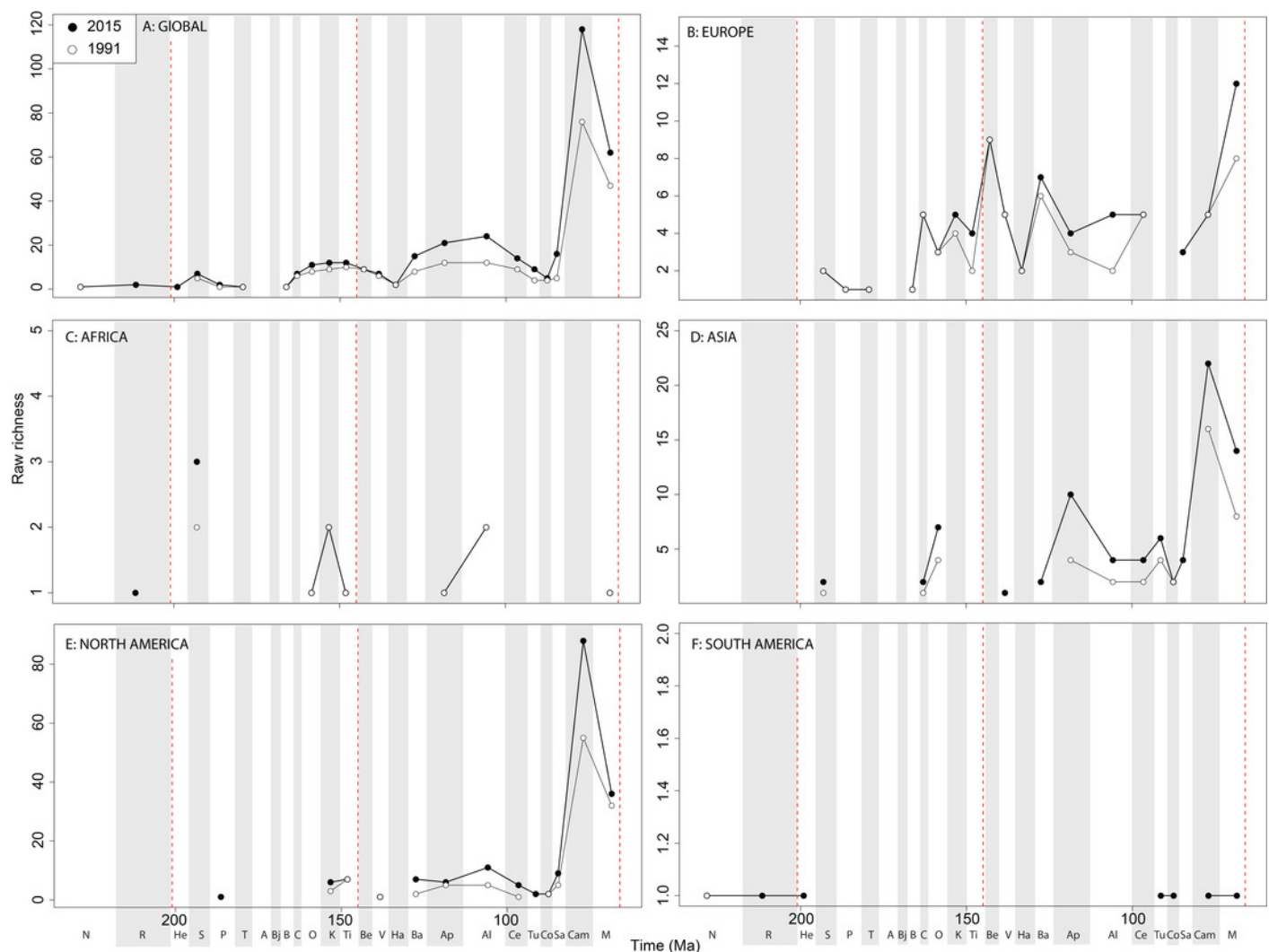
# Figure 3

Total dinosaur diversity patterns for a) raw and b) subsampled data. The vertical red lines represent major interval boundaries.



# Figure 4

Raw ornithischian diversity at a) global and b-f) regional levels (Europe, Africa, Asia, North America, and South America, respectively) based on our published knowledge in 1991 and 2015. Abbreviations as Figure 3.

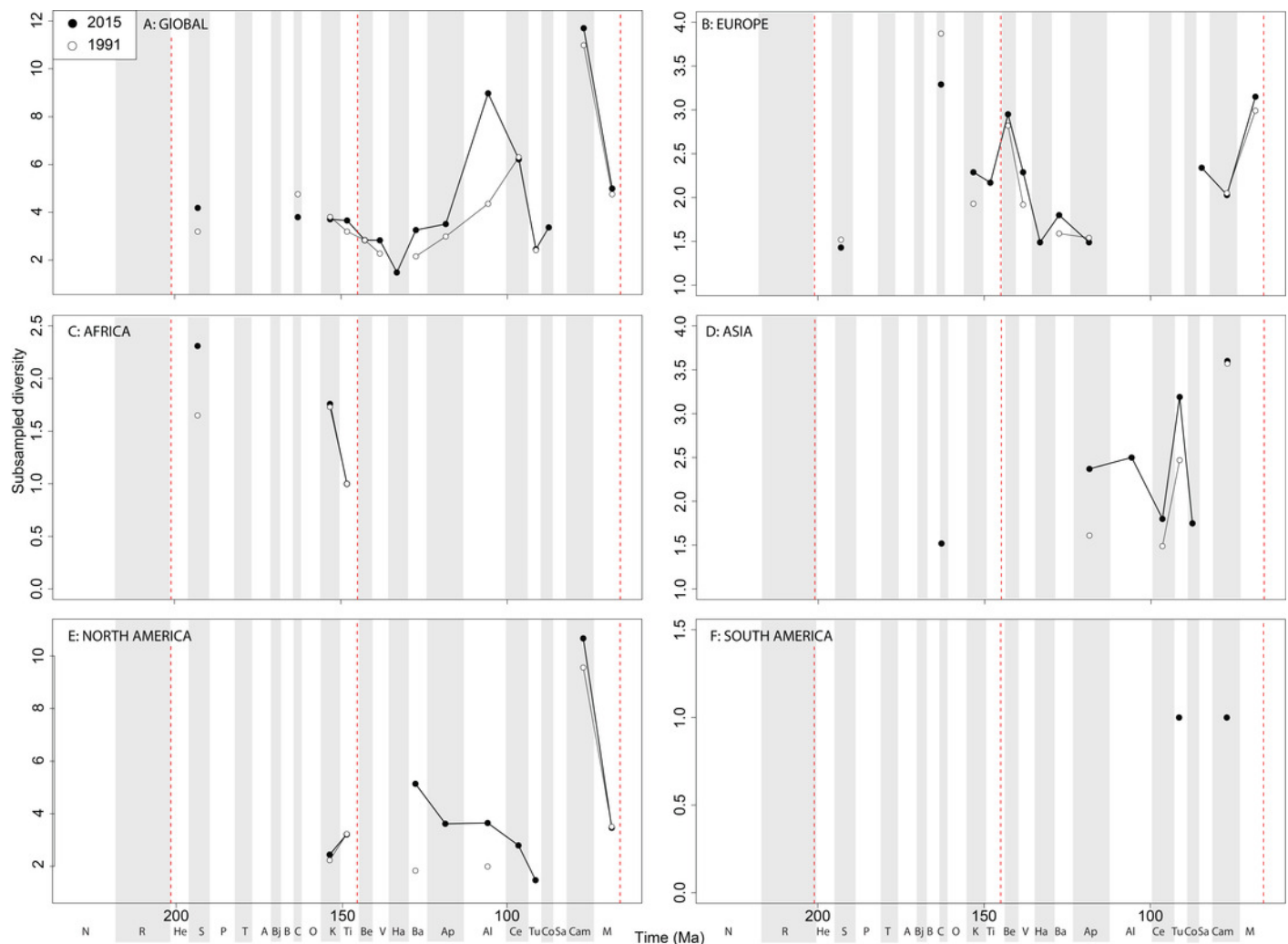




# Figure 5

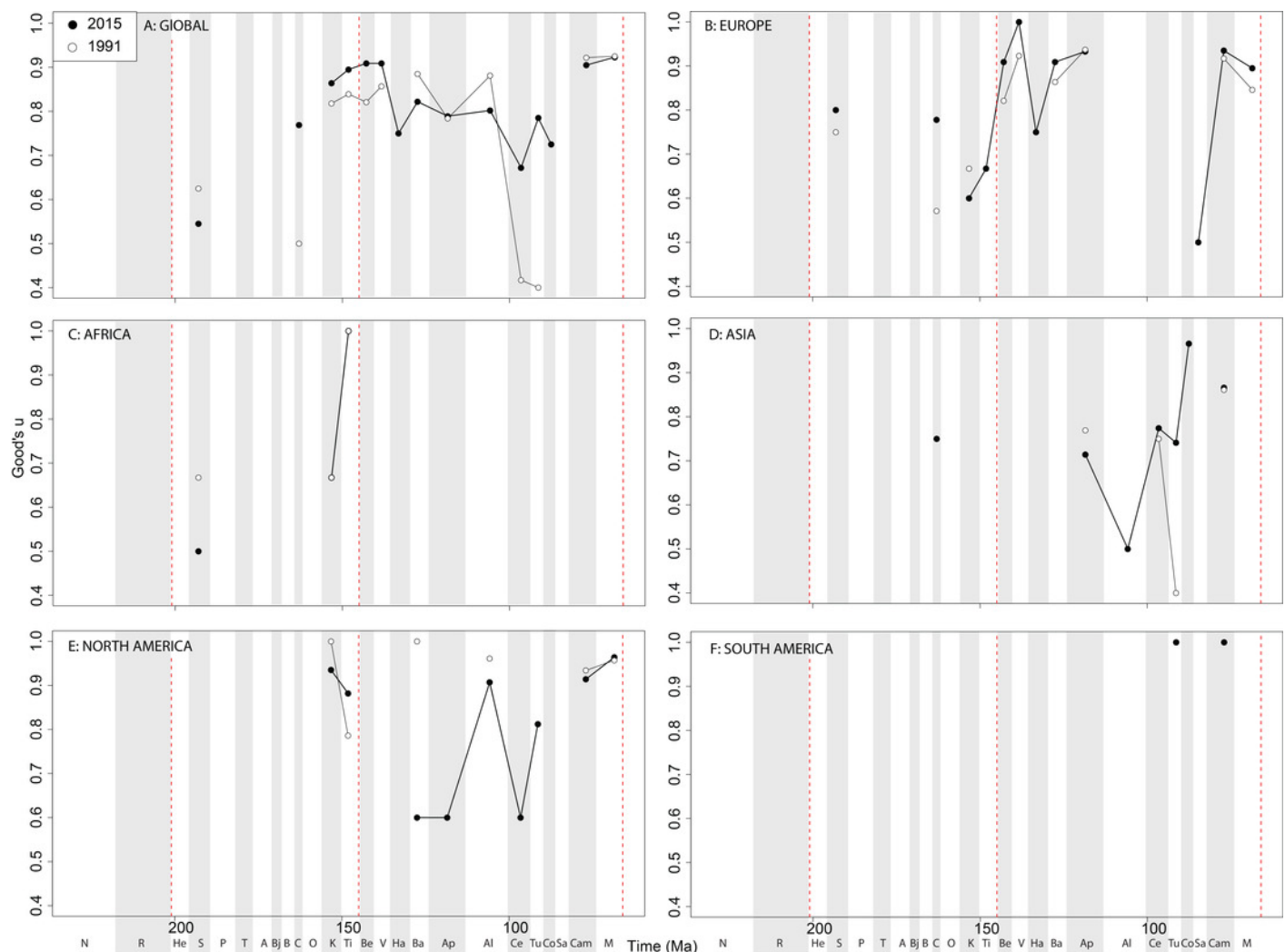
Subsampled ornithischian diversity at a) global and b-f) regional levels (Europe, Africa, Asia, North America, and South America, respectively) based on our published knowledge in 1991 and 2015.

Abbreviations as Figure 3.



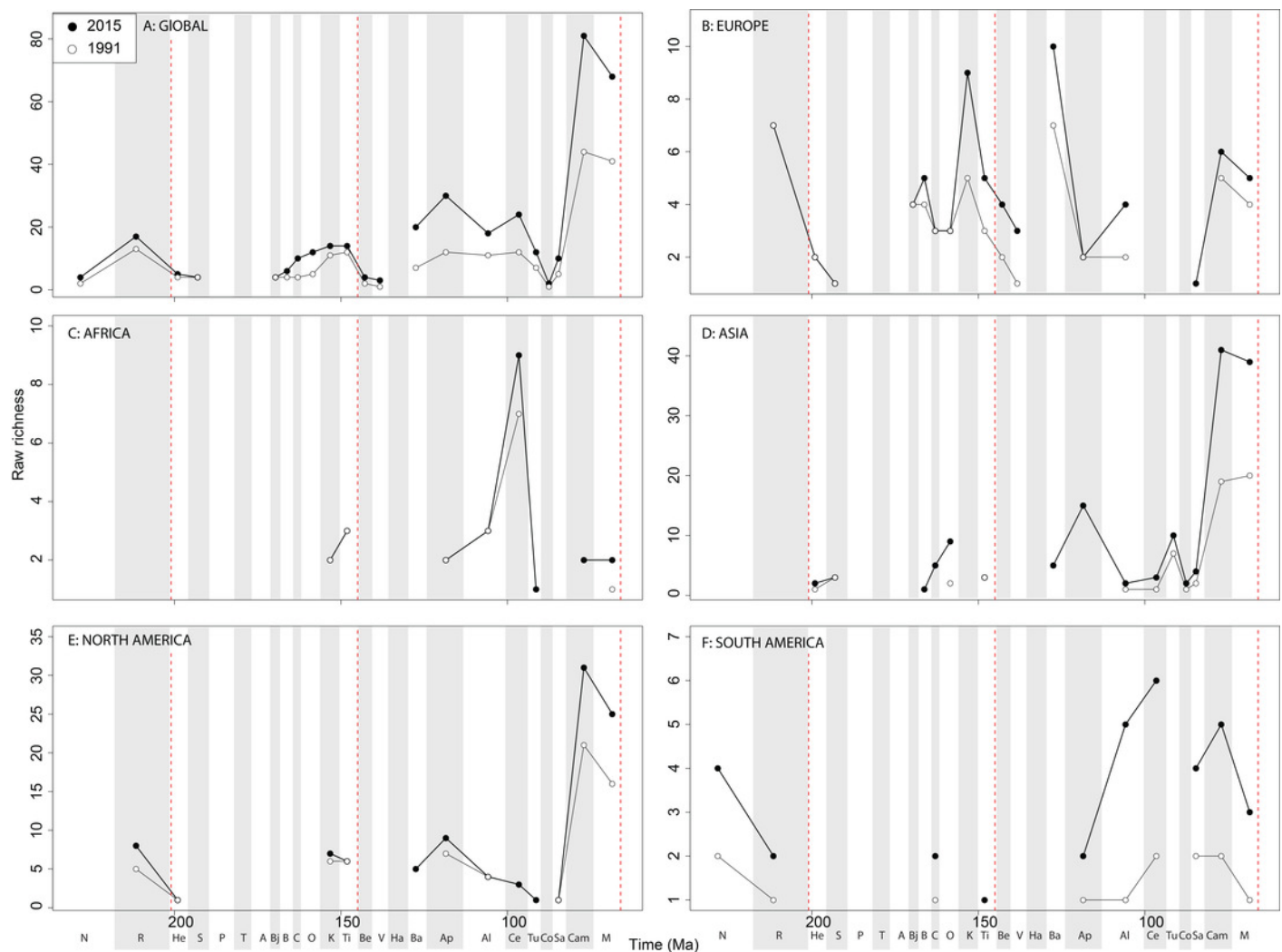
# Figure 6

Good's  $u$  estimates for ornithischians at A) global and B-F) regional levels (Europe, Africa, Asia, North America, and South America, respectively) based on our published knowledge in 1991 and 2015. Abbreviations as Figure 3.



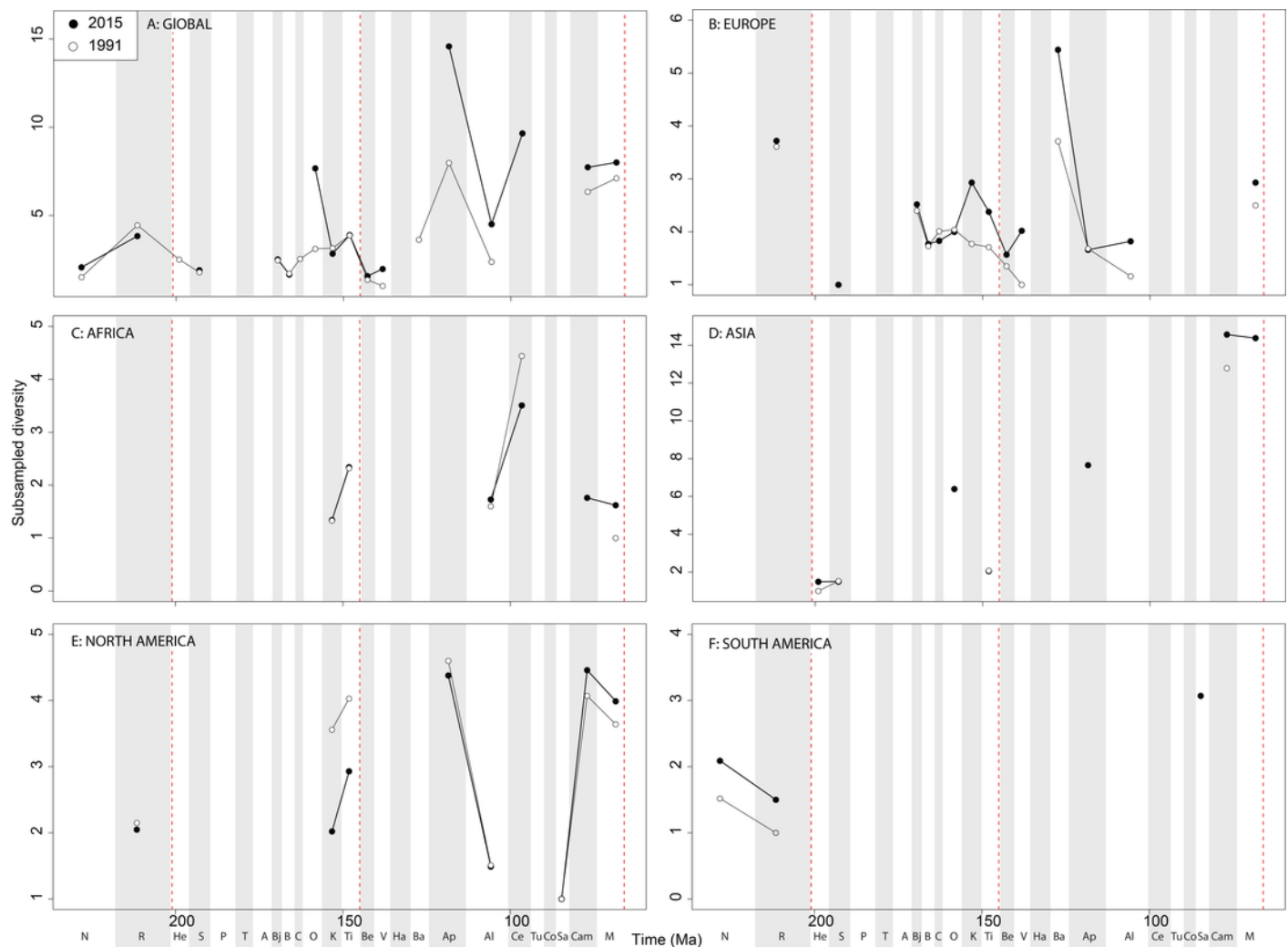
# Figure 7

Raw theropod diversity at A) global and B-F) regional levels (Europe, Africa, Asia, North America, and South America, respectively) based on our published knowledge in 1991 and 2015. Abbreviations as Figure 3.



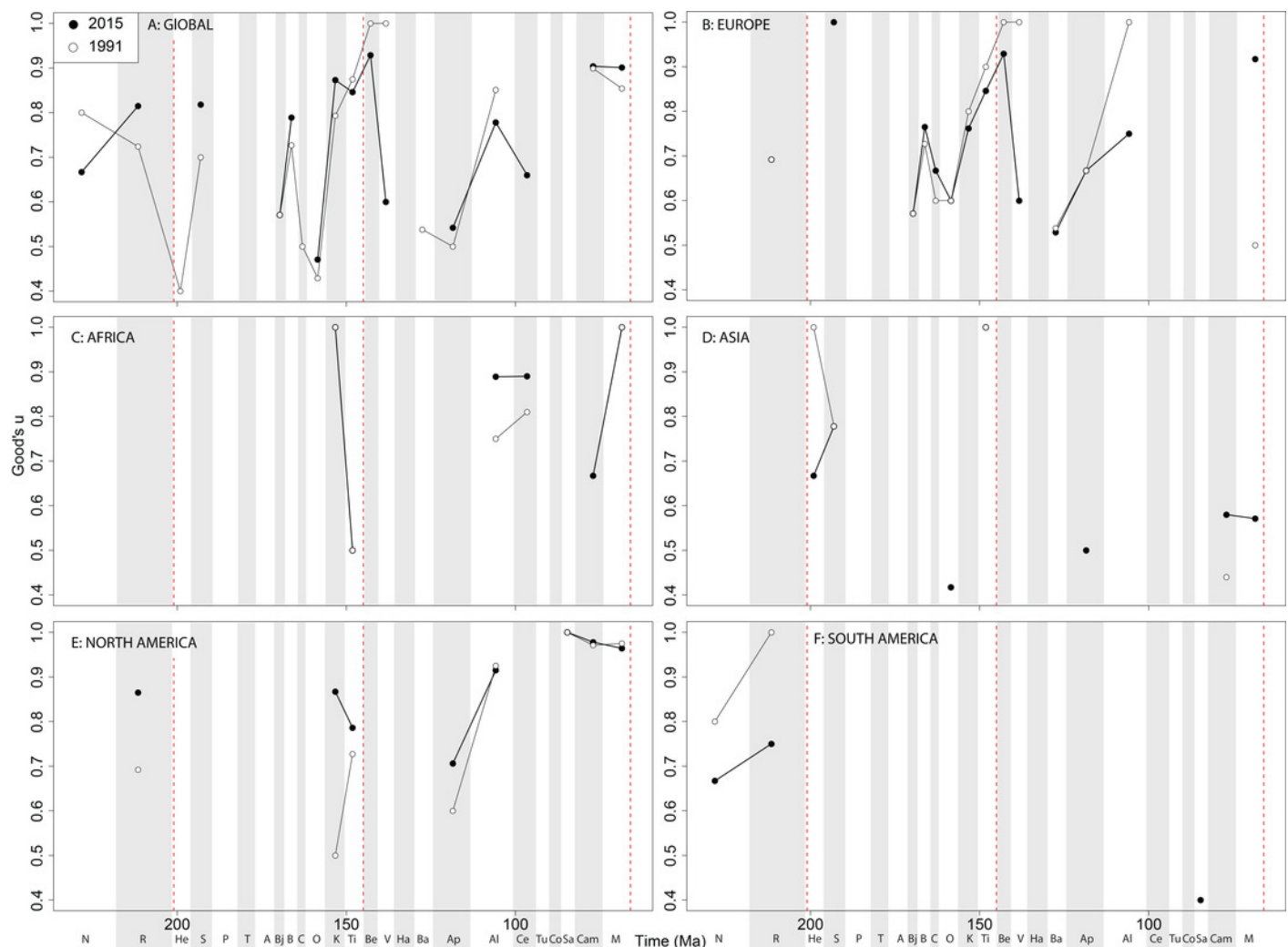
# Figure 8

Subsampled theropod diversity at A) global and B-F) regional levels (Europe, Africa, Asia, North America, and South America, respectively) based on our published knowledge in 1991 and 2015. Abbreviations as Figure 3.



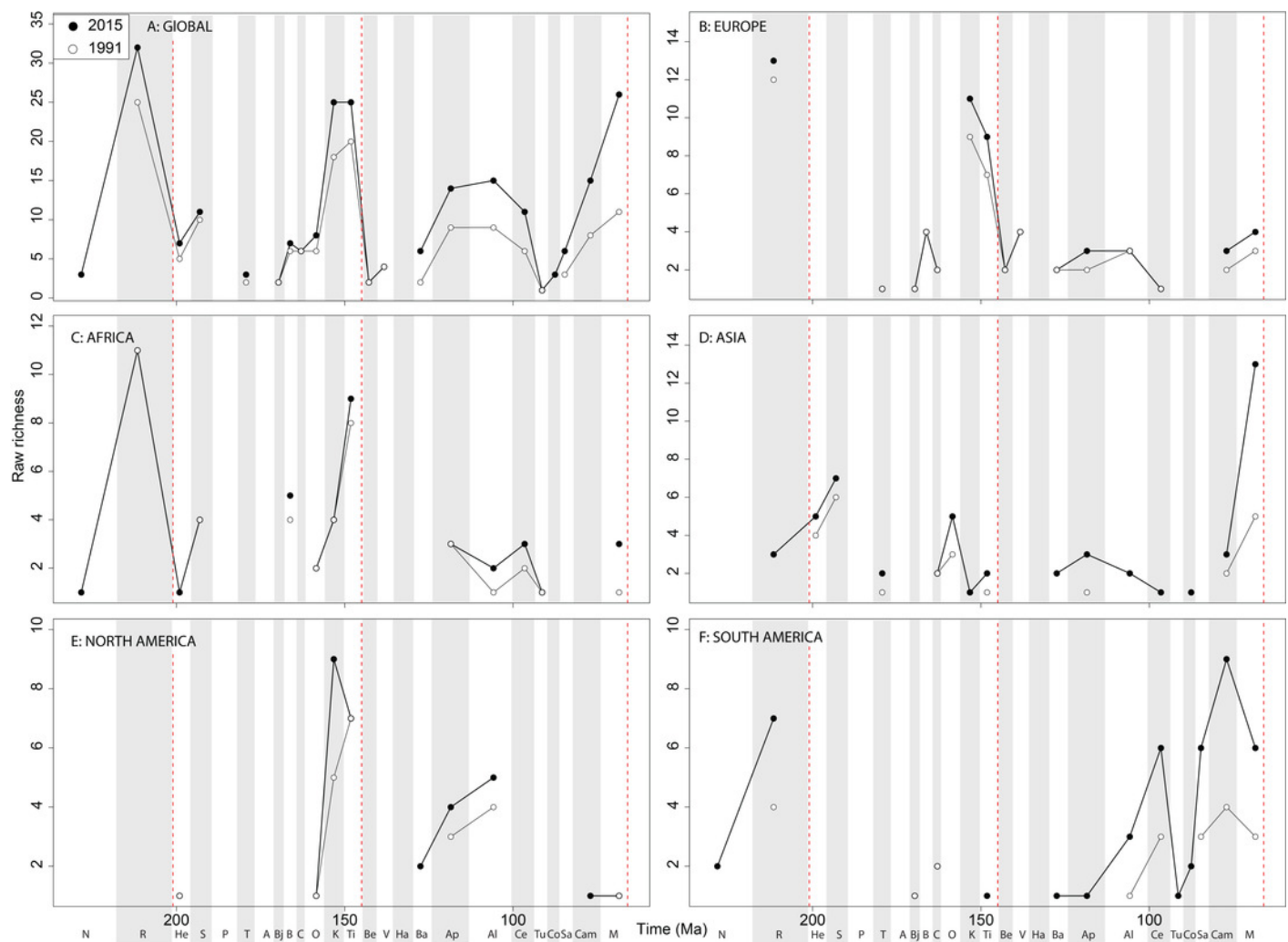
# Figure 9

Good's  $u$  estimates for theropods at A) global and B-F) regional levels (Europe, Africa, Asia, North America, and South America, respectively) based on our published knowledge in 1991 and 2015. Abbreviations as Figure 3.



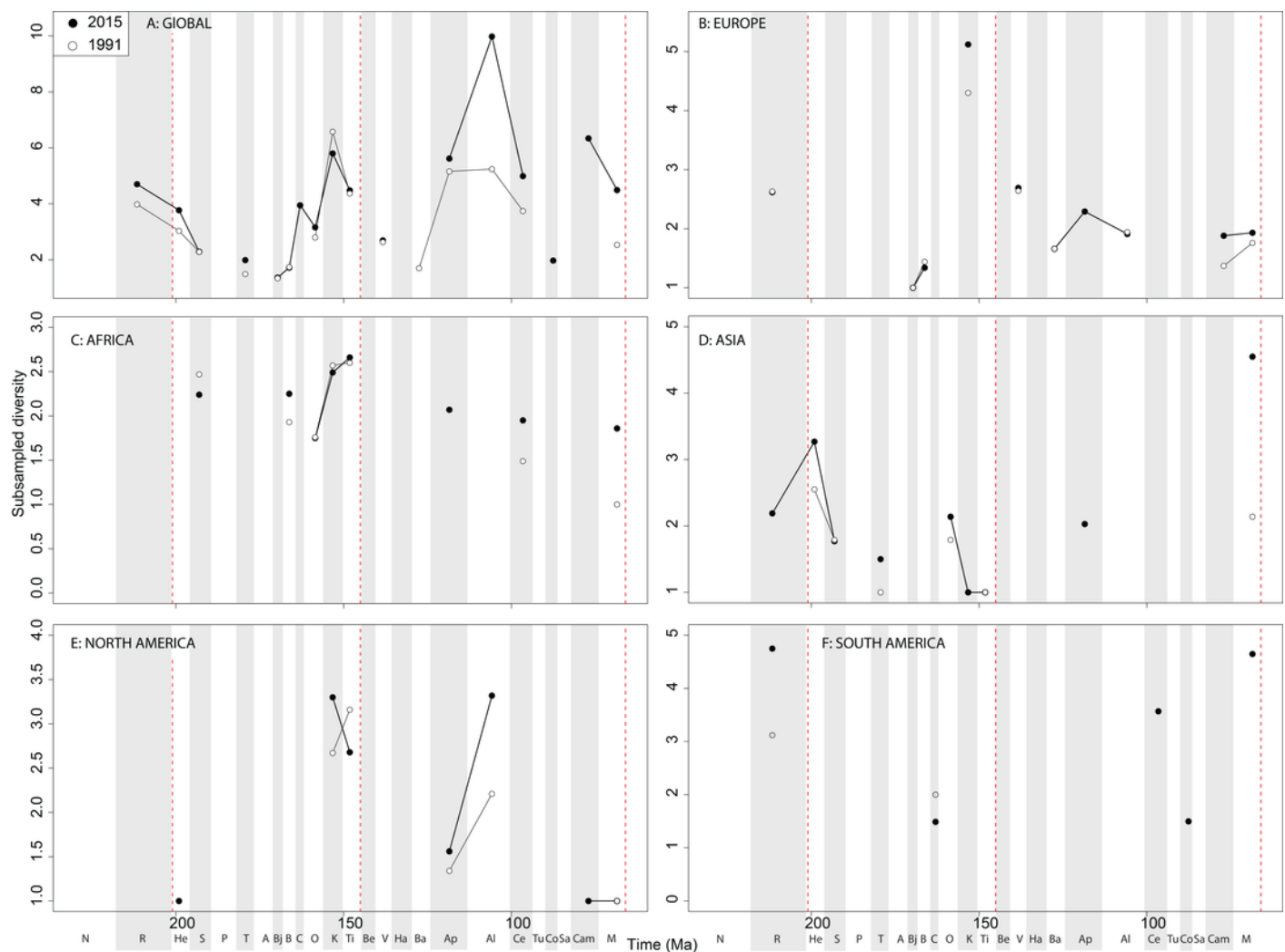
# Figure 10

Raw sauropodomorph diversity at A) global and B-F) regional levels (Europe, Africa, Asia, North America, and South America, respectively) based on our published knowledge in 1991 and 2015. Abbreviations as Figure 3.



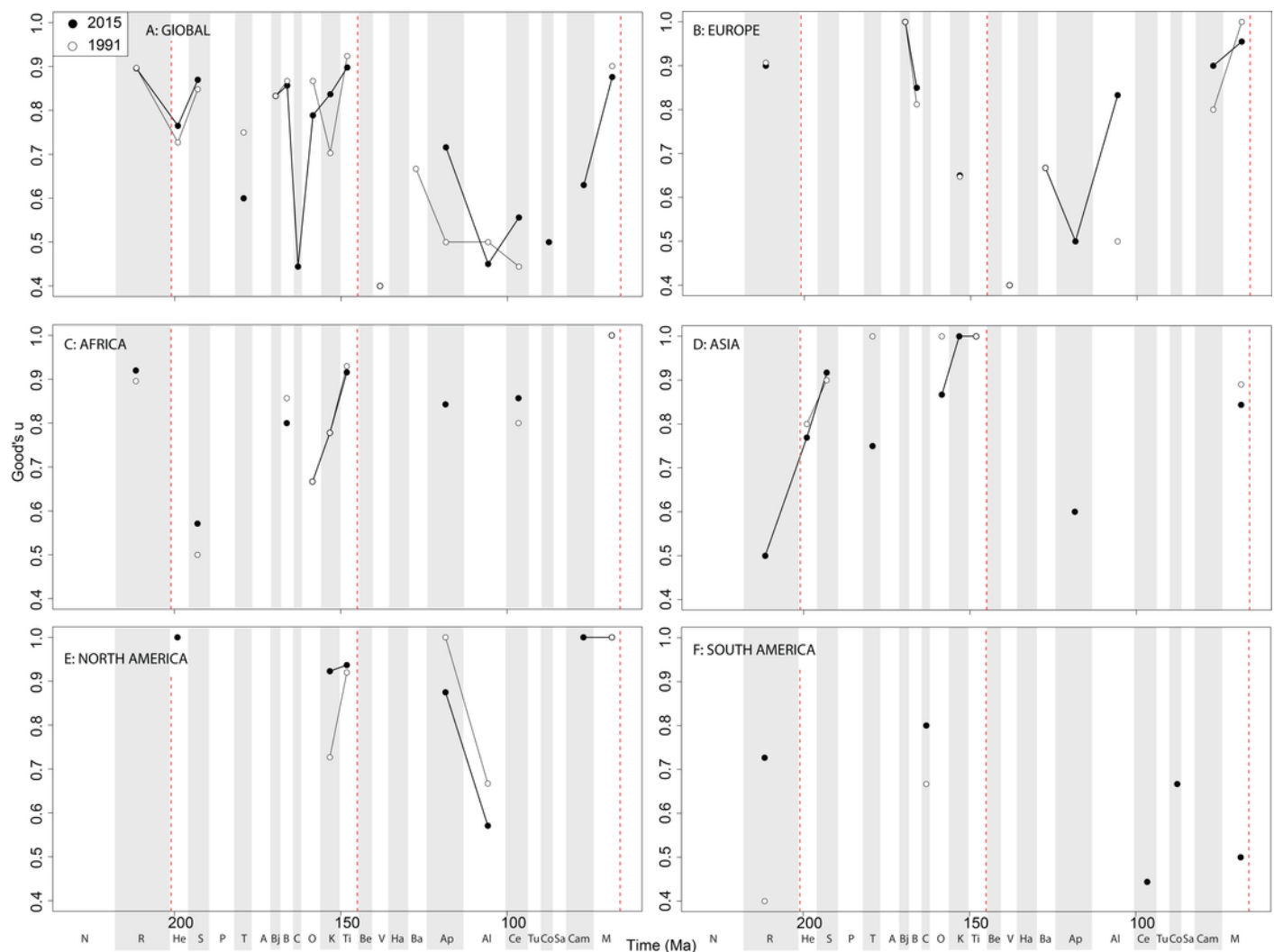
# Figure 11

Subsampled sauropodomorph diversity at A) global and B-F) regional levels (Europe, Africa, Asia, North America, and South America, respectively) based on our published knowledge in 1991 and 2015. Abbreviations as Figure 3.



# Figure 12

Good's  $u$  estimates for sauropodomorphs at a A) global and B-F) regional levels (Europe, Africa, Asia, North America, and South America, respectively) based on our published knowledge in 1991 and 2015. Abbreviations as Figure 3.





**Table 1**(on next page)

Ornithischian correlation test results.

1

Ornithischians			Sea level			Palaeotemperature		
	Shapiro-Wilk (p)	Correlation test	cor	p	adjusted p	cor	p	adjusted p
2015	0.003	Spearman	0.42	0.137	0.322	-0.432	0.109	0.235
2013	0.002	Spearman	0.481	0.084	0.273	-0.396	0.145	0.235
2011	0.002	Spearman	0.481	0.084	0.273	-0.396	0.145	0.235
2009	0.002	Spearman	0.516	0.062	0.273	-0.429	0.113	0.235
2007	0.001	Spearman	0.503	0.069	0.273	-0.471	0.078	0.235
2005	<0.001	Spearman	0.358	0.209	0.273	-0.346	0.206	0.237
2003	0.002	Spearman	0.314	0.274	0.322	-0.325	0.237	0.237
2001	0.001	Spearman	0.332	0.246	0.322	-0.329	0.232	0.237
1999	0.002	Spearman	0.327	0.253	0.322	-0.432	0.109	0.235
1997	0.001	Spearman	0.341	0.233	0.322	-0.429	0.113	0.235
1995	<0.001	Spearman	0.258	0.394	0.394	-0.367	0.197	0.237
1993	0.001	Spearman	0.413	0.185	0.322	-0.495	0.089	0.235
1991	0.002	Spearman	0.329	0.297	0.322	-412	0.163	0.235

2

# **Table 2**(on next page)

Sauropodomorph correlation test results.

1

Sauropodomorphs			Sea level			Palaeotemperature		
	Shapiro-Wilk (p)	Correlation test	cor	p	adjusted p	cor	p	adjusted p
2015	0.036	Spearman	-0.114	0.711	0.795	-0.171	0.527	0.609
2013	0.045	Spearman	-0.08	0.795	0.795	-0.138	0.609	0.609
2011	0.274	Pearson	0.399	0.201	0.877	0.095	0.736	0.81
2009	0.192	Pearson	0.399	0.201	0.877	0.067	0.813	0.813
2007	0.052	Pearson	0.161	0.619	0.877	-0.197	0.482	0.81
2005	0.477	Pearson	0.115	0.71	0.877	-0.221	0.41	0.81
2003	0.19	Pearson	0.168	0.614	0.877	-0.235	0.4	0.81
2001	0.385	Pearson	0.007	0.991	0.991	-0.199	0.477	0.81
1999	0.124	Pearson	0.105	0.75	0.877	-0.174	0.522	0.81
1997	0.887	Pearson	-0.145	0.673	0.877	-0.116	0.692	0.81
1995	0.485	Pearson	-0.091	0.797	0.877	-0.147	0.615	0.81
1993	0.763	Pearson	-0.155	0.654	0.877	-0.147	0.617	0.81
1991	0.295	Pearson	-0.145	0.673	0.877	-0.147	0.615	0.81

2

**Table 3**(on next page)

Theropod correlation tests results.

1

Theropods			Sea level			Palaeotemperature		
	Shapiro-Wilk (p)	Correlation test	cor	p	adjusted p	cor	p	adjusted p
2015	0.036	Spearman	0.175	0.588	0.672	0.115	0.71	0.868
2013	0.098	Pearson	0.234	0.464	0.464	0.334	0.264	0.362
2011	0.027	Spearman	0.099	0.751	0.751	0.059	0.844	0.868
2009	0.032	Spearman	0.17	0.579	0.672	0.055	0.856	0.868
2007	0.029	Spearman	0.17	0.579	0.672	0.055	0.856	0.868
2005	0.072	Pearson	0.289	0.316	0.464	0.363	0.184	0.362
2003	0.027	Spearman	0.407	0.151	0.659	-0.061	0.832	0.868
2001	0.006	Spearman	0.346	0.247	0.659	-0.086	0.773	0.868
1999	0.028	Spearman	0.379	0.202	0.659	-0.051	0.868	0.868
1997	0.193	Pearson	0.476	0.1	0.25	0.254	0.362	0.362
1995	0.107	Pearson	0.511	0.074	0.25	0.257	0.355	0.362
1993	0.101	Pearson	0.251	0.409	0.464	0.264	0.342	0.362
1991	0.013	Spearman	0.209	0.494	0.672	-0.071	0.803	0.868

2

**Table 4**(on next page)

Total dinosaur correlation tests results.

1

All dinosaurs			Sea level			Palaeotemperature		
	Shapiro-Wilk (p)	Correlation test	cor	p	adjusted p	cor	p	adjusted p
2015	0.327	Pearson	0.189	0.467	0.467	-0.051	0.832	0.984
2013	0.233	Pearson	0.226	0.385	0.467	-0.099	0.678	0.984
2011	0.059	Pearson	0.324	0.204	0.467	0.108	0.652	0.984
2009	0.021	Spearman	0.284	0.268	0.367	-0.072	0.763	0.876
2007	0.489	Pearson	0.233	0.367	0.467	0.01	0.966	0.984
2005	0.045	Spearman	0.207	0.407	0.367	-0.095	0.682	0.876
2003	0.053	Pearson	0.305	0.218	0.467	0.025	0.914	0.984
2001	0.043	Spearman	0.232	0.367	0.367	-0.089	0.71	0.876
1999	0.066	Pearson	0.342	0.179	0.467	0.005	0.984	0.984
1997	0.27	Pearson	0.358	0.159	0.467	-0.048	0.84	0.984
1995	0.13	Pearson	0.275	0.303	0.467	0.021	0.931	0.984
1993	0.119	Pearson	0.221	0.429	0.467	0.046	0.856	0.984
1991	0.049	Spearman	0.261	0.347	0.367	-0.04	0.876	0.876

2