

DNA barcode-based survey of Trichoptera in the Crooked River reveals three new species records for British Columbia

Daniel J. Erasmus^{1,*}, Emily A. Yurkowski¹ and Dezene P.W. Huber^{2,*}

¹Department of Biochemistry and Molecular Biology, University of Northern British Columbia, Prince George, British Columbia, Canada

²Department of Ecosystem Science and Management Program, University of Northern British Columbia, Prince George, British Columbia, Canada

*These authors contributed equally to this work.

ABSTRACT

Anthropogenic pressures on aquatic systems have placed a renewed focus on biodiversity of aquatic macroinvertebrates. By combining classical taxonomy and DNA barcoding we identified 39 species of caddisflies from the Crooked River, a unique and sensitive system in the southernmost arctic watershed in British Columbia. Our records include three species never before recorded in British Columbia: *Lepidostoma togatum* (Lepidostomatidae), *Ceraclea annulicornis* (Leptoceridae), and possibly *Cheumatopsyche harwoodi* (Hydropsychidae). Three other specimens may represent new occurrence records and a number of other records seem to be substantial observed geographic range expansions within British Columbia.

Subjects Biogeography, Ecosystem Science, Entomology, Taxonomy, Freshwater Biology

Keywords Trichoptera, Caddisflies, British Columbia, *Lepidostoma togatum*, *Ceraclea annulicornis*, *Cheumatopsyche harwoodi*, Lepidostomatidae, Leptoceridae, Hydropsychidae

INTRODUCTION

With accelerating anthropogenic climate change there is a renewed interest in assessing biodiversity in freshwater ecosystems (*Parmesan, 2006*). Freshwater ecosystems are especially under cumulative threats with increased demand for fresh water by industrial activities in riparian zones (*Meyer, Sale & Mulholland, 1999*). Assessing insect biodiversity is a challenging, but vital, activity in the face of these changes in order to understand aquatic food webs, ecosystem services, and for use in aquatic environmental monitoring (*Burgmer, Hillebrand & Pfenninger, 2007; Dobson & Frid, 2009; Cairns Jr & Pratt, 1993*).

Trichoptera taxonomy is primarily based on male adult morphology, which often requires experts for definitive identification. Taxonomy of the larvae is complicated and often problematic as it is not always possible to distinguish between species of the same genus (*Burington, 2011; Ruiter, Boyle & Zhou, 2013*). DNA barcoding and the use of sequence databases, combined with classical taxonomy, can help to speed up this process by allowing rapid surveys of novel regions (*Ruiter, Boyle & Zhou, 2013; DeSalle, Egan & Siddall, 2005; Jinbo, Kato & Motomi, 2011; Pauls et al., 2010; Zhou, Kjer & Morse, 2007*). The Barcode Of Life Database (BOLD) currently contains DNA barcodes for more than

Submitted 19 June 2017

Accepted 12 December 2017

Published 12 January 2018

Corresponding authors

Daniel J. Erasmus, erasmus@unbc.ca,

daniel.erasmus@unbc.ca

Dezene P.W. Huber, huber@unbc.ca

Academic editor

Marcio Pie

Additional Information and
Declarations can be found on
page 12

DOI 10.7717/peerj.4221

© Copyright

2018 Erasmus et al.

Distributed under

Creative Commons CC-BY 4.0

OPEN ACCESS

260,000 species including ~4,555 Trichoptera species, and facilitates the identification of species based on subunit I of the cytochrome oxidase I (COI) DNA gene. In addition, recent comprehensive work on barcode-assisted Trichoptera taxonomy (Zhou et al., 2009; Zhou et al., 2010a; Zhou et al., 2010b; Zhou et al., 2011; Zhou et al., 2016) provides a solid foundation for biodiversity surveys of caddisflies in North America. Trichoptera, Ephemeroptera (mayflies), Plecoptera (stoneflies), and often aquatic Diptera (true flies) are used in well-developed protocols as indicators of aquatic ecosystem health (Lenat & Barbour, 1994). Due to their taxonomic richness, differential susceptibility to pollutants, and abundance in almost all water bodies worldwide, shifts in their numbers, relative ratios, or taxonomic diversity both temporally and/or geographically are used to observe stability and disturbance of ecosystems (Houghton, 2004; Pond, 2012). Monitoring work is best accomplished with good information on which species are present. Due to a lack of historical sampling in some areas, managers often must rely on regional (often province- or state-level) checklists that may or may not represent the taxonomic and functional diversity of smaller areas or specific sensitive systems. The Crooked River (Fig. 1) is the southernmost lotic system in British Columbia that ultimately drains into the Arctic Ocean. It flows north from Summit Lake (which is just on the north side of the continental divide) to McLeod Lake, connecting a series of lakes along the way. From there its water flows via other systems to eventually end up in the Williston Reservoir—a massive hydroelectric reservoir in the Rocky Mountain Trench that represents one of the largest anthropogenic landscape modifications on earth.

The Crooked River is named for all the oxbows due to its slow meandering flow (McKay, 2000). This river is also fed by underground springs, such as Livingston Springs in Crooked River Provincial Park. This well-known spring supplies the river with water year round and moderates annual temperature shifts. An extinct volcano (Teapot Mountain) is situated at its headwaters, and likely provides mineral nutrient inputs. As a *bona fide* spring creek, the Crooked River has a very flat gradient with swamp and marshland along much of its shoreline. During freshet the river floods these marshes bringing more nutrients into the system. These factors result in high productivity and a fairly stable year-round temperature which make the Crooked River unique compared to neighbouring systems. Nearby river systems are more typical of British Columbia—they are best described as oligotrophic freestone rivers that are highly susceptible to drastic changes in discharge from spring freshets and that show considerable annual temperature variation. The watershed has been logged for years resulting in a network of resource roads and bridges. A major highway and a rail line also run along much of its length, and are at times only a few meters from the river's main channel. However, even with its unique nature and high levels of anthropogenic impacts, our searches have revealed no recorded biodiversity surveys on the Crooked River.

Besides that, to our knowledge no comprehensive recent assessment has been done on Trichoptera in central or northern British Columbia. As the Crooked River is such a unique and nutrient-rich system we questioned whether it may provide habitat to species not yet reported for British Columbia. The aim of this study was to provide a comprehensive list

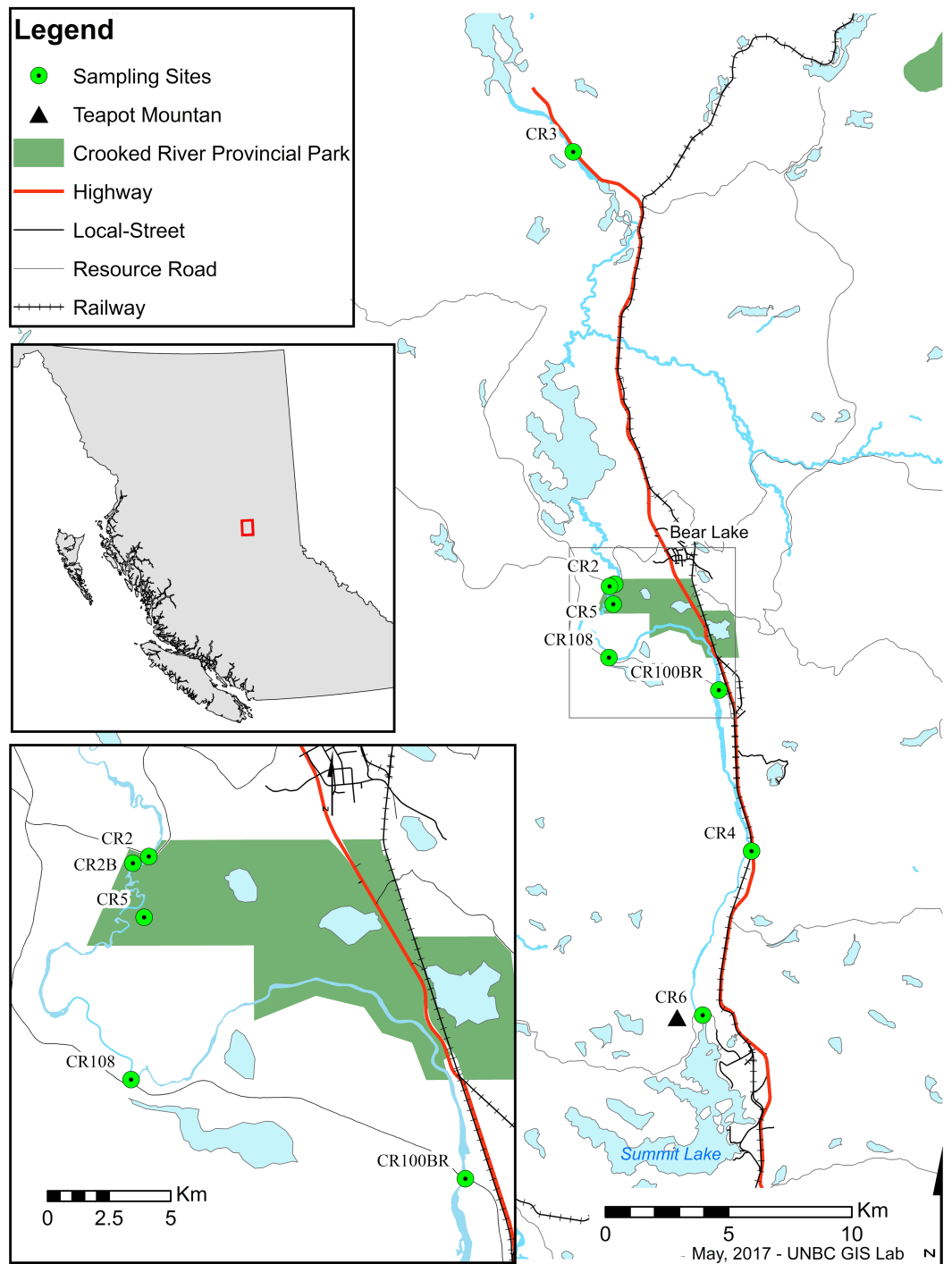


Figure 1 Map of sampling sites along the Crooked River, British Columbia. CR2: 54.485265°N, -122.717974°W; CR2B: 54.484474°N, -122.721257°W; CR3: 54.642963°N, -122.743021°W; CR4: 54.387709°N, -122.633217°W; CR5: 54.477975°N, -122.719000°W; CR6: 54.328038°N, -122.669236°W; CR100BR: 54.446455°N, -122.653129°W; CR108: 54.458511°N, -122.721828°W.

Full-size DOI: [10.7717/peerj.4221/fig-1](https://doi.org/10.7717/peerj.4221/fig-1)

of the Trichoptera biodiversity in a unique and vulnerable river as a baseline for future work and management.

METHODS AND MATERIALS

We collected specimens on a biweekly basis from eight locations (CR2—54.484°N, −122.721°W, CR2B—54.484°N, −122.721°W, CR3—54.643°N, −122.743°W, CR4—54.388°N, −122.633°W, CR5—54.478°N, −122.719°W, CR6—54.328°N, −122.669°W, CR100BR—54.446°N, −122.653°W, CR108—54.458°N, −122.722°W) along the edge of the Crooked River, British Columbia between May and August 2014 using both hand and kick-net methods. This study focused mainly on larvae to ensure that we collected caddisflies from the Crooked River only and not from nearby water bodies. We completed collections under the British Columbia Ministry of Environment Park Use Permit #107171 where required. We preserved specimens in 80% ethanol upon collection. We identified all 2,204 caddisfly specimens that we collected to the lowest possible taxonomic ranking (genus or family) based on published morphological keys (*Wiggins, 1977; Clifford, 1991; Schmid, 1998*). We selected morpho-species and 214 specimens were subsequently sent to the Biodiversity Institute of Ontario (BIO) and its Barcode of Life Database (<http://www.boldsystems.org>) in Guelph, Ontario, to have their barcode region (COI) sequenced for further classification. We received back 185 useable sequences (>400 bp., <5 miscalls, no contamination detected). We vouchered all specimens sent for sequencing at the Centre for Biodiversity Genomics at the University of Guelph. Initial species identification was based on a 650 bp sequence in COI 5' region using the BOLD platform with MUSCLE sequence alignments and a Kimura-2-parameter distance model. The data for all collected specimens are available as dataset [10.5883/DS-CRTRI](https://doi.org/10.5883/DS-CRTRI).

Neighbor joining analyses were performed on *Cheumatopsyche harwoodi*, *Lepidostoma togatum* and *Ceraclea annulicornis* specimens from the Crooked River compared to con- and heterospecific sequence data from the Barcode Of Life Database (BOLD). Evolutionary distances were computed using the Kimura 2-parameter method bootstrapped (5,000 replications) after a MUSCLE alignment and were visualized in MEGA6.0 (*Saitou & Nei, 1987; Felsenstein, 1985; Kimura, 1980; Tamura et al., 2013*). We cross-referenced the Crooked River Trichoptera species list that we obtained from analysis of our BOLD data using checklists, museums records and databases from the following: Canadian National Collection of Insects, Arachnids and Nematodes (<http://www.canacoll.org/>); Strickland Museum at the University of Alberta; Beaty Biodiversity Museum at the University of British Columbia; Electronic Atlas of the Wildlife of British Columbia (<http://ibis.geog.ubc.ca/biodiversity/efauna/>); Natureserve (<http://www.natureserve.org/>); Canadensys (<http://www.canadensys.net/>); Global Biodiversity Information Facility (<http://www.gbif.org/>); the Royal Ontario Museum; and the Royal British Columbia Museum (<http://search-collections.royalbcmuseum.bc.ca/Entomology>).

RESULTS & DISCUSSION

We used morphological keys to identify all 2,204 collected specimens to family or genus, after which we used successful barcodes and database searches to deduce the species identities of 185 individuals based on previous database annotations. In total we detected 41 caddisfly species—found in 20 genera within 11 families—in the Crooked River system (Table 1). All barcode data are publicly available at BOLD ([10.5883/DS-CRTRI](https://www.boldsystems.org/)). Thirty five of the 41 species we identified were assigned to known species via database matches using a 2% threshold for delineating species within Trichoptera, which is considered to be a reliable approach (Zhou *et al.*, 2009). COI sequences of specimens from the Crooked River with DNA sequences matching 99.67% and 99.13% to *Lepidostoma cinereum* and *Neophylax rickeri* respectively, were assigned to the aforementioned species.

Among the 34 specimens identified to species with 100% database matches are *Cheumatopsyche harwoodi*, *Lepidostoma togatum* and *Ceraclea annulicornis*, all three are new species records for British Columbia.

There are currently six species within the genus *Cheumatopsyche* known from British Columbia: *C. analis*, *C. campyla*, *C. gracilis*, *C. oxa*, *C. pettiti* and *C. smithi* (<http://ibis.geog.ubc.ca/biodiversity/efauna>, Cannings, 2007). We found a larva of *Cheumatopsyche harwoodi* (synonym *C. enigma* Ross, Morse, & Gordon, 1971) at CR4 on May 16th 2014. Based on morphological keys we were only able to classify our specimen to genus level. This is not surprising as morphology-based taxonomy of *Cheumatopsyche* larvae is exceedingly difficult (Wiggins, 1996). In some cases *C. harwoodi* larvae are indistinguishable from other species within the genus (Burlington, 2011). Based on our phylogenetic tree-based analysis the Crooked River *C. harwoodi* sequence groups with *C. harwoodi* sequences from Ontario (JF434099, JF434097), New Brunswick (KR146677), and Manitoba (HM102631); and not with any of the known species of *Cheumatopsyche* in British Columbia (Fig. 2). The Crooked River specimen also aligns 100% with a DNA sequence of *C. harwoodi* from Alberta (HM102632), but also with a *C. gracilis* sequence from Wyoming (HQ560573) (Fig. 2).

To identify a species based on DNA sequence, an accurate morphological identification to species of a physical specimen is required—and ideally replicated a number of times. Currently BOLD has 178 barcodes for specimens identified as *C. harwoodi* and the Crooked River specimen aligns very closely to these with less than 0.6% difference within the species as a whole, well below the 2% threshold suggested by Zhou and co-workers in 2009. There are currently only two barcodes for *C. gracilis* and both these barcodes group with the various *C. harwoodi* sequences. These two *C. gracilis* specimens are also quite different, with a 1.3% difference based on our analysis. The preponderance of evidence, then, points to one of three possibilities. First, the two *C. gracilis* specimens in BOLD are actually misidentified *C. harwoodi* and our specimen is also *C. harwoodi*. Second, the specimens represent different species but that difference is not reflected in the DNA barcode. And third, the taxonomic status of both species should be reconsidered as potentially being one species. A more definitive identification might be possible as BOLD is populated with more *C. gracilis* sequences that helps delineate the two species.

Table 1 Trichoptera collected along the Crooked River, British Columbia and associated COI DNA barcode-assigned identifications along with date ranges of collection. Locations of collection sites are given in the footnotes. All sequence data are available in public repositories as listed, and all specimens are vouchered at the University of Guelph—Centre for Biodiversity Genomics.

Family ^a	Genus ^a	Species ^a	Sample IDs ^b	BIN	NCBI accession ^c	Collection site(s) ^d	Collection date range ^e	Notes
Brachycentridae	<i>Brachycentrus</i>	<i>americanus</i>	BIOUG18684-B11 and 22 others	BOLD:ABX6535	KX144627	CR2, CR2B, CR4, CR108	11-JUN to 13-AUG	Potential new BC record
		<i>occidentalis</i>	BIOUG18683-H05 and 5 others	BOLD:AAE0281	KX144012	CR3, CR100BR	04-JUN to 13-AUG	
	<i>Micrasema</i>	<i>bactro</i>	BIOUG18683-F09.1	BOLD:AAC4650	KX143689	CR4	11-JUN	
		sp.	BIOUG18683-F08	BOLD:ACC4912	KX142261	CR2	18-JUN	
Hydropsychidae	<i>Arctopsyche</i>	<i>grandis</i>	BIOUG18683-A11.1 and 6 others	BOLD:AAB3049	KX143192	CR2, CR108	09-JUL to 13-AUG	New BC record
	<i>Cheumatopsyche</i>	<i>analis</i>	BIOUG18684-B10	BOLD:AAA5695	KX144608	CR100BR	28-JUL	
		<i>harwoodi</i>	BIOUG18684-B09	BOLD:AAA2316	KX141182	CR4	16-MAY	
		sp.	BIOUG18684-E05	BOLD:ACE5262	KX142965	CR108	09-JUL	
	<i>Hydropsyche</i>	sp.	BIOUG18684-E08 and 4 others	BOLD:AAA3891	KX142829	CR3	29-JUL to 13-AUG	
		<i>alhedra</i>	BIOUG18683-H03 and 2 others	BOLD:AAC1650	KX143172	CR4, CR108	04-JUN to 11-JUN	
		<i>alternans</i>	BIOUG18683-C12 and 14 others	BOLD:AAA3236	KX140968	CR3, CR100BR	10-JUN to 13-AUG	
		<i>cockerelli</i>	BIOUG18683-A03	BOLD:AAC3057	KX143078	CR4	16-MAY	
		<i>morosa</i>	BIOUG18684-E01 and 5 others	BOLD:AAA3679	KX143491	CR3	28-JUL	
		<i>slossonae</i>	BIOUG18684-E06 and 12 others	BOLD:AAA2527	KX143429	CR2, CR4, CR100BR, CR108	11-JUN to 13-AUG	
Hydroptilidae	<i>Hydroptila</i>	<i>arctia</i>	BIOUG18683-F10.1	BOLD:AAE5200	KX141605	CR108	25-JUN	Potential new BC record
		sp.	BIOUG18683-A06	BOLD:AAK3416	KX142062	CR2	18-JUN	

(continued on next page)

Table 1 (continued)

Family ^a	Genus ^a	Species ^a	Sample IDs ^b	BIN	NCBI accession ^c	Collection site(s) ^d	Collection date range ^e	Notes
Lepidostomatidae	<i>Lepidostoma</i>	<i>pluviale</i>	BIOUG18684-D07.1 and 3 others	BOLD:ACF2295	KX142857	CR100BR	18-JUN to 13-AUG	
		sp.	BIOUG18683-G10	BOLD:ACL5324	KX144650	CR2	4-AUG	Potential new BC record
		<i>togatum</i>	BIOUG18684-D02	BOLD:AAA2325	KX144002	CR3	14-JUL	New BC record
		<i>cinereum</i>	BIOUG18683-C07.1 and 3 others	BOLD:AAK7943	KX142572	CR2, CR2B, CR4	25-JUN to 4-AUG	
		<i>unicolor</i>	BIOUG18684-H04 and 8 others	BOLD:AAC5923	KX142875	CR4, CR108	11-JUN to 4-AUG	
Leptoceridae	<i>Ceraclea</i>	<i>alagma</i>	BIOUG18683-F06 and two others	BOLD:AAA5876	KX143301	CR6, CR100BR, CR108	16-MAY to 14-JUL	
		<i>annulicornis</i>	BIOUG18683-B02	BOLD:AAA5429	KX142035	CR3	13-AUG	New BC record
		<i>cancellata</i>	BIOUG18684-A01	BOLD:ABZ0710	KX143326	CR4	4-AUG	
		<i>nigronevosa</i>	BIOUG18683-H09 and 1 other	BOLD:AAC3781	KX141154	CR100BR	10-JUN	
		<i>resurgens</i>	BIOUG18683-F07.1 and 2 others	BOLD:ACG9704	KX142221	CR3	14-JUL to 28-JUL	
Limnephilidae	<i>Amphicosmoecus</i>	<i>canax</i>	BIOUG18683-D09 and 5 others	BOLD:AAE2491	KX143314	CR2B, CR4, CR100BR	11-JUN to 9-JUL	
		<i>Clistoronia</i>	<i>magnifica</i>	BIOUG18683-F05 and 1 other	BOLD:AAC1848	KX141495	CR3, CR4	28-JUL to 13-AUG
	<i>Dicosmoecus</i>	<i>atripes</i>	BIOUG18683-G05 and 2 others	BOLD:AAC5045	KX140940	CR4	11-JUN	
		<i>gilvipes</i>	BIOUG18684-H07 and six others	BOLD:AAI9526	KX142636	CR2B, CR4, CR100BR	16-MAY to 9-JUL	
	<i>Limnephilus</i>	<i>externus</i>	BIOUG18683-F12 and 1 other	BOLD:AAA2803	KX141731	CR2B, CR6	11-JUN to 18-JUN	
	<i>Onocosmoecus</i>	<i>unicolor</i>	BIOUG18684-H04 and 8 others	BOLD:AAC5923	KX142875	CR4, CR108	11-JUN to 4-AUG	
	<i>Psychoglypha</i>	<i>alascensis</i>	BIOUG18683-G07 and 7 others	BOLD:ACH0278	KX141905	CR4, CR5	9-MAY to 4-AUG	
		<i>subborealis</i>	BIOUG18683-D11.1 and 2 others	BOLD:AAE0945	KX144814	CR4	9-JUL to 4-AUG	

(continued on next page)

Table 1 (continued)

Family ^a	Genus ^a	Species ^a	Sample IDs ^b	BIN	NCBI accession ^c	Collection site(s) ^d	Collection date range ^e	Notes
Philopotamidae	<i>Wormaldia</i>	<i>gabriella</i>	BIOUG18684-C03 and 4 others	BOLD:AAC1539	KX143731	CR2, CR108	21-JUL to 13-AUG	
Phryganeidae	<i>Agrypnia</i>	<i>improba</i>	BIOUG18683-C01	BOLD:ACK0044	KX143489	CR2	13-AUG	
Polycentropodidae	<i>Neureclipsis</i>	<i>bimaculata</i>	BIOUG18683-A08 and 3 others	BOLD:AAE2683	KX141945	CR3	14-JUL to 28-JUL	
	<i>Plectrocnemia</i>	<i>cinerea</i>	BIOUG18684-A08	BOLD:AAA3441	KX141515	CR6	14-JUL	
Rhyacophilidae	<i>Rhyacophila</i>	<i>brunnea</i>	BIOUG18683-B12 and 11 others	BOLD:AAB3088	KX141430	CR4, CR100BR, CR108	18-JUN to 2-AUG	
		sp.	BIOUG18684-A07 and 3 others	BOLD:ACL4744	KX140935	CR2, CR100BR	13-AUG	
Uenoidae	<i>Neophylax</i>	<i>rickeri</i>	BIOUG18683-G08	BOLD:AAG9543	KX144032	CR4	4-JUN	

Notes.

^aDetermined from morphological keys and BOLD database match.

^bIf more than one specimen, longest sequence from BOLD with an NCBI accession number; other sample data are available at BOLD dataset CRTRI.

^cFor the sample specified in the fourth column.

^dCR2—54.484°N, -122.721°W; CR2B—54.484°N, -122.721°W; CR3—54.643°N, -122.743°W; CR4—54.388°N, -122.633°W; CR5—54.478°N, -122.719°W; CR6—54.328°N, -122.669°W; CR100BR—54.446°N, -122.653°W; CR108—54.458°N, -122.722°W

^eFirst collection date and (if applicable) last collection date in 2014.

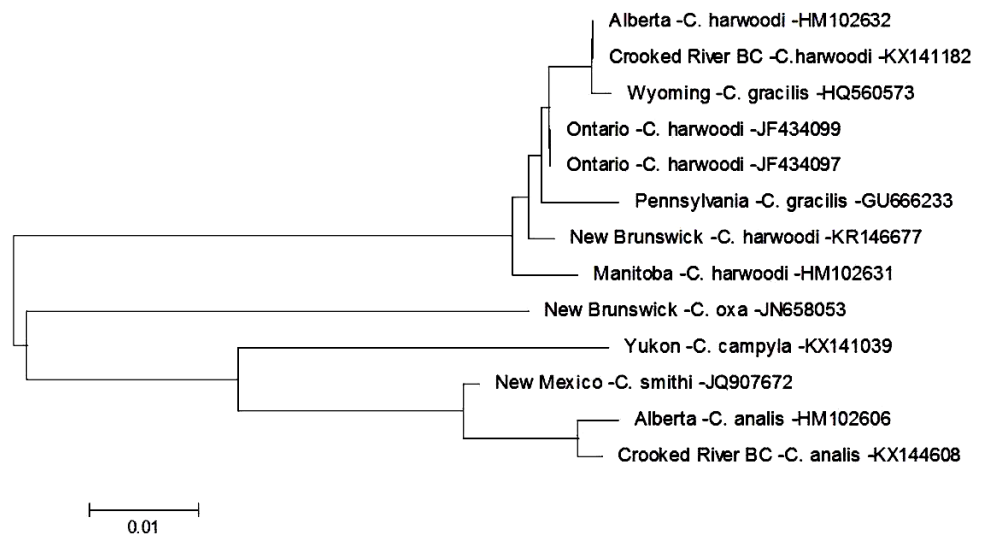


Figure 2 Phylogenetic tree of *Cheumatopsyche* spp. collected from the Crooked River and congeneric COI-5P DNA sequences of *Cheumatopsyche* species with DNA barcodes. Evolutionary history is based on the Neighbour-Joining Method bootstrapped (5,000 replicates) and the Kimura-2 method to calculate distances. Each species is identified by the geographic region of collection, species, and Genbank accession number for the COI-5P DNA sequence.

Full-size  DOI: [10.7717/peerj.4221/fig-2](https://doi.org/10.7717/peerj.4221/fig-2)

On 14 July 2014 we found a larva for *Lepidostoma toгатum* {synonyms *L. canadense* (Banks, 1899), *L. pallidum* (Banks, 1897), *Mormomyia toгатum* Hagen, 1861, *Pristosilo canadensis* Banks, 1899, *Silo pallidus* Banks, 1897} at CR3. The DNA sequence of this specimen aligns clearly with *L. toгатum* sequences (Fig. 3). Based on museum and database records in Canada *L. toгатum* is known to be present in the Northwest Territories, Alberta and the Maritime Provinces of Canada. Our report is the first for this species west of the Rocky Mountains.

On 13 August 2014 we found a specimen of *Ceraclea annulicornis* {(synonyms: *Athripsodes annulicornis* (Stephens, 1836), *C. futilis* (Banks, 1914), *C. recurvata* (Banks, 1908), *Leptocerus annulicornis* Stephens, 1836, *L. futilis* (Banks, 1914)} at CR3 (Fig. 1). The phylogenetic tree-based analysis using sequences from Manitoba, Ontario, and New Brunswick strongly suggest our specimen is *C. annulicornis* (Fig. 4).

We found specimens belonging to three genera that had no significant matches at the species level on either the Barcode of Life Database or at NCBI; therefore we only provide genus-level identifications (Table 1). A specimen we putatively assign as *Micrasema* had only one match in BOLD: Genbank accession number KR145307 (Zhou et al., 2016), but much further south, on southern Vancouver Island. Images of this specimen are publicly available at BOLD (BIOUG18683-F08).

A specimen putatively belonging to the genus *Hydroptila* had a number of 100% matches to the Crooked River *Hydroptila* sp. in the BOLD database (Zhou et al., 2016), but none identified to species. Sequence alignments revealed 86% and 84.74% similarity to *H. rono* and *H. xera* respectively; both species are known to be present in British Columbia. The other two known *Hydroptila* spp. in British Columbia, *H. arctia* and *H. consimilis*, are

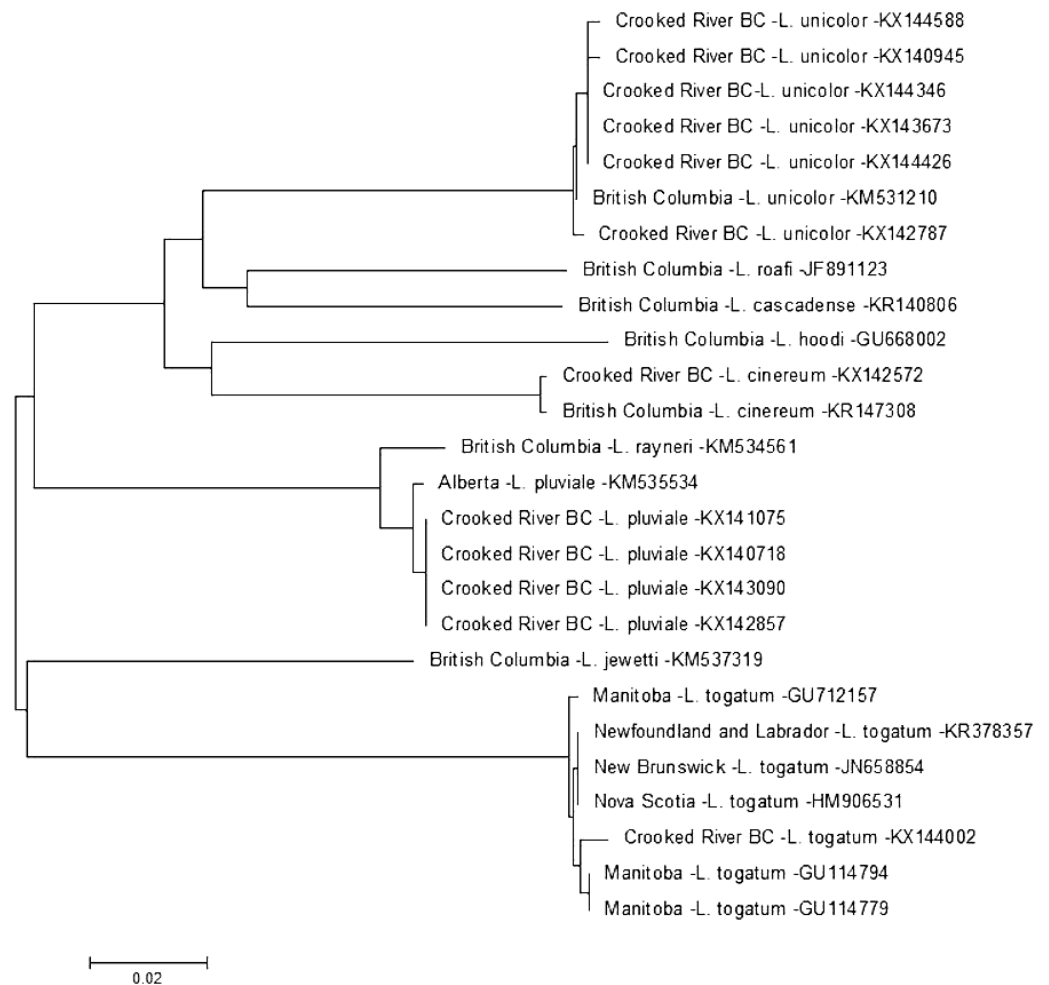


Figure 3 Phylogenetic tree of *Lepidostoma* spp. collected from the Crooked River and congeneric COI-5P DNA sequences of *Lepidostoma* species with DNA barcodes. Evolutionary history is based on the Neighbour-Joining Method bootstrapped (5,000 replicates) and the Kimura-2 method to calculate distances. Each species is identified by the geographic region of collection, species, and Genbank accession number for the COI-5P DNA sequence.

Full-size DOI: [10.7717/peerj.4221/fig-3](https://doi.org/10.7717/peerj.4221/fig-3)

substantially dissimilar from our specimen (81% and 82% match, respectively). Images of our specimen are publicly available at BOLD (BIOUG18683-A06).

A third specimen putatively assigned to *Lepidostoma* resides in a BIN with only two members (BOLD:ACL5324)—the Crooked River specimen and one other from British Columbia (Genbank Accession # [KX142483](https://www.ncbi.nlm.nih.gov/nuccore/KX142483)). Images of this specimen (adult) are publicly available at BOLD (BIOUG18683-G10).

These three specimens are thus most likely also new species records for British Columbia. All known species in British Columbia belonging to *Micrasema* and *Hydroptila* have DNA barcodes in BOLD, and ten of the 12 *Lepidostoma* species known to be in British Columbia have DNA barcodes in BOLD. Only *L. quercina* and *L. stigma* do not, and it is possible that our specimen belongs to one of these two species.

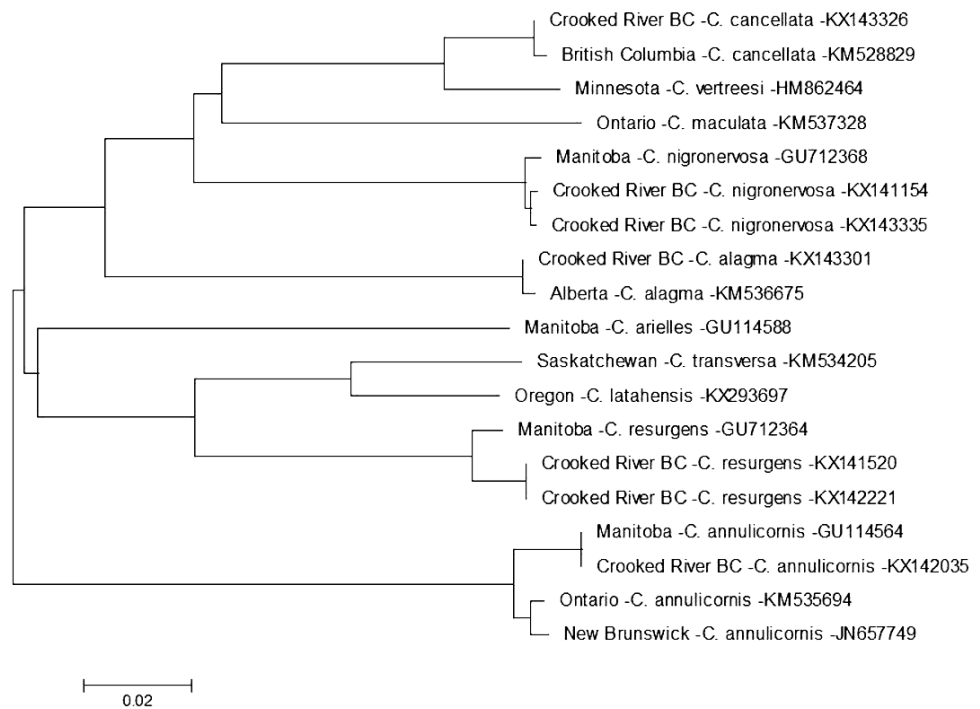


Figure 4 Phylogenetic tree of *Ceraclea* spp. collected from the Crooked River and congeneric COI-5P DNA sequences of *Ceraclea* species with DNA barcodes. Evolutionary history is based on the Neighbour-Joining Method bootstrapped (5,000 replicates) and the Kimura-2 method to calculate distances. Each species is identified by the geographic region of collection, species, and Genbank accession number for the COI-5P DNA sequence.

Full-size  DOI: [10.7717/peerj.4221/fig-4](https://doi.org/10.7717/peerj.4221/fig-4)

The presence of 41 species (20 genera, 11 families) of caddisflies in the Crooked River is comparable to other rivers and regions. For instance collection from the Churchill, Manitoba area—including the Churchill River, tundra ponds, lakes, and small streams—revealed 68 species (Zhou *et al.*, 2009). Collection from the Ochre River, Manitoba revealed 33 species (8 families, 17 genera) (Cobb & Flannagan, 1990). Broad-scale sampling across northern Canada from the Ogilvie Mountains in the Yukon to Goose Bay in Newfoundland revealed 56 species (Cordero, Sánchez-Ramírez & Currie, 2017). To our knowledge, there is no study that provides a comprehensive species checklist of caddisflies for a specific tributary in British Columbia to which we could compare our data more regionally.

In summary, our assessment of the Trichoptera inhabiting the Crooked River revealed three new species records for British Columbia *Lepidostoma togatum*, *Ceraclea annulicornis* and possibly *Cheumatopsyche harwoodi*. Our results also suggest at least two, and possibly three, other new species records. This baseline biodiversity data is vital for ongoing monitoring and management of this unique and highly impacted system and provides new data for managers and conservationists working in this understudied region.

ACKNOWLEDGEMENTS

We thank Claire Shrimpton for assistance in the field. Museum databases were provided by the Beaty Biodiversity Museum at the University of British Columbia (Karen Needham and Chris Ratzlaff), the Royal British Columbia Museum (Claudia Copley and Joel Gibson), the Strickland Museum at the University of Alberta (Bryan Brunet and Felix Sperling), and the Royal Ontario Museum (Doug Currie, Antonia Guidotti, Brad Hubley, and Brenna Wells). Thank you to the reviewers, especially Dr. Ralph Holzenthal, for their feedback and comments as it improved the manuscript immensely.

ADDITIONAL INFORMATION AND DECLARATIONS

Funding

This research was funded by the University of Northern British Columbia, the Canada Research Chairs Program, the Royal British Columbia Museum, and the Canada Foundation for Innovation. The funders had no role in study design, data collection and analysis, decision to publish, or preparation of the manuscript.

Grant Disclosures

The following grant information was disclosed by the authors:

University of Northern British Columbia.

Canada Research Chairs Program.

Royal British Columbia Museum.

Canada Foundation for Innovation.

Competing Interests

Dezene P.W. Huber is an Academic Editor for PeerJ.

Author Contributions

- Daniel J. Erasmus and Dezene P.W. Huber conceived and designed the experiments, performed the experiments, analyzed the data, contributed reagents/materials/analysis tools, wrote the paper, prepared figures and/or tables, reviewed drafts of the paper.
- Emily A. Yurkowski performed the experiments, analyzed the data, wrote the paper, prepared figures and/or tables.

Field Study Permissions

The following information was supplied relating to field study approvals (i.e., approving body and any reference numbers):

Collections were completed under the British Columbia Ministry of Environment Park Use Permit #107171 where required.

Data Availability

The following information was supplied regarding data availability:

The raw data have been uploaded as a [Supplemental File](#) and are permanently available at [10.5883/DS-CRTRI](https://doi.org/10.5883/DS-CRTRI).

Supplemental Information

Supplemental information for this article can be found online at <http://dx.doi.org/10.7717/peerj.4221#supplemental-information>.

REFERENCES

- Burgmer T, Hillebrand H, Pfenninger M. 2007.** Effects of climate-driven temperature changes on the diversity of freshwater macroinvertebrates. *Oecologia* **151**:93–103 DOI [10.1007/s00442-006-0542-9](https://doi.org/10.1007/s00442-006-0542-9).
- Burington ZL. 2011.** Larval taxonomy, phylogeny and historical biogeography of the genus *Cheumatopsyche* (Trichoptera: Hydropsychidae) in North America. MSc thesis, Clemson University, Clemson SC.
- Cairns Jr J, Pratt JR. 1993.** A history of biological monitoring using benthic macroinvertebrates. In: Rosenberg DM, Resh VH, eds. *Freshwater biomonitoring and benthic macroinvertebrates*. New York: Chapman & Hall, 10–27.
- Cannings RA. 2007.** Checklist List of the Trichoptera (Caddisflies) of British Columbia (2007). Victoria: Royal British Columbia Museum. Available at <http://ibis.geog.ubc.ca/biodiversity/efauna/documents/TrichopteraofBC2007.pdf>.
- Clifford HF. 1991.** *Aquatic invertebrates of Alberta*. Edmonton: The University of Alberta Press, 314–352.
- Cobb DG, Flannagan JF. 1990.** Trichoptera and substrate stability in the Ochre River, Manitoba. *Hydrobiologica* **206**:29–38 DOI [10.1007/BF00018967](https://doi.org/10.1007/BF00018967).
- Cordero RD, Sánchez-Ramírez S, Currie DC. 2017.** DNA barcoding of aquatic insects reveals unforeseen diversity and recurrent population divergence patterns through broad-scale sampling in northern Canada. *Polar Biology* **40**:1687–1695 DOI [10.1007/s00300-016-2062-3](https://doi.org/10.1007/s00300-016-2062-3).
- DeSalle R, Egan MG, Siddall M. 2005.** The unholy trinity: taxonomy, species delimitation and DNA barcoding. *Philosophical Transactions of the Royal Society B: Biological Sciences* **360**:1905–1916 DOI [10.1098/rstb.2005.1722](https://doi.org/10.1098/rstb.2005.1722).
- Dobson M, Frid C. 2009.** Rivers. In: *Ecology of aquatic systems*. Oxford: Oxford University Press, 45–83.
- Felsenstein J. 1985.** Confidence limits on phylogenies: an approach using the bootstrap. *Evolution* **39**:783–791 DOI [10.1111/j.1558-5646.1985.tb00420.x](https://doi.org/10.1111/j.1558-5646.1985.tb00420.x).
- Houghton DC. 2004.** Biodiversity of Minnesota caddisflies (Insect: Trichoptera): delimitation and characterization of regions. *Environmental Monitoring and Assessment* **95**:153–181 DOI [10.1023/B:EMAS.0000029890.07995.90](https://doi.org/10.1023/B:EMAS.0000029890.07995.90).
- Jinbo U, Kato T, Motomi ITO. 2011.** Current progress in DNA barcoding and future implications for entomology. *Entomological Science* **14**:107–124 DOI [10.1111/j.1479-8298.2011.00449.x](https://doi.org/10.1111/j.1479-8298.2011.00449.x).
- Kimura M. 1980.** A simple method for estimating evolutionary rate of base substitutions through comparative studies of nucleotide sequences. *Journal of Molecular Evolution* **16**:111–120 DOI [10.1007/BF01731581](https://doi.org/10.1007/BF01731581).

- Lenat DR, Barbour MT. 1994.** Using benthic macroinvertebrate community structure for rapid, cost-effective, water quality monitoring: rapid bioassessment. In: Loeb SL, Spacie A, eds. *Biological monitoring of aquatic systems*. New York: Lewis Publishers.
- McKay B. 2000.** *Crooked river rats: the adventures of pioneer rivermen*. Surrey, British Columbia: Hancock House Publishers Ltd.
- Meyer JL, Sale MJ, Mulholland PJ. 1999.** Impacts of climate change on aquatic ecosystem functioning and health. *JAWRA* **35**:1373–1386
[DOI 10.1111/j.1752-1688.1999.tb04222.x](https://doi.org/10.1111/j.1752-1688.1999.tb04222.x).
- Parmesan C. 2006.** Ecological and evolutionary responses to recent climate change. *Annual Review of Ecology, Evolution, and Systematics* **37**:637–669
[DOI 10.1146/annurev.ecolsys.37.091305.110100](https://doi.org/10.1146/annurev.ecolsys.37.091305.110100).
- Pauls SU, Blahnik RJ, Zhou X, Wardwell CT, Holzenthal RW. 2010.** DNA barcode data confirm new species and reveal cryptic diversity in Chilean *Smicridea* (*Smicridea*) (Trichoptera: Hydropsychidae). *Journal of the North American Benthological Society* **29**(3):1058–1074 [DOI 10.1899/09-108.1](https://doi.org/10.1899/09-108.1).
- Pond GJ. 2012.** Biodiversity loss in Appalachian headwater streams (Kentucky, USA): plecoptera and Trichoptera communities. *Hydrobiologia* **679**:97–117
[DOI 10.1007/s10750-011-0858-2](https://doi.org/10.1007/s10750-011-0858-2).
- Ruiter DE, Boyle EE, Zhou X. 2013.** DNA barcoding facilitates associations and diagnoses for Trichoptera larvae of the Churchill (Manitoba, Canada) area. *BMC Ecology* **13**:5 [DOI 10.1186/1472-6785-13-5](https://doi.org/10.1186/1472-6785-13-5).
- Saitou N, Nei M. 1987.** The neighbor-joining method: a new method for reconstructing phylogenetic trees. *Molecular Biology and Evolution* **4**:406–425.
- Schmid F. 1998.** *The insects and Arachnids of Canada. Part 7. Genera of the Trichoptera of Canada and adjoining or adjacent United States*. Ottawa: NRC Research Press, p. 319.
- Tamura K, Stecher G, Peterson D, Filipski A, Kumar S. 2013.** MEGA6: molecular evolutionary genetics analysis version 6.0. *Molecular Biology and Evolution* **30**:2725–2729
[DOI 10.1093/molbev/mst197](https://doi.org/10.1093/molbev/mst197).
- Wiggins GB. 1977.** *Larvae of the North American Caddisfly genera (Trichoptera)*. Toronto: University of Toronto Press, p. 381.
- Wiggins GB. 1996.** *Larvae of the North American Caddisfly Genera (Trichoptera)*. Toronto: University of Toronto Press.
- Zhou X, Adamowicz SJ, Jacobus LM, DeWalt RE, Hebert PD. 2009.** Towards a comprehensive barcode library for arctic life—Ephemeroptera, Plecoptera, and Trichoptera of Churchill, Manitoba, Canada. *Frontiers in Zoology* **6**(1):Article 30
[DOI 10.1186/1742-9994-6-30](https://doi.org/10.1186/1742-9994-6-30).
- Zhou X, Frandsen PB, Holzenthal RW, Beet CR, Bennett KR, Blahnik RJ, Bonada N, Cartwright D, Chuluunbat S, Cocks GV, Collins GE. 2016.** The Trichoptera barcode initiative: a strategy for generating a species-level Tree of Life. *Philosophical Transactions of the Royal Society B: Biological Sciences* **371**(1702):Article 20160025
[DOI 10.1098/rstb.2016.0025](https://doi.org/10.1098/rstb.2016.0025).
- Zhou X, Jacobus LM, DeWalt RE, Adamowicz SJ, Hebert PDN. 2010a.** Ephemeroptera, Plecoptera, and Trichoptera fauna of Churchill (Manitoba, Canada): insights

into biodiversity patterns from DNA barcoding. *Journal of the North American Benthological Society* **29**:814–837 DOI [10.1899/09-121.1](https://doi.org/10.1899/09-121.1).

Zhou X, Jacobus LM, DeWalt RE, Adamowicz SJ, Hebert PDN. 2010b. The Ephemeroptera, Plecoptera, and Trichoptera fauna of Churchill (Manitoba, Canada): insights into biodiversity patterns from DNA barcoding. *Journal of the North American Benthological Society* **29(3)**:814–837 DOI [10.1899/09-121.1](https://doi.org/10.1899/09-121.1).

Zhou X, Kjer KM, Morse JC. 2007. Associating larvae and adults of Chinese Hydropsychidae caddisflies (Insecta:Trichoptera) using DNA sequences. *Journal of the North American Benthological Society* **26(4)**:719–742 DOI [10.1899/06-089.1](https://doi.org/10.1899/06-089.1).

Zhou X, Robinson JL, Geraci CJ, Parker CR, Flint Jr OS, Etnier DA, Ruiter D, DeWalt RE, Jacobus LM, Hebert PD. 2011. Accelerated construction of a regional DNA-barcode reference library: caddisflies (Trichoptera) in the Great Smoky Mountains National Park. *Journal of the North American Benthological Society* **30(1)**:131–162 DOI [10.1899/10-010.1](https://doi.org/10.1899/10-010.1).