

# Mass marking of juvenile *Schizothorax wangchiachii* (Fang) with alizarin red S and evaluation of stock enhancement in the Jinping area of the Yalong River (#20560)

1

First revision

## Editor guidance

Please submit by **15 Nov 2017** for the benefit of the authors (and your \$200 publishing discount).



### Structure and Criteria

Please read the 'Structure and Criteria' page for general guidance.



### Custom checks

Make sure you include the custom checks shown below, in your review.



### Author notes

Have you read the author notes on the [guidance page](#)?



### Raw data check

Review the raw data. Download from the [materials page](#).



### Image check

Check that figures and images have not been inappropriately manipulated.

Privacy reminder: If uploading an annotated PDF, remove identifiable information to remain anonymous.

## Files

Download and review all files from the [materials page](#).

1 Tracked changes manuscript(s)

1 Rebuttal letter(s)

4 Figure file(s)

5 Table file(s)

## ! Custom checks

### Vertebrate animal usage checks



Have you checked the authors [ethical approval statement](#)?



Were the experiments necessary and ethical?



Have you checked our [animal research policies](#)?



## Structure your review

The review form is divided into 5 sections.

Please consider these when composing your review:

### 1. BASIC REPORTING

### 2. EXPERIMENTAL DESIGN

### 3. VALIDITY OF THE FINDINGS

4. General comments

5. Confidential notes to the editor






 You can also annotate this PDF and upload it as part of your review

When ready [submit online](#).





## Editorial Criteria

Use these criteria points to structure your review. The full detailed editorial criteria is on your [guidance page](#).





### BASIC REPORTING

-  Clear, unambiguous, professional English language used throughout.
-  Intro & background to show context. Literature well referenced & relevant.
-  Structure conforms to [PeerJ standards](#), discipline norm, or improved for clarity.
-  Figures are relevant, high quality, well labelled & described.
-  Raw data supplied (see [PeerJ policy](#)).

### EXPERIMENTAL DESIGN

-  Original primary research within [Scope of the journal](#).
-  Research question well defined, relevant & meaningful. It is stated how the research fills an identified knowledge gap.
-  Rigorous investigation performed to a high technical & ethical standard.
-  Methods described with sufficient detail & information to replicate.

### VALIDITY OF THE FINDINGS

-  Impact and novelty not assessed. Negative/inconclusive results accepted. *Meaningful* replication encouraged where rationale & benefit to literature is clearly stated.
-  Data is robust, statistically sound, & controlled.
-  Conclusions are well stated, linked to original research question & limited to supporting results.
-  Speculation is welcome, but should be identified as such.

# Standout reviewing tips

3



The best reviewers use these techniques

## Tip

**Support criticisms with evidence from the text or from other sources**

## Example

*Smith et al (J of Methodology, 2005, V3, pp 123) have shown that the analysis you use in Lines 241-250 is not the most appropriate for this situation. Please explain why you used this method.*

**Give specific suggestions on how to improve the manuscript**

*Your introduction needs more detail. I suggest that you improve the description at lines 57- 86 to provide more justification for your study (specifically, you should expand upon the knowledge gap being filled).*

**Comment on language and grammar issues**

*The English language should be improved to ensure that an international audience can clearly understand your text. Some examples where the language could be improved include lines 23, 77, 121, 128 – the current phrasing makes comprehension difficult.*

**Organize by importance of the issues, and number your points**

- 1. Your most important issue*
- 2. The next most important item*
- 3. ...*
- 4. The least important points*

**Please provide constructive criticism, and avoid personal opinions**

*I thank you for providing the raw data, however your supplemental files need more descriptive metadata identifiers to be useful to future readers. Although your results are compelling, the data analysis should be improved in the following ways: AA, BB, CC*

**Comment on strengths (as well as weaknesses) of the manuscript**

*I commend the authors for their extensive data set, compiled over many years of detailed fieldwork. In addition, the manuscript is clearly written in professional, unambiguous language. If there is a weakness, it is in the statistical analysis (as I have noted above) which should be improved upon before Acceptance.*

# Mass marking of juvenile *Schizothorax wangchiachii* (Fang) with alizarin red S and evaluation of stock enhancement in the Jinping area of the Yalong River

Kun Yang<sup>1</sup>, Shu Li<sup>1</sup>, Xiaoshuai Liu<sup>2</sup>, Weixiong Gan<sup>2</sup>, Longjun Deng<sup>2</sup>, Yezhong Tang<sup>3</sup>, Zhaobin Song<sup>Corresp.</sup><sub>1, 4</sub>

<sup>1</sup> College of Life Sciences, Sichuan University, Sichuan Key Laboratory of Conservation Biology on Endangered Wildlife, Chengdu, Sichuan Province, People's Republic of China

<sup>2</sup> Yalong River Hydropower Development Company, Ltd., Chengdu, Sichuan Province, People's Republic of China

<sup>3</sup> Chinese Academy of Sciences, Chengdu Institute of Biology, Chengdu, Sichuan Province, People's Republic of China

<sup>4</sup> College of Life Sciences, Sichuan University, Key Laboratory of Bio-Resources and Eco-Environment of Ministry of Education, Chengdu, Sichuan Province, People's Republic of China

Corresponding Author: Zhaobin Song  
Email address: zbsong@scu.edu.cn

*Schizothorax wangchiachii* is a key fish species in the stock enhancement program of the Yalong River hydropower project, China. Alizarin red S (ARS) was used to mark large numbers of juvenile *S. wangchiachii* in the Jinping Hatchery and later used to evaluate stock enhancement in the Jinping area of the Yalong River. In a small-scale pilot study, 7,000 juveniles of the 2014 cohort were successfully marked by immersion in ARS solution, and no mortality was recorded during the marking process. The ARS mark in the fish otoliths remained visible 20 months later. In the large-scale marking study, approximately 600,000 juveniles of the 2015 cohort were successfully marked. Mortalities of both marked and unmarked juveniles were very low and did not differ significantly. Total length, wet mass and condition factor did not differ significantly between unmarked and marked individuals after three months. On 24 July 2015, about 840,000 Jinping Hatchery-produced young *S. wangchiachii*, including 400,000 marked individuals, were released at two sites in the Jinping area. Recapture surveys showed that 1) marked and unmarked *S. wangchiachii* did not differ significantly in total length, wet mass and condition factor; 2) stocked individuals became an important part of recruitment of the 2015 cohort; 3) instantaneous growth rate of marked individuals tended to slightly increase; and 4) most stocked individuals were distributed along a 10–15 km stretch near the release sites. These results suggest that the ARS method is a cost-efficient way to mass mark juvenile *S. wangchiachii* and that releasing juveniles is an effective means of stock recruitment.

**1 Mass marking of juvenile *Schizothorax wangchiachii* (Fang) with alizarin red S and**  
**2 evaluation of stock enhancement in the Jinping area of the Yalong River**

**3 Kun Yang<sup>1</sup>, Shu Li<sup>1</sup>, Xiaoshuai Liu<sup>2</sup>, Weixiong Gan<sup>2</sup>, Longjun Deng<sup>2</sup>, Yezhong Tang<sup>3</sup>, Zhaobin**  
**4 Song<sup>1,4,\*</sup>**

**5 <sup>1</sup>Sichuan Key Laboratory of Conservation Biology on Endangered Wildlife, College of Life**  
**6 Sciences, Sichuan University, Chengdu 610065, China;**

**7 <sup>2</sup>Yalong River Hydropower Development Company, Ltd., Chengdu 610051, China;**

**8 <sup>3</sup>Chengdu Institute of Biology, Chinese Academy of Sciences, Chengdu 610041, China;**

**9 <sup>4</sup>Key Laboratory of Bio-Resources and Eco-Environment of Ministry of Education, College of**  
**10 Life Sciences, Sichuan University, Chengdu 610065, China;**

**11 \* Corresponding author**

**12 Zhaobin Song, Tel: +86 28 85412801, Fax: +86 28 85414886, E-mail address:**

**13 [zbsong@scu.edu.cn](mailto:zbsong@scu.edu.cn).**

14 **Abstract**

15 *Schizothorax wangchiachii* is a key fish species in the stock enhancement program of the Yalong  
 16 River hydropower project, China. Alizarin red S (ARS) was used to mark large numbers of  
 17 juvenile *S. wangchiachii* in the Jinping Hatchery and later used to evaluate stock enhancement in  
 18 the Jinping area of the Yalong River. In a small-scale pilot study, 7,000 juveniles of the 2014  
 19 cohort were successfully marked by immersion in ARS solution, and no mortality was recorded  
 20 during the marking process. The ARS mark in the fish otoliths remained visible 20 months later.  
 21 In the large-scale marking study, approximately 600,000 juveniles of the 2015 cohort were  
 22 successfully marked. Mortalities of both marked and unmarked juveniles were very low and did  
 23 not differ significantly. Total length, wet mass and condition factor did not differ significantly  
 24 between unmarked and marked individuals after three months. On 24 July 2015, about 840,000  
 25 Jinping Hatchery-produced young *S. wangchiachii*, including 400,000 marked individuals, were  
 26 released at two sites in the Jinping area. Recapture surveys showed that 1) marked and unmarked  
 27 *S. wangchiachii* did not differ significantly in total length, wet mass and condition factor; 2)  
 28 stocked individuals became an important part of recruitment of the 2015 cohort; 3) instantaneous  
 29 growth rate of marked individuals tended to slightly increase; and 4) most stocked individuals  
 30 were distributed along a 10–15 km stretch near the release sites. These results suggest that the  
 31 ARS method is a cost-efficient way to mass mark juvenile *S. wangchiachii* and that releasing  
 32 juveniles is an effective means of stock recruitment.

### 33 Introduction

34 Habitat degradation and overexploitation contribute to the decline of fisheries around the world.  
 35 In order to improve fish stocks, stock enhancement by releasing hatchery-produced fish into wild  
 36 habitats has been widely implemented (Brown & Day, 2002; Taylor et al., 2016; Yang et al.,  
 37 2013). The effectiveness of stock enhancement can be assessed by mark-release-recapture studies  
 38 (Blaxter, 2000), which require effective tagging or marking methods. Various marking  
 39 techniques, such as otolith marking (Volk et al., 1999), coded wire tags (Bernard et al., 1998) and  
 40 passive integrated transponders (Navarro et al., 2006), have been developed to monitor released  
 41 fish. Among these techniques, otolith marking is a feasible method that allows long-term  
 42 identification of small fish (Caraguel et al., 2014; Crook et al., 2009). Otolith marks can be  
 43 achieved by fluorescent marking (Yang et al., 2016), thermal marking (Volk et al., 1999) and  
 44 isotopic marking (Woodcock et al., 2011). The most popular marking protocol is to use  
 45 fluorochromes, which can form chelate complexes with calcium ions that are built into skeletal  
 46 and otolith structures (Poczyczyński et al., 2011). Fluorescent marks on the otolith are visible  
 47 under a specific inducing laser because the calcium-fluorochrome complexes emit fluorescent  
 48 light (Bashey, 2004; Taylor et al., 2005; Yang et al., 2016). Fluorochromes commonly used for  
 49 otolith marking are alizarin red S (ARS), alizarin complexone, oxytetracycline hydrochloride and  
 50 calcein. Compared with other fluorochromes, ARS offers better mark quality and lower cost and  
 51 thus is viewed as a promising dye for mass marking fish at early life stages (Taylor et al., 2005;  
 52 Yang et al., 2016).

53 In China, releasing hatchery-reared fish to enhance or restore fish stock abundance and fishery  
 54 catches has been widely implemented for more than fifty years (Yang et al., 2013). Chinese carps  
 55 and several other commonly cultured species that do not breed effectively in still waters were  
 56 selected for early artificial rearing-releasing programs (Wu & Zhong, 1964; Liu, 1965). In recent  
 57 decades, technical developments and advances in hatchery production have made it possible to  
 58 breed considerable numbers of endemic and rare fish annually, including Chinese sturgeon  
 59 *Acipenser sinensis* (Chang & Cao, 1999) and Chinese sucker *Myxocyprinus asiaticus* (Zhou et  
 60 al., 2002). However, fish stock enhancement programs in China, particularly for freshwater fish  
 61 species, have focused mainly on artificial propagation techniques and stocking scale, with little

attention paid to monitoring and evaluating the success of fish after release (Cheng & Jiang, 2010; Yang et al., 2013; Zhang et al., 2003). Some marking technologies have been tested in different fish species in recent years, but rarely has large-scale marking and recapturing been used in stock enhancement (Zhang et al., 2003; Yang et al., 2013). Therefore, it is necessary to carry out post-release evaluation based on mass marking and recapturing.

*Schizothorax wangchiachii* (Fang, 1936), which belongs to the subfamily Schizothoracinae of the family Cyprinidae, is distributed mainly in the upper Yangtze River and its tributary, the Yalong River (Yue, 2000). This species is adapted to torrential mountain rivers in the southeastern Qinghai-Tibetan Plateau (Yue, 2000). Before the 1990s, *S. wangchiachii* was caught abundantly in many parts of its distribution range. However, its recruitment has declined dramatically since the mid-1990s, likely due to habitat degradation, overfishing and hydropower development (Deng et al., 2000; Duan et al., 1995; Jiang et al., 2007). To improve the health of the *S. wangchiachii* population in the Yalong River, conservation plans, such as building fish hatcheries, have been initiated (Wang et al., 2011).

Jinping Hatchery (28°18'39.09"N, 101°38'50.10"E; Fig. 1) is the first and most important fish hatchery located in the lower Yalong River. The hatchery is used to domesticate and propagate *S. wangchiachii* and many other fish species that are threatened by hydropower development in the Yalong River. Since 2011, annual release of *S. wangchiachii* (total length 40–80 mm) from Jinping Hatchery has been carried out in the Jinping area of the Yalong River (Deng et al., 2016). The objectives of this study were to assess the feasibility of mass marking *S. wangchiachii* using ARS and subsequently to evaluate the effectiveness of stock enhancement by recapturing marked individuals of the 2015 cohort after release.

## Materials and Methods

### Experimental fish and fluorochrome

Juveniles of *S. wangchiachii* used for marking and stocking in this study were produced at Jinping Hatchery using an artificial propagation technique. The breeding stocks were native spawners caught from the wild in the Jinping area of the Yalong River in 2011 and 2012. Juveniles were reared in numerous cylindrical tanks in the juvenile rearing room. These tanks are made of fiberglass, have a diameter of 2 m and a height of 1 m, and each has a temperature-



controlled water supply (water temperature, 15.5–17.5°C; dissolved oxygen concentration, 7.0–7.4 mg L<sup>-1</sup>; pH, 7.1–7.4) from the recirculating aquaculture system.

The fluorochrome ARS (C<sub>14</sub>H<sub>7</sub>NaO<sub>7</sub>S) used for marking was analytically purified powder. During immersion marking, ARS was dissolved directly in the rearing water according to the experimental design. To optimize marking quality and minimize juvenile mortality, several preliminary experiments were conducted in 2013, and results showed that immersing juvenile *S. wangchiachii* in water containing ARS doses ≤ 100 mg L<sup>-1</sup> for 24 h resulted in the lowest death rate while producing a mark that could be seen clearly in the otolith.

#### **Small-scale marking pilot study**

A small-scale marking pilot study was performed in the rearing tank. Approximately 7,000 40-day-old juvenile *S. wangchiachii* of the 2014 cohort (total length 23.52 ± 1.50 mm, mean ± S.D., n = 20) reared in a tank were selected for immersion marking on 5 May 2014. These juveniles were starved for 24 h prior to the treatment. The inner wall of the tank was carefully cleaned, and the rearing water was completely replaced with about 500 L of clean water. Thirty-five grams of ARS were pre-dissolved in about 10 L of water, which was immediately added to the tank. The juveniles were immersed in the ARS solution (70 mg L<sup>-1</sup>) for 24 h. During immersion, the solution was aerated continuously and the fish were not fed. After immersion was completed, the ARS solution was discharged into a sewage pool, and at the same time clean water was pumped into the tank to thoroughly rinse out the remnant dye. One day after immersion, dead individuals were counted and removed from the tank. To check the visibility and persistence of the marks, 10 marked fish from the tank were haphazardly sampled and sacrificed with an overdose of MS-222 (100 mg L<sup>-1</sup>) on 29 May 2014, 28 December 2014, 4 May 2015 and 24 January 2016. Sampled fish were kept in 100% ethanol until otolith examination.

#### **Large-scale marking application**

From late April to early May 2015, five batches of juvenile *S. wangchiachii* (total length 20.85 ± 1.41 mm, mean ± S.D., n = 140) of the 2015 cohort were marked at Jinping Hatchery using the ARS immersion protocol described above. In total, an estimated 600,000 fish were marked. To ensure the safety of the very small juveniles during immersion marking, the concentrations of ARS solution were controlled within a range of 30–50 mg L<sup>-1</sup>. One day after immersion was

completed, dead fish in each tank were counted and recorded. The mortalities of three batches of unmarked fish in the rearing room also were recorded. Five days after marking, both marked and unmarked fish were transferred to four outdoor fishponds in the hatchery. The fish were fed to satiation three times a day with a commercial artificial compound diet.

To assess effects of the marking process on growth, 100 marked and unmarked *S. wangchiachii* at similar daily age were haphazardly taken from two fishponds on 24 July 2015. These fish were starved for 24 h prior to further treatment. Afterwards, they were anaesthetized with MS-222 at a concentration of 100 mg L<sup>-1</sup>. Their total length and body length was measured to the nearest 0.01 mm with a digital caliper, and their wet mass was weighed to the nearest 0.0001g with a precision electronic balance. To assess the mark effectiveness, 400 marked fish also were selected haphazardly from those in the four fishponds. They were anaesthetized with MS-222 at a concentration of 100 mg L<sup>-1</sup> and then stored in 100 % ethanol until otolith examination.

### Release and recapture

On 24 July 2015, 840,000 young *S. wangchiachii* of the 2015 cohort, of which 400,000 individuals were had been marked by ARS, were released at sites 2 and 3 in the Jinping area of the Yalong River (Fig. 1). Site 2 (28°18'47.80"N, 101°38'51.19"E) is located in the wide and deep part of the river (> 5 m maximum depth). Although it was not a suitable habitat for *S. wangchiachii*, site 2 was used because of stairs that provided access to the river. Site 3 (28°19'41.32"N, 101°38'52.18"E) was near a sand quarry, and the substrate was covered with gravel and small stones: this was an appropriate habitat for young fish. The distance between the two release sites was about 2 km. The fish were first captured from each fishpond with a nylon trawl, and 150 marked individuals were haphazardly selected for measuring and weighing. Afterwards, fish were transferred to the release sites by a pickup truck and released into the river using buckets. For comparison of growth, about 10,000 unmarked *S. wangchiachii* were raised as a control group in a fishpond in Jinping Hatchery. They were fed twice daily with commercial feed at a ratio of about 3% of body weight per day.

Before the recapture surveys were conducted, appropriate recapture sites along the Jinping area of the Yalong River were chosen. Criteria included ease of fishing, suitable habitats for young



60 km

fish and the distances from the release sites. Seven sites, including the two release sites, along a stretch of the Yalong River in the Jinping area were selected for the recapture surveys (Fig. 1). Site 1 (28°17'46.38"N, 101°38'39.19"E) was a shallow riffle area (< 0.5 m in depth) with a substrate of gravel and small stones located about 1.5 km upstream of site 2 and 7 km downstream of Jinping Dam II. Site 1 was an important nursery ground for *Schizothorax* fish at early life stages. Site 4 (28°20'50.68"N, 101°39'18.04"E), site 5 (28°24'10.28"N, 101°43'24.86"E), site 6 (28°27'41.38"N, 101°44'49.65"E) and site 7 (28°36'58.04"N, 101°55'56.04"E) were located about 3, 15, 20 and 50 km downstream of site 3, respectively, and had a similar substrate of small stones and occasional boulders.

Recapture surveys were carried out at three-month intervals (in October 2015, January 2016 and April 2016) using a similar method and sampling effort each time. At each site, three 9-m long fishing pots with 6-mm mesh were used for recapturing fish for four successive days, and catches in each pot were removed once a day. The fishing pot used in these surveys was a trap-type stationary fishing device that was especially suitable for catching small fish with total length < 20 cm. Electrofishing permitted by the Sichuan Municipal Bureau of Aquatic Products was performed only one time at each site, and it involved using a 30-cm-diameter anode and a 6-mm mesh landing net to sample for 40 min along the river. Specimens of *S. wangchiachii* assumed to be from the 2015 cohort based on personal experience of age-total length were sacrificed with an overdose of MS-222 and measured and weighed, whereas other fish were released. Meanwhile, 50 individuals sampled from the hatchery control group also were measured. All sampled fish were stored in 100 % ethanol for further processing.

# **Otolith removal and examination**

Three pairs of otoliths were removed from all fish sampled, and the left three otoliths were mounted on glass slides using neutral balsam. To check the ARS mark and to read age, otoliths were observed under an Olympus BX40 fluorescence microscope fitted with a Q-Imaging MicroPublisher 5.0 RTV digital camera using the green laser and normal transmitted light (Yang et al., 2016).

# **Data analysis**

In this study, instantaneous growth rate of mean total length ( $G_t$ ) was calculated following Ricker

178 (1975) as:

$$179 \quad G_l = (\ln l_2 - \ln l_1) / 3$$

180 where  $l_1$  is the mean total length in millimeters of *S. wangchiachii* of at a given time point,  $l_2$  is  
181 the corresponding mean total length of the same batch three months later, and 3 is the  
182 sampling interval of three months.

183 Instantaneous growth rate of mean wet mass ( $G_w$ ) was calculated as:

$$184 \quad G_w = (\ln w_2 - \ln w_1) / 3$$

185 where  $w_1$  is the mean wet mass in grams of *S. wangchiachii* at a given time,  $w_2$  is the  
186 corresponding mean wet mass of the same batch three months later, and 3 is the sampling  
187 interval of three months.

188 The percent ( $P_i$ ) of marked individuals out of all marked *S. wangchiachii* for each recapture  
189 survey was calculated as:

$$190 \quad P_i = n_i / N_t$$

191 where  $n_i$  is the number of marked fish at site  $i$  of the given recapture date and  $N_t$  is the total  
192 number of marked fish of the given recapture.

193 The condition factor of *S. wangchiachii* was calculated following Fulton (1904) as:

$$194 \quad \text{condition factor} = 10^6 \times w / l^3$$

195 where  $w$  is the wet mass in grams of *S. wangchiachii* at a given time point and  $l$  is the total length  
196 in millimeters of *S. wangchiachii* at the same time.

197 ANOVA test for total length, wet mass and condition factor between marked and unmarked  
198 *S. wangchiachii* was performed with SPSS 19.0 software. The Bonferroni Tests were used for  
199 post hoc tests when the variances were equal, and alternatively, the Games-Howell Tests were  
200 used when the variances were unequal. The significance level was set as  $P < 0.05$ .

## 201 Results

### 202 Small-scale marking pilot study

203 One day after immersion was completed, no marked fish had died. Twenty-three days after  
204 marking, all sampled individuals showed a visible red-orange mark in their otoliths (Fig. 2a).

205 Without polishing, visible marks also were easily identified in the otoliths of marked individuals  
206 sampled on 28 December 2014 (Fig. 2b), 4 May 2015 (Fig. 2c) and 24 January 2016 (Fig. 2d).

More than one year after immersion, the ARS mark still remained visible, and there was no evidence that the mark was significantly decaying.

### Large-scale marking application

In the large-scale immersion marking of juvenile *S. wangchiachii*, mortalities in each batch were very low ( $\leq 0.50\%$ ), and no significant difference in the mortality between marked and unmarked batches was detected (Table 1). Three months after being reared in outdoor fishponds, samples of marked and unmarked individuals showed no significant difference in total length, wet mass and condition factor (Table 1). A visible red-orange mark in the otoliths could be identified under green laser in all marked fish sampled.

### Recapture and evaluation

Otolith checking confirmed that a total of 852 *S. wangchiachii* of the 2015 cohort were caught during the three recapture surveys. Of these fish, 262 individuals had a clear ARS mark in their otoliths, and 590 individuals had no mark (Fig. 3; Table 2). The percent of marked individuals in each recapture survey were 32.73% in October 2015, 26.36% in January 2016 and 30.53% in April 2016.

In the October 2015 recapture effort, total length, wet mass and condition factor of both marked and unmarked *S. wangchiachii* were significantly lower than those of the hatchery control group (Table 2; one-way-ANOVA with *post hoc* Games-Howell Test,  $P < 0.001$ ). The condition factor of marked individuals when they were recaptured was also significantly lower than when they were released (Table 2; independent t-test,  $P < 0.001$ ). Between marked and unmarked individuals, there was no significant difference in wet mass ( $P = 0.134$ ) and condition factor ( $P = 0.735$ ), whereas a slight difference in total length was detected ( $P = 0.030$ ). In addition, the total length, wet mass and condition factor differed significantly among samples caught from different recapture sites (Table 3; two-way-ANOVA test without the data for site 7,  $P < 0.001$ ), but a significant difference was not observed between marked and unmarked individuals ( $P > 0.05$ ). Recapture site and ARS mark had interaction effects on wet mass ( $P = 0.006$ ).

In the January 2016 recapture effort, the total length and wet mass of both marked and unmarked *S. wangchiachii* were still significantly lower than those of the hatchery control group

(Table 2; one-way-ANOVA with *post hoc* Games-Howell Test,  $P < 0.001$ ), but the difference in condition factor was not significant ( $P = 0.304$ ). Between marked and unmarked individuals, no significant differences in total length ( $P = 0.828$ ) and wet mass ( $P = 0.816$ ) were detected. The total length, wet mass and condition factor of *S. wangchiachii* differed significantly among samples caught from different recapture sites (Table 3; two-way-ANOVA test without the data for sites 1 and 7,  $P < 0.001$ ), but ARS mark and the interaction between it and recapture site did not have significant effects on the three indexes ( $P > 0.05$ ).

In the April 2016 recapture effort, the hatchery control group was not sampled because of fishpond cleaning. There was no significant difference in total length, wet mass or condition factor between unmarked and marked *S. wangchiachii* (Table 2; independent t-test,  $P > 0.05$ ). The total length, wet mass and condition factor of *S. wangchiachii* differed significantly among samples caught from different recapture sites (Table 3; two-way-ANOVA test, including only data for sites 3, 4 and 6,  $P < 0.001$ ). A significant difference in condition factor (Table 3;  $P = 0.009$ ) was observed between marked and unmarked individuals, but a significant difference was not observed for total length ( $P = 0.181$ ) or wet mass ( $P = 0.07$ ). The interaction effects of recapture site and ARS mark were not significant ( $P > 0.05$ ).

The  $G_l$  and  $G_w$  of marked individuals tended to slowly increase after release. In the first trimester after release, the  $G_l$  and  $G_w$  values of marked individuals were 0.0566 and 0.1065, respectively, which were lower than those of the hatchery control group (0.1430 and 0.4964, respectively). In the second trimester, both  $G_l$  (0.0683) and  $G_w$  (0.2832) of marked individuals had increased slightly. At that time, the  $G_w$  of marked individuals was slightly higher than that of the hatchery control group (0.2569), whereas the  $G_l$  of marked individuals was still lower than that of the hatchery control group (0.1080). In the third trimester, the  $G_l$  of marked individuals had increased to 0.0878, whereas the  $G_w$  (0.2815) remained almost the same.

After being released, the hatchery-produced *S. wangchiachii* began to move away from the release area. In October 2015, marked individuals were recaptured at all recapture sites upstream and downstream of the release sites (Table 2). Site 2 was not suitable as nursery ground for *S. wangchiachii*, but  $P_2$  (18.90%) nevertheless represented a high percent of total recaptures (Fig. 4). In the subsequent recaptures, catches at site 2 were very small because of unsuitable habitat

(Table 2). In the three surveys, mean  $P_3$  ( $28.69 \pm 1.03\%$ ) and  $P_4$  ( $31.62 \pm 25.98\%$ ) were much higher than that of  $P_5$  ( $11.49 \pm 7.80\%$ ),  $P_6$  ( $8.58 \pm 4.38\%$ ) and  $P_7$  ( $4.17 \pm 3.23\%$ ).  $P_i$  significantly decreased with distances from the release sites.  $P_i$  for the distant sites 6 and 7 in the latter two recaptures increased slightly compared to that in the first recapture, but the values were still much lower than those of sites 3–5 (Fig. 4). This implies that stocked fish were mainly distributed over a 10–15 km long stretch around the release sites.

## Discussion

### Feasibility of ARS mass marking

Previous studies of marking different fish species demonstrated that ARS treatment produces an excellent mark quality and has no significant harmful effects on the fish (Baer & Rösch, 2008; Bashey, 2004; Caraguel et al., 2014; Liu et al., 2009). However, faced with sustained pressure to produce enough fish seed to achieve the annual goals of release programs, managers of many hatcheries continue to worry that mass marking using the ARS method will cause high mortality, and this concern has a negative impact on the use of marking to evaluate fish stock enhancement. In this study, marking juvenile *S. wangchiachii* (mean total length  $23.52 \pm 1.50$  mm) by immersion in  $70 \text{ mg L}^{-1}$  ARS solution for 24 h did not cause death. In the following large-scale marking application, the mortality of five marked batches and three unmarked ones was negligible ( $\leq 0.50\%$ ), and no significant difference in mortality between marked and unmarked fish was detected. After rearing for three months in outdoor fishponds, no significant differences in total length, body mass, or condition factor between marked and unmarked groups were detected. Because juvenile *S. wangchiachii* experienced natural mortality, the extremely low mortalities that occurred during the immersion marking process might not have been due to ARS solution. In addition, immersion marking was carried out directly in the rearing tanks, which avoided manipulations of fish, reduced stress and its cost.

The ARS mark that develops in the otolith remains highly readable for several years, whether fish are reared in the laboratory or in the field (Champigneulle & Cachera, 2003; Nagiec et al., 1995; Partridge et al., 2009; Poczyczyński et al., 2011). Because sunlight and turnover of skeletal calcium can cause fluorescent marks to fade, external fluorescent marks on scales and fin rays cannot be readily detected over time (Bashey, 2004; Elle et al., 2010). In contrast, otoliths are

protected by the skull and previously deposited otolith materials are not resorbed (Campana & Neilson, 1985), which prolongs the lifetime of the mark. In the 2014 marking effort, *S. wangchiachii* marked with 70 mg L<sup>-1</sup> ARS retained highly visible marks on otoliths after rearing for about 20 months in an indoor tank, and they did not present clear signs of significant fading. In the mass marking of 2015, fish marked with 30–50 mg L<sup>-1</sup> ARS were transferred to outdoor fishponds and reared for about three months. Jinping Hatchery is located in the arid river valley region of the western Sichuan Province, where sunshine is very strong all year long (Yuan et al., 2013). Nevertheless, ARS marks of fish sampled from each marking batch were highly visible. All of the ARS marks on the otoliths of recaptured fish were as clear as they had been at the time of release. However, because otoliths continuously grow and thicken, over time the mark can be covered by otolith materials, and marks can become faint and difficult to detect unless exposed by grinding and polishing the otoliths (Baer & Rösch 2008; Sánchez-Lamadrid, 2001; Taylor et al., 2005). In this study, although it was not experimentally tested, the final retention time of the ARS mark in the otoliths of *S. wangchiachii* was long enough to monitor the released individuals to evaluate stocking effectiveness.

### **Effectiveness of stocking enhancement**

After release, trimonthly recapture surveys confirmed that some of the stocked *S. wangchiachii* had survived. Assuming that the percent of marked (47.62%) and unmarked (52.38%) *S. wangchiachii* remained unchanged in the stocked cohort, the percent of catches that originated from stock enhancement were estimated to be 68.73 % in October 2015, 55.35% in January 2016 and 64.11% in April 2016, respectively. This demonstrated that stocked *S. wangchiachii* constituted an important part of the young fish with a mean level of 62.73% recruitment of the 2015 cohort. In previous successful stock enhancements, such as those for vendace *Coregonus albula* (Poczyński et al., 2011), brown trout *Salmo trutta* (Caudron & Champigneulle, 2009), Japanese Spanish mackerel *Scomberomorus niphonius* (Obata et al., 2008), and red sea bream *Pagrus major* and Japanese flounder *Paralichthys olivaceus* (Kitada & Kishino, 2006), hatchery-produced fish contributed considerably to population recruitment, and stocking successes were often attributable to appropriate release sizes and environmental conditions at release sites. In this study, the relatively high percent of released *S. wangchiachii* might be explained by the fact that



young fish for release were fully covered with scales, which would protect the skin against mechanical injury and bacteria and parasites (Yan et al., 2014). In addition, the negligible fishing pressure on young *S. wangchiachii* under age 2 and few predators, such as *Percocypris pingi* and *Silurus asotus*, might have had positive effects.

However, the comparative analysis of recapture data showed that total length, wet mass, and condition factor of recaptured *S. wangchiachii* differed significantly among different recapture sites (Table 3). The body sizes of fish recaptured at release sites were often smaller than those at other sites for both marked and unmarked fish (Table 2). This finding suggests that fish at release sites did not grow as well as fish at other sites. Pebbly nursery grounds in shallow waters are essential for *Schizothorax* fish at early life stages. In the Jinping area of the Yalong River, water flow sharply decreases (at a maximum percent of about 95%) due to the upstream dam of Jinping Dam II, which leads to marked physical habitat degradation (Wang et al., 2007). Excavation of sand in the river, which take place frequently at five sites along the 60 km long survey area, further destroyed the habitats. This reduction of essential habitats could have a significant negative effect on the river's carrying capacity for *Schizothorax* fishes. It is likely that the released fish moved very slowly so that nine months after release most of them still were distributed over a 10–15 km long stretch near the release sites, although a few marked fish were caught about 50 km downstream three months after release. The relatively slow migration speed would maintain a high density of fish in the release area, which would result in both released and wild fish having to compete intensely with each other for resources.

Wild fish can be replaced with hatchery-reared fish when the latter are released in numbers that exceed the carrying capacity, but it is difficult to verify the extent to which they replace the wild ones (Kitada & Kishino, 2006). The surveys conducted in this study showed that, there are some spawning grounds for *Schizothorax* fishes in the Jinping area of the Yalong River, where some naturally born juveniles were caught in April 2014. This study showed that natural recruitment still accounted for a sizeable percent (approximate 40%) of *S. wangchiachii* recruitment of the 2015 cohort. Additionally, the non-significant difference in total length, wet mass and condition factor between the marked and unmarked fish indicated that ARS marking did not have significant harmful effects. This finding suggests that the stocked *S. wangchiachii* should grow as

the naturally born fish in the Jinping area of the Yalong River. Releases at the scale used in this study might have not exceeded the carrying capacity of release sites or replaced wild fish, but repeated large annual releases might do so. To maintain the fish population at sustainable levels, new release sites around site 7 should be added (Fig. 1). Moreover, sand excavation in the river should be stopped immediately, and nursery habitats must be restored to expand the carrying capacity of the river.

Wild *S. wangchiachii* live in rapid flowing river water and consume adherent alga (Bacillariophyta) using the sharp outer horny sheath on their lower jaw to scrape it off the substrate. In contrast, the hatchery-reared fish are reared in still water ponds and fed on commercial diets. It is well known that environmental differences between hatchery-reared and wild fish can influence their behavior, especially foraging behavior and avoidance of predators, which may subsequently affect post-release success (Hervas et al., 2010; Le Vay et al., 2007; Johnsson et al., 2014). On first release into the wild, hatchery-reared fish must not only avoid predators but also adapt to a new food supply (Blaxter, 2000). In this study, condition factors of the stocked *S. wangchiachii* recaptured three months after release were significantly lower than those of the hatchery control group as well as their own cohort at the time of release (Table 2). This suggests that these hatchery-produced fish might need to be acclimatized to the wild habitat, as their growth was negatively affected by the change of environmental conditions. Perhaps, hatchery-reared fish suffered a high level of short-term post-release mortality during the first trimester after release. However, it was difficult to precisely estimate this mortality due to lack of historical data on fisheries and prior investigation in the area. In the subsequent recaptures, the condition factor of stocked fish had returned to a level as good as that of the hatchery control group. In addition, the  $G_l$  and  $G_w$  of marked fish displayed a slowly increasing trend (Tables 2 and 4). Therefore, survival of hatchery-produced *S. wangchiachii* suggests that they gradually adapted to the wild habitat, and they exhibited favorable growth six months after release.

## Conclusions

This study offers fishery administrators a cost-efficient method of mass marking juvenile *S. wangchiachii* with ARS. The marking process did not cause significant mortality or affect fish growth in this study. Release-recapture surveys indicated that the present stock enhancement

might make a considerable contribution to the recruitment of young *S. wangchiachii* in the Jinping area of the Yalong River. Results of this study will be instrumental in promoting application of mass marking techniques and applying responsible approaches to the development of stock enhancement in China. However, much information about stock enhancement remains unknown, including the post-release mortalities of stocked fish, their contribution to the spawning population, and their genetic impact on the wild population. Therefore, in order to improve stocking strategy and better protect *S. wangchiachii* and other fish species in the Yalong River, long-term monitoring and further studies of the released fish should be conducted.

### Acknowledgements

We thank Dr. Fangdong Zou for his technical assistance in examination of otoliths, and Dr. Eréndira Aceves Bueno at the University of California, Santa Barbara for his helpful revisions of English language.

### Reference

- Baer J, Rösch R. 2008. Mass-marking of brown trout (*Salmo trutta* L.) larvae by alizarin: method and evaluation of stocking. *Journal of Applied Ichthyology* 24:44-49. DOI: 10.1111/j.1439-0426.2007.01038.x.
- Bashey F. 2004. A comparison of the suitability of alizarin red S and calcein for inducing a nonlethally detectable mark in juvenile guppies. *Transactions of the American Fisheries Society* 133:1516–1523. DOI: 10.1577/T03-073.1.
- Bernard DR, Marshall RP, Clark JE. 1998. Planning programs to estimate salmon harvest with coded-wire tags. *Canadian Journal of Fisheries and Aquatic Sciences* 55:1983-1995. DOI: 10.1139/f98-069.
- Blaxter JHS. 2000. The enhancement of marine fish stocks. *Advances in Marine Biology* 38:1-54. DOI: 10.1016/S0065-2881(00)38002-6.
- Brown C, Day RL. 2002. The future of stock enhancements: lessons for hatchery practice from conservation biology. *Fish and Fisheries* 3:79-94. DOI: 10.1046/j.1467-2979.2002.00077.x.
- Campana SE, Neilson JD. 1985. Microstructure of fish otoliths. *Canadian Journal of Fisheries and Aquatic Sciences* 42:1014–1032. DOI: 10.1139/f85-127.
- Caraguel JM, Charrier F, Mazel V, Feunteun E. 2015. Mass marking of stocked European glass

eels (*Anguilla anguilla*) with alizarin red S. *Ecology of Freshwater Fish* 24:435-442. DOI: 10.1111/eff.12158.

Caudron A, Champigneulle A. 2009. Multiple marking of otoliths of brown trout, *Salmo trutta* L., with alizarin redS to compare efficiency of stocking of three early life stages. *Fisheries Management and Ecology* 16:219-224. DOI: 10.1111/j.1365-2400.2009.00661.x.

Champigneulle A, Cachera S. 2003. Evaluation of large-scale stocking of early stages of brown trout, *Salmo trutta*, to angler catches in the French-Swiss part of the River Doubs. *Fisheries Management and Ecology* 10:79-85. DOI: 10.1046/j.1365-2400.2003.00325.x.

Chang J, Cao W. 1999. History and prospect of conservation on Chinese sturgeon in the Yangtze River. *Acta Hydrobiological Sinica* 23:712-720. (in Chinese)

Cheng J, Jiang Y. 2010. Marine stock enhancement: review and prospect. *Journal of Fishery Sciences of China* 17:610-617. (in Chinese)

Crook DA, O'Mahony DJ, Sanger AC, Munro AR, Gillanders BM, Thurstan S. 2009. Development and evaluation of methods for osmotic induction marking of golden perch *Macquaria ambigua* with calcein and alizarin red S. *North American Journal of Fisheries Management* 29:279-287. DOI: 10.1577/M07-224.1.

Deng L, Wang H, Gan W. 2016. Management of earlier stage operation of fish proliferation and releasing station for Jinping-Guandi Hydropower Station. *Water Resources and Hydropower Engineering* 47:109-111. (in Chinese)

Deng Q, Yu Z, Li C. 2000. Fish fauna in Ertan Reservoir and nearby river area. *Journal of Sichuan Teachers College (Natural Science)* 21:128-131. (in Chinese)

Duan B, Deng Q, Ye L. 1995. The study of fish in the lower reaches of Yalong River. *Journal of Sichuan Teachers College (Natural Science)* 16:347-351. (in Chinese)

Fulton TW. 1904. The rate of growth of fishes. 22nd Annual Report of the Fishery Board of Scotland 1904. *Fisheries Board of Scotland*, Edinburgh, pp. 141-241.

Hervas S, Lorenzen K, Shane MA, Drawbridge MA. 2010. Quantitative assessment of a white seabass (*Atractoscion nobilis*) stock enhancement program in California: Post-release dispersal, growth and survival. *Fisheries Research* 105:237-243. DOI:10.1016/j.fishres.2010.06.001.

- 439 Jiang H, Xie S, Zhao W, Chang J. 2007. Changes of fish assemblages after construction of Ertan  
440 Reservoir in Yalongjiang River. *Acta Hydrobiological Sinica* 31:532-539. (in Chinese)
- 441 Johnsson JI, Brockmark S, Näslund J. 2014. Environmental effects on behavioural development  
442 consequences for fitness of captive-reared fishes in the wild. *Journal of Fish Biology*  
443 85:1946-1971. DOI: 10.1111/jfb.12547.
- 444 Kitada S, Kishino H. 2006. Lessons learned from Japanese marine finfish stock enhancement  
445 programmes. *Fisheries Research* 80:101-112. DOI: 10.1016/j.fishres.2006.03.019.
- 446 Le Vay L, Carvalho G R, Quintio ET, Lebata JH, Ut VN, Fushimi H. 2007. Quality of hatchery-  
447 reared juveniles for marine fisheries stock enhancement. *Aquaculture* 268:169-180.  
448 DOI:10.1016/j.aquaculture.2007.04.041.
- 449 Liu Q, Zhang XM, Zhang PD, Nwafili SA. 2009. The use of alizarin red S and alizarin  
450 complexone for immersion marking Japanese flounder *Paralichthys olivaceus* (T.). *Fisheries*  
451 *Research* 98:67-74. DOI:10.1016/j.fishres.2009.03.014.
- 452 Liu Y. 1965. On the present status and future prospect in the artificial propagation of farm fishes.  
453 *Journal of Fisheries of China* 2:49-58. (in Chinese)
- 454 Navarro A, Oliva V, Zamorano MJ, Ginés R, Izquierdo MS, Astorga N, Afonso JM. 2006.  
455 Evaluation of PIT system as a method to tag fingerlings of gilthead seabream (*Sparus auratus*  
456 L.): effects on growth, mortality and tag loss. *Aquaculture* 257:309-315.  
457 DOI:10.1016/j.aquaculture.2006.02.072.
- 458 Nagiec M, Czerkies P, Goryczko K, Witkowski A, Murawska E. 1995. Mass-marking of grayling,  
459 *Thymallus thymallus* (L.), larvae by fluorochrome tagging of otoliths. *Fisheries Management*  
460 *and Ecology* 2:185–195. DOI: 10.1111/j.1365-2400.1995.tb00111.x.
- 461 Obata Y, Yamazaki H, Iwamoto A, Hamasaki K, Kitada S. 2008. Evaluation of stocking  
462 effectiveness of the Japanese Spanish mackerel in the eastern Seto Inland Sea, Japan. *Reviews*  
463 *in Fisheries Science* 16:235-242. DOI: 10.1080/10641260701697041.
- 464 Partridge GJ, Jenkins GI, Doupe RG, De Lestang S, Ginbey BM, French D. 2009. Factors  
465 affecting mark quality of alizarin complexone-stained otoliths in juvenile black bream  
466 *Acanthopagrus butcheri* and a prescription for dosage. *Journal of Fish Biology* 75:1518-1523.  
467 DOI:10.1111/j.1095-8649.2009.02383.x.

- 468 Poczyński P, Kozłowski K, Kozłowski J, Martyniak A. 2011. Marking and return method for  
469 evaluating the effects of stocking larval vendace, *Coregonus albula* (L.), into Lake Wigry in  
470 2000-2001. *Archives of Polish Fisheries* 19:259-265. DOI: 10.2478/v10086-011-0032-5.
- 471 Ricker WE. 1975. Computation and interpretation of biological statistics of fish populations.  
472 *Bulletin of the Fisheries Research of Board of Canada* 191:1-382.
- 473 Sánchez-Lamadrid A. 2001. The use of alizarin complexone for immersion marking of otoliths of  
474 larvae of gilthead sea bream, *Sparus aurata* L. *Fisheries Management and Ecology* 8:279-  
475 281. DOI: 10.1046/j.1365-2400.2001.00248.x.
- 476 Taylor MD, Chick RC, Lorenzen K, Agnalt AL, Leber KM, Blankenship HL, Vander Haegen, G,  
477 Loneragan NR. 2017. Fisheries enhancement and restoration in a changing world. *Fisheries*  
478 *Research* 186:407-412. DOI:10.1016/j.fishres.2016.10.004.
- 479 Taylor MD, Fielder DS, Suthers IM. 2005. Batch marking of otoliths and fin spines to assess the  
480 stock enhancement of *Argyrosomus japonicus*. *Journal of Fish Biology* 66:1149-1162.  
481 DOI:10.1111/j.1095-8649.2005.00678.x.
- 482 Volk EC, Schroder SL, Grimm JJ. 1999. Otolith thermal marking. *Fisheries Research* 43:205-  
483 219. DOI: 10.1016/S0165-7836(99)00073-9.
- 484 Wang H, Wu S, Deng L. 2011. Study on fish stock enhancement and releasing of Jinping and  
485 Guandi Hydropower Plants. *Sichuan Water Power* 30:219-222. (in Chinese)
- 486 Wang Y, Li J, Li K, Rui J. 2007. Ecological water demand of reducing reach of Yalong River  
487 downstream of Jinping Waterpower Station Stage II. *Resources and Environment in the*  
488 *Yangtze Basin* 16:81-85. (in Chinese)
- 489 Woodcock SH, Gillanders BM, Munro AR, McGovern F, Crook DA, Sanger AC. 2011. Using  
490 enriched stable isotopes of barium and magnesium to batch mark otoliths of larval golden  
491 perch (*Macquaria ambigua*, Richardson). *Ecology of Freshwater Fish* 20:157-165. DOI:  
492 10.1111/j.1600-0633.2010.00475.x.
- 493 Wu X, Zhong L. 1964. Development and achievement in artificial breeding four Chinese carps.  
494 *Chinese Science Bulletin* 10:900-907. (in Chinese)
- 495 Yan T, Tang R, Liu X, Yang S, Yang S, He Z. 2014. The scale formation and development in  
496 juvenile of *Schizothorax prenanti*. *Acta Hydrobiological Sinica* 38:298-303. (in Chinese)

- 497 Yang J, Pan X, Chen X, Wang X, Zhao Y, Li J, Li Z. 2013. Overview of the artificial  
498 enhancement and release of endemic freshwater fish in China. *Zoological Research* 34: 267-  
499 280. (in Chinese)
- 500 Yang K, Zeng R, Gan W, Deng L, Song Z. 2016. Otolith fluorescent and thermal marking of  
501 elongate loach (*Leptobotia elongata*) at early life stages. *Environmental Biology of Fishes*  
502 99:687-695. DOI: 10.1007/s10641-016-0509-6.
- 503 Yuan H, Li X, Lin Y. 2013. Arid river valley division research in Sichuan province based on  
504 remote sensing. *Journal of Sichuan Agricultural University* 31:182-187. (in Chinese)
- 505 Yue P. 2000. Fauna Sinica. Osteichthys. Cypriniformes III. *Science Press*, Beijing, pp. 273–294.  
506 (in Chinese)
- 507 Zhang T, Li Z, Shu S. 2003. A review on marking techniques in fish. *Journal of Fishery Sciences*  
508 *of China* 10:246-253. (in Chinese)
- 509 Zhou J, Yang D, Wu G, Wang Z, Liu L, Chen J. 1999. Development of Chinese sucker  
510 (*Myxocyprinus asiaticus*) larval and juvenile and techniques for fry and fingerlings rearing.  
511 *Journal of Huazhong Agricultural University* 18:263-267. (in Chinese)

# **Table 1**(on next page)

The mortalities of juvenile *S. wangchiachii* unmarked and marked by immersion in late April to early May 2015, and total length, wet mass and condition factor of these fish three months later.

Mortality (mean and S.D.) of three batches of unmarked juvenile *S. wangchiachii* and five batches marked by immersion in 30–50 mg L<sup>-1</sup> ARS solution for 24 h in late April to early May 2015, was very low and did not differ significantly (independent t-test,  $P = 0.836$ ) between treatments. After being reared for three months in outdoor fishponds, total length ( $P = 0.936$ ), wet mass ( $P = 0.629$ ) and condition factor ( $P = 0.244$ ) (mean and S.D.) of marked and unmarked *S. wangchiachii* did not differ significantly ( independent t-test).



Samples	<i>N</i>	Acute mortality (%)	Total length (mm)	Wet mass (g)	Condition factor (%)
Marked batches	5	0.16(0.20)			
Unmarked batches	3	0.19(0.20)			
Marked individuals	100		49.17(9.76)	1.1460(0.6563)	1.715(0.175)
Unmarked individuals	100		49.07(7.16)	1.1052(0.5288)	1.748(0.212)

*N*, number of samples

## Table 2 (on next page)

Mean total length, wet mass and condition factor of marked and unmarked *S. wangchiachii* of the 2015 cohort.

These data were got at the time of initial release and from recapture surveys carried out in October 2015 and January and April 2016 at seven sites in the Jinping area of the Yalong River. The numbers in parentheses are the standard deviations.

Source	Marked fish				Unmarked fish			
	<i>N</i>	Total length (mm)	Wet mass (g)	Condition factor	<i>N</i>	Total length (mm)	Wet mass (g)	Condition factor
<b><i>Jul 2015</i></b>								
Initial release fish	150	44.94(6.67)	0.8225(0.3332)	1.762(0.373)				
Hatchery control fish					50	41.54(4.91)	0.6740(0.2786)	1.893(0.762)
<b><i>Oct 2015</i></b>								
Hatchery control fish					50	63.79(11.26)	2.9886(1.8327)	1.995(0.431)
Site 1	45	52.21(7.34)	1.0341(0.4257)	1.430(0.170)	69	54.61(6.72)	1.1551(0.4236)	1.447(0.193)
Site 2	31	53.02(5.61)	1.0889(0.4352)	1.472(0.115)	51	57.27(9.87)	1.5174(1.0875)	1.518(0.133)
Site 3	48	54.03(7.11)	1.1733(0.5013)	1.405(0.187)	118	55.88(6.96)	1.2401(0.4663)	1.349(0.151)
Site 4	6	59.30(6.51)	1.5886(0.6685)	1.400(0.075)	20	58.85(6.36)	1.4423(0.4303)	1.392(0.179)
Site 5	27	51.04(6.32)	0.9882(0.3255)	1.482(0.184)	68	51.54(5.61)	1.0309(0.3654)	1.481(0.195)
Site 6	6	59.88(13.19)	1.8959(1.3197)	1.511(0.158)	9	52.46(5.83)	1.1436(0.3253)	1.570(0.153)
Site 7	1	55.36	1.4478	1.835	2	53.58(3.76)	1.3499(0.3667)	1.618(0.047)
Total	164	53.26(7.23)	1.1320(0.5263)	1.443(0.169)	337	55.03(7.38)	1.2325(0.5939)	1.431(0.182)
<b><i>Jan 2016</i></b>								
Hatchery control fish					50	88.20(7.77)	6.4593(1.5860)	1.770(0.261)
Site 1	—				—			
Site 2	0				2	67.13(17.12)	2.2926(1.7039)	1.604(0.265)
Site 3	17	53.57(8.82)	1.3193(0.7693)	1.648(0.186)	36	56.87(7.22)	1.5691(0.7476)	1.676(0.157)
Site 4	21	67.51(15.57)	2.9274(2.1312)	1.622(0.212)	77	67.70(14.15)	2.9843(2.1267)	1.705(0.150)
Site 5	9	70.02(8.99)	3.1357(1.2962)	1.867(0.145)	17	74.55(9.04)	4.1380(1.6331)	1.989(0.245)
Site 6	7	75.37(9.24)	3.5619(1.4448)	1.749(0.118)	18	69.63(8.20)	2.9381(0.9454)	1.823(0.199)
Site 7	4	76.28(3.93)	4.1186(0.7443)	1.996(0.209)	12	72.64(9.62)	3.4644(1.6936)	1.814(0.162)
Total	58	65.37(13.98)	2.6471(1.7583)	1.709(0.214)	162	66.59(12.70)	2.8128(1.8472)	1.748(0.194)
<b><i>Apr 2016</i></b>								
Site 1	—				—			

Site 2	0				4	65.62(12.48)	2.7153(1.7478)	1.688(0.104)
Site 3	11	75.28(10.18)	3.8435(1.4643)	1.553(0.094)	20	77.58(14.38)	4.1291(3.2624)	1.450(0.173)
Site 4	22	85.22(17.52)	6.3145(4.1856)	1.653(0.125)	45	79.16(9.76)	4.5388(2.0997)	1.628(0.116)
Site 5	1	96.71	9.1327	1.934	11	99.50(15.42)	10.1536(4.5667)	1.805(0.143)
Site 6	4	104.02(5.54)	10.2389(1.4235)	1.764(0.126)	11	94.99(13.61)	7.7649(3.4934)	1.627(0.164)
Site 7	2	93.32(13.11)	7.5525(3.2873)	1.671(0.076)	0			
Total	40	85.06(16.42)	6.1598(3.7384)	1.644 ±0.134)	91	82.59(14.84)	5.4373(3.5597)	1.613(0.171)

—, no fish were captured because we were unable to get to the site

*N*, number of fish

# Table 3(on next page)

The results of Two-way ANOVAs on the effects of recapture site (R) and ARS mark (A) and their interaction (R×A) on total length, wet mass and condition factor of *S. wangchiachii* of the 2015 cohort.

Original data were obtained from recapture surveys carried out in October 2015 and January and April 2016 at seven sites in the Jinping area of the Yalong River.

Source	Dependent variable	SS	df	F	P
<b><i>Oct 2015</i></b>					
Recapture site	Total length	1362.827	5	272.565	< 0.001
	Wet mass	8.040	5	1.608	< 0.001
	Condition factor	1.091	5	0.218	< 0.001
ARS mark	Total length	1.948	1	1.948	0.844
	Wet mass	0.086	1	0.086	0.596
	Condition factor	0.005	1	0.005	0.683
R × A	Total length	487.183	5	97.437	0.088
	Wet mass	5.087	5	1.017	0.006
	Condition factor	0.168	5	0.034	0.316
Error	Total length	24574.918	486		
	Wet mass	149.255	486		
	Condition factor	13.776	486		
<b><i>Jan 2016</i></b>					
Recapture site	Total length	8178.913	4	15.296	< 0.001
	Wet mass	118.057	4	10.572	< 0.001
	Condition factor	1.860	4	15.275	< 0.001
ARS Mark	Total length	2.128	1	0.016	0.900
	Wet mass	0.001	1	< 0.001	0.984
	Condition factor	0.019	1	0.612	0.435
R × A	Total length	433.993	4	0.812	0.519
	Wet mass	9.423	4	0.844	0.499
	Condition factor	0.218	4	1.792	0.132
Error	Total length	27805.420	208		
	Wet mass	580.665	208		
	Condition factor	6.331	208		
<b><i>Apr 2016</i></b>					
Recapture site	Total length	4442.714	2	13.549	< 0.001
	Wet mass	208.859	2	12.230	< 0.001
	Condition factor	0.476	2	13.454	< 0.001
ARS Mark	Total length	297.492	1	1.815	0.181
	Wet mass	28.595	1	3.349	0.070
	Condition factor	0.126	1	7.134	0.009
R × A	Total length	418.750	2	1.277	0.283
	Wet mass	25.205	2	1.476	0.233
	Condition factor	0.049	2	1.388	0.254

Error	Total length	17542.681	107
	Wet mass	913.667	107
	Condition factor	1.895	107

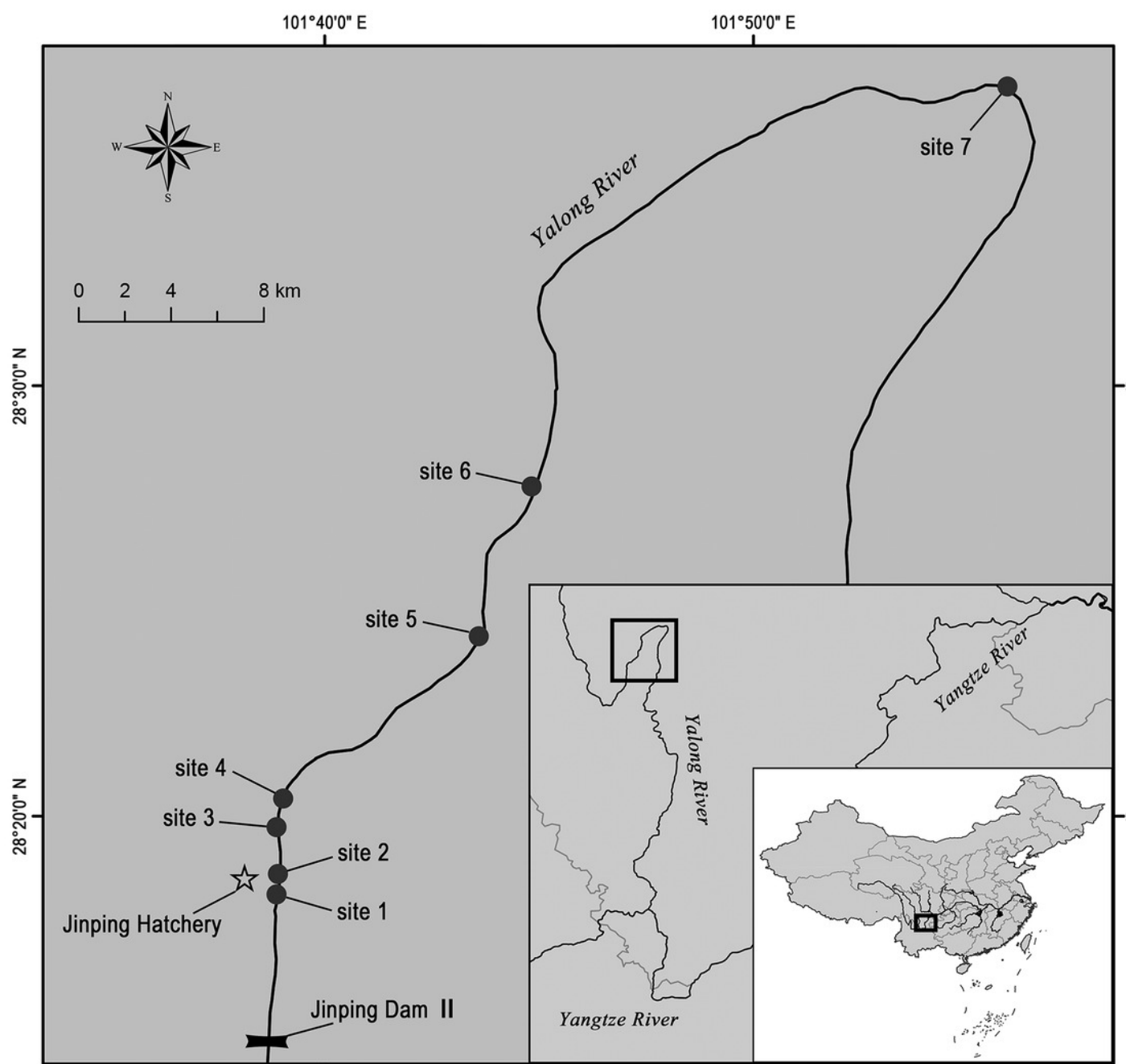
---

1

# Figure 1

Map of the Jinping area of the Yalong River showing the locations of Jinping Hatchery and the sites where the stocked *S. wangchiachii* were released and recaptured.

Fish were released at sites 2 and 3 in July 2015, recaptures were conducted at sites 1–7 from October 2015 to April 2016.



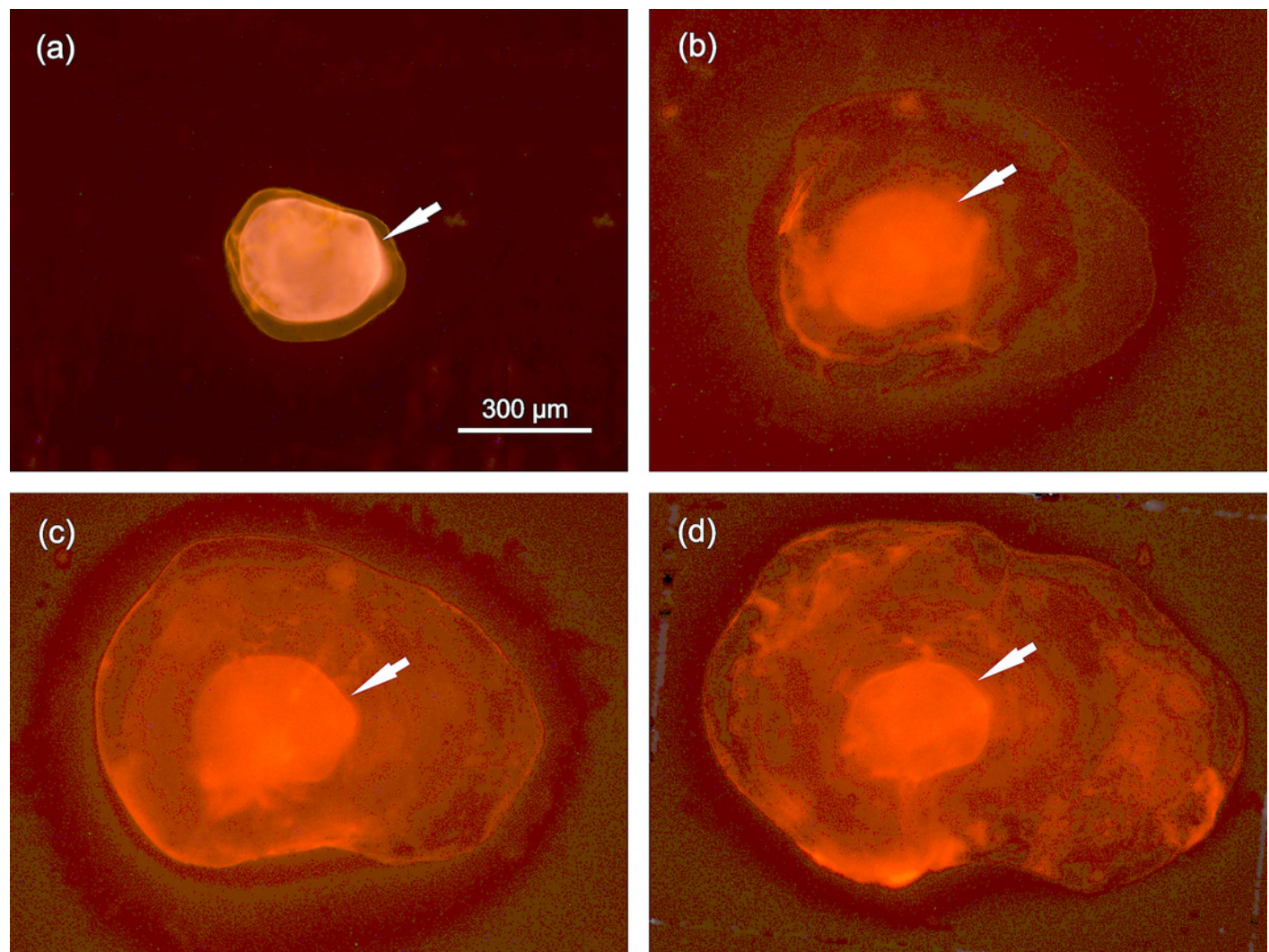


# Figure 2

Photographs of lapillus otoliths of ARS marked *S. wangchiachii* of the 2014 cohort sampled on 29 May 2014 (a), 28 December 2014 (b), 4 May 2015 (c) and 24 January 2016 (d).

These fish were marked by immersing in 70 mg L<sup>-1</sup> ARS for 24 h on 5 May 2014. Photographs were taken under green laser and × 40 magnification. White arrows show the ARS marks.

*\*Note: Auto Gamma Correction was used for the image. This only affects the reviewing manuscript. See original source image if needed for review.*

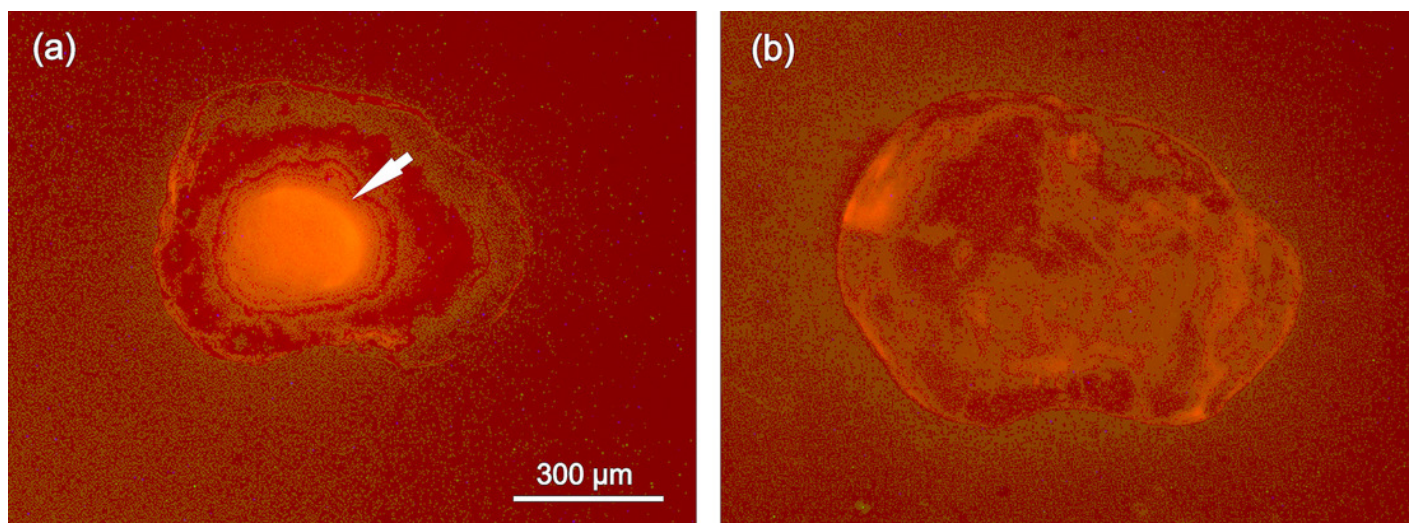


# Figure 3

Photographs of ARS marked (a) and unmarked (b) lapillus otolith of *S. wangchiachii* of the 2015 cohort recaptured in the Jinping area of the Yalong River.

Photographs were taken under green laser and  $\times 40$  magnification. White arrow shows the ARS marks.

*\*Note: Auto Gamma Correction was used for the image. This only affects the reviewing manuscript. See original source image if needed for review.*



# Figure 4

Percent of all marked *S. wangchiachii* captured at each site in three recapture surveys in October 2015 (n = 164), January 2016 (n = 58), and April 2016 (n = 40).

(x, no recapture survey was conducted; \*, the percent was 0%).

