

# Intraspecific variation in the diet of the Mexican garter snake *Thamnophis eques*

Javier Manjarrez <sup>Corresp., 1</sup>, Martha Pacheco-Tinoco <sup>1</sup>, Crystian S Venegas-Barrera <sup>2</sup>

<sup>1</sup> Facultad de Ciencias, Universidad Autónoma del Estado de México, Toluca, Estado de Mexico, Mexico

<sup>2</sup> División de Estudios de Posgrado e Investigación, Instituto Tecnológico de Ciudad Victoria, Ciudad Victoria, Tamaulipas, México

Corresponding Author: Javier Manjarrez

Email address: jsilva@ecologia.unam.mx

The Mexican Garter Snake (*Thamnophis eques*) is a terrestrial-aquatic generalist that feeds on both aquatic and terrestrial prey. We describe size-related variation and sexual variation in the diet of *T. eques* through analysis of 262 samples of identifiable stomach contents in snakes from 23 locations on the Mexican Plateau. The Mexican Garter Snakes we studied consumed mostly fish, followed in lesser amounts by leeches, earthworms, frogs, and tadpoles. Correspondence analysis suggested that the frequency of consumption of various prey items differed between the categories of age but not between sex of snakes, and the general pattern was a reduction of prey item diversity with size of snake. Snake length was correlated positively with mass of ingested prey. Large snakes consumed large prey and continued to consume smaller prey. In general, no differences were found between the prey taxa of male and female snakes, although males ate two times more tadpoles than females. Males and females did not differ in the mass of leeches, earthworms, fishes, frogs and tadpoles that they ate, and males and females that ate each prey taxon were similar in length. We discuss proximate and functional determinants of diet and suggest that the observed intraspecific variation in Mexican Garter Snakes could be explored by temporal variation in prey availability, proportions of snake size classes and possible sexual dimorphism in head traits and prey dimensions to assess the role of intersexual resource competition.

# Intraspecific variation in the diet of the Mexican garter

## snake *Thamnophis eques*

Javier Manjarrez<sup>1</sup>, Martha Pacheco-Tinoco<sup>2</sup>, Crystian S. Venegas-Barrera<sup>3</sup>

<sup>1</sup> Facultad de Ciencias, Universidad Autónoma del Estado de México, Toluca, Estado de México, México

<sup>2</sup> Facultad de Ciencias, Universidad Autónoma del Estado de México, Toluca, Estado de México, México

<sup>3</sup> División de Estudios de Posgrado e Investigación, Instituto Tecnológico de Ciudad Victoria, Ciudad Victoria, Tamaulipas, México

Corresponding Author:

Javier Manjarrez<sup>1</sup>

Instituto Literario 100, Toluca, Estado de México, CP 50000, México

Email address: jsilva@ecologia.unam.mx

### Abstract

The Mexican Garter Snake (*Thamnophis eques*) is a terrestrial-aquatic generalist that feeds on both aquatic and terrestrial prey. We describe size-related variation and sexual variation in the diet of *T. eques* through analysis of 262 samples of identifiable stomach contents in snakes from 23 locations on the Mexican Plateau. The Mexican Garter Snakes we studied consumed mostly fish, followed in lesser amounts by leeches, earthworms, frogs, and tadpoles. Correspondence analysis suggested that the frequency of consumption of various prey items differed between the

categories of age but not between sex of snakes, and the general pattern was a reduction of prey item diversity with size of snake. Snake length was correlated positively with mass of ingested prey. Large snakes consumed large prey and continued to consume smaller prey. In general, no differences were found between the prey taxa of male and female snakes, although males ate two times more tadpoles than females. Males and females did not differ in the mass of leeches, earthworms, fishes, frogs and tadpoles that they ate, and males and females that ate each prey taxon were similar in length. We discuss proximate and functional determinants of diet and suggest that the observed intraspecific variation in Mexican Garter Snakes could be explored by temporal variation in prey availability, proportions of snake size classes and possible sexual dimorphism in head traits and prey dimensions to assess the role of intersexual resource competition.

## Introduction

The Mexican Garter Snake (*T. eques*) is a medium-sized garter snake classified as a terrestrial-aquatic predator because it feeds on both aquatic and terrestrial prey; mostly frogs, tadpoles, and fish, supplemented by lizards and mice (Drummond & Macías Garcia, 1989; Manjarrez, 1998). Drummond & Macías Garcia (1989) found that *T. eques* at Tecocomulco, Hidalgo, is locally specialized in feeding on only two to three taxa. This snake forages in vegetative cover along the shore and an attack may include a sudden lunge across the surface toward prey (Drummond & Macías Garcia, 1989).

Although the Mexican Garter Snake is widely distributed over the Mexican Plateau, in this area, the disturbance and loss of habitat have caused the isolation and fragmentation of their populations (Conant, 2003; Manjarrez, Contreras-Garduño, & Janczur, 2014), with low population densities and constricted distribution (Rossman, Ford, & Seigel, 1996; Manjarrez,

1998). A scenario that raises the possibility of intraespecific dietary differences by spatial variation of the environment. In general, garter snakes show important ecological intraspecific variation (Rossman, Ford, & Seigel, 1996), and reports on diet for *T. eques* in Mexico showed sexual, ontogenetic (newborns- adults) and seasonal (rainy-dry) divergence in prey size (Macías Garcia & Drummond, 1988; Drummond & Macías Garcia, 1989; Manjarrez, Contreras-Garduño, & Janczur, 2014). For example, at Lake Tecocomulco, Mexico, small snakes fed mainly on aquatic invertebrates (leeches and earthworms), while large snakes fed on aquatic vertebrates (frogs, fish, and salamander larvae). Fluctuations in prey availability was associated with seasonal variation in prey (Macías Garcia & Drummond, 1988). At Toluca, Mexico, Mexican garter snake were detected to have eaten earthworms, tadpole, slugs and mice (Manjarrez, 1998; Manjarrez, Contreras-Garduño, & Janczur, 2014).

In this study, we provide the first broad description of the diet of the Mexican Garter Snake (*T. eques*) on the Mexican Plateau. We focused on a description of the diet under ontogenetic and sexual criteria. We looked for variation in consumption of prey type, sex and size-classes of snake from three different drainages. To permit more extensive and novel comparisons, we pooled our dietary records with those of Lozoya (1988) and Drummond & Macías Garcia (1989), as described in Materials and Methods.

Sexual differences in snake diets show that females sometimes ingest larger prey than males (Shine, 1993; Seigel, 1996; Daltry, Wuster, & Thorpe, 1998) and this difference is usually attributed to sexual dimorphism in body size when females are bigger than males. The maximum size of prey that can be ingested is constrained by a snake's gape (e.g. King, 2002), and in most species, larger snakes take larger prey and appear to drop small prey from their diet, although data from very young snakes is usually limited (review in Arnold, 1993). Garter snakes are

sexually dimorphic in body size (Shine, 1993) and their diet can vary with age/size-classes (Mushinsky, 1987; Macías García & Drummond, 1988). Female garter snakes are usually larger than males (Shine, 1994) but sexual differences in garter snake diets have not been well studied and may not exist (Seigel, 1996).

*Thamnophis eques* is sexually dimorphic with adult females being larger than males in snout-vent length (SVL) and head length (5.6% and 12%, respectively; Manjarrez & Macías García, 1993; Manjarrez, 1998; Manjarrez, Contreras-Garduño, & Janczur, 2014). Females reach sexual maturity at 39.5 cm SVL (Manjarrez, 1998).

## Materials & Methods

This study received the approval of the ethics committee of the Universidad Autónoma del Estado de México (Number 4047/2016SF). All subjects were treated humanely on the basis of guidelines outlined by the American Society of Ichthyologists and Herpetologists (ASIH, 2004).

We collected snakes that we found under stones and other objects, and looked for basking snakes along streams, rivers, canals, ponds, and lakes. We measured each captured snake (SVL in cm), and also recorded sex in adults by visual inspection of the tail-base breadth or by manually everting the hemipenis in small snakes (Conant & Collins, 1998). Although the snakes were weighed, these data were not used in this study. Then, we gently induced regurgitation of stomach contents by abdominal palpation (Carpenter, 1952). After processing, snakes were released at their capture sites. We measured the wet mass of each prey item and then fixed them in 10% formalin and preserved them in 70% alcohol.

We sampled snake stomach contents at 23 sites on the Mexican Plateau (Lerma, Tula, and Nazas, drainages, Table S1) sporadically during the active reproductive season (February to November) over a period of 16 years on  $1.5 \pm 0.9$  occasions each (mean  $\pm$  SD; range: 1 – 5;

Table S2). The sites in the Lerma and Tula drainages were sampled from 1980-1986 and 1991-1995. We obtained 194 regurgitations from 22 sites in Jalisco, Michoacán, México, Hidalgo, and Queretaro. The records obtained for these two drainages are partially reported by Lozoya (1988, 19% of the total regurgitations), a reference inaccessible to most readers.

In the Nazas drainage we obtained 68 regurgitations. The Nazas population inhabits an isolated 0.36 ha spring-fed cattle pond in the Chihuahuan Desert with a rainy season from June through October. The records were obtained during 27 2-4 day visits, bimonthly during April to November 1981, and monthly during February through December 1982, and February through November 1983. Drummond & Macías Garcia (1989) previously reported 13% of these records. Snakes were captured on the first two days of each visit and released on the second day to prevent repeat sampling during the same visit. We counted and classified prey items as fish, leeches, frogs, tadpoles, and earthworms.

# **Analysis**

We classified snakes as newborns (< 20.5 cm SVL), juveniles (20.5–39.5 cm) or adults (> 39.5 cm; Manjarrez, 1998), based on birth sizes and minimum sizes of gravid females. Percentages of regurgitations containing each prey taxon were normalized by arcsine transformation (Zar, 1984). We used MANCOVA (with snake length as a covariate) to explore variation in the mass of prey consumed by prey taxa and by the sex of each snake. We included complementary analyses of dietary variation in relation to snake size whenever these could contribute to understanding variation in diet. For analyses of prey mass we excluded taxa represented by fewer than five prey items. Prey mass and snake length were natural log transformed prior to calculating correlations because of the lack of homoscedasticity and skewed distributions.

To avoid making Type I or II errors when many Chi square ( $X^2$ ) tests are performed, we used a Multiple Correspondence Analysis (MCA) to associate prey items consumed more frequently (earthworm, tadpole, fish, frog and leech, considered as not continuous data) by the combination of two categorical variables, the sex of snake (male-female) and snake size (newborns, juveniles, and adults). The analysis is a modification of  $X^2$  used to analyze contingency tables and creates a Cartesian diagram based on the association between more than three categorical variables (Legendre & Legendre, 2003). The diagram display simultaneously the relative position (canonical position) of studied variables categories (Gotelli, 2001). The nearest canonical positions of different variables represent a high association, while distant categories show lower association. The degrees of freedom ( $df$ ) and probability ( $P$ ) for MCA have no statistical relevance, because both were used only in two-way table, therefore, we do not report these values. However, similar to  $X^2$  test, the MCA estimate the differences between observed and expected values, which allow estimate contribution of each variable to  $X^2$  test value. The analyses generates a coordinate system of reference that account variations of all variables (dimensions), where we reported the first two dimensions, which represents the higher variations. Finally, the center of graph (coordinate 0, 0) was the average of all variables, therefore categories nearest to center of graph show a lower association to rest of categories.

Additionally, we performed a Cluster analysis to identify groups of categories of age and sex of snakes with similar consumption of prey, we used the Morisita index of similarity between frequencies of prey consumed, and the Ward's Method of amalgamation (Rencher, 2002). Ward's Method attempts to minimize the Sum of Squares (SS) of any two hypothetical clusters that can be formed at each step (Legendre & Legendre, 2003), and it is considered as very efficient method, due reduce cluster long chains produced by other joining amalgamation

methods as nearest neighbor or UPGMA. The number of groups retained were determined by graph of amalgamation schedule. The graph shows a line graph of the linkage distances at successive clustering steps, the optimal cut-off to deciding how many clusters to retain is when the linkage distance line forms a plateau. Multiple Correspondence and Cluster Analyses are complementary, the MCA identify associations among categories of different categorical variables, but cannot determine differences; while cluster create groups of different elements, but we cannot know why they are different.

## Results

### Prey items

We obtained identifiable stomach contents from 262 (38%) of 690 *T. eques* collected. Thirteen regurgitations (5.7% of total) included more than one prey species, and hence contributed more than one data point for some snakes. In order of percentage of prey items identified we found 42.4% ( $n=111$  regurgitations) consumed fish, 23.7% ( $n=62$ ) leeches, 10.6% ( $n=28$ ) earthworms, 10.2% ( $n=27$ ) frogs, 9.8% ( $n=25$ ) tadpoles, and 2.3% ( $n=6$ ) axolotls (*Ambystoma sp.*). Lizard, slug, and mouse were recovered from only 1 stomach each.

Our Multiple Correspondence Analysis ( $X^2 = 2,410.1$ ) shows that prey type variable contributes with 71.6% of  $X^2$  test value ( $X^2 = 1,725.9$ ), while snake size with 19.5% ( $X^2 = 468.6$ ) and sex with 8.9% ( $X^2 = 215.6$ ). Canonical position of adult snakes was closer to tadpoles, frogs, and axolots, therefore adults tend to feed more frequently these prey types than juveniles and newborns snakes (Fig. 1). Juveniles consumed more likely earthworms, while newborns principally leeches. Canonical position of male and female snakes showed a lower variation on the prey type consumed (Fig. 1). Cluster analysis indicated that the three size classes differ in prey type consumed (Fig. 2), where adult snakes were closer to juveniles, and both distant to



newborn. Prey types consumed by female and male snakes were similar, due linkage distance nodes of males and females of the same size classes was lower than cutoff value. This grouping of snakes suggests a scheme of ontogenetic change in the taxon of prey, with lower relevance of the grouping by sex (Fig. 2).

### **Variation with snake length**

Snakes of different sizes ate a changing diversity of prey types. The general pattern was a reduction of number of prey item with size of snake (Fig. 3). Snakes < 65 cm SVL ate all prey types of all sizes, including invertebrates (leeches and earthworms) and vertebrates (tadpoles, fish, and frogs). Vertebrate prey were taken by only the largest snakes (> 60 cm SVL). At 15 cm SVL, snakes eat leeches as one of two major prey items, but at 55 cm SVL consumption of leeches decreases drastically and disappears completely in larger snakes > 65cm SVL (Fig. 3). The consumption of fish and tadpoles increases when snake body size increases. However, the longer snakes > 75 cm SVL consume only fish and tadpoles while excluding all other prey, possibly because longer snakes were a very small part of the entire sample ( $n = 7$  stomach contents).

Snake length was correlated positively with mass of ingested prey ( $r = 0.42$ ,  $F_{1,326} = 71.52$ ,  $P < 0.001$ ; Fig. 4). Large snakes consume large prey and continue to consume smaller prey. The same relationship was presented for leeches ( $r = 0.42$ ,  $F_{1,136} = 29.85$ ,  $P < 0.001$ ; Fig. 5) and fish ( $r = 0.43$ ,  $F_{1,88} = 20.30$ ,  $P < 0.001$ ; Fig. 5), but not correlated with earthworm ( $r = 0.14$ ,  $F_{1,32} = 18.32$ ,  $P = 0.806$ ; Fig. 5) and tadpole mass ( $r = 0.2$ ,  $F_{1,25} = 2.36$ ,  $P = 0.136$ ; Fig. 5).

### **Variation with snake sex**

Mean body lengths of captured snakes did not differ between sexes of newborns (Student  $t_{20} = 0.08$ ,  $P = 0.94$ ), juveniles (Student  $t_{94} = 0.95$ ,  $P = 0.34$ ), or adults (Student  $t_{131} = 0.13$ ,  $P = 0.90$ ); thus male and female snakes were similar in size.

No differences were found between the diets of male and female snakes. Pooling all sizes of snake, males ( $n = 124$ ) and females ( $n = 121$ ) ate similar proportions of the five main prey taxa ( $\chi^2 = 3.82$ ,  $P = 0.43$ ), both sexes eating mainly fishes, frogs, leeches, and earthworms, and in similar proportions. Males ate two times more tadpoles (0.13) than females (0.06).

Males and females did not differ in the mass of leeches, earthworms, fishes, frogs and tadpoles that they ate (MANCOVA  $F_{1, 193} = 0.79$ ,  $P = 0.37$ ), and males and females that ate each prey taxon were similar in length ( $F_{1, 235} = 0.91$ ,  $P = 0.34$ ).

## Discussion

In this study, we provide a broad description of the diet of the Mexican Garter snake *T. eques* on the Mexican Plateau. The results indicate 69% of total regurgitations contain two major prey: leeches and fish, while the other three main prey are ingested in similar percentages (earthworms, 10.6%; frogs, 10.2%; tadpoles, 9.8%). The diet of *T. eques* included amphibious prey (frogs), terrestrial prey (earthworms) and aquatic prey (leeches, fish and tadpoles), and occasionally other prey such as axolotls, slugs, lizards, and mice. The main prey include three vertebrates (65%) and two invertebrates (35%).

The studies that have analyzed the diet of *T. eques* in Mexico included four local descriptions and in each study *T. eques* is locally specialized in feeding on only 2-3 prey taxa (Table 1) (Drummond & Macías Garcia, 1989). This suggests a pattern of spatial variation in the diet of *T. eques*, presumably by the local availability of prey, for example the temporal variation

of prey, which has not yet been explored for *T. eques* (Gregory & Nelson, 1991; Tuttle & Gregory, 2009).

The diet of *T. eques* can also exhibit ontogenetic variations associated with individual size, changing from terrestrial to aquatic prey as snake size increases (Macías García & Drummond, 1988; Drummond & Macías García, 1989). Ontogenetic change by prey taxa in gartersnakes, could be attributed to proximate mechanisms such as morphological constraints that determine the size of ingested prey (Shine, 1991; Arnold, 1993), the availability of potential prey (Krebs, 2009), energy or nutritional needs (Britt, Hicks, & Bennett, 2006), habituation and learning (Halloy & Burghardt, 1990; Ford & Burghardt, 1993) or genetically programmed preferences (Arnold, 1977; Arnold, 1981; Britt, Hicks, & Bennett, 2006). In Tecocomulco, Hidalgo, the differential distribution of large and small snakes was interpreted as a possible cause of differences in diet of *T. eques* with differences in the pattern of foraging, so that the snake can be an effective predator in the air-water interface; preying on aquatic prey when they are particularly vulnerable and terrestrial prey being added to the diet only opportunistically (Drummond & Macías García, 1989).

In our study, the ontogenetic variation in diet of *T. eques* was also found in the relationship between snake size and prey mass. The ingested prey size gradually increases with snake size and large snakes continued eating small prey. This relationship could be interpreted as an ontogenetic telescope (Arnold, 1993), as previously reported for *T. eques* in a Zacatecas population with *Rana berlandieri* (Drummond & Macías García, 1989).

The absence of ontogenetic variation in the regurgitated samples of tadpoles and earthworms in *T. eques*, is common because in a previous study the annelids were ingested by *T. eques* regardless of snake body size (Macías García & Drummond (1988). The proximate

explanation for this phenomenon is the high availability of these prey during the annual active period of the snake or by a stable ontogenetic preference for invertebrates (Ford & Burghardt, 1993). The proximate and functional diet determinants of intraspecific variation in Mexican garter snakes could be explored by local and temporal variation in prey availability and proportions of snake size classes collected. Intraspecific differences in *Thamnophis* diet have been described for different populations, seasons, years, size classes, and sexes (Rossman, Ford, & Siegel, 1996). For example, in some species of *Thamnophis* have been described geographic dietary differences (e.g., *T. elegans*, *T. radix*, and *T. sirtalis*; Kephart, 1982; Kephart & Arnold, 1982; Tuttle & Gregory, 2009) and explained by spatial variation in prey availability, whereas proportions of stomachs containing particular taxa can vary temporally as prey populations fluctuate (Kephart and Arnold, 1982; Seigel, 1996).

The intersexual variation in food habits has been associated with sexual differences in body size (Shine et al., 1998). *Thamnophis eques* has been reported as sexually size dimorphic, with males smaller than females in SVL (Manjarrez, 1998); however in this study, the average size of male and female *T. eques* were similar and there were no sexual differences in diet, except that males ate two times more tadpoles than females. This sexual difference in diet can probably be attributed to real diet preference because females and males that ate each prey taxon were similar in length. Generally, large samples revealed no differences between male and female snakes in variety of prey taxa, proportions of different prey taxa and taxon specific prey weight (Shine, 1993), and the males and females that ate each taxon were similar in size. Overall, male and female Mexican Garter Snakes differ in size (Manjarrez, Contreras-Garduño, & Janczur, 2014), microhabitat use (Venegas-Barrera, 2001), seasonal foraging pattern (Drummond & Macías Garcia, 1989), and diet (Macías Garcia & Drummond, 1988; Manjarrez, Contreras-

Garduño, & Janczur, 2014). As was found, males and females of this species do not differ in the body size of prey and type of prey consumed. The possible small differences in diet and microhabitat can be exposed by larger sample sizes. Prey size and energetic demands may determine developmental transitions to different prey sizes or taxa, whereas sex, in this snake lacking sexual size dimorphism, has little or no influence on diet. However, sexual dimorphism in head dimensions, and eaten prey shape have seldom been searched and it will be essential to measure prey and head traits for *T. eques* to evaluate the function of resource competition between sexes.

## Conclusions

In this study, we provide the first broad description of the diet of the Mexican Garter snake on the Mexican Plateau. The two major prey were leeches and fish. The diet of *T. eques* included amphibious, terrestrial and aquatic prey with ontogenetic variations associated with individual size, changing from terrestrial to aquatic prey as snake size increases. The ontogenetic variation in diet of *T. eques* was also found in the relationship between snake size and prey mass. The average size of male and female *T. eques* were similar and there were no sexual differences in diet. The proximate and functional diet determinants of intraspecific variation in Mexican garter snakes could be explored by local and temporal variation in prey availability and proportions of snake size classes collected.

## Acknowledgements

For their assistance in the field and laboratory work we thank Hugh Drummond, Constantino Macías García and all of the students of the Evolutionary Biology Laboratory. We also thank Ruthe J. Smith for her comments and corrections of the typescript. All subjects were treated humanely on the basis of guidelines outlined by the Society for the Study of Amphibians &

273 Reptiles. C. Zepeda, M. Manjarrez-Zepeda, and J. Manjarrez-Zepeda provided moral support to  
274 JM.

## 275 **References**

276 Arnold SJ. 1977. Polymorphism and geographic variation in the feeding behavior of the garter  
277 snake *Thamnophis elegans*. *Science*, 197, 676-678.

278 Arnold SJ. 1981. Behavioral variation in natural populations. I. Phenotypic, genetic and  
279 environmental correlations between chemoreceptive responses to prey in the garter snake,  
280 *Thamnophis elegans*. *Evolution*, 35, 489-509.

281 Arnold SJ. 1993. Foraging theory and prey-size-predator-size relations. In: Segiel RA, Collins  
282 JT, eds. *Snakes: Ecology and behavior*. New York: McGraw-Hill, 87-115.

283 [ASIH] American Society of Ichthyologists and Herpetologists. 2004. Guidelines for the Use of  
284 Live Amphibians and Reptiles in Field Research. ASIH, Herpetologists League, Society  
285 for the Study of Amphibians and Reptiles. ([http://iacuc.ucsd.edu/PDF\\_References/ASIH-](http://iacuc.ucsd.edu/PDF_References/ASIH-HL-SSAR%20Guidelines%20for%20Use%20of%20Live%20Amphibians%20and%20Reptiles.htm)  
286 HL-  
287 SSAR%20Guidelines%20for%20Use%20of%20Live%20Amphibians%20and%20Reptil  
288 es.htm).

289 Britt E, Hicks J, Bennett AF. 2006. The energetic consequences of dietary specialization in  
290 populations of the garter snake, *Thamnophis elegans*. *The Journal of the Experimental*  
291 *Biology*, 209, 3164-3169.

292 Carpenter CC. 1952. Comparative ecology of the Common Garter Snake (*Thamnophis s.*  
293 *sirtalis*), the Ribbon Snake (*Thamnophis s. sauritus*), and the Butler's Garter Snake  
294 (*Thamnophis butleri*). *Ecological Monographs*, 22, 235-258.

- 295 Conant R. 2003. Observations on garter snake of the *Thamnophis eques* complex in the lakes of
- 296 the Mexico's transvolcanic belt, with descriptions of new taxa. American Museum of
- 297 Natural History Central Park West at 79<sup>th</sup> street, NY.
- 298 Conant R, Collins JT. 1998. *Reptiles and Amphibians: Eastern-Central North America*. Boston,
- 299 MA: Houghton Mifflin.
- 300 Daltry JC, Wuster W, Thorpe RS. 1998. Intraspecific variation in the feeding ecology of the
- 301 crotaline snake *Calloselasma rhodostoma* in Southeast Asia. *Journal of Herpetology*,
- 302 32,198–205.
- 303 Drummond H, Macías García C. 1989. Limitations of a generalist: a field comparison of foraging
- 304 snakes. *Behaviour*, 108, 23-43.
- 305 Ford N, Burghardt G. 1993. Perceptual mechanisms and the behavioural ecology of snakes. In:
- 306 Segiel RA, Collins JT, eds. *Snakes: Ecology and behavior*. New York: McGraw-Hill,
- 307 117-164.
- 308 Gotelli NJ. 2001. *A Primer of ecology*. (3rd ed.) Massachusetts: Sinauer.
- 309 Gregory PT, Nelson KJ. 1991. Predation on fish and intersite variation in the diet of common
- 310 garter snakes, *Thamnophis sirtalis*, on Vancouver Island. Canadian. *Journal of Zoology*,
- 311 69, 988-994.
- 312 Halloy M, Burghardt G. 1990. The comparative imperative: genetics and ontogeny of
- 313 chemoreceptive prey responses in natrice snakes. *Behaviour*, 112, 299-317.
- 314 Kephart DG. 1982. Microgeographic variation in the diets of garter snakes. *Oecologia* 52, 287-
- 315 291.
- 316 Kephart DG, Arnold SJ. 1982. Garter snake diets in a fluctuating environment: a seven-year
- 317 study. *Ecology* 63, 1232-1236.

318 King BR. 2002. Predicted and observed maximum prey size-snake size allometry. *Functional*  
 319 *Ecology*, 16, 766-772.

320 Krebs CJ. 2009. *Ecology: The experimental analysis of distribution and abundance*. (6th ed.)  
 321 San Francisco: Benjamin Cummings.

322 Legendre P, Legendre L. 2003. *Numerical ecology*. (3rd ed.) Amsterdam: Elsevier.

323 Lozoya H. 1988. Variación geográfica en la dieta de la culebra jarretera del eje neovolcanico  
 324 (*Thamnophis melanogaster*). BSc. Thesis, Universidad Nacional Autónoma de México,  
 325 México.

326 Macías García C, Drummond H. 1988. Seasonal and ontogenic variation in the diet of the  
 327 Mexican garter snake *Thamnophis eques*, in lake Tecocomulco, Hidalgo. *Journal of*  
 328 *Herpetology*, 22, 129-134.

329 Manjarrez J. 1998. Ecology of the Mexican Garter Snake (*Thamnophis eques*) in Toluca,  
 330 México. *Journal of Herpetology*, 32, 464-468.

331 Manjarrez J, Macías García C. 1993. Variación morfológica intrapoblacional de la culebra  
 332 *Thamnophis eques*. *Boletín de la Sociedad Herpetológica Mexicana*, 5, 1-5.

333 Manjarrez J, Contreras-Garduño J, Janczur MK. 2014. Sexual Size Dimorphism, Diet and  
 334 Reproduction in the Mexican Garter Snake, *Thamnophis eques*. *Herpetological*  
 335 *Conservation and Biology*, 9, 163–169.

336 Mushinsky HR. 1987. Foraging ecology. In: Seigel RA, Collins JT, Novak SS, eds. *Snakes:*  
 337 *Ecology and evolutionary biology*. New York: McGraw-Hill, 302–334.

338 Rencher AC. 2002. *Methods of Multivariate Analysis* (2nd ed.). New York: Wiley-Interscience.

339 Rossman DA, Ford NB, Seigel RA. 1996. *The Garter Snakes: Evolution and ecology*. Norman:  
 340 OK: University of Oklahoma Press.



- 341 Seigel RA. 1996. Ecology and conservation of garter snakes: Masters of plasticity. In: Rossman  
342 DA, Ford NB, Seigel RA, eds. *The Garter Snakes. Evolution and ecology*. Norman, OK:  
343 University of Oklahoma Press, 55–89.
- 344 Shine R. 1991. Why do larger snakes eat larger prey items?. *Functional Ecology* **5**: 493-502.
- 345 Shine R. 1993. Sexual Dimorphism in Snakes. In: Segiel RA, Collins JT, eds. *Snakes: Ecology*  
346 *and behavior*. New York: McGraw-Hill, 49-86.
- 347 Shine R. 1994. Sexual dimorphism in snakes revised. *Copeia*, 1994, 326-346.
- 348 Shine R, Harlow P, Keogh J, Boeadi. 1998. The influence of sex and body size on food habits of  
349 a giant tropical snake, *Python reticulatus*. *Functional Ecology*, 12, 248-258.
- 350 Tuttle KN, Gregory PT. 2009. Food habits of the plains garter snake (*Thamnophis radix*) at the  
351 northern limit of its range. *Journal of Herpetology*, 43, 65-73.
- 352 Venegas-Barrera C. 2001. Efecto del ambiente térmico y la disponibilidad de alimento en la  
353 disponibilidad de alimento en la distribución y temperatura corporal de la culebra de agua  
354 *Thamnophis eques*. BSc. Thesis, Universidad Autónoma del Estado de México, México.
- 355 Zar JH. 1984. *Biostatistical analysis*. (2nd ed.). New Jersey: Prentice Hall International.

**Table 1.** Percentage of prey reported in the diet of *Thamnophis eques* in Mexico.

	Tecocomulco <sup>1</sup>	Cerrillo <sup>2</sup>	Toluca Valley <sup>3</sup>	Fresnillo <sup>4</sup>	Present study
	126 snakes	18 regurgitations	148 snakes	64 snakes	262 regurgitations
Invertebrate prey					
Earthworm	41	22	20.2	2.9	10.6 ( <i>Eisenia foetida</i> and <i>Eisenia</i> sp.)
Leech	39	---	8.7	---	23.7 ( <i>Erpobdella punctata</i> and <i>Mooreobdella</i> sp.)
Other	1.0	5.5	---	---	0.4
Vertebrate prey					
Fish	11	---	29.0	---	42.4 ( <i>Girardinichthys multiradiatus</i> , <i>Carassius auratus</i> )
Frog	5	28	10.1	69.0	10.2 ( <i>Rana berlandieri</i> and <i>Rana</i> sp.)
Tadpole	1.5	33	22.2	23.4	9.8 ( <i>R. berlandieri</i> , <i>Rana</i> sp)
Other	4.5	11.0	9.4	4.7	3.2

<sup>1</sup>Macías García & Drummond, 1988; <sup>2</sup>Manjarrez, 1998; <sup>3</sup>Manjarrez, Contreras-Garduño & Janczur; <sup>4</sup>Drummond & Macías García, 1989.

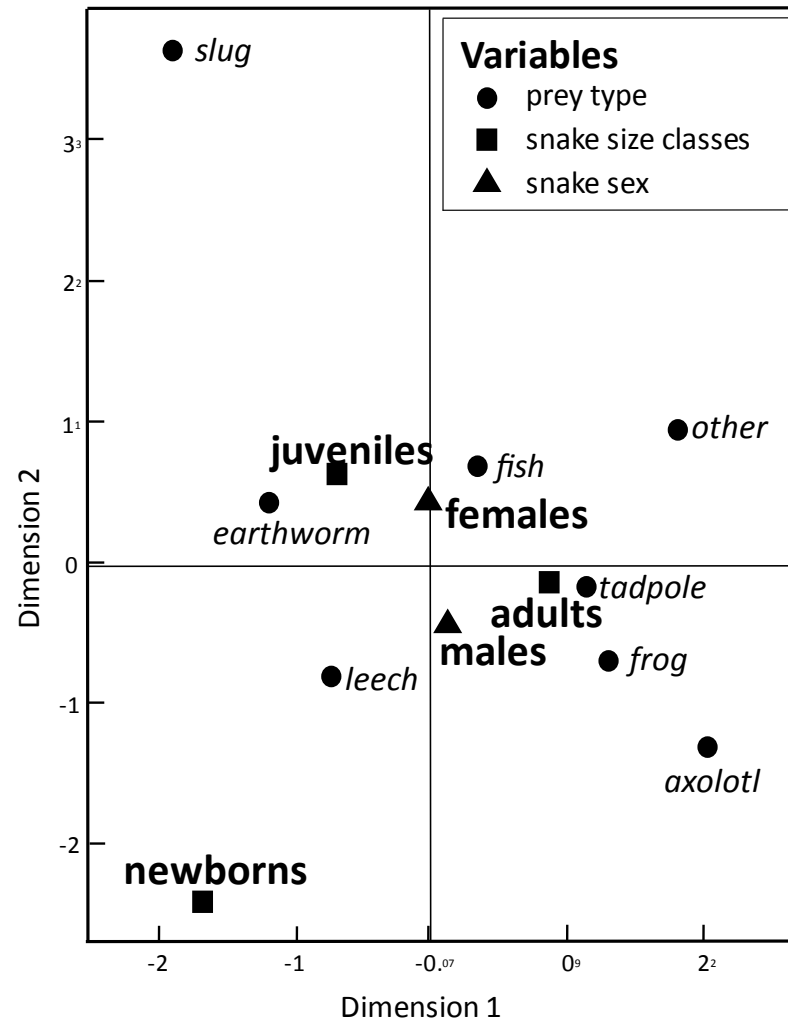


Fig. 1. Dimension variables obtained from a Multiple Correspondence Analysis to associate prey items consumed by snake *T. eques* in the combination of snake sex (male-female) and snake size classes (newborns, juveniles, and adults).

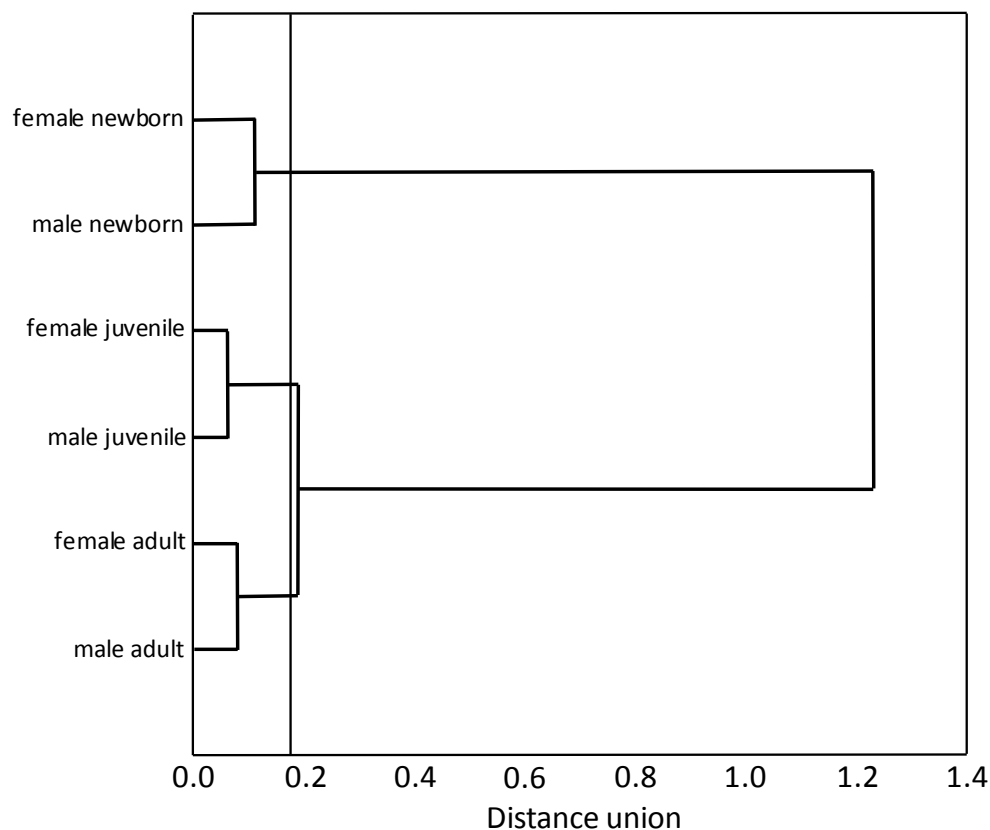
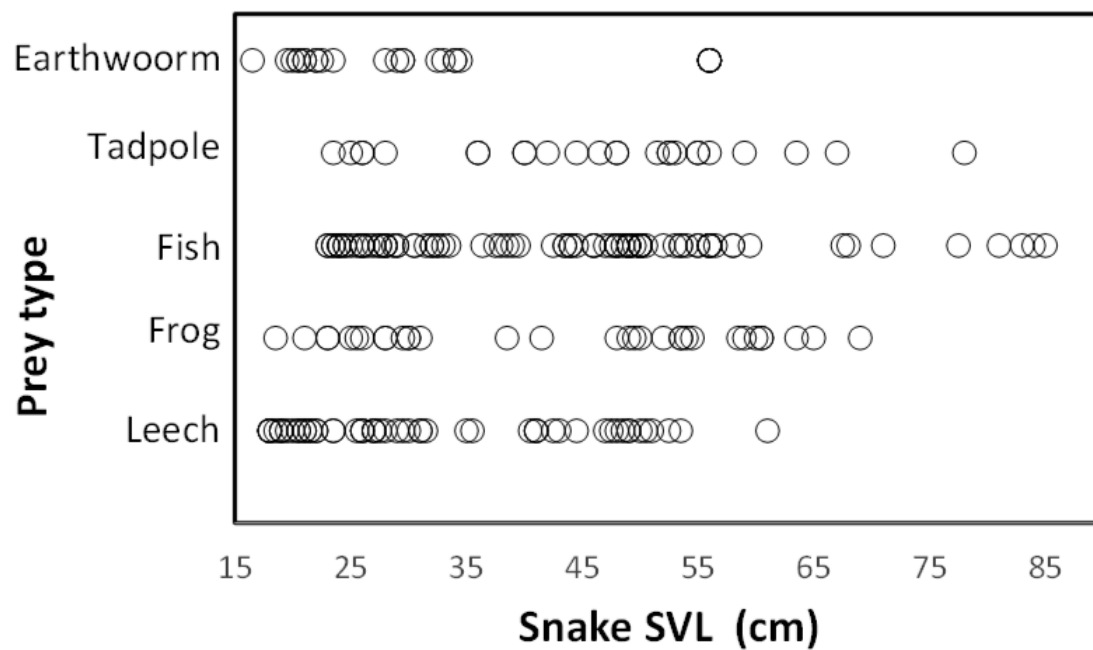


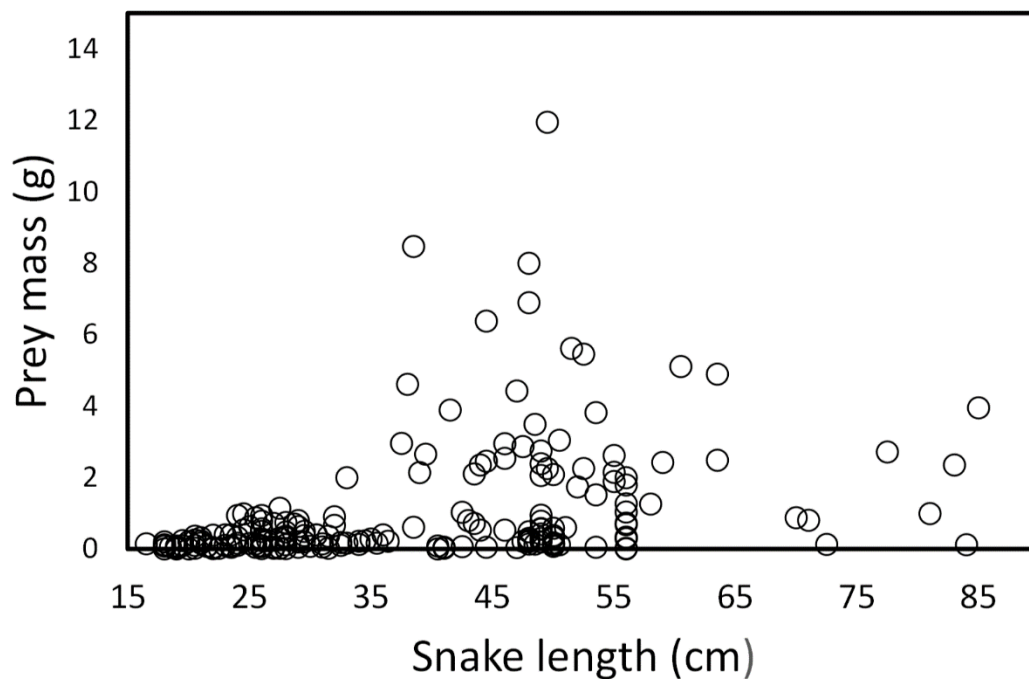
Fig. 2. Hierarchical tree produced agglomeration of size classes (newborns, juveniles and adults) and sex (female and male) of *T. eques* snakes in function of prey type consumed. The amalgamation schedule (Ward's Method) defined in 0.8 the cutoff value for the tree diagram.



402

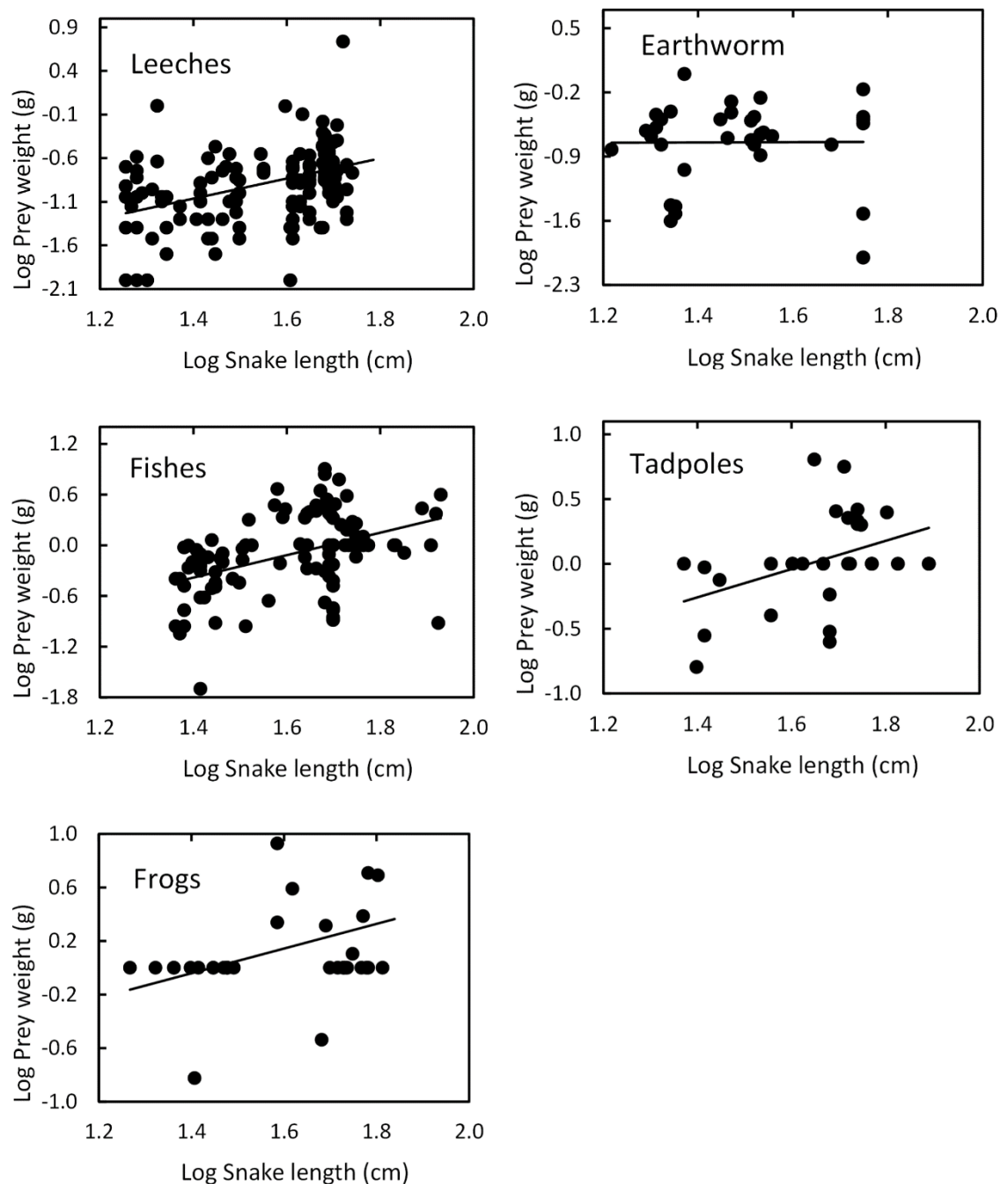
403 Fig. 3. Relationship between prey type and snake size (SVL, cm) of *T. eques* in México. Each

404 circle represents an individual snake with a type of prey item (262 regurgitations).



405

406 Fig. 4. Prey mass as a function of snake length (SVL, cm) of (*T. eques*) in México. ( $r = 0.42$ ,  $F$   
 407  $_{1, 326} = 71.52$ ,  $P < 0.001$ ). Each dot represents an individual prey item. The many circles on the  
 408 zero line of prey mass are because the low weights of leeches and earthworms.



409

410 Fig. 5. Relation between prey mass and snake length of *T. eques*. Leeches ( $r = 0.42$ ,  $P < 0.00$ ),

411 fish ( $r = 0.43$ ,  $P < 0.001$ ), earthworm ( $r = 0.14$ ,  $P = 0.806$ ), tadpole ( $r = 0.2$ ,  $P = 0.136$ ), frogs ( $r$

412  $= 0.597$ ,  $P < 0.001$ ).