

Land snails of *Leptopoma* Pfeiffer, 1847 in Sabah, Northern Borneo (Caenogastropoda: Cyclophoridae): an analysis of molecular phylogeny and geographical variations in shell form

Chee-Chean Phung¹, Pooi-San Heng¹, Thor-Seng Liew^{Corresp. 1}

¹ Institute for Tropical Biology and Conservation, Universiti Malaysia Sabah, Kota Kinabalu, Sabah, Malaysia

Corresponding Author: Thor-Seng Liew
Email address: thorsengliew@gmail.com

Leptopoma is a species rich genus with approximately 100 species documented. Species-level identification in this group has been based on shell morphology and colouration, as well as some anatomical features based on small sample sizes. However, the implications of the inter- and intra-species variations in shell form to the taxonomy of *Leptopoma* species and the congruency of its current shell based taxonomy with its molecular phylogeny are still unclear. There are four *Leptopoma* species found in Sabah, Borneo, and their taxonomy status remains uncertain due to substantial variation in shell forms. This study focuses on the phylogenetic relationships and geographical variation in shell form of three *Leptopoma* species from Sabah. The phylogenetic relationship of these species was first estimated by performing Maximum Likelihood and Bayesian analysis based on mitochondrial genes (16S and COI) and nuclear gene (ITS-1). Then, a total of six quantitative shell characters (i.e. shell height, shell width, aperture height, aperture width, shell spire height, and ratio of shell height to width) and three qualitative shell characters (i.e. shell colour patterns, spiral ridges, and dark apertural band) of the specimens were mapped across the phylogenetic tree and tested for phylogenetic signals. Data on shell characters of *Leptopoma sericatum* and *Leptopoma pellucidum* from two different locations (i.e. Balambangan Island and Kinabatangan) where both species occurred sympatrically were then obtained to examine the geographical variations in shell form. The molecular phylogenetic analyses suggested that each of the three *Leptopoma* species was monophyletic and indicated congruence with only one of the shell characters (i.e. shell spiral ridges) in the current morphological-based classification. Although the geographical variation analyses suggested some of the shell characters indicating inter-species differences between the two *Leptopoma* species, these also pointed to intra-species differences between populations from different locations. This study on *Leptopoma* species is based on small sample size and the findings appear only applicable to *Leptopoma* species in Sabah. Nevertheless, we anticipate this study to be a starting point for more

detailed investigations to include the other still little-known (*ca.* 100) *Leptopoma* species and highlights a need to assess variations in shell characters before they could be used in species classification. we anticipate this study to be a starting point for more detailed investigations to include the other still little-known (*ca.* 100) *Leptopoma* species and highlights a need to assess variations in shell characters before they could be used in species classification.

LAND SNAILS OF *LEPTOPOMA* PFEIFFER, 1847 IN SABAH, NORTHERN BORNEO (CAENOCASTROPODA: CYCLOPHORIDAE): AN ANALYSIS OF MOLECULAR PHYLOGENY AND GEOGRAPHICAL VARIATIONS IN SHELL FORM

Chee-Chean Phung, Pooi-San Heng, Thor-Seng Liew

Institute for Tropical Biology and Conservation, Universiti Malaysia Sabah, Jalan UMS, 88400 Kota Kinabalu, Malaysia.

Corresponding author: Thor-Seng Liew (thorsengliew@gmail.com)

Abstract. *Leptopoma* is a species rich genus with approximately 100 species documented. Species-level identification in this group has been based on shell morphology and colouration, as well as some anatomical features based on small sample sizes. However, the implications of the inter- and intra-species variations in shell form to the taxonomy of *Leptopoma* species and the congruency of its current shell based taxonomy with its molecular phylogeny are still unclear. There are four *Leptopoma* species found in Sabah, Borneo, and their taxonomy status remains uncertain due to substantial variation in shell forms. This study focuses on the phylogenetic relationships and geographical variation in shell form of three *Leptopoma* species from Sabah. The phylogenetic relationship of these species was first estimated by performing Maximum Likelihood and Bayesian analysis based on mitochondrial genes (16S and COI) and nuclear gene (ITS-1). Then, a total of six quantitative shell characters (i.e. shell height, shell width, aperture height, aperture width, shell spire height, and ratio of shell height to width) and three qualitative shell characters (i.e. shell colour patterns, spiral ridges, and dark apertural band) of the specimens were mapped across the phylogenetic tree and tested for phylogenetic signals. Data on shell characters of *Leptopoma sericatum* and *Leptopoma pellucidum* from two different locations (i.e. Balambangan Island and Kinabatangan) where both species occurred sympatrically were then obtained to examine the geographical variations in shell form. The molecular phylogenetic analyses suggested that each of the three *Leptopoma* species was monophyletic and indicated congruence with only one of the shell characters (i.e. shell spiral ridges) in the current morphological-based classification. Although the geographical variation analyses suggested some of the shell characters indicating inter-species differences between the two *Leptopoma* species, these also pointed to intra-species differences between populations from different locations. This study on *Leptopoma* species is based on small sample size and the findings appear only applicable to *Leptopoma* species in Sabah. Nevertheless, we anticipate this study to be a starting point for more detailed investigations to include the other still little-known (*ca.* 100) *Leptopoma* species and highlights a need to assess variations in shell characters before they could be used in species classification.

INTRODUCTION

The terrestrial snail genus *Leptopoma* is one of 35 genera in the family Cyclophoridae (Kobelt, 1902), which has a wide global distribution range extending across much of the Oriental and

Australasia zoogeographical regions. An early global overview of species-level diversity in *Leptopoma* species classified the genus into four subgenera with a total of 105 species (Kobelt, 1902). Several subsequent regional taxonomic reviews of *Leptopoma* were conducted for the Philippines (Zilch, 1956), South Asia (Gude, 1921), and most recently for Borneo (Vermeulen, 1999). To date, taxonomic works on *Leptopoma* (Kobelt, 1902; Gude, 1921; Zilch, 1954; Vermeulen, 1999) have been based mainly on shell morphology (i.e. shell size, shape, colour pattern and sculpture). Besides shell morphology, other characters of the soft body such as radula, operculum, and genital duct have been used from time to time in the species delimitation (Sarasin & Sarasin, 1899; Jonges, 1980). Although several species have been included in phylogenetic studies focussing on other taxa (Colgan *et al.*, 2000, 2003, 2007; Lee *et al.* 2008a, 2008b; Nantararat *et al.*, 2014a), little is known about the relationship within the genus *Leptopoma* itself.

The genus *Leptopoma* is widespread in the Philippines and the adjacent Malaysian state of Sabah, which is located in the northern part of Borneo (Godwin-Austen, 1891; Laidlaw, 1937; Vermeulen, 1999; Schilthuizen & Rutjes, 2001; Uchidal *et al.*, 2013). Currently, four *Leptopoma* species could be identified from the specimens collected in Sabah. Of these, *Leptopoma undatum* (Metcalf, 1851) and *Leptopoma atricapillum* (Sowerby, 1843) can be found in Borneo and the Philippines (Vermeulen, 1999). *Leptopoma sericatum* (Pfeiffer, 1851) is distributed in Borneo (Vermeulen, 1999). *Leptopoma pellucidum* (Grateloup, 1840) is widely spread in Sabah but the actual global range is unknown due to taxonomy uncertainty (Vermeulen, 1999). Its putative synonym, *L. vitreum* (Lesson, 1830), has a wide range encompassing Taiwan, South Asia, and Papua New Guinea (Vermeulen, 1999).

Leptopoma undatum is readily distinguished from the others by its uniform white shell (translucent when young and opaque when old) and distinctive shell shape (i.e. relatively less convex whorls and sharply keeled at the last whorl). The other three species, *Leptopoma atricapillum*, *L. sericatum* and *L. pellucidum*, are very similar in terms of shell shape with all showing and sharing colour pattern polymorphism. *L. atricapillum* and *L. sericatum*, however have strongly-defined spiral ridges on the shell surface, with more pronounced spiral ridges in the former, whereas the spiral ridges of *L. pellucidum* are only weakly defined.

The Cyclophoridae represents the most diverse Caenogastropoda family, but it remains poorly resolved taxonomically. Delimitation among subgenera and species in Cyclophoridae has long been a conundrum for taxonomists due to exceptionally diverse variation in morphology (e.g. subgenera in genus *Cyclophorus* and *Alycaeus* (Kobelt, 1902; Gude, 1921)). Vermeulen (1999) identified two major challenges with using shell characters to discriminate between six species of Bornean *Leptopoma*. First, the majority of species are similar in shell morphology and this limits the number of shell characters that can be used as diagnostic characters at species level. Second, there appears to be a continuum of variation in some characters (i.e. size, shape, colour

patterns), particularly between *L. pellucidum* and *L. sericatum* and this contributes to uncertainty when delimiting species. Thus it is clear that to date, the implications of the intra- and inter-specific variation in shell morphology have not been studied systematically and comprehensively in the context of the taxonomy of this genus.

This study had three aims. (1) To estimate the molecular phylogenetic relationship of three similar yet polymorphic *Leptopoma* species in Sabah to investigate the monophyly of *L. sericatum*, *L. pellucidum* and *L. atricapillum* based on two mitochondrial genes (16S RNA and COI) and nuclear gene (ITS-1). (2) To test the phylogenetic signal of three qualitative and six quantitative shell characters to evaluate their reliability as diagnostic characters. (3) To compare the differences in shell characters of two *Leptopoma* species, *L. sericatum* and *L. pellucidum*, at two locations, where they co-occur and are abundant to understand the geographical variations in shell characters under consideration and further assess their reliability as diagnostic characters.

MATERIALS AND METHODS

All the *Leptopoma* specimens included in this study were obtained from the BORNEENSIS Mollusca collection at the Institute of Tropical Biology and Conservation in Universiti Malaysia Sabah. The collection houses more than 4000 specimens of *Leptopoma* spp. collected since 2000 from various locations in Sabah (Figure 1). From this comprehensive collection, 77 alcohol-preserved specimens of four species (*L. sericatum*, *L. pellucidum*, *L. atricapillum*, *L. undatum*) were selected for molecular analysis. 249 empty shells of adult snails of *L. sericatum* (114) and *L. pellucidum* (135) from Balambangan Island and the Kinabatangan region, where both species exist sympatrically were selected for morphological analysis (Supplementary File 1). These *Leptopoma* specimens were identified as either *L. pellucidum* or *L. sericatum* on the basis of the presence/absence of distinct spiral ridges on the shell (Vermeulen, 1999).

Data Collection

Genetic Data

Genomic DNA was extracted from a total of 77 individuals preserved in 70% ethanol, but sequence data for at least two genes could only generated for 17 of these (Table S1 in Supplementary File 2). DNA was extracted from foot tissue by using DNeasy extraction kit (Qiagen Inc., Hilden, Germany) according to manufacturer instructions. We used two mitochondrial genes, the protein coding COI (cytochrome oxidase 1) and the non-coding 16S rRNA, and one nuclear gene ITS-1 (internal transcribed spacer 1). Universal primers LCO1490 (5'-GGTCAACAAATCATAAAGATATTGG-3') and HCO2198 (5'-TAACTTCAGGGTGACCAAAAATCA-3') were used to amplify and sequence COI (Folmer *et al.*, 1994). The 16s rRNA region was amplified using primers 16Sar (5'-CGCCTGTTTATCAAAAACAT-3') and 16Sbr (5'-CCGGTCTGAACTCAGATCACGT-3') (Kessing *et al.*, 1989). ITS-1 region was PCR-amplified using the primers 5.8c (5'-

GTGCGTTCGAAATGTCGATGTTCAA-3') and 18d (5'-CACACCGCCCGTCGCTACTACCGATTG-3') (Hillis & Dixon, 1991). Thermal cycling was performed with pre-denaturation at 90°C for 2 minutes, denaturation at 94°C for 45 seconds, one minute of annealing at 55°C, 60°C, and 54°C for COI, 16s, and ITS-1 respectively, extension at 72°C for one minute followed by final extension at 72°C for 5 minutes. The denaturation, annealing and extension steps were repeated for 35 cycles. The PCR products were sequenced at MacroGen, Inc. (Korea). All sequences were subsequently uploaded and stored in Barcoding of Life Database (BOLD, <http://www.boldsystems.org>, Ratnasingham & Hebert, 2007), under the project title "*Leptopoma* in Sabah" (Code: LEPT).

Shell Morphological Characters Data

Shell form in this study included both quantitative (i.e size and shape) and qualitative (i.e colour patterns, spiral ridges and presence/absence dark apertural band) shell characters. These morphological characters were evaluated from the apertural view of the 264 shells examined in total (i.e. the 249 dry specimens and 14 adult specimens included in the phylogenetic analysis). First, high quality photographs were taken of the aperture of each shell with the aid of a Leica Stereo Microscope M205. Five quantitative linear measurements, namely shell height (SH), shell width (SW), aperture height (AH), aperture width (AW), and shell spire height (SpH) were then measured directly from the photographs using Leica Application Suite software (Fig. 2A). A sixth quantitative shell character – the ratio of shell height to width – was computed. Next, the states for two qualitative shell characters (i.e. eight distinct shell colour patterns and presence/absence of the dark apertural band) were recorded for each of the shells (Figs. 2C, 2D; see Table S2 in Supplementary File 2 for the descriptions of the eight shell colour patterns).

Data Analysis

Molecular Phylogenetic Analysis

In addition to the sequences collected from 17 specimens in this study, 16S and COI sequences of *L. tigris*, *L. vitreum* and an outgroup species - *Cyclophorus formosensis* (Nevill, 1882) from Lee *et al.* (2008a) and Nantararat *et al.* (2014a) - were obtained from GenBank (Supplementary File S1, Page 1: Table S1 for informations of specimens). All the DNA sequences were aligned and checked manually using Bioedit v7.1.9 (Hall, 1999). In order to find the best-fit model of substitution, jModelTest2 (Darriba *et al.*, 2012) as implemented in CIPRES portal (Miller *et al.*, 2010) was performed based on corrected Akaike Information Criterion (AICc) for ITS-1 sequences, 16S sequences and each of the codon positions of COI sequences. Phylogenetic trees were estimated using Maximum likelihood (ML) and Bayesian Inference methods (BI) as implemented in CIPRES portal (Miller *et al.*, 2010). ML analysis was conducted using Raxml-HPC2 (Stamatakis, 2014) with 1000 rapid bootstraps. BI analysis was performed using MrBayes v3.2.3 (Huelsen & Ronquist, 2001). This consisted of running four simultaneous chains for

100,000 generations and 10 sampling frequency. The first 250 trees were discarded as burn-in, while the rest were used to obtain the final consensus tree.

Phylogenetic Signal Analysis

Phylogenetic signal analysis was used to investigate the relationship between phylogeny and morphology, with all the analyses done in the R statistical environment, version 3.1.3 (R Core Team, 2015). The tips in the tree corresponding to juvenile specimens and outgroup taxa were excluded by using package 'ape' (Paradis *et al.*, 2004). The final tree for phylogenetic signal analysis consisted of 14 adults of the three *Leptopoma* species, *L. atricapillum*, *L. pellucidum*, and *L. sericatum*. The six quantitative and three qualitative shell characters were mapped onto the tree by utilising package 'phytools'. Phylogenetic signals for each of these nine shell characters were examined using maximum likelihood (λ) (Pagel, 1999) and K (Blomberg *et al.*, 2003). The consensus tree was transformed into an ultrametric tree after which a lambda analysis was performed using the 'chronopl' function from the 'ape' package (Paradis *et al.*, 2004). As a result, a chronogram was generated using penalised likelihood with an arbitrary lambda value of 0.1, the alternative model. A null model, the *Leptopoma* phylogenetic tree with $\lambda = 0$ (no phylogenetic signal), was generated using the 'rescale' function from the 'geiger' package (Harmon *et al.*, 2008). The λ value of each shell character was estimated for both models using the 'fitDiscrete' function for three qualitative shell characters and 'fitContinuous' function for six quantitative shell characters in the 'geiger' package (Harmon *et al.*, 2008). Likelihood scores for the alternative and null models were compared by performing a likelihood ratio test in order to examine the phylogenetic signal in each shell character, wherein Blomberg's K was calculated using the 'physig' function from the 'phytool' package (Revell, 2012; R script in Supplementary File 3).

Geographical Variation in Shell Morphology Analysis

Two-way ANOVA tests were performed to determine if there were differences in the six quantitative shell characters between: (i) the two *Leptopoma* species (*L. pellucidum* and *L. sericatum*), and (ii) the two locations (Balambangan Island and Kinabatangan). In addition, the interaction effects of both factors (species and location) were tested. A Shapiro-Wilk test for normality (Shapiro & Wilk, 1965), and a Levene's test (Brown & Forsythe, 1974) for homogeneity of variance, revealed that some datasets were not normally distributed and showed non-homogeneity of variances (Table S3 & S4 in Supplementary File 2). Nevertheless, two-way ANOVA tests were still conducted since the deviations of these datasets from the ANOVA assumption were considered not too serious, and the ANOVA was considered a robust test against the normality assumption (Zar, 1999).

Chi-square two-way contingency table tests were performed to determine whether the shell colour patterns and the presence/absence of a dark apertural band were associated with species identity and location respectively. Prior to the analyses, four two-way contingency tables

were produced. These summarised frequencies as follows: (1) shell colour patterns vs. species, (2) shell colour patterns vs. location, (3) dark apertural band vs. species, and (4) dark apertural band vs. location. Each of the tables was analysed by using Pearson's Chi-squared test. When the expected frequency in the contingency table was less than 5, a Fisher exact test was performed instead of the Pearson's Chi-squared test (Bower, 2003). All the statistical analyses were performed in the R statistical environment version 3.1.3 (R Core Team, 2015) with the significant p-values set at 0.05. (R script in Supplementary File 3).

RESULTS

The molecular phylogeny of the *Leptopoma* species in Sabah

A total of 660 nucleotide sites were aligned for the COI gene, 558 nucleotide sites for the 16S gene and 627 nucleotide sites for ITS-1 (Supplementary File 4). Gaps were treated as missing data and were retained in all phylogenetic analyses. The aligned COI dataset consisted of 36.9% GC content, 207 (31.4%) parsimony informative, and 253 (38.3%) variable sites. The aligned 16S gene had 33.3% GC content with 276 (49.8%) parsimony informative and 406 (73.3%) variable sites. On the other hand, aligned ITS-1 gene had 48.6% GC content, 158 (25.2%) parsimony informative, and 274 (43.7%) variable sites. Phylogenetic analyses were run for four datasets: three single-gene datasets (ITS-1, COI, 16S) and a concatenated dataset of the three genes. The tree was rooted on the outgroup *Cyclophorus formosensis* (Fig. 3).

Best-fitted models were selected based on the corrected Akaike Information Criterion (AICc); the models were TPM3uf+G for ITS-1, TIM3+G for 16S, TIM3ef+G, TPM3uf+I, and TPM3uf+G respectively for first, second and third codons of COI. These models were used in both ML and BI analyses. Phylogenetic trees from the ML and BI analyses of the concatenated dataset showed no conflict in tree topology. The monophyly of the three *Leptopoma* species (*L. sericatum*, *L. pellucidum* and *L. atricapillum*) in Sabah was consistently strongly supported (posterior probability of 100% and bootstrap support greater than 75).

Phylogenetic signals in shell characters of the *Leptopoma* species

Figure 4 shows the correlation between phylogeny and the quantitative and qualitative shell characters for *L. sericatum*, *L. atricapillum* and *L. pellucidum*. A phylogenetic signal test based on Pagel's λ and Blomberg's K showed that spiral ridges and the presence/absence of dark apertural band represented a strong signal with $\lambda = 1$ and $K > 1$ ($K = 4.536$ for spiral ridges and $K = 1.114$ for dark apertural band) (Table 1). However, shell colour pattern, a character that is often used as a diagnostic character in traditional classification, showed a weak phylogenetic signal ($\lambda = 0.997$, $K = 0.234$). Among the quantitative shell characters, shell height exhibited a strong signal according to Pagel's λ although Blomberg's K gave a weak phylogenetic signal. The ratio of shell height to width (SH/SW) exhibited the weakest phylogenetic signal among all the shell characters ($\lambda = 0$, $K = 0.054$).

Geographical Variation in Shell Forms

Two-way ANOVA showed that all shell quantitative characters (except aperture height) differed between the two locations (Table 2, Fig. 5). In addition, all shell quantitative characters except shell width and aperture height also differed between the two species. There was interactive effect of species and location on the aperture height, shell spire height and ratio of shell height to width.

Chi-square analyses indicated a significant association between the frequencies of shell colour patterns and both species identity (Fisher's exact test: $p = 0.0000$) and location (Fisher's exact test: $p = 0.0000$). On the other hand, there was a fairly significant association between the frequency of presence/absence of dark apertural band and species identity (Pearson's Chi-Squared with Yates' continuity correction: $X^2 (1, N=249) = 4.019, p = 0.0449$) but not with location (Pearson's Chi-Squared with Yates' continuity correction: $X^2 (1, N=249) = 1.5505, p = 0.2131$). Both contingency tables are available in Table S5 & S6 in Supplementary File 2. Overall, the shell characters considered in this study did not show consistent differences between *L. pellucidum* and *L. sericatum* since the differences in shell forms were coupled with geographical variations and interaction effects between geography and species.

DISCUSSION

This study presents the first molecular phylogeny investigation on genus *Leptopoma* in Sabah, one of the many understudied genera within the Cyclophoridae, and examines the concordance between morphology and phylogeny as well as geographical variation in shell form.

We found consistently significant support for the monophyly of the three morphologically similar Sabah *Leptopoma* species, *L. pellucidum*, *L. sericatum* and *L. atricapillum*. This finding is in concordance with the existing traditional morphology-based classification. For example, take the placement of *Leptopoma pellucidum* 6014 (Fig. 3) in our phylogeny, this population was previously assumed to be *L. vitreum* (Lesson, 1830) due to its uniformly white shell, but we have shown that it falls within the *L. pellucidum* clade, and this provides support to Vermeulen (1999)'s decision to assign *L. vitreum* from Sabah to *L. pellucidum*. In the case of *L. pellucidum* and *L. sericatum*, the presence of intermediate forms between the two species led Vermeulen to recognise them as being distinct on a purely provisional basis. In this study, results suggested that the two species could be unequivocally regarded as separate. In short, the findings of this study are in line with past research in this region which proposed that a combination of morphology and molecular approaches could improve taxonomy of land snails (Nantararat *et al.*, 2014a, 2014b; Liew *et al.*, 2009; Liew *et al.*,

2014). However, we aware that this findings still need to be verified with more specimens of both species from their entire distribution range outside of Sabah.

A morphological character is assumed to have strong phylogenetic signal when the same character clusters together within closely-related species (Blomberg *et al.*, 2003). This could be a useful diagnostic indicator for species delimitation. The phylogenetic signal tests showed that spiral ridges had a significant phylogenetic signal ($\lambda=1$, $K>1$). Distinct spiral ridges were present in *L. sericatum* and *L. atricapillum*, while *L. pellucidum* had weak spiral ridges. This indicated that weak spiral ridges might be an automorphy character for *L. pellucidum* which could be useful in discriminating *L. pellucidum* from *L. sericatum* and *L. atricapillum*. This result was in agreement with Vermeulen's (1999) work where spiral ridges were also used as a key to delimit *L. pellucidum* and *L. sericatum*.

The presence of a dark apertural band has not been observed in other cyclophorids and was not mentioned in other revisionary works of *Leptopoma* species. Results showed that the presence/absence of a dark apertural band exhibited a significant phylogenetic signal and does not associate with geography for two of the species. Nevertheless, association of dark apertural band with species identity was fairly significant. Our results showed that dark apertural band only present in some *L. sericatum*, with this character being observed at just two sites (i.e. Kinabatangan and the Tabin Wildlife Reserve area). However, when observing all the specimens in the *BORNEENSIS* collection, we found that such character is actually present in both *L. pellucidum* and *L. sericatum*. The apertural band of *L. pellucidum* was darker than *L. sericatum*. We also observed that dark apertural band is generally present in shells with thickened outer lip (gerontic shell) and a high abundance of shells that such character can be found in the Tabin Wildlife Reserve area. This might indicate a longer life span of *Leptopoma* species in the area, though this requires proper investigation. Overall, our findings here suggest that although this character shows a strong phylogenetic signal, it is not an appropriate character for species-level identification in *Leptopoma*.

Shell colour patterns are usually used as one of the key determinants to discriminate between species in traditional taxonomic classification. One of the sister taxa of *Leptopoma*, the species in genus *Cyclophorus*, was distinguished unambiguously based on shell patterns that were also supported by molecular data (Nantararat *et al.*, 2014b). Compared to genus *Cyclophorus*, shell colour patterns of the *L. sericatum* and *L. pellucidum*, exhibited a weak phylogenetic signal. This case of shell colour pattern polymorphisms of the two *Leptopoma* species is similar to other well-known land snails such as *Cepaea nemoralis* and *C. hortensis* (Owen & Bengtson, 1972; Ozgo & Schilthuizen, 2012; Cameron & Cook, 2012; Cameran, 2013). However, unlike *Cepaea* land snails that have been studied extensively, the causal mechanism for the *Leptopoma* land snail's diverse shell colour patterns is still unknown. This study also revealed that the *Leptopoma* species in Sabah exhibits idiosyncratic differences between locations in the degree of shell

colour patterns polymorphism. For example, the *Leptopoma* population at Balambangan Island has more shell colour patterns as compared to the population at Kinabatangan. As a result, the geographically-associated variations in shell colour patterns and weak phylogenetic signal strongly indicate that this character is unreliable as a diagnostic character for the identification of the *Leptopoma* species considered in this study.

Significant inter- and intra-specific variations in quantitative shell characters have been noted both in family Cyclophoridae (Lee *et al.*, 2012; Nantararat *et al.*, 2014b) and in other gastropods (Kameda *et al.*, 2007; Desouky & Busais, 2012; Hirano *et al.*, 2014). In Vermeulen's (1999) descriptions of *L. sericatum* and *L. pellucidum*, the ratio of shell height to width of *L. sericatum* is slightly smaller than *L. pellucidum*. However, intermediate in ratio of shell height to width between the two species occur and lead to weak phylogenetic signal in this character. From the phylogenetic signal test, only shell height produced a significant signal. Nevertheless, this study revealed a high degree of geographical variations in the quantitative shell characters; for example, both *Leptopoma* species from Balambangan Island were larger than the same species found in Kinabatangan. Previous studies suggested that land snails found on islands tend to undergo extensive morphological diversification (Johnson & Black, 2000; Stankowski, 2011). In view of this, quantitative shell characters are thus not advisable as a diagnostic indicator to delimit among these two *Leptopoma* species in Sabah due to the strong influence of geographical variations.

While our findings reflected the reliability of 'hard' character (i.e. shell sculpture) over colour patterns and banding, and revealed considerable geographical variation in some shell characters, the findings from this study were based exclusively on *Leptopoma* species from Sabah. For future work to improve the taxonomy of this genus, the study needs to be extended to include larger numbers of specimens from a larger geographical area. In addition, more genetic markers and examination of reproductive characters are required to elucidate comprehensive phylogeny and morphological variation among the *Leptopoma* species

CONCLUSION

This study has revealed partial information on the phylogeny and morphology variations of all *Leptopoma* species in their entire distribution range. Despite its small geographical scale, the study has resolved taxonomic uncertainties of three *Leptopoma* species in Sabah and revealed notable variations in both the quantitative and qualitative shell characters for the species. From the findings, it is suggest that any future revisionary attempt of the taxonomy on the rest of *ca.* 100 *Leptopoma* species should consider the possible caveats in using the shell characters as the sole evidence and should include molecular markers in the study. Further studies that include more samples from a wider geographical reach are strongly recommended.

ACKNOWLEDGEMENTS

We would like to thank Cornelius Peter for his help with molecular lab work and Joumin Rangkasan who assisted with fieldwork. This project was carried out by CCP and PSH as part of their undergraduate honours degree dissertation. We thank Rudiger Bieler, Siong Kiat Tan and an anonymous reviewer for their constructive comments.

SUPPLEMENTARY FILES

SUPPLEMENTARY FILE 1. Raw data for shell morphological analysis.

SUPPLEMENTARY FILE 2. Table S1. Specimen information; Table S2. Description of shell colour patterns, Table S3 & S4. Results of the normality tests and homogeneity of variances tests prior to ANOVA; Table S5 & S6. Frequency data for shell qualitative characters used in chi-square tests.

SUPPLEMENTARY FILE 3. R script for shell morphological data and phylogenetic signal analysis.

SUPPLEMENTARY FILE 4. FASTA file for the concatenated DNA sequences dataset for COI, 16S, and ITS-1.

REFERENCES

Blomberg, S. P., Garland, T., & Ives, A. R. 2003. Testing for phylogenetic signal in comparative data: behavioral traits are more labile. *Evolution*, 57(4): 717-745.

Bower, K. M. 2003. When to use Fisher's exact test. In American Society for Quality, Six Sigma Forum Magazine, 2(4): 35-37.

Brown, M. B., & Forsythe, A. B. 1974. Robust tests for the equality of variances. *Journal of the American Statistical Association*, 69(346), 364-367.

Cain, A. J., & Sheppard, P. M. 1954. Natural selection in *Cepaea*. *Genetics*, 39(1): 89.

Cameron, R. A., & Cook, L. M. 2012. Habitat and the shell polymorphism of *Cepaea nemoralis* (L.): interrogating the Evolution Megalab database. *Journal of Molluscan Studies*, 78(2), 179-184.

Cameron, R. A. 2013. The poor relation? Polymorphism in *Cepaea hortensis* (OF Müller) and the Evolution Megalab. *Journal of Molluscan Studies*, 79(2), 112-117.

Colgan, D., Ponder, W. F., & Eggler, P. E. 2000. Gastropod evolutionary rates and phylogenetic relationships assessed using partial 28S rDNA and histone H3 sequences. *Zoologica Scripta*, 29(1): 29-63.

- 387 Colgan, D. J., Ponder, W. F., Beacham, E., & Macaranas, J. M. 2003. Gastropod phylogeny
388 based on six segments from four genes representing coding or non-coding and mitochondrial or
389 nuclear DNA. *Molluscan Research*, 23(2): 123-148.
- 390 Colgan, D. J., Ponder, W. F., Beacham, E., & Macaranas, J. 2007. Molecular phylogenetics of
391 Caenogastropoda (Gastropoda: Mollusca). *Molecular Phylogenetics and Evolution*, 42(3): 717-
392 737.
- 393 Darriba, D., Taboada, G. L., Doallo, R., & Posada, D. 2012. jModelTest 2: more models, new
394 heuristics and parallel computing. *Nature methods*, 9(8): 772-772.
- 395 Desouky, M., & Busais, S. 2012. Phylogenetic relationships of the land snail *Eobania*
396 *vermiculata* (Müller, 1774) from Egypt and Saudi Arabia. A combined morphological and
397 molecular analysis. *The Journal of Basic & Applied Zoology*, 65(2): 144-151.
- 398 Folmer, O., Back, M., Hoeh, W., Lutz, R. & Vrijenhoek, R. 1994. DNA primers for
399 amplification of mitochondrial cytochrome c oxidase subunit I from diverse metazoan
400 invertebrates. *Mol. Mar. Biol. Biotech*, 3: 294–299.
- 401 Godwin- Austen, L., & HH, C. 1891. 4. On a collection of land-shells made in Borneo by Mr. A.
402 Everett, with Descriptions of supposed new species. In *Proceedings of the Zoological Society of*
403 *London*, 59(1): 22-48.
- 404 Grateloup, JPS. de. 1840. Memoire sue plusieurs especes de coquilles nouvellesou peu connues
405 de mollusque exotiques, vivants, terrestres, fluviatiles et marins. *Actes de la Societe Linneenne*
406 *de Bordeaux* 11: 389-455.
- 407 Gude, G. K., 1921.Mollusca. III. Land Operculates (Cyclophoridae, Truncatellidae,
408 Assimineidae, Helicinidae) in *The Fauna of British India*, London, i-xiv, 1-386, 42figs, 2 pls
- 409 Hall, T. A. 1999. BioEdit: a user-friendly biological sequence alignment editor and analysis
410 program for Windows 95/98/NT. In *Nucleic acids symposium series*, 41: 95-98.
- 411 Harmon L. J, Jason T. W, Chad D. B, Richard E. G, & Wendell Challenger. 2008. GEIGER:
412 investigating evolutionary radiations. *Bioinformatics*, 24:129-131.
- 413 Hillis, D. M., & Dixon, M. T. 1991. Ribosomal DNA: molecular evolution and phylogenetic
414 inference. *The Quarterly review of biology*, 66(4), 411-453.
- 415 Hirano, T., Kameda, Y., Kimura, K., & Chiba, S. 2014. Substantial incongruence among the
416 morphology, taxonomy, and molecular phylogeny of the land snails *Aegista*, *Landouria*,
417 *Trishoplita*, and *Pseudobuliminus* (Pulmonata: Bradybaenidae) occurring in East Asia.
418 *Molecular phylogenetics and evolution*, 70: 171-181.
- 419 Huelsenbeck, J.P., Ronquist, F.R., Nielsen, R., Bollback, J.P., 2001. Bayesian inference of
420 phylogeny and its impact on evolutionary biology. *Science* 294, 2310–2314.

- 421 Johnson, M.S. & Black, R. 2000. Associations with habitat versus geographic cohesiveness: size
422 and shape of *Bembicium vittatum* Philippi (Gastropoda: Littorinidae) in the Houtman Abrolhos
423 Islands. Biological Journal of the Linnean Society. 71:563-580.
- 424 Jonges, K. 1980. Genital ducts in several species of the cyclophorid genus *Leptopoma* (Mollusca,
425 Mesogastropoda). Bijdragen tot de Dierkunde, 50: 292-302.
- 426 Kameda, Y., Kawakita, A., & Kato, M. 2007. Cryptic genetic divergence and associated
427 morphological differentiation in the arboreal land snail *Satsuma (Luchuhadra) largillierti*
428 (Camaenidae) endemic to the Ryukyu Archipelago, Japan. Molecular phylogenetics and
429 evolution, 45(2): 519-533.
- 430 Kessing, B., Croom, H., Martin, A., McIntosh, C., McMillan, W. O., & Palumbi, S. 1989. The
431 simple fool's guide to PCR. Department of Zoology, University of Hawaii, Honolulu, 1-23.
- 432 Kobelt, W. 1902. Cyclophoridae. Das Tierreich 16: 1-662.
- 433 Lee, Y. C., Lue, K. Y., & Wu, W. L. 2008a. A molecular phylogenetic investigation of
434 *Cyathopoma* (Prosobranchia: Cyclophoridae) in East Asia. Zoological Studies, 47(5): 591-604.
- 435 Lee, Y. C., Lue, K. Y., & Wu, W. L. 2008b. Molecular evidence for a polyphyletic genus
436 *Japonia* (Architaenioglossa: Cyclophoridae) and with the description of a new genus and two
437 new species. Zootaxa. 1792: 22-38.
- 438 Lee, Y. C., Lue, K. Y., & Wu, W. L. 2012. The Phylogeny and Morphological Adaptations of
439 *Cyclotus taivanus* ssp.(Gastropoda: Cyclophoridae).Malacologia, 55(1), 91-105.
- 440 Lesson, R. P. 1831. Mollusca. – In: voyage autour du monde, exécuté par ordre du Roi, sur la
441 corvette de Sa Majesté, La Coquille, pendant les années 1822-1825. 2(1): 1-471. Paris.
- 442 Liew, T. S., Schilthuizen, M., & Vermeulen, J. J. 2009. Systematic revision of the genus
443 *Everettia* Godwin-Austen, 1891 (Mollusca: Gastropoda: Dyakiidae) in Sabah, northern Borneo.
444 Zoological Journal of the Linnean Society, 157(3): 515-550.
- 445 Liew, T. S., Vermeulen, J. J., Marzuki, M. E., & Schilthuizen, M. 2014. A cybertaxonomic
446 revision of the micro-land snail genus *Plectostoma* Adam (Mollusca, Caenogastropoda,
447 Diplommatinidae), from Peninsular Malaysia, Sumatra and Indochina. ZooKeys, 393: 1-107.
- 448 Laidlaw, F. F. 1937. Notes on the land Mollusca from Mount Kinabalu, British North
449 Borneo. The Bulletin of the Raffles Museum, 13: 177-189.
- 450 Metcalfe W., 1851. An enumeration of species of recent shells, received by W.J. Hamilton. Esq.,
451 from Borneo, in November 1850. With descriptions of new species. Proceedings of the
452 Zoological Society of London 19: 70-74.

453 Miller, M.A., Pfeiffer, W., & Schwartz, T. 2010. Creating the CIPRES Science Gateway for
454 inference of large phylogenetic trees. In, Proceedings of the Gateway Computing Environments
455 Workshop (GCE), 14 Nov. 2010, New Orleans, LA pp 1-8.

456 Nantarat, N., Tongkerd, P., Sutcharit, C., Wade, C. M., Naggs, F., & Panha, S. 2014a.
457 Phylogenetic relationships of the operculate land snail genus *Cyclophorus* Montfort, 1810 in
458 Thailand. *Molecular Phylogenetics and Evolution*, 70: 99-111.

459 Nantarat, N., Wade, C. M., Jeratthitikul, E., Sutcharit, C., & Panha, S. 2014b. Molecular
460 evidence for cryptic speciation in the *Cyclophorus fulguratus* (Pfeiffer, 1854) species complex
461 (Caenogastropoda: Cyclophoridae) with description of new species. *PloS one*, 9(10), e109785.

462 Owen, D. F., & Bengtson, S. A. 1972. Polymorphism in the land snail *Cepaea hortensis* in
463 Iceland. *Oikos*, 218-225.

464 Özgo, M., & Schilthuizen, M. 2012. Evolutionary change in *Cepaea nemoralis* shell colour over
465 43 years. *Global Change Biology*, 18(1), 74-81.

466 Pagel, M. 1999. The maximum likelihood approach to reconstructing ancestral character states of
467 discrete characters on phylogenies. *Systematic biology*, 612-622.

468 Paradis E., Claude J. & Strimmer K. 2004. APE: analyses of phylogenetics and evolution in R
469 language. *Bioinformatics*, 20: 289-290.

470 Pfeiffer, L., 1851. Descriptions of forty-three new species of Cyclostomatacea, from collection
471 of H. Cumming, Esq. *Proceedings of Zoological Society of London*, 19: 242-251.

472 R Core Team. 2015. R: A language and environment for statistical computing. R Foundation for
473 Statistical Computing, Vienna, Austria. URL <http://www.R-project.org/>.

474 Ratnasingham, S., & Hebert, P. D. 2007. BOLD: The Barcode of Life Data System (<http://www.barcodinglife.org>). *Molecular Ecology Notes*, 7(3): 355-364.

476 Revell, L. J. 2012. phytools: An R package for phylogenetic comparative biology (and other
477 things). *Methods Ecol. Evol.*, 3: 217-223.

478 Sarasin P, Sarasin F. 1899. Die Land-Mollusken von Celebes. Wiesbaden: Kreidel. 15-25.

479 Schilthuizen, M., & Rutjes, H. A. 2001. Land snail diversity in a square kilometre of tropical
480 rainforest in Sabah, Malaysian Borneo. *Journal of Molluscan Studies*, 67(4): 417-423.

481 Shapiro, S. S., & Wilk, M. B. 1965. An analysis of variance test for normality (complete
482 samples). *Biometrika*, 52(3-4), 591-611.

483 Stamatakis, A. 2014. RAxML Version 8: A tool for Phylogenetic Analysis and Post-Analysis of
484 Large Phylogenies. *Bioinformatics* 10.1093/bioinformatics/btu033.

485 Stankowski, S. 2011. Extreme, continuous variation in an island snail: local diversification and
 486 association of shell form with the current environment. *Biological Journal of the Linnean Society*,
 487 104(4): 756-769.

488 Uchidal, R., Yahya, B. E., Ahmad, A. H., Sapaat, A., & Tomiyamal, K. 2013. Land snail fauna
 489 of Sabah, Borneo, Malaysia. *Venus*. 71(1/2): 49-59.

490 Vermeulen, J. J. 1999. Notes on the non-marine molluscs of the island of Borneo 9. The genera
 491 *Cyclophorus*, *Leptopoma*, and *Craspedotropis* (Gastropoda Prosobranchia:
 492 Cyclophoridae). *Basteria*, 63(4/6): 139-163.

493 Zar, J.H. 1999. *Biostatistical Analysis*, 4th ed., New Jersey: Prentice-Hall Inc

494 Zilch, A., 1954. Die Typen und Typoide des Natur-Museums Senckenberg, 13 Mollusca,
 495 Cyclophoridae, Cyclophorinae-Cyclophoreae (1). *Archiv für Molluskenkunde* 83:141-157.

496

497

Figure 1

Distribution map of four *Leptopoma* species in Sabah based on the records from *BORNEENSIS* Mollusca collection, Universiti Malaysia Sabah and localities of molecular samples.

Each circle represents a collection lot for a single *Leptopoma* species with the size of circle indicating the number of specimens in the lot (smallest circle = 1 individuals; largest circles = 140 individuals). The insets (A) and (B) show the sympatric populations of *L. sericatum* and *L. pellucidum* (i.e. on Balambangan Island and in Kinabatangan), which were used for shell morphological analysis. Orange triangles show localities of specimens for molecular study.

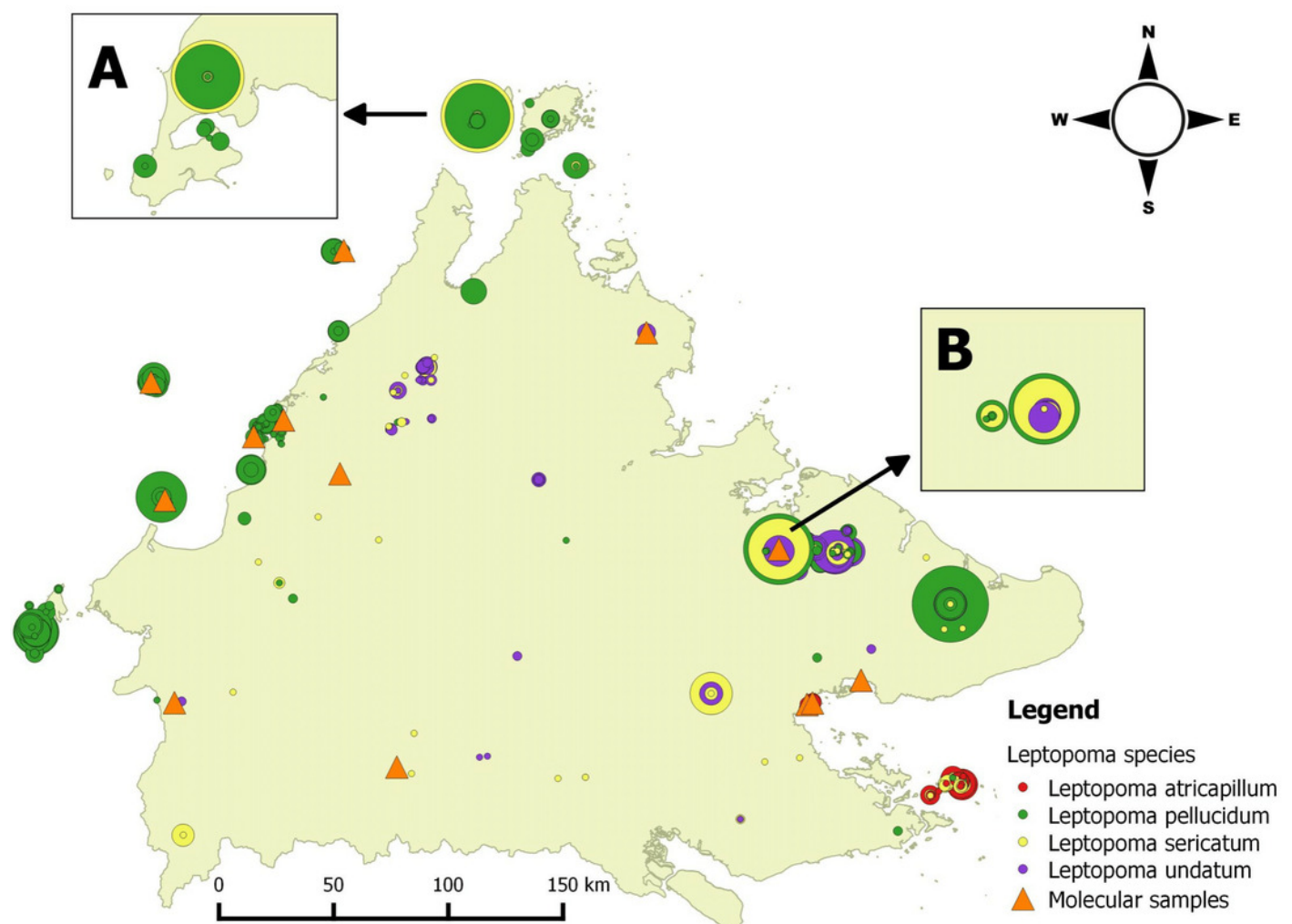


Figure 2

Qualitative and quantitative shell characters included in the study were assessed on the basis of the shell apertural view.

(A) The five shell quantitative measurements: SH - Shell height, SW - Shell width, AH - Aperture height, AW - Aperture width, SpH - Shell spire height. (B) Spiral ridges: Left - Strong, Right - Weak. (C) The eight distinct shell colour patterns identified in the study. (D) Dark apertural band: Left - Presence, Right - Absence.

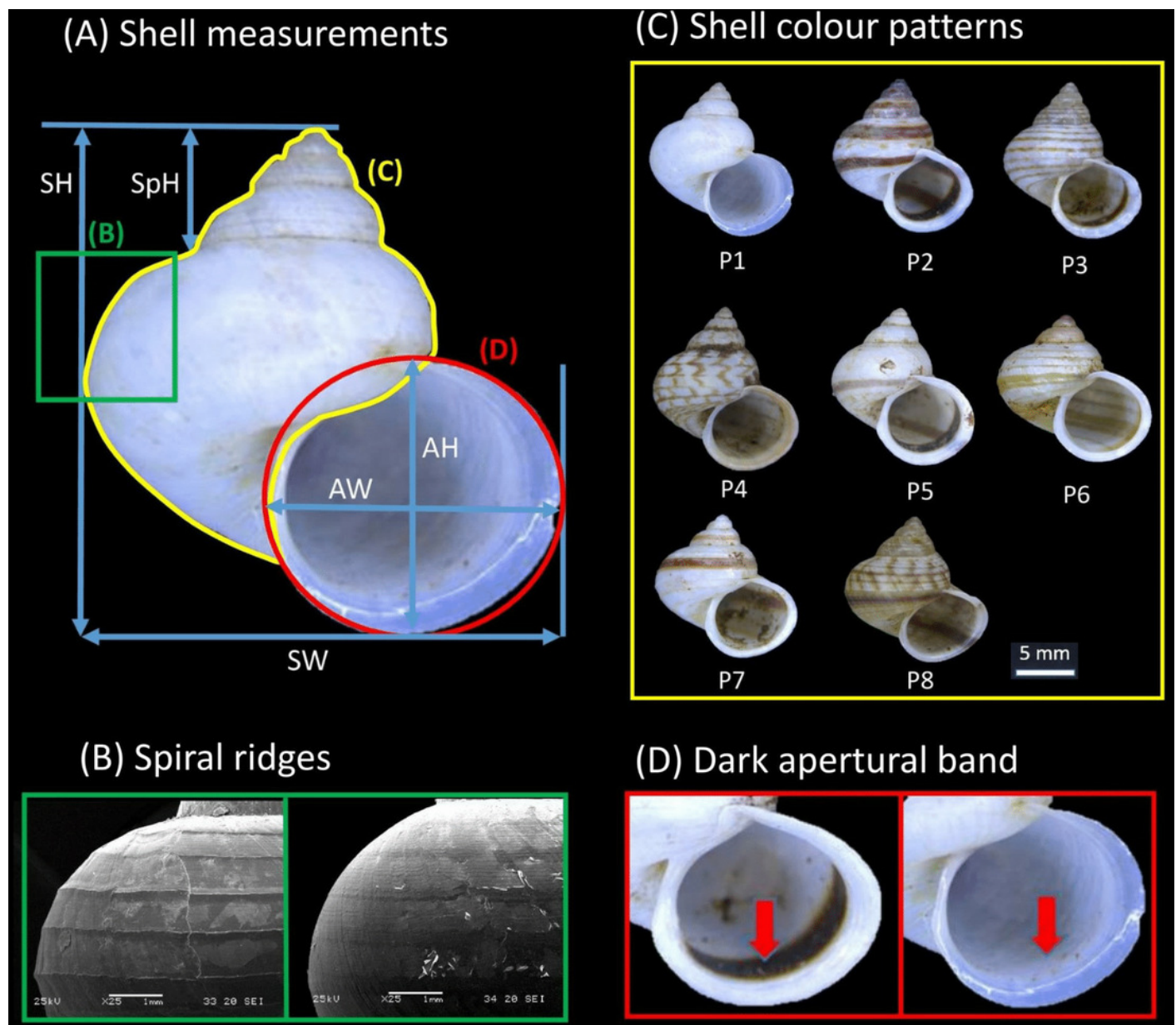


Figure 3

Bayesian inference tree of *Leptopoma* spp. based on concatenated dataset of 16S, COI and ITS-1.

Support values on branches are Bayesian posterior probability (BI) followed by maximum likelihood (ML) bootstrap value. Internal branches with ML bootstrap value = 100% and PP value =100 were not represents in the figure. The number shown beside each specimen of Sabah *Leptopoma* is the relevant specimen number (Table S1 in Supplementary File 2), and the specimens with asterisk are non-Borneo's *Leptopoma* species (i.e sequences obtained from Genbank). Clades A, B and C indicate the three Sabah species of focal interest. Scale bar for branch length = 0.1 substitutions per site.

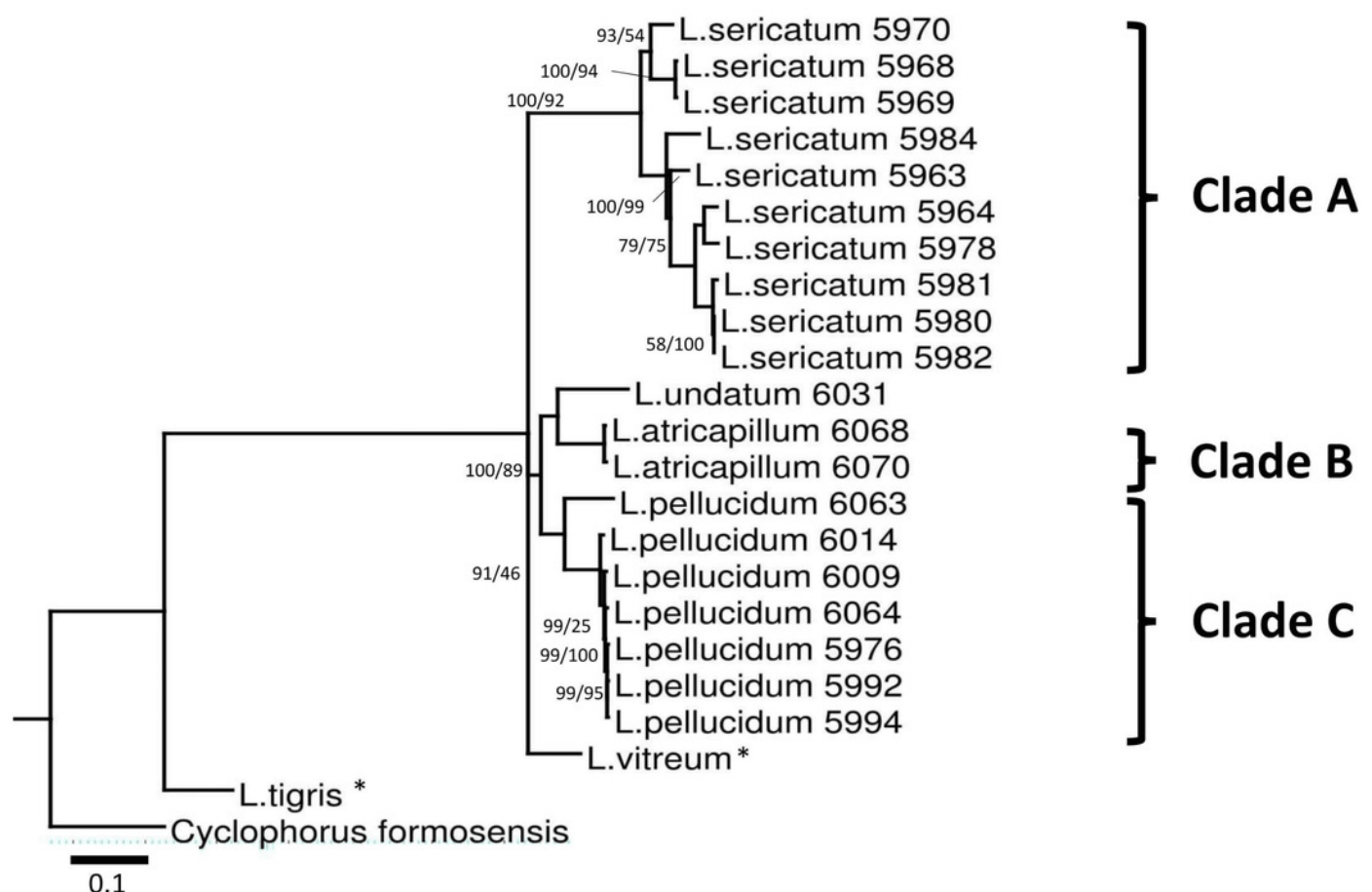


Figure 4

Shell quantitative and qualitative shell characters as mapped on to the phylogenetic tree.

Tree as in Figure 3 with the juvenile specimens were dropped from the tree and only the 14 adult specimens of the three *Leptopoma* species were retained. Different categories of the three qualitative shell characters: spiral ridges, shell colour patterns and dark apertural band (Figures 1A, 1B, 1C respectively) were represented by different colour of the squares; and the six shell quantitative measurements: shell height, shell width, aperture height, aperture width, shell spire height and ratio of shell height to width were represented by the size of the circle.

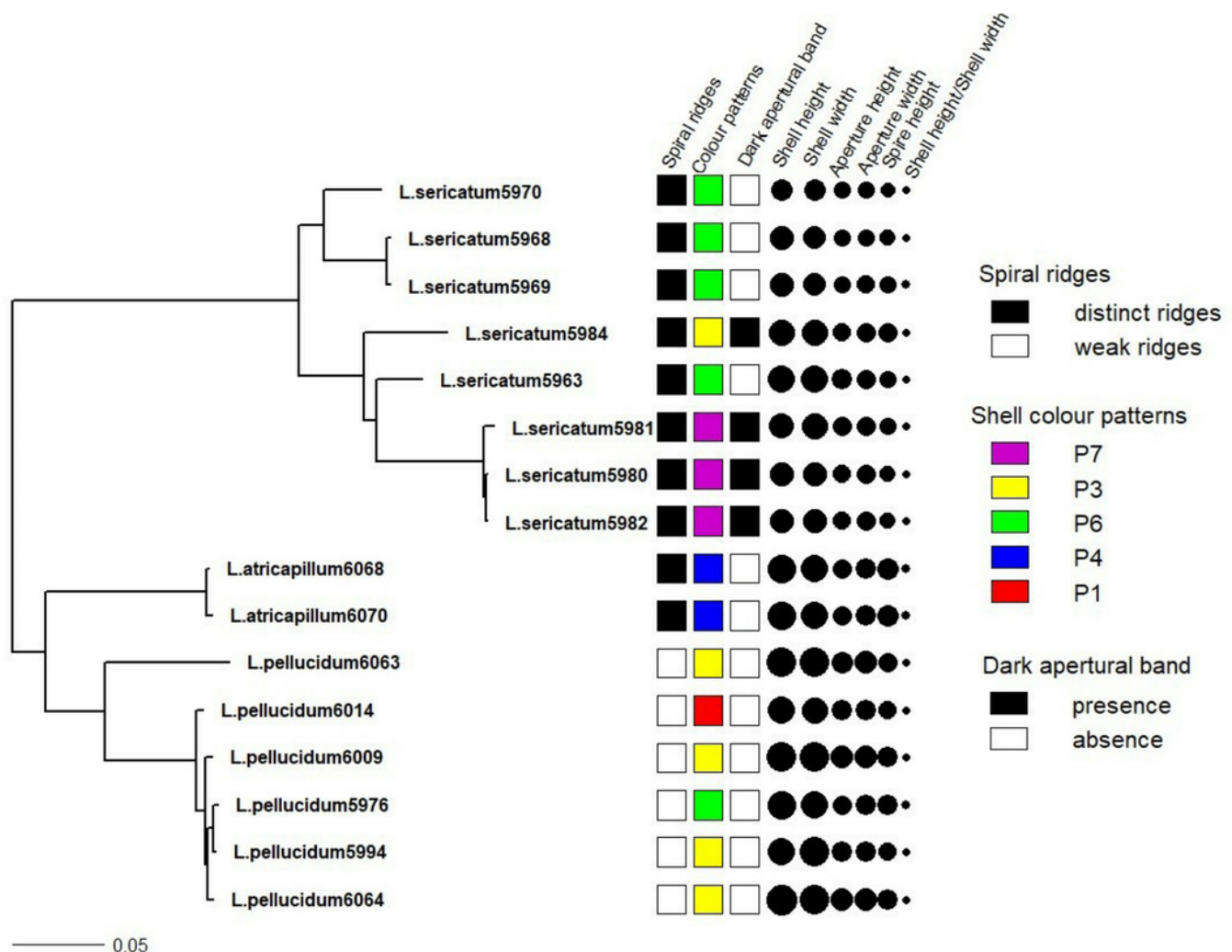


Figure 5

Boxplots show the differences of the six quantitative measurements of shell for the *Leptopoma pellucidum* and *L. sericatum* in each of the two locations (Balambangan Island and Kinabatangan region).

Grey boxplot indicated sample from Balambangan Island (BI) and white boxplot indicated sample from Kinabatangan (K). Sample sizes for each dataset were: BI-pellucidum (n=45); K-pellucidum (n=90); BI-sericatum (n=46); K-sericatum (n=68).

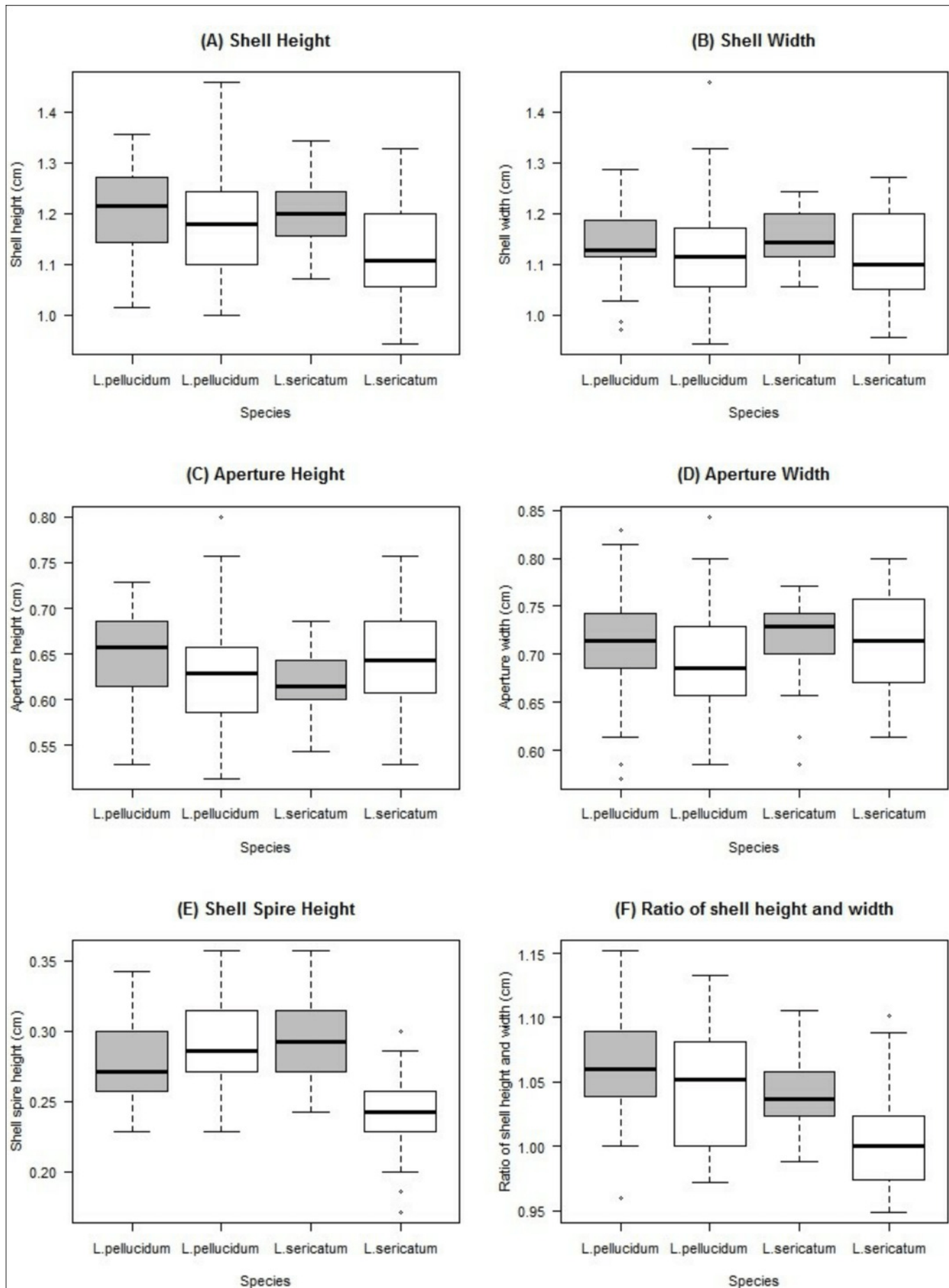


Table 1(on next page)

Phylogenetic signal test result acquired from Pagel's λ method and Blomberg's K method. Values equal to 1 or more than 1 were bolded.

Abbreviations: SH, shell height; SW, shell width; AH, aperture height; AW, aperture width; SpH, shell spire height; SH/SW ratio of shell height and width.

- 1 **Table 1.** Phylogenetic signal test result acquired from Pagel's λ method and Blomberg's K method.
- 2 Values equal to 1 or more than 1 were bolded.

Shell traits	Lambda (λ)	likelihood score (alternative model)	likelihood score (null model, $\lambda=0$)	p-value	K	P
Patterns	0.997	-17.986	-21.906	0.005	0.234	0.014
Spiral ridges	1.000	-3.654	-9.704	0.0005	4.490	0.001
Dark ring band	1.000	-4.418	-7.274	0.017	1.317	0.007
AH	0.998	-15.969	-21.266	0.001	0.518	0.001
AW	0.866	-16.641	-21.395	0.002	0.437	0.001
SpH	0.894	-17.850	-22.426	0.002	0.444	0.003
SH	1.000	-24.197	-29.651	0.0007	0.567	0.001
SW	0.829	-24.040	-29.651	0.001	0.442	0.001
SH/SW	0	17.147	17.147	1	0.056	0.320

- 3 Abbreviations: SH, shell height; SW, shell width; AH, aperture height; AW, aperture width; SpH,
- 4 shell spire height; SH/SW ratio of shell height and width.

5

Table 2 (on next page)

Two-way ANOVA for the effect of geographical variation and species identity on six quantitative shell traits. Significant p-values were bolded.

Abbreviations: SH, shell height; SW, shell width; AH, aperture height; AW, aperture width; SpH, shell spire height; SH/SW, ratio of shell height and width.

Table 2. Two-way ANOVA for the effect of geographical variation and species identity on six quantitative shell traits. Significant p-values were bolded.

	Geographical region			Species identity			Geographical* Species		
	df	F	P-value	df	F	P-value	df	F	P-value
SH	1	18.88	2.03e-05	1	12.763	0.0004	1	3.551	0.0607
SW	1	5.376	0.0212	1	0.104	0.7473	1	0.586	0.4447
AH	1	0.086	0.770	1	0.000	0.987	1	16.185	7.66e-05
AW	1	4.235	0.0407	1	4.399	0.0370	1	1.994	0.1592
SpH	1	24.92	1.14e-06	1	36.33	6.08e-09	1	80.01	< 2e-16
SH/SW	1	17.36	4.29e-05	1	62.10	1.07e-13	1	5.53	0.0195

Abbreviations: SH, shell height; SW, shell width; AH, aperture height; AW, aperture width; SpH, shell spire height; SH/SW, ratio of shell height and width.