

# The development of curvature in the porcine radioulna

Jess Pantinople<sup>1</sup>, Kyle McCabe<sup>1</sup>, Keith Henderson<sup>1</sup>, Hazel L Richards<sup>Corresp., 1</sup>, Nick Milne<sup>1</sup>

<sup>1</sup> School of Anatomy, Physiology and Human Biology, University of Western Australia, Perth, Western Australia, Australia

Corresponding Author: Hazel L Richards  
Email address: hazel.l.richards@gmail.com

Long bone curvature in animal limbs has long been a subject of interest and much work has explored why long bones should be curved. However, the 'when' and 'how' of curvature development is poorly understood. It has been shown that the rat tibia fails to attain its normal curvature if the action of muscles is removed early in life, but it is not clear if this is because the curvature fails to develop or if the bone becomes straighter without the action of muscles. No studies have examined the development of bone curvature in a normally developing quadruped, so this study tracks the course of curvature formation in the radioulna in a series of growing pigs. We also histologically examined the epiphyseal growth plates of these bones to determine if they contribute to the formation of curvature. In all three epiphyseal plates examined, the proliferative zone is thicker and more densely populated with chondrocytes on the cranial (convex) side than the caudal (concave) side. Frost's chondral modelling theory would suggest that the cranial side of the bone is under more compression than the caudal side, and we conclude that this is due to the action of triceps extending the elbow by pulling on the olecranon process. These results support the idea that bone curvature is an adaptation to habitual loading, where longitudinal loads acting on the curved bone cause bending strains that counter the bending resulting from the habitual muscle action.

# **1 The development of curvature in the porcine radioulna**

2 Jess Pantinople<sup>1</sup>, Kyle McCabe<sup>1</sup>, Keith Henderson<sup>1</sup>, Hazel L Richards<sup>1</sup>, Nick Milne<sup>1</sup>

3 <sup>1</sup>School of Anatomy, Physiology & Human Biology, The University of Western Australia, 35  
4 Stirling Highway, Crawley, WA, Australia

5 Corresponding author: Hazel L Richards<sup>1</sup>

6 Email: [hazel.l.richards@gmail.com](mailto:hazel.l.richards@gmail.com)

7

8

# 9 Abstract

10 Long bone curvature in animal limbs has long been a subject of interest and much work has  
 11 explored why long bones should be curved. However, the ‘when’ and ‘how’ of curvature  
 12 development is poorly understood. It has been shown that the rat tibia fails to attain its normal  
 13 curvature if the action of muscles is removed early in life, but it is not clear if this is because the  
 14 curvature fails to develop or if the bone becomes straighter without the action of muscles. No  
 15 studies have examined the development of bone curvature in a normally developing quadruped,  
 16 so this study tracks the course of curvature formation in the radioulna in a series of growing pigs.  
 17 We also histologically examined the epiphyseal growth plates of these bones to determine if they  
 18 contribute to the formation of curvature. In all three epiphyseal plates examined, the proliferative  
 19 zone is thicker and more densely populated with chondrocytes on the cranial (convex) side than  
 20 the caudal (concave) side. Frost’s chondral modelling theory would suggest that the cranial side  
 21 of the bone is under more compression than the caudal side, and we conclude that this is due to  
 22 the action of triceps extending the elbow by pulling on the olecranon process. These results  
 23 support the idea that bone curvature is an adaptation to habitual loading, where longitudinal  
 24 loads acting on the curved bone cause bending strains that counter the bending resulting from the  
 25 habitual muscle action.

26

27

28

# Introduction

Long bone curvature in animal limbs has been a subject of interest because it would seem to weaken the bone under weight-bearing conditions – that is, theoretically, curved bones are more prone to failure than straight bones (Bertram and Biewener 1988). Many studies have used strain gauges *in vivo* to examine the strains experienced by curved bones during locomotion (Lanyon and Baggott 1976; Lanyon and Bourn 1979). More contemporary studies have used finite element analysis to model these strains under load (Jade et al. 2014; Milne 2016), while others have studied the relationship between body size and bone curvature (Biewener 1983; Swartz 1990; Shackelford and Trinkaus 2002). It is widely understood that altering the mechanical environment of bones affects their growth (Mosley 2000) and metabolism (Uthoff & Jaworski 1979) – for instance, Lanyon (1980) showed that rat tibiae failed to attain normal curvature if loads were removed by sciatic neurectomy and patella tenotomy.

In their study, Lanyon (1980) stated that the tibia ‘fails to attain’ its normal curvature, but did not clarify whether the bone was initially straight and did not develop its normal curvature, or if it was initially curved and became straighter due to the intervention. Searching the literature failed to reveal a clear account of when and how the curvature of such bones appears. Therefore, the first aim of this study is to document when bone curvature develops, using radioulnae from a series of fetal through to six-month-old pigs (*Sus scrofa domesticus*). If the curvature of the radioulnae increases as the young pig grows and begins to use its forelimbs in locomotion, the idea of curvature development as a response to locomotor loading will be supported.

The second question addressed here is how such curvature develops. There are two ways a bone may alter its shape or size: endochondral growth during development, and surface remodelling. Frost (1973) described how bones might adjust their shape by surface remodelling in response to loading. Indeed, a curved bone under longitudinal loading would be expected to become straighter, because the concave surface would be under compression - and thus depository - and the convex side would be under tension and thus resorptive. Such a bone would straighten by surface remodelling (drift) under these loads. Conversely, Frost described how an eccentrically loaded bone may become curved by the same mechanism (Frost 1964).

Developing bones have epiphyseal growth plates which are the principal means of bone elongation. Frost (1979) described a chondral modelling theory – he suggested that articular or

epiphyseal growth cartilages respond to differences in loading: growing faster under physiological compression and slower under tension. Asymmetric growth at the distal femoral epiphysis has been shown to contribute to the orientation of the knee, producing the carrying angle in humans (Tardieu and Trinkaus 1994). Cartilage can also form at the site of repair in bone fractures, and it has been demonstrated, in newborn mice, that these chondrocytes respond in the same way to tension and compression as those concerned with epiphyseal growth (Rot et al. 2014). This is the mechanism by which these bones can straighten during fracture repair (Rot et al. 2014). It is possible that such uneven chondrocyte activity, in response to compressive and tensile loading, may be a way of producing curvature during development.

So, our second approach in this study is to examine the cranial and caudal sides of the epiphyseal plates of the porcine radius and ulna, and measure the thickness of the proliferative (growth) zone as well as the density of chondrocytes within this zone. This zone is identifiable as the area where chondrocytes appear flattened and are arranged in columns (Niehoff et al. 2004). If the growing bone is increasing in curvature, it is expected that the proliferative zone on the side of increasing convexity will be larger and more densely packed with chondrocytes than on the concave side.

# Materials & Methods

Twenty-two Duroc boar  $\times$  Landrace  $\times$  Large White crossbred pigs which died in the normal course of farming operations were collected from a pig farm in Western Australia (UWA Animal Ethics Committee approval F 69199). The pigs ranged in age from eight days prenatal to 23 weeks postnatal. The ages of the postnatal pigs were obtained from the supplier whereas those of the prenatal pigs were derived by measuring crown-rump length (Ullrey et al 1965). One additional 72-week-old pig was also used to compare the developing pigs with a mature adult. Each pig was weighed, the right radioulna removed and cleaned, and the bone length measured (Table 1). The radioulnae were photographed from the lateral side using a standardised orientation, ensuring the axis of the trochlea notch was vertical in each photograph. From the photographs, 16 landmarks and 80 semilandmarks were digitised in *tpsDig* (Rohlf 2016). The landmarks were chosen to describe the overall shape of the bone, and the semilandmarks were used to characterise the curvature of the bones' caudal and cranial surfaces in the sagittal plane (see Fig 1 and Table 2).

The coordinates of the three sets of semilandmarks, describing the curvature of the posterior ulna and the anterior and posterior radial margins, were translated, scaled and rotated so the proximal semilandmark was at the origin (0,0) and the distal semilandmark had the coordinate (1,0) (after Richmond and Whalen 2001). The largest Y-value among the semilandmarks represented the normalised curvature (i.e. maximum subtense/chord length).

97 Table 1. The age and weight of the pigs and the lengths of the radioulnae used.

98

Age (weeks)	Weight (kg)	length (mm)
-1.14	0.90	50.1
-0.57	1.06	63.4
-0.43	0.95	57.1
0	1.96	67.6
0	1.14	55.4
1	2.18	67.8
2	2.66	69.1
3	3.18	73.8
5	8.10	100.8
6	7.32	103.0
7	11.30	104.3
8	7.92	91.5
9	19.98	121.5
10	25.00	136.2
12	25.00	134.6
13	37.00	149.0
17	57.00	168
20	83.00	198
22	100.00	201
22	100.00	205
22	98.00	185
23	105.00	206
72	180.00	285

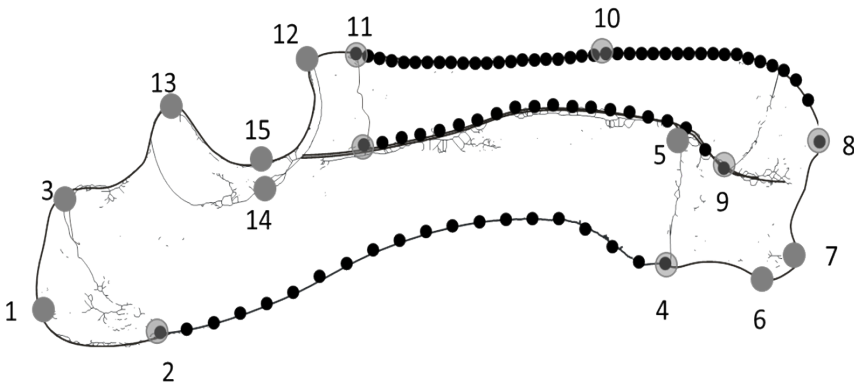


Figure 1. Diagram of a lateral view of the radioulna with the landmarks (numbered grey dots) and semilandmarks (black dots) used: 20 x posterior ulna, 20 x posterior radius and 40 x anterior ulna.

Table 2. The landmarks on the radioulna.

No.	Definition
1	Apex of olecranon
2	Proximal epiphyseal plate at posterior margin of ulna
3	Proximal epiphyseal plate at anterior margin of ulna
4	Distal epiphyseal plate at posterior margin of ulna
5	Distal epiphyseal plate at anterior margin of ulna
6	Posterior-most point of distal surface of ulna
7	Styloid process of ulna
8	Styloid process of radius
9	Distal epiphyseal plate at posterior margin of radius
10	Middle point of anterior margin of radius
11	Proximal epiphyseal plate at anterior margin of radius
12	Proximal epiphyseal plate at posterior margin of radius (lateral)
13	Midpoint of distal trochlear surface
14	Lateral point of mid-trochlear surface
15	Midpoint of mid-trochlear surface
16	Midpoint of proximal trochlear surface



The 96 landmarks were submitted to geometric morphometric analysis in *morphologika* (O'Higgins and Jones 1998). First the landmark sets were Procrustes registered so differences in size, position and orientation among the landmarks were removed and only differences in the shape described by the landmarks remained. The principal components analysis was applied to identify the main patterns of shape variation. As we were interested in the changes in shape that accompany growth, form space was used so that the first principal component (PC1) characterised the shape change with increasing size.

Six specimens of different ages (one week prenatal and one, five, nine, 17 and 22 weeks postnatal) were selected and their epiphyseal growth plates examined. The bones were sectioned in the sagittal plane, and samples of the distal ulnar, and proximal and distal radial epiphyseal plates were removed for histological analysis. The proximal ulnar plate was not included because it is a traction epiphysis for the olecranon process and does not form part of the shaft of the ulna ([Morgan et al. 2000](#)).

Each growth plate sample included the cranial and caudal sides of the epiphysis. The samples were fixed in 10% neutral buffered formalin, rinsed in 0.9% saline and then immersed in rapid decalcifier (Apex Engineering Products Corp., Aurora, IL, USA) for between two and four hours. When the samples were soft enough, they were rinsed in saline and agitated in phosphate-buffered saline (PBS) for 15 minutes, then placed in 30% sucrose solution made in PBS overnight. Samples were then agitated for 15 minutes in a 50:50 solution of PBS and OCT (optimal cutting temperature compound – ProSciTech, Thuringowa, QLD, Australia) before being embedded in OCT, frozen, and sectioned at 40 µm using a cryostat at -20°C (Leica CM 3050s). Each block had 25 sections cut and every fifth section was used. The sections were placed on *Superfrost Plus* slides (Lomb Scientific Pty Ltd., Taren Point, NSW, Australia) and air dried overnight. Initially the slides were rinsed and stained in the normal vertical orientation, but this resulted in the loss of some sections (so only four of the six distal radial sections were available). To avoid section loss, subsequent slides were laid horizontally, drops of tap water were used to wash off the OCT, and Gill's Haematoxylin I was applied for one minute before rinsing and mounting with *Kaiser's* aqueous mounting medium.

Images of the epiphyseal plates were captured at 100× magnification (Olympus BX50 microscope). The images were exported to *tpsDig*, and the thickness of the proliferative zone was measured in five locations 100 µm apart, and the mean recorded (Fig 2).

Chondrocytes in the proliferative zone were counted using the optical fractionator probe in *Stereo Investigator* (MBF Bioscience, Williston, VT, USA). This probe is used to directly count proliferating chondrocytes within a defined volume, which then produces an unbiased population estimate without being affected by the size, distribution and orientation of the chondrocytes within this zone (West, Slomianka & Gundersen 1991). The user identifies the region of interest (proliferative zone) in five sections of each tissue block and *Stereo Investigator* randomly selects 20 equidistant sampling sites in each section, so 100 sampling sites are counted for each tissue block (Fig 2). From these estimates of chondrocyte population, cell density was estimated by dividing cell count by the total volume of the sampling sites/optical *disectors* (West, Slomianka & Gundersen 1991).

Using the statistical package *Genstat* (18<sup>th</sup> edition, VSN International), Shapiro-Wilks tests were used to confirm normality of data. We then conducted linear regression to determine if the curvatures of the posterior ulna, posterior radius and anterior radius increased significantly with age. Paired t-tests were used to check for differences in the proliferative zone thickness and cell density between the cranial and caudal side of each epiphyseal growth plate.

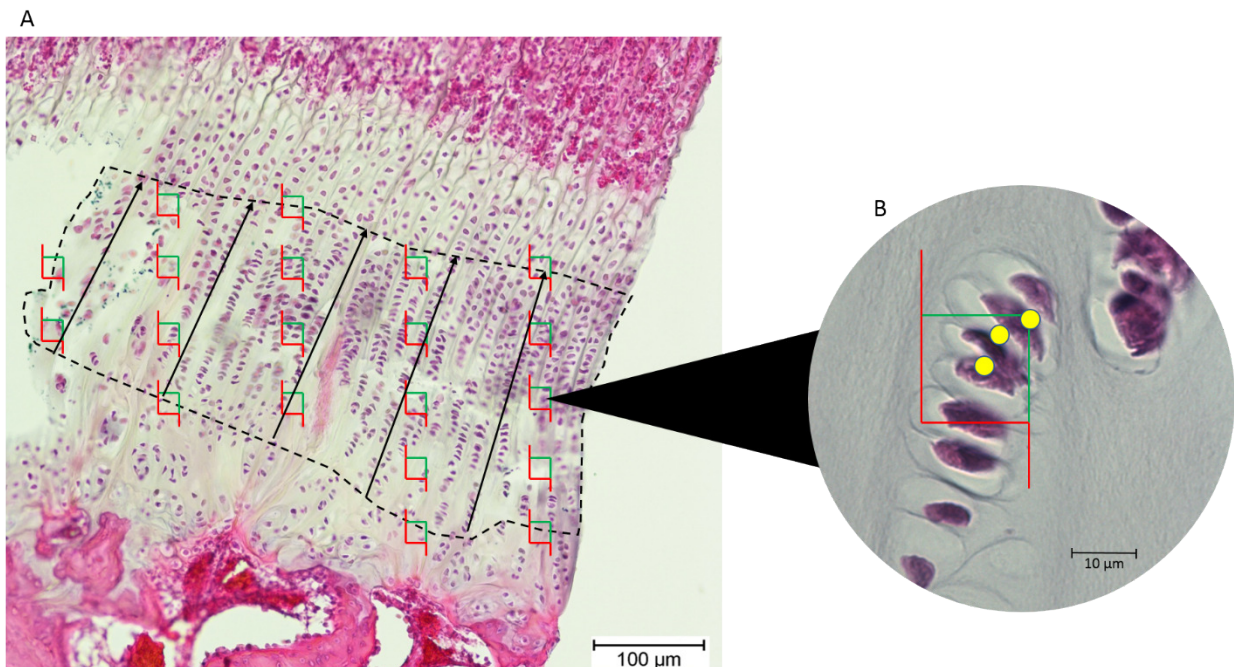


Figure 2. A: An epiphyseal plate with the proliferative zone outlined in dashed lines. Counting frames (green and red boxes) were placed equidistantly across the proliferative zone. The black lines represent the measured thickness of the proliferative zone. B: Inset at higher magnification, showing which cell nuclei (yellow dots) in each counting frame were counted by the software (those wholly within the frame and those intersecting the green boundary).

# Results

The age, weight and radioulnar length of the 23 pigs is shown in Table 1. These data are all highly correlated with one another ( $R > 0.95$ ). The 72-week-old pig was excluded from the statistical analyses, but is shown in Fig 3 to compare an adult pig with the developmental series.

Figure 3 shows wireframe diagrams representing the extremes of PC1 in a form space analysis of radioulna shape based on the 96 landmarks and semilandmarks. PC1 accounted for 98.5% of the variation and showed a 0.97 correlation with age. This figure shows that the olecranon process becomes larger and the trochlear notch becomes relatively smaller with age. The overall curvature of the radioulna increases and this is particularly evident in the distal areas.

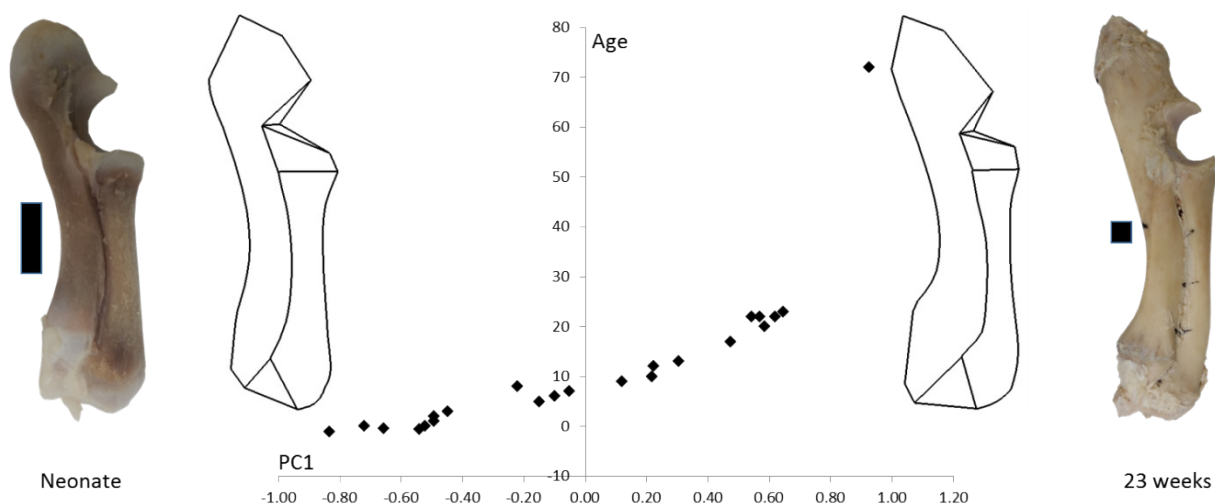


Figure 3. PC1 and age. Form space PC1 (98.5%) is plotted against age. Wireframe diagrams represent the shapes at the extremes of PC1 (-1 & +1), accompanied by representative photographs of neonatal and 23-week-old radioulnae (scale bars indicate 1 cm).

When the curvature measurements for the posterior ulna and the posterior and anterior margins of the radius are regressed against age, all three curves increase. This increase is only significant for the posterior ulna and anterior radial curves (Fig 4). The curvature value for the 72-week-old pig is also indicated, and shows that the adult curvature is attained in these pigs by 23 weeks of age. Indeed, the anterior radial curve diminishes somewhat in the older pig.

The mean thicknesses of the cranial and caudal sides of the epiphyseal proliferative zones are shown in Fig 5. Paired t-tests show that the cranial side is significantly thicker than the caudal side in all three growth cartilages examined ( $P < 0.01$ ). Figure 6 shows the chondrocyte density, and again paired t-tests show these cells are more densely packed on the cranial than the caudal side ( $P < 0.01$ ). Photomicrographs of the cranial and caudal sides of the three cartilage growth plates are shown in fig 7. In each case the cranial side is seen to have a greater chondrocyte density than the caudal side.

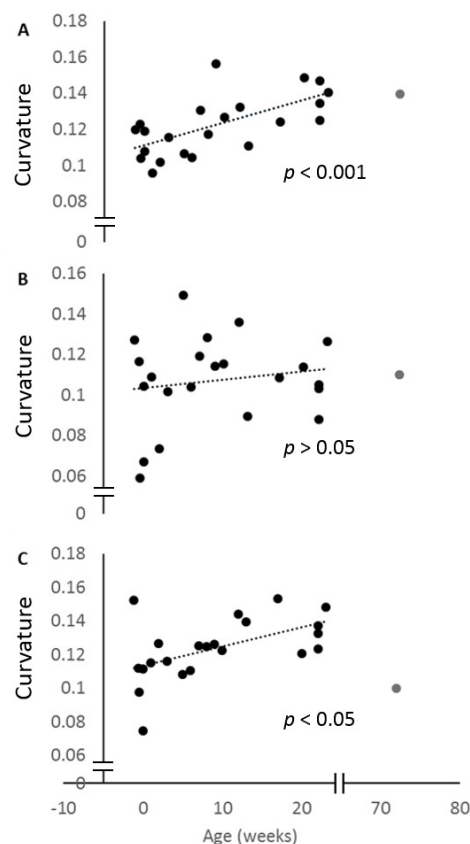


Figure 4. Change in curvature with age. Plots of the normalised curvature versus age for A) posterior ulna, B) posterior radius and C) anterior radius. The values for the 72-week-old pig (grey circle) are included to show how curvatures change beyond 23 weeks, but this specimen was not included in the regression analyses. The  $p$  values show the significance of the regression analyses.

189

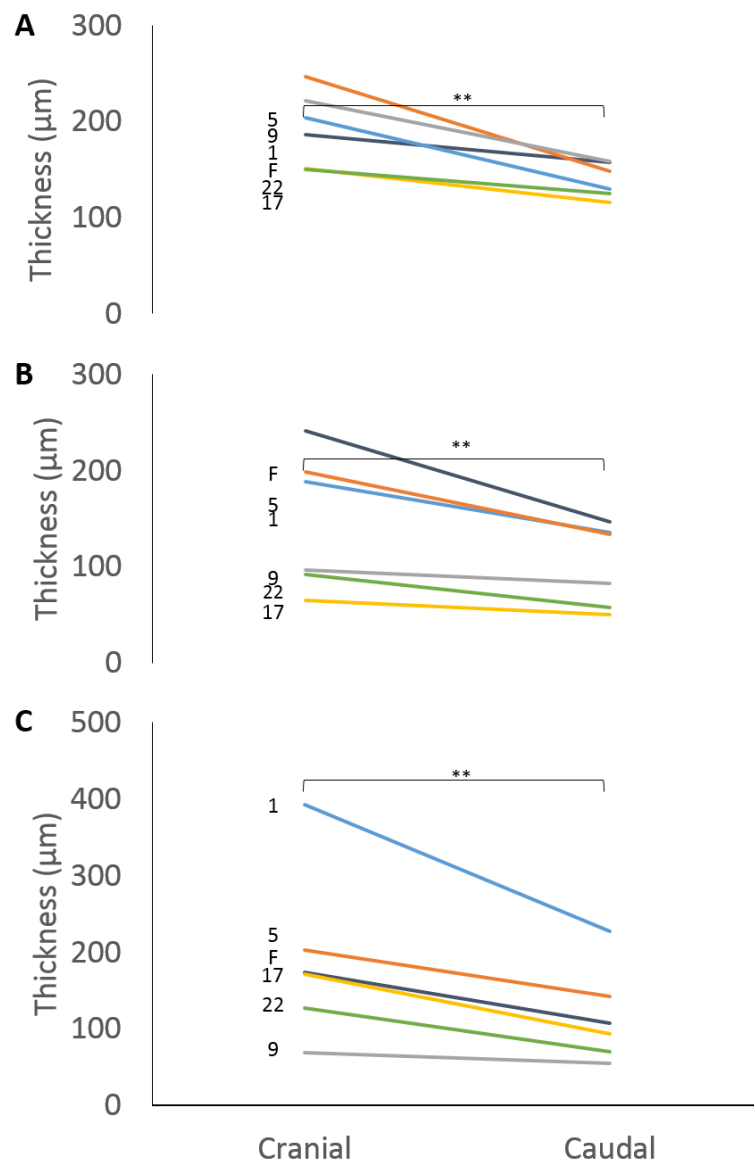


Figure 5. Thickness of the cranial and caudal regions of the proliferative zone in A) distal ulnar, B) proximal radial and C) distal radial epiphyseal growth plates. Individual lines represent a single specimen with age (in weeks) indicated. \*\*Paired t-tests show that that the cranial is significantly thicker than the caudal side ( $p < 0.01$ ).

190

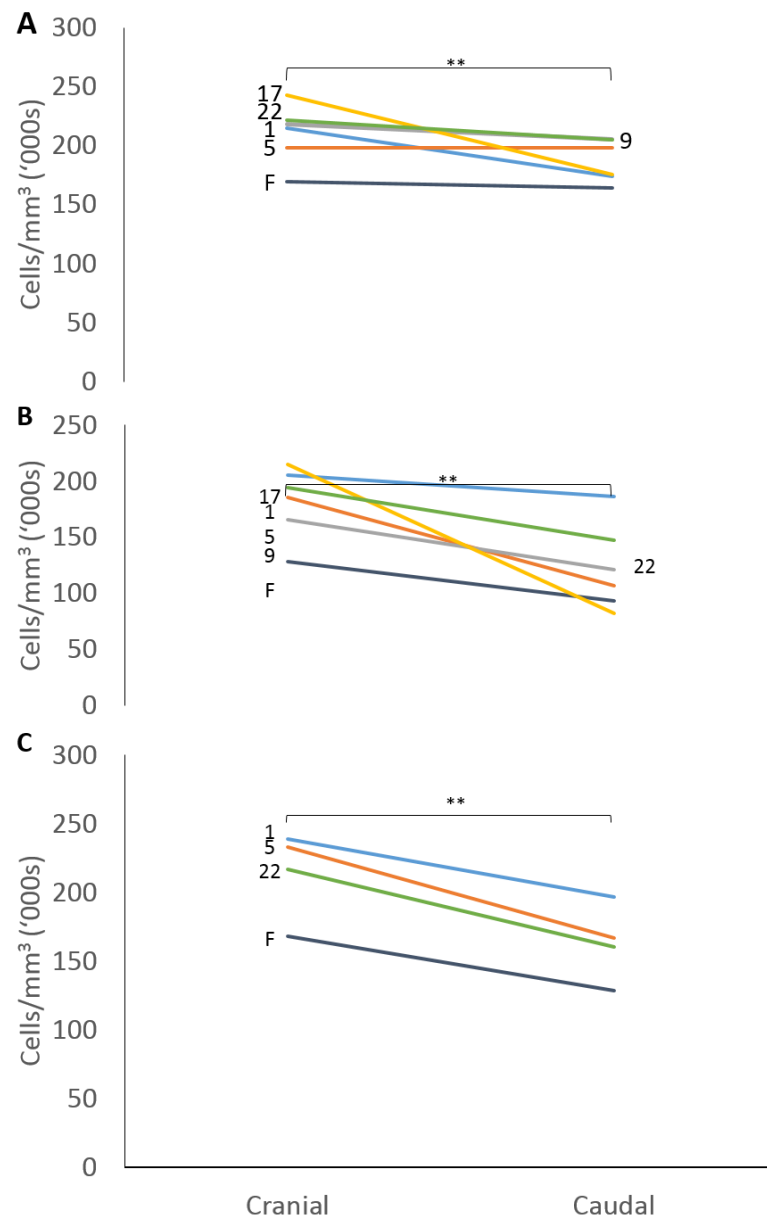


Figure 6. Chondrocyte density in the cranial and caudal regions of the proliferative zone in A) distal ulnar, B) proximal radial and C) distal radial epiphyseal growth plates. Individual lines represent a single specimen with age (in weeks) indicated. \*\*Paired t-tests show that that the cranial has a significantly denser chondrocyte population than the caudal side ( $p < 0.01$ ).



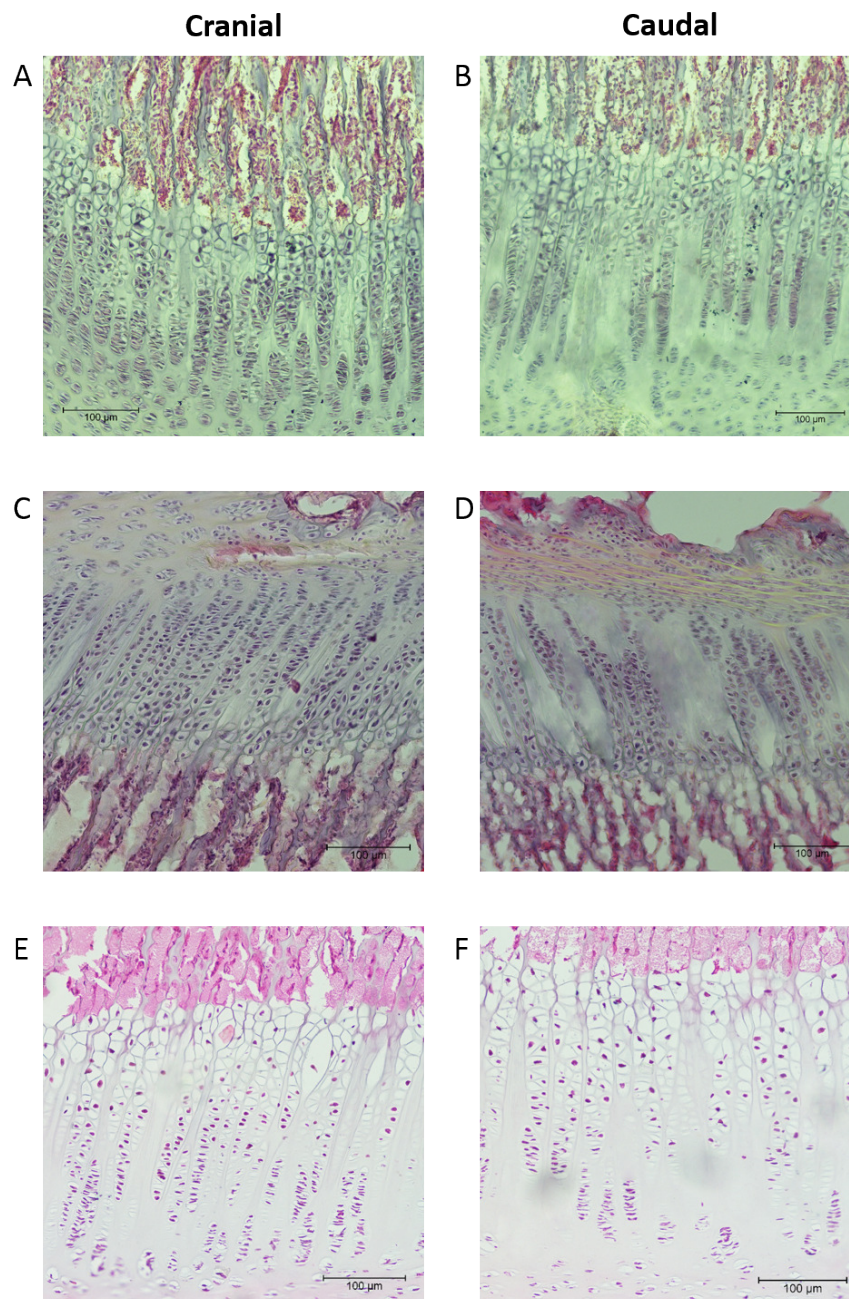


Figure 7. Photomicrographs showing examples of the cranial and caudal growth cartilages from the distal ulna (A and B), proximal radius (C and D) and distal radius (E and F). Sections A to D are 40μm thick and stained with haematoxylin. Sections E and F are 8μm thick and stained with haematoxylin and eosin. All sections are presented at the same magnification (see 100 μm scale bar).



# Discussion

This study explored the ‘when’ and the ‘how’ of curvature development in the pig radioulna. Both the radius and ulna were found to be caudally curved in near-term fetuses, and this curvature was shown to increase in the first six months of life. Examination of the epiphyseal growth plates showed more chondrocyte activity in the cranial (convex) side than the caudal (concave) side. This establishes a mechanism for the formation and maintenance of bone curvature during development. The differential growth in the cranial and caudal sides of the epiphysis may occur in response to bending strains that place the cranial side in compression and the caudal side in tension (or less compression) (Frost 1964, Milne 2016).

The geometric morphometric analyses and regressions of curvature against age showed that radioulnar curvature increased between two weeks prenatal and 23 weeks postnatal. This was true for both the entire bone, as seen in the GM analyses, and for the posterior ulnar and anterior radial margins individually. However, the posterior margin of the radius did not significantly increase in curvature over this period. The slope of the posterior radial curve regression line was shallower, and the variation among curve values greater, than in the other measured curvatures (see Fig 4). It may be that the contact between the posterior ulna and the anterior radius impedes curvature development there, or that clear identification of the anterior surface of the radius was difficult and affected our measurements.

Here we examined pigs between two weeks prenatal and 23 weeks postnatal. The prenatal pigs already had some curvature in their radioulnae so it is still uncertain whether this bone is curved throughout fetal life, or is straight during earlier stages of gestation. The initial fetal curvature seen here may be caused by primitive muscle actions *in utero*, causing forelimb movements. Such movements are at their greatest frequency around 15 days before birth (Cohen et al. 2010). Examination of younger fetuses would determine whether the radioulna is indeed curved during early gestation, or if it begins as a straight bone prior to any muscle loading. It is also uncertain whether curvature changes any further beyond 23 weeks, but the 72-week-old specimen suggests that adult curvature is not greater than that of a 23-week-old. The geometric morphometric analysis (Fig 2) and the linear regressions of curvature on age show that the 23-week-old pigs had already attained or even overshot the mature adult curvature.

Our analysis of the proliferative zone activity of the epiphyseal growth plates showed that this zone is thicker and more densely populated with chondrocytes on the cranial than the caudal side. In 1979, Frost proposed the chondral modelling theory – within the limits of physiological loading, cartilage grows faster under compression than tension, and grows slower under less compression than more. Numerous studies have supported this theory (e.g. Tardieu and Trinkaus 1994; Urban 1994; Hamrick 1999; Congdon et al 2012; Rot et al 2014). Asymmetrical growth of the epiphyseal plates can influence bone shape and was purported to be the mechanism behind both the normal formation of the carrying angle in human femora (Shackelford and Trinkaus 2002) and the straightening of bones as fractures heal (Rot et al. 2014). Formation of bone curvature may also be attributable to such asymmetrical epiphyseal plate growth, as our results here suggest.

Recently, Henderson and colleagues (2017) showed that the ulnae of terrestrial primates and marsupials are caudally curved, like that of the pig and other terrestrial quadrupeds. Conversely, the ulna of arboreal primates and marsupials is cranially curved. Terrestrial quadrupeds' forearm is dominated by the action of the triceps muscle acting to maintain extension of the elbow, but arboreal species rely on the action of the brachialis muscle to flex the elbow and allow the animal to climb and cling among the branches. The actions of triceps and brachialis place opposite bending strains upon the ulna, and it is proposed that the corresponding opposite curvatures are adaptations to those different bending strains (Milne 2016). If bone and cartilage are stimulated to grow by compressive loading and growth is inhibited by tension (Frost 1979), then this would provide a mechanism by which these opposite curvatures develop in terrestrial and arboreal species. In the case of the developing pig, where triceps acts to maintain stance during locomotion, the radioulna would experience cranial bending (with more compression on the cranial side). These bending strains may be responsible for the greater proliferation of cartilage cells in the cranial than the caudal side of the growth plates, and thus may be responsible for the development of the caudal curvature (caudal concavity) observed here.

## Conclusions

Until recently, the timing and the mechanism of bone curvature formation was unknown. Lanyon (1980) saw a straightening of the rat tibia in the absence of muscle action but did not specify

whether the bone curvature decreased or failed to form in the first place. The present study is the first to document that curvature does exist early in life, and increases as the animal grows.

Frost's (1979) chondral modelling theory was used to explain how congruent joint surfaces are maintained and how the femoral carrying angle forms – however, until now this mechanism has not been explicitly associated with curvature formation. The results presented here suggest that chondral modelling is also applicable to the formation of bone curvature. Further, it seems likely that the formation of radioulnar curvature may be a direct result of the habitual action of the triceps muscle, inducing a strain gradient that drives chondral modelling in the epiphyseal growth plates of the growing bone. This was a pilot study exploring the development of curvature and a possible mechanism of curvature formation; it is hoped that future studies will test these ideas and further explore the mechanism of long bone curvature formation.

# **Acknowledgements**

John Kopriwa provided the specimens used in the study. Lutz Slomianka, Mary Lee and Guy Ben-Ary assisted in the preparation and analysis of the cartilage samples.

# References

- Biewener, AA 1983, 'Allometry of quadrupedal locomotion: the scaling of duty factor, bone curvature and limb orientation to body size', *Journal of Experimental Biology*, vol. 105, pp. 147-171.
- Cohen, S, Mulder, EJH, van Oord, HA, Jonker, FH, Parvizi, N, van der Weijden, GC & Taverne, MAM 2010, 'Fetal movements during late gestation in the pig: A longitudinal ultrasonographic study', *Theriogenology*, vol. 74, no. 1, pp. 24-30.
- Congdon, KA, Hammond, AS & Ravosa, MJ 2012, 'Differential limb loading in miniature pigs (*Sus scrofa domestica*): a test of chondral modeling theory', *The Journal of Experimental Biology*, vol. 215, no. 9, pp. 1472-1483. Available from: PMC.
- Frost, HM 1964, *The Laws of Bone Structure*, Charles C Thomas, Springfield, IL.
- Frost, HM 1973, *Bone modelling and skeletal modelling errors*, Charles C. Thomas, Springfield, IL.
- Frost, H 1979, 'A chondral modeling theory', *Calcified Tissue International*, vol. 28, no. 1, pp. 181-200.
- Hamrick, MW 1999, 'A Chondral Modeling Theory Revisited', *Journal of Theoretical Biology*, vol. 201, no. 3, pp. 201-208.
- Henderson, K, Pantinople, J, McCabe, K, Richards, H & Milne, N 2017 'Forelimb bone curvature in terrestrial; and arboreal mammals', *PeerJ*, 5, p:e3229
- Jade, S, Tamvada, KH, Strait, DS & Grosse, IR 2014, 'Finite element analysis of a femur to deconstruct the paradox of bone curvature', *Journal of Theoretical Biology*, vol. 341, pp. 53-63.
- Lanyon, LE & Baggott, DG 1976, 'Mechanical function as an influence on the structure and form of bone', *The Journal of bone and joint surgery. British volume*, vol. 58-B, no. 4, p. 436-443.
- Lanyon, LE & Bourn, S 1979, 'The influence of mechanical function on the development of remodeling of the tibia' *The Journal of bone and joint surgery. British volume*, vol. 61-A pp263-272.
- Lanyon, LE 1980, 'The influence of function on the development of bone curvature. An experimental study on the rat tibia', *Journal of Zoology*, vol. 192, no. 4, pp. 457-466.

- 300 Milne, N 2016, 'Curved bones: An adaptation to habitual loading', *Journal of Theoretical*  
301 *Biology*, vol. 407, pp. 18-24.
- 302 [Morgan, JP, Wind, AP & Davidson, AP 2000, \*Hereditary bone and joint diseases in the dog:\*](#)  
303 [osteochondroses, hip dysplasia, elbow dysplasia, Schlütersche, Hanover.](#)
- 304 Mosley, JR 2000, 'Osteoporosis and bone functional adaptation: Mechanobiological regulation of  
305 bone architecture in growing and adult bone, a review', *Journal of Rehabilitation*  
306 *Research and Development*, vol. 37, no. 2, pp. 189-99. Available from: ProQuest Central.
- 307 Niehoff, A, Kersting, UG, Zaucke, F, Morlock, MM & Brüggemann, G-P 2004, 'Adaptation of  
308 mechanical, morphological, and biochemical properties of the rat growth plate to dose-  
309 dependent voluntary exercise', *Bone*, vol. 35, no. 4, pp. 899-908.
- 310 O'Higgins, P & Jones, N 1998, 'Facial growth in *Cercocebus torquatus*: an application of three-  
311 dimensional geometric morphometric techniques to the study of morphological variation',  
312 *Journal of Anatomy*, vol. 193, no. Pt 2, pp. 251-272. Available from: PMC.
- 313 Richmond, BG & Whalen, M 2001, 'Forelimb function, bone curvature and phylogeny of  
314 *Sivapithecus*', in *Phylogeny for the Neogene hominoid primates of Eurasia*, eds P  
315 Andrews, L de Bonis & GD Koufos, Cambridge University Press, Cambridge, pp. 326-  
316 348.
- 317 Rohlf, FJ 2004, *tpsDig*, Stony Brook Morphometrics. Available from:  
318 <http://life.bio.sunysb.edu/morph/>.
- 319 Rot, C, Stern, T, Blecher, R, Friesem, B & Zelzer, E 2014, 'A Mechanical Jack-like Mechanism  
320 Drives Spontaneous Fracture Healing in Neonatal Mice', *Developmental Cell*, vol. 31, no.  
321 2, pp. 159-170. [2016/02/29].
- 322 Shackelford, LL & Trinkaus, E 2002, 'Late Pleistocene human femoral diaphyseal curvature',  
323 *American Journal of Physical Anthropology*, vol. 118, no. 4, pp. 359-370.
- 324 Swartz, SM 1990, 'Curvature of the forelimb bones of anthropoid primates: Overall allometric  
325 patterns and specializations in suspensory species', *American Journal of Physical*  
326 *Anthropology*, vol. 83, no. 4, pp. 477-498.
- 327 Tardieu, C & Trinkaus, E 1994, 'Early ontogeny of the human femoral bicondylar angle',  
328 *American Journal of Physical Anthropology*, vol. 95, no. 2, pp. 183-195.
- 329 Uthoff, H & Jaworski, Z 1978, 'Bone loss in response to long-term immobilisation', *Bone &*  
330 *Joint Journal*, vol. 60-B, no. 3, pp. 420-429.

- Ullrey, DE, Sprague, JI, Becker, DE and Miller, ER, 1965, 'Growth of the swine fetus', *Journal of Animal Science*, vol. 24, no. 3, pp.711-717.
- Urban, JPG 1994, 'The chondrocyte: a cell under pressure', *Rheumatology*, vol. 33, no. 10, pp. 901-908.
- West, MJ, Slomianka, L & Gundersen, HJG 1991, 'Unbiased stereological estimation of the total number of neurons in the subdivisions of the rat hippocampus using the optical fractionator', *The Anatomical Record*, vol. 231, no. 4, pp. 482-497.