

***Proceraea exoryxae* sp. nov (Annelida, Syllidae, Autolytinae), the first known polychaete miner tunnelling into the tunic of an ascidian (#17038)**

1

First submission

Please read the **Important notes** below, the **Review guidance** on page 2 and our **Standout reviewing tips** on page 3. When ready [submit online](#). The manuscript starts on page 4.

Important notes

Editor and deadline

Christopher Glasby / 10 Apr 2017

Files

Please visit the overview page to [download and review](#) the files not included in this review PDF.

Declarations

Describes a new species.



Please read in full before you begin

How to review






When ready [submit your review online](#). The review form is divided into 5 sections. Please consider these when composing your review:

- 1. BASIC REPORTING**
- 2. EXPERIMENTAL DESIGN**
- 3. VALIDITY OF THE FINDINGS**
4. General comments
5. Confidential notes to the editor





 You can also annotate this PDF and upload it as part of your review

To finish, enter your editorial recommendation (accept, revise or reject) and submit.

BASIC REPORTING

-  Clear, unambiguous, professional English language used throughout.
-  Intro & background to show context. Literature well referenced & relevant.
-  Structure conforms to [PeerJ standards](#), discipline norm, or improved for clarity.
-  Figures are relevant, high quality, well labelled & described.
-  Raw data supplied (see [PeerJ policy](#)).

EXPERIMENTAL DESIGN

-  Original primary research within [Scope of the journal](#).
-  Research question well defined, relevant & meaningful. It is stated how the research fills an identified knowledge gap.
-  Rigorous investigation performed to a high technical & ethical standard.
-  Methods described with sufficient detail & information to replicate.

VALIDITY OF THE FINDINGS

-  Impact and novelty not assessed. Negative/inconclusive results accepted. *Meaningful* replication encouraged where rationale & benefit to literature is clearly stated.
-  Data is robust, statistically sound, & controlled.
-  Conclusions are well stated, linked to original research question & limited to supporting results.
-  Speculation is welcome, but should be identified as such.

The above is the editorial criteria summary. To view in full visit <https://peerj.com/about/editorial-criteria/>

7 Standout reviewing tips

3



The best reviewers use these techniques

Tip

Example

Support criticisms with evidence from the text or from other sources

Smith et al (J of Methodology, 2005, V3, pp 123) have shown that the analysis you use in Lines 241-250 is not the most appropriate for this situation. Please explain why you used this method.

Give specific suggestions on how to improve the manuscript

Your introduction needs more detail. I suggest that you improve the description at lines 57- 86 to provide more justification for your study (specifically, you should expand upon the knowledge gap being filled).

Comment on language and grammar issues

The English language should be improved to ensure that your international audience can clearly understand your text. I suggest that you have a native English speaking colleague review your manuscript. Some examples where the language could be improved include lines 23, 77, 121, 128 - the current phrasing makes comprehension difficult.

Organize by importance of the issues, and number your points

1. Your most important issue
2. The next most important item
3. ...
4. The least important points

Give specific suggestions on how to improve the manuscript

Line 56: Note that experimental data on sprawling animals needs to be updated. Line 66: Please consider exchanging "modern" with "cursorial".

Please provide constructive criticism, and avoid personal opinions

I thank you for providing the raw data, however your supplemental files need more descriptive metadata identifiers to be useful to future readers. Although your results are compelling, the data analysis should be improved in the following ways: AA, BB, CC

Comment on strengths (as well as weaknesses) of the manuscript

I commend the authors for their extensive data set, compiled over many years of detailed fieldwork. In addition, the manuscript is clearly written in professional, unambiguous language. If there is a weakness, it is in the statistical analysis (as I have noted above) which should be improved upon before Acceptance.

***Proceraea exoryxae* sp. nov (Annelida, Syllidae, Autolytinae), the first known polychaete miner tunnelling into the tunic of an ascidian**

Daniel Martin ¹ , Arne Nygren ² , Edwin Cruz-Rivera ^{Corresp.} ³

¹ (CEAB - CSIC), Centre d'Estudis Avançats de Blanes, Blanes, Spain

² Sjöfartsmuseet Akvariet, Göteborg, Sweden

³ Department of Biological Sciences, University of the Virgin Islands

Corresponding Author: Edwin Cruz-Rivera

Email address: edwin.cruzrivera@uvi.edu

While studying organisms living in association with the solitary tunicate *Phallusia nigra* (Asciacea, Ascidiidae) from a shallow fringing reef at Zeytouna Beach (Egyptian Red Sea), one of the collected ascidians showed peculiar perforations on its tunic. Once dissected, the perforations revealed to be the openings of a network of galleries excavated in the inner tunic (atrium) by at least six individuals of a polychaetous annelid. The worms belonged to the Autolytinae (Syllidae), a subfamily that is well known to include specialized predators and/or symbionts, mostly associated with cnidarians. The Red Sea worms are here described as *Proceraea exoryxae* sp. nov., which are anatomically distinguished by the combination of simple chaetae only in anterior chaetigers, and a unique trepan with 33 teeth in one outer ring where one large tooth alternates with one medium-sized tricuspid tooth, and one inner ring with small teeth located just behind the large teeth. Male and female epitokes were found together with atokous individuals within galleries. *Proceraea exoryxae* sp. nov. constitutes the first known miner in the Autolytinae and the second species in this taxon known to live symbiotically with ascidians. The implications of finding this specialised parasite are discussed considering that *P. nigra* has been introduced worldwide, in tropical and sub-tropical ecosystems, where it has the potential of becoming invasive.

***Proceraea exoryxae* sp. nov (Annelida, Syllidae, Autolytinae), the first known polychaete miner tunnelling into the tunic of an ascidian**

Daniel Martin¹, Arne Nygren² and Edwin Cruz-Rivera^{3*}

¹Centre d'Estudis Avançats de Blanes (CEAB - CSIC), 17300 Blanes (Girona), Catalunya, Spain

²Sjöfartsmuseet Akvariet, Karl Johansgatan 1-3, 41459 Göteborg, Sweden

³Department of Biological Sciences, University of the Virgin Islands, #2 John Brewers Bay, St. Thomas, Virgin Islands 00802

*Corresponding author: edwin.cruzrivera@uvi.edu

ABSTRACT

While studying organisms living in association with the solitary tunicate *Phallusia nigra* (Asciacea, Ascidiidae) from a shallow fringing reef at Zeytouna Beach (Egyptian Red Sea), one of the collected ascidians showed peculiar perforations on its tunic. Once dissected, the perforations revealed to be the openings of a network of galleries excavated in the inner tunic (atrium) by at least six individuals of a polychaetous annelid. The worms belonged to the Autolytinae (Syllidae), a subfamily that is well known to include specialized predators and/or symbionts, mostly associated with cnidarians. The Red Sea worms are here described as *Proceraea exoryxae* sp. nov., which are anatomically distinguished by the combination of simple chaetae only in anterior chaetigers, and a unique trepan with 33 teeth in one outer ring where one large tooth alternates with one medium-sized tricuspid tooth, and one inner ring with small teeth located just behind the large teeth. Male and female epitokes were found together with atokous individuals within galleries. *Proceraea exoryxae* sp. nov. constitutes the first known miner in the Autolytinae and the second species in this taxon known to live symbiotically with ascidians. The implications of finding this specialised parasite are discussed considering that *P. nigra* has been introduced worldwide, in tropical and sub-tropical ecosystems, where it has the potential of becoming invasive.

INTRODUCTION

There are approximately 11,840 polychaete annelids known, spanning a remarkable array of habitats, ecological niches, and trophic modes (Read & Fauchald 2016). Among these, symbiotic species (sensu Castro 2015) span at least 28 different families (Martin & Britayev 1998). These symbiotic interactions, in general, are poorly understood, but cases of inquilinism, commensalism, mutualism and parasitism have been documented. Interestingly, parasitism seems to be among the least common modes of life for polychaetes (< 0.5% of known species, spread among 13 families), most of them being found within the Spionidae and most often being shell borers (Martin & Britayev 1998). Several reports of associations with tunicates (Phylum Chordata) are available, but the polychaetes have not been identified in some of these instances (Fiore & Jutte 2010; Illg 1958; Monniot 1990; Okada 1935; Spooner et al. 1957). There are few details known for these associations although consumption of the ascidian host has been reported in one case (Spooner et al. 1957).

Phallusia nigra Savigny, 1816, is a solitary ascidian that has been introduced into tropical and subtropical ecosystems worldwide since it was originally discovered in the Red Sea (Shenkar 2012; Vandepas et al. 2015; Zhan et al. 2015). The ascidian hosts a remarkable array of crustacean symbionts, including amphipods and at least eight confirmed copepod species (Kim et al. 2016). During studies on the ecology of *P. nigra* and its associated fauna in the Egyptian coast of the Red Sea, one of the collected specimens showed various perforations on its tunic. Upon dissection, we discovered a network of excavated galleries resembling the habit of some leaf-mining herbivores in terrestrial and marine habitats (Brearley & Walker 1995; Connor & Taverner 1997; Mejaes et al. 2015; Sinclair & Hughes 2010). The galleries were inhabited by several specimens of a small polychaete species belonging to the subfamily Autolytinae (Annelida, Syllidae). Although some bivalves and crustaceans have been reported to live within ascidian tunics (Cañete & Rocha 2013; Lambert 2005; McClintock et al. 2009; Morton & Dinesen 2011), no previous reports of annelids exhibiting a similar habit are known (Lambert 2005; Monniot 1990).

The Autolytinae are small free-living polychaetes, ranging from 1–60 mm long and from 0.1–1.2 mm wide. They are distributed worldwide and inhabit shallow waters, mostly restricted to the continental shelf. They often live in a more or less intimate association with sedentary invertebrates on which they supposedly feed, such as cnidarians (usually hydroids), but also

bryozoans, sponges and tunicates (Fauchald & Jumars 1979; Genzano & San Martín 2002; Hamond 1969; Martin et al. 2015; Nygren 2004; Nygren & Pleijel 2007; Okada 1928). Autolytines are commonly found living inside thin, semi-hyaline tubes, either made in association with the host or secreted by the worms and attached directly to the colonial animals with which they associate (Fischer et al. 1992; Genzano & San Martín 2002; Gidholm 1967).

Autolytinae constitute a phylogenetically well-delineated group of polychaetes in the family Syllidae (Aguado & San Martín 2009), characterized by a sinuous pharynx, absence of ventral cirri, presence of simple bayonet-type dorsal chaetae, and reproduction with dimorphic sexes (Franke 1999; Nygren 2004; Nygren & Sundberg 2003). Since the comprehensive revision by Nygren (2004), numerous new species have been described (Aguirre et al. 2015; Álvarez-Campos et al. 2011; Çinar 2015; Çinar & Gambi 2005; Dietrich et al. 2015; Lucas et al. 2010; Martin et al. 2015; Nygren & Pleijel 2007; Nygren et al. 2010). Currently, the subfamily comprises 180 nominal species, of which 112 are considered valid and distributed among 13 recognized genera (Nygren & Pleijel 2007; Nygren et al. 2010; Rivolta et al. 2016). Among them, *Proceraea* Ehlers, 1864 contains 28 species (Martin et al. 2015; Nygren 2004; Nygren et al. 2010).

It is in *Proceraea* that we place the new species herein described, which occurs inside galleries excavated in the tunic of *P. nigra* and is, thus, the first known miner autolytine. This finding led us to discuss the current knowledge on symbioses involving autolytines, as well as the possible ecological implications of the symbiotic relationship between the polychaete and its host ascidian.

MATERIAL AND METHODS

Individuals of *Phallusia nigra* were collected by SCUBA from the shallow fringing reef at Zeytouna Beach, on the Egyptian Red Sea (27°24'09.2"N 33°41'08.5"E; Fig. 1) under the auspices of the John D. Gerhart Field Station in El Gouna (American University in Cairo), with permission from the management of Zeytouna Beach. All ascidians were collected on October 7, 2010 at 3-7 m depth and brought to the El Gouna Field Station. In the laboratory, the specimens of *P. nigra* (N = 50) were dissected with an incision around the entire periphery of the tunic, and the visceral mass and pharyngeal sac were removed (Fig. 2A). All of them were inspected for any associated

animals, and the mass and condition of hosts were recorded. Dissected hosts and symbionts from the atrial cavity were photographed with a digital camera equipped with a macro lens.

The entire tunic of the infested ascidian specimen was placed in formaldehyde for a few seconds. Then, the galleries were cut with an angular-tipped scalpel through the atrial surface of the tunic to extract mining autolytines with the help of fine forceps. However, their body was very delicate and all of them broke during extraction. In fact, some stolons were completely destroyed in the process and it was not possible to save them for taxonomic studies. All obtained specimens were fixed and preserved in a 4% formalin-seawater solution and transferred to 70% ethanol prior to observations.

Light microscope photos were taken with a Canon EOS 5D Mark II connected to either a Zeiss KF2 triocular microscope via a LM-Scope TUST42C coupler, or a Canon EF 65mm macro lens with 1-5 times magnification. For Scanning Electron Microscope (SEM) observations, the 70% ethanol preserved materials were prepared using standard SEM procedures (Martin et al. 2003). Prior to run the SEM procedures to observe the trepan, this structure was carefully dissected and as much as possible cleaned from the external muscular tissue layer. Images were taken in a Hitachi TM3000 TABLETOP microscope at the SEM service of the CEAB - CSIC.

This published work and the nomenclatural acts it contains have been registered in ZooBank, the online registration system for the ICZN. The ZooBank LSIDs (Life Science Identifiers) can be resolved and the associated information viewed through any standard web browser by appending the LSID to the prefix <http://zoobank.org/>. The LSID for this publication is: urn:lsid:zoobank.org:pub:685CB1C2-CB5B-4A87-9CD7-C04BFFDE03B4

RESULTS

Taxonomic account

Phylum ANNELIDA Lamarck, 1809
Subclass ERRANTIA Audouin & Milne-Edwards, 1832
Order PHYLLODOCIDA Dales, 1962
Suborder NEREIDIFORMIA

124 Family SYLLIDAE Grube, 1850

125 Subfamily AUTOLYTINAE Langerhans, 1879

126 Tribe PROCERINI Nygren, 2004

127 Genus *Proceraea* Ehlers, 1864

128

129 *Proceraea exoryxae* sp. nov.

130 LSID. urn:lsid:zoobank.org:act:34373CE6-A0D4-488D-B4A5-12CF4E103504

131 (Figures 2–7)

132

133 **Type material.** Holotype. MNCN16.01/17717: atokous anterior fragment, Zeytouna Beach,
134 Egyptian Red Sea, 27°24'09.2"N 33°41'08.5"E, October 7 2010, 3-7 m depth, E. Cruz-Rivera coll.;
135 fixed in 4% formalin seawater, preserved in 70% ethanol. Paratypes. MNCN16.01/17718: atokous
136 anterior fragment, pharynx dissected, same as holotype; MNCN16.01/17719: atokous anterior
137 fragment, prepared for SEM, same as holotype; MNCN16.01/17720: atokous anterior fragment,
138 pharynx dissected, same as holotype; MNCN16.01/17721: male stolon, anterior fragment, same
139 as holotype; MNCN16.01/17722: female stolon, anterior fragment, same as holotype;
140 MNCN16.01/17723: atokous mid-body fragments, same as holotype. MNCN16.01/17724:
141 atokous posterior fragments, same as holotype.

142

143 **Diagnosis.** *Proceraea* with simple chaetae in anterior chaetigers, and a trepan with 33 teeth with
144 one outer ring where one large tooth alternates with one medium-sized tricuspid tooth, and one inner ring
145 with small teeth located just behind the large teeth.

146

147 **Description.** All observations are from preserved specimens if not otherwise stated. Length 3–
148 10.5 mm for 10–68 chaetigers in four anterior fragments, 3–14.5 mm for 19–90 chaetigers in nine
149 median fragments, and 6.5–22 mm for 50–125 chaetigers in three posterior fragments. Width of
150 anterior fragments, excluding parapodial lobes, c. 0.4 mm. Live individuals dorsally with light
151 brown transverse stripes, one per segment, not known whether these are inter- or intrasegmental,
152 or if there is any other additional coloration (Fig. 2B-E); proventricle white (Fig. 2B, C). Formalin
153 preserved specimens without any sign of coloration.

Body shape, excluding parapodial lobes, cylindrical in transection, ventrally flattened. Body long and slender, with slowly tapering end. Nuchal epaulettes ciliated, otherwise ciliation not assessed. Prostomium rounded rectangular (Fig. 3A, C). Four eyes with lenses, anterior pair larger, confluent in dorsal view, eye spots absent (Fig 3C). Palps in dorsal view projecting c. half of prostomial length, fused (Fig. 3A, B).

Nuchal epaulettes extending to median part of chaetiger 1 (Fig. 3A). Prostomium with three antennae, median antenna inserted medially on prostomium, lateral antennae on anterior margin. Median antenna reaching chaetiger 8–10, lateral antennae about half as long as median antenna. Tentacular cirri two pairs. Dorsal tentacular cirri about two third as long as median antenna, ventral tentacular cirri about half as long as dorsal tentacular cirri. ~~Alternation in direction of cirri not assessed.~~ First dorsal cirri about as long as median antenna, second dorsal cirri as long as ventral tentacular cirri. From chaetiger 3 to chaetiger 20–25, cirri alternate indistinctly in length, shorter cirri slightly shorter and longer cirri equal or slightly longer than body width excluding parapodial lobes (Fig. 3A, B), dorsal cirri in more posterior chaetigers more or less equal in length, c. half of body width excluding parapodial lobes; anal cirri as long as half body width, excluding parapodial lobes at level of proventricle.

Cirrophores on tentacular cirri, first and second dorsal cirri (Fig. 3A), otherwise absent. Antennae, tentacular cirri, dorsal cirri, and anal cirri cylindrical. Parapodial lobes rounded. Aciculae 2–3 in anterior chaetigers, 1–2 in median and posterior chaetigers.

Chaetal fascicle with 9–12 chaetae in anterior chaetigers (Fig. 4A), 4–10 in median and posterior chaetigers. Chaetiger 1–5 with simple chaetae only (Fig. 4B, 5A–D), chaetiger 6 with simple chaetae only (n=3), or with single compound chaeta in addition to the simple chaetae (n=1). From chaetiger 7 to between chaetiger 10–13 with an increasing proportion of compound chaetae (Fig. 4A). Except for the single, thick, distally denticulated bayonet chaeta (Fig. 5E), starting at the earliest in chaetiger 9, more posterior chaetigers with compound chaetae only. Simple chaetae unidentate with rows of spines subdistally (Fig. 4B, 5A–D, F). In anterior 4–5 chaetigers most simple chaetae with a proportionally long region distal to the swollen neck (Fig. 4B, 5B–D), one or two of the inferior-most chaetae with a shorter region distal to the swollen neck (Fig. 4B, 5A, C, D), similar in appearance to the shafts of the compound chaetae found in later chaetigers. Starting from chaetigers 6–7 all simple chaetae (except for the bayonet chaeta) nearly identical to the shafts of the compound chaetae (Fig. 4B, 5E). Blades of compound chaetae serrated, with two

large distal teeth, distal-most slightly smaller, becoming smaller to almost disappear in mid-body and posterior chaetigers, shafts with a swollen neck with rows of spines (Fig. 4B, 5E).

Pharynx with several sinuations (Fig. 2C, 3E), mostly anterior to the proventricle, exact sinuation difficult to assess. Trepan at level of chaetiger 1–2 (Fig. 3C), with 33 teeth with one outer ring where one large tooth alternates with one medium-sized tricuspid tooth, and one inner ring with small teeth located just behind the large teeth. (Fig. 6A, B, C). Basal ring present, infradental spines absent. Proventricle as long as three segments in chaetiger 20–22 (uncertain observation, as the single specimen with proventricle still inside body looks distorted in this region), with 40–45 rows of square-shaped muscle cells (n=2) (Fig. 2C, 3D).

Distribution. Known only from the type locality, Zeytouna Beach (Egyptian coast of the Red Sea).

Etymology. The specific epithet “*exoryxae*” derives from the term εξόρυξη, which means miner in Greek.

Ecology. *Proceraea exoryxae* sp. nov. was extremely rare. It was only found in one *P. nigra* specimen, despite multiple successive collections of this ascidian in the same and other reefs during following years (Kim et al. 2016). The excavated galleries in which the new autolytine resided were visible only through the atrium wall (the internal surface of the tunic; Fig. 2B-F), whereas the outside surface of the host tunic showed no signs of deformation, aside from the entrance openings of the galleries (Fig. 2E). The inner walls of the galleries were covered by a thin hyaline layer, apparently secreted by the worms. The wet mass of the individuals of *P. nigra* collected in this reef ranged from 7.32 to 13.25 g and the specimen containing *P. exoryxae* sp. nov. was 11.10 g.

Reproduction

Probably with schizogamy, as several male and female stolons were found in the same galleries as the atokous forms (Fig. 2 D-F). Stolons were obtained detached from the corresponding stocks. Thus, it cannot be fully discarded that they belong to another species. However, they have identical

bayonet and compound chaetae to the atokous forms, thus strengthening the hypothesis that they belong to *P. exoryxae* sp. n. Male and female stolons are described below.

Morphology of the epitokous male. Length 2.7 mm for 6+17 chaetigers in region a and b (see Nygren 2004), incomplete; width in region a 0.4 mm excluding parapodial lobes, in region b 0.7 mm including parapodial lobes. Exact colour in vivo unknown, but either the ventral or the dorsal side of region b dark brownish, region a whitish, with diffuse darker pigmentation (Fig. 2F). Preserved specimen whitish, without colour markings, chaetiger 2–6 with paired yellowish sperm glands seen through the body wall (Fig. 7B). Ciliation not assessed. Prostomium rounded rectangular, wider than long, anterior margin convex. Four eyes with lenses, situated ventro-lateral and dorsal on prostomium, ventro-lateral pair larger (Fig. 7A, B). Palps absent. Nuchal organs not seen. Median antenna inserted medially on prostomium, reaching c. chaetiger 10; lateral bifid antennae, inserted on anterior margin, equal in length to prostomial width; basal part 1/3 of total length, outer ventral rami slightly longer and thinner than inner dorsal rami. Frontal processes possibly absent, or developing (seen as small protuberances on prostomium lateral to the median antenna) (Fig. 7A). Tentacular cirri 2 pairs (Fig. 7B), dorsal tentacular cirri, as long as 1/2 prostomial width, ventral tentacular cirri, 1/3 as long as dorsal pair. First dorsal cirri, equal in length to median antenna. Achaetous knobs absent. Cirri in region a reciprocally equal, equal in length to 1/2 body width excluding parapodial lobes, cirri in region b reciprocally equal, slightly shorter than cirri in region a. Short median ceratophore, and short cirrophores on first dorsal cirri, cirrophores otherwise absent. Median antenna, tentacular cirri, first dorsal cirri, and cirri in region a and b cylindrical. Parapodia in region a uniramous, neuropodial lobes rounded, parapodia in region b with developing notopodial lobes. Single neuropodial acicula in all chaetigers; 2 anterodorsal and 5 posteroventral notopodial aciculae in region b. Neuropodial fascicle with 7–8 compound chaetae and a single bayonet chaeta of the same types described for the atoke. Swimming chaetae absent, indicating a non fully-developed male stolon.

Morphology of the epitokous female. Length 5 mm for 6+27+9 chaetigers in region a, b and c (see Nygren 2004), incomplete; width in region a and c 0.6 mm excluding parapodial lobes, in region b 1 mm including parapodial lobes. Colour of living individuals unknown. Preserved specimen yellowish, with body filled by eggs (Fig. 7D); colour markings absent. Ciliation not

assessed. Prostomium rounded rectangular, wider than long, anterior margin straight. Four eyes with lenses, situated ventro-lateral and dorsal on prostomium, ventro-lateral pair larger (Fig. 7C, D). Palps absent. Nuchal organs reaching beginning of chaetiger 1 (Fig. 7D). Median antenna inserted medially on prostomium, reaching c. chaetiger 5; lateral antennae inserted on anterior margin, about two third in length of median antenna. Tentacular cirri 2 pairs (Fig. 7C), dorsal tentacular cirri, as long as prostomial width, ventral tentacular cirri about 1/2 as long as dorsal pair. First dorsal cirri (Fig. 7D), equal in length to lateral antennae. Achaetous knobs absent. Cirri in region a reciprocally equal, slightly shorter than first dorsal cirri, equal in length to body width excluding parapodial lobes, cirri in region b reciprocally equal, slightly longer than cirri in region a, cirri in region c reciprocally equal, slightly shorter than cirri in region a. Ceratophores on median and lateral antennae, cirrophores present on all dorsal cirri, but tentacular cirri without cirrophores. Antennae, tentacular cirri, and dorsal cirri cylindrical. Parapodia in region a uniramous, neuropodial lobes rounded, parapodia in region b with additional notopodial lobes. Single neuropodial acicula in all chaetigers; 2–3 anterodorsal and 6–7 posteroventral notopodial aciculae in region b. Neuropodial fascicle with 7–8 compound chaetae and a single bayonet chaeta of the same types described for the atokous form. Notopodial chaetal fascicle with 20–25 long and thin swimming chaetae.

DISCUSSION

Taxonomic remarks

The combination of morphological features in *Proceraea exoryxae* sp. nov. makes it difficult to place it in any specific genus within the Autolytinae. The thick type of bayonet chaeta, distally denticulated, and the presence of cirrophores only on anterior-most cirri indicate, however, that the new species is a member of the tribe Procerini. Accordingly, these morphological characters are not found in either of the two other main groups (Autolytini and *Epigamia*).

We place the new species in the genus *Proceraea* even though simple chaetae (apart from bayonet chaetae) are not found in any described member. We base our decision on the fact that the trepan teeth in *P. exoryxae* sp. nov. are arranged in more than one ring, which is only found in

Proceraea among Procerini. The observation of the trepan rings are clear under SEM, despite part of the dissected pharynx being still covered by tissue. The presence of simple chaetae in a restricted number of anterior chaetigers is a feature shared only with some members of *Procerastea* and *Imajimaea* among the Autolytinae, which differ in having trepans with a single ring, instead of separate rings as in *P. exoryxae* sp. nov. Further, all members of *Procerastea* have thick, distally dilated, bayonet chaetae and have dorsal cirri only on the first chaetiger, while *P. exoryxae* sp. nov. has thick bayonet chaetae not distally dilated and dorsal cirri on all segments. *Imajimaea*, on the other hand, shares the presence of dorsal cirri on all its segments, except for *I. draculai* that lacks dorsal cirri on chaetigers 2–5. However, all species of *Imajimaea* have thin, subdistally denticulated, bayonet chaetae, and not thick bayonet chaetae, distally denticulated as in *P. exoryxae* sp. nov.

Assuming that the assignment of the two stolons to this new species is correct, this may also shed some light on its taxonomic relationships. The type of stolon with six chaetigers in region a, two pairs of tentacular cirri, and no achaetous knobs is found in *Virchowia clavata* Langerhans, 1879, *V. pectinans* (Hartmann-Schröder, 1983), *Autolytus emertoni* Verrill, 1881, *Procerastea halleziana* Malaquin, 1893, *P. nematodes* Langerhans, 1884, and *Proceraea picta* Ehlers, 1864 (Nygren 2004). The information on the stolons of *V. clavata*, *Procerastea* spp. and *P. picta* is based on the literature only, but even in the species where the stolons are thoroughly described and illustrated, the achaetous knobs are not detailed. All other species assigned to *Proceraea* for which stolons are known, i.e. *P. cornuta* (Agassiz, 1862), *P. fasciata* Bosc, 1802, *P. hanssoni* Nygren, 2004, *P. nigropunctata* Nygren & Gidholm, 2001, *P. okadai* (Imajima, 1966), and *P. prismatica* (O.F. Müller, 1776), are equipped with achaetous knobs ventral to the first dorsal cirri. It is important to note that molecular phylogenetic studies have found the genus *Proceraea* to be paraphyletic without the inclusion of e.g. *Virchowia*, and *Procerastea* (e.g., Nygren et al. 2010). *Proceraea picta* and close relatives are found as a sister group to a clade where the *Proceraea* having stolons with achaetous knobs constitute the first subclade, and *Virchowia*, *Procerastea* and other genera, whose known stolons lack achaetous knobs, constitute the second subclade. This indicates that having stolons with achaetous knobs is the derived state, while the lack of achetous knobs is plesiomorphic. A revision of *Proceraea* is clearly needed, but beyond the scope of this paper. Until then, we consider a generic assignment to *Proceraea* for this new species to be the best option.

Autolytinid symbionts

Despite the hundreds of symbiotic polychaete species known, including > 80 species considered parasitic, parasitism is relatively rare in this taxon when compared to other lifestyles (Britayev et al. 2014; Britayev & Lyskin 2002; Martin & Britayev 1998). Most recorded symbiotic associations between polychaetes and invertebrates involve sponge, cnidarian, mollusc, or echinoderm hosts, but a few mention ascidians. Some previous reports of polychaetes living among ascidians came from dredged or scraped-quadrat samples, which are usually inadequate to determine symbiont-host associations because they result in specimen mixtures, while soft-bodied animals, like tunicates or annelids, are often greatly damaged. In this context, the term “associated with” most often refers to spatially co-occurring specimens. Nonetheless, high densities of polychaetes, including syllids, are known to occur among the fauna associated with particular benthic tunicates (e.g., Allen 1915; Cerdá & Castilla 2001; Fielding et al. 1994; Fiore & Jutte 2010; Sepúlveda et al. 2015). Polychaetes were dominant on intertidal (but not subtidal) beds of *Pyura stolonifera* (Heller 1878), the second most abundant group in beds of the congeneric *P. praeputialis* (Heller 1878) (Cerdá & Castilla 2001; Fielding et al. 1994), and constituted 28% of the fauna associated with didemnid ascidians (Fiore & Jutte 2010). These reports, however, largely refer to animals living in the sediments accumulated in the crevices among ascidian aggregates and, thus, there is no reason to suspect true symbiotic interactions. Similarly, intraspecific variation in growth form of *Pyura chilensis* Molina, 1782 has been documented in response to the presence of chaetopterid polychaete tubes in the assemblage (Sepúlveda et al. 2015), but this was interpreted as a density-dependent phenomenon not related to symbiosis.

Other studies have documented serendipitous observations obtained while searching for other ascidian associates. For example, in his monograph on ascidian-associated copepods, Illg (1958) reported unidentified polychaetes from the atria and branchial sacs of dredged ascidians. Similarly, Monniot (1990) reported ten unidentified Syllidae from the branchial sac of *Microcosmus anchylodeirus* Traustedt, 1883. In summary, information on the nature of polychaete-ascidian relationships remains very scarce. Most reports of polychaetes (and syllids in particular) do not refer to individuals “living in association with” tunicates (which would imply some degree of specialization and thus suggest any type of symbiotic interaction). In fact, there is

only one previous report specifically referring to a symbiosis, in which another autolytine, *Myrianida pinnigera*, was found living in association with *Ascidella aspersa* and *Phallusia mammilata* (Table 1). Two decades later, Spooner et al. (1957) stated that this species feeds on the body fluids of these and other ascidians from the British southern coast. While intriguing, this interaction has never been quantitatively evaluated and the evidence for this specialized trophic mode is still unclear. But if so, *P. exoryxae* sp. nov. is the second known polychaete, and the second autolytine too, living in symbiosis with ascidians.

In addition to these two species of tunicate associates, eight more autolytines have been previously reported as living in symbiosis with other invertebrates, all them cnidarians (Table 1). Most of them are considered parasites, although only some are sufficiently studied to be clearly defined as such (Martin & Britayev 1998). Among the best documented, *Proceraea penetrans* (Wright & Woodwick, 1977) induces galls on its hydrocoral hosts, while *Proceraea* sp. modifies the theca of polyps in its hydroid hosts in order to live inside, probably feeding on the polyps themselves (Britayev & San Martín 2001; Britayev et al. 1998).

***Proceraea exoryxae* sp. nov. as a miner**

Proceraea exoryxae sp. nov. is the first polychaete formally defined as miner and, certainly, the first of Autolytinae. We use the term mining as it is often used to describe insects that tunnel through the tissues of their plant hosts (Connor & Taverner 1997; Mejaes et al. 2015; Sinclair & Hughes 2010), but also marine isopods tunnelling seagrass leaves (Brearley & Walker 1995). This is also the mechanism we suggest for the formation of the galleries in the *P. nigra* tunic where *P. exoryxae* sp. nov. was found. The rarity of the polychaete precluded a thorough assessment of the host-symbiont interaction although, as in the case of *M. pinnigera*, the new species possibly feeds on the tissues of the host ascidian. Nonetheless, it represents the first clear example of mechanical damage by a polychaete on an ascidian, and as such, we classify the interaction as a parasitic symbiosis (Castro 2015). The defensive characteristics attributed to the *P. nigra* tunic, which include the accumulation of vanadium and sulfuric acid, and their derived metabolites (Hirose et al. 2001; Odate & Pawlik 2007; Pisut & Pawlik 2002; Stoecker 1980), did not prevent infestation by *P. exoryxae* sp. nov., while they have been suggested to prevent infestation by the bivalve *Musculus subpictus* (Cantraine 1835) in a population introduced in Panama (Cañete & Rocha

2013). Because both the host and polychaete symbiont were likely at their native habitat, and because symbionts are often unaffected by host defensive metabolites, the new partnership here reported may be a **well-established relationship** with a noticeable degree of specialisation. The presence of epitopkous forms certainly confirms that at least the first phases of the reproductive cycle of the species (i.e. stolon formation) occurred inside the galleries, which may be considered as an additional evidence of specialization. However, whether *P. exoryxae* sp. nov. is an exclusive parasite of *P. nigra* or infests other ascidians awaits further study.

Although rare for polychaetes, many invertebrates are known to live in symbiotic associations with ascidians, including amphipods, shrimps, copepods, pinnotherid crabs, nemerteans and cnidarians (e.g., Baeza & Díaz-Valdés 2011; Boxshall 2005; Illg 1958; Kim et al. 2016; Lambert 2005; Monniot 1990; Stock 1967; Thiel 2000; White 2011). Most of these animals live in the branchial sac of the host and are often considered commensals, with the exception of some copepod taxa, which are largely classified as ectoparasites on this respiratory organ (Boxshall 2005; Illg 1958; Kim et al. 2016; Stock 1967). In contrast, but perhaps not surprisingly, few animals have evolved to inhabit the ascidian tunic, which is often structurally tough, and may contain spicules, inorganic acids, concentrated vanadium, and a variety of defensive secondary chemicals (Joullié et al. 2003; Koplovitz et al. 2009; Odate & Pawlik 2007; Pisut & Pawlik 2002; Stoecker 1980). Some mytilid mussels in the genera *Mytilimeria* and *Musculus* (= *Modiolarca*) are symbiotic bivalves that live completely embedded in the tunic of their ascidian host (Cañete & Rocha 2013; Lambert 2005; Morton & Dinesen 2011; Say 1822; White 1949). Similarly, two species of amphipods in the genus *Polycheria* live by filter feeding from individual shallow pockets they excavate on the tunic of their host ascidians (McClintock et al. 2009; Skogsberg & Vansell 1928). Recently, the parasitic copepod *Janstockia phallusiella* Boxshall and Marchenkov, 2005 has been reported as living attached to the atrial wall of *P. nigra* (Kim et al. 2016). None of these animals, however, produce a network of tunnels similar to that observed in the specimen of *P. nigra* infested by *P. exoryxae* sp. nov.

Among polychaetes several species are known to inhabit excavated galleries. Probably the best known are polydorid spionids, which include numerous species from different genera that burrow into calcareous substrates, including algae, crustacean carapaces, and mollusc shells. Some of them are simple borers, but others are well known commensals and parasites, sometimes being even considered as pests when they infest species of commercial interest (Martin & Britayev

1998). Although less diverse, similar habits are also present among cirratulids and sabellids, the latter being also able to infest fresh water invertebrates (Martin & Britayev 1998). Polychaetes are also known to excavate galleries in seagrasses (Gambi et al. 2003; Guidetti 2000), cnidarians (Britayev et al. 2014; Cairns 2006; Cairns 2009; Cairns 2011; Cairns 2012; Cairns & Bayer 2008; Martin et al. 2002; Molodtsova et al. 2015; Mueller et al. 2013) and sponges (see Lattig & Martin 2011 and references herein). Seagrass associated polychaetes are mainly detritivores that bore into the dead sheath tissues (Gambi et al. 2003), but their galleries are also present in living meristems and leaves that have been reported as “mined” tissues (Guidetti 2000). Cnidarian associates (e.g. polynoids, eunicids, syllids) may inhabit depressions in the host skeleton that are usually covered by overgrowing host tissues and/or skeleton to form tunnels or galleries, presumably as a reaction to the symbionts’ presence (Britayev et al. 2014). A particular case is that of *Haplosyllis anthogorgicola* Utinomi, 1956, which excavates a network of galleries inside the soft tissues of its host gorgonian. Host tissue overgrowths are limited to small tube-like protuberances at the gallery exits, from where the worms supposedly feed by stealing food from the nearby host polyps (Martin et al. 2002). Polychaete sponge borers are mainly syllids (e.g. *Haplosyllis*, *Haplosyllides*), which may either inhabit the aquiferous channels of the sponge or excavate their own galleries inside the host tissues (Lattig & Martin 2011; Martin et al. 2009; Martin & Britayev 1998).

When observing the tunic of the Red Sea specimen of *P. nigra* we did not detected traces of external overgrowths associated to the gallery openings and, when dissecting the excavated galleries, we did not find any induced malformations or defined cavities (like cysts, galls or blisters). Conversely, there was a thin, translucent layer covering the galleries. Likely, this was an inner lining secreted by the worms to cover the tunnel walls, possibly made in a similar fashion as the hyaline tubes that some autolytines build to remain attached to their host cnidarians (Molodtsova et al. 2016). At present, the mechanics of excavating tunnels by *P. exoryxae* sp. nov. are unknown, but the typical syllid feeding structures (i.e., trepan, evaginable pharynx and sucking proventricle) seem to be a perfect combination enabling *P. exoryxae* sp. nov. for this particular task.

In addition to possible affectations to host fitness, the parasitic mode of life attributed to *P. exoryxae* sp. nov. may also be relevant for coastal management. Being native from the Red Sea, *P. nigra* has been introduced worldwide in tropical and sub-tropical ecosystems (Shenkar 2012; Vandepas et al. 2015) where, as many other tunicates (Zhan et al. 2015), it has the potential of

becoming invasive. Accordingly, three interesting questions remain open for further studies: 1) whether the parasitic *P. exoryxae* sp.nov. may be (or has already been) introduced together with the ascidian, 2) whether it may contribute to control the spreading of *P. nigra* in non-native regions, and 3) whether it may switch its host to infest, and thus cause damage, to native ascidians in the regions where the Red Sea host/parasite partnership has been introduced. In combination with molecular tools to trace the origin of an introduced species, the existence of a specialized parasite known only from the native host population may also help assess whether the host species has been introduced directly from this native population or indirectly from an already introduced population.

Acknowledgments

EC-R was supported by a Faculty Improvement Grant from the American University in Cairo and by a time-release allocation from the Department of Biological Sciences, University of the Virgin Islands. Hussa Al Ajeer, Ali Fahmi, Maricel Flores-Díaz, and Tamer Hafez, helped with specimen collection and ascidian dissections. We thank the staff of the J. D. Gerhart Field Station for support during our fieldwork and Dr X. Turon from the CEAB-CSIC for his advice on tunicate associates. María García, from the SEM service at the CEAB-CSIC, kindly helped with the SEM observations. This paper is contribution #??? from the Center for Marine and Environmental Sciences, University of the Virgin Islands (EC-R), and a contribution of DM to the research project MarSymBiomics (grant number CTM2013-43287-P) funded by the Ministerio de Educación, Cultura y Deporte, and to the Consolidated Research Group on Marine Benthic Ecology (grant number 2014SGR120) of the Agència de Gestió d'Ajuts Universitaris i de Recerca of the Generalitat de Catalunya.

References

- Agassiz A. 1862. On alternate generation of annelids and the embryology of *Autolytus cornutus*. *Journal of the Boston Society for Natural History* 7:384-409.

- 463 Aguado MT, and San Martín G. 2009. Phylogeny of Syllidae (Polychaeta) based on
464 morphological data. *Zoologica Scripta* 38:379–402. 10.1111/j.1463-6409.2008.00380.x
- 465 Aguirre L, San Martín G, and Álvarez-Campos P. 2015. Autolytinae from Peru: description of
466 *Myrianida paredesi* sp. nov. and new records of *Myrianida pentadentata* (Imajima, 1966),
467 and *Proceraea micropedata* (Hartmann-Schröder, 1962). *Journal of the Marine Biological*
468 *Association of the United Kingdom* FirstView:1-17. doi:10.1017/S0025315415002015
- 469 Allen EJ. 1915. Polychaeta of Plymouth and the South Devon coast, including a list of the
470 Archiannelida. *Journal of the Marine Biological Association of the United Kingdom (New*
471 *Series)* 10:592-646.
- 472 Allen EJ. 1921. Regeneration and reproduction of the syllid *Procerastea*. *Philosophical*
473 *Transactions of the Royal Society of London* 211:131-177.
- 474 Allman GJ. 1859. V.—Notes on the Hydroid zoophytes. *Annals and Magazine of Natural History*
475 4:137-144.
- 476 Alós C. 1989. Adiciones a la fauna de Anélidos Poliquetos de la península Ibérica: familia
477 Syllidae. *Cahiers de Biologie Marine* 30:329-337.
- 478 Álvarez-Campos P, San Martín G, and Piotrowski C. 2011. A new species of Myrianida Milne-
479 Edwards, 1845 (Autolytinae: Syllidae: Annelida), from Luzon, Philippine Islands. *The Coral*
480 *Triangle: The*:145-154.
- 481 Baeza JA, and Díaz-Valdés M. 2011. The symbiotic shrimp *Ascidonia flavomaculata* lives
482 solitarily in the tunicate *Ascidia mentula*: implications for its mating system. *Invertebrate*
483 *Biology* 130:351-361.
- 484 Bosc LAC. 1802. *Histoire naturelles des vers, contenant leur description et leur moeurs avec*
485 *figures dessinees d'apres nature*. Paris: Deterville Libraire.
- 486 Boxshall G. 2005. A synthetic summary of the biology of parasitic copepods in a marine
487 environment. *Marine parasitology*. Wallingford: CABI Publishing, 123-138.
- 488 Boxshall GA, and Marchenkov A. 2005. A new genus of notodelphyid copepod (Crustacea,
489 Copepoda, Cyclopoida) from a compound ascidian host collected in the Suez Canal.
490 *Zoosystema* 27:483-497.
- 491 Brearley A, and Walker D. 1995. Isopod miners in the leaves of two Western Australian
492 *Posidonia* species. *Aquatic Botany* 52:163-181.

- 493 Britayev TA, Gil J, Altuna A, Calvo M, and Martin D. 2014. New symbiotic associations
494 involving polynoids (Polychaeta, Polynoidae) from Atlantic waters, with redescrptions of
495 *Parahololepidella greeffi* (Augener, 1918) and *Gorgoniapolynoe caeciliae* (Fauvel, 1913).
496 *Memoirs of Museum Victoria* 71:27-43.
- 497 Britayev TA, and Lyskin SA. 2002. Feeding of the symbiotic polychaete *Gastrolepidia clavigera*
498 (Polynoidae) and its interactions with its hosts. *Doklady Biological Sciences* 385:352-356.
- 499 Britayev TA, and San Martín G. 2001. Description and life-history traits of a new species of
500 *Proceraea* with larvae infecting *Abietinaria turgida* (Polychaeta, Syllidae and Hydrozoa,
501 Sertulariidae). *Ophelia* 54:105-113.
- 502 Britayev TA, San Martín G, and Sheiko O. 1998. Symbiotic Polychaetes *Proceraea* sp.
503 (Polychaeta, Syllidae) and modification of hydrothecae in hydroid *Abietinaria turgida*
504 (Hydrozoa, Sertullariidae). *Zoologicheskii Zhurnal* 77:527-532.
- 505 Cairns SD. 2006. Studies on western Atlantic Octocorallia (Coelenterata: Anthozoa). Part 6: The
506 genera *Primnoella* Gray, 1858; *Thouarella* Gray, 1870; *Dasystenella* Versluys, 1906.
507 *Proceedings of the Biological Society of Washington* 119:161-194. 10.2988/0006-
508 324x(2006)119[161:sowaoc]2.0.co;2
- 509 Cairns SD. 2009. Review of Octocorallia (Cnidaria: Anthozoa) from Hawaii and adjacent
510 seamounts. Part 2: Genera *Paracalyptrophora* Kinoshita, 1908; *Candidella* Bayer, 1954; and
511 *Calyptrophora* Gray, 1866. *Pacific Science* 63:413-448.
- 512 Cairns SD. 2011. A revision of the Primnoidae (Octocorallia: Acyonacea) from the Aleutian
513 Islands and Bering Sea. *Smithsonian Contributions to Zoology* 634:1-55.
- 514 Cairns SD. 2012. New Zealand Primnoidae (Anthozoa: Alcyonacea)-Part 1: Genera *Narella*,
515 *Narelloides*, *Metanarella*, *Calyptrophora*, and *Helicoprismoa*. *NIWA Biodiversity Memories*
516 126.
- 517 Cairns SD, and Bayer FM. 2008. A Review of the Octocorallia (Cnidaria: Anthozoa) from
518 Hawaii and Adjacent Seamounts: The Genus *Narella* Gray, 18701. *Pacific Science* 62:83-115.
519 10.2984/1534-6188(2008)62[83:arotoc]2.0.co;2
- 520 Cañete JI, and Rocha RM. 2013. *Modiolarca lateralis* (Pteryomorphia: Mytilidae):
521 bivalve associated to six species of ascidians from Bocas del Toro, Panama. *Latin American*
522 *Journal of Aquatic Research* 41:1030-1035.

- Cantraine F. 1835. Diagnoses ou descriptions succinctes de quelques espèces nouvelles de mollusques, qui feront partie de l'ouvrage Malacologie mediterrannée et littorale, et comparaisons des coquilles qu'on trouve dans les collines subapennines avec celles qui vivent encore dans nos mers. *Bulletin de l'Académie Royale des Sciences et Belles-lettres de Bruxelles* 2:380-411.
- Castro P. 2015. Symbiotic Brachyura. In: Castro P, Davie P, Guinot D, Schram FR, and von Vaupel Klein JC, eds. *Treatise on Zoology-Anatomy, Taxonomy, Biology The Crustacea, Volume 9 Part C (2 vols)*. Leiden: Brill, 543-581.
- Caullery M. 1925. Schizogenese et schizogamie de *Procerastea halleziana* Malaquin. Parasitism de ce Syllidien sur les Tubulaires. *Bulletin de la Société Zoologique de France* 50:204-208.
- Cerdá M, and Castilla JC. 2001. Diversidad y biomasa de macro-invertebrados en matrices intermareales del tunicado *Pyura praeputialis* (Heller, 1878) en la Bahía de Antofagasta, Chile. *Revista Chilena de Historia Natural* 74:841-853.
- Çinar ME. 2015. A new species of *Myrianida* (Polychaeta: Syllidae: Autolytinae) from Rhodes (Greece, eastern Mediterranean). *Journal of the Marine Biological Association of the United Kingdom* 95:1101-1104. doi:10.1017/S0025315415000107
- Çinar ME, and Gambi MC. 2005. Cognetti's syllid collection (Polychaeta: Syllidae) deposited at the Museum of the Stazione Zoologica “Anton Dohrn” (Naples, Italy), with descriptions of two new species of *Autolytus*. *Journal of Natural History* 39:725-762. 10.1080/00222930400001327
- Clarke SF. 1877. Report on the hydroids collected on the coast of Alaska and the Aleutian Islands by W.H. Dall, U.S. Coast Survey, and party, from 1871 to 1874 inclusive. *Proceedings of the Academy of Natural Sciences of Philadelphia* 1876:209-238, plates 207-216.
- Clarke SF. 1882. New and Interesting Hydroids from the Chesapeake Bay. *Memoirs of the Boston Society of Natural History* 3:135-142.
- Connor EF, and Taverner MP. 1997. The evolution and adaptive significance of the leaf-mining habit. *Oikos*:6-25.
- Cuvier G. 1815. Mémoire sur les Ascidies et sur leur anatomie. *Annales du Muséum d'Histoire Naturelle de Paris* 2:10-39.
- Dietrich A, Hager T, Bönsch R, Winkelmann C, Schmidt A, and Nygren A. 2015. A new species of *Myrianida* (Autolytinae, Syllidae, Annelida) from the North Sea, with short notes on the

- 554 distribution and habitat of Northeast Atlantic autolytines. *Marine Biology Research*:1-10.
- 555 10.1080/17451000.2015.1016971
- 556 Fauchald K, and Jumars PA. 1979. The diet of worms: A study of polychaete feeding guilds.
- 557 *Oceanography and Marine Biology: An Annual Review* 17:193-284.
- 558 Fielding P, Weerts K, and Forbes A. 1994. Macroinvertebrate communities associated with
- 559 intertidal and subtidal beds of *Pyura stolonifera* (Heller)(Tunicata: Ascidiacea) on the Natal
- 560 coast. *South African Journal of Zoology* 29:46-53.
- 561 Fiore CL, and Jutte PC. 2010. Characterization of macrofaunal assemblages associated with
- 562 sponges and tunicates collected off the southeastern United States. *Invertebrate Biology*
- 563 129:105-120. 10.1111/j.1744-7410.2010.00184.x
- 564 Fischer A, Mewes K, and Franke HD. 1992. Stolonization and mating behavior of *Autolytus*
- 565 *prolifer* (Polychaeta). Göttingen, Box 2351, D-37013: Institute of the Scientific Film.
- 566 Franke HD. 1999. Reproduction of the Syllidae (Annelida: Polychaeta). In: Reproductive
- 567 Strategies and Developmental Patterns in Annelids. *Hydrobiologia* 402:39-55.
- 568 Gambi MC, van Tussenbroek BI, and Brearley A. 2003. Mesofaunal borers in seagrasses: world-
- 569 wide occurrence and a new record of boring polychaetes in the Mexican Caribbean. *Aquatic*
- 570 *Botany* 76:65-77. 10.1016/s0304-3770(03)00031-7
- 571 Gardiner SL. 1976. Errant Polychaete Annelids from North Carolina. *The Journal of the Elisha*
- 572 *Mitchell Scientific Society* 91:77-220.
- 573 Genzano GN, and San Martín G. 2002. Association between the polychaete *Procerastea*
- 574 *halleziana* (Polychaeta: Syllidae: Autolytinae) and the hydroid *Tubularia crocea* (Cnidaria:
- 575 Hydrozoa) from the Mar del Plata intertidal zone, Argentina. *Cahiers de Biologie Marine*
- 576 43:165-170.
- 577 Gidholm L. 1967. A revision of Autolytinae (Syllidae, Polychaeta) with special reference to
- 578 Scandinavian species, and with notes on external and internal morphology, reproduction and
- 579 ecology. *Arkiv för Zoologi* 19:157-213.
- 580 Guidetti P. 2000. Invertebrate borers in the Mediterranean seagrass *Posidonia oceanica*:
- 581 biological impact and ecological implications. *Journal of the Marine Biological Association*
- 582 *of the United Kingdom* 80:725-730.
- 583 Hamond R. 1969. On the preferred foods of some autolytoids (Polychaeta, Syllidae). *Cahiers de*
- 584 *Biologie Marine* 10:439-445.

- Hartmann-Schröder G. 1992. Drei neue Polychaeten-arten der familien Polynoidae und Syllidae von Neu-Kaledonien, assoziiert mit einer verkalteten Hydrozoe. *Helgoländer Meeresuntersuchungen* 46:93-101.
- Heller C. 1878. Beitrage zur nähern Kenntniss der Tunicaten. *Sitzungsberichte der Akademie der Wissenschaften in Wien* 77:83-109.
- Hirose E, Yamashiro H, and Mori Y. 2001. Properties of tunic acid in the ascidian *Phallusia nigra* (Ascidiidae, Phlebobranchia). *Zoological Science* 18:309-314.
- Illg PL. 1958. North American copepods of the family Notodelphyidae. *Proceedings of the United States National Museum* 107:463-659.
- Joullié MM, Leonard MS, Portonovo P, Liang B, Ding X, and La Clair JJ. 2003. Chemical defense in ascidians of the Didemnidae family. *Bioconjugate Chemistry* 14:30-37.
- Kim I-H, Cruz-Rivera E, and El-Sahhar S. 2016. Cyclopoid copepods (Ascidicolidae, Notodelphyidae) associated with *Phallusia nigra* Savigny, 1816 (Ascidiacea) in the Red Sea: a new ascidicolid and first descriptions of the males from two notodelphyids.
- Koplovitz G, McClintock JB, Amsler CD, and Baker BJ. 2009. Palatability and chemical anti-predatory defenses in common ascidians from the Antarctic Peninsula. *Aquatic Biology* 7:81-92.
- Lambert G. 2005. Ecology and natural history of the protochordates. *Canadian Journal of Zoology* 83:34-50.
- Lattig P, and Martin D. 2011. Sponge-associated *Haplosyllis* (Polychaeta: Syllidae: Syllinae) from the Caribbean Sea, with the description of four new species. *Scientia Marina* 75:733-758.
- Linnaeus C. 1758. *Systema Naturae per Regna Tria Naturae, Secundum Classes, Ordines, Genera, Species, cum characteribus, differentiis, synonymis, locis. Tomus I. Editio Decima, Reformata*. Stockholm: Laurentii Salvii.
- Lucas Y, San Martín G, and Sikorski A. 2010. A new genus and species of Syllidae (Annelida: Polychaeta) from off the coast of Norway with unusual morphological characters and an uncertain systematic position. *Proceedings of the Biological Society of Washington* 123:251-257. 10.2988/09-11.1
- Macgillivray J. 1842. L.—Catalogue of the Marine Zoophytes of the neighbourhood of Aberdeen. *Annals and Magazine of Natural History* 9:462-469.

- 616 Malaquin A. 1893. Recherches sur les syllidiens: morphologie, anatomie, reproduction,
617 développement. *Mémoires de la Société des Sciences, de l'Agriculture et des Arts de Lille, 4e*
618 *série* 18:1-477.
- 619 Martin D, Aguado MT, and Britayev TA. 2009. Review of the symbiotic genus *Haplosyllides*,
620 with description of a new species. *Zoological Science* 26:646-655.
- 621 Martin D, and Britayev TA. 1998. Symbiotic polychaetes: Review of known species.
622 *Oceanography and Marine Biology: An Annual Review* 36:217-340.
- 623 Martin D, Britayev TA, San Martín G, and Gil J. 2003. Inter-population variability and character
624 description in the sponge associated *Haplosyllis spongicola* complex (Polychaeta: Syllidae).
625 *Hydrobiologia* 496:145–162.
- 626 Martin D, Gil J, Abgarian C, Evans E, Turner EM, Jr. , and Nygren A. 2015. *Proceraea janetae*
627 sp. nov. (Annelida, Syllidae, Autolytinae), a scleractinian coral feeder from Grand Cayman
628 Island. *Journal of the Marine Biological Association of the United Kingdom* 95:703 - 712.
629 doi:10.1017/S0025315414001428
- 630 Martin D, Núñez J, Riera R, and Gil J. 2002. On the associations between *Haplosyllis*
631 (Polychaeta, Syllidae) and gorgonians (Cnidaria, Octocorallaria), with a description of a new
632 species. *Biological Journal of the Linnean Society* 77:455-477.
- 633 McClintock JB, Amsler MO, Koplovitz G, Amsler CD, and Baker BJ. 2009. Observations on an
634 association between the dexaminiid amphipod *Polycheria antarctica* F. Acanthopoda and its
635 ascidian host *Distaplia cylindrica*. *Journal of Crustacean Biology* 29:605-608.
- 636 Mejaes BA, Poore AG, and Thiel M. 2015. Crustaceans inhabiting domiciles excavated from
637 macrophytes and stone. *The Life Styles and Feeding Biology of the Crustacea* 2:118-144.
- 638 Molina GI. 1782. *Versuch einer Naturgeschichte von Chili.4. Viertes Buch. Würmer, Insekten,*
639 *Amphibien, Fische, Vögel und vierfüssige Thiere von Chili.* Leipzig: Friedrich Gotthold
640 Jacobäer.
- 641 Molodtsova T, Britayev TA, and Martin D. 2016. Chapter 25. Cnidarians and their polychate
642 symbionts. In: Goffredo S, and Dubinsky Z, eds. *The Cnidaria, past, present and future The*
643 *world of Medusa and her sisters* Switzerland: Springer International Publishing, 387-413.
- 644 Molodtsova Tina N, Britayev TA, Martin D, and Budaeva N. 2015. Deep-sea corals and their
645 polychaete symbionts. 14th Deep Sea Biology Symposium. Aveiro (Portugal). p 76-77.

- Monniot C. 1990. Diseases of Urochordata. In: Kinne O, ed. *Diseases of marine animals*. Hamburg: Biologische Anstalt Helgoland, 569-636.
- Montagu G. 1808. II. Description of several Marine Animals found on the South Coast of Devonshire. *Transactions of the Linnean Society of London* 9:81-114.
- Morton B, and Dinesen GE. 2011. The biology and functional morphology of *Modiolarca subpicta* (Bivalvia: Mytilidae: Musculinae), epizoically symbiotic with *Asciidiella aspersa* (Urochordata: Ascidiacea), from the Kattegat, northern Jutland, Denmark. *Journal of the Marine Biological Association of the United Kingdom* 91:1637-1649.
- Mueller CE, Lundälv T, Middelburg JJ, and van Oevelen D. 2013. The symbiosis between *Lophelia pertusa* and *Eunice norvegica* stimulates coral calcification and worm assimilation. *PLoS ONE* 8:e58660. 10.1371/journal.pone.0058660
- Müller OF. 1776. *Zoologicae Danicae Prodrum, seu Animalium Daniae et Norvegiae indigenarum characteres, nomina et synonyma imprimis popularium*. Havniae [Copenhagen]: Hallageriis.
- Nygren A. 2004. Revision of Autolytinae (Syllidae: Polychaeta). *Zootaxa* 680:1-314.
- Nygren A, and Pleijel F. 2007. A new species of *Myrianida* (Syllidae, Polychaeta) from Belize. *Zootaxa* 1595:17–29.
- Nygren A, and Pleijel F. 2010. Redescription of *Imajimaea draculai*—a rare syllid polychaete associated with the sea pen *Funiculina quadrangularis*. *Journal of the Marine Biological Association of the United Kingdom* 90:1441 -1448. 10.1017/S0025315409991536
- Nygren A, and Sundberg P. 2003. Phylogeny and evolution of reproductive modes in Autolytinae (Syllidae, Annelida). *Molecular Phylogenetics and Evolution* 29:235-249. dx.doi.org/10.1016/S1055-7903(03)00095-2
- Nygren A, Sundkvist T, Mikac B, and Pleijel F. 2010. Two new and two poorly known autolytines (Polychaeta: Syllidae) from Madeira and the Mediterranean Sea. *Zootaxa* 2640:35-52.
- Odate S, and Pawlik JR. 2007. The role of vanadium in the chemical defense of the solitary tunicate, *Phallusia nigra*. *Journal of Chemical Ecology* 33:643-654.
- Okada YK. 1928. Feeding organs and feeding habits of *Autolytus edwardsi* St. Joseph. *Quarterly Journal of Microscopical Science, London* 72:219-245.

- Okada YK. 1935. Stolonization in *Myrianida*. *Journal of the Marine Biological Association of the United Kingdom* 20:93-98,96figs.
- Pallas PS. 1766. *Miscellanea Zoologica. Quibus novae imprimis atque obscurae animalium species describuntur et observationibus iconibusque illustrantur*. Hagae Comitum apud Petrum van Cleef.
- Pettibone MH. 1963. Marine polychaete worms of the New England region. Part 1. Families Aphroditidae through Trochochaetidae. *Bulletin of the United States National Museum* 227:1-356.
- Pisut DP, and Pawlik JR. 2002. Anti-predatory chemical defenses of ascidians: secondary metabolites or inorganic acids? *Journal of Experimental Marine Biology and Ecology* 270:203-214.
- Read G, and Fauchald K. 2016. World Polychaeta database accessed at <http://www.marinespecies.org/polychaeta/aphia.php?p=taxdetails&id=129262> on 2016-12-09.
- Rivolta A, San Martín G, and Sikorski A. 2016. Additions to the description, reproduction and systematic position of the enigmatic species *Acritagasyllis longichaetosus* Lucas, San Martín & Sikorski, 2010 (Annelida: Phyllodocida: Syllidae). *Journal of the Marine Biological Association of the United Kingdom* 96:1709-1716. 10.1017/S0025315415002118
- San Martín G, and López E. 2002. New species of *Autolytus* Grube, 1850, *Paraprocerastea* San Martín and Alós, 1989, and *Sphaerosyllis* Claparède, 1863 (Syllidae, Polychaeta) from the Iberian Peninsula. *Sarsia* 87:135–143.
- Savigny J. 1816. *Mémoires sur les animaux sans vertèbres*. Paris: G. Dufour.
- Say T. 1822. An account of some of the marine shells of the United States. *Journal of the Academy of Natural Sciences of Philadelphia* 2:221-248.
- Sepúlveda RD, Rozbaczylo N, Ibáñez CM, Flores M, and Cancino JM. 2015. Ascidian-associated polychaetes: ecological implications of aggregation size and tube-building chaetopterids on assemblage structure in the Southeastern Pacific Ocean. *Marine Biodiversity* 45:733-741.
- Shenkar N. 2012. Ascidian (Chordata, Ascidiacea) diversity in the Red Sea. *Marine Biodiversity* 42:459-469.
- Sinclair RJ, and Hughes L. 2010. Leaf miners: the hidden herbivores. *Austral Ecology* 35:300-313.

- Skogsberg T, and Vansell GH. 1928. Structure and behavior of the amphipod *Polycheria osborni*.
Proceedings of the California Academy of Sciences 17:267-295.
- Spooner GM, Wilson DP, and Trebble N. 1957. Phylum Annelida. *Plymouth Marine Fauna*.
Plymouth: Marine Biological Association U.K., 109-149.
- Stock JH. 1967. Report on the Notodelphyidae (Copepoda, Cyclopoida) of the Israel South Red
Sea Expedition. *Israel South Red Sea Expedition, 1962, Reports* 27:3–126.
- Stoecker D. 1980. Chemical defenses of ascidians against predators. *Ecology* 61:1327-1334.
- Thiel M. 2000. Population and reproductive biology of two sibling amphipod species from
ascidians and sponges. *Marine Biology* 137:661-674.
- Utinomi H. 1956. On the so-called 'Umi-Utiwa' a peculiar flabellate gorgonacean, with notes on
a syllidean polychaete commensal. *Publications of the Seto Marine Biological Laboratory*
5:243-250.
- Vandepas LE, Oliveira LM, Lee SS, Hirose E, Rocha RM, and Swalla BJ. 2015. Biogeography
of *Phallusia nigra*: is it really black and white? *The Biological Bulletin* 228:52-64.
- Verrill AE. 1869. Synopsis of the polyps and corals of the North Pacific Exploring Expedition,
under Commodore C. Ringgold and Capt. John Rodgers, USN, from 1853 to 1856. Collected
by Dr. Wm. Stimpson, Naturalist to the Expedition. With descriptions of some additional
species from the west coast of North America. Pt. 3: Madreporaria. Proceedings of the Essex
Institute. p 17-50.
- White KM. 1949. *Musculus lebourae*, new species. *Journal of Molluscan Studies* 28:46-49.
- White KN. 2011. A taxonomic review of the Leucothoidae (Crustacea: Amphipoda). *Zootaxa*
3078:1-113.
- Wright JD, and Woodwick KH. 1977. A new species of *Autolytus* (Polychaeta: Syllidae)
commensal on a Californian hydrocoral. *Bulletin of the Southern California Academy of*
Sciences 76:42-48.
- Zhan A, Briski E, Bock DG, Ghabooli S, and MacIsaac HJ. 2015. Ascidians as models for
studying invasion success. *Marine Biology* 162:0. 10.1007/s00227-015-2734-5

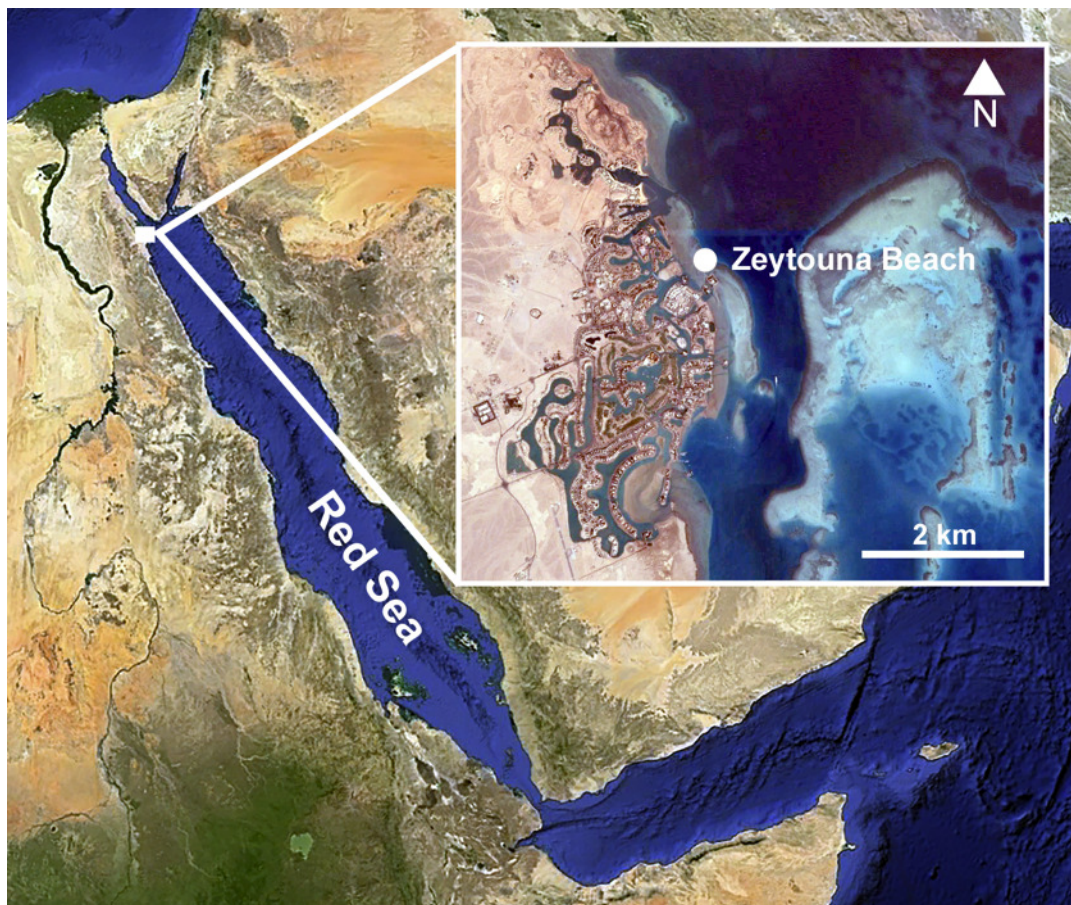


Figure 1. Location of the sampling site at Zeytouna Beach, Egyptian coast of the Red Sea. Maps are from Google Earth Pro, © 2016 DigitalGlobe, © 2016 CNS / Astrium.

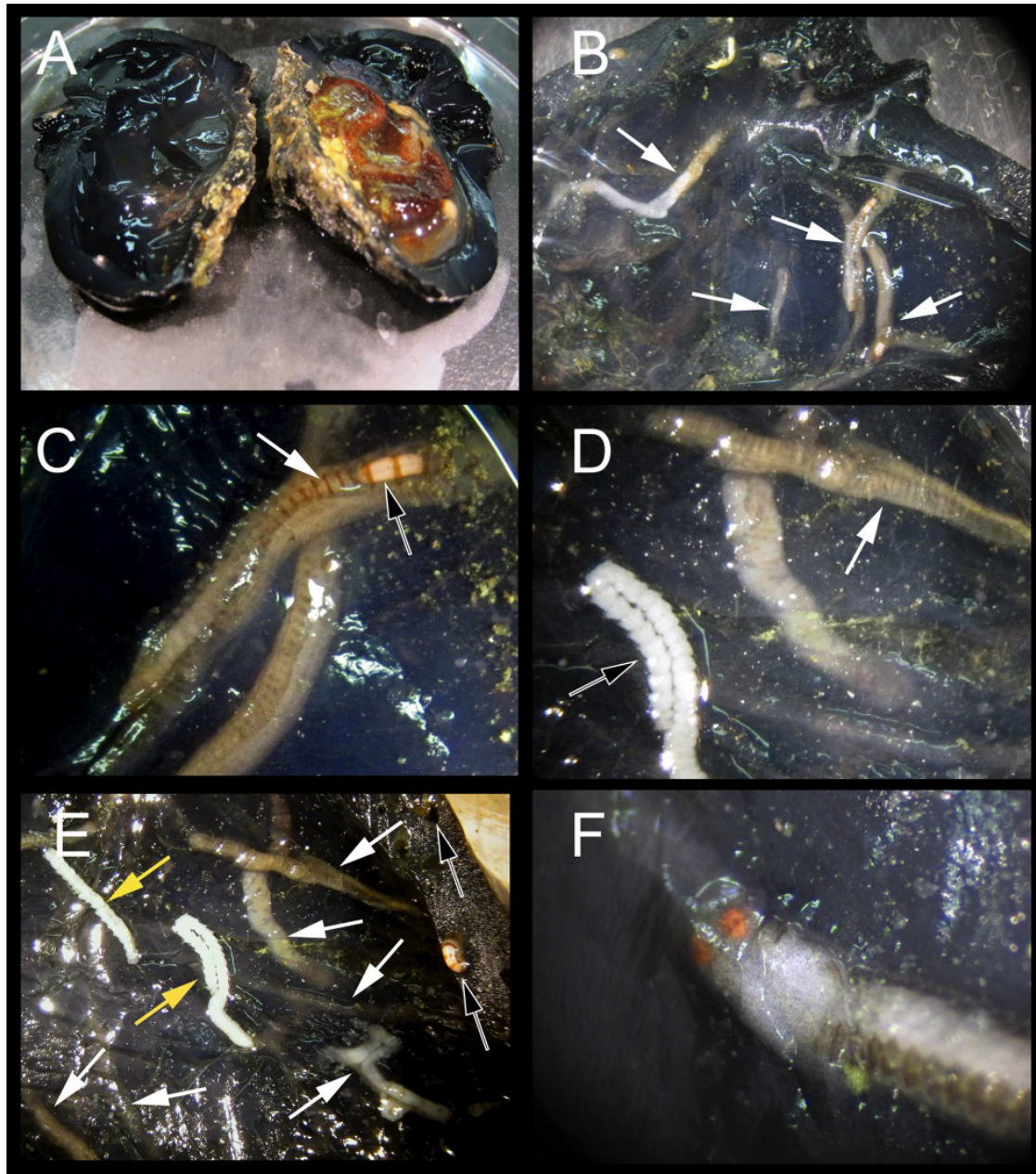


Figure 2. A. An uninfected *Phallusia nigra* dissected to show normal atrial surface (left) and internal organs. B. Inner atrial surface showing the presence of several atokous forms inside their galleries (white arrows). C. Detail of the colour of the anterior region of an atokous form; white arrow: position of pharynx; black arrow: position of proventriculum. D. Detail of colour of the mid-body of an atokous form (white arrow) and the posterior region of a male epitokous form (black arrow). E. Inner atrial surface showing the presence of atokous (white arrows) and male epitokous (yellow arrows) forms inside their galleries, as well as part of the banded body of an atokous form protruding from an external tunic opening and other empty tunic openings (black arrows). F. Close-up view of the head of a male epitoke in its gallery (specimen not preserved).

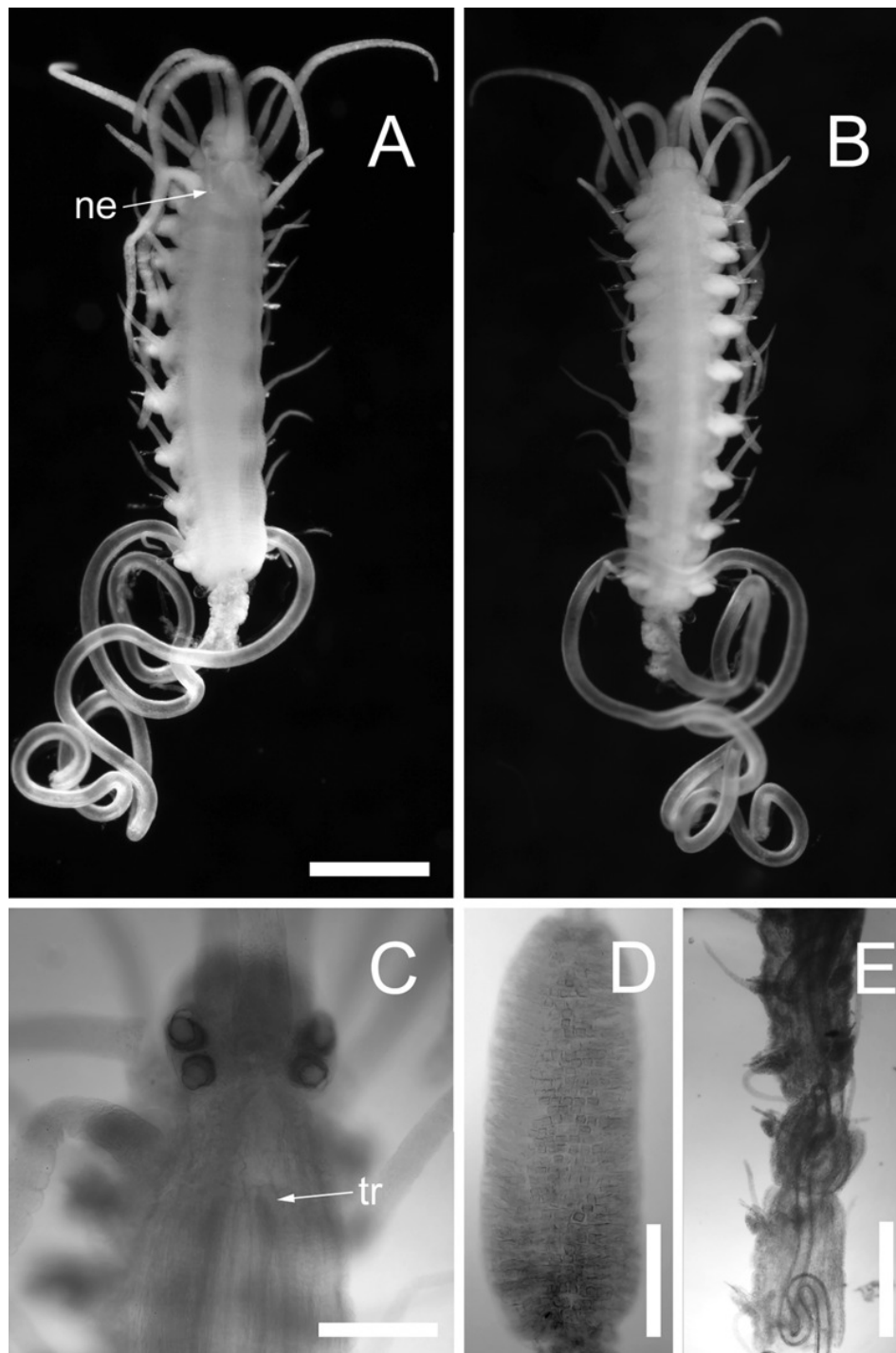


Figure 3. *Proceraea exoryxae* sp. nov. A. Anterior fragment, dorsal view [MNCN16.01/17719]. B. Anterior fragment, ventral view [MNCN16.01/17719]. C. Anterior end, dorsal view [MNCN16.01/17719]. D. Proventricle [MNCN16.01/17719]. E. Pharynx situation in chaetiger 9–14, dorsal view [MNCN16.01/17720]. Abbreviations as follows: ne = nuchal epaulettes, tr = trepan. Scale bars A, B, E = 0.5 mm, C, D = 0.2 mm.

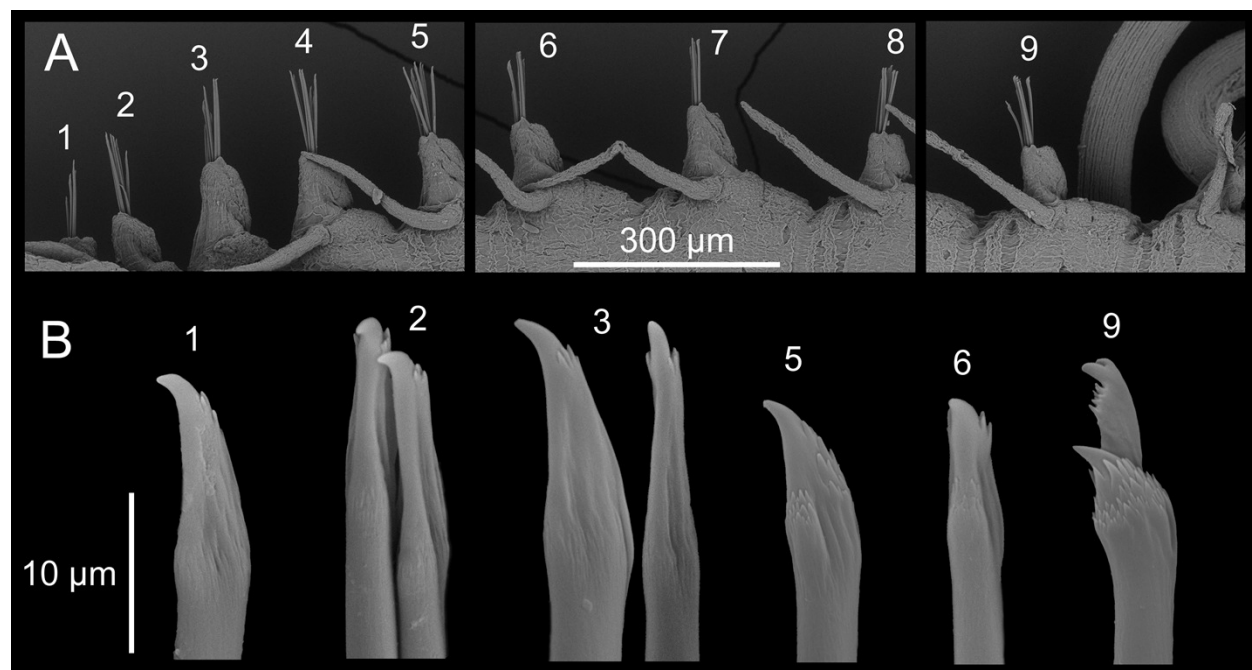


Figure 4. *Proceraea exoryxae* sp. nov. SEM micrographs. [MNCN16.01/17719] A. Chaetigers 1 to 9. B. Chaetae: 1-3, simple chaetae with long region distal to the swollen neck from chaetigers 1 to 3; 5-6, simple chaetae with short region distal to the swollen neck from chaetigers 5 and 6; 9, compound chaetae from chaetiger 9.

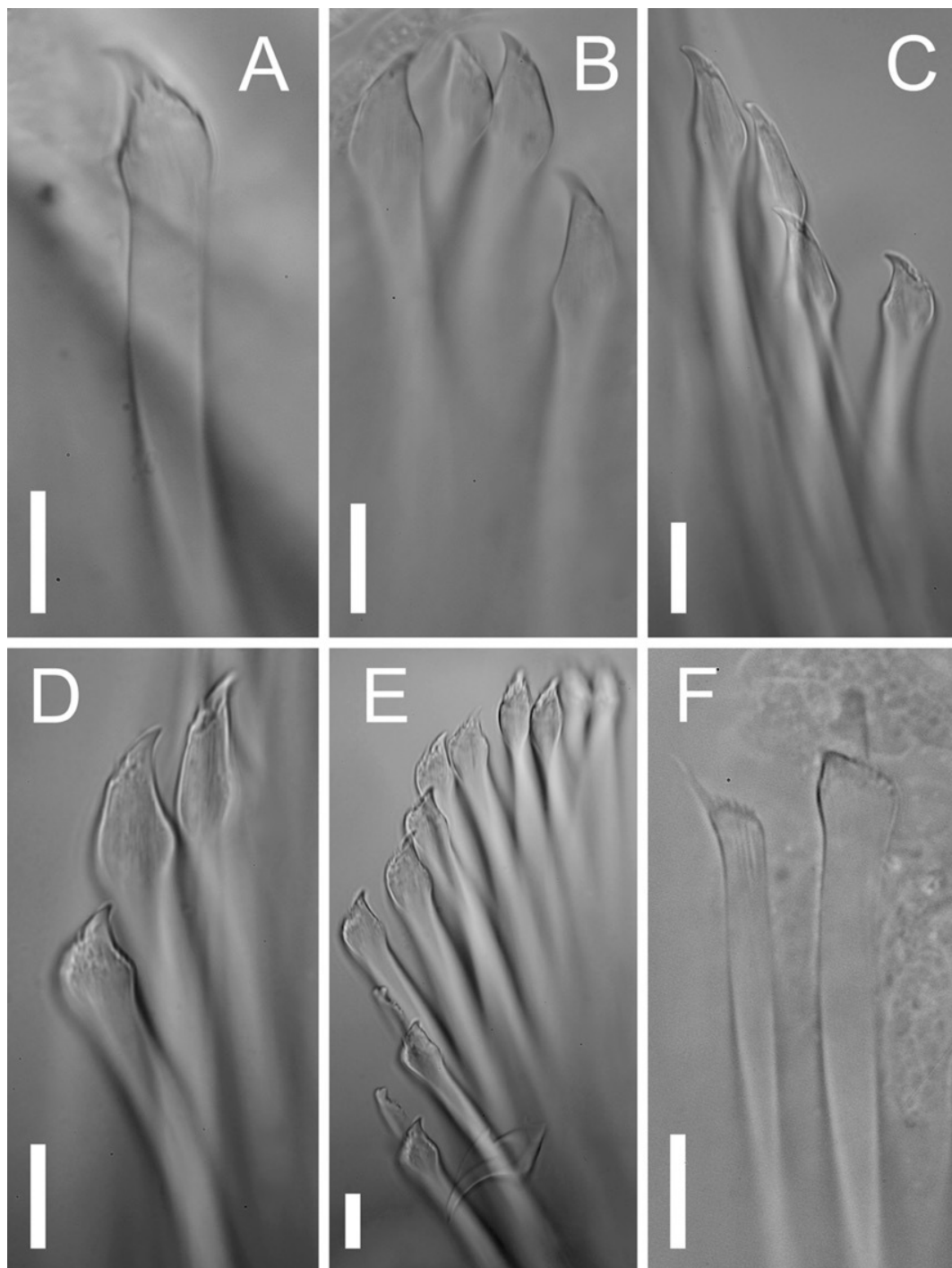


Figure 5. *Proceraea exoryxae* sp. nov. A. Inferior-most simple chaeta, chaetiger 1 [MNCN16.01/17717]. B. Simple chaetae, chaetiger 3 [MNCN16.01/17717]. C. Simple chaetae, chaetiger 4 [MNCN16.01/17719]. D. Simple chaetae, chaetiger 5 [MNCN16.01/17719]. E. Simple and compound chaetae, chaetiger 10 [MNCN16.01/17719]. F. Bayonet chaeta and compound chaeta, chaetiger 9 [MNCN16.01/17717]. Scale bars A–F = 0.1 mm.

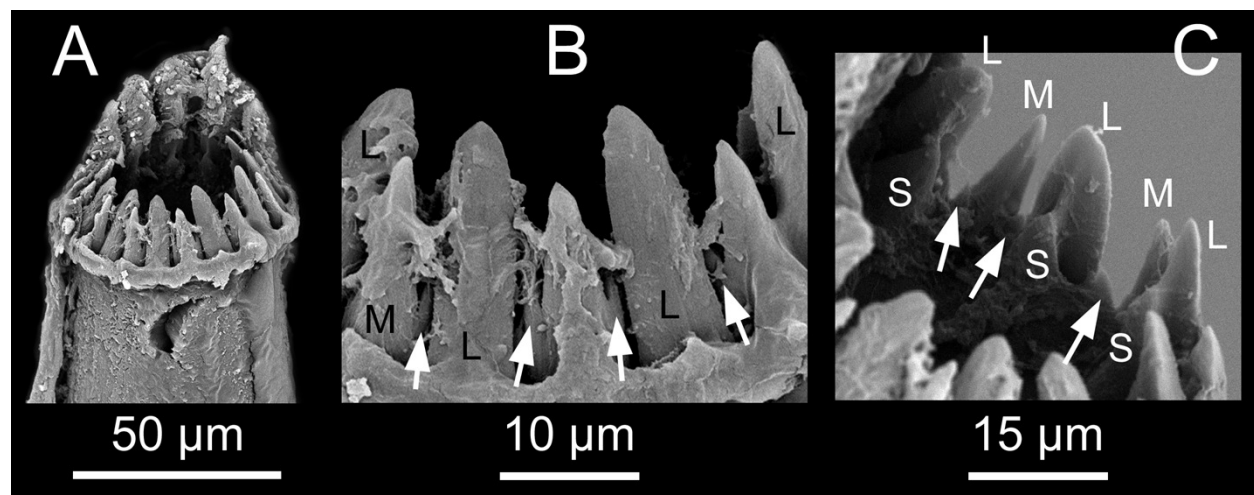


Figure 6. *Proceraea exoryxae* sp. nov. SEM micrographs.. A. Whole view of the trepan (teeth on the back partly covered by tissue) [MNCN16.01/17720]. B. Large and medium, tricuspid teeth in external view. C. Large, medium, tricuspid and small teeth in internal view. L: Large teeth; M: Medium, tricuspid teeth; S: small teeth; white arrows pointing on the lateral cusps.

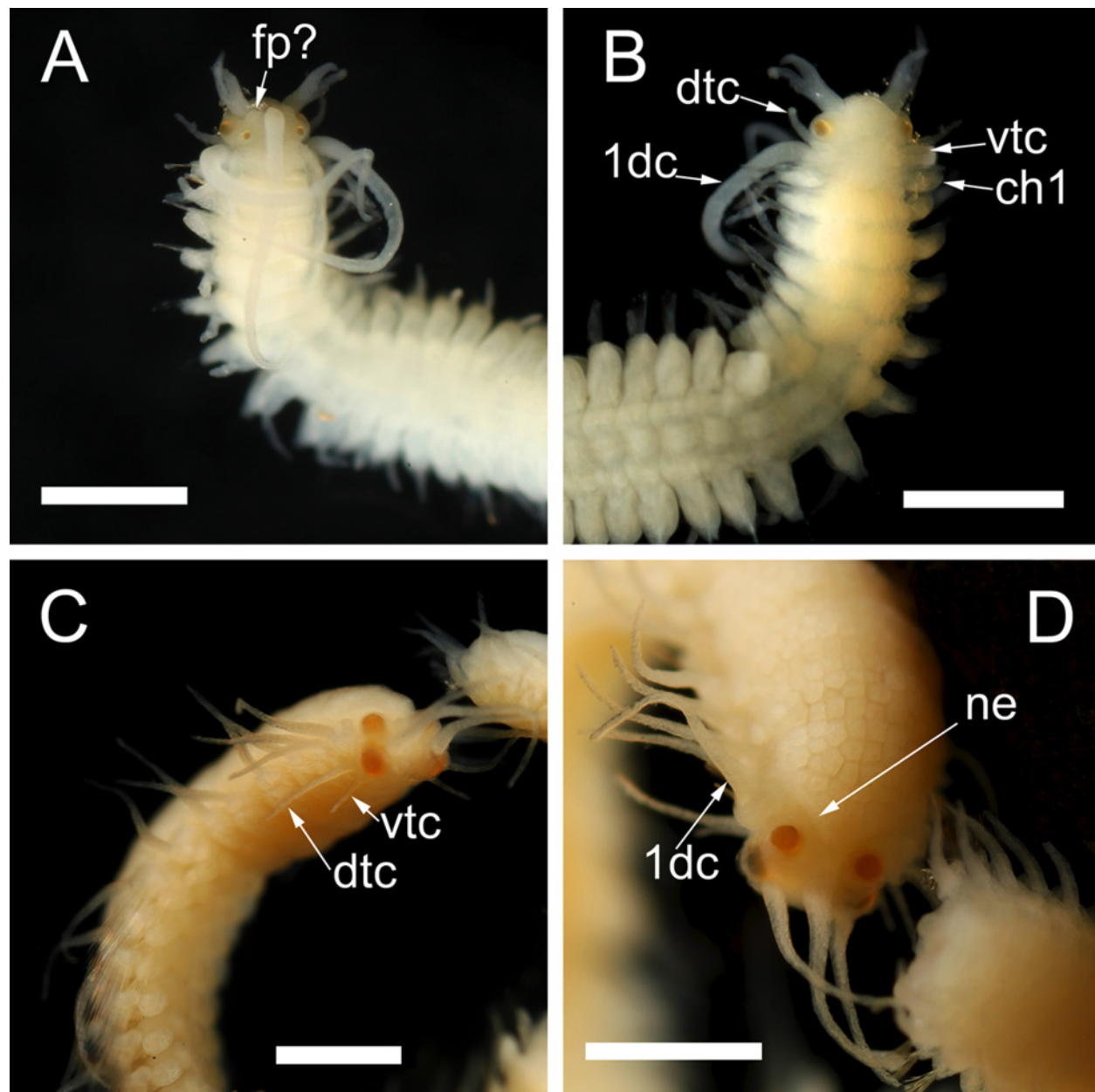


Figure 7. *Proceraea exoryxae* sp. nov. A. Male stolon, anterior end, dorsal view [MNCN16.01/17721]. B. Male stolon, anterior end, ventral view [MNCN16.01/17721]. C. Female stolon, anterior end, anteroventral view [MNCN16.01/17722]. D. Female stolon, anterior end, dorsal view [MNCN16.01/17722]. Abbreviations as follows: dte = dorsal tentacular cirri, vtc = ventral tentacular cirri, 1dc = first dorsal cirri, ch1 = chaetiger 1, fr = frontal process, ne = nuchal epaulettes. Scale bars A–D = 0.5 mm.

Table 1. List of known autolytinid syllids reported as symbionts. Cn: Cnidarians; Tu: tunicates.

SYMBIONT	HOST	REFERENCES
<i>Proceraea</i> sp.	Cn <i>Abietinaria turgida</i> (Clarke 1877)	(Britayev & San Martín 2001)
	Cn <i>Orthopyxis integra</i> (Macgillivray 1842)	T.A. Britayev, personal communication
<i>Imajimaea draculai</i> (San Martín & López 2002)	Cn <i>Funiculina quadrangularis</i> (Pallas 1766)	(Nygren & Pleijel 2010)
<i>Myrianida piningera</i> (Montagu 1808)	Tu <i>Phallusia mammillata</i> (Cuvier 1815)	(Okada 1935; Spooner et al. 1957)
	Tu <i>Ascidrella aspersa</i> (O. F. Müller 1776)	(Okada 1935; Spooner et al. 1957)
<i>Procerastea cornuta</i> Agassiz, 1862	Cn Unidentified hydroid	(Pettibone 1963)
	Cn Unidentified Coral	(Gardiner 1976)
<i>Procerastea halleziana</i> Malaquin, 1893	Cn <i>Ectopleura crocea</i> (Agassiz 1862)	(Genzano & San Martín 2002)
	Cn <i>Coryne eximia</i> Allman, 1859	(Allen 1915; Allen 1921; Alós 1989; Spooner et al. 1957)
	Cn <i>Tubularia indivisa</i> Linnaeus, 1758	(Caullery 1925; Spooner et al. 1957)
<i>Proceraea penetrans</i> (Wright & Woodwick 1977)	Cn <i>Stylaster californicus</i> (Verrill 1869)	(Wright & Woodwick 1977)
<i>Proceraea madeirensis</i> Nygren, 2004	Cn <i>Eudendrium carneum</i> Clarke, 1882	E. Cruz-Rivera, personal observations
<i>Pachyprocerastea hydrozoicola</i> (Hartmann-Schröder 1992)	Cn <i>Pseudosolanderia</i> sp.	(Hartmann-Schröder 1992)
<i>Procerastea parasimpliseta</i> Hartmann-Schröder, 1992	Cn <i>Pseudosolanderia</i> sp.	(Hartmann-Schröder 1992)