

Manuka-type honeys can eradicate biofilms produced by *Staphylococcus aureus* strains with different biofilm-forming abilities

Chronic wounds are a major global health problem. Their management is difficult and costly, and the development of antibiotic resistance by both planktonic and biofilm-associated bacteria necessitates the use of alternative wound treatments. Honey is now being revisited as an alternative treatment due to its broad-spectrum antibacterial activity and the inability of bacteria to develop resistance to it. Many previous antibacterial studies have used honeys that are not well characterized, even in terms of quantifying the levels of the major antibacterial components present, making it difficult to build an evidence base for the efficacy of honey as an antibiofilm agent in chronic wound treatment. Here we show that a range of well-characterized New Zealand manuka-type honeys, in which two principle antibacterial components, methylglyoxal and hydrogen peroxide, were quantified, can eradicate biofilms of a range of *Staphylococcus aureus* strains that differ widely in their biofilm-forming abilities. Using crystal violet and viability assays, along with confocal laser scanning imaging, we demonstrate that in all *S. aureus* strains, including methicillin-resistant strains, the manuka-type honeys showed significantly higher anti-biofilm activity than clover honey and an isotonic sugar solution. We observed higher anti-biofilm activity as the proportion of manuka-derived honey, and thus methylglyoxal, in a honey blend increased. However, methylglyoxal on its own, or with sugar, was not able to effectively eradicate *S. aureus* biofilms. We also demonstrate that honey was able to penetrate through the biofilm matrix and kill the embedded cells in some cases. As has been reported for antibiotics, sub-inhibitory concentrations of honey improved biofilm formation by some *S. aureus* strains, however, biofilm cell suspensions recovered after honey treatment did not develop resistance towards manuka-type honeys. New Zealand manuka-type honeys, at the concentrations they can be applied in wound dressings are highly active in both preventing *S. aureus* biofilm formation and in their eradication, and do not result in bacteria becoming resistant. Methylglyoxal

requires other components in manuka-type honeys for this anti-biofilm activity. Our findings support the use of well-defined manuka-type honeys as a topical anti-biofilm treatment for the effective management of wound healing.

1 Authors

2 Jing Lu¹, Lynne Turnbull¹, Catherine M. Burke¹, Michael Liu¹, Dee A. Carter², Ralf C.

3 Schlothauer³, Cynthia B. Whitchurch¹ & Elizabeth J. Harry^{1*}

4 ¹The ithree institute, University of Technology Sydney, Sydney NSW 2007, Australia

5 ²School of Molecular Bioscience, University of Sydney, NSW 2006 Australia

6 ³Comvita NZ Limited, 23 Wilson Road South, Te Puke, 3153, New Zealand.

7 *Corresponding author:

E-mail liz.harry@uts.edu.au; Tel. (+61) 2 9514 4173, Fax (+61) 2 9514 8349.

8 Introduction

9 Chronic wounds currently affect 6.5 million people in the US. These wounds are difficult to treat
10 and estimated to cost in excess of US \$ 25 billion annually, with significant increases expected in
11 the future (Sen et al. 2009). A wound is generally considered chronic if it has not started to heal
12 by four weeks or has not completely healed within eight weeks (McCarty et al. 2012). Such
13 prolonged, non-healing wounds are caused by a variety of factors, with bacterial infection being a
14 significant contributor.

15 In chronic wounds, as with everywhere on earth, bacterial cells predominantly exist as biofilms,
16 where cells are embedded within a matrix of polysaccharides and other components. This matrix
17 affords resistance to environmental stresses such as altered pH, osmolarity, and nutrient limitation
18 (Fux et al. 2005). The matrix also limits access of antibiotics to the biofilm embedded cells
19 (Ranall et al. 2012), which are up to 1,000 times more recalcitrant to these compounds than
20 planktonic cells (Hoyle & Costerton 1991). Planktonic bacteria may also contribute to
21 pathogenesis, as their release from biofilms has been proposed to maintain the inflammatory
22 response within the wound (Ngo et al. 2012; Wolcott et al. 2008), as well as allowing seeding to
23 other areas (Battin et al. 2007; Costerton et al. 2003). Along with the difficulties of treating
24 biofilm infections, the emergence of resistance to multiple antibiotics has exacerbated the
25 problem of chronic wound treatment (Engemann et al. 2003; Projan & Youngman 2002). Thus,
26 there is an increasing need for new approaches to combat bacterial biofilms in chronic wounds.

Honey has been used to treat acute and chronic wound infections since 2500 BC (Forrest 1982; Molan 1999; Simon et al. 2009). Honey possesses a number of antimicrobial properties including high sugar content, low pH, and the generation of hydrogen peroxide by the bee-derived enzyme glucose oxidase (Stephens 2009). However, not all honeys are the same and their antimicrobial properties vary with floral source, geographic location, weather conditions, storage (time and temperature) and various treatments, such as heat (Al-Waili et al. 2013; Allen et al. 1991; Molan 1999; Sherlock et al. 2010). These factors lead to differences in the levels of various antibacterial components. Manuka honey is derived from *Leptospermum scoparium* bush and is particularly potent (Adams et al. 2008; Allen et al. 1991; Kwakman et al. 2011). This is believed to be largely due to the high levels of the reactive dicarbonyl methylglyoxal (MGO) (Adams et al. 2008; Mavric et al. 2008), which is highly inhibitory to bacterial growth (Lu et al. 2013). Other antimicrobial compounds in honeys include bee defensin-1 (Kwakman et al. 2010; Kwakman & Zaat 2012), various phenolic compounds and complex carbohydrates (Adams et al. 2008; Gresley et al. 2012; Mavric et al. 2008; Molan 1999; Weston et al. 2000). The combination of these diverse assaults may account for the inability of bacteria to develop resistance to honey (Blair et al. 2009; Cooper et al. 2010), in contrast to the rapid induction of resistance observed with conventional single-component antibiotics (Colsky et al. 1998; Cooper 2008).

A few studies have examined the effect of manuka honey on biofilms, showing it to be active against a range of bacteria, including Group A *Streptococcus pyogenes*, *Streptococcus mutans*, *Proteus mirabilis*, *Pseudomonas aeruginosa*, *Enterobacter cloacae* and *Staphylococcus aureus* (Alandejani et al. 2008; Maddocks et al. 2013; Maddocks et al. 2012; Majtan et al. 2013).

However, the levels of reported anti-biofilm activity are not consistent among these studies. This

is highly likely to be at least in part due to differences in the levels of the principle antibacterial components in the honey, MGO and hydrogen peroxide, which varies with the floral and geographic source of nectar, the honey storage time and conditions, and any possible other treatments that may have occurred. All these conditions affect the antimicrobial activity of honey (Adams et al. 2008; Al-Waili et al. 2011; Sherlock et al. 2010; Stephens 2009), but are often not reported. Importantly, medical-grade honeys, while often composed primarily of manuka, can also contain honey derived from other flora sources, which can alter the levels of various antimicrobial components. Therefore, it is imperative to use well-characterized honeys to enable both accurate comparisons among studies, and the rigorous assessment of the potential of medical-grade honey to be used in wound treatment in the clinic.

Here we have performed biomass and viability assays, as well as confocal scanning light microscopy to examine the anti-biofilm activity of four NZ manuka-type honeys, clover honey and an isotonic sugar solution on a range of *S. aureus* strains that differ widely in their biofilm-forming ability. These honeys have been well characterized in terms of their geography, floral source and the level of the two principal antibacterial components found in honey, MGO and hydrogen peroxide. We demonstrate that the manuka-type honeys are highly active in both the prevention and elimination of methicillin-sensitive and methicillin-resistant *S. aureus* biofilms. The antibiofilm activity was highest in the honey blend that contained the highest level of manuka-derived honey; although the same level of MGO, with or without sugar, could not eradicate biofilms. This suggests that additional factors in these manuka-type honeys are responsible for their potent anti-biofilm activity; and emphasise the importance of characterizing honey in order to understand and choose the best honey product for wound management.

Materials and Methods

Honey Samples

The New Zealand (NZ) honey samples used in this study are listed in Table 1, and include monofloral manuka honey, Medihoney (a manuka-based medical grade honey; Comvita Ltd), a manuka/kanuka blend, and clover honey (a white New Zealand honey). All honey samples were supplied by Comvita New Zealand Ltd. (Te Puke, New Zealand). The harvesting and geographic information for these honeys, as well as the levels of the three major antimicrobial components: methylglyoxal (MGO), di-hydroxyacetone (DHA) and hydrogen peroxide, are listed in Table 1. All samples were stored in the dark at 4 °C and were freshly diluted in Tryptone Soya Broth (TSB) immediately before use in assays. All honey concentrations are expressed as % w/v.

Other Tested Solutions

A series of other solutions were included for investigation alongside the honey samples: i) a sugar solution designed to mimic the concentration and composition of honey sugars (45% glucose, 48% fructose, 1% sucrose) diluted as above for honey; ii) MGO diluted in TSB to concentrations similar to those present in the manuka-type honeys (100 mg/kg, 700 mg/kg and 900 mg/kg honey) to assess the effect of MGO alone on bacterial growth; iii) MGO diluted in sugar solution to the same concentration as (ii). MGO was obtained as a ~40% (w/w) solution in water (Sigma-Aldrich Co., MO, USA).

Hydrogen Peroxide Assay

The level of hydrogen peroxide produced by the NZ honey samples was determined using a hydrogen peroxide/peroxidase assay kit (Amplex Red, Molecular Probes, Life Technologies Corp., Carlsbad, CA, USA) as previously reported (Lu et al. 2013).

Bacterial Strains and Growth Conditions

Four strains of *S. aureus* were examined. These include two laboratory reference strains: NCTC 8325 (National Collection of Type Cultures) (Stepanovic et al. 2000) and ATCC 25923 (American Type Culture Collection) which are methicillin-sensitive, and two clinical isolates: MW2 (Hospital-Acquired Methicillin-resistant *Staphylococcus aureus*, HA-MRSA) (Baba et al. 2002) and USA300 (Community-Acquired Methicillin-resistant *Staphylococcus aureus*, CA-MRSA) (Kazakova et al. 2005). All *S. aureus* strains were grown in TSB at 37°C. For optimal biofilm formation, 1% (w/v) glucose was added to this medium (TSBG) except for strain NCTC 8325 which was found to produce optimal biofilm in the absence of added glucose.

Susceptibility of *S. aureus* to NZ Honeys: Growth Response Assays

In this study, growth response assays were carried out to assess whether the NZ honeys affected cell growth of the different strains of *S. aureus* (at concentrations of 1-32%; prepared as serial 2-fold dilutions in TSB(G)). Details of the growth assay methods are described in our previous publication (Lu et al. 2013). TSB(G) media without honey was included as a control. Unless otherwise stated, all assays were performed with three biological replicates and three technical repeats of each replicate.

Biofilm Formation Assays

110 The effects of NZ honeys and other solutions on *S. aureus* biofilm formation were determined
 111 using crystal violet static biofilm formation assays in microtitre plates according to published
 112 studies with the following modifications (Christensen et al. 1985; Stepanovic et al. 2000). Crystal
 113 violet stains all biomass including live and dead cells and the biofilm matrix. *S. aureus* strains
 114 were cultured in 2 mL of TSB(G) with shaking (250 rpm) overnight at 37°C . A suspension from
 115 the overnight culture was then diluted to a cell density of approximately 10^7 CFU/mL in fresh
 116 TSB containing the appropriate test solution (honey, sugar solution, MGO or MGO in
 117 combination with sugar) to give a final volume of 150 μ L. The suspension was added to each well
 118 of a 96-well tissue-culture treated microtitre plate (BD Falcon, NJ, USA). Media-only and media
 119 with the appropriate test solution without *S. aureus* inoculation were included as negative
 120 controls. The microtitre plates were sealed with AeraSeal (Excel Scientific, CA, USA) and
 121 incubated in a humidified incubator for 24 h at 37°C. Following this, planktonic cell growth was
 122 assessed by transferring the planktonic phase into a new 96-well microtitre plate and reading the
 123 optical density at 595 nm with a microplate reader (VersaMax, Molecular Devices, California,
 124 USA). This step was required as *S. aureus* forms biofilms on the bottom of the microtitre plate
 125 wells, which interferes with optical density readings of the planktonic culture. The microtitre
 126 plates with residual biofilm were then washed three times with sterile phosphate buffered saline
 127 (PBS) to remove unattached cells and air-dried at 65 °C for 1 h, to fix the *S. aureus* biofilm to the
 128 bottom of the well surface. The plate was then stained with 0.2% (w/v) crystal violet at room
 129 temperature for 1 h, excess crystal violet solution was decanted and the plates were washed as
 130 above with PBS. Stain that was bound to the adherent biomass was resolubilized with 200 μ L
 131 33% acetic acid and transferred into a new 96-well microtitre plate to measure the OD₅₉₅.

132 ***Biofilm Elimination Assays***

133 *S. aureus* biofilms were first formed in the wells of a 96-well microtitre plate for 24 h at 37°C as
 134 described above. Biofilms were then washed three times with PBS. Various concentrations (0% -
 135 32% in two-fold serial dilutions) of honey and other test solutions were then added to the
 136 established *S. aureus* biofilms. The assay plates were then incubated for a further 24 h at 37°C,
 137 and planktonic cell growth and biofilm mass were quantified as described above.

138 ***Determination of Bacterial Cell Viability in Biofilms***

139 Crystal violet stains all the components of the biofilm (Bauer et al. 2013). To quantify the
 140 viability of cells within the *S. aureus* biofilms following honey treatment, we used a BacTitre Glo
 141 Microbial Cell Viability Assay Kit (Promega, WI, USA), which measures ATP levels as a proxy
 142 for viability. The assay reagents lyse the bacterial cells to release intracellular ATP, the levels of
 143 which are quantified via a luminescence-based luciferase activity assay (Haddix et al. 2008;
 144 Junker & Clardy 2007). The BacTitre Glo protocol involved the same steps as crystal violet
 145 staining (above), however, instead of drying and staining the biofilms, plates were incubated with
 146 BacTitre Glo reagent in TSB(G) for 10 minutes at 37 °C in the dark. The contents of each well
 147 were then transferred into white solid-bottom 96-well microtitre plates (Cellstar, Greiner Bio-one,
 148 France) for luminescence measurement. Luminescence, which is proportional to the amount of
 149 ATP produced by metabolically active cells, was recorded using a 96-well microplate reader
 150 (Tecan, Infinite 200Pro, Männedorf, Switzerland).

151 To ensure the validity of this assay, a standard curve was constructed to assess the correlation
 152 between bacterial cell numbers and the luminescent signal in the biofilm. This was performed on

the untreated control (containing *S. aureus* in TSB(G) only). Biofilms produced as above were washed and cells within the biofilm dispersed using a small probe sonicator (Sonics and Materials VC-505) to enable quantification by direct enumeration (Merritt et al. 2005). The recovered cell suspension was serially diluted 10-fold and a 20µL aliquot was plated on Tryptone Soya Agar (TSA) for CFU determination. Luminescence of cells in the remaining suspension was assessed using the BacTitre Glo kit. From this, a correlated standard curve was constructed between calculated CFU/well and the relative luminescence readings. According to the standard curve shown in Figure 1, the detection limit of the BacTitre Glo is at a luminescence reading below 1,000, which is equivalent to 10³ CFU/well (linear range from 10³ -10⁷ CFU/well). An upper limit was not detected.

Visualizing live/dead stained S. aureus biofilms using confocal laser scanning microscope (CLSM)

S. aureus biofilms were treated with TSB containing 1%, 2%, 16%, and 32% NZ honeys or sugar solution for 24 h in black polystyrene 96-well microtitre plates with µClear bottoms (Cellstar, Greiner Bio-One, France) as described above, except the biofilm mass was not fixed by air-drying. The treated biofilm mass was washed three times with PBS and cells within the biofilm structure were fluorescently stained with 2.5 µM Syto9 (Invitrogen, CA, USA) and 4.3 µM propidium iodide (PI) (Becton Dickinson, NJ, USA), which identify live and dead cells in the biofilm structure, respectively. After 30 min of incubation in the dark at room temperature, the wells were washed thoroughly with PBS and fixed with 4% paraformaldehyde (Sigma-Aldrich, MO, USA) for 15 minutes. The wells were then rinsed and stored in PBS for imaging. Biofilms were imaged using confocal laser scanning microscopy imaging (CLSM) on a Nikon A1 confocal

176 microscope. The Syto9 and PI fluorophores were excited at 488 nm and 561 nm, and the
177 emissions were collected at 500-550 nm and 570-620 nm, respectively. For quantitative analysis,
178 at least eight separate CLSM image stacks of each NZ honey treated biofilms were acquired with
179 a resolution of 512 x 512 pixels. Biofilm biomass was calculated using COMSTAT (Heydorn et
180 al. 2000) and is expressed as volume of the biofilm over the surface area ($\mu\text{m}^3/\mu\text{m}^2$).
181 Representative presentation image stacks of each treatment were acquired at a resolution of 1024
182 x 1024 pixels and three dimensional biofilm images reconstructed using NIS-elements
183 (Version10, Nikon Instruments Inc., USA). It should be noted that due to the incomplete
184 displacement of Syto9 by propidium iodide in dead cells that there will remain some Syto9
185 staining of dead cells. Therefore the absolute level of live cells detected in the Syto9 channel will
186 be somewhat overestimated using this co-staining method (Stocks 2004).

187 *Assaying Honey Resistance in Cells Recovered from Biofilms*

188 The development of resistance is a great concern in clinical settings, where bacteria can become
189 resistant to inhibitory compounds after exposure to sub-inhibitory concentrations (Cars &
190 Odenholt-Tornqvist 1993; Pankuch et al. 1998). Planktonic cells that appeared after 24 h manuka-
191 type honey treatment of established biofilms were assumed to have been released from the
192 biofilm matrix. Cells recovered from biofilms treated with sub-eliminatory concentrations of
193 manuka-type honeys were collected and tested for their ability to grow and form biofilms under
194 the static growth conditions described above. Cell growth and biofilm formation were defined as
195 not detected when the $\text{OD}_{(x)} - \text{OD}_{(\text{media only blank})} \leq 0.1$. Each experiment was performed with three
196 biological replicates and three technical repeats of each biological replicate.

197 *Statistical Analysis*

198 Statistical analysis to determine significant differences between treatments and among honey
 199 samples were performed. First, data sets were checked for normality (Gaussian Distribution)
 200 using the D'Agostino-Pearson normality test ($\alpha = 0.05$) in GraphPad Prism (versions 5 and 6).
 201 Once normality was confirmed, significant differences between treatments and among honey
 202 samples were performed using One-Way ANOVA with Tukey Test using the same software.
 203 Statistical significance was set at $p < 0.05$.

Results

The Effect of NZ Manuka-Type Honeys on the Planktonic Growth of *S. aureus*

Planktonic growth and biofilm mass were assessed to examine the ability of four NZ honeys, three manuka-types and one clover, and a sugar solution to prevent biofilm formation by different strains of *S. aureus*. Following 24 h incubation under static conditions, *S. aureus* cells formed biofilms at the bottom of microtitre plates, with very little or no planktonic growth detected, indicating that the concentration of honey needed to prevent *S. aureus* planktonic cell growth could not be calculated under these conditions. Shaking broth cultures were instead used to assess the effect of the treatments on planktonic growth. The results are shown in Table 2. Planktonic growth of the four *S. aureus* strains, NCTC 8325, ATCC 25923, MW2 and USA300, was completely inhibited by 8% manuka honey and Medihoney, 16% manuka/kanuka honey and 32% clover honey. The 32% sugar solution was only effective at inhibiting growth of the MRSA strain MW2, with no inhibition of growth of the other strains at the concentrations tested (1-32%). These data are in agreement with the results of our previous study using the standard *S. aureus* reference strain, ATCC 25923, which used a similar suite of honey types and the same experimental conditions (Lu et al. 2013).

The Effect of NZ Manuka-Type Honeys on *S. aureus* Biofilm Formation

All strains of *S. aureus* were assessed for their biofilm-forming ability after 24 h and 48 h. Under static conditions, biofilm-forming ability varied between strains, with NCTC 8325 forming the most robust biofilms, and generating significantly more biofilm mass than the other three tested strains (Figure 2A and Figure 2B). This was followed by ATCC 25923 and USA300, with MW2 forming the thinnest biofilms (Figure 2A and 2B; $p < 0.05$). The effects of the four NZ honeys

and the sugar solution on biofilm formation of strain NCTC 8325 are shown in Figure 3A.

Manuka honey was the most effective at preventing biofilm formation by *S. aureus* NCTC 8325, resulting in ~95% reduction ($p < 0.001$) in biofilm formation at 8% (Figure 3A) compared to the untreated (0%) control. At this concentration, the other honeys and the sugar solution did not significantly reduce biofilm formation. Medihoney and manuka/kanuka honey were highly effective at 16%, preventing biofilm formation by ~95% ($p < 0.001$). Clover honey was much less active and was less able to prevent biofilm formation than the sugar solution, even at the highest concentration used (32%).

For NCTC 8325, the addition of sub-inhibitory concentrations of manuka and manuka/kanuka honey significantly enhanced biofilm formation, increasing it by 1.5- and 2-fold, compared to the untreated control ($p < 0.001$). In contrast, Medihoney, clover honey and the sugar solution did not enhance biofilm formation by strain NCTC 8325 at any concentration tested.

S. aureus strain ATCC 25923, which is a standard clinical reference strain, produced similar results to NCTC 8325, including the enhancement of biofilm formation following sub-inhibitory honey treatment (Figure 3B). The hospital-acquired MRSA strain MW2 – the weakest biofilm former out of all four tested strains (Figure 2A and 2B; $p < 0.05$) - displayed a very sensitive profile to all of the NZ honeys and the sugar solution at all tested concentrations (Figure 3C). Even with only 1% honey or sugar solution, a ~50% reduction in biofilm formation was observed for MW2 ($p < 0.001$). At higher concentrations ($\geq 8\%$), all four NZ honeys were significantly more effective than the sugar solution at preventing MW2 biofilms. The other MRSA strain, USA 300, responded similarly to NCTC 8325, with approximately the same concentrations of manuka-

type honey being required to reduce biofilm formation by ~95%. However, unlike NCTC 8325, sub-inhibitory concentrations of manuka-type honey reduced biofilm formation of USA 300 rather than enhancing it (e.g. 4% manuka-type honeys exhibited ~50-80% biofilm inhibition of USA 300). Moreover, in USA300, biofilm formation was not affected by the sugar solution at any tested concentration.

The results above can be summarize as follows: i) all three manuka-type honeys are effective at inhibiting biofilm formation of a range of of MSSA and MRSA strains; with (monofloral) manuka honey being generally more effective than the other maunka-type honeys; and ii) the manuka-type honeys are generally more effective than clover honey and the isotonic sugar solution, although clover honey was just as inhibitory as the manuka-type honeys for the weakest biofilm former, *S. aureus* MW2.

The Effect of MGO on *S. aureus* Biofilm Prevention

MGO is a principle antibacterial component of manuka honey responsible for its inhibitory effects on the growth of *S. aureus* and other bacterial species. This is evidenced by the correlation between the MGO level and the proportion of manuka-derived honey in a honey blend (Jervis-Bardy et al. 2011; Lu et al. 2013). To determine whether MGO is solely responsible for the inhibitory effect of the three manuka-type honeys on *S. aureus* biofilm formation, biofilm assays were performed using MGO at equivalent concentrations to those present in each of the manuka-based honey samples, with and without the addition of the sugar solution (Figure 4). *S. aureus* NCTC8325 biofilm formation was not significantly ($p > 0.05$) affected by MGO at concentrations equivalent to that present in 1- 16% manuka-type honeys. MGO at medium (700 mg/kg) and high

(900 mg/kg) levels at the equivalent concentration to 32% manuka-kanuka honey and Medihoney prevented approximately 50% and 75% biofilm formation, respectively ($p < 0.05$). The addition of the sugar solution to MGO at the same levels present in 16% of all three manuka-type honeys, led to a dramatic decrease (~95%) in biofilm formation.

The Effect of NZ Manuka-Type Honeys on Established *S. aureus* Biofilms

Bacterial biofilms are usually already established in open, chronic wounds prior to presentation to the clinic for medical treatment. We therefore assessed the ability of the four NZ honeys to remove established biofilms produced by the four strains of *S. aureus*. These results are presented in Figure 5, with coloured lines showing biofilm mass present following treatment with different concentrations of the various honey types. While there was variation among the *S. aureus* strains in their response to the different honeys, there are some important general trends. First, manuka honey was consistently the most effective at removing biofilm, eliminating almost all of the established *S. aureus* biofilms at concentrations of 16%–32%, ($p < 0.001$ compared to the untreated control sample; Figure 5 top panel, orange lines). Second, Medihoney and manuka/kanuka honey were also effective at these concentrations for some *S. aureus* strains, but only consistently effective across all four strains at 32% (Figure 5, blue and green lines). Third, both the clover honey and the sugar solution did not significantly reduce ($p > 0.5$) established biofilm mass until their concentration reached 32%. However, the sugar solution did not remove the USA 300 biofilm, with no significant reduction in biofilm mass at 32% (Figure 5, purple line).

NCTC 8325, the most efficient biofilm former out of all tested strains, gave a slightly different response toward honey treatment compared to the other three strains. Significant biofilm enhancement occurred in this strain at sub-inhibitory concentrations of manuka honey (1-2%) and manuka/kanuka honey (1-4%) ($p < 0.001$; Figure 5). In addition, this strain was the least sensitive to the manuka-type honeys. For example, at 8% manuka honey treatment, the NCTC 8325 biofilm mass remained similar to the untreated control ($p > 0.05$; Figure 5), while the biofilms produced by the other three strains were significantly reduced at this concentration ($p < 0.001$; Figure 5).

The Effect of NZ Manuka-Type Honeys on Cell Viability within *S. aureus* Biofilms

Elimination of biofilm mass was assessed using crystal violet, a cationic dye that stains all the components of the biofilm. However, this assay cannot assess the viability of cells remaining within the biofilm structure (Bauer et al. 2013). To determine this, we used a BacTitre Glo assay, which measures ATP levels as a proxy for viability. Side-by-side CFU measurements showed that the level of ATP detected in these assays was proportional to the count of viable cells per well (ranging from 10^3 - 10^7 CFU/well) (Figure 1).

The viability of cells remaining in the biofilm after the various treatments is shown in Figure 5. In general, cell viability decreased in proportion to the elimination of biofilm biomass (Figure 5, black lines). However, several exceptions to this general trend were observed. In some cases, biofilm biomass increased but cell viability did not, e.g. NCTC 8325 biofilms with low concentrations of manuka (2%) and manuka/kanuka honey (1-4%) (Figure 5). In others, biofilm biomass remained relatively constant while cell viability increased, e.g. NCTC 8325 with 1-4%

Medihoney ($p < 0.05$; Figure 5), and ATCC 25923 with 4% and 8% clover honey. Another deviation from the general trend was a significant reduction of cell viability while biofilm biomass remained unaffected, seen for NCTC 8325 and USA 300 with 4% and 8% manuka honey treatment (Figure 5; $p < 0.05$). This emphasizes the importance of assessing viability alongside crystal violet assays for biofilm assessment.

Overall, at concentrations easily attainable in the clinic, the tested four NZ honeys were effective at eliminating biofilm biomass and at killing both MSSA and MRSA *S. aureus* cells in the residual biofilm. Among the honey types, manuka honey was the most effective, where the elimination of biofilm biomass largely paralleled the reduction in viability. Following treatment with 8% manuka honey only ~10% of cells were viable in the remaining ATCC 25923 and USA 300 biofilms, compared to the untreated control (i.e. 0% honey), and no generation of ATP could be detected from MW2 (Figure 5). This is similar to the degree of biofilm biomass removal, where 85-98% of biofilm biomass was removed following 8% manuka honey treatment. Although NCTC 8325 biofilm biomass was seemingly unaffected at 8% manuka honey compared to the untreated control (Figure 5), the number of viable cells detected within this biofilm was drastically reduced by approximately 80% ($p < 0.001$; Figure 5).

The Effect of MGO on Established *S. aureus* Biofilms

To assess the contribution of MGO alone, as well as MGO plus sugar, to biofilm removal, these components were tested on established *S. aureus* NCTC 8325 biofilms (Figure 6). MGO levels equivalent to the presence of 1-8% manuka/kanuka honey (Table 1) caused biofilm biomass to increase approximately 2-fold, relative to the untreated control ($p < 0.001$). However, the

established biofilm biomass was not reduced significantly ($p > 0.05$), for any of the tested concentrations (1-32%) of MGO by itself, or in combination with the sugar solution. Thus, neither MGO nor the combination of MGO with sugar is solely responsible for the elimination of biofilms observed with these manuka-type honeys.

Visualizing the Effects of NZ Manuka-Type Honeys on Established *S. aureus* Biofilms

To assess the effect of the NZ honeys on *S. aureus* NCTC 8325 biofilms at the cellular level, we used confocal laser scanning microscopy (CLSM) of biofilms stained with fluorescent dyes for the detection of live and dead bacteria. This allows both the visualization of individual cells within the biofilm in three dimensions and the effect of treatments on cell viability to be determined. Treatment by sub-inhibitory (1% and 2%) and inhibitory (16% and 32%) concentrations of NZ honeys was visualized by viewing fluorescently-labelled live (Syto9; green) and dead (propidium iodide; red) cells. Representative images of each treatment are presented in Figure 7 and quantification of live and dead cell biofilm biomass for several samples for each treatment is shown in Figure 8. In general, the established biofilm biomass decreased with increasing concentrations of manuka-type honey. More specifically, manuka honeys were effective in reducing the live cells in established *S. aureus* biofilms. Sub-inhibitory concentrations of all the manuka-type honeys (1% and 2%) and the sugar solution did not reduce the amount of biomass compared to the non-treated control cells (Figure 8). This is shown in Figure 7 where the untreated control cells displayed a green (live-cell) lawn that covered nearly the entire surface and this remained following treatment with 1% and 2% manuka-type honeys. At concentrations of 16% and 32%, the manuka-type honeys substantially reduced the density and depth of the biofilm, along with the amount of live cells, compared to the untreated control (Figure 7 and

Figure 8). For example, the 32% manuka honey significantly reduced the Syto9 stained (live) biofilm biomass to 10% ($p < 0.001$) compared to the non-treated live biofilm biomass (Figure 8).

Only small micro-colonies were present following treatment with 32% manuka honey, and the colour of the biofilms was predominantly yellow (where both the green and red dye were retained within cells), indicating mostly dead cells. In contrast, 32% clover honey and sugar solution reduced the total biomass by a maximum of 30% ($p < 0.001$) compared to the non-treated control (Figure 8). This result corresponds to the 3D reconstructed images, where the Syto9 stained cells remained dominant after treatment (Figure 7). At 32%, clover honey or sugar solution, a substantially larger Syto9 stained (live) lawn remained in comparison to the 32% manuka-type honeys, although the biomass was less confluent than in the untreated control. These results are consistent with the results obtained with the crystal violet stained biofilm biomass and ATP viability assays.

Assessing the Development of Resistance to Manuka-type Honeys in *S. aureus* Biofilms

Bacteria that are exposed to sub-inhibitory concentrations of antimicrobial agents generally develop resistance to these agents (Braoudaki & Hilton 2004; Davies et al. 2006). The ability of cells released from *S. aureus* NCTC 8325 biofilms to develop resistance after exposure to sub-inhibitory concentrations of honey was investigated, and the results are summarized in Table 3. All cells recovered from the *S. aureus* biofilm after 24 h with 8% of all three manuka-type honeys were viable and able to form biofilms in media (TSB). However, they were unable to grow planktonically when subsequently exposed to 8% manuka, or 16% Medihoney and manuka/kanuka honey (the MIC levels for these honeys). Biofilm formation was also inhibited by

8% manuka honey, and by 16% Medihoney and manuka/kanuka honey. These growth- and biofilm-inhibitory concentrations of manuka-type honeys are the same as those observed for cells that had not previously been treated with these honeys. These results indicating that planktonic cells released from the biofilms with exposure to sub-inhibitory concentrations did not acquire resistance to the same honey treatment.

Discussion

Chronic wounds are costly and difficult to treat (Hoyle & Costerton 1991; Ranall et al. 2012; Sen et al. 2009), and bacterial biofilms are important contributors to the delay in healing. Honey is a promising alternative treatment for these wounds, and studies have indicated that it is able to prevent bacterial biofilms and eliminate established biofilms *in vitro* (Alandejani et al. 2008; Maddocks et al. 2013; Maddocks et al. 2012; Majtan et al. 2013). However, the effective concentration of honey reported by these studies varies significantly, making it hard to establish a foundation for the efficacy of honey on chronic wound-associated bacterial biofilms in the clinic. This is probably largely due to the fact that, in most of these studies, very little information is reported on the honey itself, including the floral source, geographic location, storage conditions, and the level of the two principle antibacterial components, MGO and hydrogen peroxide. Here we utilize a suite of well-defined NZ honeys, including manuka-type honeys (manuka, Medihoney and manuka/kanuka honey) and clover honey, to investigate their anti-biofilm activity on a range of *S. aureus* biofilms that differ in their ability to form biofilms. We show that manuka-type honeys can be used to kill all MSSA and MRSA cells when present as a biofilm in a chronic wound, supporting the use of this honey as an effective topical treatment for chronic wound infections.

Our study has shown that prevention of *S. aureus* biofilm formation occurred at honey concentrations that also inhibit planktonic growth (Figure 3A-D; Table 2), suggesting that biofilm prevention was a consequence of planktonic growth inhibition, as opposed to any specific effects on biofilm development. Other studies have also shown that manuka-type honeys can inhibit bacterial biofilm formation, however, the concentrations required were higher than those reported to inhibit growth (Alandejani et al. 2008; Maddocks et al. 2013; Maddocks et al. 2012; Majtan et al. 2013).

We found that higher concentrations of all honeys were necessary to eliminate established biofilms compared to those needed for prevention, as assessed by both quantification of biofilm biomass and cell viability. Manuka honey was the most effective, closely followed by both Medihoney and manuka/kanuka honey. Elimination of biofilms was visually confirmed using CLSM of fluorescently-stained live and dead cells. The sugar content of honey clearly mediates some effect, as sugar solution and clover honey were able to eliminate established biofilms at high concentrations (32%), as has been shown in other studies (Chirife et al. 1983; Chirife et al. 1982). However, manuka-type honeys consistently achieved biofilm elimination at lower concentrations, suggesting that components specifically within manuka-type honeys contribute towards biofilm elimination. The concentrations of manuka-type honeys that show significant anti-biofilm activity are easily achievable in the clinic, since honey dressings typically contain >80% honey (Cooper et al. 2010).

The use of assays for total biofilm biomass and cell viability to examine the effects of the various treatments on biofilm elimination afforded some other interesting observations. We observed that in some cases, sub-inhibitory concentrations of two of the manuka-type honeys enhanced biofilm formation; however, cell viability did not increase. This could be due to a stress response, as has been previously observed when bacteria are exposed to sub-inhibitory concentrations of antibiotics (Haddadin et al. 2010; Kaplan et al. 2012; Mirani & Jamil 2011; Subrt et al. 2011). In other cases, no reduction of biofilm biomass was observed but cell viability was significantly reduced. This suggests that unlike antibiotics, the manuka-type honeys (or active components therein) are able to penetrate through the biofilm matrix, killing the bacterial cells whilst leaving intact matrix.

It is believed that MGO is the primary component in manuka-type honeys responsible for its anti-biofilm activity (Jervis-Bardy et al. 2011; Kilty et al. 2011). The effectiveness of the different manuka-type honeys tested here did increase with MGO content. However, the same degree of biofilm prevention and elimination could not be reproduced with equivalent amounts of MGO either alone or in combination with sugar. In the case of prevention, MGO alone was generally ineffective, although a significant amount of biofilm prevention was achieved in combination with sugar. This suggests that the MGO and sugar do contribute to biofilm prevention, but their effects are not as strong as those observed with manuka honey.

Unlike the three NZ manuka-type honeys, neither MGO alone nor MGO with sugar at honey-equivalent concentrations showed significant *S. aureus* biofilm elimination. This indicates that the ability of manuka-type honeys to eliminate biofilms of this organism is due to one or more

components present in the honey other than MGO and sugar, such as low pH, hydrogen peroxide, phenolics and other unknown components (Jagani et al. 2009; Jarvis-Bardy et al. 2011; Kilty et al. 2011; Zmantar et al. 2010). Interestingly, while the kanuka/manuka honey had a relatively high rate of hydrogen peroxide production compared to the manuka and Medihoney (Table 1), but low MGO levels, it was not any more active against biofilms of *S. aureus*. This suggests that, at least for this organism, hydrogen peroxide within these manuka-type honeys does not provide significant anti-biofilm activity.

Conclusions

This study is the first to use a suite of well-characterized manuka-type honeys against a range of strains of *S. aureus* that differ in their ability to form biofilms. We demonstrate that: 1) at very low levels, some honeys can enhance biofilm formation, presumably by evoking a stress response similar to that seen with some antibiotics; 2) the ability to prevent or eliminate biofilms is influenced by MGO levels and the presence of sugar, but these alone do not account for all of the anti-biofilm effect; 3) honey is able to reduce biofilm mass and also to kill cells that remain embedded in the biofilm matrix; and 4) planktonic cells released from biofilms following honey treatment do not have elevated resistance to honey. Taken together our results show that if used at an appropriate therapeutic level, manuka-type honey can be used to kill *S. aureus* when present as a biofilm in a chronic wound, supporting the use of this honey as an effective topical treatment for chronic wound infections.

Acknowledgements:

CSLM was performed at the UTS Microbial Imaging Facility.

457 References:

- 458 Adams CJ, Boulton CH, Deadman BJ, Farr JM, Grainger MNC, Manley-Harris M, and Snow MJ.
459 2008. Isolation by HPLC and characterisation of the bioactive fraction of New Zealand
460 manuka (*Leptospermum scoparium*) honey. *Carbohydrate Research* 343:651-659.
- 461 Al-Waili N, Al Ghamdi A, Ansari MJ, Al-Attar Y, Osman A, and Salom K. 2013. Differences in
462 Composition of Honey Samples and Their Impact on the Antimicrobial Activities against
463 Drug Multiresistant Bacteria and Pathogenic Fungi. *Archives of Medical Research*.
- 464 Al-Waili N, Salom K, and Al-Ghamdi AA. 2011. Honey for wound healing, ulcers, and burns;
465 data supporting its use in clinical practice. *The Scientific World Journal* 11:766-787.
- 466 Alandejani T, Marsan JG, Ferris W, Slinger R, and Chan F. 2008. Effectiveness of Honey on
467 *S.aureus* and *P.aeruginosa* Biofilms. *Journal of Otolaryngology, Head and Neck Surgery*
468 139:P107-P107.
- 469 Allen KL, Molan PC, and Reid GM. 1991. A survey of the antibacterial activity of some New
470 Zealand honeys. *Journal of Pharmacy and Pharmacology* 43:817-822.
- 471 Baba T, Takeuchi F, Kuroda M, Yuzawa H, Aoki K, Oguchi A, Nagai Y, Iwama N, Asano K,
472 Naimi T, Kuroda H, Cui L, Yamamoto K, and Hiramatsu K. 2002. Genome and virulence
473 determinants of high virulence community-acquired MRSA. *Lancet* 359:1819-1827.
- 474 Battin TJ, Sloan WT, Kjelleberg S, Daims H, Head IM, Curtis TP, and Eberl L. 2007. Microbial
475 landscapes: new paths to biofilm research. *Nature Reviews Microbiology* 5:76-81.
- 476 Bauer J, Siala W, Tulkens PM, and Van Bambeke F. 2013. A combined pharmacodynamic
477 quantitative and qualitative model reveals the potent activity of Daptomycin and
478 Delafloxacin against *Staphylococcus aureus* biofilms. *Antimicrobial Agents and*
479 *Chemotherapy*.
- 480 Blair SE, Cokcetin NN, Harry EJ, and Carter DA. 2009. The unusual antibacterial activity of
481 medical-grade *Leptospermum* honey: antibacterial spectrum, resistance and transcriptome
482 analysis. *European Journal of Clinical Microbiology and Infectious Diseases* 28:1199-
483 1208.
- 484 Braoudaki M, and Hilton AC. 2004. Adaptive resistance to biocides in *Salmonella enterica* and
485 *Escherichia coli* O157 and cross-resistance to antimicrobial agents. *Journal of Clinical*
486 *Microbiology* 42:73-78.
- 487 Cars O, and Odenholt-Tornqvist I. 1993. The post-antibiotic sub-MIC effect in vitro and in vivo.
488 *Journal of Antimicrobial Chemotherapy* 31 Suppl D:159-166.
- 489 Chirife J, Herszage L, Joseph A, and Kohn ES. 1983. In vitro study of bacterial growth inhibition
490 in concentrated sugar solutions: microbiological basis for the use of sugar in treating
491 infected wounds. *Antimicrobial Agents and Chemotherapy* 23:766-773.
- 492 Chirife J, Scarmato G, and Herszage L. 1982. Scientific basis for use of granulated sugar in
493 treatment of infected wounds. *Lancet* 1:560-561.
- 494 Christensen GD, Simpson WA, Younger JJ, Baddour LM, Barrett FF, Melton DM, and Beachey
495 EH. 1985. Adherence of coagulase-negative staphylococci to plastic tissue culture plates: a
496 quantitative model for the adherence of staphylococci to medical devices. *Journal of*
497 *Clinical Microbiology* 22:996-1006.

- Colsky AS, Kirsner RS, and Kerdel FA. 1998. Analysis of antibiotic susceptibilities of skin wound flora in hospitalized dermatology patients. The crisis of antibiotic resistance has come to the surface. *Archives of Dermatology* 134:1006-1009.
- Cooper R. 2008. Using honey to inhibit wound pathogens. *Nursing Times* 104:46, 48-49.
- Cooper RA, Jenkins L, Henriques AF, Duggan RS, and Burton NF. 2010. Absence of bacterial resistance to medical-grade manuka honey. *European Journal of Clinical Microbiology and Infectious Diseases* 29:1237-1241.
- Costerton W, Veeh R, Shirtliff M, Pasmore M, Post C, and Ehrlich G. 2003. The application of biofilm science to the study and control of chronic bacterial infections. *Journal of Clinical Investigation* 112:1466-1477.
- Davies J, Spiegelman GB, and Yim G. 2006. The world of subinhibitory antibiotic concentrations. *Current Opinion in Microbiology* 9:445-453.
- Engemann JJ, Carmeli Y, Cosgrove SE, Fowler VG, Bronstein MZ, Trivette SL, Briggs JP, Sexton DJ, and Kaye KS. 2003. Adverse clinical and economic outcomes attributable to methicillin resistance among patients with Staphylococcus aureus surgical site infection. *Clinical Infectious Diseases* 36:592-598.
- Forrest RD. 1982. Early history of wound treatment. *Journal of the Royal Society of Medicine* 75:198-205.
- Fux CA, Costerton JW, Stewart PS, and Stoodley P. 2005. Survival strategies of infectious biofilms. *Trends in Microbiology* 13:34-40.
- Gresley AL, Kenny J, Cassar C, Kelly A, Sinclair A, and Fielder MD. 2012. The application of high resolution diffusion NMR to the analysis of manuka honey. *Food Chemistry* 135:2879-2886.
- Haddadin RN, Saleh S, Al-Adham IS, Buultjens TE, and Collier PJ. 2010. The effect of subminimal inhibitory concentrations of antibiotics on virulence factors expressed by Staphylococcus aureus biofilms. *Journal of Applied Microbiology* 108:1281-1291.
- Haddix PL, Jones S, Patel P, Burnham S, Knights K, Powell JN, and LaForm A. 2008. Kinetic analysis of growth rate, ATP, and pigmentation suggests an energy-spilling function for the pigment prodigiosin of Serratia marcescens. *Journal of Bacteriology* 190:7453-7463.
- Heydorn A, Nielsen AT, Hentzer M, Sternberg C, Givskov M, Ersboll BK, and Molin S. 2000. Quantification of biofilm structures by the novel computer program COMSTAT. *Microbiology* 146 (Pt 10):2395-2407.
- Hoyle BD, and Costerton JW. 1991. Bacterial resistance to antibiotics: the role of biofilms. *Progress in Drug Research* 37:91-105.
- Jagani S, Chelikani R, and Kim DS. 2009. Effects of phenol and natural phenolic compounds on biofilm formation by Pseudomonas aeruginosa. *Biofouling* 25:321-324.
- Jervis-Bardy J, Foreman A, Bray S, Tan L, and Wormald PJ. 2011. Methylglyoxal-infused honey mimics the anti-Staphylococcus aureus biofilm activity of manuka honey: potential implication in chronic rhinosinusitis. *Laryngoscope* 121:1104-1107.
- Junker LM, and Clardy J. 2007. High-throughput screens for small-molecule inhibitors of Pseudomonas aeruginosa biofilm development. *Antimicrobial Agents and Chemotherapy* 51:3582-3590.
- Kaplan JB, Izano EA, Gopal P, Karwacki MT, Kim S, Bose JL, Bayles KW, and Horswill AR. 2012. Low Levels of beta-Lactam Antibiotics Induce Extracellular DNA Release and Biofilm Formation in Staphylococcus aureus. *mBio* 3.

- Kazakova SV, Hageman JC, Matava M, Srinivasan A, Phelan L, Garfinkel B, Boo T, McAllister S, Anderson J, Jensen B, Dodson D, Lonsway D, McDougal LK, Arduino M, Fraser VJ, Killgore G, Tenover FC, Cody S, and Jernigan DB. 2005. A clone of methicillin-resistant *Staphylococcus aureus* among professional football players. *New England Journal of Medicine* 352:468-475.
- Kilty SJ, Duval M, Chan FT, Ferris W, and Slinger R. 2011. Methylglyoxal: (active agent of manuka honey) in vitro activity against bacterial biofilms. *Int Forum Allergy Rhinol* 1:348-350.
- Kwakman PH, te Velde AA, de Boer L, Speijer D, Vandenbroucke-Grauls CM, and Zaat SA. 2010. How honey kills bacteria. *FASEB Journal* 24:2576-2582.
- Kwakman PH, Te Velde AA, de Boer L, Vandenbroucke-Grauls CM, and Zaat SA. 2011. Two major medicinal honeys have different mechanisms of bactericidal activity. *PLoS ONE* 6:e17709.
- Kwakman PH, and Zaat SA. 2012. Antibacterial components of honey. *IUBMB Life* 64:48-55.
- Lu J, Carter DA, Turnbull L, Rosendale D, Hedderley D, Stephens J, Gannabathula S, Steinhorn G, Schlothauer RC, Whitchurch CB, and Harry EJ. 2013. The effect of New Zealand kanuka, manuka and clover honeys on bacterial growth dynamics and cellular morphology varies according to the species. *PLoS ONE* 8:e55898.
- Maddocks SE, Jenkins RE, Rowlands RS, Purdy KJ, and Cooper RA. 2013. Manuka honey inhibits adhesion and invasion of medically important wound bacteria in vitro. *Future Microbiology* 8:1523-1536.
- Maddocks SE, Lopez MS, Rowlands RS, and Cooper RA. 2012. Manuka honey inhibits the development of *Streptococcus pyogenes* biofilms and causes reduced expression of two fibronectin binding proteins. *Microbiology* 158:781-790.
- Majtan J, Bohova J, Horniackova M, Klaudiny J, and Majtan V. 2013. Anti-biofilm Effects of Honey Against Wound Pathogens *Proteus mirabilis* and *Enterobacter cloacae*. *Phytotherapy Research*.
- Mavric E, Wittmann S, Barth G, and Henle T. 2008. Identification and quantification of methylglyoxal as the dominant antibacterial constituent of Manuka (*Leptospermum scoparium*) honeys from New Zealand. *Molecular Nutrition & Food Research* 52:483-489.
- McCarty SM, Cochrane CA, Clegg PD, and Percival SL. 2012. The role of endogenous and exogenous enzymes in chronic wounds: a focus on the implications of aberrant levels of both host and bacterial proteases in wound healing. *Wound Repair and Regeneration* 20:125-136.
- Merritt JH, Kadouri DE, and O'Toole GA. 2005. Growing and analyzing static biofilms. *Curr Protoc Microbiol* Chapter 1:Unit 1B.1.
- Mirani ZA, and Jamil N. 2011. Effect of sub-lethal doses of vancomycin and oxacillin on biofilm formation by vancomycin intermediate resistant *Staphylococcus aureus*. *Journal of Basic Microbiology* 51:191-195.
- Molan PC. 1999. The role of honey in the management of wounds. *Journal of Wound Care* 8:415-418.
- Ngo QD, Vickery K, and Deva AK. 2012. The effect of topical negative pressure on wound biofilms using an in vitro wound model. *Wound Repair and Regeneration* 20:83-90.

- 587 Pankuch GA, Jacobs MR, and Appelbaum PC. 1998. Postantibiotic effect and postantibiotic sub-
588 MIC effect of quinupristin-dalfopristin against gram-positive and -negative organisms.
589 *Antimicrobial Agents and Chemotherapy* 42:3028-3031.
- 590 Projan SJ, and Youngman PJ. 2002. Antimicrobials: new solutions badly needed. *Current*
591 *Opinion in Microbiology* 5:463-465.
- 592 Ranall MV, Butler MS, Blaskovich MA, and Cooper MA. 2012. Resolving biofilm infections:
593 current therapy and drug discovery strategies. *Current Drug Targets* 13:1375-1385.
- 594 Sen CK, Gordillo GM, Roy S, Kirsner R, Lambert L, Hunt TK, Gottrup F, Gurtner GC, and
595 Longaker MT. 2009. Human skin wounds: a major and snowballing threat to public health
596 and the economy. *Wound Repair and Regeneration* 17:763-771.
- 597 Sherlock O, Dolan A, Athman R, Power A, Gethin G, Cowman S, and Humphreys H. 2010.
598 Comparison of the antimicrobial activity of Ulmo honey from Chile and Manuka honey
599 against methicillin-resistant *Staphylococcus aureus*, *Escherichia coli* and *Pseudomonas*
600 *aeruginosa*. *BMC Complementary and Alternative Medicine* 10:47.
- 601 Simon A, Traynor K, Santos K, Blaser G, Bode U, and Molan P. 2009. Medical honey for wound
602 care--still the 'latest resort'? *Evidence-Based Complementary and Alternative Medicine*
603 6:165-173.
- 604 Stepanovic S, Vukovic D, Dakic I, Savic B, and Svabic-Vlahovic M. 2000. A modified microtiter-
605 plate test for quantification of staphylococcal biofilm formation. *Journal of*
606 *Microbiological Methods* 40:175-179.
- 607 Stephens JM, Schlothauer, R. C., Morris, B, D., Yang, D., Fearnley, L., Greenwood, D. R., &
608 Loomes, K. M. 2009. Phenolic compounds and methylglyoxal in some New Zealand
609 Manuka and Kanuka honeys. *Food Chemistry* 120:78-86.
- 610 Stocks SM. 2004. Mechanism and use of the commercially available viability stain, BacLight.
611 *Cytometry Part A* 61:189-195.
- 612 Subrt N, Mesak LR, and Davies J. 2011. Modulation of virulence gene expression by cell wall
613 active antibiotics in *Staphylococcus aureus*. *Journal of Antimicrobial Chemotherapy*
614 66:979-984.
- 615 Weston RJ, Brocklebank LK, and Lu Y. 2000. Identification and quantitative levels of
616 antibacterial components of some New Zealand honeys. *Food Chemistry* 70:427-435.
- 617 Wolcott RD, Rhoads DD, and Dowd SE. 2008. Biofilms and chronic wound inflammation.
618 *Journal of Wound Care* 17:333-341.
- 619 Zmantar T, Kouidhi B, Miladi H, Mahdouani K, and Bakhrouf A. 2010. A microtiter plate assay
620 for *Staphylococcus aureus* biofilm quantification at various pH levels and hydrogen
621 peroxide supplementation. *New Microbiologica* 33:137-145.

Table 1 (on next page)

Harvesting and chemical information for the tested NZ honey samples

							1
							2
Honey type	Harvest period	Area	Floral source	Major Antimicrobial Composition			3
				DHA ^a	MGO ^a	H ₂ O ₂ ^{b4}	
Manuka	Spring 2010	Hokianga, Northland, NZ	<i>Leptospermum scoparium</i> var. <i>incanum</i>	4277	958	0.34	5
Medihoney	Spring 2010	Northland, NZ	<i>Leptospermum scoparium</i> var. <i>incanum</i> + <i>Kunzea ericoides</i>	883	776	0.31	6
Manuka/kanuka	Summer 2010/11	Hokianga, Northland, NZ	<i>Leptospermum scoparium</i> var. <i>incanum</i> + <i>Kunzea ericoides</i>	652	161	0.68	7
Clover	NA*	Balcutha, Otago, NZ	<i>Trifolium</i> spp.	< 20	< 10	0.11	8
							9

^a MGO (methylglyoxal) levels were analyzed against di-hydroxyacetone (DHA) and expressed as mg MGO per kg of honey.

^b Rate of production of H₂O₂ (hydrogen peroxide) is expressed as μmol/h in 1 mL of 10% w/v honey.

* Information not available

Table 2_(on next page)

Concentration of Honey Required to Inhibit *S. aureus* Growth

Honeys	NCTC	ATCC	MW2	USA300
	8325	25923		
Manuka honey	8*	8	8	8
Medihoney	8	8	8	8
Manuka/kanuka honey	16	16	16	16
Clover honey	32	32	32	32
Sugar solution	>32	>32	32	>32

* All numbers in the table are honey concentrations (% w/v).

Table 3(on next page)

Resistance of *S. aureus* Cells Recovered from Biofilms after 8% Manuka Honey Treatments^a

Honey (%)	Type of assay	Manuka honey	Medihoney	Manuka/kanuka honey
0	Growth	✓	✓	✓
	Biofilm formation	✓	✓	✓
8	Growth	×	×	✓
	Biofilm formation	×	✓	✓
16	Growth	×	×	×
	Biofilm formation	×	×	×

^a A tick means that there was normal growth or biofilm formation and a cross means that there was no growth or no biofilm formation.

Figure 1

Correlation of levels of intracellular ATP to colony forming units (CFU) in static biofilms of *S. aureus*

Static biofilms of *S. aureus* were formed in the wells of a microtitre plate for 48 h (with media replenishment at 24 h). After removal of the biofilm from the wall of each well, intracellular ATP levels were measured by the BacTitre Glo Viability Kit and CFU were determined for each well. The intracellular levels of ATP are plotted as a function of CFU and validate that the BacTitre Glo Viability Kit can be used as a surrogate measure of biofilm cell viability in subsequent assays.

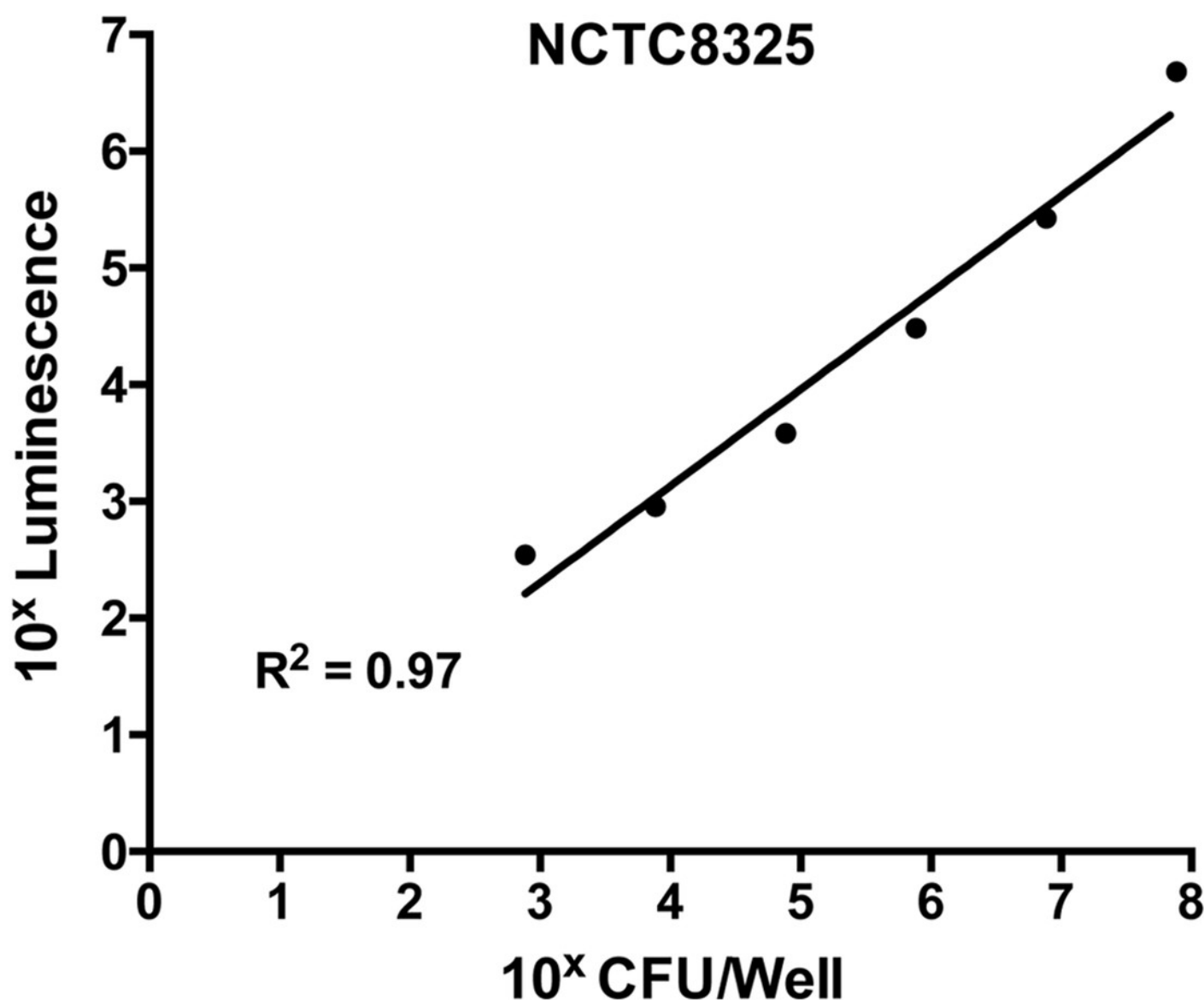


Figure 2

Quantification of Biofilm Formation by Different Strains of *S. aureus*

The ability of different strains of *S. aureus* to form biofilms on the plastic surface of tissue-culture treated 96-well microtitre plate was assessed in TSB(G) at 24 h and 48 h. Biofilm adherence was determined using a static biofilm formation assay over 24 h (A) and 48 h (with media replenished after 24 h incubation) (B). Biofilm formation was quantified by staining with 0.2% crystal violet solution and measured at an optical density of 595 nm. Error bars represent \pm standard deviation (SD) of three biological samples performed in triplicate, *** represents $p < 0.001$, compared to NCTC 8325, as assessed by One-Way ANOVA with Tukey test after confirming normality of the data set for each treatment using the D'Agnostino-Pearson normality test.

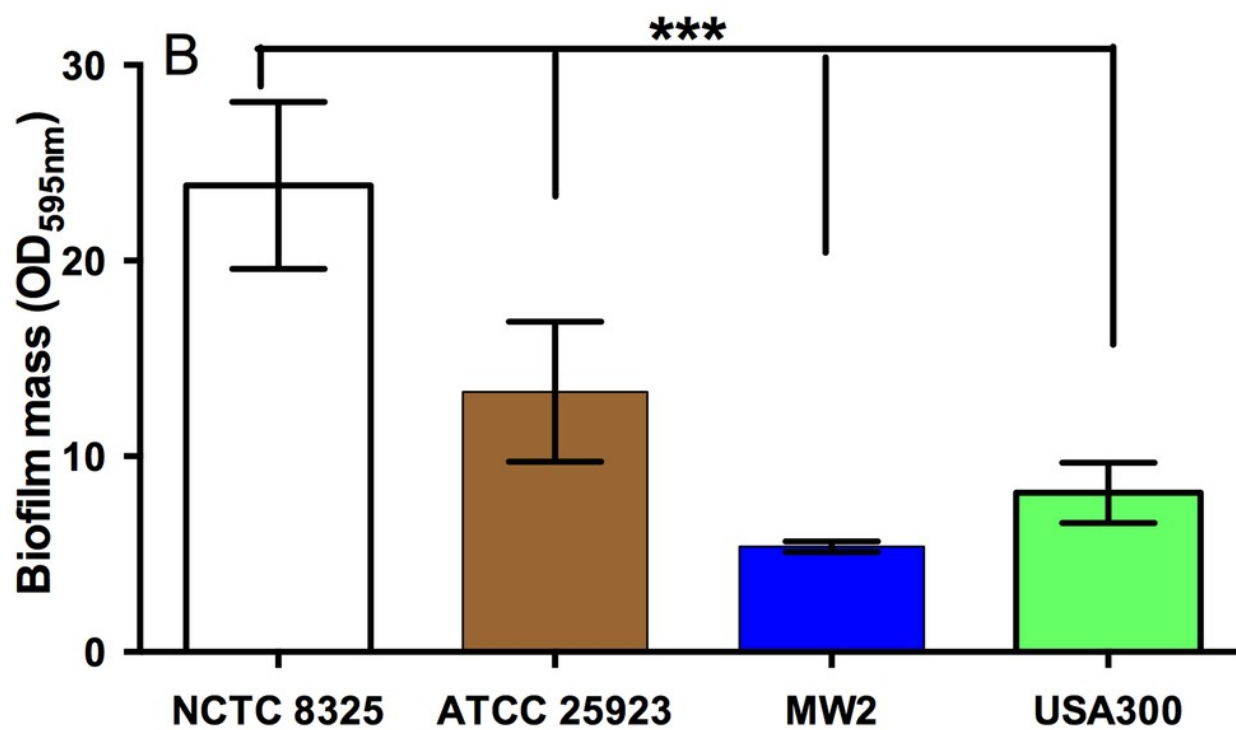
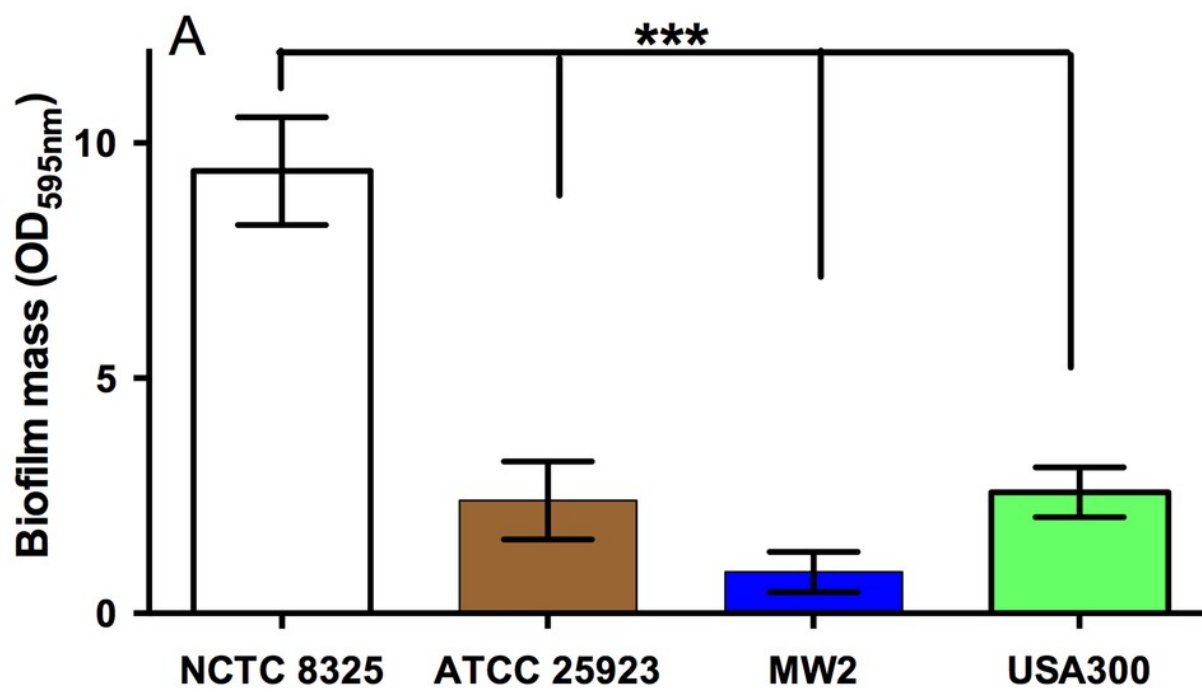


Figure 3

Effects of NZ honeys and sugar on *S. aureus* biofilm formation

S. aureus biofilms were allowed to form in the presence of four different NZ honey types (manuka, Medihoney, manuka/kanuka or clover) or a sugar solution. Biofilm formation was assessed using a static biofilm formation assay with crystal violet staining to quantify biomass. *S. aureus* strains are: (A) NCTC 8325; (B) ATCC 25923; (C) MW2 (HA-MRSA) and (D) USA300 (CA-MRSA). Biofilm formation is expressed as a percentage relative to that produced by the untreated control, which is set at 100%. Error bars represent \pm standard deviation (SD) of three biological samples performed in triplicate. Statistical significance ($p < 0.05$) was assessed by One-Way ANOVA with Tukey test after confirming normality of the data set for each treatment using the D'Agnostino-Pearson normality test.

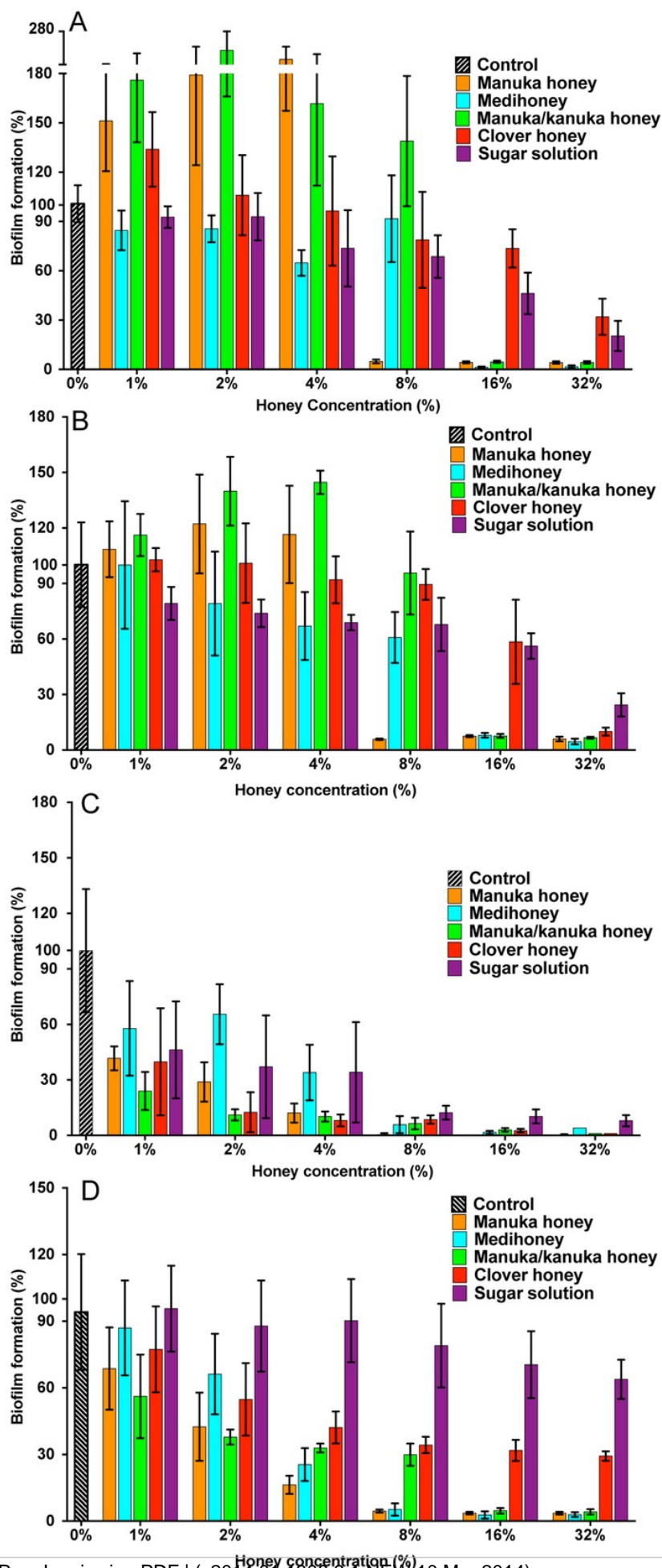


Figure 4

Effects of MGO on *S. aureus* biofilm formation

Biofilm formation by *S. aureus* NCTC 8325 grown in the presence of MGO and MGO plus sugar solution. MGO stock solutions were prepared to correspond to the MGO levels in undiluted manuka-type honeys (100 mg/kg of manuka/kanuka honey, 700mg/kg of Medihoney, and 900 mg/kg of manuka- honey; Table 1). Biofilm formation was assessed using the described static assay with crystal violet staining to quantify biomass. Biofilm formation is expressed as a percentage relative to the untreated control, which is set at 100%. Error bars represent \pm standard deviation (SD) of three biological samples performed in triplicate. Statistical significance ($p < 0.05$) was assessed by One-Way ANOVA with Tukey test after confirming normality of the data set for each treatment using the D'Agostino-Pearson normality test.

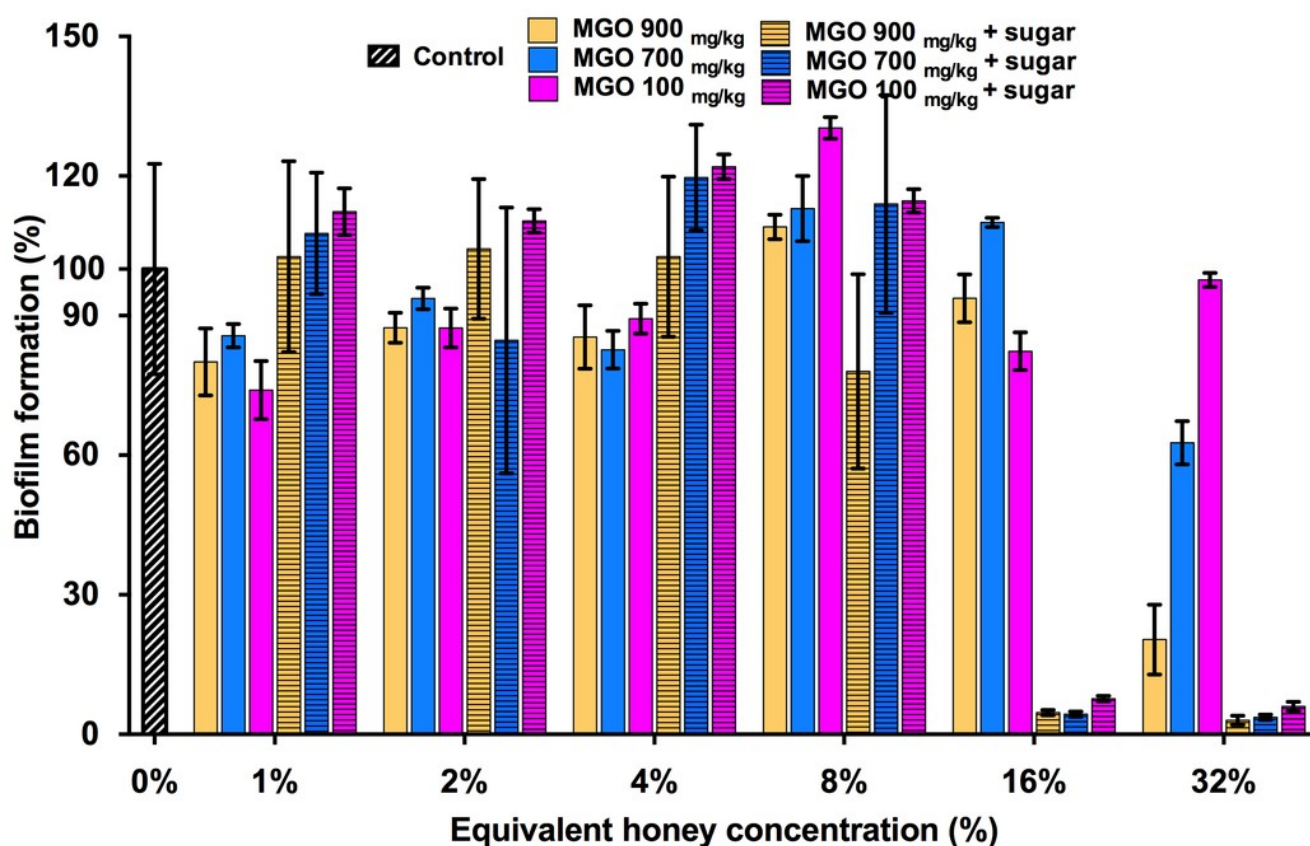


Figure 5

Effects of NZ honeys on established *S. aureus* biofilms and cell viability within the biofilms

Established *S. aureus* NCTC 8325, ATCC 25923, MW2 and USA300 biofilms were treated with NZ honeys – manuka, Medihoney, manuka/kanuka, clover, and a sugar solution. The remaining biofilm masses were quantified using crystal violet staining (left y-axis) and cell viability within these remaining biofilms were assessed using the BacTitre Glo Viability Kit (right y-axis). Error bars represent \pm standard deviation (SD) of three biological samples performed in triplicate. Statistical significance ($p < 0.05$) was assessed by One-Way ANOVA with Tukey test after confirming normality of the data set for each treatment using the D'Agnostino-Pearson normality test.

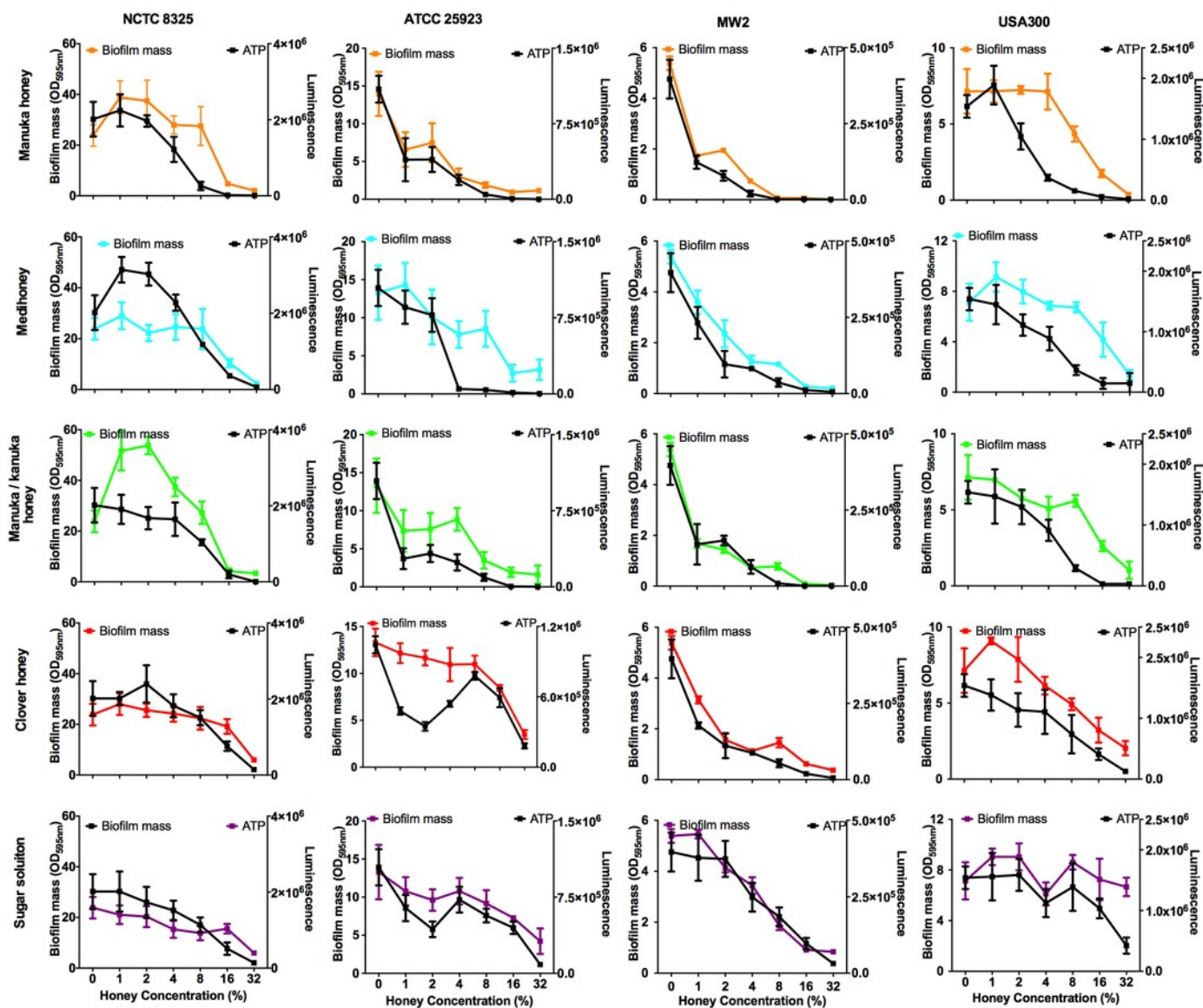


Figure 6

Effects of MGO on established *S. aureus* biofilms

S. aureus NCTC 8325 biofilms were treated with MGO and a combination of MGO and the sugar solution. MGO stock solutions were prepared to correspond to the MGO levels in undiluted honey (100 mg/kg of manuka/kanuka honey, 700mg/kg of Medihoney, and 1,000 mg/kg of manuka honey; Table 1). The crystal violet stained residual biofilm mass after 24 h treatment was quantified using optical density (OD_{595nm}). Error bars represent \pm standard deviation (SD) of three biological samples performed in triplicate. Statistical significance ($p < 0.05$) was assessed by One-Way ANOVA with Tukey test after confirming normality of the data set for each treatment using the D'Agostino-Pearson normality test.

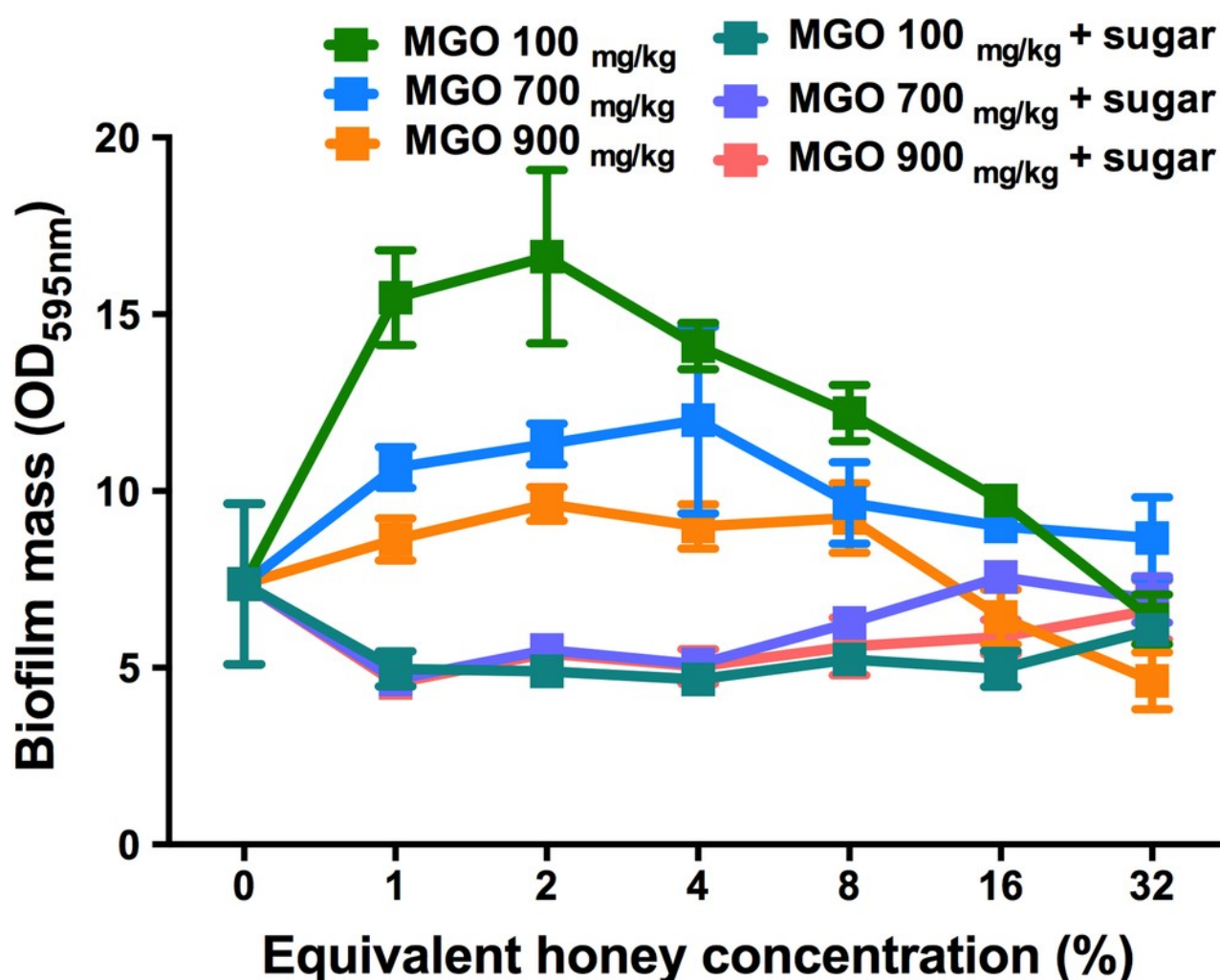


Figure 7

Live/dead staining of different honey treated established biofilms

Established biofilms produced by *S. aureus* NCTC 8325 were treated with TSB containing honey (manuka, Medihoney, manuka/kanuka or clover) or sugar solution at 1%, 2%, 16%, and 32% (w/vol). Syto9 (green; viable cells) and propidium iodine (red; dead cells) stained images were acquired using Nikon A1 Confocal Laser Scanning Microscope. The 3D- images were reconstructed using NIS-elements (version 10). Scale bar represents 50 μm .

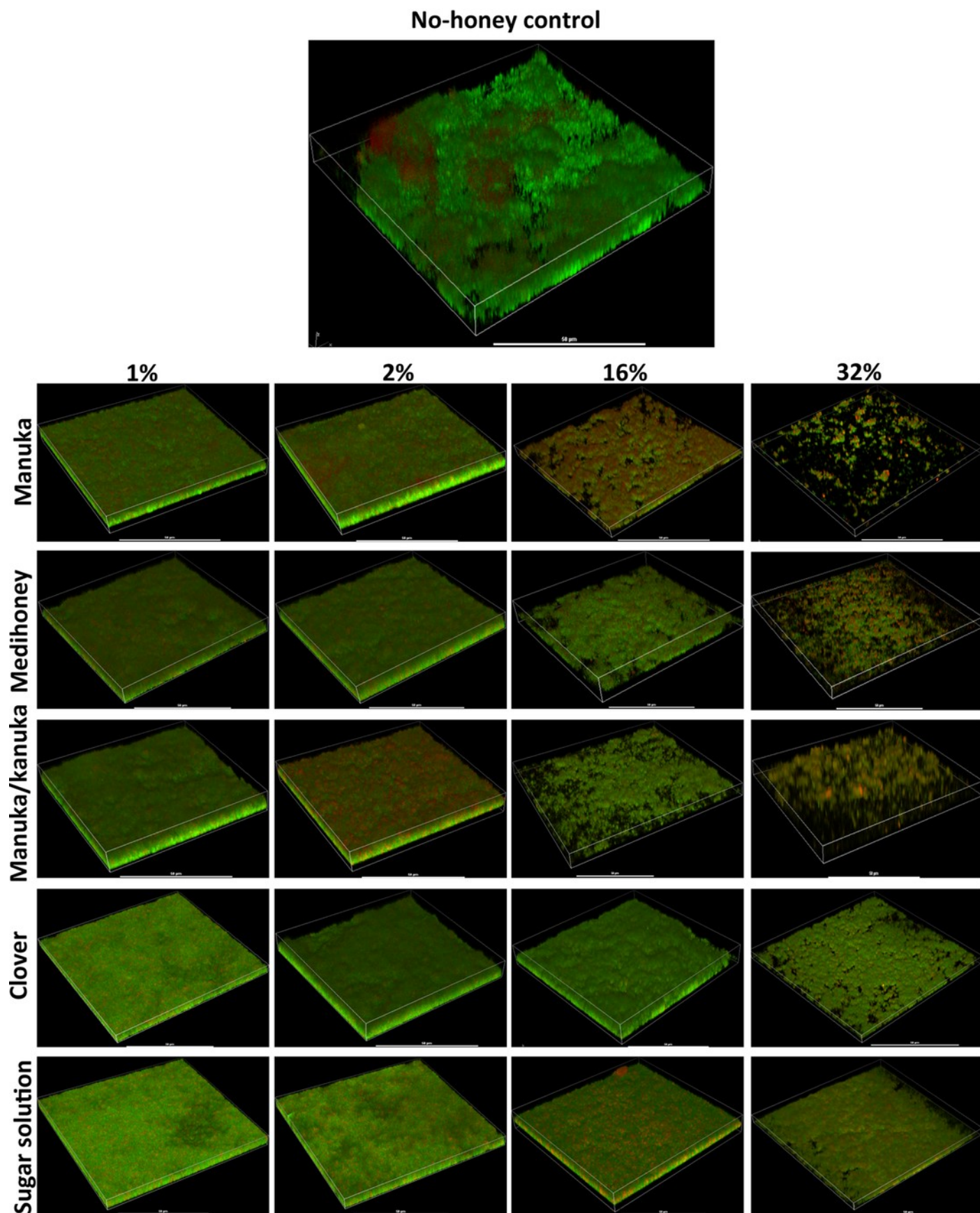


Figure 8

Quantitative analysis of live/dead stained honey treated biofilms

The established *S. aureus* NCTC 8325 biofilm was treated with New Zealand honeys (manuka honey, Medihoney, manuka/kanuka honey, and clover honey) and a sugar solution at 1%, 2%, 16%, and 32% (w/v) concentrations. Biofilms were co-stained with Syto9 (S, viable cells) and propidium iodide (P, dead cells) and analyzed using COMSTAT. The estimated live (S) and dead (P) biomass (volume of the biofilm over the surface area ($\mu\text{m}^3/\mu\text{m}^2$)) are expressed as a percentage of the non-treated control live and dead biomass, which is set at 100%. Error bars represent \pm standard deviation (SD) of three biological samples where eight representative images were acquired. Statistical significance ($p < 0.05$) was assessed by One-Way ANOVA with Tukey test after confirming normality of the data set for each treatment using the D'Agostino-Pearson normality test.

