

Species interactions in an Andean bird-flowering plant network: phenology is more important than abundance or morphology

Oscar Gonzalez ^{Corresp., 1}, Bette A Loiselle ¹

¹ Wildlife Ecology and Conservation, University of Florida, Gainesville, Florida, United States

Corresponding Author: Oscar Gonzalez
Email address: pajarologo@ufl.edu

Biological constraints and neutral processes have been proposed to explain the properties of plant-pollinator networks. Using interactions between nectarivorous birds (hummingbirds and flowerpiercers) and flowering plants in high elevation forests (i.e., “elfin” forests) of the Andes, we explore the importance of biological constraints and neutral processes to explain the observed species interactions and network metrics, such as connectance, specialization, nestedness and asymmetry. In cold environments of elfin forests, which are located at the top of the tropical montane forest zone, many plants are adapted for pollination by birds, making this an ideal system to study plant-pollinator networks. To build the network of interactions between birds and plants, we used direct field observations. We measured abundance of birds using mist-nets and flower abundance using transects, and phenology by scoring presence of birds and flowers over time. We compared the length of birds’ bills to flower length to identify “forbidden interactions” – those interactions that could not result in legitimate floral visits based on mis-match in morphology. *Diglossa* flowerpiercers, which are characterized as “illegitimate” flower visitors, were relatively abundant. We found that the elfin forest network was nested with phenology being the factor that best explained interaction frequencies and nestedness, providing support for biological constraints hypothesis. We did not find morphological constraints to be important in explaining observed interaction frequencies and network metrics. Other network metrics (connectance, evenness and asymmetry), however, were better predicted by abundance (neutral process) models. Flowerpiercers, which cut holes and access flowers at their base and, consequently, facilitate nectar access for other hummingbirds, explain why morphological mis-matches were relatively unimportant in this system. Future work should focus on how changes in abundance and phenology, likely results of climate change and habitat fragmentation, and the role of nectar robbers impact ecological and evolutionary dynamics of plant-pollinator (or flower-visitor) interactions.

Species interactions in an Andean bird-flowering plant network: phenology is more important than abundance or morphology

Oscar Gonzalez^{1,2} and Bette A. Loiselle^{1,3}

¹ Department of Wildlife Ecology & Conservation, 110 Newins-Ziegler Hall. PO Box 110430. University of Florida. Gainesville, FL 32611-0430 USA

²Grupo Aves del Peru. Gomez del Carpio 135, Surquillo. Lima 34, Peru

³Center for Latin American Studies. 319 Grinter Hall. PO Box 115530. University of Florida. Gainesville, FL 32611-5530 USA

Corresponding author:

Oscar Gonzalez^{1,2}

Email address: pajarologo@ufl.edu

Abstract

Biological constraints and neutral processes have been proposed to explain the properties of plant-pollinator networks. Using interactions between nectarivorous birds (hummingbirds and flowerpiercers) and flowering plants in high elevation forests (i.e., “elfin” forests) of the Andes, we explore the importance of biological constraints and neutral processes to explain the observed species interactions and network metrics, such as connectance, specialization, nestedness and asymmetry. In cold environments of elfin forests, which are located at the top of the tropical montane forest zone, many plants are adapted for pollination by birds, making this an ideal system to study plant-pollinator networks. To build the network of interactions between birds and plants, we used direct field observations. We measured abundance of birds using mist-nets and flower abundance using transects, and phenology by scoring presence of birds and flowers over time. We compared the length of birds’ bills to flower length to identify “forbidden interactions” – those interactions that could not result in legitimate floral visits based on mis-match in morphology. *Diglossa* flowerpiercers, which are characterized as “illegitimate” flower visitors, were relatively abundant. We found that the elfin forest network was nested with phenology being the factor that best explained interaction frequencies and nestedness, providing support for biological constraints hypothesis. We did not find morphological constraints to be important in explaining observed interaction frequencies and network metrics. Other network metrics (connectance, evenness and asymmetry), however, were better predicted by abundance (neutral process) models. Flowerpiercers, which cut holes and access flowers at their base and, consequently, facilitate nectar access for other hummingbirds, explain why morphological mis-matches

were relatively unimportant in this system. Future work should focus on how changes in abundance and phenology, likely results of climate change and habitat fragmentation, and the role of nectar robbers impact ecological and evolutionary dynamics of plant-pollinator (or flower-visitor) interactions.

Introduction

Interactions between flowering plants and their animal visitors are frequently focused on mutualistic encounters (Bascompte & Jordano, 2014). In these mutualisms, plants provide food resources (i.e., pollen, nectar), while animals provide pollinator services. Yet, these interactions are not always mutualistic. For example, animals may visit flowers and fail to effectively transfer pollen, as in the case of “nectar-robbers”, which bypass reproductive parts of the flower via cutting a hole at the base to access nectar resources (Rojas-Nossa, 2013, Rojas-Nossa, Sanchez & Navarro, 2016). The presence of nectar-robbers in a system can change the dynamics and structure of plant-flower visitor networks. In these systems, the number and diversity of flower visitors to certain floral resources may increase as more visitors gain access to nectar, although the effectiveness of pollination may remain the same or even decline.

Plant-pollinator (or plant-flower visitor) networks have been relatively well-studied in recent years (Lewinsohn et al., 2006, Burkle & Alarcon 2011, Dalsgaard et al., 2011, Bascompte & Jordano, 2014). These networks are almost always characterized by many fewer interactions than are possible and asymmetries (e.g., Jordano, Bascompte & Olesen, 2003, Vasquez & Aizen, 2004). Mutualistic networks, such as plant-pollinator networks and plant-frugivore networks, often tend towards a nested structure, where more specialist species interact with a subset of species; the latter interact also with a

suite of more generalist species; (Bascompte et al., 2003, Vasquez and Aizen, 2006, Bascompte, 2010, Thébault & Fontaine, 2010). Mutualistic networks also have been found to be compartmentalized or modular with groups of species well connected to each other, but not to others in the network, usually when they have a large number of species (e.g. Olesen et al., 2007).

How networks are structured has been shown to influence their stability and co-evolutionary dynamics (Bascompte & Jordano, 2007, Ebeling, Klein & Tscarntke, 2011, Nuismer, Jordano & Bascompte, 2013). Thus, understanding what factors explain the observed interactions and structural properties of the network is key to predicting sensitivity of networks to perturbations, such as loss of species or changes in environmental conditions. Species extinction can be preceded by the extinction of species interactions, so this study contributes to show how network theory can help to explain the web of life in an ecosystem (Bascompte & Jordano, 2014). In recent years, new analytical approaches have facilitated asking questions about the processes that drive network properties (Vasquez, Chacoff & Cagnolo, 2009, Encinas-Viso, Revilla & Etienne, 2012, Winfree et al., 2014, Vizentin-Bugoni, Maruyama & Sazima, 2014, Olito & Fox, 2015). Two main hypotheses – neutrality and biological constraints - have emerged in these network studies. The neutrality hypothesis suggests that random interactions among species best explain network structure, such that relative species abundances predict interaction frequencies and can explain resultant structural properties (Vazquez & Aizen, 2004). In contrast, the biological constraints hypothesis suggests that interactions are shaped by species' traits or phenological patterns (Jordano, Bascompte & Olesen, 2003, Vazquez, Chacoff & Cagnolo, 2009, Olesen et

al., 2011). In the former, trait mismatches can result in “forbidden interactions” that impede or prohibit interactions among network members, such as when the length or width of the flower opening prohibits animal access to the nectar resources (Jordano, Bascompte & Olesen, 2003, Olesen et al., 2011). In the latter, phenological mismatches occur when animal presence in an area does not overlap the time when specific plants are flowering (Vazquez, Chacoff & Cagnolo, 2009).

Support for the neutral or biological constraints hypotheses have been mixed (e.g., see Olito & Fox, 2015). While information from species relative abundances (neutrality) and phenology (biological constraints) predicted components of network structure in plant-pollinator networks from Argentinean shrub land (connectance, nestedness, evenness and interaction asymmetry), neither of these hypotheses explained the observed frequencies of species interactions (Vasquez, Chacoff & Cagnolo, 2009). In contrast, in a bird-flowering plant network, forbidden interactions from phenological or morphological mismatches were found to drive frequencies of observed interactions (Maglianesi et al., 2014, Maruyama et al., 2014, Vizentin-Bugoni, Maruyama & Sazima, 2014), although they were not important predictors of network structure (e.g. nestedness, connectance, specialization, evenness and asymmetry; see Maglianesi et al., 2014, Vizentin-Bugoni, Maruyama & Sazima, 2014). Similarly, phenological mismatches, in combination with relative abundances of network members, played a role in explaining interaction frequencies between nectarivorous sunbirds and flowering plants (Janecek et al., 2012).

Here, we extend these studies to investigate the drivers of species’ interactions and network structure in a bird-flowering plant network in “elfin” forests located within the

high Andes of Peru (Brack & Mendiola, 2000). Elfin forests are characterized by flowering plants adapted largely for bird pollination, as cold temperatures and often wet conditions limit insect abundance and activity (Lloyd et al., 2012). These forests, while dominated by hummingbirds of various sizes and bill morphologies, also are frequented by *Diglossa* flowerpiercers (Ramirez et al., 2007). Flowerpiercers feed extensively on nectar, but may offer limited pollinator services as they frequently access flowers via holes they cut at the base of flowers using their modified beaks (Rojas-Nossa, 2013). Their presence in the system may lessen the importance of morphological constraints in shaping interactions and structural properties of the network as they create opportunities for short-billed hummingbirds to also access flowers with long corollas. Thus, elfin forest networks may not fit the patterns reported earlier where interaction frequencies of networks are predicted by morphology of network members (Maruyama et al. 2014, Vizentin-Bugoni, Maruyama & Sazima, 2014).

By combining information on flower visits, flower phenology, bird and plant abundance, we address the following questions: 1) How are bird-flowering plant networks of elfin forest structured?, 2) Are observed interaction frequencies and network structural properties driven by biological constraints (morphological and/or phenological mismatches) or neutral processes (i.e., species relative abundance)?, and 3) How do visits by birds that offer little to no pollinator services affect network properties?

Methods

Study Area

Our study was conducted in the high elevation Andean forests of Peru known as “elfin forest” in Unchog, Huanuco Department, within the Carpish Mountains (9° 42' 32.33" S,

76° 9' 39.13" W; 3700 m.a.s.l.). The elfin forest of Unchog is located within the transition between cloud forest and puna grassland. The area is characterized by a dry (May-September; < 150 mm rain/month) and wet (October-March, > 200 mm rain/month) season (Supplementary material Fig. A1). The study area is known to harbor a number of endemic bird (Parker & O'Neill, 1976, Young et al., 2009) and plant species (Beltran & Salinas, 2010).

Within the Unchog area, we sampled birds and plants in three elfin forest sites that had continuous vegetative cover and were ~8 ha each - Unchog, Magma and Simeompampa; sites were from 0.6 to 1.7 km apart from each other and intervening habitat between these elfin forest patches was dominated by pasture and shrub land. Sites were combined for network analysis given overlap in plant and bird species, increased power to characterize network with increased sample size, and the likely non-independence of the sites.

This research was made with the permits of the Peruvian government, Resolucion 151-2014-MINAGRI-DGFFS-DGEFFS and Resolucion 182-2012-AG- DGFFS-DGEFFS and the approval of the Institutional Animal Care & Use Committee of the University of Florida; IACUC Study #201105714.

Behavioral Observations

We quantified the flowering plant-bird network with direct observations on birds and plants (Ortiz-Pulido et al., 2012). One of us (OG) walked along set transects inside the forest and along forest edges observing birds and recording which plants and how many flowers they visited during visits to the sites. If the bird visited more than one flower on a given plant during a visit, this was still scored as a single visit.

Observations were done between May 2011 and August 2014. Sites were visited approximately weekly during May-July 2011, February 2012, July-November 2012, January-July 2013, September 2013, and November 2013. In January 2014 and from May-August 2014, focal plant watches also were conducted during 30-minute blocks in which we recorded all visits and the number of flowers visited by birds. During these 30 minute observation periods, multiple individual plants and plant species were simultaneously observed. Focal plant observations were centered on plant species exhibiting typical floral traits found in bird pollination syndrome (Willmer, 2011), and those that were known or suspected to be visited by birds based on previous observations (e.g., see Maruyama et al., 2013). The combined observations of birds from transects and focal plants were used to build the interaction network (Walther & Brieschke, 2001).

We spent a total of 190 hours (150 h in dry and 40 h in wet season) observing interactions over 79 days; 73 h, 52 h, and 65 h in Unchog, Magma, and Simiumpampa, respectively. More time was spent during the dry season both because of increased flower abundance as well as logistics of working in the area.

Plant Phenology and Abundance

We used transects to record abundance and phenology of flowers in the three sampling sites. We set up one transect per study site; these transects were sampled once a month at times when behavioral observations occurred. The presence or absence of flowers on a monthly basis was used to characterize phenology for each plant species. We counted the numbers of flowers per individual plant, or estimated the number of flowers by counting a subsample of flowers and then extrapolated to the whole plant for plants with > 50 flowers. We converted the number of flowers to flowers per ha based

on area sampled; in some transects, we corrected for effective area sampled given steep topography and inability to sample some areas at a 20 m width. We used flower density as a measure of plant relative abundance, as it has been shown to be a better estimator than the density of individual plants due to the high variability of flowers per plant (Vasquez, Chacoff & Cagnolo, 2009). For this network analysis, data were combined across sites and years due to similarities in species composition among sites and because sample sizes did not warrant more detailed examination of spatial and temporal patterns.

Nectarivorous Bird Phenology and Abundance

To determine the phenology of birds at sites on a monthly basis, we scored presence or absence of birds based on point-counts, ad-hoc and behavioral observations, and mist-netting activities. To estimate overall relative abundance of bird species, we relied on mist-netting activities. We used 10-15 mist-nets (6 m or 12 m length, 36 mm mesh) in each site to capture birds, collect pollen when present from bills, and measure bill length and other morphological characters. Nets were distributed along forest edge and within the forest interior; nets were opened on one day per month overlapping periods where behavioral observations or focal plant watches occurred. Over the course of the study, mist-nets were opened a total of 2399 mist-net hours (one 12-m net open 1 hour = 1 mist-net hour). Vegetation height in the study area is 5 m on average and, thus, most birds that use the forest are expected to be captured using mist-nets. We recognize that not all birds are equally captured by mist-nets (e.g. Remsen & Good, 1996), and thus estimates may be biased. Nonetheless, in montane forest mist-netting is widely used as a recommended method for bird assessment (Lloyd et al., 2012, Maglianesi et al.,

2014). As for plants, we combined the results among sites to characterize the bird community and bird-flower observations.

Morphological Measurements

We measured bill length and width (to nearest 0.1 mm) of birds that visited flowers using individuals captured in mist nets, supplemented by measurements from museums and published literature. We measured an average of 25 specimens per bird species. Since hummingbirds extend their tongues to access nectar inside the flowers, we added 1/3rd of the total length of the bird bill following Vizentin-Bugoni, Maruyama & Sazima (2014). We measured the length and the width (to nearest 0.1 mm) of flower corollas for plants visited by birds in the field, supplemented by measurements from herbarium specimens. The length was measured from the flower opening to the base of the nectar chamber, while the width was measured at the flower's widest aperture.

Network Description

Data on observed interactions at flowers were recorded as matrices with the bird flower visitors in columns, the plant species in rows and cell values representing the number of visits following Jordano, Vasquez & Bascompte (2009) and Bascompte & Jordano (2014). We examined sampling completeness of nectarivorous birds and interactions in the study area using the Chao2 estimator in EstimateS version 9.1 (Colwell, 2013) following Chacoff et al. (2012). See Supplementary material Fig. A2.

We calculated the following network metrics: connectance, nestedness, interaction evenness and interaction asymmetry (Bascompte & Jordano, 2014). We also calculated a specialization index at the network level (H2) which is resilient to sample size and network size (Blüthgen, Menzel & Blüthgen, 2006). Connectance, which varies from 0 to 1, is the realized proportion of possible links in the network (i.e., if every bird visited

flowers of every plant species, then connectance would equal 1). Nestedness provides a measure of the aggregation of the distribution of interactions in the network (Nielsen & Bascompte, 2007). To calculate nestedness, we used a weighted nestedness measure (WNODF) because WNODF has been found to be more robust in quantitative networks (Almeida-Neto & Ulrich, 2011). When WNODF is close to 0 there is no evidence of aggregation in the matrix, whereas as it approaches 100, the interactions are increasingly nested. Interaction evenness is based on Shannon's index following Tylianakis, Tschamntke & Lewis (2007) and provides a measure of the distribution of interactions in the network. High skewness in the distribution of interactions is indicative of an uneven network. Interaction asymmetry, which measures the strength and directionality of the interaction of one level to the other (birds and plants in this case), was calculated for plants and for birds separately; higher absolute values, from -1 to 1 indicate more uneven or skewed distribution of interaction frequencies. H2 measures specialization in the matrix based on the H index of Shannon-Wiener (Blüthgen, Menzel & Blüthgen, 2006). H2 describes how much the observed distribution of species interactions deviate from the frequency of the expected distribution. It ranges from 0 to 1; when H2 is closer to 1, the interactions are considered to reflect a high degree of specialization. Connectance (conn), nestedness (WNODF), evenness (interaction evenness), specialization (H2), and interaction asymmetry (intrasymm) were calculated using bipartite package version 2.05 in R (Dormann, Gruber & Fründ, 2008). See Supplementary material Table A1 for R source code.

Interaction Probability Matrices

We built interaction probability matrices using the framework proposed by Vasquez, Chacoff & Cagnolo (2009) where interaction frequencies were assumed to be

determined by relative abundances, temporal (phenological) overlap, and morphological overlap. As above, these probability matrices are based on the data compiled across the three study sites. Relative abundance probability matrices will provide a test of the neutrality hypothesis, while the latter two (phenology, morphology) provide a test of the biological constraints hypothesis in explaining observed network structure and interaction frequencies.

To develop a phenological interaction probability matrix (PhenMat), we first compiled matrices of temporal overlap for plants and birds. In these matrices, plant or bird species were rows and sampling months were columns with ones and zeros for presence and absence; the total number of months with simultaneous data on both plants and birds were 15. We then used matrix multiplication to obtain temporal overlap between birds and plants. This matrix of temporal overlap was normalized such that the matrix cells added up to a total of one; individual cells with higher values indicated greater temporal overlap, or probability of interaction, of any particular bird-plant pair.

An abundance interaction probability matrix (AbMat) was made in a similar way as the phenological matrix, compiling matrices of abundance for plants and for birds and overlapping them in the same months. Here the cells of the plant matrix were the number of individual flowers per ha, by species summed across the sites. The cells of the bird matrix were the number of individuals captured in mist-nets per 100 net-hours (Maglianesi et al., 2014). We multiplied the two abundance matrices and the product was normalized as explained above.

The morphology interaction probability matrix (MorMat) was generated to account for morphological mismatches in length of a bird's bill (as corrected to account for tongue,

see above) and corolla length (Maruyama et al., 2014; Vizentin-Bugoni, Maruyama & Sazima, 2014). However, instead of using mean length, we used the probability of size overlap between ranges of flower length and bill length. We believe this approach is more realistic than a simple yes or no criterion because of existing intra-specific variation in morphological traits among individuals (Gonzalez-Castro et al., 2015). We first noted the range of a flower's length and the range of a bird's bill. If the lower limit of the bill's range was longer than the lower limit of the flower's length, the interaction was scored as 100% possible with a cell value of 1. If the upper limit of the bill's range was shorter than the lower limit of the flower's length, the interaction was considered impossible and a cell value of 0 was assigned. When there was overlap of ranges between the length of a bird's bill and the length of a corolla, we calculated the proportion of overlap and assigned that value to the cell. Furthermore, we considered some exceptions when the flower's width was expansive enough for a bird's head to enter the corolla. For example, the flowers of *Puya* are longer and wider than any of the bird's bills, so we considered that all bird species could visit *Puya* and assigned a value of 1 for all possible interactions with this flowering species. In cases where size overlap was zero, but the observed interaction frequency was not zero, we assigned an arbitrary value of 1×10^{-8} which is less probable than any other case in the phenology and abundance matrices (Gonzalez-Castro et al., 2015). Further, the placement of zero in the probability matrix when the observed interaction value is not zero, results in a failed calculation of the multinomial function (see next topic). As for other interaction probability matrices, we normalized this matrix so that cell values sum to 1.

We also considered the possibility that factors might act together to influence the observed bird-flower network. To do this, we used matrix multiplication to create new interaction probability matrices for all possible combinations - $AbMat * PhenMat$, $AbMat * MorMat$, $PhenMat * MorMat$ and $AbMat * PhenMat * MorMat$ - and then normalized these new matrices so that the cells summed to one. Following Vasquez, Chacoff & Cagnolo (2009) we also included a “Null” probability matrix where all pairwise interactions in the matrix made of observed plant and animal species had the same probability of occurrence (i.e., all cell values in the matrix are equal to $1/IJ$, where I and J are number of plant and bird species in the network).

Testing Neutrality and Biological Constraints Hypotheses

To test whether neutral processes or biological constraints best predicted observed interaction frequencies, we used a likelihood approach. Support for either of these hypotheses arises when the probability matrix can predict the observed interactions, such that higher probabilities of cells should match with higher frequencies of observed interactions (see Vasquez, Chacoff & Cagnolo, 2009, Vizentin-Bugoni, Maruyama & Sazima, 2014). Akaike information criteria (AIC) was used to compare the relative ability of these various hypothesized models to explain observed interactions. We assumed that probability of interaction between a given bird and flowering plant followed a multinomial distribution (Vasquez, Chacoff & Cagnolo, 2009). We used the number of species (44 in total), to determine the number of parameters used to weight different models’ complexities when calculating AIC. So 44 was used when one factor was calculated (i.e. abundance), 88 if two factors (i.e. phenology and morphology) and 132 if three factors (i.e. phenology, morphology and abundance). As in Vizentin-Bugoni,

Maruyama & Sazima (2014) we compared these results to those based on using the number of factors (abundance, phenology, morphology; either. e., 1, 2 or 3) to weight model complexity, and checked for differences. The function *dmultinom* in the *stats* package R was used to calculate likelihood (R core team 2014).

To determine the degree to which the hypotheses predicted network metrics, such as connectance, nestedness, or asymmetry, we used a randomization algorithm *mgen* from *bipartite* package in R (Vasquez, Chacoff & Cagnolo, 2009). Using the number of interactions actually observed, the randomization algorithm assigned interactions to each probability interaction matrix, including all combined interaction probability matrices, such that all species received at least one interaction (see Vasquez, Chacoff & Cagnolo, 2009). From these randomized matrices, we calculated network statistics (mean and 95% confidence intervals from 1000 repetitions using function *confint* in *bipartite* package in R) and compared the overlap with network statistics generated from our observed interaction matrix. If the observed metric values were found to be within the 95% confidence intervals of those generated from interaction probability matrices, we interpreted this to mean that factors (e.g., relative abundance, phenology, morphology, or their combination) could explain or were consistent with hypothesized explanations of drivers of mutualistic interactions at the community level.

Effect of Nectar-robbers on Network Properties

To examine the influence of nectar robbers on network properties, we recalculated all of the above matrices after removing interactions that likely did not result in pollination, such as visits to base of flowers through holes cut by *Diglossa* flowerpiercers or bees. This new interaction matrix is more equivalent to a pollinator-plant network than our bird-flowering plant network which included all flowering plant visits. This pollinator-plant

network was then used to evaluate our third question that examined the impact of flower-piercers on network structure and network properties as described above

Results

General Results

Bird-flower network. We observed a total of 17 bird species visiting flowers from 27 plant species in all our elfin forest sites combined. These observations included 278 pairwise interactions representing 74 unique interactions of bird visits to plants (Supplementary Table A2). Avian flower visitors included 12 species of hummingbirds (Trochilidae), 4 species of flowerpiercers (*Diglossa*: Thraupidae) and one conebill (*Conirostrum*: Thraupidae). Flowering plants observed to be visited by birds included plants from 24 genera, 16 families and 14 orders (Fig. 1, and Supplementary Table A2). Mutualistic networks are typically characterized by many fewer observed interactions than possible (e.g., Chacoff et al., 2012), and this was also true here. We detected only 55.2% of the estimated interactions for the whole network using Chao2 (Supplementary material Fig. A2). Despite this, the observed number of unique interactions appeared to be reaching an asymptote with our sampling effort.

Interactions in the network. We found that *Metallura theresiae*, *Pterophanes cyanopterus* and *Diglossa mystacalis*, birds considered to be indicators of the elfin forest (Parker, Stotz & Fitzpatrick, 1996), were the most important bird species in terms of flowering plant interactions (Fig. 1). *Metallura* visited a total of 26 species, while *D. mystacalis* visited 10 and *Pterophanes* visited 4 species, respectively. Among plants, *Brachyotum lutescens*, *Tristerix longibracteatus* and *Fuchsia decussata* were the species with the most interactions with visits from 8, 7, and 7 bird species, respectively

(Fig. 1). When compared to the “null” model, the bird-flowering plant network was found to be significantly less connected and more nested (Figs. 2a, b). In addition, the network was significantly less even, more specialized and exhibited greater asymmetry among bird or plant species than expected (Figs. 2c-f).

Plant-visitation network determinants

We found that biological constraints as exemplified by phenology best explained the observed interaction frequencies using the likelihood approach (Fig. 4). This result suggests that the degree of temporal overlap among interacting players in a bird-flowering plant network is an important driver of the observed interaction frequencies. Results were consistent whether either the number of species or the number of matrices used as parameters in likelihood analysis to compare among models (Supplementary material Fig. A3).

Biological constraints, either through phenological constraints or phenology in combination with morphology, were found to explain nestedness in the elfin forest bird-plant network (Fig. 2b). Network structure also was found to be explained by neutral processes, as measured by relative abundance of birds and flowering plants, in some cases. For example, connectance within the network was predicted via a combination of relative abundance of interacting players and biological constraints (Fig. 2a). Further, relative abundance was found to explain evenness and relative abundance alone, or in combination with morphology, explained asymmetry (Fig. 2e, f f). In contrast, neither biological constraints nor neutral processes were able to explain specialization (Fig. 2d).

Difference in network properties with and without nectar-robbers

To investigate the influence of nectar robbers in the plant-bird network, we removed all interactions that involved observed “illegal” visits to flowers (i.e., birds entered flower at

nectar base rather than through corolla opening). This reduced the original network of 17 birds and 27 plants to 12 birds and 26 plants; all *Diglossa* species dropped out of the network given that all observations were from *Diglossa* or *Conirostrum* removing nectar from the base of flowers. Other interactions deleted were *Heliangelis amestyticollis* - *Desfontainia spinosa*, *Pterophanes cyanopterus* - *Passiflora cumbalensis*, *Metallura tyrianthina* - *Passiflora cumbalensis* and *Metallura theresiae* with *Desfontainia spinosa*, *Fuchsia decussata* and *Passiflora cumbalensis*. Removal resulted in the loss of all interactions with *Passiflora cumbalensis*, given that all observations to this flower occurred via the floral base and were not considered “legitimate”.

The exclusion of illegal visits by primary and secondary nectar-robber birds resulted in a decrease of connectance, nestedness and evenness, but increase in specialization when comparing metrics with the null matrix and the original matrix. Asymmetry shifted in different ways with an increase for plants and decrease for birds (compare Figs. 2 and 3). Abundance and its combination with morphology were useful to explain evenness and asymmetry for plant and birds, while phenology in combination with morphology predicted connectance. However the exclusion of the nectar-robbers in the network did not change the influence of phenology as the “best” predictor of species interactions (Fig. 4b).

Discussion

Network Structure

Bird-flowering plant networks in elfin forests are characterized by many fewer interactions than possible. These results are consistent with most other pollination networks studied. For example, Chacoff et al. (2012) also observed about 55% of all possible interactions in a desert plant-pollinator network sampled over 4 years. Yet,

despite their time investment, Chacoff et al. (2012) estimate that a five-fold increase in sample effort would be needed to even possibly detect 90% of the possible interactions. The sampling effort invested in our study (190 hours) spread over multiple years matches or exceeds many other studies (e.g., Rodriguez-Flores, Stiles & Arizmendi, 2012, Ortiz-Pulido et al., 2012, Maruyama et al., 2014), but is considerably less than studies that use video-cameras to record interactions (Maglianesi et al., 2014, Vizentin-Bugoni, Maruyama & Sazima, 2014). The use of remote technology in flowering plant observational studies hold much promise, but are nonetheless, difficult or expensive to use in sites where flowering plant diversity is high.

Like several mutualistic networks, the elfin forest network was also found to be nested (Fig.3b; see also Rodriguez-Flores, Stiles & Arizmendi, 2012, Bascompte et al., 2003). Our results, however, contrast with some studies in tropical dry forests (Arizmendi & Ornelas, 1990) and savannas (Vizentin-Bugoni, Maruyama & Sazima, 2014) where the plant-bird network was not nested. Bascompte et al. (2003) suggest that increases in the number of species in networks might result in greater nestedness. Indeed, when we reduced the network to only include species and observations that resulted in “legitimate” flower visits, we found nestedness values were lower although the network was still more nested than expected. In the elfin forest the abundance of the flowerpiercers facilitating access to hummingbirds would take out several “forbidden links” as limitations, diminishing nestedness. Sampling effort did not likely bias our estimate of nestedness given that WNODF is known to be a robust estimator for nestedness (Vizentin-Bugoni et al., 2016).

The important species in networks, based on their abundance and frequency of interactions, often provide insights about the ecological or evolutionary implications of the network (Bascompte & Jordano, 2007). In this system the most abundant flower visitor in elfin forests (*Metallura theresiae*) also had the greatest number of connections and interacted with the most flowering plant species (Fig. 1). *Metallura theresiae* is quite aggressive and its behavior may interfere with other flower visitors, and thus, affect visitation rates (Justino, Maruyama & Oliveira, 2012). In contrast, the plant which had the greatest number of flowers in this system, *Brachyotum lutescens*, did not have the greatest number of flower visits nor the greatest number of visiting species. Similar results were reported by Rodriguez-Flores, Stiles & Arizmendi (2012) in a plant-hummingbird network in Colombia, where hermit hummingbirds were the most abundant birds, visiting the greatest number of plant species in the lowland Amazon. In the elfin forest system we found that abundance models combined with phenology or morphology can explain network connectance, as well as evenness and asymmetry for both plants and birds. Nestedness was predicted by phenology and phenology with morphology, matching results from an insect-plant network in a subalpine community (Olito & Fox, 2015). In contrast, in plant-hummingbird networks in the Brazilian savanna (Vizentin-Bugoni, Maruyama & Sazima, 2014) neither abundance, morphology nor phenology were associated with network metrics, except the mixed model of phenology, morphology and abundance for the asymmetry of the birds in the network.

Observed interaction frequencies

In this study, the observed interactions, either with the full suite of avian flower visitors or the reduced set of “legitimate” visitors, were best explained by phenology. Greater phenological overlap in birds and plants led to greater number of interactions between

pairs of species. The importance of phenology in explaining pairwise interactions has also been found in other studies, but was still found to be a poor predictor of observed interactions in some cases (Encinas-Viso, Revilla & Etienne, 2012, Olito & Fox, 2015). In contrast, morphology alone, or morphology interacting with phenology, have been found to explain observed pairwise interactions in some hummingbird-plant networks (Maglianesi et al., 2014, Maruyama et al., 2014, Vizentin-Bugoni, Maruyama & Sazima, 2014). The importance of phenology in driving interactions highlight the potential vulnerabilities of these mutualism networks to climate change, which can alter phenological patterns (Rafferty, CaraDonna & Bronstein, 2015). Elfin forests which are located at the top of tropical mountains are likely to be particularly impacted by climate change and, thus, as phenological patterns change, nectarivorous birds, a number of which are endemic, may face lowered availability of resources and potential invasion of competitors (Sekercioglu, Primack & Wormworth, 2012).

The nectar robber effect in the network

Morphological constraints were not an important driver in our system, or only were important when combined with abundance or phenology for some network metrics. This result is likely due to the presence of *Diglossa* flowerpiercers. The opportunities for morphological constraints to operate in this system are many as several flowering plant species have corollas that exceed the length of a number of flower visitors. Yet, the forbidden interactions in this network, which hypothetically should restrict access to nectar for small-billed birds for a number of flowering species, did not occur. *Diglossa*, which cut holes in base of flowers to gain access to nectar, act as facilitators for other species (hummingbirds with small bills) that would not be able to access to long-corolla flowers (Bruno, Stachowicz & Bertness, 2003); large bees are also known to cut holes

at base of flowers in this system and may also serve as “facilitators”. Consequently, connectance in the network increases with flowerpiercers in the system (Fig. 2a with Fig. 3a). In contrast, we found that network specialization increased markedly when nectar-robbers were removed from the network (Fig. 2d with Fig. 3d). In summary, biological processes were important in predicting observed interactions between flowering plants and birds, while neutral and biological processes interacted to explain network components. The importance of phenology, in particular, suggests that the ecological and evolutionary dynamics of networks are likely to be altered with climate change. As such, future studies should focus on how phenological changes impact network dynamics.

Acknowledgements

We thank Camilo Diaz, Bernie Britto and Juan Diego Shoobridge for plant identification. OG thanks Jessica Burnett and J. Vizentin-Bugoni for their help in R codes.

Funding

OG thanks FINCyT in Peru for funding his PhD studies. Funding for fieldwork came from the Premio Nacional para la Investigacion Ambiental of the Ministerio del Ambiente of Peru, Optics for the Tropics, Royal Society for Bird Protection, Idea Wild and University of Florida’s Tropical Conservation and Development Program field research fund.

References

- Almeida-Neto M, Ulrich W. 2011. A straightforward computational approach for measuring nestedness using quantitative matrices. *Environmental Modelling & Software* 26:173-178. DOI:10.1016/j.envsoft.2010.08.003
- Arizmendi MD, Ornelas JF. 1990. Hummingbirds and their floral resources in a tropical dry forest in Mexico. *Biotropica* 22:172-180. DOI: 10.2307/2388410
- Bascompte J. 2010. Structure and Dynamics of Ecological Networks. *Science* 329:765-766. DOI: 10.1126/science.1194255
- Bascompte J, Jordano P. 2007. Plant-animal mutualistic networks: The architecture of biodiversity. *Annual Review of Ecology and Systematics* 38:567-593. DOI: 10.1146/annurev.ecolsys.38.091206.095818
- Bascompte J., Jordano P. 2014. Mutualistic networks. *Monographs in Population Biology Series*, no. 53. Princeton University Press.
- Bascompte J, Jordano P, Melian C, Olesen JM. 2003. The nested assembly of plant-animal mutualistic networks. *Proceedings of the National Academy of Sciences of the United States of America* 100:9383-9387. DOI: 10.1073/pnas.1633576100
- Beltran H, Salinas I. 2010. The vascular flora and vegetation of the Carpish Humid Montane Forests (Huanuco - Peru). *Arnaldia* 17(1): 107 - 130
- Blüthgen N, Menzel F, Blüthgen N. 2006. Measuring specialization in species interaction networks. *BMC Ecology* 6:9. DOI: 10.1186/1472-6785-6-9

- 520 Brack A, Mendiola C. 2000. *Ecologia del Peru*. Lima: Bruño.
- 521 Bruno JF, Stachowicz JJ, Bertness MD. 2003. Inclusion of facilitation into ecological
522 theory. *Trends in Ecology and Evolution* 18:119-125. DOI: 10.1016/S0169-
523 5347(02)00045-9
- 524 Burkle LA, Alarcon R. 2011. The future of plant-pollinator diversity: understanding
525 interaction networks across time, space, and global change. *American Journal of*
526 *Botany* 98:528-538. DOI: 10.3732/ajb.1000391
- 527 Chacoff NP, Vazquez DP, Lomascolo SB, Stevani EL, Dorado J, Padron B. 2012.
528 Evaluating sampling completeness in a desert plant-pollinator network. *Journal of*
529 *Animal Ecology* 81:190-200. DOI: 10.1111/j.1365-2656.2011.01883.x
- 530 Colwell RK. 2013. EstimateS: Statistical estimation of species richness and shared
531 species from samples. Version 9. Persistent URL <purl.oclc.org/estimates>
- 532 Dalsgaard, B., Magård E., Fjeldså J., Martín González A.M., Rahbek C., Olesen J.M.,
533 Ollerton J., Alarcón R, Cardoso Araujo A, Cotton PA, Lara C, Machado CG, Sazima I,
534 Sazima M, Timmermann A, Watts S, Sandel B, Sutherland WJ, Svenning JC. 2011.
535 Specialization in plant-hummingbird networks is associated with species richness,
536 contemporary precipitation and quaternary climate-change velocity. *PLoS ONE* 6,
537 e25891. DOI: <http://dx.doi.org/10.1371/journal.pone.0025891>
- 538 Dormann CF, Gruber B, Fründ J. 2008. Introducing the bipartite package: Analysing
539 Ecological Networks. *R News* 8(2):8-11.

- 540 Ebeling A, Klein A-M, Tschardt T. 2011. Plant-flower visitor interaction webs:
541 Temporal stability and pollinator specialization increases along an experimental plant
542 diversity gradient. *Basic and Applied Ecology* 12:300-309. DOI:
543 10.1016/j.baae.2011.04.005
- 544 Encinas-Viso T, Revilla A, Etienne R. 2012. Phenology drives mutualistic network
545 structure and diversity. *Ecology Letters* 15:198-208. DOI: 10.1111/j.1461-
546 0248.2011.01726.x
- 547 Gonzalez-Castro A, Yang S, Nogales M, Carlo TA. 2015. Relative importance of
548 phenotypic trait matching and species' abundances in determining plant-avian seed
549 dispersal interactions in a small insular community. - *AoB PLANTS* 7.
550 DOI: 10.1093/aobpla/plv017.
- 551 Janecek S, Riegert J, Sedlacek O, Bartos M, Horak D, Reif J, Padysakova E, Fainova
552 D, Antczak M, Pesata M, Mikes V, Patacova E, Altman J. 2012. Food selection by avian
553 floral visitors: an important aspect of plant-flower visitor interactions in West Africa.
554 *Biological Journal of the Linnean Society* 107:355-367. DOI: 10.1111/j.1095-
555 8312.2012.01943.x
- 556 Jordano P, Bascompte J, Olesen JM. 2003. Invariant properties in coevolutionary
557 networks of plant-animal interactions. *Ecology Letters* 6:69-81. DOI: 10.1046/j.1461-
558 0248.2003.00403.x
- 559 Jordano P, Vázquez D, Bascompte J. 2009. Redes complejas de interacciones
560 mutualistas planta-animal. *in* Medel, R, Aizen M & Zamora R, editors. *Ecología y*

- 561 evolución de las interacciones planta-animal: conceptos y aplicaciones. Santiago de
562 Chile: Editorial Universitaria, 17-41.
- 563 Justino DG, Maruyama PK, Oliveira PE. 2012. Floral resource availability and
564 hummingbird territorial behaviour on a Neotropical savanna shrub. *Journal of*
565 *Ornithology* 153:189-197. DOI: 10.1007/s10336-011-0726-x
- 566 Lewinsohn T, Prado P, Jordano P, Bascompte J, Olesen JM. 2006. Structure in plant-
567 animal interaction assemblages. *Oikos* 113:174-184. DOI: 10.1111/j.0030-
568 1299.2006.14583.x
- 569 Lloyd H, Sevillano Rios S, Marsden SJ, Valdes-Velasquez A. 2012. Bird community
570 composition across an Andean tree-line ecotone. *Austral Ecology* 37(4):470-478. DOI:
571 10.1111/j.1442-9993.2011.02308.x
- 572 Maglianesi MA, Blüthgen N, Boehning-Gaese K, Schleuning M. 2014. Morphological
573 traits determine specialization and resource use in plant-hummingbird networks in the
574 neotropics. *Ecology* 95:3325-3334. DOI: 10.1890/13-2261.1
- 575 Maruyama PK, Oliveira GM, Ferreira C, Dalsgaard B, Oliveira PE. 2013. Pollination
576 syndromes ignored: importance of non-ornithophilous flowers to Neotropical savanna
577 hummingbirds. *Naturwissenschaften* 100:1061-1068. DOI: 10.1007/s00114-013-1111-9
- 578 Maruyama PK, Vizentin-Bugoni J, Oliveira GM, Oliveira PE, Dalsgaard B. 2014.
579 Morphological and Spatio-Temporal Mismatches Shape a Neotropical Savanna Plant-
580 Hummingbird Network. *Biotropica* 46:740-747. DOI: 10.1111/btp.12170

- 581 Nielsen A, Bascompte J. 2007. Ecological networks, nestedness and sampling effort.
582 Journal of Ecology 95:1134-1141. DOI: 10.1111/j.1365-2745.2007.01271.x
- 583 Nuismer SL, Jordano P, Bascompte J. 2013. Coevolution and the architecture of
584 mutualistic networks. Evolution 67:338-354. DOI: 10.1111/j.1558-5646.2012.01801.x
- 585 Olesen JM, Bascompte J, Dupont Y, Jordano P. 2007. The modularity of pollination
586 networks. Proceedings of the National Academy of Sciences of the United States of
587 America 104:19891-19896. DOI:10.1073/pnas.0706375104
- 588 Olesen JM, Bascompte J, Dupont Y, Elberling H, Rasmussen C, Jordano P. 2011.
589 Missing and forbidden links in mutualistic networks. Proceedings of the Royal Society B-
590 Biological Sciences 278:725-732. DOI: 10.1098/rspb.2010.1371
- 591 Olito C, Fox JW. 2015. Species traits and abundances predict metrics of plant-pollinator
592 network structure, but not pairwise interactions. Oikos 124:428-436.
593 DOI: 10.1111/oik.01439
- 594 Ortiz-Pulido R, Diaz SA, Valle-Diaz OI, Fisher A. 2012. Hummingbirds and the plants
595 they visit in Tehuacan-Cuicatlan Biosphere Reserve, Mexico. Revista Mexicana de
596 Biodiversidad 83:152-163.
- 597 Parker III TA, O'Neill JP. 1976. Introduction to bird-finding in Peru: Part II. The Carpish
598 Pass region of the eastern Andes along the Central Highway. Birding 8: 205-216.

599 Parker III TA, Stotz DF, Fitzpatrick JW. 1996. Ecological and distributional databases.
600 Pages 113-436 *in* Stotz DF, Fitzpatrick JW, Parker III TA, Moskovits DK, editors.
601 Neotropical birds: ecology and conservation. Chicago: University of Chicago Press.

602 R Core Team 2014. R: A language and environment for statistical computing. - R
603 Foundation for Statistical Computing. <http://www.R-project.org/>.

604 Rafferty NE, CaraDonna PJ, Bronstein JL. 2015. Phenological shifts and the fate of
605 mutualisms. *Oikos* 124:14-21. DOI: 10.1111/oik.01523

606 Ramirez O, Arana M, Bazan E, Ramirez A, Cano A. 2007. Assamblages of two mammal
607 and bird communities in two major ecological units in the high Andean plateau of
608 southern Peru. *Ecologia Aplicada* 6(1-2):1-15.

609 Remsen JV, Good DA. 1996. Misuse of data from mist-net captures to assess relative
610 abundance in bird populations. *Auk* 113:381-398.

611 Rodriguez-Flores CI, Stiles FG, Arizmendi MC. 2012. Pollination network of a hermit
612 hummingbird community (Thochilidae, Phaetornitidae) and their nectar resources in the
613 Colombian Amazon. *Ornitologia Neotropical* 23:85-100.

614 Rojas-Nossa SV. 2013. Asociación entre el robo de néctar y las características florales
615 en una comunidad montana de los Andes colombianos. *Revista Ecosistemas*
616 22(2):107-112. DOI: 10.7818/ECOS.2013.22-2.16

617 Rojas-Nossa SV, Sánchez, JM, Navarro L. 2016, Nectar robbing: a common
618 phenomenon mainly determined by accessibility constraints, nectar volume and density
619 of energy rewards. *Oikos*. DOI: 10.1111/oik.02685

620 Sekercioglu CH, Primack RB, Wormworth J. 2012. The effects of climate change on
621 tropical birds. *Biological Conservation* 148:1-18. DOI:10.1016/j.biocon.2011.10.019

622 Thébault E, Fontaine C. 2010. Stability of Ecological Communities and the Architecture
623 of Mutualistic and Trophic Networks. *Science* 329: 853-856. DOI:
624 10.1126/science.1188321

625 Tylianakis JM, Tscharntke T, Lewis OT. 2007. Habitat modification alters the structure
626 of tropical host-parasitoid food webs. *Nature* 445:202-205. DOI: 10.1038/nature05429

627 Vazquez DP, Aizen MA. 2004. Asymmetric specialization: A pervasive feature of plant-
628 pollinator interactions. *Ecology* 85:1251-1257. DOI: 10.1890/03-3112

629 Vasquez DP, Aizen MA. 2006. Community-wide pattern of specialization in Plant-
630 Pollinator interactions revealed by null models. *In*: Waser NM, Ollerton J, editors. *Plant-
631 Pollinator Interactions: From specialization to generalization*. Chicago: University of
632 Chicago Press, 200-219.

633 Vazquez DP, Chacoff NP, Cagnolo L. 2009. Evaluating multiple determinants of the
634 structure of plant-animal mutualistic networks. *Ecology* 90:2039-2046. DOI:10.1890/08-
635 1837.1

636 Vizentin-Bugoni J, Maruyama PK, Sazima M. 2014. Processes entangling interactions
637 in communities: forbidden links are more important than abundance in a hummingbird-
638 plant network. *Proceedings of the Royal Society B-Biological Sciences* 281:20132397
639 DOI: 10.1098/rspb.2013.2397

640 Vizentin-Bugoni J, Maruyama PK, Debastiani VJ, Duarte LD, Dalsgaard B, Sazima M.
641 2016. Influences of sampling effort on detected patterns and structuring processes of a
642 Neotropical plant-hummingbird network. *Journal of Animal Ecology* 85:262-272.
643 DOI: 10.1111/1365-2656.12459

644 Walther BA, Brieschke H. 2001. Hummingbird-flower relationships in a mid-elevation
645 rainforest near Mindo, Northwestern Ecuador. *International Journal of Ornithology*
646 4:115-135.

647 Willmer P. 2011. *Pollination and Floral Ecology*. Princeton: Princeton University Press.

648 Winfree R, Williams NM, Dushoff J, Kremen C. 2014. Species abundance, not diet
649 breadth, drives the persistence of the most linked pollinators as plant-pollinator
650 networks disassemble. *American Naturalist* 183:600-611. DOI: 10.1086/675716

651 Young BE, Franke I, Hernandez PA, Herzog SK, Paniagua L, Tovar C, Valqui T. 2009.
652 Using spatial models to predict areas of endemism and gaps in the protection of
653 Andean slope birds. *Auk* 126(3):554-565.
654 DOI: <http://dx.doi.org/10.1525/auk.2009.08155>

Figure 1(on next page)

Pairwise interactions in the bird-flowering plant visitation network in the elfin forest

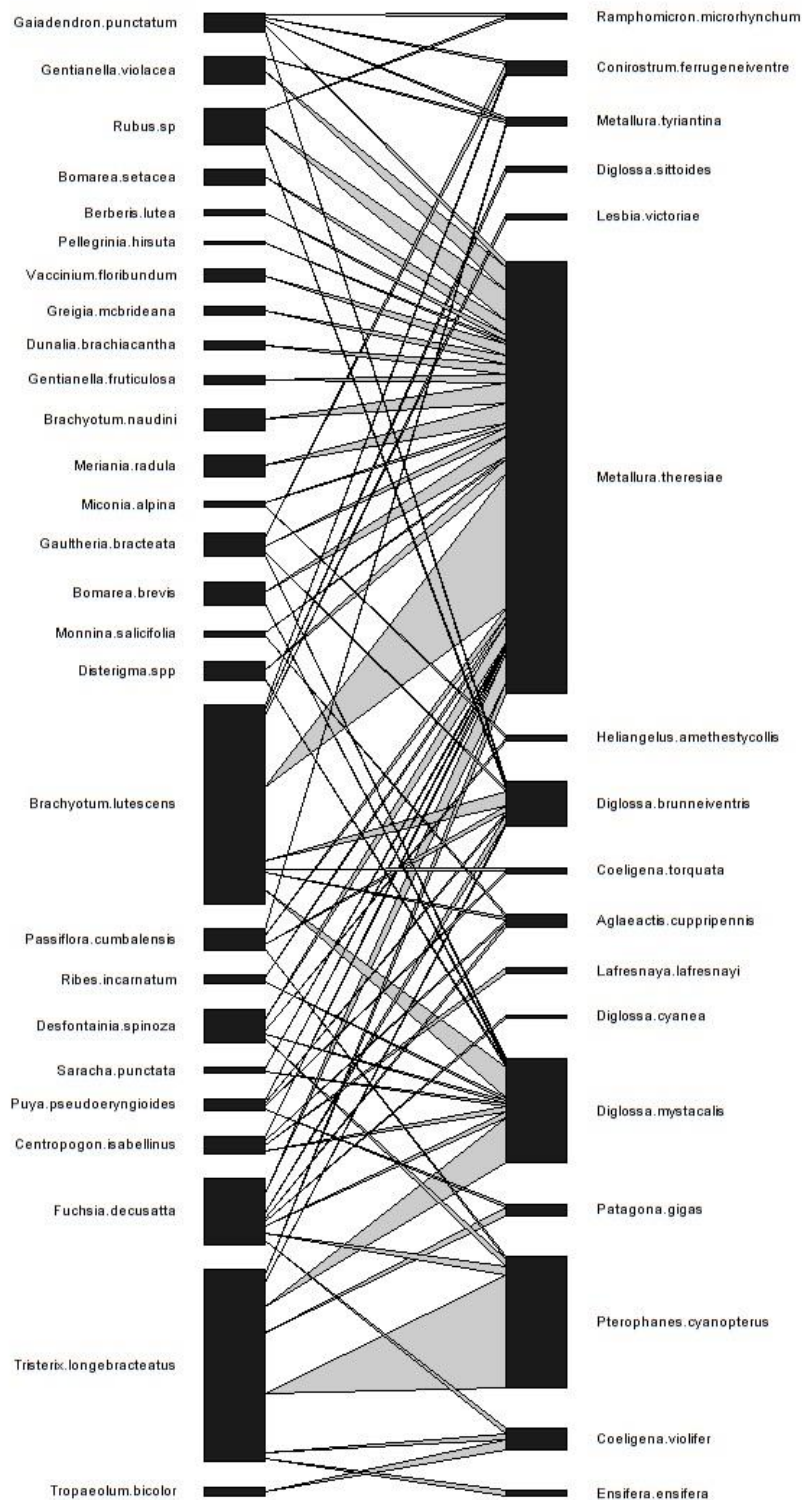


Figure 1. Pairwise interactions in the bird-flowering plant visitation network in the elfin forest.

Figure 2 (on next page)

Comparison of the network metrics produced by probability matrices (mean and 95% confidence intervals) and the observed network values for the bird-flowering plant network of the elfin forest.

Network metrics are: (a) connectance, (b) weighted nestedness (WNODF), (c) evenness, (d) specialization, (e) asymmetry of plants (f) asymmetry of birds. The dashed vertical lines in each graph represents the value for the observed matrix. Matrix codes: Ab= Abundance, Phen=Phenology, Mor=Morphology, Null= Null matrix.

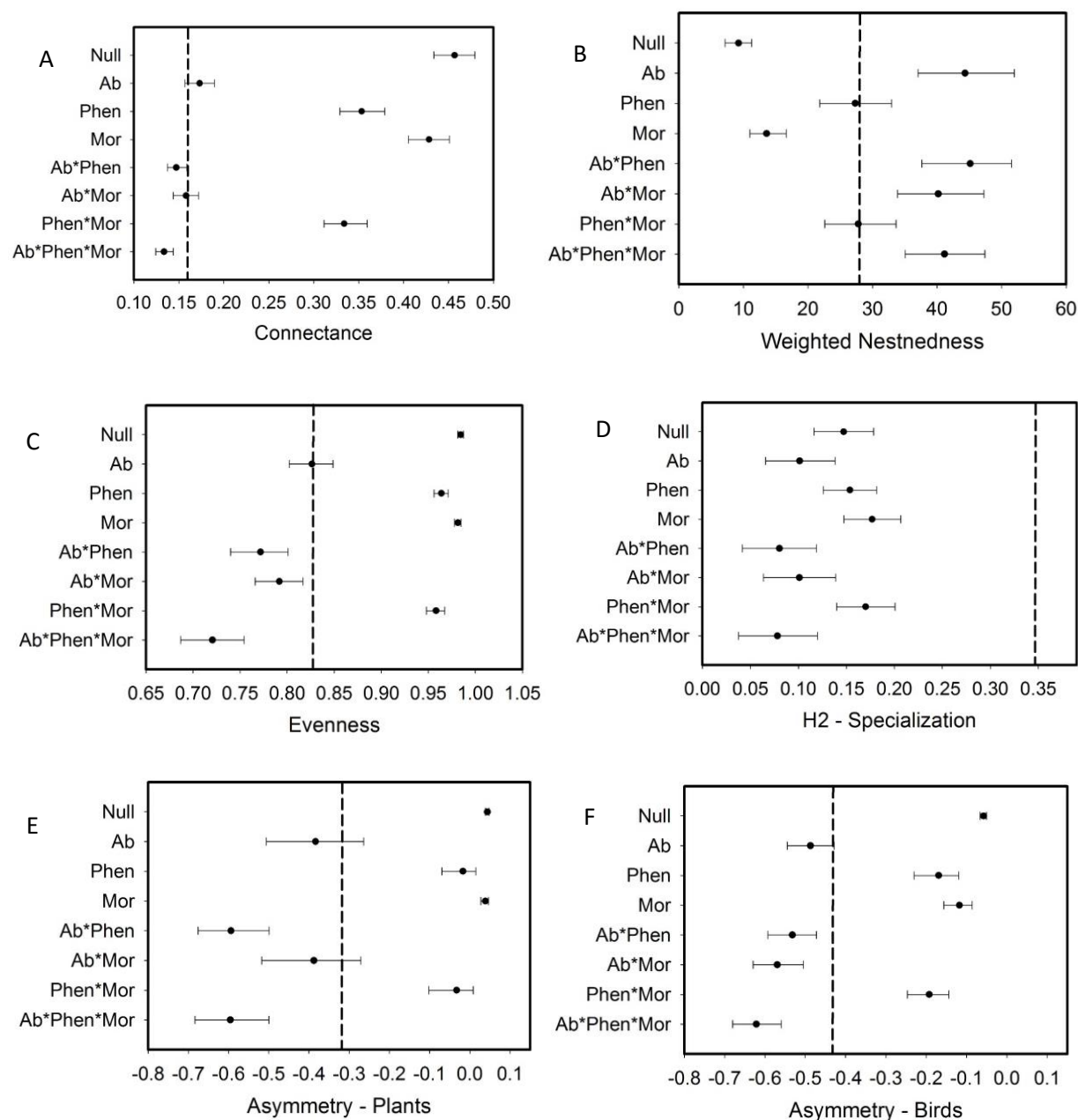


Figure 2. Comparison of the network metrics produced by probability matrices (mean and 95% confidence intervals) and the observed network values for the bird-flowering plant network of the elfin forest. Network metrics are: (a) connectance, (b) weighted nestedness (WNODF), (c) evenness, (d) specialization, (e) asymmetry of plants (f) asymmetry of birds. The dashed vertical lines in each graph represents the value for the observed matrix. Matrix codes: Ab= Abundance, Phen=Phenology, Mor=Morphology, Null= Null matrix.

Figure 3(on next page)

Comparison of the network metrics produced by probability matrices after removal of interactions involving nectar-robbers

Network metrics are: (a) connectance, (b) weighted nestedness (WNODF), (c) evenness, (d) specialization, (e) asymmetry of plants, (F) asymmetry of birds. The dashed vertical lines in each graph represents the value for the observed matrix. Matrix codes: Ab= Abundance, Phen=Phenology, Mor=Morphology, Null= Null matrix.

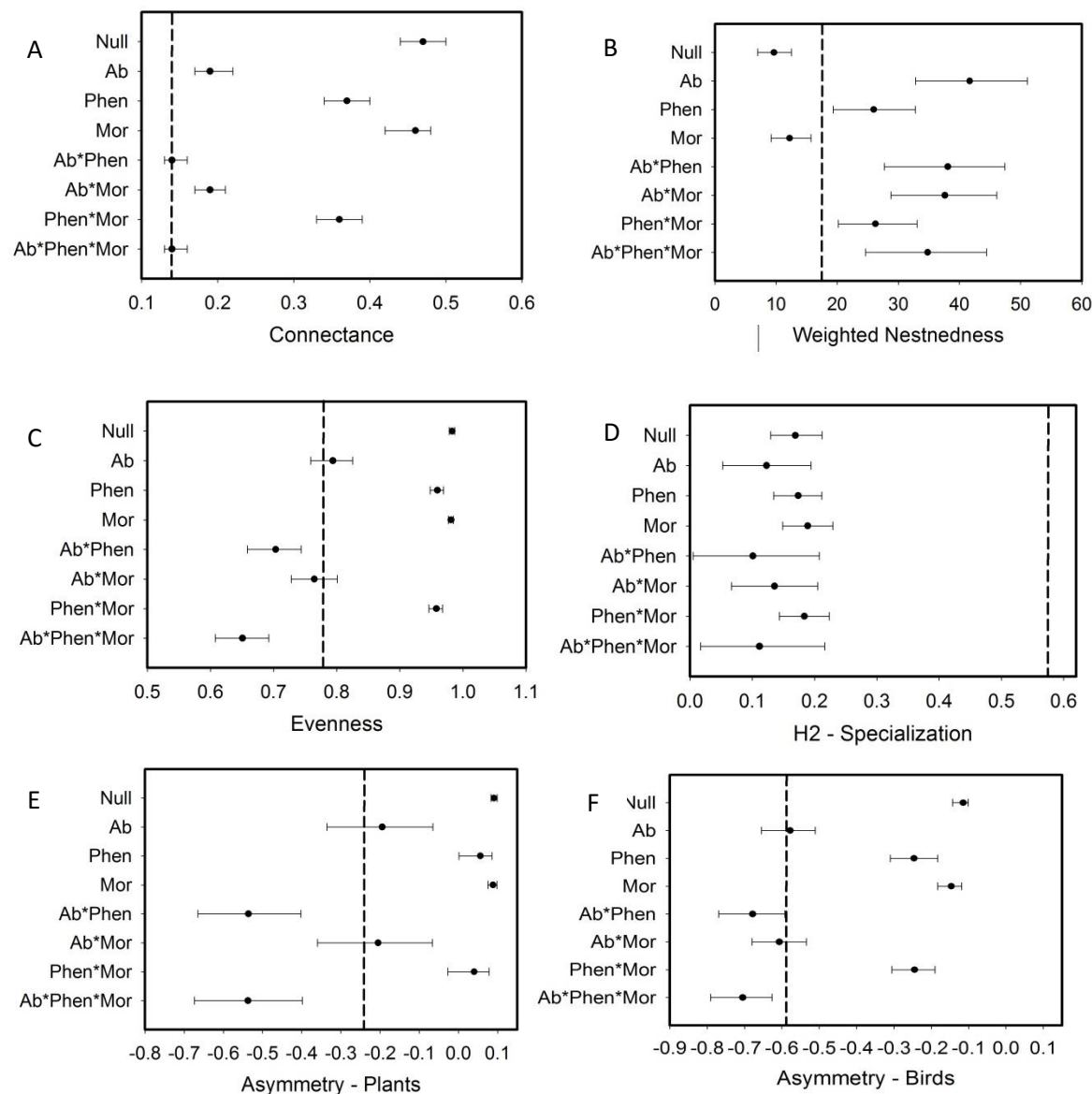


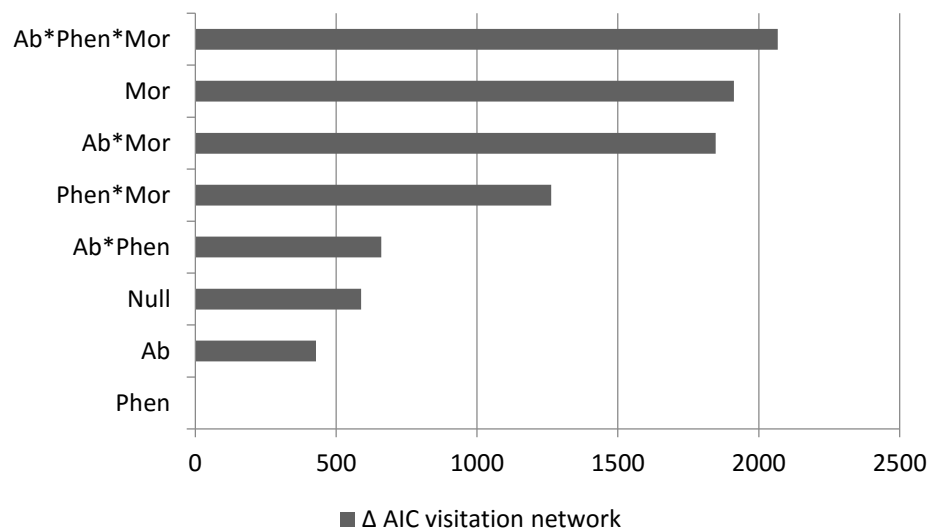
Figure 3. Comparison of the network metrics produced by probability matrices after removal of interactions involving nectar-robbers. Network metrics are: (a) connectance, (b) weighted nestedness (WNODF), (c) evenness, (d) specialization, (e) asymmetry of plants, (F) asymmetry of birds. The dashed vertical lines in each graph represents the value for the observed matrix. Matrix codes: Ab= Abundance, Phen=Phenology, Mor=Morphology, Null= Null matrix.

Figure 4(on next page)

Difference of the AIC values of the probability matrices in relation to the Phenology matrix, which has the lowest AIC

Ab= Abundance, Phen= Phenology, Mor= Morphology, Null= Null matrix. The phenology model best explained the observed interaction frequencies. (a) Δ AIC visitation network, including all bird species and (b) Δ AIC pollination network, excluding nectar-robbers and their observed forbidden interactions.

A



B

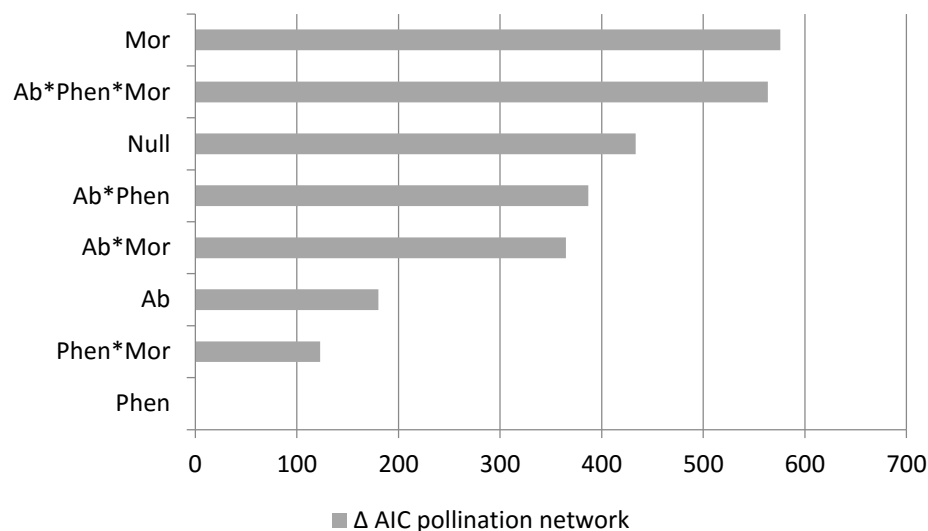


Figure 4. Difference of the AIC values of the probability matrices in relation to the Phenology matrix, which has the lowest AIC: Ab= Abundance, Phen= Phenology, Mor= Morphology, Null= Null matrix. The phenology model best explained the observed interaction frequencies. (a) ΔAIC visitation network, including all bird species and (b) ΔAIC pollination network, excluding nectar-robbers and their observed forbidden interactions.