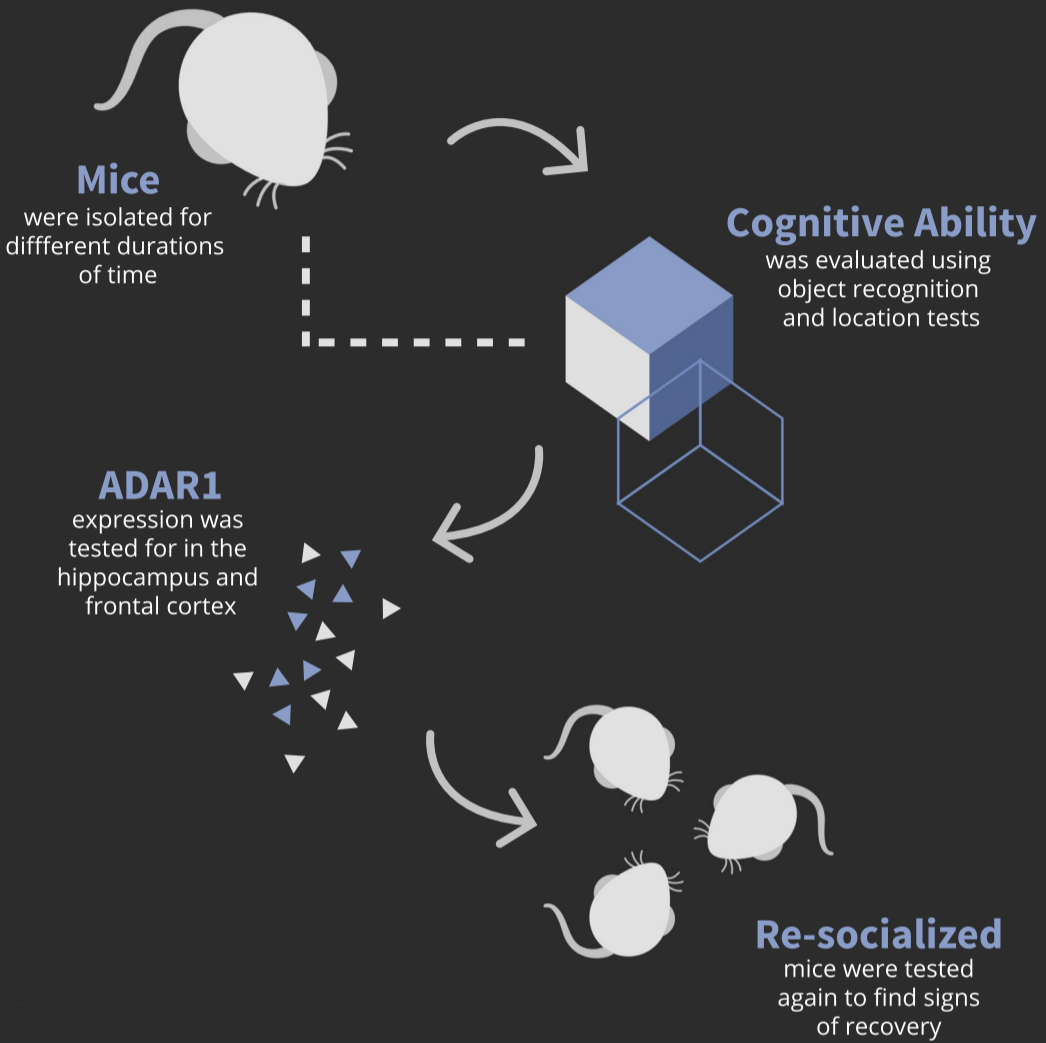


Social isolation is known to lead to behavior changes and **cognitive dysfunction**.

ADAR1 (adenosine deaminase acting on RNA) is an enzyme closely related to **cognitive function**.



ADAR1 expression significantly more than age-matched control mice



Re-socialization brings both **ADAR1 levels** and **cognition ability** back to **normal**

CONCLUSION

Increased **ADAR1** (p110) expression is induced by **social isolation stress**, but can be recovered to **normal levels** by **re-socialization**.