



In vitro evaluation of antifungal activity of monolaurin against *Candida albicans* biofilms

Dalia Seleem¹, Emily Chen¹, Bruna Benso^{2,3}, Vanessa Pardi¹ and Ramiro M. Murata¹

¹Herman Ostrow School of Dentistry, Division of Periodontology Diagnostic Sciences, Dental Hygiene and Biomedical Science, University of Southern California, Los Angeles, CA, United States

²Piracicaba Dental School, University of Campinas, Piracicaba, Sao Paulo, Brazil

³Current affiliation: School of Dentistry, Faculty of Medicine, Universidad Austral de Chile, Valdivia, Chile

ABSTRACT

Monolaurin (also known as glycerol monolaurate) is a natural compound found in coconut oil and is known for its protective biological activities as an antimicrobial agent. The nature of oral candidiasis and the increased antifungal resistance demand the search for novel antifungal therapeutic agents. In this study, we examine the antifungal activity of monolaurin against *Candida albicans* biofilms (strain ATCC:SC5314/MYA2876) *in vitro* and investigate whether monolaurin can alter gene expression of host inflammatory cytokines, IL-1 α and IL-1 β . In a co-culture model, oral fibroblast cells were cultured simultaneously with *C. albicans* for 24 hrs followed by the exposure to treatments of monolaurin (3.9–2,500 μ M), positive control fluconazole (32.2 μ M), and vehicle control group (1% ethanol), which was a model used to evaluate the cytotoxicity of monolaurin on fibroblasts as well as to analyze morphological characteristics of biofilms through fluorescence microscopy. In addition, the co-culture model was used for RNA extraction of oral fibroblasts to assess gene expression of host inflammatory cytokines, using quantitative real-time PCR. Our results showed the MIC and MFC of monolaurin were in the range 62.5–125 μ M and 125–250 μ M, respectively. Biofilm antifungal assay showed significant reduction in Log (CFU/ml) of biofilms treated with 1,250 and 2,500 μ M of 1-monolaurin when compared to the control groups. There was also a significant down-regulation of IL-1 α and IL-1 β in the co-culture treated with monolaurin. It can be concluded that monolaurin has a potential antifungal activity against *C. albicans* and can modulate the pro-inflammatory response of the host.

Subjects Cell Biology, Microbiology, Dentistry

Keywords *Candida albicans*, *In vitro*, Antimicrobial agent, Monolaurin, Biofilms, Virulence factors, Proteolytic enzymes, Oral candidiasis, MIC/MFC, Host inflammatory response

INTRODUCTION

Candida albicans is a prevalent opportunistic human fungal pathogen that lives commensally in the gut, oral pharyngeal, genito-urinary tract and skin. However, it may become pathogenic in immunocompromised patients or in individuals with an imbalance of competing bacterial microflora (Berman, 2012; Dovigo et al., 2011b; Neppelenbroek et al., 2006). The disseminated forms of the disease can be life-threatening with mortality rates of

Submitted 5 February 2016

Accepted 27 May 2016

Published 22 June 2016

Corresponding author
Ramiro M. Murata,
ramirofop@gmail.com

Academic editor
Pankaj Goyal

Additional Information and
Declarations can be found on
page 14

DOI 10.7717/peerj.2148

© Copyright
2016 Seleem et al.

Distributed under
Creative Commons CC-BY 4.0

OPEN ACCESS

40–60% among immunocompromised, cancer patients, or individuals exposed to multiple treatments, such as broad spectrum antibiotics, chemotherapy, immunosuppressive therapy, and anti-retroviral therapy (Dovigo *et al.*, 2011a; Krcmery & Barnes, 2002; Neppelenbroek *et al.*, 2006). The pathogenicity of the *Candida* species is attributed to critical virulence factors, such as adherence to surfaces (on both tissues and medical devices), biofilm formation, evasion of host immune defense mechanisms, and secretion of proteolytic enzymes, such as secreted aspartyl proteases (SAP) and phospholipases (Correia *et al.*, 2010).

As mentioned earlier, there are a number of virulence factors associated with the pathogenicity of *Candida albicans*, such as biofilm formation and secretion of proteolytic enzymes, e.g., secreted aspartic proteases (SAPs), phospholipase, and lipase enzymes. Mature fungal biofilms are characterized by a dense community of both yeasts and hyphae structures encased in a thick extracellular polymeric substance (EPS), which ensures adequate diet is supplied to biofilms, transports waste products, and may also have a role in the antifungal resistance of *Candida* species (Ramage *et al.*, 2001). The gene expression of SAPs (1–10) family as a whole has been associated with tissue damage and host invasion of the pathogenic *C. albicans* (Lermann & Morschhauser, 2008; Nailis *et al.*, 2010). Hyphal formation is considered the most critical factor involved in epithelial invasion and the degradation of epithelial cell junction proteins (Naglik *et al.*, 2008; Villar *et al.*, 2007).

Immune host defense plays a critical role in the phagocytosis of the pathogenic *Candida* species during fungal infections. Activation of the CD4+ T cells results in the production of pro-inflammatory chemokines and cytokines, such as IL-1 α , IL-1 β , and TNF- α . Antigen uptake through activation of anti-inflammatory cytokines IL-10 via dendritic cells (DCs) during the later phase of infection, ultimately leads to the elimination of the fungus (Chandra *et al.*, 2007; Gresnigt *et al.*, 2012). Thus, the pathogenic state of candidiasis is marked by an increase in the pro-inflammatory response, followed by an increase in the anti-inflammatory cytokines.

Current treatments for *C. albicans* infection consist of topical and systemic pharmaceutical antifungal agents, with triazoles being the first line of defense effective against most *Candida* species (Samaranayake & Macfarlane, 1990). However, due to the limited number of antifungal treatments available and the widespread use of such agents, there has been an increase in antifungal resistance (Hunter *et al.*, 1998; White, Marr & Bowden, 1998). For instance, oropharyngeal candidiasis in patients with advanced HIV infection and AIDS is usually treated with fluconazole. However, it is often difficult to completely eradicate the infection without relapse occurring within a few months (Rex, Rinaldi & Pfaller, 1995). Therefore, the increase in both fungal infections and antifungal resistance demand the search for new and effective antifungal therapeutic agents.

Natural compounds present as potential antifungal agents, as they are readily available in many foods and plants sources, and have been known in traditional medicine for their antimicrobial, anti-inflammatory, and antioxidant effects (Martins *et al.*, 2009). Monolaurin is a monoglyceride, composed of lauric acid esterified with glycerol, and is found in coconut oil (Carpo, Verallo-Rowell & Kabara, 2007). It is important to note that monolaurin is recognized as GRAS (Generally Recognized as Safe), as a food additive by the

FDA (Food and Drug Administration), with topical doses of up to 100 mg/ml (Title 21, Code of Federal Regulations, Part 184) (Peterson & Schlievert, 2006). Studies have shown that monolaurin has broad bioactivities, such as antibacterial and antiviral properties (Bergsson et al., 2001; Carpo, Verallo-Rowell & Kabara, 2007; Li et al., 2009; Peterson & Schlievert, 2006). In an *in vitro* study by Schlievert & Peterson (2012), the antibacterial activity of glycerol monolaurate (GML) was tested against gram-positive bacteria, *Staphylococcus aureus*. GML prevented biofilm formation of *S. aureus* with no drug resistance developing at a sub-growth inhibitory concentration (Schlievert & Peterson, 2012). It was concluded that GML has a broad-spectrum of antimicrobial activity and has the potential for future application as a topical therapeutic agent *in vivo*. However, to the best of our knowledge, the antifungal activity of monolaurin against *Candida albicans* biofilms has never been studied.

For the first time, this study aims to primarily evaluate the antifungal activity of monolaurin against *Candida albicans* biofilms *in vitro* and to investigate whether monolaurin can modulate host immune response during fungal infections. Furthermore, we provide validation for the safety of monolaurin use in future *in vivo* study for the treatment of oral candidiasis by assessing the cytotoxicity of monolaurin on oral fibroblast cells. Finally, given the fact that proteolytic enzymes secreted by *C. albicans* are often reported to elicit host tissue damage and are thus considered key virulence factors in the pathogenicity of *C. albicans*, we examined whether monolaurin had any modulatory effects on the enzymatic activities levels of proteinases and phospholipases enzymes.

MATERIALS & METHODS

Susceptibility test

The antifungal activity of 1-monolaurin (Sigma) was tested *in vitro* against the following *Candida albicans* strains: fluconazole-resistant strain 96901, SC5314, ATCC: MYA2876, and ATCC 90028, according to the NCCLS M27-A protocol (National Committee for Clinical Laboratory Standards (NCCLS), 2002; Pasetto, Pardi & Murata, 2014). The strains of *C. albicans* are proven virulent pathogens and were selected for their known genomic sequencing (Jones et al., 2004). The minimum inhibitory concentration (MIC) was determined using planktonic *C. albicans* inoculum of 5×10^3 CFU/ml, which was confirmed using a spectrophotometer by measuring an absorbance in the range of 0.08–0.10 at 625 nm. *C. albicans* inoculum was grown in RPMI-1640 (Lonza) in a 96-well plate. Serial dilutions in the range of 3.9–2,000 μ M of 1-monolaurin (99.9% high-performance liquid chromatography purchased from Sigma) were prepared. Based on the MIC found for the tested *C. albicans* strains, fluconazole (32.2 μ M) (Sigma) was used as the positive control in this experiment in comparison to the vehicle control 1% Ethanol (v/v). The plate was incubated for 24 h at 37 °C in 5% CO₂. Minimum inhibitory concentration (MIC) was determined after 24 h as the concentration, at which *C. albicans* growth was visibly inhibited (National Committee for Clinical Laboratory Standards (NCCLS), 2002; Pasetto, Pardi & Murata, 2014). Minimum fungicidal concentration (MFC) was found by subculturing 20 μ l of each well on Sabouraud Dextrose Agar (BD). After 24 h of incubation, MFC concentration was determined as the lowest concentration of 1-monolaurin, showing

no visible *C. albicans* growth on the agar plates (*National Committee for Clinical Laboratory Standards (NCCLS), 2002; Pasetto, Pardi & Murata, 2014*).

Biofilm assay

An inoculum of 1×10^6 CFU/ml of *C. albicans* (ATCC: SC5314/MYA2876) was grown for 24 h in a sterile 24-well plate using Yeast Nitrogen Base Medium (Difco) with 50 mM of glucose for 24 h at 37 °C in 5% CO₂ to establish initial biofilm growth. Total volume of 1 ml of inoculum was pipetted in each well. After 24 h of incubation, the biofilms were treated once daily with 100 µl of 1-monolaurin at concentrations of 1,250 µM and 2,500 µM (equivalent to 10×MIC and 20×MIC; respectively), which remained incubated with the biofilms suspended in medium overnight. The vehicle control used was 1% ethanol while the positive control was fluconazole (322 µM; equivalent to ten times the MIC). Before each treatment, biofilms were washed with Phosphate Buffer Solution (PBS) and replenished with 900 µl of fresh medium in addition to 100 µl of the corresponding treatment, yielding a total volume of 1 ml in each well. After 72 h of treatments, biofilms were suspended in PBS and the solution was centrifuged at 10,000 rpm for 5 min (*Santana et al., 2013*). Colony formation unit (CFU) was determined by suspending each sample of biofilm in 1 ml of PBS and plating 20 µl of the suspension on Sabouraud Dextrose Agar plates (BD). After 24 h of incubation, the number of *C. albicans* colonies was counted and data was expressed in Log (CFU/ml).

Proteinase and phospholipase enzyme secretion assay

Proteinase and phospholipase enzyme secretion assays were conducted as previously performed by *Santana et al. (2013)*. Biofilms of *C. albicans* were grown for 24 h in Yeast Nitrogen Base Medium (Difco) with 50 mM of glucose at 37 °C in 5% CO₂ and treated using 1-monolaurin concentrations of 1,250 µM and 2,500 µM (10× MIC and 20× MIC; respectively). Phospholipase A2 (for phospholipase assay) (Sigma) and Trypsin (for proteinase assay) (Lonza) were used as standards. The vehicle control used in this assay was 1% ethanol. After 72 h of biofilm maturation, the enzyme secretion assays were performed on biofilms suspended in PBS, which were sonicated for 15 s at 20% amplitude with pulses at 5 s and 10 s intervals (FB120; Fischer Scientific, Pittsburgh, PA, USA). The proteinase enzyme activity was determined by mixing the supernatant of the biofilm solution with 1% azocasein at 1:9 (v/v) for 1 h at 37 °C in 5% CO₂. Then, 500 µl of 10% trichloroacetic acid was added to stop the reaction. The solution was centrifuged for 5 min at 10,000 rpm and 500 µl of the supernatant was combined with 500 µl of NaOH, which was incubated for 15 min at 37 °C in 5% CO₂. Absorbance was read in a spectrophotometer at 440 nm (*Goncalves et al., 2012; Pande et al., 2006; Santana et al., 2013*). The phospholipase enzyme activity was determined by mixing the supernatant of the biofilm solution with phosphatidylcholine substrate for 1 h at 37 °C in 5% CO₂ and reading the absorbance in a spectrophotometer at 630 nm (*Goncalves et al., 2012; Santana et al., 2013; Taniguchi et al., 2009*).

Co-culture model fluorescence microscopy

Cytotoxicity assays using fluorometric quantification of cellular viability were performed on oral fibroblast cells (ATCC: CRL2014). Fibroblast cells (1×10^5 cells/ml) were first seeded in a 96-well plate in DMEM medium with 10% FBS and incubated at 37 °C in 5% CO₂ for 24 h. Cells were then treated with 1-monolaurin (3.9–2000 μM) and incubated for an additional 24 h. Cell viability and morphological characteristics were observed by fluorometric method and microscope, respectively (*National Committee for Clinical Laboratory Standards (NCCLS), 2002; O'Brien et al., 2000; Pasetto, Pardi & Murata, 2014*). The medium was then replaced with an inoculum of 5×10^3 to 2.5×10^3 CFU/ml *C. albicans* (ATCC: SC5314) grown in DMEM without FBS. Fibroblast cells and *C. albicans* were treated with 125 μM and 250 μM of 1-monolaurin. The plate was then incubated for 24 h. The vehicle control tested was 1% ethanol while the positive control used was fluconazole (32.2 μM). The distribution of dead and live fibroblast cells was examined using the Viability/Cytotoxicity Assay Kit for Animal Live & Dead Cells (Biotium), which contains a mixture of Calcein AM and EthDIII. Calcofluor white (Sigma) was used to stain *C. albicans*. Fluorescent images of the double staining were captured using fluorescence microscopy (EVOS fl microscope AMG, Bothell, WA, USA).

Co-culture model quantitative real-time PCR

All RNA was isolated from fibroblast cells and *C. albicans*. The fibroblast cell RNA and *C. albicans* RNA were isolated and purified using the RNeasy MiniKit (Qiagen) and the Ribopure Yeast Kit (Life Technology); respectively. A NanoPhotometer P360 (Implen) was used to quantify the total RNA extracted. Reverse transcription of the RNA into cDNA was carried out using iScript Advanced cDNA synthesis Kit for RT-qPCR (Biorad). Real-time PCR was conducted by using iQ SYBR Green Supermix (Biorad). The *C. albicans* primers for the genes: *Secreted Aspartyl Proteinases-1 (SAP-1)*, *Phospholipase B-1 (PLB-1)*, and *ACT-1 (housekeeping)* were used (*Nailis et al., 2010*). *ACT-1* was the gene used to normalize *SAP-1* and *PLB-1* genes expression. Based on a previous analysis using the RT2 Profiler PCR Array Kit (Qiagen), the following host inflammatory cytokines genes were selected: IL1-alpha (Qiagen Gene ID#: 3552; Qiagen, Hilden, Germany), IL1-beta (Qiagen Gene ID#: 3553; Qiagen, Hilden, Germany), IL-8 (Qiagen Gene ID#: 3576; Qiagen, Hilden, Germany) and *GADPH* (housekeeping) (Qiagen Gene ID#: 2597; Qiagen, Hilden, Germany). All data from cytokines genes expression were normalized using the housekeeping gene *GADPH*. PCR amplification was performed by using 20 μl reaction mix per well in a 96-well plate. The reactions were conducted at 95 °C for 3 min, followed by 40 cycles of 15 s at 95 °C and 1 min at 60 °C. After PCR, the melting curve was obtained by incubating the samples at increasing increments of 0.5 °C from 55 °C to 95 °C.

Statistical analysis

All data were expressed as means ± SEM using One-way Analysis of Variance (ANOVA), followed by Dunnett test. The level of statistical significance was set at 0.05. Results were considered significant if p-values were less than 0.05.

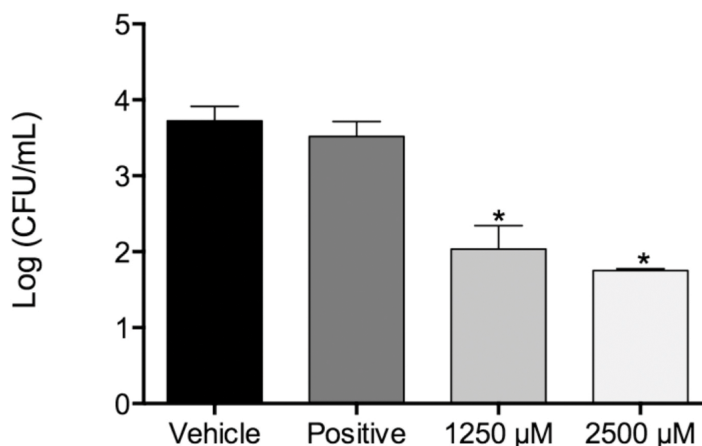


Figure 1 Fungal load of biofilms treated with monolaurin and proteolytic enzymes activity level. Fungal load of 1-monolaurin treated biofilms. * $p < 0.05$.

Table 1 Minimum inhibitory concentration (MIC) and minimum fungicidal concentration (MFC) of 1-monolaurin against *Candida albicans*.

Microorganism	Monolaurin		Fluconazole (positive control)	
	MIC (μM)	MFC (μM)	MIC (μM)	MFC (μM)
<i>Candida albicans</i> 96901 ^a	30	140	100	350
<i>Candida albicans</i> SC5314	25	100	10	80
<i>Candida albicans</i> MYA-2876	62.5–125	125–250	32.2	100
<i>Candida albicans</i> 90028	20	110	20	90

Notes.

^aFluconazole resistant.

RESULTS

Susceptibility assay of 1-monolaurin showed antifungal activity against several strains of *C. albicans* in planktonic form, including a fluconazole-resistant strain 96901 in comparison to a standard antifungal agent, fluconazole (Table 1). The ranges of the minimum inhibitory concentrations (MIC) and the minimum fungicidal concentrations (MFC) of monolaurin against *C. albicans* MYA 8276 were compared to those of fluconazole. The MIC and MFC of monolaurin were in the ranges of 62.5–125 μM and 125–250 μM , respectively, while the MIC and MFC of fluconazole; were 32.2 μM and 100 μM , respectively. The MIC and MFC of monolaurin against the fluconazole-resistant strain 96901 were found to be much lower than those of fluconazole; 30 μM and 140 μM in comparison to the MIC and MFC values of fluconazole of 100 μM and 350 μM , suggesting a strong antifungal potential against fluconazole resistant strains. The MIC and MFC were established to identify the concentrations needed to be applied to biofilms, which were in the range of ten times the MIC.

In the biofilm assay, monolaurin in the concentrations of 1,250 μM and 2,500 μM , equivalent to ten times and twenty times the upper range of MIC, were tested on *C. albicans*

MYA 8276. Biofilm fungal load was expressed, as the Log of the colony formation unit (CFU/ml). The results showed that treatments with 1-monolaurin at 1,250 μM and 2,500 μM had significant reduction ($p < 0.05$) in fungal load in comparison to the vehicle control group (Fig. 1). Such findings indicate a strong potential antifungal activity of monolaurin against *C. albicans* biofilms. It is important to note that 1-monolaurin (3.9–2,500 μM) presented very minimal cytotoxicity to oral fibroblast cells, as illustrated in Fig. 3. At the highest concentration of 2000 μM shown in Fig. 3, approximately 50% of fibroblast cells were viable. Thus, the findings of the cytotoxicity assay indicated that monolaurin in the concentrations of 3.9–2,500 μM did not result in 0% viability of cells. Such findings confirmed the safety of monolaurin to oral cells, especially as it has been approved by FDA as “GRAS” food additive substance.

Furthermore, we examined the enzymatic activities of *C. albicans* secreted proteolytic enzymes, in the proteinase and phospholipase enzyme assays of biofilms, as such enzymes are often associated with host tissue damage. Our goal was to identify any modulatory effects of monolaurin on the enzyme activity level of *C. albicans* biofilms, which are considered a major virulence factor contributing to the pathogenicity of *C. albicans* biofilms. Collected supernatants of biofilms, which were treated with 1,250 μM and 2,500 μM of 1-monolaurin, showed no significant difference in either enzyme activity of proteinases or phospholipases, when compared to the vehicle group (Fig. 2). Thus, there was no reduction in enzyme activities, as expressed in Unit U/g of biofilm dry weight. Such findings suggest no modulatory effects of monolaurin on either the proteinase or the phospholipase enzymes.

In addition, co-culture models of immature biofilms of *Candida* coexisting with fibroblasts exposed to monolaurin treatments of 62.5 μM and 125 μM were useful in assessing the gene expression of *Secreted Aspartyl Proteinases-1 (SAP-1)* and *Phospholipase B-1 (PLB-1)*, two common genes that are often up-regulated in the presence of elevated enzymatic activities of proteinases and phospholipases. Total RNA isolated from *Candida* in the co-culture model was reverse transcribed into cDNA, which was used in real-time PCR to quantify the gene expression of *SAP-1* and *PLB-1* normalized to a house keeping gene, *ACT-1*. Similar to the results obtained from the biofilm proteinase and phospholipase assays, there was no significant down-regulation of either *SAP-1* or *PLB-1* in the groups treated with 62.5 μM and 125 μM of monolaurin compared to the vehicle control (Figs. 5A and 5B). Such findings confirm that there was no gene up-regulation of either *SAP-1* or *PLB-1* in the immature *C. albicans* treated with monolaurin (62.5 μM and 125 μM).

The co-culture model was also helpful in visualizing a real model of immature *C. albicans* biofilm coexisting with fibroblast cells incubated with a tested antifungal treatment. Images obtained by fluorescence microscopy allowed for a qualitative assessment of the distribution of *C. albicans* (blue color) with respect to live (green color) and dead (red color) fibroblast cells. Figure 4 showed fluorescent imaging of *C. albicans* coexisting with oral fibroblasts in the presence of treatment of monolaurin (125 μM) in comparison fibroblasts and *C. albicans* treated with vehicle control (1%) and positive control (fluconazole). Co-culture model treated with 1-monolaurin (125 μM) (Fig. 4C) showed sparse and less

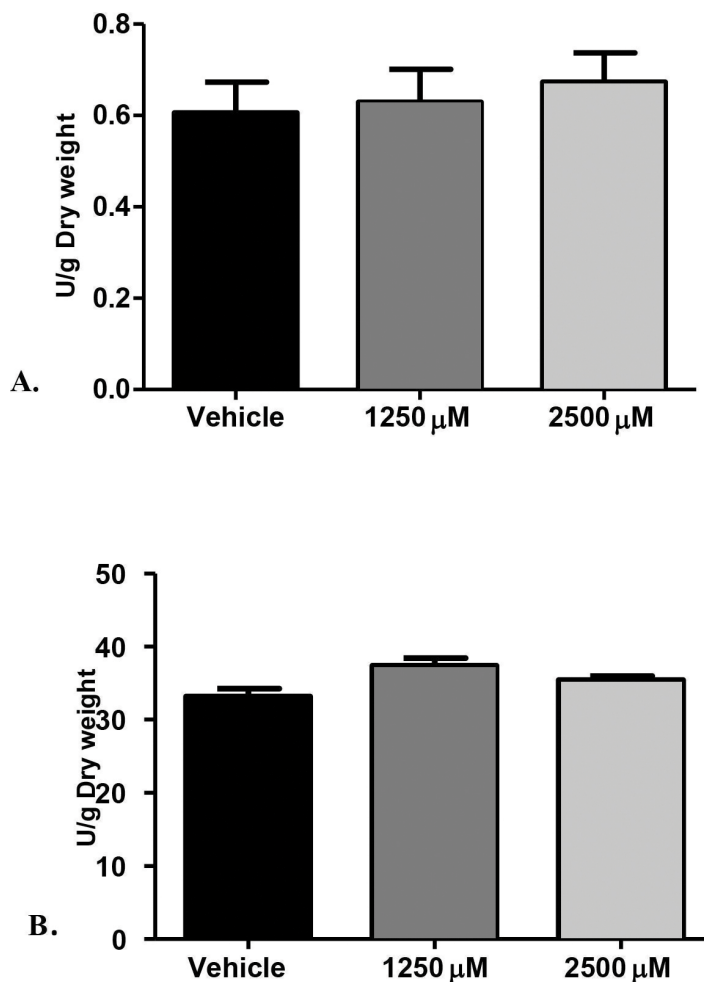


Figure 2 Proteolytic enzymes activity of *C. albicans* after treatment with monolaurin. Secreted proteolytic enzymes activity of *Candida albicans* after treatment with 1-monolaurin; of (A) Proteinase, and (B) Phospholipase enzymes.

dense accumulation of *C. albicans* (blue) compared to that treated with a vehicle control, 1% ethanol (Fig. 4A). It should be noted there were some dead fibroblast cells present in the monolaurin treated models (Fig. 4C) since the cells in this model were considered more sensitive to the agent being exposed to as opposed to cells examined in complex clinical systems. Such observation of some dead cells detected in the co-culture model of monolaurin are in agreement with the cytotoxicity reported for monolaurin, where there was approximately 80% cell viability found at 125 μM of monolaurin. In general, co-culture images of less dispersed *C. albicans* in the presence of monolaurin (Fig. 4C) were comparable to those of the positive control group (fluconazole 32.2 μM) in Fig. 4B, suggesting the efficacy of monolaurin in inhibiting the growth of *C. albicans* biofilms.

Another advantage of the co-culture model was that it provided invaluable information on gene expression of host fibroblast cells infected with *C. albicans* and exposed to 1-monolaurin treatments. Quantitative Real-time PCR assessed host gene expression of

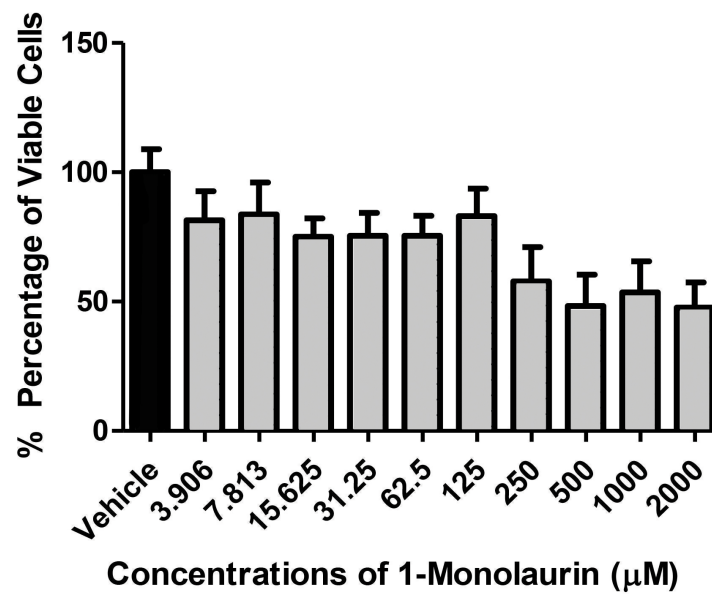


Figure 3 Cytotoxic effects of 1-monolaurin on oral fibroblast cells. Note that monolaurin is recognized as GRAS (Generally Recognized as Safe), as a food additive by the FDA (Food and Drug Administration), with topical doses of up to 100 mg/ml (Title 21, Code of Federal Regulations, Part 184).

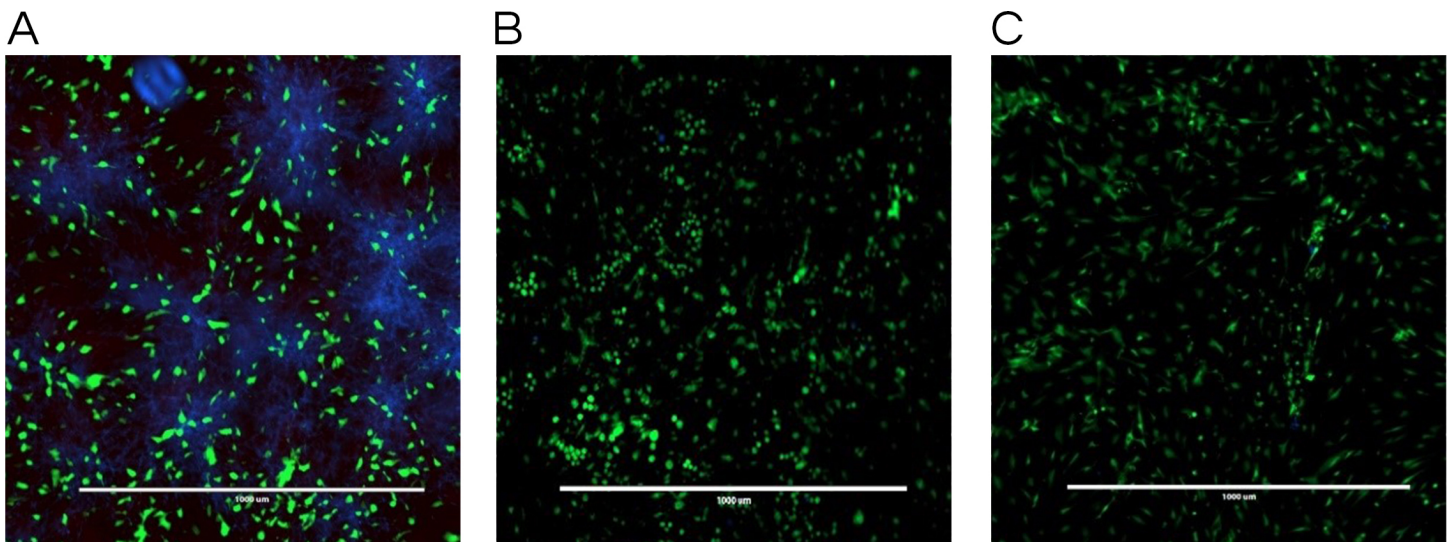


Figure 4 Co-culture fluorescence microscopy of 1-monolaurin. (A) vehicle control (1% ethanol), (B) positive control (fluconazole), and (C) 1-monolaurin (125 μM); stained with calcofluor white and cytotoxicity assay kit for animal Live/Dead cells (Blue: *Candida albicans*, Green: live fibroblast cells, and Red: dead fibroblast cells). Scale bar set at 1,000 μm at 4 \times magnification power.

pro-inflammatory cytokines IL-1 α , IL-1 β , and IL-8 in samples treated with 1-monolaurin at MIC concentrations of 62.5 μM and 125 μM in comparison to the vehicle control and the positive control groups. The goal of examining the cytokines expression of the host was to test if there was any modulatory effects of monolaurin on the host's pro-inflammatory response during fungal infection. [Figure 5C](#) showed that at 125 μM

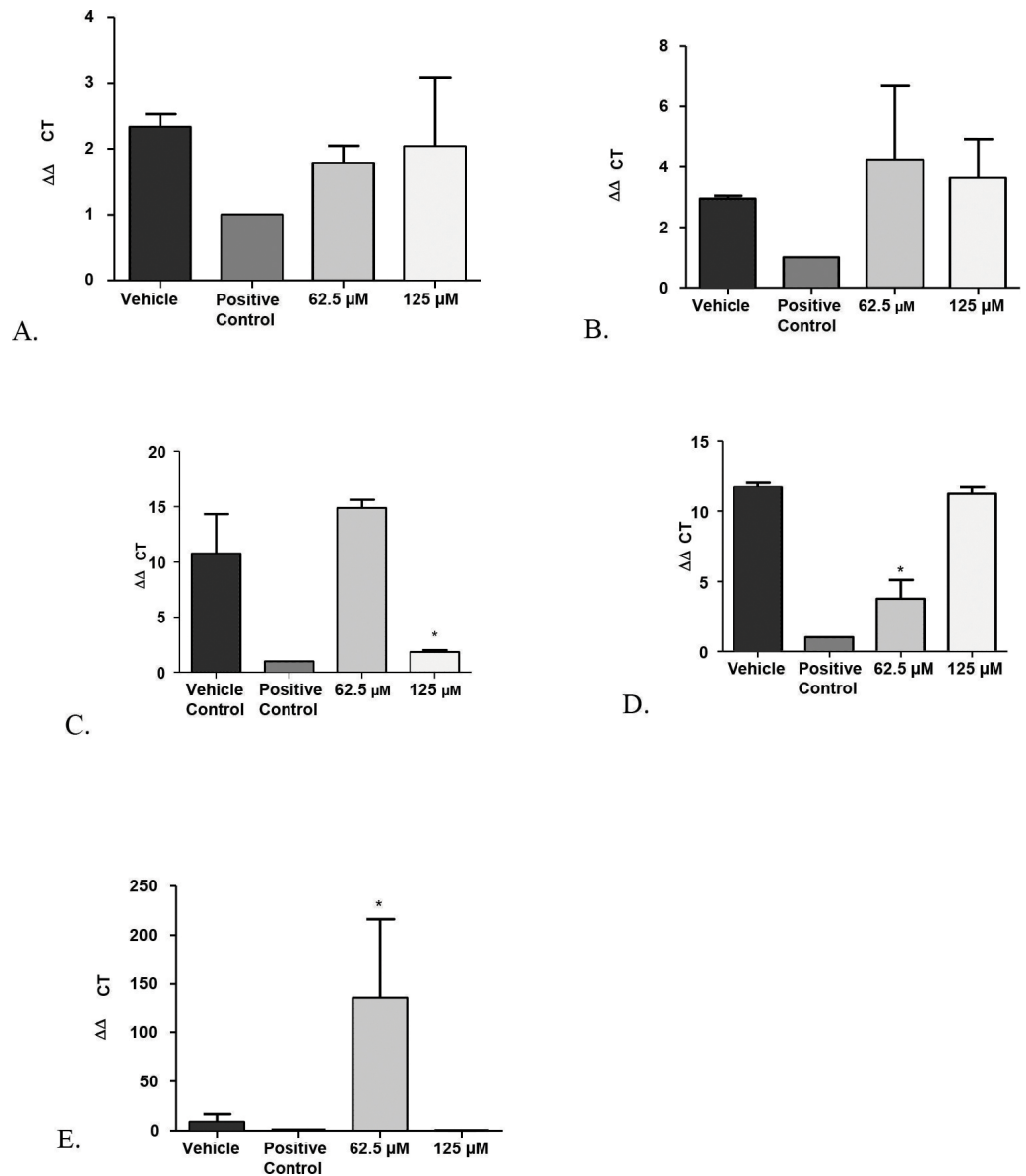


Figure 5 Real-time quantitative gene expression of oral fibroblast cells infected by *C. albicans* after 1-monolaurin treatments at 62.5 μM and 125 μM concentrations in comparison to vehicle control and positive control fluconazole (32.2 μM). (A) *SAP-1* (B) *PLB-1* (C) *IL-1 α* (D) *IL-1 β* (E) *IL-8*.

of monolaurin, there was significant down-regulation of *IL-1 α* compared to the vehicle control group ($p < 0.05$). However, at a lower concentration of 62.5 μM, there was no down-regulation of the *IL-1 α* gene expression. Figure 5D showed that at 62.5 μM, there was a significant down-regulation of *IL-1 β* gene expression in comparison to the vehicle control group. However, there was no similar down-regulatory effect at a higher concentration of 125 μM. The down-regulation of the pro-inflammatory cytokines gene expression of *IL-1 α* and *IL-1 β* found with the treatments of monolaurin suggested that monolaurin was capable of modulating the host inflammatory response although not in a dose dependent

way, as in the case of IL-1 β gene expression. IL-8 is another pro-inflammatory cytokine known as a neutrophil chemotactic factor that induces migration of neutrophils and phagocytosis at the infection site (Villar *et al.*, 2005). We hypothesized that monolaurin may affect the pro-inflammatory IL-8 cytokine in a down-regulatory manner similar to the pro-inflammatory cytokines IL-1 α and IL-1 β . However, Fig. 5E showed a significant up-regulation of IL-8 in the group treated with 62.5 μ M of 1-monolaurin compared to the vehicle control group, suggesting a strong neutrophilic chemotactic activity by the host cells. These results were not dose dependent since at higher concentration of monolaurin (125 μ M), there was a down-regulation of IL-8. However, the results of the down-regulation of IL-8 by monolaurin at 125 μ M were not statistically significant when compared to the vehicle control group.

A possible explanation for the up-regulation of IL-8 noted in the samples treated with 62.5 μ M of 1-monolaurin may be due to a negative feedback inhibition resulting from the down-regulation of IL-1, as it was found that IL-1 induces IL-8 secretion in fibroblasts (Kaplanski *et al.*, 1994). Thus, by the decrease in the production of IL-1 as expected by the down-regulation of IL-1 gene expression, there may be a negative feedback inhibition of IL-8, resulting in the up-regulation of the gene expression of IL-8. It should be noted that these cytokines were analyzed at an early or acute phase of fungal infection. It would be interesting to assess such cytokines gene expression in a future model simulating a more chronic phase of infection.

DISCUSSION

The primary goal of this study was to evaluate the antifungal effect of monolaurin against *C. albicans* biofilms *in vitro* using a co-culture model. In addition, we investigated whether monolaurin can alter the morphology of the biofilm community as well as the proteolytic enzymatic activities of proteinases and phospholipases, which are considered critical virulence factors associated with the pathogenicity of *C. albicans*. Furthermore, we explored the modulatory effects of monolaurin on the pro-inflammatory cytokines gene expression of host fibroblast cells.

Susceptibility tests of monolaurin against *C. albicans* (MYA2876) showed inhibition of fungal growth at an MIC range of 62.5–125 μ M while MFC was in the range of 125–250 μ M, which showed potential antifungal activity against this specific tested strain. In the biofilm assay model, higher concentrations of monolaurin in the range of 10 \times and 20 \times the concentrations of MIC, were used due to the tenacious nature of biofilms to be eradicated. Biofilms treated with monolaurin showed significant reduction ($p < 0.05$) in the fungal load, as illustrated by the decrease in Log (CFU/ml) in comparison to the control groups.

Similarly, the results obtained by fluorescence microscopy of the co-culture model (Fig. 4C) showed a large decrease in viable *C. albicans* dispersed among oral fibroblasts in the presence of 1-monolaurin (125 μ M). It is important to note there were some morphological changes in the oral fibroblast cells of the positive control group treated with fluconazole (Fig. 4B) as well as those of the monolaurin treated group (Fig. 4C) in comparison to the cells of the vehicle control group. While the overall density and the

distribution of live fibroblasts (green color) may seem to be similar to the vehicle control, there may be a shortened or a less elongated appearance of the fibroblasts in the 2 tested groups, of monolaurin and fluconazole. A possible explanation is that a co-culture model of fibroblasts coexisting with *Candida* and an antifungal agent may present an exaggerated, sensitive effect on the morphology and distribution of fibroblast cells compared to cells tested under clinically relevant conditions. Thus, the oral fibroblast cells in co-culture model are considered to be “naked cells,” with more sensitivity to the treatments administered. Therefore, the cells may show more signs of stress when exposed to an antifungal agent compared to those of the vehicle control group.

As mentioned earlier, the safety of monolaurin, as a food additive and emulsifier was recognized as GRAS (Generally Recognized as Safe) by the FDA (Food and Drug Administration) for up to 100 mg/ml (Peterson & Schlievert, 2006). Not surprisingly, in our cytotoxicity assay, 1-monolaurin showed no toxicity to oral fibroblast cells. In this study, the lethal dosage of 1-monolaurin could not be calculated from a regression analysis since no concentration of monolaurin has resulted in 0% cell viability. Thus, 1-monolaurin showed no toxicity (up to 2,500 μ M) to oral fibroblast cells and therefore was considered safe to be studied in future *in vivo* investigations.

A major helpful analysis provided by the co-culture model was to study the inflammatory cytokines of the host by quantification of a panel of inflammatory markers, such as IL-1 β , IL-6, IL-8, IL-10, and IL-17 (Arien, Vanham & Gali, 2011). Monolaurin 5% gel was previously shown to inhibit innate inflammatory responses, as it prevented vaginal SIV transmission in monkeys (Li et al., 2009). More specifically, glycerol monolaurate has inhibitory activity against the production of MIP-3 α and other pro-inflammatory cytokines, and can inhibit mucosal signaling and block the inflammatory response to HIV-1 and SIV *in vitro* and *in vivo* (Li et al., 2009). In our current study, we tested gene expression of pro-inflammatory cytokines, IL-1 α and IL-1 β after treatments with 1-monolaurin at 62.5 μ M and 125 μ M. Our results showed a significant ($p < 0.05$) down-regulation of IL-1 α with the treatments of 1-monolaurin treatments at 125 μ M (Fig. 5C), while down-regulation of the IL-1 β gene expression was achieved with monolaurin treatments at 62.5 μ M. However, gene expression of IL-8 was not down-regulated in the biofilms treated with monolaurin. It can be concluded that monolaurin can modulate host response by down-regulating the gene expression of some of the pro-inflammatory cytokines, such as IL-1 α and IL-1 β . Future research interests may involve studying other pro-inflammatory as well as anti-inflammatory markers, such as IL-10, using the same co-culture model in order to provide a more comprehensive analysis of the drug's ability to modulate host response and to determine if it can contribute to the anti-inflammatory mechanism in mammalian cells.

The rationale for studying the activity of proteinases and phospholipases was that such hydrolytic enzymes have been reported in the literature to be secreted by *C. albicans* and are known to elicit host tissue damage (Lermann & Morschhauser, 2008). Thus, these proteolytic enzymes are considered key virulence factors in the pathogenicity of *C. albicans*. Our hypothesis was that if monolaurin were to have an antifungal activity against *Candida*, it might do so by down-regulating such proteolytic enzymes. However, our findings did

not confirm such hypothesis. It was found that treatments of monolaurin at 1,250 μM and 2,500 μM were not associated with a decrease in the enzymatic activity level of either the proteinases or the phospholipases (Figs. 2A and 2B).

To confirm the findings on the proteolytic enzyme activities, the gene expression of *SAP1* (Secreted aspartyl protease) and phospholipase B (*PLB*) were assessed. During fungal infections, there is generally a higher gene expression of *SAPs* (1-10), which is often associated with hyphal formation and induction of *rim101p*, a transcription factor that mediates the degradation of E-cadherin protein of the epithelial cell junction (Naglik *et al.*, 2008). In our study, the gene expression of *SAP-1* was evaluated after application of treatments of 1-monolaurin at concentrations of 62.5 μM and 125 μM and normalized by the expression of *ACT*, a housekeeping gene. There was no statistical significance difference in *SAP-1* gene expression in comparison to the control groups (Fig. 5A). However, the role of specific *SAP* genes to their attenuated phenotype is yet to be elucidated. In addition, more studies would be helpful to explore the effects of monolaurin on the other members of the *SAPs* family.

Similarly, phospholipases B1, B2, C and D of *C. albicans* play a significant role in the invasion of the host tissue, as noted by their high gene expression during fungal infection (Samaranayake *et al.*, 2006). More specifically, phospholipase B (*PLB*) proteins were shown to have hydrolytic activity, as they hydrolyze acyl ester bonds in phospholipids and lysophospholipids and catalyze lysophospholipase-transacylase reactions (Theiss *et al.*, 2006). It was determined that the *PLB* multigene family of the opportunistic fungal pathogen *C. albicans* encodes for CaPLB5, a putative secretory protein with a predicted GPI-anchor attachment site. The ability of *C. albicans* to attach itself to the host tissue is considered a key pathogenic characteristic and hence, genes encoding for attachment proteins, such as *PLB*, may be potential virulence determinants (Theiss *et al.*, 2006). In this study, phospholipase enzyme activity was tested using both 1,250 μM and 2,500 μM concentrations of 1-monolaurin, which showed no significant difference when compared to the vehicle group (Fig. 2B). More studies are needed to elucidate the role of monolaurin on the gene expression of the other phospholipases, such as phospholipases B2, C, and D. Thus, it can be concluded that monolaurin did not have a down-regulatory effect on the gene expression of either *SAP-1* or *PLB-1* encoding for their respective enzymes produced by *C. albicans*.

In conclusion, 1-monolaurin had potential antifungal activities against *Candida albicans* both in susceptibility tests and biofilm assays. Furthermore, monolaurin had immune-modulatory effects on the host cells, as indicated by its down-regulation of pro-inflammatory cytokines gene expression of *IL-1 α* and *IL-1 β* . Future direction for research may include understanding its impact on proteases activity on the cellular level and whether there is a direct effect on attachment protein gene expression. Ultimately, future studies may validate the efficacy of monolaurin *in vivo*, which may translate into its potential clinical use to prevent and/or treat oral candidiasis.

ACKNOWLEDGEMENTS

We are grateful to Felipe Blanco for his efforts in formatting the figures in this manuscript.

ADDITIONAL INFORMATION AND DECLARATIONS

Funding

This work was funded by the National Center for Complementary and Integrative Health of the National Institutes of Health under award number R00AT006507, the Brazilian Federal Agency under CAPES award number 2317/2014-01 (PhD fellowship to BB), and the NIH/NIDCR Training grant under award number T90DE021982 (Postdoctoral fellowship to DS). The content is solely the responsibility of the authors and does not necessarily represent the official views of the funding agencies. The funders had no role in study design, data collection and analysis, decision to publish, or preparation of the manuscript.

Grant Disclosures

The following grant information was disclosed by the authors:

National Institutes of Health: R00AT006507.

CAPES: 2317/2014-01.

NIH/NIDCR: T90DE021982.

Competing Interests

The authors declare there are no competing interests.

Author Contributions

- Dalia Seleem conceived and designed the experiments, analyzed the data, wrote the paper, prepared figures and/or tables, reviewed drafts of the paper.
- Emily Chen conceived and designed the experiments, performed the experiments, analyzed the data, wrote the paper, prepared figures and/or tables, reviewed drafts of the paper.
- Bruna Benso conceived and designed the experiments, performed the experiments, analyzed the data, reviewed drafts of the paper.
- Vanessa Pardi conceived and designed the experiments, analyzed the data, contributed reagents/materials/analysis tools, reviewed drafts of the paper.
- Ramiro M. Murata conceived and designed the experiments, analyzed the data, contributed reagents/materials/analysis tools, wrote the paper, reviewed drafts of the paper.

Data Availability

The following information was supplied regarding data availability:

The raw data has been supplied as [Supplemental Information](#).

Supplemental Information

Supplemental information for this article can be found online at <http://dx.doi.org/10.7717/peerj.2148#supplemental-information>.

REFERENCES

- Arien KK, Vanham G, Gali Y. 2011. A dual-chamber model of the female genital tract to evaluate epithelial toxicity of candidate anti-HIV microbicides. *Current Protocols in Cell Biology, Chapter 26 (Unit 26)*:13.
- Bergsson G, Arnfinnsson J, Steingrímsson O, Thormar H. 2001. *In vitro* killing of *Candida albicans* by fatty acids and monoglycerides. *Antimicrobial Agents and Chemotherapy* 45(11):3209–3212 DOI 10.1128/AAC.45.11.3209-3212.2001.
- Berman J. 2012. *Candida albicans*. *Current Biology* 22(16):R620–R622 DOI 10.1016/j.cub.2012.05.043.
- Carpo BG, Verallo-Rowell VM, Kabara J. 2007. Novel antibacterial activity of monolaurin compared with conventional antibiotics against organisms from skin infections: an *in vitro* study. *Journal of Drugs in Dermatology* 6(10):991–998.
- Chandra J, McCormick TS, Imamura Y, Mukherjee PK, Ghannoum MA. 2007. Interaction of *Candida albicans* with adherent human peripheral blood mononuclear cells increases *C. albicans* biofilm formation and results in differential expression of pro- and anti-inflammatory cytokines. *Infection and Immunity* 75(5):2612–2620 DOI 10.1128/IAI.01841-06.
- Correia A, Lermann U, Teixeira L, Cerca F, Botelho S, Da Costa RM, Sampaio P, Gärtner F, Morschhäuser J, Vilanova M, Pais C. 2010. Limited role of secreted aspartyl proteinases Sap1 to Sap6 in *Candida albicans* virulence and host immune response in murine hematogenously disseminated candidiasis. *Infection and Immunity* 78(11):4839–4849 DOI 10.1128/IAI.00248-10.
- Dovigo LN, Pavarina AC, Carmello JC, Machado AL, Brunetti IL, Bagnato VS. 2011a. Susceptibility of clinical isolates of *Candida* to photodynamic effects of curcumin. *Lasers in Surgery and Medicine* 43(9):927–934 DOI 10.1002/lsm.21110.
- Dovigo LN, Pavarina AC, Ribeiro AP, Brunetti IL, Costa CA, Jacomassi DP, Bagnato VS, Kurachi C. 2011b. Investigation of the photodynamic effects of curcumin against *Candida albicans*. *Photochemistry and Photobiology* 87(4):895–903 DOI 10.1111/j.1751-1097.2011.00937.x.
- Goncalves LM, Del Bel Cury AA, Sartoratto A, Garcia Rehder VL, Silva WJ. 2012. Effects of undecylenic acid released from denture liner on *Candida* biofilms. *Journal of Dental Research* 91(10):985–989 DOI 10.1177/0022034512458689.
- Gresnigt MS, Joosten LA, Verschuere I, Van der Meer JW, Netea MG, Dinarello CA, Van de Veerdonk FL. 2012. Neutrophil-mediated inhibition of proinflammatory cytokine responses. *Journal of Immunology* 189(10):4806–4815 DOI 10.4049/jimmunol.1103551.
- Hunter KD, Gibson J, Lockhart P, Pithie A, Bagg J. 1998. Fluconazole-resistant *Candida* species in the oral flora of fluconazole-exposed HIV-positive patients. *Oral Surgery, Oral Medicine, Oral Pathology, Oral Radiology, and Endodontology* 85(5):558–564 DOI 10.1016/S1079-2104(98)90291-8.
- Jones T, Federspiel NA, Chibana H, Dungan J, Kalman S, Magee BB, Newport G, Thorstenson YR, Agabian N, Magee PT, Davis RW, Scherer S. 2004.

- The diploid genome sequence of *Candida albicans*. *Proceedings of the National Academy of Sciences of the United States of America* **101**(19):7329–7334
DOI [10.1073/pnas.0401648101](https://doi.org/10.1073/pnas.0401648101).
- Kaplanski G, Farnarier C, Kaplanski S, Porat R, Shapiro L, Bongrand P, Dinarello CA. 1994.** Interleukin-1 induces interleukin-8 secretion from endothelial cells by a juxtacrine mechanism. *Blood* **84**(12):4242–4248.
- Krcmery V, Barnes AJ. 2002.** Non-albicans *Candida* spp. causing fungaemia: pathogenicity and antifungal resistance. *Journal of Hospital Infection* **50**(4):243–260
DOI [10.1053/jhin.2001.1151](https://doi.org/10.1053/jhin.2001.1151).
- Lermann U, Morschhauser J. 2008.** Secreted aspartic proteases are not required for invasion of reconstituted human epithelia by *Candida albicans*. *Microbiology* **154**(Pt 11):3281–3295 DOI [10.1099/mic.0.2008/022525-0](https://doi.org/10.1099/mic.0.2008/022525-0).
- Li Q, Estes JD, Schlievert PM, Duan L, Brosnahan AJ, Southern PJ, Reilly CS, Peterson ML, Schultz-Darken N, Brunner KG, Nephew KR, Pambuccian S, Lifson JD, Carlis JV, Haase AT. 2009.** Glycerol monolaurate prevents mucosal SIV transmission. *Nature* **458**(7241):1034–1038 DOI [10.1038/nature07831](https://doi.org/10.1038/nature07831).
- Martins CVB, Da Silva DL, Neres ATM, Magalhães TFF, Watanabe GA, Modolo LV, Sabino AA, De Fátima A, De Resende MA. 2009.** Curcumin as a promising antifungal of clinical interest. *Journal of Antimicrobial Chemotherapy* **63**(2):337–339
DOI [10.1093/jac/dkn488](https://doi.org/10.1093/jac/dkn488).
- Naglik JR, Moyes D, Makwana J, Kanzaria P, Tsihchaki E, Weindl G, Tappuni AR, Rodgers CA, Woodman AJ, Challacombe SJ, Schaller M, Hube B. 2008.** Quantitative expression of the *Candida albicans* secreted aspartyl proteinase gene family in human oral and vaginal candidiasis. *Microbiology* **154**(Pt 11):3266–3280
DOI [10.1099/mic.0.2008/022293-0](https://doi.org/10.1099/mic.0.2008/022293-0).
- Nailis H, Kucharikova S, Ricicova M, Van Dijck P, Deforce D, Nelis H, Coenye T. 2010.** Real-time PCR expression profiling of genes encoding potential virulence factors in *Candida albicans* biofilms: identification of model-dependent and -independent gene expression. *BMC Microbiology* **10**:114 DOI [10.1186/1471-2180-10-114](https://doi.org/10.1186/1471-2180-10-114).
- National Committee for Clinical Laboratory Standards (NCCLS). 2002.** *Reference method for broth dilution antifungal susceptibility testing of yeast fungi. Approved standard M38-A2*. Wayne: National Committee for Clinical Laboratory Standards.
- Neppelenbroek KH, Campanha NH, Spolidorio DM, Spolidorio LC, Seo RS, Pavarina AC. 2006.** Molecular fingerprinting methods for the discrimination between *C. albicans* and *C. dubliniensis*. *Oral Diseases* **12**(3):242–253
DOI [10.1111/j.1601-0825.2005.01189.x](https://doi.org/10.1111/j.1601-0825.2005.01189.x).
- O'Brien J, Wilson I, Orton T, Pognan F. 2000.** Investigation of the Alamar Blue (resazurin) fluorescent dye for the assessment of mammalian cell cytotoxicity. *European Journal of Biochemistry* **267**(17):5421–5426 DOI [10.1046/j.1432-1327.2000.01606.x](https://doi.org/10.1046/j.1432-1327.2000.01606.x).
- Pande M, Dubey VK, Yadav SC, Jagannadham MV. 2006.** A novel serine protease cryptolepain from *Cryptolepis buchani*: purification and biochemical characterization. *Journal of Agricultural and Food Chemistry* **54**(26):10141–10150
DOI [10.1021/jf062206a](https://doi.org/10.1021/jf062206a).

- Pasetto S, Pardi V, Murata RM. 2014.** Anti-HIV-1 activity of flavonoid myricetin on HIV-1 infection in a dual-chamber *in vitro* model. *PLoS ONE* **9**(12):e115323 DOI [10.1371/journal.pone.0115323](https://doi.org/10.1371/journal.pone.0115323).
- Peterson ML, Schlievert PM. 2006.** Glycerol monolaurate inhibits the effects of Gram-positive select agents on eukaryotic cells. *Biochemistry* **45**(7):2387–2397 DOI [10.1021/bi051992u](https://doi.org/10.1021/bi051992u).
- Ramage G, Vandewalle K, Wickes BL, Lopez-Ribot JL. 2001.** Characteristics of biofilm formation by *Candida albicans*. *Revista Iberoamericana de Micología* **18**(4):163–170.
- Rex JH, Rinaldi MG, Pfaller MA. 1995.** Resistance of *Candida* species to fluconazole. *Antimicrob Agents Chemother* **39**(1):1–8 DOI [10.1128/AAC.39.1.1](https://doi.org/10.1128/AAC.39.1.1).
- Samaranayake YH, Dassanayake RS, Cheung BP, Jayatilake JA, Yeung KW, Yau JY, Samaranayake LP. 2006.** Differential phospholipase gene expression by *Candida albicans* in artificial media and cultured human oral epithelium. *Apmis* **114**(12):857–866 DOI [10.1111/j.1600-0463.2006.apm_479.x](https://doi.org/10.1111/j.1600-0463.2006.apm_479.x).
- Samaranayake LP, MacFarlane TW. 1990.** *Oral candidosis*. London: Wright-Butterworth.
- Santana IL, Goncalves LM, De Vasconcellos AA, Da Silva WJ, Cury JA, Del Bel Cury AA. 2013.** Dietary carbohydrates modulate *Candida albicans* biofilm development on the denture surface. *PLoS ONE* **8**(5):e64645 DOI [10.1371/journal.pone.0064645](https://doi.org/10.1371/journal.pone.0064645).
- Schlievert PM, Peterson ML. 2012.** Glycerol monolaurate antibacterial activity in broth and biofilm cultures. *PLoS ONE* **7**(7):e40350 DOI [10.1371/journal.pone.0040350](https://doi.org/10.1371/journal.pone.0040350).
- Taniguchi L, De fatima Faria B, Rosa RT, De Paula ECA, Gursky LC, Elifio-Esposito SL, Parahitiyawa N, Samaranayake LP, Rosa EA. 2009.** Proposal of a low-cost protocol for colorimetric semi-quantification of secretory phospholipase by *Candida albicans* grown in planktonic and biofilm phases. *Journal of Microbiological Methods* **78**(2):171–174 DOI [10.1016/j.mimet.2009.05.012](https://doi.org/10.1016/j.mimet.2009.05.012).
- Theiss S, Ishdorj G, Brenot A, Kretschmar M, Lan CY, Nichterlein T, Hacker J, Nigam S, Kohler GA. 2006.** Inactivation of the phospholipase B gene PLB5 in wild-type *Candida albicans* reduces cell-associated phospholipase A2 activity and attenuates virulence. *International Journal of Medical Microbiology* **296**(6):405–420 DOI [10.1016/j.ijmm.2006.03.003](https://doi.org/10.1016/j.ijmm.2006.03.003).
- Villar CC, Kashleva H, Mitchell AP, Dongari-Bagtzoglou A. 2005.** Invasive phenotype of *Candida albicans* affects the host proinflammatory response to infection. *Infection and Immunity* **73**(8):4588–4595 DOI [10.1128/IAI.73.8.4588-4595.2005](https://doi.org/10.1128/IAI.73.8.4588-4595.2005).
- Villar CC, Kashleva H, Nobile CJ, Mitchell AP, Dongari-Bagtzoglou A. 2007.** Mucosal tissue invasion by *Candida albicans* is associated with E-cadherin degradation, mediated by transcription factor Rim101p and protease Sap5p. *Infection and Immunity* **75**(5):2126–2135 DOI [10.1128/IAI.00054-07](https://doi.org/10.1128/IAI.00054-07).
- White TC, Marr KA, Bowden RA. 1998.** Clinical, cellular, and molecular factors that contribute to antifungal drug resistance. *Clinical Microbiology Reviews* **11**(2):382–402.