

# How urban impervious surface shapes bird foraging behavior in an arid city (#116658)

1

First revision

## Guidance from your Editor

Please submit by **15 Jul 2025** for the benefit of the authors .



### Structure and Criteria

Please read the 'Structure and Criteria' page for guidance.



### Custom checks

Make sure you include the custom checks shown below, in your review.



### Raw data check

Review the raw data.



### Image check

Check that figures and images have not been inappropriately manipulated.

All review materials are strictly confidential. Uploading the manuscript to third-party tools such as Large Language Models is not allowed.

If this article is published your review will be made public. You can choose whether to sign your review. If uploading a PDF please remove any identifiable information (if you want to remain anonymous).

## Files

Download and review all files from the [materials page](#).

1 Tracked changes manuscript(s)

1 Rebuttal letter(s)

3 Figure file(s)

1 Raw data file(s)

1 Other file(s)



## Custom checks

### Vertebrate animal usage checks



Have you checked the authors [ethical approval statement](#)?



Were the experiments necessary and ethical?



Have you checked our [animal research policies](#)?

### Field study



Have you checked the authors [field study permits](#)?



Are the field study permits appropriate?



# Structure and Criteria

## Structure your review

The review form is divided into 5 sections. Please consider these when composing your review:

1. **BASIC REPORTING**
2. **EXPERIMENTAL DESIGN**
3. **VALIDITY OF THE FINDINGS**
4. General comments
5. Confidential notes to the editor

 You can also annotate this PDF and upload it as part of your review

When ready [submit online](#).

## Editorial Criteria

Use these criteria points to structure your review. The full detailed editorial criteria is on your [guidance page](#).

### BASIC REPORTING

-  Clear, unambiguous, professional English language used throughout.
-  Intro & background to show context. Literature well referenced & relevant.
-  Structure conforms to [Peerj standards](#), discipline norm, or improved for clarity.
-  Figures are relevant, high quality, well labelled & described.
-  Raw data supplied (see [Peerj policy](#)).

### EXPERIMENTAL DESIGN

-  Original primary research within [Scope of the journal](#).
-  Research question well defined, relevant & meaningful. It is stated how the research fills an identified knowledge gap.
-  Rigorous investigation performed to a high technical & ethical standard.
-  Methods described with sufficient detail & information to replicate.

### VALIDITY OF THE FINDINGS

-  **Impact and novelty is not assessed.** Meaningful replication encouraged where rationale & benefit to literature is clearly stated.
-  All underlying data have been provided; they are robust, statistically sound, & controlled.
-  Conclusions are well stated, linked to original research question & limited to supporting results.



The best reviewers use these techniques

## Tip

## Example

**Support criticisms with evidence from the text or from other sources**

*Smith et al (J of Methodology, 2005, V3, pp 123) have shown that the analysis you use in Lines 241-250 is not the most appropriate for this situation. Please explain why you used this method.*

**Give specific suggestions on how to improve the manuscript**

*Your introduction needs more detail. I suggest that you improve the description at lines 57- 86 to provide more justification for your study (specifically, you should expand upon the knowledge gap being filled).*

**Comment on language and grammar issues**

*The English language should be improved to ensure that an international audience can clearly understand your text. Some examples where the language could be improved include lines 23, 77, 121, 128 – the current phrasing makes comprehension difficult. I suggest you have a colleague who is proficient in English and familiar with the subject matter review your manuscript, or contact a professional editing service.*

**Organize by importance of the issues, and number your points**

1. Your most important issue
2. The next most important item
3. ...
4. The least important points

**Please provide constructive criticism, and avoid personal opinions**

*I thank you for providing the raw data, however your supplemental files need more descriptive metadata identifiers to be useful to future readers. Although your results are compelling, the data analysis should be improved in the following ways: AA, BB, CC*

**Comment on strengths (as well as weaknesses) of the manuscript**

*I commend the authors for their extensive data set, compiled over many years of detailed fieldwork. In addition, the manuscript is clearly written in professional, unambiguous language. If there is a weakness, it is in the statistical analysis (as I have noted above) which should be improved upon before Acceptance.*

# How urban impervious surface shapes bird foraging behavior in an arid city

Simone Vega Rabelo<sup>1</sup>, Jeffrey D. Haight<sup>2</sup>, Heather L Bateman<sup>Corresp. 1</sup>

<sup>1</sup> College of Integrative Sciences and Arts, Arizona State University, Mesa, Arizona, United States

<sup>2</sup> Global Institute of Sustainability and Innovation, Arizona State University, Tempe, Arizona, United States

Corresponding Author: Heather L Bateman  
Email address: Heather.L.Bateman@asu.edu

Wildlife behavior and interactions in urban ecosystems can vary across landscape types and species, with some birds dominating human-derived resources. This study investigates the relationship between urbanization, measured as impervious surface cover, and bird foraging behavior in the Phoenix metropolitan area in Arizona, USA. We conducted 126 feeding trials across 13 sites along a gradient of urbanization and bird interactions with anthropogenic food sources present. Trials were conducted using popcorn placed at random distances and orientations from a trash can. We recorded bird species visiting feeding stations and time to first visit during 20-minute trials and then quantified relationships among visitation timing (latency), species richness, and impervious surface coverage. Time to first visit was negatively correlated with the amount of impervious surface, with the highly urban areas having birds arrive at the feeding station the soonest. Great-tailed Grackles (*Quiscalus mexicanus*) comprised the most common visitor across all impervious surface levels. Non-native doves like Rock Pigeons (*Columbia livia*) and Eurasian Collared-doves (*Streptopelia decaocto*) were quicker to visit feeding stations compared to native doves like Mourning Doves (*Zenaida macroura*), Inca doves (*Columbina inca*), and White-winged Doves (*Z. asiatica*). Small urban-adapted generalists, like House Sparrows (*Passer domesticus*) and House Finches (*Haemorhous mexicanus*), tended to be more frequent visitors at highly urbanized sites compared to larger birds. These emphasize how species-specific foraging behaviors can differentiate resource use by birds in urban areas.

# How urban impervious surface shapes bird foraging behavior in an arid city

## Authors:

Simone Vega Rabelo<sup>1</sup>, Jeffrey Haight<sup>2</sup>, Heather L. Bateman<sup>1</sup>

<sup>1</sup>College of Integrative Sciences and Arts, Arizona State University, Mesa, Arizona, USA

<sup>2</sup>Global Institute of Sustainability and Innovation, Arizona State University, Tempe, Arizona, USA

Corresponding Author:

Heather L. Bateman

7271 E Sonoran Arroyo Mall, Mesa, Arizona, USA 85212-6415

[Heather.L.Bateman@asu.edu](mailto:Heather.L.Bateman@asu.edu)

## Abstract

Wildlife behavior and interactions in urban ecosystems can vary across landscape types and species, with some birds dominating human-derived resources. This study investigates the relationship between urbanization, measured as impervious surface cover, and bird foraging behavior in the Phoenix metropolitan area in Arizona, USA. We conducted 126 feeding trials across 13 sites along a gradient of urbanization and bird interactions with anthropogenic food sources present. Trials (n=126) were conducted using popcorn placed at random distances and orientations from a trash can. We recorded bird species visiting feeding stations and time to first visit during 20-minute trials and then quantified relationships among visitation timing (latency), species richness, and impervious surface coverage. Time to first visit was negatively correlated with the amount of impervious surface, with the highly urban areas having birds arrive at the feeding station the soonest. Great-tailed Grackles (*Quiscalus mexicanus*) comprised the most common visitor across all impervious surface levels. Non-native doves like Rock Pigeons (*Columbia livia*) and Eurasian Collared-doves (*Streptopelia decaocto*) were quicker to visit feeding stations compared to native doves like Mourning Doves (*Zenaida macroura*), Inca doves (*Columbina inca*), and White-winged Doves (*Z. asiatica*). Small urban-adapted generalists, like House Sparrows (*Passer domesticus*), tended to be more frequent visitors at highly urbanized sites compared to larger birds. These findings highlight the role of urban-adapted birds in maintaining ecosystem services like trash removal and emphasize how species-specific foraging behaviors can differentiate resource use by birds in urban areas.

## Keywords

Ecosystem service, human-wildlife interaction, food waste, scavengers, avian behavior, urban ecology

# Introduction

As cities often overlap with areas of high species richness, wildlife habitat can be threatened by areas of rapid urban growth (Cincotta et al. 2000). However, urban green spaces can be important to support biodiversity by providing areas where wildlife and humans can coexist (Aronson et al. 2017). Metropolitan areas often contain a mix of native and non-native species, with species adapting to urban landscapes with varying levels of success (Shochat et al. 2004). Urban wildlife communities can be shaped by the availability of food and shelter among other ecological factors (Callaghan et al. 2019a). Although some species struggle to adapt to urban conditions, birds may thrive because of traits associated with novel landscapes and anthropogenic resources (Evans et al. 2011). For avifauna, habitat alterations that produce anthropogenic waste that can attract certain bird species while deterring others (García-Arroyo et al. 2023). Birds in urban environments often encounter abundant food sources, including food waste left behind by humans (Brown et al. 2022). This advantage allows “urban exploiters” to outcompete “urban avoiders” in these environments. As a result, urbanization can alter the composition and behaviors of local bird populations (Pena et al. 2023).

Behavioral responses to novel stimuli can determine how birds exploit anthropogenic food sources in urban environments. Animals can vary in response where neophilia is the attraction to a novel stimulus and neophobia is the avoidance of the stimulus (Tryjanowski et al. 2016). In cities, where food items are frequently unfamiliar or irregular, neophilic species scavenge human food waste, a trait among common and widespread urban-adapted birds (Brown et al. 2022; Pejchar et al. 2025). The heterogeneity of urban settings can desensitize birds to perceived foraging risks, encouraging bolder behavior (Tryjanowski et al. 2016). For more neophobic birds, this can suggest that individuals will quit foraging when the energetic benefits no longer outweigh the costs (Shochat et al. 2004). Consequently, smaller generalist species such as House Sparrows (*Passer domesticus*) often capitalize on feeding opportunities more quickly than larger species, which tend to assess risks differently and are more easily displaced by anthropogenic activities (Haemig et al. 2021). Together, these patterns highlight the ecological strategies birds employ to navigate the risk and rewards of the urban landscape.

Urban landscape characteristics, such as the density of buildings, pavements, and impervious surfaces, play a crucial role in shaping the presence and behaviors of wildlife species. These features can alter the availability of essential resources like food, water, and shelter

(Callaghan et al. 2019a) and even influence the presence of wildlife diseases (Hernandez et al. 2016). Specifically, impervious surfaces are key indicators of urbanization-driven habitat loss associated with reduced presence, abundance, and diversity of wildlife taxa, especially among bird species (Aronson et al. 2017; Haight et al., in press). Urbanization is also characterized by a reduction in vegetation cover, as measured by NDVI (normalized difference vegetation index) which is inversely related to the amount of impervious surface area (Weng and Lu 2008). Therefore, impervious surfaces could affect the foraging behaviors of birds in urban environments by altering resources and vegetation density, which may influence the types of birds that visit these areas.

In this study, we conducted a field experiment to investigate how bird foraging behavior can vary across an urban gradient, defined by proportion of impervious surface. We specifically assessed: time (latency) for birds to visit a feeding station across a gradient of impervious surface. We then considered species- or guild-specific likelihood of visits to feeding stations across impervious surface levels. In general, we predicted that non-native birds would visit stations sooner and at locations with higher levels of impervious surface. We hypothesized that smaller species, such as the House Sparrow, would visit feeding stations sooner in high-impervious areas, while larger species and species associated with expanding their range into mesic habitats like the Great-tailed Grackle (*Quiscalus mexicanus*), would visit feeding stations sooner in areas with lower impervious surface.

## Materials & Methods

### *Study Area*

This study was conducted in the Phoenix metropolitan area (metro Phoenix; Figure 1), characterized by its location within the Sonoran Desert ecosystem (Comus et al. 2015). This desert environment is known for its hot and arid climate, sparse natural shrubland vegetation, and landscapes transformed by urbanization, including the creation of impervious surfaces such as buildings and roads. The urbanized and agricultural environments of metro Phoenix are also characterized by extensive year-round irrigation practices that support greater vegetation cover and productivity than that of natural desert habitats (Buyantuyev and Wu 2009).

### *Feeding Trials*

We assessed bird foraging behavior by establishing feeding stations at 13 sites across a gradient of urbanization. Feeding stations were placed randomly within 13 sites across the metropolitan Phoenix area and were selected for public accessibility and with a range of (24% to 90%) urbanization levels (Figure 1). Sites included the Rio Salado Audubon Center in Phoenix, Kiwanis Park in Tempe, the Queen Creek Olive Mill, Veterans Oasis Park in Chandler, Base and Meridian Wildlife Area in Avondale, Schnepf Farms in Queen Creek, the ASU Polytechnic Campus in Mesa, the Mesa Community College Red Mountain Campus, the ASU West Valley Campus in Glendale, Civic Space Park in Phoenix, the ASU Tempe Campus, Santan Village Mall in Gilbert, and Tempe Marketplace. Levels of impervious surface at each site were calculated post-selection using i-Tree Canopy, an online tool that provides estimates based on satellite imagery (explanatory variable described in landscape variables).

Time to first visit was recorded during 6-16 trials per site to observe bird behavior near anthropogenic waste sources (a total of 126 feeding trials). Trash cans were the primary starting points for positioning feeding stations because they are ubiquitous in the urban area, represent places of resources for urban wildlife (García-Arroyo et al. 2023), and to maximize geographical coverage at each site. We did not include large dumpsters in this study. In areas with limited or no trash cans, alternative human-made structures (e.g., benches or signs) or visible trash on the ground were used as starting points, these made up fewer than 8% of trials. Although most sites had 10 feeding stations, smaller sites had fewer than 10 (i.e., Mesa Community College Red Mountain Campus had six, Civic Space Park and the Base and Meridian Wildlife Area each had seven), and one large site had more than 10 stations (i.e., the ASU Tempe Campus had 16 trials).

Once a starting point was chosen, a feeding station was established by adding a handful (15 pieces) of minimally processed and unseasoned popcorn placed on the ground. The observer walked away (approximately 25 m away) from the station and used binoculars for observations. We positioned feeding stations at a random distance (5-20 meters, using a random number generator) with a random orientation from the starting point. Random orientations were chosen by dividing the area around the trash can into 12 directional segments (e.g., a clock with N at 12:00) and used a random number generator to select one. For the safety of observers, we avoided establishing a feeding station in a parking lot and therefore truncated the orientation to avoid these areas .



Observations lasted for 20 minutes during early morning hours (6:00-9:30 AM, although some surveys exceed this range) to maximize bird activity in a hot, arid environment. We recorded bird species visiting feeding stations through visual identification (based on Sibley 2022) during the 20-minute trial periods. All birds landing at or approaching the feeding stations were noted. For stations with no visitors, a maximum time of 20 minutes (1200 seconds) was recorded as the first visit time. We primarily focused on recording the first bird visitor to the station. After the first month of surveys, we also recorded birds that arrived after the first visit within the 20-minute period (82% or 106 of 129). Field data collection occurred over a 14-week period, from 7 July 2024 to 13 October 2024. This period overlapped with bird migrations, such as the White-winged Doves (*Zenaida asiatica*) migrating from Arizona to Mexico in the fall. However, most bird visitors were non-migratory, resident species. ASU Institutional Animal Care and Use committee approved methods for this research (23-2016T).

# *Landscape Variables*

We related bird foraging behavior, species richness, and likelihood that individual species or guilds would visit a station to levels of urbanization by quantifying percent impervious surface. We quantified landscape characteristics at each site using the i-Tree Canopy tool (2024), which estimates impervious surface cover and vegetation features based on satellite imagery. The tool produced by the US Department of Agriculture utilizes imagery datasets from Google Earth. First, a bounding box was drawn around the sampling areas for each site. Then, 50 random land cover sampling points were placed across the sampling area (manually drawn grid and bounded site by roads), and each point was manually characterized by its land surface cover (e.g., impervious road, impervious buildings, tree/shrub, grass/herbaceous vegetation). We combined the resulting percentages of each land surface cover type to define impervious surface as including roads, buildings, and other impermeable land cover types (e.g., concrete sidewalks).

# *Data Analysis*

We investigated research questions by modeling the likelihood that individual species or guilds would visit a feeding station, the time to first visit, and species richness in relation to impervious surface levels. Feeding station-level response variables included whether or not a species or guild visited a station, latency or time to first visitation, and species richness (total

number of species that visited a station). We quantified relationships of each response variable with impervious surface area, day-of-year (DOY; Julian date of feeding trials at each site) using generalized linear mixed models (GLMMs) fit within the R programming language 4. using the *glmmTMB* package (Brooks et al. 2017; R Core Team 2024). We modeled the responses of whether or not a species or guild visited, latency, and species richness as having binomial (logit-link), normal (Gaussian-link), and Poisson (log-link) distributions, respectively. We fit GLMMs for each response variable with two sets of fixed effects (impervious surface area only, and impervious surface area and DOY) and study site as a random effect (intercept). We compared the relative quality of models with and without the DOY fixed effect by using the R package *performance* to calculate marginal  $R^2$  values for fixed effects and the Akaike Information Criterion adjusted for low sample size (AICc), regarding the lower-AICc model as being the better model (Anderson and Burnham 2002). Impervious surface area and DOY did not demonstrate significant collinearity across 13 sites ( $r = 0.115$ ,  $p = 0.709$ ).

## Results

### *Bird Visitors*

Across all trials, a total of 15 bird species were observed visiting feeding stations (Supplementary Table 1). Out of 126 trials, 64 trials had no visitors (50.8%) and 62 (49.2%) had visitors. Of the trials with visitors, the first visits were recorded as follows: 41.9% were Great-tailed Grackles, 12.9% were native doves (Inca Dove, *Columbia inca*; White-winged Dove; and Mourning Dove), 11.3% were House Sparrows, 11.3% were House Finches (*Haemorhous mexicanus*), 8.1% were non-native doves (Eurasian Collared-dove, *Streptopelia decaocto*, and Rock Pigeon, *Columbia livia*), and 3.2% were Abert's Towhees (*Pipilo aberti*). The following species were recorded only once as the first visitor: Rock Wren (*Salpinctes obsoletus*), Cactus Wren (*Campylorhynchus brunneicapillus*), Northern Mockingbird (*Mimus polyglottos*), Greater Roadrunner (*Geococcyx californianus*), Curve-billed Thrasher (*Toxostoma curvirostre*), and European Starling (*Sturnus vulgaris*). Most trials had only a single species visit the feeding station. For example, in trials where all species were counted (107 trials), the mean richness was 1.3 birds and 1 was the median value.

Visitation behaviors at feeding stations varied among bird species. Great-tailed Grackles were the largest proportion of first birds to visit feeding stations and averaged 318.0 seconds

(58.45 SE) to arrive (Figure 2). Among the common groups of birds that visited, native doves took the longest to arrive and averaged 451.3 seconds (145.98 SE), then House Finches averaged 285.7 seconds (91.50 SE), and House Sparrows averaged 242.0 seconds (91.53 SE). Non-native doves were the quickest to visit feeding stations and averaged 222.6 seconds (87.86 SE; Figure 2). Smaller birds were not significantly associated with shorter visitation times (slope = 0.895 seconds per gram,  $R^2 = 0.145$ ,  $r = 0.012$ ,  $p = 0.200$ ,  $n = 13$ ).

### *Bird Behavior Related to Impervious Surface*

Bird visitation to feeding stations occurred across a gradient of 24% to 90% impervious surface area. Across all response variables, the best model was the one including the fixed effect of impervious surface area ( $\beta_{ISA}$ ) but excluded DOY (Supplementary Table 2). Three species or guilds differed in their likelihood to visit stations across levels of impervious surface. Native doves were marginally more likely to visit less urbanized feeding stations ( $p=0.098$ ,  $\beta_{ISA} = -1.10$ , 95% CI: -2.41, 0.20). More urbanized feeding stations were more likely to be visited by House Finches ( $p = 0.041$ ,  $\beta_{ISA} = 1.10$ , 95% CI: 0.05, 2.16) and by House Sparrows ( $\beta_{ISA} = 0.153$ ,  $p = 0.028$ , 95% CI: 0.17, 2.90). Impervious surface area had no significant relationship with whether or not sites were visited by Great-tailed Grackles ( $p = 0.243$ ,  $\beta_{ISA} = 0.30$ , 95% CI: -0.21, 0.81) or introduced doves ( $p = 0.807$ ,  $\beta_{ISA} = -0.09$ , 95% CI: -0.81, 0.63). The best model for latency indicated that birds visited feeding stations faster in areas with high levels of impervious surface ( $p = 0.001$ ,  $\beta_{ISA} = -118.52$ , 95% CI: -188.78, -48.26;  $R^2 = 0.152$ ; Figure 3). The average time for the first visitor to arrive at feeding stations with the highest impervious surface was 2.7 times shorter in areas with lowest impervious surface (Figure 3A). Latency time demonstrated no substantial relationship with DOY, as indicated by the relatively low quality of models containing the DOY fixed effect (Supplementary Figure 1; Supplementary Table 2). We detected no significant relationship between species richness and impervious surface ( $p = 0.778$ ,  $\beta_{ISA} = 0.034$ , 95% CI: -0.20, 0.27).

## **Discussion**

We explored urban bird foraging behavior by conducting a field experiment establishing feeding stations across a range of impervious surface levels in the greater Phoenix metropolitan area. About half of the stations had bird visitors and species richness was low with only a single

species visiting during most trials. In places with high amounts of impervious surface, birds visit feeding stations sooner compared to places with less impervious surface. Great-tailed Grackles were the most common first visitor (over 40%). Other species, such as native doves, took longer to arrive; whereas, non-native doves were the quickest to visit. Bird species also varied in foraging behavior across the urban landscape. The likelihood of native doves visiting stations had a negative relationship with impervious surface amount; whereas, House Finches and House Sparrows had the opposite pattern and were more likely to visit stations with high levels of impervious surface.

Urbanized environments can be advantageous for birds with generalist feeding behaviors, especially species that can utilize anthropogenic food sources (Seress and Liker 2015). In our study, feeding stations in more urbanized areas were visited quickly by urban-adapted, generalist species (e.g., Great-tailed Grackle, non-native doves, House Sparrows). These results are consistent with others showing that urbanization tends to select bird species with more flexible, generalist diets (Hahs et al. 2023). Great-tailed Grackles, although considered native to North America, are a species that have thrived in landscapes converted to agriculture and irrigated vegetation in dryland ecosystems. The species has expanded its range in North America since the late 19th century due to human-driven landscape changes by thriving in urban areas by exploiting anthropogenic food sources like waste grain and discarded food (Wehtje 2003). Grackle presence in the Phoenix metropolitan area is linked to cultivated lands and wetland environments within urban areas where they have benefited from reduced nest predation and stable food supplies (Wehtje 2003). Grackles' ability to exploit novel food sources, including livestock feedlots, allows them to thrive in urban environments, making them well-adapted to human-altered landscapes in arid lands (Pandolfino and Handel 2018).

During our trials, we observed that first visitors often monopolized the feeding station, preventing access to other birds. Although this behavior was not limited to a single species, it was commonly observed from Great-tailed Grackles, similar to other feeding studies (Fronimos et al. 2011). The tendency of first visitors to dominate the feeding station and prevent access to others may help explain the lack of differences in species richness across sites. In our study, all visitors were birds. Perhaps sampling rural to urban areas with increase the presence of other taxa, as in small mammals found in the study by Swartz et al. (2024). Future studies could investigate how dominance hierarchies or non-avian species structure urban bird communities.

Non-native doves like Rock Pigeons and Eurasian Collared-doves were associated with more urbanized areas in this study compared to native doves like Mourning Doves, Inca doves, and White-winged Doves. Generalist species, like non-native doves, are more urban-tolerant due to their broader ecological niches and behavioral flexibility (Callaghan et al. 2019b). Urban-exploiting species have been associated with areas having high density of restaurants and discarded food waste (Brown et al. 2022). Research has shown that urban birds generally display higher neophilic tendencies than rural birds, enabling them to take advantage of unpredictable resources in urban areas (Tryjanowski et al. 2016). Thus, urbanization may shape avian community composition. As urbanization continues to alter resource availability, species with high behavioral flexibility and generalist feeding strategies are likely to dominate, potentially outcompeting more specialized native species over time.

Sonoran Desert birds, such as Cactus Wrens and Curve-billed Thrashers and winter migratory species such as White-crowned Sparrows (*Zonotrichia leucophrys*), were rarely observed at feeding stations in this study, suggesting that urbanization may exclude some species from anthropogenic food resources. One way the methods in this study could have excluded species was the choice of food at feeding stations. Some insectivorous species may not have viewed popcorn as a food source. Future studies could use a different food to determine how insectivorous birds relate to novel food sources in urban areas.

The relationship between urbanization and bird foraging behavior has implications for balancing the coexistence of humans and wildlife in cities. Birds play a wide range of social-ecological roles in urban ecosystems, and their traits and behaviors can influence human well-being. The species that are more likely to scavenge food waste in urbanized settings (e.g., Great-tailed Grackles, House Sparrows) are commonly characterized as “messy” birds with unpleasant appearance or sound (Brown et al. 2022), traits associated with negative attitudes toward and diminished appreciation of their ecosystem services (Andrade et al. 2022). Although many studies assess the value of wildlife (Von Döhren et al. 2015), understanding these relationships can better manage urban ecosystems to promote coexistence and tolerance of urban wildlife.

## Conclusion

Overall, this field-based investigation found that urban birds utilize anthropogenic food resources quickest in places with high impervious surfaces. The species composition

includes both native and non-native species and the most common species, Great-tailed Grackles, are a common urban adaptor in arid land systems. For humans and wildlife to coexist in urban systems, it is important to consider that some urban adaptors are associated with human sourced food or trash and may have undesirable traits such as ‘noisy’ or ‘messy’ which could be viewed negatively (Andrade et al. 2022). For humans and wildlife to coexist in urban systems, it is essential to consider the nuanced positive and negative impacts of species traits and biodiversity on human well-being. By acknowledging these complexities, we can promote coexistence and tolerance of urban wildlife.

## Acknowledgements

We thank Schnepf Farms and Queen Creek Olive Mill for allowing access to sites. We also thank Karen Sweazea for providing suggestions on study design.

## References

- Anderson DR, Burnham KP. 2002. Avoiding pitfalls when using information-theoretic methods. *The Journal of Wildlife Management* (2002):912-918.
- Andrade R, Larson KL, Franklin J, Lerman SB, Bateman HL, Warren PS. 2022. Species traits explain public perceptions of human–bird interactions. *Ecological Applications* **32**(8):e2676. <https://doi.org/10.1002/eap.2676>
- Aronson MFJ, Lepczyk CA, Evans KL, Goddard MA, Lerman SB, MacIvor JS, Nilon CH, Vargo T. 2017. Biodiversity in the City: Key Challenges for Urban Green Space Management. *Frontiers in Ecology and the Environment* **15**:189-196
- Brooks ME, Kristensen K, Benthem KJ van, Magnusson A, Berg CW, Nielsen A, Skaug HJ, Maechler M, Bolker BM. 2017. glmmTMB Balances Speed and Flexibility Among Packages for Zero-inflated Generalized Linear Mixed Modeling. *The R Journal* **9**:378–400. <https://doi-org/10.32614/RJ-2017-066>.
- Brown JA, Lerman SB, Basile AJ, Bateman HL, Deviche P, Warren PS, Sweazea KL. 2022. No fry zones: How restaurant distribution and abundance influence avian communities in the Phoenix, AZ metropolitan area. *PloS one* **17**(10):p.e0269334.

- Buyantuyev A, Wu J. 2009. Urbanization alters spatiotemporal patterns of ecosystem primary production: A case study of the Phoenix metropolitan region, USA. *Journal of Arid Environments* **73**:512-520. <https://doi.org/10.1016/j.jaridenv.2008.12.015>
- Callaghan CT, Bino G, Major RE, Martin JM, Lyons MB, Kingsford RT. 2019a. Heterogeneous urban green areas are bird diversity hotspots: insights using continental-scale citizen science data. *Landscape Ecology* **34**:1231-1246.
- Callaghan CT, Major RE, Wilshire JH, Martin JM, Kingsford RT, Cornwell WK. 2019b. Generalists are the most urban-tolerant of birds: a phylogenetically controlled analysis of ecological and life history traits using a novel continuous measure of bird responses to urbanization. *Oikos* **128**:845-858
- Cincotta RP, Wisniewski J, Engelman R. 2000. Human population in the biodiversity hotspots. *Nature* **404**(6781):990–992.
- Comus PW, Phillips SJ, Dimmitt MA, Brewer LM. (eds) 2015. *A natural history of the Sonoran Desert*. Univ of California Press.
- Evans KL, Chamberlain DE, Hatchwell BJ, Gregory RD, Gaston KJ. 2011. What makes an urban bird? *Global Change Biology* **17**(1):32-44.
- García-Arroyo M, Gómez-Martínez MA, MacGregor-Fors I. 2023. Litter buffet: On the use of trash bins by birds in six boreal urban settlements. *Avian Research* **14**: p.100094.
- Haemig PD, De Luna SS, Blank H. 2021. Dynamic Table-Visiting Behavior of Birds at Outdoor Restaurants and Cafés, *Ethology* **127**:505-516.
- Haight JD, de Albuquerque FS, Bateman HL, Frazier AE, Larson KL (*In Press*). Regional urbanization and climate dynamics drive long-term changes in avian diversity and associated ecosystem services in the Sonoran Desert, USA. *Ecological Applications*, May 2025.
- Hahs AK, Fournier B, Aronson MFJ, Nilon CH, Herrera-Montes A, Salisbury AB, Threlfall CG, Rega-Brotsky CC, Lepczyk CA, La Sorte FA, MacGregor-Fors I, Scott MacIvor J, Jung K, Piana MR, Williams NSG, Knapp S, Vergnes A, Acevedo AA, Gainsbury AM, Moretti M. 2023. Urbanisation generates multiple trait syndromes for terrestrial animal taxa worldwide. *Nature Communications* **14**(1):4751. <https://doi.org/10.1038/s41467-023-39746-1>



- 364 Hernandez SM, Welch CN, Peters VE, Lipp EK, Curry S, Yabsley MJ, Sanchez S, Presotto A,  
365 Gerner-Smidt P, Hise KB, Hammond E. 2016. Urbanized white ibises (*Eudocimus albus*) as  
366 carriers of *Salmonella enterica* of significance to public health and wildlife. *PLoS One*, **11**(10),  
367 p.e0164402.
- 368  
369 i-Tree. (2024 Oct 10). i-Tree Landscape (version 4.6.0) [Web application].  
370
- 371 Pandolfino ER, Handel CM. 2018. Population trends of birds wintering in the Central Valley of  
372 California, in Trends and traditions: Avifaunal change in western North America (Shuford WD,  
373 Gill Jr., RE, Handel CM, eds.), pp. 215–235. *Studies of Western Birds 3. Western Field*  
374 *Ornithologists*, Camarillo, CA; doi 10.21199/SWB3.12.
- 375 Pejchar L, Rega-Brodsky CC, Vázquez L, MacGregor-Fors I. 2025. Bird-mediated ecosystem  
376 services and disservices in cities and towns. *Frontiers in Ecology and the Environment* e2835.  
377 <https://doi.org/10.1002/fee.2835>
- 378 Pena JC, Ovaskainen O, MacGregor-Fors I, Teixeira CP, Ribeiro MC. 2023. The relationships  
379 between urbanization and bird functional traits across the streetscape. *Landscape and Urban*  
380 *Planning* **232**:104685. <https://doi.org/10.1016/j.landurbplan.2023.104685>
- 381 Seress G, Liker A. 2015. Habitat urbanization and its effects on birds. *Acta Zoologica*  
382 *Academiae Scientiarum Hungaricae* **61**(4):373-408. <https://doi.org/10.17109/AZH.61.4.373.2015>
- 383 Shochat E, Lerman SB, Katti M, Lewis DB. 2004. Linking optimal foraging behavior to bird  
384 community structure in an urban-desert landscape: field experiments with artificial food patches.  
385 *The American Naturalist* **164**(2):232-243.
- 386 Sibley DA. 2022. *The Sibley field guide to birds of western North America*. Knopf.
- 387 Swartz TM, Blaney AR, Behm JE. 2024. Crumb bums? Context dependence in ecosystem  
388 services supplied by common urban animals. *Ecosphere* **15**(10):p.e70014.
- 389 Tryjanowski P, Møller AP, Morelli F, Biaduń W, Brauze T, Ciach M, Czechowski P, Czyż S,  
390 Dulisz B, Goławski A, Hetmański T. 2016. Urbanization affects neophilia and risk-taking at  
391 bird-feeders. *Scientific Reports* **6**(1):p.28575.
- 392 United States Geological Survey. 2024. Annual National Land Cover Database (NLCD)  
393 Collection 1 Products [Pdf,png]. U.S. Geological Survey. <https://doi.org/10.5066/P94UXNTS>
- 394 Von Döhren P, Haase D. 2015. Ecosystem disservices research: A review of the state of the art  
395 with a focus on cities. *Ecological Indicators* **52**:490-497.
- 396 Wehtje W. 2003. The Range Expansion of the Great-Tailed Grackle (*Quiscalus mexicanus*  
397 Gmelin) in North America since 1880. *Journal of Biogeography* **30**(10):1593-1607.

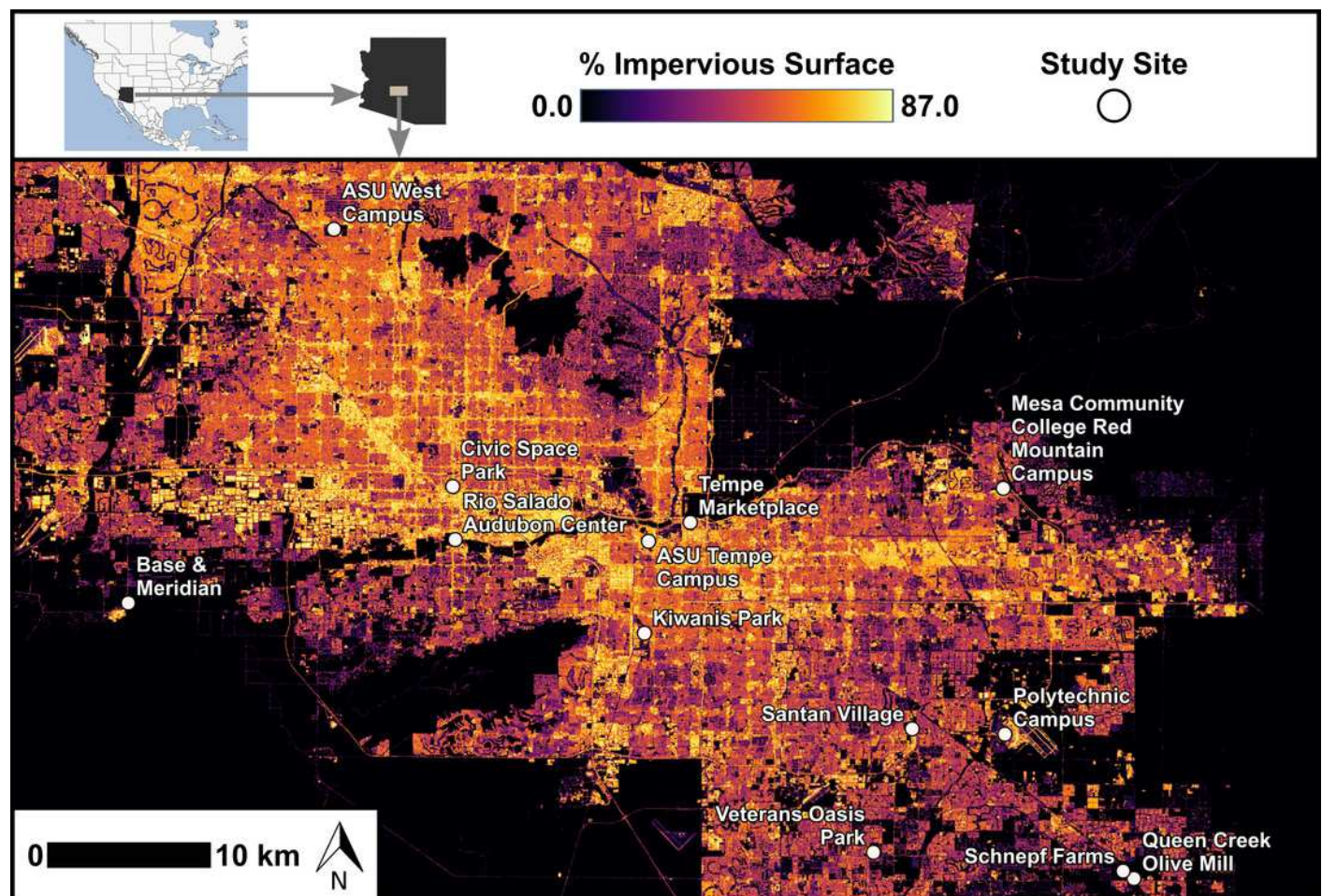


- 398 Weng Q, Lu D. 2008. A sub-pixel analysis of urbanization effect on land surface temperature  
 399 and its interplay with impervious surface and vegetation coverage in Indianapolis, United States.  
 400 *International Journal of Applied Earth Observation and Geoinformation* **10**(1):68–83.
- 401 Whelan CJ, Wenny DG, Marquis RJ. 2008. Ecosystem Services Provided by Birds. *Annals of the*  
 402 *New York Academy of Sciences* **1134**(1):25–60. <https://doi.org/10.1196/annals.1439.003>  
 403

# Figure 1

## Map of feeding trial locations across range of impervious surfaces

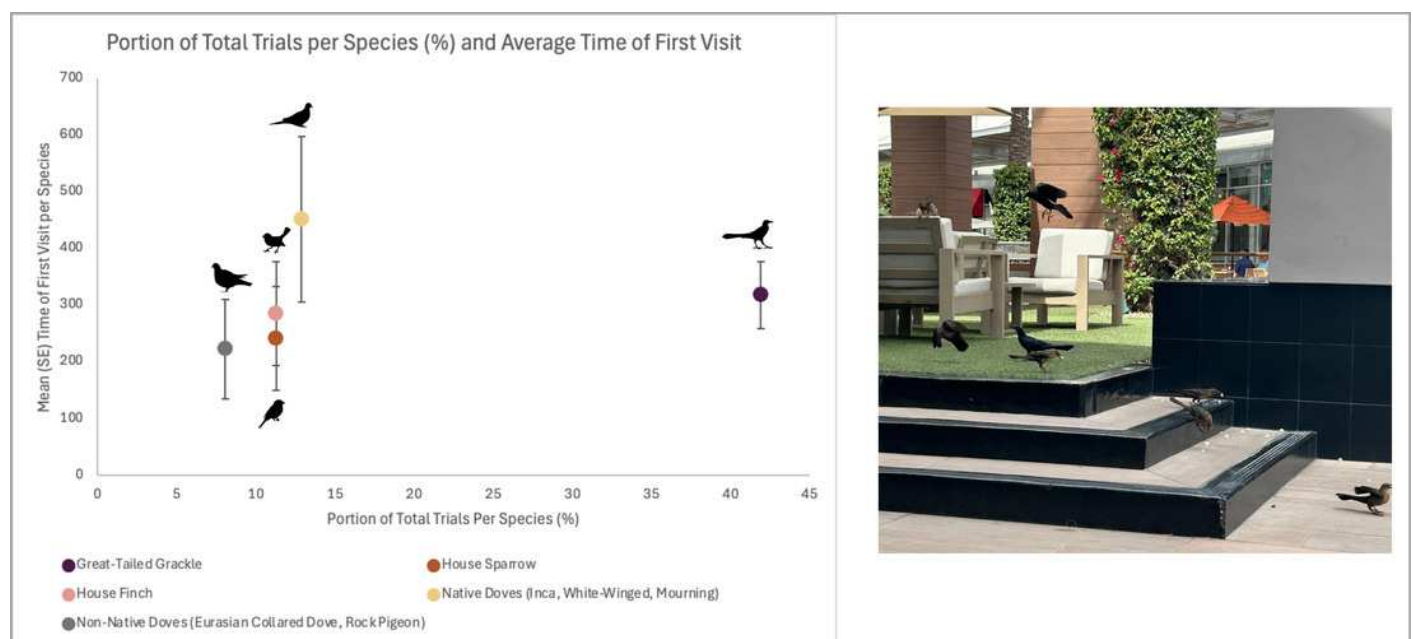
Locations of 13 sites with feeding trials within the Phoenix metropolitan area, Arizona, USA. Impervious surface from 2021 National Land Cover Database (United States Geological Survey 2024). We characterized impervious surface using the i-Tree Canopy Tool (2024) in analyses. Study site locations ranged in longitude from -112.306 to -111.583 and in latitude from 33.221 to 33.608.



# Figure 2

Five most common species/groups seen during feeding trials at stations with visitors across 13 sites in the Phoenix metropolitan area, Arizona, USA.

Mean in seconds (and SE) to first visitor to the feeding station (popcorn). Non-native doves include Eurasian Collared-dove (*Streptopelia decaocto*) and Rock Pigeon (*Columbia livia*). Native doves include Mourning Doves (*Zenaida macroura*), Inca Dove (*Columbina inca*), and White-winged Dove (*Z. asiatica*). The most common visitor was Great-tailed Grackles (*Quiscalus mexicanus*; photo).



# Figure 3

Relationships of impervious surface area with average time of first bird to feeding station.

The average time of first visits (in seconds) for each site ( $n=13$ ) was negatively associated with sites with high percent of impervious surface. Each site had 6 to 16 feeding stations and times are averaged for each site. Total feeding stations  $n=126$ . Shaded area represents the 95% confidence interval of the trendline, as approximated by the 'geom\_smooth' function in the R package 'ggplot2'.

