

# **Largest global shark biomass found in the northern Galápagos Islands of Darwin and Wolf**

Pelayo Salinas de León, David Acuña-Marrero, Etienne Rastoin, Alan M Friedlander, Enric Sala

Overfishing has dramatically depleted sharks and other large predatory fishes worldwide except for a few remote or well-protected areas. The islands of Darwin and Wolf in the far north of the Galápagos Marine Reserve (GMR) are known for their large shark abundance, making them a global scuba diving and conservation hotspot. Here we report quantitative estimates of fish abundance at Darwin and Wolf using stereo-video surveys, which reveal the largest fish biomass ever reported ( $16 \text{ t ha}^{-1}$  on average), consisting largely of sharks. Despite this, the abundance of reef fish around the GMR, such as groupers, has been severely reduced because of unsustainable fishing practices. Although Darwin and Wolf are within the GMR, they are not fully protected from fishing. Stronger protection is required to preserve this ecological hotspot of unique global value.

# 1 Largest global shark biomass found in the northern Galápagos Islands of Darwin and Wolf

2 Salinas-de-León P <sup>1,\*</sup>, Acuña-Marrero D <sup>1</sup>, Rastoin E <sup>1</sup>, Friedlander AM <sup>2,3</sup>, Sala E <sup>2</sup>

3 <sup>1</sup>Department of Marine Sciences, Charles Darwin Research Station, Av Charles Darwin s/n, Puerto Ayora,  
4 Santa Cruz Island, Galapagos Islands, Ecuador

5 <sup>2</sup>Pristine Seas, National Geographic Society, Washington, D.C. 20036

6 <sup>3</sup>Fisheries Ecology Research Lab, University of Hawaii. Honolulu, Hawaii 96822

7 \* Author to whom correspondence should be addressed. Email: [pelayo.salinas@fcdarwin.org.ec](mailto:pelayo.salinas@fcdarwin.org.ec); Tel.:

8 +593997478133

## 9 Abstract

10 Overfishing has dramatically depleted sharks and other large predatory fishes worldwide except  
11 for a few remote or well-protected areas. The islands of Darwin and Wolf in the far north of the  
12 Galápagos Marine Reserve (GMR) are known for their large shark abundance, making them a  
13 global scuba diving and conservation hotspot. Here we report quantitative estimates of fish  
14 abundance at Darwin and Wolf using stereo-video surveys, which reveal the largest fish biomass  
15 ever reported (16 t ha<sup>-1</sup> on average), consisting largely of sharks. Despite this, the abundance of  
16 reef fish around the GMR, such as groupers, has been severely reduced because of unsustainable  
17 fishing practices. Although Darwin and Wolf are within the GMR, they are not fully protected  
18 from fishing. Stronger protection is required to preserve this ecological hotspot of unique global  
19 value.

## Introduction

Overfishing has reduced biomass of most sharks and other large predatory fishes worldwide by over 90% (Baum et al., 2003; Myers & Worm, 2003; Ward-Paige et al., 2010), and even remote locations have been severely impacted (Sibaja-Cordero, 2008; Dulvy et al., 2008; Graham, Spalding & Sheppard, 2010; White et al., 2015). One in four species of cartilaginous fishes is now threatened with extinction due primarily to overexploitation and habitat loss (Dulvy et al., 2014). The systematic removal of sharks from marine ecosystems has negative effects that propagate throughout the entire food web (Bascompte, Melián & Sala, 2005; Myers et al., 2007; Heithaus, Wirsing & Dill, 2012). Only a few localities worldwide still maintain large abundances of top predatory fishes due to either being remote and unfished, or having recovered after full protection from fishing (Sandin et al., 2008; Aburto-Oropeza et al., 2011; Graham & McClanahan, 2013; Friedlander et al., 2014a).

The Galapagos Islands are known worldwide for its iconic terrestrial fauna and flora, due in large part to a young Charles Darwin who sailed to these islands in 1835 (Darwin, 1839). While Galapagos giant tortoises, Darwin's finches, and mocking birds have received much of the attention since Darwin's visit, the underwater Galapagos remains under-studied and largely unknown. The far northern islands of Darwin and Wolf in the 133,000 km<sup>2</sup> Galapagos Marine Reserve (GMR) represent a unique hotspot for sharks and other pelagic species (Hearn et al., 2010, 2014; Ketchum et al., 2014a; Acuña-Marrero et al., 2014). Most of the studies around this area have focused on the migration of scalloped hammerhead sharks (*Sphyrna lewini*) and other sharks species between Darwin and Wolf and other localities in the Eastern Tropical Pacific (Hearn et al., 2010; Bessudo et al., 2011; Ketchum et al., 2014a). An ecological monitoring program has visited the islands over the past 15 with a strong sampling focus to survey reef fishes and invertebrate communities (Edgar et al., 2011). However, no study to date has examined extensively the density, size, and biomass of sharks and other large predatory fishes around Darwin and Wolf. We conducted an expedition to Darwin and Wolf in August 2014 to establish comprehensive abundance estimates for shark and predatory fish assemblages at Darwin and Wolf.

## Materials and Methods

This research was approved by the Galapagos National Park Directorate (GNPD) as part of the 2014 annual operational plan of the Charles Darwin Foundation (Research permit PC-40-14).

### Site description

Darwin and Wolf are the two northernmost islands in the Galapagos Archipelago, a group of 13 major islands and 100 islets and rocks located 1000 km west of mainland Ecuador, in the ETP (Snell, Stone & Snell, H. L., 1996); (Fig.1). The Galapagos Archipelago lies at the congruence of three major oceanic currents, which provides a highly dynamic and unique oceanographic setting (Palacios, 2004). Darwin and Wolf represent the far northern biogeographic region of the archipelago and are heavily influenced by the warm Panama current that comes from the Northeast, which supports sub-tropical marine communities to these islands (Edgar et al., 2004; Acuña-Marrero & Salinas-De-León, 2013). Darwin and Wolf are small (approximately 1 and 2 km<sup>2</sup>, respectively) and represent the tops of eroded, extinct submerged volcanoes, which rose from the surrounding seafloor > 2000 m below (McBirney & Williams, 1969; Peñaherrera-Palma, Harpp & Banks, 2013). Darwin and Wolf are exposed to a predominant north-western water flow that supports a unique pelagic assemblage on the south-eastern portions of these islands (Hearn et

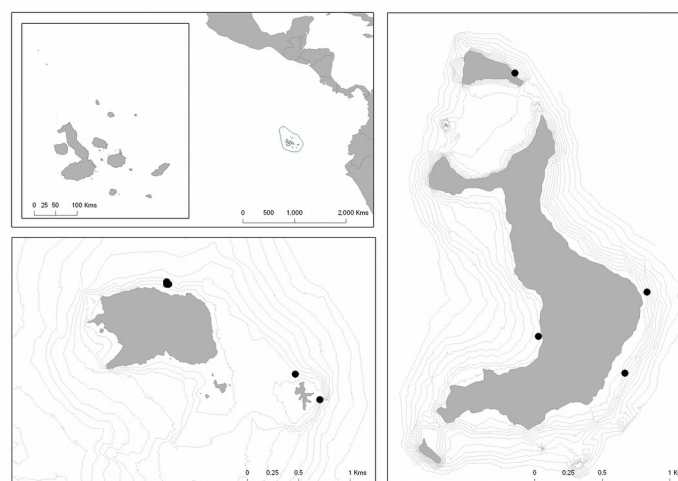
al., 2010). In contrast to much of the Galapagos, which is dominated by the cold equatorial counter-current, the waters of Darwin and Wolf range from 22.5 to 29 C throughout the year, peaking during February-March (Banks, 2002).

## Data collection

### Underwater census using Diver Operated Stereo-video

A diver operated stereo-video system (DOV) was used to sample fish assemblages around Darwin and Wolf in August 2014. DOVs use two Canon HFG-25 full high-definition cameras mounted 0.7 m apart on a base bar inwardly converged at seven degrees and are operated by experienced divers using standard open-circuit SCUBA equipment. DOVs can overcome some of the biases associated with Underwater Visual Census (UVC) by eliminating the inter-observer effect and the over/underestimation of sampling area and fish lengths estimations (Harvey & Shortis, 1995, 1998; Shortis et al., 2000; Harvey, Fletcher & Shortis, 2001, 2002; Harvey et al., 2003, 2004; Goetze et al., 2015)

Fishes were surveyed at seven sites around Wolf (n = 4) and Darwin (n = 3) islands (Fig. 1) during August 2014. At each site, divers towed a surface buoy equipped with a GPS (Garmin GPSmap 78) to create a detailed track of the area surveyed, with GPS position and exact time recorded using a watch synchronized with the GPS at the beginning and end of each survey (Schories & Niedzwiedz, 2012). Divers followed the 20 m depth contour for a period of 25-30 min in order to complete a minimum of ten 50 m long and 5 m wide replicate transects at each site. Dive times were based on preliminary surveys that revealed that swimming at a constant speed, a 2-minute DOVS survey covered approximate 50 m. At some sites, strong currents resulted in longer distances covered by the survey team, resulting in a greater area surveyed at some of the study sites. The diver towing the GPS also conducted standard UVCs to record sharks and large pelagics (50x5x5 m) in parallel to the stereo surveys, therefore the 2 minute surveys were also used to synchronize both sampling methodologies (Supplementary Information).



**Figure 1. Survey locations around Darwin and Wolf Islands.**

## Calibration and video analysis

Stereo-video cameras were calibrated prior to field deployments using the program CAL (SeaGIS Pty Ltd, Harvey & Shortis 1998). Following the dives, paired videos were viewed on a large monitor and analysed in the program Event Measure (SeaGIS Pty Ltd). Every fish observed was identified to species and measured to the nearest mm (FL). Lengths were converted to biomass (kg) using published length-weight relationships (Froese & Pauly, 2007). For individual fishes that were not measured (e.g. not present in both camera views), we calculated biomass using an average total length for that species from the site where it occurred. Cryptic reef fishes (<8cm) were excluded from our surveys due to the limited ability of the DOVs to detect these species and their lack of importance to the fisheries and overall biomass (Ackerman & Bellwood, 2000). Fishes were classified into four different trophic categories based on published information: Apex predators, lower-level carnivores, planktivores and herbivores (Friedlander & DeMartini, 2002).

For largely abundant schooling fishes, primarily the abundant planktivorous species locally known as *gringo* (*Paranthias colonus*), which form dense schools that are difficult to quantify, we developed a specific methodology in the software Event Measure. For each of the study sites surveyed, we measured to the nearest mm a subsample of 100 individuals across all replicate transects and obtained a specific set of mean individual lengths. Then, transects were divided into blocks of identical length using the GPS tracks and every individual for each 10x5x5 m wide 'cube' was counted. The number of cubes varied according to transect lengths. Total biomass for these sites were obtained by multiplying the total numbers of individuals counted in each cube by the mean individual length for each species at that site.

## Statistical tests

Patterns of fish biomass between islands and exposures were analyzed using generalized linear mixed models (Zuur, 2009) using the R package glmmADMB (Skaug & Fournier, 2004) in the R statistical program version 3.0.2 (R Development Core Team). Due to the skewed nature of our biomass estimates, data were fit with a gamma error structure with an inverse link function that works well for continuous-positive data and has a flexible structure (Crawley, 2011). Location was used as a random effect in the model. Biomass by trophic group was assessed in a similar manner except data were fitted to negative binomial distributions due to the number of zero in these data. Unplanned post hoc multiple comparisons were tested using a Tukey's honestly significant difference (HSD) test.

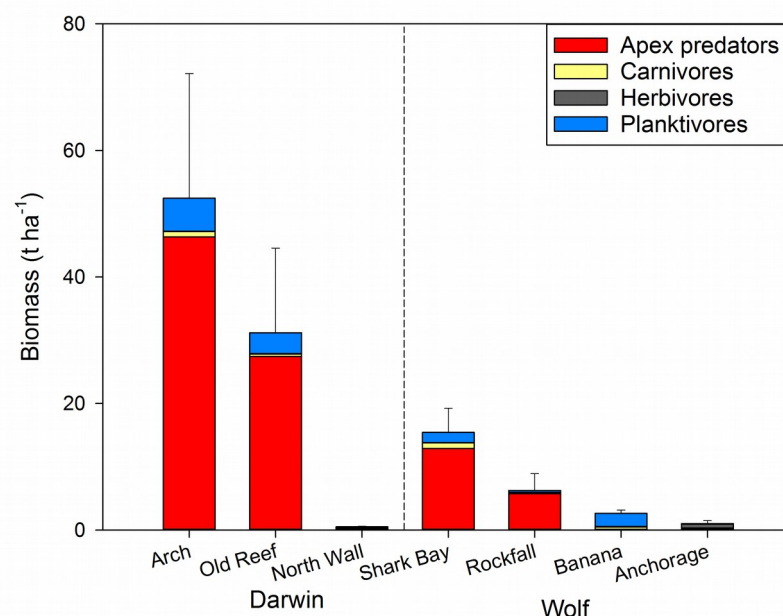
To describe the pattern of variation in fish trophic structure and their relationship to environmental factors we performed direct gradient analysis (redundancy analysis: RDA) using the ordination program CANOCO for Windows version 4.0 (Ter Braak, 1994). Response data were compositional and had a gradient < 3 SD units long, so linear methods were appropriate. The RDA introduces a series of explanatory (environmental) variables and resembles the model of multivariate multiple regression, allowing us to determine what linear combinations of these environmental variables determine the gradients. The environmental data matrix included island (Darwin, Wolf) and exposure (NW, SE). To rank environmental variables in their importance for being associated with the structure of the assemblages, we used a forward selection where the statistical significance of each variable was judged by a Monte-Carlo permutation test (ter Braak & Verdonschot, 1995). Permutations tests were unrestricted with 499 permutations.

Similarity of Percentages (SIMPER) was used to determine the fish species most responsible for the percentage dissimilarities between islands and exposures using Bray-Curtis similarity analysis of hierarchical agglomerative group average clustering (Clarke, 1993).

Differences in fish trophic biomass were tested using permutation-based multivariate analysis of variance (PERMANOVA, (Anderson, Gorley & Clarke, 2008)). Data were 4th-root-transformed. Pair-wise tests were conducted between island x exposure combinations.

## Results

Overall fish biomass averaged  $15.9 \text{ t ha}^{-1}$  ( $\pm 33.0 \text{ SD}$ ), and was 4.5 times larger at Darwin ( $28.3 \pm 46.3$ ) than at Wolf ( $6.3 \pm 8.9 \text{ SD}$ ); (Fig. 2; Table 1). In addition to this large difference in biomass between islands ( $z=2.6$ ,  $p=0.008$ ), biomass was  $> 20$  times higher at the SE exposures ( $26.2 \pm 40.0 \text{ SD}$ ) compared to NW exposures ( $1.3 \pm 1.5 \text{ SD}$ ,  $z=9.7$ ,  $p<0.001$ ). However, there was a significant interaction, with NW Darwin ( $0.5 \pm 0.2 \text{ SD}$ ) differing from all other island x exposure combinations. Total biomass at SE Darwin ( $40.7 \pm 51.3 \text{ SD}$ ) did not diff from SE Wolf ( $10.6 \pm 10.8 \text{ SD}$ ), while NW Wolf ( $1.7 \pm 1.6 \text{ SD}$ ) and SE Wolf were also similar to one another.



**Figure 2. Fish trophic biomass ( $\text{t ha}^{-1}$ ) by island and sampling site.** Error bars are standard error of the mean.

**Table 1. Comparisons of fish trophic biomass by island and exposure.** Results of generalized linear mixed models fit with a gamma error structure and an inverse link function. Unplanned post hoc multiple comparisons tested using a Tukey's honestly significant difference (HSD) test. Only significant multiple comparisons are shown.



	Estimate	Std. Error	z	P
Island	1.22	0.46	2.6	0.008
Exposure	4.39	0.45	9.7	<0.001
Island x Exposure	2.58	0.58	4.4	<0.001
Darwin SE (40.7 ± 51.3) Wolf SE (10.6 ± 10.8) Wolf NW (1.7 ± 1.6) Darwin NW (0.5 ± 0.2)				

Hammerhead sharks (*Sphyrna lewini*) dominated the fish assemblage, accounting for 68% of the overall biomass. This was followed by Galapagos sharks, *Carcharhinus galapagensis* (11% of total biomass), gringos *Paranthias colonus* (11%), and bluefin trevally *Caranx melampygus* (4%). Hammerheads were recorded at 71% of the survey sites but were most abundant at the Arch at Darwin, with a mean biomass of 43.0 t ha<sup>-1</sup> (± 63.0 SD). Galapagos sharks were most abundant at Shark Point (Wolf) with a mean biomass of 8.4 t ha<sup>-1</sup> (± 12.1 SD). Gringos were most abundant at the Arch (Darwin) with a mean biomass of 5.1 t ha<sup>-1</sup> (± 4.3 SD).

The average dissimilarity between islands, based on species biomass, was 77% with hammerhead sharks accounting for 36% of the dissimilarity, followed by gringos (23%) and Galapagos sharks (12%); (Table 2). The average dissimilarity between exposures was 91%, with the same species assemblage accounting for this dissimilarity (Table S1).

**Table 2.** Fish species most responsible for the dissimilarity between Darwin and Wolf islands based on Similarity of Percentages (SIMPER) analysis. Values for islands are biomass (t ha<sup>-1</sup>). Diss. – average dissimilarity. SD – Standard deviation. Contrib% – percent contribution to dissimilarity. Cum. % – Cumulative dissimilarity.

Species	Darwin	Wolf	Diss. (±SD)	Contrib. %	Cum.%
<i>Sphyrna lewini</i>	21.98	2.21	27.19 (0.88)	35.55	35.55
<i>Paranthias colonus</i>	2.79	0.92	17.83 (0.89)	23.31	58.86
<i>Carcharhinus galapagensis</i>	1.12	2.37	9.15 (0.59)	11.96	70.82
<i>Caranx melampygus</i>	1.43	0	4.03 (0.4)	5.27	76.09
<i>Prionurus laticlavus</i>	0.06	0.06	2.11 (0.46)	2.75	78.84
<i>Taeniura meyeni</i>	0	0.11	2.07 (0.2)	2.71	81.55
<i>Scarus ghobban</i>	0.02	0.02	1.74 (0.33)	2.28	83.83
<i>Holacanthus passer</i>	0.05	0.04	1.74 (0.38)	2.27	86.11
<i>Kyphosus analogus</i>	0	0.11	1.72 (0.17)	2.24	88.35
<i>Melichthys niger</i>	0.04	0.01	1.05 (0.43)	1.37	89.72
<i>Caranx sexfasciatus</i>	0.2	0	0.65 (0.24)	0.85	90.57

Apex predators (primarily hammerhead and Galapagos sharks) accounted for 84.9% of the total biomass on transects, followed by planktivores (11.3%), lower level carnivores (2.8%), and herbivores (1.0%); (Fig. 1). Trophic structure, based on biomass, was not significantly different between islands, but differed between exposures, as well as the interaction between islands and exposures, with all island x exposure pairwise comparisons different from one another except for NW Darwin and NW Wolf (Table 3).

**Table 3. Differences in fish trophic biomass by island and exposure.** Results of permutation-based multivariate analysis of variance (PERMANOVA) followed by pair-wise tests are shown. Data were 4th-root-transformed.

Source	df	MS	Pseudo-F	P (perm)
Island	1	466.8	1.02	0.354
Exposure	1	22371.0	48.84	0.001
Island x Exposure	1	3610.9	7.88	0.001
Residual	62	458		
Total	65			

Pair-wise comparison	t	Perm (p)
SE Darwin – SE Wolf	2.98	0.002
NW Darwin – NW Wolf	1.01	0.345
SE Darwin – NW Darwin	8.72	0.001
SE Wolf – NW Wolf	3.13	0.002

Differences in biomass of apex predators among locations were dramatic, with mean biomass at the SE locations around Darwin ( $35.9 \pm 52.5$ ), nearly 4 times higher than SE Wolf ( $9.1 \pm 10.5$ ). Biomass of sharks was trivial at NW Wolf ( $0.05 \pm 0.14$ ), with no sharks present at NW Darwin, thus precluding statistical comparisons. Biomass of planktivores was 3.7 times greater at the SE sites (Arch and Old Reef at Darwin; Shark Point and Rockfall at Wolf) compared to the NW sites (North Wall at Darwin; Anchorage and Banana at Wolf) (Table 3a). Similarly, lower-level carnivores were twice more abundant in the SE compared with the NW (Table 3b). In contrast, herbivore biomass was > 6 times larger at the NW locations compared to the SE (Table 3c).

**Table 3. Comparisons of fish trophic biomass by island and exposure.** Results of generalized linear mixed models fit with negative binomial error structure. Unplanned post hoc multiple comparisons tested using a Tukey's honestly significant difference (HSD) test. Only significant multiple comparisons are shown. A. Planktivores, B. Herbivores, and C. Lower-level carnivores.

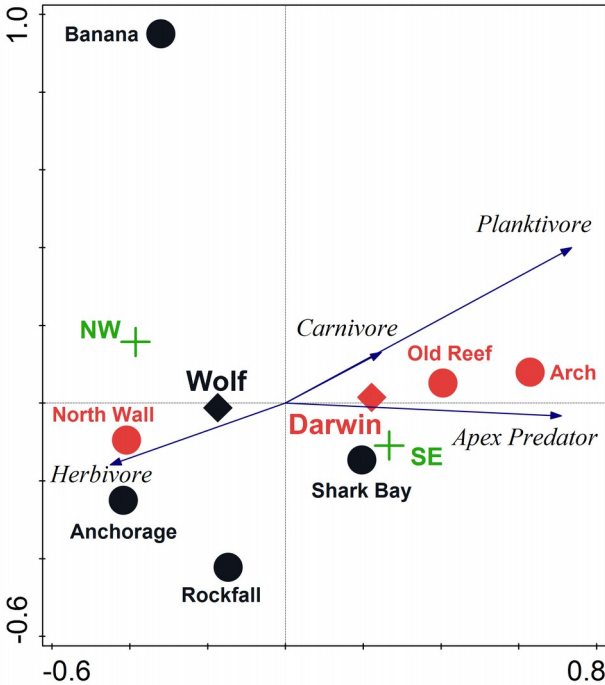
A. Planktivores	Estimate	Std. Error	z	P
Island	1.06	1.179	0.9	0.369
Exposure	3.332	1.177	2.83	0.005
Island x Exposure	-2.849	1.519	-1.88	0.061
SE ( $2.6 \pm 2.8$ ) > NW ( $0.7 \pm 1.1$ )				

B. Herbivores	Estimate	Std. Error	z	P
Island	0.564	0.546	1.03	0.302
Exposure	-1.33	0.544	-2.44	0.015
Island x Exposure	-0.772	0.706	-1.09	0.274
NW ( $0.32 \pm 0.76$ ) > SE ( $0.05 \pm 0.07$ )				



C. Carnivores	Estimate	Std. Error	z	P
Island	0.902	0.693	1.3	0.193
Exposure	1.424	0.686	2.08	0.038
Island x Exposure	-1.295	0.898	-1.44	0.149
SE (0.60 ± 1.03) > NW (0.28 ± 0.48)				

195 The SE locations at Darwin (Arch and Old Reef) were distinct in ordination space from the other  
196 locations. This distinction was driven largely by apex predators and planktivores (Fig. 3). Banana  
197 at Wolf Island was well separated from the other locations. Exposure to the prevailing current  
198 explained most of the variation among locations, accounting for > 67% of the total (Table 3).



199 **Figure 3. Biplot of results of redundancy analysis of fish trophic biomass with location and**  
200 **wave exposure.** Black circles are locations around Wolf and red circles are locations around  
201 Darwin. Crosses are wave exposures. Diamonds are centroids of Darwin and Wolf. Vectors are  
202 magnitude and directional effects of each trophic group on orientation of locations in ordination  
203 space.

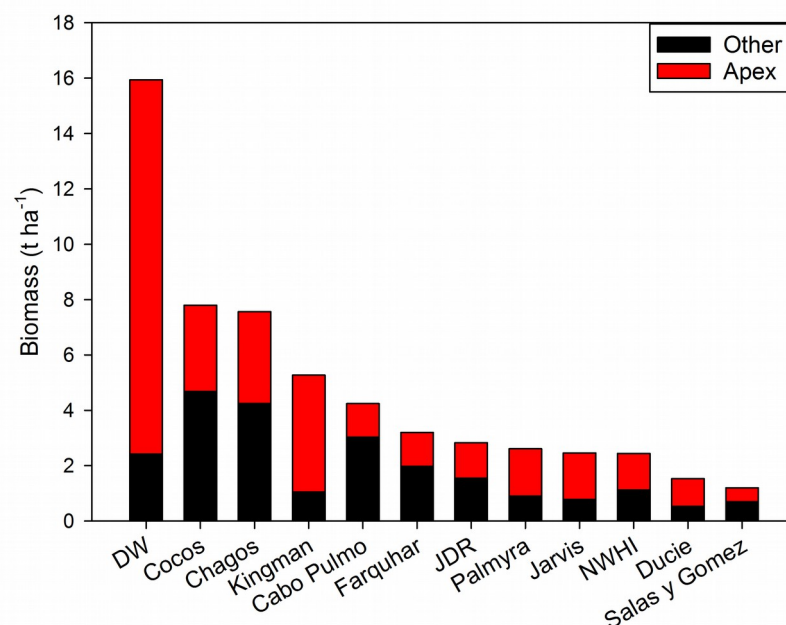
204 **Table 3. A. Results of redundancy analysis (RDA) on square root transformed fish trophic**  
205 **biomass with environmental variables (e.g., island, wave exposure). B. Conditional effects of**  
206 **Monte-Carlo permutation results on the redundancy analysis (RDA).**

A. Statistic	Axis 1	Axis 2	Axis 3
Eigenvalues	0.49	0.01	0.001
Pseudo-canonical correlation	0.74	0.39	0.35

Explained variation (cumulative)	49.51	50.73	50.87
Explained fitted variation (cumulative)	97.14	99.54	100.00
B. Variable	Pseudo-F	p	% explained
SE	32.7	0.002	33.8
NW	32.7	0.002	33.8
Rockfall	13.4	0.004	11.6
Arch	3.8	0.042	3.1

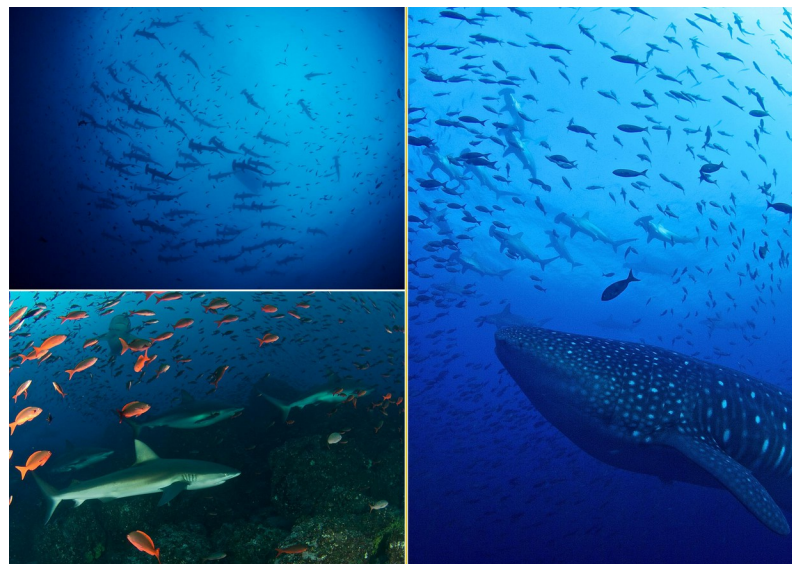
## Discussion

The first quantitative fish surveys using the stereo-video approach around Darwin and Wolf islands revealed the largest fish biomass reported to date worldwide (Fig. 4). This extraordinary biomass, which consists mostly of sharks, is considerably larger than the next largest fish biomasses reported at Cocos Island National Park (Friedlander et al., 2012) and the Chagos Marine Reserve (Graham et al., 2013). Our results add to the growing body of literature that demonstrates that nearly pristine areas are dominated by top predatory fishes, mainly sharks (Friedlander & DeMartini, 2002; Sandin et al., 2008; Graham et al., 2013; Friedlander et al., 2013, 2014a). At Darwin and Wolf, top predators account for an astonishing 85% of the fish biomass, a percentage found previously only at the pristine Kingman Reef on the Line Islands (Sandin et al., 2008). Inverted biomass pyramids had been unreported until recent surveys of pristine coral reefs (Sala, 2015), and they can be maintained when the top levels of the food web have a much lower turnover rate (slower growth rate per biomass unit) than their prey (Sandin & Zgliczynski, 2015). In the case of Darwin and Wolf, these high levels of predatory fish biomass are supported not only by the high abundance of lower trophic levels fish on the reefs but also the very productive surrounding pelagic waters



**Figure 4 Biomass at Darwin and Wolf compared to other remote pristine locations and MPAs around the world.** Data from (Sandin et al., 2008; DeMartini et al., 2008; Aburto-Oropeza et al., 2011; Friedlander et al., 2012, 2013, 2014a,b; Graham et al., 2013).

226 Sharks, mainly hammerhead and Galapagos sharks, dominated the fish assemblage, but other  
 227 predators like the bluefin trevally, black jack (*Caranx lugubris*) and bigeye jack (*C. sexfasciatus*)  
 228 were also common at several of the sites surveyed (Fig.5a-c). Our results revealed a marked  
 229 concentration of sharks and planktivorous fish biomass at the southeast corners of Darwin (Arch  
 230 and Old Reef sites) and Wolf (Rockfall and Shark Point). The higher abundance at these SE  
 231 locations may be related to local oceanographic features, dominated by a unidirectional current  
 232 from the southeast to the northwest that collides with the southeast corner of both islands (Hearn  
 233 et al. 2010). This may enhance productivity that supports rich benthic and planktivorous fishes,  
 234 mainly gringos, which may serve as a food source for sharks and other fishes around these islands  
 235 (Hamner et al., 1988). It is important to consider that these results likely represent maximum  
 236 annual shark biomass because the surveys were carried out during the cold season, when  
 237 hammerhead sharks are most abundant (Palacios, 2004; Hearn et al., 2014). Seasonal changes in  
 238 fish assemblages and biomass are likely since hammerheads are known to migrate from these  
 239 islands between February and June (Ketchum et al., 2014b). Future studies should focus on  
 240 seasonal trends and depth gradients (Lindfield, McIlwain & Harvey, 2014) in shark abundance  
 241 and distribution.



242 **Figure 5 Common encounters around Darwin and Wolf Islands.** A large school of  
 243 hammerhead sharks (*Sphyrna lewini*, B. A group of Galapagos sharks (*Carcharhinus*  
 244 *galapagensis*), including a couple of heavily pregnant females, C. A large female whale shark  
 245 (*Rhincodon typus*) swims among a school of hammerhead sharks. All photos by Pelayo Salinas-  
 246 de-León.

247 A total ban on the capture, transport, and trade of sharks within the GMR was established in 2000  
 248 (AIM, 2000). However, illegal fishing within GMR boundaries (Jacquet et al., 2008; Carr et al.,  
 249 2013) and recent efforts by local artisanal fishermen to expand longline fishing, a practice banned  
 250 since 2005 due to extremely large by-catch [35-36], threaten shark populations. While veteran  
 251 divers report larger abundance of sharks at Darwin and Wolf over the past 30 years (Peñaherrera-  
 252 Palma et al., 2015), the absence of long-term quantitative studies to monitor shark and large  
 253 pelagic fish on a systematic basis and with enough replication does not allow an accurate

assessment of the magnitude of decline of shark populations at Darwin and Wolf. By comparison, the recent analysis of a 21-year monitoring program for sharks and large pelagic fishes at Cocos Island National Park in Costa Rica revealed a sharp decline in 8 of the 12 elasmobranch species monitored, including the endangered hammerhead shark and the giant manta ray (*Manta birostris*) (White et al., 2015).

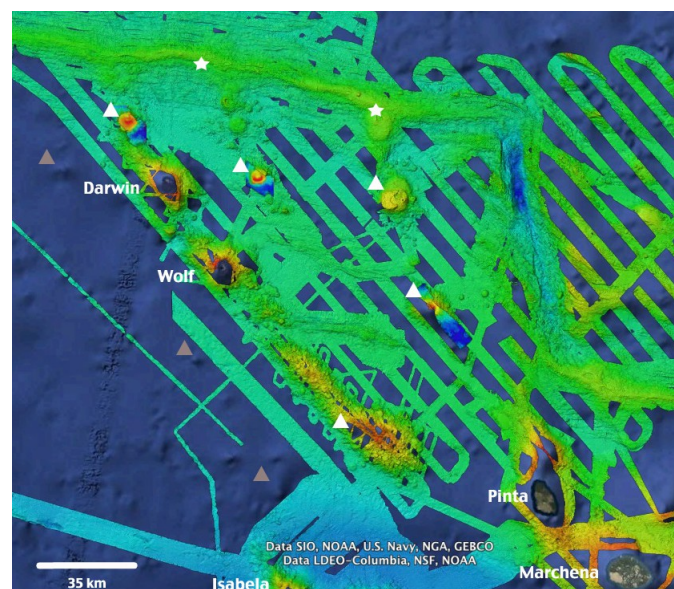
Despite the large shark biomass at Darwin and Wolf, our surveys also revealed a low overall biomass of predatory reef fishes such as the leatherbass (*Dermatolepis dermatolepis*) and the sailfin grouper (*Mycteroperca olfax*), both endemic to the Eastern Tropical Pacific (ETP) (Grove & Lavenberg, 1997). These species are highly prized by Galapagos artisanal fishermen, but their life histories (e.g., long lives, slow growing) make them extremely vulnerable to overfishing (Aburto-Oropeza & Hull, 2008; Usseglio et al., 2015). Leatherbass biomass reported for Darwin and Wolf ( $0.008 \text{ t ha}^{-1} \pm 0.05 \text{ SD}$ ) is 14 times lower than at the unfished Cocos Island ( $0.1 \text{ t ha}^{-1}$ ) (Friedlander et al., 2012). Artisanal fishermen are known to directly target the only reported spawning aggregation for *M. olfax* in the GMR (Salinas-de-León, Rastoin & Acuña-Marrero, 2015), an unsustainable fishing practice known to deplete reefs fish stocks at an alarming rate (Sala, Ballesteros & Starr, 2001; Sadovy & Domeier, 2005; Erisman et al., 2011; Hamilton et al., 2012). The low biomass estimates for groupers reported here are likely caused by the unregulated artisanal fishery for demersal fishes in the GMR that directly targets over 50 coastal fish species and has been shown to have a negative impact on coastal resources of the GMR (Ruttenberg, 2001; Molina et al., 2004; Burbano et al., 2014; Schiller et al., 2014).

Our results also add to the growing body of literature that supports the use of the stereo video methodology as a complement to traditional visual census, as this technique improves the accuracy and precision of fish length estimates (Harvey, Fletcher & Shortis, 2001, 2002), produces more accurate estimates of area surveyed (Harvey et al., 2004), and eliminates the inter-observer bias associated with species identification (Mallet & Pelletier, 2014). Our study, one of the few to evaluate the use of DOVs with large and highly mobile species such as sharks, confirmed that even experienced divers tend to underestimate the individual length of large fishes (Supplementary material).

## Conservation implications

This study adds to the growing body of literature that highlights the ecological uniqueness and the global irreplaceable value of Darwin and Wolf. These islands not only harbour the largest shark biomass reported to date, but also represent a unique tropical bioregion within the GMR (Edgar et al., 2004). In addition, they are home to the last true coral reefs in the GMR (Banks, Vera & Chiriboga, 2009; Glynn et al., 2009). These islands also represent essential stepping stones for endangered and highly migratory species, such as hammerhead sharks (Hearn et al., 2010; Bessudo et al., 2011; Ketchum et al., 2014a). They are key waypoints for a recently documented migration probably related to reproductive purposes for the largest fish species on the planet, the whale shark *Rhincodon typus* (Acuña-Marrero et al., 2014) (Fig. 5d), and are home to the only known reproductive aggregation for the regionally endemic sailfin grouper (Salinas-de-León, Rastoin & Acuña-Marrero, 2015). These islands are visited by deep-water species such as the smalltooth sandtiger shark *Odontaspis ferox* (Acuña-Marrero et al., 2013), and are surrounded by numerous seamounts and active hydrothermal vents that harbour unique biological communities (Salinas-de-León, unpublished data) (Fig. 6).





**Figure 6. High-resolution bathymetry around Darwin and Wolf Islands.** Recent multi-beam echo sounder surveys around D&W have revealed the presence of a number of seamounts (white triangles) and active hydrothermal vents and black smokers (white stars) that support unique biological communities. Additional inferred seamounts (grey triangles) are likely to be discovered to the West of the Islands. Source: (Dennis et al., 2012), Ocean Exploration Trust NA-064 2015.

The economic benefits of ecotourism from sharks are far greater than shark fishing (Clua et al., 2011; Gallagher & Hammerschlag, 2011; Cisneros-Montemayor et al., 2013). For instance, the net present value of the average hammerhead shark at Cocos Island National Park was estimated at \$1.6 million, compared to the ~\$200 that a fisherman obtains by selling a dead shark (Friedlander et al., 2012). In Galápagos, the net present value of a shark to the tourism industry is an astonishing \$5.4 million (Lynham et al., 2015). The value of a shark to the tourism industry is ~\$360,000 per year, compared to \$158 obtained from a dead shark (Lynham et al., 2015). That makes sharks alive in Galápagos the most valuable on Earth. Despite their high economic value and iconic importance, only about 50 km<sup>2</sup> of the waters around Darwin and Wolf (representing an insignificant 0.04% of the total GMR area) are fully protected from fishing.

Given the large-scale migrations reported for several shark species around Wolf and Darwin (Bessudo et al., 2011; Ketchum et al., 2014a), and the night foraging excursions by scalloped hammerhead sharks of up to ~30 km from shore (Ketchum et al., 2014a), present levels of protection are clearly insufficient. Expanding levels of protection around Darwin and Wolf, including the establishment of a large no-take zone that includes some of the numerous seamounts located around these islands (Fig. 6) (similarly to other fully-protected areas in the region such as Isla del Coco in Costa Rica or Malpelo in Colombia) is critical to ensure the recovery and long-term preservation of one of the most extraordinary marine ecosystems on the planet – and an economic engine for Ecuador.

## Acknowledgements

We would like to thank the Charles Darwin Foundation and the Galapagos National Park Directorate for their institutional support to this study. We are grateful to all the staff of the Charles Darwin Research Station that made this study possible. Special thanks to Jennifer Suarez and Jose Feijoo for their field assistance. We are also very grateful to the crew of the expedition yacht MV Queen Mabel for their logistical support. This publication is contribution number 2XXX of the Charles Darwin Foundation for the Galapagos Islands. The research was partly funded by the Helmsley Charitable Trusts.

## References

- Aburto-Oropeza O, Erisman B, Galland GR, Mascareñas-Osorio I, Sala E, Ezcurra E. 2011. Large Recovery of Fish Biomass in a No-Take Marine Reserve. *PLoS ONE* 6:e23601.
- Aburto-Oropeza O, Hull PM. 2008. A probable spawning aggregation of the leather bass *Dermatolepis dermatolepis* (Boulenger) in the Revillagigedo Archipelago, Mexico. *Journal of Fish Biology* 73:288–295.
- Ackerman JL, Bellwood DR. 2000. Reef fish assemblages: a re-evaluation using enclosed rotenone stations. *Marine Ecology-Progress Series* 206:227–237.
- Acuña-Marrero D, Zimmerhackel JS, Mayorga J, Hearn A. 2013. First record of three shark species, *Odontaspis ferox*, *Mustelus albiginnis* and *Centrophorus squamosus*, from the Galápagos Islands. *Marine Biodiversity Records* 6:e87.
- Acuña-Marrero D, Jiménez J, Smith F, Doherty PF, Hearn A, Green JR, Paredes-Jarrín J, Salinas-de-León P. 2014. Whale Shark (*Rhincodon typus*) Seasonal Presence, Residence Time and Habitat Use at Darwin Island, Galapagos Marine Reserve. *PLoS ONE* 9:e115946.
- Acuña-Marrero D, Salinas-De-León P. 2013. New record of two Indo-Pacific reef fish, *Caranx ignobilis* and *Naso annulatus*, from the Galapagos Islands. *Marine Biodiversity Records* 6:e74.
- AIM. 2000. Resolución No. 011-2000.



349 Anderson MJ, Gorley RN, Clarke KR. 2008. *PERMANOVA + for PRIMER: Guide to software and*  
350 *statistical methods*. Plymouth.

351 Banks S. 2002. Ambiente físico. In: *Reserva Marina de Galápagos. Línea base de*  
352 *biodiversidad*. Santa Cruz, Galápagos: Fundacion Charles Darwin y Servicio del  
353 Parque Nacional de Galápagos, 484.

354 Banks S, Vera M, Chiriboga A. 2009. Establishing reference points to assess long-term  
355 change in zooxanthellate coral communities of the northern Galápagos coral reefs. *J.*  
356 *Sci. Conserv. in the Galapagos Islands*:43–64.

357 Bascompte J, Melián CJ, Sala E. 2005. Interaction strength combinations and the overfishing  
358 of a marine food web. *Proceedings of the National Academy of Sciences of the United*  
359 *States of America* 102:5443–5447.

360 Baum JK, Myers RA, Kehler DG, Worm B, Harley SJ, Doherty PA. 2003. Collapse and  
361 conservation of shark populations in the Northwest Atlantic. *Science* 299:381–392.

362 Bessudo S, Soler GA, Klimley AP, Ketchum JT, Hearn A, Arauz R. 2011. Residency of the  
363 scalloped hammerhead shark (*Sphyrna lewini*) at Malpelo Island and evidence of  
364 migration to other islands in the Eastern Tropical Pacific. *Environmental Biology of*  
365 *Fishes* 91:165–176.

366 Ter Braak CJ, Verdonschot PF. 1995. Canonical correspondence analysis and related  
367 multivariate methods in aquatic ecology. *Aquatic sciences* 57:255–289.

368 Burbano DV, Mena CF, Guarderas P, Vinueza L, Reck G. 2014. Shifting Baselines in the  
369 Galapagos White Fin Fishery, Using Fisher’s Anecdotes to Reassess Fisheries  
370 Management: The Case of the Galapagos Grouper. In: Denkinger J, Vinueza L eds. *The*  
371 *Galapagos Marine Reserve*. Cham: Springer International Publishing, 227–246.

372 Cagua EF, Collins N, Hancock J, Rees R. 2014. Whale shark economics: a valuation of wildlife  
373 tourism in South Ari Atoll, Maldives. *PeerJ* 2:e515.

374 Carr LA, Stier AC, Fietz K, Montero I, Gallagher AJ, Bruno JF. 2013. Illegal shark fishing in the  
375 Galápagos Marine Reserve. *Marine Policy* 39:317–321.

376 Cisneros-Montemayor AM, Barnes-Mauthe M, Al-Abdulrazzak D, Navarro-Holm E, Sumaila  
377 UR. 2013. Global economic value of shark ecotourism: implications for conservation.  
378 *Oryx* 47:381–388.

379 Clarke KR. 1993. Non-parametric multivariate analyses of changes in community structure.  
380 *Australian Journal of Ecology* 18:117–143.

381 Clua E, Buray N, Legendre P, Mourier J, Planes S. 2011. Business partner or simple catch?  
382 The economic value of the sicklefin lemon shark in French Polynesia. *Marine and*  
383 *Freshwater Research* 62:764.

384 Crawley MJ. 2011. *The R book*. Chichester: Wiley.

385 Darwin C. 1839. *The Voyage of the Beagle*.

386 DeMartini E, Friedlander A, Sandin S, Sala E. 2008. Differences in fish-assemblage structure  
387 between fished and unfished atolls in the northern Line Islands, central Pacific.  
388 *Marine Ecology Progress Series* 365:199–215.

389 Dennis KJ, McClinton JT, White, S, Hoernie K, Mittelstaedt EL, Harpp K. 2012. Bathymetry of  
390 the Galápagos Spreading Center from a synthesis of 25 years of ship-based  
391 multibeam sonar data. In: San Francisco, CA,.

392 Dicken ML, Hosking SG. 2009. Socio-economic aspects of the tiger shark diving industry  
393 within the Aliwal Shoal Marine Protected Area, South Africa. *African Journal of*  
394 *Marine Science* 31:227–232.

- 395   Dulvy NK, Baum JK, Clarke S, Compagno LJV, Cortés E, Domingo A, Fordham S, Fowler S,  
396       Francis MP, Gibson C, Martínez J, Musick JA, Soldo A, Stevens JD, Valenti S. 2008. You  
397       can swim but you can't hide: the global status and conservation of oceanic pelagic  
398       sharks and rays. *Aquatic Conservation: Marine and Freshwater Ecosystems* 18:459–  
399       482.
- 400   Dulvy NK, Fowler SL, Musick JA, Cavanagh RD, Kyne PM, Harrison LR, Carlson JK, Davidson  
401       LN, Fordham SV, Francis MP, others. 2014. Extinction risk and conservation of the  
402       world's sharks and rays. *Elife* 3:e00590.
- 403   Edgar GJ, Banks S, Fariña JM, Calvopiña M, Martínez C. 2004. Regional biogeography of  
404       shallow reef fish and macro-invertebrate communities in the Galapagos archipelago.  
405       *Journal of Biogeography* 31:1107–1124.
- 406   Edgar GJ, Banks SA, Bessudo S, Cortés J, Guzmán HM, Henderson S, Martinez C, Rivera F,  
407       Soler G, Ruiz D, Zapata FA. 2011. Variation in reef fish and invertebrate communities  
408       with level of protection from fishing across the Eastern Tropical Pacific seascape:  
409       MPA effectiveness in the eastern Pacific. *Global Ecology and Biogeography* 20:730–  
410       743.
- 411   Erisman BE, Allen LG, Claisse JT, Pondella DJ, Miller EF, Murray JH, Walters C. 2011. The  
412       illusion of plenty: hyperstability masks collapses in two recreational fisheries that  
413       target fish spawning aggregations. *Canadian Journal of Fisheries and Aquatic Sciences*  
414       68:1705–1716.
- 415   Friedlander AM, Zgliczynski BJ, Ballesteros E, Aburto-Oropeza O, Bolaños A, Sala E. 2012.  
416       The shallow-water fish assemblage of Isla del Coco National Park, Costa Rica:  
417       structure and patterns in an isolated, predator-dominated ecosystem. *Revista de*  
418       *Biología Tropical* 60:321–338.

- 419 Friedlander AM, Ballesteros E, Beets J, Berkenpas E, Gaymer CF, Gorny M, Sala E. 2013.  
420 Effects of isolation and fishing on the marine ecosystems of Easter Island and Salas y  
421 Gómez, Chile. *Aquatic Conservation: Marine and Freshwater Ecosystems* 23:515–531.
- 422 Friedlander AM, Obura D, Aumeeruddy R, Ballesteros E, Church J, Cebrian E, Sala E. 2014a.  
423 Coexistence of Low Coral Cover and High Fish Biomass at Farquhar Atoll, Seychelles.  
424 *PLoS ONE* 9:e87359.
- 425 Friedlander AM, Caselle JE, Ballesteros E, Brown EK, Turchik A, Sala E. 2014b. The Real  
426 Bounty: Marine Biodiversity in the Pitcairn Islands. *PLoS ONE* 9:e100142.
- 427 Friedlander AM, DeMartini EE. 2002. Contrasts in density, size, and biomass of reef fishes  
428 between the northwestern and the main Hawaiian islands: the effects of fishing  
429 down apex predators. *Marine Ecology Progress Series* 230:e264.
- 430 Froese R, Pauly D. 2007. *FishBase (version 02/2012)*.
- 431 Gallagher AJ, Hammerschlag N. 2011. Global shark currency: the distribution, frequency,  
432 and economic value of shark ecotourism. *Current Issues in Tourism* 14:797–812.
- 433 Glynn PW, Riegl B, Correa AM, Baums IB. 2009. Rapid recovery of a coral reef at Darwin  
434 Island, Galapagos Islands. *Galápagos Res* 66:6–13.
- 435 Goetze JS, Jupiter SD, Langlois TJ, Wilson SK, Harvey ES, Bond T, Naisilisili W. 2015. Diver  
436 operated video most accurately detects the impacts of fishing within periodically  
437 harvested closures. *Journal of Experimental Marine Biology and Ecology* 462:74–82.
- 438 Graham NAJ, Pratchett MS, McClanahan TR, Wilson SK. 2013. The Status of Coral Reef Fish  
439 Assemblages in the Chagos Archipelago, with Implications for Protected Area  
440 Management and Climate Change. In: Sheppard CRC ed. *Coral Reefs of the United*  
441 *Kingdom Overseas Territories*. Dordrecht: Springer Netherlands, 253–270.

- 442 Graham NAJ, McClanahan TR. 2013. The Last Call for Marine Wilderness? *BioScience*
- 443 63:397–402.
- 444 Graham NAJ, Spalding MD, Sheppard CRC. 2010. Reef shark declines in remote atolls
- 445 highlight the need for multi-faceted conservation action. *Aquatic Conservation:*
- 446 *Marine and Freshwater Ecosystems* 20:543–548.
- 447 Grove JS, Lavenberg RJ. 1997. The fishes of the Galapagos Islands. *Zoological-Record-*
- 448 *Volume-134, Section-15-Pisces*:1–863.
- 449 Hamilton RJ, Giningele M, Aswani S, Ecochard JL. 2012. Fishing in the dark-local knowledge,
- 450 night spearfishing and spawning aggregations in the Western Solomon Islands.
- 451 *Biological Conservation* 145:246–257.
- 452 Hamner WM, Jones MS, Carleton JH, Hauri IR, Williams DM. 1988. Zooplankton,
- 453 planktivorous fish, and water currents on a windward reef face: Great Barrier Reef,
- 454 Australia. *Bulletin of Marine Science* 42:459–479.
- 455 Harvey E, Cappo M, Shortis M, Robson S, Buchanan J, Speare P. 2003. The accuracy and
- 456 precision of underwater measurements of length and maximum body depth of
- 457 southern bluefin tuna (*Thunnus maccoyii*) with a stereo–video camera system.
- 458 *Fisheries Research* 63:315–326.
- 459 Harvey ES, Fletcher D, Shortis MR, Kendrick G. 2004. A comparison of underwater visual
- 460 distance estimates made by SCUBA divers and a stereovideo system: Implications for
- 461 underwater visual census of reef fish abundance. *Marine and Freshwater Research*
- 462 55:573–580.
- 463 Harvey ES, Fletcher D, Shortis MR. 2001. A comparison of the precision and accuracy of
- 464 estimates of reef-fish lengths determined visually by divers with estimates produced

- 465 by a stereo-video system. *Fishery Bulletin - National Oceanic and Atmospheric*
- 466 *Administration* 99:63–71.
- 467 Harvey ES, Fletcher D, Shortis MR. 2002. Estimation of reef fish length by divers and by
- 468 stereo-video A first comparison of the accuracy and precision in the field on living
- 469 fish under operational conditions. *Fisheries Research* 57:255–265.
- 470 Harvey E, Shortis M. 1995. A system for stereo-video measurement of sub-tidal organisms.
- 471 *Marine Technology Society Journal* 29:10–22.
- 472 Harvey ES, Shortis MR. 1998. Calibration stability of an underwater stereo-video system:
- 473 implications for measurement accuracy and precision. *Marine Technology Society*
- 474 *Journal* 32:3–17.
- 475 Hearn A, Ketchum J, Klimley AP, Espinoza E, Peñaherrera C. 2010. Hotspots within hotspots?
- 476 Hammerhead shark movements around Wolf Island, Galapagos Marine Reserve.
- 477 *Marine Biology* 157:1899–1915.
- 478 Hearn AR, Acuña D, Ketchum JT, Peñaherrera C, Green J, Marshall A, Guerrero M, Shillinger G.
- 479 2014. Elasmobranchs of the Galapagos Marine Reserve. In: Denkinger J, Vinueza L
- 480 eds. *The Galapagos Marine Reserve*. Cham: Springer International Publishing, 23–59.
- 481 Heithaus MR, Wirsing AJ, Dill LM. 2012. The ecological importance of intact top-predator
- 482 populations: a synthesis of 15 years of research in a seagrass ecosystem. *Marine and*
- 483 *Freshwater Research* 63:1039.
- 484 Jacquet J, Alava JJ, Pramod G, Henderson S, Zeller D. 2008. In hot soup: sharks captured in
- 485 Ecuador's waters. *Environmental Sciences* 5:269–283.
- 486 Ketchum JT, Hearn A, Klimley AP, Peñaherrera C, Espinoza E, Bessudo S, Soler G, Arauz R.
- 487 2014a. Inter-island movements of scalloped hammerhead sharks (*Sphyrna lewini*)



488 and seasonal connectivity in a marine protected area of the eastern tropical Pacific.  
 489 *Marine Biology* 161:939–951.

490 Ketchum JT, Hearn A, Klimley AP, Espinoza E, Peñaherrera C, Largier JL. 2014b. Seasonal  
 491 changes in movements and habitat preferences of the scalloped hammerhead shark  
 492 (*Sphyrna lewini*) while refuging near an oceanic island. *Marine Biology* 161:755–767.

493 Lindfield SJ, McIlwain JL, Harvey ES. 2014. Depth refuge and the impacts of SCUBA  
 494 spearfishing on coral reef fishes. *PloS one* 9:e92628.

495 Lynham J, Costello C, Gaines SD, Sala E. 2015. *Economic valuation of marine and shark-based*  
 496 *tourisms in the Galápagos Islands*. National Geographic Pristine Seas.

497 Mallet D, Pelletier D. 2014. Underwater video techniques for observing coastal marine  
 498 biodiversity: A review of sixty years of publications (1952–2012). *Fisheries Research*  
 499 154:44–62.

500 McBirney AR, Williams H. 1969. Geology and petrology of the Galapagos Islands. *Geological*  
 501 *Society of America Memoir* 118:1–197.

502 Molina L, Danulat E, Oviedo M, González JA. 2004. Guía de especies de interés pesquero en la  
 503 Reserva Marina de Galápagos.

504 Murillo JC, Reyes H, Zárate P, Banks S, Danulat E. 2004. Evaluación de la captura incidental  
 505 durante el Plan Piloto de Pesca de Altura con Palangre en la Reserva Marina de  
 506 Galápagos.

507 Myers RA, Baum JK, Shepard TD, Powers SP, Peterson CH. 2007. Cascading effects and the  
 508 loss of apex predatory sharks from a coastal ocean. *Science* 325:1846–1850.

509 Myers RA, Worm B. 2003. Rapid worldwide depletion of predatory fish communities.  
 510 *Nature* 423:280–283.

511 Palacios DM. 2004. Seasonal patterns of sea-surface temperature and ocean color around  
512 the Galápagos: regional and local influences. *Deep Sea Research Part II: Topical*  
513 *Studies in Oceanography* 51:43–57.

514 Peñaherrera-Palma C, Llerena, Y, Espinoza E, Semmens J. 2015. Analysis of the perception of  
515 population trends for six shark species in the Galapagos Marine Reserve. In:  
516 *Galapagos Report 2013-2014*. Puerto Ayora, Galapagos, Ecuador: GNPD, GCREG, CDF  
517 and GC,.

518 Peñaherrera-Palma C, Harpp K, Banks S. 2013. Rapid seafloor mapping of the northern  
519 Galapagos Islands, Darwin and Wolf. *Galapagos Research* 68.

520 Ruttenberg BI. 2001. Effects of artisanal fishing on marine communities in the Galapagos  
521 Islands. *Conservation Biology* 15:1691–1699.

522 Sadovy Y, Domeier M. 2005. Are aggregation-fisheries sustainable? Reef fish fisheries as a  
523 case study. *Coral Reefs* 24:254–262.

524 Sala E. 2015. Shifting baselines in coral reef fishes. In: *Ecology of Fishes on Coral Reefs*.  
525 Cambridge: Cambridge University Press,.

526 Sala E, Ballesteros E, Starr RM. 2001. Rapid decline of Nassau grouper spawning  
527 aggregations in Belize: fishery management and conservation needs. *Fisheries*  
528 26:23–30.

529 Salinas-de-León P, Rastoin E, Acuña-Marrero D. 2015. First record of a spawning  
530 aggregation for the tropical eastern Pacific endemic grouper *Mycteroperca olfax* in  
531 the Galapagos Marine Reserve. *Journal of Fish Biology* 87:179–186.

532 Sandin SA, Smith JE, DeMartini EE, Dinsdale EA, Donner SD, Friedlander AM, Konotchick T,  
533 Malay M, Maragos JE, Obura D, Pantos O, Paulay G, Richie M, Rohwer F, Schroeder RE,

- 534 Walsh S, Jackson JBC, Knowlton N, Sala E. 2008. Baselines and Degradation of Coral  
535 Reefs in the Northern Line Islands. *PLoS ONE* 3:e1548.
- 536 Sandin SA, Zgliczynski BJ. 2015. Inverted trophic pyramids. In: *Ecology of Fishes on Coral*  
537 *Reefs*. Cambridge: Cambridge University Press,.
- 538 Schiller L, Alava JJ, Grove J, Reck G, Pauly D. 2014. The demise of Darwin's fishes: evidence of  
539 fishing down and illegal shark finning in the Galápagos Islands. *Aquatic Conservation:*  
540 *Marine and Freshwater Ecosystems*:n/a–n/a.
- 541 Schories D, Niedzwiedz G. 2012. Precision, accuracy, and application of diver-towed  
542 underwater GPS receivers. *Environmental Monitoring and Assessment* 184:2359–  
543 2372.
- 544 Shortis MR, Miller S, Harvey ES, Robson S. 2000. An analysis of the calibration stability and  
545 measurement accuracy of an underwater stereo-video system used for shellfish  
546 surveys. *Geomatics Research Australasia*:1–24.
- 547 Sibaja-Cordero JA. 2008. Tendencias espacio-temporales de los avistamientos de fauna  
548 marina en los buceos turísticos (Isla del Coco, Costa Rica). *Rev. Biol. Trop* 56:113–  
549 132.
- 550 Skaug HJ, Fournier D. 2004. Automatic approximation of the marginal likelihood in  
551 nonlinear hierarchical models. *Unpublished available from: [http://bemata.imr.](http://bemata.imr.no/laplace.pdf)*  
552 *no/laplace.pdf*.
- 553 Snell HM, Stone PA, Snell, H. L. 1996. A summary of geographical characteristics of the  
554 Galapagos Islands. *Journal of Biogeography* 23:619–624.
- 555 Ter Braak CJ. 1994. Canonical community ordination. Part I: Basic theory and linear  
556 methods. *Ecoscience*:127–140.

557 Usseglio P, Friedlander AM, DeMartini EE, Schuhbauer A, Schemmel E, Salinas de León P.  
 558 2015. Improved estimates of age, growth and reproduction for the regionally  
 559 endemic Galapagos sailfin grouper *Mycteroperca olfax* (Jenyns, 1840). *PeerJ* 3:e1270.

560 Vianna GMS, Meeuwig JJ, Pannell D, Sykes H, Meekan MG. 2011. The socio-economic value of  
 561 the shark-diving industry in Fiji. *Perth: University of Western Australia*. 26p.

562 Vianna GMS, Meekan MG, Pannell DJ, Marsh SP, Meeuwig JJ. 2012. Socio-economic value and  
 563 community benefits from shark-diving tourism in Palau: A sustainable use of reef  
 564 shark populations. *Biological Conservation* 145:267–277.

565 Ward-Paige CA, Mora C, Lotze HK, Pattengill-Semmens C, McClenachan L, Arias-Castro E,  
 566 Myers RA. 2010. Large-Scale Absence of Sharks on Reefs in the Greater-Caribbean: A  
 567 Footprint of Human Pressures. *PLoS ONE* 5:e11968.

568 White ER, Myers MC, Flemming JM, Baum JK. 2015. Shifting elasmobranch community  
 569 assemblage at Cocos Island-an isolated marine protected area: Elasmobranch  
 570 Community Shifts. *Conservation Biology*:n/a–n/a.

571 Zuur AF. (ed.) 2009. *Mixed effects models and extensions in ecology with R*. New York, NY:  
 572 Springer.