

# Antimicrobial activity of *Ruta angustifolia* L. Pers against periodontal pathogen: *Porphyromonas gingivalis* (#106059)

1

First revision

## Guidance from your Editor

Please submit by **17 Nov 2024** for the benefit of the authors .



### Structure and Criteria

Please read the 'Structure and Criteria' page for guidance.



### Raw data check

Review the raw data.



### Image check

Check that figures and images have not been inappropriately manipulated.

If this article is published your review will be made public. You can choose whether to sign your review. If uploading a PDF please remove any identifiable information (if you want to remain anonymous).

## Files

Download and review all files from the [materials page](#).

1 Tracked changes manuscript(s)  
1 Rebuttal letter(s)  
4 Figure file(s)  
2 Table file(s)  
2 Raw data file(s)



# Structure and Criteria

## Structure your review

The review form is divided into 5 sections. Please consider these when composing your review:

1. BASIC REPORTING
2. EXPERIMENTAL DESIGN
3. VALIDITY OF THE FINDINGS
4. General comments
5. Confidential notes to the editor

 You can also annotate this PDF and upload it as part of your review

When ready [submit online](#).

## Editorial Criteria

Use these criteria points to structure your review. The full detailed editorial criteria is on your [guidance page](#).

### BASIC REPORTING

-  Clear, unambiguous, professional English language used throughout.
-  Intro & background to show context. Literature well referenced & relevant.
-  Structure conforms to [Peerj standards](#), discipline norm, or improved for clarity.
-  Figures are relevant, high quality, well labelled & described.
-  Raw data supplied (see [Peerj policy](#)).

### EXPERIMENTAL DESIGN

-  Original primary research within [Scope of the journal](#).
-  Research question well defined, relevant & meaningful. It is stated how the research fills an identified knowledge gap.
-  Rigorous investigation performed to a high technical & ethical standard.
-  Methods described with sufficient detail & information to replicate.

### VALIDITY OF THE FINDINGS

-  **Impact and novelty is not assessed.** Meaningful replication encouraged where rationale & benefit to literature is clearly stated.
-  All underlying data have been provided; they are robust, statistically sound, & controlled.
-  Conclusions are well stated, linked to original research question & limited to supporting results.



The best reviewers use these techniques

## Tip

## Example

**Support criticisms with evidence from the text or from other sources**

*Smith et al (J of Methodology, 2005, V3, pp 123) have shown that the analysis you use in Lines 241-250 is not the most appropriate for this situation. Please explain why you used this method.*

**Give specific suggestions on how to improve the manuscript**

*Your introduction needs more detail. I suggest that you improve the description at lines 57- 86 to provide more justification for your study (specifically, you should expand upon the knowledge gap being filled).*

**Comment on language and grammar issues**

*The English language should be improved to ensure that an international audience can clearly understand your text. Some examples where the language could be improved include lines 23, 77, 121, 128 – the current phrasing makes comprehension difficult. I suggest you have a colleague who is proficient in English and familiar with the subject matter review your manuscript, or contact a professional editing service.*

**Organize by importance of the issues, and number your points**

1. Your most important issue
2. The next most important item
3. ...
4. The least important points

**Please provide constructive criticism, and avoid personal opinions**

*I thank you for providing the raw data, however your supplemental files need more descriptive metadata identifiers to be useful to future readers. Although your results are compelling, the data analysis should be improved in the following ways: AA, BB, CC*

**Comment on strengths (as well as weaknesses) of the manuscript**

*I commend the authors for their extensive data set, compiled over many years of detailed fieldwork. In addition, the manuscript is clearly written in professional, unambiguous language. If there is a weakness, it is in the statistical analysis (as I have noted above) which should be improved upon before Acceptance.*

# Antimicrobial activity of *Ruta angustifolia* L. Pers against periodontal pathogen: *Porphyromonas gingivalis*

Husna Hazirah Bakri<sup>1</sup>, Syarifah Nur Syed Abdul Rahman<sup>Corresp., 1</sup>, Zarith safinaz Dol bakri<sup>1</sup>, elly munadziroh<sup>2</sup>, Wan Himratul Aznita Wan Harun<sup>Corresp. 1, 2</sup>

<sup>1</sup> Department of Oral & Craniofacial Sciences, Faculty of Dentistry, Universiti Malaya, Kuala Lumpur, Kuala Lumpur, Malaysia

<sup>2</sup> Department of Dental Material, Faculty of Dental Medicine, Airlangga University, Surabaya, East Java, Indonesia

Corresponding Authors: Syarifah Nur Syed Abdul Rahman, Wan Himratul Aznita Wan Harun  
Email address: synur@um.edu.my, aznita@um.edu.my

**Background.** *Porphyromonas gingivalis* is widely recognised as a periodontal pathogen. In recent years, there has been growing interest in the use of medicinal plant extracts as alternative treatments for periodontitis to combat the emergence of antibiotic-resistant bacteria. *Ruta angustifolia* L. Pers has been traditionally used to treat various ailments, including oral bacterial infections. However, the antimicrobial potential of *R. angustifolia* extracts against the periodontal pathogen *P. gingivalis* remains unexplored. Hence, the aim of this study was to investigate the antimicrobial activity of *R. angustifolia* extracts against *P. gingivalis*. **Methods.** The antimicrobial activity of *R. angustifolia* extracts ( crude methanol, hexane and chloroform fractionated extracts ) against *P. gingivalis* was evaluated using the well diffusion method. Additionally, the minimum inhibitory concentration (MIC) and minimum bactericidal concentration (MBC) were determined. Biofilm biomass assessment and live/dead cell viability assays were performed to analyse the effect of *R. angustifolia* extracts. Ultrastructural morphological changes in *P. gingivalis* cells were determined using field emission scanning electron microscopy (FE-SEM). **Results.** It was found that *P. gingivalis* was susceptible to *R. angustifolia* extracts, with the chloroform fractionated extract exhibiting the highest inhibition zones. The MIC and MBC of chloroform fractionated extract were determined to be 6.25 mg/mL which substantially reduced *P. gingivalis* biofilm biomass. Live/dead cell viability assays showed the highest percentage of dead *P. gingivalis* cells after 48 hours of incubation. FE-SEM confirmed that the chloroform fractionated extract effectively damaged the bacterial cell wall and altered the ultrastructural morphology of *P. gingivalis*. **Conclusion.** The results indicated that extracts of *R. angustifolia* has the potential to be used as an alternative treatment in addition to conventional periodontal therapies.

# Antimicrobial activity of *Ruta angustifolia* L. Pers against periodontal pathogen: *Porphyromonas gingivalis*

Husna Hazirah Bakri<sup>1</sup>, Syarifah Nur Syed Abdul Rahman<sup>1\*</sup>, Zarith Safinaz Dol Bakri<sup>1</sup>, Elly Munadziroh<sup>2</sup>, Wan Himratul Aznita Wan Harun<sup>1\*, 2</sup>

<sup>1</sup> Department of Oral & Craniofacial Sciences, Faculty of Dentistry, Universiti Malaya, Kuala Lumpur, Malaysia

<sup>2</sup> Department of Dental Material, Faculty of Dental Medicine, Airlangga University, Surabaya, East Java, Indonesia

\*Corresponding Author:

Wan Himratul Aznita Wan Harun<sup>1\*, 2</sup>

Email address: [aznita@um.edu.my](mailto:aznita@um.edu.my)

Syarifah Nur Syed Abdul Rahman<sup>1\*</sup>

Email address: [synur@um.edu.my](mailto:synur@um.edu.my)

## Abstract

**Background.** *Porphyromonas gingivalis* is widely recognised as a periodontal pathogen. In recent years, there has been growing interest in the use of medicinal plant extracts as alternative treatments for periodontitis to combat the emergence of antibiotic-resistant bacteria. *Ruta angustifolia* L. Pers has been traditionally used to treat various ailments, including oral bacterial infections. However, the antimicrobial potential of *R. angustifolia* extracts against the periodontal pathogen *P. gingivalis* remains unexplored. Hence, the aim of this study was to investigate the antimicrobial activity of *R. angustifolia* extracts against *P. gingivalis*.

**Methods.** The antimicrobial activity of *R. angustifolia* extracts (crude methanol, hexane and chloroform fractionated extracts) against *P. gingivalis* was evaluated using the well diffusion method. Additionally, the minimum inhibitory concentration (MIC) and minimum bactericidal concentration (MBC) were determined. Biofilm biomass assessment and live/dead cell viability assays were performed to analyse the effect of *R. angustifolia* extracts. Ultrastructural morphological changes in *P. gingivalis* cells were determined using field emission scanning electron microscopy (FE-SEM).

**Results.** It was found that *P. gingivalis* was susceptible to *R. angustifolia* extracts, with the chloroform fractionated extract exhibiting the highest inhibition zones. The MIC and MBC of chloroform fractionated extract were determined to be 6.25 mg/mL which substantially reduced *P. gingivalis* biofilm biomass. Live/dead cell viability assays showed the highest percentage of dead *P. gingivalis* cells after 48 hours of incubation. FE-SEM confirmed that the chloroform

fractionated extract effectively damaged the bacterial cell wall and altered the ultrastructural morphology of *P. gingivalis*.

**Conclusion.** The results indicated that extracts of *R. angustifolia* has the potential to be used as an alternative treatment in addition to conventional periodontal therapies.

## Introduction

According to the World Health Organisation (WHO), nearly 3.5 billion people worldwide are affected by oral diseases, with three out of four affected individuals living in middle-income countries. Globally, severe periodontal disease is estimated to affect around 19% of the global adult population, representing more than 1 billion cases (Santhosh et al., 2023). The global oral care market has witnessed a significant rise, primarily due to the increasing prevalence of oral health issues such as periodontal diseases, dental caries, plaque-induced gingivitis, and oral cancer (Amil et al., 2024). Specific pathogenic bacteria, such as *Porphyromonas gingivalis*, are considered predominant causes of periodontitis due to their ability to disrupt the homeostatic balance of the oral microbiota and dysregulate host immune responses. The consequences include gum inflammation, breakdown of periodontal tissues, bone loss, and the formation of periodontal pockets (Howard et al., 2021).

The growing awareness of oral hygiene has prompted individuals to invest in oral care products for themselves and their families. As a result, the oral care market has experienced significant revenue growth, with an estimated cumulative annual growth rate of 8.1%. Among the diverse range of products available, mouthwashes have generated the highest revenue, closely followed by toothpaste (Siripipatthanakul & Sixl-Daniell, 2021). Concerns regarding potential chemical toxicity and adverse effects associated with prolonged exposure to chemical ingredients in oral care products have fuelled the demand for natural alternatives, particularly herbs and spices known for their antibacterial and chemopreventive properties (Böhle et al., 2022). Furthermore, the rising concern of about antimicrobial resistance necessitates the development of alternative, targeted therapies for oral health, particularly periodontal diseases. Thus, finding safe and effective therapeutic agents for oral health is deemed necessary.

Historically, plants and their extracts have been utilised for therapeutic purposes across various cultures, with traditional medicine practices highlighting their benefits. The appeal of herbal extracts lies in their perceived safety, cost-effectiveness, and efficacy, as well as their role as alternatives or complements to conventional treatments. Herbal extracts have been employed for centuries to address a variety of health conditions, including oral health issues such as gingivitis, periodontitis, and dental caries. The recent popularity of herbal medicines and products is evident among dental patients, professionals and a wider range of consumers and healthcare practitioners, due to their potential benefits for oral health and alveolar bone protection. One study demonstrated that the systemic administration of curcumin, a compound

derived from turmeric, significantly reduced alveolar bone loss in a ligature-induced rat model, suggesting its potential as an adjunct for initial periodontal therapy (Akpınar et al., 2017). Another study revealed that extracts from *Cinnamomum zeylanicum* and *Salvadora persica* exhibit antibacterial activity against various periodontal pathobionts such as *P. gingivalis*, *Treponema denticola*, *Tannerella forsythia*, and *Actinobacillus actinomycetemcomitans* (Saqib et al., 2019). The Rutaceae family, particularly the genus *Ruta*, such as *Ruta angustifolia* L. Pers., commonly referred to as “garuda”, has been traditionally used in Indonesia for the treatment of jaundice and liver disorders. Additionally, it is cultivated in Java and Vietnam, where its decoction is commonly applied to relieve cramps, bloating, and fever (Bailly, 2023).

Previous studies have reported that various extracts of *R. angustifolia* exhibit a wide range of biological activities, including strong antiviral effects (Wahyuni et al., 2014) and significant cytotoxic activity against several cancer types, such as lung cancer (A549), colon cancer (HCT-116 and HT29), and cervical cancer (CaSki) (Richardson et al., 2016; Wu et al., 2003). Additionally, *R. angustifolia* has demonstrated antibacterial properties, attributed to naturally occurring compounds like flavonoids, alkaloids, and coumarins (Bailly, 2023). These compounds have shown various medicinal effects, particularly against microbial infections (Nahar et al., 2021). For instance, chalepin, isolated from the leaves of *R. angustifolia*, exhibited weak antiparasitic activity against *Trypanosoma cruzi*, the pathogen responsible for Chagas disease (Pavão et al., 2002). Furthermore, essential oil extracted from *R. angustifolia* has shown significant antifungal activity against *Fusarium oxysporum* and *Botrytis cinerea*. However, there is a lack of comprehensive research on the antibacterial effects of *R. angustifolia* extracts against oral bacteria associated with periodontal diseases. Therefore, this study aims to investigate the antimicrobial efficacy of *R. angustifolia* extracts against *P. gingivalis*, a prominent periodontal pathogen, by assessing biofilm biomass, cell viability, and morphological characteristics.

## Materials & Methods

### Preparation of plant extracts

The plant extraction method was performed based on the method described by Suhaimi et al., (2017), with slight modifications. A total of 100.00 g of powdered leaves of *R. angustifolia* was soaked three times in methanol (MeOH), yielding a greenish crude methanol extract (28.80 g, 28.87%). Hexane was used to extract the crude MeOH (30.00 g), resulting in a hexane insoluble extract (28.85 g, 96.17 %) and a hexane fractionated extract (1.15 g, 3.83 %). The hexane insoluble extract underwent further extraction with chloroform, producing an aqueous residue and a chloroform fractionated extract (9.05 g, 30.2%). The resulting crude MeOH and fractionated extracts (hexane and chloroform) were evaporated using a rotary evaporator (BÜCHI, Switzerland) at 40°C under reduced pressure to remove the solvents completely.

(Seidel, 2012; Suhaimi et al., 2017). Prior to assessing antimicrobial activity, the extracts of *R. angustifolia* were reconstituted in 1% dimethyl sulfoxide (DMSO).

## Bacterial strains and culture conditions

*P. gingivalis* ATCC 33277 was grown from stock culture in BHI-T broth (Tryptone Soya Broth & Brain Heart Infusion broth), supplemented with hemin (5.00 mg/mL), menadione (5.00 mg/mL) & cysteine (0.50 g/mL), for 48 to 72 hours at 37°C under anaerobic conditions. The oral bacterial strain was harvested from the broth by centrifugation (10,000 X g, 5 min, 4°C) and washed three times with phosphate-buffered saline (PBS) prior to the experiments. The optical density at 600 nm (OD<sub>600</sub>) of the bacterial suspensions was adjusted to 0.1 using a UV-VIS spectrophotometer (equivalent to 10<sup>8</sup> colony-forming units per millilitre, CFU/mL) for *P. gingivalis* in all experiments. Fresh cultures of *P. gingivalis* were gram stained for validation and used in all relevant experiments (Kobatake et al., 2019; Paranagama et al., 2020).

## Well diffusion assay

Antimicrobial activity was determined using the well diffusion method (Michaylova et al., 2021). A volume of 100.00 µL of a 10<sup>8</sup> CFU/mL suspension of *P. gingivalis* suspension (OD<sub>600</sub> adjusted to 0.1) was evenly spread over the surface of the BHI-T agar using a sterile cotton swab (Zou et al., 2022).

Using a sterile cork borer, wells measuring 6.00 mm in diameter were punched in the agar and filled with 30.00 µL of crude MeOH and fractionated extracts of *R. angustifolia* at concentration of 50.00 mg/mL & 100.00 mg/mL, respectively. The plates were incubated for 24 to 72 hours at 37°C, based on optimised growth observations (Michaylova et al., 2021). A 0.12% chlorhexidine gluconate (CHX) were used as the positive control, while 1% DMSO served as the negative control. The final concentration of DMSO in the test wells did not exceed 1% (v/v). The inhibition zone diameter was measured using a 0-150 mm METR-ISO Electronic Digital Caliper 6", manufactured by J.P. Selecta company in Spain. All data presented are the mean ± standard deviation (SD) of triplicates obtained from three independent experiments.

## Determination of the minimum inhibitory concentration (MIC) & minimum bactericidal concentration (MBC)

The two-fold microdilution broth method was employed to obtain the MIC value (Nordin et al., 2013). In this test, eight concentrations were tested, with triplicate measurement taken for each concentration. The concentrations tested were 50.00, 25.00, 12.50, 6.25, 3.13, 1.56, 0.78 and 0.39 mg/mL. The bacterial cells of *P. gingivalis* were treated with the chloroform fractionated extract of *R. angustifolia* using two-fold serial dilutions. Briefly, 100.00 µL of BHI-T broth was



dispensed into the wells of a 96-microtiter plate, labelled from Well 1 (W1) to Well 8 (W8). Following this, 50.00 mg/mL of chloroform fractionated extract of *R. angustifolia* was added into W1, and two-fold serial dilution were performed for the remaining wells. Hence, the final concentrations of the extract ranged from 50.00 to 0.39 mg/mL.

A 0.12% CHX was used as the positive control. The chloroform fractionated extract of *R. angustifolia* at different concentrations, without the addition of bacterial culture served as the blank. The negative control consisted of wells containing solely a mixture of BHI-T broth and *P. gingivalis* suspension with 1% DMSO. Then, 20.00 µL of *P. gingivalis* suspension ( $10^8$  CFU/mL) was added to W1 through W8. After overnight incubation at 37°C, bacterial growth (turbidity) was assessed visually and confirmed using a spectrophotometer at an OD of 600 nm. The methods for conducting the MIC and MBC tests were according to the Clinical and Laboratory Standard Institute guidelines (CLSI, 2020). The MIC was defined as the lowest concentration of the extract in a well without turbidity (Madhloom et al., 2022). All data presented are the mean  $\pm$  standard deviation (SD) of triplicates obtained from three independent experiments.

For the determination of MBC, 50.00 µL was taken from the MIC assay wells and spread onto fresh BHI-T agar plates. The plates were incubated under anaerobic conditions at 37°C for 24 to 72 hours, or until visible growth appeared (Fadare et al., 2022). The MBC was then defined as the minimum concentration of the chloroform fractionated extract from *R. angustifolia* at which no visible microbial growth was observed on the agar plate. To ensure accuracy and reproducibility, all antimicrobial assessments of the extracts were conducted in triplicate at three separate times.

### Crystal violet biofilm assay

The crystal violet staining method was used to analyse the biomass of biofilms using a broth microdilution method in a 96-well microtiter plate, with some modifications (Luan et al., 2022). One hundred microliters of  $10^8$  CFU/mL *P. gingivalis* suspension and 100.00 µL of two-fold serial dilutions of the chloroform fractionated extract of *R. angustifolia* were added to each well in the microtiter plate. The plates were incubated for 48 hours under anaerobic condition at 37°C. The final concentrations of the extract were 12.50, 6.25, 3.13 and 1.57 mg/mL. The wells containing solely the BHI-T broth and *P. gingivalis* suspension mixture served as the negative control. All data presented are the mean  $\pm$  standard deviation (SD) of triplicates obtained from three independent experiments.

The supernatant was removed, and the wells were washed three times with PBS. Subsequently, the adhering biofilms were stained with 0.04% (w/v) crystal violet for 15 minutes after incubation with methanol. For detection, 95% ethanol was added after washing with

deionised water. The OD values were measured at a wavelength of 550 nm (Sharma & Saharan, 2016). The percentages of biofilm inhibition against *P. gingivalis* at different concentrations of the chloroform fractionated extract of *R. angustifolia* were calculated as:

$$\% \text{ biofilm inhibition} = [1 - (A_C / A_0)] \times 100$$

where  $A_C$  represents the absorbance of the well with treated *P. gingivalis* (with extract) and  $A_0$  the absorbance of the control well, untreated *P. gingivalis* (without extract).

### Live/dead cell viability assay using fluorescence microscopy

Fresh cultures of *P. gingivalis*, incubated for 48 hours at 37°C, were adjusted to an OD<sub>600</sub> of 0.1 (equivalent to 10<sup>8</sup> CFU/mL) by diluting them in supplemented BHI-T broth using a UV-VIS spectrophotometer. The *P. gingivalis* suspension and chloroform fractionated extract of *R. angustifolia* were then mixed at a ratio of 1:1 (v/v) (Widyarman et al., 2019). *P. gingivalis* biofilms were grown as described by Luan et al., (2022) with slight modifications.

Two sets of experiments were conducted, incubating the biofilms at 37°C for 24 and 48 hours, respectively. Following incubation under anaerobic conditions, 3.00 µL of the LIVE/DEAD® BacLight™ Bacterial Viability Kit (L7012, Thermo Fisher Scientific, Waltham, MA, USA) dye mixture was added per mL of bacterial suspension. The stained samples were then incubated at room temperature in the dark for 15 minutes. A 5.00 µL aliquot of the stained suspension was placed onto a microscope slide. The morphological changes of untreated and treated *P. gingivalis* biofilms with the chloroform fractionated extract of *R. angustifolia* were observed and recorded using a fluorescence microscope (Nikon Eclipse Ti-E Inverted Microscope).

### Field Emission Scanning Electron Microscopy (FE-SEM) to examine cell morphology

Briefly, *P. gingivalis* cultures were incubated for 48 hours at 37°C and adjusted to an OD<sub>600</sub> of 0.1 to achieve cell concentration of 10<sup>8</sup> CFU/mL. The *P. gingivalis* suspension was then mixed with the chloroform fractionated extract of *R. angustifolia* (6.25 mg/mL) at a ratio of 1:1 (v/v) (Luan et al., 2022; Widyarman et al., 2019).

After 24-hour incubation under anaerobic condition at 37°C, the bacterial suspensions were fixed in 4% glutaraldehyde for over 4 hours (Arvizu & Murray, 2021). The samples were then washed twice in buffer for 10 mins each, followed by fixation in 1% osmium tetroxide for 1 hour. After two 10-minute washes in double-distilled water (DDH<sub>2</sub>O), the samples were subjected to a series of dehydration steps in ascending alcohol concentrations from 30, 50, 70, 80, 90, 95 and 100% (twice), with 15 minutes each step. The samples were further dehydrated with three different ratios (3:1, 1:1, and 1:3) of ethanol-acetone mixtures for 15 mins each step,

before being fixed in pure acetone for 20 mins (twice). Finally, the samples were critical point dried (CPD) for 1 to 3 hours, mounted on stubs with carbon adhesive, sputter-coated with gold, and viewed using a scanning electron microscope (FE-SEM).

## Statistical analysis

All data are presented as the mean  $\pm$  standard deviation (SD) of triplicates obtained from three independent experiments. Statistical analyses were conducted using SPSS software (IBM Corp., version 27.0, Armonk, NY, USA). The normality of the data for biofilm biomass inhibition of *P. gingivalis* was assessed using the Shapiro–Wilk test, which indicated that the data followed a normal distribution ( $p > 0.05$ ). Data evaluation between groups was analysed using one-way ANOVA, and post-hoc Tukey’s HSD test was applied for multiple comparisons. The results of inhibitory activities for *R. angustifolia* extracts against *P. gingivalis* were subjected to the Shapiro-Wilk test to assess normality ( $p < 0.05$ ), which indicated that the data distribution was not normal. Statistical analysis between groups was performed by applying the non-parametric Kruskal-Wallis test, followed by Dunn’s post-hoc test. The significance level was set at 0.05 for all analyses, with p-values  $< 0.05$  considered statistically significant.

## Results

### Inhibitory effects of *R. angustifolia* extracts against *P. gingivalis*

Based on the well diffusion test presented in **Figure 1**, all *R. angustifolia* extracts effectively suppressed the growth of *P. gingivalis* in a concentration-dependent manner. Inhibition zone measurements indicated that the highest antimicrobial activity occurred at a concentration of 100.00 mg/mL for the chloroform fractionated extract of *R. angustifolia*, as shown in **Table 1**. Among the three extracts tested, the chloroform fractionated extract exhibited the largest inhibition zone, followed by the crude methanol extract ( $9.30 \pm 0.26$  mm) and the hexane fractionated extract ( $8.19 \pm 0.27$  mm). These results demonstrate that the chloroform fractionated extract of *R. angustifolia* most effectively inhibited the growth of *P. gingivalis*, while the negative control (1% DMSO) showed no inhibition.

In comparison, the inhibition zone for 0.12% CHX was  $13.34 \pm 0.73$  mm, while the chloroform fractionated extract at 100.00 mg/mL demonstrated an inhibition zone of  $11.65 \pm 0.62$  mm. Thus, these findings suggest that its efficacy is comparable to that of 0.12% CHX, a widely used antibacterial agent for oral diseases. Although CHX exhibited a slightly larger zone, the difference is not substantial, indicating that *R. angustifolia* may serve as an effective alternative or adjunct in managing oral infections.

## Determination of MIC and MBC

Given that *P. gingivalis* is a significant pathogen involved in the development and pathophysiology of periodontal infections, the primary aim of this study was to further assess the antimicrobial activity of the extracts against this oral bacterium. Based on the initial antimicrobial screening, the chloroform fractionated extract of *R. angustifolia* demonstrated the most potent inhibitory effect against *P. gingivalis*. Therefore, this extract was selected for all subsequent analyses in the study.

The MIC and MBC values of the chloroform fractionated extract of *R. angustifolia* (**Table 2**) were determined using serial microdilution, with concentrations ranging from 0.39 mg/mL to 50.00 mg/mL. The antimicrobial activity of the extract was compared against untreated *P. gingivalis* bacterial cells in 1% DMSO (which served as the negative control). The MIC was found to be at 6.25 mg/mL, as this concentration resulted in a significant reduction in *P. gingivalis* growth compared to the untreated sample. The negative control exhibited no inhibition, confirming its suitability as a baseline comparison. Further analysis of the MBC test showed bacterial growth at 3.13 mg/mL, indicating that MBC was not detected at this concentration. Therefore, the MBC of the chloroform fractionated extract of *R. angustifolia* against *P. gingivalis* was determined to be 6.25 mg/mL, as no bacterial growth was observed at this level.

## Effect of chloroform fractionated extract of *R. angustifolia* against *P. gingivalis* biofilm biomass

As shown in **Figure 2**, the overall biomass of *P. gingivalis* biofilms treated with various concentrations of chloroform fractionated extract of *R. angustifolia* was performed using crystal violet staining. The extract demonstrated notable antibiofilm effects by suppressing the formation of biofilm in *P. gingivalis*. A clear, concentration-dependent decrease in absorbance was observed, indicating the efficacy of the extract in reducing the biofilm biomass. Notably, the biofilm biomass of *P. gingivalis* was remarkably reduced by up to 91% at the highest concentration of chloroform fractionated extract of *R. angustifolia*. This result was consistent with the MIC determined in **Table 2**, confirming that the chloroform fractionated extract of *R. angustifolia* effectively disrupted the formation of *P. gingivalis* biofilm compared to the control.

## Live/dead cell viability assay using fluorescence microscope

LIVE/DEAD® BacLight™ viability staining was conducted to evaluate the impact of the chloroform fractionated extract of *R. angustifolia* on *P. gingivalis* biofilm (**Figure 3**). In the absence of the extract, the untreated *P. gingivalis* biofilm displayed a dense and highly uniform structure after 24 hours of incubation. In contrast, increasing concentrations of the extract led to

marked sparsity and dispersion of the biofilm, indicating a significant reduction in viable cells. As a result, biofilm formation was substantially inhibited, with a notable decrease in bacterial presence at higher concentrations of the chloroform fractionated extract of *R. angustifolia*.

Similar results were observed at 48 hours, where the untreated *P. gingivalis* biofilm remained dense and uniform, while higher extract concentrations led to increased biofilm disruption and cell death. Significantly, an abundance of lysed cells and cellular debris was visible at the higher concentration of 6.25 mg/mL. These findings demonstrate that the chloroform fractionated extract of *R. angustifolia* is capable of disrupting *P. gingivalis* biofilm formation and viability in a concentration-dependent manner.

### **The effects of the *R. angustifolia* extract on *P. gingivalis* cell morphology via FE-SEM**

FE-SEM imaging (**Figure 4**) was conducted to examine morphological alterations in *P. gingivalis* exposed to the chloroform fractionated extract of *R. angustifolia*. Untreated *P. gingivalis* exhibited a characteristic of smooth cell surface that appeared as tiny grape-like clusters with intact cell membranes. In contrast, the *P. gingivalis* biofilm treated with 6.25 mg/mL of the chloroform fractionated extract of *R. angustifolia* displayed significant changes in cellular morphology. The treated cells displayed an unravelled, crater-like appearance of the cell walls, as along with swollen, elongated, and lysed forms that aggregated into large clusters of cellular debris. Therefore, the FE-SEM analysis conclusively demonstrated that the chloroform fractionated extract of *R. angustifolia* completely inhibited *P. gingivalis* cells. At this MIC concentration, the integrity of the *P. gingivalis* bacterial cell membrane was compromised, resulting in extensive cell lysis and disruption of cellular morphology.

## **Discussion**

The present study reveals that the crude methanol extract, hexane, and chloroform fractionated extracts of *R. angustifolia* exhibit inhibitory activity against *P. gingivalis*. Among these, the chloroform fractionated extract of *R. angustifolia* was found to be the most effective in inhibiting the growth of *P. gingivalis*, leading to its selection for further investigation. This report is the first to document the antimicrobial susceptibility of *R. angustifolia* extracts against *P. gingivalis*. The antimicrobial effect of the extracts was dose-dependent, with higher concentrations of the chloroform fractionated extract of *R. angustifolia* displaying greater bactericidal activity. A previous report identified twelve components isolated from the chloroform fractionated extract of *R. angustifolia* (Richardson et al., 2017). These compounds were graveoline, kokusaginine, bergapten, moskachan B, moskachan D, chalepsin, rutamarin, arborinine, chalepin and neophytadiene. Most of these compounds belong to the classes of alkaloids, furanocoumarins, and dihydrofuranocoumarins, which possess significant antiviral, anti-inflammatory, antioxidant, and antiproliferative properties. Specifically, rutamarin and chalepin are categorized as

furanocoumarins. Current research indicates that coumarin derivatives, recognized for their antioxidant, antifungal, and antibacterial properties, hold promise as therapeutic agents across various medical applications. Structural modifications, such as the incorporation of nitrogen atoms and azomethane groups, are thought to enhance antibacterial activity by increasing membrane permeability, thereby contributing to potent bactericidal effects. These compounds likely benefit from increased lipophilicity, which enhances their ability to penetrate bacterial membranes. This lipophilic characteristic may also interfere with bacterial metabolic processes by inactivating essential enzymes and denaturing cellular proteins, ultimately leading to bacterial cell death (Betti et al., 2024). Additionally, recent studies have revealed that coumarin derivatives exhibit significant cytotoxicity towards bacterial DNA, potentially due to their modification of bacterial membrane components, including lipopolysaccharides (LPS). This modification may activate enzymes such as topoisomerases and helicases, destabilizing the DNA structure and obstructing replication, which culminates in bacterial cell apoptosis (Koszelewski et al., 2023).

Furthermore, graveoline, the most abundant compound in *R. angustifolia* (Richardson et al., 2016), exhibits antibacterial, anticancer, antifungal, and spasmolytic effects. Graveoline is a quinolone alkaloid that interacts with bacterial cell membranes, affecting their function and causing cell lysis. Alkaloids can suppress bacterial growth by interfering with nucleic acid, protein synthesis, and metabolism. Additionally, these compounds may disrupt essential metabolic processes and energy sources for various enzymatic reactions in bacteria, such as adenosine triphosphate (ATP), thereby inhibiting growth. Alkaloids can also promote the generation of reactive oxygen species (ROS), which damage bacterial cells (Yan et al., 2021). Hence, *R. angustifolia* harbours numerous bioactive compounds, showcasing significant potential for therapeutic applications in various diseases, including periodontal diseases.

The periodontal pathogen *P. gingivalis* is known as one of the late colonisers of the oral cavity, which possess a range of virulent characteristics and robust biofilm-forming capabilities that facilitate persistent infection at the gingival site (Xu et al., 2020). These late colonisers consist of slower-growing, obligate anaerobes, and Gram-negative species, such as *P. gingivalis*, along with other members of the red complex, *T. forsythia* and *T. denticola*, which are typically found at elevated levels in diseased conditions (Siddiqui et al., 2022).

Gram-positive and Gram-negative bacteria are primarily distinguished by the thickness of their cell walls and the presence of an outer membrane, which is unique to Gram-negative bacteria. The thickness of the cell walls of Gram-positive and Gram-negative bacteria ranges from 20 to 80 nm and 1.5 to 10 nm, respectively (Bismelah et al., 2022). Despite having thicker cell walls, Gram-positive bacteria can absorb foreign chemicals, such as bioactive compounds, making them more susceptible to elimination. In contrast, the effectiveness of some antibiotic treatments against Gram-negative bacteria is impaired by the presence of an outer membrane

composed of lipopolysaccharides and phospholipids (Fivenson et al., 2023). This additional membrane layer functions as an effective permeable barrier, preventing antibiotic molecules from entering the bacterial cell.

The presence of virulence factors in various periodontopathic bacteria poses significant challenges in treating infections. For example, *P. gingivalis* and *T. forsythia* are characterised by high proteolytic and peptidolytic activities, which can hydrolyse antibiotics, leading to the inactivation of their antimicrobial properties (Bismelah et al., 2022). These factors may explain why higher concentrations of plant extracts are required to effectively inhibit *P. gingivalis* in susceptibility tests. Therefore, the extract of *R. angustifolia* could serve as an adjunctive treatment for periodontitis, as it effectively targets the growth of late colonisers, thereby helping to prevent the progression of periodontal infections.

Correspondingly, the chloroform fractionated extract of *R. angustifolia* showed promising results for MIC and MBC, completely inhibiting *P. gingivalis* at a concentration of 6.25 mg/mL. Furthermore, the biofilm assay provided evidence that the chloroform fractionated extract of *R. angustifolia* exhibits inhibitory effects on the formation of *P. gingivalis* biofilms. This significant discovery suggests that the extract has potential as a viable method for mitigating the metabolic activity of *P. gingivalis* within biofilms. Biofilms are complex three-dimensional structures composed of microorganisms bound together by an extracellular matrix (Mitchell, 2011). Once microorganisms form biofilms, they become increasingly challenging to control and eradicate. According to Raut & Karuppayil (2016), biofilms are associated with over 80% of microbial illnesses in humans. Since periodontal disease involves the formation of biofilms on gingival tissues, disrupting the biofilm formed by *P. gingivalis* is critically important (Bustamante et al., 2020). The ability of the chloroform fractionated extract of *R. angustifolia* to interfere with biofilm formation at varying concentrations is crucial for preventing *P. gingivalis* from recolonising the periodontal pocket, as this treatment eliminates the protective layer of the subgingival biofilm (Bostanci & Belibasakis, 2012).

Moreover, the outcomes of our investigation closely correlate with a recent study that have demonstrated the ability of *R. angustifolia* extracts in diminishing the formation of biofilm by *S. mutans* at concentrations of 20%, 50%, and 100% (Noer, 2021). In general, the antimicrobial activities of plants are attributed to their secondary metabolites. Previous studies has confirmed that *R. angustifolia* extract contains qualitative steroids, flavonoids, tannins, and quinones, suggesting its potential as an antibiofilm agent (Lu et al., 2019). Compounds such as flavonoids in *R. angustifolia* extract have been extensively studied for their bioactivity in inhibiting both Gram-positive and Gram-negative bacteria through the inactivation of extracellular proteins (Bismelah et al., 2022). Recent studies indicate that the antibacterial activities of plant flavonoids against Gram-negative bacteria are related to their lipophilicity. The cell envelope of Gram-negative bacteria contains an inner lipophilic membrane and an outer hydrophilic membrane,



while Gram-positive bacteria possess only a cell membrane. Consequently, it is suggested that plant flavonoids employ multiple mechanisms against Gram-negative bacteria, with the cell membrane serving as a critical site of action, in contrast to Gram-positive bacteria, which are primarily affected at the cell membrane. Furthermore, DNA gyrase is another important target of plant flavonoids against Gram-negative bacteria. Thus, plant flavonoids can damage the cell membrane and inhibit DNA gyrase, representing a dual mechanism of action against Gram-negative bacteria (Yan et al., 2024).

Live/dead cell viability assays demonstrated that the chloroform fractionated extract of *R. angustifolia*, at both sub-MIC and MIC levels, induced a significant reduction in the viability of *P. gingivalis* compared to the control group. The biofilm formation of *P. gingivalis* was markedly inhibited by the chloroform fractionated extract of *R. angustifolia*, which led to a greater dispersion of biofilm structures and an increase in cell death, particularly at a concentration of 6.25 mg/mL after 48 hours of incubation. Moreover, non-viable/dead (red fluorescence) cells were evidently in greater proportion than viable/live (green fluorescence) cells. These findings suggest that the chloroform fractionated extract of *R. angustifolia* exhibits biocidal effects on the *P. gingivalis* biofilm, as evidenced by the visualization of dead microorganisms. Similar results were reported from a previous study by He et al., (2020), which investigated the impact of quercetin on *P. gingivalis* aggregation and biofilm formation.

FE-SEM images revealed morphological changes in the cell structure of *P. gingivalis* after treated with the chloroform fractionated extract of *R. angustifolia*. The results indicated that the extract caused damage to the cell membrane, leading to subsequent cell death. Active bioactive compounds, such as graveolinine, flavonoid, chalepin, and rutamarin, have been identified in *R. angustifolia* extracts and are known to contribute to alterations in cell morphology in cancer cells (Kamal et al., 2021; Richardson et al., 2017). Rutamarin and chalepin were reported to exhibit similar mechanisms, resulting in cell shrinkage, the formation of apoptotic bodies, and rounding of cancer cells (Richardson et al., 2016; Suhaimi et al., 2017). Furthermore, flavonoids have been shown to damage the cytoplasmic membrane, inhibit nucleic acid production, and disrupt energy metabolism of bacterial cells (Tsuchiya & Inuma, 2000). These factors may collectively contribute to the cell death of *P. gingivalis*. In contrast, untreated control cells grew exponentially while maintaining an intact structure. He et al., (2020) observed similar effects, where quercetin-treated *P. gingivalis* exhibited cell elongation from its coccobacillus shape, followed by cell shrinkage and eventual lysis due to deformed cell walls. Notably, the mechanism of action of the extract resembled that of chlorhexidine, in which low concentrations of chlorhexidine disrupt the integrity of the cell wall, ultimately resulting in damage. Consequently, chlorhexidine penetrates the cell, inducing leakage of the cytoplasm that leads to cell death (He et al., 2020).



The initial findings on the antimicrobial activity of the *R. angustifolia* extracts against the monospecies bacterium *P. gingivalis* are promising, indicating potential effectiveness in inhibiting this essential periodontal pathogen. However, since *P. gingivalis* is only one species within the complex oral microbiome, these results may not fully reflect the impact of the extracts on other oral microorganisms that contribute to oral health and disease. Therefore, to enhance the robustness and generalizability of the findings, future studies should encompass a broader range of oral bacterial species, such as *T. denticola*, *T. forsythia*, *S. mutans*, and *Fusobacterium nucleatum*. This approach will provide a better understanding of the antimicrobial potential across the diverse microbial community in the oral cavity and enhance the relevance of the findings.

In this present study, 0.12% Chlorhexidine (CHX) was used as the positive control. Chlorhexidine (CHX) is a widely used antibacterial agent in dentistry, known for its broad-spectrum antibacterial properties against various pathogens, including periodontal bacteria such as *P. gingivalis*. The concentration of 0.12% CHX is frequently incorporated into mouthwashes and other oral care products, establishing it as a standard concentration commonly used in numerous studies as a positive control in antibacterial tests. Utilizing 0.12% CHX as a positive control provides researchers with a reliable benchmark to compare the antibacterial effectiveness of natural products or extracts against a well-established and clinically validated antibacterial agent. This approach ensures that the findings are relevant to clinical practice.

Furthermore, while the *in vitro* results are encouraging, it is essential to thoroughly evaluate the biocompatibility of the antimicrobial agents to ensure their safety for human use. This evaluation should include testing for potential cytotoxicity and assessing the effects on normal human oral cells such as gingival and periodontal cells. Additionally, clinical efficacy should be explored through further studies utilizing human cellular models to replicate real-life conditions. Moreover, in addition to *in vitro* studies, *in vivo* research using animal models, such as rodents, is crucial for evaluating the effectiveness of the extracts in a living organism. This evaluation should consider factors such as bioavailability, immune response, and long-term safety. Ultimately, these additional studies will offer a more comprehensive understanding of the therapeutic potential of the extracts while ensuring their safety and effectiveness for future application in human oral healthcare.

## Conclusions

In conclusion, this *in vitro* study provides new evidence that *R. angustifolia* exhibits antimicrobial activity against periodontal pathogens, notably *P. gingivalis*. These findings suggest that *R. angustifolia* has the potential to be used as an alternative or adjunct treatment for periodontal disease and warrants further investigation.

# Acknowledgements

The authors would like to express their appreciation to Professor Dr. Ian Charles Paterson, a native English speaker, for his careful proofreading and feedback on the language and grammar of this manuscript. They also extend their gratitude to Mr. Anuar and the laboratory staff of Balai Ungku Aziz Research Laboratory (BUARL), Faculty of Dentistry, Universiti Malaya, for their assistance during the course of this study.

# References

- Akpınar, A., Calisir, M., Cansın Karakan, N., Lektemur Alpan, A., Goze, F., & Poyraz, O. (2017). Effects of curcumin on alveolar bone loss in experimental periodontitis in rats: A morphometric and histopathologic study. *Int J Vitam Nutr Res*, 87(5-6), 262-270. <https://doi.org/10.1024/0300-9831/a000243>
- Amil, M. A., Rahman, S., Yap, L. F., Razak, F. A., Bakri, M. M., Salem, L. S. O., Lim, X. Y., Reduan, N. A., & Sim, K. S. (2024). Antimicrobial and antiproliferative effects of zingiberaceae oils: A natural solution for oral health. *Chem Biodivers*, 21(3), e202301836. <https://doi.org/10.1002/cbdv.202301836>
- Arvizu, I. S., & Murray, S. R. (2021). A simple, quantitative assay for the detection of viable but non-culturable (VBNC) bacteria. *STAR Protoc*, 2(3), 100738. <https://doi.org/10.1016/j.xpro.2021.100738>
- Bailly, C. (2023). *Ruta angustifolia* Pers. (narrow-leaved fringed rue): Pharmacological properties and phytochemical profile. *Plants*, 12(4), 827. <https://www.mdpi.com/2223-7747/12/4/827>
- Betti, N., Shia, J. S., Kadhum, A. A. H., & Al-Amiery, A. A. (2024). Harnessing coumarin chemistry: Antibacterial, antifungal, and antioxidant profiling of novel coumarin derivatives. *Journal of Medicinal and Pharmaceutical Chemistry Research*, 6(10), 1530-1546. <https://doi.org/10.48309/jmpcr.2024.447556.1138>
- Bismelah, N. A., Ahmad, R., Mohamed Kassim, Z. H., Ismail, N. H., & Rasol, N. E. (2022). The antibacterial effect of *Plectranthus scutellarioides* (L.) R.Br. leaves extract against bacteria associated with peri-implantitis. *Journal of Traditional and Complementary Medicine*, 12(6), 556-566. <https://doi.org/https://doi.org/10.1016/j.jtcme.2022.07.002>
- Böhle, S., Röhner, E., Zippelius, T., Jacob, B., Matziolis, G., & Rohe, S. (2022). Cytotoxic effect of sodium hypochlorite (Lavanox 0.08%) and chlorhexidine gluconate (Irrisept 0.05%) on human osteoblasts. *Eur J Orthop Surg Traumatol*, 32(1), 81-89. <https://doi.org/10.1007/s00590-021-02907-3>
- Bostanci, N., & Belibasakis, G. N. (2012). *Porphyromonas gingivalis*: An invasive and evasive opportunistic oral pathogen. *FEMS microbiology letters*, 333(1), 1-9.
- Bustamante, M., Oomah, B. D., Mosi-Roa, Y., Rubilar, M., & Burgos-Díaz, C. (2020). Probiotics as an adjunct therapy for the treatment of halitosis, dental caries and periodontitis. *Probiotics Antimicrob Proteins*, 12(2), 325-334. <https://doi.org/10.1007/s12602-019-9521-4>

- 560 Clinical and Laboratory Standard Institute (CLSI). (2020). Performance standards for anti-  
561 microbial susceptibility testing. 30th Edition, M100.  
562 [https://clsi.org/media/3481/m100ed30\\_sample.pdf](https://clsi.org/media/3481/m100ed30_sample.pdf)
- 563 Fadare, O. S., Singh, V., Enabulele, O. I., Shittu, O. H., & Pradhan, D. (2022). *In vitro*  
564 evaluation of the synbiotic effect of probiotic *Lactobacillus* strains and garlic extract  
565 against *Salmonella* species. *LWT*, 153, 112439.  
566 <https://doi.org/https://doi.org/10.1016/j.lwt.2021.112439>
- 567 Fivenson, E. M., Rohs, P. D. A., Vettiger, A., Sardis, M. F., Torres, G., Forchoh, A., &  
568 Bernhardt, T. G. (2023). A role for the Gram-negative outer membrane in bacterial shape  
569 determination. *BioRxiv*. <https://doi.org/10.1101/2023.02.03.527047>
- 570 He, Z., Zhang, X., Song, Z., Li, L., Chang, H., Li, S., & Zhou, W. (2020). Quercetin inhibits  
571 virulence properties of *Porphyromonas gingivalis* in periodontal disease. *Scientific reports*,  
572 10, 18313. <https://doi.org/10.1038/s41598-020-74977-y>
- 573 Howard, K. C., Gonzalez, O. A., & Garneau-Tsodikova, S. (2021). *Porphyromonas gingivalis*:  
574 Where do we stand in our battle against this oral pathogen? *RSC Med Chem*, 12(5), 666-  
575 704. <https://doi.org/10.1039/d0md00424c>
- 576 Kamal, L. Z. M., Adam, M. A. A., Shahpudin, S. N. M., Shuib, A. N., Sandai, R., Hassan, N. M.,  
577 Tabana, Y., Basri, D. F., Than, L. T. L., & Sandai, D. (2021). Identification of alkaloid  
578 compounds arborinine and graveoline from *Ruta angustifolia* (L.) Pers for their  
579 antifungal potential against Isocitrate lyase (ICL1) gene of *Candida albicans*.  
580 *Mycopathologia*, 186(2), 221-236. <https://doi.org/10.1007/s11046-020-00523-z>
- 581 Kobatake, E., Kobayashi, R., Kabuki, T., & Kurita-Ochiai, T. (2019). *Lactobacillus helveticus*  
582 SBT2171 upregulates the expression of  $\beta$ -defensin and ameliorates periodontal disease  
583 caused by *Porphyromonas gingivalis*. *Microbiol Immunol*, 63(8), 293-302.  
584 <https://doi.org/10.1111/1348-0421.12719>
- 585 Koszelewski, D., Kowalczyk, P., Brodzka, A., Hrunyk, A., Kramkowski, K., & Ostaszewski, R.  
586 (2023). Enzymatic synthesis of a novel coumarin aminophosphonates: Antibacterial  
587 effects and oxidative stress modulation on selected *E. coli* strains. *Int J Mol Sci*, 24(8).  
588 <https://doi.org/10.3390/ijms24087609>
- 589 Lu, L., Hu, W., Tian, Z., Yuan, D., Yi, G., Zhou, Y., Cheng, Q., Zhu, J., & Li, M. (2019).  
590 Developing natural products as potential anti-biofilm agents. *Chinese Medicine*, 14(1),  
591 11. <https://doi.org/10.1186/s13020-019-0232-2>
- 592 Luan, C., Yan, J., Jiang, N., Zhang, C., Geng, X., Li, Z., & Li, C. (2022). *Leuconostoc*  
593 *mesenteroides* LVBH107 antibacterial activity against *Porphyromonas gingivalis* and  
594 anti-inflammatory activity against *P. gingivalis* Lipopolysaccharide-Stimulated RAW  
595 264.7 Cells. *Nutrients*, 14(13), 2584. <https://www.mdpi.com/2072-6643/14/13/2584>
- 596 [https://mdpi-res.com/d\\_attachment/nutrients/nutrients-14-02584/article\\_deploy/nutrients-14-](https://mdpi-res.com/d_attachment/nutrients/nutrients-14-02584/article_deploy/nutrients-14-02584.pdf?version=1655908756)  
597 [02584.pdf?version=1655908756](https://mdpi-res.com/d_attachment/nutrients/nutrients-14-02584/article_deploy/nutrients-14-02584.pdf?version=1655908756)
- 598 Madhloom, A. F., Bashir Hashim Al-Taweel, F., Sha, A. M., & Raad Abdulbaqi, H. (2022).  
599 Antimicrobial effect of *Moringa oleifera* L. and red pomegranate against clinically  
600 isolated *Porphyromonas gingivalis*: *In vitro* study. *Arch Razi Inst*, 77(4), 1405-1419.  
601 <https://doi.org/10.22092/ari.2022.357513.2051>
- 602 Michaylova, M., Yungareva, T., Urshev, Z., Dermendzieva, Y., Yaneva, B., & Dobrev, I. (2021).  
603 Probiotic candidates among dairy Lactobacilli and *Streptococcus thermophiles* strains for  
604 control of the oral pathogen *Porphyromonas gingivalis*. *Folia Med (Plovdiv)*, 63(5), 720-  
605 725. <https://doi.org/10.3897/folmed.63.e56551>

- Mitchell, J. (2011). *Streptococcus mitis*: Walking the line between commensalism and pathogenesis. *Molecular oral microbiology*, 26(2), 89-98.
- Nahar, L., El-Seedi, H. R., Khalifa, S. A. M., Mohammadhosseini, M., & Sarker, S. D. (2021). Ruta essential oils: Composition and bioactivities. *Molecules*, 26(16). <https://doi.org/10.3390/molecules26164766>
- Noer, S., Abinawanto, B. M. B., & Bowolaksono, A. (2021). Inhibition of *Candida albicans* and *Streptococcus mutans* (single and mix species) biofilms by crude extract of *Ruta angustifolia*. *Natural Volatiles & Essential Oils*, 8(4), 10533-10543. <https://www.nveo.org/index.php/journal/article/view/2170>
- Nordin, M. A., Wan Harun, W. H., & Abdul Razak, F. (2013). Antifungal susceptibility and growth inhibitory response of oral *Candida* species to *Brucea javanica* Linn. extract. *BMC Complement Altern Med*, 13, 342. <https://doi.org/10.1186/1472-6882-13-342>
- Paranagama, M. P., Piyaathne, N. S., Nandasena, T. L., Jayatilake, S., Navaratne, A., Galhena, B. P., Williams, S., Rajapakse, J., & Kita, K. (2020). The *Porphyromonas gingivalis* inhibitory effects, antioxidant effects and the safety of a Sri Lankan traditional betel quid - An *in vitro* study. *BMC Complementary Medicine and Therapies*, 20(1), 259. <https://doi.org/10.1186/s12906-020-03048-6>
- Pavão, F., Castilho, M., Pupo, M. T., Dias, R., Correa, A., Fernandes, J., da Silva, M. d. G., Mafezoli, J., Vieira, P., & Oliva, G. (2002). Structure of *Trypanosoma cruzi* glycosomal glyceraldehyde-3-phosphate dehydrogenase complexed with chalepin, a natural product inhibitor, at 1.95 Å resolution. *FEBS letters*, 520(1-3), 13-17.
- Richardson, J. S., Sethi, G., Lee, G. S., & Malek, S. N. (2016). Chalepin: isolated from *Ruta angustifolia* L. Pers induces mitochondrial mediated apoptosis in lung carcinoma cells. *BMC Complement Altern Med*, 16(1), 389. <https://doi.org/10.1186/s12906-016-1368-6>
- Richardson, J. S. M., Aminudin, N., & Abd Malek, S. N. (2017). Chalepin: A compound from *Ruta angustifolia* L. Pers exhibits cell cycle arrest at S phase, suppresses Nuclear Factor-Kappa B (NF-κB) pathway, Signal Transducer and Activation of Transcription 3 (STAT3) phosphorylation and extrinsic apoptotic pathway in non-small cell lung cancer carcinoma (A549). *Pharmacogn Mag*, 13(Suppl 3), S489-s498. [https://doi.org/10.4103/pm.pm\\_13\\_17](https://doi.org/10.4103/pm.pm_13_17)
- Santhosh, V. N., Ankola, A., Sankeshwari, R., Jalihal, S., Varghese, A. S., Chavan, P., & Shah, M. A. (2023). Impact of dental caries and periodontal disease on oral health-related quality of life among the Karnataka State Reserve Police Personnel in Belagavi, India. *J Prev Med Hyg*, 64(1), E78-e86. <https://doi.org/10.15167/2421-4248/jpmh2023.64.1.2900>
- Saqui, S. A., AlQahtani, N. A., Ahmad, I., Kader, M. A., Al Shahrani, S. S., & Asiri, E. A. (2019). Evaluation and comparison of antibacterial efficacy of herbal extracts in combination with antibiotics on periodontal pathobionts: An *in vitro* microbiological study. *Antibiotics*, 8(3), 89. <https://www.mdpi.com/2079-6382/8/3/89>
- Seidel, V. (2012). Initial and bulk extraction of natural products isolation. *Methods Mol Biol*, 864, 27-41. [https://doi.org/10.1007/978-1-61779-624-1\\_2](https://doi.org/10.1007/978-1-61779-624-1_2)
- Sharma, D., & Saharan, B. S. (2016). Functional characterization of biomedical potential of biosurfactant produced by *Lactobacillus helveticus*. *Biotechnology Reports*, 11, 27-35. <https://doi.org/https://doi.org/10.1016/j.btre.2016.05.001>
- Siddiqui, D. A., Fidai, A. B., Natarajan, S. G., & Rodrigues, D. C. (2022). Succession of oral bacterial colonizers on dental implant materials: An *in vitro* biofilm model. *Dent Mater*, 38(2), 384-396. <https://doi.org/10.1016/j.dental.2021.12.021>

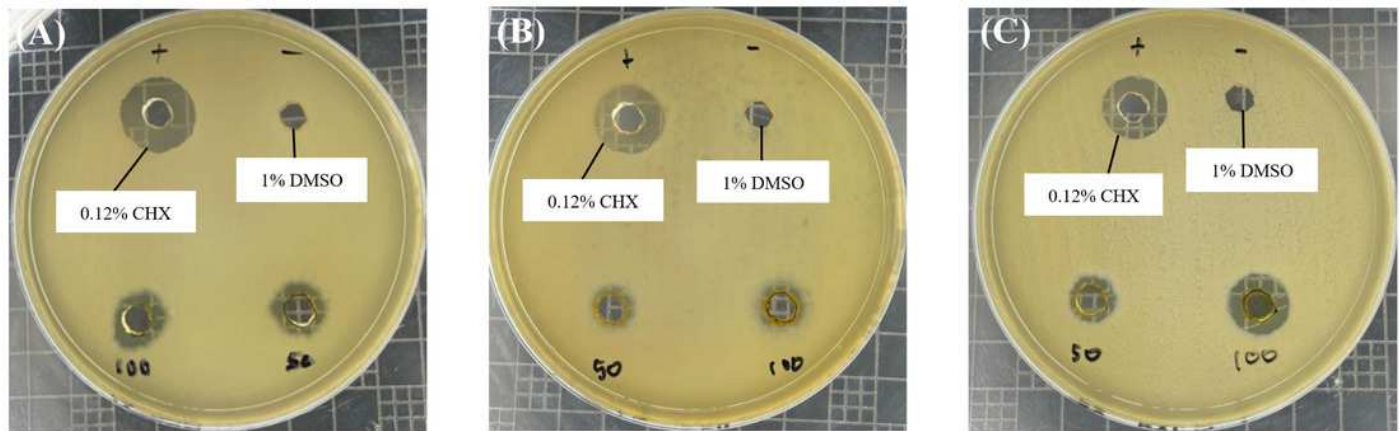
- 652 Siripipatthanakul, S., & Sixl-Daniell, K. (2021). Strategic management in oral care product  
653 market: A case study of colgate-palmolive (Thailand) limited of the creative commons  
654 attribution license (CC BY 4.0).
- 655 Suhaimi, S. A., Hong, S. L., & Abdul Malek, S. N. (2017). Rutamarin, an active constituent from  
656 *Ruta angustifolia* Pers., induced apoptotic cell death in the HT29 colon adenocarcinoma  
657 cell line. *Pharmacogn Mag*, 13(Suppl 2), S179-s188.  
658 [https://doi.org/10.4103/pm.pm\\_432\\_16](https://doi.org/10.4103/pm.pm_432_16)
- 659 Tsuchiya, H., & Iinuma, M. (2000). Reduction of membrane fluidity by antibacterial  
660 sophoraflavanone G isolated from *Sophora exigua*. *Phytomedicine*, 7(2), 161-165.
- 661 Wahyuni, T. S., Widyawaruyanti, A., Lusida, M. I., Fuad, A., Soetjipto, Fuchino, H., Kawahara,  
662 N., Hayashi, Y., Aoki, C., & Hotta, H. (2014). Inhibition of hepatitis C virus replication  
663 by chalepin and pseudane IX isolated from *Ruta angustifolia* leaves. *Fitoterapia*, 99, 276-  
664 283. <https://doi.org/10.1016/j.fitote.2014.10.011>
- 665 Widyarman, A. S., Bachtiar, E. W., Bachtiar, B. M., & Seneviratne, C. J. (2019). Inhibitory  
666 effect of probiotic lactobacilli against *Streptococcus mutans* and *Porphyromonas*  
667 *gingivalis* biofilms. *Scientific Dental Journal*, 3(2), 50.
- 668 Wu, T.-S., Wang, J.-J., Iou, S.-C., Chang, H.-C., Chen, Y.-P., Kuo, Y.-H., Chang, Y.-L., & Teng,  
669 C.-M. (2003). Cytotoxic and antiplatelet aggregation principles of *Ruta Graveolens*.  
670 *Journal of the Chinese Chemical Society*, 50. <https://doi.org/10.1002/jccs.200300024>
- 671 Xu, W., Zhou, W., Wang, H., & Liang, S. (2020). Roles of *Porphyromonas gingivalis* and its  
672 virulence factors in periodontitis. *Adv Protein Chem Struct Biol*, 120, 45-84.  
673 <https://doi.org/10.1016/bs.apcsb.2019.12.001>
- 674 Yan, Y., Li, X., Zhang, C., Lv, L., Gao, B., & Li, M. (2021). Research progress on antibacterial  
675 activities and mechanisms of natural alkaloids: A Review. *Antibiotics (Basel)*, 10(3).  
676 <https://doi.org/10.3390/antibiotics10030318>
- 677 Yan, Y., Xia, X., Fatima, A., Zhang, L., Yuan, G., Lian, F., & Wang, Y. (2024). Antibacterial  
678 activity and mechanisms of plant flavonoids against Gram-Negative bacteria based on the  
679 antibacterial statistical model. *Pharmaceuticals*, 17(3), 292. [https://www.mdpi.com/1424-  
680 8247/17/3/292](https://www.mdpi.com/1424-8247/17/3/292)
- 681 Zou, P., Cao, P., Liu, J., Li, P., & Luan, Q. (2022). Comparisons of the killing effect of direct  
682 current partially mediated by reactive oxygen species on *Porphyromonas gingivalis* and  
683 *Prevotella intermedia* in planktonic state and biofilm state – An *in vitro* study. *Journal of*  
684 *Dental Sciences*, 17(1), 459-467. <https://doi.org/https://doi.org/10.1016/j.jds.2021.07.025>



# Figure 1

Antimicrobial effect of *R. angustifolia* extracts against *P. gingivalis*.

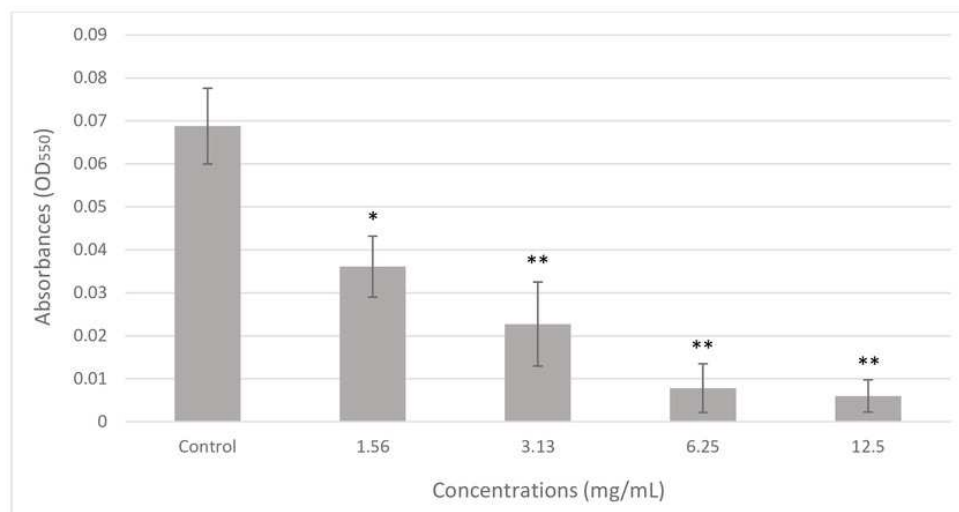
Bacterial cells were treated with 50 and 100 mg/mL of (A) crude methanol extract, (B) hexane and (C) chloroform fractionated extract, respectively. The representative images display the measured inhibition zone (in mm) of the extracts; 0.12% CHX (used as a positive control); and 1% DMSO (served as the negative control). Larger zones indicate greater inhibition.



# Figure 2

Effect of chloroform fractionated extract of *R. angustifolia* against *P. gingivalis* biofilm via the crystal violet assay.

The untreated *P. gingivalis* biofilm, is the negative control. Experiments were conducted in triplicate and values are represented as mean  $\pm$  standard deviation. Statistically significant with ANOVA (p-value < 0.05) and Tukey's HSD post hoc analysis (\*p < 0.05, \*\*p < 0.001 versus control according to analysis of variance).



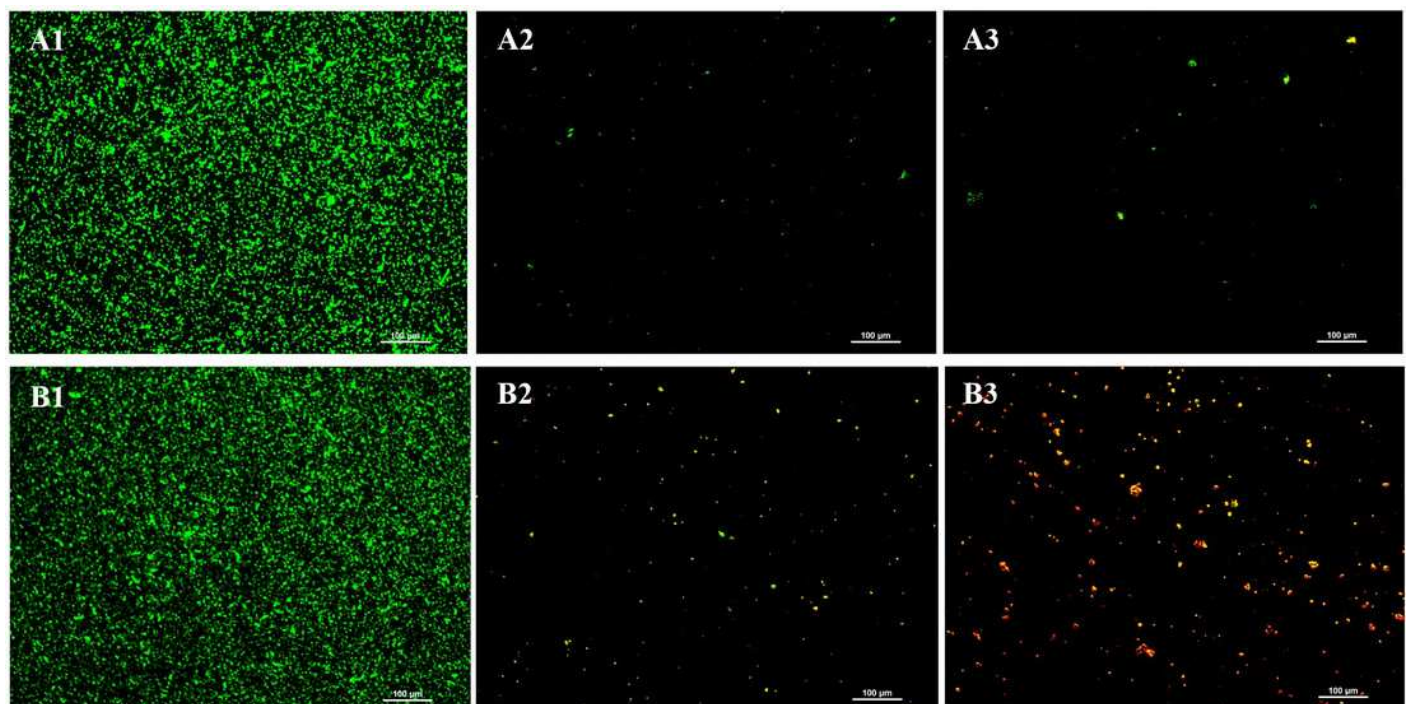
**Figure 2:** Effect of chloroform fractionated extract of *R. angustifolia* against *P. gingivalis* biofilm via the crystal violet assay. The untreated *P. gingivalis* biofilm, is the negative control. Experiments were conducted in triplicate and values are represented as mean  $\pm$  standard deviation. Statistically significant with ANOVA (p-value  $< 0.05$ ) and Tukey's HSD post hoc analysis (\*p  $< 0.05$ , \*\*p  $< 0.001$  versus control according to analysis of variance).



# Figure 3

Representative images from LIVE/DEAD® BacLight™ viability staining of untreated and treated *P. gingivalis* with chloroform fractionated extract of *R. angustifolia*.

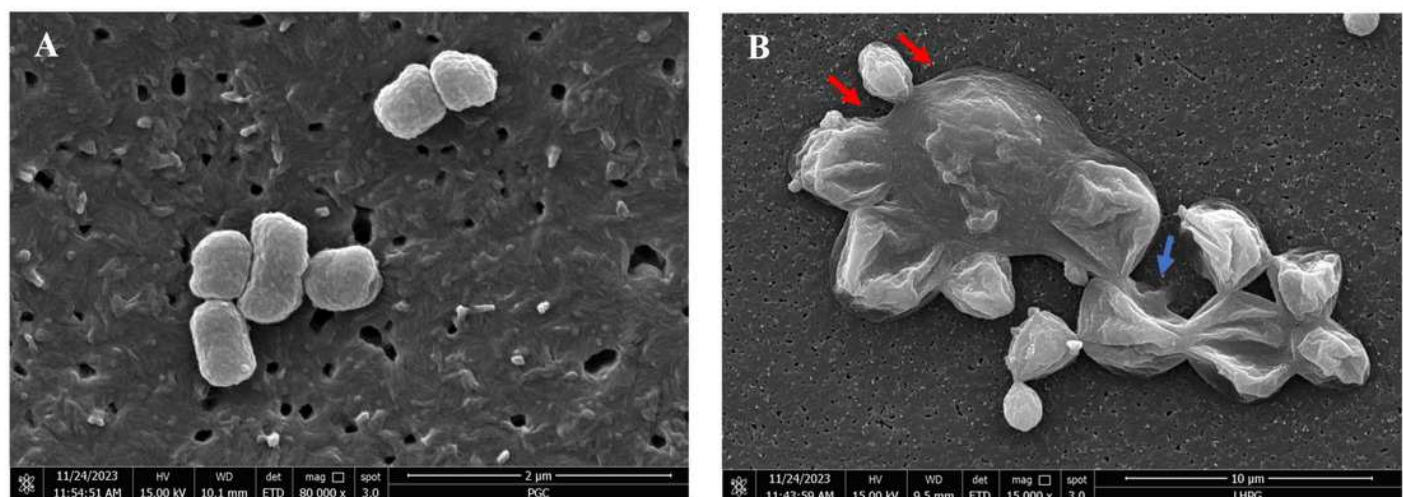
Biofilm images at (A) 24 hours and (B) 48 hours incubation time. *P. gingivalis* biofilm (1) without any treatment, *P. gingivalis* biofilm after treated with (2) 3.13 mg/mL and (3) 6.25 mg/mL of chloroform fractionated extract of *R. angustifolia*. Bacteria that are viable/alive cells were stained green and non-viable/dead cells were stained red. (Magnification: 20x, scale bar: 100  $\mu$ m).



# Figure 4

FE-SEM images of (A) non-treated and (B) treated *P. gingivalis* with 6.25 mg/mL of chloroform fractionated extract of *R. angustifolia*.

Red arrows: Swollen rods, Blue arrow: Cells ruptured to form deep craters. Magnification: 80kx (left), 15kx (right).



# Table 1 (on next page)

The inhibition zone diameters of *R. angustifolia* extracts against *P. gingivalis*.

<sup>(a)</sup>0.12% CHX served as the positive control, whilst 1% DMSO as the negative control against *P. gingivalis*. Experiments were conducted in triplicate and tabulated values are represented as mean  $\pm$  standard deviation. Statistically significant with Kruskal-Wallis (p-value < 0.05) and Dunn's post-hoc analysis (\*p < 0.05 versus control according to analysis of variance).

**Table 1:** The inhibition zone diameters of *R. angustifolia* extracts against *P. gingivalis*.

Oral microorganism		Inhibition zone diameter (mm)		
		<i>R. angustifolia</i> extracts		
		Crude methanol	Hexane	Chloroform
<i>P. gingivalis</i>	50 mg/mL	8.12 ± 0.77*	6.98 ± 0.26*	8.32 ± 1.08*
	100 mg/mL	9.30 ± 0.26	8.19 ± 0.27*	11.65 ± 0.62
	0.12% CHX <sup>(a)</sup>	13.79 ± 0.71	13.45 ± 0.79	13.34 ± 0.73

<sup>(a)</sup>0.12% CHX served as the positive control, whilst 1% DMSO as the negative control against *P. gingivalis*. Experiments were conducted in triplicate and tabulated values are represented as mean ± standard deviation. Statistically significant with Kruskal-Wallis (p-value < 0.05) and Dunn's post-hoc analysis (\*p < 0.05 versus control according to analysis of variance).

## Table 2 (on next page)

MIC & MBC of chloroform fractionated extract of *R. angustifolia* against *P. gingivalis*.

MIC, minimum inhibitory concentration; MBC, minimum bactericidal concentration.

**Table 2:** MIC & MBC of chloroform fractionated extract of *R. angustifolia* against *P. gingivalis*.

Microorganism	Chloroform fractionated extract of <i>R. angustifolia</i> (mg/mL)	
	MIC	MBC
<i>P. gingivalis</i>	6.25	6.25

MIC, minimum inhibitory concentration; MBC, minimum bactericidal concentration.

3

4