

Ultrastructure of the Jurassic serpulid tubes—phylogenetic and paleoecological implications

Jakub Słowiński¹, Olev Vinn² and Michał Zatoń¹

¹Institute of Earth Sciences, University of Silesia, Katowice, Sosnowiec, Poland

²Department of Geology, University of Tartu, Tartu, Estonia

ABSTRACT

The ultrastructural diversity of the Middle and Late Jurassic serpulid tubes from the Polish Basin has been investigated. The inspection of 12 taxa representing the two major serpulid clades allowed for the identification of three ultrastructure types—irregularly oriented prismatic structure (IOP), spherulitic prismatic structure (SPHP), and simple prismatic structure (SP). Six of the studied species are single-layered and six species possess two distinct layers. Ultrastructural diversity corresponds to certain serpulid clades. The members of Filograninae have single-layered tube walls composed of possibly plesiomorphic, irregularly oriented prismatic structure (IOP). Two-layered tubes occur solely within the clade Serpulinae, where the external, denser layer is built of either the ordered spherulitic (SPHP) or simple prismatic microstructure (SP), and the internal layer is composed of irregularly oriented prismatic structure (IOP). Apart from phylogenetic signals provided by the tube ultrastructure, it can be used in analyzing paleoecological aspects of tube-dwelling polychaetes. Compared to the more primitive, irregularly oriented microstructures of Filograninae, the regularly oriented microstructures of Serpulinae need a higher level of biological control over biomineralization. The advent of the dense outer protective layer (DOL) in serpulids, as well as the general increase in ultrastructure diversity, was likely a result of the evolutionary importance of the tubes for serpulids. Such diversity of the tube ultrastructural fabrics allowed for maximizing functionality by utilizing a variety of morphogenetic programs. The biomineralization system of serpulids remains more complex compared to other tube-dwelling polychaetes. Physiologically more expensive tube formation allows for mechanical strengthening of the tube by building robust, strongly ornamented tubes and firm attachment to the substrate. Contrary to sabellids, which perform a fugitive strategy, an increased tube durability allows serpulids a competitive advantage over other encrusters.

Submitted 1 March 2024

Accepted 23 April 2024

Published 23 May 2024

Corresponding author

Jakub Słowiński,
jakub.slowinski@us.edu.pl

Academic editor

Dagmara Żyła

Additional Information and
Declarations can be found on
page 21

DOI 10.7717/peerj.17389

© Copyright
2024 Słowiński et al.

Distributed under
Creative Commons CC-BY 4.0

OPEN ACCESS

Subjects Evolutionary Studies, Paleontology

Keywords Serpulidae, Skeletal ultrastructure, Biomineralization, Polychaeta, Tubeworms, Mesozoic, Poland

INTRODUCTION

Numerous polychaete families produce habitation tubes (*Rouse & Pleijel, 2001*). Tubicolous polychaetes may either agglutinate exogenous material, such as sand particles and shell fragments, using a proteinaceous cement to form a tube (*e.g., Stewart et al., 2004; Zhao*

et al., 2005; Fournier, Etienne & Le Cam, 2010; Vinn & Luque, 2013) or produce secretions by themselves utilizing a variety of glands (e.g., Hausen, 2005; Tanur *et al.*, 2010). Secreted tubes may be composed of organic substances, such as proteins and polysaccharides (e.g., Barnes, 1965; Chamoy *et al.*, 2001; Nishi & Rouse, 2013), and mineral substances such as calcium carbonate (Weedon, 1994; Fischer, Pernet & Reitner, 2000; Vinn *et al.*, 2008). Amongst tube-dwelling polychaetes producing hard, mineralized exoskeletons are the families Sabellidae, Cirratulidae, and Serpulidae. Whereas calcareous sabellids (Perkins, 1991; Vinn, ten Hove & Mutvei, 2008; Słowiński, Banasik & Vinn, 2023) and cirratulids (Reish, 1952; Fischer, Oliver & Reitner, 1989; Fischer, Pernet & Reitner, 2000; Taylor *et al.*, 2010; Kočí *et al.*, 2021; Guido *et al.*, 2024) are restricted to one (*Glomerula*) and two genera (*Dodecaceria*, *Diplochaetetes*) in each family respectively, only serpulids dwell exclusively in tubes composed of calcium carbonate (Vinn *et al.*, 2008).

Thus, having a hard, mineralized exoskeleton, serpulids are the most abundant polychaetes in the fossil record, appearing as far back as the Middle Permian (Sanfilippo *et al.*, 2017; Sanfilippo *et al.*, 2018). However, their hard parts are not strictly related to the organism's soft body and form only a habitation tube serving, among others, for protection against predators (e.g., Morton & Harper, 2009; Klompmaker, 2012). Although tubes' taxonomic usefulness is not without validity, as many genera possess easily recognizable tubes, which are diagnostic displaying different longitudinal and transverse elements (see e.g., Ippolitov *et al.*, 2014), homeomorphy is still a common feature in serpulid tube morphology (e.g., Kupriyanova & Ippolitov, 2015) due to convergence and high ecophenotypic plasticity. This leads to certain discrepancies between paleontological and biological classification, the latter of which is based solely on the molecular data, soft parts, and their reciprocal relationships (Kupriyanova, Macdonald & Rouse, 2006; ten Hove & Kupriyanova, 2009). Moreover, it makes the linkage of contemporary species with their ancestors difficult due to the lack of fully reliable taxonomic tools.

Serpulid tubes can be composed of up to four layers; however, most of them are single-layered (Vinn *et al.*, 2008). They exhibit different ultrastructural fabrics, depending on how calcium carbonate crystals are arranged and oriented (see Vinn *et al.*, 2008). During the progressing expansion of the tube, an animal secretes consecutive growth lamellae, which correspond to a single growth episode. Such growth lines may be either straight, perpendicular to the direction of growth (e.g., Batuk & Radwański, 1997) or much more frequently chevron-shaped (see Weedon, 1994). Serpulid ultrastructures may provide phylogenetic signals in the case of Jurassic taxa but also serve as a record of the physiological changes of the worm during its entire lifespan, providing important ecological signatures that may be successfully implemented in paleoecological analyses. Moreover, serpulid tubes may exhibit additional skeletal structures such as tubulae, alveolar structures, or internal tube structures, helping in unraveling their true systematics (e.g., Thomas, 1940; Pillai, 1993; Pillai & ten Hove, 1994; Jäger, 2005).

Recent studies have proven a tube microstructure to be a useful tool in deciphering the true affinity of fossil serpulid (e.g., Bornhold & Milliman, 1973; Vinn, ten Hove & Mutvei, 2008; Vinn & Kupriyanova, 2011; Kupriyanova & Ippolitov, 2012; Vinn, 2013; Buckman, 2020; Buckman & Harries, 2020), and other calcareous tube-dwelling polychaete species

(*Vinn, ten Hove & Mutvei, 2008; Taylor et al., 2010; Słowiński, Banasik & Vinn, 2023*). However, the majority of them were conducted based on single species, and/or single specimens.

In the present study, we performed a microstructural investigation of the Jurassic serpulid tubes based on the representatives of the two main serpulid clades according to the newest systematics (*Kupriyanova, ten Hove & Rouse, 2023*). We provide paleoecological implications of different microstructures and consequently biomineralization system and highlight some phylogenetic signals and evolutionary patterns of distinct microstructures.

MATERIAL AND METHODS

The examined fossils consist of 47 specimens of serpulids representing 12 taxa (*Table 1*). The studied material has been selected from an ample collection (see *Słowiński et al., 2020; Słowiński et al., 2022*) concerning the well-preserved specimens, which allowed for a reliable ultrastructural investigation. All diagenetically altered tubes have been discarded from further studies. Almost all specimens encrust a variety of invertebrate fossils, oncoids, and hiatus concretions, and have been derived from various localities with Middle and Upper Jurassic (upper Bajocian–lower Kimmeridgian) deposits (*Fig. 1*) representing an array of paleoenvironments. The investigated material is stored at the Institute of Earth Sciences in Sosnowiec, abbreviated GIUS 8-3589 (Callovian of Zalas), GIUS 8-3730 (middle Bathonian of Gnaszyn Dolny), GIUS 8-3745 (upper Bathonian-lower Callovian of Bołęcin), GIUS 8-3746 (Oxfordian of Zalas), GIUS 8-3747 (lower Kimmeridgian of Małogoszcz), GIUS 8-3750 (Bajocian-Bathonian of Ogródzieniec-Świertowiec), GIUS 8-3751 (upper Bathonian of Krzyworzeka and upper Bathonian of Żarki). Their paleogeographic and geological background is beyond the scope of the present research and has already been discussed in detail by *Słowiński et al. (2020)* and *Słowiński et al. (2022)*.

Before the preparation of specimens for the SEM examination, they were coated with ammonium chloride and photographed using the Canon EOS 350D digital camera. All previously selected samples were cut longitudinally, polished, and etched with a 5% solution of acetic acid for one minute prior to the SEM study. Part of these tube portions were oriented and mounted in epoxy resin before polishing. Subsequently, the serpulid tube microstructure investigations were performed on a SEM Zeiss EVO MA15 under a back-scattered electron detector (BSE) in a low vacuum regime (Department of Geology, University of Tartu, Estonia). The sections were also inspected under an environmental scanning electron microscope (ESEM) Philips XL30, and a Quanta 250 scanning electron microscope using BSE imaging (both at the Institute of Earth Sciences in Sosnowiec). The beam voltage was operated at 20 kV.

RESULTS

During the examination of 12 taxa within eight genera representing two major clades, three types of ultrastructure were distinguished: irregularly oriented prismatic structure (IOP), spherulitic prismatic structure (SPHP), and simple prismatic structure (SP) (*Table 1*).

Table 1 Ultrastructural diversity of the Jurassic serpulid tubes from Poland.

Taxon	Ultrastructure			Age	Locality	Number of individuals investigated
	IOP	SPHP	SP			
<i>Metavermilia</i> cf. <i>striatissima</i> *	1			upper Bathonian	Krzyworzeka	3
<i>Filogramula runcinata</i> *	[2]	1		middle Bathonian, Callovian	Gnaszyn Dolny, Zalas	5
<i>Filogramula spongiophila</i> *			1	Oxfordian	Zalas	3
<i>Cementula spiroloinites</i> •			1	Oxfordian	Zalas	9
<i>Cementula radwanskae</i> •			[1]	Callovian	Zalas	4
<i>Propomatoceros lumbricalis</i> ×	2	1, [3]		Bajocian-Bathonian, middle Bathonian, upper Bathonian, Bathonian-Callovian, Callovian, lower Kimmeridgian	Ogrodzieniec-Świertowiec, Gnaszyn Dolny, Żarki, Bołęcín, Zalas, Małogoszcz	8
<i>Nogrobs</i> aff. <i>quadrilatera</i> ×	2		1	middle Bathonian	Gnaszyn Dolny	3
<i>Nogrobs?</i> aff. <i>tricristata</i> ×	2		1	middle Bathonian	Gnaszyn Dolny	1
<i>Nogrobs</i> aff. <i>tetragona</i> ×	2		1	middle Bathonian	Gnaszyn Dolny	2
<i>Mucroserpula</i> sp. ×	2	1		middle Bathonian	Gnaszyn Dolny	3
<i>Placostegus planorbiformis</i> ×			1	Oxfordian	Zalas	3
Serpulidae sp. ×	2		1	middle Bathonian	Gnaszyn Dolny	3
Total						47

Notes.

IOP, irregularly oriented prismatic structure; SPHP, spherulitic prismatic structure; SP, simple prismatic structure.

Numbers (1, 2, 3) indicate the position of the layer within the tube counted from the exterior. Square brackets denote partially preserved or equivocal microstructure precluding a fully reliable recognition. Asterisk, circle, and × mark correspond to Filograminae, Serpulini, and Ficopomatini respectively. All the taxa have been described taxonomically in [Słowiński et al. \(2022\)](#).

Filograminae (BI)

Members of the clade Filograminae, formerly referred to as BI (see [Kupriyanova, Macdonald & Rouse, 2006](#); [Kupriyanova et al., 2009](#)), are represented in the herein material by two genera: *Metavermilia* and *Filogramula*, the latter one consisting of two species: *F. runcinata* ([Sowerby, 1829](#)) and *F. spongiophila* ([Słowiński et al., 2022](#)).

The tube wall of *Metavermilia* cf. *striatissima* ([Fürsich, Palmer & Goodyear, 1994](#)) is single-layered, and composed of an irregularly oriented prismatic structure (IOP) ([Fig. 2](#)). Minute (maximally a few μm), needle-like crystals are deployed more or less evenly within the entire tube wall. The longitudinal axes of crystals lack a uniform orientation.

The tube of *Filogramula runcinata* is presumably single-layered and is composed of a spherulitic, regularly oriented prismatic microstructure (SPHP) ([Fig. 3](#)). It is formed by crystals of prismatic shape exhibiting a slightly spherulitic arrangement. Some internal parts of the tube are built of irregularly oriented, tiny, elongated crystals indicating an irregularly oriented prismatic structure (IOP). However, the boundary between the two putative layers is transitional and the latter microstructure occurs rather like inclusions in certain areas of the tube wall. Growth lines are apparent across almost the entire tube. Some minor, external parts of the section may appear like fine homogeneous granular microstructure; however, more likely it corresponds to the differences in preservation

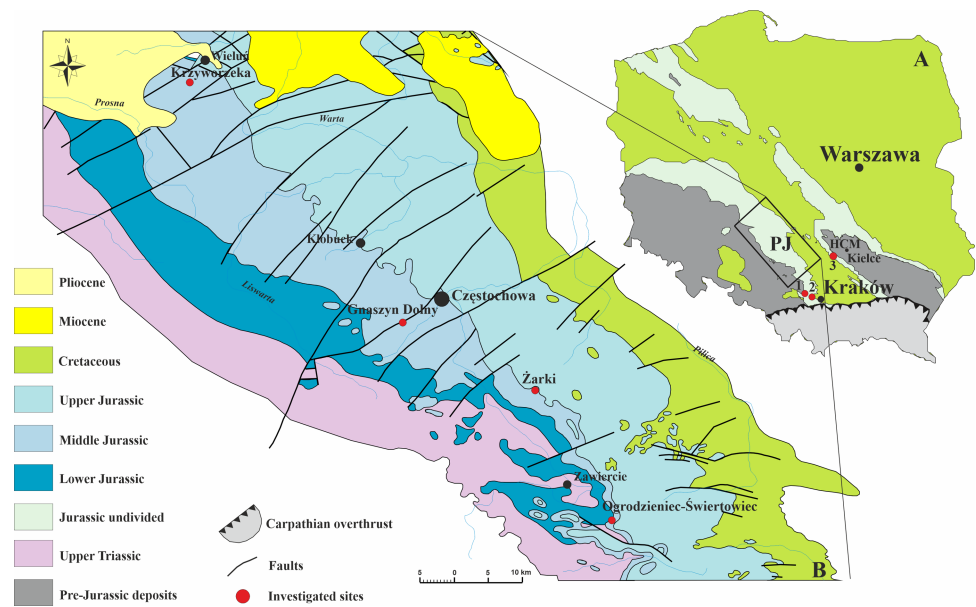


Figure 1 Geology of the investigated area. (A) Geological sketch-map of Poland without the Cenozoic cover showing three sampled sites; HCM–Holy Cross Mountains; PJ–Polish Jura; 1–Bolećin; 2–Zalas; 3–Małogoszcz. (B) Geological map of the Polish Jura area without Quaternary cover, with sampled localities indicated (modified after Zatoń, Marynowski & Bzowska, 2006).

Full-size DOI: 10.7717/peerj.17389/fig-1

between the external and internal parts of the tube due to the diagenetic alteration of irregularly oriented prismatic microstructure.

The tube of *Filogranula spongiophila* consists of a single layer that is composed of a simple, regularly oriented prismatic structure (SP) (Fig. 4). Growth increments are visible across almost the whole tube (Figs. 4C–4E).

Serpulinae, tribe Serpulini (AI)

This tribe is represented in the investigated material by one genus comprising two species: *Cementula spirolinites* (Münster in Goldfuss, 1831) and *Cementula radwanskae* (Słowiński et al., 2022).

The tube wall of *C. spirolinites* is single-layered and consists of a simple prismatic structure (SP) (Fig. 5). This microstructure is formed by parallel prismatic crystals oriented perpendicularly to each growth line showing incremental zonation. The crystals are arranged perpendicularly or obliquely to the tube wall.

The tube microstructure of the investigated specimens of *C. radwanskae* is altered in most places. However, some places exhibiting faint growth increments indicate possibly a simple (SP) or spherulitic prismatic structure (SPHP) constituting a single layer (Fig. 6). Certain areas with tiny, elongated irregularly oriented crystals presumably are an effect of a diagenetic distortion of the tube wall.

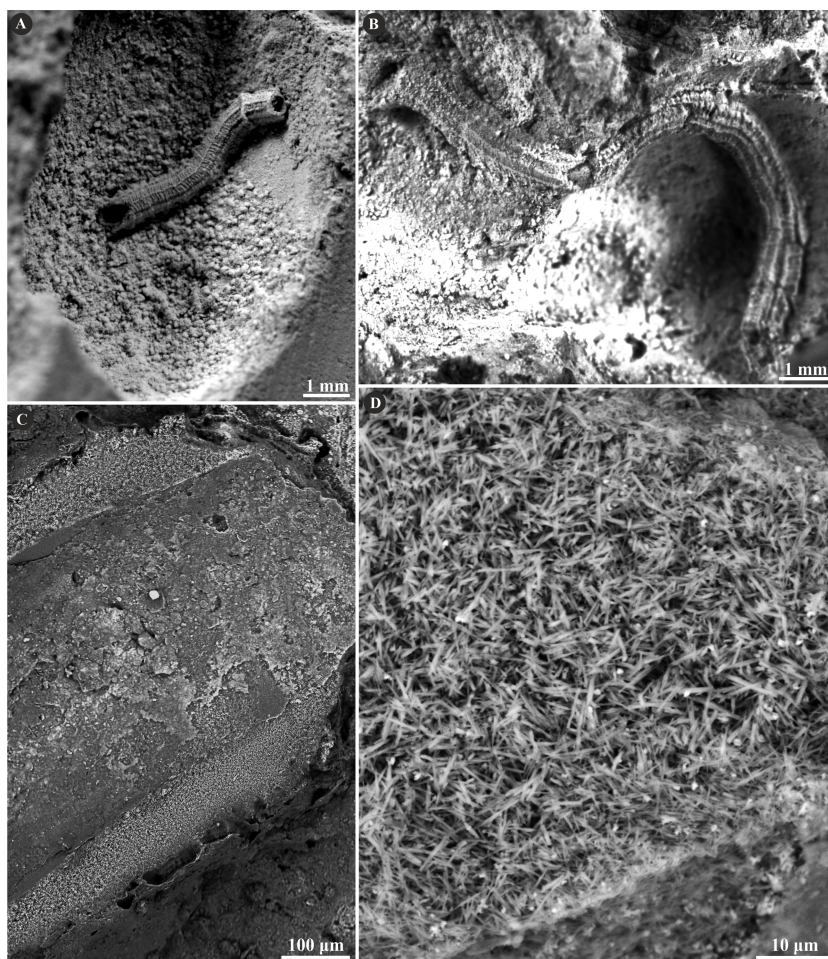


Figure 2 Selected specimens of *Metavermilia* cf. *striatissima* (Fürsich, Palmer & Goodyear, 1994) from the Jurassic of Poland. (A, B) *Metavermilia* cf. *striatissima* encrusting the interior of the boring *Gastrochaenolites* from the upper Bathonian of Krzyworzeka, Polish Jura ((A) GIUS 8-3751/3; (B) GIUS 8-3751/8). (C, D) Longitudinal sections of the tubes from the upper Bathonian of Krzyworzeka with visible irregularly oriented prismatic structure (IOP). (C) General look of the ground, polished and etched tube with visible thin, single-layered walls (GIUS 8-3751/3). (D) Close-up of the tube wall section showing densely packed, tiny, elongated prismatic crystals of irregular arrangement (GIUS 8-3751/3).

Full-size  DOI: 10.7717/peerj.17389/fig-2

Serpulinae, tribe Ficopomatini (All)

The tribe Ficopomatini, formerly referred to as AII (see Kupriyanova, Macdonald & Rouse, 2006; Kupriyanova et al., 2009), includes here five genera with seven species. *Propomatoceros lumbricalis* (von Schlotheim, 1820) possesses a tube wall consisting of two or three layers (Fig. 7). The majority of the examined specimens have two-layered tubes. The external part is formed by a spherulitic prismatic structure (SPHP), which consists of parallel crystals of a slightly spherulitic arrangement. The inner part has an irregularly oriented prismatic microstructure (IOP) comprising elongated, but relatively short, tiny crystals with inconsistent orientation axes. In some areas of the tubes' wall, the IOP structure is diagenetically altered superficially resembling a fine homogeneous granular structure. The

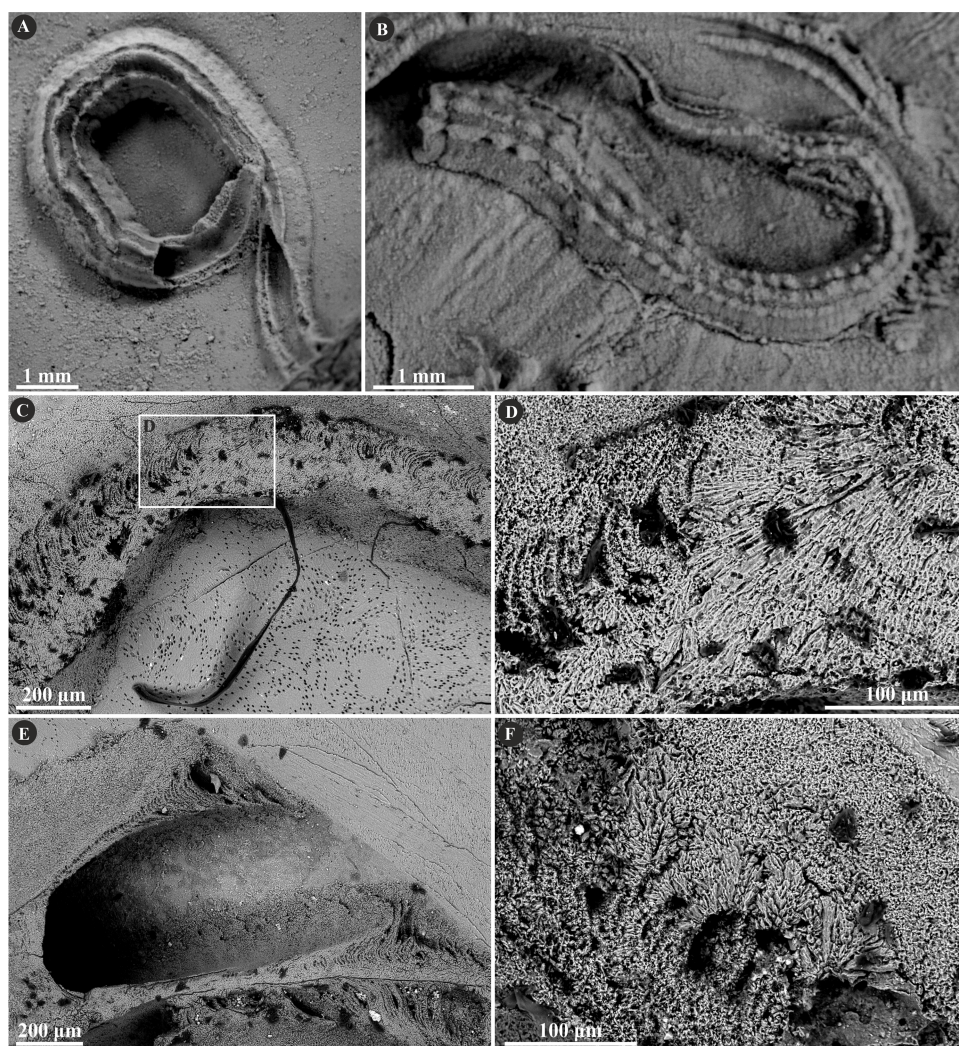


Figure 3 Selected specimens of *Filogranula runcinata* (Sowerby, 1829) from the Jurassic of Poland. (A, B) *Filogranula runcinata* from the middle Bathonian of Gnaszyn Dolny (A. GIUS 8-3730/10) and the Callovian of Zalas (B. GIUS 8-3589/6) encrusting shell fragments. (C–F) Longitudinal sections of the tubes showing a single-layered tube wall built of spherulitic prismatic structure (SPHP) with well-visible growth increments (GIUS 8-3730/10).

Full-size  DOI: [10.7717/peerj.17389/fig-3](https://doi.org/10.7717/peerj.17389/fig-3)

putative three-layered tube wall (Fig. 7D) is built of the external and internal (uncertain) parts composed of a spherulitic prismatic structure (SPHP). The middle part shows a fine homogeneous granular microstructure, which may be either a primary microstructure or similarly to other specimens, an obliterated IOP structure. In contrast to two-layered *P. lumbricalis* tubes, no areas exhibiting irregularly oriented prismatic structures have been found. As such, it is not evident, whether these microstructures are primary or have undergone diagenetic alteration. The external parts exhibit incremental zonation with prominent chevron-shaped growth lines. The crystals are continuously and regularly positioned through successive growth increments.

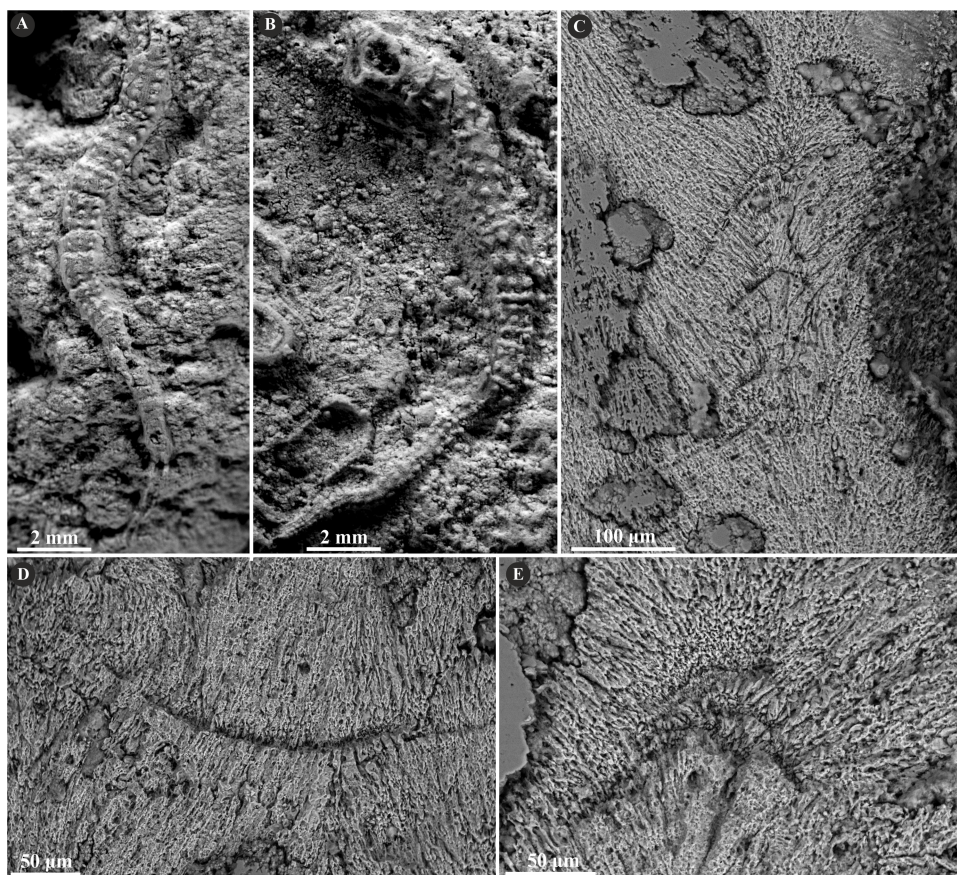


Figure 4 Selected specimens of *Filogranula spongiophila* (Słowiński et al., 2022) from the Jurassic of Poland. (A, B) *Filogranula spongiophila* from the Oxfordian of Zalas ((A) GIUS 8-3746/2; (B) GIUS 8-3746/3) encrusting sponge fragments. (C–E) Longitudinal sections of the tubes showing the simple prismatic structure (SP) with well-visible growth increments (GIUS 8-3746/9).

Full-size DOI: 10.7717/peerj.17389/fig-4

Herein, *Nogrobs* is represented by three species: *N. aff. quadrilatera* (Goldfuss, 1831), *N. aff. tetragona* (Sowerby, 1829), and *N? aff. tricristata* (Goldfuss, 1831), which, however, share all the major microstructural characters. The tube walls of all the species have two layers, which are separated from each other with a sharp boundary. The external layer is composed of a simple prismatic structure (SP), whereas the internal layer is composed of very thin, short, needle-like crystals, which make up an irregularly oriented prismatic structure (IOP) (Fig. 8).

Mucroserpula sp. (Regenhardt, 1961) possesses a two-layered tube wall (Fig. 9). The internal layer is composed of an irregularly oriented prismatic structure (IOP) consisting of bunches of densely packed, short but elongated crystals lacking uniform orientation axes. The external layer is composed of a regular spherulitic prismatic structure (SPHP), which constitutes the major part of the tube wall. Within this layer, crystals are oriented perpendicularly with respect to each incremental zone and have a somewhat prismatic arrangement. The chevron-shaped growth lines are very well-visible alongside almost the whole tube length. The border between the two layers is somewhat transitional.

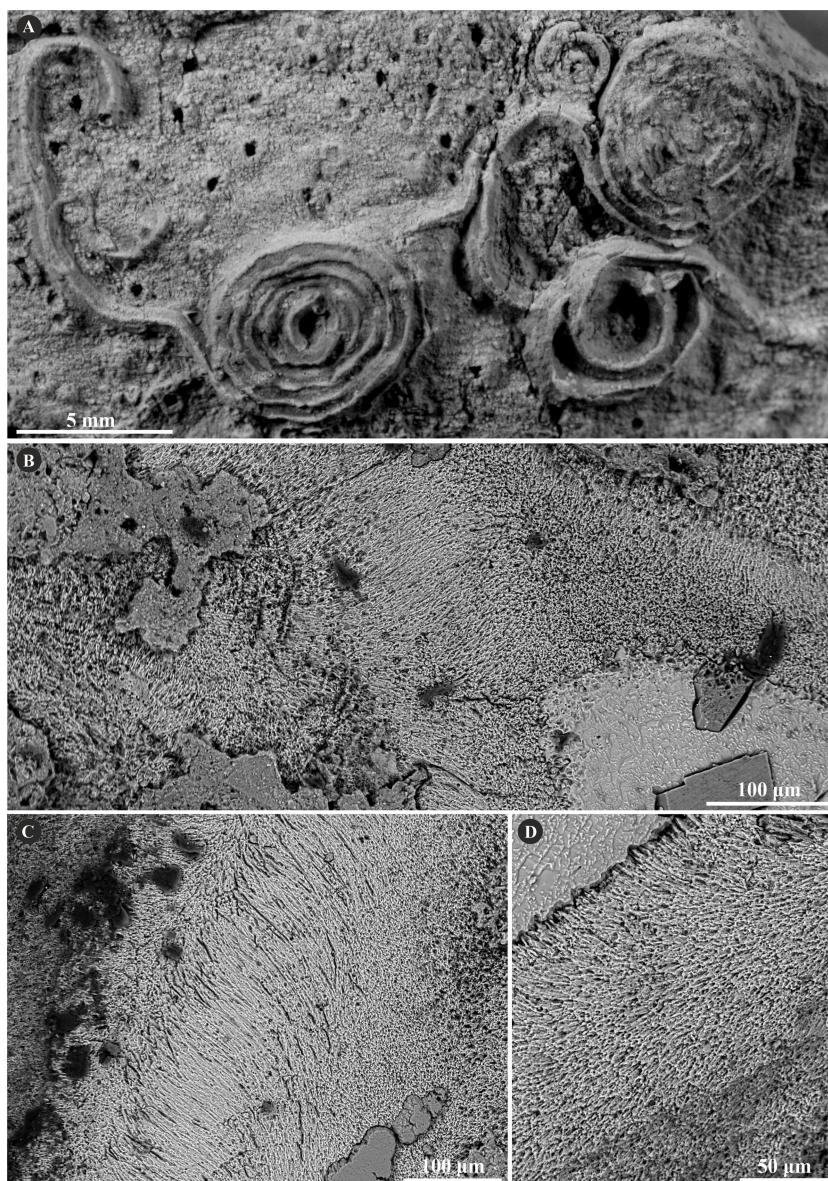


Figure 5 Selected specimens of *Cementula spirolinites* (Münster in *Goldfuss, 1831*) from the Jurassic of Poland. (A) *Cementula spirolinites* from the Oxfordian of Zalas encrusting a sponge fragment (GIUS 8-3746/4). (B–D) Longitudinal sections of the tubes showing the simple prismatic structure (SP). (B) GIUS 8-3746/10; (C, D) GIUS 8-3746/11.

Full-size  DOI: [10.7717/peerj.17389/fig-5](https://doi.org/10.7717/peerj.17389/fig-5)

The tube wall of *Placostegus planorbiformis* (Münster in *Goldfuss, 1831*) is single-layered, and composed of a simple prismatic structure (SP) (Fig. 10). All crystals are more or less parallel within each incremental zone. Within the outermost part of the tube, the crystals are oriented perpendicularly to the tube wall.

The specimens of undetermined serpulid, *Serpulidae* sp. possess a two-layered tube wall (Fig. 11). The external part features a regularly oriented simple prismatic structure (SP). The internal, thinner part, separated from the external with a sharp boundary is formed

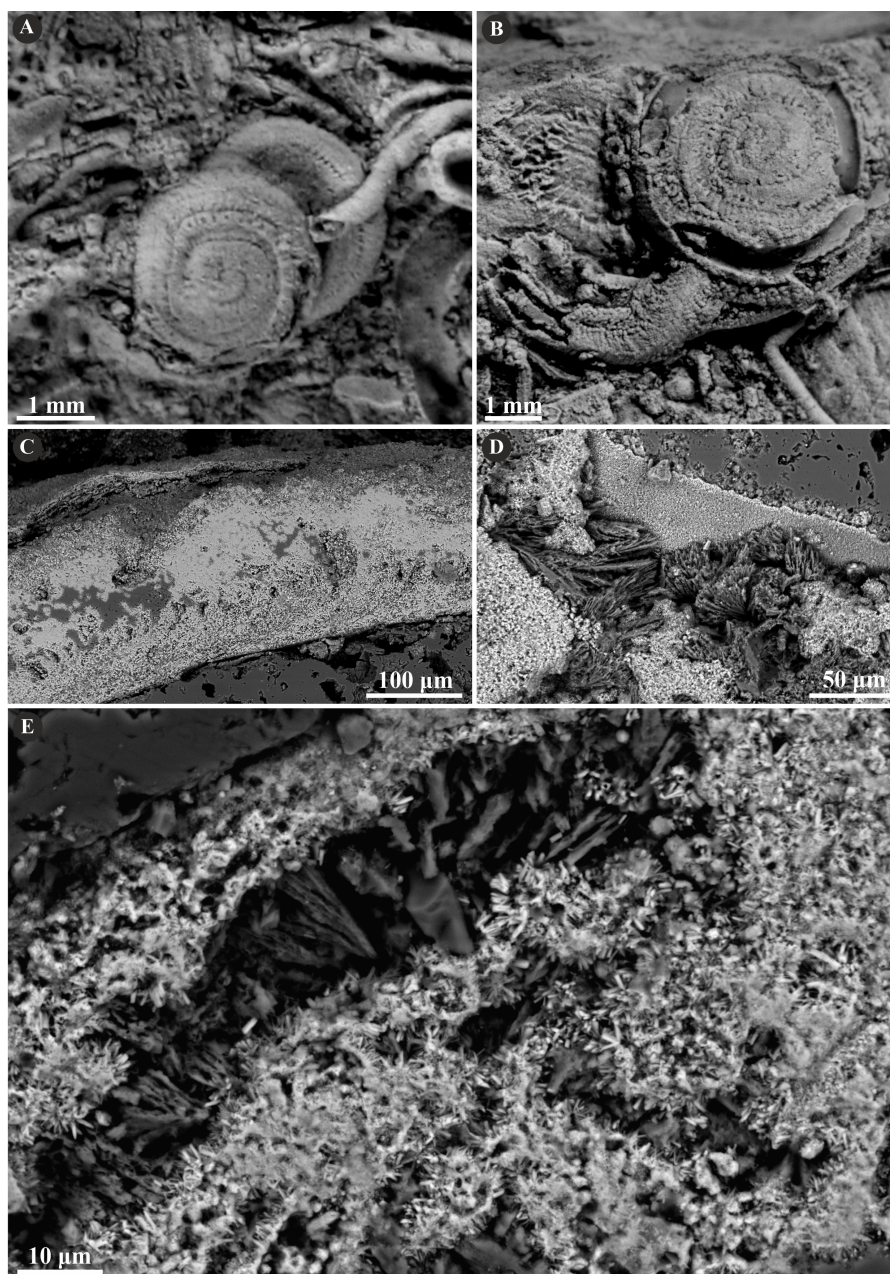


Figure 6 Selected specimens of *Cementula radwanskae* (Słowiński et al., 2022) from the Jurassic of Poland. (A, B) *Cementula radwanskae* from the Callovian of Zalas encrusting shell fragments (A) 8-3589/7; (B) GIUS 8-3589/10). (C–E) Longitudinal sections of the tubes showing mostly altered, presumably simple prismatic microstructure (SP); GIUS 8-3589/18. Note the weak growth increments in C.

Full-size  DOI: 10.7717/peerj.17389/fig-6

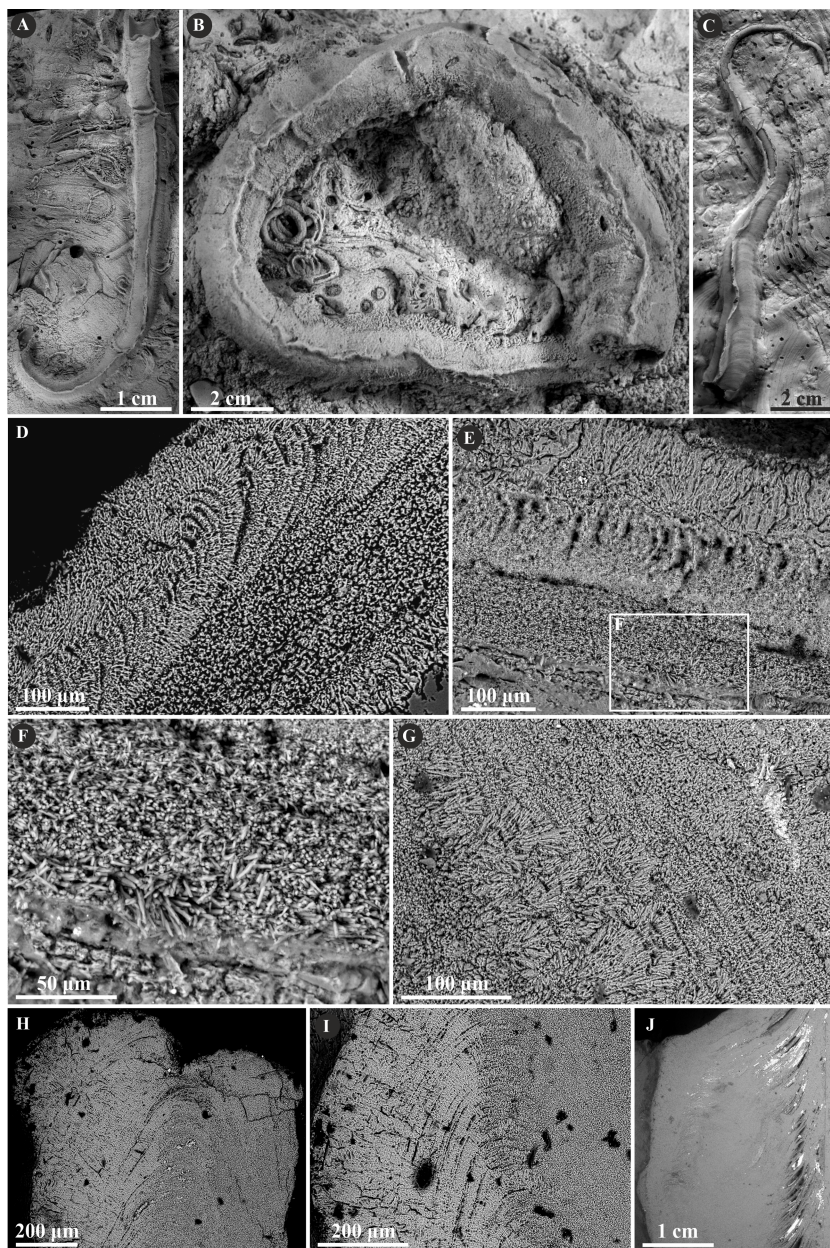


Figure 7 Selected specimens of *Propomatoceros lumbricalis* (Schlotheim, 1820) from the Jurassic of Poland. (A, B) *Propomatoceros lumbricalis* encrusting a shell fragment from the Callovian of Zalas (A) GIUS 8-3589/11; (B) GIUS 8-3589/12). (C) *Propomatoceros lumbricalis* encrusting an oyster shell from the middle Bathonian of Gnaszyn Dolny (GIUS 8-3730/12). (D–J) Sections of the tubes showing the ultrastructural details. (continued on next page...)

Full-size  DOI: 10.7717/peerj.17389/fig-7

Figure 7 (...continued)

(D) The longitudinal section of the *P. lumbricalis* tube from the upper Bathonian–lower Callovian of Bolęcín showing the putative three-layered tube (GIUS 8-3745/5). The external layer shows spherulitic prismatic structure (SPHP) with growth increments; the middle part exhibits presumably altered irregularly oriented prismatic structure (IOP) superficially resembling homogeneous structure; the internal layer shows uncertain spherulitic prismatic structure. (E) The longitudinal section of the two-layered *P. lumbricalis* tube from the middle Bathonian of Gnaszyn Dolny showing the external spherulitic prismatic structure (SPHP) with growth increments and the internal irregularly oriented prismatic structure (IOP) (GIUS 8-3730/30). (F) A close-up showing the internal layer built of irregularly oriented prismatic structure (IOP) with short, needle-like crystals of different length and orientation (GIUS 8-3730/30). (G) The longitudinal section of the *P. lumbricalis* tube from the lower Kimmeridgian of Małogoszcz (GIUS 8-3747/5) showing the spherulitic arrangement of crystals within the external tube layer. (H, I) Longitudinal sections of the two *P. lumbricalis* tubes from the middle Bathonian of Gnaszyn Dolny showing the external spherulitic prismatic structure (SPHP) with well-visible growth increments and the internal, partially recrystallized irregularly oriented prismatic structure (IOP) (H. GIUS 8-3730/31; I. GIUS 8-3730/32). (J) The lateral section of the *P. lumbricalis* tube from the middle Bathonian of Gnaszyn Dolny showing tubulae subdivided densely by septae (GIUS 8-3730/33).

by an irregularly oriented prismatic structure (IOP) composed of densely packed, minute, elongated crystals.

DISCUSSION

Tube ultrastructure evolution and its phylogenetic constraints

Three distinct types of ultrastructure have been identified within 12 taxa corresponding to the two of three main clades of serpulids—Filograninae and Serpulinae (*Kupriyanova, ten Hove & Rouse, 2023*). These microstructures comprise irregularly oriented prismatic structure (IOP), spherulitic prismatic structure (SPHP), and simple prismatic structure (SP) (see [Table 1](#)), which are among the most prevalent microstructure type in fossil serpulids (*Vinn et al., 2008; Vinn, 2020*). Six of these taxa have single-layered tubes and six are two-layered, of which one taxon perhaps may possess either two or three ultrastructural layers (see discussion). The majority of both Cenozoic and contemporary serpulids are single-layered, only about one-third of serpulid species have at least two or up to four distinct ultrastructural layers (*Vinn et al., 2008*). During the Jurassic, the percentage of multi-layered serpulid species was lower, constituting approximately 25% (*Vinn & Furrer, 2008*). It may have resulted from the evolutionary pattern where more complex tube walls with at least two layers were more common from the beginning of the Cenozoic onward—the growing complexity of microstructures combined with relatively fast biomineralization likely enhanced the strengthening abilities of the tubes. It can also be explained by the vagaries of the fossil record resulting in incomplete preservation of the outermost layers, which might be similar to the case of calcareous sabellids (*Vinn, ten Hove & Mutvei, 2008; Słowiński, Banasik & Vinn, 2023*).

Sanfilippo (1998) presented a concept to utilize the ultrastructural diversity of serpulids to assess their generic determination. Further studies revealed that microstructure characters may be species-dependent (*Vinn, 2007; Vinn et al., 2008; Kupriyanova & Ippolitov, 2015*), which limits the application of tube microstructures in deciphering the generic affiliation of serpulids. Regardless, ultrastructural fabrics of tubes may still be used to approach the

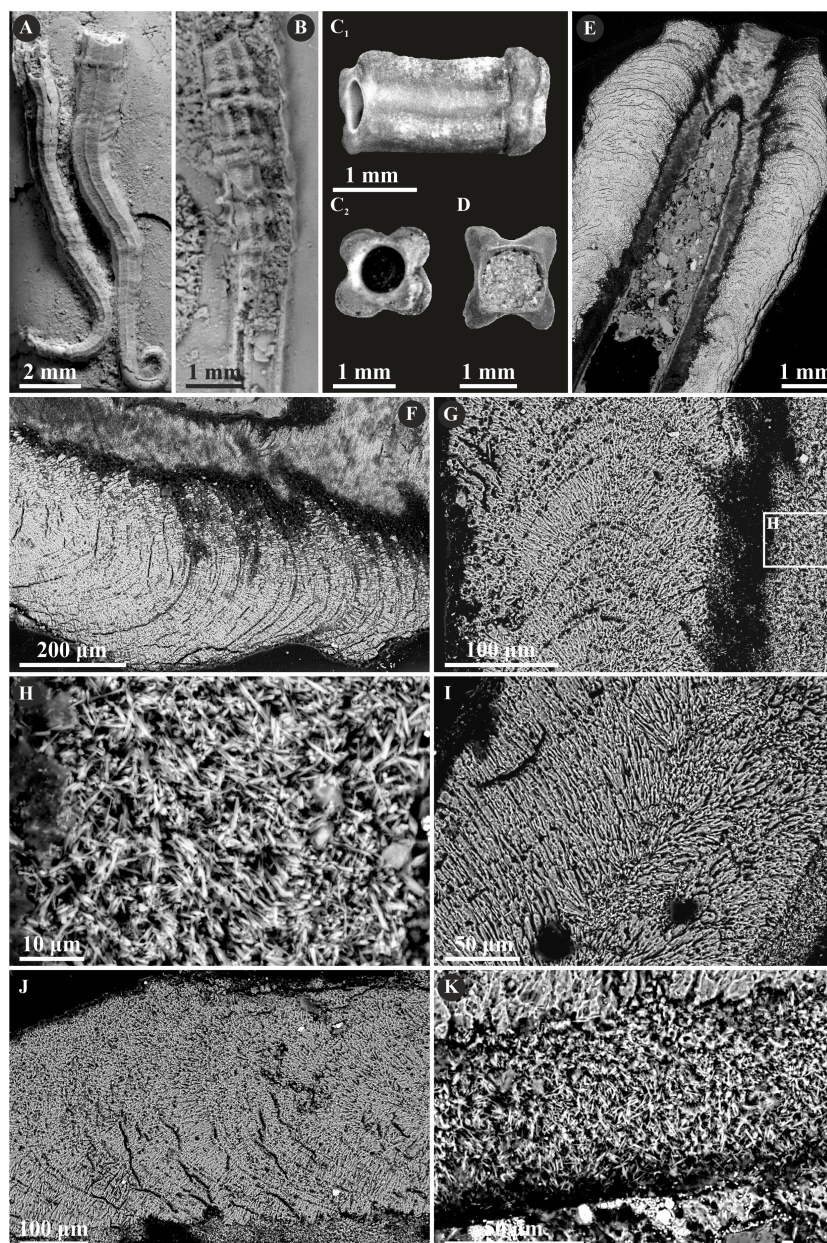


Figure 8 Selected specimens of *Nogrubs* from the Jurassic of Poland. (A) Two specimens of *Nogrubs* aff. *quadrilatera* (Goldfuss, 1831) encrusting a belemnite rostrum from the middle Bathonian of Gnaszyn Dolny (GIUS 8-3730/17). (B) *Nogrubs*? aff. *tricrostata* (Goldfuss, 1831) encrusting a belemnite rostrum from the middle Bathonian of Gnaszyn Dolny (GIUS 8-3730/19). (C, D) Free-lying tubes of *Nogrubs* aff. *tetragona* (Sowerby, 1829) (C. GIUS 8-3730/24; D. GIUS 8-3730/25); lateral (C₁) and cross-section (C₂, D) view. (continued on next page...)

Full-size  DOI: 10.7717/peerj.17389/fig-8

Figure 8 (...continued)

(E, F, G, I, J) The longitudinal sections of the *Nogrobs* aff. *tetragona* (E, F. GIUS 8-3730/34), *Nogrobs?* aff. *tricristata* (G. GIUS 8-3730/20), and *Nogrobs* aff. *quadrilatera* (I. GIUS 8-3730/35; J. GIUS 8-3730/36) tubes from the middle Bathonian of Gnaszyn Dolny showing two distinct layers: the external simple prismatic structure (SP) with distinct growth lines and internal irregularly oriented prismatic structure (IOP). (H, K) A close-up of the longitudinal sections of the internal tube layer of *Nogrobs?* aff. *tricristata* (H. GIUS 8-3730/20) and *Nogrobs* aff. *quadrilatera* (K. GIUS 8-3730/36) showing irregularly oriented prismatic structure (IOP) with short, needle-like crystals of different length and orientation.

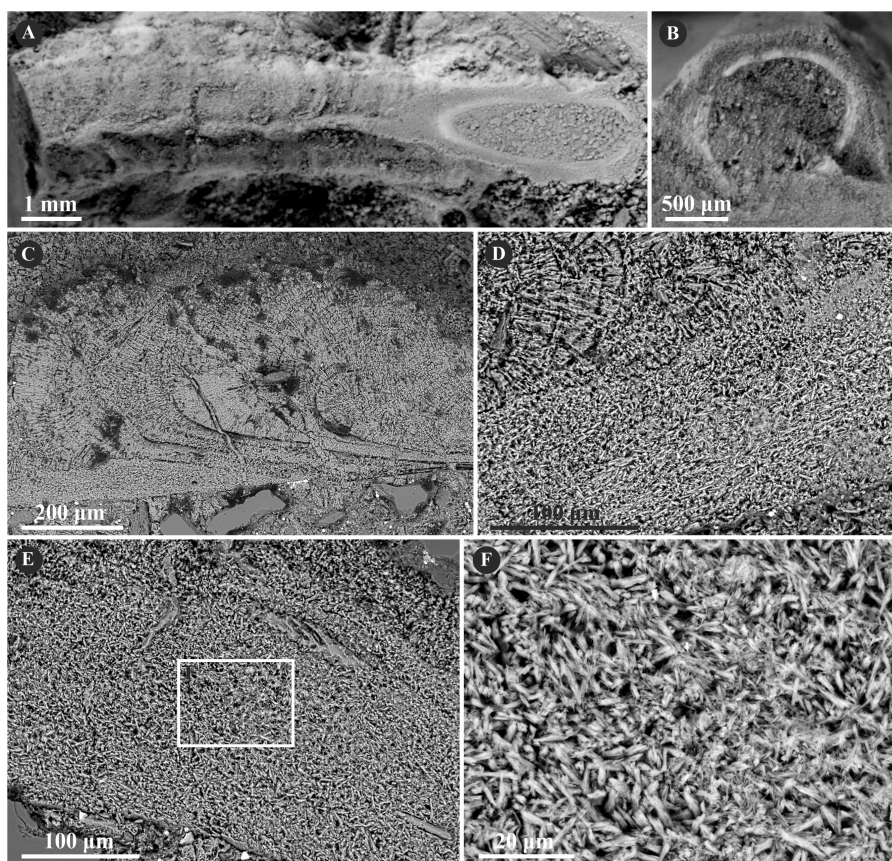


Figure 9 Selected specimens of *Mucroserpula* (Regenhardt, 1961) from the Jurassic of Poland. (A, B) *Mucroserpula* sp. encrusting a fragment of a shell from the middle Bathonian of Gnaszyn Dolny (GIUS 8-3730/26); top (A) and cross-section view (B). (C–E) Longitudinal sections of the *Mucroserpula* sp. tube from the middle Bathonian of Gnaszyn Dolny showing two distinct layers: the external spherulitic prismatic structure (SPHP) with distinct, chevron-shaped growth lines (C) and internal irregularly oriented prismatic structure (IOP) (GIUS 8-3730/26). (F) A close-up of the longitudinal section of the internal tube layer showing irregularly oriented prismatic structure (IOP) with short, needle-like crystals of different length and orientation (GIUS 8-3730/26).

Full-size  DOI: 10.7717/peerj.17389/fig-9

relationships between distinct types of structures throughout the evolution of the main serpulid clades (e.g., Vinn et al., 2008; Vinn & Kupriyanova, 2011; Vinn, 2013; Ippolitov & Rzhavsky, 2014; Ippolitov & Rzhavsky, 2015a; Ippolitov & Rzhavsky, 2015b).

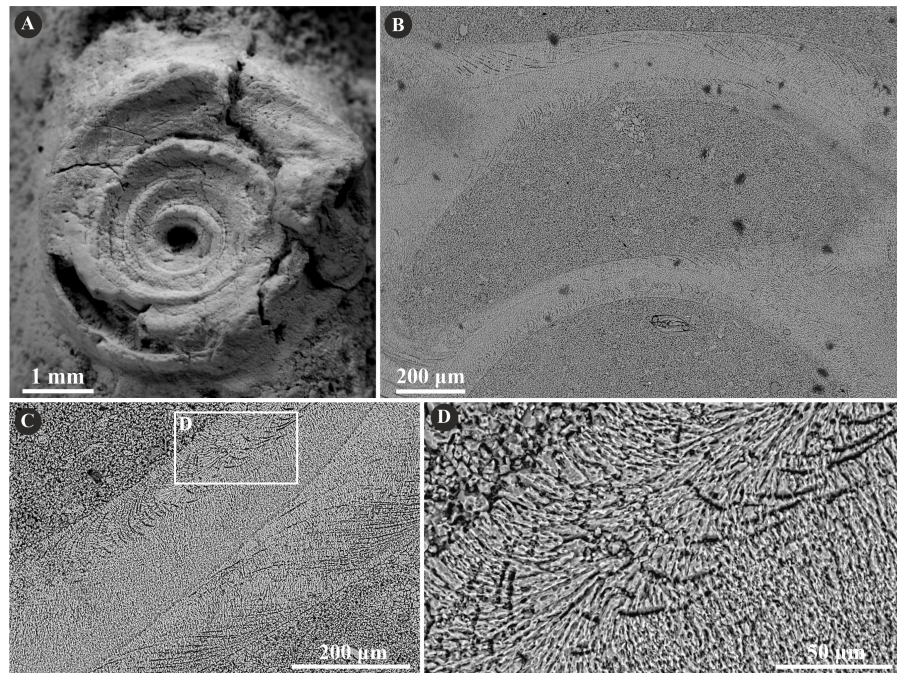


Figure 10 Selected specimens of *Placostegus planorbiformis* (Münster in Goldfuss, 1831) from the Jurassic of Poland. (A) *P. planorbiformis* encrusting a sponge fragment from the Oxfordian of Zalas (GIUS 8-3746/8). (B–D) Longitudinal sections of the tubes showing the simple prismatic structure (SP) with well-visible growth increments (GIUS 8-3746/8).

Full-size  DOI: [10.7717/peerj.17389/fig-10](https://doi.org/10.7717/peerj.17389/fig-10)

The most recent phylogenetic analyses indicate that serpulids are split into three major clades—Filigraninae, Spirorbinae, and Serpulinae, the last of which is further subdivided into two tribes: Serpulini and Ficopomatini (Kupriyanova, ten Hove & Rouse, 2023). The family Serpulidae until recently was maintained to comprise two major clades referred to as B and A, separated into BI, BII, AI, and AII (Kupriyanova, Macdonald & Rouse, 2006; Kupriyanova et al., 2009; Kupriyanova & Nishi, 2010). Formerly recognized clades BI and BII generally may be related to Filigraninae and Spirorbinae, whereas AI and AII, both settled within Serpulinae, correspond to the tribes Serpulini and Ficopomatini, respectively (Kupriyanova, Macdonald & Rouse, 2006; Kupriyanova et al., 2009; Kupriyanova, ten Hove & Rouse, 2023). Apart from Spirorbinae (former BII), members of all clades are present in the material studied.

Clade Filigraninae is possibly rooted even in the Permian with primitive tubes such as *Filigrana* (Sanfilippo et al., 2017; Ramsdale, 2021), and abundantly represented in the fossil record during the Mesozoic by many strongly ornamented tubes with several keels, e.g., *Vermiliopsis*, *Metavermilia*, and *Filigranula*, the latter two of which are present in the material investigated. *Metavermilia* cf. *striatissima* is single-layered and possesses irregularly oriented prismatic microstructure (IOP), which has been also found in the recent *Metavermilia multicristata* (Vinn et al., 2008). It is characteristic of this clade and is also the most common microstructure in the recent serpulids encompassing ca 60% of

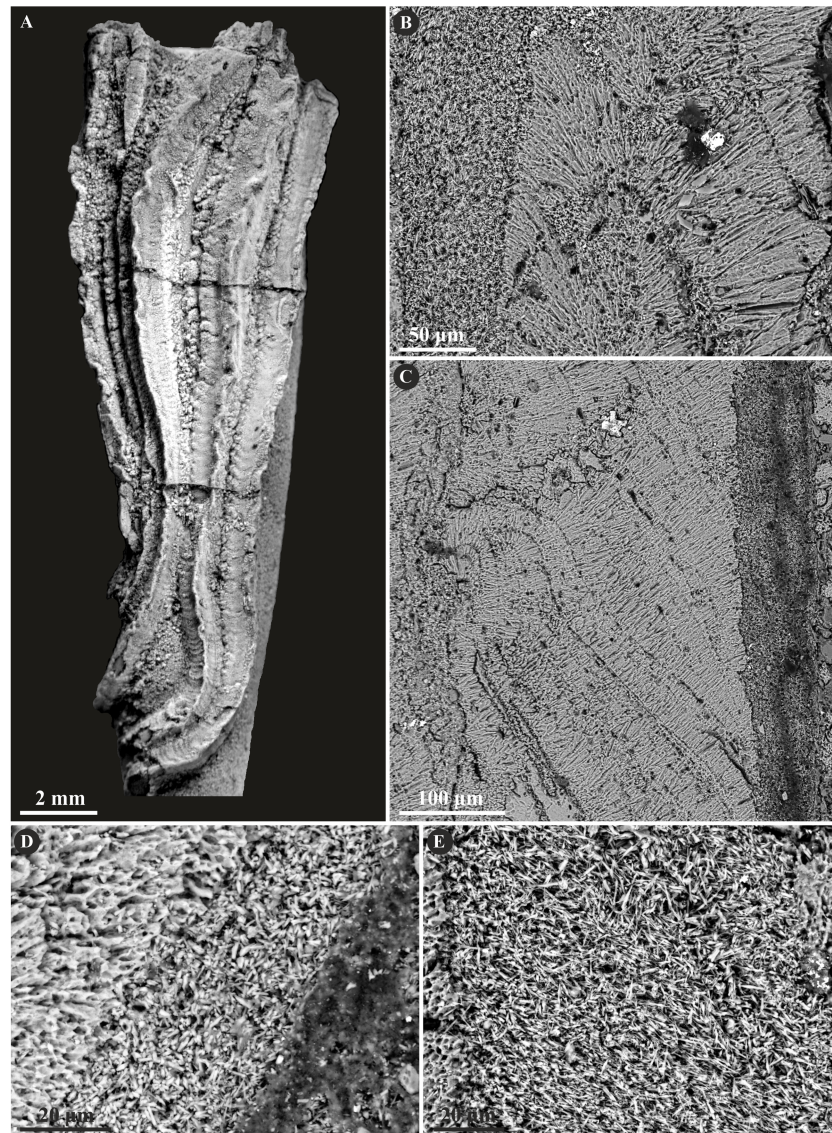


Figure 11 Selected specimens of *Serpulidae* sp. from the Jurassic of Poland. (A) Dense aggregation of closely spaced *Serpulidae* sp. 3 (see [Słowiński et al., 2022](#)) encrusting a fragment of a belemnite rostrum from the middle Bathonian of Gnaszyn Dolny (GIUS 8-3730/28). (B–E) Longitudinal sections of the *Serpulidae* sp. tube from the middle Bathonian of Gnaszyn Dolny showing two distinct layers: the external simple prismatic structure (SP) and internal irregularly oriented prismatic structure (IOP) (GIUS 8-3730/28).

Full-size  DOI: [10.7717/peerj.17389/fig-11](https://doi.org/10.7717/peerj.17389/fig-11)

species ([Vinn, 2007](#)). IOP microstructure most often builds the wall of single-layered tubes, or alternatively the inner part of multi-layered tubes (see [Vinn & Furrer, 2008](#)).

The representatives of Filograninae are generally characterized in the fossil record by more or less uniform fabrics of tube microstructures forming irregularly oriented structures, notably irregularly oriented prismatic structure (IOP). Secretion of such microstructures seems to be governed by the lower biological control of an animal, compared to more

advanced microstructures. The first confirmed appearance of such ultrastructure dates back to the Early Jurassic, possibly being present already in the Triassic (Vinn, Jäger & Kirsimäe, 2008). Such a simpler way of tube formation may indicate its plesiomorphic character and earlier origin (see also Vinn, 2013; Ippolitov & Rzhavsky, 2015a; Ippolitov & Rzhavsky, 2015b).

Another representative of this clade in the investigated material is the genus *Filogranula* comprising the recently discovered new species *F. spongiophila* (Słowiński et al., 2022), which has been studied with respect to ultrastructure for the first time, and by *F. runcinata*. The tube wall of *F. spongiophila* is single-layered and has a simple prismatic structure (SP), whereas *F. runcinata* possesses one well-preserved layer composed of spherulitic prismatic structure (SPHP) and a dubious IOP layer consisting of somewhat distorted, occasionally occurring areas of tiny, irregularly oriented crystals. As a result, the tube wall is interpreted as single-layered, composed of SPHP structure. Such microstructure occurs commonly in the clade Serpulinae comprising both formerly established “A” clades. The systematic position of the fossil *Filogranula* seems to be complicated, as the recent *Filogranula* is considered to be settled within Filograninae, relatively closely related to *Vermiliopsis* and *Metavermia* (Kupriyanova, ten Hove & Rouse, 2023). While the Cretaceous *Filogranula cincta* (Goldfuss, 1831) is classified as belonging to Filograninae too, the Jurassic *Filogranula runcinata* was considered to be placed in Serpulinae, within the tribe Ficopomatini (see Ippolitov et al., 2014; Kočí & Jäger, 2015), due to its prismatic microstructure, characteristic of the serpulid tubes appearing transparent in the recent species, such as e.g., *Placostegus*. On the other hand, prismatic structures are not a fully satisfactory character in differentiating between former A and B clades. Ippolitov & Rzhavsky (2014), Ippolitov & Rzhavsky (2015a) and Ippolitov & Rzhavsky (2015b) found out that some spirorbins may also have their tubes composed of regularly oriented prismatic microstructures, in spite of the fact, that Spirorbinae is phylogenetically closely related to Filograninae, which commonly form irregularly oriented structures.

Serpulinae constitutes two well-supported tribes—Serpulini and Ficopomatini (Kupriyanova, ten Hove & Rouse, 2023). The first unequivocal members of Serpulinae very likely existed since the Triassic (Assmann, 1937; see Ippolitov et al., 2014) if not even since the Permian (Sanfilippo et al., 2017; Sanfilippo et al., 2018). In contrast to Filograninae, which have mostly non-oriented structures, serpulids within this lineage have a more advanced biomineralization system and are capable of forming complex microstructures, such as e.g., oriented, lamello-fibrillar, or oriented-fibrillar (see Vinn & Furrer, 2008; Vinn & Kupriyanova, 2011). During the Jurassic, serpulid microstructure diversity was relatively modest (ten types; see Schlögl et al., 2018; Vinn, 2020) compared to an array of contemporary and Cenozoic ones (Vinn, 2007; Kočí, Milàn & Jäger, 2023). The most sophisticated microstructures in serpulids evolved in the Eocene (e.g., (Vinn, 2008; Buckman, 2020; Kočí, Goedert & Buckeridge, 2022). Although such complex microstructures as lamello-fibrillar or regularly ridged prismatic appeared quite late in the evolution of serpulids, the oriented prismatic structures evolved at the latest during the Middle Jurassic. Simple and spherulitic prismatic microstructures are very common and characteristic of the Jurassic Serpulinae and are considered to be apomorphic.

Oriented prismatic structures are unknown from any genus of Filograninae; however, they were found to persist in the clade Spirorbinae (Ippolitov & Rzhavsky, 2015a; Ippolitov & Rzhavsky, 2015b), which appeared in the Cretaceous. It may mean, that either it is plesiomorphic, or the prismatic structures have evolved at least twice.

The tribe Serpulini is represented in the Jurassic by characteristically coiled *Spiraserpula* and related *Cementula*, which is present in the herein material. *C. spiroloinites* and *C. radwanskae* are both single-layered and possess their tube walls built of simple prismatic microstructure (SP), though in the latter it is somewhat obliterated. Simple and spherulitic prismatic microstructures exhibit the predominantly uniform orientation of calcium carbonate crystals which determines the optical transparency of the tubes (Ippolitov & Rzhavsky, 2008; Zibrowius & ten Hove, 1987), supported also by the dense arrangement of crystals and their large size (Vinn & Kupriyanova, 2011). In contrast, the recent tubes with IOP microstructure most often are optically opaque (Vinn et al., 2008).

All the main members of the Jurassic representatives of Ficopomatini are present in the investigated material. They contain genera with various morphotypes comprising a robust, single-keeled *Propomatoceros*, a three-keeled *Mucroserpula*, quadrangular tubes attributed most often to *Nogrobs*, and a well-defined, planispirally coiled *Placostegus*. Serpulids in this tribe commonly possess two layers of tube walls having the outer dense layer built of ordered prismatic structures (simple or spherulitic), and the internal layer composed of irregularly oriented prismatic structure. Two-layered tubes appeared in the Jurassic (Vinn & Furrer, 2008) and have their external layer denser than the internal, which is composed of thinner mineral microstructure. Dense outer protective layers (DOL) have been found in tube walls of serpulids inhabiting diverse environments (see Vinn & Kupriyanova, 2011). Consequently, rather than being dependent on the environment, the advent of DOLs during the Jurassic appears to be a significant evolutionary adaptation of serpulids. Except for some members of Spirorbinae (Ippolitov & Rzhavsky, 2014; Ippolitov & Rzhavsky, 2015a; Ippolitov & Rzhavsky, 2015b) and one species in the clade Filograninae, dense, outer layers exist exclusively in the clade Serpulinae (Vinn & Kupriyanova, 2011).

Propomatoceros lumbricalis and *Mucroserpula* possess here two well-distinguishable layers: internal IOP and external SPHP. A single *Propomatoceros* specimen may have three layers, which, however, is ambiguous, as its internal layer may be diagenetically obliterated, and therefore all the specimens are considered two-layered. As discussed previously (Ippolitov et al., 2014; Słowiński et al., 2022), it cannot be ruled out, that *Mucroserpula* and *Propomatoceros* may represent the same genus. The diagnostic characters of both genera are highly transitional, subjective, and dependent to a large extent on different variables, such as e.g., ontogenetic stage (see Słowiński et al., 2022). Nonetheless, the microstructural fabrics of the two genera in our investigation are essentially the same and typical of Ficopomatini.

Nogrobs consists here of three species: *N. aff. quadrilatera*, *N. aff. tricristata*, and *N. aff. tetragona*. All of them are two-layered composed of internal IOP and external SP microstructure. Apart from *Nogrobs*, Jurassic quadrangular fossils of serpulids that share morphological similarities with this genus were attributed by various authors to different genera, partially of questionable validity—*Tetraserpula* (Parsch, 1956), *Tetraditrupe* (Regenhardt, 1961), *Glandifera* (Regenhardt, 1961), *Tubulostium* (Stoliczka, 1868),

Tectorotularia (Regenhardt, 1961), and *Ditropula* (Brünnich Nielsen, 1931). Kupriyanova & Ippolitov (2015) examined and reviewed a number of microstructures of extant and fossil taxa having tusk-shaped, tetragonal in cross-section tubes, concluding, that these morphologically similar forms belong to several different genera, most likely being an effect of convergence. Not surprisingly, these recent taxa cannot be synonymized with the fossil *Nogrobs*. Nevertheless, the authors claim that at least the majority of fossil *Nogrobs* species may be members of a single clade, as opposed to morphologically-related recent species. According to its external tube layer composed of simple prismatic microstructure (responding to a transparent tube), the three investigated species fit well Ficopomatini, confirming previous ultrastructural studies (Kupriyanova & Ippolitov, 2015). It has to be noted, however, that the recent *Nogrobs grimaldii* (Fauvel, 1909) has been found to possess an opaque tube (Kupriyanova & Nishi, 2011).

The only exception not having a two-layered tube wall within this tribe is *Placostegus*, represented here by *P. planorbiformis*, which has a single layer made entirely of a simple prismatic structure (SP). Similarly, contemporary *P. tridentatus* (Fabricius, 1779) possesses a tube wall composed of a simple prismatic microstructure resulting in a completely transparent tube (ten Hove & Kupriyanova, 2009: 8, fig. 1F; Vinn & Kupriyanova, 2011).

The undetermined serpulid taxon Serpulidae sp., described recently by Słowiński et al. (2022) has been studied here with respect to its microstructure. Although the investigated specimens externally resemble a few genera, such as *Propomatoceros*, *Placostegus*, and *Metavermilia*, they do not exactly fit any of those taxa (see Słowiński et al., 2022). The specimens possess a tube wall composed of two layers—external simple prismatic (SP), and internal irregularly oriented prismatic microstructure (IOP), which is of a very close resemblance to other members of Ficopomatini, notably *Nogrobs*.

Ecological implications and comparisons with sabellids

Serpulids perform biologically controlled biomineralization where their cellular activity regulates the nucleation and extracellular growth of the calcium carbonate crystals by the ion uptake from the surrounding water (see Neff, 1971a; Neff, 1971b) using a secretory epithelium, mediated and controlled by the organic matrix (Vinn, Kirsimäe & ten Hove, 2009; Vinn, 2021a). As a result, serpulids accomplish a specified crystal orientation within the tube wall, which is reflected by their variety of ultrastructural fabrics—the growth direction of crystals may be anisotropic, semi-oriented, or oriented (Weedon, 1994; Vinn et al., 2008). Apart from a matrix-mediated crystallization (Vinn, 2021a), an alternative explanation has been proposed recently to define the crystal orientation mechanism, which is based on a variable application of the serpulid's collar rotational force between the formation of ordered and unordered microstructures (Buckman & Harries, 2020). Considering the fact that the same growth increments may occur across zones with diverse ultrastructures makes (Vinn, 2021a; Vinn, 2021b) this model strongly disputable.

The serpulid biomineralization system differs from that of other tube-dwelling polychaetes. By the formation of the cylindrical and parabolic layers (see Jäger, 1983) serpulids are capable of forming multi-layered tubes arranged in distinct microstructures (see Vinn et al., 2008). Importantly, the parabolic layer is formed by adding secretory

increments to the rim of the worm's aperture allowing it to actively modify the external morphology according to the tube's sculpture, but also depending on the temporary ecological requirements. Such a solution results in a wide array of serpulid tube characters including attachment structures and base widenings of the tube, which combined with the ability to form several layers greatly improves the durability of the tube. Fossil cirratulids (Vinn, 2009; Taylor et al., 2010) and sabellids (Vinn, ten Hove & Mutvei, 2008; Słowiński, Banasik & Vinn, 2023) possess single-layered tube wall composed of a spherulitic prismatic structure. The presence of only cylindrical layer in sabellids strongly impairs their biomineralization abilities. Unlike serpulids having mostly chevron-shaped growth lines (see Weedon, 1994), they form their tubes by secreting calcareous material along distinct growth lamellae oriented parallel to the tube wall (Vinn, ten Hove & Mutvei, 2008; Słowiński, Banasik & Vinn, 2023). Subsequent increments are added to the internal surface of the tube, and therefore *Glomerula* is unable to modify its simple tube architecture. A much longer secretion zone in sabellids compared to serpulids enables them for a fast calcification incurring comparably lower physiological costs, which allows them to considerably prolong their tubes. On the other hand, such fast dispersal may be required by the diminishing inside of the tube, insufficient for the growing worm. Interestingly, cirratulids perform a double-phased, combined controlled, and influenced biomineralization. The products of an influenced biomineralization such as agglutinated xenolithic granules within a calcareous matrix, as well as the anisotropic orientation of different-sized crystals, indicate, that cirratulids govern even a weaker than sabellids control over biomineralization (Guido et al., 2024).

A much more advanced biomineralization system of serpulids and the resulting variety of microstructures are an important evolutionary adaptation for this taxon, which is an obligatory tube-dweller. The emergence of multi-layered tubes with dense, outer protective layers during the Jurassic could have been triggered by the intensified predation during the Mesozoic Marine Revolution (Vermeij, 1977). Interestingly, the development of dense, outer protective layers in spirorbins was shown to have a relationship with the type of paleoenvironment, its energy, and substrate kind (see Ippolitov & Rzhavsky, 2015a; Ippolitov & Rzhavsky, 2015b). With the skeleton development, serpulids could perform competitive strategies against other organisms instead of avoiding competition or temporary paleoenvironmental vagaries. Gradual increase in abundance of serpulids during the Mesozoic and Cenozoic (see Ippolitov et al., 2014 for a review), and their advantage over other organisms allowed for higher plasticity and divergence of different morphotypes (Vinn et al., 2024). Different morphogenetic programs in turn enhanced their functional utilization not only by mechanical strengthening of the tubes but also by optimizing their space by planispiral coiling, providing a higher feeding tier, avoiding being overgrown or coated by sediment thanks to upward growth. Free-living serpulids with tusk-shaped tubes were presumably adapted to live in or on the surface of soft sediment during episodes of increased sedimentation rates (see Vinn et al., 2024 for a review). Sabellid biomineralization system allowed them to quickly elongate their tubes but these polychaetes did not exhibit such diverse morphotypes. Instead, they could grow irregularly away from the initial point of encrustation and perform an opportunistic, fugitive strategy (see Taylor, 2016; Słowiński,

Banasik & Vinn, 2023). Additionally, it could be the outcome of biomineralization's lack of significance in this group as calcareous sabellids were restricted to a single genus in the family.

CONCLUSIONS

The first thorough assessment of the ultrastructural diversity of Middle and Late Jurassic serpulid tubes has been conducted. The obtained data reveal a characteristic of the Jurassic serpulids, a relatively low diversity of ultrastructural fabrics, which generally correspond to certain clades recognized among extant taxa. Amongst 12 taxa representing two (Filograninae and Serpulinae) of the three main serpulid clades, six of them possess tube walls composed of a single layer, and six are two-layered. There are certain evolutionary trends in tube ultrastructures. The representatives of the clade Filograninae are single-layered and have their tube walls built of a primitive, irregularly oriented prismatic microstructure (IOP). The majority of members of possibly apomorphic clade Serpulinae possess two-layered tube walls, where the denser, external layer is composed of oriented, prismatic microstructures (either spherulitic (SPHP) or simple (SP)), and the internal is irregularly oriented prismatic (IOP). The exceptions are *Placostegus planorbiformis* and the genus *Cementula*, which are single-layered, and built of simple prismatic structure (SP).

Serpulid tube ultrastructures reflect their biomineralization abilities providing important paleoecological signatures. Formation of the regularly oriented microstructures of Serpulinae requires a higher biological control over biomineralization compared to the more primitive, anisotropic microstructures of Filograninae. The development of serpulid ultrastructure diversity was likely triggered by the evolutionary importance of the tubes for this group. A variety of microstructure types and the ability to form multi-layered tubes allowed serpulids to employ different morphogenetic programs, which had an impact on their functional utilization.

The differences in the biomineralization system between serpulids and other tube-dwelling polychaetes resulted from the importance of tubes for the former taxon. The complex biomineralization system of serpulids resulted in a multiplicity of forms and an ability to form robust, strongly ornamented tubes, which mechanically strengthened their durability. Although higher energy expenditure of skeletal secretion decreased the rate of tube formation, the solid attachment and skeleton robustness allowed for a competitive advantage over other encrusters. Conversely, sabellid primitive biomineralization abilities presumably were elicited by the unimportance of skeleton for this taxon resulting in a simplicity of forms. On the other hand, it enabled a fast spreading over the substrate, shunning competition and disadvantageous conditions by utilizing an opportunistic strategy of quick tube elongation.

ACKNOWLEDGEMENTS

We would like to warmly thank Marian Külaviir (University of Tartu) and Arkadiusz Krz̄ątała (University of Silesia) for their assistance with SEM. Tomáš Kočí and Alexei

Ippolitov, the journal referees, are greatly acknowledged for providing valuable comments and suggestions, which improved the final version of the manuscript.

ADDITIONAL INFORMATION AND DECLARATIONS

Funding

The authors received no funding for this work.

Competing Interests

The authors declare there are no competing interests.

Author Contributions

- Jakub Słowiński conceived and designed the experiments, performed the experiments, analyzed the data, prepared figures and/or tables, authored or reviewed drafts of the article, and approved the final draft.
- Olev Vinn conceived and designed the experiments, performed the experiments, authored or reviewed drafts of the article, and approved the final draft.
- Michał Zatoń conceived and designed the experiments, authored or reviewed drafts of the article, and approved the final draft.

Data Availability

The following information was supplied regarding data availability:

The SEM photographs of the investigated ultrastructures are available in the figures.

REFERENCES

- Assmann P. 1937.** Revision der Fauna der Wirbellosen der oberschlesischen Trias. *Abhandlungen der Preußischen Geologischen Landesanstalt* **170**:1–134.
- Bałuk W, Radwański A. 1997.** The micropolychaete *Josephella commensalis* sp.n. commensal of the scleractinian coral *Tarbellastraea reussiana* (Milne-Edwards & Haime, 1850) from the Korytnica Clays (Middle Miocene; Holy Cross Mountains, Central Poland). *Acta Geologica Polonica* **47**:211–224.
- Barnes RD. 1965.** Tube-building and feeding in chaetopterid polychaetes. *Biological Bulletin* **129**:217–233 DOI [10.2307/1539840](https://doi.org/10.2307/1539840).
- Bornhold BD, Milliman JD. 1973.** Generic and environmental control of carbonate mineralogy in serpulid (polychaete) tubes. *Journal of Geology* **81**:363–373 DOI [10.1086/627876](https://doi.org/10.1086/627876).
- Brünnich Nielsen K. 1931.** Serpulidae from the Senonian and Danian deposits of Denmark. *Meddelelser Fra Dansk Geologisk Forening* **8**:71–113.
- Buckman JO. 2020.** The tube of *Ditrupa bartonensis* (Annelida, Serpulidae), from the Eocene of southern England: observations on microstructure and its significance. *Palaeontologia Electronica* **23**:a37 DOI [10.26879/1098](https://doi.org/10.26879/1098).

- Buckman JO, Harries DB. 2020.** Reef forming *Serpula vermicularis* from Scotland and Ireland: tube structure, composition and implications. *Zoologischer Anzeiger* **288**:53–65 DOI [10.1016/j.jcz.2020.07.003](https://doi.org/10.1016/j.jcz.2020.07.003).
- Chamoy L, Nicola M, Ravaux J, Quenedey B, Gaill F, Delachambre J. 2001.** A novel chitin-binding protein from vestimentiferan *Riftia pachyptila* interacts specifically with β -chitin. *Journal of Biological Chemistry* **276**:8051–8058 DOI [10.1074/jbc.M009244200](https://doi.org/10.1074/jbc.M009244200).
- Fabricius O. 1779.** *Reise nach Norwegen mit Bemerkungen aus der Naturhistorie und Oekonomie*. Hamburg: Carl Ernst Bohn, 388.
- Fauvel P. 1909.** Deuxième note préliminaire sur les Polychètes provenant des campagnes de l'Hirondelle et de la Princesse-Alice, ou déposées dans la Musée Océanographique de Monaco. *Bulletin de l'Institut Océanographique* **142**:1–76.
- Fischer R, Oliver CG, Reitner J. 1989.** Skeletal structure, growth, and paleoecology of the patch reef-building polychaete worm *Diplochaetetes mexicanus* Wilson, 1986 from the Oligocene of Baja California (Mexico). *Geobios* **22**:761–775 DOI [10.1016/S0016-6995\(89\)80071-3](https://doi.org/10.1016/S0016-6995(89)80071-3).
- Fischer R, Pernet B, Reitner J. 2000.** Organomineralization of cirratulid tubes—fossil and recent examples. *Facies* **42**:35–50 DOI [10.1007/BF02562565](https://doi.org/10.1007/BF02562565).
- Fournier J, Etienne S, Le Cam JB. 2010.** Inter- and intraspecific variability in the chemical composition of the mineral phase of cements from several tube-building polychaetes. *Geobios* **43**:191–200 DOI [10.1016/j.geobios.2009.10.004](https://doi.org/10.1016/j.geobios.2009.10.004).
- Fürsich FT, Palmer TJ, Goodyear KL. 1994.** Growth and disintegration of bivalve-dominated patch-reefs in the Portlandian (Upper Jurassic) of southern England. *Palaeontology* **37**:131–171.
- Goldfuss A. 1831.** *Petrefacta germaniae. I. Divisio secunda: radiariorum Reliquiae—Strahlenthiere der Vorwelt*. Düsseldorf: Arnz and Co., 165–240.
- Guido A, D'Amico F, De Vries TJ, Kočí T, Collareta A, Bosio G, Sanfilippo R. 2024.** Double-phased controlled and influenced biomineralization in marine invertebrates: the example of Miocene to recent reef-building polychaete cirratulids from southern Peru. *Palaeogeography, Palaeoclimatology, Palaeoecology* **639**:112060 DOI [10.1016/j.palaeo.2024.112060](https://doi.org/10.1016/j.palaeo.2024.112060).
- Hausen H. 2005.** Comparative structure of the epidermis in polychaetes (Annelida). *Hydrobiologia* **535**:25–35 DOI [10.1007/s10750-004-4442-x](https://doi.org/10.1007/s10750-004-4442-x).
- Ippolitov AP, Rzhavsky AV. 2008.** On the microstructure of tubes of modern spirorbids (Annelida, Polychaeta). *Doklady Biological Sciences* **418**:20–22 DOI [10.1134/S0012496608010079](https://doi.org/10.1134/S0012496608010079).
- Ippolitov AP, Rzhavsky AV. 2014.** Tube morphology, ultrastructures and mineralogy in recent Spirorbinae (Annelida: Polychaeta: Serpulidae). I. General introduction. Tribe Paralaeospirini. *Invertebrate Zoology* **11**:293–314 DOI [10.15298/invertzool.11.2.01](https://doi.org/10.15298/invertzool.11.2.01).
- Ippolitov AP, Rzhavsky AV. 2015a.** Tube morphology, ultrastructures and mineralogy in recent Spirorbinae (Annelida: Polychaeta: Serpulidae). II. Tribe Spirorbini. *Invertebrate Zoology* **12**:61–92 DOI [10.15298/invertzool.12.1.03](https://doi.org/10.15298/invertzool.12.1.03).

- Ippolitov AP, Rzhavsky AV. 2015b.** Tube morphology, ultrastructures and mineralogy in recent Spirorbinae (Annelida: Polychaeta: Serpulidae). III. Tribe Circeini. *Invertebrate Zoology* **12**:151–173 DOI [10.15298/invertzool.12.2.03](https://doi.org/10.15298/invertzool.12.2.03).
- Ippolitov AP, Vinn O, Kupriyanova EK, Jäger M. 2014.** Written in stone: history of serpulid polychaetes through time. *Memoirs of Museum Victoria* **71**:123–159 DOI [10.24199/j.mmv.2014.71.12](https://doi.org/10.24199/j.mmv.2014.71.12).
- Jäger M. 1983.** Serpulidae (Polychaeta sedentaria) aus der norddeutschen höheren Oberkreide—Systematik, Stratigraphie, Ökologie. *Geologisches Jahrbuch, Reihe a* **68**:3–219.
- Jäger M. 2005.** Serpulidae und Spirorbidae (Polychaeta sedentaria) aus Campan und Maastricht von Norddeutschland, den Niederlanden, Belgien und angrenzenden Gebieten. *Geologisches Jahrbuch a* **157**:121–249.
- Klompaker AA. 2012.** Drill hole predation on fossil serpulid polychaetes, with new data from the Pliocene of the Netherlands. *Palaeogeography, Palaeoclimatology, Palaeoecology* **321–322**:113–120 DOI [10.1016/j.palaeo.2012.01.024](https://doi.org/10.1016/j.palaeo.2012.01.024).
- Kočí T, Bosio G, Collareta A, Sanfilippo R, Ekrt B, Urbina M, Malinverno E. 2021.** First report on the cirratulid (Annelida, Polychaeta) reefs from the Miocene Chilcatay and Pisco Formations (East Pisco Basin, Peru). *Journal of South American Earth Sciences* **107**:103042 DOI [10.1016/j.jsames.2020.103042](https://doi.org/10.1016/j.jsames.2020.103042).
- Kočí T, Goedert JL, Buckeridge JS. 2022.** Eocene tube-dwelling annelids (Polychaeta: Sedentaria) from the Black Hills, western Washington State: the first record of *Neodexiospira* from North America. *PalZ* **96**:631–653 DOI [10.1007/s12542-022-00604](https://doi.org/10.1007/s12542-022-00604).
- Kočí T, Jäger M. 2015.** *Filogranula cincta* (Goldfuss, 1831), a serpulid worm (Polychaeta, Sedentaria, Serpulidae) from the Bohemian Cretaceous Basin. *Sborník Národního Muzea v Praze, řada B, Přírodní vědy. Acta Musei Nationalis Pragae, Series B, Historia Naturalis* **71**:293–300 DOI [10.14446/AMNP.2015.293](https://doi.org/10.14446/AMNP.2015.293).
- Kočí T, Milàn J, Jäger M. 2023.** *Neovermilia gundstrupensis* sp. nov. (Polychaeta, Serpulidae) from the Selandian (middle Paleocene) of Fyn, Denmark. *Bulletin of the Geological Society of Denmark* **72**:135–151 DOI [10.37570/bgsd-2023-72-05](https://doi.org/10.37570/bgsd-2023-72-05).
- Kupriyanova EK, ten Hove HA, Rouse GW. 2023.** Phylogeny of Serpulidae (Annelida, Polychaeta) inferred from morphology and DNA sequences, with a new classification. *Diversity* **15**:398 DOI [10.3390/d15030398](https://doi.org/10.3390/d15030398).
- Kupriyanova EK, ten Hove HA, Sket B, Trontelj P, Zakšek V, Rouse GW. 2009.** Evolution of a unique freshwater cave-dwelling serpulid polychaete *Marifugia cavatica* Absolon and Hrabě, 1930. *Systematics and Biodiversity* **7**:389–401 DOI [10.1017/S1477200009990168](https://doi.org/10.1017/S1477200009990168).
- Kupriyanova EK, Ippolitov AP. 2012.** Are Mesozoic shallow-water serpulids (Annelida, Polychaeta) ancestors of the Recent deep-sea fauna? In: *Abstracts of the 13th deep-sea biology symposium, Wellington, New Zealand*.
- Kupriyanova EK, Ippolitov AP. 2015.** Deep-sea serpulids (Annelida: Polychaeta) in tetragonal tubes: on a tube convergence path from the Mesozoic to recent. *Zootaxa* **4044**:151–200 DOI [10.11646/zootaxa.4044.2.1](https://doi.org/10.11646/zootaxa.4044.2.1).

- Kupriyanova EK, Macdonald TA, Rouse GW. 2006.** Phylogenetic relationships within Serpulidae (Sabellida, Annelida) inferred from molecular and morphological data. *Zoologica Scripta* 35:421–439 DOI [10.1111/j.1463-6409.2006.00244.x](https://doi.org/10.1111/j.1463-6409.2006.00244.x).
- Kupriyanova EK, Nishi E. 2010.** Serpulidae (Annelida, Polychaeta) from Patton-Murray seamounts, Gulf of Alaska, North Pacific Ocean. *Zootaxa* 2665:51–68 DOI [10.11646/zootaxa.2665.1.3](https://doi.org/10.11646/zootaxa.2665.1.3).
- Kupriyanova EK, Nishi E. 2011.** New records of the deep-sea *Nogrobs grimaldii* (Serpulidae: Annelida). *Marine Biodiversity Records* 4:1–4 DOI [10.1017/S1755267211000674](https://doi.org/10.1017/S1755267211000674).
- Morton B, Harper EM. 2009.** Drilling predation upon *Ditrupa arietina* (Polychaeta: Serpulidae) from the Mid-Atlantic Açores, Portugal. *Açoreana, Suplemento, Açores* 6:157–165.
- Neff JM. 1971a.** Ultrastructural studies of the secretion of calcium carbonate by the serpulid polychaete worm, *Pomatoceros caeruleus*. *Zeitschrift für Zellforschung und Mikroskopische Anatomie* 120:160–186 DOI [10.1007/BF00335534](https://doi.org/10.1007/BF00335534).
- Neff JM. 1971b.** Ultrastructure of calcium phosphate-containing cells in the serpulid polychaete worm *Pomatoceros caeruleus*. *Calcified Tissue Research* 7:191–200 DOI [10.1007/BF02062606](https://doi.org/10.1007/BF02062606).
- Nishi E, Rouse GW. 2013.** First whale fall chaetopterid; a gigantic new species of *Phyllochaetopterus* (Chaetopteridae: Annelida) from the deep sea off California. *Proceedings of the Biological Society of Washington* 126:287–298 DOI [10.2988/0006-324X-126.4.287](https://doi.org/10.2988/0006-324X-126.4.287).
- Parsch KOA. 1956.** Die Serpuliden-Fauna des südwestdeutschen Jura. *Palaeontographica* 107:211–240.
- Perkins TH. 1991.** *Calcisabella piloseta*, a new genus and species of Sabellinae (Polychaeta: Sabellidae). *Bulletin of Marine Science* 48:261–267.
- Pillai TG. 1993.** A review of some Cretaceous and Tertiary serpulid polychaetes of the genera *Cementula* and *Spiraserpula* Regenhardt 1961, *Laqueoserpula* Lommerzheim 1979 and *Protectoconorca* Jäger 1983. *Paläontologische Zeitschrift* 67:69–88 DOI [10.1007/BF02985871](https://doi.org/10.1007/BF02985871).
- Pillai TG, ten Hove HA. 1994.** On recent species of *Spiraserpula* Regenhardt, 1961, a serpulid polychaete genus hitherto known only from Cretaceous and Tertiary fossils. *Bulletin of the Natural History Museum, London (Zoology)* 60:39–104.
- Ramsdale R. 2021.** A possible serpulid tube worm of the genus *Filograna* from the upper Permian Cadeby Formation of South Yorkshire, UK. *Proceedings of the Yorkshire Geological Society* 63:pygs2020–016 DOI [10.1144/pygs2020-016](https://doi.org/10.1144/pygs2020-016).
- Regenhardt H. 1961.** Serpulidae (Polychaeta sedentaria) aus der Kreide Mitteleuropas, ihre ökologische, taxonomische und stratigraphische Bewertung. *Mitteilungen Aus Dem Geologischen Staatsinstitut in Hamburg* 30:5–115.
- Reish DJ. 1952.** Discussion of the colonial tube-building polychaetous annelid *Dodecaceria fistulicola* Ehlers. *Bulletin of the Southern California Academy of Sciences* 51:103–107.
- Rouse GW, Pleijel F. 2001.** *Polychaetes*. Oxford: Oxford University Press, 354.

- Sanfilippo R. 1998.** Tube morphology and structure of the bathyal Mediterranean serpulid *Hyalopomatus variorugosus* Ben-Eliahu et Fiege, 1996 (Annelida, Polychaeta). *Rivista Italiana di Paleontologia e Stratigrafia* **104**:131–138
[DOI 10.13130/2039-4942/6124](https://doi.org/10.13130/2039-4942/6124).
- Sanfilippo R, Rosso A, Reitano A, Insacco G. 2017.** First record of sabellid and serpulid polychaetes from the Permian of Sicily. *Acta Palaeontologica Polonica* **62**:25–38
[DOI 10.4202/app.00288.2016](https://doi.org/10.4202/app.00288.2016).
- Sanfilippo R, Rosso A, Reitano A, Viola A, Insacco G. 2018.** New serpulid polychaetes from the Permian of western Sicily. *Acta Palaeontologica Polonica* **63**:579–584
[DOI 10.4202/app.00448.2017](https://doi.org/10.4202/app.00448.2017).
- Schlögl J, Kočí T, Jäger M, Segit T, Sklenář J, Sadki D, Ibnoussina M, Tomašových A. 2018.** Tempestitic shell beds formed by a new serpulid polychaete from the Bajocian (Middle Jurassic) of the Central High Atlas (Morocco). *PalZ* **92**:219–240
[DOI 10.1007/s12542-017-0381-5](https://doi.org/10.1007/s12542-017-0381-5).
- Słowiński J, Banasik K, Vinn O. 2023.** Insights into mineral composition and ultrastructure of Jurassic sabellid tubes (Annelida, Polychaeta): the evolution of sabellid calcification and its palaeoecological implications. *Lethaia* **56**:1–12
[DOI 10.18261/let.56.3.8](https://doi.org/10.18261/let.56.3.8).
- Słowiński J, Surmik D, Duda P, Zatoń M. 2020.** Assessment of serpulid-hydroid association through the Jurassic: a case study from the Polish Basin. *PLOS ONE* **15**:e0242924 [DOI 10.1371/journal.pone.0242924](https://doi.org/10.1371/journal.pone.0242924).
- Słowiński J, Vinn O, Jäger M, Zatoń M. 2022.** Middle and Late Jurassic tube-dwelling polychaetes from the Polish Basin: diversity, palaeoecology and comparisons with other assemblages. *Acta Palaeontologica Polonica* **67**:827–864
[DOI 10.4202/app.01006.2022](https://doi.org/10.4202/app.01006.2022).
- Sowerby de J de C. 1829.** *The mineral conchology of Great Britain*. London: The Author, 230.
- Stewart RJ, Weaver JC, Morse DE, Waite JH. 2004.** The tube cement of *Phragmatopoma californica*: a solid foam. *Journal of Experimental Biology* **207**:4727–4734
[DOI 10.1242/jeb.01330](https://doi.org/10.1242/jeb.01330).
- Stoliczka F. 1868.** The Gastropoda of the Cretaceous rocks of Southern India. Memoirs of the Geological Survey of India. *Palaeontologia Indica* **5**:497.
- Tanur AE, Gunari N, Sullan RMA, Kavanagh CJ, Walker GC. 2010.** Insights into the composition, morphology, and formation of the calcareous shell of the serpulid *Hydroides dianthus*. *Journal of Structural Biology* **169**:145–160
[DOI 10.1016/j.jsb.2009.09.008](https://doi.org/10.1016/j.jsb.2009.09.008).
- Taylor PD. 2016.** Competition between encrusters on marine hard substrates and its fossil record. *Palaeontology* **59**:481–497 [DOI 10.1111/pala.12239](https://doi.org/10.1111/pala.12239).
- Taylor PD, Vinn O, Kudryavtsev A, Schopf JW. 2010.** Raman spectroscopic study of the mineral composition of cirratulid tubes (Annelida, Polychaeta). *Journal of Structural Biology* **171**:402–405 [DOI 10.1016/j.jsb.2010.05.010](https://doi.org/10.1016/j.jsb.2010.05.010).
- ten Hove HA, Kupriyanova EK. 2009.** Taxonomy of Serpulidae (Annelida, Polychaeta): the state of affairs. *Zootaxa* **2036**:1–126.

- Thomas JG. 1940.** *Pomatoceros, Sabella and Amphitrite. Liverpool Marine Biology Committee, Memoirs* **23**:1–88.
- Vermeij GJ. 1977.** The Mesozoic marine revolution: evidence from snails, predators and grazers. *Paleobiology* **3**:245–258 DOI [10.1017/S0094837300005352](https://doi.org/10.1017/S0094837300005352).
- Vinn O. 2007.** Taxonomic implications and fossilization of tube ultrastructure of some Cenozoic serpulids (Annelida, Polychaeta) from Europe. *Neues Jahrbuch Für Geologie Und Paläontologie Abhandlungen* **244**:115–128 DOI [10.1127/0077-7749/2007/0244-0115](https://doi.org/10.1127/0077-7749/2007/0244-0115).
- Vinn O. 2008.** Tube ultrastructure of the fossil genus *Rotularia* DeFrance, 1827 (Polychaeta, Serpulidae). *Journal of Paleontology* **82**:206–212 DOI [10.1666/06-125.1](https://doi.org/10.1666/06-125.1).
- Vinn O. 2009.** The ultrastructure of calcareous cirratulid (Polychaeta, Annelida) tubes. *Estonian Journal of Earth Sciences* **58**:153–156 DOI [10.3176/earth.2009.2.06](https://doi.org/10.3176/earth.2009.2.06).
- Vinn O. 2013.** SEM Study of semi-oriented tube microstructures of Serpulidae (Polychaeta, Annelida): implications for the evolution of complex oriented microstructures. *Microscopy Research and Technique* **76**:453–456 DOI [10.1002/jemt.22186](https://doi.org/10.1002/jemt.22186).
- Vinn O. 2020.** Biomineralization of Polychaete Annelids in the fossil record. *Minerals* **10**:858 DOI [10.3390/min10100858](https://doi.org/10.3390/min10100858).
- Vinn O. 2021a.** Biomineralization in polychaete annelids: a review. *Minerals* **11**:1151 DOI [10.3390/min11101151](https://doi.org/10.3390/min11101151).
- Vinn O. 2021b.** The role of aragonite in producing the microstructural diversity of serpulid skeletons. *Minerals* **11**:1435 DOI [10.3390/min11121435](https://doi.org/10.3390/min11121435).
- Vinn O, Furrer H. 2008.** Tube structure and ultrastructure of serpulids from the Jurassic of France and Switzerland, its evolutionary implications. *Neues Jahrbuch für Geologie und Paläontologie, Abhandlungen* **250**:129–135 DOI [10.1127/0077-7749/2008/0250-0129](https://doi.org/10.1127/0077-7749/2008/0250-0129).
- Vinn O, Jäger M, Kirsimäe K. 2008.** Microscopic evidence of serpulid affinities of the problematic fossil tube *Serpula etalensis* from the Lower Jurassic of Germany. *Lethaia* **41**:417–421 DOI [10.1111/j.1502-3931.2008.00093.x](https://doi.org/10.1111/j.1502-3931.2008.00093.x).
- Vinn O, Jäger M, Słowiński J, Zatoń M. 2024.** Convergent evolution of encrusting calcareous tubeworms. *Palaeoworld* **33**(2):267–283 DOI [10.1016/j.palwor.2023.04.001](https://doi.org/10.1016/j.palwor.2023.04.001).
- Vinn O, Kirsimäe K, ten Hove HA. 2009.** Tube ultrastructure of *Pomatoceros americanus* (Polychaeta, Serpulidae): implications for the tube formation of serpulids. *Estonian Journal of Earth Sciences* **58**:148–152 DOI [10.3176/earth.2009.2.05](https://doi.org/10.3176/earth.2009.2.05).
- Vinn O, Kupriyanova EK. 2011.** Evolution of a dense outer protective tube layer in serpulids (Polychaeta, Annelida). *Carnets de Géologie-Notebooks on Geology Letter CG2011/05 (CG2011_L05)* 137–147 DOI [10.4267/2042/43896](https://doi.org/10.4267/2042/43896).
- Vinn O, Luque J. 2013.** First record of a pectinariid-like (Polychaeta, Annelida) agglutinated worm tube from the Late Cretaceous of Colombia. *Cretaceous Research* **41**:107–110 DOI [10.1016/j.cretres.2012.11.004](https://doi.org/10.1016/j.cretres.2012.11.004).
- Vinn O, ten Hove HA, Mutvei H. 2008.** On the tube ultrastructure and origin of calcification in sabellids (Annelida, Polychaeta). *Palaeontology* **51**:295–301 DOI [10.1111/j.1475-4983.2008.00763.x](https://doi.org/10.1111/j.1475-4983.2008.00763.x).

- Vinn O, ten Hove HA, Mutvei H, Kirsimäe K. 2008.** Ultrastructure and mineral composition of serpulid tubes (Polychaeta, Annelida). *Zoological Journal of the Linnean Society* **154**:633–650 DOI [10.1111/j.1096-3642.2008.00421.x](https://doi.org/10.1111/j.1096-3642.2008.00421.x).
- von Schlotheim EF. 1820.** *Die Petrefactenkunde auf ihrem jetzigen Standpunkte*. Gotha: Becker, 437.
- Weedon MJ. 1994.** Tube microstructure of recent and Jurassic serpulid polychaetes and the question of the Palaeozoic ‘spirorbids’. *Acta Palaeontologica Polonica* **39**:1–15.
- Zatoń M, Marynowski L, Bzowska G. 2006.** Konkrecje hiatusowe z iłó w rudonośnych Wyzyny Krakowsko-Częstochowskiej. *Przegląd Geologiczny* **54**:131–138.
- Zhao H, Sun C, Stewart RJ, Waite JH. 2005.** Cement proteins of the tube-building polychaete *Phragmatopoma californica*. *Journal of Biological Chemistry* **280**:42938–42944 DOI [10.1074/jbc](https://doi.org/10.1074/jbc).
- Zibrowius H, ten Hove HA. 1987.** *Neovermilia falcigera* (Roule, 1898) a deep- and cold-water serpulid polychaete common in the Mediterranean Plio-Pleistocene. *Bulletin of Biological Society of Washington* **7**:259–271.