

Problems in using p-curve analysis and text-mining to detect rate of p-hacking and evidential value

Dorothy V Bishop, Paul A Thompson

Background: The p-curve is a plot of the distribution of p-values reported in a set of scientific studies. Comparisons between ranges of p-values have been used to evaluate fields of research in terms of the extent to which studies have genuine evidential value, and the extent to which they suffer from bias in the selection of variables and analyses for publication, p-hacking. **Methods:** P-hacking can take various forms. Here we used R code to simulate the use of ghost variables, where an experimenter gathers data on several dependent variables but reports only those with statistically significant effects. We also examined a text-mined dataset used by Head et al. (2015) and assessed its suitability for investigating p-hacking. **Results:** We first show that when there is ghost p-hacking, the shape of the p-curve depends on whether dependent variables are intercorrelated. For uncorrelated variables, simulated p-hacked data do not give the "p-hacking bump" just below .05 that is regarded as evidence of p-hacking, though there is a negative skew when simulated variables are inter-correlated. The way p-curves vary according to features of underlying data poses problems when automated text mining is used to detect p-values in heterogeneous sets of published papers. **Conclusions:** The absence of a bump in the p-curve is not indicative of lack of p-hacking. Furthermore, while studies with evidential value will usually generate a right-skewed p-curve, we cannot treat a right-skewed p-curve as an indicator of the extent of evidential value, unless we have a model specific to the type of p-values entered into the analysis. We conclude that it is not feasible to use the p-curve to estimate the extent of p-hacking and evidential value unless there is considerable control over the type of data entered into the analysis. In particular, p-hacking with ghost variables is likely to be missed.

**Problems in using p-curve analysis and text-mining to detect rate of p-hacking
and evidential value**

D. V. M. Bishop¹ & Paul A. Thompson
University of Oxford, UK

¹Address for correspondence:

Department of Experimental Psychology,
South Parks Road,
University of Oxford,
OX1 3UD,
UK.

Tel 44 +01865 271369; fax 44 +01865 281255; email: dorothy.bishop@psy.ox.ac.uk

Abstract

Background: The p-curve is a plot of the distribution of p-values reported in a set of scientific studies. Comparisons between ranges of p-values have been used to evaluate fields of research in terms of the extent to which studies have genuine evidential value, and the extent to which they suffer from bias in the selection of variables and analyses for publication, p-hacking.

Methods: P-hacking can take various forms. Here we used R code to simulate the use of ghost variables, where an experimenter gathers data on several dependent variables but reports only those with statistically significant effects. We also examined a text-mined dataset used by Head et al. (2015) and assessed its suitability for investigating p-hacking. **Results:** We first show that when there is ghost p-hacking, the shape of the p-curve depends on whether dependent variables are intercorrelated. For uncorrelated variables, simulated p-hacked data do not give the "p-hacking bump" just below .05 that is regarded as evidence of p-hacking, though there is a negative skew when simulated variables are inter-correlated. The way p-curves vary according to features of underlying data poses problems when automated text mining is used to detect p-values in heterogeneous sets of published papers. **Conclusions:** The absence of a bump in the p-curve is not indicative of lack of p-hacking. Furthermore, while studies with evidential value will usually generate a right-skewed p-curve, we cannot treat a right-skewed p-curve as an indicator of the *extent* of evidential value, unless we have a model specific to the type of p-values entered into the analysis. We conclude that it is not feasible to use the p-curve to estimate the extent of p-hacking and evidential value unless there is considerable control over the type of data entered into the analysis. In particular, p-hacking with ghost variables is likely to be missed.

Background

Statistical packages allow scientists to conduct complex analyses that would have been impossible before the development of fast computers. However, understanding of the conceptual foundations of statistics has not always kept pace with software (Altman 1991; Reinhart 2015), leading to concerns that much reported science is not reproducible, in the sense that a result found in one dataset is not obtained when tested in a new dataset (Ioannidis 2005). The causes of this situation are complex and the solutions are likely to require changes, both in training of scientists in methods and revision of the incentive structure of science (Ioannidis 2014; Academy of Medical Sciences et al. 2015).

Two situations where reported p-values provide a distorted estimate of strength of evidence against the null hypothesis are publication bias and p-hacking. Both can arise when scientists are reluctant to write up and submit unexciting results for publication, or when journal editors are biased against such papers. Publication bias occurs when a paper reporting positive results – e.g., those that report a significant difference between two groups, an association between variables, or a well-fitting model of a dataset – are more likely to be published than null results (Ioannidis et al. 2014). Concerns about publication bias are not new (Greenwald 1975; Newcombe 1987; Begg & Berlin 1988), but scientists have been slow to adopt recommended solutions such as pre-registration of protocols and analyses.

The second phenomenon, p-hacking, is the focus of the current paper. It has much in common with publication bias, but whereas publication bias affects which studies get published, p-hacking is a bias affecting which data and/or analyses are included in a publication arising from a single study. P-hacking has also been known about for many years; it was described, though not given that name, in 1956 (de Groot, 2014). The term p-hacking was introduced by Simonsohn et al. (2014) to describe the practice of reporting only that part of a dataset that yields significant results, making the decision about which part to publish after scrutinising the data. There are various ways in which this can be done: e.g., deciding which outliers to exclude, when to stop collecting data, or whether to include covariates. Our focus here is on what we term ghost variables: dependent variables that are included in a study but

then become invisible in the published paper after it is found that they do not show significant effects.

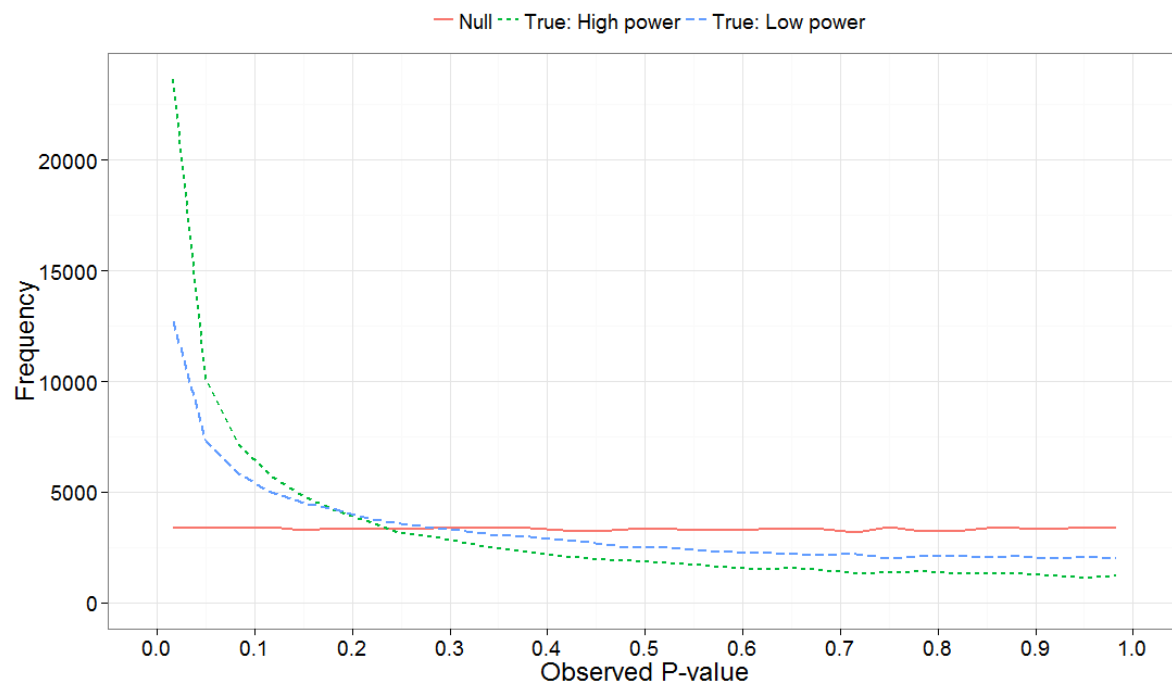
Although many researchers have been taught that multiple statistical testing will increase the rate of type I error, lack of understanding of p-values means that they may fail to appreciate how use of ghost variables is part of this problem. If we compare two groups on a single variable and there is no genuine difference between the groups in the population, then there is a one in 20 chance that we will obtain a false positive result, i.e. on a statistical test the means of the groups will differ with $p < .05$. If, however, the two groups are compared on ten independent variables, none of which differs in the overall population, then the probability that at least one of the measures will yield a 'significant' difference at $p < .05$ is $1-(1-0.05)^{10}$, i.e., .401 (de Groot, 2014). So if a researcher does not predict in advance which measure will differ between groups, but just looks for any measure that is 'significant', there is a 40 per cent chance they will find at least one false positive. If they report data on all 10 variables, then statistically literate reviewers and editors may ask them to make some correction for multiple comparisons, such as the Bonferroni correction, which requires a more stringent significance level when multiple exploratory tests are conducted. If, however, the author decides that only the significant results are worth reporting, and assigns the remaining variables to ghost status, then the published paper will be misleading in implying that the results are far more unlikely to have occurred by chance than is actually the case, because the ghost variables are not reported. It is then likely that the result will be irreproducible. Thus use of ghost variables potentially presents a major problem for science because it leads to a source of irreproducibility that is hard to detect, and is not always recognised by researchers as a problem (Kraemer, 2013; Motulsky 2015).

Simonsohn et al. (2014) proposed a method for diagnosing p-hacking by considering the distribution of p-values obtained over a series of independent studies. Their focus was on the p-curve in the range below .05, i.e., the distribution of probabilities for results meeting a conventional level of statistical significance. The logic is that a test for a group difference when there is really no effect will give a uniform distribution of obtained p-values. In contrast, when there is a true effect, repeated studies will show a right-skewed p-curve, with p-values

clustered at the lower end of the distribution (see Figure 1). As shown by Simonsohn et al. (2014), the degree of right skew will be proportional to sample size (N), as we have more power in the study to detect real group differences when N is large (Cohen 1992).

Simonsohn et al (2014) went on to show that under certain circumstances, p-hacking can lead to a left-skewing of the p-curve, with a rise in the proportion of p-values that are just less than .05. This can arise if researchers adopt extreme p-hacking methods, such as modifying analyses with covariates, or selectively removing subjects, to push 'nearly' significant results just below the .05 threshold.

Figure 1: P-curve: Expected distribution of p-values when no effect (null) vs true effect size of 0.3 with low ($N = 20$ per group) or high power ($N = 200$ per group)



Demonstrations of the properties of p-curves has led to interest in the idea that they might be useful to detect whether p-hacking is present in a body of work. Although p-curves have been analysed using curve-fitting (Masicampo and Lalande, 2012), it is possible to use a simple binomial test to detect skew near .05, characteristic of p-hacking and, conversely, to use the amount of right skew to estimate the extent to which a set of studies gives results that are

likely to be reproducible, i.e., has evidential value. In a recent example, Head et al. (2015) used text-mined p-values from over 111 000 published papers in different scientific disciplines. For each of 14 subject areas, they selected one p-value per paper to create a p-curve that was then used to test two hypotheses. First, they used the binomial test to compare the number of significant p-values in a lower bin (between 0 and .025) with the number in a higher bin (between .025 and .05). As shown in Figure 1, if there are no true effects, then we expect equal proportions of p-values in these two bins. They, therefore, concluded that if there were significantly more p-values in the lower bin than the higher bin, this was an indication of 'evidential value', i.e. results in that field were true findings. Next, they compared the number of p-values between two adjacent bins near the significance threshold of .05: a far bin ($.04 < p < .045$) and a near bin ($.045 < p < .05$). If there were more p-values in the near bin than the far bin, they regarded this as evidence of p-hacking.

Questions have, however, been raised as to whether p-curves provide a sufficiently robust foundation for such conclusions. Simonsohn et al (2014) emphasised the assumptions underlying p-curve analysis, and the dangers of applying the method when these were not met. Specifically, they stated, *"For inferences from p-curve to be valid, studies and p-values must be appropriately selected.... selected p-values must be (1) associated with the hypothesis of interest, (2) statistically independent from other selected p-values, and (3) distributed uniform under the null"* (p. 535) (i.e., following the flat function illustrated in Figure 1). Gelman and O'Rourke (2013) queried whether the requirement for a uniform distribution was realistic. They stated: *"We argue that this will be the case under very limited settings", and "The uniform distribution will not be achieved for discrete outcomes (without the addition of subsequent random noise), or for instance when a t.test is performed using the default in the R software with small sample sizes (unequal variances)." (p. 2-3)*

The question, therefore, arises as to how robust p-curve analysis is to violations of assumptions regarding the underlying data, and under what circumstances it can be usefully applied to real-world data. To throw light on this question we considered one factor that is common in reported papers: use of correlated dependent variables. We use simulated data to see how correlation between dependent measures affects the shape of the p-curve when ghost

p-hacking is adopted (i.e., several dependent measures are measured but only a subset with notionally 'significant' results is reported). We show that, somewhat counterintuitively, ghost p-hacking induces a leftward skew in the p-curve when the dependent variables are intercorrelated, but not when they are independent.

Another parameter in p-curve analysis is the number of studies included in the p-curve. The study by Head et al. (2015) exemplifies a move toward using text-mining to harvest p-values for this purpose, and their study therefore was able to derive p-curves based on a large number of studies. When broken down by subject area, the number of studies in the p-curve ranged from around 100 to 62 000. It is therefore of interest to consider how much data is needed to have reasonable power to detect skew.

Finally, with text-mining of p-values from Results sections we can include large numbers of studies, but this approach introduces other kinds of problems: not only do we lack information about the distributions of dependent variables and correlations between these; we cannot even be certain that the p-values are related to the main hypothesis of interest. We conclude our analysis with scrutiny of a subset of studies used by Head et al. (2015), showing that their analysis included p-values that were not suitable for p-curve analysis, making it unfeasible to use the p-curve to quantify the extent of p-hacking or evidential value.

Materials and methods

Simulations

A script, Ghostphack, was written in R to simulate data and derive p-curves for the situation when a researcher compares two groups on a set of variables but then reports just those with significant effects. We restrict consideration to the p-curve in the range from 0 to .05. Ghostphack gives flexibility to vary the number of variables included, the effect size, the inter-correlation between variables, the sample size, the extent to which variables are normally distributed, and whether or not p-hacking is used. P-hacking is simulated by a model where the experimenter tests X variables but only reports the subset that have $p < .05$; both one-tailed (directional) and two-tailed versions can be tested.

As illustrated in Appendix 1, each run simulates one study in which a set of X variables is measured for N subjects in each of two groups. In each run, a set of random normal deviates is generated corresponding to a set of dependent variables. In the example, we generate 40 random normal deviates, which correspond to four dependent variables measured on five participants in each of two groups, A and B. The first block of five participants is assigned to group A and the second block to group B. If we are simulating the situation where there is a genuine difference between groups on one variable, an effect size, E , is added to one of the dependent variables for group A only. A t -test is then conducted for each variable to test the difference in means between groups, to identify variables with $p < .05$. In practice, there may be more than one significant p -value per study, and we would expect that researchers would report all of these; however, for p -curve analysis, it is a requirement that p -values are independent (Simonsohn et al. 2014), and so only one significant p -value is selected at random per study for inclusion in the analysis. The analysis discards any studies with no significant p -values. The script yields tables that contain information similar to that reported by Head et al. (2015): the number of runs with p -values in specific frequency bins.

All simulations reported here were based on 100 000 runs, each of which simulated a study with either 3 or 8 dependent variables for two groups of subjects. Two power levels were compared: low (total N of 40, i.e., 20 per group) and high (total N of 400, i.e., 200 per group).

Effect of correlated data on the P -value distribution

In the example in Appendix 1, the simulated variables are uncorrelated. In practice, however, studies are likely to include several variables that show some degree of intercorrelation (Meehl 1990). We therefore compared p -curves based on situations where the dependent variables had different degrees of intercorrelation. We considered situations where researchers measure multiple response variables that are totally uncorrelated, weakly correlated, or strongly correlated with each other, and then only report one of the significant ones.

An evaluation of text-mined p-curves

Text-mining of published papers makes it possible to obtain large numbers of studies for p-curve analysis. In the final section of this paper, we note some problems for this approach, illustrated with data from Head et al. (2015).

Results

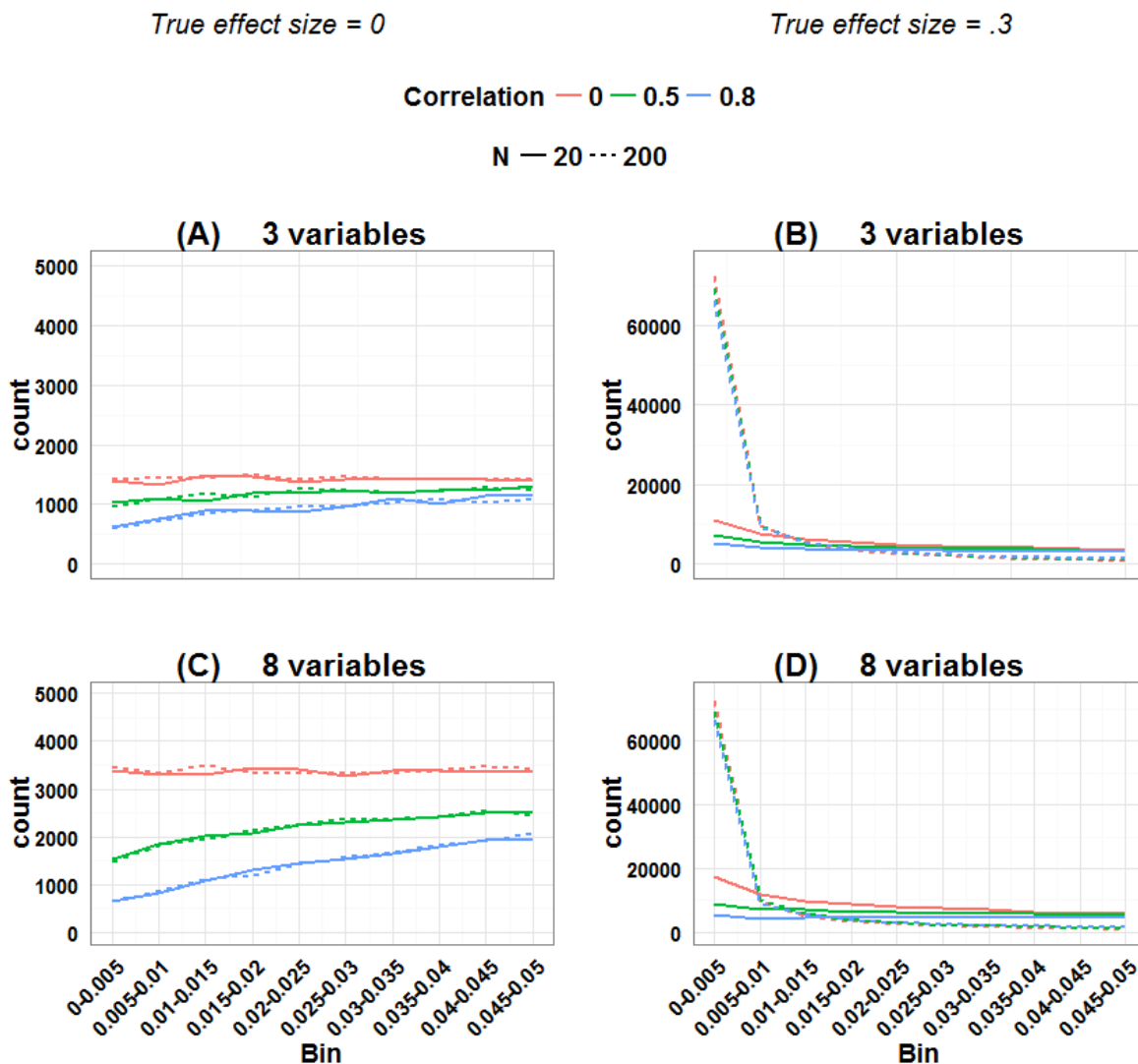
Simulations: correlated vs uncorrelated variables

Figure 2 shows output from Ghostphack for low ($N = 20$ per group) and high ($N = 200$ per group) powered studies when data are sampled from a population with no group difference. The upper panels show the situation when there are 3 variables, and the lower panels with 8 variables. Intercorrelation between the simulated variables was set at 0, .5, or .8. Directional t-tests were used; i.e. a variable was treated as a ghost variable only if there was a difference in the predicted direction, with greater mean for group 2 than for group 1.

For uncorrelated variables, using data generated with a null effect, the p-hacked p-curve is flat, whereas for correlated variables, it has a negative skew, with the amount of slope a function of the strength of correlation. The false positive rate is around 40 per cent when variables are uncorrelated, but drops to around 12 per cent when variables are intercorrelated at $r = .8$. Figure 2 also shows how the false positive rate increases when the number of variables is large (8 variables vs 3 variables) – this is simply a consequence of the well-known inflation of false positives when there are multiple comparisons.

219 Figure 2: P-curve for ghost p-hacked data when true effect size is zero (panels A and C) versus
 220 when true effect is 0.3 (panels B and D). Continuous line for low power ($N = 20$ per group) and
 221 dashed line for high power ($N = 200$ per group). Different levels of correlation between variables
 222 are colour coded.

Ghost p-hacked



223

224

225 The slope of the p-curve with correlated variables is counterintuitive, because if we plot all
 226 obtained p-values from a set of t-tests when there is no true effect, this follows a uniform
 227 distribution, regardless of the degree of correlation. The key to understanding the skew is to

recognise it arises only when we sample only one p-value per paper. When variables are intercorrelated, so too are effect sizes and p-values associated with those variables. It follows that for any one run of Ghostphack, the *range* of obtained p-values is smaller for correlated than uncorrelated variables, as shown in Table 1. In the limiting case where variables are multicollinear, they may be regarded as indicators of a single underlying factor, represented by the median p-value of that run. Across all runs of the simulation, the distribution of these median values will be uniform. However, sampling according to a cutoff from correlated p-values will distort the resulting distribution: if the median p-value for a run is well below .05, as in the 2nd row of panel B (Table 1), then most or all p-values from that run will be eligible. However, if the median p-value is just above .05, as in the final row of panel B, then only values close to the .05 boundary are eligible for selection. In contrast, when variables are uncorrelated, there are no constraints on any p-values, and all values below .05 are equally likely. See also comment by de Winter and van Assen on preprint –version 2- of this paper, which elaborates on this point.

243

244 *Table 1: Rank-ordered p-values for 10 runs of simulation with (a) $r = 0$, and (b) $r = .8$. Values less*
 245 *than .05 which are candidates for inclusion in p-curve are shown with pink highlight.*

A. Correlation between variables = 0

p1	p2	p3	p4	p5	p6	p7	p8	p9	p10	Median	Range
p											
0.030	0.208	0.259	0.564	0.715	0.807	0.832	0.875	0.895	0.969	0.761	0.939
0.049	0.050	0.276	0.332	0.472	0.479	0.785	0.804	0.936	0.974	0.475	0.925
0.085	0.164	0.383	0.456	0.470	0.481	0.600	0.615	0.718	0.839	0.476	0.754
0.006	0.181	0.202	0.244	0.315	0.325	0.359	0.443	0.471	0.635	0.320	0.629
0.332	0.351	0.411	0.426	0.505	0.611	0.648	0.713	0.884	0.913	0.558	0.581
0.076	0.160	0.266	0.276	0.309	0.328	0.342	0.346	0.422	0.964	0.319	0.888
0.046	0.053	0.105	0.227	0.508	0.508	0.800	0.819	0.885	0.973	0.508	0.927
0.048	0.101	0.234	0.264	0.414	0.433	0.606	0.709	0.788	0.968	0.424	0.921
0.051	0.113	0.282	0.445	0.452	0.456	0.656	0.670	0.736	0.757	0.454	0.705
0.082	0.202	0.221	0.241	0.297	0.383	0.387	0.717	0.955	0.982	0.340	0.900

B. Correlation between variables = .8

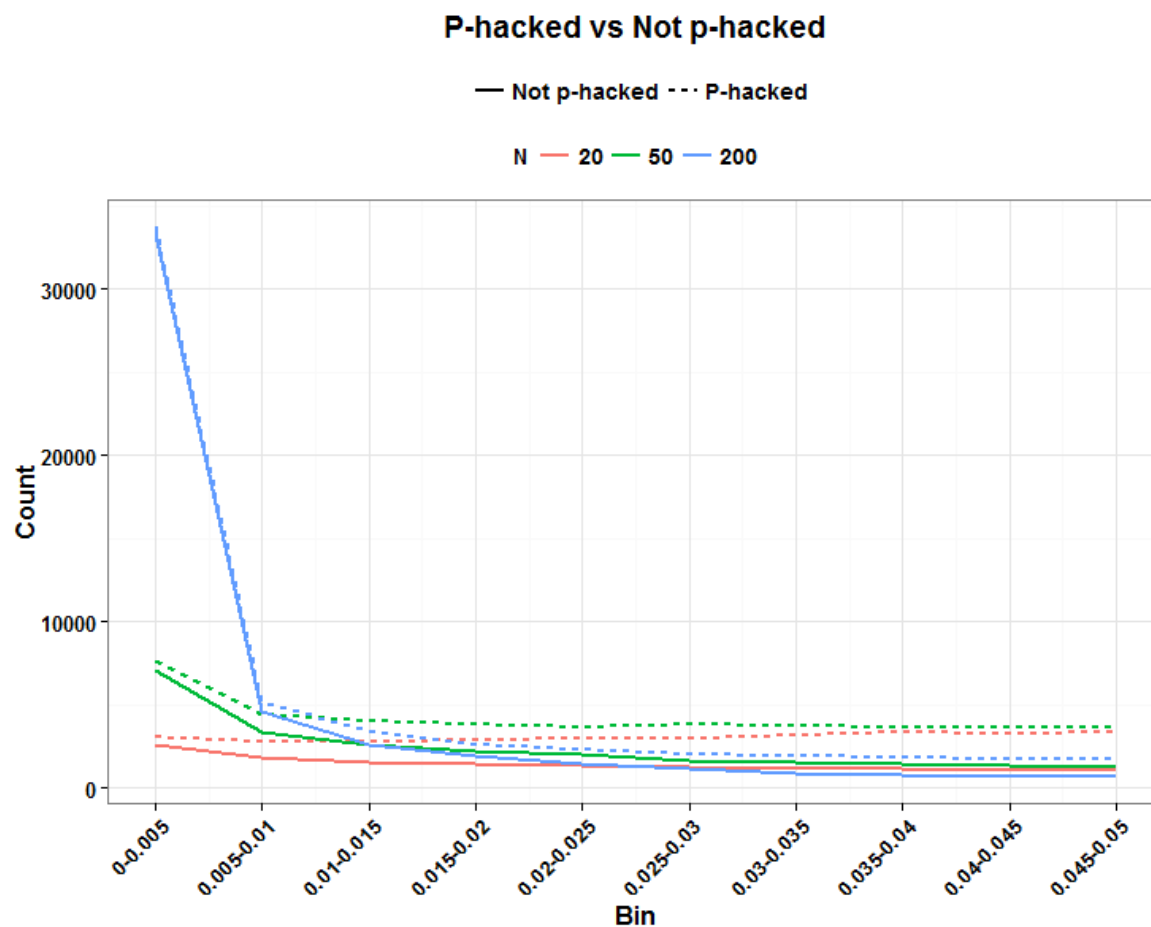
0.110	0.172	0.375	0.449	0.508	0.575	0.633	0.644	0.747	0.787	0.541	0.677
0.001	0.004	0.006	0.007	0.007	0.010	0.012	0.013	0.043	0.060	0.009	0.059
0.602	0.775	0.820	0.853	0.859	0.889	0.933	0.942	0.950	0.956	0.874	0.353
0.128	0.211	0.227	0.229	0.252	0.255	0.342	0.368	0.450	0.571	0.253	0.443
0.218	0.249	0.328	0.338	0.392	0.489	0.557	0.561	0.604	0.877	0.441	0.660
0.519	0.801	0.848	0.893	0.903	0.939	0.948	0.984	0.990	0.997	0.921	0.477
0.179	0.260	0.331	0.344	0.385	0.425	0.455	0.608	0.758	0.765	0.405	0.585
0.569	0.575	0.627	0.639	0.746	0.749	0.780	0.901	0.906	0.920	0.747	0.351
0.210	0.284	0.379	0.418	0.474	0.570	0.593	0.654	0.670	0.790	0.522	0.580
0.013	0.084	0.091	0.099	0.121	0.154	0.156	0.36	0.435	0.439	0.137	0.426

246 Figure 2 (panels B and D) also shows the situation where there is a true but modest effect (d
 247 $= .3$) for one variable. Here we obtain the signature right-skewed p-curve, with the extent of
 248 skew dependent on the statistical power, but little effect of the number of dependent variables.
 249 Appendix 2 shows analogous p-curves for plots simulated with the same parameters and no p-
 250 hacking: the p-curve is flat for the null effect; for the effect of 0.3, a similar degree of right-

skewing is seen as in Figure 2, but in neither case is there any influence of correlation between variables (see Appendix 2). For completeness, Appendix 2 also shows p-curves with the y-axis expressed as percentage of p-values, rather than counts.

In real world applications we would expect p-values entered into a p-curve to come from studies with a mixture of true and null effects, and this will affect the ability to detect the right skew indicative of evidential value, as well as the left skew. Lakens (2014) noted that a right-skewed p-curve can be obtained even when the proportion of p-hacking is relatively high. Nevertheless, the left-skewing caused by correlated variables complicates the situation, because when power is low and we have highly correlated variables, inclusion of a proportion of p-hacked trials can cancel out the right skew because of the left skew induced by p-hacking with correlated variables (see Figure 3). This is just one way in which the combination of parameters can yield unexpected effects on a p-curve: this illustrates the difficulty of interpreting p-curves in real-life situations where parameters such as proportion of p-hacked studies, sample size and number and correlation of dependent variables are not known. Such cases appear to contradict the general rule of Simonsohn et al. (2014) that: "all combinations of studies for which *at least some effects exist* are expected to produce right-skewed p-curves." (p. 536), because the right skew can be masked if the set of p-values includes a subset from low-powered null studies that were p-hacked from correlated ghost variables.

Figure 3: Illustration of how right skew showing evidential value can be masked if there is a high proportion of p-hacked studies and low statistical power. Colours show N, and continuous line is non-hacked, dotted line is p-hacked



272

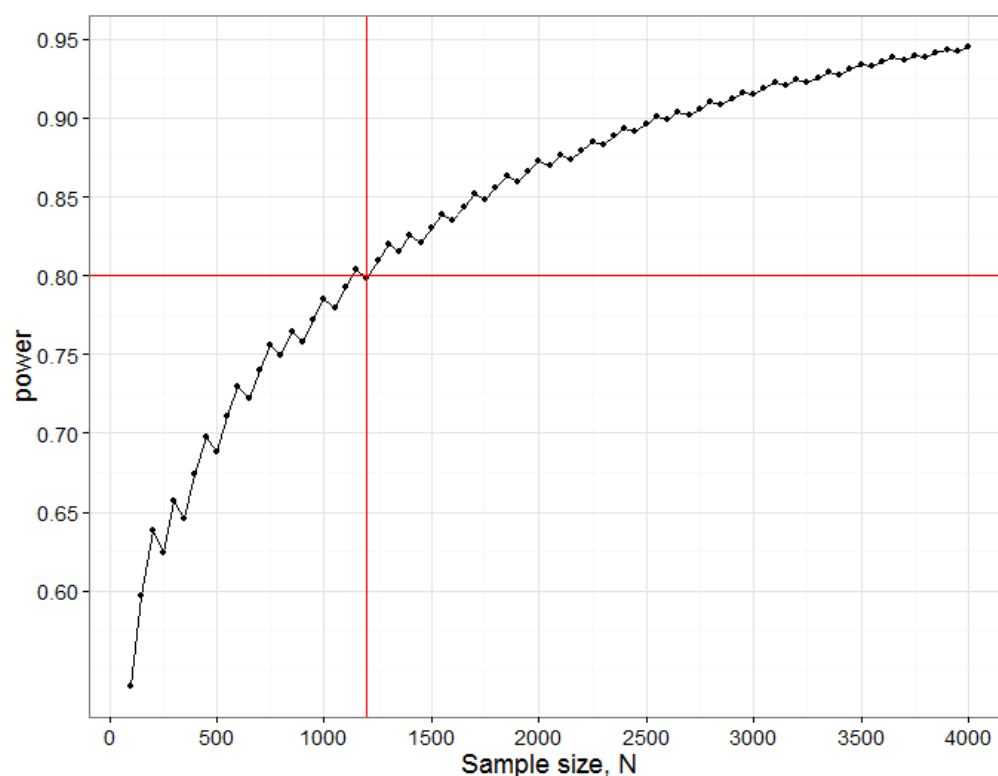
273

274 Power to detect departures from uniformity in the range $p = 0$ to $.05$

275 We have noted how power of individual studies will affect p-curves, but there is another
 276 aspects of power that also needs to be considered, namely the power of the p-curve analysis
 277 itself. We restrict consideration here to the simple method adopted by Head et al. (2015),
 278 where the number of p-values is compared across two ranges. For instance, to detect the
 279 'bump' in the p-curve just below $.05$, we can compare the number of p-values in the bins $.04 < p$
 280 $< .045$ (far) vs $.045 < p < .05$ (near). These numbers will depend on (a) the number of studies
 281 included in the p-curve analysis; (b) the proportion of studies where ghost p-hacking was used;
 282 (c) the number of variables in the study; (d) the sample size and (e) the correlation between

variables. Consider an extreme case, where we have no studies with a true effect, with ghost-hacking in all studies, and eight variables with inter-correlation of .8. This set of parameters leads to clear left-skewing of the p-curve (Figure 3). Simulated data were used to estimate the proportions of p-values in the near and far bins close to .05, and hence to derive the statistical power to detect such a difference. To achieve 80% power to detect a difference, a total of around 1 200 p-values in the range between .04 and .05 is needed. Note that to find this many p-values, considerably more studies would be required. In the simulation used for Figure 4, only 4% of simulated studies had p-values that fell in this range. It follows that to detect the p-hacking bump with 80% power in this situation, where the difference due to ghost p-hacking is maximal, we would need p-values from 30 000 studies.

Figure 4: Power curve for detecting difference between near and far p-value bins in case with null effect, 100% ghost p-hacking, and eight variables with intercorrelation of 0.8. N.B. the saw-tooth pattern is typical for this kind of power curve (Chernick & Liu 2002)



Text-mined p-curves

For their paper entitled "The extent and consequences of P-hacking in science", Head et al. (2015) downloaded all available open access papers from PubMed Commons, categorised them by subject area, and used text-mining to locate Abstracts and Results sections, and then to search for reports of p-values in these. One p-value was randomly sampled per paper. This sampling was repeated 1 000 times, and the rounded average number of p-values in a given bin was taken as the value used in the p-curve for that paper. The number of papers included by Head et al. varied considerably from discipline to discipline, from 94 in Mathematical Sciences to over 60 000 for Medical and Health Sciences. These were divided according to whether p-values came from Results or Abstracts sections. This is, to our knowledge, the largest study of p-hacking in the literature.

Although this approach to p-hacking has the merit of using massive amounts of data, problems arise from the lack of control over p-values entered into the analysis.

Ambiguous p-values in text-mined data. Some reported p-values are inherently ambiguous. In their analysis of text-mined data, Head et al. (2015) included p-values in the p-curve only if they were specified precisely (i.e. using '='). Use of a 'less than' specifier was common for very low values, e.g. $p < .001$, but these were omitted. We manually checked a random subset of 30 of the 1 736 papers in the Head et al dataset classified as Psychology and Cognitive Sciences (see Appendix 3 for details). The average number of significant p-values reported in each paper was 14.1, with a range from 2 to 43. If values specified as $< .01$ or $< .001$ were included in the bin ranging from 0 to .025, then for the 30 papers inspected in detail, the average number per paper was 9.97; if they were excluded (as was done in the analysis by Head et al.) then the average number was 4.47, suggesting that around half the extreme p-values were excluded from analysis because they were specified as 'less than', even though they could accurately have been assigned to the lowest bin. However, if all these values had been included in the analysis, then Head et al. might have been accused of being biased in favour of finding extreme p-values; in this regard, the approach they adopted was very conservative, reducing the power of the test. Another problem is variability in the number of decimal places used to report p-values, e.g. if we see $p = .04$, it is unclear if this is a precise estimate or if it has been rounded.

Head et al. (2015) dealt with this issue by including only p-values reported to at least three decimal places, but alternative solutions to the problem will give different distributions of p-values.

Unsuitable p-values in text-mined data. As Simonsohn et al. (2014, 2015) noted, it is important to select carefully the p-values for inclusion in a p-curve. Scrutiny of the 30 papers from Head et al. (2015) selected for detailed analysis (Appendix 3) raised a number of issues about the accuracy of p-curve analysis of text-mined data:

1. Perhaps the most serious issue concerns cases where p-values extracted from the mined text could exaggerate evidential value. There were numerous instances where p-values were reported that related to facts that were either well-established in the literature, or strongly expected a priori, but which were not the focus of the main hypothesis; the impression was that these were often reported for completeness and to give reassurance that the data conformed to general expectations. For instance, in paper 1, a very low p-value was found for the association between depression and suicidality – not a central focus of the paper, and not a surprising result. In paper 10, which looked at the effect of music on verbal learning, a learning effect was found with $p < .001$ – this simply demonstrated that the task used by the researchers was valid for measuring learning. This strong effect affected several p-values because it was further tested for linear and quadratic trends, both of which were significant (with $p = .004$ and $p < .001$). None of these p-values concerned a test of the primary hypothesis. In paper 11, a statistical test was done to confirm that negative photos elicited more negative emotion than positive photos – and gave $p < .001$; again, this was part of an analysis to confirm the suitability of the materials but it was not part of the main hypothesis-testing. Study 20, on Stroop effects in bilinguals, reported a highly significant Stroop effect, an effect so strong and well-established that there is little interest in demonstrating it beyond showing the methods were sound. Examples such as these could be found in virtually all the papers examined.

2. Some papers had evidence of double-dipping (Kriegeskorte et al. 2009), a circular procedure commonly seen in human brain mapping, when a large dataset is first scrutinised to identify a region that appears to respond to a stimulus, and then analysis is focused on that region. This is a practice that is commonplace in electrophysiological as well as brain imaging

studies; For instance, in paper 6, an event-related potentials study, a time range where two conditions differed was first identified by inspection of average waveforms, and then mean amplitudes in this interval were compared across conditions. This is a form of p-hacking that can generate p-values well below .05. For instance, Vul et al (2009) showed that where such circular analysis methods had been used, reported correlations between brain activation and behaviour often exceeded 0.74. Even with the small sample sizes that are often seen in this field, this would be highly significant (e.g. for $N = 16$, $p < .001$). This would not be detected by looking for a bump just below .05, but rather would give the false impression of evidential value.

3. For completeness we note also two other cases where p-values would not be suitable for p-curve analysis, (a) where they are associated with tests of assumptions of a method and (b) in model-fitting contexts, where a low p-value indicates poor model fit. Examples of these were, however, rare in the papers we analysed; two papers reported values for Mauchly's tests of sphericity of variances, but only one of these was reported exactly, as $p = .001$, and no study included statistics associated with model-fitting. So although such cases could give misleading indications of evidential value, they are unlikely to affect the p-curve except in sub-fields where use of such statistics is common.

Discussion

Problems specific to text-mined data

Automated text-mining provides a powerful means for extracting statistics from very large databases of published texts, but the increased power that this provides comes at a price, because the method cannot identify which p-values are suitable for inclusion in p-curve analysis. Simonsohn et al. (2014, 2015) argued that p-curve analysis should be conducted on p-values that meet three criteria: they test the hypothesis of interest, they have a uniform distribution under the null, and they are statistically independent of other p-values in the p-curve. The text-mined data from Results section used by Head et al. (2015) do not adhere to the first requirement. Most scientific papers include numerous statistical tests, only some of which are specifically testing the hypothesis of interest. If one simply assembles all the p-values in a paper and selects one at random, this avoids problems of dependence between p-values, but it

383 means that unsuitable p-values will be included. Table 2 summarises the problems that arise
 384 when p-curve analysis is used to detect p-hacking and evidential value from text-mined data.
 385

Table 2

Problems in quantifying p-hacking and evidential value from a p-curve using text-mined data

Cases where p-hacking not detected by binomial test	Cases where right skew not due to evidential value
P-values are reported as $p < .05$ and so excluded from analysis ¹	Where p-values used to confirm prior characteristics of groups being compared ^{1,2}
Limited power because few p-values between .04 and .05	Where p-values come from confirming well-known effects, e.g. demonstrating that a method behaves as expected ^{1,2}
Where p-values ambiguous because rounded to two decimal places ¹	Where 'double-dipping' used to find 'best' data to analyse
	P-values from model-fitting or testing of assumptions of statistical tests (where low p-value indicative of poor fit, or failure to meet assumptions) ^{1,2}

¹Problems that can potentially be overcome by analysing data from meta-analyses

²Problems that less likely to affect text-mined data from Abstracts

Most of these problems are less likely to affect text-mined data culled from Abstracts. As de Winter and Dodou (2015) noted, p-values reported in Abstracts are likely to be selected as relating to the most important findings. Indeed, studies that have used text-mining to investigate the related topic of publication bias have focused on Abstracts, presumably for this reason, e.g., Jager and Leek (2013); de Winter and Dodou (2015). However, reporting of p-values in Abstracts is optional and many studies do not do this; there is potential for bias if the decision to report p-values in the Abstract depends on the size of the p-value. Furthermore, it is difficult to achieve adequate statistical power to test for the p-hacking bump. With their extremely large set of Abstracts, Head et al. (2015) found evidence of p-hacking in only two of

the ten subject areas they investigated, but in six areas there were less than 10 p-values between .04 and .05 to be entered into the analysis.

As noted in Table 2, many of these problems can be avoided by using meta-analyses, where p-values have been selected to focus on those that tested specific hypotheses. Head et al. (2015) included such an analysis in their paper, precisely for this reason. However, such an analysis is labour-intensive, and has limited power to detect p-hacking if the overall number of p-values in the .04-.05 range is small (see Head et al, 2015, Table 3)

More general problems with drawing inferences from binomial tests on p-curves

Lakens (2015) noted that to model the distribution of p-values we need to know the number of studies where the null hypothesis or alternative hypothesis is true, the nominal type I error rate, the statistical power and extent of publication bias. We would add that we also need to know whether dependent variables were correlated, whether p-values were testing a specific hypothesis, and how many p-values had to be excluded (e.g. because of ambiguous reporting).

Our simulations raise concerns about drawing conclusions from both ends of the p-curve. In particular, we argue that the binomial test cannot be used to quantify the *amount* of p-hacking. These interpretive problems potentially apply to all p-curves, not just those from text-mined data.

As we have shown, one form of p-hacking, ghost p-hacking, does not usually lead to a significant difference between the adjacent bins close to the .05 cutoff. In particular, where there is ghost p-hacking with variables that are uncorrelated or weakly correlated the p-curve is flat across its range. Where ghost p-hacked variables are correlated, a leftward skew is induced, which increases with the degree of correlation, but our power analysis showed that very large numbers of studies would need to be entered into a p-curve for this to be detected. In such cases, a binomial test of differences between near and far bins close to .05 will give a conservative estimate of p-hacking. Use of ghost variables is just one method of p-hacking, and the 'bump' in the p-curves observed by Head et al. could have resulted for other reasons: indeed, in an analysis of meta-analysed studies, they showed that a contributing factor was authors misreporting p-values as significant (when recomputation showed they were actually

greater than .05). Our general point, however, is that without more information about the data underlying a p-curve, it can be difficult to interpret the absence of a p-hacking 'bump'.

Right skewing provides evidential value, but with heterogeneous data it is difficult to quantify the *extent* of this from the degree of rightward skew in a p-curve, because, as already established by Simonsohn et al. (2014), this is dependent on statistical power. In particular, as we have shown, when a dataset contains ghost p-hacked correlated variables, these have little impact when the statistical power is high, but can counteract the right skewing completely when power is low.

We share the concerns of Head et al (2015) about the damaging impact of p-hacking on science. On the basis of p-curve analysis of meta-analysed data, they concluded that "while p-hacking is probably common, its effect seems to be weak relative to the real effect sizes being measured." (p. 1). As we have shown here, if we rely on a 'bump' below the .05 level to detect p-hacking, it is likely that we will miss much p-hacking that goes 'under the radar'. P-curve analysis still has a place in contexts where probabilities are compared for a set of p-values (pp-values) from a series of studies that are testing a hypothesis, and which meet the criteria of Simonsohn et al (2014, 2015). However, simple comparisons between ranges of p-values in data from disparate studies do not allow us to quantify the extent of either p-hacking or real effect sizes.

Acknowledgements

We are most grateful to Head et al (2015) for making scripts and data publicly available, and for engaging in discussion about the points raised in a preprint of this paper, and specifically for providing the script by Luke Holman, which provides a useful alternative method for simulating ghost p-hacking. A slightly modified version of this script, which we used to generate some plots, is now available with our other scripts. We thank also Joost de Winter and Daniel Lakens for their contributions in helping us develop this paper.

456 **Availability of supporting data**

457 The Ghostphack code for simulations described in this report, and additional scripts for our
 458 analysis of data from Head et al (2015) are available at <https://osf.io/h5tvu/>. The original data
 459 and code from Head et al. are deposited in the Dryad depository
 460 (<http://datadryad.org/review?doi=doi:10.5061/dryad.79d43>).

References

- Academy of Medical Sciences, BBSRC, MRC, and Wellcome Trust. 2015. Reproducibility and reliability of biomedical research: improving research practice. <http://www.acmedsci.ac.uk/policy/policy-projects/reproducibility-and-reliability-of-biomedical-research/> London: Academy of Medical Sciences.
- Altman, D.G. 1991. Statistics in medical journals: Developments in the 1980s, *Statistics in Medicine*, 10:1897-1913.
- Begg, C.B. & Berlin, J.A. 1988. Publication bias: a Problem in interpreting medical data, *Journal of the Royal Statistical Society: Series A*, 151(3):419 – 463.
- Chernick MR, and Liu CY. 2002. The saw-toothed behavior of power versus sample size and software solutions. *The American Statistician* 56:149-155.
- Cohen, J. 1992. Statistical Power Analysis, *Current Directions in Psychological Science*, 1(3):98-101.
- De Groot, A. D. (2014). The meaning of “significance” for different types of research [translated and annotated by Eric-Jan Wagenmakers, Denny Borsboom, Josine Verhagen, Rogier Kievit, Marjan Bakker, Angelique Cramer, Dora Matzke, Don Mellenbergh, and Han L. J. van der Maas]. *Acta Psychologica*, 148(0), 188-194. doi: <http://dx.doi.org/10.1016/j.actpsy.2014.02.001>
- De Winter JCF, and Dodou D. 2015. A surge of p-values between 0.041 and 0.049 in recent decades (but negative results are increasing rapidly too). *PeerJ* 3:e733.
- Gelman A, and O'Rourke K. 2014. Discussion: Difficulties in making inferences about scientific truth from distributions of published p-values. *Biostatistics* 15:18-23.
- Head ML, Holman L, Lanfear R, Kahn AT, and Jennions MD. 2015. The extent and consequences of p-hacking in science. *PLOS Biology* 13:e1002106.
- Ioannidis JPA, Munafò MR, Fusar-Poli P, Nosek BA, and David SP. 2014. Publication and other reporting biases in cognitive sciences: detection, prevalence, and prevention. *Trends in Cognitive Sciences* 18:235-241.
- Ioannidis JPA. 2005. Why most published research findings are false. *Plos Medicine* 2:e124.
- Ioannidis JPA. 2014. How to make more published research true. *Plos Medicine* 11: e1001747.
- Jager LR, and Leek JT. 2013. An estimate of the science-wise false discovery rate and application to the top medical literature. *Biostatistics* 15:28-36.
- Kraemer HC. 2013. Statistical power: Issues and proper applications. In: Comer JS, and Kendall PC, editors. *The Oxford Handbook of Research Strategies for Clinical Psychology*. Oxford: Oxford University Press.
- Kriegeskorte N, Simmons WK, Bellgowan PSF, and Baker CI. 2009. Circular analysis in systems neuroscience: the dangers of double dipping. *Nature Neuroscience* 12:535-540.
- Lakens D. 2014. What p-hacking really looks like: A comment on Masicampo & Lalande (2012). *Quarterly Journal of Experimental Psychology A* 68:829-832.
- Lakens, D. 2015. On the challenges of drawing conclusions from p-values just below 0.05. *PeerJ*.

498 Masicampo EJ, and Lalande DR. 2012. A peculiar prevalence of p values just below .05. *Quarterly*
 499 *Journal of Experimental Psychology* 65:2271-2279.

500 Meehl PE. 1990. Why summaries of research on psychological theories are often uninterpretable.
 501 *Psychological Reports* 66:195-244.

502 Motulsky HJ. 2015. Common misconceptions about data analysis and statistics. *British Journal of*
 503 *Pharmacology* 172:2126-2132.

504 Newcombe, R.G. 1987. Towards a reduction in publication bias, *BMJ*, 295:656-659.

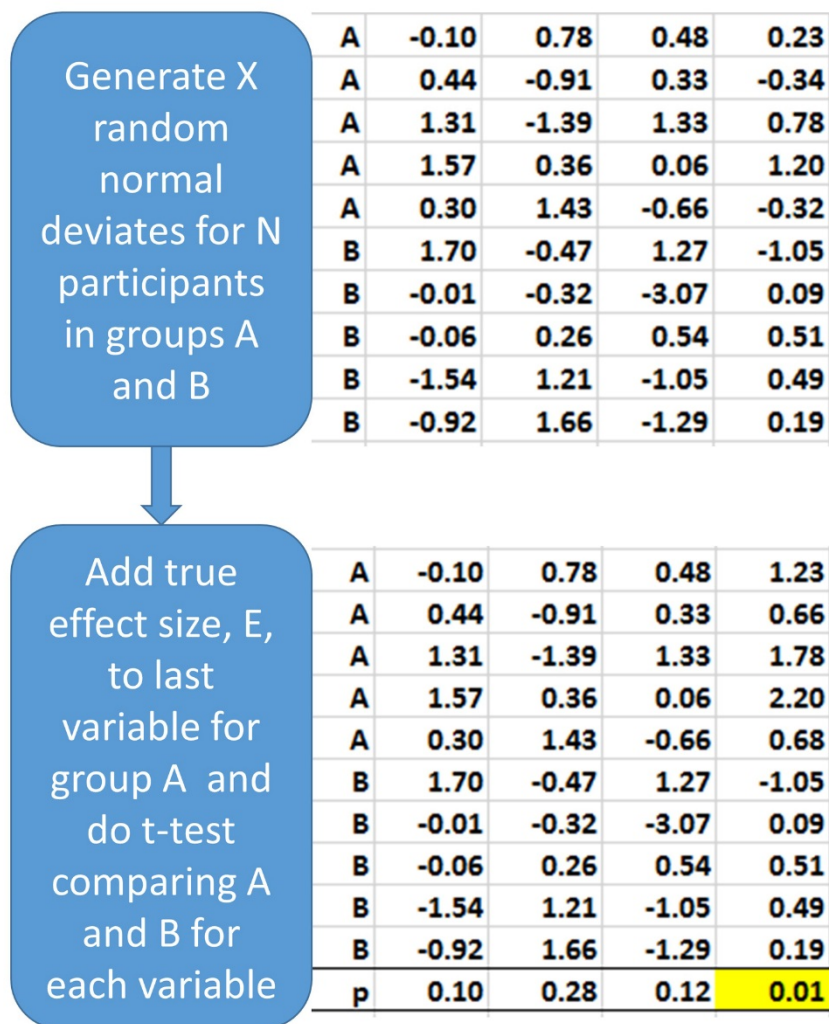
505 Reinhart A. 2015. *Statistics done wrong: a woefully complete guide*. San Francisco, CA: No Starch Press.

506 Simonsohn U, Nelson LD, and Simmons JP. 2014. P-Curve: A key to the file-drawer. *Journal of*
 507 *Experimental Psychology: General* 143:534–547.

508 Simonsohn, U., Simmons, J. P., & Nelson, L. D. 2015. Better p-curves. *Journal of Experimental*
 509 *Psychology: General*, in press.

Appendix 1

Figure A1: Schematic illustrating simulation of data by the Ghosthack program, with effect size = 1.



Appendix 2

Plots from Ghostphack to complement Figure 2.

Figure A2: Simulation as for Figure 2, but with no Ghostphacking. Note that amount of covariance between variables has no effect in this situation and so all curves for a given N are superimposed.

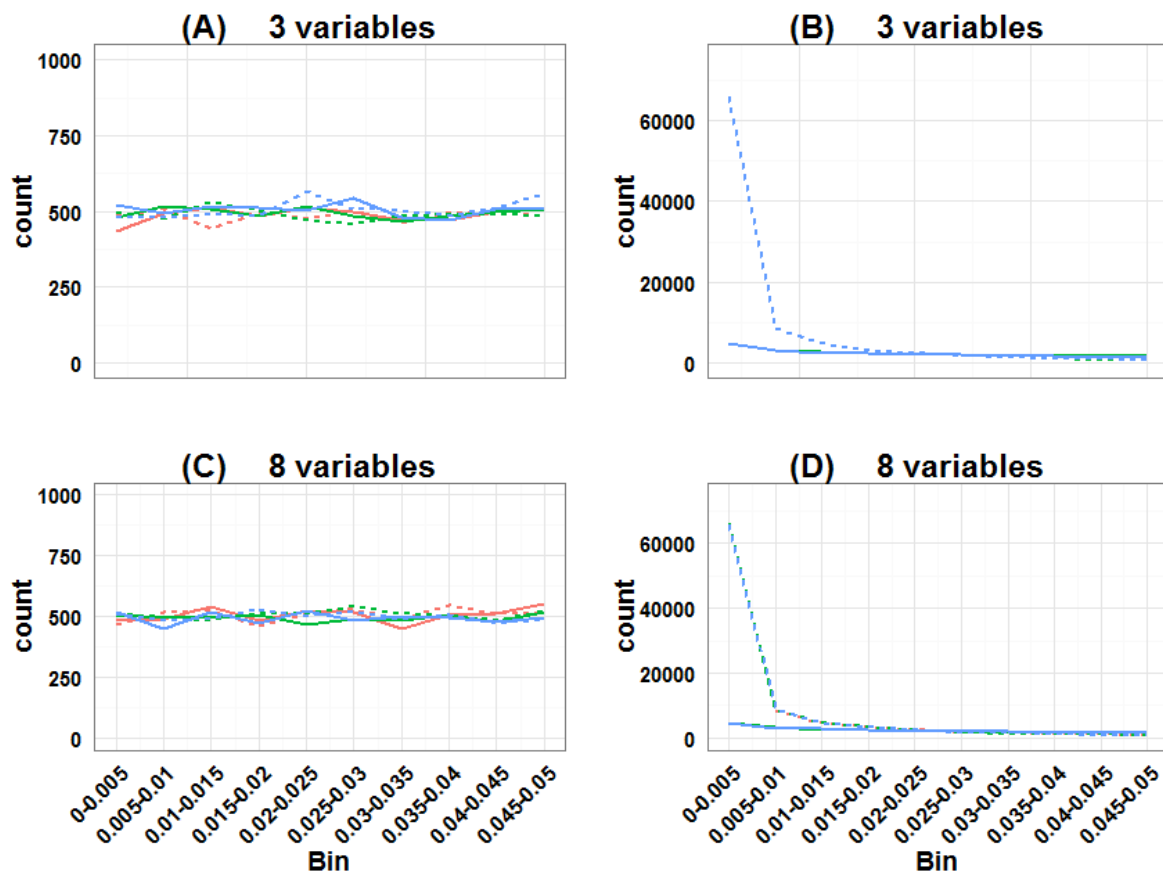
No p-hacking

True effect size = 0

True effect size = .3

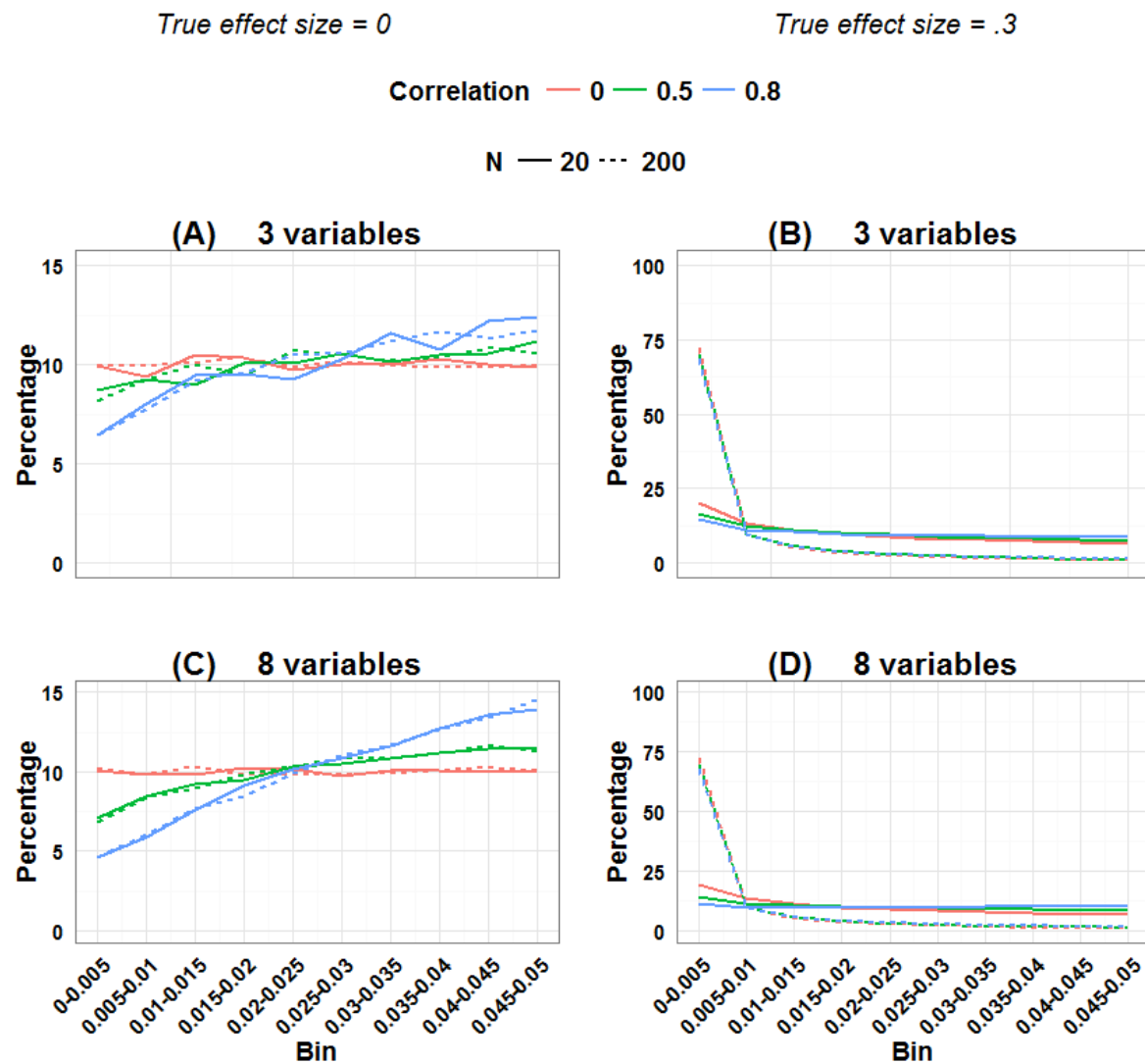
Correlation — 0 — 0.5 — 0.8

N — 20 --- 200



524 Figure A3: Simulation as for Figure 2, with y-axis as percentage of all p-values, rather than frequency

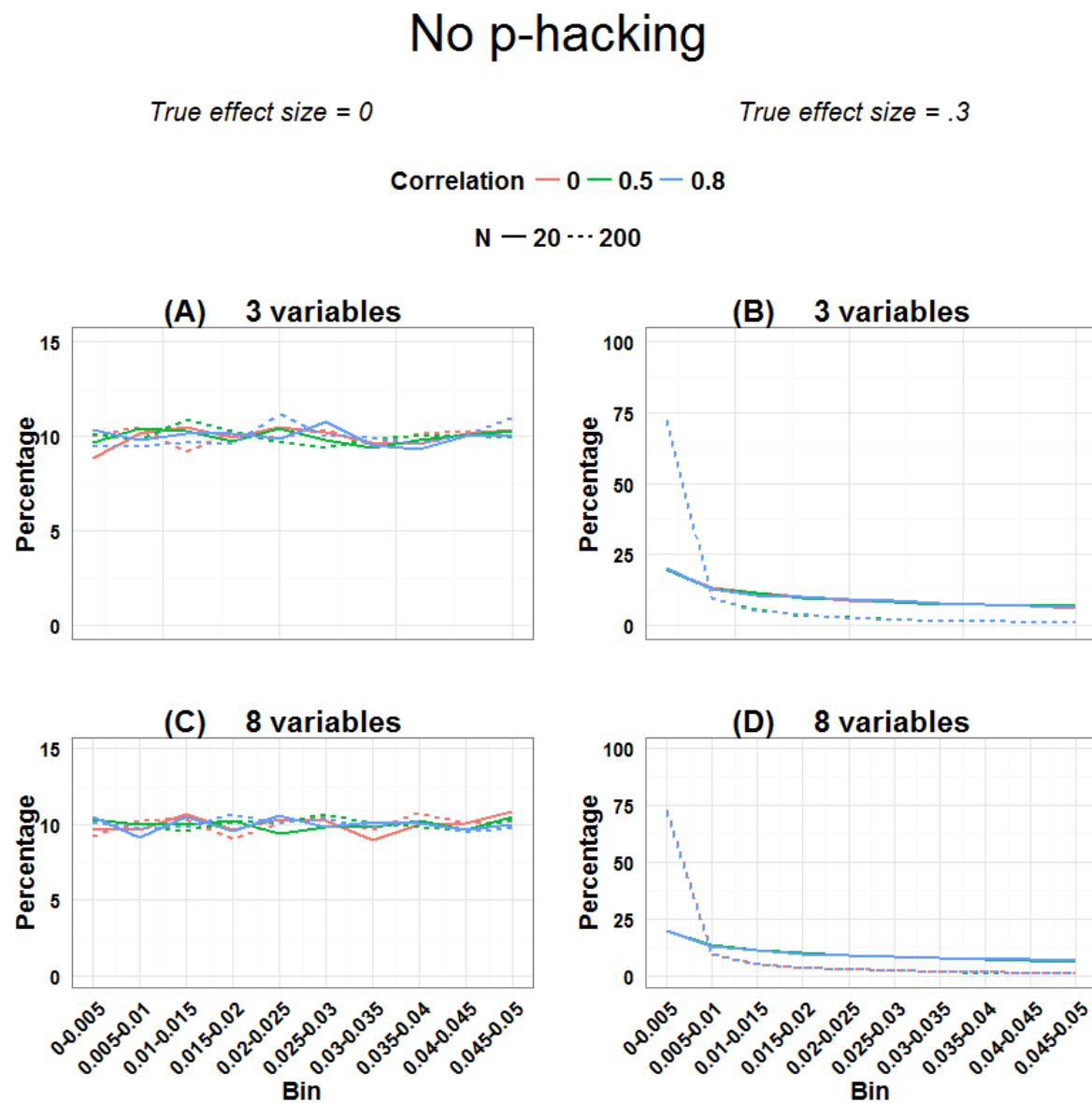
Ghost p-hacked



525

526

527 Figure A4: Simulation as for Plot A, with y-axis as percentage of all p-values, rather than frequency



528

529

530 **Appendix 3**

531 DOIs of 30 psychology papers included in the Head et al. 2015 analysis that were scrutinised
532 for qualitative analysis of p-values.

533

Code	first.doi
1	10.1186/1744-859X-12-15
2	10.3758/s13414-010-0033-2
3	10.1186/1744-9081-1-22
4	10.1186/1744-9081-4-36
5	10.1186/1744-9081-3-40
6	10.1186/1744-9081-5-30
7	10.1186/1744-9081-5-16
8	10.1186/1744-9081-6-7
9	10.1186/1744-9081-7-18
10	10.1186/1744-9081-10-10
11	10.1186/2045-5380-2-22
12	10.1111/j.1467-7687.2007.00620.x
13	10.1037/a0016305
14	10.3389/fpsyg.2012.00023
15	10.3389/fpsyg.2012.00533
16	10.3389/fpsyg.2012.00352
17	10.3389/fpsyg.2013.00942
18	10.3389/fpsyg.2013.00015
19	10.3389/fpsyg.2013.00452
20	10.3389/fpsyg.2012.00081
21	10.3389/fpsyg.2014.00276
22	10.3389/fpsyg.2014.00367
23	10.3389/fpsyg.2014.00170
24	10.3389/fpsyg.2014.00430
25	10.3389/fpsyg.2011.00319
26	10.3389/fpsyg.2013.00110

27 10.1016/j.jesp.2013.05.008
 28 10.1186/1747-597X-8-20
 29 10.1186/1747-597X-9-13
 30 10.1186/1747-597X-1-27

534

535

536

537