

Time-series analysis of meteorological factors and emergency department visits due to dog/cat bites in Jinshan area, China

Pei Pang¹, Xiaoyong Zhou^{1,2}, Yabin Hu^{3,4}, Yin Zhang⁵, Baoshi He⁶ and Guoxiong Xu⁷

¹ Department of Medical Affairs, Jinshan Hospital, Fudan University, Shanghai, China

² Emergency Department, Jinshan Hospital, Fudan University, Shanghai, China

³ Key Lab of Health Technology Assessment, National Health Commission of the People's Republic of China, Fudan University, Shanghai, China

⁴ Key Laboratory of Public Health Safety, Ministry of Education, School of Public Health, Fudan University, Shanghai, China

⁵ Shanghai Meteorological Service Center, Shanghai, China

⁶ Key Laboratory of Watershed Geographic Sciences, Nanjing Institute of Geography and Limnology, Chinese Academy of Sciences, Nanjing, China

⁷ Research Center for Clinical Medicine, Jinshan Hospital, Fudan University, Shanghai, China

ABSTRACT

Background. Meteorological factors play an important role in human health. Clarifying the occurrence of dog and cat bites (DCBs) under different meteorological conditions can provide key insights into the prevention of DCBs. Therefore, the objective of the study was to explore the relationship between meteorological factors and DCBs and to provide caution to avoid the incidents that may occur by DCBs.

Methods. In this study, data on meteorological factors and cases of DCBs were retrospectively collected at the Shanghai Climate Center and Jinshan Hospital of Fudan University, respectively, in 2016–2020. The distributed lag non-linear and time series model (DLNM) were used to examine the effect of meteorological elements on daily hospital visits due to DCBs.

Results. A total of 26,857 DCBs were collected ranging from 1 to 39 cases per day. The relationship between ambient temperature and DCBs was J-shaped. DCBs were positively correlated with daily mean temperature ($r_s = 0.588$, $P < 0.01$). The relative risk (RR) of DCBs was associated with high temperature (RR = 1.450; 95% CI [1.220–1.722]). Female was more susceptible to high temperature than male. High temperature increased the risk of DCBs.

Conclusions. The extremely high temperature increased the risk of injuries caused by DCBs, particularly for females. These data may help to develop public health strategies for potentially avoiding the occurrence of DCBs.

Subjects Surgery and Surgical Specialties, Environmental Impacts

Keywords Distributed lag non-linear model (DLNM), Meteorological factors, Emergency department visits, Dog and cat bites (DCBs), Relative risk

Submitted 22 September 2023

Accepted 13 December 2023

Published 18 January 2024

Corresponding authors

Xiaoyong Zhou,

zhou_xy@fudan.edu.cn

Guoxiong Xu,

guoxiong.xu@fudan.edu.cn

Academic editor

Haider Mahmood

Additional Information and
Declarations can be found on
page 11

DOI 10.7717/peerj.16758

© Copyright

2024 Pang et al.

Distributed under

Creative Commons CC-BY 4.0

OPEN ACCESS

INTRODUCTION

Dog and cat bites (DCBs) are now serious social and public health problems globally because the incidence of DCBs continues to rise ([Campagna et al., 2023](#); [Loder, 2019](#); [Roman et al., 2023](#)). In the United States, DCBs account for approximately 1% of all emergency department (ED) visits and an estimated 4.5 million dog bites and 0.4 million cat bites occur every year ([Bula-Rudas & Olcott, 2018](#); [Maniscalco & Edens, 2023](#)). In 2018, the WHO survey data showed that 76–94% and 2–50% of animal injuries are caused by dogs and cats ([Williams, 2018](#)). In China, an estimated 40 million people are injured by dogs and cats every year ([Liu et al., 2017](#)). In six provinces (Anhui, Guangxi, Guizhou, Hunan, Jiangsu, and Shandong) of China, 1,018,367 people were treated in clinics due to dog injuries in 2016 ([Li et al., 2018](#)).

The outcomes of DCBs on human health include varying degrees of physical and psychological consequences, including bites, scratches, secondary infections, surgeries and sequelae, and post-traumatic stress disorder (PTSD) ([Cianciara, Gorynski & Seroka, 2022](#); [Giovannini et al., 2023](#); [Murphy & Qaisi, 2021](#)). There is a high risk of contracting rabies after being injured by virus-carrying dogs. A total of 99% of human rabies infections are transmitted by dogs ([Fooks et al., 2017](#); [Liu et al., 2021](#)). Rabies virus infections kill tens of thousands of people every year and more than 95% of human deaths occur in Asia and Africa ([Abela-Ridder et al., 2016](#); [Jane Ling et al., 2023](#)), which impose costs on the health system and those affected consequences ([Barrios et al., 2021](#)).

DCBs can occur in private or public places and urban or rural areas. The risk factors are various, including the dog or cat, the owner or victim, the natural environment, and other factors ([Bay et al., 2021](#); [Campagna et al., 2023](#); [Chen et al., 2018](#)). Indeed, many issues can be considered for minimizing the risk factors such as specific factors (sex, castration/spay status, breed), victim factors (age, gender, familiarity with dog and cat, victim behavior), the relationship between the victim and the animals, the time and place of occurrence, meteorological factors, air pollution factors, etc ([Caffrey et al., 2019](#); [Chevalier et al., 2021](#); [Park et al., 2019](#); [Zangari et al., 2021](#)).

Most earlier studies focused on the social and cultural aspects that contribute to DCBs and are associated with misbehaviors by humans or animals, e.g., invading their territory, breeding, interfering with their eating, neglecting to vaccinate them, etc ([Matthias et al., 2015](#); [Patronek et al., 2013](#)). Currently, a growing number of studies have focused on links between meteorological factors and various injuries, but few on DCBs ([Chen et al., 2019](#); [Lippmann et al., 2013](#); [Oh et al., 2020](#)). The continued rise in global ambient temperatures has emerged and the impact of meteorological factors on health outcomes varies by geographic region and population ([Baccini et al., 2011](#); [Ma et al., 2015](#)). This study aims to provide public health strategies that may avoid the occurrence of DCBs and ultimately prevent the resulting incidents.

MATERIALS & METHODS

Study area

The research was conducted in the Jinshan area located in the southwest of Shanghai, which belongs to a northern subtropical region with a monsoonal climate ([Government of Jishan District, 2022](#)).

Data collection

Daily records of DCBs were collected during the years 2016–2020 from Jinshan Hospital of Fudan University, the largest hospital in the Jinshan District appointed for dog bites and rabies immunization by the local government. Gender, age, principal statement, doctor's diagnosis, and registration time of cases were collected from the electronic medical records (EMR) of the hospital. Data on meteorological factors for the same period, including ambient temperature, atmospheric pressure, mean relative humidity, wind speed, precipitation, and sunshine exposure, were collected from the Shanghai Meteorological Service Center. Daily mean ambient temperature has proven to be a reliable temperature indicator and was used as the functional exposure in this study ([Sun et al., 2014](#); [Wang et al., 2013](#)).

Data analysis

Since the number of daily DCBs obeyed a Poisson distribution and the relationship between meteorological factors (e.g., temperature) and bite events is usually nonlinear, a distributed lag non-linear model (DLNM) was used in this study to analyze the effects of meteorological factors on DCBs ([Gasparrini, Armstrong & Kenward, 2010](#); [Gasparrini et al., 2015](#); [Guo, Barnett & Tong, 2013](#)). The DLNM was utilized to control for disturbances such as humidity, insolation, long-term trends, and weekly effects. The basic pattern of the DLNM is as follows:

$$\begin{aligned} \log[E(Y_t)] = & \alpha + cb(Tmean_t, maxlag = 7) + cb(DTR_t, maxlag = 7) + cb(RH_t, maxlag = 7) \\ & + factor(year_t) + factor(month_t) + factor(DOW_t) + factor(Holiday_t). \end{aligned} \quad (1)$$

In the formula, t refers to the day of the observation; $E(Y_t)$ denotes estimated daily DCBs counted on day t ; α is the intercept; cb is the “cross-basis” function for generating bi-dimensional exposure-lag response relationship with 3 degrees of freedom (df) for the exposure and lag spaces, respectively; $Tmean_t$ is the mean temperature on day t ; “ $maxlag = 7$ ” refers a maximum lag of 7 days being used to present the lagged effect of temperature; DTR_t stands for diurnal temperature range on day t ; RH_t is the relative humidity on day t ; $factor(year_t)$ and $factor(month_t)$ are used to control the seasonality and long-term trend on day t ; $factor(DOW_t)$ is a categorical variable for adjusting day of the week on day t ; $factor(Holiday_t)$ is a binary variable for adjusting public holidays in China.

We plotted exposure-response curves based on DLNM between the daily number of DCBs in hospital ED and meteorological factors. A threshold was selected and a linear-threshold model was used to quantify the effect of meteorological factors.

Because meteorological factor affects not only the ED visits for DCBs on that day but also the ED visits for DCBs in subsequent days (lag effect), we conducted a moving average lag

model to evaluate the lag effects. Here, the 0-day lag represents the meteorological factors for the current day, and the 1-day lag represents the moving average of the meteorological factors for the current day and the previous day.

After assessing the effect of environmental factors on DCBs population-wide, we repeated the same procedure to examine correlations stratified by sex and age (≤ 14 , 15–21, 22–45, 46–59, and ≥ 60 years).

Ethics approval was approved by the Ethics Committee of Jinshan Hospital (No. JIEC 2021-S38). All statistical analyses were conducted using the R statistical environment (version 3.6.3) in which the “dlnm” package was mainly used. A two-sided *P*-value of less than 0.05 was considered statistically significant.

RESULTS

Using the house-designed technical strategy, we performed data collection and analyses of the association between DCBs and meteorological factors (Fig. S1). Table 1 shows the characteristics of 26,857 DCB cases and meteorological factors, which included 51.28% female. The number of DCBs in different age groups is listed in Table S1. Daily ED visits for DCBs were from 1 to 39 with an average of 14.7 ± 5.8 . The daily mean temperature was 17.4°C (-5.2°C to 33.9°C). Population aged 22–45 and 46–59 years accounted for 38.37% and 20.97%, respectively. In comparison, populations aged 0–14, 15–21, and ≥ 60 years accounted for 16.45%, 8.12%, and 16.09%, respectively. The fluctuation of daily ED visits for DCBs was consistent with the daily temperature but not with the daily atmospheric pressure (Fig. 1).

The temperature greater than or equal to 35°C was considered hot weather. The daily maximum temperatures were mainly in July and August (Fig. S2). The month with the highest frequency of hot weather was July, followed by August and June. We found that DCBs were more likely to occur on hot days (Table S2).

Daily ED visits for DCBs were significantly correlated with daily meteorological elements except for maximum wind speed and extreme wind speed (Table 2). Meteorological elements were associated with each other significantly except mean temperature with precipitation, maximum temperature with relative humidity, and diurnal atmospheric pressure range with relative humidity. Spearman’s rank correlation coefficient analyses showed that DCBs were positively correlated with daily mean temperature ($r_s = 0.588$, $P < 0.01$) and negatively correlated with daily mean atmospheric pressure ($r_s = -0.494$, $P < 0.01$).

The daily mean temperature with DCBs was J-shaped. The relative risk of DCBs was elevated with a rising temperature when the daily mean temperature was greater than 7.6°C (17th percentile of temperature) (Fig. 2A). Females were at greater risk of DCBs over a wide range of temperatures (Figs. 2B–2C). Population aged 22–45 years were sensitive to low temperature as well as to high temperature, the relative risk of DCBs was increased no matter when the temperature went lower or higher from 10°C . The highest risk of DCBs was found when the temperature reached about 26°C (Fig. 2F). For the population aged 46–59 years, the relative risk of DCBs was increased with temperature increased (Fig. 2G).

Table 1 Description of daily emergency department visits for dog and cat bites and meteorological factors during 2016–2020.

Variable	Mean \pm SD	Min	Max	N (weighted %)
Daily number	14.7 \pm 5.8	1	39	–
Sex				
Male	7.2 \pm 3.4	0	23	13,085 (48.72)
Female	7.5 \pm 3.6	0	22	13,772 (51.28)
Age				
≤ 14	2.4 \pm 1.8	0	10	4,419 (16.45)
15–21	1.2 \pm 1.1	0	6	2,180 (8.12)
22–45	5.6 \pm 2.9	0	17	10,305 (38.37)
46–59	3.1 \pm 2.0	0	12	5,633 (20.97)
≥ 60	2.4 \pm 1.7	0	10	4,320 (16.09)
T ^a mean (°C)	17.4 \pm 8.6	–5.2	33.9	–
DTR ^b (°C)	7.4 \pm 3.5	0.9	19.0	–
AP ^c mean (hPa)	1,016.1 \pm 9.1	986.2	1,039.7	–
RH ^d (%)	80.2 \pm 11.2	38.0	100.0	–
WS ^e max (m/s)	4.6 \pm 1.3	1.8	10.8	–
WS ^e extreme (m/s)	8.2 \pm 2.4	3.2	21.4	–
Precipitation (cm)	4.1 \pm 12.3	0.0	263.5	–
Sunshine (hour)	4.6 \pm 4.2	0.0	12.8	–

Notes.

^atemperature; ^bdiurnal temperature range; ^catmospheric pressure; ^drelative humidity; ^ewind speed.

Population aged over 60 years, the relative risk of DCBs was increased with the temperature rising from 7.6 °C (Fig. 2H).

The 3-D plots show the non-linear relationships between mean temperature and the relative risk of dog and cat bites over a lag of 0–7 days (Fig. 3A).

DISCUSSION

In this study, we observed a J-shaped relationship between the relative risk of DCBs and ambient temperature and confirmed that the case number of DCBs increased with the increase in temperature. The relationship between meteorological factors and diseases has been well-studied worldwide (Martinez-Solanas *et al.*, 2018) and is usually V-, U-, or J-shaped. As temperatures fall below or above certain thresholds, the number of cases or deaths would increase (Song *et al.*, 2018). These hot and cold effects are usually quantified once the thresholds are fixed at specific values Yue (Zhang *et al.*, 2014). Similar exposure-response relationships were found between ambient temperature and ED visits due to dog bites, basically in the ‘U’-shaped version. However, the estimated spline curve of ED visits due to dog bites showed a lower threshold temperature (Zhang *et al.*, 2017).

The ED is one of the busiest departments in the hospital, receiving a large number of patients every day, including accidental injuries, emergency attacks, *etc.* In the event of an emergency, the ED is the first department to receive and treat patients and is able to respond and deal with the emergency quickly. The emergency department also provides

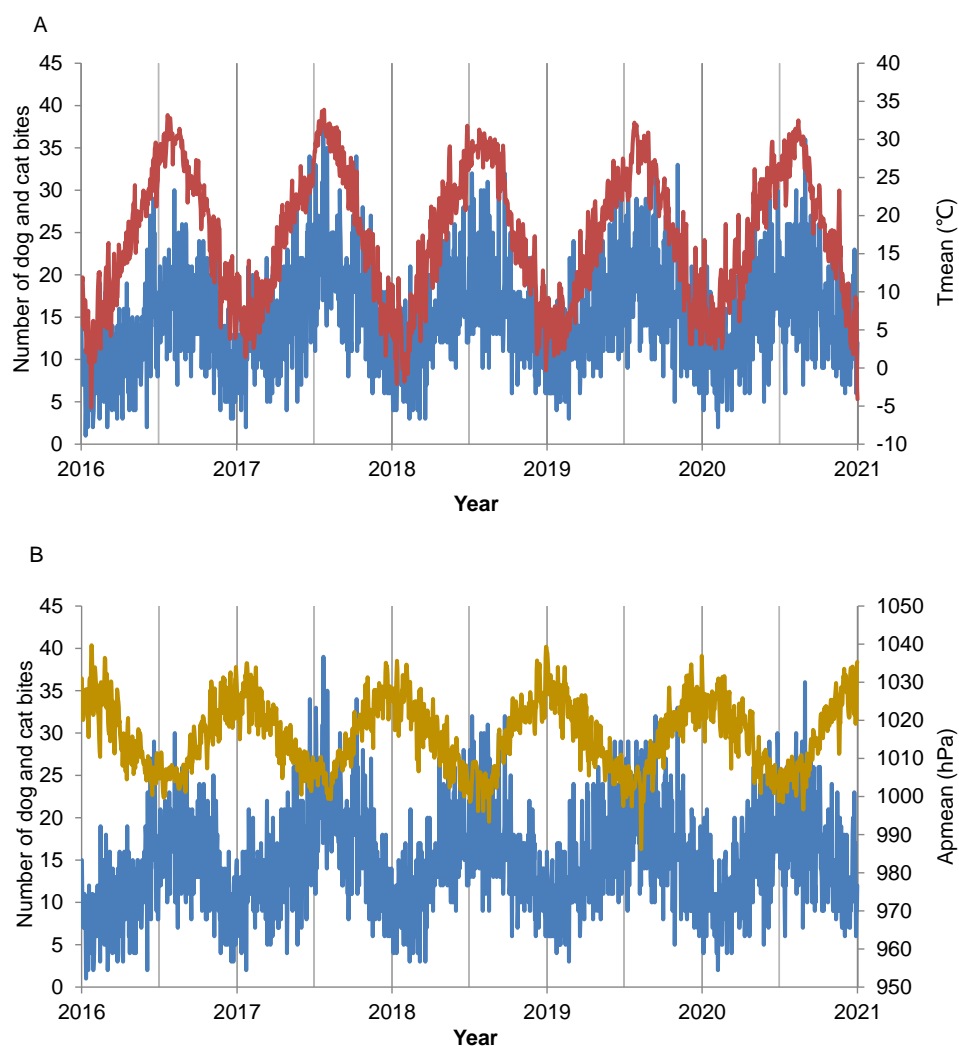


Figure 1 Correlation of the distribution of daily emergency department visits for dog and cat bites with mean temperature (Tmean) and mean atmospheric pressure (APmean) from years 2016 to 2020.

[Full-size !\[\]\(eafc244b53721dd1ec133f0772f70fc7_img.jpg\) DOI: 10.7717/peerj.16758/fig-1](https://doi.org/10.7717/peerj.16758/fig-1)

24-hour medical services and consultations for community residents to ensure the safety and health of residents (*Greenwood-Ericksen & Kocher, 2019*). We observed significant acute effects (within 0–7 days) of ambient temperature on daily ED visits to the DCBs. Especially in hot weather, the incidence rate of DCBs was higher. The underlying causes of this discrepancy were unclear. This is most likely due to, (1) high temperature can directly or indirectly affect the cerebral perfusion pressure and cerebral blood flow of animals leading to their temperament instability, and also can suppress thyroid function, leading to hypothyroidism and mood disorders (*Van Lieshout et al., 2003*). (2) Exposure to high temperatures can lead to significant increases in core body temperature, heart rate, and cerebrovascular resistance (*Nybo, Rasmussen & Sawka, 2014; Wilson et al., 2006*). However, in cold weather, people have fewer outdoor activities with walking pets and wear heavy

Table 2 Spearman's correlation coefficients between daily emergency department visits for dog and cat bites and meteorological factors.

Variable	Tmean	DTR	APmean	DAPR	RH	WSmax	WSextreme	Precipitation	Sunshine
Daily number	0.588**	0.093**	−0.494**	−0.269**	−0.061**	−0.012	−0.022	−0.165**	0.242**
N _{dog}	0.503**	0.123**	−0.414**	−0.233**	−0.031	−0.045	−0.054*	−0.155**	0.189**
N _{cat}	0.339**	−0.016	−0.296**	−0.151**	−0.083**	0.063**	0.056*	−0.072**	0.180**
T mean		−0.094**	−0.894**	−0.385**	0.112**	0.112**	0.101**	0.010	0.228**
DTR			0.154**	0.060**	−0.499**	−0.125**	−0.152**	−0.517**	0.556**
AP mean				0.249**	−0.251**	−0.170**	−0.151**	−0.168**	−0.103**
DAPR					0.020	0.192**	0.208**	0.183**	0.169**
RH						−0.082**	−0.096**	0.626**	−0.589**
WS max							0.931**	0.140**	0.083**
WS extreme								0.182**	0.056*
Precipitation									−0.593**

Notes.
N, case number of emergency department visits for animal bites; T, temperature; DTR, diurnal temperature range; AP, atmospheric pressure; DAPR, diurnal atmospheric pressure range; RH, relative humidity; WS, wind speed.
* $p < 0.05$.
** $p < 0.01$.

clothes, and therefore, the incidence rate is reduced. However, outpatient visits were less affected by these influencing factors. Therefore, meteorological factors are considered to be a good indicator of emergency disease occurrence.

We observed age-associated differences in exposure-response curves, with the risk of being DCBs for people aged 15–21 almost unaffected by temperature, probably because the population aged 15–21 years may spend most of their time in school and spend so little time with domestic pets that their risk of injury was reduced. Population aged 22–45 years were the majority and the relative risk of DCBs was associated with both high and low temperatures. Generally, this age group is economically independent and can raise pets by themselves, and they may need pets for spiritual comfort (Powell et al., 2018).

The current study revealed that the temperature-DCBs association varied by gender, such that females were affected by heat more broadly than males. It can be hypothesized that the dimorphism in human gender responses to animal attacks is due to biological differences between males and females. Indeed, Lovick's study found that female-secreted progesterone acts on the panic locus (gray matter around the midbrain aqueduct), leading to increased reactivity to animal aggression (Lovick, 2014). A study by Mishor et al. (2021) found that a compound known as hexadecanal (HEX) modulates human aggression in a gender-specific manner. HEX works by modulating the functional connectivity of the aggressive brain network, resulting in increased connectivity in males and decreased connectivity in females. At the same time, women wear thin clothes in summer and their skin is more exposed, which increases the risk of being bitten by dogs.

We observed age-associated in exposure-response curve, with subjects aged ≥ 46 years being more sensitive to hot temperatures, whereas 22–45 years were sensitive to both hot and cold. This is consistent with some relevant studies, which show that older people are more susceptible to high temperatures (de'Donato et al., 2015; Ma et al., 2019). This may be because the global population is aging and the prevalence of age-associated disease is

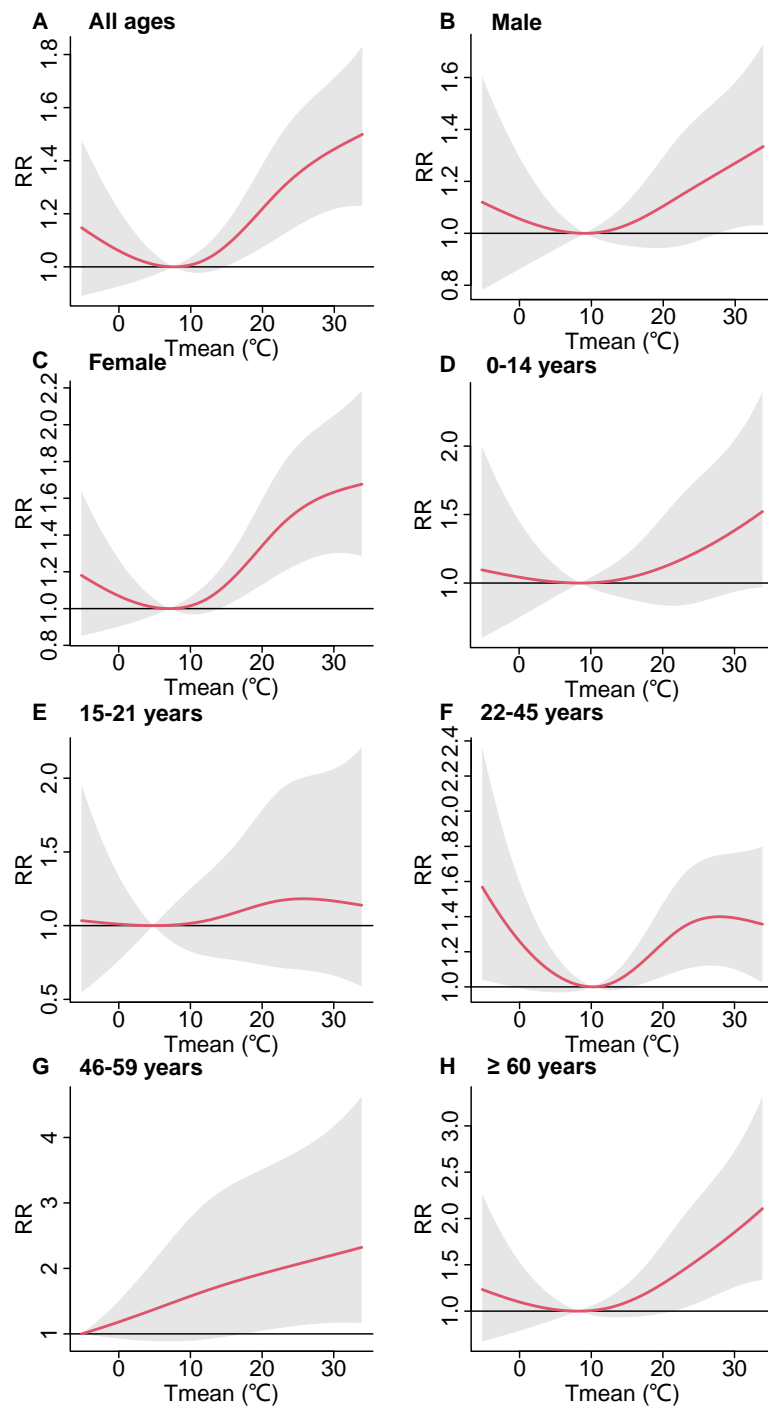


Figure 2 Cumulative associations between temperature and emergency department visits for dog and cat bites over lag 0–7 days by gender and age groups during 2016–2020.

[Full-size !\[\]\(666e09182d4cd268646ea700ea60dcdf_img.jpg\) DOI: 10.7717/peerj.16758/fig-2](https://doi.org/10.7717/peerj.16758/fig-2)

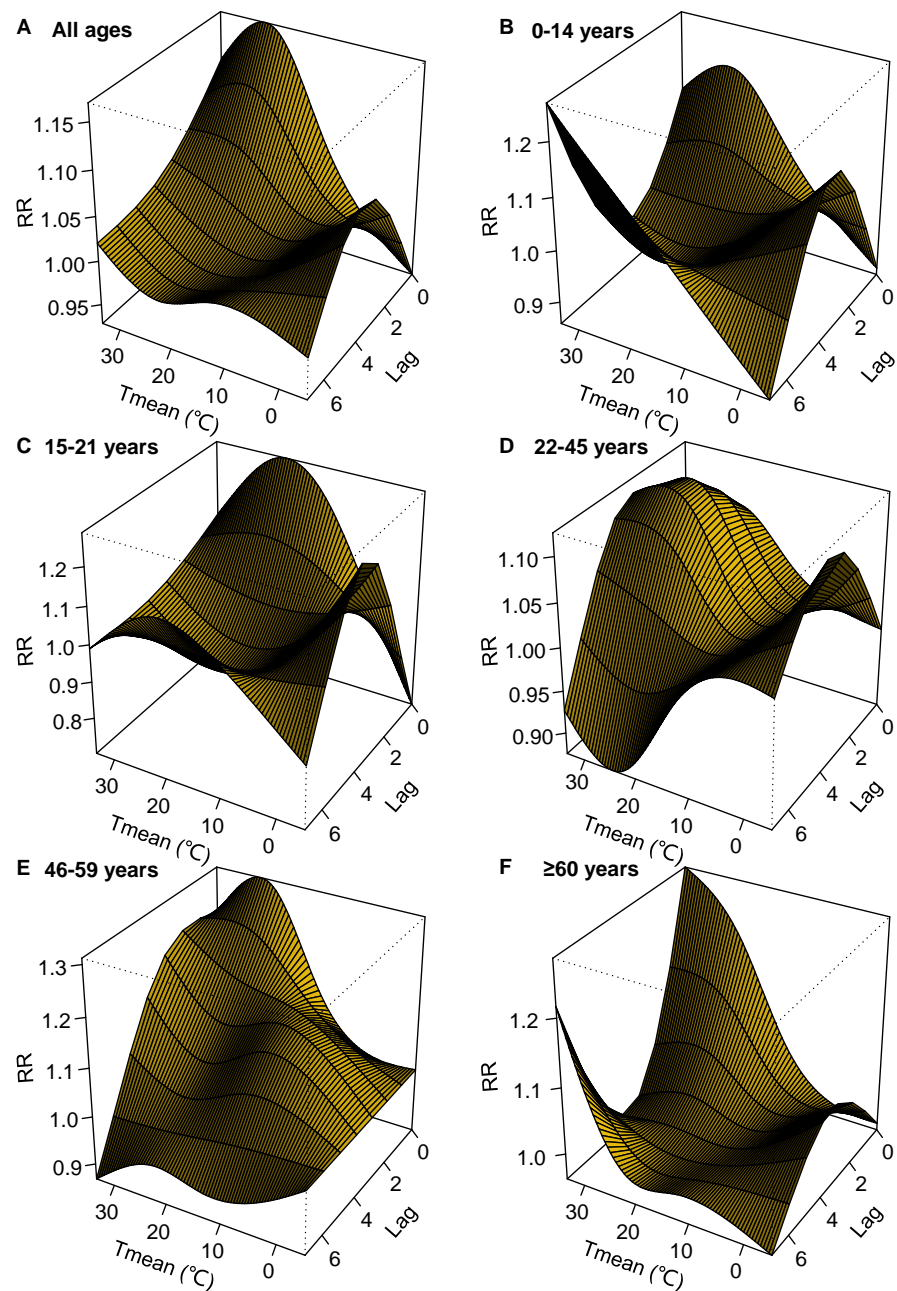


Figure 3 3-D plots for the relative risk (RR) of emergency department visits for dog and cat bites associated with mean temperature (Tmean) over lag 0–7 days produced by the distributed lag non-linear mode (DLNM).

Full-size [DOI: 10.7717/peerj.16758/fig-3](https://doi.org/10.7717/peerj.16758/fig-3)

on the rise (*Suzman et al., 2015*). At the same time, global climate change poses multiple risks of health hazards for older people, such as the inability to adapt to sudden changes in their surroundings (*Chang et al., 2022*). Individuals aged ≥ 46 years have a decreased ability to regulate their body temperature and are less able to perceive changes in body temperature during hot weather. As a result, they may not be able to perceive changes in

body temperature or take cooling measures in a timely manner, which also increases the risk of dog bites ([Chambers & Vukmanovic-Stejjic, 2020](#); [Millyard et al., 2020](#)). In addition, older persons may have cognitive impairment and mobility problems, which can impair their judgment and reaction ability and make them more vulnerable to attacks by dogs and cats ([Meade et al., 2020](#)). Therefore, in hot weather, older people can overcome heat stress and improve heat tolerance through appropriate exercise, passive heating, and behavioral adaptation ([Tan, Chin & Low, 2020](#)). They should also pay special attention to their physical conditions and take timely cooling measures ([Rudnicka et al., 2020](#)). Of course, family members and caregivers should also enhance protection and care for the elderly to avoid being bitten by dogs and cats.

All organisms are influenced by factors in their surrounding environment. Adverse meteorological factors may have critical effects on the physiological function and behavior of mammals, including humans ([Knapp & Huang, 2022](#); [Nakamura & Morrison, 2022](#)). *In vivo* physiological studies have shown that the hypothalamic-medullary circuitry functions in response to environmental stressors by interacting with other neural circuits as well as physiological systems and that it not only regulates basal body temperature, but also controls a wide range of autonomic and somatomotor responses to heat, psychology, and stress ([Morrison & Nakamura, 2019](#); [Nakamura, Nakamura & Kataoka, 2022](#); [Tan & Knight, 2018](#); [Van Hook, 2020](#)). Combine this with the American Veterinary Medical Association's assertion that dog and cat bites are primarily a response to the environment or something, such as heat, stressful situations, shock, consternation, or threat ([AVMA, 2023](#)). It is reasonable to hypothesize that stressors such as meteorological factors act on the hypothalamic-medullary circuits of humans or dogs and cats and that the hypothalamic-medullary circuits trigger cat and dog bites through a series of neurophysiological responses that control autonomic and somatic movements. However, the specific link between meteorological factors and cat and dog bites has yet to be verified through methods such as randomized double-blind exposure experiments in animals or humans.

The effects of ambient temperature on DCBs of ED visits have different delayed structures, which are similar to and different from other diseases in emergency department visits in China ([Hu et al., 2018](#); [Zhang et al., 2014](#)). In addition, a statistically significant association was observed for some, but not all, lag structures of ambient temperature. Therefore, further research is needed to elucidate the lagged structure and extent of this effect.

Limitations

A few limitations need to be taken into account in the future study. Some likely attributable risk factors such as animal breed, gender, body size, and training as well as victim's behavioral characteristics were not included in the study due to hard quantification and control that may confound the results from collected data and analytic methods. Another potential limitation of this study is data on DCBs were derived from patients who visited a hospital, those small pieces of data were missing from people who did not go to the hospital because they did not think their injuries were serious. Nevertheless, our study was based

on the theoretical basis of the influence of ambient temperature on human and animal mental/behavioral abnormalities.

CONCLUSIONS

We observed a significant association between exposure to hot ambient temperatures and increased ED visits for DCBs in different gender and age groups in Shanghai, China. The extremely high temperature increased the risk of DCBs, particularly for females and people aged over 46 years. These results indicate that ambient temperature is an important environmental hazard factor in ED visits for DCBs in Shanghai. These findings help establish public health preparedness and interventions to minimize the adverse effects of meteorological factors on DCBs.

ACKNOWLEDGEMENTS

We thank the anonymous reviewers for their useful comments.

ADDITIONAL INFORMATION AND DECLARATIONS

Funding

This work was supported by the project supported by the Science and Technology Commission of Jinshan District (No. 2018-3-06) and the Jinshan District Health Committee (No. JSKJ-KTGW-2022-05). The funders had no role in study design, data collection and analysis, decision to publish, or preparation of the manuscript.

Grant Disclosures

The following grant information was disclosed by the authors:
Science and Technology Commission of Jinshan District: 2018-3-06.
Jinshan District Health Committee: JSKJ-KTGW-2022-05.

Competing Interests

The authors declare there are no competing interests.

Author Contributions

- Pei Pang conceived and designed the experiments, performed the experiments, analyzed the data, prepared figures and/or tables, and approved the final draft.
- Xiaoyong Zhou conceived and designed the experiments, analyzed the data, authored or reviewed drafts of the article, and approved the final draft.
- Yabin Hu performed the experiments, prepared figures and/or tables, and approved the final draft.
- Yin Zhang performed the experiments, prepared figures and/or tables, and approved the final draft.
- Baoshi He conceived and designed the experiments, authored or reviewed drafts of the article, and approved the final draft.
- Guoxiong Xu analyzed the data, authored or reviewed drafts of the article, and approved the final draft.

Human Ethics

The following information was supplied relating to ethical approvals (i.e., approving body and any reference numbers):

The Ethics Committee of Jinshan Hospital of Fudan University approval to carry out the study within its facilities (Ethical Application Ref: JIEC 2021-S38).

Data Availability

The following information was supplied regarding data availability:

The raw measurements are available in the [Supplementary Files](#).

Supplemental Information

Supplemental information for this article can be found online at <http://dx.doi.org/10.7717/peerj.16758#supplemental-information>.

REFERENCES

- Abela-Ridder B, Knopf L, Martin S, Taylor L, Torres G, De Balogh K. 2016. 2016: the beginning of the end of rabies? *The Lancet Global Health* 4(11):e780–e781 DOI 10.1016/S2214-109X(16)30245-5.
- AVMA. 2023. Dog bite prevention. Available at <http://www.avma.org/resources-tools/pet-owners/dog-bite-prevention>.
- Baccini M, Kosatsky T, Analitis A, Anderson HR, D'Ovidio M, Menne B, Michelozzi P, Biggeri A, Group PC. 2011. Impact of heat on mortality in 15 European cities: attributable deaths under different weather scenarios. *Journal of Epidemiology & Community Health* 65(1):64–70 DOI 10.1136/jech.2008.085639.
- Barrios CL, Bustos-Lopez C, Pavletic C, Parra A, Vidal M, Bowen J, Fatjo J. 2021. Epidemiology of dog bite incidents in Chile: factors related to the patterns of human-dog relationship. *Animals* 11(1):96 DOI 10.3390/ani11010096.
- Bay V, Jafari M, Shirzadi MR, Bagheri A, Masoudi Asl I. 2021. Trend and epidemiological patterns of animal bites in Golestan province (Northern Iran) between 2017 and 2020. *PLOS ONE* 16(5):e0252058 DOI 10.1371/journal.pone.0252058.
- Bula-Rudas FJ, Olcott JL. 2018. Human and animal bites. *Pediatrics In Review* 39(10):490–500 DOI 10.1542/pir.2017-0212.
- Caffrey N, Rock M, Schmidt O, Anderson D, Parkinson M, Checkley SL. 2019. Insights about the epidemiology of dog bites in a Canadian City using a dog aggression scale and administrative data. *Animals* 9(6):324 DOI 10.3390/ani9060324.
- Campagna RA, Roberts E, Porco A, Fritz CL. 2023. Clinical and epidemiologic features of persons accessing emergency departments for dog and cat bite injuries in California (2005-2019). *Journal of the American Veterinary Medical Association* 261(5):723–732 DOI 10.2460/javma.22.11.0494.
- Chambers ES, Vukmanovic-Stejić M. 2020. Skin barrier immunity and ageing. *Immunology* 160(2):116–125 DOI 10.1111/imm.13152.

- Chang AY, Tan AX, Nadeau KC, Odden MC. 2022.** Aging hearts in a hotter, more turbulent world: the impacts of climate change on the cardiovascular health of older adults. *Current Cardiology Reports* 24(6):749–760 DOI 10.1007/s11886-022-01693-6.
- Chen Y, Tan Y, Yan S, Li L. 2018.** Dog bite and injury awareness and prevention in migrant and left-behind children in China. *Scientific Reports* 8(1):15959 DOI 10.1038/s41598-018-34428-1.
- Chen Y, Zheng M, Lv J, Shi T, Liu P, Wu Y, Feng W, He W, Guo P. 2019.** Interactions between ambient air pollutants and temperature on emergency department visits: analysis of varying-coefficient model in Guangzhou, China. *Science of The Total Environment* 668:825–834 DOI 10.1016/j.scitotenv.2019.03.049.
- Chevalier V, Davun H, Sorn S, Ly P, Pov V, Ly S. 2021.** Large scale dog population demography, dog management and bite risk factors analysis: a crucial step towards rabies control in Cambodia. *PLOS ONE* 16(7):e0254192 DOI 10.1371/journal.pone.0254192.
- Cianciara D, Gorynski P, Seroka W. 2022.** Hospitalization for dog bites in Poland between 2006–2020. *Annals of Agricultural and Environmental Medicine* 29(4):538–542 DOI 10.26444/aaem/152183.
- de'Donato FK, Leone M, Scortichini M, De Sario M, Katsouyanni K, Lanki T, Basagaña X, Ballester F, Åström C, Paldy A, Pascal M, Gasparrini A, Menne B, Michelozzi P. 2015.** Changes in the effect of heat on mortality in the last 20 years in nine European Cities, results from the PHASE project. *International Journal of Environmental Research and Public Health* 12(12):15567–15583 DOI 10.3390/ijerph121215006.
- Fooks AR, Cliquet F, Finke S, Freuling C, Hemachudha T, Mani RS, Müller T, Nadin-Davis S, Picard-Meyer E, Wilde H, Banyard AC. 2017.** Rabies. *Nature Reviews Disease Primers* 3:17091 DOI 10.1038/nrdp.2017.91.
- Gasparrini A, Armstrong B, Kenward MG. 2010.** Distributed lag non-linear models. *Statistics in Medicine* 29(21):2224–2234 DOI 10.1002/sim.3940.
- Gasparrini A, Guo Y, Hashizume M, Lavigne E, Zanobetti A, Schwartz J, Tobias A, Tong S, Rocklöv J, Forsberg B, Leone M, De Sario M, Bell ML, Guo Y-LL, Wu C-f, Kan H, Yi S-M, de Sousa Zanotti Stagliorio Coelho M, Saldiva PHN, Honda Y, Kim H, Armstrong B. 2015.** Mortality risk attributable to high and low ambient temperature: a multicountry observational study. *Lancet* 386(9991):369–375 DOI 10.1016/S0140-6736(14)62114-0.
- Giovannini E, Roccaro M, Peli A, Bianchini S, Bini C, Pelotti S, Fais P. 2023.** Medico-legal implications of dog bite injuries: a systematic review. *Forensic Science International* 352:111849 DOI 10.1016/j.forsciint.2023.111849.
- Government of Jishan District. 2022.** About Jinshan (Chinese version). Available at <https://en.jinshan.gov.cn/>.
- Greenwood-Ericksen MB, Kocher K. 2019.** Trends in emergency department use by rural and urban populations in the United States. *JAMA Network Open* 2(4):e191919 DOI 10.1001/jamanetworkopen.2019.1919.

- Guo Y, Barnett AG, Tong S. 2013.** Spatiotemporal model or time series model for assessing city-wide temperature effects on mortality? *Environmental Research* 120:55–62 DOI 10.1016/j.envres.2012.09.001.
- Hu W, Li Y, Han W, Xue L, Zhang W, Ma W, Bi P. 2018.** Meteorological factors and the incidence of mumps in Fujian Province, China, 2005–2013: non-linear effects. *Science of The Total Environment* 1286:619–620–1298 DOI 10.1016/j.scitotenv.2017.11.108.
- Jane Ling MY, Halim A, Ahmad D, Ramly N, Hassan MR, Syed Abdul Rahim SS, Saffree Jeffree M, Omar A, Hidrus A. 2023.** Rabies in Southeast Asia: a systematic review of its incidence, risk factors and mortality. *BMJ Open* 13(5):e066587 DOI 10.1136/bmjopen-2022-066587.
- Knapp BD, Huang KC. 2022.** The effects of temperature on cellular physiology. *Annual Review of Biophysics* 51:499–526 DOI 10.1146/annurev-biophys-112221-074832.
- Li YR, Zhu LL, Zhu WY, Tao XY. 2018.** Epidemiology of human rabies in China, 2016. *Zhonghua Liu Xing Bing Xue Za Zhi* 39(1):40–43 DOI 10.3760/cma.j.issn.0254-6450.2018.01.008.
- Lippmann SJ, Fuhrmann CM, Waller AE, Richardson DB. 2013.** Ambient temperature and emergency department visits for heat-related illness in North Carolina, 2007–2008. *Environmental Research* 124:35–42 DOI 10.1016/j.envres.2013.03.009.
- Liu JJ, Duo L, XY Tao, Zhu WY. 2021.** Epidemiological characteristics of human rabies in China, 2016–2018. *Zhonghua Liu Xing Bing Xue Za Zhi* 42(1):131–136 DOI 10.3760/cma.j.cn112338-20200116-00037.
- Liu Q, Wang X, Liu B, Gong Y, Mkandawire N, Li W, Fu W, Li L, Gan Y, Shi J, Shi B, Liu J, Cao S, Lu Z. 2017.** Improper wound treatment and delay of rabies post-exposure prophylaxis of animal bite victims in China: prevalence and determinants. *PLOS Neglected Tropical Diseases* 11(7):e0005663 DOI 10.1371/journal.pntd.0005663.
- Loder RT. 2019.** The demographics of dog bites in the United States. *Heliyon* 5(3):e01360 DOI 10.1016/j.heliyon.2019.e01360.
- Lovick TA. 2014.** Sex determinants of experimental panic attacks. *Neuroscience & Biobehavioral Reviews*, 46 Pt 3:465–471 DOI 10.1016/j.neubiorev.2014.03.006.
- Ma W, Zeng W, Zhou M, Wang L, Rutherford S, Lin H, Liu T, Zhang Y, Xiao J, Zhang Y, Wang X, Gu X, Chu C. 2015.** The short-term effect of heat waves on mortality and its modifiers in China: an analysis from 66 communities. *Environment International* 75:103–109 DOI 10.1016/j.envint.2014.11.004.
- Ma Y, Zhou J, Yang S, Yu Z, Wang F, Zhou J. 2019.** Effects of extreme temperatures on hospital emergency room visits for respiratory diseases in Beijing, China. *Environmental Science and Pollution Research* 26(3):3055–3064 DOI 10.1007/s11356-018-3855-4.
- Maniscalco K, Edens MA. 2023.** Animal bites. In: *StatPearls*. Treasure Island (FL): StatPearls Publishing.

- Martinez-Solanas E, Lopez-Ruiz M, Gasparrini A, Wellenius GA, Sunyer J, Benavides FG, Basagana X. 2018. Evaluation of the impact of ambient temperatures on occupational injuries in Spain. *Environ Health Perspect* 126(6):067002 DOI 10.1289/EHP2590.
- Matthias J, Templin M, Jordan MM, Stanek D. 2015. Cause, setting and ownership analysis of dog bites in Bay County, Florida from 2009 to 2010. *Zoonoses Public Health* 62(1):38–43 DOI 10.1111/zph.12115.
- Meade RD, Akerman AP, Notley SR, McGinn R, Poirier P, Gosselin P, Kenny GP. 2020. Physiological factors characterizing heat-vulnerable older adults: a narrative review. *Environment International* 144:105909 DOI 10.1016/j.envint.2020.105909.
- Millyard A, Layden JD, Pyne DB, Edwards AM, Bloxham SR. 2020. Impairments to thermoregulation in the elderly during heat exposure events. *Gerontology and Geriatric Medicine* 6:2333721420932432 DOI 10.1177/2333721420932432.
- Mishor E, Amir D, Weiss T, Honigstein D, Weissbrod A, Livne E, Gorodisky L, Karagach S, Ravia A, Snitz K, Karawani D, Zirler R, Weissgross R, Soroka T, Endevelt-Shapira Y, Agron S, Rozenkrantz L, Reshef N, Furman-Haran E, Breer H, Strotmann J, Uebi T, Ozaki M, Sobel N. 2021. Sniffing the human body volatile hexadecanal blocks aggression in men but triggers aggression in women. *Science Advances* 7(47):eabg1530 DOI 10.1126/sciadv.abg1530.
- Morrison SF, Nakamura K. 2019. Central mechanisms for thermoregulation. *Annual Review of Physiology* 81:285–308 DOI 10.1146/annurev-physiol-020518-114546.
- Murphy J, Qaisi M. 2021. Management of human and animal bites. *Oral and Maxillofacial Surgery Clinics of North America* 33(3):373–380 DOI 10.1016/j.coms.2021.04.006.
- Nakamura K, Morrison SF. 2022. Central sympathetic network for thermoregulatory responses to psychological stress. *Autonomic Neuroscience* 237:102918 DOI 10.1016/j.autneu.2021.102918.
- Nakamura K, Nakamura Y, Kataoka N. 2022. A hypothalamomedullary network for physiological responses to environmental stresses. *Nature Reviews Neuroscience* 23(1):35–52 DOI 10.1038/s41583-021-00532-x.
- Nybo L, Rasmussen P, Sawka MN. 2014. Performance in the heat-physiological factors of importance for hyperthermia-induced fatigue. *Comprehensive Physiology* 4(2):657–689 DOI 10.1002/cphy.c130012.
- Oh S, Ha TH, Kim H, Lee H, Myung W. 2020. Emergency department visits for panic attacks and ambient temperature: a time-stratified case-crossover analysis. *Depression and Anxiety* 37(11):1099–1107 DOI 10.1002/da.23019.
- Park JW, Kim DK, Jung JY, Lee SU, Chang I, Kwak YH, Hwang S. 2019. Dog-bite injuries in Korea and risk factors for significant dog-bite injuries: a 6-year cross-sectional study. *PLOS ONE* 14(2):e0210541 DOI 10.1371/journal.pone.0210541.
- Patronek GJ, Sacks JJ, Delise KM, Cleary DV, Marder AR. 2013. Co-occurrence of potentially preventable factors in 256 dog bite-related fatalities in the United States (2000–2009). *Journal of the American Veterinary Medical Association* 243(12):1726–1736 DOI 10.2460/javma.243.12.1726.

- Powell L, Chia D, McGreevy P, Podberscek AL, Edwards KM, Neilly B, Guastella AJ, Lee V, Besser A, Stamatakis E. 2018.** Expectations for dog ownership: perceived physical, mental and psychosocial health consequences among prospective adopters. *PLOS ONE* **13**(7):e0200276 DOI [10.1371/journal.pone.0200276](https://doi.org/10.1371/journal.pone.0200276).
- Roman J, Willat G, Piaggio J, Correa MT, Damian JP. 2023.** Epidemiology of dog bites to people in Uruguay (2010-2020). *Veterinary Medicine and Science* **9**(5):2032–2037 DOI [10.1002/vms3.1242](https://doi.org/10.1002/vms3.1242).
- Rudnicka E, Napierala P, Podfigurna A, Meczekalski B, Smolarczyk R, Grymowicz M. 2020.** The World Health Organization (WHO) approach to healthy ageing. *Maturitas* **139**:6–11 DOI [10.1016/j.maturitas.2020.05.018](https://doi.org/10.1016/j.maturitas.2020.05.018).
- Song X, Wang S, Li T, Tian J, Ding G, Wang J, Shang K. 2018.** The impact of heat waves and cold spells on respiratory emergency department visits in Beijing, China. *Science of The Total Environment* **615**:1499–1505 DOI [10.1016/j.scitotenv.2017.09.108](https://doi.org/10.1016/j.scitotenv.2017.09.108).
- Sun X, Sun Q, Yang M, Zhou X, Li X, Yu A, Geng F, Guo Y. 2014.** Effects of temperature and heat waves on emergency department visits and emergency ambulance dispatches in Pudong New Area, China: a time series analysis. *Environmental Health* **13**:76 DOI [10.1186/1476-069X-13-76](https://doi.org/10.1186/1476-069X-13-76).
- Suzman R, Beard JR, Boerma T, Chatterji S. 2015.** Health in an ageing world—what do we know? *Lancet* **385**(9967):484–486 DOI [10.1016/S0140-6736\(14\)61597-X](https://doi.org/10.1016/S0140-6736(14)61597-X).
- Tan CCS, Chin LKK, Low ICC. 2020.** Thermoregulation in the aging population and practical strategies to overcome a warmer tomorrow. *Proteomics* **20**(5–6):e1800468 DOI [10.1002/pmic.201800468](https://doi.org/10.1002/pmic.201800468).
- Tan CL, Knight ZA. 2018.** Regulation of body temperature by the nervous system. *Neuron* **98**(1):31–48 DOI [10.1016/j.neuron.2018.02.022](https://doi.org/10.1016/j.neuron.2018.02.022).
- Van Hook MJ. 2020.** Temperature effects on synaptic transmission and neuronal function in the visual thalamus. *PLOS ONE* **15**(4):e0232451 DOI [10.1371/journal.pone.0232451](https://doi.org/10.1371/journal.pone.0232451).
- Van Lieshout JJ, Wieling W, JM Karemaker, Secher NH. 2003.** Syncope, cerebral perfusion, and oxygenation. *Journal of Applied Physiology* **94**(3):833–848 DOI [10.1152/japplphysiol.00260.2002](https://doi.org/10.1152/japplphysiol.00260.2002).
- Wang M-z, Zheng S, He S-l, Li B, Teng H-j, Wang S-g, Yin L, Shang K-z, Li T-s. 2013.** The association between diurnal temperature range and emergency room admissions for cardiovascular, respiratory, digestive and genitourinary disease among the elderly: a time series study. *Science of The Total Environment* **456–457**:370–375 DOI [10.1016/j.scitotenv.2013.03.023](https://doi.org/10.1016/j.scitotenv.2013.03.023).
- Williams DJ. 2018.** Animal bites. Available at <https://www.who.int/news-room/fact-sheets/detail/animal-bites>.
- Wilson TE, Cui J, Zhang R, Crandall CG. 2006.** Heat stress reduces cerebral blood velocity and markedly impairs orthostatic tolerance in humans. *American Journal of Physiology-Regulatory, Integrative and Comparative Physiology* **291**(5):R1443–R1448 DOI [10.1152/ajpregu.00712.2005](https://doi.org/10.1152/ajpregu.00712.2005).

- Zangari A, Cerigioni E, Nino F, Guidi R, Gulia C, Piergentili R, Ilari M, Mazzoni N, Cobellis G. 2021.** Dog bite injuries in a tertiary care children's hospital: a seven-year review. *Pediatrics International* **63**(5):575–580 DOI [10.1111/ped.14484](https://doi.org/10.1111/ped.14484).
- Zhang Y, Yan C, Kan H, Cao J, Peng L, Xu J, Wang W. 2014.** Effect of ambient temperature on emergency department visits in Shanghai, China: a time series study. *Environmental Health* **13**:100 DOI [10.1186/1476-069X-13-100](https://doi.org/10.1186/1476-069X-13-100).
- Zhang Y, Zhao Q, Zhang W, Li S, Chen G, Han Z, Guo Y. 2017.** Are hospital emergency department visits due to dog bites associated with ambient temperature? A time-series study in Beijing, China. *Science of The Total Environment* **598**:71–76 DOI [10.1016/j.scitotenv.2017.04.112](https://doi.org/10.1016/j.scitotenv.2017.04.112).