

# Resource partitioning among bat species in Peninsular Malaysia rice fields (#88112)

1

First submission

## Guidance from your Editor

Please submit by **9 Aug 2023** for the benefit of the authors (and your token reward) .



### Structure and Criteria

Please read the 'Structure and Criteria' page for general guidance.



### Custom checks

Make sure you include the custom checks shown below, in your review.



### Raw data check

Review the raw data.



### Image check

Check that figures and images have not been inappropriately manipulated.

If this article is published your review will be made public. You can choose whether to sign your review. If uploading a PDF please remove any identifiable information (if you want to remain anonymous).

## Files

Download and review all files from the [materials page](#).

6 Figure file(s)

1 Raw data file(s)



## Custom checks

### Vertebrate animal usage checks



Have you checked the authors [ethical approval statement](#)?



Were the experiments necessary and ethical?



Have you checked our [animal research policies](#)?

### Field study



Have you checked the authors [field study permits](#)?



Are the field study permits appropriate?



# Structure and Criteria

## Structure your review

The review form is divided into 5 sections. Please consider these when composing your review:

1. BASIC REPORTING
2. EXPERIMENTAL DESIGN
3. VALIDITY OF THE FINDINGS
4. General comments
5. Confidential notes to the editor

 You can also annotate this PDF and upload it as part of your review

When ready [submit online](#).

## Editorial Criteria

Use these criteria points to structure your review. The full detailed editorial criteria is on your [guidance page](#).

### BASIC REPORTING

-  Clear, unambiguous, professional English language used throughout.
-  Intro & background to show context. Literature well referenced & relevant.
-  Structure conforms to [PeerJ standards](#), discipline norm, or improved for clarity.
-  Figures are relevant, high quality, well labelled & described.
-  Raw data supplied (see [PeerJ policy](#)).

### EXPERIMENTAL DESIGN

-  Original primary research within [Scope of the journal](#).
-  Research question well defined, relevant & meaningful. It is stated how the research fills an identified knowledge gap.
-  Rigorous investigation performed to a high technical & ethical standard.
-  Methods described with sufficient detail & information to replicate.

### VALIDITY OF THE FINDINGS

-  Impact and novelty not assessed. *Meaningful* replication encouraged where rationale & benefit to literature is clearly stated.
-  All underlying data have been provided; they are robust, statistically sound, & controlled.
-  Conclusions are well stated, linked to original research question & limited to supporting results.



The best reviewers use these techniques

## Tip

## Example

**Support criticisms with evidence from the text or from other sources**

*Smith et al (J of Methodology, 2005, V3, pp 123) have shown that the analysis you use in Lines 241-250 is not the most appropriate for this situation. Please explain why you used this method.*

**Give specific suggestions on how to improve the manuscript**

*Your introduction needs more detail. I suggest that you improve the description at lines 57- 86 to provide more justification for your study (specifically, you should expand upon the knowledge gap being filled).*

**Comment on language and grammar issues**

*The English language should be improved to ensure that an international audience can clearly understand your text. Some examples where the language could be improved include lines 23, 77, 121, 128 – the current phrasing makes comprehension difficult. I suggest you have a colleague who is proficient in English and familiar with the subject matter review your manuscript, or contact a professional editing service.*

**Organize by importance of the issues, and number your points**

1. Your most important issue
2. The next most important item
3. ...
4. The least important points

**Please provide constructive criticism, and avoid personal opinions**

*I thank you for providing the raw data, however your supplemental files need more descriptive metadata identifiers to be useful to future readers. Although your results are compelling, the data analysis should be improved in the following ways: AA, BB, CC*

**Comment on strengths (as well as weaknesses) of the manuscript**

*I commend the authors for their extensive data set, compiled over many years of detailed fieldwork. In addition, the manuscript is clearly written in professional, unambiguous language. If there is a weakness, it is in the statistical analysis (as I have noted above) which should be improved upon before Acceptance.*

# Resource partitioning among bat species in Peninsular Malaysia rice fields

Nur-Izzati Abdullah<sup>1, 2</sup>, Nurul-Ain Elias<sup>Corresp., 3</sup>, Nobuhito Ohte<sup>1</sup>, Christian Vincenot<sup>Corresp., 2, 4</sup>

<sup>1</sup> Department of Social Informatics, Kyoto University, Kyoto, Japan

<sup>2</sup> Island Bat Research Group, Kyoto, Japan

<sup>3</sup> School of Biological Sciences, Universiti Sains Malaysia, Gelugor, Penang, Malaysia

<sup>4</sup> Faculty of Science, Technology and Medicine, University of Luxembourg, Esch-sur-Alzette, Luxembourg

Corresponding Authors: Nurul-Ain Elias, Christian Vincenot  
Email address: nurulain.elias@usm.my, christian@vincenot.biz

Resource partitioning among tropical bats in agricultural areas in Peninsular Malaysia, remains unclear. This study was conducted to evaluate resource partitioning among bats by examining their fecal samples. The main species sampled included six bat species: *Rhinolophus coelophyllus*, *Rhinolophus malayanus*, *Rhinolophus pusillus*, *Rhinolophus refulgens*, *Taphozous melanopogon* and *Hipposideros larvatus*. Two harp traps were set at different elevations on a hilltop (Gunung Keriang) and two high nets were used in neighboring rice fields at three identified sites, for three consecutive nights per sampling. A total of 301 bats and 1,505 pellets were analyzed using a conventional approach which examined the fecal sample under the microscope. All of the bat species commonly had insects from the order Coleoptera, Lepidoptera, Diptera and Hemiptera in their diet. Larger bats exhibit a greater variety of prey consumption. Male individuals are generalists while female individuals are specialists, particularly during pregnancy and lactating reproductive stages. Bat species and insect order has a significant impact on the percentage fragment frequency of the insects consumed. *Rhinolophus coelophyllus* specializes in feeding on Coleoptera and Diptera, *H. larvatus* feeds on Coleoptera, *R. malayanus* feeds on Hemiptera, *R. pusillus* and *T. melanopogon* feeds on Lepidoptera. Future molecular analysis can be carried out to further identify the insect pests consumed by these bats up to species level. These findings enhance our understanding of bats' ecological roles in agricultural landscapes and contribute to conservation and pest management strategies.

# Resource partitioning among bat species in Peninsular Malaysia rice fields

Nur Izzati Abdullah <sup>1,2</sup>, Nurul-Ain Elias <sup>3,\*</sup>, Nobuhito Ohte <sup>1</sup>, Christian E. Vincenot <sup>2,4,\*</sup>

<sup>1</sup> Department of Social Informatics, Graduate School of Informatics, Kyoto University, Yoshidahonmachi, Sakyo-ku, Kyoto, Japan

<sup>2</sup> Island Bat Research Group, Kyoto, Japan

<sup>3</sup> School of Biological Sciences, Universiti Sains Malaysia, Gelugor, Penang, Malaysia

<sup>4</sup> Faculty of Science, Technology and Medicine, University of Luxembourg, Esch-sur-Alzette, Luxembourg

Corresponding Authors:

Nurul-Ain Elias \*

School of Biological Sciences, Universiti Sains Malaysia, Gelugor, Penang, 11800, Malaysia

Email address: [nurulain.elias@usm.my](mailto:nurulain.elias@usm.my)

Christian E. Vincenot \*

Faculty of Science, Technology and Medicine, University of Luxembourg, Esch-sur-Alzette, 4365, Luxembourg

Email address: [christian@vincenot.biz](mailto:christian@vincenot.biz)

# Resource partitioning among bat species in Peninsular Malaysia rice fields

Nur Izzati Abdullah <sup>1,2</sup>, Nurul-Ain Elias <sup>3,\*</sup>, Nobuhito Ohte <sup>1</sup>, Christian E. Vincenot <sup>2,4,\*</sup>

<sup>1</sup> Department of Social Informatics, Graduate School of Informatics, Kyoto University, Yoshidahonmachi, Sakyo-ku, Kyoto, Japan

<sup>2</sup> Island Bat Research Group, Kyoto, Japan

<sup>3</sup> School of Biological Sciences, Universiti Sains Malaysia, Gelugor, Penang, Malaysia

<sup>4</sup> Faculty of Science, Technology and Medicine, University of Luxembourg, Esch-sur-Alzette, Luxembourg

Corresponding Author:

Nurul-Ain Elias \*

School of Biological Sciences, Universiti Sains Malaysia, 11800 Gelugor, Penang, Malaysia

Email address: nurulain.elias@usm.my

Christian E. Vincenot \*

Faculty of Science, Technology and Medicine, University of Luxembourg, Esch-sur-Alzette, 4365, Luxembourg

Email address: christian@vincenot.biz

## Abstract

Resource partitioning among tropical bats in agricultural areas in Peninsular Malaysia, remains unclear. This study was conducted to evaluate resource partitioning among bats by examining their fecal samples. The main species sampled included six bat species: *Rhinolophus coelophyllus*, *Rhinolophus malayanus*, *Rhinolophus pusillus*, *Rhinolophus refulgens*, *Taphozous melanopogon* and *Hipposideros larvatus*. Two harp traps were set at different elevations on a hilltop (Gunung Keriang) and two high nets were used in neighboring rice fields at three identified sites, for three consecutive nights per sampling. A total of 301 bats and 1,505 pellets were analyzed using a conventional approach which examined the fecal sample under the microscope. All of the bat species commonly had insects from the order Coleoptera, Lepidoptera, Diptera and Hemiptera in their diet. Larger bats exhibit a greater variety of prey consumption. Male individuals are generalists while female individuals are specialists, particularly during pregnancy and lactating reproductive stages. Bat species and insect order has a significant impact on the percentage fragment frequency of the insects consumed. *Rhinolophus coelophyllus* specializes in feeding on Coleoptera and Diptera, *H. larvatus* feeds on Coleoptera, *R. malayanus* feeds on Hemiptera, *R. pusillus* and *T. melanopogon* feeds on Lepidoptera. Future molecular analysis can be carried out to further identify the insect pests consumed by these bats up to

species level. These findings enhance our understanding of bats' ecological roles in agricultural landscapes and contribute to conservation and pest management strategies.

# Introduction

Bats provide us with important ecosystem services such as pollination, seed dispersal and insect population controllers. Due to varying preferences in dietary habits, bats consume a different variety of foods such as fruits, nectar and insects. Insectivorous bats aid in the depletion of large-scale insects as most bats consume more than 50% of their body weight per night (Tuttle, 1988, Kunz *et al.*, 1995). The existence of open space bat species in agricultural areas, especially in rice fields, contribute to consuming insect pests that prey on crops. Nowadays, most farmers depend on chemical approaches (usage of pesticides) to control the insect pests in the agricultural areas for instant results and greater crop benefits. However, in the long-term, this method will demonstrate a negative impact on the environment and indirectly increase the chemical resistance among insect pests.

Stem borers, leafhoppers, planthoppers, and locusts are the most common insect pests in the rice field area (Maisarah *et al.*, 2015). A previous study carried out also recorded that the bearded tomb bat, *Taphozous melanopogon*, consumes a few species of insect pests in the surrounding rice fields at Gunung Keriang (Nur-Izzati & Nurul-Ain, 2019). Gunung Keriang (217 m above sea level) is a sole limestone hill that rises from the middle of the rice field area. It is a recreational area under the administration of Kedah State Government. Gunung Keriang is mostly visited by local residents for activities such as hiking and other outdoor activities. There is also extraction activity of calcite crystal from several entrances of cave in Gunung Keriang. For the time being, there may not be specific legal measures or dedicated conservation efforts focused on bats and other cave-dwellers or the protection of their habitat in this location. However, it is crucial to consider the conservation status of bats and their habitats to implement appropriate conservation strategies and ensure the long-term survival of these flying mammals.

This hill comprises of different sizes of caves that provide bats with the stable and colony that roosts in the caves at Gunung Keriang contributes to the large-scale depletion of insect pests in the rice fields surrounding Gunung Keriang. There have been a few studies reported on bats at Gunung Keriang for the past 37 years. A study by Hill *et al.*, in 1985 found a new record of *Hipposideros lekaguli* in Peninsular Malaysia. Since then, no study has been conducted to discover more bat species that can potentially aid in reducing insect pests in the rice fields surrounding Gunung Keriang.

Rice is a staple food consumed by the majority of Malaysians. To reduce the dependence on insecticides and pesticides, biological controls are a good option to be implemented in agricultural areas since this method has no adverse effects to the environment. For example, using natural predators in agricultural areas such as introducing barn owls in the rice field areas to reduce rat populations (Hafidzi & Naim, 2003). Malaysia is known to be a home to a huge number of bat species in the tropical region. The contribution from bats in controlling insect pests in agricultural areas, especially in rice fields, are mostly documented in the United States

(McCracken *et al.*, 2010; Boyles *et al.*, 2011), some parts of Canada (Clare *et al.*, 2009), Europe (Puig-Montserrat *et al.*, 2015) and Madagascar (Kemp *et al.*, 2019). In Southeast Asia, Thailand (Leelapaibul, 2003; Leelapaibul *et al.*, 2005; Wanger *et al.*, 2014) has the highest reported studies of bats in rice field areas. However, the situation still remains unclear in Malaysia and other Southeast Asian countries. Studies on bats in Malaysian rice field areas are still lacking and more information is needed to determine their contribution to the ecosystem.

The objective of this study is to evaluate resource partitioning among bats by examining their fecal samples. To date, there is a scarcity of data on the specific insect species consumed by bats in rice field areas. This study aims to shed light on the crucial role of bats in naturally controlling insect pest populations in rice fields. By emphasizing the significance of biological control in agricultural settings, it seeks to reduce the reliance on chemical methods for managing insect pests in the rice fields.

## Methods and materials

### Study area

Sampling was conducted in two different paddies' growing season (based on MADA's irrigation schedule):

Season 1 – dry season (April 2021 - September 2021)

Season 2 – wet season (October 2021 - February 2022)

The sites for the bat trapping in the rice fields and at Gunung Keriang (Fig. 1) are as follows:

- 1) MADA A (6°10' 59.2" N, 100°19' 22.4" E, 3 m a.s.l.) - This site is located in a rice field area near residential areas along the main road (which have streetlights along the main road).
- 2) MADA B (6°11' 57.4" N, 100°19' 50.0" E, 3 m a.s.l.) - This site is located in a rice field area near residential areas close to a small stream along the main road.
- 3) MADA C (6°11' 22.4" N, 100°20' 30.2" E, 3 m a.s.l.) - This site is located in a rice field area near a stream that supplies water to the paddy plant and there are residential areas along the rice fields.
- 4) GKRTOP (6°11' 25" N, 100°19' 56" E, 190 m a.s.l.) - This site is located at the highest part of the hill with dense vegetation and rocky terrain ascending towards the top of the hill. Due to the frequent use of the trail by hikers, it provides an ideal location to set traps across the trail.
- 5) GKRMID (6°11' 30" N, 100°20' 1" E, 70 m a.s.l.) - This site is located at the middle part of the hill and also has dense vegetation. As we ascend towards the middle elevation, we noticed the presence of relatively flat paths across the trail.
- 6) GKRLOW (6°11' 21" N, 100°20' 5" E, 20 m a.s.l.) - This site is located at the lower part of the hill with dense vegetation and several small cave entrances. Observations indicate that only a few of these entrances were utilized by bats.



The trapping was conducted every month for three consecutive days in the rice field sites, MADA A, MADA B and MADA C, as well as at different elevations of Gunung Keriang, GKRTOP, GKRMID, and GKRLow, starting from April 2021 until February 2022. There are five main phases of paddy growing which are germination, vegetative, reproductive, ripening and harvesting. For the dry season, sample for the reproductive phase of paddy growth was excluded due to movement restriction for the wet season, we recorded all the phases of paddy growth

## Bat trapping – Fecal sample collection

In Malaysia, only several species of bats from family Pteropodidae are listed as protected animals under the country's wildlife protection laws (Wildlife Conservation Act 2010). There are no specific legal provisions or regulations implemented on other bat species, or in place for their conservation in this region. We obtained the approval for our research protocol from Kyoto University (Inf-K 22009). Insectivorous bats were captured using two harp traps at different elevations of the hill and two high nets were also used in the rice field areas at three identified sites. High nets were set up at dusk (1900 h), were checked every 10-15 minutes and closed at 2200 h. Harp traps were set up at midnight (0000 h), were checked every hour and closed just after dawn (0700 h). Captured bats were weighed, sexed and identified based on their morphology (Kingston *et al.*, 2006; Francis & Barrett, 2008). Bats were kept in a cloth bag individually for less than four hours for fecal sample collection before they were released at the point of capture. We followed the protocol by Kunz *et al.* (2009) and Kingston *et al.* (2021) for capturing and handling bats in this study.

The conventional approach will be used for dietary study with different purposes. Our major focus is on the conventional approach to understand about overall resource and food partitioning among bats. Six bat species were chosen for this approach. Four bat species from the family Rhinolophidae were chosen due to the high number of individuals captured which included *Rhinolophus coelophyllus*, *Rhinolophus malayanus*, *Rhinolophus pusillus* and *Rhinolophus refulgens*. The two additional bat species: *Taphozous melanopogon* from family Emballonuridae was chosen as the representative of open space bat species and *Hipposideros larvatus* was also chosen as a representative from family Hipposideridae. *Taphozous melanopogon* and *H. larvatus* do not have sufficient sample size since they are not the most abundant bat species captured.

## Fecal analysis - Conventional

The fecal pellets were dried at 80°C for 8-10 minutes to prevent the growth of moss and fungus in the feces that will disintegrate the fecal samples (Whitaker *et al.*, 2009). The dried fecal pellets were stored in 1.5 ml Eppendorf tubes together with naphthalene powder. For each species, 10 individuals were randomly chosen (five males and five females) for each paddy growing phase. For each individual, five of the fecal pellets were chosen and examined, which is sufficient to determine the diet of a single bat (Whitaker *et al.*, 1996; Leelapaibul *et al.*, 2005). Each pellet

was soaked and softened in a petri dish with 70% alcohol for 15 minutes (Fenton *et al.*, 1998) and was dissected using insect needles and fine forceps. The fecal pellets were observed under a stereo-microscope and the prey items in the sample were identified by using a reference from a complete insect fragment collection (Wilson & Claridge, 1991). All the insects' parts observed under the microscope were identified up to their order level (Wilson & Claridge, 1991) and the fragments observed were recorded on the fecal analysis datasheet. Insect fragments photos were taken for proper documentation and publication.

## Data analysis

The *landscapemetrics* package was used to conduct the landscape fragmentation analysis. For this analysis, we used maps from the OpenStreetMap (OSM) (<http://www.openstreetmap.org/>), which we imported into ArcGIS 1.2 for preprocessing purposes. Specifically, we extracted the layers 'forest cover' and 'agriculture land' layers, focusing on the 'rice paddy' category. These layers were converted into black-and-white raster maps, representing the presence or absence of the respective land types. Subsequently, the maps were then exported as raster files and imported into R script, where the *landscapemetrics* package was used to calculate landscape-level fragmentation metrics. Using this package, we computed the metric 'number of patches' using the 'lsm\_1\_np()' function, which represents the number of patches formed by contiguous cells of a specific land cover type, such as forest and rice fields for hill side and agriculture land sites, respectively. These metrics provide a summary of the whole landscape, condensing it into one value (McGarigal *et al.*, 2012; Hesselbarth *et al.*, 2019). The calculation of the metric incorporates all patches, resulting in a single numerical output. The patch count metric offers valuable insights into landscape fragmentation, connectivity and the distribution of land cover within the landscape.

Identified insect parts in the feces were calculated by using percentage fragment frequency (McAney, 1991) and percentage volume (Whitaker *et al.*, 1996). Percentage fragment frequency was expressed by the number of occurrences of categories, then divided by total occurrences of all categories, multiplied by 100. As for percentage volume, a grid paper of 60mm×60mm was used. The occupancy of the insect parts based on the grid paper's scale was measured. The percentage volume then was expressed by the number of grids occupied by the order divided by the total number of grids, multiplied by 100. The Hardness index for the diet of each bat species was calculated using the bat's volumetric prey consumption (Freeman, 1981) and hardness value (HV) ranging from 5 (hardest) to 1 (softest) for each insect order (1 for Ephemeroptera, Isoptera, Trichoptera, Diptera; 2 for Odonata, Homoptera, and Lepidoptera; 3 for Orthoptera; 4 for Hemiptera, Hymenoptera; and 5 for Coleoptera). For bat species with multiple dietary descriptions, the index of hardness was averaged (Ghazali & Dzeverin, 2013).

The Shannon Index was calculated to determine the diversity of the diet intake within each species and also the bat diversity between sites. A dendrogram was plotted to visualize the similarity among the four bat species. The corrplot package was used to visualize the Chi-Square Test of Independence, which determined whether there is a significant relationship between bat

species and insect order. A mean comparison was performed using a two-way ANOVA to differentiate between bat species and insect order based on the percentage frequency of food consumed. Furthermore, a three-way ANOVA was conducted to examine the effects of bat species, different reproductive stages and insect order on the percentage frequency within the female individuals. All the statistical analyses were performed using R version 4.2.2.

## Results

Based on personal observations, we assumed that the sites on the hill (GKRTOP, GKRMID, and GKRLOW) are relatively similar to one another in terms of fragmentation and that same goes for the sites on the rice fields (MADA A, MADA B and MADA C). The statistical analysis reveals that there is only one continuous patch present at both the hill and rice fields sites. Yet, when comparing the differences between the hill and rice field sites in terms of bat diversity, we found that GKRTOP (2.21) exhibits the highest bat diversity, followed by the GKRMID (2.07) and GKRLOW (1.91). Among the three identified sites on the rice fields, MADA B (0.93) shows a higher bat diversity compared to MADA C (0.69) and MADA A (0.26). Hence, even though the analysis of patch density reveals that both the hill sites and rice field sites possess similar levels of fragmentation, the sites on the hill and rice fields exhibit different bat diversity.

A total of 301 individuals of bats with 1,505 pellets were analyzed for the dietary study. Overall, the studied species commonly have Coleoptera, Lepidoptera, Diptera and Hemiptera in their diet. Meanwhile, order Hymenoptera, Trichoptera, Odonata, Isoptera, Homoptera, Ephemeroptera and unidentified fragments were recorded in small percentages in a few of these species. Coleoptera and Lepidoptera comprises 80% of the volume of the insects consumed. The photo of insect fragments in the fecal sample was taken for the common insect order such as Coleoptera, Lepidoptera, Diptera and Hemiptera (Fig. 2).

Based on the percentage fragment frequency, *Rhinolophus coelophyllus* consumed insects from the order Coleoptera (74.29%), Lepidoptera (20.72%), Hemiptera (2.47%), Diptera (2.30%) and Trichoptera (0.22%) in the dry season. While in the wet season, the preference of insect groups was still the same except Trichoptera that were not found in their fecal samples (Fig. 3). However, based on the percentage volume, in the dry season, Coleoptera (92.73%) and Hemiptera (27.53%) were mostly found in the fecal samples of this species, whereas in the wet season, two major insect groups were Coleoptera (74.37%) and Lepidoptera (35.76%) (Fig. 4). Only male individuals of *Rhinolophus coelophyllus* consumed Trichoptera (0.28%) but none of female individuals recorded any fragments of Trichoptera. Male individuals also consumed a significant number of Hemiptera (26.35%) compared to females (0.20%). In the dry season, pregnant females of *R. coelophyllus* exclusively feed on Coleoptera, while non-reproductive females consume insects from Coleoptera and Lepidoptera. Lactating females consume insects from the order Coleoptera, Lepidoptera, Diptera and Hemiptera. No post-lactating females were recorded in the dry season. In the wet season, post-lactating females consume insects from the orders Coleoptera, Lepidoptera and Diptera.

*Rhinolophus malayanus* in dry season consumed insects from Coleoptera (44.82%), Lepidoptera (33.70%), Hemiptera (10.08%), Diptera (7.67%), Odonata (1.24%) and Hymenoptera (0.48%) while in the wet season they consumed insects from Coleoptera (62.47%), Lepidoptera (31.81%), Diptera (3.57%) and Hemiptera (2.15%) (Fig. 3). In the dry and wet seasons, *R. malayanus* consumed a high volume of Coleoptera and Lepidoptera (Fig. 4). Only female individuals of *R. malayanus* consumed Hymenoptera (0.84%) and Odonata (2.15%). Males consumed a small amount of Hemiptera (2.83%) and Diptera (4.88%) compared to females (Hemiptera (17.55%) and Diptera (17.45%)). In the dry season, pregnant females consumed only Coleoptera, while post-lactating females consumed a wide range of insects including Odonata and Hymenoptera but did not consume any Lepidoptera at all.

*Rhinolophus refulgens*, in the dry and wet seasons, consumed insects from the same insect order (Fig. 3). In the dry season they consumed insects from Coleoptera (61.87%), Lepidoptera (30.07%), Diptera (4.08%) and Hemiptera (3.98%) while in the wet season they consumed Coleoptera (55.46%), Lepidoptera (42.39%), Hemiptera (1.10%) and Diptera (1.05%). In the dry and wet seasons, *R. refulgens* consumed a high volume of Coleoptera and Lepidoptera. For Diptera, even though in the dry season this species recorded a high percentage fragment frequency (4.08%) (in wet season 1.05%) but for volume percentage in the wet season they were present in a high number (12.02%) compared to dry season (4.74%) (Fig. 4). Female individuals of *R. refulgens* consumed a small number of Hemiptera (0.50%) compared to male individuals (5.32%). For both dry and wet seasons, pregnant and lactating females prefer to consume Coleoptera and Diptera while post-lactating females consume Coleoptera, Diptera, Lepidoptera and Hemiptera. There are no differences in preference for dry and wet seasons.

*Rhinolophus pusillus* in the dry and wet seasons consumed insects from the same insect order (Fig. 3). In the dry season, they consumed insects from Coleoptera (55.23%), Lepidoptera (41.62%), Diptera (2.54%), Hemiptera (0.39%) and Hymenoptera (0.23%). In the wet season they consumed insects from Coleoptera (50.10%), Lepidoptera (47.27%), Diptera (2.36%), Hemiptera (0.17%) and Hymenoptera (0.10%). In the dry and wet seasons, *R. pusillus* consumed a high volume of Coleoptera and Lepidoptera (Fig. 4). Both male and female individuals of *R. pusillus* were recorded to consume a small number of Hemiptera and Hymenoptera in their diet. All females of different reproductive stages consumed a large number of Coleoptera and Lepidoptera.

*Taphozous melanopogon* was only recorded in the dry season. In dry season they consume insects from the order Lepidoptera (84.37%), Hymenoptera (5.09%), Diptera (4.21%), Coleoptera (3.44%), Hemiptera (2.05%), Unidentified (0.30%), Ephemeroptera (0.21%), Trichoptera (0.14%), Homoptera (0.11%) and Odonata (0.09%) (Fig. 3). The percentage volume of insects consumed are lower in Lepidoptera (65.15%) but double in Hymenoptera (11.78%) when compared to the percentage fragment frequency of consumption (Fig. 4). Male and female individuals are not much different in terms of insect order consumed. But within female individuals, Trichoptera and Ephemeroptera were not consumed by them and there is no preference shown in different reproductive stages of the female individuals as well.

*Hipposideros larvatus* in dry and wet season consumed insects from the same order. In the dry season, this bat species consumed insects from the order Lepidoptera (61.20%), Coleoptera (23.92%), Hymenoptera (9.44%), Hemiptera (2.72%), Diptera (2.39%) and Isoptera (0.34%). In the wet season, the percentage of the consumption of the insects are slightly different with Lepidoptera (69.03%), Coleoptera (24.14%), Diptera (2.36%), Hemiptera (2.34%), Hymenoptera (2.13%) and no insect fragments from the order of Isoptera were recorded in this season (Fig. 4). The percentage volume of the insects consumed are not much differ in dry and wet seasons. Male and female individuals do not show any preference in insects consumed and so do within female individuals with different reproductive stages.

Coleoptera and Lepidoptera fragments were found in large numbers in the fecal samples of four of these bat species. Since Coleoptera is a hard-bodied insect, elytra, leg, headpart and mouthpart are the most common parts that can be easily found in the fecal samples of insectivorous bats. However, for the soft-bodied insects, most of the identified body fragments were the leg, wing and scales (only for Lepidoptera for *Nilaparvata lugens* the stem borer). In this study, the prey hardness varied among the bat species with *R. malayanus* consuming the hardest prey while *T. melanopogon* consumed the softest prey.

Based on the Shannon index, *R. malayanus* (1.14) has the highest dietary diversity, followed by *H. larvatus* (0.98), *R. refulgens* (0.87), *R. pusillus* (0.82), *R. coelophyllus* (0.80) and *T. melanopogon* (0.68). *Taphozous melanopogon* were recorded to consume 10 different insect orders, *R. malayanus* and *H. larvatus* with six different insect orders while *R. pusillus* and *R. coelophyllus* consumed five insect orders and *R. refulgens* consumed four different insect orders. Although *T. melanopogon* has a diverse food intake compared to others, still this bat species possesses the lowest diversity index of the food consumed due to high amount of Lepidoptera and small percentage for the rest of insect order. *Taphozous melanopogon* and *H. larvatus* have a distinct food content than *Rhinolophus* species. Within the *Rhinolophus* species, *R. coelophyllus* and *R. refulgens* having the same food content while *R. malayanus* having the same dietary intake with these two species. *Rhinolophus pusillus* has a different food intake than *R. coelophyllus*, *R. refulgens* and *R. malayanus* (Fig. 5).

There was a significant relationship between the overall bat species and insect order consumed,  $X^2(50) = 172.49$ , ( $p$ -value  $< 0.001$ ). The species of bats are highly dependent on the order of insects consumed. Based on the standardized residuals of the association between the bat species and insect order, there is a strong positive relationship between *R. coelophyllus* and *R. refulgens* with Coleoptera, *R. malayanus* with Hemiptera, Odonata and Diptera, *T. melanopogon* with Lepidoptera and Hymenoptera, *H. larvatus* with Hymenoptera and Lepidoptera (Fig. 6A). From the Fig. 6B, it can be seen that the most contributing cells to the Chi-square are *R. coelophyllus*/Coleoptera (5.41%), *R. refulgens*/Coleoptera (3.51%), *R. malayanus*/Hemiptera (4.36%), *R. malayanus*/Lepidoptera (3.40%), *R. malayanus*/Odonata (3.39%), *R. pusillus*/Hemiptera (1.54%), *T. melanopogon*/Coleoptera (22.18%), *T. melanopogon*/Lepidoptera (17.24%), *H. larvatus*/Hymenoptera (6.42%) and

*H. larvatus*/Coleoptera (5.51%). These cells contribute about 72.96% to the total Chi-square score and thus account for most of the difference between expected and observed values.

The different bat species does not have a significant effect on the percentage fragment frequency of food consumed by bats,  $F_{5,1998} = 0.76$ ,  $p = 0.58$ . However, insect order has a significant effect on the percentage fragment frequency of the food consumed,  $F_{10,1998} = 97.86$ ,  $p < 0.001$ . There was a statistically significant interaction between the effects of bat species and insect order on the percentage fragment frequency of food consumed,  $F_{50,1998} = 13.34$ ,  $p < 0.001$ . Within the female individuals, the results revealed significant main effects of bat species ( $F_{5,290} = 7.90$ ,  $p < 0.001$ ), different reproductive stages ( $F_{3,290} = 4.75$ ,  $p = 0.003$ ) and insect order consumed ( $F_{7,290} = 104.39$ ,  $p < 0.001$ ), indicating that all of these factors significantly influenced the percentage fragment frequency of the food consumption of bats. None of the interactions between the three variables were statistically significant,  $F_{27,290} = 1.07$ ,  $p = 0.38$ . We run a separate one-way and two-way ANOVA to prove that which variables (bat species, reproductive stages or insect order) have an influence on the percentage fragment frequency. Based on the results, we can conclude that the different reproductive stages did not have any effect on the percentage fragment frequency and this variable have a huge impact on the interactions between the three variables.

## Discussion

Similar levels of fragmentation were observed between the sites on the hill and the sites in the rice fields. This similarity may be attributed to the dense vegetation that covers most of the hill, resulting in consistent fragmentation patterns across the sites. In the rice fields landscape, there is a single distinct patch present in this land use type. Different sites on the hill and rice fields have an impact on the bat diversity. Even though the sites on the rice fields exhibit lower bat diversity, we were able to capture *R. malayanus* and *H. larvatus* using high nets. This suggests that the hill serves as a roosting site for these species, while the rice field areas serve as their foraging sites. Although we did not conduct any radio tracking or mark recapture to further confirm this, the home ranges of these two species fall within the vicinity of the hill, supporting our observation. Kingston (2000) found that cave-roosting bat species generally exhibit higher vagility compared to forest-roosting bat species, as they are capable of efficient commuting between caves to their foraging grounds. Radio-tracking studies have shown that cave-roosting Rhinolophidae and Hipposideridae can commute several kilometers during a single night (Pavey *et al.*, 2001; Bontadina *et al.*, 2002; Struebig *et al.*, 2008). Additionally, these bats also showed a greater resilience to withstand the effects of habitat fragmentation (Struebig *et al.*, 2009).

The diet of bats is greatly influenced by the regional and temporal factors (Whitaker *et al.*, 1996), as well as seasonal variations (Leelapaibul *et al.*, 2005; Zhang *et al.*, 2005; Liu *et al.*, 2019). In the tropic with no obvious seasonal pattern as temperate, the insect availability and abundance differ between the dry and wet season (Kishimoto-Yamada & Itioka, 2015; Nurul-Ain *et al.*, 2017). It is also associated with the phase of paddy growth, due to the variations in insect species diversity and quantities (Maisarah *et al.*, 2015; Liu *et al.*, 2019). Coleoptera serves as the



primary food source for the all bat species, albeit with varying percentage consumption during the dry and wet season. Interestingly, during the wet season, although insects from the order Homoptera were the most captured insect order (Nur-Izzati *et al.*, 2023, unpublished data), they were not identified as the main food source for the bat species as no Homoptera fragments were found in the fecal samples. However, we observed that only *T. melanopogon* consumed a small amount of Homoptera during the dry season. It is possible that insects from the order Homoptera cater to the food preferences of other bat species.

In this study, Coleoptera was the most abundant prey found in all these six bat species followed by Lepidoptera, Diptera and Hemiptera. A preliminary diet analysis study of *T. melanopogon* (Black-bearded Tomb bat) in rice fields around Gunung Keriang revealed that they main insect consumption was from the orders Lepidoptera, Coleoptera and Diptera (Nur-Izzati & Nurul-Ain, 2019). Previous studies on the dietary composition of *T. melanopogon* conducted by Zubaid (1990) found that roosting individuals in caves are generalists, while those in forest exhibit more opportunistic feeding behavior. Similarly, Srinivasulu & Srinivasulu (2005) documented that *T. melanopogon* in forested areas primarily consume Coleoptera and Lepidoptera in semi-urban ecosystems. In this study, *T. melanopogon* displayed a notable preference for Lepidoptera, along with a diverse range of insect prey. This suggests that *T. melanopogon* are opportunistic feeders, consuming insects encountered during foraging, consistent with Zubaid's findings (1990). Wei *et al.*, (2006) also observed that *T. melanopogon* consume larger insect prey and return to the roost later compared to other bat species, likely due to their long distance flight capabilities.

Lepidoptera, Coleoptera and Hymenoptera were found in the diet of *Hipposideros larvatus* and these insect orders were also recorded as prey for *Hipposideros armiger* (Zubaid, 1988a). Additionally, Zubaid (1988b) reported that *Hipposideros pomona*'s diet consists of 90% of Odonata and Lepidoptera. Comparing their sizes, *H. larvatus* (FA = 51-67 mm) is slightly smaller than *H. armiger* (FA = 85-103 mm). The dietary habits of *H. armiger* suggest that this species not only catches insects in flight but also picks up insects from vegetation and surrounding objects, indicating an ability to hover (Zubaid, 1988a). The high proportion of insect fragments from the order Lepidoptera in the diet of *H. larvatus* suggests that this species primarily consumes fluttering insects present in the environment.

Wei *et al.*, (2006) discovered that insects from Lepidoptera dominate the prey items which are also found in these four *Rhinolophus* bat species. Bats from Rhinolophidae also are not restricted in capturing winged insects, these bats also capture non-winged prey (Ahmim & Moali, 2013; Pavey, 2021). The orders Odonata and Hymenoptera have been consumed by bats in small amounts. This is due to accidental consumption while catching prey or picked during flight (Whitaker & Lawhead, 1992) or being consumed by foraging bats near artificial light sources at dusk (Liu *et al.*, 2019).

During this study, we observe bats forage at the streetlights nearby the rice field area. The streetlights also produce the 'dazzling effect' as many insects will immobilize as they lay on the ground and become an easy target to many predators including bats. Lepidopterans such as

moths often prefer artificial light such as street lights rather than the moon to travel back and forth (Eisenbeis, 2006). Coleoptera were also attracted to light (Medeiros *et al.*, 2017). Open space bat species, such as *T. melanopogon* or *M. magnater*, tend to forage near streetlights (Boonchuay & Bumrungsri, 2022) due to their morphology, which enables them to hover around as the light attracts insects. The presence of insects swarming near the light indirectly attracts bats to the streetlight. However, bats from the family Rhinolophidae and Hipposideridae rarely do that due to their limitation in morphological characteristics (low wing loadings and low aspect ratio) (Stone *et al.*, 2012).

Feldhamer *et al.*, (2009) discovered a significant relationship between body mass and prey hardness. Prey hardness is highly correlated with body weight, forearm length, total bat length and bat cranial length (Ayala-Berdon *et al.*, 2023). Among the bat species, masseter muscle plays a crucial role in determining the maximum bite force, along with body size (Senawi *et al.*, 2015). In term of body size, *H. larvatus* are the largest (FA= 51-67 mm, bite force=  $9.40 \pm 1.73$  N), followed by *T. melanopogon* (FA= 60-63 mm, bite force=  $7.78 \pm 0.91$  N), *R. coelophyllus* (FA= 41-45 mm), *R. malayanus* (FA= 38-44 mm), *R. pusillus* (FA= 37-43 mm) and *R. refulgens* (FA= 33-39 mm, bite force=  $1.77 \pm 0.52$  N). Therefore, we can conclude that *H. larvatus* possesses the strongest bite force, followed by *T. melanopogon*, *R. coelophyllus*, *R. malayanus*, *R. pusillus* and *R. refulgens*.

As for the prey hardness, *T. melanopogon* and *H. larvatus* consume a smaller proportion of hard-bodied prey compared to the four *Rhinolophus* species. Our results align with the findings of Ghazali & Dzeverin (2013) and Ayala-Berdon *et al.*, (2023), which indicate that larger bats are capable of consuming harder insect prey. In this study, during the dry season, *R. coelophyllus* primarily feeds on Coleoptera, while *R. pusillus* mainly consumes Lepidoptera. Conversely, in the wet season, *R. malayanus* feeds predominantly on Coleoptera, whereas *R. pusillus* consumes Lepidoptera and Hymenoptera. Thus, it can be inferred that larger bat species have a greater capacity to feed on hard-bodied insects, although this observation is limited to the four *Rhinolophus* species. Aldridge & Rautenbach (1987) proposed that larger bats would exhibit a more diverse prey selection, which corresponds to the findings of this study. Notably, *T. melanopogon*, *H. larvatus* and *R. malayanus* consume a wider range of prey across various insect orders compared to the other bat species.

Since most of the soft-bodied fragments are easily digestible, most of the smaller insect fragments were unidentifiable as they were digested beyond recognition. However, the body fragments of hard-bodied insect orders, such as Coleoptera, Hemiptera and Hymenoptera are heavily chitinized, making them harder to digest, easier to detect and identify in the fecal samples (Belwood & Fenton, 1976; Kunz & Whitaker, 1983). It is possible that some insect fragments were missed due to their low frequency and being overlooked (Robinson & Stebbings, 1993). Additionally, bats may discard certain parts of insects such as legs, wings or antenna before ingestion (Rabinowitz & Tuttle, 1982; Kunz & Whitaker, 1983; Robinson & Stebbings, 1993).



We found that male individuals are generalists, while females are specialists, as they eat specific orders of insects that fit their energy demand in different reproductive stages. Male individuals feed on any insects that are abundant during that season and were observed to fly more actively than female individuals (Miková *et al.*, 2013) due to energy demand. In this study, pregnant females are recorded to feed mostly on Coleoptera. Pregnant females consume a specific insect order to obtain a certain nutritional value, consuming food rich in calcium and nitrogen (Tracy *et al.*, 2006). If the females cannot obtain food with high nutritional content, they have to consume an abundant variety of insects during pregnancy or lactation (Barclay, 1994). Faced with many different nutritional and energetic needs, pregnant females tend to have distinct diets and also foraging strategies compared to non-pregnant females (Fleming, 1988). Post-lactating females are generalists and opportunistic feeders due to the low energy demand.

Bat species and insect orders have a significant impact on the percentage of food consumption by bats, as do the factors within female individuals. The findings highlight the importance of bat species and insect order in shaping the dietary preferences of bats. It is noteworthy that different bat species may exhibit distinct food preferences, and even within the same genus, they may consume different insect orders to mitigate competition among and between species (Salinas-Ramos *et al.*, 2015; Roeleke *et al.*, 2018). Based on the findings, we can conclude that *R. coelophyllus* specialize in feeding on Coleoptera and Diptera, *H. larvatus* feeds on Coleoptera, *R. malayanus* feeds on Hemiptera, *R. pusillus* and *T. melanopogon* feeds on Lepidoptera. Although specific insect pest species consumed by these bats have not been definitively identified, we remain convinced that these bat species play a crucial role in controlling insect pests in rice fields. While we only identified most of the insect fragments up to the order level, future molecular analysis can be conducted to further confirm the insect pests consumed by these bat species in rice fields.

However, the molecular analysis approach is not yet widespread, costly and requires expertise to carry out. Otherwise, it would necessitate significant time, energy and resources to identify even a single insect fragment. Studies by Clare *et al.*, (2009) and Zeale *et al.*, (2011) demonstrate that PCR-based methods offer an efficient tool for robust identification of insect prey in the bat fecal samples, even resolving most prey items to the genus or species level. This technique provides valuable insight into the overall ecological relationship of bat diets. Future molecular analysis should be conducted to identify all the insect fragments up to species level. This initiative will hopefully enhance our understanding of the dietary relationships of bats in the rice fields population.

## Conclusions

Gunung Keriang has become an important roosting site for these bat species that foraging at the rice fields, emphasizing the hill's significance in bat conservation efforts. This study reveals a distinct food preference among bat species, even within the same genus. The bat species and the order of insects consumed play a crucial role in shaping the dietary partitioning of bats. Male and female individuals also exhibit different food preference based on their energy

demand, while various reproductive stages influence the food consumption patterns in females. Larger bats are capable of consuming hard-bodied prey due to their size and maximum bite force. Although we couldn't identify all fragments up to species level, we are confident that these bat species play a crucial role in controlling insect pests in the rice fields. Future molecular analysis can further confirm the consumed insect pests and provide a better understanding of the dietary relationships of these bat species in rice fields.

## Acknowledgements

We would like to thank Muda Agricultural Development Authority (MADA) especially Mr. Mohd Ikhwanuddin Khairuddin for providing technical support for this study. Our special thanks also to the field assistants: Ummu Atiyyah Mohd. Talhah, Aqilah Hanani Mohd. Razani, Muhammad Amir Shuib, Syafi'e Khazali, Mohammad Farhan Rashid, Mohd. Daniel Haiqal Mohd. Zulfikar, Ng Xuanyi, Anis Suraya Kartika Azizan and Nur Azlin Abdul Salim.

## References

- Ahmim, M., and Moali, A. (2013). The diet of four species of horseshoe bat (Chiroptera: Rhinolophidae) in a mountainous region of Algeria: evidence for gleanings. *Hystrix, the Italian Journal of Mammalogy*, 24(2), 174–176.
- Aldridge, H. D. J. N., & Rautenbach, I. L. (1987). Morphology, echolocation and resource partitioning in insectivorous bats. *The Journal of Animal Ecology*, 56, 763-778.
- Ayala-Berdon, J., Martínez Gómez, M., Ponce, A. R., Beamonte-Barrientos, R., Vázquez, J., & Rodríguez-Peña, O. N. (2023). Weather, ultrasonic, cranial and body traits predict insect diet hardness in a Central Mexican bat community. *Mammal Research*, 68, 273–282.
- Barclay, R. M. R. (1994). Constraints on reproduction by flying vertebrates; energy and calcium. *The American Naturalist*, 144, 1021-1031.
- Belwood, J. J., & Fenton, M. B. (1976). Variation in the diet of *Myotis lucifugus* (Chiroptera: Vespertilionidae). *Canadian Journal of Zoology*, 54(10), 1674-1678.
- Bontadina, F., Schofield, H., & Naef-Daenzer, B. (2002). Radio-tracking reveals that lesser horseshoe bats (*Rhinolophus hipposideros*) forage in woodland. *Journal of Zoology*, 258(3), 281-290.
- Boonchuay, P., & Bumrungsri, S. (2022). Bat Activity in Organic Rice Fields Is Higher Than in Conventional Fields in Landscapes of Intermediate Complexity. *Diversity*, 14(6), 444.
- Boyles, J. G., Cryan, P. M., McCracken, G. F., & Kunz, T. H. (2011). Economic importance of bats in agriculture. *Science*, 332(6025), 41-42.

- 530 Clare, E. L., Fraser, E. E., Braid, H. E., Fenton, M. B., & Hebert, P. D. (2009). Species on the  
531 menu of a generalist predator, the eastern red bat (*Lasiurus borealis*): using a molecular  
532 approach to detect arthropod prey. *Molecular Ecology*, 18(11), 2532-2542.
- 533 Eisenbeis, G. (2006). *Artificial night lighting and insects: attraction of insects to streetlamps in a*  
534 *rural setting in Germany*. In: Rich C, Longcore T (eds) Ecological consequences of artificial  
535 night lighting. Island Press, Washington.
- 536 Feldhamer, G. A., Carter, T. C., & Whitaker, J. O. (2009). Prey consumed by eight species of  
537 insectivorous bats from southern Illinois. *The American Midland Naturalist*, 162(1), 43-51.
- 538 Fenton, M. B., Rautenbach, I. L., Rydell, J., Arita, H. T., Ortega, J., Bouchard, S., Hovorka, M.  
539 D., Lim, B., Odgren, E., & Portfors, C. V. (1998). Emergence, echolocation, diet and foraging  
540 behavior of *Molossus ater* (Chiroptera: Molossidae)<sup>1</sup>. *Biotropica*, 30(2), 314-320.
- 541 Fleming, T. H. (1988). *The short-tailed fruit bat: a study in plant-animal interaction*. University  
542 of Chicago Press, Chicago, Illinois.
- 543 Francis, C. M., & Barrett, P. (2008). A field guide to the mammals of South-East Asia: New  
544 Holland Publishers.
- 545 Freeman, P. W. (1981). Correspondence of food habits and morphology in insectivorous bats.  
546 *Journal of Mammalogy*, 62(1), 166-173.
- 547 Ghazali, M., & Dzeverin, I. (2013). Correlations between hardness of food and craniodental  
548 traits in nine *Myotis* species (Chiroptera, Vespertilionidae). *Vestnik zoologii*, 47(1), 67-76.
- 549 Hafidzi, M. N., & Naim, M. (2003). The use of the barn owl, *Tylo alba*, to suppress rat damage  
550 in rice fields in Malaysia. *ACIAR Monograph Series*, 96, 274-276.
- 551 Hesselbarth, M. H., Sciaini, M., With, K. A., Wiegand, K., & Nowosad, J. (2019).  
552 landscapemetrics: an open-source R tool to calculate landscape metrics. *Ecography*, 42(10),  
553 1648-1657.
- 554 Hill, J. E., Zubaid, A., & Davison, G. W. H. (1985). *Hipposideros lekaguli*, a new leaf-nosed bat  
555 recorded in Peninsular Malaysia. *Malayan Nature Journal*, 39(2), 147-148.
- 556 Kemp, J., López-Baucells, A., Rocha, R., Wangenstein, O. S., Andriatafika, Z., Nair, A., &  
557 Cabeza, M. (2019). Bats as potential suppressors of multiple agricultural pests: a case study  
558 from Madagascar. *Agriculture, Ecosystems & Environment*, 269, 88-96.
- 559 Kingston, T., Frick, W., Kading, R., Leopardi, S., Medellín, R., Mendenhall, I. H., Racey, P.,  
560 Shapiro, J. T., Vicente-Santos, A., Viquez-R, L., & Worledge, L. (2021). IUCN SSC Bat

Specialist Group (BSG) Recommended Strategy for Researchers to Reduce the Risk of Transmission of SARS-CoV-2 from Humans to Bats AMP: Assess, Modify, Protect (version 2.0). *Bat Specialist Group*, 1-14.

Kingston, T., Lim, B. L., & Zubaid, A. (2006). *Bats of Krau wildlife reserve*. Bangi: Penerbit Universiti Kebangsaan Malaysia.

Kingston, T. (2000). *Diversity, extinction risk and structure in an insectivorous bat community from Malaysia*. [PhD Dissertation, Boston University, USA].

Kishimoto-Yamada, K., & Itioka, T. (2015). How much have we learned about seasonality in tropical insect abundance since Wolda (1988)? *Entomological Science*, 18(4), 407-419.

Kunz, T. H., Hodgkinson, R., & Weise, C. D. (2009). Methods of capturing and handling bats. *Ecological and behavioral methods for the study of bats*, 2, 3-35.

Kunz, T. H., Whitaker, J. O., & Wadonli, M. D. (1995). Dietary energetics of the insectivorous Mexican free-tailed bat (*Tadarida brasiliensis*) during pregnancy and lactation. *Oecologia*, 101, 407-415.

Kunz, T. H., & Whitaker J. O. (1983). An evaluation of fecal analysis for determining food habits of insectivorous bats. *Canadian Journal of Zoology*, 61(6), 1317-1321.

Leelapaibul, W., Bumrungsri, S., & Pattanawiboon, A. (2005). Diet of wrinkle-lipped free-tailed bat (*Tadarida plicata* Buchannan, 1800) in central Thailand: insectivorous bats potentially act as biological pest control agents. *Acta Chiropterologica*, 7(1), 111-119.

Leelapaibul, W. (2003). *The diet and feeding factors of the wrinkle-lipped free-tailed bat (Tadarida plicata) at Khao-Chong-Pran, Ratchaburi Province*. [Master's dissertation, Kasetsart University].

Liu, Y., Wang, Y., Zhang, Z., Bu, Y., & Niu, H. (2019). Roost selection and ecology of Stoliczka's trident bat, *Aselliscus stoliczkanus* (Hipposideridae, Chiroptera) in China. *Mammalian Biology*, 95, 143-149.

Maisarah, M. S., Badrulhadza, A., Mohd. Fitri, M., Jack, A., Siti Norsuhana, M., Ramachandran, K., Chong, T. V., & Azmi, M. (2015). Buku Poket Perosak, Penyakit dan Rumpai Padi di Malaysia. *Kuala Lumpur: Institut Penyelidikan dan Kemajuan Pertanian Malaysia (MARDI)*.

McAney, C. (1991). *The analysis of bat droppings*: Mammal Society, London.

McCracken, G. F., Westbrook, J. K., & Brown, V. A. (2010). *Opportunistic Predation by Bats Tracks and Exploits Changes in Insect Pest Populations: Evidence from Quantitative (qPCR)*

- 592 *Analysis of Fecal DNA*. Unpublished manuscript. University of Tennessee, Knoxville,  
593 Tennessee.
- 594 McGarigal, K., Cushman, S. A., & Ene, E. (2012). FRAGSTATS v4: spatial pattern analysis  
595 program for categorical and continuous maps. *Computer software program produced by the*  
596 *authors at the University of Massachusetts, Amherst*.
- 597 Medeiros, B. A. S. D., Barghini, A., & Vanin, S. A. (2017). Streetlights attract a broad array of  
598 beetle species. *Revista Brasileira de Entomologia*, 61, 74-79.
- 599 Miková, E., Varcholová, K., Boldogh, S., & Uhrin, M. (2013). Winter diet analysis in  
600 *Rhinolophus euryale* (Chiroptera). *Central European Journal of Biology*, 8(9), 848-853.
- 601 Nur-Izzati, A., & Nurul-Ain, E. (2019). Bat inventory and preliminary diet analysis of female  
602 individuals *Taphozous melanopogon* (Black-bearded Tomb bat) in Gunung Keriang, Kedah,  
603 Malaysia. 23th-25th July 2019. 14th International UMT Annual Symposium (UMTAS).  
604 Primula Beach Hotel, Terengganu, Malaysia. Poster presentation.
- 605 Nurul-Ain, E., Rosli, H., & Kingston, T. (2017). Resource availability and roosting ecology  
606 shape reproductive phenology of rain forest insectivorous bats. *Biotropica*, 49(3), 382-394.
- 607 Pavey, C. R. (2021). Comparative echolocation and foraging ecology of horseshoe bats  
608 (Rhinolophidae) and Old World leaf-nosed bats (Hipposideridae)<sup>1</sup>. *Australian Journal of*  
609 *Zoology*. 68, 382–392.
- 610 Pavey, C. R., Grunwald, J. E., & Neuweiler, G. (2001). Foraging habitat and echolocation  
611 behaviour of Schneider's leafnosed bat, *Hipposideros speoris*, in a vegetation mosaic in Sri  
612 Lanka. *Behavioral Ecology and Sociobiology*, 50, 209-218.
- 613 Puig-Montserrat, X., Torre, I., López-Baucells, A., Guerrieri, E., Monti, M. M., Ràfols-García,  
614 R., Ferrer, X., Gisbert, D., & Flaquer, C. (2015). Pest control service provided by bats in  
615 Mediterranean rice paddies: linking agroecosystems structure to ecological functions.  
616 *Mammalian Biology*, 80(3), 237-245.
- 617 Rabinowitz, A. R., & Tuttle, M. D. (1982). A test of the validity of two currently used methods  
618 of determining bat prey preferences. *Acta Theriologica*, 27(21), 283-293.
- 619 Robinson, M. F., & Stebbings, R. E. (1993). Food of the serotine bat, *Eptesicus serotinus*—is  
620 faecal analysis a valid qualitative and quantitative technique?. *Journal of Zoology*, 231(2),  
621 239-248.

- 622 Roeleke, M., Johannsen, L., & Voigt, C. C. (2018). How bats escape the competitive exclusion  
623 principle—seasonal shift from intraspecific to interspecific competition drives space use in a  
624 bat ensemble. *Frontiers in Ecology and Evolution*, 6, 101.
- 625 Salinas-Ramos, V. B., Herrera Montalvo, L. G., León-Regagnon, V., Arrizabalaga-Escudero, A.,  
626 & Clare, E. L. (2015). Dietary overlap and seasonality in three species of mormoopid bats  
627 from a tropical dry forest. *Molecular Ecology*, 24(20), 5296-5307.
- 628 Senawi, J., Schmieder, D., Siemers, B., & Kingston, T. (2015). Beyond size—morphological  
629 predictors of bite force in a diverse insectivorous bat assemblage from Malaysia. *Functional*  
630 *Ecology*, 29(11), 1411-1420.
- 631 Srinivasulu, B., & Srinivasulu, C. (2005). Diet of the black-bearded tomb bat *Taphozous*  
632 *melanopogon* Temminck, 1841 (Chiroptera: Emballonuridae) in India. *Zoos' Print Journal*,  
633 20, 1935-1938.
- 634 Stone, E. L., Jones, G., & Harris, S. (2012). Conserving energy at a cost to biodiversity? Impacts  
635 of LED lighting on bats. *Global change biology*, 18(8), 2458-2465.
- 636 Struebig, M. J., Kingston, T., Zubaid, A., Le Comber, S. C., Mohd-Adnan, A., Turner, A., Kelly,  
637 J., Božek, M., & Rossiter, S. J. (2009). Conservation importance of limestone karst outcrops  
638 for Palaeotropical bats in a fragmented landscape. *Biological Conservation*, 142(10), 2089-  
639 2096.
- 640 Struebig, M. J., Kingston, T., Zubaid, A., Mohd-Adnan, A., & Rossiter, S. J. (2008).  
641 Conservation value of forest fragments to Palaeotropical bats. *Biological Conservation*,  
642 141(8), 2112–2126.
- 643 Tracy, C. R., & Nussle, K., Esque, T., Bradley, K., Defalco, L., Castle, K., Zimmerman, L.,  
644 Espinoza, R. and Barber, A. (2006). *The importance of physiological ecology in conservation*  
645 *biology*. Integrative and comparative biology.
- 646 Tuttle, M. D. (1988). *America's neighborhood bats*. University of Texas Press, Austin.
- 647 Wanger, T. C., Darras, K., Bumrungsri, S., Tschardt, T., & Klein, A. M. (2014). Bat pest  
648 control contributes to food security in Thailand. *Biological conservation*, 171, 220-223.
- 649 Wei, L., Zhou, S., Zhang, L., Liang, B., Hong, T., & Zhang, S. (2006). Characteristics of  
650 echolocation calls and summer diet of three sympatric insectivorous bats species. *Zoological*  
651 *Research*. 27(3), 235.
- 652 Whitaker, J. O., McCracken, G. F., & Siemers, B. M. (2009). Food habit analysis of  
653 insectivorous bats. Page: 565-592. In: *Ecological and Behavioral Methods for the Study of*

654 Bats (Second Edition). Eds: Kunz, T. H., & S. Pearsons. Smithsonian Institution Press,  
655 Washington, USA.

656 Whitaker, J. O., Neefus, C., & Kunz, T. H. (1996). Dietary variation in the Mexican free-tailed  
657 bat (*Tadarida brasiliensis mexicana*). *Journal of Mammalogy*, 77(3), 716-724.

658 Whitaker, J. O., & Lawhead, B. (1992). Food of *Myotis lucifugus* in a maternity colony in  
659 Central Alaska. *Journal of Mammal*, 73, 646-648.

660 Wilson, M. R., & Claridge, M. F. (1991). *Handbook for the identification of leafhoppers and*  
661 *planthoppers of rice*: CAB International for International Institute of Entomology, in  
662 association with Natural Resources Institute, London.

663 Zeale, M. R., Butlin, R. K., Barker, G. L., Lees, D. C., & Jones, G. (2011). Taxon-specific PCR  
664 for DNA barcoding arthropod prey in bat faeces. *Molecular ecology resources*, 11(2), 236-  
665 244.

666 Zubaid, A. (1990). Food and roosting habits of the black-bearded tomb bat, *Taphozous*  
667 *melanopogon* (Chiroptera: Emballonuridae) from Peninsular Malaysia. *Mammalia (Paris)*,  
668 54(1), 159-162.

669 Zubaid, A. (1988a). Food habits of *Hipposideros armiger* (Chiroptera: Rhinolophidae) from  
670 Peninsular Malaysia. *Mammalia*, 52(4), 585-588.

671 Zubaid, A. (1988b). Food habits of *Hipposideros pomona* (Chiroptera: Rhinolophidae) from  
672 peninsular Malaysia. *Mammalia (Paris)*, 52(1), 134-137.

673 Zhang, L., Jones, G., Rossiter, S., Ades, G., Liang, B., & Zhang, S. (2005). Diet of Flat-headed  
674 bats, *Tylonycteris pachypus* and *Tylonycteris robustula*, In Guangxi South China. *Journal of*  
675 *Mammalogy*, 86(1), 61-66.

# Figure 1

Location of MADA A, MADA B and MADA C that were chosen around Gunung Keriang (created using ArcGIS® software by Esri)

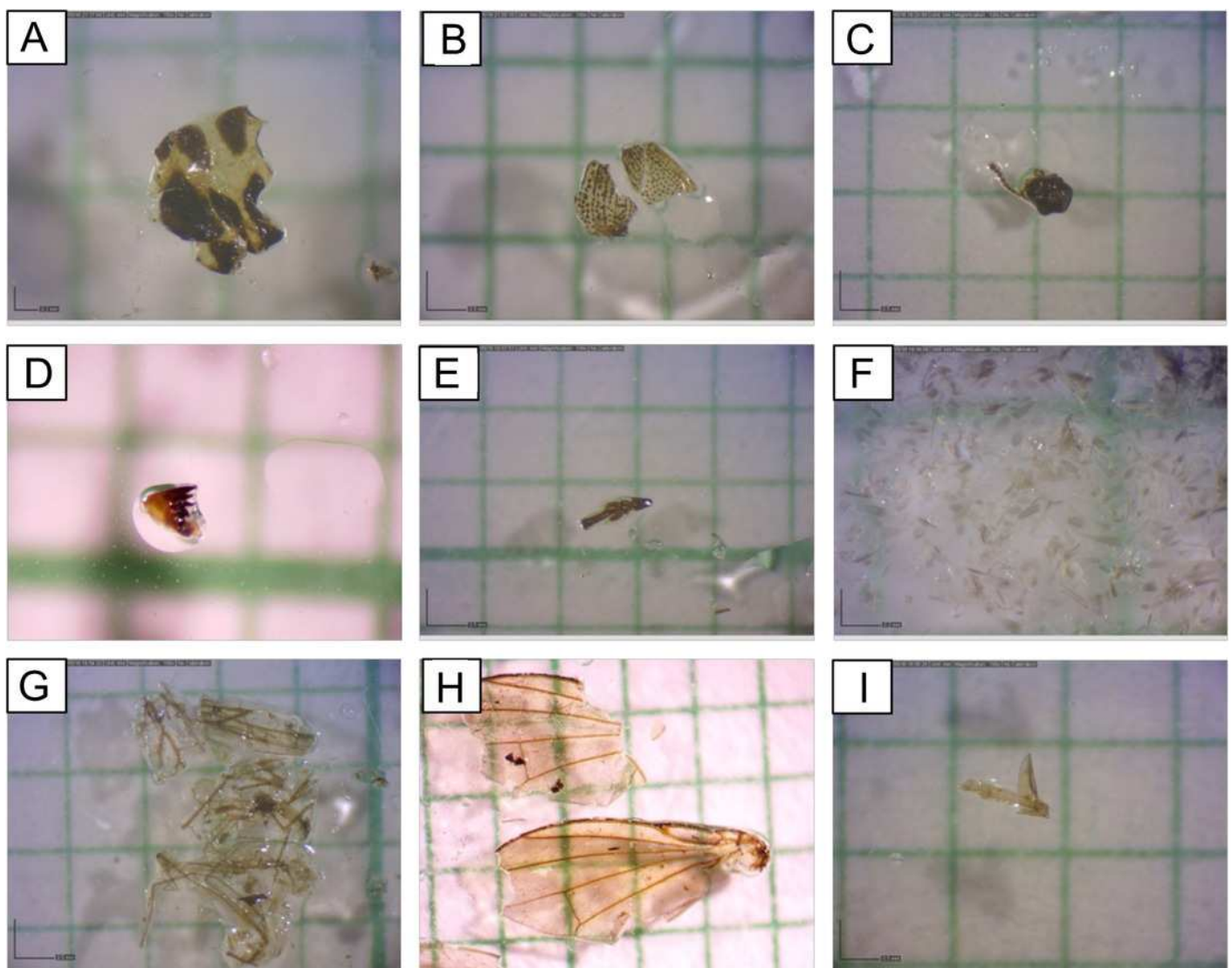




# Figure 2

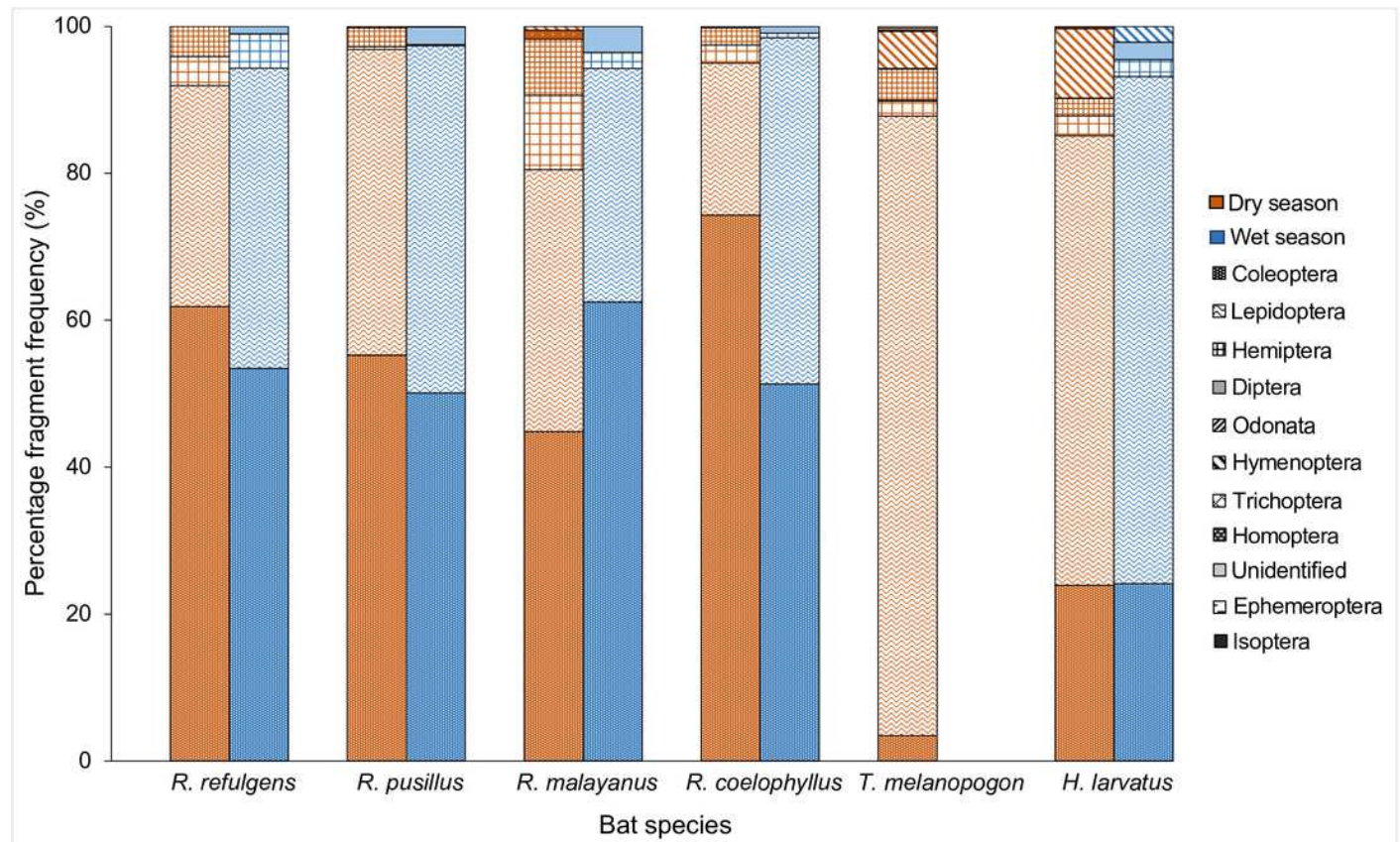
Common insect fragments found in fecal samples observed under microscope

(A) Coleoptera (body), (B) Coleoptera (body), (C) Coleoptera (head), (D) Coleoptera (mouthpart), (E) Coleoptera (leg), (F) Lepidoptera (scales), (G) Diptera (wings), (H) Diptera (wings), and (I) Hemiptera (leg)



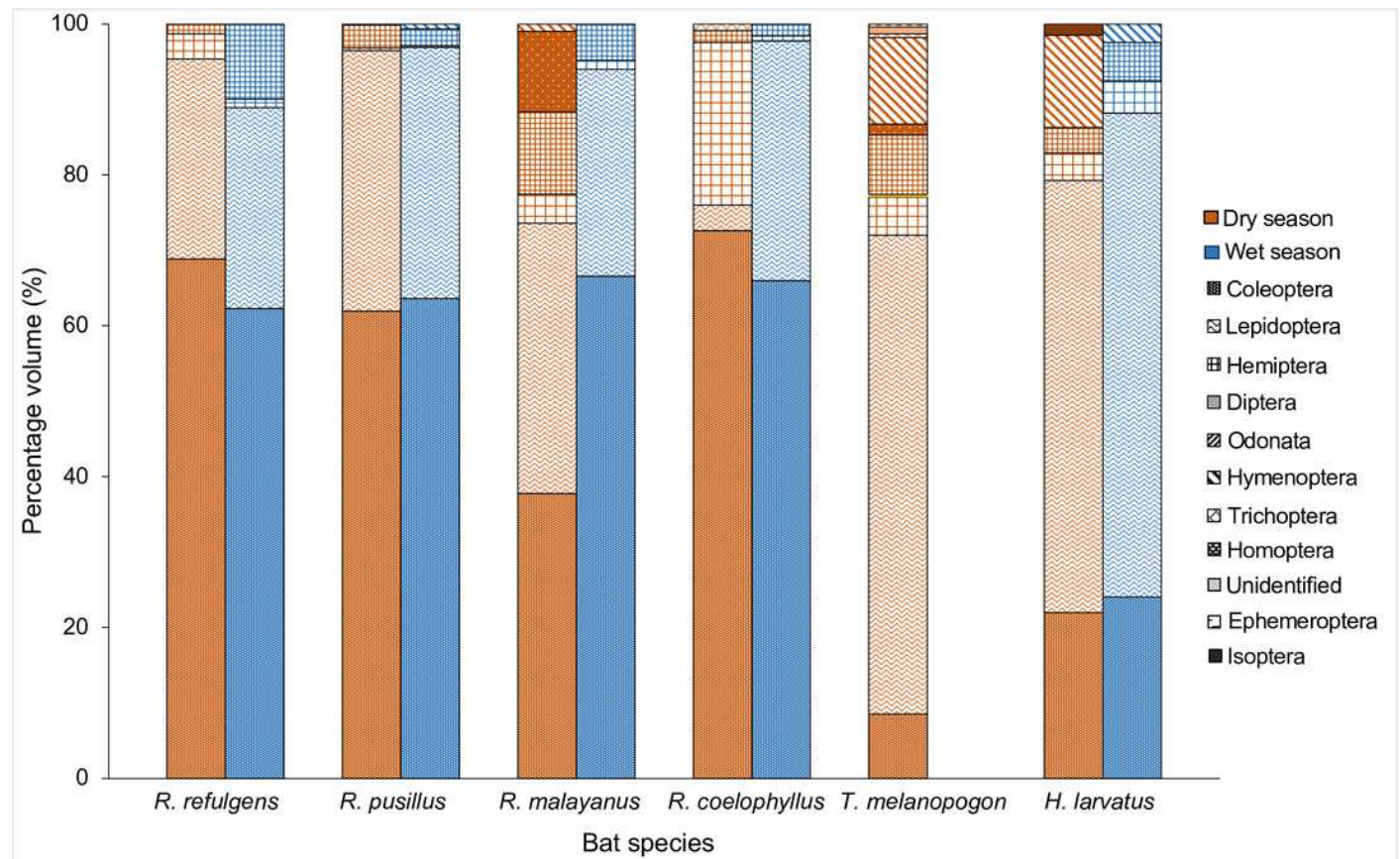
# Figure 3

Percentage fragment frequency of six bat species according to different insect order in the dry and wet season



# Figure 4

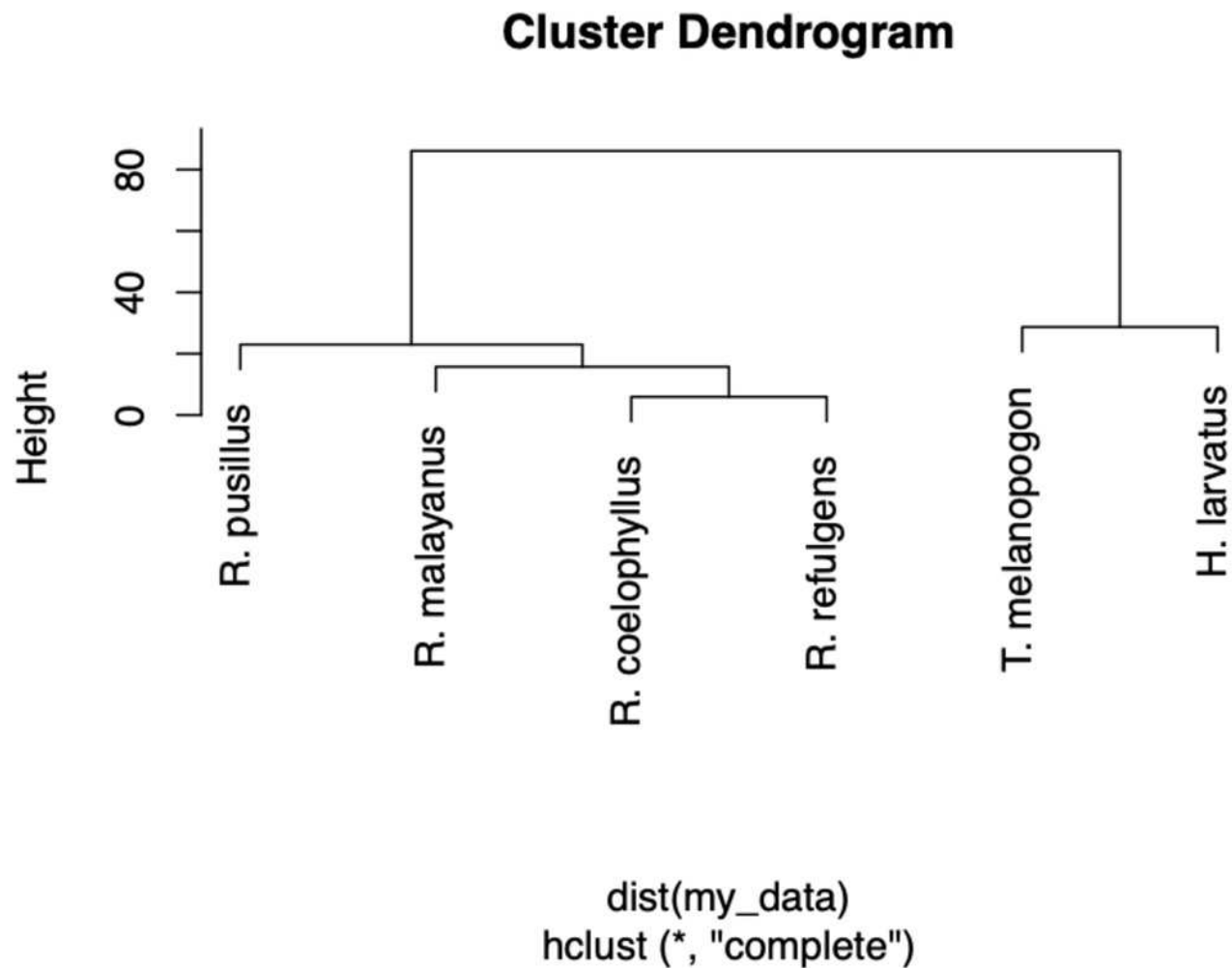
Percentage volume of six bat species according to different insect order in the dry and wet season





# Figure 5

A dendrogram of the food partitioning of bat species



# Figure 6

The visualization Chi-square score using corrplot package

A) standardized residuals and B) the dependency between bat species and insect Order. The color and size indicate the strength of the association with the darker blue and larger circle show the highest association.

