

The role of the Sunda shelf biogeographic barrier in the cryptic differentiation of *Conus litteratus* (Gastropoda: Conidae) across the Indo-Pacific region

Shijin Ameri^{1,2}, Laxmilatha Pappurajam¹, K. A. Labeeb¹,
Ranjith Lakshmanan³ and Kathirvelpandian P. V. Ayyathurai⁴

¹ Central Marine Fisheries Research Institute, Ernakulam, Kerala, India

² School of Biosciences, Mangalore University, Mangalore, India

³ Tuticorin Regional Station, CMFRI, Tuticorin, India

⁴ PMFGR Centre, ICAR-NBFGR, Ernakulam, India

ABSTRACT

Geographical and oceanographic processes have influenced the speciation of marine organisms. Cone snails are marine mollusks that show high levels of endemism and a wide distributional range across the Indian and Pacific Oceans. Discontinuities in distributions caused by biogeographic barriers can affect genetic connectivity. Here we analysed the connectivity within *Conus litteratus* using samples from the Lakshadweep archipelago (Arabian Sea, Indian Ocean) and from the Pacific Ocean. Maximum likelihood analyses based on the mitochondrial cytochrome C oxidase subunit I (COI) and on the non-coding 16S ribosomal RNA (16S rRNA) genes revealed cryptic diversity within *C. litteratus* occupying distinct oceanographic regions. The intraspecific genetic distances between the two distinct clades of *C. litteratus* from the Arabian Sea and the Pacific Ocean ranged from 7.4% to 7.6% for COI and from 2.4% to 2.8% for 16S rRNA genes, which is larger than the threshold limit for interspecific differentiation. The haplotype network analysis also corroborated the existence of two different lineages within *C. litteratus*. The detected genetic discontinuities reflect the effect of the Sunda shelf biogeographic barrier on the allopatric divergence of *C. litteratus*.

Subjects Biodiversity, Biogeography, Marine Biology, Taxonomy, Zoology

Keywords Mitochondrial markers, Cryptic species, Ocean currents, Sunda shelf barrier, Benthic ecology, Conidae

INTRODUCTION

The Arabian Sea in the Indian Ocean harbors a wide range of marine ecosystems and its endemic biodiversity is strongly linked to many unique ecological and biogeographical features (*Laxmilatha et al., 2021*). Studies on biogeographical factors reveal the discontinuities in species distribution and genetic diversity of species. Major barriers which restrict larval dispersion and gene flow between oceanic macro ecosystems have previously been identified (*Ekman, 1953; Briggs & Bowen, 2012*). The mode of larval development is the road map of evolutionary studies in the marine realm and plays an important role in connectivity (*Palumbi, 1994; Servedio & Noor, 2003; Bejer et al., 2014; Tiego et al., 2017*).

Submitted 14 December 2022

Accepted 19 May 2023

Published 14 July 2023

Corresponding author

Shijin Ameri, shijin2050@gmail.com

Academic editor

Regina Cunha

Additional Information and
Declarations can be found on
page 9

DOI 10.7717/peerj.15534

© Copyright

2023 Ameri et al.

Distributed under

Creative Commons CC-BY 4.0

OPEN ACCESS

The west coast of India is one of the most productive seas in the Indian Ocean, with strong seasonal upwelling resulting in high levels of primary productivity (Kumar *et al.*, 2000) that shapes unique marine biodiversity in the eastern Arabian Sea, including the Lakshadweep archipelago (Ameri *et al.*, 2022). The genetic structure of marine benthic invertebrate populations and their larval dispersal are known to be greatly influenced by oceanographic and geographical processes (Palumbi, 1994; Cunha *et al.*, 2005; Whittaker & Fernández-Palacios, 2007). Several mitochondrial-based studies have revealed the role that biogeography and barriers have played in the dispersal and divergence of coral reef fish lineages (Fessler & Westneat, 2007). Recent phylogeographic studies revealed the existence of cryptic differentiation within South Pacific coral reef fish species due to the influence of soft biogeographic barriers (Drew & Barber, 2012). Due to a biogeographic break located at 30°S in the southeast Pacific, several marine benthic invertebrate taxa exhibit strong genetic differentiation in this area. This indicates that biogeographic barriers often limit gene flow, promoting divergence and speciation (Haye *et al.*, 2014, 2019). Genetic diversity in Chilean barnacles also reflects the role of a biogeographic transition zone (Zakas *et al.*, 2009). The Sunda shelf barrier (SSB), is a shallow continental shelf among Indonesian islands that restricts exchange between the tropical Indian Ocean and the western Pacific during low sea level stands (Ekman, 1953; Randall, 1998). Significant genetic structure due to the influence of the SSB has been detected in pelagic coral reef fishes (Bay *et al.*, 2004; Bowen *et al.*, 2016).

Cone snails have separate sexes, and produce eggs that typically adhere to a hard surface and undergo internal fertilization (Kohn, 1959). The type of larval development has a significant impact on the dispersal abilities of these venomous marine snails (Cunha *et al.*, 2005). Larvae exhibiting nonplanktonic lecithotrophic developmental mode have no pelagic phase, while planktotrophic larvae may remain in the water column for large periods (Jablonski, 1986). The present study aims to analyze the genetic diversity of *Conus litteratus* Linnaeus, 1758 (Gastropoda, Conidae) from the Lakshadweep archipelagos in the Indian Ocean.

MATERIALS AND METHODS

Sample collection and morphological analyses

Five specimens were collected from the lagoon of Agatti, Andrott and Kalpeni Islands of Lakshadweep archipelago, Arabian Sea (Fig. 1) by snorkeling after obtaining field permit from the Lakshadweep administration. Tissue samples from the foot muscle were preserved in 95% ethanol. Taxonomy based on the following morphological characters of the shell (color, standard length (SL); shell width (SW); aperture height (AH); relative spire height (RSH = (SL - AH)/SL); position of the maximum diameter (PMD) = HMD/AH) followed Röckel, Korn & Kohn (1995).

DNA extraction and PCR amplification

DNA was isolated from the preserved tissue using a customized marine premium kit Origin ORIonX (ODP324 02P), according to the manufacturer's instructions. The purity

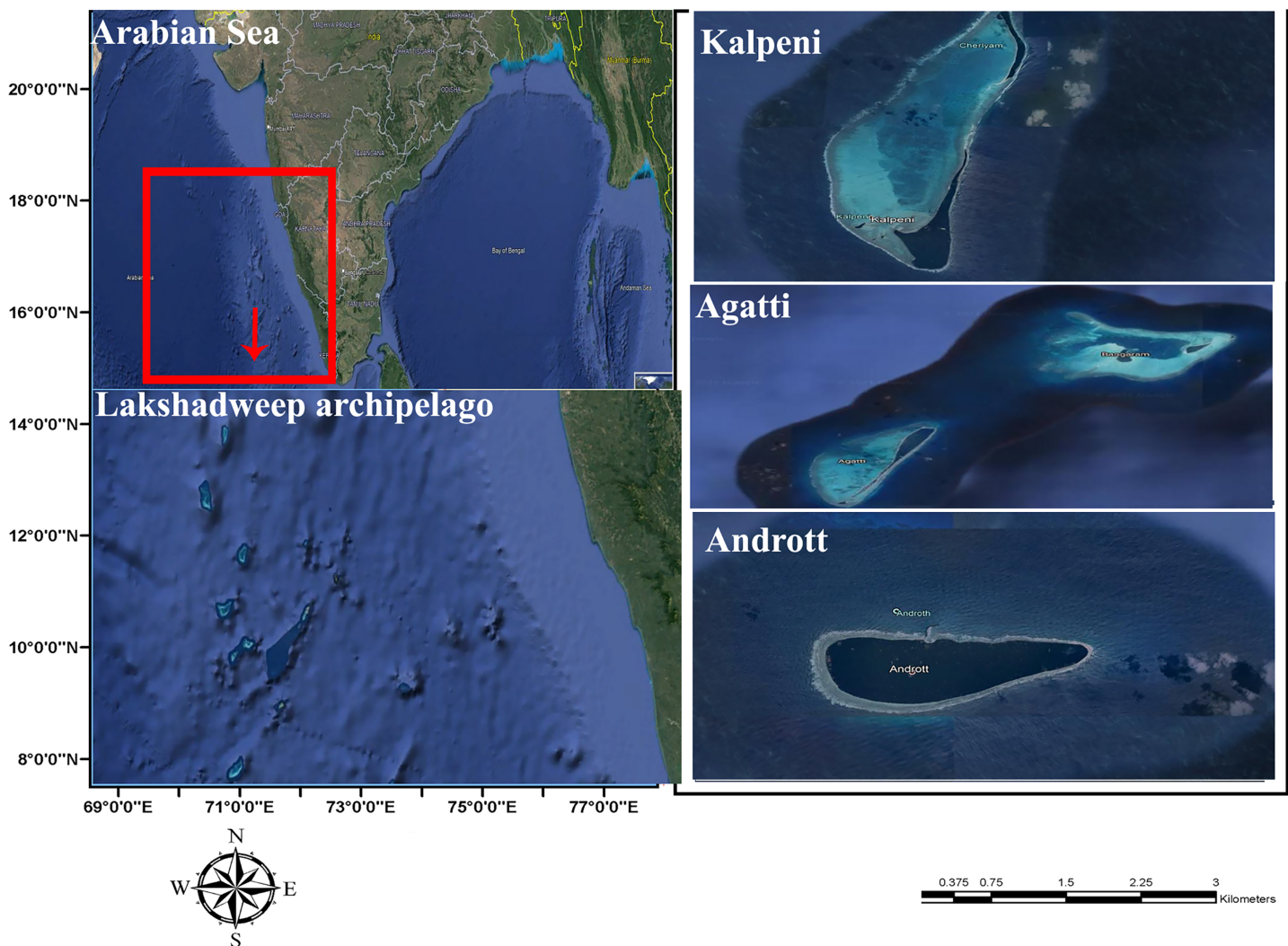


Figure 1 Sample collection location, Islands of Lakshadweep archipelago, Arabian Sea, Indian Ocean.

Full-size  DOI: [10.7717/peerj.15534/fig-1](https://doi.org/10.7717/peerj.15534/fig-1)

and quantity of isolated DNA were tested by Nanodrop (Eppendorf Pvt. Ltd, Chennai, Tamilnadu, India). The partial portion of the mitochondrial gene cytochrome *c* oxidase subunit I (COI) gene was amplified using the universal primers LCO1490/HCO2198 (Folmer *et al.*, 1994). A fragment of the ribosomal 16S rRNA was amplified using the 16Sar/16Sbr primers (Palumbi, 1996). All PCR reactions were performed as previously described in Laxmilatha *et al.* (2021) and Ameri *et al.* (2022) with slight modifications. Reaction volume of 25 μ l, containing 40 ng of DNA, 2.5 mM MgCl₂ and 0.3 mM of each primer. The amplification reaction consisted of an initial denaturation step at 94 °C for 5 min, followed by 35 cycles of denaturation at 95 °C for 30 s, annealing for 35 s at 48 °C for COI and 52 °C for 16S rRNA with an extension at 72 °C for 1 min. The final extension was at 72 °C for 5 min.

Table 1 *C. litteratus* Specimens used for phylogenetic analyses.

Sl. No	Species	Specimen voucher	Location	NCBI accession numbers	
				COI	16S rRNA
1	<i>C. litteratus</i>	LD008.1	Agatti, Lakshadweep Arabian Sea, Indian Ocean	ON942252	ON943042
2	<i>C. litteratus</i>	LD008.2	Agatti, Lakshadweep Arabian Sea, Indian Ocean	ON942253	ON943043
3	<i>C. litteratus</i>	LD008.3	Kalpeni, Lakshadweep, Arabian Sea, Indian Ocean	ON942254	ON943044
4	<i>C. litteratus</i>	LD008.4	Kalpeni, Lakshadweep, Arabian Sea, Indian Ocean	ON942255	ON943045
5	<i>C. litteratus</i>	LD008.5	Kavaratti, Lakshadweep, Arabian Sea, Indian Ocean	ON942256	ON943046
6	<i>C. litteratus</i>	–	Pacific Ocean	KJ550336	EU794329
7	<i>C. litteratus</i>	MNHN:IM-2007-30755	Pacific Ocean	KJ550338	KJ550867
8	<i>C. litteratus</i>	–	Pacific Ocean	KJ550337	HM212495
9	<i>C. litteratus</i>	UF303218	Pacific Ocean	KJ549941	KJ550652

Phylogenetic analyses

COI and 16S rRNA sequences of the five specimens from the Arabian Sea were submitted to GenBank, NCBI and accession numbers were obtained. COI and 16S rRNA sequences from the Pacific specimens were retrieved from NCBI database (Table 1). All the sequences (600 bp for COI and 477 bp for 16S rRNA) were aligned in a final data set using the software BIO Edit (Hall, 1999). A maximum likelihood (ML) analysis (1,000 bootstrap) with Kimura-2-parameters (K2P) was performed for each gene, separately using MEGA 7 (Kumar, Stecher & Tamura, 2016). Based on previous studies (Puillandre et al., 2014), *Californiconus californicus* was selected as the outgroup.

A timetree was inferred using the Realtime method ML (Tamura et al., 2012) and the Hasegawa-Kishino-Yano model HKY G+I. The best-fit model was selected using IQ tree model finder (Kalyaanamoorthy et al., 2017). The timetree was computed using calibration constraints obtained from previous studies (Williams & Duda, 2008) and also confirmed with Timetree database (<http://www.timetree.org>) (Kumar et al., 2017). The estimated log-likelihood value is $-1,671.9546$. A discrete Gamma distribution was used to model evolutionary rate differences (+G, parameter = 200.0000).

Population genetic structure

Haplotype and nucleotide diversity (π) based on COI and 16S rRNA sequences were calculated using the program PopART (Leigh & Bryant, 2015). A median-joining haplotype network (Bandelt, Forster & Röhl, 1999) was constructed to visualize the relationships among haplotypes, using the program PopART (Leigh & Bryant, 2015) with default settings. An analysis of molecular variance (AMOVA) (Excoffier, Smouse & Quattro, 1992) was used to test for hierarchical population genetic structure among regions using 1,000 permutations using the program PopART (Leigh & Bryant, 2015).

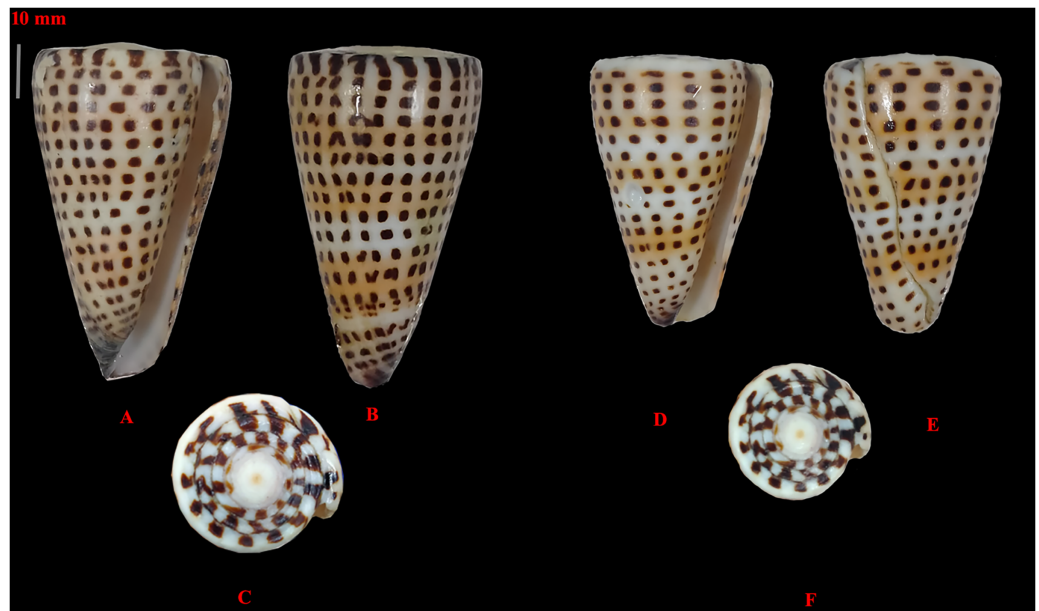


Figure 2 Images of two specimens of *Conus litteratus* collected from the Lakshadweep archipelago. (A–C) Specimen 1, haplotype 1 and (D–F) specimen 2, haplotype 2.

Full-size  DOI: 10.7717/peerj.15534/fig-2

RESULTS

Morphological analyses

The morphological variation within the collected *C. litteratus* samples (Fig. 2) was the following: standard length from 51 to 59 mm; shell width from 31 to 32 mm; aperture height from 50 to 58 mm; relative diameter from 0.53 to 0.62; relative spire height of 0.01; position of the maximum diameter from 0.82 to 0.86 mm.

Phylogenetic analyses

Analyses of the partial COI sequences revealed two well-differentiated clades within *C. litteratus*, one including specimens of the Arabian Sea and the other with samples from the Pacific Ocean (Fig. 3). The partial 16S rRNA gene sequences yielded an identical phylogenetic tree (BS 98) (Fig. S1). The dating analysis reveals that *C. litteratus* of Arabian Sea specimens diverged at 2.14 MYA (Fig. 4).

Population genetic analyses

The intraspecific K2P genetic distance between the Arabian Sea and the Pacific Ocean *C. litteratus* specimens ranged from 7.4% to 7.6% and from 2.4% to 2.8% based on COI (Table 2) and 16S rRNA (Table 3), respectively. The AMOVA based on COI sequences shows high genetic diversity within *C. litteratus* ($\phi_{ST} = 0.99409$; $P < 0.001$) and revealed 46 segregating and 39 segregating sites differentiating Lakshadweep and Pacific populations, respectively (Fig. 5). The AMOVA based on 16S rRNA sequences ($\phi_{ST} 0.98703$; $P < 0.001$), shows 13 and 11 segregating sites differentiating Lakshadweep and Pacific populations, respectively (Fig. S2).

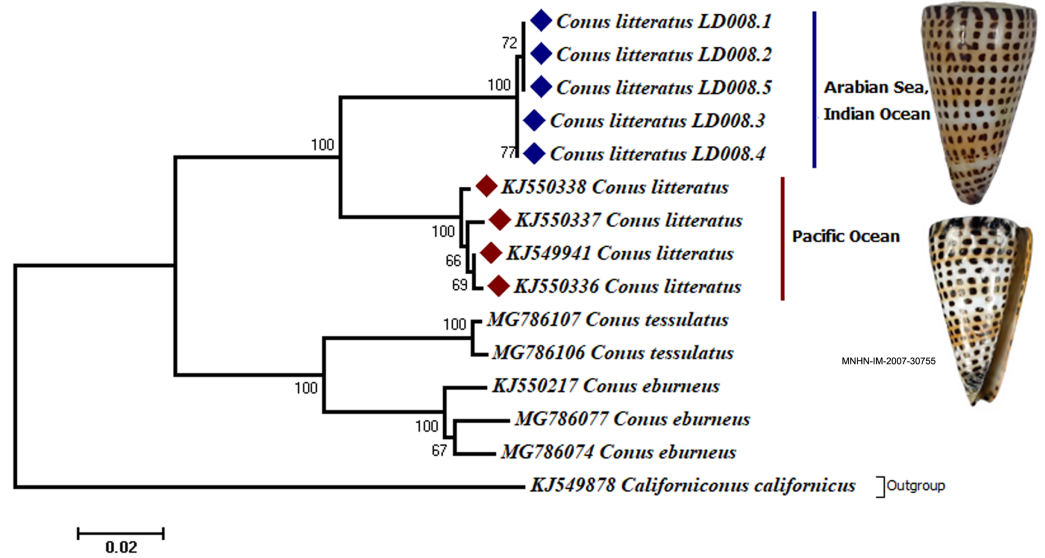


Figure 3 Phylogenetic tree of *C. litteratus* from the Arabian Sea and the Pacific Ocean based on the cytochrome oxidase subunit I gene. The image of *C. litteratus* from the Pacific Ocean was retrieved from the Muséum National d'Histoire Naturelle, Paris. [Full-size DOI: 10.7717/peerj.15534/fig-3](https://doi.org/10.7717/peerj.15534/fig-3)

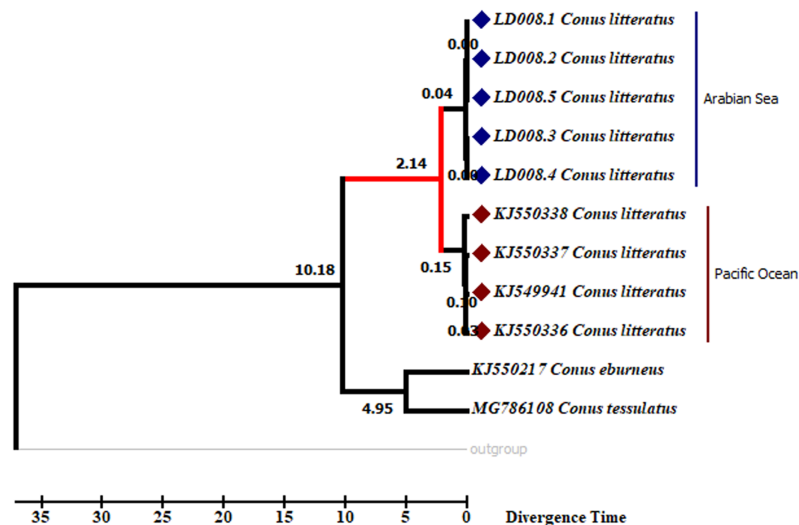


Figure 4 Divergent timetree of the Pacific and Arabian Sea specimens of *C. litteratus*. The number of nodes indicates the time of the divergent of the clusters in million years ago (MYA). [Full-size DOI: 10.7717/peerj.15534/fig-4](https://doi.org/10.7717/peerj.15534/fig-4)

DISCUSSION

An especially interesting land barrier, the Sunda Shelf Barrier (SSB) between the Indian and Pacific Oceans shapes unique marine biodiversity in tropical Indian and Pacific Ocean regions (Randall, 1998). This Indo-Pacific barrier formed during glacial periods when the sea level drops expose a complete land wall between the Indian and western Pacific Oceans (Ekman, 1953; Randall, 1998). Recent phylogeographic studies have revealed cryptic diversity within South Pacific coral reef fishes promoted by soft biogeographic barriers

Table 2 Kimura 2 parameter (K2P) genetic distances based on COI.

<i>Conus_litteratus_LD008.1</i>													
<i>Conus_litteratus_LD008.2</i>	0.000												
<i>Conus_litteratus_LD008.3</i>	0.002	0.002											
<i>Conus_litteratus_LD008.4</i>	0.002	0.002	0.000										
<i>Conus_litteratus_LD008.5</i>	0.000	0.000	0.002	0.002									
<i>KJ550338_Conus_litteratus</i>	0.074	0.074	0.072	0.072	0.074								
<i>KJ549941_Conus_litteratus</i>	0.076	0.076	0.074	0.074	0.076	0.005							
<i>KJ550337_Conus_litteratus</i>	0.078	0.078	0.076	0.076	0.078	0.007	0.005						
<i>KJ550336_Conus_litteratus</i>	0.078	0.078	0.076	0.076	0.078	0.007	0.002	0.007					
<i>MG786077_Conus_eburneus</i>	0.151	0.151	0.149	0.149	0.151	0.158	0.160	0.167	0.158				
<i>MG786074_Conus_eburneus</i>	0.151	0.151	0.149	0.149	0.151	0.158	0.156	0.162	0.158	0.022			
<i>KJ550217_Conus_eburneus</i>	0.151	0.151	0.149	0.149	0.151	0.151	0.149	0.156	0.151	0.028	0.019		
<i>MG786107_Conus_tessulatus</i>	0.149	0.149	0.151	0.151	0.149	0.147	0.145	0.147	0.147	0.087	0.077	0.075	
<i>MG786106_Conus_tessulatus</i>	0.151	0.151	0.153	0.153	0.151	0.149	0.147	0.149	0.149	0.085	0.075	0.073	0.005

Table 3 Kimura 2 parameter (K2P) genetic distances based on 16s rRNA.

<i>Conus_litteratus_LD008.1</i>													
<i>Conus_litteratus_LD008.2</i>	0.000												
<i>Conus_litteratus_LD008.3</i>	0.000	0.000											
<i>Conus_litteratus_LD008.4</i>	0.000	0.000	0.000										
<i>Conus_litteratus_LD008.5</i>	0.000	0.000	0.000	0.000									
<i>EU794329_Conus_litteratus</i>	0.024	0.024	0.024	0.024	0.024								
<i>KJ550867_Conus_litteratus</i>	0.028	0.028	0.028	0.028	0.028	0.004							
<i>HM212495_Conus_litteratus</i>	0.024	0.024	0.024	0.024	0.024	0.000	0.004						
<i>KJ550652_Conus_litteratus</i>	0.024	0.024	0.024	0.024	0.024	0.000	0.004	0.000					
<i>KJ550825_Conus_eburneus</i>	0.068	0.068	0.068	0.068	0.068	0.061	0.061	0.061	0.061				
<i>KJ550607_Conus_eburneus</i>	0.071	0.071	0.071	0.071	0.071	0.064	0.064	0.064	0.064	0.002			
<i>KJ550608_Conus_eburneus</i>	0.068	0.068	0.068	0.068	0.068	0.061	0.061	0.061	0.061	0.004	0.006		
<i>KJ550735_Conus_tessulatus</i>	0.078	0.078	0.078	0.078	0.078	0.068	0.071	0.068	0.068	0.026	0.024	0.028	

(Fessler & Westneat, 2007; Drew & Barber, 2012). Bullethead parrotfish and seahorses from the Indo-Pacific region show significant genetic differences among locations separated by the Indo-Pacific SSB (Bay et al., 2004; Lourie & Vincent, 2004). The present study provides new insights into the role of the SSB in the divergence of a gastropod species, *C. litteratus*. Our analysis showed two distinct lineages of *C. litteratus*, one from the Pacific and the other in the Arabian Sea. The two lineages did not exhibit any significant differences at the

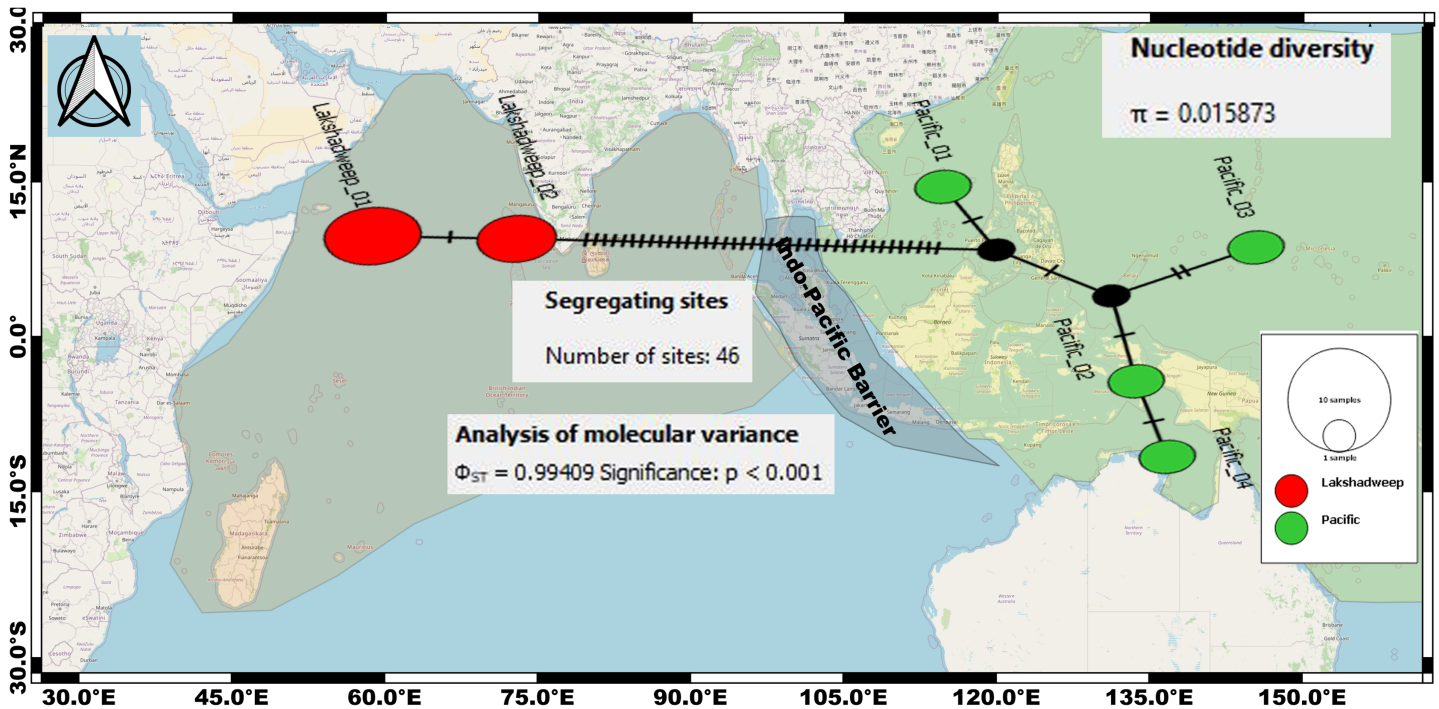


Figure 5 Median-joining networks for representing the genetic divergence (cryptic species) among the *C. litteratus* specimens of Indian Ocean (Red dots) and Pacific Ocean (Green dots) based on COI sequences. Circle sizes correspond to haplotype frequencies. Dashed line represents one mutational step between the haplotypes (39 segregating sites differentiating Lakshadweep and Pacific populations).

Full-size [DOI: 10.7717/peerj.15534/fig-5](https://doi.org/10.7717/peerj.15534/fig-5)

morphological level. The intraspecific genetic distance of *C. litteratus* between the Arabian Sea and Pacific Ocean lineages is larger than the threshold limit for different Conidae species (>6% in COI and >2% in 16S rRNA) (Puillandre et al., 2014). There is an increasing number of molecular-based studies showing the existence of cryptic diversity, in the absence of diagnostic morphological characters, particularly in gastropods (Duda et al., 2008; Puillandre et al., 2014).

The dispersal range and rate of speciation of cone snails may be significantly influenced by the different developmental modes that may range from planktotrophy (pelagic larval stage) to lecithotrophy (absence of pelagic larval stage), particularly in the archipelagic ecosystem (Kohn & Perron, 1994). For instance, in the Cape Verde archipelago all endemic species of *Conus* exhibit a nonplanktonic lecithotrophic developmental mode (Kohn & Perron, 1994; Cunha et al., 2005), which limits gene flow between populations because of the reduced capacity of the larvae to disperse. It is not possible from our data to determine whether the ancestors of *C. litteratus* of the Lakshadweep archipelago had planktotrophic larval development or non-planktonic lecithotrophy. However, insights from previous studies in cone snails confirm that most isolated oceanic islands show high levels of endemism promoted by nonplanktonic lecithotrophy (Kohn & Perron, 1994; Cunha et al., 2005, 2008).

Our dating analysis revealed that the two lineages of *C. litteratus* diverged during the Pleistocene at 2.14 MYA (Fig. 5). Earlier research indicated that the isolation of marginal

ocean basins during the Pleistocene low sea-level stands may have promoted speciation within the Indo-West Pacific islands (*McManus, 1985; Potts, 1985*). The exchange of water between the west Pacific and Indian Oceans was averted during the Pleistocene due to the formation of a biogeographic barrier, the SSB, when the land area was maximal (*Voris, 2000; Bird, Taylor & Hunt, 2005*). The role of other biogeographic barriers in lineages' divergence has been described in the Isthmus of Panama where the exchange of water between the tropical Atlantic and Pacific Oceans ceased about 3 million years ago promoting diversification of the existing fauna (*Leigh, O'Dea & Vermeij, 2013*). The broad distribution of *C. litteratus* throughout the Indian and Pacific Oceans makes this species an excellent model organism for studying patterns of species diversification. Our phylogenetic and phylogeographic analyses detected high levels of genetic differentiation between the two-ocean basin most likely due to the influence of SSB on *C. litteratus* dispersal during Pleistocene low sea level stands.

CONCLUSION

The present study provides evidence for the existence of cryptic diversification within *C. litteratus* from the Lakshadweep archipelago. Molecular sequence analyses revealed the existence of two well-differentiated clades in specimens of *C. litteratus* from the Indian and Pacific Oceans. The intraspecific genetic distance between specimens of *C. litteratus* from the two ocean basins is larger than the threshold limit for interspecific differentiation, nonetheless further analyses based on nuclear markers are needed to confirm the taxonomic status of the species. Dating analyses revealed that the divergence of the two lineages occurred during the Pleistocene and was promoted by the SSB oceanographic barrier, when the land area was maximal.

ACKNOWLEDGEMENTS

The authors are thankful to the Director of ICAR-CMFRI for the facilities, guidance, and encouragement provided for carrying out the work. The Director of ICAR-NBFGR is also acknowledged for providing facility and support for carrying out molecular part of the study. We are also thankful to the Lakshadweep Administration, Department of Science & Technology and Department of Environment & Forest, Union Territory of Lakshadweep, for their support for carrying out the study. Image of *Conus litteratus* Pacific specimen accessed from the Muséum national d'Histoire naturelle, Paris (France) Collection: Molluscs (IM) Specimen (MNHN-IM-2007-30755).

ADDITIONAL INFORMATION AND DECLARATIONS

Funding

This study was funded by a project grant (BT/PR12376/AAQ/3/699/2014) from Department of Biotechnology (DBT), Ministry of Science and Technology, Government of India. The funders had no role in study design, data collection and analysis, decision to publish, or preparation of the manuscript.

Grant Disclosures

The following grant information was disclosed by the authors:

Department of Biotechnology (DBT), Ministry of Science and Technology, Government of India: BT/PR12376/AAQ/3/699/2014.

Competing Interests

The authors declare that they have no competing interests.

Author Contributions

- Shijin Ameri conceived and designed the experiments, performed the experiments, analyzed the data, prepared figures and/or tables, authored or reviewed drafts of the article, and approved the final draft.
- Laxmilatha Pappurajam conceived and designed the experiments, analyzed the data, authored or reviewed drafts of the article, and approved the final draft.
- K. A. Labeeb performed the experiments, authored or reviewed drafts of the article, and approved the final draft.
- Ranjith Lakshmanan analyzed the data, authored or reviewed drafts of the article, and approved the final draft.
- Kathirvelpandian P. V. Ayyathurai performed the experiments, analyzed the data, authored or reviewed drafts of the article, and approved the final draft.

Field Study Permissions

The following information was supplied relating to field study approvals (*i.e.*, approving body and any reference numbers):

Field permits were obtained from the Lakshadweep administration.

DNA Deposition

The following information was supplied regarding the deposition of DNA sequences:

The sequences are available in the [Supplemental Files](#) and at GenBank: COI ([ON942252](#) to [ON942256](#)), 16SrRNA ([ON943042](#) to [ON943046](#)).

Data Availability

The following information was supplied regarding data availability:

The raw data used for the morphological analysis are available in the [Supplemental Files](#).

Supplemental Information

Supplemental information for this article can be found online at <http://dx.doi.org/10.7717/peerj.15534#supplemental-information>.

REFERENCES

- Ameri S, Laxmilatha P, Labeeb KA, Ranjith L, Kathirvel Pandian A. 2022. Mitochondrial marker-based analyses provide new insights into role of coral reef ecosystems in molluscan speciation. *Organisms Diversity & Evolution* 22(2):409–418 DOI 10.1007/s13127-021-00533-9.

- Bandelt H, Forster P, Röhl A. 1999.** Median-joining networks for inferring intraspecific phylogenies. *Molecular Biology and Evolution* **16**(1):37–48
DOI [10.1093/oxfordjournals.molbev.a026036](https://doi.org/10.1093/oxfordjournals.molbev.a026036).
- Bay LK, Choat JH, van Herwerden L, Robertson DR. 2004.** High genetic diversities and complex genetic structure in an Indo-Pacific tropical reef fish (*Chlorurus sordidus*): evidence of an unstable evolutionary past? *Marine Biology* **144**(4):757–767 DOI [10.1007/s00227-003-1224-3](https://doi.org/10.1007/s00227-003-1224-3).
- Beger M, Sommer B, Harrison PL, Smith SDA, Pandolfi JM. 2014.** Conserving potential coral reef refuges at high latitudes. *Diversity & Distributions* **20**(3):245–257 DOI [10.1111/ddi.12140](https://doi.org/10.1111/ddi.12140).
- Bird MI, Taylor D, Hunt C. 2005.** Palaeoenvironments of insular Southeast Asia during the Last Glacial Period: a savanna corridor in Sundaland? *Quaternary Science Reviews* **24**(20–21):2228–2242 DOI [10.1016/j.quascirev.2005.04.004](https://doi.org/10.1016/j.quascirev.2005.04.004).
- Bowen BW, Gaither MR, DiBattista JD, Iacchi M, Andrews KR, Grant WS, Toonen RJ, Briggs JC. 2016.** Comparative phylogeography of the ocean planet. *Proceedings of the National Academy of Sciences of the United States of America* **113**(29):7962–7969
DOI [10.1073/pnas.1602404113](https://doi.org/10.1073/pnas.1602404113).
- Briggs JC, Bowen BW. 2012.** A realignment of marine biogeographic provinces with particular reference to fish distributions. *Journal of Biogeography* **39**(1):12–30
DOI [10.1111/j.1365-2699.2011.02613.x](https://doi.org/10.1111/j.1365-2699.2011.02613.x).
- Cunha RL, Castilho R, Rüber L, Zardoya R. 2005.** Patterns of cladogenesis in the venomous marine gastropod genus *Conus* from the Cape Verde Islands. *Systematic Biology* **54**(4):634–650
DOI [10.1080/106351591007471](https://doi.org/10.1080/106351591007471).
- Cunha RL, Tenorio MJ, Afonso C, Castilho R, Zardoya R. 2008.** Replaying the tape: recurring biogeographical patterns in Cape Verde *Conus* after 12 million years. *Molecular Ecology* **17**(3):885–901 DOI [10.1111/j.1365-294X.2007.03618.x](https://doi.org/10.1111/j.1365-294X.2007.03618.x).
- Drew JA, Barber PH. 2012.** Comparative phylogeography in Fijian coral reef fishes: a multi-taxa approach towards marine reserve design. *PLOS ONE* **7**:e47710
DOI [10.1371/journal.pone.0047710](https://doi.org/10.1371/journal.pone.0047710).
- Duda TF Jr, Bolin MB, Meyer C, Kohn AJ. 2008.** Hidden diversity in a hyperdiverse gastropod genus: discovery of previously unidentified members of a *Conus* species complex. *Molecular Phylogenetics and Evolution* **49**(3):867–876 DOI [10.1016/j.ympev.2008.08.009](https://doi.org/10.1016/j.ympev.2008.08.009).
- Ekman S. 1953.** *Zoogeography of the sea*. London, United Kingdom: Sidgwick and Jacks.
- Excoffier L, Smouse PE, Quattro JM. 1992.** Analysis of molecular variance inferred from metric distances among DNA haplotypes: application to human mitochondrial DNA restriction data. *Genetics* **131**(2):479–491 DOI [10.1093/genetics/131.2.479](https://doi.org/10.1093/genetics/131.2.479).
- Fessler JL, Westneat MW. 2007.** Molecular phylogenetics of the butterflyfishes (*Chaetodontidae*): taxonomy and biogeography of a global coral reef fish family. *Molecular Phylogenetics and Evolution* **45**:50–68 DOI [10.1016/j.ympev.2007.05.018](https://doi.org/10.1016/j.ympev.2007.05.018).
- Folmer O, Black M, Hoeh W, Lutz R, Vrijenhoek R. 1994.** DNA primers for amplification of mitochondrial cytochrome c oxidase subunit I from diverse metazoan invertebrates. *Molecular Marine Biology and Biotechnology* **3**:294–299.
- Hall TA. 1999.** BioEdit: a user-friendly biological sequence alignment editor and analysis program for Windows 95/98/NT. *Nucleic Acids Symposium Series* **41**:95–98.
- Haye PA, Segovia NI, Muñoz-Herrera NC, Gálvez FE, Martínez A, Meynard A, Pardo-Gandarillas MC, Poulin E, Faugeron S. 2014.** Phylogeographic structure in benthic marine invertebrates of the Southeast Pacific coast of Chile with differing dispersal potential. *PLOS ONE* **9**:e88613 DOI [10.1371/journal.pone.0088613](https://doi.org/10.1371/journal.pone.0088613).

- Haye PA, Segovia NI, Varela AI, Rojas R, Rivadeneira MM, Thiel M. 2019.** Genetic and morphological divergence at a biogeographic break in the beach-dwelling brooder *Excirrolana hirsuticauda* Menzies (Crustacea, Peracarida). *BMC Evolutionary Biology* **19**(1):118 DOI [10.1186/s12862-019-1442-z](https://doi.org/10.1186/s12862-019-1442-z).
- Jablonski D. 1986.** Larval ecology and macroevolution in marine invertebrates. *Bulletin of Marine Science* **39**:565–587.
- Kalyaanamoorthy S, Minh BQ, Wong TKF, Haeseler A, Jermiin LS. 2017.** ModelFinder: fast model selection for accurate phylogenetic estimates. *Nature Methods* **14**:587–589 DOI [10.1038/nmeth.4285](https://doi.org/10.1038/nmeth.4285).
- Kohn AJ. 1959.** The ecology of *Conus* in Hawaii. *Ecological Monographs* **29**(1):47–90 DOI [10.2307/1948541](https://doi.org/10.2307/1948541).
- Kohn AJ, Perron FE. 1994.** *Life history and biogeography: patterns in Conus*. Vol. 9. Oxford: Oxford University Press on Demand.
- Kumar SP, Madhupratap M, Kumar MD, Gauns M, Muraleedharan PM, Sarma VVSS, De Souza SN. 2000.** Physical control of primary productivity on a seasonal scale in central and eastern Arabian Sea. *Journal of Earth System Science* **109**(4):433–441 DOI [10.1007/BF02708331](https://doi.org/10.1007/BF02708331).
- Kumar S, Stecher G, Suleski M, Hedges SB. 2017.** TimeTree: a resource for timelines, timetrees, and divergence times. *Molecular Biology and Evolution* **34**(7):1812–1819 DOI [10.1093/molbev/msx116](https://doi.org/10.1093/molbev/msx116).
- Kumar S, Stecher G, Tamura K. 2016.** MEGA7: molecular evolutionary genetics analysis version 7.0 for bigger datasets. *Molecular Biology and Evolution* **33**:1870–1874 DOI [10.1093/molbev/msw054](https://doi.org/10.1093/molbev/msw054).
- Laxmilatha P, Ameri S, Labeeb KA, Ranjith L, Kathirvelpandian A. 2021.** A new species of cone snail, *Conus laccadivensis* sp. nov.: (Gastropoda: Conidae) from the Islands of Lakshadweep Archipelago. *Regional Studies in Marine Science* **44**:101783, 1–7 DOI [10.1016/j.rsma.2021.101783](https://doi.org/10.1016/j.rsma.2021.101783).
- Leigh JW, Bryant D. 2015.** PopART: full-feature software for haplotype network construction. *Methods in Ecology and Evolution* **6**(9):1110–1116 DOI [10.1111/2041-210X.12410](https://doi.org/10.1111/2041-210X.12410).
- Leigh EG, O’Dea A, Vermeij GJ. 2013.** Historical biogeography of the Isthmus of Panama. *Biological Reviews* **89**:148–172 DOI [10.1111/brv.12048](https://doi.org/10.1111/brv.12048).
- Linnaeus C. 1758.** *Systema Naturae per regna tria naturae, secundum classes, ordines, genera, species, cum characteribus, differentiis, synonymis, locis*. In: *Editio Decima, Reformata*. Tenth Revised Edition. Vol. 1. Laurentius Salvius: Holmiae, 824.
- Lourie SA, Vincent ACJ. 2004.** A marine fish follows Wallace’s Line: the phylogeography of the three-spot seahorse (*Hippocampus trimaculatus*, Syngnathidae, Teleostei) in Southeast Asia. *Journal of Biogeography* **31**:1975–1985 DOI [10.1111/j.1365-2699.2004.01153.x](https://doi.org/10.1111/j.1365-2699.2004.01153.x).
- McManus JW. 1985.** Marine speciation, tectonics and sea level changes in Southeast Asia. In: *5th International Coral Reef Congress*, Tahiti, 135–139.
- Palumbi S. 1994.** Genetic divergence, reproductive isolation, and marine speciation. *Annual Review of Ecology and Systematics* **25**(1):547–572 DOI [10.1146/annurev.es.25.110194.002555](https://doi.org/10.1146/annurev.es.25.110194.002555).
- Palumbi S. 1996.** Nucleic acids II: the polymerase chain reaction. In: Hillis D, Moritz C, Mable BK, eds. *Molecular Systematics*. Sinauer Associates, Inc, 205–247.
- Potts DC. 1985.** Sea-level fluctuations and speciation in Scleractinia. In: *Proceedings of the 5th International Coral Reef Congress*, Vol. 4. 127–132.

- Puillandre N, Bouchet P, Duda JTF, Kaufenstein S, Kohn AJ, Olivera BM, Watkins M, Meyer C. 2014.** Molecular phylogeny and evolution of cone snails (Gastropoda, Conoidea). *Molecular Phylogenetics and Evolution* **78**:290–303 DOI [10.1016/j.ympev.2014.05.023](https://doi.org/10.1016/j.ympev.2014.05.023).
- Randall JE. 1998.** Zoogeography of shore fishes of the Indo-Pacific region. *Zoological Studies* **37**:227–268.
- Röckel D, Korn W, Kohn AJ. 1995.** *Manual of the living conidae Vol. 1: Indo-Pacific Region*. Germany: Verlag Christa Hemmen.
- Servedio MR, Noor MAF. 2003.** The role of reinforcement in speciation: theory and data. *Annual Review of Ecology and Systematics* **34**(1):339–364 DOI [10.1146/annurev.ecolsys.34.011802.132412](https://doi.org/10.1146/annurev.ecolsys.34.011802.132412).
- Tamura K, Battistuzzi FU, Billings-Ross P, Murillo O, Filipowski A, Kumar S. 2012.** Estimating divergence times in large molecular phylogenies. *Proceedings of the National Academy of Sciences of the United States of America* **109**(47):19333–19338 DOI [10.1073/pnas.1213199109](https://doi.org/10.1073/pnas.1213199109).
- Tiego LA, Costa M, Grazia P, Liana FM. 2017.** Identifying ecological barriers in marine environment: the case study of *Dasyatis marianae*. *Marine Environmental Research* **125**(5):1–9 DOI [10.1016/j.marenvres.2016.12.005](https://doi.org/10.1016/j.marenvres.2016.12.005).
- Voris HK. 2000.** Maps of Pleistocene sea levels in Southeast Asia: shorelines, river systems and time durations. *Journal of Biogeography* **27**(5):1153–1167 DOI [10.1046/j.1365-2699.2000.00489.x](https://doi.org/10.1046/j.1365-2699.2000.00489.x).
- Whittaker RJ, Fernández-Palacios JM. 2007.** *Island biogeography: ecology, evolution and conservation*. New York: Oxford University Press, 304.
- Williams ST, Duda F Jr. 2008.** Did tectonic activity stimulate Oligo-Miocene speciation in the Indo-West Pacific? *Evolution* **62**(7):1618–1634 DOI [10.1111/j.1558-5646.2008.00399.x](https://doi.org/10.1111/j.1558-5646.2008.00399.x).
- Zakas C, Binford J, Navarrete SA, Wares JP. 2009.** Restricted gene flow in Chilean barnacles reflects an oceanographic and biogeographic transition zone. *Marine Ecology Progress Series* **394**:165–177 DOI [10.3354/meps08265](https://doi.org/10.3354/meps08265).