



Phylogenetic diversity and the structure of host-epiphyte interactions across the Neotropics

Marcio R. Pie¹, Fernanda S. Caron², Thom Dallimore^{1,3}, Helena Einzmann⁴, Peter Hietz⁵, Michael Kessler⁶, Flavio Nunes Ramos⁷, João Pedro Costa Elias⁷, Holger Kreft⁸, Thorsten Krömer⁹, Maria Judith Carmona Higueta⁹, Daniel Zuleta¹⁰, Giesta Machado¹¹, André Luís de Gasper¹¹, Gerhard Zotz^{12,13}, Glenda Mendieta Leiva¹⁴, Derio Antonio Jimenez-Lopez¹⁵, Alex Fernando Mendes¹⁶, Pedro Brancalion¹⁷, Sara Mortara¹⁸, Christopher Thomas Blum¹⁹, Mariana Victória Irumé²⁰, Nayely Martínez-Meléndez Nayely²¹, Ana Maria Benavides²², Carlos Renato Boelter²⁰ and Sven Batke^{1,23}

¹ Biology Department, Edge Hill University, Ormskirk, United Kingdom

² Departamento de Zoologia, Universidade Federal do Paraná, Curitiba, Brazil

³ World Museum, National Museums Liverpool, Liverpool, United Kingdom

⁴ Institute for Biology and Environmental Sciences, Carl von Ossietzky Universität Oldenburg, Oldenburg, Germany

⁵ Institute of Botany, University of Natural Resources and Life Sciences, Vienna, Austria

⁶ Department of Systematic and Evolutionary Botany, University of Zurich, Zurich, Switzerland

⁷ Instituto de Ciências da Natureza, Universidade Federal de Alfenas, Alfenas, Brasil

⁸ Biodiversity, Macroecology & Biogeography, University of Göttingen, Göttingen, Germany

⁹ Universidad Veracruzana, Xalapa, Mexico

¹⁰ Forest Global Earth Observatory, Smithsonian Tropical Research Institute, Washington DC, United States of America

¹¹ Departamento de Ciências Naturais, Universidade Regional de Blumenau, Blumenau, Brazil

¹² Institute for Biology and Environmental Sciences, Carl von Ossietzky University, Oldenburg, Germany

¹³ Smithsonian Tropical Research Institute, Balboa, Panama

¹⁴ Phillips University of Marburg, Marburg, Germany

¹⁵ Programa de doctorado en Ciencias, El Colegio de la Frontera Sur, San Cristóbal de las Casas, Chiapas, Mexico

¹⁶ Departamento de Ciências Florestais, Escola Superior de Agricultura Luiz de Queiroz, Universidade de São Paulo, São Paulo, Brazil

¹⁷ Universidade de São Paulo, São Paulo, Brazil

¹⁸ International Institute for Sustainability IIS-Rio, Rio, Brazil

¹⁹ Universidade Federal do Paraná, Curitiba, Brazil

²⁰ Coordenação de Biodiversidade, Instituto Nacional de Pesquisas da Amazônia - INPA, Amazônia, Brazil

²¹ Ministry of Environment and Natural History, Orquidario and Botanical Garden "Comitán", Chiapas, Mexico

²² Medellin Botanical Garden, Medellín, Colombia

²³ Centro Zamorano de Biodiversidad, Departamento de Ambiente y Desarrollo, Escuela Agrícola Panamericana, Francisco Morazan, Honduras

Submitted 6 January 2023

Accepted 12 May 2023

Published 19 June 2023

Corresponding author

Sven Batke, sven.batke@edgehill.ac.uk

Academic editor

Victoria Sosa

Additional Information and
Declarations can be found on
page 12

DOI 10.7717/peerj.15500

© Copyright
2023 Pie et al.

Distributed under
Creative Commons CC-BY 4.0

OPEN ACCESS

ABSTRACT

Understanding the mechanisms driving community assembly has been a major focus of ecological research for nearly a century, yet little is known about these mechanisms in commensal communities, particularly with respect to their historical/evolutionary components. Here, we use a large-scale dataset of 4,440 vascular plant species to

explore the relationship between the evolutionary distinctiveness (ED) (as measured by the 'species evolutionary history' (SEH)) of host species and the phylogenetic diversity (PD) of their associated epiphyte species. Although there was considerable variation across hosts and their associated epiphyte species, they were largely unrelated to host SEH. Our results mostly support the idea that the determinants of epiphyte colonization success might involve host characteristics that are unrelated to host SEH (e.g., architectural differences between hosts). While determinants of PD of epiphyte assemblages are poorly known, they do not appear to be related to the evolutionary history of host species. Instead, they might be better explained by neutral processes of colonization and extinction. However, the high level of phylogenetic signal in epiphyte PD (independent of SEH) suggests it might still be influenced by yet unrecognized evolutionary determinants. This study highlights how little is still known about the phylogenetic determinants of epiphyte communities.

Subjects Biodiversity, Ecology, Evolutionary Studies, Genetics, Plant Science

Keywords Evolution, Commensalism, Neotropics, Trees, Forests, Distinctiveness

INTRODUCTION

The study of community assembly mechanisms has a long tradition in ecology that has provided valuable insights into the organization of ecological communities (*Gleason, 1927; Clements, 1936; Diamond, 1975; Fukami, 2015*). Nevertheless, an evolutionary perspective has only been added recently (*Emerson & Gillespie, 2008; Narwani et al., 2015*). Mutualistic, and/or parasitic community relationships have been intensively studied in animals and plants (*Rezende et al., 2007b; Krasnov, Poulin & Mouillot, 2011*), however, commensal communities have been overlooked. Most likely, the scarcity of studies on commensal organisms might be due to the opportunistic nature of their interactions. Indeed, that property could suggest that these interactions are less affected by processes at evolutionary timescales.

Regardless of the type of interaction, there are two main approaches to study community assembly in an evolutionary perspective: phylogenetic diversity and community phylogenetics (*Faith, 1992; Webb et al., 2002*). Phylogenetic diversity (PD) is a measure of the total amount of phylogenetic distance between species in a community (*Faith, 1992*). Throughout the text we refer to PD as the general concept of describing the phylogenetic history present in a set of taxa, rather than the specific metric proposed by *Faith (1992)*. Although PD was initially seen as a tool for conservation prioritization, later studies have found that PD plays a role in ecosystem stability (*Cadotte, Dinnage & Tilman, 2012*) and might also be used to predict ecosystem functions (*Srivastava et al., 2012; Cadotte, 2015*). Community phylogenetics (*Webb et al., 2002; Swenson et al., 2006*) on the other hand, seeks to understand how the phylogenetic relationships of sets of local species might reflect sorting mechanisms. These sorting mechanisms can include interspecific competition or environmental filtering that act on their regional species pools (*Pearse et al., 2014; Kraft et al., 2015*). Although these two approaches are clearly related, they provide complementary

views on the role of historical processes on community organization. Even though these concepts are complementary, they tend to be used in different contexts through the scientific literature and are rarely explored in the same study.

Here we explore patterns of PD in vascular epiphytes and their hosts. Epiphytes are plants that grow on other plants for physical support but are not parasitic (Benzing, 2008; Zotz, 2013a; Zotz, 2013b). They contribute about 10% of global vascular plant diversity (Zotz et al., 2021b) and account for up to 23–27% of the diversity of plants regionally, or nationally, across the Neotropics (Cascante-Marín & Nivia-Ruíz, 2013; Batke, Cascante-Marín & Kelly, 2016). Epiphytes are most diverse in tropical regions, especially in the Neotropics (Zotz, 2005; Suissa, Sundue & Testo, 2021) and there are extreme cases of high abundance where they can cover most of the surface area of the host tree. Hundreds of papers have been published since the late 1800s describing the ecology, biogeography, taxonomy, and population genetic structure of epiphytes (Zotz & Hietz, 2001; Zotz, 2013a; Menini Neto et al., 2016; Zotz, Hietz & Einzmann, 2021c; Chaves et al., 2021; Taylor et al., 2022; Marcusso et al., 2022). Many studies have related within and between canopy epiphyte assemblages to environmental and structural properties of the host tree (Morales-Linares et al., 2020; Victoriano-Romero et al., 2020) and also focused more recently on epiphyte-host tree commensalistic networks (Burns, 2007; Burns & Zotz, 2010; Silva et al., 2010; Piazzon, Larrinaga & Santamaría, 2011; Ceballos, Chacoff & Malizia, 2016; Francisco et al., 2018; Francisco et al., 2019; Naranjo et al., 2019; Zotarelli et al., 2019; Cortés-Anzúres et al., 2020). Some studies have shown that host-tree characteristics can be important in local epiphyte assemblages (see Wagner, Mendieta-Leiva & Zotz, 2015), however, we do not know whether host PD is a suitable predictor of epiphyte PD. However, our understanding of the drivers of epiphyte PD is sorely limited, with only two studies published to date, with only one investigating the relationship between host and epiphyte PD. For example, the study by Kluge & Kessler (2011) focused specifically on the phylogenetics of epiphytic fern communities (but not host species) in two locations in Costa Rica and found evidence of phylogenetic clustering that was consistent with environmental filtering in stressful conditions (drought at low elevations and frost at high elevations), whereas milder conditions were associated with overdispersion, possibly due to interspecific competition and character displacement. The only study that investigated host and epiphyte PD in a coastal area of Veracruz, Mexico, found that perturbation did not have an effect (Aguirre et al., 2010). However, they found that palms harbored a more phylogenetically diverse epiphyte community than other host trees. However, this study was limited taxonomically and geographically (a total of nine families, 16 genera and 21 species of epiphyte), making generalisation regarding the phylogenetic component of host-epiphyte associations difficult.

Here, we use a large-scale dataset of 4,440 species of vascular epiphytes and host plants to test three alternative hypotheses regarding epiphyte PD and their host trees. First, a host tree that is evolutionarily unique might possess ecological and structural characteristics that are uncommon (e.g., very acute branch angles or flaky and shedding bark), which might hamper the colonization of epiphytes, leading to a low PD of its associated epiphyte communities. Likewise, host species with low evolutionary uniqueness would tend to

share characteristics with other co-occurring species, thus allowing for the same epiphyte assemblages to colonize many host species. Our first hypothesis is that this scenario would result in a negative relationship between epiphyte PD and host plant evolutionary distinctiveness (ED) (Fig. 1, see the methods section below for a more precise definition of PD and ED). Our second hypothesis is that an evolutionarily unique host plant would have been available for colonization for a long time, allowing ample time for epiphytes to be selected to colonize it by natural selection, whereas relatively young lineages could show novel adaptations that could prevent some epiphyte species from colonizing them (Fig. 1). In this second scenario, host plant evolutionary distinctiveness would be positively associated with the PD of its epiphyte community. Finally, our third hypothesis, the determinants of host suitability for colonization by epiphytes might be unrelated to its phylogenetic history, such that no significant relationship would be found between host tree evolutionary distinctiveness and the PD of its epiphyte community. It might not be evolutionary history that is important, and there is very little evidence for host specificity in epiphytes, suggesting that host characteristics are affecting epiphyte communities more. Studies found rather little host specificity for epiphytes (Wagner, Mendieta-Leiva & Zotz, 2015); thus it is also predicted that phylogenetic history might also not be of importance. To the best of our knowledge, none of these scenarios have explicitly been tested before.

MATERIALS & METHODS

A database of epiphytes ('true' epiphytes, hemiepiphytes and nomadic vines sensu (Zotz, 2013a; Zotz et al., 2021a) and their host plants (e.g., trees, palms, shrubs, tree ferns) was obtained in October 2021 from the Epiphyte Inventory Database (EpIG-DB), a database of vascular epiphyte assemblages in the Neotropics (Mendieta-Leiva et al., 2020). EpIG-DB contains epiphyte assemblages from 18,148 relevés sampled within 687 forest plots across the Neotropics. We extracted all epiphyte (2,890 species) and host (1,551 species) related information for 4,441 species from the EpIG-DB database. The information in the extracted database included: sample location (incl. latitude and longitude), host species, diameter at breast height (DBH) and total height, and epiphyte species. We corrected manually any taxonomic issues using Zotz et al. (2021a); Zotz et al. (2021b), the Plant List (<http://www.theplantlist.org/>), and Tropicos (<http://www.tropicos.org/>). We omitted records only identified to the family level, but kept the species identified to the genus level. This compilation generated an incidence matrix, reporting which epiphytes are present on each host plant. Given that some host and epiphyte names appeared more than once in the original dataset, we combined the rows/columns in the incidence matrix that included the same species. For the other characters used here, we averaged them across multiple records of the same species.

Although considerable advances have been made in recent decades, we are still far from a complete species-level phylogeny of all plants, especially with vascular epiphytes. Consequently, plant studies often used family-level phylogenetic information, particularly through the use of the 'phylomatic' tool (Webb & Donoghue, 2004). In this study, we employed an alternative approach that used phylogenetic imputation to generate

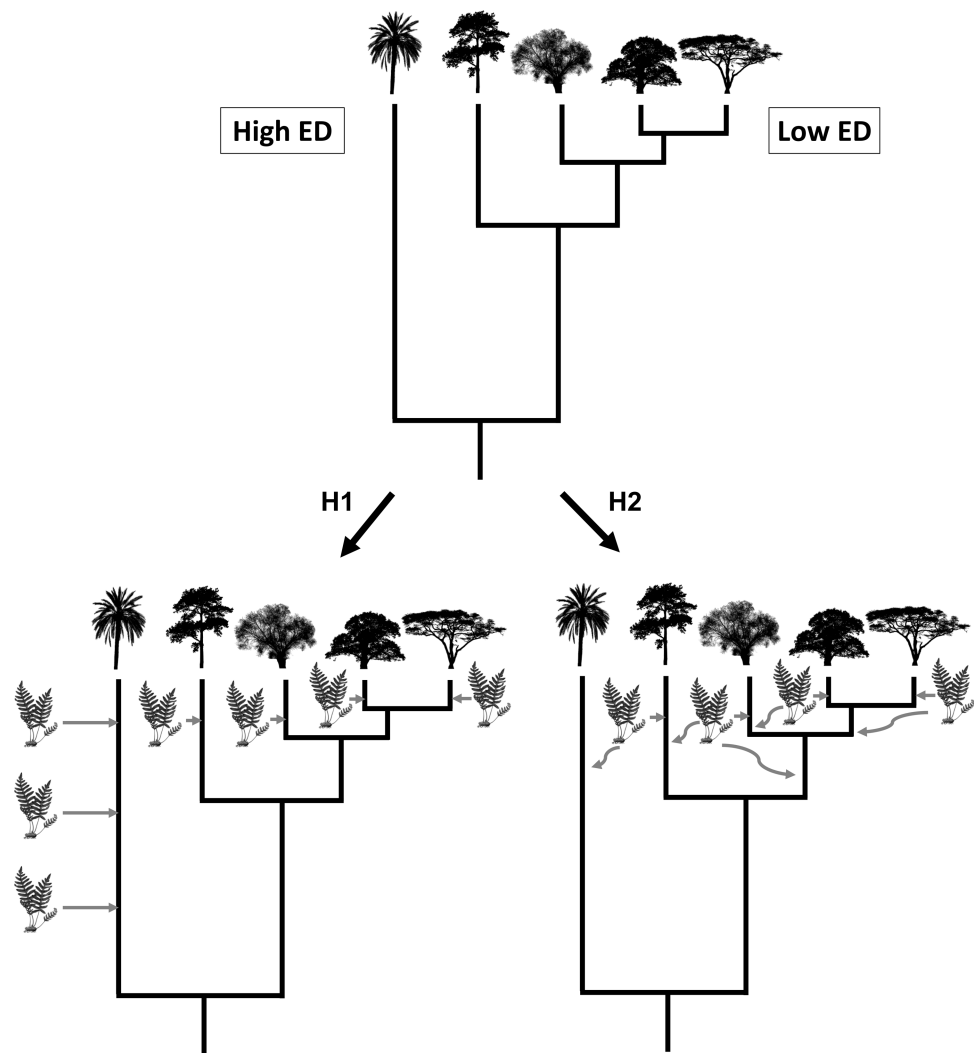


Figure 1 Visualisation of hypothesis one (H1) and two (H2). The silhouette of the fern represents epiphyte species and the tree silhouettes different lineages of trees. ED refers to evolutionary distinctiveness.

Full-size [DOI: 10.7717/peerj.15500/fig-1](https://doi.org/10.7717/peerj.15500/fig-1)

alternative, species-level phylogenies of the species in our dataset known as the Taxonomic Addition for Complete Trees (TACT; [Chang, Rabosky & Alfaro \(2020\)](#)). We began by establishing a backbone tree using the phylogenies of [Qian & Zhang \(2014\)](#) for seed plants and [Testo & Sundue \(2016\)](#) for ferns. In both phylogenies, we pruned all families that were not present in our dataset. We had to exclude 63 species ([Table S1](#)) of plants from the incidence matrix described above, given that their families were not present in any of the backbones. We joined the two trees by placing the phylogeny of the seed plants at the tips of the ferns tree corresponding to the seed plants, such that the fern tree includes some seed plants as the outgroup. We then used taxonomic information to place species within genera and genera within families based on a model of lineage diversification (see [Chang, Rabosky & Alfaro \(2020\)](#) for more details). We generated 100 alternative phylogenetic trees that included all 4,441 species in our dataset. All analyses were repeated with this set of

phylogenetic trees to account for phylogenetic uncertainty. All analysis were performed using R 4.1.1 (*R Core Team, 2021*).

There are many alternative metrics to describe phylogenetic distinctiveness and diversity (*Vellend et al., 2011*). For host plants, we chose the 'species evolutionary history' (SEH) metric of *Redding & Mooers (2006)*, instead of using its modification known as evolutionary distinctiveness (ED) of *Redding et al. (2008)*. Both seek to assess the portion of a phylogenetic diversity in a tree attributable to any particular species, but they differ in their calculations: in SEH, shared branches are apportioned equally among daughter clades ('equal splits'), whereas in ED, shared branches are apportioned equally among descendant species ('fair proportions'). However, simulations have shown that SEH and ED are highly correlated (*Vellend et al., 2011*), therefore we only used SEH here. For the associated epiphytes, we used the mean pairwise distance (MPD), as it can be more sensitive under some conditions, to detect non-random community assembly than the alternative, distance-based metrics (*Vellend et al., 2011*). We calculated SEH for the host plants and MPD for the epiphytes using the `evol.distinct` and `mpd` functions, respectively, in the R package 'picante' 1.8.2 (*Kembel et al., 2010*).

We used phylogenetic generalized least squares regression (PGLS) to test the relationships between the host and epiphyte metrics of the available data for all species, namely: (i) SEH of the host plants as the predictor variable and MPD of the epiphytes present in each host plant as the response variable; (ii) SEH of the host plants as the predictor variable and the number of epiphyte species in the host plant as the response variable; (iii) mean latitudinal position of host plants as the predictor variable and MPD of the epiphytes as the response variable; and (iv) mean DBH of the host plants as the predictor variable and MPD of the epiphytes as the response variable. PGLS analyses were performed using the `pgls` function in the R package 'caper' 1.0.1 (*Orme et al., 2018*), with the phylogenetic signal of the residuals being estimated during the regression. We chose SEH and MPD metrics because simulations demonstrated that they were robust to incomplete taxonomic sampling (data not shown). In addition, we also evaluated the phylogenetic signal of MPD of the epiphytes in each host, mean latitudinal position and mean DBH of the host plants, both using Pagel's λ (*Pagel, 1999*) and *Blomberg, Garland Jr & Ives (2003)* K with `phylosig` function in the R package 'phytools' 0.7–90 (*Revell, 2012*). All variables with a skewed distribution were log-transformed prior to the analyses. All R scripts and the database have been provided within the supplementary material.

The R script for our analysis, all relevant datafiles and a supporting analysis metadata file can be found here: https://github.com/fernandacaron/epi_evol (<https://doi.org/10.5281/zenodo.7714935>).

RESULTS

Epiphytes are found in several independent lineages across the plant tree of life, with only a small number of potential reversals back to the terrestrial habit. A visual example of one topology generated using TACT is shown in [Fig. 2](#).

The distribution of SEH was highly skewed across host plants ([Fig. 3A](#)). Most species had low to intermediate levels of SEH, with the exception of a few lineages such as *Cupressus*

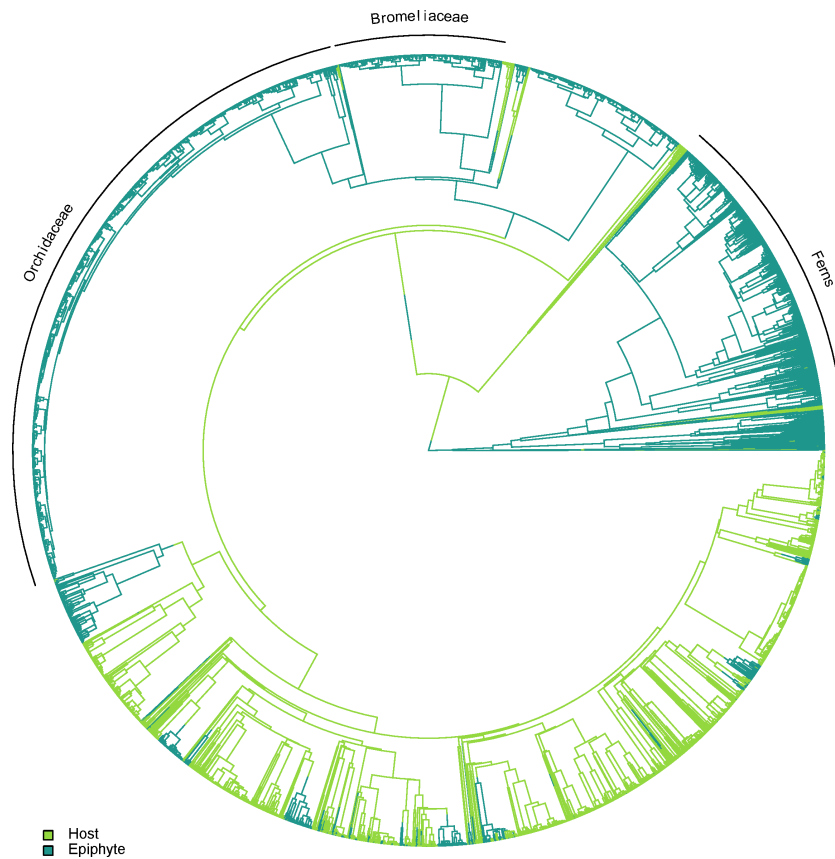


Figure 2 One of the alternative topologies representing the phylogenetic relationships of vascular epiphytes and their hosts in our dataset. Three major epiphytes groups are highlighted, namely ferns, bromeliads and orchids.

Full-size  DOI: [10.7717/peerj.15500/fig-2](https://doi.org/10.7717/peerj.15500/fig-2)

lusitanica Mill. and the tree fern *Dicksonia sellowiana* Hook. that showed considerably higher SEH. We found that the number of epiphyte species per host species was highly skewed (Fig. 3B), varying from a minimum of one species per host species, to a maximum of 163 in the case of *Alchornea triplinervia* (Spreng.) Müll. Arg.. On the other hand, the distribution of epiphyte MPD was largely unimodal (Fig. 3C).

We found no evidence for a relationship between host SEH and the phylogenetic diversity (as measured by MPD) of the host's associated epiphyte species (Fig. 4, Table 1). This result is unlikely to be due to the confounding effects of latitude, host DBH, or the total number of epiphyte species associated with each host species (Fig. 4, Table 1). One might suppose that the absence of a relationship between host SEH and the epiphyte MPD could be because the latter might be evolutionarily labile. However, there is significant phylogenetic signal in epiphyte MPD, as well as in latitude and host DBH (Table 2).

DISCUSSION

Our results demonstrate that the MPD of the vascular epiphyte species associated with a given host plant species is largely independent of its evolutionary distinctiveness. Before

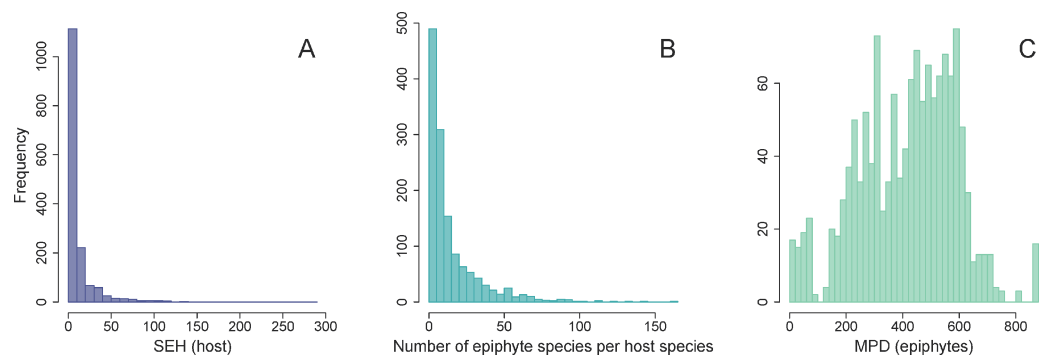


Figure 3 Frequency distributions of host and epiphyte metrics. Frequency distribution of host SEH (species evolutionary history) (A), the number of vascular epiphyte species associated with each host (B), and their associated MPD (mean phylogenetic distance) (C).

Full-size [DOI: 10.7717/peerj.15500/fig-3](https://doi.org/10.7717/peerj.15500/fig-3)

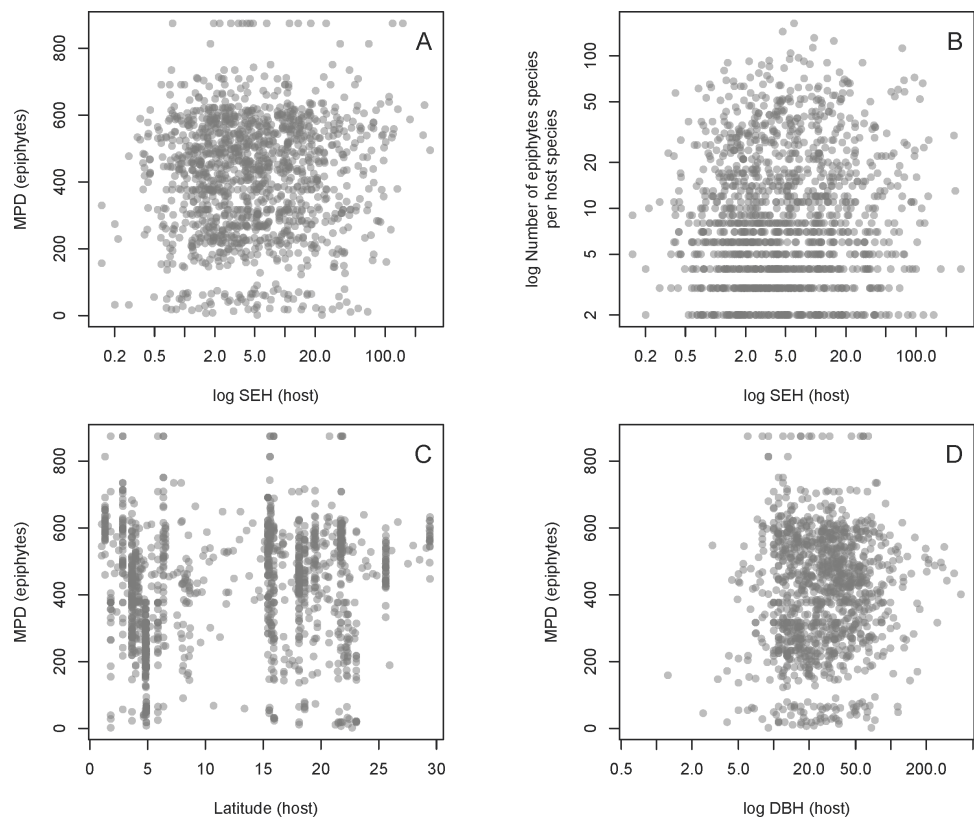


Figure 4 Relationships between the host and epiphyte metrics. Relationships of host SEH (species evolutionary history) against MPD (mean phylogenetic distance) (A) and the number of vascular epiphyte species per host (B), as well as two potential confounding effects on MPD, namely absolute latitude (C) and the logarithm of host diameter at breast height (DBH) (D). See text for details.

Full-size [DOI: 10.7717/peerj.15500/fig-4](https://doi.org/10.7717/peerj.15500/fig-4)

Table 1 Phylogenetic generalized least squares (PGLS) analyses of the proposed models. Response variables correspond to the number and the mean pairwise distance (MPD) of epiphytes in each host, and predictor variables correspond to species evolutionary history (SEH), absolute latitude, and diameter at breast height (DBH) of host plants.

Response	Predictor	N	Slope	SE	t	P	R ²
log(number of epiphyte species)	log(SEH)	1,347	−0.01 (−0.4–0.6)	0.1 (0.1–0.8)	−0.06 (−2.9–5.6)	0.6 (0–0.9)	0 (0–0.02)
MPD	log(SEH)	1,347	3.8 (−65.9–99.2)	22.5 (14.1–135.1)	0.1 (−3.8–7.1)	0.5 (0–0.9)	0 (0–0.07)
	Latitude	1,347	1.9 (−17.3–27.2)	0.7 (0.1–3.6)	2.8 (−41.9–133.2)	0 (0–0.9)	0.02 (0–0.9)
	DBH	1,160	26.8 (−330.5–833.5)	6.9 (2.1–27.6)	3.8 (−41.02–81.9)	0 (0–0.9)	0.03 (0–0.9)

Notes.

Estimates are provided as medians and ranges across 100 alternative topologies.

Table 2 Phylogenetic signal of mean pairwise distance (MPD) of the epiphytes occurring in each host, and latitude and diameter at breast height (DBH) of host plants.

Trait	N	λ	logL	logL0	P	K	P
MPD	1,347	0.2 (0.2–0.3)	−8,803.3 (−8,851.8–8,698.4)	−8,817.5 (−8,867.5–8,714.1)	0 (0–0)	0.002 (0–0.004)	0.02 (0.001–0.9)
Latitude	1,553	0.6 (0.6–0.7)	−5,296.8 (−5,305.7–5,286.7)	−5,430.2 (−5,430.2–5,430.2)	0 (0–0)	0.002 (0–0.004)	0.001 (0.001–0.8)
DBH	1,339	0.4 (0.3–0.5)	−6,577.5 (−6,583.1–6,571.2)	−6,616.2 (−6,616.2–6,616.2)	0 (0–0)	0.001 (0–0.003)	0.3 (0.009–0.9)

Notes.

Estimates are provided as medians and ranges across 100 alternative topologies.

exploring the implications of these results, it is important to revisit the rationale of the tested hypotheses to ensure that they are reasonable. First, we hypothesized a negative relationship between host ED and epiphyte PD, given that a host tree that is evolutionarily unique (*i.e.*, on a long phylogenetic branch) may have uncommon characteristics that could make it less likely to be colonized by epiphytes. This rationale is based on the widespread observation that functional traits are often well approximated by a Brownian-like process, with trait variance evolving at a relatively constant rate over time. One can envision a geographical region in which two sister groups of host plants are found—one with a single species and the other that is species-rich. Under a scenario of relatively constant rate of host plant trait evolution, the members of the second group would tend to resemble each other, causing their functional traits to be more prevalent in that region. As epiphytes become adapted to their local environments, they would tend to be exposed most often to the traits found in the most species-rich host group. Alternatively, the sister group with only one species could display relatively uncommon traits, leading to some level of filtering of potential epiphytes, leading to low PD. Second, we might envision a scenario in which an evolutionarily unique host plant would have been available for colonization for a long time, allowing ample time to be colonized by epiphytes, whereas relatively young lineages could show novel trait combinations that could hamper epiphyte colonization. If true, one

could predict a positive association between host plant evolutionary distinctiveness and the PD of its epiphyte community. Although this scenario would be more easily understood if evolutionarily distinct lineages show relatively low rates of evolution (as in the case of many relictual lineages), that is not necessarily a requirement. For instance, epiphytes could more easily track the evolution of a single evolutionary lineage than a set of closely related lineages that differ to varying degrees, due to potential trade-offs when becoming adapted to phenotypically variable host plants. Finally, our third hypothesis—the determinants of host suitability for colonization by epiphytes might be unrelated to its phylogenetic history, such that no significant relationship would be found between host tree evolutionary distinctiveness and the PD of its epiphyte community—serves as a null model in relation to the first two hypotheses. Although in hindsight this reasoning might sound simplistic, it is usually worth starting simple and adding complexity to hypotheses as the evidence requires it.

Given the opportunistic nature of commensal communities, one might interpret our results as an indication that interspecific host variation in their epiphyte PD is largely due to neutral/stochastic mechanisms unrelated to processes at large evolutionary timescales as predicted by our third hypothesis. Although we do not reject the notion of the important role of neutral mechanisms, it is important to keep in mind that there was substantial evidence for phylogenetic signals in epiphyte PD across different host species (Table 2). In other words, if a host plant has a phylogenetically diverse set of associated epiphytes, closely related host species are also likely to show high epiphyte PD. Some studies have uncovered proximate mechanisms that might influence the presence of different epiphyte species, such as habitat conditions, availability of propagules, their dispersal characteristics and requirements for seedling establishment (Cascante-Marín *et al.*, 2006; Burns, 2007; Ceballos, Chacoff & Malizia, 2016; Francisco *et al.*, 2018; Francisco *et al.*, 2019; Zotarelli *et al.*, 2019), as well as the physical characteristics of the host plants (Sanger & Kirkpatrick, 2014). One might therefore hypothesize that these properties of host plants might predict epiphyte PD in a way that is independent of host evolutionary distinctiveness. Although we concede that these arguments are still highly speculative, the scarcity of other empirical studies on drivers of epiphyte PD still precludes more precise predictions. However, we hope that our results will stimulate more research on commensal PD and its determinants.

Although we present the most comprehensive test of a determinant of epiphyte PD to date, there are a few important caveats. First, although the plant phylogenies we used included many species, they were far from complete. However, although incomplete taxonomic sampling might indeed affect estimates of SEH, the missing species are likely to occur in specific geographical regions that are far from the occurrence records included in our dataset, and therefore would not be particularly relevant, given the rationale behind the hypotheses tested in our study (Fig. S1). Another consequence of incomplete taxon sampling for estimating SEH is that estimates from incomplete trees are necessarily lower than those of complete trees because of the way this statistic is computed. However, estimates from pruned trees are still significantly correlated to those of complete trees ($\rho = 0.46$, $p < 2.2e-16$), although imperfectly, so that our conclusions should be revisited once improved phylogenetic knowledge is improved over time. Finally, although our

broad-scale analysis did not find a relationship between the MPD of the vascular epiphyte species and the evolutionary distinctness of host plant species, it might still take place at smaller geographical scales.

Since [Burns \(2007\)](#), many studies investigate the commensal relationship between epiphytes and its host species from tropical to temperate forests. Differently from parasitic relationship, such as those from mistletoes and lianas ([Blick & Burns, 2009](#)), the epiphytic commensal ones showed nested and low specialization, based only on the trees abundance (or density), size (height and diameter) and/or bark traits (wood density and bark texture) ([Burns, 2007](#); [Silva et al., 2010](#); [Sáyago et al., 2013](#); [Ceballos, Chacoff & Malizia, 2016](#); [Francisco et al., 2018](#); [Francisco et al., 2019](#); [Zotarelli et al., 2019](#); [Francisco et al., 2021](#)). These studies suggest that the epiphytes are selecting its host trees for colonization more based on specific host traits, such as area/habitat opportunity, a greater number of microenvironment and the time available for colonization, rather than specific host species. Although [Callaway et al. \(2002\)](#) and [Wagner, Mendieta-Leiva & Zotz \(2015\)](#) suggested that phorophyte specificity could be more evident in suboptimal habitats, some studies suggested that even in these habitats this relationship showed low specificity. In Brazilian Inselbergs, despite the low diversity of potential phorophytes, instead of species preferences, [Francisco et al. \(2018\)](#) found that epiphyte richness was influenced by the phorophyte diameter.

As mentioned above, the overall influence of the tree host traits on epiphyte assemblage diversity is complex and specific. Tree size (e.g., DBH ([Zotz & Schultz, 2008](#)); height ([Flores-Palacios & García-Franco, 2006](#); [Fayle et al., 2009](#))) for example, showed a positive influence on epiphyte species richness and abundance in biomes with higher epiphyte diversity. Larger host trees suggest more area available to epiphyte establishment ([Gradstein et al., 2003](#); [Werner et al., 2012](#)), reducing the epiphyte competition, and consequently harboring more epiphyte species. Also, tallest trees could have a vertical stratification of environmental conditions on the tree canopy (e.g., light, moisture) ([Murakami et al., 2022](#)), providing a highest diversity of microhabitats for a wider range of epiphytes species ([Krömer, Kessler & Gradstein, 2007](#); [Fayle et al., 2009](#); [Dislich & Mantovani, 2016](#)). However, in disturbed habitats (e.g., pasture, secondary forest), showing lower epiphyte diversity, few dominant drought-tolerant species, such as atmospheric *Tillandsia* or poikilohydric polypodioid ferns, are able to occur on host trees ([Hietz, Buchberger & Winkler, 2006](#); [Larrea & Werner, 2010](#); [Poltz & Zotz, 2011](#); [Krömer, García-Franco & Toledo-Aceves, 2014](#); [Einzmann & Zotz, 2017](#); [Elias et al., 2021](#); [Trejo-Cruz et al., 2021](#)). Even tree size showing a positive influence on epiphyte assemblage species richness as in the forest, other traits (e.g., bark rugosity) are equally, or even more important, to the host harbor higher epiphyte diversity ([Poltz & Zotz, 2011](#)). [Elias et al. \(2021\)](#) showed that larger pasture trees tend to harbor more epiphyte species and individuals. However, only large hosts with rugose bark, harbored drought-tolerant epiphyte species and more forest specialist epiphytes compared to smaller trees.

Our study suggests that neutral processes might dominate phylogenetic community assemblages of epiphytes, and is consistent with previous studies ([Ceballos, Chacoff & Malizia, 2016](#); [Zotarelli et al., 2019](#)). Dispersal limitation, among neutral processes (random

extinction and speciation, and migration), is an important factor in community assembly, despite variation in environmental conditions (Hubbell, 2006). The commensalistic relationship involving abundance and phorophyte traits (e.g., height, diameter and bark types) suggest that the random encounters of individuals (regardless of the species to which they belong) concurring in space and time, gradually built up these communities (Sáyago et al., 2013).

Although significant phylogenetic signal is not uncommon on mutualistic and antagonistic interactions (Rezende, Jordano & Bascompte, 2007a; Rezende et al., 2007b; Gómez, Verdú & Perfectti, 2010; Eklöf et al., 2012), we did not find evidence for it in our analysis of epiphyte-host interactions. Two other studies on commensal interactions, but within specific families, such as epiphytic orchid- (Brazil; Silva et al. (2010)) and bromeliad- (Mexico; Sáyago et al. (2013)) host tree networks, also did not find evidence for phylogenetic signal. According to Thompson (2005), natural selection acting on epiphyte-host tree networks may not tend to favor convergence of traits among the interacting species, only among epiphytes. Although Sáyago et al. (2013) suggested that the lack of support for phylogenetic signal could be due to the use of small phylogenies, that is unlikely to be the case in our dataset. Nevertheless, we found evidence for phylogenetic signal in epiphyte PD across different host species. It is important to note that the phylogenetic signal in epiphyte PD might be due to phylogenetic autocorrelation at parts of the tree, such as (i) within or among food web compartments (Rezende et al., 2009), (ii) according to different species roles in food webs (Stouffer et al., 2012) and/or (iii) within particular clades (Gómez, Verdú & Perfectti, 2010).

CONCLUSIONS

In conclusion our study demonstrated that the PD of an epiphyte community is unrelated to the host evolutionary distinctiveness. This could imply that mechanisms operating at ecological timescales might be more important in epiphyte community assembly and exploring those mechanisms might shed more light of the local, regional, global, and commensal biodiversity patterns. To the best of our knowledge, this is the first study that underscores the utility of using community phylogenetics and phylogenetic diversity to try and understand community assembly mechanisms.

ACKNOWLEDGEMENTS

We would like that all researchers who contributed to the Epiphyte Inventory Group database.

ADDITIONAL INFORMATION AND DECLARATIONS

Funding

The authors received no funding for this work.

Competing Interests

Marcio Pie is an Academic Editor for PeerJ.

Author Contributions

- Marcio R. Pie conceived and designed the experiments, performed the experiments, analyzed the data, prepared figures and/or tables, authored or reviewed drafts of the article, and approved the final draft.
- Fernanda S. Caron conceived and designed the experiments, performed the experiments, analyzed the data, prepared figures and/or tables, authored or reviewed drafts of the article, and approved the final draft.
- Thom Dallimore conceived and designed the experiments, analyzed the data, prepared figures and/or tables, authored or reviewed drafts of the article, and approved the final draft.
- Helena Einzmann conceived and designed the experiments, authored or reviewed drafts of the article, and approved the final draft.
- Peter Hietz conceived and designed the experiments, authored or reviewed drafts of the article, and approved the final draft.
- Michael Kessler conceived and designed the experiments, authored or reviewed drafts of the article, and approved the final draft.
- Flavio Nunes Ramos conceived and designed the experiments, authored or reviewed drafts of the article, and approved the final draft.
- João Pedro Costa Elias conceived and designed the experiments, authored or reviewed drafts of the article, and approved the final draft.
- Holger Kreft conceived and designed the experiments, authored or reviewed drafts of the article, and approved the final draft.
- Thorsten Krömer conceived and designed the experiments, authored or reviewed drafts of the article, and approved the final draft.
- Maria Judith Carmona Higueta conceived and designed the experiments, authored or reviewed drafts of the article, and approved the final draft.
- Daniel Zuleta conceived and designed the experiments, authored or reviewed drafts of the article, and approved the final draft.
- Giesta Machado conceived and designed the experiments, authored or reviewed drafts of the article, and approved the final draft.
- André Luís de Gasper conceived and designed the experiments, authored or reviewed drafts of the article, and approved the final draft.
- Gerhard Zotz conceived and designed the experiments, authored or reviewed drafts of the article, and approved the final draft.
- Glenda Mendieta Leiva conceived and designed the experiments, authored or reviewed drafts of the article, and approved the final draft.
- Derio Antonio Jimenez-Lopez conceived and designed the experiments, authored or reviewed drafts of the article, and approved the final draft.
- Alex Fernando Mendes conceived and designed the experiments, authored or reviewed drafts of the article, and approved the final draft.
- Pedro Brancalion conceived and designed the experiments, authored or reviewed drafts of the article, and approved the final draft.

- Sara Mortara conceived and designed the experiments, authored or reviewed drafts of the article, and approved the final draft.
- Christopher Thomas Blum conceived and designed the experiments, authored or reviewed drafts of the article, and approved the final draft.
- Mariana Victória Irumé conceived and designed the experiments, authored or reviewed drafts of the article, and approved the final draft.
- Nayely Martínez-Meléndez Nayely conceived and designed the experiments, authored or reviewed drafts of the article, and approved the final draft.
- Ana Maria Benavides conceived and designed the experiments, authored or reviewed drafts of the article, and approved the final draft.
- Carlos Renato Boelter conceived and designed the experiments, authored or reviewed drafts of the article, and approved the final draft.
- Sven Batke conceived and designed the experiments, analyzed the data, prepared figures and/or tables, authored or reviewed drafts of the article, and approved the final draft.

Data Availability

The following information was supplied regarding data availability:

The R script for our analysis, all relevant datafiles and a supporting analysis metadata file are available at GitHub and Zenodo:

https://github.com/fernandacaron/epi_evolution.

Sven Batke (corresponding author). (2023). Phylogenetic diversity and the structure of host-epiphyte interactions. Zenodo. <https://doi.org/10.5281/zenodo.7714935>.

Supplemental Information

Supplemental information for this article can be found online at <http://dx.doi.org/10.7717/peerj.15500#supplemental-information>.

REFERENCES

- Aguirre A, Guevara R, García M, López J. 2010.** Fate of epiphytes on phorophytes with different architectural characteristics along the perturbation gradient of *Sabal mexicana* forests in Veracruz, Mexico. *Journal of Vegetation Science* **21**:6–15 DOI [10.1111/j.1654-1103.2009.01131.x](https://doi.org/10.1111/j.1654-1103.2009.01131.x).
- Batke S, Cascante-Marin A, Kelly D. 2016.** Epiphytes in Honduras: a geographical analysis of the vascular epiphyte flora and its floristic affinities to other Central American countries. *Tropical Ecology* **57**:663–675.
- Benzing DH. 2008.** *Vascular epiphytes: general biology and related biota*. Cambridge: Cambridge University Press.
- Blick R, Burns K. 2009.** Network properties of arboreal plants: are epiphytes, mistletoes and lianas structured similarly? *Perspectives in Plant Ecology, Evolution and Systematics* **11**:41–52 DOI [10.1016/j.ppees.2008.10.002](https://doi.org/10.1016/j.ppees.2008.10.002).
- Blomberg SP, Garland Jr T, Ives AR. 2003.** Testing for phylogenetic signal in comparative data: behavioral traits are more labile. *Evolution* **57**:717–745.

- Burns K. 2007.** Network properties of an epiphyte metacommunity. *Journal of Ecology* **95**:1142–1151 DOI [10.1111/j.1365-2745.2007.01267.x](https://doi.org/10.1111/j.1365-2745.2007.01267.x).
- Burns K, Zotz G. 2010.** A hierarchical framework for investigating epiphyte assemblages: networks, meta-communities, and scale. *Ecology* **91**:377–385 DOI [10.1890/08-2004.1](https://doi.org/10.1890/08-2004.1).
- Cadotte MW. 2015.** Phylogenetic diversity–ecosystem function relationships are insensitive to phylogenetic edge lengths. *Functional Ecology* **29**:718–723 DOI [10.1111/1365-2435.12429](https://doi.org/10.1111/1365-2435.12429).
- Cadotte MW, Dinnage R, Tilman D. 2012.** Phylogenetic diversity promotes ecosystem stability. *Ecology* **93**:223–233 DOI [10.1890/11-0426.1](https://doi.org/10.1890/11-0426.1).
- Callaway RM, Reinhart KO, Moore GW, Moore DJ, Pennings SC. 2002.** Epiphyte host preferences and host traits: mechanisms for species-specific interactions. *Oecologia* **132**:221–230 DOI [10.1007/s00442-002-0943-3](https://doi.org/10.1007/s00442-002-0943-3).
- Cascante-Marín A, Nivia-Ruíz A. 2013.** Neotropical flowering epiphyte diversity: local composition and geographic affinities. *Biodiversity and Conservation* **22**:113–125 DOI [10.1007/s10531-012-0404-1](https://doi.org/10.1007/s10531-012-0404-1).
- Cascante-Marín A, Wolf JH, Oostermeijer JGB, Den Nijs J, Sanahuja O, Durán-Apuy A. 2006.** Epiphytic bromeliad communities in secondary and mature forest in a tropical premontane area. *Basic and Applied Ecology* **7**:520–532 DOI [10.1016/j.baae.2005.10.005](https://doi.org/10.1016/j.baae.2005.10.005).
- Ceballos SJ, Chacoff NP, Malizia A. 2016.** Interaction network of vascular epiphytes and trees in a subtropical forest. *Acta Oecologica* **77**:152–159 DOI [10.1016/j.actao.2016.10.007](https://doi.org/10.1016/j.actao.2016.10.007).
- Chang J, Rabosky DL, Alfaro ME. 2020.** Estimating diversification rates on incompletely sampled phylogenies: theoretical concerns and practical solutions. *Systematic Biology* **69**:602–611 DOI [10.1093/sysbio/syz081](https://doi.org/10.1093/sysbio/syz081).
- Chaves CJN, Leal BSS, Rossatto DR, Berger U, Palma-Silva C. 2021.** Deforestation is the turning point for the spreading of a weedy epiphyte: an IBM approach. *Scientific Reports* **11**:1–14 DOI [10.1038/s41598-020-79139-8](https://doi.org/10.1038/s41598-020-79139-8).
- Clements FE. 1936.** Nature and structure of the climax. *Journal of Ecology* **24**:252–284 DOI [10.2307/2256278](https://doi.org/10.2307/2256278).
- Cortés-Anzúres BO, Corona-López AM, Damon A, Mata-Rosas M, Flores-Palacios A. 2020.** Phorophyte type determines epiphyte-phorophyte network structure in a Mexican oak forest. *Flora* **272**:151704 DOI [10.1016/j.flora.2020.151704](https://doi.org/10.1016/j.flora.2020.151704).
- Diamond JM. 1975.** Assembly of species communities. In: *Ecology and evolution of communities*. Cambridge: Harvard University Press, 342–444.
- Dislich R, Mantovani W. 2016.** Vascular epiphyte assemblages in a Brazilian Atlantic Forest fragment: investigating the effect of host tree features. *Plant Ecology* **217**:1–12 DOI [10.1007/s11258-015-0553-x](https://doi.org/10.1007/s11258-015-0553-x).
- Einzmann HJ, Zotz G. 2017.** No signs of saturation: long-term dynamics of vascular epiphyte communities in a human-modified landscape. *Biodiversity and Conservation* **26**:1393–1410 DOI [10.1007/s10531-017-1306-z](https://doi.org/10.1007/s10531-017-1306-z).

- Eklöf A, Helmus MR, Moore M, Allesina S. 2012.** Relevance of evolutionary history for food web structure. *Proceedings of the Royal Society B: Biological Sciences* 279:1588–1596 DOI 10.1098/rspb.2011.2149.
- Elias JP, Mortara SR, Nunes-Freitas AF, van den Berg E, Ramos FN. 2021.** Host tree traits in pasture areas affect forest and pasture specialist epiphyte species differently. *American Journal of Botany* 108:598–606 DOI 10.1002/ajb2.1634.
- Emerson BC, Gillespie RG. 2008.** Phylogenetic analysis of community assembly and structure over space and time. *Trends in Ecology & Evolution* 23:619–630 DOI 10.1016/j.tree.2008.07.005.
- Faith DP. 1992.** Conservation evaluation and phylogenetic diversity. *Biological Conservation* 61:1–10 DOI 10.1016/0006-3207(92)91201-3.
- Fayle TM, Chung AY, Dumbrell AJ, Eggleton P, Foster WA. 2009.** The effect of rain forest canopy architecture on the distribution of epiphytic ferns (*Asplenium* spp.) in Sabah, Malaysia. *Biotropica* 41:676–681 DOI 10.1111/j.1744-7429.2009.00523.x.
- Flores-Palacios A, García-Franco JG. 2006.** The relationship between tree size and epiphyte species richness: testing four different hypotheses. *Journal of Biogeography* 33:323–330 DOI 10.1111/j.1365-2699.2005.01382.x.
- Francisco TM, Couto DR, Evans DM, Garbin ML, Ruiz-Miranda CR. 2018.** Structure and robustness of an epiphyte–phorophyte commensalistic network in a neotropical inselberg. *Austral Ecology* 43:903–914 DOI 10.1111/aec.12640.
- Francisco TM, Couto DR, Garbin ML, Misaki F, Ruiz-Miranda CR. 2021.** Role of spatial and environmental factors in structuring vascular epiphyte communities in two neotropical ecosystems. *Perspectives in Plant Ecology, Evolution and Systematics* 51:125621 DOI 10.1016/j.ppees.2021.125621.
- Francisco TM, Couto DR, Garbin ML, Muylaert RL, Ruiz-Miranda CR. 2019.** Low modularity and specialization in a commensalistic epiphyte–phorophyte network in a tropical cloud forest. *Biotropica* 51:509–518 DOI 10.1111/btp.12670.
- Fukami T. 2015.** Historical contingency in community assembly: integrating niches, species pools, and priority effects. *Annual Review of Ecology, Evolution, and Systematics* 46:1–23 DOI 10.1146/annurev-ecolsys-110411-160340.
- Gleason HA. 1927.** Further views on the succession-concept. *Ecology* 8:299–326 DOI 10.2307/1929332.
- Gómez JM, Verdú M, Perfectti F. 2010.** Ecological interactions are evolutionarily conserved across the entire tree of life. *Nature* 465:918–921 DOI 10.1038/nature09113.
- Gradstein SR, Nadkarni NM, Krömer T, Holz I, Nöske N. 2003.** A protocol for rapid and representative sampling of vascular and non-vascular epiphyte diversity of tropical rain forests. *Selbyana* 24:105–111.
- Hietz P, Buchberger G, Winkler M. 2006.** Effect of forest disturbance on abundance and distribution of epiphytic bromeliads and orchids. *Ecotropica* 12:103–112.
- Hubbell SP. 2006.** Neutral theory and the evolution of ecological equivalence. *Ecology* 87:1387–1398 DOI 10.1890/0012-9658(2006)87[1387:NTATEO]2.0.CO;2.

- Kembel SW, Cowan PD, Helmus MR, Cornwell WK, Morlon H, Ackerly DD, Blomberg SP, Webb CO. 2010. Picante: R tools for integrating phylogenies and ecology. *Bioinformatics* 26:1463–1464 DOI 10.1093/bioinformatics/btq166.
- Kluge J, Kessler M. 2011. Phylogenetic diversity, trait diversity and niches: species assembly of ferns along a tropical elevational gradient. *Journal of Biogeography* 38:394–405 DOI 10.1111/j.1365-2699.2010.02433.x.
- Kraft NJ, Adler PB, Godoy O, James EC, Fuller S, Levine JM. 2015. Community assembly, coexistence and the environmental filtering metaphor. *Functional ecology* 29:592–599 DOI 10.1111/1365-2435.12345.
- Krasnov BR, Poulin R, Mouillot D. 2011. Scale-dependence of phylogenetic signal in ecological traits of ectoparasites. *Ecography* 34:114–122 DOI 10.1111/j.1600-0587.2010.06502.x.
- Krömer T, García-Franco JG, Toledo-Aceves T. 2014. Epífitas vasculares como bioindicadores de la calidad forestal: impacto antrópico sobre su diversidad y composición. In: González-Zuarth CA, Vallarino A, Pérez-Jimenez JC, Low-Pfeng AM, eds. *Bioindicadores: guardianes de nuestro futuro ambiental*. México City: Instituto Nacional de Ecología y Cambio Climático (INECC) –El Colegio de la Frontera Sur (ECOSUR), 605–623.
- Krömer T, Kessler M, Gradstein SR. 2007. Vertical stratification of vascular epiphytes in submontane and montane forest of the Bolivian Andes: the importance of the understory. *Plant Ecology* 189:261–278 DOI 10.1007/s11258-006-9182-8.
- Larrea ML, Werner FA. 2010. Response of vascular epiphyte diversity to different land-use intensities in a neotropical montane wet forest. *Forest Ecology and Management* 260:1950–1955 DOI 10.1016/j.foreco.2010.08.029.
- Marcusso GM, Kamimura VD, Borgiani R, Neto L, Menini, Lombardi JA. 2022. Phytogeographic meta-analysis of the vascular epiphytes in the Neotropical Region. *The Botanical Review* 88:388–412 DOI 10.1007/s12229-021-09270-2.
- Mendieta-Leiva G, Ramos FN, Elias JP, Zotz G, Acuña Tarazona M, Alvim FS, Barbosa DE, Basílio GA, Batke SP, Benavides AM. 2020. EpIG-DB: a database of vascular epiphyte assemblages in the Neotropics. *Journal of Vegetation Science* 31:518–528 DOI 10.1111/jvs.12867.
- Menini Neto L, Furtado SG, Zappi DC, de Oliveira Filho AT, Forzza RC. 2016. Biogeography of epiphytic Angiosperms in the Brazilian Atlantic forest, a world biodiversity hotspot. *Brazilian Journal of Botany* 39:261–273 DOI 10.1007/s40415-015-0238-7.
- Morales-Linares J, García-Franco JG, Flores-Palacios A, Krömer T, Toledo-Aceves T. 2020. The role of shaded cocoa plantations in the maintenance of epiphytic orchids and their interactions with phorophytes. *Journal of Plant Ecology* 13:27–35 DOI 10.1093/jpe/rtz052.
- Murakami M, Nunes Ramos F, Durand M, Ashton R, Batke SP. 2022. Quantification and variation of microclimatic variables within tree canopies—considerations for epiphyte research. *Frontiers in Forests and Global Change* 5:828725 DOI 10.3389/ffgc.2022.828725.

- Naranjo C, Iriondo JM, Riofrio ML, Lara-Romero C. 2019.** Evaluating the structure of commensalistic epiphyte–phorophyte networks: a comparative perspective of biotic interactions. *AoB Plants* **11**(2):plz011 DOI [10.1093/aobpla/plz011](https://doi.org/10.1093/aobpla/plz011).
- Narwani A, Matthews B, Fox J, Venail P. 2015.** Using phylogenetics in community assembly and ecosystem functioning research. *Functional Ecology* **29**:589–591 DOI [10.1111/1365-2435.12431](https://doi.org/10.1111/1365-2435.12431).
- Orme D, Freckleton R, Thomas G, Petzoldt T, Fritz S, Isaac N, Pearse W. 2018.** The caper package: comparative analysis of phylogenetics and evolution in R. Available at <https://cran.r-project.org/web/packages/caper/>.
- Pagel M. 1999.** Inferring the historical patterns of biological evolution. *Nature* **401**:877–884 DOI [10.1038/44766](https://doi.org/10.1038/44766).
- Pearse WD, Purvis A, Cavender-Bares J, Helmus MR. 2014.** Metrics and models of community phylogenetics. In: Garamszegi LZ, ed. *Modern phylogenetic comparative methods and their application in evolutionary biology*. Berlin, Heidelberg: Springer, 451–464.
- Piazzon M, Larrinaga AR, Santamaría L. 2011.** Are nested networks more robust to disturbance? A test using epiphyte–tree, commensalistic networks. *PLOS ONE* **6**:e19637 DOI [10.1371/journal.pone.0019637](https://doi.org/10.1371/journal.pone.0019637).
- Poltz K, Zotz G. 2011.** Vascular epiphytes on isolated pasture trees along a rainfall gradient in the lowlands of Panama. *Biotropica* **43**(2):165–172 DOI [10.1111/j.1744-7429.2010.00669.x](https://doi.org/10.1111/j.1744-7429.2010.00669.x).
- Qian H, Zhang J. 2014.** Using an updated time-calibrated family-level phylogeny of seed plants to test for non-random patterns of life forms across the phylogeny. *Journal of Systematics and Evolution* **52**:423–430 DOI [10.1111/jse.12086](https://doi.org/10.1111/jse.12086).
- R Core Team. 2021.** *R: A language and environment for statistical computing*. Version 4.1.1. Vienna: R Foundation for Statistical Computing. Available at <https://www.r-project.org>.
- Redding DW, Hartmann K, Mimoto A, Bokal D, De Vos M, Mooers AØ. 2008.** Evolutionarily distinctive species often capture more phylogenetic diversity than expected. *Journal of Theoretical Biology* **251**:606–615 DOI [10.1016/j.jtbi.2007.12.006](https://doi.org/10.1016/j.jtbi.2007.12.006).
- Redding DW, Mooers AØ. 2006.** Incorporating evolutionary measures into conservation prioritization. *Conservation Biology* **20**:1670–1678 DOI [10.1111/j.1523-1739.2006.00555.x](https://doi.org/10.1111/j.1523-1739.2006.00555.x).
- Revell LJ. 2012.** phytools: an R package for phylogenetic comparative biology (and other things). *Methods in Ecology and Evolution* **3**:217–223 DOI [10.1111/j.2041-210X.2011.00169.x](https://doi.org/10.1111/j.2041-210X.2011.00169.x).
- Rezende EL, Albert EM, Fortuna MA, Bascompte J. 2009.** Compartments in a marine food web associated with phylogeny, body mass, and habitat structure. *Ecology Letters* **12**:779–788 DOI [10.1111/j.1461-0248.2009.01327.x](https://doi.org/10.1111/j.1461-0248.2009.01327.x).
- Rezende EL, Jordano P, Bascompte J. 2007a.** Effects of phenotypic complementarity and phylogeny on the nested structure of mutualistic networks. *Oikos* **116**:1919–1929 DOI [10.1111/j.0030-1299.2007.16029.x](https://doi.org/10.1111/j.0030-1299.2007.16029.x).

- Rezende EL, Lavabre JE, Guimarães PR, Jordano P, Bascompte J. 2007b. Non-random coextinctions in phylogenetically structured mutualistic networks. *Nature* 448:925–928 DOI 10.1038/nature05956.
- Sanger JC, Kirkpatrick JB. 2014. Epiphyte assemblages respond to host life-form independently of variation in microclimate in lower montane cloud forest in Panama. *Journal of Tropical Ecology* 30:625–628 DOI 10.1017/S0266467414000492.
- Sáyago R, Lopezaraiza-Mikel M, Quesada M, Álvarez Añorve MY, Cascante-Marín A, Bastida JM. 2013. Evaluating factors that predict the structure of a commensalistic epiphyte–phorophyte network. *Proceedings of the Royal Society B: Biological Sciences* 280:20122821 DOI 10.1098/rspb.2012.2821.
- Silva IA, Ferreira AW, Lima MI, Soares JJ. 2010. Networks of epiphytic orchids and host trees in Brazilian gallery forests. *Journal of Tropical Ecology* 26:127–137 DOI 10.1017/S0266467409990551.
- Srivastava DS, Cadotte MW, MacDonald AAM, Marushia RG, Mirotnick N. 2012. Phylogenetic diversity and the functioning of ecosystems. *Ecology Letters* 15:637–648 DOI 10.1111/j.1461-0248.2012.01795.x.
- Stouffer DB, Sales-Pardo M, Sizer MI, Bascompte J. 2012. Evolutionary conservation of species' roles in food webs. *Science* 335:1489–1492 DOI 10.1126/science.1216556.
- Suissa JS, Sundue MA, Testo WL. 2021. Mountains, climate and niche heterogeneity explain global patterns of fern diversity. *Journal of Biogeography* 48:1296–1308 DOI 10.1111/jbi.14076.
- Swenson NG, Enquist BJ, Pither J, Thompson J, Zimmerman JK. 2006. The problem and promise of scale dependency in community phylogenetics. *Ecology* 87:2418–2424 DOI 10.1890/0012-9658(2006)87[2418:TPAPOS]2.0.CO;2.
- Taylor A, Zotz G, Weigelt P, Cai L, Karger DN, König C, Kreft H. 2022. Vascular epiphytes contribute disproportionately to global centres of plant diversity. *Global Ecology and Biogeography* 31:62–74 DOI 10.1111/geb.13411.
- Testo W, Sundue M. 2016. A 4,000-species dataset provides new insight into the evolution of ferns. *Molecular Phylogenetics and Evolution* 105:200–211 DOI 10.1016/j.ympev.2016.09.003.
- Thompson JN. 2005. *The geographic mosaic of coevolution*. Chicago: University of Chicago Press.
- Trejo-Cruz IA, Martínez-Camilo R, Martínez-Meléndez N, Jiménez-López DA. 2021. Diversidad de epífitas vasculares en árboles remanentes del género *Ficus* (Moraceae) en sistemas silvopastoriles del sureste de México. *Acta Botánica Mexicana* 128:e1827.
- Vellend M, Cornwell WK, Magnuson-Ford K, Mooers AØ. 2011. Measuring phylogenetic biodiversity. In: Magurran AE, McGill BJ, eds. *Biological diversity: frontiers in measurement and assessment*. Oxford: Oxford University Press, 194–207.
- Victoriano-Romero E, García-Franco J, Mehlreter K, Valencia-Díaz S, Toledo-Hernández V, Flores-Palacios A. 2020. Epiphyte associations and canopy soil volume: nutrient capital and factors influencing soil retention in the canopy. *Plant Biology* 22:541–552 DOI 10.1111/plb.13080.

- Wagner K, Mendieta-Leiva G, Zotz G. 2015.** Host specificity in vascular epiphytes: a review of methodology, empirical evidence and potential mechanisms. *AoB Plants* 7:plu092 DOI [10.1093/aobpla/plv092](https://doi.org/10.1093/aobpla/plv092).
- Webb CO, Ackerly DD, McPeck MA, Donoghue MJ. 2002.** Phylogenies and community ecology. *Annual Review of Ecology and Systematics* 33:475–505 DOI [10.1146/annurev.ecolsys.33.010802.150448](https://doi.org/10.1146/annurev.ecolsys.33.010802.150448).
- Webb CO, Donoghue MJ. 2004.** Phylomatic: tree assembly for applied phylogenetics. *Molecular Ecology Notes* 5:181–183.
- Werner F, Homeier J, Oesker M, Boy J. 2012.** Epiphytic biomass of a tropical montane forest varies with topography. *Journal of Tropical Ecology* 28:23–31 DOI [10.1017/S0266467411000526](https://doi.org/10.1017/S0266467411000526).
- Zotarelli HG, Molina JM, Ribeiro JE, Sofia SH. 2019.** A commensal network of epiphytic orchids and host trees in an Atlantic Forest remnant: a case study revealing the important role of large trees in the network structure. *Austral Ecology* 44:114–125 DOI [10.1111/aec.12659](https://doi.org/10.1111/aec.12659).
- Zotz G. 2005.** Vascular epiphytes in the temperate zones—a review. *Plant Ecology* 176:173–183 DOI [10.1007/s11258-004-0066-5](https://doi.org/10.1007/s11258-004-0066-5).
- Zotz G. 2013a.** ‘Hemiepiphyte’: a confusing term and its history. *Annals of Botany* 111:1015–1020 DOI [10.1093/aob/mct085](https://doi.org/10.1093/aob/mct085).
- Zotz G. 2013b.** The systematic distribution of vascular epiphytes—a critical update. *Botanical Journal of the Linnean Society* 171:453–481 DOI [10.1111/boj.12010](https://doi.org/10.1111/boj.12010).
- Zotz G, Almeda F, Bautista-Bello AP, Eskov A, Giraldo-Cañas D, Hammel B, Harrison R, Köster N, Krömer T, Lowry IIPP. 2021a.** Hemiepiphytes revisited. *Perspectives in Plant Ecology, Evolution and Systematics* 51:125620 DOI [10.1016/j.ppees.2021.125620](https://doi.org/10.1016/j.ppees.2021.125620).
- Zotz G, Hietz P. 2001.** The physiological ecology of vascular epiphytes: current knowledge, open questions. *Journal of Experimental Botany* 52:2067–2078 DOI [10.1093/jexbot/52.364.2067](https://doi.org/10.1093/jexbot/52.364.2067).
- Zotz G, Hietz P, Einzmann HJ. 2021c.** Functional ecology of vascular epiphytes. *Annual Plant Reviews Online* 4:869–906.
- Zotz G, Schultz S. 2008.** The vascular epiphytes of a lowland forest in Panama—species composition and spatial structure. *Plant Ecology* 195:131–141 DOI [10.1007/s11258-007-9310-0](https://doi.org/10.1007/s11258-007-9310-0).
- Zotz G, Weigelt P, Kessler M, Kreft H, Taylor A. 2021b.** EpiList 1.0: a global checklist of vascular epiphytes. *Ecology* 102(6):e03326 DOI [10.1002/ecy.3326](https://doi.org/10.1002/ecy.3326).