

# Life cycle evolution in the trilobites *Balangia* and *Duyunaspis* from the Cambrian Series 2 (Stage 4) of South China

Zhengpeng Chen<sup>1</sup>, Yuanlong Zhao<sup>1,2</sup>, Xinglian Yang<sup>1,2,3</sup>, Jorge Esteve<sup>4</sup>, Xiong Liu<sup>1</sup> and Shengguang Chen<sup>1</sup>

<sup>1</sup> College of Resources and Environmental Engineering, Guizhou University, Guiyang, Guizhou, China

<sup>2</sup> Guizhou Research Center for Palaeontology, Guiyang, Guizhou, China

<sup>3</sup> Key Laboratory of Karst Georesources and Environment (Guizhou University), Ministry of Education, Guiyang, Guizhou, China

<sup>4</sup> Departamento de Geodinámica, Estratigrafía y Paleontología, Facultad de Ciencias Geológicas, Geológicas, Universidad Complutense de Madrid, Madrid, Spain

## ABSTRACT

The evolution process can be reconstructed by tracking the changes in the dynamic characters of life cycles. A number of related trilobites from the Cambrian of South China provide additional information for the study of trilobite evolutionary patterns, which has been hampered by previous incomplete fossil record though. Here, *Balangia* and *Duyunaspis* represent related Cambrian oryctocephalid trilobites from South China, are comprehensively discussed over the ontogeny, and the results show that, from *B. balangensis* via *D. duyunensis* to *D. jianheensis*, their exoskeletal morphology shows a directional evolution. Based on the direction of evolutionary changes in the development of *Balangia* and *Duyunaspis*, we speculate that *Duyunaspis* likely evolved from *Balangia* instead of *Balangia* evolved from *Duyunaspis*, as was previously assumed. This inference is also supported by the phylogenetic tree. This research provides not only a better understanding of the mechanisms of evolution in trilobites, but also new insights for the relationship between developmental evolutionary changes and phylogeny in trilobites.

Submitted 23 September 2022

Accepted 23 February 2023

Published 10 April 2023

Corresponding author  
Xinglian Yang,  
yangxinglian2002@163.com

Academic editor  
Shaw Badenhorst

Additional Information and  
Declarations can be found on  
page 16

DOI 10.7717/peerj.15068

© Copyright  
2023 Chen et al.

Distributed under  
Creative Commons CC-BY 4.0

## OPEN ACCESS

**Subjects** Evolutionary Studies, Paleontology, Zoology

**Keywords** Trilobite, Life cycle, Ontogeny, Evolution, Cambrian

## INTRODUCTION

The incompleteness of the fossil record is widely distributed in strata, so species with lower strata may be younger than those with higher strata in evolutionary relationships (*Paterson, Edgecombe & Lee, 2019*). This impedes the exploration of biological evolution, particularly the studies of heterochrony that require the determination of ancestor-descendant relationship. Heterochrony is widely defined as a potential pattern of evolution (*McKinney, 1988; McKinney & McNamara, 1991*) and thought to be a dominant factor in trilobite evolution (*McNamara, 1986*), which makes the heterochronic evolution in oryctocephalid trilobites earn much attention (*McNamara, Yu & Zhou, 2003; McNamara, Yu & Zhou,*

2006). However, the main problem of heterochrony in trilobites (e.g., [McNamara, 1986](#); [McNamara, Yu & Zhou, 2003](#); [McNamara, Yu & Zhou, 2006](#)) is the determination of sexual maturity, which is hard to be addressed for the lack of reliable evidence indicating the onset of sexual maturity ([Hughes, Minelli & Fusco, 2006](#)). In consequence, it seems difficult to justify the perspective proposed by [McNamara, Yu & Zhou \(2006\)](#) that *Balangia* may have evolved from *Duyunaspis* by paedomorphosis.

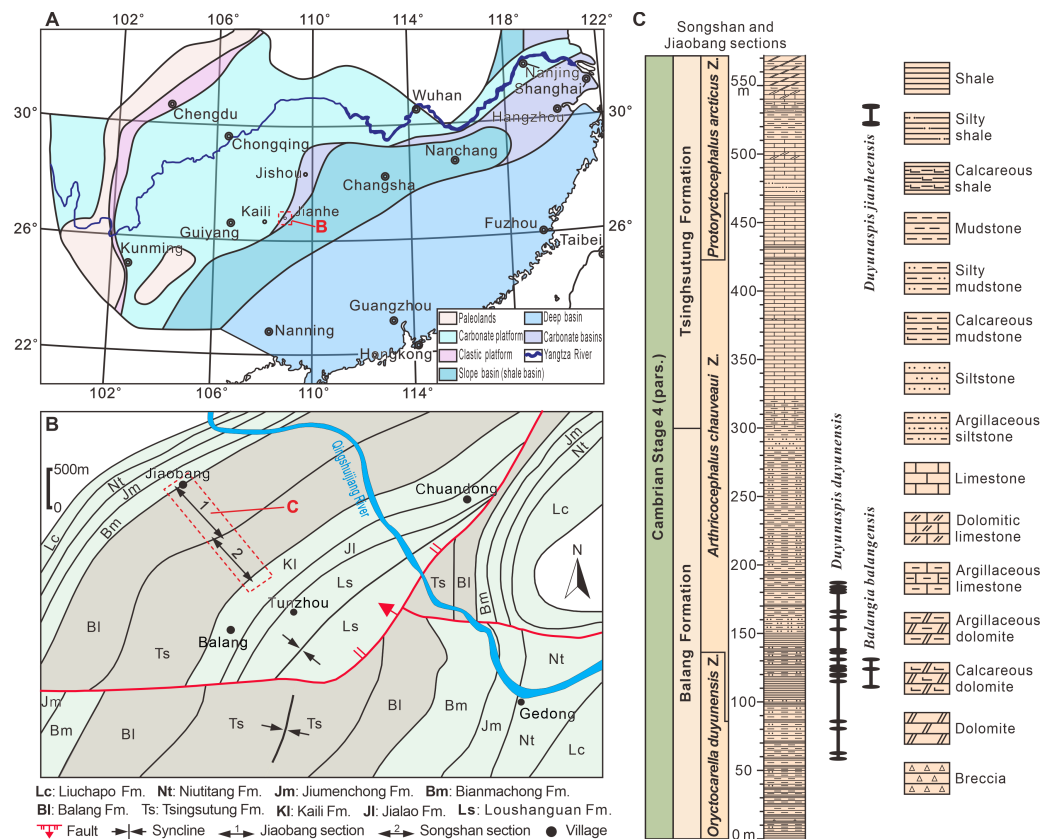
Phylogenetic tree provides a possible solution for the determination of ancestries ([Smith, 1994](#)). The construction of paleontological phylogenetic tree is established based on the morphological character, so the study of morphology is a necessary prerequisite for phylogenetic tree that cannot be ignored. In particular, the development of trilobites may provide information on evolution ([Park & Choi, 2011](#)). Some morphological characters like glabellar furrows are progressively effaced during the course of trilobite evolution ([Fortey & Owens, 1997](#); [Webster, 2009](#)). The effacement in trilobites progressively developed during ontogeny, rarely occurring in the early growth stage (e.g., [Robison & Pantoja-Alor, 1968](#); [Webster, 2009](#)), and some trilobites are effaced as well in phylogeny (e.g., [Fortey & Owens, 1997](#); [Cotton, 2001](#); [Webster, 2009](#); [Zhu, Hughes & Peng, 2013](#); [Mergl & Kozák, 2016](#)). At present, the effaced morphological characters of trilobite are not fully understood, which is caused by multiple factors ([Fortey & Owens, 1997](#); [Webster, 2009](#)). One of the values of the effaced trilobite is that the early remained morphological characters may aid in fixing the phylogenetic position of the effacement group ([Webster, 2009](#)).

The effaced trilobites provide phylogenetic information, and certain morphological characters of trilobites appeared repeatedly throughout their history ([Fortey & Owens, 1997](#)). Thus, the appeared morphologic characters in trilobites may provide corresponding information regarding phylogeny. Unfortunately, the appeared trilobites have not received appreciable attention yet. The greatest obstacle to the study of evolution, such as effacement and appearance, is access to available fossils. However, the massive trilobite fossils preserved in continuous deposited Cambrian shales in South China provide incomparable advantage to studying evolution.

Here we conducted morphological analysis on two species of oryctocephalid trilobites *Duyunaspis* (*Duyunaspis duyunensis* Zhang & Qian in [Zhou et al., 1977](#) and *Duyunaspis jianheensis* [Chen et al., 2018](#)) and the only one species of oryctocephalid trilobites *Balangia* (*Balangia balangensis* [Qian, 1961](#)), which are all produced from Balang or Tsinghsutung formations, Cambrian Series 2 Stage 4, South China. The evolutionary relationship between *Balangia* and *Duyunaspis* was explored in terms of ontogeny and speciation. This study provides significant clues for further research on the evolutionary mechanism and evolutionary developmental biology of oryctocephalid trilobites.

## MATERIALS & METHODS

The oryctocephalid trilobites *Balangia* and *Duyunaspis* are currently found only on the Jiangnan Slope Belt of South China ([Qian, 1961](#); [Zhou et al., 1977](#); [Zhang et al., 1980](#); [Yuan, Zhao & Li, 2001](#); [Yuan et al., 2002](#); [McNamara, Yu & Zhou, 2006](#); [Lei & Peng, 2014](#); [Lei, 2016](#); [Dai et al., 2017](#); [Peng et al., 2017](#); [Chen et al., 2018](#); [Peng, 2020](#); [Chen et al., 2022](#)). B.

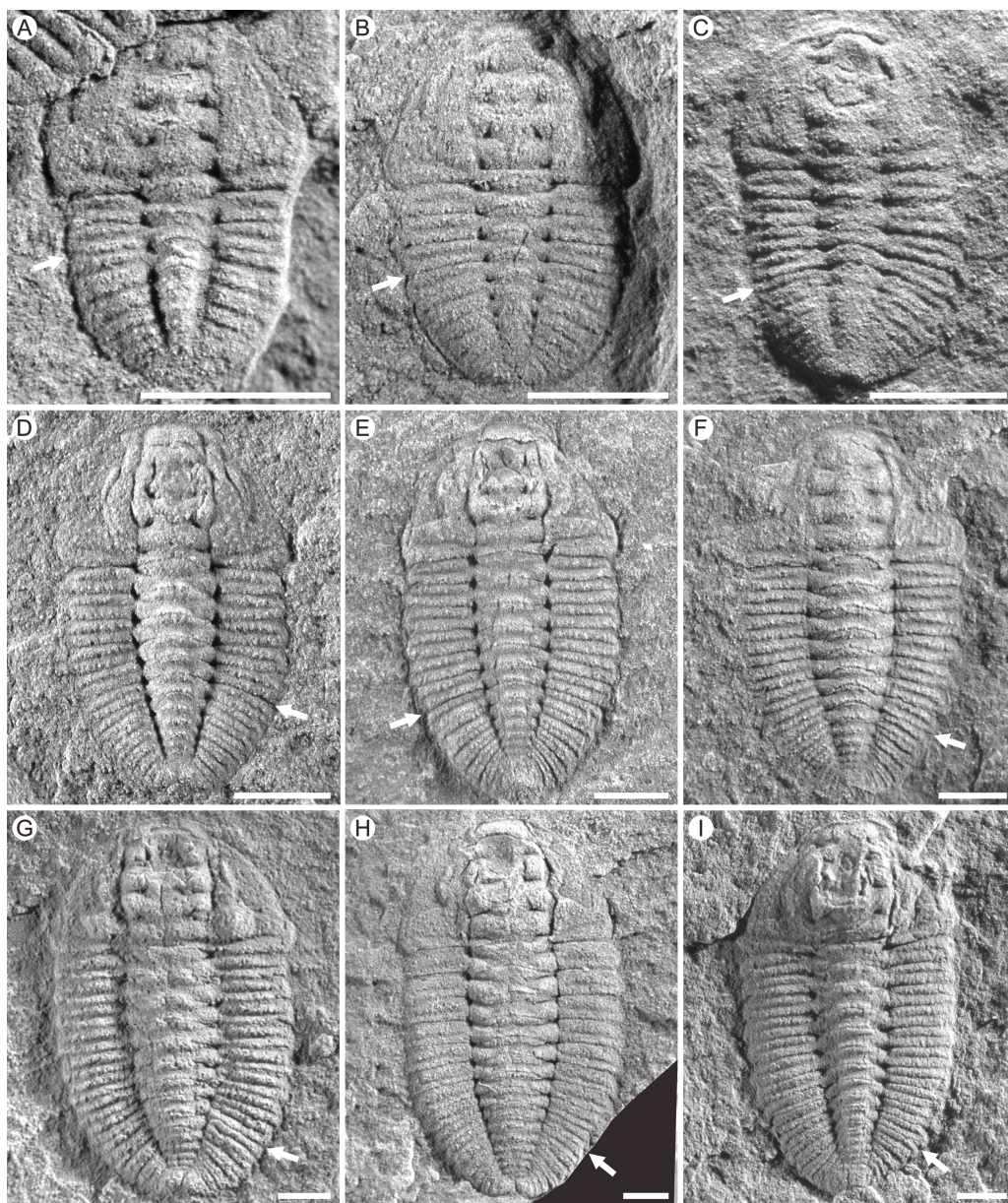


**Figure 1** Location and geological setting of the Jiaobang and Songshan sections. (A) Lithofacies reconstruction of South China during the Cambrian Age 4. Based on [Feng et al. \(2001\)](#) and [Zhang, Liu & Zhao \(2008\)](#). (B) Geological map of the part of Jianhe County, Guizhou Province, China. The Jiaobang section and the Songshan section are two adjacent sections and can be linked together. (C) Stratigraphic occurrences of *Balangia balangensis*, *Duyunaspis duyunensis* and *D. jianheensis* in the Jiaobang and Songshan sections at Jiaobang and Balang villages, Jianhe County, Guizhou Province, China.

Full-size [DOI: 10.7717/peerj.15068/fig-1](https://doi.org/10.7717/peerj.15068/fig-1)

*balangensis* and *D. duyunensis* occur in siliciclastic rocks of the Balang Formation ([Fig. 1](#)) in eastern Guizhou and western Hunan ([Qian, 1961](#); [McNamara, Yu & Zhou, 2006](#); [Lei & Peng, 2014](#); [Lei, 2016](#); [Dai et al., 2017](#); [Peng et al., 2017](#)). *D. duyunensis* occurs in almost all of the Balang Formation in eastern Guizhou and western Hunan, by comparison, *B. balangensis* occurs only in a few localities ([McNamara, Yu & Zhou, 2006](#); [Peng, 2009](#); [Wu et al., 2019](#)), and it is difficult to find *B. balangensis* in the Balang Formation in western Hunan ([Lei & Peng, 2014](#)). *D. jianheensis* occurs in siliciclastic rocks from the Tsinghsutung Formation ([Fig. 1](#)) in eastern Guizhou ([Chen et al., 2018](#); [Chen et al., 2022](#)). Both the Balang Formation (eastern Guizhou, southern Guizhou and western Hunan) and the Tsinghsutung Formation (eastern Guizhou) are thought to represent deep-water slope deposits ([Peng, 2018](#)). It is worth noting that, despite being at higher strata in fossil record, the number of *B. balangensis* is significantly smaller than that of *D. duyunensis*.

A total of 236 specimens (see [File S1](#)) out of more than 1,000 specimens in *Duyunaspis jianheensis* ([Fig. 2](#)) were used in this study, and all were collected from the Songshan section



**Figure 2** Photographs of *Dyuynaspis jianheensis* from the Songshan section, Balang Village, Jianhe County, Guizhou Province, China. White arrows indicate the boundary between the thorax and the pygidium. (A) Meraspid degree two exoskeletons, Q51-2995. (B) Meraspid degree three exoskeleton, Q52-1462. (C) Meraspid degree four exoskeleton, Q52-2060B. (D) Meraspid degree five exoskeleton, Q51-1166. (E) Meraspid degree six exoskeletons, Q51-A2. (F) Meraspid degree seven exoskeleton, Q51-A3. (G) Meraspid degree eight exoskeleton, Q51-3202. (H) Meraspid degree nine exoskeleton, Q51-2823. (I) Holaspid exoskeleton, Q51-1834. All scale bars represent one mm. All the specimens are housed at the Guizhou Research Center for Palaeontology (GRCP).

Full-size  DOI: [10.7717/peerj.15068/fig-2](https://doi.org/10.7717/peerj.15068/fig-2)

in Balang Village, Jianhe County, Guizhou Province. A total of 14 specimens (see [File S2](#)) out of 21 specimens in *Balangia balangensis* (Figs. 3D–3I) were used, which collected from the fossils site near the Jiaobang section in Jiaobang Village, Jianhe County, Guizhou

Province. *D. duyunensis* refers to Figures 2–5, 7 in [Dai et al. \(2017\)](#). All the specimens (except for the *D. duyunensis*) in this study are housed at the Guizhou Research Center for Palaeontology (GRCP). The phylogenetic position of *D. paiwuensis* is not discussed in this article due to its small number of specimens, unclear stratigraphic range ([Lei & Peng, 2014](#)) and its significantly different morphology from other species.

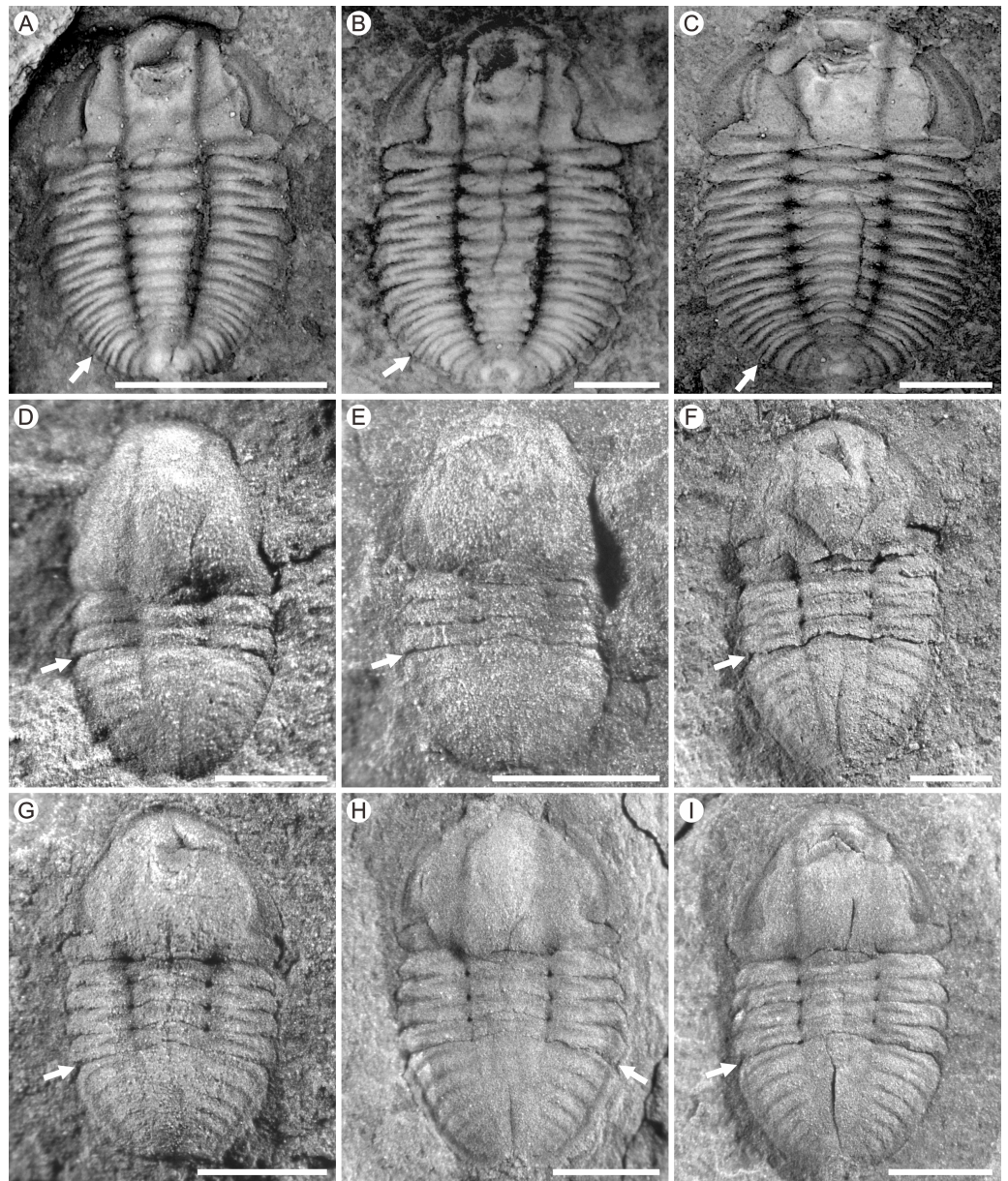
The specimens were photographed using a Leica DVM6 microscope. The resulting images were processed using the Digimizer software. Cephalic length means the length along the sagittal line from the anterior cephalic margin to the posterior occipital margin. Thoracic length means the length along the sagittal line from the occipital furrow to the anterior pygidial margin. Pygidial length means the length along the sagittal line from the anterior pygidial margin to the posterior pygidial margin. Exoskeletal length is the sum of the length of the cephalon, thorax and pygidium. All data were averaged after three measurements.

The morphological terms used herein follow [Whittington \(1997a\)](#). The ontogenetic pattern of trilobites is established based on suggestions by [Hughes, Minelli & Fusco \(2006\)](#) and [Hughes et al. \(2021\)](#). In addition, we use the term “appeared” to refer to morphological character that emerge gradually during the ontogeny of trilobite, as opposed to “effaced” (p. 265, [Fortey & Owens, 1997](#)).

## RESULTS

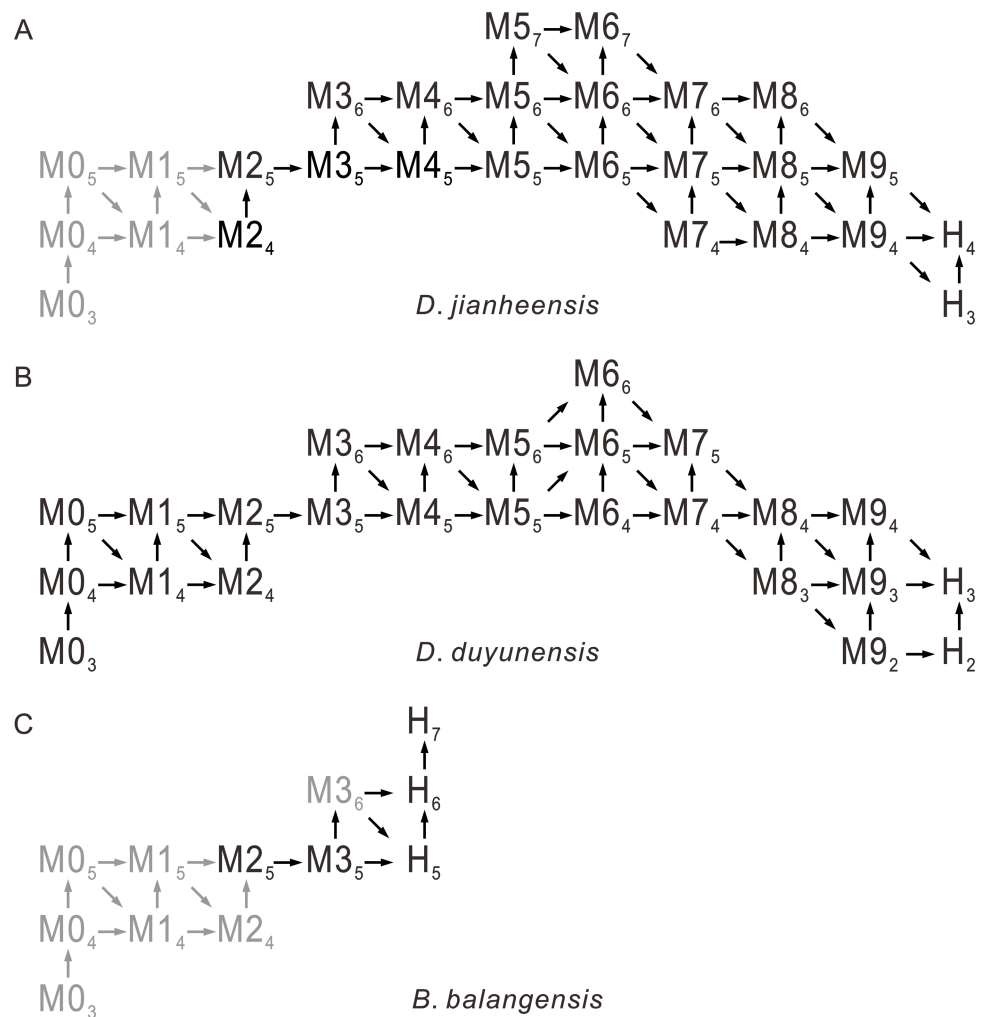
In the ontogeny of *Balangia balangensis*, *Duyunaspis duyunensis* and *D. jianheensis*, the number of pygidial segments was not fixed during the same degree (with the same number of thoracic segments). The number of pygidial segments is present in two or three types at the same degree ([Fig. 4](#)). There were at most ten thoracic segments, six pygidial segments and fifteen trunk segments in the ontogenetic sequences of *D. jianheensis* ([Fig. 4A](#)). There were at most ten thoracic segments, six pygidial segments and thirteen trunk segments in the ontogenetic sequences of *D. duyunensis* ([Fig. 4B](#)). There were at most four thoracic segments, seven pygidial segments and eleven trunk segments in the ontogenetic sequences of *B. balangensis* ([Fig. 4C](#)). Several instars, when only thoracic segments other than trunk segments increase, may exist in *B. balangensis*, *D. duyunensis* and *D. jianheensis* ([Fig. 4](#)). Although the number of the pygidial segments of *D. duyunensis* and *D. jianheensis* varied during the meraspid period, but the overall trend was decreasing, while the number of the pygidial segments of *B. balangensis* increased, observed in samples collected, all the postembryonic stages, including the holaspid period ([Fig. 4](#)).

During the ontogeny, the exoskeletal length of *Duyunaspis jianheensis* gradually increases and is longer than that of *D. duyunensis* ([Dai et al., 2017](#)) at the same period. In particular, during the M6–M8, the exoskeletal length of the morph with the most pygidial segments in the same meraspid degree is closer to that of the next meraspid degree ([Fig. 5A](#)). The cephalon of *D. jianheensis* increases gradually in length during ontogeny. During the M6–M8, the cephalon length of the morph with the most pygidial segments in the same meraspid degree is closer to that of the next meraspid degree ([Fig. 5B](#)). The thorax of *D. jianheensis* increases gradually in length during ontogeny. In the same meraspid period,



**Figure 3** Photographs of *Duyunaspis duyunensis* and *Balangia balangensis*. (A–C) *Duyunaspis duyunensis* from the Zila A section (ZA) and Zila B (ZB), Zila Village, Huayuan County, Hunan Province, China (Lei & Peng, 2014; Lei, 2016). White arrows indicate the boundary between the thorax and the pygidium. (A) Meraspid degree eight exoskeleton, ZB, NIGP159520. (B) Meraspid degree eight exoskeleton, ZB, NIGP159755. (C) Meraspid degree nine exoskeleton, ZA, NIGP159527. (D–I) *Balangia balangensis* from the fossils site near the Jiaobang section, Jiaobang Village, Jianhe County, Guizhou Province, China. (D) Meraspid degree two exoskeleton, JJB-B-19-1. (E) Meraspid degree three exoskeleton, JJB-B-18-1; F, Holaspid exoskeleton, JJB-B-4-1. (G) Holaspid exoskeleton, JJB-B-13-1. (H) Holaspid exoskeleton, JJB-B-12-3. (I) Holaspid exoskeleton, JJB-B-12-1. All scale bars represent one mm except for D where the scale bars represent 0.5 mm. (A–C) courtesy of Qianping Lei. Specimens of *D. duyunensis* are housed at the Nanjing Institute of Geology and Palaeontology, Chinese Academy of Sciences (NIGP, CAS). Specimens of *B. balangensis* are housed at the Guizhou Research Center for Palaeontology (GRCP).

Full-size  DOI: [10.7717/peerj.15068/fig-3](https://doi.org/10.7717/peerj.15068/fig-3)

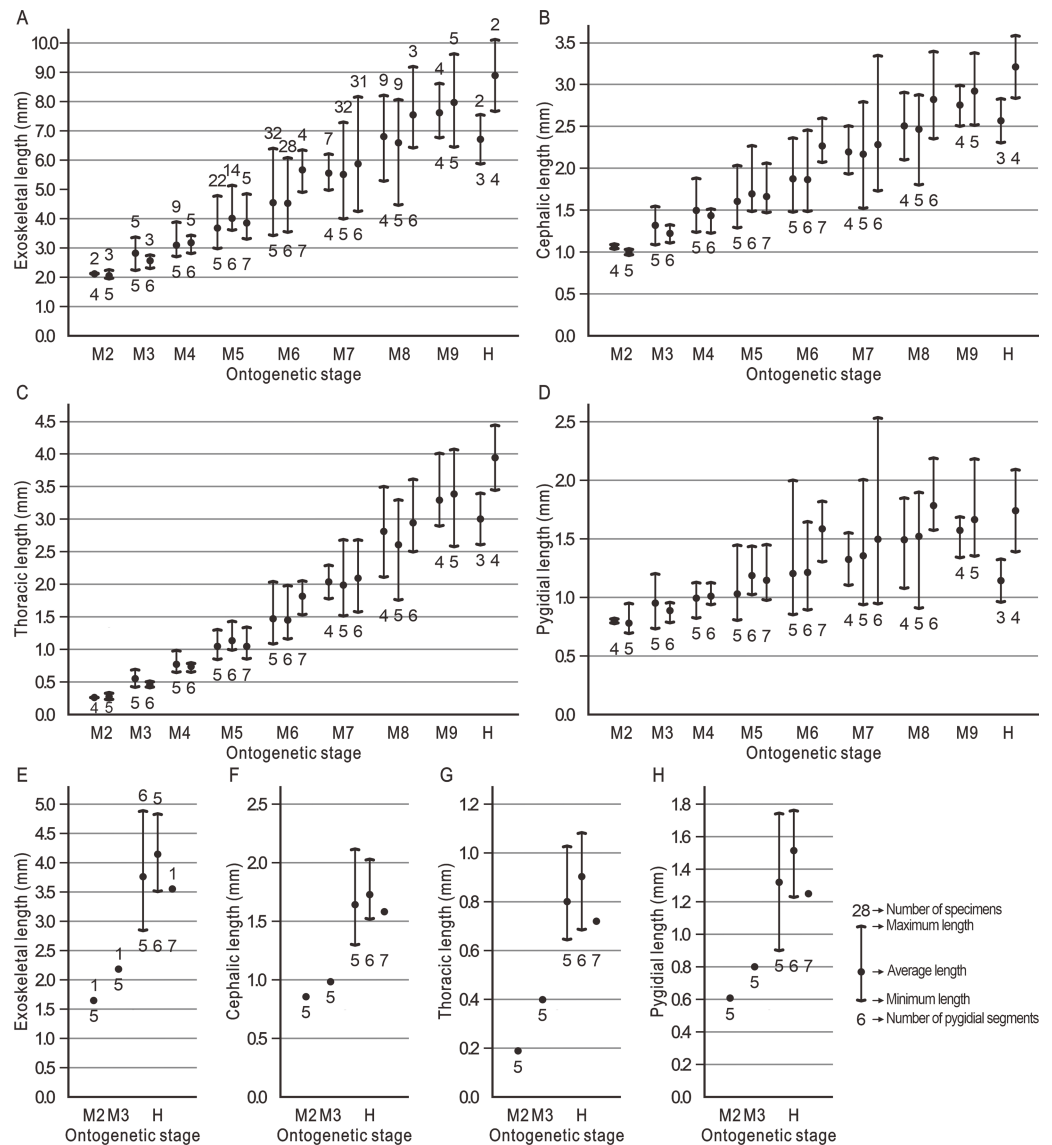


**Figure 4** Possible ontogenetic of the segmentation pathways of *Duyunaspis jianheensis*, *D. duyunensis* and *Balangia balangensis*. Trilobite ontogenetic methodological standard from *Hughes, Minelli & Fusco (2006)* and *Hughes et al. (2021)* as reference. Gray indicates the speculative stage, in which no specimen has been collected for the time being. M designates meraspid instars and H designates holaspid instars.  $M_x$ , ( $H_y$ ), where  $x$  is the number of thoracic segments and  $y$  the number of pygidial segments. The arrows indicate the direction of transition from different stages to subsequent stages. (A) *Duyunaspis jianheensis*, based on *Chen et al. (2018)* and the materials from this article. (B) *D. duyunensis* based on *Dai et al. (2017)*. (C) *Balangia balangensis*, based on the materials from this article.

Full-size DOI: 10.7717/peerj.15068/fig-4

the length of the thorax is almost identical at different morphs (Fig. 5C). The pygidium of *D. jianheensis* gradually increases in length during ontogeny. During the M6–M8, the pygidial length of the morph with the most pygidial segments in the same meraspid degree is closer to the pygidial length of the next meraspid degree (Fig. 5D). The length (including the exoskeleton, cephalon, thorax and pygidium) of *B. balangensis* all gradually increases during ontogeny (Figs. 5E–5H).

The ontogenetic pathways of *Balangia balangensis*, *Duyunaspis duyunensis* or *D. jianheensis* are probably multiple pathways (Fig. 4). Referring to *Dai et al. (2021a)*; *Dai et*



**Figure 5** Body lengths of *Duyunaspis jianheensis* and *Balangia balangensis* in each period of ontogeny. (A–D) *Duyunaspis jianheensis* (see File S1). (E–H) *Balangia balangensis* (see File S2).

Full-size [DOI: 10.7717/peerj.15068/fig-5](https://doi.org/10.7717/peerj.15068/fig-5)

*al.* (2021b), an average ontogenetic pathway (Fig. 6) was derived by calculating the average pygidial segments of *D. jianheensis* (Fig. 7). Two segments were added in M4<sub>5</sub> to M5<sub>6</sub> in this pathway. This pathway is only one of many possibilities and may not represent the true ontogenetic pathway. The morphological characters of the morph with the most pygidial segments (except for exoskeletal, cephalic and pygidial length) are almost identical to those of the other morph in the same meraspide degree. Thus, the average ontogeny pathways for *D. jianheensis* can reflect the changes in morphological characters during ontogeny. The case of *B. balangensis* and *D. duyunensis* are similar to that of *D. jianheensis*. Based on that, possible ontogenetic pathways of *B. balangensis* and *D. duyunensis* are shown in



**Fig. 6.** Similarly, the two pathways are only two of many possible pathways and may not represent the true ontogenetic pathways, but they can reflect the changes in morphological characters during ontogeny.

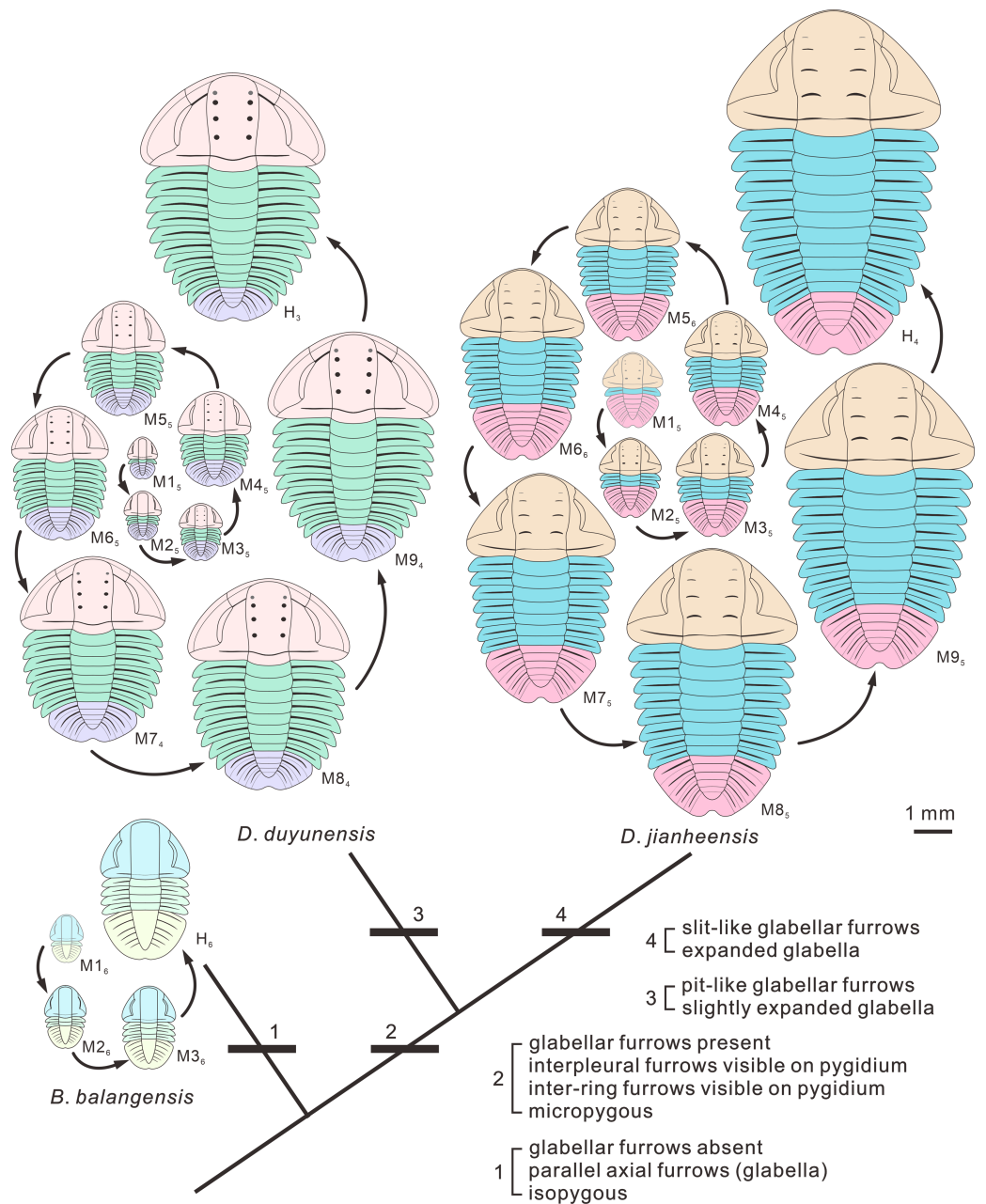
The size of pygidium was nearly equal to that of the cephalon during the early ontogeny (M2, [Fig. 2A](#)) for *Duyunaspis jianheensis*, which can approximately be regarded as isopygous. It could be inferred that it might be isopygous in the M1 ([Fig. 6](#)). Compared to the cephalon, the size of pygidium progressively narrowed down and finally became micropygous (holaspid) during the late ontogeny ([Figs. 2B–2I](#) and [6](#)). The middle of the glabella gradually changed from slight to significant expansion during ontogeny. Despite the fourth pair of glabellar furrows (S4) being indistinguishable throughout the ontogeny, the glabellar furrow (S1–S3) and inter-ring furrow (pygidium) were developed and obvious. Since no specimens of the whole ontogenetic sequence have been obtained, it can only be confirmed that the glabellar furrow of *D. jianheensis* had already appeared in M2 and was pit-like ([Figs. 2A, 6](#)). The shape of glabellar furrows in *D. jianheensis* changed progressively from pit-like to slit-like during ontogeny. The facial suture type remained the same, belonging to proparian all the period (M2–H, [Figs. 2](#) and [6](#)). The anterior border was shorter (sag.) and preserved as linear shape throughout the ontogeny ([Figs. 2](#) and [6](#)).

In the early ontogeny of *Duyunaspis duyunensis* ([Fig. 6](#)), the size of pygidium was closely equal to that of the cephalon, which can be approximately regarded as isopygous. While in the late ontogeny of *D. duyunensis*, the size of the pygidium narrowed down progressively compared to the cephalon and finally turned to be micropygous in the holaspid period. The glabella gradually changed from parallel on both sides to slightly expand in the middle during the ontogeny. The glabellar furrows of *D. duyunensis* are barely developed or weak in the early ontogeny and only gradually emerged and deepened until the late degrees. At the holaspid period (H), *D. duyunensis* had a pit-like glabellar furrows. The fourth pair of glabellar furrows (S4) is indistinguishable throughout the ontogeny. Though unobvious in the early stage, the inter-ring furrow in the pygidium developed at the M1. The type of facial suture changes from proparian (M0–M6) to gonatoparian (M7–M8) and finally to opisthoparian (M9–H) ([Fig. 6](#)). The anterior border progressively became shorter (sag.) during the ontogeny and approximately linear in holaspid period ([Fig. 6](#)).

In the ontogeny, the pygidium of *Balangia balangensis* was nearly the same size as the cephalon, being isopygous ([Figs. 3D–3I, 6](#)). The glabella remains parallel on both sides during the ontogeny. The glabellar furrow, eye ridge and inter-ring furrow (pygidium) were barely developed. The type of facial suture in the early ontogeny (M2–M3, [Figs. 3D–3F, 4C](#)) was proparian, the posterior branch of the facial suture approached genal angle in late ontogeny (H, [Figs. 3G–3I, 6](#)), approximately gonatoparian suture. Anterior border was relatively narrow during the ontogeny.

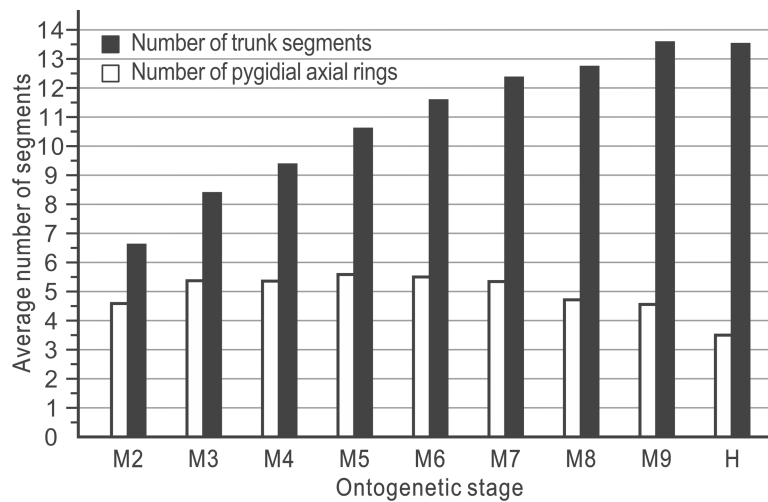
## DISCUSSION

Evolution is considered to be the change of ontogenies or life cycles over time instead of a simple modification of genotypes and phenotypes ([Gilbert, Opitz & Raff, 1996](#); [Fusco, 2019](#)). As an important part of the life cycle, ontogenetic processes play a key role in evolutionary and developmental biology (e.g., [Jaeger, 2019](#)). The reconstruction and comparison of



**Figure 6** Evolutionary changes in development of the exoskeleton of *Balangia balangensis*, *Duyunaspis duyunensis* and *D. jianheensis*. The idealized ontogenetic pathway for each of the three species is one of those illustrated in Fig. 4. The number of pygidial segments in *Duyunaspis jianheensis* during the ontogeny is referenced to the mean number of pygidial segments (see Fig. 7). The number of pygidial segments in *Duyunaspis duyunensis* and *Balangia balangensis* is referenced to *D. jianheensis*. Reconstructions in dorsal view of ontogeny of *D. jianheensis*, based on Chen et al. (2018) and the materials from this article, M<sub>1s</sub> is speculative and no due to lack of specimens of it have been found. Reconstructions in dorsal view of ontogeny of *D. duyunensis*, based on Dai et al. (2017), the meraspid M<sub>9s</sub> is speculative because the specimens were incomplete. Reconstructions in dorsal view of ontogeny of *B. balangensis*, based on the materials from this article (Figs. 2D–2I), M<sub>1s</sub> is speculative and because of no specimens of it have been found. Grey glabellar furrows indicate indistinguishable or missing S<sub>4</sub>.

Full-size DOI: 10.7717/peerj.15068/fig-6



**Figure 7** The mean numbers of trunk and pygidial segments for each ontogenetic stage of the *Duyunaspis jianheensis* (see File S1).

Full-size DOI: 10.7717/peerj.15068/fig-7

ontogenetic series of extinct species provide important insights into the phylogenetic relationships of organisms and evolutionary changes in development (e.g., *Waloszek & Maas, 2005; Minelli & Fusco, 2008; Park & Choi, 2011; Fusco et al., 2012; Fusco, Hong & Hughes, 2016; Hughes et al., 2017; Holmes, Paterson & García-Bellido, 2021a*). Because of the basal phylogenetic position and geological age of the underlying trilobites, their ontogeny is thought to potentially reveal ancestral characters of arthropod development (*Hughes, Minelli & Fusco, 2006*). The study of the selection and evolution of ontogenetic pathways in trilobites remains challenging (e.g., *Hughes, Minelli & Fusco, 2006; Hughes et al., 2021; Dai et al., 2021a; Dai et al., 2021b*). The timing of the release of trilobite segment to the thorax and to segment expressed in the subterminal growth zone is sometimes not perfectly synchronized and varies by species (*Hughes, Minelli & Fusco, 2006; Shen et al., 2014; Lei, 2016; Dai et al., 2017; Dai et al., 2021a; Dai et al., 2021b; Chen et al., 2018; Du et al., 2020; Holmes, Paterson & García-Bellido, 2021a*). In some trilobites, especially the oryctocephalid trilobites (*Lei, 2016; Dai et al., 2017; Dai et al., 2021a; Dai et al., 2021b; Chen et al., 2018; Du et al., 2020*), there are degrees with the same number of thoracic segments but different numbers of pygidial segments. This casts doubt on the reconstruction of their ontogenetic pathways, as there are segments that are reabsorbed in a number of successive stages (*Hughes et al., 2021; Dai et al., 2021b*). Although a trilobite ontogenetic pathway based on segmental patterns has been proposed as a standard for trilobite ontogenetic pathway (*Hughes et al., 2021*), there are still many observations that have not been rationally explained yet. With more than 1,700 specimens, *Dai et al. (2021b)* made a discussion on the ontogenetic pathway of *Oryctocarella duyunensis* using statistical methods, and adopted an average state (average number of pygidial and trunk segments) to reconciled meraspid periods with different numbers of pygidial segments (*Dai et al., 2021b*). As *Dai et al. (2021b)* stated, “Our recognition of degrees and morphs is a descriptive one, and does not lead directly to any particular interpretation of ontogenetic stages and sequence.”

The postembryonic developmental stages of trilobites are delineated based on the development of articulations between segments (Hughes, Minelli & Fusco, 2006). A series of successive postembryonic developmental stages can be divided into protaspid, meraspid or holaspid periods based on the number of thoracic segments (Chatterton & Speyer, 1997; Fusco et al., 2012). The variation in the number of postembryonic stages within a species due to factors such as population density, food, light and temperature in living arthropods is known as developmental polymorphism (Beck, 1971; Solomon, 1973; Chippendale & Yin, 1973; Kfir, 1991; Quenedey et al., 1995; Esperk, Tammaru & Nylín, 2007; Minelli & Fusco, 2013). The diversity in the number of pygidial segments of oryctocephalid trilobites at the same degree may be the result of developmental polymorphism. One (only two different quantities of pygidial segments in this degree) or two (three different quantities of pygidial segments in this degree) morphs of the same degree of *Duyunaspis jianheensis* account for the majority in the sample (Fig. 5A). The oryctocephalid trilobite *Oryctocarella duyunensis* has same phenomenon (Dai et al., 2021b). So, the multiple ontogenetic pathways of oryctocephalid trilobites are obviously differ from the majority of trilobites that have only a single ontogenetic pathway (see Hughes, Minelli & Fusco, 2006). Degrees with the same thoracic segments but different pygidial segments are also observed in ptychopariid (Shen et al., 2014) and ellipsocephaloid (Holmes, Paterson & García-Bellido, 2021a) trilobites. To some degree, this indicates that the diversity in the number of pygidial segments for the same degree may not be an exceptional case in early trilobites. Any possible ontogenetic pathway selected (the sequence in the pathway is based on the number of thoracic segments) brings little effect on the description for morphological changes in *Balangia balangensis*, *Duyunaspis duyunensis* and *D. jianheensis* (see below), for these morphologic changes are progressive (with the thoracic segment increasing) rather than sudden. Here by using the ontogenetic pathway of Fig. 6, we make a discussion on evolutionary changes in development of the glabellar furrows, glabellar, anterior border, facial suture and relative size of pygidium and cephalon. This discussion also applies in the context of other possible ontogenetic pathways.

Some characters have appeared repeatedly over the course of trilobite evolution, such as the effacement (Fortey & Owens, 1997). The effaced characters (e.g., glabellar furrow, occipital furrow, and axial furrow) are usually augmented during the ontogeny or clade of a group (Fortey & Owens, 1997; Webster, 2009). Webster (2009) suggested comparative morphology at early (pre-effacement) ontogenetic stages may therefore be useful in resolving phylogenetic placement of effaced taxa within otherwise non-effaced clades. Interestingly, the glabellar furrow in *Balangia balangensis*–*Duyunaspis duyunensis*–*Duyunaspis jianheensis* appeared and deepened progressively (Fig. 6). The presence or absence of the glabellar furrow is one of the main differences between *Balangia* and *Duyunaspis* according geometric morphometrics (Chen et al., 2022). The glabellar furrows of *B. balangensis* is absent and underdeveloped during the ontogeny (Figs. 3D–3I, 6). The glabellar furrows of *D. duyunensis* progresses from absent to present during the ontogeny and eventually becomes pit-like (Dai et al., 2017). The glabellar furrows of *D. duyunensis* collected from different lithologies and localities all exhibit the same case (McNamara, Yu & Zhou, 2006; Lei, 2016; Dai et al., 2017), ruling out the possibility that the glabellar

furrows come from absence to presence due to compaction. The glabellar furrows of *D. jianheensis* gradually changes from pit-like to slit-like during the ontogeny (Figs. 2 and 6). This ontogenetic trend towards glabellar furrows is phylogenetically mirrored in a large part.

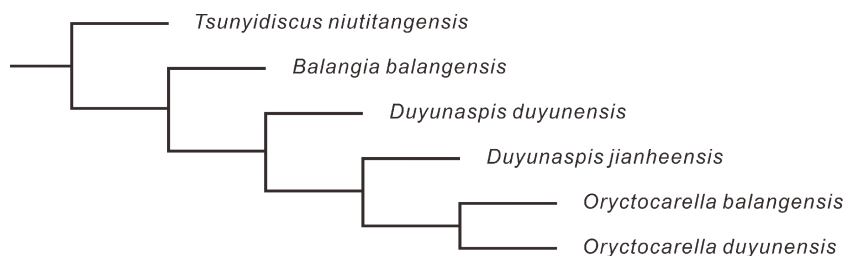
Though morphological function of the effaced character is unclear (Webster, 2009), they are not thought to be related to the living environment or the dorsal shell morphology (Fortey & Owens, 1997). Fortey & Owens (1997) suggested that multiple selection pressure can lead to effacement, which was beneficial to trilobites in holaspid period. To some extent, we speculate that the appearance may also be beneficial to trilobites in holaspid period. However, to date we are not sure if there is connection between the appearance of the glabellar furrow, the plasticity of the posterior branch of the facial suture (facial suture type) and the environment, the development of corresponding organs, or the changes in living habits. It is more likely that glabellar furrow did not develop in the ancestral taxa of *Balangia balangensis*. Conversely, it is also possible that the ancestral taxon of *B. balangensis* had glabellar furrows, and the effacement of the glabellar furrow is an apomorphy. In fact, the effacement of the glabellar furrow is a plesiomorphy according to the clade *Balangia balangensis*–*Duyunaspis duyunensis*–*Duyunaspis jianheensis* (Fig. 6).

The shape of the glabellar changes gradually from parallel on both sides to middle expansion in the clade *Balangia balangensis*–*Duyunaspis duyunensis*–*Duyunaspis jianheensis* (Fig. 6). Also, the anterior border of *B. balangensis*–*D. duyunensis*–*D. jianheensis* followed a shortening (sag.) trend (Fig. 6). The gradual changes (*B. balangensis*–*D. duyunensis*–*D. jianheensis*) in the shape of the glabellar and the anterior border are both representation of ontogenetic sequences and possibly evidence of phylogeny. In addition, *D. duyunensis* and *D. jianheensis* both changed progressively from isopygous to micropygous during the ontogeny (Fig. 6). *Balangia*–*Duyunaspis* changes from isopygous to micropygous. The micropygous condition is dominant in the late stratigraphic range of oryctocephalid trilobites (Wuliuan, Miaolingian), while the isopygous condition (e.g., *Arthrocephalus chauveaui*) is more likely to occur in the early stratigraphic range (Stage 4, Series 2) (Yuan et al., 2002). The number of micropygous is more than that of isopygous in the later stratigraphic range of oryctocephalid trilobites, indicating that the micropygous may be advantageous for survival. Both *B. balangensis* and *D. duyunensis* show a change in the facial suture type during ontogeny, and this change is directional in the evolutionary changes in development. As is expressed (Fig. 6), it changes from *B. balangensis* (proparian–gonatoparian) to *D. duyunensis* (proparian–gonatoparian–opisthoparian). In fact, this change is the result of the intersection between the end of the posterior branch of the facial suture and the cephalon from the lateral margin of the head, which progressively approaches to the posterior margin of the cephalon. Generally, the facial suture type remained the same in ontogeny. Considering that *D. duyunensis* is largely variable in the facial suture type during the ontogeny (Dai et al., 2017), the variation in facial sutures needs to be further confirmed by obtaining more specimens with opisthoparian. In the clade *B. balangensis*–*D. duyunensis*–*D. jianheensis* (Fig. 6), the proparian of *D. jianheensis* seemingly remained in the early ontogeny of *B. balangensis* or *D. duyunensis*. The facial suture type in trilobites is linked to the mode of moulting (Henningsmoen, 1975; Whittington, 1997b;

[Daley & Drage, 2016](#)). Further studies are needed to determine whether the changes in the moulting patterns of *B. balangensis*, *D. duyunensis* and *D. jianheensis* are related to the changes in facial sutures during its ontogeny and evolution.

[Yuan, Zhao & Li \(2001\)](#), [Yuan et al. \(2002\)](#) and [McNamara, Yu & Zhou \(2006\)](#) suggested that *Balangia* might have derived from *Duyunaspis* based on heterochrony. As a potential pattern for an evolutionary change, the key issue in heterochrony is to determine the ancestral-descendant relationships and the timing of sexual maturation ([McKinney, 1988](#); [McKinney & McNamara, 1991](#)). [McNamara, Yu & Zhou \(2006\)](#) equated the attainment of sexual maturity with the start of the holaspid period in *B. balangensis* and *D. duyunensis*, but there was no sufficient evidence to confirm the correlation between sexual maturation of trilobite and its holaspid period ([Hughes, Minelli & Fusco, 2006](#)). Based on the changes in growth trajectories, the onset of sexual maturity in the trilobite *Estaingia bilobata* is thought to coincide with the onset of the holaspid period ([Holmes, Paterson & García-Bellido, 2021b](#)). However, the changes in the growth trajectory of *E. bilobata* do not exactly coincide with the onset of the holaspid period ([Holmes, Paterson & García-Bellido, 2021b](#)). In living arthropods, the stage at which sexual maturity begins is not necessarily correlated with the stage at which the number of adult segments is acquired ([Minelli & Fusco, 2013](#)). Furthermore, sexual maturation is more than one stage in some modern arthropods, and there are mature stages alternating with intercalary stages, in such stage reproduction not workable in some arthropods ([Verhoeff, 1939](#); [Sahli, 1985](#); [Sahli, 1989](#); [Sahli, 1990](#); [Minelli & Fusco, 2013](#)). More evidence is needed to support whether there is a link between sexual maturity and holaspid period of trilobites. Based on the higher strata of *B. balangensis* than that of *D. duyunensis* in Balang Formation, [Yuan, Zhao & Li \(2001\)](#), [Yuan et al. \(2002\)](#) and [McNamara, Yu & Zhou \(2006\)](#) suggested that *Balangia* was the descendant of *Duyunaspis*, which is not rigorous because some other factors like incomplete records of fossils or insufficient excavation can influence the first appeared datum. Phylogenetic trees provide a means to determine the ancestral relationships (e.g., [Goloboff, 2022](#)). To further verify the relationship between *Balangia* and *Duyunaspis* we selected 25 characters (see S3 in Supplementary Information) and constructed a phylogenetic tree by taking *Tsunyidiscus niutitangensis* as the outgroup ([Fig. 8](#)). The phylogenetic tree verified the evolutionary direction of *B. balangensis*–*D. duyunensis*–*D. jianheensis*.

*Balangia balangensis* sporadically distributed in a few strata, accounting for one thousandth of *Duyunaspis duyunensis* in number collected from the Balang Formation. Moreover, the geographical distribution of *B. balangensis* is much narrower than that of *D. duyunensis* ([Qian, 1961](#); [McNamara, Yu & Zhou, 2006](#); [Lei & Peng, 2014](#); [Peng, 2020](#)). Nearly all the early oryctocephalid trilobites we observed were first appeared at the base of Balang Formation in south China, equal to the lowest stratigraphic stratum of oryctocephalid (except Cheiruroidinae, see [Peng et al., 2018](#)) trilobites we have identified so far. For this, it is possible that oryctocephalid (except cheiruroidin) trilobites might exist in the strata underlying Balang Formation, and we failed to find it because of the lack of fossil records or excavation. [Allmon & Sampson \(2016\)](#) proposed four common elements in the speciation process: (1) isolated populations must be formed; (2) the new species must survive in isolation; (3) the new population must be genetically differentiated by



**Figure 8** Phylogenetic tree of *Balangia balangensis*, *Duyunaspis duyunensis* and *D. jianheensis*. Tree is generated by TNT v1.5 (Goloboff, Farris & Nixon, 2008). A traditional search algorithm (TBR) with 10,000 replications, 1 random seed, and 10 trees saved per replication was used to determine the most parsimonious trees for the data matrix. All characters were unweighted and all multistate characters were treated as unordered. Parsimony analysis recovered one most parsimonious trees of length 42 steps (CI = 0.85, RI = 0.667). For character data see supporting material (see S3 in Supplementary Information).

Full-size DOI: 10.7717/peerj.15068/fig-8

heredity; (4) a new species must stabilize or expand its population. Both *B. balangensis* and *D. duyunensis* have been confirmed as two separate species (Qian, 1961; Zhou et al., 1977; Peng, 2020; Chen et al., 2022), and thus both of them meet the requirements in (1) and (3). If *B. balangensis* evolved from *D. duyunensis* (by heterochrony), the co-occurrence of *B. balangensis* and *D. duyunensis* in the same strata in Banglang Formation is clearly incompatible with the second element proposed by Allmon & Sampson (2016). And this is also a controversial issue in sympatric speciation (Felsenstein, 1981; Futuyma & Kirkpatrick, 2017). The validity of *B. balangensis* and *D. duyunensis* (Chen et al., 2022) implies that the time, *D. duyunensis* diverged from *B. balangensis*, was earlier than their co-existence record. Besides, the earliest fossil records of *D. duyunensis* has not been found to co-occur with *B. balangensis* in the Balang Formation. Therefore, we speculate that the “original *D. duyunensis*” diverged from *B. balangensis* and then settled in new habitat, forming the *D. duyunensis*. After that, *B. balangensis* may have migrated to the habitat of *D. duyunensis* from where it lived. The absence of *B. balangensis* beneath the stratum where *D. duyunensis* occurs may be the result of incompleteness of fossil record. In addition, *B. balangensis* of the Balang Formation is extremely rare, which does not accord with the fourth element proposed by Allmon & Sampson (2016). Such rarity may reflect the fact that *B. balangensis* here is in the final stages of its stratigraphic range. To sum up, we speculate that *B. balangensis* did not evolved (heterochrony) from *D. duyunensis*. The developmental evolutionary changes of phenotypic traits appear to be directional in *B. balangensis*, *D. duyunensis*, and *D. jianheensis*, therefore, we believe that the clade *B. balangensis*–*D. duyunensis*–*D. jianheensis* (Fig. 6) is reasonable.

## CONCLUSIONS

There is a directional gradual evolution of *Balangia balangensis*–*Duyunaspis duyunensis*–*Duyunaspis jianheensis* in terms of the cephalon morphology, size of the pygidium relative to the cephalon and the trunk segments number in developmental evolutionary change. Furthermore, according to the four common elements in the speciation process, the lowest datum of *B. balangensis* is higher than that of *D. duyunensis*, which is probably caused by

the incompleteness of the fossil record. We speculate that *Balangia* is not necessarily the descendant of *Duyunaspis*, on the contrary, *Balangia* may be the ancestor of *Duyunaspis*. This inference is also supported by the phylogenetic tree.

## ACKNOWLEDGEMENTS

Brian Pratt, Lukáš Laibl, and an anonymous reviewer are thanked for helpful comments and suggestions. We thank Qianping Lei for providing the *Duyunaspis duyunensis* images.

## ADDITIONAL INFORMATION AND DECLARATIONS

### Funding

This study was supported by the National Natural Science Foundation of China (grant numbers 42262003, 41962002, 42162005, 41772021), the Guizhou Bureau of Science and Technology (grant numbers Gui. Sci. Sup. [2020]4Y241; Gui. Sci. Tal. [2017] 5788), and the strategic Priority Research Program of Chinese Academy of Sciences (XDB26000000). The funders had no role in study design, data collection and analysis, decision to publish, or preparation of the manuscript.

### Grant Disclosures

The following grant information was disclosed by the authors:

National Natural Science Foundation of China: 42262003, 41962002, 42162005, 41772021.

Guizhou Bureau of Science and Technology: [2020]4Y241, [2017] 5788.

Priority Research Program of Chinese Academy of Sciences: XDB26000000.

### Competing Interests

The authors declare there are no competing interests.

### Author Contributions

- Zhengpeng Chen conceived and designed the experiments, performed the experiments, analyzed the data, prepared figures and/or tables, authored or reviewed drafts of the article, and approved the final draft.
- Yuanlong Zhao performed the experiments, authored or reviewed drafts of the article, and approved the final draft.
- Xinglian Yang conceived and designed the experiments, performed the experiments, authored or reviewed drafts of the article, and approved the final draft.
- Jorge Esteve conceived and designed the experiments, authored or reviewed drafts of the article, and approved the final draft.
- Xiong Liu analyzed the data, prepared figures and/or tables, and approved the final draft.
- Shengguang Chen analyzed the data, prepared figures and/or tables, and approved the final draft.

### Data Availability

The following information was supplied regarding data availability:

The raw measurements and the locations of the 250 specimens are available in the [Supplemental Files](#).



## Supplemental Information

Supplemental information for this article can be found online at <http://dx.doi.org/10.7717/peerj.15068#supplemental-information>.

## REFERENCES

- Allmon WD, Sampson SD. 2016.** The stages of speciation: a stepwise framework for analysis of speciation in the fossil record. In: Allmon WA, Yacobucci MM, eds. *Species and speciation in the fossil record*. Chicago: University of Chicago Press, 121–167.
- Beck SD. 1971.** Growth and retrogression in larvae of *Trogoderma glabrum* (Coleoptera Dermestidae), 1. Characteristics under feeding and starvation conditions. *Annals of the Entomological Society of America* **64**(1):149–155 DOI [10.1093/aesa/64.1.149](https://doi.org/10.1093/aesa/64.1.149).
- Chatterton BDE, Speyer SE. 1997.** Ontogeny. In: Kaesler RL, ed. *Treatise on invertebrate paleontology, part 6, trilobite (Revised)*. Boulder, Colorado and Lawrence, Kansas: Geological Society of America and University of Kansas, 173–247.
- Chen ZP, Zhao YL, Yang XL, Esteve J, Liu X, Chen SG, Feng R. 2022.** Interspecies and intraspecific variability in the trilobites *Duyunaspis* and *Balangia* from the Cambrian Series 2 (Stage 4) of Jianhe, South China. *Lethaia* **55**(4):1–13 DOI [10.18261/let.55.4.5](https://doi.org/10.18261/let.55.4.5).
- Chen ZP, Zhao YL, Yang XL, Wang MK. 2018.** *Duyunaspis* Zhang and Qian in Zhou et al 1977 (trilobite) from the Tsinghsutung Formation (Series 2, Stage 4) of eastern Guizhou, south China. *Acta Palaeontologica Sinica* **57**(2):181–191 DOI [10.19800/j.cnki.aps.2018.02.004](https://doi.org/10.19800/j.cnki.aps.2018.02.004).
- Chippendale GM, Yin C-M. 1973.** Endocrine activity retained in diapause insect larvae. *Nature* **246**:511–513 DOI [10.1038/246511a0](https://doi.org/10.1038/246511a0).
- Cotton TJ. 2001.** The phylogeny and systematics of blind Cambrian ptychoparioid trilobites. *Palaeontology* **44**(1):167–207 DOI [10.1111/1475-4983.00176](https://doi.org/10.1111/1475-4983.00176).
- Dai T, Hughes NC, Zhang XL, Fusco G. 2021a.** Absolute axial growth and trunk segmentation in the early Cambrian trilobite *Oryctocarella duyunensis*. *Paleobiology* **47**(3):517–532 DOI [10.1017/pab.2020.63](https://doi.org/10.1017/pab.2020.63).
- Dai T, Hughes NC, Zhang XL, Peng SC. 2021b.** Development of the early Cambrian oryctocephalid trilobite *Oryctocarella duyunensis* from western Hunan, China. *Journal of Paleontology* **95**(4):777–792 DOI [10.1017/jpa.2020.111](https://doi.org/10.1017/jpa.2020.111).
- Dai T, Zhang XL, Peng SC, Yao XY. 2017.** Intraspecific variation of trunk segmentation in the oryctocephalid trilobite *Duyunaspis duyunensis* from the Cambrian (Stage 4, Series 2) of South China. *Lethaia* **50**(4):527–539 DOI [10.1111/let.12208](https://doi.org/10.1111/let.12208).
- Daley AC, Drage HB. 2016.** The fossil record of ecdysis, and trends in the moulting behaviour of trilobites. *Arthropod Structure & Development* **45**(2):71–96 DOI [10.1016/j.asd.2015.09.004](https://doi.org/10.1016/j.asd.2015.09.004).
- Du GY, Peng J, Wang DZ, Wen RQ, Liu S. 2020.** Morphology and trunk development of the trilobite *Arthricocephalus chauveaui* from the Cambrian series 2 of Guizhou, South China. *Historical Biology* **32**(2):174–186 DOI [10.1080/08912963.2018.1476857](https://doi.org/10.1080/08912963.2018.1476857).

- Esperk T, Tammaru T, Nylin S. 2007.** Intraspecific variability in number of larval instars in insects. *Journal of Economic Entomology* **100**(3):627–645  
DOI [10.1603/0022-0493\(2007\)100\[627:ivinol\]2.0.co;2](https://doi.org/10.1603/0022-0493(2007)100[627:ivinol]2.0.co;2).
- Felsenstein J. 1981.** Skepticism towards Santa Rosalia, or why are there so few kinds of animals? *Evolution* **35**(1):124–138 DOI [10.2307/2407946](https://doi.org/10.2307/2407946).
- Feng ZS, Peng YM, Jin ZK, Jiang PL, Bao ZD, Luo Z, Ju TY, Tian HQ, Wang H. 2001.** Lithofacies palaeogeography of the Cambrian in South China. *Journal of Palaeogeography* **3**(1):1–14.
- Fortey RA, Owens RM. 1997.** Evolutionary history. In: Kaesler RL, ed. *Treatise on invertebrate paleontology, pt. o, arthropoda 1, trilobite, Revised, Volume 1*. Boulder, Colorado and Lawrence, Kansas: Geological Society of America and University of Kansas Press, 249–287.
- Fusco G. 2019.** Evo-devo beyond development: the evolution of life cycles. In: Fusco G, ed. *Perspectives on evolutionary and developmental biology*. Padova: Padova University Press, 309–318.
- Fusco G, Garland Jr T, Hunt G, Hughes NC. 2012.** Developmental trait evolution in trilobites. *Evolution* **66**(2):314–329 DOI [10.1111/j.1558-5646.2011.01447.x](https://doi.org/10.1111/j.1558-5646.2011.01447.x).
- Fusco G, Hong PS, Hughes NC. 2016.** Axial growth gradients across the postprotaspid ontogeny of the Silurian trilobite *Aulacopleura koninckii*. *Paleobiology* **42**(3):426–438 DOI [10.1017/pab.2016.5](https://doi.org/10.1017/pab.2016.5).
- Futuyma DJ, Kirkpatrick M. 2017.** *Evolution*. 4th edn. Massachusetts: Sinauer Associates, Inc, 599.
- Gilbert SF, Opitz JM, Raff RA. 1996.** Resynthesizing evolutionary and developmental biology. *Developmental Biology* **173**(2):357–372 DOI [10.1006/dbio.1996.0032](https://doi.org/10.1006/dbio.1996.0032).
- Goloboff PA. 2022.** *From observations to optimal phylogenetic trees: phylogenetic analysis of morphological data: Volume 1*. Boca Raton: CRC Press, 277.
- Goloboff PA, Farris JS, Nixon KC. 2008.** TNT, a free program for phylogenetic analysis. *Cladistics* **24**(5):774–786 DOI [10.1111/j.1096-0031.2008.00217.x](https://doi.org/10.1111/j.1096-0031.2008.00217.x).
- Henningsmoen G. 1975.** Moulting in trilobites. *Fossils and Strata* **4**:179–200.
- Holmes JD, Paterson JR, García-Bellido DC. 2021a.** The post-embryonic ontogeny of the early Cambrian trilobite *Estaingia bilobata* from south Australia: trunk development and phylogenetic implications. *Papers in Palaeontology* **7**(2):931–950 DOI [10.1002/spp2.1323](https://doi.org/10.1002/spp2.1323).
- Holmes JD, Paterson JR, García-Bellido DC. 2021b.** Complex axial growth patterns in an early Cambrian trilobite from South Australia. *Proceedings of the Royal Society B: Biological Sciences* **288**(1965):1–8 DOI [10.1098/rspb.2021.2131](https://doi.org/10.1098/rspb.2021.2131).
- Hughes NC, Adrain JM, Holmes JD, Hong PS, Hopkins MJ, Hou JB, Minelli A, Park TYS, Paterson JR, Peng J, Webster M, Zhang XG, Zhang XL, Fusco G. 2021.** Articulated trilobite ontogeny: suggestions for a methodological standard. *Journal of Paleontology* **95**(2):298–304 DOI [10.1017/jpa.2020.96](https://doi.org/10.1017/jpa.2020.96).
- Hughes NC, Hong PS, Hou J, Fusco G. 2017.** The development of the Silurian trilobite *Aulacopleura koninckii* reconstructed by applying inferred growth and segmentation

- dynamics: a case study in paleo-evo-devo. *Frontiers in Ecology and Evolution* 5:37 DOI 10.3389/fevo.2017.00037.
- Hughes NC, Minelli A, Fusco G. 2006.** The ontogeny of trilobite segmentation: a comparative approach. *Paleobiology* 32(4):602–627 DOI 10.1666/06017.1.
- Jaeger J. 2019.** Dynamic structures in evo-devo: from morphogenetic fields to evolving organisms. In: Fusco G, ed. *Perspectives on evolutionary and developmental biology*. Padova: Padova University Press, 335–355.
- Kfir R. 1991.** Effect of diapause on development and reproduction of the stem borers *Busseola fusca* (Lepidoptera: Noctuidae) and *Chilo partellus* (Lepidoptera: Pyralidae). *Journal of Economic Entomology* 84(6):1677–1680 DOI 10.1093/jee/84.6.1677.
- Lei QP. 2016.** New ontogenetic information on *Duyunaspis duyunensis* Zhang & Qian in (Zhou et al., 1977) (Trilobita, Corynexochida) from the Cambrian and its possible sexual dimorphism. *Alcheringa: An Australasian Journal of Palaeontology* 40(1):12–23 DOI 10.1080/03115518.2015.1069485.
- Lei QP, Peng SC. 2014.** *Duyunaspis* Zhang and Qian in (Zhou et al., 1977) (Trilobita) from the Balang Formation (Cambrian, Qiangdongia) in northwestern Hunan Province and its intraspecific variations. *Acta Palaeontologica Sinica* 53(3):352–362 DOI 10.19800/j.cnki.aps.2014.03.010.
- McKinney ML. 1988.** *Heterochrony in evolution: a multidisciplinary approach*. New York: Plenum Press, 348.
- McKinney ML, McNamara KJ. 1991.** *Heterochrony: the evolution of ontogeny*. New York: Plenum Press, 437.
- McNamara KJ. 1986.** The role of heterochrony in the evolution of Cambrian trilobites. *Biological Reviews* 61(2):121–156 DOI 10.1111/j.1469-185x.1986.tb00464.x.
- McNamara KJ, Yu F, Zhou ZY. 2003.** Ontogeny and heterochrony in the oryctocephalid trilobite *Arthricocephalus* from the Early Cambrian of China. *Special Papers in Palaeontology* 70:103–126.
- McNamara KJ, Yu F, Zhou ZY. 2006.** Ontogeny and heterochrony in the Oryctocephalid trilobites *Changaspis*, *Duyunaspis* and *Balangia* from China. *Palaeontology* 49(1):1–19 DOI 10.1111/j.1475-4983.2005.00525.x.
- Mergl M, Kozák V. 2016.** The effaced Ordovician trilobite *Svobodapeltis* and the earliest history of illaenimorph trilobites in the Ordovician of the Prague Basin (Bohemia). *Bulletin of Geosciences* 91(1):155–168 DOI 10.3140/bull.geosci.1516.
- Minelli A, Fusco G. 2008.** Evolving pathways. In: *Key themes in evolutionary developmental biology*. Cambridge: Cambridge University Press, 426.
- Minelli A, Fusco G. 2013.** Arthropod post-embryonic development. In: Minelli A, Boxshall G, Fusco G, eds. *Arthropod biology and evolution: molecules, development, morphology*. Berlin: Springer-Verlag, 91–122.
- Park T-Y, Choi DK. 2011.** Constraints on using ontogenetic data for trilobite phylogeny. *Lethaia* 44(3):250–254 DOI 10.1111/j.1502-3931.2011.00279.x.
- Paterson JR, Edgecombe GD, Lee MSY. 2019.** Trilobite evolutionary rates constrain the duration of the Cambrian explosion. *Proceedings of the National Academy of Sciences* 116(10):4394–4399 DOI 10.1073/pnas.1819366116.

- Peng J. 2009.** The Qiangdongian (Cambrian) Balang Fauna from eastern Guizhou, South China. PhD thesis, Nanjing University, 1–137.
- Peng SC. 2018.** Cambrian system. In: National Commission on Stratigraphy of China, ed. *Explanatory notes for the stratigraphic chart of China*. Beijing: Geological Press, 71–100.
- Peng SC. 2020.** *Illustrations of Cambrian stratigraphy and index fossils of China, Trilobites*. Hangzhou: Zhejiang University Press, 571.
- Peng SC, Babcock LE, Zhu XJ, Dai T. 2018.** A new oryctocephalid trilobite from the Balang Formation (Cambrian Stage 4) of northwestern Hunan, South China, with remarks on the classification of oryctocephalids. *Palaeoworld* **27**(3):322–333 DOI [10.1016/j.palwor.2018.04.005](https://doi.org/10.1016/j.palwor.2018.04.005).
- Peng SC, Babcock LE, Zhu XJ, Lei QP, Dai T. 2017.** Revision of the oryctocephalid trilobite genera *Arthricocephalus* Bergeron and *Oryctocarella* Tomashpolskaya and Karpinski (Cambrian) from South China and Siberia. *Journal of Paleontology* **91**(5):933–959 DOI [10.1017/jpa.2017.44](https://doi.org/10.1017/jpa.2017.44).
- Qian YY. 1961.** Cambrian trilobites from Sandu and Duyun, southern Guizhou. *Acta Palaeontologica Sinica* **9**(2):91–139.
- Quenedey A, Aribi N, Everaerts C, Delbecq J-P. 1995.** Postembryonic development of *Zophobas atratus* Fab. (Coleoptera: Tenebrionidae) under crowded or isolated conditions and effects of juvenile hormone analogues applications. *Journal of Insect Physiology* **41**(2):143–152 DOI [10.1016/0022-1910\(94\)00091-T](https://doi.org/10.1016/0022-1910(94)00091-T).
- Robison RA, Pantoja-Alor J. 1968.** Tremadocian trilobites from the Nochixtlán region, Oaxaca, Mexico. *Journal of Paleontology* **42**(3):767–800 DOI [10.2307/1302374](https://doi.org/10.2307/1302374).
- Sahli F. 1985.** Périodomorphose et mâles intercalaires des Diplopodes Julida: une nouvelle terminologie. *Bulletin scintifique de Bourgogne* **38**:23–31.
- Sahli F. 1989.** The structure of two populations of *Tachypodoiulus niger* (Leach) in Burgundy and some remarks on periodomorphosis. *Revue d'écologie et de Biologie du Sol* **26**:355–361.
- Sahli F. 1990.** On post-adult moults in Julida (Myriapoda: Diplopoda). Why do periodomorphosis and intercalaries occur in males? In: Minelli A, ed. *Proceedings of the 7th international congress of myriapodology*. Leiden: Brill Academic Publishers 135–156.
- Shen C, Clarkson ENK, Yang J, Lan T, Hou JB, Zhang XG. 2014.** Development and trunk segmentation of early instars of a ptychopariid trilobite from Cambrian Stage 5 of China. *Scientific Reports* **4**:6970 DOI [10.1038/srep06970](https://doi.org/10.1038/srep06970).
- Smith AB. 1994.** *Systematics and the fossil record: documenting evolutionary patterns*. Oxford: Blackwell Science, 223.
- Solomon JD. 1973.** Instars in the carpenterworm, *Prionoxystus robiniae*. *Annals of the Entomological Society of America* **66**(6):1258–1260 DOI [10.1093/aesa/66.6.1258](https://doi.org/10.1093/aesa/66.6.1258).
- Verhoeff KW. 1939.** Wachstum und Lebensverlängerung bei Blaniuliden und über die Periodomorphose, II Teil. *Zeitschrift für Morphologie und Ökologie der Tiere* **36**(1):21–40.

- Waloszek D, Maas A. 2005.** The evolutionary history of crustacean segmentation: a fossil-based perspective. *Evolution & Development* **7(6)**:515–527  
[DOI 10.1111/j.1525-142X.2005.05056.x](https://doi.org/10.1111/j.1525-142X.2005.05056.x).
- Webster M. 2009.** Ontogeny, systematics, and evolution of the effaced early Cambrian Trilobites *Peachella* and *Eopeachella* New Genus (Olenelloidea). *Journal of Paleontology* **83(2)**:197–218 [DOI 10.1666/08-106.1](https://doi.org/10.1666/08-106.1).
- Whittington HB. 1997a.** Morphology of the exoskeleton. In: Kaesler RL, ed. *Treatise on invertebrate paleontology, Part O, Trilobite (Revised)*. Boulder, Colorado and Lawrence, Kansas: Geological Society of America and University of Kansas, 1–67.
- Whittington HB. 1997b.** Mode of life, habits, and occurrence. In: Kaesler RL, ed. *Treatise on invertebrate paleontology, part o, trilobite (revised)*. Boulder, Colorado and Lawrence, Kansas: Geological Society of America and University of Kansas, 137–169.
- Wu MY, Zhao YL, Yang XL, Chen ZP, Yang GF. 2019.** The trilobite biostratigraphy of the Balang formation, Duyunian Stage, Qiandong Series (Cambrian Series 2, Stage 4) from Huanglian area in Songtao County, Guizhou Province and its correlation significance. *Acta Palaeontologica Sinica* **58(4)**:456–462  
[DOI 10.19800/j.cnki.aps.2019.04.004](https://doi.org/10.19800/j.cnki.aps.2019.04.004).
- Yuan JI, Zhao YL, Li Y. 2001.** Notes on the classification and phylogeny of oryctocephalids (Trilobita: Arthropoda). *Acta Palaeontologica Sinica* **40(Supplement)**: 214–226.
- Yuan JI, Zhao YL, Li Y, Huang YZ. 2002.** *Trilobite fauna of the Kaili Formation (uppermost Lower Cambrian lower-Middle Cambrian) from Southeastern Guizhou, South China*. Shanghai: Shanghai Science and Technology Publishing House, 423.
- Zhang WT, Lu YH, Zhu ZL, Qian YY, Lin HL, Zhou ZY, Zhang SG, Yuan JL. 1980.** *Cambrian Trilobite Fauna of Southwestern China. New Series B*. Beijing: Science Press, 479.
- Zhang XL, Liu W, Zhao YL. 2008.** Cambrian Burgess shale-type lagerstätten in South China: distribution and significance. *Gondwana Research* **14(1-2)**:255–262  
[DOI 10.1016/j.gr.2007.06.008](https://doi.org/10.1016/j.gr.2007.06.008).
- Zhou TM, Liu YR, Meng XS, Sun ZH. 1977.** Trilobita. In: Hubei Institute of Geological Sciences, Geological Bureau of Henan Province, Geological Bureau of Hubei Province, et al., eds. *Palaeontological Atlas of Central and Southern China (1), Early Palaeozoic*. Beijing: Geological Publishing House, 104–266.
- Zhu XJ, Hughes NC, Peng SC. 2013.** Onset of maturity and ontogenetic tagmatization of the pygidium in the development of *Lonchopygella megaspina* (Trilobita, later Furongian, Cambrian). *Journal of Paleontology* **87(3)**:472–483 [DOI 10.1666/12-073.1](https://doi.org/10.1666/12-073.1).