

# Individuality and stability of the koala (*Phascolarctos cinereus*) faecal microbiota through time

**Raphael Eisenhofer**<sup>Corresp., Equal first author, 1, 2</sup>, **Kylie L Brice**<sup>Equal first author, 3</sup>, **Michaela D.J. Blyton**<sup>4</sup>, **Scott E. Bevins**<sup>3</sup>, **Kellie Leigh**<sup>5</sup>, **Brajesh K Singh**<sup>3, 6</sup>, **Kristofer M Helgen**<sup>7, 8, 9</sup>, **Ian Hough**<sup>9</sup>, **Chris Daniels**<sup>9</sup>, **Natasha Speight**<sup>10</sup>, **Ben D Moore**<sup>Corresp. 3</sup>

<sup>1</sup> School of Biological Sciences, The University of Adelaide, Adelaide, South Australia, Australia

<sup>2</sup> Australian Research Council Centre of Excellence for Australian Biodiversity and Heritage, The University of Adelaide, Adelaide, South Australia, Australia

<sup>3</sup> Hawkesbury Institute for the Environment, Western Sydney University, Richmond, New South Wales, Australia

<sup>4</sup> School of Chemistry and Molecular Biosciences, Faculty of Science, University of Queensland, Brisbane, Queensland, Australia

<sup>5</sup> Science for Wildlife Ltd, Sydney, New South Wales, Australia

<sup>6</sup> Global Centre for Land Based Innovation, Western Sydney University, Penrith, New South Wales, Australia

<sup>7</sup> Australian Museum Research Institute, Sydney, New South Wales, Australia

<sup>8</sup> Australian Research Council Centre of Excellence for Australian Biodiversity and Heritage, University of New South Wales, Sydney, New South Wales, Australia

<sup>9</sup> Koala Life Foundation, Cleland Wildlife Park, Department for Environment and Water, 365c Mt Lofty Summit Road, Adelaide, South Australia, Australia

<sup>10</sup> School of Animal and Veterinary Sciences, The University of Adelaide, Adelaide, South Australia, Australia

Corresponding Authors: Raphael Eisenhofer, Ben D Moore

Email address: raph.eisenhofer@gmail.com, B.Moore@westernsydney.edu.au

Gut microbiota studies often rely on a single sample taken per individual, representing a snapshot in time. However, we know that gut microbiota composition in many animals exhibits intra-individual variation over the course of days to months. Such temporal variations can be a confounding factor in studies seeking to compare the gut microbiota of different wild populations, or to assess the impact of medical/veterinary interventions. To date, little is known about the variability of the koala (*Phascolarctos cinereus*) gut microbiota through time. Here, we characterise the gut microbiota from faecal samples collected at 8 timepoints over a month for a captive population of South Australian koalas (n individuals = 7), and monthly over 7 months for a wild population of New South Wales koalas (n individuals = 5). Using 16S rRNA gene sequencing, we found that microbial diversity was stable over the course of days to months. Each koala had a distinct faecal microbiota composition which in the captive koalas was stable across days. The wild koalas showed more variation across months, although each individual still maintained a distinct microbial composition. Per koala, an average of 57 ( $\pm 16$ ) amplicon sequence variants (ASVs) were detected across all time points; these ASVs accounted for an average of 97% ( $\pm 1.9\%$ ) of the faecal microbial community per koala. The koala faecal microbiota exhibits stability over the course of days to months. Such knowledge will be useful for future studies comparing koala populations and developing microbiota interventions for this

regionally endangered marsupial.

# Individuality and stability of the koala (*Phascolarctos cinereus*) faecal microbiota through time

**Running title:** Longitudinal koala faecal microbiota

Raphael Eisenhofer<sup>\*^1,2</sup>, Kylie L. Brice<sup>^3</sup>, Michaela D.J. Blyton<sup>4</sup>, Scott E. Bevins <sup>†</sup>, Kellie Leigh<sup>5</sup>, Brajesh K. Singh<sup>3,6</sup>, Kristofer M. Helgen<sup>7,8,9</sup>, Ian Hough<sup>9</sup>, Chris Daniels<sup>9</sup>, Natasha Speight<sup>10</sup>, Ben D. Moore<sup>3</sup>.

1. Australian Research Council Centre of Excellence for Australian Biodiversity and Heritage, The University of Adelaide, Adelaide SA, Australia.

2. School of Biological Sciences, Faculty of Science, The University of Adelaide, Adelaide SA, Australia.

3. Hawkesbury Institute for the Environment, Western Sydney University, Richmond NSW, Australia.

4. School of Chemistry and Molecular Biosciences, Faculty of Science, University of Queensland, Brisbane QLD, Australia.

5. Science for Wildlife Ltd, Sydney NSW, Australia.

6. Global Centre for Land Based Innovation, Western Sydney University, Penrith NSW, Australia.

7. Australian Museum Research Institute, Australian Museum, Sydney NSW, Australia.

8. Australian Research Council Centre of Excellence for Australian Biodiversity and Heritage, University of New South Wales, Sydney, NSW, Australia.

9. Koala Life Foundation, Cleland Wildlife Park, Department for Environment and Water, 365c Mt Lofty Summit Road, Crafers, South Australia.

10. School of Animal and Veterinary Sciences, University of Adelaide, Roseworthy, SA, Australia.

\* Corresponding author

^ These authors contributed equally

† Author has passed away

Corresponding author address: North Terrace Campus, University of Adelaide, South Australia, 5005

Corresponding author email: [raph.eisenhofer@gmail.com](mailto:raph.eisenhofer@gmail.com)

Corresponding author phone number: +61 4358 24262

Repositories: NCBI SRA (BioProject ID: PRJNA823502)

## Abstract

Gut microbiota studies often rely on a single sample taken per individual, representing a snapshot in time. However, we know that gut microbiota composition in many animals exhibits intra-individual variation over the course of days to months. Such temporal variations can be a confounding factor in studies seeking to compare the gut microbiota of different wild populations, or to assess the impact of medical/veterinary interventions. To date, little is known about the variability of the koala (*Phascolarctos cinereus*) gut microbiota through time. Here, we characterise the gut microbiota from faecal samples collected at 8 timepoints over a month for a captive population of South Australian koalas (n individuals = 7), and monthly over 7 months for a wild population of New South Wales koalas (n individuals = 5).

Using 16S rRNA gene sequencing, we found that microbial diversity was stable over the course of days to months. Each koala had a distinct faecal microbiota composition which in the captive koalas was stable across days. The wild koalas showed more variation across months, although each individual still maintained a distinct microbial composition. Per koala, an average of 57 ( $\pm$  16) amplicon sequence variants (ASVs) were detected across all time points; these ASVs accounted for an average of 97% ( $\pm$  1.9%) of the faecal microbial community per koala.

The koala faecal microbiota exhibits stability over the course of days to months. Such knowledge will be useful for future studies comparing koala populations and developing microbiota interventions for this regionally endangered marsupial.

## Keywords

Time-series, Longitudinal, 16S rRNA, Marsupial, *Eucalyptus*, Core microbiota, Caecum fermenter, arboreal folivore, Koala, Australia

## Introduction

Temporal dynamics of the gut microbiota of wild animals are generally poorly understood, due primarily to the difficulty of repeatedly collecting samples from known individuals over

an extended period [1,2]. Recently there has been a surge in time-series investigations in wild animals and humans [2–7]. Most longitudinal studies in wild animals have focused on primates, with diets encompassing a wide variety of plant species, and incorporating multiple plant parts (e.g., foliage, bark, and fruit) in their diet. These studies have included western lowland gorillas (*Gorilla gorilla gorilla*) and mountain gorillas (*Gorilla beringei beringei*) [7], black howler monkeys (*Alouatta pigra*) [8], and Udzungwa red colobus monkeys (*Procolobus gordonorum*) [9]. Others have focused on primates with more omnivorous diets, including chimpanzees (*Pan troglodytes schweinfurthii*) [10], baboons (*Papio cynocephalus*) [5], ring-tailed lemurs (*Lemur catta*) [11]. The results of these studies, particularly those focusing on wild herbivores, have shown that seasonal shifts in food availability (e.g., of ripe fruit) can drive gut microbiota composition. In contrast, studies in humans have found that diet and host lifestyle influence the gut microbiota at a finer (e.g., daily) scale [1,4,12]. Overall, temporal variability of the gut microbiota varies from animal to animal and can be heavily influenced by diet.

The koala (*Phascolarctos cinereus*), a specialist folivore, has recently been listed as endangered due to threatening processes including habitat fragmentation [13], climate change [14], and disease (e.g., chlamydiosis and koala retrovirus) [15–17]. The koala is an obligate dietary specialist [18] which relies almost exclusively on eucalypt foliage (from the genera *Eucalyptus*, *Corymbia* and *Angophora*, family Myrtaceae) [19]. Eucalypt foliage is a chemically complex and nutritionally challenging food source [20] and its consumption and digestion is thought to be facilitated by the fermentative ability of gut microbiota and by the host's physiological capacity to detoxify and eliminate plant toxins. Given recent calls that the gut microbiota could be linked to host health and conservation [21,22], there has been a surge of interest in understanding the role of the gut microbiota in koala diet choice and health. Recently Brice *et. al.*, [23] found that within a single koala population, the gut microbiota of koalas differed according to which of two *Eucalyptus* species, manna gum (*Eucalyptus viminalis*) and messmate (*E. obliqua*), were eaten. They concluded that the koala gut microbiota adjusts to individual diet, presumably enabling optimal degradation and extraction of available nutrients. This population of koalas had experienced a period of exponential growth, resulting in overbrowsing and die-back of their preferred food species, manna gum [24]. In 2013, hundreds or thousands of koalas died of starvation, due in part to their reluctance to feed on available messmate patches [24]. In a captive experiment, Blyton *et. al.*, [25] altered the microbial community composition of manna gum-feeding koalas to resemble more closely that of messmate-feeding koalas, using faecal inoculations. Individuals with more substantially altered microbiota subsequently increased their consumption of messmate. This demonstrated that an individual koala's gut microbiota influences feeding behaviour and suggests that the microbiota might limit the ability of koalas to feed from messmate during mass starvation events. However, we currently lack a detailed understanding of the stability of

the koala gut microbiota through time, particularly in wild koalas. Such knowledge could be useful for disentangling the effects of diet and other treatment effects from natural variations in koalas.

To fill this gap, we characterised the gut microbiota from faecal pellets collected over a one-month period from wild koalas rescued from extensive wildfires that occurred on Kangaroo Island, South Australia (SA), from December 2019 - January 2020, and rehomed at Cleland Wildlife Park, SA, as well as from mainland South Australian koalas housed at Cleland. We also undertook a seven-month time-series study to determine the stability of the faecal microbiota of wild koalas living in a mixed eucalypt forest at Mountain Lagoon, in and adjoining Wollemi National Park, NSW, Australia. We aimed to address the questions: 1) how much intra-individual variation in faecal microbiota diversity and composition is there for koalas over days and months, and 2) is there significant inter-individual variation in gut microbial community composition between koalas?

## Experimental procedures

### Study sites and faecal collection methods

#### *Cleland koala population*

Pellets were collected from Cleland captive koalas (n = 4) and Kangaroo Island koalas (rescued wild koalas, n = 3) housed at the Cleland Wildlife Park (34°58'01.5" S, 138°41'49.0" E) in the Adelaide Hills, SA, Australia (Table 1). The koalas were housed individually for the duration of the study, as they were being kept isolated during testing for koala retrovirus and *Chlamydia*. Between April and May 2020, freshly defecated faecal pellets were collected every three to four days for a period of one month into 5 mL tubes and immediately stored in a -20 °C freezer (SI table 2). All koalas were supplied with branches of a range of eucalypt species daily, primarily including river red gum (*E. camaldulensis*), manna gum (*E. viminalis*), and South Australian blue gum (*E. leucoxylon*) (SI table 2).

#### *Mountain Lagoon koala population*

Faecal pellets were collected from three female and two 2 male) radio-collared koalas (VHF single stage transmitter, Tittley Scientific, Brendale, QLD, Australia) that were part

of a larger study at Mountain Lagoon (33°10'02" S, 150°28'11" E) in the Blue Mountains, NSW, Australia (Figure 1). This was a medium-density koala population, inhabiting continuous mixed eucalypt forest, in and adjoining Wollemi National Park. Mountain Lagoon is a small basin with a layer of relatively more-fertile Wianamatta shale overlying Triassic Hawkesbury sandstone [26]. A range of vegetation communities occur at the site, including Lower Blue Mountains Exposed Red Bloodwood Forest, Blue Mountains Grey Gum-Stringybark Transition Forest, Blue Mountains Blue Gum-Turpentine Gully Forest, Sydney Hinterland Sheltered Turpentine-Apple Forest, and Blue Mountains Shale Cap Forest.

Koalas were recorded using at least thirteen different eucalypt species from these five vegetation communities [27] across the genera *Eucalyptus* (subgenera *Symphyomyrtus* and *Eucalyptus* -- previously *Monocalyptus*), *Corymbia* and *Angophora* (See supplementary information Table 1). The wide variety of potential food species available at Mountain Lagoon increases the diversity of digestive and nutritional challenges posed to koalas, as well as exposure to plant secondary metabolites including polyphenols such as tannins, flavonoids and quinic acid derivatives [28], terpenoids [29], formylated phloroglucinol compounds (FPCs) [30] and unsubstituted B-ring flavanones (UBFs) [31]. Each of the koalas sampled in the study were recorded using from 5 to 9 different tree species, and predominantly utilised the shale and shale-sandstone transition soil types [27].

The koalas were radio tracked diurnally over a three-day period at fortnightly intervals between January and July 2015; upon observation of the koala, the occupied tree was identified to species, and the location recorded with a hand-held GPS unit. A mat was placed directly underneath the koala to catch fresh faecal pellets and periodically checked throughout the day at typical intervals of 15 minutes (no greater than four hours). If no pellets were observed during the day, the mats were left out overnight and pellets collected the following morning. Collected pellets were bagged and placed on ice until they could be stored in a -20°C freezer. Studies into the impact of post-collection storage, handling and DNA extraction methods on DNA quality, microbial composition and diversity of faecal samples have concluded that there is no significant impact of short-term storage in temperatures of 4°C for up to 24-72 h. They also found short or long-term storage at -20 and -80°C did not have a significant impact [32–34].

## DNA extraction

Microbial DNA was extracted from faecal pellets using the DNeasy PowerSoil® DNA isolation kit (QIAGEN) as per the manufacturer's instructions. Briefly, 0.25 grams (g) of faeces (frozen) was added to the 750 microliters (µl) bead bed, 100 µl of sterilised milli-Q ultra-pure water and 160 µl of the C1 solution were added, the tubes were vortexed on

high for 10 minutes (min). Final elution was performed with 100 µl of sterile nuclease-free water (Invitrogen, Mulgrave, VIC, Australia). DNA concentration was quantified by Qubit 2.0 Fluorometric assay (Life Technologies, Carlsbad, California, USA), and adjusted to a concentration of 10 ng/µl.

## 16S rRNA gene library preparation

### *Cleland samples*

Single PCR reactions [35] were performed for all extracted Cleland koala faecal DNA using the reverse-barcoded V4 region 515F-806R primer pair (515F 5-GTGCC AGCMGCCGCGGTAA-3 and 806R 5-GGACTACHVHH HTWTCTAAT-3) [36]. Each reaction contained 2.5 µl HiFi Buffer (X10), 0.1 µl Platinum™ Taq DNA Polymerase (ThermoFisher), 1µl MgSO<sub>4</sub> (50 mM), 0.2 µl dNTP mix (100µM), 0.5 µl (10µM) of each primer, 1 µl template DNA, reaction volumes were adjusted to a total of 25 µl with milli-Q ultra-pure water. PCR conditions consisted of 94°C (3 min), 94°C (45 seconds (s)), annealing temperature of 50°C (60 s), extension temperature of 68°C (90 s), repeated 35 times, then 68°C (10 min).

### *Mountain Lagoon samples*

The V4 region of the bacterial 16S rRNA gene was amplified using primers 515F and 806R from Caporaso *et. al.*, [36]. Each 20 µl reaction contained 10 µl MyTaq™ HS Red Mix (2x) hot-start PCR (BioLine, Taunton, Massachusetts, USA), 1µl of each primer (20 micromole (µM); Applied Biosystems®/Life Technologies Australia Pty, Ltd, Mulgrave, VIC, Australia), and 2 µl template DNA (20 nanogram (ng) /µl). Reaction volumes were adjusted to a total of 20 µl with milli-Q ultra-pure water (Millipak® 40 Millipore, Merck Millipore, Kilsyth, VIC, Australia). PCR conditions were 95°C (1 min), 95°C (30 seconds (s)), annealing temperature of 61.5°C (30 s), extension temperature of 72°C (1 min), repeated 35 times, then 72°C (10 min).

Paired-end DNA sequencing was performed on an Illumina MiSeq® platform, using the MiSeq reagent Kit v3 (Mountain Lagoon) and v2 (Cleland) by the Next Generation Sequencing Facility at Western Sydney University, Richmond, NSW (Mountain Lagoon samples) and at the SAHMRI (South Australian Health and Medical Research Institute), SA (Cleland samples).

## Bioinformatic analysis

Analysis of all sequence data was performed using Quantitative Insights into Microbial Ecology (QIIME2) pipeline, version 2020.6 [37] unless otherwise stated. Forward read sequences were denoised using Deblur [38] to create a BIOM table [39]. Taxonomy was assigned using a naive Bayesian classifier against the SILVA 138 v4 database [40,41]. A



phylogenetic tree was constructed using the SATe-Enabled Phylogenetic Placement (SEPP) [42] insertion pipeline as implemented in the q2-fragment-insertion-plugin [43,44], with the SILVA 128 reference tree. We set the sampling depth to 36,622 to retain all samples and computed various alpha and beta diversity metrics using the q2-diversity plugin, including richness, pielou's evenness [45], unweighted [46] and weighted [47] UniFrac distances.

Count tables and diversity metrics were imported into R Studio [48] using qiime2R (<https://github.com/jbisanz/qiime2R>) and phyloseq [49] and manipulated using dplyr (<https://github.com/tidyverse/dplyr>), tidyr (<https://github.com/tidyverse/tidyr>), and the microbiome package (<https://github.com/microbiome/microbiome>). Plots were created using ggplot2 [50]. Alpha diversity ANOVAs [51] and linear models were run using the lme4, lmerTest, and stargazer R packages. Beta diversity PERMANOVAs [52] were run using the vegan R package. All QIIME2 and R code used for analysis and visualisation are available at the following GitHub repository ([https://github.com/EisenRa/2022\\_Koala\\_Faeces\\_R](https://github.com/EisenRa/2022_Koala_Faeces_R)).

## Results

DNA sequencing of the 80 koala faecal samples produced 17,457,412 reads (mean 218,218 reads per sample, min 65,214, max 1,009,351), which after de-noising yielded a total of 947 ASVs.

### Temporal stability of koala faecal microbiota diversity through time

To measure the stability of the koala gut microbiota through time, we longitudinally sampled faecal samples from koalas at the level of days and months. Koalas housed at Cleland, South Australia exhibited stable gut microbial evenness and richness (despite subtle variation in *Eucalyptus* species eaten; SI Table 2/3) when sampled every four days over a month (Figure 2A and C). The one exception was the koala named Lola, who experienced a rise and subsequent normalisation of microbial richness from days 16 to 24. Wild Mountain Lagoon koalas also generally exhibited stable evenness and richness when sampled monthly for six months (Figure 2B and C). There were significant differences among koalas in microbial diversity (ANOVA of richness  $p$ -value = < 0.001, ANOVA of evenness = < 0.001 SI Figure 1), and Mountain Lagoon koalas had significantly lower ASV richness (but not evenness) compared to Cleland koalas (mean richness Mountain Lagoon =  $112 \pm 24.3$ , mean richness Cleland =  $145 \pm 29.5$ ;  $t = -2.716$ ,  $p = 0.0203$ ; SI Figure 2). However, given the overall low population-level sample sizes (7 vs 5), this result should be met with caution.

### Faecal ASV stability through time at the individual level

The dominant members of the koala faecal microbiota remained highly stable at the individual level (Table 2). Each koala had on average 249 ( $\pm$  43) ASV detected over the course of sampling. Of these, an average of 57 ( $\pm$  16) were detected at all time points per koala. These ASVs accounted for on average 97% ( $\pm$  1.9%) of the relative abundance of ASVs in each koala, suggesting a stable individual core microbiota at the ASV level for koalas over the course of days to months. Within the Cleland koalas, five ASVs were found in all koalas at all time points, of which one (593a5c45dd38f6d9ec369b9b2679997f, classified as f = *Tannerellaceae*, g = *Parabacteroides*) had a mean relative abundance of 18.6% ( $\pm$  15.3%). Mountain Lagoon koalas had nine, ASVs that were found in all Mountain Lagoon koala samples, two of which (ce3b37d15aee37e4213c2d13ad8b1b1a; classified as f = *Paludibacteraceae*, and f3521f355b29e7f7c878d616495def33; classified as f = *Tannerellaceae*, g = *Parabacteroides*) had mean relative abundances of 15.6% ( $\pm$  9.9%) and 20.7% ( $\pm$  11.2%), respectively. While no ASVs were shared between all koalas in the study (i.e., Cleland and Mountain Lagoon), 82 of 947 ASVs were shared between Cleland and Mountain Lagoon (with 501 and 353 being found only in Cleland and Mountain Lagoon, respectively; SI Figure 2). These shared ASVs accounted for a mean relative abundance of 36% and 25% for Cleland and Mountain Lagoon koalas, respectively.

# **Stability and individuality of koala faecal microbiota composition through time**

The analysis of microbial composition by principal coordinates analysis (PCoA) of unweighted and weighted UniFrac distances, indicated that faecal microbial composition tended to cluster by individual (Figure 3). Over the course of days, Cleland samples showed tight clustering of microbial community composition by individual koala (Figure 3A; PERMANOVA  $p$ -value < 0.001,  $R^2$  = 0.615), with looser clustering when taking abundance into account (Figure 3B; PERMANOVA  $p$ -value < 0.001,  $R^2$  = 0.746). In wild koalas sampled over months, the clustering of microbial communities was less tight but still significant (Figure 3C/3D; PERMANOVA of unweighted UniFrac  $p$ -value < 0.001,  $R^2$  = 0.506; PERMANOVA of weighted UniFrac  $p$ -value < 0.001,  $R^2$  = 0.757).

Taxonomically we observed similar trends, with Cleland koalas being clearly distinguishable from each other by the types and relative abundances of microbial families, with minor variation in the relative abundances of microbes on the day-to-day scale (Figure 4). Mountain Lagoon koalas were less distinguishable between each other at the family level, except for Phasco, who had much lower levels of *Paludibacteraceae* (Figure 4) and was also the only koalas to demonstrate a strong preference for occupying *Eucalyptus deanei* (K Leigh unpublished data). Across all koalas in the study, *Tannerellaceae* had the highest relative abundance (mean 25.7% in Cleland, 36.3% in Mountain Lagoon). Cleland koalas had higher relative abundances of *Ruminococcaceae* compared to Mountain Lagoon koalas (mean 14.2% vs 3.1%, respectively), and *Gastranaerophilales* (mean 6.2% vs 0.09%, respectively). *Muribaculaceae* [formerly S24-7] (mean 11.4%), *Akkermansiaceae* (mean 1.5%), and *Prevotellaceae* (mean 1.1%) were

detected in Cleland koalas but not Mountain Lagoon koalas. Mountain Lagoon koalas had substantially higher relative abundances of both *Paludibacteraceae* (15.7% vs. 0.0008%) and *Synergistaceae* (mean 11.5% vs. 0.9%) compared to Cleland samples. Across all koala samples, the genus *Lonepinella* had a prevalence of 82.5% and a mean relative abundance of 1.1% (min = 0%, max = 9.7%).

## Discussion

The extent of intra-individual variation in faecal microbiota diversity and composition is important to consider, especially when trying to understand factors that drive microbiota changes (e.g., diet or experimental treatment). Given that intra-individual variability is species-specific [1,6] and potentially context-specific (i.e., dietary and environmental stability), it is ideal to characterise this variability on the study species of interest. To this end, we sought to characterise the level of intra-individual variation in faecal microbiota composition and diversity in the koala. Both the evenness and richness of ASVs stayed relatively stable at the scale of days (Cleland koalas), and months (Mountain Lagoon koalas). We also identified a stable core microbiota within the faecal microbiota of each koala which persisted throughout the duration of sample collection. These individual core ASVs were a subset of the total diversity found in each individual (mean of 20% of the total diversity over the entire sampling of an individual) yet accounted for the majority (>95%) of the individual's microbial community in terms of relative abundance. This persistence of highly abundant individual core ASVs was observed in Cleland koalas despite their mixed *Eucalyptus* diets (though it should be noted that most of the *Eucalyptus* eaten by Cleland koalas was *Eucalyptus camaldulensis*). This suggests that while there could be an influx of transient microbes from the diet/environment, the dominant members of the koala faecal microbiota remain stable through time. These individual core ASVs were specific to individual koalas, as only a subset (5 and 9 ASVs) was detected in all koalas within the Cleland and Mountain Lagoon populations, respectively. This suggests that there is a degree of functional redundancy in the different individual core microbes between koalas, which has been observed in other host species [53,54] and which could be tested in the koala in future studies using shotgun metagenomics. It is likely that these dominant individual core ASVs are inherited from the mother via pap—a faecal-like substance fed from the mother to the joey around the time of pouch emergence that acts as a microbial inoculant [55,56]. Overall, our results suggest that koalas maintain a stable, individual core faecal microbiota over the course of days to months.

We found that each individual koala had a distinct faecal microbiota composition, with inter-individual differences in composition being greater than intra-individual differences over the course of days to months. Such clustering by individuals over the course of days has been observed in desert woodrats (*Neotoma lepida*) [57]. Long-term stability of faecal microbiota composition has also been observed in other species, albeit not to the degree that we see in koalas in this study. In chimpanzees, conserved phylotypes were detected from longitudinally sampled individuals in 2000, 2001, and 2008, and these phylotypes accounted for the bulk of the microbial community (40-70% of relative abundance) [10]. A degree of individuality of in faecal microbiota composition over three weeks has previously been found in *Chlamydia*-infected koalas being treated with antibiotics in captivity [58]. Our study extends this to healthy koalas living both in captivity and the wild, as well as increasing the sampling time to months. We found that koalas at Mountain Lagoon had more similar faecal microbial compositions when compared to koalas from Cleland. One possible explanation is that Mountain Lagoon koalas are likely more closely related and share a greater proportion of their faecal microbial communities as a consequence—especially considering the strong degree of vertical transmission in koalas [56]. In contrast, Cleland koalas represent individuals from distinct and broader geographic regions (Kangaroo Island, Adelaide Hills).

Differences in faecal microbiota composition between host populations have been previously observed in other taxa, such as Black howler monkeys (*Alouatta pigra*) [8], and Udzungwa red colobus monkeys (*Procolobus gordonorum*) [9]. Such population-level differences have also been observed in the marsupial Southern hairy-nosed wombat (*Lasiorhinus latifrons*) [59]. In this study, we observed faecal microbiota differences between the different koala populations sampled. Mountain Lagoon koalas had substantially higher relative abundance of Synergistaceae compared to Cleland koalas. Members of this family have been shown to detoxify pyridinediols and fluoroacetate in ruminants [60,61], and some have predicted that this family is important for koalas to feed on *Eucalyptus* [62]. *Synergistaceae* has been found previously in koalas from Victoria and Queensland [23,62], so its near absence in koalas from South Australia is surprising. Another microbial family that had a much higher relative abundance in Mountain Lagoon was *Paludibacteraceae* (phylum Bacteroidota), however, little is known about this recently described family [63]. *Gastranaerophilales* (phylum Melainabacteria — closely related to Cyanobacteria) were found at a much higher relative abundance in Cleland koalas. A genome from this family has been obtained from a Queensland koala, and its putative functions involve genes relating to plant fermentation and vitamin synthesis [64]. *Muribaculaceae* (Formerly S24-7) was found to be highly abundant in some Cleland koalas, but completely absent from Mountain Lagoon koalas. This taxon was previously identified at high relative abundance (>20%) from captive koalas located in Queensland and NSW [62,65], and yet was also not detected from wild koalas sampled from Cape

Otway, Victoria [23]. Broader geographic sampling could determine whether this taxon is a marker for captivity, or endemic to specific koala populations. We also found *Lonepinella koalarum* to be highly prevalent (albeit low in relative abundance) across the koalas samples studied. *L koalarum* has been shown to degrade tannin-protein complexes and was first isolated and described by [66]. This bacterium has received interest due to its positive association with koala survival during antibiotic treatment for *Chlamydia* [58,67]. However, these inter-population findings should be treated with caution, as our population-level comparison is confounded by captive (Cleland) vs. wild (Mountain Lagoon), which can influence faecal microbiota composition in some vertebrate species [65,68,69]. These comparisons are also hindered by the small individual-level sample sizes (n = 7 for Cleland, n = 5 for Mountain Lagoon). Regardless, these preliminary population-level differences are interesting — particularly in the context of adaptation to different environments and *Eucalyptus* species — and warrant follow up in future studies.

## Conclusion

This study found that koalas have individual core faecal microbiota that are stable over the course of days to months. This stability could be due to the lack of horizontal transfer between individuals or uptake from the environment. Such stability may have ramifications for the ability of koalas to adapt to different environments and dietary *Eucalyptus* species.

## Abbreviations

ASV: Amplicon Sequence Variant  
CL: Cleland Wildlife Park  
KI: Kangaroo Island  
ML: Mountain Lagoon  
NSW: New South Wales  
PCoA: Principal Coordinates Analysis  
PSM: Plant Secondary Metabolite  
SA: South Australia

## Acknowledgements

We would like to thank the keepers at Cleland Wildlife Park for their help with collecting samples.

# Statements and declarations

## Availability of data and materials

Raw sequencing data are available at the NCBI SRA (BioProject ID: PRJNA823502)

All QIIME2, code, analysis files, and R code used for analyses and to plot figures can be found at the following GitHub repository: [https://github.com/EisenRa/2022\\_Koala\\_Faeces\\_R](https://github.com/EisenRa/2022_Koala_Faeces_R)

## Funding

RE was funded by the Australian Research Council Centre of Excellence for Australian Biodiversity and Heritage (CABAH). KB was funded by the Australian Postgraduate Award (APA), Hawkesbury Institute for the Environment and Western Sydney University. KB was partly supported by the Gblal Centre for Land Based Innovation, also partly under the Australian Research Council's Linkage Projects funding scheme (project number LP140100751), and a Paddy Pallin Science Grant Award from the Royal Zoological Society of NSW.

## Contributions

All authors initiated and conceived the project. IH, KB and SB collected the samples. KB and RE performed the molecular work. RE performed the bioinformatic analysis and data visualisation. KB and RE wrote the manuscript, with input from all authors.

## Ethics approval

Cleland sampling was conducted with University of Adelaide Animal Ethics Committee Approval S-2016-169 and Department for Environment and Water scientific permit Y26054.

The Mountain Lagoon project was conducted as part of a koala project with the approval of the Western Sydney University Animal Care and Ethics Committee (ACEC), reference number: A10670 and New South Wales National Parks and Wildlife Service Scientific Licence SL101364.

## References

1. David LA, Maurice CF, Carmody RN, Gootenberg DB, Button JE, Wolfe BE, et al. Diet rapidly and reproducibly alters the human gut microbiome. *Nature*. Nature Publishing Group; 2014;505:559–63.

- 440 2. Faust K, Lahti L, Gonze D, de Vos WM, Raes J. Metagenomics meets time series analysis:  
441 unraveling microbial community dynamics. *Current Opinion in Microbiology*. 2015;25:56–66.
- 442 3. Caporaso JG, Lauber CL, Costello EK, Berg-Lyons D, Gonzalez A, Stombaugh J, et al.  
443 Moving pictures of the human microbiome. *Genome Biology*. 2011;12:R50.
- 444 4. David LA, Materna AC, Friedman J, Campos-Baptista MI, Blackburn MC, Perrotta A, et al.  
445 Host lifestyle affects human microbiota on daily timescales. *Genome Biology*. 2014;15:R89.
- 446 5. Ren T, Grieneisen LE, Alberts SC, Archie EA, Wu M. Development, diet and dynamism:  
447 longitudinal and cross-sectional predictors of gut microbial communities in wild baboons.  
448 *Environ Microbiol*. 2016;18:1312–25.
- 449 6. Amato KR, Leigh SR, Kent A, Mackie RI, Yeoman CJ, Stumpf RM, et al. The gut microbiota  
450 appears to compensate for seasonal diet variation in the wild black howler monkey (*Alouatta*  
451 *pigra*). *Microb Ecol*. 2015;69:434–43.
- 452 7. Gomez A, Rothman JM, Petzelkova K, Yeoman CJ, Vlckova K, Umaña JD, et al. Temporal  
453 variation selects for diet–microbe co-metabolic traits in the gut of Gorilla spp. *ISME J. Nature*  
454 *Publishing Group*; 2016;10:514–26.
- 455 8. Amato KR, Yeoman CJ, Kent A, Righini N, Carbonero F, Estrada A, et al. Habitat degradation  
456 impacts black howler monkey (*Alouatta pigra*) gastrointestinal microbiomes. *The ISME Journal*.  
457 *Nature Publishing Group*; 2013;7:1344–53.
- 458 9. Barelli C, Albanese D, Donati C, Pindo M, Dallago C, Rovero F, et al. Habitat fragmentation is  
459 associated to gut microbiota diversity of an endangered primate: implications for conservation.  
460 *Scientific Reports. Nature Publishing Group*; 2015;5:14862.
- 461 10. Degnan PH, Pusey AE, Lonsdorf EV, Goodall J, Wroblewski EE, Wilson ML, et al. Factors  
462 associated with the diversification of the gut microbial communities within chimpanzees from  
463 Gombe National Park. *Proc Natl Acad Sci U S A*. 2012;109:13034–9.
- 464 11. Fogel AT. The Gut Microbiome of Wild Lemurs: A Comparison of Sympatric Lemur catta and  
465 *Propithecus verreauxi*. *Folia Primatol (Basel)*. 2015;86:85–95.
- 466 12. Faith JJ, Guruge JL, Charbonneau M, Subramanian S, Seedorf H, Goodman AL, et al. The  
467 Long-Term Stability of the Human Gut Microbiota. *Science*. 2013;341:1237439–1237439.
- 468 13. Melzer A, Carrick F, Menkhorst P, Lunney D, John BST. Overview, Critical Assessment, and  
469 Conservation Implications of Koala Distribution and Abundance. *Conservation Biology*.  
470 2000;14:619–28.
- 471 14. Seabrook L, McAlpine C, Baxter G, Rhodes J, Bradley A, Lunney D, et al. Drought-driven  
472 change in wildlife distribution and numbers: a case study of koalas in south west Queensland.  
473 *Wildl Res. CSIRO PUBLISHING*; 2011;38:509–24.
- 474 15. Polkinghorne A, Hanger J, Timms P. Recent advances in understanding the biology,  
475 epidemiology and control of chlamydial infections in koalas. *Vet Microbiol*. 2013;165:214–23.

- 476 16. Simmons GS, Young PR, Hanger JJ, Jones K, Clarke D, McKee JJ, et al. Prevalence of  
477 koala retrovirus in geographically diverse populations in Australia. *Aust Vet J.* 2012;90:404–9.
- 478 17. McEwen GK, Alquezar-Planas DE, Dayaram A, Gillett A, Tarlinton R, Mongan N, et al.  
479 Retroviral integrations contribute to elevated host cancer rates during germline invasion. *Nat*  
480 *Commun.* Nature Publishing Group; 2021;12:1316.
- 481 18. Shipley LA, Forbey JS, Moore BD. Revisiting the dietary niche: When is a mammalian  
482 herbivore a specialist? *Integr Comp Biol.* 2009;49:274–90.
- 483 19. Hindell MA, Handasyde KA, Lee AK. Tree Species Selection by Free-Ranging Koala  
484 Populations in Victoria. *Wildl Res.* CSIRO PUBLISHING; 1985;12:137–44.
- 485 20. Moore BD, Foley WJ. Tree use by koalas in a chemically complex landscape. *Nature.*  
486 2005;435:488–90.
- 487 21. Redford KH, Segre JA, Salafsky N, del Rio CM, McAloose D. Conservation and the  
488 Microbiome. *Conserv Biol.* 2012;26:195–7.
- 489 22. Trevelline, Brian K., Fontaine Samantha S., Hartup Barry K., Kohl Kevin D. Conservation  
490 biology needs a microbial renaissance: a call for the consideration of host-associated microbiota  
491 in wildlife management practices. *Proceedings of the Royal Society B: Biological Sciences.*  
492 2019;286:20182448.
- 493 23. Brice KL, Trivedi P, Jeffries TC, Blyton MDJ, Mitchell C, Singh BK, et al. The Koala  
494 (*Phascolarctos cinereus*) faecal microbiome differs with diet in a wild population. *PeerJ.*  
495 2019;7:e6534.
- 496 24. Whisson DA, Dixon V, Taylor ML, Melzer A. Failure to Respond to Food Resource Decline  
497 Has Catastrophic Consequences for Koalas in a High-Density Population in Southern Australia.  
498 *PLOS ONE.* Public Library of Science; 2016;11:e0144348.
- 499 25. Blyton MDJ, Soo RM, Whisson D, Marsh KJ, Pascoe J, Le Pla M, et al. Faecal inoculations  
500 alter the gastrointestinal microbiome and allow dietary expansion in a wild specialist herbivore,  
501 the koala. *Animal Microbiome.* 2019;1:6.
- 502 26. Robbie A, Martin HA. The History of the Vegetation from the Last Glacial Maximum at  
503 Mountain Lagoon, Blue Mountains, New South Wales. *Proceedings of the Linnean Society of*  
504 *New South Wales.* Linnean Society of New South Wales; 128:57–80.
- 505 27. Gallahar N, Leigh K, Phalen D, Gallahar N, Leigh K, Phalen D. Koala tree selection in a  
506 mixed-tenure landscape and post-fire implications. *Wildl Res.* CSIRO PUBLISHING;  
507 2021;48:737–55.
- 508 28. Marsh KJ, Kulheim C, Blomberg SP, Thornhill AH, Miller JT, Wallis IR, et al. Genus-wide  
509 variation in foliar polyphenolics in eucalypts. *Phytochemistry.* 2017;144:197–207.
- 510 29. Boland DJ, Australian Centre for International Agricultural Research C, Brophy JJ, House  
511 APN. *Eucalyptus leaf oils: use, chemistry, distillation and marketing* [Internet]. Melbourne  
512 (Australia) Inkata Press; 1991. Available from:  
513 [https://scholar.google.com/scholar\\_lookup?title=Eucalyptus+leaf+oils%3A+use%2C+chemistry](https://scholar.google.com/scholar_lookup?title=Eucalyptus+leaf+oils%3A+use%2C+chemistry)



514 %2C+distillation+and+marketing&author=Boland%2C+D.J.%0A++++%28ed.%29&publication\_y  
515 ear=1991

516 30. Moore BD, Wallis IR, Palá-Paul J, Brophy JJ, Willis RH, Foley WJ. Antiherbivore chemistry  
517 of Eucalyptus-cues and deterrents for marsupial folivores. *J Chem Ecol.* 2004;30:1743–69.

518 31. Marsh KJ, Saraf I, Hocart CH, Youngentob K, Singh I-P, Foley WJ. Occurrence and  
519 distribution of unsubstituted B-ring flavanones in Eucalyptus foliage. *Phytochemistry.*  
520 2019;160:31–9.

521 32. Carroll IM, Ringel-Kulka T, Siddle JP, Klaenhammer TR, Ringel Y. Characterization of the  
522 fecal microbiota using high-throughput sequencing reveals a stable microbial community during  
523 storage. *PLoS One.* 2012;7:e46953.

524 33. Ezzy AC, Hagstrom AD, George C, Hamlin AS, Pereg L, Murphy AJ, et al. Storage and  
525 handling of human faecal samples affect the gut microbiome composition: A feasibility study. *J*  
526 *Microbiol Methods.* 2019;164:105668.

527 34. Lauber CL, Zhou N, Gordon JI, Knight R, Fierer N. Effect of storage conditions on the  
528 assessment of bacterial community structure in soil and human-associated samples. *FEMS*  
529 *Microbiology Letters.* 2010;307:80–6.

530 35. Marotz C, Sharma A, Humphrey G, Gottel N, Daum C, Gilbert JA, et al. Triplicate PCR  
531 reactions for 16S rRNA gene amplicon sequencing are unnecessary. *BioTechniques [Internet].*  
532 2019 [cited 2019 May 28]; Available from: [https://www.future-science.com/doi/full/10.2144/btn-](https://www.future-science.com/doi/full/10.2144/btn-2018-0192)  
533 2018-0192

534 36. Caporaso JG, Lauber CL, Walters WA, Berg-Lyons D, Lozupone CA, Turnbaugh PJ, et al.  
535 Global patterns of 16S rRNA diversity at a depth of millions of sequences per sample. *PNAS.*  
536 2011;108:4516–22.

537 37. Bolyen E, Rideout JR, Dillon MR, Bokulich NA, Abnet CC, Al-Ghalith GA, et al.  
538 Reproducible, interactive, scalable and extensible microbiome data science using QIIME 2.  
539 *Nature biotechnology.* 2019;37:852–7.

540 38. Amir A, McDonald D, Navas-Molina JA, Kopylova E, Morton JT, Xu ZZ, et al. Deblur Rapidly  
541 Resolves Single-Nucleotide Community Sequence Patterns. *mSystems.* 2017;2:e00191-16.

542 39. McDonald D, Clemente JC, Kuczynski J, Rideout JR, Stombaugh J, Wendel D, et al. The  
543 Biological Observation Matrix (BIOM) format or: how I learned to stop worrying and love the  
544 ome-ome. *Gigascience.* 2012;1:7.

545 40. Bokulich NA, Kaehler BD, Rideout JR, Dillon M, Bolyen E, Knight R, et al. Optimizing  
546 taxonomic classification of marker-gene amplicon sequences with QIIME 2's q2-feature-  
547 classifier plugin. *Microbiome.* 2018;6:90.

548 41. Quast C, Pruesse E, Yilmaz P, Gerken J, Schweer T, Yarza P, et al. The SILVA ribosomal  
549 RNA gene database project: improved data processing and web-based tools. *Nucleic Acids*  
550 *Res.* 2013;41:D590–6.

551 42. Mirarab S, Nguyen N, Warnow T. SEPP: SATé-enabled phylogenetic placement. *Pac Symp*  
552 *Biocomput.* 2012;247–58.

553 43. Janssen S, McDonald D, Gonzalez A, Navas-Molina JA, Jiang L, Xu ZZ, et al. Phylogenetic  
554 Placement of Exact Amplicon Sequences Improves Associations with Clinical Information.  
555 *mSystems.* 2018;3:e00021-18.

556 44. Matsen FA, Kodner RB, Armbrust EV. pplacer: linear time maximum-likelihood and  
557 Bayesian phylogenetic placement of sequences onto a fixed reference tree. *BMC*  
558 *Bioinformatics.* 2010;11:538.

559 45. Pielou EC. The measurement of diversity in different types of biological collections. *Journal*  
560 *of Theoretical Biology.* 1966;13:131–44.

561 46. Lozupone C, Knight R. UniFrac: a New Phylogenetic Method for Comparing Microbial  
562 Communities. *Applied and Environmental Microbiology.* 2005;71:8228–35.

563 47. Lozupone CA, Hamady M, Kelley ST, Knight R. Quantitative and qualitative beta diversity  
564 measures lead to different insights into factors that structure microbial communities. *Appl*  
565 *Environ Microbiol.* 2007;73:1576–85.

566 48. RStudio Team. RStudio: Integrated Development for R. RStudio, Inc, Boston, MA [Internet].  
567 2015; Available from: <http://www.rstudio.com/>

568 49. McMurdie PJ, Holmes S. phyloseq: An R Package for Reproducible Interactive Analysis and  
569 Graphics of Microbiome Census Data. *PLOS ONE. Public Library of Science;* 2013;8:e61217.

570 50. Wickham H. ggplot2: Elegant Graphics for Data Analysis [Internet]. Springer-Verlag New  
571 York; 2016. Available from: <https://ggplot2.tidyverse.org>

572 51. Anderson MJ. A new method for non-parametric multivariate analysis of variance. *Austral*  
573 *Ecology.* 2001;26:32–46.

574 52. Anderson MJ. Permutational Multivariate Analysis of Variance (PERMANOVA). Wiley  
575 StatsRef: Statistics Reference Online [Internet]. John Wiley & Sons, Ltd; 2017 [cited 2022 Apr  
576 18]. p. 1–15. Available from:  
577 <https://onlinelibrary.wiley.com/doi/abs/10.1002/9781118445112.stat07841>

578 53. Moya A, Ferrer M. Functional Redundancy-Induced Stability of Gut Microbiota Subjected to  
579 Disturbance. *Trends in Microbiology.* 2016;24:402–13.

580 54. Vieira-Silva S, Falony G, Darzi Y, Lima-Mendez G, Garcia Yunta R, Okuda S, et al.  
581 Species–function relationships shape ecological properties of the human gut microbiome. *Nat*  
582 *Microbiol. Nature Publishing Group;* 2016;1:1–8.

583 55. Osawa R, Blanshard WH, Ocallaghan PG. Microbiological Studies of the Intestinal  
584 Microflora of the Koala, *Phascolarctos Cinereus* .2. Pap, a Special Maternal Feces Consumed  
585 by Juvenile Koalas. *Aust J Zool.* 1993;41:611–20.

586 56. Blyton MDJ, Soo RM, Hugenholtz P, Moore BD. Maternal inheritance of the koala gut  
587 microbiome and its compositional and functional maturation during juvenile development.  
588 *Environmental Microbiology*. 2022;24:475–93.

589 57. Kohl KD, Luong K, Dearing MD. Validating the use of trap-collected feces for studying the  
590 gut microbiota of a small mammal (*Neotoma lepida*). *Journal of Mammalogy*. 2015;96:90–3.

591 58. Dahlhausen KE, Doroud L, Firl AJ, Polkinghorne A, Eisen JA. Characterization of shifts of  
592 koala (*Phascolarctos cinereus*) intestinal microbial communities associated with antibiotic  
593 treatment. *PeerJ*. 2018;6:e4452.

594 59. Eisenhofer R, Helgen KM, Taggart D. Signatures of landscape and captivity in the gut  
595 microbiota of Southern Hairy-nosed Wombats (*Lasiorninus latifrons*). *Animal Microbiome*.  
596 2021;3:4.

597 60. Allison MJ, Mayberry WR, Mcsweeney CS, Stahl DA. *Synergistes jonesii*, gen. nov., sp. nov.:  
598 A Rumen Bacterium That Degrades Toxic Pyridinediols. *Systematic and Applied Microbiology*.  
599 1992;15:522–9.

600 61. Davis CK, Webb RI, Sly LI, Denman SE, McSweeney CS. Isolation and survey of novel  
601 fluoroacetate-degrading bacteria belonging to the phylum Synergistetes. *FEMS Microbiol Ecol*.  
602 Oxford Academic; 2012;80:671–84.

603 62. Shiffman ME, Soo RM, Dennis PG, Morrison M, Tyson GW, Hugenholtz P. Gene and  
604 genome-centric analyses of koala and wombat fecal microbiomes point to metabolic  
605 specialization for *Eucalyptus* digestion. *PeerJ*. 2017;5:e4075.

606 63. Ormerod KL, Wood DLA, Lachner N, Gellatly SL, Daly JN, Parsons JD, et al. Genomic  
607 characterization of the uncultured Bacteroidales family S24-7 inhabiting the guts of  
608 homeothermic animals. *Microbiome*. 2016;4:36.

609 64. Soo RM, Skennerton CT, Sekiguchi Y, Imelfort M, Paech SJ, Dennis PG, et al. An  
610 Expanded Genomic Representation of the Phylum Cyanobacteria. *Genome Biol Evol*.  
611 2014;6:1031–45.

612 65. Blyton MDJ, Soo RM, Hugenholtz P, Moore BD. Characterization of the juvenile koala gut  
613 microbiome across wild populations. *Environmental Microbiology* [Internet]. [cited 2022 Apr  
614 18];n/a. Available from: <https://onlinelibrary.wiley.com/doi/abs/10.1111/1462-2920.15884>

615 66. Osawa R, Rainey F, Fujisawa T, Lang E, Busse HJ, Walsh TP, et al. *Lonepinella koalarum*  
616 gen. nov., sp. nov., a New Tannin-Protein Complex Degrading Bacterium. *Systematic and*  
617 *Applied Microbiology*. 1995;18:368–73.

618 67. Dahlhausen KE, Jospin G, Coil DA, Eisen JA, Wilkins LGE. Isolation and sequence-based  
619 characterization of a koala symbiont: *Lonepinella koalarum*. *PeerJ*. PeerJ Inc.; 2020;8:e10177.

620 68. Kohl KD, Skopec MM, Dearing MD. Captivity results in disparate loss of gut microbial  
621 diversity in closely related hosts. *Conserv Physiol* [Internet]. 2014 [cited 2018 Dec 5];2.  
622 Available from: <https://www.ncbi.nlm.nih.gov/pmc/articles/PMC4806740/>

623 69. Alberdi A, Martin Bideguren G, Aizpurua O. Diversity and compositional changes in the gut  
 624 microbiota of wild and captive vertebrates: a meta-analysis. Sci Rep. Nature Publishing Group;  
 625 2021;11:22660.

626

627

**Table 1**(on next page)

Characteristics of koalas in this study

Characteristics of koalas in this study

Koala Name	Sex	Geographic Origin	Entry date (Cleland)	Age (years)
Lola	Female	Adelaide Hills, SA	Unknown	8
Byron	Male	Kangaroo Island, SA	13/1/2020	4
Blaze	Male	Kangaroo Island, SA	22/1/2020	3
Claudette	Female	Kangaroo Island, SA	22/1/2020	4
Leo	Male	Reared at Cleland, SA	NA	2
George	Male	Reared at Cleland, SA	NA	2
Theo	Male	Reared at Cleland, SA	NA	1
Cin	Female	Mountain Lagoon, NSW	NA	Adult
Phasco	Female	Mountain Lagoon, NSW	NA	Adult
Reus	Female	Mountain Lagoon, NSW	NA	Adult
Tos	Male	Mountain Lagoon, NSW	NA	Adult
Uno	Male	Mountain Lagoon, NSW	NA	Adult

1

## Table 2 (on next page)

ASV-level statistics per koala

‘Total ASVs per koala’ represents the total number of ASVs detected for each koala through the course of the study. ‘Individual core ASVs’ is the number of ASVs found at all time points for a given koala. ‘Mean rel. abund. individual core ASVs’ represents the mean relative abundance of the core ASVs for each koala. CL = Cleland, ML = Mountain Lagoon.

Koala	ASVs per koala	Individual core ASVs	Mean rel. abund. individual core ASVs
<i>Blaze (CL)</i>	259	58	0.99
<i>Byron (CL)</i>	286	67	0.93
<i>Cin (CL)</i>	234	43	0.97
<i>Claudette (CL)</i>	256	45	0.98
<i>George (CL)</i>	279	84	0.97
<i>Leo (CL)</i>	233	59	0.99
<i>Lola (CL)</i>	340	76	0.98
<i>Phasco (ML)</i>	206	62	0.98
<i>Reus (ML)</i>	204	68	0.96
<i>Theo (ML)</i>	284	59	0.93
<i>Tos (ML)</i>	200	40	0.98
<i>Uno (ML)</i>	204	27	0.98

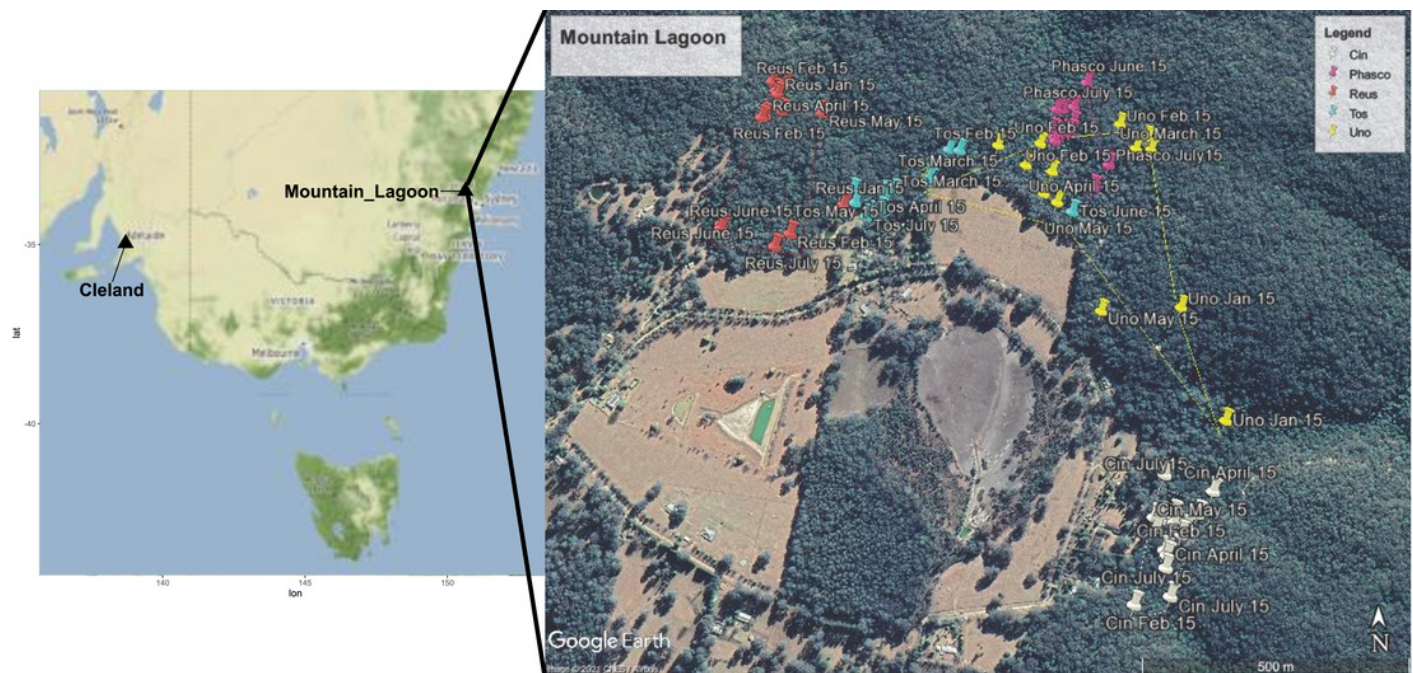
1



# Figure 1

Map showing locations of Mountain Lagoon, NSW and Cleland Wildlife Park, SA.

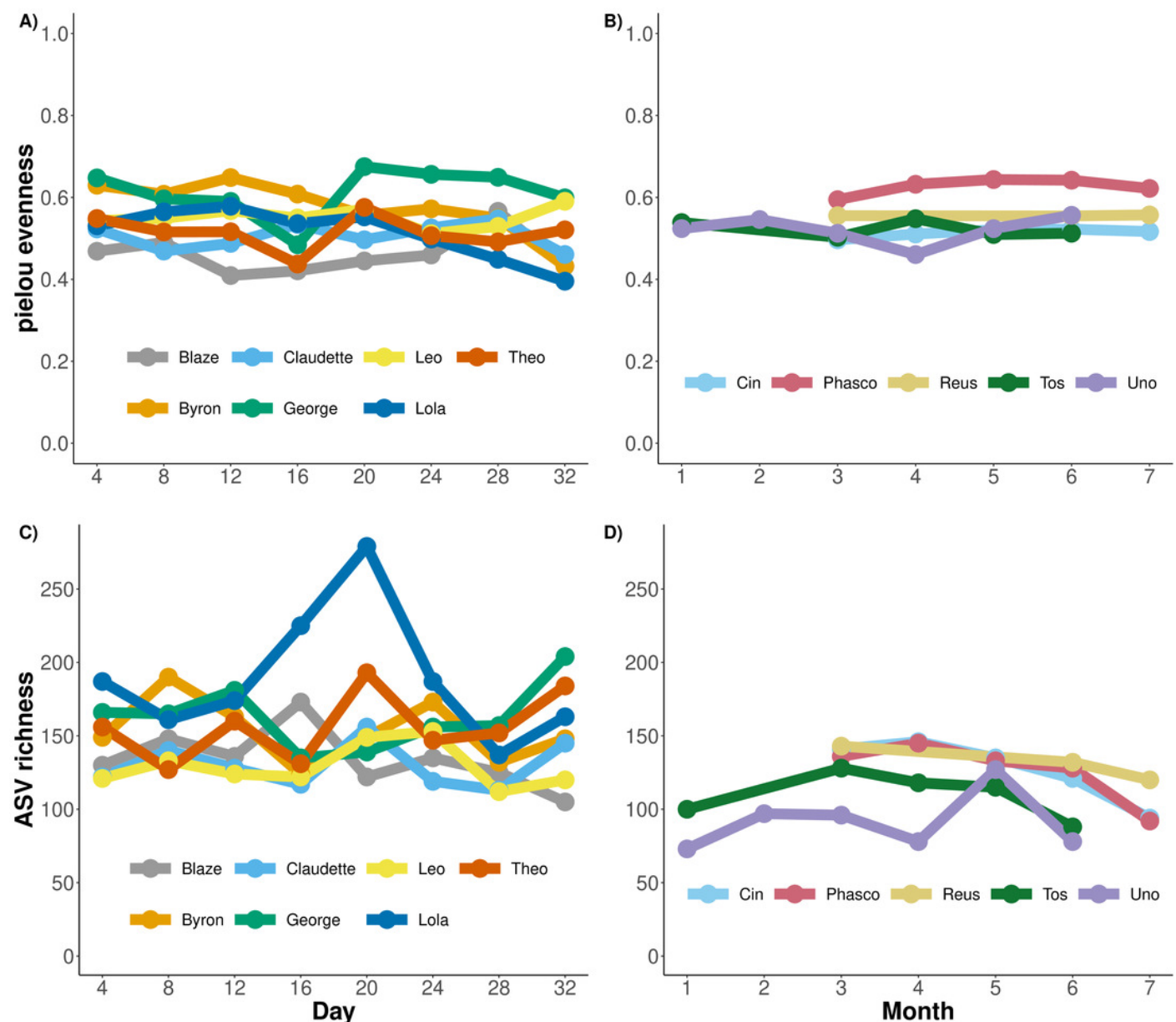
Wild Mountain Lagoon koalas were radio tracked over a seven-month period during 2016. The cutaway map demonstrates the approximate home range (100% minimum convex polygon) for each koala at Mountain Lagoon. Each coloured pin represents one tracking time point for a particular koala. Key: White Cin (female), pink Phasco (female), red Reus (female), blue Tos (male), and yellow represents Uno (male).



# Figure 2

Microbial evenness and richness in koala faecal samples

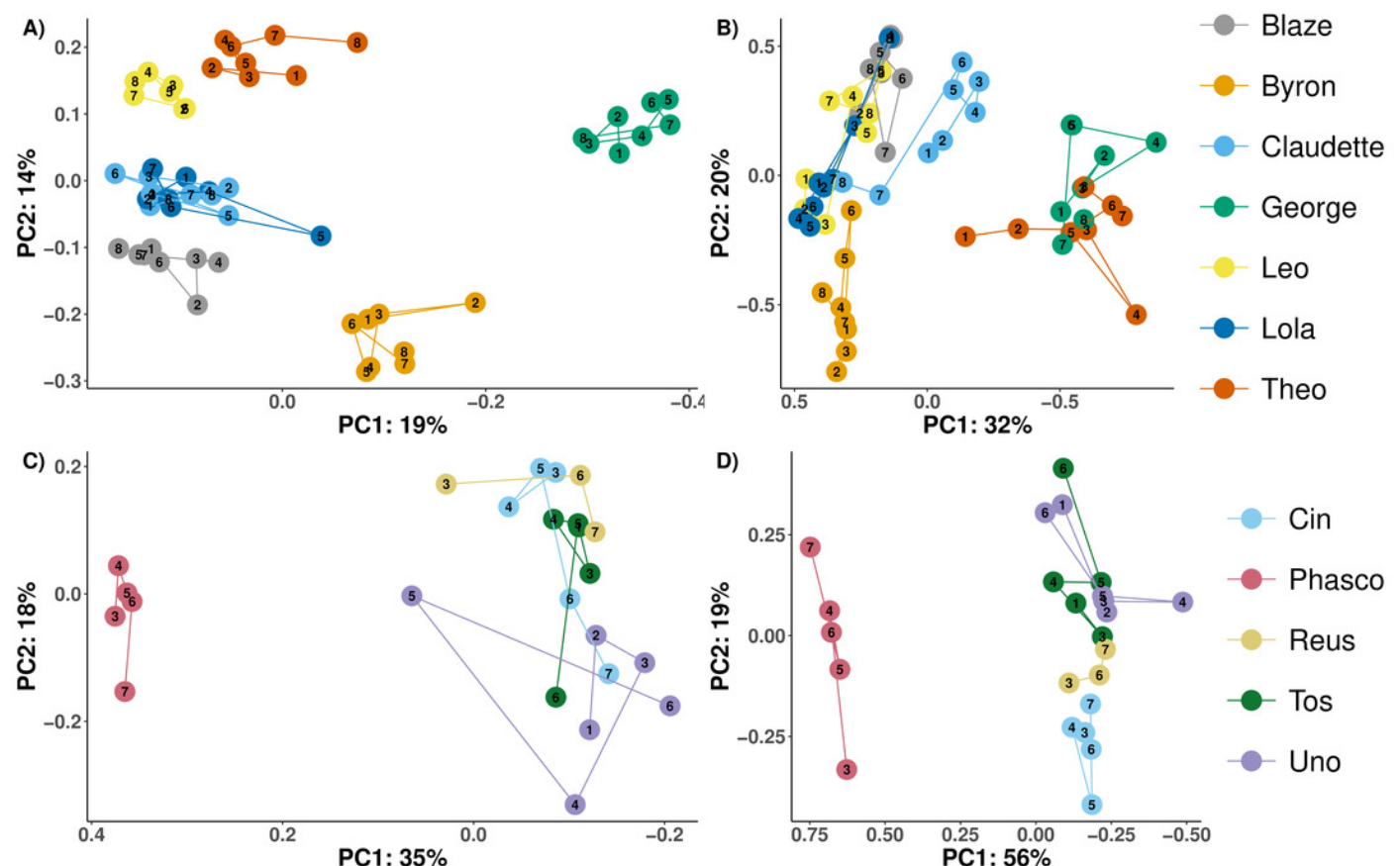
Microbial evenness and richness in koala faecal samples through time from days (Cleland; A and C) to months (Mountain Lagoon; B and D).



# Figure 3

## Principal coordinates analysis of koala faecal microbiota beta diversity

Principal coordinates analysis (PCoA) of unweighted A) and weighted B) UniFrac diversity in the faecal microbiota of Cleland koalas sampled every four days for a month, and Mountain Lagoon koalas sampled monthly for six months: unweighted C), weighted D). Lines connect faecal samples from the same koala in the order they were sampled. Numbers inside points represent the sample collection number.



# Figure 4

Relative abundances of the 20-most abundant bacterial families in Cleland and Mountain Lagoon koalas

Relative abundances of the 20-most abundant bacterial families in Cleland and Mountain Lagoon koalas. Bacterial families below this threshold are merged into the 'Other' bin. The top 20-most abundance families account for a mean relative abundance of 98.1% across the dataset.

