

Patch and matrix characteristics determine the outcome of ecosystem engineering by mole rats in dry grasslands

Orsolya Valkó ^{Corresp., 1}, András Kelemen ^{1, 2}, Orsolya Kiss ², Balázs Deák ¹

¹ Lendület Seed Ecology Research Group, Centre for Ecological Research, Vácrátót, Hungary

² University of Szeged, Szeged, Hungary

Corresponding Author: Orsolya Valkó
Email address: valkoorsl@gmail.com

Background. Burrowing mammals are important ecosystem engineers, especially in open ecosystems where they create patches that differ from the surrounding matrix in their structure or ecosystem functions. **Methods.** We evaluated the fine-scale effects of a subterranean ecosystem engineer, the western blind mole rat on the vegetation composition of sandy dry grasslands in Hungary. In this model system we tested whether the characteristics of the patch (mound size) and the matrix (total vegetation cover in the undisturbed grassland) influence the structural and functional contrasts between the mounds and the undisturbed grasslands. We sampled the vegetation of 80 mounds and 80 undisturbed grassland plots in four sites, where we recorded the total vegetation cover, and the occurrence and cover of each vascular plant species. We used two proxies to characterise the patches (mounds) and the matrix (undisturbed grassland): we measured the perimeter of the mounds and estimated the total vegetation cover of the undisturbed grasslands. First, we compared the vegetation characteristics of the mounds and the surrounding grasslands with general linear models. Second, we characterised the contrasts between the mounds and the undisturbed grassland by relative response indices (RRIs) of the vegetation characteristics studied in the first step. **Results.** Species composition of the vegetation of the mounds and undisturbed grasslands was well separated in three out of the four study sites. Mounds were characterised by lower vegetation cover, lower cover of perennial graminoids, and higher diversity, and evenness compared to undisturbed grasslands. The contrast in vegetation cover between mounds and undisturbed grasslands increased with decreasing patch size. Increasing vegetation cover in the matrix grasslands increased the contrasts between the mounds and undisturbed grasslands in terms of total cover, perennial graminoid cover, diversity, and evenness. Our results suggest that mole rat mounds provide improved establishment conditions for subordinate species, because they are larger than other types of natural gaps and are characterised by less intense belowground competition. The ecosystem engineering effect, i.e., the contrast between

the patches and the matrix was the largest in the more closed grasslands.

Patch and matrix characteristics determine the outcome of ecosystem engineering by mole rats in dry grasslands

*Orsolya Valkó¹, András Kelemen^{1,2}, Orsolya Kiss³, Balázs Deák¹

¹ Lendület Seed Ecology Research Group, Institute of Ecology and Botany, Centre for Ecological Research, Vácrátót, Hungary

² Department of Ecology, University of Szeged, Szeged, Hungary

³ Institute of Animal Sciences and Wildlife Management, Faculty of Agriculture, University of Szeged, Hódmezővásárhely, Hungary

Corresponding Author:

Orsolya Valkó

2-4 Alkotmány street, Vácrátót, H-2163, Hungary

Email address: valkoorsi@gmail.com

Abstract

Background. Burrowing mammals are important ecosystem engineers, especially in open ecosystems where they create patches that differ from the surrounding matrix in their structure or ecosystem functions.

Methods. We evaluated the fine-scale effects of a subterranean ecosystem engineer, the western blind mole rat on the vegetation composition of sandy dry grasslands in Hungary. In this model system we tested whether the characteristics of the patch (mound size) and the matrix (total vegetation cover in the undisturbed grassland) influence the structural and functional contrasts between the mounds and the undisturbed grasslands. We sampled the vegetation of 80 mounds and 80 undisturbed grassland plots in four sites, where we recorded the total vegetation cover, and the occurrence and cover of each vascular plant species. We used two proxies to characterise the patches (mounds) and the matrix (undisturbed grassland): we measured the perimeter of the mounds and estimated the total vegetation cover of the undisturbed grasslands. First, we compared the vegetation characteristics of the mounds and the surrounding grasslands with general linear models. Second, we characterised the contrasts between the mounds and the undisturbed grassland by relative response indices (RRIs) of the vegetation characteristics studied in the first step.

Results. Species composition of the vegetation of the mounds and undisturbed grasslands was well separated in three out of the four study sites. Mounds were characterised by lower vegetation cover, lower cover of perennial graminoids, and higher diversity, and evenness compared to undisturbed grasslands. The contrast in vegetation cover between mounds and undisturbed grasslands increased

with decreasing patch size. Increasing vegetation cover in the matrix grasslands increased the contrasts between the mounds and undisturbed grasslands in terms of total cover, perennial graminoid cover, diversity, and evenness. Our results suggest that mole rat mounds provide improved establishment conditions for subordinate species, because they are larger than other types of natural gaps and are characterised by less intense belowground competition. The ecosystem engineering effect, i.e., the contrast between the patches and the matrix was the largest in the more closed grasslands.

Introduction

Ecosystem engineer organisms create patches that differ from the surrounding matrix in their structure or ecosystem functions (Jones, Lawton & Shachak, 1994). In this way they alter the resource distribution in the landscape (Mallen-Cooper, Nakagawa & Eldridge, 2018; Neilly, Cale & Eldridge, 2022; Valkó et al., 2022). Previous syntheses on ecosystem engineers found that there are several factors determining the characteristics of the engineered patches, including the traits of the engineer, the habitat, climate and soil type (Mallen-Cooper, Nakagawa & Eldridge, 2018; Root-Bernstein and Ebensperger, 2013). Burrowing mammals are important ecosystem engineers, especially in open habitats (Davidson, Detling & Brown, 2012; Reichman and Seabloom, 2012; Valkó et al., 2021; Whitford and Kay, 1998). Many of these animals are endangered due to land use changes and various human activities, therefore it is crucial to understand the ecological functions they provide to support their more effective protection (Davidson et al., 2012). Through their mound-building and burrowing activities, they move large amounts of soil and create sparsely vegetated patches that often have different vegetation compared to the surrounding habitat matrix (Coggan, Hayward & Gibb, 2018; Mallen-Cooper, Nakagawa & Eldridge, 2018).

Subterranean rodents inhabit open landscapes, including open woodland savanna in Africa (e.g., African mole-rats or blesmols, Bathyergidae family, Nevo, 1999; Visser, Bennett & van Vuuren, 2019) and Mediterranean and continental steppes of Eurasia (e.g., blind mole rats, Spalacidae family, Németh et al., 2020a, Nevo, 1999; and zokors, Myotalpinae family Zhang, Zhang & Liu, 2003). They are highly specialised to a subterranean lifestyle and most of these species spend the majority of their time below ground. Therefore, their ecosystem engineering effect is different from burrowing mammals that feed and graze aboveground, like marmots (Valkó et al., 2021) or prairie dogs (Winter, Cully Jr. & Pontius, 2002). Subterranean rodents can alter vegetation composition by several mechanisms: 1) they generally feed on belowground plant organs, such as roots and bulbs which can decrease the abundance of certain plant species (Šklíba et al., 2017); 2) they create mounds with open soil surface that can play a role in vegetation dynamics as establishment gaps (Reichman and Jarvis, 1998); 3) their underground activity affects soil structure and several soil parameters, therefore vegetation as well (Platt et al., 2016; Reichman and Seabloom, 2012; Zhang et al., 2003). Blind mole rats make food storages by hoarding bulbs,

rhizomes and tubers and sometimes they do not eat all the stored plant organs so these can sprout later (Szabó and Zimmermann, 2012).

Subterranean rodents are ideal organisms for the study of ecosystem engineering, as they often create clearly visible mounds with sharp boundaries that are distinct patches in the grassland matrix (Boldog, 2010). African mole-rats are considered as ecosystem engineers in fynbos ecosystems, where their mounds are characterised by lower vegetation cover and higher species richness compared to the surrounding matrix (Davies et al., 1986; Hagenah and Bennett, 2012; Reichman and Jarvis, 1998). The engineer effect of European blind mole rats was tested in one study conducted in temperate dry grasslands, where the vegetation of twelve mounds was compared with undisturbed grasslands (Zimmermann et al., 2014). No difference was found between the vegetation characteristics and species richness of the mounds and the surrounding grasslands, but some differences in the species composition were found. This weak engineering effect detected in European blind mole rats compared to African mole-rats might be due to the generally more accentuated effects of ecosystem engineers at lower latitudes (Romero et al., 2015). However, given the similarities in some ecological functions of African and Eurasian subterranean rodents, we believe that a more detailed analysis on the potential engineer effect of mole rats in temperate Eurasia is necessary.

The aim of our study was to evaluate the fine-scale effect of Lesser blind mole rat (*Nannospalax* [superspecies *leucodon*]) mounds on the vegetation composition of dry grasslands in Hungary. In this model system we tested whether the characteristics of the patch (mound size) and the matrix (total vegetation cover in the neighbouring undisturbed grassland) influence the structural and functional contrasts between the mounds and the undisturbed grasslands. We tested the following hypotheses: i) Mounds have a more open vegetation structure, and different species composition and diversity patterns compared to the undisturbed grasslands. ii) Vegetation of larger mounds are less affected by the edge effect so the structural and functional contrasts between the mounds and the undisturbed grasslands decrease with increasing mound size. iii) The structural and functional contrasts between the vegetation of mounds and the undisturbed grasslands increases with increasing vegetation cover in the grassland matrix. As mole rats create a large number of mounds locally in an ecosystem type where gap dynamics are crucial driver of the vegetation composition, the study system is ideal for testing these hypotheses.

Materials & Methods

Study system

The western blind mole rat (*Nannospalax* [superspecies *leucodon*]) superspecies complex includes several morphologically very similar but genetically isolated species (Csorba et al., 2015; Németh et al., 2020a). Besides genetic differences within the superspecies complex, involved taxa have the

same ecological function and lifestyle, hence here we did not distinguish between them. These subterranean mammals are strictly protected and critically endangered in Central Europe (Csorba et al., 2015). They inhabit dry grasslands, old-fields, and sometimes also urban areas (Németh, Moldován & Szél, 2020b). We sampled four study sites that all hold large populations of the mole rats. In Bagamér and Hajdúbajos sites the *Nannospalax (leucodon) transsylvanicus* taxon, while in Ásotthalom and Baja sites the *Nannospalax (leucodon) hungaricus* taxon occurs according to Csorba et al., 2015. The study sites include many of the largest known populations of the species in Hungary and are characterised by pristine sandy grassland vegetation in a good conservation status (Csorba et al., 2015; Németh Moldován & Szél, 2020b). The study sites are located in the operation area of the Hortobágy National Park (Bagamér site – N 47.47028, E 21.95873, and Hajdúbajos site – N 47.41340, E 21.67606) and the Kiskunság National Park (Ásotthalom site – N 46.22235, E 19.67164, and Baja site –N 46.19643, E 18.99083). The Trans-Tisza Environmental, Nature Protection and Water Inspectorate approved this study (6646/08/2014). The characteristic vegetation of the study sites is dry sandy grassland, the dominant grass species are *Festuca pseudovina*, *F. rupicola*, *F. vaginata* and *Koeleria glauca*. The sites provide habitat to several protected grassland plant species, such as *Astragalus varius*, *Colchicum arenarium*, and the strictly protected *Pulsatilla flavescens* (Borhidi et al., 2012).

Sampling design

The study was performed in April 2020 and in each study site, we selected 20 mounds built by mole rats. We selected mounds that were built at least one year before the survey. We did not survey freshly built mounds with no vegetation and also, we did not consider mounds where the mound structure had been disintegrated. Instead of using a fix-sized sampling quadrat, we considered one mound as one sampling unit as in this case we could capture the potential within-mound variety in the vegetation. We adjusted a measuring tape along the mound edge and used the same measuring tape for delineating a control plot with the same size and shape as the mound. Control plots were designated in the undisturbed sandy grassland in one meter distance from each mound. We recorded the perimeter of each mound.

We sampled the vegetation of 80 mounds and 80 undisturbed grassland plots: we recorded the total vegetation cover, and the occurrence and cover of each vascular plant species. Plant nomenclature follows the work of Király (2009).

Data analysis

We used two proxies to characterise the patches (mounds) and the matrix (undisturbed grassland): the perimeter of the mounds and the total vegetation cover of the undisturbed grasslands. We calculated the Shannon diversity and the evenness of the vegetation in each sampling unit.

First, we compared the vegetation characteristics of the mounds and the surrounding grasslands with general linear models, where the fixed factor was microsite type (mound vs. undisturbed grassland), and site was used as random factor in the models. In the analysis, the following dependent variables were used: total vegetation cover, cover of perennial graminoids, species richness, Shannon diversity, and evenness.

Second, we characterised the contrasts between the mounds and the undisturbed grassland by relative response indices (RRIs, Armas, Ordiales & Pugnaire, 2004; Perkins and Hatfield, 2014) of the vegetation characteristics studied in the first step. RRIs were calculated based on the following equation: $RRI = (X_M - X_G) / (X_M + X_G)$; where X_M is the value of a dependent variable (e.g., Shannon diversity) in a mound and X_G is the value of the same dependent variable in the undisturbed grassland plot paired with the adjacent mound plot. Value of RRI ranges between -1 and +1. The closer is |RRI| to 1, the higher the contrast between the mounds and the undisturbed grasslands. With generalized linear mixed models (GLMMs), we tested the effects of patch size (fixed factor) and total vegetation cover in matrix grassland (fixed factor) on the contrasts between the mounds and the undisturbed grasslands (i.e., |RRI|s of the studied vegetation characteristics). Study site was used as random factor. GLMs and GLMMs were calculated using SPSS 17.0.

We applied non-metric multidimensional scaling (NMDS) using Bray-Curtis index of dissimilarity to test differences in the species composition of the mounds and undisturbed grasslands in CANOCO 5.0 program (ter Braak and Šmilauer, 2012). We made the calculations for each site separately.

Results

We recorded in total 112 vascular plant species, out of which 102 species occurred on mounds and 93 in undisturbed grassland plots. Nineteen species occurred exclusively on mounds and ten exclusively in the grassland plots. Sixty-four species were more frequent on mounds than in the undisturbed grasslands, 18 occurred with the same frequency, and 30 species were more frequent in the undisturbed grasslands. Out of the six protected plant species recorded at the study sites, one occurred only on mounds (*Pulsatilla flavescens*), four occurred both on mounds and grassland plots (*Colchicum arenarium*, *Dianthus serotinus*, *Onosma arenaria*, *Stipa borystenica*) and one only in undisturbed grassland plots (*Astragalus varius*). For the complete list of the recorded species, please see Appendix 1.

Species composition of the vegetation of the mounds and undisturbed grasslands was well separated in three of the study sites (Hajdúbajos, Bagamér and Ásotthalom), whilst it showed considerable similarity in the case of the Baja site (**Figure 1**). The dominant grass species (*Festuca* spp.) and some typical perennial (such as *Thymus glabrescens*, *Potentilla arenaria*, *Euphorbia cyparissias*) species of the studied dry grasslands characterised the undisturbed grasslands.

Vegetation of mounds were characterised by several disturbance-tolerant species (such as *Erophila verna*, *Eryngium campestre*, *Poa bulbosa*, *Rumex acetosella*, *Vicia lathyroides*).

Mounds were characterised by lower vegetation cover ($F = 87.168$, $p = 0.003$), lower cover of perennial graminoids ($F = 93.503$, $p = 0.002$), higher Shannon diversity ($F = 16.422$, $p = 0.027$) and evenness ($F = 15.780$, $p = 0.029$) compared to undisturbed grasslands (**Figure 2**). Species richness on the mounds and in the undisturbed grasslands was not different ($F = 6.820$, $p = 0.080$).

The average perimeter of the mounds was $2.18 \text{ m} \pm 0.88 \text{ SD}$, and the total vegetation cover in the undisturbed grasslands was $66.94\% \pm 14.17 \text{ SD}$. There was a high contrast in total vegetation cover between small patches and the matrix, which decreased with increasing patch size (**Table 1**). RRI calculated for total vegetation cover was the lowest in small patches and increased with increasing patch size. The RRIs calculated for perennial graminoid cover, species richness, Shannon diversity and evenness were not affected by patch size (Table 1, Appendix 2).

Increasing vegetation cover in the matrix grasslands increased the contrasts between the vegetation of the mounds and undisturbed grasslands in terms of total cover, perennial graminoid cover, Shannon diversity and evenness (Table 1, Appendix 3). RRIs calculated for total vegetation cover and perennial graminoid cover were lower in more closed grasslands, indicating larger contrasts between the mounds and the undisturbed grasslands than in more open grasslands. RRIs calculated for Shannon diversity and evenness increased with increasing cover of the matrix grasslands, indicating that mole rat mounds are more diverse than the undisturbed grasslands in the more closed grasslands (Appendix 3).

Discussion

We found that western blind mole rats created patches with different structural attributes (lower vegetation cover, lower cover of perennial graminoids) compared to the surrounding sand grassland. The vegetation of the mounds and undisturbed grasslands was different in terms of total vegetation cover, cover of perennial graminoids as well as Shannon diversity and evenness, which confirmed our first hypothesis. This suggests that the mole rats play an important role in the gap dynamics in the study system. We found a more open vegetation with lower cover of perennial graminoids on the mounds, which is a general pattern observed on mounds of various burrowing mammals (e.g., root-rats: Asefa et al., 2022; prairie dogs: Winter, Cully Jr. & Pontius, 2002; pikas: Wesche, Nadrowski & Retzer, 2007; marmots: Valkó et al., 2021). These are notable effects considering the small size of the mounds. Note that the vegetation of the control plots might also have been influenced by the underground activity of the mole rats (e.g., root consumption), which is a potential limitation of our study. However, this potential bias is consistent in all the 80 pairs

of mounds and control plots, as these paired treatments were always situated at the same distance (1 m) from each other.

In the studied sandy grassland ecosystems, the vegetation is open, but there is an intense belowground competition between the perennial graminoids and other subordinate plant species (Borhidi, Kevey & Lendvai, 2012). It is possible that the gaps created by mole rats can provide improved establishment conditions for subordinate species, because the mounds are larger than other types of natural gaps. Also, as mole rats feed on roots and other belowground organs (Corbet, 1984), they can locally decrease the belowground competition which gives an establishment advantage to subordinate species over perennial graminoids. Similar results were obtained in a study about the effect of plateau zokor (*Myospalax fontanierii*) mounds on the vegetation of alpine meadows in the Tibetan Plateau (Zhang et al., 2003). A study on the root-rat (*Tachyoryctes macrocephalus*) mounds in Ethiopian grasslands found that the mounds were characterised by lower cover of the dominant species and higher cover of subordinate plants (Šklíba et al., 2017), which is also in line with our findings. The differences between the vegetation of the mole rat mounds and the undisturbed grasslands is interesting also because of the subterranean lifestyle of the mole rats. In most burrowing mammals, mounds are not only biogeomorphological features but the mammals' activities on the mound surface also shape vegetation composition, e.g., by trampling and manuring (e.g., foxes, Godó et al., 2018; marmots, Valkó et al., 2021; pikas, Yoshihara et al., 2010), but this is not the case in mole rats that spend most of their life underground.

Compared to the only other published study on the ecosystem engineer effect of mole rat species in temperate Eurasia (Zimmermann et al., 2014), we found more and stronger evidence for the engineer effects. The detected weaker evidence of the engineer effect in the previous study can be either a result of the particular study design (one study site, small sample size, fixed plot size in the other study) or by the slightly different habitat types considered (sandy grasslands in our study and loess steppes in Zimmermann et al., 2014).

The species composition of the mounds and undisturbed grasslands was not different when considering all the sites together; however, looking at the site level we found marked differences in three of the four study sites. This finding supports our first hypothesis and also suggests that the effect of mole rats on the vegetation should be considered at the local and not the regional scale. This is in line with another study on the effect of fine-scale environmental heterogeneity on the species composition of grasslands, where the effects of environmental heterogeneity were more pronounced on the local than on the regional scale (Deák et al., 2021).

Most of the species recorded in the study (74%) occurred both on the mounds and in the intact grasslands. This implies that mounds are not unique establishment microsites for the majority of plant species; however, mounds can provide improved establishment opportunities for subordinate

species, due to the low level of competition by perennial graminoids. There was no difference between the species richness of the mounds and the undisturbed grasslands, but vegetation patches on the mounds were more diverse and the species were more evenly distributed compared to the undisturbed grassland matrix.

Our second hypothesis, i.e., that the contrasts between the mounds and the undisturbed grasslands decrease with increasing mound size, was partly supported: in case of total vegetation cover, smaller mounds were more different from the undisturbed grasslands than larger ones. This suggests that the height of the mounds (approximately 20 cm) and their steep slopes provide a sharp vegetation boundary which prevents the clonal growth of the surrounding vegetation on the mound. The colonization of the mounds by plants is probably driven by random dispersal processes (i.e., seed rain), and a higher number of incoming diaspores can be expected on the larger surface of larger patches. Also, besides total vegetation cover, we found that mound size did not affect the other studied variables. Even there was variation in mound size they were rather small so the effect of patch size might be relevant in other scales.

We confirmed our third hypothesis as the contrasts between the vegetation of mounds and undisturbed grasslands were higher in the more closed grasslands. This suggests that the importance of the ecosystem engineering effect is the highest in the more closed grasslands, where the engineer organisms increase more the structural and functional heterogeneity of the ecosystem. For the conservation of the plant species associated to dry grasslands, creating proper establishment microsites is crucial (Klaus et al., 2018). Our results suggest that mounds of mole rats can provide suitable establishment microsites for approximately 91% of the species pool of the studied sandy dry grasslands. Thus, they might be potentially feasible as establishment gaps in restoration projects or when introducing particular rare species (Kiss et al., 2021; Limb et al., 2010). The spatio-temporal dynamics of the creation and the re-vegetation of the mounds can be an important driver of establishment of subordinate species in the studied grassland ecosystems. These results highlight that the protection of these endangered subterranean rodents is crucial also for maintaining the vegetation dynamics and ecosystem functioning of their habitats. Further studies are needed for testing the effectiveness of natural gaps created by blind mole rats in increasing species richness during restoration.

Conclusions

We found that the subterranean mole rats create patches in temperate sandy grasslands that differ from the undisturbed grasslands in species composition and vegetation characteristics. The contrast between the vegetation of the mounds and undisturbed grasslands were the sharpest in grasslands with more closed vegetation cover. We suggest that the contrasts between the patches and the matrix which was proposed in this study as a proxy for the strength of the engineering

effect, can be a useful variable also in other studies. The effects of patch and matrix characteristics on the contrasts should be studied in other ecosystems and other organisms for a deeper understanding of the mechanisms beyond ecosystem engineering.

Acknowledgements

We are grateful to László Szél and Szabolcs Lengyel for interesting discussions about the study topic.

References

- Armas C, Ordiales R, Pugnaire FI. 2004. Measuring plant interactions: a new comparative index. *Ecology* 85:2682–2686. <https://doi.org/10.1890/03-0650>
- Asefa A, Reuber V, Miehe G, Wondafrash M, Wraase L, Wube T, Farwig N, Schabo DG. 2022. The activity of a subterranean small mammal alters Afroalpine vegetation patterns and is positively affected by livestock grazing. *Basic and Applied Ecology* <https://doi.org/10.1016/j.baae.2022.09.001>
- Boldog G. 2010. The mound morphology survey of the subterranean mammals, especially considering the monitoring of the lesser mole rat (*Spalax leucodon*). *Crisicum* 6:199–211. [in Hungarian]
- Borhidi A, Kevey B, Lendvai G. 2012. *Plant Communities of Hungary*. Budapest: Akadémiai Kiadó.
- Coggan NV, Hayward MW, Gibb H. 2018. A global database and “state of the field” review of research into ecosystem engineering by land animals. *Journal of Animal Ecology* 87:974–994. <https://doi.org/10.1111/1365-2656.12819>
- Corbet G. 1984. *The Encyclopedia of Mammals*. New York: Facts on File Publications.
- Csorba G, Krivek G, Sendula T, Homonnay ZG, Hegyeli Z, Sugár S, Farkas J, Stojnić N, Németh A. 2015. How can scientific researches change conservation priorities? A review of decade-long research on blind mole-rats (Rodentia: Spalacinae) in the Carpathian Basin. *Therya* 6(1): 103–121. <https://doi.org/10.12933/therya-15-245>, ISSN 2007-3364
- Davidson AD, Detling JK, Brown JH. 2012. Ecological roles and conservation challenges of social, burrowing, herbivorous mammals in the world's grasslands. *Frontiers in Ecology and the Environment* 10(9):477–486. <https://doi.org/10.1890/110054>
- Davies KC, Jarvis JU. 1986. The burrow systems and burrowing dynamics of the mole-rats *Bathyergus suillus* and *Cryptomys hottentotus* in the fynbos of the south-western Cape, South Africa. *Journal of Zoology* 209(1):125–147. <https://doi.org/10.1111/j.1469-7998.1986.tb03570.x>
- Deák B, Kovács B, Rádai Z, Apostolova I, Kelemen A, Kiss R, Lukács K, Palpurina S, Sopotlieva D, Báthori F, Valkó O. 2021. Linking environmental heterogeneity and plant diversity: the

- ecological role of small natural features in homogeneous landscapes. *Science of the Total Environment* 763:144199. <https://doi.org/10.1016/j.scitotenv.2020.144199>.
- Godó L, Tóthmérész B, Valkó O, Tóth K, Radócz S, Kiss R, Kelemen A, Török P, Švamberková E, Deák B. 2018. Ecosystem engineering by foxes is mediated by isolation in grassland fragments. *Ecology and Evolution* 8(14):7044–7054. <https://doi.org/10.1002/ece3.4224>
- Hagenah N, Bennett NC. 2013. Mole rats act as ecosystem engineers within a biodiversity hotspot, the Cape Fynbos. *Journal of Zoology* 289(1):19–26. <https://doi.org/10.1111/j.1469-7998.2012.00958.x>
- Jones CG, Lawton JH, Shachak M. 1994. Organisms as ecosystem engineers. In: *Ecosystem Management*. New York, NY: Springer.
- Király G. 2009. New Hungarian Herbal. The Vascular Plants of Hungary. Identification Keys. Aggtelek National Park Directorate, Jósvalő (in Hungarian).
- Kiss R, Deák B, Tóthmérész B, Migléc T, Tóth K, Török P, Lukács K, Godó L, Körmöczy Z, Radócz S, Kelemen A, Sonkoly J, Kirmer A, Tischew S, Švamberková E, Valkó O. 2021. Establishment gaps: biodiversity hotspots to support the colonization of target species in species-poor grasslands. *Restoration Ecology* 29(S1):e13135. <https://doi.org/10.1111/rec.13135>
- Klaus VH, Hoefer CJ, Fischer M, Hamer U, Kleinebecker T, Mertens D, Schäfer D, Prati D, Hölzel N. 2018. Contribution of the soil seed bank to the restoration of temperate grasslands by mechanical sward disturbance. *Restoration Ecology* 26:S114–S122. <https://doi.org/10.1111/rec.12626>
- Limb RF, Engle DM, Bidwell TG, Althoff DP, Anderson AB, Gipson PS, Howard HR. 2010. Restoring biopedturbation in grasslands with anthropogenic focal disturbance. *Plant Ecology* 210(2):331–342. <https://doi.org/10.1007/s11258-010-9760-7>
- Mallen-Cooper M, Nakagawa S, Eldridge DJ. 2019. Global meta-analysis of soil-disturbing vertebrates reveals strong effects on ecosystem patterns and processes. *Global Ecology and Biogeography* 28(5):661–679.
- Neilly H, Cale P, Eldridge DJ. 2022. Incubation mound building by the Australian megapode (malleefowl, *Leipoa ocellata*) creates novel, resource-rich patches in a semi-arid woodland. *Journal of Ecology* 110(6):1432–1441. <https://doi.org/10.1111/1365-2745.13883>
- Németh A, Csorba G, Laczkó L, Mizsei E, Bereczki J, Pásztor JA, Petró P, Sramkó G. 2020a. Multi-locus genetic identification of a newly discovered population reveals a deep genetic divergence in European blind mole rats (Rodentia: Spalacidae: Nannospalax). *Annales Zoologici Fennici* 57(1):89–98. <https://doi.org/10.5735/086.057.0110>
- Németh A, Moldován O, Szél L. 2020b. Do they always stand in the way? – Challenges of Blind Mole Rat Protection in Urban Environments in Hungary. *Természetvédelmi Közlemények* 26:52–69.
- Nevo E 1999. Mosaic evolution of subterranean mammals: regression, progression, and global convergence. Oxford University Press, Oxford.

- Perkins LB, Hatfield G. 2014. Competition, legacy, and priority and the success of three invasive species. *Biological Invasions* 16:2543–2550. <https://doi.org/10.1007/s10530-014-0684-3>
- Platt BF, Kolb DJ, Kunhardt CG, Milo SP, New LG. 2016. Burrowing through the literature: the impact of soil-disturbing vertebrates on physical and chemical properties of soil. *Soil Science* 181(3/4):175–191. <https://doi.org/10.1097/SS.0000000000000150>
- Reichman OJ, Jarvis JUM. 1989. The influence of three sympatric species of fossorial mole-rats (Bathyergidae) on vegetation. *Journal of Mammalogy* 70(4):763–771. <https://doi.org/10.2307/1381710>
- Reichman OJ, Seabloom EW. 2002. The role of pocket gophers as subterranean ecosystem engineers. *Trends in Ecology & Evolution* 17(1):44–49. [https://doi.org/10.1016/S0169-5347\(01\)02329-1](https://doi.org/10.1016/S0169-5347(01)02329-1)
- Romero GQ, Gonçalves-Souza T, Vieira C, Koricheva J. 2015. Ecosystem engineering effects on species diversity across ecosystems: A meta-analysis. *Biological Reviews* 90(3):877–890. <https://doi.org/10.1111/brv.12138>
- Root-Bernstein M, Ebensperger LA. 2013. Meta-analysis of the effects of small mammal disturbances on species diversity, richness and plant biomass. *Austral Ecology* 38:289–299. <https://doi.org/10.1111/j.1442-9993.2012.02403.x>
- Šklíba J, Vlasata T, Lövy M, Hrouzkova E, Meheretu Y, Sillero-Zubiri C, Šumbera R. 2017. Ecological role of the giant root-rat (*Tachyoryctes macrocephalus*) in the Afroalpine ecosystem. *Integrative Zoology* 12(4):333–344. <https://doi.org/10.1111/1749-4877.12241>
- Szabó G, Zimmermann Z. 2012. Földalatti ökoszisztéma-mérnök fajok szerepe a gyepek fenntartásában. *Gyepgazdálkodási Közlemények* 2012(1-2):49–55. [in Hungarian]
- ter Braak CJF, Šmilauer P. 2012. *CANOCO reference manual and user's guide: Software for ordination, Wageningen version 5.0*. Ithaka: Microcomputer Power.
- Valkó O, Borza S, Godó L, Végvári Z, Deák B. 2022. The Eurasian crane (*Grus grus*) as ecosystem engineer in grasslands – conservation values, ecosystem services and disservices related to a large iconic bird species. *Land Degradation and Development* 33(12):2155–2165. <https://doi.org/10.1002/ldr.4314>
- Valkó O, Tölgyesi C, Kelemen A, Bátor Z, Gallé R, Rádai Z, Bragina TM, Bragin YA, Deák B. 2021. Steppe Marmot (*Marmota bobak*) as ecosystem engineer in arid steppes. *Journal of Arid Environments* 184:104244. <https://doi.org/10.1016/j.jaridenv.2020.104244>
- Visser JH, Bennett NC, van Vuuren BJ. 2019. Phylogeny and biogeography of the African Bathyergidae: a review of patterns and processes. *PeerJ* 7:e7730. <https://doi.org/10.7717/peerj.7730>
- Wesche K, Nadrowski K, Retzer V. 2007. Habitat engineering under dry conditions: the impact of pikas (*Ochotona pallasi*) on vegetation and site conditions in southern Mongolian steppes. *Journal of Vegetation Science* 18 (5):665–674.
- Whitford WG, Kay FR. 1999. Biopedturbation by mammals in deserts: a review. *Journal of Arid Environments* 41(2):203–230. <https://doi.org/10.1006/jare.1998.0482>

436 Winter SL, Cully Jr. JF, Pontius JS. 2002. Vegetation of prairie dog colonies and non-colonized
437 shortgrass prairie. *Journal of Rangeland Management* 55:502–508.

438 Yoshihara Y, Okuro T, Buuveibaatar B, Undarmaa J, Takeuchi K. 2010. Clustered animal burrows
439 yield higher spatial heterogeneity. *Plant Ecology* 206 (2):211–224.
440 <https://doi.org/10.1007/s11258-009-9636-x>

441 Zhang Y, Zhang Z, Liu J. 2003. Burrowing rodents as ecosystem engineers: the ecology and
442 management of plateau zokors *Myospalax fontanierii* in alpine meadow ecosystems on the
443 Tibetan Plateau. *Mammal Review* 33(3-4): 284–294. [https://doi.org/10.1046/j.1365-](https://doi.org/10.1046/j.1365-2907.2003.00020.x)
444 [2907.2003.00020.x](https://doi.org/10.1046/j.1365-2907.2003.00020.x)

445 Zimmermann Z, Szabó G, Csathó AI, Sallainé Kapocsi J, Szentes S, Juhász M, Házi J, Komoly C,
446 Virág K, Harkányiné Szekeres Z, Lampert R, Sutyinszki Z, Bartha S. 2014. The impact of
447 the lesser blind mole rat [*Nannospalax* (superspecies *leucodon*)] on the species composition
448 and diversity of a loess steppe in Hungary. *Applied Ecology and Environmental Research*
449 12(2):577–588.

450

Table 1(on next page)

The effect of patch size and matrix cover (fixed factors) on the contrasts between the vegetation of the mounds and the grassland matrix.

Contrasts were expressed by the relative response indices (RRIs) calculated between the vegetation characteristics of the mounds and the undisturbed grasslands.

Table 1. The effect of patch size and matrix cover (fixed factors) on the contrasts between the vegetation of the mounds and the grassland matrix. Contrasts were expressed by the relative response indices (RRIs) calculated between the vegetation characteristics of the mounds and the undisturbed grasslands.

	Patch size			Matrix cover		
	direction	F	p	direction	F	p
Total cover, RRI	↑	6.355	0.014	↓	31.240	0.000
Species richness, RRI		0.715	0.401		0.294	0.589
Perennial graminoid cover, RRI		0.360	0.550	↓	9.527	0.003
Shannon diversity, RRI		0.219	0.641	↑	4.135	0.045
Evenness, RRI		0.012	0.912	↑	9.303	0.003

Figure 1

Figure1. Differences in the species composition of mounds and undisturbed grasslands in the four studied sites (NMDS ordination).

We plotted the 20 most abundant species at each site on the panels. Species names are abbreviated using the first three letters of the genus and species names. Yellow circles denote mole rat mounds, green circles denote undisturbed grasslands.

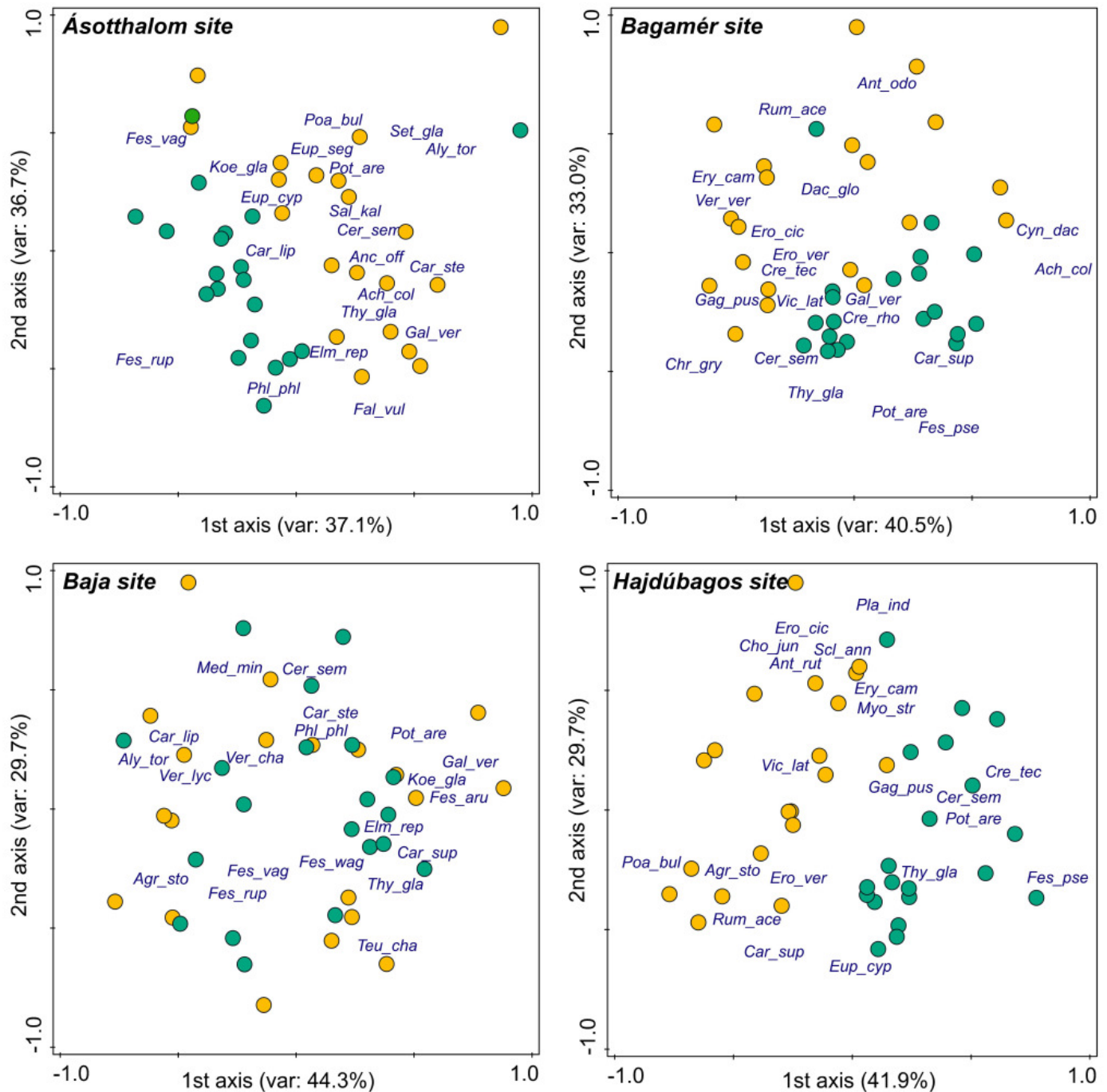


Figure 2

Figure 2. Vegetation characteristics on the patches (mole rat mounds) and matrix (undisturbed grasslands).

Yellow boxes denote mole rat mounds, green boxes denote undisturbed grasslands.

