

# Anthropogenic influences on the distribution of a threatened apex-predator around sustainable-use reserves following hydropower dam installation

Deborah C. Dávila Raffo<sup>1,2</sup>, Darren Norris<sup>2,3,4</sup>, Sandra Maria Hartz<sup>1</sup> and Fernanda Michalski<sup>2,4,5</sup>

<sup>1</sup> Postgraduate Programme in Ecology, Federal University of Rio Grande do Sul, Porto Alegre, Rio Grande do Sul, Brazil

<sup>2</sup> Ecology and Conservation of Amazonian Vertebrates Research Group, Federal University of Amapá, Macapá, Amapá, Brazil

<sup>3</sup> School of Environmental Sciences, Federal University of Amapá, Macapá, Amapá, Brazil

<sup>4</sup> Postgraduate Programme in Tropical Biodiversity, Federal University of Amapá, Macapá, Amapá, Brazil

<sup>5</sup> Pro-Carnivores Institute, Atibaia, São Paulo, Brazil

## ABSTRACT

Although previous studies demonstrate declines in many large bodied species following hydropower dam installation, others suggest that some species, including the giant otter (*Pteronura brasiliensis*) may return to newly created reservoir habitats. Yet, there is a lack of evidence to support such theories. Here, we analyzed the effects of a hydropower dam on giant otters using a before-after control-impact study design in the eastern Brazilian Amazon. We collected data 3 years before (2011–2012 and 2015) and after (2017–2019) dam construction, totaling 6,459 km of surveys along rivers with 43 direct sightings of giant otters. Contrary to expectations, our results revealed that giant otters did not remain nor did they return to the dam reservoir. Beyond the zone directly impacted by the dam giant otter occurrence and relative abundance declined next to sustainable-use reserves where the river was more intensely used by people. Our study showed that in the absence of active management sustainable-use reserves and low human density were not sufficient to maintain this apex-predator. Our findings suggest a need to proactively create and maintain areas with low levels of anthropogenic disturbance to enable sustainable coexistence between energy demands and biodiversity across Amazonia.

Submitted 7 July 2022

Accepted 2 October 2022

Published 20 October 2022

Corresponding author

Fernanda Michalski,  
fmichalski@unifap.br

Academic editor

Mahendra Tomar

Additional Information and  
Declarations can be found on  
page 10

DOI 10.7717/peerj.14287

© Copyright

2022 Raffo et al.

Distributed under

Creative Commons CC-BY 4.0

**OPEN ACCESS**

**Subjects** Conservation Biology, Zoology, Coupled Natural and Human Systems, Freshwater Biology, Natural Resource Management

**Keywords** Carnivore, Dam, Freshwater ecosystems, Human impacts, Reservoir

## INTRODUCTION

The range and populations of large bodied freshwater species are declining rapidly due to anthropogenic changes impacting freshwater environments (*He et al., 2019; Tickner et al., 2020*). Energy demand has generated an unprecedented expansion of new and planned hydropower dams across Amazonia (*Anderson et al., 2019; Finer & Jenkins, 2012*). Hydropower developments are among the most significant threats to Amazonian

freshwater ecosystems (Castello & Macedo, 2016; Latrubesse et al., 2017) and biodiversity (Dudgeon, 2019; Latrubesse et al., 2021; Vasconcelos et al., 2021). Thus, even the large coverage of protected areas (22%), which together with indigenous territories protects more than half (52%) of the Amazon rainforest (Walker et al., 2020), is unlikely to offset the negative effects caused by hydropower dams. Although adverse dam effects on Amazonian vertebrates have been widely suggested, there remains a lack of robust evidence to inform development of effective minimization and mitigation actions (Santos, Michalski & Norris, 2021). To our knowledge, here we provide the first study on the effects of a new hydropower dam on a threatened apex-predator (giant otter—*Pteronura brasiliensis*) using a before-after control-impact (BACI) study design (Conner et al., 2016).

Most work documenting biological responses to hydropower impacts focused on fishes in temperate regions (Algera et al., 2020; Harper et al., 2020). Although some localized studies quantified hydropower dam impacts on vertebrates such as freshwater turtles (Bárcenas-García et al., 2022a) and dwarf caimans (*Paleosuchus palpebrosus* and *Paleosuchus trigonatus*) in the Brazilian Amazon, the majority focused on fishes, and adopted less robust study designs that limited the insight possible from the available scientific evidence (Santos, Michalski & Norris, 2021). It is therefore unsurprising that to date, there has been no consensus on the effects of hydropower dams on giant otters, the world's largest otter (Groenendijk et al., 2021; Santos, Michalski & Norris, 2021).

There are currently 29 hydropower dams (with installed power > 30 MW) across 5 Mkm<sup>2</sup> of the Legal Brazilian Amazon, yet a recent review found studies of giant otter at only two dams (Santos, Michalski & Norris, 2021). Although there are few studies around dams it is possible to suggest likely impacts based on previous studies. Giant otters are large, piscivorous group living otters that were once widely distributed across South America, but since 2,000 are classified as Endangered by the IUCN Red List Criteria (Groenendijk et al., 2021). Giant otters are sensitive to a variety of anthropogenic perturbations including: deforestation surrounding waterways (Duplaix, 2002; Michalski et al., 2006; Rosas, Mattos & Cabral, 2007), traffic of water-craft (Duplaix, 2002; Staib & Schenck, 1994), river pollution, and human exploitation of fishes (Carter & Rosas, 1997; Duplaix, 2002). The species is a visual predator and previous studies suggest that water transparency is an important factor that can affect both habitat use and distribution of giant otters (Duplaix, 1980; Duplaix, Evangelista & Rosas, 2015; Rosas, Zuanon & Carter, 1999). Giant otters also use terrestrial habitats, including areas close to river and lake margins to build dens and maintain campsites that are important habitats for this group living otter (Carter & Rosas, 1997; Duplaix, 1980). While water transparency can be higher in the dam (de Castro et al., 2021) the vulnerability to permanently flooding in dams (Norris, Michalski & Gibbs, 2018) and the amplitude of the water level fluctuations can affect the availability of dens and campsites for giant otters (Duplaix, Evangelista & Rosas, 2015). Studies argued that giant otters can inhabit hydropower reservoirs (Calaça, Faedo & de Melo, 2015; Rosas, Mattos & Cabral, 2007), and could even benefit with the temporal increase of fish abundance in the reservoir (Calaça & de Melo, 2017). In contrast, others suggest that the reservoir environment provides relatively low-quality aquatic habitats and limited food web to sustain these apex predators (Palmeirim, Peres & Rosas,

2014). A more recent notice found no evidence that giant otters remain in the region directly impacted by another dam (Michalski & Norris, 2021).

Here, we provide the first evidence using a robust study design that even in the most preserved state of the Brazilian Amazon (INPE, 2021), sustainable-use reserves are not effective to reduce the pervasive effects of hydropower dams. If dam reservoirs that held giant otters before dam construction could have potential for the conservation of the species (Rosas, Mattos & Cabral, 2007), we expected sightings of the species in the reservoir during 3 years of monitoring following dam construction. Contrary to expectations we confirmed that giant otters did not remain nor return to a new reservoir 3 years after construction. Additionally, changes following the new hydropower dam, including movement of riverside populations to previously uninhabited areas negatively affected the distribution of giant otters. This large bodied apex-predator was found to depend on more isolated areas, both further from hydropower dams and with a low human density.

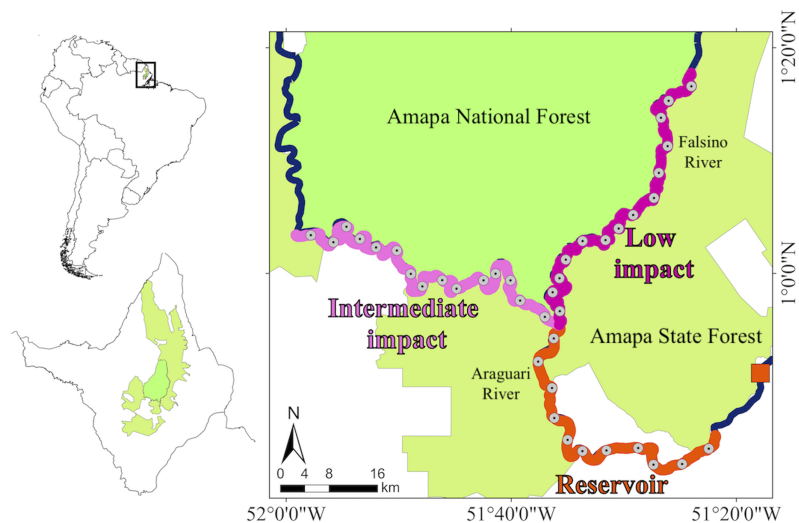
## MATERIALS AND METHODS

### Ethics statement

Data collection used non-invasive, field observation and did not involve direct contact or interaction with animals. Fieldwork was conducted under research permit number IBAMA/SISBIO 26653, 49632, and 69342 to DN and FM, issued by the Instituto Chico Mendes de Conservação da Biodiversidade (ICMBio).

### Study area and data collection

The data were collected along 212.7 km of rivers that flow between two sustainable-use protected areas (Amapá National Forest and Amapá State Forest) in the eastern Brazilian Amazon (Fig. 1) (Michalski et al., 2020). According to the International Union for Conservation of Nature (IUCN) criteria these two protected areas are classified into multiple use management category VI (Dudley, 2008). Brazilian sustainable-use reserves include areas with different management objectives that contain traditional human communities and need to ensure both, the rights of local communities to explore natural resources and the maintenance of biodiversity and ecological processes (MMA, 2000; Peres, 2011). These protected areas and the study rivers are upstream from three dams installed along an 18 km stretch of the Araguari River (SIGEL, 2021). The present study focuses on the 219 MW Cachoeira Caldeirão dam (51°17'W, 0°51'N), which became operational in 2016 and is the most recent and most upstream dam in the Araguari River. Oliveira, Norris & Michalski (2015) demonstrated the presence of giant otters in upstream rivers prior to the filling of the Cachoeira Caldeirão dam reservoir. The reservoir was filled in 2016 and covers an area of 47.99 km<sup>2</sup>, including 24 km<sup>2</sup> of flooding beyond the original river channels. We combined collections that occurred during the low (September–November) and rising (December–February) river levels (Oliveira, Norris & Michalski, 2015) in two periods, before (2011–2012, 2015) and after (2017–2019) dam construction. On a coarse scale, the river stretches were divided into three zones, one directly impacted by the dam reservoir and two control zones upstream of the direct dam impacts (Fig. 1). The 59.1 km dam “reservoir” impact zone included approximately 39 km



**Figure 1 Study area and giant otter distribution.** Study area with insets showing location of Amapá state and protected area coverage within the state. The Polygon of the Amapa National Forest and the Amapa State Forest showing the zones that were sampled, the location of the Cachoeira Caldeirão hydropower dam (orange square), the division of the Araguari and Falsino rivers into three zones (reservoir, intermediate impact and low impact) and the central point of each subzone.

Full-size  DOI: [10.7717/peerj.14287/fig-1](https://doi.org/10.7717/peerj.14287/fig-1)

of reservoir and an additional 20 km where upstream river levels changed after dam construction (Bárceñas-García *et al.*, 2022a; Norris, Michalski & Gibbs, 2018), together with relatively high levels of anthropogenic disturbance. The control zones included a 79.3 km “intermediate impact” zone not directly affected by the dam (>70 km upstream of the dam) but with an intermediate anthropogenic disturbance (including commercial fishing activity), and a 74.3 km “low impact” zone not directly affected by the dam (>70 km upstream of the dam) with low anthropogenic disturbance and no commercial fishing allowed (Oliveira, Norris & Michalski, 2015). On a finer scale, each zone was divided into subzones of similar river-length (mean  $\pm$  SD = 5.31  $\pm$  0.052 km, min-max = 5.24 – 5.40 km). The subzone river length corresponds approximately to the minimum home range estimated in the dry season for giant otters in the Brazilian Amazon (4.6 km) (Evangelista & Rosas, 2011).

Diurnal census surveys conducted in a 9 m aluminum boat at a standard speed (mean  $\pm$  SD = 9.6  $\pm$  2.8 km/h, min-max = 1.4 – 15.9 km/h), by a team of a minimum of two people, were used to search for direct sightings of giant otters along the river stretches (Oliveira, Norris & Michalski, 2015). To minimize any possible observer related bias between years, a local resident with over 20 years of knowledge on otters, was present in our searches throughout the entire study period. The principal objective was to monitor temporal and spatial patterns not social behavior. As such, observations of giant otters were limited to a 15 min maximum that prevented observation of additional details such as feeding, social behavior, and group size that require extended acclimatization of the study species. Locations of riverside houses and number of boats during the study period were also obtained during our boat census surveys with the aid of a handheld GPS.

As preliminary analysis showed that the number of boats was highly correlated with the number of houses ([Oliveira, Norris & Michalski, 2015](#)) and previous studies showed that riverside people in the region usually stay close (<500 m) to their homes when fishing ([Norris & Michalski, 2013](#)) we excluded 'boats' in further analysis.

## Data analysis

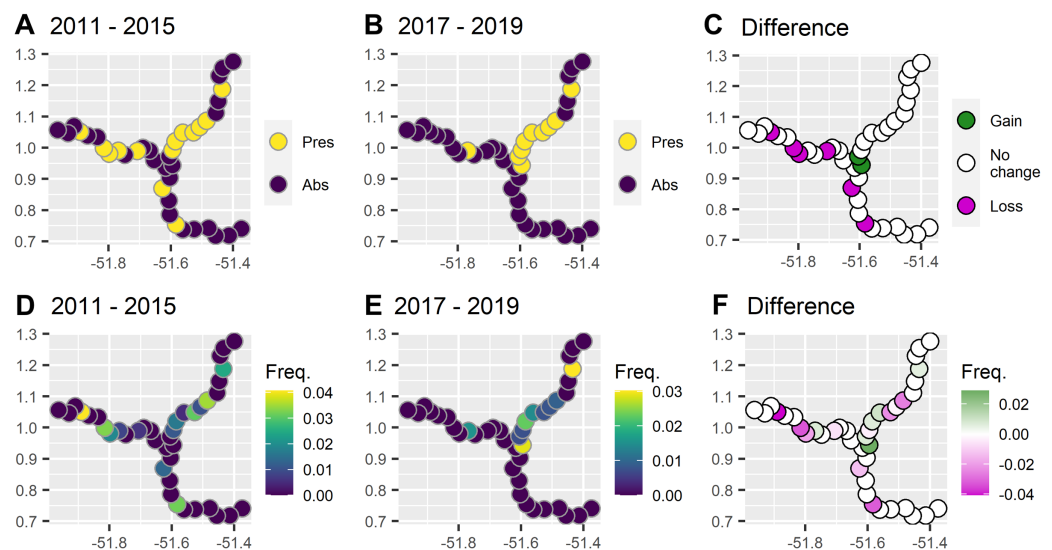
Two response variables were analyzed: (1) presence, and; (2) relative abundance (frequency of sightings by the sampling effort (km)) of giant otters (electronic [Supplemental Material, Raw Data](#)). To determine the distance along the river between the central point of each subzone, and the nearest house we used functions available in the `riverdist` package ([Tyers, 2017](#)). Spatial autocorrelation was quantified using Mantel tests ([Dale & Fortin, 2014](#)), which confirmed that each subzone could be considered as spatially independent sample units ( $p = 0.995$  and  $p = 0.797$ , for giant otter presence and relative abundance, respectively).

Generalized additive models (GAMs) were applied to all model sets using the `mgcv` package ([Wood, 2017](#)) in R ([R Core Team, 2020](#)). To represent the before-after control-impact sampling design ([Underwood, 1993](#)), the response variables were modeled by including two parametric fixed factors (before-after, zone and their interaction). A null model (intercept only), effort model (sampling effort) and a full model (with all explanatory variables) were also included for comparisons. GAMs were run with binary and tweedie error distribution family for giant otter presence and relative abundance, respectively. All models included subzone location as a random effect to account for unexplained variation that was not part of the sampling design and enable estimation of the mean and variance of the global distribution of explanatory variables ([Pedersen et al., 2019](#)). Model comparison was performed using a second-order Akaike information criteria corrected for small sample sizes (AICc), with an evidence ratio  $\geq 2$  ( $\Delta\text{AICc} \leq 2$ ) used to identify the most plausible models ([Burnham & Anderson, 2002](#)). Data used for all models are available in the [Supplemental Material](#).

## RESULTS

During 6 years and 6,459 km of survey effort there were 43 giant otter sightings. Giant otters were recorded in less than half of the subzones (40%, 16/40) and were rarely encountered in the reservoir zone even before dam construction ([Fig. 2](#)). Prior to dam construction the low impact zone had the majority of giant otter detections (59%, 16/27) and there was a threefold increase in relative abundance in the low impact zone compared with the reservoir zone before dam construction ([Table 1](#)).

After dam construction giant otter relative abundance increased slightly in the least impacted zone ([Fig. 2](#)), but changes did not follow the same patterns across the three zones. Indeed, after dam construction there was a significant difference in the proportion of subzones with giant otters between zones ( $\chi^2 = 17.9$ ,  $df = 2$ ,  $p = 0.0001$ ), with declines in giant otter presence and relative abundance in the reservoir and intermediate impact zones ([Fig. 3](#)). In the low impact zone there was no significant change in presence but differences in relative abundances did vary between subzones, with proportionally more



**Figure 2** Comparison between presence and frequency of giant otter sightings before and after the dam became operational. (A) Presence of giant otter before and (B) after the dam became operational, and (C) subzones where giant otter sightings disappeared and where new sightings were registered. (D) Frequency of sightings before and (E) after the dam was operational, and (F) subzones where the frequency of sightings decreased or increased. [Full-size !\[\]\(1679558f37f6db0dd8360a2a7e913e90\_img.jpg\) DOI: 10.7717/peerj.14287/fig-2](https://doi.org/10.7717/peerj.14287/fig-2)

**Table 1** Summary of survey effort. Sampling effort and number of sightings of giant otters for the three sampling zones between January 2011 and December 2019.

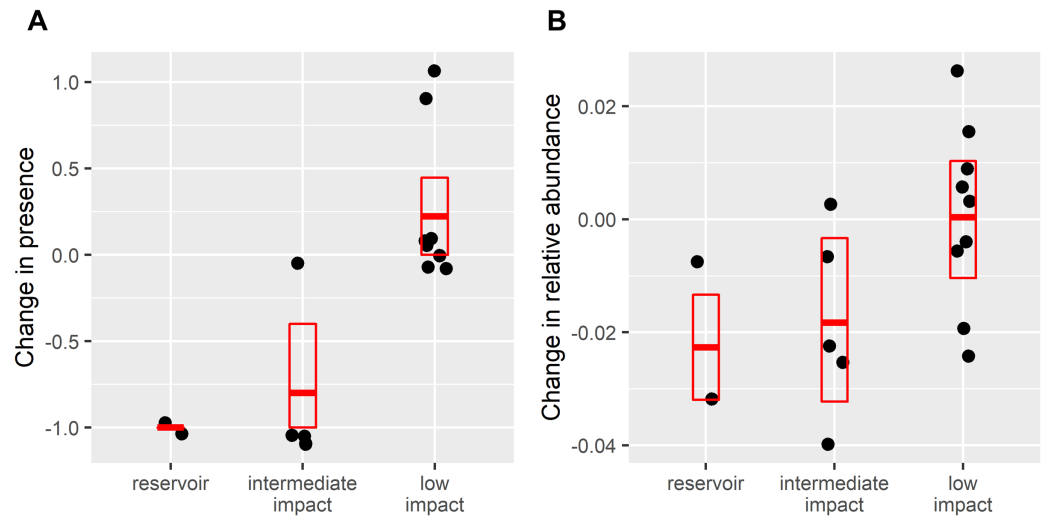
	Zone		
	Reservoir	Intermediate impact	Low impact
River km	59.1	79.3	74.3
Subzone count	11	15	14
Census km (before/after)	1,523 (822/701)	2,214 (1,396/819)	2,722 (1,459/1,263)
House (before/after)	105/89	11/28	3/7
Giant otter (before/after)	3 (3/0)	9 (8/1)	31 (16/15)
Giant otter relative abundance (before/after)	0.002 (0.004/0)	0.004 (0.006/0.001)	0.011 (0.011/0.011)

subzones with increases in the low impact zone compared with the other two zones ( $\chi^2 = 7.5$ ,  $df = 2$ ,  $p = 0.024$ , Fig. 3).

The model comparison analysis showed that the changes in both responses were best explained with the inclusion of all variables. Models with only a subset of variables in isolation (e.g., effort, zone) were not as strongly supported based on the differences in model deviance explained and AICc values (Table 2).

## DISCUSSION

The analysis of this long-term study with a unique standardized before-after control-impact dataset revealed that giant otters do not remain nor return to a reservoir with anthropogenic disturbance. Previous studies that demonstrated the reestablishment of



**Figure 3** Change in (A) giant otter presence and (B) relative abundance after dam construction. Points are difference in values from 16 subzones where giant otters were sighted between 2011–2015 (before dam construction) and 2017–2019 (after dam construction). Boxplots show means and 95% confidence limits estimated *via* nonparametric bootstrap. [Full-size !\[\]\(fd7fe780e8fd8eece60268c87d0c3e04\_img.jpg\) DOI: 10.7717/peerj.14287/fig-3](https://doi.org/10.7717/peerj.14287/fig-3)

**Table 2** Generalized Additive Models used to explain patterns in giant otter from 2011–2019 in the eastern Brazilian Amazon. Models ranked according to an Information criteria approach using AICc (Akaike Information Criterion corrected for small sample sizes). K, number of parameters;  $\Delta$ , difference in AICc between the model with the lowest score and subsequent models;  $w_i$ , the model selection weights. Models ordered by AICc values.

Model	Model construction	K	$R^2_{adj}$	Dev. Exp. (%)	AICc		
					AICc	$\Delta$	$w_i$
Presence-absence							
Full	$Y \sim BA: Zone + Dist. to house + s(Effort) + s(Subzone^\dagger)$	8	0.40	39.0	78.7	0.0	0.67
Effort	$Y \sim s(Effort) + s(Subzone^\dagger)$	4	0.29	26.1	81.1	2.4	0.20
Before-After Zone interaction	$Y \sim BA : Zone + s(Subzone^\dagger)$	6	0.30	30.9	83.0	4.4	0.08
Zone	$Y \sim Zone + s(Subzone^\dagger)$	3	0.28	23.3	83.4	4.8	0.06
Distance to house	$Y \sim Dist. to house + s(Subzone^\dagger)$	4	0.17	17.8	90.3	11.6	0.00
Null	$Y \sim intercept$	0	0.00	0.0	99.8	21.1	0.00
Before-After	$Y \sim BA + s(Subzone^\dagger)$	2	0.02	3.7	100.3	21.6	0.00
Relative abundance							
Full	$Y \sim BA: Zone + Dist. to house + s(Effort) + s(Subzone^\dagger)$	9	0.14	31.7	-60.1	0.0	0.76
Before-After Zone interaction	$Y \sim BA : Zone + s(Subzone^\dagger)$	8	0.08	18.7	-56.5	3.6	0.13
Distance to house	$Y \sim Dist. to house + s(Subzone^\dagger)$	5	0.09	13.2	-54.7	5.4	0.05
Zone	$Y \sim Zone + s(Subzone^\dagger)$	5	0.08	11.7	-53.8	6.3	0.03
Effort	$Y \sim s(Effort) + s(Subzone^\dagger)$	5	0.06	9.7	-51.9	8.2	0.01
Null	$Y \sim intercept$	3	0.00	0.0	-50.9	9.2	0.00
Before-After	$Y \sim BA + s(Subzone^\dagger)$	4	0.02	6.1	-50.9	9.2	0.00

**Note:** s, Non-parametric smooth terms; †, Random effects;  $R^2_{adj}$ , Adjusted R squared for the model; Dev. Exp. (%), Percent of total deviance explained.

giant otters around hydropower dams, were conducted in regions that do not necessarily represent present day Amazonia *i.e.*, regions with no evidence of human occupation on the reservoirs banks (Calaça & de Melo, 2017). These conditions, with the presence of giant otters before dam construction and a low number of human communities were also highlighted as key conditions to maintain giant otters in dam reservoirs (Rosas, Mattos & Cabral, 2007). Our results corroborate the negative effects of human presence for this species as both most plausible models (for presence and relative abundance) of giant otters retained variables related to human disturbance (zone and distance to the nearest house).

Surprisingly, in a region with the lowest deforestation levels across the Brazilian Amazon (INPE, 2021), with low human density and large protected area coverage (Kauano, Silva & Michalski, 2017), we found that giant otters were still experiencing declines. The Amapa National Forest, one of the sustainable-use reserves surrounding our study region was considered to have a highly effective protection performance compared with a large spectrum of protected areas within the Brazilian Amazon (Barber *et al.*, 2012). Yet, we show that the presence of protected areas *per se* is not sufficient to ameliorate direct and indirect negative effects of hydropower developments.

As giant otters are social animals, living in groups with up to 16 individuals with complex intra-social interactions (Davenport, 2010; Duplaix, 1980) and with a diet mainly based on fish that generates negative interactions with fisherman (Michalski *et al.*, 2012; Rosas-Ribeiro, Rosas & Zuanon, 2012), more specific mitigation strategies to reduce negative effects caused by new hydropower developments must be developed. Additionally, dams affect the environment flooding terrestrial areas permanently, which can affect habitat use for giant otters as they build dens and maintain campsites along waterways (Carter & Rosas, 1997; Duplaix, 1980). During the initial phase of a new dam construction the removal of the riparian vegetation and the noise and movement of people can also reduce giant otter habitat use (Calaça, Faedo & de Melo, 2015). The increase in anoxia levels created by dams tend to increase mercury levels in the food web as well as change fish productivity and community (Duplaix, Evangelista & Rosas, 2015), all of which can negatively affect piscivorous species such as giant otters.

In our study changes to giant otter distribution and relative abundance after dam construction were caused by anthropogenic impacts at two scales—zones and subzones (houses). In the reservoir and intermediate anthropogenic impact zone both presence and relative abundance of the species reduced compared with the period before dam construction. The displacement of human riverside populations (Fearnside, 2014) that may move to previously uninhabited areas post dam construction could negatively affect giant otters (Duplaix, Evangelista & Rosas, 2015; Rosas, Mattos & Cabral, 2007). In our study, there was an alarming increase in houses in the intermediate impact zone, where the number of houses more than doubled after dam construction (from 0.14 to 0.35 houses per km). Thus, it is not surprising that giant otters reduced significantly in the intermediate impact zone. Although the number of houses reduced in the reservoir zone after the dam (from 1.78 to 1.51 houses per km), this reduction was clearly not sufficient to allow giant otters to reestablish the use of the reservoir zone, as we could not find the presence of the species even after 3 years of monitoring. As riverside people usually fish around



500 m from their houses in our study region (Norris & Michalski, 2013) it is likely that the density of houses (above 0.14 per river km) coupled with boat/canoe movement is an impediment for giant otters to occupy the two zones with higher human disturbance.

Our study used a unique dataset on the effects of hydropower dams on giant otters, demonstrating that even in areas with large protected area coverage and relatively low human density dam developments and associated social effects including human displacement may limit coexistence for a large apex-predator such as giant otters. We therefore recommend that the creation and maintenance of areas with low levels of anthropogenic disturbance to enable sustainable coexistence between energy demands and biodiversity across the Amazon should be mandatory in Environmental Impact Assessments. With the growing development of new and planned hydropower dams across the Amazon (Anderson et al., 2019; Finer & Jenkins, 2012), there is need to act rapidly and efficiently in order to avoid no return effects from these new developments in such a bio diverse ecosystem.

The implementation of minimization and mitigation actions to ameliorate negative impacts caused by dams remains limited for Amazonian vertebrates due to a lack of evidence as to efficacy of available options (Bárceñas-García et al., 2022b; Berthinussen, Smith & Sutherland, 2021; Santos, Michalski & Norris, 2021). For example, the installation of dam bypass channels could allow aquatic mammals to swim around dams and access habitats on both sides, which could be particularly relevant when multiple dams are located along the same river as in our study area. As giant otters are semi-aquatic animals, they can move on land and dam structures may not act as genetic barriers (Duplaix, Evangelista & Rosas, 2015). Yet, to date no studies evaluated the effects of installing dams bypass channels on freshwater mammal populations (Berthinussen, Smith & Sutherland, 2021). Perhaps one of the most important changes in dam reservoirs for this apex predator is the increase in anoxia levels, which increases mercury levels in the food web as well as changing fish productivity and assemblages (Duplaix, Evangelista & Rosas, 2015), all of which can affect piscivorous species such as giant otters. We are unaware of any studies that addressed such impacts on giant otters. For this long lived social species, additional population level studies on group size, social behavior and feeding habits must be developed in areas with new dam constructions both before and after environmental changes caused by dams.

## CONCLUSIONS

Our long-term study revealed that giant otters do not remain nor return to a reservoir with anthropogenic disturbance. Our study area, in one of the regions with the lowest deforestation levels across the Brazilian Amazon (INPE, 2021), with low human density and large protected area coverage (Kauano, Silva & Michalski, 2017), demonstrated that giant otters were still experiencing declines. Indeed, our results showed that the presence of protected areas *per se* is not sufficient to ameliorate direct and indirect negative effects of hydropower developments. Giant otters have a diet mainly based on fish that generates negative interactions with fisherman (Michalski et al., 2012; Rosas-Ribeiro, Rosas & Zuanon, 2012), which reinforces that more specific mitigation strategies to reduce

negative effects caused by new hydropower developments must be developed. Therefore, the creation and maintenance of areas with low levels of anthropogenic disturbance to enable sustainable coexistence between energy demands and biodiversity across the Amazon should be mandatory in future Environmental Impact Assessments.

## ACKNOWLEDGEMENTS

The Instituto Chico Mendes de Conservação da Biodiversidade (ICMBio) and the Federal University of Amapá (UNIFAP) provided logistical support. We are grateful to Alvino Pantoja Leal, Cremilson and Cleinaldo Alves Marques, Edinaldo and Davi Sousa, and Gilberto Souza for their invaluable assistance during fieldwork. We also thank all students, volunteer interns, and field assistants who participated on field activities over the study period. Fernando C. W. Rosas, Caroline Leuchtenberger, and Maria João Veloso Pereira provided suggestions on an earlier version of this manuscript. We also thank Mahendra Tomar, Lisa Davenport and two anonymous reviewers whose helpful comments improved this manuscript.

## ADDITIONAL INFORMATION AND DECLARATIONS

### Funding

This study was supported by an MSc scholarship from the Program PAEC OEA-GCUB and the Federal Agency for Support and Evaluation of Graduate Education, Brazilian Ministry of Education (Coordenação de Aperfeiçoamento de Pessoal de Nível Superior - CAPES process 88882.345624/2019-01) and by Idea Wild to Deborah Raffo. This research was funded by the National Academy of Sciences and the United States Agency for International Development through the Partnership for Enhanced Engagement in Research (award number AID-OAA-A11-00012) to Darren Norris and Fernanda Michalski. This study was also supported by the National Council for Scientific and Technological Development - CNPq (Process 305549/2018-9) to Sandra Hartz. This research was also supported by Conservation International – Brazil and the Walmart Institute – Brazil through the project “Support to the implementation of the Amapá National Forest”, The Rufford Small Grants for Nature Conservation, the CNPq (Processes 477629/2011-3, 301562/2015-6, 403679/2016-8, 302806/2018-0), and Conservation, Food & Health Foundation to Fernanda Michalski. Fernanda Michalski receives a productivity scholarship from the CNPq (Process 310573/2021-1). The funders had no role in study design, data collection and analysis, decision to publish, or preparation of the manuscript.

### Grant Disclosures

The following grant information was disclosed by the authors:

Program PAEC OEA-GCUB.

Federal Agency for Support and Evaluation of Graduate Education.

Brazilian Ministry of Education: 88882.345624/2019-01.

Idea Wild.

National Academy of Sciences.

United States Agency for International Development: AID-OAA-A11-00012.  
National Council for Scientific and Technological Development: 305549/2018-9.  
Conservation International, Brazil.  
Walmart Institute, Brazil.  
Rufford Small Grants for Nature Conservation.  
CNPq: 477629/2011-3, 301562/2015-6, 403679/2016-8, 302806/2018-0.  
Conservation, Food & Health Foundation.  
CNPq: 310573/2021-1.

### Competing Interests

Fernanda Michalski is a research associate from the Pro-Carnivores Institute. Fernanda Michalski and Darren Norris are Academic Editors for PeerJ. The authors declare that they have no competing interests.

### Author Contributions

- Deborah C. Dávila Raffo performed the experiments, analyzed the data, authored or reviewed drafts of the article, and approved the final draft.
- Darren Norris conceived and designed the experiments, performed the experiments, analyzed the data, prepared figures and/or tables, authored or reviewed drafts of the article, and approved the final draft.
- Sandra Maria Hartz conceived and designed the experiments, authored or reviewed drafts of the article, and approved the final draft.
- Fernanda Michalski conceived and designed the experiments, performed the experiments, analyzed the data, prepared figures and/or tables, authored or reviewed drafts of the article, and approved the final draft.

### Field Study Permissions

The following information was supplied relating to field study approvals (*i.e.*, approving body and any reference numbers):

Permissions to conduct research were approved by IBAMA and ICMBio (IBAMA/SISBIO permits 26653, 49632, and 69342).

### Data Availability

The following information was supplied regarding data availability:

The raw data used in all analyses is available in the [Supplemental File](#).

### Supplemental Information

Supplemental information for this article can be found online at <http://dx.doi.org/10.7717/peerj.14287#supplemental-information>.

## REFERENCES

- Algera DA, Rytwinski T, Taylor JJ, Bennett JR, Smokorowski KE, Harrison PM, Clarke KD, Enders EC, Power M, Bevelhimer MS, Cooke SJ. 2020. What are the relative risks of mortality and injury for fish during downstream passage at hydroelectric dams in temperate regions? A systematic review. *Environmental Evidence* 9(1):3 DOI 10.1186/s13750-020-0184-0.

- Anderson EP, Osborne T, Maldonado-Ocampo JA, Mills-Novoa M, Castello L, Montoya M, Encalada AC, Jenkins CN. 2019. Energy development reveals blind spots for ecosystem conservation in the Amazon basin. *Frontiers in Ecology and the Environment* 17(9):521–529 DOI 10.1002/fee.2114.
- Barber CP, Cochrane MA, Souza C, Veríssimo A. 2012. Dynamic performance assessment of protected areas. *Biological Conservation* 149(1):6–14 DOI 10.1016/j.biocon.2011.08.024.
- Bárceñas-García A, Michalski F, Gibbs JP, Norris D. 2022a. Amazonian run-of-river dam reservoir impacts underestimated: evidence from a before-after control-impact study of freshwater turtle nesting areas. *Aquatic Conservation—Marine and Freshwater Ecosystems* 32(3):508–522 DOI 10.1002/aqc.3775.
- Bárceñas-García A, Michalski F, Morgan WH, Smith RK, Sutherland WJ, Gibbs JP, Norris D. 2022b. Impacts of dams on freshwater turtles: a global review to identify conservation solutions. *Tropical Conservation Science* 15(4):19400829221103709 DOI 10.1177/19400829221103709.
- Berthinussen A, Smith RK, Sutherland WJ. 2021. Marine and freshwater mammal conservation: global evidence for the effects of interventions. In: *Conservation Evidence Series Synopses*. Cambridge, UK: University of Cambridge.
- Burnham KP, Anderson DR. 2002. *Model selection and multimodel inference: a practical information-theoretic approach*. New York: Springer-Verlag.
- Calaça AM, de Melo FR. 2017. Reestablishment of giant otters in habitats altered by the filling of the Teles Pires hydroelectric dam in the Amazonia. *IUCN Otter Specialist Group Bulletin* 34:73–78.
- Calaça AM, Faedo OJ, de Melo FR. 2015. Hydroelectric dams: the first responses from giant otters to a changing environment. *IUCN Otter Specialist Group Bulletin* 32:48–58.
- Carter SK, Rosas FCW. 1997. Biology and conservation of the giant otter *Pteronura brasiliensis*. *Mammal Review* 27(1):1–26 DOI 10.1111/j.1365-2907.1997.tb00370.x.
- Castello L, Macedo MN. 2016. Large-scale degradation of Amazonian freshwater ecosystems. *Global Change Biology* 22(3):990–1007 DOI 10.1111/gcb.13173.
- Conner MM, Saunders WC, Bouwes N, Jordan C. 2016. Evaluating impacts using a BACI design, ratios, and a Bayesian approach with a focus on restoration. *Environmental Monitoring and Assessment* 188(10):555 DOI 10.1007/s10661-016-5526-6.
- Dale MRT, Fortin M-J. 2014. *Spatial analysis: a guide for ecologists*. Cambridge: Cambridge University Press.
- Davenport LC. 2010. Aid to a declining matriarch in the giant otter (*Pteronura brasiliensis*). *PLOS ONE* 5(6):e11385 DOI 10.1371/journal.pone.0011385.
- de Castro LS, de Souza Lopes AA, Colares L, Palheta L, de Souza Menezes M, Fernandes LM, Dunck B. 2021. Dam promotes downriver functional homogenization of phytoplankton in a transitional river-reservoir system in Amazon. *Limnology* 22(2):245–257 DOI 10.1007/s10201-021-00650-6.
- Dudgeon D. 2019. Multiple threats imperil freshwater biodiversity in the Anthropocene. *Current Biology* 29(19):R960–R967 DOI 10.1016/j.cub.2019.08.002.
- Dudley N. 2008. *Guidelines for applying protected area management categories*. Gland, Switzerland: IUCN.
- Duplaix N. 1980. Observations on the ecology and behavior of the giant river otter *Pteronura brasiliensis* in Suriname. *Revue Écologique (Terre et Vie)* 34:495–620.

- Duplaix N. 2002.** Giant Otter Final Report. WWF—Guianas rapid river bio-assessments and Giant Otter Conservation Project. Available at [http://www.giantotterresearch.com/articles/WWF\\_Giant\\_Otter\\_Report\\_PDFMini.pdf](http://www.giantotterresearch.com/articles/WWF_Giant_Otter_Report_PDFMini.pdf).
- Duplaix N, Evangelista E, Rosas FCW. 2015.** Advances in the study of giant otter (*Pteronura brasiliensis*) ecology, behavior, and conservation: a review. *Latin American Journal of Aquatic Mammals* **10**(2):75–98 DOI [10.5597/lajam00200](https://doi.org/10.5597/lajam00200).
- Evangelista E, Rosas FCW. 2011.** The home range and movement of giant otters (*Pteronura brasiliensis*) in the Xixuaú Reserve, Roraima, Brazil. *IUCN Otter Specialist Group Bulletin* **28**:31–37.
- Fearnside PM. 2014.** Impacts of Brazil's Madeira River dams: unlearned lessons for hydroelectric development in Amazonia. *Environmental Science & Policy* **38**(1):164–172 DOI [10.1016/j.envsci.2013.11.004](https://doi.org/10.1016/j.envsci.2013.11.004).
- Finer M, Jenkins CN. 2012.** Proliferation of hydroelectric dams in the Andean Amazon and implications for Andes-Amazon connectivity. *PLOS ONE* **7**(4):e35126 DOI [10.1371/journal.pone.0035126](https://doi.org/10.1371/journal.pone.0035126).
- Groenendijk J, Marmontel M, Van Damme P, Schenck C, Schenck C, Wallace R. 2021.** *Pteronura brasiliensis*. The IUCN Red List of Threatened Species 2021: e.T18711A164580466. (Downloaded on 29 August 2022). Available at <https://dx.doi.org/10.2305/IUCN.UK.2021-3.RLTS.T18711A164580466.en>.
- Harper M, Rytwinski T, Taylor JJ, Bennett JR, Smokorowski KE, Cooke SJ. 2020.** How do changes in flow magnitude due to hydroelectric power production affect fish abundance and diversity in temperate regions? A systematic review protocol. *Environmental Evidence* **9**(1):14 DOI [10.1186/s13750-020-00198-5](https://doi.org/10.1186/s13750-020-00198-5).
- He F, Zarfl C, Bremerich V, David JNW, Hogan Z, Kalinkat G, Tockner K, Jähnig SC. 2019.** The global decline of freshwater megafauna. *Global Change Biology* **25**(11):3883–3892 DOI [10.1111/gcb.14753](https://doi.org/10.1111/gcb.14753).
- INPE. 2021.** Programa de monitoramento da Amazônia e demais biomas. Desmatamento—Amazônia Legal. Available at <http://terrabrasilis.dpi.inpe.br/downloads/> (accessed 21 October 2021).
- Kauano EE, Silva JMC, Michalski F. 2017.** Illegal use of natural resources in federal protected areas of the Brazilian Amazon. *PeerJ* **5**:e3902 DOI [10.7717/peerj.3902](https://doi.org/10.7717/peerj.3902).
- Latrubesse EM, Arima EY, Dunne T, Park E, Baker VR, d'Horta FM, Wight C, Wittmann F, Zuanon J, Baker PA, Ribas CC, Norgaard RB, Filizola N, Ansar A, Flyvbjerg B, Stevaux JC. 2017.** Damming the rivers of the Amazon basin. *Nature* **546**(7658):363–369 DOI [10.1038/nature22333](https://doi.org/10.1038/nature22333).
- Latrubesse EM, d'Horta FM, Ribas CC, Wittmann F, Zuanon J, Park E, Dunne T, Arima EY, Baker PA. 2021.** Vulnerability of the biota in riverine and seasonally flooded habitats to damming of Amazonian rivers. *Aquatic Conservation: Marine and Freshwater Ecosystems* **31**(5):1136–1149 DOI [10.1002/aqc.3424](https://doi.org/10.1002/aqc.3424).
- Michalski F, Boulhosa RLP, Faria A, Peres CA. 2006.** Human-wildlife conflicts in a fragmented Amazonian forest landscape: determinants of large felid depredation on livestock. *Animal Conservation* **9**(2):179–188 DOI [10.1111/j.1469-1795.2006.00025.x](https://doi.org/10.1111/j.1469-1795.2006.00025.x).
- Michalski F, Conceição PC, Amador JA, Laufer J, Norris D. 2012.** Local perceptions and implications for Giant Otter (*Pteronura brasiliensis*) conservation around protected areas in the eastern Brazilian Amazon. *IUCN Otter Specialist Group Bulletin* **29**:34–45.

- Michalski F, Norris D. 2021. Giant otters are negatively affected by a new hydropower dam in the most protected state of the Brazilian Amazon. *Oryx* 55(6):811 DOI 10.1017/S0030605321001125.
- Michalski F, Norris D, Quintana I, Valerio A, Gibbs JP. 2020. Substrate influences human removal of freshwater turtle nests in the eastern Brazilian Amazon. *Scientific Reports* 10(1):8082 DOI 10.1038/s41598-020-65074-1.
- MMA. 2000. *Sistema Nacional de Unidades de Conservação—SNUC*. Brasília, DF: MMA.
- Norris D, Michalski F. 2013. Socio-economic and spatial determinants of anthropogenic predation on yellow-spotted River Turtle, *Podocnemis unifilis* (Testudines: Pelomedusidae), nests in the Brazilian Amazon: implications for sustainable conservation and management. *Zoologia* 30(5):482–490 DOI 10.1590/S1984-46702013000500003.
- Norris D, Michalski F, Gibbs JP. 2018. Beyond harm's reach? Submersion of river turtle nesting areas and implications for restoration actions after Amazon hydropower development. *PeerJ* 6(1):e4228 DOI 10.7717/peerj.4228.
- Oliveira IAP, Norris D, Michalski F. 2015. Anthropogenic and seasonal determinants of giant otter sightings along waterways in the northern Brazilian Amazon. *Mammalian Biology* 80(1):39–46 DOI 10.1016/j.mambio.2014.07.006.
- Palmeirim AF, Peres CA, Rosas FCW. 2014. Giant otter population responses to habitat expansion and degradation induced by a mega hydroelectric dam. *Biological Conservation* 174:30–38 DOI 10.1016/j.biocon.2014.03.015.
- Pedersen EJ, Miller DL, Simpson GL, Ross N. 2019. Hierarchical generalized additive models in ecology: an introduction with mgcv. *PeerJ* 7(3):e6876 DOI 10.7717/peerj.6876.
- Peres CA. 2011. Conservation in sustainable-use tropical forest reserves. *Conservation Biology* 25(6):1124–1129 DOI 10.1111/j.1523-1739.2011.01770.x.
- R Core Team. 2020. R: a language and environment for statistical computing. Vienna, Austria: R Foundation for Statistical Computing. Available at <http://www.R-project.org/>.
- Rosas FCW, Mattos GE, Cabral MMM. 2007. The use of hydroelectric lakes by giant otters *Pteronura brasiliensis*: balbina lake in central Amazonia, Brazil. *Oryx* 41(4):520–524 DOI 10.1017/S0030605307005121.
- Rosas FCW, Zuanon JAS, Carter SK. 1999. Feeding ecology of the giant otter, *Pteronura brasiliensis*. *Biotropica* 31(3):502–506 DOI 10.1111/j.1744-7429.1999.tb00393.x.
- Rosas-Ribeiro PF, Rosas FCW, Zuanon J. 2012. Conflict between fishermen and giant otters *Pteronura brasiliensis* in western Brazilian Amazon. *Biotropica* 44(3):437–444 DOI 10.1111/j.1744-7429.2011.00828.x.
- Santos ER, Michalski F, Norris D. 2021. Understanding hydropower impacts on Amazonian wildlife is limited by a lack of robust evidence: results from a systematic review. *Tropical Conservation Science* 14(2):194008292110457 DOI 10.1177/19400829211045788.
- SIGEL. 2021. Sistema de Informações Georreferenciadas do Setor Elétrico (Downloaded on 30 March 2021). Available at <https://sigel.aneel.gov.br/Down/>.
- Staib E, Schenck C. 1994. Giant otters and ecotourism in Peru. *IUCN Otter Specialist Group Bulletin* 9:7–8.
- Tickner D, Opperman JJ, Abell R, Acreman M, Arthington AH, Bunn SE, Cooke SJ, Dalton J, Darwall W, Edwards G, Harrison I, Hughes K, Jones T, Leclère D, Lynch AJ, Leonard P, McClain ME, Muruven D, Olden JD, Ormerod SJ, Robinson J, Tharme RE, Thieme M, Tockner K, Wright M, Young L. 2020. Bending the curve of global freshwater biodiversity loss: an emergency recovery plan. *BioScience* 70(4):330–342 DOI 10.1093/biosci/biaa002.

- Tyers M. 2017.** Riverdist: river network distance computation and applications. R package version 0.15.0. Available at <https://cran.r-project.org/package=riverdist>.
- Underwood AJ. 1993.** The mechanics of spatially replicated sampling programmes to detect environmental impacts in a variable world. *Australian Journal of Ecology* **18(1)**:99–116 DOI [10.1111/j.1442-9993.1993.tb00437.x](https://doi.org/10.1111/j.1442-9993.1993.tb00437.x).
- Vasconcelos LP, Alves DC, da Câmara LF, Hahn L. 2021.** Dams in the Amazon: the importance of maintaining free-flowing tributaries for fish reproduction. *Aquatic Conservation: Marine and Freshwater Ecosystems* **31(5)**:1106–1116 DOI [10.1002/aqc.3465](https://doi.org/10.1002/aqc.3465).
- Walker WS, Gorelik SR, Baccini A, Aragon-Osejo JL, Josse C, Meyer C, Macedo MN, Augusto C, Rios S, Katan T, de Souza AA, Cuellar S, Llanos A, Zager I, Mirabal GD, Solvik KK, Farina MK, Moutinho P, Schwartzman S. 2020.** The role of forest conversion, degradation, and disturbance in the carbon dynamics of Amazon indigenous territories and protected areas. *Proceedings of the National Academy of Sciences of the United States of America* **117(6)**:3015–3025 DOI [10.1073/pnas.1913321117](https://doi.org/10.1073/pnas.1913321117).
- Wood SN. 2017.** *Generalized additive models: an introduction with R*. Second edition. Boca Raton: Chapman and Hall/CRC.