

# Interaction estimation of pathogenicity determinant protein $\beta$ C1 encoded by Cotton leaf curl Multan Betasatellite with *Nicotiana benthamiana* Nuclear Transport Factor 2

Ammara Nasim<sup>1</sup>, Muhammad Abdul Rehman Rashid<sup>Corresp., 1</sup>, Khadim Hussain<sup>1, 2</sup>, Ibrahim Muhammad Al-Shahwan<sup>2</sup>, Mohammed Ali Al-Saleh<sup>2</sup>, Zhongguo Xiong

<sup>1</sup> Bioinformatics and Biotechnology, Government College University Faisalabad, Faisalabad, Punjab, Pakistan

<sup>2</sup> Plant protection department, College of Food Sciences and Agriculture, King Saud University, Riyadh, Saudi Arabia

Corresponding Author: Muhammad Abdul Rehman Rashid  
Email address: marrashid@gcuf.edu.pk

**Background:** Begomovirus is one of the most devastating pathogens that can cause more than 90% yield loss in various crop plants. The pathogenicity determinant  $\beta$ C1, located on the betasatellite associated with monopartite begomoviruses, alters the host signaling mechanism to enhance the viral disease phenotype by undermining the host immunity. The understanding of its interacting proteins in host plants to develop disease symptoms such as curly leaves, enations, vein swelling, and chlorosis is crucial to enhance the disease resistance in crop plants. The current study was designed to reveal the contribution of  $\beta$ C1 in disease pathogenicity and to unveil potential interacting partners of  $\beta$ C1 protein in the model plant *Nicotiana benthamiana*. **Methods:**  $\beta$ C1 gene was cloned in pGKBT7 and used as bait against the cDNA library of *N. benthamiana* and its pathogenesis was tested against the healthy plant and the plants infiltrated with empty vectors. The yeast two-hybrid-based screening was performed to find the interacting factors. Successful interacting proteins were screened and evaluated in various steps and confirmed by sequence analysis. The three-dimensional structure of the Nuclear Transport Factor2 (NTF2) protein was predicted, and *in-silico* protein-protein interaction was evaluated. Furthermore, protein sequence alignment and molecular phylogenetic analysis were carried out to identify its homologues in other related families. *In-silico* analyses were performed to validate the binding affinity of  $\beta$ C1 protein with NTF2. The 3D model was predicted by using I-TASSER and then analyzed by SWISS MODEL-Workspace, RAMPAGE, and Verify 3D. The interacting amino acid residues of  $\beta$ C1 protein with NTF2 were identified by using PyMOL and Chimera. **Results:** The agroinfiltrated leaf samples developed severe phenotypic symptoms of virus infection. The yeast-two-hybrid study identified the NTF2 as a strong interacting partner of the  $\beta$ C1. The NTF2 in *Solanaceae* and *Nicotiana* was found to be evolved from the *Brassica* and *Gossypium* species. The *in-silico*

interaction studies showed a strong binding affinity with releasing energy value of -730.6 KJ/mol, and the involvement of 10 amino acids from the middle portion towards the C-terminus and five amino acid residues from the middle portion of  $\beta$ C1 to interact with six amino acids of NTF2. The study not only provided an insight into the molecular mechanism of pathogenicity but also put the foundation stone to develop the resistance genotypes for commercial purposes and food security.

# Interaction estimation of pathogenicity determinant protein $\beta$ C1 encoded by Cotton leaf curl Multan Betasatellite with *Nicotiana benthamiana* Nuclear Transport Factor 2

Ammara Nasim<sup>1</sup>, Muhammad Abdul Rehman Rashid<sup>1\*</sup>, Khadim Hussain<sup>1,2</sup>, Ibrahim Muhammad Al-Shahwan<sup>2</sup>, Mohammed Ali Al-Saleh<sup>2</sup>,

<sup>1</sup>Department of Bioinformatics and Biotechnology, Government College University Faisalabad, Pakistan

<sup>2</sup>Plant protection department, College of Food Sciences and Agriculture, King Saud University Riyadh 11451, Saudi Arabia

\*Corresponding Author:

Muhammad Abdul Rehman Rashid,

Department of Bioinformatics and Biotechnology, Government College University Faisalabad, Pakistan

Email address: [marrashid@gcuf.edu.pk](mailto:marrashid@gcuf.edu.pk),

## Abstract

**Background:** Begomovirus is one of the most devastating pathogens that can cause more than 90% yield loss in various crop plants. The pathogenicity determinant  $\beta$ C1, located on the betasatellite associated with monopartite begomoviruses, alters the host signaling mechanism to enhance the viral disease phenotype by undermining the host immunity. The understanding of its interacting proteins in host plants to develop disease symptoms such as curly leaves, enations, vein swelling, and chlorosis is crucial to enhance the disease resistance in crop plants. The current study was designed to reveal the contribution of  $\beta$ C1 in disease pathogenicity and to unveil potential interacting partners of  $\beta$ C1 protein in the model plant *Nicotiana benthamiana*.

**Methods:**  $\beta$ C1 gene was cloned in pGKBT7 and used as bait against the cDNA library of *N. benthamiana* and its pathogenesis was tested against the healthy plant and the plants infiltrated with empty vectors. The yeast two-hybrid-based screening was performed to find the interacting factors. Successful interacting proteins were screened and evaluated in various steps and confirmed by sequence analysis. The three-dimensional structure of the Nuclear Transport Factor2 (NTF2) protein was predicted, and *in-silico* protein-protein interaction was evaluated. Furthermore, protein sequence alignment and molecular phylogenetic analysis were carried out to identify its homologues in other related families. *In-silico* analyses were performed to validate the binding affinity of  $\beta$ C1 protein with NTF2. The 3D model was predicted by using I-TASSER

and then analyzed by SWISS MODEL-Workspace, RAMPAGE, and Verify 3D. The interacting amino acid residues of  $\beta$ C1 protein with NTF2 were identified by using PyMOL and Chimera.

**Results:** The agroinfiltrated leaf samples developed severe phenotypic symptoms of virus infection. The yeast-two-hybrid study identified the NTF2 as a strong interacting partner of the  $\beta$ C1. The NTF2 in *Solanaceae* and *Nicotiana* was found to be evolved from the *Brassica* and *Gossypium* species. The *in-silico* interaction studies showed a strong binding affinity with releasing energy value of -730.6 KJ/mol, and the involvement of 10 amino acids from the middle portion towards the C-terminus and five amino acid residues from the middle portion of  $\beta$ C1 to interact with six amino acids of NTF2. The study not only provided insight into the molecular mechanism of pathogenicity but also put the foundation stone to develop the resistance genotypes for commercial purposes and food security.

**Keywords:** CLCuMB,  $\beta$ C1, DNA satellites, Protein-protein interaction, Yeast two hybrid

## Introduction

Plant viruses cause significant damage to the quality and production of crops. They pose a severe risk to food security across the several places worldwide (Oerke & Dehne 2004). Among the Plant viruses, *Geminivirus* from the *Geminiviridae* family is one of the largest groups. According to the international committee on taxonomy of viruses (ICTV) classification, the family *Geminiviridae* has evolved to divided into fourteen genera based on genome organization, insect, vectors, and host range (Fiallo-Olivé et al. 2021). *Begomovirus* is the largest and economically most important genus of all. Begomoviruses cause more than 90% yield loss in agronomic crops, including cotton and tobacco (Brown et al. 2015). Cotton leaf curl Multan virus (CLCuMuV) is a monopartite begomovirus (Yousaf et al. 2013). Monopartite begomoviruses are transmitted by whitefly, and their genomes contain one circular, single-stranded DNA (ssDNA) (Anwar et al. 2020; Briddon et al. 2018; Mansoor et al. 2008). Besides, they contain an additional single-stranded DNA, approximately 1,350 nucleotides in size, known as a betasatellite, involved to promote the disease symptoms. The acquisition of new proteins and the integrating partners are the common causes of viral genome evolution (Garamszegi et al. 2013). Hence, information about virus-host interacting partners is required to understand the evolution of the viral genome and for disease management.

The betasatellite belongs to the genus *Betasatellite*, consisting of 61 well-recognized species, replicates and spreads through helper begomovirus (Nawaz-ul-Rehman et al. 2021). All the betasatellites encode a multi-functional pathogenicity determinant, the *Beta C1* ( $\beta$ C1) protein, and the  $\beta$ V1 to induce the disease symptoms (Hu et al. 2020). The highly conserved  $\beta$ C1 gene, located on the complementary strand of betasatellite, is involved in the reprogramming of host cellular processes to facilitate the begomoviruses-based infections (Li et al. 2018). It causes pathogenicity by contributing to disease symptoms such as vein thickening, stunting, leaf deformation, enation, and suppressing gene silencing (Amin et al. 2011; Khan et al. 2017; Yang & Zhou 2017).

$\beta$ C1 is reported to interact with many host factors to manipulate the infection and disease symptoms. After infection,  $\beta$ C1 moves to the nucleus of the infected plant cells and interacts with transcription factors to reprogram the gene expression, hence promoting viral propagation and disease symptoms (Hanley-Bowdoin et al. 2013).  $\beta$ C1 alters the expression levels of photosystem proteins, resulting a decrease in photosynthesis rate, which is one of the key reasons for developing disease symptoms in plants (Gnanasekaran et al. 2019; Sehrish et al. 2014). The aforementioned studies have clearly shown that  $\beta$ C1 has been playing a significant role in viral pathogenesis, leading to the initiation of the disease symptoms such as chlorosis, wilting, and leaf deformation.

Coordination and regulation of cellular events in a eukaryotic cell depend on the transport of micro- and macro-molecules across the nucleus. Passive transport processes such as diffusion enable micro-molecules (40kDa) to move across the nuclear envelope (NE). The bigger molecules, on the other hand, cannot diffuse through the NE and hence require the assistance of other proteins in their active transport to the nucleus (Macara 2001; Paschal & Gerace 1995). The Nuclear Transport Factor 2 (NTF2) and GTP binding or Ras-related nuclear protein (Ran-proteins) are the two crucial soluble cytosolic factors that assist in active transport through permeabilized cells. To perform this function in nuclear transport, NTF2 interacts with the cytosolic factor Ran. In each transport cycle, Ran delivers one molecule to the cytoplasm which converts to the GTP-bound state and ultimately returns to the nucleus. As Ran is a small protein to diffuse through the nuclear pores, it results in low passive diffusion rate than that required for efficient nucleocytoplasmic traffic. To maintain the asymmetric cellular distribution of regulatory proteins, a small homodimeric protein NTF2 receives the signals and triggers the downstream signaling pathways. It binds specifically the GDP-bound and interacts with nuclear pore complexes (NPC) (Bayliss et al. 2002; Quimby et al. 2000; Ribbeck et al. 1998; Wong et al. 1997). Begomoviruses which replicate in the nucleus of the host may exploit this transport system for the movement of the virus genome from cytoplasm to nucleus. Despite the potential biological function suggested by earlier investigations, less was known about NTF2's contribution to plant defence against pathogen assault. *Nicotiana benthamiana* (*N. benthamiana*) has attained scientific importance due to its widespread usage as an experimental host plant as its genome data availability and successful inoculation of viral infection are helpful for scientific study (Goodin et al. 2008; Park et al. 2009). The *N. benthamiana* bears the special ability to be vulnerable to a wide range of plant viruses. As a result, it has emerged as a keystone for virus interaction studies.

The current study was designed to reveal the contribution of  $\beta$ C1 to disease pathogenicity and its interacting partner in the host plant *N. benthamiana*. To identify host factors interacting with CLCuMuB  $\beta$ C1, *N. benthamiana* GAL4-based yeast-two-hybrid (Y2H) approach developed by Fields & Song (Fields & Song 1989) was used to screen the cDNA library. This protein-protein interaction (PPI) was further evaluated using computational analysis. Identification of  $\beta$ C1 interacting host proteins will broaden the horizon of understanding virus-host interactions required for disease dissemination. Furthermore, the identification of  $\beta$ C1 interacting partners

would be helpful in the future to uncover the pathways involved in disease that could be engineered to improve the plants' resilience against ever-evolving viruses.

# Materials and Methods

## Sequence retrieval for $\beta$ C1 and construction of expression cassette

Full-length  $\beta$ C1 gene was amplified from the isolate H181 of CLCuMB using the primers having restriction sites HindIII and BamHI (F: CCAAGCTTATGACAACGAGCG and R: CCGGATCCTTAAACGGTGAAC). The polymerase chain reaction (PCR) profile was adjusted as an initial denaturation at 95°C for 5 min, denaturation at 95°C for 30 sec, annealing at 50°C for 30 sec, extension at 72°C for 30 sec and then final extension at 72°C for 10 min followed by 35 cycles.

The amplified product of  $\beta$ C1 (357 bps) was phenol-chloroform purified and digested to clone under CaMV (Cauliflower Mosaic Virus) 35S promoter of expression vector pJIT-163. Positive clones were confirmed by restriction analysis and further confirmed by standard PCR. Gene expression cassette (1888 bps) was excised from positive clone samples in pJIT-163 vector using SacI and XhoI. This expression cassette was cloned in binary vector pGreen-0029 at the SacI and XhoI sites.

## Agroinfiltration of expression cassette of $\beta$ C1 gene

For in-planta interaction evaluation, *N. benthamiana* plants were grown under controlled conditions including 16 hours of light, 8 hours of dark photoperiod at 28°C and 25°C day and night temperature and approximately 65% humidity. Seeds of plants were grown in pots containing peat moss for three weeks.

The expression cassette of  $\beta$ C1 gene and empty vector pGreen-0029 was electroporated into *Agrobacterium tumefaciens* strain GV3101 within electroporation cuvette of (2mm space) according to the previously reported procedure (Shen & Forde 1989). *Agrobacterium* culture nurtured this construct of expression cassette and mock inoculation (empty vector pGreen-0029) was grown within 100  $\mu$ l of kanamycin and 25  $\mu$ l of ampicillin per 100 ml media for 48 h (at 28°C). Bacterial cells were pelleted (5,000 $\times$ g for 15 minutes at 4°C) on an OD at 600nm of 1 and then resuspended in 10 mM MgCl<sub>2</sub> and 100  $\mu$ M acetosyringone. Cells were left for 2 to 3 h before infiltration at room temperature. The *Agrobacterium* suspension was then infiltrated using 1 ml needle-free disposable syringe on the lower side of three weeks old healthy, young, and fully expanded leaves directly. After infiltration, plants were placed in control conditions of 16 h light photoperiod at 25°C to 28°C in an insect-free chamber.

## Generating a Bait clone

Bait vector was constructed for Yeast-two-Hybrid analysis, primers designed having restriction sites NcoI and BamHI (F: 5' AACC ATG GAA ATG ACA ACG AGC GGA ACA and R: 5' CCG GAT CCT TAA ACG GTG AAC TTT TTA). The primers were designed to avoid any codon change and frame-shift mutation.  $\beta$ C1 was amplified using these primers. The conditions for PCR using Phusion High-Fidelity DNA polymerase (New England Biolabs, Ipswich, MA, USA) with the following parameters: 98°C pre-denaturation temperature for 30

sec, denaturation at 98°C for 10 sec: annealing at 55°C for 30 sec: extension at 72°C for 60 sec following 35 cycles. A final extension was 72°C for 7 minutes and hold temperature 25°C. The amplified DNA fragment of  $\beta$ C1 was cloned into the vector pGBKT7 (Clontech Laboratories Inc., Mountain View, CA, USA), It has a GAL4 DNA-binding domain, Kan<sup>r</sup> for *Escherichia coli* selection, and *TRP1* for yeast selection. As a result, the gene encoding for  $\beta$ C1 was included in the pGBKT7 vector, which was created as bait for a GAL4-based two-hybrid system and given the name as pGBKT7- $\beta$ C1. Y2H Gold cells were transformed with 100ng of pGBKT7- $\beta$ C1 construct along with positive and negative control, whereas, pGBKT7-53 was a positive control and pGBKT7-lam was used as the negative control. Preparation of master mix by using denatured salmon sperm DNA (ssDNA) at 100°C for 5 min, 50% PEG and 1M Lithium Acetate [LiAC] was done. The mixture was heated at 30°C for 30 min, 42°C for 20 min, and cool the tubes on ice for 10 min. 100 $\mu$ L of transformants was spread on a single SD/-Trp plate while spreading of positive and negative was done on SD/-Leu/-Trp plates. Bait autoactivation and toxicity test were done by transforming pGBKT7- $\beta$ C1 construct into Y2H Gold cells along with positive and negative controls.

### Screening of $\beta$ C1 interacting partner

The *N. benthamiana* cDNA library was generated with an activation domain (AD) having GAL4-AD (Clontech Laboratories Inc., Mountain View, CA, USA). It was generated at Plant Virology Lab at The University of Arizona, USA. Concentrated bait culture of pGBKT7- $\beta$ C1 working as binding domains (BD) was prepared and combined with library vial AD, after mating the culture was spread on an array of selective agar plates. Initially on 150mm double dropout SD/-Leu/-Trp (DDO), Quarter dropout SD/-Ade/His/Leu/-Trp QDO/X-  $\alpha$ -Gal agar plates following incubation at 30°C for 3-5 days.

Mating efficiency was determined by the following formula:

$$\text{Mating efficiency (Diploids \%)} = \frac{\text{Number of cfu/ml of diploids}}{\text{Number of cfu/ml of limiting partner}} \times 100$$

Whereas, the number of colony forming units per mL (cfu/mL) of diploid indicated the Diploid viability that was equal to number of cfu/mL on SD/-Leu/-Trp, Number of cfu/mL of limiting partner was estimated as viability of the Prey Library that was equal to the number of cfu/mL on SD/-Leu, while the viability of Bait was equal to the number of cfu/mL on SD/-Trp.

### Confirmation of positive interaction and rescuing prey plasmid

The true positive prey plasmids were rescued from a single blue colony selected from Y2H experiment and re-streaked on DDO/X-  $\alpha$ -Gal agar plates (Table 1). The cultures were inoculated overnight in DDO medium at 30°C. The plasmids were isolated from yeast cells and used for transformation into *E. coli* DH5 $\alpha$  cells. Plasmids showed positive interaction was further evaluated and confirmed by transformation and co-transformation.

### Prey plasmid PCR for sequencing

Ten samples showing genuine positive interaction were used for sequence analysis. Plasmids isolated from yeast cells were used for PCR (Table 2). The PCR amplicons were analyzed on 1% Agarose gel. The positive clones were confirmed by amplification with SMART III primer and CDS III primer from both directions (Table 2).

## Sequence homology, alignment, and evolution analyses

NTF2 gene sequence and protein sequences were subjected to the Basic Local alignment search tool for nucleotides (BLASTN) for the identification of their close relatives. Multiple sequence alignments were performed to construct the neighbor-joining phylogenetic tree using MEGA7 (Kumar et al. 2016) and sequence pairwise identity was analyzed by the Clustal W algorithm in MegAlign application Lasergene package of sequence analysis software (DNA Star Inc., Madison, WI, USA).

## Protein structure prediction of viral proteins

The protein structure of NTF2 was retrieved from the National Center of Biotechnology Information (NCBI) database (XP\_019236968). Evaluation of primary protein structure including the amino acid composition, atomic composition, molecular weight, theoretical isoelectric point (pI), estimated half-life, extinction coefficient, instability index, aliphatic index, and grand average of hydropathicity (GRAVY) was determined by using ProtParam (<https://web.expasy.org/protparam/>) (Gasteiger et al. 2005). PSIPRED tools were used for secondary protein structure analysis (<http://bioinf.cs.ucl.ac.uk/psipred/>). As Protein Data Bank (PDB) did not have a three-dimensional (3D) structure of the NTF2 protein, therefore, I-TASSER online server (<https://zhanglab.ccmb.med.umich.edu/I-TASSER/>) (Zhang 2008) was used for 3D structure prediction. Then, the model was further refined by using ModRefiner (<https://zhanglab.ccmb.med.umich.edu/ModRefine/>). After 3D model prediction and refinement of the NTF2, further structural evaluation, validation, and stereo-chemical analysis were performed. Evaluation of backbone confirmation was done by examining the  $\psi/\phi$  Ramachandran plot acquired from RAMPAGE (<http://mordred.bioc.cam.ac.uk/~rapper/rampage.php>) (Lovell et al. 2003). The 3D model was assessed by Verify-3D (<http://servicesn.mbi.ucla.edu/Verify3D/>) to determine three-dimensional protein profiles and compatibility of the atomic model with its own amino acid sequence in comparison to the results of good structure (Eisenberg et al. 1997).

## Protein-protein interaction (PPI) evaluation

A web-based server ClusPro 2.0 (<https://cluspro.bu.edu>), was used to perform Protein-Protein interaction analysis. It performs rigid-body docking of two proteins by giving a basic interface and gives the lowest energy of an interacting complex. ClusPro 2.0 required only two pdb files, receptor, and ligand (Comeau et al. 2004).  $\beta$ C1 model was used as a receptor, while predicted NTF2 was used as a ligand. Furthermore, PyMOL v1.7.4 software and Chimera (DeLano 2002) were used to visualize and analyze the interactions between receptor and ligand complexes, thus obtained.

## Results

### Transient expression of 35S- $\beta$ C1 from CLCuMB strain in model host plant *Nicotiana benthamiana*

Non-transgenic *N. benthamiana* plants were inoculated with *Agrobacterium* cultures harboring expression cassette of  $\beta$ C1 gene from CLCuMB strain and analyzed the infectivity and symptoms induction ability of 35S- $\beta$ C1 gene expression cassette. Inoculated leaves sample developed severe phenotypic symptoms of virus infection at 14 days post-inoculation (dpi). The



health plants (Fig. 1A) and the plants inoculated with empty vector (Fig. 1B) were compared to the agroinfiltrated plants (Fig. 1C). These symptoms were downward leaf curling and yellowing of inoculated leaves area were observed on the infiltrated leaves (Fig. 1C). With the passage of time, the symptoms became prominent and deeply intense. In all of the four inoculated *N. benthamiana* plants, the leaf showed these typical symptoms at 21-25 dpi when compared to control leaves infiltrated with empty vector pGreen-0029 and healthy plants (Fig. 1A and 1B). The appearance of infectious symptoms in all the nurture leaves confirmed the working efficiency of the 35S- $\beta$ C1 construct in the model plants and justified the major role of the  $\beta$ C1 gene in diseased symptoms induction in infected plants.

### **Yeast two hybrid assay using $\beta$ C1 as bait and *N. benthamiana* proteins as prey**

Based on the available virus genome sequence information (Accession No. LN886545.1), primers for the  $\beta$ C1 gene were designed.  $\beta$ C1 was cloned into the pGBKT7 vector and confirmed by sequencing showing no point mutation. The results showed 100% identity with the  $\beta$ C1 gene encoded by CLCuMB. Transformation for confirmed clones was done into Y2H Gold competent cells.

A preliminary study for the autoactivation of  $\beta$ C1 was conducted to investigate the interaction among bait and prey fusion proteins. Yeast cells expressing the reporter genes *HIS3* and *His3* auxotrophic on histidine deficient medium were employed for verification. No growth was observed in yeast cells when pGBKT7- $\beta$ C1 construct was co-expressed with pGADT7-empty in the histidine-deficient medium. In contrast, positive control showed blue colonies indicating that there was a positive interaction between 53+t, similarly, negative control lam+t showed no interaction at all (Fig. 2).

For mating, the screening of more than  $2 \times 10^7$  cells per mL was confirmed by library titrating. Mating efficiency was 5.6% which was sufficient to screen the library successfully (Table 3). Positively interacted proteins showing blue colonies from 150 mm DDO/ X- $\alpha$ -Gal plates were further screened and purified by patching on DDO/ X- $\alpha$ -Gal plates and QDO/ X- $\alpha$ -Gal agar plates (Fig. 3). Positive interacted protein's plasmids were rescued by transformation into *Dh5 $\alpha$*  of *E. coli*.

### **Validation of positive interaction through transformation and co-transformation**

After being propagated in *E. coli*, the extracted plasmids were again transformed into yeast and co-expressed with the pGBKT7- $\beta$ C1 construct to examine the reproducibility of the candidate proteins in retransformed yeast cells. On SD/Leu-/Trp-/His- plates, yeast transformants were dispersed, and the survival rate was used to assess the interaction's efficacy. Positive clones were further verified to have strong positive interaction by spreading onto SD/Leu-/Trp-/His-/Ade- plates. As a final point, ten positive clones with strong  $\beta$ C1 interacting proteins were identified.

### **Identification of *in vivo* $\beta$ C1 interacting proteins using Y2H**

Ten candidate protein plasmids showing genuine positive interaction were-sequenced for further analyses (Supplementary Table 1). The sequencing data was validated for true interaction by homology study, sequence alignment, and open reading frames (ORFs) detection. The

sequence homolog was searched in NCBI by the BLASTN tool. All the identified sequences were translated, a significant chunk of sequences was revealed, and ORFs were extracted and aligned. Finally, the similarity index was estimated by the BLAST tool of NCBI. Among the identified sequences, the LOC109217199 mRNA of *Nicotiana tabacum* nuclear transport factor 2-like occurred repeatedly. Therefore, the sequences encoding for Nuclear Transport Factor-2 occurring more than once indicated the best interacting partner of  $\beta$ C1 protein.

### Phylogenetic analysis of NTF2 encoded genes and encoded proteins

Gene sequences of NTF2 from *N. benthamiana* and other plant species were aligned to find its close relatives. Twenty closely related sequences were retrieved from databases with the help of BLASTN. In phylogenetic analysis of *N. benthamiana* NTF2 sequence showed the closest relationship with the members of its own genus *Nicotiana tabacum* and *Nicotiana attenuata*. Next closest clade of NTF2 gene sequences consisted of *Solanum tuberosum* (potato), *Solanum lycopersicum* (tomato) from the genus *Solanum* of the Solanaceae family (Fig. 4, Supplementary Table 2).

In phylogenetic analysis, the studied NTF2 protein sequence also showed the closest relationship with same members of its own genus *Nicotiana* as revealed for gene sequence. Further, the NTF2 protein sequence was rooted to the *Brassica rapa* (Turnip) and *Arabidopsis* family suggesting the wide pedigree of NTF2 from these species (Fig. 5, Supplementary Table 3).

### In silico prediction of viral protein structure

The NTF2 data retrieved from the online server revealed 123 amino acid residues. Its primary structure showed a molecular weight of 13747.67 Dalton, and a 5.87 pI-value (Fig 6A). The pI value was below 7, which indicated the negatively charged protein. Significant stability of protein was revealed by computed instability index of 39.37. The availability of methionine (M) at the N-terminus of the protein, and the negative large average of hydropathicity (-0.089) indicated that the protein was hydrophobic in nature. The Glutamine (Q), Leucine (L), Glycine (G), Phenylalanine (F), Serine (S), and Valine (V) residues were observed in excess (Fig 6A).

Secondary structure analysis exposed that NTF2 had 20.32% helices and 29.26% extended strands ( $\beta$ -sheets) (Fig 6B). The predicted 3D model of NTF2 (Fig 6C) was also evaluated through the Ramachandran plot. The 96.7% of the residues were found in the favored region, 2.5% of the residues were in the allowed region and only 0.8% residues were found in the outlier region (Fig 6D). I-TASSER was used to predict the 3D structure of NTF2 and the predicted structure was refined by ModRefiner. Having more than 99% residues of the predicted structure in the favored and allowed regions, the structure was considered to be validated (Fig 6E).

### Estimation of protein-protein interaction (PPI)

To study the PPI of  $\beta$ C1 and NTF2,  $\beta$ C1 protein was used as a receptor in cluspro while NTF2 was used as the ligand (Fig 6F). Interaction studies of  $\beta$ C1 with NTF2 showed a strong binding affinity with releasing energy value of -730.6 KJ/mol (Table 4). Analysis of interacting residues showed that 10 amino acids from the middle portion towards the C-terminus and five

amino acid residues (TYR48, TYR50, ASP52, ASP58, ASN60) from the middle portion of  $\beta$ C1 interacted with six amino acids of NTF2 (Table 4).

**Discussion** DNA betasatellites associated with helper mono-, and bi-partite begomoviruses depend on the begomoviruses for their replication encapsidation, and spread (Fiallo-Olivé & Navas-Castillo 2020). The satellites contribute to the helper virus's symptomatic range (Briddon & Stanley 2006). Betasatellites consist of a single complementary sense gene ( $\beta$ C1), an adenine-rich region (A-rich region), and a satellite-conserved region (Briddon et al. 2003). The  $\beta$ C1, a pathogenicity determinant and suppressor of PTGS, up-regulates viral DNA levels, binds DNA and RNA, and facilitates the virus intracellular movement in plants (Hu et al. 2020; Li et al. 2018; Nair et al. 2020; Saeed et al. 2007).  $\beta$ C1 interacts with the host plant machinery for the successful propagation of disease (Kamal et al. 2019b). During an infection cycle, viruses direct many changes in the intracellular environment of the host cell and provide a safe passage to spread a successful infection by circumventing the antiviral defense mechanism. For the last few decades, virology just focused on the pathogen, but now it is believed that knowing “the host response” is equally or more important in determining the pathological outcome of infection (Peng et al. 2009). Virus-host interaction studies are a helpful tool to understand how viruses manipulate host machinery and cause disease. Biological data retrieval and *in-silico* analyses provide an understanding of new hosts which potentially associated with CLCuD viruses/satellites but lack the information of binding sites (Kamal et al. 2019a).

In this study, we identified NTF2 as a strong interacting partner of CLCuMB  $\beta$ C1 by screening a *N. benthamiana* Y2H library with the  $\beta$ C1 as a bait. This interaction was evaluated and validated using the *in-silico* analysis of the protein-protein interaction. Many recent studies used Y2H and transcriptomics approaches to understand the interactional pathways of viruses with host plants (Kamal et al. 2019a; Liu et al. 2014).

The NTF2 is involved in the nuclear transportation of macromolecules. Mostly the viral proteins or plant viruses interact with the chloroplast proteins to aid viral infection and disease symptoms induction (DeBlasio et al. 2018; Kong et al. 2014). The NTF2, a protein involved in nuclear trafficking, is conserved in most of the eukaryotes including, yeast, mammals, and *Arabidopsis*. It shows a diverse biological function in different species. Changes in its mRNA expression in various stress conditions depict its involvement not only in normal protein translocation but also in the regulation and mitigation of challenges posed by deleterious conditions (Quimby et al. 2000).

This is the first report of the interaction between NTF2 and  $\beta$ C1 protein of the betasatellites. However, other viral proteins have been reported to interact with plant NTF2. For instance, ectopic higher expression of *Arabidopsis* NTF2 in *N. benthamiana* results in impaired translocation of a transcription factor and GTPases (Zhao et al. 2006). In addition, it expresses at a higher rate in soybean roots challenged with *Meloidogyne javanica* (Sá et al. 2012). Furthermore, *ntf2* knockdown wheat lines showed more susceptibility to stripe rust, a disease caused by *Puccinia striiformis*, suggesting a positive role of NTF2 in plant immunity (Zhang et al. 2018).

The interaction of NTF2 and  $\beta$ C1 was evidenced using further expression of  $\beta$ C1 in *N. benthamiana*.  $\beta$ C1 was transiently expressed in the *N. benthamiana* leaves. The expression of  $\beta$ C1 induced typical symptoms in the infected agroinfiltrated leaves like chlorosis, leaf wilting, and deformation. In host-virus interactions, the offending pathogen frequently develops counter-defense tactics to a host's defensive mechanisms (Sheikh 2018). The presence of upward-curved leaves or even radial leaves in agroinfiltrated plants suggested that this viral pathogenic protein may disrupt the formation of adaxial–abaxial polarity in leaves (Wang et al. 2015). The *N. benthamiana* leaves carrying pGreen- $\beta$ C1, pGreen-empty and healthy-control plants in this study showed different levels of protein expression (Fig 1). The typical symptoms of leaf deformation were clearly observable in leaves carrying the pGreen- $\beta$ C1 (Fig 1C), while there was no expression on leaves with an empty vector and the control-healthy plant (Fig 1A & 1B). These findings not only validated the integration and proper working of  $\beta$ C1 in *N. benthamiana* but also described the interaction of the viral protein with the host plant machinery to evade host defense mechanism.

Phylogenetic analysis was carried out to evaluate the conservation of NTF2 in different species (Supplementary Table 2 and 3). The NTF2 gene of *N. benthamiana* in the current study showed the closest relationship and the highest sequence identity with the NTF2 gene in the *N. tabacum* and *N. attenuata* (Fig 4 and 5). The previous studies showed that geminiviruses caused different diseases in *Nicotiana tabacum* and *Nicotiana glauca* (Murad et al. 2004). The background relationship with *Solanum lycopersicum*, and the sequence identity with different members of the genus *Gossypium* was further elaborated in results. The literature revealed that the members of geminivirus actively target the species of genus *Solanum* and *Gossypium*, and induce curly leaf symptoms and leaf deformation (Naqvi et al. 2017; Prajapat et al. 2013; Varma & Malathi 2003). The NTF2 from the *Capsicum annuum* showed its conservation with NTF2 of *N. benthamiana*. The yellow leaf curl disease in the genus *Capsicum* has also been reported by begomovirus caused (Mishra et al. 2020). High gene and protein sequence identity indicate the NTF2 homologs' presence in a wide range of host plant families. It is involved in disease development by interaction with  $\beta$ C1 protein. The homology and conservation of NTF2 is not only proved in plants but also in yeast and mammals along with elaboration of its function in targeting proteins into the nucleus (Bhattacharya & Steward 2002). Furthermore, it was determined that the sequences of NTF2 in yeast, humans, and *Arabidopsis* were noticeably similar (Zhao et al. 2006).

*In silico* protein-protein docking results of this study depicted the strong interaction between NTF2 and viral protein CLCuMB  $\beta$ C1, which was further substantiated by Y2H assays.

Overall, the current study found that NTF2 had a strong binding affinity with  $\beta$ C1 as indicated by the involvement of six residues with the lowest energy value of -730.6KJ/mol. So, suggesting its potential role in nuclear trafficking of begomovirus genome, its replication, and dissemination in neighboring cells can cause chlorosis, leaf curling, and/or wilting symptoms. Various multi-pronged *in-silico* techniques on the basis of energetic, sequence conservation analysis, and the

binding site might be useful to envisage the host-pathogen interaction such as geminivirus proteins and their interacting partners in cotton (Kamal et al. 2019a).

## Conclusion

This study aimed to evaluate the pathogenicity of  $\beta$ C1 protein and its interacting partners. The agroinfiltrated leaves of *N. benthamiana* showed the disease symptoms as chlorosis and leaf deformation. We proposed a new role for  $\beta$ C1 in plant immunity responses that has been in veil until now. The Y2H-based experiment and *in-silico* protein analyses presented in the current study suggested that the  $\beta$ C1 strongly interacts with NTF2, for nuclear transportation. Further studies on  $\beta$ C1 tagging with the green fluorescent protein (GFP) in wild-type and *ntf2* mutant background will shed light on the NTF2 requirement for its nuclear translocation and disease propagation. In the future, the interaction site mapping and mutant studies will aid in finding the NTF2 domain involved in interaction with  $\beta$ C1. Finding interaction sites will pave the way to find the common mechanism involved in  $\beta$ C1 nuclear translocation in many host plants. The results in this study may not only provide an insight into resistance mechanism but also set a base for future research on the involvement of cytoplasmic nuclear transportation in protein interaction and disease defense mechanisms.

## Acknowledgment

We would like to acknowledge the School of Plant Sciences, University of Arizona, USA for their assistance in providing the *N. benthamiana* "Mate and Plate" library.

## References

- Amin I, Hussain K, Akbergenov R, Yadav JS, Qazi J, Mansoor S, Hohn T, Fauquet CM, and Briddon RW. 2011. Suppressors of RNA silencing encoded by the components of the cotton leaf curl begomovirus-betasatellite complex. *Molecular plant-microbe interactions* 24:973-983.
- Anwar I, Bukhari HA, Nahid N, Rashid K, Amin I, Shaheen S, Hussain K, and Mansoor S. 2020. Association of cotton leaf curl Multan betasatellite and Ageratum conyzoides symptomless alphasatellite with tomato leaf curl New Delhi virus in *Luffa cylindrica* in Pakistan. *Australasian Plant Pathology* 49:25-29.
- Bayliss R, Leung SW, Baker RP, Quimby BB, Corbett AH, and Stewart M. 2002. Structural basis for the interaction between NTF2 and nucleoporin FxFG repeats. *The EMBO journal* 21:2843-2853.
- Bhattacharya A, and Steward R. 2002. The Drosophila homolog of NTF-2, the nuclear transport factor-2, is essential for immune response. *EMBO reports* 3:378-383.
- Briddon R, and Stanley J. 2006. Subviral agents associated with plant single-stranded DNA viruses. *Virology* 344:198-210.
- Briddon RW, Bull SE, Amin I, Idris AM, Mansoor S, Bedford ID, Dhawan P, Rishi N, Siwatch SS, and Abdel-Salam AM. 2003. Diversity of DNA  $\beta$ , a satellite molecule associated with some monopartite begomoviruses. *Virology* 312:106-121.
- Briddon RW, Martin DP, Roumagnac P, Navas-Castillo J, Fiallo-Olivé E, Moriones E, Lett J-M, Zerbini FM, and Varsani AJAov. 2018. Alphasatellitidae: a new family with two subfamilies for the classification of geminivirus-and nanovirus-associated alphasatellites. *Archives of virology* 163:2587-2600.

- 440 Brown JK, Zerbini FM, Navas-Castillo J, Moriones E, Ramos-Sobrinho R, Silva JC, Fiallo-Olivé  
441 E, Briddon RW, Hernández-Zepeda C, and Idris A. 2015. Revision of Begomovirus  
442 taxonomy based on pairwise sequence comparisons. Springer.
- 443 Comeau SR, Gatchell DW, Vajda S, and Camacho CJ. 2004. ClusPro: an automated docking and  
444 discrimination method for the prediction of protein complexes. *Bioinformatics* 20:45-50.
- 445 DeBlasio SL, Rebelo AR, Parks K, Gray SM, and Heck MC. 2018. Disruption of chloroplast  
446 function through downregulation of phytoene desaturase enhances the systemic  
447 accumulation of an aphid-borne, phloem-restricted virus. *Molecular plant-microbe*  
448 *interactions* 31:1095-1110.
- 449 DeLano WL. 2002. Unraveling hot spots in binding interfaces: progress and challenges. *Current*  
450 *opinion in structural biology* 12:14-20.
- 451 Eisenberg D, Lüthy R, and Bowie J. 1997. VERIFY3D: assessment of protein models with three-  
452 dimensional profiles. In *Methods in enzymology*. Academic Press DOI 10:396-404.  
453 s0076-6879
- 454 Fiallo-Olivé E, Lett JM, Martin DP, Roumagnac P, Varsani A, Zerbini FM, and Navas-Castillo J.  
455 2021. ICTV Virus Taxonomy Profile: Geminiviridae 2021. *J Gen Virol* 102.  
456 10.1099/jgv.0.001696
- 457 Fiallo-Olivé E, and Navas-Castillo J. 2020. Molecular and Biological Characterization of a New  
458 World Mono-/Bipartite Begomovirus/Deltasatellite Complex Infecting Corchorus  
459 siliquosus. *Front Microbiol* 11:1755. 10.3389/fmicb.2020.01755
- 460 Fields S, and Song O-k. 1989. A novel genetic system to detect protein–protein interactions.  
461 *Nature* 340:245-246.
- 462 Garamszegi S, Franzosa EA, and Xia Y. 2013. Signatures of pleiotropy, economy and  
463 convergent evolution in a domain-resolved map of human–virus protein–protein  
464 interaction networks. *PLoS pathogens* 9:e1003778.
- 465 Gasteiger E, Hoogland C, Gattiker A, Wilkins MR, Appel RD, and Bairoch A. 2005. Protein  
466 identification and analysis tools on the ExPASy server. *The proteomics protocols*  
467 *handbook*:571-607.
- 468 Gnanasekaran P, KishoreKumar R, Bhattacharyya D, Vinoth Kumar R, and Chakraborty S.  
469 2019. Multifaceted role of geminivirus associated betasatellite in pathogenesis. *Mol Plant*  
470 *Pathol* 20:1019-1033. 10.1111/mpp.12800
- 471 Goodin MM, Zaitlin D, Naidu RA, and Lommel SA. 2008. Nicotiana benthamiana: its history  
472 and future as a model for plant–pathogen interactions. *Molecular plant-microbe*  
473 *interactions* 21:1015-1026.
- 474 Hanley-Bowdoin L, Bejarano ER, Robertson D, and Mansoor S. 2013. Geminiviruses: masters at  
475 redirecting and reprogramming plant processes. *Nature Reviews Microbiology* 11:777-  
476 788.
- 477 Hu T, Song Y, Wang Y, and Zhou X. 2020. Functional analysis of a novel βV1 gene identified in  
478 a geminivirus betasatellite. *Sci China Life Sci* 63:688-696. 10.1007/s11427-020-1654-x
- 479 Kamal H, Minhas F-u-AA, Farooq M, Tripathi D, Hamza M, Mustafa R, Khan MZ, Mansoor S,  
480 Pappu HR, and Amin I. 2019a. In silico prediction and validations of domains involved  
481 in Gossypium hirsutum SnRK1 protein interaction with cotton leaf curl Multan  
482 betasatellite encoded βC1. *Frontiers in plant science*:656.
- 483 Kamal H, Minhas F-u-AA, Tripathi D, Abbasi WA, Hamza M, Mustafa R, Khan MZ, Mansoor  
484 S, Pappu HR, and Amin I. 2019b. βC1, pathogenicity determinant encoded by Cotton leaf

- curl Multan betasatellite, interacts with calmodulin-like protein 11 (Gh-CML11) in *Gossypium hirsutum*. *PloS one* 14:e0225876.
- Khan A, Fiaz S, Bashir I, Ali S, Afzal M, Kettener K, Mahmood N, and Manzoor M. 2017. Estimation of genetic effects controlling different plant traits in cotton (*Gossypium hirsutum* L.) under clcuv epidemic condition. *Cercetari Agronomice in Moldova*.
- Kong L, Wu J, Lu L, Xu Y, and Zhou X. 2014. Interaction between Rice stripe virus disease-specific protein and host PsbP enhances virus symptoms. *Molecular plant* 7:691-708.
- Kumar S, Stecher G, and Tamura K. 2016. MEGA7: molecular evolutionary genetics analysis version 7.0 for bigger datasets. *Molecular biology evolution* 33:1870-1874.
- Li F, Yang X, Bisaro DM, and Zhou X. 2018. The  $\beta$ C1 Protein of geminivirus–betasatellite complexes: a target and repressor of host defenses. *Molecular plant* 11:1424-1426.
- Liu J, Yang J, Bi H, and Zhang PJJolPB. 2014. Why mosaic? Gene expression profiling of African cassava mosaic virus-infected cassava reveals the effect of chlorophyll degradation on symptom development. *Journal of Integrative Plant Biology* 56:122-132.
- Lovell SC, Davis IW, Arendall III WB, De Bakker PI, Word JM, Prisant MG, Richardson JS, and Richardson DC. 2003. Structure validation by  $\alpha$  geometry:  $\phi$ ,  $\psi$  and  $C\beta$  deviation. *Proteins: Structure, Function, Bioinformatics* 50:437-450.
- Macara IG. 2001. Transport into and out of the nucleus. *Microbiology molecular biology reviews* 65:570-594.
- Mansoor S, Amin I, and Briddon RJEov. 2008. Cotton leaf curl disease. *Encyclopedia of virology* 5:563-569.
- Mishra M, Verma RK, Marwal A, Sharma P, and Gaur R. 2020. Biology and interaction of the natural occurrence of distinct monopartite begomoviruses associated with satellites in *Capsicum annum* from India. *Frontiers in microbiology* 11:2366.
- Murad L, Bielawski J, Matyasek R, Kovarik A, Nichols R, Leitch A, and Lichtenstein C. 2004. The origin and evolution of geminivirus-related DNA sequences in *Nicotiana*. *Heredity* 92:352-358.
- Nair A, Chatterjee KS, Jha V, Das R, and Shivaprasad PV. 2020. Stability of Begomoviral pathogenicity determinant  $\beta$ C1 is modulated by mutually antagonistic SUMOylation and SIM interactions. *BMC Biology* 18:110. 10.1186/s12915-020-00843-y
- Naqvi RZ, Zaidi SS-e-A, Akhtar KP, Strickler S, Woldemariam M, Mishra B, Mukhtar MS, Scheffler BE, Scheffler JA, and Jander G. 2017. Transcriptomics reveals multiple resistance mechanisms against cotton leaf curl disease in a naturally immune cotton species, *Gossypium arboreum*. *Scientific Reports* 7:1-15.
- Nawaz-ul-Rehman MS, Nahid N, Hassan M, and Mubin M. 2021. Betasatellites and Deltasatellites (Tolecusatellitidae). In: Bamford DH, and Zuckerman M, eds. *Encyclopedia of Virology (Fourth Edition)*. Oxford: Academic Press, 239-246.
- Oerke E-C, and Dehne H-W. 2004. Safeguarding production—losses in major crops and the role of crop protection. *Crop protection* 23:275-285.
- Park M-R, Park S-H, Cho S-Y, and Kim K-H. 2009. *Nicotiana benthamiana* protein, NbPCIP1, interacting with Potato virus X coat protein plays a role as susceptible factor for viral infection. *Virology* 386:257-269.
- Paschal BM, and Gerace L. 1995. Identification of NTF2, a cytosolic factor for nuclear import that interacts with nuclear pore complex protein p62. *The Journal of Cell Biology* 129:925-937.

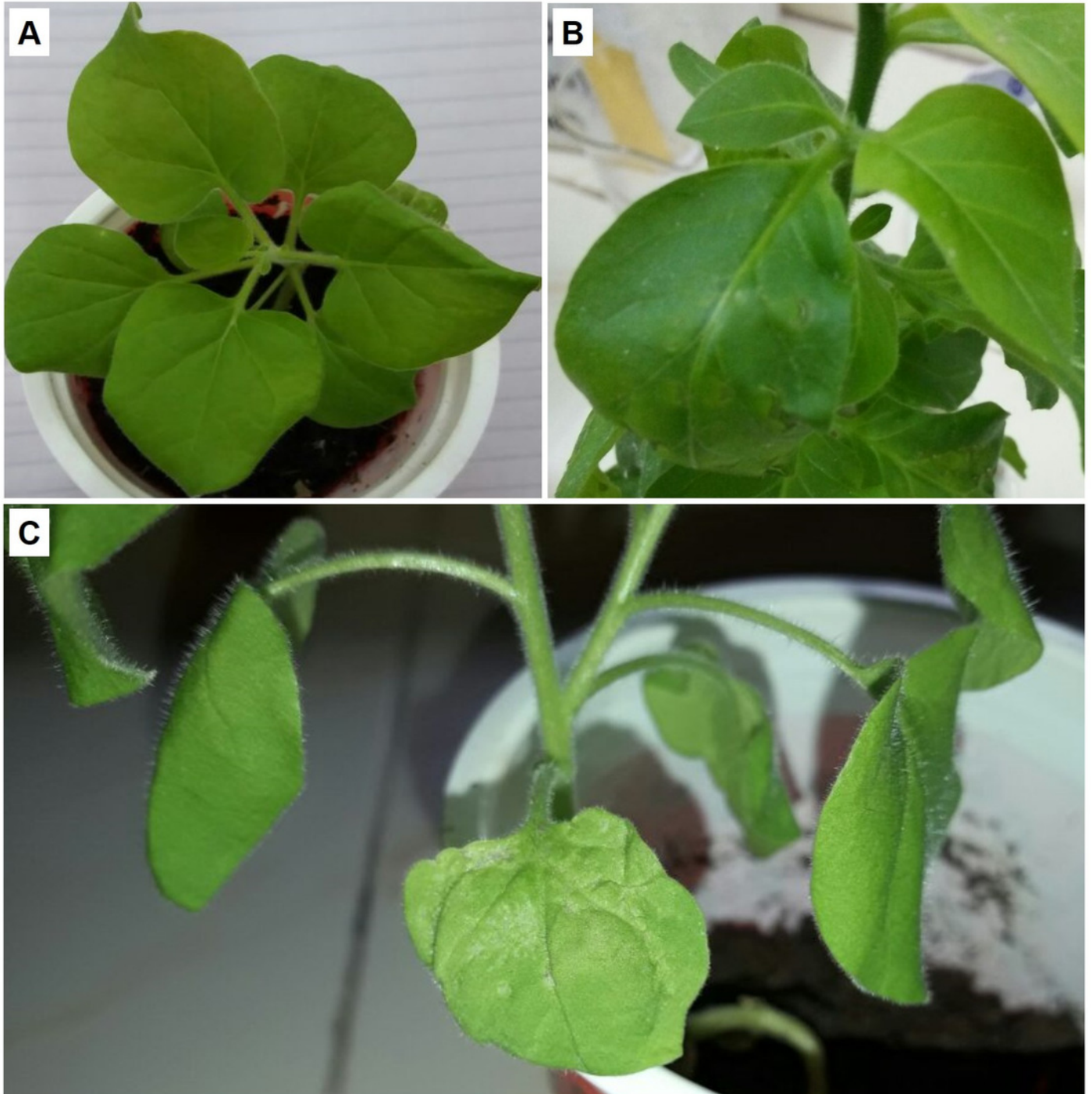
- Peng X, Chan EY, Li Y, Diamond DL, Korth MJ, and Katze MG. 2009. Virus–host interactions: from systems biology to translational research. *Current opinion in microbiology* 12:432-438.
- Prajapat R, Marwal A, and Gaur RK. 2013. Evidence of the Association of Solanum leaf curl lakshmangarh virus with a Weed Plant Solanum nigrum in Rajasthan, India. *Science International* 1:379-383.
- Quimby BB, Lamitina T, L'Hernault SW, and Corbett AH. 2000. The mechanism of ran import into the nucleus by nuclear transport factor 2. *Journal of Biological Chemistry* 275:28575-28582.
- Ribbeck K, Lipowsky G, Kent HM, Stewart M, and Görlich D. 1998. NTF2 mediates nuclear import of Ran. *The EMBO journal* 17:6587-6598.
- Sá MELd, Lopes MJC, Campos MdA, Paiva LV, Amorim RMSd, Beneventi MA, Firmino AAP, and Sá MFGd. 2012. Transcriptome analysis of resistant soybean roots infected by Meloidogyne javanica. *Genetics Molecular Biology* 35:272-282.
- Saeed M, Zafar Y, Randles JW, and Rezaian MA. 2007. A monopartite begomovirus-associated DNA  $\beta$  satellite substitutes for the DNA B of a bipartite begomovirus to permit systemic infection. *Journal of General Virology* 88:2881-2889.
- Sehrish M, Fakhra S, Muhammad S, and Haider MS. 2014. Effect of whitefly transmitted Geminiviruses on the physiology of tomato (Lycopersicon esculentum L.) and tobacco (Nicotiana benthamiana L.) plants. *Journal of Natural Sciences Research* 4:109-118.
- Sheikh MA. 2018. Plant defense and counter defense by viruses. *Advances in Plant Pathology*: IntechOpen.
- Shen WJ, and Forde BG. 1989. Efficient transformation of Agrobacterium spp. by high voltage electroporation. *Nucleic Acids Res* 17:8385. 10.1093/nar/17.20.8385
- Varma A, and Malathi V. 2003. Emerging geminivirus problems: a serious threat to crop production. *Annals of Applied Biology* 142:145-164.
- Wang J, Yu W, Yang Y, Li X, Chen T, Liu T, Ma N, Yang X, Liu R, and Zhang B. 2015. Genome-wide analysis of tomato long non-coding RNAs and identification as endogenous target mimic for microRNA in response to TYLCV infection. *Scientific Reports* 5:16946. 10.1038/srep16946
- Wong DH, Corbett AH, Kent HM, Stewart M, and Silver PA. 1997. Interaction between the small GTPase Ran/Gsp1p and Ntf2p is required for nuclear transport. *Molecular Cellular Biology* 17:3755-3767.
- Yang X, and Zhou X. 2017. Betasatellites of Begomoviruses. *Viroids and satellites*. Academic Press, USA: Elsevier, 671-678.
- Yousaf S, Rasool G, Amin I, Mansoor S, and Saeed M. 2013. Interference of a synthetic rep protein to develop resistance against cotton leaf curl disease. *International Journal of Agriculture Biology* 15.
- Zhang Q, Wang B, Wei J, Wang X, Han Q, and Kang Z. 2018. TaNTF2, a contributor for wheat resistance to the stripe rust pathogen. *Plant Physiology Biochemistry* 123:260-267.
- Zhang Y. 2008. I-TASSER server for protein 3D structure prediction. *BMC bioinformatics* 9:1-8.
- Zhao Q, Leung S, Corbett AH, and Meier I. 2006. Identification and characterization of the Arabidopsis orthologs of nuclear transport factor 2, the nuclear import factor of ran. *Plant physiology* 140:869-878.



# Figure 1

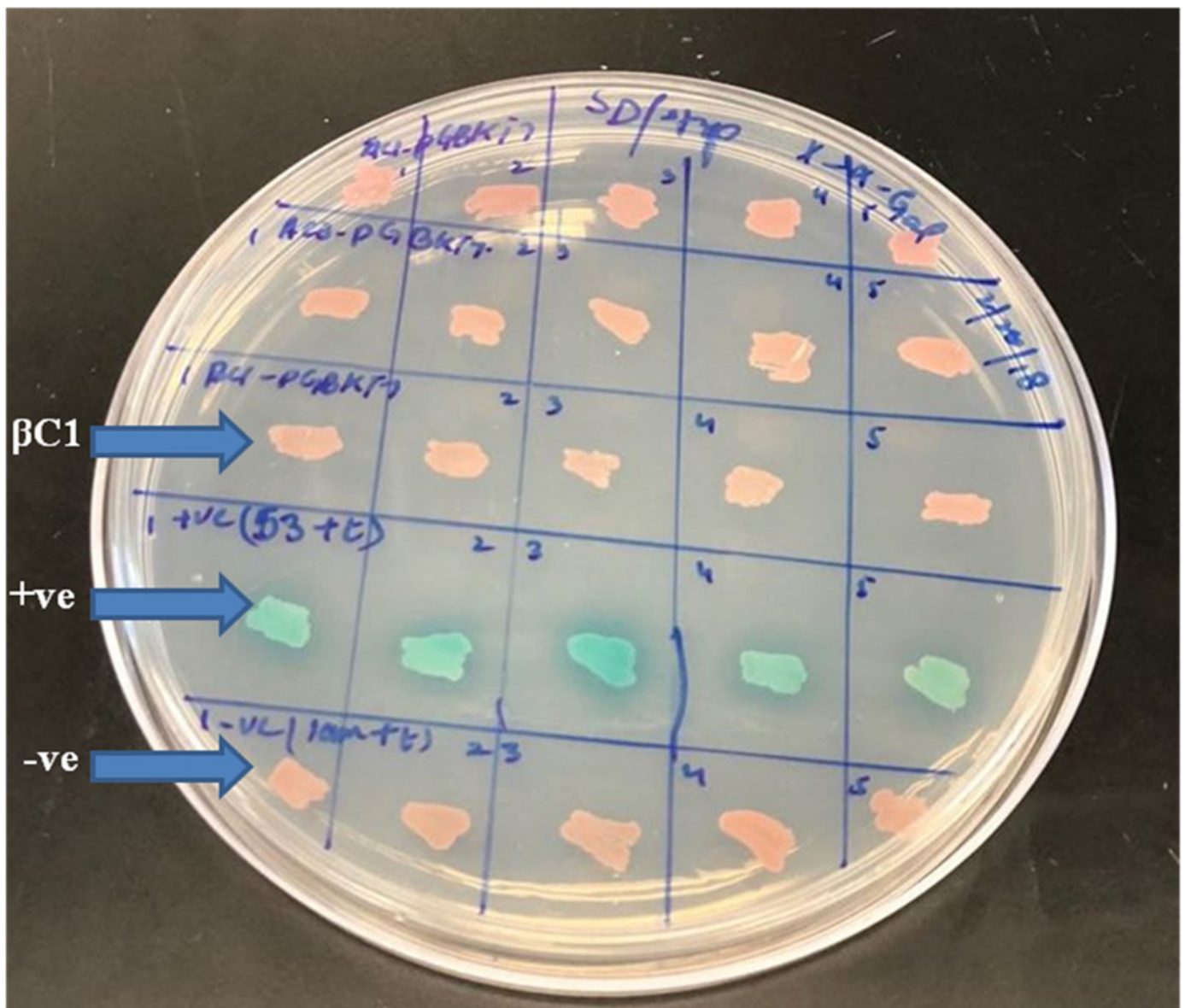
The  $\beta$ C1 ORF expression evaluated by agrobacterium-infiltration

**The disease-like symptoms in *Nicotiana benthamiana*.** (A) is the healthy plant, (B) leaves infiltrated with empty vector, and (C) the leaves infiltrated leaves with pGreen- $\beta$ C1



For autoactivation test, few random colonies were patched on SD/-Trp X- $\alpha$ -Gal plates.

$\beta$ C1 and negative control did not show any autoactivation, positive control turns blue indicating the two proteins interacting.

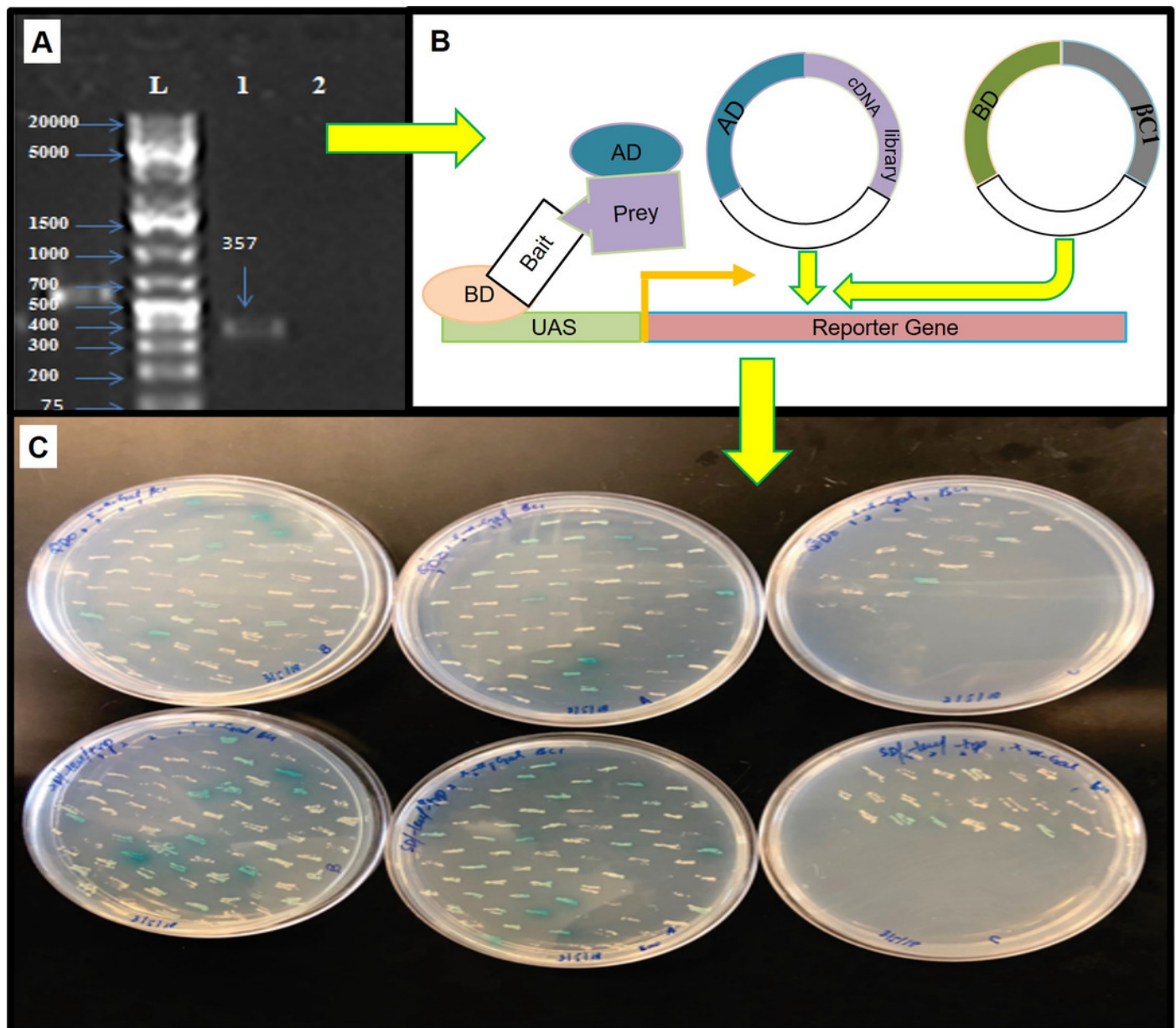


# Figure 3

The yeast two hybrid (Y2H) screening using  $\beta$ C1 baits with cDNA library of *Nicotiana benthamiana*

(A)  $\beta$ C1 PCR amplicon on 1% agarose gel, column-1 showing 357bp band, column-2 showing negative control, column-L has 1kb Plus DNA ladder (Thermo Fisher Scientific, USA), (B) Y2H method to identify  $\beta$ C1 interacting proteins, (C) interacting clones (Blue colonies) from 150mm plates patched on DDO/ X- $\alpha$ -Gal plates and QDO/ X- $\alpha$ -Gal plates for the purification.

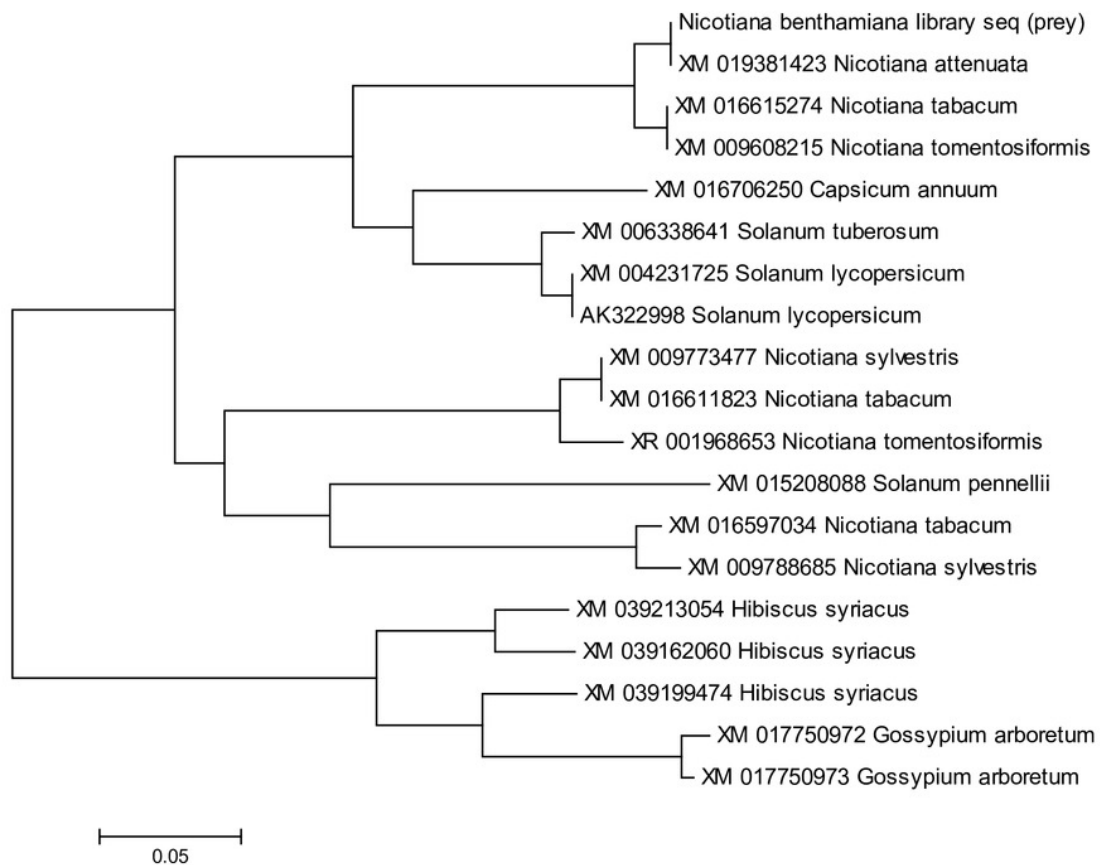




# Figure 4

Phylogenetic analysis of NTF2 gene sequence

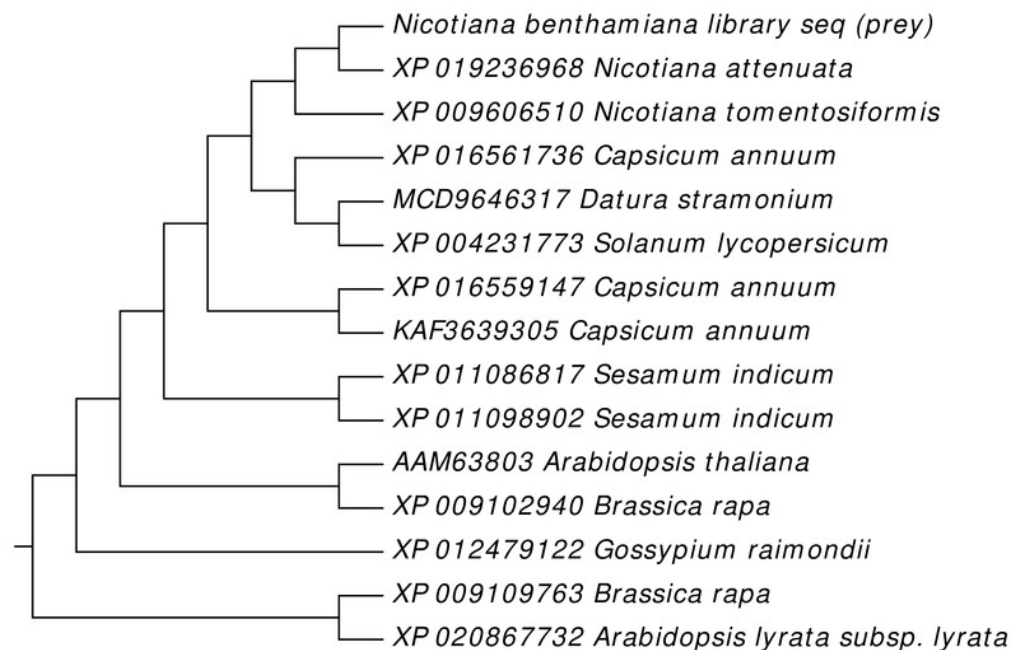
Showing its close relatives.



# Figure 5

Phylogenetic analysis of NTF2 protein

Showing the close relatives.







**Table 1**(on next page)

Co-transformation scheme of candidate prey with bait and empty bait

1

Reagents	Selective Agar Plate	Distinct 2mm colonies	Color
Candidate Prey + bait	DDO/X- $\alpha$ -Gal	Yes	Blue
	QDO/X- $\alpha$ -Gal	Yes	Blue
Candidate prey + empty pGBKT7	DDO/X- $\alpha$ -Gal	Yes	White
	QDO/X- $\alpha$ -Gal	No	N/A

2

## **Table 2**(on next page)

The primers used in the study to amplify the activation domain of protein and the targeted genes for sequencing

1

Name	Sequence
F-AD LD Insert	CTATTCGATGAAGATACCCACCAAACCC
R-AD LD Insert	GTGAACTTGCGGGGTTTTTCAGTATCTACGATT
SMART III primer	AAGCAGTGGTATCAACGCAGAGTGGCCATTATGGCC
CDS III primer	TCTAGAGGCCGAGGCGGCCGACATG

2

# **Table 3**(on next page)

The dilutions spread on agar plates to determine the mating efficiency, and the number of colonies from each plate with dilution factor1:1000 and 1:10,000

1

Agar Plate	Dilution Factor	Number of Colonies
	1:1000	>1000
SD/-Trp	1:10,1000	1000
	1:1000	225
SD/-Leu	1:10,1000	53
	1:1000	18
SD/-Leu/-Trp (DDO)	1:10,1000	3

2

**Table 4**(on next page)

The properties of protein-protein interaction (PPI) including the interacting amino acid residues, and energy released during protein interaction



1

Property	Description
<b>Interacting Residues of Receptor (βC1 Protein)</b>	TYR48, TYR50, ASP52, ASP58, ASN60
<b>Ligand</b>	NTF2
<b>Interacting Residues of Ligan</b>	GLU38, GLY39, VAL40, PRO56, GLN58, HIS93
<b>Lowest Energy</b>	-730.6 kJ/mol

2