



# Impacts of river fragmentation on limiting individual dietary specialization of Amazonian predatory fish

Jamerson Aguiar-Santos<sup>1</sup>, Pieter deHart<sup>2</sup>, Bruce Forsberg<sup>3</sup> and Carlos Freitas<sup>4</sup>

<sup>1</sup> Graduate Program in Ecology, National Institute of Amazonian Research, Manaus, Amazonas, Brazil

<sup>2</sup> Office of Graduate Studies, University of Wisconsin–Green Bay, Green Bay, WI, United States of America

<sup>3</sup> Department of Environmental Conservation, Vermont Agency of Natural Resources, Montpelier, VT, United States of America

<sup>4</sup> Department of Fishery Sciences, Federal University of Amazonas, Manaus, Amazonas, Brazil

## ABSTRACT

Individual dietary specialization is one of the factors that promotes variation in resource use at the individual level. Here we used stable isotope analysis of multiple tissues with different turnover rates to examine the degree of individual specialization in two sub-populations of the predator *Cichla temensis* inhabiting both fragmented and undammed rivers within the Uatumã River basin of the Amazon. Our results showed that the undammed river provides better conditions to promote individual dietary specialization than the fragmented river. This study contributes to the understanding of how specific life history characteristics of populations of generalist predators are impacted by fragmentation within megadiverse environments such as the Amazon basin.

**Subjects** Biodiversity, Ecology, Freshwater Biology

**Keywords** Intrapopulation niche, Individual niche, Trophic niche, Peacock bass, *Cichla temensis*, Habitat fragmentation

## INTRODUCTION

Like other populations of predators, predatory fish, normally considered generalists, can have populations composed of both generalist and specialist individuals, that is, individuals of the same species can use resources in different ways (Bylak, 2018; Balme et al., 2020). Some studies have suggested that among-individual niche variation or individual dietary specialization is a common phenomenon that can affect the ecological dynamics of a population, contribute to niche variation within the population (Bolnick et al., 2003), and even alter community ecology more broadly. Araújo, Bolnick & Layman (2011) summarized the role of different mechanisms, such as interspecific competition and ecological opportunism, that can promote individual specialization in natural populations.

In response to interspecific competition, individual specialization may increase or decrease depending on the distribution of resources. If the competitor reduces the abundance of preferred resources, individuals may use alternative resources or change habitats depending on resource availability (Futuyma & Moreno, 1988; Bylak, 2018). In the tropics, ecological opportunity (high diversity of resources) may be more important than interspecific competition in promoting niche variation among individuals (Araújo

Submitted 17 June 2022

Accepted 27 September 2022

Published 15 December 2022

Corresponding author

Jamerson Aguiar-Santos, jamerson-aguiar1@gmail.com

Academic editor

Alban Kuriqi

Additional Information and  
Declarations can be found on  
page 15

DOI 10.7717/peerj.14266

© Copyright

2022 Aguiar-Santos et al.

Distributed under

Creative Commons CC-BY 4.0

OPEN ACCESS

& *Costa-Pereira, 2013*). Individual-level dietary specialization may be common in many species but has rarely been investigated in Amazonian predatory fish.

A fish can often use the food sources more profitably at different times (*Gerking, 1994; Mortillaro et al., 2015*). The speckled peacock bass, *Cichla temensis*, is an Amazonian diurnal predator able to feed on a variety of prey and take advantage of the most abundant prey (*Aguiar-Santos et al., 2018; Hoeninghaus et al., 2006*). This opportunistic behavior can be advantageous in the Amazonian environment, which provides a wide variety of food items for fish. However, the diversity and supply of food sources are subject to strong seasonal variations (*Junk, Bayley & Sparks, 1989*). In general, predatory fish can exploit a wide variety of prey species that become available during the hydrological cycle (*Lowe-McConnell, 1999; Mérona & Rankin-de Mérona, 2004*). For example, in the Amazon basin, the piranha *Serrasalminus gouldingi* begins ingesting fruits and seeds as they become available during the flood season, but fish fragments are the main source of food during the other hydrological periods (*Prudente et al., 2016*). A high degree of feeding plasticity is common among predatory species and may reflect opportunistic feeding choices at the individual level (*Neves et al., 2021*), but this dynamic may be altered by river fragmentation (*Mérona & Vigouroux, 2006*).

One of the largest drivers of river fragmentation is the increasing abundance of hydroelectric dams (*Latrubesse et al., 2017*). While dams have afforded society many benefits, regulated rivers are ecologically and physically different from undammed rivers (*Collier, Webb & Schmidt, 1996*). In the Amazon, specifically, the Balbina Hydroelectric Dam was constructed more than thirty years ago on the Uatumã River, and it has since caused several downstream impacts. Changes in predictability, amplitude, duration, and frequency of river flow have impacted the hydrology and floodplain ecosystems downstream which are adapted and dependent on seasonal variation in river level (*Assahira et al., 2017; Rocha et al., 2020; Schöngart et al., 2021; Melack et al., 2021*). Impacts on alluvial forests downstream from dams can reduce fish richness and abundance, which can alter overall fish diversity (*Lobón-Cerviá et al., 2015*). Besides the impacts of large hydroelectric dams, small hydropower plants (SHPs) also can cause substantial environmental impacts (*Couto & Olden, 2018*). SHPs may lead to the disappearance of fish species or the isolation of populations as occurs with large hydroelectric dams (*Kukuła & Bylak, 2022*). In the Amazon Basin, thousands of small dams are operating and acting as physical barriers to fish movement (*Freitas et al., 2022*). Blocking movement between upstream and downstream stretches, small dams can alter the composition and trophic structure of fish assemblages in Amazonian streams (*Sousa et al., 2018*). These changes in the fish assemblage in turn influence the prey-predator relationships, the fish prey composition, and overall resource availability for predatory fish.

Several approaches have been used to quantify the variation in resource use at the individual level (*Bolnick et al., 2003*), and stable isotope analysis has been shown to be a useful tool for inferring the resource niche-breadth of individuals over time (*Lima et al., 2019*). The use of different types of tissue of the same individual permits the assessment of dietary specialization on different time scales due to different rates of tissue incorporation of recent dietary inputs (*Martínez del Río et al., 2009*). *Quevedo, Svanbäck & Eklöv (2009)*

showed marked intrapopulation niche partitioning in a generalist predator using tissues formed at different times of trophic activity integration.

In this study, we investigated whether sub-populations of the predator *C. temensis* from two distinct fluvial environments differed in their degree of trophic resource specialization. Specifically, we used carbon and nitrogen stable isotope analysis ( $\delta^{13}\text{C}$  and  $\delta^{15}\text{N}$ , respectively) of prey fish and multiple tissues with different turnover rates (*i.e.*, muscle and caudal fin) in *C. temensis*, to examine the degree of individual trophic specialization in distinct *C. temensis* populations inhabiting a dammed and an undammed reach of the Uatumã River system, Amazon basin. In addition, we tested the influence of standard length and trophic position on individual specialization values of *C. temensis* individuals, using the  $\delta^{15}\text{N}$  levels in autotrophic energy sources to determine the trophic position of *Cichla*. We hypothesized that the undammed river, due to its greater environmental complexity and diversity of food sources, could offer better environmental conditions to promote individual specialization than the fragmented river.

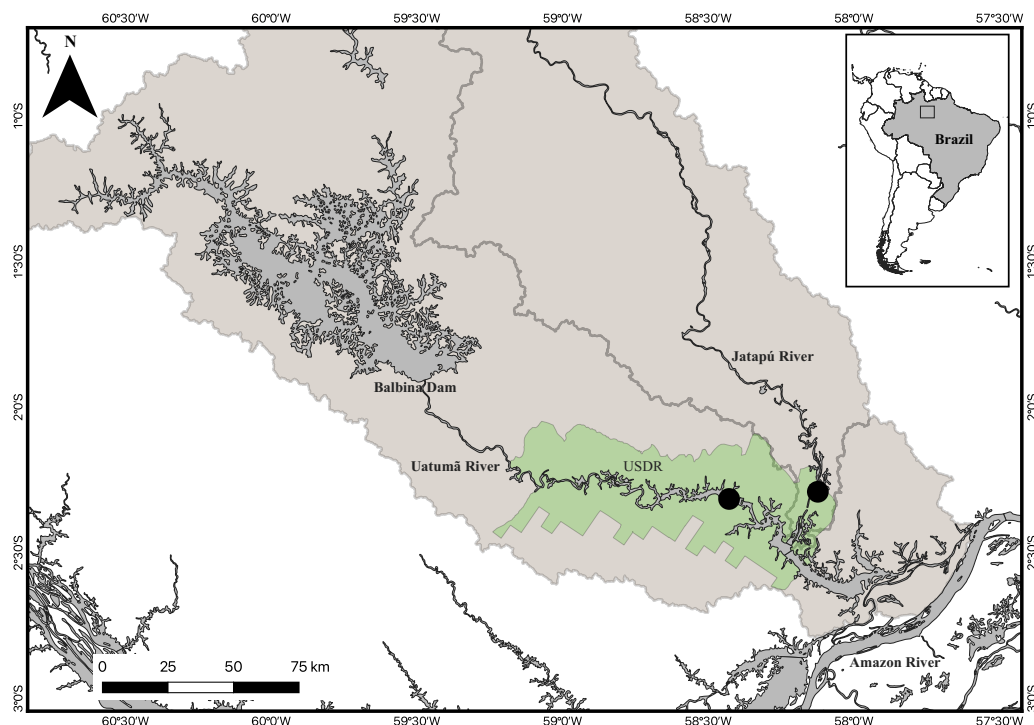
## MATERIAL AND METHODS

### Study area

Fieldwork was carried out at the Uatumã Sustainable Development Reserve (USDR) in the Brazilian State of Amazonas. The USDR is situated in the lower course of the Uatumã and Jatapú rivers (Fig. 1). The Uatumã River is regulated by the Balbina hydropower dam, which was built in the middle reach of the Uatumã River in 1987. Balbina Dam has a nominal capacity of 250 MW, but is highly inefficient, generating only 112.2 MW, on average (Fearnside, 2015). The environmental impacts found upstream of the dam were magnified by the formation of a huge reservoir. The downstream reach of the Uatumã also was impacted by massive tree mortality, decrease in the maximum water level, increase in the minimum water level, diversity loss, increased greenhouse gas emissions, and high methylmercury levels in aquatic biota (Kemenes, Forsberg & Melack, 2007; Kasper *et al.*, 2014; Schöngart *et al.*, 2021). In contrast, the Jatapú River is an undammed river. It is the main tributary of the Uatumã River with its confluence located approximately 228 km downstream from the Balbina dam (Schöngart *et al.*, 2021). The Jatapú River originates in the Guiana Shield and drains areas with low population density, including several indigenous protected areas, with a low degree of land use change. Both the Uatumã and Jatapú are acid black water rivers with pH ranging between 4 and 5, low inorganic nutrient concentrations, and high levels of dissolved organic materials, mainly humic and fulvic acids (Junk *et al.*, 2015).

### Ethical statement

All procedures performed in the study were approved by the Ethics Committee on Animal Use of the Federal University of Amazonas, Manaus, Brazil (Protocol No. 023/2019). The specimens were collected with authorization for activities with scientific purposes by license number 65955-1 SISBIO/IBAMA/MMA.



**Figure 1** Map of the study area. The inserted map represents the location of the study area in Brazil. The Uatumã Sustainable Development Reserve (USDR) is shown with the green shaded color, including the locations of the sampled sites (filled circles) downstream from the Balbina dam, Amazonas, Brazil. The darker grey area represents the Balbina dam reservoir. Broader shaded area is the Uatumã River watershed.

Full-size  DOI: [10.7717/peerj.14266/fig-1](https://doi.org/10.7717/peerj.14266/fig-1)

## Sample collection

Sampling was performed in October 2020, during the falling water period. Samples of *C. temensis* were collected in both the Uatumã and Jatapú Rivers approximately 25 km upstream from their confluence. All fish were caught with a fishing rod and artificial bait. After capture, the fish were euthanized through hypothermic treatment in an isothermal box with water and ice. Standard length (SL, cm) was recorded for each captured fish. Muscle tissue from the middorsal region was removed, stored in glass scintillation vials, and placed in a freezer until processing and analysis for stable isotopes. Caudal fin tissue with a slower turnover rate was also collected to infer individual specialization over a longer time period (Araújo, Bolnick & Layman, 2011). Tissue from the upper lobe of the caudal fin, including fin rays, was removed from each individual and stored in a 1.5 ml centrifuge tube with 70% alcohol solution. Since the isotopic values can be affected by the method of tissue preservation, the isotopic values were corrected using an equation for ethanol treatment provided by Planas et al. (2020) for finfish.

Since the diversity of food sources (prey fish) may be different between the rivers, the fish assemblage was sampled at each sampling site. Potential fish prey were collected using gillnets (2 m height × 15 m length) and mesh sizes varying from 30–120 mm. Gillnets were

left fishing for 4 h in the morning (05:00–09:00 h) and 4 h in the evening (17:00–21:00 h). Dorsal muscle samples were collected from each individual and stored as described above. In addition, suspended particulate organic material (SPOM), predominantly phytoplankton, was collected at each sampling site and analyzed for stable isotopes to represent the autotrophic (base) energy source in the *C. temensis* food chain. These samples were collected using a 25  $\mu\text{m}$  plankton net dragged horizontally three times in the subsurface water, then stored in 500 ml bottles. The samples were collected on pre-combusted Whatman GF/F glass fiber filters using a vacuum filtration system under low pressure and stored until analysis.

### Sample processing

All biological samples were dried in an oven at 60 °C for 24 h. After desiccation, all samples were transported to the University of Wisconsin (Green Bay, WI, USA) for isotopic analysis. Sample preparation was performed as previously described in [deHart, Powers & Hyzy \(2016\)](#). All samples were cleaned using double-distilled water and freeze-dried before the subsampling procedure. Each sample was ground into a fine powder using a mortar and pestle. To obtain values for  $\delta^{13}\text{C}$  and  $\delta^{15}\text{N}$ ,  $1.0 \pm 0.2$  mg of this material was then subsampled into pre-weight tin capsules (Costech 5  $\times$  nine mm) and weighed using a Sartorius CPA2P microbalance. C and N isotopic composition were analyzed at the Central Appalachians Stable Isotope Facility in Frostburg, Maryland (USA), using a Carlo Erba NC2500 elemental analyzer interfaced with a Thermo Delta V+ isotope ratio mass spectrometer. Stable isotope ratios were expressed as  $\delta^{13}\text{C}$  or  $\delta^{15}\text{N} = ((R_{\text{sample}}/R_{\text{standard}}) - 1) \times 1,000$ , where  $R_{\text{sample}}/R_{\text{standard}}$  are the ratios of  $^{13}\text{C}/^{12}\text{C}$  and  $^{15}\text{N}/^{14}\text{N}$ . Data were expressed using delta notation ( $\delta$ ) in parts per thousand (‰) with the reference material for  $\delta^{13}\text{C}$  being Vienna PeeDee Belemnite for  $\delta^{13}\text{C}$  and atmospheric air for  $\delta^{15}\text{N}$ . Measurement precision was estimated at  $\pm 0.11\text{‰}$  and  $\pm 0.12\text{‰}$  for  $\delta^{15}\text{N}$  and  $\delta^{13}\text{C}$ , respectively. Lipid corrections of  $\delta^{13}\text{C}$  values were not considered appropriate because all fish samples displayed C/N ratios  $< 3.5$  ([Post et al., 2007](#)).

### Data analysis

The degree of individual specialization for both populations of *C. temensis* was measured using an index of within-individual component (WIC) to total niche width (TNW) for continuous data, for both  $\delta^{13}\text{C}$  and  $\delta^{15}\text{N}$  values from muscle tissue and caudal fin of each specimen. The TNW of a population is composed of the sum of its WIC and between individual component (BIC) ([Roughgarden, 1972](#); [Bolnick et al., 2003](#)). Individual specialization is computed as the ratio between WIC and TNW. The WIC/TNW index compares the average individual's niche to the population niche. This index ranges from zero when the population is composed of specialists that use a small subset of the population niche, to 1, when individuals are generalists and use the same resources as the population ([Bolnick et al., 2002](#)). To test the significance of the WIC/TNW index against the null hypothesis that individuals are all generalists,  $10^3$  replicates were generated through a non-parametric Monte Carlo bootstrap procedure, which resulted in values referred to as *p* values ([Zaccarelli, Bolnick & Mancinelli, 2013](#)).

Prey fish were divided into four functional groups: carnivores, detritivores, herbivores and omnivores (Sleeg & Albert, 2018). The relative contributions of these prey groups for each individual of *C. temensis* were estimated using the  $\delta^{15}\text{N}$  and  $\delta^{13}\text{C}$  values of prey group muscle tissue and *C. temensis* muscle tissue and caudal fin with a Bayesian mixing model from the MixSIAR R package (Stock et al., 2018). Before applying the mixing model, we compared the variances of the caudal fin samples to account for the sample size differences through F-test. The individual identity was included in the models as a random effect. The fish prey groups are the same used by Aguiar-Santos et al. (2022) that were collected in the same areas and at the same time as individuals of *C. temensis*. From the outputs of the MixSIAR models, we calculated the degree of specialization for each individual through the individual specialization (IS) index. The IS index quantifies the mean proportional similarity ( $\text{PS}_i$ ) between the individual diet and the population diet (Bolnick et al., 2002). This index spans from 0, when individuals are specialists, to 1, when all individuals are generalists. That is, when there is complete overlap between the diet of the individual and the population, there is no individual specialization. We used Monte Carlo bootstrap permutations with 10,000 replicates to test whether observed IS values differed from a random distribution of values subsampled from the population. These analyses were performed using the RInSp package (Zaccarelli, Bolnick & Mancinelli, 2013).

To identify differences in the degree of individual specialization between populations, and to test whether the standard length and the trophic position influence the degree of individual specialization, we perform a generalized linear model (GLM) using beta family distribution in the betareg package (Cribari-Neto & Zeileis, 2010). This distribution is used when proportional data assume values in the standard unit interval (0,1). Nitrogen isotopic values for SPOM (phytoplankton, baseline) and *Cichla* (consumer) were used to estimate the trophic positions of *C. temensis* individuals following the equation: Trophic Position (TP) =  $[1 + \delta^{15}\text{N}_{\text{consumer}} - \delta^{15}\text{N}_{\text{baseline}}]/3.04\text{‰}$ , where 1 is the trophic level of the baseline organism (phytoplankton) and 3.04‰ is the estimated fraction per trophic level (Post, 2002; Bastos et al., 2017). We only used isotopic information from fish muscle tissue for these analyses because it had a similar number of replicates per population.

Finally, we performed an analysis of variance (ANOVA) to compare the trophic position of *C. temensis* individuals in both populations. We also calculated the proportion of the trophic groups in each sampling site to analyze the influence of the potential prey fish assemblage on the trophic position of *C. temensis* populations. The percentage of each trophic group (Carnivores, Detritivores, Herbivores, Omnivores) was calculated by dividing the number of species on each trophic group in each sampling site by the total number of species.

## RESULTS

In total, we sampled 48 adult individuals of *C. temensis* (Table 1). Eight caudal fin samples were lost from the Jatapú collection. Individual isotopic variation in *C. temensis* was larger for energy source use ( $\delta^{13}\text{C}$ ) than the trophic level ( $\delta^{15}\text{N}$ ) for both populations (Table 2). The WIC component accounted for 81.22% and 46% of the TNW variation in

**Table 1** Mean ( $\pm$ SD)  $\delta^{13}\text{C}$  and  $\delta^{15}\text{N}$  values of *C. temensis* populations.

Population/tissue	<i>n</i>	$\delta^{13}\text{C}$	$\delta^{15}\text{N}$
<i>Uatumã River</i>			
Muscle tissue	27	−35.95 (1.41)	14.43 (0.82)
Caudal fin	27	−30.95 (1.19)	14.15 (0.92)
<i>Jatapú River</i>			
Muscle tissue	21	−35.51 (1.22)	13.55 (0.82)
Caudal fin	13	−30.36 (0.99)	11.95 (0.60)

**Notes.**

*n*, Number of individuals.  
The isotopic values are expressed in ‰.

**Table 2** Individual specialization metrics for *C. temensis* populations.

Population	TNW	WIC	BIC	WIC/TNW	<i>p</i> value
$\delta^{13}\text{C}$					
Uatumã	7.88	6.40	1.48	0.81	0.99
Jatapú	8.44	7.52	0.92	0.89	0.99
$\delta^{15}\text{N}$					
Uatumã	0.75	0.35	0.40	0.46	0.32
Jatapú	1.12	0.72	0.39	0.64	0.81

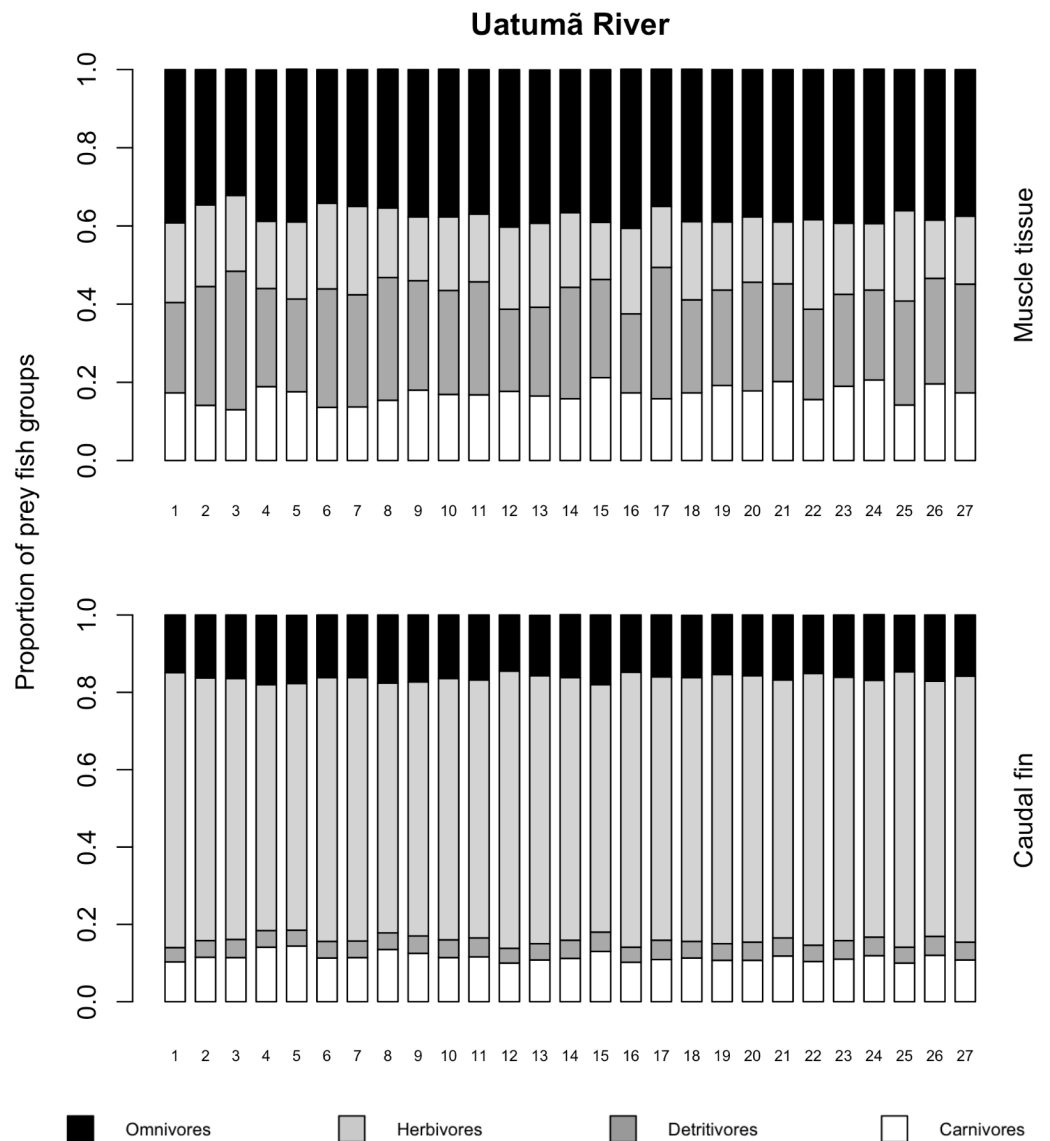
**Notes.**

TNW, Total niche width; WIC, Within-individual component; BIC, Between-individual component.

$\delta^{13}\text{C}$  and  $\delta^{15}\text{N}$  of the Uatumã River *C. temensis* population, and 89.1% and 64.28% of the TNW variation in  $\delta^{13}\text{C}$  and  $\delta^{15}\text{N}$  of Jatapú River *C. temensis* population. The individual specialization index WIC/TNW showed values close to 1 for  $\delta^{13}\text{C}$  and low values for  $\delta^{15}\text{N}$  for both populations. The simulations generated by the Monte Carlos bootstrap procedure did not indicate the presence of specialist individuals (Table 2).

The variances of  $\delta^{13}\text{C}$  and  $\delta^{15}\text{N}$  of the caudal fin are homogeneous (Table S1). MixSIAR outputs for muscle samples indicated that omnivores and detritivores were the most consumed fish prey groups for both *C. temensis* populations (Figs. 2 and 3). The results obtained from caudal fin showed that the herbivores were the most important prey fish group for both populations (Figs. 2 and 3), and the IS values calculated from dietary estimates for both tissues were high (Table 3). The  $PS_i$  values differed between the *C. temensis* populations (Table 4) with lower values in the Jatapú River *C. temensis* population as compared to the Uatumã River *C. temensis* population (Fig. 4A). However, neither the standard length nor the trophic position influenced the  $PS_i$  values (Table 4; Fig. 5).

The Jatapú River *C. temensis* population has higher trophic position values than the Uatumã River population (ANOVA:  $F = 179$ ;  $df = 1,46$ ;  $p < 0.05$ , Fig. 4B). Sixty prey species were recorded in total, consisting of 23 species recorded only in the Jatapú River, nine species recorded only in the Uatumã River, and 28 in both rivers. The trophic composition of the potential prey fish in the Jatapú River was comprised of 43.2% carnivores, 35.3% omnivores, 15.7% detritivores, and 5.8% herbivores. In the Uatumã, the



**Figure 2** Contribution of fish prey groups to the diet of *C. temensis* individuals obtained from each tissue type in the Uatumã River. The lower axis is individual fish.

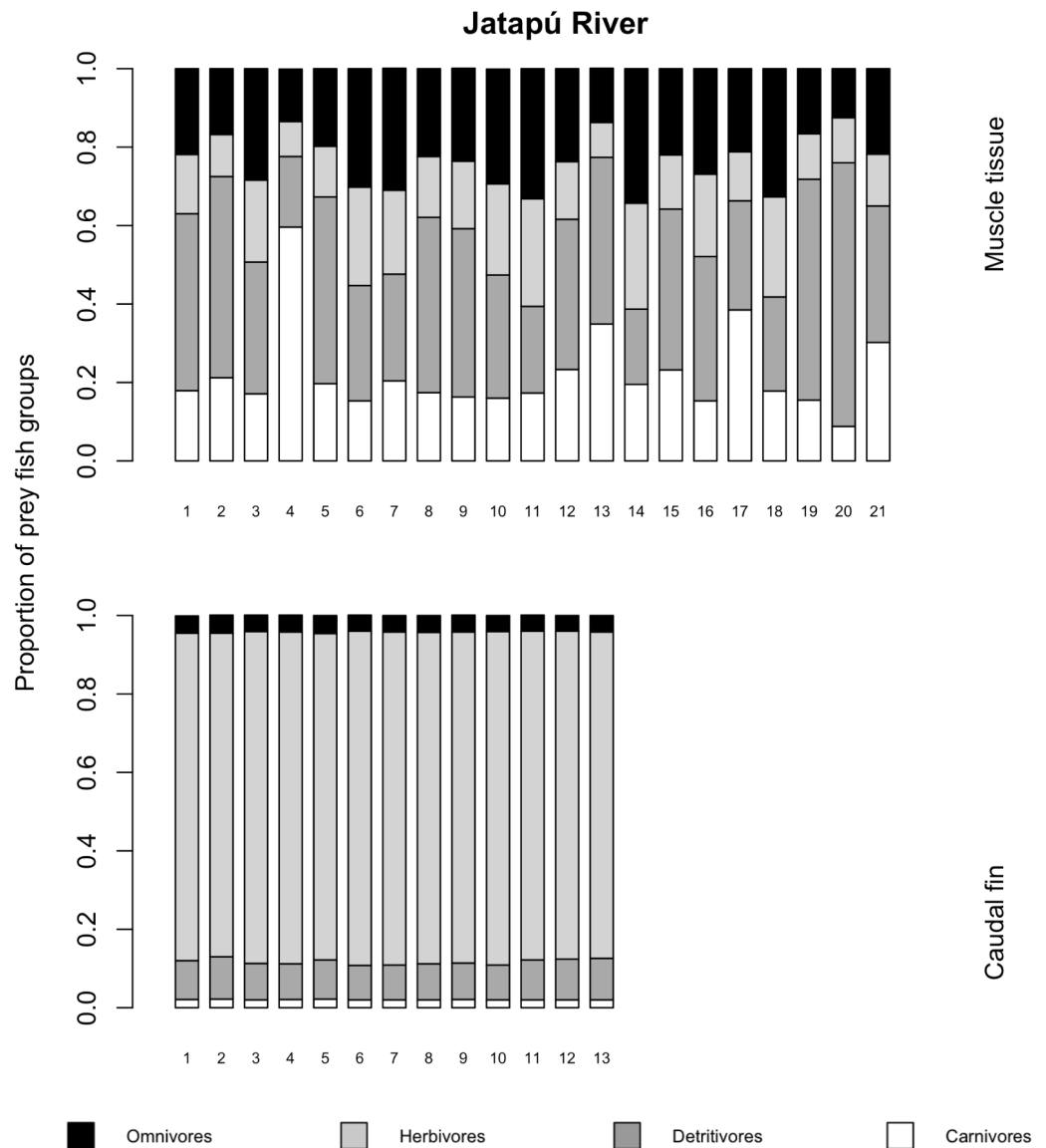
Full-size  DOI: 10.7717/peerj.14266/fig-2

proportion of trophic groups was 40.5% carnivores, 32.4% omnivores, 16.2% detritivores, and 10.8% herbivores (Fig. 6).

## DISCUSSION

Individual dietary specialization in typically generalist populations is a widespread phenomenon but has rarely been investigated in Amazonian predatory fish (*Bolnick et al., 2003*). Our study used stable isotope analysis of multiple tissues with different turnover rates to analyze the degree of trophic resource specialization of *C. temensis* populations inhabiting a fragmented and an undammed reach of the Uatumã River system, Amazon





**Figure 3** Contribution of fish prey groups to the diet of *C. temensis* individuals obtained from each tissue type in the Jatapú River. The lower axis is individual fish.

Full-size DOI: [10.7717/peerj.14266/fig-3](https://doi.org/10.7717/peerj.14266/fig-3)

basin. Our results showed that the undammed river reach may provide better conditions to promote individual specialization than the fragmented reach we considered. Specifically, while our analysis of WIC/TNW values and the high IS values calculated from the dietary estimates for both tissues both suggest a low proportion of specialist individuals in populations of both rivers, the overall differences in  $PS_i$  values between the two river populations suggest a higher degree of individual specialization of *C. temensis* in the Jatapú river as compared to the Uatumã river. Additionally, the prey fish assemblage did vary between the two rivers, which affected the trophic position of *C. temensis* and may have

**Table 3** Mean estimated contribution and standard deviation of fish prey groups and individual specialization index (IS) index for *C. temensis* populations.

	Carnivores	Detritivores	Herbivores	Omnivores	IS	<i>p</i> -values
<i>Uatumã River</i>						
Muscle tissue	0.17 (0.009–0.36)	0.26 (0.13–0.38)	0.19 (0.01–0.38)	0.38 (0.01–0.75)	0.96	1
Caudal fin	0.11 (0.007–0.25)	0.04 (0.002–0.12)	0.68 (0.46–0.86)	0.16 (0.005–0.46)	0.98	1
<i>Jatapú River</i>						
Muscle tissue	0.21 (0.09–0.34)	0.38 (0.26–0.50)	0.17 (0.01–0.32)	0.24 (0.01–0.55)	0.86	1
Caudal fin	0.02 (0.001–0.06)	0.09 (0.006–0.22)	0.84 (0.72–0.95)	0.04 (0.001–0.14)	0.99	0.34

**Table 4** Results of the Generalized Linear Model (GLM) examining variation of the trophic position, standard length and site on proportional similarity values (PSi) of the *C. temensis* individuals.

Predictor variable	Estimate (SE)	<i>z</i>	<i>p</i>
Intercept	2.92 (1.32)	2.21	<b>0.03</b>
Trophic position	−0.304 (0.31)	−0.98	0.32
Standard length	0.002 (0.01)	0.16	0.87
River (Uatumã)	0.7675 (0.40)	1.91	<b>0.05</b>

**Notes.**

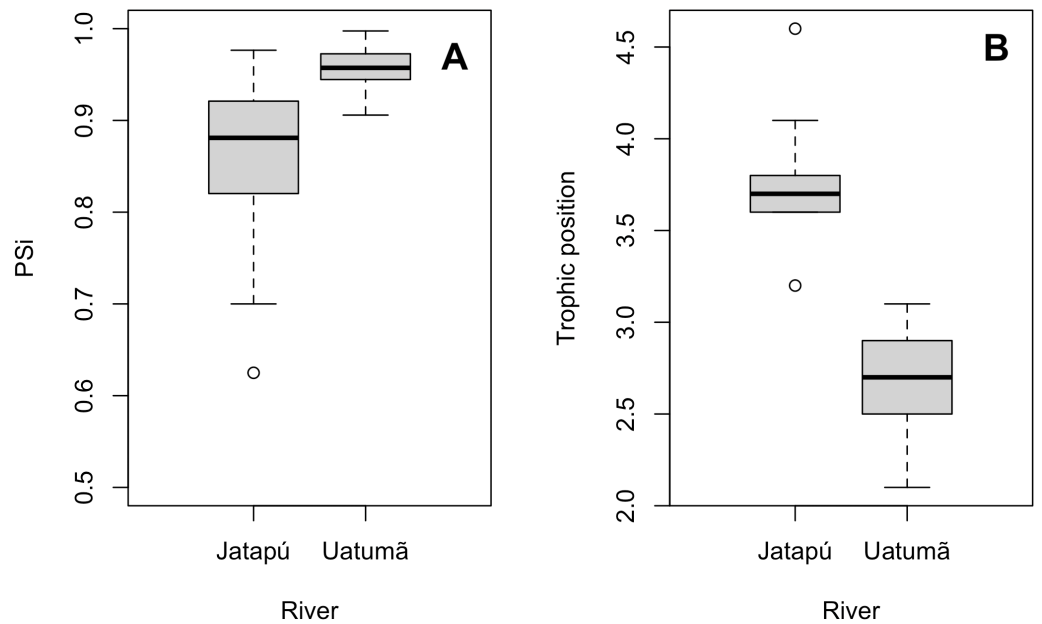
SE, Standard error.

We modeled PSi values from muscle tissue of *C. temensis* individuals with beta regression (R function betareg). Model: PSi ~Trophic position + Standard length + River. The significant ( $p < 0.05$ ) effects are given in bold.

influenced the degree of specialization. These results suggest that the *C. temensis* population of the Jatapú river is less generalist than the population of the Uatumã river.

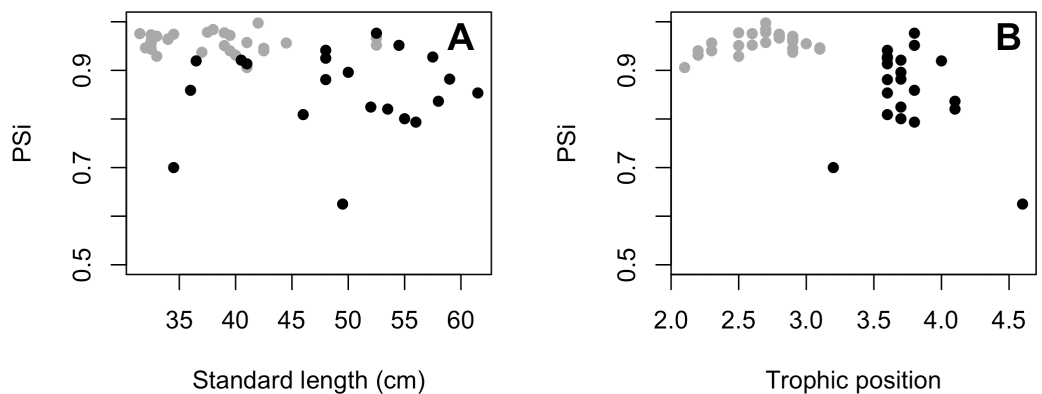
In natural habitats, individuals of the *C. temensis* are opportunist strict piscivores that consume a variety of fish prey (Aguiar-Santos et al., 2018). In these environments, the feeding ecology of the organisms is influenced by seasonal and predictable variations in river level which affect the availability of foraging areas and food resources (Junk, Bayley & Sparks, 1989). This dynamic affects the abundance and composition of the fish assemblage and consequently influences prey composition (Silva et al., 2021). As with other populations of predatory fish in the Amazon basin, some individuals may show some trophic specialization. In the Rio Negro, some individuals of the predator *Acestrorhynchus falcirostris* show a diet specialized in the consumption of seasonally abundant prey, while others are more generalist, consuming prey that occurs throughout the year (Lubich et al., 2024). Thus, variable prey availability associated with phenotypic characteristics may drive prey capture, leading to differing degrees of individual specialization (Cardoso et al., 2019).

Habitat fragmentation by hydroelectric dams causes multiple impacts on the structure, dynamics, history, and functioning of freshwater ecosystems (Pelicice et al., 2021). For example, the fragmentation of the Madeira River has modified the food spectrum of piscivores mainly changes in piscivorous abundance, diet composition, niche breadth, and resource partitioning among piscivorous fish (Lonardoní et al., 2021). The regular and



**Figure 4** Comparison of the proportional similarity values and the trophic position values by population. (A) Boxplot of proportional similarity values (PS<sub>i</sub>) by rivers and (B) boxplot of trophic position of *C. temensis* by rivers. The Uatumã River is the dammed river and the Jatapú River is the undammed river.

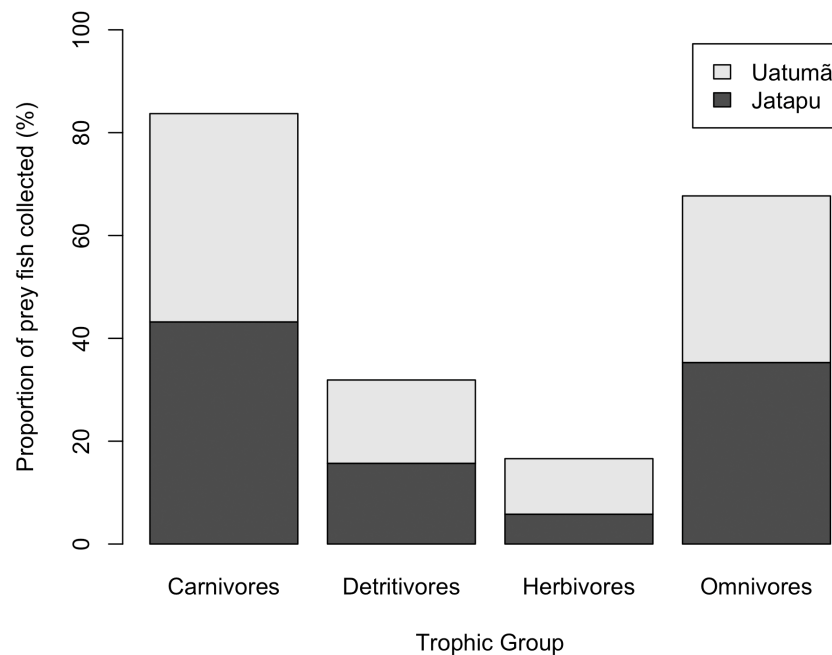
Full-size [DOI: 10.7717/peerj.14266/fig-4](https://doi.org/10.7717/peerj.14266/fig-4)



**Figure 5** (A) Relationship between proportional similarity values (PS<sub>i</sub>) and standard length. (B) Proportional similarity values (PS<sub>i</sub>) and trophic position of *C. temensis*. Each point represents an individual of *C. temensis* from the dammed river (gray circle) and the undammed river (black circle). There is no effect of standard length or trophic position on PS<sub>i</sub> values.

Full-size [DOI: 10.7717/peerj.14266/fig-5](https://doi.org/10.7717/peerj.14266/fig-5)

predictable variation in water level in the Uatumã River was altered by the construction of the Balbina hydroelectric plant; these changes in the fluvial flood pulse modified the composition, distribution and structure of the biological communities (Arantes *et al.*, 2019; Schöngart *et al.*, 2021). Fish populations lost important food sources due to the loss of floodplain forest (*igapó* forest), which then leads to a reduction in the abundance of potential prey associated with these environments. Thus, in fragmented habitats such as



**Figure 6** The proportion of potential prey trophic groups collected in the dammed river: Uatumã River, and in the undammed river: Jatapu River.

Full-size  DOI: [10.7717/peerj.14266/fig-6](https://doi.org/10.7717/peerj.14266/fig-6)

those that have been dammed, individuals need to expand their diet to include alternative food items to meet their dietary requirements. Besides losses of the ecologically unique and important *igapó* forest by the damming, the Uatumã River has also been altered by human settlements with different land cover types (Resen de et al., 2019). The combination of all these factors contributes to the diet generalization of individuals of the *C. temensis* population in the Uatumã River.

Ecological opportunity may favor specialization in populations that have access to a greater diversity of prey (Balme et al., 2020). In the Negro River basin, *C. temensis* adult individuals showed a narrow trophic niche with a highly specialized diet based on prey fish consumption (Aguiar-Santos et al., 2018). In the dam-impacted region of the Uatumã River, the *C. temensis* population had a broader trophic niche and higher exploitation of carbon sources than the population of the undammed river within the same watershed. While in the undammed river, individual *C. temensis* exploited prey at higher trophic levels (Aguiar-Santos et al., 2022). Non-fragmented habitats have better conditions to promote individual specialization because of the greater availability, diversity, and seasonal fluctuations of prey fish (Araújo, Bolnick & Layman, 2011). Thus, the difference in the trophic structure of potential prey assemblages drives differences in the degree of trophic specialization and trophic position of *C. temensis* populations.

Stable isotopes have been used to quantify individual specialization through studies which examine multiple types of tissues with different metabolic rates from the same individual to infer dietary habits in different periods (Dalerum & Angerbjörn, 2005). There are very few studies reporting isotopic turnover rates of caudal fin for freshwater fishes.

The few works that exist report that fin samples exhibit slow isotopic turnover in relation to liver and blood samples for cartilaginous fish and fast turnover ( $\sim 1$  month) in teleost fish (German & Miles, 2010; Malpica-Cruz et al., 2012). The isotopic signature of muscle tissue of fish species reflects the diet of approximately 3-4 months ago but there is no consensus on the replacement rate of white muscle tissue in freshwater fish. Some authors reported 13.9 days to 85 days for tissues to equilibrate with dietary isotopic signatures (Sacramento, Manetta & Benedito, 2016). The time period and region examined in this study correspond to the peak flood and early falling water period; the period corresponding to the reproductive peak of *C. temensis* (Campos, Freitas & Amadio, 2015). During this period, individuals form pairs, prepare nests, and perform mouthbrooding; the parents take turns caring for the offspring and show characteristics of guardians and territoriality behavior. Throughout this time, feeding activity is reduced. Individuals capture their prey by ambush and/or pursuit, targeting prey that approaches the nests (Jepsen, Winemiller & Taphorn, 1997). These feeding behaviors are all unique to the reproductive period of a generalist predator, and so it is unsurprising that we did not detect the presence of specialist individuals in both populations during that window of time.

Outside the reproductive period, in the Cinaruco River –Venezuela, large individuals of *C. temensis* can move over moderate distances ( $\sim 21$  km) (Hoeinghaus et al., 2003). This behavior can be associated with the seasonal exploiting of large schools of *Semaprochilodus kneri* that can provide large piscivores with nutrients, fueling high rates of growth, fecundity, and recruitment (Winemiller & Jepsen, 2002; Hoeinghaus et al., 2006). This seasonal contribution of prey to the diet of some individuals can lead to increased variation in diet among individuals, favoring an increase in populational trophic niche width (Araújo, Bolnick & Layman, 2011). Therefore, ecological opportunity and competition for valuable resources among individuals in the population can promote individual specialization.

On the other hand, interspecific competition weakens individual specialization in species-rich communities (Araújo, Bolnick & Layman, 2011). The presence of a competitor species increases the pressure on food resources and forces niche differentiation between the competitors. Amazonian aquatic environments, in particular, have high species richness and resources (Reis et al., 2016); it would not be metabolically beneficial for predators in megadiverse environments, living in conditions characterized by seasonal changes such as those found in the Amazon to specialize on specific prey species, because they need to modify their diet to ingest the food resources that are available at different times of the year (Lowe-McConnell, 1999). In periods of food scarcity, there is an increase in population trophic niche width and a greater overlap of individual niches with the population niche. In the central Amazon floodplain, four out of six piscivores increased their trophic niche breadth in the low water season, replacing part of their fish diet with shrimp or even vegetable matter to reduce interspecific competition (Mérona & Rankin-de Mérona, 2004). In doing so, the interspecific competition in this environment changes and can lead predator fish to behave more like a trophic generalist and yield lower abundance and densities of specialist individuals in their populations. Even still, the high diversity of food resources associated with the seasonal variation in water level remains an environmental opportunity and can provide conditions for individuals to exhibit more specialized diets.

The use of multiple stable isotope analyses in distinct tissues with different turnover rates allowed us to compare the degree of individual specialization in two sub-populations of an Amazonian predator fish in dammed and undammed river reaches. However, some caveats must be considered in this analysis. The inferences derived here from a single field collection, integrating feeding patterns over a limited part of the annual flood cycle (peak flood through early falling water) in two reaches of the same river system may be strong in this specific spatial and temporal context, but caution must be used in extrapolating these results to other rivers systems and hydrological periods. The hydrological complexity of the river reaches sampled in this study also makes it difficult to evaluate the specific impacts of impoundment on these systems. A large decline in the magnitude of the flood pulse and major impacts on alluvial flora and fauna were encountered along the first 50 km downstream from Balbina dam, but it is not clear whether similar impacts have occurred at our collection sites ~150 km downstream (Fig. 1). Both sites are much closer to the confluence of the Amazon River than to the dam and backwater effects from the Amazon are also expected to have strong effects on the hydrological dynamics of the Uatumã and associated tributaries like the Jatapú (Meade *et al.*, 1991). Additional investigations will be required before we can separate the influence of these two opposing hydrological impacts and their effects on the aquatic food webs in these tributaries. If discrete effects of impoundment on the Uatumã can be demonstrated, it may still be difficult to isolate its effects on predator food webs due to fish migrations. *C. temensis* is a relatively sedentary predator and is unlikely to migrate between our two sample sites (Hoeinghaus *et al.*, 2003). However, some prey species migrate much longer distances and could carry the impacts of impoundment, reflected in their relative abundances, from the Uatumã to the undammed Jatapú River. These migration patterns will need to be considered in future studies. The analysis of stomach contents in predators and prey samples could improve the understanding of the trophic relationships of these populations.

## CONCLUSIONS

In summary, although no specialist individuals were found in either population, our results suggest that the *C. temensis* population from the undammed river was less generalist than the *C. temensis* population from the dammed river. The undammed ecosystems offered better environmental conditions to promote trophic specialization of predator populations. Undammed rivers preserve characteristics that maintain the complexity and connectivity of riverine habitats and create ideal conditions for the maintenance of biological communities. These results contribute to the understanding of how populations of generalist predators are composed in megadiverse environments such as the Amazon River system. They also provide insight into the consequences of river fragmentation due to damming on individual niche variation in predatory fish. Future studies should consider the effect of seasonal variations in river level on the persistence of specialist individuals in predatory fish populations in Amazonian rivers.

## ACKNOWLEDGEMENTS

We gratefully Ana Utta, Bruna Rodrigues and Lorenzo Barroco for their support at field expedition and the laboratory.

## ADDITIONAL INFORMATION AND DECLARATIONS

### Funding

Funding was provided by Coordenação de Aperfeiçoamento de Pessoal de Nível Superior (CAPES) –finance code 001, Conselho Nacional de Desenvolvimento Científico e Tecnológico (CNPq), Fundação de Amparo à Pesquisa do Estado do Amazonas (FAPEAM), and Fundo Brasileiro para a Biodiversidade (FUNBIO). The funders had no role in study design, data collection and analysis, decision to publish, or preparation of the manuscript.

### Grant Disclosures

The following grant information was disclosed by the authors:

Coordenação de Aperfeiçoamento de Pessoal de Nível Superior (CAPES) –finance code 001.

Conselho Nacional de Desenvolvimento Científico e Tecnológico (CNPq).

Fundação de Amparo à Pesquisa do Estado do Amazonas (FAPEAM).

Fundo Brasileiro para a Biodiversidade (FUNBIO).

### Competing Interests

The authors declare there are no competing interests.

### Author Contributions

- Jamerson Aguiar-Santos conceived and designed the experiments, performed the experiments, analyzed the data, prepared figures and/or tables, authored or reviewed drafts of the article, and approved the final draft.
- Pieter deHart analyzed the data, authored or reviewed drafts of the article, and approved the final draft.
- Bruce Forsberg conceived and designed the experiments, analyzed the data, authored or reviewed drafts of the article, and approved the final draft.
- Carlos Freitas conceived and designed the experiments, analyzed the data, authored or reviewed drafts of the article, and approved the final draft.

### Animal Ethics

The following information was supplied relating to ethical approvals (i.e., approving body and any reference numbers):

The Ethics Committee on Animal Use of the Federal University of Amazonas, Manaus, Brazil (Protocol No. 023/2019).

Instituto Chico Mendes de Conservação da Biodiversidade—ICMBio provided full approval for fish samplings (65955-1 SISBIO / IBAMA / MMA).

## Data Availability

The following information was supplied regarding data availability:

The raw measurements are available in the [Supplementary Files](#).

## Supplemental Information

Supplemental information for this article can be found online at <http://dx.doi.org/10.7717/peerj.14266#supplemental-information>.

## REFERENCES

- Aguiar-Santos J, De Hart PAP, Pouilly M, Freitas CEC, Siqueira-Souza FK. 2018.** Trophic ecology of speckled peacock bass *Cichla temensis* Humboldt 1821 in the middle Negro River, Amazon, Brazil. *Ecology of Freshwater Fish* 27:1076–1086 DOI 10.1111/eff.12416.
- Aguiar-Santos J, De Hart PAP, Forsberg BR, Freitas CEC. 2022.** Isotopic niche alteration of a predator fish in a dammed Amazonian black water river. *Journal of Fish Biology* Epub ahead of print 2022 5 October DOI 10.1111/jfb.15230.
- Arantes CC, Fitzgerald DB, Hoeninghaus DJ, Winemiller KO. 2019.** Impacts of hydroelectric dams on fishes and fisheries in tropical rivers through the lens of functional traits. *Current Opinion in Environmental Sustainability* 37:28–40 DOI 10.1016/j.cosust.2019.04.009.
- Araújo MS, Bolnick DI, Layman CA. 2011.** The ecological causes of individual specialisation. *Ecology Letters* 14:948–958 DOI 10.1111/j.1461-0248.2011.01662.x.
- Araújo MS, Costa-Pereira R. 2013.** Latitudinal gradients in intraspecific ecological diversity. *Biology Letters* 9:20130778 DOI 10.1098/rsbl.2013.0778.
- Assahira C, Piedade MTF, Trumbore SE, Wittmann F, Cintra BBL, Batista ES, Resende AF de, Schöngart J. 2017.** Tree mortality of a flood-adapted species in response of hydrographic changes caused by an Amazonian river dam. *Forest Ecology and Management* 396:113–123 DOI 10.1016/J.FORECO.2017.04.016.
- Balme GA, Roex N, Rogan MS, Hunter LTB. 2020.** Ecological opportunity drives individual dietary specialization in leopards. *Journal of Animal Ecology* 89:589–600 DOI 10.1111/1365-2656.13109.
- Bastos RF, Corrêa F, Winemiller KO, Garcia AM. 2017.** Are you what you eat? Effects of trophic discrimination factors on estimates of food assimilation and trophic position with a new estimation method. *Ecological Indicators* 75:234–241 DOI 10.1016/j.ecolind.2016.12.007.
- Bolnick DI, Svanbäck R, Fordyce JA, Yang LH, Davis JM, Hulsey CD, Forister ML. 2003.** The ecology of individuals: incidence and implications of individual specialization. *The American Naturalist* 161:1–28 DOI 10.1086/343878.
- Bolnick DI, Yang LH, Fordyce JA, Davis JM, Svanback R. 2002.** Measuring individual-level resource specialization. *Ecology* 83:2936–2941 DOI 10.2307/3072028.
- Bylak A. 2018.** The effects of brown trout (*Salmo trutta morpha fario*) on habitat selection by larval Fire Salamanders (*Salamandra salamandra*): a predator-avoidance strategy. *Canadian Journal of Zoology* 96:213–219 DOI 10.1139/cjz-2017-0064.



- Campos CP, Freitas CEC, Amadio S. 2015.** Growth of the *Cichla temensis* Humboldt, 1821 (Perciformes : Cichlidae) from the middle rio Negro, Amazonas, Brazil. *Neotropical Ichthyology* **13**:413–420 DOI [10.1590/1982-0224-20140090](https://doi.org/10.1590/1982-0224-20140090).
- Cardoso DC, De Hart P, Freitas CE de C, Siqueira-Souza FK. 2019.** Diet and ecomorphology of predator fish species of the Amazonian floodplain lakes. *Biota Neotropica* **19**:e20180678 DOI [10.1590/1676-0611-bn-2018-0678](https://doi.org/10.1590/1676-0611-bn-2018-0678).
- Collier M, Webb RH, Schmidt JC. 1996.** *Dams and rivers: a primer on the downstream effects of dams*. Tucson, Arizona: U.S Geological Survey.
- Couto TB, Olden JD. 2018.** Global proliferation of small hydropower plants—science and policy. *Frontiers in Ecology and the Environment* **16**:91–100 DOI [10.1002/fee.1746](https://doi.org/10.1002/fee.1746).
- Cribari-Neto F, Zeileis A. 2010.** Beta Regression in R. *Journal of Statistical Software* **34**:1–24 DOI [10.18637/jss.v034.i02](https://doi.org/10.18637/jss.v034.i02).
- Rocha M da, Feitosa YO, Wittmann F, Piedade MTF, Resende AF de, Assis RL de. 2020.** River damming affects seedling communities of a floodplain forest in the Central Amazon. *Acta Botanica Brasilica* **34**:192–203 DOI [10.1590/0102-33062019abb0263](https://doi.org/10.1590/0102-33062019abb0263).
- Dalerum F, Angerbjörn A. 2005.** Resolving temporal variation in vertebrate diets using naturally occurring stable isotopes. *Oecologia* **144**:647–658 DOI [10.1007/s00442-005-0118-0](https://doi.org/10.1007/s00442-005-0118-0).
- deHart PAP, Powers KE, Hyzy BA. 2016.** Preliminary Report: initial explorations into the feeding ecology of the invasive small Indian mongoose in the Caribbean using stable isotope analyses. *BIOS* **87**:155–162 DOI [10.1893/BIOS-D-15-00011.1](https://doi.org/10.1893/BIOS-D-15-00011.1).
- Fearnside PM. 2015.** A hidrelétrica De Balbina: o faraonismo irreversível versus o meio ambiente na Amazônia. In: *Hidrelétricas na Amazônia: impactos ambientais e sociais na tomada de decisões sobre grandes obras*. Manaus: Editora do Inpa, 296.
- Freitas CE, Mereles MA, Pereira DV, Siqueira-Souza F, Hurd L, Kahn J, Morais G, Sousa RGC. 2022.** Death by a thousand cuts: small local dams can produce large regional impacts in the Brazilian Legal Amazon. *Environmental Science & Policy* **136**:447–452 DOI [10.1016/j.envsci.2022.07.013](https://doi.org/10.1016/j.envsci.2022.07.013).
- Futuyma D, Moreno G. 1988.** The evolution of ecological specialization. *Annual Review of Ecology and Systematics* **19**:207–233 DOI [10.1146/annurev.es.19.110188.001231](https://doi.org/10.1146/annurev.es.19.110188.001231).
- Gerking SD. 1994.** *Feeding ecology of fish*. San Diego, CA: Academic Press.
- German DP, Miles RD. 2010.** Stable carbon and nitrogen incorporation in blood and fin tissue of the catfish *Pterygoplichthys disjunctivus* (Siluriformes, Loricariidae). *Environmental Biology of Fishes* **89**:117–133 DOI [10.1007/s10641-010-9703-0](https://doi.org/10.1007/s10641-010-9703-0).
- Hoeinghaus DJ, Layman CA, Arrington DA, Winemiller KO. 2003.** Movement of *Cichla* species (Cichlidae) in a Venezuelan floodplain river. *Neotropical Ichthyology* **1**:121–126 DOI [10.1590/S1679-62252003000200006](https://doi.org/10.1590/S1679-62252003000200006).
- Hoeinghaus DJ, Winemiller KO, Layman CA, Arrington DA, Jepsen DB. 2006.** Effects of seasonality and migratory prey on body condition of *Cichla* species in a tropical floodplain river. *Ecology of Freshwater Fish* **15**:398–407 DOI [10.1111/j.1600-0633.2006.00152.x](https://doi.org/10.1111/j.1600-0633.2006.00152.x).

- Jepsen DB, Winemiller KO, Taphorn DC. 1997.** Temporal patterns of resource partitioning among *Cichla* species in a Venezuelan blackwater river. *Journal of Fish Biology* **51**:1085–1108.
- Junk WJ, Bayley PB, Sparks RE. 1989.** The flood-pulse concept in river-floodplain systems. *Canadian Special Publication of Fisheries and Aquatic Sciences* **106**:110–127.
- Junk WJ, Wittmann F, Shöngart J, Piedade MTF. 2015.** A classification of the major habitats of Amazonian black-water river floodplains and a comparison with their white-water counterparts. *Wetlands Ecology and Management* **23**:677–693 DOI [10.1007/s11273-015-9412-8](https://doi.org/10.1007/s11273-015-9412-8).
- Kasper D, Forsberg BR, Amaral JHF, Leitão RP, Py-Daniel SS, Bastos WR, Malm O. 2014.** Reservoir stratification affects methylmercury levels in river water, plankton, and fish downstream from Balbina Hydroelectric Dam, Amazonas, Brazil. *Environmental Science & Technology* **48**:1032–1040 DOI [10.1021/es4042644](https://doi.org/10.1021/es4042644).
- Kemenes A, Forsberg BR, Melack JM. 2007.** Methane release below a tropical hydroelectric dam. *Geophysical Research Letters* **34**:L12809 DOI [10.1029/2007GL029479](https://doi.org/10.1029/2007GL029479).
- Kukuła K, Bylak A. 2022.** Barrier removal and dynamics of intermittent stream habitat regulate persistence and structure of fish community. *Scientific Reports* **12**:1512 DOI [10.1038/s41598-022-05636-7](https://doi.org/10.1038/s41598-022-05636-7).
- Latrubesse EM, Arima EY, Dunne T, Park E, Baker VR, d’Horta FM, Wight C, Wittmann F, Zuanon J, Baker PA, Ribas CC, Norgaard RB, Filizola N, Ansar A, Flyvbjerg B, Stevaux JC. 2017.** Damming the rivers of the Amazon basin. *Nature* **546**:363–369 DOI [10.1038/nature22333](https://doi.org/10.1038/nature22333).
- Lima RC, Franco-Trecu V, Vales DG, Inchausti P, Secchi ER, Botta S. 2019.** Individual foraging specialization and sexual niche segregation in South American fur seals. *Marine Biology* **166**:32 DOI [10.1007/s00227-019-3480-x](https://doi.org/10.1007/s00227-019-3480-x).
- Lobón-Cervía J, Hess LL, Melack JM, Araujo-Lima CARM. 2015.** The importance of forest cover for fish richness and abundance on the Amazon floodplain. *Hydrobiologia* **750**:245–255 DOI [10.1007/s10750-014-2040-0](https://doi.org/10.1007/s10750-014-2040-0).
- Lonardoní AP, Röpke CP, Melo T, Torrente-Vilara G. 2021.** Damming in the Madeira River modifies the food spectrum of piscivorous and affects their resource partitioning. *Neotropical Ichthyology* **19**:e210087 DOI [10.1590/1982-0224-2021-0087](https://doi.org/10.1590/1982-0224-2021-0087).
- Lowe-McConnell RH. 1999.** *Estudos ecológicos de comunidades de peixes tropicais*. São Paulo: Edusp.
- Lubich C, Aguiar-Santos J, Corrêa F, Freitas CEC, Siqueira-Souza FK. 2024.** Trophic ecology of *Acestrorhynchus falcirostris* Cuvier, 1819 in island lakes on the lower stretch of the Solimões River, Amazon Basin. *Brazilian Journal of Biology* **84**:e253852 DOI [10.1590/1519-6984.253852](https://doi.org/10.1590/1519-6984.253852).
- Malpica-Cruz L, Herzka SZ, Sosa-Nishizaki O, Lazo JP. 2012.** Tissue-specific isotope trophic discrimination factors and turnover rates in a marine elasmobranch: empirical and modeling results. *Canadian Journal of Fisheries and Aquatic Sciences* **69**:551–564 DOI [10.1139/f2011-172](https://doi.org/10.1139/f2011-172).

- Martínez del Rio C, Sabat P, Anderson-Sprecher R, Gonzalez SP. 2009.** Dietary and isotopic specialization: the isotopic niche of three *Cinclodes* ovenbirds. *Oecologia* **161**:149–159 DOI [10.1007/s00442-009-1357-2](https://doi.org/10.1007/s00442-009-1357-2).
- Meade RH, Rayol JM, Conceição SC, Natividade JRG. 1991.** Backwater effects in the Amazon River basin of Brazil. *Environmental Geology and Water Sciences* **18**:105–114 DOI [10.1007/BF01704664](https://doi.org/10.1007/BF01704664).
- Melack JM, Kasper D, Amaral JHF, Barbosa PM, Forsberg BR. 2021.** Limnological perspectives on conservation of floodplain lakes in the Amazon basin. *Aquatic Conservation: Marine and Freshwater Ecosystems* **31**:1041–1055 DOI [10.1002/aqc.3556](https://doi.org/10.1002/aqc.3556).
- Mérona B, Rankin-de Mérona J. 2004.** Food resource partitioning in a fish community of the central Amazon floodplain. *Neotropical Ichthyology* **2**:75–84 DOI [10.1590/S1679-62252004000200004](https://doi.org/10.1590/S1679-62252004000200004).
- Mérona B, Vigouroux R. 2006.** Diet changes in fish species from a large reservoir in South America and their impact on the trophic structure of fish assemblages (Petit-Saut Dam, French Guiana). *Annales De Limnologie - International Journal of Limnology* **42**:53–61 DOI [10.1051/limn/2006006](https://doi.org/10.1051/limn/2006006).
- Mortillaro JM, Pouilly M, Wach M, Freitas CEC, Abril G, Meziane T. 2015.** Trophic opportunism of central Amazon floodplain fish. *Freshwater Biology* **60**:1659–1670 DOI [10.1111/fwb.12598](https://doi.org/10.1111/fwb.12598).
- Neves RC, Borges PP, Zeni J de O, Casatti L, Teresa FB. 2021.** Generalist populations formed by generalist individuals: a case of study on the feeding habits of a Neotropical stream fish. *Acta Limnologica Brasiliensia* **33**:e21 DOI [10.1590/s2179-975x1721](https://doi.org/10.1590/s2179-975x1721).
- Pelicice FM, Bialezki A, Camelier P, Carvalho FR, García-Berthou E, Pompeu PS, Mello FT de, Pavanelli CS. 2021.** Human impacts and the loss of Neotropical freshwater fish diversity. *Neotropical Ichthyology* **19**:e210134 DOI [10.1590/1982-0224-2021-0134](https://doi.org/10.1590/1982-0224-2021-0134).
- Planas M, Paltrinieri A, Carneiro MDD, Hernández-Urcera J. 2020.** Effects of tissue preservation on carbon and nitrogen stable isotope signatures in syngnathid fishes and prey. *Animals* **10**:2301 DOI [10.3390/ani10122301](https://doi.org/10.3390/ani10122301).
- Post DM. 2002.** Using stable isotopes to estimate trophic position: models, methods, and assumptions. *Ecology* **83**:703–718 DOI [10.2307/3071875](https://doi.org/10.2307/3071875).
- Post DM, Layman CA, Arrington DA, Takimoto G, Quattrochi J, Montaña CG. 2007.** Getting to the fat of the matter: models, methods and assumptions for dealing with lipids in stable isotope analyses. *Oecologia* **152**:179–189 DOI [10.1007/s00442-006-0630-x](https://doi.org/10.1007/s00442-006-0630-x).
- Prudente B da S, Carneiro-Marinho P, Valente R de M, Montag LF de A. 2016.** Feeding ecology of *Serrasalmus gouldingi* (Characiformes: Serrasalminidae) in the lower Anapu River region, Eastern Amazon, Brazil. *Acta Amazonica* **46**:259–270 DOI [10.1590/1809-4392201600123](https://doi.org/10.1590/1809-4392201600123).
- Quevedo M, Svanbäck R, Eklöv P. 2009.** Intrapopulation niche partitioning in a generalist predator limits food web connectivity. *Ecology* **90**:2263–2274 DOI [10.1890/07-1580.1](https://doi.org/10.1890/07-1580.1).

- Reis RE, Albert JS, diDario F, Mincarone MM, Petry P, Rocha LA. 2016. Fish biodiversity and conservation in South America. *Journal of Fish Biology* **89**:12–47 DOI [10.1111/jfb.13016](https://doi.org/10.1111/jfb.13016).
- Resende AF de, Schöngart J, Streher AS, Ferreira-Ferreira J, Piedade MTF, Silva TSF. 2019. Massive tree mortality from flood pulse disturbances in Amazonian floodplain forests: the collateral effects of hydropower production. *Science of the Total Environment* **659**:587–598 DOI [10.1016/j.scitotenv.2018.12.208](https://doi.org/10.1016/j.scitotenv.2018.12.208).
- Roughgarden J. 1972. Evolution of niche width. *The American Naturalist* **106**:683–718 DOI [10.1086/282807](https://doi.org/10.1086/282807).
- Sacramento PA, Manetta GI, Benedito E. 2016. Diet-tissue discrimination factors ( $\Delta^{13}\text{C}$  and  $\Delta^{15}\text{N}$ ) and turnover rate in somatic tissues of a neotropical detritivorous fish on  $\text{C}_3$  and  $\text{C}_4$  diets. *Journal of Fish Biology* **89**:213–219 DOI [10.1111/jfb.12859](https://doi.org/10.1111/jfb.12859).
- Schöngart J, Wittmann F, Faria De Resende A, Assahira C, Sousa Lobo G, Rocha Duarte Neves J, Rocha M, Biem Mori G, Costa Quaresma A, Oreste Demarchi L, Weiss Albuquerque B, Oliveira Feitosa Y, Silva Costa G, Vieira Feitoza G, Machado Durgante F, Lopes A, Trumbore SE, Sanna Freire Silva T, Steege H, Val AL, Junk WJ, Piedade MTF. 2021. The shadow of the Balbina dam: a synthesis of over 35 years of downstream impacts on floodplain forests in Central Amazonia. *Aquatic Conservation: Marine and Freshwater Ecosystems* **31**:1117–1135 DOI [10.1002/aqc.3526](https://doi.org/10.1002/aqc.3526).
- Silva PB, Arantes CC, Freitas CEC, Petrere M, Ribeiro v FR. 2021. Seasonal hydrology and fish assemblage structure in the floodplain of the lower Amazon River. *Ecology of Freshwater Fish* **30**:162–173 DOI [10.1111/eff.12572](https://doi.org/10.1111/eff.12572).
- Sleeg P van der, Albert JS. 2018. *Field guide to the fishes of the Amazon, Orinoco & Guianas*. New Jersey: Princeton University Press.
- Sousa R, Mereles M, Siqueira-Souza F, Hurd L, De Carvalho Freitas C. 2018. Small dams for aquaculture negatively impact fish diversity in Amazonian streams. *Aquaculture Environment Interactions* **10**:89–98 DOI [10.3354/aei00253](https://doi.org/10.3354/aei00253).
- Stock BC, Jackson AL, Ward EJ, Parnell AC, Phillips DL, Semmens BX. 2018. Analyzing mixing systems using a new generation of Bayesian tracer mixing models. *PeerJ* **6**:e5096 DOI [10.7717/peerj.5096](https://doi.org/10.7717/peerj.5096).
- Winemiller KO, Jepsen DB. 2002. Migratory neotropical fish subsidize food webs of oligotrophic blackwater rivers. In: Polis GA, Power ME, Huxle G, eds. *Food webs at the landscape level*. Chicago: University of Chicago Press.
- Zaccarelli N, Bolnick DI, Mancinelli G. 2013. RInSp: an R package for the analysis of individual specialization in resource use. *Methods in Ecology and Evolution* **4**:1018–1023 DOI [10.1111/2041-210X.12079](https://doi.org/10.1111/2041-210X.12079).