

Phytotoxic effects of *Acacia saligna* dry leachates on germination, seedling growth, photosynthetic performance, and gene expression of economically important crops

Haifa Abdulaziz Sakit ALHaithloul¹, Muhammad Ishfaq Khan², Arafa Musa^{3,4}, Mohammed M. Ghoneim^{4,5}, Ayshah Aysh ALrashidi⁶, Imtiaz Khan², Ehab Azab⁷, Adil A. Gobouri⁸, Mahmoud R. Sofy⁹, Mohamed El-Sherbiny^{10,11} and Mona H. Soliman^{12,13}

¹ Biology Department, College of Science, Jouf University, Sakaka, Saudi Arabia

² Department of Weed Science and Botany, University of Agriculture Peshawar, Peshawar, Pakistan

³ Department of Pharmacognosy, College of Pharmacy, Jouf University, Sakaka, Aljouf, Saudi Arabia

⁴ Pharmacognosy and Medicinal Plants Department, Faculty of Pharmacy (Boys), Al-Azhar University, Cairo, Egypt

⁵ Department of Pharmacy Practice, College of Pharmacy, Al Maarefa University, Ad Diriyah, Saudi Arabia

⁶ Department of Biology, Faculty of Science, University of Hail, Hail, Saudi Arabia

⁷ Department of Food Science and Nutrition, College of Sciences, Taif University, Taif, Saudi Arabia

⁸ Department of Chemistry, College of Science, Taif University, Taif, Saudi Arabia

⁹ Botany and Microbiology Department, Faculty of Science, Al-Azhar University, Cairo, Egypt

¹⁰ Department of Basic Medical Sciences, College of Medicine, AlMaarefa University, Riyadh, Saudi Arabia

¹¹ Department of Anatomy, Faculty of Medicine, Mansoura University, Mansoura, Egypt

¹² Botany and Microbiology Department, Faculty of Science, Cairo University, Giza, Egypt

¹³ Biology Department, Faculty of Science, Taibah University, Yanbu, Medina, Saudi Arabia

Submitted 16 November 2021

Accepted 2 June 2022

Published 2 August 2022

Corresponding author
Muhammad Ishfaq Khan,
mishfaq@aup.edu.pk

Academic editor
Piotr Dąbrowski

Additional Information and
Declarations can be found on
page 18

DOI 10.7717/peerj.13623

© Copyright
2022 ALHaithloul et al.

Distributed under
Creative Commons CC-BY 4.0

OPEN ACCESS

ABSTRACT

The influence of dry leachates of *Acacia saligna* was tested on the seedling growth, photosynthesis, biochemical attributes, and gene expression of the economically important crops, including wheat (*Triticum aestivum* L.), radish (*Raphanus sativus* L.), barley (*Hordeum vulgare* L.) and arugula (*Eruca sativa* L.). Different concentrations (5%, 10%, 15%, 20%, and 25%) of stem extract (SE) and leaf extract (LE) of *A. saligna* were prepared, and seedlings were allowed to grow in Petri plates for 8 days. The results showed that all plant species exhibited reduced germination rate, plant height, and fresh and dry weight due to leachates extracts of *A. saligna*. Moreover, the activities of antioxidant enzymes, including superoxide dismutase (SOD), catalase (CAT), and ascorbate peroxidase (APX), exhibited differential regulation due to the extract treatment. The SOD was increased with increasing the concentration of extracts, while CAT and APX activities were decreased with increasing the extract concentrations. In addition, leachate extract treatment decrease chlorophyll content, photosynthesis, PSII activity, and water use efficiency, with evident effects at their higher concentrations. Furthermore, the content of proline,

sugars, protein, total phenols, and flavonoids were reduced considerably due to leachates extract treatments. Furthermore, seedlings treated with high concentrations of LE increased the expression of genes. The present results lead to the conclusion that *A. saligna* contains significant allelochemicals that interfere with the growth and development of the tested crop species and reduced the crops biomass and negatively affected other related parameters. However, further studies are suggested to determine the isolation and purification of the active compounds present in *A. saligna* extracts.

Subjects Agricultural Science, Biochemistry, Biodiversity, Molecular Biology, Plant Science

Keywords *Acacia saligna*, Allelopathy, Gene expression, Osmolytes, Secondary metabolism, Allelopathy/phytotoxicity

INTRODUCTION

Numerous primary and secondary compounds are produced by plants that are consequently released into their environment either through volatilization, root exudates, or decomposition and leaching by the leftover residues. The released compounds or metabolites can impart damaging or beneficial effects on the plants growing in the vicinity, referred to as the allelopathic effect (*Grutters et al., 2017; Hadacek, 2002*). The damaging influence of these released secondary compounds on the other plant species is considered as allelochemical stress (*Abu-Shahba et al., 2022*) and categorized as biotic stress. On its positive aspects, allelopathy leads to an organic approach through its natural means (*Seufert et al., 2019*). On the other hand, the effects of allelochemicals are diverse and intense, consequently altering the vegetation pattern, crop and weed growth, and productivity (*Cheng & Cheng, 2015*). Furthermore, it has been reported that plant allelochemicals affect germination, biochemical and physiological attributes and influence other plants' mineral uptake and assimilation. Resulting in reduced yield, and this trait can sometimes be used against the associated weeds of the crops as a natural herbicide (*Tomar & Agarwal, 2013*).

Allelochemicals/phytochemicals mediated a drastic decrease in growth associated with the upsurge in reactive oxygen species (ROS), which include hydroxyl, hydrogen peroxide, and superoxide formed at different sites within different organelles (*Lara-Nuñez et al., 2006*). Increased ROS cause calcium-dependent signaling cascade initiating changes at genetic and molecular levels (*Bais et al., 2003*). Excess ROS accumulation leads to oxidative harm to membranes, nucleic acids, and proteins (*Ahanger et al., 2017*). Such oxidative effects significantly damage root growth and proliferation, reducing water uptake, photosynthesis, and assimilate production, reducing crop productivity (*Lara-Nuñez et al., 2006*). Plant species are armed with defense mechanisms that coordinately assist plants in countering any damaging effect. The antioxidant system, osmolyte accumulation, and gene expression have unique roles in eliminating toxic radicals (*Ahanger et al., 2017*).

Antioxidant structures include enzymatic and non-enzymatic constituents that maintain cells' structural and functional integrity by scavenging ROS. Osmolytes prevent turgor loss, scavenge ROS and protect the enzyme activity (*Ahanger et al., 2014; Sivakumar et al.,*

2002). The changes drive loss of photosynthetic activity and growth reduction at the molecular levels (Abdelmigid & Morsi, 2017).

Acacia saligna that belongs to the family Fabaceae is a small tree and has a worldwide distribution, commonly known as orange wattle, blue-leafed wattle, golden wreath wattle, coojong, etc. It is a small tree with dense spreading short stem and a howling habit. It has a phyllode with a nectar gland secreting sugary fluid that usually attracts ants. As a natural colonizer or invasive potential, *A. saligna* can grow in disturbed soils like new roads. It has been reported to contain a greater concentration of phenols, flavonoids, and terpenes (El-Toumy et al., 2010; Lin & Chang, 2013). Therefore, its continuous planting along the roadsides and agricultural lands can lead to the excess accumulation of phytochemicals present in it, posing a threat to the crop plants' productivity around this plant.

Triticum aestivum and *Hordeum Vulgar* are important staple food crops consumed throughout the world belonging to the family Poaceae, while *Raphanus sativus* and, *Eruca Sativa* are important vegetable crops belonging to the Brassicaceae family. All these plant species are rich in proteins and minerals and form an important source of critical metabolites. Excessive planting of *A. saligna* leads to accumulation of allelochemicals in agricultural soils that can drastically influence their growth as well as productivity, thus affecting the lifestyle of the world populace. The present study was envisioned that allelochemical extracts of *A. saligna* can reduce the growth of the above-mentioned plants by altering photosynthesis, biochemical attributes, expression of genes. To explore the phenomenon of allelopathy/ phytotoxicity and the potency of the *A. saligna* extracts for future studies to closely know about the effect of natural compounds that could be further explored.

In the present study stem extracts and root extracts of *Acacia saligna* were tested to know their effects on the important physiological attributes, e.g., ROS, CAT, APX, water use efficiency, photosynthesis, and PS-II activity on economically important crops. Moreover, biochemical parameters and secondary metabolites such as proline, sugars, total phenols, and total flavonoids and gene expressions were also studied in instant trials, which are novel approaches regarding *Acacia sligna* extracts. Leaves and stem of *A. saligna* were collected from the El Jouf area Kingdom of Saudi Arabia.

MATERIALS AND METHODS

Plant extract preparation

Leaves and stem tissues of *A. saligna* tree were harvested and washed with distilled water and left to dry at room temperature in a shaded place for several days till complete dryness. The dried samples were ground well to pass a 1 mM screen, and then stored at 4 °C. Different concentrations i.e., 5, 10, 15, 20, 25 gm of dry powdered *A. saligna* leaves and stem were added to 100 mL distilled water and subjected to rotary evaporator for 48 h at 40 °C. Thereafter extracts were filtered through muslin cloth followed by Whatman No. 1 filter article and final volume was made upto 100 mL. Extract was stored at 4 °C until further use (Tomar, Sharma & Agarwal, 2015).

Crop growth and experimental treatments

Seeds of wheat (*Triticum aestivum*), barley (*Hordeum vulgare*), radish (*Raphanus sativus*), and arugula (*Eruca Sativa*) were treated with NaOCl (5%). Sterilized seeds were placed in the Petri dishes with 9 cm size on two layers of filter paper Whatman No. 1 and wetted with 5 mL of extract of each *A. saligna* leaf or stem concentration. Control was supplied with 5 mL of distilled water. In addition, 3 mL of 10% Hoagland solution was added to each treatment every 2 days to overcome the nutrient deficiency. Petri plates were arranged in a completely randomized design with four replications and kept at room temperature (25 °C) for 8 days, with 70% humidity with 12 h photoperiod. The seeds were divided into two groups, and each group was divided into five subgroups as follows:

T1: control (5 mL of distilled water)

T2: 5% SE as 5 g/L stem extract (SE) of *A. Saligna*

T3: 10% SE as 10 g/L stem extract (SE) of *A. Saligna*

T4: 15% SE as 15 g/L stem extract (SE) of *A. Saligna*

T5: 20% SE as 20 g/L stem extract (SE) of *A. Saligna*

T6: 25% SE as 25 g/L stem extract (SE) of *A. Saligna*

T7: 5% LE as 5 g/L leaf extract (LE) of *A. Saligna*

T8: 10% LE as 10 g/L leaf extract (LE) of *A. Saligna*

T9: 15% LE as 15 g/L leaf extract (LE) of *A. Saligna*

T10: 20% LE as 20 g/L leaf extract (LE) of *A. Saligna*

T11: 25% LE as 25 g/L leaf extract (LE) of *A. Saligna*

The growth and other different parameters were analyzed after eight days, and the details of experimentation done are given here as under:

Germination parameters

Seeds showing a radical of 0.5 cm was considered as germinated seed. The following formulas calculated calculation of germination index, 50%, and germination percentage:

$$\text{Germination percentage (GP)} = \frac{\text{No. of germinated seeds}}{\text{total no. of seeds planted}} \times 100$$

$$\text{Germination index (GI)} = (G1/1) + (G2/2) + \dots + (Gx/x) \quad (1)$$

where G = germination day

X = days of germination

Morphological traits

Morphological traits, including plant height, fresh and dry biomass, were examined after 8 days of extract treatment. An electronic weight balance was used to measure fresh shoots and roots, followed by oven-dried plant tissues at 70 °C for 48 h to calculate the dry weight.

Chlorophyll content and photosynthetic characteristics

In acetone leaf samples of 100 mg were extracted, and the supernatant's absorbance was recorded using a spectrophotometer (Genesys 10S UV-VIS, Thermo Fisher Scientific, Waltham, MA, USA) at 622, 664, and 440 nm. To calculate leaf chlorophyll (Chl.) Content

([Lichtenthaler, 1987](#)). The net photosynthetic (Pn) value was measured using an infrared gas analyzer system (TPS-2, USA) in fully expanded leaves between 09:00 and 11:00 AM. Fv/Fm was measured using a chlorophyll fluorometer (PAM 2500, Germany). Used water efficiency can be obtained by net photosynthetic /transpiration (Pn/Tr) ([Sofy et al., 2021a](#)).

Biochemical analysis

Lipid peroxidation, hydrogen peroxide, and electrolyte leakage

Malonaldehyde (MDA) was estimated by following the method of [Heath & Packer \(1968\)](#). A molar coefficient of $155 \text{ mmol}^{-1} \text{ cm}^{-1}$ was used for calculation and expressed as $\text{nmol g}^{-1} \text{ FW}$.

For hydrogen peroxide, fresh 100 mg tissues were homogenized in 2 mL of 0.1% trichloroacetic acid (TCA) solution, and the homogenate was centrifuged at 12,000g for 15 min. Supernatant (0.5 mL) was mixed with 0.5 mL of potassium phosphate buffer (10 mM, pH 7.0) and 1 mL of potassium iodide (1 M). Absorbance was read at 390 nm using spectrophotometer (Shimadzu, Kyoto, Japan), and the amount of H_2O_2 was calculated from the standard curve ([Dawood et al., 2022](#)).

The method described by [Dionisio-Sese & Tobita \(1998\)](#) was used to examine electrolyte leakage. Twenty fresh leaf discs' electrical conductivity (EC0) were briefly determined after floating them in the test tube with 10 mL distilled water. The samples were then boiled for 20 min and 10 min at 50°C and 100°C , respectively, and electrical conductivities (EC1 and EC2, respectively) were recorded. Digital conductivity meter was used for taking readings, finally, the formula given below was used to estimate the electrolyte leakage.

$$EL(\%) = \frac{(EC1 - ECo)}{(EC2 - ECo)} \times 100$$

Proline, total soluble sugars, total phenolic, flavonoids content, and protein

For proline estimation, the method of [Bates, Waldren & Teare \(1973\)](#) was used. Plants extracted in sulfosalicylic acid (3%) followed by centrifugation at 10,000 rpm for 10 min. The mixture containing 2 mL supernatant, 2 mL ninhydrin reagent, and 2 mL glacial acetic acid were heated at 100°C for 1 h. After cooling, proline was extracted with toluene, and absorbance was read at 520 nm using spectrophotometer (Shimadzu, Kyoto, Japan).

The method of [Irigoyen, Einerich & Sánchez-Díaz \(1992\)](#) was used to quantify the soluble sugars. One hundred mg of finely powdered sample was extracted in ethanol (80%), and total soluble sugar content was examined using the anthrone reagent. The calculation was carried using calibration curves of glucose.

For estimation of total phenol content method of [Singleton, Orthofer & Lamuela-Raventós \(1999\)](#) was used. Tissue was extracted in ethanol, and the extract was reacted with folin-Ciocalteu reagent and Na_2CO_3 . Gallic acid was used as a standard.

Flavonoids were extracted in methanol, and the homogenate was centrifuged at 10,000 rpm for 10 min. The supernatant was reacted with NaNO_2 and AlCl_3 , followed by the addition of NaOH after 5 min. Absorbance was recorded at 510 nm, and the calculations were done using the standard curve of catching ([Zhishen, Mengcheng & Jianming, 1999](#)).

A total of 100 mg fresh leaf tissue was homogenized in phosphate buffer (0.1 M, pH 7.0) using cooled mortar and pestle for protein estimation. The concentration of protein and absorbance was read at 595 nm, according to [Bradford \(1976\)](#). Bovine serum albumin was used as the standard.

Assay of antioxidant enzymes

For extraction of enzymes, 1 g fresh leaf tissue was grounded by using mortar and pestle in 5 mL ice-cold extraction buffer (50 mM potassium phosphate buffer, pH 7.0), containing 1 mM EDTA and 2% polyvinyl pyrrolidone (PVP). The homogenate was centrifuged at 18,000 rpm for 30 min at 4 °C, and the supernatant was collected and used for enzyme assay.

The method by [Beyer & Fridovich \(1987\)](#) was used to assay the superoxide dismutase (SOD, EC 1.15.1.1) activity. The assay mixture contained 100 mM phosphate buffer (pH 7.4), methionine, nitrobluetetrazolium (NBT), 2 μM riboflavin, 0.1 mM EDTA, and enzyme extract. The mixture was incubated under light for 15 min, and photo reduction of NBT was read at 560 nm against the dark incubated samples. For assaying catalase (CAT, EC 1.11.1.6) activity method of [Dhindsa, Plumb-Dhindsa & Thorpe \(1981\)](#) was adopted, and the decrease in optical density was measured at 240 nm for 2 min in a reaction mixture containing 50 mM phosphate buffer (pH 7.0), H₂O₂, and enzyme extract. For calculation extinction coefficient of 0.036 mM⁻¹cm⁻¹ was used. The activity of APX was determined in an assay mixture containing 0.1 mL enzyme, 1 mL of 100 mM potassium phosphate buffer (pH 7.0), 0.1 mM EDTA, ascorbate, and H₂O₂. The reduction in absorbance was recorded at 290 nm for 2 min ([Nakano & Asada, 1981](#)). Antioxidant enzymes activities were expressed as U mg⁻¹ protein.

Total mRNA extraction and RT-PCR studies

According to the manufacturer's protocol, a total RNA extraction kit (Sigma-Aldrich, St. Louis, MO, USA) was used for total mRNA extraction that was isolated from 0.1 g of leaf tissue. The isolated RNA was spectrophotometrically quantified and examined on a 1% agarose gel. RNA reverse transcription was carried out by following our previous method ([Alhaithloul, 2019](#)). The reaction mixture were included 10 as oligodT primer (10 pml/μL), 2.5 μL 5X buffer, 2.5 μL MgCl₂, 2.5 μL 2.5 mM dNTPs, 4 μl from oligo (dT), 0.2 μL (5 unit μL⁻¹) reverse transcriptase (Promega, Madison, WI, USA) and 2.5 μL RNA. The RT-PCR amplification was carried out in a thermal cycler PCR set to 42 °C for 1 h and 72 °C for 20 min.

qReal-time PCR

[Table 1](#) lists the primer sequences used in quantitative real-time PCR (qRT-PCR) for gene expression investigation of two genes, CYP (cytochrome P450) and glutathione S-transferase (GST). A total of 20 μL of reaction volume was used, which included 2 μL of template, 10 μL of SYBR Green Master Mix, 2 μL of reverse primer, 2 μL of forwarding primer, and deionized water. The following conditions were used for PCR assays: 95 °C for 15 min, followed by 40 cycles of 95 °C for 30 s and 60 °C for 30 s. CT values were calculated

Table 1 Primers used for quantitative real-time PCR for cytochrome and S-transferase genes.

Genes		Primer sequence (5'-3')	
GST	TtGSTU2	F	5-GTGTGCTGGCTCAGTTAG-3
	TtGSTU3	R	5-GCATCAAGCGAGCCGAAAC-3
CYP 450	CYP72A	F	5- CAGTGATGACTTGCTAGGATTG-3
		R	5-CATGCTGAGCAGAATTAGTGTC-3
	CYP81A	F	5-AGGGGAGACGGGATGCTGG-3
		R	5-TTGGGCATGGTGATCCCTGG-3
Ref.	β -Actin	F	5-GGTTCACTGAAGGGTGGTG-3
		R	5-TGAGGTGTACCTGTCCTCGTT

using the CT of each sample (target gene CT subtracted from actin gene CT). The $2^{-\Delta\Delta Ct}$ method was used to determine relative gene expression (Togawa *et al.*, 2008).

Statistical examination

The experimental design was completely randomized, and statistical analysis was conducted with the statistical software SPSS (Statistical Package for the Social Science Version 26.0) (Gomez & Gomez, 1984). A one-way ANOVA with *post hoc* test variance analysis from Fisher's test with Levine's sample parametric distribution was used for the quantitative analysis. The confidence interval was set to 95%, and the negotiated margin for error was fixed at 5%. All graphs were done with Graph Pad Prism 8.

RESULTS

Germination percentage and mean germination index

The influence of stem and leaf extracts on the germination percentage and mean germination index is shown in Figs. 1A and 1B. The germination and mean germination index reduced with increasing extract concentration, attaining maximal decrease with higher concentration, *i.e.*, 25%. Relative to control, percent decrease in germination percentage was 23.97, 31.96, 22.13, and 42.69% due to stem extract (25% SE) and 24.32%, 37.67%, 27.25%, and 56.99% due to leaf extract (25% LE) for *T. aestivum*, *H. vulgare*, *R. sativus*, and *E. Sativa* seedlings, respectively. However, lower concentration (5%) of both stem and leaf extracts of *A. saligna* did not impart such a significant reduction in germination attributes of all four plant species. Moreover, the treatment with four plant species with 25% SE or 25% LE led to a higher decrease in the germination index than the control plant (Fig. 1B).

Morphological growth parameters

Seedling or plant height and fresh and dry weights were also significantly reduced with higher concentrations of the extracts in all the four tested plant species. However, leaf extracts (LE) proved more damaging than stem extracts (SE). Reduction showed a gradual trend with an increasing concentration of extracts. Relative to control, percent reduction in seedling height, fresh and dry weight was 44.55%, 27.13% and 48.87% for *T. aestivum*,

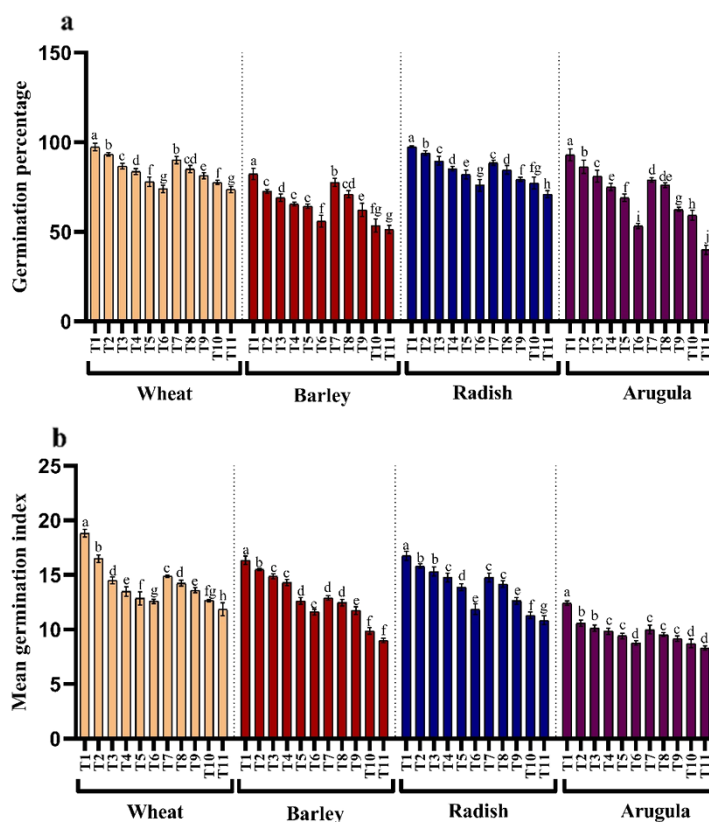


Figure 1 Effect of *A. Saligna* stem extracts (SE) and leaf extracts (LE). (A) germination percentage and (B) mean germination index in wheat, barley, radish, and arugula plant. Data is mean (\pm SE) of three replicates, and different lowercase letters denote significant difference at $P < 0.05$. T1: control, T2: 5% SE, T3: 10% SE, T4: 15% SE, T5: 20% SE, T6: 25% SE, T7: 5% LE, T8: 10% LE, T9: 15% LE, T10: 20% LE, T11: 25% LE. [Full-size !\[\]\(5fd6ef84f97f42d7f8b34275f1b65312_img.jpg\) DOI: 10.7717/peerj.13623/fig-1](https://doi.org/10.7717/peerj.13623/fig-1)

62.49%, 25.46% and 59.19% for *H. vulgare*, 42.01%, 31.84% and 78.23% for *R. sativus* and 65.23%, 46.06% and 70.53% for *E. Sativa* due to 25% LE treatment (Figs. 2A–2C).

Photosynthetic pigments

The influence of SE and LE on the chlorophyll pigments, photosynthesis, and Fv/Fm activity in *T. aestivum*, *H. vulgare*, *R. sativus*, and *E. sativa* are shown in Figs. 3A–3C. Chlorophyll content decreased with increasing concentration of extracts attaining maximal reduction due to 25% concentration. At 25% of SE, LE of *A. saligna*, total chlorophylls were reduced by 10.10%, 12.09% in *T. aestivum*, 11.62%, 12.49% for *H. vulgare*, 17.80%, and 22.71% for *R. sativus* 28.24%, 39.09% for *E. Sativa*. Net photosynthesis and Fv/Fm activity in all four plant species was decreased maximally due to 25% SE and LE compared to control and other concentrations. Relative to control, the reduction in water use efficiency (WUE) was gradual with increasing concentrations of the extracts. The maximal decrease WUE was 15.16%, 21.37% for *T. aestivum*, 37.53%, 54.30% for *H. vulgare*, 34.79%, 31.88% for *R. sativus*, 48.57%, 34.64% for *E. Sativa* due to 25% of SE and LE respectively (Fig. 3D).

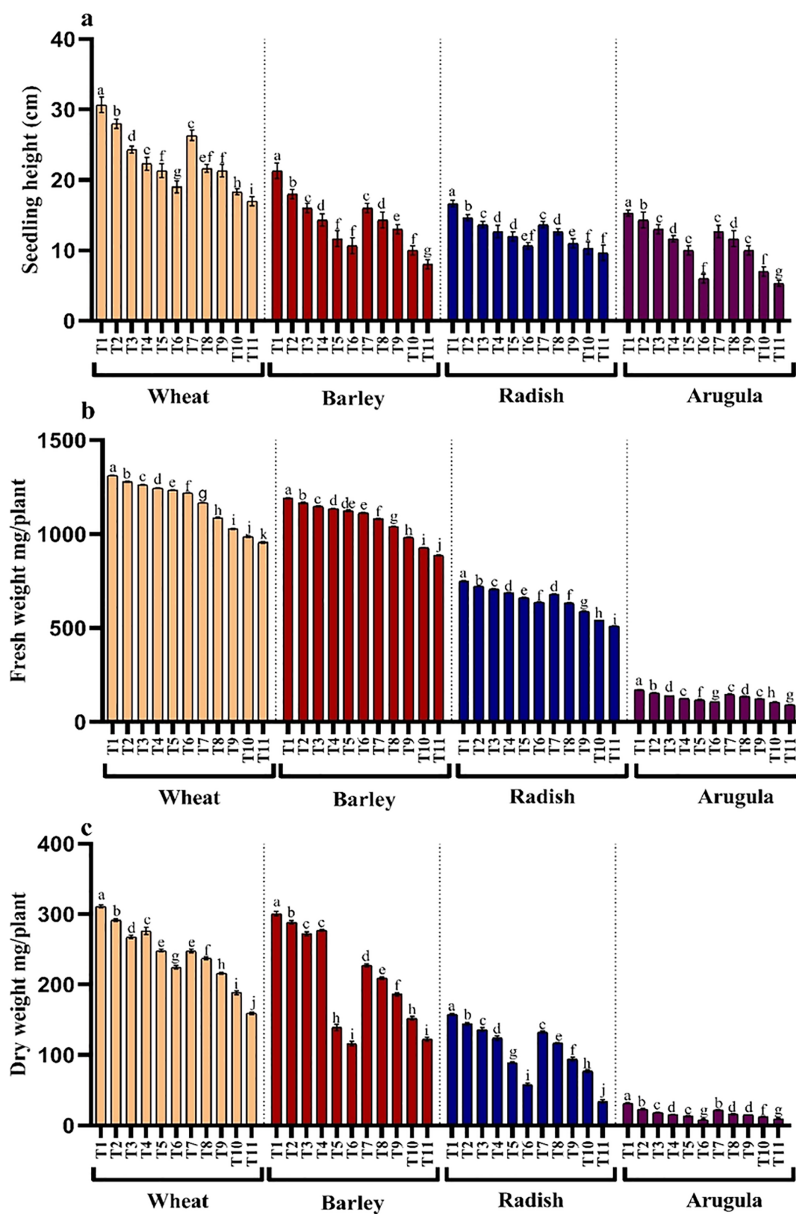


Figure 2 Effect of *A. Saligna* stem extracts (SE) and leaf extracts (LE) on (A) plant height, (B) fresh and (C) dry weight in wheat, barley, radish, and arugula plant. Data is mean (\pm SE) of three replicates, and different lowercase letters denote significant difference at $P < 0.05$. T1: control, T2: 5% SE, T3: 10% SE, T4: 15% SE, T5: 20% SE, T6: 25% SE, T7: 5% LE, T8: 10% LE, T9: 15% LE, T10: 20% LE, T11: 25% LE. [Full-size !\[\]\(fcc3264021d438d9732560e78099f674_img.jpg\) DOI: 10.7717/peerj.13623/fig-2](https://doi.org/10.7717/peerj.13623/fig-2)

H₂O₂, lipid peroxidation, and electrolyte leakage

Treatments application from stem and leaf of *A. saligna* extracts on *T. aestivum*, *H. vulgare*, *R. sativus* and *E. sativa* resulted in induction of oxidative damage by triggering the generation of hydrogen peroxide (H₂O₂), resulting in lipid peroxidation and electrolyte leakage (Figs. 4A–4C). Relative to the control, H₂O₂ maximally increased by 16.18%, 19.46% for *T. aestivum*, 12.58%, 29.06% for *H. vulgare*, 31.27%, 58.51% for *R. sativus* 72.17%, 77.83% for *E. Sativa* due to 25% of SE and LE respectively (Fig. 3A). In addition,

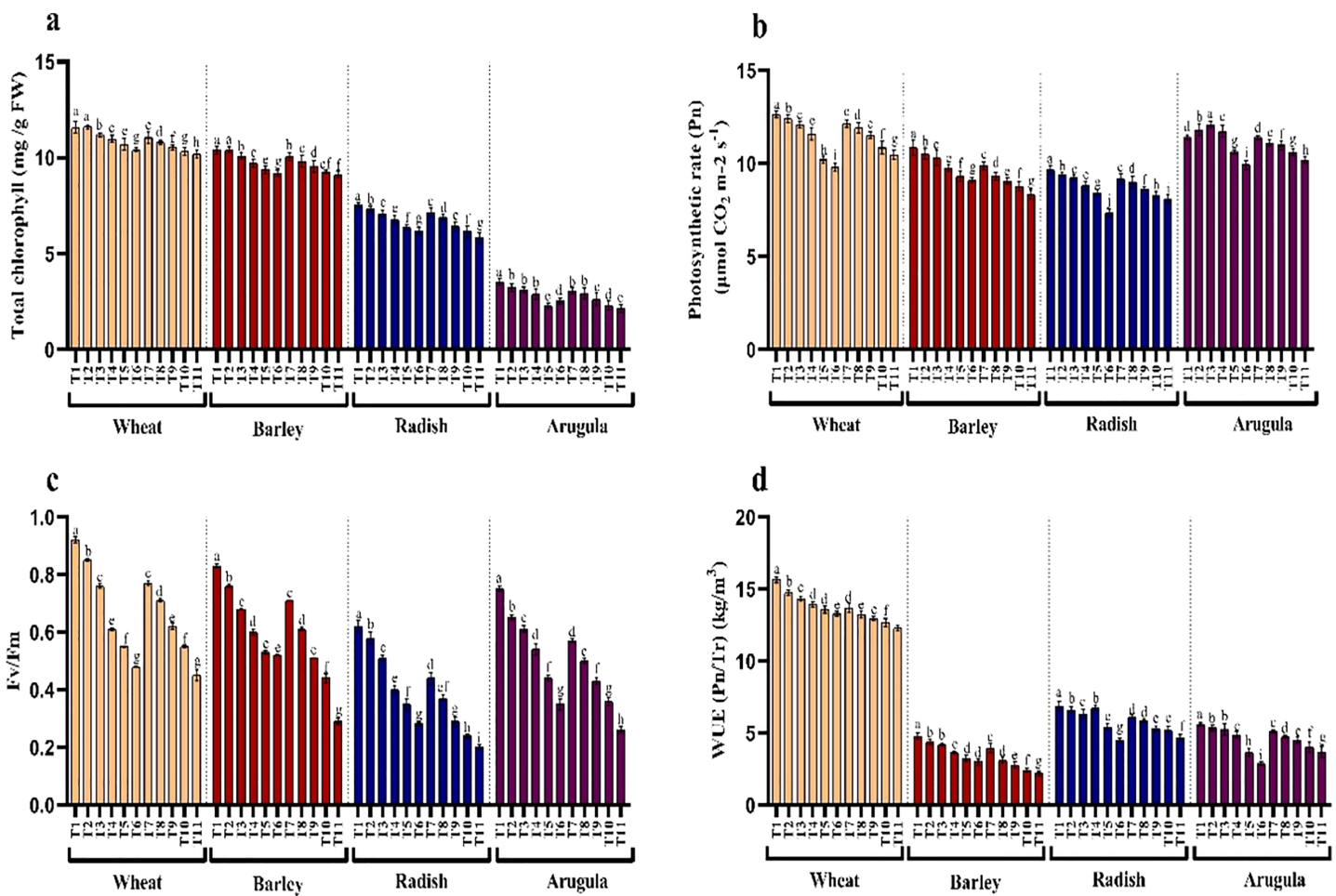


Figure 3 Effect of *A. Saligna* stem extracts (SE) and leaf extracts (LE) on (A) total chlorophyll, (B) net photosynthesis, (C) Fv/Fm, and (D) water use efficiency (WUE) in wheat, barley, radish, and arugula plant. Data is mean (\pm SE) of three replicates, and different lowercase letters denote significant difference at $P < 0.05$. T1: control, T2: 5% SE, T3: 10% SE, T4: 15% SE, T5: 20% SE, T6: 25% SE, T7: 5% LE, T8: 10% LE, T9: 15% LE, T10: 20% LE, T11: 25% LE.

Full-size [DOI: 10.7717/peerj.13623/fig-3](https://doi.org/10.7717/peerj.13623/fig-3)

increased H_2O_2 accumulation resulted in increased lipid peroxidation exhibiting maximal increase with the treatment of 25% concentration. Electrolyte leakage also showed a noticeable increase in seedlings grown in the presence of extracts (Fig. 4C).

Proline, soluble sugars, phenols, flavonoids, and protein

Seedlings treated with different extract concentrations of *A. saligna* exhibited decrease in the accumulation of proline and soluble sugars (Figs. 5A and 5B). Relative to control, treatment of both extracts induced gradual reduction with increasing concentrations imparting more obvious decrease at higher concentrations, *i.e.*, 25%. It was observed that LE imparted more reduced than SE. In seedlings treated with 25% LE, the maximal decrease in proline was 25.18%, 17.05%, 7.70%, and 9.00%, and sugars were 13.92%, 13.64%, 12.35% and 32.69%, respectively in *T. aestivum*, *H. vulgare*, *R. sativus*, and *E. Sativa* (Figs. 5A and 5B).

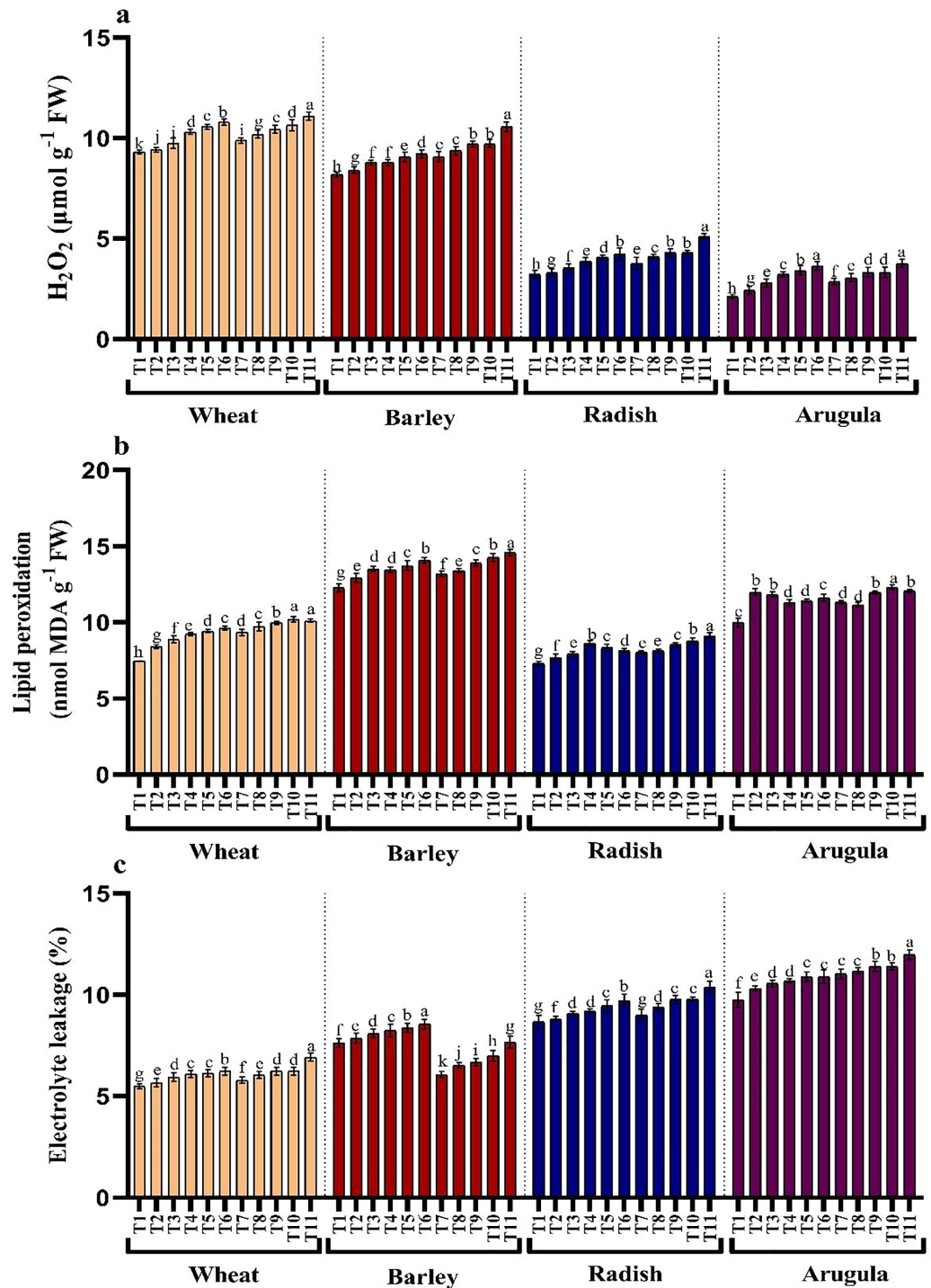


Figure 4 Effect of *A. Saligna* stem extracts (SE) and leaf extracts (LE) (A) hydrogen peroxide (H₂O₂), (B) lipid peroxidation, and (C) electrolyte leakage in wheat, barley, radish, and arugula plant. Data is mean (±SE) of three replicates, and different lowercase letters denote significant difference at $P < 0.05$. T1: control, T2: 5% SE, T3: 10% SE, T4: 15% SE, T5: 20% SE, T6: 25% SE, T7: 5% LE, T8: 10% LE, T9: 15% LE, T10: 20% LE, T11: 25% LE.

Full-size DOI: 10.7717/peerj.13623/fig-4

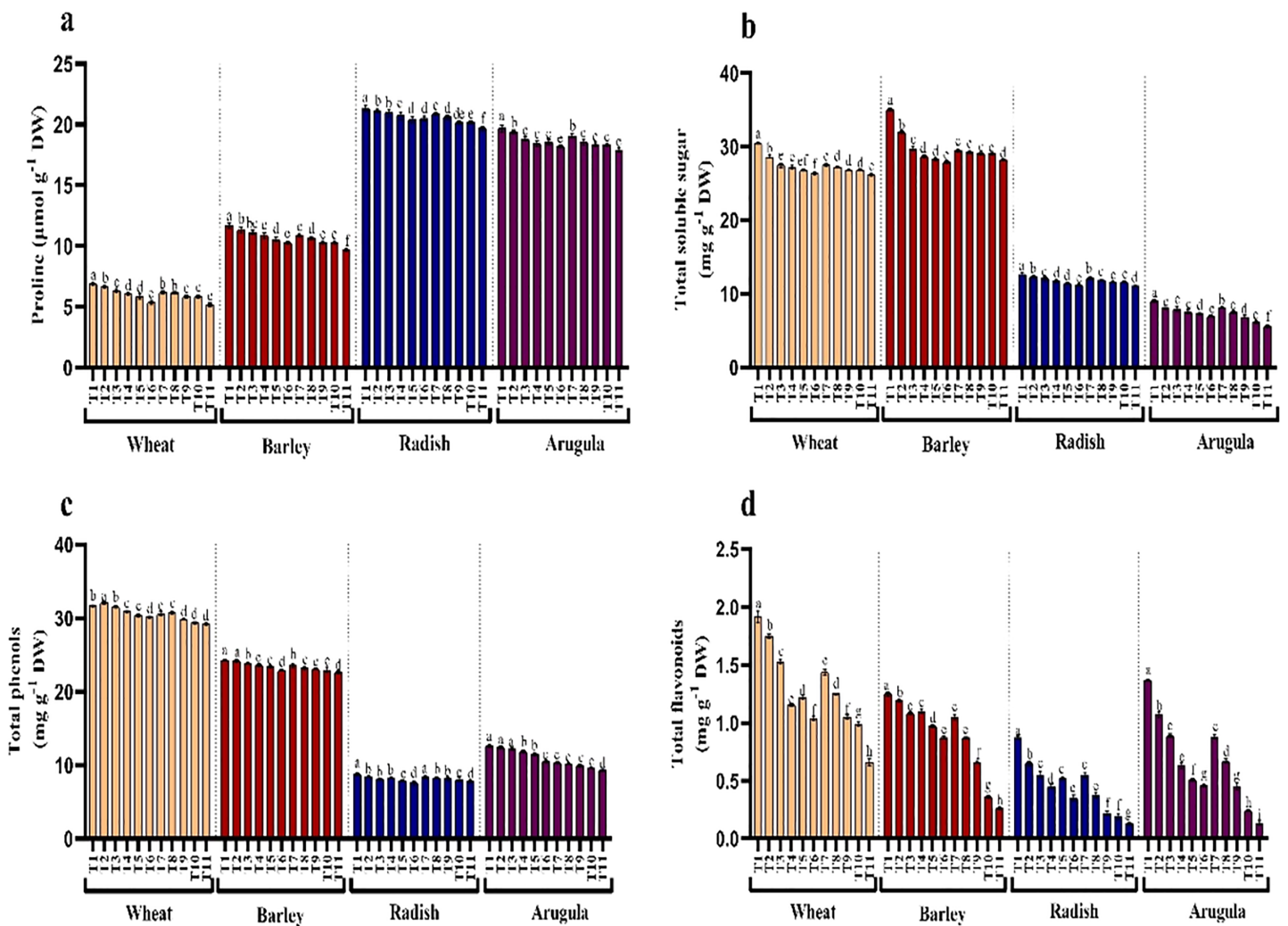


Figure 5 Effect of *A. Saligna* stem extracts (SE) and leaf extracts (LE) on (A) proline, (B) total soluble sugar, (C) total phenols, and (D) total flavonoids in wheat, barley, radish, and arugula plant. Data is mean (\pm SE) of three replicates, and different lowercase letters denote significant difference at $P < 0.05$. T1: control, T2: 5% SE, T3: 10% SE, T4: 15% SE, T5: 20% SE, T6: 25% SE, T7: 5% LE, T8: 10% LE, T9: 15% LE, T10: 20% LE, T11: 25% LE. [Full-size !\[\]\(5f471a71b78d7676bc356df190b88ab4_img.jpg\) DOI: 10.7717/peerj.13623/fig-5](https://doi.org/10.7717/peerj.13623/fig-5)

Contents of total phenols and flavonoids decreased due to treatments of extracts in all four plant species. Relative to control, phenols and flavonoids decreased maximally in seedlings treated with 25% LE. Percent decrease observed was 7.74%, 65.68% in *T. aestivum*, 6.92%, 79.20% in *H. vulgare*, 11.29%, 85.06% in *R. sativus* 26.52%, 88.60% in *E. Sativa* for total phenols and total flavonoids respectively over the control (Figs. 5C and 5D).

Protein content and antioxidant enzymes

Seedlings treated with different extract concentrations of *A. saligna* exhibited a reduction in protein accumulation. For example, the maximal decrease in protein in seedlings treated with 25% LE, in *T. aestivum*, *H. vulgare*, *R. sativus*, and *E. Sativa* (Fig. 6A).

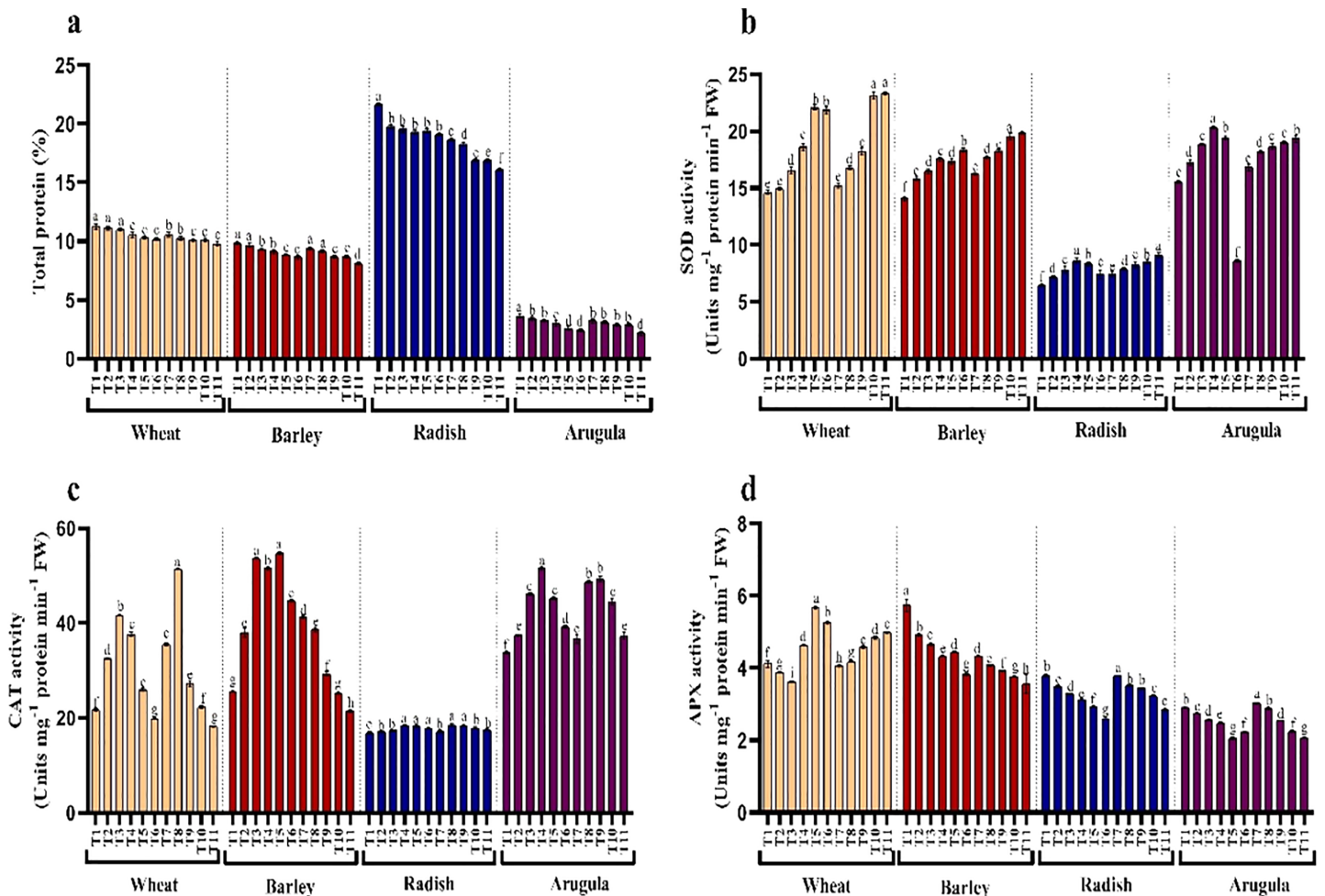


Figure 6 Effect of *A. Saligna* stem extracts (SE) and leaf extracts (LE) on (A) total protein content and activity of (B) SOD, (C) CAT, and (D) APX in wheat, barley, radish, and arugula plant. Data is mean (\pm SE) of three replicates, and different lowercase letters denote significant difference at $P < 0.05$. T1: control, T2: 5% SE, T3: 10% SE, T4: 15% SE, T5: 20% SE, T6: 25% SE, T7: 5% LE, T8: 10% LE, T9: 15% LE, T10: 20% LE, T11: 25% LE.

Full-size DOI: 10.7717/peerj.13623/fig-6

Seedlings of *T. aestivum*, *H. vulgare*, *R. sativus*, and *E. Sativa* that have grown with extracts of different concentrations showed differential responses for activity antioxidant enzymes assayed. Relative to control, SOD exhibited noticeable enhancement due to extracting treatments, while CAT and APX increased with lower concentrations while declining with higher concentrations of SE and LE.

Relative gene expression

Treatment of *A. saligna* extracts on *T. aestivum*, *H. vulgare*, *R. sativus*, and *E. sativa* seedlings had increased gene expression of CYP72A, CYP81A, and GST. The relative gene expression of CYP72A was greater in extract treated plants as compared to control plants. In case of CYP81A expression, the 25% LE increased gene expression in *T. aestivum*, *H. vulgare*, *R. sativus*, and *E. sativa* seedlings as compared to their respective controls. A similar results were observed in GST gene expression in which maximum gene

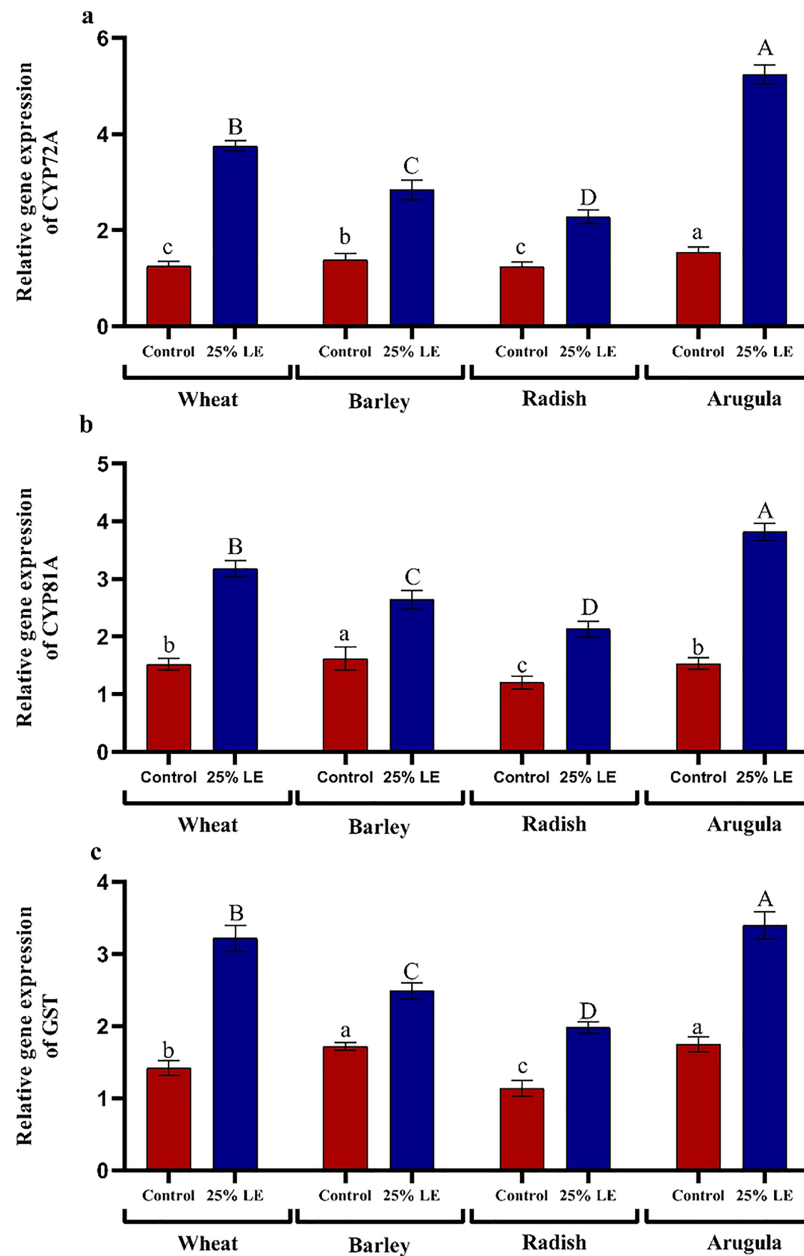


Figure 7 Effect of *A. Saligna* leaf extracts (25%) on the expression of (A) CYP72A, (B) CYP81A, and (C) GST in wheat, barley, radish, and arugula plant. Data is mean (\pm SE) of three replicates, and different lowercase letters denote significant difference at $P < 0.05$.

Full-size DOI: 10.7717/peerj.13623/fig-7

expression was observed in *E. sativa* followed by *T. aestivum*, *R. sativus*, and *H. vulgare*, with respect to their respective control treatments (Figs. 7A–7C).

DISCUSSION

Phytotoxicity imparted by the neighboring plant species is one of the main causes for the maximum reduction in growth and yield of crops. The current study investigated the influence of extracts from *A. saligna* on the growth of *T. aestivum*, *H. vulgare*, *R. sativus*,

and *E. Sativa*. It was observed that extracts induced a significant decrease in germination and the other studied parameters of tested crops. Extracts from stem and leaf showed differential effects on the tested crops, with leaf extracts imparting many damaging effects. It has been reported that plant parts differ in the content of allelochemicals (Argal et al., 2016). Therefore, it can be concluded that leaf extracts may have higher concentrations of allelochemicals or have the presence of some exclusive allelochemicals. According to Fernandez et al. (2009), the allelochemicals are presented higher in leaves than roots. Allelochemicals mostly affect root growth because of their direct contact. Our study observed that higher concentrations of extracts influenced the growth in terms of length, weight, and biomass accumulation for tested crops seedlings. Inderjit (1996) has attributed the inhibitory effect of allelochemicals to their high-water solubility. It has been accepted that phenols form the key allelochemicals inhibiting the growth of plants (Blum et al., 1993). Reduction in germination and growth of mustard, millet, tomato, mung bean, corn, and radish is due to the release of phenolic compounds like vanillic acid, catechol, gallic acid, and syringic acid from *Cornus canadensis* L. (Shaukat, Munir & Siddiqui, 2003). Plant extracts can prove inhibitory or stimulatory effect based on their concentration, and the current study also showed that extracts of *A. saligna* imparted slight inhibitory effects even at a lower concentration. However, its impact was much evident at higher concentrations. In addition, *E. Sativa* exhibited more sensitivity to *A. saligna* extracts as compared to other tested crops. Growth inhibition of plants by allelochemicals can be considered a synergistic impact (Fagg & Stewart, 1994).

Treatment with the extracts of *A. saligna* reduced the chlorophylls contents, photosynthetic rate, WUE, and PSII activity (Fv/Fm), and maximal reduction in seedlings was recorded that were treated with higher concentrations of shoot and leaf extracts. It was in great analogy with our results that reduction in green contents was caused by plant extract treatment (Abou El-Ghit, 2016; Singh, Pandey & Singh, 2009; Singh, Singh & Singh, 2009; Tomar, Sharma & Agarwal, 2015). Reduced Pn and Fv/Fm in extract-treated seedlings reflect the stomatal and non-stomatal photosynthetic restriction. Earlier Singh, Pandey & Singh (2009) also reported reduced photosynthesis in bananas after application of *Cyperus rotundus* extracts. Reduced photosynthesis and PSII activity in tested crops due to *A. saligna* leachate treatment was correlated with reduced WUE, which can significantly impact the yield productivity.

Seedlings of all four plants treated with extract of *A. saligna* exhibited increased generation and accumulation of free radicals like H₂O₂. Leachate treatments enhance the generation of toxic free radicals (El-Sheshtawy et al., 2021; Howladar, 2014). Excessive generation of ROS like singlet oxygen, H₂O₂, hydroxyl radical leads to the oxidative damage to the key macromolecules like proteins, lipids, and nucleic acids (Ahanger et al., 2018; Abdel Maksoud et al., 2022). Such damage led by excess ROS may reduce the membrane stability, thereby leading to the electrolyte leakage, which was obvious in this investigation. In a few other studies, increased generation of ROS due to leachate treatment (Cruz-Ortega, Ayala-Cordero & Anaya, 2002; Oracz et al., 2007). Stress-induced lipid peroxidation and electrolyte leakage are considered key parameters for assessing crop plants' stress intensity and tolerance levels (Ahanger et al., 2020a; Ahanger et al., 2020b).

Seedlings treated with higher concentrations of *A. saligna* extracts resulted in increased electrolyte leakage and lipid peroxidation due to loss of membrane integrity and functioning. Loss of structural and functional integrity of membranes due to treatment of plant extracts has been reported by [Alqarawi et al. \(2018\)](#). Allelopathic extracts reduced the concentration of polyunsaturated fatty acids resulting in loss of membrane structure and functioning ([Alqarawi et al., 2018](#)). It has been reported that stressful growth conditions trigger the activity of lipoxygenase and the generation of ROS, resulting in increased lipid peroxidation and membrane damage ([Ahanger et al., 2019](#); [Megahed et al., 2013](#)). Increased ROS accumulation reduced the photosynthetic functioning by affecting the structure and function of chloroplast machinery ([Bi et al., 2009](#); [Shapiguzov et al., 2012](#)). Plants *Lycopersicon esculentum* treated with aqueous extract of *Sicyos deppei* resulted in enhancement in production of ROS, such as hydrogen peroxide and superoxide concomitant due to increased activity of NADPH-oxidase ([Zhang et al., 2010](#)). P-coumaric and vanillic acid have induced the generation of O₂⁻ radicals in *Microcystis aeruginosa* cells ([Bi et al., 2009](#)). According to [Agha et al. \(2021\)](#), crop plants exposed to environmental stresses result in more damage due to ROS production. Stresses increase the activity of radical generating plasma membrane oxidase, NADP-oxidase ([El-Sheshtawy et al., 2022](#)). Advance research is required to investigate the actual process leading to increased ROS generation under allelochemical stress.

For averting the damage caused due to excessive generation of ROS, plants up-regulate the tolerance mechanisms aimed at scavenging the excess ROS. In the present study, *A. saligna* extract treatment led to the differential up-regulation of the antioxidant enzyme activities. The activity of antioxidant enzymes including SOD, CAT, and APX assayed showed different responses, with SOD exhibiting apparent increase with increasing concentration of extracts while CAT exhibited increase with a lower concentration and slight decrease with higher concentration. SOD scavenges superoxide radicals, thereby protecting photosynthetic electron transport, while hydrogen peroxide is neutralized by CAT in the cytosol or by APX in chloroplast and mitochondria *via* ascorbate-glutathione cycle ([Ahanger et al., 2017](#); [El-Sheshtawy et al., 2022](#)). Environmental stresses, including biotic and abiotic components like drought, salinity, extreme temperatures, metals, metalloids, allelopathic stress, and disease infestation, result in increased ROS generation and altered cellular functioning ([Ahanger et al., 2020a](#); [Ahanger et al., 2017](#); [Alqarawi et al., 2018](#); [Khan et al., 2015](#); [Parvaiz, 2012](#)). Comparable to our findings, [Singh, Singh & Singh \(2009\)](#) have also revealed differential regulation of antioxidant system in *Zea mays* due to application of aqueous extracts of *Nicotiana plumbaginifolia*. Greater stress tolerance in plants is associated with more antioxidant functioning. Antioxidant enzymes like SOD, CAT, and APX work closely with non-enzymatic components to neutralize the toxic radicals produced under stress ([Shapiguzov et al., 2012](#)). [Cruz-Ortega, Ayala-Cordero & Anaya \(2002\)](#) have reported increased CAT activity in bean, maize, and tomato treated with *Callicarpa acuminata* extracts. It has been reported that the presence of water-soluble phenolics in leaf extract of sunflower imparted oxidative stress in mustard by triggering excess ROS generation resulting in increased activity of SOD and CAT ([Oracz et al., 2007](#)). [Batish et al. \(2007\)](#) have demonstrated increased ROS generation in mung beans due to

caffeic acid treatment resulting in a significant alteration in the activity of peroxidases. Increased activity of SOD and POD protects membranes and cellular functioning by preventing the formation of toxic hydroxyl radicals. The presence of a higher concentration of allelochemical-like phenolic compounds like p-hydroxybenzoic acid and ferulic acid can induce oxidative stress (Zhang *et al.*, 2010) by increasing the generation of free radicals' initiation of antioxidants (Abu-Shahba *et al.*, 2022; Lara-Nuñez *et al.*, 2006). Under intense oxidative stress, excessive ROS generation may cause a decrease in antioxidant enzymes' activity, which may be attributed to the presence of higher contents of allelochemicals. ROS mediate signal transduction when present in optimal concentration; however, it can prove deleterious for metabolism when the concentration exceeds the antioxidants' scavenging potential, leading to programmed cell death (Sofy *et al.*, 2022).

Seedlings treated with aqueous extracts of *A. saligna* exhibited a decrease in compatible osmolytes consisting of free sugar and proline, with the effect being much obvious at higher (25%) concentrations. Similar to our results earlier, Singh, Singh & Singh (2009) has demonstrated reduced sugar accumulation in maize due to applying aqueous extracts of *Nicotiana plumbaginifolia*. Similarly, Rao & Singh (2015) reported a significant decrease in the synthesis of sugars in pea seedlings treated with *Hyptis suaveolens* L leachates. In maize and *Phaseolus vulgaris*, treatment of higher concentration of leaf leachates of *Acacia nilotica* and *Eucalyptus rostrata* has been reported to induce the expression of stress proteins and ABA formation (El-Khawas & Shehata, 2005). Accumulation of osmolytes, including amino acid, sugar, and proline, contribute to turgor maintenance under stressful conditions (Ahanger *et al.*, 2014; Fouda & Sofy, 2022). Accumulation of compatible solutes assists in counteracting the unfavorable conditions by protecting membrane structural and functional integrity, enzyme functioning through osmotic adjustment (Megahed *et al.*, 2012; Sivakumar *et al.*, 2002). However, the reduced accumulation of proline and sugars observed in the present study reflects the damaging effects of *A. saligna* extracts on the tested crop species. In addition to their role as an osmolyte, proline and sugars are believed to assist in ROS scavenging (Ahanger *et al.*, 2018; Hayat *et al.*, 2012).

The CYP gene family is among the large families involved in the development of plants and mediates the synthesis of key secondary signals (Biazzi *et al.*, 2015). In the present study, 25% leaf extract treated seedlings significantly enhanced CYP72A, CYP81A, and GST gene expression. GST genes are ubiquitous and have an important role in stress mitigation (Gullner *et al.*, 2018). However, studies discussing the influence of plant extracts on the expression of CYP and GST are not available. Increased expression of GST prevents cytotoxic effects of stresses, mediates detoxification of xenobiotics, thereby restricting the damage to macromolecules (Sytykiewicz, 2011).

CONCLUSION

In conclusion, the extracts of *A. saligna* deleteriously affected the growth of wheat, barley, radish, and arugula by reducing germination, and promoting the accumulation of osmolytes, and secondary metabolism. Allelopathic effects were further obvious as reduced membrane functioning reflected as increased lipid peroxidation due to ROS production.

Differential regulation of antioxidant enzymes and increased gene expression of CYP and GST were also evident. The present studies indicated that each tested crop exhibited reduced germination rate, plant height, fresh and dry weight with the application of *A. saligna* extracts. Moreover, the activities of antioxidant enzymes, including superoxide dismutase (SOD), catalase (CAT), and ascorbate peroxidase (APX), exhibited varying regulation due to the extracts application. Higher concentration of *A. Saligna* dry leachates reduced chlorophyll content, photosynthesis, PSII activity, and water use efficiency. Furthermore, the content of proline, sugars, protein, total phenols, and flavonoids were also decreased considerably due to the instant extracts application. On other hand high concentrations of LE enhanced the expression of genes. The study concludes the presence of significant allelochemicals in *Acaccia saligna*. Therefore, further studies are suggested to explore the natural compounds in *A. saligna* imparting such inhibitory effects on the plants.

ADDITIONAL INFORMATION AND DECLARATIONS

Funding

This work was supported by the AlMaarefa University researchers supporting program (Grant Number: MA-006), AlMaarefa University, Riyadh, Saudi Arabia and the Taif University Researchers Supporting Project Number (TURSP-2020/13), Taif University, Taif, Saudi Arabia. The funders had no role in study design, data collection and analysis, decision to publish, or preparation of the manuscript.

Grant Disclosures

The following grant information was disclosed by the authors:

AlMaarefa University, Riyadh, Saudi Arabia: MA-006.

Taif University, Taif, Saudi Arabia: TURSP-2020/13.

Competing Interests

The authors declare that they have no competing interests.

Author Contributions

- Haifa Abdulaziz Sakit ALHaithloul conceived and designed the experiments, performed the experiments, analyzed the data, prepared figures and/or tables, authored or reviewed drafts of the article, and approved the final draft.
- Muhammad Ishfaq Khan conceived and designed the experiments, performed the experiments, analyzed the data, prepared figures and/or tables, authored or reviewed drafts of the article, and approved the final draft.
- Arafa Musa conceived and designed the experiments, performed the experiments, analyzed the data, prepared figures and/or tables, authored or reviewed drafts of the article, and approved the final draft.
- Mohammed M. Ghoneim conceived and designed the experiments, performed the experiments, analyzed the data, prepared figures and/or tables, authored or reviewed drafts of the article, and approved the final draft.

- Ayshah Aysh ALrashidi conceived and designed the experiments, performed the experiments, analyzed the data, prepared figures and/or tables, authored or reviewed drafts of the article, and approved the final draft.
- Imtiaz Khan conceived and designed the experiments, performed the experiments, analyzed the data, prepared figures and/or tables, authored or reviewed drafts of the article, and approved the final draft.
- Ehab Azab conceived and designed the experiments, performed the experiments, analyzed the data, prepared figures and/or tables, authored or reviewed drafts of the article, and approved the final draft.
- Adil A. Gobouri conceived and designed the experiments, performed the experiments, analyzed the data, prepared figures and/or tables, authored or reviewed drafts of the article, and approved the final draft.
- Mahmoud R. Sofy conceived and designed the experiments, performed the experiments, analyzed the data, prepared figures and/or tables, authored or reviewed drafts of the article, and approved the final draft.
- Mohamed El-Sherbiny conceived and designed the experiments, performed the experiments, analyzed the data, prepared figures and/or tables, authored or reviewed drafts of the article, and approved the final draft.
- Mona H. Soliman conceived and designed the experiments, performed the experiments, analyzed the data, prepared figures and/or tables, authored or reviewed drafts of the article, and approved the final draft.

Data Availability

The following information was supplied regarding data availability:

The raw data is available in the [Supplemental File](#).

Supplemental Information

Supplemental information for this article can be found online at <http://dx.doi.org/10.7717/peerj.13623#supplemental-information>.

REFERENCES

- Abdelmigid HM, Morsi MM. 2017.** Cytotoxic and molecular impacts of allelopathic effects of leaf residues of *Eucalyptus globulus* on soybean (*Glycine max*). *Journal of Genetic Engineering and Biotechnology* **15**:297–302 DOI [10.1016/j.jgeb.2017.08.005](https://doi.org/10.1016/j.jgeb.2017.08.005).
- Abdel Maksoud MIA, Mohamad B, Dina ME, Sofy AR, Sofy MR. 2022.** Gamma radiation-induced synthesis of a novel chitosan/silver/Mn-Mg ferrite nanocomposite and its impact on cadmium accumulation and translocation in brassica plant growth. *International Journal of Biological Macromolecules* **194**(1):306–316 DOI [10.1016/j.ijbiomac.2021.11.197](https://doi.org/10.1016/j.ijbiomac.2021.11.197).
- Abou El-Ghit HM. 2016.** Physiological allelopathic effect of aqueous extracts of cucumber, carrot, onion, and garlic seeds on germination and growth of Pea. *Journal of Pharmaceutical, Chemical and Biological Sciences* **4**:13–19.
- Abu-Shahba MS, Mansour MM, Mohamed HI, Sofy MR. 2022.** Effect of biosorptive removal of cadmium ions from hydroponic solution containing indigenous garlic peel and mercerized garlic peel on lettuce productivity. *Scientia Horticulturae* **293**(5):110727 DOI [10.1016/j.scienta.2021.110727](https://doi.org/10.1016/j.scienta.2021.110727).

- Agha MS, Abbas MA, Sofy MR, Haroun SA, Mowafy AM. 2021.** Dual inoculation of Bradyrhizobium and Enterobacter alleviates the adverse effect of salinity on *Glycine max* seedling. *Notulae Botanicae Horti Agrobotanici Cluj-Napoca* **49(3)**:12461
DOI [10.15835/nbha49312461](https://doi.org/10.15835/nbha49312461).
- Ahanger MA, Aziz U, Alsahli AA, Alyemini MN, Ahmad P. 2020a.** Influence of exogenous salicylic acid and nitric oxide on growth, photosynthesis, and ascorbate-glutathione cycle in salt stressed *Vigna angularis*. *Biomolecules* **10(1)**:42 DOI [10.3390/biom10010042](https://doi.org/10.3390/biom10010042).
- Ahanger MA, Gul F, Ahmad P, Akram NA. 2018.** Environmental stresses and metabolomics—Deciphering the role of stress responsive metabolites. *Plant Metabolites and Regulation Under Environmental Stress*. Cambridge: Academic Press, 53–67
DOI [10.1016/B978-0-12-812689-9.00003-0](https://doi.org/10.1016/B978-0-12-812689-9.00003-0).
- Ahanger MA, Mir RA, Alyemini MN, Ahmad P. 2020b.** Combined effects of brassinosteroid and kinetin mitigates salinity stress in tomato through the modulation of antioxidant and osmolyte metabolism. *Plant Physiology and Biochemistry* **147**:31–42 DOI [10.1016/j.plaphy.2019.12.007](https://doi.org/10.1016/j.plaphy.2019.12.007).
- Ahanger MA, Qin C, Maodong Q, Dong XX, Ahmad P, Abd_Allah EF, Zhang L. 2019.** Spermine application alleviates salinity induced growth and photosynthetic inhibition in *Solanum lycopersicum* by modulating osmolyte and secondary metabolite accumulation and differentially regulating antioxidant metabolism. *Plant Physiology and Biochemistry* **144**:1–13
DOI [10.1016/j.plaphy.2019.09.021](https://doi.org/10.1016/j.plaphy.2019.09.021).
- Ahanger MA, Tomar NS, Tittal M, Argal S, Agarwal R. 2017.** Plant growth under water/salt stress: ROS production; antioxidants and significance of added potassium under such conditions. *Physiology and Molecular Biology of Plants* **23**:731–744
DOI [10.1007/s12298-017-0462-7](https://doi.org/10.1007/s12298-017-0462-7).
- Ahanger MA, Tyagi SR, Wani MR, Ahmad P. 2014.** Drought tolerance: role of organic osmolytes, growth regulators, and mineral nutrients. In: *Physiological Mechanisms and Adaptation Strategies in Plants Under Changing Environment*. Berlin: Springer, 25–55.
- Alhaithloul HAS. 2019.** Impact of combined heat and drought stress on the potential growth responses of the desert grass artemisia Sieberi ALBA: relation to biochemical and molecular adaptation. *Plants* **8(10)**:416 DOI [10.3390/plants8100416](https://doi.org/10.3390/plants8100416).
- Alqarawi AA, Hashem A, Kumar A, Al-Arjani A-BF, Abd_Allah EF, Dar BA, Wirth S, Davranov K, Egamberdieva D. 2018.** Allelopathic effects of the aqueous extract of *Rhazya stricta* on growth and metabolism of *Salsola villosa*. *Plant Biosystems-An International Journal Dealing with all Aspects of Plant Biology* **152(6)**:1263–1273
DOI [10.1080/11263504.2018.1439117](https://doi.org/10.1080/11263504.2018.1439117).
- Argal S, Bhat WM, Ahanger MA, Agarwal R. 2016.** A note on phyto analysis of *P. juliflora* (Swartz) DC. *Journal of Functional And Environmental Botany* **6**:58–65
DOI [10.5958/2231-1750.2016.00010.X](https://doi.org/10.5958/2231-1750.2016.00010.X).
- Bais HP, Vepachedu R, Gilroy S, Callaway RM, Vivanco JM. 2003.** Allelopathy and exotic plant invasion: from molecules and genes to species interactions. *Science* **301**:1377–1380
DOI [10.1126/science.1083245](https://doi.org/10.1126/science.1083245).
- Bates LS, Waldren RP, Teare I. 1973.** Rapid determination of free proline for water-stress studies. *Plant and Soil* **39**:205–207 DOI [10.1007/BF00018060](https://doi.org/10.1007/BF00018060).
- Batish DR, Lavanya K, Pal Singh H, Kohli RK. 2007.** Root-mediated Allelopathic Interference of Nettle-leaved Goosefoot (*Chenopodium murale*) on Wheat (*Triticum aestivum*). *Journal of Agronomy and Crop Science* **193(1)**:37–44 DOI [10.1111/j.1439-037X.2006.00243.x](https://doi.org/10.1111/j.1439-037X.2006.00243.x).

- Beyer J, Fridovich I. 1987.** Assaying for superoxide dismutase activity: some large consequences of minor changes in conditions. *Analytical Biochemistry* **161**:559–566
DOI [10.1016/0003-2697\(87\)90489-1](https://doi.org/10.1016/0003-2697(87)90489-1).
- Bi Y, Chen W, Zhang W, Zhou Q, Yun L, Xing D. 2009.** Production of reactive oxygen species, impairment of photosynthetic function and dynamic changes in mitochondria are early events in cadmium-induced cell death in *Arabidopsis thaliana*. *Biology of the Cell* **101(11)**:629–643
DOI [10.1042/BC20090015](https://doi.org/10.1042/BC20090015).
- Biazzì E, Carelli M, Tava A, Abbruscato P, Losini I, Avato P, Scotti C, Calderini O. 2015.** CYP72A67 catalyzes a key oxidative step in medicago truncatula hemolytic saponin biosynthesis. *Molecular Plant* **8(10)**:1493–1506 DOI [10.1016/j.molp.2015.06.003](https://doi.org/10.1016/j.molp.2015.06.003).
- Blum U, Gerig T, Worsham A, King L. 1993.** Modification of allelopathic effects of p-coumaric acid on morning-glory seedling biomass by glucose, methionine, and nitrate. *Journal of Chemical Ecology* **19**:2791–2811 DOI [10.1007/BF00980584](https://doi.org/10.1007/BF00980584).
- Bradford MM. 1976.** A rapid and sensitive method for the quantitation of microgram quantities of protein utilizing the principle of protein-dye binding. *Analytical Biochemistry* **72**:248–254
DOI [10.1006/abio.1976.9999](https://doi.org/10.1006/abio.1976.9999).
- Cheng F, Cheng Z. 2015.** Research progress on the use of plant allelopathy in agriculture and the physiological and ecological mechanisms of allelopathy. *Frontiers in Plant Science* **6**:1020
DOI [10.3389/fpls.2015.01020](https://doi.org/10.3389/fpls.2015.01020).
- Cruz-Ortega R, Ayala-Cordero G, Anaya AL. 2002.** Allelochemical stress produced by the aqueous leachate of *Callicarpa acuminata*: effects on roots of bean, maize, and tomato. *Physiologia Plantarum* **116**:20–27 DOI [10.1034/j.1399-3054.2002.1160103.x](https://doi.org/10.1034/j.1399-3054.2002.1160103.x).
- Dawood MFA, Abdelghafar MA, Sofy MR, Heba IM, Soliman MH. 2022.** Appraisal of kinetin spraying strategy to alleviate the harmful effects of UVC stress on tomato plants. *Environmental Science and Pollution Research* **3**:1–21 DOI [10.1007/s11356-022-19378-6](https://doi.org/10.1007/s11356-022-19378-6).
- Dhindsa RS, Plumb-Dhindsa P, Thorpe TA. 1981.** Leaf senescence: correlated with increased levels of membrane permeability and lipid peroxidation, and decreased levels of superoxide dismutase and catalase. *Journal of Experimental Botany* **32**:93–101 DOI [10.1093/jxb/32.1.93](https://doi.org/10.1093/jxb/32.1.93).
- Dionisio-Sese ML, Tobita S. 1998.** Antioxidant responses of rice seedlings to salinity stress. *Plant Science* **135**:1–9 DOI [10.1016/S0168-9452\(98\)00025-9](https://doi.org/10.1016/S0168-9452(98)00025-9).
- El-Khawas AS, Shehata MM. 2005.** The Allelopathic Potentialities of *Acacia nilotica* and *Eucalyptus rostrata* on Monocot (*Zea mays* L.) and Dicot (*Phaseolus vulgaris* L.) Plants. *Biotechnology* **4**:23–34 DOI [10.3923/biotech.2005.23.34](https://doi.org/10.3923/biotech.2005.23.34).
- El-Sheshtawy HS, Sofy MR, Ghareeb DA, Yacout GA, Eldemellawy MA, Ibrahim BM. 2021.** Eco-friendly polyurethane acrylate (PUA)/natural filler-based composite as an antifouling product for marine coating. *Applied Microbiology and Biotechnology* **105(18)**:7023–7034
DOI [10.1007/s00253-021-11501-w](https://doi.org/10.1007/s00253-021-11501-w).
- El-Sheshtawy HS, Hesham MM, Sofy AR, Sofy MS. 2022.** Production of biosurfactant by *Bacillus megaterium* and its correlation with lipid peroxidation of *Lactuca sativa*. *Egyptian Journal of Petroleum* **31(2)**:1–6 DOI [10.1016/j.ejpe.2022.03.001](https://doi.org/10.1016/j.ejpe.2022.03.001).
- El-Toumy SAA, Salib JY, Mohamed WM, Morsy FA. 2010.** Phytochemical and antimicrobial studies on *acacia saligna* leaves. *Egyptian Journal of Chemistry* **53**:705–717.
- Fagg C, Stewart J. 1994.** The value of *Acacia* and *Prosopis* in arid and semi-arid environments. *Journal of Arid Environments* **27**:3–25 DOI [10.1006/jare.1994.1041](https://doi.org/10.1006/jare.1994.1041).
- Fernandez C, Monnier Y, Ormeño E, Baldy V, Greff S, Pasqualini V, Mévy J-P, Bousquet-Mélou A. 2009.** Variations in allelochemical composition of leachates of different organs and

- maturity stages of *Pinus halepensis*. *Journal of Chemical Ecology* **35**:970–979
DOI 10.1007/s10886-009-9667-8.
- Fouda H, Sofy M. 2022.** Effect of biological synthesis of nanoparticles from *Penicillium chrysogenum* as well as traditional salt and chemical nanoparticles of zinc on canola plant oil productivity and metabolic. *Egyptian Journal of Chemistry* **65**(3):507–516
DOI 10.21608/ejchem.2021.95120.4469.
- Gomez KA, Gomez AA. 1984.** *Statistical procedures for agricultural research*. Hoboken: John Wiley & Sons.
- Grutters BM, Saccomanno B, Gross EM, Van de Waal DB, van Donk E, Bakker ES. 2017.** Growth strategy, phylogeny and stoichiometry determine the allelopathic potential of native and non-native plants. *Oikos* **126**:1770–1779 DOI 10.1111/oik.03956.
- Gullner G, Komives T, Király L, Schröder P. 2018.** Glutathione S-transferase enzymes in plant-pathogen interactions. *Frontiers in Plant Science* **9**:106 DOI 10.3389/fpls.2018.01836.
- Hadacek F. 2002.** Secondary metabolites as plant traits: current assessment and future perspectives. *Critical Reviews in Plant Sciences* **21**:273–322 DOI 10.1080/0735-260291044269.
- Hayat S, Hayat Q, Alyemeni MN, Wani AS, Pichtel J, Ahmad A. 2012.** Role of proline under changing environments. *Plant Signaling & Behavior* **7**(11):1456–1466 DOI 10.4161/psb.21949.
- Heath RL, Packer L. 1968.** Photoperoxidation in isolated chloroplasts: I. Kinetics and stoichiometry of fatty acid peroxidation. *Archives of Biochemistry and Biophysics* **125**:189–198
DOI 10.1016/0003-9861(68)90654-1.
- Howladar SM. 2014.** A novel *Moringa oleifera* leaf extract can mitigate the stress effects of salinity and cadmium in bean (*Phaseolus vulgaris* L.) plants. *Ecotoxicology and Environmental Safety* **100**:69–75 DOI 10.1016/j.ecoenv.2013.11.022.
- Inderjit. 1996.** Plant phenolics in allelopathy. *The Botanical Review* **62**:186–202
DOI 10.1007/BF02857921.
- Irigoyen J, Einerich D, Sánchez-Díaz M. 1992.** Water stress induced changes in concentrations of proline and total soluble sugars in nodulated alfalfa (*Medicago sativa*) plants. *Physiologia Plantarum* **84**:55–60 DOI 10.1111/j.1399-3054.1992.tb08764.x.
- Khan MIR, Nazir F, Asgher M, Per TS, Khan NA. 2015.** Selenium and sulfur influence ethylene formation and alleviate cadmium-induced oxidative stress by improving proline and glutathione production in wheat. *Journal of Plant Physiology* **173**:9–18 DOI 10.1016/j.jplph.2014.09.011.
- Lara-Nuñez A, Romero-Romero T, Ventura JL, Blancas V, Anaya AL, Cruz-Ortega R. 2006.** Allelochemical stress causes inhibition of growth and oxidative damage in *Lycopersicon esculentum* Mill. *Plant, Cell & Environment* **29**:2009–2016
DOI 10.1111/j.1365-3040.2006.01575.x.
- Lichtenthaler HK. 1987.** [34] Chlorophylls and carotenoids: pigments of photosynthetic biomembranes. In: *Methods in Enzymology*. Cambridge: Academic Press, 350–382.
- Lin H, Chang S. 2013.** Antioxidant potency of phenolic phytochemicals from the root extract of *Acacia confusa*. *Industrial Crops and Products* **49**:871–878 DOI 10.1016/j.indcrop.2013.07.001.
- Megahed AA, Dougdoug KAE, Othman BA, Lashin SM, Ibrahim MA, Sofy AR. 2012.** A new Egyptian satellite strain of cucumber mosaic cucumovirus. *International Journal of Virology* **8**(3):240–257 DOI 10.3923/ijv.2012.240.257.
- Megahed AA, El-Dougdoug K, Othman BA, Lashin SM, Ibrahim MA, Sofy AR. 2013.** Induction of resistance in tomato plants against tomato mosaic tobamovirus using beneficial microbial isolates. *Pakistan Journal of Biological Sciences: PJBS* **16**(8):385–390
DOI 10.3923/pjbs.2013.385.390.

- Nakano Y, Asada K. 1981.** Hydrogen peroxide is scavenged by ascorbate-specific peroxidase in spinach chloroplasts. *Plant and Cell Physiology* **22**:867–880
DOI [10.1093/oxfordjournals.pcp.a076232](https://doi.org/10.1093/oxfordjournals.pcp.a076232).
- Oracz K, Bailly C, Gniazdowska A, Côme D, Corbineau F, Bogatek R. 2007.** Induction of oxidative stress by sunflower phytotoxins in germinating mustard seeds. *Journal of Chemical Ecology* **33**(2):251–264 DOI [10.1007/s10886-006-9222-9](https://doi.org/10.1007/s10886-006-9222-9).
- Parvaiz A. 2012.** Salt-induced changes in photosynthetic activity and oxidative defense system of three cultivars of mustard (*Brassica juncea* L.). *African Journal of Biotechnology* **11**(11):2694–2703 DOI [10.5897/AJB11.3203](https://doi.org/10.5897/AJB11.3203).
- Rao SNB, Singh SA. 2015.** Allelopathic effects of *Hyptis suaveolens* L. on growth and metabolism of pea seedlings. *Scientia Agriculturae* **12**:171–176 DOI [10.15192/PSCP.SA.2015.12.3.171176](https://doi.org/10.15192/PSCP.SA.2015.12.3.171176).
- Seufert V, Mehrabi Z, Gabriel D, Benton TG. 2019.** Current and potential contributions of organic agriculture to diversification of the food production system. In: *Agroecosystem Diversity*. Amsterdam: Elsevier, 435–452.
- Shapiguzov A, Vainonen JP, Wrzaczek M, Kangasjärvi J. 2012.** ROS-talk – how the apoplast, the chloroplast, and the nucleus get the message through. *Frontiers in Plant Science* **3**:292 DOI [10.3389/fpls.2012.00292](https://doi.org/10.3389/fpls.2012.00292).
- Shaukat SS, Munir N, Siddiqui IA. 2003.** Allelopathic responses of *Conyza canadensis* (L.) Cronquist: a cosmopolitan weed. *Asian Journal of Plant Sciences* **2**:1034–1039 DOI [10.3923/ajps.2003.1034.1039](https://doi.org/10.3923/ajps.2003.1034.1039).
- Singh NB, Pandey BN, Singh A. 2009.** Allelopathic effects of *Cyperus rotundus* extract in vitro and ex vitro on banana. *Acta Physiologiae Plantarum* **31**(3):633–638 DOI [10.1007/s11738-009-0274-7](https://doi.org/10.1007/s11738-009-0274-7).
- Singh A, Singh D, Singh N. 2009.** Allelochemical stress produced by aqueous leachate of *Nicotiana plumbaginifolia* Viv. *Plant Growth Regulation* **58**:163–171 DOI [10.1007/s10725-009-9364-1](https://doi.org/10.1007/s10725-009-9364-1).
- Singleton VL, Orthofer R, Lamuela-Raventós RM. 1999.** [14] Analysis of total phenols and other oxidation substrates and antioxidants by means of folin-ciocalteu reagent. *Methods in Enzymology* **299**:152–178 DOI [10.1016/S0076-6879\(99\)99017-1](https://doi.org/10.1016/S0076-6879(99)99017-1).
- Sivakumar P, Sharmila P, Jain V, Saradhi PP. 2002.** Sugars have potential to curtail oxygenase activity of Rubisco. *Biochemical and Biophysical Research Communications* **298**:247–250 DOI [10.1016/S0006-291X\(02\)02437-3](https://doi.org/10.1016/S0006-291X(02)02437-3).
- Sofy AR, Sofy MR, Hmed AA, Dawoud RA, Alnaggar AE-AM, Soliman AM, El-DougDoug NK. 2021a.** Ameliorating the adverse effects of tomato mosaic tobamovirus infecting tomato plants in Egypt by boosting immunity in tomato plants using zinc oxide nanoparticles. *Molecules* **26**:1337 DOI [10.3390/molecules26051337](https://doi.org/10.3390/molecules26051337).
- Sofy MR, Ahmed GM, Abd El-Aleem MA, Ehab ER, Heba IM, Mohamed EE, Sofy AR. 2022.** A polishing the harmful effects of Broad Bean Mottle Virus infecting broad bean plants by enhancing the immunity using different potassium concentrations. *Notulae Botanicae Horti Agrobotanici Cluj-Napoca* **50**(1):12654 DOI [10.15835/nbha50112654](https://doi.org/10.15835/nbha50112654).
- Sytykiewicz H. 2011.** Expression patterns of glutathione transferase gene (GstI) in maize seedlings under juglone-induced oxidative stress. *International Journal of Molecular Sciences* **12**:7982–7995 DOI [10.3390/ijms12117982](https://doi.org/10.3390/ijms12117982).
- Togawa T, Dunn WA, Emmons AC, Nagao J, Willis JH. 2008.** Developmental expression patterns of cuticular protein genes with the R&R Consensus from *Anopheles gambiae*. *Insect Biochemistry and Molecular Biology* **38**:508–519 DOI [10.1016/j.ibmb.2007.12.008](https://doi.org/10.1016/j.ibmb.2007.12.008).
- Tomar NS, Agarwal R. 2013.** Influence of treatment of *Jatropha curcas* L. leachates and potassium on growth and phytochemical constituents of wheat (*Triticum aestivum* L.). *American Journal of Plant Sciences* **4**:1134–1150 DOI [10.4236/ajps.2013.45140](https://doi.org/10.4236/ajps.2013.45140).

- Tomar NS, Sharma M, Agarwal R. 2015.** Phytochemical analysis of *Jatropha curcas* L. during different seasons and developmental stages and seedling growth of wheat (*Triticum aestivum* L) as affected by extracts/leachates of *Jatropha curcas* L. *Physiology and Molecular Biology of Plants* **21**:83–92 DOI [10.1007/s12298-014-0272-0](https://doi.org/10.1007/s12298-014-0272-0).
- Zhang T-T, Zheng C-Y, Hu W, Xu W-W, Wang H-F. 2010.** The allelopathy and allelopathic mechanism of phenolic acids on toxic *Microcystis aeruginosa*. *Journal of Applied Phycology* **22**(1):71–77 DOI [10.1007/s10811-009-9429-6](https://doi.org/10.1007/s10811-009-9429-6).
- Zhishen J, Mengcheng T, Jianming W. 1999.** The determination of flavonoid contents in mulberry and their scavenging effects on superoxide radicals. *Food Chemistry* **64**:555–559 DOI [10.1016/S0308-8146\(98\)00102-2](https://doi.org/10.1016/S0308-8146(98)00102-2).