

Hide and seek shark teeth in Random Forests: Machine learning applied to *Scyliorhinus canicula* populations (#67386)

1

Second revision

Guidance from your Editor

Please submit by **8 May 2022** for the benefit of the authors .



Structure and Criteria

Please read the 'Structure and Criteria' page for general guidance.



Custom checks

Make sure you include the custom checks shown below, in your review.



Raw data check

Review the raw data.



Image check

Check that figures and images have not been inappropriately manipulated.

Privacy reminder: If uploading an annotated PDF, remove identifiable information to remain anonymous.

Files

Download and review all files from the [materials page](#).

- 1 Tracked changes manuscript(s)
- 1 Rebuttal letter(s)
- 6 Figure file(s)
- 3 Latex file(s)
- 2 Other file(s)

! Custom checks

Vertebrate animal usage checks

- ! Have you checked the authors [ethical approval statement](#)?
- ! Were the experiments necessary and ethical?
- ! Have you checked our [animal research policies](#)?



Structure and Criteria

Structure your review

The review form is divided into 5 sections. Please consider these when composing your review:

1. **BASIC REPORTING**
2. **EXPERIMENTAL DESIGN**
3. **VALIDITY OF THE FINDINGS**
4. General comments
5. Confidential notes to the editor

 You can also annotate this PDF and upload it as part of your review

When ready [submit online](#).

Editorial Criteria

Use these criteria points to structure your review. The full detailed editorial criteria is on your [guidance page](#).

BASIC REPORTING

-  Clear, unambiguous, professional English language used throughout.
-  Intro & background to show context. Literature well referenced & relevant.
-  Structure conforms to [PeerJ standards](#), discipline norm, or improved for clarity.
-  Figures are relevant, high quality, well labelled & described.
-  Raw data supplied (see [PeerJ policy](#)).

EXPERIMENTAL DESIGN

-  Original primary research within [Scope of the journal](#).
-  Research question well defined, relevant & meaningful. It is stated how the research fills an identified knowledge gap.
-  Rigorous investigation performed to a high technical & ethical standard.
-  Methods described with sufficient detail & information to replicate.

VALIDITY OF THE FINDINGS

-  Impact and novelty not assessed. *Meaningful* replication encouraged where rationale & benefit to literature is clearly stated.
-  All underlying data have been provided; they are robust, statistically sound, & controlled.
-  Conclusions are well stated, linked to original research question & limited to supporting results.



The best reviewers use these techniques

Tip

Example

Support criticisms with evidence from the text or from other sources

Smith et al (J of Methodology, 2005, V3, pp 123) have shown that the analysis you use in Lines 241-250 is not the most appropriate for this situation. Please explain why you used this method.

Give specific suggestions on how to improve the manuscript

Your introduction needs more detail. I suggest that you improve the description at lines 57- 86 to provide more justification for your study (specifically, you should expand upon the knowledge gap being filled).

Comment on language and grammar issues

The English language should be improved to ensure that an international audience can clearly understand your text. Some examples where the language could be improved include lines 23, 77, 121, 128 – the current phrasing makes comprehension difficult. I suggest you have a colleague who is proficient in English and familiar with the subject matter review your manuscript, or contact a professional editing service.

Organize by importance of the issues, and number your points

1. Your most important issue
2. The next most important item
3. ...
4. The least important points

Please provide constructive criticism, and avoid personal opinions

I thank you for providing the raw data, however your supplemental files need more descriptive metadata identifiers to be useful to future readers. Although your results are compelling, the data analysis should be improved in the following ways: AA, BB, CC

Comment on strengths (as well as weaknesses) of the manuscript

I commend the authors for their extensive data set, compiled over many years of detailed fieldwork. In addition, the manuscript is clearly written in professional, unambiguous language. If there is a weakness, it is in the statistical analysis (as I have noted above) which should be improved upon before Acceptance.

Hide and seek shark teeth in Random Forests: Machine learning applied to *Scyliorhinus canicula* populations

Fidji Berio ^{Corresp., Equal first author, 1, 2}, **Yann Bayle** ^{Equal first author, 3}, **Daniel Baum** ⁴, **Nicolas Goudemand** ¹, **Mélanie Debais-Thibaud** ²

¹ Institut de Génomique Fonctionnelle de Lyon, Univ. Lyon, École Normale Supérieure de Lyon, Lyon, France

² Institut des Sciences de l'Évolution de Montpellier, CNRS, IRD, EPHE, Univ. Montpellier, Montpellier, France

³ Université de Bordeaux, Bordeaux INP, CNRS, LaBRI, UMR5800, Talence, France

⁴ Department of Visual and Data-Centric Computing, Zuse Institute Berlin, Berlin, Germany

Corresponding Author: Fidji Berio
Email address: fidji.berio@gmail.com

Shark populations that are distributed alongside a latitudinal gradient often display body size differences at sexual maturity and vicariance patterns related to their number of tooth files. Previous works have demonstrated that *Scyliorhinus canicula* populations differ between the northeastern Atlantic Ocean and the Mediterranean Sea based on biological features and genetic analysis. In this study, we sample more than 3,000 teeth from 56 *S. canicula* specimens caught incidentally off Roscoff and Banyuls. We investigate population differences based on tooth shape and form by using two approaches. Classification results show that the classical geometric morphometric framework is outperformed by an original Random Forests-based framework. Visually, both *S. canicula* populations share similar ontogenetic trends and timing of gynandric heterodonty emergence but the Atlantic population has bigger, blunter teeth, and less numerous accessory cusps than the Mediterranean population. According to the models, the populations are best differentiated based on their lateral tooth edges, which bear accessory cusps, and the tooth centroid sizes significantly improve classification performances. The differences observed are discussed in light of dietary and behavioural habits of the populations considered. The method proposed in this study could be further adapted to complement DNA analyses to identify shark species or populations based on tooth morphologies. This process would be of particular interest for fisheries management and identification of shark fossils.

1 Hide and seek shark teeth in Random 2 Forests: Machine learning applied to 3 *Scyliorhinus canicula* populations

4 Fidji Berio^{1,2 *}, Yann Bayle^{3 *}, Daniel Baum⁴, Nicolas Goudemand², and
5 Mélanie Debais-Thibaud¹

6 ¹ISEM, CNRS, IRD, EPHE, Univ. Montpellier, Montpellier, Place Eugène Bataillon, 34090
7 Montpellier, France

8 ²Institut de Génomique Fonctionnelle de Lyon, UMR 5242, Univ. Lyon, École Normale
9 Supérieure de Lyon, Centre National de la Recherche Scientifique, 46 Allée d'Italie,
10 F-69364 Lyon Cedex 07, France

11 ³Université de Bordeaux, Bordeaux INP, CNRS, LaBRI, UMR5800, F-33400 Talence,
12 France

13 ⁴Zuse Institute Berlin, Department of Visual and Data-Centric Computing, Takustr. 7,
14 14195 Berlin, Germany

15 *These authors contributed equally to this work.

16 Corresponding author:

17 Fidji Berio^{1,2}

18 Email address: fidji.berio@gmail.com

19 ABSTRACT

20 Shark populations that are distributed alongside a latitudinal gradient often display
21 body size differences at sexual maturity and vicariance patterns related to their number
22 of tooth files. Previous works have demonstrated that *Scyliorhinus canicula* populations
23 differ between the northeastern Atlantic Ocean and the Mediterranean Sea based on
24 biological features and genetic analysis. In this study, we sample more than 3,000
25 teeth from 56 *S. canicula* specimens caught incidentally off Roscoff and Banyuls.
26 We investigate population differences based on tooth shape and form by using two
27 approaches. Classification results show that the classical geometric morphometric
28 framework is outperformed by an original Random Forests-based framework. Visually,
29 both *S. canicula* populations share similar ontogenetic trends and timing of gynandric
30 heterodonty emergence but the Atlantic population has bigger, blunter teeth, and
31 less numerous accessory cusps than the Mediterranean population. According to
32 the models, the populations are best differentiated based on their lateral tooth edges,
33 which bear accessory cusps, and the tooth centroid sizes significantly improve classifi-
34 cation performances. The differences observed are discussed in light of dietary and
35 behavioural habits of the populations considered. The method proposed in this study
36 could be further adapted to complement DNA analyses to identify shark species or
37 populations based on tooth morphologies. This process would be of particular interest
38 for fisheries management and identification of shark fossils.

INTRODUCTION

The recognition of disjunct shark populations has opened to new questionings on marine ecosystem connectivity and consequences of gene flows on species evolution. Shark population distributions are structured by ecological habits of species (e.g., degree of habitat fidelity), reproductive strategies (e.g., use of nursery areas by females), dispersal ability (e.g., type of reproduction, migratory behaviour), and environmental barriers to gene flow (e.g., oceanic basins, geological climatic events) (Lucifora et al., 2003; Rodríguez-Cabello et al., 2004; Portnoy et al., 2010; Veríssimo et al., 2010; Karl et al., 2012; Kousteni et al., 2015). Populations of a given shark species sometimes display vicariance patterns of number of vertebrae (Gruber and Compagno, 1981) and tooth files (McEachran and Martin, 1977; Templeman, 1984; Lucifora et al., 2003). In some species, the total length of a specimen at sexual maturity also differs between populations, as in bonnethead sharks *Sphyrna tiburo* (Parsons, 1993; Lombardi-Carlson et al., 2003), shortspine spurdogs *Squalus mitsukurii* (Taniuchi and Tachikawa, 1997), starspotted smooth-hounds *Mustelus manazo* (Yamaguchi et al., 1998, 2000), and cloudy catsharks *Scyliorhinus torazame* (Horie and Tanaka, 2002). Such differences in specimen size at sexual maturity that are reported among shark populations have been hypothesized to result from genetic or environmental constraints, or both, but the combination between these factors is difficult to evaluate (Lombardi-Carlson et al., 2003).

When observed, these size differences at sexual maturity are often distributed alongside the latitudinal gradient and shark populations inhabiting higher and colder latitudes are significantly bigger (Leloup and Olivereau, 1951; Parsons, 1993; Taniuchi and Tachikawa, 1997; Yamaguchi et al., 2000; Horie and Tanaka, 2002; Lombardi-Carlson et al., 2003; Capapé et al., 2014; Kousteni and Megalofonou, 2019). The warmer temperatures at lower latitudes (Blackburn et al., 2008) are thought to limit the energy allowed for somatic growth by inducing increased energy expenditure (Parsons, 1993; Carlson and Parsons, 1997) and also trigger early sexual maturity (Parsons, 1993; Yamaguchi et al., 2000; Goren, 2014).

Scyliorhinus canicula is an abundant benthic species in the eastern Atlantic Ocean (from Senegal to the UK) and Mediterranean Sea that inhabits depths from a few meters to 500 m (most commonly found around 110 m) (Ellis and Shackley, 1997; Compagno, 1984; Rodríguez-Cabello et al., 2004). Support for population differentiation was raised by morphometric and genetic diversity analyses within the distribution range of this species (Barbieri et al., 2014; Capapé et al., 2014; Kousteni et al., 2015). Population genetic structures have been attributed to the philopatric behaviour of *S. canicula* and to its low dispersal ability across basins (Leloup and Olivereau, 1951; Mellinger et al., 1984; Rodríguez-Cabello et al., 2004; Barbieri et al., 2014; Capapé et al., 2014; Kousteni et al., 2015; Anastasopoulou et al., 2016; Kousteni and Megalofonou, 2019).

Despite genetic structuration, Mediterranean *S. canicula* populations exhibit very slight body size differences at sexual maturity (Barbieri et al., 2014; Capapé et al., 2014; Kousteni et al., 2015; Kousteni and Megalofonou, 2019). Conversely, populations differ greatly in body size at sexual maturity between the North Atlantic Ocean (Bristol Channel, UK) and the Mediterranean Sea (Leloup and Olivereau, 1951; Mellinger et al., 1984; Rodríguez-Cabello et al., 1998a; Kousteni et al., 2010; Capapé et al., 2014; Kousteni and Megalofonou, 2019). Furthermore, there is currently no recognition of

unequivocal morphological differences between *S. canicula* populations, or any other shark populations, other than body length at sexual maturity which differs along vast latitudinal gradient and separated marine environments. This is an important gap in our ability to follow population dynamics, notably for sharks that have long generation time and struggle withstanding or recovering from accidental catches and fishing (Smith et al., 1998; Cortés, 2000; Dulvy et al., 2014, 2021). Commercial frauds are regularly checked, but the identification of species mainly relies on a framework based on DNA barcoding (Barbuto et al., 2010; Melo Palmeira et al., 2013; Almerón-Souza et al., 2018), whose cost, time, and dependence to a wet lab are limitations to the current inspection process. Therefore, we investigated the possibility to identify differences in tooth morphology between catshark populations, considering that shark tooth shape undergoes morphological changes with ontogeny, sexual maturation and diet (Powter et al., 2010; Moyer and Bemis, 2016; Tomita et al., 2017; Cullen and Marshall, 2019; Berio et al., 2020) and that life history traits differ between Atlantic and Mediterranean *S. canicula* populations (Leloup and Olivereau, 1951; Ivory et al., 2004; Bendiab et al., 2012; Capapé et al., 2014).

This work tests a feature-based framework to reliably discriminate shark populations based on their tooth morphological characteristics. The assessment of shark tooth form differences is successfully achieved with geometric morphometrics (Whitenack and Gottfried, 2010; Soda et al., 2017; Cullen and Marshall, 2019; Berio et al., 2020). Linear Discriminant Analysis (LDA) is a frequently used machine learning algorithm to discriminate between groups based on geometric morphometric data (Mitteroecker and Bookstein, 2011; MacLeod, 2017; Doyle et al., 2018). The performances of LDA depend on a much higher number of items (e.g., teeth) as compared to the number of features (e.g., aligned coordinates). These conditions are difficult to meet in biological datasets, which often implies a feature reduction step through a Principal Component Analysis (PCA) (Fort and Lambert-Lacroix, 2005; Pechenizkiy et al., 2006; Sheets et al., 2006; Archer and Kimes, 2008). Moreover, subtle discriminant patterns can also be missed when reducing data dimensionality to the first PCA axes prior to a classification task (MacLeod, 2018). Traditional and geometric morphometric studies use several machine learning algorithms for classification, but often focus on the classification performances –rather than on interpretable features (Santos et al., 2014; Navega et al., 2015; Doyle et al., 2018; Courtenay et al., 2019). As opposed to LDA, Random Forests (Breiman, 2001) usually outperform other machine learning algorithms for supervised classification (Caruana and Niculescu-Mizil, 2006; Domínguez-Rodrigo and Baquedano, 2018; Doyle et al., 2018; Püschel et al., 2018; Courtenay et al., 2019). Furthermore, Random Forests provide intuitive and interpretable importance measures of feature contribution to classification, is highly resistant to overfitting, and do not require feature reduction prior to the analysis to achieve good performances (Díaz-Uriarte and Alvarez de Andrés, 2006; Archer and Kimes, 2008; Doyle et al., 2018).

This work is a proof of concept that shark populations can be discriminated based on tooth morphology. We take advantage of the geometric morphometric and machine learning methods to test for differences between *S. canicula* teeth from northeast Atlantic and Mediterranean populations that exhibit clear body size differences at sexual maturity (Capapé et al., 2014; Kousteni and Megalofonou, 2019). By using Random Forests to classify the teeth of *S. canicula* population samples of different geographic origin, we

aim not only to challenge the traditional geometric morphometrics workflow, but also to provide indications of discriminant tooth form features between *S. canicula* populations. Our work aims to provide an alternative tool for discrimination of shark species and populations based on dental features and to set the basis for future research.

MATERIALS AND METHODS

Sampling

S. canicula populations were sampled in 2018 and 2019 in two localities separated by over 2,000 nautical miles: off Roscoff (France, northeast Atlantic Ocean) and Banyuls-sur-mer (France, western Mediterranean Sea). The Atlantic specimens were sampled at the Roscoff fishmarket and were provided by the Station Biologique de Roscoff and the University of Montpellier. The Mediterranean specimens were incidentally caught during experimental surveys of the Observatoire Océanologique de Banyuls-sur-Mer or were formerly euthanized for independent experiments led by the Observatoire Océanologique de Banyuls-sur-Mer. Biological samples were preserved in 70% ethanol. Specimens were selected based on their total body length (TL, from the tip of the snout to the tip of the tail) to represent three ontogenetic stages within each population, hereafter referred to as “hatchling”, “juvenile”, and “mature”. The TL of mature Mediterranean and Atlantic specimens was selected according to Ivory et al. (2004) (>53.5 cm TL for males, >57 cm TL for females) and Leloup and Olivereau (1951) (≥40 cm TL for both sexes). Hatchling specimens were sampled just after hatching while juveniles were selected as being approximately half the size of the defined mature specimens, for each population. The Mediterranean sample is composed of six hatchling (3 females, 3 males; 9.1 ± 0.3 cm TL), 10 juvenile (5 females, 5 males; 26.8 ± 4.1 cm TL), and nine mature (5 females, 4 males, 42.9 ± 2.7 cm TL) specimens. The Atlantic sample includes 11 hatchling (6 females, 5 males, 11.9 ± 1.4 cm TL), 10 juvenile (5 females, 5 males, 34.4 ± 1.5 cm TL), and 10 mature (5 females, 5 males, 58.9 ± 2.7 cm TL) specimens. The maturity assessment of specimens was not conducted because only the heads were collected for the juvenile and sexually mature specimens after body length was recorded in marine stations. Attempts were made to equally sample specimens from both sexes (F, female; M, male) within each category. In addition, we estimated the approximate age of the specimens using the von Bertalanffy growth parameters for the Atlantic and Mediterranean populations provided by Ivory et al. (2004) and Bendiab et al. (2012) respectively because these studies provide sex-specific growth curves. Ivory et al. (2004) estimated von Bertalanffy parameters based on vertebral growth increment counts, whereas Bendiab et al. (2012) estimated these parameters by analyzing length-frequency distributions.

We confirmed the consistency of different growth parameters (K , coefficient of growth; L_{∞} , asymptotic length; L_t , length at age t ; t_0 , theoretical age at which the size is zero) between the Atlantic and Mediterranean populations using supplementary literature data (Županović, 1961; Rodríguez-Cabello et al., 1998b; Jennings et al., 1999; Henderson and Casey, 2001; Ivory et al., 2004; Rodríguez-Cabello et al., 2005; Bendiab et al., 2012; Ozcan and Başusta, 2018) (Figure 1) and computed von Bertalanffy growth curves with the following growth equation: $L_t = L_{\infty}[1 - e^{-K(t-t_0)}]$.

Based on the von Bertalanffy growth curves, we estimated the age of hatchlings to

be 0 years and 0.2 years in the Mediterranean and Atlantic populations, respectively. The Mediterranean juveniles were estimated to be 0.7 years old, while the Atlantic juveniles and Mediterranean matures were 3.5 years old, and the Atlantic matures were 9.6 years old. However, the parameters for the Atlantic and Mediterranean specimens were estimated with different methods, the results of which depend either on calcification degree (Natanson et al., 2018) and periodicity, or on sample size and reproducibility of the results (Schwamborn et al., 2019). The estimated ages of the specimens sampled in this study are therefore not strictly comparable and should be interpreted in light of the method limitations, but are useful indicators of differences between the populations and ontogenetic stages considered.

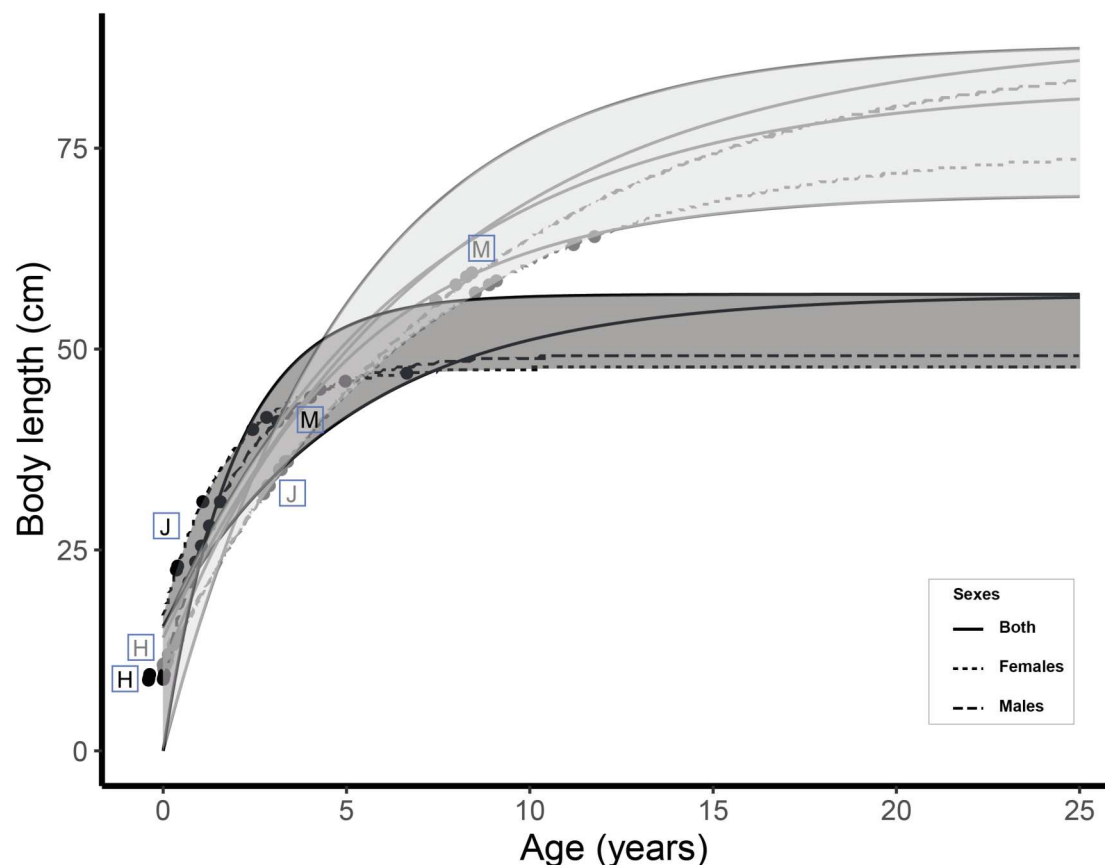


Figure 1. Growth curves of *Scyliorhinus canicula* from northeast Atlantic Ocean and Mediterranean Sea. Von Bertalanffy growth parameters retrieved from Županović (1961); Rodríguez-Cabello et al. (1998b); Jennings et al. (1999); Henderson and Casey (2001); Ivory et al. (2004); Rodríguez-Cabello et al. (2005); Bendiab et al. (2012); Ozcan and Başusta (2018). Dots represent the specimens used in the current study. Black, teeth from Mediterranean specimens; grey, teeth from Atlantic specimens. H, hatchling; J, juvenile; M, mature.

Data acquisition

The jaws were microCT scanned using a Phoenix Nanotom S or an EasyTom 150 with voxel sizes ranging from 6.0 μm to 30.8 μm and 3D volumes were reconstructed using

187 the phoenix datos x2 (v2.3.0) reconstruction or xact softwares (v.11025). The surfaces
 188 are available in Berio et al. (2022). 3D surfaces of right palatoquadrate (upper) and
 189 Meckelian (lower) teeth were generated with the AmiraZIBEdition software (v6.5)
 190 (Stalling et al., 2005), extracted using the ContourTreeSegmentation module, and were
 191 labelled according to their mesio-distal position along the jaw ($N_{Atlantic} = 1,757$ and
 192 $N_{Mediterranean} = 1,542$, Figure 2A). Seven landmarks (respectively numbered 1, 13, 15,
 193 17, 19, 21, and 33 in Figure 2, Supp. Mat. 1, and Supp. Mat. 2) and 31 semilandmarks
 194 were placed on each 3D tooth surface. The semilandmarks were made denser on the
 195 lateral sides of the teeth, where modifications of accessory cusp number are reported
 196 during *S. canicula* ontogeny (Debiais-Thibaud et al., 2015) (Figure 2B and see Berio
 197 et al. (2020) for similar trend in *S. stellaris*).

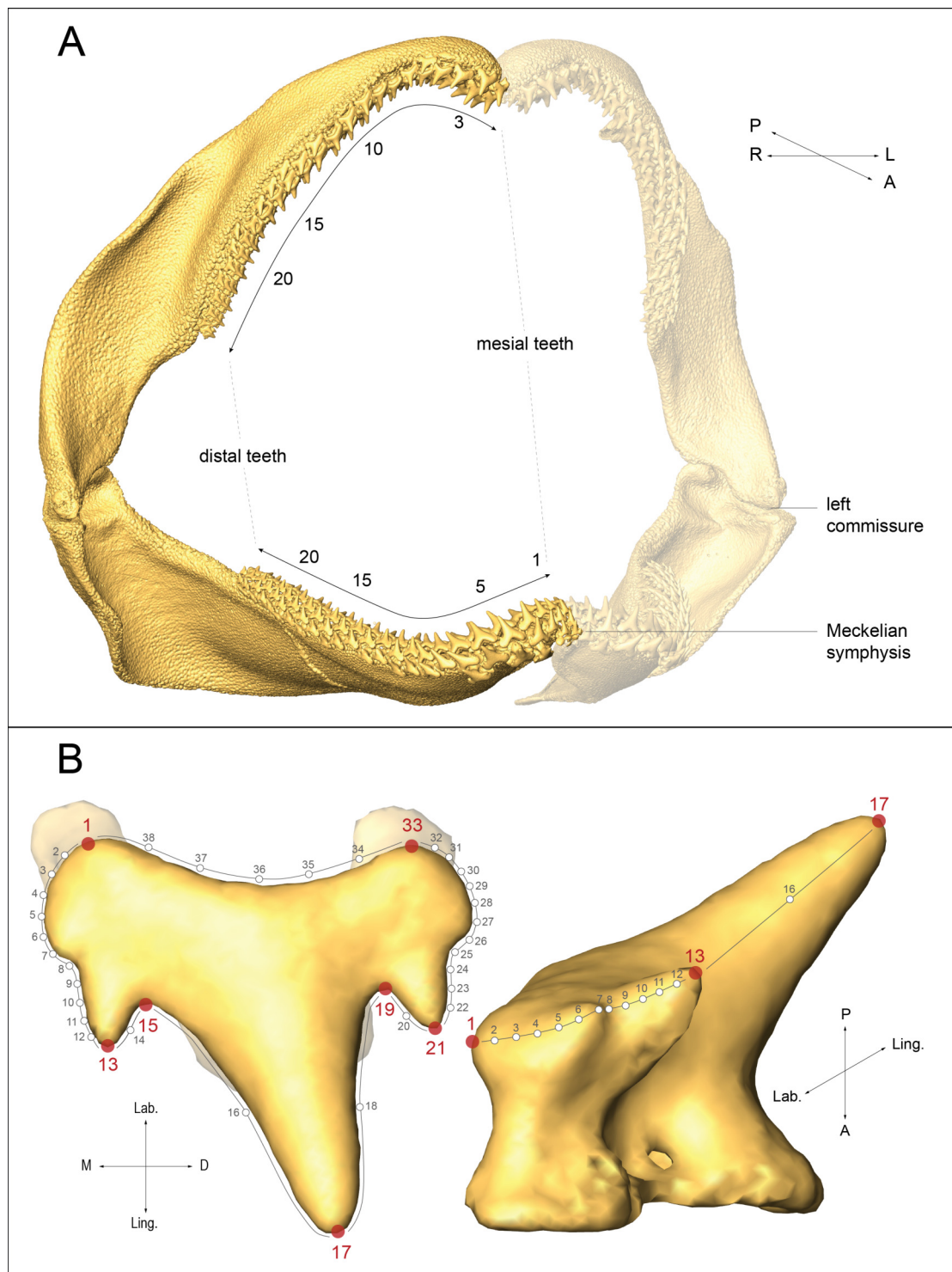


Figure 2. Labelling and landmarking *Scyliorhinus canicula* teeth. A) Mesio-distal numbering of right palatoquadrate and Meckelian teeth in a mature male from the Atlantic population (59 cm TL); B) Right Meckelian lateral tooth of the specimen in A with numbering of landmarks (red dots) and semilandmarks (small circles on grey lines). Dorsal (left) and mesial (right) views. A, anterior; D, distal; L, left; Lab., labial; Ling., lingual; P, posterior; R, right.

Data analyses

A Generalised Procrustes Analysis was performed on 3D coordinates, where semilandmarks were allowed to slide based on minimised bending energy (Bookstein, 1991). The structure of the dataset was first investigated through a PCA and centroid size patterns, and tooth centroid sizes were used as a proxy for tooth size. The centroid size is computed as the square root of the sum of squared distances between all landmarks and semilandmarks and the centroid of a form (Webster and Sheets, 2010; Klingenberg, 2016). The slopes of allometric patterns between populations of same sex was assessed with ANCOVAs and the interaction between shape data and size was tested using linear regression models. The shape data used to test for allometry were PC axes, whose number was determined following the procedure described by Evin et al. (2013). The relationship between shape data and size was tested using centroid size values of teeth and the specimens TL. Allometric vectors were computed with linear models and pairwise comparisons allowed to compare lengths and angles between the vectors of populations of same sex.

Supervised classification of teeth from Atlantic and Mediterranean populations was first achieved with LDA on the same PC axes used for testing allometry, without and with tooth centroid sizes [respectively tooth shapes and forms (Klingenberg, 2016)]. The results from the LDA model were compared with those obtained with Random Forests on tooth shape (Procrustes coordinates) and form (Procrustes coordinates + tooth centroid sizes) (Breiman, 2001). A five-fold cross-validation was performed in both methods (train set = 80% and test set = 20%).

In Random Forest models, the number of trees was set to 500 and the minimal node size was set to 1. The models were allowed to sample among 114 (shape) to 115 (form) variables to split each internal node. A good fit of the models was determined through the comparison between the accuracies reached on the train and test sets, and for both models (on shape and form), the difference between these metric values was 0.2%. The feature importance for the classification was assessed with a measure of Mean Decrease Accuracy (MDA) and features with importance values $\geq 1.0\%$ were commented (Breiman, 2001).

The classification performances reached by the models were compared based on three metrics: the accuracy, precision, and recall. The accuracy is an average of precision values for the Atlantic and Mediterranean populations. The precision is the number of items correctly assigned to a group (e.g., Atlantic), as compared to all items (Atlantic and Mediterranean) classified in this same group (Atlantic). The recall is interpreted as the number of specimens correctly assigned to a group (e.g., Atlantic), as compared to the total number of specimens actually belonging to this class (Atlantic). Additionally, a detailed confusion matrix is proposed to identify which teeth of males, females and hatchling, juvenile, and mature specimens were classified the best.

The classification results on shape and form were compared to evaluate the contribution of the centroid size to population discrimination. The overall results of LDA and Random Forest models on tooth shape and form were further compared.

The geometric morphometric analyses were performed using the geomorph package (v3.1.1) and supervised classification was computed using the MASS package (v7.3.53) for LDA and the randomForest package (v4.6.14) for Random Forests with R software (v4.0.3) (Liaw and Wiener, 2002; Venables and Ripley, 2002; Adams et al., 2019).

RESULTS

Visual description

The tooth diversity presented in Figure 3 is a selection of examples among the whole variation observed in the dataset. It provides a broad overview of the main morphological differences and associated factors in *S. canicula* tooth forms. Differences in mesio-distal location of a tooth are usually linked with an addition of accessory cusps (Figure 3A-B) and an increase of the main cusp bending. Gynandric heterodonty at sexually mature stage is characterised by more accessory cusps in females as compared to males (Figure 3C-D). Along the ontogeny, new teeth undergo size increase, as well as the addition of accessory cusps, except after sexual maturation (Figure 3E-F), when males experience a decrease in number of accessory cusps, as opposed to females. The interpopulational tooth form differences involve less accessory cusps and blunter teeth in the Atlantic population than in the Mediterranean population (Figure 3G-H).

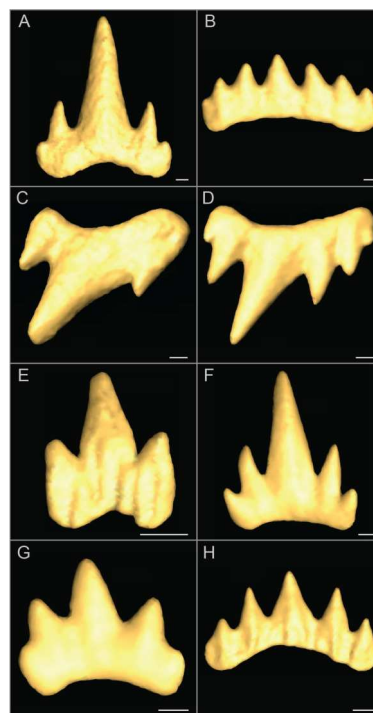


Figure 3. Examples of tooth morphological differences in *Scyliorhinus canicula*. (A-B) Form differences between tooth files: Meckelian teeth from file 5 (A) and 20 (B) of an Atlantic mature female; (C-D) Form differences between sexes: Palatoquadrate teeth from file 15 of Mediterranean mature male (C) and female (D); (E-F) Form differences between ontogenetic stages: Meckelian teeth from file 5 of Atlantic hatchling (E) and juvenile (F) males; (G-H) Form differences between populations: Meckelian teeth from file 15 of Atlantic (G) and Mediterranean (H) juvenile males. Scale bars are 100 μ m.

We report significantly more Meckelian tooth files in Atlantic juvenile females (23 ± 2) as compared to the Mediterranean ones (20 ± 1) (permutation t test, $t=3.29$, $p\text{-val}=0.04$), all other interpopulation tests being not statistically significant (permutation

t tests, $p\text{-vals} > 0.11$).

Geometric morphometrics

The first two principal components gather 61% of the total variation in the dataset. The Atlantic and Mediterranean populations are not visually discriminated in the morphospace (Figure 4). Extreme shapes for PC1 and PC2 suggest that most variation of the dataset relates to the number of accessory cusps, to their relative size compared to the main cusp, and to the mesio-distal bending of the main cusp (Figure 4). In addition, shape variation along PC1 might also involve the relative width of the crown base, as compared to the main cusp height (Figure 4).

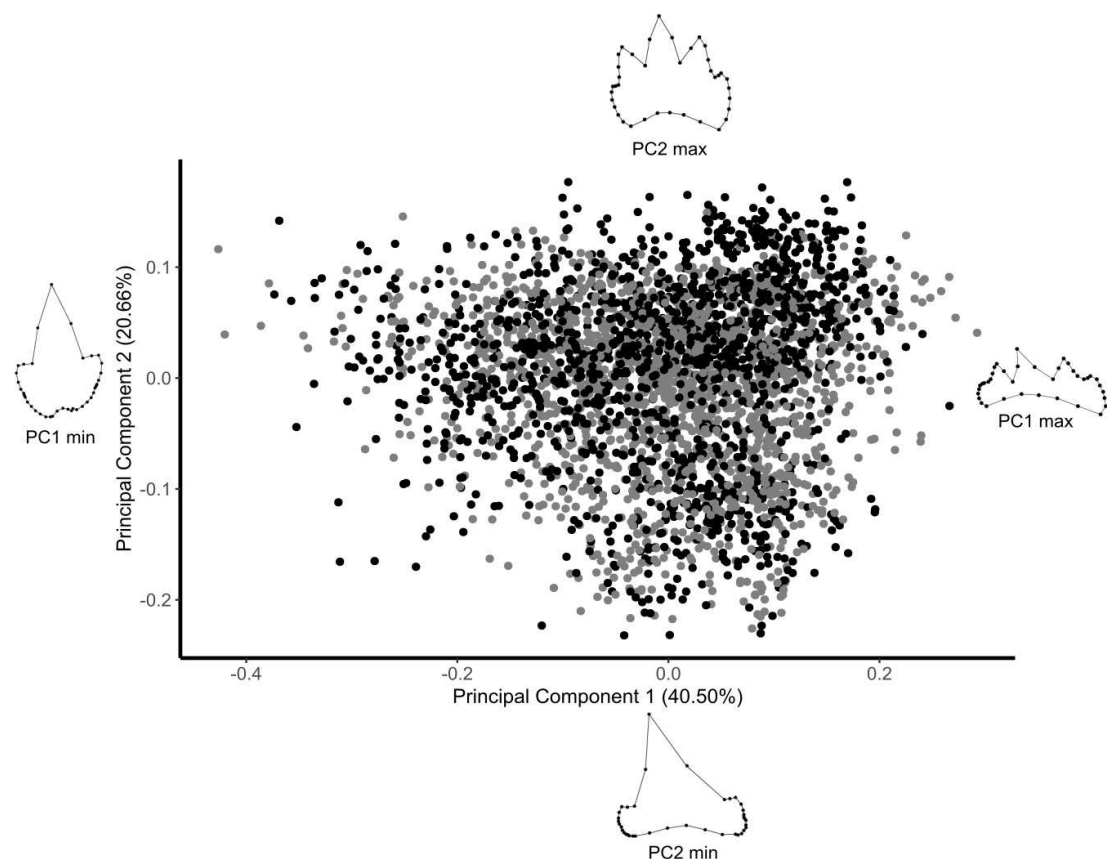


Figure 4. PCA with all *Scyliorhinus canicula* teeth contained in the dataset. Black, teeth from Mediterranean specimens; grey, teeth from Atlantic specimens. Wireframes are the extreme shapes for PC1 and PC2.

The tooth centroid size patterns in the *S. canicula* dataset are exemplified for male palatoquadrate teeth (Figure 5), but similar trends are observed for both jaws and sexes. In hatchlings, the tooth centroid size patterns display no variation along the jaw nor visual differences between populations (Figure 5). The patterns overlap between juveniles of both populations, while tooth centroid sizes of mature Atlantic males are 35% bigger than those of mature Mediterranean males (Figure 5). In mature specimens of both populations, the tooth centroid sizes are overall higher for the Atlantic population, whose body length is also higher as compared to Mediterranean specimens (Figure 1

and Figure 5). However, no such trend is observed for juveniles, whose differences in body length are not reflected by their centroid size patterns (Figure 1 and Figure 5).

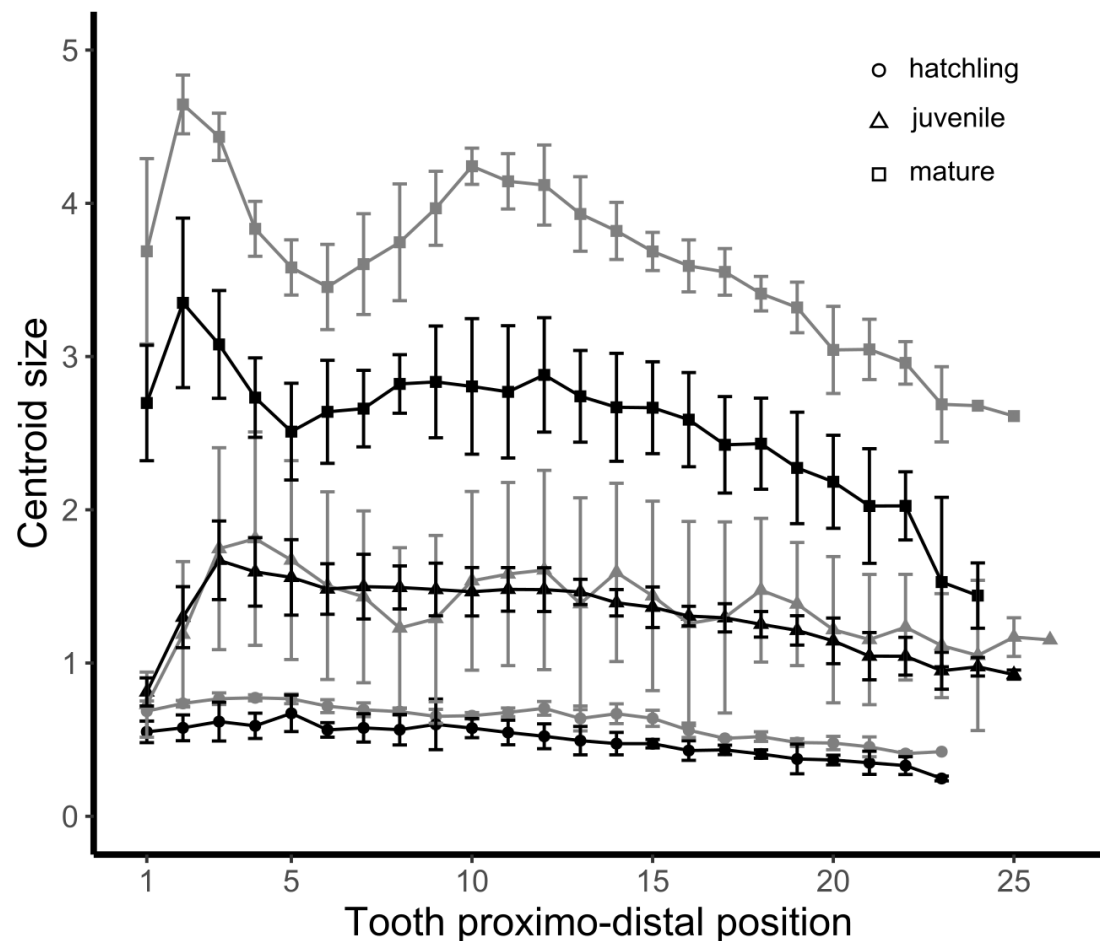


Figure 5. Tooth centroid size patterns of North Atlantic and Mediterranean populations of *Scyliorhinus canicula*: Example of male palatoquadrate teeth. Black, teeth from Mediterranean specimens; grey, teeth from Atlantic specimens. The centroid size is in mm.

The first 12 PCs (93.43% of the total variation) are selected to represent the tooth shape in the following statistical tests and are used as LDA features. The tooth centroid size and the TL of specimens significantly impact the tooth shape in all subgroups (e.g., Mediterranean x females) (One-Way MANOVAs, $p\text{-vals} < 2.20e^{-16}$), meaning for example that bigger teeth in larger specimens constrain the global shape of their teeth. The slopes of allometric patterns significantly differ between females and between males of both populations, indicating that the relationship between tooth size and shape is not equivalent between populations (Two-Way ANCOVAs, $p\text{-vals} < 2.20e^{-16}$). The strength of relationship between shape and tooth centroid size is similar between females from Atlantic and Mediterranean populations (linear regressions, adjusted R-squared respectively of 0.83 and 0.81, $p\text{-vals} < 2.20e^{-16}$), as well as between Atlantic and Mediterranean males (linear regressions, adjusted R-squared respectively of 0.86 and

0.84, $p\text{-vals} < 2.20e^{-16}$). The allometric relationship between shape and TL is also similar between Atlantic and Mediterranean populations (linear regressions, adjusted R-squared respectively of 0.73 and 0.69 in females and of 0.82 and 0.81 in males, $p\text{-vals} < 2.20e^{-16}$), which indicates that the tooth shapes are similarly modified over the ontogeny in both populations.

Supervised classification

General performances

The LDA classification reached an accuracy of $64.5\% \pm 0.7\%$ with tooth shapes and $74.6\% \pm 1.2\%$ with tooth forms. The precision is similar for both populations, whereas the recall is much higher for the Atlantic population as compared to the Mediterranean one (Figure 6). Better performances are also achieved on tooth forms as compared to tooth shapes (Figure 6).

The classification task performed by the Random Forests reaches an accuracy of $81.7\% \pm 1.7\%$ with tooth shapes and $86.9\% \pm 1.4\%$ with tooth forms, indicating a significant contribution of the centroid size information at improving the discrimination between populations. This means our protocol allows differentiating Mediterranean from Atlantic *S. canicula* tooth forms with 85.5% to 88.3% accuracy. The precision values are similar between both populations, but the recall values are better for the Atlantic population than for the Mediterranean one (Figure 6).

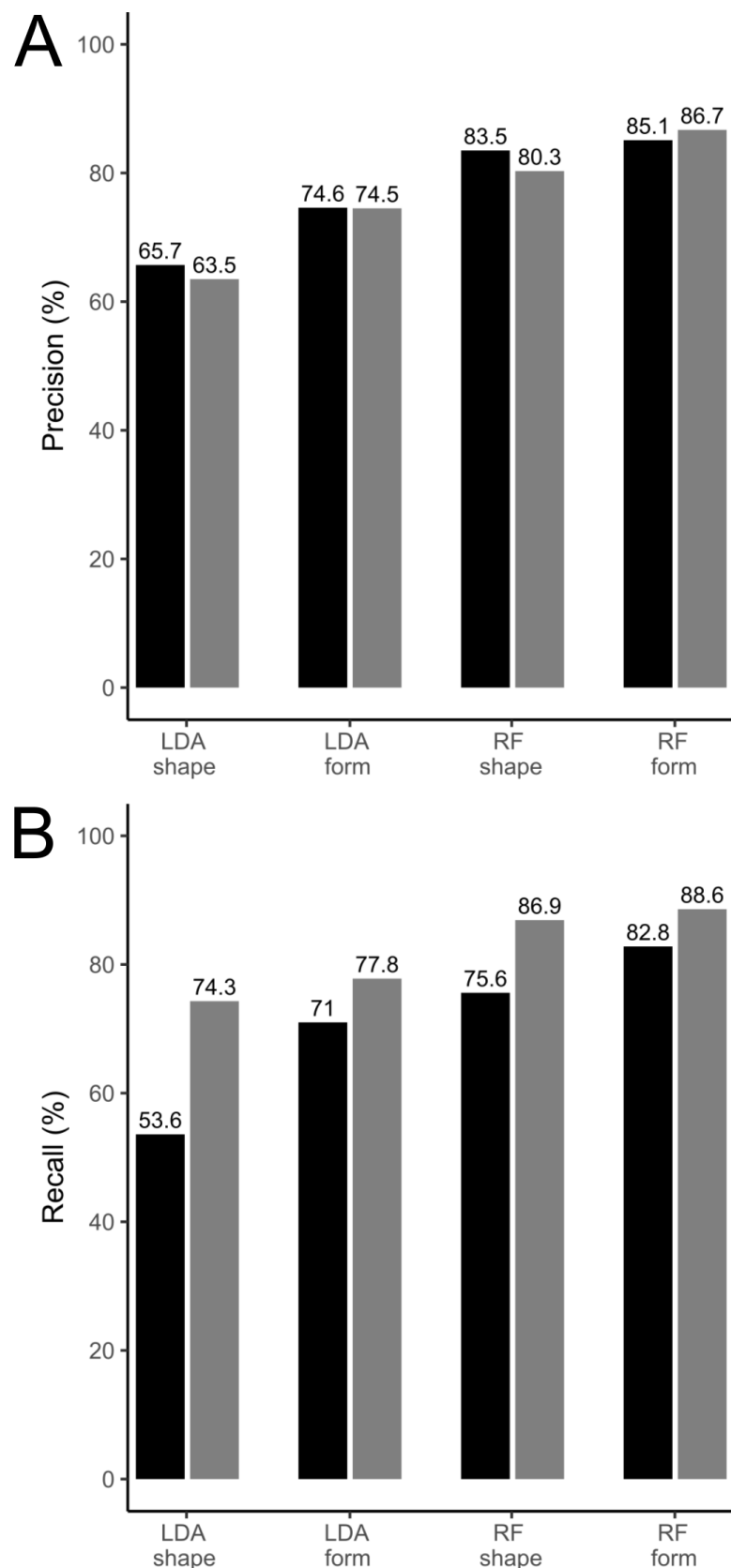


Figure 6. Classification performances of LDA and RF algorithms on *Scyliorhinus canicula* teeth from an Atlantic and a Mediterranean population. (A) Precision values; (B) Recall values. Black, teeth from Mediterranean specimens; grey, teeth from Atlantic specimens. LDA, Linear Discriminant Analysis; RF, Random Forests.

Subclass results

To get further indications of the classification performances, we detail the confusion matrix for each sex-stage subclass in the dataset (Table 1). We remind, however, that these values are still computed based on the population class (Atlantic and Mediterranean) only and that the performances for subclasses (e.g., Atlantic female hatchling) are detailed after the classification process.

Table 1. LDA and Random Forest performances of tooth shape and form classification from Atlantic and Mediterranean *Scyliorhinus canicula* populations. Atl, Atlantic; Med., Mediterranean.

	LDA				Random Forests			
	Shape		Form		Shape		Form	
	Precision	Recall	Precision	Recall	Precision	Recall	Precision	Recall
Atl. (female hatchling)	57.1%	63.8%	63.5%	68.1%	64.4%	80.6%	82.8%	80.0%
Atl. (female juvenile)	74.5%	75.0%	88.5%	69.4%	81.4%	81.4%	88.5%	83.1%
Atl. (female mature)	73.6%	61.3%	78.8%	84.0%	81.5%	84.3%	85.7%	84.6%
Atl. (male hatchling)	49.3%	59.6%	60.7%	59.6%	70.4%	79.2%	83.3%	83.3%
Atl. (male juvenile)	78.4%	79.0%	86.1%	73.4%	94.3%	97.1%	91.9%	89.5%
Atl. (male mature)	50.9%	92.2%	65.2%	94.8%	77.9%	92.3%	84.9%	100%
Med. (female hatchling)	41.9%	35.3%	52.2%	47.1%	69.6%	50.0%	66.7%	70.6%
Med. (female juvenile)	65.7%	65.1%	67.9%	87.7%	76.8%	76.8%	79.2%	85.7%
Med. (female mature)	72.8%	82.4%	86.5%	81.9%	83.1%	80.2%	84.6%	85.7%
Med. (male hatchling)	45.2%	35.2%	58.2%	59.3%	80.0%	71.4%	72.2%	72.2%
Med. (male juvenile)	71.7%	71.0%	70.3%	84.1%	95.7%	91.7%	87.7%	90.5%
Med. (male mature)	57.1%	10.5%	90.4%	49.0%	88.9%	70.2%	100%	75.8%

With LDA, the lesser precision values are achieved for hatchlings and mature males with shape data and for hatchlings only with form data (Table 1). The less complex dental morphologies of the dataset are also visually identified in these groups that display one or three tooth cusps. Recall values are low for Mediterranean hatchlings and mature males for which the recall reaches 10.5% with shape data (Table 1). This means that amongst all Mediterranean mature males only 10.5% are detected as such by the model.

The Random Forests models on shape and form data achieve better classification performances for juvenile and mature specimens than for hatchling ones (Table 1). The model with form data also reaches 100% precision for Mediterranean mature males and 100% recall for Atlantic mature males (Table 1).

In most subclasses, better performances are obtained with form data as compared with shape data (Table 1). In some cases, however, the classification of form data confuses the models, which reach identical or lesser performance values than with shape data. The tooth centroid size for example does not improve the recall of Atlantic hatchling males after a LDA (Table 1). Lesser performances with form rather than shape data are also reported with LDA performed on teeth of Atlantic juvenile males and females (recall values) and with Random Forests performed on teeth of Atlantic and Mediterranean juvenile males (precision and recall) (Table 1).

With shape data, the most important feature lies in semilandmark 11 (4.5% in x), followed by semilandmark 24 (1.5% in x and 1.4 in y) and landmarks 1, 13, and 19 (1.5% in y, y, and x respectively) (Supp. Mat. 1). Semilandmarks 12, 22, and 23 also account for more than 1.0% in accuracy (1.0% in x and 1.3% in y, 1.0% in y, and 1.1%

in y, respectively) (Supp. Mat. 1). With form data, however, the feature contributing the most to the classification is centroid size (12.3%) (Supp. Mat 2). The following most important features with form data are semilandmark 11 (5.7% in x and 1.6% in y), semilandmark 24 (2.1% in x), landmark 19 (1.1% in x and 1.8% in y), semilandmark 23 (1.7% in x), semilandmark 12 (1.2% in y), landmarks 1 and 13 (1.0% in y), and semilandmark 38 (1.0% in z) (Supp. Mat. 2).

DISCUSSION

Visual descriptions and GM struggle to discriminate between populations

This work highlights that inter-population tooth differences lie in the lateral cusps. We first visually examined *S. canicula* teeth from both populations and, except in hatchlings, the teeth in the Mediterranean population appear sharper than in the Atlantic at all locations and usually display more accessory cusps for equivalent mesio-distal positions along the jaw.

On centroid size patterns, very few elements discriminate between the two populations: hatchling and juvenile of both populations display similar tooth centroid size patterns and amplitude along the jaw. The main difference between populations arises between juvenile and mature stages because mature Atlantic specimens have teeth whose centroid size is about 35% higher than those of mature Mediterranean *S. canicula*. The similarities between the tooth centroid size patterns of Atlantic and Mediterranean hatchlings are consistent with their very close estimated age and TL (Figure 1). In mature specimens also, the amplitude delta in tooth centroid size patterns can be easily interpreted in light of their TL and age differences (Figure 1). Yet, the age estimations we provide remain approximative because we chose among several available growth parameters on *S. canicula*. The similar amplitude of tooth centroid size patterns between juveniles of both populations could also be a consequence of the very close ranges of size of our specimens (Figure 1). Regarding allometric patterns, differences in slopes were detected between populations, meaning that the difference of increase between tooth centroid size and body size is not the same between the Atlantic and Mediterranean populations considered.

In summary, the reported differences between the populations' tooth centroid size patterns seem to be related to the TL of mature specimens, but they do not discriminate within hatchlings and juveniles of both populations.

The contribution of Random Forests to decipher inter-population differences

Machine learning models have already improved the understanding of subtle structures in geometric morphometric data (Lorenz et al., 2015; Soda et al., 2017; Doyle et al., 2018; Courtenay et al., 2019; Quenu et al., 2020; Barone et al., 2021), especially when the shapes between groups share common quadrants in a morphospace, as it is the case for the *S. canicula* populations considered in this study. However, even though the algorithms perform well at classifying geometric morphometric data, the choices made by these models to make groups are usually unknown and deprived of biological meaning (Lorenz et al., 2015; Quenu et al., 2020).

In traditional geometric morphometrics, supervised classification is performed with

an LDA on several PC axes based on raw shape data. We aimed to compare the results from this traditional workflow with the classification performances obtained with Random Forests on raw shape data. Doyle et al. (2018) already compared the classification performances of LDA and Random Forests on the shells of populations of common periwinkles (*Littorina littorea*) distributed in different niches. They recommended the use of Random Forests over LDA because the former is more straightforward and robust, does not make assumptions about the data nor necessitate the user to check the violation of LDA assumptions (Doyle et al., 2018). However, the models of Doyle et al. (2018) do overfit and the results obtained might not be optimal.

Overall, LDA models achieve lower performances than Random Forests with our dataset, which can be due to the information reduction. We used LDA for classification as in the majority of geometric morphometric articles, e.g., without considering the data distribution nor the homogeneity of variance. That such criteria for optimality are not met does not prevent from performing an LDA. The LDA algorithm is robust to such violations and still achieves good performances when assumptions of normality and common covariance matrix among groups are not met (Lachenbruch and Goldstein, 1979; Li et al., 2006). Furthermore, Doyle et al. (2018) showed similar performances between LDA and Random Forests on geometric morphometric data and conclude that LDA is robust enough to the abovementioned violated conditions to achieve good classification performances.

The contribution of Random Forest models to our work is four-fold. It needs less preprocessing steps than LDA, performs better than LDA at the classification task, achieves good performances at classifying teeth from two *S. canicula* populations based on raw data, and determines the most discriminant features to perform this task. Among landmark and semilandmark features, it is clear that the most discriminant information is contained in two dimensions (x and y), whereas the third dimension brings less information. This implies that running the models with 2D landmark data would have probably achieved similar classification performances as those obtained here, as this has also been evidenced in some traditional geometric morphometric studies (Cardini, 2014; Buser et al., 2018; Wasiljew et al., 2020). Nevertheless, 3D landmarking avoids parallax biases (Cardini, 2014) and none of the landmarks and semilandmarks caused a decrease of the metrics, indicating that even though the z dimension contains little information, it still cannot be considered as noise. Furthermore, the landmarks (1, 13, 19) and semilandmarks (11, 12, 23, and 24) contributing the most to the classification are located at geometrical extrema, at extreme mesial and distal locations of the teeth and on the lateral edges, where accessory cusps emerge. It is also likely that the spacing of these points makes them useful to the algorithm and that spatially close points would bring less information. Overall, the results show that a few points, especially on the lateral sides of the teeth, provide enough information to represent most differences between the tooth shapes of the two *S. canicula* populations considered. This is consistent with our visual inspection on the variation of accessory cusps number.

The use of form features instead of shape greatly improves the overall classification. We expected such impact in the classification of mature specimens due to the amplitude differences of their centroid size patterns (likely caused by TL and putative age discrepancies, Figure 1). However, the reason for the significant contribution of tooth centroid size to the classification improvement of the teeth of juveniles and hatchlings

is less intuitive. We first assume that the very slight differences in tooth centroid size patterns we visually interpret as part of the inter-population variability might actually be considered useful information for the model to discriminate between populations. The centroid size is theoretically independent of shape, however, the placement and density of landmarks and semilandmarks modify the contribution of certain parts of a tooth (e.g., the lateral sides of the crown as compared to the main cusp) to the centroid size value. Thus, we assume that slight changes in centroid size values between populations might also convey relevant shape information for the Random Forest model, which is cryptic to the observer. For a minority of subclasses, however, the addition of centroid size to shape features does not improve the classification performances or diminish them. In the first case, the centroid size is probably too similar between two subgroups (e.g., Atlantic and Mediterranean hatchling males) to allow the model to discriminate against the populations. In the second case, the centroid size information confuses the model, which might indicate that some form data contain more noise than in other groups, which could be overcome by increasing the sampling effort for the subclasses considered (e.g., Atlantic and Mediterranean juvenile males).

Ecological origins of anatomical divergence between populations

The inter- and intraspecific diversity of shark tooth shapes correlates with their feeding behaviour. Molariform teeth, for example, help crushing hard-bodied preys, while cutting teeth allow to remove pieces from larger items (Cappetta, 1986).

S. canicula is considered a generalist predator with opportunistic behaviour, whose favourite preys are teleosts, cephalopods, and crustaceans but it also occasionally feeds on macroalgae and echinoderms (Olaso, 1998; Mnasri et al., 2012; Kousteni et al., 2017, 2018). Within the same population, however, slight differences in diet composition can occur between specimens of different sex and ontogenetic stages (Lyle, 1983; Olaso, 1998; Rodríguez-Cabello et al., 2007; Mnasri et al., 2012; Kousteni et al., 2017, 2018). *S. canicula* also displays seasonal diet shifts that differ according to the geographic area: more cephalopods are eaten in the winter than in autumn by a Cantabrian Sea (North Atlantic Ocean) population, while a population from eastern Mediterranean Sea feeds most on teleosts in spring and on molluscs in autumn (Olaso, 1998; Kousteni et al., 2017). Molluscs are far less important in the diet composition of Atlantic populations than in Mediterranean ones, whereas Atlantic specimens feed more on teleosts (Kousteni et al., 2017). However, the diet differences between several Atlantic and Mediterranean *S. canicula* populations are probably due to the variability of available prey items in contrasting habitats, as suggested by the opportunistic behaviour of this species (Lyle, 1983; Kousteni et al., 2017). Additionally, we show in this work that *S. canicula* tooth shapes differ between one Atlantic and one Mediterranean populations. If this variation is under functional selection, diet differences would correlate with distinct tooth forms: sharper teeth of the Mediterranean population may enhance grasping molluscs such as cephalopods, whereas teeth of Atlantic specimens might perform better at catching benthic teleosts. However, the specific diet of the specimens sampled in this study is not known and the relationship between the tooth morphologies depicted here and broad dietary trends in all Atlantic and Mediterranean *S. canicula* remains hypothetical. Overall, several studies already suggested that the diet composition of *S. canicula*, as well as of other elasmobranchs, is correlated to the body size (Lyle, 1983; Bethea et al.,

2006; Ellis and Musick, 2007; Borrell et al., 2011; Šantić, M. and Rađa, B. and Pallaoro, A., 2012; Kousteni et al., 2017). Furthermore, our results support the link between tooth shape and body length in *S. canicula*, which could suggest that there is an association between diet shifts and tooth shape modifications over a specimen lifetime.

S. canicula has a philopatric behaviour and most specimens do not move further than 30 km over the years (Rodríguez-Cabello et al., 2004). Additionally, shared haplotypes between specimens caught off Portugal and specimens from the Mediterranean Sea demonstrate past communication occurrences between the populations, probably resulting from colonisation events from the Atlantic or retention of ancestral polymorphism (Kousteni et al., 2015; Ramírez-Amaro et al., 2018). There is evidence of multiple genetic stocks of *S. canicula* within the Mediterranean Sea (Barbieri et al., 2014; Kousteni et al., 2015). Yet, molecular studies suggest that the Siculo-Tunisian Strait may allow gene flow between the eastern and western Mediterranean populations, whereas genetic exchanges are currently very low between the Atlantic and Mediterranean populations of *S. canicula* (Barbieri et al., 2014; Kousteni et al., 2015). The communication between these Atlantic and Mediterranean populations would indeed only be permitted through the Strait of Gibraltar, yet bottom topography may limit the migration between populations to a few specimens (Ramírez-Amaro et al., 2018). The differences in tooth morphology between the Atlantic and Mediterranean population samples of *S. canicula* is probably related to the species genetic differentiation recorded between these locations (Barbieri et al., 2014). This assumption could be further tested by examining the differentiation at both molecular and tooth morphology level between these stocks.

CONCLUSIONS

We combined geometric morphometrics with a machine learning approach to discriminate between teeth of population samples of *S. canicula* from the northeastern Atlantic Ocean and the Mediterranean Sea. The traditional framework used in geometric morphometrics reached lesser performances at distinguishing the tooth shapes of *S. canicula* specimens from the two populations. Nevertheless, these shape data combined with centroid sizes allow a Random Forest model to classify the *S. canicula* teeth with up to 100% precision. This framework should be further tested in more *S. canicula* populations to decipher tooth morphological differences between spatially and genetically close-related populations. We hope this emergent framework to be further tuned by ichthyologists by including geographical parameters and life history traits to discriminate between subtle tooth morphologies and to provide a basis for facilitating the identification procedures of fish stocks and improving fisheries management.

ACKNOWLEDGMENTS

We acknowledge the MRI platform member of the national infrastructure France-BioImaging supported by the French National Research Agency (ANR-10-INBS-04, “Investments for the future”), the labex CEMEB (ANR-10-LABX-0004) and NUMEV (ANR-10-LABX-0020) and thank Renaud Lebrun for his help with microCT imaging. We acknowledge the contribution of SFR Biosciences (UMS3444/CNRS, US8/Inserm, ENS de Lyon, UCBL) AniRa-ImmOs facility and thank Mathilde Bouchet-Combe for

her help with microCT imaging. We thank Sylvie Agret for her help generating 3D surfaces.

REFERENCES

- Adams, D., Collyer, M., and Kaliontzopoulou, A. (2019). Geomorph: Software for geometric morphometric analyses. R package version 3.1.0.
- Almerón-Souza, F., Sperb, C., Castilho, C. L., Figueiredo, P. I. C. C., Gonçalves, L. T., Machado, R., Oliveira, L. R., Valiati, V. H., and Fagundes, N. J. R. (2018). Molecular Identification of Shark Meat From Local Markets in Southern Brazil Based on DNA Barcoding: Evidence for Mislabeling and Trade of Endangered Species. *Frontiers in Genetics*, 9:138.
- Anastasopoulou, A., Biandolino, F., Chatzispyrou, A., Hemida, F., Guijarro, B., Kousteni, V., Mytilineou, C., Pattoura, P., and Prato, E. (2016). New Fisheries-related data from the Mediterranean Sea (November, 2016). *Mediterranean Marine Science*, 17(3):822–827.
- Archer, K. J. and Kimes, R. V. (2008). Empirical characterization of random forest variable importance measures. *Computational Statistics and Data Analysis*, 52(4):2249–2260.
- Barbieri, M., Maltagliati, F., Roldán, M., and Castelli, A. (2014). Molecular contribution to stock identification in the small-spotted catshark, *Scyliorhinus canicula* (Chondrichthyes, Scyliorhinidae). *Fisheries Research*, 154:11–16.
- Barbuto, M., Galimberti, A., Ferri, E., Labra, M., Malandra, R., Galli, P., and Casiraghi, M. (2010). DNA barcoding reveals fraudulent substitutions in shark seafood products: The Italian case of “palombo” (*Mustelus* spp.). *Food Research International*, 43(1):376–381.
- Barone, M., Mollen, F. H., Giles, J. L., Marshall, L. J., Villate-Moreno, M., Mazzoldi, C., Pérez-Costas, E., Heine, J., and Guisande, C. (2021). Performance of *iSharkFin* in the identification of wet dorsal fins from priority shark species. *Ecological Informatics*, page 101514.
- Bendiab, A. A. T., Mouffok, S., and Boutiba, Z. (2012). Reproductive biology and growth of lesser spotted dogfish *Scyliorhinus canicula* (Linnaeus, 1758) in western Algerian coasts (Chondrichthyes, Scyliorhinidae). *Biodiversity Journal*, 3(1):41–48.
- Berio, F., Bayle, Y., Agret, S., Baum, D., Goudemand, N., and Debiais-Thibaud, M. (2022). 3D models related to the publication: Hide and seek shark teeth in Random Forests: Machine learning applied to *Scyliorhinus canicula*. *MorphoMuseuM*.
- Berio, F., Evin, A., Goudemand, N., and Debiais-Thibaud, M. (2020). The intraspecific diversity of tooth morphology in the large-spotted catshark *Scyliorhinus stellaris*: insights into the ontogenetic cues driving sexual dimorphism. *Journal of Anatomy*, 237(5):960–978.
- Bethea, D. M., Carlson, J. K., Buckel, J. A., and Satterwhite, M. (2006). Ontogenetic and site-related trends in the diet of the Atlantic sharpnose shark *Rhizoprionodon terraenovae* from the northeast Gulf of Mexico. *Bulletin of Marine Science*, 78(2):287–307.
- Blackburn, T. M., Gaston, K. J., and Loder, N. (2008). Geographic gradients in body size: a clarification of Bergmann’s rule. *Diversity and distributions*, 5(4):165–174.

- 558 Bookstein, F. L. (1991). *Morphometric Tools for Landmark Data: Geometry and*
559 *Biology*. Cambridge University Press, Cambridge, 1 edition.
- 560 Borrell, A., Aguilar, A., Gazo, M., Kumarran, R. P., and Cardona, L. (2011). Stable
561 isotope profiles in whale shark (*Rhincodon typus*) suggest segregation and dissim-
562 ilarities in the diet depending on sex and size. *Environmental Biology of Fishes*,
563 92(4):559–567.
- 564 Breiman, L. (2001). Random forests. *Machine learning*, 45(1):5–32.
- 565 Buser, T. J., Sidlauskas, B. L., and Summers, A. P. (2018). 2D or Not 2D? Testing the
566 Utility of 2D Vs. 3D Landmark Data in Geometric Morphometrics of the Sculpin
567 Subfamily Oligocottinae (Pisces; Cottoidea). *The Anatomical Record*, 301(5):806–
568 818.
- 569 Capapé, C., Mnasri-Sioudi, N., El Kamel-Moutalibi, O., Boumaïza, M., Amor, M. B.,
570 and Reynaud, C. (2014). Production, maturity, reproductive cycle and fecundity
571 of small-spotted catshark, *Scyliorhinus canicula* (Chondrichthyes: Scyliorhinidae)
572 from the northern coast of Tunisia (Central Mediterranean). *Journal of Ichthyology*,
573 54(1):111–126.
- 574 Cappetta, H. (1986). Types dentaires adaptatifs chez les sélaciens actuels et post-
575 paléozoïques. *Palaeovertebrata*, 16(2):57–76.
- 576 Cardini, A. L. (2014). Missing the third dimension in geometric morphometrics: how to
577 assess if 2D images really are a good proxy for 3D structures? *Hystrix*, 25:73–81.
- 578 Carlson, J. K. and Parsons, G. R. (1997). Age and growth of the bonnethead shark,
579 *Sphyrna tiburo*, from northwest Florida, with comments on clinal variation. *Environ-*
580 *mental Biology of Fishes*, 50(3):331–341.
- 581 Caruana, R. and Niculescu-Mizil, A. (2006). An empirical comparison of supervised
582 learning algorithms. In *Proceedings of the 23rd international conference on Machine*
583 *learning*, pages 161–168.
- 584 Compagno, L. J. V. (1984). FAO species catalogue: vol 4 Sharks of the world
585 an annotated and illustrated catalogue of shark species known to date Part 2-
586 Carcharhiniformes. *FAO Fisheries Synopsis*, 4:251–265.
- 587 Cortés, E. (2000). Life History Patterns and Correlations in Sharks. *Reviews in Fisheries*
588 *Science*, 8(4):299–344.
- 589 Courtenay, L. A., Yravedra, J., Huguet, R., Aramendi, J., Maté-González, M. Á.,
590 González-Aguilera, D., and Arriaza, M. C. (2019). Combining machine learning
591 algorithms and geometric morphometrics: A study of carnivore tooth marks. *Palaeo-*
592 *geography, Palaeoclimatology, Palaeoecology*, 522:28–39.
- 593 Cullen, J. A. and Marshall, C. D. (2019). Do sharks exhibit heterodonty by tooth
594 position and over ontogeny? A comparison using elliptic Fourier analysis. *Journal of*
595 *Morphology*, 280(5):687–700.
- 596 Debiais-Thibaud, M., Chiori, R., Enault, S., Oulion, S., Germon, I., Martinand-Mari, C.,
597 Casane, D., and Borday-Birraux, V. (2015). Tooth and scale morphogenesis in shark:
598 an alternative process to the mammalian enamel knot system. *BMC Evolutionary*
599 *Biology*, 15(1):292.
- 600 Díaz-Uriarte, R. and Alvarez de Andrés, S. (2006). Gene selection and classification of
601 microarray data using random forest. *BMC Bioinformatics*, 7(1):1–13.
- 602 Domínguez-Rodrigo, M. and Baquedano, E. (2018). Distinguishing butchery cut marks
603 from crocodile bite marks through machine learning methods. *Scientific Reports*,

- 8(1):1–8.
- Doyle, D., Gammell, M. P., and Nash, R. (2018). Morphometric methods for the analysis and classification of gastropods: A comparison using *Littorina littorea*. *Journal of Molluscan Studies*, 84(2):190–197.
- Dulvy, N. K., Fowler, S. L., Musick, J. A., Cavanagh, R. D., Kyne, P. M., Harrison, L. R., Carlson, J. K., Davidson, L. N. K., Fordham, S. V., Francis, M. P., Pollock, C. M., Simpfendorfer, C. A., Burgess, G. H., Carpenter, K. E., Compagno, L. J. V., Ebert, D. A., Gibson, C., Heupel, M. R., Livingstone, S. R., Sanciangco, J. C., Stevens, J. D., Valenti, S., and White, W. T. (2014). Extinction risk and conservation of the world’s sharks and rays. *eLife*, 3:e00590.
- Dulvy, N. K., Pacoureau, N., Rigby, C. L., Pollom, R. A., Jabado, R. W., Ebert, D. A., Finucci, B., Pollock, C. M., Cheok, J., Derrick, D. H., Herman, K. B., Sherman, C. S., VanderWright, W. J., Lawson, J. M., Walls, R. H. L., Carlson, J. K., Charvet, P., Bineesh, K. K., Fernando, D., Ralph, G. M., Matsushiba, J. H., Hilton-Taylor, C., Fordham, S. V., and Simpfendorfer, C. A. (2021). Overfishing drives over one-third of all sharks and rays toward a global extinction crisis. *Current Biology*, 31(22):5118–5119.
- Ellis, J. K. and Musick, J. A. (2007). Ontogenetic changes in the diet of the sandbar shark, *Carcharhinus plumbeus*, in lower Chesapeake Bay and Virginia (USA) coastal waters. *Environmental Biology of Fishes*, 80:51–67.
- Ellis, J. R. and Shackley, S. E. (1997). The reproductive biology of *Scyliorhinus canicula* in the Bristol Channel, U.K. *Journal of Fish Biology*, 51(2):361–372.
- Evin, A., Cucchi, T., Cardini, A., Vidarsdottir, U. S., Larson, G., and Dobney, K. (2013). The long and winding road: identifying pig domestication through molar size and shape. *Journal of Archaeological Science*, 40:735–743.
- Fort, G. and Lambert-Lacroix, S. (2005). Classification using partial least squares with penalized logistic regression. *Bioinformatics*, 21(7):1104–1111.
- Goren, M. (2014). The Fishes of the Mediterranean: A Biota Under Siege. In *The Mediterranean Sea*, pages 385–400. Springer Netherlands, Dordrecht.
- Gruber, S. H. and Compagno, L. J. V. (1981). Taxonomic status and biology of the bigeye thresher *Alopias superciliosus* (Mediterranean Sea, New Zealand). *Fishery Bulletin*, 79(4):617–640.
- Henderson, A. C. and Casey, A. (2001). Reproduction and growth in the lesser-spotted dogfish *Scyliorhinus canicula* (Elasmobranchii; Scyliorhinidae), from the west coast of Ireland. *Cahiers de Biologie Marine*, 42(4):397–405.
- Horie, T. and Tanaka, S. (2002). Geographic variation of maturity size of the cloudy catshark, *Scyliorhinus torazame*, in Japan. *Journal of the Faculty of Marine Science and Technology-Tokai University*.
- Ivory, P., Jeal, F., Nolan, C. P., and Jeal, P. F. (2004). Age determination, growth and reproduction in the lesser-spotted dogfish, *Scyliorhinus canicula* (L.). *Journal of Northwest Atlantic Fishery Science*, 35:89–106.
- Jennings, S., Greenstreet, S. P. R., and Reynolds, J. D. (1999). Structural change in an exploited fish community: a consequence of differential fishing effects on species with contrasting life histories. *Journal of Animal Ecology*, 68(3):617–627.
- Karl, S. A., Castro, A. L. F., and Garla, R. C. (2012). Population genetics of the nurse shark (*Ginglymostoma cirratum*) in the western Atlantic. *Marine Biology*,

- 159(3):489–498.
- Klingenberg, C. P. (2016). Size, shape, and form: concepts of allometry in geometric morphometrics. *Development genes and evolution*, 226(3):113–137.
- Kousteni, V., Karachle, P. K., and Megalofonou, P. (2017). Diet of the small-spotted catshark *Scyliorhinus canicula* in the Aegean Sea (eastern Mediterranean). *Marine Biology Research*, 13(2):161–173.
- Kousteni, V., Karachle, P. K., Megalofonou, P., and Lefkaditou, E. (2018). Cephalopod prey of two demersal sharks caught in the Aegean Sea (eastern Mediterranean). *Journal of the Marine Biological Association of the United Kingdom*, 98(1):81–88.
- Kousteni, V., Kasapidis, P., Kotoulas, G., and Megalofonou, P. (2015). Strong population genetic structure and contrasting demographic histories for the small-spotted catshark (*Scyliorhinus canicula*) in the Mediterranean Sea. *Heredity*, 114(3):333–343.
- Kousteni, V., Kontopoulou, M., and Megalofonou, P. (2010). Sexual maturity and fecundity of *Scyliorhinus canicula* (Linnaeus, 1758) in the Aegean Sea. *Marine Biology Research*, 6(4):390–398.
- Kousteni, V. and Megalofonou, P. (2019). Reproductive strategy of *Scyliorhinus canicula* (L., 1758): a holistic approach based on macroscopic measurements and microscopic observations of the reproductive organs. *Marine and Freshwater Research*, 71(6):596–616.
- Lachenbruch, P. A. and Goldstein, M. (1979). Discriminant analysis. *Biometrics*, 35(1):85.
- Leloup, J. and Olivereau, M. (1951). Données biométriques comparatives sur la Roussette (*Scyllium canicula* L.) de la Manche et de la Méditerranée. *Vie et milieu*, 2(2):182–206.
- Li, T., Zhu, S., and Ogihara, M. (2006). Using discriminant analysis for multi-class classification: An experimental investigation. *Knowledge and Information Systems*, 10(4):453–472.
- Liaw, A. and Wiener, M. (2002). Classification and Regression by randomForest. *R News*, 2(3):18–22.
- Lombardi-Carlson, L. A., Cortés, E., Parsons, G. R., and Manire, C. A. (2003). Latitudinal variation in life-history traits of bonnethead sharks, *Sphyrna tiburo*, (Carcharhiniformes: Sphyrnidae) from the eastern Gulf of Mexico. *Marine and Freshwater Research*, 54(7):875–883.
- Lorenz, C., Ferraudo, A. S., and Suesdek, L. (2015). Artificial Neural Network applied as a methodology of mosquito species identification. *Acta Tropica*, 152:165–169.
- Lucifora, L. O., Cione, A. L., Menni, R. C., and Escalante, A. H. (2003). Tooth row counts, vicariance, and the distribution of the sand tiger shark *Carcharias taurus*. *Ecography*, 26(5):567–572.
- Lyle, J. M. (1983). Food and feeding habits of the lesser spotted dogfish, *Scyliorhinus canicula* (L.), in Isle of Man waters. *Journal of Fish Biology*, 23(6):725–737.
- MacLeod, N. (2017). On the use of machine learning in morphometric analysis. In *Biological shape analysis: proceedings of the 4th international symposium*, pages 134–171.
- MacLeod, N. (2018). The quantitative assessment of archaeological artifact groups: Beyond geometric morphometrics. *Quaternary Science Reviews*, 201:319–348.
- McEachran, J. D. and Martin, C. O. (1977). Possible occurrence of character dis-

- 696 placement in the sympatric skates *Raja erinacea* and *R. ocellata* (Pisces: Rajidae).
697 *Environmental Biology of Fishes*, 2(2):121–130.
- 698 Mellinger, J., Wriese, F., and Alluchon-Gérard, M.-J. (1984). Caractères biométriques
699 distinctifs de l'embryon et de ses annexes chez la roussette (*Scyliorhinus canicula*) de
700 la Manche, comparée à celle de la Méditerranée, et détermination précise du stade
701 d'éclosion. *Cahiers de biologie marine*, 25(3):305–317.
- 702 Melo Palmeira, C. A., da Silva Rodrigues-Filho, L. F., de Luna Sales, J. B., Vallinoto,
703 M., Schneider, H., and Sampaio, I. (2013). Commercialization of a critically endan-
704 gered species (largetooth sawfish, *Pristis perotteti*) in fish markets of northern Brazil:
705 Authenticity by DNA analysis. *Food Control*, 34(1):249–252.
- 706 Mitteroecker, P. and Bookstein, F. (2011). Linear discrimination, ordination, and the
707 visualization of selection gradients in modern morphometrics. *Evolutionary Biology*,
708 38:100–114.
- 709 Mnasri, N., El-Kamel, O., Boumaïza, M., Reynaud, C., and Capapé, C. (2012). Food and
710 feeding habits of the small-spotted catshark, *Scyliorhinus canicula* (Chondrichthyes:
711 Scyliorhinidae) from the northern coast of Tunisia (central Mediterranean). *Cahiers
712 de Biologie Marine*, 53(1):139–150.
- 713 Moyer, J. K. and Bemis, W. E. (2016). Tooth Microstructure and Replacement in the
714 Gulper Shark, *Centrophorus granulosus* (Squaliformes: Centrophoridae). *Copeia*,
715 104(2):529–538.
- 716 Natanson, L. J., Skomal, G. B., Hoffmann, S. L., Porter, M. E., Goldman, K. J., and
717 Serra, D. (2018). Age and growth of sharks: do vertebral band pairs record age?
718 *Marine and Freshwater Research*, 69(9):1440–1452.
- 719 Navega, D., Vicente, R., Vieira, D. N., Ross, A. H., and Cunha, E. (2015). Sex
720 estimation from the tarsal bones in a Portuguese sample: a machine learning approach.
721 *International Journal of Legal Medicine*, 129(3):651–659.
- 722 Olaso, I. (1998). Importance of discarded blue whiting (*Micromesistius poutassou*) in
723 the diet of lesser spotted dogfish (*Scyliorhinus canicula*) in the Cantabrian Sea. *ICES
724 Journal of Marine Science*, 55(3):331–341.
- 725 Ozcan, E. I. and Başusta, N. (2018). Some population parameters of *Scyliorhinus
726 canicula* (Linnaeus, 1758) from the northeastern Mediterranean Sea. *Journal of the
727 Black Sea/Mediterranean Environment*, 24(1):51–64.
- 728 Parsons, G. R. (1993). Geographic variation in reproduction between two populations
729 of the bonnethead shark, *Sphyrna tiburo*. In Demski, L. S. and Wourms, J. P., editors,
730 *The reproduction and development of sharks, skates, rays and ratfishes*, chapter 3,
731 pages 25–35. Springer.
- 732 Pechenizkiy, M., Puuronen, S., and Tsymbal, A. (2006). The impact of sample reduction
733 on PCA-based feature extraction for supervised learning. In *Proceedings of the ACM
734 Symposium on Applied Computing*, volume 1, pages 553–558, New York, New York,
735 USA. ACM Press.
- 736 Portnoy, D. S., McDowell, J. R., Heist, E. J., Musick, J. A., and Graves, J. E. (2010).
737 World phylogeography and male-mediated gene flow in the sandbar shark, *Carcharhi-
738 nus plumbeus*. *Molecular Ecology*, 19(10):1994–2010.
- 739 Powter, D. M., Gladstone, W., and Platell, M. (2010). The influence of sex and maturity
740 on the diet, mouth morphology and dentition of the Port Jackson shark, *Heterodontus
741 portusjacksoni*. *Marine and Freshwater Research*, 61(1):74.

- 742 Püschel, T. A., Marcé-Nogué, J., Gladman, J. T., Bobe, R., and Sellers, W. I. (2018).
743 Inferring locomotor behaviours in Miocene New World monkeys using finite element
744 analysis, geometric morphometrics and machine-learning classification techniques
745 applied to talar morphology. *Journal of the Royal Society Interface*, 15(146).
- 746 Quenu, M., Trewick, S. A., Brescia, F., and Morgan-Richards, M. (2020). Geometric
747 morphometrics and machine learning challenge currently accepted species limits of
748 the land snail *Placostylus* (Pulmonata: Bothriembryontidae) on the Isle of Pines, New
749 Caledonia. *Journal of Molluscan Studies*.
- 750 Ramírez-Amaro, S., Picornell, A., Arenas, M., Castro, J. A., Massutí, E., Ramon, M. M.,
751 and Terrasa, B. (2018). Contrasting evolutionary patterns in populations of demersal
752 sharks throughout the western Mediterranean. *Marine Biology*, 165(1):1–16.
- 753 Rodríguez-Cabello, C., Cabello, F., Olosó, I., and Olosó, I. (1998a). Reproductive
754 biology of lesser spotted dogfish *Scyliorhinus canicula* (L., 1758) in the Cantabrian
755 Sea. *Scientia Marina*, 62(3):187–191.
- 756 Rodríguez-Cabello, C., de la Gándara, F., and Sánchez, F. (1998b). Preliminary results
757 on growth and movements of dogfish *Scyliorhinus canicula* (Linnaeus, 1758) in the
758 Cantabrian Sea. *Oceanologica Acta*, 21(2):363–370.
- 759 Rodríguez-Cabello, C., Sánchez, F., Fernández, A., and Olosó, I. (2004). Is the lesser
760 spotted dogfish (*Scyliorhinus canicula*) from the Cantabrian Sea, a unique stock?
761 *Fisheries research*, 69(1):57–71.
- 762 Rodríguez-Cabello, C., Sánchez, F., and Olosó, I. (2007). Distribution patterns and
763 sexual segregations of *Scyliorhinus canicula* (L.) in the Cantabrian Sea. *Journal of*
764 *Fish Biology*, 70(5):1568–1586.
- 765 Rodríguez-Cabello, C., Sánchez, F., and Velasco, F. (2005). Growth of lesser spotted
766 dogfish (*Scyliorhinus canicula* L., 1758) in the Cantabrian Sea, based on tag-recapture
767 data. *Journal of Northwest Atlantic Fishery Science*, 35:131–140.
- 768 Šantić, M. and Rađa, B. and Pallaoro, A. (2012). Feeding habits of small-spotted
769 catshark (*Scyliorhinus canicula* Linnaeus, 1758) from the eastern central Adriatic Sea.
770 *Marine Biology Research*, 8(10):1003–1011.
- 771 Santos, F., Guyomarc’h, P., and Bruzek, J. (2014). Statistical sex determination from
772 craniometrics: Comparison of linear discriminant analysis, logistic regression, and
773 support vector machines. *Forensic Science International*, 245:204.e1–204.e8.
- 774 Schwamborn, R., Mildenerger, T. K., and Taylor, M. H. (2019). Assessing sources
775 of uncertainty in length-based estimates of body growth in populations of fishes and
776 macroinvertebrates with bootstrapped ELEFAN. *Ecological Modelling*, 393:37–51.
- 777 Sheets, H. D., Covino, K. M., Panasiewicz, J. M., and Morris, S. R. (2006). Comparison
778 of geometric morphometric outline methods in the discrimination of age-related
779 differences in feather shape. *Frontiers in Zoology*, 3(1):15.
- 780 Smith, S. E., Au, D. W., and Show, C. (1998). Intrinsic rebound potentials of 26 species
781 of Pacific sharks. *Marine and Freshwater Research*, 49(7):663–678.
- 782 Soda, K., Slice, D., and Naylor, G. (2017). Artificial neural networks and geometric
783 morphometric methods as a means for classification: A case-study using teeth from
784 *Carcharhinus* sp. (Carcharhinidae). *Journal of Morphology*, 278(1):131–141.
- 785 Stalling, D., Westerhoff, M., and Hege, H.-C. (2005). Amira: a highly interactive system
786 for visual data analysis. In *The Visualization Handbook*, pages 749–767. Elsevier.
- 787 Taniuchi, T. and Tachikawa, H. (1997). Geographical variation in age and growth of

- 788 *Squalus mitsukurii* (Elasmobranchii: Squalidae) in north Pacific. In *Proceedings of*
789 *5th Indo-Pacific Fish Conference, Nouméa*, pages 321–328.
- 790 Templeman, W. (1984). Variations in numbers of median dorsal thorns and rows of
791 teeth in thorny skate (*Raja radiata*) of the Northwest Atlantic. *Journal of Northwest*
792 *Atlantic Fishery Science*, 5(2):171–179.
- 793 Tomita, T., Miyamoto, K., Kawaguchi, A., Toda, M., Oka, S.-I., Nozu, R., and Sato,
794 K. (2017). Dental ontogeny of a white shark embryo. *Journal of Morphology*,
795 278(2):215–227.
- 796 Venables, W. N. and Ripley, B. D. (2002). *Modern Applied Statistics with S*. Springer
797 New York, fourth edition.
- 798 Veríssimo, A., McDowell, J. R., and Graves, J. E. (2010). Global population structure of
799 the spiny dogfish *Squalus acanthias*, a temperate shark with an antitropical distribution.
800 *Molecular Ecology*, 19(8):1651–1662.
- 801 Wasiljew, B. D., Pfaender, J., Wipfler, B., Utama, I. V., and Herder, F. (2020). Do
802 we need the third dimension? Quantifying the effect of the z-axis in 3D geometric
803 morphometrics based on sailfin silversides (Telmatherinidae). *Journal of Fish Biology*,
804 97(2):537–545.
- 805 Webster, M. and Sheets, H. D. (2010). A practical introduction to landmark-based
806 geometric morphometrics. *The Paleontological Society Papers*, 16:163–188.
- 807 Whitenack, L. B. and Gottfried, M. D. (2010). A morphometric approach for address-
808 ing tooth-based species delimitation in fossil mako sharks, *Isurus* (Elasmobranchii:
809 Lamniformes). *Journal of Vertebrate Paleontology*, 30(1):17–25.
- 810 Yamaguchi, A., Taniuchi, T., and Shimizu, M. (1998). Geographic variation in growth
811 of the star-spotted dogfish *Mustelus manazo* from five localities in Japan and Taiwan.
812 *Fisheries Science*, 64(5):732–739.
- 813 Yamaguchi, A., Taniuchi, T., and Shimizu, M. (2000). Geographic Variations in Repro-
814 ductive Parameters of the Star-spotted Dogfish, *Mustelus manazo*, from Five Localities
815 in Japan and in Taiwan. *Environmental Biology of Fishes*, 57(2):221–233.
- 816 Županović, S. (1961). Contribution à la connaissance de la biologie des poissons de
817 l'Adriatique. *Acta Adriatica*, 9(4):1–84.