

Winter diet of burrowing owls in the Llano La Soledad, Galeana, Nuevo Leon, Mexico

Jose I Gonzalez Rojas^{Corresp., Equal first author, 1}, Miguel A Cruz Nieto¹, Antonio Guzman Velasco¹, Irene Ruvalcaba Ortega¹, Alina Olalla Kerstupp¹, Gabriel Ruiz Ayma^{Equal first author, 1}

¹ Facultad de Ciencias Biológicas, Universidad Autónoma de Nuevo León, San Nicolas de los Garza, Nuevo Leon, México

Corresponding Author: Jose I Gonzalez Rojas
Email address: jose.gonzalezr@uanl.mx

We determined dietary niche breadth of burrowing owls *Athene cunicularia* Molina, 1782 in Llano La Soledad, Galeana, Nuevo Leon in northern Mexico, considering prey type, frequency of occurrence, and biomass. We compared these data among three winter seasons (2002-2003, 2003-2004, 2004-2005) by analyzing 358 pellets and identifying 821 prey items. Vertebrates accounted for 87% of consumed biomass of which 74% represented mammals. Most of mammal biomass consumed were Cricetid rodents (58%). Ninety percent of prey items were invertebrates, most of which were insects (84%); beetles were the most commonly found in pellets (55%). Niche breadth based on frequency of occurrence and biomass confirmed the burrowing owl as a generalist species with mean values per year ranging between 0.68 and 0.82. There was a significant association between relative biomass of rodent species and invertebrate families with wintering season. This association was driven mainly by changes in composition and frequency of these types of prey during the second season, which was likely caused by high annual rainfall. The second season also showed a significantly narrower niche (0.68 vs. 0.82) and the smallest overlap (<47% vs. 88%) among the three winters.

Winter diet of Burrowing Owls in the Llano La Soledad, Galeana, Nuevo Leon, Mexico.

José I. González Rojas^{1*}, Miguel A. Cruz Nieto¹, Antonio Guzmán Velasco¹, Irene Ruvalcaba-Ortega¹, Alina Olalla Kerstupp¹, Gabriel Ruiz-Ayma¹.

¹ Universidad Autónoma de Nuevo León (UANL), Facultad de Ciencias Biológicas, Laboratorio de Biología de la Conservación y Desarrollo Sustentable. Nuevo León, México.

*Corresponding Author:

José I. González Rojas

Ave. Universidad s/n. Cd. Universitaria, 66455, San Nicolas de los Garza, Nuevo Leon, Mexico

Email address: jose.gonzalezr@uanl.mx

Abstract

We determined dietary niche breadth of Burrowing Owls *Athene cunicularia* Molina, 1782 in Llano La Soledad, Galeana, Nuevo Leon in northern Mexico, considering prey type, frequency of occurrence, and biomass. We compared these data among three winter seasons (2002-2003, 2003-2004, 2004-2005) by analyzing 358 pellets and identifying 821 prey items. Vertebrates accounted for 87% of consumed biomass of which 74% represented mammals. Most of mammal biomass consumed were Cricetid rodents (58%). Ninety percent of prey items were invertebrates, most of which were insects (84%); beetles were the most commonly found in pellets (55%). Niche breadth based on frequency of occurrence and biomass confirmed the burrowing owl as a generalist species with mean values per year ranging between 0.68 and 0.82. There was and significant association between relative biomass of rodent species and invertebrate families with wintering season. This association was driven mainly by changes in composition and frequency of these types of prey during the second season, which was likely caused by high annual rainfall.

The second season also showed a significantly narrower niche (0.68 vs. 0.82) and the smallest overlap (<47% vs. 88%) among the three winters.

Key words: biomass, burrowing owl, grassland, niche breadth, winter diet.

INTRODUCTION

The Burrowing Owl (*Athene cunicularia* Molina, 1782; Fig.1); has shown a significant negative population trend in United States for almost 50 years (-0.91%/yr.; 1966-2015; *Sauer et al.*, 2017). In Canada is this decline especially steep (-6.42%/yr.; 1966-2015; *Sauer et al.*, 2017) where it is listed as an endangered species (Committee on the Status of Endangered Wildlife in Canada [COSEWIC] 2006). In the U.S. Burrowing Owl it is considered as a National Bird of Conservation Concern U.S. Fish and Wildlife Service [USFWS] 2008; whereas in Mexico it is protected under the “special protection” category (Secretaria de Medio Ambiente y Recursos Naturales [SEMARNAT] 2010). The current population status of the Burrowing Owl is a function of multiple threats such as habitat fragmentation, decreased availability of prey, increased predation, inclement weather, vehicles strikes, environmental contaminants, and loss of burrows (*Environment Canada*, 2012). Food availability, in particular, is one of the most important natural limiting factors in populations during winter (*Newton*, 1998; *McDonald et al.*, 2004).

The winter diet of the Burrowing Owl has been mostly studied in the United States in Texas, Nevada, and California, as well as in other countries in North, and South America and consists of invertebrates, small mammals, and reptiles (*Plumpton & Lutz*, 1993). Invertebrates are consumed most frequently (*Poulin*, 2003) but mammals compose most of the biomass (*Andrade et al.*, 2004; *Littles et al.*, 2007; *Nabte et al.*, 2008; *De Tomasso et al.*, 2009; *Andrade et al.*, 2010; *Carevic et al.*, 2013). However, frequency of occurrence of insect orders is highly variable, both temporally and spatially. Beetles (Coleoptera) and crickets (Gryllidae) consumption ranged from

20% to 80%. On the other hand, mammal species, which include Deer Mice (*Peromyscus manicualtos*), Silky Pocket Mice (*Perognathus flavus*) and Kangaroo Rats (*Dipodomys merriami*), are reported to be as high as 98% (Ross & Smith, 1970; Coulombe, 1971; Butts, 1976; Tyler, 1983; Barrows, 1989; Mills, 2016). In British Columbia, Canada, indicate that 56% of their diet is insects, such as earwigs and beetles (Morgan, 1993). The only report of the Burrowing Owl's winter diet in Mexico has been done in central Mexico in the state of Guanajuato, where 78% of prey items were invertebrates, while the remaining 22% were vertebrates (Valdez-Gómez, 2003), while and biomass was more evenly distributed among Orthoptera (26.8%), Lepidoptera (20.6%) and rodents (20.9%; Valdez-Gómez et al., 2009). Diet during the breeding season has also been analyzed in the states of Durango and Nuevo León, where insects were the most frequent prey items (67-84%) and mammals represented 50% of the biomass (Rodríguez-Estrella, 1997, Ruiz-Aymá, 2019).

Variation in diet has been associated with prey availability, suggesting that small mammals are selected over invertebrates when their densities are sufficiently high (Silva et al., 1995). A change in prey composition has also been associated with rainfall, with more grasshoppers and some rodents *Perognathus sp.*, *Onychomys leucogaster* consumed during dry years and birds during wet years (Conrey, 2010).

Information of the Burrowing Owls' winter diet in Mexico is limited and temporal variation has not been examined. Thus, our objective was to determine the wintering diet composition and dietary niche breadth of Burrowing Owls during three winter seasons (2002-2003, 2003-2004, 2004-2005) in northern Mexico, (Llano La Soledad, in the southern Chihuahuan Desert). We predicted that in a year with high rainfall, diet composition will be different than in drier years, and that will likely affect dietary niche breadth.

STUDY AREA AND METHODS

Site descriptions

Llano la Soledad is a plain located in northeastern Mexico, state of Nuevo Leon, municipality of Galeana, within the Grassland Priority Conservation Area “El Tokio” (CEC & TNC 2005, Pool & Panjabi 2011), which is part of the Chihuahuan Desert ecoregion (25° 9’ 8.87” N, 101° 6’ 8.00” W and 24° 18’ 54.12”N, 100° 23’ 41.48” W; Fig. 2). It is a State Natural Protected Area (*Diario Oficial de la Federación, 2002*) and internationally known for its importance for shorebird conservation (*WHSRN, 2004*). It is also part of an important bird area "Pradera de Tokio" (AICA-NE-36; *Del Coro & Márquez, 2000*) that harbors vulnerable bird species both endemic and migratory, such as Golden Eagle (*Aquila chrysaetos*), Long-billed Curlew (*Numenius americanus*), Mountain Plover (*Charadrius montanus*) and Worthen's Sparrow (*Spizella wortheni*) (*Macias et al., 2011*). The Llano La Soledad also contains the largest colony of Mexican Prairie Dogs (*Cynomys mexicanus*) (*Treviño & Grant, 1998*) and therefore represents the most extensive and continuous habitat in terms of burrow and food availability for the Burrowing Owl in northeastern Mexico.

The area is dominated by open grasslands with 80% bare ground and 20% plant cover: 3% of grass and 17% of forbs and shrubs. The most common species are: Spear Globemallow (*Sphaeralcea hastulata*), Four Wing Saltbush (*Atriplex canescens*), Three Awn (*Aristida ssp.*) and Burrograss (*Scleropogon brevifolius*), Creeping Muhly (*Muhlenbergia repens*), Sand Muhly (*M. arenicola*) and Grama (*Bouteloua karwinskii*) (*Cruz-Nieto, 2006*). The semi-arid climate features temperatures ranging from 6 to 25 °C with an annual average of 16 °C (*CONAGUA, 2019*). Average annual precipitation is 427mm (*INEGI, 2005*). Annual rainfall for 2002-2004

years, was obtained from the closest (~6 km) meteorological station in La Carbonera (19032; *CONAGUA*, 2019).

Pellet Collection and Analyses

Pellets were collected at the entrances of burrows, from the first week of October through the first week of March over three winter seasons: 2002-2003, 2003-2004, and 2004-2005. We collected pellets from burrows every third day. We analyzed and quantified the remains of each pellet according to the methods of *Errington*, (1930; 1932) and *Marti*, (1987). We identified mammals according to *Anderson*, (1972) and *Roest*, (1991), herpetofauna following *Smith & Taylor*, (1950) and *Smith & Smith*, (1993), birds following *Howell & Webb*, (2004) and *Dunn*, (2006), and invertebrates according to *Borror et al.*, (1989). All vertebrate prey items that could not be determined to the species level were included in the unidentified category.

We estimated biomass multiplying weight for the frequency of occurrence of each type of prey, assuming there was one individual per pellet. For mammals we used the median of the weight for each species to avoid overestimation (*Holt & Childs*, 1991). Medians were obtained from data given for Mexico by *Ceballos & Oliva*, (2005). For reptiles, we used specimens from the Herpetology Laboratory collection at the Universidad Autonoma de Nuevo Leon/Facultad de Ciencias Biologicas; for insects, data reported by *Olalla* (2014); and for spider, median weights were obtained from live specimens of the Arachnology collection at the Facultad de Ciencias Biologicas/Universidad Autonoma de Nuevo Leon.

Statistical Analyses

We estimated niche breadth and their 95% confidence intervals for each season using Smith's measure (1982), and their overlap using Horn's index (1966) with Ecological Methodology 7.2

(*Krebs, 2011*) software. We considered niche breadth estimates with non-overlapping 95% confidence intervals as statistically different.

To test for an association ($\alpha = 0.05$) of prey frequency and biomass among taxonomic levels and years we used χ^2 contingency tests (*Zar, 1998*). We also calculated and interpreted Cramér's phi coefficient (ϕ_c) as a measure of the effect size of the association (Cohen 1988). These analyses were conducted using PAST 3.14 (*Hammer et al., 2001*).

RESULTS

We analyzed 358 pellets, and found 821 items from 26 taxa. We recorded 7 orders and 17 families of invertebrates, 6 genera of small mammals, 2 genera of reptiles, and 1 avian genus. Vertebrates represented 10% and invertebrates 90% of prey items consumed during the three winter seasons, but the proportions were inversed for biomass, with vertebrates composing 84% and invertebrates 16% of biomass consumed. Rodents composed 7% of the prey items eaten, but 82% of the biomass particularly Cricetid rodents. Insects, primarily from the orders Coleoptera (55%) and Orthoptera (27%) represented 84% of consumed items but contributed only to 12% of the biomass (Fig. 3; Tables 1, 2).

Niche breadth measures were wide, indicating, as expected, a generalist species, with consistent overall estimates for both frequency of occurrence (FT= 0.77; 95%CI=0.74-0.80) and biomass (FT=0.74; 95%CI=0.70-0.77). However, the niche breadth based on biomass was significantly smaller for the winter of 2003-04 (Table 3, Fig. 4). This also coincided with above average (395 mm; 1956-2014) annual precipitation of 505 mm during 2003, compared with drier years: 288 mm (2002) and 304 mm (2004).

There was a highly significant and small correlation between yearly parameters and prey items of invertebrate classes ($\chi^2=23.13$, $df=2$, $p<0.0001$, $\phi_c=0.18$) and orders ($\chi^2=47.14$, $df=8$, $p<0.0001$,

$\phi_c=0.18$), and moderate with families ($X^2=215.2$, $df=32$, $p<0.0001$, $\phi_c=0.38$). There were weak to strong associations between biomass and year at every taxonomic level (Table 4). Year associations with vertebrate taxonomic levels were primarily caused by a greater consumption of mammal (rodents) biomass, particularly, Spotted Ground Squirrel (*Xerospermophilus spilosoma*) and Mexican Woodrats (*Neotoma Mexicana*). During the second (wet) year, Merriam's Kangaroo Rat (*Dipodomys merriami*) consumption decreased during the same period (Table 2). Changes in prey composition and relative biomass during the second season were also evident from niche overlap indices, which show the smallest values when compared to the first and third seasons (0.45 and 0.47), and greater frequency of occurrence, ranging from 0.78 to 0.87 (Table 5). Birds on the contrary, were very stable among years with a relative biomass between 11 and 13% (Table 2).

DISCUSSION

Our findings provide additional evidence that the burrowing owl is a generalist and opportunistic predator. Invertebrates (mainly arthropods) were the most frequent food items, corroborating previous studies that have shown that overwintering Burrowing Owls feed mainly on arthropods and small mammals (Ross & Smith, 1970; Coulombe, 1971; Butts, 1976; Tyler, 1983; York et al., 200; Valdez- Gómez, 2003; Littles et al., 2007; Hall et al., 2009).

Invertebrates represented 90% of prey items consumed, which is similar to results from other studies (Littles et al., 2007; Caveric et al., 2013; Cavalli et al., 2014) as they report values ranging from 93% to 98%, but higher than the 78% reported by Valdez- Gómez for Mexico (2003).

Insects represented 84% of the items in the diet, which was very similar among the seasons, varying between 83 and 87%, which is greater than the 63% reported in México (*Valdez- Gómez, 2003*) and less than the 91% reported in southern Texas (*Littles et al., 2007*).

Beetles were the most-frequently consumed insects overall with 55%, and a maximum variation of 10% between years. Beetles have been observed as a consumed insect order, which is not common in North America and has only been observed during the breeding season (39%-54%; e.g. *Haug, 1985; Green et al., 1993; Floate et al., 2008*) and more prevailing in South America (e.g. *Andrade et al., 2010; Cavalli et al., 2013*). In most studies in North America, crickets (*Gryllidae*) were the most frequently ingested insects (*York et al., 2002; Valdez- Gómez, 2003; Littles et al., 2007; Hall et al., 2009*). At the family level, Carabid beetles were the most frequently consumed (25%) in our study, while other authors report *Gryllidae* (crickets; *Valdez- Gómez, 2003; Littles et al., 2007*). *Jonas et al., (2002)* observed a positive correlation between native vegetation and beetles, whose consumption by Burrowing Owls in our study was likely related to the high proportion of native vegetation in Llano La Soledad. Beetles have an affinity for native vegetation (*Crisp et al., 1998; Jonas et al., 2002; Littles et al., 2007*) whereas crickets are common in disturbed areas (*Smith, 1940; Jonas et al., 2002*) in North America, especially in grazed and overgrazed pastures, abandoned pastures (*Jonas et al., 2002*), abandoned crop fields, lawns, old fields and other grassy areas (*Cade & Otte, 2000; Moulton et al., 2005*), as well as in tilled and plowed fields (*Carmona, 1998*); however, these types of fields were not common in our study area, and the closest were around 10 km away.

Conversely, in South America, although coleopterans have been found to be highly consumed and preferred by the burrowing owl, their relative abundance was higher in agricultural areas than in vegetated sand-dunes (*Cavalli et al., 2013*). These authors suggested that coleopterans

may also have been common in owls' diet because they require little effort to capture, particularly when they are abundant near burrows. *Littles et al.*, (2007) reported that beetles were the second most consumed item (32%) of all prey items on a barrier island, where vast expanses of the native vegetation occur in comparison to agricultural and grassland, in grasslands, fire suppression has allowed brush species such as Honey Mesquite (*Prosopis glandulosa*) to invade the remaining native pastures and most remaining grasslands are dominated by exotic grass species that were introduced for cattle.

The second-most frequently consumed prey items in our study were the grasshoppers (22%), while *Valdez- Gómez, 2003* reported to this same group (15%) and *Littles et al., 2007*, mentioned Lepidoptera (13%). Our data showed variation in relative frequency of consumption among arthropod groups, with the greatest frequency of occurrence of spiders during the first season (<10%); and a decrease in the presence of Scarabeidae and an increase of Tenebrionidae and Gryllidae occurrence in the third year (Table 1).

In addition, the Burrowing Owls' consumption at Llano de la Soledad showed more variation, which is an indicator of a natural habitat and typical of an opportunistic predator that feeds on what is available (*Jaksic & Martí, 1981; Jaksic, 1988; Green et al., 1993; Haug et al., 1993; Littles, 2007*).

Vertebrates represented 10% of the remaining prey items consumed by the Burrowing Owls, which was less than the 21% recorded in Guanajuato, Mexico (*Valdez- Gómez, 2003*), and greater than the 2% recorded in southern Texas (*Littles et al., 2007*). However, rodents were consistent as the most frequently vertebrate with 74%, in comparison with 70% reported by *Littles et al., (2007)* and 86% by *Valdez- Gómez (2003)*.

We found that Silky Pocket mice were the most common rodent prey (19%), followed by the Western Harvest Mouse (15%), the Deer Mice and Merriam's Kangaroo Rats (14% each). In contrast, the most commonly found rodents in Guanajuato were deer (39%) and Silky Pocket Mice (35%; *Valdez- Gómez, 2003*); while in Texas the most common were Northern Pigmy (23%) and Fulvous Harvest Mice (19%; *Littles et al., 2007*). All of these rodent species are distributed in U. S. and Mexico, mostly within arid areas of both countries, and their variation as the most consumed prey per region is consistent with the capacity of the Burrowing Owl to use what is likely most available on each region.

Even though vertebrates only represent 10% of prey items, they accounted for 87% of the total biomass consumed, which is similar to other authors' findings (*Littles et al., 2007; Nabte et al., 2008; Carevic et al., 2013*). Mammals biomass was of 74% varied between 62 and 82% between years, which is higher than what has been reported for Texas (52%) (*Littles et al., 2007*) and Mexico (25%; *Valdéz-Gómez et al., 2009*), but within the 25 to 95% reported in Argentina and Chile (*Andrade et al., 2004; Nabte et al., 2008; De Tomasso et al., 2009; Andrade et al., 2010; Carevic et al., 2013*). Cricetid rodents composed 58% of the biomass, which falls within the range of 37 to 95% found in other studies (*Littles et al., 2007; Nabte et al., 2008; Andrade et al., 2010*).

As previously stated, within vertebrates, changes in rodent species biomass use during the second season drove the main differences in niche breadth and composition among years. This difference coincides with a high annual rainfall that may have produced irruptive population events (*Greenville et al., 2012*), or caused changes in rodent species' population densities, which would affect their availability and their selection as prey by the Burrowing Owl (*Silva et al., 1995*). Although this was not measured, temporal variation in populations of all the prey species

in our study have been associated with rainfall, more strongly for the species we found changed the most, such as Merriam's Kangaroo Rat, Silky Pocket Mice, Spotted Ground Squirrel and Western Harvest Mouse (*Whitford, 1976; Brown & Zeng, 1989; Brown & Ernest, 2002*). Temporal studies that include prey availability in disturbed and undisturbed areas of southern Chihuahuan Desert would clarify the dynamics of prey use and preference for this vulnerable owl species. Examining the effects of the variation in vertebrate biomass consumption on survival of Burrowing Owls during wet and dry years would also be informative, especially considering climate change scenarios. Another relevant aspect of the temporal framework for diet studies is their relationship with pesticides and indirect exposure to contaminated prey, which is likely, although with limited evidence at the moment (*Haug & Oliphant, 1987; James et al., 1990*). Finally, it is also important to highlight that Llano La Soledad grasslands are key to maintaining healthy populations of the Burrowing Owl and other species. Management and conservation of this population depends on the depth of our knowledge of this species, and one of the key components is its feeding ecology.

Acknowledgements

We are grateful to the Universidad Autonoma de Nuevo Leon through the support program for Scientific and Technological Research (PAICyT).

References

Anderson S. 1972. Mammals of Chihuahua taxonomy and distribution. *Bulletin of the American Museum of Natural History New York* 148:149-410. Available at <http://hdl.handle.net/2246/1101>

246 Andrade A, Sauthier DEU, Pardiñas DE. 2004. Vertebrados depredados por la lechucita
247 vizcachera (*Athene cunicularia*) en la Meseta de Somuncurá (Río Negro, Argentina). *El Hornero*
248 9: 91-93. Available at
249 <https://pdfs.semanticscholar.org/78b3/acde4ee980ac6a09ea1df0aa5e999a317d5a.pdf>.
250 Andrade A, Nabte MJ, Kun ME. 2010. Diet of the Burrowing Owl (*Athene cunicularia*) and its
251 seasonal variation in Patagonian steppes: implications for biodiversity assessments in the
252 Somuncurá Plateau Protected Area, Argentina. *Studies on Neotropical Fauna and Environment*
253 45:101-110. DOI: [10.25260/EA.17.27.3.0.465](https://doi.org/10.25260/EA.17.27.3.0.465)
254 Barrows CW. 1989. Diets of five species of desert owls. *Western Birds* 20:1-10. Available at
255 [https://www.westernfieldornithologists.org/archive/V20/20\(1\)%20p0001-p0011.pdf](https://www.westernfieldornithologists.org/archive/V20/20(1)%20p0001-p0011.pdf)
256 Brown JH, Ernest KM. 2002. Rain and rodents: complex dynamics of desert consumers.
257 *Bioscience* 52:979-987.
258 DOI:[10.1641/0006- 3568\(2002\)052\[0979:RARCDO\]2.0.CO;2](https://doi.org/10.1641/0006-3568(2002)052[0979:RARCDO]2.0.CO;2)
259 Brown JH, Zeng Z. 1989. Comparative population ecology of eleven species of rodents in the
260 Chihuahuan Desert. *Ecology* 70:1507-1525. DOI: [10.2307/1938209](https://doi.org/10.2307/1938209)
261 Borror DJ, Triplehorn CA, Johnson NF. 1989. *An introduction to the study of insects*. 6^a. Ed.
262 Brooks/Cole Thomson Learning. Pacific Grove, California. USA.
263 Butts KO. 1976. Burrowing Owls wintering in the Oklahoma Panhandle. *Auk* 93:510-516.
264 Available at <https://sora.unm.edu/sites/default/files/journals/auk/v093n03/p0510-p0516.pdf>
265 Cade WH, Otte D. 2000. *Gryllus texensis* n.sp.: a widely studied field cricket (Orthoptera:
266 Gryllidae) from the southern United States. *Transactions of the American Entomological Society*
267 126:117-123. Available at [http://people.uleth.ca/~bill.cade/wp-](http://people.uleth.ca/~bill.cade/wp-content/Publications/Cade_Otte_Gtex_2000.pdf)
268 [content/Publications/Cade_Otte_Gtex_2000.pdf](http://people.uleth.ca/~bill.cade/wp-content/Publications/Cade_Otte_Gtex_2000.pdf)

269 Carmona DM. 1998. Influence of refuge habitats on seasonal activity-density of ground beetles
270 (Coleoptera: Carabidae) and the northern field cricket (*Gryllus pennsylvanicus*) Burmeister
271 (Orthoptera: Gryllidae). M.S. thesis, Michigan State Univ., East Lansing, MI U.S.A.

272 Carevic FS, Carmona ER, Muñoz-Pedrerros A. 2013. Seasonal diet of the burrowing owl *Athene*
273 *cunicularia* Molina, 1782 (Strigidae) in a hyperarid ecosystem of the Atacama desert in northern
274 Chile. *Journal of Arid Environments* 97:237–241. DOI: [10.1016/j.jaridenv.2013.07.008](https://doi.org/10.1016/j.jaridenv.2013.07.008).

275 Cavalli M, Blandron VA, Isacch JP, Martinez G, Bo MS. 2014. Prey selection and food habitats
276 of breeding Burrowing Owl (*Athene cunicularia*) in natural and modified habitats of Argentine
277 pampas. *Emu* 12:184-188. DOI: [10.1071/MU13040](https://doi.org/10.1071/MU13040).

278 Ceballos G, Oliva G. 2005. *Los mamíferos silvestres de México*. Comisión Nacional para el
279 Conocimiento y Uso de la Biodiversidad y Fondo de Cultura Económica, México, D.F.

280 CEC and TNC. 2005. North American central grasslands priority conservation areas: technical
281 report and documentation. In: Karl, J.W. and Hoth, J., Eds., Commission for Environmental
282 Cooperation and The Nature Conservancy, Montreal, Quebec; Canada. Available at
283 [http://www3.cec.org/islandora/es/item/2568-north-american-grassland-priority-conservation-](http://www3.cec.org/islandora/es/item/2568-north-american-grassland-priority-conservation-areas-en.pdf)
284 [areas-en.pdf](http://www3.cec.org/islandora/es/item/2568-north-american-grassland-priority-conservation-areas-en.pdf) (accessed August 08, 2015).

285 Cohen J. 1988, *Statistical power and analysis for the behavioral sciences* (2nd ed.), Hillsdale,
286 N.J., Lawrence Erlbaum Associates, Inc. New York, USA.

287 Committee on the Status of Endangered Wildlife in Canada. 2006. COSEWIC Assessment and
288 Update Status Report on Burrowing Owl *Athene cunicularia* in Canada. Committee on the Status
289 of Endangered Wildlife in Canada, Ottawa, Canada. Available at
290 [https://www.canada.ca/en/environment-climate-change/services/species-risk-public-](https://www.canada.ca/en/environment-climate-change/services/species-risk-public-registry/cosewic-assessments-status-reports/burrowing-owl.html)
291 [registry/cosewic-assessments-status-reports/burrowing-owl.html](https://www.canada.ca/en/environment-climate-change/services/species-risk-public-registry/cosewic-assessments-status-reports/burrowing-owl.html) (accessed July 13, 2015).

292 CONAGUA. Comisión Nacional del Agua 2019. Consulta base de datos. Distrito Federal,
 293 Mexico. Available at <http://www.smn.cna.gob.mx/es/emas>. (accessed September 13, 2015).

294 Conrey, R. C. Y. 2010. Breeding success, prey use, and mark-resight estimation of Burrowing
 295 Owls nesting on black-tailed prairie dog towns: plague affects a non-susceptible raptor. Ph.D.
 296 Thesis. Colorado State University, USA. 218 pp.

297 Coulombe HN. 1971. Behavior and Population Ecology of the Burrowing Owl, *Speotyto*
 298 *cunicularia*, in the Imperial Valley of California. The Condor 73:162–176. DOI:
 299 10.2307/1365837.

300 Crisp PN, Dickinson KJM, Gibbs GW. 1998. Does native invertebrate diversity reflect native
 301 plant diversity? A case study from New Zealand and implications for conservation. Biological
 302 Conservation 83:209–220. DOI: 10.1016/S0006-3207(97)00053-0.

303 Cruz-Nieto, M.A. 2006. Ecología invernal de la lechuza llanera (*Athene cunicularia*), en los
 304 pastizales ocupados por el perrito llanero mexicano (*Cynomys mexicanus*), Nuevo Leon, Mexico.
 305 Ph.D. Thesis. Universidad Autónoma de Nuevo León, Facultad de Ciencias Biológicas. 118 pp.
 306 Mexico.

307 Del Coro-Arizmendi M, Marquez LV. 2000. *Áreas de Importancia para la Conservación de las*
 308 *Aves*. CONABIO & Fondo Mexicano para la Conservación de la Naturaleza. México.

309 De Tommaso DC, Callicó RG, Teta P, Pereira JA. 2009. Dieta de la lechucita vizcachera en dos
 310 áreas con diferente uso de la tierra en el centro-sur de la provincia de la pampa, Argentina.
 311 *Hornero* 24:87-93. Available at <http://www.scielo.org.ar/pdf/hornero/v24n2/v24n2a04.pdf>

312 Diario Oficial de la Federación 2002. Monterrey, N. L., Gobierno Constitucional del Estado
 313 Libre y Soberano de Nuevo León, México. Tomo CXXXIX.

314 Dunn JL. 2006. *Field Guide to the birds of North America*. National Geographic. 5th edition
 315 Washington D.C. USA.

316 Environment Canada. 2012. Recovery Strategy for the Burrowing Owl (*Athene cunicularia*) in
 317 Canada. Species at Risk Act Recovery Strategy Series. Environment Canada, Ottawa, Ontario.
 318 viii + 34 pp.

319 Errington PL. 1930. The pellet analysis method of raptor food habits study. *Condor* 32:292–296.
 320 *Available at*
 321 <https://pdfs.semanticscholar.org/c924/ccce741b9df5fc7c03a9596931bcf65d08b9.pdf>

322 Errington PL. 1932. Technique of raptor food habits study. *Condor* 34:75-86. *Available at*
 323 <https://sora.unm.edu/sites/default/files/journals/condor/v034n02/p0075-p0086.pdf>

324 Floate KD, Bouchard P, Holroyd G, Poulin R, Wellicome TI. 2008b. Does Doramectin Use on
 325 Cattle Indirectly Affect the Endangered Burrowing Owl. *Rangeland Ecology & Management*
 326 61:543–553. DOI: 10.2111/08-099.1.

327 Green GA, Fitzner RE, Anthony RG, Rogers LE. 1993. Comparative diets of burrowing owls in
 328 Oregon and Washington. *Northwest Science* 67:88-93.

329 Greenville AC, Wardle GM, Dickman CR. 2012. Extreme climatic events drive mammal
 330 irruptions: regression analysis of 100-year trends in desert rainfall and temperature. *Ecology and*
 331 *Evolution* 2:2645–2658. DOI: 10.1002/ece3.377.

332 Hall DB, Greger PD, Rosier JR. 2009. Regional and seasonal diet of the Western Burrowing Owl
 333 in South Central Nevada. *Western North American Naturalist* 69:1-8. *Available at*
 334 <https://scholarsarchive.byu.edu/wnan/vol69/iss1/1>

335 Hammer Ø, Harper DAT, Ryan PD. 2001. PAST: Paleontological statistics software package for
336 education and data analysis. *Palaeontologia Electronica* 4: 9pp. Available at [palaeo-](http://palaeo-electronica.org/2001_1/past/issue1_01.htm)
337 [electronica.org/2001_1/past/issue1_01.htm](http://palaeo-electronica.org/2001_1/past/issue1_01.htm)

338 Haug EA, Oliphant LW. 1990. Movements, Activity Patterns, and Habitat Use of Burrowing
339 Owls in Saskatchewan. *The Journal of Wildlife Management* 54:27–35. DOI: [10.2307/3808896](https://doi.org/10.2307/3808896).

340 Haug EA. 1985. Observations on the breeding ecology of Burrowing Owls in Saskatchewan.
341 M.S. Thesis. University of Saskatchewan. 89 pp. Canada.

342 Holt DW, Childs NN. 1991. Non-Breeding season diet of Long-eared Owls in Massachusetts.
343 *Journal Raptor Research* 25:23-24. Available at
344 <https://sora.unm.edu/sites/default/files/journals/jrr/v025n01/p00023-p00024.pdf>

345 Horn H. 1966. Measurements of overlap in comparative ecological studies. *American Naturalist*
346 100:419-424. Available at <https://www.jstor.org/stable/2459242>

347 Howell SNG, Webb S. 2004. *A guide to the birds of Mexico and northern Central America*.
348 Oxford University Press. USA. Pp. 200-201.

349 Instituto Nacional de Estadística Geografía e Informática. INEGI 2005. Conjunto de datos
350 vectoriales de la carta de uso del suelo y vegetación, escala 1:250,000, Serie III. INEGI. México;
351 2005.

352 Jaksic FM. 1988. Trophic structure of some nearctic, neotropical, and palearctic owl assemblages:
353 potential roles of diet opportunism, interspecific interference and resource depression. *Journal*
354 *Raptor Research* 22:44-52. Available at
355 <https://sora.unm.edu/sites/default/files/journals/jrr/v022n02/p00044-p00052.pdf>

356 Jaksic FM, Marti CD. 1981. Trophic ecology of *Athene* owls in mediterranean-type ecosystems:
357 a comparative analysis. *Canadian Journal of Zoology* 59:2331–2340. DOI: 10.1139/z81-312.

Jonas JL, Whiles MR, Carlton RE. 2002. Above ground invertebrate response to land management differences in a central Kansas grassland. *Environmental Entomology* 31:1142-1152. DOI:[10.1603/0046-225X-31.6.1142](https://doi.org/10.1603/0046-225X-31.6.1142)

James PC, Fox GA, Ethier TJ. 1990. Is the operational use of strychnine to control ground squirrels detrimental to burrowing owls?. *Journal of Raptor Research* 24: 120–123. Available at <https://sora.unm.edu/sites/default/files/journals/jrr/v024n04/p00120-p00123.pdf>

Krebs JC. 2011. *Ecological Methodology*. Addison Wesley Longman. University of British Columbia. Canada.

Littles CJ, Williford D, Skoruppa MK, Woodin MC, Hickman GC. 2007. Diet of Western Burrowing Owls wintering in Southern Texas. *Journal Raptor Research*. 41:307-313. DOI: [10.3356/0892-1016\(2007\)41\[307:DOWBOW\]2.0.CO;2](https://doi.org/10.3356/0892-1016(2007)41[307:DOWBOW]2.0.CO;2).

Macías-Duarte A, Panjabi AO, Pool D, Youngberg E, Levandoski G. 2011. Wintering grassland bird density in Chihuahuan desert grassland priority conservation areas, 2007-2011. Rocky Mountain Bird Observatory, Brighton, CO, RMBO Technical Report INEOTROP-MXPLAT-10-2. 164 pp.

McDonald D, Korfanta NM, Lantz SJ. 2004. The Burrowing Owl (*Athene cunicularia*): a technical conservation assessment. [Online]. USDA Forest Service, Rocky Mountain Region. Available at <http://www.fs.fed.us/r2/projects/scp/assessments/burrowingowl.pdf> [date of access]. (accessed July 18, 2016).

Marti CD. 1974. Feeding ecology of four sympatric owls. *Condor* 76:45-61. Available at <https://sora.unm.edu/sites/default/files/journals/condor/v076n01/p0045-p0061.pdf>

379 Marti CD. 1987. Raptor food habitat studies. Pages 67-80 in B.A. Giron Pendleton, B.A.
 380 Millsap, K.W. Cline, and D.W. Bird [Eds.], Raptor management techniques manual. Natl. Wildl.
 381 Fed. Sci. Tech. Ser. No. 10, Washington, DC U.S.A.

382 Maser, C., E.W. Hammer, and S.H. Anderson. 1971. Food habits of the Burrowing Owl in
 383 central Oregon. *Northwest Science* 45:19-26.

384 Mills KL. 2016. Seabirds as part of migratory owl diet on Southeast Farallon Island, California.
 385 Marine Ornithology 44:121–126. Available at
 386 <https://pdfs.semanticscholar.org/dc88/07d7c8609fdc81c36f281e7dcd83ec1d9c9f.pdf>

387 Moulton CE, Brady RS, Belthoff RJ. 2005. A comparison of breeding season food habits of
 388 Burrowing Owls nesting in agricultural and nonagricultural habitat in Idaho. *Journal of Raptor*
 389 *Research* 39:429-438. Available at
 390 <https://sora.unm.edu/sites/default/files/journals/jrr/v039n04/p00429-p00438.pdf>

391 Morgan KH, Cannings RJ, Guppy CS. 1993. Some Foods Eaten by a Burrowing Owl
 392 Overwintering on Southern Vancouver Island. *Northwestern Naturalist* 74:84. DOI:
 393 10.2307/3536603

394 Nabte MJ, Pardiñas UJF, Saba SL. 2008. The diet of the Burrowing Owl, *Athene cunicularia*, in
 395 the arid lands of northeastern Patagonia, Argentina. *Journal of Arid Environments* 72:1526–
 396 1530. DOI: 10.1016/j.jaridenv.2008.02.009.

397 Newton I. 1998. *Population Limitation in Birds*. Academic Press, San Diego, CA. USA.

398 Olalla KA. 2014. Aspectos ecológicos del zarapito pico largo *Numenius americanus* (Bechstein,
 399 1812) en dos sitios de invernación del Desierto Chihuahuense. PhD. Dissertation, Universidad
 400 Autónoma de Nuevo León, 152 p. México.

401 Pool DB, Panjabi AO. 2011. Assessment and Revisions of North American Grassland Priority
 402 Conservation Areas. Background Paper Commission for Environmental Cooperation. Montreal
 403 (Quebec) Canada. 66p.

404 Poulin, R.G. 2003. Relationships between Burrowing Owls (*Athene cunicularia*), small
 405 mammals, and agriculture. PhD thesis, University of Regina, Regina, Saskatchewan; 145 pp.
 406 Canada.

407 Plumpton DL, Lutz RS. 1993. Nesting habitat use by Burrowing Owls in Colorado. *Journal of*
 408 *Raptor Research* 27:175-179. Available at
 409 <https://sora.unm.edu/sites/default/files/journals/jrr/v027n04/p00175-p00179.pdf>

410 Rodriguez-Estrella R. 1997. Nesting sites and feeding habits of the Burrowing Owl in the
 411 Biosphere Reserve of Mapimi, Mexico. *Journal Raptor Research Report* 9:99-106.

412 Roest AI. 1991. *A key guide to mammal skulls and lower jaws*. Mad river Press Inc. Eureka,
 413 CA.USA.

414 Ross PV, Smith DJ. 1970. Notes on the ecology of the Burrowing Owl, *Speotyto cunicularia*, in
 415 the Texas High Plains. *Texas Journal Science* 21:479-480.

416 Ruiz-Aymá, G, Kerstupp OA, Guzmán VA, Gonzalez RJI. 2019. Diet and Prey Delivery of
 417 Burrowing Owls (*Athene cunicularia hypugaea*) During the Breeding Season in the Chihuahuan
 418 Desert, Mexico. *Journal of Raptor Research* 53:75-83. [DOI:10.3356/JRR-17-90](https://doi.org/10.3356/JRR-17-90)

419 Sauer JR, Hines JE, Fallon JE, Pardieck KL, Ziolkowski DJ, Link WA. 2017. *The North*
 420 *American Breeding Bird Survey, Results and Analysis 1966 - 2015*. Version 01.30.2015 USGS
 421 Patuxent Wildlife Research Center, Laurel, MD.

422 Secretaria de Medio Ambiente y Recursos Naturales (SEMARNAT). 2010. Norma Oficial
 423 Mexicana. NOM-059-ECOL-2010. *Proteccion Ambiental Especies Nativas de Mexico de Flora y*

424 *Fauna Silvestre Categorías de Riesgo y Especificaciones para Su Inclusión Exclusión o Cambio*
 425 *Lista de Especies en Riesgo*. Diario Oficial de la Federación, 30 de Diciembre del 2010, Mexico,
 426 D.F. Mexico.

427 Silva SI, Lazo I, Silva-Aranguiz E, Jaksic FM, Meserve PL, Gutierrez JR. 1995. [Numerical and](#)
 428 [functional response of Burrowing Owls to long-term mammal fluctuations in Chile](#). *Journal of*
 429 *Raptor Research* 29:250-255. Available at
 430 <https://sora.unm.edu/sites/default/files/journals/jrr/v029n04/p00250-p00255.pdf>

431 Smith EP. 1982. Niche Breadth, Resource Availability, and Inference. *Ecology* 63:1675–1681.
 432 DOI: 10.2307/1940109.

433 Smith, H.M., and R.B. Smith. 1993. Synopsis of the herpetofauna of Mexico. Volumen VII.
 434 University Press of Colorado.USA. 1082 pp.

435 Smith HM, Taylor EH. 1950. An annotated checklist and key to the reptiles of Mexico exclusive
 436 of snakes. U.S. *National Museum Bulletin* 1-253. DOI: 10.5479/si.03629236.199

437 Treviño-Villarreal J, Grant WE. 1998. Geographic Range of the Endangered Mexican Prairie
 438 Dog (*Cynomys mexicanus*). *Journal of Mammalogy* 79:1273–1287. DOI: 10.2307/1383019.

439 Tyler JD. 1983. Notes on Burrowing Owl (*Athene cunicularia*) Food Habits in Oklahoma. The
 440 *Southwestern Naturalist* 28:100–102. DOI: 10.2307/3670602.

441 U.S. Fish and Wildlife Service. 2008. Birds of Conservation Concern 2008. United States
 442 Department of Interior, Fish and Wildlife Service, Division of Migratory Bird Management,
 443 Arlington, Virginia. 85 pp. Available at <http://www.fws.gov/migratorybirds/> (accessed
 444 November 24, 2017).

445 Valdez-Gómez, H.E. 2003. Dieta del Tecolote Llanero Occidental *Athene cunicularia hypugaea*,
 446 (Bonaparte, 1825), durante su estancia invernal en el Bajío Mexicano. Bachelor Thesis,
 447 Universidad de Guadalajara, Jalisco, México.

448 Valdez-Gómez HE, Holroyd GL, Trefry HE, Contreras-Balderas AJ. 2009. Do the winter diets of
 449 sympatric burrowing owl and short-eared owl overlap in west-central Mexico? Proceedings of
 450 the Fourth International Partners in Flight Conference: *Tundra to Tropics*: 96-101.
 451 DOI:10.1525/cond.2011.113.2.470

452 Whitford WG. 1976. Temporal Fluctuations in Density and Diversity of Desert Rodent
 453 Populations. *Journal of Mammalogy* 57:351–369. DOI: 10.2307/1379694.

454 WHSRN. 2005. Designación de Sitio en Categoría de Importancia Internacional para la
 455 conservación de aves playeras de la Western Hemisphere Shorebird Reserve Network. *Available*
 456 *at* <http://www.whsrn.org/site-profile/llano-de-la-soledad> (accessed November 3, 2015).

457 York M, Rosenberg D, Sturm K. 2002. Diet and food-niche breadth of Burrowing Owls (*Athene*
 458 *cunicularia*) in the Imperial Valley, California. *Western North American Naturalist* 62:280-287.
 459 *Available at* <https://scholarsarchive.byu.edu/wnan/vol62/iss3/3>

460 Zar JH. 2010. *Biostatistical Analysis*. Fifth Ed. Pearson Prentice-Hall. Upper Saddle, NJ, USA.

Table 1(on next page)

.Percentage of prey consumed by burrowing owl

Frequency of occurrence (%) of prey items from 358 Burrowing Owl pellets collected in Llano La Soledad, Galeana, N.L., Mexico.

	Winters			
	2002- 2003 (n=125)	2003- 2004 (n=116)	2004- 2005 (n=117)	Total (n=358)
Mammals				
<i>Peromyscus maniculatus</i>	0.7	1.2	1.0	1.0
<i>Dipodomys merriami</i>	1.1	0.4	1.4	1.0
<i>Perognathus flavus</i>	0.4	1.2	1.7	1.1
<i>Xerospermophilus spilosoma</i>		0.8		0.2
<i>Reithrodontomys megalotis</i>	0.7	0.4	2.8	1.3
<i>Neotoma mexicana</i>		0.8		0.2
Rodent unidentified	2.8	2.0	2.1	2.3
Birds				
<i>Amphispiza bilineata</i>	0.4			0.1
Birds unidentified	1.1	4.4	2.1	2.4
Reptiles				
<i>Holbrookia maculata</i>	0.4			0.1
<i>Aspidoscelis inornata</i>		0.4		0.1
Reptiles unidentified		0.4		0.1
Insects	83.1	83.1	86.9	84.4
Coleoptera				
Elateridae		0.8	2.1	1.0
Carabidae	25	26.2	24.6	25.2
Scarabaeidae	16.9	18.1	1.4	11.8
Curculionidae	6.7	6.9	5.9	6.5
Cerambycidae	4.9	2.8	7.3	5.1
Passalidae		6.5	2.1	2.7
Buprestidae			0.7	0.2
Tenebrionidae			6.9	2.4
Orthoptera				
Acrididae	24.3	17.3	23.9	22
Gryllidae	1.1	2.4	11.1	5.0
Hymenoptera				
Vespididae	0.7			0.2
Formicidae		2.0	0.7	0.9
Dermaptera				
Forficulidae	3.5		0.3	1.3
Arachnids	9.5	4.8	2.1	5.5
Araneae				

1	Theraphosidae	2.1		1.0	1.1
2	Araneidae	6.0	1.6		2.6
3	Solifugae				
4	Eremobatidae	1.4	3.2	0.3	1.6
5	Thelyphonida				
6	Thelyphonidae			0.7	0.2
7	Total ítems	284	248	289	821
8					

Table 2(on next page)

Biomass from winter diet consumption of burrowing owl

Biomass percentage (%) of prey from Burrowing Owl pellets (358) collected from Llano La Soledad, Galeana, N.L., Mexico.

	Winters			
	2002-2003	2003-2004	2004-2005	Total
	(n=125)	(n=116)	(n=117)	(n=358)
Mammals				
<i>Peromyscus maniculatus</i>	10.7	6.4	11.4	8.7
<i>Dipodomys merriami</i>	30.2	4.0	28.8	16.4
<i>Perognathus flavus</i>	1.8	2.1	6.4	3.3
<i>Xerospermophilus spilosoma</i>		26.5		13.5
<i>Reithrodontomys megalotis</i>	5.0	1.0	14.2	5.6
<i>Neotoma mexicana</i>		38.2		19.5
Unidentified rodents	14.2	3.6	7.6	6.9
Birds				
<i>Amphispiza bilineata</i>	2.9			0.6
Unidentified birds	8.5	12.5	12.2	11.6
Reptiles				
<i>Holbrookia maculata</i>	1.8			0.4
<i>Aspidoscelis inornata</i>		0.4		0.2
Unidentified reptiles		0.4		0.2
Insects				
Coleoptera	4.7	2.0	4.9	3.4
Elateridae		0.02	0.1	0.03
Carabidea	1.7	0.6	1.2	1.0
Scarabaeidae	1.1	0.4	0.1	0.5
Curculionidae	0.9	0.3	0.6	0.5
Cerambycidae	1.0	0.2	1.1	0.6
Passalidae		0.4	0.3	0.3
Buprestidae			0.2	0.1
Tenebrionidae			1.5	0.4
Orthoptera				
Acrididae	9.3	2.3	6.7	5.0
Gryllidae	0.3	0.2	2.0	0.7
Hymenoptera				
Vespidae	0.1			0.02
Formicidae		0.002	0.1	0.03
Dermaptera	1.9		0.1	0.4
Forficulidae	1.9		0.1	0.4
Arachnids	8.7	0.5	5.7	3.6
Araneae				
Theraphosidae	7.6		2.7	2.3
Araneidae	0.7	0.06		0.2
Solifugae				

Eremobatidae	0.5	0.4	0.1	0.3
Thelyphonida				
Thelyphonidae			2.9	0.8
Total (g)	422	1056	591	2070

1

2

Table 3(on next page)

Results of niche width with frequencies of winter diet consumption

Niche breadth estimate and 95% confidence intervals based on frequency of occurrence data and biomass.

	2002-2003	2003-2004	2004-2005	Total
	(N=125)	(N=116)	(N=117)	(N=358)
Frequency of occurrence				
Smith's measure (95%CI)	0.80	0.82	0.82	0.77
	(0.74-0.85)	(0.76-0.87)	(0.77-0.87)	(0.74-0.80)
Frequently consumed items (>5%)	5	5	6	5
Biomass				
Smith's measure (95%CI)	0.82	0.68	0.77	0.74
	(0.77-0.87)	(0.61-0.74)	(0.71-0.82)	(0.70-0.77)
Frequently consumed items (>5%)	6	4	7	7

1
2
3

Table 4(on next page)

Biomass per year with association by level of consumption of the winter diet

Association test (X²) of biomass between year and taxonomic level. Cramer's phi coefficient (ϕ_c) is included as a measure of its effect size.

1

Taxonomic Level	χ^2	p	ϕ_c
Vertebrates			
Classes	16.7	<0.001	0.07
Species (Rodents)	1067.3	<0.001	0.59
Invertebrates			
Classes	11.8	0.003	0.21
Orders	69.4	<0.001	0.36
Families	111.9	<0.001	0.45

2

Table 5(on next page)

Niche analysis using Horn's index.

Niche overlap among wintering seasons using Horn's index. Upper diagonal was estimated from frequency of occurrence data (FO) and below diagonal was calculated from biomass data.

Biomass\FO	2002-2003	2003-2004	2004-2005
2002-2003	-	0.873	0.78
2003-2004	0.451	-	0.801
2004-2005	0.884	0.472	-

1

2

3

Figure 1

Image of the study species

Burrowing owl in Galeana, Nuevo Leon; Mexico.



Figure 2

Location map of the study area

Location of State Natural Protected Area Llano La Soledad, Galeana, N.L., Mexico.

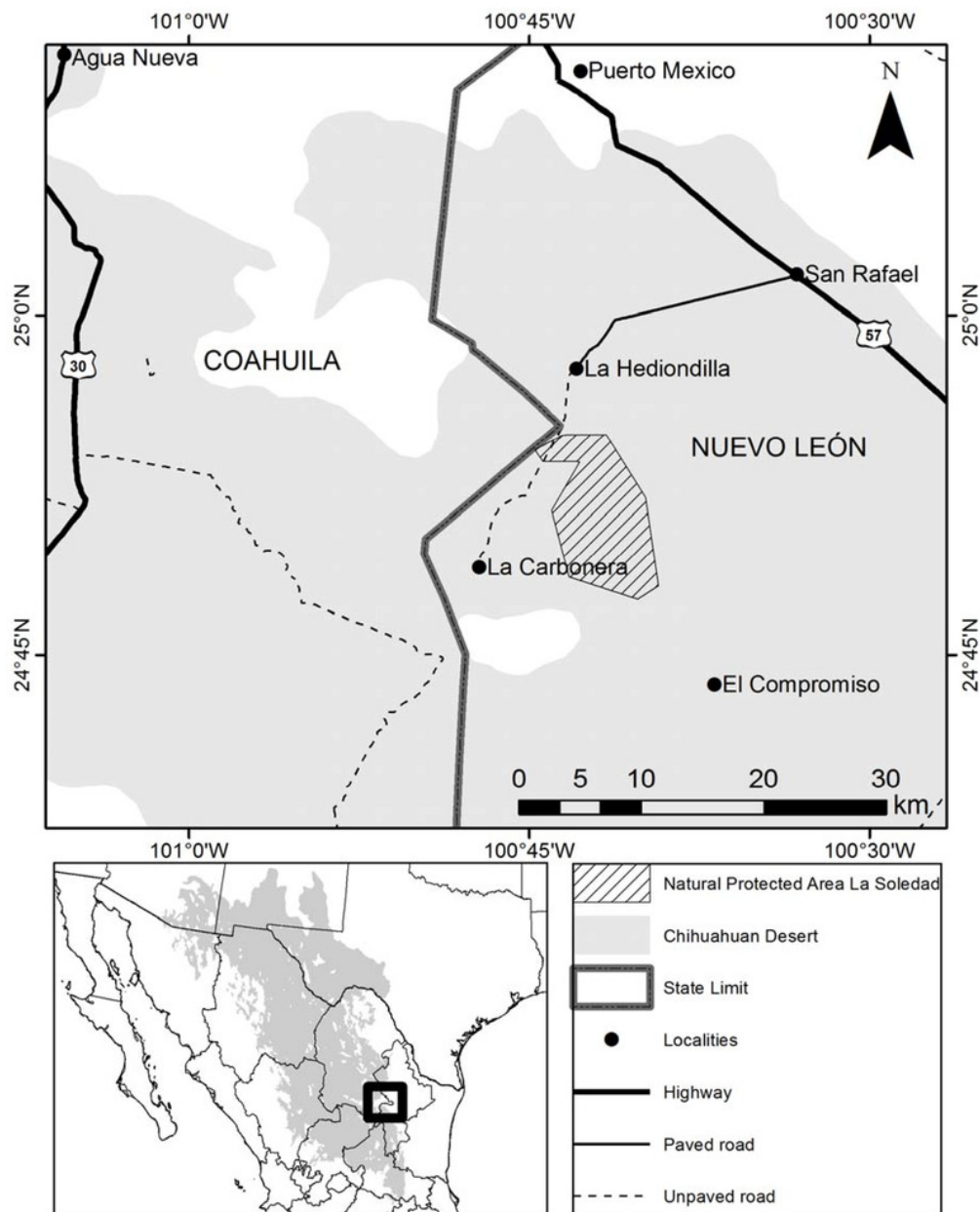


Figure 3

Remains of winter prey from the Burrowing owl

Remains of winter prey from the Burrowing owl: A) Pellets; B) Head with antenna, mandible, compound eye of beetle; C) Bones and teeth; D) Femur and tibia of grasshopper; E) Tibia and mandible of beetle; F) Chelicera and palpal tibia of arachids.

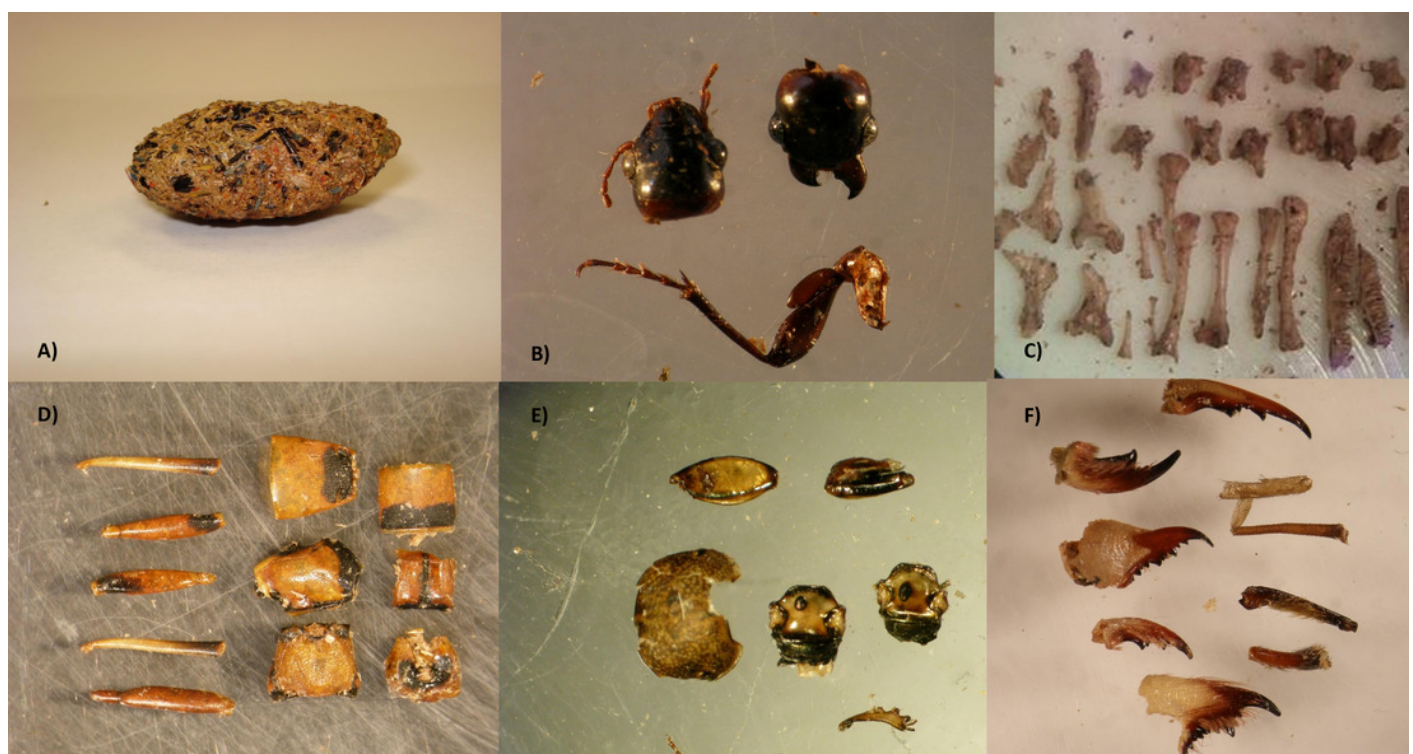


Figure 4

niche analysis confidence intervals

Dietary niche breadth estimate (Smith 1982) and 95%CI of Burrowing Owl *Athene cunicularia* during three winter seasons (2002-2005) based on biomass.

