

Small herbivores and abiotic heterogeneity promote trait variation of a saltmarsh plant in local communities

Qingqing Chen ^{Corresp., 1}, Christian Smit ¹, Ido Pen ¹, Han Olff ¹

¹ Groningen Institute for Evolutionary Life Sciences (GELIFES), University of Groningen, Groningen, The Netherlands

Corresponding Author: Qingqing Chen
Email address: chqq365@hotmail.com

Intraspecific trait variation (ITV) enables plants to respond to global changes. However, causes for ITV, especially from biotic components such as herbivory, are not well understood. We explored whether small vertebrate herbivores (hares and geese) impact ITV of a dominant clonal grass (*Elytrigia atherica*) in local communities. Moreover, we looked at the relative importance of their direct (e.g. selective grazing) and indirect effects (altering genotypic richness/diversity and abiotic environment) on ITV. We used exclosures at two successional stages in a Dutch saltmarsh, where grazing pressure at the early successional stage was ca. 1.5 times higher than that of the intermediate successional stage. We measured key functional traits of *E. atherica* including height, aboveground biomass, flowering (flower or not), specific leaf area, and leaf dry matter content in local communities (1 m × 1m plots) inside and outside the exclosures. We determined genotypic richness and diversity of each plant using molecular markers. We further measured abiotic variations in topography and clay thickness (a proxy for soil total nitrogen). Structural equation models revealed that small herbivores significantly promoted ITV in height and flowering at the early successional stage, while they marginally promoted ITV in height at the intermediate successional stage. Moreover, the direct effects of herbivores played a major role in promoting ITV. Small herbivores decreased genotypic diversity at the intermediate successional stage, but genotypic richness and diversity did not impact ITV. Small herbivores did not alter topographic variation and variation in clay thickness, but these variations increased ITV in all traits at the early successional stage. Small herbivores may not only impact trait means in plants as studies have shown but also their ITV.

1 **Small herbivores and abiotic heterogeneity promote trait variation of a saltmarsh plant in**
 2 **local communities**

3 **running title:** small herbivores and trait variation

4 Qingqing Chen^{1*}, Christian Smit¹, Ido Pen¹, Han Olff¹

5 Affiliations:

6 1 Groningen Institute for Evolutionary Life Sciences (GELIFES), University of Groningen,
 7 Nijenborgh 7, 9747 AG Groningen, The Netherlands.

8 *Correspondence to Qingqing Chen (chqq365@gmail.com); ORCID: 0000000319573848

9

Abstract

Intraspecific trait variation (ITV) enables plants to respond to global changes. However, causes for ITV, especially from biotic components such as herbivory, are not well understood. We explored whether small vertebrate herbivores (hares and geese) impact ITV of a dominant clonal grass (*Elytrigia atherica*) in local communities. Moreover, we looked at the relative importance of their direct (e.g. selective grazing) and indirect effects (altering genotypic richness/diversity and abiotic environment) on ITV. We used exclosures at two successional stages in a Dutch saltmarsh, where grazing pressure at the early successional stage was ca. 1.5 times higher than that of the intermediate successional stage. We measured key functional traits of *E. atherica* including height, aboveground biomass, flowering (flower or not), specific leaf area, and leaf dry matter content in local communities (1 m × 1m plots) inside and outside the exclosures. We determined genotypic richness and diversity of each plant using molecular markers. We further measured abiotic variations in topography and clay thickness (a proxy for soil total nitrogen). Structural equation models revealed that small herbivores significantly promoted ITV in height and flowering at the early successional stage, while they marginally promoted ITV in height at the intermediate successional stage. Moreover, the direct effects of herbivores played a major role in promoting ITV. Small herbivores decreased genotypic diversity at the intermediate successional stage, but genotypic richness and diversity did not impact ITV. Small herbivores did not alter topographic variation and variation in clay thickness, but these variations increased ITV in all traits at the early successional stage. Small herbivores may not only impact trait means in plants as studies have shown but also their ITV.

Keywords: trait variation; plant-herbivore interaction; grazing; abiotic; genetic diversity; saltmarsh

Introduction

Studies show that intraspecific trait variation (i.e. variability in traits of conspecific individuals; hereafter ITV) can enable plant species to respond to global changes (Westerband, Funk & Barton, 2021), impact community composition and structure (Whitlock, Grime & Burke, 2010), and govern ecosystem processes (Boege & Dirzo, 2004; Crutsinger et al., 2006; Crutsinger, Souza & Sanders, 2008; Lecerf & Chauvet, 2008). The importance of ITV has been increasingly realized over the years (Violle et al., 2012; Siefert et al., 2015; Funk et al., 2017; Westneat et al., 2019; Westerband, Funk & Barton, 2021), therefore, exploring the causes for ITV is of prime importance, particularly under the current rapid global changes (Westerband, Funk & Barton, 2021). Several components including genotypic richness/diversity and phenotypic plasticity triggered by biotic and abiotic environments can drive ITV (Valladares, Gianoli & Gomez, 2007). However, biotic components, particularly herbivory, received much less attention than genotypic richness/diversity and abiotic environments (Valladares, Gianoli & Gomez, 2007).

Whilst herbivores are one of the major drivers for plant trait differentiation globally (Díaz et al., 2007; He & Silliman, 2016), the majority of the studies that document the effects of herbivores on plant traits focus on trait means without considering ITV (e.g. Bullock et al., 2001; Louault et al., 2005; Kahmen & Poschlod, 2008). Limited studies suggest that herbivores may also impact ITV (e.g. Jessen et al., 2020). However, these studies mainly focus on large herbivores. Large and small herbivores are relative. Here we refer to small herbivores as vertebrate herbivores with body mass ranging from 1 to 10 kg such as hares and geese. Small herbivores sometimes can have stronger impacts on plant communities than large ones especially when their abundance is

high (Olofsson et al., 2004). Additionally, small herbivores are usually more selective with forage plants (Olf & Ritchie, 1998). Therefore, small herbivores may also impact ITV, however, we currently lack empirical evidence. As small herbivore populations are changing dramatically due to human actions (Smith, Jennings & Harris, 2005; Menu, Gauthier & Reed, 2002), it is important to understand whether and how small herbivores impact ITV.

Small herbivores may impact ITV via multiple non-exclusive processes. First, small herbivores can promote ITV through selective grazing. Studies show that large herbivores generally prefer young plants that are often more nutritious (e.g. higher protein and lower lignin and cellulose) (Augustine & McNaughton, 1998). Thus, larger herbivores decrease plant height by grazing them down (Díaz et al., 2007; Evju et al., 2009). Similarly, small herbivores may prefer young plants and decrease plant height, but because small herbivores consume less and they are more selective with forage plants, some young plants may escape from small herbivores via association with unpalatable species (Van Der Wal et al., 2000; Kuijper & Bakker, 2008). Thus, small herbivores may promote variation in plant height. Second, small herbivores may impact ITV indirectly through altering genotypic richness and diversity. Increased genotypic richness and diversity can increase ITV (Evans et al., 2016). Studies looking at the effects of large herbivores on genotypic diversity show that large herbivores can increase genotypic diversity by promoting seed transportation (Rico & Wagner, 2016) or decrease it by promoting clonal growth (Kleijn & Steinger, 2002). Small herbivores can have similar effects to large ones on many processes such as seed dispersal (Bakker & Olf, 2003). Therefore, small herbivores can either increase or decrease genotypic richness and diversity. Third, small herbivores may promote ITV indirectly through altering abiotic heterogeneity (e.g. topographic variation and variation in soil nutrients) via grazing the vegetation at particular spatial scales, trampling, and localized

deposition of droppings (Adler, Raff & Lauenroth, 2001). Abiotic heterogeneity usually promotes ITV (Westerband, Funk & Barton, 2021). However, whether small herbivores impact ITV via these processes and the relative importance of them in shaping ITV remains underexplored.

To test these hypotheses, we used long-term (22-year) exclosure experiment at the early and intermediate successional stages of a Dutch saltmarsh. In the eastern part of the saltmarsh of the island of Schiermonnikoog, hares and geese are the abundant herbivores while large herbivores are absent (Kuijper & Bakker, 2005; Schrama et al., 2015; Chen et al., 2019). A well-calibrated successional gradient is present here (Olf et al., 1997). Hares and geese are more abundant at the early successional stages but their abundance decreases at intermediate and late successional stages due to less preferred late successional plants such as *Elytrigia atherica* (synonym *Elymus athericus*) increase in dominance (Kuijper & Bakker, 2005; Schrama et al., 2015; Chen et al., 2019). *Elytrigia atherica* mainly reproduces clonally, but sexual reproduction may occur occasionally via windows of opportunity and their seeds are mainly dispersed by tidal water, thus genotypic richness is high in this grass (Bockelmann et al., 2003; Change et al., 2005; Chen, 2020). Topographic variation and variation in clay thickness are important factors for the growth and expansion of *E. atherica* in saltmarshes (Olf et al., 1997; Nolte et al., 2019). Thus, the long-term exclosure experiment along the successional gradient in this saltmarsh provides ideal conditions to look at the effects of small herbivores on ITV in plants.

In this study, we look at the effects of hares and geese on ITV of *E. atherica* in local communities (1 m × 1 m plots). This is because ITV is usually strongly driven by processes operating at small spatial scales (Westerband, Funk & Barton, 2021). We measured key functional traits of this dominant grass including height, aboveground biomass, flowering (flower or not), specific leaf area, and leaf dry matter content within local communities inside and outside the exclosures. Using structural equation models, we test whether hares and geese impact ITV of *E. atherica*, and the relative importance of their direct effects (e.g. selective grazing) and indirect effects (via altering genotypic richness/diversity and abiotic variables) on ITV. We expect that hares and geese would increase ITV in all traits measured and their effects would be more apparent at the early successional stage (relative to the intermediate one) where grazing pressure was higher. Although adult plants of *E. atherica* are less preferred, hares and geese considerably graze on its seedling/young plants (Kuijper, Nijhoff & Bakker, 2004; Fokkema et al., 2016). However, short seedlings/young plants may escape from grazing by associating with non-preferred plants such as *Artemisia maritima*. Hares and geese may increase topographic variation via trampling (Wijnen, Wal & Bakker, 1999; Elschot et al., 2015), they may also impact sediment accumulation (measured by clay thickness) by trampling and altering vegetation structure (Boorman, Garbutt & Barratt, 1998). However, because hares and geese play a less important role than tidal water in seed dispersal (Chang et al., 2005), it is unlikely that they can increase genotypic richness and diversity by dispersing seeds. Instead, hares and geese may decrease genotypic richness and diversity by promoting clonal spread of *E. atherica* (Van Der Graaf, Stahl & Bakker, 2005). Therefore, we also expect that hares and geese may increase ITV through selective grazing and promoting topographic variation and variation in clay thickness but may decrease ITV by decreasing genotypic richness and diversity.

Materials and methods

Study site

A natural successional gradient is present in the back-barrier saltmarsh of the island of Schiermonnikoog (53°30' N, 6°10' E), the Netherlands. Because this island expands eastward, thus the eastern part of the island is younger relative to the western part (Oloff et al., 1997). The western part of the saltmarsh is enclosed for cattle grazing, while the eastern part of it is grazed by wild small herbivores such as spring staging geese, year-round present hares and rabbits. Hares and geese are the most abundant herbivores (Van de Koppel et al., 1996; Van Der Wal, Kunst & Drent, 1998; Wal et al., 2000; Kuijper & Bakker, 2005; Schrama et al., 2015). Rabbits are very rare. Kuijper and Bakker (2005) found that biomass removed by rabbits in 2000 was 6.33% and 0.16% of the total biomass removed by small herbivores at the early and intermediate successional stage, respectively.

We used long-term hare and goose exclosures that were initiated in 1994 (details in Chen et al., 2019). We selected exclosures located at the early and intermediate successional stages, which are approximately 2.5 km apart (Fig. 1A). Vegetation succession has undergone around 30 and 60 years at the early and intermediate successional stage, respectively. Age of the vegetation succession was counted from the year of vegetation establishment to 2016. The year of vegetation establishment was determined by checking aerial photographs (Oloff et al., 1997). Grazing pressure from hares and geese was ca. 1.5 times higher at the early successional stage

than the intermediate successional stage based on year-round dropping count in 2000 and 2016 (see Table S1 for more details; Kuijper & Bakker, 2005; Chen et al., 2019; Chen et al., 2019a).

Hare and goose exclosures (one per each successional stage) were located in a similar elevation (early stage: 1.42 ± 0.004 ; intermediate stage: 1.44 ± 0.004 ; mean \pm 1se; N=24; m+NAP; Normal Amsterdam Water Level). Exclosures (8 m \times 12 m and 6 m \times 8 m at the early and intermediate successional stages) were made by chicken mesh (mesh width 25 mm) supported by wooden posts every 3.5 m to exclude hare grazing inside the exclosures. Exclosures were around 1 m in height, ropes were suspended on top of the wooden posts to stop geese flying into the exclosures. At the beginning of the exclosure experiment (1995), *E. atherica* rarely occurred (< 2.5 %; percent cover) inside and outside the exclosures at these two stages. Vegetation composition differed in the grazed areas and inside the exclosures in 2016 (Fig.1; also see Table S2 for species composition for the three most abundant species). Specifically, *Artemisia maritima* was the most dominant plant in the grazed area at these two stages, while *E. atherica* was the most dominant plant inside the exclosures.

Experimental design

To make our results spatially comparable, we sampled within ca. 6 m \times 8 m inside and outside the exclosures at both successional stages in June 2017. We chose this size because this is the largest area we can sample inside the exclosures at the intermediate successional stage. The distance between the area and the exclosure measured ca. 80 m. We randomly set up 7 plots (1m \times 1m) inside these two grazed areas and exclosures (Fig. 1). The distance between these plots

ranged from 0.5 m to 9 m. We divided each plot into 25 grids (0.2 m × 0.2 m). Within each grid, we collected one individual stem of *E. atherica* (with roots), usually in the middle of the grid (Fig. 1). *Elytrigia atherica* did not occur everywhere, particularly not in the grazed area, thus sample size per plot varied from 9 to 25.

Trait measurement

We measured traits for individual stems of *E. atherica* in the field. We sampled individual stems without obvious grazing marks. We cut individual stems at the ground level and measured maximum height (cm) from the base to the highest point. We measured the maximum leaf width and length of the first fully grown leaf, usually the third leaf from the top. We also recorded whether individual stems flowered or not. After these measurements, each stem was stored in a paper bag, sealed, labeled, and then put in a self-sealing plastic bag to reduce water loss in tissues. At the end of each day, samples were brought to the lab, we measured fresh biomass of the individual stems and fully-grown leaves. We also measured their dried biomass (g) after oven-dry (70 °C) to constant mass (ca. 3 days). We calculated specific leaf area (mm² mg⁻¹) as (leaf width × leaf length) / dried leaf biomass. We calculated leaf dry matter content (mg g⁻¹) as dried leaf biomass / fresh leaf biomass. Specific leaf area and leaf dry matter content were not measured in the standard way (Pérez-Harguindeguy et al., 2016), and caution should be taken when comparing our data with other studies. Due to that reason, in the main text, we focus on height, aboveground biomass, and flowering, we present the results for specific leaf area and leaf dry matter content in the online supporting file.

Genotyping and genotype richness and diversity

We used oven-dried leaf samples (ca. 2 mg per individual stem) for DNA extraction. We first shredded leaf samples into smaller pieces using tissuelyser. We then extracted DNA from each leaf sample using the CTAB method (Doyle & Doyle, 1987) and stored DNA samples at -20 °C before PCR. We amplified DNA using PCR with fluorescence-labeled primers. We used five microsatellite markers (ECGA89, WMS6, WMS44, WMS2, and ECGA89) originally designed for the other Poaceae species, *Elymus caninus* (Sun, Salomon & Bothmer, 1998) and *Triticum aestivum* (Röder et al., 1998). These five markers were used for genotyping *E. atherica* in this system (Bockelmann et al., 2003; Chen 2020). The PCR products from primer ECGA89, WMS6, and WMS44 were pooled together, while the PCR products from WMS2 and ECGA89 were pooled together. Additionally, 1 µL rROX was added in each sample as the internal size standard (Gene Scan™–350 ROXTM, Applied Biosystem). We visualized the pooled PCR products using the 3730 DNA analyzer and scored the microsatellite peak patterns (height > 100) manually using GeneMapper. In total, we successfully genotyped 579 individual stems of *E. atherica*, but 2 were excluded for further analyses as some trait data measured in the field for these samples were missing.

Abiotic variables

We measured clay thickness and topographic variation for each plot (3 replicates). We measured clay thickness using a 2 cm Ø soil corer with tick marks as a proxy for soil total nitrogen (Olff et al., 1997). Previous studies show that clay thickness is strongly positively correlated with soil total nitrogen in this system (i.e. total nitrogen (g) = 186 + 43 clay thickness (cm); r = 0.9,

p<0.0001; Olff et al., 1997). Also, clay thickness is used as a proxy of soil fertility (e.g. Schrama et al., 2017). We measured topography using Trimble R8 (precision for elevation ca. 1 cm).

Data analysis

Calculating trait means, ITV, topographic variation, and variation in clay thickness

We calculated means for each trait by averaging trait values over 9 -25 individual stems in each plot. We calculated ITV in each trait each plot as the standard deviation /mean. Topographic variation and variation in clay thickness were calculated as standard deviation /mean (over 3 samples) of elevation and clay thickness, respectively.

Calculating genotypic richness, genotypic diversity, and genetic differentiation

To calculate genotype richness and diversity per plot, we first calculated pairwise genetic distance using Dice dissimilarity from the R package ade4 (Dray & Dufour, 2015) based on the presence/absence matrix of 42 allele bands from those five markers. We then assigned genotypes based on dice dissimilarity, using the function “assignClones” from the R package polysat (Lindsay, Clark & Clark, 2018). We calculated genotypic richness as the number of unique genotypes detected divided by the number of individual stems genotyped for each plot. Genotypic diversity – taking into account the abundance of different genotypes – was calculated using the function “genotypeDiversity” with the index of “Shannon” from the package polysat (Lindsay, Clark & Clark, 2018). Because small herbivores may select for some particular genotypes that are more resistant or tolerant to herbivore grazing (Kotaneen & Bergelson, 2000), which may also impact traits. We explored genetic differentiation using principal coordinates

analysis (PCoA) from the R package ade4 (Dray & Dufour, 2015). We looked at genetic differentiation at the treatment level, that is, grazed and ungrazed across plots at each successional stage, result can be found in Fig. S1.

Effects of small herbivores on trait means and ITV

Although our focus is on ITV, to compare whether the effects of small herbivores on ITV are stronger than trait means, we also looked at the effects of small herbivores on trait means. We use analysis of variance, function “lm”, to look at the effects of small herbivores on means and ITV of each trait at the early and intermediate successional stage, separately. We checked model assumptions by visually inspecting residual plots for homogeneity and quantile-quantile plots for normality. In all cases, models fitted the data reasonably well.

Direct and indirect effects of small herbivores on ITV

We estimated the direct, indirect effects through altering genotypic richness and diversity, indirect effects through altering abiotic variables, and total effects (sum of direct and indirect effects) of small herbivores on ITV. We estimated these effects in each trait at each successional stage based on the standardized path coefficients using structural equation models from the R package “lavaan” (Rosseel, 2012). Grazing (0: ungrazed, 1: grazed), genotypic richness, genotypic diversity, topographic variation, and variation in clay thickness were included in the models. Note that genotypic diversity was not included for ITV at the early successional stage, as it was significantly correlated with genotypic richness (variance inflation factor > 4). See online supporting text for an example of a structural equation model for ITV in height at the intermediate successional stage and calculation of the direct and indirect effects. Effects are

significant when $p \leq 0.05$, while marginally significant when $p > 0.05$ and $p < 0.1$. Data analysis was performed in R3.5.3 (R Core Team 2020).

Results

Effects of small herbivores on trait means and ITV

At the early successional stage, small herbivores significantly decreased means in height, aboveground biomass, and flowering of *E. atherica*. Also, small herbivores significantly increased ITV in flowering and marginally increased ITV in height, but had no effects on ITV in aboveground biomass. At the intermediate successional stage, small herbivores significantly decreased means in height, aboveground biomass, and flowering. However, small herbivores had no effects on ITV in all traits (Fig. 2; see Table S3 for test statistics). Small herbivores did not impact mean and ITV in specific leaf area and leaf dry matter content at both successional stages except that small herbivores decreased mean in specific leaf area at the intermediate successional stage (Table S3).

Direct and indirect effects of small herbivores on ITV

The structural equation model reveals that overall (summing up the direct and indirect effects), small herbivores tended to promote ITV in height and flowering, but not in other traits at the early successional stage. Overall, small herbivores tended to promote ITV in height, but not in other traits at the intermediate stage. Moreover, these positive overall effects of small herbivores on ITV in height and flowering were mainly attributable to their direct effects. Although the overall effects of small herbivores on ITV in aboveground biomass and specific leaf area were not significant, small herbivores also directly significantly impacted ITV in these two traits at the

early successional stage (Fig 3; Fig. S2). See Table 1 for the standardized path coefficient estimated from SEM for the direct, indirect, and total effects of small herbivores on ITV.

At the early successional stage, small herbivores did not have significant effects on genotypic richness and diversity, but genotypic richness decreased ITV in flowering. At the intermediate successional stage, small herbivores did not have significant effects on genotypic richness, but significantly reduced genotypic diversity. However, genotypic richness and diversity did not impact ITV in any traits at the intermediate successional stages (Fig. 3; Fig. S2).

Small herbivores did not impact topographic variation and variation in clay thickness at both successional stages. However, these variations significantly increased ITV in all traits at the early successional stage except that the effects of topographic variation on ITV in flowering were not significant. The effects of these variations on ITV were less apparent at the intermediate successional stage except that variation in clay thickness marginally decreased ITV in height (Fig. 3; Fig. S2).

Discussion

In this study, using long-term exclosures, in combination with field observations and genetic analyses, we explored ITV of a dominant clonal grass (*Elytrigia atherica*) and the direct and indirect effects of small herbivores on ITV. We found that, at the early successional stage, small herbivores promoted ITV in height and flowering of this grass. At the intermediate successional stage, small herbivores marginally promoted ITV in height. Moreover, small herbivores

promoted ITV mainly through direct effects (e.g. selective grazing) but not through altering genotypic richness/diversity or topographic variation and variation in clay thickness.

Effects of small herbivores on trait means and ITV

Our results suggest that small herbivores could impact both means and variations in key functional traits of *E. atherica*, but their effects differed in different traits. At the early successional stage, we found that small herbivores significantly decreased means in three traits measured (height, aboveground biomass, and flowering) and they significantly promoted ITV in two traits (height and flowering). At the intermediate successional stage, small herbivores significantly decreased means in four traits (height, aboveground biomass, flowering, and specific leaf area) and they marginally promoted ITV in one trait (height; Fig. 2; Fig. S2). This suggests that trait means and variations may be driven by different processes. Moreover, we only observed ITV in height and flowering may be because these two traits have higher plasticity than other traits, and traits with a higher level of plasticity also show higher ITV (Givnish, 2002). Furthermore, small herbivores had similar effects on trait means at both successional stages, but had stronger impacts on ITV at the early successional stage. This may be because the effects of small herbivores on trait means and variations were mediated by community composition in the field. At the early successional stage, the preferred plant, *F. rubra*, was more abundant in the grazed area (ca. 3 times relative to that of the intermediate successional stage), thus small herbivores (although more abundant) may graze more on *F. rubra* rather than *E. atherica*. At the intermediate successional stage, the abundance of *F. rubra* decreased, while the abundance of *E. atherica* increased in the grazed area (ca. 5 times relative to that of the early successional stage),

thus small herbivores (less abundant) may also substantially grazed on less preferred *E. atherica*. Therefore, overall, the effects of small herbivores on trait means were similar at these two stages. Meanwhile, non-preferred species (*A. maritima*) was more abundant in the grazed area at the early successional stage (ca. 2 times relative to that of the intermediate successional stage; see Table S2 for detailed percent cover of these species). It may facilitate young *E. atherica* escape from herbivore grazing. Therefore, ITV was more apparent at the early successional stage than the intermediate one. Previous studies in this system have shown that hares and geese are the important drivers for plant community composition and structure along this successional gradient (Olff et al., 1997; Kuijper & Bakker, 2005; Chen et al., 2019). Here, extending the current knowledge, we show that small herbivores may also impact trait means and variations, which in turn could impact community composition and structure (Whitlock, Grime & Burke, 2010).

Direct and indirect effects of small herbivores on ITV

As we hypothesized, the direct effects of small herbivores through selective grazing increased ITV. This is not only true for height and flowering but also for aboveground biomass and specific leaf area, despite the overall effects of small herbivores on aboveground biomass and specific leaf area were not significant. As explained in the previous paragraph, the direct effects of small herbivores may be mediated by community composition especially the proportion of preferred and non-preferred plants. Herz et al. (2017) found that local neighborhood diversity can explain a large amount of ITV in German meadows and pastures, possibly through increased plant-plant interactions (e.g. competition). In this study, plant diversity was higher in the grazed than the ungrazed plots at both successional stages after 22-year grazing (Table S2). Thus, higher

plant diversity may also contribute to increased ITV in height under grazing at both successional stages. Future studies/experiments looking at the effects of herbivores on ITV in plant communities with the same composition are needed to fully separate the effects of selective grazing from the effects of neighboring plants.

We found that small herbivores did not impact genotype richness and diversity of *E. atherica* at the early successional stage but decreased genotypic diversity at the intermediate successional stage. A previous study in the west part of this saltmarsh found that cattle grazing does not impact genotype richness and diversity of this grass, but cattle grazing alters its morphological traits in the field such as decreasing height and leaf width (Veeneklaas et al., 2011). Here, we found that genotypic richness and diversity generally had no significant effects on ITV. Microsatellite markers are commonly used in studying plant genetics (Jarne & Lagoda, 1996; Vieira et al., 2016), but because they are selectively neutral, they may not control gene expression for the traits measured here. More generally speaking, the genetic basis of most traits in many wild plants is unknown. Thus, it is difficult to know in advance which genes or genomic regions to consider, which further hinders inferring a causal relationship between genetic variation and phenotypic variation (Merilä & Hendry, 2014). A low correlation between variation in morphological traits and DNA markers was also reported before (Kolliker et al., 1998). Additionally, we found genetic differentiation of *E. atherica* in the grazed and ungrazed areas at the early successional stage, but not at the intermediate successional stage (Fig. S1), however, more data (presumably from more exclosures) are needed to consolidate this result. Thus, the observed trait changes (at both successional stages) may not be associated with genetic changes in *E. atherica*.

368

369 In contrast, we found no effects of small herbivores on topographic variation and variation in
 370 clay thickness within plots. These abiotic variations may be primarily induced by flooding and
 371 inundation, which may overrule the effects of small herbivores in salt marshes. However,
 372 variations in these two abiotic variables had substantial positive impacts on ITV particularly at
 373 the early successional stage. Abiotic environment may be more heterogenous at the early
 374 successional stage because this stage has more frequent sediment deposition than the
 375 intermediate successional stage (Schrama, Berg & Olff, 2012). A previous study conducted in
 376 the western part of this saltmarsh also found that topographic variation at the small spatial scales
 377 (0.1 m^2 and 10 m^2) is positively correlated with species richness and cattle grazing additionally
 378 increased species richness (Ruifrok et al., 2014). Thus, abiotic variations, even at very small
 379 spatial scales, may play an important role in promoting ITV and altering other plant community
 380 properties.

381

382 *Long-term exclosures*

383 Although we used 22-year old herbivore exclosures, our data cannot answer whether duration of
 384 herbivore grazing impacts ITV, as we only collected data for one year. To our knowledge, no
 385 studies have compared the effects of short- and long-term grazing on ITV. Didiano et al. (2014)
 386 found that tolerance to rabbit grazing decreased as the age of the exclosures increased in *F.*
 387 *rubra*, the most abundant plant in Silwood Park, England. Therefore, grazing duration may also
 388 impact ITV.

389

Conclusion

Our results suggest that small herbivores may not only impact means but also ITV in some key functional traits of a dominant grass (*E.atherica*). Additionally, small herbivores impacted ITV mainly through selective grazing but not through altering genotypic richness/diversity and abiotic variations. However, topographic variation and variation in clay thickness may contribute to ITV. Small herbivore populations are changing rapidly due to human actions. For instance, populations of European brown hares have declined dramatically due to land-use changes (Smith, Jennings & Harris, 2005), while populations of geese are rapidly increasing globally (Menu, Gauthier & Reed, 2002). These changes in small herbivore populations could thus impact their effects on ITV in plant species, which may have consequences for plants to respond to increasing environmental changes.

Declarations

Funding: Not applicable

Conflicts of interest/Competing interests: The authors declare no conflict of interest.

Availability of data and material (data transparency): Data can be found <https://figshare.com/s/d7e2cee03c89cf0a9d6a>. Data will be made public once the manuscript is accepted. Figures are not copyrighted.

Authors' contributions: QC conceived and designed the experiments, performed the experiments, analyzed the data, and wrote the manuscript. All authors contributed to revisions and gave final approval for publication.

Acknowledgments

We thank Iris Bontekoe, Erica Zuidersma for helping collect samples in the field. We thank Marco van der Velde, Jan Veldsink, and Yvonne Verkuil for their help with genotyping in the lab. We thank J. F. Scheepens for his constructive comments on the earlier versions of this manuscript. We thank Juan Alberti and Oliver Carroll for their constructive suggestions for improving the structure and readability of this manuscript. We thank three anonymous reviewers and the associate editor for their constructive comments and suggestions. We thank Natuurmonumenten for offering us the opportunity to work in the saltmarsh of the island of Schiermonnikoog. QC is funded by CSC (China Scholarship Council).

References

- Adler P, Raff D, Lauenroth W. 2001. The effect of grazing on the spatial heterogeneity of vegetation. *Oecologia* 128:465–479. DOI: 10.1007/s004420100737.
- Augustine DJ, McNaughton SJ. 1998. Ungulate Effects on the Functional Species Composition of Plant Communities : Herbivore Selectivity and Plant Tolerance. *The Journal of Wildlife Management* 62:1165–1183.
- Bakker ES, Olff H. 2003. Impact of different-sized herbivores on recruitment opportunities for

subordinate herbs in grasslands. *Journal of Vegetation Science* 14:465–474. DOI:
10.1658/1100-9233(2003)014[0465:IODHOR]2.0.CO;2.

Bockelmann AC, Reusch TBH, Bijlsma R, Bakker JP. 2003. Habitat differentiation vs. isolation-
by-distance: the genetic population structure of *Elymus athericus* in European salt marshes.
Molecular ecology 12:505–15. DOI: 10.1046/j.1365-294X.2003.01706.x.

Boege K, Dirzo R. 2004. Intraspecific variation in growth, defense and herbivory in *Dialium*
guianense (Caesalpiniaceae) mediated by edaphic heterogeneity. *Plant Ecology* 175:59–69.
DOI: 10.1023/B:VEGE.0000048092.82296.9a.

Boorman LA, Garbutt A, Barratt D. 1998. The role of vegetation in determining patterns of the
accretion of salt marsh sediment. *Geological Society, London, Special Publications* 139:
389-399. <https://doi.org/10.1144/GSL.SP.1998.139.01.29>

Bullock JM, Franklin J, Stevenson MJ, Silvertown J, Sarah J, Gregory SJ, Tofts R. 2001. A Plant
Trait Analysis of Responses to Grazing in a Long-Term Experiment. *Journal of Applied*
Ecology 38:253–267.

Chang ER, Zozaya EL, Kuijper DPJ, Bakker JP. 2005. Seed dispersal by small herbivores and
tidal water: Are they important filters in the assembly of salt-marsh communities?
Functional Ecology 19:665–673. DOI: 10.1111/j.1365-2435.2005.01011.x.

Chen Q. 2020. Low-marsh ecotypes of a dominant plant may not be better adapted to increased
sea level. *Flora* 273:151722. DOI: 10.1016/j.flora.2020.151722.

Chen Q, Howison RA, Bakker JP, Alberti J, Kuijper DPJ, Olff H, Smit C. 2019. Small
herbivores slow down species loss up to 22 years but only at early successional stage.

- 450 *Journal of Ecology* 107:2688–2696. DOI: 10.1111/1365-2745.13236.
- 451 Chen Q, Howison RA, Bakker JP, Alberti J, Kuijper DPJ, Olff H, Smit C. 2019a. Data from:
452 Small herbivores slow down species loss up to 22 years but only at early successional stage.
453 Dryad. <http://dx.doi.org/10.5061/DRYAD.KR6409Q>
- 454 Crutsinger GM, Collins MD, Fordyce JA, Gompert Z, Nice CC, Sanders NJ. 2006. Plant
455 Genotypic Diversity Predicts Community Structure and Governs an Ecosystem Process.
456 *Nature* 313:966–968.
- 457 Crutsinger GM, Souza L, Sanders NJ. 2008. Intraspecific diversity and dominant genotypes
458 resist plant invasions. *Ecology Letters* 11:16–23. DOI: 10.1111/j.1461-0248.2007.01118.x.
- 459 Díaz S, Lavorel S, McIntyre S, Falczuk V, Casanoves F, Milchunas DG, Skarpe C, Rusch G,
460 Sternberg M, Noy-Meir I, Landsberg J, Zhang W, Clark H, Campbell BD. 2007. Plant trait
461 responses to grazing - A global synthesis. *Global Change Biology* 13:313–341. DOI:
462 10.1111/j.1365-2486.2006.01288.x.
- 463 Didiano TJ, Turley NE, Everwand G, Schaefer H, Crawley MJ, Johnson MTJ. 2014.
464 Experimental test of plant defence evolution in four species using long-term rabbit
465 exclosures. *Journal of Ecology* 102:584–594. DOI: 10.1111/1365-2745.12227.
- 466 Doyle JJ, Doyle JL. 1987. A rapid DNA isolation procedure for small quantities of fresh leaf
467 tissue. *Phytochem. Bull.* 74:11–15.
- 468 Dray S, Dufour A-B. 2015. The ade4 Package: Implementing the Duality Diagram for
469 Ecologists . *Journal of Statistical Software* 22. DOI: 10.18637/jss.v022.i04.
- 470 Elschot K, Bakker JP, Temmerman S, Van De Koppel J, Bouma TJ. 2015. Ecosystem

471 engineering by large grazers enhances carbon stocks in a tidal salt marsh. *Marine Ecology*
 472 *Progress Series* 537:9–21. DOI: 10.3354/meps11447.

473 Evans SM, Sinclair EA, Poore AGB, Bain KF, Vergés A. 2016. Genotypic richness predicts
 474 phenotypic variation in an endangered clonal plant. *PeerJ* 2016:1–24. DOI:
 475 10.7717/peerj.1633.

476 Evju M, Austrheim G, Halvorsen R, Mysterud A. 2009. Grazing responses in herbs in relation to
 477 herbivore selectivity and plant traits in an alpine ecosystem. *Oecologia* 161:77–85. DOI:
 478 10.1007/s00442-009-1358-1.

479 Fokkema W, de Boer W, van der Jeugd HP, Dokter A, Nolet BA, De Kok LJ, Elzenga JTM, Olf
 480 H. 2016. The nature of plant adaptations to salinity stress has trophic consequences. *Oikos*
 481 125:804–811. DOI: 10.1111/oik.02757.

482 Funk JL, Larson JE, Ames GM, Butterfield BJ, Cavender-Bares J, Firn J, Laughlin DC, Sutton-
 483 Grier AE, Williams L, Wright J. 2017. Revisiting the Holy Grail: Using plant functional
 484 traits to understand ecological processes. *Biological Reviews* 92:1156–1173. DOI:
 485 10.1111/brv.12275.

486 Givnish TJ. 2002. Ecological constraints on the evolution of plasticity in plants. *Evolutionary*
 487 *Ecology* 16:213–242. DOI: 10.1023/A:1019676410041.

488 He Q, Silliman BR. 2016. Consumer control as a common driver of coastal vegetation
 489 worldwide. *Ecological Monographs* 86:278–294. DOI: 10.1002/ecm.1283.

490 Herz K, Dietz S, Haider S, Jandt U, Scheel D, Bruehlheide H. 2017. Drivers of intraspecific trait
 491 variation of grass and forb species in German meadows and pastures. *Journal of Vegetation*

- 492 *Science* 28:705–716. DOI: 10.1111/jvs.12534.
- 493 Jarne P, Lagoda P. 1996. Microsatellites, from molecules to populations and back. *Trends in*
494 *Ecology and Evolution* 11:424–429. DOI: 10.1016/0169-5347(96)10049-5.
- 495 Jessen MT, Kaarlejärvi E, Olofsson J, Eskelinen A. 2020. Mammalian herbivory shapes
496 intraspecific trait responses to warmer climate and nutrient enrichment. *Global Change*
497 *Biology* 26:6742–6752. DOI: 10.1111/gcb.15378.
- 498 Kahmen S, Poschlod P. 2008. Effects of grassland management on plant functional trait
499 composition. *Agriculture, Ecosystems and Environment* 128:137–145. DOI:
500 10.1016/j.agee.2008.05.016.
- 501 Kleijn D, Steinger T. 2002. Contrasting effects of grazing and hay cutting on the spatial and
502 genetic population structure of *Veratrum album*, an unpalatable, long-lived, clonal plant
503 species. *Journal of Ecology* 90:360–370.
- 504 Kolliker R, Stadelmann, F J, Reidy B, Nosberger J. 1998. Fertilization and defoliation frequency
505 affect genetic diversity of *Festuca pratensis* Huds. in permanent grasslands. *Molecular*
506 *Ecology*:1557–1567.
- 507 Kotanen PM, Bergelson J. 2000. Effects of simulated grazing on different genotypes of
508 *Bouteloua gracilis*: How important is morphology? *Oecologia* 123:66–74. DOI:
509 10.1007/s004420050990.
- 510 Kuijper DPJ, Bakker JP. 2005. Top-down control of small herbivores on salt-marsh vegetation
511 along a productivity gradient. *Ecology* 86:914–923.
- 512 Kuijper DPJ, Bakker JP. 2008. Unpreferred plants affect patch choice and spatial distribution of

513 European brown hares. *Acta Oecologica* 34:339–344. DOI: 10.1016/j.actao.2008.06.007.

514 Lecerf A, Chauvet E. 2008. Intraspecific variability in leaf traits strongly affects alder leaf
515 decomposition in a stream. *Basic and Applied Ecology* 9:598–605. DOI:
516 10.1016/j.baae.2007.11.003.

517 Lindsay A, Clark V, Clark ML V. 2018. Package ‘polysat.’ DOI: 10.1111/1755-
518 0998.12639>.License.

519 Louault F, Pillar VD, Aufrère J, Garnier E, Soussana J. 2005. Plant Traits and Functional Types
520 in Response to Reduced Disturbance in a Semi-Natural Grassland. *Journal of Vegetation*
521 *Science* 16:151–160.

522 Menu S, Gauthier G, Reed A. 2002. Changes in survival rates and population dynamics of
523 greater snow geese over a 30 year period. *Journal of Applied Ecology* 39:91–102.

524 Merilä J, Hendry AP. 2014. Climate change, adaptation, and phenotypic plasticity: The problem
525 and the evidence. *Evolutionary Applications* 7:1–14. DOI: 10.1111/eva.12137.

526 Nolte S, Wanner A, Stock M, Jensen K. 2019. Elymus athericus encroachment in Wadden Sea
527 salt marshes is driven by surface elevation change. *Applied Vegetation Science* 22:454–464.
528 DOI: 10.1111/avsc.12443.

529 Olff H, Leeuw J De, Bakker JP, Platerink RJ, van Wijnen HJ. 1997. Vegetation Succession and
530 Herbivory in a Salt Marsh: Changes Induced by Sea Level Rise and Silt Deposition Along
531 an Elevational Gradient. *Journal of Ecology* 85:799. DOI: 10.2307/2960603.

532 Olff H, Ritchie ME. 1998. Effects of herbivores on grassland plant diversity. *Trends in Ecology*
533 *and Evolution* 13:261–265. DOI: 10.1016/S0169-5347(98)01364-0.

534 Olofsson J, Hulme philip E, Oksanen L, Suominen O. 2004. Importance of large and small
535 mammalian herbivores for the plant community structure in the forest tundra ecotone. *Oikos*
536 106:324–334. DOI: 10.3923/biotech.2011.136.148.

537 Pérez-Harguindeguy N, Díaz S, Garnier E, Lavorel S, Poorter H, Jaureguiberry P, Bret-Harte
538 MS, Cornwell WK, Craine JM, Gurvich DE, Urcelay C, Veneklaas EJ, Reich PB, Poorter L,
539 Wright IJ, Ray P, Enrico L, Pausas JG, de Vos AC, Buchmann N, Funes G, Quétier F,
540 Hodgson JG, Thompson K, Morgan HD, ter Steege H, Sack L, Blonder B, Poschlod P,
541 Vaieretti M V, Conti G, Staver AC, Aquino S, Cornelissen JHC. 2016. Corrigendum to:
542 New handbook for standardised measurement of plant functional traits worldwide.
543 *Australian Journal of Botany* 64:715. DOI: 10.1071/bt12225_co.

544 R Core Team. (2020). R: A language and environment for statistical comput- ing. R Foundation
545 for Statistical Computing.

546 Rico Y, Wagner HH. 2016. Reduced fine-scale spatial genetic structure in grazed populations of
547 *Dianthus carthusianorum*. *Heredity* 117:367–374. DOI: 10.1038/hdy.2016.45.

548 Röder MS, Korzun V, Wendehake K, Plaschke J, Tixier MH, Leroy P, Ganai MW. 1998. A
549 microsatellite map of wheat. *Genetics* 149:2007–2023. DOI: 10.1007/bf00279889.

550 Rosseel Y. 2012. Lavaan: An R Package for Structural Equation Modeling. *Journal of Statistical*
551 *Software* 48:1–93.

552 Ruifrok JL, Postma F, Olff H, Smit C. 2014. Scale-dependent effects of grazing and topographic
553 heterogeneity on plant species richness in a Dutch salt marsh ecosystem. *Applied Vegetation*
554 *Science* 17:615–624. DOI: 10.1111/avsc.12107.

- 555 Schrama M, Berg MP, Olff H. 2012. Ecosystem assembly rules: The interplay of green and
556 brown webs during salt marsh succession. DOI: 10.1890/11-1102.1.
- 557 Schrama M, Kuijper DPJ, Veeneklaas RM, Bakker JP. 2015. Long-term decline in a salt marsh
558 hare population largely driven by bottom-up factors. *Ecoscience* 22:71–82. DOI:
559 10.1080/11956860.2015.1079409.
- 560 Schrama M, van der Plas F, Berg MP, Olff H. 2017. Decoupled diversity dynamics in green and
561 brown webs during primary succession in a saltmarsh. *Journal of Animal Ecology* 86:158–
562 169. DOI: 10.1111/1365-2656.12602.
- 563 Siefert A, Violle C, Chalmandrier L, Albert CH, Taudiere A, Fajardo A, Aarssen LW, Baraloto
564 C, Carlucci MB, Cianciaruso M V., de L. Dantas V, de Bello F, Duarte LDS, Fonseca CR,
565 Freschet GT, Gaucherand S, Gross N, Hikosaka K, Jackson B, Jung V, Kamiyama C,
566 Katabuchi M, Kembel SW, Kichenin E, Kraft NJB, Lagerström A, Bagousse-Pinguet Y Le,
567 Li Y, Mason N, Messier J, Nakashizuka T, Overton JM, Peltzer DA, Pérez-Ramos IM,
568 Pillar VD, Prentice HC, Richardson S, Sasaki T, Schamp BS, Schöb C, Shipley B,
569 Sundqvist M, Sykes MT, Vandewalle M, Wardle DA. 2015. A global meta-analysis of the
570 relative extent of intraspecific trait variation in plant communities. *Ecology Letters*
571 18:1406–1419. DOI: 10.1111/ele.12508.
- 572 Smith RK, Jennings N V., Harris S. 2005. A quantitative analysis of the abundance and
573 demography of European hares *Lepus europaeus* in relation to habitat type, *Mammal*
574 *Review* 35:1–24. DOI: 10.1111/j.1365-2907.2005.00057.x.
- 575 Sun G-LL, Salomon B, Bothmer R V. 1998. Characterization and analysis of microsatellite loci
576 in *Elymus caninus* (Triticeae: Poaceae). *Theoretical and Applied Genetics* 96:676–682.

DOI: 10.1007/s001220050788.

Valladares F, Gianoli E, Gomez JM. 2007. Ecological limits to plant phenotypic plasticity. *New Phytologist* 176:749–763. DOI: 10.1111/j.1469-8137.2007.02275.x.

Van Der Graaf AJ, Stahl J, Bakker JP. 2005. Compensatory growth of *Festuca rubra* after grazing: Can migratory herbivores increase their own harvest during staging? *Functional Ecology* 19:961–969. DOI: 10.1111/j.1365-2435.2005.01056.x.

Van de Koppel J, Huisman J, Van Der Wal R, Olff H. 1996. Patterns of Herbivory Along a Productivity Gradient : An Empirical and Theoretical Investigation. *Ecology* 77:736–745. DOI: 10.2307/2265498.

Veeneklaas R, Bockelmann A, Reusch T, Bakker J. 2011. Effect of grazing and mowing on the clonal structure of *Elytrigia atherica*: A long-term study of abandoned and managed sites. *Preslia* 83:455–470.

Vieira MLC, Santini L, Diniz AL, Munhoz C de F. 2016. Microsatellite markers: What they mean and why they are so useful. *Genetics and Molecular Biology* 39:312–328. DOI: 10.1590/1678-4685-GMB-2016-0027.

Violle C, Enquist BJ, McGill BJ, Jiang L, Albert CH, Hulshof C, Jung V, Messier J. 2012. The return of the variance: Intraspecific variability in community ecology. *Trends in Ecology and Evolution* 27:244–252. DOI: 10.1016/j.tree.2011.11.014.

Wal R Van Der, Lieshout S Van, Bos D, Drent RH. 2000. Are Spring Staging Brent Geese Evicted by Vegetation Succession ? *Ecography* 23:60–69.

Van Der Wal R, Kunst P, Drent R. 1998. Interactions between hare and brent goose in a salt marsh system: Evidence for food competition? *Oecologia* 117:227–234. DOI:

598 10.1007/s004420050652.

599 Van Der Wal R, Wijnen H van, Wieren S van, Beucher O, Bos D. 2000. On Facilitation between
600 Herbivores: How Brent Geese Profit from Brown Hares. *Ecology* 81:969–980.

601 Westerband AC, Funk JL, Barton KE. 2021. Intraspecific trait variation in plants: a renewed
602 focus on its role in ecological processes. *Annals of Botany*:397–410. DOI:
603 10.1093/aob/mcab011.

604 Westneat DF, Potts LJ, Sasser KL, Shaffer JD. 2019. Causes and Consequences of Phenotypic
605 Plasticity in Complex Environments. *Trends in Ecology and Evolution* 34:555–568. DOI:
606 10.1016/j.tree.2019.02.010.

607 Whitlock R, Grime JP, Burke T. 2010. Genetic variation in plant morphology contributes to the
608 species-level structure of grassland communities. *Ecology* 91:1344–1354.

609 Wijnen HJ Van, Wal R Van Der, Bakker JP. 1999. The Impact of Herbivores on Nitrogen
610 Mineralization Rate : Consequences for Salt-Marsh Succession. *Oecologia* 118:225–231.

611

Figure 1

Sampling location and scheme

Location for the 22-year exclosures at the early and intermediate successional stage in the saltmarsh of the island of Schiermonnikoog. Pictures of the exclosures at the early and intermediate successional stages are shown. Sampling plots (1× 1 m) within an exclosure and sampling scheme for individuals of *Elytrigia atherica* within a 1× 1 m plot are shown. We followed the same sampling scheme for each plot. *Elytrigia atherica* did not always occur within each grid, thus sample size varied for each plot. Sampling plots and scheme were similar outside the exclosures (in the grazed area) at both successional stages. Number of hares and geese indicate the abundance of small herbivores such that the early successional stage had higher grazing pressure (indicated by two hares and two geese) relative to the intermediate successional stage (indicated by one hare and one goose). Note, only the map of the saltmarsh, but not exclosures and sampling plots, is projected according to its actual size.

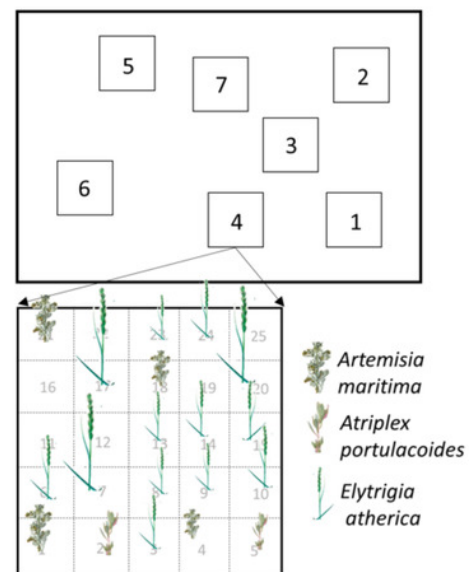
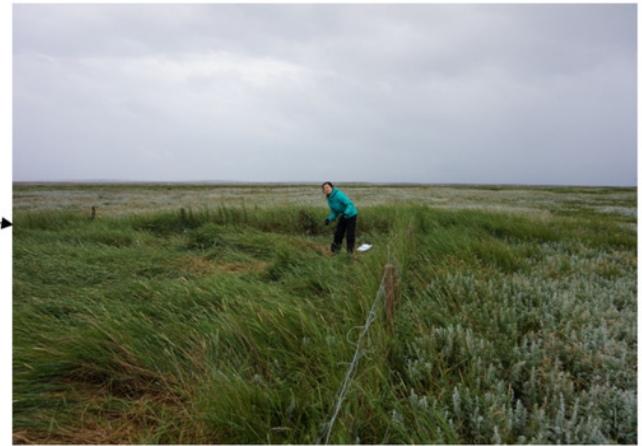


Figure 2

Means and variations in functional traits of individual stems of *Elytrigia atherica* in the grazed and ungrazed plots at the early and intermediate stages.

Traits include height (cm), aboveground biomass (g), flower frequency. Results for specific leaf area ($\text{cm}^2 \text{g}^{-1}$) and leaf dry matter content (g g^{-1}) are not shown because small herbivores generally did not impact mean and ITV in these two traits at both successional stages. Dots are the means, error bars show 1 se. Asterisks indicate significant levels: * $P < 0.1$; ** $P < 0.05$; *** $P < 0.001$. See Table S3 for test statistics.

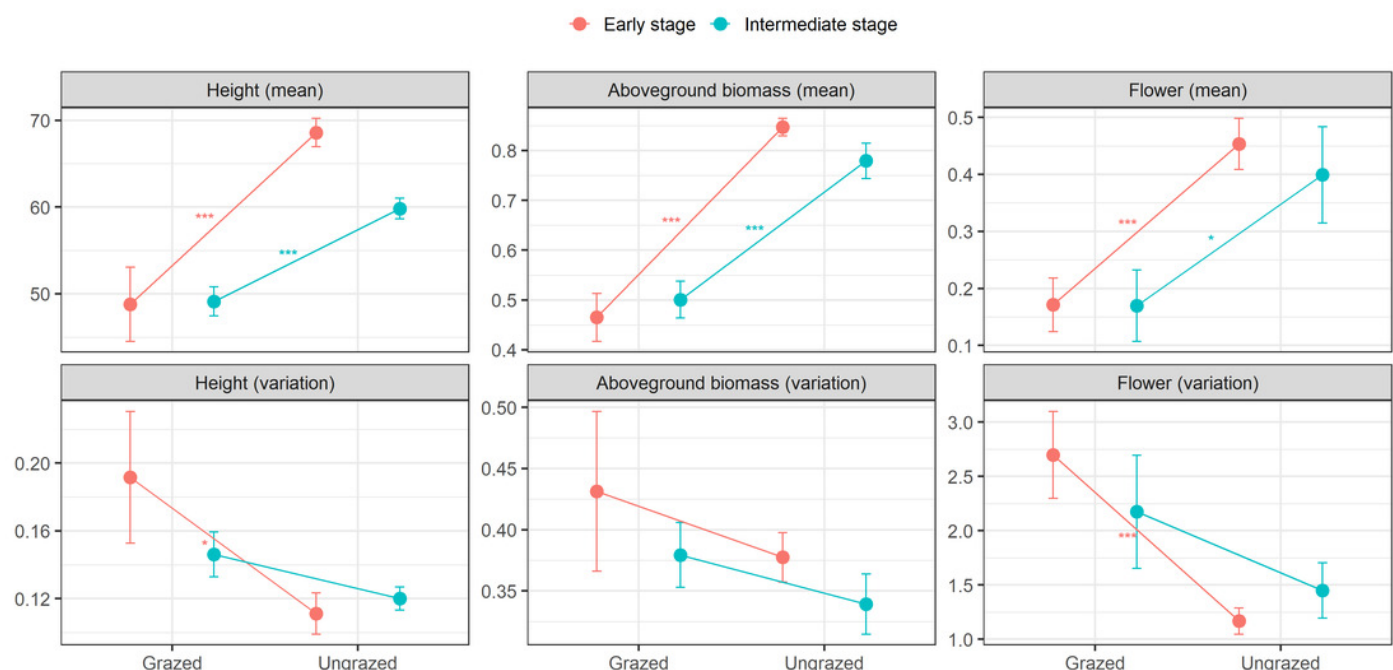


Figure 3

Intraspecific trait variation (ITV) of the dominant grass *Elytrigia atherica* and the direct and indirect effects of small herbivores on ITV in local communities at the early (A-C) and intermediate stage (D-F).

The direct effects, indirect effects through genotypes, indirect effects through abiotic variations, and total effects of small herbivores on ITV in each trait are summarized in Table 1. Model fit the data well (for all models at the early successional stage: $\chi^2 = 4.409$, $df = 3$, $N = 14$, $p > 0.05$; for all models at the intermediate successional stage: $\chi^2 = 6.559$, $df = 6$, $N = 14$, $p > 0.05$). Variance explained for clay thickness (variation), topographic variation, and genotypic richness for models at the early successional stage are 0.024, 0.008, and 0.056, respectively. Variance explained for clay thickness (variation), topographic variation, genotypic richness, and genotype diversity for models at the intermediate successional stage are 0.079, 0.045, 0.016, and 0.289, respectively. Number of hares and geese indicate the abundance of small herbivores such that the early successional stage had higher grazing pressure (indicated by two hares and two geese) relative to the intermediate stage (indicated by one hare and one goose). Boxes are measured variables. Arrows denote unidirectional relationships among variables. Blue arrows are significant positive relationships, red arrows are significant negative relationships, and grey arrows show non-significant relationships. The width of the arrows indicates the strength of the pathways. The values on the arrows denote standardized path coefficients. Asterisks indicate significant paths: * $p < 0.1$; ** $p < 0.05$; *** $p < 0.001$. See Fig. S2 for the direct and indirect effects of small herbivores on ITV in specific leaf area at the both successional stages. Note that leaf dry matter content was not evaluated in structural equation models due to limited sample size (see online supporting text).

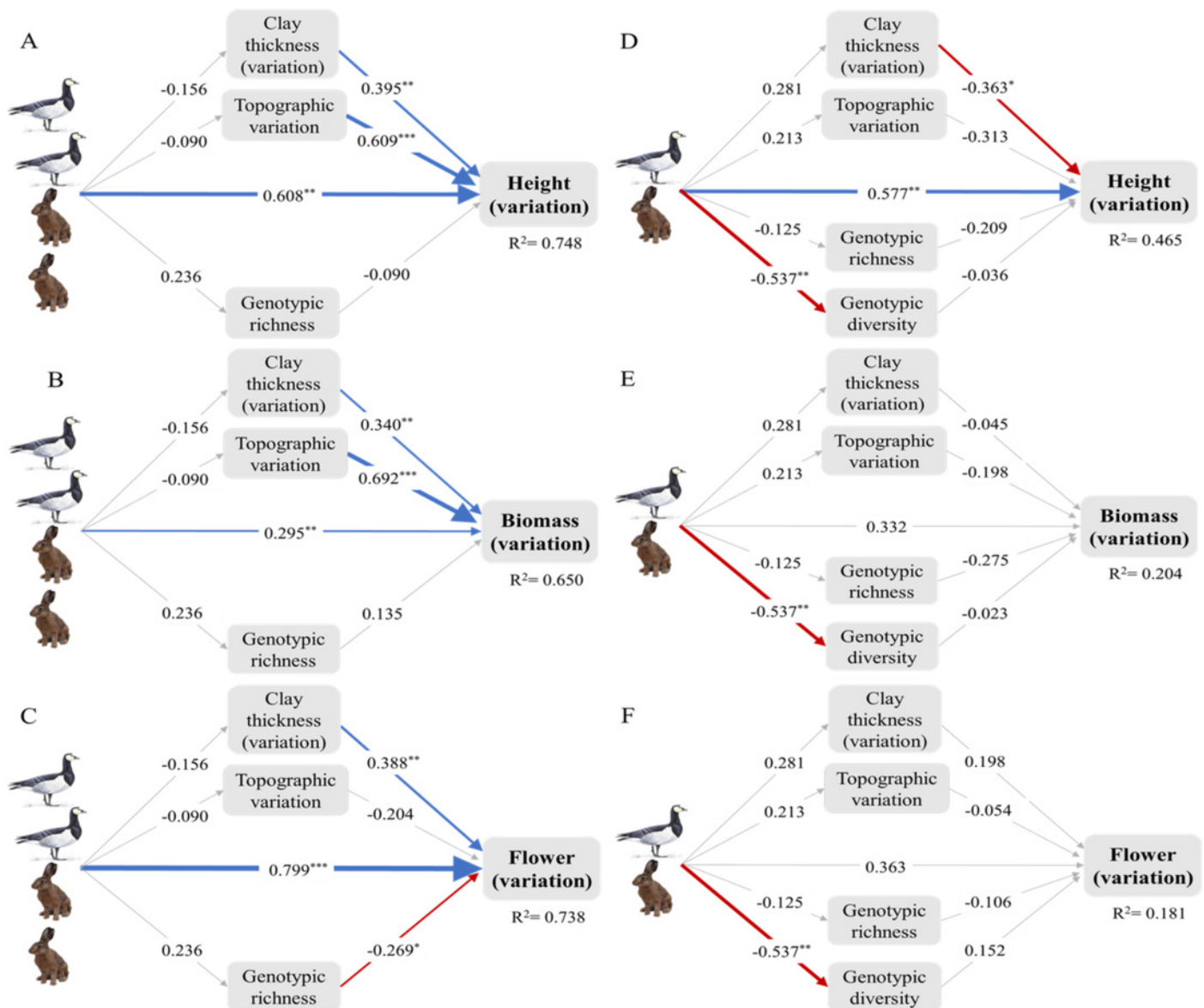


Table 1(on next page)

Direct and indirect effects of hares and geese on intraspecific trait variation (ITV) of *Elytrigia atherica* at the early and intermediate successional stages.

See online supporting text for an example of how these data were calculated and how significance was determined using lavaan SEM. Asterisks indicate significant effects: * $p < 0.1$; ** $p < 0.05$; *** $p < 0.001$.

1

Successional stages	Traits	Direct effects	Indirect effects through genotypes	Indirect effects through abiotic variations	Total effects
Early	Height	0.608***	-0.021	-0.117	0.47**
	Biomass	0.295**	0.032	-0.116	0.211
	Flowering	0.799***	-0.063	-0.042	0.694***
Intermediate	Height	0.577**	0.045	-0.169	0.454*
	Biomass	0.332	0.022	-0.055	0.299
	Flowering	0.363	-0.068	0.044	0.339

2