



# Courtship behavior and identification of a sex pheromone in *Ibalia leucospoides* (Hymenoptera: Ibalidae), a larval parasitoid of *Sirex noctilio* (Hymenoptera: Siricidae)

Hajar Faal<sup>1,2</sup>, Peter J. Silk<sup>3</sup>, Peter D. Mayo<sup>3</sup> and Stephen A. Teale<sup>1</sup>

<sup>1</sup>Department of Environmental and Forest Biology, State University of New York-Environmental Science and Forestry, Syracuse, NY, USA

<sup>2</sup>Forest Pest Methods Laboratory (Otis Laboratory), USDA-APHIS-PPQ-CPHST, Buzzards Bay, MA, United States of America

<sup>3</sup>Natural Resources Canada, Atlantic Forestry Centre, Fredericton, New Brunswick, Canada

## ABSTRACT

**Background.** *Ibalia leucospoides* (Hymenoptera: Ibalidae) is a larval parasitoid that has been widely introduced as a biological control agent for the invasive woodwasp, *Sirex noctilio* (Hymenoptera: Siricidae) in the Southern Hemisphere. In this study, the courtship behavior and identification of sex pheromones are described for *I. leucospoides* under laboratory conditions.

**Methods.** For courtship behavior, both sexes were observed in a wire mesh observation cylinder (75 cm length × 10 cm diameter) for 15 minutes. The female body washes were analyzed using Gas Chromatography- Electroantennographic Detection (GC-EAD). Then the EAD-active compounds were tentatively identified using GC-Mass Spectrometry (GC-MS) and examined in olfactometer assays.

**Results.** The courtship behavior included rhythmic lateral movements, mounting, head-nodding cycles in males, and wing-fanning in females. GC-EAD analysis of female body washes with male antennae revealed seven compounds which elicited antennal responses, four of which are straight-chain alkanes (C<sub>23</sub>, C<sub>25</sub>, C<sub>26</sub>, and C<sub>27</sub>). The identities of these alkanes were confirmed by matching the retention times, mass spectra, and male antennal activity to those of commercially obtained chemicals. In olfactometer assays, a blend of the four straight-chain alkanes was attractive to *I. leucospoides* males, and there was no response to blends that lacked any of these four compounds. Female body wash was no more attractive than the four-component blend. The ratios of EAD-active components differ between hydrocarbon profiles from males and females.

**Conclusion.** This study is the first investigation of cuticular hydrocarbons in the family Ibalidae. It provides evidence that the ubiquitous alkanes (C<sub>23</sub>, C<sub>25</sub>, C<sub>26</sub>, and C<sub>27</sub>) in sex-specific ratios attract *I. leucospoides* males.

Submitted 28 January 2021  
Accepted 16 September 2021  
Published 4 November 2021

Corresponding author  
Hajar Faal, hajar.faal@usda.gov, hajar.faal@gmail.com

Academic editor  
Joseph Gillespie

Additional Information and  
Declarations can be found on  
page 15

DOI 10.7717/peerj.12266

© Copyright  
2021 Faal et al.

Distributed under  
Creative Commons CC-BY 4.0

OPEN ACCESS

**Subjects** Agricultural Science, Animal Behavior, Ecology, Entomology, Parasitology

**Keywords** Courtship behavior, Sex pheromone, Cuticular hydrocarbon, Parasitoid, Ibalidae

## INTRODUCTION

The parasitic wasp, *Ibalia leucospoides* (Hochenwarth) (Hymenoptera: Ibalidae), is a solitary endoparasitoid native to the Northern Hemisphere (Hurley et al., 2020). This parasitoid has been extensively employed in biological control programs against the invasive Eurasian woodwasp, *Sirex noctilio* Fabricius (Hymenoptera: Siricidae) in the Southern Hemisphere (Taylor, 1980; Fischbein & Corley, 2015). *S. noctilio* attacks a broad range of *Pinus* species (Carnegie et al., 2006), causes severe damage and mortality in pine plantations, and has been successfully established in the Southern Hemisphere (Hurley, Slippers & Wingfield, 2007; Slippers, Hurley & Wingfield, 2015). As a management plan for the control of *S. noctilio*, multiple exotic biological agents from disparate geographic locations were introduced in various countries of Southern Hemisphere, of which only five parasitoids, including *I. leucospoides*, became established after numerous introductions (Cameron, 2012; Hurley et al., 2020).

The success of *I. leucospoides* as an effective natural enemy of *S. noctilio* is attributed to its high survival and dispersal capacity, emergence synchronization with *S. noctilio* and high fertility and fecundity (Klasmer & Botto, 2012; Ryan et al., 2012; Foelker et al., 2016). This parasitoid has been investigated in studies addressing biological traits, such as the role of food consumption on patch residence time (Corley, Villacide & Van Nouhuys, 2010), flight (Fischbein et al., 2011), longevity, egg maturation (Fischbein et al., 2012), and host searching decisions (Pietrantuono et al., 2012), as well as host-foraging behavior, including interference competition (Corley, Villacide & Van Nouhuys, 2010; Fernández-Arhex & Corley, 2010), host location (Madden, 1968; Spradbery, 1974; Martínez, Fernández-Arhex & Corley, 2006; Faal, 2020), patch choice decisions (Fischbein et al., 2012), and functional response (Fernández-Arhex & Corley, 2005). Other important behavioral features of this parasitoid have not been adequately addressed, such as mate searching, courtship, and mating behaviors. For parasitoids, these behaviors are frequently mediated by sex pheromones (Ruther, 2013). Highly volatile sex pheromones can attract mates from long distances, and male-male competition and courtship behaviors commence in response to short-range pheromones with lower volatility (Ayasse, Paxton & Tengö, 2001). Parasitoid courtship is often defined as a series of behaviors such as tapping antennae on a substrate, antennal grooming, trail-following, body or abdomen vibration, wing fanning, and mounting (Ayasse, Paxton & Tengö, 2001). The study of courtship and mating behaviors as well as sex pheromones in parasitoids is important because the success of an exotic parasitoid in a biological control program stems from its ability to find mates and increase the female sex ratio to ensure both insect reproduction and population establishment (Hopper & Roush, 1993). They may also be a powerful tool for assessing the establishment and spread of introduced parasitoids.

Within the parasitic Hymenoptera, the existence of sex pheromones has been documented for several dozen families (Ayasse, Paxton & Tengö, 2001; Keeling, Plettner & Slessor, 2004; Boulton, Collins & Shuker, 2015). Most are female-produced sex pheromones including those identified in Braconidae (Swedenborg & Jones, 1992a; Swedenborg & Jones, 1992b; Syvertsen et al., 1995), Ichneumonidae (Eller et al., 1984; Dalen et al., 2015;

Marepally & Benarjee, 2016), Figitidae (Weiss et al., 2013), Aphelinidae (Fauvergue, Hopper & Antolin, 1995; Bernal & Luck, 2007), Eurytomidae (Krokos, Konstantopoulou & Mazomenos, 2001), Pteromalidae (Sullivan, 2002; Steiner, Hermann & Ruther, 2006; Ruther, Döring & Steiner, 2011), Chalcididae (Roscoe et al., 2016), and Platygasteridae (Salerno et al., 2012). Several male-produced sex pheromones of parasitic Hymenoptera have been identified; these are from the Pteromalidae (e.g., *Nasonia vitripennis* (Walker), (Ruther et al., 2007) and Eulophidae (e.g., *Melittobia digitata* Dahms, Cónsoli et al., 2002).

The objectives of this study were to observe and describe the sequence of courtship behaviors and to identify semiochemicals that are involved in attraction of this parasitoid to conspecifics.

## METHODS

### Insect collection

*Pinus sylvestris* Linnaeus and *P. resinosa* Aiton (Pinaceae) naturally infested with *S. noctilio* were collected at two sites in New York State from January 2015 to April 2019. The locations were Chimney Bluffs State Park (43°16'50"N, 76°54'48"W) in Wolcott, NY, USA and the Pack Demonstration Forest (43°32'58"N, 73°49'12"W) in Chestertown, NY, USA. Fieldwork was approved by the New York State Office of Parks, Recreation, and Historic Preservation (application numbers: 2015-CB-001, 2017-CB-001, 2018-CHB-001). Trees were felled and cut into 1 meter bolts and transported to the laboratory at the SUNY-College of Environmental Science and Forestry in Syracuse, NY, USA. The bolt ends were coated with wax (Gulf Wax, Royal Oak Enterprises, LLC, Roswell, GA) to slow moisture loss, stored at 1–5 °C for two weeks to two months, and every two weeks a subset of logs was transferred to emergence cages at room temperature. After 6–8 weeks adult *I. leucospoides* began emerging and were collected daily and individually stored in 59 ml plastic mini-cups (Wal-Mart Stores, Inc., Bentonville, AR) at 5 °C. We did not observe mating in the emergence cages in the entire time of collections, so we assumed collected wasps were not mated (Fischbein et al., 2012). In addition, we collected and dissected newly emerged females and males and observed them under a compound microscope at 1000× to assess the presence of spermatozoa in the spermathecae and testes (as a positive control). Spermatozoa were clearly visible in the testes but no spermatozoa were observed in the dissected spermathecae ( $n = 16$  females, 10 males).

### Mating behaviors

Courtship behavior of *I. leucospoides* adults was observed in a wire mesh observation cage (0.5 mm mesh, 75 cm length × 10 cm diameter). The observation cage was positioned horizontally on a table with a two-bulb white fluorescent strip light (40 W) centered 75 cm above it. Wasps were taken out of cold storage and held at room temperature ( $25 \pm 3$  °C) for at least one hour before starting observations. A male and a female were released at opposite ends and observed for 15 min. Any wasp that did not move or interact with other wasp within 15 min was removed and replaced. All courtship observations ( $n = 14$ ) were conducted at  $25 \pm 3$  °C between the hours of 09:00 and 12:00 and were recorded using an iPhone SE device. All wasps were presumably virgin, and each individual wasp

was used only once. The ages of males and females were between 1 and 20 and 1 and 10 days post-emergence, respectively. At the end of each day, wasps were fed only with water (reverse osmosis [RO] water) (Pietrantuono *et al.*, 2012), then refrigerated for other experiments, including olfactometer assays.

### Cuticular hydrocarbons extracts

*Ibalia leucospoides* cuticular hydrocarbons were obtained individually from 1- to 5-day post-emergence virgin adults (males and females) by immersing the whole body of a live wasp into 2 ml of dichloromethane (DCM) (99.9%, OmniSolv, Billerica, USA) for 2 min. Each individual was immersed three times (Böröczky *et al.*, 2009) and the extracts from each insect were combined, concentrated to 200  $\mu$ l under a gentle stream of nitrogen, and stored at  $-60$  °C until further analysis. A total of 24 extracts were prepared for each sex.

### Body size measurement

The body size of *Ibalia* males is smaller than that of females, so the ratio of male/female body size was applied to the quantities of cuticular components in males as a correction factor for size when the quantities of cuticular components of males was compared to those of females.

To measure the body sizes, measurements were carried out with extracted individuals using a caliper accurate to 0.1 mm. Body surface area of both males ( $n = 32$ ) and females ( $n = 24$ ) was estimated based on the length, width, and height of the thorax (including propodeum but minus wings and legs) and abdomen. The surface areas of the thoraxes and abdomens were calculated as prolate ellipsoids (Wang & Messing, 2004; Macias-Ordonez & Draud, 2005; Wang *et al.*, 2016).

### Identification of EAD-active components

The cuticular hydrocarbon extracts were analyzed with a Gas Chromatograph (GC) (Hewlett-Packard, HP 5890 Series, Sunnyvale, CA, USA) with a flame ionization detector (FID) and a custom electroantennographic detection system. Analytical conditions were as follows: splitless mode, injector temperature 239 °C, detector temperature 240 °C, a non-polar HP5-MS column 30 m  $\times$  0.25 mm ID  $\times$  0.25  $\mu$ m film thickness (Agilent Technologies, Santa Clara, CA, USA), and nitrogen carrier gas. The temperature program was 39 °C for 1 min, increased 10 °C/min to 240 °C, and held for 40 min. The GC was coupled with an electroantennographic detection (EAD) system and Clarity Lite integrator (Data Apex Ltd., Czech Republic). The column effluent was split 1:1 in the oven using a Y-splitter (Supelco, Bellefonte, PA, USA); the EAD side had nitrogen make-up gas added (8 ml/min) through a second Y-splitter. Both the FID and the heated EAD port were 280 °C. The EAD half of the effluent was introduced into a cooled humidified air stream (1 L/min) directed toward the antennal mount. Whole head preparations were made of individual insects by excising the head and positioning the antennae between two gold wire electrodes immersed in saline-filled (140 mmol NaCl, 10 mmol KCl, 6 mmol CaCl<sub>2</sub>, 2 mmol MgCl<sub>2</sub>) wells in an acrylic holder. The EAD signal was amplified (10 $\times$ ) with a custom-built high input impedance DC amplifier and signals from both the FID and the antenna were collected simultaneously and digitized with the Clarity Lite integrator

and Clarity Lite software (version 7.1.0.151-2016; DataApex Ltd., Czech Republic). The electrophysiological activity of samples and the identified synthetic compounds were confirmed on GC–EAD for both males and females.

The cuticular hydrocarbon extracts were also analyzed on a gas chromatograph (Model 7890A; Agilent Technologies, Inc., Santa Clara, CA, USA) equipped with a mass spectrometric detector (Model 5975c; EI mode, 70 eV with a scanning range of 30.0–550.0 m/z; Agilent Technologies, Inc., Santa Clara, CA, USA) and a non-polar capillary column, HP5-MS (30 m × 0.25 mm ID × 0.25 μm film thickness; Agilent Technologies, Inc., Santa Clara, CA, USA). The carrier gas was helium at a constant flow rate of 1 ml/min. The EAD-active components were tentatively identified by comparison of mass spectra from National Institute of Standards and Technology (NIST) mass spectra (MS), Kovats indices (KI) were calculated relative to straight chain alkanes (*Kováts, 1965*), and confirmed by comparison with the KI, the retention times and electron impact mass spectra of available compounds. Female and male equivalents for each EAD-active compound were determined by GC-MS quantification using authentic samples of each EAD-active component as external standards to create calibration curves. Components 1 and 2 were quantified using the closest alkane standards (pentacosane and hexacosane) as external standards.

### Synthesis of (6Z,9Z)-heptadeca-6,9-diene

Barton decarboxylation / bromination was used to synthesize this compound from linoleic acid (*Loreau et al., 2000*) analogous to (3Z,6Z,9Z)-heptadeca-3,6,9-triene synthesis from linolenic acid adapted from a previously published study of blueberry spanworm (*Itame argillacearia*, (Lepidoptera: Geometridae)). (*De Silva et al., 2013*) (See Scheme 1 and details in [Supplemental Information](#)).

### Chemicals

Chemical standards of tricosane (99%) and pentacosane (99%) were purchased from Sigma-Aldrich Inc. (St. Louis, MO, USA) and BeanTown Chemical (Hudson, NH, USA), respectively. Hexacosane (99%) and heptacosane (99%) were obtained from Alfa Aesar (Ward Hill, MA, USA). (6Z,9Z)-heptadeca-6,9-diene was synthesized as described above.

### Two-choice olfactometer assays

A Y-shaped glass olfactometer was used to determine male responses to pairs of stimulus blends ([Table 1](#)). The olfactometer consisted of a Y-shaped glass olfactometer (6 cm i.d.) with a 26 cm main stem and two 21 cm arms and a 70° angle between the arms. The olfactometer was positioned horizontally on a table with a 500 W halogen lamp centered 50 cm above the Y-tube. Charcoal-filtered air was passed through two Erlenmeyer flasks containing 100 ml water, connected to plastic tubing (1 m length), and attached to polytetrafluoroethylene (PTFE) tubing (10 cm length) at the ends of each of the choice arms. The air flow rate in each of the choice arms was 500 ml/min, and at the base the rate was 1000 ml/min. Air was removed from the base by vacuum. Cardboard (100 cm length × 60 cm width) surrounded the olfactometer to eliminate visual cues. A piece of filter paper (5 cm × 0.5 cm) was loaded with 5 μl of extract or solution and was placed at the end of a choice arm. For each trial, a male was released at the base of the main

**Table 1** Components of each blend used in behavioral assays for male *Ibalia leucospoides*.

| Component                 | Amount (ng) <sup>a</sup> | Blends |   |   |   |   |   |
|---------------------------|--------------------------|--------|---|---|---|---|---|
|                           |                          | 1      | 2 | 3 | 4 | 5 | 6 |
| (Z,Z) 6,9, heptadecadiene | 1.4                      | ×      |   |   |   |   |   |
| Tricosane                 | 3.25                     | ×      | × |   | × | × | × |
| Pentacosane               | 275                      | ×      | × | × |   | × | × |
| Hexacosane                | 1000                     | ×      | × | × | × |   | × |
| Heptacosane               | 1450                     | ×      | × | × | × | × |   |

**Notes.**

<sup>a</sup>Each blend used in each olfactometer assay was equal to 0.25 Female Equivalent.

arm and was allowed 6 min to respond to an odor source by reaching the end of a choice arm. The positions of odor sources and the olfactometer arms were alternated after every trial to control for potential positional bias. The Y-tubes were washed between trials after every responsive insect with unscented detergent (Alconox, Jersey City, NJ, USA) and hot water, rinsed with RO water, and baked at 120 °C for at least 1 h. At the end of each day, the glassware was washed and baked overnight. All bioassays were carried out between 07:00 and 18:00 at 25 ± 3 °C, and each male was used no more than once per day. Males were re-used in different olfactometer experiments using different stimuli and none was reused for the same pair of stimuli, *i.e.*, in the same experiment. A positive response was recorded when a male reached the end of the arm containing a stimulus, while a negative response was recorded for those that reached the end of the arm containing the control within 6 min. All males were 1–14 day old virgins, and were provided with RO water for one day before being used in assays (Pietrantuono *et al.*, 2012). Females were not used in the olfactometer assays because only male attraction to females was observed in our study of mating behavior.

The following assays were conducted: (1) female body wash *vs.* DCM, (2) male body wash *vs.* DCM, (3) a blend of the five authentic compounds (Blend 1, commercially obtained or synthesized) (Table 1) *vs.* DCM, (4) Blend 1 *vs.* a blend of the four commercially available alkanes (Blend 2), (5) a series of subtractive assays in which one component was removed from Blend 1 at a time and the remaining blend was assayed against DCM, (6) Blend 2 *vs.* female body wash. The component ratios in the blends approximated those in extracts obtained from individual females and measured with GC-MS (Table 1).

### Statistical analysis

The equality of variance and normality of body size measurements (surface area) were confirmed using the Kolmogorov–Smirnov test. The Student’s two-tailed t test was used to compare the surface area measurements for both males and females. The amount of each EAD-active component in individual females was multiplied by 0.75 to adjust for sexual dimorphism in surface area. The Student’s two-tailed t test was used to compare the quantity of each EAD-active component between males and females. *P*-values were compared with the Bonferroni corrected alpha level (0.05/7 = 0.0071). For each trial in Y-tube assays, the numbers of wasps that responded to stimuli were compared with a



binomial test with expected 1:1 ratio at a probability of 5%. All statistical analyses were conducted in SAS 9.4.

## RESULTS

### Mating behaviors

A consistent sequence of courtship behaviors was observed. Once a male was released into an arena, it groomed its antennae with its mouthparts and front legs, and progressively walked toward the female. Once it encountered the female, the male occasionally bounced its abdomen vertically, approached from the rear or side, and initiated rhythmical lateral movements while holding its antennae upright. Meanwhile, the female slowly walked in the opposite direction and slightly vibrated its wings (wing fanning). The female then groomed its antennae with its front legs, occasionally bounced its abdomen vertically, and waited for the male to arrive. The male climbed onto the female (mounted) from the side while making antennal contact, and aligned its body with its head above that of the female. Once the male mounted the female, it initiated head-nodding behavior, starting with multiple fast strokes with its antennae against the female antennae, followed by slow upward sweeping movements. All strokes and sweeping movements occurred with one male antenna against one female antenna, alternating antennae at the end of each head-nodding cycle. The duration of each cycle was  $3.5 \pm 0.4$  s, and each male performed  $17.7 \pm 0.6$  head-nodding cycles for a total of  $62 \pm 8.1$  s ( $n = 14$ ). Females held their antennae upright with no movement during the male head-nodding cycles. Two types of responses were observed in females: (1) in most cases the female ignored the male, particularly smaller and older males, and did not allow the male to mount, or (2) the male immediately mounted and initiated the head-nodding cycle, but the female was not sexually receptive, and kicked the male off with her back legs after multiple kicks. Meanwhile, males exhibited a short bout of wing fanning immediately following each rejection. This was the only instance in which males exhibited wing fanning. We observed no successful copulations ( $n = 14$ ), although the majority of males tried to mount the female and then repeated the cycle after rejection by the female. Our observations showed that the majority of males, regardless of size or age, were attracted to females, although females only allowed males of similar or larger size to mount.

### Body size measurements

There was no significant difference between thoracic surface area measurements between males and females (Student two-tailed t test,  $P > 0.05$ ,  $t = 0.68$ ) (Table 2). The abdominal surface area and the total surface area measurements of *I. leucospoides* females were significantly greater than those of males (Student two-tailed t test,  $P < 0.05$ ,  $t = 3.75$  for abdomen, and  $P < 0.05$ ,  $t = 2.48$ ) (Table 2).

### Identification of EAD-active components

In GC-EAD analyses of female body washes, antennae of males repeatedly responded to seven components present in all extracts (Table 3, Fig. 1). In GC-MS analyses of female body washes, the retention time and mass spectra of five of the components matched

**Table 2** Body sizes of *Ibalia leucospoides* males ( $n = 32$ ) and females ( $n = 24$ ).

| Sex    | Body size           |             |             |  |             |            |             |                                 | Total Surface Area (mm <sup>2</sup> ) |
|--------|---------------------|-------------|-------------|--|-------------|------------|-------------|---------------------------------|---------------------------------------|
|        | Thorax <sup>1</sup> |             |             |  | Abdomen     |            |             |                                 |                                       |
|        | Length (mm)         | Width (mm)  | Depth (mm)  | Surface Area (mm <sup>2</sup> ) <sup>2</sup> | Length (mm) | Width (mm) | Depth (mm)  | Surface Area (mm <sup>2</sup> ) |                                       |
| Female | 2.98 ± 0.15         | 1.60 ± 0.09 | 1.71 ± 0.08 | 12.9 ± 1.18 a <sup>3</sup>                   | 5.77 ± 0.22 | 0.1 ± 0.0  | 2.31 ± 0.12 | 20.4 ± 1.64 a                   | 34.61 ± 2.77 a                        |
| Male   | 2.83 ± 0.08         | 1.54 ± 0.06 | 1.66 ± 0.05 | 12.6 ± 0.66 a                                | 4.72 ± 0.14 | 0.1 ± 0.0  | 1.88 ± 0.04 | 14.3 ± 0.66 b                   | 26.9 ± 1.26 b                         |

**Notes.**

<sup>1</sup>Includes propodeum.

<sup>2</sup>The relative body surface area was calculated for both thorax and abdomen, which were both assumed to be a prolate ellipsoid (Wang & Messing, 2004; Macias-Ordonez & Draud, 2005; Wang et al., 2016).

<sup>3</sup>Values (mean ± S.E.) followed by the same letter within each column were not significantly different (Student two-tailed t test,  $P > 0.05$ ).



**Table 3** Electrophysiologically active components of female *Ibalia leucospoides* body washes.

| Component                   | Kovat's index <sup>1</sup><br>(reference) | Females                         | Males        | t (P)         | Ratios Male/Female |
|-----------------------------|---|---------------------------------|--------------|---------------|--------------------|
|                             |   | (n = 23)                        | (n = 37)     |               |                    |
|                             |   | Amount (μg) ± S.E. <sup>2</sup> |              |               |                    |
| (6Z,9Z)-heptadeca-6,9-diene | 1670 (1662 <sup>3</sup> )                 | 0.03 ± 0.0 a <sup>7</sup>       | 0.00 ± 0.0 b | 2.93 (<0.001) | 0.04               |
| Tricosane                   | 2300 (2300 <sup>4</sup> )                 | 0.06 ± 0.01 a                   | 0.04 ± 0.0 a | 0.99 (0.32)   | 0.66               |
| Pentacosane                 | 2500 (2500 <sup>4</sup> )                 | 5.4 ± 0.6 a                     | 2.5 ± 0.2 b  | 3.95 (<0.001) | 0.46               |
| Hexacosane                  | 2600 (2600 <sup>4</sup> )                 | 20 ± 2.3 a                      | 11.3 ± 0.8 b | 4.42 (<0.001) | 0.56               |
| Heptacosane                 | 2700 (2700 <sup>4</sup> )                 | 29 ± 3.4 a                      | 26.7 ± 2.5 a | 0.08 (0.94)   | 0.92               |
| Component 1 <sup>8</sup>    | 2460 (2465 <sup>5</sup> )                 | 9.2 ± 1.1 a                     | 4.4 ± 0.4 b  | 3.92 (<0.001) | 0.48               |
| Component 2                 | 2670 (2665 <sup>6</sup> )                 | 78.1 ± 8.4 a                    | 56 ± 5 a     | 0.85 (0.39)   | 0.72               |

**Notes.**

<sup>1</sup>The calculated Kovat's indices of compounds eluted on a non-polar HP5-MS column.

<sup>2</sup>Amount of each component and standard errors correspond to those found in individual body wash extracts.

<sup>3</sup>Tsai et al. (2019).

<sup>4</sup>Zgheib et al. (2020).

<sup>5</sup>Zaikin & Borisov (2002).

<sup>6</sup>Hedlund et al. (1996).

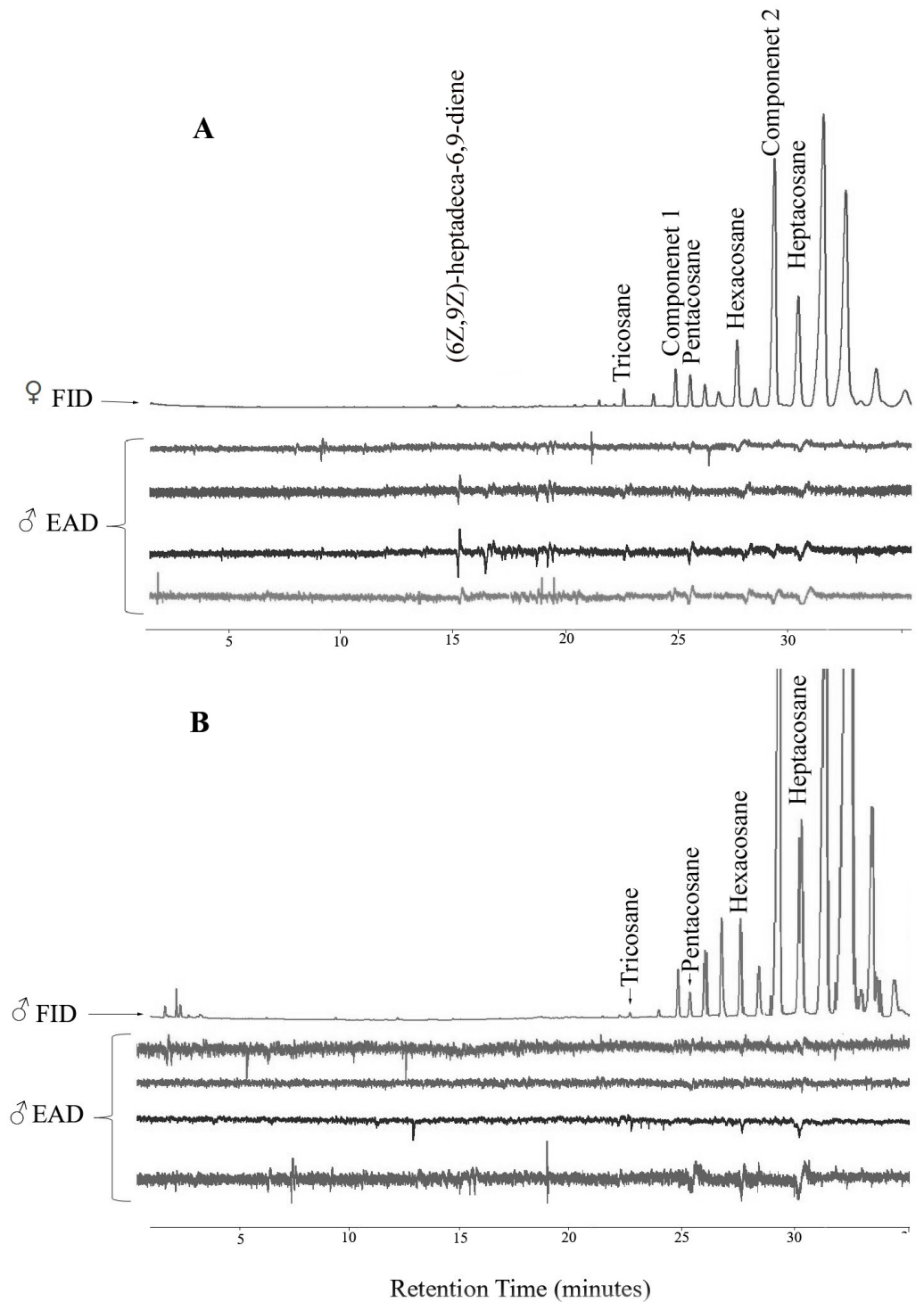
<sup>7</sup>Values (mean ± S.E.) were compared after adjusting for sexual dimorphism in surface area. Values with the same letter within each row were not significantly different (Student two-tailed t test,  $P > 0.05$ ).

<sup>8</sup>Components 1 and 2 were quantified using the authentic samples of pentacosane and hexacosane as external standards.

those of (6Z,9Z)-heptadeca-6,9-diene (supplemental information) tricosane, pentacosane, hexacosane, and heptacosane (Fig. 2). Although the retention time, EI-mass spectra and KI of the synthetic diene support this structure, the identification of this compound remains tentative. Further microchemical analyses (e.g., epoxidation) followed by GC/MS analysis, were not successful in producing structural information because of high background. The mass spectra of two additional EAD-active components are indicative of the branch point; 2-methylalkanes give highly characteristic EI-mass spectra showing enhanced M-15 and M-43 (loss of an isopropyl radical leaving the positive charge on the primary fragment). Authentic compounds were not available. The Kovats indices of them matched with two methylbranched alkanes (2-methyltetracosane and 2-methylhexacosane; components 1 and 2, respectively, see supplemental information). All EAD-active components were present in all male and female body washes, except (6Z,9Z)-heptadeca-6,9-diene, which was present in all female samples, but found in low quantity in the body washes of only seven of forty males. The amount of each EAD-active component was compared between males and females after correcting for the sexual dimorphism in body surface area. The statistical analysis showed that the amounts of C<sub>25</sub>, C<sub>26</sub>, (6Z,9Z)-heptadeca-6,9-diene, and component 1 were significantly different between males and females ( $P < 0.05$ ).

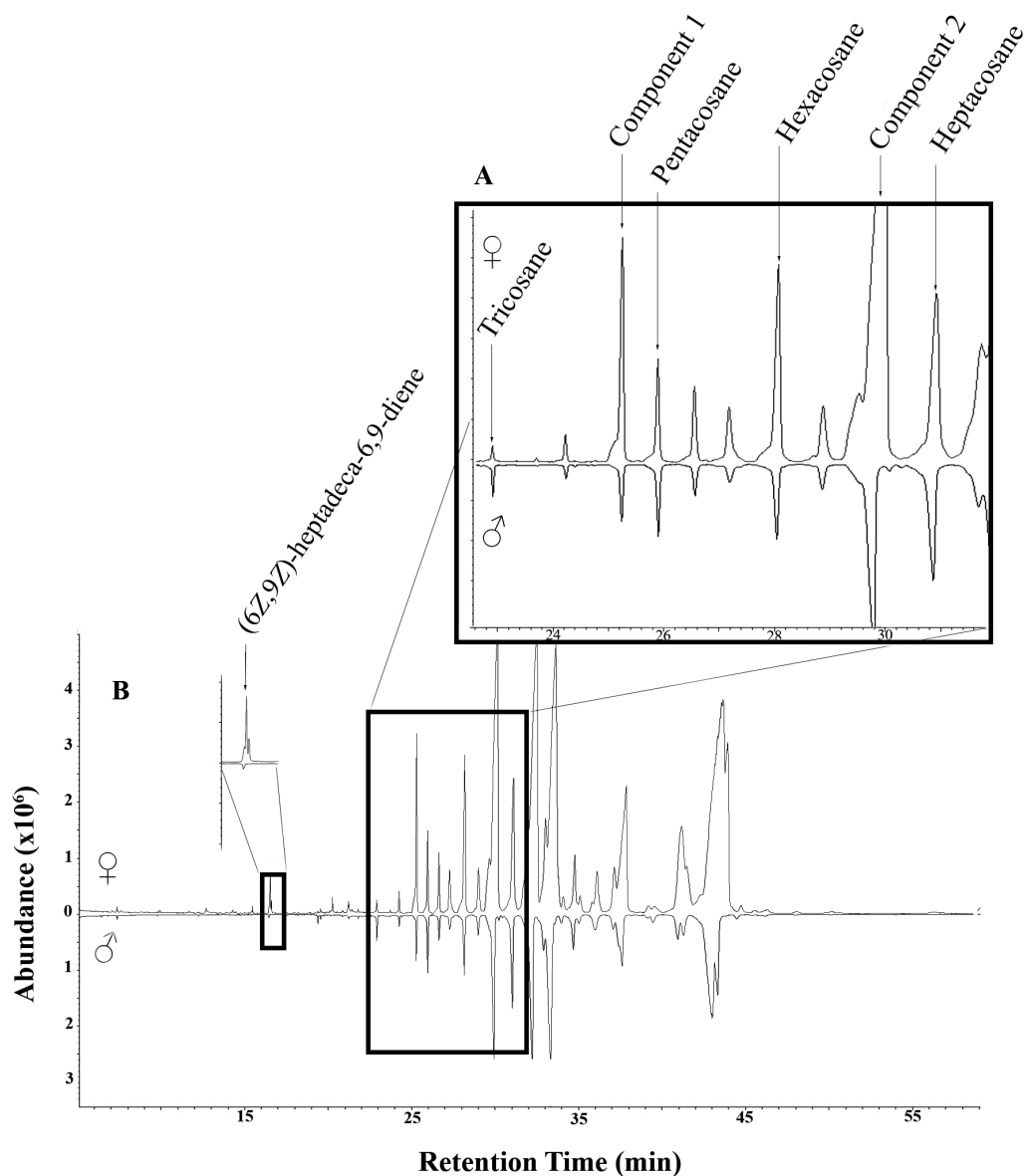
### Two-choice olfactometer assays

In olfactometer assays, 30 *I. leucospoides* males were attracted to female body washes, compared to 15 males that responded to DCM alone ( $P < 0.05$ ) (Fig. 3). *I. leucospoides* males were not attracted to male body washes. The five-component blend (Blend 1) was attractive to *I. leucospoides* males ( $P = 0.05$ ). Similarly, 25 males responded to odors of the four-component Blend 2, compared to only 13 that responded to DCM ( $P = 0.03$ ). Blend 2 was more attractive than Blend 1 to *I. leucospoides* males ( $P = 0.04$ ). Male *I.*



**Figure 1** Representative coupled gas chromatography-electroantennogram detection analysis of body wash extracts of *Ibalia leucospoides* female (A) and male (B), using antennae from *I. leucospoides* males.

Full-size  DOI: [10.7717/peerj.12266/fig-1](https://doi.org/10.7717/peerj.12266/fig-1)

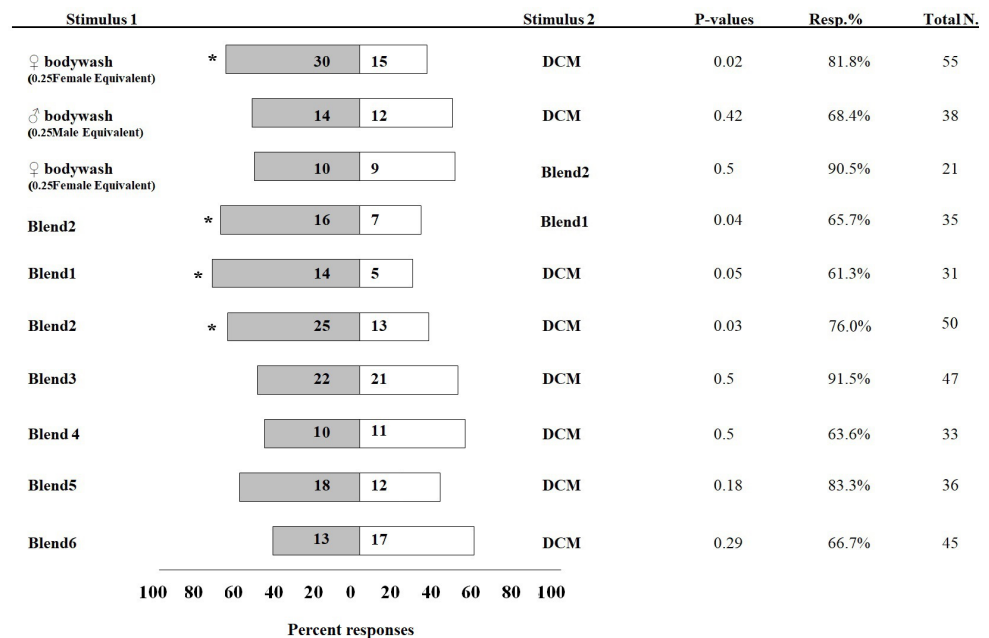


**Fig. 2.** Representative total ion chromatograms from GC-MS analysis of body-wash extracts of *Ibalia leucospoides* females (A) and males (B).

**Figure 2** Representative total ion chromatograms from GC-MS analysis of body wash extracts of *Ibalia leucospoides* females (A) and males (B).

Full-size  DOI: [10.7717/peerj.12266/fig-2](https://doi.org/10.7717/peerj.12266/fig-2)

*leucospoides* were not attracted to other blends in which individual components were successively removed from Blend 2 (Fig. 3). When the female body wash was tested for male attractiveness against the four-component blend (Blend 2), Blend 2 was no more attractive to males than the female body wash ( $P = 0.5$ ).



**Figure 3** Percentage of *Ibalia leucospoides* male responses to different stimuli in olfactometer assays. The authentic blends were prepared at the same concentrations and ratios found in body wash extracts of individual *I. leucospoides* females. Table 1 provides the composition of each blend. The number of insects that responded to the stimuli are noted next to the corresponding bar. The *P*-value, percent responding (Resp.%), and total number of wasps for each trial is presented adjacent to the corresponding bar. The significant differences at  $\alpha = 0.05$  are indicated by asterisks.

Full-size DOI: 10.7717/peerj.12266/fig-3

## DISCUSSION

Our study is the first description of the courtship behavior and identification of attractive components in the cuticular hydrocarbons of *I. leucospoides*. Our observations of the courtship behavior of *I. leucospoides* revealed a consistent sequence of behaviors, including rhythmic lateral movements, approaching from the rear or side, mounting, head-nodding cycles in males, and wing-fanning, antennal grooming, and abdominal bouncing in females. These observations are consistent with previously reported courtship behavior sequences in other hymenopteran parasitoids (Vinson, 1972; Sullivan, 2002; Roscoe et al., 2016).

Rhythmic lateral movements were only observed in males when the male was in close proximity to a female. Similar behavior was not observed in Y-tube assays when males were exposed to both the female body wash extract and the multi-component blend. It could also be a result of visual cues. Several explanations have been proposed for these rhythmic lateral movements in other parasitic Hymenoptera, including enhancing volatile detection and mate recognition (Leonard & Ringo, 1978; Roscoe et al., 2016), or observing immobile females (Roscoe et al., 2016). In *I. leucospoides*, this behavior may be a visual cue that plays a role in mate recognition. The male head-nodding cycle has also been observed in pteromalids including *Roptrocerus xylophagorum* (Ratzeburg) (Sullivan, 2002) and several *Nasonia* species (reviewed by Mair & Ruther, 2019). However,

the length and number of cycles were different for each species tested (Mair & Ruther, 2019). Some males may provoke receptiveness in females by releasing a pheromone from their mouthparts or antennal exocrine glands during antennal stroking (Van den Assem, Jachmann & Simbolotti, 1980; Isidoro, Romani & Bin, 2001).

The wing fanning of *I. leucospoides* females may assist males in orienting toward mates. Similar behavior was observed in the parasitoid *Campoletis sonorensis* (Cameron) (Hymenoptera: Ichneumonidae) (Vinson, 1972). Wing fanning may indicate recognition of a conspecific adult (Sullivan, 2002; Danci et al., 2006) or be an indicator of male quality for females (Benelli et al., 2014).

We did not observe successful copulation, perhaps because females were mated in the emergence cage before the daily collection, or the observations were made outside the time window of normal daily mating activity. To our knowledge, there is no record of the mating activity of *I. leucospoides* in the literature. Spradbery (1970) reported successful mating behavior of *I. drewseni* Borries in an observation cage. The duration of copulation of *I. drewseni* was 0.3 to 2.9 min ( $n = 10$ ) and both sexes attempted to mate multiple times (Spradbery, 1970). In order to understand the mating sequence of *I. leucospoides*, additional studies are required to analyze visual or chemical stimuli, or both, under controlled conditions.

Our results provide evidence of the attraction of *I. leucospoides* males to the cuticular hydrocarbons of female conspecifics. Seven EAD-active components were identified: four long-chain alkanes with 23, 25, 26, and 27 carbons, (6Z,9Z)-heptadeca-6,9-diene, 2-methyltetracosane, and 2-methylhexacosane. Interestingly, male body wash extracts were not attractive to males in olfactometer assays, although all identified alkanes exist in male body washes. It is possible that the sex-specific ratios of the alkanes ( $C_{23}$ ,  $C_{25}$ ,  $C_{26}$ , and  $C_{27}$ ) play an important role in the attraction of males to female, but not male, body wash extracts. In *I. leucospoides*, all EAD-active components exist in both sexes but in different ratios, except (6Z,9Z)-heptadeca-6,9-diene, which was consistently present and in significantly greater relative quantities in female body washes compared to male body washes in which it occurred in fewer than 20% of the individuals sampled.

In olfactometer assays, a four-component blend of long-chain alkanes with 23, 25, 26, and 27 carbons was attractive to *I. leucospoides* males, which did not respond to the blend in the absence of any single component. A combination of all four straight-chain alkanes was needed to attract males in olfactometer assays. Hydrocarbons and other lipids in this size range are commonly used for short-range pheromones, which facilitate mate recognition or courtship coordination (Keeling, Plettner & Slessor, 2004; Johansson & Jones, 2007; Kather & Martin, 2015). For instance, male courtship sequences in *N. vitripennis* are mediated by a fraction of female cuticular hydrocarbons with chain lengths between 25 and 37 carbons (Steiner, Hermann & Ruther, 2006). We do not know the active range of the four-component blend for *I. leucospoides* males. However, the chain lengths and therefore the volatility of the identified alkanes in cuticular hydrocarbons of *I. leucospoides* females suggest short-range activity (Syvertsen et al., 1995; Steiner, Hermann & Ruther, 2006). (6Z,9Z)-heptadeca-6,9-diene was present in all female body wash extracts, but only in seven male extracts, and at a significantly lower amounts than in female body

washes. This evidence initially suggested that (6Z,9Z)-heptadeca-6,9-diene might be an important component of the *I. leucospoides* sex pheromone. However, in two-choice olfactometer assays, Blend 2 was more attractive than Blend 1. We did not test the activity of (6Z,9Z)-heptadeca-6,9-diene alone, and future assays are needed to determine its activity and function. The same compound, (6Z,9Z)-heptadeca-6,9-diene, has been identified as a sex pheromone of geometrid and noctuid moths (Ando et al., 1995), as well as an alarm pheromone of the Astigmatid mite, *Tortonia* sp., which feeds on pollen masses of the megachilid bee, *Osmia cornifrons* (Kuwahara et al., 1995a; Kuwahara et al., 1995b). Contact behaviors (antennation and mounting) in *Cardiochiles nigriceps* (Viereck) (Hymenoptera: Braconidae) are mediated by the (7Z,13Z)-7, 13-heptacosadiene (Syvertsen et al., 1995).

Tentative identification indicated that our components 1 and 2 are methylbranched alkanes (2-methyltetracosane and 2-methylhexacosane, respectively). Methylbranched alkanes and alkenes possess additional structural features for species-specific discrimination over straight-chain alkanes in the pteromalid *Lariophagus distinguendus* (Kühbandner et al., 2013). Blends of long chain methylbranched alkanes have been identified as contact sex pheromones for two parasitoids: a blend of 3-methylnonacosane and 3-methylhentriacontane for the pteromalid parasitoid *Dibrachys cavus* (Walker) (Ruther, Döring & Steiner, 2011) and a blend of 5-methylheptacosane and 5,17-dimethylheptacosane for *Ooencyrtus kuvanae* (Howard) (Hymenoptera: Encyrtidae) (Ablard et al., 2012). A female-specific blend of methyl 6-methylsalicylate, fatty alcohol acetates, and cuticular hydrocarbons elicited male courtship behavior in *Asobara tabida* (Nees) (Hymenoptera: Braconidae), a larval parasitoid of *Drosophila* sp. (Stökl, Dandekar & Ruther, 2014). For current study, the methylbranched alkanes were not commercially available, but more importantly, the four alkane blend elicited the same level of attraction from males as the female body washes indicating that all of the activity of the female body washes was attributable to the alkanes. However, the activity of other EAD-active components remains to be determined.

Numerous sex pheromones with different ranges of activity have been identified for hymenopteran parasitoids, including short range sex pheromones with low volatility (Sullivan, 2002; Steiner, Hermann & Ruther, 2006; Salerno et al., 2012) and long range sex pheromones with high volatility (Eller et al., 1984; Swedenborg & Jones, 1992a; Swedenborg & Jones, 1992b). Also, the behavioral observations of several male parasitoids have confirmed the existence of substrate-borne sex pheromones for *Ascogaster reticulatus* Watanabe (Hymenoptera: Braconidae) (Kamano et al., 1989; Kainoh et al., 1991; Kainoh & Oishi, 1993), *Aphelinus asychis* Walker (Hymenoptera: Aphelinidae) (Fauvergue, Hopper & Antolin, 1995), *Trichogramma brassicae* Bezdenko (Hymenoptera: Trichogrammatidae) (Pompanon et al., 1997), and *Glyptapanteles flavicoxis* Ashmead (Hymenoptera: Braconidae) (Danci et al., 2006). In some cases, the majority of the males actively explored areas previously visited by virgin females (Kamano et al., 1989; Fauvergue, Hopper & Antolin, 1995; Pompanon et al., 1997; Danci et al., 2006).

Analyses of cuticular hydrocarbon profiles of parasitic wasps have shown them to be species and sex-specific (Howard & Blomquist, 2005; Ruther, 2013). In most cases, one or more distinctive hydrocarbons occur in only one sex (Darrouzet et al., 2010; Raychoudhury

*et al.*, 2010; Salerno *et al.*, 2012; Buellesbach *et al.*, 2013; Weiss, Ruther & Stökl, 2015; Bien *et al.*, 2019; Ruther *et al.*, 2019), while in some cases, the same hydrocarbons occur in both sexes but in different proportions (Howard, 1998; Howard, Pérez-Lachaud & Lachaud, 2001), or in similar proportions (Howard, 1992; Howard & Liang, 1993; Howard & Pérez-Lachaud, 2002; Howard & Baker, 2003). The majority of the documented cuticular hydrocarbons in parasitoid wasps may act as short-range pheromones but this has yet to be explicitly demonstrated. Interestingly, the orchid *Ophrys* produces several straight-chain saturated and unsaturated hydrocarbons with 21-29 carbons in component ratios that mimic those of a female bee pollinator, *Andrena nigroaenea* and both orchid and female produced blends attract males (Schiestl *et al.*, 1999).

Our results demonstrated the attraction of *I. leucospoides* males in a Y-tube olfactometer to a blend of n-alkanes, which is significant because previous studies reported the attraction of males only after contact with females (Sullivan, 2002; Steiner, Hermann & Ruther, 2006; Salerno *et al.*, 2012). A blend of four long chain alkanes (C<sub>23</sub>, C<sub>25</sub>, C<sub>26</sub>, and C<sub>27</sub>) was attractive in behavioral assays. It is interesting that *I. leucospoides* employs ubiquitous compounds to locate a mate, but a specific component ratio of otherwise common compounds may be the key. Because males did not discriminate between the blend of four alkanes and the female body wash, we concluded that the other EAD-active components (the diene and two methylbranched alkanes) are not essential for male attraction in the laboratory. This could potentially change when these compounds are eventually field-tested. An integrated approach using the identified attractive components of the symbiotic fungal volatiles (Faal *et al.*, 2021), sex pheromones of *S. noctilio* (Faal, 2020), and sex pheromones of *I. leucospoides* is likely required for monitoring populations of both *Sirex noctilio* and its parasitoid.

## ACKNOWLEDGEMENTS

The authors thank Thomas Hughes for issuing a permit to access and cut down infested trees at Chimney Bluffs State Park, and Terry Ettinger for providing access to the ESF greenhouse facility. Many thanks to Tian Xu, Alejandro Mieles, Ruixu Chen, Joseph Marascalchi, Michael Preminger, Julia Fairbanks, Matt Cares, and many others for their assistance in the field. A special thanks to Michael Marascalchi for his helpful comments on the first draft of this manuscript. Dr. Deepa Abeysekera (Natural Resources Canada) aided in synthetic chemistry.

## ADDITIONAL INFORMATION AND DECLARATIONS

### Funding

This work was supported by the U.S. Forest Service grant no. 12DG11420004168 to Stephen A. Teale and the USDA-CSRS McIntire-Stennis Cooperative Forestry Program grant no. 32100061020832100 to Stephen A. Teale. The funders had no role in study design, data collection and analysis, decision to publish, or preparation of the manuscript.



### Grant Disclosures

The following grant information was disclosed by the authors:

The U.S. Forest Service: 12DG11420004168.

USDA-CSRS McIntire-Stennis Cooperative Forestry Program: 32100061020832100.

### Competing Interests

The authors declare there are no competing interests.

### Author Contributions

- Hajar Faal conceived and designed the experiments, performed the experiments, analyzed the data, prepared figures and/or tables, and approved the final draft.
- Peter J. Silk, Peter D. Mayo and Stephen A. Teale conceived and designed the experiments, authored or reviewed drafts of the paper, and approved the final draft.

### Field Study Permissions

The following information was supplied relating to field study approvals (i.e., approving body and any reference numbers):

Infested trees were collected from Chimney Bluffs State Park, NY. Fieldwork was approved by the York State Office of Parks, Recreation, and Historic Preservation (application numbers: 2015-CB-001, 2017-CB-001, 2018-CHB-001).

### Data Availability

The following information was supplied regarding data availability:

The raw data are available as [Supplemental Files](#).

### Supplemental Information

Supplemental information for this article can be found online at <http://dx.doi.org/10.7717/peerj.12266#supplemental-information>.

## REFERENCES

- Ablard K, Gries R, Khaskin G, Schaefer PW, Gries G. 2012.** Does the stereochemistry of methylated cuticular hydrocarbons contribute to mate recognition in the egg parasitoid wasp *Ooencyrtus kuvanae*?. *Journal of Chemical Ecology* **38**:1306–1317 DOI [10.1007/s10886-012-0189-4](https://doi.org/10.1007/s10886-012-0189-4).
- Ando T, Kishi H, Akashio N, Qin XR, Saito N, Abe H, Hashimoto S. 1995.** Sex attractants of geometrid and noctuid moths: chemical characterization and field test of monoepoxides of 6, 9-dienes and related compounds. *Journal of Chemical Ecology* **21**:299–311 DOI [10.1007/BF02036719](https://doi.org/10.1007/BF02036719).
- Van den Assem J, Jachmann F, Simbolotti P. 1980.** Courtship behaviour of *Nasonia vitripennis* (Hym., Pteromalidae): some qualitative, experimental evidence for the role of pheromones. *Behaviour* **1**:301–307 DOI [10.1163/156853980X00456](https://doi.org/10.1163/156853980X00456).
- Ayasse M, Paxton RJ, Tengö J. 2001.** Mating behavior and chemical communication in the order Hymenoptera. *Annual Review of Entomology* **46**:31–78 DOI [10.1146/annurev.ento.46.1.31](https://doi.org/10.1146/annurev.ento.46.1.31).

- Benelli G, Messing RH, Wright MG, Giunti G, Kavallieratos NG, Canale A. 2014.** Cues triggering mating and host-seeking behavior in the aphid parasitoid *Aphidius colemani* (Hymenoptera: Braconidae: Aphidiinae): implications for biological control. *Journal of Economic Entomology* **107**:2005–2022 DOI [10.1603/EC14291](https://doi.org/10.1603/EC14291).
- Bernal JS, Luck RF. 2007.** Mate finding via a trail sex pheromone by *Aphytis melinus* De Bach (Hymenoptera: Aphelinidae) males. *Journal of Insect Behavior* **20**:515–525 DOI [10.1007/s10905-007-9092-1](https://doi.org/10.1007/s10905-007-9092-1).
- Bien T, Gadau J, Schnapp A, Yew JY, Sievert C, Dreisewerd K. 2019.** Detection of very long-chain hydrocarbons by laser mass spectrometry reveals novel species-sex-, and age-dependent differences in the cuticular profiles of three *Nasonia* species. *Analytical and Bioanalytical Chemistry* **411**:2981–2993 DOI [10.1007/s00216-019-01736-y](https://doi.org/10.1007/s00216-019-01736-y).
- Böröczky K, Crook DJ, Jones TH, Kenny JC, Zylstra KE, Mastro VC, Tumlinson JH. 2009.** Monoalkenes as contact sex pheromone components of the woodwasp *Sirex noctilio*. *Journal of Chemical Ecology* **35**:1202–1211 DOI [10.1007/s10886-009-9693-6](https://doi.org/10.1007/s10886-009-9693-6).
- Boulton RA, Collins LA, Shuker DM. 2015.** Beyond sex allocation: the role of mating systems in sexual selection in parasitoid wasps. *Biological Reviews* **90**:599–627 DOI [10.1111/brv.12126](https://doi.org/10.1111/brv.12126).
- Buellesbach J, Gadau J, Beukeboom LW, Echinger F, Raychoudhury R, Werren JH, Schmitt T. 2013.** Cuticular hydrocarbon divergence in the jewel wasp *Nasonia*: evolutionary shifts in chemical communication channels?. *Journal of Evolutionary Biology* **26**:2467–2478 DOI [10.1111/jeb.12242](https://doi.org/10.1111/jeb.12242).
- Cameron EA. 2012.** Parasitoids in the management of *Sirex noctilio*: looking back and looking ahead. In: Slippers B, De Groot P, Wingfield MJ, eds. *The Sirex woodwasp and its fungal symbiont*. Dordrecht: Springer, 103–117 DOI [10.1007/978-94-007-1960-6\\_8](https://doi.org/10.1007/978-94-007-1960-6_8).
- Carnegie AJ, Matsuki M, Haugen DA, Hurley BP, Ahumada R, Klasmer P, Sun J, Iede ET. 2006.** Predicting the potential distribution of *Sirex noctilio* (Hymenoptera: Siricidae), a significant exotic pest of Pinus plantations. *Annals of Forest Science* **63**:119–128 DOI [10.1051/forest:2005104](https://doi.org/10.1051/forest:2005104).
- Chrystal RN. 1930.** Studies of the Sirex Parasites. In: *The Biology and post-embryonic Development of Ibalia leucospoides Hochenw. (Hymenoptera-Cynipoidea)*. Oxford: Oxford University Press, 1–63.
- Cônsoli FL, Williams HJ, Vinson SB, Matthews RW, Cooperband MF. 2002.** Transbergamotenes—male pheromone of the ectoparasitoid *Melittobia digitata*. *Journal of Chemical Ecology* **28**:1675–1689 DOI [10.1023/A:1019940932605](https://doi.org/10.1023/A:1019940932605).
- Corley JC, Villacide JM, Van Nouhuys S. 2010.** Patch time allocation by a parasitoid: the influence of con-specifics, host abundance and distance to the patch. *Journal of Insect Behavior* **23**:431–440 DOI [10.1007/s10905-010-9226-8](https://doi.org/10.1007/s10905-010-9226-8).
- Dalen M, Knudsen GK, Norli HR, Thöming G. 2015.** Sources of volatiles mediating host location behaviour of *Glypta haesitator*, a larval parasitoid of *Cydia nigricana*. *Biological Control* **90**:128–140 DOI [10.1016/j.biocontrol.2015.05.019](https://doi.org/10.1016/j.biocontrol.2015.05.019).

- Danci A, Gries R, Schaefer PW, Gries G. 2006.** Evidence for four-component close-range sex pheromone in the parasitic wasp *Glyptapanteles flavicoxis*. *Journal of Chemical Ecology* **32**:1539–1554 DOI [10.1007/s10886-006-9068-1](https://doi.org/10.1007/s10886-006-9068-1).
- Darrouzet E, Lebreton S, Gouix N, Wipf A, Bagnères AG. 2010.** Parasitoids modify their oviposition behavior according to the sexual origin of conspecific cuticular hydrocarbon traces. *Journal of Chemical Ecology* **36**:1092–1100 DOI [10.1007/s10886-010-9845-8](https://doi.org/10.1007/s10886-010-9845-8).
- Eller FJ, Bartelt RJ, Jones RL, Kulman HM. 1984.** Ethyl (Z)-9-hexadecenoate a sex pheromone of *Syndipnus rubiginosus*, a sawfly parasitoid. *Journal of Chemical Ecology* **10**:291–300 DOI [10.1007/BF00987857](https://doi.org/10.1007/BF00987857).
- Faal H. 2020.** Semiochemicals mediating multitrophic interactions among *Sirex noctilio* and associated organisms. Ph.D. Dissertation, State University of New York-Environmental Science and Forestry.
- Faal H, Cha DH, Hajek AE, Teale SA. 2021.** A double-edged sword: *Amylostereum areolatum* odors attract both *Sirex noctilio* (Hymenoptera: Siricidae) and its parasitoid, *Ibalia leucospoides*. *Fungal Ecology* DOI [10.1016/j.funeco.2021.101108](https://doi.org/10.1016/j.funeco.2021.101108).
- Fauvergue X, Hopper KR, Antolin MF. 1995.** Mate finding via a trail sex pheromone by a parasitoid wasp. *Proceedings of the National Academy of Sciences of the United States of America* **92**:900–904 DOI [10.1073/pnas.92.3.900](https://doi.org/10.1073/pnas.92.3.900).
- Fernández-Arhex V, Corley JC. 2005.** The functional response of *Ibalia leucospoides* (Hymenoptera: Ibalidae), a parasitoid of *Sirex noctilio* (Hymenoptera: Siricidae). *Biocontrol Science and Technology* **15**:207–212 DOI [10.1080/09583150400016084](https://doi.org/10.1080/09583150400016084).
- Fernández-Arhex V, Corley JC. 2010.** The effects of patch richness on con-specific interference in the parasitoid *Ibalia leucospoides* (Hymenoptera: Ibalidae). *Insect Science* **17**:379–385 DOI [10.1111/j.1744-7917.2010.01312.x](https://doi.org/10.1111/j.1744-7917.2010.01312.x).
- Fischbein D, Bettinelli J, Bernstein C, Corley JC. 2012.** Patch choice from a distance and use of habitat information during foraging by the parasitoid *Ibalia leucospoides*. *Ecological Entomology* **37**:161–168 DOI [10.1111/j.1365-2311.2012.01350.x](https://doi.org/10.1111/j.1365-2311.2012.01350.x).
- Fischbein D, Corley JC. 2015.** Classical biological control of an invasive forest pest: a world perspective of the management of *Sirex noctilio* using the parasitoid *Ibalia leucospoides* (Hymenoptera: Ibalidae). *Bulletin of Entomological Research* **105**:1–12 DOI [10.1017/S0007485314000418](https://doi.org/10.1017/S0007485314000418).
- Fischbein D, Corley JC, Villacide JM, Bernstein C. 2011.** The influence of food and conspecifics on the flight potential of the parasitoid *Ibalia leucospoides*. *Journal of Insect Behavior* **24**:456–467 DOI [10.1007/s10905-011-9270-z](https://doi.org/10.1007/s10905-011-9270-z).
- Foelker CJ, Standley CR, Parry D, Fierke MK. 2016.** Complex ecological relationships among an assemblage of indigenous hymenopteran parasitoids, the exotic European woodwasp (*Sirex noctilio*; Hymenoptera: Siricidae), and a native congener. *The Canadian Entomologist* **148**:532–542 DOI [10.4039/tce.2016.6](https://doi.org/10.4039/tce.2016.6).
- Hedlund K, Bartelt RJ, Dicke M, Vet LE. 1996.** Aggregation pheromones of *Drosophila immigrans*, *D. phalerata*, and *D. subobscura*. *Journal of Chemical Ecology* **22**:1835–1844 DOI [10.1007/BF02028507](https://doi.org/10.1007/BF02028507).

- Hopper KR, Roush RT. 1993.** Mate finding, dispersal, number released, and the success of biological control introductions. *Ecological Entomology* **18**:321–331 DOI [10.1111/j.1365-2311.1993.tb01108.x](https://doi.org/10.1111/j.1365-2311.1993.tb01108.x).
- Howard RW. 1992.** Comparative analysis of cuticular hydrocarbons from the ectoparasitoids *Cephalonomia waterstoni* and *Laelius utilis* (Hymenoptera: Bethylinidae) and their respective hosts, *Cryptolestes ferrugineus* (Coleoptera: Cucujidae) and *Trogoderma variabile* (Coleoptera: Dermestidae). *Annals of the Entomological Society of America* **85**:317–325 DOI [10.1093/aesa/85.3.317](https://doi.org/10.1093/aesa/85.3.317).
- Howard RW. 1998.** Ontogenetic, reproductive, and nutritional effects on the cuticular hydrocarbons of the host-specific ectoparasitoid *Cephalonomia tarsalis* (Hymenoptera: Bethylinidae). *Annals of the Entomological Society of America* **91**:101–112 DOI [10.1093/aesa/91.1.101](https://doi.org/10.1093/aesa/91.1.101).
- Howard RW, Baker JE. 2003.** Cuticular hydrocarbons and wax esters of the ectoparasitoid *Habrobracon hebetor*: ontogenetic, reproductive, and nutritional effects. *Archives of Insect Biochemistry and Physiology* **53**:1–8 DOI [10.1002/arch.10078](https://doi.org/10.1002/arch.10078).
- Howard RW, Blomquist GJ. 2005.** Ecological, behavioral, and biochemical aspects of insect hydrocarbons. *Annual Review of Entomology* **50**:371–393 DOI [10.1146/annurev.ento.50.071803.130359](https://doi.org/10.1146/annurev.ento.50.071803.130359).
- Howard RW, Liang Y. 1993.** Cuticular hydrocarbons of winged and wingless morphs of the ectoparasitoid *Choetospila elegans* Westwood (Hymenoptera: Pteromalidae) and its host, larval lesser grain borer (*Rhyzopertha dominica*) (Coleoptera: Bostrichidae). *Comparative Biochemistry and Physiology* **106**:407–414.
- Howard RW, Pérez-Lachaud G. 2002.** Cuticular hydrocarbons of the ectoparasitic wasp *Cephalonomia hyalinipennis* (Hymenoptera: Bethylinidae) and its alternative host, the stored product pest *Caulophylus oryzae* (Coleoptera: Curculionidae). *Archives of Insect Biochemistry and Physiology* **50**:75–84 DOI [10.1002/arch.10034](https://doi.org/10.1002/arch.10034).
- Howard RW, Pérez-Lachaud G, Lachaud JP. 2001.** Cuticular hydrocarbons of *Kapala sulcifacies* (Hymenoptera: Eucharitidae) and its host, the ponerine Ant *Ectatomma ruidum* (Hymenoptera: Formicidae). *Annals of the Entomological Society of America* **94**:707–716 DOI [10.1603/0013-8746\(2001\)094\[0707:CHOKSH\]2.0.CO;2](https://doi.org/10.1603/0013-8746(2001)094[0707:CHOKSH]2.0.CO;2).
- Hurley BP, Fitza KN, Wingfield MJ, Slippers B. 2020.** Sequence data reflect the introduction pathways of the Sirex woodwasp parasitoid, *Ibalia leucospoides* (Ibaliidae, Hymenoptera). *Agricultural and Forest Entomology* **22**:129–135 DOI [10.1111/afe.12367](https://doi.org/10.1111/afe.12367).
- Hurley BP, Slippers B, Wingfield MJ. 2007.** A comparison of control results for the alien invasive woodwasp, *Sirex noctilio*, in the southern hemisphere. *Agricultural and Forest Entomology* **9**:159–171 DOI [10.1111/j.1461-9563.2007.00340.x](https://doi.org/10.1111/j.1461-9563.2007.00340.x).
- Isidoro N, Romani R, Bin F. 2001.** Antennal multiporous sensilla: their gustatory features for host recognition in female parasitic wasps (Insecta, Hymenoptera: Platygasteroidea). *Microscopy Research and Technique* **55**:350–358 DOI [10.1002/jemt.1183](https://doi.org/10.1002/jemt.1183).
- Johansson BG, Jones TM. 2007.** The role of chemical communication in mate choice. *Biological Reviews* **82**:265–289 DOI [10.1111/j.1469-185X.2007.00009.x](https://doi.org/10.1111/j.1469-185X.2007.00009.x).

- Kainoh Y, Nemoto T, Shimizu K, Tatsuki S, Kusano T, Kuwahara Y. 1991.** Mating behavior of *Ascogaster reticulatus* Watanabe (Hymenoptera: Braconidae), an egg-larval parasitoid of the smaller tea tortrix, *Adoxophyes* sp. (Lepidoptera: Tortricidae): III. identification of a sex pheromone. *Applied Entomology and Zoology* **26**:543–549 DOI [10.1303/aez.21.1](https://doi.org/10.1303/aez.21.1).
- Kainoh Y, Oishi Y. 1993.** Source of sex pheromone of the egg-larval parasitoid, *Ascogaster reticulatus* Watanabe (Hymenoptera: Braconidae). *Journal of Chemical Ecology* **19**:963–969 DOI [10.1007/BF00992531](https://doi.org/10.1007/BF00992531).
- Kamano Y, Shimizu K, Kainoh Y, Tatsuki S. 1989.** Mating behavior of *Ascogaster reticulatus* Watanabe (hymenoptera: Braconidae), an egg-larval parasitoid of the smaller tea tortrix, *Adoxophyes* sp. (Lepidoptera: Tortricidae): II. Behavioral sequence and a role of sex pheromone. *Applied Entomology and Zoology* **24**:372–378 DOI [10.1303/aez.24.372](https://doi.org/10.1303/aez.24.372).
- Kather R, Martin SJ. 2015.** Evolution of cuticular hydrocarbons in the hymenoptera: a meta-analysis. *Journal of Chemical Ecology* **41**:871–883 DOI [10.1007/s10886-015-0631-5](https://doi.org/10.1007/s10886-015-0631-5).
- Keeling CI, Plettner E, Slessor KN. 2004.** Hymenopteran semiochemicals. In: Ando T, ed. *The chemistry of pheromones and other semiochemicals I*. Berlin, Heidelberg: Springer, 133–177.
- Klasmer P, Botto E. 2012.** The ecology and biological control of the woodwasp *Sirex noctilio* in Patagonia, Argentina. In: Slippers B, De Groot P, Wingfield MJ, eds. *The sirex woodwasp and its fungal symbiont*. Dordrecht: Springer, 203–215.
- Kováts E. 1965.** Gas chromatographic characterization of organic substances in the retention index system. In: Giddings JC, Keller RA, eds. *Advances in Chromatography*. New York: Marcel Dekker, 229–247.
- Krokos FD, Konstantopoulou MA, Mazomenos BE. 2001.** Alkadienes and alkenes, sex pheromone components of the almond seed wasp *Eurytoma amygdali*. *Journal of Chemical Ecology* **27**:2169–2181 DOI [10.1023/A:1012218618218](https://doi.org/10.1023/A:1012218618218).
- Kühbandner S, Bello JE, Mori K, Millar JG, Ruther J. 2013.** Elucidating structure-bioactivity relationships of methyl-branched alkanes in the contact sex pheromone of the parasitic wasp *Lariophagus distinguendus*. *Insects* **4**:743–760 DOI [10.3390/insects4040743](https://doi.org/10.3390/insects4040743).
- Kuwahara Y, Ohshima M, Sato M, Kurosa K, Matsuyama S, Suzuki T. 1995a.** Chemical ecology of Astigmatid mites XL identification of the alarm pheromone and new C17 hydrocarbons from *Tortonia* sp., a pest attacking the nest of *Osmia cornifrons*. *Applied Entomology and Zoology* **30**:177–184 DOI [10.1303/aez.30.177](https://doi.org/10.1303/aez.30.177).
- Kuwahara Y, Samejima M, Sakata T, Kurosa K, Sato M, Matsuyama S, Suzuki T. 1995b.** Chemical ecology of Astigmatid mites XLIV identification of (Z,Z,Z)-5, 9, 12-octadecatrienoic acid and (Z,Z)-5, 9-octadecadienoic acid as possible biosynthetic precursors of new hydrocarbons (Z,Z,Z)-4, 8, 11-heptadecatriene and (Z,Z)-4, 8-heptadecadiene found in the Astigmatid mite, *Tortonia* sp. *Applied Entomology and Zoology* **30**:433–441 DOI [10.1303/aez.30.433](https://doi.org/10.1303/aez.30.433).



- Leonard SH, Ringo JM. 1978.** Analysis of male courtship patterns and mating behavior of *Brachymeria intermedia*. *Annals of the Entomological Society of America* **71**:817–826 DOI [10.1093/aesa/71.6.817](https://doi.org/10.1093/aesa/71.6.817).
- Loreau O, Maret A, Poullain D, Chardigny JM, Sébédio JL, Beaufrère B, Noël JP. 2000.** Large-Scale Preparation of (9Z, 12E)-[1-13C]-Octadeca-9, 12-Dienoic Acid, (9Z, 12Z, 15E)-[1-13C]-Octadeca-9, 12, 15-Trienoic Acid and Their [1-13C] All-Cis Isomers. *Chemistry and Physics of Lipids* **106**:65–78 DOI [10.1016/S0009-3084\(00\)00137-7](https://doi.org/10.1016/S0009-3084(00)00137-7).
- Macias-Ordóñez R, Draud M. 2005.** An optimum estimator of body size to relate to behavioural and physiological parameters in field studies. *Marine and Freshwater Behaviour and Physiology* **38**:159–168 DOI [10.1080/10236240500222101](https://doi.org/10.1080/10236240500222101).
- Madden JL. 1968.** Behavioural responses of parasites to the symbiotic fungus associated with *Sirex noctilio* F. *Nature* **218**:189–190 DOI [10.1038/218189A0](https://doi.org/10.1038/218189A0).
- Mair MM, Ruther J. 2019.** Chemical ecology of the parasitoid wasp genus *Nasonia* (Hymenoptera, Pteromalidae). *Frontiers in Ecology and Evolution* **7**:184 DOI [10.3389/fevo.2019.00184](https://doi.org/10.3389/fevo.2019.00184).
- Marepally L, Benarjee G. 2016.** Identification and behavioral evaluation of sex pheromone in *Xanthopimpla pedator* (Fabricius)—a serious pupal parasitoid of tropical tasar silkworm *Anthereae mylitta* Drury. *HAYATI Journal of Biosciences* **23**:185–190 DOI [10.4308/hjb.23.4.185](https://doi.org/10.4308/hjb.23.4.185).
- Martínez AS, Fernández-Arhex V, Corley JC. 2006.** Chemical information from the fungus *Amylostereum areolatum* and host-foraging behaviour in the parasitoid *Ibalia leucospoides*. *Physiological Entomology* **31**:336–340 DOI [10.1111/j.1365-3032.2006.00523.x](https://doi.org/10.1111/j.1365-3032.2006.00523.x).
- Pietrantuono AL, Fernández-Arhex V, Jofré N, Corley JC. 2012.** Food and host searching decisions made by *Ibalia leucospoides* (Hymenoptera: Ibalidae), a parasitoid of *Sirex noctilio* (Hymenoptera: Siricidae). *Journal of Insect Behavior* **25**:320–327 DOI [10.1007/s10905-011-9301-9](https://doi.org/10.1007/s10905-011-9301-9).
- Pompanon F, De Schepper B, Mourer Y, Fouillet P, Bouletreau M. 1997.** Evidence for a substrate-borne sex pheromone in the parasitoid wasp *Trichogramma brassicae*. *Journal of Chemical Ecology* **23**:1349–1360 DOI [10.1023/B:JOEC.0000006468.19993.70](https://doi.org/10.1023/B:JOEC.0000006468.19993.70).
- Raychoudhury R, Desjardins CA, Buellesbach J, Loehlin DW, Grillenberger BK, Beukeboom L, Schmitt T, Werren JH. 2010.** Behavioral and genetic characteristics of a new species of *Nasonia*. *Heredity* **104**:278–288 DOI [10.1038/hdy.2009.147](https://doi.org/10.1038/hdy.2009.147).
- Roscoe LE, Lyons DB, Ryall KL, Smith SM. 2016.** Courtship sequence and evidence of volatile pheromones in *Phasgonophora sulcata* (Hymenoptera: Chalcididae), a North American parasitoid of the invasive *Agrilus planipennis* (Coleoptera: Buprestidae). *The Canadian Entomologist* **148**:151–162 DOI [10.4039/tce.2015.52](https://doi.org/10.4039/tce.2015.52).
- Ruther J. 2013.** Novel insights into pheromone-mediated communication in parasitic hymenopterans. In: Wajnberg E, Colazza S, eds. *Chemical ecology of insect parasitoids*. John Wiley & Sons, 112–144 DOI [10.1603/EN11275](https://doi.org/10.1603/EN11275).
- Ruther J, Döring M, Steiner S. 2011.** Cuticular hydrocarbons as contact sex pheromone in the parasitoid *Dibrachys cavus*. *Entomologia Experimentalis Et Applicata* **140**:59–68 DOI [10.1111/j.1570-7458.2011.01129.x](https://doi.org/10.1111/j.1570-7458.2011.01129.x).

- Ruther J, Stahl LM, Steiner S, Garbe LA, Tolasch T. 2007. A male sex pheromone in a parasitic wasp and control of the behavioral response by the female's mating status. *Journal of Experimental Biology* 210:2163–2169 DOI 10.1242/jeb.02789.
- Ruther J, Wittman T, Grimm C, Feichtner FS, Fleischmann S, Kiermaier J, King BH, Kremer W, Kalbitzer HR, Schulz S. 2019. Male sex pheromone of the parasitoid wasp *Urolepis rufipes* demonstrates biosynthetic switch between fatty acid and isoprenoid metabolism within the *Nasonia* group. *Frontiers in Ecology and Evolution* 7:26 DOI 10.3389/fevo.2019.00026.
- Ryan K, De Groot P, Nott RW, Drabble S, Ochoa I, Davis C, Smith SM, Turgeon JJ. 2012. Natural enemies associated with *Sirex Noctilio* (Hymenoptera: Siricidae) and *S. Nigricornis* in Ontario, Canada. *Environmental Entomology* 41:289–297 DOI 10.1603/EN11275.
- Salerno G, Iacovone A, Carlin S, Frati F, Conti E, Anfora G. 2012. Identification of sex pheromone components in *Trissolcus brochymenae* females. *Journal of Insect Physiology* 58:1635–1642 DOI 10.1016/j.jinsphys.2012.10.003.
- Schiestl FP, Ayasse F, Paulus HF, Löfstedt C, Hansson BS, Ibarra F, Francke W. 1999. Orchid pollination by sexual swindle. *Nature* 399:421–424 DOI 10.1038/20829.
- De Silva AC, Silk PJ, Mayo P, Hillier NK, Cutler C. 2013. Identification of sex pheromone, synthesis and field trapping studies of the blueberry spanworm (*Itame argillacearia*, Lepidoptera: Geometridae). *Journal of Chemical Ecology* 39:1169–1181 DOI 10.1007/s10886-013-0337-5.
- Slippers B, Hurley BP, Wingfield MJ. 2015. *Sirex* woodwasp: a model for evolving management paradigms of invasive forest pests. *Annual Review of Entomology* 60:601–619 DOI 10.1146/annurev-ento-010814-021118.
- Spradbery JP. 1970. The biology of *Ibalia drewseni* Borries (Hymenoptera: Ibalidae), a parasite of siricid woodwasps. *Physiological Entomology* 45:104–113 DOI 10.1111/j.1365-3032.1970.tb00707.x.
- Spradbery JP. 1974. The responses of *Ibalia* species (Hymenoptera: Ibalidae) to the fungal symbionts of siricid woodwasp hosts. *Journal of Entomology Series a Physiology & Behavior* 48:217–222 DOI 10.1111/j.1365-3032.1974.tb00058.x.
- Steiner S, Hermann N, Ruther J. 2006. Characterization of a female-produced courtship pheromone in the parasitoid *Nasonia vitripennis*. *Journal of Chemical Ecology* 32:1687–1702 DOI 10.1007/s10886-006-9102-3.
- Stökl J, Dandekar AT, Ruther J. 2014. High chemical diversity in a wasp pheromone: a blend of methyl 6-methylsalicylate, fatty alcohol acetates and cuticular hydrocarbons releases courtship behavior in the *Drosophila* parasitoid *Asobara tabida*. *Journal of Chemical Ecology* 40:159–168 DOI 10.1007/s10886-014-0378-4.
- Sullivan BT. 2002. Evidence for a sex pheromone in bark beetle parasitoid *Roptrocerus xylophagorum*. *Journal of Chemical Ecology* 28:1045–1063 DOI 10.1023/A:1015270003717.
- Swedenborg PD, Jones RL. 1992a. Multicomponent sex pheromone in *Macrocentrus grandii* Goidanich (Hymenoptera: Braconidae). *Journal of Chemical Ecology* 18:1901–1912 DOI 10.1007/BF00981915.



- Swedenborg PD, Jones RL. 1992b.** (Z)-4-Tridecenal, a pheromonally active air oxidation product from a series of (Z, Z)-9, 13 dienes in *Macrocentrus grandii* Goidanich (Hymenoptera: Braconidae). *Journal of Chemical Ecology* **18**:1913–1931 DOI [10.1007/BF00981916](https://doi.org/10.1007/BF00981916).
- Syvertsen TC, Jackson LL, Blomquist GJ, Vinson SB. 1995.** Alkadienes mediating courtship in the parasitoid *Cardiochiles nigriceps* (Hymenoptera: Braconidae). *Journal of Chemical Ecology* **21**:1971–1989 DOI [10.1007/BF02033856](https://doi.org/10.1007/BF02033856).
- Taylor KL. 1980.** Studies with *Sirex noctilio* (Hymenoptera: Siricidae) and its parasites that illustrate the importance of evaluating biological control attempts. *Acta Oecologica* **1**:181–187.
- Tsai FJ, Liu HJ, Lee MY, Lin CC. 2019.** Determination of volatile components from live water lily flowers by an orthogonal-array-design-assisted trapping cell. *Applied Sciences* **9**:1269 DOI [10.3390/app9071269](https://doi.org/10.3390/app9071269).
- Vinson SB. 1972.** Courtship behavior and evidence for a sex pheromone in the parasitoid *Campoletis sonorensis* (Hymenoptera: Ichneumonidae). *Environmental Entomology* **1**:409–414 DOI [10.1093/ee/1.4.409](https://doi.org/10.1093/ee/1.4.409).
- Wang XG, Kaçar G, Biondi A, Daane KM. 2016.** Life-history and host preference of *Trichopria drosophilae*, a pupal parasitoid of spotted wing drosophila. *BioControl* **61**:387–397 DOI [10.1007/s10526-016-9720-9](https://doi.org/10.1007/s10526-016-9720-9).
- Wang XG, Messing RH. 2004.** Fitness consequences of body-size-dependent host species selection in a generalist ectoparasitoid. *Behavioral Ecology and Sociobiology* **56**:513–522 DOI [10.1007/s00265-004-0829-y](https://doi.org/10.1007/s00265-004-0829-y).
- Weiss I, Rössler T, Hofferberth J, Brummer M, Ruther J, Stökl J. 2013.** A nonspecific defensive compound evolves into a competition avoidance cue and a female sex pheromone. *Nature Communications* **4**:2767 DOI [10.1038/ncomms3767](https://doi.org/10.1038/ncomms3767).
- Weiss I, Ruther J, Stökl J. 2015.** Species specificity of the putative male antennal aphrodisiac pheromone in *Leptopilina heterotoma*, *Leptopilina boulardi*, and *Leptopilina victoriana*. *BioMed Research International* 202965 DOI [10.1155/2015/202965](https://doi.org/10.1155/2015/202965).
- Zaikin VG, Borisov RS. 2002.** Chromatographic–mass spectrometric analysis of Fischer–Tropsch synthesis products. *Journal of Analytical Chemistry* **57**:544–551 DOI [10.1023/A:1015754120136](https://doi.org/10.1023/A:1015754120136).
- Zgheib R, Najm W, Azzi-Achkouty S, Sadaka C, Ouaini N, Beyrouthy ME. 2020.** Essential oil chemical composition of *Rosa corymbifera* borkh. *Rosa phoenicia* Boiss. and *Rosa damascena* Mill. from Lebanon. *Journal of Essential Oil Bearing Plants* **23**:1161–1172 DOI [10.1080/0972060X.2020.1843544](https://doi.org/10.1080/0972060X.2020.1843544).