

The oldest species of *Peltoperleidus* (Louwoichthyiformes, Neopterygii) from the Middle Triassic (Anisian) of China, with phylogenetic and biogeographic implications

Guang-Hui Xu^{1,2}

¹ Key Laboratory of Vertebrate Evolution and Human Origins of Chinese Academy of Sciences, Institute of Vertebrate Paleontology and Paleoanthropology, Chinese Academy of Sciences, Beijing, China

² CAS Center for Excellence in Life and Paleoenvironment, Beijing, China

ABSTRACT

The previously alleged ‘perleidid’ genus *Peltoperleidus* is a stem-neopterygian fish taxon with two or three horizontal rows of notably deepened flank scales. Until recently, members of this genus were known only from the Ladinian (late Middle Triassic) or near the Anisian/Ladinian boundary (~242 Ma) in southern Switzerland and northern Italy. Here, I report the discovery of a new species of the genus, *Peltoperleidus asiaticus* sp. nov., based on three well-preserved specimens from the Anisian (early Middle Triassic, ~244 Ma) of Luoping, eastern Yunnan, China. The discovery extends the geological range of *Peltoperleidus* by approximately two million years and documents the first record of the genus in Asia. Similar to its relatives (represented by *P. macrodontus*) from Europe, *P. asiaticus* sp. nov. is likely a small-sized durophagous predator with dentition combining grasping and crushing morphologies. Results of a cladistic analysis unite four species of *Peltoperleidus* as a monophyletic group within the Louwoichthyiformes, and suggest that the presence of two horizontal rows of notably deepened scales was independently evolved in *Peltoperleidus* and another stem-neopterygian taxon *Altisolepis*. *P. asiaticus* sp. nov. is nested at the base of *Peltoperleidus*, and a new family Peltoperleididae is proposed for the genus, contrasting the previous placement of *Peltoperleidus* in the poorly defined, paraphyletic ‘Perleididae’. Comparative studies of the basal peltoperleidid from China with its younger relatives from Europe provide new insights into the evolutionary origin and paleogeographic distribution of this clade.

Submitted 20 July 2021
Accepted 8 September 2021
Published 29 September 2021

Corresponding author
Guang-Hui Xu,
xuguanghui@ivpp.ac.cn

Academic editor
Kenneth De Baets

Additional Information and
Declarations can be found on
page 21

DOI 10.7717/peerj.12225

© Copyright
2021 Xu

Distributed under
Creative Commons CC-BY 4.0

OPEN ACCESS

Subjects Evolutionary Studies, Marine Biology, Paleontology, Taxonomy, Zoology

Keywords Osteology, Phylogeny, Louwoichthyiformes, Neopterygii, Triassic

INTRODUCTION

Neopterygii (Teleostei, Holostei and closely related fossil taxa) is the largest group of ray-finned fishes today, exhibiting high morphological and taxonomic diversity (e.g., *Gardiner, Maisey & Littlewood, 1996; Grande & Bemis, 1998; Cavin, 2010; Grande, 2010; Sallan, 2014; Friedman, 2015; Arratia, 2015; Nelson, Grande & Wilson, 2016; López-*

Arbarello & Sferco, 2018; Xu, 2021). This group underwent a rapid radiation in the aftermath of the end-Permian mass extinction (e.g., *Benton et al., 2013; Romano et al., 2016; Clarke & Friedman, 2018*). Fossil records of stem-neopterygian taxa are particularly rich from the Triassic deposits in almost all continents except Antarctica, and they have long attracted the attention of palaeoichthyologists interested in the early diversification of this clade (e.g., *Brough, 1931, 1939; Stensiö, 1932; Wade, 1935; Lehman, 1952; Schaeffer, 1956; Gardiner, 1960; Patterson, 1973; Hutchinson, 1973a, b; Griffith, 1977; Bürgin et al., 1991; Tintori & Sassi, 1992; Lombardo, 2001; Bürgin & Herzog, 2002; Mutter, 2004, 2005; Lombardo & Brambillasca, 2005; López-Arbarello & Zavattieri, 2008; Sun et al., 2009, 2012; Geng et al., 2012; Xu, Gao & Coates, 2015; Xu, Zhao & Shen, 2015; Xu, Ma & Zhao, 2018; Cartanyà et al., 2015, 2019; Xu & Ma, 2016; Marramà et al., 2017; Wen et al., 2019; Xu, 2020a, 2020b; Ma, Xu & Geng, 2021*).

The extinct genus *Peltoperleidus* is a stem-neopterygian taxon from the Ladinian (late Middle Triassic) or near the Anisian/Ladinian boundary in southern Switzerland and northern Italy (*Bürgin et al., 1991; Herzog, 2001; Mutter & Herzog, 2004*). This genus has two or three horizontal rows of notably deepened flank scales, showing an intermediate condition between perleidids and peltopleurids (from that its name was derived). The type species, *P. ducanensis*, was named by *Bürgin et al. (1991)* on the basis of three specimens from the Ladinian of Canton Grisons, eastern Switzerland. *Bürgin (1992)* and *Herzog (2001)* referred five additional species to this genus, but *Mutter & Herzog (2004)* considered three of them (*P. obristi, P. macrodontus* and *P. triseriis*) as valid, and moved the remaining two into another stem-neopterygian genus *Altisolepis*. Both *Peltoperleidus* and *Altisolepis* were originally placed in the Perleididae (*Bürgin, 1992; Herzog, 2001; Mutter & Herzog, 2004*) and *Altisolepis* was later referred to the Peltopleuridae (*Sun et al., 2015*). However, these taxonomic hypotheses are not based on phylogenetic analyses.

Here, I report the discovery of a new species of *Peltoperleidus* based on three well-preserved specimens from the Second (Upper) Member of the Guanling Formation exposed in Luoping, eastern Yunnan, China (*Fig. 1*). The discovery documents the first record of *Peltoperleidus* outside Europe, significantly adding our knowledges on the paleogeographic distribution of the genus. In addition, the superb preservation of the skeletons of the new species provides us more comprehensive information on the anatomical diversity of the genus. The aim of this paper is to describe the morphology of the new species of *Peltoperleidus* and to discuss the affinities of *Peltoperleidus* and *Altisolepis* with other early neopterygian clades using cladistic approaches.

Along with the new species of *Peltoperleidus*, other taxa from the same fossiliferous level in Luoping localities include plants, invertebrates, marine reptiles, and other groups of bony fishes; the whole fossil assemblage has been referred to the Luoping Biota (e.g., *Zhang et al., 2009; Sun et al., 2009, 2015; Tintori et al., 2010; López-Arbarello et al., 2011; Wu et al., 2011; Lin et al., 2011; Lombardo et al., 2011; Xu & Wu, 2012; Geng et al., 2012; Wen et al., 2019; Feldmann et al., 2012; Huang et al., 2013; Benton et al., 2013; Xu, Zhao & Coates, 2014; Xu, Ma & Zhao, 2018; Xu & Zhao, 2016; Ma & Xu, 2017; Xu, 2019, 2020a, 2021*). The age of this biota (Pelsonian, Anisian, ~244.2 Ma) is well constrained by



Figure 1 Fossil locality. Map showing the fossil locality of *Peltoperleidus asiaticus* sp. nov.

Full-size  DOI: [10.7717/peerj.12225/fig-1](https://doi.org/10.7717/peerj.12225/fig-1)

conodont biozonation and zircon dating ([Zhang et al., 2009, 2015](#)), and therefore this taxon documents the earliest known member of *Peltoperleidus*, predating the previously oldest record near the Anisian/Ladinian boundary (~242 Ma) from Europe by approximately two Ma. The fossil beds are composed of thinly laminated micritic limestones alternating with silty limestones, indicating a semi-enclosed intraplatform depositional environment in the Triassic Yangtze Sea, a part of the eastern Palaeotethys Ocean ([Hu et al., 2011](#); [Metcalfe, 2011](#); [Benton et al., 2013](#)).

MATERIALS AND METHODS

The specimens are curated at the fossil collections of the Institute of Vertebrate Paleontology and Paleoanthropology (IVPP), Chinese Academy of Sciences in Beijing, China. They were prepared with sharp steel needles. For better contrast, some specimens were dusted with ammonium chloride (NH₄Cl) before being photographed. The relative position of fins and scale counts were expressed following [Westoll \(1944\)](#). The traditional actinopterygian nomenclatures ([Gardiner & Schaeffer, 1989](#); [Bürgin, 1992](#); [Grande & Bemis, 1998](#)) are generally followed, for ease of comparison with most existing literature. The segmented and unbranched rays anterior to the principal fin rays are termed as procurrent rays, following [Arratia \(2008, 2009\)](#).

The new taxon was incorporated in a phylogenetic analysis based on the data matrix of [Ma, Xu & Geng \(2021\)](#). The current data matrix was generated by WinClada 1.00.08 ([Nixon, 2002](#)), including 134 morphological characters and 59 actinopterygian taxa (see [Supplemental Material](#)). The sampled taxa included almost all species of *Peltoperleidus* from Europe with an exception of *P. triseriis* that is represented by a single incomplete specimen lacking phylogenetically important information on the skull. All characters were unordered and equally weighted. The basal actinopterygian *Moythomasia durgaringa* was selected for out-group comparison. Tree searches were accomplished with the heuristic

search algorithm (gaps treated as missing data; 500 random addition sequence replicates; tree bisection-reconnection (TBR) branch-swapping, with five trees held at each step and multiple trees saved) in PAUP * 4.0b10 (Swofford, 2003).

The electronic version of this article in Portable Document Format (PDF) will represent a published work according to the International Commission on Zoological Nomenclature (ICZN), and hence the new names contained in the electronic version are effectively published under that Code from the electronic edition alone. This published work and the nomenclatural acts it contains have been registered in ZooBank, the online registration system for the ICZN. The ZooBank LSIDs (Life Science Identifiers) can be resolved and the associated information viewed through any standard web browser by appending the LSID to the prefix <http://zoobank.org/>. The LSID for this publication is: urn:lsid:zoobank.org:pub: F1B1BD3A-DD3F-4876-A7EE-649C8B224E31. The online version of this work is archived and available from the following digital repositories: PeerJ, PubMed Central and CLOCKSS.

RESULTS

Systematic paleontology

Actinopterygii *Cope, 1887*

Neopterygii *Regan, 1923*

Louwoichthyiformes *Xu, 2021*

Emended diagnosis. Stem group of neopterygians distinguished from other members of this clade by the following combination of features (autapomorphies identified with an asterisk): no more than two suborbitals confined between dermosphenotic and preopercle; maxilla relatively short and deep, ending nearly below posterior orbital margin; presence of teeth only on anterior half portions of both jaws; ventral portion of preopercle anterior extended, contacting maxilla anteriorly (*); posttemporal relatively narrow, not reaching median line; branchiostegal rays relatively few, two or three pairs in number; subopercle slightly larger than opercle, with prominent anteroventral extension (*).

Peltoerleididae fam. nov.

LSID urn:lsid:zoobank.org:act: 80D7CFFE-379A-4012-BC46-73D855D42BCA

Type genus. *Peltoerleidus* *Bürgin et al., 1991*.

Diagnosis. As for the monotype genus.

Geographical distribution and age. As for the monotype genus.

Peltoerleidus *Bürgin et al., 1991*

Emended Diagnosis. Small-sized louwoichthyiforms distinguished from louwoichthyids and pseudobeaconiids by the following features (autapomorphies, those unique among louwoichthyiforms, identified with an asterisk): two or three horizontal rows of deepened scales (lateral line scales and one or two horizontal rows just ventral to them) in anterior flank region; fusion of paired frontals into single element; fusion of paired parietals into single element; presence of molariform teeth on prearticular and palatine

bones; absence of epaxial procurent rays in caudal fin (*); and presence of six or more epiaxial basal fulcra associated with caudal fin (*).

Content. *Peltoerleidus ducanensis* [Bürgin et al., 1991](#); *P. obristi* [Herzog, 2001](#); *P. macrodontus* [Bürgin, 2002](#); *P. triseriis* [Bürgin, 2002](#); *P. asiaticus* sp. nov.

Type species. *Peltoerleidus ducanensis* [Bürgin et al., 1991](#).

Geographical distribution and age: Besano, Italy; Monte San Giorgio and Ducantal, Valbellahorn, Switzerland; Luoping, Yunnan, China; Pelsonian (Anisian) to Ladinian, Middle Triassic.

Peltoerleidus asiaticus sp. nov.

LSID urn:lsid:zoobank.org:act:97631528-FB7E-4B82-9FF8-33955D8E2DDE
([Figs. 1–9](#)).

Etymology. The specific epithet is derived from the Latin *asiaticus*, means Asia.

Holotype. IVPP V22942, a nearly complete specimen with part of left pectoral fin missing.

Paratype. IVPP V25694 and 25695.

Locality and horizon: Luoping, Yunnan, China; Second (Upper) Member of Guanling Formation, Pelsonian (~244.2 Ma), Anisian, Middle Triassic ([Zhang et al., 2009](#)).

Diagnosis: A new species of *Peltoerleidus* distinguished from other species of this genus by the following features (autapomorphies identified with an asterisk): rostral more expanded ventrally than dorsally, with width/length ratio of 0.8; frontals constricted above orbit, with narrowest width 26% of length of fused frontals and parietals (*); presence of four supraorbitals; presence of two suborbitals (*); premaxilla small, with two peg-like teeth; maxilla and dentary strongly ornamented with ganoid ridges; ten principal dorsal fin rays; 14 anal fin rays; 17 or 18 principal caudal fin rays; three horizontal rows of deepened scales in anterior flank region; anterior flank scales with serrated posterior margin; scales in predorsal region with prominent posteroventral spine (*), and pterygial formula of D22–23/P12–13, A19–21, C31–32/T34–35 (*).

Description

General morphology and size. Similar to other species of the genus, *Peltoerleidus asiaticus* sp. nov. is a small-sized stem-neopterygian fish with a blunt snout, a fusiform body and an abbreviated heterocercal caudal fin. The dorsal fin inserts slightly posterior to the origins of pelvic fins. The holotype ([Figs. 2A, 2B](#)) has a head length of 12 mm, a standard length (the length from the tip of the snout to the posterior extremity of the caudal peduncle) of 38 mm, and a total length of about 46 mm. The greatest body depth lies midway between the posterior margin of the opercle and the origin of the dorsal fin, being 13 mm in the holotype. The two paratypes have a standard length of 36 mm ([Fig. 3A](#)) and 38 mm ([Fig. 3B](#)), respectively. The body is fully covered with rhomboid scales, and the vertebral column and pterygiophores are not exposed.

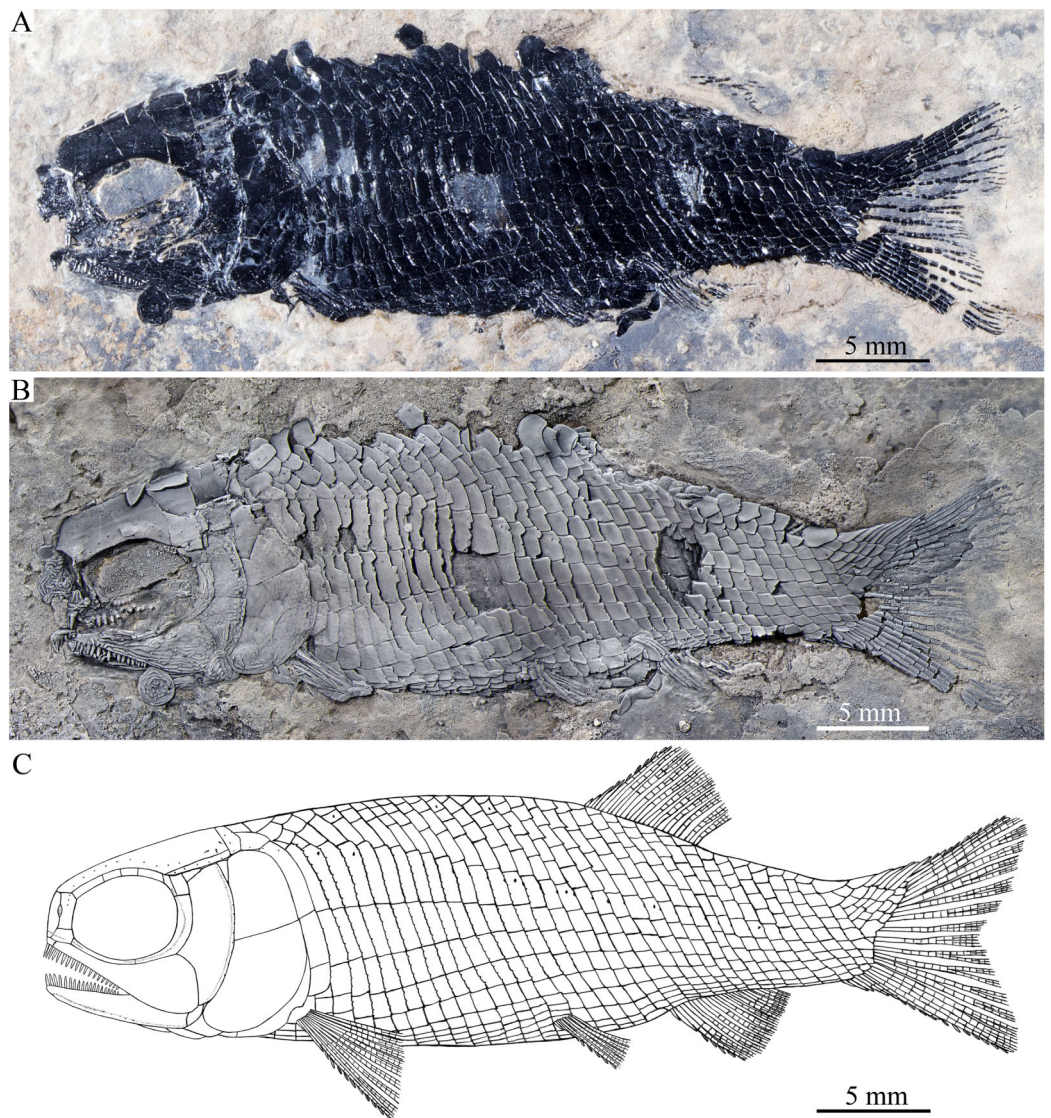


Figure 2 Holotype and reconstruction. Holotype and reconstruction of *Peltoperleidus asiaticus* sp. nov. (A) IVPP V22942, holotype. (B) Specimen dusted with ammonium chloride. (C) Reconstruction.

Full-size  DOI: [10.7717/peerj.12225/fig-2](https://doi.org/10.7717/peerj.12225/fig-2)

Snout. The snout region is composed of a median rostral and a pair of nasals and antorbitals (Figs. 4–7). The rostral is broad and shield-like, more expanded ventrally than dorsally. The greatest width is about 80% of the depth of this bone. The ventral margin of the rostral is concave and the dorsal margin rounded. A distinct notch for the anterior nostril is present at the lateral margin. The anterior commissure of the lateral line system is enclosed in the rostral, indicated by a generally curved line of three small pores at the anteroventral portion of this bone. The outer surface of the rostral is ornamented with curved ridges and some tubercles.

The nasal is relatively large and irregular, bearing a large notch for the anterior nostril at its medial margin (Figs. 5, 6). It contacts the rostral medially, the frontal and first

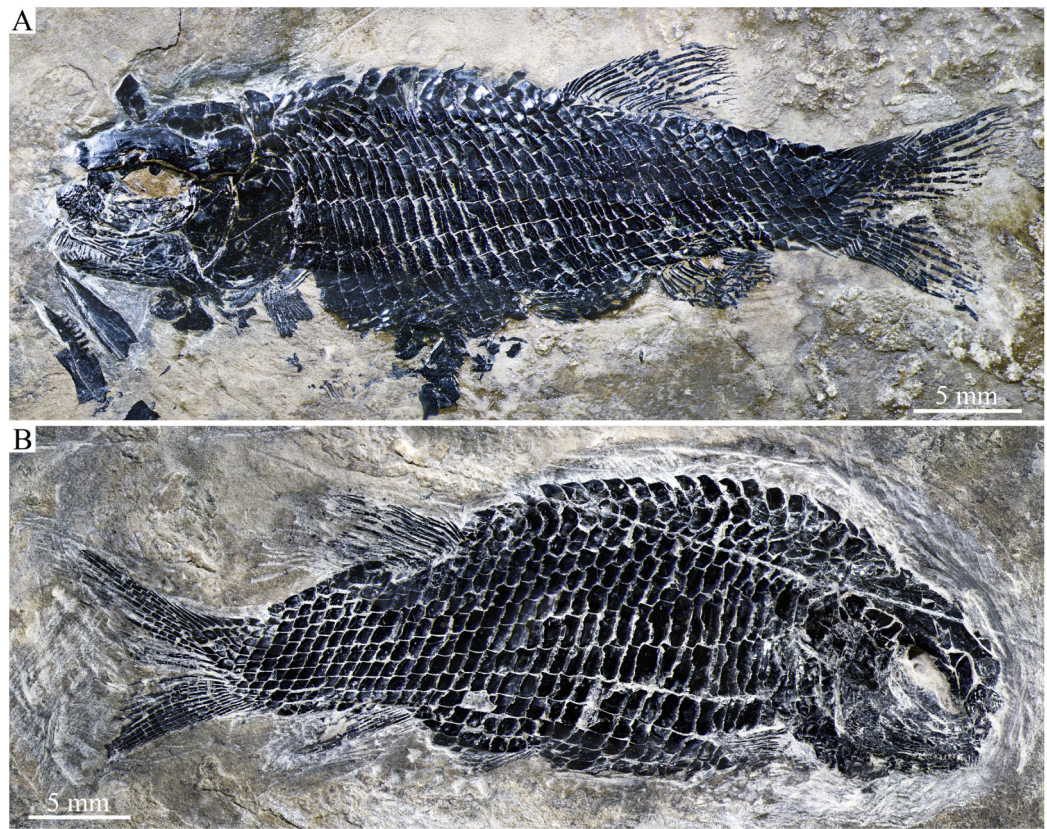


Figure 3 Two paratypes. Two paratypes of *Peltoperleidus asiaticus* sp. nov. (A) IVPP V25694. (B) IVPP V25695.

Full-size  DOI: [10.7717/peerj.12225/fig-3](https://doi.org/10.7717/peerj.12225/fig-3)

supraorbital dorsally, and the antorbital ventrally. The lateral margin of the nasal is slightly concave, forming a part of the anterior margin of the orbit. There is no distinct notch for the posterior nostril at the lateral margin of the nasal. The ornamentation of the nasal includes some ridges and tubercles. The supraorbital sensory canal extends into the nasal from the frontal, with a longitudinal line of three small pores discernable at the dorsal portion of the nasal (Fig. 5).

The antorbital is small and nearly trapezoidal, contacting the rostral anteromedially, the nasal dorsally, the premaxilla and maxilla ventrally, and the first infraorbital posteriorly (Figs. 4, 5). The posterolateral edge of the antorbital forms part of the anteroventral margin of the orbit. The ethmoid commissure between the rostral and antorbital bone is continuous. The outer surface of the antorbital is ornamented with ganoid ridges and tubercles.

Skull roof. The paired frontals, parietals and dermopterotics are fused into a broad skull roof plate in the holotype (Fig. 4) and IVPP V25695 (Fig. 6). In IVPP V25694 (Fig. 5), however, a suture is discernable between the left dermopterotic and the fused frontals and parietals. The skull roof plate tapers anteriorly to form a short, pointed process at the medial line of the skull. The frontal portion is constricted above the orbit, where the narrowest width is 26% of the length of the skull roof plate. The trajectory of the

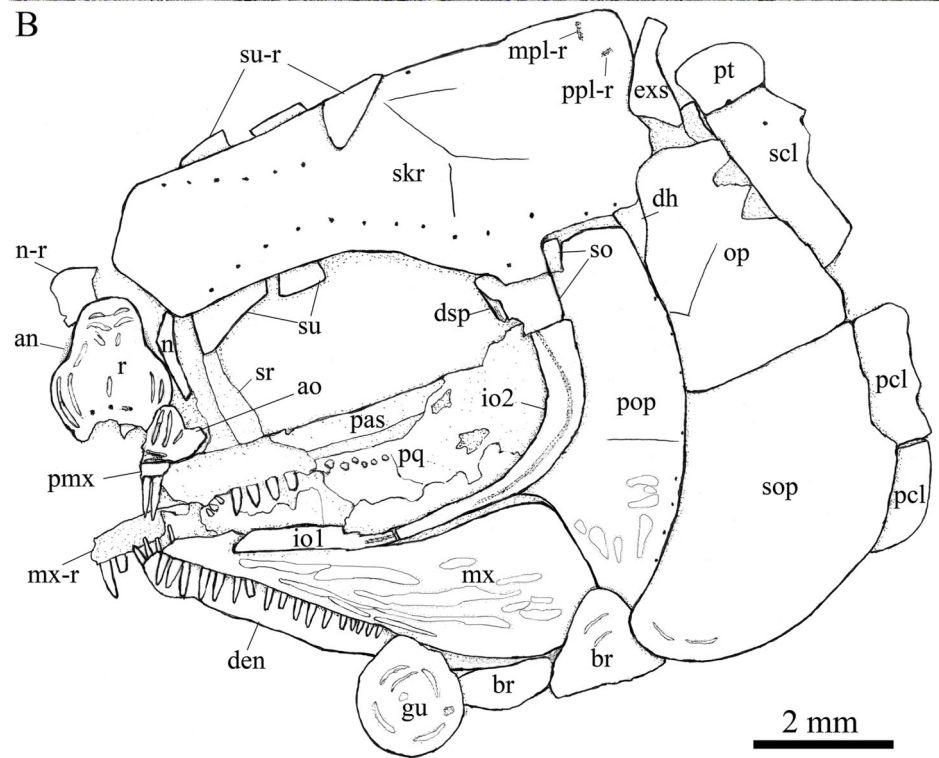


Figure 4 Skull and pectoral girdle in the holotype. Skull and pectoral girdle of *Peltoperleidus asiaticus* sp. nov., IVPP V22942 (holotype). [Full-size !\[\]\(bc797a94aafc1f7587775d98c87011d1_img.jpg\) DOI: 10.7717/peerj.12225/fig-4](https://doi.org/10.7717/peerj.12225/fig-4)

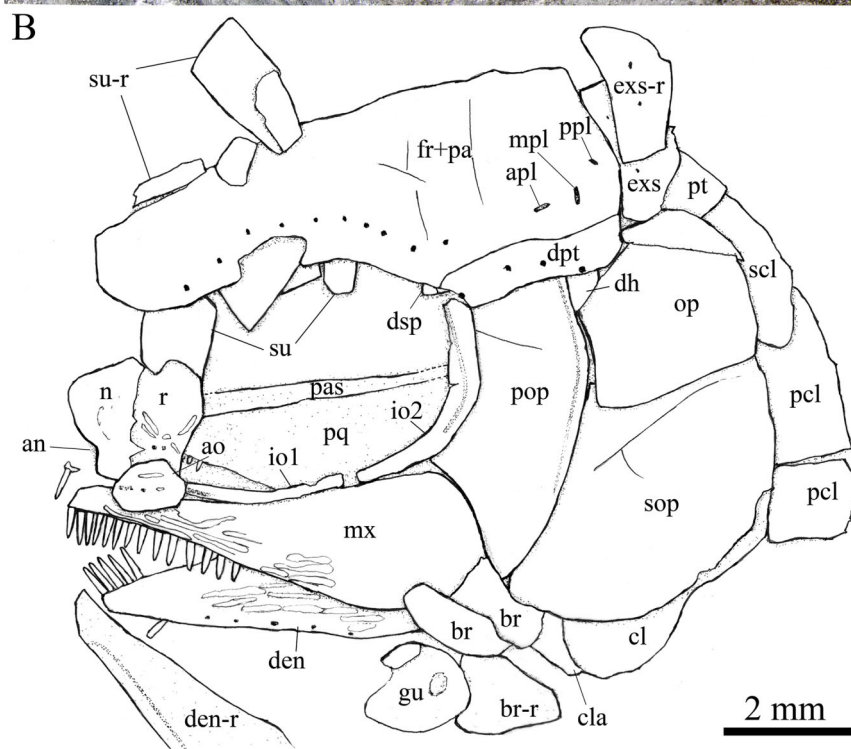


Figure 5 Skull and pectoral girdle in IVPP V25694. Skull and pectoral girdle of *Peltoperleidus asiaticus* sp. nov., IVPP V25694. (A) Photograph, dusted with ammonium chloride. (B) Line-drawing.

Full-size  DOI: [10.7717/peerj.12225/fig-5](https://doi.org/10.7717/peerj.12225/fig-5)

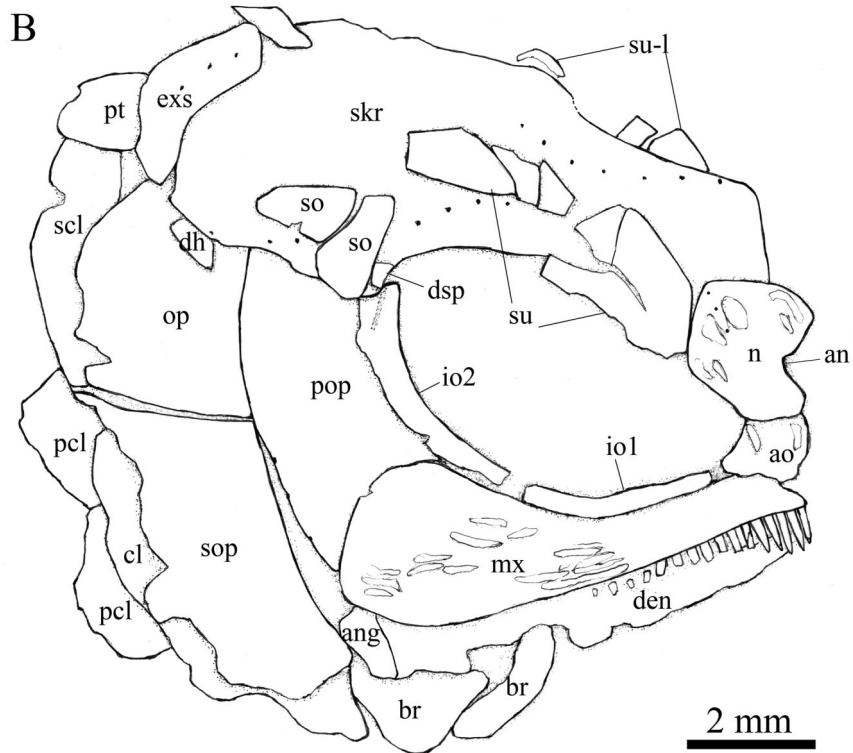
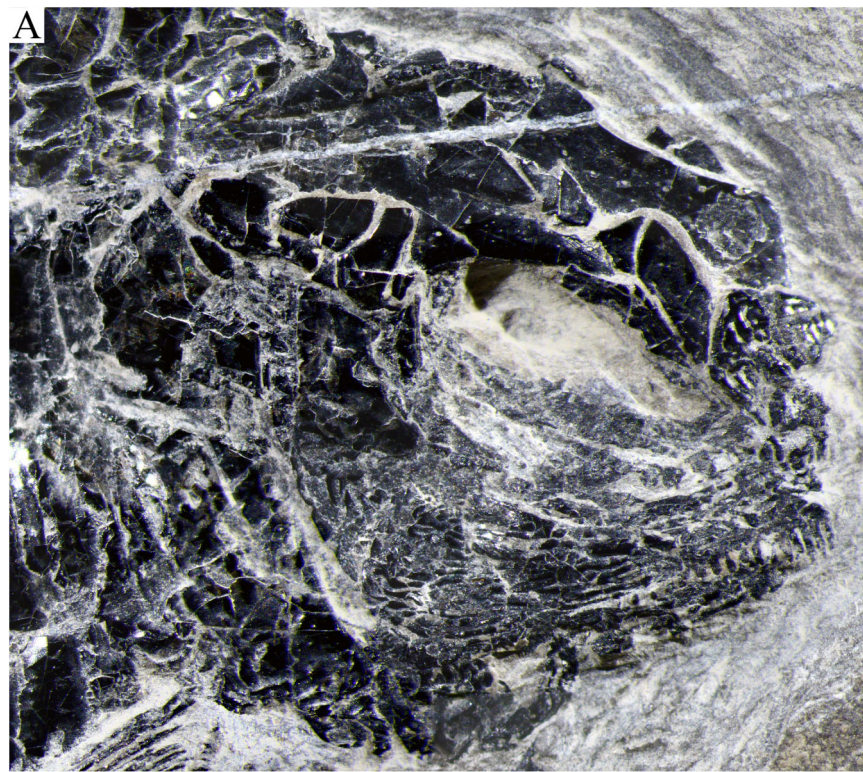


Figure 6 Skull and pectoral girdle in IVPP V25695. Skull and pectoral girdle of *Peltoperleidus asiaticus* sp. nov., IVPP V25695. (A) Photograph. (B) Line-drawing. [Full-size !\[\]\(95c552df6353b48e62ab71c0e20270ca_img.jpg\) DOI: 10.7717/peerj.12225/fig-6](https://doi.org/10.7717/peerj.12225/fig-6)

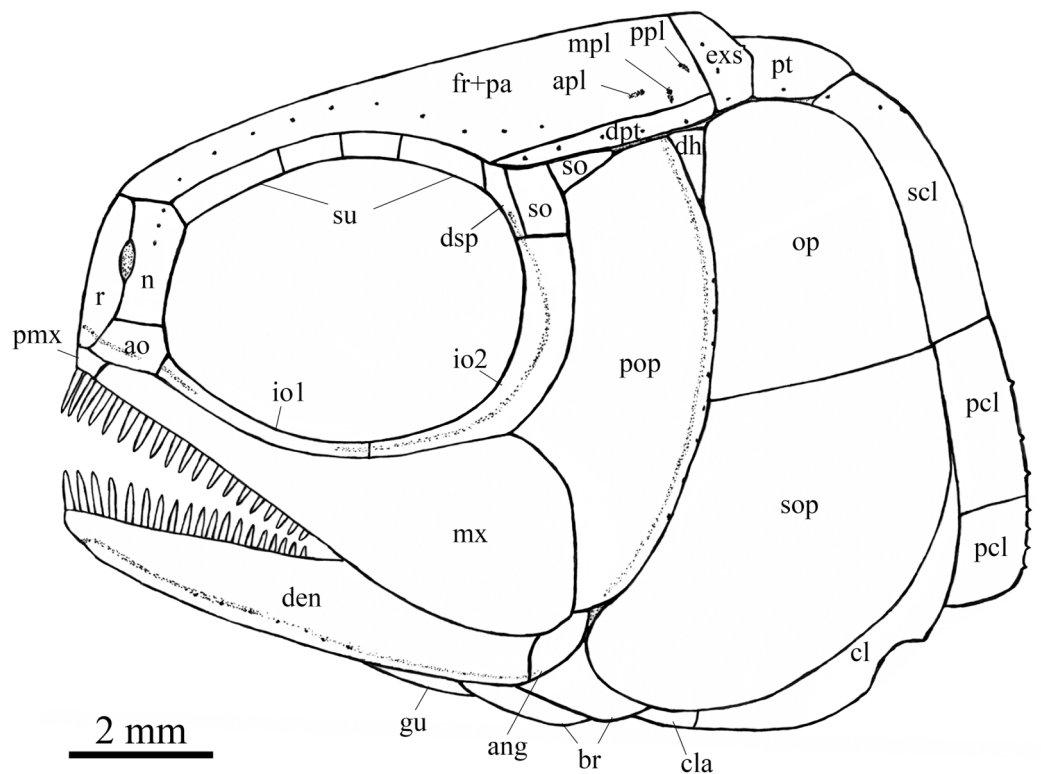


Figure 7 Reconstruction of skull and pectoral girdle. Reconstruction of skull and pectoral girdle of *Peltoperleidus asiaticus* sp. nov. [Full-size !\[\]\(ba1b80118482ccef74a5d718ca4d7242_img.jpg\) DOI: 10.7717/peerj.12225/fig-7](https://doi.org/10.7717/peerj.12225/fig-7)

supraorbital canal can be traced by the openings of small pores into the smooth surface of the skull roof plate. Three short pit-lines are present in the parietal portion (Figs. 4, 5), including an anterior pit-line, a laterally extended middle one and a posterolaterally extended posterior one. Indicated by a line of small pores, the temporal sensory canal runs longitudinally through the dermopterotic bone or the dermopterotic portion of the skull roof plate (Figs. 4–6).

The extrascapular is largely trapezoidal, having a concave anterior margin and a convex posterior margin. A small spine is discernable at the middle portion of the posterior margin of the left extrascapular in IVPP V25694 (Fig. 5). Each extrascapular tapers medially and contacts its counterpart at the mid-line of the skull. The supratermporal commissure transverses through the middle portion of the extrascapular (Figs. 5, 6).

Circumorbital bones. There are four rectangular or trapezoidal supraorbitals, and their sizes slightly vary in different specimens (Figs. 4, 5). Among them, the first (anterior-most) supraorbital is consistently the largest, the middle two are smallest, and the last is slighter shorter than the first.

Two infraorbitals are present (Figs. 4–6). The first is elongate and tube-like, with a concave dorsal margin and a convex ventral margin. The second is slightly expanded and curved, contacting the first anteriorly, the maxilla ventrally, the preopercle posteriorly, and the dermosphenotic and anterior suborbital dorsally. The dermosphenotic is small and

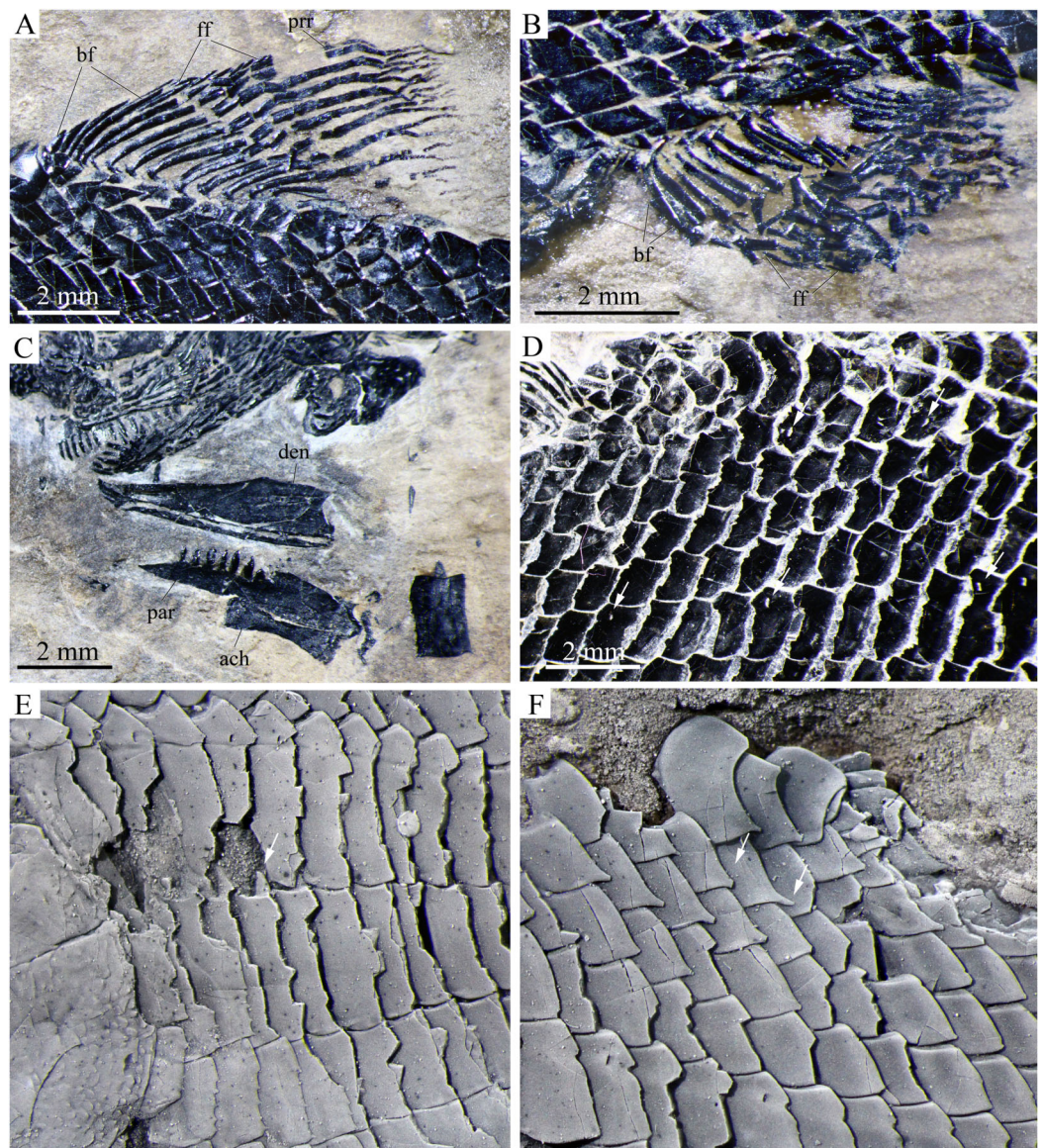


Figure 8 Detached cranial bones, fins and scales. Detached cranial bones, fins and scales of *Pelto-perleidus asiaticus* sp. nov. (A–C) IVPP V25694; (A) Dorsal fin, (B) Anal fin, and (C) Dentary, pre-articular and anterior ceratohyal. (D) IVPP V25695, flank scales, with arrows indicating pores in additional (upper) and main lateral line scales (below). (E, F) IVPP V22942, dusted with ammonium chloride; (E) Deepened anterior flank scales, with arrow indicating the dorsal peg of the scale, and (F) Scales with a prominent posteroventral spine in the predorsal region.

Full-size  DOI: [10.7717/peerj.12225/fig-8](https://doi.org/10.7717/peerj.12225/fig-8)

narrow, tapering ventrally; its depth is nearly equal to the length of the last supraorbital. Posteriorly, two suborbitals are present (Figs. 4, 6). The anterior is relatively large and trapezoidal, 1.8 times deeper than long, and the posterior is smaller and nearly triangular, half of the depth of the anterior.

The infraorbital sensory canal passes longitudinally through the first infraorbital, extends upwards through the second infraorbital and enters the dermosphenotic. Part of

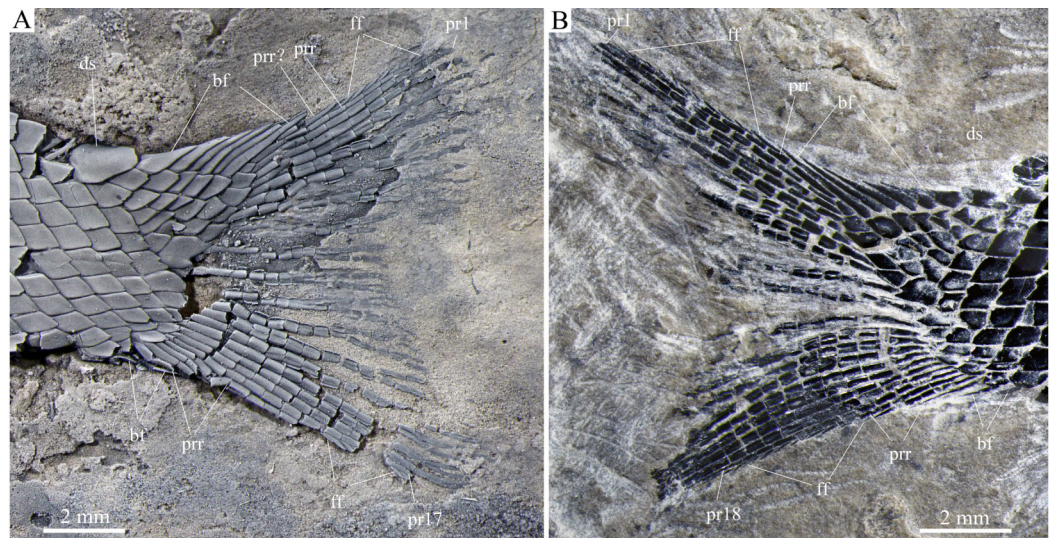


Figure 9 Caudal fin. Caudal fin of *Peltoperleidus asiaticus* sp. nov. (A) IVPP V22942 (holotype), dusted with ammonium chloride; (B) IVPP V25695. [Full-size !\[\]\(b345a1c4255362eec3746050dd71ccac_img.jpg\) DOI: 10.7717/peerj.12225/fig-9](https://doi.org/10.7717/peerj.12225/fig-9)

narrow and slightly curved sclerotic bone is discernable near the anterior orbital margin in the holotype (Fig. 4), but its complete shape is still unknown because of incomplete preservation.

Upper jaw. The upper jaw consists of premaxilla and maxilla. The premaxilla is quite small, bearing two long, peg-like teeth on its oral margin (Fig. 4). The maxilla has a slender anterior ramus and a posterodorsally expanded cheek plate; the ratio of the length to the maximum depth of the maxilla is 2.8 in the holotype. The posterior margin of the maxilla is nearly rounded, ending at the level of the posterior margin of the second infraorbital. The outer surface of the maxilla is strongly ornamented with ganoid ridges. The oral margin of the maxilla is slightly convex, bearing 17 peg-like teeth on its anterior portion. The anterior teeth are longest and slightly recurved distally with an acuminate acrodine apex; the teeth gradually reduce in length posteriorly.

The lower jaw is wedge-shaped, ornamented with longitudinal ridges. Two elements, dentary and angular, are discernable in lateral view (Figs. 6, 7). Additionally, a prearticular is well exposed in medial view (Fig. 8C). The dentary is largest, accounting for 92% of the length of the lower jaw. The angular is small and narrow, contacting the dentary posteriorly. The prearticular is slightly shorter than the dentary, having a pointed anterior tip, a curved posterior margin, a convex dorsal margin and a nearly straight ventral margin. The mandibular canal runs longitudinally through the dentary parallel to the slightly convex ventral margin of this bone and enters the angular posteriorly. The posterodorsal portion of the lower jaw is laterally covered by the maxilla; the supra-angular, commonly present in other stem-neopterygians, is not exposed. The teeth in the dentary are peg-like, similar to those of the maxilla in size. The anterior teeth are longest and slightly inclined anteriorly, and others gradually reduce in length posteriorly. A row of seven teeth is present in the oral margin of the prearticular (Fig. 8C). The teeth

are molariform, stronger and blunter than those in the dentary; the fifth teeth are longest, and the last shortest with a rounded tip.

Parasphenoid and palatoquadrate. The elongate parasphenoid and plate-like palatoquadrate are partly discernable through the orbit, but no distinct palatine bones can be identified (Figs. 4, 5). A series of teeth are discernable in the medial margin of the palatine. The teeth are large and molariform, shorter but stronger than those in the maxilla.

Opercular series and dermohyal. The preopercle is sickle-shaped, tapering ventrally. Anteriorly, it has a short triangular process inserting between the second infraorbital and the maxilla (Figs. 4–6). The ornamentation of the preopercle includes some short ridges on its posterior and ventral parts (Fig. 4). The preopercular sensory canal is indicated by a vertical line of small pores close to the posterior margin of this bone.

Both the opercle and subopercle are trapezoidal. The opercle is relatively small, with a depth/length ratio of 1.3. The subopercle is larger, 1.3 times as deep as the opercle, having a prominent anteroventral extension that reaches the posterior end of the lower jaw (Fig. 6). In addition, a small triangular dermohyal is wedged between the preopercle and opercle. The opercle and dermohyal are nearly smooth on their surfaces, and the subopercle is ornamented with some short ridges. An interopercle is primitively absent, as in other stem neopterygians.

Gular, branchiostegal rays and ceratohyal. The median gular is nearly drop-shaped, with a slightly pointed anterior tip and a rounded posterior margin. It has a length about 27.5% of that of the maxilla. Two pairs of branchiostegal rays are present (Figs. 4–6); the anterior are small and elongate, and the posterior larger and triangular. The outer surfaces of the gular and branchiostegal rays are ornamented with ganoid ridges and tubercles.

A detached anterior ceratohyal is preserved near the prearticular (Fig. 8C). It is hourglass-shaped, half of the length of the dentary. The posterior ceratohyal and other elements of the hyoid series are not exposed.

Paired girdles and fins. A posttemporal, a supracleithrum, a cleithrum, a clavicle and two postcleithra are present on each side of the pectoral girdle (Figs. 4–7). The posttemporal is triangular, half as wide as the extrascapular. The supracleithrum is rhomboidal, nearly as deep as the opercle. The lateral line pierces the lateral portion of the posttemporal and runs posteriorly through the dorsal portion of the supracleithrum (Fig. 4).

Most of the curved cleithrum is laterally covered by the subopercle and its complete shape remains unknown. A triangular clavicle contacts the anteroventral arm of the cleithrum. Additionally, there are two rhomboidal postcleithra associated with the cleithrum; the dorsal is twice as deep as the ventral. Several small spines are discernable at the posterior margins of both postcleithra (Fig. 5).

The pectoral fins insert low on the body, and each is composed of about ten distally segmented rays, preceded by two basal fulcra and a series of small leaf-like fringing fulcra

(Figs. 3, 5A). The pelvic girdles are not exposed. The pelvic fins are small, located at the 12th or 13th vertical scale row. Each has five distally segmented rays, preceded by three basal fulcra and a series of fringing fulcra.

Median fins. The dorsal fin originates above the 22nd or 23rd vertical scale row, including a procurrent ray and ten principal rays (Fig. 8A). All rays are distally segmented. The procurrent ray is unbranched, preceded by four basal fulcra and a series of fringing fulcra. The first principal ray is unbranched and longest, and others are branched distally and gradually reduce in length posteriorly.

The anal fin originates below the 19th to 21st vertical scale row, and is composed of 14 distally segmented principal rays (Fig. 8B). The first ray is unbranched, preceded by two basal fulcra and a series of fringing fulcra; the remaining rays are branched distally.

The caudal fin is abbreviated heterocercal with a forked posterior profile. It is composed of 17 or 18 principal rays, eight in the dorsal lobe (Fig. 9). In addition, one or two procurrent rays are present at the dorsal lobe, and three or four procurrent rays at the ventral lobe. All rays are smooth on their surfaces. Both marginal principal rays are unbranched, and the rest branched distally. Small leaf-like fringing fulcra are associated with the leading margin of the procurrent ray in the dorsal lobe, and with leading margins of the 17th or 18th principal ray and last procurrent ray in the ventral lobe (Fig. 9B). There are six epaxial basal fulcra and two hypaxial basal fulcra; they are elongate, leaf-like elements. An anteriorly expanded dorsal scute precedes the anterior epaxial basal fulcrum, and a ventral scute is absent.

Scales. The body is fully covered with rhomboidal scales. The scales are smooth, arranged in 34 or 35 vertical rows between the pectoral girdle and the caudal inversion. On each side of the body, there are 14 or 15 scales in the 22nd vertical row, six or seven above the lateral line. The lateral line scales and two horizontal rows of scales immediately ventral to them are notably deepened in the anterior flank region. Each lateral line scale has a small notch at its posterior margin (Fig. 8F). The anterior lateral line scales are deepest, nearly three times as deep as long, and the depths of the lateral line scales gradually become shorter posteriorly. A small pore is present at the dorsal portion of some lateral line scales. Moreover, several small pores on the scales in the pre-dorsal region indicate the presence of an additional lateral line (Fig. 8D). The scales in anterior flank region have a serrated posterior margin, whereas those in other regions are nearly straight in their posterior margins. Peg-socket articulations are discernable between scales in the anterior flank region (Fig. 8E). Additionally, some scales in the pre-dorsal region bear a prominent posteroventral spine (Fig. 8F).

DISCUSSION

Phylogenetic relationships

My analysis resulted in 120 most parsimonious trees (tree length = 384 steps, consistency index = 0.4505, retention index = 0.7719). The strict consensus tree (Fig. 10) shows that the traditional, broadly inclusive 'Perleidiformes' or even 'Perleididae' are paraphyletic

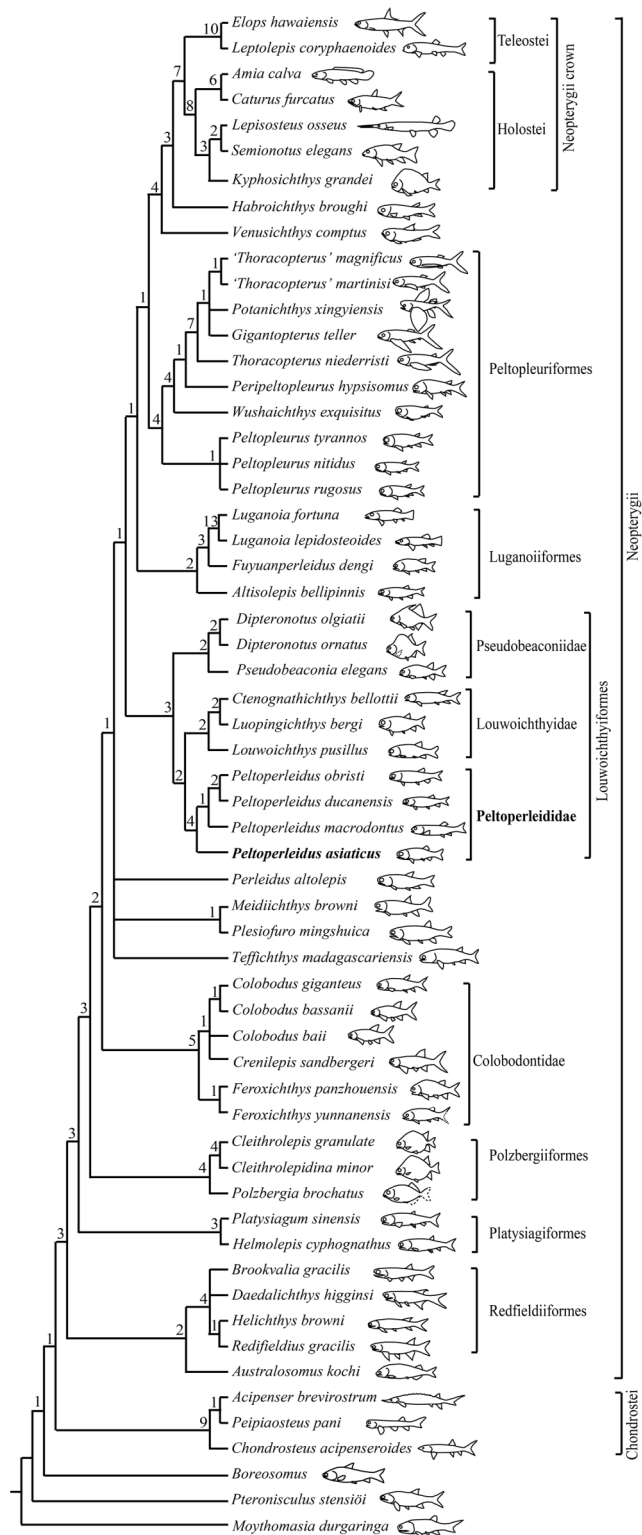


Figure 10 Strict consensus of 120 most parsimonious trees. Strict consensus of 120 most parsimonious trees (tree length = 384 steps, consistency index = 0.4505, retention index = 0.7719), illustrating the phylogenetic position of *Peltoperleidus asiaticus* sp. nov. within the Neopterygii. Digits above nodes indicate Bremer decay indices. For character descriptions and data matrix, see the online [Supplemental Material](#). Full-size DOI: 10.7717/peerj.12225/fig-10

groups composed of a series of independent stem-neopterygian lineages, in accordance with other recent analyses (Xu, Gao & Coates, 2015; Xu, Zhao & Shen, 2015; Xu, Ma & Zhao, 2018; Wen et al., 2019; Xu, 2020a, 2021; Ma, Xu & Geng, 2021). In this cladogram, four species of *Peltoperleidus* form a well-supported monophyletic group within the Louwoichthyiformes, and *P. asiaticus* sp. nov. is recovered at the base of *Peltoperleidus*.

Peltoperleidus is referred to the Louwoichthyiformes because it shares four synapomorphies of this order: the ventral portion of the preopercle anterior extended, contacting maxilla anteriorly (rather than ventrally); maxilla relatively short, ending nearly below the posterior margin of the orbit; presence of a prominent anteroventral extension of the subopercle; and presence of two or three pairs of branchiostegal rays. Within the Louwoichthyiformes, *Peltoperleidus* is more closely related to louwoichthyids than to pseudobeaconiids, sharing three derived features with louwoichthyids: presence of a small premaxilla with only one or two marginal teeth (reverse in *P. obristi* and *P. ducanensis*); presence of only two pairs of branchiostegal rays; and presence of a triangular posterior-most branchiostegal ray.

Four species of *Peltoperleidus* form a monophyletic group, supported by four synapomorphies: fusion of paired frontals into a median bone, fusion of paired parietals into a median bone, absence of epaxial procurrent rays in the caudal fin, and presence of six or more epiaxial basal fulcra associated with the caudal fin. *P. asiaticus* sp. nov. is recovered at the base of *Peltoperleidus* because it possesses the synapomorphies of this genus listed above but lacks the derived feature of *P. macrodontus* shared with *P. ducanensis* and *P. obristi*, presence of two horizontal rows of notably deepened scales (lateral line scales and the scales just ventral to them) in anterior flank region (independently evolved in *Altisolepis*). Above *P. macrodontus*, the sister taxon relationships between *P. ducanensis* and *P. obristi* are supported by presence of the supraorbital sensory canal ending in the frontal, and presence of a relatively long premaxilla with three or more teeth (independently evolved in *Pseudobeaconia*).

Peltoperleididae, a new family of Louwoichthyiformes

I propose a new family (Peltoperleididae) for *Peltoperleidus* within Louwoichthyiformes because the family possesses diagnostic features of this order but shows distinct morphological gaps with other louwoichthyiforms (Xu, 2021). Peltoperleidids lack two derived features of pseudobeaconiids, including presence of only one or two supraorbital bones and presence of a posteriorly directed spine on ridge scales anterior to the dorsal fin. Additionally, peltoperleidids lack two derived features of louwoichthyids, presence of extraordinarily long, fang-like marginal teeth on jaws and the absence of molariform teeth on coronoids, prearticular and palatine. These dentation differences could implicate disparity of feeding between peltoperleidids and louwoichthyids. The feeding apparatus of louwoichthyids are adapted for biting; they could use their long and sharp teeth to grasp and tear the prey from the substrate or to bite a piece from a larger prey item (Bürgin, 1996; Xu, 2021). However, peltoperleidids likely evolved a durophagous diet with dentition

combining grasping and crushing morphologies (as described above), resembling colobodontids and some perleidids.

Notably, peltoperleidids are easily distinguished from other louwoichthyiforms in the skull roof. The frontals and parietals are consistently fused into median bones in all species of *Peltoperleidus*, contrasting the paired conditions in other louwoichthyiforms. A rudimental, transverse suture is present between the median frontal and parietal in three species of *Peltoperleidus* from Europe, but it is absent in *P. asiaticus*, in which the median frontal is further fused with the median parietal (with only a longitudinal suture between parietal and dermopterotic in the skull roof). Among other stem-neopterygians, a median frontal is independently evolved in luganooids and some peltopleuriforms (Bürgin, 1992; Xu, 2020a, 2020b).

Additionally, peltoperleidids are unique among louwoichthyiforms in lacking any epaxial procurrent rays in the caudal fin. By contrast, pseudobeaconiids and louwoichthyids, resembling many other stem-neopterygian clades, have three or more epaxial procurrent rays in the caudal fin. Outside louwoichthyiforms, the epaxial procurrent rays were independently lost in the *Plesiofuro-Meidiichthys* clade and Platysiagiformes (Wen et al., 2019; Xu, 2020a). In line with the absence of epaxial procurrent rays, peltoperleidids have at least six epiaxial basal fulcra associated with the caudal fin, contrasting other louwoichthyiforms that generally have three or four epiaxial basal fulcra in the caudal fin.

Moreover, peltoperleidids have two or three horizontal rows of notably deepened flank scales. *Peltoperleidus asiaticus* sp. nov. and *P. triseriis* primitively have three rows of deepened flank scales, and derived peltoperleidids generally have two rows of even notably deepened flank scales, showing a condition similar to that of *Altisolepis*. The recovered basal position of *P. asiaticus* within *Peltoperleidus* in my analysis further supports that the presence of two horizontal rows of notably deepened scales was independently evolved in *Altisolepis* and peltoperleidids (Mutter & Herzog, 2004). By contrast, the lateral line scales are similar in depth to adjacent scales in other louwoichthyiforms.

Validity and taxonomy of *Altisolepis*

My comparative study supports the validity of *Altisolepis* (Mutter & Herzog, 2004). *Altisolepis* differs from *Peltoperleidus* in the following features: a subopercle smaller than the opercle (larger than the opercle in *Peltoperleidus*); a long maxilla extending well posterior to the orbital margin (relatively short in *Peltoperleidus*); presence of teeth in almost full length of the oral margin of the maxilla (only anterior half in *Peltoperleidus*); presence of multiple epaxial procurrent rays in the caudal fin (absent in *Peltoperleidus*); presence of only two or three epiaxial basal fulcra in the caudal fin (six or more in *Peltoperleidus*); presence of six pairs of branchiostegal rays (only two pairs in *Peltoperleidus*); and absence of fringing fulcra (present in *Peltoperleidus*). Based on the presence of deepened flank scales, Sun et al. (2015) placed *Altisolepis* in the Peltopleuridae (Peltopleuriformes). However, the greatly deepened scales persist to the caudal peduncle in *Altisolepis* but they are only present in the anterior flank region of peltopleuriforms. *Altisolepis* lacks the diagnostic features of Peltopleuriformes (sensu Xu & Ma, 2016),

e.g., supraorbital sensory canal ending in the frontal, absence of a preopercle/dermopterotic contact, presence of a postspiracle, and presence of enlarged lateral scutes associated with the anal fin. The absence of fringing fulcra in all fins support that *Altisolepis* is more closely related to the Fuyuanperleididae-Luganoiidae clade than to the Peltopleuriformes. Consequently, this genus is tentatively placed incertae sedis among the expanded Luganoiiformes (Fig. 10). A detailed taxonomic revision of *Altisolepis* will be undertaken in the future on the basis of comparative studies of *A. sinensis* (Sun et al., 2015) with its relatives from Europe (Bürgin, 1992; Mutter & Herzog, 2004).

Biogeographic implications

The discovery of *Peltoperleidus asiaticus* sp. nov. in South China documents the first record of the genus outside Europe, and predates the previously oldest record near the Anisian/Ladinian boundary (~242 Ma) in Switzerland and Italy by approximately two Ma. During the Middle Triassic, South China was located at the eastern rim of the Palaeotethys Ocean, and Switzerland and Italy at the western rim of that ocean (Metcalf, 2011). The older age and basal position of *P. asiaticus* within the genus indicates that *Peltoperleidus* probably originated in the early Middle Triassic of South China, and the Palaeotethys Ocean would have provided an east–west corridor for dispersal of the genus into Europe. The biological exchanges between the eastern and western rims of the Palaeotethys Ocean have previously been implicated by studies of other groups of ray-finned fishes and marine reptiles (Lombardo et al., 2011; Xu et al., 2012; Xu, Ma & Zhao, 2018; Benton et al., 2013; Sun et al., 2015; Wen et al., 2019; Xu, 2020a, Xu, 2021). The discovery of *P. asiaticus* provides an additional, new evidence supporting these exchanges in the Middle Triassic.

CONCLUSION

The recovery and study of *Peltoperleidus asiaticus* sp. nov. from the early Middle Triassic (Anisian) of eastern Yunnan, South China adds our knowledge of the phylogeny and distribution of the genus and taxonomic diversity of early neopterygians in the Luoping Biota. Although small-sized, *P. asiaticus* is likely a durophagous predator with dentition combining grasping and crushing morphologies. The new species resembles *P. triserius* in primitively having three horizontal rows of deepened flank scales; the presence of two horizontal rows of deepened scales in other peltoperleidids are considered derived (independently evolved in *Altisolepis*). Phylogenetic studies support the validity of *Altisolepis* and its affinities with the Fuyuanperleididae-Luganoiidae clade, challenging the previous placement of the genus in the Peltopleuriformes. *Peltoperleidus* shares certain derived features with louwoichthyids, but its morphology is distinct enough from that of louwoichthyids, to warrant the erection of a new family (Peltoperleididae) within the Louwoichthyiformes. The older age and basal position of *P. asiaticus* implicate that the Peltoperleididae was probably originated in the early Middle Triassic of South China, and the Palaeotethys Ocean would have provided an east–west corridor for dispersal of this clade into Europe.

ABBREVIATIONS

ach	anterior ceratohyal
an	anterior nostril
ao	antorbital
apl	anterior pit line
bf	basal fulcrum
br	branchiostegal ray
cl	cleithrum
cla	clavicle
den	dentary
dh	dermohyal
dpt	dermopterotic
dsp	dermosphenotic
exs	extrascapular
ff	fringing fulcrum
fr	frontal
gu	gular
io	infraorbital
mpl	middle pit line
mx	maxilla
n	nasal
op	opercle
pa	parietal
par	prearticular
pas	parasphenoid
pcl	postcleithrum
ppl	posterior pit line
pr	principle fin ray
pmx	premaxilla
pop	preopercle
pt	posttemporal
pq	palatoquadrate
r	rostral
pr	procurrent ray
scl	supracleithrum
skr	skull roof plate
so	suborbital
sop	subopercle
sr	sclerotic bone
su	supraorbital

ACKNOWLEDGEMENTS

I thank Toni Bürgin, Jack Stack, Kenneth De Baets and an anonymous reviewer for helpful comments on an early version of the manuscript, and Heinz Furrer for granting access to comparative fossil materials in the Paläontologisches Institut und Museum, Universität Zürich (Zürich).

ADDITIONAL INFORMATION AND DECLARATIONS

Funding

This work was supported by the Strategic Priority Research Program (B) of Chinese Academy of Sciences (Grants XDB 26000000 and 18000000), and National Natural Science Foundation of China (NSFC Grants 42172008, 41672001 and 41688103). The funders had no role in study design, data collection and analysis, decision to publish, or preparation of the manuscript.

Grant Disclosures

The following grant information was disclosed by the authors:

Chinese Academy of Sciences: XDB 26000000 and 18000000.

National Natural Science Foundation of China: 42172008, 41672001 and 41688103.

Competing Interests

The author declares that he has no competing interests.

Author Contributions

- Guang-Hui Xu conceived and designed the experiments, performed the experiments, analyzed the data, prepared figures and/or tables, authored or reviewed drafts of the paper, and approved the final draft.

Data Availability

The following information was supplied regarding data availability:

The raw data are available in the [Supplementary File](#).

The specimens (IVPP V22942, 25694 and 25695) illustrated and described are stored at the fossil collections of the Institute of Vertebrate Paleontology and Paleoanthropology, Chinese Academy of Sciences in Beijing, China.

New Species Registration

The following information was supplied regarding the registration of a newly described species:

Publication LSID: urn:lsid:zoobank.org:pub:F1B1BD3A-DD3F-4876-A7EE-649C8B224E31

Family, Peltoperleididae Xu LSID: urn:lsid:zoobank.org:act:80D7CFFE-379A-4012-BC46-73D855D42BCA

Species, Peltoperleididae Xu LSID: urn:lsid:zoobank.org:act:97631528-FB7E-4B82-9FF8-33955D8E2DDE.

Supplemental Information

Supplemental information for this article can be found online at <http://dx.doi.org/10.7717/peerj.12225#supplemental-information>.

REFERENCES

- Arratia G. 2008.** Actinopterygian postcranial skeleton with special reference to the diversity of fin ray elements, and the problem of identifying homologies. In: Arratia G, Schultze H-P, Wilson MVH, eds. *Mesozoic Fishes 4-Homology and Phylogeny*. München: Verlag Dr. Friedrich Pfeil, 40–101.
- Arratia G. 2009.** Identifying patterns of diversity of the actinopterygian fulcra. *Acta Zoologica (Stockholm)* **90**(Suppl. 1):220–235 DOI [10.1111/j.1463-6395.2008.00375.x](https://doi.org/10.1111/j.1463-6395.2008.00375.x).
- Arratia G. 2015.** Complexities of early Teleostei and the evolution of particular morphological structures through time. *Copeia* **103**(4):999–1025 DOI [10.1643/CG-14-184](https://doi.org/10.1643/CG-14-184).
- Benton MJ, Zhang Q-Y, Hu S-X, Chen Z-Q, Zhou C-Y, Wen W, Liu J, Huang J-Y, Zhou C-Y, Xie T, Tong J-N, Choo B. 2013.** Exceptional vertebrate biotas from the Triassic of China, and the expansion of marine ecosystems after the Permo-Triassic mass extinction. *Earth-Science Reviews* **125**(5):199–243 DOI [10.1016/j.earscirev.2013.05.014](https://doi.org/10.1016/j.earscirev.2013.05.014).
- Brough J. 1931.** The Triassic fishes of the karroo system and some general considerations on the bony fishes of the Triassic period. In: *Proceedings of the Zoological Society of London*, Vol. 1931. 235–296.
- Brough J. 1939.** *The Triassic fishes of Besano, Lombardy*. London: British Museum (Natural History).
- Bürgin T, Eichenberger U, Furrer H, Tschanz K. 1991.** Die Prosanto formation-eine fischreiche Fossil-Lagerstätte in der Mitteltrias der Silvretta-Decke (Kanton Graubünden, Schweiz). *Eclogae Geologicae Helveticae* **84**:921–990.
- Bürgin T. 1992.** Basal ray-finned fishes (Osteichthyes; Actinopterygii) from the middle Triassic of Monte San Giorgio (Canton Tessin, Switzerland). *Schweizerische Palaontologische Abhandlungen* **114**:1–164.
- Bürgin T. 1996.** Diversity in the feeding apparatus of perleiid fishes (Actinopterygii) from the middle Triassic of Monte San Giorgio (Switzerland). In: Arratia G, Viohl G, eds. *Mesozoic Fishes and Paleoecology*. München: Verlag Dr. Friedrich Pfeil, 555–565.
- Bürgin T, Herzog A. 2002.** Die Gattung *Ctenognathichthys* (Actinopterygii, Perleiidformes) aus der Prosanto-Formation (Ladin, Mitteltrias) Graubündens (Schweiz), mit der Beschreibung einer neuen Art *C. hattichi* sp. nov. *Eclogae Geologicae Helveticae* **95**:461–469.
- Cartanyà J, Fortuny J, Bolet A, Mutter RJ. 2015.** *Colobododus giganteus* (Beltan, 1972) comb. nov. from the upper Muschelkalk facies of Catalonia (NE Iberian Peninsula). *Neues Jahrbuch für Geologie und Paläontologie, Abhandlungen* **278**(3):323–333 DOI [10.1127/njgpa/2015/0532](https://doi.org/10.1127/njgpa/2015/0532).
- Cartanyà J, Fortuny J, Bolet A, Garcia-Artigas R. 2019.** *Moradebrichthys vilasecae* gen. et sp. nov., a new perleiid (Actinopterygii: Osteichthyes) from the Middle Triassic of Catalonia (NE Iberian Peninsula). *Neues Jahrbuch für Geologie und Paläontologie, Abhandlungen* **292**:171–190.
- Cavin L. 2010.** Diversity of Mesozoic semionotiform fishes and the origin of gars (Lepisosteidae). *Naturwissenschaften* **97**(12):1035–1040 DOI [10.1007/s00114-010-0722-7](https://doi.org/10.1007/s00114-010-0722-7).
- Clarke JT, Friedman M. 2018.** Body-shape diversity in Triassic-Early Cretaceous neopterygian fishes: sustained holostean disparity and predominantly gradual increases in teleost phenotypic variety. *Paleobiology* **44**(3):402–433 DOI [10.1017/pab.2018.8](https://doi.org/10.1017/pab.2018.8).
- Cope ED. 1887.** Zittel's manual of palaeontology. *American Naturalist* **21**:1014–1019.

- Feldmann RM, Schweitzer CE, Hu S-X, Zhang Q-Y, Zhou C-Y, Xie T, Huang J-Y, Wen W. 2012.** Macrurous Decapoda from the Luoping Biota (Middle Triassic) of China. *Journal of Paleontology* **86**(3):425–441 DOI [10.1666/11-113.1](https://doi.org/10.1666/11-113.1).
- Friedman M. 2015.** The early evolution of ray-finned fishes. *Palaeontology* **58**(2):213–228 DOI [10.1111/pala.12150](https://doi.org/10.1111/pala.12150).
- Gardiner BG. 1960.** A revision of certain actinopterygian and coelacanth fishes, chiefly from the Lower Lias. *Bulletin of the British Museum (Natural History) Geology* **4**(7):239–384 DOI [10.5962/p.313860](https://doi.org/10.5962/p.313860).
- Gardiner BG, Maisey JG, Littlewood DTJ. 1996.** Interrelationships of basal neopterygians. In: Stiassney MLJ, Parenti LR, Johnson GD, eds. *Interrelationships of Fishes*. San Diego: Academic Press, 117–146.
- Gardiner BG, Schaeffer B. 1989.** Interrelationships of lower actinopterygian fishes. *Zoological Journal of the Linnean Society* **97**(2):135–187 DOI [10.1111/j.1096-3642.1989.tb00550.x](https://doi.org/10.1111/j.1096-3642.1989.tb00550.x).
- Geng B-H, Jin F, Wu F-X, Wang Q. 2012.** New perleidid fishes from the Middle Triassic strata of Yunnan Province. *Geological Bulletin of China* **31**:915–927.
- Grande L, Bemis WE. 1998.** A comprehensive phylogenetic study of amiid fishes (Amiidae) based on comparative skeletal anatomy: an empirical search for interconnected patterns of natural history. *Society of Vertebrate Paleontology Memoir (Supplement to Journal of Vertebrate Paleontology)* **4**:1–690.
- Grande L. 2010.** An empirical synthetic pattern study of gars (Lepisosteiformes) and closely related species, based mostly on skeletal anatomy. The resurrection of Holostei. *Copeia* **10**(Supplement):1–871.
- Griffith J. 1977.** The Upper Triassic fishes from Polzberg bei Lunz. *Austria Zoological Journal of the Linnean Society* **60**(1):1–93 DOI [10.1111/j.1096-3642.1977.tb00834.x](https://doi.org/10.1111/j.1096-3642.1977.tb00834.x).
- Herzog A. 2001.** *Peltoerleidus obristi* sp. nov., ein neuer, kleiner Strahlenflosser (Actinopterygii, Perleidiformes) aus der Prosanto-Formation (Mitteltrias) von Graubünden (Schweiz). *Eclogae Geologicae Helveticae* **94**:495–507.
- Hu S-X, Zhang Q-Y, Chen Z-Q, Zhou C-Y, Lü T, Xie T, Wen W. 2011.** The Luoping biota: exceptional preservation, and new evidence on the Triassic recovery from end-Permian mass extinction. *Proceedings of the Royal Society B* **278**(1716):2274–2282 DOI [10.1098/rspb.2010.2235](https://doi.org/10.1098/rspb.2010.2235).
- Huang J-Y, Feldmann RM, Schweitzer CE, Hu S-X, Zhou C-Y, Benton MJ, Zhang Q-Y, Wen W, Xie T. 2013.** A new shrimp (Decapoda, Dendrobranchiata, Penaeoidea) from the Middle Triassic of Yunnan, Southwest China. *Journal of Paleontology* **87**(4):603–611 DOI [10.1666/13-024](https://doi.org/10.1666/13-024).
- Hutchinson P. 1973a.** *Pseudobeaconia*, a perleidiform fish from the Triassic Santa Clara Formation. *Argentina Breviora* **398**:1–24.
- Hutchinson P. 1973b.** A revision of the redfieldiiform and perleidiform fishes from the Triassic of Bekker's Kraal (South Africa) and Brookvale (New South Wales). *Bulletin of the British Museum of Natural History (Geology)* **22**:235–354.
- Lehman JP. 1952.** Etude complémentaire des poissons de l'Eotrias de Madagascar. *Kungliga Svenska Vetenskapsakademiens Handlingar* **2**:1–201.
- Lin H-Q, Sun Z-Y, Tintori A, Lombardo C, Jiang D-Y, Hao W-C. 2011.** A new species of *Habroichthys* Brough, 1939 (Actinopterygii; Peltoleuroides) from the Pelsonian (Anisian, Middle Triassic) of Yunnan Province, South China. *Neues Jahrbuch für Geologie und Paläontologie, Abhandlungen* **262**(1):79–89 DOI [10.1127/0077-7749/2011/0186](https://doi.org/10.1127/0077-7749/2011/0186).

- Lombardo C. 2001.** Actinopterygians from the Middle Triassic of northern Italy and Canton Ticino (Switzerland): anatomical descriptions and nomenclatural problems. *Rivista Italiana di Paleontologia e Stratigrafia* **107**:345–369.
- Lombardo C, Brambillasca F. 2005.** A new perleidiform (Actinopterygii, Osteichthyes) from the Late Triassic of Northern Italy. *Bollettino della Società Paleontologica Italiana* **44**:25–43.
- Lombardo C, Sun Z-Y, Tintori A, Jiang D-Y, Hao W-C. 2011.** A new species of the genus *Perleidus* (Actinopterygii: Perleidiformes) from the Middle Triassic of southern China. *Bollettino della Società Paleontologica Italiana* **50**:75–83.
- López-Arbarello A, Sferco E. 2018.** Neopterygian phylogeny: the merger assay. *Royal Society Open Science* **5**(3):172337 DOI [10.1098/rsos.172337](https://doi.org/10.1098/rsos.172337).
- López-Arbarello A, Sun Z-Y, Sferco E, Tintori A, Xu G-H, Sun Y-L, Wu F-X, Jiang D-Y. 2011.** New species of *Sangiorgioichthys* Tintori and Lombardo, 2007 (Neopterygii, Semionotiformes) from the Anisian of Luoping (Yunnan Province, South China). *Zootaxa* **2749**(1):25–39 DOI [10.11646/zootaxa.2749.1.2](https://doi.org/10.11646/zootaxa.2749.1.2).
- López-Arbarello A, Zavattieri AM. 2008.** Systematic revision of *Pseudobeaconia* Bordas, 1944, and *Mendocinichthys* Whitley, 1953 (Actinopterygii: ‘Perleidiformes’) from the Triassic of Argentina. *Palaeontology* **51**(5):1025–1052 DOI [10.1111/j.1475-4983.2008.00806.x](https://doi.org/10.1111/j.1475-4983.2008.00806.x).
- Ma X-Y, Xu G-H. 2017.** A new ionoscopiform fish (Holostei: Halecomorphi) from the Middle Triassic (Anisian) of Yunnan, China. *Vertebrata Palasiatica* **55**:92–106.
- Ma X-Y, Xu G-H, Geng B-H. 2021.** *Feroxichthys panzhouensis* sp. nov., a hump-backed colobodontid (Neopterygii, Actinopterygii) from the early Middle Triassic of Panzhou, Guizhou, China. *PeerJ* **9**:e11257 DOI [10.7717/peerj.11257](https://doi.org/10.7717/peerj.11257).
- Marramà G, Lombardo C, Tintori A, Carnevale G. 2017.** Redescription of ‘*Perleidus*’ (Osteichthyes, Actinopterygii) from the early Triassic of northwestern Madagascar. *Rivista Italiana di Paleontologia e Stratigrafia* **123**:219–242.
- Metcalfe I. 2011.** Palaeozoic-Mesozoic history of SE Asia. In: Hall R, Cottam MA, Wilson MEJ, eds. *The SE Asian Gateway: History and Tectonics of the Australia-Asia Collision*. Vol. 355. London: Geological Society, Special Publications, 7–35.
- Mutter RI. 2004.** The perleidiform family colobodontidae: a review. In: Arratia G, Tintori A, eds. *Mesozoic Fishes 3–Systematics, Palaeoenvironments and Biodiversity*. München: Verlag Dr. Friedrich Pfeil, 197–208.
- Mutter RJ. 2005.** Re-assessment of the genus *Helmolepis* Stensiö 1932 (Actinopterygii: Platysiagidae) and the evolution of platysiagids in the Early-Middle Triassic. *Eclogae Geologicae Helvetiae* **98**:271–280.
- Mutter RJ, Herzog A. 2004.** A new genus of Triassic actinopterygian with an evaluation of deepened flank scales in fusiform fossil fishes. *Journal of Vertebrate Paleontology* **24**(4):794–801 DOI [10.1671/0272-4634\(2004\)024\[0794:ANGOTA\]2.0.CO;2](https://doi.org/10.1671/0272-4634(2004)024[0794:ANGOTA]2.0.CO;2).
- Nelson JS, Grande TC, Wilson MVH. 2016.** *Fishes of the world*. Fifth Edition. Hoboken, NJ: John Wiley and Sons, Inc.
- Nixon KC. 2002.** WinClada, version 1.00.08. Available at <http://www.cladistics.com>.
- Patterson C. 1973.** Interrelationships of holosteans. In: Greenwood PH, Miles RS, Patterson C, eds. *Interrelationships of Fishes*. London: Academic Press, 233–305.
- Regan CT. 1923.** The skeleton of *Lepidosteus*, with remarks on the origin and evolution of the lower neopterygian fishes. In: *Proceedings of the Zoological Society of London 1923*. 445–461.

- Romano C, Koot MB, Kogan I, Brayard A, Minikh AV, Brinkmann W, Bucher H, Kriwe J. 2016.** Permian-Triassic Osteichthyes (bony fishes): diversity dynamics and body size evolution. *Biological Reviews* **91(1)**:106–147 DOI [10.1111/brv.12161](https://doi.org/10.1111/brv.12161).
- Sallan LC. 2014.** Major issues in the origins of ray-finned fish (Actinopterygii) biodiversity. *Biological Reviews* **89(4)**:950–971 DOI [10.1111/brv.12086](https://doi.org/10.1111/brv.12086).
- Schaeffer B. 1956.** Evolution in the Subholostean Fishes. *Evolution* **10(2)**:201–212 DOI [10.1111/j.1558-5646.1956.tb02845.x](https://doi.org/10.1111/j.1558-5646.1956.tb02845.x).
- Stensiö EA. 1932.** Triassic fishes from East Greenland. *Meddelser om Grønland* **83**:1–305.
- Sun Z-Y, Lombardo C, Tintori A, Jiang D-Y, Hao W-C, Sun Y-L, Lin H-Q. 2012.** Fuyuanperleidus dengi Geng et al. 2012 (Osteichthyes, Actinopterygii) from the Middle Triassic of Yunnan Province, South China. *Rivista Italiana di Paleontologia e Stratigrafia* **118**:359–373.
- Sun Z-Y, Lombardo C, Tintori A, Jiang D-Y. 2015.** A new species of Altisolepis (Peltopleuriformes, Actinopterygii) from the Middle Triassic of southern China. *Journal of Vertebrate Paleontology* **35(2)**:e909819 DOI [10.1080/02724634.2014.909819](https://doi.org/10.1080/02724634.2014.909819).
- Sun Z-Y, Tintori A, Jiang D-Y, Lombardo C, Rusconi M, Hao W-C, Sun Y-L. 2009.** A new perleidiform (Actinopterygii, Osteichthyes) from the Middle Anisian (Middle Triassic) of Yunnan, South China. *Acta Geologica Sinica* **83(3)**:460–470 DOI [10.1111/j.1755-6724.2009.00067.x](https://doi.org/10.1111/j.1755-6724.2009.00067.x).
- Swofford DL. 2003.** PAUP*. *Phylogenetic analysis using parsimony (*and other methods) Version 4.0b10*. Sunderland, Massachusetts: Sinauer Associates.
- Tintori A, Sassi D. 1992.** *Thoracopterus* Bronn (Osteichthyes: Actinopterygii): a gliding fish from the Upper Triassic of Europe. *Journal of Vertebrate Paleontology* **12(3)**:265–283 DOI [10.1080/02724634.1992.10011459](https://doi.org/10.1080/02724634.1992.10011459).
- Tintori A, Sun Z-Y, Lombardo C, Jiang D-Y, Sun Y-L, Hao W-C. 2010.** A new basal neopterygian from the Middle Triassic of Luoping County (South China). *Rivista Italiana di Paleontologia e Stratigrafia* **116(2)**:161–172 DOI [10.13130/2039-4942/5947](https://doi.org/10.13130/2039-4942/5947).
- Wade RT. 1935.** *The Triassic fishes of Brookvale, New South Wales*. London: British Museum (Natural History).
- Wen W, Hu S-X, Zhang Q-Y, Benton MJ, Kriwet J, Chen Z-Q, Zhou C-Y, Xie T, Huang J-Y. 2019.** A new species of Platysiagum from the Luoping Biota (Anisian, Middle Triassic, Yunnan, South China) reveals the relationship between Platysiagidae and Neopterygii. *Geological Magazine* **156(4)**:669–682 DOI [10.1017/S0016756818000079](https://doi.org/10.1017/S0016756818000079).
- Westoll TS. 1944.** The Haplolepididae, a new family of Late Carboniferous bony fishes—a study in taxonomy and evolution. *Bulletin of the American Museum of Natural History* **83**:1–121.
- Wu F-X, Sun Y-L, Xu G-H, Hao W-C, Jiang D-Y, Sun Z-Y. 2011.** New saurichthyid actinopterygian fishes from the Anisian (Middle Triassic) of southwestern China. *Acta Palaeontologica Polonica* **56(3)**:581–614 DOI [10.4202/app.2010.0007](https://doi.org/10.4202/app.2010.0007).
- Xu G-H. 2019.** Osteology and phylogeny of *Robustichthys luopingensis*, the largest holostean fish in the Middle Triassic. *PeerJ* **7(1)**:e7184 DOI [10.7717/peerj.7184](https://doi.org/10.7717/peerj.7184).
- Xu G-H. 2020a.** *Feroxichthys yunnanensis* gen. et sp. nov. (Colobodontidae, Neopterygii), a large durophagous predator from the Middle Triassic (Anisian) Luoping Biota, eastern Yunnan, China. *PeerJ* **8(Suppl. 1)**:e10229 DOI [10.7717/peerj.10229](https://doi.org/10.7717/peerj.10229).
- Xu G-H. 2020b.** A new species of *Luganoia* (Luganoiidae, Neopterygii) from the Middle Triassic Xingyi Biota, Guizhou, China. *Vertebrata Palasiatica* **58**:267–282 DOI [10.19615/j.cnki.1000-3118.200624](https://doi.org/10.19615/j.cnki.1000-3118.200624).

- Xu G-H. 2021.** A new stem-neopterygian fish from the Middle Triassic (Anisian) of Yunnan, China, with a reassessment of the relationships of early neopterygian clades. *Zoological Journal of the Linnean Society* **191**:375–394 DOI [10.1093/zoolinnean/zlaa053](https://doi.org/10.1093/zoolinnean/zlaa053).
- Xu G-H, Gao K-Q, Coates MI. 2015.** Taxonomic revision of *Plesiofuro mingshuica* from the Lower Triassic of northern Gansu, China, and the relationships of early neopterygian clades. *Journal of Vertebrate Paleontology* **35(6)**:e1001515 DOI [10.1080/02724634.2014.1001515](https://doi.org/10.1080/02724634.2014.1001515).
- Xu G-H, Ma X-Y. 2016.** A Middle Triassic stem-neopterygian fish from China sheds new light on the peltopleuriform phylogeny and internal fertilization. *Science Bulletin* **61(22)**:1766–1774 DOI [10.1007/S11434-016-1189-5](https://doi.org/10.1007/S11434-016-1189-5).
- Xu G-H, Ma X-Y, Zhao L-J. 2018.** A large peltopleurid fish from the Middle Triassic (Ladinian) of Yunnan and Guizhou, China. *Vertebrata Palasiatica* **56**:106–120.
- Xu G-H, Wu F-X. 2012.** A deep-bodied ginglymodian fish from the Middle Triassic of eastern Yunnan Province, China, and the phylogeny of lower neopterygians. *Chinese Science Bulletin* **57(1)**:111–118 DOI [10.1007/s11434-011-4719-1](https://doi.org/10.1007/s11434-011-4719-1).
- Xu G-H, Zhao L-J. 2016.** A Middle Triassic stem-neopterygian fish from China shows remarkable secondary sexual characteristics. *Science Bulletin* **61(4)**:338–344 DOI [10.1007/s11434-016-1007-0](https://doi.org/10.1007/s11434-016-1007-0).
- Xu G-H, Zhao L-J, Coates MI. 2014.** The oldest ionoscopiform from China sheds new light on the early evolution of halecomorph fishes. *Biology Letters* **10(5)**:20140204 DOI [10.1098/rsbl.2014.0204](https://doi.org/10.1098/rsbl.2014.0204).
- Xu G-H, Zhao L-J, Gao K-Q, Wu F-X. 2012.** A new stem-neopterygian fish from the Middle Triassic of China shows the earliest over-water gliding strategy of the vertebrates. *Proceedings of the Royal Society B* **280(1750)**:20122261 DOI [10.1098/rspb.2012.2261](https://doi.org/10.1098/rspb.2012.2261).
- Xu G-H, Zhao L-J, Shen C-C. 2015.** A Middle Triassic thoracopterid from China highlights the evolutionary origin of over-water gliding in early ray-finned fishes. *Biology Letters* **11(1)**:20140960 DOI [10.1098/rsbl.2014.0960](https://doi.org/10.1098/rsbl.2014.0960).
- Zhang Q-Y, Hu S-X, Wen W, Zhou C-Y, Xie T, Huang J-Y. 2015.** Research achievements and prospect on the Luoping Biota: according to 1:50000 regional geological survey and achievement of specific study for Luoping, Guishan, Datong, Pengzha, Yunnan. *Geological Survey of China* **2**:24–32.
- Zhang Q-Y, Zhou C-Y, Lü T, Xie T, Lou X-Y, Liu W, Sun Y-Y, Huang J-Y, Zhao L-S. 2009.** A conodont-based Middle Triassic age assignment for the Luoping Biota of Yunnan, China. *Science in China Series D-Earth Sciences* **52(10)**:1673–1678 DOI [10.1007/s11430-009-0114-z](https://doi.org/10.1007/s11430-009-0114-z).